

CATALOGUE No.

22-005

MONTHLY

DOES NOT CIRCULATE

NE PAS PRÊTER



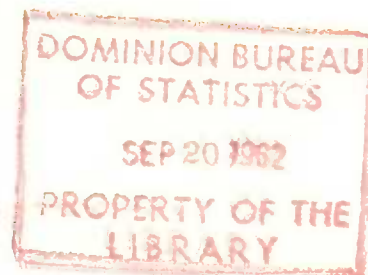
CANADA

DOMINION BUREAU OF STATISTICS
AGRICULTURE DIVISION

THE WHEAT REVIEW



AUGUST 1962



DOMINION BUREAU OF STATISTICS

THE
WHEAT REVIEW

AUGUST 1962

Published by Authority of
The Honourable George Hees, Minister of Trade and Commerce

Prepared in the Crops Section, Agriculture Division
Dominion Bureau of Statistics, Ottawa.

TABLE OF CONTENTS

Page

World Wheat Situation

Wheat Supplies of Four Major Exporting Countries Decline by 19 Per Cent

From a Year Ago	1
Shipments from Four Major Exporters 95 Million Bushels Above 1960-61	1
Near-Record World Wheat Crop Expected	2
I.W.C. Cumulative Totals of Commercial Purchases, Crop Year 1961-62	3

Canadian Situation

Canadian Wheat Supplies for 1962-63 Register a Four Per Cent Increase

Over Last Year	4
Preliminary Totals Indicate 1961-62 Exports of Wheat and Flour Third	
Highest on Record	5
August Forecast of Production of Canada's 1962 Grain Crops	6
Lake Shipments	8
Initial Grain Payments	8
The Effect of Intercensal Revisions on Estimates of All Wheat Acreage,	
Production and Farm Stocks - Prairie Provinces 1957-1961	9
Wheat Sale to Poland	12
Crop Conditions in the Prairie Provinces	12
Delivery Policy	12
Wheat Production in Canada and the Prairie Provinces 1910-62	13
Carryover Stocks of Canadian Grain at July 31, 1962	14
Canadian Wheat Carryover 1931-62	15
Farmers' Marketings of Wheat in the Prairie Provinces, Crop Year 1961-62 ..	16
Visible Supply of Canadian Wheat	17
Grading of Wheat Inspected August 1961-July 1962 with Comparisons	17
Weekly Visible Supply and Farmers' Marketings (Charts)	18
Wheat Shipments to the United States by Destination	19
Rail Shipments of Wheat to Maritime Ports	19
Rail Shipments of Wheat from Fort William-Port Arthur	20
Overseas Exports of Canadian Grain by Ports of Loading	20
Freight Assistance Shipments	21
Monthly Exports of Canadian Wheat and Wheat Flour	22
Exports of Canadian Wheat by Destination	23
Cumulative Exports of Canadian Wheat by Destination	24
Customs Exports of Canadian Wheat Flour by Countries of Consignment	26
Initial Payment to Producers	30
Canadian Wheat Board Weekly Average Cash Wheat Prices	31

Canadian Flour Milling Situation

Production and Exports	33
------------------------------	----

United States

Supply Position	34
1962 Wheat Crop Forecast at 1,063 Million Bushels	35
Preliminary Vote Shows Producers Approve Marketing Quota for 1963 Wheat Crop	36
Flour Production	36
United States Tops Last Year's Record in Wheat and Flour Exports	37
Cash Wheat Prices on the Kansas City and Minneapolis Markets	39
Chicago Wheat Futures High Points of Closing	39

Australian Situation	40
----------------------------	----

French Situation	43
------------------------	----

Argentine Situation	46
---------------------------	----

Crop Prospects in West Germany	46
--------------------------------------	----

Calendar of Wheat Events	47
--------------------------------	----

WORLD WHEAT SITUATION

Wheat Supplies of Four Major Exporting Countries Decline by 19 Per Cent From a Year Ago

Reflecting reduced supplies in each of the four major exporting countries, latest available estimates indicate that total supplies of wheat remaining on or about August 1, 1962 in these same countries for export and for carryover at the end of their respective crop years, amounted to 2,184.5 million bushels, 19 per cent less than the 2,705.4 million available a year ago and the lowest level at this date since August 1, 1957. Supplies at August 1, 1962, in millions of bushels, were held as follows, with 1961 comparable figures in brackets: United States, 1,726.4 (1,956.5); Canada, 395.7 (607.8 revised); Argentina, 13.7 (42.9); and Australia, 48.7 (98.2). Estimates for both years include on farm stocks as well as those in commercial positions. It is to be noted that the 1962 United States crop estimated at 1,063 million bushels is now included in these calculations. The supply figures for Canada represent crop-year-end carryover only, the new crop not being taken into account until September 1. Australian and Argentine production will be included at January 1.

Shipments from Four Major Exporters 95 Million Bushels Above 1960-61

It now appears evident that world wheat exports in the 1961-62 crop year have attained record proportions for the second consecutive year. This situation is largely due to reduced crops in Western Europe and North Africa as well as the continued high level of import requirements in Asia.

During the August-July (Canadian) crop year, total exports of wheat and flour in terms of wheat amounted to 1,386.3 million bushels, 7 per cent greater than the 1960-61 total of 1,291.6 million, and 59 per cent more than the ten year (1950-51—1959-60) average of 872.6 million. It is anticipated that when final tabulations are completed for other wheat exporting countries, that the 1961-62 total will have surpassed the previous year's record level of some 1.5 billion bushels. Canada, United States, Australia and Argentina each shared in the increase. Canadian wheat and flour exports amounted to 357.9 million bushels 1 per cent above those of the previous year and the third largest total on record. Shipments from the four traditional major wheat exporters during 1961-62, and for preceding years are shown in the accompanying table.

Exports of Wheat and Flour in Terms of Wheat, August-July 1961-62
with Comparisons

August-July	United States	Canada	Argentina	Australia	Total
	- million bushels -				
1950-51	375.3	241.0	94.5	127.8	838.6
1951-52	466.6	355.8	24.1	93.4	939.9
1952-53	322.6	385.5	38.9	107.0	854.0
1953-54	211.4	255.1	110.3	63.4	640.2
1954-55	280.4	251.9	134.5	94.3	761.1
1955-56	359.4	312.3	108.6	107.5	887.8
1956-57	539.5	264.4	100.6	120.2	1,024.7
1957-58	396.4	320.3	77.6	61.9	856.2
1958-59	455.6	294.5	106.2	82.7	939.0
1959-60	513.1	277.3	76.5	117.8	984.7
1960-61 <u>1/</u>	677.5	353.2	62.9	198.0	1,291.6
1961-62 <u>2/</u>	712.8	357.9	95.8	219.8	1,386.3

1/ Revised.

2/ Preliminary.

Near-Record World
Wheat Crop Expected

The August 30, 1962 issue of Foreign Crops and Markets, World Summaries, published by the Foreign Agricultural Service, United States Department of Agriculture, stated

in part that present prospects indicate that 1962 world wheat production may be second only to the record outturn in 1958, according to preliminary information available to Foreign Agricultural Service.

Although firm estimates are not yet available for a number of countries, the present outlook is for increases over the 1961 total in all major areas except Eastern Europe. A net increase is expected in North America because of Canada's larger harvest; this will more than offset a smaller U.S. outturn. Thus North America's exportable supplies will again be large, though smaller than last year in the United States.

Editor's Note: Canada's 1962 wheat crop, based on conditions at August 15, was forecast at 530.7 million bushels, 87 per cent larger than last year's outturn of 283.4 million.

U.S. supplies, in contrast, are about 280 million bushels smaller as a result of reduced carryover stocks and a smaller production this year. The August production estimate of 1,063 million bushels is 172 million bushels less than last year and 6 per cent below average. The decline is due to reduced area; as a result of mandatory acreage reductions under the 1962 program, acreage for harvest is 20 per cent below the 1951-60 average. Estimated yields of 24.1 bushels per harvested acre are the third largest recorded.

Western Europe's wheat crop is somewhat larger than in 1961 and import needs for the current season will be lower. Increases are especially marked in the exporting countries. France and Spain have large increases and Italy, a moderate increase. Though all three are listed as exporters under the International Wheat Agreement, both Spain and Italy have been net importers for the past 2 seasons. However, they are expected to have a small exportable surplus this year. France's surplus this year will be large, possibly about 80 million bushels. French exports during 1961-62 were about 66 million bushels.

Production is also larger than last year in a number of Western Europe's importing countries, especially the United Kingdom and Portugal. The outstanding exception to general increases is West Germany, where production is expected to be somewhat smaller than the fairly good 1961 harvest.

Growing conditions have been unfavourable over a good part of Eastern Europe, especially the Danube Basin countries. Although it is too early to have firm indications, it seems likely that Eastern Europe's production this year will be well below the 1962 total.

Despite serious winterkill in the important Ukraine, the Soviet Union's wheat acreage for harvest in 1962 is up about 12 million acres or 8 per cent, according to official estimates. However, much of the increase is in the lower yielding spring wheat area. Midsummer drought has adversely affected prospects for wheat in a number of important producing regions and the outlook is for a crop no better than last year.

Available information for Asia indicates a larger outturn than in 1961. Larger harvests are estimated for all countries reporting to date.

Africa's total production will be well above the poor 1961 harvest, according to preliminary reports. Good outturns in former French North Africa in

International Wheat Council
Cumulative Totals of Commercial Purchases by Importing Countries from Exporting Countries
Crop Year 1961-62 — Through June 30, 1962

Importing Countries	EXPORTING COUNTRIES							Total Purchases
	Canada	Argentina	Australia	France	Italy	Sweden	U.S.A.	
- thousand bushels -								
Austria	1,555	33	-	-	-	-	279	1,867
Belgium & Luxembourg	10,596	786	-	14	-	-	5,219	16,615
Brazil	-	15,648	-	-	-	-	742	16,390
Costa Rica	829	-	-	1	-	-	979	1,809
Cuba	-	-	-	-	-	-	-	-
Dominican Republic	1,754	-	-	-	-	-	223	1,977
El Salvador	557	-	-	-	-	-	396	953
Germany, Federal Republic ..	43,752	12,615	12,368	16,392	-	5,258	15,605	105,990
Greece	8	-	-	-	-	-	14	22
Guatemala	123	-	-	-	-	-	1,859	1,982
Haiti	-	-	-	-	-	-	529	529
Honduras Republic	111	-	-	-	-	-	705	816
Iceland	13	-	-	-	-	-	95	108
India	-	-	22,516	1	-	-	3,807	26,324
Indonesia	-	-	733	488	-	-	1	1,222
Ireland	2,241	19	1,222	26	-	-	268	3,776
Israel	829	-	-	-	-	-	2,957	3,786
Japan	45,255	-	14,840	-	-	-	32,737	92,832
Korea	-	-	-	-	-	-	-	-
Netherlands	3,087	1,690	3	1,563	-	588	24,772	31,703
Netherlands Territories ..	287	-	128	1	-	-	665	1,081
New Zealand	-	-	6,342	-	-	-	-	6,342
Nigeria	1,884	-	-	-	15	-	1,761	3,660
Norway	1,729	213	2,817	34	-	492	3,311	8,596
Panama	463	-	-	45	-	-	751	1,259
Peru	20	7,724	58	38	-	-	999	8,839
Philippines	4,622	-	142	-	-	-	8,906	13,670
Portugal	12	-	5	273	-	-	5,388	5,678
Portuguese Territories ...	908	-	328	194	1	-	601	2,032
Rhodesia & Nyasaland	113	-	3,148	3	-	-	33	3,297
Saudi Arabia	473	-	773	14	3	-	2,707	3,970
Sierra Leone	359	-	-	-	-	-	62	421
South Africa	485	-	3,264	-	-	-	-	3,749
Switzerland	7,177	525	-	2,188	253	-	1,258	11,401
United Arab Republic (Inc. Syria).....	3	-	3,070	-	126	-	474	3,673
United Kingdom	80,683	7,460	26,078	6,803	-	-	21,090	142,114
United Kingdom Territories	6,308	-	7,498	2,124	459	-	4,849	21,238
Vatican City	377	-	-	-	-	-	374	751
Venezuela	4,322	717	-	-	-	-	9,924	14,963
Tc Orders	-	12,387	-	-	-	-	-	12,387
Totals	220,935	59,817	105,333	30,202	857	6,338	154,340	577,822
Percentage of Total Sales by Exporting Countries	38.24	10.35	18.22	5.23	0.15	1.10	26.71	100.00

NOTE: Mexico and Spain - no sales reported.

Argentine figures cover period from August 1, 1961 to April 6, 1962.

CANADIAN SITUATION

Canadian Wheat Supplies
for 1962-63 Register
a Four Per Cent
Increase Over Last Year

Assuming realization of the August 31 forecast of production, Canadian wheat supplies for the crop year 1962-63, consisting of the July-end carryover of 395.7 million bushels and the new crop placed at 530.7 million (forecast on the basis of conditions at August 15) will amount to 926.3 million bushels. Supplies of the size indicated, reflecting a substantial increase in production which more than offset a decline in carryover stocks, would represent a gain of 4 per cent over last year's revised total of 891.2 million bushels.

Total Supply and Disposition of Canadian Wheat 1956-57— 1961-62 1/
and Estimated Supply, 1962-63
(Crop Years August 1 - July 31)

Item	1956-57	1957-58	1958-59	1959-60	1960-61	1961-62 <u>2/</u>	1962-63
- million bushels -							
Supplies							
Carryover, at beginning of crop year	579.6	733.5	648.5	588.0	599.6	607.8	395.7 <u>3/</u>
Production	573.0	392.5	397.7	444.7	517.6	283.4	530.7 <u>4/</u>
Imports wheat and flour	0.1	<u>5/</u>	<u>5/</u>	<u>5/</u>	<u>5/</u>	<u>5/</u>	
Totals <u>6/</u>	1,152.8	1,126.1	1,046.2	1,032.7	1,117.2	891.2	926.4
Disposition							
Exports wheat and flour .	264.4	320.3	294.5	277.3	353.2	357.9	
Human consumption	52.4	53.1	53.7	55.0	56.3	58.6	
Seed	31.0	34.7	34.3	35.7	37.9	39.0	
Industrial use	1.4	1.4	1.3	1.5	1.5	1.5 <u>7/</u>	
Carryover, at end of crop year	733.5	648.5	588.0	599.6	607.8	395.7 <u>3/</u>	
Residual item <u>8/</u>	70.0	68.1	74.3	63.7	60.5	38.6	
Totals <u>6/</u>	1,152.8	1,126.1	1,046.2	1,032.7	1,117.2	891.2	

- 1/ Intercensal revisions in the Prairie Provinces affecting data on production, farm stocks, seed and human consumption have been taken into account. Further minor revisions may be required for 1957 to 1960 when intercensal revisions for the other provinces have been completed.
- 2/ Subject to further revision.
- 3/ Subject to further revision pending receipts of Board of Grain Commissioners' final data on commercial stocks at July 31, 1962.
- 4/ Based on August 31, 1962 forecast of production and subject to revision as later estimates become available.
- 5/ Less than 50,000 bushels.
- 6/ Components may not add exactly to the totals due to rounding.
- 7/ Estimated.
- 8/ Includes feed for livestock and waste but also reflects the effect of any estimating errors in other components of the balance sheet.

Realization of the 1962 production forecast for wheat will be dependent upon how weather and other developments affect the crop between August 15 and completion of harvesting. The second official forecast of production, to be released on September 28, will give greater effect to actual harvesting conditions and outturns.

Preliminary Totals Indicate
1961-62 Exports of Wheat and
Flour Third Highest on Record

According to preliminary data, combined exports of Canadian wheat in bulk, bagged seed wheat and wheat flour in terms of wheat equivalent during the 1961-62 crop year amounted to 357.9 million bushels, one per cent greater than the 1960-61 total of 353.2 million and 21 per cent above the ten-year (1950-51-1959-60) average of 295.8 million bushels. Exports of wheat in bulk (as reported by the Board of Grain Commissioners) represented an increase of 4 per cent over the 1960-61 total of 311.0 million and 29 per cent more than the ten-year average of 249.9 million. Exports of bagged seed, based on preliminary data, amounted to 3.2 million bushels as against 6.6 million in 1960-61. Wheat flour exports, also based on preliminary data, were the equivalent of 31.9 million bushels of wheat and 11 per cent less than the 1960-61 revised total of 35.7 million bushels.

The 1961-62 totals for exports of wheat in bulk are compiled from overseas clearances and exports to the United States as recorded by the Board of Grain Commissioners for Canada, while data on exports of wheat flour and bagged seed wheat are obtained from Canadian Customs returns. Adjusted data on wheat flour exports for the 1961-62 crop year, removing the effect of time lag in reporting Customs returns, will be included in a subsequent issue of this publication.

Monthly exports of wheat in bulk, bagged seed wheat and wheat flour in terms of wheat during the crop year recently completed ranged from a high of 43.5 million bushels in November to a low of 20.4 million in January.

Overseas clearances of bulk wheat, the major component of the total exports of wheat, bagged seed wheat and flour, ranged between 37.8 million bushels in November and 17.5 million in January. In addition, total overseas clearances of some 321.3 million bushels, were the second highest on record, having been exceeded only by the 344.4 million in 1928-29.

Increased shipments to Mainland China, the Federal Republic of Germany, Poland and East Germany more than offset reduced exports of wheat to Italy, Japan and Britain. Czechoslovakia did not enter the Canadian wheat market in 1961-62 after receiving 12.1 million bushels in 1960-61. Britain, however, remained as Canada's leading purchaser of wheat, with exports to that destination amounting to some 73.7 million bushels in 1961-62 compared with 78.6 million in the preceding year. Clearances to Mainland China, at 72.0 million bushels, were more than double the 1960-61 total of 34.7 million. Japan was the third largest market for Canadian wheat receiving 48.0 million bushels compared with 54.0 million the previous year. The Federal Republic of Germany boosted imports of Canadian wheat from 33.0 million in 1960-61 to 43.9 million in 1961-62.

Shipments to other major markets in 1961-62, with 1960-61 figures in brackets, were as follows, in millions of bushels: Poland, 12.3 (5.7); Belgium-Luxembourg, 11.5 (12.2); East Germany, 8.0 (1.9); Switzerland, 8.0 (7.3); Venezuela, 4.7 (2.7); Italy, 3.9 (14.9); Philippines, 3.9 (1.0); Netherlands, 3.6 (6.6); and India, 3.5 (4.0). In total, these thirteen markets accounted for 92 per cent of the 1961-62 overseas clearances of wheat.

Exports of wheat flour during 1961-62 went to fifty countries with shipments to Britain amounting to the equivalent of 12.2 million bushels and representing 38 per cent of the crop year total. In 1960-61, based on revised data, exports of Canadian wheat flour to Britain were the equivalent of 13.2 million bushels and accounted for 37 per cent of the total. Other leading markets for Canadian wheat flour in 1961-62, were as follows, in millions of bushels of wheat equivalent, with revised 1960-61 data in brackets: Ghana, 2.1 (2.2); Nigeria, 1.7 (0.9);

Jamaica, 1.5 (1.5); United States, 1.4 (1.3); Trinidad and Tobago, 1.3 (1.4); Philippines, 1.1 (2.6); Japan, 1.1 (1.6); and Leeward and Windward Islands, 1.0 (1.1).

August Forecast of
Production of Canada's
1962 Grain Crops

Based on yields indicated at August 15 production of each of the major Canadian grains will exceed last year's levels. Realization of the 1962 yield and production forecasts in the accompanying table is dependent on the existence of satisfactory weather conditions throughout the remainder of the growing and harvesting season. By mid-August only a limited acreage of spring-sown cereals had been harvested in the Prairie Provinces and while some progress has been made since that time, showery weather has caused delays in those areas where the crop is ready for combining and retarded maturity in other areas. Harvesting of cereal crops included in this report is well advanced in Ontario, but progress has been behind normal in parts of Quebec and over most of the Maritimes. The cereal crop harvest is also late in the Peace River Block of British Columbia.

Crops got off to a good start in the Prairie Provinces but areas in Eastern Manitoba particularly and some districts of northern Alberta were late being planted because of excessive spring precipitation. In almost all other areas, sub-soil reserves were low and crop development depended more than normal on timely precipitation. Rain, while somewhat spotty, fell at frequent intervals during the growing season, and this, coupled with cool weather, permitted crops to make maximum use of the limited moisture supplies. As a result average wheat yields are forecast at 19.4 bushels compared with the 1961 crop of 10.6 bushels when limited rainfall and hot weather took a heavy toll over wide areas of the Prairies. Average yields of other crops in the Prairies are also markedly improved over 1961.

August Forecast of the 1962 Production of Principal Grain Crops
Canada and Prairie Provinces, Compared with 1961

Province and Crop	Area		Yield per Acre		Production	
	1961 <u>1/</u>	1962	1961 <u>1/</u>	1962 <u>2/</u>	1961 <u>1/</u>	1962 <u>2/</u>
	- acres -		- bushels -		- bushels -	
<u>CANADA</u>						
Winter wheat	561,000	450,000	35.6	35.3	19,981,000	15,885,000
Spring wheat <u>3/</u> ...	24,755,000	26,442,900	10.6	19.5	263,413,000	514,769,000
All wheat	25,316,000	26,892,900	11.2	19.7	283,394,000	530,654,000
Oats for grain	8,542,700	10,523,100	33.2	44.9	283,965,000	472,278,000
Barley	5,529,000	5,287,100	20.4	30.6	112,640,000	161,737,000
Fall rye	471,600	570,200	12.5	20.0	5,903,000	11,429,000
Spring rye	89,200	97,300	6.9	12.9	616,000	1,260,000
All rye	560,800	667,500	11.6	19.0	6,519,000	12,689,000
Flaxseed	2,075,400	1,414,600	6.9	10.8	14,318,000	15,248,000
Mixed grains	1,565,700	1,521,600	39.2	45.7	61,310,000	69,579,000
<u>PRAIRIE PROVINCES</u>						
Wheat	24,629,000	26,313,000	10.6	19.4	260,000,000	511,000,000
Oats	5,122,000 <u>4/</u>	7,084,000 <u>4/</u>	25.2	42.3	129,000,000	300,000,000
Barley	5,361,000	5,097,000	19.8	30.2	106,000,000	154,000,000
Rye	492,700	599,300	9.8	18.5	4,836,000	11,060,000
Flaxseed	2,051,000	1,391,000	6.8	10.7	13,900,000	14,900,000

1/ Revised on the basis of 1961 Census acreage data.

2/ As indicated on basis of conditions on or about August 15.

3/ Includes durum wheat.

4/ Estimated area for harvest as oats.

Canada's 1962 wheat crop, forecast at 530.7 million bushels is 87 per cent larger than last year's crop of 283.4 million. Average yields increased from 11.2 bushels in 1961 to 19.7 bushels per acre this year.

The 1962 crop of spring wheat, forecast at 514.8 million bushels is being harvested from a seeded area of 26.4 million acres, yielding an indicated 19.5 bushels per acre. The 1961 spring wheat crop of 263.4 million bushels was produced on 24.8 million acres yielding an average of 10.6 bushels per acre. The 1962 yield for Ontario's winter wheat crop is placed at 35.3 bushels per acre as compared with 35.6 bushels in 1961. A 20 per cent decrease in acreage combined with a one per cent decrease in yields lowered the production to 15.9 million bushels in 1962 compared with 20.0 million in 1961.

In the Prairie Provinces, the 1962 wheat crop is forecast at 511.0 million bushels, some 97 per cent above last year's crop of 260.0 million. The forecasted average yield per seeded acre in the Prairie Provinces, on the basis of conditions at August 15, is 19.4 bushels per acre with Manitoba averaging 26.0, Saskatchewan, 18.1 and Alberta, 19.8 bushels per acre. Production in each of these provinces in millions of bushels, with last year's estimate in brackets, is as follows: Manitoba, a record 81.0 (34.0); Saskatchewan, 315.0 (137.0); and Alberta, 115.0 (89.0). Relatively small amounts of winter wheat are included in these forecasts for the Prairie Provinces.

August Forecast of the 1962 Production of Wheat, Canada and Provinces
Compared with 1961

Province	Area		Yield per Acre		Production	
	1961 <u>1/</u>	1962	1961 <u>1/</u>	1962 <u>2/</u>	1961 <u>1/</u>	1962 <u>2/</u>
	- acres -		- bushels -		- bushels -	
All wheat -						
Canada	25,316,000	26,892,900	11.2	19.7	283,394,000	530,654,000
Ontario	581,100	468,000	35.2	34.9	20,447,000	16,335,000
Spring wheat -						
Canada <u>3/</u>	24,755,000	26,442,900	10.6	19.5	263,413,000	514,769,000
Prince Ed. Is.	4,100	4,600	27.8	30.4	114,000	140,000
Nova Scotia ..	1,400	1,200	30.0	33.3	42,000	40,000
New Brunswick.	2,500	2,600	25.0	29.6	62,000	77,000
Quebec	10,600	10,000	23.6	26.2	250,000	252,000
Ontario	20,100	18,000	23.2	25.0	466,000	450,000
Manitoba <u>3/</u> ..	2,914,000	3,118,000	11.7	26.0	34,000,000	81,000,000
Saskatchewan <u>3/</u>	16,082,000	17,388,000	8.5	18.1	137,000,000	315,000,000
Alberta <u>3/</u> ...	5,633,000	5,807,000	15.8	19.8	89,000,000	115,000,000
Br. Columbia .	87,300	93,500	28.4	29.9	2,479,000	2,800,000
Winter wheat -						
Canada <u>4/</u>	561,000	450,000	35.6	35.3	19,981,000	15,885,000

1/ Revised on the basis of 1961 Census acreage data. 2/ As indicated on basis of conditions on or about August 15. 3/ Includes Durum wheat. 4/ Winter wheat estimates apply to Ontario only. The western wheat crop contains a relatively small proportion of winter wheat but, due to difficulties encountered in obtaining acreage data required for a separate winter wheat estimate in the Prairie Provinces, all western wheat is currently included under spring wheat.

The indicated production of durum wheat, which is included in the above forecast of spring wheat is a record 58.4 million bushels compared with last year's estimate of 14.5 million. Forecasts of 1962 production in each of the Prairie Provinces in millions of bushels, with last year's estimates in brackets are: Manitoba, 3.8 (0.8); Saskatchewan, 48.0 (12.0); and Alberta, 6.6 (1.7). Acreage seeded to this crop was 73 per cent larger than in 1961 and this was coupled with an increase of 135 per cent in yield per acre. Yields per acre in 1962, with 1961 figures in brackets are: Manitoba, 23.6 (9.4); Saskatchewan, 18.4 (7.6); Alberta, 15.5 (9.0); and the Prairie Provinces, 18.3 (7.8).

Lake Shipments Lake shipments of the five major grains out of Lakehead terminals from the opening of navigation to August 22 this year amounted to 97.8 million bushels as against 187.1 million during the comparable period of 1961. In 1962 the season of navigation opened on April 22 while the 1961 season opened on April 9. Shipments of wheat, although sharply below last year's total, accounted for about 72 per cent of the current total. Rye was the only one of the five grains moving in greater volume this year than last.

Lake Shipments of Canadian Grain from the Opening of Navigation to August 22, 1962 and to Approximately the Same Date, 1952 to 1961*

Year	Wheat	Oats	Barley	Rye	Flaxseed	Total
- thousand bushels -						
1952	138,195	56,133	50,368	4,534	2,867	252,097
1953	147,933	47,410	63,353	6,700	2,777	268,174
1954	63,639	31,306	35,898	4,255	1,985	137,083
1955	91,740	19,201	34,515	7,426	3,271	156,153
1956	139,049	23,426	49,097	9,828	3,535	224,936
1957	96,319	23,391	25,967	3,723	6,609	156,008
1958	113,799	24,615	43,655	4,576	3,115	189,759
1959	105,680	14,726	24,768	3,424	3,474	152,071
1960	112,001	12,109	27,404	2,951	4,228	158,693
1961	140,656	15,486	25,487	1,462	4,043	187,134
1962	70,729	8,267	13,572	1,960	3,295	97,823

* Shipments from the opening of navigation to the following August dates: 21, 1952; 20, 1953; 20, 1954; 24, 1955; 22, 1956; 21, 1957; 20, 1958; 19, 1959; 24, 1960; and 23, 1961.

Initial Grain Payments On August 7, 1962 an initial payment of \$1.50 per bushel for western wheat was announced by Agriculture Minister Alvin Hamilton. It is a 10-cent increase over that in effect at the beginning of the 1961-62 crop year and is the first boost since 1949-50.

Initial payments for oats and barley remain unchanged at 60 cents a bushel for oats and 96 cents for barley.

The new figure for wheat is in line with the adjusted payment of \$1.50 which became effective March 1 this year. It applies to No. 1 Northern in store at Fort William-Port Arthur or Vancouver. The initial payment for oats is based on No. 2 C.W., and for barley on No. 3 C.W. 6-Row, in both cases in store at Fort William-Port Arthur.

The Canadian Wheat Board will shortly make recommendations on initial payments for other grades of wheat including durums, as well as for oats and barley.

The Effect of Intercensal Revisions on Estimates of All Wheat Acreage
Production and Farm Stocks

Prairie Provinces - 1957-1961

One of the principal purposes of the quinquennial census of Agriculture is to provide benchmark data to serve as new starting points for the annual estimates (based on mail questionnaire surveys) made in the Agriculture Division of the Dominion Bureau of Statistics. It is, therefore, standard practice to adjust the annual estimates of the Agriculture Division to bring them into line with the new benchmarks provided by the Agricultural Census.

When the census material became available in the summer of 1962, it became evident that the Agriculture Division's estimate for 1961 wheat acreage for the Prairie Provinces was too low. The census indicated a seeded area of 24,629,000 acres as against the Division's estimate of 23,162,000 acres, a difference of 1,467,000 or about 6 per cent.

Investigation of the estimates for the intercensal period indicate that the difference was cumulative in nature, i.e. it had built up during the period and was not simply the result of underestimation in 1961. Bearing in mind the methods used in making these annual estimates, an error amounting, on the average, to a little over one per cent per year is not considered excessive. In fact it is probably as small as could be expected from a strictly random sample of similar size.

The Division's annual acreage estimates were determined during the 1957-1961 period on the basis of percentage changes from one year to the next with the 1956 census acreage providing the beginning benchmark. These percentages, in turn, were derived from reports from farmers on acreage seeded to wheat on their farms in two successive seasons. Most of the difference between the preliminary and revised change ratios occurred between 1956 and 1957 and between 1957 and 1958. In fact during the last three years of the period, essentially no correction was found necessary for the Prairie Provinces as a whole.

Comparison of the Preliminary and Revised Acreage Change Ratios For Wheat
from 1957 to 1961, Prairie Provinces

Years	Change Ratio, Per Cent	
	Preliminary	Revised
1956 to 1957	93	95
1957 to 1958	99	103
1958 to 1959	111	112
1959 to 1960	100	100
1960 to 1961	103	103

Changes in acreage estimates are necessarily reflected in estimates of the stocks, seed, and the feed, waste and dockage components of the balance sheet. Details of these revisions and their net effect may be observed in the table following this statement.

Yield per acre estimates for the intercensal period, with minor exceptions, remain unchanged. It is felt that these estimates are relatively accurate and this contention is borne out by numerous independent annual yield surveys which seldom fail to check closely with the Agriculture Division's estimates. It accordingly follows that changes in acreage estimates must lead to changes in production estimates.

In addition to estimates of acreage, yield and production, the Agriculture

Division publishes estimates of grain stocks on farms at March 31 and at July 31, the close of the crop year. These estimates are determined partly on the basis of balance sheet data, similar to that shown in the following table and partly on the basis of a mailed questionnaire survey of the Division's crop correspondents. The revisions in stocks as noted in the table satisfy balance sheet requirements in that correspondingly revised disposals for seed, feed, waste and dockage (items 7 and 8) can be reasonably well substantiated by other survey data. The revised farm stocks now also correspond closely to those obtained from the mailed questionnaire survey sample indications.

The results obtained from the farm stocks survey have proved to be highly accurate during the past intercensal period considering the nature of the sample. However, until July 31, 1962, a good benchmark, against which the results could be tested, was not available. Some 7,000 farmer crop correspondents in the Prairie Provinces report regularly to various surveys conducted by the Crops Section. Due to a combination of factors, approximately 60 per cent of these correspondents may be expected to reply in time to meet tabulation deadlines. Thus some 4,000 to 4,500 farmers report stocks on the farms they operate. This is approximately a 2 per cent sample of the 210,000 farmers in the Prairie Provinces. Returns are edited and sorted by crop districts and sample results are expanded by determining the ratio of stocks to acreages in principal crops and summerfallow. Since it has now been demonstrated that the survey and method of expansion can provide good results, more reliance than in the past will be placed on these estimates during the 1961-66 period.

No significant change in methods of estimating average yields per acre is contemplated at this time for the 1962-66 period.

Although the method of sample expansion for acreage of wheat proved to be highly accurate during three of the five intercensal years and reasonably accurate in the remaining two years, a change in method was introduced in June 1962. The procedure used during the 1956-61 period was known as the current-historic change ratio method of sample expansion. In June of each year, half of the farmers in the Prairie Provinces were asked to report acreage seeded to specified crops and summerfallow in the preceding and current year and change ratios were calculated. A sample of between 15 to 20 per cent of usable returns was obtained and while the system had some excellent features, it did present some insolvable problems with respect to biases in the change ratios derived for some crops and for summerfallow acreage. A research project to find ways of using the maximum number of returns, yet not introduce biases, was undertaken and of out of a number of possible alternatives tested, using the 1956 to 1961 sample data for testing purposes, a system known technically as the 'double ratio' method has been selected for use during the 1962 to 1966 period. The formula for the method is as follows:

$$\frac{SA_2}{CA_2} \bigg/ \frac{sa_2}{ca_2} = \frac{SA_1}{CA_1} \bigg/ \frac{sa_1}{ca_1}$$

where: SA = total acreage in a specified crop (universe)
CA = total cultivated acreage (universe)
sa = sample acreage in a specified crop
ca = sample cultivated acreage
2 = current year
1 = preceding year

then:

$$SA_2 = \frac{sa_2}{ca_2} \times \frac{ca_1}{sa_1} \times \frac{CA_2}{CA_1} \times SA_1$$

Sample acreages of specified crops are as reported by farmers during June of the year in which the crop is planted.

INTERCENSAL REVISIONS OF WHEAT ACREAGE, FARM SUPPLY AND DISPOSITION - PRAIRIE PROVINCES, 1956-57 TO 1961-62
COMPARED WITH PREVIOUSLY PUBLISHED ESTIMATES TOGETHER WITH PRELIMINARY ESTIMATES OF FARM SUPPLIES FOR 1962-63
(CROP YEARS BEGINNING AUGUST 1)

		1956-57	1957-58		1958-59		1959-60		1960-61		1961-62		1962-63
		Revised	Preliminary	Revised	Preliminary	Revised	Preliminary	Revised	Preliminary	Revised	Preliminary	Revised	Preliminary
1. Acreage ('000 acres)													
	Manitoba	2,199 ^{1/}	2,200	2,200	2,358	2,480	2,594	2,670	2,659	2,800	2,765	2,914 ^{1/}	3,118
	Saskatchewan	14,569 ^{1/}	13,365	13,800	13,182	14,200	14,803	15,800	14,871	15,800	15,093	16,082 ^{1/}	17,388
	Alberta	5,296 ^{1/}	4,881	4,881	4,704	4,800	5,160	5,500	5,060	5,300	5,304	5,633 ^{1/}	5,807
	Prairie Provinces	22,064 ^{1/}	20,446	20,881	20,244	21,480	22,557	23,970	22,590	23,900	23,162	24,629 ^{1/}	26,313
2. Yield per acre (bushels)													
	Manitoba	25.6	22.3	22.3	24.6	24.6	23.1	23.1	23.3	23.6	11.6	11.7	26.0
	Saskatchewan	24.4	16.6	16.6	14.6	15.0	15.7	16.0	20.7	20.7	8.2	8.5	18.1
	Alberta	26.5	19.1	19.1	20.4	20.4	20.7	20.9	19.8	19.8	15.8	15.8	19.8
	Prairie Provinces	25.0	17.8	17.8	17.1	17.3	17.7	17.9	20.8	20.8	10.4	10.6	19.4
3. Production							- million bushels -						
	Manitoba	56.0	49.0	49.0	58.0	61.0	60.0	62.0	62.0	66.0	32.0	34.0	81.0
	Saskatchewan	355.0	222.0	229.0	192.0	213.0	232.0	253.0	308.0	327.0	124.0	137.0	315.0
	Alberta	140.0	93.0	93.0	96.0	98.0	107.0	115.0	100.0	105.0	84.0	89.0	115.0
	Prairie Provinces	551.0	364.0	371.0	346.0	372.0	399.0	430.0	470.0	498.0	240.0	260.0	511.0
4. Farm Stocks at beginning of Crop Year													
	Manitoba	4.0	12.0	12.0	9.0	9.0	8.0	8.0	8.0	9.0	8.0	13.0	2.0
	Saskatchewan	136.0	229.0	229.0	164.0	173.0	90.0	121.0	51.0	99.0	66.0	127.0	39.0
	Alberta	62.0	78.0	78.0	56.0	56.0	28.0	36.0	21.0	34.0	13.0	28.0	15.0
	Prairie Provinces	202.0	319.0	319.0	229.0	238.0	126.0	165.0	80.0	142.0	87.0	168.0	56.0
5. Farm Supplies (3 + 4)													
	Manitoba	60.0	61.0	61.0	67.0	70.0	68.0	70.0	70.0	75.0	40.0	47.0	83.0
	Saskatchewan	491.0	451.0	458.0	356.0	386.0	322.0	374.0	359.0	426.0	190.0	264.0	354.0
	Alberta	202.0	171.0	171.0	152.0	154.0	135.0	151.0	121.0	139.0	97.0	117.0	130.0
	Prairie Provinces	753.0	683.0	690.0	575.0	610.0	525.0	595.0	550.0	640.0	327.0	428.0	567.0
Less Disposition:													
6. Deliveries from Farms ^{2/} (Board of Grain Commissioners' Marketing data plus exports of Registered seed.)													
	Manitoba	40.6	43.8	43.8	50.3	50.3	52.0	51.9	51.4	51.4		35.6 ^{3/}	
	Saskatchewan	223.7	247.9	247.9	225.6	225.5	238.3	237.6	261.0	260.5		189.3 ^{3/}	
	Alberta	99.7	90.7	90.5	97.1	96.3	94.3	93.8	90.5	89.4		82.5 ^{3/}	
	Prairie Provinces	364.0	382.4	382.2	373.0	372.1	384.6	383.3	402.9	401.3		307.4 ^{3/}	
7. Farm Seed Requirements													
	Manitoba	3.4	3.5	3.7	3.9	4.0	4.0	4.1	4.1	4.4		4.7	
	Saskatchewan	19.3	18.5	19.5	20.7	22.0	20.8	22.0	21.1	22.5		24.0	
	Alberta	6.8	6.6	6.7	7.2	7.7	7.1	7.4	7.4	7.8		8.1	
	Prairie Provinces	29.5	28.6	29.9	31.8	33.7	31.9	33.5	32.6	34.7		36.8	
8. Feed, Waste and Dockage													
	Manitoba	4.0	4.7	4.5	4.8	7.7	4.0	5.0	6.5	6.2		4.7	
	Saskatchewan	19.0	20.6	17.6	19.7	17.5	11.9	15.4	10.9	16.0		11.7	
	Alberta	17.5	17.7	17.8	19.7	14.0	12.6	15.8	10.1	13.8		11.4	
	Prairie Provinces	40.5	43.0	39.9	44.2	39.2	28.5	36.2	27.5	36.0		27.8	
9. Total Disposition (6 + 7 + 8)													
	Manitoba	48.0	52.0	52.0	59.0	62.0	60.0	61.0	62.0	62.0		45.0	
	Saskatchewan	262.0	287.0	285.0	266.0	265.0	271.0	275.0	293.0	299.0		225.0	
	Alberta	124.0	115.0	115.0	124.0	118.0	114.0	117.0	108.0	111.0		102.0	
	Prairie Provinces	434.0	454.0	452.0	449.0	445.0	445.0	453.0	463.0	472.0		372.0	
10. Farm Stocks at end of Crop Year (5-9)													
	Manitoba	12.0	9.0	9.0	8.0	8.0	8.0	9.0	8.0	13.0		2.0	
	Saskatchewan	229.0	164.0	173.0	90.0	121.0	51.0	99.0	66.0	127.0		39.0	
	Alberta	78.0	56.0	56.0	28.0	36.0	21.0	34.0	13.0	28.0		15.0	
	Prairie Provinces	319.0	229.0	238.0	126.0	165.0	80.0	142.0	87.0	168.0		56.0	

^{1/} Census benchmark.

^{2/} These figures do not agree exactly with the Board of Grain Commissioners' published reports of total deliveries from western farms due to the exclusion of British Columbia marketings for this series. Estimated marketings from British Columbia farms have been deducted from the Board's figure on Alberta marketings to provide net figures for Alberta and for the total deliveries in the Prairie Provinces. In addition these figures include marketings of registered seed wheat for export which are not included in the Board of Grain Commissioners' data.

^{3/} Subject to further revision pending receipt of Board of Grain Commissioners' final data on marketings.

Wheat Sale
to Poland

Agriculture Minister Alvin Hamilton announced on August 30, 1962 that an agreement with Poland for the sale of 300,000 tons of wheat — or roughly 11 million bushels — had been concluded. Details of the agreement were ironed out by the Canadian Wheat Board and the Polish foreign trade company Rolimpex. It calls for shipment of the bulk of the wheat from St. Lawrence ports before the close of navigation.

The contract also provides for an option on the purchase of an additional 200,000 tons, or about 7.3 million bushels, later in the crop year. Mr. Hamilton said the government's credit insurance arrangements facilitating this sale were completed last week in Ottawa between the Polish and Canadian governments. Terms of payment include 10 per cent cash, with one-third of the balance payable two years from the date of shipment, one-third in two and a half years, and one-third in three years.

Poland has become a regular customer for Canadian grain under credit arrangements, Mr. Hamilton pointed out. Previous purchases amounted to 53 million bushels of wheat and 8.5 million bushels of barley.

Crop Conditions
in the Prairie
Provinces

According to the Telegraphic Crop Report published by the Dominion Bureau of Statistics under date of September 5, 1962, crop conditions in the Prairie Provinces were summarized as follows: Although a large proportion of the crop has reached maturity in the Prairie Provinces, harvesting has been delayed by cool, showery weather during the past week. Over half of the crop in Saskatchewan has been swathed while only about one-quarter has been combined. Similar progress has been made in western Manitoba, but in eastern parts a considerable proportion of the crop is still green. Harvesting is well advanced in most of southern Alberta, but in most western, central and northern districts operations are just getting underway. Yields reported to date are generally bearing out earlier estimates. Light frosts have occurred over wide areas in all three provinces, and damage to late grain crops has been reported from some districts.

Delivery Policy

Supplementary Quota on Rye ex Manitoba, Saskatchewan and Alberta
Delivery Points The Canadian Wheat Board in its Instructions to the Trade, re Quotas (General) No. 5, under date of August 1, 1962 stated in part that effective immediately at all Manitoba, Saskatchewan and Alberta delivery points a supplementary quota of five (5) bushels per seeded acre to rye as shown in the individual producer's delivery permit book, or two hundred (200) bushels, whichever quantity is the larger, is hereby authorized.

Supplementary Quota - Soft White Spring Wheat The Canadian Wheat Board in its Instructions to the Trade re Quotas (General) No. 9 under date of August 24, 1962 stated in part that in order to obtain sufficient quantities of Soft White Spring Wheat to meet mill requirements, a supplementary delivery quota of five (5) bushels per seeded acre of Soft White Spring Wheat is hereby authorized to become effective Monday, August 27, 1962, to producers who contracted with mills for the production of this variety.

As delivery permit declarations do not indicate the acreage seeded to this variety of wheat, special permits will be issued to such producers on the basis of information supplied by the mills concerned and deliveries on this supplementary quota may only be made on the basis of such permit which is to be attached to the producer's delivery permit book.

Wheat Production in
Canada and the Prairie
Provinces 1910-62

The first forecast of the 1962 wheat crop in Canada, based on conditions at August 15, placed the probable outturn at 530.7 million bushels, of which the Prairie Provinces accounted for 511.0 million. If a crop of this size is realized, it would be 87 per cent greater than last year's crop of 283.4 million and 5 per cent above the ten-year (1951-60) average of 506.6 million.

Wheat Production in Canada and the Prairie Provinces, 1910-62

Year	Canada	Manitoba	Saskatchewan	Alberta	Three Prairie Provinces
- thousand bushels -					
1910	132,078	34,127	66,979	9,060	110,167
1911	231,237	62,820	109,323	36,554	208,697
1912	224,159	63,017	106,960	34,303	204,280
1913	231,717	53,331	121,559	34,372	209,262
1914	161,280	38,605	73,494	28,859	140,958
1915	393,543	69,337	224,312	66,538	360,187
1916	262,781	29,667	147,559	65,088	242,314
1917	233,743	41,040	117,921	52,992	211,953
1918	189,075	48,191	92,493	23,752	164,436
1919	193,260	40,975	89,994	34,575	165,544
1920	263,189	37,542	113,135	83,461	234,138
1921	300,858	39,054	188,000	53,044	280,098
1922	399,786	60,051	250,167	64,976	375,194
1923	474,199	35,804	271,622	144,834	452,260
1924	262,097	41,464	132,918	61,312	235,694
1925	395,475	33,624	235,472	97,962	367,058
1926	407,136	47,133	219,646	113,986	380,765
1927	479,665	30,773	252,500	171,286	454,559
1928	566,726	52,383	321,215	171,000	544,598
1929	302,192	28,565	160,565	90,206	279,336
1930	420,672	43,600	206,700	147,000	397,300
1931	321,325	28,112	132,466	140,603	301,181
1932	443,061	44,041	211,551	167,355	422,947
1933	281,892	32,666	128,004	102,334	263,004
1934	275,849	37,100	114,200	112,500	263,800
1935	281,935	23,250	142,198	98,648	264,096
1936	219,218	26,000	110,000	66,000	202,000
1937	180,210	45,100	36,000	75,700	156,800
1938	360,010	50,000	137,800	148,200	336,000
1939	520,623	61,300	271,300	161,400	494,000
1940	540,190	66,400	266,700	180,700	513,800
1941	314,710	51,000	147,000	98,000	296,000
1942	556,067	53,000	305,000	171,000	529,000
1943	282,377	39,000	146,000	82,800	267,800
1944	414,859	50,300	242,100	99,300	391,700
1945	316,320	38,800	168,100	87,700	294,600
1946	411,601	58,000	208,000	127,000	393,000
1947	338,506	42,000	173,000	105,000	320,000
1948	381,413	50,000	191,000	115,000	356,000
1949	366,028	52,000	186,000	103,000	341,000
1950	466,490	50,000	272,000	117,000	439,000
1951	553,678	53,000	325,000	152,000	530,000
1952	701,973	57,000	449,000	172,000	678,000
1953	634,040	48,000	391,000	165,000	604,000
1954	331,981	29,000	169,000	107,000	305,000
1955	519,178	42,000	320,000	135,000	497,000
1956	573,040	56,000	355,000	140,000	551,000
1957 1/	392,508	49,000	229,000	93,000	371,000
1958 1/	397,730	61,000	213,000	98,000	372,000
1959 1/	444,730	62,000	253,000	115,000	430,000
1960 1/	517,624	66,000	327,000	105,000	498,000
1961 1/	283,394	34,000	137,000	89,000	260,000
1962 2/	530,654	81,000	315,000	115,000	511,000

1/ Revised on the basis of 1961 Census acreage data.

2/ Based on conditions on or about August 15, 1962.

Carryover Stocks
of Canadian Grain
at July 31, 1962

Total carryover stocks of the five major Canadian grains in all North American positions at July 31, 1962 were estimated at 542.2 million bushels, 36 per cent below last year's revised total of 850.5 million. Total stocks of wheat were estimated at 395.7 million bushels compared with last year's revised estimate of 607.8 million and the previous record high at July 31, 1957 of 733.5 million bushels. Stocks of oats in all positions were estimated at 79.0 million bushels, 31 per cent smaller than last year's 115.2 million. Barley stocks, at 58.3 million bushels, were down 48 per cent from the 112.6 million held in 1961. Carryover stocks of rye in all positions, estimated at 3.9 million bushels, were 47 per cent lower than last year's 7.4 million. July-end carryover stocks of flaxseed, at 5.4 million bushels, were substantially below last year's 7.6 million.

Stocks of Canadian Grain at July 31, 1962

Position	Wheat	Oats	Barley	Rye	Flaxseed
- thousand bushels -					
In Canada					
On Farms	59,170	56,900	26,280	1,190	1,320
Country elevators <u>1/</u>	166,506	14,027	18,089	820	1,424
Interior private and mill elevators	6,190	721	2,147	29	21
Interior terminal elevators	8,269	334	489	-	-
Pacific Coast terminals	12,370	67	788	17	372
Churchill elevator	4,400	-	-	-	-
Fort William-Port Arthur elevators	62,938	3,733	6,451	1,250	1,138
In transit - lake	4,903	419	261	145	432
In transit - rail	13,334	360	1,158	179	318
Eastern elevators	55,624	2,107	2,611	171	402
Eastern mills (mill bins only)	1,869	298	1	-	-
Western mills (mill bins only)	83	3	2	1	-
Totals in Canada <u>1/</u>	395,657	78,971	58,276	3,803	5,426
In United States	-	-	-	71	-
Total Canadian Grain in Canada and United States, July 31, 1962 <u>1/</u>	395,657	78,971	58,276	3,874	5,426
Comparative Stocks, July 31, 1961 <u>2/</u>					
In Canada	607,841	115,154	112,262	7,417	7,580
In United States	-	-	295	-	-
Totals in Canada and United States	607,841	115,154	112,557	7,417	7,580

1/ Preliminary revised - subject to further revision.

2/ Revised.

Farm-held stocks of wheat, oats, barley, rye and flaxseed at July 31, 1962 amounted to 118.4 million bushels, a decrease of 61 per cent from the July-end 1961 total of 304.8 million. Since the bulk of farm stocks of grain is held in Western Canada, stocks in the Prairie Provinces have been segregated from the above table for ease in comparison with last year's totals.

Estimated Farm Stocks in the Prairie Provinces, July 31, 1962 and 1961

Province	Wheat	Oats	Barley	Rye	Flaxseed
- thousand bushels -					
Manitoba	2,000	5,000	2,000	50	200
Saskatchewan	39,000	12,000	8,000	500	800
Alberta	15,000	19,000	14,000	600	300
Totals, July 31, 1962 <u>1/</u>	56,000	36,000	24,000	1,150	1,300
Totals, July 31, 1961 <u>2/</u>	168,000	75,000	58,000	2,400	1,400

1/ Subject to revision.

2/ Revised.

Canadian Wheat Preliminary estimates place total stocks of Canadian wheat in all North American positions at July 31, 1962 at 395.7 million bushels compared with last year's revised estimate of 607.8 million and the record high at July 31, 1957 of 733.5 million bushels. An estimated 59.2 million bushels of this year's total were held on farms, while 166.5 million of the off-farm stocks were in country elevators. The next largest amounts, 62.9 million and 55.6 million bushels, were in store in Fort William-Port Arthur terminals, and in Eastern elevators, respectively.

It should be pointed out that the figures in the table below are not strictly comparable because of certain omissions in the earlier years. For example, figures for the year 1931 do not include wheat in transit to United States ports. Beginning with 1932, this item is included in stocks of Canadian wheat in United States positions. It should also be noted that for 1931 the stocks of Canadian wheat in the United States lake and seaboard ports are reported for the week-end nearest to the close of the crop year. Stocks of Canadian wheat held in bond by United States flour mills were omitted each year until 1940-41 when they were included for the first time. The carryover totals now include all Canadian wheat in North American positions whether on farms, in store or in transit.

Carryover of Canadian Wheat in Canada and the United States, July 31, 1931-62

Year	Carryover of Wheat in Canada	Stocks of Canadian Wheat in U.S. Positions	Total Carryover of Canadian Wheat in Canada and U.S.
- thousand bushels -			
1931	133,060	5,538	138,598
1932	130,053	5,888	135,941
1933	209,969	7,688	217,657
1934	192,948	9,954	202,902
1935	202,148	11,705	213,852
1936	108,094	19,268	127,363
1937	32,938	4,111	37,049
1938	23,553	983	24,536
1939	94,632	8,279	102,911
1940	272,928	27,546	300,473
10-Year average 1931-40	140,032	10,096	150,128
1941	448,338	31,792	480,129
1942	404,897	18,856	423,752
1943	579,371	15,255	594,626
1944	338,138	18,394	356,531
1945	238,480	19,593	258,073
1946	73,466	134	73,600
1947	86,055	87	86,141
1948	77,676	35	77,710
1949	102,343	68	102,411
1950	112,200	-	112,200
10-Year average 1941-50	246,096	10,421	256,517
1951	187,190	2,013	189,203
1952	214,934	2,244	217,178
1953	382,546	640	383,185
1954	618,568	107	618,675
1955	536,302	446	536,748
1956	578,802	771	579,574
1957	733,335	211	733,546
1958 ^{1/}	648,454	-	648,454
1959 ^{1/}	587,842	159	588,001
1960 ^{1/}	599,588	-	599,588
10-Year average 1951-60	508,756	659	509,415
1961 ^{1/}	607,841	-	607,841
1962 ^{2/}	395,657	-	395,657

^{1/} Revised.
^{2/} Preliminary.

Farmers' Marketings 1/ of Wheat in the Prairie Provinces 1961-62

Week Ending		Manitoba	Saskatchewan	Alberta	Total	Last Year <u>2/</u>
- bushels -						
August	9, 1961	66,412	298,654	59,779	424,845	770,867
	16	78,431	354,050	249,553	682,034	3,072,038
	23	1,732,408	3,132,734	433,666	5,298,808	6,057,404
	30	1,960,688	5,795,205	1,368,107	9,124,000	6,634,518
September	6	972,846	3,230,317	2,070,908	6,274,071	8,451,034
	13	907,424	4,617,726	2,258,606	7,783,756	9,033,552
	20	721,238	3,242,834	2,769,649	6,733,721	6,371,926
	27	630,826	4,260,220	2,806,814	7,697,860	3,416,603
October	4	1,104,469	4,761,138	2,490,732	8,356,339	4,629,456
	11	963,662	3,860,475	2,201,300	7,025,437	4,045,618
	18	929,061	4,531,791	2,056,024	7,516,876	4,787,219
	25	1,023,510	4,178,369	1,941,585	7,143,464	5,419,462
November	1	1,127,996	3,495,742	2,239,758	6,863,496	6,363,414
	8	833,376	3,129,828	1,674,622	5,637,826	6,929,093
	15	697,308	4,359,574	2,038,116	7,094,998	5,784,997
	22	723,530	3,759,473	2,121,428	6,604,431	7,341,044
December	29	654,608	3,088,767	2,046,531	5,789,906	8,037,409
	6	540,239	1,998,306	1,148,799	3,687,344	6,799,472
	13	507,881	3,375,334	1,597,033	5,480,248	7,405,082
	20	382,974	1,832,893	1,419,291	3,635,158	9,840,652
January	27	477,164	1,494,090	983,966	2,955,220	6,488,616
	3, 1962	278,621	2,449,310	1,745,762	4,473,693	5,826,586
	10	807,973	6,788,154	3,743,947	11,340,074	9,867,207
	17	273,409	4,004,264	2,493,320	6,770,993	9,427,211
February	24	100,603	794,836	1,396,613	2,292,052	7,212,448
	31	421,374	2,943,223	2,048,704	5,413,301	3,478,552
	7	227,185	2,826,814	2,211,117	5,265,116	4,078,418
	14	113,464	1,513,126	1,806,659	3,433,249	4,988,578
March	21	173,506	2,319,400	1,808,525	4,301,431	2,260,783
	28	98,971	839,594	922,842	1,861,407	3,563,846
	7	23,752	155,960	354,942	534,654	4,834,676
	14	184,151	1,223,416	1,201,729	2,609,296	4,096,848
April	21	233,895	2,029,561	2,047,411	4,310,867	4,406,523
	28	424,216	2,197,602	1,084,751	3,706,569	4,382,341
	4	246,724	1,452,227	1,599,143	3,298,094	4,408,174
	11	257,282	1,393,720	983,701	2,634,703	5,177,282
May	18	324,147	2,426,646	880,655	3,631,448	8,191,359
	25	197,437	3,750,840	836,282	4,784,559	9,259,730
	2	649,608	5,012,795	1,236,537	6,898,940	10,158,815
	9	609,229	2,995,219	765,909	4,370,357	9,791,100
June	16	330,424	1,918,782	653,743	2,902,949	8,752,162
	23	249,352	1,405,485	450,822	2,105,659	5,897,213
	30	225,859	3,079,208	572,773	3,877,840	9,212,695
	6	270,513	3,540,313	732,449	4,543,275	15,710,109
July	13	427,671	4,562,193	714,115	5,703,979	14,514,410
	20	720,115	4,765,611	1,022,009	6,507,735	15,810,504
	27	1,108,762	5,669,705	1,496,936	8,275,403	14,217,530
	4	1,176,562	5,717,986	1,377,270	8,271,818	9,901,116
August	11	822,060	6,958,358	1,346,304	9,126,722	10,219,850
	18	602,604	6,203,696	1,411,058	8,217,358	10,297,439
	25	1,342,308	9,149,724	2,186,857	12,678,889	14,475,418
	31	2,692,045	20,333,973	6,521,411	29,547,429	24,113,196
Totals		32,649,873	189,219,261	83,630,563	305,499,697	396,211,595
Average similar period:						
1950-51-1959-60		40,374,362	246,909,049	104,295,993	391,579,403	

1/ Includes receipts at country, interior private and mill elevators, interior semi-public terminals and platform loadings. 2/ Revised.

Visible Supply of Canadian Wheat, August 22, 1962
Compared with Approximately the Same Date, 1960 and 1961

Position	1960	1961	1962
- thousand bushels -			
Country elevators - Manitoba	28,750	28,280	14,552
Saskatchewan	139,334	140,908	83,953
Alberta	77,993	65,929	45,016
Totals	246,078	235,117	143,520
Interior private and mill	7,131	6,616	6,503
Interior terminals	12,564	11,359	8,239
Vancouver-New Westminster	11,705	9,608	11,584
Victoria	479	313	684
Churchill	2,427	3,606	3,168
Fort William-Port Arthur	57,718	58,493	67,302
In transit rail (Western Division)	16,300	15,173	15,936
Bay, Lake and Upper St. Lawrence ports.	44,932	41,317	29,939
Lower St. Lawrence and Maritime ports .	34,539	30,310	28,801
In transit lake	5,656	4,183	1,437
In transit rail (Eastern Division)	413	-	221
Totals	439,943	416,096	317,334

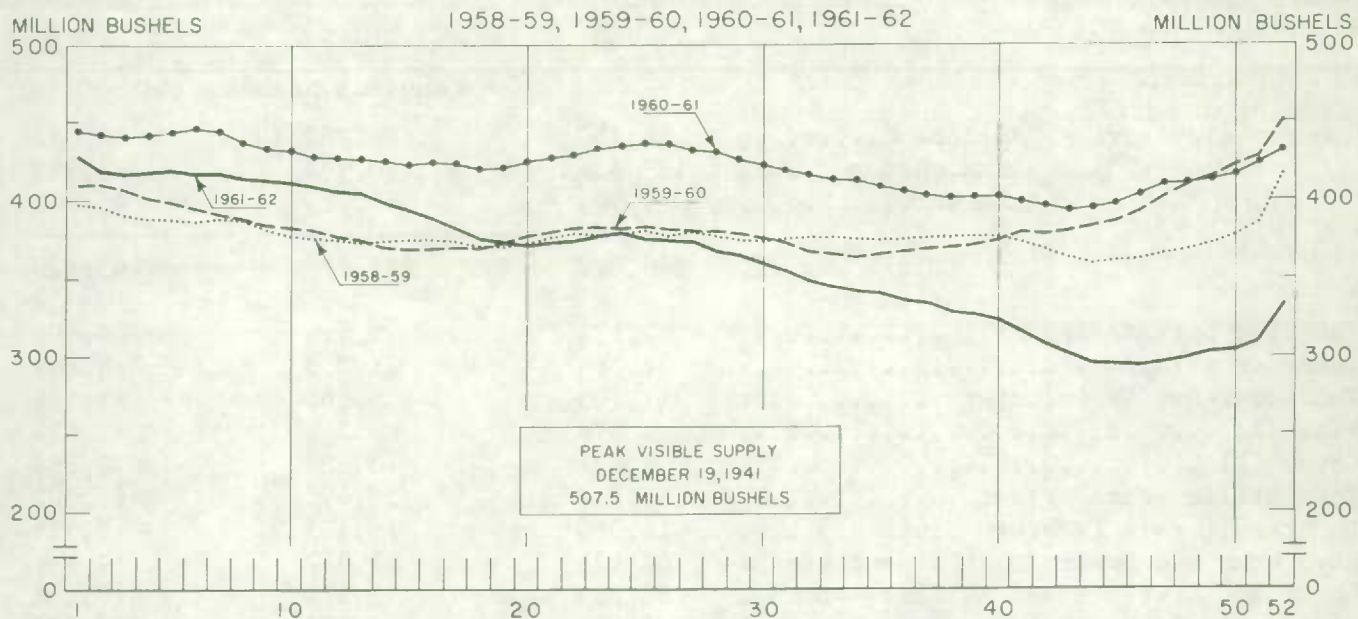
Grading of Wheat Inspected, August 1961-July 1962 with Comparisons

Grade	Crop Year				
	Average	1960-61		1961-62	
	1955-56- 1959-60				
	per cent	cars	per cent	cars	per cent
No. 1 Hard	-	-	-	66	<u>1/</u>
No. 1 Man. Northern	1.6	4,444	2.1	43,807	20.8
No. 2 Man. Northern	28.2	88,291	41.1	111,131	52.8
No. 3 Man. Northern	27.7	54,719	25.5	32,991	15.7
No. 4 Man. Northern	14.0	18,184	8.5	7,202	3.4
No. 5 Wheat	9.2	11,210	5.2	1,475	0.7
No. 6 Wheat	2.3	1,687	0.8	387	0.2
Feed Wheat	0.2	13	<u>1/</u>	9	<u>1/</u>
Others Red Spring	10.7	15,727	7.3	7,219	3.4
C.W. Garnet	0.2	35	<u>1/</u>	462	0.2
C.W. White Spring	0.1	285	0.1	151	0.1
C.W. Mixed Wheat	0.1	94	<u>1/</u>	67	<u>1/</u>
Alberta Winter	0.3	383	0.2	716	0.3
Nos. 1-6 C.W. Amber Durum	5.3	19,268	9.0	4,883	2.3
Others C.W. Amber Durum	0.2	375	0.2	102	<u>1/</u>
Totals	100.0	214,715	100.0	210,668	100.0
Gross bushels (approx.)		411,510,000 <u>2/</u>		406,060,000	

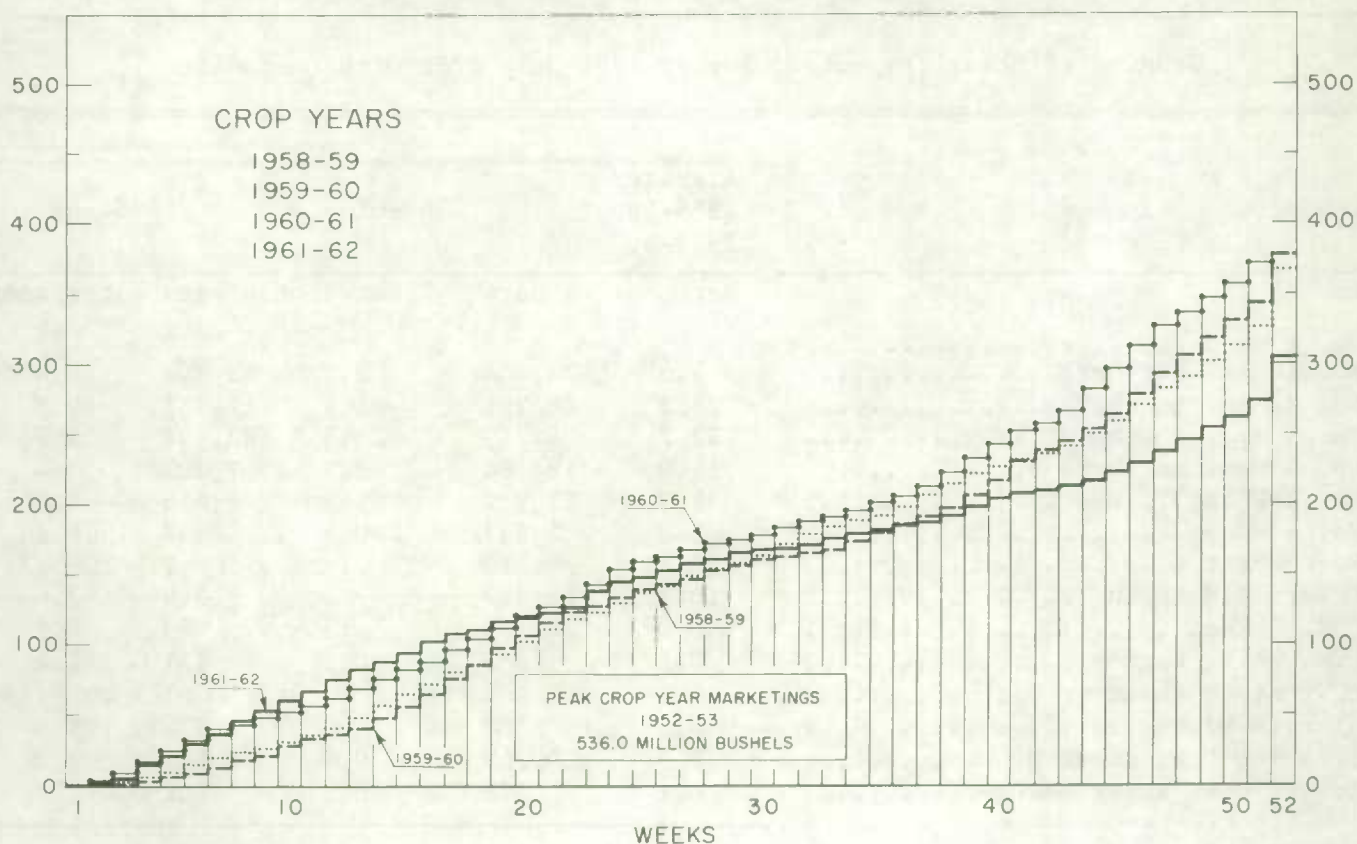
1/ Less than .05 per cent.

2/ Revised.

WEEKLY VISIBLE SUPPLY OF CANADIAN WHEAT



CUMULATIVE RECORD OF WHEAT MARKETINGS IN THE PRAIRIE PROVINCES BY WEEKS



(Data in both charts for crop years beginning August 1)

Wheat Shipments to
the United States
by Destination

Total rail and vessel shipments of wheat to the United States, either for re-export or retention for domestic use, during the crop year 1961-62 amounted to 2.3 million bushels compared with the 1960-61 and 1959-60 crop year totals of 3.3 million and 2.8 million bushels, respectively. Some 95 per cent of the 1961-62 total was shipped by vessel with Buffalo being the principal port of unload.

Wheat Shipments* to the United States by Destination
Crop Year 1961-62 with Comparisons

Destination	1959-60	1960-61	1961-62
- bushels -			
<u>By Vessel</u>			
Buffalo	2,000,030	2,099,607	1,582,086
Chicago	48,956	325,890	160,000
Duluth-Superior	574,018	619,658	420,978
Milwaukee	-	81,537	-
Totals, Vessel	2,623,004	3,126,692	2,163,064
<u>By Rail</u>			
U.S.A. Domestic Points	212,875	207,400	111,957
Totals, Rail	212,875	207,400	111,957
Totals, Shipments	2,835,879	3,334,092	2,275,021

* Either for re-export or retention for domestic use. Excluding bagged seed.

Rail Shipments
of Wheat to
Maritime Ports

Rail shipments of wheat to Maritime Ports from Bay, Lake and Upper St. Lawrence Ports during the 1961-62 crop year totalled 17.0 million bushels compared with the 1960-61 figure of 31.6 million.

Rail Shipments of Wheat to Maritime Ports from Bay
Lake and Upper St. Lawrence Ports

Origin of Shipments	August 1, 1960 to July 31, 1961	August 1, 1961 to July 31, 1962
- bushels -		
Port McNicoll	8,776,269	4,910,364
Midland, Tiffin	10,790,964	6,089,433
Collingwood	1,222,967	405,993
Owen Sound	3,610,462	2,228,068
Goderich	1,943,017	474,656
Sarnia	3,447,572	1,288,279
Walkerville	-	-
Lakefield	1,210,263	1,109,181
Peterborough	583,695	507,193 ^{1/}
Totals	31,585,209	17,013,167

^{1/} Revised.

Rail Shipments of Wheat from Fort William-Port Arthur, 1958-59-1961-62

Month	1958-59	1959-60	1960-61	1961-62
- bushels -				
August	33,123	34,383	14,717	20,648
September	15,692	31,690	19,227	14,598
October	68,834	30,904	5,417	33,944
November	205,061	8,383	24,000	22,915
December	214,398	25,355	17,500	60,167
January	684,845	103,087	71,335	126,533
February	173,387	23,878	135,339	68,421
March	280,705	18,826	28,073	37,000
April	243,292	64,156	9,833	37,777
May	44,783	19,513	15,805	11,203
June	10,128	25,234	17,563	16,022
July	33,696	26,803	10,940	17,315
Totals	2,007,944	412,212	369,749	466,543

Distribution of Rail Shipments of Wheat from Fort William-Port Arthur, July 1962

Grade	Quebec	Ontario
- bushels -		
5 Wheat	1,333	3,000
Durum	4,000	-
Others	7,547	1,435
Totals	12,880	4,435

Overseas Exports of Canadian Grain by Ports of Loading, August 1, 1961-July 31, 1962
with Comparisons

Port	Wheat <u>1/</u>	Durum Wheat <u>1/</u>	Oats <u>1/</u>	Barley	Rye	Flaxseed	Rapeseed <u>2/</u>
- bushels -							
<u>Pacific Seaboard</u>							
Van.-New West. ...	145,520,327	-	505,779	12,612,942	1,098,359	6,183,862	6,265,712
Victoria	4,426,583	-	-	-	-	-	530,150
Prince Rupert	-	-	-	10,531,314	-	-	-
<u>Churchill</u>	19,244,868	-	-	-	-	-	-
<u>Lakehead Direct</u>	9,921,296	-	837,665	2,206,986	1,090,967	1,007,029	-
<u>Lower Lake</u>							
Prescott	-	-	60,463	-	-	-	-
Toronto	-	-	-	-	-	20,184	-
<u>St. Lawrence</u>							
Montreal	49,266,391	2,749,967	297,597	1,549,622	1,763,967	4,668,673	-
Sorel	20,715,588	2,886,306	-	-	200,109	-	-
Three Rivers	20,274,258	14,024	-	-	-	-	-
Quebec	11,238,458	16,876	-	-	-	-	-
Baie Comeau	12,613,182	702,255	-	-	-	-	-
<u>Maritimes</u>							
Saint John	820,389	7,467	-	-	-	-	-
West Saint John ..	8,817,140	695,669	26,479	-	-	107,847	-
Halifax	11,275,905	57,682	-	-	-	-	-
Totals	314,134,385	7,130,246	1,727,983	26,900,864	4,153,402	11,987,595	6,795,862
Aug. 1/60-July 31/61 ^{3/}	267,242,675	41,190,549	1,106,729	29,486,441	1,016,593	13,603,333	7,945,920

^{1/} Excluding bagged seed.

^{2/} In bushels of 50 pounds.

^{3/} Revised.

Freight Assistance Shipments Claims filed for payment up to July 31, 1962 represent the movement of some 11.5 million bushels of wheat from the Prairie Provinces to Eastern Canada and British Columbia under the freight assistance policy during the August-June period of the 1961-62 crop year. During the corresponding period in 1960-61 claims had been filed for a total of 16.8 million bushels, indicating on the assumption of approximately the same rate of submission of claims during both crop years that the 1961-62 August-June shipments of wheat under the policy were running about 31 per cent below those of 1960-61. Revised data on the 1960-61 August-June shipments of wheat based on claims submitted up to July 31, 1962 place the eleven-month total at 17.2 million bushels. About 70 per cent of the shipments during the period under review went to destinations in Ontario and Quebec.

Provincial Distribution of Wheat Shipments under the Freight Assistance Policy
August-June 1961-62 and 1960-61

Month	Nfld.	P.E.I.	N.S.	N.B.	Que.	Ont.	B.C.	Total
- thousand bushels -								
August, 1961	11	10	162	38	516	557	121	1,414
September	11	19	98	37	422	466	270	1,325
October	8	8	93	41	441	424	189	1,203
November	15	12	98	36	469	317	208	1,156
December	9	10	120	31	390	348	189	1,097
January, 1962	11	16	112	38	408	309	264	1,158
February	8	10	102	35	303	293	117	867
March	8	12	106	29	353	280	165	954
April	4	7	75	31	271	249	140	777
May	6	11	47	29	432	301	105	930
June	3/	5	63	16	256	218	83	639
Totals 1/	91	121	1,074	360	4,260	3,763	1,850	11,520
Same period 1960-61:								
Preliminary 2/ ..	131	193	1,377	500	5,513	6,867	2,199	16,781
Revised 1/	140	201	1,411	514	5,619	6,978	2,374	17,236

Preliminary data on millfeed shipments under the freight assistance policy indicate shipments of 476,745 tons during the August-June period of the 1961-62 crop year. During the same eleven months of 1960-61 claims had been filed for a total of 522,369 tons, indicating on the assumption of approximately the same rate of submission of claims during both crop years that the 1961-62 August-June shipments of millfeeds under the policy were running about 9 per cent below those of 1960-61. Revised data on the 1960-61 August-June shipments of millfeeds based on claims submitted up to July 31, 1962 place the eleven-month total at 546,105 tons. Shipments amounting to 232,307 tons and 128,659 tons to destinations in Quebec and Ontario, respectively, accounted for a combined 76 per cent of the August-June 1961-62 total.

Provincial Distribution of Millfeed Shipments under the Freight Assistance Policy
August-June 1961-62 and 1960-61

Province	1960-61		1961-62
	Preliminary 2/	Revised 1/	Preliminary 1/
- tons -			
Newfoundland	4,615	4,930	5,332
Prince Edward Island	8,474	9,115	8,120
Nova Scotia	35,330	36,653	33,330
New Brunswick	30,304	31,333	29,300
Quebec	251,651	261,804	232,307
Ontario	155,169	162,050	128,659
British Columbia	36,826	40,220	39,697
Totals	522,369	546,105	476,745

1/ Based on claims filed up to July 31, 1962.

2/ Based on claims filed up to July 31, 1961.

3/ Less than 500 bushels.

Monthly Exports of Canadian Wheat and Wheat Flour

Year and Month	Wheat in Bulk 1/	Bagged Seed Wheat 2/	Total Wheat	Wheat Flour 2/ 3/	Total 3/ Wheat and Wheat Flour
- thousand bushels -					
<u>1959-60</u>					
August	21,203	157	21,360	3,090	24,451
September	22,606	133	22,739	2,873	25,611
October	22,440	124	22,565	3,705	26,270
November	29,239	532	29,771	3,093	32,864
December	20,262	881	21,144	3,168	24,311
January	13,220	809	14,029	2,522	16,551
February	16,462	788	17,250	2,734	19,984
March	17,102	991	18,093	2,737	20,830
April	15,373	871	16,244	3,281	19,525
May	21,210	224	21,434	3,522	24,956
June	21,011	26	21,037	3,323	24,359
July	14,589	67	14,656	2,923	17,578
Totals	234,717	5,604	240,321	36,970	277,291
<u>1960-61</u>					
August	23,908	127	24,034	2,867	26,901
September	26,742	232	26,974	2,694	29,668
October	21,172	304	21,476	3,727	25,203
November	23,224	570	23,794	4,198	27,992
December	20,222	883	21,105	3,320	24,426
January	16,408	773	17,181	2,104	19,285
February	20,517	1,043	21,560	2,404	23,964
March	23,377	1,934	25,312	3,088	28,399
April	31,395	599	31,994	3,009	35,003
May	42,190	135	42,325	3,166	45,491
June	35,532	12	35,544	2,499	38,043
July	26,265	4	26,269	2,607	28,876
Totals	310,952	6,616	317,568	35,682	353,249
<u>1961-62 4/</u>					
August	35,625	79	35,705	3,540	39,245
September	28,966	250	29,216	2,560	31,777
October	32,910	61	32,970	2,693	35,663
November	40,823	216	41,039	2,435	43,474
December	19,966	414	20,381	3,036	23,416
January	17,534	446	17,979	2,419	20,399
February	23,739	440	24,179	2,262	26,441
March	20,482	598	21,080	2,595	23,675
April	24,981	576	25,557	2,381	27,938
May	35,150	145	35,294	3,162	38,457
June	23,559	8	23,567	2,261	25,829
July	19,016	7	19,024	2,577	21,601
Totals	322,752	3,240	325,992	31,921	357,913

1/ Export clearances including shipments to the United States compiled by the Statistics Branch, Board of Grain Commissioners for Canada. 2/ Compiled from Canadian Customs returns, 1959-60 and 1960-61 adjusted to remove effect of time lag in reporting.

3/ In terms of wheat equivalent. Wheat flour conversion rate: 2.3 bushels per cwt.

4/ Preliminary.

Exports of Canadian Wheat 1/ by Destination, July 1962

Destination	Wheat (Except Durum)	Durum Wheat	All Wheat
- bushels -			
<u>COMMONWEALTH AND PREFERENTIAL COUNTRIES</u>			
<u>Western Europe</u>			
Britain	5,093,925	28,000	5,121,925
Ireland	31,439	-	31,439
<u>Other Africa</u>			
Nigeria	58,800	-	58,800
Republic of South Africa	504,000	-	504,000
<u>Other Asia</u>			
Hong Kong	37,333	-	37,333
Totals, Com. and Pref. Countries.	5,725,497	28,000	5,753,497
<u>OTHER COUNTRIES</u>			
<u>Western Europe</u>			
Belgium and Luxembourg	430,148	84,000	514,148
Germany, Federal Republic	18,667	748,396	767,063
Netherlands	234,044	-	234,044
Sweden	17,733	-	17,733
Switzerland	231,146	192,031	423,177
<u>Middle East</u>			
Saudi Arabia	39,594	-	39,594
<u>Other Africa</u>			
Mozambique	11,125	11,200	22,325
<u>Other Asia</u>			
China, Communist	5,689,936	-	5,689,936
Japan	4,107,973	-	4,107,973
Philippines	438,294	-	438,294
Taiwan	37,333	-	37,333
<u>South America</u>			
Ecuador	44,095	-	44,095
Venezuela	820,219	-	820,219
<u>Central America and Antilles</u>			
El Salvador	88,145	-	88,145
Guatemala	10,000	-	10,000
<u>North America</u>			
United States			
for domestic use <u>2/</u>	8,534	-	8,534
Totals, Other Countries	12,226,986	1,035,627	13,262,613
Sub-Totals, All Countries	17,952,483	1,063,627	19,016,110
Bagged seed wheat <u>3/</u>			7,494
Totals, All Countries	17,952,483	1,063,627	19,023,604

NOTE: See footnotes page 25 .

Cumulative Exports of Canadian Wheat 1/ by Destination

Destination	August 1961-July 1962			Total same period last year
	Wheat (Except Durum)	Durum Wheat	Total Wheat	
- bushels -				
<u>COMMONWEALTH AND PREFERENTIAL COUNTRIES</u>				
<u>Western Europe</u>				
Britain	73,376,715*	361,623	73,738,338*	78,616,245
Ireland	2,284,237*	-	2,284,237*	3,413,425
Malta and Gozo	1,237,867	-	1,237,867	1,198,699
<u>Other Africa</u>				
Nigeria	271,600	-	271,600	-
Republic of South Africa	504,000	-	504,000	-
Rhodesia and Nyasaland	74,667	-	74,667	108,517
<u>Other Asia</u>				
Hong Kong	616,559	-	616,559	523,787
India	3,541,390	-	3,541,390	3,955,436
Pakistan	1,856,325	-	1,856,325	2,098,690
<u>Central America and Antilles</u>				
Barbados	-	-	-	167
Jamaica	399	-	399	-
<hr/>				
Totals, Com. and Pref. Countries	83,763,759*	361,623	84,125,382*	89,914,966

OTHER COUNTRIES

<u>Western Europe</u>				
Austria	1,476,688*	149,333	1,626,021*	1,529,411
Belgium and Luxembourg	10,900,222*	557,947	11,458,169*	12,167,952
Denmark	11,200	-	11,200	-
Finland	2,456,002	-	2,456,002	439,284
France	431,200	604,769	1,035,969	9,902,903
Germany, Federal Republic	40,351,155*	3,590,153	43,941,308*	32,979,004
Greece	-	-	-	22,400
Italy	3,852,833*	25,200	3,878,033*	14,932,951
Netherlands	3,486,686*	110,454	3,597,140*	6,625,169
Norway	1,728,869	-	1,728,869	3,301,427
Portugal	-	-	-	93,333
Sweden	30,053	-	30,053	18,667
Switzerland	6,555,523*	1,477,691	8,033,214*	7,315,964
<u>Eastern Europe</u>				
Albania	2,101,643	-	2,101,643	2,354,800
Czechoslovakia	-	-	-	12,138,608
Germany, East	8,040,229	-	8,040,229	1,918,075
Poland	12,293,711	-	12,293,711	5,693,870
U.S.S.R. (Russia)	-	-	-	7,511,317
<u>Middle East</u>				
Israel	829,100	-	829,100	1,592,267
Saudi Arabia	555,637	-	555,637	-
U.A.R. - Egypt	451,733	-	451,733	-
<u>Other Africa</u>				
Algeria	1,322,604	37,035	1,359,639	373,333
Congo	18,257	-	18,257	-
Mozambique	654,750	26,134	680,884	436,724
Tunisia	-	189,905	189,905	1,439

FARMERS' MARKETINGS OF WHEAT, PRAIRIE PROVINCES

(SPECIFIED PERIODS)

MILLION BUSHEL

450 —

400 —

350 —

300 —

250 —

200 —

150 —

100 —

50 —

0

28 year average
1932-33
1959-60

10 year average
1950-51
1959-60

JULY

JUNE

MAY

APR.

M

F

JAN.

DEC.

NOV

OCT.

SEPT.

AUG.

1956-57

1957-58

1958-59

1959-60

1960-61

1961-62

PEAK MARKETINGS
1952-53 CROP YEAR
536.0 MILLION BUSHEL

MILLION BUSHEL

450 —

400 —

350 —

300 —

250 —

200 —

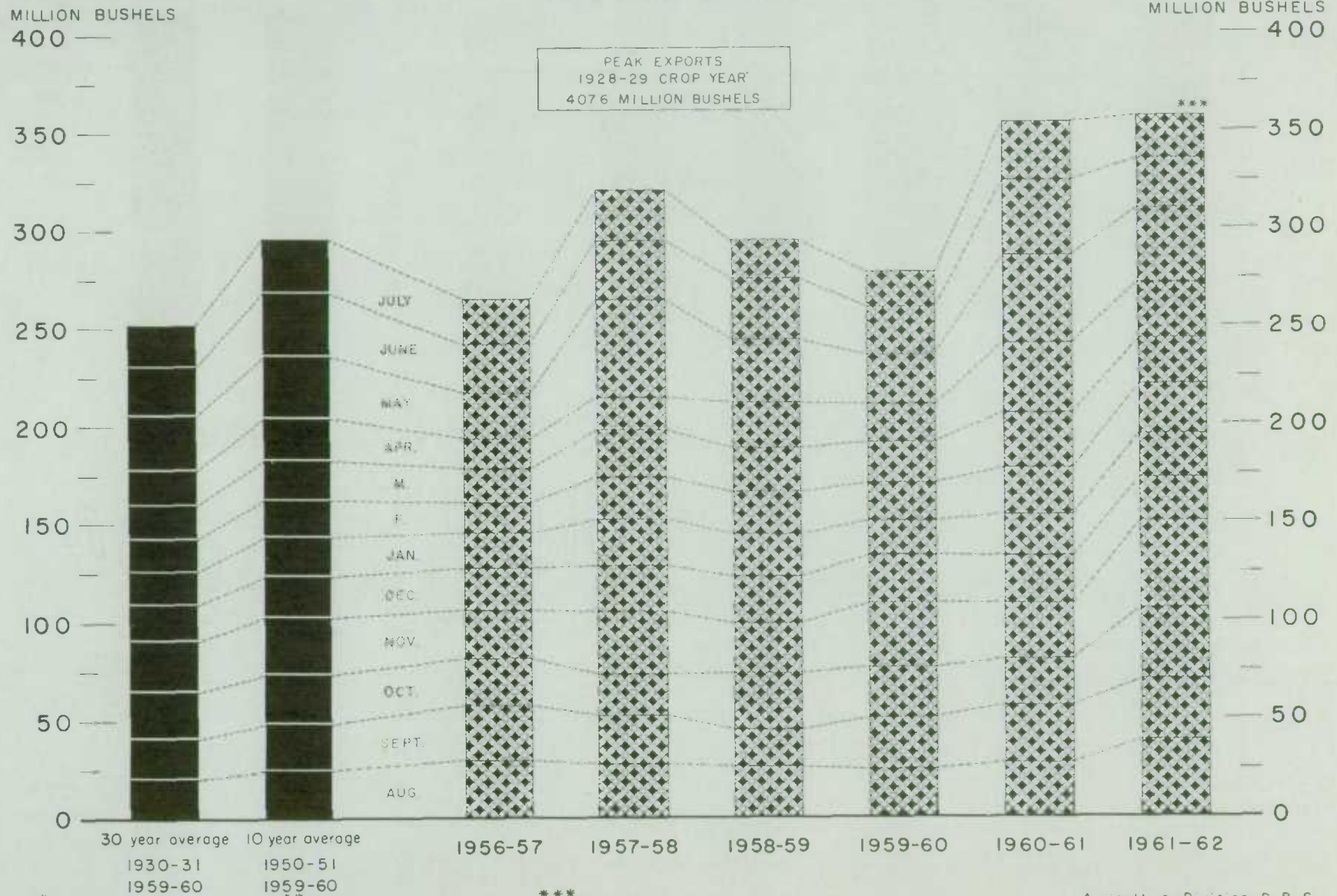
150 —

100 —

50 —

0

EXPORTS OF CANADIAN WHEAT* AND WHEAT FLOUR** (SPECIFIED PERIODS)



*Includes bagged seed wheat. **In terms of wheat equivalent. *** Preliminary.

FARMERS' MARKETINGS OF BARLEY, PRAIRIE PROVINCES

(SPECIFIED PERIODS)

MILLION BUSHEL

140 —

120 —

100 —

80 —

60 —

40 —

20 —

0 —

30 year average
1930-31
1959-60

10 year average
1950-51
1959-60

AUG
SEPT
OCT
NOV
DEC
JAN
FEB
MAR
APR
MAY
JUNE
JULY

1956-57

1957-58

1958-59

1959-60

1960-61

1961-62

MILLION BUSHEL

140 —

120 —

100 —

80 —

60 —

40 —

20 —

0 —

Agriculture Division D.B.S.

EXPORTS OF CANADIAN BARLEY AND BARLEY PRODUCTS*

(SPECIFIED PERIODS)

MILLION BUSHELS

90 —

80 —

70 —

60 —

50 —

40 —

30 —

20 —

10 —

0

MILLION BUSHELS

90 —

80 —

70 —

60 —

50 —

40 —

30 —

20 —

10 —

0

30 year average
1930-31
1959-60

10 year average
1950-51
1959-60

*In terms of grain equivalent

1956-57

1957-58

1958-59

1959-60

1960-61

1961-62

JULY

JUNE

MAY

APR.

MAR.

FEB.

JAN.

DEC.

NOV.

OCT.

SEPT.

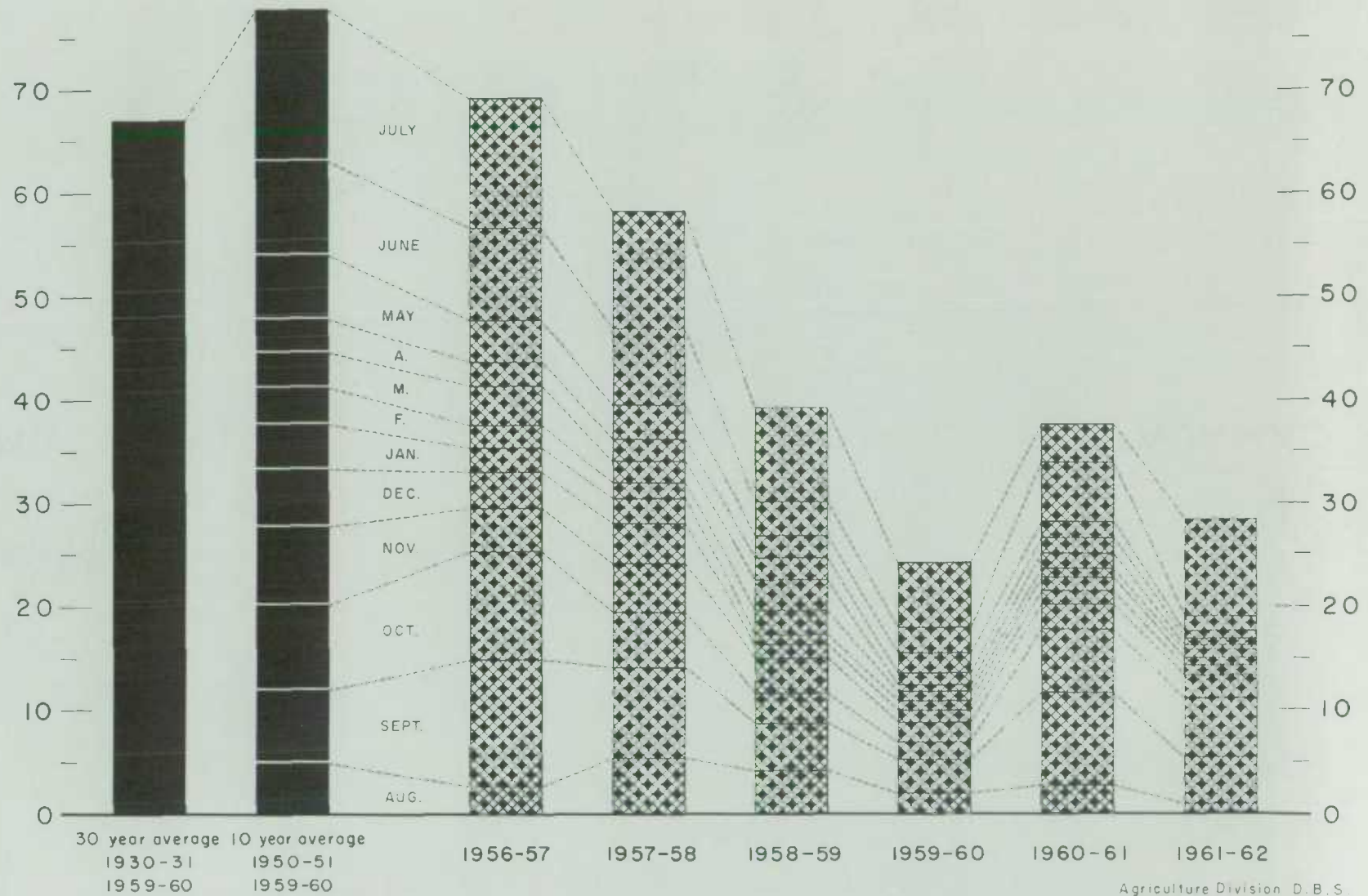
AUG.

Agriculture Division D.B.S.

FARMERS' MARKETINGS OF OATS, PRAIRIE PROVINCES (SPECIFIED PERIODS)

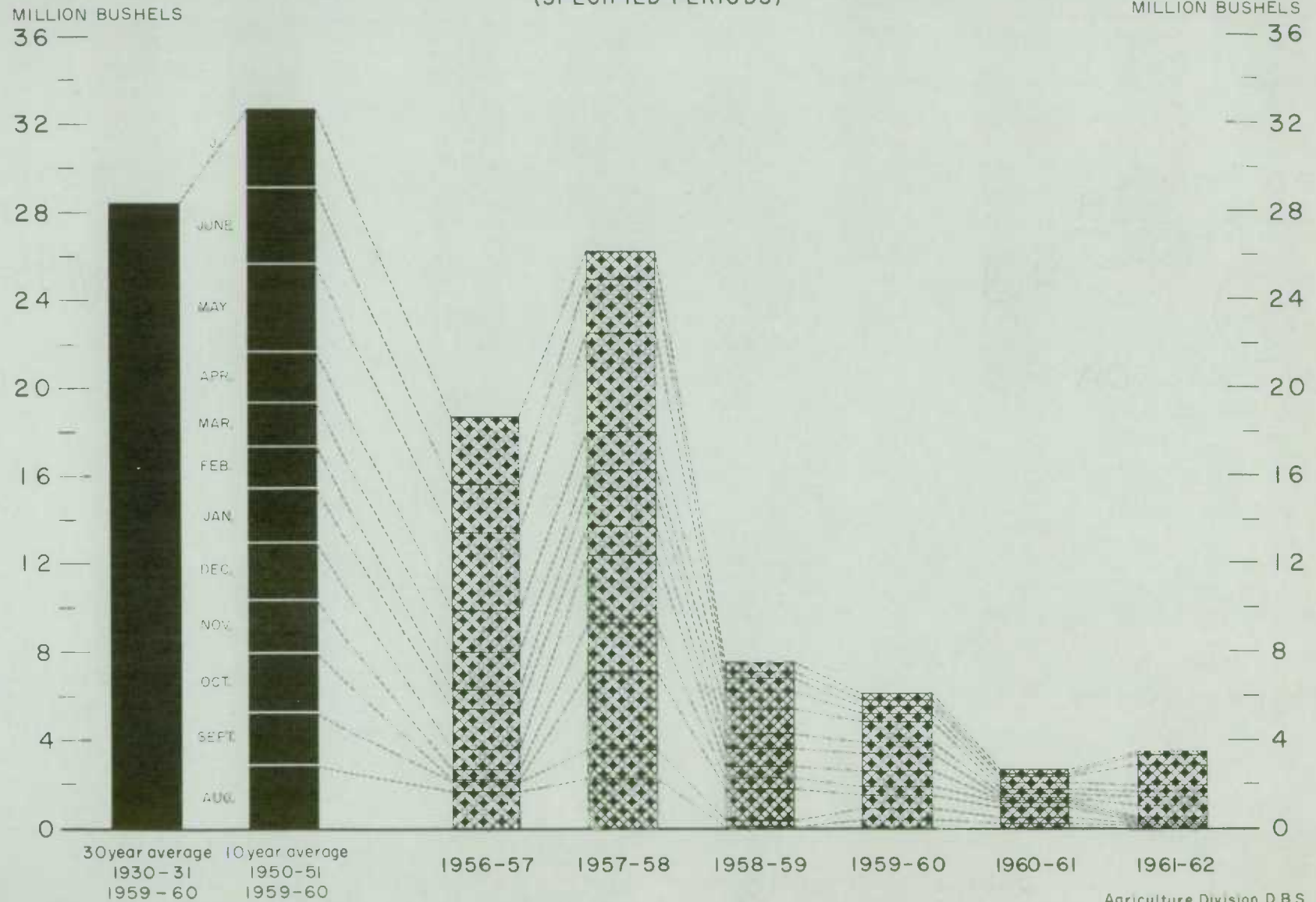
MILLION BUSHEL
80 —

MILLION BUSHEL
80 —



EXPORTS OF CANADIAN OATS* AND OAT PRODUCTS**

(SPECIFIED PERIODS)

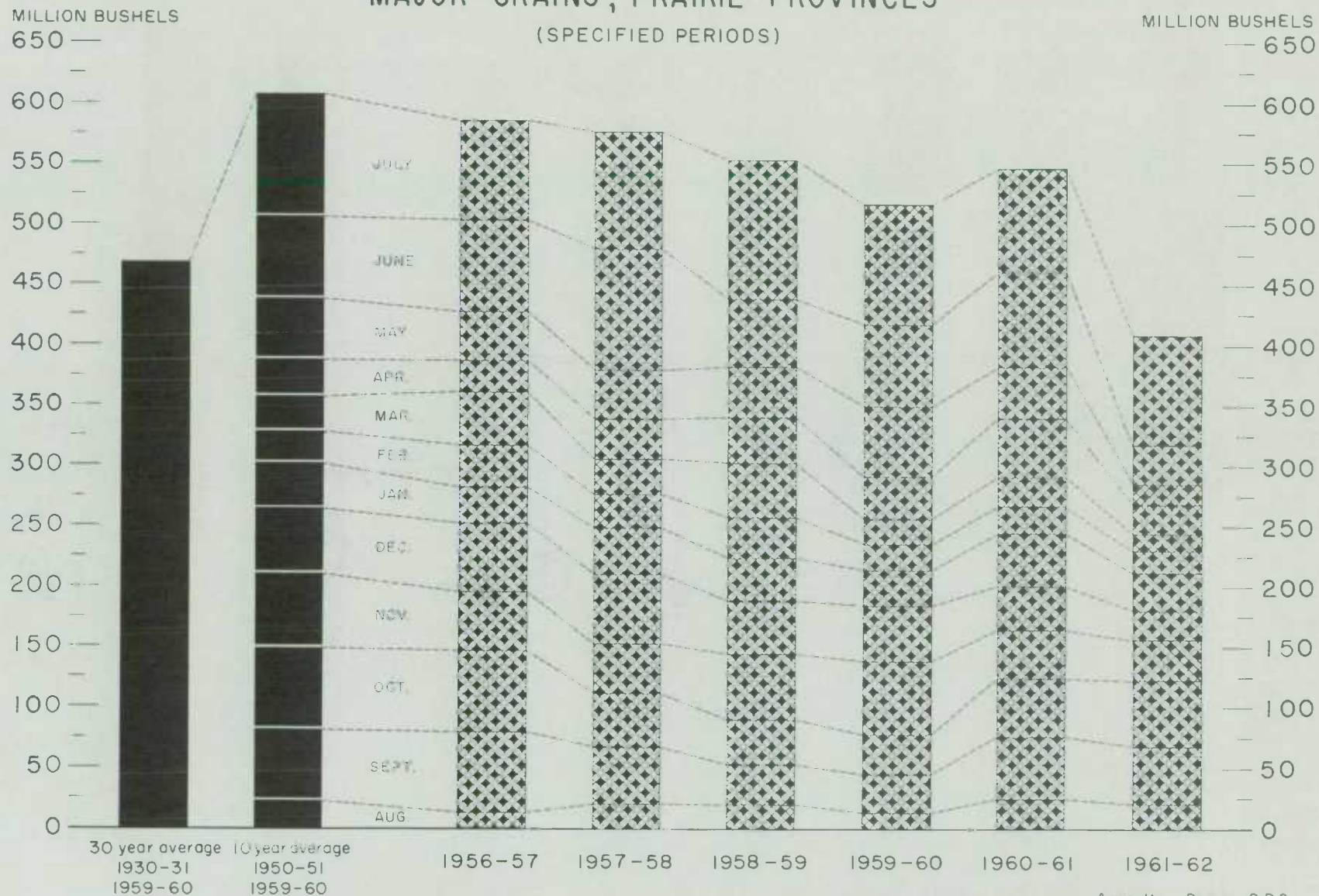


* Beginning with 1960-61 includes relatively small quantity of bagged seed.

** In terms of grain equivalent.

Agriculture Division D.B.S.

FARMERS' MARKETINGS OF CANADA'S FIVE MAJOR GRAINS*, PRAIRIE PROVINCES

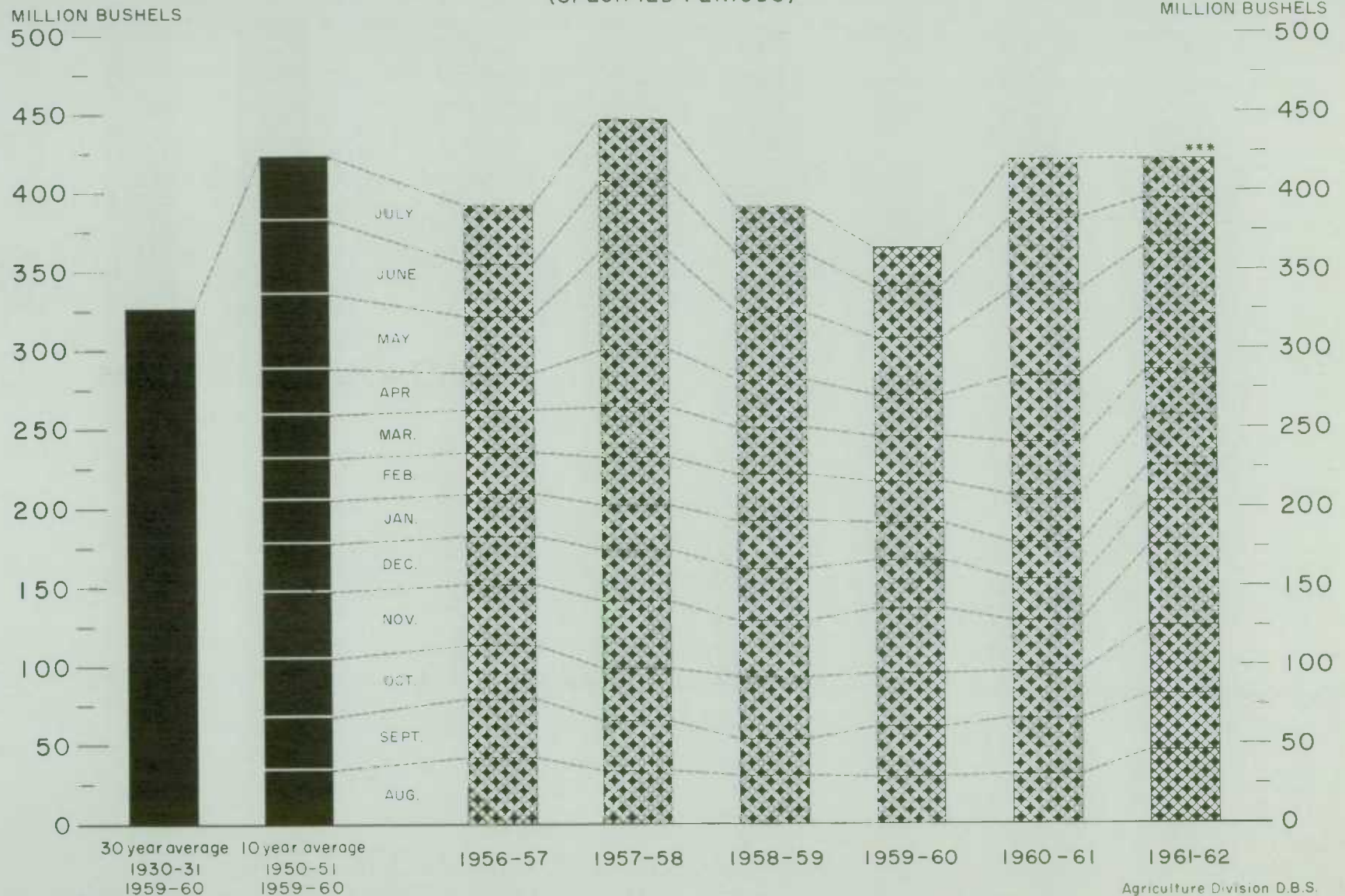


*Wheat, oats, barley, rye and flaxseed.

Agriculture Division D.B.S.

EXPORTS OF CANADA'S FIVE MAJOR GRAINS AND PRODUCTS*

(SPECIFIED PERIODS)



* Wheat, bagged seed wheat, and wheat flour; oats, bagged seed oats, and rolled oats, barley, malt and pot and pearl, rye and flaxseed.

*** Preliminary

Cumulative Exports of Canadian Wheat 1/ by Destination

Destination	August 1961-July 1962			Total same period last year
	Wheat (Except Durum)	Durum Wheat	Total Wheat	
- bushels -				
<u>OTHER COUNTRIES (concluded)</u>				
<u>Other Asia</u>				
Burma	221,978	-	221,978	356,229
China, Communist	71,977,630	-	71,977,630	34,699,851
Japan	48,042,969	-	48,042,969	53,996,664
Philippines	3,854,530	-	3,854,530	987,363
Taiwan	171,610	-	171,610	139,626
<u>Oceania</u>				
United States Oceania	473,759	-	473,759	313,152
<u>South America</u>				
Colombia	264,550	-	264,550	-
Ecuador	1,157,040	-	1,157,040	1,190,686
Peru	-	-	-	1,816,267
Venezuela	4,736,226	-	4,736,226	2,658,101
<u>Central America and Antilles</u>				
Cuba	-	-	-	5,056
Dominican Republic	1,490,978	-	1,490,978	922,831
El Salvador	384,693	-	384,693	18,372
Guatemala	46,568	-	46,568	60,166
Honduras	-	-	-	4,996
<u>North America</u>				
United States for domestic use <u>2/</u>	1,487,496	-	1,487,496	2,518,758
Totals, Other Countries ...	231,858,122*	6,768,621	238,626,743*	221,037,016
Sub-Totals, All Countries .	315,621,881	7,130,244	322,752,125	310,951,982
Bagged seed			3,239,957 <u>3/</u>	6,615,634 <u>4/</u>
Totals, All Countries	315,621,881	7,130,244	325,992,082	317,567,616

* Revisions in June data have been taken into account in the August-July cumulative totals.

1/ Overseas clearances as reported by the Statistics Branch, Board of Grain Commissioners for Canada, for all countries except the United States. Excluding bagged seed.

2/ Compiled from returns of Canadian elevator licensees and shippers and advice from American Grain correspondents.

3/ Compiled from Canadian Customs returns. Unadjusted.

4/ Adjusted for time lag.

Customs Exports of Canadian Wheat Flour by Countries of Consignment

Destination	February 1962	June 1962	August-June	
	<u>1/</u>	<u>2/</u>	1961-62 <u>2/</u>	1960-61 <u>1/</u>
- bushels -				
<u>COMMONWEALTH AND PREFERENTIAL COUNTRIES</u>				
<u>Western Europe</u>				
Britain	1,009,969	976,891	11,227,326	12,308,140
Gibraltar	-	6,440	69,957	31,170
<u>Middle East</u>				
Kuwait	-	7,705	33,079	19,950
Qatar	-	-	2,376	5,580
British Middle East, nes	2,834	-	23,699	13,390
<u>Other Africa</u>				
Ghana	212,564	75,346	1,954,009	1,887,251
Nigeria	156,182	127,002	1,515,850	784,125
Rhodesia and Nyasaland	1,546	3,836	25,086	32,623
Sierra Leone	53,539	48,415	442,421	373,136
Tanganyika	3,623	-	31,045	16,560
British Africa, nes	24,150	1,196	56,189	53,183
<u>Other Asia</u>				
Ceylon	-	-	384,008	566,718
Hong Kong	52,898	79,559	817,845	710,226
India	-	-	12,714	-
Malaya and Singapore	48,282	44,098	587,774	524,069
British East Indies, nes	209	-	9,198	8,324
<u>Oceania</u>				
Fiji	-	-	4,888	6,037
British Oceania, nes	-	-	-	1,104
<u>South America</u>				
British Guiana	2,486	5,968	35,581	197,736
<u>Central America and Antilles</u>				
Bahamas	24,911	24,978	244,200	265,762
Bermuda	10,322	7,728	109,183	115,545
British Honduras	4,167	1,725	29,081	16,864
Barbados	15,298	9,228	119,550	149,601
Jamaica	145,157	103,603	1,340,042	1,331,343
Leeward and Windward Islands	83,405	70,882	911,996	963,429
Trinidad and Tobago	95,284	106,791	1,232,349	1,304,344
Totals, Com. and Pref. Countries	1,946,826	1,701,391	21,219,446	21,686,210

OTHER COUNTRIES

<u>Western Europe</u>				
Belgium and Luxembourg	9,016	12,560	210,346	161,265
Denmark	460	-	2,760	1,380
France	-	-	345	-
Germany, Federal Republic	-	-	2,010	-
Greece	3,066	759	6,369	9,524
Iceland	3,809	-	24,438	16,261
Italy	-	-	17,696	3,765
Netherlands	-	-	1,939	4,492
Norway	-	322	2,622	1,011,768
Portugal	9,561	4,830	43,504	41,522
Sweden	506	-	1,518	19,665
Switzerland	-	-	30	-
<u>Middle East</u>				
Ethiopia	-	-	-	253
Iran	281	-	2,589	1,465
Israel	-	-	255	-
Jordan	-	-	109,749	1,040
Lebanon	-	5,297	549,088	951,347

Customs Exports of Canadian Wheat Flour by Countries of Consignment

Destination	February 1962	June 1962	August-June	
	<u>1/</u>	<u>2/</u>	1961-62 <u>2/</u>	1960-61 <u>1/</u>
- bushels -				
<u>OTHER COUNTRIES (concluded)</u>				
<u>Middle East</u>				
Saudi Arabia	-	-	966	8,936
Syria	-	-	2,266	6,930
U.A.R.-Egypt	-	-	171,994	-
<u>Other Africa</u>				
Angola	-	-	1,725	18,055
Congo	7,590	19,596	172,700	197,464
French Equatorial Africa	-	1,644	4,220	5,370
French West Africa	8,140	7,613	22,096	-
Liberia	-	2,321	25,059	17,836
Mozambique	230	1,573	16,891	4,933
Portuguese Africa, nes	9,096	10,872	92,021	89,318
<u>Other Asia</u>				
Cambodia and Laos	-	-	-	56,157
Indonesia	-	-	390,367	205,795
Japan	142,600	197,570	1,007,262	1,511,324
Philippines	37,377	5,750	1,125,316	2,503,078
Portuguese India	-	-	67,944	162,875
Portuguese Asia, nes	2,024	-	15,686	38,962
Thailand	36,685	31,144	318,380	311,928
Viet-Nam	-	-	28,083	-
<u>Oceania</u>				
French and Netherlands Oceania	230	115	886	1,311
United States Oceania	-	1,095	1,095	28,750
<u>South America</u>				
Bolivia	-	-	-	954
Chile	920	920	7,130	11,587
Colombia	-	-	3,048	114,871
Peru	1,380	1,380	18,016	3,910
Surinam	3,583	5,769	70,385	78,800
Venezuela	-	-	16,227	32,166
<u>Central America and Antilles</u>				
Costa Rica	65,407	47,897	748,864	683,390
Cuba	-	-	-	802,912
Dominican Republic	-	4,600	202,308	5,405
El Salvador	20,514	6,555	182,684	166,269
French West Indies	-	-	2,024	3,829
Guatemala	3,797	7,422	78,750	59,207
Honduras	4,025	6,555	93,049	63,052
Netherlands Antilles	10,452	17,618	188,834	93,339
Nicaragua	65,389	12,095	447,996	345,915
Panama	27,858	47,808	385,572	276,214
<u>North America</u>				
St. Pierre and Miquelon	-	1,725	10,840	6,555
United States	125,352	96,674	1,228,138	1,247,897
Totals, Other Countries	599,348	560,079	8,124,080	11,389,041
Totals, All Countries	2,546,174	2,261,470	29,343,526	33,075,251

nes - not elsewhere specified.

1/ In terms of wheat equivalent. Adjusted to remove effect of time lag in the returns made by Customs. Conversion rate: 2.3 bushels per cwt.

2/ In terms of wheat equivalent. Preliminary and unadjusted for time lag. Conversion rate: 2.3 bushels per cwt.

Customs Exports of Canadian Wheat Flour by Countries of Consignment

Destination	March 1962	July 1962	August-July	
	<u>1/</u>	<u>2/</u>	1961-62 <u>2/</u>	1960-61 <u>1/</u>
- bushels -				
<u>COMMONWEALTH AND PREFERENTIAL COUNTRIES</u>				
<u>Western Europe</u>				
Britain	1,128,238	983,657	12,210,983	13,157,035
Gibraltar	5,152	-	69,957	36,837
<u>Middle East</u>				
Kuwait	6,698	2,576	35,655	27,034
Qatar	575	-	2,376	6,114
British Middle East, nes	2,318	2,576	26,275	14,936
<u>Other Africa</u>				
Ghana	423,352	147,055	2,101,064	2,219,431
Nigeria	141,878	176,980	1,692,830	934,589
Rhodesia and Nyasaland	4,641	2,880	27,966	33,810
Sierra Leone	40,015	57,905	500,326	411,429
Tanganyika	11,380	1,150	32,195	17,940
British Africa, nes	1,725	-	56,189	55,310
<u>Other Asia</u>				
Ceylon	-	-	384,008	566,718
Hong Kong	80,622	83,168	901,013	761,636
India	12,714	-	12,714	-
Malaya and Singapore	64,496	57,965	645,739	559,657
British East Indies, nes	531	1,433	10,631	9,370
<u>Oceania</u>				
Fiji	667	1,253	6,141	6,037
British Oceania, nes	-	-	-	1,104
<u>South America</u>				
British Guiana	7,213	1,465	37,046	204,222
<u>Central America and Antilles</u>				
Bahamas	21,358	30,871	275,071	282,304
Bermuda	6,321	13,563	122,746	120,193
British Honduras	662	5,538	34,619	17,492
Barbados	10,980	13,956	133,506	161,471
Jamaica	111,207	168,360	1,508,402	1,518,768
Leeward and Windward Islands	82,032	104,013	1,016,009	1,055,670
Trinidad and Tobago	122,832	100,207	1,332,556	1,433,694
Totals, Com. and Pref. Countries.....	2,287,607	1,956,571	23,176,017	23,612,801

OTHER COUNTRIES

<u>Western Europe</u>				
Belgium and Luxembourg	18,032	17,671	228,017	197,225
Denmark	460	460	3,220	1,840
France	345	-	345	-
Germany, Federal Republic	-	1,753	3,763	-
Greece	-	-	6,369	10,554
Iceland	6,242	-	24,438	17,022
Italy	-	-	17,696	3,765
Netherlands	483	-	1,939	5,964
Norway	2,300	-	2,622	1,011,768
Portugal	3,473	5,658	49,162	48,192
Sweden	-	-	1,518	19,665
Switzerland	-	-	30	-

Customs Exports of Canadian Wheat Flour by Countries of Consignment

Destination	March 1962	July 1962	August-July	
	<u>1/</u>	<u>2/</u>	1961-62 <u>2/</u>	1960-61 <u>1/</u>
- bushels -				
<u>OTHER COUNTRIES (concluded)</u>				
<u>Middle East</u>				
Ethiopia	-	-	-	253
Iran	547	46	2,635	2,132
Israel	255	-	255	-
Jordan	-	311	110,060	1,040
Lebanon	5,451	-	549,088	956,970
Saudi Arabia	-	-	966	8,936
Syria	750	-	2,266	6,930
U.A.R.-Egypt	-	-	171,994	-
<u>Other Africa</u>				
Angola	-	-	1,725	19,205
Congo	25,176	575	173,275	210,804
French Equatorial Africa	-	-	4,220	5,370
French West Africa	2,645	2,185	24,281	-
Liberia	5,187	6,430	31,489	19,216
Mozambique	3,229	2,434	19,325	5,048
Portuguese Africa, nes	8,763	1,150	93,171	103,695
<u>Other Asia</u>				
Cambodia and Laos	-	-	-	56,157
Indonesia	-	-	390,367	205,795
Japan	25,521	95,963	1,103,225	1,632,879
Philippines	40,855	8,050	1,133,366	2,633,714
Portuguese India	-	-	67,944	162,875
Portuguese Asia, nes	1,012	-	15,686	40,986
Thailand	20,357	46,094	364,474	343,613
Viet-Nam	-	-	28,083	28,083
<u>Oceania</u>				
French and Netherlands Oceania	58	57	943	1,311
United States Oceania	-	1,074	2,169	28,750
<u>South America</u>				
Bolivia	-	-	-	954
Chile	-	920	8,050	11,587
Colombia	-	-	3,048	115,331
Peru	3,565	3,749	21,765	4,600
Surinam	6,134	5,232	75,617	83,228
Venezuela	3,174	-	16,227	37,157
<u>Central America and Antilles</u>				
Costa Rica	111,214	46,977	795,841	727,619
Cuba	-	-	-	802,912
Dominican Republic	68,908	69,288	271,596	5,405
El Salvador	21,772	32,985	215,669	187,526
French West Indies	-	345	2,369	4,059
Guatemala	9,386	4,183	82,933	64,274
Honduras	13,168	14,736	107,785	76,797
Netherlands Antilles	17,123	15,661	204,495	101,209
Nicaragua	72,059	42,026	490,022	396,398
Panama	31,820	54,577	440,149	313,085
<u>North America</u>				
St. Pierre and Miquelon	4,405	225	11,065	7,475
United States	146,264	139,672	1,367,810	1,339,649
Totals, Other Countries	680,133	620,487	8,744,567	12,069,022
Totals, All Countries	2,967,740	2,577,058	31,920,584	35,681,823

nes - not elsewhere specified.

1/ In terms of wheat equivalent. Adjusted to remove effect of time lag in the returns made by Customs. Conversion rate: 2.3 bushels per cwt. 2/ In terms of wheat equivalent. Preliminary and unadjusted for time lag. Conversion rate: 2.3 bushels per cwt.

Initial Payment
to Producers

The Canadian Wheat Board in its Instructions to the Trade No. 16 announced the fixed minimum carlot prices for wheat basis in store Fort William-Port Arthur or Vancouver. The amount to be paid in respect of wheat of the grade No. 1 Northern was fixed by Order-in-Council P.C. 1962-1100 of the 1st day of August, 1962. The amount to be paid in respect of each other grade of wheat referred to in the following table was fixed by the Board and approved by Order-in-Council P.C. 1962-1152 of the 15th day of August, 1962, pursuant to the Canadian Wheat Board Act, as amended.

Canadian Wheat Board Price List for Specified Grades of Wheat, Crop Year 1962-63
(In Carload Lots, Basis in Store Fort William-Port Arthur or Vancouver)

Grade	Straight	Tough 1/	Damp 2/
No. 1 Hard	1.50	1.46	
No. 1 Northern	1.50	1.46	1.34
No. 2 Northern	1.46	1.42	1.30
No. 3 Northern	1.42	1.38	1.26
No. 4 Northern	1.35	1.31	1.19
No. 5 Wheat	1.18	1.14	1.02
No. 6 Wheat	1.12	1.08	.98
Feed Wheat	1.08	1.04	.94
No. 4 Special	1.35	1.31	1.19
No. 5 Special	1.18	1.14	1.02
No. 6 Special	1.12	1.08	.98
No. 1 C.W. Amber Durum	1.50	1.46	1.34
No. 2 C.W. Amber Durum	1.46	1.42	1.30
No. 3 C.W. Amber Durum	1.42	1.38	1.26
Extra No. 4 C.W. Amber Durum	1.42	1.38	1.26
No. 4 C.W. Amber Durum	1.35	1.31	1.19
No. 5 C.W. Amber Durum	1.18	1.14	1.02
No. 6 C.W. Amber Durum	1.12	1.08	.98
No. 1 C.W. Garnet	1.35	1.31	1.19
No. 2 C.W. Garnet	1.30	1.26	1.14
No. 3 C.W. Garnet	1.25	1.21	1.09
No. 4 C.W. Garnet	1.19	1.15	1.03
No. 1 Alberta Red Winter	1.34	1.30	1.18
No. 2 Alberta Winter	1.29	1.25	1.13
No. 3 Alberta Winter	1.23	1.19	1.07
No. 4 Alberta Winter	1.17	1.13	1.01
No. 1 Soft White Spring	1.40	1.36	1.24
No. 2 Soft White Spring	1.37	1.33	1.21
No. 3 Soft White Spring	1.33	1.29	1.17
No. 4 Soft White Spring	1.30	1.26	1.14
No. 1 Mixed Wheat	1.18	1.14	1.04
No. 2 Mixed Wheat	1.13	1.09	.99
No. 3 Mixed Wheat	1.13	1.09	.99
No. 4 Mixed Wheat	1.08	1.04	.94
No. 5 Mixed Wheat	1.18	1.14	1.04
No. 6 Mixed Wheat	1.13	1.09	.99
No. 1 C.W. Mixed Grain	1.03	.99	.89

1/ Moisture content for wheat other than Durum, 14.6 per cent to 17 per cent, inclusive; for Durum wheat, 14.9 per cent to 17 per cent, inclusive.

2/ Moisture content over 17 per cent.

Canadian Wheat Board Weekly Average Cash Wheat Prices
Basis in Store Fort William-Port Arthur

Class and Grade	Week Ending				
	August 3	August 10	August 17	August 24	August 31

- cents and eighths per bushel -

Initial Payment to Producers

1 Northern	150	150	150	150	150
2 Northern	146	146	146	146	146
3 Northern	142	142	142	142	142
4 Northern	135	135	135	135	135
5 Wheat	118	118	118	118	118
6 Wheat	112	112	112	112	112
Feed Wheat	108	108	108	108	108
1 C. W. Garnet	135	135	135	135	135
2 C. W. Garnet	130	130	130	130	130
3 C. W. Garnet	125	125	125	125	125
1 Alberta Red Winter	134	134	134	134	134
2 Alberta Winter	129	129	129	129	129
1 C. W. Amber Durum	150	150	150	150	150
2 C. W. Amber Durum	146	146	146	146	146
3 C. W. Amber Durum	142	142	142	142	142

International Wheat Agreement

and Domestic Sales

1 Northern	196/2	196/2	196/4	198	198
2 Northern	195/2	195/2	195/4	197	196/5
3 Northern	194/2	194/2	194/4	196	195/5
4 Northern	189/2	189/2	189/4	191	191
5 Wheat	185/2	185/2	185/1	185	185
6 Wheat	184/2	184/2	184/1	184	184
Feed Wheat	180/2	180/2	180/1	180	180
1 C. W. Garnet	195/2	195/2	195/1	195	195
2 C. W. Garnet	191/2	191/2	191/1	191	191
3 C. W. Garnet	189/2	189/2	189/1	189	189
1 Alberta Red Winter	196/2	196/2	196/1	196	196
2 Alberta Winter	193/2	193/2	193/1	193	193
3 Alberta Winter	190/2	190/2	190/1	190	190
1 C. W. Amber Durum	349/2	327/6	309/1	297	295
2 C. W. Amber Durum	348/2	326/6	308/1	296	294
3 C. W. Amber Durum	346/2	324/6	305	292	290

Export - Class II

1 Northern	196/2	196/2	196/4	198	198
2 Northern	195/2	195/2	195/4	197	196/5
3 Northern	194/2	194/2	194/4	196	195/5
4 Northern	189/2	189/2	189/4	191	191
5 Wheat	185/2	185/2	185/1	185	185
6 Wheat	184/2	184/2	184/1	184	184
Feed Wheat	180/2	180/2	180/1	180	180
1 C. W. Garnet	195/2	195/2	195/1	195	195
2 C. W. Garnet	191/2	191/2	191/1	191	191
3 C. W. Garnet	189/2	189/2	189/1	189	189
1 C. W. Amber Durum	349/2	327/6	309/1	297	295
2 C. W. Amber Durum	348/2	326/6	308/1	296	294
3 C. W. Amber Durum	346/2	324/6	305	292	290

Canadian Wheat Board Weekly Average Cash Wheat Prices
Basis in Store Vancouver

Class and Grade	Week Ending				
	August 3	August 10	August 17	August 24	August 31

- cents and eighths per bushel -

Initial Payment to Producers

1 Northern	150	150	150	150	150
2 Northern	146	146	146	146	146
3 Northern	142	142	142	142	142
4 Northern	135	135	135	135	135
5 Wheat	118	118	118	118	118
6 Wheat	112	112	112	112	112
Feed Wheat	108	108	108	108	108
1 C. W. Garnet	135	135	135	135	135
2 C. W. Garnet	130	130	130	130	130
3 C. W. Garnet	125	125	125	125	125
1 Alberta Red Winter	134	134	134	134	134
2 Alberta Winter	129	129	129	129	129
1 C. W. Amber Durum	150	150	150	150	150
2 C. W. Amber Durum	146	146	146	146	146
3 C. W. Amber Durum	142	142	142	142	142

International Wheat Agreement

and Domestic Sales

1 Northern	203/6	203/6	203/5	203/4	203/4
2 Northern	202/6	202/6	202/5	202/4	202/1
3 Northern	201/6	201/6	201/5	201/4	201/1
4 Northern	196/6	196/6	196/5	196/4	196/4
5 Wheat	190/6	190/6	190/5	190/4	190/4
6 Wheat	183/6	183/6	183/5	183/4	183/4
Feed Wheat	180/6	180/6	180/5	180/4	180/4
1 C. W. Garnet	194/6	194/6	194/5	194/4	194/4
2 C. W. Garnet	190/6	190/6	190/5	190/4	190/4
3 C. W. Garnet	189/6	189/6	189/5	189/4	189/4
1 Alberta Red Winter	194/6	194/6	194/5	194/4	194/4
2 Alberta Winter	192/6	192/6	192/5	192/4	192/4
3 Alberta Winter	191/6	191/6	191/5	191/4	191/4

Export - Class II

1 Northern	203/6	203/6	203/5	203/4	203/4
2 Northern	202/6	202/6	202/5	202/4	202/1
3 Northern	201/6	201/6	201/5	201/4	201/1
4 Northern	196/6	196/6	196/5	196/4	196/4
5 Wheat	190/6	190/6	190/5	190/4	190/4
6 Wheat	183/6	183/6	183/5	183/4	183/4
Feed Wheat	180/6	180/6	180/5	180/4	180/4
1 C. W. Garnet	194/6	194/6	194/5	194/4	194/4
2 C. W. Garnet	190/6	190/6	190/5	190/4	190/4
3 C. W. Garnet	189/6	189/6	189/5	189/4	189/4
1 Alberta Red Winter	194/6	194/6	194/5	194/4	194/4
2 Alberta Winter	192/6	192/6	192/5	192/4	192/4
3 Alberta Winter	191/6	191/6	191/5	191/4	191/4

CANADIAN FLOUR MILLING SITUATION

Production Wheat flour production by Canadian mills during July 1962 amounted to 3,732,000 hundredweight, representing increases of 3 per cent over the June output of 3,631,000 hundredweight, 10 per cent greater than the 3,389,000 hundredweight produced in July 1961, and 13 per cent above the ten-year (1952-61) average production for the month of July of 3,289,000 hundredweight. Mills reporting operations during July 1962 had a total rated capacity of 163,000 hundredweight per 24-hour day and on the basis of a 25-day working period 91.4 per cent of this rated capacity was effective.

Wheat milled for flour during July 1962 amounted to 8,271,000 bushels, 3 per cent above the 8,051,000 bushels milled during the preceding month and 9 per cent greater than the 7,561,000 bushels milled during July 1961. Of the wheat milled for flour during July 1962, some 7,559,000 bushels were Western Canadian spring wheat (other than Durum) while the remainder consisted of Ontario winter wheat (547,000 bushels); Durum (89,000 bushels); and all other (76,000 bushels).

Exports According to preliminary Customs returns, exports of Canadian wheat flour during July 1962 amounted to 1,120,000 hundredweight (some 2,577,000 bushels of wheat equivalent); representing an increase of 14 per cent over the 2,261,000 bushels exported during the previous month, but 1 per cent less than the adjusted July 1961 total of 2,607,000 bushels. Flour shipments during the month went to fifty countries with exports to Britain amounting to 984,000 bushels of wheat equivalent and accounting for 38 per cent of the July 1962 total. Other leading markets for Canadian wheat flour during the month, with shipments in thousands of bushels of wheat equivalent were as follows: Nigeria, 177; Jamaica, 168; Ghana, 147; United States, 140; Leeward and Windward Islands, 104; and Trinidad and Tobago, 100.

Wheat Milled for Flour, and Production and Exports of Wheat Flour, Canada

Crop Year	Wheat Milled for Flour - bushels -	Wheat Flour	
		Production	Exports ^{1/}
		- cwt. -	
1935-36—1939-40 average	67,845,114	29,405,451	9,603,941
1940-41—1944-45 average	99,704,638	43,908,245	23,699,546
1945-46—1949-50 average	107,330,372	47,011,540	25,819,721
1950-51—1954-55 average	100,446,328	43,847,894	21,812,041
1955-56	91,770,025	40,148,750	17,391,300
1956-57	85,149,373	37,623,446	14,582,431
1957-58	92,288,897	40,819,678	17,556,886
1958-59	90,142,957	39,826,493	16,141,267
1959-60	91,389,801	40,344,578	16,073,893
1960-61	89,731,155	39,914,644	15,513,836
1961-62 ^{2/}			
August	7,605,269	3,386,312	1,539,241
September	7,038,632	3,125,061	1,113,117
October	7,554,017	3,390,604	1,170,699
November	8,196,493	3,668,026	1,058,724
December	6,890,583	3,084,983	1,319,836
January	6,919,873	3,092,954	1,051,801
February	6,323,460	2,826,583	983,284
March	7,843,383	3,516,174	1,128,123
April	6,057,314	2,725,239	1,035,139
May	7,472,551	3,359,755	1,374,843
June	8,051,025	3,630,533	983,248
July	8,271,356	3,732,000	1,120,460
Totals	88,223,956	39,538,224	13,878,515
Same months 1960-61 ^{3/}	89,731,155	39,914,644	15,513,836

^{1/} Based on Customs returns. Exports for the crop years 1945-46—1960-61 revised to remove effect of time lag in the returns made by Customs.

^{2/} Subject to revision.

^{3/} Revised.

UNITED STATES SITUATION

Supply Position Domestic supplies of wheat in the United States for the 1962-63 crop year are estimated at 2,367.3 million bushels, consisting of the July 1, 1962 carryover of 1,304.3 million and the 1962 crop, estimated as of August 1, at 1,063.0 million bushels. Domestic supplies of the size indicated would be 11 per cent less than last year's record of 2,645.9 million bushels. In addition, current crop year supplies may be supplemented by imports of about 6 million bushels, mostly of feeding quality wheat and wheat for seed.

Domestic disappearance during 1962-63 is estimated at about 594 million bushels, 6 per cent less than the 630.5 million last year. After deducting anticipated domestic requirements for the current United States crop year, some 1,773.4 million remain available for export and for carryover, a decrease of 12 per cent from the 2,015.5 million in 1961-62. Exports of wheat, wheat flour and other products in terms of grain equivalent during July 1962 amounted to 47.0 million bushels 20 per cent below the 59.0 million exported during the same month last year. The balance remaining on August 1, 1962 for export and for carryover was estimated at 1,726.4 million bushels compared with 1,956.5 million on the same date a year ago.

United States Wheat Supplies

Item	1961-62 <u>1/</u>	1962-63 <u>2/</u>
	- million bushels -	
Carryover at beginning of crop year (July 1)	1,411.2	1,304.3
New Crop	1,234.7	1,063.0
Total estimated domestic supplies	2,645.9	2,367.3
Imports of wheat and wheat flour in terms of wheat for domestic use, July	0.1	0.1
Total estimated supplies <u>3/</u>	2,646.0	2,367.4
Less estimated domestic requirements for crop year <u>4/</u>	630.5	594.0
Available for export and for carryover	2,015.5	1,773.4
Deduct:		
Exports of wheat as grain, July	50.7	39.0
Exports of wheat flour and products in terms of wheat, July <u>5/</u>	8.3	8.0
Total exports of wheat, wheat flour and products <u>6/</u>	59.0	47.0
Balance on August 1 for export and for carryover ...	1,956.5	1,726.4

1/ Revised.

2/ Preliminary.

3/ Excluding imports for August-June.

4/ Includes shipments to United States Territories and wheat for military food use at home and abroad.

5/ Flour exports exclude "Milled in bond".

6/ These figures now include all shipments under relief programs which formerly were not available from Census data.

1962 Wheat Crop
Forecast at 1,063
Million Bushels

In a report released on August 10, the Crop Reporting Board of the United States Department of Agriculture stated in part that production of all wheat is estimated at 1,063 million bushels, an increase of 13 million bushels or 1 per cent from a month ago. The 1962 crop, as presently forecast, would be 14 per cent smaller than last year and 6 per cent below average. Indicated yield of 24.1 bushels per harvested acre would be the third highest of record, above the 1961 average of 23.9 and 3.4 bushels per acre above the 10-year average.

Production of winter wheat is forecast at 815 million bushels, a drop of 2 per cent from the July forecast. Production is 24 per cent below 1961 and the smallest since 1957. A serious infestation of black stem rust, which spread northward from Nebraska into South Dakota, Wyoming, and Minnesota, caused much of the decline in prospects, although post-harvest returns in Texas and the eastern States were generally below earlier expectations. A slightly higher estimate for the Kansas crop tempered the drop in the U.S. estimate.

Harvest of the 1962 crop was early and by August 1 was mostly finished except in the northern tier of States. In the Northwest, harvest was well started in early areas. In Michigan and New York, the crop was more than half harvested by August 1. Harvest was nearing completion in the higher elevations of the western mountain States.

Black stem rust blasted South Dakota winter wheat prospects, causing considerable acreage to be abandoned and dropping average yield prospects from 26.0 bushels per acre on July 1 to 8.5 bushels per acre on August 1. Rust, first reported this year in epidemic proportions in Nebraska caused shrunken yields during July in the late Nebraska areas. On August 1, the Nebraska yield was down 3.5 bushels from the July 1 forecast. Areas in Wyoming and Minnesota adjacent to the heavily infested South Dakota crop suffered lower yields as the disease spread with nearly ideal epidemic conditions.

Post-harvest returns from most States east of the Mississippi River, as well as Texas, were lower than on July 1 as full effects of drought in the east and the hot winds in Texas during late May and early June were finally assessed. A notable exception was Ohio, where the final crop outturn showed yields to be above earlier expectations.

Cool weather and adequate soil moisture during early July favored the filling of winter wheat in the Pacific Northwest and in Montana. While some rust is present in Montana, production losses are not expected to be serious. Soil moisture supplies were becoming short in North Idaho and parts of Oregon and Washington by August 1. Yield prospects improved during July in the Pacific northwest.

Production of durum wheat is now estimated at 57 million bushels, or 21 per cent more than on July 1. A crop of this size would be over twice the 1951-60 average. The 1961 crop of 19 million bushels was extremely low, as near drought conditions prevailed in most of the main durum area.

During July, the crop progressed fairly well with abundant rains, except in local areas, and generally below normal temperatures. As of August 1, stem rust had not become as serious as for some of the other small grains. There was some deterioration of the crop in South Dakota and yield prospects declined 2 bushels per acre. However, this was more than offset by a 5-bushel increase in average yield in both North Dakota and Minnesota. Cutting of durum was barely started by early August, somewhat later than usual. The prospective crop of spring wheat other than durum is now estimated at 191 million bushels, 37 per cent more than the 139 million bushels in 1961 but 16 per cent below the 10-year average.

Preliminary Vote Shows
Producers Approve
Marketing Quotas for
1963 Wheat Crop

Preliminary returns from a referendum Thursday (August 30) in the 39-State commercial wheat-producing area show that 68.4 per cent of farmers voting favoured marketing quotas on 1963-crop wheat, the U.S. Department of Agriculture announced on August 31, 1962.

Preliminary returns show a total vote of 235,696. Of these, 161,242 (68.4 per cent) favoured marketing quotas on 1963-crop wheat and 74,454 (31.6 per cent) were opposed. Last year, 79.4 per cent of farmers voting favoured marketing quotas for the 1962 wheat crop. The total vote was 278,515, with 221,250 favouring marketing quotas and 57,265 opposed.

Challenged ballots reported in the preliminary count August 30 but not included in the preliminary totals amounted to 9,687. In the past wheat referenda, the final percentages for and against with the challenged ballots counted showed little difference from preliminary percentages, and the outcome was not affected. Because wheat marketing quotas when proclaimed are effective on approval by two-thirds or more of farmers voting in a referendum, marketing quotas will be in effect for the 1963 crop.

Producers in the 39-State commercial area who stay within their acreage allotments will be eligible for price support on 1963-crop wheat at not less than a national average price of \$1.82 per bushel.

Flour Production

The Bureau of the Census, Department of Commerce estimated wheat flour production in the United States in July, 1962 at 20,336,000 hundredweight, an average of 968,000 hundredweight per working day. This compared with an average output per working day of 958,000 hundredweight in June 1962 and 990,000 hundredweight in July 1961. Wheat flour mills in July operated at 88.2 per cent of capacity compared with 86.9 per cent and 91.0 per cent, respectively, for the previous month and the same month a year ago. Flour mills in July ground 46,135,000 bushels of wheat compared with 45,677,000 bushels during the previous month. Wheat offal output during July amounted to 377,861 tons.

Rye flour production in July was 165,000 hundredweight. Rye grindings were 375,000 bushels, and 1,987 tons of offal were produced.

Continued from page 2 .

contrast with virtual failure last year, are the most important factor in the increase.

The growing season is now getting under way in Southern Hemisphere countries and final outturns will be determined by conditions up to November. Severe drought has affected about a third of Argentina's wheat zone and has dispelled expectation of record plantings in this principal producing country of South America. Conditions are excellent over most of the remainder of the wheat zone.

The outlook is generally good in Australia though in a number of regions rains are needed for germination and to complete late wheat planting. It now seems that earlier predictions of record wheat acreage may not be achieved, although it will again be large.

United States Tops
Last Year's Record
in Wheat and Flour
Exports

U.S. wheat and flour exports from July 1961 through June 1962, totaled 716 million bushels, 8 per cent larger than the previous record in 1960-61.

Shipments of wheat during 1961-62 totaled 607.5 million bushels. This was the largest amount ever exported by a single country in a 12-month period.

India continued to be the largest market in 1961-62, although exports to that country were 25 per cent below those of a year earlier. This reduction to India was more than offset by increased sales to Brazil and Turkey, the next largest markets in size, with a total of 104 million bushels; these two countries imported a total of 57 million bushels from the United States in 1960-61.

Other countries with increased shipments were West Germany, the Netherlands, Japan, Algeria, Egypt, Morocco, and Tunisia. In contrast, exports to Italy, Poland, and Pakistan in 1961-62 were well below those in 1960-61.

Flour exports from July 1961 through June 1962 totaled 109 million bushels (grain equivalent), up 9.5 per cent from the year before. The record of U.S. flour exports was in 1946-47 when 195 million bushels were exported. Exports to Egypt in 1961-62, which has been the largest market in the last 3 years, totaled 32 million bushels, compared with 25.7 million a year earlier. Larger shipments of flour were also made to British Guiana, Colombia, Greece, Poland, Yugoslavia, and Indonesia. Exports to Syria in 1961-62 were considerably down from last year.

United States Exports of Wheat and Flour by Country of Destination
July-June 1960-61 and 1961-62

Destination	July-June 1960-61			July-June 1961-62		
	Wheat	Flour <u>1/</u>	Total	Wheat	Flour <u>1/</u>	Total
- thousand bushels -						
<u>Western Hemisphere</u>						
Canada	9,336	94	9,430	13,890	176	14,066
Central America	3,044	3,043	6,087	3,305	2,851	6,156
Cuba	547	1,197	1,744	-	-	-
Haiti	798	88	886	2,281	71	2,352
Trinidad and Tobago	22	1,177	1,199	13	1,524	1,537
Bolivia	-	3,026	3,026	196	3,235	3,431
Brazil	39,141	166	39,307	52,315	302	52,617
British Guiana	2	980	982	-	1,193	1,193
Chile	1,200	1,046	2,246	7,557	1,594	9,151
Colombia.....	4,124	971	5,095	4,276	1,039	5,315
Paraguay	-	74	74	2,359	60	2,419
Peru	4,344	456	4,800	7,053	540	7,593
Venezuela	8,476	117	8,593	10,876	134	11,010
Others	1,578	2,442	4,020	978	2,810	3,788
Totals	72,612	14,877	87,489	105,099	15,529	120,628
<u>Europe</u>						
Belgium-Luxembourg	4,509	4	4,513	5,896	2	5,898
France	1,606	3	1,609	3,875	1	3,876
Germany, West	6,612	315	6,927	14,036	158	14,194
Greece	3,102	1,952	5,054	1,986	2,576	4,562
Italy	45,254	5,883	51,137	13,581	6,140	19,721
Malta, Gozo, and Cyprus	1,464	24	1,488	1,491	25	1,516
Netherlands	9,343	3,552	12,895	21,856	3,635	25,491

United States Exports of Wheat and Flour by Country of Destination
July-June 1960-61 and 1961-62

Destination	July-June 1960-61			July-June 1961-62		
	Wheat	Flour ^{1/}	Total	Wheat	Flour ^{1/}	Total
- thousand bushels -						
<u>Europe (concluded)</u>						
Norway	1,315	409	1,724	3,897	14	3,911
Poland	40,356	810	41,166	15,970	1,191	17,161
Portugal	4,228	844	5,072	9,675	670	10,345
Spain	30,897	469	31,366	25,460	2	25,462
Switzerland	3,931	5	3,936	5,510	2/	5,510
United Kingdom	16,135	2,069	18,204	14,989	3,179	18,168
Yugoslavia	12,254	1,921	14,175	36,364	2,528	38,892
Others	960	652	1,612	1,049	1,412	2,461
Totals	181,966	18,912	200,878	175,635	21,533	197,168
<u>Asia</u>						
Afghanistan	1,696	37	1,733	735	1	736
Ceylon	-	3,274	3,274	-	3,028	3,028
India	123,564	388	123,952	92,783	732	93,515
Indonesia	-	783	783	-	2,781	2,781
Iran	7,109	279	7,388	3,868	608	4,476
Israel	7,372	381	7,753	9,664	197	9,861
Japan	29,794	2,642	32,436	34,253	2,803	37,056
Jordan	3,005	3,099	6,104	8	3,228	3,236
Korea	12,332	970	13,302	12,254	1,078	13,332
Lebanon	741	896	1,637	203	1,300	1,503
Pakistan	38,074	860	38,934	25,613	836	26,449
Philippines	7,392	1,550	8,942	8,257	992	9,249
Saudi Arabia	44	3,153	3,197	78	2,449	2,527
Syria	7,022	7,088	14,110	3,417	3,787	7,204
Taiwan	9,596	1,574	11,170	11,287	1,001	12,288
Turkey	17,745	109	17,854	51,208	233	51,441
Vietnam, Laos, and Cambodia.	575	3,938	4,513	148	2,918	3,066
Others	1,950	3,076	5,026	857	2,615	3,472
Totals	268,011	34,097	302,108	254,633	30,587	285,220
<u>Africa</u>						
Algeria	3,437	373	3,810	10,444	648	11,092
Canary Islands	1,714	5	1,719	-	-	-
Congo, Republic of the	-	781	781	5	2,314	2,319
Egypt	17,381	25,699	43,080	29,276	31,958	61,234
Mozambique	1,058	-	1,058	931	13	944
Morocco	5,924	954	6,878	15,442	1,384	16,826
Nigeria	-	1,911	1,911	234	1,724	1,958
Tunisia	6,509	77	6,586	14,089	150	14,239
Others	2,570	1,971	4,541	1,685	3,126	4,811
Totals	38,593	31,771	70,364	72,106	41,317	113,423
Oceania	-	43	43	-	39	39
Totals, All Countries ^{3/}	561,182	99,700	660,882	607,473	109,005	716,478

^{1/} Wholly of U.S. wheat (grain equivalent). ^{2/} Less than 500 bushels. ^{3/} Includes shipments for relief or charity.

Cash Wheat Prices on the Kansas City and Minneapolis Markets

No. 2 Hard Winter, Kansas City			No. 1 Northern Spring, Minneapolis		
Date		Price	Date		Price
- cents per bushel -			- cents per bushel -		
July	30, 1962	219 1/2 - 221 1/2	July	30, 1962	233 7/8 - 234 7/8
	31	221 1/2 - 237		31	233 5/8
August	1	220 1/4 - 228 1/2	August	1	233 3/8
	2	221 1/4 - 247 1/2		2	233 3/8
	3	218 3/4 - 229 3/4		3	234 7/8
	6	221 1/2 - 231 1/2		6	232 3/4 - 233 3/4
	7	216 3/4 - 239 1/4		7	231 7/8 - 232 7/8
	8	220 1/4 - 239		8	230 3/4 - 231 3/4
	9	222 - 227 1/2		9	230 1/2 - 231 1/2
	10	215 - 227 1/4		10	230 1/8 - 231 1/8
	13	216 - 235		13	229 5/8 - 230 5/8
	14	216 1/2 - 228 1/4		14	230 3/8
	15	216 1/4		15	230 1/8
	16	217 3/4 - 230 3/4		16	229 1/4
	17	213 1/2 - 225		17	226 1/2
	20	213 1/2		20	225 1/2
	21	211 1/2 - 265 1/2		21	225 1/2
	22	216 - 266 1/2		22	228 1/2
	23	213 1/2 - 265 1/4		23	222 2/2
	24	215		24	228 3/8
	27	215 1/4 - 222 1/2		27	227 3/8
	28	212 - 251 1/4		28	229 1/8 - 230 1/8
	29	216 1/4 - 223		29	231 3/4 - 232 3/4
	30	216 1/2 - 216 3/4		30	233 1/2 - 234 1/2
	31	217 1/2		31	229 3/4 - 232 3/4

1/ Nominal.

Chicago Wheat Futures High Points of Closing

Date	September	December	March	May
- cents and eighths per bushel -				
July 30, 1962	212/5	219/1	222/7	220/7
31	212/3	218/4	221/3	220/2
August 1	211/6	217/7	221/6	220
2	211/5	218	222/2	220
3	212/2	218/5	222/5	220/7
6	212	218/3	222/4	220/2
7	210/4	216/7	220/7	219
8	207/4	214	218/4	216/6
9	205/5	212/4	217/1	215/3
10	207/2	213/5	218/4	216/3
13	207/6	214/3	219	217/2
14	208/3	214/7	219/7	218/2
15	208/6	215/3	220/3	218/5
16	208/1	214/7	219/4	216/7
17	207	213/6	218/4	216/2
20	207/5	214/2	218/7	217
21	207/4	214/3	219	217/4
22	210	216/5	221/6	220/2
23	209/1	215/5	220/2	218/6
24	208/1	215	219/6	217/7
27	207/2	213/5	217/6	215/3
28	207/2	213/7	218/4	216
29	208/2	215	219/4	216/4
30	207/5	214/3	218/6	215/6
31	207/2	214/2	219/2	216/6

AUSTRALIAN SITUATION

Supply Position Estimated supplies of wheat in Australia for the 1961-62 (December-November) crop year amount to some 270.6 million bushels, consisting of the December 1, 1961 carryover of 24.3 million and the current crop estimated at 246.3 million bushels. The current total, reflecting relatively sharp declines in both carryover stocks and production, represents an 18 per cent reduction from the 1960-61 total of 331.4 million. After deducting 76.0 million for anticipated domestic requirements, an estimated 194.6 million are available for export and for carryover during 1961-62, as against 255.7 million in 1960-61.

Combined exports of wheat as grain and wheat flour in terms of grain equivalent during the period December 1-August 4 of the 1961-62 Australian crop year amounted to 145.9 million bushels 7 per cent less than the 157.5 million exported during the corresponding period of 1960-61. The balance remaining on August 5, 1962, for export and for carryover, at 48.7 million bushels, represented a decrease of 50 per cent from the comparable 1961 figure of 98.2 million.

Australian Wheat Supplies

Item	1960-61	1961-62 ^{1/}
	- million bushels -	
Carryover, including flour as wheat, at beginning of crop year (December 1)	60.5	24.3
New Crop	270.9	246.3
Total estimated domestic supplies	331.4	270.6
Less estimated domestic requirements for crop year ...	75.7	76.0
Available for export and for carryover	255.7	194.6
Deduct:		
Exports of wheat as grain, December 1-August 4	137.9	129.1
Exports of wheat flour in terms of wheat, December 1-August 4	19.6	16.8
Total exports of wheat and wheat flour	157.5	145.9
Balance on August 5 for export and for carryover	98.2	48.7

^{1/} Preliminary.

The following information relative to the Australian situation has been extracted from a report from Mr. H.A. Gilbert, Commercial Counsellor for Canada, Melbourne, under date of August 16, 1962 and is reproduced with the permission of the Trade Commissioner Service, Department of Trade and Commerce.

Crop Position Although it appeared at one stage as if the good weather conditions enjoyed by Australian wheatgrowers were going to deteriorate, they quickly improved again and resulted in the successful completion of seeding. It is now estimated that 16 million acres have been sown to wheat and, given satisfactory weather, should produce the 300 million bushel crop already forecast. This estimate is based on the average of the last two seasons and the continuance of normal climatic conditions.

From New South Wales where good rains late in July saved part of that State's crop it is reported that over 5 million acres are under wheat and a record crop of over 90 million bushels is forecast. Similarly, Queensland growers are looking forward to a bumper harvest as recent rains have greatly improved conditions for their record sowing of 850,000 acres.

Parts of Western and Southern Australia, together with Victoria, are needing rain at present but the plants are in a healthy condition, if somewhat backward. In these areas heavy rains are needed to ensure reasonable soil moisture so that the plants can withstand the dry conditions which normally develop during early summer.

Marketing Position At the middle of the year only 20 million bushels of the exportable surplus, excluding carryover, remained to be sold and this was reserved for traditional markets. The excellent marketing record was achieved by the Australian Wheat Board in the season just past in spite of deliveries totalling 224 million bushels being made to the Board. The shipment of wheat is proceeding at a fast rate and the carryover at the end of the season is expected to be down to a minimum. This will be particularly important if the current season's harvest turns out as currently forecast.

Sales totalling 9.6 million bushels were made by the Board in the first two weeks of the period under review. Major sales were 3.7 million bushels to India and 1.2 million to Japan. The Indian sales were the result of negotiations which had been going on for some considerable time. The wheat will come from reserve stocks set aside by the Board in anticipation of the sale.

Exports of Australian Wheat and Wheat Flour in Terms of Wheat
December 1-August 4, 1961-62 and Corresponding Period 1960-61

Destination	Wheat		Wheat Flour	
	1960-61	1961-62	1960-61	1961-62
- thousand bushels -				
<u>Europe</u>				
Albania	678	-	-	-
Britain	16,897	15,550	1,758	2,018
Eire	3,841	1,013	-	-
France	-	450	-	-
Italy	14,483	4,846	-	-
Malta	303	549	-	-
Norway	1,022	2,572	-	-
Spain and Canary Islands	3,171	11,527	-	-
Switzerland	135	73	-	-
West Germany	4,537	8,698	-	-
Others	-	-	2	8
<u>Middle East</u>				
Aden	338	693	-	-
Aden and Aden I/T	-	-	727	782
Aden Atta	-	-	203	289
Egypt	3,946	1,882	-	-
Iran	804	302	-	-
Iraq	4,552	733	-	-

Exports of Australian Wheat and Wheat Flour in Terms of Wheat
December 1-August 4, 1961-62 and Corresponding Period 1960-61

Destination	Wheat		Wheat Flour	
	1960-61	1961-62	1960-61	1961-62
- thousand bushels -				
<u>Middle East (continued)</u>				
Lebanon, Jordan, Syria	1,516	3,906	-	-
Persian Gulf	-	-	266	108
Persian Gulf Atta	-	-	620	858
Saudi Arabia	-	-	159	135
Others	160	281	43	11
<u>Africa</u>				
Algeria	1,147	446	-	-
Kenya	148	882	-	-
Mauritius	-	-	609	459
Nyasaland	-	-	171	156
Port. East Africa	-	197	-	-
Rhodesia	2,002	1,941	-	-
South Africa	2,611	1,258	-	-
Zanzibar	-	-	131	85
Others	28	9	48	61
<u>Asia</u>				
British North Borneo	-	-	188	151
Brunei	-	-	37	29
Burma	107	147	176	192
Ceylon	7	19	2,445	4,533
Ceylon Atta	-	-	-	1
China	51,600	38,067	2,233	-
Hong Kong	1,803	2,429	165	262
India	3,737	11,111	-	-
Indonesia	-	-	3,037	228
Japan	9,621	12,184	-	-
Malaya	350	370	2,375	2,202
Malaya Atta	-	-	48	59
North Korea	2,519	-	-	-
Pakistan	1,243	2,805	-	-
Sarawak	-	-	185	183
Singapore	76	48	1,737	1,896
Singapore Atta	-	-	7	9
Singapore a/c War Office	-	-	41	18
Thailand	-	-	440	445
Others	209	165	33	108
<u>Pacific Area and Sundries</u>				
Dutch New Guinea	-	-	65	62
New Zealand	4,267	3,857	-	-
Pacific Islands etc	39	31	1,560	1,360
Peru	-	56	-	7
Royal Navy	4	2	-	-
Ships' Stores etc.	-	-	89	83
Totals	137,900	129,100	19,600	16,800

FRENCH SITUATION

Supply Position Total estimated commercial domestic supplies of wheat in France for the crop year (August-July) 1961-62, consisting of the August 1 carryover of 67.5 million bushels and marketings of 257.2 million, amounted to some 324.7 million bushels, four per cent less than the 1960-61 total (including August-June imports of 3.9 million bushels) of 336.5 million. After deducting 211.3 million bushels for anticipated domestic requirements, a total of 113.4 million were available for export and for carryover during 1961-62, 12 per cent below the 1960-61 level of 128.5 million.

Combined exports of wheat and wheat flour in terms of grain equivalent during the first eleven months of the 1961-62 crop year amounted to 59.7 million bushels, 9 per cent above the comparable 1960-61 total of 54.7 million. The balance of commercial supplies remaining on July 1, 1962 amounted to 53.8 million bushels compared with the July 1, 1961 total of 73.8 million.

French Supplies of Soft Wheat

Item	1960-61	1961-62 <u>1/</u>
	- million bushels -	
Commercial carryover, August 1	54.3	67.5
Deliveries to Grain Board	278.4	257.2
Imports, August-June	3.9	-
Total estimated supplies	336.5	324.7
Less estimated domestic requirements for crop year	208.0	211.3
Available for export and for carryover	128.5	113.4
Deduct:		
Exports of wheat as grain, August-June	48.0	48.8
Exports of wheat flour in terms of wheat, August-June .	6.8	10.8
Total exports of wheat and wheat flour	54.7	59.7
Balance on July 1 for export and for carryover	73.8	53.8

1/ Preliminary.

The following account of the current crop situation in France has been extracted from a report by Mr. R.G. Woolham, Assistant Commercial Secretary, Canadian Embassy, Paris, under date of August 24, 1962, and is reproduced with the permission of the Trade Commissioner Service, Department of Trade and Commerce. Where possible, conversions from French to Canadian measures have been made and rounded for the convenience of our readers. One new franc equals .2200 Canadian dollars the quotation in effect on August 13, 1962.

Weather and Crops All preliminary indications point to a record harvest plus above-average quality for this year's French wheat crop. By the first week in August about one-third of the crop had been harvested and by mid-month combining was well underway in the regions north of Paris. From the Loire region,

initial tests show specific weight at 82 kilograms per quintal (66 pounds per bushel) and moisture in the 13 - 14 per cent range. This quality is much above previous years, and if favourable weather conditions continue to prevail, quality and yields will be well above average.

Latest production estimates place this year's French wheat crop at 11,545,100 tons (424.2 million bushels) compared with 9,570,000 tons (351.6 million bushels) last year. Production of durum wheat is estimated at a record 75,000 tons (2.8 million bushels) - 55,000 tons (2.0 million bushels) last year - while forecasts for barley production are 4,936,500 tons (226.7 million bushels), down slightly from the figure of 5,460,000 tons (250.8 million bushels) given last year. Estimates for corn are not yet available, but corn acreage is down 8 per cent over last year, and while weather conditions have favoured wheat, the same weather conditions have not favoured corn. The result is that the corn now growing is in a poorer condition than in 1961, and therefore it is probable that total production will be less this year than last.

The carryover in grains held in elevators as of July 1, 1962, reflects, especially for barley, lower deliveries plus efforts that were made to encourage through subsidies both internal consumption and exports. Figures reflecting the carryover position are given in thousand bushels as follows:

	July 1, 1961	July 1, 1962
	- thousand bushels -	
Wheat	71,282	52,506
Rye	591	79
Barley	29,303	2,251
Oats	2,983	512
Corn	13,031	13,267

French Grain Market

Estimates given as to France's exportable surplus from this year's crop of soft wheat are 1.5 - 1.8 million tons (55,115,000-66,138,000 bushels). Availabilities of barley and corn for export are not yet known but are expected to be considerably reduced from last year, partly as a result of higher consumption on farms. France's durum requirements are expected to be in the neighbourhood of 430,000 tons (15,800,000 bushels) and deducting domestic production and anticipated purchases from North Africa, potential purchases from other sources of supply are estimated very roughly at between 50,000 and 100,000 tons (1,837,000 and 3,674,000 bushels). It is not yet definitely known what quantities of durum wheat Tunisia and Morocco will have to offer, although some reports suggest a figure of 300,000 tons (11,023,000 bushels). Algerian durum availabilities are also obscure, and it remains to be seen what arrangements will be undertaken between France and these North African countries regarding durum imports.

Effective July 29, 1962, the E.E.C. Common Agricultural Policy Regulations were put into effect. The uncertainties resulting from the change-over are gradually being cleared-up, and adjustments to the new regulations can be noted.

Formerly, the French Cereals Office (O.N.I.C.) enjoyed a complete monopoly in the field of fixing prices, movement, sale and purchase of both domestic and imported cereals and cereal products. Importers, under the old system, made bids (negotiable) to O.N.I.C. on the difference between domestic and international prices, which the importer calculated as the minimum necessary to sell the grain

in question on export markets. The area in France from which the wheat had to be exported was also specified by O.N.I.C. The reverse procedure was followed for imported cereals, with the importer bidding on the amount he was prepared to pay to O.N.I.C. to permit him to sell at domestic prices.

Two features of the former system are noteworthy: in the first place, virtually no import licenses were granted for Manitoba or other high quality wheat, except for very special requirements for seed, or where millers were re-exporting flour. In the second place, purchases of durum wheat, which was France's principal cereal import from Canada, were made by O.N.I.C. on behalf of French semolina millers and distributed accordingly.

Under the new E.E.C. regulations, the monopoly powers formerly held by O.N.I.C. have been abrogated. A variable levy (prelevement), announced daily, has been substituted. This is added to the c.i.f. price, and plus domestic taxes, results in the price paid by the French buyers. French importers and millers are now free to purchase according to their own preferences or judgement. Import licenses are still required from O.N.I.C., but under the E.E.C. regulations, approval is supposed to be automatic.

The new E.E.C. grain regulations have created a number of problems regarding the pricing mechanism for French wheat exports. Formerly, O.N.I.C. could designate the region or even a particular elevator authorized to export wheat. This had the effect of equalizing differences in freight costs of moving wheat into export position. Under the new regulations, this is no longer possible. Exporters can obtain, without restriction, a subsidy equal in amount to the announced levy applicable to wheat imports, for wheat exports to third countries. Subsidies are no longer given on exports to E.E.C. countries. Since the beginning of August, the French import levy has centered around 18 N.F. The effect therefore, has been to give those wheat growing areas which are close to export positions an advantage over interior producing areas which was not formerly the case.

Last year, the harvest in the South-West area of France was much below average, while that of the Western area was about normal. In contrast this year's harvest in the South West is exceptionally high, while the harvest in the Western area, will probably be well above average. This suggests that there will be less activity in the internal movement of wheat for domestic purposes, leaving much of the market activity to areas close to ports or frontier positions, where the lowest cost of freight will be of new importance.

So far, France's E.E.C. partners have not been purchasing very much French wheat, having stockpiled considerable quantities prior to July 29, 1962. On exports to third countries, market comment states that subsidies limited to the import levy will not be high enough to permit French wheat to compete on international markets.

Under the new regulations, however, O.N.I.C. can grant supplementary subsidies, which must be determined by auction for wheat exported to third countries. Aside from setting new freight rates, there is a good possibility that supplementary subsidies will be announced, which will probably be used to aid producing regions at a disadvantage because of distance from markets, as well as improve French competitiveness on sales to third countries.

ARGENTINE SITUATION

Supply Position Estimated total supplies of wheat in the Argentine for the 1961-62 (December-November) crop year amount to 237.4 million bushels, consisting of the December 1, 1961 carryover of 35.3 million and the new crop, now placed at 202.1 million. Indicated supplies for the current Argentine crop year, reflecting a 39 per cent increase in production which more than offset a decline in carryover stocks, are about 20 per cent more than the 1960-61 total of 197.1 million bushels. After making an allowance of 136.0 million bushels for anticipated domestic requirements, an estimated 101.5 million are available for export and for carryover compared with 74.8 million in 1960-61.

Exports of wheat and wheat flour in terms of grain equivalent during December 1961-July 1962 amounted to 87.8 million bushels, exceeding by a wide margin the 32.0 million exported during the same months in 1960-61. The balance remaining on August 1, 1962 for export and for carryover was estimated at 13.7 million bushels, substantially below the August 1, 1961 total of 42.9 million.

Argentine Wheat Supplies

Item	1960-61	1961-62 <u>1/</u>
	- million bushels -	
Carryover at beginning of crop year (December 1) <u>2/</u>	51.6	35.3
New Crop <u>3/</u>	145.5	202.1 <u>4/</u>
Total estimated domestic supplies	197.1	237.4
Less estimated domestic requirements for crop year.	122.3	136.0
Available for export and for carryover	74.8	101.5
Deduct:		
Exports of wheat as grain, December-July	31.8	87.5
Exports of wheat flour in terms of wheat, December-July	0.1	0.3
Total exports of wheat and wheat flour	32.0	87.8
Balance on August 1 for export and for carryover ..	42.9	13.7

1/ Preliminary.

2/ Includes allowances for farm stocks.

3/ Official estimate.

4/ Revised.

CROP PROSPECTS IN WEST GERMANY

According to a report received from Mr. W.J. O'Connor, Assistant Commercial Secretary, Bonn, Germany, under date of August 2, 1962 West German farmers in some areas are now combining their early crops, although it will be another week or two before the harvest is in full swing. Low temperatures during most of the growing season retarded growth and therefore the harvest is about three weeks later than normal. The weather has

been more favourable in the last week or two and if it continues the quality of the crop will be better than in 1960 and 1961.

According to preliminary reports the total grain acreage is approximately one per cent less than the 12.1 million acres harvested in 1961. The bread grain acreage, largely as the result of winterkilling, is eight per cent less than last year and approximately twelve per cent below the 1956-61 average. The acreage sown to summer wheat this year is fifty per cent greater than last year, but the total wheat acreage is reported to be eight per cent below the 3.46 million acres harvested last fall. It is however equal to the five year average. The rye acreage has been declining steadily in recent years and this year, partly due to winterkilling, dropped a further eight per cent. The acreage sown to feed grains is greater than in 1961. Summer barley acreage is up nine per cent and the acreage sown to oats has increased by fourteen per cent.

Wheat yields are not expected to be any better than the rather poor results obtained in 1961, and in view of the smaller acreage the crop is expected to be less than last year's harvest of 4 million metric tons (147.0 million bushels). Rye yields are expected to be better than last year and therefore the harvest, although below average, will be bigger than the 2.5 million metric tons (98.4 million bushels) harvested in 1961.

The West German Government has already opened import possibilities for 120,000 tons (4,724,000 bushels) of rye in the current crop year and total imports may exceed the 1961-62 imports. Final figures for this period are not available, but are estimated at 400,000 metric tons (15,747,000 bushels). In addition the Government plans to release 100,000 tons (3,937,000 bushels) of rye in August and 50,000 tons (1,968,000 bushels) in September from the Federal Reserve. In the case of wheat it is expected that the Government will supply the trade from its stocks with 200,000 tons (7,349,000 bushels) in August and 100,000 tons (3,674,000 bushels) in September.

CALENDAR OF WHEAT EVENTS

- August 7 The Hon. Alvin Hamilton, Minister of Agriculture, announced that the initial payment for wheat in the 1962-63 crop year, basis No. 1 Northern, in store Fort William-Port Arthur, would be \$1.50 per bushel.
- 10 According to a report published by the Crop Reporting Board, United States Department of Agriculture, production of all wheat in the United States in 1962, based on conditions at August 1, was forecast at 1,063 million bushels.
- 30 According to World Summaries, Foreign Crops and Markets, published by the Foreign Agricultural Service, United States Department of Agriculture present prospects indicate that the 1962 world wheat production may be second only to the record outturn in 1958.
- 31 Based on conditions at August 15, Canada's 1962 wheat crop was forecast at 530.7 million bushels, 87 per cent larger than last year's outturn of 283.4 million.
- 31 Preliminary returns from a referendum held August 30 in the 39-State Commercial wheat-producing area show that 68.4 per cent of farmers voting favoured marketing quotas on 1963 crop wheat.
-

STATISTICS CANADA LIBRARY
BIBLIOTHÈQUE STATISTIQUE CANADA



1010686835