

CATALOGUE No.

22-005

MONTHLY

DOES NOT CIRCULATE

NE PAS PRÊTER

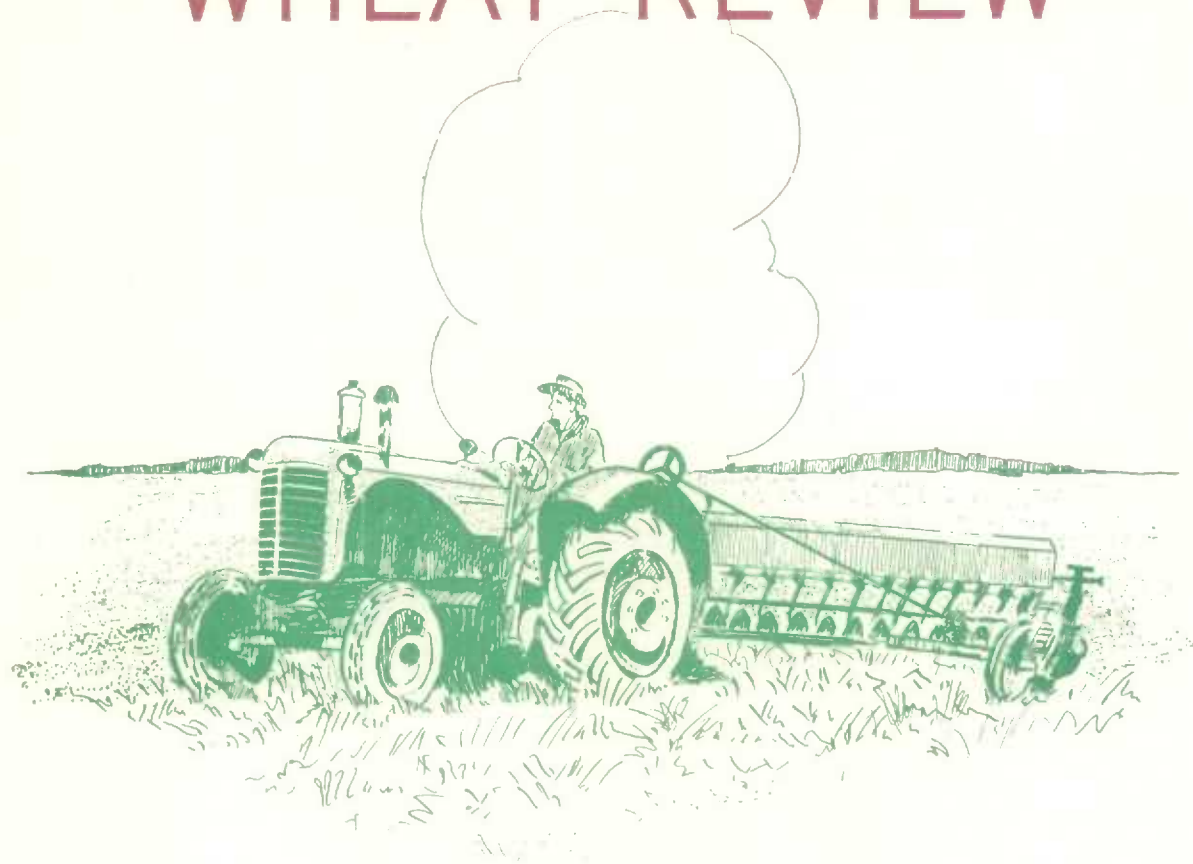


CANADA

DOMINION BUREAU OF STATISTICS
AGRICULTURE DIVISION

DOMINION BUREAU
OF STATISTICS
JUL 2 1963
PROPERTY OF THE
LIBRARY

THE WHEAT REVIEW



MAY 1963

DOMINION BUREAU OF STATISTICS

THE
WHEAT REVIEW

MAY 1963

Published by Authority of
The Minister of Trade and Commerce

Prepared in the Crops Section, Agriculture Division
Dominion Bureau of Statistics, Ottawa.

TABLE OF CONTENTS

| | <u>Page</u> |
|--|-------------|
| World Wheat Situation | |
| Wheat Supplies of Four Major Exporters One Per Cent Below a Year Ago..... | 1 |
| August-April Exports Decline from Last Year but Remain Well Above Average... | 1 |
| I.W.C. Cumulative Totals of Commercial Purchases..... | 2 |
| Canadian Situation | |
| Supply Position..... | 3 |
| April 1963 Exports of Wheat and Flour Total 32.7 Million Bushels..... | 4 |
| Lake Shipments of Canadian Grain..... | 5 |
| General Quota Position..... | 6 |
| Inferior Variety of Wheat..... | 6 |
| Farmers' Marketings of Wheat..... | 7 |
| Visible Supply of Canadian Wheat..... | 8 |
| Grading of Wheat Inspected, August-April 1962-63 with Comparisons..... | 8 |
| Weekly Visible Supply and Farmers' Marketings (Charts)..... | 9 |
| Wheat Shipments to the United States by Destination..... | 10 |
| Rail Shipments of Wheat to Maritime Ports..... | 10 |
| Rail Shipments of Wheat from Fort William-Port Arthur..... | 11 |
| Overseas Exports of Canadian Grain by Ports of Loading..... | 11 |
| Freight Assistance Shipments..... | 12 |
| Monthly Exports of Canadian Wheat and Wheat Flour..... | 13 |
| Exports of Canadian Wheat by Destination..... | 14 |
| Customs Exports of Canadian Wheat Flour by Countries of Consignment..... | 17 |
| Canadian Wheat Board Weekly Average Cash Wheat Prices..... | 19 |
| Canadian Flour Milling Situation | |
| Production and Exports..... | 21 |
| United States Situation | |
| Supply Position..... | 22 |
| U.S. Wheat and Flour Exports Continue Downtrend..... | 23 |
| Winter Wheat Crop Estimated at 885 Million Bushels..... | 25 |
| Wheat Farmers Disapprove 1964-Crop Wheat Marketing Quotas..... | 26 |
| Statement by Secretary Freeman on Wheat Referendum..... | 26 |
| Statement by Secretary Freeman on International Wheat Agreement..... | 27 |
| Cash Wheat Prices on the Kansas City and Minneapolis Markets..... | 28 |
| Chicago Wheat Futures, High Points of Closing..... | 28 |
| Australian Situation..... | 29 |
| French Situation..... | 32 |
| Argentine Situation..... | 34 |
| Calendar of Wheat Events..... | 36 |

WORLD WHEAT SITUATION

Wheat Supplies of Four Major Exporters One Per Cent Below a Year Ago

Total supplies of wheat held by the four traditional major exporters, for export and for carryover at the end of their respective crop years, totalled 2,035.9 million bushels at May 1, 1963 compared with 2,062.0 million at the same time a year ago. Reduced supplies in United States and Argentina more than offset larger totals in Canada and Australia. Supplies at May 1, 1963, in millions of bushels, were held as follows, with last year's comparable figures in brackets: United States, 1,293.9 (1,426.4); Canada, 554.8 (476.6); Argentina, 21.6 (47.6); and Australia, 165.6 (111.4).

August-April Exports Decline from Last Year but Remain Well Above Average

With each of the four traditional major wheat exporters sharing in the decrease, total shipments of wheat and flour in terms of wheat from United States, Canada, Argentina and Australia, during the first nine months of the 1962-63 crop year amounted to 867.3 million bushels, some 16 per cent less than last year's record August-April level of 1,035.4 million but 31 per cent more than the ten-year (1951-52-1960-61) average of 663.3 million for the same period. Shipments from the four traditional major wheat exporters during August-April of the 1962-63 crop year, with comparisons, appear in the accompanying table.

Exports of Wheat and Flour in Terms of Wheat August 1962 - April 1963 with Comparisons

| August-April | United States | Canada | Argentina | Australia | Total |
|-------------------------|---------------|--------|-----------|-----------|---------|
| - million bushels - | | | | | |
| 1950-51..... | 257.3 | 154.4 | 67.5 | 89.7 | 568.9 |
| 1951-52..... | 372.5 | 224.5 | 24.0 | 69.8 | 690.8 |
| 1952-53..... | 260.8 | 249.6 | 10.6 | 68.0 | 589.0 |
| 1953-54..... | 146.4 | 187.0 | 86.8 | 43.0 | 463.2 |
| 1954-55..... | 207.4 | 190.4 | 102.6 | 74.6 | 575.0 |
| 1955-56..... | 219.4 | 194.5 | 90.2 | 72.4 | 576.5 |
| 1956-57..... | 409.6 | 193.5 | 72.7 | 103.9 | 779.7 |
| 1957-58..... | 295.2 | 224.7 | 54.6 | 49.7 | 624.2 |
| 1958-59..... | 335.4 | 211.2 | 74.6 | 55.8 | 677.0 |
| 1959-60..... | 373.0 | 210.4 | 53.6 | 88.6 | 725.6 |
| 1960-61..... | 505.2 | 240.8 | 57.5 | 128.8 | 932.3 |
| 1961-62 <u>1/</u> | 534.9 | 272.5 | 69.7 | 158.3 | 1,035.4 |
| 1962-63 <u>2/</u> | 455.6 | 243.8 | 51.4 | 116.5 | 867.3 |

1/ Revised.

2/ Preliminary.

International Wheat Council
Cumulative Totals of Commercial Purchases by Importing Countries from Exporting Countries
Crop Year 1962-63 -- Through April 27, 1963

| Importing Countries | EXPORTING COUNTRIES | | | | | | | | Total |
|---|---------------------|-----------|-----------|--------|-------|--------|----------|---------|-----------|
| | Canada | Argentina | Australia | France | Italy | Sweden | U.S.S.R. | U.S.A. | Purchases |
| - thousand bushels - | | | | | | | | | |
| Austria..... | 1,390 | - | - | - | - | - | - | - | 1,390 |
| Belgium & Luxembourg..... | 7,151 | 2,412 | - | 908 | - | - | 184 | 2,822 | 13,477 |
| Brazil..... | - | 10,562 | - | - | - | - | - | 10,240 | 20,802 |
| Costa Rica..... | 367 | - | - | - | - | - | - | 462 | 829 |
| Cuba..... | - | - | - | - | - | - | - | - | - |
| Dominican Republic..... | 830 | - | - | - | - | - | - | 657 | 1,487 |
| El Salvador..... | 641 | - | - | - | - | - | - | 538 | 1,179 |
| Finland..... | 703 | - | - | - | - | 111 | - | 187 | 1,001 |
| Germany, Federal Republic. | 21,386 | 2,545 | 1,348 | 2,900 | - | 1,654 | 3,707 | 8,847 | 42,387 |
| Greece..... | 28 | - | 2 | - | - | - | - | 18 | 48 |
| Iceland..... | 7 | - | - | - | - | - | - | 86 | 93 |
| India..... | - | - | 3,976 | - | - | - | - | 2 | 3,978 |
| Indonesia..... | - | - | 255 | - | - | - | - | 1 | 256 |
| Ireland..... | 2,320 | - | 2,338 | 6 | - | - | - | 292 | 4,956 |
| Israel..... | 1,257 | - | - | - | - | - | - | 2,698 | 3,955 |
| Japan..... | 36,980 | - | 10,271 | - | - | - | 2,234 | 38,977 | 88,462 |
| Korea..... | - | - | - | - | - | - | - | 1 | 1 |
| Liberia..... | 51 | - | - | - | - | - | - | 67 | 118 |
| Libya..... | - | - | - | 167 | 926 | - | - | - | 1,093 |
| Netherlands..... | 4,015 | 3,399 | - | 267 | - | 331 | 4,903 | 11,191 | 24,106 |
| Netherlands Territories. | 271 | - | 22 | 6 | - | - | - | 525 | 824 |
| New Zealand..... | - | - | 5,533 | - | - | - | - | - | 5,533 |
| Nigeria..... | 920 | - | 1 | - | 1 | - | - | 1,843 | 2,765 |
| Norway..... | 1,568 | 643 | 3,020 | 2,214 | - | 260 | 2,756 | 309 | 10,770 |
| Peru..... | 919 | 8,690 | 10 | - | - | - | - | 90 | 9,709 |
| Philippines..... | 5,393 | - | 632 | - | - | - | - | 6,016 | 12,041 |
| Portugal..... | 16 | 404 | 8 | 353 | - | - | - | 2,060 | 2,841 |
| Portuguese Territories.. | 575 | - | 96 | - | - | - | - | 2,946 | 3,617 |
| Rhodesia & Nyasaland..... | 49 | - | 3,618 | 1 | 3 | - | - | 127 | 3,798 |
| Saudi Arabia..... | 550 | - | 526 | - | 4 | - | 441 | 2,993 | 4,514 |
| Sierra Leone..... | 227 | - | - | - | - | - | - | 15 | 242 |
| South Africa..... | 8,019 | - | 761 | - | - | - | - | - | 8,780 |
| Switzerland..... | 1,793 | 533 | - | 1,836 | 137 | 5 | 92 | 670 | 5,066 |
| Tunisia..... | - | - | - | - | - | - | - | - | - |
| United Arab Republic..... | - | - | - | - | 890 | - | - | 19 | 909 |
| United Kingdom..... | 72,161 | 9,504 | 17,495 | 1,297 | - | 367 | 14,466 | 3,973 | 119,263 |
| U.K. Territories..... | 3,176 | - | 5,412 | 1,413 | 1 | - | - | 2,519 | 12,521 |
| Vatican City..... | 441 | - | - | - | - | - | - | - | 441 |
| Venezuela..... | 6,037 | 331 | - | - | - | - | - | 4,826 | 11,194 |
| Western Samoa..... | - | - | 32 | - | - | - | - | - | 32 |
| To Orders..... | - | 4,887 | - | 10,940 | - | 2,205 | 147 | - | 18,179 |
| Totals..... | 179,241 | 43,910 | 55,356 | 22,308 | 1,962 | 4,933 | 28,930 | 106,017 | 442,657 |
| Percentage of Total Sales by Exporting Countries.... | 40.49 | 9.92 | 12.51 | 5.04 | .44 | 1.11 | 6.54 | 23.95 | 100.00 |

NOTE: Mexico and Spain - no sales reported.

Quantities for Argentina and Italy cover period ending April 13, 1963.

Quantities for France cover period ending April 20, 1963.

CANADIAN SITUATION

Supply Position Total estimated supplies of wheat for the 1962-63 (August-July) crop year are placed at 948.6 million bushels, 6 per cent greater than the 1961-62 total of 891.2 million, with a substantial decline in carryover stocks more than offset by a sharp increase in production. After deducting 150.0 million bushels for anticipated domestic requirements, supplies available for export and for carryover during 1962-63 amount to 798.6 million bushels, 7 per cent above the 749.1 million in 1961-62.

Exports of wheat and flour in terms of wheat during the August-April period of the current crop year amounted to 243.8 million bushels compared with 272.5 million exported during the corresponding period of 1961-62 and the ten-year (1951-52-1960-61) average for the same months of 212.7 million bushels. This year's total consisted of 223.7 million bushels of wheat and 20.0 million of wheat flour equivalent. Corresponding totals for the same period of the preceding crop year were 248.2 million bushels of wheat and 24.3 million of flour equivalent. The balance remaining on May 1, 1963 for export and for carryover amounted to 554.8 million bushels, 16 per cent more than the May 1, 1962 total of 476.6 million.

Canadian Wheat Supplies

| Item | 1961-62 <u>1/</u> | 1962-63 <u>2/</u> |
|--|---------------------|-------------------|
| | - million bushels - | |
| Carryover in North America at beginning of crop year (August 1)..... | 607.8 | 391.1 |
| New Crop..... | 283.4 | 557.6 |
| Imports of wheat for domestic use, August-April..... | <u>3/</u> | <u>4/</u> |
| Total estimated supplies..... | 891.2 | 948.6 |
| Less estimated domestic requirements for crop year.... | 142.2 | 150.0 |
| Available for export and for carryover..... | 749.1 | 798.6 |
| Deduct: | | |
| Exports of wheat in bulk, August-April <u>5/</u> | 245.0 | 219.4 |
| Exports of bagged seed wheat, August-April <u>6/</u> | 3.2 | 4.4 |
| Total exports of wheat as grain..... | 248.2 | 223.7 |
| Exports of wheat flour in terms of wheat, August-April <u>6/</u> | 24.3 | 20.0 |
| Total exports of wheat and wheat flour..... | 272.5 | 243.8 |
| Balance on May 1 for export and for carryover..... | 476.6 | 554.8 |

1/ Subject to revision.

2/ Preliminary.

3/ Less than 50,000 bushels.

4/ Not available.

5/ As reported by the Board of Grain Commissioners. (Includes overseas clearances and imports into the United States).

6/ Customs returns, 1961-62 adjusted for time lag.

Farmers' marketings of wheat, (both east and west) up to May 22, of the 1962-63 crop year amounted to 334.8 million bushels in contrast to last year's corresponding total of 213.8 million. Some 25.4 million bushels of this year's total were delivered during the five weeks April 18 to May 22. During the same period the volume of Canadian wheat entering domestic and export channels amounted to about 43.9 million bushels. As a result, the total visible supply of Canadian wheat declined from 378.3 million bushels at April 17 to a level of 359.7 million at May 22, 1963.

The total visible supply of Canadian wheat at May 22 this year represented an increase of 17 per cent over the 1962 comparable total of 307.8 million but was 9 per cent less than the 1961 figure of 396.8 million. Stocks in country elevators amounted to 191.7 million bushels as against 146.2 million in this position a year ago and 243.0 million two years ago. This year's supplies in country elevators at May 22 accounted for 53 per cent of the total visible wheat supply compared with the 1962 and 1961 corresponding percentages of 48 per cent and 61 per cent, respectively. Interior terminal stocks, at 5.4 million bushels were sharply below both the 1962 figure of 9.0 million and the 1961 total of 9.3 million. The 16.2 million bushels "in transit rail" (Western Division) represented a decrease of 3 per cent from the 1962 total of 16.7 million and 6 per cent less than the 1961 figure of 17.3 million. Supplies at the Canadian Lakehead, at May 22 this year, amounted to 57.1 million bushels, 11 per cent above last year's comparable total of 51.4 million and 39 per cent greater than the 41.0 million bushels in this position two years ago. The 6.9 million bushels "in transit lake" were slightly less than the 7.3 million of a year ago and sharply below the 1961 total of 12.3 million. Supplies in Bay, Lake and Upper St. Lawrence ports, at 30.0 million bushels, were 12 per cent above the 26.8 million at May 23, 1962 and exceeded by 23 per cent the 24.4 million at May 24, 1961. The 26.3 million bushels in Lower St. Lawrence and Maritime ports were 3 per cent more than the 25.5 million of a year ago and 2 per cent above the 25.7 million of two years ago. On the west coast, total supplies in Vancouver-New Westminster, Victoria and Prince Rupert at May 22, 1963, at 12.2 million bushels, were higher than both the previous years' corresponding total of 11.6 million and the 11.3 million bushels in 1961.

April 1963 Exports of
Wheat and Flour Total
32.7 Million Bushels

Combined exports of wheat in bulk, bagged seed wheat and wheat flour in terms of grain equivalent during April 1963 amounted to 32.7 million bushels, 47 per cent greater than the March 1963 total of 22.3 million, 38 per cent more than the ten-year (1952-61) average for the month of April of 23.7 million and 17 per cent above the April 1962 figure of 27.9 million. Exports of wheat in bulk (as reported by the Board of Grain Commissioners) during April 1963, at 28.9 million bushels represented an increase of 50 per cent over the 19.2 million of last month, 47 per cent more than the ten-year (1952-61) average for the month of April of 19.6 million and 16 per cent above the April 1962 total of 25.0 million. Exports of bagged seed wheat during April 1963, based on Canadian Customs returns, amounted to 1,316 thousand bushels, 21 per cent above the March 1963 figure of 1,088 thousand and about 2 1/2 times larger than the April 1962 (adjusted to remove time lag) of 539 thousand bushels. Customs returns also indicate that the equivalent of 2.4 million bushels of wheat was exported in the form of flour during April 1963, 26 per cent above the 1.9 million exported last month and 2 per cent more than the adjusted April 1962 total of 2.4 million.

Cumulative exports of wheat in bulk during the August 1962-April 1963 period amounted to 219.4 million bushels compared with the 1961-62 total of 245.0 million and about one fifth greater than the ten-year (1951-52-1960-61) average for the period of 179.1 million bushels. Britain, remaining in its position as Canada's leading market for wheat, received shipments amounting to 56.4 million bushels and representing 26 per cent of the nine-month total. During the August-

April period of 1961-62 shipments of wheat to Britain amounted to 55.9 million bushels and accounted for 23 per cent of the total. Other principal markets for Canadian wheat in bulk during the first nine months of the current crop year, with figures for the same period of the preceding crop year in brackets, were as follows, in millions of bushels: China Communist, 45.4 (49.2); Japan, 32.9 (36.9); Federal Republic of Germany, 20.2 (35.8); Poland, 14.2 (12.3); Belgium and Luxembourg, 7.0 (9.3); Venezuela, 4.8 (3.0); France, 4.7 (0.7); Philippines, 4.6 (2.3); Republic of South Africa, 4.5 (nil); Italy, 4.3 (3.3); and Netherlands, 4.1 (2.0). Cumulative exports of bagged seed wheat during August-April of the 1962-63 crop year, basis Canadian Customs returns, amounted to 4.4 million bushels 37 per cent above last year's revised total of 3.2 million.

Cumulative exports of wheat flour during August-April of the 1962-63 crop year, based on Customs returns, were the equivalent of 20.0 million bushels of wheat, as against the adjusted August 1961-April 1962 total of 24.3 million bushels. As with bulk wheat, Britain was also the major market for Canadian wheat flour. Shipments of wheat flour to that country during the period under review amounted to the equivalent of 8.7 million bushels and accounted for 44 per cent of the August 1962-April 1963 total. During the same months of 1961-62 shipments of wheat flour to Britain amounted to the equivalent of 9.0 million bushels and represented 37 per cent of the total. Other leading markets for Canadian wheat flour in terms of grain equivalent during the August-April period of the 1962-63 crop year, with revised data for the same months of the preceding crop year in brackets, were as follows, in thousands of bushels: Ghana, 1,272 (1,638); Trinidad and Tobago, 1,051 (1,042); Jamaica, 1,011 (1,101); United States, 985 (966); Leeward and Windward Islands, 749 (743); Hong Kong, 713 (665); Nigeria, 673 (1,235); Costa Rica, 653 (648); and Malaya and Singapore, 479 (498).

Lake Shipments of Canadian Grain Total shipments of the five major grains out of Lakehead terminals from the opening of navigation to May 22 this year amounted to 45.8 million bushels, 16 per cent greater than the 39.6 million during the comparable period of 1962. In 1963 the season of navigation opened on April 19 while the 1962 season opened on April 22. Shipments of wheat, at 28.5 million bushels accounted for 64 per cent of the current total. Shipments of oats, rye and flaxseed were above last year's corresponding levels, while those for wheat and barley were lower.

Lake Shipments of Canadian Grain from the Opening of Navigation to May 22, 1963 and to Approximately the Same Date 1953 to 1962

| Year | Wheat | Oats | Barley | Rye | Flaxseed | Total |
|----------------------|--------|--------|--------|-------|----------|---------|
| - thousand bushels - | | | | | | |
| 1953..... | 66,674 | 18,188 | 25,412 | 3,146 | 1,183 | 114,604 |
| 1954..... | 7,405 | 13,656 | 12,833 | 1,482 | 1,259 | 36,635 |
| 1955..... | 41,851 | 7,414 | 19,061 | 4,683 | 1,782 | 74,790 |
| 1956..... | 52,876 | 5,741 | 17,988 | 3,755 | 880 | 81,239 |
| 1957..... | 44,845 | 7,881 | 12,037 | 572 | 2,850 | 68,185 |
| 1958..... | 53,137 | 10,145 | 20,516 | 1,647 | 1,215 | 86,660 |
| 1959..... | 27,425 | 4,130 | 8,819 | 663 | 677 | 41,714 |
| 1960..... | 48,802 | 4,790 | 11,915 | 458 | 978 | 66,943 |
| 1961..... | 60,891 | 5,787 | 9,189 | 882 | 1,448 | 78,196 |
| 1962..... | 30,156 | 3,171 | 5,533 | 81 | 623 | 39,564 |
| 1963..... | 28,490 | 10,857 | 4,491 | 516 | 1,441 | 45,795 |

General Quota
Position

By May 27, 1963, out of a total of 1,942 shipping points in the Western Division, the Canadian Wheat Board had placed 1,000 points on a delivery quota of ten bushels per specified acre, 241 on an 8-bushel quota and 296 on a 7-bushel quota. Of the remainder 370 points were on a 6-bushel quota and 14 on a 5-bushel quota. Twenty one stations were reported as "closed".

Summary of Elevator Shipping Points in the Western Division
as at May 27, 1963

| Province | General Quota in Bushels per Specified Acre | | | | | Closed | Total |
|-----------------------|--|-----|-------|-------|-------|--------|-------|
| | Five | Six | Seven | Eight | Ten | | |
| Ontario..... | - | - | - | - | 1 | 1 | 2 |
| Manitoba..... | 6 | 142 | 88 | 43 | 66 | 2 | 347 |
| Saskatchewan..... | 8 | 228 | 208 | 179 | 420 | 11 | 1,054 |
| Alberta..... | - | - | - | 19 | 508 | 7 | 534 |
| British Columbia..... | - | - | - | - | 5 | - | 5 |
| All Provinces..... | 14 | 370 | 296 | 241 | 1,000 | 21 | 1,942 |

Inferior Variety
of Wheat

The Board of Grain Commissioners in its Circular No. 301, under date of May 14, 1963 stated in part that the Board is seriously concerned over the appearance of an unlicensed variety of Red Spring Wheat known as Prairie Pride. There are known concentrations of this variety in the South-central part of Saskatchewan, with a possibility of it spreading into other areas. This variety has been tested for milling and baking quality in the Board's Research Laboratory. The tests have shown that Prairie Pride is extremely inferior in quality; and if significant quantities of it were permitted to enter any of the grades that are used for bread flours, the results could be disastrous.

The Chief Grain Inspector has been directed by the Board that effective August 1, 1963, Prairie Pride variety will be graded no higher than No. 6 Wheat. Producers are therefore urged to refrain from seeding this variety, and if possible, to dispose of any supplies of it that they have as feed.

Appreciating that some producers have already obtained Prairie Pride for seeding, and that some lots are in country elevators, the Board will endeavour to protect them from financial losses so far as possible, provided that shipments are delivered to terminals before August 1, 1963. This may mean diverting the grain into feed channels, but producers and shippers will be given the best grades possible if they co-operate in the effort to dispose of this serious threat to the reputation of our hard wheats.

Farmers' Marketings 1/ of Wheat in the Prairie Provinces 1962-63

| Week Ending | | Manitoba | Saskatchewan | Alberta | Total | Last Year <u>2/</u> |
|-------------------------|-----------|------------|--------------|------------|-------------|---------------------|
| - bushels - | | | | | | |
| August | 8, 1962.. | 14,548 | 7,645 | 42,489 | 64,682 | 424,845 |
| | 15 | 1,778 | 38,975 | 176,287 | 217,040 | 682,034 |
| | 22 | 38,237 | 592,588 | 584,243 | 1,215,068 | 5,298,808 |
| | 29 | 426,174 | 1,911,503 | 1,468,566 | 3,806,243 | 9,124,000 |
| September | 5 | 757,304 | 3,085,240 | 1,211,254 | 5,053,798 | 6,274,071 |
| | 12 | 1,742,316 | 6,416,266 | 1,870,574 | 10,029,156 | 7,783,756 |
| | 19 | 1,699,681 | 8,177,978 | 1,709,135 | 11,586,794 | 6,733,721 |
| | 26 | 2,359,440 | 10,406,284 | 4,587,559 | 17,353,283 | 7,697,860 |
| October | 3 | 2,522,313 | 13,068,961 | 5,556,144 | 21,147,418 | 8,356,339 |
| | 10 | 1,585,234 | 12,747,546 | 4,121,329 | 18,454,109 | 7,025,437 |
| | 17 | 1,117,194 | 7,344,064 | 3,084,468 | 11,545,726 | 7,516,876 |
| | 24 | 1,177,866 | 7,435,220 | 2,545,531 | 11,158,617 | 7,143,464 |
| | 31 | 1,370,408 | 6,674,985 | 2,270,438 | 10,315,831 | 6,863,496 |
| November | 7 | 1,514,458 | 6,123,753 | 2,618,264 | 10,256,475 | 5,637,826 |
| | 14 | 1,629,145 | 5,879,142 | 1,928,069 | 9,436,356 | 7,094,998 |
| | 21 | 1,669,582 | 6,738,169 | 1,957,899 | 10,365,650 | 6,604,431 |
| | 28 | 1,783,131 | 7,723,197 | 1,816,305 | 11,322,633 | 5,789,906 |
| December | 5 | 1,282,296 | 7,478,541 | 1,868,468 | 10,629,305 | 3,687,344 |
| | 12 | 1,499,357 | 7,709,086 | 1,926,894 | 11,135,337 | 5,480,248 |
| | 19 | 2,183,481 | 8,514,663 | 2,732,106 | 13,430,250 | 3,635,158 |
| | 26 | 2,048,763 | 9,012,883 | 2,580,076 | 13,641,722 | 2,955,220 |
| January | 2, 1963.. | 672,092 | 5,572,797 | 2,134,963 | 8,379,852 | 4,473,693 |
| | 9 | 1,573,326 | 2,662,279 | 2,291,794 | 6,527,399 | 11,340,074 |
| | 16 | 511,792 | 6,416,935 | 1,902,677 | 8,831,404 | 6,770,993 |
| | 23 | 253,560 | 2,018,232 | 1,473,736 | 3,745,528 | 2,292,052 |
| | 30 | 391,919 | 871,723 | 566,338 | 1,829,980 | 5,413,301 |
| February | 6 | 987,378 | 3,454,795 | 1,056,130 | 5,498,303 | 5,265,116 |
| | 13 | 1,419,331 | 7,027,411 | 2,351,424 | 10,798,166 | 3,433,249 |
| | 20 | 739,654 | 4,537,612 | 2,881,336 | 8,158,602 | 4,301,431 |
| | 27 | 368,030 | 1,980,051 | 1,950,601 | 4,298,682 | 1,861,407 |
| March | 6 | 757,059 | 3,457,719 | 1,656,138 | 5,870,916 | 534,654 |
| | 13 | 653,438 | 3,536,306 | 2,016,221 | 6,205,965 | 2,609,296 |
| | 20 | 491,482 | 2,753,143 | 1,957,599 | 5,202,224 | 4,310,867 |
| | 27 | 770,903 | 3,273,586 | 1,693,218 | 5,737,707 | 3,706,569 |
| April | 3 | 742,635 | 2,600,145 | 994,011 | 4,336,791 | 3,298,094 |
| | 10 | 623,515 | 4,354,381 | 1,069,585 | 6,047,481 | 2,634,703 |
| | 17 | 718,424 | 2,409,799 | 446,697 | 3,574,920 | 3,631,448 |
| | 24 | 522,989 | 3,643,640 | 520,099 | 4,686,728 | 4,784,559 |
| May | 1 | 926,348 | 5,901,950 | 1,070,077 | 7,898,375 | 6,898,940 |
| | 8 | 807,021 | 3,830,290 | 927,245 | 5,564,556 | 4,370,357 |
| | 15 | 643,266 | 2,369,468 | 793,467 | 3,806,201 | 2,902,949 |
| | 22 | 691,799 | 2,116,103 | 594,063 | 3,401,965 | 2,105,659 |
| Totals | | 43,688,667 | 211,875,054 | 77,003,517 | 332,567,238 | 208,749,249 |
| Average similar period: | | | | | | |
| 1951-52-1960-61.. | | 28,125,702 | 162,203,138 | 76,202,818 | 266,531,659 | |

1/ Includes receipts at country, interior private and mill elevators, interior semi-public terminals and platform loadings. 2/ Revised.

Visible Supply of Canadian Wheat, May 22, 1963
Compared with Approximately the Same Date, 1961 and 1962

| Position | 1961 | 1962 | 1963 |
|--|---------|---------|---------|
| - thousand bushels - | | | |
| Country elevators - Manitoba..... | 30,394 | 21,378 | 26,224 |
| Saskatchewan..... | 143,937 | 77,721 | 107,602 |
| Alberta..... | 68,710 | 47,131 | 57,873 |
| Totals..... | 243,041 | 146,230 | 191,699 |
| Interior private and mill..... | 7,072 | 8,015 | 7,272 |
| Interior terminals..... | 9,344 | 9,024 | 5,399 |
| Vancouver-New Westminster..... | 10,718 | 10,693 | 10,902 |
| Victoria..... | 628 | 921 | 572 |
| Prince Rupert..... | - | - | 683 |
| Churchill..... | 4,766 | 4,829 | 4,857 |
| Fort William-Port Arthur..... | 41,034 | 51,383 | 57,050 |
| In transit rail (Western Division)..... | 17,304 | 16,744 | 16,195 |
| Bay, Lake and Upper St. Lawrence ports.. | 24,358 | 26,800 | 29,954 |
| Lower St. Lawrence and Maritime ports... | 25,722 | 25,519 | 26,288 |
| In transit lake..... | 12,301 | 7,284 | 6,917 |
| In transit rail (Eastern Division)..... | 466 | 359 | 1,910 |
| Totals..... | 396,753 | 307,801 | 359,699 |

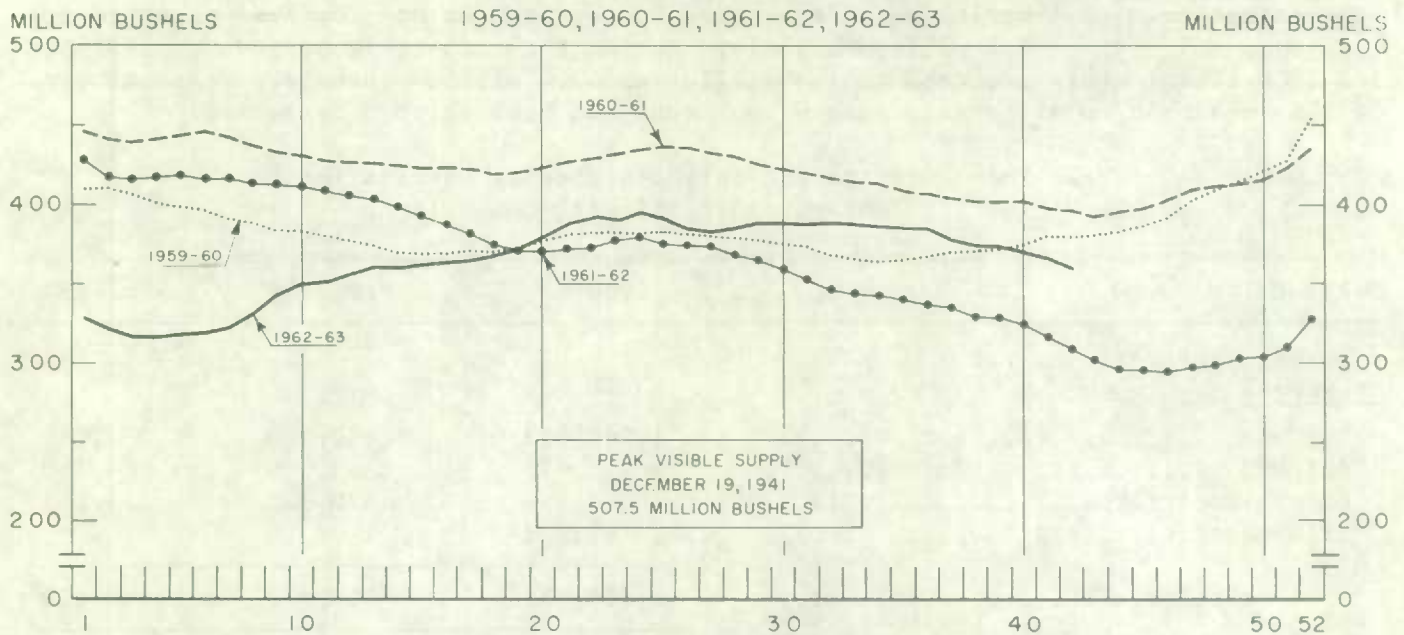
Grading of Wheat Inspected, August 1962-April 1963 with Comparisons

| Grade | Crop Year | | August - April | | | |
|------------------------------|-----------|----------|----------------|----------|---------|----------|
| | Average | | 1961-62 | | 1962-63 | |
| | 1956-57 | 1961-62 | 1961-62 | 1962-63 | 1961-62 | 1962-63 |
| | per cent | per cent | cars | per cent | cars | per cent |
| No. 1 Hard..... | - | 1/ | 57 | 1/ | 11 | 1/ |
| No. 1 Man. Northern..... | 1.3 | 20.8 | 25,188 | 16.4 | 19,231 | 13.3 |
| No. 2 Man. Northern..... | 29.2 | 52.8 | 83,030 | 54.2 | 54,293 | 37.7 |
| No. 3 Man. Northern..... | 28.3 | 15.7 | 26,511 | 17.3 | 21,159 | 14.7 |
| No. 4 Man. Northern..... | 14.0 | 3.4 | 6,491 | 4.2 | 15,946 | 11.1 |
| No. 5 Wheat..... | 8.3 | 0.7 | 1,326 | 0.9 | 8,034 | 5.6 |
| No. 6 Wheat..... | 1.9 | 0.2 | 371 | 0.2 | 1,462 | 1.0 |
| Feed Wheat..... | 0.1 | 1/ | 8 | 1/ | 16 | 1/ |
| Others Red Spring..... | 10.0 | 3.4 | 5,546 | 3.6 | 9,202 | 6.4 |
| C.W. Garnet..... | 1/ | 0.2 | 278 | 0.2 | 119 | 0.1 |
| C.W. White Spring..... | 0.1 | 0.1 | 134 | 0.1 | 202 | 0.1 |
| C.W. Mixed Wheat..... | 1/ | 1/ | 46 | 1/ | 50 | 1/ |
| Alberta Winter..... | 0.3 | 0.3 | 643 | 0.4 | 429 | 0.3 |
| Nos. 1-6 C.W. Amber Durum... | 6.3 | 2.3 | 3,438 | 2.2 | 13,259 | 9.2 |
| Others C.W. Amber Durum..... | 0.2 | 1/ | 69 | 1/ | 753 | 0.5 |
| Totals..... | 100.0 | 100.0 | 153,136 | 100.0 | 144,166 | 100.0 |

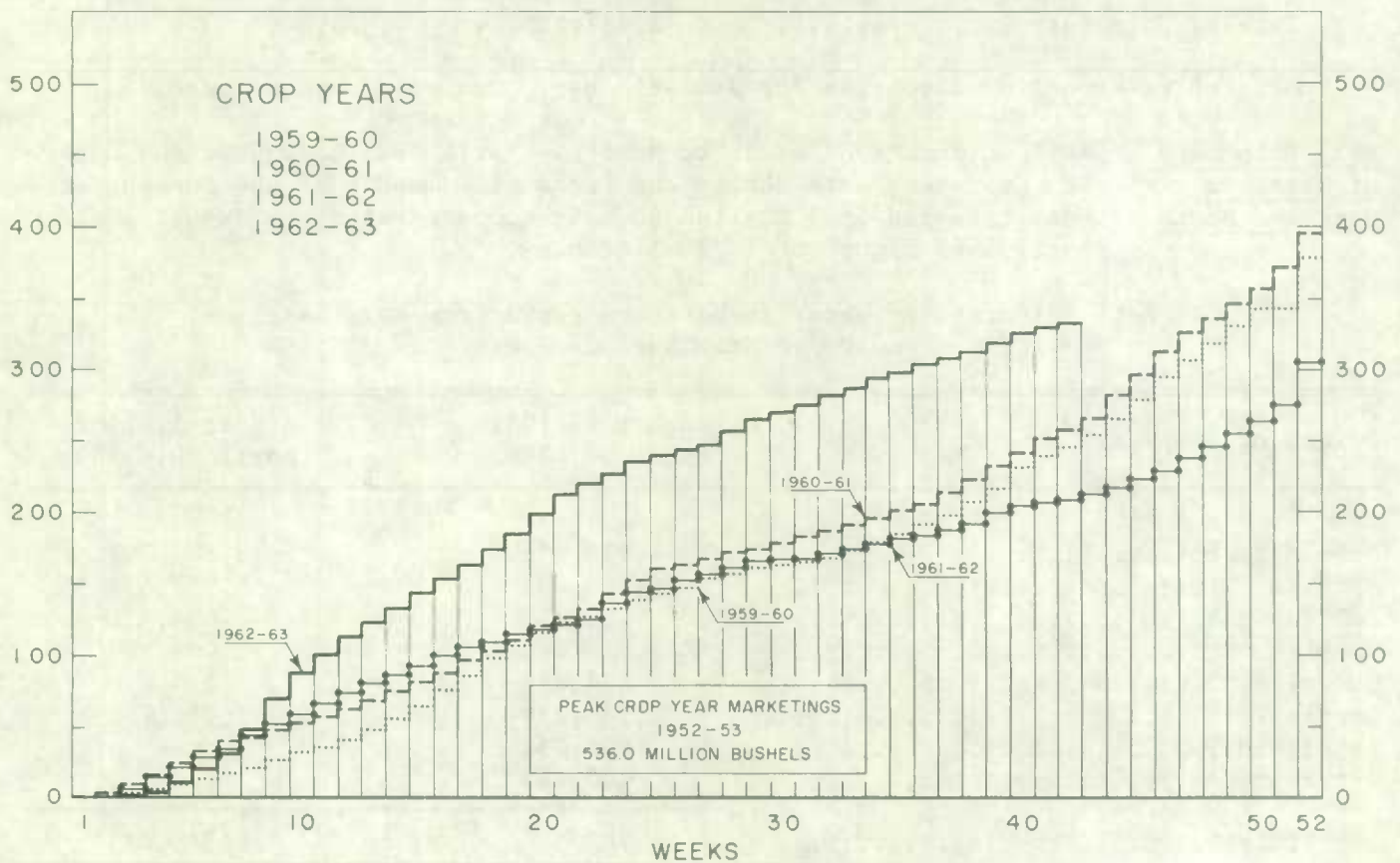
Gross bushels (approx.)..... 294,511,000 275,351,000

1/ Less than .05 per cent.

WEEKLY VISIBLE SUPPLY OF CANADIAN WHEAT



CUMULATIVE RECORD OF WHEAT MARKETINGS IN THE PRAIRIE PROVINCES BY WEEKS



(Data in both charts for crop years beginning August 1)

Wheat Shipments to the United States by Destination Total rail and vessel shipments of wheat to the United States, either for re-export or retention for domestic use, from the beginning of the current crop year to May 22, 1963 amounted to 1.3 million bushels. During the comparable periods of 1961-62 and 1960-61 shipments amounted to 1.1 million and 2.4 million bushels, respectively. Of this season's total to date some 91 per cent has been shipped by vessel.

Wheat Shipments* to the United States by Destination
August 1, 1962-May 22, 1963 with Comparisons

| Destination | 1960-61 | 1961-62 | 1962-63 |
|-----------------------------|-----------|-----------|-----------|
| - bushels - | | | |
| <u>By Vessel</u> | | | |
| Buffalo..... | 1,360,683 | 400,000 | 1,008,445 |
| Chicago..... | 216,477 | 160,000 | 84,750 |
| Duluth-Superior..... | 597,958 | 420,978 | 115,208 |
| Milwaukee..... | 81,537 | - | - |
| Totals, Vessel..... | 2,256,655 | 980,978 | 1,208,403 |
| <u>By Rail</u> | | | |
| U.S.A. Domestic Points..... | 180,900 | 95,828 | 113,156 |
| Totals, Shipments..... | 2,437,555 | 1,076,806 | 1,321,559 |

* Either for re-export or retention for domestic use. Excluding bagged seed.

Rail Shipments of Wheat to Maritime Ports Rail shipments of wheat to Maritime Ports from Bay, Lake and Upper St. Lawrence Ports during the first nine months of the current crop year totalled 16.3 million bushels compared with the August 1961-April 1962 figure of 16.8 million.

Rail Shipments of Wheat to Maritime Ports from Bay, Lake
and Upper St. Lawrence Ports

| Origin of Shipments | August 1, 1961- April 30, 1962 | August 1, 1962- April 30, 1963 |
|----------------------|-----------------------------------|-----------------------------------|
| - bushels - | | |
| Port McNicoll..... | 4,910,364 | 5,802,391 |
| Midland, Tiffin..... | 6,089,433 | 5,957,659 |
| Collingwood..... | 405,993 | 464,910 |
| Owen Sound..... | 2,228,068 | 2,069,103 |
| Goderich..... | 474,656 | 233,210 |
| Sarnia..... | 1,288,279 | 1,788,756 |
| Lakefield..... | 905,334 | - |
| Peterborough..... | 480,193 | - |
| Totals..... | 16,782,320 | 16,316,029 |

Rail Shipments of Wheat from Fort William-Port Arthur, 1959-60-1962-63

| Month | 1959-60 | 1960-61 | 1961-62 | 1962-63 |
|----------------|---------|---------|---------|---------|
| - bushels - | | | | |
| August..... | 34,383 | 14,717 | 20,648 | 13,933 |
| September..... | 31,690 | 19,227 | 14,598 | 11,657 |
| October..... | 30,904 | 5,417 | 33,944 | 22,716 |
| November..... | 8,383 | 24,000 | 22,915 | 12,024 |
| December..... | 25,355 | 17,500 | 60,167 | 12,778 |
| January..... | 103,087 | 71,335 | 126,533 | 39,534 |
| February..... | 23,878 | 135,339 | 68,421 | 22,967 |
| March..... | 18,826 | 28,073 | 37,000 | 86,398 |
| April..... | 64,156 | 9,833 | 37,777 | 69,067 |
| May..... | 19,513 | 15,805 | 11,203 | |
| June..... | 25,234 | 17,563 | 16,022 | |
| July..... | 26,803 | 10,940 | 17,315 | |
| Totals..... | 412,212 | 369,749 | 466,543 | |

Distribution of Rail Shipments of Wheat from Fort William-Port Arthur, April 1963

| Grade | Nova Scotia | New Brunswick | Quebec | Ontario | U.S.A. |
|---------------|-------------|---------------|--------|---------|--------|
| - bushels - | | | | | |
| 5 Wheat..... | - | 1,333 | 10,500 | 4,334 | - |
| 6 Wheat..... | - | - | - | - | 10,000 |
| Tough..... | 1,500 | - | 17,667 | - | - |
| Rejected..... | - | - | 10,500 | - | - |
| Durum..... | - | - | 10,000 | - | - |
| Others..... | - | 3,000 | - | 233 | - |
| Totals..... | 1,500 | 4,333 | 48,667 | 4,567 | 10,000 |

Overseas Exports of Canadian Grain by Ports of Loading, August 1, 1962-May 22, 1963
with Comparisons

| Port | Wheat <u>1/</u> | Durum Wheat <u>1/</u> | Oats <u>1/</u> | Barley | Rye | Flaxseed | Rapeseed <u>2/</u> |
|-------------------------------|-----------------|--------------------------|----------------|------------|-----------|------------|--------------------|
| - bushels - | | | | | | | |
| <u>Pacific Seaboard</u> | | | | | | | |
| Van.-New West. | 108,706,659 | - | 8,818,644 | 2,356,015 | 1,609,961 | 4,336,601 | 5,177,939 |
| Victoria..... | 4,857,748 | - | - | - | - | - | - |
| Prince Rupert..... | 2,302,721 | - | - | 110,849 | - | - | - |
| Churchill..... | 20,577,620 | - | - | - | - | - | - |
| Lakehead Direct..... | 3,030,612 | 758,629 | 4,503,789 | 1,322,984 | 2,379,061 | 1,092,256 | - |
| Kingston Direct..... | 489,067 | - | - | - | - | - | - |
| <u>St. Lawrence</u> | | | | | | | |
| Montreal..... | 24,689,069 | 8,352,096 | 1,508,901 | 862,125 | 1,521,437 | 3,995,742 | - |
| Sorel..... | 11,408,439 | 2,571,650 | - | - | - | 116,286 | - |
| Three Rivers..... | 7,600,672 | 2,024,967 | 87,360 | 186,815 | - | 102,166 | - |
| Quebec..... | 6,446,783 | - | 95,735 | - | - | 98,407 | - |
| Baie Comeau..... | 18,222,344 | - | 167,515 | - | - | - | - |
| <u>Maritimes</u> | | | | | | | |
| Saint John..... | 767,182 | - | - | - | - | 40,978 | - |
| West Saint John..... | 7,118,103 | 1,608,100 | 336,751 | 96,858 | 40,612 | 506,113 | - |
| Halifax..... | 8,384,240 | 780,928 | - | 70,316 | - | 50,473 | - |
| <u>United States Ports...</u> | | | | | | | |
| | - | - | - | - | 366,342 | - | - |
| Totals..... | 224,601,259 | 16,096,370 | 15,518,695 | 5,005,962 | 5,917,413 | 10,339,022 | 5,177,939 |
| Aug.1/61-May 23/62.... | 263,959,340 | 5,434,811 | 1,167,953 | 24,134,348 | 3,390,041 | 9,961,006 | 7,943,360 |

1/ Excluding bagged seed. 2/ In bushels of 50 pounds.

Freight Assistance Shipments Claims filed for payment up to April 30, 1963 represent the movement of some 6.6 million bushels of wheat from the Prairie Provinces to Eastern Canada and British Columbia under the freight assistance policy during the August-March period of the 1962-63 crop year. During the same months of the 1961-62 crop year claims had been filed for a total of 9.0 million bushels, indicating on the assumption of approximately the same rate of submission of claims during both the current and preceding crop years that the 1962-63 August-March shipments of wheat under the policy were running about 26 per cent below those of 1961-62. Revised data on the 1961-62 August-March shipments of wheat based on claims submitted up to April 30, 1963 place the eight-month total at 9.2 million bushels. The bulk of the shipments during the current eight-month period under review went to destinations in Quebec and Ontario, with these two provinces accounting for 40 per cent and 32 per cent of the total, respectively.

Provincial Distribution of Wheat Shipments under the Freight Assistance Policy
August-March 1962-63 and 1961-62

| Month | Nfld. | P.E.I. | N.S. | N.B. | Que. | Ont. | B.C. | Total |
|----------------------|-------|--------|------|------|-------|-------|-------|-------|
| - thousand bushels - | | | | | | | | |
| August, 1962..... | 9 | 13 | 48 | 29 | 381 | 354 | 84 | 918 |
| September..... | 7 | 7 | 29 | 21 | 335 | 234 | 200 | 833 |
| October..... | 9 | 10 | 43 | 25 | 361 | 239 | 149 | 837 |
| November..... | 12 | 7 | 41 | 20 | 402 | 295 | 142 | 919 |
| December..... | 7 | 6 | 47 | 23 | 309 | 269 | 121 | 782 |
| January, 1963..... | 10 | 7 | 66 | 30 | 376 | 290 | 195 | 973 |
| February..... | 4 | 6 | 58 | 28 | 225 | 240 | 141 | 703 |
| March..... | 3 | 8 | 51 | 23 | 282 | 223 | 81 | 671 |
| Totals 1/..... | 62 | 63 | 383 | 200 | 2,672 | 2,145 | 1,113 | 6,638 |
| Same period 1961-62: | | | | | | | | |
| Preliminary 2/..... | 77 | 97 | 886 | 273 | 3,274 | 2,948 | 1,418 | 8,972 |
| Revised 1/..... | 81 | 98 | 890 | 289 | 3,302 | 2,996 | 1,529 | 9,184 |

Preliminary data on millfeed shipments under the freight assistance policy indicate shipments of 303,742 tons during the August-March period of the current crop year. During the same eight months of 1961-62 claims had been filed for a total of 356,815 tons, indicating on the assumption of approximately the same rate of submission of claims during both the current and preceding crop years that the 1962-63 August-March shipments of millfeeds under the policy were running about 15 per cent below those of 1961-62. Revised data on the 1961-62 August-March shipments of millfeeds based on claims submitted up to April 30, 1963 place the eight-month total at 368,587 tons. As with freight-assisted shipments of wheat, the greater portion of the millfeed shipments during the period under review went to destinations in Quebec and Ontario.

Provincial Distribution of Millfeed Shipments under the Freight Assistance Policy
August-March 1962-63 and 1961-62

| Province | 1961-62 | | 1962-63 |
|---------------------------|-----------------------|-------------------|-----------------------|
| | Preliminary <u>2/</u> | Revised <u>1/</u> | Preliminary <u>1/</u> |
| | - tons - | | |
| Newfoundland..... | 4,080 | 4,547 | 4,427 |
| Prince Edward Island..... | 6,163 | 6,391 | 4,815 |
| Nova Scotia..... | 25,692 | 26,024 | 21,597 |
| New Brunswick..... | 20,867 | 22,938 | 18,397 |
| Quebec..... | 173,341 | 176,618 | 149,895 |
| Ontario..... | 95,553 | 99,168 | 81,585 |
| British Columbia..... | 31,119 | 32,901 | 23,026 |
| Totals..... | 356,815 | 368,587 | 303,742 |

1/ Based on claims filed up to April 30, 1963.

2/ Based on claims filed up to April 30, 1962.

Monthly Exports of Canadian Wheat and Wheat Flour

| Year and Month | Wheat in Bulk <u>1/</u> | Bagged Seed Wheat <u>2/</u> | Total Wheat | Wheat Flour <u>2/</u> <u>3/</u> | Total <u>3/</u> Wheat and Wheat Flour |
|--------------------------|-------------------------|-----------------------------|-------------|---------------------------------|---------------------------------------|
| - thousand bushels - | | | | | |
| <u>1960-61</u> | | | | | |
| August..... | 23,908 | 127 | 24,034 | 2,867 | 26,901 |
| September..... | 26,742 | 232 | 26,974 | 2,694 | 29,668 |
| October..... | 21,172 | 304 | 21,476 | 3,727 | 25,203 |
| November..... | 23,224 | 570 | 23,794 | 4,198 | 27,992 |
| December..... | 20,222 | 883 | 21,105 | 3,320 | 24,426 |
| January..... | 16,408 | 773 | 17,181 | 2,104 | 19,285 |
| February..... | 20,517 | 1,043 | 21,560 | 2,404 | 23,964 |
| March..... | 23,377 | 1,934 | 25,312 | 3,088 | 28,399 |
| April..... | 31,395 | 599 | 31,994 | 3,009 | 35,003 |
| May..... | 42,190 | 135 | 42,325 | 3,166 | 45,491 |
| June..... | 35,532 | 12 | 35,544 | 2,499 | 38,043 |
| July..... | 26,265 | 4 | 26,269 | 2,607 | 28,876 |
| Totals..... | 310,952 | 6,616 | 317,568 | 35,682 | 353,249 |
| <u>1961-62</u> | | | | | |
| August..... | 35,625 | 89 | 35,714 | 3,123 | 38,837 |
| September..... | 28,966 | 242 | 29,209 | 2,786 | 31,995 |
| October..... | 32,910 | 86 | 32,996 | 2,391 | 35,386 |
| November..... | 40,823 | 377 | 41,200 | 3,150 | 44,351 |
| December..... | 19,966 | 392 | 20,359 | 2,643 | 23,002 |
| January..... | 17,534 | 458 | 17,992 | 2,304 | 20,295 |
| February..... | 23,739 | 433 | 24,173 | 2,546 | 26,719 |
| March..... | 20,482 | 574 | 21,056 | 2,968 | 24,023 |
| April..... | 24,981 | 539 | 25,520 | 2,389 | 27,909 |
| May..... | 35,150 | 77 | 35,227 | 2,486 | 37,713 |
| June..... | 23,559 | 5 | 23,564 | 2,456 | 26,020 |
| July..... | 19,016 | 44 | 19,060 | 2,711 | 21,772 |
| Totals..... | 322,752 | 3,317 | 326,069 | 31,953 | 358,022 |
| <u>1962-63</u> <u>4/</u> | | | | | |
| August..... | 21,944 | 160 | 22,105 | 2,670 | 24,775 |
| September..... | 25,040 | 228 | 25,268 | 2,939 | 28,207 |
| October..... | 29,705 | 20 | 29,725 | 2,451 | 32,176 |
| November..... | 33,309 | 103 | 33,412 | 2,158 | 35,570 |
| December..... | 20,949 | 340 | 21,289 | 1,771 | 23,059 |
| January..... | 21,486 | 520 | 22,006 | 2,234 | 24,240 |
| February..... | 18,779 | 590 | 19,370 | 1,420 | 20,789 |
| March..... | 19,246 | 1,088 | 20,334 | 1,939 | 22,273 |
| April..... | 28,916 | 1,316 | 30,232 | 2,441 | 32,673 |
| Totals..... | 219,374 | 4,365 | 223,739 | 20,023 | 243,762 |

1/ Export clearances including shipments to the United States compiled by the Statistics Branch, Board of Grain Commissioners for Canada. 2/ Compiled from Canadian Customs returns, 1960-61 and 1961-62 adjusted to remove effect of time lag in reporting. 3/ In terms of wheat equivalent. Wheat flour conversion rate: 2.3 bushels per cwt. 4/ Preliminary.

Exports of Canadian Wheat 1/ by Destination, April 1963 and 1962

| Destination | Wheat (Except Durum) | Durum Wheat | All Wheat | |
|---|-------------------------|----------------|------------|------------|
| | | | April 1963 | April 1962 |
| - bushels - | | | | |
| COMMONWEALTH AND PREFERENTIAL COUNTRIES | | | | |
| Western Europe | | | | |
| Britain..... | 6,860,074 | 18,666 | 6,878,740 | 4,685,672 |
| Ireland..... | 382,667 | - | 382,667 | 278,133 |
| Malta and Gozo..... | 177,333 | - | 177,333 | 393,200 |
| Other Africa | | | | |
| Republic of South Africa..... | 2,071,594 | - | 2,071,594 | - |
| Other Asia | | | | |
| Hong Kong..... | 19,600 | - | 19,600 | 54,133 |
| India..... | 5,479 | - | 5,479 | - |
| Central America and Antilles | | | | |
| Jamaica..... | 1,195 | - | 1,195 | - |
| Totals, Com. and Pref. Countries.. | 9,517,942 | 18,666 | 9,536,608 | 5,411,138 |
| OTHER COUNTRIES | | | | |
| Western Europe | | | | |
| Belgium and Luxembourg..... | 577,921 | 16,866 | 594,787 | 1,506,061 |
| Denmark..... | - | - | - | 11,200 |
| Finland..... | 351,680 | - | 351,680 | 358,400 |
| France..... | 22,400 | 397,600 | 420,000 | - |
| Germany, Federal Republic..... | 202,197 | 1,182,381 | 1,384,578 | 1,390,079 |
| Italy..... | 588,000 | - | 588,000 | 702,936 |
| Netherlands..... | 88,967 | - | 88,967 | 297,776 |
| Norway..... | 77,013 | - | 77,013 | - |
| Sweden..... | - | 18,667 | 18,667 | - |
| Switzerland..... | - | 53,088 | 53,088 | 194,592 |
| Eastern Europe | | | | |
| Albania..... | - | - | - | 341,600 |
| Czechoslovakia..... | 1,394,100 | - | 1,394,100 | - |
| Middle East | | | | |
| Israel..... | 95,200 | - | 95,200 | - |
| Saudi Arabia..... | 27,482 | - | 27,482 | 25,216 |
| Other Africa | | | | |
| Mozambique..... | 33,375 | - | 33,375 | 11,125 |
| Other Asia | | | | |
| China, Communist..... | 8,210,142 | - | 8,210,142 | 9,701,065 |
| Japan..... | 4,826,908 | - | 4,826,908 | 4,069,743 |
| Philippines..... | 283,733 | - | 283,733 | 204,363 |
| Oceania | | | | |
| United States Oceania..... | - | - | - | 37,707 |
| South America | | | | |
| Ecuador..... | 280,000 | - | 280,000 | - |
| Venezuela..... | 400,141 | - | 400,141 | 643,253 |
| Central America and Antilles | | | | |
| Dominican Republic..... | 153,067 | - | 153,067 | - |
| El Salvador..... | 88,480 | - | 88,480 | - |
| North America | | | | |
| United States for domestic use 2/..... | 10,000 | - | 10,000 | 74,388 |
| Totals, Other Countries..... | 17,710,806 | 1,668,602 | 19,379,408 | 19,569,504 |
| Sub-Totals, All Countries..... | 27,228,748 | 1,687,268 | 28,916,016 | 24,980,642 |
| Bagged seed 3/..... | | | 1,315,526 | 538,934 |
| Totals, All Countries..... | 27,228,748 | 1,687,268 | 30,231,542 | 25,519,576 |

NOTE: See footnotes on page 16.

Cumulative Exports of Canadian Wheat 1/ by Destination

| Destination | August 1962-April 1963 | | | Total same period last year |
|--|-------------------------|----------------|----------------|-----------------------------------|
| | Wheat (Except Durum) | Durum Wheat | Total Wheat | |
| - bushels - | | | | |
| <u>COMMONWEALTH AND PREFERENTIAL COUNTRIES</u> | | | | |
| <u>Western Europe</u> | | | | |
| Britain..... | 56,157,213 | 245,130 | 56,402,343 | 55,881,372 |
| Ireland..... | 2,185,603 | 7,467 | 2,193,070 | 1,802,065 |
| Malta and Gozo..... | 870,987 | - | 870,987 | 1,237,867 |
| <u>Other Africa</u> | | | | |
| Nigeria..... | 543,953 | - | 543,953 | 212,800 |
| Republic of South Africa..... | 4,497,887 | - | 4,497,887 | - |
| Rhodesia and Nyasaland..... | 8,244 | - | 8,244 | 56,000 |
| <u>Other Asia</u> | | | | |
| Hong Kong..... | 393,494 | - | 393,494 | 505,493 |
| India..... | 703,612 | - | 703,612 | 3,541,390 |
| Pakistan..... | - | - | - | 1,856,325 |
| <u>Central America and Antilles</u> | | | | |
| Jamaica..... | 7,761 | - | 7,761 | - |
| Totals, Com. and Pref. Countries... | 65,368,754 | 252,597 | 65,621,351 | 65,093,312 |
| <u>OTHER COUNTRIES</u> | | | | |
| <u>Western Europe</u> | | | | |
| Austria..... | 382,779 | 419,655 | 802,434 | 1,554,946 |
| Belgium and Luxembourg..... | 6,916,484 | 122,913 | 7,039,397 | 9,296,632 |
| Denmark..... | 11,200 | - | 11,200 | 11,200 |
| Finland..... | 702,613 | - | 702,613 | 1,509,802 |
| France..... | 91,470 | 4,633,989 | 4,725,459 | 658,902 |
| Germany, Federal Republic..... | 11,763,663 | 8,437,431 | 20,201,094 | 35,812,323 |
| Greece..... | - | 10 | 10 | - |
| Italy..... | 4,286,826 | - | 4,286,826 | 3,252,448 |
| Netherlands..... | 4,054,261 | - | 4,054,261 | 1,993,270 |
| Norway..... | 1,645,280 | - | 1,645,280 | 1,728,869 |
| Sweden..... | 127,680 | 18,667 | 146,347 | - |
| Switzerland..... | 718,849 | 1,009,544 | 1,728,393 | 3,765,483 |
| <u>Eastern Europe</u> | | | | |
| Albania..... | - | - | - | 1,391,936 |
| Czechoslovakia..... | 1,394,100 | - | 1,394,100 | - |
| Germany, East..... | - | - | - | 8,040,229 |
| Poland..... | 14,183,656 | - | 14,183,656 | 12,293,711 |
| <u>Middle East</u> | | | | |
| Israel..... | 1,074,680 | - | 1,074,680 | 829,100 |
| Saudi Arabia..... | 543,803 | - | 543,803 | 268,566 |
| U.A.R.-Egypt..... | - | - | - | 451,733 |

Cumulative Exports of Canadian Wheat 1/ by Destination

| Destination | August 1962-April 1963 | | | Total same period last year |
|---|-------------------------|----------------|----------------|-----------------------------------|
| | Wheat (Except Durum) | Durum Wheat | Total Wheat | |
| - bushels - | | | | |
| OTHER COUNTRIES (concluded) | | | | |
| Other Africa | | | | |
| Algeria..... | - | - | - | 1,359,639 |
| Congo..... | - | - | - | 18,257 |
| Katanga..... | 9,186 | - | 9,186 | - |
| Mozambique..... | 409,893 | - | 409,893 | 475,576 |
| Tunisia..... | - | - | - | 189,905 |
| Other Asia | | | | |
| Burma..... | - | - | - | 200,358 |
| China, Communist..... | 45,400,008 | - | 45,400,008 | 49,212,591 |
| Japan..... | 32,892,445 | - | 32,892,445 | 36,854,282 |
| Philippines..... | 4,632,781 | - | 4,632,781 | 2,263,644 |
| Taiwan..... | 53,972 | - | 53,972 | 75,787 |
| Oceania | | | | |
| United States Oceania..... | 355,039 | - | 355,039 | 409,546 |
| South America | | | | |
| Colombia..... | - | - | - | 264,550 |
| Ecuador..... | 1,025,560 | - | 1,025,560 | 749,680 |
| Venezuela..... | 4,791,873 | - | 4,791,873 | 3,014,449 |
| Central America and Antilles | | | | |
| Dominican Republic..... | 692,813 | - | 692,813 | 1,000,464 |
| El Salvador..... | 502,994 | - | 502,994 | 296,548 |
| Guatemala..... | 148,334 | - | 148,334 | 20,000 |
| North America | | | | |
| United States for domestic use 2/..... | 298,263 | - | 298,263 | 668,867 |
| Totals, Other Countries..... | 139,110,505 | 14,642,209 | 153,752,714 | 179,933,293 |
| Sub-Totals, All Countries..... | 204,479,259 | 14,894,806 | 219,374,065 | 245,026,605 |
| Bagged seed 3/..... | | | 4,365,161 | 3,190,054 |
| Totals, All Countries..... | 204,479,259 | 14,894,806 | 223,739,226 | 248,216,659 |

1/ Overseas clearances as reported by the Statistics Branch, Board of Grain Commissioners for Canada, for all countries except the United States. Excluding bagged seed.

2/ Compiled from returns of Canadian elevator licensees and shippers and advice from American grain correspondents.

3/ Compiled from Canadian Customs returns, 1961-62 adjusted for time lag.

Customs Exports of Canadian Wheat Flour by Countries of Consignment

| Destination | January 1963 <u>1/</u> | April 1963 <u>2/</u> | August-April | |
|--|------------------------|----------------------|-------------------|-------------------|
| | | | 1962-63 <u>2/</u> | 1961-62 <u>1/</u> |
| - bushels - | | | | |
| <u>COMMONWEALTH AND PREFERENTIAL COUNTRIES</u> | | | | |
| <u>Western Europe</u> | | | | |
| Britain..... | 716,880 | 1,072,563 | 8,717,729 | 9,031,233 |
| Gibraltar..... | - | - | 24,987 | 57,850 |
| <u>Middle East</u> | | | | |
| Kuwait..... | 287 | - | 54,641 | 22,154 |
| Qatar..... | - | 258 | 2,107 | 1,842 |
| British Middle East, nes | 2,061 | 5,152 | 18,547 | 17,001 |
| <u>Other Africa</u> | | | | |
| Ghana..... | - | 136,146 | 1,271,548 | 1,637,842 |
| Nigeria..... | 7,728 | 460 | 673,118 | 1,234,583 |
| Rhodesia and Nyasaland..... | 2,208 | 3,377 | 30,954 | 20,063 |
| Sierra Leone..... | 1,840 | 88,637 | 349,936 | 358,784 |
| Tanganyika..... | 4,588 | 2,300 | 11,489 | 29,665 |
| British Africa, nes | - | 25,277 | 61,658 | 52,118 |
| <u>Other Asia</u> | | | | |
| Ceylon..... | - | - | - | 384,008 |
| Hong Kong..... | 67,944 | 55,043 | 712,910 | 664,845 |
| India..... | - | - | - | 12,714 |
| Malaya and Singapore..... | 56,665 | 50,382 | 479,033 | 498,228 |
| British East Indies, nes | 1,256 | 1,746 | 9,290 | 8,335 |
| <u>Oceania</u> | | | | |
| Australia..... | - | 55 | 55 | - |
| Fiji..... | 115 | 529 | 3,484 | 4,887 |
| <u>South America</u> | | | | |
| British Guiana..... | 8,901 | 2,852 | 21,546 | 23,796 |
| <u>Central America and Antilles</u> | | | | |
| Bahamas..... | 23,295 | 31,991 | 228,149 | 212,545 |
| Bermuda..... | 4,430 | 16,183 | 85,935 | 94,342 |
| British Honduras..... | 1,127 | 1,228 | 27,701 | 23,400 |
| Barbados..... | 4,363 | 20,546 | 113,790 | 100,404 |
| Jamaica..... | 125,990 | 103,889 | 1,011,016 | 1,101,005 |
| Leeward and Windward Islands..... | 71,500 | 133,402 | 748,606 | 743,324 |
| Trinidad and Tobago..... | 109,326 | 135,659 | 1,051,367 | 1,042,413 |
| Totals, Com. and Pref. Countries... | 1,210,504 | 1,887,675 | 15,709,596 | 17,377,381 |
| <u>OTHER COUNTRIES</u> | | | | |
| <u>Western Europe</u> | | | | |
| Belgium and Luxembourg..... | 3,954 | 21,330 | 115,407 | 161,826 |
| Denmark..... | - | 3,213 | 9,230 | 2,300 |
| France..... | - | - | - | 345 |
| Germany, Federal Republic..... | - | - | 6,463 | 2,010 |
| Greece..... | - | 2,535 | 26,114 | 5,094 |
| Iceland..... | - | - | 14,573 | 24,438 |
| Italy..... | - | - | 6,265 | 17,696 |
| Netherlands..... | - | - | 2,316 | 1,939 |
| Norway..... | - | - | 115 | 2,300 |
| Portugal..... | 3,501 | 5,635 | 57,829 | 34,136 |
| Sweden..... | - | - | 1,265 | 1,518 |
| Switzerland..... | - | - | 6,900 | 30 |
| <u>Middle East</u> | | | | |
| Iran..... | - | 453 | 3,287 | 2,383 |
| Iraq..... | - | - | 948 | - |
| Israel..... | - | - | 8,437 | 255 |

Customs Exports of Canadian Wheat Flour by Countries of Consignment

| Destination | January 1963 <u>1/</u> | April 1963 <u>2/</u> | August-April | |
|-------------------------------------|------------------------|----------------------|-------------------|-------------------|
| | | | 1962-63 <u>2/</u> | 1961-62 <u>1/</u> |
| - bushels - | | | | |
| <u>OTHER COUNTRIES (concluded)</u> | | | | |
| <u>Middle East</u> | | | | |
| Jordan..... | 87 | - | 651 | 109,749 |
| Lebanon..... | 8,759 | 3,606 | 194,186 | 543,520 |
| Saudi Arabia..... | - | 5,575 | 6,679 | 690 |
| Syria..... | 759 | - | 4,791 | 2,266 |
| U.A.R.-Egypt..... | 14,812 | 14,812 | 38,962 | 171,994 |
| <u>Other Africa</u> | | | | |
| Angola..... | - | - | 1,840 | 575 |
| Congo-Leo. | 5,118 | 3,128 | 69,948 | 136,866 |
| French West Africa..... | - | - | 23,442 | 14,483 |
| Liberia..... | - | 10,548 | 30,827 | 22,048 |
| Mozambique..... | 2,771 | 2,116 | 15,707 | 15,203 |
| Portuguese Africa, nes | 6,325 | 15,732 | 73,623 | 70,955 |
| Togo..... | - | 12,144 | 21,747 | - |
| <u>Other Asia</u> | | | | |
| Indonesia..... | - | - | 64 | 390,368 |
| Japan..... | 4,738 | 107,302 | 325,875 | 762,314 |
| Philippines..... | - | - | 10,350 | 1,077,433 |
| Portuguese India..... | - | - | - | 67,944 |
| Portuguese Asia..... | - | 506 | 8,197 | 15,686 |
| Thailand..... | 19,780 | 34,236 | 277,838 | 265,155 |
| Viet-Nam..... | - | - | 44,576 | - |
| <u>Oceania</u> | | | | |
| French Oceania..... | 80 | - | 1,300 | 771 |
| United States Oceania..... | 575 | - | 2,875 | - |
| <u>South America</u> | | | | |
| Chile..... | 1,150 | 575 | 6,843 | 5,060 |
| Colombia..... | - | - | - | 1,840 |
| Peru..... | 4,140 | 8,050 | 30,176 | 15,187 |
| Surinam..... | 1,070 | 5,598 | 50,280* | 59,335 |
| Venezuela..... | - | 138 | 1,748* | 11,235 |
| <u>Central America and Antilles</u> | | | | |
| Costa Rica..... | 88,720 | 64,012 | 653,255 | 648,324 |
| Dominican Republic..... | - | - | 109,089 | 105,708 |
| El Salvador..... | 4,717 | 6,900 | 70,810 | 174,653 |
| French West Indies..... | - | - | 2,610 | 1,794 |
| Guatemala..... | 1,380 | 12,868 | 44,293 | 61,458 |
| Haiti..... | - | - | 619 | - |
| Honduras..... | 2,530 | 6,820 | 47,488 | 72,464 |
| Netherlands Antilles..... | 10,902 | 37,924 | 196,104 | 154,093 |
| Nicaragua..... | 32,172 | 28,315 | 329,698 | 393,923 |
| Panama..... | 47,677 | 27,359 | 363,552 | 320,358 |
| <u>North America</u> | | | | |
| St. Pierre and Miquelon..... | 471 | 1,782 | 8,862 | 7,505 |
| United States..... | 109,294 | 110,073 | 985,476 | 965,501 |
| Totals, Other Countries..... | 375,482 | 553,285 | 4,313,530 | 6,922,728 |
| Totals, All Countries..... | 1,585,986 | 2,440,960 | 20,023,126 | 24,300,109 |

* Revisions in March data have been taken into account in the August-April cumulative totals.
nes - not elsewhere specified.

1/ In terms of wheat equivalent. Adjusted to remove effect of time lag in the returns made by Customs.
Conversion rate: 2.3 bushels per cwt. 2/ In terms of wheat equivalent. Preliminary and un-
adjusted for time lag. Conversion rate: 2.3 bushels per cwt.

FARMERS' MARKETINGS OF WHEAT, PRAIRIE PROVINCES

(SPECIFIED PERIODS)

MILLION BUSHELS

450 —

400 —

350 —

300 —

250 —

200 —

150 —

100 —

50 —

0

MILLION BUSHELS

450 —

400 —

350 —

300 —

250 —

200 —

150 —

100 —

50 —

0

PEAK MARKETINGS
1952-53 CROP YEAR
536.0 MILLION BUSHELS

JULY

JUNE

MAY

APR

M

F

JAN

DEC

NOV

OCT

SEPT

AUG

29 year average 10 year average

1932-33

1951-52

1960-61

1960-61

1957-58

1958-59

1959-60

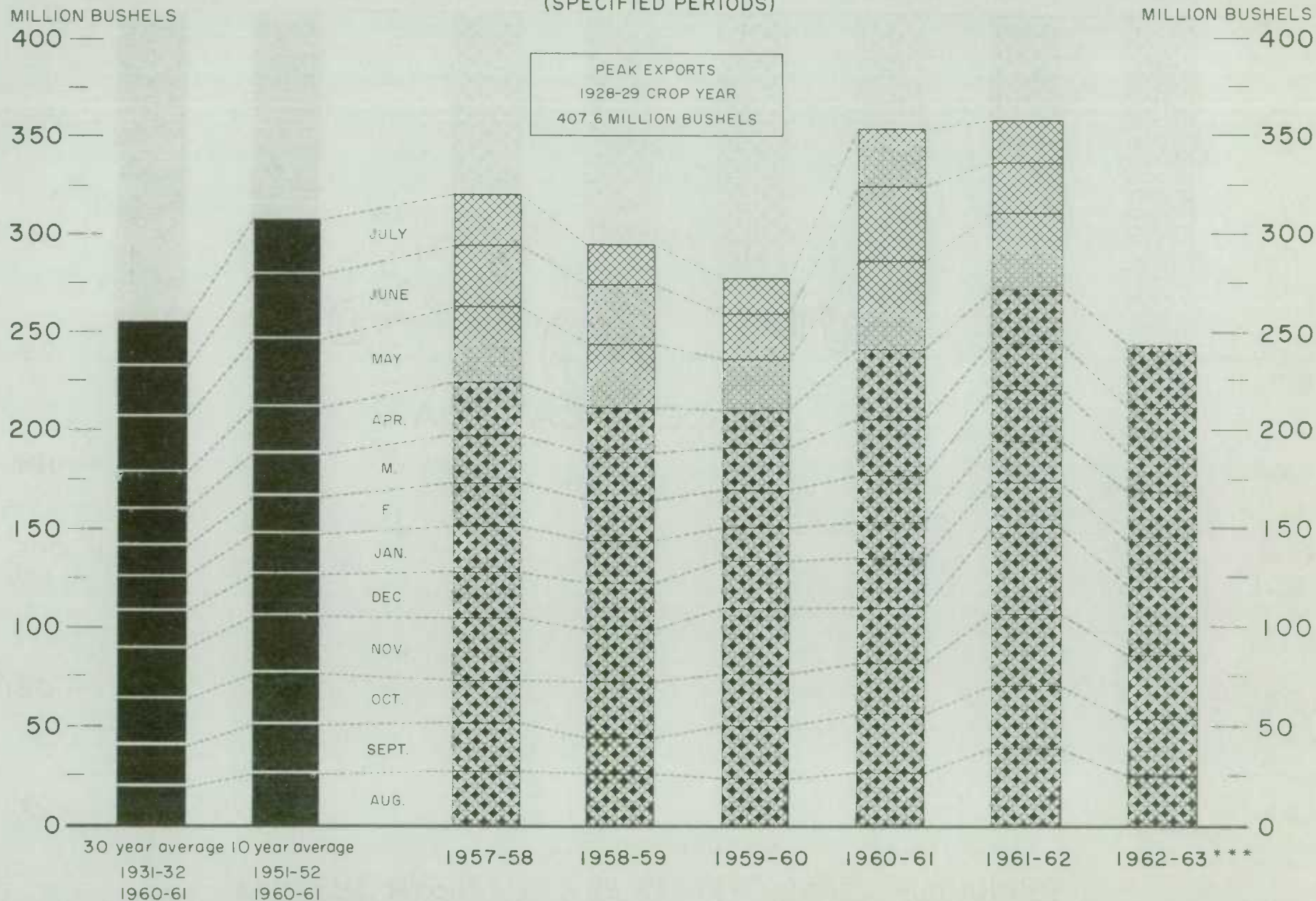
1960-61

1961-62

1962-63

EXPORTS OF CANADIAN WHEAT* AND WHEAT FLOUR**

(SPECIFIED PERIODS)



*Beginning with 1956-57 includes bagged seed wheat.

In terms of wheat equivalent. * Preliminary.

Agriculture Division D.B.S.

FARMERS' MARKETINGS OF BARLEY, PRAIRIE PROVINCES

(SPECIFIED PERIODS)

MILLION BUSHEL

140 —

120 —

100 —

80 —

60 —

40 —

20 —

0 —

MILLION BUSHEL

140 —

120 —

100 —

80 —

60 —

40 —

20 —

0 —

JULY

JUNE

MAY

APR.

MAR.

FEB.

JAN.

DEC.

NOV.

OCT.

SEPT.

AUG.

30 year average 10 year average
1931-32 1951-52
1960-61 1960-61

1957-58

1958-59

1959-60

1960-61

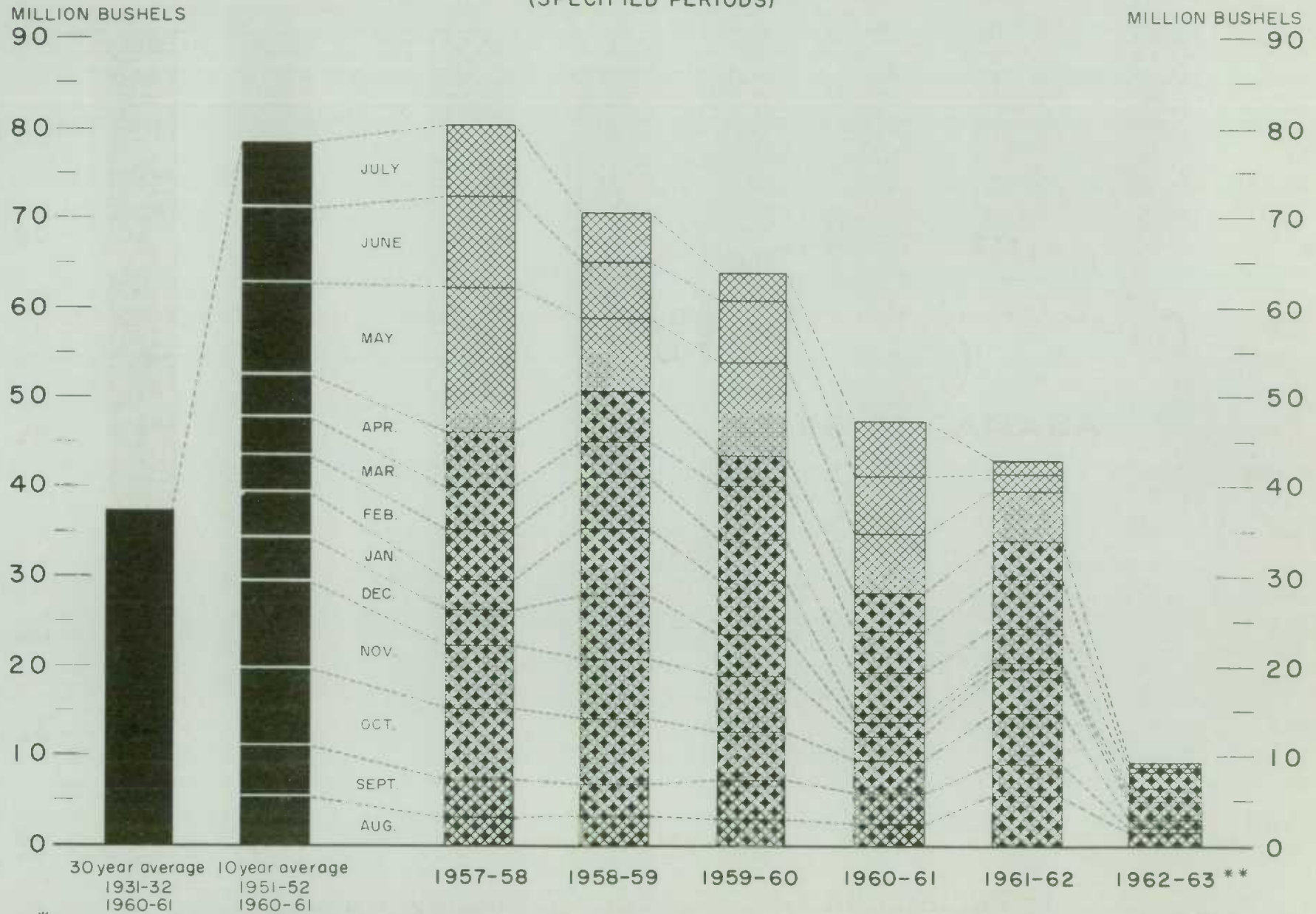
1961-62

1962-63

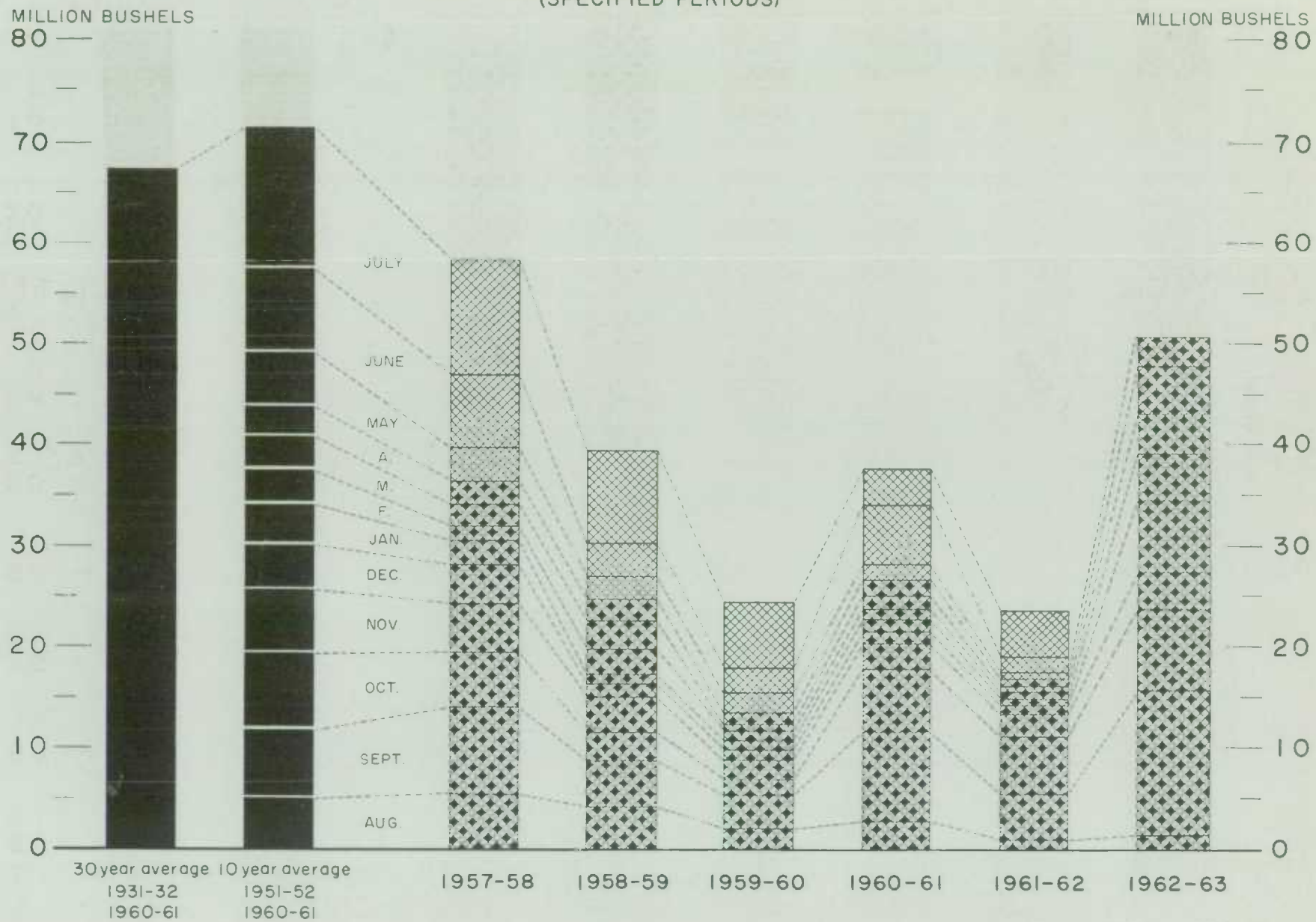
Agriculture Division D B S

EXPORTS OF CANADIAN BARLEY AND BARLEY PRODUCTS*

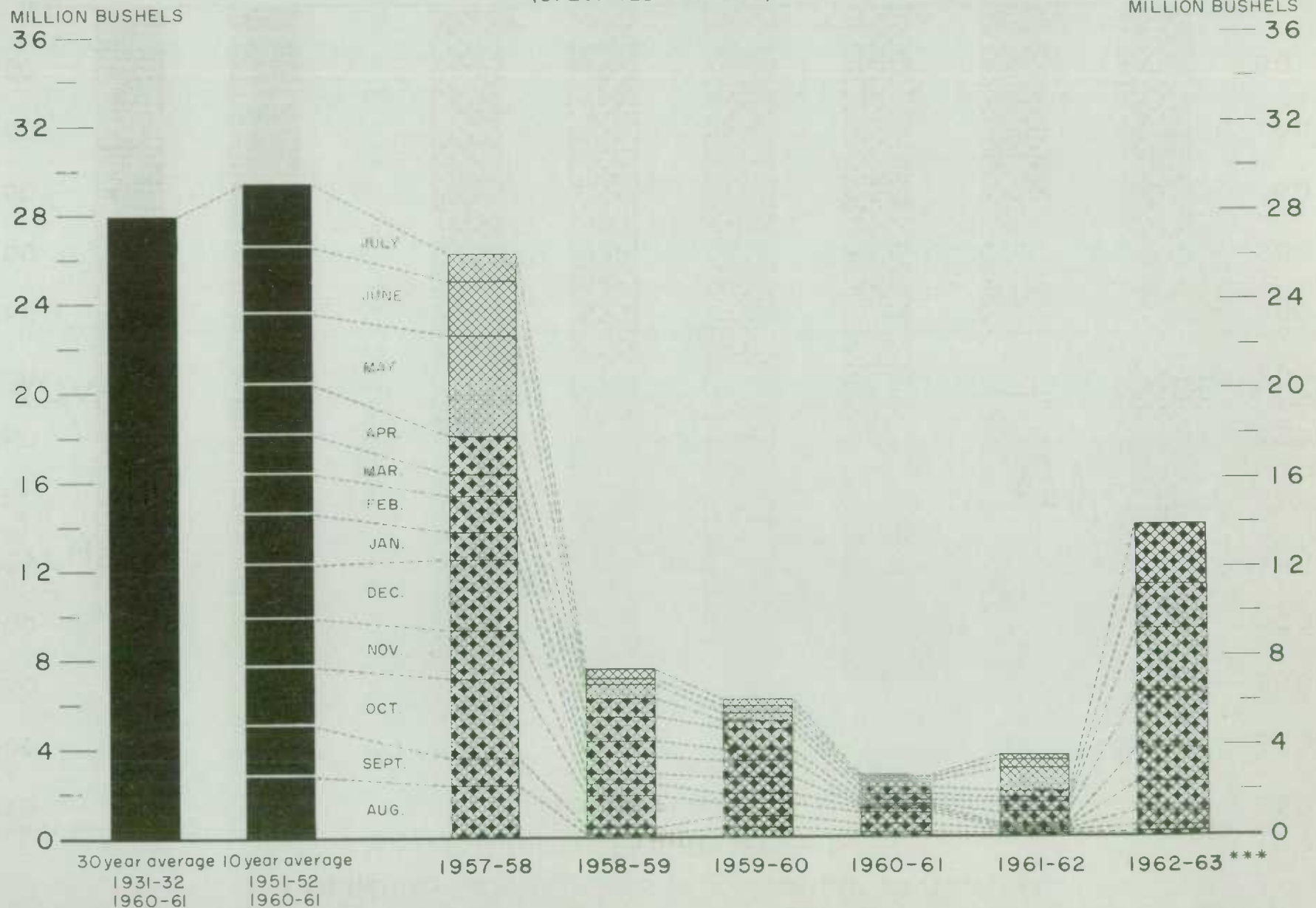
(SPECIFIED PERIODS)



FARMERS' MARKETINGS OF OATS, PRAIRIE PROVINCES (SPECIFIED PERIODS)



EXPORTS OF CANADIAN OATS* AND OAT PRODUCTS** (SPECIFIED PERIODS)



FARMERS' MARKETINGS OF CANADA'S FIVE MAJOR GRAINS*, PRAIRIE PROVINCES

MILLION BUSHELS

650
600
550
500
450
400
350
300
250
200
150
100
50
0

(SPECIFIED PERIODS)

MILLION BUSHELS

650
600
550
500
450
400
350
300
250
200
150
100
50
0

30 year average 10 year average
1931-32 1951-52
1960-61 1960-61

1957-58

1958-59

1959-60

1960-61

1961-62

1962-63

JULY

JUNE

MAY

APR.

MAR.

FEB.

JAN.

DEC.

NOV.

OCT.

SEPT.

AUG.

*Wheat, oats, barley, rye and flaxseed

Agriculture Division D.B.S.

EXPORTS OF CANADA'S FIVE MAJOR GRAINS AND PRODUCTS*

(SPECIFIED PERIODS)

MILLION BUSHELS

500

MILLION BUSHELS

500

450

450

400

400

350

350

300

300

250

250

200

200

150

150

100

100

50

50

0

0

30 year average 10 year average
 1931-32 1951-52
 1960-61 1960-61

1957-58

1958-59

1959-60

1960-61

1961-62

1962-63 **

*Wheat, bagged seed wheat, and wheat flour; oats, bagged seed oats, and oatmeal and rolled oats; barley, malt and pot and pearl; rye and flaxseed.

**Preliminary.

Agriculture Division D.B.S.

JULY

JUNE

MAY

APR.

MAR.

FEB.

JAN.

DEC.

NOV.

OCT.

SEPT.

AUG.

Canadian Wheat Board Weekly Average Cash Wheat Prices
Basis in Store Fort William-Port Arthur

| Class and Grade | Week Ending | | | |
|--------------------------------------|-------------|--------|--------|--------|
| | May 10 | May 17 | May 24 | May 31 |
| - cents and eighths per bushel - | | | | |
| <u>Initial Payment to Producers</u> | | | | |
| 1 Northern..... | 150 | 150 | 150 | 150 |
| 2 Northern..... | 146 | 146 | 146 | 146 |
| 3 Northern..... | 142 | 142 | 142 | 142 |
| 4 Northern..... | 135 | 135 | 135 | 135 |
| 5 Wheat..... | 118 | 118 | 118 | 118 |
| 6 Wheat..... | 112 | 112 | 112 | 112 |
| Feed Wheat..... | 108 | 108 | 108 | 108 |
| 1 C.W. Garnet..... | 135 | 135 | 135 | 135 |
| 2 C.W. Garnet..... | 130 | 130 | 130 | 130 |
| 3 C.W. Garnet..... | 125 | 125 | 125 | 125 |
| 1 Alberta Red Winter..... | 134 | 134 | 134 | 134 |
| 2 Alberta Winter..... | 129 | 129 | 129 | 129 |
| 1 C.W. Amber Durum..... | 150 | 150 | 150 | 150 |
| 2 C.W. Amber Durum..... | 146 | 146 | 146 | 146 |
| 3 C.W. Amber Durum..... | 142 | 142 | 142 | 142 |
| <u>International Wheat Agreement</u> | | | | |
| <u>and Domestic Sales</u> | | | | |
| 1 Northern..... | 195/2 | 195/3 | 195/2 | 195/3 |
| 2 Northern..... | 194/2 | 194/3 | 194/2 | 194/3 |
| 3 Northern..... | 190/4 | 190/3 | 190/2 | 190/3 |
| 4 Northern..... | 183/4 | 183/3 | 183/2 | 183/3 |
| 5 Wheat..... | 178 | 178/3 | 178/2 | 178/3 |
| 6 Wheat..... | 173/2 | 173/3 | 173/2 | 173/3 |
| Feed Wheat..... | 170/5 | 170/3 | 170/2 | 170/3 |
| 1 C.W. Garnet..... | 190/2 | 190/3 | 190/2 | 190/3 |
| 2 C.W. Garnet..... | 188/2 | 188/3 | 188/2 | 188/3 |
| 3 C.W. Garnet..... | 187/2 | 187/3 | 187/2 | 187/3 |
| 1 Alberta Red Winter..... | 190/2 | 190/3 | 190/2 | 190/3 |
| 2 Alberta Winter..... | 188/2 | 188/3 | 188/2 | 188/3 |
| 3 Alberta Winter..... | 187/2 | 187/3 | 187/2 | 187/3 |
| 1 C.W. Amber Durum..... | 237/6 | 237/7 | 237 | 236/7 |
| 2 C.W. Amber Durum..... | 236/6 | 236/7 | 236 | 235/7 |
| 3 C.W. Amber Durum..... | 229/1 | 228/7 | 226/4 | 225/7 |
| <u>Export - Class 11</u> | | | | |
| 1 Northern..... | 195/2 | 195/3 | 195/2 | 195/3 |
| 2 Northern..... | 194/2 | 194/3 | 194/2 | 194/3 |
| 3 Northern..... | 190/4 | 190/3 | 190/2 | 190/3 |
| 4 Northern..... | 183/4 | 183/3 | 183/2 | 183/3 |
| 5 Wheat..... | 178 | 178/3 | 178/2 | 178/3 |
| 6 Wheat..... | 173/2 | 173/3 | 173/2 | 173/3 |
| Feed Wheat..... | 170/5 | 170/3 | 170/2 | 170/3 |
| 1 C.W. Garnet..... | 190/2 | 190/3 | 190/2 | 190/3 |
| 2 C.W. Garnet..... | 188/2 | 188/3 | 188/2 | 188/3 |
| 3 C.W. Garnet..... | 187/2 | 187/3 | 187/2 | 187/3 |
| 1 C.W. Amber Durum..... | 237/6 | 237/7 | 237 | 236/7 |
| 2 C.W. Amber Durum..... | 236/6 | 236/7 | 236 | 235/7 |
| 3 C.W. Amber Durum..... | 229/1 | 228/7 | 226/4 | 225/7 |

Canadian Wheat Board Weekly Average Cash Wheat Prices
Basis in Store Vancouver

| Class and Grade | Week Ending | | | |
|--------------------------------------|-------------|--------|--------|--------|
| | May 10 | May 17 | May 24 | May 31 |
| - cents and eighths per bushel - | | | | |
| <u>Initial Payment to Producers</u> | | | | |
| 1 Northern..... | 150 | 150 | 150 | 150 |
| 2 Northern..... | 146 | 146 | 146 | 146 |
| 3 Northern..... | 142 | 142 | 142 | 142 |
| 4 Northern..... | 135 | 135 | 135 | 135 |
| 5 Wheat..... | 118 | 118 | 118 | 118 |
| 6 Wheat..... | 112 | 112 | 112 | 112 |
| Feed Wheat..... | 108 | 108 | 108 | 108 |
| 1 C.W. Garnet..... | 135 | 135 | 135 | 135 |
| 2 C.W. Garnet..... | 130 | 130 | 130 | 130 |
| 3 C.W. Garnet..... | 125 | 125 | 125 | 125 |
| 1 Alberta Red Winter..... | 134 | 134 | 134 | 134 |
| 2 Alberta Winter..... | 129 | 129 | 129 | 129 |
| 1 C.W. Amber Durum..... | 150 | 150 | 150 | 150 |
| 2 C.W. Amber Durum..... | 146 | 146 | 146 | 146 |
| 3 C.W. Amber Durum..... | 142 | 142 | 142 | 142 |
| <u>International Wheat Agreement</u> | | | | |
| <u>and Domestic Sales</u> | | | | |
| 1 Northern..... | 200/4 | 200/5 | 200/4 | 201/3 |
| 2 Northern..... | 199/4 | 199/5 | 199/4 | 199/5 |
| 3 Northern..... | 195/6 | 195/5 | 195/4 | 196/5 |
| 4 Northern..... | 188/5 | 188/5 | 188/4 | 188/5 |
| 5 Wheat..... | 180/4 | 180/5 | 180/4 | 180/5 |
| 6 Wheat..... | 178/4 | 178/5 | 178/4 | 178/5 |
| Feed Wheat..... | 175/4 | 175/5 | 175/4 | 175/5 |
| 1 C.W. Garnet..... | 191/4 | 191/5 | 191/4 | 191/5 |
| 2 C.W. Garnet..... | 189/4 | 189/5 | 189/4 | 189/5 |
| 3 C.W. Garnet..... | 188/4 | 188/5 | 188/4 | 188/5 |
| 1 Alberta Red Winter..... | 191/4 | 191/5 | 191/4 | 191/5 |
| 2 Alberta Winter..... | 189/4 | 189/5 | 189/4 | 189/5 |
| 3 Alberta Winter..... | 188/4 | 188/5 | 188/4 | 188/5 |
| <u>Export - Class 11</u> | | | | |
| 1 Northern..... | 200/4 | 200/5 | 200/4 | 201/3 |
| 2 Northern..... | 199/4 | 199/5 | 199/4 | 199/5 |
| 3 Northern..... | 195/6 | 195/5 | 195/4 | 196/5 |
| 4 Northern..... | 188/5 | 188/5 | 188/4 | 188/5 |
| 5 Wheat..... | 180/4 | 180/5 | 180/4 | 180/5 |
| 6 Wheat..... | 178/4 | 178/5 | 178/4 | 178/5 |
| Feed Wheat..... | 175/4 | 175/5 | 175/4 | 175/5 |
| 1 C.W. Garnet..... | 191/4 | 191/5 | 191/4 | 191/5 |
| 2 C.W. Garnet..... | 189/4 | 189/5 | 189/4 | 189/5 |
| 3 C.W. Garnet..... | 188/4 | 188/5 | 188/4 | 188/5 |
| 1 Alberta Red Winter..... | 191/4 | 191/5 | 191/4 | 191/5 |
| 2 Alberta Winter..... | 189/4 | 189/5 | 189/4 | 189/5 |
| 3 Alberta Winter..... | 188/4 | 188/5 | 188/4 | 188/5 |

CANADIAN FLOUR MILLING SITUATION

Production Wheat flour production by Canadian mills during April 1963 amounted to 3,045,000 hundredweight, representing an increase of 3 per cent over the March 1963 output of 2,954,000 hundredweight and 12 per cent greater than the April 1962 figure of 2,724,000 hundredweight, but 6 per cent below the ten-year (1953-62) average production for the month of April of 3,234,000 hundredweight. Mills reporting operations during April 1963 had a total rated capacity of 166,000 hundredweight per 24-hour day and, on the basis of a 25-day working period, 73.2 per cent of this rated capacity was effective.

Wheat milled for flour during April 1963 amounted to 6,727,000 bushels compared with the 6,548,000 bushels milled during the preceding month and 6,054,000 bushels milled during April 1962. Of the wheat milled for flour during April 1963 some 6,086,000 bushels were Western-Canadian spring wheat (other than Durum) while the remainder consisted of Ontario winter wheat (484,000 bushels); Durum (96,000 bushels); and all other (60,000 bushels).

Exports According to preliminary Customs returns, exports of Canadian wheat flour during April 1963 amounted to 1,061,000 hundredweight (some 2,441,000 bushels of wheat equivalent) compared with the 1,939,000 bushels exported during the previous month and the adjusted April 1962 total of 2,389,000 bushels. Flour shipments during the month went to 51 countries with exports to Britain amounting to 1,073,000 bushels of wheat equivalent and accounting for 44 per cent of the April 1963 total. Other principal markets for Canadian wheat flour during the month, with shipments in thousands of bushels of wheat equivalent, were as follows: Ghana, 136; Trinidad and Tobago, 136; Leeward and Windward Islands, 133; United States, 110; Japan, 107; and Jamaica, 104.

Wheat Milled for Flour, and Production and Exports of Wheat Flour, Canada

| Crop Year | Wheat Milled for Flour bushels | Wheat Flour | |
|---|--------------------------------------|-------------|-----------------------|
| | | Production | Exports ^{1/} |
| | | - cwt. - | |
| 1935-36—1939-40 average..... | 67,845,114 | 29,405,451 | 9,603,941 |
| 1940-41—1944-45 average..... | 99,704,638 | 43,908,245 | 23,699,546 |
| 1945-46—1949-50 average..... | 107,330,372 | 47,011,540 | 25,819,721 |
| 1950-51—1954-55 average..... | 100,446,328 | 43,847,894 | 21,812,041 |
| 1955-56..... | 91,770,025 | 40,148,750 | 17,391,300 |
| 1956-57..... | 85,149,373 | 37,623,446 | 14,582,431 |
| 1957-58..... | 92,288,897 | 40,819,678 | 17,556,886 |
| 1958-59..... | 90,142,957 | 39,826,493 | 16,141,267 |
| 1959-60..... | 91,389,801 | 40,344,578 | 16,073,893 |
| 1960-61..... | 89,731,155 | 39,914,644 | 15,513,836 |
| 1961-62..... | 88,240,580 | 39,539,651 | 13,892,676 |
| 1962-63 ^{2/} August..... | 6,576,578 | 2,952,879 | 1,160,900 |
| September..... | 6,346,386 | 2,863,042 | 1,277,841 |
| October..... | 7,256,425 | 3,265,003 | 1,065,714 |
| November..... | 6,815,604 | 3,064,494 | 938,473 |
| December..... | 5,547,290 | 2,499,301 | 769,876 |
| January..... | 6,197,875 | 2,793,497 | 971,159 |
| February..... | 6,250,139 | 2,815,286 | 617,296 |
| March..... | 6,547,894 | 2,953,530 | 843,161 |
| April..... | 6,726,603 | 3,045,159 | 1,061,287 |
| Totals..... | 58,264,794 | 26,252,191 | 8,705,707 |
| Same months 1961-62 ^{3/} | 64,435,173 | 28,812,291 | 10,565,265 |

^{1/} Based on Customs returns. Exports for the crop years 1945-46—1961-62 revised to remove effect time lag in the returns made by Customs. ^{2/} Subject to revision. ^{3/} Revised.

UNITED STATES SITUATION

Supply Position Domestic supplies of wheat in the United States for the 1962-63 crop year (July-June) are estimated at 2,396.5 million bushels, consisting of the July 1, 1962 carryover of 1,304.8 million and the 1962 crop, placed at 1,091.8 million bushels. Domestic supplies of this size are 9 per cent less than last year's total of 2,645.9 million and 10 per cent smaller than the record 1960-61 figure of 2,670.8 million bushels. Imports of wheat from Canada during July-April of the current United States crop year amounted to 5.0 million bushels. Domestic disappearance during 1962-63 is estimated at about 605.0 million bushels, 4 per cent less than the 630.1 million last year. After deducting anticipated domestic requirements for the current United States crop year, some 1,796.5 million remain available for export and for carryover, a decrease of 11 per cent from the 2,020.4 million in 1961-62.

Exports of wheat, wheat flour and other products in terms of grain equivalent during the first ten months (July-April) of the 1962-63 United States crop year amounted to 502.6 million bushels, 15 per cent below the 594.0 million exported during the same months in 1961-62. The balance remaining on April 1, 1963 for export and for carryover was estimated at 1,293.9 million bushels compared with 1,426.4 million on the same date a year ago.

United States Wheat Supplies

| Item | 1961-62 <u>1/</u> | 1962-63 <u>2/</u> |
|---|---------------------|-------------------|
| | - million bushels - | |
| Carryover at beginning of crop year (July 1)..... | 1,411.2 | 1,304.8 |
| New Crop..... | 1,234.7 | 1,091.8 |
| Total estimated domestic supplies..... | 2,645.9 | 2,396.5 |
| Imports of wheat and wheat flour in terms of wheat for domestic use, July-April..... | 4.6 | 5.0 |
| Total estimated supplies <u>3/</u> | 2,650.5 | 2,401.5 |
| Less estimated domestic requirements for crop year <u>4/</u> | 630.1 | 605.0 |
| Available for export and for carryover..... | 2,020.4 | 1,796.5 |
| Deduct: | | |
| Exports of wheat as grain, July-April..... | 502.4 | 422.5 |
| Exports of wheat flour and products in terms of wheat, July-April <u>5/</u> | 91.6 | 80.1 |
| Total exports of wheat, wheat flour and products <u>6/</u> | 594.0 | 502.6 |
| Balance on May 1 for export and for carryover..... | 1,426.4 | 1,293.9 |

1/ Revised. 2/ Preliminary. 3/ Excluding imports for May-June. 4/ Includes shipments to United States Territories and wheat for military food use at home and abroad. 5/ Flour exports exclude "Milled in bond". 6/ These figures now include all shipments under relief programs which formerly were not available from Census data.

U.S. Wheat and Flour

Exports Continue Downtrend

U.S. wheat and flour exports from July 1962 through February 1963 totaled 357 million bushels, compared with 472 million during the first 8 months of 1961-62.

Wheat exports at 297 million bushels were more than 26 per cent below last season. Areawise, the largest reduction was made in shipments to Europe, with 34 million bushels less going to the Common Market countries, and 48 million less to other European countries. Shipments to the Western Hemisphere were 62 million bushels during the first 8 months of 1962-63, compared with 78 million a year earlier; the largest reduction being in shipments to Brazil, followed by Venezuela. In contrast, shipments to Asia so far in 1962-63 have increased 3 million bushels. This increase resulted from larger shipments to India, Korea, and Pakistan outweighing reductions to Japan and Turkey. The downward trend was again realized in shipments to Africa, where the heaviest cut was made in exports to Morocco and Tunisia. A slight increase was shown in shipments to other areas.

Flour exports from July 1962 through February 1963 totaled 59 million bushels in wheat equivalent, down 10 million from last season. Most of the reduction was the result of a 6-million bushel loss to Egypt, the major market. More than 2 million bushels less went to the Common Market and shipments to Syria in July-February 1962-63 were nil, compared with 2.7 million a year earlier. Wheat and flour exports during the first 9 months of 1962-63 are currently forecast at 423 million bushels, compared with 535 million during July-March 1961-62. Shipments of wheat and flour to Canada as shown in Table A were mostly for transshipment to other countries. Table B shows the quantities of U.S. wheat inspected for exports from Canadian ports and total exports from Table A adjusted to include inspections during July-February 1961-62 and July-February 1962-63.

Table A. United States Exports of Wheat and Flour by Country of Destination
July-February 1961-62 and 1962-63

| Destination | July-February 1961-62 | | | July-February 1962-63 | | |
|---------------------------|-----------------------|----------|--------|-----------------------|----------|--------|
| | Wheat | Flour 1/ | Total | Wheat | Flour 1/ | Total |
| - thousand bushels - | | | | | | |
| <u>Western Hemisphere</u> | | | | | | |
| Canada 2/..... | 9,222 | 116 | 9,338 | 8,333 | 136 | 8,469 |
| Central America..... | 2,261 | 1,895 | 4,156 | 2,167 | 1,674 | 3,841 |
| Trinidad and Tobago.... | 10 | 1,028 | 1,038 | 18 | 917 | 935 |
| Haiti..... | 1,370 | 44 | 1,414 | 932 | 59 | 991 |
| Bolivia..... | - | 2,358 | 2,358 | 572 | 2,097 | 2,669 |
| Brazil..... | 38,423 | 203 | 38,626 | 33,264 | 259 | 33,523 |
| Chile..... | 6,933 | 1,041 | 7,974 | 5,600 | 858 | 6,458 |
| Colombia..... | 2,578 | 616 | 3,194 | 2,131 | 390 | 2,521 |
| Paraguay..... | 2,354 | 59 | 2,413 | 563 | 587 | 1,150 |
| Peru..... | 5,950 | 323 | 6,273 | 4,079 | 243 | 4,322 |
| Venezuela..... | 7,951 | 63 | 8,014 | 3,119 | 84 | 3,203 |
| Others..... | 757 | 2,194 | 2,951 | 775 | 1,883 | 2,658 |
| Totals..... | 77,809 | 9,940 | 87,749 | 61,553 | 9,187 | 70,740 |
| <u>Europe</u> | | | | | | |
| <u>EEC</u> | | | | | | |
| Belgium-Luxembourg..... | 4,353 | 2 | 4,355 | 2,029 | 3 | 2,032 |
| France..... | 3,118 | 3/ | 3,118 | 1,136 | 129 | 1,265 |
| Germany, West..... | 12,577 | 146 | 12,723 | 4,735 | 6 | 4,741 |
| Italy..... | 13,206 | 3,877 | 17,083 | 857 | 2,965 | 3,822 |
| Netherlands..... | 15,451 | 2,067 | 17,518 | 6,361 | 844 | 7,205 |
| EEC sub-totals..... | 48,705 | 6,092 | 54,797 | 15,118 | 3,947 | 19,065 |

Table A. United States Exports of Wheat and Flour by Country of Destination
July-February 1961-62 and 1962-63

| Destination | July-February 1961-62 | | | July-February 1962-63 | | |
|---|-----------------------|---------------------|----------------|-----------------------|---------------------|----------------|
| | Wheat | Flour ^{1/} | Total | Wheat | Flour ^{1/} | Total |
| - thousand bushels - | | | | | | |
| Europe (concluded) | | | | | | |
| Greece..... | 1,409 | 1,131 | 2,540 | 791 | 1,238 | 2,029 |
| Norway..... | 2,774 | 7 | 2,781 | 716 | 13 | 729 |
| Poland..... | 8,956 | 538 | 9,494 | 444 | 516 | 960 |
| Portugal..... | 6,348 | 447 | 6,795 | 1,441 | 408 | 1,849 |
| Spain..... | 14,994 | 350 | 15,344 | - | 14 | 14 |
| Switzerland..... | 4,749 | 3/ | 4,749 | 2,431 | 3/ | 2,431 |
| United Kingdom..... | 10,230 | 2,078 | 12,308 | 2,172 | 219 | 2,391 |
| Yugoslavia..... | 18,586 | 1,580 | 20,166 | 11,581 | 1,281 | 12,862 |
| Others..... | 1,525 | 772 | 2,297 | 1,547 | 291 | 1,838 |
| Totals..... | 118,276 | 12,995 | 131,271 | 36,241 | 7,927 | 44,168 |
| Asia | | | | | | |
| Ceylon..... | - | 1,947 | 1,947 | - | 3,287 | 3,287 |
| India..... | 58,065 | 521 | 58,586 | 81,128 | 343 | 81,471 |
| Indonesia..... | - | 1,142 | 1,142 | 5 | 10 | 15 |
| Iran..... | 640 | 136 | 776 | 3,577 | 1,482 | 5,059 |
| Israel..... | 6,343 | 83 | 6,426 | 6,412 | 102 | 6,514 |
| Japan..... | 23,179 | 1,702 | 24,881 | 20,505 | 3,305 | 23,810 |
| Jordan..... | 8 | 2,746 | 2,754 | 691 | 2,036 | 2,727 |
| Korea..... | 5,666 | 602 | 6,268 | 12,440 | 635 | 13,075 |
| Lebanon..... | - | 941 | 941 | - | 785 | 785 |
| Pakistan..... | 22,239 | 423 | 22,662 | 25,597 | 548 | 26,145 |
| Philippines..... | 6,518 | 856 | 7,374 | 4,183 | 550 | 4,733 |
| Saudi Arabia..... | 47 | 1,374 | 1,421 | 6 | 2,287 | 2,293 |
| Syria..... | 2,966 | 2,691 | 5,657 | - | - | - |
| Taiwan..... | 8,555 | 768 | 9,323 | 5,934 | 1,272 | 7,206 |
| Turkey..... | 27,672 | 202 | 27,874 | 4,943 | 366 | 5,309 |
| Vietnam, Laos and Cambodia..... | 117 | 1,833 | 1,950 | 223 | 2,845 | 3,068 |
| Others..... | 1,531 | 2,004 | 3,535 | 546 | 608 | 1,154 |
| Totals..... | 163,546 | 19,971 | 183,517 | 166,190 | 20,461 | 186,651 |
| Africa | | | | | | |
| Algeria..... | 7,458 | 337 | 7,795 | 6,471 | 1,877 | 8,348 |
| British East Africa.... | 93 | 50 | 143 | 1,264 | 24 | 1,288 |
| Congo (Leopoldville)... | - | 1,274 | 1,274 | 21 | 1,551 | 1,572 |
| Egypt..... | 15,375 | 20,881 | 36,256 | 14,743 | 14,761 | 29,504 |
| Morocco..... | 7,597 | 872 | 8,469 | 799 | 1,558 | 2,357 |
| Nigeria..... | - | 1,265 | 1,265 | 402 | 198 | 600 |
| Sudan..... | - | - | - | 1,031 | 311 | 1,342 |
| Tunisia..... | 11,277 | 108 | 11,385 | 6,652 | 146 | 6,798 |
| Others..... | 1,613 | 1,182 | 2,795 | 2,117 | 1,008 | 3,125 |
| Totals..... | 43,413 | 25,969 | 69,382 | 33,500 | 21,434 | 54,934 |
| Oceania..... | | | | | | |
| Totals, All Countries ^{4/}..... | - | 28 | 28 | - | 31 | 31 |
| Totals, All Countries ^{4/}..... | 403,044 | 68,903 | 471,947 | 297,484 | 59,040 | 356,524 |

^{1/} Grain equivalent. ^{2/} The bulk of exports to Canada are for transshipment to other destinations. ^{3/} Less than 500 bushels. ^{4/} Includes shipments for relief or charity.

Table B. United States Exports of Wheat and Flour as Adjusted for Transshipment Through Canadian Ports, July-February 1961-62 and 1962-63

| Destination | July-February 1961-62 | | July-February 1962-63 | |
|-------------------------|---|--------------------------------------|---|--------------------------------------|
| | Wheat in-spected for export from Canadian ports | Adjusted totals for listed countries | Wheat in-spected for export from Canadian ports | Adjusted totals for listed countries |
| - thousand bushels - | | | | |
| EEC | | | | |
| Belgium-Luxembourg..... | 649 | 5,004 | 221 | 2,253 |
| France..... | 2,165 | 5,283 | 1,495 | 2,760 |
| Germany, West..... | 478 | 13,201 | 827 | 5,568 |
| Italy..... | - | 17,083 | - | 3,822 |
| Netherlands..... | 3,219 | 20,737 | 1,993 | 9,198 |
| Totals..... | 6,511 | 61,308 | 4,536 | 23,601 |
| United Kingdom..... | 821 | 13,129 | 1,179 | 3,570 |
| Portugal..... | - | 6,795 | 981 | 2,830 |
| Spain..... | 1,125 | 16,469 | - | 14 |
| Yugoslavia..... | - | 20,166 | 2,958 | 15,820 |
| Turkey..... | 1,456 | 29,330 | - | 5,309 |
| Algeria..... | 2,401 | 10,196 | - | 8,348 |
| Egypt..... | 938 | 37,194 | - | 29,504 |
| Tunisia..... | 92 | 11,477 | - | 6,798 |
| Totals 1/..... | 13,344 | 206,064 | 9,654 | 95,794 |

1/ Excludes 126,000 bushels in July-February 1961-62 and 810,000 bushels in July-February 1962-63 to unspecified areas.

Winter Wheat Crop
Estimated at
885 Million Bushels

In a report released on May 10, 1963 the Crop Reporting Board of the United States Department of Agriculture stated in part that production of winter wheat is forecast at 885 million bushels, 5 per cent below the April estimate, 11 per cent less than average, but 8 per cent more than last year. Greatest losses in production prospects from early April occurred in the Central and Southern Plains where continued drought parched wheat fields already damaged by severe winter weather and locally severe infestations of army worms. Here, in an area centering in northeastern New Mexico, southeastern Colorado, southwestern Kansas, and the panhandle areas of Texas and Oklahoma, many fields reached the point of no return and some farmers began destroying the poorest fields. Elsewhere, except in the Northern Plains and the Pacific Coast States, April weather was dry, but rains starting the last of April renewed hopes for the crop. In the Northern Plains, soil moisture was adequate during April and in the Pacific Northwest weather was too cool and wet for the best development of the crop.

In the past 10 years the average change in the United States production estimate from May 1 to harvest has been 79 million bushels, ranging from a maximum of 164 million bushels to a minimum of 9 million bushels.

Yield per harvested acre is indicated at 25.5 bushels, nearly 1 bushel above last year, and the fourth highest yield of record. Acreage to be harvested is indicated at 34.7 million acres, 4 per cent more than was harvested last

year. It is expected that 83 per cent of the acreage seeded will be harvested for grain.

Wheat Farmers Disapprove
1964-Crop Wheat Marketing
Quotas

On May 22, 1963, the United States Department of Agriculture announced that preliminary results from the Tuesday (May 21) referendum showed that farmers did not approve marketing quotas for 1964-crop wheat.

The vote was 547,151 or 47.79 per cent for and 597,776 or 52.21 per cent against. Total vote cast, a record, was 1,144,927, excluding the challenged vote (73,245).

Because the for vote was less than two-thirds approval as required by law, marketing quotas will not be in effect on the 1964 wheat crop.

As required by law when marketing quotas are disapproved, acreage allotments - previously announced at 49.5 million acres - will continue in effect as a condition of eligibility for price support which will be at 50 per cent of parity as of the beginning of the marketing year on July 1, 1964.

Statement by Secretary
Freeman on Wheat
Referendum

On May 22 the United States Department of Agriculture released the following statement by Secretary Orville L. Freeman. Yesterday, wheat farmers in the United States with complete information on the alternatives open to them, chose to reject national marketing quotas for the 1964 crop. It means that for the next year unlimited wheat production with no price support is an option open to every American farmer.

It is the earnest hope of the Secretary of Agriculture and this Administration that wheat farmers and our agricultural economy in particular and our national economy in general will benefit from this decision freely made by American farmers at the ballot box. We will do everything in our power to that end. There will be no dumping of CCC wheat. CCC sales of wheat for unrestricted use in domestic markets will be limited in 1964 to prices 5 per cent higher than the price support of \$1.25 plus reasonable carrying charges.

The wheat program, however, is a continuing program. Since 1938 Congress has wisely provided an alternative to acreage allotments and marketing quotas, to be effective if marketing quotas are not approved. That alternative program as provided by law will be in effect for the 1964 crop. The 1964 wheat program provides price supports at 50 per cent of parity for producers who voluntarily choose to comply with the acreage allotments applicable to their farms. Such farmers will be eligible for price support loans on the 1964 crop at about \$1.25 a bushel. This program then will be in effect for the 1964 wheat crop. If it works satisfactorily and farm income is maintained and wheat supplies are not excessive as those who urged a "no" vote in the referendum confidently predicted, no further program will be necessary. In any event, this point of view which prevailed in the referendum is entitled to a full and fair trial. Only when we see what happens can we be certain what program is the best.

If however, supplies of wheat in 1963-64 prove to be excessive the Secretary of Agriculture under the law must proclaim a national marketing quota and a national acreage allotment for the 1965 crop of wheat prior to April 15, 1964. And a referendum must by law then be held within 60 days after such a marketing quota is announced to determine if two-thirds of the wheat farmers support quotas. This means that should the program voted in on May 21, 1963, not succeed that a referendum will be held for the 1965 crop prior to June 13, 1964.

Such a referendum if it proves necessary will be held not later than June 13, 1964.

In the world market, we can and will continue to fulfill our obligations under the International Wheat Agreement despite the current price and production uncertainty. This will be done under authority delegated to the Secretary of Agriculture by the President. The United States will work with the International Wheat Council and with its member countries and with the wheat trade and wheat producers to preserve the stability of world wheat markets and world wheat prices which we have so long sought together. Sales for export will be handled in normal channels of trade to the maximum extent possible consistent with the fulfillment of our international obligations. There will be no dumping of U.S. wheat in world markets.

Statement by Secretary
Freeman on International
Wheat Agreement

The following statement was released by the United States Department of Agriculture, May 23, 1963. The President today delegated to the Secretary of Agriculture the authority vested in the President by the Congress under the International Wheat Agreement Act of 1949 as amended. Copies of the Executive Order were made available by the White House on May 23. This action is necessary for the United States to exercise the rights, obtain the benefits, achieve the objectives and fulfill the obligations of the International Wheat Agreement because of uncertainties introduced into domestic and world markets by disapproval of marketing quotas in the May 21 wheat referendum.

If U.S. farmers should produce a crop far in excess of normal domestic and export needs in 1964, wheat prices in the United States are expected to fall below the levels equivalent to the minimum prices specified for sales under the International Wheat Agreement. Exports by the United States at such prices would result in collapse of the Agreement. This will not be permitted. Sales by the United States to member countries at prices at or near 1962-63 levels remain our goal for 1964. All available authority will be utilized to insure the achievement of this goal.

The key provisions of the authority vested in the Secretary of Agriculture under this executive order are:

- * To make available or cause to be made available, through the Commodity Credit Corporation, such quantities of wheat and wheat-flour and at such prices as are necessary to exercise the rights, obtain the benefits, achieve the objectives, and fulfill the obligations of the United States under the International Wheat Agreement.
- * To prohibit or restrict the importation or exportation of wheat or wheat-flour and issue such rules and regulations as he may deem necessary in the implementation of the International Wheat Agreement.
- * To take such other action as may be necessary in his judgment in the implementation of the International Wheat Agreement.

There are benefits as well as obligations under the International Wheat Agreement. The benefits to exporters include the obligation of importing countries to purchase specified shares of their requirement at prices within the Agreement range of \$1.62 1/2 to \$2.02 1/2 for No. 1 Northern Spring wheat in store at Fort William-Port Arthur, Canada.

Continued on page 35.

Cash Wheat Prices on the Kansas City and Minneapolis Markets

| No. 2 Hard Winter, Kansas City | | | No. 1 Northern Spring, Minneapolis | | |
|--------------------------------|----------------------|-----|------------------------------------|----------------------|--|
| Date | Price | | Date | Price | |
| | - cents per bushel - | | | - cents per bushel - | |
| May 1, 1963..... | 236 | 3/4 | May 1, 1963..... | 235 5/8 - 237 5/8 | |
| 2 | 236 | 1/4 | 2 | 235 1/2 - 237 1/2 | |
| 3 | 239 3/4 - 261 1/4 | 1/ | 3 | 235 1/8 - 237 1/8 | |
| 6 | 230 1/2 - 235 3/4 | | 6 | 235 1/2 - 237 1/2 | |
| 7 | 227 1/4 - 262 1/2 | 1/ | 7 | 236 5/8 - 238 5/8 | |
| 8 | 227 - 260 1/4 | 1/ | 8 | 237 1/8 - 239 1/8 | |
| 9 | 233 3/4 | | 9 | 238 1/2 - 240 1/2 | |
| 10 | 228 1/2 - 229 | | 10 | 238 1/2 - 240 1/2 | |
| 13 | 224 1/2 | | 13 | 236 1/8 - 238 1/8 | |
| 14 | 220 1/4 | | 14 | 234 1/8 - 236 1/8 | |
| 15 | 214 1/4 - 249 3/4 | 1/ | 15 | 230 3/4 - 233 3/4 | |
| 16 | 221 1/4 | | 16 | 228 3/8 - 231 3/8 | |
| 17 | 217 3/4 - 253 | 1/ | 17 | 227 3/4 - 230 3/4 | |
| 20 | 218 1/4 - 253 | 1/ | 20 | 227 3/4 - 230 3/4 | |
| 21 | 218 - 251 3/4 | 1/ | 21 | 228 - 231 | |
| 22 | 212 1/2 - 251 1/4 | 1/ | 22 | 228 1/2 - 231 1/2 | |
| 23 | 216 1/4 - 250 3/4 | 1/ | 23 | 228 1/4 - 231 1/4 | |
| 24 | 217 - 250 3/4 | 1/ | 24 | 228 1/4 - 231 1/4 | |
| 27 | 215 3/4 - 250 1/2 | 1/ | 27 | 227 3/4 - 230 3/4 | |
| 28 | 217 | | 28 | 228 3/4 - 231 3/4 | |
| 29 | 215 1/4 - 215 3/4 | | 29 | 229 5/8 - 231 5/8 | |
| 30 | Memorial Day | | 30 | Memorial Day | |
| 31 | 213 1/2 | | 31 | 231 3/8 - 232 3/8 | |

1/ Nominal.

Chicago Wheat Futures, High Points of Closing

| Date | May | July | September | December | March |
|------------------|----------------------------------|-------|--------------|----------|-------|
| | - cents and eighths per bushel - | | | | |
| May 1, 1963..... | 211/7 | 188/3 | 189/5 | 194 | 194/4 |
| 2 | 209/4 | 187/3 | 188/7 | 193/2 | 194/1 |
| 3 | 208/3 | 187/7 | 189/2 | 193/5 | 194/2 |
| 6 | 208/3 | 188/1 | 189/3 | 193/6 | 194/4 |
| 7 | 210 | 188/6 | 189/3 | 194 | 194/7 |
| 8 | 208/6 | 187/3 | 188/5 | 193/3 | 194 |
| 9 | 209/4 | 188 | 189/3 | 194 | 194/6 |
| 10 | 209 | 188/1 | 189/3 | 194 | 194/5 |
| 13 | 207/4 | 187/1 | 188/4 | 193/2 | 194 |
| 14 | 203 | 186/7 | 188/4 | 193/1 | 194/3 |
| 15 | 203/6 | 186/5 | 188 | 192/6 | 193/6 |
| 16 | 205/2 | 185/5 | 186/7 | 191/3 | 192/3 |
| 17 | 209/4 | 185/1 | 186/2 | 190 | 190/5 |
| 20 | 218/6 | 185/4 | 186/6 | 190/6 | 191/4 |
| 21 | | 185/1 | 186/6 | 191 | 192/1 |
| 22 | | 185 | 186/6 | 190/6 | 190/5 |
| 23 | | 186/2 | 187/2 | 191/3 | 191 |
| 24 | | 186/2 | 187/4 | 191/6 | 191/4 |
| 27 | | 185/1 | 186/4 | 191 | 190/6 |
| 28 | | 185/4 | 186/7 | 191/3 | 191/2 |
| 29 | | 185/3 | 186/7 | 191/3 | 191 |
| 30 | | | Memorial Day | | |
| 31 | | 185/3 | 186/7 | 191 | 191 |

AUSTRALIAN SITUATION

Supply Position Estimated supplies of wheat in Australia for the 1962-63 (December-November) crop year amount to some 325.1 million bushels, consisting of the December 1, 1962 carryover of 17.9 million and the current crop now officially estimated at a record 307.2 million bushels. Supplies of the size indicated, reflecting a substantially larger production which more than offset a decline in carryover, represent an increase of 20 per cent over the 1961-62 total of 271.8 million bushels. After deducting 75.0 million for anticipated domestic requirements, an estimated 250.1 million are available for export and for carryover during 1962-63, 28 per cent above the 195.8 million in 1961-62.

Combined exports of wheat as grain and wheat flour in terms of grain equivalent during the period December 1-April 27 of the current Australian crop year amounted to 84.5 million bushels compared with 84.4 million exported during the corresponding period of 1961-62. The balance remaining on April 28, 1963 for export and for carryover, at 165.6 million bushels, exceeded by 49 per cent the comparable 1962 total of 111.4 million.

Australian Wheat Supplies

| Item | 1961-62 <u>1/</u> | 1962-63 <u>2/</u> |
|--|---------------------|-------------------|
| | - million bushels - | |
| Carryover, including flour as wheat, at beginning of crop year (December 1)..... | 24.6 | 17.9 |
| New Crop..... | 247.2 | 307.2 <u>1/</u> |
| Total estimated domestic supplies..... | 271.8 | 325.1 |
| Less estimated domestic requirements for crop year.... | 76.0 | 75.0 <u>1/</u> |
| Available for export and for carryover..... | 195.8 | 250.1 |
| Deduct: | | |
| Exports of wheat as grain, December 1-April 27..... | 74.1 | 74.8 |
| Exports of wheat flour in terms of wheat, December 1-April 27..... | 10.3 | 9.7 |
| Total exports of wheat and wheat flour..... | 84.4 | 84.5 |
| Balance on April 28 for export and for carryover..... | 111.4 | 165.6 |

1/ Revised.

2/ Preliminary.

The following information relative to the Australian situation has been extracted from a report from Mr. H.A. Gilbert, Commercial Counsellor for Canada, Melbourne, under date of May 15, 1963 and is reproduced with the permission of the Trade Commissioner Service, Department of Trade and Commerce.

Crop Position An all-time record wheat crop of 307.2 million bushels was harvested in Australia during 1962-63 according to figures just released by the Commonwealth Bureau of Census and Statistics. This is 33 million bushels more than was produced in 1960-61 when the previous highest production was recorded and 60 million bushels greater than last year. Estimates of the crop in New South Wales, Queensland and Western Australia constitute a record while the harvest in Victoria has been previously exceeded on only one occasion, in 1960-61.

Production figures on a State basis are as follows:

| | | |
|-------------------|-------|-----------------|
| New South Wales | 110.0 | million bushels |
| Victoria | 67.0 | " " |
| Queensland | 19.7 | " " |
| South Australia | 38.1 | " " |
| Western Australia | 72.0 | " " |
| Tasmania | 0.4 | " " |
| <hr/> | | |
| Total | 307.2 | million bushels |
| <hr/> | | |

The estimated yield per acre of 19.0 bushels is 2.2 bushels more than in the previous year but still below the record yield of 20.7 bushels recorded in 1958-59. The yield in New South Wales, however, at 22.9 bushels per acre, was the highest on record. Other State yields per acre were as follows: Victoria, 21.4; Queensland, 23.2; South Australia, 14.8; and Western Australia 15.0.

The area sown to wheat in Australia last year is estimated to have been 16.2 million acres, a post-war record, and the largest acreage since 1930-31 when 18.2 million acres were sown. The seeded acreages in the various States were as follows, in millions of acres: New South Wales, 4.8; Victoria, 3.13; Queensland, 0.85; South Australia, 2.58; and Western Australia, 4.8.

Outlook for 1963-64 The outlook for a record seeding in Australia appears to be very good. Western and South Australia have had excellent rains over large portions of their grain growing areas. While there is still time for adverse weather to interfere with the seeding apparently it is some years since prospects at this period were so favourable as now. Victorian wheat growing areas have benefitted from good soaking rains while in New South Wales enough rain has fallen to enable seeding in the traditionally early districts of the State.

Figures published by leading seed wheat treating concerns indicate an increased wheat sowing by Australian growers of 9 per cent. By States the increases indicated are Western Australia 11 per cent, South Australia 7 1/2 per cent and Victoria 9 per cent. If increases in New South Wales and Queensland are of the same order and if favourable growing conditions are experienced a harvest in the vicinity of 330 million bushels could be gathered.

Marketing Position Two important announcements have been released by the Australian Wheat Board during the period under review.

Firstly, the Board has made a sale of 90,000 tons (3,360,000 bushels) of f.a.q. wheat to India. Of the total, 70,000 tons (2,613,000 bushels) will be supplied from Victoria, the balance from Northern New South Wales. The wheat is to be shipped before the end of June.

According to the Chairman, this brings the total volume of wheat sold to India for the fiscal year ending June 30, 1963 to 200,000 tons (7,467,000 bushels) which is the full quantity of commercial purchases India is committed to import from wheat exporting countries under her P.L. 480 Agreement with the United States.

The second announcement advises that China has prepaid to the Board an amount of £7.6 million (approximately \$18.5 million Canadian) in advance of due dates of payments on their shipments falling due up to the end of June this year.

The Board stated that receipt of these advances should help to dissipate the fears expressed in some quarters concerning payment by China for wheat purchased by them from Australia.

Mr. J.V. Moroney, Chairman of the Board, is currently heading a four-member selling mission in Hong Kong and has intimated that he would be having talks with mainland Chinese officials there.

Exports of Australian Wheat and Wheat Flour in Terms of Wheat
December 1 - April 27, 1962-63 and Corresponding Period 1961-62

| Destination | Wheat | | Wheat Flour | |
|-------------------------------|---------|---------|-------------|---------|
| | 1961-62 | 1962-63 | 1961-62 | 1962-63 |
| - thousand bushels - | | | | |
| <u>Europe</u> | | | | |
| Albania..... | - | 444 | - | - |
| Britain..... | 8,719 | 7,527 | 1,168 | 639 |
| Eire..... | 717 | 937 | - | - |
| France..... | 450 | - | - | - |
| Italy..... | 4,845 | - | - | - |
| Malta..... | 317 | 205 | - | - |
| Norway..... | 1,793 | - | - | - |
| Spain and Canary Islands..... | 7,487 | 2,087 | - | - |
| Switzerland..... | 73 | - | - | - |
| West Germany..... | 5,972 | 1,213 | - | - |
| Others..... | - | - | 5 | 7 |
| <u>Middle East</u> | | | | |
| Aden..... | 288 | 282 | - | - |
| Aden and Aden I/T..... | - | - | 481 | 490 |
| Aden Atta..... | - | - | 136 | 150 |
| Egypt..... | 1,882 | - | - | - |
| Iran..... | 146 | 210 | - | - |
| Iraq..... | 733 | - | - | - |
| Lebanon, Jordan, Syria..... | 1,904 | 1,875 | - | - |
| Persian Gulf..... | - | - | 53 | 56 |
| Persian Gulf Atta..... | - | - | 739 | 470 |
| Saudi Arabia..... | - | - | 25 | 128 |
| Others..... | 116 | 75 | 7 | 8 |
| <u>Africa</u> | | | | |
| Algeria..... | 446 | - | - | - |
| Kenya..... | 882 | - | - | - |
| Mauritius..... | - | - | 355 | 231 |
| Nyasaland..... | - | - | 89 | 119 |
| Port. East Africa..... | 197 | - | - | - |

Exports of Australian Wheat and Wheat Flour in Terms of Wheat
December 1 - April 27, 1962-63 and Corresponding Period 1961-62

| Destination | Wheat | | Wheat Flour | |
|----------------------------------|---------|---------|-------------|---------|
| | 1961-62 | 1962-63 | 1961-62 | 1962-63 |
| - thousand bushels - | | | | |
| Rhodesia..... | 1,454 | 1,566 | - | - |
| Zanzibar..... | - | - | 47 | 76 |
| Others..... | 5 | 7 | 41 | 26 |
| <u>Asia</u> | | | | |
| British North Borneo..... | - | - | 88 | 51 |
| Brunei..... | - | - | 19 | 13 |
| Burma..... | 147 | 551 | 99 | 80 |
| Ceylon..... | 11 | 4 | 2,593 | 2,764 |
| China..... | 24,060 | 46,460 | - | - |
| Hong Kong..... | 1,436 | 1,029 | 129 | 90 |
| India..... | 1,071 | 1,929 | - | - |
| Indonesia..... | - | - | 227 | 253 |
| Japan..... | 6,087 | 3,616 | - | - |
| Malaya..... | 260 | 195 | 1,430 | 1,286 |
| Malaya Atta..... | - | - | 33 | 36 |
| Pakistan..... | 19 | 1,847 | - | - |
| Sarawak..... | - | - | 96 | 65 |
| Singapore..... | 29 | 16 | 1,189 | 1,056 |
| Singapore Atta..... | - | - | 6 | 6 |
| Singapore a/c War Office..... | - | - | 12 | 8 |
| Thailand..... | - | - | 263 | 304 |
| Others..... | 157 | 116 | 76 | 251 |
| <u>Pacific Area and Sundries</u> | | | | |
| New Guinea, West..... | - | - | 33 | 6 |
| New Zealand..... | 2,379 | 2,590 | - | - |
| Pacific Islands etc. | 15 | 19 | 807 | 879 |
| Peru..... | - | - | 2 | 10 |
| Royal Navy..... | 2 | - | - | - |
| Ships' Stores and Sundries..... | - | - | 52 | 145 |
| Totals..... | 74,100 | 74,800 | 10,300 | 9,700 |

FRENCH SITUATION

Supply

Position

Total estimated commercial domestic supplies of soft wheat in France for the crop year (August-July) 1962-63 are placed at some 396.1 million bushels, consisting of the August 1, 1962 carryover of 30.9 million and marketings of 365.2 million. Imports during the period August 1, 1962 to May 10, 1963 have amounted to 3.2 million bushels. After deducting 218.7 million bushels for anticipated domestic requirements, a total of 180.6 million are available for export and for carryover during 1962-63.

Exports of soft wheat during the period August 1, 1962 to May 10, 1963 amounted to 79.5 million bushels and as a result the balance of commercial supplies remaining on May 11, 1963 totalled 101.1 million.

French Supplies of Soft Wheat

| Item | 1962-63 1/ million bushels |
|--|-------------------------------|
| Commercial carryover, August 1 | 30.9 |
| Deliveries to Grain Board..... | 365.2 |
| Total estimated domestic supplies..... | 396.1 |
| Imports of soft wheat August 1, 1962 - May 10, 1963 | |
| EEC..... | 0.3 |
| Others..... | 3.0 |
| Total..... | 3.2 |
| Total estimated supplies..... | 399.3 |
| Less estimated domestic requirements for crop year..... | 218.7 |
| Available for export and for carryover..... | 180.6 |
| Deduct exports of soft wheat August 1, 1962 - May 10, 1963 | |
| EEC..... | 4.3 |
| Others..... | 75.2 |
| Total..... | 79.5 |
| Balance on May 11 for export and for carryover..... | 101.1 |

1/ Preliminary.

The following account of the current crop situation in France has been extracted from a report by Mr. R.G. Woolham, Assistant Commercial Secretary, Canadian Embassy, Paris, under date of May 21, 1963, and is reproduced with the permission of the Trade Commissioner Service, Department of Trade and Commerce. Where possible, conversions from French to Canadian measures have been made and rounded for the convenience of our readers.

Weather and Crops Cool weather, local but persistent rain showers, and heavy cloud over most regions during the month of May have delayed spring seeding and plant growth after an exceptionally severe winter. Winter damage estimates reported by the Ministry of Agriculture for fall seeded cereals were, for wheat 26 per cent destroyed and 35 per cent damaged. Losses on barley were higher at 47 per cent destroyed and 30 per cent damaged, while oat losses were even heavier with 72 per cent destroyed and 19 per cent damaged.

Estimates of the area resown to Spring crops were indicated as follows:

| | |
|---------------|------------------------------------|
| Soft wheat | 479,200 hectares (1,184,000 acres) |
| Durum wheat | 15,100 " (37,000 ") |
| Barley | 537,100 " (1,327,000 ") |
| Oats | 213,500 " (527,000 ") |
| Other cereals | 23,600 " (58,000 ") |
| Corn | 107,100 " (265,000 ") |

A significant proportion of the reseeded area is carrying barley and corn, and it is therefore anticipated that France's wheat crop this year will not be greater than 9 million metric tons (330.7 million bushels) as compared with last year's bumper crop of 13.7 million tons (503.4 million bushels). Production of barley and corn should range higher than last year if adverse weather is not encountered.

In Algeria, although the season is also somewhat retarded, a good harvest is anticipated. Forecasts indicate a substantial production increase in barley, with a decrease in soft and durum wheat production. The deficit in soft wheat in this country is expected to be substantial, and durum wheat production this year may not be sufficient to meet local requirements.

Information regarding Morocco points to increased barley production, a reasonably good position in durum wheat, but a net deficit in soft wheat supplies for domestic requirements.

The French semolina millers purchased 12,000 tons (441,000 bushels) of Argentine durum wheat at the beginning of May at \$83 per metric ton (\$2.26 per bushel) for delivery to Rouen and Marseille. Milling requirements are now covered to the end of July. Recently an agreement was reported between France and Algeria and Morocco whereby the export quotas of semoule by the latter two countries to France would be reduced by 25 per cent compared with last year, while on the other hand, French imports of durum wheat for these countries would be increased accordingly.

1963-64 Crop Year Some proposals are currently being studied in France with a view to legislating a grading system for cereals. Similar questions with respect to grading systems were opened last year, but no action was taken. However, with a view towards moving closer to Common Market quality standards, it is anticipated that for the next crop year, the French quality standard for wheat will specify 16 per cent moisture, and the specific weight fixed at 75 kilograms per hectolitre (60 pounds per bushel). As for cereal prices the "Six" have so far failed to reach agreement regarding "target prices" for the 1963-64 crop year, which if developed along the lines laid down by the E.E.C. Grain Regulations would begin decreasing the disparity of cereal prices between member countries.

ARGENTINE SITUATION

Supply Position Estimated total supplies of wheat in the Argentine for the 1962-63 (December-November) crop year amount to 188.6 million bushels, consisting of the December 1, 1962 carryover of 8.6 million and the new crop, placed at 180.0 million. Indicated supplies for the current Argentine crop year, reflecting decreases in both carryover stocks and production, are about 21 per cent less than the 1961-62 total of 237.4 million bushels. After making an allowance of 128.6 million bushels for anticipated domestic requirements, an estimated 60.0 million are available for export and for carryover in 1962-63, in contrast to 109.4 million the previous year.

Exports of wheat and wheat flour in terms of grain equivalent during December 1962-April 1963 amounted to 38.4 million bushels, 38 per cent below the 61.7 million exported during the same months in 1961-62. The balance remaining on May 1, 1963 for export and for carryover was estimated at 21.6 million bushels, less than half the May 1, 1962 total of 47.6 million.

Argentine Wheat Supplies

| Item | 1961-62 <u>1/</u> | 1962-63 <u>2/</u> |
|---|---------------------|-------------------|
| | - million bushels - | |
| Carryover at beginning of crop year (December 1) <u>3/</u> | 35.3 | 8.6 |
| New Crop <u>4/</u> | 202.1 | 180.0 |
| Total estimated domestic supplies..... | 237.4 | 188.6 |
| Less estimated domestic requirements for crop year..... | 128.0 | 128.6 |
| Available for export and for carryover..... | 109.4 | 60.0 |
| Deduct: | | |
| Exports of wheat as grain, December-April..... | 61.6 | 38.2 |
| Exports of wheat flour in terms of wheat, December - April..... | 0.1 | 0.1 |
| Total exports of wheat and wheat flour..... | 61.7 | 38.4 |
| Balance on May 1 for export and for carryover..... | 47.6 | 21.6 |

1/ Revised. 2/ Preliminary. 3/ Includes allowances for farm stocks. 4/ Official estimate.

According to Broomhall's Corn Trade News under date of May 29, 1963 light scattered rains have fallen in Argentina. Preparations for the seeding of this year's small grains are well advanced and, seeding conditions are certainly much better than they were at this time a year ago.

Continued from page 27.

The United States expects not only to fulfill its obligations by not exporting at prices below the minimum, but also to continue to realize the benefits of the Agreement by exporting at prices in line with prices at which other IWA exporting countries are selling wheat. In the past year, U.S. sales under the IWA have been made at prices near the middle of the IWA range. Prior to the referendum, the Department of Agriculture indicated that in the event marketing quotas were not approved, special arrangements would be made for exports under the International Wheat Agreement. It was indicated also that commercial sales by the U.S. to nonmember countries would have to be made at prices within the IWA range in order to not impair the successful operation of the Agreement. Commercial exports to countries which are not parties to the International Wheat Agreement account for about 25 per cent of total U.S. commercial wheat exports. Such sales would probably break the Agreement if they were made at prices outside the IWA range. Thus, sales to nonmember countries will be limited to the IWA price range in 1964.

Under the Executive Order, the Secretary of Agriculture is directed to consult with the Secretary of State, the Special Representative for Trade Negotiations, and with other officers or agencies of the Government as he determines necessary. The Department of Agriculture will initiate talks within the Government immediately to further establish the procedures which would operate for wheat exports in 1964. At an early date, the Department will hold discussions with farm groups and the grain industry in order that a full understanding may be reached, and procedures for export operations announced well in advance of the 1964 marketing year.

CALENDAR OF WHEAT EVENTS

- April 29 According to a report received from the office of the Commercial Counsellor for Canada, Buenos Aires, the official minimum prices for Argentine wheat, 1963-64 crop year, were announced. Converted to dollars per bushel these prices were as follows, basis f.o.r. Buenos Aires, with 1962-63 figures in brackets: Hard wheat, 1.52 (1.22); Semi-hard, 1.48 (1.19); and "Candeal" or durum wheat 1.61 (1.22). It is to be noted that, for the first time, the price set for "durum" wheat exceeds those of other types.
- May 10 According to a report published by the Crop Reporting Board of the United States Department of Agriculture, the U.S. winter wheat crop for harvest in 1963, based on conditions at May 1, was forecast at 885 million bushels, 8 per cent greater than last year.
- 15 According to a report received from Mr. H.A. Gilbert, Commercial Counsellor for Canada, Melbourne, the 1962-63 wheat crop in Australia is now placed at a record 307.2 million bushels.
- 22 The United States Department of Agriculture announced that preliminary results from the May 21 referendum showed that farmers did not approve marketing quotas for 1964-crop wheat. The vote was 547,151 or 47.79 per cent for and 597,776 or 52.21 per cent against. Total vote cast, a record, was 1,144,927, excluding the challenged vote (73,245).
- 29 The Bureau of the Census, United States Department of Commerce, estimated wheat flour production in the United States in April 1963 at 21,570,000 hundredweight, an average of 980,455 hundredweight per working day.
- June 5 According to a telegraphic crop report published by the Dominion Bureau of Statistics seeding is virtually completed in Alberta and Saskatchewan but about 25 per cent remains to be done in Manitoba. Heavy rains continue to delay operations in Manitoba, especially in some eastern sections of the province. Crop conditions are very promising in most districts of Saskatchewan, in central and northern Alberta, and western and central Manitoba. Serious drought persists in southern Alberta with damage to dry-land crops increasing. Damage from cutworms has been kept under control by chemical sprays. Grasshoppers are now commencing to hatch in forecast areas and control measures are being undertaken where necessary.
-

STATISTICS CANADA LIBRARY
BIBLIOTHEQUE STATISTIQUE CANADA



1010686742