

CATALOGUE No.

22-005

MONTHLY

DOES NOT CIRCULATE

NE PAS PRÊTER



CANADA

DOMINION BUREAU OF STATISTICS
AGRICULTURE DIVISION

THE WHEAT REVIEW

DOMINION BUREAU
OF STATISTICS
JUL 22 1963
PROPERTY OF THE
LIBRARY



JUNE 1963

DOMINION BUREAU OF STATISTICS

THE
WHEAT REVIEW

JUNE 1963

Published by Authority of
The Minister of Trade and Commerce

Prepared in the Crops Section, Agriculture Division
Dominion Bureau of Statistics, Ottawa.

TABLE OF CONTENTS

	<u>Page</u>
World Wheat Situation	
Wheat Supplies of Four Major Exporters One Per Cent Below a Year Ago.....	1
August-May Exports Decline from Last Year but Remain Well Above Average.....	1
Wheat Crop Smaller in Northern Hemisphere.....	2
I.W.C. Cumulative Totals of Commercial Purchases.....	3
Canadian Situation	
Supply Position.....	4
May 1963 Exports of Wheat and Flour Total 38.2 Million Bushels.....	5
Lake Shipments of Canadian Grain.....	6
Delivery Policy.....	7
Crop and Weather Conditions.....	7
Farmers' Marketings of Wheat.....	8
Visible Supply of Canadian Wheat.....	9
Grading of Wheat Inspected, August-May 1962-63 with Comparisons.....	9
Weekly Visible Supply and Farmers' Marketings (Charts).....	10
Wheat Shipments to the United States by Destination.....	11
Rail Shipments of Wheat to Maritime Ports.....	11
Rail Shipments of Wheat from Fort William-Port Arthur.....	12
Overseas Exports of Canadian Grain by Ports of Loading.....	12
Freight Assistance Shipments.....	13
Monthly Exports of Canadian Wheat and Wheat Flour.....	14
Exports of Canadian Wheat by Destination.....	15
Customs Exports of Canadian Wheat Flour by Countries of Consignment.....	18
Canadian Wheat Board Weekly Average Cash Wheat Prices.....	20
Canadian Flour Milling Situation	
Production and Exports.....	22
United States Situation	
Supply Position.....	23
1963 Wheat Crop Forecast at 1,084 Million Bushels.....	24
Prices in 1963-64.....	25
Flour Production.....	25
U.S. Wheat Exports Up in March.....	26
Cash Wheat Prices on the Kansas City and Minneapolis Markets.....	29
Chicago Wheat Futures, High Points of Closing.....	29
Australian Situation.....	30
French Situation.....	33
Argentine Situation.....	34
Calendar of Wheat Events.....	35

WORLD WHEAT SITUATION

Wheat Supplies of Four Major Exporters One Per Cent Below a Year Ago

Total supplies of wheat held by the four traditional major exporters, for export and for carryover at the end of their respective crop years, totalled 1,900.1 million bushels at June 1, 1963 compared with 1,918.4 million at the same time a year ago. Reduced supplies in United States and Argentina more than offset larger totals in Canada and Australia. Supplies at June 1, 1963, in millions of bushels, were held as follows, with last year's comparable figures in brackets: United States, 1,214.0 (1,358.7); Canada, 516.6 (438.8); Argentina, 22.5 (37.2); and Australia, 147.0 (83.7).

August-May Exports Decline from Last Year but Remain Well Above Average

With each of the four traditional major wheat exporters sharing in the decrease, total shipments of wheat and flour in terms of wheat from United States, Canada, Argentina and Australia, during the first ten months of the 1962-63 crop year amounted to 1,009.7 million bushels, some 14 per cent less than last year's record August-May level of 1,180.2 million but 34 per cent more than the ten-year (1951-52—1960-61) average of 752.4 million for the same period. Shipments from the four traditional major wheat exporters during August-May of the 1962-63 crop year, with comparisons, appear in the accompanying table.

Exports of Wheat and Flour in Terms of Wheat, August 1962-May 1963 with Comparisons

August-May	United States	Canada	Argentina	Australia	Total
- million bushels -					
1950-51.....	304.6	178.8	75.8	106.5	665.7
1951-52.....	413.5	268.5	24.1	81.1	787.2
1952-53.....	279.8	297.5	19.2	84.8	681.3
1953-54.....	170.7	209.1	94.1	52.2	526.1
1954-55.....	226.4	209.7	112.0	81.8	629.9
1955-56.....	267.7	236.9	97.9	84.6	687.1
1956-57.....	448.4	216.8	82.9	108.9	857.0
1957-58.....	327.1	263.7	63.4	53.3	707.5
1958-59.....	380.6	243.8	85.5	61.6	771.5
1959-60.....	426.5	235.4	61.3	92.8	816.0
1960-61.....	566.8	286.3	59.2	148.4	1,060.7
1961-62 <u>1/</u>	603.8	310.2	80.2	186.0	1,180.2
1962-63 <u>2/</u>	536.6	282.0	55.0	136.1	1,009.7

1/ Revised.

2/ Preliminary.

Wheat Crop Smaller
in Northern Hemisphere

According to the June 28, 1963 issue of the Wheat Situation, published by the Economic Research Service, United States Department of Agriculture the Northern Hemisphere's 1963 wheat crop is expected to be smaller than in 1962. The principal reduction is in Europe's crop; the harvest there is expected to be somewhat below the record 1962 harvest.

Total production in North America may approximate that of 1962. Mexico is harvesting a record wheat crop. Although it is too early for specific indications of Canada's crop, the outlook is good.

The European wheat crop is developing slowly, although faster growth has occurred in recent weeks. Production in 1963 will be lower than a year earlier, with lower production in all the principal wheat countries. However, production may still be above average.

An unusually severe winter caused losses in some parts of Europe. In France, substantial acreage had to be reseeded. Only part of that land was seeded to spring wheat. Total wheat acreage on May 1 was 2 million acres less than in 1962. Prospects have improved recently, however, and an average crop is expected. The 1955-59 average production was about 360 million bushels.

The outlook is good for West Germany's harvest, and crop conditions in early April were better than a year earlier. Despite fears of heavy winter damage, losses were small because of good snowcover during heavy-freeze periods.

Prospects for Italy's crop are for a substantial reduction from last year's bumper harvest. Acreage is smaller because of excessive rain during fall seeding. Unfavourable weather also occurred during late winter and early spring, hampering spring seeding.

The outlook is good in Spain. Acreage is larger than last year and moisture supplies generally are ample. Fall grain came through the winter in better condition than a year ago, despite fears of winter damage.

Cold weather halted planting in the United Kingdom before the normal winter wheat acreage was seeded. Spring seeding also was delayed, so total wheat acreage is well below 1962. Crops are late but in satisfactory condition.

Eastern Europe's outlook is brighter than last year, except in Hungary where winter damage was substantial. In most areas, plentiful moisture supplies add to the favourable outlook.

Prospects are less favourable than last year in the Soviet Union. Acreage seeded to winter wheat was increased by 12 million acres. However, severe winter weather caused heavy damage and an area equivalent to the increased acreage seeded was reported plowed up and reseeded to spring crops. A late spring season and the third successive drought in the New Lands make the outlook poor for spring wheat.

A record wheat harvest is reported in India and a near-record crop in Pakistan.

Southern Hemisphere crops are being planted now, and no estimate of production can be made at this time.

International Wheat Council
Cumulative Totals of Commercial Purchases by Importing Countries from Exporting Countries
Crop Year 1962-63 — Through June 1, 1963

Importing Countries	EXPORTING COUNTRIES								Total Purchases
	Canada	Argentina	Australia	France	Italy	Sweden	U.S.S.R.	U.S.A.	
- thousand bushels -									
Austria.....	1,419	-	-	-	-	-	-	-	1,419
Belgium & Luxembourg.....	7,716	3,275	-	1,101	-	-	305	3,009	15,406
Brazil.....	-	15,339	-	-	-	-	-	13,547	28,886
Costa Rica.....	478	-	-	-	-	-	-	543	1,021
Cuba.....	-	-	-	-	-	-	-	-	-
Dominican Republic.....	933	-	-	-	-	-	-	663	1,596
El Salvador.....	689	-	-	-	-	-	-	553	1,242
Finland.....	1,050	-	-	-	-	111	-	187	1,348
Germany, Federal Republic.	24,129	2,545	1,348	3,027	-	1,727	5,417	9,215	47,408
Greece.....	29	-	2	-	-	-	189	19	239
Iceland.....	7	-	-	-	-	-	-	87	94
India.....	-	-	7,336	-	-	-	-	2	7,338
Indonesia.....	-	-	255	-	-	-	-	1	256
Ireland.....	2,793	-	2,674	6	-	-	-	384	5,857
Israel.....	1,259	-	101	-	-	-	-	2,687	4,047
Japan.....	42,876	-	13,081	-	-	-	2,234	42,792	100,983
Korea.....	-	-	-	-	-	-	-	1,721	1,721
Liberia.....	66	-	-	-	-	-	-	75	141
Libya.....	-	-	-	167	1,102	-	-	1	1,270
Netherlands.....	4,016	3,866	-	358	-	331	5,151	12,553	26,275
Netherlands Territories.	303	-	31	6	-	-	-	592	932
New Zealand.....	-	-	6,647	-	-	-	-	-	6,647
Nigeria.....	921	-	1	-	1	-	-	1,972	2,895
Norway.....	1,827	643	3,020	2,214	-	260	3,621	316	11,901
Peru.....	934	8,690	10	-	-	-	-	655	10,289
Philippines.....	5,831	-	836	-	-	-	-	6,356	13,023
Portugal.....	16	404	11	353	-	-	-	2,179	2,963
Portuguese Territories..	606	-	101	-	-	-	-	2,958	3,665
Rhodesia & Nyasaland Fed. of	54	-	3,684	1	3	-	-	127	3,869
Saudi Arabia.....	572	-	554	-	4	-	441	3,098	4,669
Sierra Leone.....	287	-	-	-	-	-	-	1	306
South Africa.....	8,019	-	761	-	-	-	-	-	8,780
Switzerland.....	2,292	570	-	1,836	148	5	92	878	5,821
Tunisia.....	-	-	-	-	-	-	-	-	-
United Arab Republic.....	-	-	-	-	890	-	-	19	909
United Kingdom.....	81,103	9,660	20,939	1,399	-	367	15,026	4,760	133,254
U.K. Territories.....	3,416	-	6,702	1,413	1	-	-	2,587	14,119
Vatican City.....	441	-	-	-	-	-	-	-	441
Venezuela.....	6,882	331	-	-	-	-	-	5,332	12,545
Western Samoa.....	-	-	47	-	-	-	-	-	47
To Orders.....	-	1,896	-	13,841	-	2,205	147	-	18,089
Totals.....	200,964	47,219	68,141	25,722	2,149	5,006	32,623	119,887	501,711
Percentage of Total Sales by Exporting Countries....	40.06	9.41	13.58	5.13	.43	1.00	6.50	23.89	100.00

NOTE: Mexico and Spain - no sales reported.

Quantities for Argentina and Italy cover period ending May 18, 1963.

Quantities for France cover period ending May 25, 1963.

CANADIAN SITUATION

Supply Position Total estimated supplies of wheat for the 1962-63 (August-July) crop year are placed at 948.6 million bushels, 6 per cent greater than the 1961-62 total of 891.2 million, with a substantial decline in carryover stocks more than offset by a sharp increase in production. After deducting 150.0 million bushels for anticipated domestic requirements, supplies available for export and for carryover during 1962-63 amount to 798.6 million bushels, 7 per cent above the 749.1 million in 1961-62.

Exports of wheat and flour in terms of wheat during the August-May period of the current crop year amounted to 282.0 million bushels compared with 310.2 million exported during the corresponding period of 1961-62 and the ten-year (1951-52-1960-61) average for the same months of 246.8 million bushels. This year's total consisted of 259.2 million bushels of wheat and 22.8 million of wheat flour equivalent. Corresponding totals for the same period of the preceding crop year were 283.4 million bushels of wheat and 26.8 million of flour equivalent. The balance remaining on June 1, 1963 for export and for carryover amounted to 516.6 million bushels, 18 per cent more than the June 1, 1962 total of 438.8 million.

Canadian Wheat Supplies

Item	1961-62 <u>1/</u>	1962-63 <u>2/</u>
	- million bushels -	
Carryover in North America at beginning of crop year (August 1).....	607.8	391.1
New Crop.....	283.4	557.6
Imports of wheat for domestic use, August-May.....	<u>3/</u>	<u>4/</u>
Total estimated supplies.....	891.2	948.6
Less estimated domestic requirements for crop year....	142.2	150.0
Available for export and for carryover.....	749.1	798.6
Deduct:		
Exports of wheat in bulk, August-May <u>5/</u>	280.2	254.7
Exports of bagged seed wheat, August-May <u>6/</u>	3.3	4.4
Total exports of wheat as grain.....	283.4	259.2
Exports of wheat flour in terms of wheat, August-May <u>6/</u>	26.8	22.8
Total exports of wheat and wheat flour.....	310.2	282.0
Balance on June 1 for export and for carryover.....	438.8	516.6

1/ Subject to revision.

2/ Preliminary.

3/ Less than 50,000 bushels.

4/ Not available.

5/ As reported by the Board of Grain Commissioners. (Includes overseas clearances and imports into the United States).

6/ Customs returns, 1961-62 adjusted for time lag.

Farmers' marketings of wheat, (both east and west) up to June 19, of the 1962-63 crop year amounted to 372.4 million bushels in contrast to last year's corresponding total of 234.5 million. Quality of this year's deliveries, although falling below last year's unusually high levels, has remained generally good. Wheat inspected by the Board of Grain Commissioners during the first ten months of the current crop year indicates that some 77 per cent of inspected deliveries were recorded in the grades No. 4 Northern and higher as against the comparable 1961-62 figure of 92 per cent but still above the crop year average of 73 per cent for the five years 1956-57-1960-61. Some 37.6 million bushels of this year's total were delivered during the four weeks May 23 to June 19. During the same period the volume of Canadian wheat entering domestic and export channels amounted to about 38.5 million bushels. As a result, the total visible supply of Canadian wheat declined only from 359.7 million bushels at May 22 to a level of 357.2 million at June 19, 1963.

The total visible supply of Canadian wheat at June 19 this year represented an increase of 21 per cent over the 1962 comparable total of 294.8 million but was 11 per cent less than the 1961 figure of 402.8 million. Stocks in country elevators amounted to 189.8 million bushels as against 135.3 million in this position a year ago and 238.4 million two years ago. This year's supplies in country elevators at June 19 accounted for 53 per cent of the total visible wheat supply compared with the 1962 and 1961 corresponding percentages of 46 per cent and 59 per cent, respectively. Interior terminal stocks, at 5.4 million bushels were sharply below both the 1962 figure of 8.4 million and the 1961 total of 9.3 million. The 15.2 million bushels "in transit rail" (Western Division) represented an increase of 9 per cent over the 1962 total of 13.9 million but were 26 per cent less than the 1961 figure of 20.4 million. Supplies at the Canadian Lakehead, at June 19 this year, amounted to 64.7 million bushels, 12 per cent above last year's comparable total of 57.9 million and 48 per cent greater than the 43.7 million bushels in this position two years ago. The 3.3 million bushels "in transit lake" were considerably less than the 5.9 million of a year ago and sharply below the 1961 total of 9.8 million. Supplies in Bay, Lake and Upper St. Lawrence ports, at 28.9 million bushels, were 16 per cent above the 25.0 million at June 20, 1962 but 2 per cent below the 29.5 million at June 21, 1961. The 25.8 million bushels in Lower St. Lawrence and Maritime ports were 14 per cent more than the 22.7 million of a year ago but 14 per cent less than the 30.1 million of two years ago. On the west coast, total supplies in Vancouver-New Westminster, Victoria and Prince Rupert at June 19, 1963, at 11.0 million bushels, were lower than the previous year's corresponding total of 13.3 million but exceeded the 8.7 million bushels in 1961.

May 1963 Exports of
Wheat and Flour Total
38.2 Million Bushels

Combined exports of wheat in bulk, bagged seed wheat and wheat flour in terms of grain equivalent during May 1963 amounted to 38.2 million bushels, 17 per cent greater than the April 1963 total of 32.7 million, 12 per cent more than the

ten-year (1952-61) average for the month of May of 34.1 million and 1 per cent above the May 1962 figure of 37.7 million. Exports of wheat in bulk (as reported by the Board of Grain Commissioners) during May 1963, at 35.4 million bushels represented an increase of 22 per cent over the 28.9 million of last month, 18 per cent more than the ten-year (1952-61) average for the month of May of 30.1 million and 1 per cent above the May 1962 total of 35.1 million. Exports of bagged seed wheat during May 1963, based on Canadian Customs returns, amounted to only 68 thousand bushels, in contrast to the 1,316 thousand of the previous month and compared with the May 1962 total (adjusted to remove time lag) of 77 thousand bushels. Customs returns also indicate that the equivalent of 2.8 million bushels of wheat was exported in the form of flour during April 1963, 16 per cent above the 2.4 million exported last month and 14 per cent more than the adjusted May 1962 total of 2.5 million.

Cumulative exports of wheat in bulk during the August 1962-May 1963 period amounted to 254.7 million bushels compared with the 1961-62 total of 280.2 million and about one fifth greater than the ten-year (1951-52-1960-61) average for the period of 209.2 million bushels. Britain, remaining in its position as Canada's leading market for wheat, received shipments amounting to 63.8 million bushels and representing 25 per cent of the ten-month total. During the August-May period of 1961-62 shipments of wheat to Britain amounted to 62.6 million bushels and accounted for 22 per cent of the total. Other principal markets for Canadian wheat in bulk during the first ten months of the current crop year, with figures for the same period of the preceding crop year in brackets, were as follows, in millions of bushels: China Communist, 50.8 (59.9); Japan, 37.6 (42.0); Federal Republic of Germany, 24.4 (40.7); Poland, 14.2 (12.3); Belgium and Luxembourg, 8.4 (10.2); Republic of South Africa, 6.4 (nil); Venezuela, 5.8 (3.5); France, 5.3 (1.0); and the Philippines, 5.1 (2.8). Cumulative exports of bagged seed wheat during August-May of the 1962-63 crop year, basis Canadian Customs returns, amounted to 4.4 million bushels, 36 per cent above last year's revised total of 3.2 million.

Cumulative exports of wheat flour during August-May of the 1962-63 crop year, based on Customs returns, were the equivalent of 22.8 million bushels of wheat, as against the adjusted August 1961-May 1962 total of 26.8 million bushels. As with bulk wheat, Britain was also the major market for Canadian wheat flour. Shipments of wheat flour to that country during the period under review amounted to the equivalent of 10.1 million bushels and accounted for 44 per cent of the August 1962-May 1963 total. During the same months of 1961-62 shipments of wheat flour to Britain amounted to the equivalent of 10.2 million bushels and represented 38 per cent of the total. Other leading markets for Canadian wheat flour in terms of grain equivalent during the August-May period of the 1962-63 crop year, with revised data for the same months of the preceding crop year in brackets, were as follows, in thousands of bushels: Ghana, 1,506 (1,682); United States, 1,175 (1,143); Trinidad and Tobago, 1,172 (1,164); Jamaica, 1,149 (1,204); Leeward and Windward Islands, 832 (845); Hong Kong, 758 (725); Costa Rica, 724 (698); Nigeria, 680 (1,346); and Malaya and Singapore, 537 (541).

Lake Shipments of Canadian Grain Total shipments of the five major grains out of Lakehead terminals from the opening of navigation to June 19 this year amounted to 70.0 million bushels, 15 per cent greater than the 60.7 million during the comparable period of 1962. In 1963 the season of navigation opened on April 19 while the 1962 season opened on April 22. Shipments of wheat, at 44.3 million bushels accounted for 63 per cent of the current total. Shipments of oats, rye and flaxseed were above last year's corresponding levels, while those for wheat and barley were lower.

Lake Shipments of Canadian Grain from the Opening of Navigation to June 19, 1963 and to Approximately the Same Date 1953 to 1962

Year	Wheat	Oats	Barley	Rye	Flaxseed	Total
- thousand bushels -						
1953	94,974	26,611	39,449	4,948	1,453	167,435
1954	39,818	20,238	19,062	3,580	1,474	84,173
1955	64,123	10,963	25,876	4,965	2,321	108,249
1956	78,954	9,281	25,929	6,339	1,917	122,420
1957	62,379	12,000	17,178	3,081	4,620	99,257
1958	81,643	16,274	30,829	3,691	2,182	134,619
1959	50,399	8,870	16,209	998	1,363	77,839
1960	73,827	7,308	18,927	1,523	1,996	103,581
1961	96,690	10,016	15,018	1,272	2,431	125,429
1962	44,299	5,932	8,936	154	1,385	60,704
1963	44,269	15,393	7,201	1,007	2,085	69,956

Delivery Policy Seeded Acreage Quota on Durum Wheat The Canadian Wheat Board in its Instructions to the Trade re Quotas (General) No. 25 under date of June 20, 1963 announced in part that effective immediately at all delivery points within the designated area the quota of twelve (12) bushels per seeded acre to Durum Wheat authorized in Instructions to the Trade re Quotas (General) No. 15 of November 14th, 1962, is hereby increased to fifteen (15) bushels per seeded acre to Durum Wheat as shown in the individual producer's delivery permit book, or six hundred and fifty (650) bushels, whichever is the larger.

Delivery Quotas 1962-63 Crop Year The Canadian Wheat Board in its Instructions to the Trade re Quotas (General) No. 26 under date of June 20, 1963 announced in part that the Board wishes to advise that they will endeavour to equalize delivery quotas at all delivery points in the designated area to a 12-bushel per specified acreage quota. Once a delivery point has sufficient space to accommodate the 12-bushel quota and Instructions to the Trade has been issued listing the delivery point as "restricted" all existing shipping orders must be withdrawn from the railway companies, including orders for cars on an out-of-order basis re congested elevators, and thereafter no further shipments are to be made unless authorized by the Board.

General Quota Position By July 2, 1963, out of a total of 1,942 shipping points in the Western Division, the Canadian Wheat Board had placed 1,109 points on a delivery quota of twelve bushels per specified acre and 466 on a 10-bushel quota. Of the remainder 310 points were on an 8-bushel quota and 35 on a 7-bushel quota. Twenty two stations were reported as "closed".

Summary of Elevator Shipping Points in the Western Division
as at July 2, 1963

Province	General Quota in Bushels per Specified Acre				Closed	Total
	Seven	Eight	Ten	Twelve		
Ontario.....	-	-	-	1	1	2
Manitoba.....	4	80	160	101	2	347
Saskatchewan.....	31	230	270	511	12	1,054
Alberta.....	-	-	36	491	7	534
British Columbia.....	-	-	-	5	-	5
All Provinces.....	35	310	466	1,109	22	1,942

Crop and Weather Conditions The telegraphic crop report, published by the Dominion Bureau of Statistics on July 3, 1963 summarized crop conditions in the Prairie Provinces as follows: The crop outlook for the Prairie Provinces is generally good at this time. Exceptions are Northern Alberta where drought is now prevailing, Southern Alberta where early drought took its toll on fall-sown and early-spring-seeded crops, and in Eastern Manitoba where wet weather reduced seeded area and caused flooding of crops. Crops in most areas are developing rapidly on heavy stands and are coming into shot blade. In southern areas wheat is heading. Apart from Northern Alberta, moisture conditions are good to excellent. A continuous good supply will be needed, however, to support the heavy crop in the making. Haying is starting in many districts and on the whole, a good crop is in prospect. There has been isolated damage from hail and high winds, but grasshoppers and other pests are under control. Pastures and livestock are generally in good condition.

Farmers' Marketings 1/ of Wheat in the Prairie Provinces 1962-63

Week Ending		Manitoba	Saskatchewan	Alberta	Total	Last Year <u>2/</u>
		- bushels -				
August	8, 1962...	14,548	7,645	42,489	64,682	424,845
	15	1,778	38,975	176,287	217,040	682,034
	22	38,237	592,588	584,243	1,215,068	5,298,808
	29	426,174	1,911,503	1,468,566	3,806,243	9,124,000
September	5	757,304	3,085,240	1,211,254	5,053,798	6,274,071
	12	1,742,316	6,416,266	1,870,574	10,029,156	7,783,756
	19	1,699,681	8,177,978	1,709,135	11,586,794	6,733,721
	26	2,359,440	10,406,284	4,587,559	17,353,283	7,697,860
October	3	2,522,313	13,068,961	5,556,144	21,147,418	8,356,339
	10	1,585,234	12,747,546	4,121,329	18,454,109	7,025,437
	17	1,117,194	7,344,064	3,084,468	11,545,726	7,516,876
	24	1,177,866	7,435,220	2,545,531	11,158,617	7,143,464
	31	1,370,408	6,674,985	2,270,438	10,315,831	6,863,496
November	7	1,514,458	6,123,753	2,618,264	10,256,475	5,637,826
	14	1,629,145	5,879,142	1,928,069	9,436,356	7,094,998
	21	1,669,582	6,738,169	1,957,899	10,365,650	6,604,431
	28	1,783,131	7,723,197	1,816,305	11,322,633	5,789,906
December	5	1,282,296	7,478,541	1,868,468	10,629,305	3,687,344
	12	1,499,357	7,709,086	1,926,894	11,135,337	5,480,248
	19	2,183,481	8,514,663	2,732,106	13,430,250	3,635,158
	26	2,048,763	9,012,883	2,580,076	13,641,722	2,955,220
January	2, 1963...	672,092	5,572,797	2,134,963	8,379,852	4,473,693
	9	1,573,326	2,662,279	2,291,794	6,527,399	11,340,074
	16	511,792	6,416,935	1,902,677	8,831,404	6,770,993
	23	253,560	2,018,232	1,473,736	3,745,528	2,292,052
	30	391,919	871,723	566,338	1,829,980	5,413,301
February	6	987,378	3,454,795	1,056,130	5,498,303	5,265,116
	13	1,419,331	7,027,411	2,351,424	10,798,166	3,433,249
	20	739,654	4,537,612	2,881,336	8,158,602	4,301,431
	27	368,030	1,980,051	1,950,601	4,298,682	1,861,407
March	6	757,059	3,457,719	1,656,138	5,870,916	534,654
	13	653,438	3,536,306	2,016,221	6,205,965	2,609,296
	20	491,482	2,753,143	1,957,599	5,202,224	4,310,867
	27	770,903	3,273,586	1,693,218	5,737,707	3,706,569
April	3	742,635	2,600,145	994,011	4,336,791	3,298,094
	10	623,515	4,354,381	1,069,585	6,047,481	2,634,703
	17	718,424	2,409,799	446,697	3,574,920	3,631,448
	24	522,989	3,643,640	520,099	4,686,728	4,784,559
May	1	926,348	5,901,950	1,070,077	7,898,375	6,898,940
	8	807,021	3,830,290	927,245	5,564,556	4,370,357
	15	643,266	2,369,468	793,467	3,806,201	2,902,949
	22	691,799	2,116,103	594,063	3,401,965	2,105,659
	29	773,051	4,100,176	838,207	5,711,434	3,877,840
June	5	1,051,824	6,423,260	1,212,399	8,687,483	4,543,275
	12	1,696,397	4,975,371	1,749,382	8,421,150	5,703,979
	19	2,452,068	10,812,126	1,548,306	14,812,500	6,507,735
Totals.....		49,662,007	238,185,987	82,351,811	370,199,805	229,382,078

Average similar period:

1951-52-1960-61... 32,391,298 190,706,931 84,944,233 308,042,462

1/ Includes receipts at country, interior private and mill elevators, interior semi-public terminals and platform loadings. 2/ Revised.

Visible Supply of Canadian Wheat June 19, 1963
Compared with Approximately the Same Date 1961 and 1962

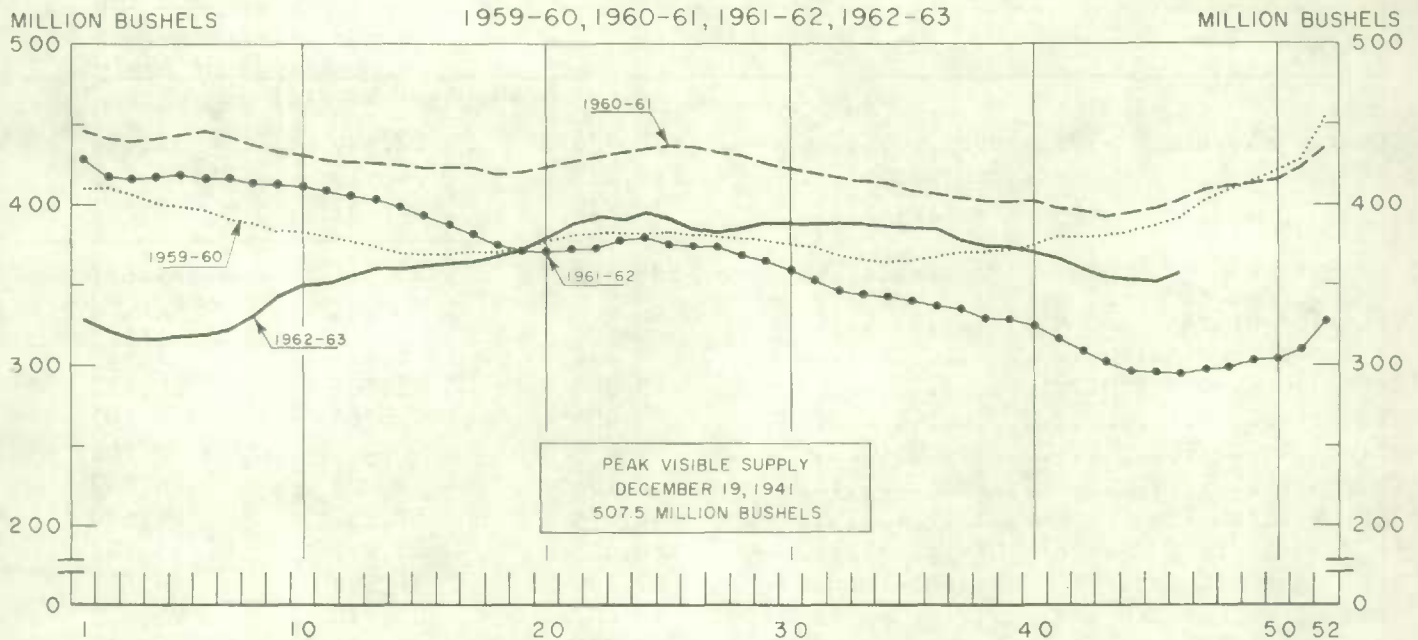
Position	1961	1962	1963
- thousand bushels -			
Country elevators - Manitoba.....	28,921	17,649	23,438
Saskatchewan.....	139,213	74,915	107,448
Alberta.....	70,219	42,747	58,941
Totals.....	238,353	135,311	189,827
Interior private and mill.....	7,319	7,273	7,743
Interior terminals.....	9,312	8,424	5,430
Vancouver-New Westminster.....	8,300	12,581	10,113
Victoria.....	406	766	202
Prince Rupert.....	-	-	706
Churchill.....	4,766	4,829	4,857
Fort William-Port Arthur.....	43,674	57,852	64,680
In transit rail (Western Division)....	20,419	13,891	15,189
Bay, Lake and Upper St. Lawrence ports	29,539	24,969	28,863
Lower St. Lawrence and Maritime ports.	30,082	22,710	25,847
In transit lake.....	9,770	5,939	3,273
In transit rail (Eastern Division)....	844	237	481
Totals.....	402,783	294,781	357,210

Grading of Wheat Inspected, August 1962-May 1963 with Comparisons

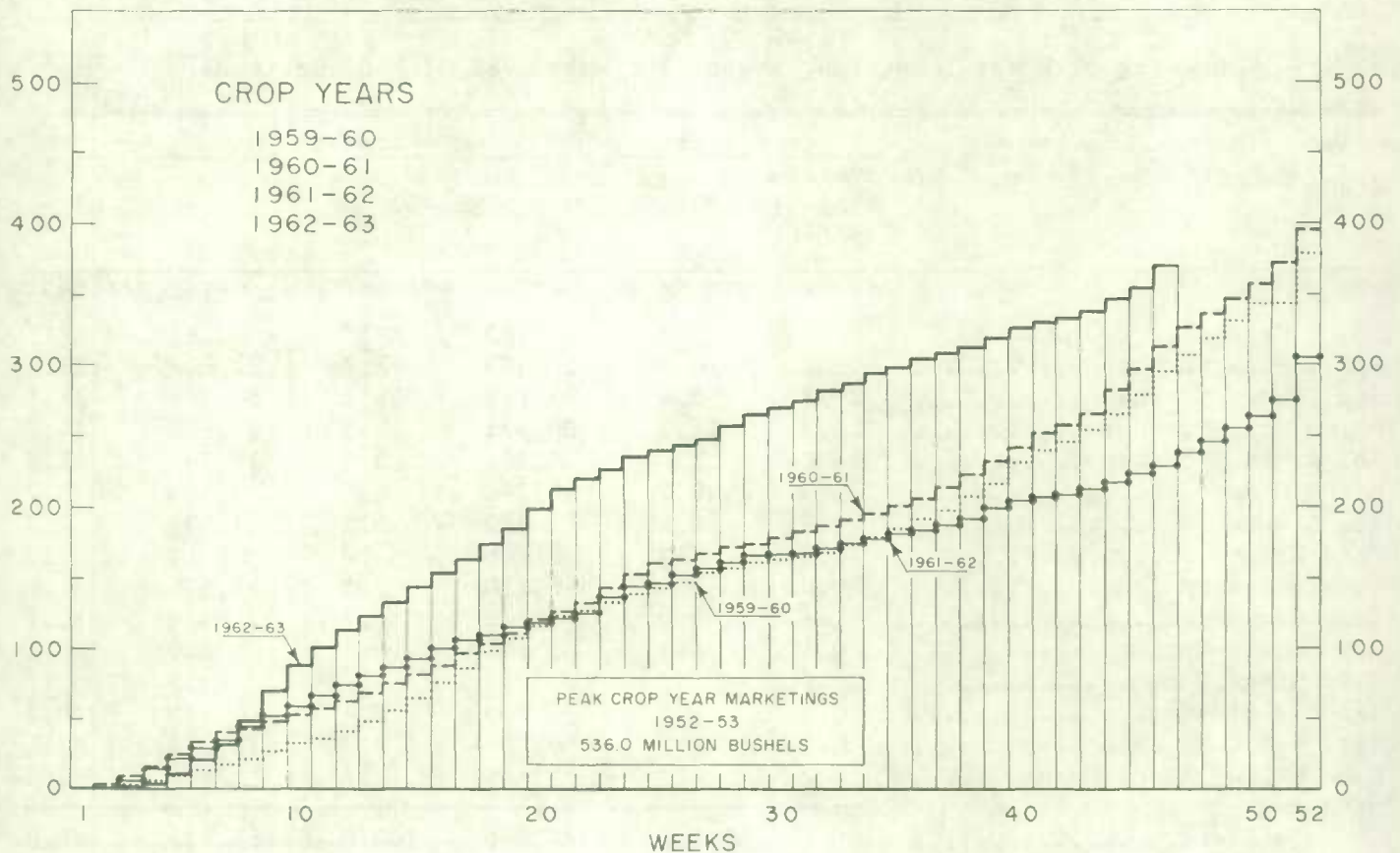
Grade	Crop Year		August - May			
	Average					
	1956-57	1961-62	1961-62		1962-63	
	per cent	per cent	cars	per cent	cars	per cent
No. 1 Hard.....	-	1/	63	1/	66	1/
No. 1 Man. Northern.....	1.3	20.8	31,498	17.9	21,647	12.9
No. 2 Man. Northern.....	29.2	52.8	95,176	54.1	64,129	38.1
No. 3 Man. Northern.....	28.3	15.7	28,971	16.5	24,668	14.7
No. 4 Man. Northern.....	14.0	3.4	6,761	3.8	18,792	11.2
No. 5 Wheat.....	8.3	0.7	1,396	0.8	9,584	5.7
No. 6 Wheat.....	1.9	0.2	382	0.2	1,622	1.0
Feed Wheat.....	0.1	1/	8	1/	17	1/
Others Red Spring.....	10.0	3.4	6,230	3.5	11,526	6.9
C.W. Garnet.....	1/	0.2	386	0.2	119	0.1
C.W. White Spring.....	0.1	0.1	141	0.1	210	0.1
C.W. Mixed Wheat.....	1/	1/	52	1/	57	1/
Alberta Winter.....	0.3	0.3	689	0.4	430	0.3
Nos. 1-6 C.W. Amber Durum.....	6.3	2.3	4,058	2.3	14,454	8.6
Others C.W. Amber Durum.....	0.2	1/	85	1/	830	0.5
Totals.....	100.0	100.0	175,896	100.0	168,151	100.0
Gross bushels (approx.).....			338,493,000		322,184,000	

1/ Less than .05 per cent.

WEEKLY VISIBLE SUPPLY OF CANADIAN WHEAT



CUMULATIVE RECORD OF WHEAT MARKETINGS IN THE PRAIRIE PROVINCES BY WEEKS



(Data in both charts for crop years beginning August 1)

Wheat Shipments to
the United States
by Destination

Total rail and vessel shipments of wheat to the United States, either for re-export or retention for domestic use, from the beginning of the current crop year to June 19, 1963 amounted to 1.2 million bushels. During the comparable periods of 1961-62 and 1960-61 shipments amounted to 2.3 million and 3.3 million bushels, respectively. Of this season's total to date some 88 per cent has been shipped by vessel.

Wheat Shipments* to the United States by Destination
August 1, 1962-June 19, 1963 with Comparisons

Destination	1960-61	1961-62	1962-63
	- bushels -		
<u>By Vessel</u>			
Buffalo.....	2,099,607	1,582,086	884,176 ^{1/}
Chicago.....	325,890	160,000	84,750
Duluth-Superior.....	597,958	420,978	115,208
Milwaukee.....	81,537	-	-
Totals, Vessel.....	3,104,992	2,163,064	1,084,134
<u>By Rail</u>			
U.S.A. Domestic Points.....	192,900	99,888	142,212
Totals, Shipments.....	3,297,892	2,262,952	1,226,346

* Either for re-export or retention for domestic use. Excluding bagged seed.

^{1/} Revised May, 1963.

Rail Shipments
of Wheat to
Maritime Ports

Rail shipments of wheat to Maritime Ports from Bay, Lake and Upper St. Lawrence Ports during the first ten months of the current crop year totalled 16.5 million bushels compared with the August 1961-May 1962 figure of 17.0 million.

Rail Shipments of Wheat to Maritime Ports from Bay, Lake
and Upper St. Lawrence Ports

Origin of Shipments	August 1, 1961- May 31, 1962	August 1, 1962- May 31, 1963
	- bushels -	
Port McNicoll.....	4,910,364	6,016,576
Midland, Tiffin.....	6,089,433	5,957,659
Collingwood.....	405,993	464,910
Owen Sound.....	2,228,068	2,069,103
Goderich.....	474,656	233,210
Sarnia.....	1,288,279	1,788,756
Lakefield.....	1,109,181	-
Peterborough.....	480,193	-
Totals.....	16,986,167	16,530,214

Rail Shipments of Wheat from Fort William-Port Arthur, 1959-60-1962-63

Month	1959-60	1960-61	1961-62	1962-63
- bushels -				
August.....	34,383	14,717	20,648	13,933
September.....	31,690	19,227	14,598	11,657
October.....	30,904	5,417	33,944	22,716
November.....	8,383	24,000	22,915	12,024
December.....	25,355	17,500	60,167	12,778
January.....	103,087	71,335	126,533	39,534
February.....	73,878	135,339	68,421	22,967
March.....	18,826	28,073	37,000	86,398
April.....	64,156	9,833	37,777	69,067
May.....	19,513	15,805	11,203	13,651
June.....	25,234	17,563	16,022	
July.....	26,803	10,940	17,315	
Totals.....	412,212	369,749	466,543	

Distribution of Rail Shipments of Wheat from Fort William-Port Arthur, May 1963

Grade	Nova Scotia	Quebec	Ontario
- bushels -			
5 Wheat.....	-	-	3,000
Tough.....	1,500	-	666
Rejected.....	-	-	1,742
Durum.....	-	4,000	-
Others.....	-	-	2,743
Totals.....	1,500	4,000	8,151

Overseas Exports of Canadian Grain by Ports of Loading, August 1, 1962-June 19, 1963
with Comparisons

Port	Wheat 1/	Durum Wheat 1/	Oats 1/	Barley	Rye	Flaxseed	Rapeseed 2/
- bushels -							
<u>Pacific Seaboard</u>							
Van.-New West.	120,815,036	-	8,976,268	4,265,520	1,630,774	4,595,408	5,371,910
Victori	6,122,863	-	-	-	-	-	-
Prince Rupert.....	3,023,254	-	-	110,849	-	-	-
Churchill.....	20,577,620	-	-	-	-	-	-
Lakehead Direct.....	3,756,169	1,498,460	5,988,319	1,322,984 3/	2,734,413	1,343,256	-
Kingston Direct.....	638,400	-	-	-	-	-	-
<u>St. Lawrence</u>							
Montreal.....	28,841,235	9,439,731	1,584,665	1,057,942	1,652,504	4,471,300	-
Sorel.....	14,103,309	2,571,650	-	-	-	201,728	-
Three Rivers.....	9,597,103	2,024,967	201,805	186,815	-	102,166	-
Quebec.....	7,497,398	-	95,735	-	-	98,407	-
Baie Comeau.....	20,744,206	359,408	167,515	-	-	-	-
<u>Maritimes</u>							
Saint John.....	767,182	-	-	-	-	40,978	-
West Saint John.....	7,118,103	1,608,100	336,751	96,858	40,612	506,113	-
Halifax.....	8,384,240	780,928	-	70,316	-	50,473	-
United States Ports...	-	-	-	-	366,342	-	-
Totals.....	251,986,118	18,283,244	17,351,058	7,111,284	6,424,645	11,409,829	5,371,910
Aug.1/61-June 20/62...	288,607,843	6,047,952	1,638,012	26,050,290	3,462,641	10,817,291	6,181,726

1/ Excluding bagged seed. 2/ In bushels of 50 pounds. 3/ Revised.

Freight Assistance Shipments Claims filed for payment up to May 31, 1963 represent the movement of some 7.3 million bushels of wheat from the Prairie Provinces to Eastern Canada and British Columbia under the freight assistance policy during the August-April period of the 1962-63 crop year. During the same months of the 1961-62 crop year claims had been filed for a total of 9.8 million bushels, indicating on the assumption of approximately the same rate of submission of claims during both the current and preceding crop years that the 1962-63 August-April shipments of wheat under the policy were running about 25 per cent below those of 1961-62. Revised data on the 1961-62 August-April shipments of wheat based on claims submitted up to May 31, 1963 place the nine-month total at 10.0 million bushels. The bulk of the shipments during the current nine-month period under review went to destinations in Quebec and Ontario, with these two provinces accounting for 40 per cent and 33 per cent of the total, respectively.

Provincial Distribution of Wheat Shipments under the Freight Assistance Policy
August-April 1962-63 and 1961-62

Month	Nfld.	P.E.I.	N.S.	N.B.	Que.	Ont.	B.C.	Total
- thousand bushels -								
August, 1962.....	10	13	48	29	381	354	84	919
September.....	7	7	29	21	335	234	200	833
October.....	9	10	43	25	361	239	149	837
November.....	12	7	41	20	402	295	142	919
December.....	8	6	47	23	309	270	121	784
January, 1963.....	11	7	66	30	382	291	195	980
February.....	4	6	58	28	225	240	143	705
March.....	5	8	59	23	298	256	108	757
April.....	3	4	61	27	222	215	57	587
Totals <u>1/</u>	69	67	451	227	2,916	2,394	1,199	7,322
Same period 1961-62:								
Preliminary <u>2/</u>	81	104	957	300	3,544	3,194	1,584	9,764
Revised <u>1/</u>	85	106	966	320	3,573	3,252	1,671	9,974

Preliminary data on millfeed shipments under the freight assistance policy indicate shipments of 342,944 tons during the August-April period of the current crop year. During the same nine months of 1961-62 claims had been filed for a total of 392,993 tons, indicating on the assumption of approximately the same rate of submission of claims during both the current and preceding crop years that the 1962-63 August-April shipments of millfeeds under the policy were running about 13 per cent below those of 1961-62. Revised data on the 1961-62 August-April shipments of millfeeds based on claims submitted up to May 31, 1963 place the nine-month total at 410,483 tons. As with freight-assisted shipments of wheat, the greater portion of the millfeed shipments during the period under review went to destinations in Quebec and Ontario.

Provincial Distribution of Millfeed Shipments under the Freight Assistance Policy
August-April 1962-63 and 1961-62

Province	1961-62		1962-63
	Preliminary <u>2/</u>	Revised <u>1/</u>	Preliminary <u>1/</u>
- tons -			
Newfoundland.....	4,424	4,871	4,950
Prince Edward Island.....	6,741	6,948	5,537
Nova Scotia.....	28,182	28,916	24,221
New Brunswick.....	23,080	25,796	21,093
Quebec.....	191,622	197,628	171,715
Ontario.....	105,113	110,163	91,097
British Columbia.....	33,831	36,161	24,331
Totals.....	392,993	410,483	342,944

1/ Based on claims filed up to May 31, 1963.

2/ Based on claims filed up to May 31, 1962.

Monthly Exports of Canadian Wheat and Wheat Flour

Year and Month	Wheat in Bulk <u>1/</u>	Bagged Seed Wheat <u>2/</u>	Total Wheat	Wheat Flour <u>2/</u>	Total <u>3/</u> Wheat and Wheat Flour
- thousand bushels -					
<u>1960-61</u>					
August.....	23,908	127	24,034	2,867	26,901
September.....	26,742	232	26,974	2,694	29,668
October.....	21,172	304	21,476	3,727	25,203
November.....	23,224	570	23,794	4,198	27,992
December.....	20,222	883	21,105	3,320	24,426
January.....	16,408	773	17,181	2,104	19,285
February.....	20,517	1,043	21,560	2,404	23,964
March.....	23,377	1,934	25,312	3,088	28,399
April.....	31,395	599	31,994	3,009	35,003
May.....	42,190	135	42,325	3,166	45,491
June.....	35,532	12	35,544	2,499	38,043
July.....	26,265	4	26,269	2,607	28,876
Totals.....	310,952	6,616	317,568	35,682	353,249
<u>1961-62</u>					
August.....	35,625	89	35,714	3,123	38,837
September.....	28,966	242	29,209	2,786	31,995
October.....	32,910	86	32,996	2,391	35,386
November.....	40,823	377	41,200	3,150	44,351
December.....	19,966	392	20,359	2,643	23,002
January.....	17,534	458	17,992	2,304	20,295
February.....	23,739	433	24,173	2,546	26,719
March.....	20,482	574	21,056	2,968	24,023
April.....	24,981	539	25,520	2,389	27,909
May.....	35,150	77	35,227	2,486	37,713
June.....	23,559	5	23,564	2,456	26,020
July.....	19,016	44	19,060	2,711	21,772
Totals.....	322,752	3,317	326,069	31,953	358,022
<u>1962-63 4/</u>					
August.....	21,944	160	22,105	2,670	24,775
September.....	25,040	228	25,268	2,939	28,207
October.....	29,705	20	29,725	2,451	32,176
November.....	33,309	103	33,412	2,158	35,570
December.....	20,949	340	21,289	1,771	23,059
January.....	21,486	520	22,006	2,234	24,240
February.....	18,779	590	19,370	1,420	20,789
March.....	19,246	1,088	20,334	1,939	22,273
April.....	28,916	1,316	30,232	2,441	32,673
May.....	35,355	68	35,423	2,827	38,250
Totals.....	254,727	4,433	259,162	22,850	282,012

1/ Export clearances including shipments to the United States compiled by the Statistics Branch, Board of Grain Commissioners for Canada. 2/ Compiled from Canadian Customs returns, 1960-61 and 1961-62 adjusted to remove effect of time lag in reporting. 3/ In terms of wheat equivalent. Wheat flour conversion rate: 2.3 bushels per cwt. 4/ Preliminary.

Exports of Canadian Wheat 1/ by Destination, May 1963 and 1962

Destination	Wheat	Durum	All Wheat	
	(Except Durum)	Wheat	May 1963	May 1962
COMMONWEALTH AND PREFERENTIAL COUNTRIES				
- bushels -				
<u>Western Europe</u>				
Britain.....	7,364,210	-	7,364,210	6,684,321
Ireland.....	510,219	-	510,219	166,751
<u>Other Africa</u>				
Republic of South Africa.....	1,949,421	-	1,949,421	-
Rhodesia and Nyasaland.....	-	-	-	18,667
<u>Other Asia</u>				
Hong Kong.....	37,333	-	37,333	56,000
Pakistan.....	348,320	-	348,320	-
<u>Central America and Antilles</u>				
Jamaica.....	1,196	-	1,196	-
Totals, Com. and Pref. Countries...	10,210,699	-	10,210,699	6,925,739
<u>OTHER COUNTRIES</u>				
<u>Western Europe</u>				
Austria.....	489,140	121,260	610,400	-
Belgium and Luxembourg.....	1,060,282	251,655	1,311,937	898,872
Finland.....	623,398	-	623,398	343,467
France.....	87,234	503,077	590,311	377,067
Germany, Federal Republic.....	2,681,505	1,469,360	4,150,865	4,867,475
Netherlands.....	744,277	62,720	806,997	1,256,597
Norway.....	32,747	-	32,747	-
Switzerland.....	143,733	392,933	536,666	1,459,969
<u>Eastern Europe</u>				
Albania.....	-	-	-	343,467
Czechoslovakia.....	2,999,795	-	2,999,795	-
<u>Middle East</u>				
Israel.....	82,507	-	82,507	-
Saudi Arabia.....	22,017	-	22,017	95,180
<u>Other Africa</u>				
Mozambique.....	18,543	-	18,543	160,733
<u>Other Asia</u>				
China, Communist.....	5,384,475	-	5,384,475	10,710,872
Japan.....	4,752,802	-	4,752,802	5,148,117
Philippines.....	420,535	-	420,535	563,733
Taiwan.....	61,729	-	61,729	39,200
<u>Oceania</u>				
United States Oceania.....	36,400	-	36,400	64,213
<u>South America</u>				
Ecuador.....	77,165	-	77,165	269,932
Peru.....	381,734	-	381,734	-
Venezuela.....	994,473	-	994,473	531,398
<u>Central America and Antilles</u>				
Dominican Republic.....	266,965	-	266,965	289,353
El Salvador.....	76,683	-	76,683	-
Guatemala.....	83,333	-	83,333	-
<u>North America</u>				
<u>United States</u>				
for domestic use 2/.....	821,854	-	821,854	804,530
Totals, Other Countries.....	22,343,326	2,801,005	25,144,331	28,224,175
Sub-Totals, All Countries.....	32,554,025	2,801,005	35,355,030	35,149,914
Bagged seed 3/.....			67,945	77,304
Totals, All Countries.....	32,554,025	2,801,005	35,422,975	35,227,218

NOTE: See footnotes on page 17.

Cumulative Exports of Canadian Wheat 1/ by Destination

Destination	August 1962-May 1963			Total same period last year
	Wheat (Except Durum)	Durum Wheat	Total Wheat	
- bushels -				
<u>COMMONWEALTH AND PREFERENTIAL COUNTRIES</u>				
<u>Western Europe</u>				
Britain.....	63,521,423	245,130	63,766,553	62,565,693
Ireland.....	2,695,822	7,467	2,703,289	1,968,816
Malta and Gozo.....	870,987	-	870,987	1,237,867
<u>Other Africa</u>				
Nigeria.....	543,953	-	543,953	212,800
Republic of South Africa.....	6,447,308	-	6,447,308	-
Rhodesia and Nyasaland.....	8,244	-	8,244	74,667
<u>Other Asia</u>				
Hong Kong.....	430,827	-	430,827	561,493
India.....	703,612	-	703,612	3,541,390
Pakistan.....	348,320	-	348,320	1,856,325
<u>Central America and Antilles</u>				
Jamaica.....	8,957	-	8,957	-
Totals, Com. and Pref. Countries...	75,579,453	252,597	75,832,050	72,019,051
<u>OTHER COUNTRIES</u>				
<u>Western Europe</u>				
Austria.....	871,919	540,915	1,412,834	1,554,946
Belgium and Luxembourg.....	7,976,766	374,568	8,351,334	10,195,504
Denmark.....	11,200	-	11,200	11,200
Finland.....	1,326,011	-	1,326,011	1,853,269
France.....	178,704	5,137,066	5,315,770	1,035,969
Germany, Federal Republic.....	14,445,168	9,906,791	24,351,959	40,679,798
Greece.....	-	10	10	-
Italy.....	4,286,826	-	4,286,826	3,252,448
Netherlands.....	4,798,538	62,720	4,861,258	3,249,867
Norway.....	1,678,027	-	1,678,027	1,728,869
Sweden.....	127,680	18,667	146,347	-
Switzerland.....	862,582	1,402,477	2,265,059	5,225,452
<u>Eastern Europe</u>				
Albania.....	-	-	-	1,735,403
Czechoslovakia.....	4,393,895	-	4,393,895	-
Germany, East.....	-	-	-	8,040,229
Poland.....	14,183,656	-	14,183,656	12,293,711
<u>Middle East</u>				
Israel.....	1,157,187	-	1,157,187	829,100
Saudi Arabia.....	565,820	-	565,820	363,746
U.A.R.-Egypt.....	-	-	-	451,733

Cumulative Exports of Canadian Wheat 1/ by Destination

Destination	August 1962-May 1963			Total same period last year
	Wheat (Except Durum)	Durum Wheat	Total Wheat	
- bushels -				
<u>OTHER COUNTRIES (concluded)</u>				
<u>Other Africa</u>				
Algeria.....	-	-	-	1,359,639
Congo-Leo.....	-	-	-	18,257
Katanga.....	9,186	-	9,186	-
Mozambique.....	428,436	-	428,436	636,309
Tunisia.....	-	-	-	189,905
<u>Other Asia</u>				
Burma.....	-	-	-	200,358
China, Communist.....	50,784,483	-	50,784,483	59,923,463
Japan.....	37,645,247	-	37,645,247	42,002,399
Philippines.....	5,053,316	-	5,053,316	2,827,377
Taiwan.....	115,701	-	115,701	114,987
<u>Oceania</u>				
United States Oceania.....	391,439	-	391,439	473,759
<u>South America</u>				
Colombia.....	-	-	-	264,550
Ecuador.....	1,102,725	-	1,102,725	1,019,612
Peru.....	381,734	-	381,734	-
Venezuela.....	5,786,346	-	5,786,346	3,545,847
<u>Central America and Antilles</u>				
Dominican Republic.....	959,778	-	959,778	1,289,817
El Salvador.....	579,677	-	579,677	296,548
Guatemala.....	231,667	-	231,667	20,000
<u>North America</u>				
United States				
for domestic use <u>2/</u>	1,120,117	-	1,120,117	1,473,397
Totals, Other Countries.....	161,453,831	17,443,214	178,897,045	208,157,468
Sub-Totals, All Countries.....	237,033,284	17,695,811	254,729,095	280,176,519
Bagged seed <u>3/</u>			4,433,106	3,267,358
Totals, All Countries.....	237,033,284	17,695,811	259,162,201	283,443,877

1/ Overseas clearances as reported by the Statistics Branch, Board of Grain Commissioners for Canada, for all countries except the United States. Excluding bagged seed.

2/ Compiled from returns of Canadian elevator licensees and shippers and advice from American grain correspondents.

3/ Compiled from Canadian Customs returns, 1961-62 adjusted for time lag.

Customs Exports of Canadian Wheat Flour by Countries of Consignment

Destination	February 1963 <u>1/</u>	May 1963 <u>2/</u>	August-May	
			1962-63 <u>2/</u>	1961-62 <u>1/</u>
- bushels -				
<u>COMMONWEALTH AND PREFERENTIAL COUNTRIES</u>				
<u>Western Europe</u>				
Britain.....	692,944	1,354,245	10,071,974	10,238,236
Gibraltar.....	5,152	5,152	30,139	64,290
<u>Middle East</u>				
Kuwait.....	2,576	7,901	62,542	22,154
Qatar.....	874	-	2,107	1,842
British Middle East, nes	2,833	3,091	21,638	29,858
<u>Other Africa</u>				
Ghana.....	37,076	234,214	1,505,762	1,682,473
Mauritius and Dependencies.....	-	460	460	-
Nigeria.....	-	7,052	680,170	1,345,820
Rhodesia and Nyasaland.....	2,576	3,266	34,220	23,900
Sierra Leone.....	38,647	132,696	482,632	394,843
Tanganyika.....	-	1,610	13,099	29,665
British Africa, nes	13,977	10,677	72,335	54,809
<u>Other Asia</u>				
Ceylon.....	1,150	-	-	384,008
Hong Kong.....	94,250	45,540	758,450	725,061
India.....	-	-	-	12,714
Malaya and Singapore.....	58,234	57,838	536,871	541,036
British East Indies, nes	1,534	1,923	11,213	8,940
<u>Oceania</u>				
Australia.....	55	-	55	-
Fiji.....	483	345	3,829	4,887
<u>South America</u>				
British Guiana.....	2,070	1,405	22,951	29,836
<u>Central America and Antilles</u>				
Bahamas.....	22,892	29,805	257,954	235,140
Bermuda.....	10,702	11,672	97,607	104,763
British Honduras.....	9,262	1,996	29,697	27,375
Barbados.....	21,999	15,040	128,830	110,740
Jamaica.....	108,167	137,705	1,148,721	1,204,082
Leeward and Windward Islands.....	89,608	83,276	831,882	845,467
Trinidad and Tobago.....	114,423	120,810	1,172,177	1,163,554
Totals, Com. and Pref. Countries..	1,331,484	2,267,719	17,977,315	19,285,493
<u>OTHER COUNTRIES</u>				
<u>Western Europe</u>				
Belgium and Luxembourg.....	19,745	8,308	123,715	161,826
Denmark.....	-	-	9,230	2,760
France.....	-	-	-	345
Germany, Federal Republic.....	-	-	6,463	2,010
Greece.....	-	506	26,620	5,094
Iceland.....	4,749	-	14,573	24,438
Italy.....	-	-	6,265	18,966
Netherlands.....	338	230	2,546	1,939
Norway.....	-	-	115	2,622
Portugal.....	6,720	5,787	63,616	38,957
Sweden.....	-	-	1,265	1,518
Switzerland.....	-	1,035	7,935	30
<u>Middle East</u>				
Iran.....	950	-	3,287	2,383
Iraq.....	-	-	948	-
Israel.....	-	-	8,437	255

FARMERS' MARKETINGS OF WHEAT, PRAIRIE PROVINCES

(SPECIFIED PERIODS)

MILLION BUSHEL

450 —

400 —

350 —

300 —

250 —

200 —

150 —

100 —

50 —

0

29 year average 10 year average
1932-33 1951-52
1960-61 1960-61

JULY

JUNE

MAY

APR.

M.

F.

JAN.

DEC.

NOV.

OCT.

SEPT.

AUG.

PEAK MARKETINGS
1952-53 CROP YEAR
536.0 MILLION BUSHEL

1957-58

1958-59

1959-60

1960-61

1961-62

1962-63

MILLION BUSHEL

450 —

400 —

350 —

300 —

250 —

200 —

150 —

100 —

50 —

0

EXPORTS OF CANADIAN WHEAT* AND WHEAT FLOUR**

(SPECIFIED PERIODS)

MILLION BUSHELS

400 —

350 —

300 —

250 —

200 —

150 —

100 —

50 —

0

MILLION BUSHELS

400 —

350 —

300 —

250 —

200 —

150 —

100 —

50 —

0

PEAK EXPORTS
1928-29 CROP YEAR
407.6 MILLION BUSHELS

JULY

JUNE

MAY

APR

M

E

JAN

DEC

NOV

OCT

SEPT

AUG

30 year average 10 year average

1931-32

1951-52

1960-61

1960-61

1957-58

1958-59

1959-60

1960-61

1961-62

1962-63***

*Beginning with 1956-57 includes bagged seed wheat.

**In terms of wheat equivalent.

***Preliminary.

Agriculture Division D.B.S.

FARMERS' MARKETINGS OF BARLEY, PRAIRIE PROVINCES

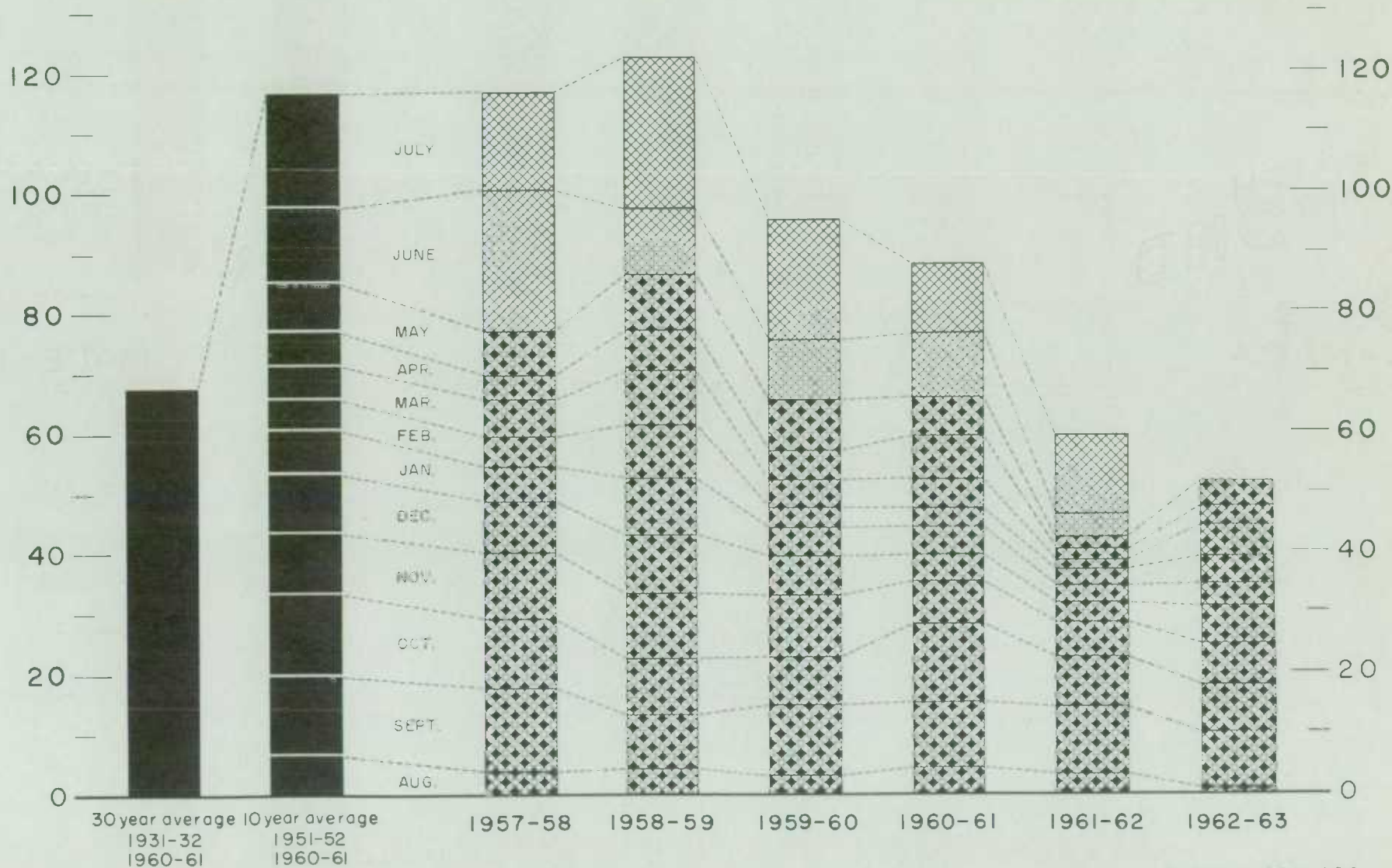
(SPECIFIED PERIODS)

MILLION BUSHELS

140 —

MILLION BUSHELS

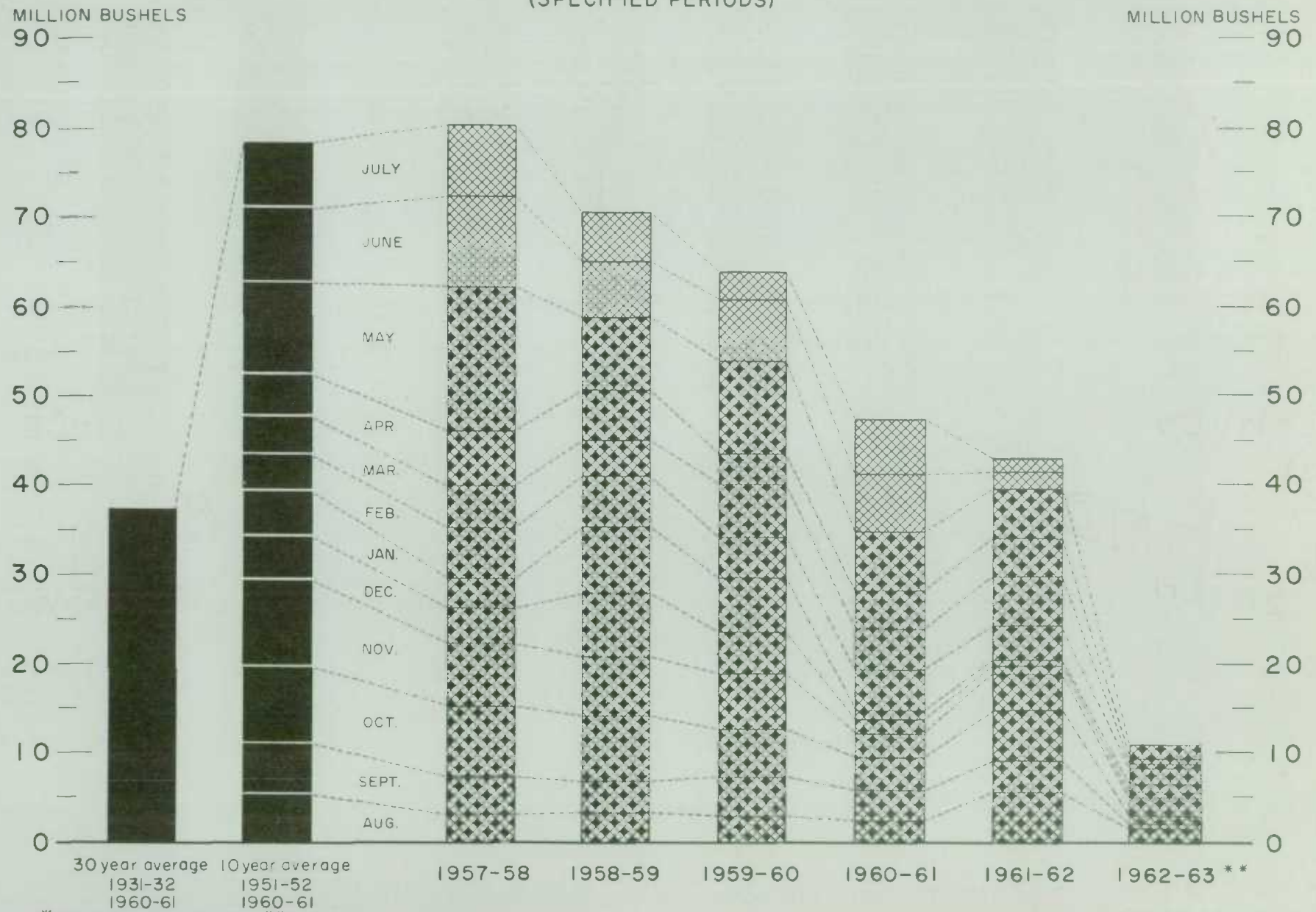
140 —



Agriculture Division D B S

EXPORTS OF CANADIAN BARLEY AND BARLEY PRODUCTS*

(SPECIFIED PERIODS)



FARMERS' MARKETINGS OF OATS, PRAIRIE PROVINCES (SPECIFIED PERIODS)

MILLION BUSHELS

80 —

MILLION BUSHELS

80 —

70 —

70 —

60 —

60 —

50 —

50 —

40 —

40 —

30 —

30 —

20 —

20 —

10 —

10 —

0

0

30 year average 10 year average
1931-32 1951-52
1960-61 1960-61

1957-58

1958-59

1959-60

1960-61

1961-62

1962-63

JULY

JUNE

MAY

A.

M.

F.

JAN.

DEC.

NOV.

OCT.

SEPT.

AUG.

EXPORTS OF CANADIAN OATS* AND OAT PRODUCTS**

(SPECIFIED PERIODS)

MILLION BUSHEL

36

MILLION BUSHEL

36

32

32

28

28

24

24

20

20

16

16

12

12

8

8

4

4

0

0

JULY

JUNE

MAY

APR

MAR

FEB.

JAN.

DEC.

NOV.

OCT

SEPT.

AUG

30 year average 10 year average
 1931-32 1951-52
 1960-61 1960-61

1957-58

1958-59

1959-60

1960-61

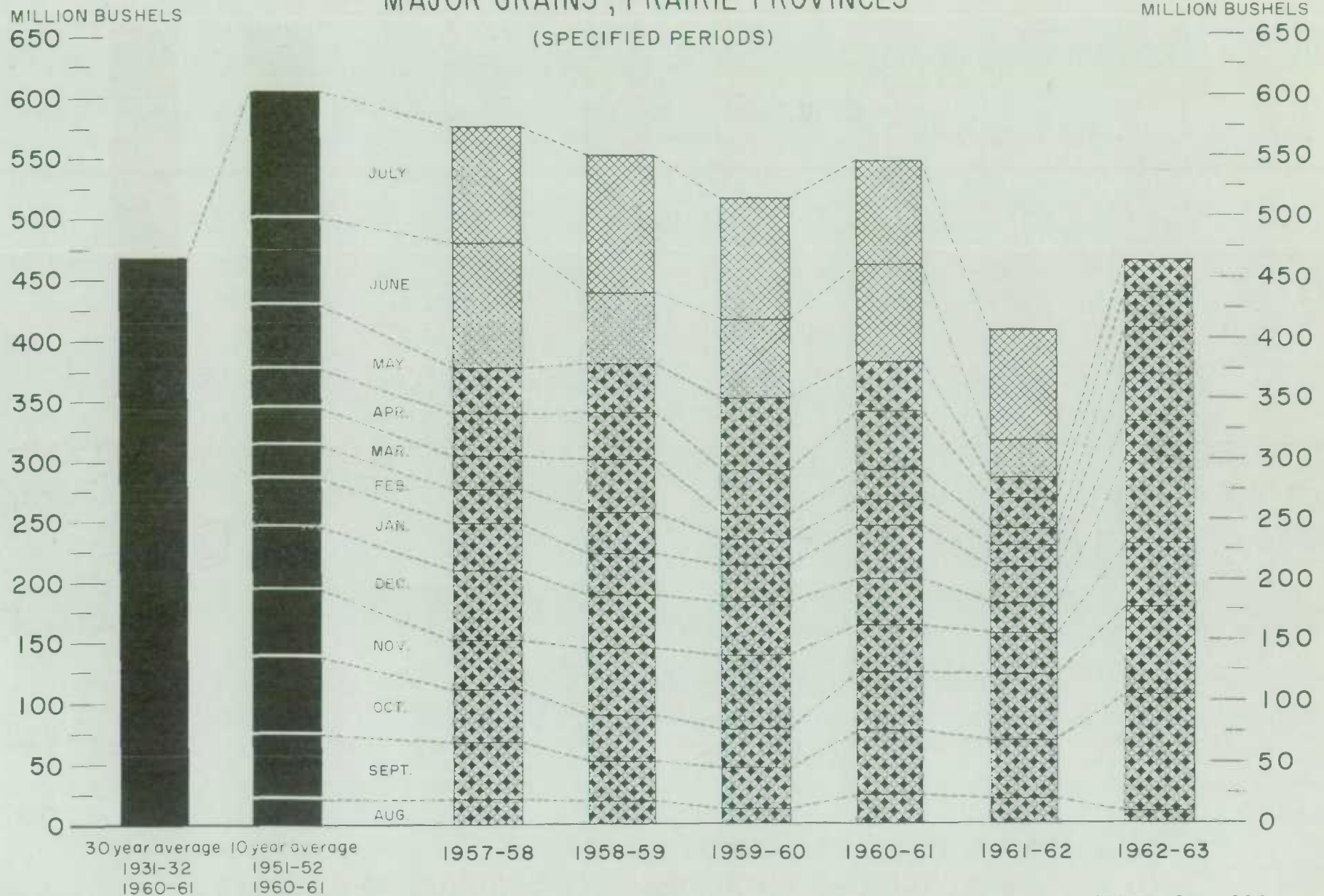
1961-62

1962-63 ***

*Beginning with 1960-61 includes relatively small quantity of bagged seed. **In terms of grain equivalent. ***Preliminary

Agriculture Division D B S

FARMERS' MARKETINGS OF CANADA'S FIVE MAJOR GRAINS*, PRAIRIE PROVINCES (SPECIFIED PERIODS)

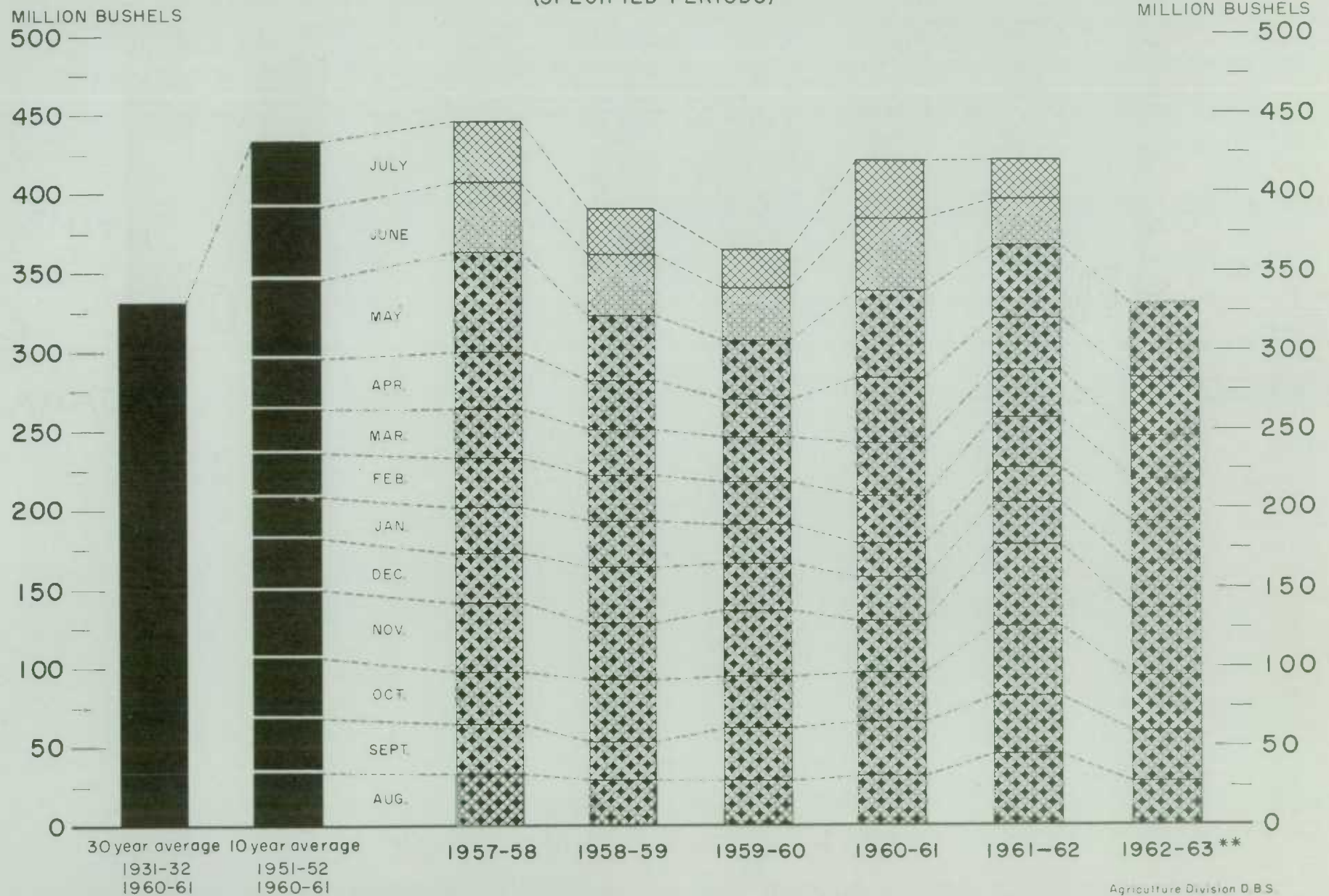


*Wheat, oats, barley, rye and flaxseed.

Agriculture Division D.B.S.

EXPORTS OF CANADA'S FIVE MAJOR GRAINS AND PRODUCTS*

(SPECIFIED PERIODS)



* Wheat, bagged seed wheat, and wheat flour; oats, bagged seed oats, and oatmeal and rolled oats; barley, malt and pat and pearl; rye and flaxseed.

** Preliminary.

Customs Exports of Canadian Wheat Flour by Countries of Consignment

Destination	February 1963 1/	May 1963 2/	August-May	
			1962-63 2/	1961-62 1/
- bushels -				
OTHER COUNTRIES (concluded)				
Middle East				
Jordan.....	-	-	651	110,059
Lebanon.....	1,497	5,152	199,338	548,904
Saudi Arabia.....	-	-	6,679	966
Syria.....	1,245	738	5,529	2,266
U.A.R.-Egypt.....	-	-	38,962	171,994
Other Africa				
Angola.....	1,840	920	2,760	575
Congo-Leo.	517	9,200	79,148	147,814
French West Africa.....	-	-	23,442	14,483
Liberia.....	5,193	9,968	40,795	23,543
Mozambique.....	-	4,899	20,606	16,776
Portuguese Africa, nes	14,214	6,866	80,489	74,796
Togo.....	6,210	17,445	39,192	-
Other Asia				
Indonesia.....	-	-	64	390,368
Japan.....	59,545	84,435	410,310	877,822
Philippines.....	-	690	11,040	1,077,433
Portuguese India.....	-	-	-	67,944
Portuguese Asia.....	1,546	-	8,197	15,686
Thailand.....	31,968	13,110	290,948	280,335
Viet-Nam.....	-	-	44,576	-
Oceania				
French Oceania.....	-	425	1,725	886
United States Oceania.....	575	-	2,875	-
South America				
Chile.....	-	2,300	9,143	6,210
Colombia.....	-	-	-	2,588
Peru.....	2,645	3,910	34,086	16,636
Surinam.....	12,553	9,016	59,296	64,743
Venezuela.....	-	-	1,748	11,235
Central America and Antilles				
Costa Rica.....	61,242	70,438	723,693	698,034
Dominican Republic.....	3,450	3,450	112,539	197,708
El Salvador.....	13,113	3,795	74,605	175,228
French West Indies.....	230	230	2,840	1,794
Guatemala.....	14,044	2,530	46,823	73,250
Haiti.....	173	57	676	-
Honduras.....	4,945	7,878	55,366	83,274
Netherlands Antilles.....	32,557	17,034	213,138	171,387
Nicaragua.....	25,042	54,660	384,358	409,105
Panama.....	40,312	21,401	384,953	350,474
North America				
St. Pierre and Miquelon.....	3,162	2,903	11,765	9,920
United States.....	109,303	189,766	1,175,242	1,142,865
Totals, Other Countries.....	479,623	559,082	4,872,612	7,500,244
Totals, All Countries.....	1,811,107	2,826,801	22,849,927	26,785,737

nes - not elsewhere specified.

1/ In terms of wheat equivalent. Adjusted to remove effect of time lag in the returns made by Customs. Conversion rate: 2.3 bushels per cwt.

2/ In terms of wheat equivalent. Preliminary and unadjusted for time lag. Conversion rate: 2.3 bushels per cwt.

Canadian Wheat Board Weekly Average Cash Wheat Prices
Basis in Store Fort William-Port Arthur

Class and Grade	Week Ending			
	June 7	June 14	June 21	June 28
- cents and eighths per bushel -				
<u>Initial Payment to Producers</u>				
1 Northern.....	150	150	150	150
2 Northern.....	146	146	146	146
3 Northern.....	142	142	142	142
4 Northern.....	135	135	135	135
5 Wheat.....	118	118	118	118
6 Wheat.....	112	112	112	112
Feed Wheat.....	108	108	108	108
1 C.W. Garnet.....	135	135	135	135
2 C.W. Garnet.....	130	130	130	130
3 C.W. Garnet.....	125	125	125	125
1 Alberta Red Winter.....	134	134	134	134
2 Alberta Winter.....	129	129	129	129
1 C.W. Amber Durum.....	150	150	150	150
2 C.W. Amber Durum.....	146	146	146	146
3 C.W. Amber Durum.....	142	142	142	142
<u>International Wheat Agreement</u>				
<u>and Domestic Sales</u>				
1 Northern.....	195/4	195/5	195/4	195/3
2 Northern.....	194/4	194/5	194/4	194/3
3 Northern.....	190/4	191/3	191/4	191/3
4 Northern.....	183/4	184/3	184/4	184/3
5 Wheat.....	178/4	178/5	178/4	178/3
6 Wheat.....	173/4	173/5	173/4	173/3
Feed Wheat.....	170/4	170/5	170/4	170/3
1 C.W. Garnet.....	190/4	190/5	190/4	190/3
2 C.W. Garnet.....	188/4	188/5	188/4	188/3
3 C.W. Garnet.....	187/4	187/5	187/4	187/3
1 Alberta Red Winter.....	190/4	190/5	190/4	190/3
2 Alberta Winter.....	188/4	188/5	188/4	188/3
3 Alberta Winter.....	187/4	187/5	187/4	187/3
1 C.W. Amber Durum.....	234/4	234/5	234/4	234
2 C.W. Amber Durum.....	233/4	233/5	233/4	233
3 C.W. Amber Durum.....	223/4	223/5	223/4	223/3
<u>Export - Class 11</u>				
1 Northern.....	195/4	195/5	195/4	195/3
2 Northern.....	194/4	194/5	194/4	194/3
3 Northern.....	190/4	191/3	191/4	191/3
4 Northern.....	183/4	184/3	184/4	184/3
5 Wheat.....	178/4	178/5	178/4	178/3
6 Wheat.....	173/4	173/5	173/4	173/3
Feed Wheat.....	170/4	170/5	170/4	170/3
1 C.W. Garnet.....	190/4	190/5	190/4	190/3
2 C.W. Garnet.....	188/4	188/5	188/4	188/3
3 C.W. Garnet.....	187/4	187/5	187/4	187/3
1 C.W. Amber Durum.....	234/4	234/5	234/4	234
2 C.W. Amber Durum.....	233/4	233/5	233/4	233
3 C.W. Amber Durum.....	223/4	223/5	223/4	223/3

Canadian Wheat Board Weekly Average Cash Wheat Prices
Basis in Store Vancouver

Class and Grade	Week Ending			
	June 7	June 14	June 21	June 28
- cents and eighths per bushel -				
<u>Initial Payment to Producers</u>				
1 Northern.....	150	150	150	150
2 Northern.....	146	146	146	146
3 Northern.....	142	142	142	142
4 Northern.....	135	135	135	135
5 Wheat.....	118	118	118	118
6 Wheat.....	112	112	112	112
Feed Wheat.....	108	108	108	108
1 C.W. Garnet.....	135	135	135	135
2 C.W. Garnet.....	130	130	130	130
3 C.W. Garnet.....	125	125	125	125
1 Alberta Red Winter.....	134	134	134	134
2 Alberta Winter.....	129	129	129	129
1 C.W. Amber Durum.....	150	150	150	150
2 C.W. Amber Durum.....	146	146	146	146
3 C.W. Amber Durum.....	142	142	142	142
<u>International Wheat Agreement</u>				
<u>and Domestic Sales</u>				
1 Northern.....	201/6	201/7	201/6	201/5
2 Northern.....	199/6	199/7	199/6	199/5
3 Northern.....	196/6	196/7	196/6	196/5
4 Northern.....	188/6	188/7	188/6	188/5
5 Wheat.....	180/6	180/7	180/6	180/5
6 Wheat.....	178/6	178/7	178/6	178/5
Feed Wheat.....	175/6	175/7	175/6	175/5
1 C.W. Garnet.....	191/6	191/7	191/6	191/5
2 C.W. Garnet.....	189/6	189/7	189/6	189/5
3 C.W. Garnet.....	188/6	188/7	188/6	188/5
1 Alberta Red Winter.....	191/6	191/7	191/6	191/5
2 Alberta Winter.....	189/6	189/7	189/6	189/5
3 Alberta Winter.....	188/6	188/7	188/6	188/5
<u>Export - Class 11</u>				
1 Northern.....	201/6	201/7	201/6	201/5
2 Northern.....	199/6	199/7	199/6	199/5
3 Northern.....	196/6	196/7	196/6	196/5
4 Northern.....	188/6	188/7	188/6	188/5
5 Wheat.....	180/6	180/7	180/6	180/5
6 Wheat.....	178/6	178/7	178/6	178/5
Feed Wheat.....	175/6	175/7	175/6	175/5
1 C.W. Garnet.....	191/6	191/7	191/6	191/5
2 C.W. Garnet.....	189/6	189/7	189/6	189/5
3 C.W. Garnet.....	188/6	188/7	188/6	188/5
1 Alberta Red Winter.....	191/6	191/7	191/6	191/5
2 Alberta Winter.....	189/6	189/7	189/6	189/5
3 Alberta Winter.....	188/6	188/7	188/6	188/5

CANADIAN FLOUR MILLING SITUATION

Production Wheat flour production by Canadian mills during May 1963 amounted to 3,357,000 hundredweight, representing an increase of 10 per cent over the April 1963 output of 3,045,000 hundredweight, relatively unchanged from the May 1962 figure of 3,360,000 hundredweight, but 2 per cent below the ten-year (1953-62) average production for the month of May of 3,430,000 hundredweight. Mills reporting operations during May 1963 had a total rated capacity of 165,000 hundredweight per 24-hour day and on the basis of a 26-day working period 78.1 per cent of this rated capacity was effective.

Wheat milled for flour during May 1963 amounted to 7,406,000 bushels, 10 per cent higher than the 6,727,000 bushels milled during the preceding month, but 1 per cent lower than the 7,473,000 bushels milled during May 1962. Of the wheat milled for flour during May 1963 some 6,700,000 bushels were Western Canadian spring wheat (other than Durum) while the remainder consisted of Ontario winter wheat (495,000 bushels); Durum (137,000 bushels); and all other (75,000 bushels).

Exports According to preliminary Customs returns, exports of Canadian wheat flour during May 1963 amounted to 1,229,000 hundredweight (some 2,827,000 bushels of wheat equivalent) representing an increase of 16 per cent over the 2,441,000 bushels exported during the previous month and 14 per cent greater than the adjusted May 1962 total of 2,486,000 bushels. Flour shipments during the month went to fifty-five countries with exports to Britain amounting to 1,354,000 bushels of wheat equivalent and accounting for 48 per cent of the May 1963 total. Other leading markets for Canadian wheat flour during the month, with shipments in thousands of bushels of wheat equivalent were as follows: Ghana, 234; United States, 190; Jamaica, 138; Sierra Leone, 133; and Trinidad and Tobago, 121.

Wheat Milled for Flour, and Production and Exports of Wheat Flour, Canada

Crop Year	Wheat Milled for Flour bushels	Wheat Flour	
		Production	Exports ^{1/}
		- cwt. -	
1935-36--1939-40 average.....	67,845,114	29,405,451	9,603,941
1940-41--1944-45 average.....	99,704,638	43,908,245	23,699,546
1945-46--1949-50 average.....	107,330,372	47,011,540	25,819,721
1950-51--1954-55 average.....	100,446,328	43,847,894	21,812,041
1955-56.....	91,770,025	40,148,750	17,391,300
1956-57.....	85,149,373	37,623,446	14,582,431
1957-58.....	92,288,897	40,819,678	17,556,886
1958-59.....	90,142,957	39,826,493	16,141,267
1959-60.....	91,389,801	40,344,578	16,073,893
1960-61.....	89,731,155	39,914,644	15,513,836
1961-62.....	88,240,580	39,539,651	13,892,676
1962-63 ^{2/} August.....	6,576,578	2,952,879	1,160,900
September.....	6,346,386	2,863,042	1,277,841
October.....	7,256,425	3,265,003	1,065,714
November.....	6,815,604	3,064,494	938,473
December.....	5,547,290	2,499,301	769,876
January.....	6,197,875	2,793,497	971,159
February.....	6,250,139	2,815,286	617,296
March.....	6,547,894	2,953,530	843,161
April.....	6,726,603	3,045,159	1,061,287
May.....	7,406,415	3,357,198	1,229,044
Totals.....	65,671,209	29,609,389	9,934,751
Same months 1961-62 ^{3/}	71,907,724	32,172,046	11,645,973

^{1/} Based on Customs returns. Exports for the crop years 1945-46--1961-62 revised to remove effect of time lag in the returns made by Customs. ^{2/} Subject to revision. ^{3/} Revised.

UNITED STATES SITUATION

Supply Position Domestic supplies of wheat in the United States for the 1962-63 crop year (July-June) are estimated at 2,396.5 million bushels, consisting of the July 1, 1962 carryover of 1,304.8 million and the 1962 crop, placed at 1,091.8 million bushels. Domestic supplies of this size are 9 per cent less than last year's total of 2,645.9 million and 10 per cent smaller than the record 1960-61 figure of 2,670.8 million bushels. Imports of wheat from Canada during July-May of the current United States crop year amounted to 6.0 million bushels. Domestic disappearance during 1962-63 is estimated at about 605.0 million bushels, 4 per cent less than the 630.1 million last year. After deducting anticipated domestic requirements for the current United States crop year, some 1,797.6 million remain available for export and for carryover, a decrease of 11 per cent from the 2,021.5 million in 1961-62.

Exports of wheat, wheat flour and other products in terms of grain equivalent during the first eleven months (July-May) of the 1962-63 United States crop year amounted to 583.6 million bushels, 12 per cent below the 662.8 million exported during the same months in 1961-62. The balance remaining on June 1, 1963 for export and for carryover was estimated at 1,214.0 million bushels compared with 1,358.7 million on the same date a year ago.

United States Wheat Supplies

Item	1961-62 <u>1/</u>	1962-63 <u>2/</u>
	- million bushels -	
Carryover at beginning of crop year (July 1).....	1,411.2	1,304.8
New Crop.....	1,234.7	1,091.8
Total estimated domestic supplies.....	2,645.9	2,396.5
Imports of wheat and wheat flour in terms of wheat for domestic use, July-May.....	5.6	6.0
Total estimated supplies <u>3/</u>	2,651.5	2,402.6
Less estimated domestic requirements for crop year <u>4/</u>	630.1	605.0
Available for export and for carryover.....	2,021.5	1,797.6
Deduct:		
Exports of wheat as grain, July-May.....	559.9	493.2
Exports of wheat flour and products in terms of wheat, July-May <u>5/</u>	102.9	90.4
Total exports of wheat, wheat flour and products <u>6/</u>	662.8	583.6
Balance on June 1 for export and for carryover.....	1,358.7	1,214.0

1/ Revised. 2/ Preliminary. 3/ Excluding imports for June. 4/ Includes shipments to United States Territories and wheat for military food use at home and abroad.

5/ Flour exports exclude "Milled in bond". 6/ These figures now include all shipments under relief programs which formerly were not available from Census data.

According to the June 28 issue of "The Wheat Situation" published by the United States Department of Agriculture the total supply of wheat for the 1963-64 marketing year is now put at 2,254 million bushels, the smallest since 1957. This decrease results from a reduction in carryover and production. Included in the supply figure is an allowance of 5 million bushels for imports.

Based on the total 1962-63 wheat supply of 2,402 million bushels and the projected total disappearance of 1,237 million, the carryover on June 30, 1963, is expected to be 1,165 million bushels. This would be the second consecutive decline in carryover stocks. The expected carryover is 140 million bushels below a year earlier and 246 million below the record 2 years earlier. Although hard winter wheat dominates with an expected carryover of 912 million bushels, it will be about 192 million below the record amount held on June 30, 1961. Stocks of hard spring, red winter, and white wheats will be smaller than in recent years, although stocks of hard spring are expected to be slightly above a year earlier. Durum stocks, estimated at 50 million bushels, would be substantially above any year on record. The 1963 crop is estimated at 1,084 million bushels, slightly below last year's small crop as a result of the acreage diversion program and unfavourable weather in the Southwest.

Domestic disappearance in 1963-64 may show an increase from the approximately 600-million-bushel average of the last 10 years. Such an increase would result entirely from additional seed use of wheat. There is considerable speculation on the extent of noncompliance that may result under the program now in effect for the 1964 crop. There are no direct penalties for noncompliance but such growers will lose price support eligibility and acreage-allotment history. Despite this, it is likely that many farmers will exceed their allotments. Pending reports on planting during the fall of 1963, an estimate of 70 million bushels - enough to seed about 60 million acres - will be used for seed. Little change is anticipated in domestic food and feed uses; these are currently put at 500 million bushels and 49 million, respectively. Exports are estimated at 675 million bushels for a total disappearance of 1,294 million. On the basis of these estimates, a carryover of about 960 million bushels would result on July 1, 1964. A carryover of this size would be the smallest since July 1958 and would represent the third consecutive reduction in carryover stocks.

1963 Wheat Crop
Forecast at 1,084
Million Bushels

In a report released on June 10, 1963 the Crop Reporting Board of the United States Department of Agriculture stated in part that all wheat production in 1963 is forecast at 1,084 million bushels, 1 per cent below last year and 12 per cent below average.

The 1963 production of winter wheat is forecast at 855 million bushels, 38 million above 1962 but 143 million below average. The June 1 forecast is 30 million bushels below the forecast of a month earlier, largely because of reduced prospects in the Central Plains. Drought conditions in this area, becoming evident by May 1, continued well into May taking an added toll of acreage and further reducing yields. Rains near the end of May brought relief to most of the parched Panhandle areas of Oklahoma and Texas, southwest Kansas, and southeast Colorado but much acreage in this area had already been destroyed. Unseasonably cool temperatures occurred during early May and again in late May with damaging freezes in an area centered in Nebraska-South Dakota with minor damage extending southeastward to Ohio-Kentucky. Much of the acreage in this area was in or approaching the flower stage and damage ranged from light to extensive in local areas. Yield per harvested acre of 24.7 bushels is about the same as last year and about 1 bushel below the 1957-61 average.

An all spring wheat crop of 230 million bushels is forecast, based on June 1 condition of the crop. This would be 17 per cent below last year's relatively large crop but 1 per cent above average. Spring seeding of wheat was accomplished in good season and earlier than last year in the main producing areas; however, in parts of Montana and the Pacific Northwest seeding was delayed due to unfavourable conditions. By June 1 the crop was all seeded. Freezing weather on May 21 and 22 set back spring wheat in South Dakota and parts of Iowa, Minnesota, and Wisconsin but did little permanent damage. Soil moisture was favourable in all the major producing areas and irrigation water supplies were generally adequate for spring wheat in the West. Conditions in North Dakota, the major spring wheat producing State, were reported to be the best of record for June 1. Production of durum wheat is estimated at 43 million bushels, compared with last year's all time record of 72 million bushels and the average of 27 million bushels. If realized this would be the second largest production since 1948. Soil moisture in the main producing area was excellent and crop development to date has been nearly ideal. Spring wheat production, other than durum, is indicated at 186 million bushels this year compared with 204 million bushels in 1962 and the average production of 200 million bushels.

Prices in
1963-64

According to the June 28, 1963 issue of "The Wheat Situation" the average price received by farmers for 1963-crop wheat is likely to be near the \$1.82 national average price-support level.

The expected heavy demand in 1963-64, relative to the crop, will be a major factor in keeping prices near the loan. In addition, farmers participating in the 1963 voluntary acreage diversion program will receive a price support payment of 18 cents per bushel on their normal production. This will be made as a direct payment and will not be reflected in market prices. The lower price-support level for the 1964 crop will have a weakening effect late in the 1963-64 year. However, with a substantially lower price support on the 1964 crop, farmers probably will make extensive use of the price-support loan for 1963-crop wheat. As a result, during the period from loan maturity date (March 31, 1964) until new-crop wheat is available, CCC and farm resale wheat may be the only source of supply other than trade stocks. Such stocks probably will be small or non-existent, since most purchases will be hand-to-mouth. CCC will be required to sell on a statutory minimum basis, which is 105 per cent of the \$1.82 loan rate plus carrying charges. Also, redemption of resale wheat will be possible only when prices are competitive with the 1963 loan rate.

During 1962-63 and the preceding year, the price received by farmers has averaged at or above the price-support loan rate. This has resulted principally from total demand (export and domestic) exceeding the currently available crops. However, extremely heavy use in 1962-63 of the price-support loan program with its sedimentation premiums also was an important price-strengthening factor.

Flour
Production

The Bureau of the Census, Department of Commerce estimated wheat flour production in the United States in May 1963, at 22,542,000 hundredweight, an average of 1,025,000 hundredweight per working day. This compared with an average output per working day of 980,455 hundredweight in April 1963 and 963,000 hundredweight in May 1962. Wheat flour mills in May operated at 94.0 per cent of capacity compared with 90.0 per cent and 87.1 per cent, respectively, for the previous month and the same month a year ago. Flour mills in May ground 51,105,000 bushels of wheat compared with 49,005,000 bushels during the previous month. Wheat offal output during May amounted to 414,423 tons.

U.S. Wheat Exports Up in March U.S. wheat exports in March 1963 at 55 million bushels were larger than during any month of the current fiscal year. The monthly average of the previous 8 months was less than 40 million bushels, the highest being in February when 52 million bushels were exported. Although wheat and flour exports in March were larger than in recent months, total shipments during the first 9 months of 1962-63 continued to be well below the same period a year earlier. Wheat exports during July-March 1962-63 were 353 million bushels, compared with 453 million during the first 9 months of the previous year. This substantial reduction resulted from smaller shipments to practically every country in the Western Hemisphere, Europe, and Africa. The largest cut to the Western Hemisphere was made to Venezuela. In Europe which had formerly been the main wheat market, most of the reduction was made in shipments to the usually large buyers, namely, West Germany, Italy, and the Netherlands in the Common Market; Poland, Portugal, Spain, the United Kingdom, and Yugoslavia. Considerably less wheat went to Algeria, Morocco, and Tunisia during July-March 1962-63 than during the same months a year earlier. Larger shipments to India, Korea, and Pakistan more than offset the 17-million bushel loss to Turkey and minor reduction to other Asian countries.

Exports of flour (in grain equivalent) during the first 9 months of 1962-63 totalled 71 million bushels, compared with 81 million the previous season. Egypt continues to be the largest major outlet for U.S. flour, but took 3.6 million bushels less in July-March 1962-63 than the season before. Total wheat and flour exports during July-April 1962-63 are currently estimated at approximately 503 million bushels, compared with 594 million during the first 10 months of 1961-62. Shipments of wheat and flour to Canada as shown in Table A were mostly for transshipment to other countries. Table B shows the quantities of U.S. wheat inspected for export from Canadian ports and total exports from Table A adjusted to include inspections during July-March 1961-62 and July-March 1962-63.

Table A. United States Exports of Wheat and Flour by Country of Destination
July-March 1961-62 and 1962-63

Destination	July-March 1961-62			July-March 1962-63		
	Wheat	Flour 1/	Total	Wheat	Flour 1/	Total
- thousand bushels -						
Western Hemisphere						
Canada 2/.....	9,222	134	9,356	8,333	143	8,476
Central America.....	2,708	2,806	5,514	2,679	2,047	4,726
Trinidad and Tobago....	10	1,169	1,179	1	1,093	1,094
Haiti.....	1,369	56	1,425	931	60	991
Bolivia.....	-	2,458	2,458	572	2,361	2,933
Brazil.....	39,328	205	39,533	38,538	272	38,810
Chile.....	6,937	1,358	8,295	5,655	880	6,535
Colombia.....	3,018	794	3,812	2,432	532	2,964
Paraguay.....	2,742	59	2,801	919	30	949
Peru.....	5,987	376	6,363	4,107	272	4,379
Venezuela.....	9,071	103	9,174	3,621	93	3,714
Others.....	372	1,933	2,305	985	2,913	3,898
Totals.....	80,764	11,451	92,215	68,773	10,696	79,469

Table A. United States Exports of Wheat and Flour by Country of Destination
July-March 1961-62 and 1962-63

Destination	July-March 1961-62			July-March 1962-63		
	Wheat	Flour 1/	Total	Wheat	Flour 1/	Total
- thousand bushels -						
<u>Europe</u>						
EEC						
Belgium-Luxembourg...	4,679	1	4,680	2,469	3	2,472
France.....	3,118	3/	3,118	1,220	130	1,350
Germany, West.....	12,732	157	12,889	6,072	6	6,078
Italy.....	13,580	4,530	18,110	1,239	3,150	4,389
Netherlands.....	16,727	2,388	19,115	7,470	916	8,386
EEC sub-totals.....	50,836	7,076	57,912	18,470	4,205	22,675
Greece.....	1,416	1,653	3,069	793	1,490	2,283
Norway.....	2,864	8	2,872	754	19	773
Poland.....	13,490	807	14,297	1,787	530	2,317
Portugal.....	7,978	454	8,432	1,441	103	1,544
Spain.....	15,800	349	16,149	-	14	14
Switzerland.....	4,862	3/	4,862	2,431	3/	2,431
United Kingdom.....	11,203	2,375	13,578	2,386	260	2,646
Yugoslavia.....	24,365	1,908	26,273	17,222	1,416	18,638
Others.....	1,671	802	2,473	1,596	616	2,212
Totals.....	134,485	15,432	149,917	46,880	8,653	55,533
<u>Asia</u>						
Ceylon.....	-	2,857	2,857	-	3,439	3,439
India.....	68,269	652	68,921	96,176	336	96,512
Indonesia.....	-	2,636	2,636	-	11	11
Iran.....	2,145	361	2,506	4,292	1,773	6,065
Israel.....	6,881	98	6,979	6,424	104	6,528
Japan.....	24,862	1,887	26,749	23,686	2,480	26,166
Jordan.....	8	2,811	2,819	980	2,212	3,192
Korea.....	7,317	805	8,122	15,685	768	16,453
Lebanon.....	859	1,058	1,917	-	1,046	1,046
Pakistan.....	23,210	423	23,633	32,155	870	33,025
Philippines.....	6,789	869	7,658	5,351	557	5,908
Saudi Arabia.....	78	1,710	1,788	8	2,712	2,720
Syria.....	3,417	3,096	6,513	-	-	-
Taiwan.....	9,493	805	10,298	6,393	1,483	7,876
Turkey.....	32,912	218	33,130	5,998	366	6,364
Vietnam, Laos and Cambodia.....	117	2,233	2,350	169	2,845	3,014
Others.....	515	2,135	2,650	893	2,122	3,015
Totals.....	186,872	24,654	211,526	198,210	23,124	221,334

Table A. United States Exports of Wheat and Flour by Country of Destination
July-March 1961-62 and 1962-63

Destination	July-March 1961-62			July-March 1962-63		
	Wheat	Flour ^{1/}	Total	Wheat	Flour	Total
- thousand bushels -						
Africa						
Algeria.....	8,323	422	8,745	6,702	2,547	9,249
British East Africa....	93	52	145	1,264	32	1,296
Congo (Leopoldville)...	-	1,583	1,583	28	1,758	1,786
Egypt.....	19,259	24,149	43,408	17,043	20,546	37,589
Morocco.....	9,511	909	10,420	1,291	1,613	2,904
Nigeria.....	-	1,460	1,460	1,081	204	1,285
Sudan.....	-	-	-	1,143	311	1,454
Tunisia.....	11,870	106	11,976	7,611	146	7,757
Others.....	1,827	1,564	3,391	2,703	1,097	3,800
Totals.....	50,883	30,245	81,128	38,866	28,254	67,120
Oceania.....	-	28	28	-	31	31
Totals, All Countries ^{4/}	453,004	81,810	534,814	352,729	70,758	423,487

^{1/} Grain equivalent. ^{2/} The bulk of exports to Canada are for transshipment to other destinations - see Table B. ^{3/} Less than 500 bushels. ^{4/} Includes shipments for relief or charity.

Table B. United States Exports of Wheat and Flour as Adjusted for Transshipment
Through Canadian Ports, July-March 1961-62 and 1962-63

Destination	July-March 1961-62		July-March 1962-63	
	Wheat in- spected for export from Canadian ports	Adjusted totals for listed countries	Wheat in- spected for export from Canadian ports	Adjusted totals for listed countries
- thousand bushels -				
EEC				
Belgium-Luxembourg.....	649	5,329	221	2,693
France.....	2,165	5,283	1,495	2,845
Germany, West.....	478	13,367	827	6,905
Italy.....	-	18,110	-	4,389
Netherlands.....	3,219	22,334	1,993	10,379
Totals.....	6,511	64,423	4,536	27,211
United Kingdom.....	821	14,399	1,179	3,825
Portugal.....	-	8,432	981	2,525
Spain.....	1,125	17,274	-	14
Yugoslavia.....	-	26,273	2,958	21,596
Turkey.....	1,456	34,586	-	6,364
Algeria.....	2,401	11,146	-	9,249
Egypt.....	938	44,346	-	37,589
Tunisia.....	92	12,068	-	7,757
Totals ^{1/}	13,344	232,947	9,654	116,130

^{1/} Excludes 126,000 bushels inspected for export to unspecified areas during July-March 1961-62 and 810,000 bushels during July-March 1962-63.

Cash Wheat Prices on the Kansas City and Minneapolis Markets

No. 2 Hard Winter, Kansas City			No. 1 Northern Spring, Minneapolis		
Date		Price	Date		Price
- cents per bushel -			- cents per bushel -		
June 3, 1963.....	210	- 244 1/2 1/	June 3, 1963.....	232 3/4	- 233 3/4
4	209 1/2	- 244 1/	4	234 1/2	- 235 1/2
5	205 1/2	- 240 1/	5	235 1/4	- 236 1/4
6	207 3/4	- 240 1/4 1/	6	238 1/4	- 239 1/4
7	209	- 241 1/	7	241 1/2	- 242 1/2
10	205	- 236 1/	10	240 1/2	- 241 1/2
11	201 1/4	- 231 1/2 1/	11	240 1/8	- 242 1/8
12	207 1/4		12	240 1/4	- 242 1/4
13	202 3/4	- 229 1/2	13	240	- 242
14	209	- 214 1/2	14	240 3/4	- 242 3/4
17	207 1/4		17	242 3/8	- 244 3/8
18	202 1/4	- 225 1/2 1/	18	240 1/8	- 242 1/8
19	205 1/2	- 225 1/2 1/	19	239 7/8	- 241 7/8
20	204 1/4	- 226 1/	20	240 1/2	- 242 1/2
21	198 1/4	- 203 1/4	21	239 3/4	- 241 3/4
24	203 1/2		24	239 5/8	- 241 5/8
25	200		25	240 5/8	- 242 5/8
26	Not Available		26	240 3/8	- 242 3/8
27	198 3/4	- 209 1/4	27	240 7/8	- 242 7/8
28	197 1/4	- 201 1/4	28	240 5/8	- 242 5/8

1/ Nominal.

Chicago Wheat Futures, High Points of Closing

Date	July	September	December	March	May
- cents and eighths per bushel -					
June 3, 1963.....	185/2	187	192	192	186/4
4	185/1	186/7	191/7	192/2	186/2
5	185/2	187	192/1	192/5	186/5
6	185/7	187/4	193/1	193/7	188/3
7	186/4	188/1	193/4	195/1	189/5
10	187/2	188/6	194/2	195/4	191/3
11	186/5	188/4	193/6	195/2	190/1
12	187	188/5	194	195	190
13	186/7	188/5	194	195	189/4
14	189/1	191	196/4	197/4	191/5
17	189/4	191/4	196/5	197/4	191/3
18	188/1	191/1	195/1	196/4	190/1
19	188/5	190/3	195/4	196/2	189/6
20	189/1	191	196/2	197/2	190/7
21	187/2	189/1	194/2	195/2	189/1
24	186/1	187/6	193/2	194/6	189
25	185/5	187/6	193/2	195	189/4
26	185/3	187/2	192/6	193/6	188/5
27	185	186/7	192/4	193/6	188/3
28	184/5	186/2	192/2	194	188/4

AUSTRALIAN SITUATION

Supply Position Estimated supplies of wheat in Australia for the 1962-63 (December-November) crop year amount to some 325.1 million bushels, consisting of the December 1, 1962 carryover of 17.9 million and the current crop officially estimated at a record 307.2 million bushels. Supplies of the size indicated, reflecting a substantially larger production which more than offset a decline in carryover, represent an increase of 20 per cent over the 1961-62 total of 271.8 million bushels. After deducting 74.0 million for anticipated domestic requirements, an estimated 251.1 million are available for export and for carryover during 1962-63, 28 per cent above the 195.8 million in 1961-62.

Combined exports of wheat as grain and wheat flour in terms of grain equivalent during the period December 1-May 25 of the current Australian crop year amounted to 104.1 million bushels compared with 112.1 million exported during the corresponding period of 1961-62. The balance remaining on May 26, 1963 for export and for carryover, at 147.0 million bushels, exceeded by 76 per cent the comparable 1962 total of 83.7 million.

Australian Wheat Supplies

Item	1961-62 <u>1/</u>	1962-63 <u>2/</u>
	- million bushels -	
Carryover, including flour as wheat, at beginning of crop year (December 1).....	24.6	17.9
New Crop.....	247.2	307.2
Total estimated domestic supplies.....	271.8	325.1
Less estimated domestic requirements for crop year....	76.0	74.0 <u>1/</u>
Available for export and for carryover.....	195.8	251.1
Deduct:		
Exports of wheat as grain, December 1-May 25.....	99.5	92.9
Exports of wheat flour in terms of wheat, December 1-May 25.....	12.6	11.2
Total exports of wheat and wheat flour.....	112.1	104.1
Balance on May 26 for export and for carryover.....	83.7	147.0

1/ Revised.

2/ Preliminary.

The following information relative to the Australian situation has been extracted from a report from Mr. H.A. Gilbert, Commercial Counsellor for Canada, Melbourne, under date of June 17, 1963 and is reproduced with the permission of the Trade Commissioner Service, Department of Trade and Commerce.

Crop Position Heavy rains over some parts of the wheat-growing areas in Australia during the period under review have tended to slow down wheat sowing operations as fields, in some instances, are impassable.

Consequently it is difficult at this stage to hazard an estimate of the acreage likely to be sown to wheat for the current season. However, should earlier reports be a good indicator, wheat growers in Australia are preparing for what could be another record-breaking crop.

Marketing Position The most important announcement regarding the disposal of Australia's wheat crop during the period has been the news that an Australian Wheat Board delegation has concluded a contract with mainland China for the sale of 1.25 million tons of wheat or approximately 46 million bushels.

Although no specific details were released as to the monetary amount involved, Mr. J. V. Moroney, Wheat Board Chairman, stated that there had been no extension or variation of the terms of payment provided in earlier contracts.

This contract will mean that the Board has already ensured the satisfactory disposal of practically the whole of the all-time record 1962-63 Australian Crop, including a substantial quantity of rain damaged wheat in Victoria and New South Wales.

The latest sale brings China's total purchases of last season's crop to about 116 million bushels.

Exports of Australian Wheat and Wheat Flour in Terms of Wheat
December 1 - May 25, 1962-63 and Corresponding Period 1961-62

Destination	Wheat		Wheat Flour	
	1961-62	1962-63	1961-62	1962-63
- thousand bushels -				
<u>Europe</u>				
Albania.....	-	444	-	-
Britain.....	11,964	8,514	1,545	791
Eire.....	776	937	-	-
France.....	487	-	-	-
Italy.....	5,247	-	-	-
Malta.....	344	205	-	-
Norway.....	1,942	2,649	-	-
Spain and Canary Islands.....	8,707	-	-	-
Switzerland.....	79	-	-	-
West Germany.....	8,701	1,212	-	-
Others.....	-	-	5	7
<u>Middle East</u>				
Aden.....	451	354	-	-
Aden and Aden I/T.....	-	-	594	582
Aden Atta.....	-	-	192	246
Egypt.....	2,038	-	-	-
Iran.....	223	333	-	-
Iraq.....	794	-	-	-
Lebanon, Jordan, Syria.....	2,516	1,874	-	-

Exports of Australian Wheat and Wheat Flour in Terms of Wheat
December 1 - May 25, 1962-63 and Corresponding Period 1961-62

Destination	Wheat		Wheat Flour	
	1961-62	1962-63	1961-62	1962-63
- thousand bushels -				
<u>Middle East</u>				
Persian Gulf.....	-	-	56	60
Persian Gulf Atta.....	-	-	778	473
Saudi Arabia.....	-	-	131	133
Others.....	189	75	8	8
<u>Africa</u>				
Algeria.....	483	-	-	-
Kenya.....	955	-	-	-
Mauritius.....	-	-	371	282
Nyasaland.....	-	-	105	165
Port. East Africa.....	214	-	-	-
Rhodesia.....	1,575	2,003	-	-
Zanzibar.....	-	-	57	90
Others.....	6	7	45	29
<u>Asia</u>				
British North Borneo.....	-	-	109	57
Brunei.....	-	-	22	15
Burma.....	159	551	118	89
Ceylon.....	16	4	3,165	2,768
China.....	33,965	60,524	-	-
Hong Kong.....	1,989	1,097	176	116
India.....	3,722	1,928	-	-
Indonesia.....	-	-	237	252
Japan.....	8,355	4,894	-	-
Malaya.....	304	230	1,705	1,536
Malaya Atta.....	-	-	41	45
Pakistan.....	20	1,847	-	-
Sarawak.....	-	-	119	80
Singapore.....	38	20	1,495	1,275
Singapore Atta.....	-	-	7	7
Singapore a/c War Office.....	-	-	13	9
Thailand.....	-	-	323	307
Others.....	177	209	83	508
<u>Pacific Area and Sundries</u>				
Irian, West.....	-	-	37	7
New Zealand.....	2,979	2,959	-	-
Pacific Islands etc.	22	31	999	1,071
Peru.....	61	-	-	10
Royal Navy.....	2	-	-	-
Ships' Stores and Sundries.....	-	-	63	184
Totals.....	99,500	92,900	12,600	11,200

FRENCH SITUATION

The following account of the current crop situation in France has been extracted from a report by Mr. R.G. Woolham, Assistant Commercial Secretary, Canadian Embassy, Paris, under date of June 25, 1963, and is reproduced with the permission of the Trade Commissioner Service, Department of Trade and Commerce. Where possible, conversions from French to Canadian measures have been made and rounded for the convenience of our readers.

Weather and Crops Weather conditions showed considerable variation during the month of June. There were a few days of sunshine alternating with a few days of rain, and in some areas with violent thunderstorms. Temperatures were somewhat cooler than normal, and although the cereal crop continued to lag by about three weeks, crop growth and condition were reported as being very satisfactory. The first official crop estimates were announced as follows, in millions of bushels with 1962 figures in brackets: wheat, 314.5 (516.4); barley, 279.9 (270.7); oats, 166.6 (167.9). The final turn-out will depend largely on July weather conditions. In Morocco, a good harvest is reported. Production in this country this year should provide an exportable surplus of from 255,000-300,000 tons (9,370,000-11,023,000 bushels) of durum wheat and about 500,000 tons (22,965,000 bushels) of barley.

French Grain Market June was a relatively quiet month in the French Grain Market, partly attributable to the uncertainty of new crop cereal prices within the EEC, as well as the level of target prices and subsidies, to be fixed by EEC cereals commission in Brussels.

Cereal trade in France for the crop year to June 14, 1963 based on applications for certificates as reported by the French cereals office was as follows, in thousands of bushels:

	<u>Exports</u>	<u>Imports</u>
	- thousand bushels -	
Wheat-third countries	82,348	3,365
EEC	4,562	268
Algeria	2,737	-
Durum wheat-third countries	-	16,817
Rye EEC	137	106
Barley-third countries	23,256	698
EEC	23,779	16
Oats-third countries	17	2,898
EEC	475	161
Corn-third countries	1,436	12,376
EEC	2,375	880

Under date of July 5, Mr. Woolham reported further that the French government has announced the following cereal prices for the 1963 crop, (conversion rates have been made at the rate of one new franc equals 0.2200 Canadian dollars): the price for soft wheat has been increased 2 per cent, from 44.63 francs to 45.52 francs per quintal (\$2.67 to \$2.73 per bushel); the price of hard wheat was also increased 2 per cent to 55.39 francs per quintal (\$3.32 per bushel). In addition the subsidy for planting hard wheat has been increased from 3.50 to 5.65 francs (21 to 34 cents per bushel).

ARGENTINE SITUATION

Supply Position Estimated total supplies of wheat in the Argentine for the 1962-63 (December-November) crop year amount to 193.0 million bushels, consisting of the December 1, 1962 carryover of 8.6 million and the new crop now placed at 184.5 million. Indicated supplies for the current Argentine crop year, reflecting decreases in both carryover stocks and production, are about 19 per cent less than the 1961-62 total of 237.4 million bushels. After making an allowance of 128.6 million bushels for anticipated domestic requirements, an estimated 64.4 million are available for export and for carryover in 1962-63, in contrast to 109.4 million the previous year.

Exports of wheat and wheat flour in terms of grain equivalent during December 1962-May 1963 amounted to 41.9 million bushels, 42 per cent below the 72.2 million exported during the same months in 1961-62. The balance remaining on June 1, 1963 for export and for carryover was estimated at 22.5 million bushels, 39 per cent less than the June 1, 1962 total of 37.2 million.

Argentine Wheat Supplies

Item	1961-62 <u>1/</u>	1962-63 <u>2/</u>
	- million bushels -	
Carryover at beginning of crop year (December 1) <u>3/</u>	35.3	8.6
New Crop <u>4/</u>	202.1	184.5 <u>1/</u>
Total estimated domestic supplies.....	237.4	193.0
Less estimated domestic requirements for crop year.....	128.0	128.6
Available for export and for carryover.....	109.4	64.4
Deduct:		
Exports of wheat as grain, December-May.....	72.0	41.8
Exports of wheat flour in terms of wheat, December - May.....	0.1	0.1
Total exports of wheat and wheat flour.....	72.2	41.9
Balance on June 1 for export and for carryover.....	37.2	22.5

1/ Revised. 2/ Preliminary. 3/ Includes allowances for farm stocks. 4/ Official estimate.

The following account of the Argentine situation has been extracted from a report from Mr. J.G. Ireland, Assistant Commercial Secretary, Buenos Aires, under date of July 8, 1963 and is reproduced with the permission of the Trade Commissioner Service, Department of Trade and Commerce. Where possible, conversions from Argentine to Canadian measures have been made for the convenience of our readers. Currency conversions have been made at the rate of 127.29 pesos per Canadian dollar the quotation in effect on June 17, 1963.

The new minimum official prices for wheat have been well received and an increased acreage is forecast for this crop as producers anticipate good profits. Present wheat prices on the cereal exchange are: bread type, averaging 740 pesos per quintal (\$1.58 per bushel) and durum wheat, 840 pesos per quintal (\$1.80 per bushel). The final official production estimate for 1962-63 places the wheat crop at 5,020,000 metric tons (184.5 million bushels) with the average yield amounting to 1,460 kilos per hectare (22 bushels per acre). Exports of bread wheat to non-LAFTA countries are still banned but the Grain Board recently offered 65,000 metric tons (2,388,000 bushels) to any destination. Brazil bought 70,000 metric tons (2,572,000 bushels) at US dollars 64 (\$1.74 per bushel) f.o.b., completing the agreement of 700,000 metric tons (25,720,000 bushels) for 1963. It is now rumoured that exports of an additional 150,000 tons (5,511,000 bushels) will be permitted.

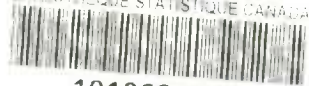
Argentine Wheat Exports December-May 1962-63 with Comparisons

Destination	Wheat	Destination	Wheat
	'000 bushels		'000 bushels
Africa, North.....	198	Netherlands.....	4,343
Algeria.....	1,516	Norway.....	725
Belgium.....	2,297	Paraguay.....	495
Brazil.....	8,465	Peru.....	6,134
Britain.....	6,395	Portugal.....	411
Finland.....	147	Sweden.....	53
France.....	2,788	Switzerland.....	368
Germany.....	1,700	Venezuela.....	373
Italy.....	5,350	Totals.....	41,759
Compared with:			
December-May	1961-62.....		72,046
	1960-61.....		28,491
	1959-60.....		42,223
	1958-59.....		56,453
	1957-58.....		31,479

CALENDAR OF WHEAT EVENTS

- June 10 According to a report published by the Crop Reporting Board, United States Department of Agriculture all wheat production in the United States in 1963 is forecast at 1,084 million bushels, 1 per cent less than the 1962 crop and 12 per cent below the 1957-61 average.
- 25 According to a report received from Mr. R.G. Woolham, Assistant Commercial Secretary, Canadian Embassy, Paris, the first official crop estimate places the 1963 wheat production in France at 314.5 million bushels.
- July 8 According to a report received from Mr. J.G. Ireland, Assistant Commercial Secretary, Buenos Aires, the final production estimate for 1962-63 places the wheat crop at 184.5 million bushels.

STATISTICS CANADA LIBRARY
BIBLIOTHÈQUE STATISTIQUE CANADA



1010686743