

CATALOGUE No.

22-005

MONTHLY

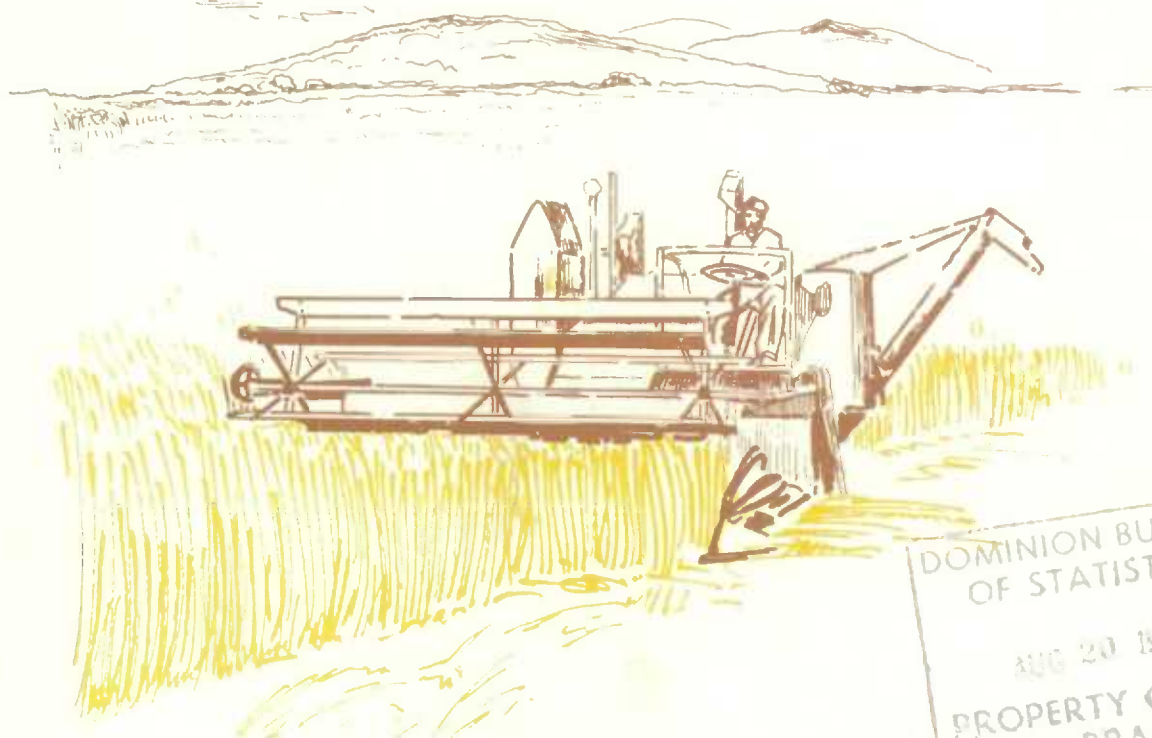
DOES NOT CIRCULATE  
NE PAS PRÊTER



CANADA

DOMINION BUREAU OF STATISTICS  
AGRICULTURE DIVISION

# THE WHEAT REVIEW



DOMINION BUREAU  
OF STATISTICS  
AUG 20 1963  
PROPERTY OF THE  
LIBRARY

JULY 1963



DOMINION BUREAU OF STATISTICS

---

THE  
WHEAT REVIEW

JULY 1963

*Published by Authority of*  
The Minister of Trade and Commerce

Prepared in the Crops Section, Agriculture Division  
Dominion Bureau of Statistics, Ottawa.

## TABLE OF CONTENTS

	<u>Page</u>
World Wheat Situation	
Wheat Supplies of Four Major Exporters Almost Unchanged from a Year Ago.....	1
Wheat Shipments from Major Exporters Below Previous Year's Record.....	1
Canadian Situation	
Initial Prices and Grain Policy.....	2
Supply Position.....	3
June 1963 Exports of Wheat and Flour Total 27.2 Million Bushels.....	5
Long-Term Wheat Agreement with China.....	5
General Quota Position.....	6
Delivery Quota Policy 1963-64.....	6
Preliminary Estimates of Specified Crop and Summerfallow Acreages, 1963.....	8
Lake Shipments of Canadian Grain.....	10
Wheat Sale to Poland.....	10
Farmers' Marketings of Wheat.....	11
Visible Supply of Canadian Wheat.....	12
Grading of Wheat Inspected, August-June 1962-63 with Comparisons.....	12
Weekly Visible Supply and Farmers' Marketings (Charts).....	13
Wheat Shipments to the United States by Destination.....	14
Rail Shipments of Wheat to Maritime Ports.....	14
Rail Shipments of Wheat from Fort William-Port Arthur.....	15
Overseas Exports of Canadian Grain by Ports of Loading.....	15
Freight Assistance Shipments.....	16
Monthly Exports of Canadian Wheat and Wheat Flour.....	17
Exports of Canadian Wheat by Destination.....	18
Customs Exports of Canadian Wheat Flour by Countries of Consignment.....	21
Canadian Wheat Board Weekly Average Cash Wheat Prices.....	23
Canadian Flour Milling Situation	
Production and Exports.....	25
United States Situation	
Disappearance of United States Wheat Declines 7 Per Cent from 1961-62 Level....	26
Stocks of Wheat in All Positions July 1, 1963.....	27
Flour Production.....	27
1963 Wheat Crop Forecast at 1,111 Million Bushels.....	28
U.S. Wheat and Flour Exports make a Record in April 1963.....	29
Cash Wheat Prices on the Kansas City and Minneapolis Markets.....	32
Chicago Wheat Futures, High Points of Closing.....	32
Australian Situation.....	33
Argentine Situation.....	36
French Situation.....	39
Crop Situation in Britain.....	41
Calendar of Wheat Events.....	43

---



## WORLD WHEAT SITUATION

### Wheat Supplies of Four Major Exporters Almost Unchanged from a Year Ago

Total supplies of wheat remaining on or about July 1, 1963 in United States, Canada, Argentina and Australia, amounted to 1,821.5 million bushels compared with 1,830.7 million a year ago. Although supplies in Canada and Australia were at higher levels than a year ago these were more than offset by smaller totals for United States (carryover stocks only) and Argentina. Supplies at July 1, 1963, in millions of bushels, were held as follows, with last year's comparable figures in brackets: United States, 1,189.4 (1,321.9); Canada, 489.4 (412.8); Argentina, 23.1 (32.5); and Australia, 119.6 (63.5). Estimates for both crop years include on-farm stocks as well as those in commercial positions.

### Wheat Shipments from Major Exporters Below Previous Year's Record

As anticipated early in the crop year, world trade in wheat during 1962-63 (August-July) did not maintain the peak volume established in 1961-62. World production of wheat increased to near-record volume in 1962 and this offset the decline in beginning carryover stocks. The expansion in production was, however, not uniform in all parts of the world and it was evident that those areas in which significant increases occurred, particularly Western Europe and North Africa, were regions which had accounted for a considerable volume of the increased wheat imports in 1961-62. Reflecting this background of increased world supplies, total shipments of wheat and flour in terms of wheat from the United States, Canada and Australia during the first eleven months of 1962-63 have amounted to 1,118.7 million bushels, 13 per cent below the previous year's total of 1,286.8 million, with each of these four countries sharing in the decline. However, the 1962-63 August-June total was still one third above the ten-year (1951-52--1960-61) average for the corresponding period. Shipments from the four traditional major wheat exporters during August-June of the 1962-63 crop year, with comparisons, appear in the accompanying table.

### Exports of Wheat and Flour in Terms of Wheat, August 1962-June 1963 with Comparisons

August-June	United States	Canada	Argentina	Australia	Total
- million bushels -					
1950-51.....	346.4	209.1	87.5	119.7	762.7
1951-52.....	446.1	312.9	24.1	86.4	869.5
1952-53.....	296.7	341.4	29.3	94.8	762.2
1953-54.....	190.7	234.3	101.2	57.0	583.2
1954-55.....	253.2	231.9	123.0	88.6	696.7
1955-56.....	317.8	284.1	103.3	96.3	801.5
1956-57.....	507.2	241.9	93.2	115.6	957.9
1957-58.....	370.0	294.6	70.2	57.2	792.0
1958-59.....	416.3	274.7	95.7	71.5	858.2
1959-60.....	470.1	259.7	67.5	103.9	901.2
1960-61.....	618.4	324.4	60.7	170.2	1,173.7
1961-62 <u>1/</u> .....	659.2	336.2	85.2	206.2	1,286.8
1962-63 <u>2/</u> .....	588.7	309.2	57.2	163.6	1,118.7

1/ Revised.

2/ Preliminary.

CANADIAN SITUATION

Initial Prices and Grain Policy

The Hon. Mitchell Sharp (Minister of Trade and Commerce) made the following speech in the House of Commons on July 24, 1963. "I wish to make a statement about Canadian Wheat Board initial prices to producers for western wheat, oats and barley for the crop year beginning August 1, 1963. These are being fixed at \$1.50 per bushel for No. 1 Manitoba northern, basis in store Fort William-Port Arthur or Vancouver; 60 cents per bushel for 2 C.W. oats, basis in store Fort William-Port Arthur; 96 cents per bushel for 3 C.W. six-row barley, basis in store Fort William-Port Arthur. These are the same levels as for these grades during the crop year which is now drawing to a close. Initial prices for other grades of western wheat, oats and barley will be announced later by the Canadian Wheat Board. Although the government takes full responsibility for the level of initial prices, under the Canadian Wheat Board Act the Canadian Wheat Board was, as is customary, asked to make its recommendations which were in accord with the government's decision.

Before reaching its decision on initial prices and on other aspects of the government's program which I shall refer to later, the government made a careful reassessment of the rapidly changing grain situation, and consulted not only with the Canadian Wheat Board but with a number of farm leaders from the prairies. Taking into consideration the stocks on hand, the record grain crop that appears likely to be produced on the prairies this year, the uncertainties created by the results of the United States farm referendum, and the negotiations now going on in Geneva under the auspices of GATT for new international arrangements for the marketing of cereals, the government came to the view that the initial prices should remain unchanged for the coming year. The government shares the opinion of major farm organizations that efforts should be concentrated on moving as much grain as possible.

There are two sides to this matter of our wheat marketing, supply and demand. Taking one year with another and a variation in yields which must be expected, we should aim to avoid the production of unmanageable surpluses and through appropriate crop diversification be in a position to meet changing domestic and foreign demand for wheat, coarse grains and livestock. Our production policies, including the various programs affecting wheat and other grains, must be designed to achieve these objectives. The government has initiated a review of these policies and programs to determine in what way they might be adjusted to achieve a better balance in agricultural production and the avoidance of burdensome surpluses. For example, the government considers that we should be in a better position than we are at present to meet the expected increase in demand for livestock and feed grains. On the demand side, the government is making every effort to help the Wheat Board to increase to the maximum commercial sales in markets throughout the world, wherever they are to be found.

The government has decided that the time has come to move forward on another front which should prove of both short run and long run advantage to western wheat producers. To help meet the food needs of the developing countries, Canada for many years now has been making wheat and flour available as part of our Colombo plan assistance. I wish to announce at this time the intention of the government to ask parliament to provide for a program of supplying wheat or wheat flour to international agencies, including the world food program, and to developing countries which are now commercial markets or where commercial exports are limited by capacity to pay. Something can be done this year. The intention is on a progressive basis to increase the amount of Canadian food aid in appropriate relationship to the total of our assistance activities. It is expected that the total allocation for this purpose might rise to a level of around \$40 million per annum over the course of the next few years.



The actual amount of feed and flour to be made available for assistance purposes in the next crop year will depend on the needs of the world food program and the absorptive capacity of the developing countries we wish to assist. Safeguards will be introduced to ensure that the provision of additional Canadian wheat and flour does not interfere with the normal commercial marketings of Canada and other exporting countries whom we shall be consulting as appropriate. I am confident all members of the house will agree that food aid, in particular the provision of wheat and flour which we are so well placed to produce, should be a continuing and important part of our external development assistance programs as long as the need for food exists.

This enlarged program of food aid, in combination with the efforts that are being made to maintain and increase commercial sales, to gain access to import markets and to stabilize international trade at reasonable prices, seems to the government to represent the right approach to the problems that confront western grain producers under present circumstances. I feel confident it is an approach that will commend itself to western producers and to hon. members on all sides of the house."

### Supply Position

#### Canadian Wheat Supplies

Item	1961-62 <u>1/</u>	1962-63 <u>2/</u>
	- million bushels -	
Carryover at beginning of crop year (August 1).....	607.8	391.1
Production.....	283.4	557.6
Imports of wheat for domestic use, August-June.....	<u>3/</u>	<u>4/</u>
Total estimated supplies.....	891.2	948.6
Less estimated domestic requirements for crop year.....	142.2	150.0
Available for export and for carryover.....	749.1	798.6
Deduct:		
Exports of wheat in bulk, August-June <u>5/</u> .....	303.7	279.2
Exports of bagged seed wheat, August-June <u>6/</u> .....	3.3	4.4
Total exports of wheat as grain.....	307.0	283.7
Exports of wheat flour in terms of wheat, August-June <u>6/</u> .....	29.2	25.5
Total exports of wheat and wheat flour.....	336.2	309.2
Balance on July 1 for export and for carryover.....	412.8	489.4

1/ Subject to revision.

2/ Preliminary.

3/ Less than 50,000 bushels.

4/ Not available.

5/ As reported by the Board of Grain Commissioners. (Includes overseas clearances and imports into the United States).

6/ Customs returns, 1961-62 adjusted for time lag.

Total estimated supplies of wheat for the 1962-63 (August-July) crop year are placed at 948.6 million bushels, 6 per cent greater than the 1961-62 total of 891.2 million, with a substantial decline in carryover stocks more than offset by a sharp increase in production. After deducting an estimated 150.0 million bushels for anticipated domestic requirements, supplies available for export and for carryover during 1962-63 amount to 798.6 million bushels, 7 per cent above the 749.1 million in 1961-62.

Exports of wheat and flour in terms of wheat during the August-June period of the 1962-63 crop year amounted to 309.2 million bushels compared with 336.2 million exported during the corresponding period of 1961-62 and the ten-year (1951-52--1960-61) average for the same months of 280.0 million bushels. The 1962-63 total consisted of 283.7 million bushels of wheat and 25.5 million of wheat flour equivalent. Corresponding totals for the same period of the preceding crop year were 307.0 million bushels of wheat and 29.2 million of flour equivalent. The balance remaining on July 1, 1963 for export and for carryover amounted to 489.4 million bushels, 19 per cent more than the July 1, 1962 total of 412.8 million.

Farmers' marketings of wheat, (both east and west) up to July 24, of the 1962-63 crop year amounted to 443.0 million bushels in contrast to last year's corresponding total of 282.0 million. Quality of this year's deliveries, although falling below last year's unusually high levels, has remained generally good. Wheat inspected by the Board of Grain Commissioners during the first eleven months of the current crop year indicates that some 77 per cent of inspected deliveries were recorded in the grades No. 4 Northern and higher as against the comparable 1961-62 figure of 93 per cent but still above the crop year average of 73 per cent for the five years 1956-57--1960-61. Some 70.6 million bushels of this year's total were delivered during the five weeks June 20 to July 24. During the same period volume of Canadian wheat entering domestic and export channels amounted to about 31.2 million bushels. As a result, the total visible supply of Canadian wheat recorded a considerable increase, from 357.2 million bushels at June 19 to a level of 396.3 million at July 24, 1963.

The total visible supply of Canadian wheat at July 24 this year represented an increase of 28 per cent over the 1962 comparable total of 309.9 million but was 6 per cent less than the 1961 figure of 423.6 million. Stocks in country elevators amounted to 213.4 million bushels in contrast to 145.3 million in this position a year ago and compared with 236.7 million two years ago. This year's supplies in country elevators at July 24 accounted for 54 per cent of the total visible wheat supply compared with the 1962 and 1961 corresponding percentages of 47 per cent and 56 per cent, respectively. Interior terminal stocks, at 5.4 million bushels were sharply below both the 1962 figure of 8.3 million and the 1961 total of 11.0 million. The 21.3 million bushels "in transit rail" (Western Division) represented an increase of 49 per cent over the 1962 total of 14.3 million and exceeded by 5 per cent the 1961 figure of 20.4 million. Supplies at the Canadian Lakehead, at July 24 this year, amounted to 52.9 million bushels, compared with last year's comparable total of 61.1 million and the 53.6 million bushels in this position two years ago. The 5.4 million bushels "in transit lake" were above the 3.4 million of a year ago but below the 1961 total of 7.1 million. Supplies in Bay, Lake and Upper St. Lawrence ports, at 36.9 million bushels, were 32 per cent above the 27.9 million at July 25 1962 but 9 per cent below the 40.6 million at July 26, 1961. The 33.0 million bushels in Lower St. Lawrence and Maritime ports were 21 per cent and 7 per cent, respectively, above the 27.2 million of a year ago and the 30.9 million of two years ago. On the west coast, total supplies in Vancouver-New Westminster, Victoria and Prince Rupert at July 24, 1963, at 15.0 million bushels, exceeded both the previous years' corresponding totals of 11.8 million and the 12.5 million bushels in 1961.



June 1963 Exports of  
Wheat and Flour Total  
27.2 Million Bushels

Combined exports of wheat in bulk, bagged seed wheat and wheat flour in terms of grain equivalent during June 1963 amounted to 27.2 million bushels, 5 per cent more than the June 1962 total of 26.0 million, but below both the 38.2 million of last month and the ten-year average (1952-61) for the month of June of 33.2 million. Exports of wheat in bulk (as reported by the Board of Grain Commissioners) during June 1963, at 24.5 million bushels represented an increase of 4 per cent over the 23.6 million of last year, but registered declines from the 35.4 million of May 1963 and the June ten-year average of 29.6 million. Exports of bagged seed wheat during June 1963, based on Canadian Customs returns, amounted to only 500 bushels, in contrast to the 68 thousand of the previous month and the June 1962 total (adjusted to remove time lag) of 5 thousand bushels. Customs returns also indicate that the equivalent of 2.7 million bushels of wheat was exported in the form of flour during June 1963, 10 per cent above the 2.5 million, adjusted for time lag, of a year ago but below the previous month's figure of 2.8 million.

Cumulative exports of wheat in bulk during the August 1962-June 1963 period amounted to 279.2 million bushels compared with the 1961-62 total of 303.7 million and about 17 per cent more than the ten-year (1951-52-1960-61) average for the period of 238.8 million bushels. Britain, remaining in its position as Canada's leading market for wheat, received shipments amounting to 71.6 million bushels and representing 26 per cent of the eleven-month total. During the August-June period of 1961-62 shipments of wheat to Britain amounted to 68.6 million bushels and accounted for 23 per cent of the total. Other principal markets for Canadian wheat in bulk during the first eleven months of the current crop year, with figures for the same period of the preceding crop year in brackets, were as follows, in millions of bushels: China Communist, 56.0 (66.3); Japan, 41.2 (43.9); Federal Republic of Germany, 26.4 (43.2); Poland, 14.2 (12.3); Belgium and Luxembourg, 9.1 (10.9); Republic of South Africa, 7.5 (nil); Venezuela, 6.4 (3.9); the Philippines, 5.9 (3.4) and France, 5.8 (1.0). Cumulative exports of bagged seed wheat during August-June of the 1962-63 crop year, basis Canadian Customs returns, amounted to 4.4 million bushels, 35 per cent above last year's revised total of 3.3 million.

Cumulative exports of wheat flour during August-June of the 1962-63 crop year, based on Customs returns, were the equivalent of 25.5 million bushels of wheat, as against the adjusted August 1961-June 1962 total of 29.2 million bushels. As with bulk wheat, Britain was also the major market for Canadian wheat flour. Shipments of wheat flour to that country during the period under review amounted to the equivalent of 11.1 million bushels and accounted for 43 per cent of the August 1962-June 1963 total. During the same months of 1961-62 shipments of wheat flour to Britain also amounted to the equivalent of 11.1 million bushels and represented 38 per cent of the total. Other leading markets for Canadian wheat flour in terms of grain equivalent during the August-June period of the 1962-63 crop year, with revised data for the same months of the preceding crop year in brackets, were as follows, in thousands of bushels: Ghana, 1,804 (1,884); United States, 1,265 (1,256); Trinidad and Tobago, 1,261 (1,248); Jamaica, 1,234 (1,348); Leeward and Windward Islands, 896 (943); Costa Rica, 829 (737); Hong Kong, 827 (825); Nigeria, 693 (1,595); Malaya and Singapore, 593 (601); and Sierra Leone, 544 (464).

Long-Term Wheat  
Agreement with China

The following is part of the text of a statement made in the House of Commons on August 2, 1963 by The Honourable Mitchell Sharp, Minister of Trade and Commerce: "I am pleased to advise the House that the Canadian Wheat Board will be making the following announcement today regarding a new long term Wheat Agreement with the China National Cereals, Oils and Foodstuffs Import and Export Corporation - 'The Canadian Wheat Board is pleased to announce the conclusion of a Long Term Agreement with the China National Cereals, Oils and Foodstuffs Import and Export Corporation. This Agreement is

similar in form to the agreement signed on April 22, 1961, that is, under the Agreement, the Chinese Corporation has declared its intention to purchase from Canada 3 to 5 million long tons (112.0 to 186.7 million bushels) of wheat over a three-year period, August 1, 1963 to July 31, 1966. The Canadian Wheat Board has undertaken to make such supplies available to the Chinese corporation concerned, with specific quantities, prices and shipping periods to be negotiated periodically.

'The terms of payment for sales under the Long Term Agreement are 25 per cent cash when each vessel is loaded and the balance of 75 per cent in 18 months, with interest. The deferred payment provision is made possible by a guarantee to the Canadian Wheat Board by the Government of Canada.

'The first sales contract under the Long Term Agreement has been negotiated and provides for the export to China of 500,000 long tons of wheat from Pacific Coast Ports during the period August 1, 1963 to January 31, 1964."

General Quota  
Position

At the close of the 1962-63 crop year, the Canadian Wheat Board had, with the exception of 3 points in Saskatchewan and 4 points in Alberta, placed all operating shipping points in the Western Division on a delivery quota of 12 bushels per specified acre. Twenty-two stations were reported as "closed",

Summary of Elevator Shipping Points in the Western Division  
as at July 31, 1963

Province	General Quota in Bushels per Specified Acre		Closed	Total
	Ten	Twelve		
Ontario.....	-	1	1	2
Manitoba.....	-	345	2	347
Saskatchewan.....	3	1,039	12	1,054
Alberta.....	4	523	7	534
British Columbia.....	-	5	-	5
All Provinces.....	7	1,913	22	1,942

Delivery Quota  
Policy 1963-64

The Canadian Wheat Board in its Instructions to the Trade re Quotas (General) No. 3 under date of July 26, 1963 announced in part that the Board wishes to advise that all delivery quotas in effect in the 1962-63 crop year, including open quotas, special permits, etc., will automatically expire as at the close of business July 31, 1963.

Effective on and after August 1, 1963, the quota policy for the Board for the 1963-64 crop year will be as follows:

Durum Wheat In accordance with Instructions to the Trade re Quotas (General) No. 23 of April 10, 1963, Durum Wheat will be included and become part of the producer's specified acreage for quota purposes.



Flaxseed Effective August 1, at all delivery points within the designated area a quota of five (5) bushels per seeded acre to flaxseed as shown in the individual producer's permit book or 200 bushels, whichever is the larger.

All deliveries made under this quota must be properly recorded in the producer's permit book on one of the pages provided for deliveries made under seeded acreages and as in the previous crop year, producers may deliver flaxseed within existing quotas to any delivery point selected by them at which elevator space for flaxseed is available.

Rapeseed Effective August 1, at all delivery points within the designated area a quota of seven (7) bushels per seeded acre to rapeseed as shown in the individual producer's permit book or 300 bushels, whichever is the larger.

All deliveries made under this quota must be properly recorded in the producer's permit book on one of the pages provided for deliveries made under seeded acreages and as in the previous crop year, producers may deliver rapeseed within existing quotas to any delivery point selected by them at which elevator space for rapeseed is available.

Malting, Pot and Pearling Barley The Board will again consider applications on behalf of producers of malting, pot and/or pearling barley, for permission to deliver, in excess of the established quotas, one carlot of such barley provided:

- (a) A representative sample of such carlot has been submitted to and accepted by a maltster or shipper as suitable for malting, pot and/or pearling; and
- (b) A premium is to be paid to the producer for the carlot of barley so accepted.

Full details under the foregoing provisions have been announced in Instructions to the Trade re Quotas (General) No. 2 of July 26, 1963.

Initial Delivery Quota 1963-64 Crop Year - Wheat, (including Durum), Oats, Barley, and Rye Effective at all delivery points on and after August 1, 1963, the following initial quota is hereby authorized in respect of the above grains:

An initial delivery quota applicable to all permit holders regardless of the acreage shown on their 1963 permit books of the equivalent of one hundred (100) units. Each such unit shall be the equivalent of three (3) bushels of Wheat or eight (8) bushels of Oats or five (5) bushels of Barley or five (5) bushels of Rye.

As space becomes available each permit holder will be entitled to deliver at his option any of the above grains or any combination of the above grains calculated on the unit basis, but his total deliveries under the initial quota must not exceed the equivalent of one hundred (100) units.

Under the above policy a permit holder will be entitled to deliver a maximum of 300 bushels of Wheat or 800 bushels of Oats or 500 bushels of Barley or 500 bushels of Rye, or any combination of these grains which, when calculated on the unit basis outlined above, does not exceed one hundred (100) units.

All deliveries to be made under the initial quota must be entered in the producer's delivery permit book at the time of delivery. Such entries are to be made commencing on Page 1, with the quantity being entered in the appropriate column for the kind of grain delivered. The unit value of the delivery is to be determined by dividing the bushel quantity by three (3) in the case of Wheat, or

eight (8) in the case of Oats, or five (5) in the case of Barley and Rye, calculating same to one decimal point. The total units delivered, as determined above, should then be entered in the "Total Delivery" column. For example, a load of 151.4 bushels would be entered as 50.4 units in the case of Wheat, 18.8 units in the case of Oats or 30.2 units if it consisted of Barley or Rye.

General Delivery Quotas 1963-64 Crop Year Following the initial quota, the Board will again establish general quotas at individual delivery points, based upon bushels per "specified" acre. The "specified" acreage upon which general delivery quotas will be based will consist of the total of each permit holder's acreage seeded to wheat (including Durum), oats, barley and rye, summerfallow, and the eligible acreage seeded to cultivated grasses and forage crops.

Comment

The Canadian Wheat Board Act provides that:

- (a) the person delivering the grain is the actual producer or is entitled as a producer to the grain.
- (b) the grain was produced on the lands described in the permit book.

It will be noted that the initial quota and later general quotas as provided in 1962-63 will be again effective in 1963-64. It is expected that the past experience of producers and elevator agents, especially in regard to the initial quota, will be helpful in the administration of delivery quotas during the present crop year and that the available storage space will be handled this Fall and throughout the crop year in the best interests of all concerned.

Preliminary Estimates of Specified Crop and Summerfallow Acreages, 1963

The acreage estimates for 1963 are based on returns from the Dominion Bureau of Statistics' annual June survey of seeded acreages and have been made in consultation with the officials responsible for agricultural statistics in each of the provinces. As in former years, current estimates are subject to revision in the light of further information received during the season and when marketing and other check data become available after the end of the crop year.

Preliminary Estimates of Crop and Summerfallow Acreages, 1963  
with Comparisons - Canada

Crops	1962 <u>1/</u>	1963	1963 as % of 1962
	- acres -		%
Winter wheat.....	450,000	442,000	98
Spring wheat <u>2/</u> .....	26,366,900	27,124,200	103
All wheat.....	26,816,900	27,566,200	103
Oats for grain <u>3/</u> .....	11,998,100	10,612,800	88
Barley.....	5,287,100	6,160,100	117
Fall rye <u>4/</u> .....	527,200	552,800	105
Spring rye.....	97,300	98,800	102
All rye.....	624,500	651,600	104
Flaxseed.....	1,445,000	1,685,400	117
Rapeseed.....	371,200	483,500	130
Summerfallow.....	27,495,000	27,211,000	99

1/ Revised. 2/ Includes relatively small acreages of winter wheat in all provinces other than Ontario. 3/ Includes oats for grain and for hay in the Prairie Provinces. 4/ Includes small acreages of spring rye in Quebec, Ontario and British Columbia.



Total wheat acreage in Canada in 1963, estimated at 27.6 million acres, is 3 per cent larger than last year's 26.8 million, and is 14 per cent above the ten-year (1951-60) average of 24.2 million acres. This total is second only to the record 28.7 million acres seeded in 1940. In the Prairie Provinces, where most of Canada's wheat is grown, acreage is estimated at 27.0 million, an increase of 3 per cent over last year's 26.2 million and 15 per cent above the ten-year average of 23.4 million.

Preliminary estimates of durum wheat acreage in the Prairie Provinces at 2.2 million acres indicate a 37 per cent decrease in acreage this year compared with 1962.

Preliminary Estimate of Durum Wheat Acreages, 1963  
with Comparisons - Prairie Provinces

Province	1962 <u>1/</u>	1963	1963 as % of 1962
	- acres -		%
Manitoba.....	161,000	140,000	87
Saskatchewan.....	2,897,000	1,796,000	62
Alberta.....	371,000	234,000	63
Prairie Provinces.....	3,429,000	2,170,000	63

1/ Revised.

The area seeded to oats in Canada in 1963 is estimated at 10.6 million acres, some 12 per cent smaller than that of 1962 and 5 per cent smaller than the ten-year average area of 11.1 million acres. In the Prairie Provinces the oats acreage, at 7.4 million acres, is 14 per cent smaller than that of 1962, with decreases occurring in all three provinces. Canadian barley acreage for 1963 at 6.2 million acres increased 17 per cent from the 1962 level of 5.3 million but is still 27 per cent below the ten-year average of 8.5 million. Barley acreage in the Prairies is placed at 5.9 million, up 16 per cent from the 1962 level.

Rye acreage at 651,600 is 4 per cent above the 1962 level but 20 per cent below the ten-year (1951-60) average. Fall seedings of rye were up 5 per cent, and spring rye increased by 2 per cent. The greater part of Canada's rye is grown in the Prairie Provinces where the 1963 acreage is estimated at 582,800 acres as against 556,300 acres in 1962.

Preliminary Estimates of Crop and Summerfallow Acreages, 1963  
with Comparisons - Prairie Provinces

Crops	1962 <u>1/</u>	1963	1963 as % of 1962
	- acres -		%
Spring wheat (including durum).....	26,237,000	26,996,000	103
Oats (including oats for hay).....	8,559,000	7,385,000	86
Barley.....	5,097,000	5,922,000	116
Fall rye.....	459,000	484,000	105
Spring rye.....	97,300	98,800	102
All rye.....	556,300	582,800	105
Flaxseed.....	1,396,000	1,629,000	117
Rapeseed.....	371,200	483,500	130
Summerfallow.....	27,495,000	27,211,000	99

1/ Revised.

Following last year's decline in acreage, flaxseed plantings increased in 1963. This year 1.7 million acres were sown to flax in Canada, an increase of 17 per cent over the 1962 level of 1.4 million acres. The 1963 acreage, however, is 15 per cent smaller than the 1951-60 average of 2.0 million. Commercial rapeseed production is carried on only in the Prairie Provinces where in 1963 an estimated 483,500 acres were seeded to this crop. An acreage of this size represents an increase of 30 per cent from last year's seedings of 371,200 acres.

Summerfallow acreage in the Prairie Provinces in 1963 is estimated at 27.2 million acres, a decrease of one per cent from last year's 27.5 million acres but 11 per cent larger than the 1951-60 average of 24.5 million acres.

Lake Shipments of Canadian Grain

Total shipments of the five major grains out of Lake-head terminals from the opening of navigation to July 24 this year amounted to 114.7 million bushels, 35 per cent greater than the 84.9 million during the comparable period of 1962. In 1963 the season of navigation opened on April 19 while the 1962 season opened on April 22. Shipments of wheat, at 81.0 million bushels accounted for 71 per cent of the current total. Shipments of wheat, oats and rye were above last year's corresponding levels, while those for barley and flaxseed were lower.

Lake Shipments of Canadian Grain from the Opening of Navigation to July 24, 1963 and to Approximately the Same Date 1953 to 1962

Year	Wheat	Oats	Barley	Rye	Flaxseed	Total
- thousand bushels -						
1953 .....	130,207	36,650	52,797	5,787	2,408	227,849
1954 .....	56,476	26,630	27,795	4,127	1,765	116,793
1955 .....	79,727	15,449	31,037	6,214	2,884	135,311
1956 .....	122,759	17,037	38,932	8,448	2,536	189,713
1957 .....	86,178	19,264	22,115	3,703	5,815	137,074
1958 .....	108,202	21,866	39,259	4,157	2,653	176,137
1959 .....	84,834	11,506	20,500	2,066	2,627	121,531
1960 .....	90,846	9,109	22,395	2,301	3,176	127,827
1961 .....	127,771	13,548	21,431	1,388	3,076	167,214
1962 .....	62,620	7,025	11,141	1,176	2,942	84,904
1963 .....	80,953	19,329	10,077	1,485	2,839	114,683

Wheat Sale to Poland

On July 18, 1963 the Canadian Wheat Board announced that a contract has been negotiated for the sale of approximately 100,000 metric tons of wheat for shipment to Poland. This sale totalling about 3.7 million bushels is for shipment from St. Lawrence and Pacific coast ports during the period August to November 1963.

Payment for the wheat is to be made on the basis of 10 per cent at time of shipment with the remaining balance to be paid in equal instalments plus interest at 2, 2 1/2, and 3 years, respectively. These credit arrangements were authorized by the Government of Canada under the provisions of the Export Credits Insurance Act.

This is the third sale made to Poland during the current crop year - previous contracts having been negotiated on August 29, 1962 and October 1, 1962 for approximately 300,000 and 80,000 metric tons, respectively.



Farmers' Marketings 1/ of Wheat in the Prairie Provinces 1962-63

Week Ending		Manitoba	Saskatchewan	Alberta	Total	Last Year <u>2/</u>
		- bushels -				
August	8, 1962...	14,548	7,645	42,489	64,682	424,845
	15 .....	1,778	38,975	176,287	217,040	682,034
	22 .....	38,237	592,588	584,243	1,215,068	5,298,808
	29 .....	426,174	1,911,503	1,468,566	3,806,243	9,124,000
September	5 .....	757,304	3,085,240	1,211,254	5,053,798	6,274,071
	12 .....	1,742,316	6,416,266	1,870,574	10,029,156	7,783,756
	19 .....	1,699,681	8,177,978	1,709,135	11,586,794	6,733,721
	26 .....	2,359,440	10,406,284	4,587,559	17,353,283	7,697,860
October	3 .....	2,522,313	13,068,961	5,556,144	21,147,418	8,356,339
	10 .....	1,585,234	12,747,546	4,121,329	18,454,109	7,025,437
	17 .....	1,117,194	7,344,064	3,084,468	11,545,726	7,516,876
	24 .....	1,177,866	7,435,220	2,545,531	11,158,617	7,143,464
	31 .....	1,370,408	6,674,985	2,270,438	10,315,831	6,863,496
November	7 .....	1,514,458	6,123,753	2,618,264	10,256,475	5,637,826
	14 .....	1,629,145	5,879,142	1,928,069	9,436,356	7,094,998
	21 .....	1,669,582	6,738,169	1,957,899	10,365,650	6,604,431
	28 .....	1,783,131	7,723,197	1,816,305	11,322,633	5,789,906
December	5 .....	1,282,296	7,478,541	1,868,468	10,629,305	3,687,344
	12 .....	1,499,357	7,709,086	1,926,894	11,135,337	5,480,248
	19 .....	2,183,481	8,514,663	2,732,106	13,430,250	3,635,158
	26 .....	2,048,763	9,012,883	2,580,076	13,641,722	2,955,220
January	2, 1963...	672,092	5,572,797	2,134,963	8,379,852	4,473,693
	9 .....	1,573,326	2,662,279	2,291,794	6,527,399	11,340,074
	16 .....	511,792	6,416,935	1,902,677	8,831,404	6,770,993
	23 .....	253,560	2,018,232	1,473,736	3,745,528	2,292,052
	30 .....	391,919	871,723	566,338	1,829,980	5,413,301
February	6 .....	987,378	3,454,795	1,056,130	5,498,303	5,265,116
	13 .....	1,419,331	7,027,411	2,351,424	10,798,166	3,433,249
	20 .....	739,654	4,537,612	2,881,336	8,158,602	4,301,431
	27 .....	368,030	1,980,051	1,950,601	4,298,682	1,861,407
March	6 .....	757,059	3,457,719	1,656,138	5,870,916	534,654
	13 .....	653,438	3,536,306	2,016,221	6,205,965	2,609,296
	20 .....	491,482	2,753,143	1,957,599	5,202,224	4,310,867
	27 .....	770,903	3,273,586	1,693,218	5,737,707	3,706,569
April	3 .....	742,635	2,600,145	994,011	4,336,791	3,298,094
	10 .....	623,515	4,354,381	1,069,585	6,047,481	2,634,703
	17 .....	718,424	2,409,799	446,697	3,574,920	3,631,448
	24 .....	522,989	3,643,640	520,099	4,686,728	4,784,559
May	1 .....	926,348	5,901,950	1,070,077	7,898,375	6,898,940
	8 .....	807,021	3,830,290	927,245	5,564,556	4,370,357
	15 .....	643,266	2,369,468	793,467	3,806,201	2,902,949
	22 .....	691,799	2,116,103	594,063	3,401,965	2,105,659
	29 .....	773,051	4,100,176	838,207	5,711,434	3,877,840
June	5 .....	1,051,824	6,423,260	1,212,399	8,687,483	4,543,275
	12 .....	1,696,397	4,975,371	1,749,382	8,421,150	5,703,979
	19 .....	2,452,068	10,812,126	1,548,306	14,812,500	6,507,735
	26 .....	2,041,401	8,913,834	1,538,657	12,493,892	8,275,403
July	3 .....	2,267,297	8,605,645	1,924,722	12,797,664	8,271,818
	10 .....	1,422,730	12,514,687	1,811,238	15,748,655	9,126,722
	17 .....	1,585,755	9,860,768	1,842,964	13,289,487	8,217,358
	24 .....	1,887,641	11,535,865	2,752,282	16,175,788	12,678,889
Totals.....		58,866,831	289,616,786	92,221,674	440,705,291	275,952,268
Average similar period: 1951-52-1960-61....		38,050,203	227,963,432	96,458,806	362,472,442	

1/ Includes receipts at country, interior private and mill elevators, interior semi-public terminals and platform loadings. 2/ Revised.

Visible Supply of Canadian Wheat July 24, 1963  
Compared with Approximately the Same Date 1961 and 1962

Position	1961	1962	1963
- thousand bushels -			
Country elevators - Manitoba.....	25,830	16,064	23,871
Saskatchewan.....	140,939	85,516	126,803
Alberta.....	69,925	43,707	62,731
Totals.....	236,694	145,287	213,406
Interior private and mill.....	6,718	5,961	7,707
Interior terminals.....	11,038	8,294	5,437
Vancouver-New Westminster.....	11,767	10,788	13,369
Victoria.....	760	970	935
Prince Rupert.....	-	-	693
Churchill.....	4,113	4,829	4,857
Fort William-Port Arthur.....	53,574	61,089	52,944
In transit rail (Western Division).....	20,369	14,289	21,348
Bay, Lake and Upper St. Lawrence ports..	40,572	27,869	36,896
Lower St. Lawrence and Maritime ports...	30,857	27,197	32,997
In transit lake.....	7,051	3,361	5,397
In transit rail (Eastern Division).....	77	-	294
Totals.....	423,591	309,934	396,281

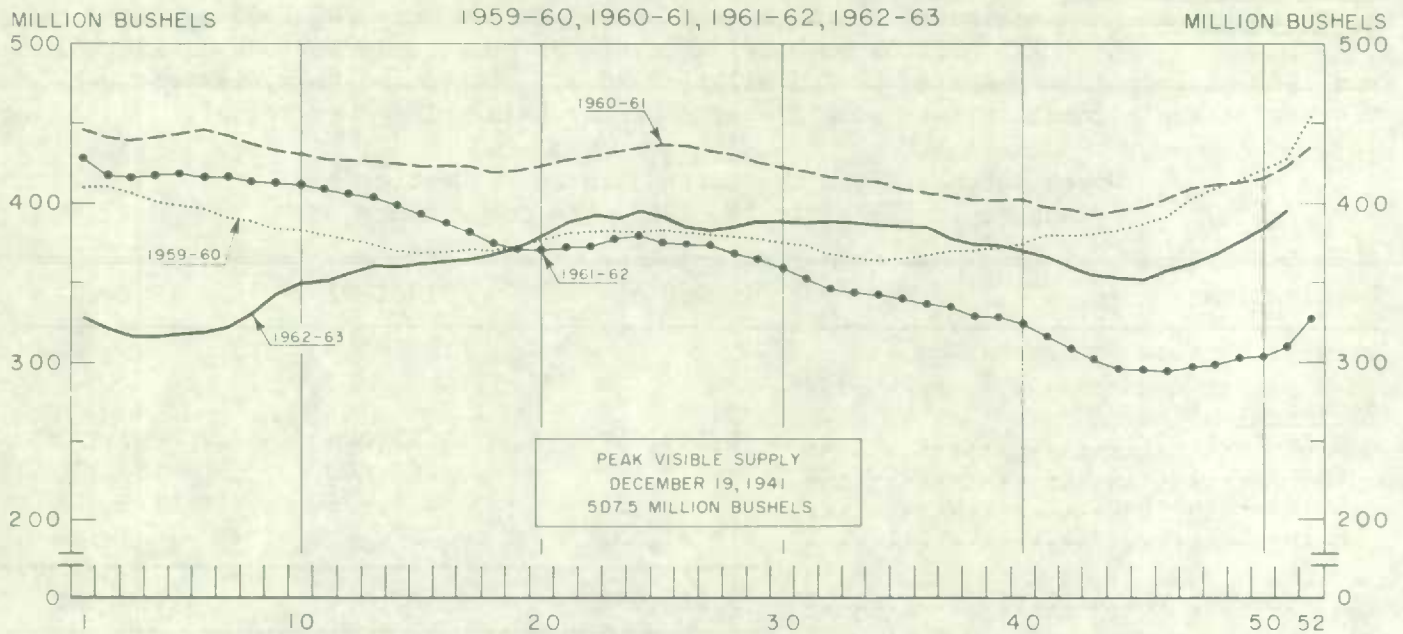
Grading of Wheat Inspected, August 1962-June 1963 with Comparisons

Grade	Crop Year		August - June			
	Average		1961-62		1962-63	
	1956-57	1961-62	1961-62	1962-63	1961-62	1962-63
	per cent	per cent	cars	per cent	cars	per cent
No. 1 Hard.....	-	1/	64	1/	66	1/
No. 1 Man. Northern.....	1.3	20.8	37,159	19.3	23,581	12.6
No. 2 Man. Northern.....	29.2	52.8	103,720	53.7	71,712	38.4
No. 3 Man. Northern.....	28.3	15.7	30,844	16.0	27,807	14.9
No. 4 Man. Northern.....	14.0	3.4	6,916	3.6	21,243	11.4
No. 5 Wheat.....	8.3	0.7	1,417	0.7	10,580	5.7
No. 6 Wheat.....	1.9	0.2	384	0.2	1,676	0.9
Feed Wheat.....	0.1	1/	8	1/	17	1/
Others Red Spring.....	10.0	3.4	6,695	3.5	13,541	7.3
C.W. Garnet.....	1/	0.2	436	0.2	120	0.1
C.W. White Spring.....	0.1	0.1	149	0.1	215	0.1
C.W. Mixed Wheat.....	1/	1/	59	1/	61	1/
Alberta Winter.....	0.3	0.3	706	0.4	431	0.2
Nos. 1-6 C.W. Amber Durum...	6.3	2.3	4,337	2.2	14,831	7.9
Others C.W. Amber Durum.....	0.2	1/	93	1/	860	0.5
Totals.....	100.0	100.0	192,987	100.0	186,741	100.0
Gross bushels (approx.).....			371,625,000		358,616,000	

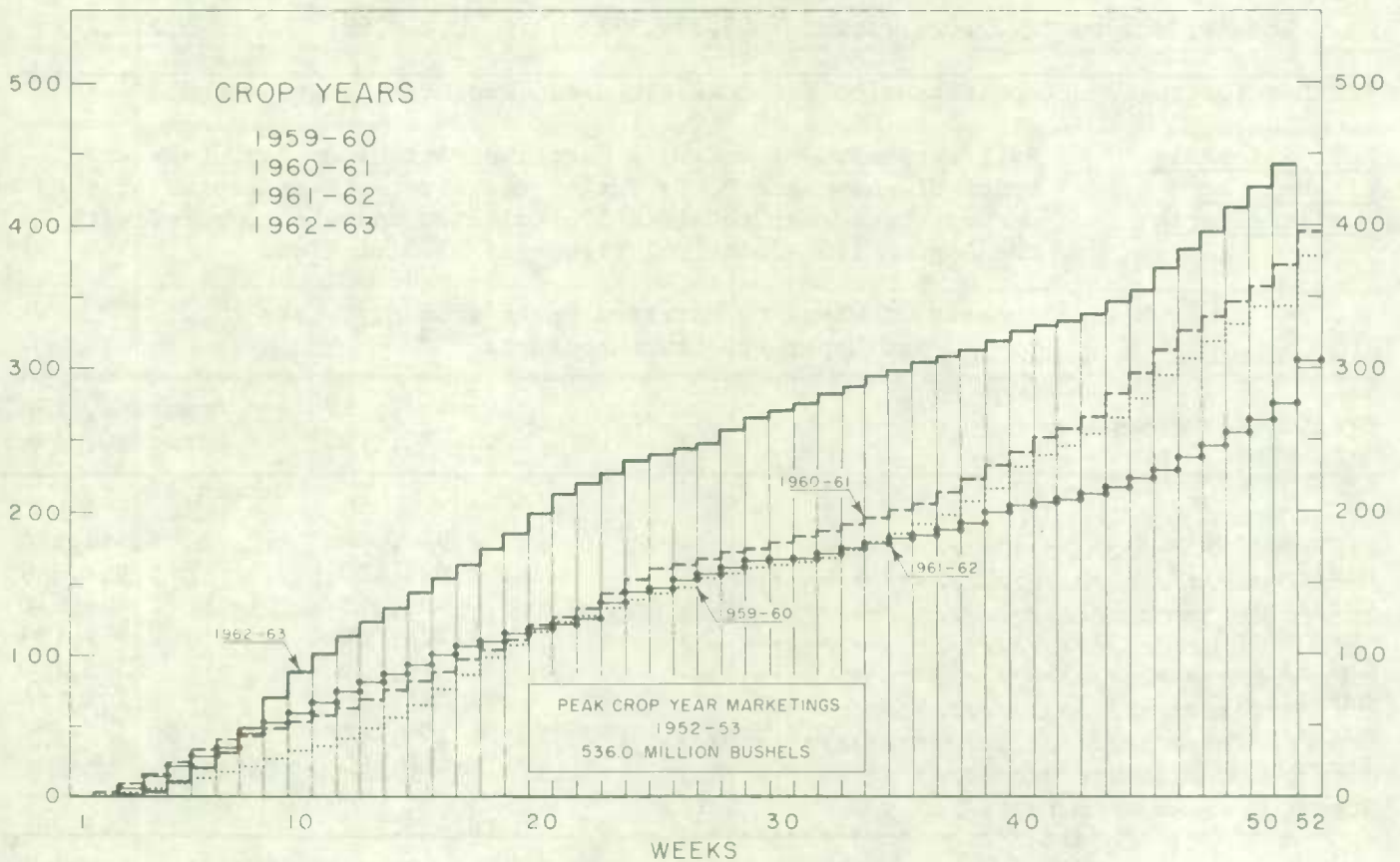
1/ Less than .05 per cent.



# WEEKLY VISIBLE SUPPLY OF CANADIAN WHEAT



## CUMULATIVE RECORD OF WHEAT MARKETINGS IN THE PRAIRIE PROVINCES BY WEEKS



(Data in both charts for crop years beginning August 1)

Wheat Shipments to  
the United States  
by Destination

Total rail and vessel shipments of wheat to the United States, either for re-export or retention for domestic use, from the beginning of the current crop year to July 24, 1963 amounted to 1.3 million bushels. During the comparable periods of 1961-62 and 1960-61 shipments amounted to 2.3 million and 3.3 million bushels, respectively. Of this season's total to date some 87 per cent has been shipped by vessel.

Wheat Shipments\* to the United States by Destination  
August 1, 1962-July 24, 1963 with Comparisons

Destination	1960-61	1961-62	1962-63
- bushels -			
<u>By Vessel</u>			
Buffalo.....	2,099,607	1,582,086	897,127
Chicago.....	325,890	160,000	84,750
Duluth-Superior.....	619,658	420,978	115,208
Milwaukee.....	81,537	-	-
Totals, Vessel.....	3,126,692	2,163,064	1,097,085
<u>By Rail</u>			
U.S.A. Domestic Points.....	203,900	104,957	161,212
Totals, Shipments.....	3,330,592	2,268,021	1,258,297

\*Either for re-export or retention for domestic use. Excluding bagged seed.

Rail Shipments  
of Wheat to  
Maritime Ports

Rail shipments of wheat to Maritime Ports from Bay, Lake and Upper St. Lawrence Ports during the first eleven months of the current crop year totalled 17.1 million bushels compared with the August 1961-June 1962 figure of 17.0 million.

Rail Shipments of Wheat to Maritime Ports from Bay, Lake  
and Upper St. Lawrence Ports

Origin of Shipments	August 1, 1961- June 30, 1962	August 1, 1962- June 30, 1963
- bushels -		
Port McNicoll.....	4,910,364	6,452,124
Midland, Tiffin.....	6,089,433	5,957,659
Collingwood.....	405,993	464,910
Owen Sound.....	2,228,068	2,069,103
Goderich.....	474,656	333,210
Sarnia.....	1,288,279	1,788,756
Lakefield.....	1,109,181	-
Peterborough.....	480,193	-
Totals.....	16,986,167	17,065,762



Rail Shipments of Wheat from Fort William-Port Arthur, 1959-60--1962-63

Month	1959-60	1960-61	1961-62	1962-63
- bushels -				
August.....	34,383	14,717	20,648	13,933
September.....	31,690	19,227	14,598	11,657
October.....	30,904	5,417	33,944	22,716
November.....	8,383	24,000	22,915	12,024
December.....	25,355	17,500	60,167	12,778
January.....	103,087	71,335	126,533	39,534
February.....	23,878	135,339	68,421	22,967
March.....	18,826	28,073	37,000	86,398
April.....	64,156	9,833	37,777	69,067
May.....	19,513	15,805	11,203	11,851 <sup>1/</sup>
June.....	25,234	17,563	16,022	15,746
July.....	26,803	10,940	17,315	
Totals.....	412,212	369,749	466,543	

<sup>1/</sup> Revised.

Distribution of Rail Shipments of Wheat from Fort William-Port Arthur, June 1963

Grade	Nova Scotia	Quebec	Ontario
- bushels -			
5 Wheat.....	-	2,833	2,833
Durum.....	-	6,000	-
Others.....	1,971	1,514	595
Totals.....	1,971	10,347	3,428

Overseas Exports of Canadian Grain by Ports of Loading, August 1, 1962-July 24, 1963  
with Comparisons

Port	Wheat <sup>1/</sup>	Durum Wheat <sup>1/</sup>	Oats <sup>1/</sup>	Barley	Rye	Flaxseed	Rapeseed <sup>2/</sup>
- bushels -							
<u>Pacific Seaboard</u>							
Van.-New West. ....	127,984,446	-	9,017,481	4,983,231	1,630,774	4,636,744	5,436,019
Victoria.....	6,221,796	-	-	-	-	-	-
Prince Rupert.....	3,553,387	-	-	110,849	-	-	-
<u>Churchill.....</u>	20,577,620	-	-	-	-	-	-
<u>Lakehead Direct.....</u>	5,631,867	1,882,952	6,512,577	1,591,527	2,734,413	1,434,849	-
<u>Kingston Direct.....</u>	956,099	-	-	-	-	-	-
<u>St. Lawrence</u>							
Montreal.....	33,791,317	9,872,701	1,642,641	1,057,942	1,736,829	4,567,308	-
Sorel.....	15,959,946	2,982,290	-	-	-	293,284	-
Three Rivers.....	10,539,919	2,024,967	316,408	186,815	-	102,166	-
Quebec.....	8,124,731	-	95,735	-	-	98,407	-
Baie Comeau.....	24,029,466	359,408	167,515	-	-	38,015	-
<u>Maritimes</u>							
Saint John.....	767,182	-	-	-	-	40,978	-
West Saint John.....	7,118,103	1,608,100	336,751	96,858	40,612	506,113	-
Halifax.....	8,427,302	780,928	-	70,316	-	50,473	-
<u>United States Ports...</u>	-	-	-	-	366,342	-	-
Totals.....	273,683,181	19,511,346	18,089,108	8,097,538	6,508,970	11,768,337	5,436,019
Aug.1/61-July 25/62...	311,180,797	6,826,215	1,727,983	26,885,526	4,153,402	11,846,145	6,733,958

<sup>1/</sup> Excluding bagged seed. <sup>2/</sup> In bushels of 50 pounds.

Freight Assistance Shipments Claims filed for payment up to June 30, 1963 represent the movement of some 8.3 million bushels of wheat from the Prairie Provinces to Eastern Canada and British Columbia under the freight assistance policy during the August-May period of the 1962-63 crop year. During the same months of the 1961-62 crop year claims had been filed for a total of 10.7 million bushels, indicating on the assumption of approximately the same rate of submission of claims during both the current and preceding crop years that the 1962-63 August-May shipments of wheat under the policy were running about 22 per cent below those of 1961-62. Revised data on the 1961-62 August-May shipments of wheat based on claims submitted up to June 30, 1963 place the ten-month total at 11.0 million bushels. The bulk of the shipments during the current ten-month period under review went to destinations in Quebec and Ontario, with these two provinces accounting for 41 per cent and 32 per cent of the total, respectively.

Provincial Distribution of Wheat Shipments under the Freight Assistance Policy  
August-May 1962-63 and 1961-62

Month	Nfld.	P.E.I.	N.S.	N.B.	Que.	Ont.	B.C.	Total
- thousand bushels -								
August, 1962.....	10	13	48	29	381	354	84	919
September.....	7	7	29	21	335	234	200	833
October.....	9	10	43	25	361	239	149	837
November.....	12	7	41	20	402	295	142	919
December.....	8	6	47	23	309	270	124	787
January, 1963.....	11	7	66	30	382	291	199	984
February.....	5	6	59	28	232	241	144	716
March.....	5	8	59	23	302	257	122	775
April.....	5	4	62	27	230	236	111	675
May.....	2	8	51	28	444	259	47	840
Totals 1/.....	74	75	504	255	3,379	2,676	1,322	8,285
Same period 1961-62:								
Preliminary 2/.....	83	114	1,001	323	3,959	3,490	1,702	10,671
Revised 1/.....	92	117	1,015	349	4,013	3,563	1,808	10,958

Preliminary data on millfeed shipments under the freight assistance policy indicate shipments of 379,292 tons during the August-May period of the current crop year. During the same ten months of 1961-62 claims had been filed for a total of 429,323 tons, indicating on the assumption of approximately the same rate of submission of claims during both the current and preceding crop years that the 1962-63 August-May shipments of millfeeds under the policy were running about 12 per cent below those of 1961-62. Revised data on the 1961-62 August-May shipments of millfeeds based on claims submitted up to June 30, 1963 place the ten-month total at 455,714 tons. As with freight-assisted shipments of wheat, the greater portion of the millfeed shipments during the period under review went to destinations in Quebec and Ontario.

Provincial Distribution of Millfeed Shipments under the Freight Assistance Policy  
August-May 1962-63 and 1961-62

Province	1961-62		1962-63
	Preliminary 2/	Revised 1/	Preliminary 1/
- tons -			
Newfoundland.....	4,618	5,471	5,317
Prince Edward Island.....	7,250	7,771	6,150
Nova Scotia.....	30,367	32,178	26,789
New Brunswick.....	24,781	28,972	23,402
Quebec.....	211,201	219,783	189,753
Ontario.....	115,572	121,956	101,522
British Columbia.....	35,534	39,583	26,359
Totals.....	429,323	455,714	379,292

1/ Based on claims filed up to June 30, 1963.

2/ Based on claims filed up to June 30, 1962.



Monthly Exports of Canadian Wheat and Wheat Flour

Year and Month	Wheat in Bulk <u>1/</u>	Bagged Seed Wheat <u>2/</u>	Total Wheat	Wheat Flour <u>2/</u>	Total <u>3/</u> Wheat and Wheat Flour
- thousand bushels -					
<u>1960-61</u>					
August.....	23,908	127	24,034	2,867	26,901
September.....	26,742	232	26,974	2,694	29,668
October.....	21,172	304	21,476	3,727	25,203
November.....	23,224	570	23,794	4,198	27,992
December.....	20,222	883	21,105	3,320	24,426
January.....	16,408	773	17,181	2,104	19,285
February.....	20,517	1,043	21,560	2,404	23,964
March.....	23,377	1,934	25,312	3,088	28,399
April.....	31,395	599	31,994	3,009	35,003
May.....	42,190	135	42,325	3,166	45,491
June.....	35,532	12	35,544	2,499	38,043
July.....	26,265	4	26,269	2,607	28,876
Totals.....	310,952	6,616	317,568	35,682	353,249
<u>1961-62</u>					
August.....	35,625	89	35,714	3,123	38,837
September.....	28,966	242	29,209	2,786	31,995
October.....	32,910	86	32,996	2,391	35,386
November.....	40,823	377	41,200	3,150	44,351
December.....	19,966	392	20,359	2,643	23,002
January.....	17,534	458	17,992	2,304	20,295
February.....	23,739	433	24,173	2,546	26,719
March.....	20,482	574	21,056	2,968	24,023
April.....	24,981	539	25,520	2,389	27,909
May.....	35,150	77	35,227	2,486	37,713
June.....	23,559	5	23,564	2,456	26,020
July.....	19,016	44	19,060	2,711	21,772
Totals.....	322,752	3,317	326,069	31,953	358,022
<u>1962-63 <u>4/</u></u>					
August.....	21,944	160	22,105	2,670	24,775
September.....	25,040	228	25,268	2,939	28,207
October.....	29,705	20	29,725	2,451	32,176
November.....	33,309	103	33,412	2,158	35,570
December.....	20,949	340	21,289	1,771	23,059
January.....	21,486	520	22,006	2,234	24,240
February.....	18,779	590	19,370	1,420	20,789
March.....	19,246	1,088	20,334	1,939	22,273
April.....	28,916	1,316	30,232	2,441	32,673
May.....	35,355	68	35,423	2,827	38,250
June.....	24,512	1	24,513	2,693	27,206
Totals.....	279,241	4,434	283,675	25,543	309,218

1/ Export clearances including shipments to the United States compiled by the Statistics Branch, Board of Grain Commissioners for Canada. 2/ Compiled from Canadian Customs returns, 1960-61 and 1961-62 adjusted to remove effect of time lag in reporting. 3/ In terms of wheat equivalent. Wheat flour conversion rate: 2.3 bushels per cwt. 4/ Preliminary.

Exports of Canadian Wheat 1/ by Destination, June 1963 and 1962

Destination	Wheat	Durum	All Wheat	
	(Except Durum)	Wheat	June 1963	June 1962
COMMONWEALTH AND PREFERENTIAL COUNTRIES				
- bushels -				
<u>Western Europe</u>				
Britain.....	7,807,924	-	7,807,924	6,050,720
Ireland.....	269,285	-	269,285	283,982
Malta and Gozo.....	224,000	-	224,000	-
<u>Other Africa</u>				
Republic of South Africa.....	1,035,253	-	1,035,253	-
<u>Other Asia</u>				
Hong Kong.....	90,533	-	90,533	17,733
Pakistan.....	13,344	-	13,344	-
<u>Central America and Antilles</u>				
Barbados.....	40	-	40	-
Jamaica.....	1,194	-	1,194	399
Totals, Com. and Pref. Countries...	9,441,573	-	9,441,573	6,352,834
<u>OTHER COUNTRIES</u>				
<u>Western Europe</u>				
Austria.....	-	141,470	141,470	71,075
Belgium and Luxembourg.....	843,408	26,506	869,914	748,517
Denmark.....	11,424	-	11,424	-
Finland.....	355,480	-	355,480	602,733
France.....	24,453	410,667	435,120	-
Germany, Federal Republic.....	1,457,715	-	1,457,715	2,494,447
Italy.....	381,928	-	381,928	625,585
Netherlands.....	200,000	-	200,000	113,229
Norway.....	149,516	-	149,516	-
Sweden.....	-	-	-	12,320
Switzerland.....	73,727	35,299	109,026	2,384,585
<u>Eastern Europe</u>				
Albania.....	-	-	-	366,240
<u>Middle East</u>				
Israel.....	504,129	-	504,129	-
Saudi Arabia.....	-	-	-	152,297
<u>Other Africa</u>				
Mozambique.....	4,475	-	4,475	22,250
<u>Other Asia</u>				
Burma.....	-	-	-	21,620
China, Communist.....	5,169,896	-	5,169,896	6,364,231
Japan.....	3,556,420	-	3,556,420	1,932,597
Philippines.....	875,093	-	875,093	588,859
Taiwan.....	-	-	-	19,290
<u>Oceania</u>				
United States Oceania.....	35,915	-	35,915	-
<u>South America</u>				
Ecuador.....	38,583	-	38,583	93,333
Peru.....	153,440	-	153,440	-
Venezuela.....	568,922	-	568,922	370,160
<u>Central America and Antilles</u>				
Dominican Republic.....	-	-	-	201,161
Guatemala.....	23,333	-	23,333	16,568
<u>North America</u>				
<u>United States</u>				
for domestic use 2/.....	28,833	-	28,833	5,565
Totals, Other Countries.....	14,456,690	613,942	15,070,632	17,206,662
Sub-Totals, All Countries.....	23,898,263	613,942	24,512,205	23,559,496
Bagged seed 3/.....	-	-	508	4,951
Totals, All Countries.....	23,898,263	613,942	24,512,713	23,564,447

NOTE: See footnotes on page 20.



Cumulative Exports of Canadian Wheat 1/ by Destination

Destination	August 1962-June 1963			Total same period last year
	Wheat (Except Durum)	Durum Wheat	Total Wheat	
- bushels -				
COMMONWEALTH AND PREFERENTIAL COUNTRIES				
Western Europe				
Britain.....	71,367,270*	245,130	71,612,400*	68,616,413
Ireland.....	2,965,107	7,467	2,972,574	2,252,798
Malta and Gozo.....	1,094,987	-	1,094,987	1,237,867
Other Africa				
Nigeria.....	543,953	-	543,953	212,800
Republic of South Africa.....	7,475,911*	-	7,475,911*	-
Rhodesia and Nyasaland.....	8,244	-	8,244	74,667
Other Asia				
Hong Kong.....	521,360	-	521,360	579,226
India.....	703,612	-	703,612	3,541,390
Pakistan.....	361,664	-	361,664	1,856,325
Central America and Antilles				
Barbados.....	40	-	40	-
Jamaica.....	10,151	-	10,151	399
Totals, Com. and Pref. Countries...	85,052,299*	252,597	85,304,896*	78,371,885

OTHER COUNTRIES

Western Europe

Austria.....	871,919	682,385	1,554,304	1,626,021
Belgium and Luxembourg.....	8,739,428*	324,541*	9,063,969*	10,944,021
Denmark.....	22,624	-	22,624	11,200
Finland.....	1,681,491	-	1,681,491	2,456,002
France.....	203,157	5,547,733	5,750,890	1,035,969
Germany, Federal Republic.....	16,478,461*	9,926,391*	26,404,852*	43,174,245
Greece.....	-	10	10	-
Italy.....	4,668,754	-	4,668,754	3,878,033
Netherlands.....	4,416,541*	- *	4,416,541*	3,363,096
Norway.....	1,827,543	-	1,827,543	1,728,869
Sweden.....	150,266*	18,667	168,933*	12,320
Switzerland.....	962,965*	1,557,429*	2,520,394*	7,610,037

Eastern Europe

Albania.....	-	-	-	2,101,643
Czechoslovakia.....	4,393,895	-	4,393,895	-
Germany, East.....	-	-	-	8,040,229
Poland.....	14,183,656	-	14,183,656	12,293,711

Middle East

Israel.....	1,661,316	-	1,661,316	829,100
Saudi Arabia.....	565,820	-	565,820	516,043
U.A.R.-Egypt.....	-	-	-	451,733

Cumulative Exports of Canadian Wheat 1/ by Destination

Destination	August 1962-June 1963			Total same period last year
	Wheat (Except Durum)	Durum Wheat	Total Wheat	
- bushels -				
OTHER COUNTRIES (concluded)				
Other Africa				
Algeria.....	-	-	-	1,359,639
Congo-Leo.....	-	-	-	18,257
Katanga.....	9,186	-	9,186	-
Mozambique.....	439,561*	-	439,561*	658,559
Tunisia.....	-	-	-	189,905
Other Asia				
Burma.....	-	-	-	221,978
China, Communist.....	55,954,379	-	55,954,379	66,287,694
Japan.....	41,201,667	-	41,201,667	43,934,996
Philippines.....	5,928,409	-	5,928,409	3,416,236
Taiwan.....	115,701	-	115,701	134,277
Oceania				
United States Oceania.....	427,354	-	427,354	473,759
South America				
Colombia.....	-	-	-	264,550
Ecuador.....	1,141,308	-	1,141,308	1,112,945
Peru.....	535,174	-	535,174	-
Venezuela.....	6,355,268	-	6,355,268	3,916,007
Central America and Antilles				
Dominican Republic.....	959,778	-	959,778	1,490,978
El Salvador.....	579,677	-	579,677	296,548
Guatemala.....	255,000	-	255,000	36,568
North America				
United States for domestic use 2/.....	1,148,950	-	1,148,950	1,478,962
Totals, Other Countries.....	175,879,248*	18,057,156	193,936,404*	225,364,130
Sub-Totals, All Countries.....	260,931,547	18,309,753	279,241,300	303,736,015
Bagged seed 3/.....			4,433,614	3,272,309
Totals, All Countries.....	260,931,547	18,309,753	283,674,914	307,008,324

\* Revisions in May data have been taken into account in the August-June cumulative totals.

1/ Overseas clearances as reported by the Statistics Branch, Board of Grain Commissioners for Canada, for all countries except the United States. Excluding bagged seed.

2/ Compiled from returns of Canadian elevator licensees and shippers and advice from American grain correspondents.

3/ Compiled from Canadian Customs returns, 1961-62 adjusted for time lag.



Customs Exports of Canadian Wheat Flour by Countries of Consignment

Destination	March 1963 <u>1/</u>	June 1963 <u>2/</u>	August-June	
			1962-63 <u>2/</u>	1961-62 <u>1/</u>
- bushels -				
<u>COMMONWEALTH AND PREFERENTIAL COUNTRIES</u>				
<u>Western Europe</u>				
Britain.....	1,252,208	1,027,953	11,099,927	11,123,594
Gibraltar.....	-	-	30,139	64,290
<u>Middle East</u>				
Kuwait.....	9,446	2,063	64,605	24,730
Qatar.....	-	-	2,107	1,842
British Middle East, nes .....	-	2,061	23,699	32,434
<u>Other Africa</u>				
Ghana.....	106,016	298,687	1,804,449	1,884,404
Mauritius and Dependencies.....	-	-	460	-
Nigeria.....	4,347	12,347	692,517	1,594,613
Rhodesia and Nyasaland.....	5,573	2,902	37,122	26,779
Sierra Leone.....	64,349	60,900	543,532	463,988
Tanganyika.....	2,300	1,150	14,249	30,815
British Africa, nes .....	12,190	1,196	73,531	55,729
<u>Other Asia</u>				
Ceylon.....	-	-	-	384,008
Hong Kong.....	78,034	68,825	827,275	824,952
India.....	-	-	-	12,714
Malaya and Singapore.....	47,856	56,161	593,032	601,050
British East Indies, nes .....	660	844	12,057	9,471
<u>Oceania</u>				
Australia.....	-	-	55	-
Fiji.....	-	69	3,898	4,887
<u>South America</u>				
British Guiana.....	2,907	37	22,988	31,103
<u>Central America and Antilles</u>				
Bahamas.....	29,327	11,316	269,270	260,500
Bermuda.....	9,552	10,530	108,137	118,363
British Honduras.....	1,997	4,124	33,821	30,204
Barbados.....	13,451	19,414	148,244	124,453
Jamaica.....	128,273	85,562	1,234,283	1,348,382
Leeward and Windward Islands.....	93,631	64,076	895,958	943,306
Trinidad and Tobago.....	114,558	89,171	1,261,348	1,247,962
Totals, Com. and Pref. Countries...	1,976,675	1,819,388	19,796,703	21,244,573

OTHER COUNTRIES

<u>Western Europe</u>				
Belgium and Luxembourg.....	10,382	14,697	138,412	174,386
Denmark.....	1,150	987	10,217	2,760
France.....	-	-	-	345
Germany, Federal Republic.....	-	-	6,463	3,763
Greece.....	2,535	3,774	30,394	7,121
Iceland.....	1,774	-	14,573	24,438
Italy.....	-	-	6,265	18,966
Netherlands.....	563	-	2,546	1,939
Norway.....	-	-	115	2,622
Portugal.....	2,588	6,382	69,998	49,031
Sweden.....	-	-	1,265	1,518
Switzerland.....	-	-	7,935	30
<u>Middle East</u>				
Iran.....	-	1,046	4,333	2,429
Iraq.....	-	-	948	-
Israel.....	-	-	8,437	255

Customs Exports of Canadian Wheat Flour by Countries of Consignment

Destination	March 1963 <u>1/</u>	June 1963 <u>2/</u>	August-June	
			1962-63 <u>2/</u>	1961-62 <u>1/</u>
- bushels -				
<u>OTHER COUNTRIES (concluded)</u>				
<u>Middle East</u>				
Jordan.....	-	-	651	110,059
Lebanon.....	5,152	149,634	348,972	549,463
Saudi Arabia.....	-	-	6,679	966
Syria.....	738	-	5,529	2,266
U.A.R.-Egypt.....	-	60,278	99,240	171,994
<u>Other Africa</u>				
Angola.....	-	-	2,760	575
Cameroons.....	-	2,300	2,300	-
Congo-Leo. ....	2,933	3,450	82,598	161,694
French West Africa.....	-	-	23,442	22,096
Liberia.....	5,699	11,974	52,769	29,534
Mozambique.....	2,990	2,125	22,731	19,209
Portuguese Africa, nes .....	9,913	15,594	96,083	82,570
Togo.....	12,397	10,005	49,197	-
<u>Other Asia</u>				
Indonesia.....	-	152,821	152,885	390,368
Japan.....	8,388	70,525	480,835	1,008,582
Philippines.....	1,150	-	11,040	1,083,183
Portuguese India.....	-	-	-	67,944
Portuguese Asia.....	1,030	1,012	9,209	15,686
Thailand.....	31,643	47,628	338,576	324,245
Viet-Nam.....	-	-	44,576	-
<u>Oceania</u>				
French Oceania.....	-	-	1,725	886
United States Oceania.....	575	-	2,875	1,095
<u>South America</u>				
Chile.....	1,150	-	9,143	7,130
Colombia.....	-	-	-	2,588
Peru.....	3,910	4,945	39,031	20,546
Surinam.....	11,921	4,637	63,933	70,385
Venezuela.....	138	-	1,748	11,235
<u>Central America and Antilles</u>				
Costa Rica.....	98,565	105,793	829,486	736,731
Dominican Republic.....	-	11,040	123,579	202,308
El Salvador.....	2,530	6,643	81,248	181,783
French West Indies.....	-	-	2,840	2,139
Guatemala.....	10,474	690	47,513	77,335
Haiti.....	-	16,560	17,236	-
Honduras.....	11,702	6,440	61,806	89,829
Netherlands Antilles.....	19,828	21,372	234,510	188,851
Nicaragua.....	49,510	40,057	424,415	421,201
Panama.....	39,518	9,860	394,813	386,779
<u>North America</u>				
St. Pierre and Miquelon.....	226	1,410	13,175	10,145
United States.....	125,808	89,870	1,265,112	1,256,145
Totals, Other Countries.....	476,880	873,549	5,746,161	7,997,148
Totals, All Countries.....	2,453,555	2,692,937	25,542,864	29,241,721

nes - not elsewhere specified.

<sup>1/</sup> In terms of wheat equivalent. Adjusted to remove effect of time lag in the returns made by Customs. Conversion rate: 2.3 bushels per cwt. <sup>2/</sup> In terms of wheat equivalent. Preliminary and unadjusted for time lag. Conversion rate: 2.3 bushels per cwt.



# FARMERS' MARKETINGS OF WHEAT, PRAIRIE PROVINCES

(SPECIFIED PERIODS)

MILLION BUSHEL

450 —

400 —

350 —

300 —

250 —

200 —

150 —

100 —

50 —

0 —

MILLION BUSHEL

450 —

400 —

350 —

300 —

250 —

200 —

150 —

100 —

50 —

0 —

PEAK MARKETINGS  
1952-53 CROP YEAR  
536.0 MILLION BUSHEL

JULY

JUNE

MAY

APR.

M.

F.

JAN.

DEC.

NOV.

OCT.

SEPT.

AUG.

29 year average 10 year average  
1932-33 1951-52  
1960-61 1960-61

1957-58

1958-59

1959-60

1960-61

1961-62

1962-63

Agriculture Division D.B.S.

## EXPORTS OF CANADIAN WHEAT\* AND WHEAT FLOUR\*\*

(SPECIFIED PERIODS)

MILLION BUSHELS

400 —

350 —

300 —

250 —

200 —

150 —

100 —

50 —

0

MILLION BUSHELS

400 —

350 —

300 —

250 —

200 —

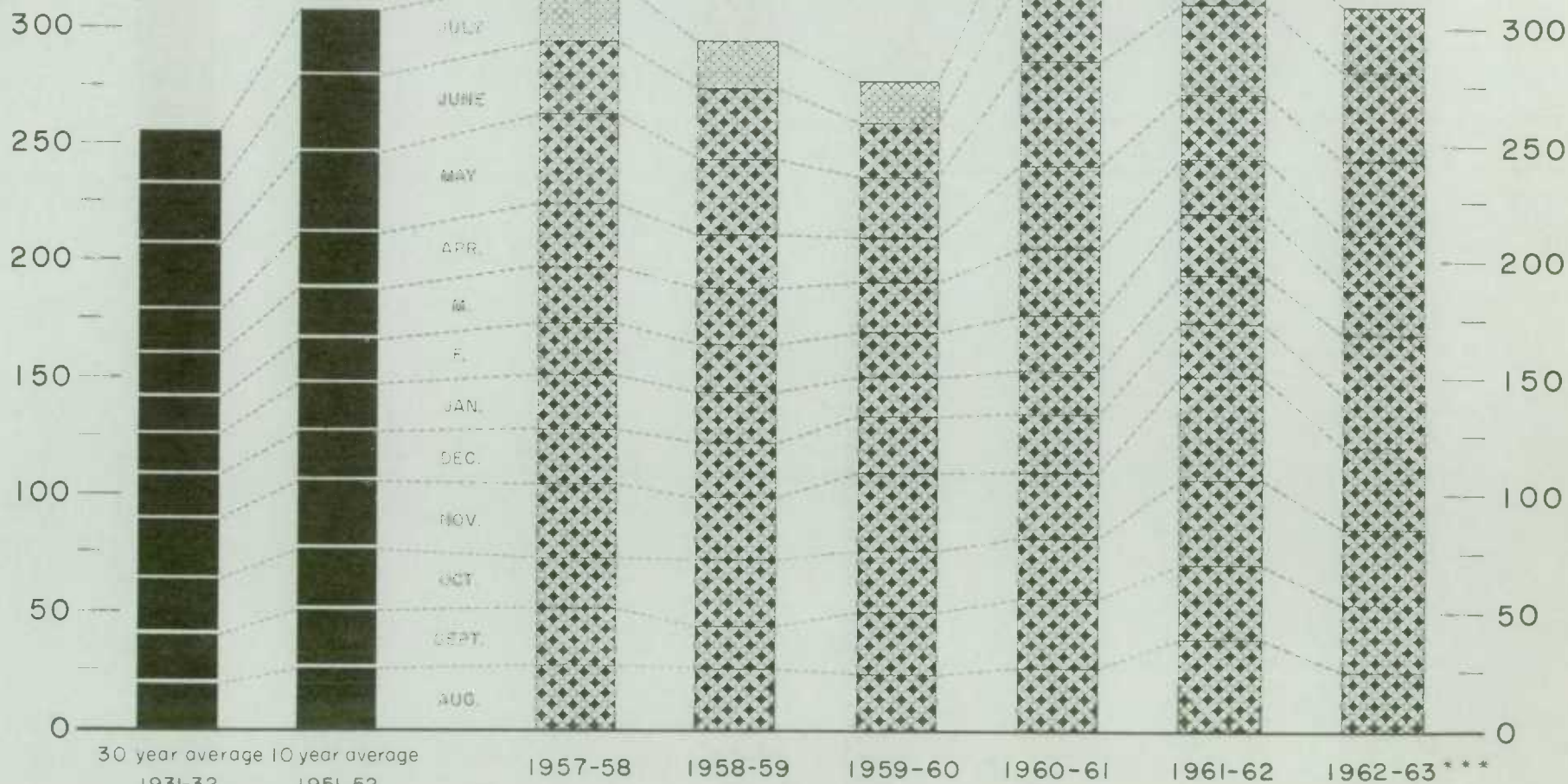
150 —

100 —

50 —

0

PEAK EXPORTS  
1928-29 CROP YEAR  
407.6 MILLION BUSHELS



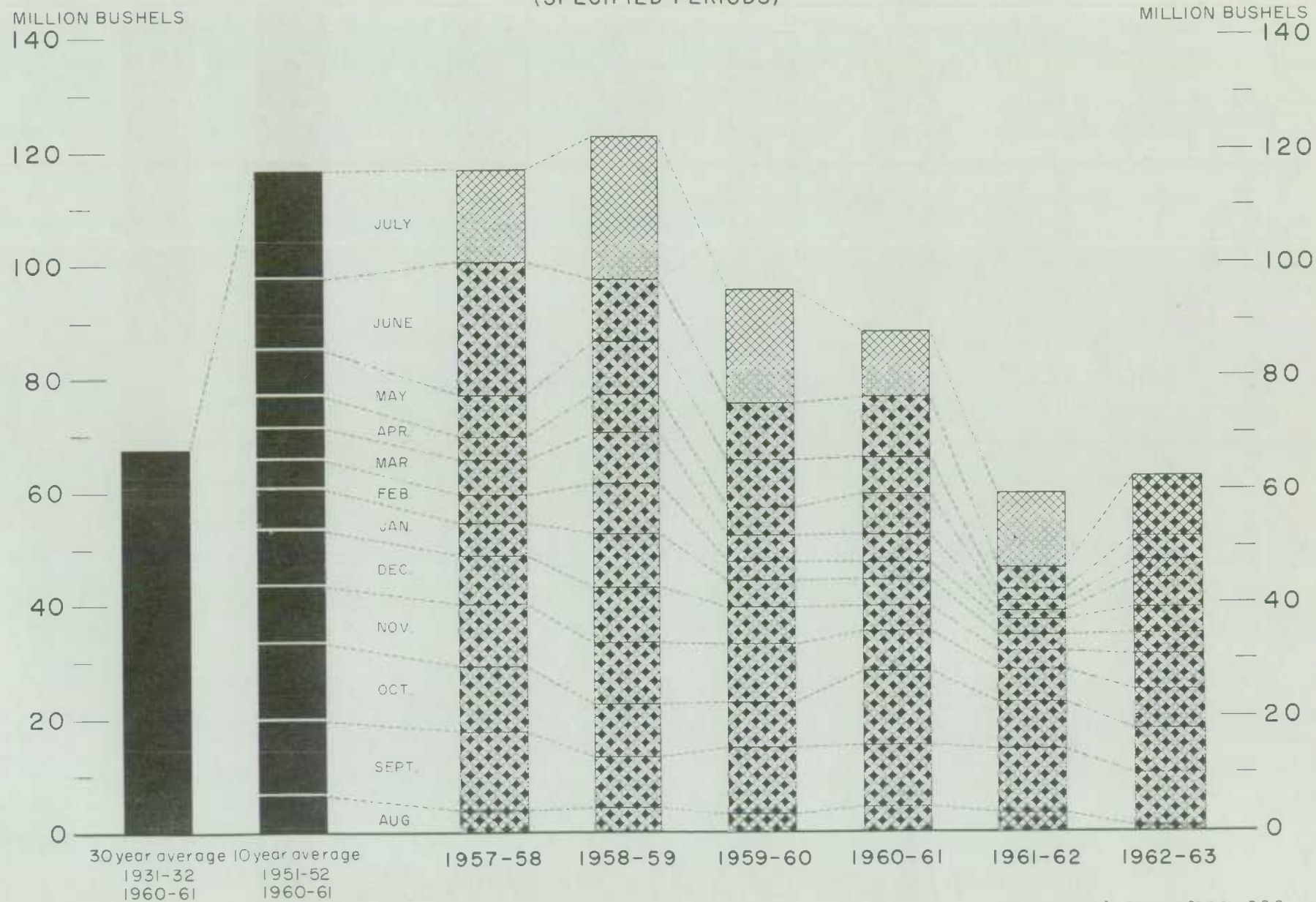
\*Beginning with 1956-57 includes bagged seed wheat.

\*\*In terms of wheat equivalent. \*\*\*Preliminary

Agriculture Division D.B.S.



# FARMERS' MARKETINGS OF BARLEY, PRAIRIE PROVINCES (SPECIFIED PERIODS)

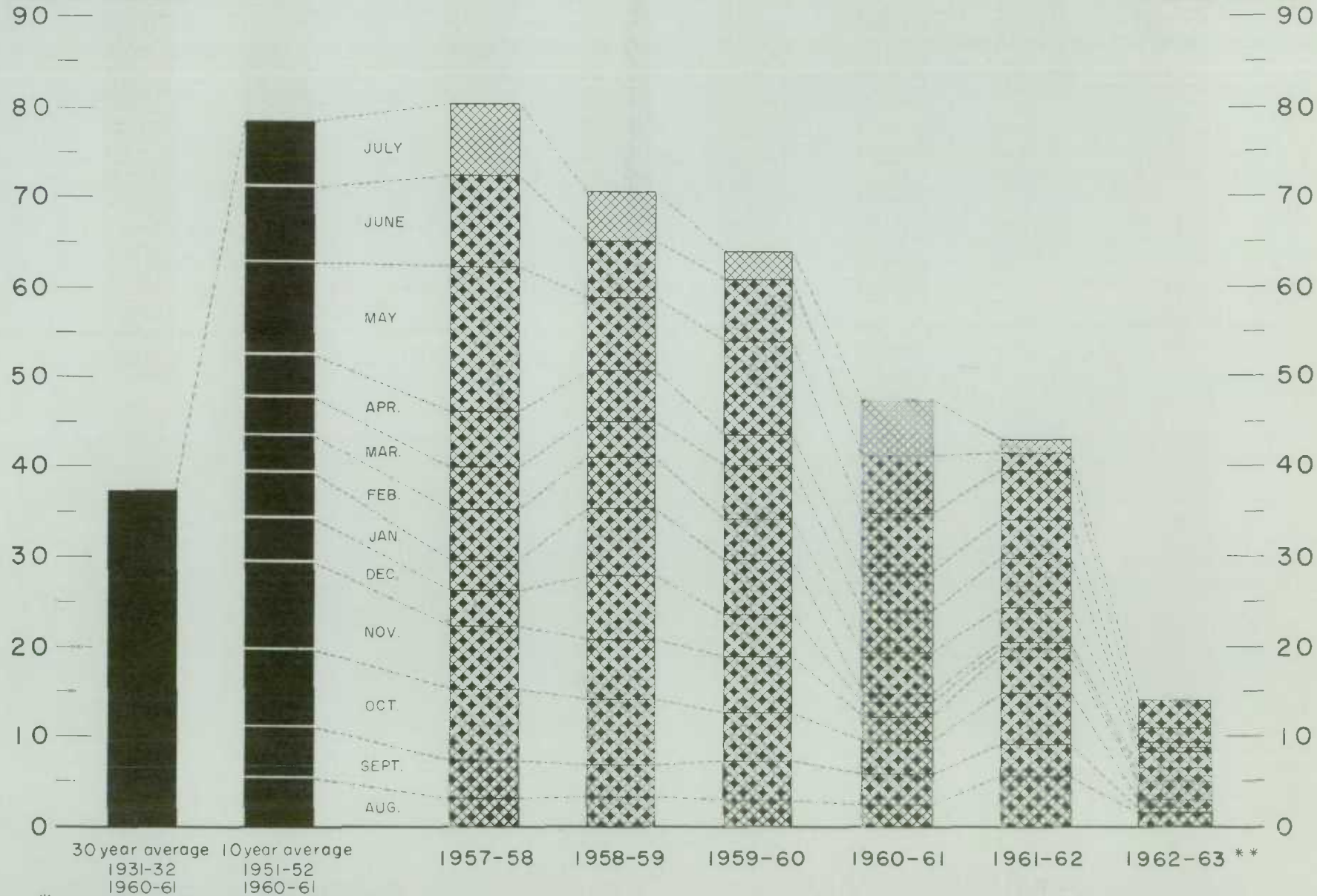


## EXPORTS OF CANADIAN BARLEY AND BARLEY PRODUCTS\*

(SPECIFIED PERIODS)

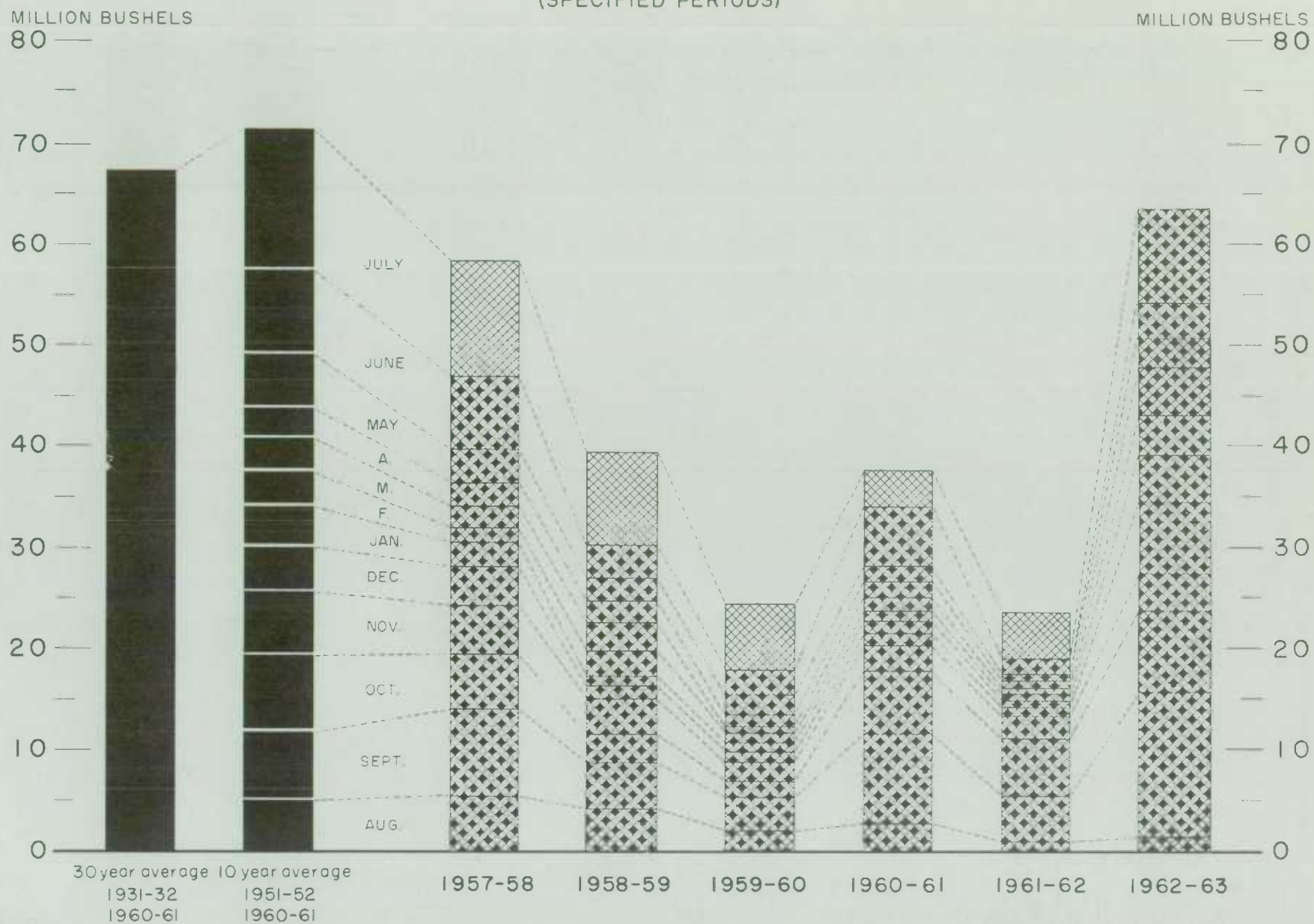
MILLION BUSHELS

MILLION BUSHELS



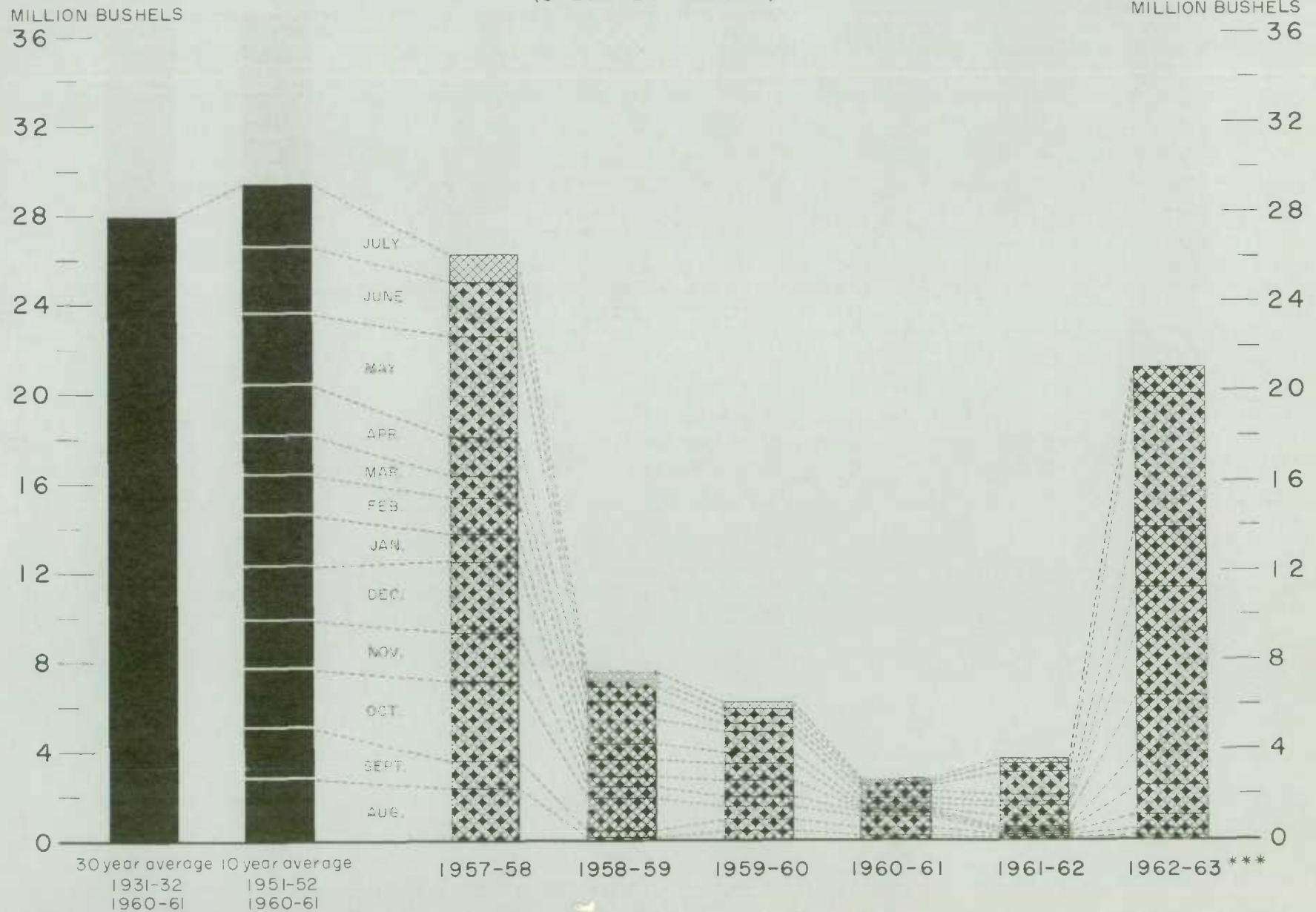


# FARMERS' MARKETINGS OF OATS, PRAIRIE PROVINCES (SPECIFIED PERIODS)



## EXPORTS OF CANADIAN OATS\* AND OAT PRODUCTS\*\*

(SPECIFIED PERIODS)



\*Beginning with 1960-61 includes relatively small quantity of bagged seed.

\*\*In terms of grain equivalent.

\*\*\*Preliminary.

Agriculture Division D.B.S.



# FARMERS' MARKETINGS OF CANADA'S FIVE MAJOR GRAINS\*, PRAIRIE PROVINCES

MILLION BUSHEL

650  
600  
550  
500  
450  
400  
350  
300  
250  
200  
150  
100  
50  
0

(SPECIFIED PERIODS)

MILLION BUSHEL

650  
600  
550  
500  
450  
400  
350  
300  
250  
200  
150  
100  
50  
0

JULY

JUNE

MAY

APR

MAR

FEB

JAN.

DEC

NOV

OCT.

SEPT.

AUG

30 year average 1931-32  
10 year average 1951-52  
1960-61 1960-61

1957-58

1958-59

1959-60

1960-61

1961-62

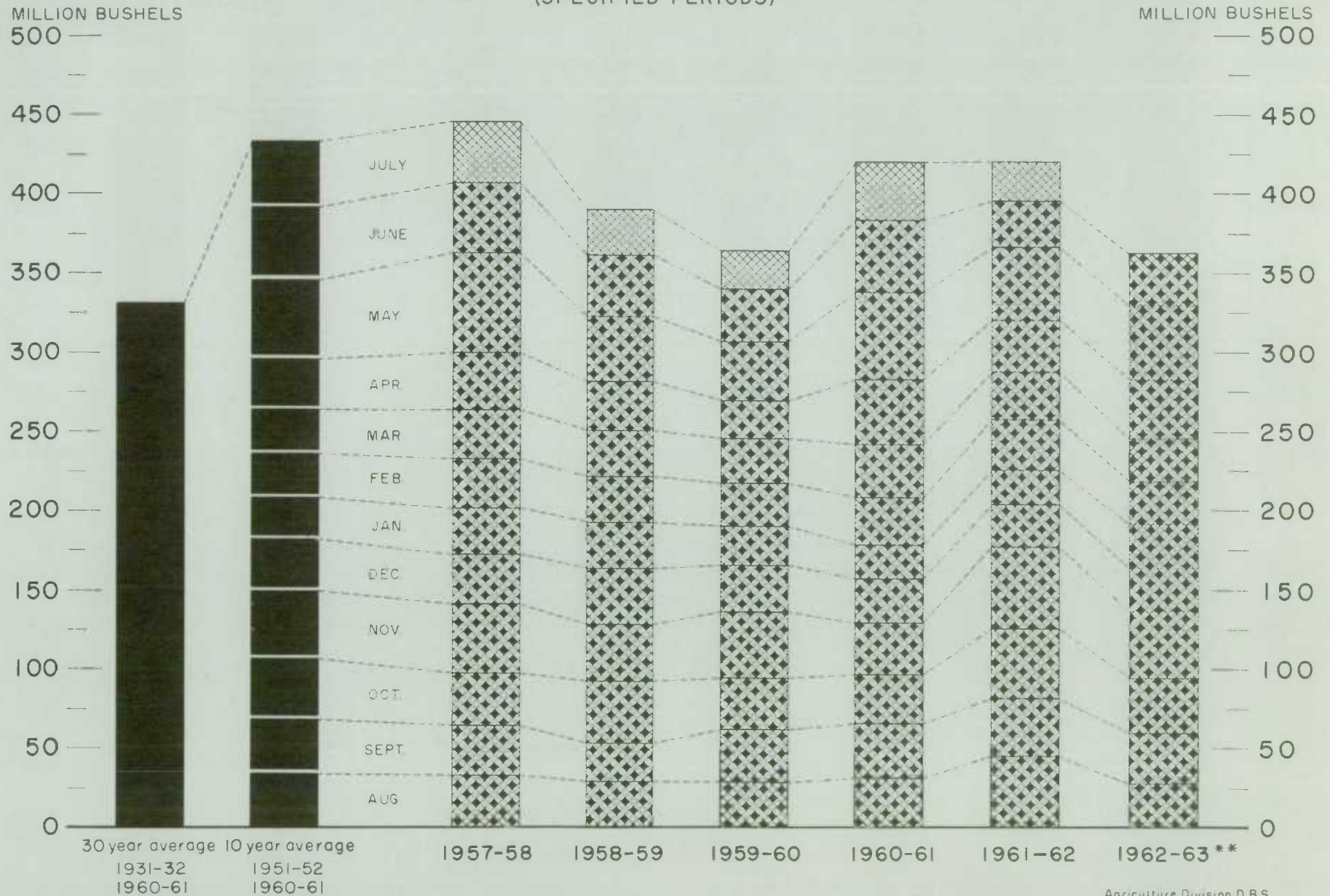
1962-63

\* Wheat, oats, barley, rye and flaxseed.

Agriculture Division D.B.S.

# EXPORTS OF CANADA'S FIVE MAJOR GRAINS AND PRODUCTS\*

(SPECIFIED PERIODS)



\* Wheat, bagged seed wheat, and wheat flour; oats, bagged seed oats, and oatmeal and rolled oats; barley, malt and pot and peck; rye and flaxseed  
 \*\* Preliminary.



Canadian Wheat Board Weekly Average Cash Wheat Prices  
Basis in Store Fort William-Port Arthur

Class and Grade	Week Ending			
	July 5	July 12	July 19	July 26
- cents and eighths per bushel -				
<u>Initial Payment to Producers</u>				
1 Northern.....	150	150	150	150
2 Northern.....	146	146	146	146
3 Northern.....	142	142	142	142
4 Northern.....	135	135	135	135
5 Wheat.....	118	118	118	118
6 Wheat.....	112	112	112	112
Feed Wheat.....	108	108	108	108
1 C.W. Garnet.....	135	135	135	135
2 C.W. Garnet.....	130	130	130	130
3 C.W. Garnet.....	125	125	125	125
1 Alberta Red Winter.....	134	134	134	134
2 Alberta Winter.....	129	139	129	129
1 C.W. Amber Durum.....	150	150	150	150
2 C.W. Amber Durum.....	146	146	146	146
3 C.W. Amber Durum.....	142	142	142	142
<u>International Wheat Agreement</u>				
<u>and Domestic Sales</u>				
1 Northern.....	195	194/5	194/7	194/7
2 Northern.....	194	193/5	193/7	193/7
3 Northern.....	191/4	191/5	191/7	191/7
4 Northern.....	184/4	184/5	184/2	183/3
5 Wheat.....	178/4	178/5	178/3	177/7
6 Wheat.....	173/4	173/5	173/3	172/7
Feed Wheat.....	170/4	170/5	170/3	169/7
1 C.W. Garnet.....	190/4	190/5	186/3	179/7
2 C.W. Garnet.....	188/4	188/5	184/3	177/7
3 C.W. Garnet.....	187/4	187/5	183/3	176/7
1 Alberta Red Winter.....	190/4	190/5	186/3	179/7
2 Alberta Winter.....	188/4	188/5	184/3	177/7
3 Alberta Winter.....	187/4	187/5	183/3	176/7
1 C.W. Amber Durum.....	232/4	232/5	232/7	232/7
2 C.W. Amber Durum.....	231/4	231/5	231/7	231/7
3 C.W. Amber Durum.....	223/4	223/5	223/7	223/7
<u>Export - Class 11</u>				
1 Northern.....	195	194/5	194/7	194/7
2 Northern.....	194	193/5	193/7	193/7
3 Northern.....	191/4	191/5	191/7	191/7
4 Northern.....	184/4	184/5	184/2	183/3
5 Wheat.....	178/4	178/5	178/3	177/7
6 Wheat.....	173/4	173/5	173/3	172/7
Feed Wheat.....	170/4	170/5	170/3	169/7
1 C.W. Garnet.....	190/4	190/5	186/3	179/7
2 C.W. Garnet.....	188/4	188/5	184/3	177/7
3 C.W. Garnet.....	187/4	187/5	183/3	176/7
1 C.W. Amber Durum.....	232/4	232/5	232/7	232/7
2 C.W. Amber Durum.....	231/4	231/5	231/7	231/7
3 C.W. Amber Durum.....	223/4	223/5	223/7	223/7

Canadian Wheat Board Weekly Average Cash Wheat Prices  
Basis in Store Vancouver

Class and Grade	Week Ending			
	July 5	July 12	July 19	July 26
- cents and eighths per bushel -				
<u>Initial Payment to Producers</u>				
1 Northern.....	150	150	150	150
2 Northern.....	146	146	146	146
3 Northern.....	142	142	142	142
4 Northern.....	135	135	135	135
5 Wheat.....	118	118	118	118
6 Wheat.....	112	112	112	112
Feed Wheat.....	108	108	108	108
1 C.W. Garnet.....	135	135	135	135
2 C.W. Garnet.....	130	130	130	130
3 C.W. Garnet.....	125	125	125	125
1 Alberta Red Winter.....	134	134	134	134
2 Alberta Winter.....	129	129	129	129
1 C.W. Amber Durum.....	150	150	150	150
2 C.W. Amber Durum.....	146	146	146	146
3 C.W. Amber Durum.....	142	142	142	142
<u>International Wheat Agreement</u>				
<u>and Domestic Sales</u>				
1 Northern.....	201/2	200/7	201/1	201/1
2 Northern.....	199/2	198/7	199/1	199/1
3 Northern.....	196/6	196/7	197/1	197/1
4 Northern.....	188/6	188/7	189/1	189/1
5 Wheat.....	180/6	180/7	180/2	179/1
6 Wheat.....	178/6	178/7	178/2	177/1
Feed Wheat.....	175/6	175/7	175/2	174/1
1 C.W. Garnet.....	191/6	191/7	187/5	181/1
2 C.W. Garnet.....	189/6	189/7	185/5	179/1
3 C.W. Garnet.....	188/6	188/7	184/5	178/1
1 Alberta Red Winter.....	191/6	191/7	187/5	181/1
2 Alberta Winter.....	189/6	189/7	185/5	179/1
3 Alberta Winter.....	188/6	188/7	184/5	178/1
<u>Export - Class 11</u>				
1 Northern.....	201/2	200/7	201/1	201/1
2 Northern.....	199/2	198/7	199/1	199/1
3 Northern.....	196/6	196/7	197/1	197/1
4 Northern.....	188/6	188/7	189/1	189/1
5 Wheat.....	180/6	180/7	180/2	179/1
6 Wheat.....	178/6	178/7	178/2	177/1
Feed Wheat.....	175/6	175/7	175/2	174/1
1 C.W. Garnet.....	191/6	191/7	187/5	181/1
2 C.W. Garnet.....	189/6	189/7	185/5	179/1
3 C.W. Garnet.....	188/6	188/7	184/5	178/1
1 Alberta Red Winter.....	191/6	191/7	187/5	181/1
2 Alberta Winter.....	189/6	189/7	185/5	179/1
3 Alberta Winter.....	188/6	188/7	184/5	178/1



CANADIAN FLOUR MILLING SITUATION

Production Wheat flour production by Canadian mills during June 1963 amounted to 3,029,000 hundredweight, indicating a decrease of 10 per cent from the May 1963 output of 3,357,000 hundredweight, 17 per cent lower than the June 1962 figure of 3,631,000 hundredweight and 10 per cent less than the ten-year (1953-62) average production for the month of June of 3,383,000 hundredweight. Mills reporting operations during June 1963 had a total rated capacity of 165,000 hundredweight per 24-hour day and on the basis of a 25-day working period 73.4 per cent of this rated capacity was effective.

Wheat milled for flour during June 1963 amounted to 6,775,000 bushels, 9 per cent below the 7,406,000 bushels milled during the preceding month, and 16 per cent lower than the 8,052,000 bushels milled during June 1962. Of the wheat milled for flour during June 1963 some 6,079,000 bushels were Western Canadian spring wheat (other than Durum) while the remainder consisted of Ontario winter wheat (527,000 bushels); Durum (110,000 bushels); and all other (60,000 bushels).

Exports According to preliminary Customs returns, exports of Canadian wheat flour during June 1963 amounted to 1,171,000 hundredweight (some 2,693,000 bushels of wheat equivalent) indicating a decrease of 5 per cent from the 2,827,000 bushels exported during the previous month, but 10 per cent greater than the adjusted June 1962 total of 2,456,000 bushels. Flour shipments during the month went to fifty-one countries with exports to Britain amounting to 1,028,000 bushels of wheat equivalent and accounting for 38 per cent of the June 1963 total. Other principal markets for Canadian wheat flour during the month, with shipments in thousands of bushels of wheat equivalent were as follows: Ghana, 299; Indonesia, 153; Lebanon, 150; Costa Rica, 106; United States, 90; Trinidad and Tobago, 89; and Jamaica 86.

Wheat Milled for Flour, and Production and Exports of Wheat Flour, Canada

Crop Year	Wheat Milled for Flour bushels	Wheat Flour	
		Production	Exports <sup>1/</sup>
		- cwt. -	
1935-36--1939-40 average.....	67,845,114	29,405,451	9,603,941
1940-41--1944-45 average.....	99,704,638	43,908,245	23,699,546
1945-46--1949-50 average.....	107,330,372	47,011,540	25,819,721
1950-51--1954-55 average.....	100,446,328	43,847,894	21,812,041
1955-56.....	91,770,025	40,148,750	17,391,300
1956-57.....	85,149,373	37,623,446	14,582,431
1957-58.....	92,288,897	40,819,678	17,556,886
1958-59.....	90,142,957	39,826,493	16,141,267
1959-60.....	91,389,801	40,344,578	16,073,893
1960-61.....	89,731,155	39,914,644	15,513,836
1961-62.....	88,240,580	39,539,651	13,892,676
1962-63 <sup>2/</sup>			
August.....	6,576,578	2,952,879	1,160,900
September.....	6,346,386	2,863,042	1,277,841
October.....	7,256,425	3,265,003	1,065,714
November.....	6,815,604	3,064,494	938,473
December.....	5,547,290	2,499,301	769,876
January.....	6,197,875	2,793,497	971,159
February.....	6,250,139	2,815,286	617,296
March.....	6,547,894	2,953,530	843,161
April.....	6,726,603	3,045,159	1,061,287
May.....	7,406,415	3,357,198	1,229,044
June.....	6,774,896	3,028,851	1,170,842
Totals.....	72,446,105	32,638,240	11,105,593
Same months 1961-62 <sup>3/</sup> .....	79,959,716	35,802,860	12,713,792

<sup>1/</sup> Based on Customs returns. Exports for the crop years 1945-46--1961-62 revised to remove effect of time lag in the returns made by Customs. <sup>2/</sup> Subject to revision. <sup>3/</sup> Revised.

UNITED STATES SITUATION

Disappearance of  
United States Wheat  
Declines 7 Per Cent  
from 1961-62 Level

Total disappearance (exports plus domestic use) of United States wheat during the crop year (July-June) 1962-63 amounted to 1,231 million bushels and represented a decline of 7 per cent from the comparable 1961-62 total of 1,330 million. The decrease in total disappearance reflected a substantial drop in exports from the 1961-62 record level as well as a reduction in domestic requirements. Preliminary data indicate that the 1962-63 exports of wheat, wheat flour and products in terms of grain equivalent amounted to 636 million bushels and represented a decline of 11 per cent from the 1961-62 peak of 718 million. Domestic requirements in the crop year recently completed decreased from an estimated 612 million bushels in 1961-62 to 595 million in 1962-63.

Although total disappearance into domestic and export channels in 1962-63 was at a lower level than in the preceding year this volume still exceeded the 1962 production by a considerable margin, and as a result, year-end stocks declined from 1,322 million at June 30, 1962 to 1,189 in 1963.

United States Wheat Supplies

Item	1961-62 <u>1/</u>	1962-63
	- million bushels -	
Carryover at beginning of crop year (July 1).....	1,411.2	1,321.9 <u>1/</u>
Production.....	1,234.7	1,092.6 <u>1/</u>
Total estimated domestic supplies.....	2,645.9	2,414.4
Imports of wheat and wheat flour in terms of wheat for domestic use, July-June.....	5.7	6.1
Total estimated supplies.....	2,651.7	2,420.6
Less estimated domestic requirements for crop year <u>2/</u>	611.6	595.4 <u>1/</u>
Available for export and for carryover.....	2,040.1	1,825.1
Deduct:		
Exports of wheat as grain, July-June.....	608.1	535.4
Exports of wheat flour and products in terms of wheat, July-June <u>3/</u> .....	110.1	100.4
Total exports of wheat, wheat flour and products <u>4/</u>	718.2	635.7
Balance on July 1 for export and for carryover.....	1,321.9	1,189.4

1/ Revised. 2/ Includes shipments to United States Territories and wheat for military food use at home and abroad. 3/ Flour exports exclude "Milled in bond". 4/ These figures now include all shipments under relief programs which formerly were not available from Census data.



Stocks of Wheat  
in All Positions  
July 1, 1963

On July 24, the United States Department of Agriculture reported that all wheat stocks in storage on July 1 totalled 1,189 million bushels - 10 per cent below a year earlier and marks the second year of decline from the record high carryover of wheat on July 1, 1961. Stores of wheat on July 1 were 9 per cent greater than the 1962 production of wheat. Off-farm wheat stocks were 1,094 million bushels and those stored on farms amounted to about 95 million. Wheat owned by the Government made up more than 80 per cent of the carryover stocks. Disappearance of wheat from all storage positions during the April-June quarter was 316 million bushels, slightly less than the record quarterly disappearance of a year earlier.

Durum wheat stocks of 40.8 million bushels on July 1 this year compare with 5.2 million a year earlier. Carryover stocks a year ago were unusually low following a drought and low production in the durum area during the 1961 growing season. Disappearance of durum in the April-June quarter was 18.1 million bushels.

U.S. Wheat Stocks by Positions, July 1, 1963 with Comparisons

Position	July 1 Average 1957-61	July 1 1962	April 1 1963	July 1 1963
- thousand bushels -				
<u>All Wheat</u>				
On Farms <u>1/</u> .....	91,780	102,308	195,917	95,713
Commodity Credit Corp. <u>2/</u> .....	76,871	59,547	46,903	34,779
Mills, Elev. & Whses. <u>1/ 3/</u> ...	993,342	1,160,015	1,262,190	1,058,914
Totals.....	1,161,993	1,321,870	1,505,010	1,189,406
<u>Durum Wheat</u> <u>4/</u>				
On Farms <u>1/</u> .....	-	1,757	40,748	18,012
Mills, Elev. & Whses. <u>1/ 3/</u> ...	-	3,411	18,162	22,780
Totals.....	-	5,168	58,910	40,792

1/ Estimates of the Crop Reporting Board.

2/ Owned by C.C.C. and stored in bins or other storages owned or controlled by C.C.C.; other C.C.C.-owned grain is included in the estimates by positions.

3/ All off-farm storages not otherwise designated, including flour mills, terminal elevators, and processing plants.

4/ Totals included in all wheat.

Flour  
Production

The Bureau of the Census, Department of Commerce estimated wheat flour production in the United States in June 1963, at 20,421,000 hundredweight, an average of 1,021,000 hundredweight per working day. This compared with an average output per working day of 1,025,000 hundredweight in May 1963 and 958,000 hundredweight in June 1962. Wheat flour mills in June operated at 93.6 per cent of capacity compared with 94.0 per cent and 86.9 per cent, respectively, for the previous month and the same month a year ago. Flour mills in June ground 46,520,000 bushels of wheat compared with 51,105,000 bushels during the previous month. Wheat offal output during June amounted to 377,287 tons.

1963 Wheat Crop  
Forecast at 1,111  
Million Bushels

In a report released on July 10, the Crop Reporting Board of the United States Department of Agriculture stated in part that production of all wheat is forecast at 1,111 million bushels, 2 per cent more than the 1962 crop but 9 per cent less than average. The indicated yield of 25.0 bushels per harvested acre is one-tenth of a bushel less than last year's yield. Winter wheat yield is above last year but spring wheat yields are expected to be lower.

Total acreage of all wheat for harvest as grain is estimated to be 44.5 million acres, 2 per cent above last year but 12 per cent below the 1957-61 average. The all wheat national allotment is 55 million acres for the 1963 crop. There is no mandatory reduction in allotted acres as was the case with the 1962 crop. The 1963 program permits growers to voluntarily divert a minimum of 20 per cent of the acreage allotment or small farm acreage base up to a maximum of 50 per cent. A total of 7.8 million acres was enrolled in the 1963 program as intended for diversion.

The winter wheat crop is now expected to be 875 million bushels, 7 per cent more than last year but 12 per cent below average. By the first of July one of the earliest harvests of record had progressed northward to central Nebraska, Illinois, Indiana, and Ohio. Texas and Oklahoma harvests were completed a week to ten days earlier than usual. Combining of wheat was coming to a close in Kansas by July 1 and Colorado harvest was over half completed. Better than expected harvest returns in eastern United States, near record prospects in the Northwest, and higher yields in Kansas and Nebraska boosted the wheat production forecast above the June 1 level. The yield per acre, estimated at 25.9 bushels, is a half-bushel higher than last year and above average.

The acreage seeded for the 1963 crop of winter wheat was 42.1 million acres. Acreage to be harvested for grain was estimated at 33.8 million acres, 1 per cent more than in 1962. Abandonment and diversion to uses other than grain accounted for 19.6 per cent of the seeded acreage. This would be the largest abandonment and diversion since 1956. Abandonment was heavy in the Southern plains where winter injured wheat fields were further subjected to severe spring drought and, in some areas, serious insect injury. Heaviest acreage loss centered in southeastern Colorado, the Panhandle of Texas and Oklahoma and southwestern Kansas.

The durum wheat production forecast of 43.7 million bushels is 39 per cent less than last year's large crop but 59 per cent above the average. Yield per harvested acre, forecast at 22.0 bushels, is the third highest of record. The crop outlook is excellent except in north central Montana where persistent drought limited production prospects. Some acreage was drowned out in Canadian Border areas of North Dakota, the Red River Valley and northeastern South Dakota. The drowned out acreage is not extensive and, generally, abandonment is expected to be about average. Crop development this year was more advanced by July 1 than last year's late crop but was about the same as usual. Less than half the acreage was headed in the main durum area. The acreage for harvest in 1963 is expected to be 2.0 million acres, compared with 2.4 million acres last year and the average of 1.5 million. North Dakota, the leading durum State, expects to have the largest harvested acreage, with the exception of last year, since 1959. South Dakota's durum acreage is the smallest since 1951. Acreage is unchanged from 1962 in Minnesota but is down more than a third in Montana.

Production of spring wheat other than durum is forecast at 192 million bushels, 6 per cent smaller than the 1962 crop and 4 per cent below average. Present yield prospects are 22.1 bushels per harvested acre and if realized would be the third highest yield of record.



U.S. Wheat and Flour  
Exports make a Record  
in April 1963

U.S. wheat and flour (grain equivalent) exports at 77 million bushels during April 1963 topped the previous record of 74 million bushels exported in October 1961. Present indications (based on wheat inspections for export and estimated flour exports) are that May exports were even larger. Although wheat exports during the last quarter may be much larger than previous months, total exports for the year ending June 30, 1963 are expected to be about 75 million bushels below the record of the 608 million exported in 1961-62. Wheat and flour exports in total are expected to be about 630 million bushels, down about 90 million from 1961-62.

Wheat and flour (in grain equivalent) exports from July 1962 through April 1963 totaled 501 million bushels, compared with 594 million during the first 10 months of the previous year. Areawide, the largest reduction was the result of smaller shipments of both wheat and flour to the Common Market countries and other European areas. Exports to the Western Hemisphere and African countries were also down. In contrast, shipments to Asia were much larger, as a result of increased shipments of wheat to India and Pakistan.

Table A shows country of destination for wheat and flour during July-April 1962-63, compared with the same period in 1961-62. Shipments of wheat and flour to Canada in this table were mostly for transshipment to other countries.

Table B shows the quantities of U.S. wheat inspected for export from Canadian ports and total exports from Table A adjusted to include inspections during July-April 1961-62 and July-April 1962-63.

Table A. United States Exports of Wheat and Flour by Country of Destination  
July-April 1961-62 and 1962-63

Destination	July-April 1961-62			July-April 1962-63		
	Wheat	Flour <u>1</u>	Total	Wheat	Flour <u>1</u>	Total
- thousand bushels -						
<u>Western Hemisphere</u>						
Canada <u>2</u> /.....	9,844	151	9,995	9,250	148	9,398
Central America.....	2,789	2,379	5,168	2,843	2,247	5,090
Trinidad and Tobago.....	11	1,266	1,277	20	1,227	1,247
Haiti.....	1,760	58	1,818	1,087	70	1,157
Bolivia.....	196	2,499	2,695	610	2,570	3,180
Brazil.....	40,104	205	40,309	43,050	397	43,447
Chile.....	6,937	1,392	8,329	5,760	910	6,670
Colombia.....	3,445	867	4,312	3,467	629	4,096
Paraguay.....	2,737	59	2,796	919	80	999
Peru.....	6,621	411	7,032	4,108	287	4,395
Venezuela.....	9,493	103	9,596	3,876	130	4,006
Others.....	379	3,096	3,475	1,081	3,736	4,817
Totals.....	84,316	12,486	96,802	76,071	12,431	88,502

Table A. United States Exports of Wheat and Flour by Country of Destination  
July-April 1961-62 and 1962-63

Destination	July-April 1961-62			July-April 1962-63		
	Wheat	Flour <u>1/</u>	Total	Wheat	Flour <u>1/</u>	Total
- thousand bushels -						
<u>Europe</u>						
EEC						
Belgium-Luxembourg...	5,169	2	5,171	2,509	10	2,519
France.....	3,118	<u>3/</u>	3,118	1,220	130	1,350
Germany, West.....	13,094	157	13,251	6,278	6	6,284
Italy.....	13,581	4,921	18,502	1,240	3,877	5,117
Netherlands.....	18,689	2,870	21,559	7,727	973	8,700
EEC sub-totals.....	53,651	7,950	61,601	18,974	4,996	23,970
Greece.....	1,986	1,681	3,667	794	1,571	2,365
Norway.....	3,715	9	3,724	755	21	776
Poland.....	15,666	868	16,534	7,535	720	8,255
Portugal.....	7,978	460	8,438	1,441	545	1,986
Spain.....	21,446	448	21,894	-	14	14
Switzerland.....	5,219	<u>3/</u>	5,219	2,590	<u>3/</u>	2,590
United Kingdom.....	12,824	2,721	15,545	2,647	276	2,923
Yugoslavia.....	29,095	2,215	31,310	24,623	1,445	26,068
Others.....	1,671	852	2,523	1,832	350	2,182
Totals.....	153,251	17,204	170,455	61,191	9,938	71,129
<u>Asia</u>						
Ceylon.....	-	2,929	2,929	-	3,584	3,584
India.....	74,197	684	74,881	107,289	359	107,648
Indonesia.....	-	2,771	2,771	5	328	333
Iran.....	2,511	579	3,090	4,665	1,777	6,442
Israel.....	7,427	156	7,583	8,081	108	8,189
Japan.....	25,629	2,233	27,862	27,304	2,712	30,016
Jordan.....	8	2,874	2,882	1,820	2,692	4,512
Korea.....	8,889	805	9,694	19,823	804	20,627
Lebanon.....	1	1,180	1,181	-	1,086	1,086
Pakistan.....	23,930	630	24,560	45,138	870	46,008
Philippines.....	7,358	898	8,256	6,102	562	6,664
Saudi Arabia.....	78	1,858	1,936	7	3,157	3,164
Syria.....	3,417	3,210	6,627	-	-	-
Taiwan.....	10,606	999	11,605	8,629	1,483	10,112
Turkey.....	39,349	218	39,567	8,494	472	8,966
Vietnam, Laos and Cambodia.....	118	2,494	2,612	359	2,852	3,211
Others.....	1,412	2,328	3,740	735	2,329	3,064
Totals.....	204,930	26,846	231,776	238,451	25,175	263,626



Table A. United States Exports of Wheat and Flour by Country of Destination  
July-April 1961-62 and 1962-63

Destination	July-April 1961-62			July-April 1962-63		
	Wheat	Flour <sup>1/</sup>	Total	Wheat	Flour <sup>1/</sup>	Total
- thousand bushels -						
<b>Africa</b>						
Algeria.....	9,120	422	9,542	6,715	2,550	9,265
British East Africa.....	93	70	163	1,268	57	1,325
Congo (Leopoldville)....	-	1,890	1,890	35	1,854	1,889
Egypt.....	22,538	27,468	50,006	21,356	23,800	45,156
Morocco.....	12,974	945	13,919	2,097	1,913	4,010
Nigeria.....	-	1,564	1,564	1,085	211	1,296
Sudan.....	-	203	203	1,143	615	1,758
Tunisia.....	13,128	138	13,266	8,012	146	8,158
Others.....	2,044	1,948	3,992	3,304	1,513	4,817
Totals.....	59,897	34,648	94,545	45,015	32,659	77,674
Oceania.....	-	35	35	-	47	47
Totals, All Countries <sup>4/</sup> .....	502,394	91,219	593,613	420,728	80,250	500,978

<sup>1/</sup> Grain equivalent. <sup>2/</sup> The bulk of exports to Canada are for transshipment to other destinations - see Table B. <sup>3/</sup> Less than 500 bushels. <sup>4/</sup> Includes shipments for relief or charity.

Table B. United States Exports of Wheat and Flour as Adjusted for Transshipment  
Through Canadian Ports, July-April 1961-62 and 1962-63

Destination	July-April 1961-62		July-April 1962-63	
	Wheat in- spected for export from Canadian ports	Adjusted totals for listed countries	Wheat in- spected for export from Canadian ports	Adjusted totals for listed countries
- thousand bushels -				
<b>EEC</b>				
Belgium-Luxembourg.....	649	5,820	221	2,740
France.....	2,165	5,283	1,495	2,845
Germany, West.....	478	13,729	827	7,111
Italy.....	-	18,502	-	5,117
Netherlands.....	3,361	24,920	1,993	10,693
Totals.....	6,653	68,254	4,536	28,506
United Kingdom.....	1,050	16,595	1,215	4,138
Portugal.....	-	8,438	981	2,967
Spain.....	1,125	23,019	-	14
Yugoslavia.....	-	31,310	2,958	29,026
Turkey.....	1,456	41,023	-	8,966
Algeria.....	2,401	11,943	-	9,265
Egypt.....	938	50,944	-	45,156
Tunisia.....	92	13,358	-	8,158
Totals <sup>1/</sup> .....	13,715	264,884	9,690	136,196

<sup>1/</sup> Excludes 126,000 bushels inspected for export to unspecified areas during July-April 1961-62 and 840,000 bushels during July-April 1962-63.

Cash Wheat Prices on the Kansas City and Minneapolis Markets

No. 2 Hard Winter, Kansas City		No. 1 Northern Spring, Minneapolis	
Date	Price	Date	Price
- cents per bushel -		- cents per bushel -	
July 1, 1963.....	198 1/2 - 212 1/2	July 1, 1963.....	231 1/8 - 233 1/8
2 .....	199 1/4 - 208 1/4	2 .....	227 1/2 - 229 1/2
3 .....	199 - 209 3/4	3 .....	227 1/2 - 229 1/2
4 .....	Independence Day	4 .....	Independence Day
5 .....	198 1/2 - 211	5 .....	226 7/8 - 228 7/8
8 .....	197 3/4 - 208	8 .....	226 1/2 - 228 1/2
9 .....	196 1/2 - 208 3/4	9 .....	225 1/2 - 227 1/2
10 .....	194 3/4 - 206	10 .....	224 1/4 - 226 1/4
11 .....	195 1/4 - 203 1/4	11 .....	223 3/4 - 225 3/4
12 .....	196 1/4 - 198 1/4	12 .....	223 3/8 - 225 3/8
15 .....	195 3/4 - 210	15 .....	222 3/4 - 224 3/4
16 .....	199 - 201 3/4	16 .....	222 3/8 - 224 3/8
17 .....	195 - 200 1/2	17 .....	222 7/8 - 224 7/8
18 .....	195 1/4 - 197 1/4	18 .....	222 1/2 - 224 1/2
19 .....	194 - 202 3/4	19 .....	222 1/4 - 224 1/2
22 .....	194 1/2 - 196	22 .....	218 - 223
23 .....	192 1/2 - 230 <sup>1/</sup>	23 .....	217 1/8 - 222 1/8
24 .....	198 1/2 - 199 1/2	24 .....	213 1/4 - 222 1/4
25 .....	192 1/2 - 195	25 .....	212 - 222
26 .....	191 1/4 - 221 3/4	26 .....	211 5/8 - 221 5/8
29 .....	196 1/2	29 .....	211 3/8 - 219 3/8
30 .....	195 1/2 - 204 1/2	30 .....	209 - 216
31 .....	197 1/4	31 .....	209 3/4 - 216 3/4

<sup>1/</sup> Nominal.

Chicago Wheat Futures, High Points of Closing

Date	July	September	December	March	May	July	September
- cents and eighths per bushel -							
July 1, 1963.....	185/3	187/3	193/2	196/3	191/2	166	167
2 .....	185/5	187/4	193/5	195/6	190/6	167	169
3 .....	184/6	186/7	193	195/4	190/4	167	170
4 .....	Independence Day						
5 .....	183/5	185/3	191/6	194/2	190	167/2	170
8 .....	183/3	185	191/1	193/6	189/6	166	169/7
9 .....	183	184/6	190/6	193/4	188/6	165/4	167/2
10 .....	182/1	184/1	190	192/5	187/2	162/4	164
11 .....	180	181/7	187/7	190/4	184/6	161/2	162/4
12 .....	179	181/4	189/4	190/7	186	160/2	161/4
15 .....	180/4	182/6	189/2	192/2	187/4	159/7	161
16 .....	180/6	183/2	189/3	192/4	187	158/2	159/6
17 .....	180	182/4	188/5	191/6	186	157/2	159
18 .....	179/5	182/3	188/4	191/4	185/4	156/4	158/2
19 .....	178/7	181/2	187/3	190/2	183	152/2	154
22 .....	178/4	180/1	186/1	189/2	181/4	152/2	153/6
23 .....		179/5	185/5	188/2	181/2	152	153/6
24 .....		177/2	183/2	186	178/6	154/4	154/2
25 .....		176/6	182/6	185/4	178/7	154/4	156/2
26 .....		177/2	183	185/7	180	155/4	157/2
29 .....		178/5	184/4	187	180/6	154	156/4
30 .....		178/6	184/4	187/3	181/2	154/5	156/4
31 .....		179/1	184/7	187/5	181/4	154/5	156/4



# AUSTRALIAN SITUATION

Supply Position Estimated supplies of wheat in Australia for the 1962-63 (December-November) crop year amount to some 325.1 million bushels, consisting of the December 1, 1962 carryover of 17.9 million and the current crop officially estimated at a record 307.2 million bushels. Supplies of the size indicated, reflecting a substantially larger production which more than offset a decline in carryover, represent an increase of 20 per cent over the 1961-62 total of 271.8 million bushels. After deducting 73.9 million for anticipated domestic requirements, an estimated 251.2 million are available for export and for carryover during 1962-63, 28 per cent above the 195.8 million in 1961-62.

Combined exports of wheat as grain and wheat flour in terms of grain equivalent during the period December 1-July 6 of the current Australian crop year amounted to 131.6 million bushels compared with 132.3 million exported during the corresponding period of 1961-62. The balance remaining on July 7, 1963 for export and for carryover, at 119.6 million bushels, exceeded by 88 per cent the comparable 1962 total of 63.5 million.

## Australian Wheat Supplies

Item	1961-62 <u>1/</u>	1962-63 <u>2/</u>
	- million bushels -	
Carryover, including flour as wheat, at beginning of crop year (December 1).....	24.6	17.9
Production.....	247.2	307.2
Total estimated domestic supplies.....	271.8	325.1
Less estimated domestic requirements for crop year....	76.0	73.9 <u>1/</u>
Available for export and for carryover.....	195.8	251.2
Deduct:		
Exports of wheat as grain, December 1-July 6.....	117.6	118.1
Exports of wheat flour in terms of wheat, December 1-July 6.....	14.7	13.5
Total exports of wheat and wheat flour.....	132.3	131.6
Balance on July 7 for export and for carryover.....	63.5	119.6

1/ Revised.

2/ Preliminary.

The following information relative to the Australian situation has been extracted from a report from Mr. H.A. Gilbert, Commercial Counsellor for Canada, Melbourne, under date of July 16, 1963 and is reproduced with the permission of the Trade Commissioner Service, Department of Trade and Commerce. Currency conversions have been made at the rate of £1 equals \$2.4144 (Canadian) the quotation in effect on June 27, 1963.

Crop Position Wheat sowing operations in most of the wheat areas of Australia have again been hampered, and severely restricted in some cases, by torrential rains. It is impossible to give an estimate of the damage caused by these heavy falls as it will be quite some time before a clearer picture emerges. However, reports from Western Australia would indicate that sowing operations there have had to be abandoned entirely as many acres are under inches of water.

The remaining important wheat-growing States of New South Wales, Victoria and Queensland have experienced similar downpours. Seeding conditions in these states, although difficult, appear to be slightly better than in Western Australia. In most areas growers were able to seed nearly their full intended acreage although in many cases the seed went in later than normal.

Although no official reports have been released on the position of the current season's crop it would appear to be safe at this stage to forecast that the chances of Australia producing a near-record harvest are very slim indeed.

Marketing Position The Chairman of the Australian Wheat Board announced during the period under review that another sale had been concluded with Mainland China. The contract was for 110,000 tons (4,107,000 bushels) of Northern New South Wales premium wheat. No other details were released about this sale which apparently was negotiated at the same time as the sale announced in our previous report.

The possibilities of Australia exporting wheat to Brazil have been discussed by executives of the Board and the new Brazilian Ambassador in Australia. Recently, offers of Australian wheat have been made in response to tenders called by Brazilian authorities, but they were not accepted. No sales of wheat or flour have been made to Brazil since 1948.

Miscellaneous Although no official announcement has as yet been made on the state of negotiations for the Wheat Stabilization Plan which is due to expire later this year, experts are forecasting that a reduction in wheat prices is certain under the new plan. It has been stated that prices for the current season's harvest will be from 1s. 6d. to 2s. (18 to 24 cents) per bushel lower than previously.

Under the existing plan, growers are allowed a yield of 15.5 bushels per acre whereas, in fact, the actual average for the past five years has been 18.5 bushels. The Commonwealth Government is expected to insist that 15.5 bushels could not be regarded as a realistic estimate of yield in the next five years, and will hold out for a figure of at least 17 bushels per acre. This, of course, will automatically reduce wheat prices.

Exports of Australian Wheat and Wheat Flour in Terms of Wheat  
December 1 - July 6, 1962-63 and Corresponding Period 1961-62

Destination	Wheat		Wheat Flour	
	1961-62	1962-63	1961-62	1962-63
- thousand bushels -				
<u>Europe</u>				
Albania.....	-	878	-	-
Britain.....	14,366	12,086	1,867	1,037
Eire.....	717	1,466	-	-
France.....	450	-	-	-
Italy.....	4,846	-	-	-



Exports of Australian Wheat and Wheat Flour in Terms of Wheat  
December 1 - July 6, 1962-63 and Corresponding Period 1961-62

Destination	Wheat		Wheat Flour	
	1961-62	1962-63	1961-62	1962-63
- thousand bushels -				
Malta.....	549	204	-	-
Norway.....	2,572	3,208	-	-
Spain and Canary Islands.....	10,636	1,235	-	-
Switzerland.....	73	-	-	-
West Germany.....	8,336	1,212	-	-
Others.....	-	-	7	9
<u>Middle East</u>				
Aden.....	665	514	-	-
Aden and Aden I/T.....	-	-	701	877
Aden Atta.....	-	-	265	333
Egypt.....	1,882	-	-	-
Iran.....	255	332	-	-
Iraq.....	733	-	-	-
Lebanon, Jordan, Syria.....	3,403	1,873	-	-
Persian Gulf.....	-	-	96	64
Persian Gulf Atta.....	-	-	811	543
Saudi Arabia.....	-	-	126	159
Others.....	234	178	10	14
<u>Africa</u>				
Africa South.....	441	-	-	-
Algeria.....	446	-	-	-
Kenya.....	882	-	-	-
Mauritius.....	-	-	457	360
Nyasaland.....	-	-	137	207
Port. East Africa.....	197	-	-	-
Rhodesia.....	1,941	2,328	-	-
Zanzibar.....	-	-	74	115
Others.....	9	9	57	40
<u>Asia</u>				
British North Borneo.....	-	-	128	95
Brunei.....	-	-	25	24
Burma.....	147	551	157	99
Ceylon.....	15	4	3,545	2,785
China.....	35,924	72,286	-	-
Hong Kong.....	2,187	1,329	246	135
India.....	9,029	2,781	-	-
Indonesia.....	-	-	227	253
Japan.....	10,583	5,877	-	-
Korea, North.....	-	3,143	-	-
Malaya.....	341	272	1,961	1,862
Malaya Atta.....	-	-	51	56
Pakistan.....	1,775	1,846	-	-
Sarawak.....	-	-	149	128
Singapore.....	42	82	1,725	1,628
Singapore Atta.....	-	-	8	8
Singapore a/c War Office.....	-	-	18	25
Thailand.....	-	-	362	426
Others.....	165	488	106	566

Exports of Australian Wheat and Wheat Flour in Terms of Wheat  
December 1 - July 6, 1962-63 and Corresponding Period 1961-62

Destination	Wheat		Wheat Flour	
	1961-62	1962-63	1961-62	1962-63
- thousand bushels -				
<u>Pacific Area and Sundries</u>				
Irian, West.....	-	-	48	8
New Zealand.....	3,673	3,883	-	-
Pacific Islands etc. ....	28	35	1,256	1,373
Peru.....	56	-	2	10
Royal Navy.....	2	-	-	-
Ships' Stores and Sundries.....	-	-	76	262
Totals.....	117,600	118,100	14,700	13,500

ARGENTINE SITUATION

Supply Position Estimated total supplies of wheat in the Argentine for the 1962-63 (December-November) crop year amount to 193.3 million bushels, consisting of the December 1, 1962 revised carryover of 8.9 million and the new crop placed at 184.5 million. Indicated supplies for the current Argentine crop year, reflecting decreases in both carryover stocks and production, are about 19 per cent less than the 1961-62 total of 237.4 million bushels. After making an allowance of 126.0 million bushels for anticipated domestic requirements, an estimated 67.3 million are available for export and for carryover in 1962-63, in contrast to 109.7 million the previous year.

Argentine Wheat Supplies

Item	1961-62 <u>1/</u>	1962-63 <u>2/</u>
- million bushels -		
Carryover at beginning of crop year (December 1) <u>3/</u> ....	35.3	8.9 <u>1/</u>
Production.....	202.1	184.5
Total estimated domestic supplies.....	237.4	193.3
Less estimated domestic requirements for crop year.....	127.7 <u>1/</u>	126.0
Available for export and for carryover.....	109.7	67.3
Deduct:		
Exports of wheat as grain, December-June.....	77.0	44.0
Exports of wheat flour in terms of wheat, December - June.....	0.2	0.2
Total exports of wheat and wheat flour.....	77.2	44.2
Balance on July 1 for export and for carryover.....	32.5	23.1

1/ Revised. 2/ Preliminary. 3/ Includes allowances for farm stocks. 4/ Official estimate.



Exports of wheat and wheat flour in terms of grain equivalent during December 1962-June 1963 amounted to 44.2 million bushels, 43 per cent below the 77.2 million exported during the same months in 1961-62. The balance remaining on July 1, 1963 for export and for carryover was estimated at 23.1 million bushels, compared with the July 1, 1962 total of 32.5 million.

The following account of the Argentine situation has been extracted from a report from Mr. M.B. Bursey, Commercial Counsellor, Buenos Aires, under date of July 17, 1963 and is reproduced with the permission of the Trade Commissioner Service, Department of Trade and Commerce. Where possible, conversions from Argentine to Canadian measures have been made for the convenience of our readers. Currency conversions have been made at the rate of 127.62 pesos per Canadian dollar the quotation in effect on June 27, 1963.

Weather and Crops Weather conditions were generally favourable during the period under review, although in some northern areas more rain would be welcome. Rainfall has been rather scarce in sections of the northern grain belt in the Provinces of Cordoba and Santa Fe and this, coupled with recurring frosts, has hindered the development of the winter crops now growing. On the other hand, in most areas of the southern grain belt, recent rainfall has resulted in optimum soil conditions, and in only a few areas has the rainfall been excessive.

There are indications of a noticeable increase in the area sown to wheat as a result of the well received minimum official producers prices and the availability of land for wheat in areas, which were depleted of livestock during last year's drought. It is still too early to make an accurate forecast of wheat acreage or of acreage sown to flax, which is sown later than wheat. The dual-purpose early grain (oats, barley and rye) are growing well and, in some areas, already are being used for grazing. In a few areas of Santa Fe and Cordoba Provinces, dry conditions have caused infestations of green aphids in these crops.

Wheat The outlook for the 1963-64 crop is generally favourable, although as mentioned earlier, dry conditions in a few northern areas are delaying the development of early-sown fields as well as hindering seeding operations. Some members of the trade are predicting a 20 per cent increase over the 4,610,300 hectares (11.4 million acres) sown in 1962-63, but this is only a rough guess. The new minimum official producers prices are considered by growers to be remunerative; as already reported, they are 710 pesos per 100 kgs (\$1.51 per bushel) for hard wheat, 690 pesos (\$1.47 per bushel) for semi-hard and 750 pesos (\$1.60 per bushel) for "Durums" f.o.r. Buenos Aires Port. Producers are also encouraged by the fact that the Government intends to re-establish the system used last year, whereby producers who sell their wheat later in the season, receive progressively higher prices. This system is designed essentially, to regulate the flow of grain into the country's terminal elevator facilities, but it is also designed to provide some sort of safeguard against future currency devaluation.

There has been a steady market for wheat during the period under review as a result of good local demand and interest by exporters in selling to neighbouring countries. The recent prices in the Buenos Aires Futures Market were as follows:

<u>For delivery in:</u>	<u>June 19</u>	<u>June 26</u>	<u>July 3</u>	<u>July 16</u>
		- dollars per bushel -		
July	1.65	1.64	-	-
August	1.71	1.69	1.69	1.67
September	1.78	1.75	1.76	1.70
October	1.84	1.80	1.81	1.73
November	-	-	1.83	1.74

At the end of June, prices in the Rosario Exchange averaged 715 pesos per 100 kgs (\$1.52 per bushel) for hard wheat grade 1, while prices for the same quality at Buenos Aires averaged 765 pesos (\$1.63 per bushel). Present prices in the Buenos Aires and Bahia Blanca Cereal Exchange are averaging 730 pesos per 100 kgs (\$1.56 per bushel) for hard wheat; 702 pesos (\$1.50 per bushel) for semi-hard, and 800 (\$1.71 per bushel) for "Durums". The present price in Rosario for hard wheat is around 720 pesos (\$1.54 per bushel).

Export sales to non-LAFTA countries continue to be banned. A recent announcement by the National Grain Board confirmed that, "for the time being", no further authorizations would be made for 1962-63 wheat. Prior to this announcement, the Grain Board sold 65,000 metric tons (2,388,000 bushels) for home consumption or export to any destination. It is reported that 30,000 tons (1,102,000 bushels) of this quantity were sold at 7,760 pesos per ton (\$1.65 per bushel), and the remainder at 7,881 pesos (\$1.68 per bushel) f.o.b.

It has been reported that Brazil will soon be calling for tenders for the supply of 50,000 tons (1,837,000 bushels) of wheat from any origin and a further 50,000 metric tons (1,837,000 bushels) from Argentina.

It appears that, at long last, there is a hope of a solution to the problem of the 100,000 metric tons (3,674,000 bushels) of wheat which has been owed to Argentina by Uruguay for several years. It seems that an agreement has been reached that 20,000 tons (735,000 bushels) of Uruguayan wheat will be shipped direct from Uruguay to Brazil to help Argentina fulfill her present contract with that country, but confirmation is not yet available.

During the month of June, some 60,000 metric tons (2,205,000 bushels) of wheat were exported, all to Brazil, with the exception of 9,300 tons (342,000 bushels) to Peru. With the June tonnage, exports so far in the present crop year, December 1, 1962 to June 30, 1963, have totalled 1,196,510 metric tons (43,964,000 bushels).

Meanwhile, domestic consumption of wheat has decreased, as the official Grain Board figures for wheat milled during the December 1962-May 1963 inclusive period, indicate a monthly average of 248,000 metric tons (9,112,000 bushels), which would indicate a yearly consumption of some 2,970,000 tons (109,128,000 bushels), as compared to the figure of 3,100,000 tons (113,904,000 bushels) in the wheat disposition table. Therefore, it seems that more wheat will be available for export during the current year than anticipated earlier, as even if the area seeded to wheat increases by 20 per cent, such an increase will require only 65,000 metric tons (2,388,000 bushels) additional seed.



## FRENCH SITUATION

The following account of the current crop situation in France has been extracted from a report by Mr. A.G. Kniewasser, Commercial Counsellor, Canadian Embassy, Paris, under date of July 25, 1963, and is reproduced with the permission of the Trade Commissioner Service, Department of Trade and Commerce. Where possible, conversions from French to Canadian measures have been made and rounded for the convenience of our readers. Currency conversions, except where otherwise indicated, have been made at the rate of one new franc equals .2199 Canadian dollars and one Deutsche mark equals .2706 Canadian dollars, the quotations in effect on June 27, 1963.

Weather and Growing Conditions Warm and generally dry weather has prevailed throughout July in most grain producing regions of France and growing conditions have been favourable. Wheat and barley harvesting has begun in the Paris area. Elsewhere harvesting operations will be delayed from two to three weeks due to the wet, cold Spring.

Production Estimates Official acreage, yield and production estimates effective July 1 have just been released by the French Government. They are moderately higher than the June 1 figures, due to good weather and heavy applications of fertilizer by farmers anxious to make up for winter and spring damage to crops.

Soft Wheat Acreage of this crop is now estimated at 3,766,000 hectares (9.3 million acres) and estimated yield at 24.5 quintals per hectare (36.4 bushels per acre). Production is therefore forecast at 7,018,710 metric tons (257.9 million bushels) for winter wheat and 2,191,390 metric tons (80.5 million bushels) for spring varieties - a total of 9,210,100 metric tons (338.4 million bushels) as compared with 14,053,770 metric tons (516.4 million bushels) for the 1962-63 crop year. Stocks in the hands of millers are estimated at 647,000 metric tons (23,773,000 bushels) and an additional 2,800,000 metric tons (102,881,000 bushels) are in storage in commercial positions. This substantial carryover will not however permit important exports of French wheat during the current crop year.

Rye Acreage sown to rye is 228,000 hectares (563,000 acres); forecast average yield 15.2 quintals per hectare (24.2 bushels per acre) and total production is estimated at 345,560 metric tons (13.6 million bushels).

New Prices Announced On July 6, the French Government announced new schedules of cereal prices and guaranteed purchases (quantums) for the 1963-64 crop year. The new price ranges and quantums are only slightly higher than in the previous year and represent a serious effort by the French Government to limit price increases in the face of strong pressures from agricultural organizations. The new price ranges are linked to quality standards as summarized below.

Soft Wheat The new indicative price for soft wheat in the heaviest surplus area (Chartres) has been increased by 2 per cent from 44.63 to 45.52 francs per quintal (\$2.67 to \$2.72 per bushel). The quantum for soft wheat has been increased from 72 to 75 million quintals (264.6 to 275.6 million bushels). An increase of 4 million quintals (14,697,000 bushels) in the carryover is also authorized.

Quality standards:

Specific weight	75 kilos (60 pounds per bushel)
Humidity	16 per cent
Tolerance	0.5 per cent for foreign matter and 2.0 per cent for broken kernels.

Durums The indicative price for durums, triticum variety only, has been fixed at 55.39 francs per quintal (\$3.31 per bushel) for the Carcassonne region.

Quality standards:

Specific weight	78 kilos (62 pounds per bushel)
Tolerance for other grain components	20 per cent, of which not more than 4 per cent may be soft wheat.
Tolerance for other impurities	0.5 per cent

Rye The new indicative price for rye is 36.42 francs per quintal (\$2.03 per bushel) for the Orleans area.

Quality standards:

Specific weight	71 kilos (57 pounds per bushel)
Humidity	16 per cent
Tolerance	0.5 per cent for foreign matter and 2.0 per cent for broken kernels.

Wheat Imports

Imports of durums and other wheat for the period January 1 to June 30, 1963, amounted to 180,658 metric tons (6,638,000 bushels) and 80,245 metric tons (2,948,000 bushels), respectively. The following table, extracted from French Customs Returns, summarizes the position:

French Wheat Imports - January 1 - June 30, 1963

<u>Countries</u>	<u>Durum</u>	<u>Soft</u>
	- thousand bushels -	
Canada	1,557	646
United States	603	451
Argentina	3,156	395
Australia	-	32
Iraq	10	-
Jordan	79	-
Israel	-	1/
Britain	-	955
Denmark	-	72
Syria	40	-
USSR	449	36
Belgium-Luxembourg	1	93
Algeria	-	8
Sweden	-	91
Morocco	415	-
Tunisia	328	-
Netherlands	-	170
Totals	6,638	2,948

1/ Less than 500 bushels.



### Exports Slow

Trading was light in French cereal markets during July. 8,500 metric tons (312,000 bushels) of soft wheat were shipped from stocks to Portugal at a price of \$US. 98.00 per ton (US. \$2.67 per bushel) c.i.f. Some very small shipments of soft wheat were also moved to West Germany by barge at a price of \$US. 98.00 per ton (US. \$2.67 per bushel) c.i.f. Cologne. Feed barley is being offered for July delivery at \$US. 79.00 (US. \$1.72 per bushel) c.i.f. Duisburg and \$US. 80.50 c.i.f. (US. \$1.75 per bushel) Hamburg. Malt barley from the 1962 harvest is being booked at \$US. 82.50 (US. \$1.80 per bushel) f.o.b. Strasbourg and from the current crop year at \$US 83.50 (US. \$1.82 per bushel) c.i.f. Duisburg September delivery. Very substantial corn exports are foreseen. 4,000 tons (157,000 bushels) were shipped in July to Spain at a price of \$US. 66.00 (US. \$1.68 per bushel) franco Spanish border. French corn exporters are currently booking business by rail to Duisburg at DM 401 (\$2.76 per bushel) and to Hamburg at DM 406 per metric ton (\$2.79 per bushel) for August delivery. Some 980,000 hectares (2.4 million acres) have been sown to corn in France this year and yields are expected to be heavy.

### Summary

Traders are awaiting more precise information on yields and qualities before committing themselves for the current crop year. The grain market has consequently been slow but will of course pick up as the statistical position becomes clearer. It is clear however, that the 1963 soft wheat harvest in France will barely meet local demand and there will be considerably reduced pressure on marketing authorities to move supplies of these grades into international channels. Prospects for the sale of Canadian durum are becoming more interesting in view of growing demand in France and recent unfavourable crop reports from North Africa. French efforts to produce hard wheat suitable for pastes have not as yet met with great success despite extensive subsidized plantings of the triticum variety in the Orleans and Carcassonne regions. It is expected however, that there will be substantial supplies of French coarse grains available for export within the next few months.

### CROP SITUATION IN BRITAIN

The following account of the current crop situation and grain prices in Britain has been extracted from a report received from Mr. D.B. Laughton, Commercial Counsellor for Canada, London, under date of July 12, 1963 and is reproduced with the permission of the Trade Commissioner Service, Department of Trade and Commerce.

Weather conditions early in June were warm, dry and sunny, but in the latter half of the month temperatures dropped and rain was fairly widespread with some thunderstorms. Growing conditions were, on the whole, good.

The Ministry of Agriculture report for June states that all cereal crops made good progress, although local storms did some damage. In general, autumn-sown cereals have grown well and promise good yields, though many autumn-sown oats did not survive the winter. Spring-sown crops are more variable and are generally backward.

Wheat crops are fairly free from pests and diseases, but there are a number of reports of mildew and pest attacks on barley, whilst frit-fly damage to oats is fairly common.

No estimates of probable yields were given in the Ministry report, probably because of the lateness of the season. The Financial Times estimates, however, that production may amount to 280 million bushels of barley, 102 million bushels of wheat and 98 million bushels of oats and mixed corn, making 480 million bushels in all (over 10 million long tons). It is now estimated that a

total of nearly 5 million acres of barley has been planted in Britain this season. When the March census was taken it was estimated that the total to be planted would not exceed 4.5 million acres, but delayed planting resulted in additional barley acreages, mainly at the expense of wheat. The wheat acreage is likely to be well below 2 million, whilst oats and mixed corn may reach 1.5 million.

Grain Stocks Provisional results of the end of May sample survey of stocks of  
Remaining Unsold home-grown cereals indicate that about 3 per cent of the 1962 wheat crop, about 5.5 per cent of the 1962 barley crop and about 9 per cent of the 1962 oats crop remained unsold on farms at that time.

The table below shows the grain stocks unsold on farms on May 31, 1963, and in the two previous years at the same date.

	<u>May 1961</u>	<u>May 1962</u>	<u>May 1963</u>
	- million bushels -		
Wheat	7.8 (7.5%)	6.7 (7.5%)	3.7 (3%)
Barley	8.9 (5%)	5.1 (2.5%)	13.1 (5.5%)
Oats	8.5 (11%)	3.9 (6%)	5.9 (9%)

Wheat Deficiency The Ministry of Agriculture announced that deficiency payments for  
Payments the fourth accounting period (March 1 - April 30) for the cereal year 1962-63 will be 90.5 cents per bushel. This represents the difference between the seasonal standard price of \$2.35 and the ascertained average price per bushel for 36.0 million bushels. The estimated cost of this payment is \$33 million.

The Ministry has now announced the guaranteed prices for the 1963 harvest, together with the seasonal standard prices. The guaranteed prices are:

Wheat	\$2.14 per bushel
Barley	\$1.72 " "
Oats	\$1.26 " "
Rye	\$0.98 " "

For wheat the standard price will, as in former years, be converted on a rising scale of seasonal standard prices spread over five periods as follows:

July-September 1963	\$1.94 per bushel
October-November 1963	\$2.07 " "
December 1963-February 1964	\$2.19 " "
March-April 1964	\$2.32 " "
May-June 1964	\$2.36 " "

Wheat and Barley This year for the first time a guide price for milling wheat has  
Guide Prices been issued in addition to the guide price for barley by the Working Party for Millable Wheat and Barley. The prices are as follows:

Millable Wheat - fair average quality, August delivery,  
£20 per long ton ex-farm (\$1.62 per bushel)

Feeding Barley - fair average quality, 16 per cent moisture, July-August  
delivery, £19.10.0. per long ton ex-farm (\$1.26 per bushel)

These prices are issued as an "indicated value" based on comparable values of imported grains, and they are only given as a guide to farmers as to the probable worth of their crops. The Chairman of the Working Party described the prices recently as a bit of free market intelligence for the farmer.



CALENDAR OF WHEAT EVENTS

July 10

According to a report published by the Crop Reporting Board, United States Department of Agriculture all wheat production in the United States in 1963 is forecast at 1,111 million bushels, 2 per cent more than the 1962 crop but 9 per cent less than the ten-year (1957-61) average of 1,225 million.

24

According to a Telegraphic Crop Report published by the Dominion Bureau of Statistics crop conditions in the Prairie Provinces were summarized as follows: Crops continue to make good to excellent progress over most areas in the Prairie Provinces. Recent rains in the Peace River area have provided some relief from the drought conditions. Most crops have headed and in earlier districts are beginning to fill. Swathing of fall rye is well underway in southern districts and about to commence in later areas. Moisture conditions generally remain satisfactory and some districts now report sufficient moisture to carry the crop to maturity. With drier weather, haying and summerfallow operations are now making good progress.

The United States Department of Agriculture reported that all wheat stocks in storage on July 1, 1963 totalled 1,189 million bushels, 10 per cent less than a year earlier.

25

The Canadian Wheat Board announced that the initial payment for wheat, effective August 1, 1963 to July 31, 1964 would be \$1.50 per bushel, basis No. 1 Northern, in store Fort William-Port Arthur or Vancouver.

According to a report received from Mr. A.G. Kniewasser, Commercial Counsellor for Canada, Paris, the acreage of wheat in France is now estimated at 9.3 million acres and the average yield is estimated at 36.4 bushels per acre. Production, therefore, is forecast at 338.4 million bushels (257.9 million of winter wheat and 80.5 million of spring-sown varieties).

August 2

The Canadian Wheat Board announced the conclusion of a Long Term Wheat Agreement with the China National Cereals, Oils and Foodstuffs Import and Export Corporation. This Agreement is similar in form to the agreement signed on April 22, 1961, that is, under the Agreement, the Chinese Corporation has declared its intention to purchase from Canada 3 to 5 million long tons (112.0 to 186.7 million bushels) of wheat over a three-year period, August 1, 1963 to July 31, 1966.

.....













STATISTICS CANADA LIBRARY  
BIBLIOTHÈQUE STATISTIQUE CANADA



1010686744