

CATALOGUE No.

22-005

MONTHLY

DOES NOT CIRCULATE

NE PAS PRÊTER



CANADA

DOMINION BUREAU OF STATISTICS

AGRICULTURE DIVISION

DOMINION BUREAU
OF STATISTICS

APR 25 1963

PROPERTY OF THE
LIBRARY

THE WHEAT REVIEW



MARCH 1963

DOMINION BUREAU OF STATISTICS

THE
WHEAT REVIEW

MARCH 1963

Published by Authority of
The Minister of Trade and Commerce

Prepared in the Crops Section, Agriculture Division
Dominion Bureau of Statistics, Ottawa.

TABLE OF CONTENTS

Page

World Wheat Situation

Wheat Supplies of Four Major Exporters One Per Cent Below a Year Ago.....	1
August-February Exports Decline from Last Year but Remain Well Above Average..	1
Near Record 1962 World Bread Grain Crop Confirmed.....	2
I.W.C. Cumulative Totals of Commercial Purchases.....	3

Canadian Situation

Supply Position.....	4
February 1963 Exports of Wheat and Flour Total 20.8 Million Bushels.....	5
1961-62 Wheat Pool Closed.....	6
Area Intended for Wheat 1963.....	7
Farmers' Marketings of Wheat.....	8
Visible Supply of Canadian Wheat.....	9
Grading of Wheat Inspected, August-February 1962-63 with Comparisons.....	9
Weekly Visible Supply and Farmers' Marketings (Charts).....	10
Wheat Shipments to the United States by Destination.....	11
Rail Shipments of Wheat to Maritime Ports.....	11
Rail Shipments of Wheat from Fort William-Port Arthur.....	12
Overseas Exports of Canadian Grain by Ports of Loading.....	12
Freight Assistance Shipments.....	13
Monthly Exports of Canadian Wheat and Wheat Flour.....	14
Exports of Canadian Wheat by Destination.....	15
Customs Exports of Canadian Wheat Flour by Countries of Consignment.....	18
Canadian Wheat Board Weekly Average Cash Wheat Prices.....	20

Canadian Flour Milling Situation

Production and Exports.....	22
-----------------------------	----

United States Situation

Supply Position.....	23
Prospective Plantings of Spring Wheat.....	24
Crop and Weather Conditions.....	24
July 1 Carryover to Decline Again.....	25
Supply in 1963-64 May Increase.....	25
1964 Wheat Program Announced.....	25
United States Wheat and Flour Exports Continue Downtrend.....	26
Cash Wheat Prices on the Kansas City and Minneapolis Markets.....	29
Chicago Wheat Futures, High Points of Closing.....	29

Australian Situation.....	30
---------------------------	----

Argentine Situation.....	33
--------------------------	----

French Situation.....	36
-----------------------	----

Calendar of Wheat Events.....	37
-------------------------------	----

WORLD WHEAT SITUATION

Wheat Supplies of Four Major Exporters One Per Cent Below a Year Ago

Total supplies of wheat held by the four traditional major exporters, for export and for carryover at the end of their respective crop years, totalled 2,280.4 million bushels at March 1, 1963 compared with 2,302.1 million at the same time a year ago. Reduced supplies in United States and Argentina more than offset larger totals in Canada and Australia. Supplies at March 1, 1963, in millions of bushels, were held as follows, with last year's comparable figures in brackets: United States, 1,438.0 (1,546.8); Canada, 609.8 (528.5); Argentina, 34.6 (82.9); and Australia, 198.0 (143.9).

August-February Exports Decline from Last Year but Remain Well Above Average

Reduced shipments from United States, Canada and Australia have more than offset larger exports from Argentina and as a result, total exports of wheat and flour in terms of wheat from the four major exporters during the first seven months of the 1962-63 crop year, at 615.7 million bushels, are some 22 per cent less than last year's record August 1961-February 1962 level of 794.1 million, but 23 per cent more than the ten-year (1951-52-1960-61) average of 501.2 million for the same period. Shipments from the four traditional major wheat exporters during August-February of the 1962-63 crop year, with comparisons, appear in the accompanying table.

Exports of Wheat and Flour in Terms of Wheat, August 1962-February 1963 with Comparisons

August-February	United States	Canada	Argentina	Australia	Total
- million bushels -					
1950-51	160.2	119.6	42.6	70.0	392.4
1951-52	280.4	177.6	23.8	56.2	538.0
1952-53	197.7	207.8	3.2	45.9	454.6
1953-54	111.0	152.7	69.2	34.7	367.6
1954-55	154.8	152.3	78.2	53.9	439.2
1955-56	145.2	138.9	72.8	48.6	405.5
1956-57	300.7	160.6	51.2	81.9	594.4
1957-58	224.8	173.4	42.1	42.8	483.1
1958-59	254.5	165.9	52.4	43.9	516.7
1959-60	256.3	170.0	31.0	69.3	526.6
1960-61	374.1	177.4	46.7	87.9	686.1
1961-62 1/.....	413.2	220.6	34.5	125.8	794.1
1962-63 2/.....	309.5	188.8	38.5	78.9	615.7

1/ Revised.

2/ Preliminary.

Near Record 1962
World Bread Grain
Crop Confirmed

According to the February 1963 edition of World Agricultural Production and Trade published by the United States Department of Agriculture revised estimates place 1962 world breadgrain production at 297 million short tons, second only to the 1958 record. Latest information available to the Foreign Agricultural Service indicates a substantial increase in the 1962 world total since the first forecast.

The increase is wholly in wheat, with the present estimate of 8,670 million bushels up 280 million bushels above the early forecast. Most of the increase is in Western Europe, especially France, and in the Soviet Union, where final outturns were larger than expected. World rye production is now placed at 1,310 million bushels, the smallest outturn for many years. This is a reduction of 40 million bushels from the earlier forecast, all in the estimate for the Soviet Union.

A record wheat crop in Western Europe this year will greatly reduce import requirements for this marketing season. An increase of 340 million bushels over the 1961 outturn in this area would seem to limit import needs to the amount of strong wheats required for blending with weaker domestic wheats. Asia's overall total is also high and 155 million bushels above the 1961 total. This will mean reduction in import requirements of some countries, though total imports will still be large. With Africa's total back to normal after the poor 1961 harvest, some reduction in imports can be expected there also.

As a result of reduced import requirements in a number of importing countries, world trade is expected to fall about 180 million bushels below the 1961-62 total of 1,734 million bushels.

Wheat production in North America is now estimated at 1,702 million bushels, well above the 1961 total of 1,570 million since recovery of Canada's crop more than offsets the reduction in the U.S. crop. Acreage is much smaller than in 1961 but yields are somewhat larger. Rye production is up in both the United States and Canada. Western Europe's wheat production of 1,605 million bushels is unprecedented and 292 million bushels above the 1955-59 average. Increases over the small 1961 harvest are general but the gain in France is the outstanding one. A large acreage with record yields bring the crop to a record 510 million bushels and a surplus of about 150 million bushels is estimated. Rye production of 230 million bushels in Western Europe is above the poor 1961 outturn but is still below average.

Wheat production in Eastern Europe is below the good harvest of 1961 but is above average. The rye outturn is moderately below the 1961 harvest and also below average.

The Soviet Union's wheat crop appears larger than a year earlier and above average because of a near-record acreage. The rye crop was less than in 1961 because of lower yields. A record wheat crop of 2,020 million bushels in Asia resulted from large acreage and good yields. Africa's outturn of 210 million bushels contrasts with the poor 1961 crop of 160 million bushels because of higher production in North African countries.

The wheat crop in South America appears to be at the 1961 level while Australia's crop of 290 million bushels is well above. The high level is due to record acreage and above-average yields.

Editor's Note: The 1962-63 Australian wheat crop is now estimated at a record 300 million bushels.

International Wheat Council
Cumulative Totals of Commercial Purchases by Importing Countries from Exporting Countries
Crop Year 1962-63 — Through February 2, 1963

Importing Countries	EXPORTING COUNTRIES								Total Purchases
	Canada	Argentina	Australia	France	Italy	Sweden	U.S.S.R.	U.S.A.	
	- thousand bushels -								
Austria.....	681	-	-	-	-	7	-	-	688
Belgium & Luxembourg.....	4,901	1,928	-	133	-	-	184	2,304	9,450
Brazil.....	-	5,745	-	-	-	-	-	8,109	13,854
Costa Rica.....	134	-	-	-	-	-	-	196	330
Cuba.....	-	-	-	-	-	-	-	-	-
Dominican Republic.....	649	-	-	-	-	-	-	393	1,042
El Salvador.....	458	-	-	-	-	-	-	399	857
Finland.....	351	-	-	-	-	78	-	-	429
Germany, Federal Republic.	19,341	2,067	1,021	2,215	-	1,598	2,899	7,529	36,670
Greece.....	22	-	-	-	-	-	-	9	31
Iceland.....	2	-	-	-	-	-	-	59	61
India.....	-	-	3,845	-	-	-	-	1	3,846
Indonesia.....	-	-	255	-	-	-	-	-	255
Ireland.....	1,624	-	1,801	6	-	-	-	189	3,620
Israel	1,261	-	-	-	-	-	-	1,091	2,352
Japan.....	24,626	-	7,491	-	-	-	2,234	18,964	53,315
Korea.....	-	-	-	-	-	-	-	1	1
Liberia.....	28	-	-	-	-	-	-	55	83
Libya.....	-	-	-	167	646	-	-	-	813
Netherlands.....	3,802	2,496	-	-	-	331	2,203	7,938	16,770
Netherlands Territories.	190	-	19	6	-	-	-	336	551
New Zealand.....	-	-	4,057	-	-	-	-	-	4,057
Nigeria.....	921	-	1	-	-	-	-	1,596	2,518
Norway.....	1,568	643	2,958	1,869	-	3	1,653	280	8,974
Peru.....	7	5,016	4	-	-	-	-	59	5,086
Philippines.....	3,472	-	297	-	-	-	-	3,694	7,463
Portugal.....	13	404	3	-	-	-	-	1,631	2,051
Portuguese Territories..	410	-	87	-	-	-	-	2,263	2,760
Rhodesia & Nyasaland.....	34	-	2,183	1	3	-	-	112	2,333
Saudi Arabia.....	451	-	486	-	3	-	257	2,127	3,324
Sierra Leone.....	64	-	-	-	-	-	-	6	70
South Africa.....	4,032	-	761	-	-	-	-	-	4,793
Switzerland.....	1,593	354	-	1,171	130	5	92	569	3,914
United Arab Republic.....	-	-	-	-	890	-	-	13	903
United Kingdom.....	49,691	7,645	13,287	1,162	-	1	8,400	2,763	82,949
U.K. Territories.....	2,533	-	4,530	1,413	1	-	-	2,099	10,576
Vatican City.....	441	-	-	-	-	-	-	-	441
Venezuela.....	4,679	331	-	-	-	-	-	2,904	7,914
Western Samoa.....	-	-	7	-	-	-	-	-	7
To Orders.....	-	3,174	-	7,521	-	-	147	-	10,842
Totals.....	127,979	29,803	43,093	15,664	1,673	2,023	18,069	67,689	305,993
Percentage of Total Sales by Exporting Countries....	41.82	9.74	14.08	5.12	.55	.66	5.91	22.12	100.00

NOTE: Mexico and Spain - no sales reported.

Quantities for France and Italy cover period ending January 26, 1963.

Quantities for Argentina cover period ending January 19, 1963.

CANADIAN SITUATION

Supply Position Total estimated supplies of wheat for the 1962-63 (August-July) crop year are placed at 948.6 million bushels, 6 per cent greater than the 1961-62 total of 891.2 million, with a substantial decline in carryover stocks more than offset by a sharp increase in production. After deducting 150.0 million bushels for anticipated domestic requirements, supplies available for export and for carryover during 1962-63 amount to 798.6 million bushels, 7 per cent above the 749.1 million in 1961-62.

Exports of wheat and flour in terms of wheat during the August-February period of the current crop year amounted to 188.8 million bushels compared with 220.6 million exported during the corresponding period of 1961-62 and the ten-year (1951-52-1960-61) average for the same months of 167.7 million bushels. This year's total consisted of 173.2 million bushels of wheat and 15.6 million of wheat flour equivalent. Corresponding totals for the same period of the preceding crop year were 201.6 million bushels of wheat and 18.9 million of flour equivalent. The balance remaining on March 1, 1963 for export and for carryover amounted to 609.8 million bushels, 15 per cent more than the March 1, 1962 total of 528.5 million.

Canadian Wheat Supplies

Item	1961-62 <u>1/</u>	1962-63 <u>2/</u>
	- million bushels -	
Carryover in North America at beginning of crop year (August 1).....	607.8	391.1
New Crop.....	283.4	557.6
Imports of wheat for domestic use, August-February....	<u>3/</u>	<u>4/</u>
Total estimated supplies.....	891.2	948.6
Less estimated domestic requirements for crop year....	142.2	150.0
Available for export and for carryover.....	749.1	798.6
Deduct:		
Exports of wheat in bulk, August-February <u>5/</u>	199.6	171.2
Exports of bagged seed wheat, August-February <u>6/</u>	2.1	2.0
Total exports of wheat as grain.....	201.6	173.2
Exports of wheat flour in terms of wheat, August- February <u>6/</u>	18.9	15.6
Total exports of wheat and wheat flour.....	220.6	188.8
Balance on March 1 for export and for carryover.....	528.5	609.8

1/ Subject to revision.

2/ Preliminary.

3/ Less than 50,000 bushels.

4/ Not available.

5/ As reported by the Board of Grain Commissioners. (Includes overseas clearances and imports into the United States).

6/ Customs returns, 1961-62 adjusted for time lag.

Farmers' marketings of wheat, (both east and west) up to March 20 of the 1962-63 crop year amounted to 289.7 million bushels and exceeded by 62 per cent last year's corresponding total of 179.2 million. Some 21.5 million bushels of this year's total were delivered during the four weeks February 21 to March 20. During the same period the volume of Canadian wheat entering domestic and export channels amounted to about 23.8 million bushels. As a result, the total visible supply of Canadian wheat recorded a slight decline from 389.9 million bushels at February 20 to a level of 387.5 million at March 20, 1963.

The total visible supply of Canadian wheat at March 20 this year represented an increase of 13 per cent over the 1962 comparable total of 344.3 million but 6 per cent less than the 1961 figure of 414.4 million. Stocks in country elevators amounted to 211.1 million bushels as against 178.5 million in this position a year ago and 259.4 million two years ago. This year's supplies in country elevators at March 20 accounted for 54 per cent of the total visible wheat supply compared with the 1962 and 1961 corresponding percentages of 52 per cent and 63 per cent, respectively. Interior terminal stocks, at 5.3 million bushels were sharply below both the 1962 figure of 10.2 million and the 1961 total of 10.9 million. The 17.3 million bushels "in transit rail" (Western Division) represented increases over both the 1962 total of 14.1 million and the 1961 figure of 11.0 million. Supplies at the Canadian Lakehead, at March 20 this year, amounted to 57.5 million bushels, 6 per cent above last year's comparable total of 54.4 million but 1 per cent lower than the 58.4 million bushels in this position two years ago. Supplies in Bay, Lake and Upper St. Lawrence ports, at 28.7 million bushels, were below the 29.9 million at March 21, 1962 but substantially above the 20.0 million at March 22, 1961. Stocks of Canadian wheat in "Storage Afloat" at March 20, 1963, amounted to 17.5 million bushels as against 14.4 million the previous year and in contrast to only 7.4 million in 1961. The 22.6 million bushels in Lower St. Lawrence and Maritime ports were slightly greater than both the 20.9 million of a year ago and the 20.8 million of two years ago. On the west coast, total supplies in Vancouver-New Westminster, Victoria and Prince Rupert at March 20, 1963, at 11.2 million bushels, were higher than both the previous years' corresponding total of 7.4 million and the 10.9 million bushels in 1961.

February 1963 Exports of
Wheat and Flour Total
20.8 Million Bushels

Combined exports of wheat in bulk, bagged seed wheat and wheat flour in terms of grain equivalent during February 1963 amounted to 20.8 million bushels, compared with the January 1963 figure of 24.2 million, the February 1962

total of 26.7 million and the ten-year (1952-61) average for the month of February of 19.6 million. Exports of wheat in bulk (as reported by the Board of Grain Commissioners) during February 1963, at 18.8 million bushels, were below both the 21.5 million exported during last month and the 23.7 million of February last year but exceeded the ten-year (1952-61) average for the month of February of 16.0 million. Exports of bagged seed wheat during February 1963, based on Canadian Customs returns, amounted to 590 thousand bushels 14 per cent above the January 1963 figure of 520 thousand and 36 per cent larger than February 1962 (adjusted to remove time lag) of 433 thousand bushels. Customs returns also indicate that the equivalent of 1.4 million bushels of wheat was exported in the form of flour during February 1963 as against 2.2 million exported that month and the adjusted February 1962 total of 2.5 million.

Cumulative exports of wheat in bulk during the August 1962-February 1963 period amounted to 171.2 million bushels compared with the 1961-62 total of 199.6 million and about one fifth greater than the ten-year (1951-52-1960-61) average for the period of 142.5 million bushels. Britain, remaining in its

position as Canada's leading market for wheat, received shipments amounting to 44.2 million bushels and representing 26 per cent of the seven-month total. During August-February of 1961-62, shipments of wheat to Britain amounted to 46.8 million bushels and accounted for 23 per cent of the total. Other principal markets for Canadian wheat in bulk during the first seven months of the current crop year, with figures for the same period of the preceding crop year in brackets, were as follows, in millions of bushels: China Communist, 30.6 (31.1); Japan, 24.2 (29.6); Federal Republic of Germany, 18.8 (32.5); Poland, 14.2 (12.3); Belgium and Luxembourg, 6.4 (7.4); France, 4.2 (0.7); Venezuela, 4.1 (1.7); Netherlands, 3.8 (1.6); Italy, 3.5 (2.3); and Philippines, 3.4 (1.8). Cumulative exports of bagged seed wheat during August-February of the 1962-63 crop year, based Canadian Customs returns, amounted to 1,962 thousand bushels compared with last year's comparable total (adjusted to remove time lag) of 2,078 thousand.

Cumulative exports of wheat flour during August-February of the 1962-63 crop year, based on Customs returns, were the equivalent of 15.6 million bushels of wheat, as against the adjusted August 1961-February 1962 total of 18.9 million bushels. As with bulk wheat, Britain was also the major market for Canadian wheat flour. Shipments of wheat flour to that country during the period under review amounted to the equivalent of 6.7 million bushels and accounted for 43 per cent of the August 1962-February 1963 total. During the same months of 1961-62 shipments of wheat flour to Britain amounted to the equivalent of 7.0 million bushels and represented 37 per cent of the total. Other leading markets for Canadian wheat flour in terms of grain equivalent during the August-February period of the 1962-63 crop year, with revised data for the same months of the preceding crop year in brackets, were as follows, in thousands of bushels: Ghana, 1,134 (1,028); Jamaica, 804 (906); Trinidad and Tobago, 801 (782); United States, 771 (717); Nigeria, 665 (842); Hong Kong, 566 (515); Leeward and Windward Islands, 540 (603); and Costa Rica, 514 (457).

1961-62 Wheat Pool Closed

On March 22, 1963, Agriculture Minister Alvin Hamilton announced that the Canadian Wheat Board had closed out the 1961-62 wheat pool account and the average final payment to producers amounted to 42.974 cents per bushel - the highest in history. Final payment on No. 1 Manitoba Northern is 40.611 cents per bushel. The initial payment was adjusted upwards by 10 cents to \$1.50 a year ago, making the final price of \$1.90611 the highest ever paid by the Wheat Board. Producers delivered 288,406,785 bushels of wheat (other than Durum wheat) to the 1961-62 pool and at its close February 28, there was a surplus of \$123,939,019 to be distributed. Payment of the surplus proceeds from the sale of Durum wheat was made to producers last December. The closing date was the same as for the 1960-61 pool account. Substantial sales during the pool period made the February 28 closing possible. Mr. Hamilton stressed that the payment is the farmers' own money - earned for them by the sale of their wheat deliveries to the 1961-62 wheat pool account.

Final payments and final realized prices for the principal grades of wheat delivered to the 1961-62 pool are as follows:

	<u>Final Payment</u> (\$ per bushel)	<u>Final Realized Price</u>
No. 1 Manitoba Northern.....	\$.40611	\$1.90611
No. 2 Manitoba Northern.....	.43666	1.89666
No. 3 Manitoba Northern.....	.46459	1.88459
No. 4 Manitoba Northern.....	.46930	1.81930
No. 5 Wheat.....	.56229	1.74229
No. 6 Wheat.....	.61179	1.73179

Area Intended
for Wheat 1963

On the basis of farmers' intentions at March 1 the largest individual change in the use of Canadian crop land in 1963 is the intended increase of 579,400 acres sown to barley followed by all wheat, which may increase by 167,400 acres. The largest offsetting decreases are prospective reductions of 480,400 acres in oats for grain and a reduction in summerfallow of 389,000 acres.

Intended Acreage of Spring Wheat in Canada, as at March 1, 1963
Compared with Acreages in 1962

Province	Acreage Seeded in 1962 ^{1/} acres	Acreage Intended to be Seeded in 1963		
		Per Cent of 1962	Area 1963 ^{1/} acres	Indicated Change acres
Prince Edward Island.....	4,600	100	4,600	unchanged
Nova Scotia.....	1,200	100	1,200	unchanged
New Brunswick.....	2,600	100	2,600	unchanged
Quebec.....	10,000	93	9,300	- 700
Ontario.....	18,000	98	17,600	- 400
Manitoba.....	3,118,000	103	3,220,000	+ 102,000
Saskatchewan.....	17,388,000	100	17,439,000	+ 51,000
Alberta.....	5,807,000	100	5,784,000	- 23,000
British Columbia.....	93,500	98	92,000	- 1,500
Totals.....	26,442,900	100	26,570,300	+ 127,400

^{1/} For provinces other than Ontario includes relatively small acreages of winter wheat for which annual estimates are not available.

Based on farmers' intentions at March 1 the acreage seeded to all classes of wheat will be 27.1 million acres an increase of one per cent over the 1962 seedings, and 3.4 million acres or 15 per cent above the 1957-61 average. In Manitoba the increase in acreage may be 3 per cent, while in Saskatchewan and Alberta no change from a year ago is expected.

Prospective plantings of spring wheat of 26.6 million acres are unchanged from the 1962 acreage and 15 per cent above the 1957-61 average. Durum wheat is included with the spring wheat figures, but in view of the interest shown by Prairie farmers in this crop, intended acreage was obtained separately. The results indicate that a 37 per cent decrease in acreage is planned for this spring. If the acreage intentions are carried out Prairie farmers will plant 2,012,000 acres to this crop compared with 3,199,000 grown in 1962 and the 1957-61 average of 1,444,200 acres. All Canada spring wheat acreage excluding durum may total 24.6 million in 1963 compared with 23.2 million planted in 1962 and the 1957-61 average of 21.6 million. The 0.5 million acres seeded to winter wheat last fall in Ontario is some 9 per cent greater than the previous year but 9 per cent below the 1957-61 average.

Intended Acreage of Spring Wheat ^{1/} in the Prairie Provinces
As at March 1, 1963, Compared with Estimated Acreage 1962

Crop	Manitoba		Saskatchewan		Alberta		Prairie Provinces	
	1962	1963	1962	1963	1962	1963	1962	1963
- thousand acres -								
Wheat, all spring....	3,118	3,220	17,388	17,439	5,807	5,784	26,313	26,443
Durum.....	161	143	2,613	1,679	425	190	3,199	2,012
Other spring.....	2,957	3,077	14,775	15,760	5,382	5,594	23,114	24,431

^{1/} Includes a relatively small acreage of winter wheat.

Farmers' Marketings 1/ of Wheat in the Prairie Provinces 1962-63

Week Ending		Manitoba	Saskatchewan	Alberta	Total	Last Year <u>2/</u>
- bushels -						
August	8, 1962..	14,548	7,645	42,489	64,682	424,845
	15	1,778	38,975	176,287	217,040	682,034
	22	38,237	592,588	584,243	1,215,068	5,298,808
	29	426,174	1,911,503	1,468,566	3,806,243	9,124,000
September	5	757,304	3,085,240	1,211,254	5,053,798	6,274,071
	12	1,742,316	6,416,266	1,870,574	10,029,156	7,783,756
	19	1,699,681	8,177,978	1,709,135	11,586,794	6,733,721
	26	2,359,440	10,406,284	4,587,559	17,353,283	7,697,860
October	3	2,522,313	13,068,961	5,556,144	21,147,418	8,356,339
	10	1,585,234	12,747,546	4,121,329	18,454,109	7,025,437
	17	1,117,194	7,344,064	3,084,468	11,545,726	7,516,876
	24	1,177,866	7,435,220	2,545,531	11,158,617	7,143,464
	31	1,370,408	6,674,985	2,270,438	10,315,831	6,863,496
November	7	1,514,458	6,123,753	2,618,264	10,256,475	5,637,826
	14	1,629,145	5,879,142	1,928,069	9,436,356	7,094,998
	21	1,669,582	6,738,169	1,957,899	10,365,650	6,604,431
	28	1,783,131	7,723,197	1,816,305	11,322,633	5,789,906
December	5	1,282,296	7,478,541	1,868,468	10,629,305	3,687,344
	12	1,499,357	7,709,086	1,926,894	11,135,337	5,480,248
	19	2,183,481	8,514,663	2,732,106	13,430,250	3,635,158
	26	2,048,763	9,012,883	2,580,076	13,641,722	2,955,220
January	2, 1963..	672,092	5,572,797	2,134,963	8,379,852	4,473,693
	9	1,573,326	2,662,279	2,291,794	6,527,399	11,340,074
	16	511,792	6,416,935	1,902,677	8,831,404	6,770,993
	23	253,560	2,018,232	1,473,736	3,745,528	2,292,052
	30	391,919	871,723	566,338	1,829,980	5,413,301
February	6	987,378	3,454,795	1,056,130	5,498,303	5,265,116
	13	1,419,331	7,027,411	2,351,424	10,798,166	3,433,249
	20	739,654	4,537,612	2,881,336	8,158,602	4,301,431
	27	368,030	1,980,051	1,950,601	4,298,682	1,861,407
March	6	757,059	3,457,719	1,656,138	5,870,916	534,654
	13	653,438	3,536,306	2,016,221	6,205,965	2,609,296
	20	491,482	2,753,143	1,957,599	5,202,224	4,310,867
Totals		37,241,767	181,375,692	68,895,055	287,512,514	174,415,971

Average similar period:

1951-52-1960-61.. 22,629,039 127,675,684 60,870,679 211,175,402

1/ Includes receipts at country, interior private and mill elevators, interior semi-public terminals and platform loadings.

2/ Revised.

Visible Supply of Canadian Wheat, March 20, 1963
Compared with Approximately the Same Date, 1961 and 1962

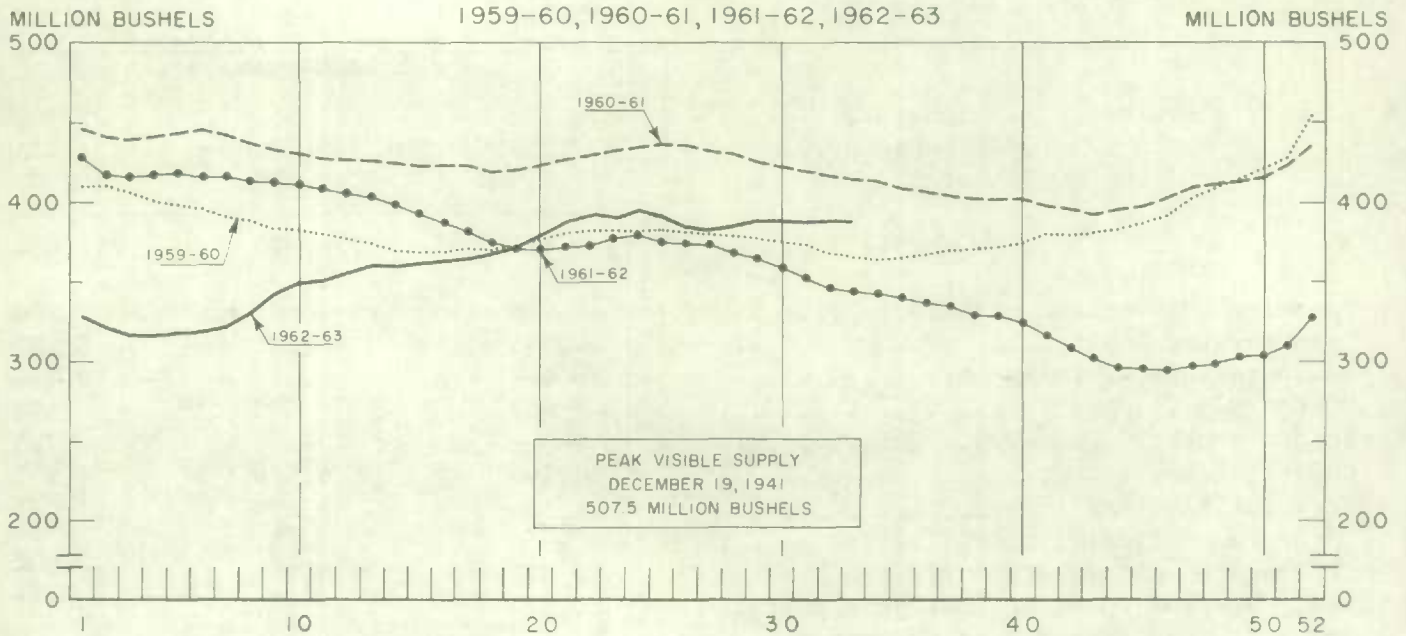
Position	1961	1962	1963
- thousand bushels -			
Country elevators - Manitoba.....	35,172	25,350	28,705
Saskatchewan.....	152,559	95,002	121,441
Alberta.....	71,679	58,172	60,907
Totals.....	259,411	178,525	211,054
Interior private and mill.....	7,456	7,436	7,860
Interior terminals.....	10,865	10,221	5,281
Vancouver-New Westminster.....	10,386	6,998	9,786
Victoria.....	483	388	670
Prince Rupert.....	-	-	788
Churchill.....	4,766	4,829	4,857
Fort William-Port Arthur.....	58,384	54,429	57,525
Storage afloat.....	-	681	-
In transit rail (Western Division).....	11,027	14,132	17,332
Bay, Lake and Upper St. Lawrence ports..	20,002	29,949	28,682
Lower St. Lawrence and Maritime ports...	20,803	20,935	22,639
Storage afloat.....	7,373	14,360	17,543
In transit rail (Eastern Division).....	3,418	1,409	3,484
Totals.....	414,374	344,290	387,503

Grading of Wheat Inspected, August 1962-February 1963 with Comparisons

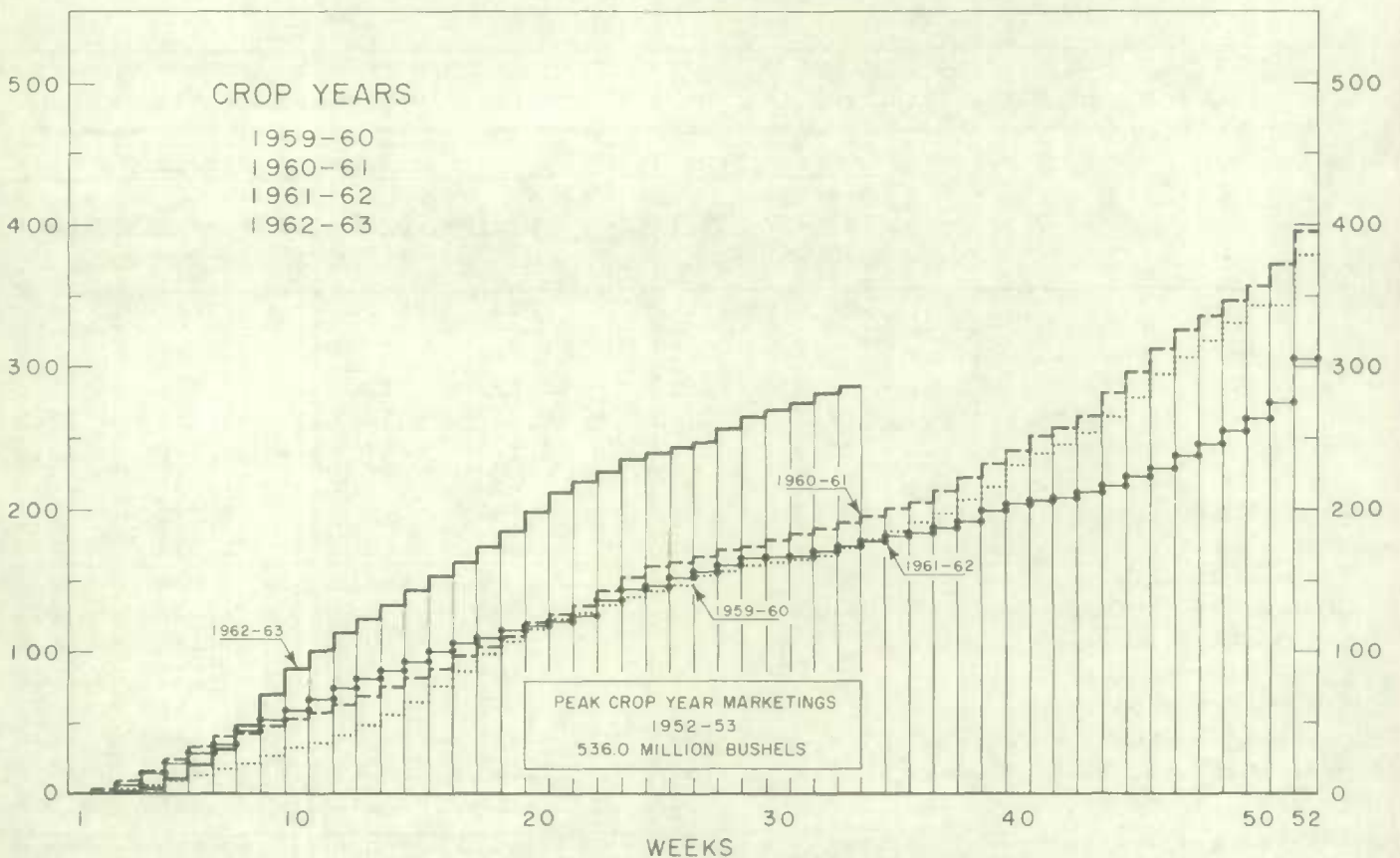
Grade	Crop Year		August - February			
	Average					
	1956-57	1961-62	1961-62		1962-63	
	1960-61					
	per cent	per cent	cars	per cent	cars	per cent
No. 1 Hard.....	-	1/	42	1/	11	1/
No. 1 Man. Northern.....	1.3	20.8	18,832	15.2	15,782	13.5
No. 2 Man. Northern.....	29.2	52.8	66,827	53.9	45,133	38.5
No. 3 Man. Northern.....	28.3	15.7	22,214	17.9	16,146	13.8
No. 4 Man. Northern.....	14.0	3.4	5,752	4.6	11,731	10.0
No. 5 Wheat.....	8.3	0.7	1,194	1.0	5,282	4.5
No. 6 Wheat.....	1.9	0.2	364	0.3	1,353	1.2
Feed Wheat.....	0.1	1/	6	1/	14	1/
Others Red Spring.....	10.0	3.4	4,602	3.7	7,537	6.4
C.W. Garnet.....	1/	0.2	229	0.2	117	0.1
C.W. White Spring.....	0.1	0.1	109	0.1	172	0.1
C.W. Mixed Wheat.....	1/	1/	41	1/	41	1/
Alberta Winter.....	0.3	0.3	490	0.4	426	0.4
Nos. 1-6 C.W. Amber Durum...	6.3	2.3	3,123	2.5	12,703	10.8
Others C.W. Amber Durum.....	0.2	1/	65	0.1	711	0.6
Totals.....	100.0	100.0	123,890	100.0	117,159	100.0
Gross bushels (approx.).....			238,172,000		223,437,000	

1/ Less than .05 per cent.

WEEKLY VISIBLE SUPPLY OF CANADIAN WHEAT



CUMULATIVE RECORD OF WHEAT MARKETINGS IN THE PRAIRIE PROVINCES BY WEEKS



(Data in both charts for crop years beginning August 1)

Wheat Shipments to
the United States
by Destination

Total rail and vessel shipments of wheat to the United States, either for re-export or retention for domestic use, from the beginning of the current crop year to March 20, 1963 amounted to 286 thousand bushels. During the comparable periods of

1961-62 and 1960-61 shipments amounted to 578 thousand and 1,231 thousand bushels, respectively. Of this season's total to date some 70 per cent has been shipped by vessel.

Wheat Shipments to the United States by Destination
August 1, 1962 - March 20, 1963
with Comparisons

Destination	1960-61	1961-62	1962-63
	- bushels -		
<u>By Vessel</u>			
Buffalo	298,631	-	-
Chicago	216,477	100,000	84,750
Duluth-Superior	477,836	420,978	115,208
Milwaukee	81,537	-	-
Totals, Vessel	1,074,481	520,978	199,958
<u>By Rail</u>			
U. S. A. Domestic Points	156,400	56,636	85,959
Totals, Shipments	1,230,881	577,614	285,917

* Either for re-export or retention for domestic use. Excluding bagged seed.

Rail Shipments
of Wheat to
Maritime Ports

Rail shipments of wheat to Maritime Ports from Bay, Lake and Upper St. Lawrence Ports during the first seven months of the current crop year totalled 14.7 million bushels compared with the August 1961-February 1962 figure of 12.2 million.

Rail Shipments of Wheat to Maritime Ports from Bay, Lake
and Upper St. Lawrence Ports

Origin of Shipments	August 1, 1961 February 28, 1962	August 1, 1962 February 28, 1963
	- bushels -	
Port McNicoll	3,824,026	5,802,391
Midland, Tiffin	4,677,955	5,271,244
Collingwood	405,993	97,646
Owen Sound	1,209,068	1,651,851
Goderich	230,866	233,210
Sarnia	1,188,279	1,658,054
Lakefield	458,417	-
Peterborough	250,000	-
Totals	12,244,604	14,714,396

Rail Shipments of Wheat from Fort William-Port Arthur, 1959-60--1962-63

Month	1959-60	1960-61	1961-62	1962-63
- bushels -				
August.....	34,383	14,717	20,648	13,933
September.....	31,690	19,227	14,598	11,657
October.....	30,904	5,417	33,944	22,716
November.....	8,383	24,000	22,915	12,024
December.....	25,355	17,500	60,167	12,778
January.....	103,087	71,335	126,533	39,534
February.....	23,878	135,339	68,421	22,967
March.....	18,826	28,073	37,000	
April.....	64,156	9,833	37,777	
May.....	19,513	15,805	11,203	
June.....	25,234	17,563	16,022	
July.....	26,803	10,940	17,315	
Totals.....	412,212	369,749	466,543	

Distribution of Rail Shipments of Wheat from Fort William-Port Arthur, February 1963

Grade	New Brunswick	Quebec	Ontario	U.S.A.
- bushels -				
5 Wheat.....	-	1,333	2,834	-
6 Wheat.....	-	-	-	9,800
Tough.....	2,000	-	-	-
Durum.....	-	4,000	-	-
Others.....	3,000	-	-	-
Totals.....	5,000	5,333	2,834	9,800

Overseas Exports of Canadian Grain by Ports of Loading, August 1, 1962-March 20, 1963
with Comparisons

Port	Wheat <u>1/</u>	Durum Wheat <u>1/</u>	Oats <u>1/</u>	Barley	Rye	Flaxseed	Rapeseed <u>2/</u>
- bushels -							
<u>Pacific Seaboard</u>							
Van.-New West.	80,826,452	-	7,575,270	2,019,595	1,361,672	3,362,633	4,049,231
Victoria.....	3,181,109	-	-	-	-	-	-
Prince Rupert.....	875,654	-	-	110,849	-	-	-
Churchill.....	20,577,620	-	-	-	-	-	-
Lakehead Direct.....	2,659,002	374,098	528,463	793,621	2,198,488	843,639	-
Kingston Direct.....	336,000	-	-	-	-	-	-
<u>St. Lawrence</u>							
Montreal.....	18,372,648	6,394,654	881,207	862,125	1,521,437	3,348,410	-
Sorel.....	6,523,907	2,450,390	-	-	-	74,321	-
Three Rivers.....	4,568,298	2,006,300	-	186,815	-	102,166	-
Quebec.....	5,702,283	-	95,735	-	-	98,407	-
Baie Comeau.....	12,066,432	-	-	-	-	-	-
<u>Maritimes</u>							
Saint John.....	767,182	-	-	-	-	40,978	-
West Saint John....	6,455,661	1,598,767	135,832	96,858	40,612	506,113	-
Halifax.....	7,243,973	383,328	-	70,316	-	30,550	-
<u>United States Ports</u>							
	-	-	-	-	351,071	-	-
Totals.....	170,156,221	13,207,537	9,216,507	4,140,179	5,473,280	8,407,217	4,049,231
Aug. 1/61-Mar. 21/62...	208,612,210	5,342,072	485,668	16,943,515	3,321,721 ^{3/}	8,881,680	3,471,057

1/ Excluding bagged seed.

2/ In bushels of 50 pounds.

3/ Revised.

Freight Assistance Shipments Claims filed for payment up to February 28, 1963 represent the movement of some 4,988 thousand bushels of wheat from the Prairie Provinces to Eastern Canada and British Columbia under the freight assistance policy during the August-January period of the 1962-63 crop year. During the same months of the 1961-62 crop year claims had been filed for a total of 6,811 thousand bushels, indicating on the assumption of approximately the same rate of submission of claims during both the current and preceding crop years that the 1962-63 August-January shipments of wheat under the policy were running about 27 per cent below those of 1961-62. Revised data on the 1961-62 August-January shipments of wheat based on claims submitted up to February 28, 1963 place the six-month total at 7,354 thousand bushels. The bulk of the shipments during the current six-month period under review went to destinations in Quebec and Ontario, with these two provinces accounting for 42 per cent and 33 per cent of the total, respectively.

Provincial Distribution of Wheat Shipments under the Freight Assistance Policy
August - January 1962-63 and 1961-62

Month	Nfld.	P.E.I.	N.S.	N.B.	Que.	Ont.	B.C.	Total
- thousand bushels -								
August, 1962.....	9	13	48	27	381	354	84	916
September.....	7	7	29	18	335	234	200	830
October.....	8	10	43	23	361	239	144	829
November.....	11	7	41	17	394	288	137	894
December.....	5	5	46	20	297	269	109	749
January, 1963.....	3	4	49	22	346	247	100	771
Totals 1/.....	43	45	255	127	2,113	1,630	774	4,988
Same period 1961-62:								
Preliminary 2/.....	55	73	616	203	2,472	2,330	1,062	6,811
Revised 1/.....	64	76	683	222	2,646	2,422	1,241	7,354

Preliminary data on millfeed shipments under the freight assistance policy indicate shipments of 218,566 tons during the August-January period of the current crop year. During the same six months of 1961-62 claims had been filed for a total of 256,538 tons, indicating on the assumption of approximately the same rate of submission of claims during both the current and preceding crop years that the 1962-63 August-January shipments of millfeeds under the policy were running about 15 per cent below those of 1961-62. Revised data on the 1961-62 August-January shipments of millfeeds based on claims submitted up to February 28, 1963 place the six-month total at 278,529 tons. As with freight-assisted shipments of wheat, the greater portion of the millfeed shipments during the period under review went to destinations in Quebec and Ontario.

Provincial Distribution of Millfeed Shipments under the Freight Assistance Policy
August-January 1962-63 and 1961-62

Province	1961-62		1962-63
	Preliminary 2/	Revised 1/	Preliminary 1/
- tons -			
Newfoundland.....	2,858	3,503	3,026
Prince Edward Island.....	4,402	4,799	3,680
Nova Scotia.....	17,936	19,428	16,039
New Brunswick.....	15,445	17,266	12,252
Quebec.....	124,360	131,647	109,502
Ontario.....	71,051	77,340	57,095
British Columbia.....	20,486	24,546	16,972
Totals.....	256,538	278,529	218,566

1/ Based on claims filed up to February 28, 1963.

2/ Based on claims filed up to February 28, 1962.

Monthly Exports of Canadian Wheat and Wheat Flour

Year and Month	Wheat in Bulk <u>1/</u>	Bagged Seed Wheat <u>2/</u>	Total Wheat	Wheat Flour <u>2/</u> <u>3/</u>	Total <u>3/</u> Wheat and Wheat Flour
- thousand bushels -					
<u>1960-61</u>					
August.....	23,908	127	24,034	2,867	26,901
September.....	26,742	232	26,974	2,694	29,668
October.....	21,172	304	21,476	3,727	25,203
November.....	23,224	570	23,794	4,198	27,992
December.....	20,222	883	21,105	3,320	24,426
January.....	16,408	773	17,181	2,104	19,285
February.....	20,517	1,043	21,560	2,404	23,964
March.....	23,377	1,934	25,312	3,088	28,399
April.....	31,395	599	31,994	3,009	35,003
May.....	42,190	135	42,325	3,166	45,491
June.....	35,532	12	35,544	2,499	38,043
July.....	26,265	4	26,269	2,607	28,876
Totals.....	310,952	6,616	317,568	35,682	353,249
<u>1961-62</u>					
August.....	35,625	89	35,714	3,123	38,837
September.....	28,966	242	29,209	2,786	31,995
October.....	32,910	86	32,996	2,391	35,386
November.....	40,823	377	41,200	3,150	44,351
December.....	19,966	392	20,359	2,643	23,002
January.....	17,534	458	17,992	2,304	20,295
February.....	23,739	433	24,173	2,546	26,719
March.....	20,482	574	21,056	2,968	24,023
April.....	24,981	539	25,520	2,389	27,909
May.....	35,150	77	35,227	2,486	37,713
June.....	23,559	5	23,564	2,456	26,020
July.....	19,016	44	19,060	2,711	21,772
Totals.....	322,752	3,317	326,069	31,953	358,022
<u>1962-63 <u>4/</u></u>					
August.....	21,944	160	22,105	2,670	24,775
September.....	25,040	228	25,268	2,939	28,207
October.....	29,705	20	29,725	2,451	32,176
November.....	33,309	103	33,412	2,158	35,570
December.....	20,949	340	21,289	1,771	23,059
January.....	21,486	520	22,006	2,234	24,240
February.....	18,779	590	19,370	1,420	20,789
Totals.....	171,212	1,962	173,174	15,643	188,817

1/ Export clearances including shipments to the United States compiled by the Statistics Branch, Board of Grain Commissioners for Canada.

2/ Compiled from Canadian Customs returns, 1960-61 and 1961-62 adjusted to remove effect of time lag in reporting.

3/ In terms of wheat equivalent. Wheat flour conversion rate: 2.3 bushels per cwt.

4/ Preliminary.

Exports of Canadian Wheat ^{1/} by Destination, February 1963 and 1962

Destination	Wheat (Except Durum)	Durum Wheat	All Wheat	
			February 1963	February 1962
- bushels -				
<u>COMMONWEALTH AND PREFERENTIAL COUNTRIES</u>				
<u>Western Europe</u>				
Britain.....	5,916,442	-	5,916,442	5,422,940
Ireland.....	498,027	-	498,027	239,307
<u>Other Africa</u>				
Republic of South Africa.....	1,471,680	-	1,471,680	-
<u>Other Asia</u>				
Hong Kong.....	36,027	-	36,027	94,827
India.....	-	-	-	75,703
Pakistan.....	-	-	-	26,391
Totals, Com. and Pref. Countries..	7,922,176	-	7,922,176	5,859,168
<u>OTHER COUNTRIES</u>				
<u>Western Europe</u>				
Austria.....	-	121,379	121,379	530,133
Belgium and Luxembourg.....	1,275,877	18,666	1,294,543	486,528
Germany, Federal Republic.....	86,389	-	86,389	2,254,209
Italy.....	-	-	-	77,033
Netherlands.....	97,067	-	97,067	-
Switzerland.....	-	74,667	74,667	-
<u>Middle East</u>				
Saudi Arabia.....	78,333	-	78,333	-
<u>Other Africa</u>				
Mozambique.....	14,833	-	14,833	116,480
<u>Other Asia</u>				
China, Communist.....	5,685,539	-	5,685,539	9,314,744
Japan.....	2,428,977	-	2,428,977	4,460,360
Philippines.....	219,233	-	219,233	246,288
Taiwan.....	-	-	-	75,787
<u>Oceania</u>				
United States Oceania.....	-	-	-	56,747
<u>South America</u>				
Colombia.....	-	-	-	80,835
Venezuela.....	742,000	-	742,000	178,795
<u>Central America and Antilles</u>				
Guatemala.....	5,000	-	5,000	-
<u>North America</u>				
United States for domestic use 2/.....	9,133	-	9,133	2,000
Totals, Other Countries.....	10,642,381	214,712	10,857,093	17,879,939
Sub-Totals, All Countries.....	18,564,557	214,712	18,779,269	23,739,107
Bagged seed 3/.....			590,346	433,487
Totals, All Countries.....	18,564,557	214,712	19,369,615	24,172,594

NOTE: See footnotes on page 17,

Cumulative Exports of Canadian wheat 1/ by Destination

Destination	August 1962-February 1963			Total same period last year
	Wheat (Except Durum)	Durum Wheat	Total Wheat	
- bushels -				
<u>COMMONWEALTH AND PREFERENTIAL COUNTRIES</u>				
<u>Western Europe</u>				
Britain.....	44,029,469	189,131	44,218,600	46,801,000
Ireland.....	1,542,723	7,467	1,550,190	1,523,932
Malta and Gozo.....	693,654	-	693,654	844,667
<u>Other Africa</u>				
Nigeria.....	543,953	-	543,953	-
Republic of South Africa.....	1,471,680	-	1,471,680	-
Rhodesia and Nyasaland.....	8,244	-	8,244	56,000
<u>Other Asia</u>				
Hong Kong.....	316,027	-	316,027	339,360
India.....	698,133	-	698,133	3,541,390
Pakistan.....	-	-	-	1,856,325
<u>Central America and Antilles</u>				
Jamaica.....	6,566	-	6,566	-
Totals, Com. and Pref. Countries..	49,310,449	196,598	49,507,047	54,962,674

OTHER COUNTRIES

<u>Western Europe</u>				
Austria.....	382,779	419,655	802,434	1,554,946
Belgium and Luxembourg.....	6,338,563*	106,047	6,444,610*	7,389,257
Finland.....	350,933	-	350,933	1,151,402
France.....	46,670	4,199,056	4,245,726	658,902
Germany, Federal Republic.....	11,561,466	7,255,050	18,816,516	32,500,360
Greece.....	-	10	10	-
Italy.....	3,474,826	-	3,474,826	2,329,040
Netherlands.....	3,836,121*	-	3,836,121*	1,638,994
Norway.....	1,568,267	-	1,568,267	1,728,869
Sweden.....	67,200	-	67,200	-
Switzerland.....	718,849	956,456	1,675,305	3,570,891
<u>Eastern Europe</u>				
Albania.....	-	-	-	1,050,336
Germany, East.....	-	-	-	8,040,229
Poland.....	14,183,656	-	14,183,656	12,293,711
<u>Middle East</u>				
Israel.....	835,000	-	835,000	829,100
Saudi Arabia.....	516,321	-	516,321	166,525
U.A.R.-Egypt.....	-	-	-	451,733

Cumulative Exports of Canadian Wheat ^{1/} by Destination

Destination	August 1962-February 1963			Total same period last year
	Wheat (Except Durum)	Durum Wheat	Total Wheat	
- bushels -				
OTHER COUNTRIES (concluded)				
Other Africa				
Algeria.....	-	-	-	1,359,639
Congo.....	-	-	-	18,257
Katanga.....	9,186	-	9,186	-
Mozambique.....	343,478	-	343,478	376,979
Tunisia.....	-	-	-	189,905
Other Asia				
Burma.....	-	-	-	175,467
China, Communist.....	30,565,240	-	30,565,240	31,139,900
Japan.....	24,245,771	-	24,245,771	29,567,923
Philippines.....	3,362,141	-	3,362,141	1,758,561
Taiwan.....	53,972	-	53,972	75,787
Oceania				
United States Oceania.....	298,479	-	298,479	296,986
South America				
Colombia.....	-	-	-	264,550
Ecuador.....	527,830	-	527,830	749,680
Venezuela.....	4,112,551	-	4,112,551	1,660,330
Central America and Antilles				
Dominican Republic.....	539,746	-	539,746	730,401
El Salvador.....	414,514	-	414,514	296,548
Guatemala.....	148,334	-	148,334	20,000
North America				
United States for domestic use 2/.....	267,066	-	267,066	565,987
Totals, Other Countries.....	108,768,959	12,936,274	121,705,233	144,601,195
Sub-Totals, All Countries....	158,079,408	13,132,872	171,212,280	199,563,869
Bagged seed 3/.....			1,961,879	2,077,526
Totals, All Countries.....	158,079,408	13,132,872	173,174,159	201,641,395

* Revisions in data for previous months have been taken into account in the August-February cumulative totals.

^{1/} Overseas clearances as reported by the Statistics Branch, Board of Grain Commissioners for Canada, for all countries except the United States. Excluding bagged seed.

^{2/} Compiled from returns of Canadian elevator licensees and shippers and advice from American grain correspondents.

^{3/} Compiled from Canadian Customs returns, 1961-62 adjusted for time lag.

Customs Exports of Canadian Wheat Flour by Countries of Consignment

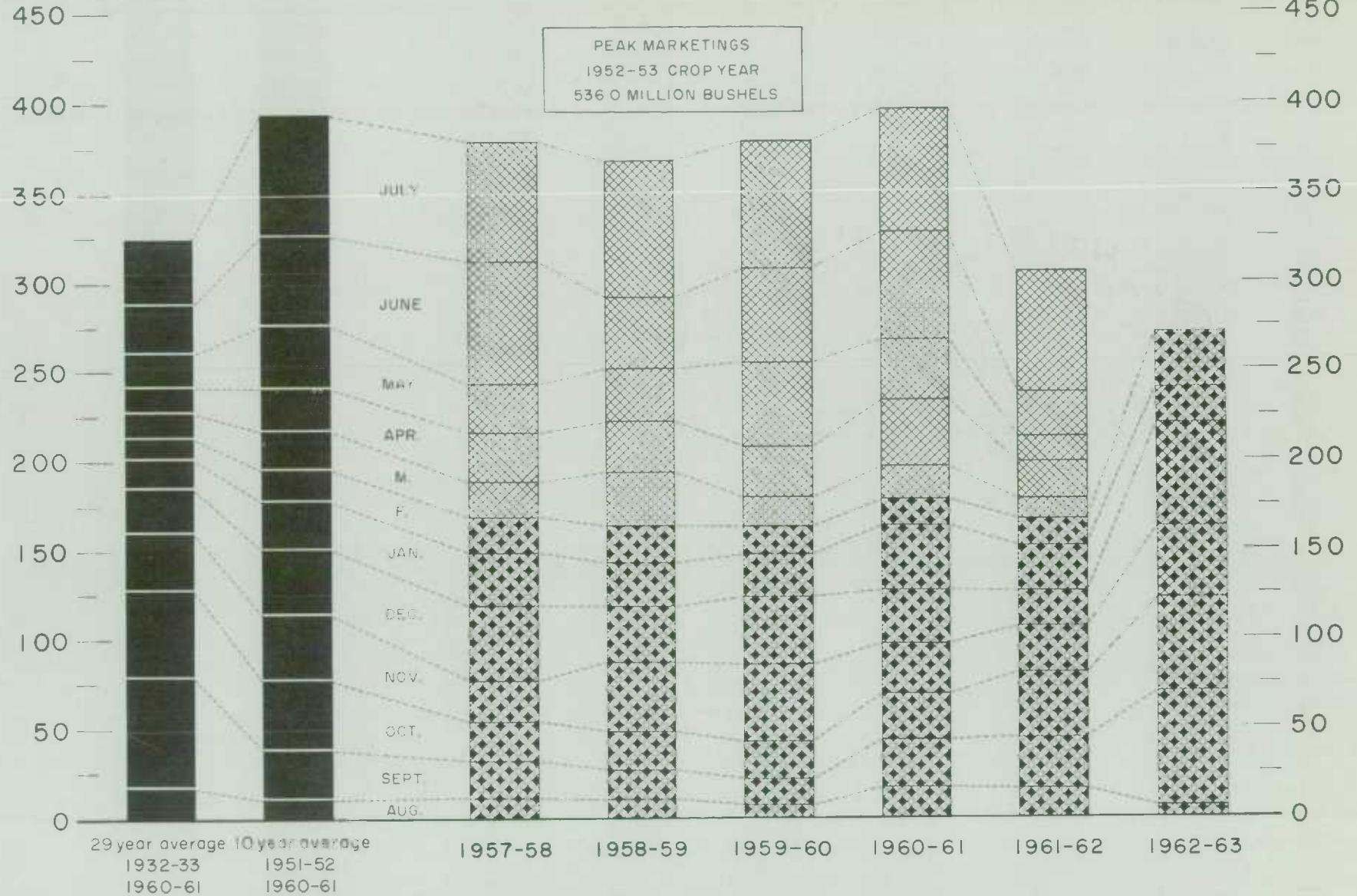
Destination	November 1962 1/	February 1963 2/	August-February	
			1962-63 2/	1961-62 1/
- bushels -				
COMMONWEALTH AND PREFERENTIAL COUNTRIES				
Western Europe				
Britain.....	1,054,839	559,831	6,698,053	7,009,491
Gibraltar.....	6,698	-	19,835	52,698
Middle East				
Kuwait.....	8,372	5,440	50,520	10,304
Qatar.....	-	874	1,849	575
British Middle East, nes	-	2,833	11,334	12,365
Other Africa				
Ghana.....	71,314	-	1,133,562	1,027,891
Nigeria.....	2,300	-	664,930*	841,692
Rhodesia and Nyasaland.....	1,546	2,466	21,517	14,336
Sierra Leone.....	16,687	1,840	261,299	275,671
Tanganyika.....	-	4,589	9,189	18,285
British Africa, nes	5,175	-	36,381	50,393
Other Asia				
Ceylon.....	-	-	-	384,008
Hong Kong.....	87,182	69,609	565,542	515,453
Malaya and Singapore.....	70,923	47,129	370,318	400,543
British East Indies, nes	1,614	1,534	6,884	7,514
Oceania				
Fiji.....	-	-	2,472	4,220
South America				
British Guiana.....	1,366	9,154	17,020	10,463
Central America and Antilles				
Bahamas.....	33,492	30,794	175,929	171,113
Bermuda.....	11,038	6,040	63,570	77,811
British Honduras.....	5,232	6,923	21,355	18,269
Barbados.....	7,192	3,954	76,243	77,087
Jamaica.....	168,215	85,314	803,657	906,248
Leeward and Windward Islands.....	79,815	75,696	540,169	603,081
Trinidad and Tobago.....	123,505	82,814	801,005	781,740
Totals, Com. and Pref. Countries..	1,756,505	996,834	12,352,633*	13,271,251
OTHER COUNTRIES				
Western Europe				
Belgium and Luxembourg.....	7,213	-	73,984	107,266
Denmark.....	1,546	-	5,557	1,840
Germany, Federal Republic.....	-	-	6,463	-
Greece.....	19,014	-	23,579	5,094
Iceland.....	1,610	4,750	12,800	14,976
Italy.....	-	-	6,265	17,696
Netherlands.....	-	-	1,415	1,456
Norway.....	-	-	115	-
Portugal.....	6,824	5,046	46,386	25,983
Sweden.....	-	-	1,265	1,518
Switzerland.....	-	-	6,900	-
Middle East				
Iran.....	-	612	2,496	1,698
Iraq.....	-	-	948	-
Israel.....	-	-	8,437	-
Jordan.....	-	87	651	109,749
Lebanon.....	276	5,152	189,083	538,069

FARMERS' MARKETINGS OF WHEAT, PRAIRIE PROVINCES

(SPECIFIED PERIODS)

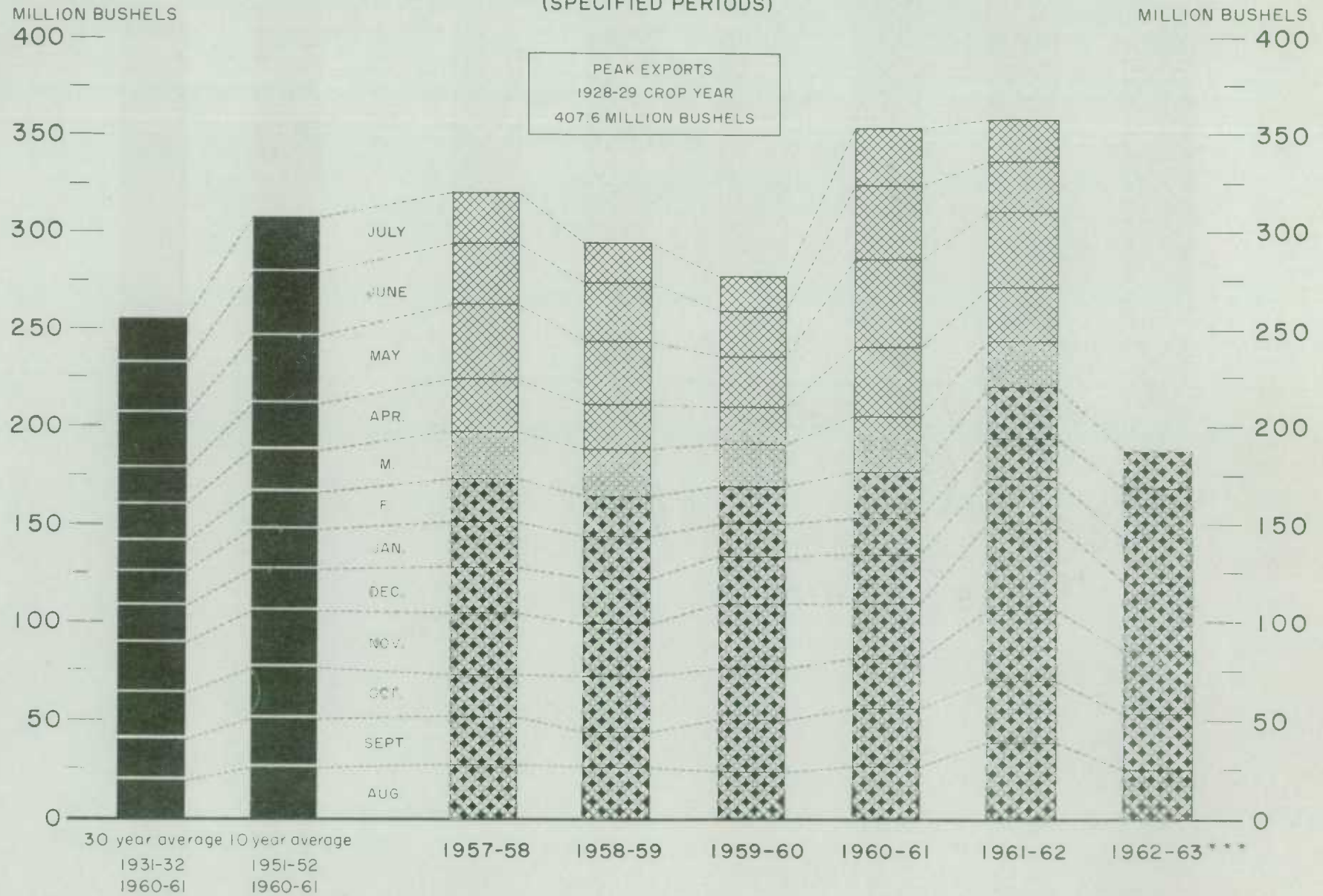
MILLION BUSHEL

MILLION BUSHEL



EXPORTS OF CANADIAN WHEAT* AND WHEAT FLOUR**

(SPECIFIED PERIODS)



FARMERS' MARKETINGS OF BARLEY, PRAIRIE PROVINCES

(SPECIFIED PERIODS)

MILLION BUSHEL

140 —

MILLION BUSHEL

140 —

120 —

120 —

100 —

100 —

80 —

80 —

60 —

60 —

40 —

40 —

20 —

20 —

0

0

30 year average 10 year average
1931-32 1951-52
1960-61 1960-61

1957-58

1958-59

1959-60

1960-61

1961-62

1962-63

JULY

JUNE

MAY

APR.

MAR.

FEB.

JAN.

DEC.

NOV.

OCT.

SEPT.

AUG.

EXPORTS OF CANADIAN BARLEY AND BARLEY PRODUCTS*

(SPECIFIED PERIODS)

MILLION BUSHELS

90 —

80 —

70 —

60 —

50 —

40 —

30 —

20 —

10 —

0

MILLION BUSHELS

90 —

80 —

70 —

60 —

50 —

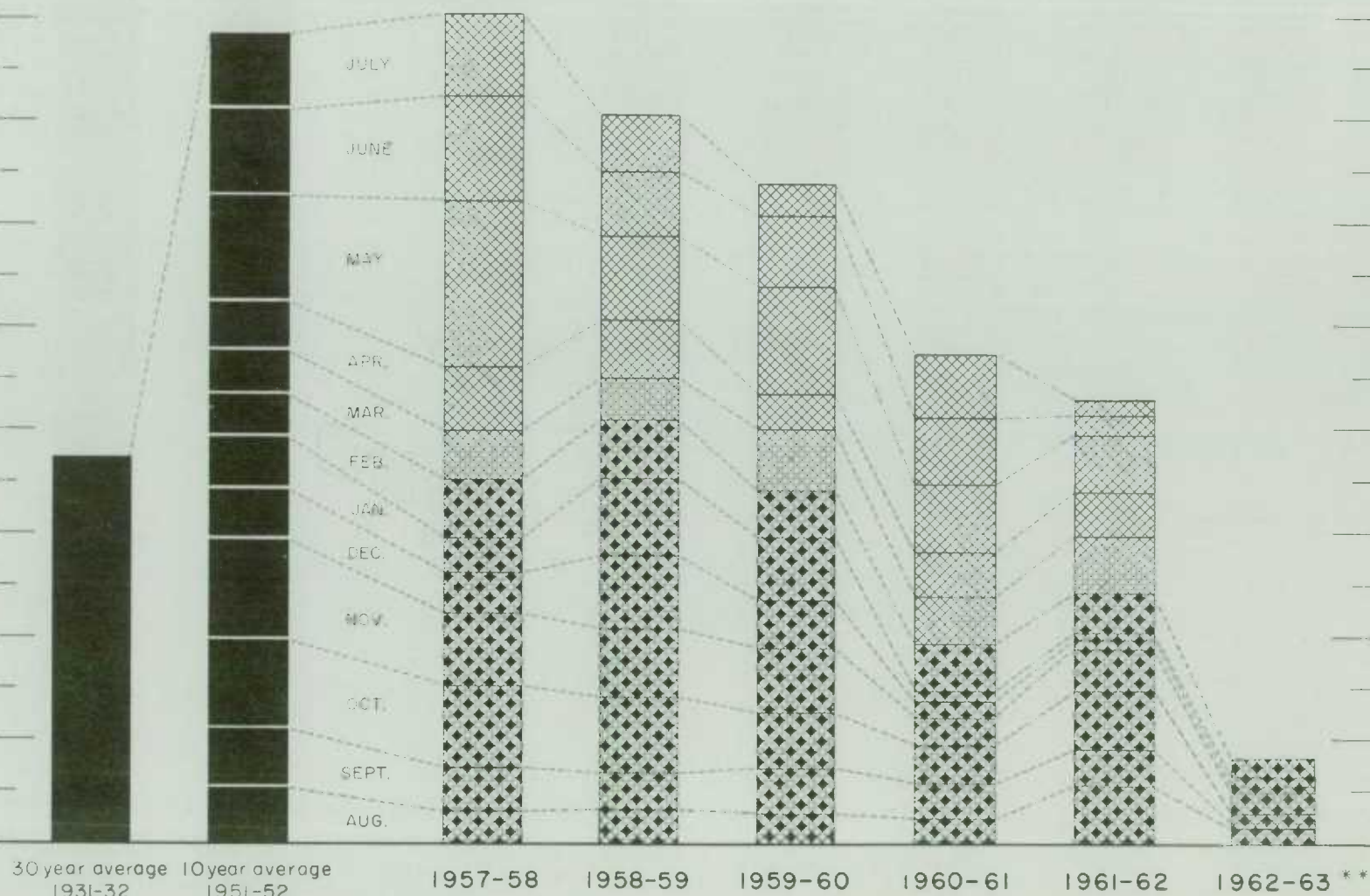
40 —

30 —

20 —

10 —

0

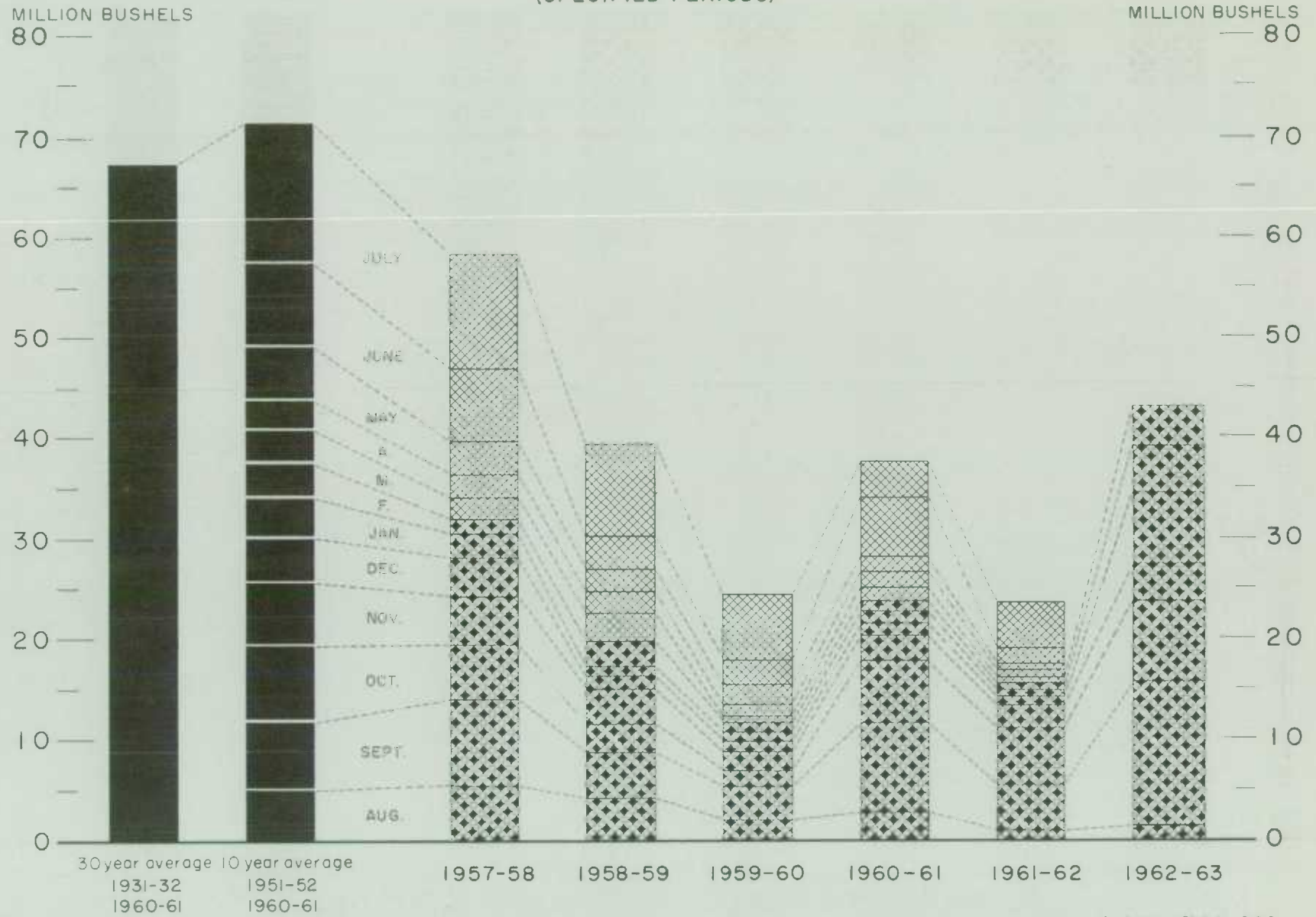


* In terms of grain equivalent. ** Preliminary.

Agriculture Division D.B.S.

FARMERS' MARKETINGS OF OATS, PRAIRIE PROVINCES

(SPECIFIED PERIODS)



Agriculture Division D.B.S.

EXPORTS OF CANADIAN OATS* AND OAT PRODUCTS**

(SPECIFIED PERIODS)

MILLION BUSHEL

36

32

28

24

20

16

12

8

4

0

30 year average 10 year average
 1931-32 1951-52
 1960-61 1960-61

JULY

JUNE

MAY

APR

MAR

FEB.

JAN.

DEC.

NOV.

OCT

SEPT.

AUG.

1957-58

1958-59

1959-60

1960-61

1961-62

1962-63 ***

MILLION BUSHEL

36

32

28

24

20

16

12

8

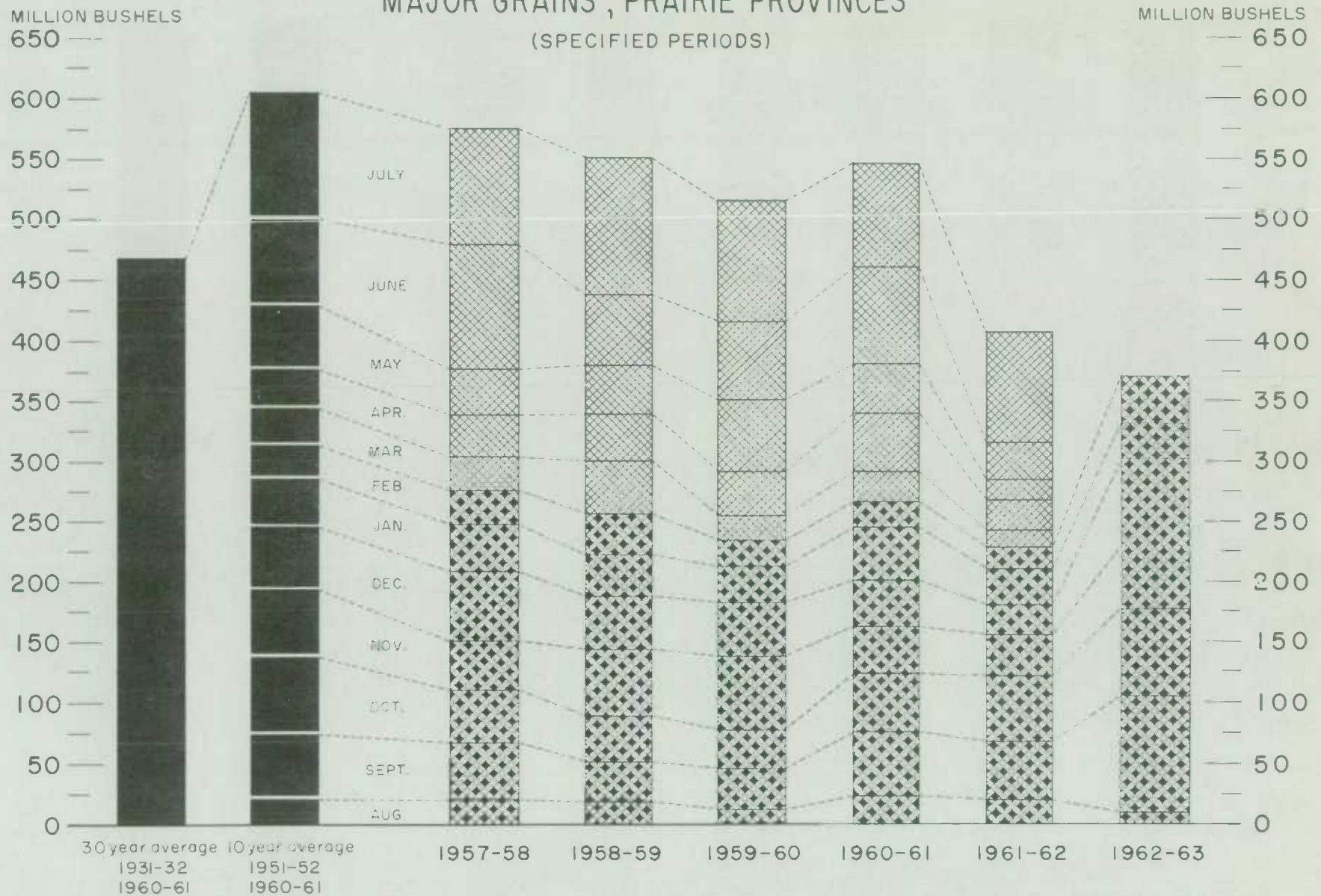
4

0

*Beginning with 1960-61 includes relatively small quantity of bogged seed. **In terms of grain equivalent. ***Preliminary.

Agriculture Division D.B.S.

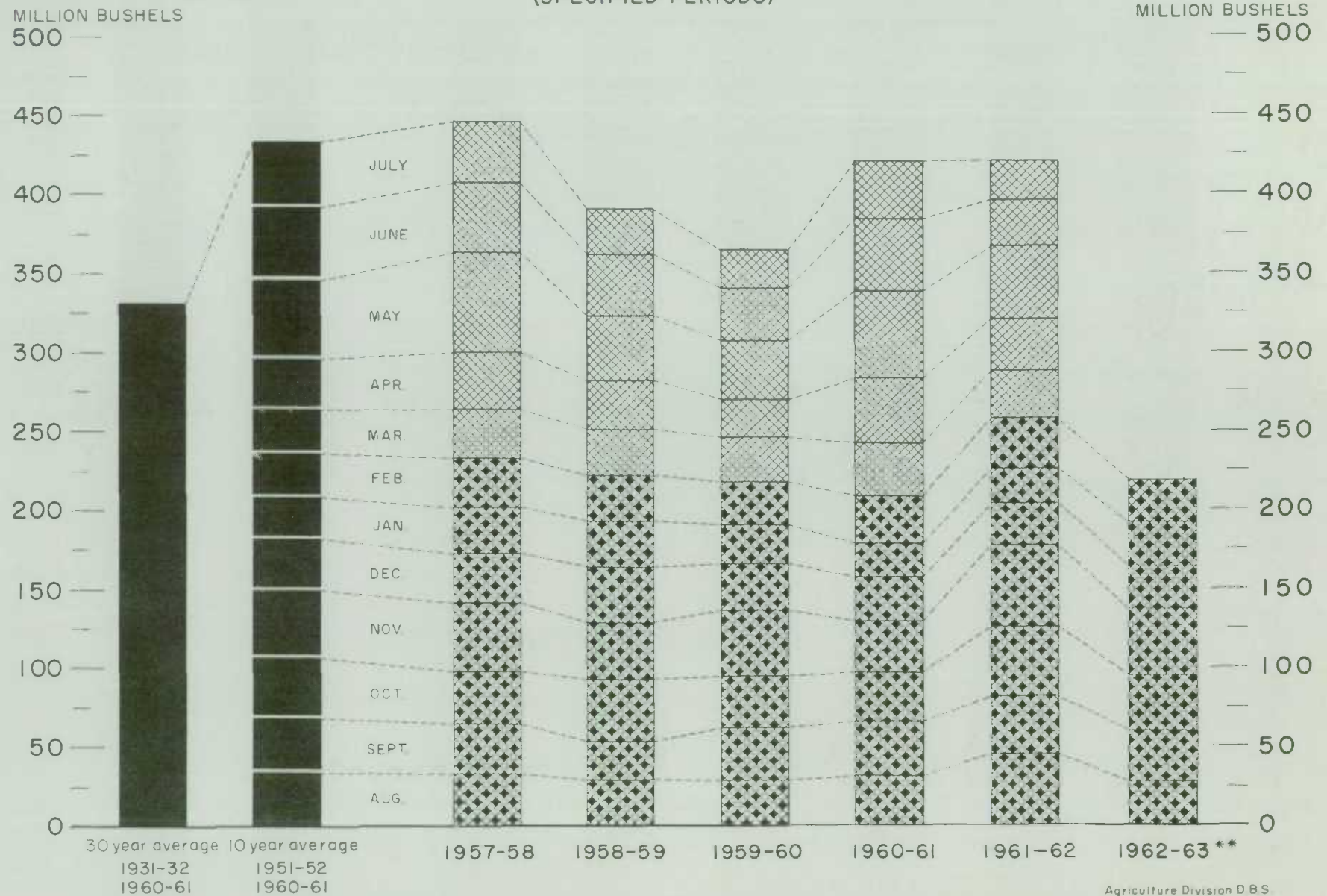
FARMERS' MARKETINGS OF CANADA'S FIVE MAJOR GRAINS*, PRAIRIE PROVINCES



Agriculture Division D.B.S.

EXPORTS OF CANADA'S FIVE MAJOR GRAINS AND PRODUCTS*

(SPECIFIED PERIODS)



* Wheat, bagged seed wheat, and wheat flour; oats, bagged seed oats, and oatmeal and rolled oats; barley, malt and pot and pearl; rye and flaxseed

*** Preliminary.

Agriculture Division D B S

Customs Exports of Canadian Wheat Flour by Countries of Consignment

Destination	November 1962 <u>1/</u>	February 1963 <u>2/</u>	August-February	
			1962-63 <u>2/</u>	1961-62 <u>1/</u>
			- bushels -	
<u>OTHER COUNTRIES (concluded)</u>				
<u>Middle East</u>				
Saudi Arabia.....	-	-	1,104	288
Syria.....	-	1,564	4,351	1,516
U.A.R.-Egypt.....	-	-	12,880	171,994
<u>Other Africa</u>				
Angola.....	-	1,840	1,840	575
Congo-Leo.....	4,140	7,935	63,887	88,000
French Equatorial Africa.....	-	-	- *	-
French West Africa.....	7,751	-	23,442	10,594
Liberia.....	1,610	345	17,979	13,669
Mozambique.....	-	2,772	12,096	9,766
Portuguese Africa, nes	7,636	1,840	52,923	51,391
Togo.....	-	1,840	7,418	-
<u>Other Asia</u>				
Indonesia.....	-	-	64	390,368
Japan.....	9,483	4,243	159,247	687,286
Philippines.....	-	-	9,200	1,033,128
Portuguese India.....	-	-	-	67,944
Portuguese Asia.....	1,030	1,546	6,661	13,662
Thailand.....	25,300	31,048	213,914	219,335
Viet-Nam.....	-	-	44,576	-
<u>Oceania</u>				
French Oceania.....	426	-	1,300	713
United States Oceania.....	-	575	2,300	-
<u>South America</u>				
Chile.....	58	-	5,118	3,220
Colombia.....	-	-	-	1,840
Peru.....	2,070	6,785	18,216	9,092
Surinam.....	6,274	4,757	29,277	43,624
Venezuela.....	-	-	1,610	8,061
<u>Central America and Antilles</u>				
Costa Rica.....	15,812	125,297	514,024	456,713
Dominican Republic.....	83,113	2,300	105,639	-
El Salvador.....	3,910	5,952	56,635	122,859
French West Indies.....	172	-	2,380	1,794
Guatemala.....	1,150	11,514	23,941	41,294
Haiti.....	331	-	446	-
Honduras.....	-	4,255	33,106	55,731
Netherlands Antilles.....	30,777	19,076	137,206	112,277
Nicaragua.....	36,761	20,902	268,205	257,213
Panama.....	27,715	45,602	295,179	252,462
<u>North America</u>				
St. Pierre and Miquelon.....	320	1,380	7,080	3,100
United States.....	116,722	103,932	770,675	717,114
Totals, Other Countries.....	419,044	422,947	3,290,263*	5,671,968
Totals, All Countries.....	2,175,549	1,419,781	15,642,896	18,943,219

nes - not elsewhere specified.

* Revisions in data for previous months have been taken into account in the August-February cumulative totals.

1/ In terms of wheat equivalent. Adjusted to remove effect of time lag in the returns made by Customs. Conversion rate: 2.3 bushels per cwt.

2/ In terms of wheat equivalent. Preliminary and unadjusted for time lag. Conversion rate: 2.3 bushels per cwt.

Canadian Wheat Board Weekly Average Cash Wheat Prices
Basis in Store Fort William-Port Arthur

Class and Grade	Week Ending			
	March 8	March 15	March 22	March 29
- cents and eighths per bushel -				
<u>Initial Payment to Producers</u>				
1 Northern.....	150	150	150	150
2 Northern.....	146	146	146	146
3 Northern.....	142	142	142	142
4 Northern.....	135	135	135	135
5 Wheat.....	118	118	118	118
6 Wheat.....	112	112	112	112
Feed Wheat.....	108	108	108	108
1 C.W. Garnet.....	135	135	135	135
2 C.W. Garnet.....	130	130	130	130
3 C.W. Garnet.....	125	125	125	125
1 Alberta Red Winter.....	134	134	134	134
2 Alberta Winter.....	129	129	129	129
1 C.W. Amber Durum.....	150	150	150	150
2 C.W. Amber Durum.....	146	146	146	146
3 C.W. Amber Durum.....	142	142	142	142
<u>International Wheat Agreement</u>				
<u>and Domestic Sales</u>				
1 Northern.....	195/7	196	196	195/7
2 Northern.....	195/3	195/4	195/4	195/3
3 Northern.....	194/3	194/4	194/2	193/3
4 Northern.....	187/7	188	187/4	185/3
5 Wheat.....	181/7	182	181/1	177/7
6 Wheat.....	180/7	181	180	175/7
Feed Wheat.....	176/7	177	176/3	173/7
1 C.W. Garnet.....	192/7	193	192/4	190/3
2 C.W. Garnet.....	190/7	191	190/4	188/3
3 C.W. Garnet.....	189/7	190	189/4	187/3
1 Alberta Red Winter.....	192/7	193	192/4	190/3
2 Alberta Winter.....	190/7	191	190/4	188/3
3 Alberta Winter.....	189/7	190	189/4	187/3
1 C.W. Amber Durum.....	243/4	240	240	239/7
2 C.W. Amber Durum.....	242/4	239	239	238/7
3 C.W. Amber Durum.....	238/4	235	235	234/7
<u>Export - Class II</u>				
1 Northern.....	195/7	196	196	195/7
2 Northern.....	195/3	195/4	195/4	195/3
3 Northern.....	194/3	194/4	194/2	193/3
4 Northern.....	187/7	188	187/4	185/3
5 Wheat.....	181/7	182	181/1	177/7
6 Wheat.....	180/7	181	180	175/7
Feed Wheat.....	176/7	177	176/3	173/7
1 C.W. Garnet.....	192/7	193	192/4	190/3
2 C.W. Garnet.....	190/7	191	190/4	188/3
3 C.W. Garnet.....	189/7	190	189/4	187/3
1 C.W. Amber Durum.....	243/4	240	240	239/7
2 C.W. Amber Durum.....	242/4	239	239	238/7
3 C.W. Amber Durum.....	238/4	235	235	234/7

Canadian Wheat Board Weekly Average Cash Wheat Prices
Basis in Store Vancouver

Class and Grade	Week Ending			
	March 8	March 15	March 22	March 29

- cents and eighths per bushel -

Initial Payment to Producers

1 Northern.....	150	150	150	150
2 Northern.....	146	146	146	146
3 Northern.....	142	142	142	142
4 Northern.....	135	135	135	135
5 Wheat.....	118	118	118	118
6 Wheat.....	112	112	112	112
Feed Wheat.....	108	108	108	108
1 C.W. Garnet.....	135	135	135	135
2 C.W. Garnet.....	130	130	130	130
3 C.W. Garnet.....	125	125	125	125
1 Alberta Red Winter.....	134	134	134	134
2 Alberta Winter.....	129	129	129	129
1 C.W. Amber Durum.....	150	150	150	150
2 C.W. Amber Durum.....	146	146	146	146
3 C.W. Amber Durum.....	142	142	142	142

Internatoonal Wheat Agreement

and Domestic Sales

1 Northern.....	201/5	201/6	201/6	201/5
2 Northern.....	201/1	201/2	201/2	201/1
3 Northern.....	198/1	198/2	198/2	198/1
4 Northern.....	189/5	189/6	189/5	189/1
5 Wheat.....	181/5	181/6	181/4	180/5
6 Wheat.....	179/5	179/6	179/4	178/5
Feed Wheat.....	176/5	176/6	176/4	175/5
1 C.W. Garnet.....	191/5	191/6	191/6	191/5
2 C.W. Garnet.....	189/5	189/6	189/6	189/5
3 C.W. Garnet.....	188/5	188/6	188/6	188/5
1 Alberta Red Winter.....	191/5	191/6	191/6	191/5
2 Alberta Winter.....	189/5	189/6	189/6	189/5
3 Alberta Winter.....	188/5	188/6	188/6	188/5

Export - Class II

1 Northern.....	201/5	201/6	201/6	201/5
2 Northern.....	201/1	201/2	201/2	201/1
3 Northern.....	198/1	198/2	198/2	198/1
4 Northern.....	189/5	189/6	189/5	189/1
5 Wheat.....	181/5	181/6	181/4	180/5
6 Wheat.....	179/5	179/6	179/4	178/5
Feed Wheat.....	176/5	176/6	176/4	175/5
1 C.W. Garnet.....	191/5	191/6	191/6	191/5
2 C.W. Garnet.....	189/5	189/6	189/6	189/5
3 C.W. Garnet.....	188/5	188/6	188/6	188/5
1 Alberta Red Winter.....	191/5	191/6	191/6	191/5
2 Alberta Winter.....	189/5	189/6	189/6	189/5
3 Alberta Winter.....	188/5	188/6	188/6	188/5

CANADIAN FLOUR MILLING SITUATION

Production Wheat flour production by Canadian mills during February 1963 amounted to 2,815,000 hundredweight, representing an increase of one per cent over both the January 1963 output of 2,793,000 hundredweight and the February 1962 figure of 2,782,000 hundredweight, but 10 per cent below the ten-year (1953-62) average production for the month of February of 3,132,000 hundredweight. Mills reporting operations during February 1963 had a total rated capacity of 166,000 hundredweight per 24-hour day and on the basis of a 24-day working period 70.5 per cent of this rated capacity was effective.

Wheat milled for flour during February 1963 amounted to 6,250,000 bushels, one per cent more than both the 6,198,000 bushels milled during the preceding month and the 6,218,000 bushels milled during February 1962. Of the wheat milled for flour during February 1963 some 5,537,000 bushels were Western Canadian spring wheat (other than Durum) while the remainder consisted of Ontario winter wheat (540,000 bushels); Durum (113,000 bushels); and all other (59,000 bushels).

Exports According to preliminary Customs returns, exports of Canadian wheat flour during February 1963 amounted to 617,000 hundredweight (some 1,420,000 bushels of wheat equivalent) as against the 2,234,000 bushels exported during the previous month and the adjusted February 1962 total of 2,546,000 bushels. Flour shipments during the month went to 46 countries with exports to Britain amounting to 560,000 bushels of wheat equivalent and accounting for 39 per cent of the February 1963 total. Other principal markets for Canadian wheat flour during the month with shipments in thousands of bushels of wheat equivalent were as follows: Costa Rica, 1,250; United States, 104; Jamaica, 85; Trinidad and Tobago, 83; Leeward and Windward Islands, 76; and Hong Kong, 70.

Wheat Milled for Flour, and Production and Exports of Wheat Flour, Canada

Crop Year	Wheat Milled for Flour bushels	Wheat Flour	
		Production	Exports ^{1/}
			- cwt. -
1935-36—1939-40 average.....	67,845,114	29,405,451	9,603,941
1940-41—1944-45 average.....	99,704,638	43,908,245	23,699,546
1945-46—1949-50 average.....	107,330,372	47,011,540	25,819,721
1950-51—1954-55 average.....	100,446,328	43,847,894	21,812,041
1955-56.....	91,770,025	40,148,750	17,391,300
1956-57.....	85,149,373	37,623,446	14,582,431
1957-58.....	92,288,897	40,819,678	17,556,886
1958-59.....	90,142,957	39,826,493	16,141,267
1959-60.....	91,389,801	40,344,578	16,073,893
1960-61.....	89,731,155	39,914,644	15,513,836
1961-62.....	88,240,580	39,539,651	13,892,676
1962-63 ^{2/} August.....	6,576,578	2,952,879	1,160,900
September.....	6,346,386	2,863,042	1,277,841
October.....	7,256,425	3,265,003	1,065,714
November.....	6,815,604	3,064,494	938,473
December.....	5,547,290	2,499,301	769,876
January.....	6,197,875	2,793,497	971,159
February.....	6,250,139	2,815,286	617,296
Totals.....	44,990,297	20,253,502	6,801,259
Same months 1961-62 ^{3/}	50,541,674	22,573,891	8,236,182

^{1/} Based on Customs returns. Exports for the crop years 1945-46--1961-62 revised to remove effect of time lag in the returns made by Customs.

^{2/} Subject to revision.

^{3/} Revised.

UNITED STATES SITUATION

Supply Position Domestic supplies of wheat in the United States for the 1962-63 crop year (July-June) are estimated at 2,396.5 million bushels, consisting of the July 1, 1962 carryover of 1,304.8 million and the 1962 crop, placed at 1,091.8 million bushels. Domestic supplies of this size are 9 per cent less than last year's total of 2,645.9 million and 10 per cent smaller than the record 1960-61 figure of 2,670.8 million bushels. Imports of wheat from Canada during July-February of the current United States crop year amounted to 3.0 million bushels. Domestic disappearance during 1962-63 is estimated at about 605.0 million bushels, 4 per cent less than the 630.1 million last year. After deducting anticipated domestic requirements for the current United States crop year, some 1,794.5 million remain available for export and for carryover, a decrease of 11 per cent from the 2,019.1 million in 1961-62.

Exports of wheat, wheat flour and other products in terms of grain equivalent during the first eight months (July-February) of the 1962-63 United States crop year amounted to 356.5 million bushels, 25 per cent below the 472.3 million exported during the same months in 1961-62. The balance remaining on March 1, 1963 for export and for carryover was estimated at 1,438.0 million bushels compared with 1,546.8 million on the same date a year ago.

United States Wheat Supplies

Item	1961-62 <u>1/</u>	1962-63 <u>2/</u>
	- million bushels -	
Carryover at beginning of crop year (July 1).....	1,411.2	1,304.8 <u>1/</u>
New Crop.....	1,234.7	1,091.8
Total estimated domestic supplies.....	2,645.9	2,396.5
Imports of wheat and wheat flour in terms of wheat for domestic use, July-February.....	3.2	3.0
Total estimated supplies <u>3/</u>	2,649.2	2,399.5
Less estimated domestic requirements for crop year <u>4/</u>	630.1 <u>1/</u>	605.0
Available for export and for carryover.....	2,019.1	1,794.5
Deduct:		
Exports of wheat as grain, July-February.....	403.0	299.6
Exports of wheat flour and products in terms of wheat, July-February <u>5/</u>	69.2	56.9
Total exports of wheat, wheat flour and products <u>6/</u>	472.3	356.5
Balance on March 1 for export and for carryover...	1,546.8	1,438.0

1/ Revised. 2/ Preliminary. 3/ Excluding imports for March-June. 4/ Includes shipments to United States Territories and wheat for military food use at home and abroad. 5/ Flour exports exclude "Milled in bond". 6/ These figures now include all shipments under relief programs which formerly were not available from Census data.

Prospective Plantings
of Spring Wheat

The following report on prospective plantings of spring wheat in the United States was taken from the March 20 report of the Crop Reporting Board, United States Department of Agriculture. Farmers intend to plant 11.1 million acres of all spring wheat in 1963, 6 per cent more than in 1962, but 11 per cent below average. Planted acreage of all wheat is indicated to be 53.2 million acres if the March 1 intentions for spring wheat are combined with the December estimate of winter wheat planted last fall. This would be an increase of 8 per cent or 4.1 million acres from 1962.

Durum wheat plantings are expected to total 2.2 million acres, 12 per cent less than in 1962, but 37 per cent above average. With prices for durum wheat averaging as high or higher than hard spring wheat and durum yields also averaging higher, there is a shift in some areas from hard spring to durum wheat in 1963.

The acreage of other spring wheat is indicated to be 8.9 million acres, 11 per cent more than in 1962, but 18 per cent below average and the second smallest planted acreage of record. The major producing States expect substantial acreage increases over a year earlier. Acreage reduction is expected in Wisconsin and several western States.

If present planting intentions are carried out and with average yields, with an allowance for trend, an all spring wheat crop of 240 million bushels would be produced. Based on conditions as of December 1, 1962, a winter wheat crop of 1,028 million bushels was forecast. The projected total wheat crop of 1,268 million bushels compares with 1,092 million bushels produced in 1962.

Crop and
Weather Conditions

The following extract has been taken from the Weekly Weather and Crop Bulletin, published jointly by the United States Department of Commerce and United States Department of Agriculture for the week ending March 25, 1963. Another week of mild weather stimulated further greening and growth of winter grains in the northern Great Plains and brought more acreages out of dormancy in the Corn Belt region. Crop prospects were improved considerably by additional moisture in the form of snow, sleet, and rain in the Dakotas and Nebraska. Precipitation was generally inadequate in the remainder of the Great Plains, however. High winds during the period continued to cause more than the usual amount of soil blowing in the Central and Southern Plains States as a result of limited growth for ground cover so far this season and relatively dry topsoil conditions. Winterkill on barley acreages became more evident as growth advanced in the central Great Plains. The worst army worm outbreak in several years continued to plague farmers in the winter wheat areas of Kansas. Infestations were severest in the southwestern part of the State, but populations were also reported building up in the west-central and northwestern districts. High winds and above-normal temperatures further depleted rather limited topsoil moisture supplies throughout the southern Great Plains.

Winter wheat stands continued to look good in the Far Northwest, although warmer weather is needed in most sections for optimum growth. Small grain crops in California were given a boost by substantial and widespread showers during the period, especially in the southern dryland areas. Winter grains and grazing crops showed further improvement in response to warmer weather and ample soil moisture in the lower Mississippi Valley and eastward.

Seeding of spring grains was generally well along in the Far Northwest, as far north as Colorado in the central Great Plains, and was started on a limited scale in the southern part of the Corn Belt. Rice planting moved along at a rapid pace in Texas and a start was made during the week in Louisiana.

July 1 Carryover to
Decline Again

According to the Wheat Situation published by the Economic Research Service, United States Department of Agriculture, under date of March 2, 1963, July 1 stocks of wheat are expected to decline for the second consecutive year. The carryover at the end of 1962-63 is presently estimated at 1,225 million bushels, 80 million below July 1, 1962, and 186 million below the record of 1961. The anticipated decreases in stocks of winter wheats would more than offset increases in stocks of spring wheats.

The carryover of hard winter wheat on July 1, 1963, may total about 960 million bushels, a decrease of over 100 million from a year earlier. Soft red winter stocks are expected to be about 10 million bushels on July 1, down 14 million from a year earlier. The hard winter and soft red winter wheat crops in 1962 were considerably below those of 1961.

The carryover of hard spring, at 195 million bushels, would be only 8 million above that on July 1, 1962, although stocks of durum, at 45 million, would be 40 million above the small stocks of 5 million bushels on hand a year earlier. Crops of each of these classes in 1962 far exceeded the poor crops of 1961.

White wheat (winter and spring) stocks, estimated at 15 million bushels, would be 6 million below last July 1.

Supply in 1963-64
May Increase

The Wheat Situation stated further that the signup for diversion of spring wheat acreage started on February 1 and will run through March 22. The first report on spring wheat diversion has not yet been released. Based on the reported winter wheat diversion and expected spring wheat diversion, it appears that the acreage of all wheat harvested in 1963 may be about 47.0 million acres. This would be 3.5 million acres more than in 1962. With a continuation of the upward trend in yield, the output per harvested acre might be about 26 bushels. This would be nearly a bushel above the yield in 1962. On the basis of these assumptions, an all wheat crop of 1,225 million bushels would be produced in 1963.

This estimate of the crop is identical with the current estimate of the July 1, 1963, carryover. These two supply items along with imports of about 5 million bushels would provide a total supply of 2,455 million bushels, about 50 million more than the supply in 1962-63. Domestic disappearance in 1963-64 might change little from the level of recent years, 600 million bushels, while exports might be somewhat larger, about 625 million. As a result, the carryover on July 1, 1964, might be about the same as that currently estimated for the end of 1962-63.

1964 Wheat Program
Announced

On March 29, United States Secretary of Agriculture, Orville Freeman set May 21 as the date for the referendum on the 1964 wheat program; support prices were established at \$2.00 per bushel national average for certificated wheat and \$1.30 per bushel for non-certificated wheat if the referendum carries; set the national marketing quota at 1,220,000,000 bushels and the national acreage allotment for 1964 at 49,500,000 acres, the same as in 1962. The marketing allocation for certificated wheat was determined at 975,000,000 bushels, 80 per cent of the national marketing quota. Individual producers will receive marketing certificates for 80 per cent of the normal production on their acreage allotments.

United States Wheat and
Flour Exports Continue
Downtrend

U.S. wheat and flour exports during the first half of 1962-63 totaled 277 million bushels - 89 million below shipments during July-December 1961. The decrease in wheat and flour exports reflects a larger production of wheat in various parts of Europe, Asia, and Africa where import requirements in 1962-63 are smaller than during the previous year. The East Coast dock strike during December and January seriously curtailed shipments during the period it was in effect. Wheat exports at 231 million bushels were approximately 28 per cent below last season. Smaller shipments to Brazil and Venezuela accounted for 13 million of the 19-million bushel decline to the Western Hemisphere. There was an overall reduction of 65 million bushels to Europe, with 32 million less going to the Common Market countries and about 23 million less to Spain and Yugoslavia. Exports to Asia were slightly above July-December 1961. However, significant changes were made in the destinations. About 19 million bushels more went to India with a contrast of about 18 million less going to Turkey. Larger shipments went to Iran and Korea, but smaller quantities were exported to the Philippines and Taiwan. Smaller shipments to Morocco accounted for most of the 6.7 million bushels decline to Africa. Exports to Algeria and Tunisia were also down, but were slightly larger to British East Africa and Egypt.

Flour exports during July-December 1962 at 46.3 million bushels (grain equivalent) were slightly below last season. Shipments to EEC countries, United Kingdom, Yugoslavia, and Egypt were down. Exports to Ceylon, Saudi Arabia, Vietnam, Laos, Cambodia, Algeria, and Morocco were up somewhat. Total wheat and flour exports during July-January 1962-63 are currently estimated to be about 30 per cent below the 416 million bushels exported during the first 7 months of last year.

Shipments of wheat and flour to Canada as shown in Table A were largely for transshipment to other countries. Table B shows the quantities and destinations of U.S. wheat inspected for export from Canadian ports and total exports from Table A adjusted to include inspections during July-December 1961 and July-December 1962. As the Great Lakes and St. Lawrence Seaway are frozen during the winter months, little, if any, additional U.S. wheat will be transhipped through Canadian ports until the lakes reopen.

Table A. United States Exports of Wheat and Flour by Country of Destination
July-December 1961 and 1962

Destination	July-December 1961			July-December 1962		
	Wheat	Flour 1/	Total	Wheat	Flour 1/	Total
- thousand bushels -						
<u>Western Hemisphere</u>						
Canada 2/.....	9,221	78	9,299	8,333	117	8,450
Central America.....	1,728	1,414	3,142	1,690	1,361	3,051
Bolivia.....	-	1,740	1,740	462	1,911	2,373
Brazil.....	34,577	135	34,712	26,343	241	26,584
Colombia.....	1,836	531	7,847	1,984	369	2,353
Chile.....	6,928	919	2,367	5,597	832	6,429
Paraguay.....	2,359	59	2,418	-	24	24
Peru.....	5,217	296	5,513	4,002	228	4,230
Venezuela.....	7,109	37	7,146	2,609	79	2,688
Others.....	1,647	2,377	4,024	1,167	3,028	4,195
Totals.....	70,622	7,586	78,208	52,187	8,190	60,377

Table A. United States Exports of Wheat and Flour by Country of Destination
July-December 1961 and 1962

Destination	July-December 1961			July-December 1962		
	Wheat	Flour 1/	Total	Wheat	Flour 1/	Total
- thousand bushels -						
<u>Europe</u>						
EEC						
Belgium-Luxembourg.....	4,061	1	4,062	1,702	2	1,704
France.....	3,063	-	3,063	1,033	129	1,162
Germany, West.....	11,488	153	11,641	3,864	3	3,867
Italy.....	13,206	3,292	16,498	478	2,246	2,724
Netherlands.....	13,091	1,695	14,786	5,495	570	6,065
Sub-totals.....	44,909	5,141	50,050	12,572	2,950	15,522
Greece.....	1,409	1,093	2,502	6	1,009	1,015
Norway.....	1,919	6	1,925	716	12	728
Poland.....	1,355	445	1,800	444	422	866
Portugal.....	3,226	326	3,552	1,441	383	1,824
Spain.....	12,533	276	12,809	-	-	-
Switzerland.....	3,382	3/	3,382	2,265	3/	2,265
United Kingdom.....	5,753	1,460	7,213	1,864	136	2,000
Yugoslavia.....	13,031	1,388	14,419	3,513	911	4,424
Others.....	1,035	267	1,302	1,424	245	1,669
Totals.....	88,552	10,402	98,954	24,245	6,068	30,313
<u>Asia</u>						
Ceylon.....	-	1,827	1,827	-	2,132	2,132
India.....	45,586	427	46,013	64,629	335	64,964
Iran.....	302	135	437	2,525	988	3,513
Israel.....	4,445	87	4,532	5,599	102	5,701
Japan.....	19,421	1,119	20,540	17,140	1,631	18,771
Jordan.....	8	1,881	1,889	689	1,551	2,240
Korea.....	4,975	517	5,492	8,757	532	9,289
Pakistan.....	18,809	346	19,155	17,946	548	18,494
Philippines.....	5,077	711	5,788	3,124	268	3,392
Saudi Arabia.....	47	1,051	1,098	7	1,756	1,763
Taiwan.....	5,720	616	6,336	3,864	1,014	4,878
Turkey.....	21,268	188	21,456	2,866	352	3,218
Vietnam, Laos and Cambodia.....	-	1,325	1,325	143	2,262	2,405
Others.....	1,574	2,434	4,008	435	2,417	2,852
Totals.....	127,232	12,664	139,896	127,724	15,888	143,612
<u>Africa</u>						
Algeria.....	6,018	252	6,270	4,532	1,488	6,020
British East Africa....	93	35	128	1,252	18	1,270
Egypt.....	9,960	12,840	22,800	10,879	10,388	21,267
Morocco.....	7,027	641	7,668	254	1,904	2,158
Tunisia.....	8,703	101	8,804	6,652	117	6,769
Others.....	1,537	3,042	4,579	3,077	2,216	5,293
Totals.....	33,338	16,911	50,249	26,646	16,131	42,777

Table A. United States Exports of Wheat and Flour by Country of Destination
July-December 1961 and 1962

Destination	July-December 1961			July-December 1962		
	Wheat	Flour ^{1/}	Total	Wheat	Flour ^{1/}	Total
- thousand bushels -						
Oceania.....	-	22	22	-	23	23
Totals, All Countries ^{4/}	319,744	47,585	367,329	230,802	46,300	277,102

^{1/} Grain equivalent.

^{2/} The bulk of exports to Canada are for transshipment to other destinations.

^{3/} Less than 500 bushels.

^{4/} Includes shipments for relief or charity.

Table B. United States Exports of Wheat and Flour as Adjusted for Transshipment
Through Canadian Ports, July-December, 1961 and 1962

Destination	July-December 1961		July-December 1962	
	Wheat in- spected for export from Canadian ports	Adjusted totals for listed countries	Wheat in- spected for export from Canadian ports	Adjusted totals for listed countries
- thousand bushels -				
EEC				
Belgium-Luxembourg...	649	4,711	221	1,925
France.....	2,165	5,228	506	1,668
Germany, West.....	478	12,119	788	4,655
Italy.....	-	16,498	-	2,724
Netherlands.....	3,219	18,005	1,984	8,049
Totals.....	6,511	56,561	3,499	19,021
United Kingdom.....	821	8,034	827	2,827
Portugal.....	-	3,552	981	2,805
Yugoslavia.....	-	14,419	1,157	5,581
Turkey.....	1,456	22,912	-	3,218
Algeria.....	2,401	8,671	-	6,020
Egypt.....	938	23,738	-	21,267
Tunisia.....	92	8,896	-	6,769
Totals ^{1/}	12,219	146,783	6,464	67,508

^{1/} Excludes 126,000 bushels in July-December 1961 and 649,000 bushels in July-December 1962 to unspecified areas.

Cash Wheat Prices on the Kansas City and Minneapolis Markets

No. 2 Hard Winter, Kansas City		No. 1 Northern Spring, Minneapolis	
Date	Price	Date	Price
	- cents per bushel -		- cents per bushel -
March 1, 1963.....	228 1/2 - 236 1/2	March 1, 1963.....	234 1/8 - 235 1/8
4	231 1/2 - 237	4	233 1/2 - 234 1/2
5	228 1/2 - 237 3/4	5	233 3/4 - 234 3/4
6	228 1/4 - 275 1/	6	233 3/4 - 234 3/4
7	229 1/2 - 233 3/4	7	233 5/8 - 234 5/8
8	229 3/4 - 239 1/4	8	233 1/2 - 234 1/2
11	233 1/2	11	233 5/8 - 234 5/8
12	229 1/2 - 238 1/4	12	233 3/4 - 234 3/4
13	231 1/4	13	233 5/8 - 234 5/8
14	229 - 271 1/	14	233 7/8 - 234 7/8
15	231 3/4	15	233 7/8 - 234 7/8
18	231 1/2	18	233 1/8 - 234 1/4
19	231 1/2 - 234	19	233 1/2 - 234 1/2
20	236	20	233 7/8 - 234 7/8
21	230 1/4 - 233 1/4	21	233 7/8 - 234 7/8
22	236	22	234 1/2 - 235 1/4
25	234 1/2 - 235	25	233 3/4 - 234 3/4
26	235	26	233 1/4 - 234 1/4
27	232	27	233 1/8 - 234 1/8
28	232 3/4 - 233 1/2	28	233 3/4 - 234 3/4
29	233 1/2 - 271 1/2 1/	29	233 5/8 - 234 5/8

1/ Nominal

Chicago Wheat Futures, High Points of Closing

Date	March	May	July	September	December
	- cents and eighths per bushel -				
March 1, 1963.....	208/2	207/6	192/1	194	198/4
4	207/6	206/6	190/7	192/5	196/6
5	209	207/6	190/7	192/2	196/2
6	207/3	206/7	190/2	191/6	195/6
7	206/5	206/4	190/7	192/3	196/3
8	207/7	207/2	190/7	192/3	196/3
11	208/3	207/1	189/6	191	195
12	208/2	207	189/2	191	195
13	207/7	206/2	188/5	190/5	194/6
14	208/5	206/3	189/3	191	195/2
15	208/6	206	189/1	191	195/1
18	207/4	204/1	189	191	195
19	205/1	201/7	188/5	190/3	194/6
20	205	202/5	188/5	190/4	194/4
21		203/3	189/1	190/6	195/1
22		204/6	189/5	191/5	195/6
25		203/7	189/3	191/2	195/4
26		203/7	188/7	190/7	195/2
27		204/2	188/7	190/6	195
28		206/4	189/4	191/5	195/6
29		207/3	190/3	192/1	196/2

AUSTRALIAN SITUATION

Supply Position Estimated supplies of wheat in Australia for the 1962-63 (December-November) crop year amount to some 317.9 million bushels, consisting of the December 1, 1962 carryover of 17.9 million and the current crop estimated at a record 300.0 million bushels. Supplies of the size indicated, reflecting a substantially larger production which more than offset a decline in carryover, represent an increase of 17 per cent over the 1961-62 total of 271.8 million bushels. After deducting 73.0 million for anticipated domestic requirements, an estimated 244.9 million are available for export and for carryover during 1962-63, 25 per cent above the 195.8 million in 1961-62.

Combined exports of wheat as grain and wheat flour in terms of grain equivalent during the period December 1-March 2 of the current Australian crop year amounted to 46.9 million bushels compared with 51.9 million exported during the corresponding period of 1961-62. The balance remaining on March 3, 1963 for export and for carryover, at 198.0 million bushels, exceeded by 38 per cent the comparable 1962 total of 143.9 million.

Australian Wheat Supplies

Item	1961-62 <u>1/</u>	1962-63 <u>2/</u>
	- million bushels -	
Carryover, including flour as wheat, at beginning of crop year (December 1).....	24.6	17.9
New Crop.....	247.2	300.0
Total estimated domestic supplies.....	271.8	317.9
Less estimated domestic requirements for crop year....	76.0	73.0
Available for export and for carryover.....	195.8	244.9
Deduct:		
Exports of wheat as grain, December 1-March 2.....	45.1	42.9
Exports of wheat flour in terms of wheat, December 1-March 2.....	6.8	4.0
Total exports of wheat and wheat flour.....	51.9	46.9
Balance on March 3 for export and for carryover.....	143.9	198.0

1/ Revised.

2/ Preliminary.

The following information relative to the Australian situation has been extracted from a report from Mr. H.A. Gilbert, Commercial Counsellor for Canada, Melbourne, under date of March 15, 1963 and is reproduced with the permission of the Trade Commissioner Service, Department of Trade and Commerce. Currency conversions have been made at the rate of £1 equals \$2.4148 (Canadian) the quotation in effect on February 25, 1963.

Crop Position No further figures have been released by the Australian Wheat Board on the final crop estimates but it is still generally accepted that a 300 million bushel harvest will be brought in.

Preparations are under way now for the sowing of the 1963-64 crop but here again, no figures are available; except an estimate for New South Wales where six million acres are expected to be sown to wheat. This compares with five million last year which produced the all-time record harvest in that State of 101 million bushels.

Experts are forecasting that a greater acreage will be put under wheat this year and should events prove them to be right, given favourable growing conditions, another good harvest can be expected.

Marketing Position Reviewing the wheat stocks situation in Australia and the marketing outlook for the current season, the Australian Wheat Board recently issued a statement to clarify the "confusing picture" that exists in this country and overseas about the wheat situation. The Board is faced with the task of marketing within Australia and overseas 278 million bushels which allows for a 20 million bushel carryover in November, 1963. As at February 16 this year, the Board had sold, for export, 108 million bushels and for local consumption a further 8.5 million bushels. The balance still required for home consumption will be in the vicinity of 44 million bushels, leaving about 118 million bushels for sale to overseas markets as wheat and flour.

The Board states that a considerable proportion of this quantity, currently estimated at around 70 million bushels will be required for their "traditional" markets. With the necessity to prospect all avenues of disposal for the balance, the Board, although it is optimistic regarding the marketing outlook, appreciates that intensive selling efforts will be required. Upon the return of the mission at present exploring selling possibilities in Africa, Europe and Britain the Board intends to dispatch a further mission to investigate market prospects in Japan and the Philippines.

Figures just released by the Commonwealth Statistician show that China bought more than one-third of Australia's total wheat exports in the year ended June, 1962. For that financial period, 203.2 million bushels of wheat were exported from Australia, valued at £142.5 million (\$ 344 million). Shipments to China totalled 71.8 million bushels, worth £48.8 million (\$ 118 million). Other major purchasers of Australian wheat were Britain, 23.2 million bushels, worth £16 million (\$ 39 million); India, 21.2 million bushels, £14.9 million (\$ 36 million); and Japan, 15.7 million, £11.1 million (\$ 27 million).

Australia's exports of flour in 1961-62 totalled 603,000 short tons (27,738,000 bushel equivalent) valued at £18.2 million (\$ 44 million). The major customer was Ceylon, which purchased 179,000 short tons (8,234,000 bushel equivalent) worth £5 million (\$ 12 million) - more than double the next largest customer, Malaya 83,000 tons (3,818,000 bushel equivalent) valued at £2.7 million (\$ 7 million).

Exports of Australian Wheat and Wheat Flour in Terms of Wheat
December 1 - March 2, 1962-63 and Corresponding Period 1961-62

Destination	Wheat		Wheat Flour	
	1961-62	1962-63	1961-62	1962-63
- thousand bushels -				
<u>Europe</u>				
Britain.....	5,731	4,933	813	343
Eire.....	717	937	-	-
Italy.....	4,845	-	-	-
Malta.....	317	205	-	-
Norway.....	1,398	1,159	-	-
Spain and Canary Islands.....	4,305	-	-	-
Switzerland.....	73	-	-	-
West Germany.....	3,995	696	-	-
Others.....	-	-	2	4
<u>Middle East</u>				
Aden.....	187	162	-	-
Aden and Aden I/T.....	-	-	241	232
Aden Atta.....	-	-	52	76
Egypt.....	1,882	-	-	-
Iran.....	38	107	-	-
Iraq.....	733	-	-	-
Lebanon, Jordan, Syria.....	1,903	1,439	-	-
Persian Gulf.....	-	-	45	38
Persian Gulf Atta.....	-	-	634	223
Saudi Arabia.....	-	-	25	121
Others.....	105	53	6	1
<u>Africa</u>				
Algeria.....	446	-	-	-
Kenya.....	882	-	-	-
Mauritius.....	-	-	202	146
Nyasaland.....	-	-	56	64
Port. East Africa.....	88	-	-	-
Rhodesia.....	1,092	961	-	-
Zanzibar.....	-	-	30	46
Others.....	4	3	20	16
<u>Asia</u>				
British North Borneo.....	-	-	55	23
Brunei.....	-	-	12	8
Burma.....	147	290	59	31
Ceylon.....	7	-	1,612	43
China.....	9,364	25,009	-	-
Hong Kong.....	790	664	91	48
India.....	724	1,765	-	-
Indonesia.....	-	-	226	240
Japan.....	3,582	1,519	-	-
Malaya.....	189	103	990	754

Exports of Australian Wheat and Wheat Flour in Terms of Wheat
December 1 - March 2, 1962-63 and Corresponding Period 1961-62

Destination	Wheat		Wheat Flour	
	1961-62	1962-63	1961-62	1962-63
- thousand bushels -				
Malaya Atta.....	-	-	21	23
Pakistan.....	19	1,328	-	-
Sarawak.....	-	-	69	33
Singapore.....	23	6	757	569
Singapore Atta.....	-	-	3	3
Singapore a/c War Office.....	-	-	12	6
Thailand.....	-	-	183	130
Others.....	39	76	44	150
<u>Pacific Area and Sundries</u>				
New Guinea, West.....	-	-	19	15
New Zealand.....	1,464	1,475	-	-
Pacific Islands etc.....	10	10	489	539
Peru.....	-	-	-	2
Royal Navy.....	2	-	-	-
Ships' Stores and Sundries.....	-	-	33	72
Totals.....	45,100	42,900	6,800	4,000

ARGENTINE SITUATION

Supply Position Estimated total supplies of wheat in the Argentine for the 1962-63 (December-November) crop year amount to 188.6 million bushels, consisting of the December 1, 1962 carryover of 8.6 million and the new crop, placed at 180.0 million. Indicated supplies for the current Argentine crop year, reflecting decreases in both carryover stocks and production, are about 21 per cent less than the 1961-62 total of 237.4 million bushels. After making an allowance of 128.6 million bushels for anticipated domestic requirements, an estimated 60.0 million are available for export and for carryover in 1962-63, in contrast to 109.4 million the previous year.

Exports of wheat and wheat flour in terms of grain equivalent during December 1962-February 1963 amounted to 25.4 million bushels, 4 per cent below the 26.5 million exported during the same months in 1961-62. The balance remaining on March 1, 1963 for export and for carryover was estimated at 34.6 million bushels, less than half the March 1, 1962 total of 82.9 million.

Argentine Wheat Supplies

Item	1961-62 <u>1/</u>	1962-63 <u>2/</u>
	- million bushels -	
Carryover at beginning of crop year (December 1) <u>3/</u>	35.3	8.6
New Crop <u>4/</u>	202.1	180.0
Total estimated domestic supplies.....	237.4	188.6
Less estimated domestic requirements for crop year.....	128.0 <u>1/</u>	128.6
Available for export and for carryover.....	109.4	60.0
Deduct:		
Exports of wheat as grain, December-February.....	26.4	25.3
Exports of wheat flour in terms of wheat, December - February.....	0.1	0.1
Total exports of wheat and wheat flour.....	26.5	25.4
Balance on March 1 for export and for carryover.....	82.9	34.6

1/ Revised.

2/ Preliminary.

3/ Includes allowances for farm stocks.

4/ Official estimate.

The following account of the Argentine situation has been extracted from a report from Mr. C.O.R. Rousseau, Commercial Counsellor, Buenos Aires, under date of March 20, 1963 and is reproduced with the permission of the Trade Commissioner Service, Department of Trade and Commerce. Where possible, conversions from Argentine to Canadian measures have been made for the convenience of our readers. Currency conversions have been made at the rate of 135.40 pesos per U.S. dollar and £1 equals \$3.0185 (Canadian) the quotation in effect on March 11, 1963.

Weather and Crops Rainfall has been abundant during the period under review and although it came too late for the recovery of some areas of summer sown crops (corn, sorghum, millet) it has provided a much more favourable outlook for the Autumn and Winter seasons through soil moisture build up. The grain trade believes that the area sown to wheat will increase this year in the former drought areas of Buenos Aires and La Pampa provinces as cattle populations have been seriously depleted in those areas. It has been reported from some of the worst drought areas that just a few days after the rains first came, a green 'fuzz' had already appeared on land which previously had been completely barren.

Wheat The official production estimate for wheat still stands at 4,900,000 metric tons (180.0 million bushels) which is very close to the 5,000,000 metric tons (183.7 million bushels) predicted by the trade.

During the second half of February, both exporters and millers bought at the minimum prices of 650 pesos per 100 kilos (\$1.31 per bushel). At the end of the month there were rumours that the wheat export ban would soon be lifted and that prompted some exporters to enter the market. Although it was reported that some 45,000 metric tons (1,653,000 bushels) were purchased for delivery to various Argentine ports, the rumours now appear to have been without any basis.

Brazil issued another tender for wheat during February and it is reported that Argentine exporters participated at least to some extent in the 60,000 metric tons (2,205,000 bushels) purchased. Price was \$US 57.00 per ton (\$1.55 per bushel) f.o.b. In the meantime, it has been stipulated that Argentina will sell only 600,000 metric tons (22,046,000 bushels) of wheat to Brazil this year, thereby waiving the contract requirement for 1,000,000 metric tons (36,743,000 bushels) per annum agreed upon on December 30, 1961.

At the end of February, c.i.f. prices for Argentine bread wheat averaged \$US 66.50 (\$1.31 per bushel) to the Continent and £ 24.10 0d (\$2.01 per bushel) for Britain. Prices for durum during February rose to as high as 1,000 pesos per 100 kilos (\$2.01 per bushel) about \$US 89.00 per metric ton (\$2.42 per bushel) c.i.f., Continental ports, but later dropped somewhat from this high.

Wheat shipments during February totalled 220,140 metric tons (8,089,000 bushels), the main buyers being Italy with 42,995 tons (1,580,000 bushels); Britain with 37,939 (1,394,000 bushels); Brazil with 23,595 (867,000 bushels); and Peru with 22,143 tons (814,000 bushels).

During the past two days a number of measures have been announced which at first glance seem to represent an effort on the part of the Secretariat of Agriculture and Livestock to encourage wheat producers to increase production and to assist the National Grain Board in its hunt for funds. Some of these measures will require further clarification but in essence, they are:

- (1) An export tax on wheat has been established amounting to the equivalent of \$US 5.00 per metric ton (14 cents per bushel); revenue to be used exclusively to build up the operating funds of the National Grain Board. It appears that this tax is destined as much as anything to prevent exporters from realizing excessive profits on their transactions abroad, although the official decree covering the new tax mentions Argentina's obligations under the I.W.A. agreement to maintain prices at international levels. In addition, exporters appear to have been given some encouragement to purchase wheat at prices higher than the minimum official producers prices, as from now on, such exporters will be entitled to a tax refund equivalent to the total amount of money they have paid in excess of the minimum producer's price. Regardless of the price paid to the producer for his wheat, the producer should benefit from the new tax as it is destined to build up the Board's funds (which were exhausted) for the purchase of additional wheat.
- (2) By another decree, new bonuses have been established over and above minimum official producers prices. This decree establishes a progressive fortnightly increase in the minimum official prices from April 1, 1963, to September 1, 1963. The bonuses covering the first fortnight of this period, i.e. April 1, to April 15, will be 10 pesos per 100 kilos (2 cents per bushel). Each fortnight the bonus will be increased by a specific amount until reaching the maximum of 100 pesos per 100 kilos (20 cents per bushel) as from September 1, 1963. These bonuses are destined to stretch out purchases until later in the

year when more funds will be available to the Board. At the same time, an effort is to be made by the Central Government to pay back gradually the 1.8 billion pesos (\$13 million) owed by it to the Grain Board.

- (3) It has been decided to allot 100,000 metric tons (3,674,000 bushels) of wheat for export to LAFTA countries other than Brazil during the current crop year.

Argentine Wheat Exports December-February 1962-63 with Comparisons

Destination	Wheat	Destination	Wheat
	'000 bushels		'000 bushels
Africa, North.....	198	Netherlands.....	3,161
Algeria.....	264	Norway.....	455
Belgium.....	1,773	Paraguay.....	495
Brazil.....	3,046	Peru.....	3,684
Britain.....	5,795	Portugal.....	411
Finland.....	147	Sweden.....	53
France.....	809	Switzerland.....	338
Germany.....	1,700	Venezuela.....	373
Italy.....	2,270	Totals.....	24,970
Compared with:			
December-February 1961-62.....			26,440
1960-61.....			15,669
1959-60.....			11,943
1958-59.....			23,902
1957-58.....			10,521

FRENCH SITUATION

The following account of the current crop situation in France has been extracted from a report by Mr. R.G. Woolham, Assistant Commercial Secretary, Canadian Embassy, Paris, under date of March 29, 1963, and is reproduced with the permission of the Trade Commissioner Service, Department of Trade and Commerce. Where possible, conversions from French to Canadian measures have been made and rounded for the convenience of our readers.

Weather
and Crops

Temperature levels moderated at the beginning of the month bringing some sunshine and relief. However, cooler weather returned within a few days with wide spread rain and wind storms. This cool wet weather reported throughout most regions has held back crop growth and re-seeding by about three weeks compared with normal.

Estimates of winter damage to cereals have now risen to 25-30 per cent of the seeded area or between 1.15 to 1.17 million hectares (2,840,000 to 2,890,000 acres). In addition, another 0.8 to 1.0 million hectares (1,976,000 to 2,470,000 acres) are classed as doubtful. However, these figures are tentative and because the season is considerably retarded, official damage reports based on re-growth observations, will probably not be available until after the first week in April.

Up to March 1 no changes were reported in estimates of seeded area compared with the previous month. On the whole however, there is little doubt that wheat production in France will be down considerably this year. Chances of re-seeding to spring wheat have also been reduced because of the late arrival of spring, and, therefore, the area seeded to barley will probably be substantially higher this year than last.

French
Grain Market

Activity in the French Grain Market has been somewhat below normal although some orders for durum wheat were concluded during the month. These orders amounted to 10,000 tons (367,000 bushels) of No. 4 Canadian Western Amber Durum for April shipment through Le Havre and 10,000 tons (367,000 bushels) of Russian Durum plus 2,000 (73,000 bushels) of Argentine Durum wheat booked for Marseille. At the same time, Tunisia offered to market 60,000-80,000 tons (2,205,000-2,939,000 bushels) of Durum wheat but no purchases by French millers were made.

Reports have recently appeared reporting French Soft wheat sales to Switzerland at fully subsidized prices. This wheat would subsequently be transhipped to Germany, imported under temporary license and re-exported as flour.

CALENDAR OF WHEAT EVENTS

- March 20 Based on farmers' intentions at March 1, the acreage seeded to all classes of wheat in Canada in 1963 will be 27.1 million acres, an increase of one per cent over the 1962 seedings and 3.4 million acres or 15 per cent above the 1957-61 average.
- According to a report published by the Crop Reporting Board, United States Department of Agriculture, prospective plantings of all spring wheat in the United States for 1963 are expected to total 11.1 million acres, 6 per cent more than the acreage planted in 1962 but 11 per cent less than the 1957-61 average.
- March 22 The Hon. Alvin Hamilton, Minister of Agriculture, announced that the Canadian Wheat Board had closed out the 1961-62 wheat pool account and the average final payment to producers amounted to 42.974 cents per bushel - the highest in history.
- According to the Bureau of the Census, United States Department of Commerce, total commercial production of wheat flour in the United States in 1962 amounted to 262.1 million hundredweight, about 1.8 million hundredweight above the previous year's production. Production in 1962 was at 92.4 per cent of total annual capacity.
- March 28 According to the Bureau of the Census, United States Department of Commerce wheat flour production in the United States in February 1963 amounted to 20,676,000 hundredweight, an average of 1,034,000 hundredweight per working day.
- March 29 United States Secretary of Agriculture, Orville Freeman set May 21 as the date for the referendum on the 1964 wheat program.
- April 1 Out of a total of 1,942 shipping points in the Western Division, the Canadian Wheat Board had placed 764 points on a delivery quota of 8 bushels per specified acre, 307 on a 7-bushel quota and 279 on a 6-bushel quota. Of the remainder 418 points were on a 5-bushel quota and 155 on a 4-bushel quota. Nineteen stations were reported as "closed".

STATISTICS CANADA LIBRARY
BIBLIOTHÈQUE STATISTIQUE CANADA



1010686740