

CATALOGUE No.

22-005

MONTHLY

DOES NOT CIRCULATE

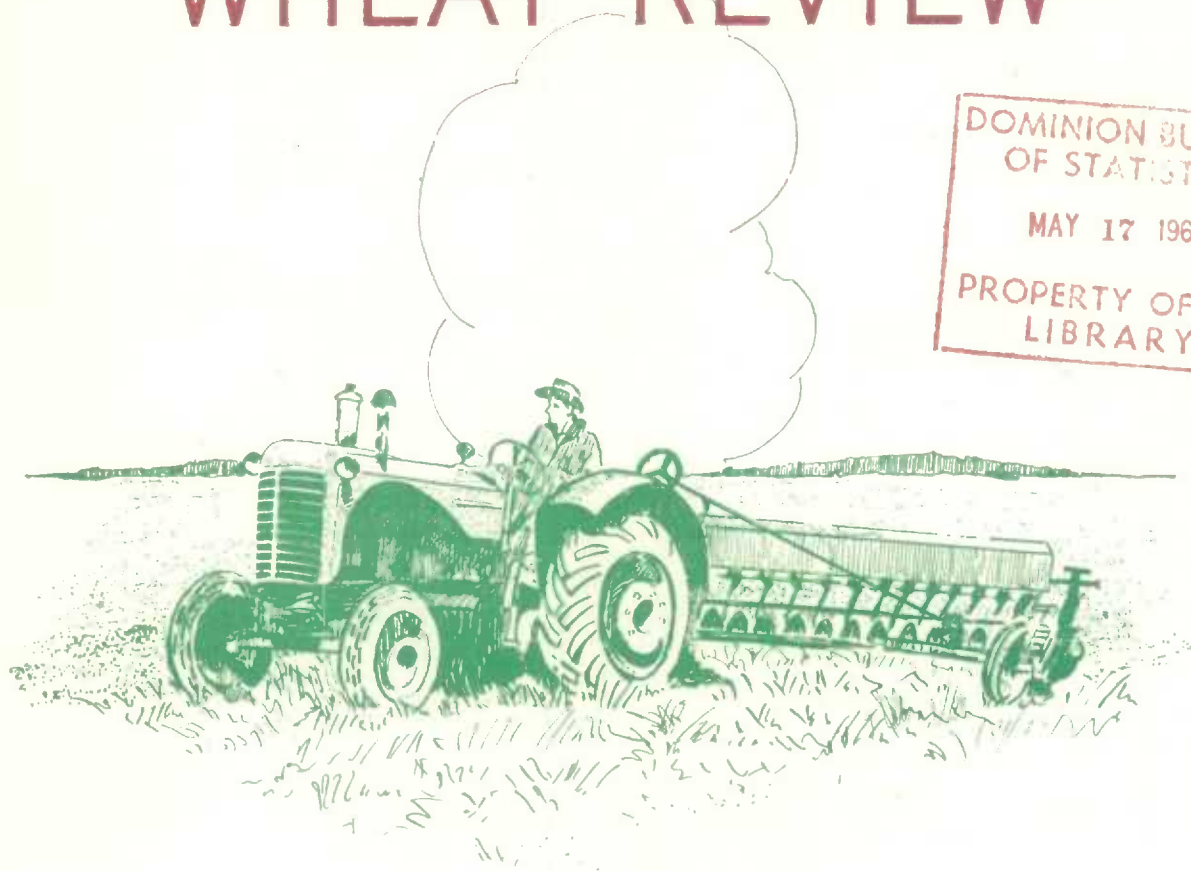
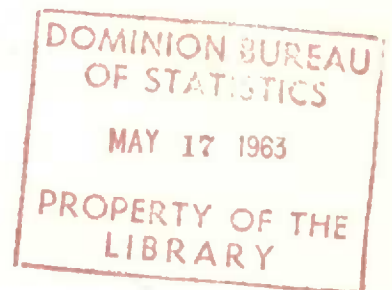
NE PAS PRÊTER



CANADA

DOMINION BUREAU OF STATISTICS  
AGRICULTURE DIVISION

# THE WHEAT REVIEW



APRIL 1963



DOMINION BUREAU OF STATISTICS

---

# THE WHEAT REVIEW

APRIL 1963

*Published by Authority of*  
The Minister of Trade and Commerce

Prepared in the Crops Section, Agriculture Division  
Dominion Bureau of Statistics, Ottawa.

## TABLE OF CONTENTS

## Page

### World Wheat Situation

Wheat Supplies of Four Major Exporters Almost the Same as a Year Ago.....	1
August-March Exports Decline from Last Year but Remain Well Above Average...	1
Canada Leads in Wheat Exports to E.E.C. ....	2
Wheat Production Increased in E.E.C. Countries.....	3
Condition of Fall-Sown Crops in Western Europe.....	3
I.W.C. Cumulative Totals of Commercial Purchases.....	4

### Canadian Situation

Supply Position.....	5
March 1963 Exports of Wheat and Flour Total 22.3 Million Bushels.....	6
General Quota Position.....	7
Crop and Weather Conditions.....	8
Durum Wheat - Crop Year 1963-64.....	8
1963 Season of Navigation Opens at Canadian Lakehead.....	8
Canadian Wheat Stocks at March 31, 1963.....	9
Farmers' Marketings of Wheat.....	10
Visible Supply of Canadian Wheat.....	11
Grading of Wheat Inspected, August-March 1962-63 with Comparisons.....	11
Weekly Visible Supply and Farmers' Marketings (Charts).....	12
Wheat Shipments to the United States by Destination.....	13
Rail Shipments of Wheat to Maritime Ports.....	13
Rail Shipments of Wheat from Fort William-Port Arthur.....	14
Overseas Exports of Canadian Grain by Ports of Loading.....	14
Freight Assistance Shipments.....	15
Monthly Exports of Canadian Wheat and Wheat Flour.....	16
Exports of Canadian Wheat by Destination.....	17
Customs Exports of Canadian Wheat Flour by Countries of Consignment.....	20
Canadian Wheat Board Weekly Average Cash Wheat Prices.....	22

### Canadian Flour Milling Situation

Production and Exports.....	24
-----------------------------	----

### United States Situation

Supply Position.....	25
U.S. Wheat and Flour Exports Off 29 Per Cent.....	26
Winter Wheat Crop Estimated at 927 Million Bushels.....	28
Stocks of Wheat in All Positions April 1, 1963.....	29
Final Report Shows 1963-Crop Wheat Diversion Total of 7.7 Million Acres.....	30
Cash Wheat Prices on the Kansas City and Minneapolis Markets.....	31
Chicago Wheat Futures, High Points of Closing.....	31

Australian Situation.....	32
---------------------------	----

Argentine Situation.....	35
--------------------------	----

Calendar of Wheat Events.....	38
-------------------------------	----

---



# WORLD WHEAT SITUATION

## Wheat Supplies of Four Major Exporters Almost the Same as a Year Ago

time a year ago. Reduced supplies in United States and Argentina more than offset larger totals in Canada and Australia. Supplies at April 1, 1963, in millions of bushels, were held as follows, with last year's comparable figures in brackets: United States, 1373.1 (1,484.6); Canada, 587.5 (504.5); Argentina, 27.8 (62.8); and Australia, 185.4 (127.8).

## August-March Exports Decline from Last Year but Remain Well Above Average

With each of the four traditional major wheat exporters sharing in the decrease, total shipments of wheat and flour in terms of wheat from United States, Canada, Argentina and Australia, during the first eight months of the 1962-63 crop year amounted to 728.5 million bushels, some 21 per cent less than last year's record August-March level of 917.1 million but 25 per cent more than the ten-year (1951-52--1960-61) average of 584.2 million for the same period. Shipments from the four traditional major wheat exporters during August-March of the 1962-63 crop year, with comparisons, appear in the accompanying table.

Exports of Wheat and Flour in Terms of Wheat, August 1962-March 1963  
with Comparisons

August-March	United States	Canada	Argentina	Australia	Total
- million bushels -					
1950-51.....	198.3	135.9	54.4	80.3	468.9
1951-52.....	333.4	200.1	23.9	62.8	620.2
1952-53.....	233.0	224.7	6.0	56.7	520.4
1953-54.....	125.7	170.9	78.0	40.2	414.8
1954-55.....	188.1	172.7	92.2	62.8	515.8
1955-56.....	185.5	160.8	80.4	63.5	490.2
1956-57.....	356.3	178.0	62.8	97.6	694.7
1957-58.....	255.5	197.6	48.5	46.4	548.0
1958-59.....	297.2	188.5	61.7	50.4	597.8
1959-60.....	309.7	190.9	41.5	80.1	622.2
1960-61.....	447.8	205.8	55.4	108.6	817.6
1961-62 <u>1/</u> .....	476.1	244.6	54.5	141.9	917.1
1962-63 <u>2/</u> .....	375.6	211.1	45.3	96.5	728.5

1/ Revised.

2/ Preliminary.

Canada Leads in Wheat Exports to E.E.C.

Based on data covering the first half of the current crop year, exports of Canadian wheat to the European Economic Community have accounted for some 60 per cent of the total volume of wheat supplied to this region by the four traditional major exporters (see accompanying table). This figure is in sharp contrast to last year's corresponding share of 39 per cent and, as a result, Canadian exports of wheat to E.E.C. exceeded by wide margins those of the other three principal exporters. Although the total volume of Canadian wheat exports to this region declined from 41.8 million bushels in the August-January period of 1961-62 to 35.4 million in the same period of 1962-63, this amount still represented 21 per cent of the total Canadian wheat exports to all destinations (168.0 million) compared with 22 per cent a year previous. On the same basis, exports of wheat from the United States to the European Economic Community declined from 49.9 million bushels in August-January 1961-62 to only 15.2 million this year. Expressed as a percentage of total wheat exports during the period under review, these figures represented a drop in United States shipments to this group, from 14 per cent a year ago to 6 per cent in the current year. Although shipments of Argentine wheat to the E.E.C. during August-January this year at 7.8 million bushels, recorded an increase of 1.8 million over the comparable 1961-62 level, the ratio of exports to E.E.C. as against total Argentine wheat exports actually declined from 28 per cent to 26 per cent. Exports of Australian wheat to the E.E.C., during the August-January period, dropped sharply from 10.1 million a year ago to only 0.6 million this year.

Although Canadian wheat exports to both West Germany and Belgium-Luxembourg have declined, shipments to France, Italy and the Netherlands have increased. Most of the increased movement to France was accounted for by shipments of durum wheat while those to Italy and the Netherlands represented exports of hard spring wheat.

Wheat 1/ Shipments from the Four Major Exporters to the European Economic Community, August - January 1961-62 and 1962-63

Destination	United States	Canada	Argentina	Australia	Total
- thousand bushels -					
<u>1961-62</u>					
Belgium and Luxembourg.....	4,220	7,001	599	-	11,820
France.....	3,063	659	231	-	3,953
Germany, West.....	11,557	30,246	2,707	4,894	49,404
Italy.....	16,109	2,270	140	5,161	23,680
Netherlands.....	14,996	1,640	2,350	-	18,986
Totals, E.E.C. ....	49,945	41,816	6,027	10,055	107,843
Percentage of E.E.C. total ....	46%	39%	6%	9%	100%
Totals, wheat exports to all Countries.....	357,095	193,866	21,836	110,400	683,197
Percentage E.E.C. of total all Countries.....	14%	22%	28%	9%	16%
<u>1962-63</u>					
Belgium and Luxembourg.....	1,891	4,791	1,672	-	8,354
France.....	1,256	4,246	223	-	5,725
Germany, West.....	3,753	18,736	1,181	615	24,285
Italy.....	2,724	3,481	1,661	-	7,866
Netherlands.....	5,607	4,173	3,077	-	12,857
Totals, E.E.C. ....	15,231	35,427	7,814	615	59,087
Percentage of E.E.C. total ....	26%	60%	13%	1%	100%
Totals, wheat exports to all Countries.....	246,175	168,028	30,143	58,500	502,846
Percentage E.E.C. of total all Countries.....	6%	21%	26%	1%	12%

1/ Includes wheat flour in terms of wheat.



Wheat Production Increased  
in E.E.C. Countries

Wheat production in each of the E.E.C. countries was larger in 1962 than the preceding year with France registering a particularly large increase. Total outturns are recorded at 1,082 million bushels as against 849 million in 1961 for a gain of 243 million bushels. With the large increase in domestic supplies a decline in imports could be expected but it is of interest to note that the demand for high quality Canadian wheat has been well maintained.

Wheat Production, European Economic Community

<u>Country</u>	<u>1961</u>	<u>1962</u>
	- million bushels -	
Belgium	26.5	30.7
France	351.8	510.0
Germany, West	148.0	168.0
Italy	305.0	350.0
Netherlands	17.4	23.0
Totals	848.7	1,081.7

Condition of Fall-Sown  
Crops in Western Europe

According to reports received from Canadian Trade Offices in a number of West European countries winter damage to fall-sown grain crops was variable. Official figures released by the French Ministry of Agriculture on April 10, place the total area seeded to wheat at 10.4 million acres and, of this, 4.0 million acres are estimated as undamaged, 3.7 million partly damaged and 2.7 million totally destroyed. At the same time it was hoped that some 1.7 million acres could be re-seeded this spring. Of the 598 thousand acres seeded to rye in France, about 445 thousand were estimated to be undamaged, 132 thousand partly damaged and 21 thousand totally destroyed. The area seeded to fall-sown barley in France was placed at 773 thousand acres, with 182 thousand reported as undamaged, 231 thousand partly damaged and 359 thousand totally destroyed. According to a report received from the Canadian Agricultural Counsellor in Britain, under date of April 16, the official report by the Ministry states that wheat has come through the winter remarkably well in most areas and was beginning to make good growth by the beginning of March. There has been some discoloration but the damage was not nearly as bad as anticipated. Barley is described as variable, autumn-sown spring varieties have suffered considerable frost damage which will need a good deal of re-sowing or patching. Oats also have suffered severe damage in many areas and crops which have survived are only making slow recovery. Conditions up to Easter continued rather wet, further delaying cultivation work. Indications are, that because of this the spring wheat acreage will be reduced and there may be a further record barley acreage as a result.

A report from Bonn, West Germany, under date of April 19 indicates that, according to the Federal Statistical Office the extent of winter-killing of grain and forage crops in West Germany has not been severe in spite of the long and cold winter. The extent of damage is as follows (1957-62 average in brackets): Winter wheat 4 per cent (5); winter rye 2 per cent (2.5); winter barley 4 per cent (6.8); mixed winter grain 2 per cent (4.7); winter rapeseed 4 per cent (8). According to a report from the Canadian Commercial Assistant at the Hague, under date of April 3, official investigations have recently been conducted as to the effect of the severe cold and prolonged frost on winter grains in the Netherlands. Contrary to expectations, no damage of any significance has been reported from the growing areas in the Netherlands. This is due to the fact that fairly heavy

International Wheat Council  
Cumulative Totals of Commercial Purchases by Importing Countries from Exporting Countries  
Crop Year 1962-63 — Through March 30, 1963

Importing Countries	EXPORTING COUNTRIES								Total
	Canada	Argentina	Australia	France	Italy	Sweden	U.S.S.R.	U.S.A.	Purchases
- thousand bushels -									
Austria.....	1,390	-	-	-	-	7	-	-	1,397
Belgium & Luxembourg.....	6,538	1,978	-	596	-	-	184	2,667	11,963
Brazil.....	-	7,990	-	-	-	-	-	8,035	16,025
Costa Rica.....	297	-	-	-	-	-	-	425	722
Cuba.....	-	-	-	-	-	-	-	-	-
Dominican Republic.....	804	-	-	-	-	-	-	655	1,459
El Salvador.....	514	-	-	-	-	-	-	525	1,039
Finland.....	362	-	-	-	-	111	-	187	660
Germany, Federal Republic.	19,279	2,354	1,262	2,765	-	1,654	3,707	8,463	39,484
Greece.....	24	-	2	-	-	-	-	16	42
Iceland.....	7	-	-	-	-	-	-	81	88
India.....	-	-	3,974	-	-	-	-	2	3,976
Indonesia.....	-	-	255	-	-	-	-	1	256
Ireland.....	2,072	-	2,188	6	-	-	-	255	4,521
Israel.....	1,257	-	-	-	-	-	-	1,911	3,168
Japan.....	33,075	-	10,022	-	-	-	2,234	34,737	80,068
Korea.....	-	-	-	-	-	-	-	1	1
Liberia.....	45	-	-	-	-	-	-	63	108
Libya.....	-	-	-	167	808	-	-	-	975
Netherlands.....	3,926	2,692	-	-	-	331	3,825	10,645	21,419
Netherlands Territories.	244	-	22	6	-	-	-	475	747
New Zealand.....	-	-	4,976	-	-	-	-	-	4,976
Nigeria.....	920	-	1	-	1	-	-	1,714	2,636
Norway.....	1,568	643	2,958	2,214	-	260	2,756	289	10,688
Peru.....	388	5,016	10	-	-	-	-	83	5,497
Philippines.....	4,529	-	579	-	-	-	-	5,416	10,524
Portugal.....	13	404	8	353	-	-	-	1,703	2,481
Portuguese Territories..	528	-	93	-	-	-	-	2,569	3,190
Rhodesia & Nyasaland.....	48	-	3,222	1	3	-	-	127	3,401
Saudi Arabia.....	522	-	526	-	4	-	441	2,910	4,403
Sierra Leone.....	168	-	-	-	-	-	-	11	179
South Africa.....	8,018	-	761	-	-	-	-	-	8,779
Switzerland.....	1,702	503	-	1,763	131	5	92	582	4,778
United Arab Republic.....	-	-	-	-	890	-	-	12	902
United Kingdom.....	62,663	7,818	15,773	1,198	-	31	12,599	3,813	103,895
U.K. Territories.....	2,908	-	4,999	1,413	1	-	-	2,468	11,789
Vatican City.....	441	-	-	-	-	-	-	-	441
Venezuela.....	4,772	331	-	-	-	-	-	3,814	8,917
Western Samoa.....	-	-	28	-	-	-	-	-	28
To Orders.....	-	4,195	-	10,304	-	-	147	-	14,646
Totals.....	159,022	33,924	51,659	20,786	1,838	2,399	25,985	94,655	390,268
Percentage of Total Sales by Exporting Countries....	40.75	8.69	13.24	5.33	.47	.61	6.66	24.25	100.00

NOTE: Mexico and Spain - no sales reported.

Quantities for Argentina cover period ending March 1, 1963.

Quantities for Italy cover period ending March 16, 1963.



CANADIAN SITUATION

Supply Position Total estimated supplies of wheat for the 1962-63 (August-July) crop year are placed at 948.6 million bushels, 6 per cent greater than the 1961-62 total of 891.2 million, with a substantial decline in carryover stocks more than offset by a sharp increase in production. After deducting 150.0 million bushels for anticipated domestic requirements, supplies available for export and for carryover during 1962-63 amount to 798.6 million bushels, 7 per cent above the 749.1 million in 1961-62.

Exports of wheat and flour in terms of wheat during the August-March period of the current crop year amounted to 211.1 million bushels compared with 244.6 million exported during the corresponding period of 1961-62 and the ten-year (1951-52-1960-61) average for the same months of 189.0 million bushels. This year's total consisted of 193.5 million bushels of wheat and 17.6 million of wheat flour equivalent. Corresponding totals for the same period of the preceding crop year were 222.7 million bushels of wheat and 21.9 million of flour equivalent. The balance remaining on April 1, 1963 for export and for carryover amounted to 587.5 million bushels, 16 per cent more than the April 1, 1962 total of 504.5 million.

Canadian Wheat Supplies

Item	1961-62 <u>1/</u>	1962-63 <u>2/</u>
	- million bushels -	
Carryover in North America at beginning of crop year (August 1).....	607.8	391.1
New Crop.....	283.4	557.6
Imports of wheat for domestic use, August-March.....	<u>3/</u>	<u>4/</u>
Total estimated supplies.....	891.2	948.6
Less estimated domestic requirements for crop year....	142.2	150.0
Available for export and for carryover.....	749.1	798.6
Deduct:		
Exports of wheat in bulk, August-March <u>5/</u> .....	220.0	190.5
Exports of bagged seed wheat, August-March <u>6/</u> .....	2.7	3.0
Total exports of wheat as grain.....	222.7	193.5
Exports of wheat flour in terms of wheat, August-March <u>6/</u> .....	21.9	17.6
Total exports of wheat and wheat flour.....	244.6	211.1
Balance on April 1 for export and for carryover.....	504.5	587.5

1/ Subject to revision.

2/ Preliminary.

3/ Less than 50,000 bushels.

4/ Not available.

5/ As reported by the Board of Grain Commissioners. (Includes overseas clearances and imports into the United States).

6/ Customs returns, 1961-62 adjusted for time lag.

Farmers' marketings of wheat, (both east and west) up to April 17 of the 1962-63 crop year amounted to 309.4 million bushels in contrast to last year's corresponding total of 192.5 million. Some 19.7 million bushels of this year's total were delivered during the four weeks March 21 to April 17. During the same period the volume of Canadian wheat entering domestic and export channels amounted to about 28.5 million bushels. As a result, the total visible supply of Canadian wheat declined from 387.5 million bushels at March 20 to a level of 378.3 million at April 17, 1963.

The total visible supply of Canadian wheat at April 17 this year represented an increase of 13 per cent over the 1962 comparable total of 334.4 million but was 6 per cent less than the 1961 figure of 403.7 million. Stocks in country elevators amounted to 209.6 million bushels as against 160.8 million in this position a year ago and 255.8 million two years ago. This year's supplies in country elevators at April 17 accounted for 55 per cent of the total visible wheat supply compared with the 1962 and 1961 corresponding percentages of 48 per cent and 63 per cent, respectively. Interior terminal stocks, at 5.4 million bushels were sharply below both the 1962 figure of 10.1 million and the 1961 total of 10.4 million. The 18.2 million bushels "in transit rail" (Western Division) represented a decrease of 13 per cent from the 1962 total of 20.9 million but was 5 per cent more than the 1961 figure of 17.3 million. Supplies at the Canadian Lakehead, at April 17 this year, amounted to 59.4 million bushels, 2 per cent below last year's comparable total of 60.8 million but 23 per cent greater than the 48.2 million bushels in this position two years ago. Supplies in Bay, Lake and Upper St. Lawrence ports, at 30.7 million bushels, were 4 per cent above the 29.5 million at April 18, 1962 and exceeded by a wide margin the 18.4 million at April 19, 1961. The 21.3 million bushels in Lower St. Lawrence and Maritime ports were 8 per cent larger than the 19.7 million of a year ago and 9 per cent above the 19.6 million of two years ago. On the west coast, total supplies in Vancouver-New Westminster, Victoria and Prince Rupert at April 17, 1963, at 13.3 million bushels, were higher than both the previous years' corresponding total of 11.7 million and the 8.7 million bushels in 1961.

March 1963 Exports of  
Wheat and Flour Total  
22.3 Million Bushels

Combined exports of wheat in bulk, bagged seed wheat and wheat flour in terms of grain equivalent during March 1963 amounted to 22.3 million bushels, 7 per cent above the February 1963 figure of 20.8 million, and 4 per cent more than the ten-year (1952-61) average for the month of March of 21.3 million but 7 per cent below the March 1962 figure of 24.0 million. Exports of wheat in bulk (as reported by the Board of Grain Commissioners) during March 1963, at 19.2 million bushels, represented an increase of 2 per cent over the 18.8 million of last month and 12 per cent more than the ten-year (1952-61) average for the month of March, of 17.1 million. Exports of bagged seed wheat during March 1963, based on Canadian Customs returns, amounted to 1,088 thousand bushels 84 per cent above the February 1963 figure of 590 thousand and 90 per cent larger than the March 1962 (adjusted to remove time lag) of 574 thousand bushels. Customs returns also indicate that the equivalent of 1.9 million bushels of wheat was exported in the form of flour during March 1963, 37 per cent above the 1.4 million exported last month but considerably below the adjusted March 1962 total of 3.0 million.

Cumulative exports of wheat in bulk during the August 1962-March 1963 period amounted to 190.5 million bushels compared with the 1961-62 total of 220.0 million and about one fifth greater than the ten-year (1951-52-1960-61) average for the period of 159.5 million bushels. Britain, remaining in its



position as Canada's leading market for wheat, received shipments amounting to 49.5 million bushels and representing 26 per cent of the eight-month total. During the August-March period of 1961-62, shipments of wheat to Britain amounted to 51.2 million bushels and accounted to 23 per cent of the total. Other principal markets for Canadian wheat in bulk during the first eight months of the current crop year, with figures for the same period of the preceding crop year in brackets, were as follows, in millions of bushels: China Communist, 37.2 (39.5); Japan, 28.1 (32.8); Federal Republic of Germany, 18.8 (34.4); Poland, 14.2 (12.3); Belgium and Luxembourg, 6.4 (7.8); Venezuela, 4.4 (2.4); Philippines, 4.3 (2.1); France, 4.3 (0.7); Netherlands, 4.0 (1.7); and Italy, 3.7 (2.5). Cumulative exports of bagged seed wheat during August-March of the 1962-63 crop year, basis Canadian Customs returns, amounted to 3,050 thousand bushels 15 per cent above last year's revised total of 2,651 thousand.

Cumulative exports of wheat flour during August-March of the 1962-63 crop year, based on Customs returns, were the equivalent of 17.6 million bushels of wheat, as against the adjusted August 1961-March 1962 total of 21.9 million bushels. As with bulk wheat, Britain was also the major market for Canadian wheat flour. Shipments of wheat flour to that country during the period under review amounted to the equivalent of 7.6 million bushels and accounted for 43 per cent of the August 1962-March 1963 total. During the same months of 1961-62 shipments of wheat flour to Britain amounted to the equivalent of 8.1 million bushels and represented 37 per cent of the total. Other leading markets for Canadian wheat flour in terms of grain equivalent during the August-March period of the 1962-63 crop year, with revised data for the same months of the preceding crop year in brackets, were as follows, in thousands of bushels: Ghana, 1,135 (1,451); Trinidad and Tobago, 916 (905); Jamaica, 907 (1,017); United States, 875 (863); Nigeria, 673 (984); Hong Kong, 658 (596); Leeward and Windward Islands, 615 (685); Costa Rica, 589 (568); and Malaya and Singapore, 429 (465).

General Quota  
Position

By April 29, 1963, out of a total of 1,942 shipping points in the Western Division, the Canadian Wheat Board had placed 693 points on a delivery quota of ten bushels per specified acre, 317 on an 8-bushel quota and 213 on a 7-bushel quota. Of the remainder 268 points were on a 6-bushel quota, 411 on a 5-bushel quota and 21 on a 4-bushel quota. Nineteen stations were reported as "closed".

Summary of Elevator Shipping Points in the Western Division  
as at April 29, 1963

Province	General Quota in Bushels per Specified Acre						Closed Total	
	Four	Five	Six	Seven	Eight	Ten		
Ontario.....	-	-	-	-	-	1	1	2
Manitoba.....	8	156	73	38	30	40	2	347
Saskatchewan.....	13	255	194	151	172	259	10	1,054
Alberta.....	-	-	1	24	115	388	6	534
British Columbia.....	-	-	-	-	-	5	-	5
All Provinces.....	21	411	268	213	317	693	19	1,942



Crop and Weather Conditions      The telegraphic crop report, published by the Dominion Bureau of Statistics on May 8, 1963, summarized crop conditions in each of the Prairie Provinces as follows:

Although early seeding is underway at scattered points throughout Manitoba, a week of warm weather is needed in order for it to become general. Wheat seeding is half complete at Altona and north to Morris. It is also 30 to 40 per cent complete south and west of Boissevain and Melita. Progress is also fairly rapid at Carberry, Russell, Roblin and Swan River. Fifteen per cent of the lighter soils around Carman have been seeded. Tillage is underway in many other areas but consists mostly of seed bed preparation. Only very little seeding has been carried out. Warm weather is needed in the northern part of the Red River Valley in order to promote tillage. Planting of coarse grains and special crops has started but has been held back because of weed growth. Planting of sugar beets and sunflowers has begun. The acreage devoted to forage and special crops, wheat and barley is expected to increase as a result of a decline in acres planted to oats and flax. Use of fertilizer is increasing. Except at St. Rose, fodder supplies appear adequate until full grazing is underway.

Generally cool weather in Saskatchewan has not favoured rapid progress of spring operations. The exception is the southwest part of the province where about two-thirds of the wheat acreage has been seeded. In areas along the United States border some 10 to 20 per cent of the wheat has been seeded while in the remaining districts up to 5 per cent has been sown. Generally, growth has been slow and the weather has been unsuitable for obtaining a satisfactory weed kill. The warming trend during this week will increase farm activities in all districts. Surface moisture supplies are generally sufficient to germinate grains.

In Alberta, progress has been made with seeding in the south but strong winds have dried out the surface soil and many farmers are now waiting for rain before proceeding with field operations. Considerable soil erosion has already occurred in some areas. Seeding is just beginning in the south-central region. In the Calgary-Hanna area moisture is sufficient to insure germination but is disappearing quickly at Hanna. Very little seeding has been done north of Red Deer and Coronation. Fields are especially wet in the northwest and northeast of Edmonton and seeding is not expected to become general until between the 10th and 20th of May. The situation in the Peace River, though variable, indicates seeding will also be late this spring. Cattle wintered well in the south and good to fair in the remainder of the province. Because of the poor weather pasture growth is slow.

Durum Wheat - Crop Year 1963-64      The Canadian Wheat Board in its instructions to the trade re quotas (general) No. 23 under date of April 10, 1963 stated in part that the Board has given consideration to the position of Durum Wheat and, in order to enable producers to plan their seeding operations for this Spring, wishes to advise all concerned that effective August 1st, 1963, acreage seeded to Durum Wheat will be included and become part of the producer's specified acreage for quota purposes during the 1963-64 crop year.

1963 Season of Navigation Opens at Canadian Lakehead      The 1963 Lakehead navigation season opened with a rush on April 19. Four giant grain carriers operated by Canada Steamship Lines docked in a period of less than two hours and promptly began filling their holds with wheat for lower Great Lakes and St. Lawrence points.

Canadian Wheat  
Stocks at  
March 31, 1963

Total stocks of Canadian wheat at March 31, 1963 were estimated at 669.4 million bushels compared with 580.7 million on the same date in 1962 and the record 904.4 million in 1957. The ten-year (1953-62) average was 731.5 million bushels. Data for these

estimates were obtained from the Dominion Bureau of Statistics' annual March 31 survey of grain held on farms, from mill returns, and from information supplied by the Board of Grain Commissioners for Canada relative to grain in commercial positions at the close of business on April 3. An estimated 280.8 million bushels, representing 42 per cent of the total were held on farms, 19 per cent more than last year's total of 235.9 million but 34 per cent below the 423.9 million at March 31, 1961. All but 5.8 million bushels of the total farm stocks of wheat were held on farms in the Prairie Provinces. Farm-held stocks in Saskatchewan were placed at 190.0 million while those in Alberta and Manitoba were estimated at 48.0 million and 37.0 million bushels, respectively. Of the 388.6 million bushels held in off-farm positions, 210.8 million were in country elevators compared with 173.6 million a year ago and 259.3 million two years ago. Stocks in Lakehead positions amounted to 58.6 million bushels, 4 per cent above last year's corresponding total of 56.5 million but little changed from the 1961 level of 58.7 million. Supplies in Eastern elevators, at 51.6 million bushels represented an increase of 4 per cent over the 1962 comparable total of 49.8 million and 31 per cent greater than the 1961 figure of 39.6 million bushels.

Stocks of Canadian Wheat at March 31, 1961-63 1/

Position	1961	1962	1963
- thousand bushels -			
<u>In Canada</u>			
On farms.....	423,900 <u>2/</u>	235,900 <u>2/</u>	280,800
Country elevators.....	259,289	173,570	210,807
Interior private and mill elevators.	7,536	7,499	8,061
Interior terminal elevators.....	10,721	10,214	5,352
Vancouver-New Westminster elevators.	10,545	8,241	10,984
Victoria elevator.....	714	233	687
Prince Rupert elevator.....	-	-	607
Churchill elevator.....	4,766	4,829	4,857
Fort William-Port Arthur elevators..	58,736	56,452	58,626
Storage afloat (Lakehead).....	-	681	-
In transit rail (Western Division)..	12,149	16,025	16,956
Eastern elevators.....	39,550	49,778	51,637
Storage afloat (Eastern Division)...	6,706	12,532	13,669
In transit rail (Eastern Division)..	2,460	2,513	3,695
Eastern mills (mill bins only) <u>3/</u> ...	2,443	2,060 <u>2/</u>	2,429
Western mills (mill bins only) <u>3/</u> ...	123	181 <u>2/</u>	249
Totals, in Canada.....	839,637	580,707	669,416
<u>In United States</u> .....	-	-	-
Totals, in Canada and United States	839,637	580,707	669,416

1/ Stocks other than on farms and in mills compiled by the Statistics Branch, Board of Grain Commissioners for Canada, as at the close of business on March 29, 1961, March 28, 1962 and April 3, 1963.

2/ Revised.

3/ Small quantities of grain going into ground feeds have been excluded.



Farmers' Marketings 1/ of Wheat in the Prairie Provinces 1962-63

Week Ending		Manitoba	Saskatchewan	Alberta	Total	Last Year <u>2/</u>
- bushels -						
August	8, 1962..	14,548	7,645	42,489	64,682	424,845
	15 .....	1,778	38,975	176,287	217,040	682,034
	22 .....	38,237	592,588	584,243	1,215,068	5,298,808
	29 .....	426,174	1,911,503	1,468,566	3,806,243	9,124,000
September	5 .....	757,304	3,085,240	1,211,254	5,053,798	6,274,071
	12 .....	1,742,316	6,416,266	1,870,574	10,029,156	7,783,756
	19 .....	1,699,681	8,177,978	1,709,135	11,586,794	6,733,721
	26 .....	2,359,440	10,406,284	4,587,559	17,353,283	7,697,860
October	3 .....	2,522,313	13,068,961	5,556,144	21,147,418	8,356,339
	10 .....	1,585,234	12,747,546	4,121,329	18,454,109	7,025,437
	17 .....	1,117,194	7,344,064	3,084,468	11,545,726	7,516,876
	24 .....	1,177,866	7,435,220	2,545,531	11,158,617	7,143,464
	31 .....	1,370,408	6,674,985	2,270,438	10,315,831	6,863,496
November	7 .....	1,514,458	6,123,753	2,618,264	10,256,475	5,637,826
	14 .....	1,629,145	5,879,142	1,928,069	9,436,356	7,094,998
	21 .....	1,669,582	6,738,169	1,957,899	10,365,650	6,604,431
	28 .....	1,783,131	7,723,197	1,816,305	11,322,633	5,789,906
December	5 .....	1,282,296	7,478,541	1,868,468	10,629,305	3,687,344
	12 .....	1,499,357	7,709,086	1,926,894	11,135,337	5,480,248
	19 .....	2,183,481	8,514,663	2,732,106	13,430,250	3,635,158
	26 .....	2,048,763	9,012,883	2,580,076	13,641,722	2,955,220
January	2, 1963..	672,092	5,572,797	2,134,963	8,379,852	4,473,693
	9 .....	1,573,326	2,662,279	2,291,794	6,527,399	11,340,074
	16 .....	511,792	6,416,935	1,902,677	8,831,404	6,770,993
	23 .....	253,560	2,018,232	1,473,736	3,745,528	2,292,052
	30 .....	391,919	871,723	566,338	1,829,980	5,413,301
February	6 .....	987,378	3,454,795	1,056,130	5,498,303	5,265,116
	13 .....	1,419,331	7,027,411	2,351,424	10,798,166	3,433,249
	20 .....	739,654	4,537,612	2,881,336	8,158,602	4,301,431
	27 .....	368,030	1,980,051	1,950,601	4,298,682	1,861,407
March	6 .....	757,059	3,457,719	1,656,138	5,870,916	534,654
	13 .....	653,438	3,536,306	2,016,221	6,205,965	2,609,296
	20 .....	491,482	2,753,143	1,957,599	5,202,224	4,310,867
	27 .....	770,903	3,273,586	1,693,218	5,737,707	3,706,569
April	3 .....	742,635	2,600,145	994,011	4,336,791	3,298,094
	10 .....	623,515	4,354,381	1,069,585	6,047,481	2,634,703
	17 .....	718,424	2,409,799	446,697	3,574,920	3,631,448
Totals .....		40,097,244	194,013,603	73,098,566	307,209,413	187,686,785

Average similar period:

1951-52—1960-61.. 24,265,856 137,751,435 65,917,275 227,934,566

1/ Includes receipts at country, interior private and mill elevators, interior semi-public terminals and platform loadings. 2/ Revised.



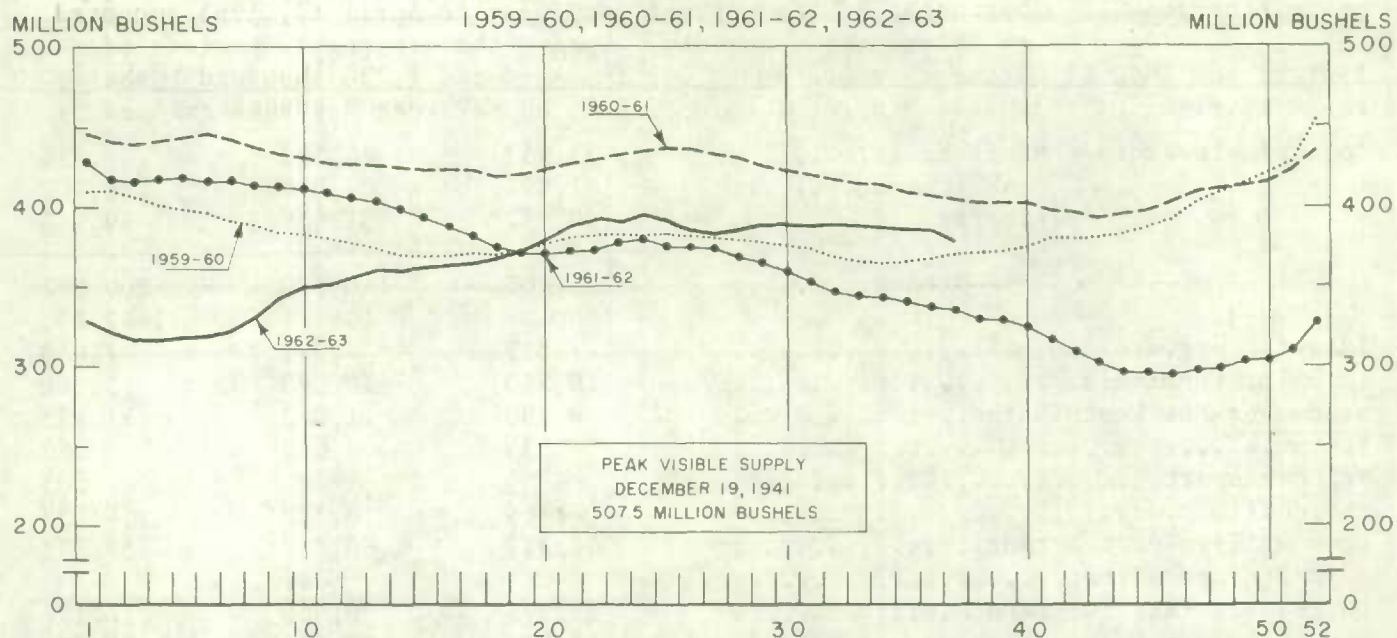
Visible Supply of Canadian Wheat, April 17, 1963  
Compared with Approximately the Same Date, 1961 and 1962

Position	1961	1962	1963
- thousand bushels -			
Country elevators - Manitoba.....	33,952	24,293	28,926
Saskatchewan.....	151,892	84,918	120,702
Alberta.....	69,957	51,579	59,944
Totals.....	255,801	160,790	209,572
Interior private and mill.....	7,317	8,042	7,853
Interior terminals.....	10,350	10,073	5,380
Vancouver-New Westminster.....	8,390	11,062	11,895
Victoria.....	335	619	888
Prince Rupert.....	-	-	503
Churchill.....	4,766	4,829	4,857
Fort William-Port Arthur.....	48,212	60,817	59,392
Storage afloat.....	-	681	-
In transit rail (Western Division).....	17,298	20,868	18,197
Bay, Lake and Upper St. Lawrence ports..	18,414	29,538	30,738
Lower St. Lawrence and Maritime ports...	19,578	19,686	21,269
Storage afloat.....	-	5,813	-
In transit lake.....	12,007	-	5,242
In transit rail (Eastern Division).....	1,232	1,582	2,517
Totals.....	403,700	334,399	378,302

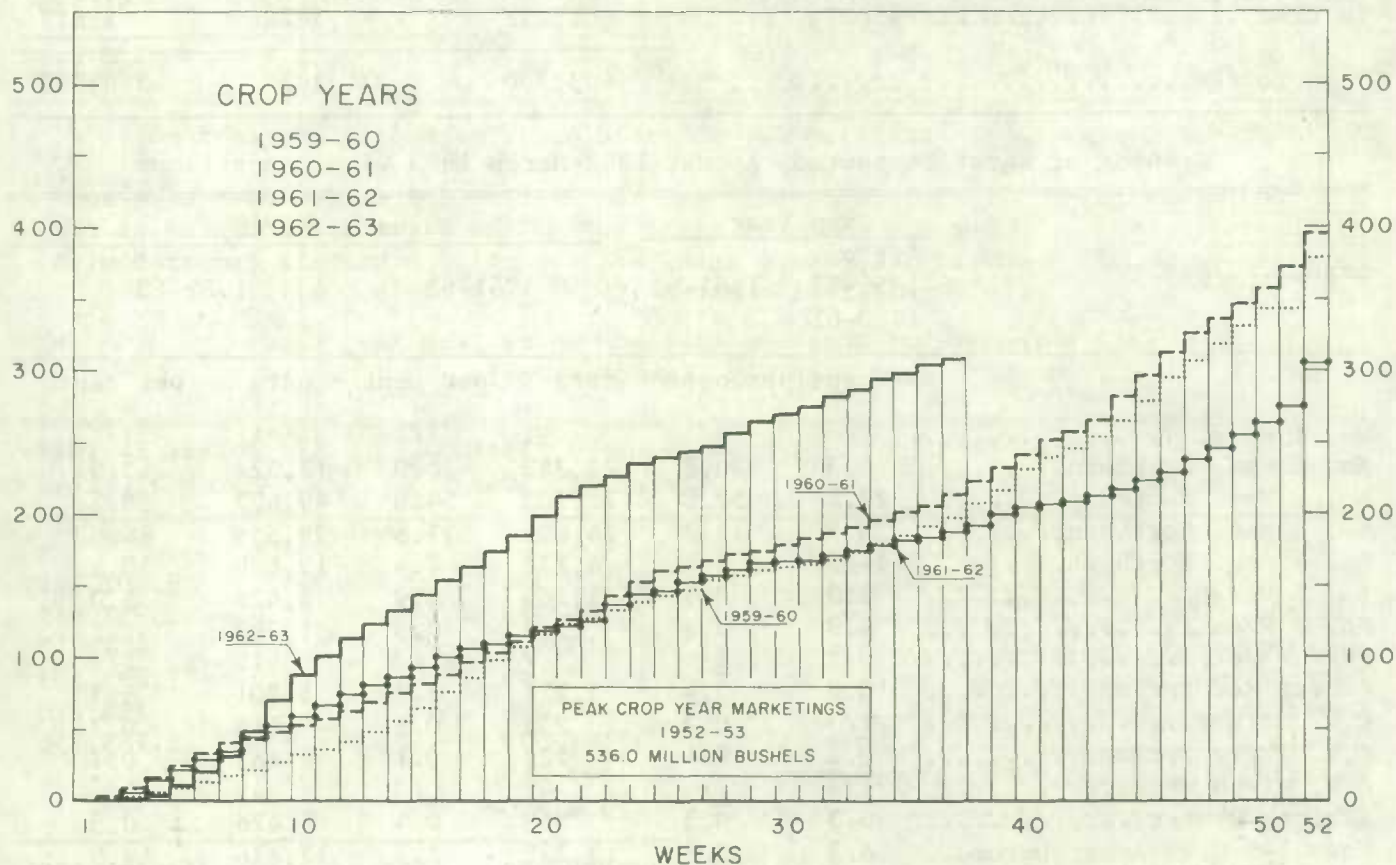
Grading of Wheat Inspected, August 1962-March 1963 with Comparisons

Grade	Crop Year		August - March			
	Average					
	1956-57	1961-62	1961-62		1962-63	
	1960-61					
	per cent	per cent	cars	per cent	cars	per cent
No. 1 Hard.....	-	1/	51	1/	11	1/
No. 1 Man. Northern.....	1.3	20.8	22,243	16.0	17,522	13.5
No. 2 Man. Northern.....	29.2	52.8	75,103	54.0	49,477	38.1
No. 3 Man. Northern.....	28.3	15.7	24,496	17.6	18,655	14.4
No. 4 Man. Northern.....	14.0	3.4	6,172	4.4	13,689	10.5
No. 5 Wheat.....	8.3	0.7	1,264	0.9	6,428	5.0
No. 6 Wheat.....	1.9	0.2	368	0.3	1,392	1.1
Feed Wheat.....	0.1	1/	7	1/	16	1/
Others Red Spring.....	10.0	3.4	5,121	3.7	8,201	6.3
C.W. Garnet.....	1/	0.2	236	0.2	118	0.1
C.W. White Spring.....	0.1	0.1	126	0.1	187	0.1
C.W. Mixed Wheat.....	1/	1/	42	1/	45	1/
Alberta Winter.....	0.3	0.3	556	0.4	426	0.3
Nos. 1-6 C.W. Amber Durum...	6.3	2.3	3,222	2.3	12,876	9.9
Others C.W. Amber Durum.....	0.2	1/	65	1/	730	0.6
Totals.....	100.0	100.0	139,072	100.0	129,773	100.0
Gross bushels (approx.).....			267,447,000		247,593,000	
1/ Less than .05 per cent.						

# WEEKLY VISIBLE SUPPLY OF CANADIAN WHEAT



## CUMULATIVE RECORD OF WHEAT MARKETINGS IN THE PRAIRIE PROVINCES BY WEEKS



(Data in both charts for crop years beginning August 1)



Wheat Shipments to the United States by Destination      Total rail and vessel shipments of wheat to the United States, either for re-export or retention for domestic use, from the beginning of the current crop year to April 17, 1963 amounted to 291 thousand bushels. During the comparable periods of 1961-62 and 1960-61 shipments amounted to 602 thousand and 1,238 thousand bushels, respectively. Of this season's total to date some 69 per cent has been shipped by vessel.

Wheat Shipments\* to the United States by Destination  
August 1, 1962-April 17, 1963 with Comparisons

Destination	1960-61	1961-62	1962-63
- bushels -			
<u>By Vessel</u>			
Buffalo.....	298,631	-	-
Chicago.....	216,477	100,000	84,750
Duluth-Superior.....	477,836	420,978	115,208
Milwaukee.....	81,537	-	-
Totals, Vessel.....	1,074,481	520,978	199,958
<u>By Rail</u>			
U.S.A. Domestic Points.....	163,400	80,828	91,156
Totals, Shipments.....	1,237,881	601,806	291,114

\* Either for re-export or retention for domestic use. Excluding bagged seed.

Rail Shipments of Wheat to Maritime Ports      Rail shipments of wheat to Maritime Ports from Bay, Lake and Upper St. Lawrence Ports during the first seven months of the current crop year totalled 16.1 million bushels compared with the August 1961 - March 1962 figure of 16.0 million.

Rail Shipments of Wheat to Maritime Ports from Bay, Lake and Upper St. Lawrence Ports

Origin of Shipments	August 1, 1961- March 31, 1962	August 1, 1962- March 31, 1963
- bushels -		
Port McNicoll.....	4,880,364	5,802,391
Midland, Tiffin.....	5,870,820	5,957,659
Collingwood.....	405,993	464,910
Owen Sound.....	2,113,453	1,892,103
Goderich.....	408,456	233,210
Sarnia.....	1,188,279	1,788,756
Lakefield.....	712,467	-
Peterborough.....	373,000	-
Totals.....	15,952,832	16,139,029



Rail Shipments of Wheat from Fort William-Port Arthur, 1959-60-1962-63

Month	1959-60	1960-61	1961-62	1962-63
- bushels -				
August.....	34,383	14,717	20,648	13,933
September.....	31,690	19,227	14,598	11,657
October.....	30,904	5,417	33,944	22,716
November.....	8,383	24,000	22,915	12,024
December.....	25,355	17,500	60,167	12,778
January.....	103,087	71,335	126,533	39,534
February.....	23,878	135,339	68,421	22,967
March.....	18,826	28,073	37,000	86,398
April.....	64,156	9,833	37,777	
May.....	19,513	15,805	11,203	
June.....	25,234	17,563	16,022	
July.....	26,803	10,940	17,315	
Totals.....	412,212	369,749	466,543	

Distribution of Rail Shipments of Wheat from Fort William-Port Arthur, March 1963

Grade	Nova Scotia	New Brunswick	Quebec	Ontario	U.S.A.
- bushels -					
4 Northern.....	-	-	-	1,333	-
5 Wheat.....	-	-	5,833	1,500	-
6 Wheat.....	-	-	-	-	15,333
Tough.....	1,500	1,500	7,500	-	-
Rejected.....	-	-	10,500	-	-
Durum.....	-	-	8,000	-	-
Others.....	-	1,500	30,399	1,500	-
Totals.....	1,500	3,000	62,232	4,333	15,333

Overseas Exports of Canadian Grain by Ports of Loading, August 1, 1962-April 17, 1963  
with Comparisons

Port	Wheat <u>1/</u>	Durum Wheat <u>1/</u>	Oats <u>1/</u>	Barley	Rye	Flaxseed	Rapeseed <u>2/</u>
- bushels -							
<u>Pacific Seaboard</u>							
Van.-New West. ....	92,536,221	-	7,830,827	2,081,195	1,522,461	3,758,904	4,349,583 <u>3/</u>
Victoria.....	3,676,522	-	-	-	-	-	-
Prince Rupert.....	1,803,388	-	-	110,849	-	-	-
Churchill.....	20,577,620	-	-	-	-	-	-
Lakehead Direct.....	2,659,002	374,098	528,463	793,621	2,198,488	843,639	-
Kingston Direct.....	336,000	-	-	-	-	-	-
<u>St. Lawrence</u>							
Montreal.....	19,505,049	6,716,489	881,207	862,125	1,521,437	3,567,789	-
Sorel.....	7,386,307	2,450,390	-	-	-	74,321	-
Three Rivers.....	5,763,935	2,006,300	-	186,815	-	102,166	-
Quebec.....	5,702,283	-	95,735	-	-	98,407	-
Baie Comeau.....	15,859,498	-	-	-	-	-	-
<u>Maritimes</u>							
Saint John.....	767,182	-	-	-	-	40,978	-
West Saint John.....	7,118,103	1,608,100	135,832	96,858	40,612	506,113	-
Halifax.....	8,384,240	780,928	-	70,316	-	50,473	-
United States Ports...	-	-	-	-	351,071	-	-
Totals.....	192,075,350	13,936,305	9,472,064	4,201,779	5,634,069	9,042,790	4,349,583 <u>3/</u>
Aug.1/61-Apr.18/62....	225,410,487	5,360,739	511,985	20,568,326	3,321,721 <u>3/</u>	9,273,584	4,656,237

1/ Excluding bagged seed. 2/ In bushels of 50 pounds. 3/ Revised.

Freight Assistance Shipments Claims filed for payment up to March 31, 1963 represent the movement of some 5.8 million bushels of wheat from the Prairie Provinces to Eastern Canada and British Columbia under the freight assistance policy during the August-February period of the 1962-63 crop year. During the same months of the 1961-62 crop year claims had been filed for a total of 7.9 million bushels, indicating on the assumption of approximately the same rate of submission of claims during both the current and preceding crop years that the 1962-63 August-February shipments of wheat under the policy were running about 27 per cent below those of 1961-62. Revised data on the 1961-62 August-February shipments of wheat based on claims submitted up to March 31, 1963 place the seven-month total at 8.2 million bushels. The bulk of the shipments during the current seven-month period under review went to destinations in Quebec and Ontario, with these two provinces accounting for 41 per cent and 33 per cent of the total, respectively.

Provincial Distribution of Wheat Shipments under the Freight Assistance Policy  
August-February 1962-63 and 1961-62

Month	Nfld.	P.E.I.	N.S.	N.B.	Que.	Ont.	B.C.	Total
- thousand bushels -								
August, 1962.....	9	13	48	29	381	354	84	918
September.....	7	7	29	21	335	234	200	833
October.....	8	10	43	23	361	239	149	833
November.....	12	7	41	20	402	295	142	919
December.....	7	6	47	23	303	269	121	776
January, 1963.....	8	7	65	29	370	290	167	935
February.....	1	5	56	28	216	219	65	592
Totals 1/.....	53	55	329	172	2,369	1,900	928	5,806
Same period 1961-62:								
Preliminary 2/.....	67	86	775	245	2,888	2,654	1,201	7,916
Revised 1/.....	72	86	784	257	2,949	2,715	1,358	8,221

Preliminary data on millfeed shipments under the freight assistance policy indicate shipments of 261,255 tons during the August-February period of the current crop year. During the same seven months of 1961-62 claims had been filed for a total of 304,423 tons, indicating on the assumption of approximately the same rate of submission of claims during both the current and preceding crop years that the 1962-63 August-February shipments of millfeeds under the policy were running about 14 per cent below those of 1961-62. Revised data on the 1961-62 August-February shipments of millfeeds based on claims submitted up to March 31, 1963 place the seven-month total at 318,952 tons. As with freight-assisted shipments of wheat, the greater portion of the millfeed shipments during the period under review went to destinations in Quebec and Ontario.

Provincial Distribution of Millfeed Shipments under the Freight Assistance Policy  
August-February 1962-63 and 1961-62

Province	1961-62		1962-63
	Preliminary 2/	Revised 1/	Preliminary 1/
- tons -			
Newfoundland.....	3,474	3,958	3,756
Prince Edward Island.....	5,366	5,418	4,226
Nova Scotia.....	21,723	22,412	18,816
New Brunswick.....	18,247	20,037	15,659
Quebec.....	147,181	150,758	129,294
Ontario.....	83,315	87,976	69,354
British Columbia.....	25,117	28,393	20,150
Totals.....	304,423	318,952	261,255

1/ Based on claims filed up to March 31, 1963.

2/ Based on claims filed up to March 31, 1962.



Monthly Exports of Canadian Wheat and Wheat Flour

Year and Month	Wheat in Bulk <u>1/</u>	Bagged Seed Wheat <u>2/</u>	Total Wheat	Wheat Flour <u>2/</u> <u>3/</u>	Total <u>3/</u> Wheat and Wheat Flour
- thousand bushels -					
<u>1960-61</u>					
August.....	23,908	127	24,034	2,867	26,901
September.....	26,742	232	26,974	2,694	29,668
October.....	21,172	304	21,476	3,727	25,203
November.....	23,224	570	23,794	4,198	27,992
December.....	20,222	883	21,105	3,320	24,426
January.....	16,408	773	17,181	2,104	19,285
February.....	20,517	1,043	21,560	2,404	23,964
March.....	23,377	1,934	25,312	3,088	28,399
April.....	31,395	599	31,994	3,009	35,003
May.....	42,190	135	42,325	3,166	45,491
June.....	35,532	12	35,544	2,499	38,043
July.....	26,265	4	26,269	2,607	28,876
Totals.....	310,952	6,616	317,568	35,682	353,249
<u>1961-62</u>					
August.....	35,625	89	35,714	3,123	38,837
September.....	28,966	242	29,209	2,786	31,995
October.....	32,910	86	32,996	2,391	35,386
November.....	40,823	377	41,200	3,150	44,351
December.....	19,966	392	20,359	2,643	23,002
January.....	17,534	458	17,992	2,304	20,295
February.....	23,739	433	24,173	2,546	26,719
March.....	20,482	574	21,056	2,968	24,023
April.....	24,981	539	25,520	2,389	27,909
May.....	35,150	77	35,227	2,486	37,713
June.....	23,559	5	23,564	2,456	26,020
July.....	19,016	44	19,060	2,711	21,772
Totals.....	322,752	3,317	326,069	31,953	358,022
<u>1962-63 <sup>4/</sup></u>					
August.....	21,944	160	22,105	2,670	24,775
September.....	25,040	228	25,268	2,939	28,207
October.....	29,705	20	29,725	2,451	32,176
November.....	33,309	103	33,412	2,158	35,570
December.....	20,949	340	21,289	1,771	23,059
January.....	21,486	520	22,006	2,234	24,240
February.....	18,779	590	19,370	1,420	20,789
March.....	19,246	1,088	20,334	1,939	22,273
Totals.....	190,458	3,050	193,508	17,582	211,090

1/ Export clearances including shipments to the United States compiled by the Statistics Branch, Board of Grain Commissioners for Canada.

2/ Compiled from Canadian Customs returns, 1960-61 and 1961-62 adjusted to remove effect of time lag in reporting.

3/ In terms of wheat equivalent. Wheat flour conversion rate: 2.3 bushels per cwt.

4/ Preliminary.



Exports of Canadian Wheat 1/ by Destination, March 1963 and 1962

Destination	Wheat (Except Durum)	Durum Wheat	All Wheat	
			March 1963	March 1962
- bushels -				
<u>COMMONWEALTH AND PREFERENTIAL COUNTRIES</u>				
<u>Western Europe</u>				
Britain.....	5,267,670	37,333	5,305,003	4,394,700
Ireland.....	260,213	-	260,213	-
<u>Other Africa</u>				
Nigeria.....	-	-	-	212,800
Republic of South Africa.....	954,613	-	954,613	-
<u>Other Asia</u>				
Hong Kong.....	57,867	-	57,867	112,000
Totals, Com. and Pref. Countries...	6,540,363	37,333	6,577,696	4,719,500
<u>OTHER COUNTRIES</u>				
<u>Western Europe</u>				
Belgium and Luxembourg.....	-	-	-	401,314
France.....	22,400	37,333	59,733	-
Germany, Federal Republic.....	-	-	-	1,921,884
Italy.....	224,000	-	224,000	220,472
Netherlands.....	162,773	-	162,773	56,500
Sweden.....	38,080	-	38,080	-
<u>Middle East</u>				
Israel.....	144,480	-	144,480	-
Saudi Arabia.....	-	-	-	76,825
<u>Other Africa</u>				
Mozambique.....	33,040	-	33,040	87,472
<u>Other Asia</u>				
Burma.....	-	-	-	24,891
China, Communist.....	6,624,626	-	6,624,626	8,371,626
Japan.....	3,819,766	-	3,819,766	3,216,616
Philippines.....	986,907	-	986,907	300,720
<u>Oceania</u>				
United States Oceania.....	56,560	-	56,560	74,853
<u>South America</u>				
Ecuador.....	217,730	-	217,730	-
Venezuela.....	279,181	-	279,181	710,866
<u>Central America and Antilles</u>				
Dominican Republic.....	-	-	-	270,063
<u>North America</u>				
United States for domestic use 2/.....	21,197	-	21,197	28,492
Totals, Other Countries.....	12,630,740	37,333	12,668,073	15,762,594
Sub-Totals, All Countries.....	19,171,103	74,666	19,245,769	20,482,094
Bagged seed 3/.....			1,087,756	573,594
Totals, All Countries.....	19,171,103	74,666	20,333,525	21,055,688

NOTE: See footnotes on page 19.

Cumulative Exports of Canadian Wheat 1/ by Destination

Destination	August 1962-March 1963			Total same period last year
	Wheat (Except Durum)	Durum Wheat	Total Wheat	
- bushels -				
<u>COMMONWEALTH AND PREFERENTIAL COUNTRIES</u>				
<u>Western Europe</u>				
Britain.....	49,297,139	226,464	49,523,603	51,195,700
Ireland.....	1,802,936	7,467	1,810,403	1,523,932
Malta and Gozo.....	693,654	-	693,654	844,667
<u>Other Africa</u>				
Nigeria.....	543,953	-	543,953	212,800
Republic of South Africa.....	2,426,293	-	2,426,293	-
Rhodesia and Nyasaland.....	8,244	-	8,244	56,000
<u>Other Asia</u>				
Hong Kong.....	373,894	-	373,894	451,360
India.....	698,133	-	698,133	3,541,390
Pakistan.....	-	-	-	1,856,325
<u>Central America and Antilles</u>				
Jamaica.....	6,566	-	6,566	-
Totals, Com. and Pref. Countries...	55,850,812	233,931	56,084,743	59,682,174
<u>OTHER COUNTRIES</u>				
<u>Western Europe</u>				
Austria.....	382,779	419,655	802,434	1,554,946
Belgium and Luxembourg.....	6,338,563	106,047	6,444,610	7,790,571
Denmark.....	11,200*	-	11,200*	-
Finland.....	350,933	-	350,933	1,151,402
France.....	69,070	4,236,389	4,305,459	658,902
Germany, Federal Republic.....	11,561,466	7,255,050	18,816,516	34,422,244
Greece.....	-	10	10	-
Italy.....	3,698,826	-	3,698,826	2,549,512
Netherlands.....	3,965,294*	-	3,965,294*	1,695,494
Norway.....	1,568,267	-	1,568,267	1,728,869
Sweden.....	127,680*	-	127,680*	-
Switzerland.....	718,849	956,456	1,675,305	3,570,891
<u>Eastern Europe</u>				
Albania.....	-	-	-	1,050,336
Germany, East.....	-	-	-	8,040,229
Poland.....	14,183,656	-	14,183,656	12,293,711
<u>Middle East</u>				
Israel.....	979,480	-	979,480	829,100
Saudi Arabia.....	516,321	-	516,321	243,350
U.A.R.-Egypt.....	-	-	-	451,733



# FARMERS' MARKETINGS OF WHEAT, PRAIRIE PROVINCES

(SPECIFIED PERIODS)

MILLION BUSHELS

450 —

400 —

350 —

300 —

250 —

200 —

150 —

100 —

50 —

0

MILLION BUSHELS

450 —

400 —

350 —

300 —

250 —

200 —

150 —

100 —

50 —

0

PEAK MARKETINGS  
1952-53 CROP YEAR  
536.0 MILLION BUSHELS

JULY

JUNE

MAY

APR.

M.

F.

JAN.

DEC.

NOV.

OCT.

SEPT.

AUG.

29 year average 10 year average  
1932-33 1951-52  
1960-61 1960-61

1957-58

1958-59

1959-60

1960-61

1961-62

1962-63

Agriculture Division D.B.S.

## EXPORTS OF CANADIAN WHEAT\* AND WHEAT FLOUR\*\*

(SPECIFIED PERIODS)

MILLION BUSHELS

400 —

350 —

300 —

250 —

200 —

150 —

100 —

50 —

0

30 year average 10 year average

1931-32

1951-52

1960-61

1960-61

1957-58

1958-59

1959-60

1960-61

1961-62

1962-63 \*\*\*

JULY

JUNE

MAY

APR.

M.

F.

JAN.

DEC.

NOV.

OCT.

SEPT.

AUG.

PEAK EXPORTS

1928-29 CROP YEAR

407.6 MILLION BUSHELS

MILLION BUSHELS

400 —

350 —

300 —

250 —

200 —

150 —

100 —

50 —

0

\*Beginning with 1956-57 includes bagged seed wheat.

\*\*In terms of wheat equivalent. \*\*\*Preliminary.

Agriculture Division D.B.S.

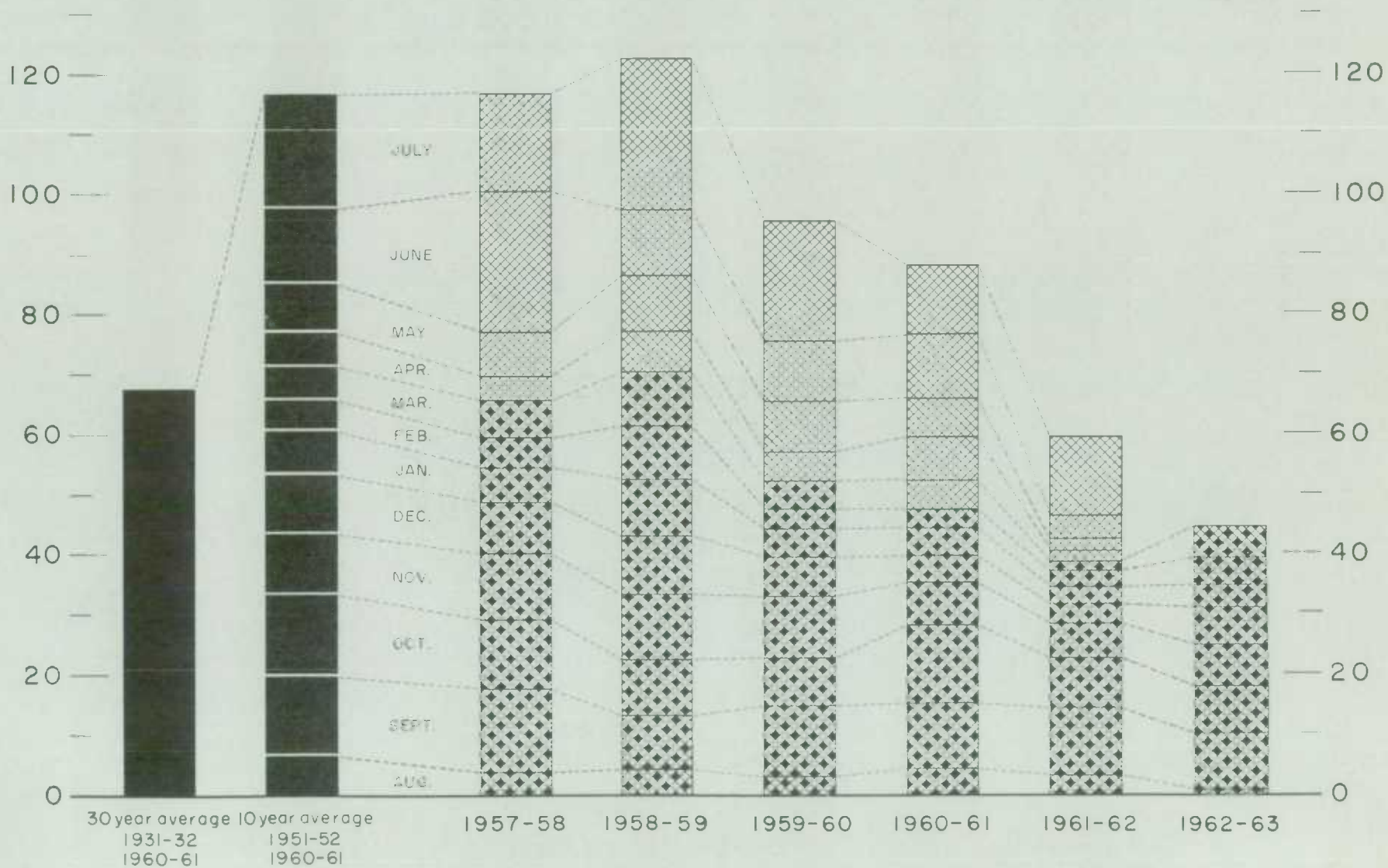


# FARMERS' MARKETINGS OF BARLEY, PRAIRIE PROVINCES

(SPECIFIED PERIODS)

MILLION BUSHELS  
140 —

MILLION BUSHELS  
140 —



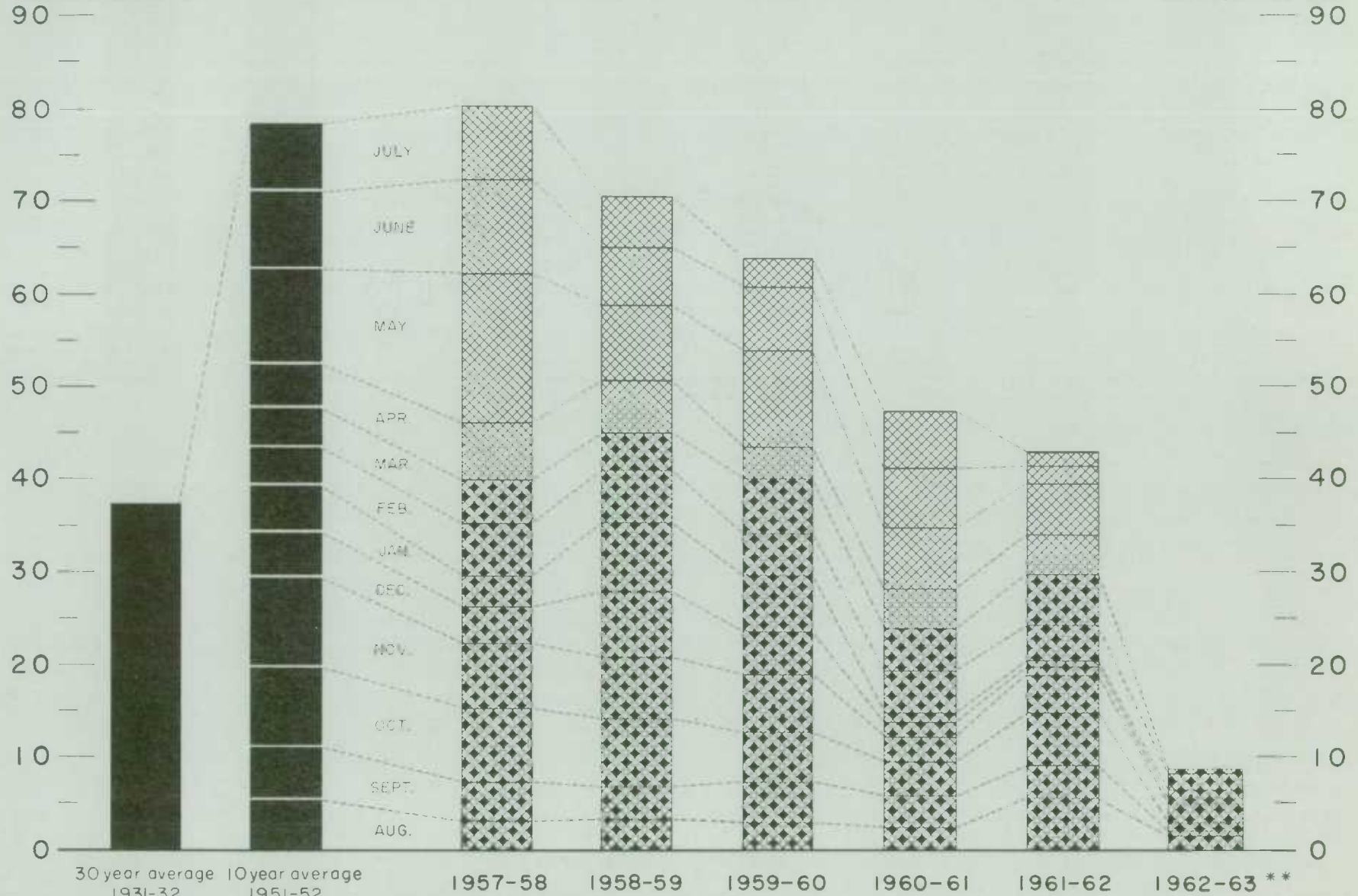
Agriculture Division D.B.S.

## EXPORTS OF CANADIAN BARLEY AND BARLEY PRODUCTS\*

(SPECIFIED PERIODS)

MILLION BUSHEL

MILLION BUSHEL

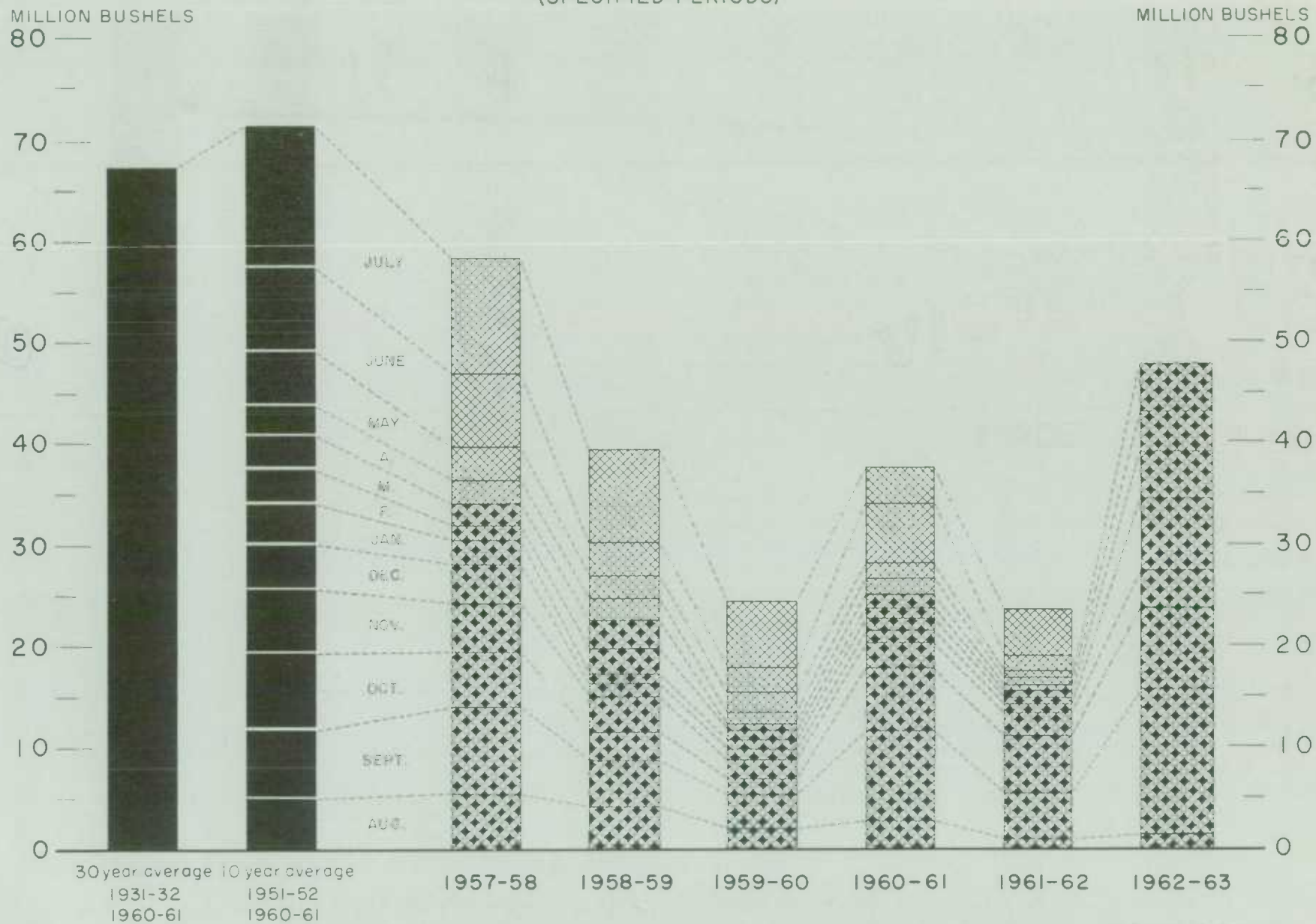


\*In terms of grain equivalent. \*\*Preliminary.

Agriculture Division D.B.S.



# FARMERS' MARKETINGS OF OATS, PRAIRIE PROVINCES (SPECIFIED PERIODS)

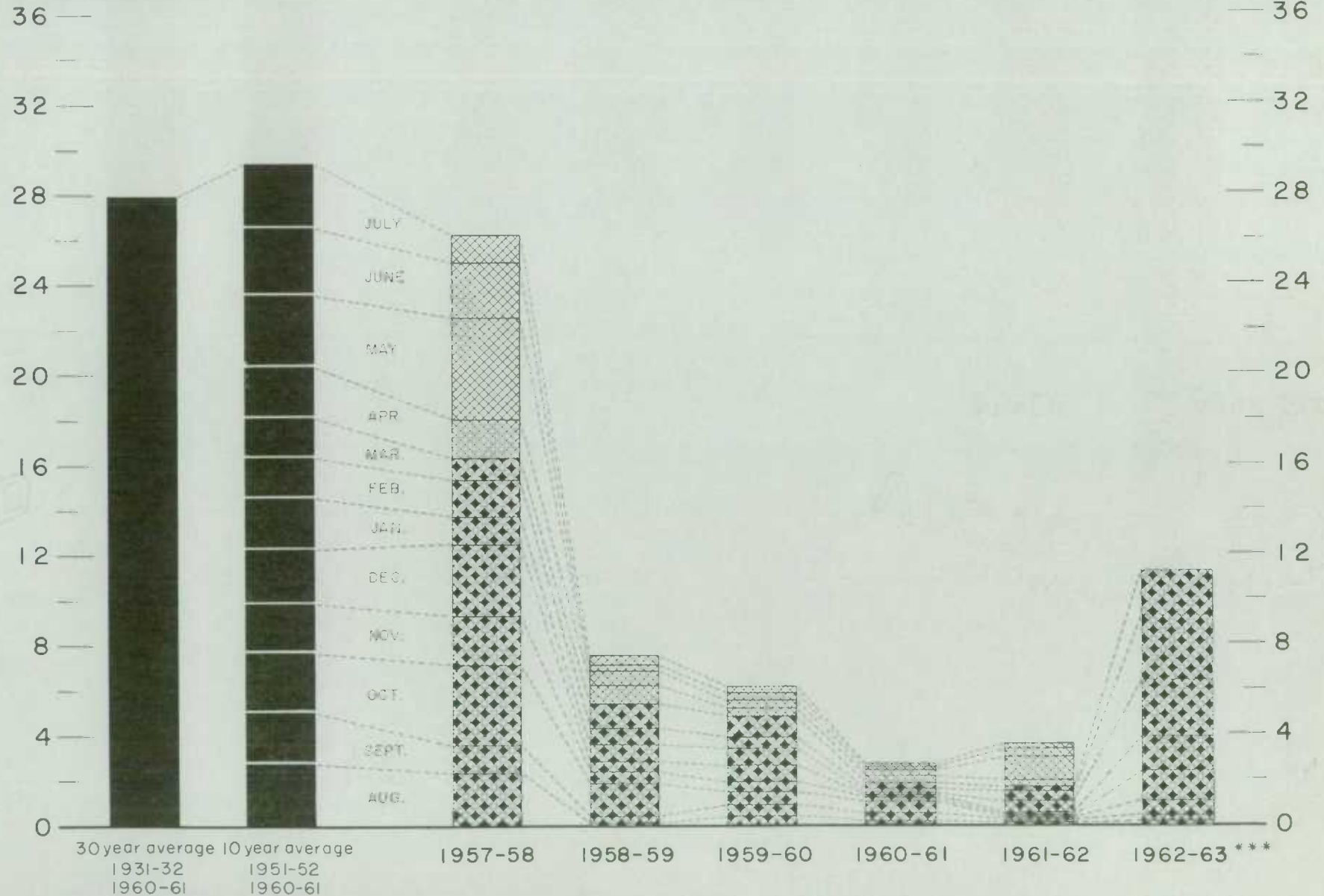


# EXPORTS OF CANADIAN OATS\* AND OAT PRODUCTS\*\*

(SPECIFIED PERIODS)

MILLION BUSHELS

MILLION BUSHELS



\*Beginning with 1960-61 includes relatively small quantity of bagged seed

\*\*In terms of grain equivalent.

\*\*\*Preliminary

Agriculture Division D.B.S.



# FARMERS' MARKETINGS OF CANADA'S FIVE MAJOR GRAINS\*, PRAIRIE PROVINCES

MILLION BUSHELS

650

600

550

500

450

400

350

300

250

200

150

100

50

0

30 year average

1931-32

1960-61

10 year average

1951-52

1960-61

\*Wheat, oats, barley, rye and flaxseed

(SPECIFIED PERIODS)

JULY

JUNE

MAY

APR

MAR

FEB

JAN

DEC

NOV

OCT

SEPT

AUG

1957-58

1958-59

1959-60

1960-61

1961-62

1962-63

MILLION BUSHELS

650

600

550

500

450

400

350

300

250

200

150

100

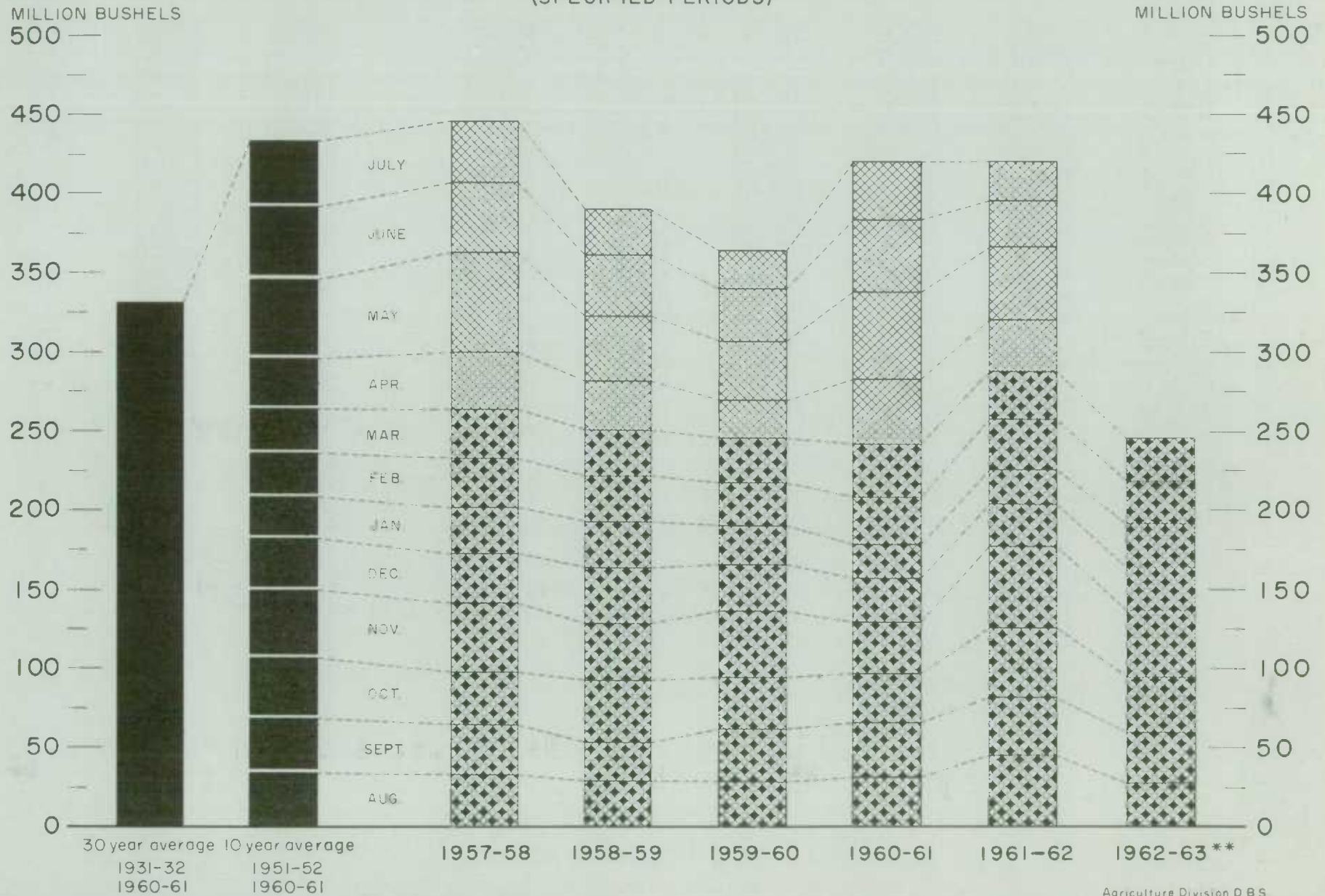
50

0

Agriculture Division D.B.S.

# EXPORTS OF CANADA'S FIVE MAJOR GRAINS AND PRODUCTS\*

(SPECIFIED PERIODS)



\* Wheat, bagged seed wheat, and wheat flour; oats, bagged seed oats, and oatmeal and rolled oats; barley, malt and pot and pearl; rye and flaxseed.

\*\* Preliminary.



Cumulative Exports of Canadian Wheat 1/ by Destination

Destination	August 1962-March 1963			Total same period last year
	Wheat (Except Durum)	Durum Wheat	Total Wheat	
- bushels -				
<u>OTHER COUNTRIES (concluded)</u>				
<u>Other Africa</u>				
Algeria.....	-	-	-	1,359,639
Congo.....	-	-	-	18,257
Katanga.....	9,186	-	9,186	-
Mozambique.....	376,518	-	376,518	464,451
Tunisia.....	-	-	-	189,905
<u>Other Asia</u>				
Burma.....	-	-	-	200,358
China, Communist.....	37,189,866	-	37,189,866	39,511,526
Japan.....	28,065,537	-	28,065,537	32,784,539
Philippines.....	4,349,048	-	4,349,048	2,059,281
Taiwan.....	53,972	-	53,972	75,787
<u>Oceania</u>				
United States Oceania.....	355,039	-	355,039	371,839
<u>South America</u>				
Colombia.....	-	-	-	264,550
Ecuador.....	745,560	-	745,560	749,680
Venezuela.....	4,391,732	-	4,391,732	2,371,196
<u>Central America and Antilles</u>				
Dominican Republic.....	539,746	-	539,746	1,000,464
El Salvador.....	414,514	-	414,514	296,548
Guatemala.....	148,334	-	148,334	20,000
<u>North America</u>				
United States				
for domestic use 2/.....	288,263	-	288,263	594,479
Totals, Other Countries.....	121,399,699	12,973,607	134,373,306	160,363,789
Sub-Totals, All Countries.....	177,250,511	13,207,538	190,458,049	220,045,963
Bagged seed 3/.....			3,049,635	2,651,120
Totals, All Countries.....	177,250,511	13,207,538	193,507,684	222,697,083

\* Revisions in data for February have been taken into account in the August-March cumulative totals.

1/ Overseas clearances as reported by the Statistics Branch, Board of Grain Commissioners for Canada, for all countries except the United States. Excluding bagged seed.

2/ Compiled from returns of Canadian elevator licensees and shippers and advice from American grain correspondents.

3/ Compiled from Canadian Customs returns, 1961-62 adjusted for time lag.

Customs Exports of Canadian Wheat Flour by Countries of Consignment

Destination	December 1962 <u>1/</u>	March 1963 <u>2/</u>	August-March	
			1962-63 <u>2/</u>	1961-62 <u>1/</u>
- bushels -				
<u>COMMONWEALTH AND PREFERENTIAL COUNTRIES</u>				
<u>Western Europe</u>				
Britain.....	962,060	947,113	7,645,166	8,137,729
Gibraltar.....	4,894	5,152	24,987	57,850
<u>Middle East</u>				
Kuwait.....	22,540	4,121	54,641	17,002
Qatar.....	448	-	1,849	1,150
British Middle East, nes .....	3,349	2,061	13,395	14,683
<u>Other Africa</u>				
Ghana.....	351,491	1,840	1,135,402	1,451,243
Nigeria.....	31,644	7,728	672,658	983,570
Rhodesia and Nyasaland.....	3,694	6,060	27,577	18,977
Sierra Leone.....	43,631	-	261,299	315,686
Tanganyika.....	-	-	9,189	29,665
British Africa, nes .....	15,571	-	36,381	52,118
<u>Other Asia</u>				
Ceylon.....	-	-	-	384,008
Hong Kong.....	83,182	92,325	657,867	596,075
India.....	-	-	-	12,714
Malaya and Singapore.....	51,959	58,333	428,651	465,039
British East Indies, nes .....	451	660	7,544	8,045
<u>Oceania</u>				
Fiji.....	1,184	483	2,955	4,887
<u>South America</u>				
British Guiana.....	1,092	1,674	18,694	17,676
<u>Central America and Antilles</u>				
Bahamas.....	24,681	20,229	196,158	192,471
Bermuda.....	8,535	6,182	69,752	84,132
British Honduras.....	2,604	5,118	26,473	18,931
Barbados.....	10,987	17,001	93,244	88,067
Jamaica.....	74,939	103,470	907,127	1,017,455
Leeward and Windward Islands.....	79,024	75,035	615,204	685,113
Trinidad and Tobago.....	105,699	114,703	915,708	904,572
Totals, Com. and Pref. Countries...	1,883,659	1,469,288	13,821,921	15,558,858
<u>OTHER COUNTRIES</u>				
<u>Western Europe</u>				
Belgium and Luxembourg.....	8,758	20,093	94,077	125,298
Denmark.....	2,005	460	6,017	2,300
France.....	-	-	-	345
Germany, Federal Republic.....	-	-	6,463	-
Greece.....	-	-	23,579	5,094
Iceland.....	-	1,773	14,573	21,218
Italy.....	-	-	6,265	17,696
Netherlands.....	541	901	2,316	1,939
Norway.....	-	-	115	2,300
Portugal.....	4,370	5,808	52,194	29,456
Sweden.....	759	-	1,265	1,518
Switzerland.....	-	-	6,900	-
<u>Middle East</u>				
Iran.....	46	338	2,834	2,245
Iraq.....	948	-	948	-
Israel.....	-	-	8,437	255



Customs Exports of Canadian Wheat Flour by Countries of Consignment

Destination	December 1962 <u>1/</u>	March 1963 <u>2/</u>	August-March	
			1962-63 <u>2/</u>	1961-62 <u>1/</u>
- bushels -				
<u>OTHER COUNTRIES (concluded)</u>				
<u>Middle East</u>				
Jordan.....	306	-	651	109,749
Lebanon.....	786	1,497	190,580	543,520
Saudi Arabia.....	1,104	-	1,104	288
Syria.....	1,274	440	4,791	2,266
U.A.R.-Egypt.....	11,270	11,270	24,150	171,994
<u>Other Africa</u>				
Angola.....	-	-	1,840	575
Congo-Leo. ....	15,518	2,933	66,820	113,176
French West Africa.....	575	-	23,442	13,239
Liberia.....	7,737	2,300	20,279	18,856
Mozambique.....	1,380	1,495	13,591	12,995
Portuguese Africa, nes .....	16,112	4,968	57,891	60,154
Togo.....	5,578	2,185	9,603	-
<u>Other Asia</u>				
Indonesia.....	-	-	64	390,368
Japan.....	23,092	59,326	218,573	712,807
Philippines.....	-	1,150	10,350	1,073,983
Portuguese India.....	-	-	-	67,944
Portuguese Asia.....	-	1,030	7,691	14,674
Thailand.....	30,912	29,688	243,602	239,692
Viet-Nam.....	-	-	44,576	-
<u>Oceania</u>				
French Oceania.....	-	-	1,300	771
United States Oceania.....	-	575	2,875	-
<u>South America</u>				
Chile.....	1,150	1,150	6,268	3,220
Colombia.....	-	-	-	1,840
Peru.....	2,070	3,910	22,126	12,657
Surinam.....	5,536	-	29,277	49,758
Venezuela.....	-	15,405	17,015	11,235
<u>Central America and Antilles</u>				
Costa Rica.....	21,907	75,219	589,243	567,927
Dominican Republic.....	5,750	3,450	109,089	68,908
El Salvador.....	5,699	7,275	63,910	144,631
French West Indies.....	230	230	2,610	1,794
Guatemala.....	5,297	7,484	31,425	50,680
Haiti.....	-	173	619	-
Honduras.....	1,265	7,562	40,668	68,899
Netherlands Antilles.....	26,153	20,974	158,180	129,400
Nicaragua.....	40,584	33,178	301,383	329,272
Panama.....	40,499	41,014	336,193	284,282
<u>North America</u>				
St. Pierre and Miquelon.....	2,300	-	7,080	7,505
United States.....	130,143	104,728	875,403	863,378
Totals, Other Countries.....	421,654	469,982	3,760,245	6,352,101
Totals, All Countries.....	2,305,313	1,939,270	17,582,166	21,910,959

nes - not elsewhere specified.

1/ In terms of wheat equivalent. Adjusted to remove effect of time lag in the returns made by Customs. Conversion rate: 2.3 bushels per cwt.

2/ In terms of wheat equivalent. Preliminary and unadjusted for time lag. Conversion rate: 2.3 bushels per cwt.

Canadian Wheat Board Weekly Average Cash Wheat Prices  
Basis in Store Fort William-Port Arthur

Class and Grade	Week Ending				
	April 5	April 12	April 19	April 26	May 3
- cents and eighths per bushel -					
<u>Initial Payment to Producers</u>					
1 Northern.....	150	150	150	150	150
2 Northern.....	146	146	146	146	146
3 Northern.....	142	142	142	142	142
4 Northern.....	135	135	135	135	135
5 Wheat.....	118	118	118	118	118
6 Wheat.....	112	112	112	112	112
Feed Wheat.....	108	108	108	108	108
1 C.W. Garnet.....	135	135	135	135	135
2 C.W. Garnet.....	130	130	130	130	130
3 C.W. Garnet.....	125	125	125	125	125
1 Alberta Red Winter.....	134	134	134	134	134
2 Alberta Winter.....	129	129	129	129	129
1 C.W. Amber Durum.....	150	150	150	150	150
2 C.W. Amber Durum.....	146	146	146	146	146
3 C.W. Amber Durum.....	142	142	142	142	142
<u>International Wheat Agreement</u>					
<u>and Domestic Sales</u>					
1 Northern.....	196	195/6	195/5	195/3	195
2 Northern.....	195/4	195/2	195/1	194/5	194
3 Northern.....	193/4	193/2	193/1	192/5	192
4 Northern.....	185/4	185/2	185/1	185	185
5 Wheat.....	178	177/6	177/5	177/4	177/4
6 Wheat.....	176	175/6	175/5	175/4	175/4
Feed Wheat.....	174	173/6	173/5	173/4	173/4
1 C.W. Garnet.....	190/4	190/2	190/1	190	190
2 C.W. Garnet.....	188/4	188/2	188/1	188	188
3 C.W. Garnet.....	187/4	187/2	187/1	187	187
1 Alberta Red Winter.....	190/4	190/2	190/1	190	190
2 Alberta Winter.....	188/4	188/2	188/1	188	188
3 Alberta Winter.....	187/4	187/2	187/1	187	187
1 C.W. Amber Durum.....	240	239/6	239/5	238/3	237/4
2 C.W. Amber Durum.....	239	238/6	238/5	237/3	236/4
3 C.W. Amber Durum.....	235	234/6	234/5	233/3	232/4
<u>Export - Class II</u>					
1 Northern.....	196	195/6	195/5	195/3	195
2 Northern.....	195/4	195/2	195/1	194/5	194
3 Northern.....	193/4	193/2	193/1	192/5	192
4 Northern.....	185/4	185/2	185/1	185	185
5 Wheat.....	178	177/6	177/5	177/4	177/4
6 Wheat.....	176	175/6	175/5	175/4	175/4
Feed Wheat.....	174	173/6	173/5	173/4	173/4
1 C.W. Garnet.....	190/4	190/2	190/1	190	190
2 C.W. Garnet.....	188/4	188/2	188/1	188	188
3 C.W. Garnet.....	187/4	187/2	187/1	187	187
1 C.W. Amber Durum.....	240	239/6	239/5	238/3	237/4
2 C.W. Amber Durum.....	239	238/6	238/5	237/3	236/4
3 C.W. Amber Durum.....	235	234/6	234/5	233/3	232/4



Canadian Wheat Board Weekly Average Cash Wheat Prices  
Basis in Store Vancouver

Class and Grade	Week Ending				
	April 5	April 12	April 19	April 26	May 3

- cents and eighths per bushel -

Initial Payment to Producers

1 Northern.....	150	150	150	150	150
2 Northern.....	146	146	146	146	146
3 Northern.....	142	142	142	142	142
4 Northern.....	135	135	135	135	135
5 Wheat.....	118	118	118	118	118
6 Wheat.....	112	112	112	112	112
Feed Wheat.....	108	108	108	108	108
1 C.W. Garnet.....	135	135	135	135	135
2 C.W. Garnet.....	130	130	130	130	130
3 C.W. Garnet.....	125	125	125	125	125
1 Alberta Red Winter.....	134	134	134	134	134
2 Alberta Winter.....	129	129	129	129	129
1 C.W. Amber Durum.....	150	150	150	150	150
2 C.W. Amber Durum.....	146	146	146	146	146
3 C.W. Amber Durum.....	142	142	142	142	142

International Wheat Agreement

and Domestic Sales

1 Northern.....	201/6	201/2	200/3	200/2	200/2
2 Northern.....	201/2	200/5	199/3	199/2	199/2
3 Northern.....	198/2	197/6	196/7	196/6	196/6
4 Northern.....	189/2	189	188/7	188/6	188/6
5 Wheat.....	180/6	180/4	180/3	180/2	180/2
6 Wheat.....	178/6	178/4	178/3	178/2	178/2
Feed Wheat.....	175/6	175/4	175/3	175/2	175/2
1 C.W. Garnet.....	191/6	191/4	191/3	191/2	191/2
2 C.W. Garnet.....	189/6	189/4	189/3	189/2	189/2
3 C.W. Garnet.....	188/6	188/4	188/3	188/2	188/2
1 Alberta Red Winter.....	191/6	191/4	191/3	191/2	191/2
2 Alberta Winter.....	189/6	189/4	189/3	189/2	189/2
3 Alberta Winter.....	188/6	188/4	188/3	188/2	188/2

Export - Class II

1 Northern.....	201/6	201/2	200/3	200/2	200/2
2 Northern.....	201/2	200/5	199/3	199/2	199/2
3 Northern.....	198/2	197/6	196/7	196/6	196/6
4 Northern.....	189/2	189	188/7	188/6	188/6
5 Wheat.....	180/6	180/4	180/3	180/2	180/2
6 Wheat.....	178/6	178/4	178/3	178/2	178/2
Feed Wheat.....	175/6	175/4	175/3	175/2	175/2
1 C.W. Garnet.....	191/6	191/4	191/3	191/2	191/2
2 C.W. Garnet.....	189/6	189/4	189/3	189/2	189/2
3 C.W. Garnet.....	188/6	188/4	188/3	188/2	188/2
1 Alberta Red Winter.....	191/6	191/4	191/3	191/2	191/2
2 Alberta Winter.....	189/6	189/4	189/3	189/2	189/2
3 Alberta Winter.....	188/6	188/4	188/3	188/2	188/2

# CANADIAN FLOUR MILLING SITUATION

**Production** Wheat flour production by Canadian mills during March 1963 amounted to 2,954,000 hundredweight, representing an increase of 5 per cent over the February 1963 output of 2,815,000 hundredweight, but 16 per cent below the March 1962 figure of 3,514,000 hundredweight and 14 per cent lower than the ten-year (1953-62) average production for the month of March of 3,430,000 hundredweight. Mills reporting operations during March 1963 had a total rated capacity of 167,000 hundredweight per 24-hour day and on the basis of a 26-day working period 68.1 per cent of this rated capacity was effective.

Wheat milled for flour during March 1963 amounted to 6,548,000 bushels compared with the 6,250,000 bushels milled during the preceding month and 7,839,000 bushels milled during March 1962. Of the wheat milled for flour during March 1963 some 5,851,000 bushels were Western Canadian spring wheat (other than Durum) while the remainder consisted of Ontario winter wheat (532,000 bushels); Durum (112,000 bushels); and all other (53,000 bushels).

**Exports** According to preliminary Customs returns, exports of Canadian wheat flour during March 1963 amounted to 843,000 hundredweight (some 1,939,000 bushels of wheat equivalent) compared with the 1,420,000 bushels exported during the previous month and the adjusted March 1962 total of 2,968,000 bushels. Flour shipments during the month went to 52 countries, with exports to Britain amounting to 947,000 bushels of wheat equivalent and accounting for 49 per cent of the March 1963 total. Other principal markets for Canadian wheat flour during the month with shipments in thousands of bushels of wheat equivalent were as follows: Trinidad and Tobago, 115; United States, 105; Jamaica, 103; Hong Kong, 92; Costa Rica, 75; Leeward and Windward Islands, 75; Japan, 59; and Malaya and Singapore 58.

## Wheat Milled for Flour, and Production and Exports of Wheat Flour, Canada

Crop Year	Wheat Milled for Flour bushels	Wheat Flour	
		Production	Exports <sup>1/</sup>
		- cwt. -	
1935-36--1939-40 average.....	67,845,114	29,405,451	9,603,941
1940-41--1944-45 average.....	99,704,638	43,908,245	23,699,546
1945-46--1949-50 average.....	107,330,372	47,011,540	25,819,721
1950-51--1954-55 average.....	100,446,328	43,847,894	21,812,041
1955-56.....	91,770,025	40,148,750	17,391,300
1956-57.....	85,149,373	37,623,446	14,582,431
1957-58.....	92,288,897	40,819,678	17,556,886
1958-59.....	90,142,957	39,826,493	16,141,267
1959-60.....	91,389,801	40,344,578	16,073,893
1960-61.....	89,731,155	39,914,644	15,513,836
1961-62.....	88,240,580	39,539,651	13,892,676
1962-63 <sup>2/</sup> August.....	6,576,578	2,952,879	1,160,900
September.....	6,346,386	2,863,042	1,277,841
October.....	7,256,425	3,265,003	1,065,714
November.....	6,815,604	3,064,494	938,473
December.....	5,547,290	2,499,301	769,876
January.....	6,197,875	2,793,497	971,159
February.....	6,250,139	2,815,286	617,296
March.....	6,547,894	2,953,530	843,161
Totals.....	51,538,191	23,207,032	7,644,420
Same months 1961-62 <sup>3/</sup> .....	58,380,844	26,088,326	9,526,504

<sup>1/</sup> Based on Customs returns. Exports for the crop years 1945-46--1961-62 revised to remove effect of time lag in the returns made by Customs.

<sup>2/</sup> Subject to revision.

<sup>3/</sup> Revised.



UNITED STATES SITUATION

Supply Position Domestic supplies of wheat in the United States for the 1962-63 crop year (July-June) are estimated at 2,396.5 million bushels, consisting of the July 1, 1962 carryover of 1,304.8 million and the 1962 crop, placed at 1,091.8 million bushels. Domestic supplies of this size are 9 per cent less than last year's total of 2,645.9 million and 10 per cent smaller than the record 1960-61 figure of 2,670.8 million bushels. Imports of wheat from Canada during July-March of the current United States crop year amounted to 4.1 million bushels. Domestic disappearance during 1962-63 is estimated at about 605.0 million bushels, 4 per cent less than the 630.1 million last year. After deducting anticipated domestic requirements for the current United States crop year, some 1,795.7 million remain available for export and for carryover, a decrease of 11 per cent from the 2,019.8 million in 1961-62.

Exports of wheat, wheat flour and other products in terms of grain equivalent during the first nine months (July-March) of the 1962-63 United States crop year amounted to 422.6 million bushels, 21 per cent below the 535.2 million exported during the same months in 1961-62. The balance remaining on April 1, 1963 for export and for carryover was estimated at 1,373.1 million bushels compared with 1,484.6 million on the same date a year ago.

United States Wheat Supplies

Item	1961-62 <u>1/</u>	1962-63 <u>2/</u>
	- million bushels -	
Carryover at beginning of crop year (July 1).....	1,411.2	1,304.8
New Crop.....	1,234.7	1,091.8
Total estimated domestic supplies.....	2,645.9	2,396.5
Imports of wheat and wheat flour in terms of wheat for domestic use, July-March.....	3.9	4.1
Total estimated supplies <u>3/</u> .....	2,649.9	2,400.7
Less estimated domestic requirements for crop year <u>4/</u>	630.1	605.0
Available for export and for carryover.....	2,019.8	1,795.7
Deduct:		
Exports of wheat as grain, July-March.....	453.0	353.5
Exports of wheat flour and products in terms of wheat, July-March <u>5/</u> .....	82.2	69.1
Total exports of wheat, wheat flour and products <u>6/</u>	535.2	422.6
Balance on April 1 for export and for carryover...	1,484.6	1,373.1

1/ Revised. 2/ Preliminary. 3/ Excluding imports for April-June. 4/ Includes shipments to United States Territories and wheat for military food use at home and abroad. 5/ Flour exports exclude "Milled in bond". 6/ These figures now include all shipments under relief programs which formerly were not available from Census data.

U.S. Wheat and Flour  
Exports Off 29 Per Cent

U.S. wheat and flour exports from July 1962 through January 1963 at 294 million bushels were approximately 28.6 per cent below the same period a year earlier. Wheat exports at 245 million bushels were off 112 million from last season. Exports to the Common Market totaled 13 million bushels, about 28 per cent of what they were during July-January 1961-62. The largest reductions were in shipments to West Germany, Italy and the Netherlands. Sizeable reductions were also made in shipments to European countries outside the Common Market, notably Spain, the United Kingdom and Yugoslavia. There was a 20-million bushel loss in exports to the Western Hemisphere, mostly to Brazil and Venezuela. The 24-million bushel increase to India and Brazil was offset by reductions to Japan, Pakistan and Turkey. Variations to other destinations reflected a net decrease of 4 million bushels to Asia. Increased production of wheat in Morocco and Tunisia resulted in a decline of 13 million bushels in U.S. exports to that area.

Flour exports (in grain equivalent) from July 1962 through January 1963 totaled 49 million bushels, compared with 56 million last season. Exports to Egypt, the major market for U.S. flour, were off the equivalent of 4.8 million bushels in grain. About 2.5 million bushels (in grain equivalent) less went to the Common Market, principal destinations were Italy and the Netherlands. Wheat and flour exports during July-February 1962-63 are presently forecast at approximately 356 million bushels, compared with 472 million during the first 8 months of 1961-62. Shipments of wheat and flour to Canada as shown in Table A were mostly for transshipment to other countries. Table B shows the quantities of U.S. wheat inspected for exports from Canadian ports and total exports from Table A adjusted to include inspections during July-January 1961-62 and July-January 1962-63.

Table A. United States Exports of Wheat and Flour by Country of Destination  
July-January 1961-62 and 1962-63

Destination	July-January 1961-62			July-January 1962-63		
	Wheat	Flour <sup>1/</sup>	Total	Wheat	Flour <sup>1/</sup>	Total
- thousand bushels -						
<u>Western Hemisphere</u>						
Canada <sup>2/</sup> .....	9,220	98	9,318	8,333	113	8,446
Central America.....	2,068	1,686	3,754	1,886	1,387	3,273
Haiti.....	1,369	35	1,404	523	49	572
Bolivia.....	-	1,860	1,860	462	2,063	2,525
Brazil.....	35,125	140	35,265	26,361	242	26,603
Chile.....	6,933	946	7,879	5,597	835	6,432
Colombia.....	2,140	540	2,680	1,904	384	2,288
Paraguay.....	2,742	60	2,802	-	24	24
Peru.....	5,546	357	5,903	4,043	228	4,271
Venezuela.....	7,316	46	7,362	2,797	79	2,876
Others.....	385	2,819	3,204	726	3,037	3,763
Totals.....	72,844	8,587	81,431	52,632	8,441	61,073
<u>Europe</u>						
<u>EEC</u>						
Belgium-Luxembourg.....	4,218	2	4,220	1,889	2	1,891
France.....	3,063	-	3,063	1,137	129	1,266
Germany, West.....	11,999	156	12,155	3,864	4	3,868
Italy.....	13,206	3,564	16,770	478	2,246	2,724
Netherlands.....	14,296	1,780	16,076	5,590	574	6,164
Sub-totals.....	46,782	5,502	52,284	12,958	2,955	15,913



Table A. United States Exports of Wheat and Flour by Country of Destination  
July-January 1961-62 and 1962-63

Destination	July-January 1961-62			July-January 1962-63		
	Wheat	Flour 1/	Total	Wheat	Flour 1/	Total
- thousand bushels -						
<u>Europe (concluded)</u>						
Greece.....	1,408	1,124	2,532	-	100	100
Norway.....	2,331	7	2,338	716	12	728
Poland.....	4,030	491	4,521	454	445	899
Portugal.....	4,211	355	4,566	1,441	383	1,824
Spain.....	13,905	324	14,229	-	14	14
Switzerland.....	4,385	3/	4,385	2,265	3/	2,265
United Kingdom.....	7,369	1,742	9,111	1,864	167	2,031
Yugoslavia.....	13,386	1,515	14,901	4,150	1,015	5,165
Others.....	1,487	712	2,199	1,452	1,156	2,608
Totals.....	99,294	11,772	111,066	25,300	6,247	31,547
<u>Asia</u>						
Ceylon.....	-	1,947	1,947	-	3,170	3,170
India.....	52,765	435	53,200	70,770	335	71,105
Iran.....	301	135	436	2,772	1,255	4,027
Israel.....	5,273	81	5,354	5,599	125	5,724
Japan.....	20,826	1,525	22,351	17,910	1,704	19,614
Jordan.....	8	2,331	2,339	689	1,732	2,421
Korea.....	4,979	562	5,541	11,089	589	11,678
Pakistan.....	21,371	346	21,717	19,521	1,488	21,009
Philippines.....	5,883	715	6,598	3,669	290	3,959
Saudi Arabia.....	47	1,178	1,225	7	1,773	1,780
Syria.....	1,909	989	2,898	-	-	-
Taiwan.....	6,930	649	7,579	5,379	89	5,468
Turkey.....	23,023	193	23,216	2,874	352	3,226
Vietnam, Laos and Cambodia.....	63	1,675	1,738	128	2,270	2,398
Others.....	1,211	3,342	4,553	511	2,657	3,168
Totals.....	144,589	16,103	160,692	140,918	17,829	158,747
<u>Africa</u>						
Algeria.....	6,916	255	7,171	4,851	1,488	6,339
British East Africa...	93	35	128	1,245	24	1,269
Congo (Leopoldville)...	-	1,096	1,096	13	1,228	1,241
Egypt.....	13,213	15,260	28,473	10,879	10,462	21,341
Morocco.....	7,027	748	7,775	254	1,520	1,774
Nigeria.....	-	1,159	1,159	312	190	502
Sudan.....	-	-	-	1,031	311	1,342
Tunisia.....	10,909	104	11,013	6,599	117	6,716
Others.....	1,612	1,081	2,693	1,572	921	2,493
Totals.....	39,770	19,738	59,508	26,756	16,261	43,017
<u>Oceania</u>						
Totals.....	-	23	23	-	30	30
Totals, All Countries 4/.....	356,497	56,223	412,720	245,606	48,808	294,414

1/ Grain equivalent. 2/ The bulk of exports to Canada are for transshipment to other destinations. 3/ Less than 500 bushels. 4/ Includes shipments for relief or charity.

Table B. United States Exports of Wheat and Flour as Adjusted for Transshipment Through Canadian Ports, July-January, 1961-62 and 1962-63

Destination	July-January 1961-62		July-January 1962-63	
	Wheat in-spected for export from Canadian ports	Adjusted totals for listed countries	Wheat in-spected for export from Canadian ports	Adjusted totals for listed countries
- thousand bushels -				
EEC				
Belgium-Luxembourg.....	649	4,869	221	2,112
France.....	2,165	5,228	506	1,772
Germany, West.....	478	12,633	788	4,656
Italy.....	-	16,770	-	2,724
Netherlands.....	3,219	19,295	1,984	8,148
Totals.....	6,511	58,795	3,499	19,412
United Kingdom.....	821	9,932	827	2,858
Portugal.....	-	4,566	981	2,805
Spain.....	1,125	15,354	-	14
Yugoslavia.....	-	14,901	2,318	7,483
Turkey.....	1,456	24,672	-	3,226
Algeria.....	2,401	9,572	-	6,339
Egypt.....	938	29,411	-	21,341
Tunisia.....	92	11,105	-	6,716
Totals <u>1/</u> .....	13,344	178,308	7,625	70,194

1/ Excludes 126,000 bushels in July-January 1961-62 and 649,000 bushels in July-January 1962-63 to unspecified areas.

Winter Wheat Crop  
Estimated at  
927 Million Bushels

In a report released on April 10, 1963, the Crop Reporting Board of the United States Department of Agriculture stated that production is now forecast at 927 million bushels, 14 per cent more than the 1962 crop, but 7 per cent below the 5-year average. Prospective winter wheat production is 10 per cent less than that indicated on December 1. The 1963 winter wheat crop resumed growth in all but the northernmost areas. With the resumption of growth farmers were able to assess damage from the severely cold winter. In the North Central and Northeastern States, snow cover was sufficient to protect dormant plants during the coldest weather. Wheat in the Rocky Mountain areas and the Pacific Northwest escaped with only nominal winter damage. However, in the important Southern Plains damage from cold weather was severe, especially in the panhandles of Texas and Oklahoma and adjacent southwestern Kansas and Southeastern Colorado. Low winter temperature reduced prospects in Southeastern States but favorable March weather favored recovery.

Soils were critically dry in northwestern Texas, western Oklahoma, and southwestern Kansas. Elsewhere in the Western States soil moisture about April 1 was adequate to sustain present growth but rain would be welcome. Soil moisture was favorable in the Corn Belt and in Eastern States.

The indicated yield is 22.0 bushels per seeded acre compared with 21.2 bushels in 1962. This forecast is based on growing conditions about



April 1 as reported by crop correspondents. In addition to the usual factors of weather, insects and disease that exert significant influence on the final crop, the 1963 outturn will also be dependent on the final decision of growers relative to acreage to be harvested. In the last ten years, the average of increases or decreases in the United States production estimate from April 1 to harvest has been 92 million bushels ranging from a maximum change of 210 million bushels to a minimum of 24 million bushels.

The acreage expected to be harvested for grain at 35.5 million acres, is 84.3 per cent of the seeded acreage compared with 86.8 per cent harvested in 1962 and below the average of 91.3 per cent.

Seeding of the 1963 winter wheat crop started early in nearly all areas. Germination and early growth were vigorous because of favorable soil moisture and mild temperature. By December 1 soil moisture in the Plains States had diminished because of the dry fall weather and heavy moisture demands of the developing wheat stands. Numbing cold over the Nation during January and continued cold weather during February in eastern United States caused damage to wheat fields where the dormant plants were not protected by snow. A snow blanket extending from Northeastern Nebraska eastward across the Corn Belt into Kentucky, West Virginia, Pennsylvania and New York, gave wheat ample protection and with the sustained cold weather reduced losses from soil heaving.

Prospects in the southern Great Plains States about April 1 were diminishing rapidly. The poorest wheat condition centered in southwestern Kansas, southeastern Colorado and the Texas and Oklahoma panhandles. Here, continued dry weather, soil blowing, and an infestation of army cutworms on stands of wheat already badly damaged from the winter's cold weather dropped hopes daily. In central and eastern Oklahoma and Kansas conditions were better, ranging from good to excellent. In Nebraska and South Dakota some winter damage was sustained but present condition of the crop ranges from fair to good.

In the Corn Belt area, winter wheat acreage shows high promise with little damage apparent and adequate soil moisture. Some low lying fields were flooded in early March in parts of Ohio and Kentucky.

Prospects in the northern Rocky Mountain and Pacific Northwest States were generally favorable, however, March rainfall was light and rain will be needed soon. In Utah and southern Idaho considerable winter damage resulted from cold weather on bare wheat fields.

In the South Atlantic and East South Central States severely cold weather damaged the crop, however, favorable spring weather has promoted a rapid recovery of damaged wheat stands.

<u>Stocks of Wheat</u> <u>in All Positions</u> <u>April 1, 1963</u>	On April 24, the United States Department of Agriculture reported all wheat stocks of 1,503 million bushels stored in all positions were 8 per cent below a year earlier but 6 per cent more than the 1957-61 average. Stocks were the smallest for the date since 1958. Farm stocks of wheat were 10 per cent less than the April 1 average, while off-farm stocks were 8 per cent above average for April 1. Disappearance of all wheat in the January-March quarter, at 314 million bushels, was 8 per cent smaller than in the same quarter a year earlier. More than 80 per cent of the total stocks were either owned by the Government or were under Government loan.
---	--

Durum wheat stocks were estimated at 58.3 million bushels compared with 65.9 million bushels on January 1 and 12.7 million bushels on April 1, last year.

U.S. Wheat Stocks by Positions, April 1, 1963 with Comparisons

Position	April 1 Average 1957-61	April 1 1962	January 1 1963	April 1 1963
- thousand bushels -				
<u>All Wheat</u>				
On Farms <u>1/</u> .....	217,981	211,652	317,468	195,878
Commodity Credit Corp. <u>2/</u> .....	77,766	59,223	58,221	46,903
Mills, Elev. & Whses. <u>1/ 3/</u> ...	1,128,603	1,371,134	1,441,817	1,260,304
Totals.....	1,424,350	1,642,009	1,817,506	1,503,085
<u>Durum Wheat 4/</u>				
On Farms <u>1/</u> .....	-	7,342	48,889	40,748
Commodity Credit Corp. <u>2/</u> .....	-	-	-	-
Mills, Elev. & Whses. <u>1/ 3/</u> ...	-	5,400	16,967	17,524
Totals.....	-	12,742	65,856	58,272

1/ Estimates of the Crop Reporting Board.

2/ Owned by C.C.C. and stored in bins or other storages owned or controlled by C.C.C.; other C.C.C.-owned grain is included in the estimates by positions.

3/ All off-farm storages not otherwise designated, including flour mills, terminal elevators, and processing plants.

4/ Totals included in all wheat.

Final Report Shows 1963-Crop  
Wheat Diversion Total of  
7.7 Million Acres

On April 26 the United States Department of Agriculture reported that the final signup under the voluntary 1963 wheat program shows 428,558 farms have been signed up to divert 7,758,600 acres from wheat production

to conserving uses this year.

Totals reported at that date showed increases during the spring signup as compared to the 1963-crop winter wheat signup of 2,539,460 acres signed for diversion and of 103,890 farms signed up.

Last year under the mandatory 1962 wheat stabilization program 818,683 farms were signed up to divert 15,126,000 acres. However, actual acreage diversion amounted to about 11 million acres.

For farms signed up under the 1963 wheat program, possible advance payments under provisions permitting about half of the diversion payment to be made at signup time came to \$87,253,322.

Farmers participating in the 1963 voluntary wheat program will be eligible for wheat price support at \$2.00 per bushel, national average. Of this, 18 cents per bushel will be an in-kind payment based on the normal production of the farm's acreage for harvest. The remaining \$1.82 per bushel support will be available through loans and purchase agreements.



Cash Wheat Prices on the Kansas City and Minneapolis Markets

No. 2 Hard Winter, Kansas City			No. 1 Northern Spring, Minneapolis		
Date	Price		Date	Price	
	- cents per bushel -			- cents per bushel -	
April 1, 1963.....	236 1/4	- 238 1/2	April 1, 1963.....	233 5/8	- 235 5/8
2 .....	239	- 241 1/4	2 .....	233 1/4	- 235 1/4
3 .....	239		3 .....	233 5/8	- 235 5/8
4 .....	238 1/2		4 .....	233 3/4	- 235 3/4
5 .....	239 3/4	- 244 1/2	5 .....	233 5/8	- 235 5/8
8 .....	243 1/4		8 .....	234 1/4	- 236 1/4
9 .....	243 1/2	- 244 1/2 1/	9 .....	234 3/4	- 236 3/4
10 .....	244 1/2	- 245 1/2	10 .....	235 5/8	- 237 5/8
11 .....	245	- 245 1/2	11 .....	236 3/4	- 238 3/4
12 .....	GOOD FRIDAY		12 .....	GOOD FRIDAY	
15 .....	235 1/2	- 272 1/2 1/	15 .....	235 1/2	- 237 1/2
16 .....	234	- 246	16 .....	236 1/4	- 238 1/4
17 .....	235 3/4		17 .....	237	- 239
18 .....	232	- 270 1/2 1/	18 .....	238 1/4	- 240 1/4
19 .....	232 1/2	- 235 3/4	19 .....	237 3/4	- 239 3/4
22 .....	232 3/4	- 235	22 .....	236 3/4	- 238 3/4
23 .....	230 1/2		23 .....	237	- 239
24 .....	238	- 260 3/4 1/	24 .....	236 5/8	- 238 5/8
25 .....	236 1/2	- 241 1/2	25 .....	236 3/4	- 238 3/4
26 .....	231 1/4	- 234 3/4	26 .....	235 3/4	- 237 3/4
29 .....	231	- 235 1/2	29 .....	236	- 238
30 .....	236	- 236 3/4	30 .....	236	- 238

1/ Nominal.

Chicago Wheat Futures, High Points of Closing

Date	May	July	September	December	March
	- cents and eighths per bushel -				
April 1, 1963.....	207/4	188/7	190/3	194/4	194/4
2 .....	206/7	188/6	190/2	194/2	194/4
3 .....	208/4	189/3	190/5	194/6	195
4 .....	210/3	190/3	191/4	195/4	195/5
5 .....	210	190/2	191/2	195/2	195/1
8 .....	212	190/1	191/5	195/4	195/3
9 .....	210/2	188/6	189/6	193/7	193/6
10 .....	210/2	189/2	190/4	194/4	194/5
11 .....	211/2	188/4	189/7	193/6	193/7
12 .....	G O O D F R I D A Y				
15 .....	208/5	187	188/3	192/2	192/2
16 .....	207/6	187/6	189/1	193	193
17 .....	208/4	187/4	188/6	192/6	192/7
18 .....	208/5	187/5	189	193	193/1
19 .....	209/7	188/2	189/4	193/2	193/2
22 .....	210/4	189/1	190	194	194
23 .....	210/4	189/4	190/5	194/4	194/4
24 .....	209/4	188/6	189/7	194	194
25 .....	210/1	188	189/3	193/6	193/7
26 .....	208/5	187/6	189/2	193/1	193/4
29 .....	210/7	187/3	188/6	193	193/2
30 .....	212/4	188/3	189/5	193/5	194

# AUSTRALIAN SITUATION

Supply Position Estimated supplies of wheat in Australia for the 1962-63 (December-November) crop year amount to some 322.9 million bushels, consisting of the December 1, 1962 carryover of 17.9 million and the current crop now officially estimated at a record 305.0 million bushels. Supplies of the size indicated, reflecting a substantially larger production which more than offset a decline in carryover, represent an increase of 19 per cent over the 1961-62 total of 271.8 million bushels. After deducting 73.0 million for anticipated domestic requirements, an estimated 249.9 million are available for export and for carryover during 1962-63, 28 per cent above the 195.8 million in 1961-62.

Combined exports of wheat as grain and wheat flour in terms of grain equivalent during the period December 1-March 30 of the current Australian crop year amounted to 64.5 million bushels compared with 68.0 million exported during the corresponding period of 1961-62. The balance remaining on March 31, 1963 for export and for carryover, at 185.4 million bushels, exceeded by 45 per cent the comparable 1962 total of 127.8 million.

## Australian Wheat Supplies

Item	1961-62 <u>1/</u>	1962-63 <u>2/</u>
	- million bushels -	
Carryover, including flour as wheat, at beginning of crop year (December 1).....	24.6	17.9
New Crop.....	247.2	305.0 <u>1/</u>
Total estimated domestic supplies.....	271.8	322.9
Less estimated domestic requirements for crop year....	76.0	73.0
Available for export and for carryover.....	195.8	249.9
Deduct:		
Exports of wheat as grain, December 1-March 30.....	59.3	57.1
Exports of wheat flour in terms of wheat, December 1-March 30.....	8.7	7.4
Total exports of wheat and wheat flour.....	68.0	64.5
Balance on March 31 for export and for carryover.....	127.8	185.4

1/ Revised.

2/ Preliminary.

The following information relative to the Australian situation has been extracted from a report from Mr. H.A. Gilbert, Commercial Counsellor for Canada, Melbourne, under date of April 17, 1963 and is reproduced with the permission of the Trade Commissioner Service, Department of Trade and Commerce.



Crop Situation Although no official reports have been released on the acreage sown, or about to be sown to wheat for the 1963-64 season, present indications are that a record acreage will be prepared in Australia this year.

Apart from parts of Queensland where flood conditions exist at present, the weather has been favourable elsewhere and generally farmers are experiencing one of their best sowing seasons.

In a report issued towards the end of March, the Australian Wheat Board advised that wheat from the 1962-63 crop continues to be delivered to the Board and there are quantities still held on the farms for later delivery. As at March 21, receipts throughout Australia amounted to 284.5 million bushels. The previous record deliveries were in the year 1960-61 and amounted to 251.5 million bushels.

The deliveries so far reported in the respective States this season are as follows:-

New South Wales	-	98.20	million bushels
Victoria	-	66.70	" "
South Australia	-	35.00	" "
Western Australia	-	66.90	" "
Queensland	-	17.50	" "
Tasmania	-	.25	" "
Total		284.55	" "

Actual harvest figures show that New South Wales may have had a record crop of 110 million bushels, while Western Australia's total will probably be 72 million bushels, also a record. It is expected that Victoria may slightly better the record harvest of 1960-61 when 67.8 million bushels were reaped. In Queensland, where 18.5 million bushels were harvested, wheat growers had their best season for ten years. South Australia was the only State not showing record figures with a harvest of 37.5 million bushels, or 8.5 million less than the record year of 1960-61.

Marketing Position The Minister for Primary Industry (Mr. Adermann) has said that unless further big wheat sales are made outside the expected requirements of Australia's traditional markets the carryover at the end of the current season could be much larger than last year's and could even be higher than the 60 million bushel carryovers of 1958-59 and 1959-60.

Mr. Adermann said the Australian Wheat Board was making vigorous efforts to quit the balance and was sending missions to many countries to explore selling possibilities.

Recent sales, details of which have not been released, have been made to a number of countries, the principal ones being to Britain, Japan, New Zealand, Eire, Burma and the Philippines. It is reported that negotiations were proceeding with other countries, some of which were not normal customers for Australian wheat.

Mr. J.V. Moroney, Chairman of the Australian Wheat Board recently visited Japan and the Philippines to explore market prospects in that area. Prior to his departure he stated that in addition to fair, average quality soft wheat,

Australia now produces substantial quantities of semi-hard wheats and this trend is likely to continue.

A mission recently returned from Africa and Europe has reported that, in general, the marketing outlook for Australian wheat in those countries visited "gives us no cause for pessimism".

Exports of Australian Wheat and Wheat Flour in Terms of Wheat  
December 1 - March 30, 1962-63 and Corresponding Period 1961-62

Destination	Wheat		Wheat Flour	
	1961-62	1962-63	1961-62	1962-63
- thousand bushels -				
<u>Europe</u>				
Britain.....	7,342	6,113	1,009	535
Eire.....	716	937	-	-
Italy.....	4,844	-	-	-
Malta.....	317	205	-	-
Norway.....	1,641	1,668	-	-
Spain and Canary Islands.....	5,912	-	-	-
Switzerland.....	73	-	-	-
West Germany.....	4,362	697	-	-
Others.....	-	-	2	4
<u>Middle East</u>				
Aden.....	212	227	-	-
Aden and Aden I/T.....	-	-	362	334
Aden Atta.....	-	-	74	121
Egypt.....	1,881	-	-	-
Iran.....	97	210	-	-
Iraq.....	733	-	-	-
Lebanon, Jordan, Syria.....	1,903	1,876	-	-
Persian Gulf.....	-	-	50	43
Persian Gulf Atta.....	-	-	686	381
Saudi Arabia.....	-	-	26	127
Others.....	114	74	7	3
<u>Africa</u>				
Algeria.....	445	-	-	-
Kenya.....	881	-	-	-
Mauritius.....	-	-	281	228
Nyasaland.....	-	-	75	113
Port. East Africa.....	197	-	-	-
Rhodesia.....	1,092	961	-	-
Zanzibar.....	-	-	43	69
Others.....	5	6	31	22
<u>Asia</u>				
British North Borneo.....	-	-	68	39
Brunei.....	-	-	15	11
Burma.....	147	290	92	63
Ceylon.....	11	-	2,115	1,689
China.....	17,364	35,690	-	-



Exports of Australian Wheat and Wheat Flour in Terms of Wheat  
December 1 - March 30, 1962-63 and Corresponding Period 1961-62

Destination	Wheat		Wheat Flour	
	1961-62	1962-63	1961-62	1962-63
- thousand bushels -				
<u>Asia</u>				
Hong Kong.....	1,127	880	105	80
India.....	919	1,765	-	-
Indonesia.....	-	-	228	250
Japan.....	4,868	1,852	-	-
Malaya.....	232	183	1,261	1,102
Malaya Atta.....	-	-	30	28
Pakistan.....	19	1,329	-	-
Sarawak.....	-	-	83	53
Singapore.....	26	14	1,014	834
Singapore Atta.....	-	-	5	5
Singapore a/c War Office.....	-	-	12	8
Thailand.....	-	-	222	235
Others.....	157	76	70	220
<u>Pacific Area and Sundries</u>				
New Guinea, West.....	-	-	33	6
New Zealand.....	1,646	2,035	-	-
Pacific Islands etc.....	13	13	660	678
Peru.....	-	-	-	6
Royal Navy.....	2	-	-	-
Ships' Stores and Sundries.....	-	-	41	114
Totals.....	59,300	57,100	8,700	7,400

ARGENTINE SITUATION

Supply Position Estimated total supplies of wheat in the Argentine for the 1962-63 (December-November) crop year amount to 188.6 million bushels, consisting of the December 1, 1962 carryover of 8.6 million and the new crop, placed at 180.0 million. Indicated supplies for the current Argentine crop year, reflecting decreases in both carryover stocks and production, are about 21 per cent less than the 1961-62 total of 237.4 million bushels. After making an allowance of 128.6 million bushels for anticipated domestic requirements, an estimated 60.0 million are available for export and for carryover in 1962-63, in contrast to 109.4 million the previous year.

Exports of wheat and wheat flour in terms of grain equivalent during December 1962-March 1963 amounted to 32.2 million bushels, 3 per cent below the 46.5 million exported during the same months in 1961-62. The balance remaining on April 1, 1963 for export and for carryover was estimated at 27.8 million bushels, less than half the April 1, 1962 total of 62.8 million.

# Argentine Wheat Supplies

Item	1961-62 <u>1/</u>	1962-63 <u>2/</u>
	- million bushels -	
Carryover at beginning of crop year (December 1) <u>3/</u> ....	35.3	8.6
New Crop <u>4/</u> .....	202.1	180.0
Total estimated domestic supplies.....	237.4	188.6
Less estimated domestic requirements for crop year.....	128.0	128.6
Available for export and for carryover.....	109.4	60.0
Deduct:		
Exports of wheat as grain, December-March.....	46.5	32.1
Exports of wheat flour in terms of wheat, December - March.....	0.1	0.1
Total exports of wheat and wheat flour.....	46.5	32.2
Balance on April 1 for export and for carryover.....	62.8	27.8

1/ Revised.

2/ Preliminary.

3/ Includes allowances for farm stocks.

4/ Official estimate.

The following account of the Argentine situation has been extracted from a report from Mr. C.O.R. Rousseau, Commercial Counsellor, Buenos Aires, under date of April 23, 1963 and is reproduced with the permission of the Trade Commissioner Service, Department of Trade and Commerce. Where possible, conversions from Argentine to Canadian measures have been made for the convenience of our readers. Currency conversions have been made at the rate of 126.68 pesos per U.S. dollar and £1 equals \$3.0147 (Canadian) the quotation in effect on April 22, 1963.

Weather and Crops Heavy rainfall was general throughout the country during the month of March with only short intervals between each downpour. This rainfall was beneficial to most grain-growing areas. The increased soil moisture aided land preparation operations for the autumn and winter sown crops and substantially benefitted the dual-purpose crops already growing. The rains did prove detrimental in some corn and sunflower areas in the Provinces of Buenos Aires and Santa Fe as harvest operations were delayed and strong winds caused some lodging. Temperatures have been more or less normal, although on the mild side in some areas.

The situation at time of writing is substantially the same, although temperatures have turned cooler and early frosts have been reported from some areas.

Wheat Plowing is well under way in the northern and southern wheat belts and ideal soil conditions are reported in practically all areas. Seeding operations will have begun by the end of April. Although soil conditions are excellent, the financial problems associated with the marketing of the 1962-63 crop have dampened growers' interest and it is, as yet, too early to make any prediction as to seeding plans. It does seem, however, that unless new sound marketing



policies are soon announced no spectacular increase in seeded acreage is likely.

The market was on the dull side during February as millers appeared to have adequate stocks and exporters' purchases were adequate to cover their commitments. The only export business of any importance reported was 70,000 metric tons (2,572,000 bushels) sold to Brazil under the present Agreement, prices averaging \$US 61.30 per metric ton (\$1.67 per bushel) f.o.b. for shipment between mid-April and mid-May. The announcement by the Grain Board in late March that wheat shipments to other LAFTA countries besides Brazil would be permitted, spurred the interest of exporters and offers were received by the Board in excess of the 100,000 metric ton (3,674,000 bushels) limit set. Of this quota, 41,000 metric tons (1,506,000 bushels) were earmarked for Paraguay and 59,000 metric tons (2,168,000 bushels) for Peru.

Argentine Wheat Exports December-March 1962-63 with Comparisons

Destination	Wheat	Destination	Wheat
	'000 bushels		'000 bushels
Africa, North.....	198	Netherlands.....	3,648
Algeria.....	1,139	Norway.....	725
Belgium.....	2,298	Paraguay.....	495
Brazil.....	3,433	Peru.....	4,187
Britain.....	6,296	Portugal.....	411
Finland.....	147	Sweden.....	53
France.....	2,210	Switzerland.....	368
Germany.....	1,700	Venezuela.....	373
Italy.....	4,102	Totals.....	31,783
Compared with:			
December-March 1961-62.....			45,408
1960-61.....			24,410
1959-60.....			22,487
1958-59.....			32,998
1957-58.....			16,894

At the end of March, c.i.f. prices for Argentine wheat averaged \$US 67.00 (\$1.82 per bushel) for continental ports and about £ 25.0.0 (\$2.05 per bushel) for Britain per metric ton.

Prices in the Buenos Aires Futures Market during the period under review were as follows:

For delivery in:	March 27	April 1	April 10
		- dollars per bushel -	
April	1.40		
May	1.40	1.40	1.40
June	1.43	1.44	1.42
July	1.47	1.48	1.46
August		1.54	1.51

The present price in the Buenos Aires Cereal Exchange is 650 pesos per 100 kilos (\$1.40 per bushel) for hard wheat and 630 pesos per 100 kilos (\$1.35 per bushel) for semi-hard, i.e., the minimum official producer prices.

In order to assure adequate supplies of wheat for seeding purposes for the present crop year, the Grain Board announced recently that they will buy certified seed wheat from registered nurseries at 610 pesos per 100 kilos (\$1.31 per bushel) for 1st generation seed and 600 pesos (\$1.29 per bushel) for second generation. Payments will be made by cash and the Board in turn will sell the purchases of seed exclusively to agricultural co-operatives, rural societies and other farm organizations for distribution principally to those producers who were hardest hit by the drought last year. The re-sale price of the seed has been established at 710 pesos per 100 kilos (\$1.53 per bushel) for 1st generation seed and 700 pesos per 100 kilos (\$1.50 per bushel) for second generation.

Continued from page 3.

snowfall in December of last year prevented the crops from being affected by the immediately following long period of continued frost. A report from the office of the Canadian Commercial Counsellor in Madrid, under date of April 4, states in part that according to official information supplied by the Ministry of Agriculture, the winter damage to grain crops in Spain has been very small. Of the total acreage of wheat, some 297,000 acres have been affected, mostly by floods, during the heavy rainy season. However, with the spring sowing, the major part of this acreage will be recovered. With regard to rye, the damage has been practically negligible. As far as barley is concerned, around 247,000 acres have been affected by the cold weather and floods, but here again with the spring sowing a good part of the crop will be saved.

#### CALENDAR OF WHEAT EVENTS

- April 10      The Canadian Wheat Board announced that effective August 1, 1963 the acreage seeded to Durum wheat will be included and become part of the producer's specified acreage for quota purposes during the 1963-64 crop year.
- According to a report published by the Crop Reporting Board, the 1963 winter wheat crop is forecast at 927 million bushels.
- April 19      The 1963 season of navigation opened at the Canadian Lakehead.
- Total stocks of Canadian wheat at March 31, 1963 were estimated at 669.4 million bushels compared with 580.7 million on the same date in 1962 and the record of 904.4 million in 1957.
- April 26      The United States Department of Agriculture reported that the final signup under the voluntary 1963 wheat program showed that 428,558 farms had been signed up to divert 7,758,600 acres from wheat production to conserving uses this year.
- May 3          According to the Bureau of the Census, United States Department of Commerce wheat flour production in the United States in March 1963 amounted to 22,272,000 hundredweight, an average of 1,061,000 hundredweight per working day.





STATISTICS CANADA LIBRARY  
BIBLIOTHÈQUE STATISTIQUE CANADA



1010686741