

CATALOGUE No.

22-005

MONTHLY

DOES NOT CIRCULATE

NE PAS PRÊTER



CANADA

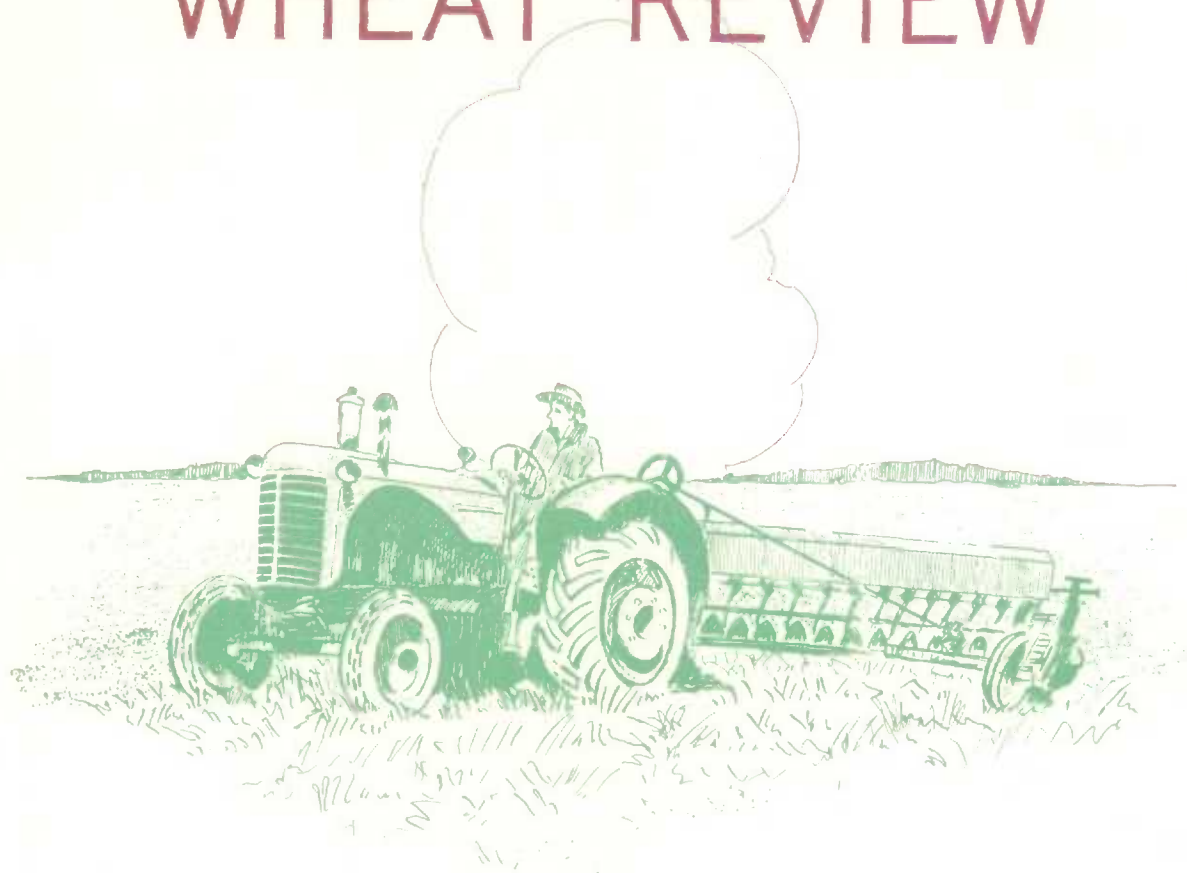
DOMINION BUREAU
OF STATISTICS

JUN 19 1964

PROPERTY OF THE
LIBRARY

DOMINION BUREAU OF STATISTICS
AGRICULTURE DIVISION

THE WHEAT REVIEW



MAY 1964

37A11-101-101-101

101-101-101

DOMINION BUREAU OF STATISTICS

THE
WHEAT REVIEW

MAY 1964

Published by Authority of
The Minister of Trade and Commerce

Prepared in the Crops Section, Agriculture Division
Dominion Bureau of Statistics, Ottawa

TABLE OF CONTENTS

Page

World Wheat Situation

Wheat Exports Maintain Rush to New Records	1
Wheat Supplies of Four Major Exporters 8 per cent Lower than Year Ago	1
I.W.C. Cumulative Totals of Commercial Purchases	2

Canadian Situation

Supplies Remain at Record Level	3
Exports 22 Per Cent Ahead of Record	3
April Exports of Wheat and Flour Set Record of 50 Million Bushels	4
August-April Wheat Exports Almost Equal Record Crop Year Total	4
Wheat Flour Exports Highest Since 1947-48	4
Visible Supplies Register Decline of 101 Million Bushels	5
Canadian Wheat Board Announces Change in Delivery Quotas	6
General Quota Position	6
Lake Shipments of Canadian Grain	7
Crop and Weather Conditions	7
Wheat Sale to China	41
Farmers' Marketings of Wheat	8
Visible Supply of Canadian Wheat	9
Grading of Wheat Inspected, August-April 1963-64 with Comparisons	9
Weekly Visible Supply and Farmers' Marketings (Charts)	10
Wheat Shipments to the United States by Destination	11
Rail Shipments of Wheat to Maritime Ports	11
Rail Shipments of Wheat from Fort William-Port Arthur	12
Overseas Exports of Canadian Grain by Ports of Loading	12
Freight Assistance Shipments	13
Monthly Exports of Canadian Wheat and Wheat Flour	14
Exports of Canadian Wheat by Destination	15
Customs Exports of Canadian Wheat Flour by Countries of Consignment	18
Canadian Wheat Board Weekly Average Cash Wheat Prices	20

Canadian Flour Milling Situation

Production and Exports	22
------------------------------	----

United States Situation

Domestic Supplies 3 Per Cent Below Previous Year	23
July-April Exports Maintain Record Level	23
Winter Wheat Crop Estimated at 1,013 Million Bushels	24
Prospects for 1964-65	25
United States Wheat and Flour Exports Soon to Top Record	25
Flour Production	28
Cash Wheat Prices on the Kansas City and Minneapolis Markets	29
Chicago Wheat Futures, High Points of Closing	29

Australian Situation	30
----------------------------	----

Argentine Situation	33
---------------------------	----

Wheat Situation in Uruguay	35
----------------------------------	----

French Situation	36
------------------------	----

Wheat Situation in Italy	38
--------------------------------	----

Crop Situation in Britain	40
---------------------------------	----

Calendar of Wheat Events	41
--------------------------------	----

WORLD WHEAT SITUATION

Wheat Exports Maintain Rush to New Records

Shipments of wheat and flour in terms of wheat, from the four traditional major exporters continue to move in record volume, with the April total of 167.7 million bushels only fractionally less than the peak of 169.0 million exported in the previous month. The total of 1,328.6 million bushels of wheat and flour exported from Canada, United States, Argentina and Australia during the August-April period of the current Canadian crop year registered an increase of 28 per cent over the previous record of 1,035.4 million shipped during the same months of 1961-62. This year's August-April shipments of wheat and flour are 52 per cent greater than last year's corresponding level of 872.3 million bushels, nearly double the ten-year (1952-53--1961-62) average for the period of 687.8 million and only 4 per cent less than the entire 1961-62 crop year record of 1,377.5 million bushels. On this basis it is evident that the 1963-64 crop year shipments of wheat, including flour, will establish a new peak well in excess of the previous high set two seasons ago.

At the three-quarter mark of the current (Canadian) crop year, exports of wheat from Australia show the largest proportionate increase (78 per cent) over shipments during the same period of last year. Canadian wheat and flour shipments during August 1963-April 1964 were 63 per cent greater than during the same months in 1962-63 while wheat exports from United States and Argentina recorded increases of 42 per cent and 33 per cent, respectively.

Exports of Wheat and Flour in Terms of Wheat, August 1963-April 1964 with Comparisons

August-April	United States	Canada	Argentina	Australia	Total
- million bushels -					
1950-51	257.3	154.4	67.5	89.7	568.9
1951-52	372.5	224.5	24.0	69.8	690.8
1952-53	260.8	249.6	10.6	68.0	589.0
1953-54	146.4	187.0	86.8	43.0	463.2
1954-55	207.4	190.4	102.6	74.6	575.0
1955-56	219.4	194.5	90.2	72.4	576.5
1956-57	409.6	193.5	72.7	103.9	779.7
1957-58	295.2	224.7	54.6	49.7	624.2
1958-59	335.4	211.2	74.6	55.8	677.0
1959-60	373.0	210.4	53.6	88.6	725.6
1960-61	505.2	240.8	57.5	128.8	932.3
1961-62	534.9	272.5	69.7	158.3	1,035.4
1962-63 <u>1/</u>	456.6	243.5	55.7	116.5	872.3
1963-64 <u>2/</u>	648.7	398.1	74.2	207.6	1,328.6

1/ Revised. 2/ Preliminary.

Wheat Supplies of Four Major Exporters 8 per cent Lower Than Year Ago

Supplies of wheat, held by the four traditional major exporters at May 1, 1964, for export and for carryover (less estimated domestic requirements to the end of their respective crop years) amounted to 1,941.9 million bushels, 8 per cent less than both the 2,103.1 million of a month ago and the 2,115.3 million available at the same time a year ago. As indicated by the accompanying figures, smaller supplies in the United States and Australia more than offset larger totals in Canada and Argentina. Supplies at May 1, 1964, in millions of bushels, were held as follows, with last year's comparable figures in brackets: United States, 1,030.9 (1,330.2); Canada, 657.6 (574.9); Argentina, 110.2 (42.6); and Australia, 143.2 (167.6).

International Wheat Council
Cumulative Totals of Commercial Purchases by Importing Countries from Exporting Countries
Crop Year 1963-64 — Through May 2, 1964

Importing Countries	EXPORTING COUNTRIES								Total
	Canada	Argentina	Australia	France	Italy	Sweden	U.S.S.R.	U.S.A.	Purchases
	- thousand bushels -								
Austria	525	-	-	1,909	-	-	-	116	2,550
Belgium & Luxembourg	13,981	1,008	-	6,538	-	7	55	4,467	26,056
Brazil	-	18,556	-	-	-	-	-	8,732	27,288
Costa Rica	634	-	-	78	-	-	-	1,120	1,832
Cuba	-	-	-	-	-	-	-	-	-
Dominican Republic	891	-	-	-	-	-	-	608	1,499
El Salvador	1,064	-	-	1	-	-	-	907	1,972
Finland	357	-	-	-	-	1	-	209	567
Germany, Federal Republic	38,424	7,763	8,135	5,211	-	681	-	18,397	78,611
Greece	15	-	-	-	-	-	-	203	218
Guatemala	430	-	-	-	-	-	-	1,596	2,026
Iceland	-	-	-	6	-	-	-	83	89
India	-	-	7,034	1	-	-	-	3	7,038
Indonesia	-	-	186	-	-	-	-	1	187
Ireland	2,123	-	2,227	17	-	-	-	271	4,638
Israel	1,590	-	148	-	-	-	-	2,189	3,927
Japan	44,378	-	15,870	-	-	-	-	65,874	126,122
Korea	511	-	1,539	-	-	-	-	3,690	5,740
Liberia	60	-	-	-	-	-	-	75	135
Libya	-	-	2	139	1,113	-	-	277	1,531
Netherlands	3,081	2,813	1	2,367	-	110	735	21,149	30,256
Netherlands Territories	205	-	16	184	-	-	-	696	1,101
New Zealand	-	-	5,808	-	-	-	-	-	5,808
Nigeria	523	-	-	16	-	-	-	1,979	2,518
Norway	1,667	-	4,286	122	-	908	-	4,240	11,223
Peru	1,178	8,225	9	24	-	-	-	3,690	13,126
Philippines	7,954	-	2,289	-	-	-	-	7,579	17,822
Portugal	428	411	12	334	-	-	-	5,181	6,366
Portuguese Territories.	345	-	988	-	-	-	-	1,207	2,540
Rhodesia & Nyasaland	58	-	1,772	2	-	-	-	111	1,943
Saudi Arabia	824	-	803	2	1	-	-	3,190	4,820
Sierra Leone	411	-	-	5	-	-	-	71	487
South Africa	3,061	-	-	-	-	-	-	3,036	6,097
Switzerland	8,112	226	-	1,872	33	22	-	1,835	12,100
Tunisia	-	-	-	-	-	-	-	-	-
United Arab Republic	-	-	-	-	-	-	-	12	12
United Kingdom	94,508	5,601	26,757	12,473	4	240	874	20,797	161,254
U.K. Territories	3,372	-	4,948	345	-	-	-	1,934	10,599
Vatican City	205	-	-	-	-	-	-	-	205
Venezuela	7,315	-	-	-	-	-	-	9,969	17,284
Western Samoa	-	-	115	-	-	-	-	5	120
To Orders	-	7,707	-	5,571	-	294	-	-	13,572
Totals	238,230	52,310	82,945	37,217	1,151	2,263	1,664	195,499	611,279
Percentage of Total Sales by Exporting Countries ..	38.97	8.56	13.57	6.09	0.19	0.37	0.27	31.98	100.00

NOTE: Mexico - no sales reported to October 31, 1963.
Spain - no sales reported.
Argentina - quantities cover period ending April 10, 1964.
Italy - quantities cover period ending April 18, 1964.
U.S.S.R. - no sales made since September 14, 1963.

CANADIAN SITUATION

Supplies Remain
at Record Level

Total estimated supplies of wheat for the 1963-64 crop year are placed at an all-time high of 1,210.7 million bushels, consisting of the August 1 carryover of 487.2 million and the 1963 crop, estimated at a record 723.4 million bushels. Supplies of the size indicated represent a 27 per cent increase over the 956.6 million of a year ago and surpass by 5 per cent the previous peak of 1,152.8 million bushels established in 1956-57. After making an allowance of 155.0 million bushels for anticipated domestic requirements, supplies available for export and for carryover during 1963-64 amount to 1,055.7 million bushels, 29 per cent above the 818.5 million in 1962-63.

Exports 22 Per Cent
Ahead of Record

Total exports of wheat and flour during the August-April period of the current crop year amounted to the unsurpassed level of 398.1 million bushels, exceeding by 22 per cent the previous peak of 325.8 million shipped during the same period in 1928-29 and exceeding by 63 per cent last season's comparable total of 243.5 million. Of the current total, shipments of wheat as grain accounted for some 356.5 million bushels as against 223.2 million a year ago. The equivalent of 41.6 million bushels was exported in the form of wheat flour in contrast to 20.3 million shipped during the August-April period last year. The balance remaining on May 1, 1964 for export and for carryover amounted to 657.6 million bushels, 14 per cent larger than the May 1, 1963 total of 574.9 million.

Canadian Wheat Supplies

Item	1962-63 <u>1/</u>	1963-64 <u>2/</u>
	- million bushels -	
Carryover in North America at beginning of crop year (August 1)	391.1	487.2
Production	565.6	723.4
Imports of wheat for domestic use, August-April	<u>3/</u>	<u>4/</u>
Total estimated supplies	956.6	1,210.7
Less estimated domestic requirements for crop year .	138.1	155.0
Available for export and for carryover	818.5	1,055.7
Deduct:		
Exports of wheat in bulk, August-April <u>5/</u>	219.4	353.7
Exports of bagged seed wheat, August-April <u>6/</u>	3.9	2.8
Total exports of wheat as grain	223.2	356.5
Exports of wheat flour in terms of wheat, August - April <u>6/</u>	20.3	41.6
Total exports of wheat and wheat flour	243.5	398.1
Balance on May 1 for export and for carryover	574.9	657.6

1/ Revised. 2/ Preliminary. 3/ Less than 50,000 bushels. 4/ Not available.

5/ As reported by the Board of Grain Commissioners. (Includes overseas clearances and imports into the United States). 6/ Customs returns, 1962-63 adjusted for time lag.

April Exports of
Wheat and Flour Set
Record of 50 Million Bushels

Total exports of wheat in bulk, bagged seed wheat and wheat flour in terms of grain equivalent amounted to 50.1 million bushels during April 1964, the highest total ever recorded for that month and surpassing by a wide margin the previous peak of 41.3 million shipped in April 1944. This year's April total was more than double the ten-year 1953-62 average for the month and exceeded by margins of 76 per cent and 58 per cent the March 1964 exports of 28.4 million bushels and the April 1963 figure of 31.7 million. Exports of wheat in bulk (as reported by the Board of Grain Commissioners) during April 1964 reached 43.2 million bushels, the largest clearances for that month since 34.4 million were exported in 1944. In addition, this year's April exports of wheat in bulk were nearly double the March total of 22.5 million, 49 per cent greater than the April 1963 figure of 28.9 million and in sharp contrast to the ten-year average exports for the month of April of 20.1 million bushels. Exports of bagged seed wheat during April 1964, based on Canadian Customs returns, amounted to 261 thousand bushels as against the March 1964 figure of 605 thousand and the April 1963 total (adjusted to remove time lag) of 422 thousand bushels. Customs returns also indicate that the equivalent of 6.6 million bushels of wheat was exported in the form of flour during April 1964, the largest volume of flour shipped in the month of April since 1947. This season's April total exceeded the previous month's exports of 5.3 million by 26 per cent and was nearly three times greater than the adjusted April 1963 total of 2.3 million bushels.

August-April Wheat Exports
Almost Equal Record
Crop Year Total

Cumulative exports of wheat in bulk during the first three quarters (August-April) of the current crop year have amounted to 353.7 million bushels, almost the same as the 1928-29 crop year total of 354.4 million. This year's August-April total represented an increase of 61 per cent over the 1962-63 comparable figure of 219.4 million and 92 per cent more than the ten-year average for the period of 184.6 million. Clearances to the U.S.S.R. (Russia) totalled 16.0 million bushels during the month of April 1964 and raised the cumulative crop year total to that destination to 127.5 million. This total represented 36 per cent of the nine-month total exports of Canadian wheat in bulk form. Shipments of wheat to Britain amounted to 54.9 million bushels and accounted for 16 per cent of the August-April 1963-64 total. During the same period of 1962-63 there were no shipments of wheat to the U.S.S.R. while those to Britain amounted to 56.4 million bushels and represented 26 per cent of the August-April total. Other principal markets for Canadian wheat in bulk during the first nine months of the current crop year, with figures for the same period of the preceding crop year in brackets, were as follows, in millions of bushels: Japan, 36.3 (32.9); China Communist, 30.8 (45.4); Federal Republic of Germany, 27.2 (20.2); Belgium and Luxembourg, 13.6 (7.0); Poland, 8.1 (14.2); Venezuela, 5.1 (4.8); Cuba, 5.0 (nil); and Philippines, 4.8 (4.6). Cumulative exports of bagged seed wheat during August-April of the current crop year, based on Canadian Customs returns, amounted to 2,814 thousand bushels compared with last year's comparable total (adjusted to remove time lag) of 3,870 thousand.

Wheat Flour Exports
Highest Since 1947-48

Cumulative exports of wheat flour during the first nine months of the 1963-64 crop year, based on Customs returns, were the equivalent of 41.6 million bushels, the highest August-April volume since 48.4 million were exported during the same months in 1947-48 and more than double the adjusted 1962-63 total for the same period of 20.3 million bushels. The U.S.S.R. (Russia) and Britain were the two major markets for Canadian wheat flour during the period under review. Shipments of wheat flour to

the U.S.S.R. during the August-April period of the current crop year amounted to the equivalent of 16.3 million bushels and accounted for 39 per cent of the nine-month total while those to Britain, at 9.5 million bushels, represented 23 per cent of the August 1963-April 1964 exports of wheat flour. During the same months of the 1962-63 crop year there were no shipments of flour to the U.S.S.R. but shipments of wheat flour to Britain amounted to the equivalent of 9.0 million bushels and represented 44 per cent of the total. Other leading markets for Canadian wheat flour in terms of grain equivalent during the August-April period of the 1963-64 crop year, with revised data for the same months of the preceding crop year in brackets, were as follows, in thousands of bushels: Cuba, 5,434 (nil); Jamaica, 1,303 (1,015); Trinidad, 1,072 (991); Leeward and Windward Islands, 792 (719); Ghana, 753 (1,414); Hong Kong, 752 (720); United States, 701 (963); and Ceylon, 612 (1).

Visible Supplies
Register Decline of
101 Million Bushels

Visible supplies of Canadian wheat, reflecting the impact of the greatest movement of this cereal in the history of the trade, have declined from a level of 420 million bushels at August 1, 1963 to 319 million at May 20, 1964.

Deliveries from farms have added 385 million bushels to the commercial supply over the same period but this amount has been slightly exceeded by the unprecedented volume of 387 million bushels flowing into export channels. With exports offsetting marketings, the decline in commercial supplies basically reflects the unusually large movement of some 100 million bushels to the domestic commercial market.

During the current four-week period since the last report the combined total of 57.4 million bushels moving into export and domestic markets was 36 per cent above the 42.1 million bushels delivered from farms and, as a result, the total visible supply of Canadian wheat decreased from 334.5 million bushels at April 22 to a level of 319.1 million at May 20, 1964.

The total visible supply of Canadian wheat at May 20 this year represented a decrease of 11 per cent from the 1963 comparable total of 359.7 million but 4 per cent more than the 1962 figure of 307.8 million. Stocks in country elevators amounted to 176.4 million bushels compared with 191.7 million in this position a year ago and 146.2 million two years ago. This year's supplies in country elevators at May 20 accounted for 55 per cent of the total visible wheat supply compared with the 1963 and 1962 corresponding percentages of 53 per cent and 48 per cent, respectively. Interior terminal stocks, at 5.6 million bushels were slightly above the 1963 figure of 5.4 million but considerably less than the 9.0 million of 1962. The 26.3 million bushels "in transit rail" (Western Division) represented relatively substantial increases over both the 1963 total of 16.2 million and the 1962 figure of 16.7 million. Supplies at the Canadian Lakehead, at May 20 this year, amounted to 54.8 million bushels, 4 per cent below last year's comparable total of 57.1 million but 7 per cent more than the 51.4 million bushels in this position two years ago. Supplies in Bay, Lake and Upper St. Lawrence ports, at 8.3 million bushels, were in sharp contrast to both the 30.0 million of last year and the 26.8 million of 1962. Stocks of Canadian wheat "in transit lake" at May 20, 1964, amounted to 10.8 million bushels and exceeded both the 6.9 million of the previous year and the 7.3 million in 1962. The 15.0 million bushels in Lower St. Lawrence and Maritime ports were sharply reduced from both the 26.3 million of last year and the 25.5 million of two years ago. On the west coast, total supplies in Vancouver-New Westminster, Victoria and Prince Rupert at May 20, 1964, at 9.0 million bushels, were lower than both the previous year's corresponding total of 12.2 million and the 1962 figure of 11.6 million bushels.

Canadian Wheat Board
Announces Change in
Delivery Quotas

In its Instructions to the Trade No. 42, under date of May 7, 1964, the Canadian Wheat Board announced a basic change in its administration of delivery quotas. Effective Monday, May 11 all delivery points in Western Canada currently on an 8 bushel per specified acreage quota will be given a supplementary 5 bushel per seeded acre quota for wheat deliveries (other than Durum). As delivery points in Western Canada are raised to an 8 bushel per specified acre level, they will automatically be placed on a 5 bushel per seeded acre for wheat. The supplementary quota for wheat (other than Durum) will be raised above this level if and when the export and domestic movement on wheat warrants an increase.

With respect to Durum wheat, oats and barley no further deliveries of these grains will be allowed beyond the 8 bushel per specified acre level unless market demand for these grains warrant quota increases. In this event it will be the Board's intention to grant supplementary quotas for the grain required.

The basic reason for this change in policy is that the Board must have the type of grain in the marketing pipeline that is required to meet market requirements. Extremely heavy commitments for wheat (other than Durum) have been entered into for delivery prior to the end of the crop year. To facilitate the movement of this wheat and to avoid congesting marketing facilities with grain that is not immediately required for the market, the Board deems this change in quota policy to be essential.

With respect to oats, barley and Durum wheat, the Board wishes to call attention to the fact that producers can deliver these grains up to the 8 bushel per specified acre level. This level is comparable to the quota level normally existing the past few years at the end of the crop year.

General Quota
Position

By June 1, 1964, out of a total of 1,921 shipping points in the Western Division, the Canadian Wheat Board had placed 1,571 points on a delivery quota of eight bushels per specified acre while 339 points were on a 7-bushel quota. Eleven stations were reported as "closed".

Summary of Elevator Shipping Points in the Western Division
as at June 1, 1964

Province	General Quota in Bushels Per Specified Acre		Closed	Total
	Seven	Eight		
Ontario	-	1	-	1
Manitoba	-	343	2	345
Saskatchewan	339	696	7	1,042
Alberta	-	526	2	528
British Columbia	-	5	-	5
All Provinces	339	1,571	11	1,921

Lake Shipments of Canadian Grain

Total shipments of the five major grains out of Lakehead terminals from the opening of navigation to May 20 this year amounted to 76.3 million bushels, 67 per cent greater than the 45.8 million shipped during the comparable period of 1963. In 1964 the season of navigation opened on April 2 while the 1963 season opened on April 19. Shipments of wheat, at 60.7 million bushels accounted for 80 per cent of the current total. Shipments of wheat, barley, rye and flaxseed were above last year's corresponding levels, while those for oats were lower.

Lake Shipments of Canadian Grain from the Opening of Navigation to May 20, 1964 and to Approximately the Same Date 1954 to 1963

Year	Wheat	Oats	Barley	Rye	Flaxseed	Total
- thousand bushels -						
1954	4,988	12,771	11,196	1,223	1,123	31,301
1955	35,343	6,330	16,271	4,481	1,381	63,807
1956	52,876	5,741	17,988	3,755	880	81,239
1957	44,845	7,881	12,037	572	2,850	68,185
1958	53,137	10,145	20,516	1,647	1,215	86,660
1959	27,425	4,130	8,819	663	677	41,714
1960	42,619	3,265	9,788	458	750	56,880
1961	52,896	5,284	8,133	689	1,049	68,051
1962	30,156	3,171	5,533	81	623	39,564
1963	28,490	10,857	4,491	516	1,441	45,795
1964	60,724	6,028	6,869	996	1,663	76,280

Crop and Weather Conditions

The telegraphic crop report, published by the Dominion Bureau of Statistics on June 10, 1964 summarized crop conditions in each of the Prairie Provinces as follows:

Early-sown crops in Manitoba are in fair condition but later-sown crops germinated unevenly. All crops require rain to ensure development. Frost damage last week was confined to vegetables, rapeseed, flax and mustard and reseeding of damaged crops is almost finished. The last bit of seeding of oats and flax is being held up until moisture is received. Rainfall last week was light and scattered. Hay and pasture conditions are poor. Legume hay was partly damaged from frost.

After showing excellent germination and emergence crop growth in Saskatchewan is now very slow due to lack of adequate surface moisture in the greater part of the province. Rains in the southeast and the Regina-Weyburn district, as well as local showers in a few other scattered points, have resulted in satisfactory advancement, but crop progress is at a standstill in the remaining areas. Early rains are now a requirement to ensure proper development and to stimulate and encourage a favourable crop outlook. Grasshopper and cutworm activity is very spotty and there has been no significant damage so far. It has been necessary to reseed a few fields of coarse grains and rapeseed which were badly damaged by frost, but the indications are most other fields will recover from this setback.

continued on page 40.

Farmers' Marketings ^{1/} of Wheat in the Prairie Provinces 1963-64

Week Ending		Manitoba	Saskatchewan	Alberta	Total	Last Year
- bushels -						
August	7, 1963 ..	5,607	49,346	16	54,969	64,682
	14	107,808	180,957	199,749	488,514	217,040
	21	171,927	507,568	134,487	813,982	1,215,068
	28	418,689	2,215,916	324,163	2,958,768	3,806,243
September	4	1,180,171	1,906,057	583,877	3,670,105	5,053,798
	11	1,505,137	4,022,800	1,886,765	7,414,702	10,029,156
	18	923,910	5,604,941	2,449,570	8,978,421	11,586,794
	25	527,179	4,091,520	1,672,602	6,291,301	17,353,283
October	2	897,896	5,940,764	2,766,137	9,604,797	21,147,418
	9	991,898	7,917,939	2,398,902	11,308,739	18,454,109
	16	1,229,961	6,090,935	1,468,255	8,789,151	11,545,726
	23	1,757,450	7,878,678	1,922,268	11,558,396	11,158,617
	30	2,684,196	10,340,541	1,964,809	14,989,546	10,315,831
November	6	2,456,981	10,317,922	2,506,806	15,281,709	10,256,475
	13	1,961,553	9,352,062	2,285,644	13,599,259	9,436,356
	20	2,166,743	10,866,244	2,299,453	15,332,440	10,365,650
	27	1,634,110	8,450,399	1,763,585	11,848,094	11,322,633
December	4	1,675,155	12,895,482	2,958,327	17,528,964	10,629,305
	11	1,834,277	14,091,997	3,430,903	19,357,177	11,135,337
	18	809,924	7,114,341	2,176,998	10,101,263	13,430,250
	23	772,650	4,685,432	1,834,729	7,292,811	13,641,722
	30	896,593	8,228,088	2,114,472	11,239,153	8,379,852
January	8, 1964 ..	1,960,032	9,382,077	4,457,844	15,799,953	6,527,399
	15	1,095,206	11,147,003	4,478,272	16,720,481	8,831,404
	22	1,004,626	11,046,582	4,216,919	16,268,127	3,745,528
	29	328,145	3,172,189	2,195,060	5,695,394	1,829,980
February	5	653,099	6,699,397	3,687,396	11,039,892	5,498,303
	12	505,890	4,774,844	2,681,419	7,962,153	10,798,166
	19	327,771	4,464,188	2,792,607	7,584,566	8,158,602
	26	263,900	3,439,055	2,116,665	5,819,620	4,298,682
March	4	188,991	2,706,690	2,328,892	5,224,573	5,870,916
	11	315,807	2,515,004	2,137,479	4,968,290	6,205,965
	18	350,340	3,011,709	2,160,895	5,522,944	5,202,224
	25	176,886	2,839,918	1,377,878	4,394,682	5,737,707
April	1	101,817	1,150,086	1,255,507	2,507,410	4,336,791
	8	504,172	3,318,296	2,039,248	5,861,716	6,047,481
	15	416,259	3,586,827	1,987,624	5,990,710	3,574,920
	22	671,027	4,623,698	2,446,817	7,741,542	4,686,728
	29	962,356	10,384,726	2,024,977	13,372,059	7,898,375
May	6	737,787	10,747,928	1,735,424	13,221,139	5,564,556
	13	495,199	5,388,389	1,322,253	7,205,841	3,806,201
	20	801,168	5,119,387	2,125,054	8,045,609	3,401,965
Totals		38,470,293	252,267,922	88,710,747	379,448,962	332,567,238
Average similar period:						
1952-53-1961-62 ..		26,429,074	152,023,723	72,372,798	250,825,594	

^{1/} Includes receipts at country, interior private and mill elevators, interior semi-public terminals and platform loadings.

Visible Supply of Canadian Wheat, May 20, 1964
Compared with Approximately the Same Date, 1962 and 1963

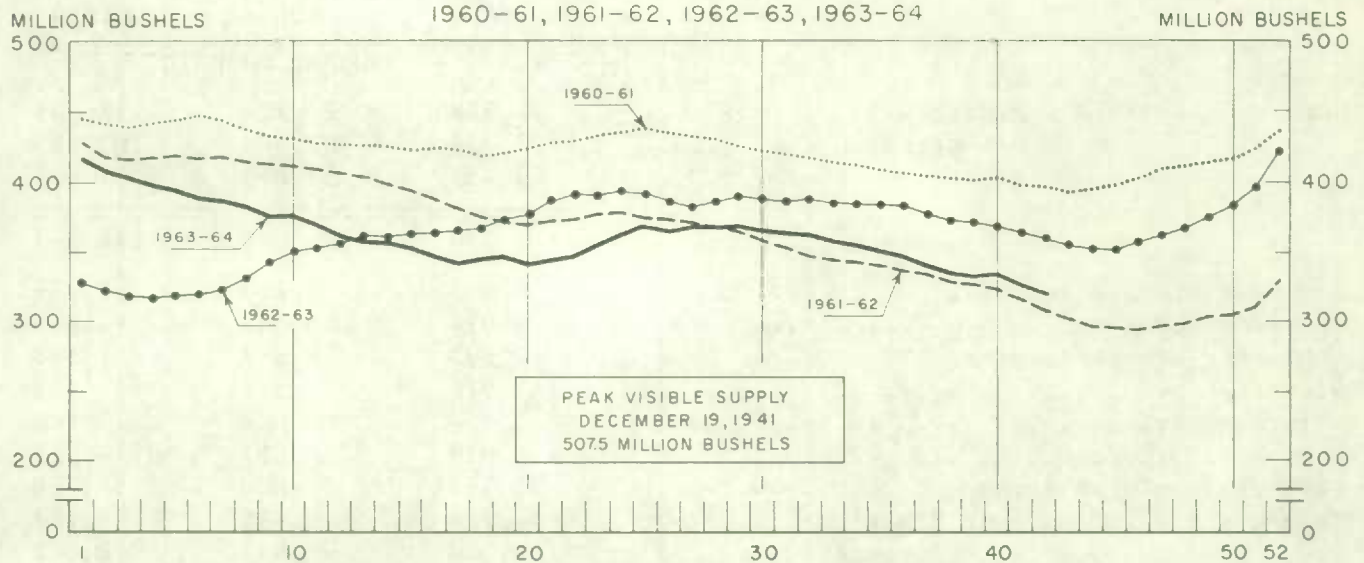
Position	1962	1963	1964
- thousand bushels -			
Country elevators - Manitoba	21,378	26,224	17,441
Saskatchewan	77,721	107,602	103,985
Alberta	47,131	57,873	54,941
Totals	146,230	191,699	176,367
Interior private and mill	8,015	7,272	7,728
Interior terminals	9,024	5,399	5,553
Vancouver-New Westminster	10,693	10,902	7,578
Victoria	921	572	577
Prince Rupert	-	683	826
Churchill	4,829	4,857	4,759
Fort William-Port Arthur	51,383	57,050	54,750
In transit rail (Western Division)	16,744	16,195	26,257
Bay, Lake and Upper St. Lawrence ports	26,800	29,954	8,342
Lower St. Lawrence and Maritime ports	25,519	26,288	15,012
In transit lake	7,284	6,917	10,768
In transit rail (Eastern Division)	359	1,910	549
Totals	307,801	359,699	319,066

Grading of Wheat Inspected, August 1963 - April 1964 with Comparisons

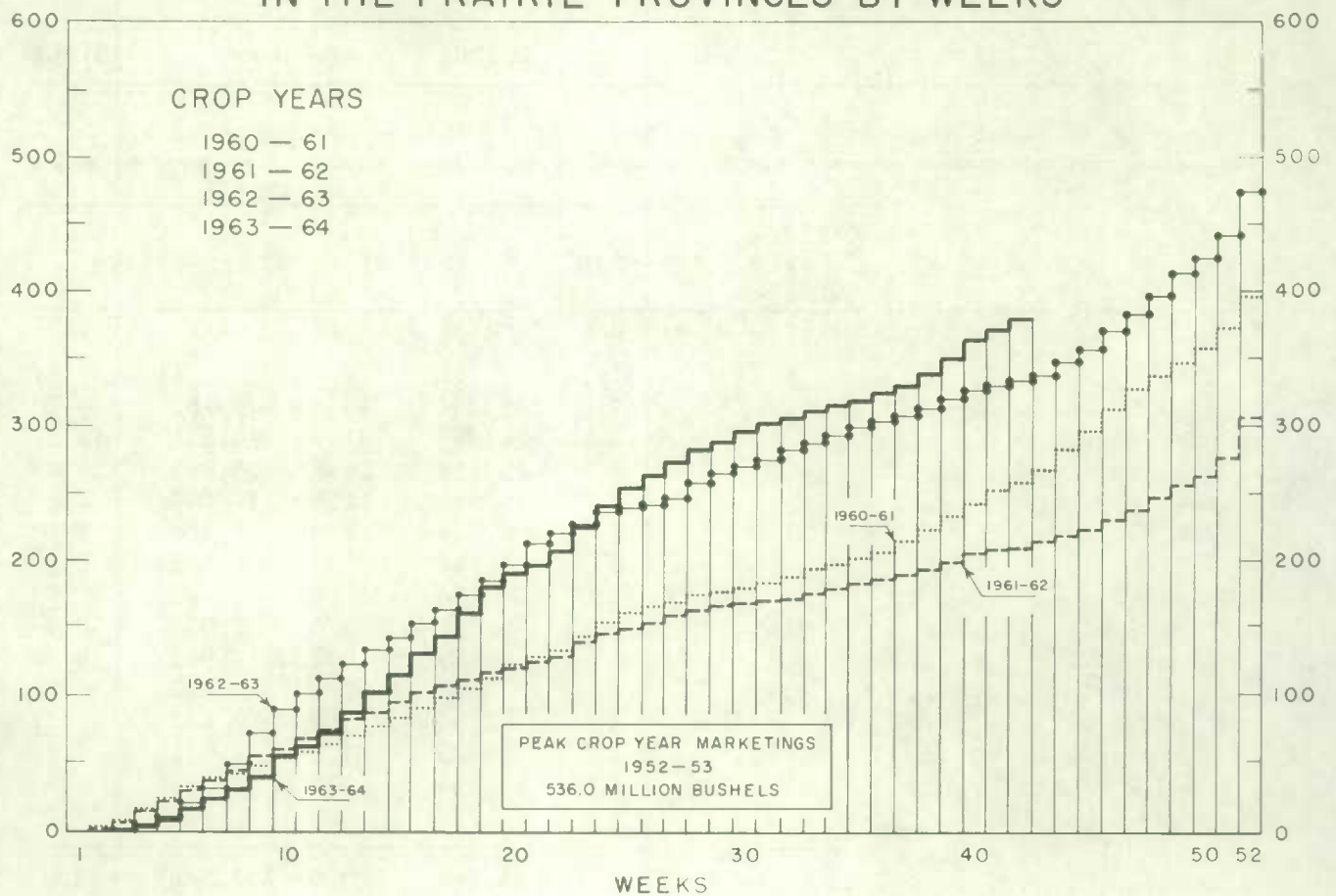
Grade	Crop Year		August-April			
	Average	1962-63	1962-63		1963-64	
	1957-58 1961-62		cars	per cent	cars	per cent
No. 1 Hard	1/	1/	11	1/	1	1/
No. 1 Man. Northern	5.3	12.1	19,231	13.3	8,785	4.2
No. 2 Man. Northern	34.4	38.4	54,293	37.7	90,611	43.6
No. 3 Man. Northern	26.0	14.9	21,159	14.7	54,856	26.4
No. 4 Man. Northern	12.1	11.4	15,946	11.1	17,807	8.6
No. 5 Wheat	5.5	5.7	8,034	5.6	9,886	4.8
No. 6 Wheat	1.1	0.9	1,462	1.0	1,465	0.7
Feed Wheat	1/	1/	16	1/	14	1/
Others Red Spring	9.4	8.0	9,202	6.4	8,033	3.9
C.W. Garnet	0.1	0.1	119	0.1	991	0.5
C.W. White Spring	0.1	0.1	202	0.1	182	0.1
C.W. Mixed Wheat	1/	1/	50	1/	102	1/
Alberta Winter	0.2	0.2	429	0.3	2,341	1.1
Nos. 1-6 C.W. Amber Durum .	5.6	7.7	13,259	9.2	12,055	5.8
Others C.W. Amber Durum ...	0.2	0.5	753	0.5	459	0.2
Totals	100.0	100.0	144,166	100.0	207,588	100.0
Gross bushels (approx.) ...			275,351,000		399,244,000	

1/ Less than .05 per cent.

WEEKLY VISIBLE SUPPLY OF CANADIAN WHEAT



CUMULATIVE RECORD OF WHEAT MARKETINGS IN THE PRAIRIE PROVINCES BY WEEKS



(Data in both charts for crop years beginning August 1)

Wheat Shipments to
the United States
by Destination

Total rail and vessel shipments of wheat to the United States, either for re-export or retention for domestic use, from the beginning of the current crop year to May 20, 1964 amounted to 231 thousand bushels. During the comparable periods of 1962-63 and 1961-62 shipments amounted to 1,322 thousand and 1,077 thousand bushels, respectively. Of this season's total to date some 54 per cent has been shipped by vessel.

Wheat Shipments* to the United States by Destination
August 1, 1963-May 20, 1964 with Comparisons

Destination	1961-62	1962-63	1963-64
- bushels -			
<u>By Vessel</u>			
Buffalo	400,000	1,008,445	-
Chicago	160,000	84,750	-
Duluth-Superior	420,978	115,208	123,729
Totals, Vessel	980,978	1,208,403	123,729
<u>By Rail</u>			
U.S.A. Domestic Points	95,828	113,156	107,166
Totals, Shipments	1,076,806	1,321,559	230,895

* Either for re-export or retention for domestic use. Excluding bagged seed.

Rail Shipments
of Wheat to
Maritime Ports

Rail shipments of wheat to Maritime Ports from Bay, Lake and Upper St. Lawrence Ports during the first nine months of the current crop year totalled 40.7 million bushels in contrast to the August 1962-April 1963 figure of 16.3 million.

Rail Shipments of Wheat to Maritime Ports from Bay, Lake
and Upper St. Lawrence Ports

Origin of Shipments	August 1, 1962- April 30, 1963	August 1, 1963- April 30, 1964
- bushels -		
Port McNicoll	5,802,391	11,854,674
Midland, Tiffin	5,957,659	14,152,626
Collingwood	464,910	1,117,940
Owen Sound	2,069,103	5,667,783
Goderich	233,210	3,097,728
Sarnia	1,788,756	3,726,796
Lakefield	-	254,500
Peterborough	-	841,367
Totals	16,316,029	40,713,414

Rail Shipments of Wheat from Fort William-Port Arthur, 1960-61-1963-64

Month	1960-61	1961-62	1962-63	1963-64
- bushels -				
August	14,717	20,648	13,933	5,500
September	19,227	14,598	11,657	9,104
October	5,417	33,944	22,716	25,355
November	24,000	22,915	12,024	13,500
December	17,500	60,167	12,778	23,047
January	71,335	126,533	39,534	58,772
February	135,339	68,421	22,967	28,768
March	28,073	37,000	86,398	21,268
April	9,833	37,777	69,067	26,063
May	15,805	11,203	11,851	
June	17,563	16,022	15,746	
July	10,940	17,315	11,158	
Totals	369,749	466,543	329,829	

Distribution of Rail Shipments of Wheat from Fort William-Port Arthur, April 1964

Grade	Quebec	Ontario
- bushels -		
5 Wheat	-	2,833
Durum	2,000	16,000
Others	2,000	3,230
Totals	4,000	22,063

Overseas Exports of Canadian Grain by Ports of Loading, August 1, 1963-May 20, 1964
with Comparisons

Port	Wheat 1/	Durum Wheat 1/	Oats 1/	Barley	Rye	Flaxseed	Rapeseed 2/
- bushels -							
<u>Pacific Seaboard</u>							
Van.-New West.	123,638,193	-	12,130,799	15,852,974	1,444,068	5,333,835	4,117,933
Victoria	6,306,400	-	-	-	-	-	-
Prince Rupert	7,611,521	-	-	-	-	-	-
<u>Churchill</u>	21,680,276	-	-	-	-	-	-
<u>Lakehead Direct</u>	2,618,182	733,765	1,525,363	3,234,551	1,046,055	1,599,418	-
<u>Kingston Direct</u>	818,460	-	-	-	-	-	-
<u>St. Lawrence</u>							
Montreal	71,016,271	10,337,185	664,718	180,145	719,946	2,218,654	-
Sorel	19,978,033	1,514,329	-	-	-	206,698	-
Three Rivers	16,367,323	2,633,978	228,193	-	-	359,133	-
Quebec	15,543,444	-	-	-	439,707	-	-
Baie Comeau	34,112,815	205,763	-	-	89,887	283,961	-
<u>Maritime</u>							
Saint John	2,978,507	-	185,010	-	-	-	-
West Saint John	26,636,014	1,989,681	-	-	-	379,550	-
Halifax	18,504,083	2,086,592	-	-	-	-	-
Totals	367,809,522	19,501,293	14,734,083	19,267,670	3,739,663	10,381,249	4,117,933
Aug.1/62-May 22/63 ...	224,601,259	16,096,370	15,518,695	5,005,962	5,917,413	10,339,022	5,177,939

1/ Excluding bagged seed.

2/ In bushels of 50 pounds.

Freight Assistance Shipments Claims filed for payment up to April 30, 1964 represent the movement of some 10.4 million bushels of wheat from the Prairie Provinces to Eastern Canada and British Columbia under the freight assistance policy during the August-March period of the 1963-64 crop year. During the same months last year claims had been filed for a total of 6.6 million bushels, indicating on the assumption of approximately the same rate of submission of claims during both the current and preceding crop years that the August-March shipments of wheat under the policy were running about 56 per cent above those of 1962-63. Revised data on the August-March 1962-63 shipments of wheat based on claims submitted up to April 30, 1964 place the eight-month total at 6.8 million bushels. The bulk of the shipments during the current eight-month period under review went to destinations in Quebec and Ontario with these two provinces accounting for 40 per cent and 32 per cent of the total, respectively.

Provincial Distribution of Wheat Shipments under the Freight Assistance Policy
August - March 1963-64 and 1962-63

Month	Nfld.	P.E.I.	N.S.	N.B.	Que.	Ont.	B.C.	Total
- thousand bushels -								
August, 1963	19	15	143	43	603	515	99	1,437
September	20	12	155	57	631	685	183	1,744
October	21	14	187	73	667	631	234	1,828
November	70	12	157	46	534	378	149	1,347
December	17	12	133	42	456	336	158	1,154
January, 1964	15	13	153	51	456	323	148	1,160
February	11	12	131	37	388	247	84	910
March	-	15	127	34	369	248	-	794
Totals <u>1/</u>	174	106	1,187	385	4,105	3,363	1,056	10,374
Same period 1962-63:								
Preliminary	62	63	383	200	2,672	2,145	1,113	6,638
Revised <u>1/</u>	70	65	398	202	2,733	2,180	1,174	6,821

Preliminary data on millfeed shipments under the freight assistance policy indicate shipments of 349,275 tons during the August-March period of the current crop year. During the same eight months of 1962-63 claims had been filed for a total of 303,742 tons, indicating on the assumption of approximately the same rate of submission of claims during both the current and preceding crop years that the August-March shipments of millfeeds under the policy were running about 15 per cent above those of 1962-63. Revised data on the 1962-63 August-March shipments of millfeeds based on claims submitted up to April 30, 1964 place the eight-month total at 317,759 tons. As with freight-assisted shipments of wheat, the greater portion of the millfeed shipments during the period under review went to destinations in Quebec and Ontario.

Provincial Distribution of Millfeed Shipments under the Freight Assistance Policy
August-March 1963-64 and 1962-63

Province	1962-63		1963-64
	Preliminary <u>2/</u>	Revised <u>1/</u>	Preliminary <u>1/</u>
- tons -			
Newfoundland	4,427	5,072	4,062
Prince Edward Island	4,815	5,014	5,717
Nova Scotia	21,597	22,217	21,333
New Brunswick	18,397	18,805	19,369
Quebec	149,895	158,964	170,541
Ontario	81,585	84,038	104,918
British Columbia	23,026	23,649	23,335
Totals	303,742	317,759	349,275

1/ Based on claims filed up to April 30, 1964.

2/ Based on claims filed up to April 30, 1963.

Monthly Exports of Canadian Wheat and Wheat Flour

Year and Month	Wheat in Bulk <u>1/</u>	Bagged Seed Wheat <u>2/</u>	Total Wheat	Wheat Flour <u>2/</u> <u>3/</u>	Total <u>3/</u> Wheat and Wheat Flour
- thousand bushels -					
<u>1961-62</u>					
August	35,625	89	35,714	3,123	38,837
September	28,966	242	29,209	2,786	31,995
October	32,910	86	32,996	2,391	35,386
November	40,823	377	41,200	3,150	44,351
December	19,966	392	20,359	2,643	23,002
January	17,534	458	17,992	2,304	20,295
February	23,739	433	24,173	2,546	26,719
March	20,482	574	21,056	2,968	24,023
April	24,981	539	25,520	2,389	27,909
May	35,150	77	35,227	2,486	37,713
June	23,559	5	23,564	2,456	26,020
July	19,016	44	19,060	2,711	21,772
Totals	322,752	3,317	326,069	31,953	358,022
<u>1962-63</u>					
August	21,944	157	22,101	2,852	24,953
September	25,040	200	25,240	2,604	27,844
October	29,705	31	29,737	2,181	31,917
November	33,309	144	33,452	2,176	35,628
December	20,949	451	21,399	2,305	23,705
January	21,486	473	21,959	1,586	23,545
February	18,779	743	19,522	1,811	21,333
March	19,246	1,251	20,496	2,454	22,950
April	28,916	422	29,338	2,330	31,669
May	35,355	14	35,369	2,186	37,555
June	24,512	<u>4/</u>	24,513	2,837	27,350
July	20,854	-	20,854	1,943	22,798
Totals	300,095	3,884	303,980	27,265	331,245
<u>1963-64 5/</u>					
August	29,204	160	29,364	3,039	32,403
September	42,556	155	42,711	1,645	44,356
October	59,020	7	59,027	2,384	61,411
November	65,296	245	65,541	3,881	69,422
December	41,763	397	42,160	5,393	47,553
January	28,451	482	28,933	6,607	35,541
February	21,675	501	22,176	6,709	28,885
March	22,510	605	23,115	5,278	28,393
April	43,211	261	43,472	6,639	50,111
Totals	353,686	2,814	356,499	41,575	398,075

1/ Export clearances including shipments to the United States compiled by the Statistics Branch, Board of Grain Commissioners for Canada. 2/ Compiled from Canadian Customs returns, 1961-62 and 1962-63 adjusted to remove effect of time lag in reporting. 3/ In terms of wheat equivalent. Wheat flour conversion rate: 2.3 bushels per cwt. 4/ Less than 500 bushels. 5/ Preliminary.

Exports of Canadian Wheat 1/ by Destination, April 1963 and 1964

Destination	April 1964			April 1963
	Wheat (Except Durum)	Durum Wheat	Total All Wheat	Total All Wheat
- bushels -				
<u>COMMONWEALTH AND PREFERENTIAL COUNTRIES</u>				
<u>Western Europe</u>				
Britain	7,311,467	-	7,311,467	6,878,740
Ireland	-	-	-	382,667
Malta and Gozo	384,533	-	384,533	177,333
<u>Other Africa</u>				
Republic of South Africa	-	-	-	2,071,594
<u>Other Asia</u>				
Hong Kong	19,600	-	19,600	19,600
India	-	-	-	5,479
Malaysia	55,253	-	55,253	-
<u>Central America and Antilles</u>				
Jamaica	596	-	596	1,195
Totals, Com. and Pref. Countries ..	7,771,449	-	7,771,449	9,536,608
<u>OTHER COUNTRIES</u>				
<u>Western Europe</u>				
Belgium and Luxembourg	469,214	-	469,214	594,787
Finland	-	-	-	351,680
France	-	559,654	559,654	420,000
Germany, Federal Republic	2,028,503	-	2,028,503	1,384,578
Italy	-	-	-	588,000
Netherlands	157,629	-	157,629	88,967
Norway	-	-	-	77,013
Sweden	-	-	-	18,667
Switzerland	-	-	-	53,088
<u>Eastern Europe</u>				
Albania	238,867	-	238,867	-
Bulgaria	1,924,720	-	1,924,720	-
Czechoslovakia	771,605	-	771,605	1,394,100
Poland	774,107	-	774,107	-
U.S.S.R. (Russia)	15,661,075	366,433	16,027,508	-
<u>Middle East</u>				
Israel	-	-	-	95,200
Saudi Arabia	-	-	-	27,482
<u>Other Africa</u>				
Mozambique	-	-	-	33,375
<u>Other Asia</u>				
China, Communist	5,968,191	-	5,968,191	8,210,142
Japan	4,008,436	-	4,008,436	4,826,908
Philippines	474,694	-	474,694	283,733
<u>Oceania</u>				
United States Oceania	90,533	-	90,533	-
<u>South America</u>				
Ecuador	-	-	-	280,000
Venezuela	595,840	-	595,840	400,141
<u>Central America and Antilles</u>				
Cuba	1,189,656	-	1,189,656	-
Dominican Republic	-	-	-	153,067
El Salvador	141,680	-	141,680	88,480
<u>North America</u>				
United States, for domestic use 2/..	18,326	-	18,326	10,000
Totals, Other Countries	34,513,076	926,087	35,439,163	19,379,408
Sub-Totals, All Countries	42,284,525	926,087	43,210,612	28,916,016
Bagged seed 3/.....	-	-	261,221	422,192
Totals, All Countries	42,284,525	926,087	43,471,833	29,338,208

NOTE: See footnotes on page 17.

Cumulative Exports of Canadian Wheat 1/ by Destination

Destination	August 1963-April 1964			Aug/62-Apr/63
	Wheat (Except Durum)	Durum Wheat	Total All Wheat	Total All Wheat
- bushels -				
<u>COMMONWEALTH AND PREFERENTIAL COUNTRIES</u>				
<u>Western Europe</u>				
Britain	54,797,528*	84,408	54,881,936*	56,402,343
Ireland	2,142,000	-	2,142,000	2,193,070
Malta and Gozo	1,093,827	-	1,093,827	870,987
<u>Other Africa</u>				
Nigeria	520,218	-	520,218	543,953
Northern Rhodesia	18,667	-	18,667	8,244 <u>4/</u>
Republic of South Africa	-	-	-	4,497,887
<u>Other Asia</u>				
Hong Kong	504,372	-	504,372	393,494
India	-	-	-	703,612
Malaysia	242,853	-	242,853	-
<u>Central America and Antilles</u>				
Barbados	40	-	40	-
Jamaica	6,634	-	6,634	7,761
Totals, Com. and Pref. Countries .	59,326,139	84,408	59,410,547	65,621,351

OTHER COUNTRIES

<u>Western Europe</u>				
Austria	524,904	-	524,904	802,434
Belgium and Luxembourg	13,229,699*	411,167	13,640,866*	7,039,397
Denmark	20,543	-	20,543	11,200
Finland	356,533	-	356,533	702,613
France	2,176,884*	1,362,345	3,539,229*	4,725,459
Germany, Federal Republic	21,850,682	5,335,899	27,186,581	20,201,094
Greece	-	-	-	10
Italy	3,758,777	-	3,758,777	4,286,826
Netherlands	3,076,295*	154,168	3,230,463*	4,054,261
Norway	1,667,203	-	1,667,203	1,645,280
Sweden	22,400	-	22,400	146,347
Switzerland	2,840,786*	1,543,096	4,383,882*	1,728,393
<u>Eastern Europe</u>				
Albania	1,954,401	-	1,954,401	-
Bulgaria	3,159,520	-	3,159,520	-
Czechoslovakia	3,535,026	-	3,535,026	1,394,100
Poland	8,074,354	-	8,074,354	14,183,656
U.S.S.R. (Russia)	119,510,159	7,995,540	127,505,699	-
Yugoslavia	3,501,866	-	3,501,866	-
<u>Middle East</u>				
Israel	1,067,248	-	1,067,248	1,074,680
Saudi Arabia	677,029	-	677,029	543,803

Cumulative Exports of Canadian Wheat ^{1/} by Destination

Destination	August 1963-April 1964			Aug/62-Apr/63
	Wheat (Except Durum)	Durum Wheat	Total Wheat	Total All Wheat
- bushels -				
<u>OTHER COUNTRIES (concluded)</u>				
<u>Other Africa</u>				
Katanga	-	-	-	9,186
Mozambique	90,857	11,200	102,057	409,893
<u>Other Asia</u>				
Burma	78,931	-	78,931	-
China, Communist	30,791,685	-	30,791,685	45,400,008
Japan	36,347,504	-	36,347,504	32,892,445
Korea	511,467	-	511,467	-
Philippines	4,756,181	-	4,756,181	4,632,781
Taiwan	333,284	-	333,284	53,972
<u>Oceania</u>				
United States Oceania	347,722	-	347,722	355,039
<u>South America</u>				
Ecuador	561,188	-	561,188	1,025,560
Peru	730,614	-	730,614	-
Venezuela	5,141,989	-	5,141,989	4,791,873
<u>Central America and Antilles</u>				
Cuba	4,969,176	-	4,969,176	-
Dominican Republic	658,839	-	658,839	692,813
El Salvador	732,035	-	732,035	502,994
Guatemala	175,000	-	175,000	148,334
<u>North America</u>				
United States for domestic use ^{2/}	230,859	-	230,859	298,263
Totals, Other Countries	277,461,640	16,813,415	294,275,055	153,752,714
Sub-Totals, All Countries	336,787,779	16,897,823	353,685,602	219,374,065
Bagged seed ^{3/}			2,813,750	3,870,424
Totals, All Countries	336,787,779	16,897,823	356,499,352	223,244,489

* Revisions in data for previous months have been taken into account in the August-April cumulative totals.

^{1/} Overseas clearances as reported by the Statistics Branch, Board of Grain Commissioners for Canada, for all countries except the United States. Excluding bagged seed.

^{2/} Compiled from returns of Canadian elevator licensees and shippers and advice from American grain correspondents.

^{3/} Compiled from Canadian Customs returns, 1962-63 adjusted for time lag.

^{4/} Rhodesia and Nyasaland.

Customs Exports of Canadian Wheat Flour by Countries of Consignment

Destination	January 1964 <u>1/</u>	April 1964 <u>2/</u>	August-April	
			1963-64 <u>2/</u>	1962-63 <u>1/</u>
- bushels -				
COMMONWEALTH AND PREFERENTIAL COUNTRIES				
<u>Western Europe</u>				
Britain	639,420	1,266,154	9,485,648	8,990,633
Gibraltar	3,348	5,152	31,944	30,139
<u>Middle East</u>				
Kuwait*	-	-	13,255	62,541
Qatar	-	-	838	2,107
British Middle East, nes	773	3,864	28,851	21,638
<u>Other Africa</u>				
Gambia	1,150	3,818	5,106	-
Ghana	18,860	94,362	753,133	1,413,548
Nigeria	216	515	22,494	531,781
Nyasaland	2,346	2,208	26,485	29,015
Sierra Leone	27,715	21,505	281,660	400,490
Southern Rhodesia	-	1,150	3,680	-
Tanganyika	-	2,300	9,315	11,948
British Africa, nes	-	-	35,420	66,700
<u>Other Asia</u>				
Ceylon	-	26,365	612,421	1,150
Hong Kong	76,342	41,973	752,220	719,926
Malaysia	52,084	30,270	515,142	492,212
British East Indies, nes	-	-	-	9,531
<u>Oceania</u>				
Australia	-	-	124	55
Fiji	460	230	4,313	3,484
<u>South America</u>				
British Guiana	3,441	4,727	21,597	22,579
<u>Central America and Antilles</u>				
Bahamas	16,990	21,075	239,193	227,364
Bermuda	14,617	16,711	93,957	83,170
British Honduras	5,274	2,544	27,759	26,004
Barbados	14,667	19,079	122,859	107,247
Jamaica	169,011	188,975	1,302,844	1,014,652
Leeward and Windward Islands	63,310	80,502	791,669	719,450
Trinidad	96,561	157,610	1,071,901	990,971
Totals, Com. and Pref. Countries.	1,206,585	1,991,089	16,253,828	15,978,335
OTHER COUNTRIES				
<u>Western Europe</u>				
Belgium and Luxembourg	13,910	29,882	144,767	123,714
Denmark	920	-	4,221	9,230
Germany, Federal Republic	-	-	-	6,463
Greece	-	166	11,636	24,847
Iceland	-	-	3,220	14,573
Italy	-	-	-	4,996
Netherlands	-	433	4,876	2,316
Norway	-	-	-	115
Portugal	6,107	6,628	92,839	51,120
Sweden	-	-	1,265	1,265
Switzerland	-	-	39	7,935
<u>Eastern Europe</u>				
U.S.S.R. (Russia)	3,549,983	2,654,097	16,337,184	-
<u>Middle East</u>				
Ethiopia	-	-	253	-
Iran	-	409	2,921	3,287
Iraq	-	-	-	948
Israel	-	-	5,152	8,436
Jordan	-	-	356	651
Kuwait*	1,776	5,096	7,102	-

Customs Exports of Canadian Wheat Flour by Countries of Consignment

Destination	January 1964 <u>1/</u>	April 1964 <u>2/</u>	August-April	
			1963-64 <u>2/</u>	1962-63 <u>1/</u>
<u>OTHER COUNTRIES (concluded)</u>				
	- bushels -			
<u>Middle East</u>				
Lebanon	287	-	28,152	174,823
Saudi Arabia	276	-	1,116	6,679
Syria	998	-	998	5,529
U.A.R. - Egypt	-	-	-	27,692
<u>Other Africa</u>				
Angola	-	-	4,600	1,840
Congo-Leo.	-	9,200	42,895	81,448
French West Africa	-	-	-	23,442
Ivory Coast	-	2,070	2,070	-
Liberia	3,489	5,382	52,424	34,160
Mozambique	1,966	5,854	27,064	18,616
Portuguese Africa, nes	973	1,518	66,534	73,232
Togo	14,010	7,015	134,294	33,615
<u>Other Asia</u>				
Burma	-	-	76,404	-
Indonesia	-	-	-	64
Japan	4,370	281,400	382,009	306,326
Philippines	-	-	7,590	10,350
Portuguese Asia	3,055	1,012	21,344	8,197
Thailand	40,395	11,270	337,766	276,688
Viet-Nam	41,476	-	41,476	44,576
<u>Oceania</u>				
French Oceania	-	-	1,070	1,299
United States Oceania	-	-	1,881	2,875
<u>South America</u>				
Chile	1,150	-	6,928	7,993
Colombia	-	-	589	-
Peru	7,107	3,225	50,881	30,176
Surinam	7,898	4,749	57,208	51,959
Venezuela	-	-	230	1,748
<u>Central America and Antilles</u>				
Costa Rica	47,035	53,820	463,836	622,895
Cuba	765,983	1,452,680	5,433,978	-
Dominican Republic	4,600	4,600	44,420	109,089
El Salvador	690	-	11,222	74,605
French West Indies	230	-	1,725	2,610
Guatemala	1,152	1,725	11,964	45,331
Haiti	7,604	5,865	75,330	619
Honduras	1,610	1,150	44,574	55,365
Netherlands Antilles	6,214	4,853	130,865	195,578
Nicaragua	242	2,300	292,342	386,083
Panama	13,860	8,174	135,159	370,026
<u>North America</u>				
St. Pierre and Miquelon	3,082	1,553	13,630	11,509
United States	70,175	81,496	700,964	963,357
Totals, Other Countries	4,622,623	4,647,622	25,321,363	4,320,290
Totals, All Countries	5,829,208	6,638,711	41,575,191	20,298,625

* Kuwait included in Commonwealth and Preferential Countries from August to December 1963 and in Other Countries from January 1, 1964.

nes - not elsewhere specified.

^{1/} In terms of wheat equivalent. Adjusted to remove effect of time lag in the returns made by Customs. Conversion rate: 2.3 bushels per cwt. ^{2/} In terms of wheat equivalent. Preliminary and unadjusted for time lag. Conversion rate: 2.3 bushels per cwt.

Canadian Wheat Board Weekly Average Cash Wheat Prices
Basis in Store Fort William-Port Arthur

Class and Grade	Week Ending			
	May 8	May 15	May 22	May 29

- cents and eighths per bushel -

Initial Payment to Producers

1 Northern	150	150	150	150
2 Northern	146	146	146	146
3 Northern	142	142	142	142
4 Northern	135	135	135	135
5 Wheat	118	118	118	118
6 Wheat	112	112	112	112
Feed Wheat	108	108	108	108
1 C.W. Garnet	135	135	135	135
2 C.W. Garnet	130	130	130	130
3 C.W. Garnet	125	125	125	125
1 Alberta Red Winter	134	134	134	134
2 Alberta Winter	129	129	129	129
3 Alberta Winter	123	123	123	123
1 C.W. Amber Durum	150	150	150	150
2 C.W. Amber Durum	146	146	146	146
3 C.W. Amber Durum	142	142	142	142

International Wheat Agreement

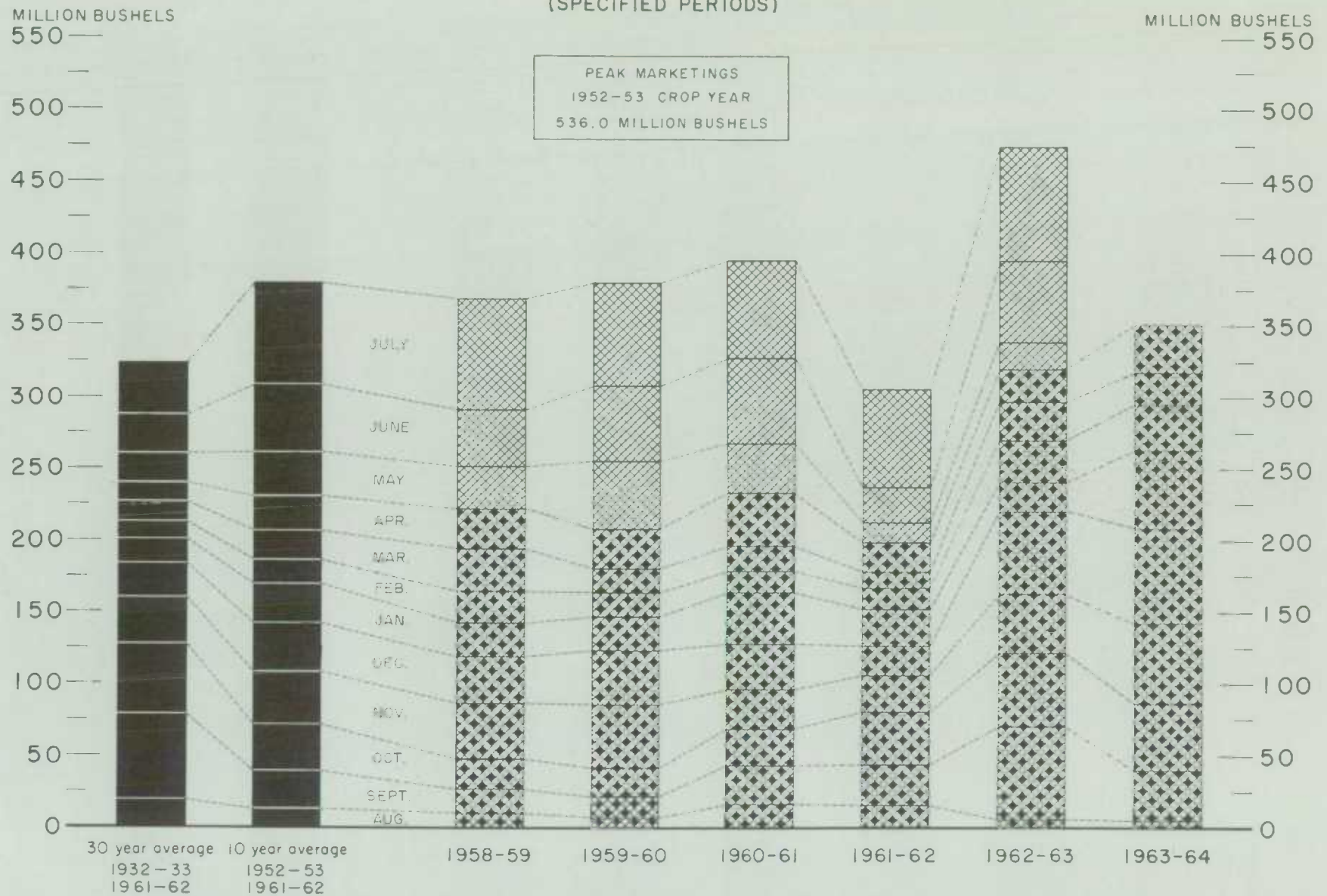
and Domestic Sales

1 Northern	206/3	205/5	205/5	205/5
2 Northern	203/3	202/5	202/5	202/5
3 Northern	200/1	198/1	198/7	199/1
4 Northern	193/3	192/5	192/5	192/5
5 Wheat	187/3	186/5	186/5	186/5
6 Wheat	182/3	181/5	181/5	181/5
Feed Wheat	179/3	178/5	178/5	178/5
1 C.W. Garnet	189/3	188/5	188/5	188/5
2 C.W. Garnet	187/3	186/5	186/5	186/5
3 C.W. Garnet	186/3	185/5	185/5	185/5
1 Alberta Red Winter	192/3	191/5	191/5	191/5
2 Alberta Winter	190/3	189/5	189/5	189/5
3 Alberta Winter	189/3	188/5	188/5	188/5
1 C.W. Amber Durum	215/3	213/5	213/5	213/5
2 C.W. Amber Durum	214/3	212/5	212/5	212/5
3 C.W. Amber Durum	204/3	201/5	200/4	200/1

Export - Class II

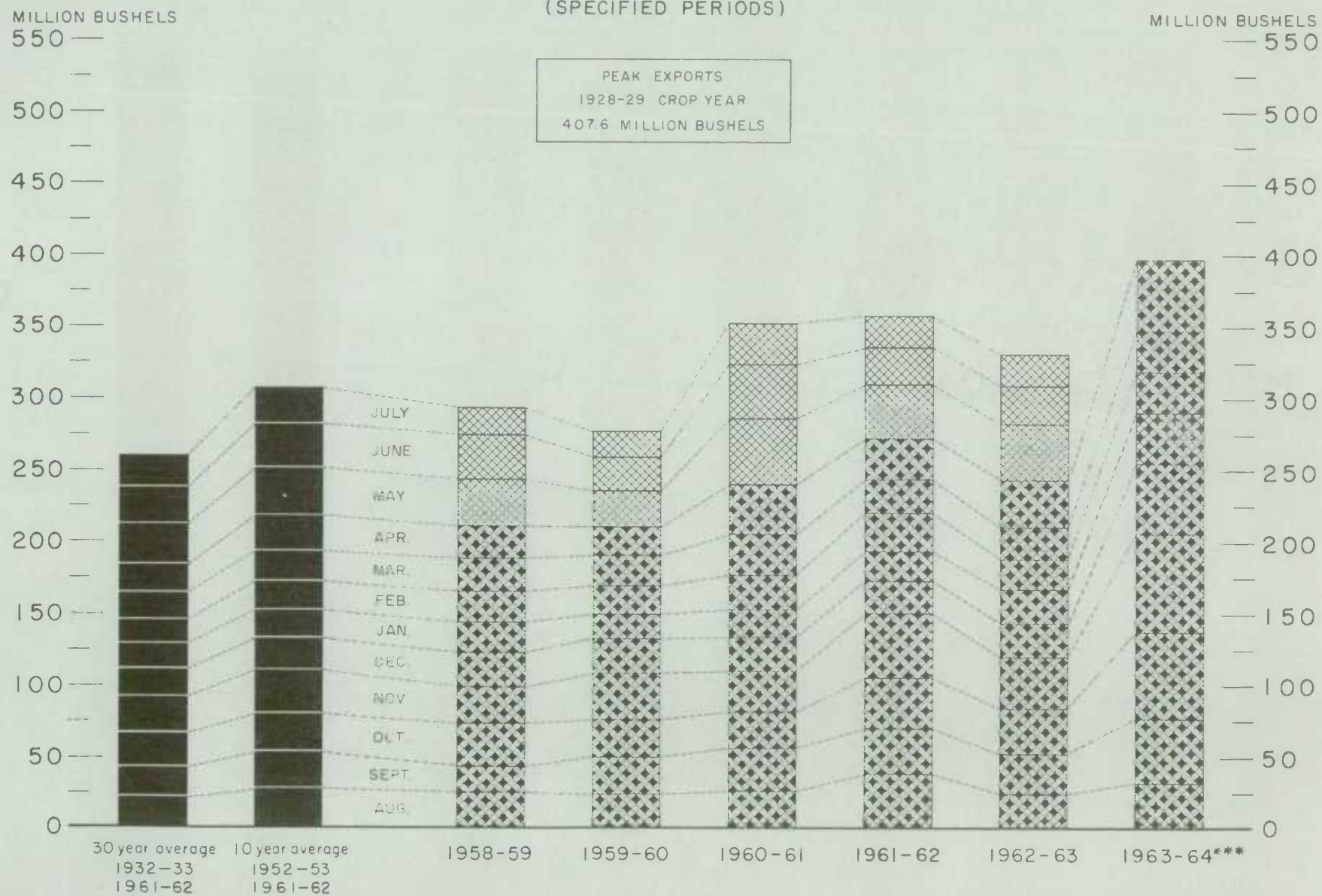
1 Northern	206/3	205/5	205/5	205/5
2 Northern	203/3	202/5	202/5	202/5
3 Northern	200/1	198/1	198/7	199/1
4 Northern	193/3	192/5	192/5	192/5
5 Wheat	187/3	186/5	186/5	186/5
6 Wheat	182/3	181/5	181/5	181/5
Feed Wheat	179/3	178/5	178/5	178/5
1 C.W. Garnet	189/3	188/5	188/5	188/5
2 C.W. Garnet	187/3	186/5	186/5	186/5
3 C.W. Garnet	186/3	185/5	185/5	185/5
1 C.W. Amber Durum	215/3	213/5	213/5	213/5
2 C.W. Amber Durum	214/3	212/5	212/5	212/5
3 C.W. Amber Durum	204/3	201/5	200/4	200/1

FARMERS' MARKETINGS OF WHEAT, PRAIRIE PROVINCES (SPECIFIED PERIODS)



EXPORTS OF CANADIAN WHEAT* AND WHEAT FLOUR**

(SPECIFIED PERIODS)



*Beginning with 1956-57 includes bagged seed wheat

**In terms of wheat equivalent

***Preliminary

Agriculture Division D.B.S.

FARMERS' MARKETINGS OF BARLEY, PRAIRIE PROVINCES

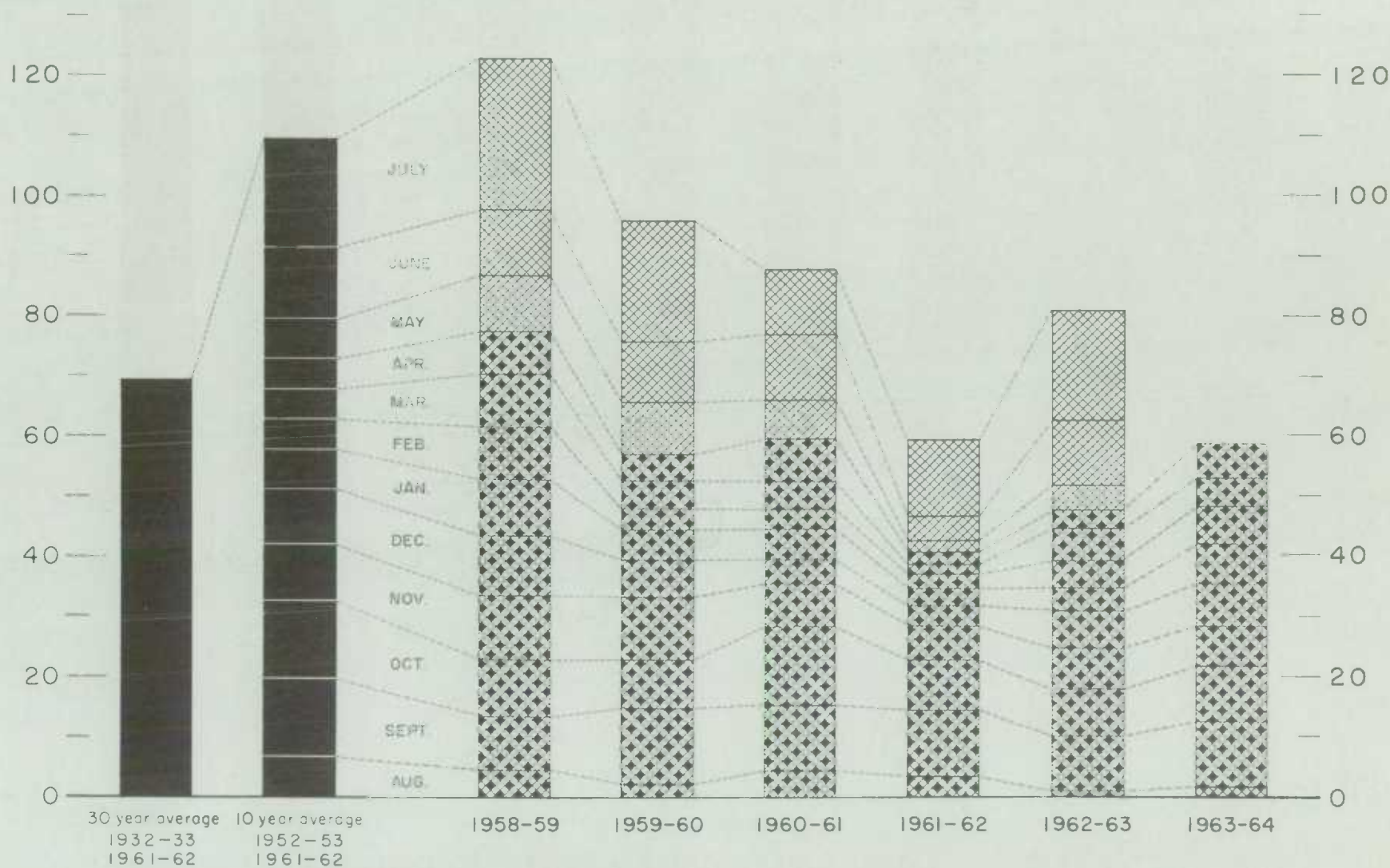
(SPECIFIED PERIODS)

MILLION BUSHELS

140 —

MILLION BUSHELS

140 —



(SPECIFIED PERIODS)



FARMERS' MARKETINGS OF OATS, PRAIRIE PROVINCES

(SPECIFIED PERIODS)

MILLION BUSHEL



MILLION BUSHEL



30 year average

1932-33

1961-62

10 year average

1952-53

1961-62

JULY

JUN.

M.

A.

M.

F.

J.

D.

NOV.

OCT.

SEPT.

AUG.

1958-59

1959-60

1960-61

1961-62

1962-63

1963-64

EXPORTS OF CANADIAN OATS* AND OAT PRODUCTS**

(SPECIFIED PERIODS)

MILLION BUSHELS

45 —

40 —

35 —

30 —

25 —

20 —

15 —

10 —

5 —

0 —

MILLION BUSHELS

45 —

40 —

35 —

30 —

25 —

20 —

15 —

10 —

5 —

0 —

30 year average 10 year average
 1932-33 1952-53
 1961-62 1961-62

1958-59

1959-60

1960-61

1961-62

1962-63

1963-64***

J
J
M
A
M
F
J
D
N
O
S
A

*Beginning with 1960-61 includes relatively small quantity of bagged seed. **In terms of grain equivalent. ***Preliminary

Agriculture Division D.B.S.

FARMERS' MARKETINGS OF CANADA'S FIVE MAJOR GRAINS,* PRAIRIE PROVINCES

MILLION BUSHELS

900 —

800 —

700 —

600 —

500 —

400 —

300 —

200 —

100 —

0

30 year average 10 year average
1932-33 1952-53
1961-62 1961-62

JULY

JUNE

MAY

APR

MAR

FEB

JAN

DEC

NOV

OCT

SEPT

AUG

1958-59

1959-60

1960-61

1961-62

1962-63

1963-64

MILLION BUSHELS

900 —

800 —

700 —

600 —

500 —

400 —

300 —

200 —

100 —

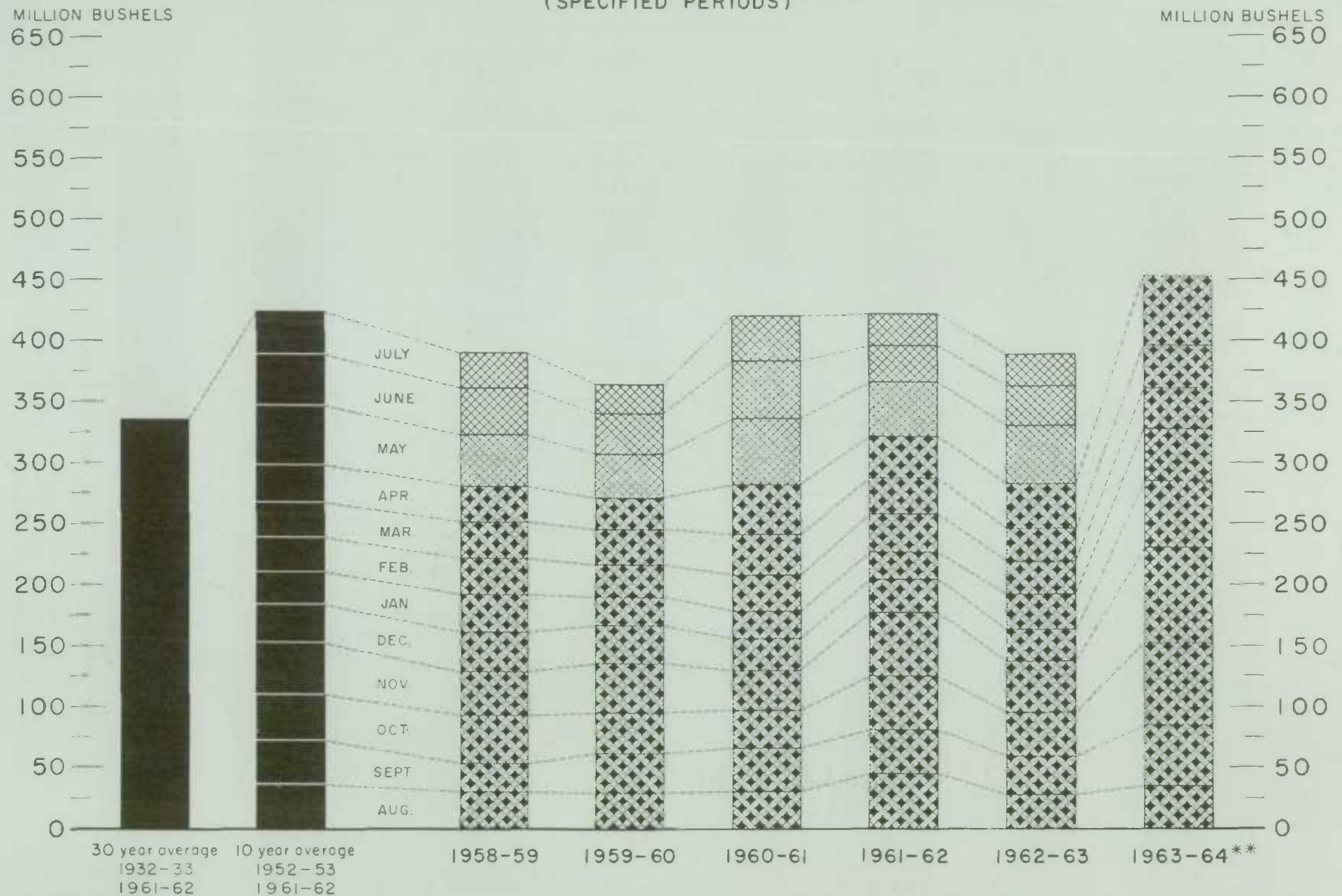
0

* wheat, oats, barley, rye and flaxseed.

Agriculture Division D.B.S.

EXPORTS OF CANADA'S FIVE MAJOR GRAINS AND PRODUCTS*

(SPECIFIED PERIODS)



* Wheat, bagged seed wheat, and wheat flour; oats, bagged seed oats, and oatmeal and rolled oats; barley, malt and pot and pearl; rye and flaxseed.
** Preliminary.

Agriculture Division D.B.S.

Canadian Wheat Board Weekly Average Cash Wheat Prices
Basis in Store Vancouver

Class and Grade	Week Ending			
	May 8	May 15	May 22	May 29
- cents and eighths per bushel -				
<u>Initial Payment to Producers</u>				
1 Northern	150	150	150	150
2 Northern	146	146	146	146
3 Northern	142	142	142	142
4 Northern	135	135	135	135
5 Wheat	118	118	118	118
6 Wheat	112	112	112	112
Feed Wheat	108	108	108	108
1 C.W. Garnet	135	135	135	135
2 C.W. Garnet	130	130	130	130
3 C.W. Garnet	125	125	125	125
1 Alberta Red Winter	134	134	134	134
2 Alberta Winter	129	129	129	129
3 Alberta Winter	123	123	123	123
1 C.W. Amber Durum	150	150	150	150
2 C.W. Amber Durum	146	146	146	146
3 C.W. Amber Durum	142	142	142	142
<u>International Wheat Agreement</u>				
<u>and Domestic Sales</u>				
1 Northern	211/6	209/3	209/3	209/3
2 Northern	208/6	205/7	205/7	205/7
3 Northern	206/6	204/3	204/3	204/3
4 Northern	199/6	197/3	197/3	197/3
5 Wheat	192/6	188/7	188/7	188/7
6 Wheat	189/6	186/7	186/7	186/7
Feed Wheat	186/6	183/7	183/7	183/7
1 C.W. Garnet	193/6	189/7	189/7	189/7
2 C.W. Garnet	192/6	188/7	188/7	188/7
3 C.W. Garnet	191/6	187/7	187/7	187/7
1 Alberta Red Winter	193/6	189/7	189/7	189/7
2 Alberta Winter	192/6	188/7	188/7	188/7
3 Alberta Winter	191/6	187/7	187/7	187/7
<u>Export - Class II</u>				
1 Northern	211/6	209/3	209/3	209/3
2 Northern	208/6	205/7	205/7	205/7
3 Northern	206/6	204/3	204/3	204/3
4 Northern	199/6	197/3	197/3	197/3
5 Wheat	192/6	188/7	188/7	188/7
6 Wheat	189/6	186/7	186/7	186/7
Feed Wheat	186/6	183/7	183/7	183/7
1 C.W. Garnet	193/6	189/7	189/7	189/7
2 C.W. Garnet	192/6	188/7	188/7	188/7
3 C.W. Garnet	191/6	187/7	187/7	187/7
1 Alberta Red Winter	193/6	189/7	189/7	189/7
2 Alberta Winter	192/6	188/7	188/7	188/7
3 Alberta Winter	191/6	187/7	187/7	187/7

CANADIAN FLOUR MILLING SITUATION

Production Wheat flour production by Canadian mills during April 1964 amounted to 3,960,000 hundredweight, representing a decrease of 16 per cent from the 4,725,000 hundredweight produced during March 1964 but 30 per cent greater than the April 1963 figure of 3,045,000 hundredweight and 25 per cent above the ten-year (1954-63) average production for the month of April of 3,163,000 hundredweight. Mills reporting operations during April 1964 had a total rated capacity of 176,000 hundredweight per 24-hour day and on the basis of a 26-day working period 86.7 per cent of this rated capacity was effective.

Wheat milled for flour during April 1964 amounted to 8,818,000 bushels, 16 per cent less than the 10,505,000 bushels milled during the preceding month but 31 per cent higher than the 6,727,000 bushels milled during April 1963. Of the wheat milled for flour during April 1964 some 7,929,000 bushels were Western Canadian spring wheat (other than Durum) while the remainder consisted of Ontario winter wheat (557,000 bushels); Durum (237,000 bushels); and all other (95,000 bushels).

Exports According to preliminary Customs returns, exports of Canadian wheat flour during April 1964 amounted to 2,886,000 hundredweight (some 6,639,000 bushels of wheat equivalent) representing an increase of 26 per cent over the 5,278,000 bushels exported during the previous month, and in sharp contrast to the adjusted April 1963 total of 2,330,000 bushels. Flour shipments during the month went to fifty-one countries with exports to the U.S.S.R. amounting to 2,654,000 bushels of wheat equivalent and accounting for 40 per cent of the April 1964 total. Shipments of Canadian wheat flour during April to Cuba, at 1,453,000 bushels equivalent, and to Britain, at 1,266,000 bushels equivalent, accounted for 22 per cent and 19 per cent of the total, respectively. Other principal markets for Canadian wheat flour during April this year with shipments in thousands of bushels of wheat equivalent were as follows: Japan, 281; Jamaica, 189; Trinidad, 158; Ghana, 94; United States, 81; and Leeward and Windward Islands, 81.

Wheat Milled for Flour, and Production and Exports of Wheat Flour, Canada

Crop Year	Wheat Milled for Flour bushels	Wheat Flour	
		Production	Exports 1/
		- cwt. -	
1935-36—1939-40 average	67,845,114	29,405,451	9,603,941
1940-41—1944-45 average	99,704,638	43,908,245	23,699,546
1945-46—1949-50 average	107,330,372	47,011,540	25,819,721
1950-51—1954-55 average	100,446,328	43,847,894	21,812,041
1955-56—1959-60 average	90,148,211	39,752,589	16,349,156
1960-61	89,731,155	39,914,644	15,513,836
1961-62	88,240,580	39,539,651	13,892,676
1962-63	78,789,332	35,505,220	11,854,458
1963-64 2/			
August	6,719,665	3,003,765	1,321,208
September	7,712,078	3,459,156	715,309
October	10,422,696	4,667,613	1,036,575
November	10,564,882	4,737,321	1,687,554
December	10,234,008	4,585,013	2,344,686
January	10,404,242	4,718,375	2,872,668
February	10,043,366	4,494,554	2,916,992
March	10,505,354	4,725,459	2,294,782
April	8,817,797	3,960,091	2,886,396
Totals	85,424,088	38,351,347	18,076,170
Same months 1962-63 3/	58,258,111	26,259,319	8,825,489

1/ Based on Customs returns. Exports for the crop years 1945-46—1962-63 revised to remove effect of time lag in the returns made by Customs.

2/ Subject to revision.

3/ Revised.

UNITED STATES SITUATION

Domestic Supplies
3 Per Cent Below
Previous Year

Domestic supplies of wheat in the United States for the 1963-64 crop year (July-June) are estimated at 2,333.0 million bushels, consisting of the July 1, 1963 carryover of 1,195.4 million and the 1963 crop, placed at 1,137.6 million bushels.

Domestic supplies of the size indicated are 3 per cent less than last year's total of 2,415.5 million and 13 per cent smaller than the record 1960-61 figure of 2,670.8 million bushels. Imports of wheat from Canada during July-April of the current United States crop year amounted to 3.6 million bushels. Domestic disappearance during 1963-64 is estimated at about 598.0 million bushels, 2 per cent more than the 588.6 million last year. After deducting anticipated domestic requirements for the current United States crop year some 1,738.6 million remained available for export and for carryover, a decrease of 5 per cent from the 1,831.9 million in 1962-63.

July-April
Exports Maintain
Record Level

Exports of wheat and flour in terms of grain equivalent during the July-April period of the 1963-64 crop year, amounted to a record 707.7 million bushels, surpassing by a substantial margin the previous peak of some 594.0 million exported in July-April 1961-62, and exceeding last year's comparable total of 501.7 million bushels by 41 per cent. The balance remaining on May 1, 1964 for export and for carryover was estimated at 1,030.9 million bushels compared with 1,330.2 million on the same date a year ago.

United States Wheat Supplies

Item	1962-63 <u>1/</u>	1963-64 <u>2/</u>
	- million bushels -	
Carryover at beginning of crop year (July 1)	1,321.9	1,195.4
Production	1,093.7	1,137.6
Total estimated domestic supplies	2,415.5	2,333.0
Imports of wheat and wheat flour in terms of wheat for domestic use, July-April	5.0	3.6
Total estimated supplies <u>3/</u>	2,420.5	2,336.6
Less estimated domestic requirements for crop year <u>4/</u> ..	588.6	598.0 <u>1/</u>
Available for export and for carryover	1,831.9	1,738.6
Deduct:		
Exports of wheat as grain, July-April	421.4	631.3
Exports of wheat flour in terms of wheat, July- April <u>5/</u>	80.3	76.4
Total exports of wheat and wheat flour <u>6/</u>	501.7	707.7
Balance on May 1 for export and for carryover	1,330.2	1,030.9

1/ Revised. 2/ Preliminary. 3/ Excluding imports for May-June. 4/ Includes shipments to United States Territories and wheat for military food use at home and abroad. 5/ Flour exports exclude "Milled in bond". 6/ These figures now include all shipments under relief programs which formerly were not available from Census data.

Winter Wheat Crop
Estimated at
1,013 Million Bushels

In a report released on May 11, 1964 the Crop Reporting Board of the United States Department of Agriculture stated that production of winter wheat is forecast at 1,013 million bushels, about the same as the April 1 estimate, 12 per cent more than the 1963 crop, but 1 per cent less than the 1958-62 average. Frequent and generous April rainfall over the Corn Belt, Eastern, and most Southern States raised yield prospects and brightened expectations for record to near-record yields. These improved prospects were partially offset by reduced production potentials from a month earlier in the Texas and Oklahoma panhandles, southwest Kansas and southeast Colorado where continued dry weather and soil blowing lowered hopes for good yields. Elsewhere in the important producing Plains States, prospects remained favourable. In western States, the outlook was generally good but warmer weather and timely rains are needed for the best development of the crop.

In the past 10 years the average change in the United States production estimate from May 1 to harvest has been 65 million bushels, ranging from a maximum of 164 million bushels to a minimum of 9 million bushels. Yield per harvested acre is indicated at 26.9 bushels, 0.8 bushel above last year and the third highest of record. Acreage for harvest is indicated at 37.6 million acres, 9 per cent more than harvested last year but 3 per cent below average. Based on growers appraisal of crop prospects as of May 1, it is anticipated that about 87 per cent of the acreage seeded will be harvested for grain.

In Kansas, prospects continued favourable. Timely rainfall over the northwest, and eastern one-half of the State, along with the warmer temperatures, stimulated rapid growth. However, in the southwest quarter the crop was suffering from a lack of moisture. Wheat in south central counties is starting to head. In Oklahoma, prospects in the major producing western districts were dimmed by lack of rain, above normal temperatures and high winds. In eastern areas, wheat was generally in good condition with adequate moisture to carry the crop to maturity. Texas wheat in the Cross Timbers district and eastward, and irrigated wheat in the High Plains were in good condition. However, lack of moisture, soaring temperatures and high winds caused deterioration of dryland wheat on the High and Southern Plains. In Nebraska, winter wheat prospects are good to excellent. The crop has tillered heavily and is growing rapidly. Surface moisture is generally adequate but subsoil moisture is still deficient in many areas. Colorado wheat prospects declined during April as lack of moisture and high winds caused considerable damage in the southeast. Wheat in the northeast and on the Western Slope of Colorado made favourable growth and with normal precipitation should produce a good crop.

Pacific Northwest prospects continued favourable during April but cool temperatures and moisture shortages in Washington and Oregon retarded development. Soil moisture is generally favourable in Idaho. Warmer temperatures and a general rain over Washington and Oregon are needed to overcome the slow development of the crop. In most other western States, prospects were slightly below a month earlier but the wheat outlook is still generally favourable, except in New Mexico where moisture is extremely short.

In the East and most of the South, wheat production prospects improved during April as abundant rainfall during the month bolstered hopes for good to excellent yields. Heading of wheat was becoming general in southern States.

Prospects for
1964 - 65

The May 1964 issue of "The Wheat Situation" published by the Economic Research Service, United States Department of Agriculture stated in part that. ...

Small Supply

The Agricultural Act of 1964 became effective on April 11. The sign-up to participate in this program took place from May 1 to 22. The latest official winter wheat estimate by the Crop Reporting Board is based on May 1 conditions. Their report estimated winter wheat production in 1964 at 1,013 million bushels on an estimated 37.6 million acres for harvest. The only official estimate to date of spring wheat production was based on farmers' intentions to plant as of March 1. This estimate placed spring wheat production at 262 million bushels. In addition to natural factors, these estimates may be changed as a result of farmer participation in the 1964 wheat program. However, no attempt to adjust the estimates was made, since complete sign-up data were not available.

Adding the May winter wheat estimate of 1,013 million bushels to the spring wheat estimate of 262 million bushels provides a total crop of 1,275 million. Along with the anticipated carryover of 890 million bushels on July 1, 1964, and an allowance for the usual small imports, this would provide a total supply of 2,170 million bushels in 1964-65.

Demand At
High Level

Domestic disappearance in 1964-65 may be slightly above the level of recent years due to some increase in the use of wheat for feed. Total domestic use of wheat for food, feed, and seed may be about 620 million bushels. Exports will be well below the record level of 1963-64, but should be in line with the high level of recent years. Total exports are currently assumed at about 700 million bushels in 1964-65 with commercial exports accounting for only 20 to 25 per cent of the total. With total disappearance of 1,320 million bushels, carryover stocks on July 1, 1965, may be further reduced from those estimated for July 1, 1964.

Even with the fairly strong demand indicated at the present time, the average farm price of wheat in 1964-65 will decline substantially from the \$1.85 per bushel estimated for the current year. The relation of market prices to the \$1.30-per-bushel loan level will depend to a large extent on the quantity of wheat eligible for price support and on farmers use of the loan program.

United States Wheat
and Flour Exports
Soon to Top Record

United States exports of wheat and flour (grain equivalent) totaled 623 million bushels between July 1963 and March 1964 -- 47 per cent more than the 424 million bushels last year during the same period. The large increase was reflected in shipments to all areas, with 80 million bushels shipped to the Eastern European countries, which represented the largest percentage increase. The U.S.S.R. received 44 million bushels, slightly over half the amount going to these countries. Exports to the EEC doubled as these countries continued to import large amounts of wheat and flour to offset the shortages in their crops. About 46 per cent of U.S. exports went to Asiatic countries. As in the past, India received the largest amount. Shipments to this country amounted to 116 million bushels during the July 1963-March 1964 period or 18 per cent of the U.S. total. Second largest market was Japan with 54 million bushels, while Pakistan was a close third with 50 million bushels.

United States shipments of wheat as grain were 57 per cent higher in the first nine months of this fiscal year as compared with the same period in 1962-63. Approximately 26 per cent of this commodity or 115 million bushels went to India. Flour shipments decreased about 3 per cent, from 71 million

bushels (grain equivalent) to 69 million bushels. Egypt continues to be the largest market receiving about one third of the total shipments.

Exports of wheat and flour by country of destination for the period July 1963 through March 1964 are shown in Table A. Canadian imports of wheat from the United States are largely for transshipment to other destinations. Inspections of U.S. wheat for export from Canadian ports are shown in Table B. These inspections are three times greater than they were last year at this time. Exports for specified countries which have been adjusted to include these inspections also shown in Table B, are 75 per cent higher than they were during the July 1962-March 1963 period. It is anticipated that United States exports of wheat and flour will reach 850 million bushels by June 30, 1964 as compared to 638 million bushels for July-June 1962-63. This will be the largest volume shipped in any one fiscal year to date.

Table A. United States Exports of Wheat and Flour by Country of Destination
July-March 1962-63 and 1963-64 ^{1/}

Destination	July 1962-March 1963			July 1963-March 1964		
	Wheat	Flour ^{2/}	Total	Wheat	Flour ^{2/}	Total
- thousand bushels -						
<u>Western Hemisphere</u>						
Canada ^{3/}	8,333	143	8,476	23,231	7	23,238
Mexico	36	611	647	36	1,434	1,470
Central America	2,679	2,047	4,726	4,081	1,630	5,711
Haiti	932	59	991	1,207	160	1,367
Trinidad and Tobago	17	1,093	1,110	4	925	929
Bolivia	572	2,361	2,933	64	2,361	2,425
Brazil	38,538	272	38,810	28,370	264	28,634
British Guiana	-	902	902	-	823	823
Chile	5,655	880	6,535	1,217	609	1,826
Colombia	2,432	532	2,964	4,443	421	4,864
Paraguay	919	30	949	1,000	126	1,126
Peru	4,107	272	4,379	2,860	206	3,066
Venezuela	3,621	90	3,711	7,201	211	7,412
Others	932	1,402	2,334	2,075	2,021	4,096
Totals	68,773	10,694	79,467	75,789	11,198	86,987
<u>Western Europe</u>						
EEC						
Belgium-Luxembourg	2,469	3	2,472	4,057	17	4,074
France	1,219	130	1,349	9,771	2	9,773
Germany, West	6,072	6	6,078	10,903	10	10,913
Italy	1,239	3,150	4,389	4,170	2,394	6,564
Netherlands	7,393	916	8,309	13,919	1,042	14,961
Totals	18,392	4,205	22,597	42,820	3,465	46,285
<u>Other Western Europe</u>						
Greece	793	1,490	2,283	1,294	1,465	2,759
Norway	755	19	774	2,978	19	2,997
Portugal	1,441	417	1,858	2,201	434	2,635
Spain	-	14	14	3,792	9	3,801
Switzerland	2,508	4/	2,508	7,438	-	7,438
United Kingdom	2,386	260	2,646	14,673	146	14,819
Yugoslavia	17,222	1,415	18,637	1,902	902	2,804
Others	1,606	304	1,910	1,860	485	2,345
Totals	26,711	3,919	30,630	36,138	3,460	39,598

Table A. United States Exports of Wheat and Flour by Country of Destination
July-March 1962-63 and 1963-64 ^{1/}

Destination	July 1962-March 1963			July 1963-March 1964		
	Wheat	Flour ^{2/}	Total	Wheat	Flour ^{2/}	Total
- thousand bushels -						
Eastern Europe						
Czechoslovakia	-	-	-	1,312	-	1,312
East Germany	-	-	-	3,268	-	3,268
Hungary	-	-	-	6,002	-	6,002
Poland	1,777	530	2,307	24,122	622	24,744
U.S.S.R.	<u>4/</u>	-	<u>4/</u>	44,406	-	44,406
Totals	1,777	530	2,307	79,110	622	79,732
Totals, Europe ..	46,880	8,654	55,534	158,068	7,547	165,615
Asia						
Afghanistan	-	1	1	2,448	78	2,526
India	96,187	356	96,543	115,423	154	115,577
Indonesia	5	11	16	-	463	463
Iran	4,292	1,773	6,065	904	1,161	2,065
Iraq	-	5	5	5,644	100	5,744
Israel	6,424	104	6,528	6,259	62	6,321
Japan	23,686	2,480	26,166	52,180	2,026	54,206
Jordan	980	2,212	3,192	987	3,744	4,731
Korea	15,685	768	16,453	17,437	2,576	20,013
Lebanon	-	1,046	1,046	45	1,127	1,172
Pakistan	32,743	870	33,613	50,393	26	50,419
Philippines	5,067	557	5,624	7,498	252	7,750
Saudi Arabia	7	2,712	2,719	95	2,858	2,953
Taiwan	6,364	1,483	7,847	6,797	965	7,762
Turkey	5,998	366	6,364	5,740	290	6,030
Vietnam, Laos and Cambodia	359	2,845	3,204	10	1,984	1,994
Others	1,055	5,535	6,590	924	1,775	2,699
Totals	198,852	23,124	221,976	272,784	19,641	292,425
Africa						
Algeria	6,697	2,550	9,247	8,886	940	9,826
British East Africa	1,252	32	1,284	134	88	222
Congo (Leopoldville)	28	1,883	1,911	119	2,740	2,859
Egypt	17,042	20,546	37,588	24,284	21,029	45,313
Morocco	1,291	1,613	2,904	2,601	2,341	4,942
Nigeria	1,081	204	1,285	1,437	49	1,486
Sudan	1,143	404	1,547	1,643	2,854	4,497
Tunisia	7,611	146	7,757	2,626	137	2,763
South Africa, Republic of	-	-	-	3,045	32	3,077
Others	2,715	968	3,683	2,709	255	2,964
Totals	38,860	28,346	67,206	47,484	30,465	77,949
Oceania	-	31	31	6	46	52
Totals, All Countries	353,365	70,849	424,214	554,131	68,897	623,028

^{1/} Data includes shipment for relief or charity. ^{2/} Grain equivalent. ^{3/} The bulk of exports to Canada are for transshipment to other destinations - see Table B.
^{4/} Less than 500 bushels.

Table B. United States Exports of Wheat and Flour as Adjusted for Transshipment Through Canadian Ports, July-March 1962-63 and 1963-64

Destination	July 1962-March 1963		July 1963-March 1964	
	Wheat in- spected for export from Canadian ports	Adjusted totals for listed countries	Wheat in- spected for export from Canadian ports	Adjusted totals for listed countries
- thousand bushels -				
EEC				
Belgium-Luxembourg	221	2,693	3,146	7,220
France	1,495	2,844	269	10,042
Germany, West	827	6,905	1,323	12,236
Italy	-	4,389	-	6,564
Netherlands	1,993	10,302	8,905	23,866
Totals	4,536	27,133	13,643	59,928
Brazil	-	38,810	108	28,742
Venezuela	-	3,711	742	8,154
United Kingdom	1,179	2,646	986	15,805
Ireland	28	304	194	385
Poland	-	2,307	1,363	26,107
Spain	-	14	230	4,031
Portugal	981	2,839	781	3,416
Hungary	-	-	661	6,663
Egypt	-	37,588	5,921	51,234
Canary Islands	-	486	708	713
Nigeria	442	1,727	507	1,993
Madeira Islands	-	539	331	667
Mozambique	224	861	413	538
Totals	7,390	118,965	26,588	208,376

Flour Production

The Bureau of the Census, Department of Commerce, estimated wheat flour production in the United States in April 1964 at 22,241,000 hundredweight, an average of 1,011,000 hundredweight per working day. This compared with an average output per working day of 998,000 hundredweight last month and 980,000 hundredweight in April 1963. Wheat flour mills in April operated at 91.5 per cent of capacity compared with 90.3 per cent and 90.0 per cent, respectively, for the previous month and the same month a year ago. Flour mills in April ground 50,226,000 bushels of wheat compared with 49,646,000 bushels during the previous month. Wheat offal output during April amounted to 410,787 tons.

Cash Wheat Prices on the Kansas City and Minneapolis Markets

No. 2 Hard Winter, Kansas City			No. 1 Northern Spring, Minneapolis		
Date	Price		Date	Price	
	- cents per bushel -			- cents per bushel -	
May 1, 1964	not available		May 1, 1964	230 5/8 - 232 5/8	
4	216 3/4 - 239 1/2	1/	4	232 1/2 - 233 1/4	
5	220 1/2 - 241 1/4	1/	5	233 1/2 - 235 1/2	
6	218 1/2 - 238 1/2	1/	6	233 1/4 - 235 1/4	
7	223		7	232 - 234	
8	220 1/2 - 239	1/	8	228 7/8 - 230 7/8	
11	220 - 240 1/2	1/	11	216 7/8 - 218 7/8	
12	220 - 241	1/	12	219 - 221	
13	218 - 242 1/2	1/	13	227 - 229	
14	223 1/4 - 243	1/	14	225 - 227	
15	221 1/2 - 243 1/2	1/	15	225 - 227	
18	224 - 243 1/2	1/	18	230 - 232	
19	224 - 243	1/	19	227 3/4 - 229 3/4	
20	224 1/2 - 243 1/2	1/	20	228 1/2 - 230 1/2	
21	221 1/2 - 242	1/	21	229 3/4 - 231 3/4	
22	202 1/2 - 222 1/4	1/	22	229 - 231	
25	202 1/4 - 217 3/4	1/	25	233 1/4 - 235 1/4	
26	201		26	231 1/2 - 233 1/2	
27	198 1/4 - 213 1/2	1/	27	229 3/4 - 231 3/4	
28	193 1/2 - 211 1/2	1/	28	229 3/4 - 231 3/4	
29	Market closed		29	Market closed	

1/ Nominal.

Chicago Wheat Futures, High Points of Closing

Date		May	July		September		December		March
			Old	New	Old	New	Old	New	
- cents and eighths per bushel -									
May	1, 1964	197/7	151/4	152/5	153/2	154/2	158	158/6	162
	4	202/6	153/5	154/4	155/1	156	160	161	164
	5	202	152/4	153/2	154/1	155	158/6	159/6	163
	6	203/2	152/5	153/4	154/2	155/2	159	160	163
	7	202/1	152/2	153/2	153/6	154/6	158/5	159/4	162/4
	8	200/4	152/1	153/1	153/6	154/6	158/4	159/3	162/2
	11	197/2	151/5	152/6	153/1	154	157/6	158/5	161/7
	12	195/6	149/7	150/4	150/6	151/6	155/6	156/6	159/4
	13	203	149/3	150/2	150/6	151/6	153/4	156/2	159/2
	14	205/6	148/6	149/6	150/2	151/4	155/1	155/7	159/2
	15	205	147/5	148/5	149/3	150/3	154	154/7	158/4
	18	205	147/4	148/3	149/2	150/3	154/2	155/2	158/2
	19	204/4	147/3	148/3	149/4	150/4	154/2	155/2	158/2
	20		148/5	149/7	150/7	151/7	155/6	156/6	159/6
	21		150/4	151/6	152/4	153/6	157/2	158/4	161/4
	22		149/6	151/2	152/2	153/2	156/6	158	161
	25		151/5	153/6	154/6	156	159/2	160/6	163/6
	26		150	152	152/5	154/2	157/6	159/4	162/4
	27		148/4	150/7	151/2	153/3	156/2	158/4	161/4
	28		147/3	149/2	150/1	151/6	155/4	157	160
	29				Market closed				

AUSTRALIAN SITUATION

Supply Position Total estimated supplies of wheat in Australia for the 1963-64 (December-November) crop year are placed at an all-time high of 351.5 million bushels, exceeding by 8 per cent the previous peak of 325.4 million in 1962-63. Indicated supplies for the current Australian crop year reflect an increase in carryover stocks from 18.2 million bushels at December 1, 1962 to 23.5 million in 1963 while production, estimated at 328.0 million bushels, represents a record crop for the second consecutive year. After deducting 75.0 million for anticipated domestic requirements, an estimated 276.5 million are available for export and for carryover in 1963-64, an increase of 10 per cent over the 252.1 million the previous year.

Combined exports of wheat as grain and wheat flour in terms of grain equivalent during the period December 1-April 25 of the current Australian crop year amounted to 133.3 million bushels, 58 per cent more than the 84.5 million exported during the corresponding period of 1962-63. The balance remaining on April 26, 1964 for export and for carryover, at 143.2 million bushels, is 15 per cent below the comparable 1963 total of 176.6 million.

Australian Wheat Supplies

Item	1962-63 <u>1/</u>	1963-64 <u>2/</u>
	- million bushels -	
Carryover, including flour as wheat, at beginning of crop year (December 1)	18.2	23.5
Production	307.2	328.0
Total estimated domestic supplies	325.4	351.5
Less estimated domestic requirements for crop year ..	73.3	75.0
Available for export and for carryover	252.1	276.5
Deduct:		
Exports of wheat as grain, December 1-April 25	74.8	118.9
Exports of wheat flour in terms of wheat, December 1-April 25	9.7	14.4
Total exports of wheat and wheat flour	84.5	133.3
Balance on April 26 for export and for carryover	167.6	143.2

1/ Revised. 2/ Preliminary.

The following information relative to the Australian situation has been extracted from a report from Mr. H. A. Gilbert, Commercial Counsellor for Canada, Melbourne, under date of May 15, 1964 and is reproduced with the permission of the Trade Commissioner Service, Department of Trade and Commerce.

Crop Position

Extensive rains over the wheat-growing areas in Australia have ensured a good start to the wheat season. Early indications are that a higher acreage than last year will be sown to wheat and although it is not possible at this stage to assess the actual harvest, it could develop into yet another bumper crop. A reported shortage of superphosphates, however, in the eastern states, particularly New South Wales could well have an effect on wheat production in the coming season.

Rainfall has been most favourable in New South Wales, especially in the western districts where the extent of the acreage to be sown is dependent greatly on the amount of moisture available at seeding time. Cereal growing areas in Victoria have also received good soaking rains and lighter rains extended into South Australia. In Western Australia rainfall has been earlier than usual but amounts have only been light.

Marketing Position

No sales have been announced in the period under review.

The Minister for Primary Industry, Mr. Adermann said recently that wheat sold to Mainland China on credit has been diverted to Cuba and other countries in the Communist Bloc. It appears that some 12,000 tons (448,000 bushels) have been transshipped to Cuba, 61,000 to Albania (2,277,000 bushels) and 57,000 tons (2,128,000 bushels) to North Korea. Another 11,000 tons (411,000 bushels) have been diverted to Tunisia and Morocco. Mr. Adermann added, however, that China has been unfailing in making payments by the due date and recently had been paying ahead of schedule.

Miscellaneous

A record movement of over 114 million bushels of wheat will be delivered by the New South Wales Railways this financial year. This is an increase of 12 million bushels compared with the previous record set in 1962-63.

However, in New South Wales, storage once again is proving to be a problem as it seems that the silos now being constructed under the State Government's 15 million bushel storage building programme will not be ready for the forthcoming harvest. Should the expected acreage increase be realized, this lack of bulk storage space will cause some disruption in the wheatgrowing areas. In 1965, when the current programme is completed, the State's storage capacity will increase by 16.6 million to 100 million bushels.

Exports of Australian Wheat and Wheat Flour in Terms of Wheat
December 1 - April 25, 1963-64 and Corresponding Period 1962-63

Destination	Wheat		Wheat Flour	
	1962-63	1963-64	1962-63	1963-64
- thousand bushels -				
<u>Europe</u>				
Albania	444	-	-	-
Britain	7,527	11,392	639	622
Eire	937	1,353	-	-
Malta	205	437	-	-
Norway	2,087	2,420	-	-
Western Germany	1,213	6,031	-	-
Others	-	-	7	1/
<u>U.S.S.R.</u>	-	31,862	-	4,510

Exports of Australian Wheat and Wheat Flour in Terms of Wheat
December 1 - April 25, 1963-64 and Corresponding Period 1962-63

Destination	Wheat		Wheat Flour	
	1962-63	1963-64	1962-63	1963-64
- thousand bushels -				
<u>Middle East</u>				
Aden	282	468	-	-
Aden and Aden I/T	-	-	490	414
Aden and Aden I/T Atta	-	-	150	196
Arabian Gulf	-	-	56	95
Arabian Gulf Atta	-	-	470	579
Iran	210	169	-	-
Iraq	-	3,101	-	-
Lebanon, Jordan, Syria	1,875	2,848	-	-
Saudi Arabia	-	-	128	10
Others	75	327	8	15
<u>Africa</u>				
Mauritius	-	-	231	506
Nyasaland	-	-	119	109
Portuguese East Africa	-	462	-	-
Rhodesia	1,566	1,440	-	-
Zanzibar	-	-	76	79
Others	7	8	26	24
<u>Asia</u>				
Brunei	-	-	13	10
Burma	551	-	80	-
Ceylon	4	7	2,764	2,750
China	46,460	39,910	-	-
Hong Kong	1,029	893	90	43
India	1,929	3,204	-	-
Indonesia and Irian	-	-	259	62
Japan	3,616	9,209	-	-
Pakistan	1,847	-	-	-
Philippines	95	242	223	919
Thailand	21	75	304	256
<u>Malaysia</u>				
Malaya	195	23	1,286	1,186
Malaya Atta	-	-	36	41
Sabah	-	-	51	69
Sarawak	-	-	65	61
Singapore	16	730	1,056	781
Singapore Atta	-	-	6	3
Singapore A/C B.W.O.	-	-	8	16
Others	-	-	29	44
<u>Pacific Area and Sundries</u>				
New Zealand	2,590	2,261	-	-
Pacific Islands and Sundries ...	19	29	879	768
Peru	-	-	10	2
Ships' Stores and Sundries	-	-	145	229
Totals	74,800	118,900	9,700	14,400

1/ Less than 500 bushels.

ARGENTINE SITUATION

Supply Position Estimated total supplies of wheat in the Argentine for the 1963-64 (December-November) crop year amount to 300.0 million bushels, consisting of the December 1, 1963 carryover of 18.5 million and the new crop, estimated at 281.5 million. Indicated supplies for the current Argentine crop year, reflecting a substantial increase in production as well as slightly larger opening stocks are about 41 per cent more than the 1962-63 total of 212.6 million bushels. After making an allowance of 132.3 million bushels for anticipated domestic requirements, an estimated 167.7 million are available for export and for carryover in 1963-64, in contrast to 84.6 million the previous year.

Exports of wheat and wheat flour in terms of grain equivalent during December 1963-April 1964 amounted to 57.5 million bushels, 13 per cent above the 42.0 million exported during the same months in 1962-63. The balance remaining on May 1, 1964 for export and for carryover was estimated at 110.2 million bushels, more than two and one-half times greater than the May 1, 1963 total of 42.6 million.

Argentine Wheat Supplies

Item	1962-63 <u>1/</u>	1963-64 <u>2/</u>
	- million bushels -	
Carryover at beginning of crop year (December 1) <u>3/</u> ...	18.0	18.5
Production <u>4/</u>	194.5	281.5
Total estimated domestic supplies	212.6	300.0
Less estimated domestic requirements for crop year	128.0	132.3
Available for export and for carryover	84.6	167.7
Deduct:		
Exports of wheat as grain, December-April	41.8	57.2
Exports of wheat flour in terms of wheat, December-April	0.2	0.3
Total exports of wheat and wheat flour	42.0	57.5
Balance on May 1 for export and for carryover	42.6	110.2

1/ Revised.

2/ Preliminary.

3/ Includes allowances for farm stocks.

4/ Official estimate.

The following account of the Argentine situation has been extracted from a report from Mr. M. B. Bursey, Commercial Counsellor, Buenos Aires, under date of May 21, 1964 and is reproduced with the permission of the Trade Commissioner Service, Department of Trade and Commerce. Where possible, conversions from Argentine to Canadian measures have been made for the convenience of our readers.

Weather
and Crops

Heavy rainfall, coupled with abnormally high temperatures, has characterized the period under review. The rains have proved highly beneficial to the now growing dual-purpose lots of oats, barley and rye, and in most livestock areas, adequate grazing is ensured for the winter months.

Heavy rainfalls, however, have proved detrimental to crops now being harvested, and many delays have been reported in harvest operations for corn, sunflowerseed and cotton. Harvested lots of these grains are arriving in country and terminal positions in a very damp condition, and costly drying operations are being required.

Wheat

The outlook for export sales of present stocks of Argentine wheat is very poor. When the minimum official producers prices for the present crop year were established, last year, the exchange rate was approximately 146 pesos per U\$S 1.00, and the established prices permitted Argentine exporters to export wheat at what was, for the time, a normal price of around U\$S 62 per metric ton (\$1.82 per bushel). The minimum producers prices increased progressively to the present 8,800 pesos per metric ton (\$1.90 per bushel) for hard wheat. During the same period, the Argentine peso has strengthened to approximately 137 pesos per U\$S 1.00, and assuming U\$S 62 per ton (\$1.82 per bushel) to be the normal price for Argentine wheat, this would convert to just 8,000 pesos. As a consequence, exports by the private trade have been at a standstill for some time, with the exception to Brazil.

As a consequence, the National Grain Board has been forced to purchase most of the available wheat, and total purchases to date have amounted to approximately 4 million metric tons (146,973,000 bushels). Of this tonnage, only the following sales have been made by the Board:

National Grain Board Export Sales

27,557,000 bushels sold direct to Mainland China
3,013,000 bushels sold to private exporters or shipments to Brazil
404,000 bushels sold to private exporters or shipments to Peru
110,000 bushels sold to private exporters or shipments to Paraguay
37,000 bushels sold to Argentine millers

Total 31,122,000 bushels

The only sales abroad reported during the period under review were 80,000 metric tons (2,939,000 bushels) sold by the private trade to Brazil at a f.o.b. price of U\$S 69 metric ton (\$2.03 per bushel). It should be noted that sales to Brazil at prices in excess of world prices are possible in accordance with the terms of existing trade agreements between the two countries. Also, Brazil insists that her purchases of Argentine wheat include grain of the highest quality. The Board announced just a few days ago that Brazil will accept, during the current year, the entire one million metric tons (36,743,000 bushels) of wheat called for under the existing agreements. There had been some concern in Argentine trading circles that the recent agreement, whereby Brazil would increase her 1964 purchases of United States wheat under PL 480 by one million metric tons (36,743,000 bushels) might affect Argentine sales to that market. However, these fears appear to have been dispelled. At the present time, there are rumours circulating that the Grain Board will sell 100,000 to 150,000 metric tons (3,674,000 to 5,511,000 bushels) to West Germany and 150,000 metric tons (5,511,000 bushels) to Chile. However, no further details whatsoever are available at writing.

The season is fast approaching for the sowing of the 1964-65 crop of wheat and, in theory at least, the new minimum official prices should have been announced by now in order to permit farmers to plan in advance. At the present time, there is considerable criticism by the trade of the present system, as it is against the law for private traders to purchase any wheat below the minimum price. Many trading firms feel that the system of minimum prices should be replaced by a system of "support" prices, under which private traders would be free to operate at any price level. No announcements whatsoever have been forthcoming from the Government, so there is no way of knowing their intentions.

Wheat prices in both the Buenos Aires Futures Market and the Buenos Aires Cereal Exchange are at the minimum official levels.

Argentine Wheat Exports December-March 1963-64 with Comparisons

Destination	Wheat	Destination	Wheat
	'000 bushels		'000 bushels
Belgium	909	Italy	3,114
Bolivia	73	Netherlands	1,678
Brazil	7,286	Paraguay	424
Britain	2,656	Peru	4,119
China, Communist	19,944	Poland	415
Czechoslovakia	982	Russia	354
France	1,663	Switzerland	164
Germany, East	646		
Germany, Fed. Rep.	7,058	Total	51,486
Compared with:			
December-March 1962-63			31,783
1961-62			45,408
1960-61			24,410
1959-60			22,487
1958-59			32,998

Wheat Situation in Uruguay

The following account of the wheat situation in Uruguay has been extracted from a report supplied by the Commercial Division, Canadian Embassy, Montevideo, under date of May 7, 1964 and is reproduced with the permission of the Trade Commissioner Service, Department of Trade and Commerce. Where possible, conversions from metric to Canadian measures have been made and rounded for the convenience of our readers.

The wheat harvest during the 1963-64 crop year was the poorest since 1959, which was a year of heavy flooding. The high output of wheat per acre of the previous year had revived interest in that crop, but heavy rains during the seeding period hindered seeding operations and even prevented seeding in some cases. Continued heavy rainfall during October and November caused erosion and flood damage in sections of the principal wheat growing districts. Total planted acreage was 353,155 hectares (872,000 acres), from which it is estimated that around 260,000 metric tons (9,553,000 bushels) were harvested, some 45 per cent less than the previous year. The average yield per hectare was only 708 kilos (11 bushels per acre), some 37 per cent lower than that of the previous crop.

During 1963, Uruguay exported 56,564 metric tons (2,078,000 bushels) of wheat; all of this being shipped between July and November, and most of it to Brazil, which received nearly 41,000 tons (1,506,000 bushels). On the instructions of the Argentine Government, some 6,500 tons (239,000 bushels) of wheat were exported to Czechoslovakia, West Germany and Paraguay, as part payment of the 100,000 tons (3,674,000 bushels) of wheat borrowed from Argentina in 1959. When it became apparent, towards the end of 1963, that the wheat crop would be small, the Government issued a decree prohibiting all exports of wheat and wheat products. At the present time, Uruguay is facing an acute shortage of wheat, and it is estimated that some 150,000 tons (5,511,000 bushels) will be required to be imported before the new crop comes in towards the end of 1964.

FRENCH SITUATION

Supply Position Total estimated commercial domestic supplies of wheat in France for the crop year (July-June) 1963-64, consisting of the July 1 carryover of 100.4 million bushels and anticipated marketings of 260.9 million, amount to some 361.3 million bushels, 16 per cent less than the 1962-63 total of 429.8 million. Imports of wheat during the July-April period of the current crop year amounted to 12.3 million bushels as against only 3.8 million imported during the same period in 1962-63. After deducting 210.7 million bushels for estimated domestic use, including normal feed wheat requirements, the surplus available for export and for carryover amounts to 162.9 million bushels in contrast to 214.6 million last year.

French Supplies of Soft Wheat

Item	1962-63	1963-64 ^{1/}
	- million bushels -	
Commercial carryover, July 1	58.7	100.4
Deliveries to Grain Board	371.1	260.9
Total estimated domestic supplies	429.8	361.3
Imports, July-April	3.8	12.3
Total estimated commercial supplies	433.6	373.6
Less domestic requirements for crop year	219.0	210.7
Available for export and for carryover	214.6	162.9
Deduct:		
Exports of wheat as grain, July-April	77.7	65.3
Exports of wheat flour in terms of wheat, July-April	20.1	16.7
Total exports of wheat and wheat flour	97.8	82.0
Balance on May 1 for export and for carryover	116.8	80.9

^{1/} Preliminary.

Combined exports of wheat and wheat flour in terms of grain equivalent during the first ten months of the 1963-64 crop year amounted to 82.0 million bushels, and represented a decrease of 16 per cent from the comparable 1962-63 total of 97.8 million. The balance of commercial supplies remaining on May 1, 1964 for export and for carryover amounted to 80.9 million bushels, 31 per cent below the May 1, 1963 total of 116.8 million.

The following account of the current crop situation in France has been extracted from a report by Mr. R. G. Woolham, Assistant Commercial Secretary, Canadian Embassy, Paris, under date of May 25, 1964, and is reproduced with the permission of the Trade Commissioner Service, Department of Trade and Commerce. Where possible, conversions from French to Canadian measures have been made and rounded.

French supplies of wheat available for export at the present time are estimated in the neighbourhood of 1.7 million tons (62,464,000 bushels). In addition to this quantity, another 400,000 to 500,000 tons (14,697,000 to 18,372,000 bushels) of wheat and flour stocks are held on a continuing basis by the flour industry. Assuming export sales of wheat and flour, between now and the end of the crop year (June 30) in the order of 300,000-400,000 tons (11,023,000 to 14,697,000 bushels) a total carryover of 1.8 to 1.9 million tons (66,138,000 to 69,812,000 bushels) is anticipated on July 1. If this turns out to be the case, it will be one of the lowest carryovers on record during the past several years. Efforts are now being made to move current supplies of relatively inferior wheat into export markets in order to release as much elevator space as possible for the new crop.

Farm Deliveries of Grain - July 1 to May 1

	<u>1962-63</u>	<u>1963-64</u>
	- thousand bushels -	
Wheat	361,958	255,513
Durum Wheat	3	2
Barley	125	183
Corn <u>1/</u>	23	51
Oats	19	26
Rye	2	3

1/ Since October 1.

Market
Situation

Sales of cereals during the last month were considered as being very slow with 50,000 tons (1,837,000 bushels) of wheat sold to East Germany at \$60 (\$1.63 per bushel) CIF Hamburg for delivery before June 30. This sale was concluded under a proposed long term contract which would commit France to deliver 350,000 tons (12,860,000 bushels) of wheat and 100,000 tons of other cereals during the 1964-65 crop year, plus another 350,000 tons of cereals during 1965-66. Ireland also purchased during this month 10,000 tons (367,000 bushels) of feed wheat.

Imports of hard milling wheats into France were considerably less active than interest registered during previous months. To May 15, 1964, Import Certificates for hard wheat totalled 360,000 tons (13,228,000 bushels) for the crop year.

Weather
and Crops

The fine weather conditions noted for April carried into May. Warm, sunny weather, broken occasionally by scattered rain or thunderstorms throughout the area were reported. Crop growth is very satisfactory and if present weather conditions continue until harvest time a bumper crop in all cereals can be anticipated. The estimated area seeded to wheat as of May 1 is already 5 per cent higher than the 5-year average, and almost as high as the area seeded to wheat in 1962 - a record year.

Given average yields, wheat production this year will probably reach between 10.5 and 12.5 million tons (385.8 and 459.3 million bushels).

Estimated Area Seeded to Cereals on May 1

Grain	5-yr. Average Actual	May 1 1962	May 1 1963	May 1 1964
- thousand acres -				
Wheat	10,455	11,073	9,116	10,963
Wheat and rye	42	28	32	29
Rye	676	647	571	586
Barley	5,442	4,924	5,533	5,282
Oats	3,457	3,280	3,073	2,821
Mixed cereals	263	189	278	210
Totals	20,335	20,143	18,603	19,891

WHEAT SITUATION IN ITALY

The following account of the current crop situation in Italy has been extracted from a report by Miss M. D. Johnson, Commercial Assistant, Canadian Embassy, Rome, under date of May 15, 1964, and is reproduced with the permission of the Trade Commissioner Service, Department of Trade and Commerce. Where possible, conversions from Italian to Canadian measures have been made and rounded for the convenience of our readers. Currency conversions have been made at the rate of 578.03 lire per Canadian dollar, the quotation in effect on May 15, 1964.

A provisional official estimate as to the area sown to winter and spring wheat during the current crop year is just over 11 million acres, an increase of 1.4 per cent over last year. Weather conditions have, so far, been generally favourable to grain growing and, although no estimated figures have yet been released, excellent outturns of all grain products are anticipated.

No decision has yet been made by EEC in Brussels as to this year's target prices for wheat and other grains. On the other hand, the Italian Minister of Agriculture has publicly stated that there will be no change in the wheat prices in Italy. For the 1963-64 crop year target prices per metric ton ranged, according to areas and/or qualities, from Lire 64,000 to Lire 71,000 (\$3.01 to \$3.34 per bushel) for non-durum wheat and from Lire 84,000 to Lire 92,500 (\$3.95 to \$4.36 per bushel) for durum. Threshold prices for imports from third countries were established at Lire 70,500 per metric ton (\$3.32 per bushel) for non-durum and Lire 92,500 (\$4.36 per bushel) for durum wheat. Starting September 1, 1963, and for a period of eight months these prices have been raised monthly by 500 Lire per metric ton (2.4 cents per bushel) and therefore they are at present increased by 4,000 Lire (18.8 cents per bushel).

Italy obtained authority in June 1963 to impose a supplementary levy on a series of hard wheats, including Manitoba 1, 2 and 3, to discourage using imported hard wheats to make "pasta". The authority to apply these levies expires on June 30, 1964, and there is no indication yet whether the Italian Government will ask for an extension.

On May 1, 1964, the general levies applicable to imports from third countries were as follows: Wheat (except Durum) \$1.56 per bushel and Durum wheat \$2.22 per bushel.

On the same date the supplementary levies for quality wheats (to be added to the above levy for "wheat") were as follows:

		cents per bushel
CANADA	Manitoba 1	49
	Manitoba 2	50
	Manitoba 3	54
U.S.A.	Dark Hard Winter 1 & 2	59
	Dark Northern Spring 1 & 2	50
ARGENTINA	Southern	59
U.R.S.S.	431 type	59
AUSTRALIA	Semihard	59
MOROCCO	Florence Aurora	59

Imports of wheat in 1963 totalled about 300,000 metric tons (11,023,000 bushels), against about 450,000 tons (16,534,000 bushels) in 1962. Official figures show January 1964 wheat imports at 36,580 metric tons (1,344,000 bushels) against 18,321 tons (673,000 bushels) in January 1963, and it is unofficially reported that between December 1963 and April 1964 about 50,000 metric tons (1,837,000 bushels) of soft wheat from France have been imported.

During the current crop year farmers delivered to the "Intervention Organization" (Government agency) both durum and soft wheat at established prices ranging, according to areas and/or qualities, from Lire 61,250 to Lire 65,500 per metric ton (\$2.88 to \$3.08 per bushel) for non-durum wheat and from Lire 73,000 to Lire 85,500 (\$3.44 to \$4.03 per bushel) for durum. Established prices for sale of this wheat to millers range from Lire 64,000 to Lire 71,000 per metric ton (\$3.01 to \$3.34 per bushel) for non durum and from Lire 84,000 to Lire 92,500 (\$3.95 to \$4.36 per bushel) for durum wheat. Both the buying and selling prices given above have been increased for eight months, starting September 1, 1963, by Lire 500 per metric ton (2.4 cents per bushel) per month, and consequently have all now risen by 4,000 Lire (18.8 cents per bushel). However, only a portion of the crop has been delivered to the Intervention Organization, whose principal scope is to assure a minimum price to farmers for their wheat crops. The greater part of the crop has been, and is being, sold on the open market either direct or through authorized voluntary pools.

At April 22, 1964, stocks of the Intervention Organization were as follows:

- 11,023,000 bushels domestic soft wheat (safety stock piling)
- 367,000 bushels domestic soft wheat still available for sale
- 3,535,000 bushels domestic durum wheat still available for sale
- 1,102,000 bushels domestic durum wheat (stock piling held for Sicily).

It would appear that while imports of wheat will still be small, especially if the excellent crop forecasts materialize, the increase in the imports of other grains, with the exception of rye and with the emphasis on maize, will continue.

CROP SITUATION IN BRITAIN

The following account of the current crop situation in Britain has been extracted from a report received from Mr. D. B. Laughton, Agricultural Counsellor for Canada, London, under date of May 19, 1964 and is reproduced with the permission of the Trade Commissioner Service, Department of Trade and Commerce.

The weather up to the end of April was cloudy and wet, making conditions for spring sowing generally unfavourable; some grain still remained to be seeded. Heavier soils were too wet for this operation, but some seeding was done on lighter soils.

Winter wheat made good progress in the later part of the month, looking vigorous and generally healthy, but with some yellowing in wetter areas. Germination of spring sown wheat was satisfactory on the whole, but had been checked by cold wet conditions; this and a leatherjacket infestation (grub of the crane fly) in some areas caused some patchiness.

Winter sown barley was described as healthy and pest free and made rapid growth in the second half of the month. Spring sown barley germination has been uneven, being similarly affected by the above conditions.

Winter sown oats similarly made vigorous growth in the latter part of April and looked in good condition; spring sown oats made satisfactory progress except on heavy, wet soils.

Grain Acreages - England and Wales

<u>Grain</u>	<u>June 1962</u>	<u>June 1963</u>	<u>Forecast March '63</u>	<u>Forecast March '64</u>
- thousand acres -				
Wheat	2,144	1,837	1,887	2,111
Barley	3,501	4,148	3,974	4,307
Oats	787	616	677	542
Mixed Grain	120	94	102	81
(for threshing)				
Rye, for threshing	17	21	20	N/A
Total Cereals	6,570	6,717	6,660	7,041

Compared with March 1963, the forecast of the total cereals area is up by 6 per cent, or 401,000 acres. The largest acreage increase is in barley, by 333,000 or 8 per cent. The wheat forecast is up by 224,000 or 12 per cent on the previous year. Continuing the trend of recent years oats are down by 135,000 acres or 20 per cent.

continued from page 7.

With warm weather, early-sown crops are making good progress in Alberta. In general, however, surface soils are drying rapidly and late-seeded crops need rain for even germination. Useful precipitation during the past week was confined to the southwest and the Peace River area. In some areas seeding of late flax and other late crops is being postponed for more moisture. Because of streak mosaic damage about 40 per cent of the winter wheat has been cultivated out at Lethbridge and other areas are affected to the extent of 10 to 15 per cent.

Indications are that planting intentions have been carried out in all areas except eastern Peace River districts where wet weather hindered wheat seeding. Pastures are good in southern, central and Peace River districts but rate only fair in most other northern regions. Grasshoppers are hatching rapidly in the south, and in isolated cases, considerable damage had occurred before observed, due to species being the type that hatch throughout fields rather than predominantly in field borders. The hatch in central regions is not sufficiently advanced to permit an estimate of infestation. Damage by pale western cutworms has occurred across the south of the province as far north as Nobleford with some control by chemicals reported.

Wheat Sale
to China

On May 11, 1964 the Canadian Wheat Board announced that under the provisions of the Second Long Term Wheat Agreement with China, a further sales contract had been signed to provide for the export of 1,075,000 long tons, 5 per cent more or less, of wheat of which one million tons will be shipped from Pacific Coast Ports during July to December, and the balance of 75,000 tons shipped from St. Lawrence River Ports during the period May through December, 1964. Assuming the full tolerance is taken this amounts to slightly over 42 million bushels.

Including the sales contract covered by this announcement, total sales under the Second Long Term Agreement amount to 2.1 million tons or approximately 77.4 million bushels. As in the previous sales contracts payment terms for sales under the long term agreement are 25 per cent cash when each vessel is loaded and the balance of 75 per cent in 18 months with interest. The deferred payment provision is made possible by a guarantee to the Canadian Wheat Board by the Government of Canada.

CALENDAR OF WHEAT EVENTS

- May 7 The Canadian Wheat Board, in its Instructions to the Trade, re Quotas (General) No. 19, announced in part that a supplementary quota of five (5) bushels per seeded acre to wheat (other than Durum) as shown in the individual producer's delivery permit book, or three hundred (300) bushels, whichever is the larger, will be made effective Monday, May 11th, at all delivery points in the designated area which are presently on an eight (8) bushel specified acreage quota.
- 11 According to a report published by the Crop Reporting Board, United States Department of Agriculture, the U.S. winter wheat crop for harvest in 1964, based on conditions at May 1, was forecast at 1,013 million bushels, 12 per cent more than the 1963 crop, but 1 per cent less than the 1958-62 average.
- 15 According to a report received from Mr. H. A. Gilbert, Commercial Counsellor for Canada, Melbourne, extensive rains over the wheat-growing areas in Australia have ensured a good start to the wheat season. Early indications are that a higher acreage than last year will be sown to wheat.
- 25 According to a report received from Mr. R. G. Woolham, Assistant Commercial Secretary, Canadian Embassy, Paris, the estimated area seeded to wheat in France as of May 1 is already 5 per cent higher than the 5-year average, and almost as high as the area seeded to wheat in 1962 - a record year.
-

STATISTICS CANADA LIBRARY
BIBLIOTHEQUE STATISTIQUE CANADA



1010686755