

CATALOGUE No.

22-005

MONTHLY

DOES NOT CIRCULATE

NE PAS PRÊTER



CANADA

DOMINION BUREAU OF STATISTICS

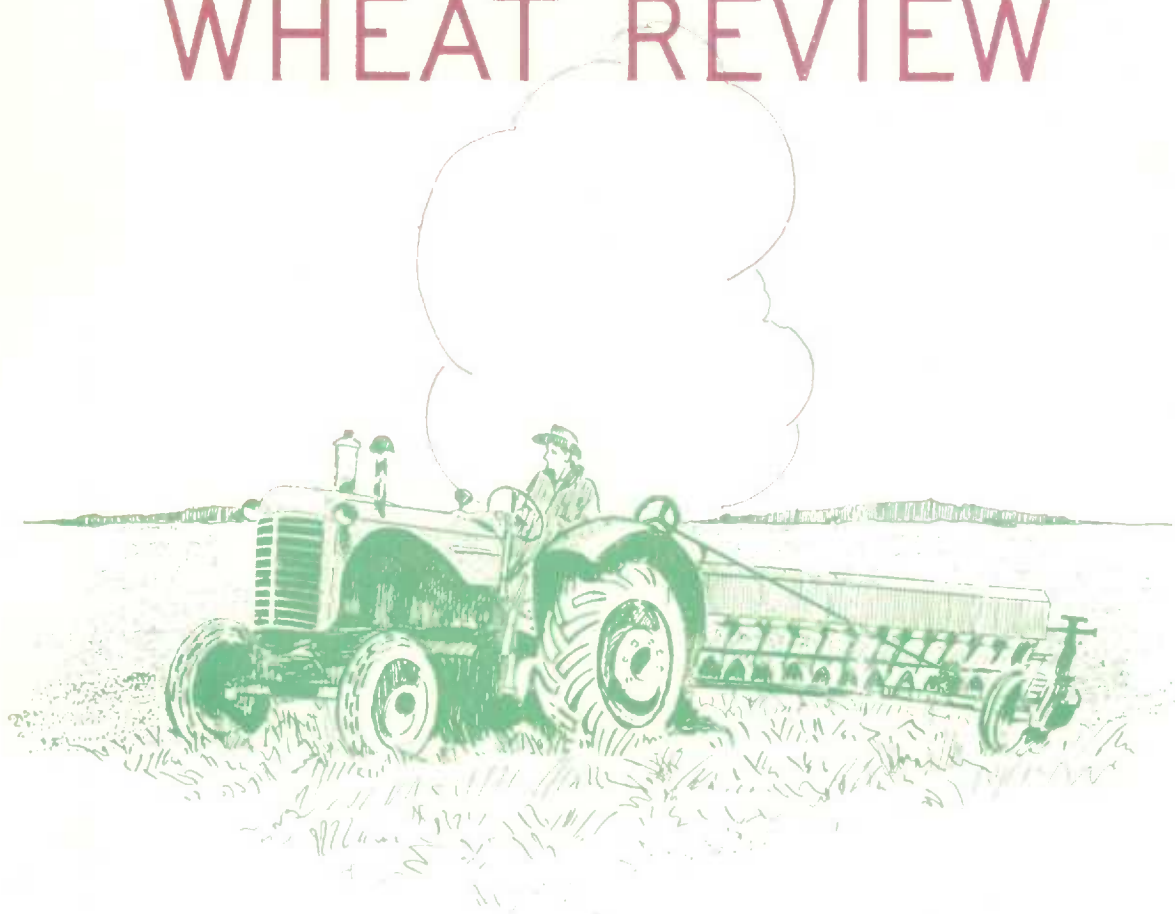
AGRICULTURE DIVISION

DOMINION BUREAU
OF STATISTICS

JUL 28 1964

PROPERTY OF THE
LIBRARY

THE WHEAT REVIEW



JUNE 1964

DOMINION BUREAU OF STATISTICS

THE
WHEAT REVIEW

JUNE 1964

Published by Authority of
The Minister of Trade and Commerce

Prepared in the Crops Section, Agriculture Division
Dominion Bureau of Statistics, Ottawa

TABLE OF CONTENTS

	<u>Page</u>
World Wheat Situation	
August-May Exports Exceed Previous Record for Crop Year.....	1
Wheat Supplies of Four Major Exporters 20 Per Cent Less Than Average.....	1
I.W.C. Cumulative Totals of Commercial Purchases.....	2
Canadian Situation	
Crop Year Supplies Set New Record.....	3
Exports 29 Per Cent Ahead of Previous Record.....	3
May Exports of Wheat and Flour Set Record at 61 Million Bushels.....	4
August-May Wheat Exports Exceed Record Crop Year Total.....	4
Wheat Flour Exports Highest Since 1952-53.....	4
Visible Supplies Experience Relatively Moderate Fluctuations.....	5
Initial Payment for Wheat.....	5
Delivery Policy.....	6
Lake Shipments of Canadian Grain.....	6
Crop and Weather Conditions.....	6
Farmers' Marketings of Wheat.....	7
Visible Supply of Canadian Wheat.....	8
Grading of Wheat Inspected, August-May 1963-64 with Comparisons.....	8
Weekly Visible Supply and Farmers' Marketings (Charts).....	9
Wheat Shipments to the United States by Destination.....	10
Rail Shipments of Wheat to Maritime Ports.....	10
Rail Shipments of Wheat from Fort William-Port Arthur.....	11
Overseas Exports of Canadian Grain by Ports of Loading.....	11
Freight Assistance Shipments.....	12
Monthly Exports of Canadian Wheat and Wheat Flour.....	13
Exports of Canadian Wheat by Destination.....	14
Customs Exports of Canadian Wheat Flour by Countries of Consignment.....	17
Canadian Wheat Board Weekly Average Cash Wheat Prices.....	19
Canadian Flour Milling Situation	
Production and Exports.....	21
United States Situation	
Domestic Supplies 3 Per Cent Below Previous Year.....	22
July-May Exports Set New Record.....	22
1964 Wheat Crop Forecast at 1,213 Million Bushels.....	23
United States Wheat and Flour Exports Second Highest in History.....	24
Cash Wheat Prices on Kansas City and Minneapolis Markets.....	27
Chicago Wheat Futures, High Points of Closing.....	27
Australian Situation.....	28
Argentine Situation.....	31
French Situation.....	33
Calendar of Wheat Events.....	34

WORLD WHEAT SITUATION

August-May Exports Exceed Previous Record for Crop Year

Exports of wheat and flour in terms of wheat from the four traditional major exporters amounted to some 191.1 million bushels during May, the highest total for any month on record. As a result, cumulative wheat exports from the United States, Canada, Argentina and Australia during the August-May period of the current Canadian crop year, have now reached a level of 1,519.7 million bushels, representing an increase of 10 per cent over the previous record for a complete crop year, when 1,377.5 million were shipped in 1961-62. This year's August-May exports of wheat, including flour, were 49 per cent greater than last year's corresponding level of 1,019.5 million, 29 per cent higher than the previous record of 1,180.2 million shipped during the same months in 1961-62 and nearly double the ten-year (1952-53-1961-62) average for the period of 791.7 million bushels.

The most important single factor contributing to the increase in the world wheat trade in 1963-64 was the extent of the crop failure in the U.S.S.R. In addition to the large volume of wheat shipments to that destination, exports to several other countries of Eastern Europe have reported increases. Gains are also reported for wheat imports into Western Europe and Asia.

Of the current August-May exports, wheat shipments from the United States represent 48 per cent of the total while those from Canada have accounted for 30 per cent. Clearances from Australia and Argentina were equivalent to 16 per cent and 6 per cent, respectively.

Exports of Wheat and Flour in Terms of Wheat, August 1963-May 1964 with Comparisons

August-May	United States	Canada	Argentina	Australia	Total
- million bushels -					
1950-51	304.6	178.8	75.8	106.5	665.7
1951-52	413.5	268.5	24.1	81.1	787.2
1952-53	279.8	297.5	19.2	84.8	681.3
1953-54	170.7	209.1	94.1	52.2	526.1
1954-55	226.4	209.7	112.0	81.8	629.9
1955-56	267.7	236.9	97.9	84.6	687.1
1956-57	448.4	216.8	82.9	108.9	857.0
1957-58	327.1	263.7	63.4	53.3	707.5
1958-59	380.6	243.8	85.5	61.6	771.5
1959-60	426.5	235.4	61.3	92.8	816.0
1960-61	566.8	286.3	59.2	148.4	1,060.7
1961-62	603.8	310.2	80.2	186.0	1,180.2
1962-63 <u>1/</u>	542.9	281.1	59.4	136.1	1,019.5
1963-64 <u>2/</u>	722.7	459.2	95.6	242.2	1,519.7

1/ Revised.

2/ Preliminary.

Wheat Supplies of Four Major Exporters 20 Per Cent Less Than Average

Supplies of wheat held by the four traditional major exporters at June 1, 1964, for export and for carryover (less estimated domestic requirements to the end of their respective crop years) amounted to 1,759.3 million bushels, 11 per cent smaller than the 1,976.7 million available at the same time a year ago and one-fifth below the ten-year (1953-62) average of 1,890.5 million. As indicated by the accompanying figures, smaller supplies in the United States and Australia more than offset larger totals in Canada and Argentina. Supplies at June 1, 1964, in millions of bushels, were held as follows, with last year's comparable figures in brackets: United States, 957.0 (1,245.0); Canada, 596.5 (537.4); Argentina, 96.1 (46.3); and Australia, 109.7 (148.0).

International Wheat Council
Cumulative Totals of Commercial Purchases by Importing Countries from Exporting Countries
Crop Year 1963-64 — Through May 30, 1964

Importing Countries	EXPORTING COUNTRIES								Total
	Canada	Argentina	Australia	France	Italy	Sweden	U.S.S.R.	U.S.A.	Purchases
	- thousand bushels -								
Austria	754	-	-	1,909	-	-	-	116	2,779
Belgium & Luxembourg	14,382	1,008	-	6,671	-	7	55	4,758	26,881
Brazil	-	21,495	-	-	-	-	-	8,738	30,233
Costa Rica	694	-	-	78	-	-	-	1,174	1,946
Cuba	-	-	-	-	-	-	-	-	-
Dominican Republic	891	-	-	-	-	-	-	1,056	1,947
El Salvador	1,065	-	-	1	-	-	-	915	1,981
Finland	726	-	-	-	-	1	-	210	937
Germany, Federal Republic	39,916	7,763	8,135	5,359	-	1,763	-	18,536	81,472
Greece	15	-	-	-	-	-	-	209	224
Guatemala	430	-	-	-	-	-	-	1,637	2,067
Iceland	2	-	-	6	-	-	-	91	99
India	-	-	7,034	1	-	-	-	3	7,038
Indonesia	-	-	209	-	-	-	-	2	211
Ireland	2,123	-	2,219	17	-	-	-	271	4,630
Israel	1,590	-	148	-	-	-	-	2,199	3,937
Japan	48,990	-	17,496	-	-	-	-	68,818	135,304
Korea	511	-	1,539	-	-	-	-	4,060	6,110
Liberia	65	-	-	-	-	-	-	94	159
Libya	-	-	2	139	1,141	-	-	277	1,559
Netherlands	3,081	2,813	1	2,615	-	110	735	21,548	30,903
Netherlands Territories	215	-	16	184	-	-	-	785	1,200
New Zealand	-	-	5,800	-	-	-	-	-	5,800
Nigeria	523	-	-	16	-	-	-	2,047	2,586
Norway	1,703	-	3,726	122	-	908	-	4,277	10,736
Peru	1,177	8,655	12	24	-	-	-	4,082	13,950
Philippines	7,758	-	2,376	-	-	-	-	7,689	17,823
Portugal	428	411	12	334	-	-	-	5,639	6,824
Portuguese Territories.	360	-	1,013	-	-	-	-	1,215	2,588
Rhodesia & Nyasaland	56	-	1,772	2	-	-	-	111	1,941
Saudi Arabia	824	-	971	2	1	-	-	3,399	5,197
Sierra Leone	430	-	-	5	-	-	-	79	514
South Africa	3,061	-	-	-	-	-	-	3,036	6,097
Switzerland	8,169	226	-	1,872	33	22	-	1,860	12,182
Tunisia	-	-	-	-	-	-	-	-	-
United Arab Republic	-	-	-	-	-	-	-	12	12
United Kingdom	94,043	5,601	27,047	12,473	4	240	875	19,870	160,153
U.K. Territories	3,433	-	5,538	345	-	-	-	2,004	11,320
Vatican City	205	-	-	-	-	-	-	-	205
Venezuela	7,544	-	-	-	-	-	-	10,501	18,045
Western Samoa	-	-	125	-	-	-	-	5	130
To Orders	-	7,707	-	5,571	-	294	-	-	13,572
Totals	245,164	55,679	85,191	37,746	1,179	3,345	1,665	201,323	631,292
Percentage of Total Sales by Exporting Countries. . .	38.84	8.82	13.49	5.98	0.19	0.53	0.26	31.89	100.0

NOTE: Mexico - no sales reported to October 31, 1963.
Spain and the U.S.S.R. have been granted exemption from reporting.
Argentina - quantities cover period ending May 16, 1964.
Italy - quantities cover period ending May 9, 1964.

CANADIAN SITUATION

Crop Year Supplies Set New Record

Total estimated supplies of Canadian wheat for the 1963-64 crop year reached an all-time high of 1,210.7 million bushels, reflecting an increase in carryover stocks, from 391.1 million in 1962 to 487.2 million in 1963, combined with the record 1963 production of 723.4 million. Supplies of the size indicated are 27 per cent greater than the previous year's total of 956.6 million bushels and exceed by 5 per cent the previous peak of 1,152.8 million established in 1956-57. After making an allowance of 155.0 million bushels for anticipated domestic requirements, supplies available for export and for carryover during the 1963-64 crop year amount to 1,055.7 million bushels, 29 per cent above the comparable 1962-63 level of 818.5 million.

Exports 29 Per Cent Ahead of Previous Record

Total exports of wheat and flour during the August-May period of the current crop year amounted to the unprecedented level of 459.2 million bushels, surpassing by 29 per cent the previous peak of 357.0 million shipped during the same ten months in 1928-29 and exceeding by 63 per cent the 1962-63 comparable total of 281.1 million. Of the current total, shipments of wheat as grain accounted for some 413.5 million bushels, in sharp contrast to the previous season's corresponding figure of 258.6 million. Exports of wheat flour have amounted to the equivalent of 45.6 million bushels, slightly more than double the 22.5 million shipped during the August-May period of last year. The balance remaining on June 1, 1964 for export and for carryover amounted to 596.5 million bushels, 11 per cent larger than the June 1, 1963 total of 537.4 million.

Canadian Wheat Supplies

Item	1962-63 <u>1/</u>	1963-64 <u>2/</u>
	- million bushels -	
Carryover in North America at beginning of crop year (August 1)	391.1	487.2
Production	565.6	723.4
Imports of wheat for domestic use, August-May	<u>3/</u>	<u>4/</u>
Total estimated supplies	956.6	1,210.7
Less estimated domestic requirements for crop year .	138.1	155.0
Available for export and for carryover	818.5	1,055.7
Deduct:		
Exports of wheat in bulk, August-May <u>5/</u>	254.7	410.7
Exports of bagged seed wheat, August-May <u>6/</u>	3.9	2.9
Total exports of wheat as grain	258.6	413.5
Exports of wheat flour in terms of wheat, August - May <u>6/</u>	22.5	45.6
Total exports of wheat and wheat flour	281.1	459.2
Balance on June 1 for export and for carryover	537.4	596.5

1/ Revised. 2/ Preliminary. 3/ Less than 50,000 bushels. 4/ Not available.

5/ As reported by the Board of Grain Commissioners. (Includes overseas clearances and imports into the United States). 6/ Customs returns, 1962-63 adjusted for time lag.

May Exports of Wheat
and Flour Set Record
at 61 Million Bushels

Total exports of wheat in bulk, bagged seed wheat and wheat flour in terms of grain equivalent amounted to 61.1 million bushels during May 1964, the highest total ever recorded for that month and surpassing by 27 per cent the previous

peak of 48.2 million shipped in May 1945. This year's May total was 83 per cent over the ten-year (1953-62) average of 33.5 million and exceeded by margins of 63 per cent and 22 per cent the May 1963 exports of 37.6 million bushels and the April 1964 figure of 50.1 million, respectively. Exports of wheat in bulk (as reported by the Board of Grain Commissioners) during May 1964 reached a record of 57.0 million bushels, the largest clearances for that month since 42.3 million were exported in 1961. In addition, this year's May exports of wheat in bulk were 32 per cent above the April total of 43.2 million, 61 per cent greater than the May 1963 figure of 35.4 million and in sharp contrast to the ten-year average exports for the month of May of 29.8 million bushels. Exports of bagged seed wheat during May 1964, based on Canadian Customs returns, amounted to 38 thousand bushels as against the April 1964 figure of 261 thousand and the May 1963 total (adjusted to remove time lag) of only 14 thousand bushels. Customs returns also indicate that the equivalent of 4.1 million bushels of wheat was exported in the form of flour during May 1964. This season's May total exceeded the previous year's adjusted exports of 2.2 million by 86 per cent but was 39 per cent less than the April 1964 total of 6.6 million bushels.

August-May Wheat Exports
Exceed Record
Crop Year Total

Cumulative exports of wheat in bulk during the first ten months (August-May) of the current crop year have amounted to 410.7 million bushels and exceed by 16 per cent the record of 354.4 million for the complete crop year 1928-29.

This year's August-May total represented an increase of 61 per cent over the 1962-63 comparable figure of 254.7 million and 92 per cent more than the ten-year (1952-53-1961-62) average for the period of 214.4 million. Clearances to the U.S.S.R. (Russia) totalled 27.0 million bushels during the month of May 1964 and raised the cumulative crop year total to that destination to 154.5 million. This total represented 38 per cent of the ten-month total exports of Canadian wheat in bulk form. Shipments of wheat to Britain amounted to 61.3 million bushels and accounted for 15 per cent of the August-May 1963-64 total. During the same period of 1962-63 there were no shipments of wheat to the U.S.S.R. while those to Britain amounted to 63.8 million bushels and represented 25 per cent of the August-May total. Other principal markets for Canadian wheat in bulk during the first ten months of the current crop year, with figures for the same period of the preceding crop year in brackets, were as follows, in millions of bushels: Japan, 40.4 (37.6); China Communist, 35.1 (50.8); Federal Republic of Germany, 32.3 (24.9); Belgium and Luxembourg, 14.4 (8.2); Poland, 8.1 (14.2); Venezuela, 6.2 (5.8), Cuba, 5.6 (nil); Philippines, 5.5 (5.1); Bulgaria, 5.4 (nil); Switzerland, 5.3 (2.4); and Czechoslovakia, 5.1 (4.4). Cumulative exports of bagged seed wheat during August-May of the current crop year, based on Canadian Customs returns, amounted to 2,852 thousand bushels compared with last year's comparable total (adjusted to remove time lag) of 3,884 thousand.

Wheat Flour Exports
Highest Since 1952-53

Cumulative exports of wheat flour during the first ten months of the 1963-64 crop year, based on Customs returns, were the equivalent of 45.6 million bushels, the highest

August-May volume since 47.7 million were exported during the same months in 1952-53 and more than double the adjusted 1962-63 total for the same period of 22.5 million bushels. The U.S.S.R. (Russia) and Britain were the two major markets for Canadian wheat flour during the period under review. Shipments of wheat flour to the U.S.S.R. during the August-May period of the current crop year amounted to the equivalent of 18.3 million bushels and accounted for 40 per cent of the ten-month total while those to Britain, at 10.3 million bushels, represented 23 per cent of the August 1963-May 1964 exports of wheat flour. During the same months of the 1962-63 crop year

there were no shipments of flour to the U.S.S.R. but shipments of wheat flour to Britain amounted to the equivalent of 10.0 million bushels and represented 45 per cent of the total. Other leading markets for Canadian wheat flour in terms of grain equivalent during the August-May period of the 1963-64 crop year, with revised data for the same months of the preceding crop year in brackets, were as follows, in thousands of bushels: Cuba, 5,890 (nil); Jamaica, 1,420 (1,121); Trinidad, 1,152 (1,086); Leeward and Windward Islands, 878 (794); Ghana, 811 (1,476); Hong Kong, 781 (777); United States, 769 (1,159); and Ceylon, 612 (1).

Visible Supplies
Experience Relatively
Moderate Fluctuations

The total visible supply of Canadian wheat declined during late May and, at June 3, was 304.0 million bushels, its lowest level of the current crop year. Increases were recorded for each of the two weeks following this date and largely reflected the implementation of the supplementary delivery quota for wheat, announced by the Canadian Wheat Board on May 7, 1964. Wheat deliveries reached a crop year high during the week ending June 10, amounting to some 27.7 million bushels. During the week ending June 24, with increased disappearance offsetting marketings, the total visible supply declined to 318.9 million bushels, and was relatively unchanged from the 319.1 million at May 20. This situation reflected a virtual balance between marketings and disappearance during the five-week period under review, with deliveries from farms (both east and west) amounting to some 84.5 million bushels between May 20 and June 24 while a similar amount entered into domestic and export markets.

The total visible supply of Canadian wheat at June 24 this year represented a decrease of 12 per cent from the 1963 comparable total of 362.3 million but was 7 per cent more than the 1962 figure of 296.8 million. Stocks in country elevators amounted to 186.0 million bushels compared with 193.2 million in this position a year ago and 137.5 million two years ago. This year's supplies in country elevators at June 24 accounted for 58 per cent of the total visible wheat supply compared with the 1963 and 1962 corresponding percentages of 53 per cent and 46 per cent, respectively. Interior terminal stocks, at 5.5 million bushels were slightly above the 1963 figure of 5.4 million but considerably less than the 8.4 million of 1962. The 21.9 million bushels "in transit rail" (Western Division) represented relatively substantial increases over both the 1963 total of 16.6 million and the 1962 figure of 12.0 million. Supplies at the Canadian Lakehead, at June 24 this year, amounted to 52.8 million bushels and, reflecting a heavy outward movement, was 14 per cent below last year's comparable total of 61.6 million and 6 per cent less than the 56.2 million bushels in this position two years ago. Supplies in Bay, Lake and Upper St. Lawrence ports, at 7.2 million bushels, were in sharp contrast to both the 29.6 million of last year and the 25.2 million of 1962. Stocks of Canadian wheat "in transit lake" at June 24, 1964, amounted to 13.3 million bushels, more than double both the 5.8 million of the previous year and the 6.2 million in 1962. The 9.3 million bushels in Lower St. Lawrence and Maritime ports were sharply reduced from both the 26.2 million of last year and the 25.0 million of two years ago. On the west coast, total supplies in Vancouver-New Westminster, Victoria and Prince Rupert at June 24, 1964, at 10.0 million bushels, were lower than both the previous year's corresponding total of 10.7 million and the 1962 figure of 14.7 million bushels.

Initial Payment
for Wheat

Speaking in the House of Commons on June 17, 1964 the Hon. Mitchell Sharp, Minister of Trade and Commerce stated in part that: "I wish to inform the House that initial payment for the basic grade of western wheat, delivered during the 1964-65 crop year will be at the same level as the present crop year. The initial payment for wheat, effective August 1, 1964, is: \$1.50 per bushel basis No. 1 Northern, in store Fort William-Port Arthur or Vancouver. For all other grades of wheat, the initial payment for the 1964-65 crop year will be established at a later date by the Canadian Wheat Board."

Delivery Policy Quota Position With the exception of 11 stations reported as "closed", the Canadian Wheat Board had placed all shipping points in the Western Division on a delivery quota of 8 bushels per specified acre by June 11, 1964. As a result, all operating delivery points in the Western Division were eligible for the 5-bushel per seeded acre quota for deliveries of wheat (other than Durum) announced by the Board on May 7, 1964.

Supplementary Quota on Wheat (Other Than Durum) In its Instructions to the Trade, re Quotas, (General) No. 20 under date of June 18, the C.W.B. announced in part that effective Monday, June 22, 1964, the supplementary quota of five (5) bushels per seeded acre to wheat (other than Durum) authorized in Instructions to the Trade re Quotas (General) No. 19 issued May 7, 1964, is hereby increased to ten (10) bushels per seeded acre to wheat (other than Durum) as shown in the producer's delivery permit book, and the three hundred (300) bushels mentioned therein are hereby increased to six hundred (600) bushels.

Lake Shipments of Canadian Grain Reflecting a record movement of wheat, total shipments of the five major grains out of Lakehead terminals from the opening of navigation to June 24 this year amounted to 146.3 million bushels, 85 per cent greater than the 79.1 million shipped during the comparable period of 1963 and the highest figure since 178.1 million were shipped during the corresponding period of 1953. In 1964 the season of navigation opened on April 2 while the 1963 season opened on April 19. Shipments of wheat, at 120.7 million bushels accounted for 82 per cent of the current total. Shipments of wheat, barley, rye and flaxseed were above last year's corresponding levels, while those for oats were lower.

Lake Shipments of Canadian Grain from the Opening of Navigation to June 24, 1964 and to Approximately the Same Date 1954 to 1963

Year	Wheat	Oats	Barley	Rye	Flaxseed	Total
- thousand bushels -						
1954	39,818	20,238	19,062	3,580	1,474	84,173
1955	64,123	10,963	25,876	4,965	2,321	108,249
1956	87,364	9,842	27,781	6,351	2,094	133,432
1957	66,639	13,536	18,255	3,252	4,894	106,576
1958	86,832	17,658	33,337	3,947	2,235	144,009
1959	56,157	9,460	17,485	1,121	1,509	85,733
1960	73,827	7,308	18,927	1,523	1,996	103,581
1961	96,690	10,016	15,018	1,272	2,431	125,429
1962	49,510	6,014	9,514	666	1,583	67,287
1963	52,198	15,997	7,696	1,007	2,177	79,075
1964	120,653	9,043	11,649	1,789	3,207	146,342

Crop and Weather Conditions The telegraphic crop report, published by the Dominion Bureau of Statistics on July 8, 1964 summarized crop conditions in the Prairie Provinces as follows: Crop prospects remain generally favourable in the southern districts of all three Prairie Provinces, although some damage from flooding has occurred in the Red River Valley of Manitoba. Recent rains in northern Manitoba and east-central Saskatchewan have improved crop prospects in those areas, but a hard core of drought still exists in large areas of central and northern Saskatchewan. Dry conditions also prevail in many parts of west-central Saskatchewan and in adjacent areas of Alberta, extending in spotty fashion as far west as Barrhead. Except for most southern districts, hay crops are generally light and pastures are poor.

Farmers' Marketings ^{1/} of Wheat in the Prairie Provinces 1963-64

Week Ending		Manitoba	Saskatchewan	Alberta	Total	Last Year ^{2/}
- bushels -						
August	7, 1963 ..	5,607	49,346	16	54,969	58,509
	14	107,808	180,957	199,749	488,514	218,639
	21	171,927	507,568	134,487	813,982	1,214,985
	28	418,689	2,215,916	324,163	2,958,768	3,806,243
September	4	1,180,171	1,906,057	583,877	3,670,105	5,053,798
	11	1,505,137	4,022,800	1,886,765	7,414,702	10,029,156
	18	923,910	5,604,941	2,449,570	8,978,421	11,586,794
	25	527,179	4,091,520	1,672,602	6,291,301	17,353,283
October	2	897,896	5,940,764	2,766,137	9,604,797	21,147,418
	9	991,898	7,917,939	2,398,902	11,308,739	18,452,593
	16	1,229,961	6,090,935	1,468,255	8,789,151	11,545,726
	23	1,757,450	7,878,678	1,922,268	11,558,396	11,158,617
	30	2,684,196	10,340,541	1,964,809	14,989,546	10,315,831
November	6	2,456,981	10,317,922	2,506,806	15,281,709	10,256,475
	13	1,961,553	9,352,062	2,285,644	13,599,259	9,436,356
	20	2,166,743	10,866,244	2,299,453	15,332,440	10,365,650
	27	1,634,110	8,450,399	1,763,585	11,848,094	11,322,633
December	4	1,675,155	12,895,482	2,958,327	17,528,964	10,629,522
	11	1,834,277	14,091,997	3,430,903	19,357,177	11,135,337
	18	809,924	7,114,341	2,176,998	10,101,263	13,430,250
	23	772,650	4,685,432	1,834,729	7,292,811	13,643,942
	30	896,593	8,228,088	2,114,472	11,239,153	8,377,415
January	8, 1964 ..	1,960,032	9,382,077	4,457,844	15,799,953	6,527,399
	15	1,095,206	11,147,003	4,478,272	16,720,481	8,831,404
	22	1,004,626	11,046,582	4,216,919	16,268,127	3,745,528
	29	328,145	3,172,189	2,195,060	5,695,394	1,829,980
February	5	653,099	6,699,397	3,687,396	11,039,892	5,498,303
	12	505,890	4,774,844	2,681,419	7,962,153	10,798,166
	19	327,771	4,464,188	2,792,607	7,584,566	8,158,602
	26	263,900	3,439,055	2,116,665	5,819,620	4,298,682
March	4	188,991	2,706,690	2,328,892	5,224,573	5,870,916
	11	315,807	2,515,004	2,137,479	4,968,290	6,205,965
	18	350,340	3,011,709	2,160,895	5,522,944	5,202,224
	25	176,886	2,839,918	1,377,878	4,394,682	5,737,707
April	1	101,817	1,150,086	1,255,507	2,507,410	4,336,791
	8	504,172	3,318,296	2,039,248	5,861,716	6,047,481
	15	416,259	3,586,827	1,987,624	5,990,710	3,574,920
	22	671,027	4,623,698	2,446,817	7,741,542	4,686,728
	29	962,356	10,384,726	2,024,977	13,372,059	7,898,375
May	6	737,787	10,747,928	1,735,424	13,221,139	5,564,556
	13	495,199	5,388,389	1,322,253	7,205,841	3,806,201
	20	801,168	5,119,387	2,125,054	8,045,609	3,401,965
	27	329,669	5,384,032	1,489,915	7,203,616	5,711,434
June	3	1,130,943	9,435,314	2,116,878	12,683,135	8,687,483
	10	1,996,757	22,567,498	3,092,663	27,656,918	8,421,348
	17	1,480,907	18,549,515	3,394,093	23,424,515	14,812,302
	24	916,045	9,706,671	2,830,910	13,453,626	12,493,892
Totals		44,324,614	317,910,952	101,635,206	463,870,772	382,687,524

Average similar period:

1952-53-1961-62 .. 32,138,737 187,720,536 82,754,933 302,614,206

^{1/} Includes receipts at country, interior private and mill elevators, interior semi-public terminals and platform loadings.

^{2/} Revised.

Visible Supply of Canadian Wheat, June 24, 1964
Compared with Approximately the Same Date, 1962 and 1963

Position	1962	1963	1964
- thousand bushels -			
Country elevators - Manitoba	17,297	23,522	17,905
Saskatchewan	77,327	110,273	112,792
Alberta	42,847	59,439	55,349
Totals	137,471	193,234	186,046
Interior private and mill	6,621	7,804	7,590
Interior terminals	8,366	5,436	5,516
Vancouver-New Westminster	13,794	9,991	8,648
Victoria	891	434	660
Prince Rupert	-	268	710
Churchill	4,829	4,857	4,759
Fort William-Port Arthur	56,201	61,633	52,825
In transit rail (Western Division)	12,040	16,552	21,876
Bay, Lake and Upper St. Lawrence ports	25,166	29,645	7,192
Lower St. Lawrence and Maritime ports	24,997	26,211	9,303
In transit lake	6,166	5,760	13,319
In transit rail (Eastern Division)	237	435	475
Totals	296,779	362,260	318,917

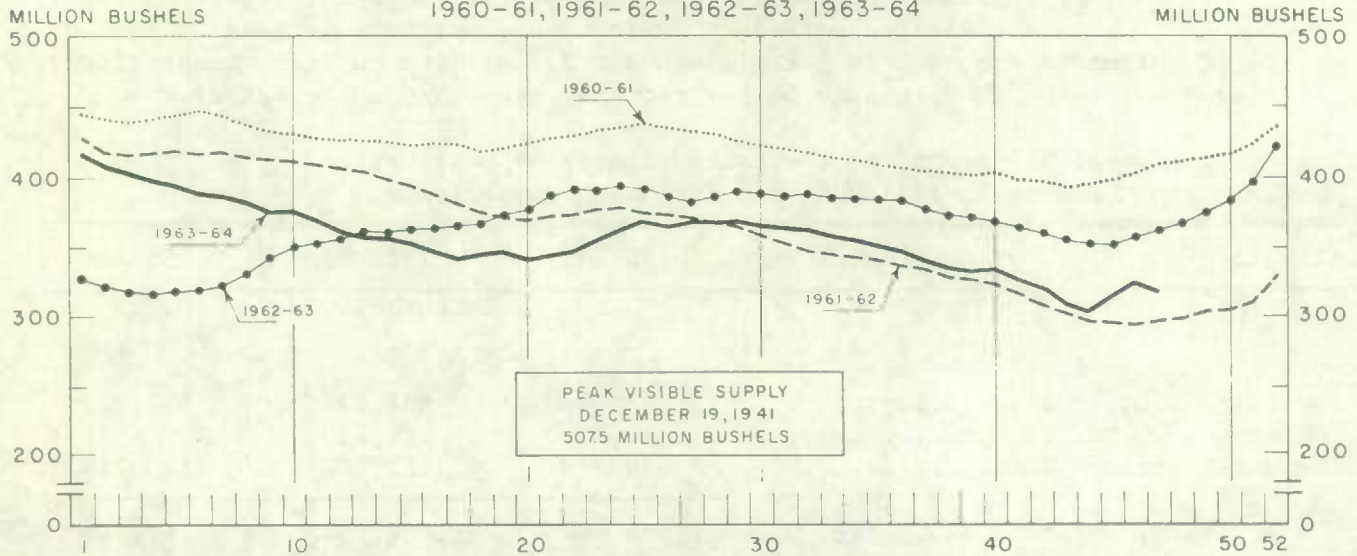
Grading of Wheat Inspected, August 1963-May 1964 with Comparisons

Grade	Crop Year		August-May			
	Average		1962-63		1963-64	
	1957-58 1961-62	1962-63				
	per cent	per cent	cars	per cent	cars	per cent
No. 1 Hard	1/	1/	66	1/	1	1/
No. 1 Man. Northern	5.3	12.1	21,647	12.9	10,424	4.3
No. 2 Man. Northern	34.4	38.4	64,129	38.1	108,717	45.3
No. 3 Man. Northern	26.0	14.9	24,668	14.7	63,336	26.4
No. 4 Man. Northern	12.1	11.4	18,792	11.2	18,973	7.9
No. 5 Wheat	5.5	5.7	9,584	5.7	10,074	4.2
No. 6 Wheat	1.1	0.9	1,622	1.0	1,468	0.6
Feed Wheat	1/	1/	17	1/	15	1/
Others Red Spring	9.4	8.0	11,526	6.9	8,515	3.5
C.W. Garnet	0.1	0.1	119	0.1	1,068	0.4
C.W. White Spring	0.1	0.1	210	0.1	212	0.1
C.W. Mixed Wheat	1/	1/	57	1/	120	1/
Alberta Winter	0.2	0.2	430	0.3	2,635	1.1
Nos. 1-6 C.W. Amber Durum ..	5.6	7.7	14,454	8.6	13,963	5.8
Others C.W. Amber Durum	0.2	0.5	830	0.5	509	0.2
Totals	100.0	100.0	168,151	100.0	240,030	100.0
Gross bushels (approx.)			322,184,000		462,051,000	

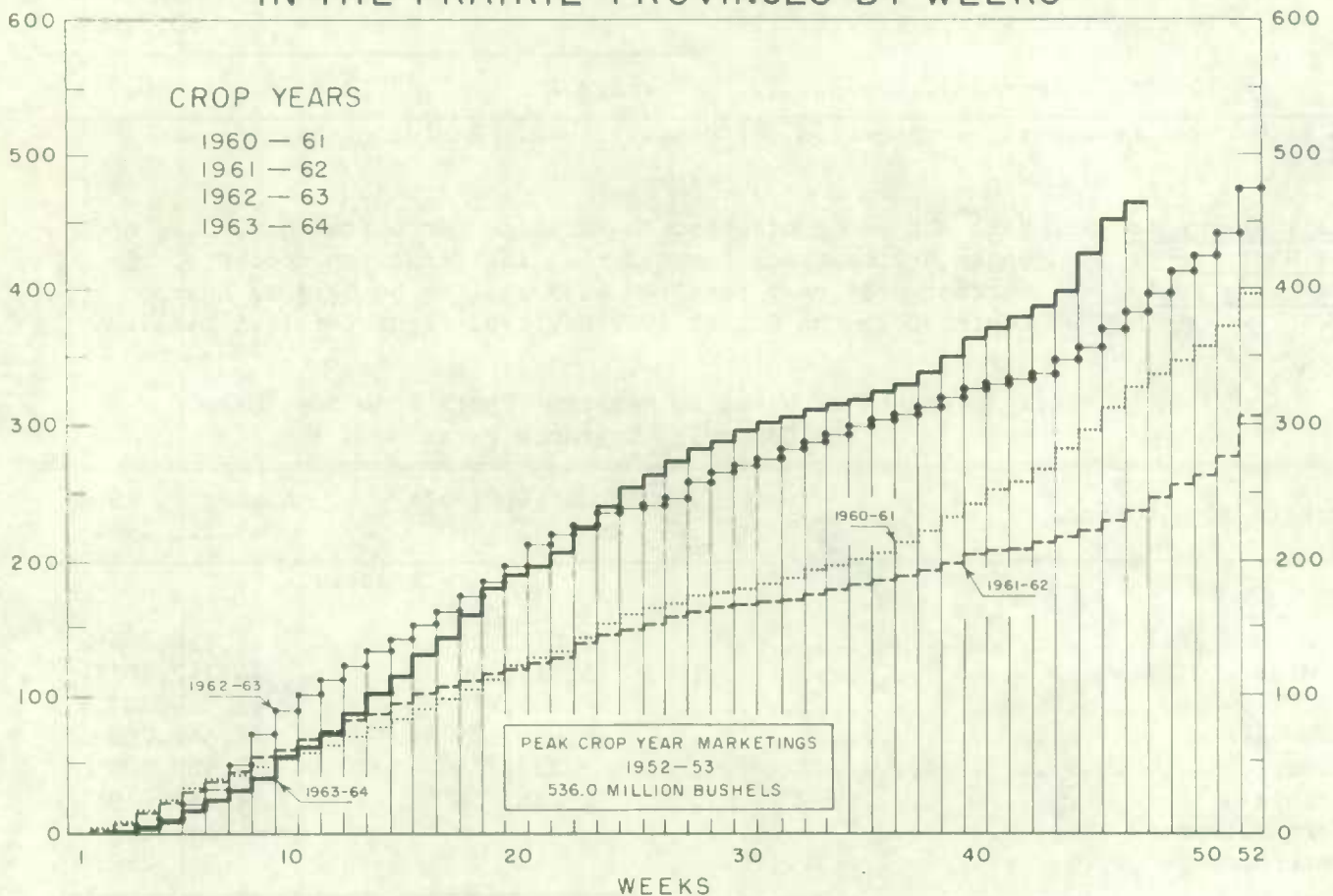
1/ Less than .05 per cent.

WEEKLY VISIBLE SUPPLY OF CANADIAN WHEAT

1960-61, 1961-62, 1962-63, 1963-64



CUMULATIVE RECORD OF WHEAT MARKETINGS IN THE PRAIRIE PROVINCES BY WEEKS



(Data in both charts for crop years beginning August 1)

Wheat Shipments to the United States by Destination Total rail and vessel shipments of wheat to the United States, either for re-export or retention for domestic use, from the beginning of the current crop year to June 24, 1964 amounted to 1.4 million bushels. During the comparable periods of 1962-63 and 1961-62 shipments amounted to 1.2 million and 2.3 million bushels, respectively. Of this season's total to date some 54 per cent has been shipped by vessel.

Wheat Shipments* to the United States by Destination
August 1, 1963-June 24, 1964 with Comparisons

Destination	1961-62	1962-63	1963-64
- bushels -			
<u>By Vessel</u>			
Buffalo	1,582,086	884,176	657,020
Chicago	160,000	84,750	-
Duluth-Superior	420,978	115,208	123,729
Totals, Vessel	2,163,064	1,084,134	780,749
<u>By Rail</u>			
U.S.A. Domestic Points	99,888	142,212	107,166
Buffalo	-	-	553,000
Totals, Shipments	2,262,952	1,226,346	1,440,915

* Either for re-export or retention for domestic use. Excluding bagged seed.

Rail Shipments of Wheat to Maritime Ports Rail shipments of wheat to Maritime Ports from Bay, Lake and Upper St. Lawrence Ports during the first ten months of the current crop year totalled 41.9 million bushels in sharp contrast to the August 1962-May 1963 figure of 16.5 million.

Rail Shipments of Wheat to Maritime Ports from Bay, Lake
and Upper St. Lawrence Ports

Origin of Shipments	August 1, 1962- May 31, 1963	August 1, 1963- May 31, 1964
- bushels -		
Port McNicoll	6,016,576	11,854,674
Midland, Tiffin	5,957,659	14,242,201
Collingwood	464,910	1,388,393
Owen Sound	2,069,103	5,667,783
Goderich	233,210	3,463,804
Sarnia	1,788,756	4,155,019
Port Colborne	-	747,601
Peterborough	-	348,266
Totals	16,530,214	41,867,741

Rail Shipments of Wheat from Fort William-Port Arthur, 1960-61--1963-64

Month	1960-61	1961-62	1962-63	1963-64
- bushels -				
August	14,717	20,648	13,933	5,500
September	19,227	14,598	11,657	9,104
October	5,417	33,944	22,716	25,355
November	24,000	22,915	12,024	13,500
December	17,500	60,167	12,778	23,047
January	71,335	126,533	39,534	58,772
February	135,339	68,421	22,967	28,768
March	28,073	37,000	86,398	21,268
April	9,833	37,777	69,067	26,063
May	15,805	11,203	11,851	7,941
June	17,563	16,022	15,746	
July	10,940	17,315	11,158	
Totals	369,749	466,543	329,829	

Distribution of Rail Shipments of Wheat from Fort William-Port Arthur, May 1964

Grade	Quebec	Ontario
- bushels -		
5 Wheat	-	1,500
Durum	2,000	-
Others	1,500	2,941
Totals	3,500	4,441

Overseas Exports of Canadian Grain by Ports of Loading, August 1, 1963-June 24, 1964
with Comparisons

Port	Wheat <u>1/</u>	Durum Wheat <u>1/</u>	Oats <u>1/</u>	Barley	Rye	Flaxseed	Rapeseed <u>2/</u>
- bushels -							
<u>Pacific Seaboard</u>							
Van.-New West.	136,286,809	-	12,559,691	25,237,230	1,541,705	5,692,158	4,695,736
Victoria	7,619,040	-	-	-	-	-	-
Prince Rupert	8,960,374	-	-	-	-	-	-
<u>Churchill</u>	21,680,276	-	-	-	-	-	-
<u>Lakehead Direct</u>	3,908,357	815,898	1,806,812	4,002,902	1,461,576	1,898,323	-
<u>Kingston Direct</u>	818,460	-	-	-	-	-	-
<u>St. Lawrence</u>							
Montreal	91,980,968	12,434,742	674,895	455,478	769,897	2,977,588	-
Sorel	26,930,675	1,514,329	-	-	-	206,698	-
Three Rivers	22,594,908	2,748,924	228,193	-	-	399,133	-
Quebec	20,379,637	-	-	-	439,707	-	-
Baie Comeau	46,767,525	205,763	-	-	89,887	283,961	-
<u>Maritime</u>							
Saint John	2,978,507	-	185,010	-	-	-	-
West Saint John	26,636,014	1,989,681	-	-	-	379,550	-
Halifax	18,504,083	3,802,549	-	-	-	-	-
Totals	436,045,633	23,511,886	15,454,601	29,695,610	4,302,772	11,837,411	4,695,736
Aug.1/62-June 26/63	257,611,651	18,309,751	17,875,316	7,111,284	6,424,645	11,409,829	5,393,137

1/ Excluding bagged seed.

2/ In bushels of 50 pounds.

Freight Assistance Shipments Claims filed for payment up to May 31, 1964 represent the movement of some 11.1 million bushels of wheat from the Prairie Provinces to Eastern Canada and British Columbia under the freight assistance policy during the August-April period of the 1963-64 crop year. During the same months last year claims had been filed for a total of 7.3 million bushels, indicating on the assumption of approximately the same rate of submission of claims during both the current and preceding crop years that the August-April shipments of wheat under the policy were running about 51 per cent above those of 1962-63. Revised data on the August-April 1962-63 shipments of wheat based on claims submitted up to May 31, 1964 place the nine-month total at 7.6 million bushels. The bulk of the shipments during the current nine-month period under review went to destinations in Quebec and Ontario with these two provinces accounting for 39 per cent and 32 per cent of the total, respectively.

Provincial Distribution of Wheat Shipments under the Freight Assistance Policy
August - April 1963-64 and 1962-63

Month	Nfld.	P.E.I.	N.S.	N.B.	Que.	Ont.	B.C.	Total
- thousand bushels -								
August, 1963	19	15	143	43	606	515	99	1,440
September	20	12	155	57	634	685	183	1,748
October	21	14	187	74	675	631	234	1,836
November	70	12	157	46	534	378	149	1,347
December	17	12	133	42	456	336	158	1,154
January, 1964	15	13	153	51	456	323	153	1,166
February	11	12	132	37	388	247	109	935
March	1	17	136	37	376	287	55	909
April	13	5	74	22	248	146	45	554
Totals <u>1/</u>	188	113	1,269	410	4,373	3,548	1,186	11,088
Same period 1962-63:								
Preliminary <u>2/</u>	69	67	451	227	2,916	2,394	1,199	7,322
Revised <u>1/</u>	78	70	468	230	2,988	2,423	1,327	7,583

Preliminary data on millfeed shipments under the freight assistance policy indicate shipments of 377,536 tons during the August-April period of the current crop year. During the same nine months of 1962-63 claims had been filed for a total of 342,944 tons, indicating on the assumption of approximately the same rate of submission of claims during both the current and preceding crop years that the August-April shipments of millfeeds under the policy were running about 10 per cent above those of 1962-63. Revised data on the 1962-63 August-April shipments of millfeeds based on claims submitted up to May 31, 1964 place the nine-month total at 360,076 tons. As with freight-assisted shipments of wheat, the greater portion of the millfeed shipments during the period under review went to destinations in Quebec and Ontario.

Provincial Distribution of Millfeed Shipments under the Freight Assistance Policy
August-April 1963-64 and 1962-63

Province	1962-63		1963-64
	Preliminary <u>2/</u>	Revised <u>1/</u>	Preliminary <u>1/</u>
- tons -			
Newfoundland	4,950	5,499	4,643
Prince Edward Island	5,537	5,865	6,363
Nova Scotia	24,221	25,743	23,810
New Brunswick	21,093	21,738	21,262
Quebec	171,715	181,344	181,821
Ontario	91,097	93,573	111,327
British Columbia	24,331	26,314	28,310
Totals	342,944	360,076	377,536

1/ Based on claims filed up to May 31, 1964.

2/ Based on claims filed up to May 31, 1963.

Monthly Exports of Canadian Wheat and Wheat Flour

Year and Month	Wheat in Bulk <u>1/</u>	Bagged Seed Wheat <u>2/</u>	Total Wheat	Wheat Flour <u>2/</u> <u>3/</u>	Total <u>3/</u> Wheat and Wheat Flour
- thousand bushels -					
<u>1961-62</u>					
August	35,625	89	35,714	3,123	38,837
September	28,966	242	29,209	2,786	31,995
October	32,910	86	32,996	2,391	35,386
November	40,823	377	41,200	3,150	44,351
December	19,966	392	20,359	2,643	23,002
January	17,534	458	17,992	2,304	20,295
February	23,739	433	24,173	2,546	26,719
March	20,482	574	21,056	2,968	24,023
April	24,981	539	25,520	2,389	27,909
May	35,150	77	35,227	2,486	37,713
June	23,559	5	23,564	2,456	26,020
July	19,016	44	19,060	2,711	21,772
Totals	322,752	3,317	326,069	31,953	358,022
<u>1962-63</u>					
August	21,944	157	22,101	2,852	24,953
September	25,040	200	25,240	2,604	27,844
October	29,705	31	29,737	2,181	31,917
November	33,309	144	33,452	2,176	35,628
December	20,949	451	21,399	2,305	23,705
January	21,486	473	21,959	1,586	23,545
February	18,779	743	19,522	1,811	21,333
March	19,246	1,251	20,496	2,454	22,950
April	28,916	422	29,338	2,330	31,669
May	35,355	14	35,369	2,186	37,555
June	24,512	<u>4/</u>	24,513	2,837	27,350
July	20,854	-	20,854	1,943	22,798
Totals	300,095	3,884	303,980	27,265	331,245
<u>1963-64 5/</u>					
August	29,204	160	29,364	3,039	32,403
September	42,556	155	42,711	1,645	44,356
October	59,020	7	59,027	2,384	61,411
November	65,296	245	65,541	3,881	69,422
December	41,763	397	42,160	5,393	47,553
January	28,451	482	28,933	6,607	35,541
February	21,675	501	22,176	6,709	28,885
March	22,510	605	23,115	5,278	28,393
April	43,211	261	43,472	6,639	50,111
May	56,992	38	57,030	4,066	61,096
Totals	410,678	2,852	413,530	45,641	459,171

1/ Export clearances including shipments to the United States compiled by the Statistics Branch, Board of Grain Commissioners for Canada. 2/ Compiled from Canadian Customs returns, 1961-62 and 1962-63 adjusted to remove effect of time lag in reporting. 3/ In terms of wheat equivalent. Wheat flour conversion rate: 2.3 bushels per cwt. 4/ Less than 500 bushels. 5/ Preliminary.

Exports of Canadian Wheat 1/ by Destination, May 1964 and 1963

Destination	May 1964			May 1963
	Wheat (Except Durum)	Durum Wheat	Total All Wheat	Total All Wheat
<u>COMMONWEALTH AND PREFERENTIAL COUNTRIES</u> - bushels -				
<u>Western Europe</u>				
Britain	6,459,452	65,520	6,524,972	7,402,133
Ireland	50,400	-	50,400	510,219
<u>Other Africa</u>				
Republic of South Africa	-	-	-	1,942,771
<u>Other Asia</u>				
Hong Kong	38,267	-	38,267	37,333
Malaysia	39,200	-	39,200	-
Pakistan	354,984	-	354,984	348,320
<u>Central America and Antilles</u>				
Jamaica	1,793	-	1,793	1,196
Totals, Com. and Pref. Countries .	6,944,096	65,520	7,009,616	10,241,972
<u>OTHER COUNTRIES</u>				
<u>Western Europe</u>				
Austria	91,509	114,946	206,455	610,400
Belgium and Luxembourg	487,023	48,533	535,556	1,154,658
Finland	369,600	-	369,600	623,398
France	-	408,762	408,762	590,311
Germany, Federal Republic	2,719,284	2,289,298	5,008,582	4,746,043
Netherlands	132,533	79,094	211,627	162,280
Norway	35,467	-	35,467	32,747
Portugal	-	410,667	410,667	-
Sweden	-	-	-	22,586
Switzerland	408,194	534,000	942,194	682,975
<u>Eastern Europe</u>				
Bulgaria	2,214,645	-	2,214,645	-
Czechoslovakia	1,564,300	-	1,564,300	2,999,795
U.S.S.R. (Russia)	25,334,049	1,638,467	26,972,516	-
<u>Middle East</u>				
Israel	-	-	-	82,507
Saudi Arabia	-	-	-	22,017
<u>Other Africa</u>				
Mozambique	-	-	-	25,193
<u>Other Asia</u>				
China, Communist	4,281,116	-	4,281,116	5,384,475
Japan	4,020,368	-	4,020,368	4,752,802
Philippines	712,525	-	712,525	420,535
Taiwan	39,200	-	39,200	61,729
<u>Oceania</u>				
United States Oceania	-	-	-	36,400
<u>South America</u>				
Ecuador	287,094	-	287,094	77,165
Peru	-	-	-	381,734
Venezuela	1,084,101	-	1,084,101	994,473
<u>Central America and Antilles</u>				
Cuba	678,011	-	678,011	-
Dominican Republic	-	-	-	266,965
El Salvador	-	-	-	76,683
Guatemala	-	-	-	83,333
<u>North America</u>				
United States, for domestic use 2/..	-	-	-	821,854
Totals, Other Countries	44,459,019	5,523,767	49,982,786	25,113,058
Sub-Totals, All Countries	51,403,115	5,589,287	56,992,402	35,355,030
Bagged seed 3/			38,027	13,722
Totals, All Countries	51,403,115	5,589,287	57,030,429	35,368,752

NOTE: See footnotes on page 16.

Cumulative Exports of Canadian Wheat 1/ by Destination

Destination	August 1963-May 1964			Aug/62-May/63
	Wheat (Except Durum)	Durum Wheat	Total All Wheat	Total All Wheat
- bushels -				
<u>COMMONWEALTH AND PREFERENTIAL COUNTRIES</u>				
<u>Western Europe</u>				
Britain	61,126,957*	149,928	61,276,885*	63,804,476
Ireland	2,192,400	-	2,192,400	2,703,289
Malta and Gozo	1,093,827	-	1,093,827	870,987
<u>Other Africa</u>				
Nigeria	520,218	-	520,218	543,953
Northern Rhodesia	18,667	-	18,667	8,244 <u>4/</u>
Republic of South Africa	-	-	-	6,440,658
<u>Other Asia</u>				
Hong Kong	542,639	-	542,639	430,827
India	-	-	-	703,612
Malaysia	282,053	-	282,053	-
Pakistan	354,984	-	354,984	348,320
<u>Central America and Antilles</u>				
Barbados	40	-	40	-
Jamaica	8,427	-	8,427	8,957
Totals, Com. and Pref. Countries.	66,140,212*	149,928	66,290,140*	75,863,323

OTHER COUNTRIES

<u>Western Europe</u>				
Austria	616,413	114,946	731,359	1,412,834
Belgium and Luxembourg	13,890,326*	459,700	14,350,026*	8,194,055
Denmark	20,543	-	20,543	11,200
Finland	726,133	-	726,133	1,326,011
France	2,176,884	1,771,107	3,947,991	5,315,770
Germany, Federal Republic	24,679,385*	7,625,197	32,304,582*	24,947,137
Greece	-	-	-	10
Italy	3,758,777	-	3,758,777	4,286,826
Netherlands	3,055,828*	233,262	3,289,090*	4,216,541
Norway	1,702,670	-	1,702,670	1,678,027
Portugal	-	410,667	410,667	-
Sweden	22,400	-	22,400	168,933
Switzerland	3,248,980	2,077,096	5,326,076	2,411,368
<u>Eastern Europe</u>				
Albania	1,954,401	-	1,954,401	-
Bulgaria	5,374,165	-	5,374,165	-
Czechoslovakia	5,099,326	-	5,099,326	4,393,895
Poland	8,074,354	-	8,074,354	14,183,656
U.S.S.R. (Russia)	144,844,208	9,634,007	154,478,215	-
Yugoslavia	3,501,866	-	3,501,866	-
<u>Middle East</u>				
Israel	1,067,248	-	1,067,248	1,157,187
Saudi Arabia	677,029	-	677,029	565,820

Cumulative Exports of Canadian Wheat 1/ by Destination

Destination	August 1963-May 1964			Aug/62-May/63
	Wheat (Except Durum)	Durum Wheat	Total Wheat	Total All Wheat
- bushels -				
<u>OTHER COUNTRIES (concluded)</u>				
<u>Other Africa</u>				
Katanga	-	-	-	9,186
Mozambique	90,857	11,200	102,057	435,086
<u>Other Asia</u>				
Burma	78,931	-	78,931	-
China, Communist	35,072,801	-	35,072,801	50,784,483
Japan	40,367,872	-	40,367,872	37,645,247
Korea	511,467	-	511,467	-
Philippines	5,468,706	-	5,468,706	5,053,316
Taiwan	372,484	-	372,484	115,701
<u>Oceania</u>				
United States Oceania	347,722	-	347,722	391,439
<u>South America</u>				
Ecuador	848,282	-	848,282	1,102,725
Peru	730,614	-	730,614	381,734
Venezuela	6,226,090	-	6,226,090	5,786,346
<u>Central America and Antilles</u>				
Cuba	5,647,187	-	5,647,187	-
Dominican Republic	658,839	-	658,839	959,778
El Salvador	732,035	-	732,035	579,677
Guatemala	175,000	-	175,000	231,667
<u>North America</u>				
United States for domestic use <u>2/</u>	230,859	-	230,859	1,120,117
Totals, Other Countries	322,050,682*	22,337,182	344,387,864*	178,865,772
Sub-Totals, All Countries	388,190,894	22,487,110	410,678,004	254,729,095
Bagged seed <u>3/</u>			2,851,777	3,884,146
Totals, All Countries	388,190,894	22,487,110	413,529,781	258,613,241

* Revisions in data for previous months have been taken into account in the August-May cumulative totals.

1/ Overseas clearances as reported by the Statistics Branch, Board of Grain Commissioners for Canada, for all countries except the United States. Excluding bagged seed.

2/ Compiled from returns of Canadian elevator licensees and shippers and advice from American grain correspondents.

3/ Compiled from Canadian Customs returns, 1962-63 adjusted for time lag.

4/ Rhodesia and Nyasaland.

FARMERS' MARKETINGS OF WHEAT, PRAIRIE PROVINCES

(SPECIFIED PERIODS)

MILLION BUSHELS

550

500

450

400

350

300

250

200

150

100

50

0

MILLION BUSHELS

550

500

450

400

350

300

250

200

150

100

50

0

PEAK MARKETINGS
1952-53 CROP YEAR
536.0 MILLION BUSHELS

30 year average 10 year average
1932-33 1952-53
1961-62 1961-62

1958-59

1959-60

1960-61

1961-62

1962-63

1963-64

JULY

JUNE

MAY

APR.

MAR.

FEB.

JAN.

DEC.

NOV.

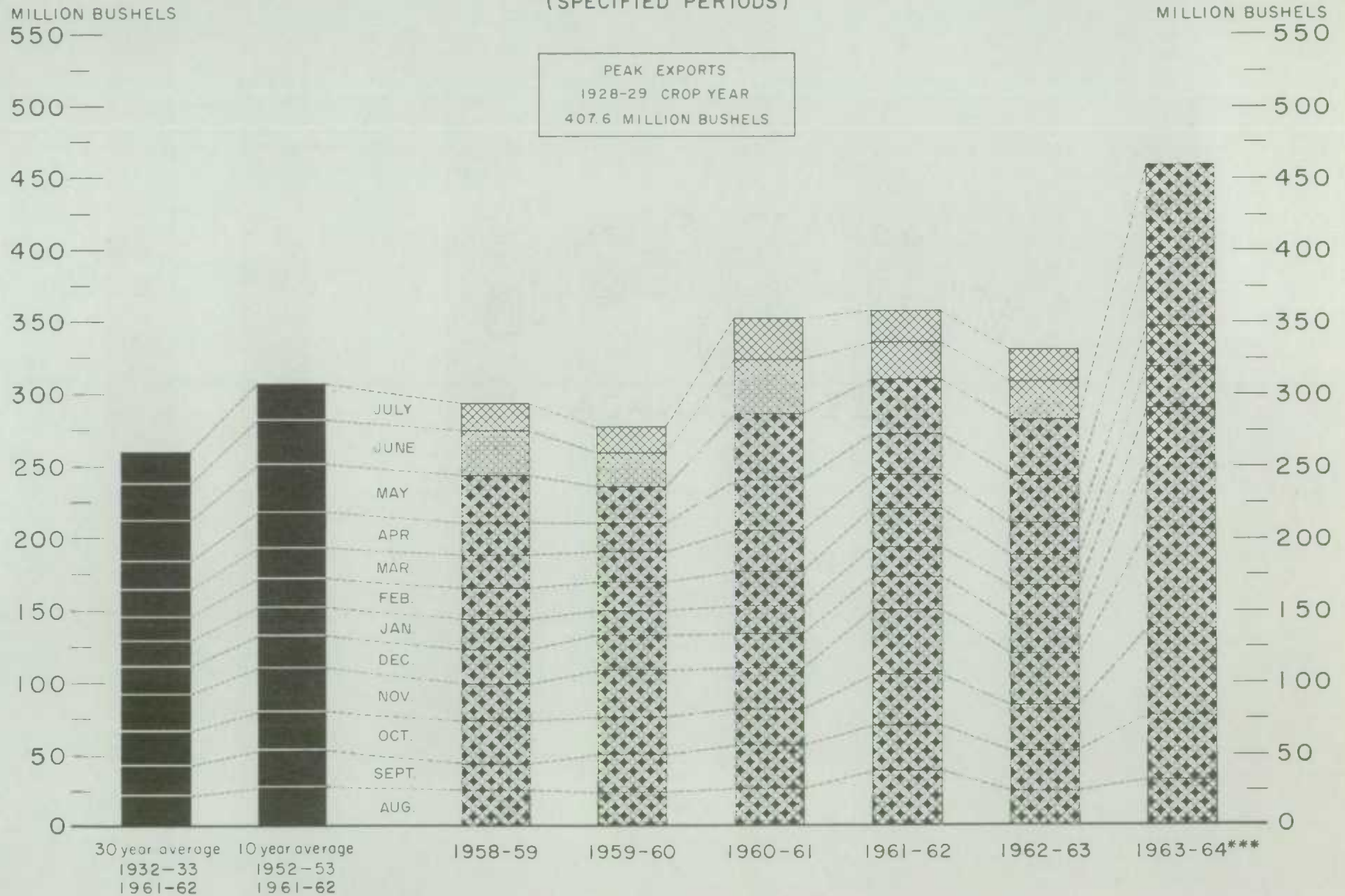
OCT.

SEPT.

AUG.

EXPORTS OF CANADIAN WHEAT* AND WHEAT FLOUR**

(SPECIFIED PERIODS)



*Beginning with 1956-57 includes bagged seed wheat.

**In terms of wheat equivalent

***Preliminary.

Agriculture Division D B S

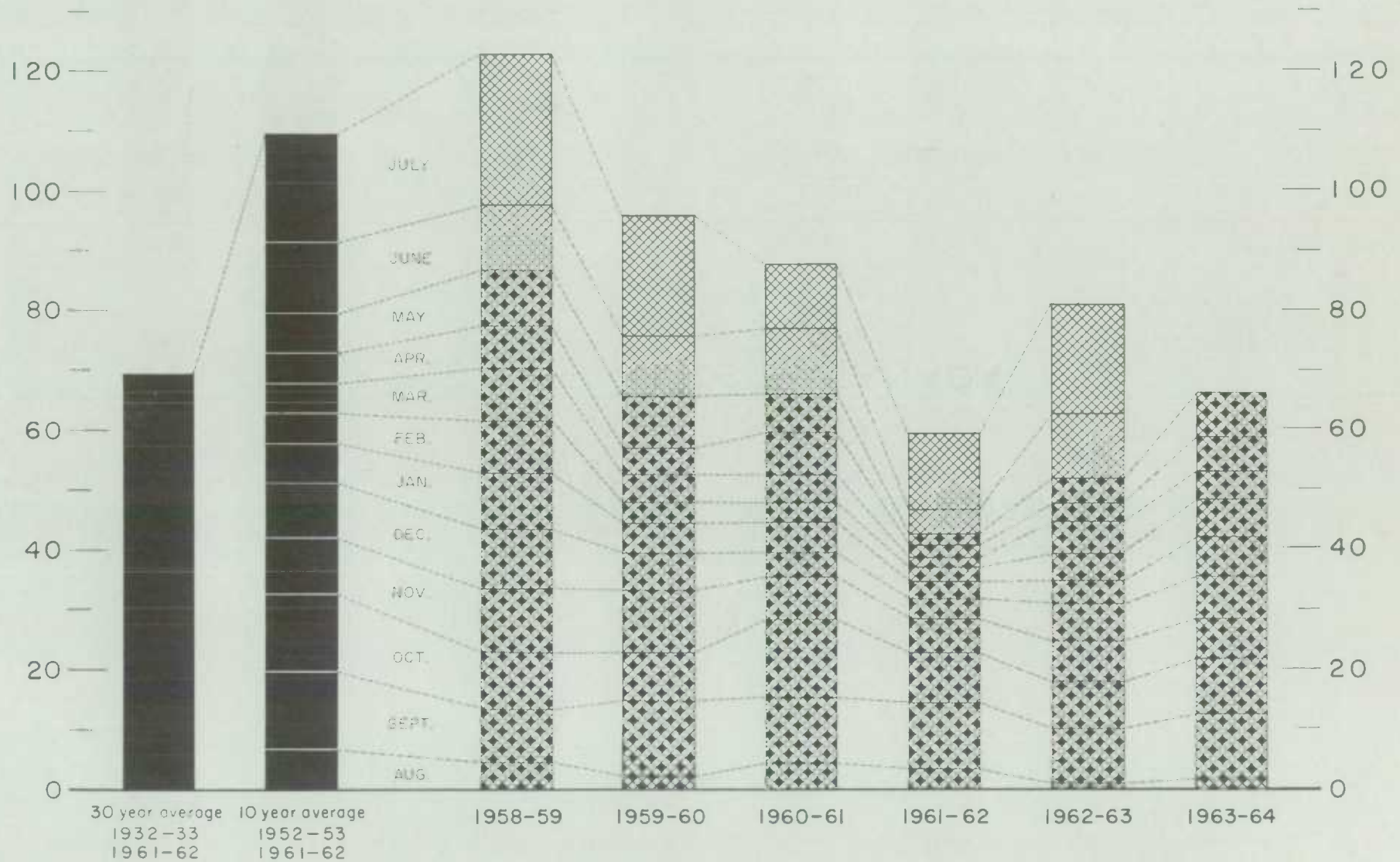
FARMERS' MARKETINGS OF BARLEY, PRAIRIE PROVINCES (SPECIFIED PERIODS)

MILLION BUSHELS

140 —

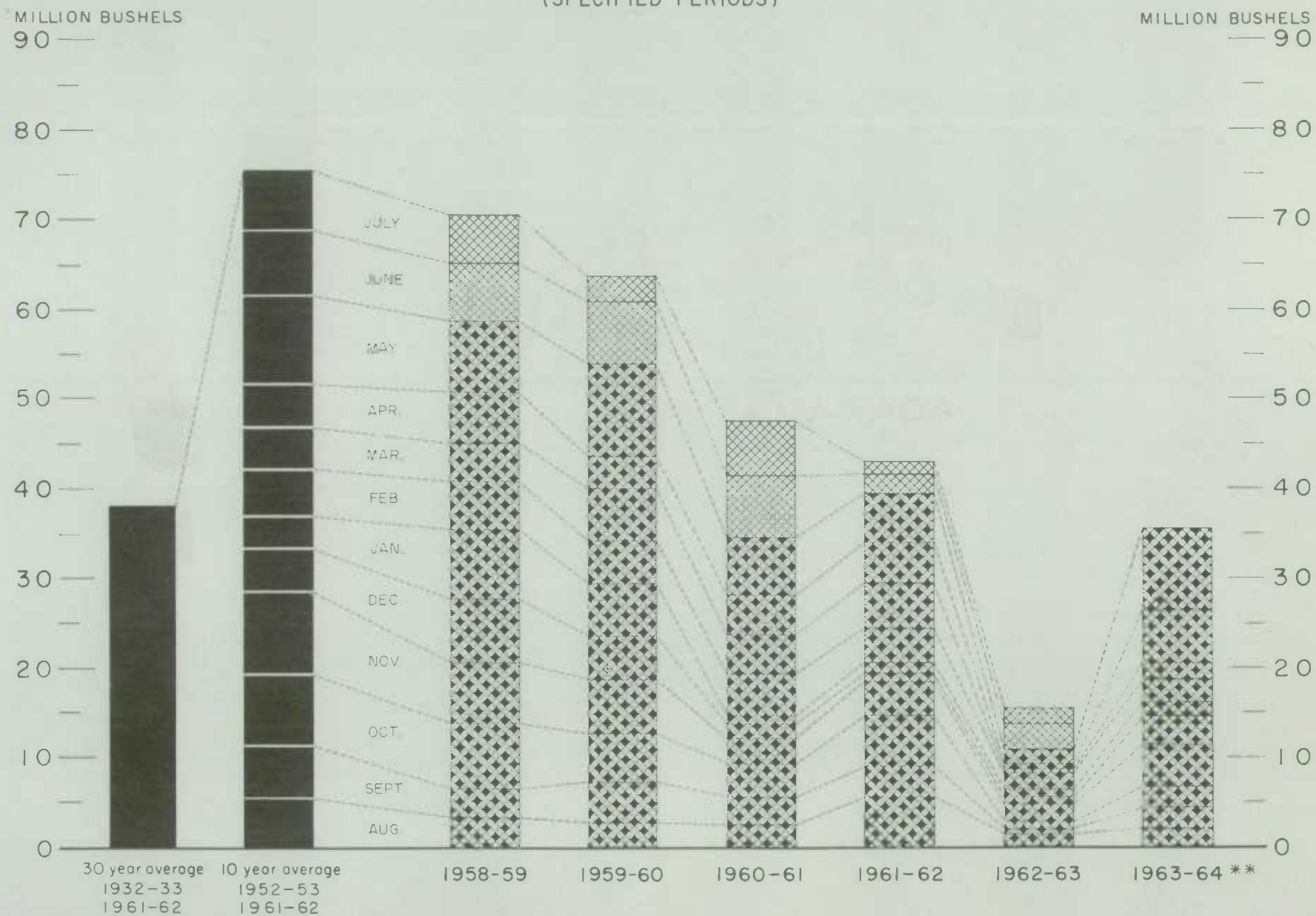
MILLION BUSHELS

140 —



EXPORTS OF CANADIAN BARLEY AND BARLEY PRODUCTS*

(SPECIFIED PERIODS)



FARMERS' MARKETINGS OF OATS, PRAIRIE PROVINCES

(SPECIFIED PERIODS)

MILLION BUSHELS

100 —

MILLION BUSHELS

100 —

90 —

90 —

80 —

80 —

70 —

70 —

60 —

60 —

50 —

50 —

40 —

40 —

30 —

30 —

20 —

20 —

10 —

10 —

0 —

0 —

JULY

JUN

M

A

M

F

J

O

NOV

OCT

SEPT

AUG

30 year average

10 year average

1932-33

1952-53

1961-62

1961-62

1958-59

1959-60

1960-61

1961-62

1962-63

1963-64

EXPORTS OF CANADIAN OATS* AND OAT PRODUCTS**

(SPECIFIED PERIODS)

MILLION BUSHEL

45 —

MILLION BUSHEL

— 45

40 —

— 40

35 —

— 35

30 —

— 30

25 —

— 25

20 —

— 20

15 —

— 15

10 —

— 10

5 —

— 5

0

0

30 year average

1932-33

10 year average

1952-53

1961-62

1961-62

1958-59

1959-60

1960-61

1961-62

1962-63

1963-64***

J
J
M
A
M
F
J
D
N
O
S
A

*Beginning with 1960-61 includes relatively small quantity of bagged seed. **In terms of grain equivalent. ***Preliminary.

Agriculture Division D.B.S.

FARMERS' MARKETINGS OF CANADA'S FIVE MAJOR GRAINS,* PRAIRIE PROVINCES

MILLION BUSHELS

900 —

800 —

700 —

600 —

500 —

400 —

300 —

200 —

100 —

0

(SPECIFIED PERIODS)

MILLION BUSHELS

900 —

800 —

700 —

600 —

500 —

400 —

300 —

200 —

100 —

0

JULY

JUNE

MAY

APR

MAR

FEB

JAN

DEC

NOV

OCT

SEPT

AUG

30 year average 10 year average
1932-33 1952-53
1961-62 1961-62

1958-59

1959-60

1960-61

1961-62

1962-63

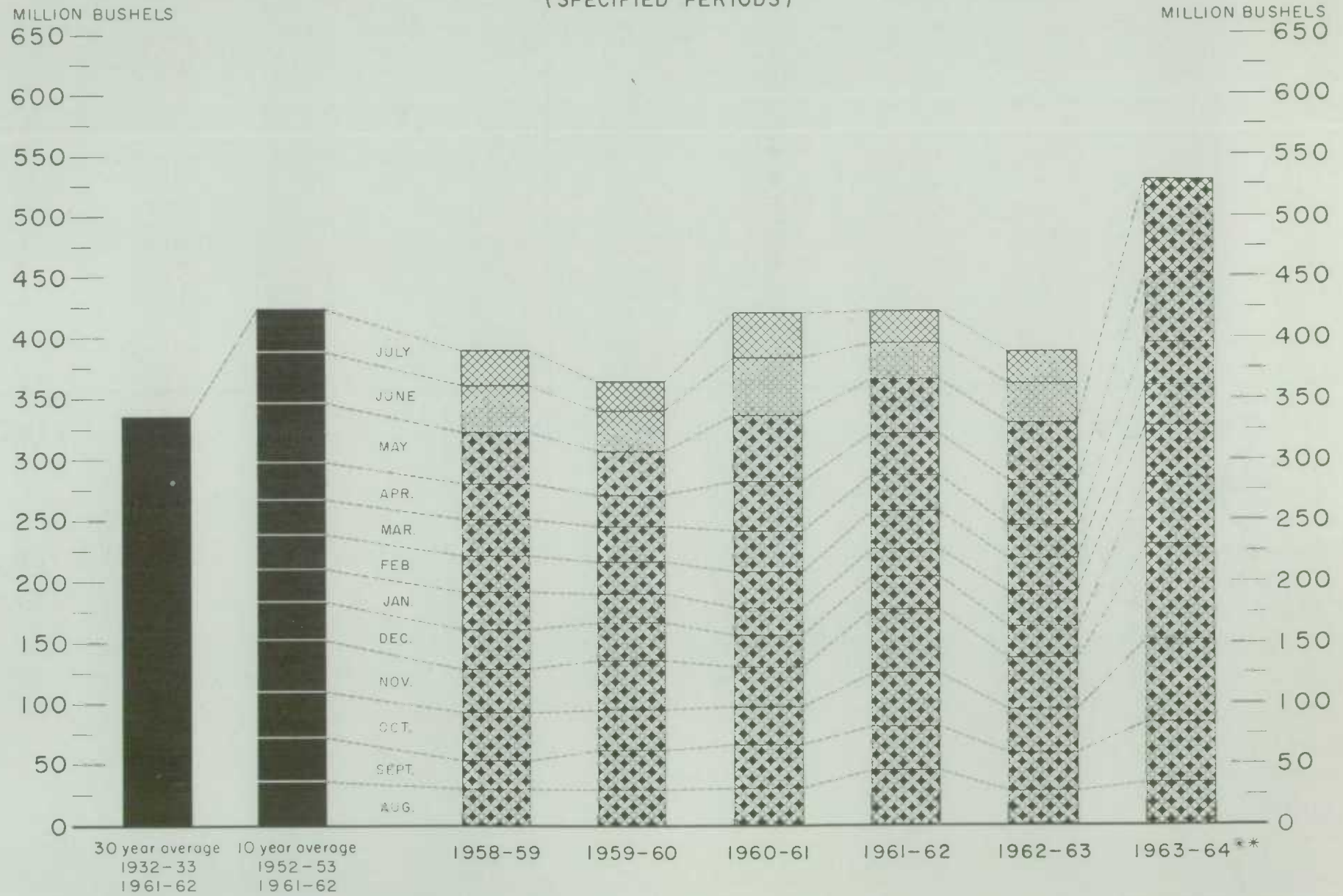
1963-64

* Wheat, oats, barley, rye and flaxseed.

Agriculture Division D.B.S.

EXPORTS OF CANADA'S FIVE MAJOR GRAINS AND PRODUCTS*

(SPECIFIED PERIODS)



* Wheat, bagged seed wheat, and wheat flour; oats, bagged seed oats, and oatmeal and rolled oats; barley, malt and pot and pearl; rye and flaxseed
 ** Preliminary.

Agriculture Division D.B.S.

Customs Exports of Canadian Wheat Flour by Countries of Consignment

Destination	February 1964 <u>1/</u>	May 1964 <u>2/</u>	August-May	
			1963-64 <u>2/</u>	1962-63 <u>1/</u>
- bushels -				
<u>COMMONWEALTH AND PREFERENTIAL COUNTRIES</u>				
<u>Western Europe</u>				
Britain	990,668	848,302	10,333,950	10,035,484
Gibraltar	5,154	-	31,944	30,139
<u>Middle East</u>				
Kuwait*	-	-	13,255	64,374
Qatar	-	230	1,068	2,107
British Middle East, nes	4,894	3,349	32,200	21,638
<u>Other Africa</u>				
Gambia	-	55	5,161	-
Ghana	70,621	58,086	811,219	1,476,398
Mauritius and Dependencies	-	-	-	460
Nigeria	225	46	22,540	541,036
Nyasaland	789	1,573	28,058	31,490
Sierra Leone	318	54,855	336,515	464,257
Southern Rhodesia	-	1,150	4,830	-
Tanganyika	1,725	-	9,315	11,948
British Africa, nes	-	-	35,420	67,896
<u>Other Asia</u>				
Ceylon	-	-	612,421	1,150
Hong Kong	63,802	28,752	780,972	777,311
Malaysia	36,137	22,329	537,471	557,433
British East Indies, nes	-	-	-	11,389
<u>Oceania</u>				
Australia	-	-	124	55
Fiji	414	1,046	5,359	3,829
<u>South America</u>				
British Guiana	2,229	1,875	23,472	22,637
<u>Central America and Antilles</u>				
Bahamas	24,424	31,570	270,763	250,645
Bermuda	7,958	9,757	103,714	92,253
British Honduras	465	6,856	34,615	29,143
Barbados	12,610	11,447	134,306	125,242
Jamaica	146,480	117,615	1,420,459	1,120,866
Leeward and Windward Islands.....	92,644	86,680	878,349	793,650
Trinidad	91,943	79,638	1,151,539	1,086,495
Totals, Com. and Pref. Countries .	1,553,500	1,365,211	17,619,039	17,619,325
<u>OTHER COUNTRIES</u>				
<u>Western Europe</u>				
Belgium and Luxembourg	-	26,379	171,146	138,411
Denmark	-	805	5,026	10,217
Germany, Federal Republic	-	-	-	6,463
Greece	-	-	11,636	28,115
Iceland	-	1,776	4,996	14,573
Italy	-	-	-	4,996
Netherlands	-	890	5,766	3,305
Norway	-	-	-	115
Portugal	8,772	6,732	99,571	62,369
Sweden	-	506	1,771	1,265
Switzerland	-	-	39	7,935
<u>Eastern Europe</u>				
U.S.S.R. (Russia)	3,141,455	1,976,967	18,314,151	-
<u>Middle East</u>				
Ethiopia	-	-	253	-
Iran	292	414	3,335	3,793
Iraq	-	-	-	948
Israel	-	-	5,152	8,436
Jordan	-	-	356	651

Customs Exports of Canadian Wheat Flour by Countries of Consignment

Destination	February 1964 <u>1/</u>	May 1964 <u>2/</u>	August-May	
			1963-64 <u>2/</u>	1962-63 <u>1/</u>
OTHER COUNTRIES (concluded)			- bushels -	
<u>Middle East</u>				
Kuwait*	230	1,546	8,648	-
Lebanon	-	-	28,152	180,320
Saudi Arabia	-	402	1,518	6,679
Syria	-	-	998	5,529
U.A.R. - Egypt	-	-	-	27,692
<u>Other Africa</u>				
Angola	1,610	-	4,600	2,760
Congo-Leo	14,375	13,800	56,695	81,448
French West Africa	-	-	-	23,442
Ivory Coast	690	690	2,760	-
Liberia	442	4,768	57,192	41,819
Mozambique	1,380	1,587	28,651	19,904
Portuguese Africa, nes	230	6,590	73,124	90,298
Togo	26,910	3,818	138,112	41,492
<u>Other Asia</u>				
Burma	-	-	76,404	-
Indonesia	-	-	-	64
Japan	9,609	380	382,389	390,842
Philippines	-	-	7,590	11,040
Portuguese Asia	1,012	1,012	22,356	8,197
Thailand	47,093	6,976	344,742	308,214
Viet-Nam	-	-	41,476	44,576
<u>Oceania</u>				
French Oceania	-	356	1,426	1,725
United States Oceania	759	-	1,881	2,875
<u>South America</u>				
Chile	-	-	6,928	9,143
Colombia	-	-	589	-
Peru	3,910	3,450	54,331	34,086
Surinam	6,716	5,497	62,705	58,468
Venezuela	-	-	230	1,748
<u>Central America and Antilles</u>				
Costa Rica	69,782	49,565	513,401	724,958
Cuba	790,239	456,193	5,890,171	-
Dominican Republic	4,731	7,187	51,607	118,289
El Salvador	-	-	11,222	74,605
French West Indies	-	230	1,955	2,610
Guatemala	805	2,302	14,266	46,481
Haiti	12,126	25,300	100,630	677
Honduras	3,680	10,145	54,719	55,365
Netherlands Antilles	4,885	6,279	137,144	210,822
Nicaragua	1,943	690	293,032	386,083
Panama	14,364	6,114	141,273	390,496
<u>North America</u>				
St. Pierre and Miquelon	1,368	3,004	16,634	11,539
United States	76,638	68,420	769,384	1,159,494
Totals, Other Countries	4,246,046	2,700,770	28,022,133	4,865,372
Totals, All Countries	5,799,546	4,065,981	45,641,172	22,484,697

* Kuwait included in Commonwealth and Preferential Countries from August to December 1963 and in Other Countries from January 1, 1964.

nes - not elsewhere specified.

1/ In terms of wheat equivalent. Adjusted to remove effect of time lag in the returns made by Customs. Conversion rate: 2.3 bushels per cwt. 2/ In terms of wheat equivalent. Preliminary and unadjusted for time lag. Conversion rate: 2.3 bushels per cwt.

Canadian Wheat Board Weekly Average Cash Wheat Prices
Basis in Store Fort William-Port Arthur

Class and Grade	Week Ending			
	June 5	June 12	June 19	June 26
- cents and eighths per bushel -				
<u>Initial Payment to Producers</u>				
1 Northern	150	150	150	150
2 Northern	146	146	146	146
3 Northern	142	142	142	142
4 Northern	135	135	135	135
5 Wheat	118	118	118	118
6 Wheat	112	112	112	112
Feed Wheat	108	108	108	108
1 C.W. Garnet	135	135	135	135
2 C.W. Garnet	130	130	130	130
3 C.W. Garnet	125	125	125	125
1 Alberta Red Winter	134	134	134	134
2 Alberta Winter	129	129	129	129
3 Alberta Winter	123	123	123	123
1 C.W. Amber Durum	150	150	150	150
2 C.W. Amber Durum	146	146	146	146
3 C.W. Amber Durum	142	142	142	142
<u>International Wheat Agreement</u>				
<u>and Domestic Sales</u>				
1 Northern	205/5	205/5	205/5	205/6
2 Northern	202/5	202/5	202/5	202/6
3 Northern	199/1	199/1	199/6	200/2
4 Northern	192/5	192/5	193/2	193/6
5 Wheat	186/5	186/5	186/5	186/6
6 Wheat	181/5	181/5	181/5	181/6
Feed Wheat	178/5	178/5	178/5	178/6
1 C.W. Garnet	188/5	188/5	188/5	188/6
2 C.W. Garnet	186/5	186/5	186/5	186/6
3 C.W. Garnet	185/5	185/5	185/5	185/6
1 Alberta Red Winter	191/5	191/5	191/5	191/6
2 Alberta Winter	189/5	189/5	189/5	189/6
3 Alberta Winter	188/5	188/5	188/5	188/6
1 C.W. Amber Durum	213/5	213/5	213/5	213/6
2 C.W. Amber Durum	212/5	212/5	212/5	212/6
3 C.W. Amber Durum	200/1	200/1	200/1	200/2
<u>Export - Class II</u>				
1 Northern	205/5	205/5	205/5	205/6
2 Northern	202/5	202/5	202/5	202/6
3 Northern	199/1	199/1	199/6	200/2
4 Northern	192/5	192/5	193/2	193/6
5 Wheat	186/5	186/5	186/5	186/6
6 Wheat	181/5	181/5	181/5	181/6
Feed Wheat	178/5	178/5	178/5	178/6
1 C.W. Garnet	188/5	188/5	188/5	188/6
2 C.W. Garnet	186/5	186/5	186/5	186/6
3 C.W. Garnet	185/5	185/5	185/5	185/6
1 C.W. Amber Durum	213/5	213/5	213/5	213/6
2 C.W. Amber Durum	212/5	212/5	212/5	212/6
3 C.W. Amber Durum	200/1	200/1	200/1	200/2

Canadian Wheat Board Weekly Average Cash Wheat Prices
Basis in Store Vancouver

Class and Grade	Week Ending			
	June 5	June 12	June 19	June 26

- cents and eighths per bushel -

Initial Payment to Producers

1 Northern	150	150	150	150
2 Northern	146	146	146	146
3 Northern	142	142	142	142
4 Northern	135	135	135	135
5 Wheat	118	118	118	118
6 Wheat	112	112	112	112
Feed Wheat	108	108	108	108
1 C.W. Garnet	135	135	135	135
2 C.W. Garnet	130	130	130	130
3 C.W. Garnet	125	125	125	125
1 Alberta Red Winter	134	134	134	134
2 Alberta Winter	129	129	129	129
3 Alberta Winter	123	123	123	123
1 C.W. Amber Durum	150	150	150	150
2 C.W. Amber Durum	146	146	146	146
3 C.W. Amber Durum	142	142	142	142

International Wheat Agreement

and Domestic Sales

1 Northern	209/3	209/3	209/1	209
2 Northern	205/7	205/7	205/7	206
3 Northern	204/3	204/3	204/3	204/4
4 Northern	197/3	197/3	197/3	197/4
5 Wheat	188/7	188/7	188/7	189
6 Wheat	186/7	186/7	186/7	187
Feed Wheat	183/7	183/7	183/7	184
1 C.W. Garnet	189/7	189/7	189/7	190
2 C.W. Garnet	188/7	188/7	188/7	189
3 C.W. Garnet	187/7	187/7	187/7	188
1 Alberta Red Winter	189/7	189/7	189/7	190
2 Alberta Winter	188/7	188/7	188/7	189
3 Alberta Winter	187/7	187/7	187/7	188

Export - Class II

1 Northern	209/3	209/3	209/1	209
2 Northern	205/7	205/7	205/7	206
3 Northern	204/3	204/3	204/3	204/4
4 Northern	197/3	197/3	197/3	197/4
5 Wheat	188/7	188/7	188/7	189
6 Wheat	186/7	186/7	186/7	187
Feed Wheat	183/7	183/7	183/7	184
1 C.W. Garnet	189/7	189/7	189/7	190
2 C.W. Garnet	188/7	188/7	188/7	189
3 C.W. Garnet	187/7	187/7	187/7	188
1 Alberta Red Winter	189/7	189/7	189/7	190
2 Alberta Winter	188/7	188/7	188/7	189
3 Alberta Winter	187/7	187/7	187/7	188

CANADIAN FLOUR MILLING SITUATION

Production Wheat flour production by Canadian mills during May 1964 amounted to 3,881,000 hundredweight, representing a decrease of 2 per cent from the 3,960,000 hundredweight produced during April 1964 but 16 per cent greater than both the May 1963 figure of 3,357,000 hundredweight and the ten-year (1954-63) average production for the month of May of 3,343,000 hundredweight. Mills reporting operations during May 1964 had a total rated capacity of 176,000 hundredweight per 24-hour day and on the basis of a 25-day working period 88.1 per cent of this rated capacity was effective.

Wheat milled for flour during May 1964 amounted to 8,635,000 bushels, 2 per cent less than the 8,818,000 bushels milled during the preceding month but 17 per cent higher than the 7,406,000 bushels milled during May 1963. Of the wheat milled for flour during May 1964 some 7,782,000 bushels were Western Canadian spring wheat (other than Durum) while the remainder consisted of Ontario winter wheat (561,000 bushels); Durum (205,000 bushels); and all other (87,000 bushels).

Exports According to preliminary Customs returns, exports of Canadian wheat flour during May 1964 amounted to 1,768,000 hundredweight (some 4,066,000 bushels of wheat equivalent) representing a decrease of 39 per cent from the 6,639,000 bushels exported during the previous month, but in sharp contrast to the adjusted May 1963 total of 2,186,000 bushels. Flour shipments during the month went to fifty-four countries with exports to the U.S.S.R. amounting to 1,977,000 bushels of wheat equivalent and accounting for 49 per cent of the May 1964 total. Shipments of Canadian wheat flour during May to Britain, at 848,000 bushels equivalent, and to Cuba, at 456,000 bushels equivalent, accounted for 21 per cent and 11 per cent of the total, respectively. Other leading markets for Canadian wheat flour during May this year, with shipments in thousands of bushels of wheat equivalent were as follows: Jamaica, 118; Leeward and Windward Islands, 87; Trinidad, 80; and United States, 68.

Wheat Milled for Flour, and Production and Exports of Wheat Flour, Canada

Crop Year	Wheat Milled for Flour bushels	Wheat Flour	
		Production	Exports ^{1/}
		- cwt -	
1935-36—1939-40 average	67,845,114	29,405,451	9,603,941
1940-41—1944-45 average	99,704,638	43,908,245	23,699,546
1945-46—1949-50 average	107,330,372	47,011,540	25,819,721
1950-51—1954-55 average	100,446,328	43,847,894	21,812,041
1955-56—1959-60 average	90,148,211	39,752,589	16,349,156
1960-61	89,731,155	39,914,644	15,513,836
1961-62	88,240,580	39,539,651	13,892,676
1962-63	78,789,332	35,505,220	11,854,458
1963-64 ^{2/}			
August	6,719,665	3,003,765	1,321,208
September	7,712,078	3,459,156	715,309
October	10,422,696	4,667,613	1,036,575
November	10,564,882	4,737,321	1,687,554
December	10,234,008	4,585,013	2,344,686
January	10,404,242	4,718,375	2,872,668
February	10,043,366	4,494,554	2,916,992
March	10,505,354	4,725,459	2,294,782
April	8,817,797	3,960,091	2,886,396
May	8,634,667	3,881,329	1,767,818
Totals	94,058,755	42,232,676	19,843,988
Same months 1962-63 ^{3/}	65,664,526	29,616,517	9,775,955

^{1/} Based on Customs returns. Exports for the crop years 1945-46—1962-63 revised to remove effect of time lag in the returns made by Customs.

^{2/} Subject to revision.

^{3/} Revised.

UNITED STATES SITUATION

Domestic Supplies
3 Per Cent Below
Previous Year

Domestic supplies of wheat in the United States for the 1963-64 crop year (July-June) are estimated at 2,333.0 million bushels, consisting of the July 1, 1963 carryover of 1,195.4 million and the 1963 crop, placed at 1,137.6 million bushels.

Domestic supplies of the size indicated are 3 per cent less than last year's total of 2,415.5 million and 13 per cent smaller than the record 1960-61 figure of 2,670.8 million bushels. Imports of wheat from Canada during July-May of the current United States crop year amounted to 3.7 million bushels. Domestic disappearance during 1963-64 is estimated at about 598.0 million bushels, 2 per cent more than the 588.6 million last year. After deducting anticipated domestic requirements for the current United States crop year some 1,738.7 million bushels remained available for export and for carryover, a decrease of 5 per cent from the 1,832.9 million in 1962-63.

July-May
Exports Set
New Record

Exports of wheat and flour in terms of grain equivalent during the July-May period of the 1963-64 crop year, amounted to a record 781.7 million bushels, surpassing by a wide margin the previous peak of some 662.8 million exported in July-May 1961-

62, and exceeding last year's comparable total of 588.0 million bushels by 32 per cent. The balance remaining on June 1, 1964 for export and for carryover was estimated at 957.0 million bushels compared with 1,245.0 million on the same date a year ago.

United States Wheat Supplies

Item	1962-63 <u>1/</u>	1963-64 <u>2/</u>
	- million bushels -	
Carryover at beginning of crop year (July 1)	1,321.9	1,195.4
Production	1,093.7	1,137.6
Total estimated domestic supplies	2,415.5	2,333.0
Imports of wheat and wheat flour in terms of wheat for domestic use, July-May	6.0	3.7
Total estimated supplies <u>3/</u>	2,421.5	2,336.7
Less estimated domestic requirements for crop year <u>4/</u>	588.6	598.0
Available for export and for carryover	1,832.9	1,738.7
Deduct:		
Exports of wheat as grain, July-May	496.1	696.3
Exports of wheat flour in terms of wheat, July-May <u>5/</u>	91.8	85.4
Total exports of wheat and wheat flour <u>6/</u>	588.0	781.7
Balance on June 1 for export and for carryover	1,245.0	957.0

1/ Revised. 2/ Preliminary. 3/ Excluding imports for June. 4/ Includes shipments to United States Territories and wheat for military food use at home and abroad. 5/ Flour exports exclude "Milled in bond". 6/ These figures now include all shipments under relief programs which formerly were not available from Census data.

1964 Wheat Crop
Forecast at 1,213
Million Bushels

average.

In a report released on June 10, 1964 the Crop Reporting Board of the United States Department of Agriculture stated in part that all wheat production in 1964 is forecast at 1,213 million bushels, 7 per cent above last year but 3 per cent below

Winter wheat production is forecast at 981 million bushels, 8 per cent above last year but 4 per cent below the 1958-62 average. The June 1 forecast is 33 million bushels -- 3 per cent -- below the forecast a month earlier. Lack of moisture, high temperatures, and damaging winds caused a further reduction in production prospects in the area centering around southwest Kansas, southeast Colorado, and the Texas and Oklahoma Panhandles. In this area much of the wheat was beyond recovery by June 1 and extensive acreage had already been plowed up. Production prospects also declined rather sharply in the Pacific Northwest where precipitation had been light during the past several months. Partially offsetting these declines were further improvement in yield potentials in most southern, eastern and Corn Belt States.

Harvest of the 1964 winter wheat crop started in mid-May in the Low Plains of Texas and by June 1 had extended into Oklahoma. Winter wheat was approaching maturity in the central Plains States and starting to head in the northernmost States.

The indicated yield per harvested acre of 26.1 bushels is about the same as last year and average. In the past 10 years, the average change in the United States production from June 1 to harvest has been 56 million bushels, ranging from a minimum of 23 million bushels to a maximum of 105 million bushels.

All spring wheat production is forecast at 232 million bushels based on June 1 conditions of the crop. This would be about the same as the 1963 crop and the 1958-62 average. Production by States is based on an evaluation of current yield prospects applied to the intended acreage reported by growers about March 1 taking into account possible changes in intentions due to the new wheat program and other factors.

Seeding of spring wheat was completed in good time although some areas in the Dakotas, Minnesota, and Montana were slowed by cool, wet weather while in the Pacific Northwest cool, dry weather slowed seeding. By June 1, the crop was virtually all seeded. Conditions in North Dakota, the major spring wheat State, have generally been good although topsoils were becoming dry by the end of May. General rains during early June over much of the important spring wheat area will be of significance in maintaining current prospects.

Production of durum wheat is estimated at 46.5 million bushels compared to last year's 49.8 million bushels and the average of 33.4 million bushels. Soil moisture in the main producing area was good at seeding time although cool weather slowed early development. By the end of May, topsoils were becoming dry and welcomed the early June rains that fell over much of the durum area.

Spring wheat production, other than durum, is indicated at 186 million bushels this year compared with 183 million bushels in 1963 and the average of 200 million bushels.

United States Wheat and
Flour Exports Second
Highest in History

The 706 million bushels of wheat and wheat flour (grain equivalent) exported by the United States between July 1963 and April 1964 is the largest amount reported for a July-April period. It is exceeded only by the record high of 718 million bushels exported during the 1961-62 fiscal year. July 1963-April 1964 shipments of these commodities are 41 per cent higher than those during the same period last year. Shipments to all areas increased substantially, with those to the Eastern European countries far exceeded those of last year. Over 57 per cent of shipments to Eastern Europe went to Russia and another 32 per cent to Poland. Exports to the EEC more than doubled and France alone received almost 10 times more during July 1963-April 1964 than during the same period last year.

The Asiatic countries again took approximately 46 per cent of U.S. wheat and flour. The U.S. exported 130 million bushels of wheat and flour to India, its largest market. Japan was the second largest market with almost 62 million bushels during July 1963-April 1964, or more than twice the amount reported during a similar period last year. In the Western Hemisphere, U.S. exports to Venezuela showed the largest increase. That country received over 8 million bushels of U.S. wheat and flour so far this fiscal year. While Venezuela does not represent our largest market in this area, the 8 million bushels represents an increase of over 106 per cent as compared with July-April last year. Shipments of flour to all countries dropped slightly from 80 million bushels grain equivalent between July 1962 and April 1963 to 78 million bushels between July 1963 and April 1964 with Egypt taking over a third of U.S. flour exports or 26 million bushels (grain equivalent).

Table A shows exports of wheat and flour for the period July 1963 through April 1964. Imports of wheat into Canada are largely for transshipment to other destinations. Table B shows inspections of U.S. wheat exported from Canadian ports. These inspections are almost 3 times greater than last year. Exports to specified countries which have been adjusted to include these inspections reached 236 million bushels, with almost 59 million going to Egypt. It is anticipated that U.S. exports of wheat and flour will reach 783 million bushels by May 31, 1964 as compared with 510 million bushels for July-May 1962-63. This will be 9 per cent higher than the alltime record of 718 million bushels reported for the 1961-62 fiscal year.

Table A.- United States Exports of Wheat and Flour by Country of Destination
July-April 1962-63 and 1963-64¹/

Destination	July 1962-April 1963			July 1963-April 1964		
	Wheat	Flour 2/	Total	Wheat	Flour 2/	Total
- thousand bushels -						
<u>Western Hemisphere</u>						
Canada 3/	9,250	148	9,398	28,446	188	28,634
Mexico	36	955	991	2	1,454	1,456
Central America	2,873	2,255	5,128	4,498	1,822	6,320
Haiti	1,087	70	1,157	1,215	184	1,399
Trinidad and Tobago	20	1,227	1,247	6	1,019	1,025
Bolivia	610	2,742	3,352	64	2,400	2,464
Brazil	43,050	397	43,447	35,613	363	35,976
British Guiana	-	1,022	1,022	-	909	909
Chile	5,759	910	6,669	1,772	681	2,453
Colombia	3,467	629	4,096	4,461	466	4,927
Paraguay	919	80	999	1,000	126	1,126
Peru	4,108	287	4,395	4,038	220	4,258
Venezuela	3,876	128	4,004	8,016	246	8,262
Others	1,016	1,579	2,595	2,419	2,113	4,532
Totals	76,071	12,429	88,500	91,550	12,191	103,741

Table A.- United States Exports of Wheat and Flour by Country of Destination
July-April 1962-63 and 1963-64 1/

Destination	July 1962-April 1963			July 1963-April 1964		
	Wheat	Flour 2/	Total	Wheat	Flour 2/	Total
- thousand bushels -						
<u>Western Europe</u>						
EEC						
Belgium-Luxembourg ..	2,509	10	2,519	4,075	19	4,094
France	1,219	130	1,349	10,161	3	10,164
Germany, West	6,278	6	6,284	11,447	12	11,459
Italy	1,239	3,877	5,116	4,170	2,503	6,673
Netherlands	7,650	973	8,623	14,681	1,080	15,761
Totals	18,895	4,996	23,891	44,534	3,617	48,151
<u>Other Western Europe</u>						
Greece	794	1,571	2,365	1,297	1,894	3,191
Norway	755	21	776	3,530	19	3,549
Portugal	1,441	545	1,986	2,533	444	2,977
Spain	-	14	14	3,792	9	3,801
Switzerland	2,667	4/	2,667	7,658	-	7,658
United Kingdom	2,647	276	2,923	15,561	187	15,748
Yugoslavia	24,623	1,445	26,068	1,902	1,116	3,018
Others	1,834	350	2,184	2,329	322	2,651
Totals	34,761	4,222	38,983	38,602	3,991	42,593
<u>Eastern Europe</u>						
Czechoslovakia	-	-	-	1,312	-	1,312
East Germany	-	-	-	3,268	-	3,268
Hungary	-	-	-	6,002	622	6,624
Poland	7,535	720	8,255	31,605	-	31,605
U.S.S.R.	-	-	-	56,350	-	56,350
Totals	7,535	720	8,255	98,537	622	99,159
Totals, Europe .	61,191	9,938	71,129	181,673	8,230	189,903
<u>Asia</u>						
Afghanistan	-	1	1	3,202	78	3,280
India	107,129	359	107,488	130,221	188	130,409
Indonesia	5	11	16	11	468	479
Iran	4,665	1,777	6,442	904	1,122	2,026
Iraq	-	5	5	5,868	100	5,968
Israel	8,081	108	8,189	6,259	62	6,321
Japan	27,304	2,712	30,016	59,479	2,114	61,593
Jordan	1,820	2,692	4,512	987	3,884	4,871
Korea	19,823	803	20,626	18,252	1,120	19,372
Lebanon	-	1,086	1,086	48	1,132	1,180
Pakistan	45,726	870	46,596	53,107	29	53,136
Philippines	5,819	562	6,381	7,654	416	8,070
Saudi Arabia	7	3,157	3,164	115	3,070	3,185
Taiwan	8,600	1,483	10,083	7,695	1,083	8,778
Turkey	8,494	472	8,966	5,960	290	6,250
Vietnam, Laos and Cambodia	359	2,852	3,211	10	2,341	2,351
Others	1,260	6,225	7,485	945	3,921	4,866
Totals	239,092	25,175	264,267	300,717	21,418	322,135

Table A.- United States Exports of Wheat and Flour by Country of Destination
July-April 1962-63 and 1963-64 ^{1/}

Destination	July 1962-April 1963			July 1963-April 1964		
	Wheat	Flour ^{2/}	Total	Wheat	Flour ^{2/}	Total
- thousand bushels -						
<u>Africa</u>						
Algeria	7,070	2,550	9,620	9,003	1,002	10,005
British East Africa ...	1,256	57	1,313	138	88	226
Congo (Leopoldville) ..	35	1,854	1,889	127	2,984	3,111
Egypt	21,356	23,800	45,156	26,348	26,379	52,727
Morocco	2,097	1,913	4,010	2,667	2,518	5,185
Nigeria	1,308	211	1,519	1,685	49	1,734
Sudan	1,143	708	1,851	1,643	1,352	2,995
Tunisia	8,012	146	8,158	3,008	137	3,145
South Africa, Republic of	-	-	-	3,045	42	3,087
Others	2,733	1,513	4,246	6,186	1,832	8,018
Totals	45,010	32,752	77,762	53,850	36,383	90,233
<u>Oceania</u>	-	47	47	6	61	67
Totals, All Countries	421,364	80,341	501,705	627,796	78,283	706,079

^{1/} Data include shipment for relief or charity. ^{2/} Grain equivalent. ^{3/} The bulk of exports to Canada are for transshipment to other destinations -see Table B.
^{4/} Less than 500 bushels.

Table B.- United States Exports of Wheat and Flour as Adjusted for Transshipment
Through Canadian Ports, July-April 1962-63 and 1963-64

Destination	July 1962-April 1963		July 1963-April 1964	
	Wheat inspected for export from Canadian ports	Adjusted totals for listed countries	Wheat inspected for export from Canadian ports	Adjusted totals for listed countries
- thousand bushels -				
<u>EEC</u>				
Belgium-Luxembourg ..	221	2,740	3,421	7,515
France	1,495	2,844	269	10,433
Germany, West	827	7,111	1,323	12,782
Italy	-	5,116	-	6,673
Netherlands	1,993	10,616	9,799	25,560
Totals	4,536	28,427	14,812	62,963
Brazil	-	43,447	108	36,084
Venezuela	-	4,004	742	9,004
United Kingdom	1,215	4,138	1,210	16,958
Ireland	57	397	194	385
Poland	-	8,255	1,363	32,968
Spain	-	14	230	4,031
Portugal	981	2,967	781	3,758
Hungary	-	-	661	7,285
Egypt	-	45,156	5,921	58,648
Canary Islands	-	486	708	715
Nigeria	442	1,961	507	2,241
Madeira Islands	-	282	331	897
Mozambique	224	1,091	413	539
Totals	7,455	140,625	27,981	236,476

Cash Wheat Prices on the Kansas City and Minneapolis Markets

No. 2 Hard Winter, Kansas City			No. 1 Northern Spring, Minneapolis		
Date	Price		Date	Price	
	- cents per bushel -			- cents per bushel -	
June 1, 1964	193	- 211 1/4 1/	June 1, 1964	230 1/4	- 232 1/4
2	193 1/2	- 212 1/2 1/	2	233 3/4	- 235 3/4
3	193	- 212 3/4 1/	3	235	- 237
4	197 1/2	- 215 1/2 1/	4	236 1/8	- 238 1/2
5	196 3/4	- 215 1/	5	236	- 238
8	174	- 192 1/2 1/	8	227 1/2	- 234 1/2
9	164 1/2	- 182 3/4 1/	9	223 3/4	- 232 3/4
10	163 3/4	- 182 1/4 1/	10	219	- 228
11	169	- 186 1/4 1/	11	214 1/4	- 223 1/4
12	169 1/4	- 186 1/	12	212 7/8	- 221 7/8
15	168 3/4	- 186 3/4 1/	15	207 7/8	- 216 7/8
16	163	- 181 1/	16	203 1/4	- 212 1/4
17	161 3/4	- 181 1/	17	197 1/4	- 203 1/4
18	155 1/2	- 172 1/2 1/	18	191 7/8	- 197 7/8
19	155 3/4	- 160 1/2	19	189	- 195
22	154 1/2	- 159 3/4	22	182 3/4	- 188 3/4
23	151 1/2	- 156 1/4	23	176 1/2	- 182 1/2
24	149	- 160 1/4	24	176 3/8	- 182 3/8
25	151 1/4	- 157 3/4	25	173 1/8	- 179 1/8
26	155 1/2		26	172 5/8	- 176 5/8
29	148 3/4	- 151 1/2	29	173 3/8	
30	150 1/2	- 161	30	173	

1/ Nominal.

Chicago Wheat Futures, High Points of Closing

Date	July		September		December		March	May
	New	Old	New	Old	New	Old		
- cents and eighths per bushel -								
June 1, 1964	149/5	148/3	152/4	153/3	157/5	155/7	160/6	161/4
2	151/1	149/4	153/4	151/4	158/6	156/5	161/7	163
3	150	148/5	152/6	150/6	157/7	156	161/2	161/5
4	150/5	148/7	153	151	158/2	156/6	161/4	162/4
5	149/3	147/4	151/6	149/7	157	155/5	160/2	161/2
8	146/4	144/5	149	147/1	154/3	153	157/4	158/6
9	144/7	143/3	147/3	145/3	153	152/2	156/2	157
10	144/2	142/6	146/7	145	152/4	151/6	155/7	156/6
11	144/2	142/7	146/6	145/2	152/4	151/4	155/6	156/4
12	144	142/5	146/6	144/5	152/3	151/1	155/6	156/2
15	144/5	143/4	147/2	145/2	153	152/3	156/4	157/1
16	145/4	144	148/2	146/1	153/6	152/4	157/3	158/2
17	143/5	141/6	146	144/1	151/6	150/4	155/2	156/1
18	143/5	141/4	146	144/1	151/7	150	155/2	156/1
19	143/7	142/5	146/3	144/1	152/1	149/7	155/6	156/4
22	142/5	140/7	145/1	143	150/7	149	154/4	155/2
23	142/5	140/4	145/2	143/1	151	149/2	154/4	155
24	142/6	141	145/4	143/3	150/7	149/5	154/4	155/2
25	141/7	139/3	144/3	142/2	149/7	149/5	153/2	153/7
26	140/3	138	142/7	141/5	148/3	146/7	151/4	152/1
29	140/3	138	142/6	140/6	148/4	147/6	151/2	152
30	142	139/3	144/2	142/4	149/6	148/2	152/7	153/3

AUSTRALIAN SITUATION

Supplies for 1963-64
Crop Year at Record
Level

Total estimated supplies of wheat in Australia for the 1963-64 (December-November) crop year are placed at an all-time high of 351.5 million bushels, reflecting an increase in carryover stocks, from 18.2 million at December 1, 1962 to 23.5 million in 1963, combined with the record 1963 production of 328.0 million bushels. The 1963 crop represented a record outturn for the second consecutive year. After deducting 74.0 million for anticipated domestic requirements, an estimated 277.5 million are available for export and for carryover in 1963-64, an increase of 10 per cent over the 252.1 million the previous year.

Combined exports of wheat as grain and wheat flour in terms of grain equivalent during the period December 1-June 6 of the current Australian crop year amounted to 167.8 million bushels, 61 per cent more than the 104.1 million exported during the corresponding period of 1962-63. The balance remaining on June 6, 1964 for export and for carryover, at 109.7 million bushels, is 26 per cent below the comparable 1963 total of 148.0 million.

Australian Wheat Supplies

Item	1962-63 <u>1/</u>	1963-64 <u>2/</u>
	- million bushels -	
Carryover, including flour as wheat, at beginning of crop year (December 1)	18.2	23.5
Production	307.2	328.0
Total estimated domestic supplies	325.4	351.5
Less estimated domestic requirements for crop year .	73.3	74.0 <u>1/</u>
Available for export and for carryover	252.1	277.5
Deduct:		
Exports of wheat as grain, December 1-June 6	92.9	149.6
Exports of wheat flour in terms of wheat, December 1-June 6	11.2	18.2
Total exports of wheat and wheat flour	104.1	167.8
Balance on June 7, for export and for carryover	148.0	109.7

1/ Revised. 2/ Preliminary.

The following information relative to the Australian situation has been extracted from a report from Mr. H. A. Gilbert, Commercial Counsellor for Canada, Melbourne, under date of June 12, 1964 and is reproduced with the permission of the Trade Commissioner Service, Department of Trade and Commerce. Currency conversions have been made at the rate of £1 equals \$2.4158 (Canadian) the quotation in effect on June 15, 1964.

Crop Position Early indications are that farmers in Australia have prepared increased acreages for wheat sowing this year. The trend appears to be averaging out at a 5 per cent increase over last season's acreage, which if all seeding takes place, will mean a total acreage of some 16.26 million acres.

In New South Wales which is facing an acute shortage of superphosphates, excessive rains over parts of the State have recently resulted in widespread floodings, but it is too early to know whether wheat farmers have been affected to any degree. Sowings have already been delayed in isolated instances due to the heavy rains but, until these recent floods, good conditions prevailed over most of the State.

Reports from Victoria, Queensland and South Australia are optimistic, but once again, Western Australia is off to a bad start. It may be remembered that last season heavy rains and subsequent flooding spoiled a large percentage of the seeding in Western Australia. This year there has been no worthwhile rain for some eight weeks and many pastures are dead. Seeding that should have been in full swing three weeks ago has hardly commenced.

Marketing Position There have been no announcements regarding sales made by the Australian Wheat Board during the period under review.

Wheat Research The Commonwealth Government has announced that allocations amounting to £287,000 (\$693,000) have been approved for wheat research during the fiscal year 1964-65.

The allocations, recommended by the Wheat Industry Research Council, represent funds provided by the Government to match amounts contributed by wheat growers through a wheat tax of one farthing (1/4 cent) a bushel for research purposes.

The money will be distributed to State Departments of Agriculture, the C.S.I.R.O., Australian Universities and other research organizations. The 1964-65 allocations provide for the combination of projects already in hand; the improvement and extension of research facilities by capital grant and the commencement of new investigations.

Exports of Australian Wheat and Wheat Flour in Terms of Wheat
December 1 - June 6, 1963-64 and Corresponding Period 1962-63

Destination	Wheat		Wheat Flour	
	1962-63	1963-64	1962-63	1963-64
- thousand bushels -				
<u>Europe</u>				
Albania	814	-	-	-
Britain	8,767	14,786	855	637
Eire	868	1,353	-	-
Malta	190	437	-	-
Norway	2,456	3,021	-	-
Western Germany	1,124	7,785	-	-
Others	-	-	6	1
<u>U.S.S.R.</u>	-	41,971	-	5,808
<u>Middle East</u>				
Aden	353	580	-	-
Aden and Aden I/T	-	-	678	609
Aden and Aden I/T Atta	-	-	246	296

Exports of Australian Wheat and Wheat Flour in Terms of Wheat
December 1 - June 6, 1963-64 and Corresponding Period 1962-63

Destination	Wheat		Wheat Flour	
	1962-63	1963-64	1962-63	1963-64
- thousand bushels -				
<u>Middle East (concluded)</u>				
Arabian Gulf	-	-	58	99
Arabian Gulf Atta	-	-	462	634
Iran	308	169	-	-
Iraq	-	3,100	-	-
Lebanon, Jordan, Syria	1,738	3,871	-	-
Saudi Arabia	-	-	127	36
Others	70	422	9	16
<u>Africa</u>				
Mauritius	-	-	270	659
Nyasaland	-	-	163	127
Portuguese East Africa	-	945	-	-
Rhodesia	1,857	2,240	-	-
Zanzibar	-	-	88	90
Others	7	10	29	34
<u>Asia</u>				
Brunei	-	-	17	12
Burma	511	-	86	-
Ceylon	3	7	2,653	3,572
China	58,827	48,887	-	-
Formosa	-	79	-	-
Hong Kong	1,096	1,036	114	49
India	1,788	3,567	-	-
Indonesia and Irian	-	-	248	74
Japan	5,133	10,505	-	-
Korea North	1,548	-	-	-
Pakistan	1,712	-	-	-
Philippines	275	242	233	1,061
Thailand	3	320	310	301
Malaysia				
Malaya	229	23	1,500	1,446
Malaya Atta	-	-	46	48
Sabah	-	-	68	86
Sarawak	-	-	92	90
Singapore	20	1,040	1,265	903
Singapore Atta	-	-	7	5
Singapore A/C B.W.O.	-	-	8	32
Others (Okinawa)	85	-	255	45
<u>Pacific Area and Sundries</u>				
New Zealand	3,087	3,171	-	-
Pacific Islands	31	37	1,115	1,124
Peru	-	-	9	4
Ships' Stores and Sundries	-	-	183	303
Totals	92,900	149,600	11,200	18,200

ARGENTINE SITUATION

Supply Position Estimated total supplies of wheat in the Argentine for the 1963-64 (December-November) crop year amount to 307.3 million bushels, consisting of the December 1, 1963 revised carryover of 25.9 million and the new crop, estimated at 281.5 million. Indicated supplies for the current Argentine crop year, reflecting a substantial increase in production as well as slightly larger opening stocks are about 40 per cent more than the 1962-63 total of 220.1 million bushels. After making an allowance of 132.3 million bushels for anticipated domestic requirements, an estimated 175.0 million are available for export and for carryover in 1963-64, almost double the 92.0 million of the previous year.

Exports of wheat and wheat flour in terms of grain equivalent during December 1963-May 1964 amounted to 78.9 million bushels, 73 per cent greater than the 45.7 million exported during the same months in 1962-63. The balance remaining on June 1, 1964 for export and for carryover was estimated at 96.1 million bushels, more than double the June 1, 1963 total of 46.3 million.

Argentine Wheat Supplies

Item	1962-63 <u>1/</u>	1963-64 <u>2/</u>
	- million bushels -	
Carryover at beginning of crop year (December 1) <u>3/</u>	25.4	25.9 <u>1/</u>
Production <u>4/</u>	194.8	281.5
Total estimated domestic supplies	220.1	307.3
Less estimated domestic requirements for crop year	128.2	132.3
Available for export and for carryover	92.0	175.0
Deduct:		
Exports of wheat as grain, December-May	45.4	78.5
Exports of wheat flour in terms of wheat, December-May	0.3	0.4
Total exports of wheat and wheat flour	45.7	78.9
Balance on June 1 for export and for carryover	46.3	96.1

1/ Revised.

2/ Preliminary.

3/ Includes allowances for farm stocks.

4/ Official estimate.

The following account of the Argentine situation has been extracted from a report from Mr. M. B. Bursey, Commercial Counsellor, Buenos Aires, under date of June 18, 1964 and is reproduced with the permission of the Trade Commissioner Service, Department of Trade and Commerce. Where possible, conversions to Canadian measures and currency have been made for the convenience of our readers.

Weather
and Crops

Temperatures were generally above normal throughout the month of May in most Pampa regions, and rainfall was abundant. In most areas, the rainfall proved beneficial to growing forage and grain crops but was detrimental to the corn and sorghum crops now being harvested, as much of the grain arriving at commercial points is suffering from excessive dampness.

Wheat

Weather and soil conditions are almost perfect for the oncoming crop. Soil preparation is well underway, and seeding will soon begin in northern regions. The new minimum official producers prices for autumn and winter sown grain for 1964-65 have still not been announced, despite the fact that they are established normally before the end of April. Despite the absence of minimum prices and despite the present uncertainty over wheat sales, both the trade and the National Grain Board are guessing that the acreage seeded will increase. Supporting such a thesis is the fact that many former livestock producing areas are still depopulated as a result of the drought of past years, and such land will probably be sown to wheat while herds are being rebuilt. Coupled with this is the fact that the market for oats, barley and rye has been dull for some time, and even the durum market has shown signs of weakness; hence wheat - especially bread wheat - would appear to offer the most promising prospect. The very high minimum prices paid to wheat producers during the current crop year will, undoubtedly, influence the sowing intentions of some producers, despite the fact that the wheat trade has been condemning present prices for some months as being unrealistically high. The present market for wheat continues to be extremely dull.

No action has been taken by the Government during the period under review to find a solution to the problem of moving wheat into export markets. It is quite obvious that, with the present minimum price of 880 pesos per 100 kilos (\$1.90 per bushel) and the present rate of exchange of the Argentine peso, some sort of subsidy will be required to permit the Grain Board to sell their surplus stocks of wheat abroad. Argentina could probably sell her wheat at a f.o.b. price of approximately US\$62.00 per metric ton (\$1.82 per bushel), but with a minimum producers price of 880 pesos per 100 kilos (\$1.90 per bushel), exporters prices must, of necessity, be higher. To the 880 pesos per 100 kilos (\$1.90 per bushel) paid by exporters must be added some 75 pesos (16 cents per bushel) for fobbing charges, plus 5.3 per cent for export taxes (which are levied on an index value of 860 pesos (\$1.86 per bushel) and includes INTA tax, 1.5 per cent; elevators construction tax, 1.5 per cent; National Grain Board tax, 1 per cent; road construction tax, 1 per cent; and statistical tax, 0.3 per cent). This would give a final f.o.b. value of 1,001 pesos per 100 kilos (\$2.16 per bushel), which at the current rate of exchange would be equivalent to US\$72.53 per metric ton (approximately \$2.13 per bushel). This figure is approximately US\$10.00 per metric ton (29 cents per bushel) higher than the trade estimate for the price at which Argentina could market wheat abroad at the present time.

Wheat shipments during the month of May totalled approximately 260,000 metric tons (9,553,000 bushels); most of this went to Brazil and Communist China and only small parcels to European countries. Brazil bought 80,000 metric tons (2,939,000 bushels) at a f.o.b. of US\$68.50 per metric ton (\$2.01 per bushel). Approximately 4,000 metric tons (147,000 bushels) were sold to Britain at £27.5.0 (\$2.24 per bushel) c.i.f., for June shipment. Uruguay called tenders last month for the purchase of 70,000 metric tons (2,572,000 bushels) of wheat; it is believed that 20,000 tons (735,000 bushels) was awarded to an Argentine firm, although at writing no further details are available. It is reported that the National Grain Board is endeavouring to sell wheat to Colombia, South Africa and East Germany, but no further details are available on these prospective sales.

Prices for wheat in both the Buenos Aires Cereal Exchange and the Futures Market continue to be equivalent to the minimum official producers prices.

FRENCH SITUATION

Supply Position Total estimated commercial domestic supplies of wheat in France for the crop year (July-June) 1963-64, consisting of the July 1 carryover of 100.4 million bushels and anticipated marketings of 260.9 million, amount to some 361.3 million bushels, 16 per cent less than the 1962-63 total of 429.8 million. Imports of wheat during the July-May period of the current crop year amounted to 13.1 million bushels as against only 3.9 million imported during the same period in 1962-63. After deducting 210.7 million bushels for estimated domestic use, including normal feed wheat requirements the surplus available for export and for carryover amounts to 163.6 million bushels in contrast to 214.7 million last year.

Combined exports of wheat and wheat flour in terms of grain equivalent during the first eleven months of the 1963-64 crop year amounted to 89.4 million bushels, and represented a decrease of 15 per cent from the comparable 1962-63 total of 105.0 million. The balance of commercial supplies remaining on June 1, 1964 for export and for carryover amounted to 74.2 million bushels, 32 per cent below the June 1, 1963 total of 109.7 million.

French Supplies of Soft Wheat

Item	1962-63	1963-64 ^{1/}
	- million bushels -	
Commercial carryover, July 1	58.7	100.4
Deliveries to Grain Board	371.1	260.9
Total estimated domestic supplies	429.8	361.3
Imports, July-May	3.9	13.1
Total estimated commercial supplies	433.7	374.4
Less domestic requirements for crop year	219.0	210.7
Available for export and for carryover	214.7	163.6
Deduct:		
Exports of wheat as grain, July-May	82.8	70.8
Exports of wheat flour in terms of wheat, July-May	22.3	18.6
Total exports of wheat and wheat flour	105.0	89.4
Balance on June 1 for export and for carryover	109.7	74.2

^{1/} Preliminary.

The following account of the current crop situation in France has been extracted from a report by Mr. J.E. Montgomery, Assistant Commercial Secretary, Canadian Embassy, Paris, under date of July 3, 1964, and is reproduced with the permission of the Trade Commissioner Service, Department of Trade and Commerce. Where possible, conversions from French to Canadian measures have been made and rounded.

Market Situation

The market was considered to be very active during June in anticipation of good prospects for the new crop. The first official estimates for the 1964-65 crop year as compared with previous years are as follows:

<u>Grain</u>	<u>1962</u>	<u>1963</u>	<u>Estimate June 1</u>
	- thousand bushels -		
Wheat	516,379	373,033	466,265
Barley	270,670	339,141	282,382
Oats	167,932	186,477	159,386

Target prices for the new crop have not been raised for wheat and barley. They will remain at the same level as the last crop year. The price of wheat per quintal will be between 45.52NF and 49.02NF (\$2.73 and \$2.94 per bushel) and for barley between 36.72NF and 40.52NF (\$1.76 and \$1.94 per bushel). The intervention price has been slightly-raised. It will now be less than 5 per cent as compared with 6 per cent previously. The fixed quantity that may be supported has been raised for wheat from 7,500 thousand metric tons (275,575,000 bushels) to 8,100 thousand metric tons (297,621,000 bushels). The quantity for barley will be three million metric tons (137,788,000 bushels). The Government expects that the producers' income will be substantially supplemented by these measures.

Imports of hard milling wheat continued to be inactive. At the end of May import certificates for hard wheat totalled 365,239 tons (13,420,000 bushels).

Weather and Crops

Wheat acreage is reported to be about 10.7 million acres, considerably larger than in 1963. Planting of spring grain was delayed by persistent rains but with the better weather which has prevailed since April it is now expected that about 11 million acres will be harvested. This will be almost 2 million acres above the small 1963 acreage.

The weather in June has been variable. After a brief rainy period, sunny weather set in about mid-June. In some growing areas, the hot sunny weather has been accompanied by thunderstorms and hail and in these areas the quality of the grain will be poor. It is not expected that these regional conditions will have any effect on the current estimate of volume. A bumper French grain harvest is still anticipated.

CALENDAR OF WHEAT EVENTS

- June 10 According to a report published by the Crop Reporting Board, United States Department of Agriculture all wheat production in the United States in 1964 is forecast at 1,213 million bushels.
- 11 With the exception of 11 stations reported as "closed" the Canadian Wheat Board had placed all shipping points in the Western Division on a delivery quota of 8 bushels per specified acre.
- 12 According to a report received from Mr. H.A. Gilbert, Commercial Counsellor for Canada, Melbourne, early indications are that farmers in Australia have prepared increased acreages for wheat sowing this year.
- 17 Speaking in the House of Commons the Hon. Mitchell Sharp, Minister of Trade and Commerce, announced that the initial payment for wheat, effective August 1, 1964 would be \$1.50 per bushel, basis No. 1 Northern in store Fort William-Port Arthur or Vancouver.
- 18 The Canadian Wheat Board announced that effective June 22, 1964 the supplementary quota of 5 bushels per seeded acre to wheat (other than Durum) was increased to 10 bushels per seeded acre to wheat (other than Durum). For details see page 6 of this publication.

STATISTICS CANADA LIBRARY
BIBLIOTHEQUE STATISTIQUE CANADA



1010686756