

CATALOGUE No.

22-005

MONTHLY

DOES NOT CIRCULATE

NE PAS PRÊTER



CANADA

DOMINION BUREAU OF STATISTICS  
AGRICULTURE DIVISION

# THE WHEAT REVIEW



OCTOBER 1963



DOMINION BUREAU OF STATISTICS

---

THE  
WHEAT REVIEW

OCTOBER 1963

*Published by Authority of*  
The Minister of Trade and Commerce

Prepared in the Crops Section, Agriculture Division  
Dominion Bureau of Statistics, Ottawa

November 1963  
5502-502

Price \$3 per year

Vol. 34—No. 3

## TABLE OF CONTENTS

	<u>Page</u>
World Wheat Situation	
Wheat Supplies of Four Major Exporters 5 Per Cent Above a Year Ago.....	1
August-September Exports 28 Per Cent Over Last Year.....	1
I.W.C. Cumulative Totals of Commercial Purchases, Crop Year 1963-64.....	2
Canadian Situation	
Supply Position.....	3
Marketings, Disappearance and Visible Supplies.....	4
September 1963 Exports of Wheat and Flour Total 44.4 Million Bushels.....	4
Wheat - Announcement of Sale to Czechoslovakia.....	5
Quality of 1963 Western Canadian Wheat.....	6
General Quota Position.....	7
Farmers' Marketings.....	7
Visible Supply of Canadian Wheat.....	8
Grading of Wheat Inspected, August-September 1963 with Comparisons.....	8
Weekly Visible Supply and Farmers' Marketings (Charts).....	9
Lake Shipments of Canadian Grain.....	10
Record Wheat Shipments from Churchill during 1963 Season.....	10
Wheat Shipments to the United States by Destination.....	11
Rail Shipments of Wheat to Maritime Ports.....	11
Rail Shipments of Wheat from Fort William-Port Arthur.....	12
Overseas Exports of Canadian Grain by Ports of Loading.....	12
Freight Assistance Shipments.....	13
Monthly Exports of Canadian Wheat and Wheat Flour.....	14
Exports of Canadian Wheat by Destination.....	15
Customs Exports of Canadian Wheat Flour by Countries of Consignment.....	18
Canadian Wheat Board Weekly Average Cash Wheat Prices.....	20
Canadian Flour Milling Situation	
Production and Exports.....	22
United States Situation	
Supply Position.....	23
1963 Wheat Crop Forecast at 1,133 Million Bushels.....	24
Stocks of Wheat in All Positions October 1, 1963.....	24
Cash Wheat Prices on the Kansas City and Minneapolis Markets.....	25
Chicago Wheat Futures, High Points of Closing.....	25
Australian Situation.....	26
Argentine Situation.....	29
French Situation.....	32
Crop Situation in Britain.....	35
Calendar of Wheat Events.....	36

---

# WORLD WHEAT SITUATION

## Wheat Supplies of Four Major Exporters 5 Per Cent Above a Year Ago

Latest available estimates indicate that supplies of wheat remaining on or about October 1, 1963 in the four major exporting countries for export and for carryover at the end of their respective crop years amounted to 2,614.0 million bushels, exceeding by 5 per cent the 2,489.9 million available a year ago. Supplies in Canada and Australia were larger this year than last while those for United States and Argentina were smaller. Supplies at October 1, 1963, in millions of bushels, were held as follows, with last year's comparable figures in brackets: United States, 1,554.8 (1,672.1); Canada, 986.0 (768.0); Argentina, 9.5 (13.9); and Australia, 63.7 (35.9). Estimates for both years include on-farm stocks as well as those in commercial positions.

## August-September Exports 28 Per Cent Over Last Year

With increased shipments from United States, Canada and Australia more than offsetting smaller exports from Argentina total exports of wheat and flour in terms of wheat from the four major exporting countries during the first two months of the 1963-64 crop year amounted to a record 226.5 million bushels, some 28 per cent more than last year's August-September level of 177.6 million and 49 per cent greater than the ten-year (1952-61) average for the same period of 151.8 million.

Shipments from the four traditional major wheat exporters during August-September 1963 with comparisons appear in the accompanying table.

## Exports of Wheat and Flour in Terms of Wheat August-September, 1963 with Comparisons

August-September	United States	Canada	Argentina	Australia	Total
- million bushels -					
1950.....	31.6	31.8	11.6	21.5	96.5
1951.....	82.4	44.0	12.3	21.2	159.9
1952.....	52.4	62.1	-	12.6	127.1
1953.....	41.9	53.2	19.2	9.0	123.3
1954.....	33.1	48.8	22.5	11.1	115.5
1955.....	42.9	42.5	19.6	16.8	121.8
1956.....	76.7	57.3	17.2	29.1	180.3
1957.....	68.1	52.0	14.8	18.2	153.1
1958.....	69.9	44.4	11.0	11.9	137.2
1959.....	68.9	50.1	10.7	17.8	147.5
1960.....	98.4	56.6	19.5	18.4	192.9
1961.....	106.2	70.8	2.3	40.4	219.7
1962 <u>1/</u> .....	102.9	52.8	8.2	13.7	177.6
1963 <u>2/</u> .....	107.3	76.9	7.8	34.5	226.5

1/ Revised.

2/ Preliminary.

International Wheat Council  
Cumulative Totals of Commercial Purchases by Importing Countries from Exporting Countries  
Crop Year 1963-64 — Through September 28, 1963

Importing Countries	EXPORTING COUNTRIES								Total Purchases
	Canada	Argentina	Australia	France	Italy	Sweden	U.S.S.R.	U.S.A.	
- thousand bushels -									
Austria.....	-	-	-	-	-	-	-	-	-
Belgium & Luxembourg.....	11,596	6	-	548	-	-	110	2,783	15,043
Brazil.....	-	3,307	-	-	-	-	-	147	3,454
Costa Rica.....	238	-	-	-	-	-	-	161	399
Cuba.....	-	-	-	-	-	-	-	-	-
Dominican Republic.....	352	-	-	-	-	-	-	2	354
El Salvador.....	307	-	-	-	-	-	-	435	742
Finland.....	373	-	-	-	-	-	-	-	373
Germany, Federal Republic	22,421	28	3,487	877	-	-	-	7,638	34,451
Greece.....	7	-	-	-	-	-	-	143	150
Guatemala.....	116	-	-	-	-	-	-	467	583
Iceland.....	-	-	-	6	-	-	-	9	15
India.....	-	-	505	-	-	-	-	1	506
Indonesia.....	-	-	110	-	-	-	-	1	111
Ireland.....	2,156	-	224	-	-	-	-	189	2,569
Israel.....	1,060	-	93	-	-	-	-	805	1,958
Japan.....	19,190	-	5,255	-	-	-	-	22,798	47,243
Korea.....	511	-	1,497	-	-	-	-	1	2,009
Liberia.....	39	-	-	-	-	-	-	23	62
Libya.....	-	-	-	-	143	-	-	-	143
Netherlands.....	1,635	480	-	269	-	-	2,719	9,766	14,869
Netherlands Territories	143	-	8	-	-	-	-	121	272
New Zealand.....	-	-	2,069	-	-	-	-	-	2,069
Nigeria.....	97	-	-	-	-	-	-	901	998
Norway.....	1,667	-	2,389	9	-	29	-	1,288	5,382
Peru.....	762	750	7	-	-	-	-	1,751	3,270
Philippines.....	5,261	-	901	-	-	-	-	2,982	9,144
Portugal.....	25	411	3	334	-	-	-	1,468	2,241
Portuguese Territories.	316	-	11	-	-	-	-	433	760
Rhodesia & Nyasaland.....	23	-	1,980	-	-	-	-	22	2,025
Saudi Arabia.....	623	-	399	-	1	-	-	671	1,694
Sierra Leone.....	381	-	-	-	-	-	-	7	388
South Africa.....	-	-	-	-	-	-	-	896	896
Switzerland.....	4,082	-	-	20	12	-	-	1,235	5,349
Tunisia.....	-	-	-	-	-	-	-	-	-
United Arab Republic.....	-	-	-	-	-	-	-	-	-
United Kingdom.....	54,720	148	13,660	943	-	60	1,867	6,131	77,529
U.K. Territories.....	2,549	-	1,700	-	-	-	-	614	4,863
Vatican City.....	187	-	-	-	-	-	-	-	187
Venezuela.....	4,081	-	-	-	-	-	-	3,936	8,017
Western Samoa.....	-	-	30	-	-	-	-	-	30
To Orders.....	-	1,166	-	5,152	-	360	-	-	6,678
Totals.....	134,918	6,296	34,328	8,158	156	449	4,696	67,825	256,826
Percentage of Total Sales by Exporting Countries...	52.53	2.45	13.37	3.18	0.06	0.17	1.83	26.41	100.00

NOTE: Mexico and Spain - no sales reported.

Quantities for Argentina cover period ending August 30, 1963.

Quantities for France cover period ending September 14, 1963.

Quantities for Italy cover period ending September 14, 1963.

Quantities for U.K. territories include North Borneo and Sarawak up to September 16, 1963, when they became non-members.

# CANADIAN SITUATION

Supply Position Total estimated supplies of wheat for the 1963-64 crop year are placed at an all-time high of 1,207.9 million bushels, consisting of the August 1 carryover of 488.8 million and the 1963 crop, forecast on the basis of conditions at September 15, at a record 719.1 million bushels. Supplies of the size indicated represent a 26 per cent increase over the 956.6 million of a year ago and surpass by 5 per cent the previous peak of 1,152.8 million bushels established in 1956-57. Assuming realization of the September forecast of production and after making an allowance of 145.0 million bushels for anticipated domestic requirements, supplies available for export and for carryover during 1963-64 would amount to 1,062.9 million bushels, 29 per cent above the 820.8 million in 1962-63.

Exports of wheat as grain during the August-September period of the current crop year amounted to 72.1 million bushels, 52 per cent above the 47.3 million exported during the same months a year ago. Exports of wheat flour, in terms of wheat, during August-September this year were estimated at 4.8 million bushels, bringing total exports of wheat and flour during the same two months, to some 76.9 million bushels, 46 per cent more than the 52.8 million exported during the comparable period of last year. Subject to realization of current production and utilization estimates, the balance remaining on October 1, 1963 for export and for carryover, amounted to 986.0 million bushels, 28 per cent larger than the October 1, 1962 total of 768.0 million.

## Canadian Wheat Supplies

Item	1962-63 <u>1/</u>	1963-64 <u>2/</u>
	- million bushels -	
Carryover in North America at beginning of crop year (August 1).....	391.1	488.8 <u>3/</u>
Production.....	565.6	719.1
Imports of wheat for domestic use, August-September.	<u>4/</u>	<u>5/</u>
Total estimated supplies.....	956.6	1,207.9
Less estimated domestic requirements for crop year..	135.8 <u>3/</u>	145.0
Available for export and for carryover.....	820.8	1,062.9
Deduct:		
Exports of wheat in bulk, August-September <u>6/</u> .....	47.0	71.8
Exports of bagged seed wheat, August-September <u>7/</u> .	0.4	0.3
Total exports of wheat as grain.....	47.3	72.1
Exports of wheat flour in terms of wheat, August - September <u>7/</u> .....	5.5	4.8
Total exports of wheat and wheat flour.....	52.8	76.9
Balance on October 1 for export and for carryover...	768.0	986.0

1/ Subject to revision. 2/ Preliminary. 3/ Revised. 4/ Less than 50,000 bushels. 5/ Not available. 6/ As reported by the Board of Grain Commissioners. (Includes overseas clearances and imports into the United States). 7/ Customs returns, 1962-63 adjusted for time lag.

Marketings, Disappearance  
and Visible Supplies

Total primary deliveries of wheat (both east and west) up to October 16 of the current crop year have amounted to 65.1 million bushels compared with 102.6 million marketed during the same period of the previous year. Some 36.3 million bushels of this year's total were delivered during the four weeks September 19 to October 16. During the same period the volume of Canadian wheat entering domestic and export channels amounted to 55.3 million bushels. As a result, the total visible supply of Canadian wheat decreased from 389.4 million bushels at September 18 to a level of 369.6 million at October 16, 1963.

The total visible supply of Canadian wheat at October 16 this year represented an increase of 5 per cent over the 1962 comparable total of 352.1 million but was 10 per cent less than the 1961 figure of 408.8 million. The bulk of the increase over a year ago was accounted for by larger stocks in country elevators, with stocks in this position amounting to 203.2 million bushels as against the 1962 comparable total of 186.7 million, but still below the 1961 figure of 237.7 million. Wheat stocks at interior terminals at October 16, 1963 totalled 6.2 million bushels as against 6.9 million a year ago and 10.4 million two years ago. The 16.8 million bushels "in transit rail" (Western Division) was unchanged from the 1962 total but exceeded the 1961 figure of 13.5 million. Supplies at the Lakehead, totalling some 36.5 million bushels, were 29 per cent below last year's comparable level of 51.3 million and 23 per cent less than the 1961 figure of 47.1 million. Stocks "in transit lake", amounting to 11.5 million bushels were above both the 1962 level of 9.5 million and the 1961 total of 8.7 million. The 37.3 million bushels in Bay, Lake and Upper St. Lawrence ports were considerably greater than the 28.0 million of a year ago but less than the 39.7 million of two years ago. Supplies in Lower St. Lawrence and Maritime ports at October 16, 1963 at 36.5 million bushels, were above both the 1962 and 1961 corresponding totals of 31.0 million and 34.0 million bushels, respectively. The 10.6 million bushels in West Coast ports (Vancouver-New Westminster, Prince Rupert and Victoria) were below the 12.3 million of last year but more than the 8.3 million of two years ago. Wheat supplies at the port of Churchill amounted to 2.6 million bushels compared with the 1962 total of 1.1 million and the 1961 figure of 2.4 million.

September 1963 Exports of  
Wheat and Flour Total  
44.4 Million Bushels

Combined exports of wheat in bulk, bagged seed wheat and wheat flour in terms of grain equivalent during September 1963 amounted to 44.4 million bushels, 36 per cent above the August 1963 total of 32.5 million, 59 per cent more than the 27.8 million of a year ago and 70 per cent greater than the ten-year (1952-61) average for the month of September of 26.1 million. Exports of wheat in bulk (as reported by the Board of Grain Commissioners) during September 1963, at 42.6 million bushels, were 46 per cent more than the 29.2 million exported during the preceding month, 70 per cent larger than the 25.0 million of the same month a year ago and 88 per cent greater than the ten-year (1952-61) September average of 22.7. Exports of bagged seed wheat during September 1963, based on Canadian Customs returns, amounted to 155 thousand bushels compared with the August 1963 figure of 160 thousand and the September 1962 total (adjusted to remove time lag) of 200 thousand bushels. Customs returns also indicate that the equivalent of 1.6 million bushels of wheat was exported in the form of flour during September 1963, below both the August 1963 and the adjusted September 1962 totals of 3.2 million and 2.6 million bushels, respectively.

Cumulative exports of wheat in bulk during the August-September 1963 period amounted to 71.8 million bushels, representing an increase of 53 per cent over the comparable 1962 total of 47.0 million and 52 per cent above the ten-year average for the period of 47.1 million. Britain, remaining in its position as Canada's leading market for wheat, received shipments amounting to 16.0

million bushels and representing 22 per cent of the two-month total. During August-September 1962 shipments of wheat to Britain amounted to 13.0 million bushels and accounted for 28 per cent of the total. Other principal markets for Canadian wheat in bulk during the first two months of the current crop year, with figures for the same period of the preceding crop year in brackets, were as follows, in millions of bushels: Japan, 9.7 (7.8); Poland, 6.0 (5.4); Federal Republic of Germany, 5.9 (3.2); U.S.S.R.(Russia), 5.1 (nil); Belgium and Luxembourg, 4.8 (2.2); Yugoslavia, 3.5 (nil); China Communist, 2.9 (4.9); Philippines, 2.5 (1.6); and Italy, 2.2 (1.5). Cumulative exports of bagged seed wheat during August-September of the current crop year, based on Canadian Customs returns, amounted to 315 thousand bushels compared with last year's comparable total (adjusted to remove time lag) of 357 thousand.

Cumulative exports of wheat flour during the first two months of the 1963-64 crop year, based on Customs returns, were the equivalent of 4.8 million bushels, below the adjusted August-September 1962 total of 5.5 million bushels. As with bulk wheat, Britain was also the major market for Canadian wheat flour. Shipments of wheat flour to that country during the period under review amounted to the equivalent of 1,938 thousand bushels and accounted for 40 per cent of the August-September 1963 total. During the same months of the 1962-63 crop year shipments of wheat flour to Britain amounted to the equivalent of 2,231 thousand bushels and represented 41 per cent of the total. Other leading markets for Canadian wheat flour in terms of grain equivalent during the August-September period of the 1963-64 crop year, with revised data for the same months of the preceding crop year in brackets, were as follows, in thousands of bushels: Ceylon, 586 (nil); Trinidad and Tobago, 237 (211); Jamaica, 203 (223); Hong Kong, 211 (143); Leeward and Windward Islands, 198 (165); Malaya and Singapore, 143 (91); Philippines, 127 (8); Costa Rica, 123 (159); Ghana, 123 (492); and United States, 122 (199).

Wheat - Announcement  
of Sale to  
Czechoslovakia

On October 29, 1963 the Honourable Paul Martin, Secretary of State for External Affairs, speaking in the House of Commons on behalf of the Honourable Mitchell Sharp, Minister of Trade and Commerce stated as follows: "Mr. Speaker, for the Minister of Trade and Commerce, who is away on public business, I wish to announce that he has just signed, on behalf of the Canadian government, a long term wheat agreement with the Czechoslovak Socialist Republic. In connection with the negotiation of the agreement, the Minister of Trade and Commerce welcomed to Ottawa Mr. J. Poula, Czechoslovak vice minister of foreign trade, who is in the gallery today witnessing our proceedings. Mr. Poula signed the agreement on behalf of the government of his country.

The agreement is for a period of five years during which Czechoslovakia will purchase and Canada will supply 1.2 million metric tons of Canadian wheat, that is, about 44 million bushels, for shipment in the following quantities: In the first year of the agreement, 350,000 metric tons, of which 120,000 tons will be shipped before July 31, 1964; in the second year of the agreement, between 300,000 and 400,000 tons; in the third, fourth and fifth years, a combined total of between 450,000 and 550,000 metric tons, provided that the quantity in each of these years shall not be less than 120,000 tons.

The Canadian wheat board and Koospol have concluded the first sales contract under this agreement, which provides for the shipment of 120,000 metric tons of wheat during the summer of 1964. Purchases under this agreement will be facilitated by the extension of credit arrangements under the Export Credits Insurance Act providing for payment over three years.

There is a long standing tradition of friendly and fruitful trade relations between Canada and Czechoslovakia. The house will share my view

that this important new agreement between the two governments is a clear indication of the desire of both parties to see an increase in the development of mutually advantageous trade".

Quality of 1963  
Western Canadian  
Wheat

The following information relative to the quality of this year's wheat crop in the Prairie Provinces is taken from a press release issued on October 23, by the Grain Research Laboratory of the Board of Grain Commissioners.

For the seventh consecutive year Western Canada's red spring wheat crop is above average in milling and baking quality according to studies made by the Board of Grain Commissioners' Laboratory. Red spring wheat production is estimated at 646 million bushels and it is expected that over 80 per cent of the crop will grade No. 2 and No. 3 Northern. Average bushel weights for the new crop No. 1 to No. 4 Northern are 64.1, 62.4, 61.0 and 58.6 lbs. respectively and corresponding protein levels are 14.3, 14.3, 14.4 and 14.8 per cent. This year one of the principal degrading factors is low bushel weight on account of thin wheat. In otherwise sound wheat there is usually an inverse relationship between bushel weight and protein content; thus the lower grades of the 1963 crop are, on the average, higher in protein content than the top grades. These high protein levels are reflected in high baking strength and supporting value. Compared with last year's crop, the new crop is a little lower in flour yield and slightly higher in ash content but flour colour is at much the same level. Though milling quality is slightly lower this year, baking quality is about the same for the top grades and much superior for the lower grades.

Tests made on 6,188 samples of the statutory grades of wheat obtained from 1,728 shipping points in the Prairie Provinces shows that average protein content is 14.3 per cent which is the third highest on record. It is 0.4 per cent higher than last year and 0.7 per cent higher than the long-term average of 13.6 per cent. Average protein levels are 14.1 per cent for Manitoba, 14.6 per cent for Saskatchewan and 13.8 per cent for Alberta. The most significant change is in Manitoba where the level shows an increase of 0.9 per cent over last year; Saskatchewan is 0.4 per cent higher and Alberta is at the same level. The highest protein areas (over 14.9 per cent) are in western Saskatchewan and southeastern Alberta.

This year the amber durum wheat crop is estimated at 52.4 million bushels compared with the record breaking 65.9 million bushels last year. It is estimated that 70 per cent of this crop will grade No. 2 and No. 3 C.W. Average protein content is 14.3 per cent and average bushel weight is 64.0 lb. Compared with last year's crop, the new crop is higher in protein content and percentage vitreous kernels but lower in bushel weight and kernel weight and about the same in semolina yield. Macaroni quality is equal to the high quality of last year's wheat.

The 1963 wheat crop will assure an adequate supply of high quality red spring and amber durum wheat grades. As the new crop moves into export positions it is expected that the quality of Atlantic shipments will improve, especially in the lower grades, while the high quality of Pacific shipments will be maintained.

A crop bulletin and the final protein map will be released by the Laboratory shortly. Crop Bulletin No. 88, 1963, will deal with the milling and baking quality of red spring wheat and with the macaroni-making quality of durum wheat; the final map shows the geographic distribution of wheat of different protein levels in Western Canada.

General Quota Position By October 24, 1963 out of a total of 1,921 shipping points in the Western Division, the Canadian Wheat Board had placed 249 points on a delivery quota of 3 bushels per specified acre, 580 points on a two-bushel quota and 721 points on a one-bushel quota. Of the remainder 365 points were on an Initial Unit Quota. Only six stations were reported as "closed".

Summary of Elevator Shipping Points in the Western Division  
as at October 24, 1963

Province	Initial Unit Quota	General Quota in Bushels per Specified Acre			Closed	Total
		One	Two	Three		
Ontario.....	-	-	-	1	-	1
Manitoba.....	8	77	120	139	1	345
Saskatchewan.....	98	488	365	86	5	1,042
Alberta.....	259	156	93	20	-	528
British Columbia.....	-	-	2	3	-	5
All Provinces....	365	721	580	249	6	1,921

Farmers' Marketings Deliveries of wheat from farms in the Prairie Provinces up to October 16 of the current crop year amounted to 60.4 million bushels, representing a decrease of 40 per cent from the comparable 1962 total of 100.5 million but 3 per cent above the ten-year (1952-61) average for the period of 58.5 million bushels.

Farmers' Marketings <sup>1/</sup> of Wheat in the Prairie Provinces 1963-64

Week Ending		Manitoba	Saskatchewan	Alberta	Total	Last Year
- bushels -						
August	7, 1963...	5,607	49,346	16	54,969	64,682
	14 .....	110,875	180,957	199,749	491,581	217,040
	21 .....	171,927	507,568	134,487	813,982	1,215,068
	28 .....	418,689	2,215,916	324,163	2,958,768	3,806,243
September	4 .....	1,180,171	1,906,057	583,877	3,670,105	5,053,798
	11 .....	1,537,062	4,022,800	1,886,765	7,446,627	10,029,156
	18 .....	926,891	5,604,941	2,449,570	8,981,402	11,586,794
	25 .....	527,179	4,091,520	1,672,602	6,291,301	17,353,283
October	2 .....	897,896	5,940,764	2,766,137	9,604,797	21,147,418
	9 .....	991,898	7,917,939	2,398,902	11,308,739	18,454,109
	16 .....	1,229,961	6,090,935	1,468,255	8,789,151	11,545,726
Totals.....		7,998,156	38,528,743	13,884,523	60,411,422	100,473,317
Average similar period:						
1952-61.....		7,122,181	36,513,867	14,823,461	58,459,509	

<sup>1/</sup> Includes receipts at country, interior private and mill elevators, interior semi-public terminals and platform loadings.

Visible Supply of Canadian Wheat, October 16, 1963  
Compared with Approximately the Same Date, 1961 and 1962

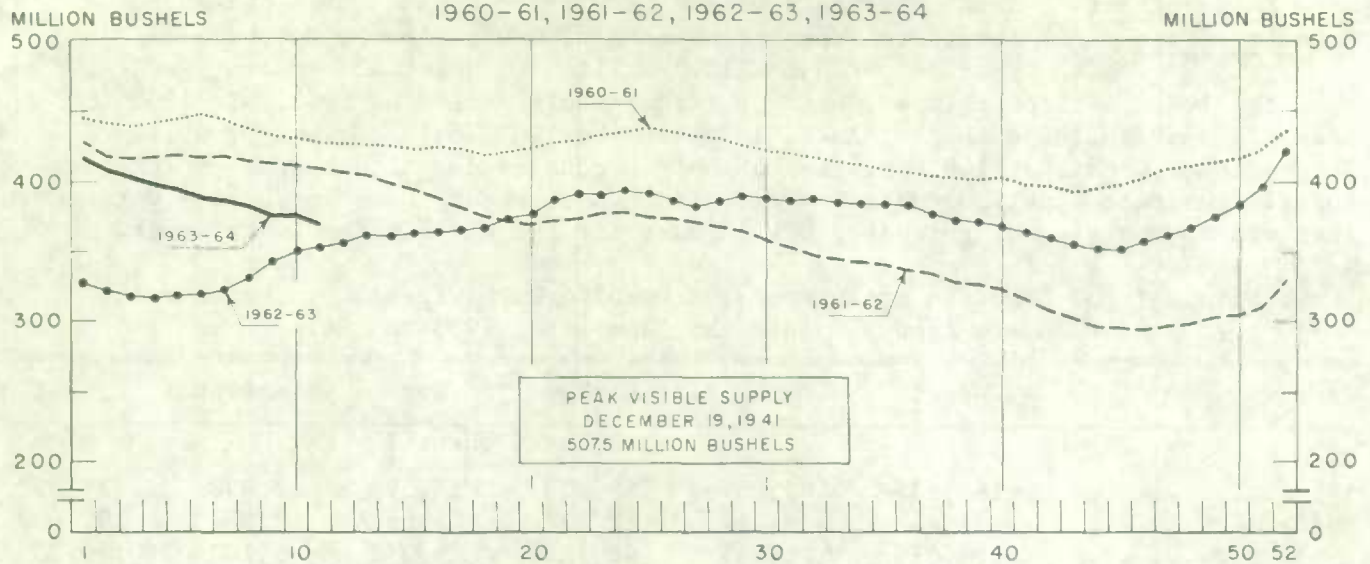
Position	1961	1962	1963
- thousand bushels -			
Country elevators - Manitoba.....	32,699	21,643	21,060
Saskatchewan.....	136,740	109,921	119,345
Alberta.....	68,297	55,155	62,751
Totals.....	237,735	186,720	203,157
Interior private and mill.....	6,913	7,690	6,654
Interior terminals.....	10,407	6,893	6,211
Vancouver-New Westminster.....	7,949	11,446	9,473
Victoria.....	337	896	773
Prince Rupert.....	-	-	352
Churchill.....	2,445	1,069	2,581
Fort William-Port Arthur.....	47,133	51,290	36,532
In transit rail (Western Division).....	13,544	16,843	16,842
Bay, Lake and Upper St. Lawrence ports..	39,720	28,009	37,257
Lower St. Lawrence and Maritime ports...	33,973	31,045	36,536
In transit lake.....	8,683	9,547	11,477
In transit rail (Eastern Division).....	-	675	1,772
Totals.....	408,839	352,124	369,617

Grading of Wheat Inspected, August-September 1963 with Comparisons

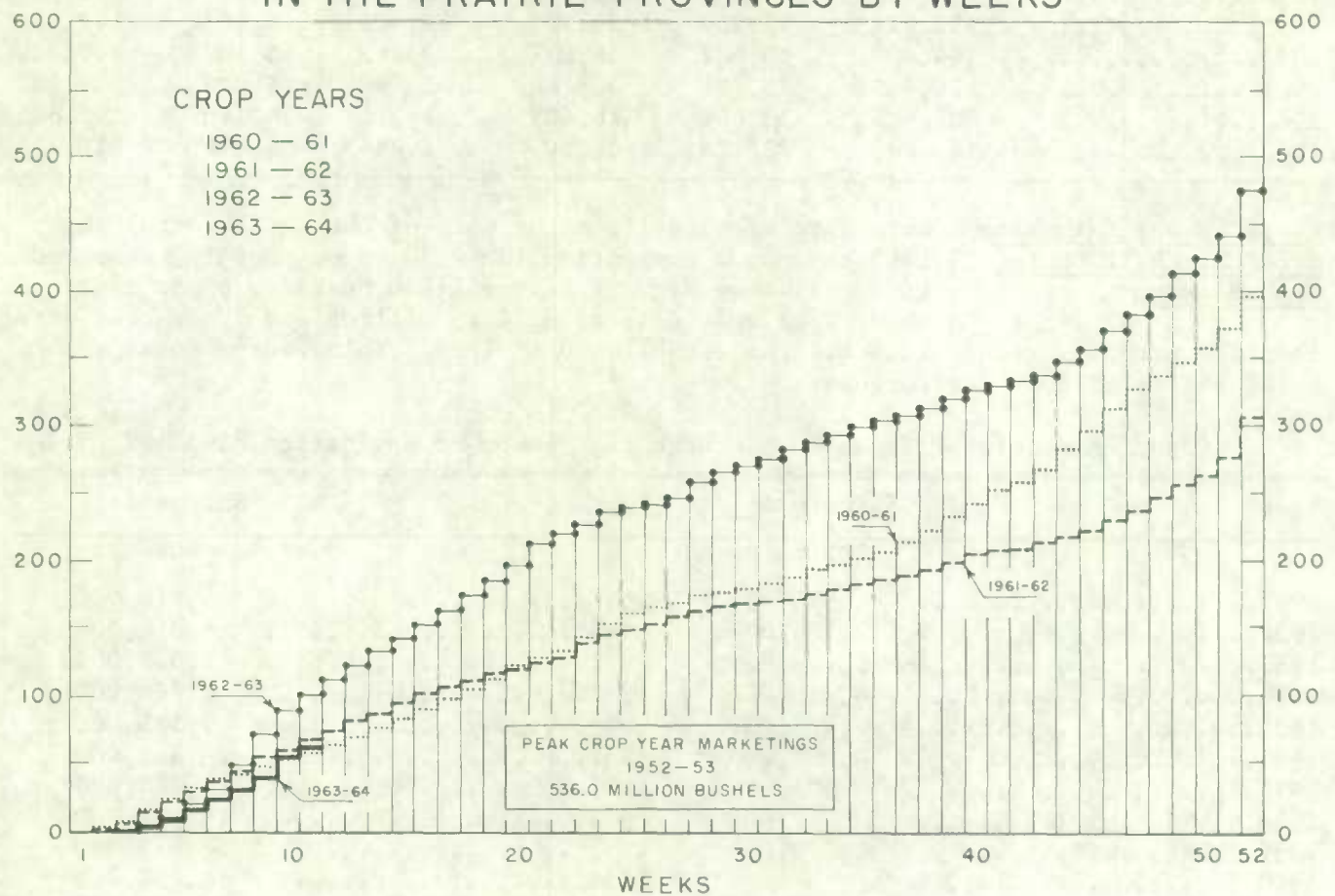
Grade	Crop Year		August - September			
	Average					
	1957-58	1962-63	1962		1963	
	1961-62					
	per cent	per cent	cars	per cent	cars	per cent
No. 1 Hard.....	1/	1/	2	1/	1	1/
No. 1 Man. Northern.....	5.3	12.1	9,662	31.0	2,439	6.5
No. 2 Man. Northern.....	34.4	38.4	13,446	43.1	13,741	36.7
No. 3 Man. Northern.....	26.0	14.9	3,103	9.9	5,632	15.0
No. 4 Man. Northern.....	12.1	11.4	659	2.1	5,842	15.6
No. 5 Wheat.....	5.5	5.7	162	0.5	2,737	7.3
No. 6 Wheat.....	1.1	0.9	31	0.1	369	1.0
Feed Wheat.....	1/	1/	1	1/	2	1/
Others Red Spring.....	9.4	8.0	1,296	4.2	3,364	9.0
C.W. Garnet.....	0.1	0.1	10	1/	246	0.7
C.W. White Spring.....	0.1	0.1	57	0.2	67	0.2
C.W. Mixed Wheat.....	1/	1/	12	1/	15	1/
Alberta Winter.....	0.2	0.2	312	1.0	1,053	2.8
Nos. 1-6 C.W. Amber Durum...	5.6	7.7	2,409	7.7	1,885	5.0
Others C.W. Amber Durum.....	0.2	0.5	42	0.1	79	0.2
Totals.....	100.0	100.0	31,204	100.0	37,472	100.0
Gross bushels (approx.).....			59,476,000		72,337,000	
1/ Less than .05 per cent.						

# WEEKLY VISIBLE SUPPLY OF CANADIAN WHEAT

1960-61, 1961-62, 1962-63, 1963-64



## CUMULATIVE RECORD OF WHEAT MARKETINGS IN THE PRAIRIE PROVINCES BY WEEKS



( Data in both charts for crop years beginning August 1 )

Lake Shipments of Canadian Grain

Total shipments of the five major grains out of Lakehead terminals from the opening of navigation to October 16 this year amounted to 210.2 million bushels, 42 per cent greater than the 147.6 million shipped during the comparable period of 1962. In 1963 the season of navigation opened on April 19 while the 1962 season opened on April 22. Shipments of wheat, at 148.8 million bushels accounted for 71 per cent of the current total. During the period under review shipments of wheat, oats and barley were above last year's corresponding levels, while those for rye and flaxseed were lower.

Lake Shipments of Canadian Grain from the Opening of Navigation to October 16, 1963 and to Approximately the Same Date, 1953 to 1962

Year	Wheat	Oats	Barley	Rye	Flaxseed	Total
- thousand bushels -						
1953.....	169,635	66,857	85,323	10,576	3,998	336,390
1954.....	95,453	38,712	52,577	5,667	2,601	195,009
1955.....	104,619	24,561	46,121	9,352	5,102	189,755
1956.....	164,419	31,805	67,259	10,122	5,173	278,779
1957.....	113,625	30,838	36,299	4,003	8,895	193,660
1958.....	136,421	31,288	52,655	5,024	5,660	231,048
1959.....	132,212	21,948	34,105	4,401	4,502	197,168
1960.....	144,402	18,682	36,831	3,242	6,167	209,325
1961.....	174,789	18,701	32,144	2,090	5,228	232,951
1962.....	106,645	13,601	18,409	4,210	4,740	147,605
1963.....	148,845	32,126	22,805	1,844	4,604	210,224

Record Wheat Shipments from Churchill During 1963 Season

Shipments of wheat from the port of Churchill during the 1963 season of navigation (July 30 to October 19) amounted to an all-time high of 22.9 million bushels, 6 per cent above last year's total of 21.5 million and 5 per cent more than the previous record 21.8 million established in 1959. This year's total was moved out in 48 overseas cargoes.

Ocean Shipments of Wheat from Churchill, Season of Navigation, 1931-62

Year	Shipments 1/ bushels	Year	Shipments 1/ bushels
1931.....	545,000	1947.....	4,976,000
1932.....	2,736,000	1948.....	5,314,000
1933.....	2,708,000	1949.....	5,528,000
1934.....	4,050,000	1950.....	6,768,000
1935.....	2,407,000	1951.....	7,545,000
1936.....	4,294,000	1952.....	8,585,000
1937.....	604,000	1953.....	10,784,000
1938.....	917,000	1954.....	12,485,000
1939.....	1,772,000	1955.....	13,078,000
1940.....	-	1956.....	16,250,000
1941.....	-	1957.....	16,577,000
1942.....	-	1958.....	19,599,000
1943.....	740,000	1959.....	21,787,000
1944.....	-	1960.....	19,585,000
1945.....	-	1961.....	19,351,000
1946.....	2,929,000	1962.....	21,525,000
		1963.....	22,864,000

1/ To nearest thousand bushels.

Wheat Shipments to the United States by Destination      Total vessel and rail shipments of wheat to the United States, either for re-export or retention for domestic use, from the beginning of the current crop year to October 16, 1963 amounted to 181 thousand bushels. During the comparable periods of 1962 and 1961 rail and vessel shipments amounted to 17 thousand and 352 thousand bushels, respectively.

Wheat Shipments\* to the United States by Destination  
August 1 - October 16, 1963 with Comparisons

Destination	1961	1962	1963
	- bushels -		
<u>By Vessel</u>			
Duluth-Superior.....	339,826	-	123,729
<u>By Rail</u>			
U.S.A. Domestic Points.....	11,700	16,767	57,034
Totals, Shipments.....	351,526	16,767	180,763

\*Either for re-export or retention for domestic use. Excluding bagged seed.

Rail Shipments of Wheat to Maritime Ports      Rail shipments of wheat to Maritime Ports from Bay, Lake and Upper St. Lawrence Ports during August-September 1963 amounted to 334 thousand bushels compared with the August-September 1962 figure of 851 thousand.

Rail Shipments of Wheat to Maritime Ports from Bay  
Lake and Upper St. Lawrence Ports

Origin of Shipment	August 1- September 30, 1962	August 1- September 30, 1963
	- bushels -	
Port McNicoll.....	850,635	277,726
Midland, Tiffin.....	-	56,423
Totals.....	850,635	334,149

Rail Shipments of Wheat from Fort William-Port Arthur, 1960-61--1963-64

Month	1960-61	1961-62	1962-63	1963-64
- bushels -				
August.....	14,717	20,648	13,933	5,500
September.....	19,227	14,598	11,657	9,104
October.....	5,417	33,944	22,716	
November.....	24,000	22,915	12,024	
December.....	17,500	60,167	12,778	
January.....	71,335	126,533	39,534	
February.....	135,339	68,421	22,967	
March.....	28,073	37,000	86,398	
April.....	9,833	37,777	69,067	
May.....	15,805	11,203	11,851	
June.....	17,563	16,022	15,746	
July.....	10,940	17,315	11,158	
Totals.....	369,749	466,543	329,829	

Distribution of Rail Shipments of Wheat from Fort William-Port Arthur, September 1963

Grade	Quebec	Ontario
- bushels -		
5 Wheat.....	-	1,500
Durum.....	4,000	-
Others.....	-	3,604
Totals.....	4,000	5,104

Overseas Exports of Canadian Grain by Ports of Loading, August 1 - October 16, 1963  
with Comparisons

Port	Wheat <u>1/</u>	Durum Wheat <u>1/</u>	Oats <u>1/</u>	Barley	Rye	Flaxseed	Rapeseed <u>2/</u>
- bushels -							
<u>Pacific Seaboard</u>							
Van.-New West. ....	29,137,889	-	79,999	2,448,140	-	858,171	764,303
Victoria.....	933,334	-	-	-	-	-	-
Prince Rupert.....	785,867	-	-	-	-	-	-
Churchill.....	21,012,732	-	-	-	-	-	-
Lakehead Direct.....	2,359,605	677,170	1,134,849	856,333	124,000	91,508	-
Kingston Direct.....	655,201	-	-	-	-	-	-
<u>St. Lawrence</u>							
Montreal.....	13,349,626	2,777,798	121,324	95,177	234,606	386,091	-
Sorel.....	3,970,231	375,143	-	-	-	-	-
Three Rivers.....	3,014,001	11,200	-	-	-	107,188	-
Quebec.....	3,284,902	-	-	-	-	-	-
Baie Comeau.....	10,586,246	205,763	-	-	89,887	265,459	-
<u>Maritime</u>							
West Saint John.....	700,964	-	-	-	-	-	-
Halifax.....	1,239,466	-	-	-	-	-	-
Totals.....	91,030,064	4,047,074	1,336,172	3,399,650	448,493	1,708,417	764,303
Aug. 1-Oct. 17, 1962..	65,276,736 <u>3/</u>	2,782,478	218,698	1,184,153	2,021,974	2,361,568	375,139

1/ Excluding bagged seed.

2/ In bushels of 50 pounds.

3/ Revised.

Freight Assistance Shipments Claims filed for payment up to September 30, 1963 represent the movement of 1,139 thousand bushels of wheat from the Prairie Provinces to Eastern Canada and British Columbia under the freight assistance policy during August 1963. During the same month last year claims had been filed for a total of 739 thousand bushels, indicating on the assumption of approximately the same rate of submission of claims during both months, that August shipments of wheat under the policy were running about 54 per cent above those of last year. Revised data on August 1962 shipments of wheat based on claims submitted up to September 30, 1963 place the one-month total at 919 thousand bushels. The bulk of the shipments during the month under review went to destinations in Quebec and Ontario, with these two provinces accounting for 45 per cent and 38 per cent of the total, respectively.

Provincial Distribution of Wheat Shipments under the Freight Assistance Policy  
August 1963 and 1962

Month	Nfld.	P.E.I.	N.S.	N.B.	Que.	Ont.	B.C.	Total
- thousand bushels -								
August, 1963 <u>1</u> /.....	3	12	127	30	507	436	24	1,139
Same period 1962:								
Preliminary <u>2</u> /.....	4	10	20	21	342	301	41	739
Revised <u>1</u> /.....	10	13	48	29	381	354	84	919

Preliminary data on millfeed shipments under the freight assistance policy indicate shipments of 23,334 tons during the first month of the current crop year. During August 1962 claims had been filed for a total of 24,456 tons, indicating on the assumption of approximately the same rate of submission of claims during August 1963 and August 1962, that this year's shipments of millfeeds under the policy were running about 5 per cent below those of 1962. Revised data on August 1962 shipments of millfeeds based on claims submitted up to September 30, 1963 place the one-month total at 39,732 tons. Shipments of 12,673 tons to Quebec and 6,128 tons to Ontario, accounted for 54 per cent and 26 per cent, respectively, of the August movement of freight-assisted millfeeds.

Provincial Distribution of Millfeed Shipments under the Freight Assistance Policy  
August 1963 and 1962

Province	1962		1963
	Preliminary <u>2</u> /	Revised <u>1</u> /	Preliminary <u>1</u> /
- tons -			
Newfoundland.....	186	636	149
Prince Edward Island.....	414	735	484
Nova Scotia.....	1,492	2,671	1,864
New Brunswick.....	1,614	2,454	1,663
Quebec.....	12,362	18,149	12,673
Ontario.....	7,703	11,607	6,128
British Columbia.....	685	3,480	373
Totals.....	24,456	39,732	23,334

1/ Based on claims filed up to September 30, 1963.

2/ Based on claims filed up to September 30, 1962.

Monthly Exports of Canadian Wheat and Wheat Flour

Year and Month	Wheat in Bulk <u>1/</u>	Bagged Seed Wheat <u>2/</u>	Total Wheat	Wheat Flour <u>2/</u> <u>3/</u>	Total <u>3/</u> Wheat and Wheat Flour
----------------------	----------------------------	-----------------------------------	----------------	------------------------------------	---

- thousand bushels -

1961-62

August.....	35,625	89	35,714	3,123	38,837
September.....	28,966	242	29,209	2,786	31,995
October.....	32,910	86	32,996	2,391	35,386
November.....	40,823	377	41,200	3,150	44,351
December.....	19,966	392	20,359	2,643	23,002
January.....	17,534	458	17,992	2,304	20,295
February.....	23,739	433	24,173	2,546	26,719
March.....	20,482	574	21,056	2,968	24,023
April.....	24,981	539	25,520	2,389	27,909
May.....	35,150	77	35,227	2,486	37,713
June.....	23,559	5	23,564	2,456	26,020
July.....	19,016	44	19,060	2,711	21,772
Totals.....	322,752	3,317	326,069	31,953	358,022

1962-63 4/

August.....	21,944	160	22,105	2,670	24,775
September.....	25,040	228	25,268	2,939	28,207
October.....	29,705	20	29,725	2,451	32,176
November.....	33,309	103	33,412	2,158	35,570
December.....	20,949	340	21,289	1,771	23,059
January.....	21,486	520	22,006	2,234	24,240
February.....	18,779	590	19,370	1,420	20,789
March.....	19,246	1,088	20,334	1,939	22,273
April.....	28,916	1,316	30,232	2,441	32,673
May.....	35,355	68	35,423	2,827	38,250
June.....	24,512	1	24,513	2,697 <u>5/</u>	27,210 <u>5/</u>
July.....	20,854	-	20,854	2,015	22,869
Totals.....	300,095	4,434	304,529	27,562 <u>5/</u>	332,091 <u>5/</u>

1963-64 4/

August.....	29,204	160	29,364	3,166	32,530
September.....	42,556	155	42,711	1,645	44,356
Totals.....	71,760	315	72,075	4,811	76,886

1/ Export clearances including shipments to the United States compiled by the Statistics Branch, Board of Commissioners for Canada.

2/ Compiled from Canadian Customs returns, 1961-62 adjusted to remove effect of time lag in reporting.

3/ In terms of wheat equivalent. Wheat flour conversion rate: 2.3 bushels per cwt.

4/ Preliminary.

5/ Revised.

Exports of Canadian Wheat<sup>1/</sup> by Destination, September 1963 and 1962

Destination	Wheat	Durum	All Wheat	
	(Except Durum)	Wheat	September 1963	September 1962
- bushels -				
<u>COMMONWEALTH AND PREFERENTIAL COUNTRIES</u>				
<u>Western Europe</u>				
Britain.....	8,513,565	-	8,513,565	6,589,951
Ireland.....	298,667	-	298,667	-
<u>Other Africa</u>				
Nigeria.....	39,600	-	39,600	142,240
<u>Other Asia</u>				
Hong Kong.....	37,333	-	37,333	35,467
<u>Central America and Antilles</u>				
Jamaica.....	996	-	996	1,293
Totals, Com. and Pref. Countries..	8,890,161	-	8,890,161	6,768,951
<u>OTHER COUNTRIES</u>				
<u>Western Europe</u>				
Belgium and Luxembourg.....	2,588,483	177,513	2,765,996	1,504,557
France.....	1,047,961	-	1,047,961	7,118
Germany, Federal Republic.....	3,497,425	876,872	4,374,297	2,386,304
Italy.....	1,668,987	-	1,668,987	643,560
Netherlands.....	928,656	-	928,656	1,074,476
Norway.....	1,060,267	-	1,060,267	511,467
Switzerland.....	1,047,338	294,250	1,341,588	305,011
<u>Eastern Europe</u>				
Poland.....	3,950,260	-	3,950,260	5,390,603
U.S.S.R. (Russia).....	5,077,371	-	5,077,371	-
Yugoslavia.....	664,533	-	664,533	-
<u>Middle East</u>				
Saudi Arabia.....	294,575	-	294,575	48,701
<u>Other Africa</u>				
Mozambique.....	5,067	11,200	16,267	48,533
<u>Other Asia</u>				
China, Communist.....	2,922,640	-	2,922,640	1,415,867
Japan.....	4,000,880	-	4,000,880	3,721,164
Korea.....	511,467	-	511,467	-
Philippines.....	1,373,120	-	1,373,120	741,067
Taiwan.....	39,200	-	39,200	-
<u>Oceania</u>				
United States Oceania.....	49,317	-	49,317	55,066
<u>South America</u>				
Ecuador.....	312,548	-	312,548	-
Peru.....	375,947	-	375,947	-
Venezuela.....	329,657	-	329,657	415,408
<u>Central America and Antilles</u>				
Cuba.....	374,080	-	374,080	-
Guatemala.....	50,000	-	50,000	-
<u>North America</u>				
United States				
for domestic use <sup>2/</sup> .....	136,560	-	136,560	2,000
Totals, Other Countries.....	32,306,339	1,359,835	33,666,174	18,270,902
Sub-Totals, All Countries.....	41,196,500	1,359,835	42,556,335	25,039,853
Bagged seed <sup>3/</sup> .....			154,673	200,079
Totals, All Countries.....	41,196,500	1,359,835	42,711,008	25,239,932

Note: See footnotes on page 17.

Cumulative Exports of Canadian Wheat<sup>1/</sup> by Destination

Destination	August-September 1963			Total same period last year
	Wheat (Except Durum)	Durum Wheat	Total Wheat	
- bushels -				
<u>COMMONWEALTH AND PREFERENTIAL COUNTRIES</u>				
<u>Western Europe</u>				
Britain.....	16,014,873	-	16,014,873	12,983,762
Ireland.....	1,127,467	-	1,127,467	11,030
Malta and Gozo.....	281,294	-	281,294	449,867
<u>Other Africa</u>				
Nigeria.....	96,533	-	96,533	142,240
<u>Other Asia</u>				
Hong Kong.....	114,426	-	114,426	110,134
Malaya and Singapore.....	58,800	-	58,800	-
<u>Central America and Antilles</u>				
Jamaica.....	1,993	-	1,993	2,388
Totals, Com. and Pref. Countries...	17,695,386	-	17,695,386	13,699,421

OTHER COUNTRIES

<u>Western Europe</u>				
Belgium and Luxembourg.....	4,580,491*	236,476*	4,816,967*	2,236,309
France.....	1,118,850	229,087	1,347,937	7,118
Germany, Federal Republic.....	4,716,936	1,206,089*	5,923,025*	3,188,213
Greece.....	-	-	-	10
Italy.....	2,154,451	-	2,154,451	1,502,471
Netherlands.....	1,703,928*	39,200	1,743,128*	1,999,208
Norway.....	1,667,203	-	1,667,203	1,568,267
Sweden.....	22,400	-	22,400	-
Switzerland.....	1,124,860	362,570*	1,487,430*	800,774
<u>Eastern Europe</u>				
Poland.....	6,047,527	-	6,047,527	5,390,603
U.S.S.R. (Russia).....	5,077,371	-	5,077,371	-
Yugoslavia.....	3,501,866	-	3,501,866	-
<u>Middle East</u>				
Israel.....	537,040	-	537,040	835,000
Saudi Arabia.....	440,318	-	440,318	70,198
<u>Other Africa</u>				
Katanga.....	-	-	-	9,186
Mozambique.....	29,667	11,200	40,867	150,974

Cumulative Exports of Canadian Wheat<sup>1/</sup> by Destination

Destination	August-September 1963			Total same period last year
	Wheat (Except Durum)	Durum Wheat	Total Wheat	
- bushels -				
<u>OTHER COUNTRIES (concluded)</u>				
<u>Other Asia</u>				
Burma.....	78,931	-	78,931	-
China, Communist.....	2,922,640	-	2,922,640	4,858,934
Japan.....	9,669,413	-	9,669,413	7,801,875
Korea.....	511,467	-	511,467	-
Philippines.....	2,455,476	-	2,455,476	1,620,902
Taiwan.....	77,781	-	77,781	-
<u>Oceania</u>				
United States Oceania.....	55,029	-	55,029	120,773
<u>South America</u>				
Ecuador.....	312,548	-	312,548	-
Peru.....	730,614	-	730,614	-
Venezuela.....	1,344,573	-	1,344,573	992,098
<u>Central America and Antilles</u>				
Cuba.....	374,080	-	374,080	-
Dominican Republic.....	156,800	-	156,800	-
El Salvador.....	300,533	-	300,533	119,840
Guatemala.....	100,000	-	100,000	-
<u>North America</u>				
United States for domestic use <u>2/</u> .....	167,593	-	167,593	12,100
Totals, Other Countries.....	51,980,386	2,084,622	54,065,008	33,284,853
Sub-Totals, All Countries.....	69,675,772	2,084,622	71,760,394	46,984,274
Bagged seed <u>3/</u> .....			314,538	356,974
Totals, All Countries.....	69,675,772	2,084,622	72,074,932	47,341,248

\* Revisions in data for August have been taken into account in the August-September cumulative totals.

1/ Overseas clearances as reported by the Statistics Branch, Board of Grain Commissioners for Canada, for all countries except the United States. Excluding bagged seed.

2/ Compiled from returns of Canadian elevator licensees and shippers and advice from American grain correspondents.

3/ Compiled from Canadian Customs returns, 1962 adjusted for time lag.

Customs Exports of Canadian Wheat Flour by Countries of Consignment

Destination	June 1963 <u>1/</u>	September 1963 <u>2/</u>	August-September	
			1963 <u>2/</u>	1962 <u>1/</u>
- bushels -				
<u>COMMONWEALTH AND PREFERENTIAL COUNTRIES</u>				
<u>Western Europe</u>				
Britain.....	995,684	489,369	1,937,619	2,231,373
Gibraltar.....	5,667	6,698	8,308	1,288
<u>Middle East</u>				
Kuwait.....	13,110	2,721	5,297	7,728
Qatar.....	-	-	258	175
British Middle East, nes .....	2,061	4,121	6,955	3,091
<u>Other Africa</u>				
Ghana.....	303,894	90,095	122,845	491,933
Nigeria.....	9,211	12,140	13,515*	470,628
Rhodesia and Nyasaland.....	2,208	6,182	13,379	3,303
Sierra Leone.....	41,603	64,177	95,514	127,613
Tanganyika.....	2,760	-	690	1,150
British Africa, nes .....	-	6,222	16,457	6,721
<u>Other Asia</u>				
Ceylon.....	-	24,626	586,056	-
Hong Kong.....	76,445	89,272	210,986	143,302
Malaya and Singapore.....	42,736	69,929	142,883	90,643
British East Indies, nes .....	667	1,788	3,117	1,417
<u>Oceania</u>				
Australia.....	-	27	124	-
Fiji.....	69	575	1,449	598
<u>South America</u>				
British Guiana.....	-	1,633	2,125	4,138
<u>Central America and Antilles</u>				
Bahamas.....	22,637	28,642	63,038	54,319
Bermuda.....	18,112	10,902	20,003	20,164
British Honduras.....	5,594	5,085	5,085	3,463
Barbados.....	16,562	9,996	21,238	31,485
Jamaica.....	108,822	89,302	203,426	222,562
Leeward and Windward Islands.....	65,902	84,410	197,623	165,459
Trinidad and Tobago.....	100,998	134,433	236,693	210,779
Totals, Com. and Pref. Countries...	1,834,742	1,232,345	3,914,683*	4,293,332

OTHER COUNTRIES

<u>Western Europe</u>				
Belgium and Luxembourg.....	29,523	-	-	48,176
Denmark.....	-	460	1,470	460
Germany, Federal Republic.....	-	-	-	4,283
Greece.....	2,300	1,288	1,288	1,014
Iceland.....	-	1,610	1,610	3,220
Italy.....	-	-	-	3,726
Netherlands.....	540	506	2,279	874
Norway.....	-	-	-	115
Portugal.....	2,875	10,247	26,202	15,642
Sweden.....	-	-	506	506
Switzerland.....	39	-	39	4,600

# FARMERS' MARKETINGS OF WHEAT, PRAIRIE PROVINCES

(SPECIFIED PERIODS)

MILLION BUSHELS

550 —

500 —

450 —

400 —

350 —

300 —

250 —

200 —

150 —

100 —

50 —

0

30 year average  
1932-33  
1961-62

10 year average  
1952-53  
1961-62

JULY

JUNE

MAY

APR

MAR

FEB

JAN

DEC

NOV

OCT

SEPT

AUG

1958-59

1959-60

1960-61

1961-62

1962-63

1963-64

PEAK MARKETINGS  
1952-53 CROP YEAR  
536.0 MILLION BUSHELS

MILLION BUSHELS

550 —

500 —

450 —

400 —

350 —

300 —

250 —

200 —

150 —

100 —

50 —

0

## EXPORTS OF CANADIAN WHEAT\* AND WHEAT FLOUR\*\*

(SPECIFIED PERIODS)

MILLION BUSHEL

550 —

500 —

450 —

400 —

350 —

300 —

250 —

200 —

150 —

100 —

50 —

0 —

30 year average

1932-33

1961-62

10 year average

1952-53

1961-62

JULY

JUNE

MAY

APR.

MAR.

FEB.

JAN.

DEC.

NOV.

OCT.

SEPT.

AUG.

1958-59

1959-60

1960-61

1961-62

1962-63

1963-64\*\*\*

PEAK EXPORTS  
1928-29 CROP YEAR  
407.6 MILLION BUSHEL

MILLION BUSHEL

550 —

500 —

450 —

400 —

350 —

300 —

250 —

200 —

150 —

100 —

50 —

0 —

\*Beginning with 1956-57 includes bagged seed wheat.

\*\*In terms of wheat equivalent. \*\*\*Preliminary.

Agriculture Division D.B.S.

# FARMERS' MARKETINGS OF BARLEY, PRAIRIE PROVINCES

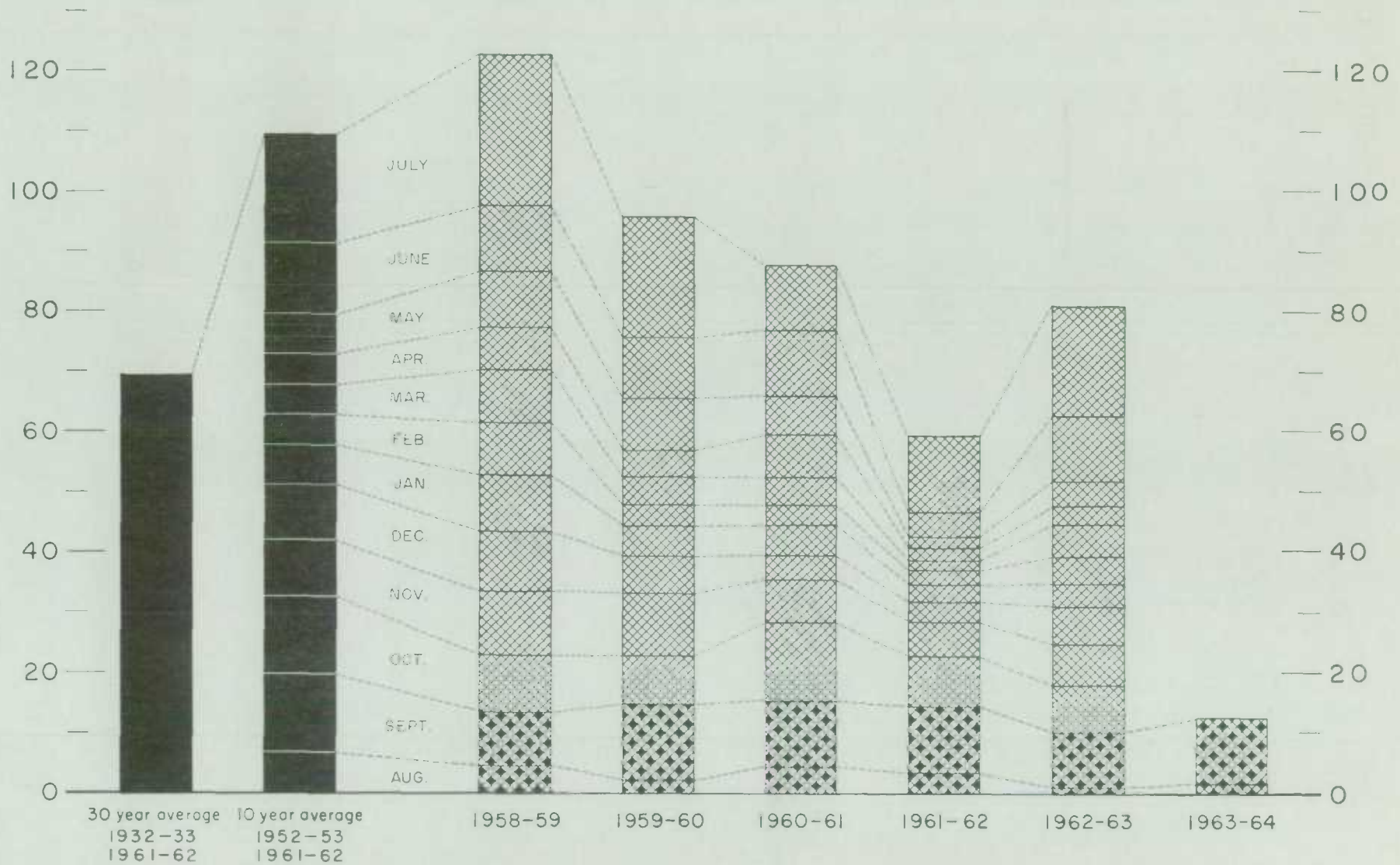
(SPECIFIED PERIODS)

MILLION BUSHEL

140 —

MILLION BUSHEL

140 —





# FARMERS' MARKETINGS OF OATS, PRAIRIE PROVINCES

(SPECIFIED PERIODS)

MILLION BUSHELS

100 —

MILLION BUSHELS

100 —

90 —

90 —

80 —

80 —

70 —

70 —

60 —

60 —

50 —

50 —

40 —

40 —

30 —

30 —

20 —

20 —

10 —

10 —

0

0

30 —

30 —

20 —

20 —

10 —

10 —

0

0

30 —

30 —

20 —

20 —

10 —

10 —

0

0

30 —

30 —

20 —

20 —

10 —

10 —

0

0

JULY

JUNE

MAY

APRIL

MARCH

FEBRUARY

JANUARY

DECEMBER

NOVEMBER

OCTOBER

SEPTEMBER

AUGUST

30 year average

1932-33

1961-62

10 year average

1952-53

1961-62

1958-59

1959-60

1960-61

1961-62

1962-63

1963-64

## EXPORTS OF CANADIAN OATS\* AND OAT PRODUCTS\*\*

(SPECIFIED PERIODS)

MILLION BUSHEL

45 —

MILLION BUSHEL

45 —

40 —

40 —

35 —

35 —

30 —

30 —

25 —

25 —

20 —

20 —

15 —

15 —

10 —

10 —

5 —

5 —

0 —

0 —

30 year average 10 year average  
1932-33 1952-53  
1961-62 1961-62

1958-59

1959-60

1960-61

1961-62

1962-63

1963-64\*\*\*

\*Beginning with 1960-61 includes relatively small quantity of bagged seed. \*\*In terms of grain equivalent. \*\*\*Preliminary.

Agriculture Division D.B.S.

J  
J  
M  
A  
M  
F  
J  
D  
N  
O  
S  
A

# FARMERS' MARKETINGS OF CANADA'S FIVE MAJOR GRAINS,\* PRAIRIE PROVINCES

MILLION BUSHELS

900 —

800 —

700 —

600 —

500 —

400 —

300 —

200 —

100 —

0

30 year average 10 year average  
1932-33 1952-53  
1961-62 1961-62

AUG.  
SEPT.  
OCT.  
NOV.  
DEC.  
JAN.  
FEB.  
MAR.  
APR.  
MAY  
JUNE  
JULY

1958-59

1959-60

1960-61

1961-62

1962-63

1963-64

MILLION BUSHELS

900 —

800 —

700 —

600 —

500 —

400 —

300 —

200 —

100 —

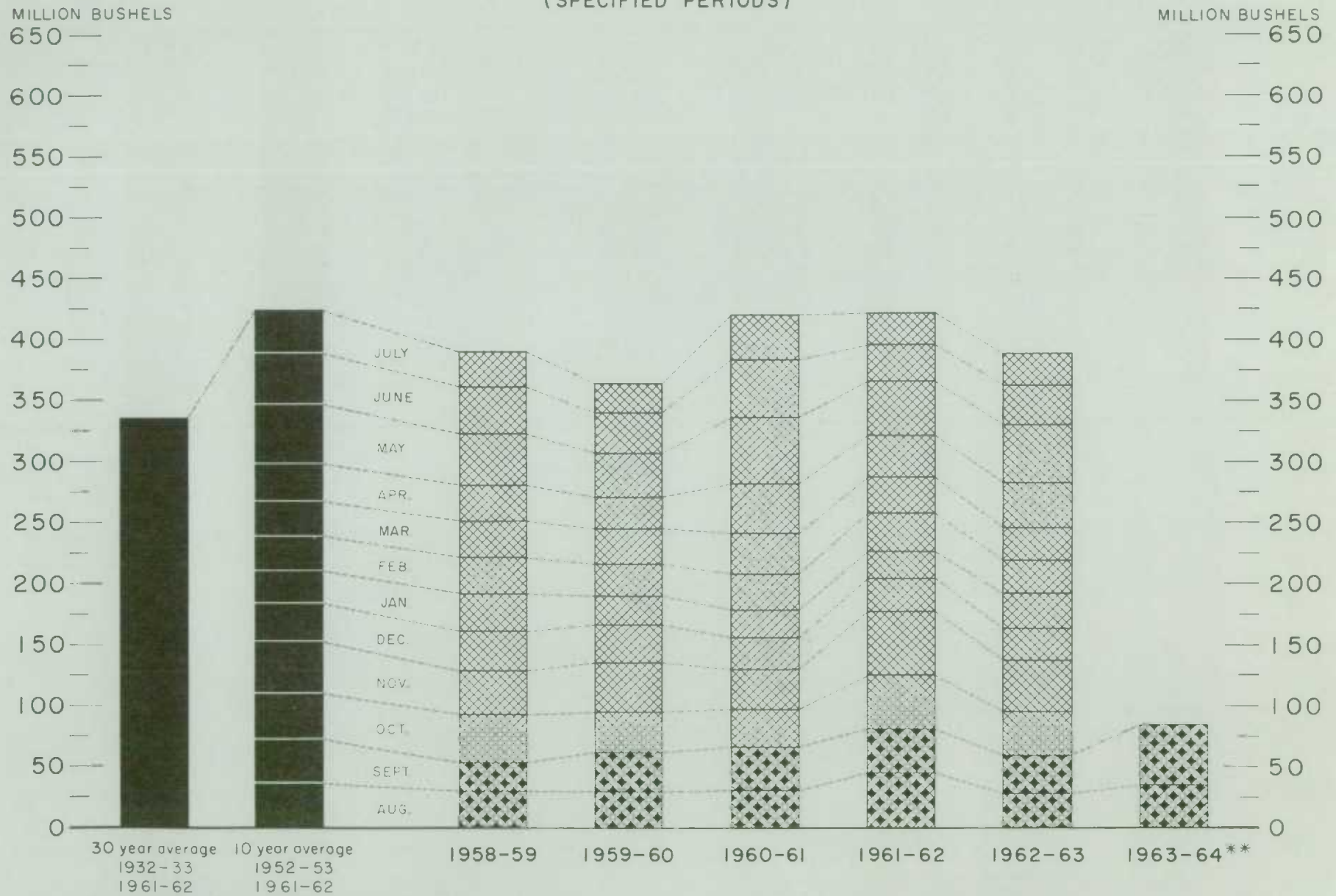
0

\* Wheat, oats, barley, rye and flaxseed.

Agriculture Division D.B.S.

# EXPORTS OF CANADA'S FIVE MAJOR GRAINS AND PRODUCTS\*

(SPECIFIED PERIODS)



\* Wheat, bagged seed wheat, and wheat flour; oats, bagged seed oats, and oatmeal and rolled oats; barley, malt and pot and pearl; rye and flaxseed.  
 \*\* Preliminary.

Agriculture Division D. R. S.

Customs Exports of Canadian Wheat Flour by Countries of Consignment

Destination	June 1963	1/ September 1963	2/ August-September	1963	2/ 1962	1/
	- bushels -					
OTHER COUNTRIES (concluded)						
Middle East						
Iran.....	540	297	1,562	927		
Israel.....	5,152	-	5,152	8,179		
Jordan.....	584	253	356	258		
Lebanon.....	174,036	6,072	10,481	152,366		
Saudi Arabia.....	-	276	276	-		
Syria.....	-	-	-	1,129		
U.A.R. - Egypt.....	60,278	-	-	1,610		
Other Africa						
Angola.....	-	460	460	-		
Congo-Leo.....	6,900	9,775	16,445	28,267		
French West Africa.....	-	-	-	10,010		
Liberia.....	11,843	10,838	22,897	2,167		
Mozambique.....	2,868	1,265	9,934	3,303		
Portuguese Africa, nes .....	2,415	3,220	22,448	14,191		
Togo.....	8,165	18,379	31,604	-		
Other Asia						
Indonesia.....	152,821	-	-	64		
Japan.....	93,513	37,950	73,669	82,478		
Philippines.....	-	-	127,312	8,050		
Portuguese Asia.....	1,012	3,054	4,572	2,042		
Thailand.....	40,508	31,091	55,876	64,662		
Viet-Nam.....	-	-	-	44,576		
Oceania						
French Oceania.....	-	356	356	368		
United States Oceania.....	575	-	-	1,150		
South America						
Chile.....	1,840	1,178	3,478	2,760		
Peru.....	4,945	3,565	6,555	2,806		
Surinam.....	4,637	7,063	11,132	9,030		
Central America and Antilles						
Costa Rica.....	139,447	96,803	123,133	159,126		
Dominican Republic.....	10,534	6,900	12,089	16,776		
El Salvador.....	8,367	226	481	29,398		
French West Indies.....	1,001	-	230	1,518		
Guatemala.....	2,992	1,610	1,610	2,187		
Haiti.....	18,400	6,900	13,800	-		
Honduras.....	9,890	4,600	5,290	18,950		
Netherlands Antilles.....	24,070	23,717	45,397	38,548		
Nicaragua.....	69,154	34,477	80,866	57,125		
Panama.....	16,259	22,386	51,101	114,250		
North America						
St. Pierre and Miquelon.....	3,020	1,437	2,817	2,383		
United States.....	91,393	64,607	121,845	199,426		
Totals, Other Countries.....	1,002,436	412,866	896,618*	1,162,696		
Totals, All Countries.....	2,837,178	1,645,211	4,811,301	5,456,028		

nes - not elsewhere specified.

\* August 1963 add Nigeria and deduct Cameroons 1,150 bushels.

1/ In terms of wheat equivalent. Adjusted to remove effect of time lag in the returns made by Customs. Conversion rate: 2.3 bushels per cwt. 2/ In terms of wheat equivalent. Preliminary and unadjusted for time lag. Conversion rate: 2.3 bushels per cwt.

Canadian Wheat Board Weekly Average Cash Wheat Prices  
Basis in Store Fort William-Port Arthur

Class and Grade	Week Ending			
	October 4	October 11	October 18	October 25

- cents and eighths per bushel -

Initial Payment to Producers

1 Northern.....	150	150	150	150
2 Northern.....	146	146	146	146
3 Northern.....	142	142	142	142
4 Northern.....	135	135	135	135
5 Wheat.....	118	118	118	118
6 Wheat.....	112	112	112	112
Feed Wheat.....	108	108	108	108
1 C.W. Garnet.....	135	135	135	135
2 C.W. Garnet.....	130	130	130	130
3 C.W. Garnet.....	125	125	125	125
1 Alberta Red Winter.....	134	134	134	134
2 Alberta Winter.....	129	129	129	129
3 Alberta Winter.....	123	123	123	123
1 C.W. Amber Durum.....	150	150	150	150
2 C.W. Amber Durum.....	146	146	146	146
3 C.W. Amber Durum.....	142	142	142	142

International Wheat Agreement

and Domestic Sales

1 Northern.....	195/4	200/1	200/6	202/2
2 Northern.....	192/4	197/1	197/6	199/2
3 Northern.....	189/4	194/1	194/6	196/2
4 Northern.....	182/4	187/1	187/6	189/2
5 Wheat.....	176/4	181/1	181/6	183/2
6 Wheat.....	171/4	176/1	176/6	178/2
Feed Wheat.....	168/4	173/1	173/6	175/2
1 C.W. Garnet.....	178/4	183/1	183/6	185/2
2 C.W. Garnet.....	176/4	181/1	181/6	183/2
3 C.W. Garnet.....	175/4	180/1	180/6	182/2
1 Alberta Red Winter.....	181/4	186/1	186/6	188/2
2 Alberta Winter.....	179/4	184/1	184/6	186/2
3 Alberta Winter.....	178/4	183/1	183/6	185/2
1 C.W. Amber Durum.....	210/4	215/1	215/6	219
2 C.W. Amber Durum.....	209/4	214/1	214/6	218
3 C.W. Amber Durum.....	201/4	206/1	206/6	210

Export - Class II

1 Northern.....	195/4	200/1	200/6	202/2
2 Northern.....	192/4	197/1	197/6	199/2
3 Northern.....	189/4	194/1	194/6	196/2
4 Northern.....	182/4	187/1	187/6	189/2
5 Wheat.....	176/4	181/1	181/6	183/2
6 Wheat.....	171/4	176/1	176/6	178/2
Feed Wheat.....	168/4	173/1	173/6	175/2
1 C.W. Garnet.....	178/4	183/1	183/6	185/2
2 C.W. Garnet.....	176/4	181/1	181/6	183/2
3 C.W. Garnet.....	175/4	180/1	180/6	182/2
1 C.W. Amber Durum.....	210/4	215/1	215/6	219
2 C.W. Amber Durum.....	209/4	214/1	214/6	218
3 C.W. Amber Durum.....	201/4	206/1	206/6	210

Canadian Wheat Board Weekly Average Cash Wheat Prices  
Basis in Store Vancouver

Class and Grade	Week Ending			
	October 4	October 11	October 18	October 25

- cents and eighths per bushel -

Initial Payment to Producers

1 Northern.....	150	150	150	150
2 Northern.....	146	146	146	146
3 Northern.....	142	142	142	142
4 Northern.....	135	135	135	135
5 Wheat.....	118	118	118	118
6 Wheat.....	112	112	112	112
Feed Wheat.....	108	108	108	108
1 C. W. Garnet.....	135	135	135	135
2 C. W. Garnet.....	130	130	130	130
3 C. W. Garnet.....	125	125	125	125
1 Alberta Red Winter.....	134	134	134	134
2 Alberta Winter.....	129	129	129	129
3 Alberta Winter.....	123	123	123	123
1 C. W. Amber Durum.....	150	150	150	150
2 C. W. Amber Durum.....	146	146	146	146
3 C. W. Amber Durum.....	142	142	142	142

International Wheat Agreement

and Domestic Sales

1 Northern.....	199/6	204/3	205	206/4
2 Northern.....	195/6	200/3	201	202/4
3 Northern.....	194/6	199/3	200	201/4
4 Northern.....	186/6	191/3	192	193/5
5 Wheat.....	176/6	181/3	182	183/7
6 Wheat.....	174/6	179/3	180	181/7
Feed Wheat.....	171/6	176/3	177	178/7
1 C. W. Garnet.....	178/6	183/3	184	185/4
2 C. W. Garnet.....	176/6	181/3	182	183/4
3 C. W. Garnet.....	175/6	180/3	181	182/4
1 Alberta Red Winter.....	178/6	183/3	184	185/4
2 Alberta Winter.....	176/6	181/3	182	183/4
3 Alberta Winter.....	175/6	180/3	181	182/4

Export - Class II

1 Northern.....	199/6	204/3	205	206/4
2 Northern.....	195/6	200/3	201	202/4
3 Northern.....	194/6	199/3	200	201/4
4 Northern.....	186/6	191/3	192	193/5
5 Wheat.....	176/6	181/3	182	183/7
6 Wheat.....	174/6	179/3	180	181/7
Feed Wheat.....	171/6	176/3	177	178/7
1 C. W. Garnet.....	178/6	183/3	184	185/4
2 C. W. Garnet.....	176/6	181/3	182	183/4
3 C. W. Garnet.....	175/6	180/3	181	182/4
1 Alberta Red Winter.....	178/6	183/3	184	185/4
2 Alberta Winter.....	176/6	181/3	182	183/4
3 Alberta Winter.....	175/6	180/3	181	182/4

CANADIAN FLOUR MILLING SITUATION

Production Wheat flour production by Canadian mills during September 1963 amounted to 3,459,000 hundredweight, representing an increase of 15 per cent over the August output of 3,004,000 hundredweight, 21 per cent above the September 1962 figure of 2,865,000 hundredweight and 3 per cent more than the ten-year (1953-62) average production for the month of September of 3,345,000 hundredweight. Mills reporting operations during September 1963 had a total rated capacity of 167,000 hundredweight per 24-hour day and on the basis of a 24-day working period 86.5 per cent of this rated capacity was effective.

Wheat milled for flour during September 1963 amounted to 7,712,000 bushels, 15 per cent more than the 6,720,000 bushels milled during the preceding month and 22 per cent higher than the 6,346,000 bushels milled during September 1962. Of the wheat milled for flour during September 1963, some 6,888,000 bushels were Western Canadian spring wheat (other than Durum) while the remainder consisted of Ontario winter wheat (631,000 bushels); Durum (121,000 bushels); and all other (73,000 bushels).

Exports According to preliminary Customs returns, exports of Canadian wheat flour during September 1963 amounted to 715,000 hundredweight (some 1,645,000 bushels of wheat equivalent), compared with the 3,166,000 bushels exported during the previous month and the adjusted September 1962 exports of 2,604,000 bushels. Flour shipments during the month went to fifty-six countries with exports to Britain amounting to 489,000 bushels of wheat equivalent and accounting for 30 per cent of the September 1963 total. Other leading markets for Canadian wheat flour during the month, with shipments in thousands of bushels of wheat equivalent were as follows: Trinidad and Tobago, 134; Costa Rica, 97; Ghana, 90; Jamaica, 89; Hong Kong, 89; Leeward and Windward Islands, 84; Malaya and Singapore, 70; United States, 65; and Sierra Leone, 64.

Wheat Milled for Flour, and Production and Exports of Wheat Flour, Canada

Crop Year	Wheat Milled for Flour bushels	Wheat Flour	
		Production	Exports <sup>1/</sup>
		- cwt. -	
1935-36—1939-40 average.....	67,845,114	29,405,451	9,603,941
1940-41—1944-45 average.....	99,704,638	43,908,245	23,699,546
1945-46—1949-50 average.....	107,330,372	47,011,540	25,819,721
1950-51—1954-55 average.....	100,446,328	43,847,894	21,812,041
1955-56—1959-60 average.....	90,148,211	39,752,589	16,349,156
1960-61 .....	89,731,155	39,914,644	15,513,836
1961-62 .....	88,240,580	39,539,651	13,892,676
1962-63 .....	78,789,332	35,505,220	11,981,585 <sup>2/</sup>
1963-64 <sup>2/</sup>			
August.....	6,719,665	3,003,765	1,376,561
September.....	7,712,078	3,459,156	715,309
Totals.....	14,431,743	6,462,921	2,091,870
Same months 1962-63 <sup>3/</sup> .....	12,923,131	5,820,031	2,372,186

<sup>1/</sup> Based on Customs returns. Exports for the crop years 1945-46—1961-62 revised to remove effect of time lag in the returns made by Customs.

<sup>2/</sup> Subject to revision.

<sup>3/</sup> Revised.

UNITED STATES SITUATION

Supply Position Domestic supplies of wheat in the United States for the 1963-64 crop year are estimated at 2,322.4 million bushels, consisting of the July 1, 1963 carryover of 1,189.4 million and the 1963 crop, estimated as of October 1, at 1,133.0 million bushels. Domestic supplies of the size indicated would be 4 per cent less than last year's total of 2,414.4 million and 13 per cent smaller than the record 1960-61 figure of 2,670.8 million bushels. Imports of wheat from Canada during July-September of the current United States crop year amounted to 0.7 million bushels. Domestic disappearance during 1963-64 is estimated at about 602.0 million bushels, one per cent more than the 595.1 million last year. The current estimate of domestic disappearance includes allowances of wheat for food of 500 million bushels, and for feed of about 30 million bushels. Both of these disappearance items are about the same as in 1962-63. The major change in domestic disappearance is expected to be in the quantity of wheat used for seed. Farmers are not planting wheat for 1964 under a mandatory control program as in the past; thus, the possibility exists that acreage seeded to wheat could exceed the 49.5-million-acre allotment.

Exports of wheat, wheat flour and other products in terms of grain equivalent during July-September 1963 amounted to 166.3 million bushels, 12 per cent above the 147.9 million exported during the same months last year. The balance remaining on October 1, 1963 for export and for carryover was estimated at 1,554.8 million bushels compared with 1,672.1 million on the same date a year ago.

United States Wheat Supplies

Item	1962-63 <u>1/</u>	1963-64 <u>2/</u>
	- million bushels -	
Carryover at beginning of crop year (July 1).....	1,321.9	1,189.4
Production.....	1,092.6	1,133.0 <u>1/</u>
Total estimated domestic supplies.....	2,414.4	2,322.4
Imports of wheat and wheat flour in terms of wheat for domestic use, July-September.....	0.7	0.7
Total estimated supplies <u>3/</u> .....	2,415.1	2,323.1
Less estimated domestic requirements for crop year <u>4/</u>	595.1	602.0 <u>1/</u>
Available for export and for carryover.....	1,820.1	1,721.1
Deduct:		
Exports of wheat as grain, July-September.....	124.0	150.8
Exports of wheat flour and products in terms of wheat, July-September <u>5/</u> .....	23.9	15.5
Total exports of wheat, wheat flour and products <u>6/</u>	147.9	166.3
Balance on October 1 for export and for carryover...	1,672.1	1,554.8

1/ Revised. 2/ Preliminary. 3/ Excluding imports for October-June. 4/ Includes shipments to United States Territories and wheat for military food use at home and abroad. 5/ Flour exports exclude "Milled in bond". 6/ These figures now include all shipments under relief programs which formerly were not available from Census data.

1963 Wheat Crop Forecast at 1,133 Million Bushels In a report released on October 10, the Crop Reporting Board of the United States Department of Agriculture stated in part that production of all wheat is estimated at 1,133 million bushels, practically the same as a month ago but 4 per cent more than 1962. Durum and other spring wheat each declined fractionally from last month, with production of both below last year. The yield per acre of all wheat at 25.5 bushels is 0.4 bushel above last year and the third highest of record.

Production of durum wheat is estimated at 51 million bushels, sharply below last year's crop of 72 million but nearly double the average of 27 million bushels. The yield of 25.4 bushels per acre ranks second to the 1962 record yield of 29.7 bushels.

Harvest operations were virtually complete by mid-September with final tallies little changed from September 1 except in California where yields are now reported three bushels higher and Minnesota with a bushel increase. This was offset by a one bushel decline in Montana.

Other spring wheat production is estimated at 187 million bushels, 8 per cent less than last year and 7 per cent below average. Current yield estimates are little changed from September 1. The yield of 21.5 bushels per acre is 5.1 bushels below last year but the third highest of record.

Harvest of other spring wheat was practically completed by mid-September, except for a few high elevation fields. Periods of hot, dry weather during July and August hastened maturity of the crop and generally favourable weather during the harvest period pushed combine operations to an early finish.

Stocks of Wheat in All Positions October 1, 1963 United States wheat stocks stored in all positions on October 1 totalled 1,947 million bushels, the smallest October 1 stocks since 1957. The October 1, 1963 stocks were 6 per cent below the previous year and 8 per cent below average. This is the third year of decline from the record high October 1 holdings in 1960. The decline in total stocks occurred in elevators and warehouses and Government owned bins as wheat held on farms was one per cent higher than a year earlier. Nearly two-thirds of the total stocks was either owned by the Government or under Government loan.

U.S. Wheat Stocks by Positions, October 1, 1963 with Comparisons

Position	Oct. 1 Av. 1957-61	Oct. 1 1962	July 1 1963	Oct. 1 1963
- thousand bushels -				
On Farms <u>1/</u> .....	501,899	407,394	95,713	411,085
Commodity Credit Corp. <u>2/</u> .....	74,493	58,958	38,317	34,028
Mills, Elev. & Whses. <u>1/</u> <u>3/</u> .....	1,531,580	1,604,885	1,061,362	1,501,663
Totals.....	2,107,972	2,071,237	1,195,392	1,946,776

1/ Estimates of the Crop Reporting Board.

2/ Owned by C.C.C. and stored in bins or other storages owned or controlled by C.C.C.; other C.C.C.-owned grain is included in the estimates by positions.

3/ All off-farm storages not otherwise designated, including flour mills, terminal elevators, and processing plants.

Cash Wheat Prices on the Kansas City and Minneapolis Markets

No. 2 Hard Winter, Kansas City			No. 1 Northern Spring, Minneapolis		
Date	Price		Date	Price	
	- cents per bushel -			- cents per bushel -	
October 1, 1963.....	214	- 218 1/4	October 1, 1963.....	232 3/8	- 233 3/8
2 .....	211 1/4	- 249 3/4 1/	2 .....	231 3/8	- 232 3/8
3 .....	210 1/2		3 .....	231	- 232
4 .....	212 3/4	- 249 1/4 1/	4 .....	231 3/4	- 232 3/4
7 .....	213 3/4	- 220 1/4 1/	7 .....	235 1/4	- 236 1/4
8 .....	216 1/2	- 218	8 .....	233 1/8	- 235 1/8
9 .....	218	- 221 1/2	9 .....	233 1/4	- 235 1/4
10 .....	218 3/4		10 .....	232 3/4	- 234 3/4
11 .....	214 3/4	- 251 1/4 1/	11 .....	231 1/4	- 233 1/4
14 .....	217 1/2	- 218 1/2	14 .....	233 1/4	- 235 1/4
15 .....	215 3/4	- 224	15 .....	233 1/2	- 235 1/2
16 .....	216 1/2	- 254 3/4 1/	16 .....	233 3/8	- 235 3/8
17 .....	218		17 .....	232 5/8	- 234 5/8
18 .....	216 3/4		18 .....	231 7/8	- 233 7/8
21 .....	216 1/4	- 221 1/4	21 .....	232 1/8	- 234 1/4
22 .....	219 3/4	- 225 3/4	22 .....	232 1/2	- 234 1/2
23 .....	219 1/2		23 .....	232 1/2	- 234 1/2
24 .....	220		24 .....	232 1/2	- 234 1/2
25 .....	220 1/2	- 221	25 .....	234	- 236
28 .....	225 1/2	- 227 1/2	28 .....	233 1/4	- 235 1/4
29 .....	218	- 243 3/4 1/	29 .....	232 7/8	- 234 7/8
30 .....	218	- 243 1/4 1/	30 .....	233	- 235
31 .....	222	- 222 1/4	31 .....	233 3/8	- 235 3/8

1/ Nominal.

Chicago Wheat Futures, High Points of Closing

Date	December	March	May	July	September
- cents and eighths per bushel -					
October 1, 1963.....	207/6	209/2	206	167/6	169/4
2 .....	207/6	208/6	204/6	166	168/2
3 .....	207/6	208/3	204	165/4	167/4
4 .....	208/2	208/2	204/2	169	171
7 .....	211	211/2	207/2	175	177
8 .....	209/4	209/4	205/6	175/6	177/4
9 .....	211/4	211/6	209	178	180
10 .....	211/4	211/5	208/2	174/4	175/6
11 .....	209/2	209/4	205/4	173	174
14 .....	210/4	211	207	175/2	177
15 .....	212/4	212/7	209/1	175/6	177/4
16 .....	213/4	214	210/4	175	176/4
17 .....	213/3	213/6	209/7	172/7	174/2
18 .....	212/7	213/4	209/5	171/6	173/1
21 .....	212	212/4	209	170/6	172
22 .....	213	212/6	209/1	171/7	173/6
23 .....	212/1	212/6	208/5	172/5	173/6
24 .....	212/7	213/6	209/6	174/4	175/6
25 .....	216/4	218	214	177/4	178/6
28 .....	216	217/2	213/5	177	178/2
29 .....	215/2	216/2	212/5	176/2	177/6
30 .....	215/4	216/1	212/5	176/6	178/2
31 .....	214/6	215/5	212/1	176	177

# AUSTRALIAN SITUATION

Supply Position Estimated supplies of wheat in Australia for the current (December-November) crop year consisting of the December 1, 1962 carryover of 18.2 million and the 1962-63 crop, estimated at a record 307.2 million bushels, amount to some 325.4 million bushels. Supplies of the size indicated, reflect a substantially larger production which more than offset a decline in carryover, and represent an increase of 20 per cent over the 1961-62 total of 271.8 million bushels. After deducting 73.0 million for anticipated domestic requirements, an estimated 252.4 million are available for export and for carryover during the 1962-63 crop year, 29 per cent above the 195.5 million in 1961-62.

Combined exports of wheat as grain and wheat flour in terms of grain equivalent during the period December 1-September 28 of the current Australian crop year amounted to 188.7 million bushels compared with 159.6 million exported during the corresponding period of 1961-62. The balance remaining on September 29, 1963 for export and for carryover, at 63.7 million bushels, was sharply above the comparable 1962 total of 35.9 million.

## Australian Wheat Supplies

Item	1961-62	1962-63 <sup>1/</sup>
	- million bushels -	
Carryover, including flour as wheat, at beginning of crop year (December 1).....	24.6	18.2
Production.....	247.2	307.2
Total estimated domestic supplies.....	271.8	325.4
Less estimated domestic requirements for crop year....	76.3	73.0 <sup>2/</sup>
Available for export and for carryover.....	195.5	252.4
Deduct:		
Exports of wheat as grain, December 1-September 28..	138.6	169.1
Exports of wheat flour in terms of wheat, December 1-September 28.....	21.0	19.6
Total exports of wheat and wheat flour.....	159.6	188.7
Balance on September 29 for export and for carryover..	35.9	63.7

<sup>1/</sup> Preliminary.    <sup>2/</sup> Revised.

The following information relative to the Australian situation has been extracted from a report from Mr. R.D. Lucas, Assistant Commercial Secretary for Canada, Melbourne, under date of October 16, 1963 and is reproduced with the permission of the Trade Commissioner Service, Department of Trade and Commerce. Currency conversions have been made at the rate of £1 equals \$2.4148 (Canadian) the quotation in effect on September 23, 1963.

Crop Position The Australian Wheat Board has officially announced that minimum deliveries of 270 million bushels can be expected from the 1963-64 crop. The Board states that growing conditions vary from State to State but, if reasonably favourable seasonal conditions are experienced over the next two months or so, the above figure should be achieved. This would compare quite favourably with total deliveries of 285 million bushels from last season's record harvest of 307 million bushels.

The Board indicated that excessive rains in many areas had a restrictive effect on the 1963-64 plantings.

Marketing Position The wheat marketing outlook for the next 14 months is quite healthy, according to the Board. It is anticipated that there will be little, if any, wheat left for sale on December 1, 1964. This assessment allows for a safe carryover for local needs into the 1964-65 season.

The chairman of the Wheat Board, Mr. J.V. Moroney, pointed out however, that the latest review of marketing prospects did not mean that the expected surplus from the next crop had already been sold.

The Board planned to reserve reasonable quantities for traditional and regular markets which had supported the Australian wheat industry in past years.

Mr. Moroney said the present policy of the Board was to assure availability of normal quantities to established customers but not to supply unusual orders from new sources for the time being until the size of the new crop was known. Beyond November 1964 the marketing outlook could not be forecast with any confidence.

The past month has been a record for peacetime trading, with a total of 80.5 million bushels being sold by the Board. Apart from the usual home consumption sales within Australia, the Board was contracted to sell over 76 million bushels for shipment to many overseas destinations during the remaining months of 1963 and well into 1964. Part of the deliveries will be effective from the current 1962-63 crop and the balance from the 1963-64 crop which has yet to be harvested.

The biggest individual sale in this period was the sale of 58.5 million bushels of wheat and flour to Communist-bloc countries with an option to increase this figure to 64 million bushels. The value of the sale is estimated at between £40 million and £50 million (\$96.6 million and \$120.7 million).

Exports of Australian Wheat and Wheat Flour in Terms of Wheat  
December 1-September 28, 1962-63 and Corresponding Period 1961-62

Destination	Wheat		Wheat Flour	
	1961-62	1962-63	1961-62	1962-63
- thousand bushels -				
<u>Europe</u>				
Albania.....	-	2,294	-	-
Britain.....	17,806	18,082	2,525	1,724
Eire.....	1,013	1,809	-	-
France.....	450	-	-	-
Italy.....	4,847	-	-	-
Malta.....	737	445	-	-
Norway.....	2,572	3,208	-	-

Exports of Australian Wheat and Wheat Flour in Terms of Wheat  
December 1-September 28, 1962-63 and Corresponding Period 1961-62

Destination	Wheat		Wheat Flour	
	1961-62	1962-63	1961-62	1962-63
- thousand bushels -				
<u>Europe (concluded)</u>				
Spain and Canary Islands.....	11,531	1,235	-	-
Switzerland.....	50	-	-	-
West Germany.....	8,860	1,341	-	-
Others.....	-	-	10	10
<u>Middle East</u>				
Aden.....	857	944	-	-
Aden and Aden I/T.....	-	-	983	1,110
Aden Atta.....	-	-	389	444
Arabian Gulf.....	-	-	171	138
Arabian Gulf Atta.....	-	-	1,083	1,021
Egypt.....	1,883	-	-	-
Iran.....	433	834	-	-
Iraq.....	734	314	-	-
Lebanon, Jordan, Syria.....	3,907	2,725	-	-
Saudi Arabia.....	-	-	235	340
Others.....	549	357	19	18
<u>Africa</u>				
Africa South.....	2,020	-	-	-
Algeria.....	446	-	-	-
Kenya.....	882	343	-	-
Mauritius.....	-	-	621	397
Nyasaland.....	-	-	208	272
Port. East Africa.....	197	-	-	-
Rhodesia.....	2,621	3,137	-	-
Zanzibar.....	-	-	107	166
Others.....	14	16	75	68
<u>Asia</u>				
British North Borneo.....	-	-	195	134
Brunei.....	-	-	37	39
Burma.....	169	876	250	119
Ceylon.....	19	7	5,378	3,485
China.....	38,238	95,889	-	-
Hong Kong.....	2,753	1,720	318	190
India.....	11,443	5,335	-	-
Indonesia.....	-	-	232	352
Irian.....	-	-	82	7
Japan.....	13,869	11,410	-	-
Korea, North.....	-	4,986	-	-
Korea, South.....	-	1,024	-	-
Malaya.....	476	361	2,793	2,773
Malaya Atta.....	-	-	73	81
Pakistan.....	3,241	3,481	-	-
Sarawak.....	-	-	246	202
Singapore.....	57	299	2,324	2,461

Exports of Australian Wheat and Wheat Flour in Terms of Wheat  
December 1-September 28, 1962-63 and Corresponding Period 1961-62

Destination	Wheat		Wheat Flour	
	1961-62	1962-63	1961-62	1962-63
- thousand bushels -				
<u>Asia (concluded)</u>				
Singapore Atta.....	-	-	11	11
Singapore a/c War Office.....	-	-	22	36
Thailand.....	-	-	561	637
Others.....	331	850	184	895
<u>Pacific Area and Sundries</u>				
Chile.....	357	-	-	-
New Zealand.....	5,139	5,733	-	-
Pacific Islands etc. ....	41	46	1,746	2,009
Peru.....	56	-	7	14
Royal Navy.....	2	-	-	-
Ships' Stores and Sundries.....	-	-	115	448
Totals.....	138,600	169,100	21,000	19,600

ARGENTINE SITUATION

Supply Position Estimated total supplies of wheat in the Argentine for the 1962-63 (December-November) crop year amount to 193.3 million bushels, consisting of the December 1, 1962 carryover of 8.9 million and a production of 184.5 million. Indicated supplies for the current Argentine crop year, reflecting decreases in both carryover stocks and production, are about 19 per cent less than the 1961-62 total of 237.4 million bushels. After making an allowance of 126.6 million bushels for anticipated domestic requirements, an estimated 66.7 million are available for export and for carryover in 1962-63, in contrast to 109.7 million the previous year.

Argentine Wheat Supplies

Item	1961-62 <u>1/</u>	1962-63 <u>2/</u>
- million bushels -		
Carryover at beginning of crop year (December 1) <u>3/</u> ....	35.3	8.9
Production <u>4/</u> .....	202.1	184.5
Total estimated domestic supplies.....	237.4	193.3
Less estimated domestic requirements for crop year.....	127.7	126.6 <u>1/</u>
Available for export and for carryover.....	109.7	66.7
Deduct:		
Exports of wheat as grain, December-September.....	95.3	56.9
Exports of wheat flour in terms of wheat, December - September.....	0.4	0.3
Total exports of wheat and wheat flour.....	95.7	57.2
Balance on October 1 for export and for carryover.....	13.9	9.5

1/ Revised. 2/ Preliminary. 3/ Includes allowances for farm stocks. 4/ Official estimate.

Exports of wheat and wheat flour in terms of grain equivalent during December 1962-September 1963 amounted to 57.2 million bushels, 40 per cent below the 95.7 million exported during the same months in 1961-62. The balance remaining on October 1, 1963 for export and for carryover was estimated at 9.5 million bushels, compared with the October 1, 1962 total of 13.9 million.

The following account of the Argentine situation has been extracted from a report from Mr. M.B. Bursey, Commercial Counsellor, Buenos Aires, under date of October 21, 1963 and is reproduced with the permission of the Trade Commissioner Service, Department of Trade and Commerce. Where possible, conversions from Argentine to Canadian measures have been made for the convenience of our readers. Currency conversions have been made at the rates of 134.64 pesos per Canadian dollar and £1 equals \$3.0185 (Canadian) the quotations in effect on September 23, 1963.

Weather and Crops The period under review has been characterized by substantial rainfall throughout the Argentine grain growing regions. During the second week of October, rain fell solidly for 96 hours in many sections of Buenos Aires Province, and during that same period, even the area around Villa Maria (the centre of the Cordoba Province drought area) reported more than 40 mm (1.6 inches) of rain. The rainfall was accompanied by strong winds, but so far, no damage has been reported to either the grain or oilseed crops.

These rains came too late for the recovery of wheat in many areas of southern Cordoba Province, but losses in other parts of the drought area will be less than estimated originally. As at writing, the trade is predicting an exceptionally good crop in the southern wheat belt, and a better than expected crop in the northern belt. Weather conditions are also favourable in the important flax growing provinces of Entre Rios and Santa Fe, but as usual, it is dangerous to make predictions for this crop at this early stage.

Wheat The National Grain Board and the trade are each predicting a wheat crop in the neighbourhood of 5.9 to 6.0 million metric tons (216.8 million to 220.5 million bushels). As indicated earlier, crop conditions are excellent in the southern grain belt, and it is hoped that the recent heavy downpours have not caused any deterioration in the situation. It is still not known what percentage of the seeded area in Cordoba Province must be considered a total loss, as a result of the recent drought conditions.

According to our own wheat disposition table, at October 1, 1963, Argentina still had some 240,000 metric tons (8,818,000 bushels) of old crop wheat available for export. The export surplus of new crop grain has been estimated officially by the National Grain Board at around 2,300,000 metric tons (84,510,000 bushels).

Up to the beginning of October, there was no ban on export sales of new crop bread wheat, as the National Grain Board considered that supplies would be adequate. However, from around September 20, unusually large amounts of new crop bread wheat were traded for future delivery, and this prompted the National Grain Board to declare an immediate ban on export sales, details of which are as follows.

Existing regulations require that all grain and oilseed purchases or sales must be reported to the National Grain Board. Up until September 20, some 401,000 metric tons (14,734,000 bushels) of new crop bread wheat had been sold for export. From September 20 to September 27 a further 927,000 tons (34,061,000 bushels) were sold, making a total of 1,328,000 tons (48,795,000 bushels). With commitments with Brazil and other LAFTA countries of some 1,200,000 tons (44,092,000 bushels), it became obvious that the exportable surplus of bread wheat for the coming year had been more than covered. On the single day of October 2, a further 1,550,000 tons

(56,952,000 bushels) of bread wheat were declared to the Grain Board as export sales, and this prompted the Board to declare an immediate ban - effective that date - on any further sales. The Grain Board also declared that, for the time being, only those sales of bread wheat, which have already been concluded (a fixed purchaser and destination), will be allowed, and only contingent upon home market requirements. All sales not already concluded will not be approved, including the 1,550,000 tons (56,952,000 bushels) declared on October 2. The wheat trade and the Argentine press are of the opinion that the bulk of the 1,550,000 tons (56,952,000 bushels) of bread wheat declared on October 2 was based on the expectation of future sales being made to Mainland China.

In the meantime, the existing ban on export sales of old crop wheat was lifted as from October 10, but it is not expected that this decision will have any marked effect on the wheat export picture, as stocks are considered to be very low. The lifting of the ban appears to be designed more to clearing out storage facilities in readiness for the new crop, and exporters must ship before next November 15.

Recently, Uruguay finally returned 20,000 metric tons (735,000 bushels) of the 100,000 tons (3,674,000 bushels) loaned by Argentina a few years ago. The National Grain Board has sold a further 30,000 tons (1,102,000 bushels) from its own stocks for any destination at a price averaging 905 pesos per 100 kilos (\$1.83 per bushel) f.o.b. southern or up-river ports.

At the end of September, 795 pesos per 100 kilos (\$1.61 per bushel) were being paid for bread wheat down south, while 780 pesos (\$1.58 per bushel) were being paid at Buenos Aires. Present prices in the Buenos Aires Cereal Exchange are as follows:

Hard wheat - grade 1 - 80 kilos per hectolitre (64 pounds per bushel)	830 pesos per 100 kilos (\$1.68 per bushel).
Durums - 900 pesos (\$1.82 per bushel).	

Prices in the Buenos Aires Futures Market during the period under review were as follows:

	<u>September 25</u>	<u>October 2</u>	<u>October 16</u>
Delivery in:	- dollars per bushel -		
October, 1963	1.57		
November	1.62	1.64	1.68
December	1.67	1.70	1.65
January, 1964	1.69	1.75	1.67
February		1.78	1.69

It is reported by the trade, in connection with the 70,000 metric tons (2,572,000 bushels) tender for Brazil called during September, that all offers were too high and that a new tender would be called during October. Prices were reported to have averaged \$US 64 per metric ton (\$1.74 per bushel) f.o.b.

We have just been advised by the Argentine Foreign Ministry of a recent amendment to Argentina's agreement with Brazil, whereby during calendar year 1963 some 600,000 metric tons (22,046,000 bushels) of wheat would be supplied to that market. The new amendment stipulates that the 600,000 tons (22,046,000 bushels) will be increased by 140,000 tons (5,144,000 bushels), and that the total quantity 740,000 tons (27,190,000 bushels) will be exported to Brazil by the end of January, 1964.

At the end of September, prices in Europe for new crop Argentine wheat averaged \$US 75.00 per metric ton (\$2.04 per bushel) c.i.f. for Italy, and £27.12.6 (\$2.27 per bushel) for Britain for December-January shipment. Prices were the same for both Rosafe wheat (semi-hard) and southern hard wheat.

Argentine Wheat Exports December-August 1962-63 with Comparisons

Destination	Wheat	Destination	Wheat
	'000 bushels		'000 bushels
Africa, North.....	198	Netherlands.....	4,611
Algeria.....	1,516	Norway.....	725
Belgium.....	4,241	Paraguay.....	495
Bolivia.....	73	Peru.....	8,389
Brazil.....	13,165	Portugal.....	821
Britain.....	6,472	Sweden.....	53
Finland.....	147	Switzerland.....	368
France.....	2,788	Venezuela.....	373
Germany.....	1,773		
Italy.....	6,238	Total.....	52,447
Compared with:			
December-August 1961-62.....			90,920
1960-61.....			33,994
1959-60.....			69,514
1958-59.....			82,751
1957-58.....			50,848

FRENCH SITUATION

Supply Position

French Supplies of Soft Wheat

Item	1962-63	1963-64 <u>1/</u>
	- million bushels -	
Commercial carryover, July 1.....	58.7	100.4
Deliveries to Grain Board.....	371.1	235.9
Total estimated domestic supplies.....	429.8	336.3
Imports, July-September.....	0.6	1.5
Total estimated commercial supplies.....	430.4	337.8
Less domestic requirements for crop year.....	219.0	208.7 <u>2/</u>
Available for export and for carryover.....	211.4	129.1
Deduct:		
Exports of wheat as grain July-September.....	13.3	13.9
Exports of wheat flour in terms of wheat, July-September.....	6.4	2.7
Total exports of wheat and wheat flour.....	19.8	16.6
Balance on October 1 for export and for carryover.	191.6	112.5

1/ Preliminary. 2/ Includes allowances for denatured wheat sold as feed.

Total estimated commercial domestic supplies of wheat in France for the crop year (July-June) 1963-64, consisting of the July 1 carryover of 100.4 million bushels and anticipated marketings of 235.9 million amount to some 336.3 million bushels, 22 per cent less than the 1962-63 total of 429.8 million. Imports of wheat during the July-September period of 1963 amounted to 1.5 million bushels. Reflecting the adverse weather conditions during harvest, about 57 million bushels of this year's expected deliveries of wheat will be marketed as feed.

After deducting 208.7 million bushels for estimated domestic use, including normal feed wheat requirements, the surplus available for export and for carryover is about 129 million bushels compared with 211 million last year. The current total consists of about 37 million bushels of feed wheat and about 92 million of milling quality.

Combined exports of wheat and wheat flour in terms of grain equivalent during the first three months of the 1963-64 crop year amounted to 16.6 million bushels, and represented a decrease of 16 per cent from the comparable 1962-63 total of 19.8 million. The balance of commercial supplies remaining on October 1, 1963 for export and for carryover amounted to 112.5 million bushels in contrast to the October 1, 1962 total of 191.6 million.

The following account of the current crop situation in France has been extracted from a report by Mr. R.G. Woolham, Assistant Commercial Secretary, Canadian Embassy, Paris, under date of October 22, 1963, and is reproduced with the permission of the Trade Commissioner Service, Department of Trade and Commerce. Where possible, conversions from French to Canadian measures have been made and rounded for the convenience of our readers. One new franc equals .2201 Canadian dollars the quotation in effect on September 23, 1963.

#### Crop Situation

More sunshine and less rain characterized October in France compared with recent months, but this trend came too late to carry much significance for the almost completed wheat harvest. However, for the corn crop this turn in weather has contributed further promise of record production this year. The production estimates remain unchanged from last month with the exception of corn which on October 1 was 57,400 tons (2,260,000 bushels) higher than the estimate given a month earlier.

Wheat production in France this year is estimated at 9.4 million tons (345.4 million bushels) of which about 6.2-6.4 million tons (227,808,000-235,157,000 bushels) will probably be delivered into commercial channels. It is anticipated a quarter of the wheat deliveries will be classed as feed wheat. This year only wheat containing more than 5 per cent sprouted kernels may be denatured for feed. Denatured wheat is resold at a subsidized price of 10.42 to 8.17 francs per quintal (62 to 49 cents per bushel) less than the 31.50 to 36.50 francs per quintal (\$1.89 to \$2.19 per bushel) paid on delivery.

There is little problem this year of finding markets for French milling quality wheat both domestically and abroad. Producer organizations of hard wheats in France, production of which is very minor, 50,000-80,000 tons (1.8 million to 2.9 million bushels) have been successful in having the export financing assessment on wheat producers, which this year is 1.28 francs per quintal (8 cents per bushel) for the first 150 quintals (551 bushels) delivered and 2.56 francs per quintal (15 cents per bushel) thereafter, reduced to a flat 1.00 franc per quintal (6 cents per bushel) for any quantity of hard wheat delivered. The principal hard wheat varieties grown in France are "Magdalena", "Florence-Aurore" and "Dr. Mazet".

French Cereal Production

	Average 1958-62	1963 1/
	- thousand bushels -	
Soft wheat	403,956	333,273
Durum wheat	2,374	2,014
Rye	16,070	13,232
Barley	231,414	321,684
Oats	172,471	171,875
Corn	81,074	144,161

1/ Preliminary

Market Situation

Figures are based on actual export and import shipment statistics. Statistics obtained from the E.E.C. Export and Import Certificates as issued by the French Cereals Office provide a more forward description of French Cereal Trade. Certificates are valid for the next three months after date of issue and may be cancelled although the high cancellation fee of about \$6 per ton discourages this practice.

Export Certificates issued from July 1 to October 18, 1963, covering shipments and contracts up to January 31, 1964, now total about 900,000 tons (33,069,000 bushels) of wheat, about 1.0 million tons (45,929,000 bushels) of barley and about 200,000 tons (7,874,000 bushels) of corn. Therefore, the exportable balance during the present crop year for wheat, barley and corn is about 1.6, 1.1, and 1.3 million tons (58,789,000, 50,522,000, 51,178,000 bushels), respectively. Certificates issued for the import into France of quality wheats (principally from Canada and the U.S.A.) total 106,000 tons (3,895,000 bushels).

About one-half of France's wheat export contracts noted above, are in feed wheat; more than half of these contracts are classed as "Special Sales" with East European countries, which provides for credit and supplementary subsidies. These special sales made so far are detailed below:

		<u>thousand bushels</u>
Poland	Milling wheat..	7,349
	Feed wheat.....	5,511
	Barley.....	4,593
Hungary	Milling wheat..	1,837
	Barley.....	2,296
Bulgaria	Barley.....	10,564
East Germany	Barley.....	6,889
Russia	Wheat flour....	5,511
	(wheat equivalent)	
China	Milling wheat..	3,674

New Regulations

On October 18, 1963, regulations were instituted by the French Government which now exempt from import levies imports of wheat into France in an amount equivalent to the same tonnage of wheat exported to third countries or in the case of flour exports, a tonnage of wheat equivalent based on specified conversion factors. These regulations will probably encourage the replacement of French domestic wheat, with imported wheats of higher quality.

CROP SITUATION IN BRITAIN

The following account of the current crop situation and grain prices in Britain has been extracted from a report received from Mr. W.M. Miner, Commercial Secretary, (Agriculture) for Canada, London, under date of October 15, 1963 and is reproduced with the permission of the Trade Commissioner Service, Department of Trade and Commerce.

The Ministry of Agriculture reports that with the exception of a small area of spring wheat, and of oats in northern and upland areas, the harvest was completed by the end of September. Although conditions were cool and wet at the beginning of the month, twelve days of good weather enabled farmers to get on with the delayed harvest. Rainy weather for the last week of the month again held up harvesting.

Wheat From all areas there are reports of high moisture content and the need for artificial drying. Quality and condition varied, but was generally below average.

Ministry forecasts of yields per acre as at September 10, 1963 for wheat, oats and barley with allowance, as necessary, for excessive moisture content are given below:

<u>Grain</u>	<u>5-Year Average</u> <u>1958-62</u>	<u>Final Estimates</u> <u>1962</u>	<u>Forecast</u> <u>1963</u>
		- bushels per acre -	
Wheat	53.0	60.1 <sup>1/</sup>	56.2
Barley	60.2	67.6	63.0
Oats	73.8	83.0	77.1

1/ This figure remains subject to revision.

If the above were applied to the acreage figures they would give a wheat crop of about 2,850,000 long tons (106.4 million bushels) and 5,600,000 long tons (261.3 million bushels) for barley in England and Wales. Thus the total barley crop in Britain as a whole should exceed 5 million tons (280 million bushels).

The Ministry of Agriculture has now started to publish a new series of statistical statements on cereals giving a statement of estimated cereal supplies and requirements for the United Kingdom. The first of these dated October 11, 1963 shows that requirements of wheat and coarse grains for human consumption are likely to be marginally higher in 1963-64 than in the previous year. It also shows that, though wheat production is likely to be about 1 million tons less than last year, imports of wheat for milling are not expected to rise by more than about 200,000 tons, but there will be reduced supplies for animal feed. Current expectations are that requirements of all cereals for animal feed will be nearly 250,000 tons more than in the previous year.

Although animal feed requirements are expected to increase the Ministry anticipates imports of about 4.6 million tons of coarse grains (as in 1962-63) because last year's supplies were some 250,000 tons in excess of requirements. Forward commitments on wheat at the end of September were some 400,000 tons higher than at the corresponding date last year, but commitments on coarse grains were nearly 100,000 tons lower.

The Ministry emphasizes the tentative nature of the figures and states that the figures should be interpreted with a good deal of caution and judgement.

Market Prices

Offers of home-grown wheat on corn exchanges have been limited with demand firm. Hard milling wheats have made up to \$1.81 per bushel and soft wheats up to \$1.75 per bushel. Compounding wheats reached \$1.67.

CALENDAR OF WHEAT EVENTS

- October 10 According to a report published by the Crop Reporting Board, United States Department of Agriculture, production of all wheat in the United States in 1963, based on conditions at October 1, was forecast at 1,133 million bushels.
- 19 The 1963 season of navigation closed at the Port of Churchill. Shipments of wheat from this port set a new record this year of 22,864,000 bushels.
- 21 According to a report received from Mr. M.B. Bursey, Commercial Counsellor for Canada, Buenos Aires, the National Grain Board and the trade are each predicting a wheat crop in Argentina of about 216.8 million to 220.5 million bushels.
- 22 According to a report received from Mr. R.G. Woolham, Assistant Commercial Secretary, Canadian Embassy, Paris, wheat production in France this year is estimated at 345.4 million bushels.
- 23 According to a press release issued by the Board of Grain Commissioners' Research Laboratory at Winnipeg, tests made on 6,188 samples of the statutory grades of wheat obtained from 1,728 shipping points in the Prairie Provinces show that the average protein content is 14.3 per cent, the third highest on record, 0.4 per cent higher than last year and 0.7 per cent higher than the long-term average of 13.6 per cent.
- According to a report published by the Statistics Branch of the Board of Grain Commissioners for Canada, clearances of Canadian wheat during the week ending October 23 set a record weekly export figure of 17.9 million bushels.
- 24 Wheat stocks in all positions in the United States on October 1, 1963 were estimated at 1,947 million bushels, 6 per cent below the previous year and 8 per cent less than the 1957-61 average.
- 29 The signing of a wheat agreement between Canada and Czechoslovakia was announced. The Agreement is for a period of five years during which Czechoslovakia will purchase and Canada will supply about 44 million bushels of wheat.
-







STATISTICS CANADA LIBRARY  
BIBLIOTHÈQUE STATISTIQUE CANADA



1010686747