

CATALOGUE No.

22-005

MONTHLY

DOES NOT CIRCULATE

NE PAS PRÊTER



CANADA

DOMINION BUREAU OF STATISTICS

AGRICULTURE DIVISION



# THE WHEAT REVIEW



NOVEMBER 1963



DOMINION BUREAU OF STATISTICS

---

THE  
WHEAT REVIEW

NOVEMBER 1963

*Published by Authority of*  
The Minister of Trade and Commerce

Prepared in the Crops Section, Agriculture Division  
Dominion Bureau of Statistics, Ottawa

## TABLE OF CONTENTS

	<u>Page</u>
World Wheat Situation	
August-October Exports at Record Level.....	1
Wheat Supplies of Four Major Exporters 2 Per Cent Above a Year Ago.....	1
I.W.C. Reports on Wheat Trade.....	2
Canada Leading Wheat Supplier to EEC in 1962-63.....	3
I.W.C. Cumulative Totals of Commercial Purchases, Crop Year 1963-64.....	4
Canadian Situation	
Supply Position.....	5
Canadian Wheat Moving at Brisk Pace.....	6
October 1963 Exports of Wheat and Flour Set New Record.....	6
Wheat Sale to China.....	7
Canada's 1963 Wheat Crop Estimated at a Record 723.4 Million Bushels.....	8
Lake Shipments of Canadian Grain.....	9
Protein Survey of Western Canada's 1963 Hard Red Spring Wheat.....	10
Farmers' Marketings.....	11
General Quota Position.....	11
Visible Supply of Canadian Wheat.....	12
Grading of Wheat Inspected, August-October 1963 with Comparisons.....	12
Weekly Visible Supply and Farmers' Marketings (Charts).....	13
Wheat Shipments to the United States by Destination.....	14
Rail Shipments of Wheat to Maritime Ports.....	14
Rail Shipments of Wheat from Fort William-Port Arthur.....	15
Overseas Exports of Canadian Grain by Ports of Loading.....	15
Freight Assistance Shipments.....	16
Monthly Exports of Canadian Wheat and Wheat Flour.....	17
Exports of Canadian Wheat and Wheat Flour by Destination, Crop Years 1962-63 and 1961-62.....	18
Exports of Canadian Wheat by Destination.....	21
Customs Exports of Canadian Wheat Flour by Countries of Consignment.....	24
Canadian Wheat Board Weekly Average Cash Wheat Prices.....	26
Canadian Flour Milling Situation	
Production and Exports.....	28
United States Situation	
Supply Position.....	29
Winter Wheat Outlook Varies Widely.....	30
Outlook for Wheat in 1964.....	30
U.S. Wheat and Flour Exports Increase 17 Per Cent.....	32
Cash Wheat Prices on the Kansas City and Minneapolis Markets.....	35
Chicago Wheat Futures, High Points of Closing.....	35
Australian Situation.....	36
Argentine Situation.....	39
French Situation.....	42
Calendar of Wheat Events.....	44

---



# WORLD WHEAT SITUATION

## August-October Exports at Record Level

Total exports of wheat and wheat flour in terms of wheat from the four major exporting countries during the August-October period of the current Canadian crop year, at 389.1 million bushels, were some 50 per cent greater than the 258.8 million exported during the same months of 1962. They were 70 per cent more than the ten-year (1952-61) average of 228.8 million for the same period. Although exports from Canada recorded the largest increase, shipments of wheat from each of the four countries, United States, Canada, Argentina and Australia were at higher levels this year than last.

Shipments from the four traditional major wheat exporters during August-October 1963 with comparisons appear in the accompanying table.

## Exports of Wheat and Flour in Terms of Wheat, August-October 1963 with Comparisons

August-October	United States	Canada	Argentina	Australia	Total
- million bushels -					
1950.....	51.4	49.3	17.2	30.9	148.8
1951.....	116.0	75.4	17.9	30.5	239.8
1952.....	85.1	94.6	-	23.0	202.7
1953.....	54.8	79.2	32.5	16.6	183.1
1954.....	53.8	73.8	33.7	21.5	182.8
1955.....	54.4	60.1	30.2	23.2	167.9
1956.....	118.8	81.4	24.2	40.9	265.3
1957.....	100.7	73.5	21.8	24.9	220.9
1958.....	108.2	73.8	21.4	16.2	219.6
1959.....	100.3	76.3	15.1	20.4	212.1
1960.....	150.8	81.8	25.5	27.7	285.8
1961.....	180.0	106.2	6.1	55.9	348.2
1962 <u>1/</u> .....	140.2	84.7	10.7	23.2	258.8
1963 <u>2/</u> .....	192.0	138.3	11.5	47.3	389.1

1/ Revised.

2/ Preliminary.

## Wheat Supplies of Four Major Exporters 2 Per Cent Above a Year Ago

Latest available estimates indicate that supplies of wheat remaining on or about November 1, 1963 in the four major exporting countries for export and for carryover at the end of their respective crop years amounted to 2,461.3 million bushels, exceeding by 2 per cent the 2,408.2 million available a year ago. Supplies in Canada and Australia were larger this year than last while those for United States and Argentina were smaller. Supplies at November 1, 1963 in millions of bushels, were held as follows, with last year's comparable figures in brackets: United States, 1,476.2 (1,634.9); Canada, 928.9 (735.4); Argentina, 5.3 (11.5); and Australia, 50.9 (26.4). Estimates for both years include on-farm stocks as well as those in commercial positions.

IWC Reports  
on Wheat Trade

The International Wheat Council held its Thirty-eighth Session in London from November 19 to 26, 1963. The session was attended by delegates from thirty-three member countries and by observers from the Food and Agriculture Organization and from the Commission of the European Economic Community. The membership of the Council now totals forty-eight countries, of which ten are exporting countries and thirty-eight importing countries.

The Council reviewed the performance of member countries during the crop year 1962-63 in relation to their undertakings under the Agreement.

Trade in wheat in which member countries participated amounted to 39.4 million tons out of a total world trade estimated at approximately 43 million tons. Of this 39.4 million tons, commercial purchases by member importing countries from member exporting countries at 14.6 million tons were 2.2 million tons lower than in the previous crop year, largely as a result of higher domestic crops in Western Europe.

In accordance with the relevant provisions of the Agreement, the Council held its fifth review of the world wheat situation. The Council noted that world wheat production (excluding mainland China) in 1963-64 is provisionally estimated at 215 million tons, about 19 million tons, below the 1962-63 record. There were, however, major changes of far-reaching effect in the regional pattern of production, the most significant being the sharp decline in the U.S.S.R., Eastern and Western Europe and the larger crops in North America, particularly in Canada.

The particular incidence of these changes in production has led to a substantial increase in import demand and on present estimates world trade should rise to about 50 million tons, about 2.5 million tons above the previous record of 1961-62 and seven million tons above the level of 1962-63. This large increase in trade is due primarily to the heavy purchases made so far by the U.S.S.R., normally a substantial exporter, but also reflects the increased requirements of Western Europe and Japan.

This unprecedented level of world trade rests on a supply position which is statistically strong with larger total supplies in Canada, United States, Argentina and Australia taken together, but there may be an element of tightness in the position owing to the capacity of the inland transportation and the port facilities in two cases. With the expansion in world trade, prices have risen in 1963-64 to well above the average of recent years, and this is particularly true of import prices which have also reflected the effects of the sharp increase in freight rates to the highest level since the Suez crisis.

Carryover stocks in eight exporting countries may decline as a result of this trade from 52 million tons to 44 million or less and be smaller than at any time since the beginning of the 1953-54 year.



Canada Leading Wheat Supplier to EEC in 1962-63

Wheat production in countries of the European Economic Community in 1962 was at record levels and, due to the plentiful supplies, import requirements declined. However, the need for high quality, high protein wheat for mixing purposes was very evident and Canada's exports to the region were well maintained. Based on data covering the crop year 1962-63 Canada supplied 50 per cent of the total volume of wheat exported to the European Economic Community by the four traditional major exporters. This figure exceeded by a wide margin the previous year's comparable share of 32 per cent and placed Canadian shipments to the EEC well above each of the other three principal wheat exporters. Although exports to this region from Canada decreased by 9.4 million bushels, from 64.1 million in 1961-62 to 54.7 million in 1962-63, heavier declines were recorded over the same period by each of the other three major suppliers of wheat. Shipments of United States wheat dropped from 75.4 million in 1961-62 (August-July) to 33.5 million in 1962-63 or, expressed as a share of the wheat trade to the EEC these data represented 38 per cent in 1961-62 and 30 per cent in the past year. Although exports of wheat from Argentina to the EEC declined from 38.1 million two years ago to 20.6 million a year ago the percentage share of this market remained at 19 per cent. Exports of Australian wheat to the EEC dropped sharply from 20.6 million bushels in 1961-62 to only 1.4 million in 1962-63 and these accounted for 11 per cent of the shipments from the four major wheat suppliers to the EEC two years ago as against 1 per cent last year.

Exports to the European Economic Community from each of the four traditional wheat exporters, expressed as a percentage of their respective total shipments to all destinations, indicate that Canadian shipments declined from 18 per cent in 1961-62 to 17 per cent in 1962-63. Corresponding percentages for the other three major wheat suppliers were: United States, 11 per cent and 5 per cent; Argentina, 40 per cent and 33 per cent; and Australia, 9 per cent and 1 per cent. Actual bushel volumes exported by these same four countries to both the EEC and to all destinations are set forth in the accompanying table.

Wheat <sup>1/</sup> Shipments from the Four Major Exporters to the European Economic Community, August - July 1961-62 and 1962-63

Destination	United States	Canada	Argentina	Australia	Total
- thousand bushels -					
<u>1961-62</u>					
Belgium and Luxembourg.....	7,105	11,650	1,246	-	20,001
France.....	6,041	1,036	4,905	450	12,432
Germany, West.....	14,179	43,945	20,564	12,283	90,971
Italy.....	19,060	3,897	2,403	7,911	33,271
Netherlands.....	29,010	3,599	8,998	-	41,607
Totals, E.E.C. ....	75,395	64,127	38,116	20,644	198,282
Percentage of E.E.C. total ....	38%	32%	19%	11%	100%
Totals, wheat exports to all Countries.....	703,877	358,022	95,490	219,800	1,377,189
Percentage E.E.C. of total all Countries.....	11%	18%	40%	9%	14%
<u>1962-63</u>					
Belgium and Luxembourg.....	3,310	10,149	4,510	-	17,969
France.....	2,933	6,877	2,825	-	12,635
Germany, West.....	8,473	27,997	1,796	1,371	39,637
Italy.....	5,223	4,920	6,366	-	16,509
Netherlands.....	13,581	4,754	5,058	-	23,393
Totals, E.E.C. ....	33,520	54,697	20,555	1,371	110,143
Percentage of E.E.C. total....	30%	50%	19%	1%	100%
Totals, wheat exports to all Countries.....	652,948	331,372	62,457	186,200	1,232,977
Percentage E.E.C. of total all Countries.....	5%	17%	33%	1%	9%

<sup>1/</sup> Includes wheat flour in terms of wheat.

International Wheat Council  
Cumulative Totals of Commercial Purchases by Importing Countries from Exporting Countries  
Crop Year 1963-64 -- Through November 2, 1963

Importing Countries	E X P O R T I N G   C O U N T R I E S								Total Purchases
	Canada	Argentina	Australia	France	Italy	Sweden	U.S.S.R.	U.S.A.	
- thousand bushels -									
Austria.....	459	-	-	-	-	-	-	-	459
Belgium & Luxembourg.....	12,245	348	-	1,825	-	-	110	3,858	18,386
Brazil.....	-	4,409	-	-	-	-	-	872	5,281
Costa Rica.....	428	-	-	-	-	-	-	365	793
Cuba.....	-	-	-	-	-	-	-	-	-
Dominican Republic.....	398	-	-	-	-	-	-	5	403
El Salvador.....	308	-	-	-	-	-	-	493	801
Finland.....	355	-	-	-	-	-	-	-	355
Germany, Federal Republic	24,550	1,369	3,487	2,607	-	18	-	14,045	46,076
Greece.....	7	-	-	-	-	-	-	172	179
Guatemala.....	117	-	-	-	-	-	-	735	852
Iceland.....	-	-	-	6	-	-	-	9	15
India.....	-	-	505	-	-	-	-	1	506
Indonesia.....	-	-	115	-	-	-	-	1	116
Ireland.....	2,366	-	1,407	-	-	-	-	237	4,010
Israel.....	1,067	-	93	-	-	-	-	805	1,965
Japan.....	24,576	-	7,947	-	-	-	-	28,123	60,646
Korea.....	511	-	1,497	-	-	-	-	1	2,009
Liberia.....	48	-	-	-	-	-	-	20	68
Libya.....	-	-	-	-	319	-	-	-	319
Netherlands.....	2,584	1,795	1	994	-	-	2,719	14,759	22,852
Netherlands Territories	166	-	10	-	-	-	-	219	395
New Zealand.....	-	-	4,294	-	-	-	-	-	4,294
Nigeria.....	99	-	-	-	-	-	-	1,080	1,179
Norway.....	1,667	-	4,256	9	-	165	-	2,210	8,307
Peru.....	782	5,159	7	-	-	-	-	2,010	7,958
Pbilippines.....	5,262	-	1,468	-	-	-	-	5,564	12,294
Portugal.....	25	411	12	334	-	-	-	2,072	2,854
Portuguese Territories.	322	-	19	-	-	-	-	789	1,130
Rhodesia & Nyasaland.....	36	-	2,347	-	-	-	-	34	2,417
Saudi Arabia.....	641	-	432	-	1	-	-	1,252	2,326
Sierra Leone.....	385	-	-	-	-	-	-	12	397
South Africa.....	-	-	-	-	-	-	-	2,949	2,949
Switzerland.....	4,380	59	-	23	14	5	-	1,489	5,970
Tunisia.....	-	-	-	-	-	-	-	-	-
United Arab Republic.....	-	-	-	-	-	-	-	-	-
United Kingdom.....	80,016	2,019	20,391	1,005	3	60	1,867	11,384	116,745
U.K. Territories.....	3,056	-	2,690	-	-	-	-	903	6,649
Vatican City.....	205	-	-	-	-	-	-	-	205
Venezuela.....	4,294	-	-	-	-	-	-	5,703	9,997
Western Samoa.....	-	-	56	-	-	-	-	1	57
To Orders.....	-	6,216	-	15,619	-	360	-	-	22,195
Totals.....	171,355	21,785	51,034	22,422	337	608	4,696	102,172	374,409
Percentage of Total Sales by Exporting Countries...	45.77	5.82	13.63	5.99	0.09	0.16	1.25	27.29	100.00

NOTE: Mexico and Spain - no sales reported.

Quantities for Argentina cover period ending September 27, 1963.

Quantities for Italy cover period ending October 19, 1963.



# CANADIAN SITUATION

Supply Position Total estimated supplies of wheat for the 1963-64 crop year are now placed at an all-time high of 1,212.2 million bushels, consisting of the August 1 carryover of 488.8 million and the 1963 crop, forecast on the basis of conditions at October 15, at a record 723.4 million bushels. Supplies of the size indicated represent a 27 per cent increase over the 956.6 million of a year ago and surpass by 5 per cent the previous peak of 1,152.8 million bushels established in 1956-57. After making an allowance of 145.0 million bushels for anticipated domestic requirements, supplies available for export and for carryover during 1963-64 would amount to 1,067.2 million bushels, 30 per cent above the 820.1 million in 1962-63.

Exports of wheat as grain during the August-October period of the current crop year amounted to 131.1 million bushels, 70 per cent above the 77.1 million exported during the same months a year ago. Exports of wheat flour, in terms of wheat, during August-October this year were estimated at 7.2 million bushels, bringing total exports of wheat and flour during the same three months to some 138.3 million bushels, 63 per cent more than the 84.7 million exported during the comparable period of last year. Subject to realization of current production and utilization estimates, the balance remaining on November 1, 1963 for export and for carryover, amounted to 928.9 million bushels, 26 per cent larger than the November 1, 1962 total of 735.4 million.

## Canadian Wheat Supplies

Item	1962-63 <u>1/</u>	1963-64 <u>2/</u>
	- million bushels -	
Carryover in North America at beginning of crop year (August 1).....	391.1	488.8
Production.....	565.6	723.4 <u>3/</u>
Imports of wheat for domestic use, August-October...	<u>4/</u>	<u>5/</u>
Total estimated supplies.....	956.6	1,212.2
Less estimated domestic requirements for crop year..	136.5 <u>3/</u>	145.0
Available for export and for carryover.....	820.1	1,067.2
Deduct:		
Exports of wheat in bulk, August-October <u>6/</u> .....	76.7	130.8
Exports of bagged seed wheat, August-October <u>7/</u> ...	0.4	0.3
Total exports of wheat as grain.....	77.1	131.1
Exports of wheat flour in terms of wheat, August - October <u>7/</u> .....	7.6	7.2
Total exports of wheat and wheat flour.....	84.7	138.3
Balance on November 1 for export and for carryover..	735.4	928.9

1/ Subject to revision. 2/ Preliminary. 3/ Revised. 4/ Less than 50,000 bushels.  
5/ Not available. 6/ As reported by the Board of Grain Commissioners. (Includes overseas clearances and imports into the United States). 7/ Customs returns, 1962-63 adjusted for time lag.

Canadian Wheat Moving  
at Brisk Pace

The movement of Canadian wheat has gained considerable momentum in recent weeks. Total deliveries up to November 20 of the current season, at 135.9 million bushels, were still lower than last year's comparable 154.2 million. This was due in part, at least, to opening stocks of wheat in country elevators being some 71.0 million bushels higher than at August 1, 1962. However, some 70.8 million bushels, or more than half of the current total, were delivered during the five weeks October 17 to November 20. The volume of Canadian wheat entering export and domestic channels amounted to 93.6 million bushels during the same period and as a result, the total visible supply of Canadian wheat declined steadily, from 369.6 million bushels at October 16 to a level of 346.6 million at November 20. Overseas clearances alone set a new weekly record during the week ending November 20, reaching a peak of 18.1 million bushels.

The total visible supply of Canadian wheat at November 20 this year represented declines of 5 per cent from the 1962 comparable total of 363.0 million and 11 per cent less than the 1961 figure of 388.8 million. Stocks in country elevators amounted to 198.5 million bushels compared with 197.8 million in this position a year ago and 224.6 million two years ago. This year's supplies in country elevators at November 20 accounted for 57 per cent of the total visible wheat supply compared with the 1962 and 1961 corresponding percentages of 54 per cent and 58 per cent, respectively. Wheat stocks at interior terminals at November 20, 1963 totalled 6.3 million bushels as against 6.8 million a year ago and 10.7 million two years ago. The 21.8 million bushels "in transit rail" (Western Division) represented increases over both the 1962 total of 18.4 million and the 1961 figure of 18.2 million. Supplies at the Lakehead, totalling some 34.9 million bushels, were 3 per cent below last year's comparable level of 35.9 million and 2 per cent less than the 1961 figure of 35.7 million. Stocks "in transit lake", amounting to 11.1 million bushels were below the 1962 level of 12.4 million and little changed from the 11.0 million of two years ago. The 30.7 million bushels in Bay, Lake and Upper St. Lawrence ports were below both the 31.3 million bushels of last year and 34.1 million at November 22, 1961. Supplies in Lower St. Lawrence and Maritime ports at November 20, 1963 at 21.6 million bushels also registered declines from both the 1962 and 1961 corresponding totals of 33.1 million and 31.6 million bushels, respectively. The 7.9 million bushels in West Coast ports (Vancouver-New Westminster, Prince Rupert and Victoria) were sharply lower than the 14.1 million of last year and considerably below the 9.9 million of two years ago.

October 1963 Exports of  
Wheat and Flour Set  
New Record

Combined exports of wheat in bulk, bagged seed wheat and wheat flour in terms of grain equivalent during October 1963 amounted to 61.4 million bushels, the highest total for that month since 49.0 million were exported in October 1928 and in sharp contrast to both last year's October figure of 31.9 million and the ten-year average for the month of 26.3 million bushels. Exports of wheat in bulk (as reported by the Board of Grain Commissioners) during October 1963, at 59.0 million bushels, were some 39 per cent greater than the 42.6 million exported during the preceding month, almost double the 29.7 million exported during October a year ago and about two and one half times greater than the ten-year average for the month of 22.6 million bushels. Exports of bagged seed wheat during October 1963, based on Canadian Customs returns, amounted to only 7 thousand bushels in contrast to the September 1963 total of 155 thousand and the October 1962 figure (adjusted to remove time lag) of 31 thousand bushels. Customs returns also indicate that the equivalent of 2.4 million bushels of wheat was exported in the form of flour during October 1963, 45 per cent greater than the September volume of 1.6 million and 9 per cent more than the adjusted October 1962 total of 2.2 million.



Cumulative exports of wheat in bulk during the August-October 1963 period amounted to 130.8 million bushels, representing an increase of 71 per cent over the comparable 1962 total of 76.7 million and 88 per cent above the ten-year average for the period of 69.7 million. Shipments of wheat to the U.S.S.R. totalled some 25.4 million bushels during October alone and raised the August-October exports to that country to 30.5 million bushels. As a result, the U.S.S.R. became Canada's leading market for wheat to date this year and accounted for 23 per cent of three-month total exports of wheat in bulk form. There were no shipments of Canadian wheat to the U.S.S.R. during the past crop year. Shipments of wheat to Britain amounted to 24.1 million bushels and accounted for 18 per cent of the August-October total. During the same period of 1962 shipments of wheat to Britain amounted to 19.5 million bushels and represented 25 per cent of the August-October total. Other principal markets for Canadian wheat in bulk during the first three months of the current crop year, with figures for the same period of the preceding crop year in brackets, were as follows, in millions of bushels: Federal Republic of Germany, 13.1 (5.9); Japan, 12.8 (12.2); Belgium and Luxembourg, 7.9 (3.0); Poland, 7.3 (11.9); China Communist, 6.0 (8.7); Yugoslavia, 3.5 (nil); Switzerland, 3.0 (1.1); Italy, 2.6 (2.4); Netherlands, 2.6 (2.1); Philippines, 2.5 (2.5); France, 2.1 (0.4); and Venezuela, 2.0 (1.5). Cumulative exports of bagged seed wheat during August-October of the current crop year, based on Canadian Customs returns, amounted to 322 thousand bushels compared with last year's comparable total (adjusted to remove time lag) of 388 thousand.

Cumulative exports of wheat flour during the first three months of the 1963-64 crop year, based on Customs returns, were the equivalent of 7.1 million bushels, below the adjusted August-October 1962 total of 7.6 million bushels. Britain was the major market for Canadian wheat flour. Shipments of wheat flour to that country during the period under review amounted to the equivalent of 3,294 thousand bushels and accounted for 46 per cent of the August-October 1963 total. During the same months of the 1962-63 crop year shipments of wheat flour to Britain amounted to the equivalent of 3,263 thousand bushels and represented 43 per cent of the total. Other leading markets for Canadian wheat flour in terms of grain equivalent during the August-October period of the 1963-64 crop year, with revised data for the same months of the preceding crop year in brackets, were as follows, in thousands of bushels: Ceylon, 586 (nil); Trinidad and Tobago, 369 (301); Jamaica, 328 (338); Leeward and Windward Islands, 283 (213); Hong Kong, 259 (249); United States, 213 (286); Nicaragua, 199 (143); Malaya and Singapore, 198 (142); Ghana, 181 (643); and Costa Rica, 150 (286).

#### Wheat Sale To China

On December 4, 1963 the Canadian Wheat Board announced that a Sales Contract had been signed to provide for the export to China of 500 thousand long tons or approximately 18.7 million bushels of wheat from Pacific ports during the period February 1, 1964 to June 30, 1964.

On August 1, 1963 the Board announced that a Long Term Agreement had been entered into with the China National Cereals, Oils and Foodstuffs Import and Export Corporation for the intention of purchase by China from Canada of 3 to 5 million long tons of wheat over the three year period August 1, 1963 to July 31, 1966. The Canadian Wheat Board under this Agreement undertook to make supplies available to the Chinese Trading Corporation with specific quantities, prices and shipping periods to be negotiated periodically.

Including the Sales Contract covered by this announcement total sales under the second Long Term Agreement dated August 1, 1963 amount to 1 million long tons or approximately 37.3 million bushels. Payment terms for sales under the Long Term Agreement are 25 per cent cash when each vessel is loaded and the balance of 75 per cent in eighteen months with interest. The deferred payment provision is made possible by a guarantee to the Canadian Wheat Board by the Government of Canada.



Canada's 1963 Wheat Crop Based on conditions at October 15 Canada's 1963 wheat crop is estimated at an all-time record of 723.4 million bushels, Estimated at a Record 28 per cent above last year's estimate of 565.6 million and 723.4 Million Bushels 51 per cent above the ten-year average of 479.8 million bushels. The increase in production compared with last year is due to a 24 per cent increase in yields and a 3 per cent increase in seeded acreage. The average yield at 26.2 bushels per acre is 32 per cent above the ten-year (1952-61) average of 19.9 bushels per acre. This year's all Canada crop of spring wheat, including durum, is estimated at 705.7 million bushels compared with the 1962 crop of 549.8 million and the ten-year average of 459.3 million bushels. Ontario's winter wheat crop is estimated at 17.7 million bushels, an increase of 12 per cent from last year's crop of 15.8 million.

November Estimate of the 1963 Production of Spring and Winter Wheat in Canada  
Compared with 1962

Crop	Area		Yield per Acre		Production	
	1962 <u>1/</u>	1963	1962	1963 <u>2/</u>	1962 <u>1/</u>	1963 <u>2/</u>
	- acres -		- bushels -		- bushels -	
<u>CANADA</u>						
Spring wheat <u>3/</u>	26,366,900	27,124,200	20.9	26.0	549,759,000	705,694,000
Winter wheat....	450,000	442,000	35.1	40.2	15,795,000	17,748,000
All wheat.....	26,816,900	27,566,200	21.1	26.2	565,554,000	723,442,000
<u>PRAIRIE PROVINCES</u>						
Manitoba.....	3,042,000	3,153,000	26.3	19.3	80,000,000	61,000,000
Saskatchewan....	17,388,000	17,910,000	20.4	27.5	354,000,000	493,000,000
Alberta.....	5,807,000	5,933,000	19.3	25.1	112,000,000	149,000,000
Totals <u>3/</u> .....	26,237,000	26,996,000	20.8	26.0	546,000,000	703,000,000

1/ Revised.

2/ As indicated on basis of conditions on or about October 15.

3/ Includes durum wheat and relatively small quantities of winter wheat in all provinces except Ontario.

In the Prairie Provinces the 1963 wheat crop is now placed at a record 703.0 million bushels, some 157.0 million bushels or 29 per cent above the 1962 crop. Wheat outturns in Manitoba were the same as indicated at mid-September, while an increase from the September estimate was registered in Saskatchewan and Alberta. Manitoba production is estimated at 61.0 million bushels compared with 80.0 million last year. Production in Saskatchewan, accounts for 68 per cent of this year's all Canada wheat crop and is estimated at a record 493.0 million bushels, some 39 per cent more than last year's outturn of 354.0 million. The Alberta crop, estimated at 149.0 million bushels, is up 33 per cent from last year's production of 112.0 million. The indicated average yield per seeded acre in the Prairie Provinces is 26.0 bushels, with Manitoba averaging 19.3; Saskatchewan, 27.5; and Alberta, 25.1 bushels per acre. Current estimates of production in the Prairie Provinces include relatively small quantities of winter wheat principally in Alberta, and an estimated 53.4 million bushels of durum wheat.

November Estimate of the 1963 Production of Durum Wheat 1/  
in the Prairie Provinces Compared with 1962

Province	Area		Yield per Acre		Production	
	1962 <u>2/</u>	1963	1962	1963 <u>3/</u>	1962 <u>2/</u>	1963 <u>3/</u>
	- acres -		- bushels -		- bushels -	
Manitoba.....	161,000	140,000	23.6	17.1	3,800,000	2,400,000
Saskatchewan.....	2,897,000	1,796,000	19.5	25.6	56,500 000	46,000,000
Alberta.....	371,000	234,000	15.1	21.4	5,600,000	5,000,000
Totals.....	3,429,000	2,170,000	19.2	24.6	65,900,000	53,400,000

1/ Acreage and production included with spring wheat.

2/ Revised.

3/ As indicated on the basis of conditions on or about October 15.

The acreage in durum wheat in the Prairie Provinces in 1963 was 37 per cent smaller than that seeded in 1962, but average yields estimated at 24.6 bushels per acre, are 28 per cent above the 1962 outturn of 19.2 bushels. Mid-October indications are for a crop of 53.4 million bushels compared with the 1962 crop of 65.9 million. Estimated production by provinces, in millions of bushels, is as follows: Manitoba, 2.4; Saskatchewan, 46.0; and Alberta, 5.0.

Lake Shipments of Canadian Grain

Total shipments of the five major grains out of Lakehead terminals from the opening of navigation to November 20 this year amounted to 277.2 million bushels and represented an increase of 35 per cent over the 205.9 million shipped during the comparable period of 1962. In 1963 the season of navigation opened on April 19 while the 1962 season opened on April 22. Shipments of wheat at 194.9 million bushels, accounted for 70 per cent of the current total. During the period under review shipments of wheat, oats and barley were above last year's corresponding levels, while those for rye and flaxseed were lower.

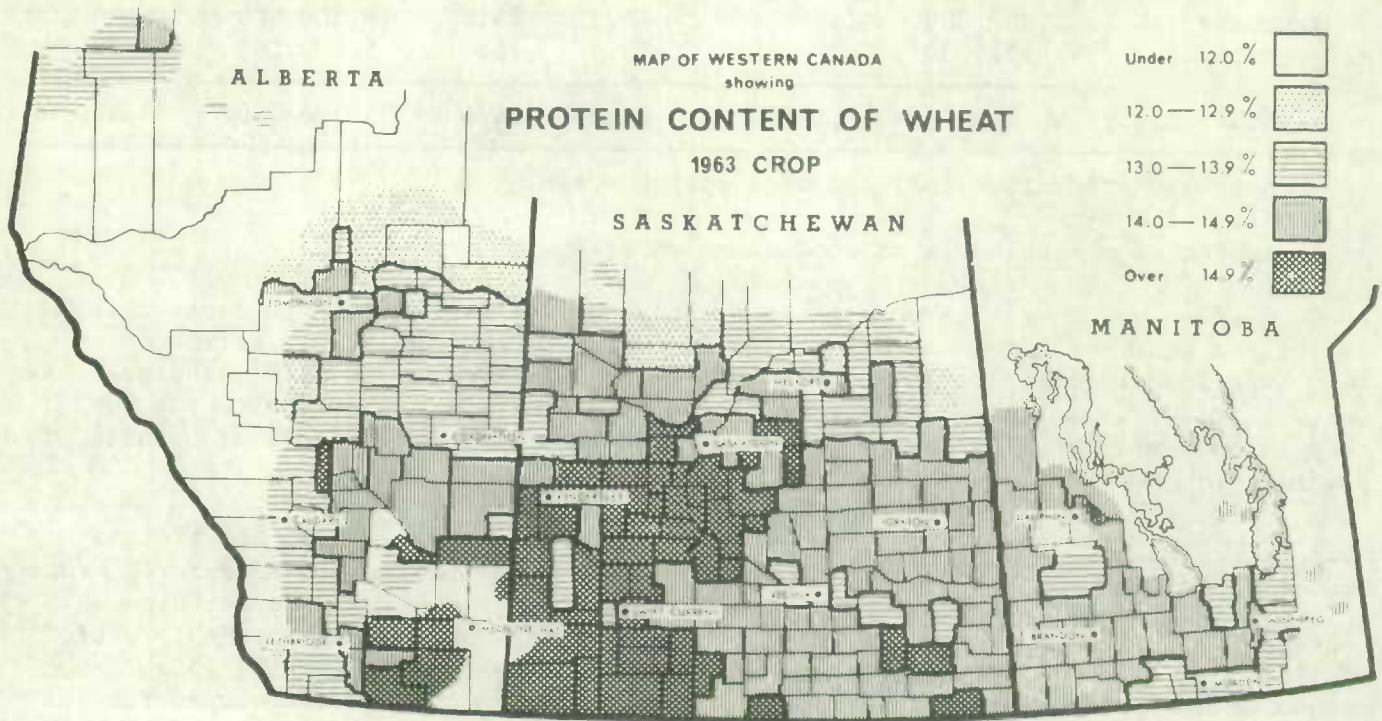
Lake Shipments of Canadian Grain from the Opening of Navigation to November 20, 1963 and to Approximately the Same Date, 1953 to 1962

Year	Wheat	Oats	Barley	Rye	Flaxseed	Total
	- thousand bushels -					
1953.....	187,441	86,386	102,234	15,547	5,848	397,457
1954.....	116,051	50,817	73,006	6,750	4,147	250,770
1955.....	119,045	29,610	60,104	10,105	8,865	227,730
1956.....	179,241	40,583	81,464	10,174	9,558	321,020
1957.....	134,292	41,831	50,001	4,147	10,620	240,891
1958.....	161,762	39,780	66,459	5,242	7,991	281,233
1959.....	154,315	28,875	45,815	4,651	6,131	239,787
1960.....	164,082	25,197	48,061	3,545	8,243	249,128
1961.....	206,597	22,915	40,223	4,284	7,517	281,536
1962.....	146,110	21,251	25,714	5,308	7,522	205,905
1963.....	194,919	38,053	34,587	3,575	6,058	277,191



Protein Survey of  
Western Canada's 1963  
Hard Red Spring Wheat

According to Crop Bulletin No. 88 "Canadian Wheat 1963", published by the Grain Research Laboratory, Board of Grain Commissioners for Canada, the mean protein content of the 1963 crop of hard red spring wheat is 14.3 per cent which is the third highest level on record. It is 0.4 per cent higher than last year and 0.7 per cent higher than the long-term average of 13.6 per cent. This is the seventh consecutive year that protein levels have been well above the long-term average. Prior to this period there were five consecutive years at below-average levels. The Laboratory's study of the 1963 crop is based on 6,188 samples of No. 1 Northern to No. 4 Northern, No. 4 Special and the Garnet grades obtained from 1,728 shipping points in the Prairie Provinces during the harvest season.



The above map shows the geographic distribution of the 1963 crop for five levels of protein. The highest protein areas (over 14.9 per cent) are in western Saskatchewan and southeastern Alberta while average protein areas cover most of the remaining districts in Saskatchewan and Manitoba. The northern half of Alberta is the only large area of below-average protein.

Protein Contents of Grades of Hard Red Spring Wheat  
1963 Values for Each Province and 1963 and 1962 Values for Western Canada

Grade	1963 Crop			Western Canada	
	Manitoba	Saskatchewan	Alberta	1963	1962
- per cent -					
No. 1 Hard.....	-	-	-	-	14.5
No. 1 Northern.....	14.3	14.4	14.1	14.3	14.3
No. 2 Northern.....	13.8	14.4	13.8	14.2	14.0
No. 3 Northern.....	14.1	14.8	13.6	14.4	13.8
No. 4 Northern.....	14.4	15.3	14.1	14.8	13.4
No. 4 Special.....	14.5	16.9	12.3	14.3	-
Garnet Grades.....	-	-	12.8	12.8	11.7
Weighted Mean.....	14.1	14.6	13.8	14.3	13.9



Farmers' Marketings Deliveries of wheat from farms in the Prairie Provinces up to November 20 of the current crop year amounted to 131.2 million bushels, representing a decrease of 14 per cent from the comparable 1962 total of 152.0 million but 38 per cent above the ten-year (1952-61) average for the period of 95.4 million bushels.

Farmers' Marketings 1/ of Wheat in the Prairie Provinces 1963-64

Week Ending		Manitoba	Saskatchewan	Alberta	Total	Last Year
- bushels -						
August	7, 1963...	5,607	49,346	16	54,969	64,682
	14 .....	110,875	180,957	199,749	491,581	217,040
	21 .....	171,927	507,568	134,487	813,982	1,215,068
	28 .....	418,689	2,215,916	324,163	2,958,768	3,806,243
September	4 .....	1,180,171	1,906,057	583,877	3,670,105	5,053,798
	11 .....	1,537,062	4,022,800	1,886,765	7,446,627	10,029,156
	18 .....	926,891	5,604,941	2,449,570	8,981,402	11,586,794
	25 .....	527,179	4,091,520	1,672,602	6,291,301	17,353,283
October	2 .....	897,896	5,940,764	2,766,137	9,604,797	21,147,418
	9 .....	991,898	7,917,939	2,398,902	11,308,739	18,454,109
	16 .....	1,229,961	6,090,935	1,468,255	8,789,151	11,545,726
	23 .....	1,757,450	7,878,678	1,922,268	11,558,396	11,158,617
	30 .....	2,697,265	10,340,541	1,964,809	15,002,615	10,315,831
November	6 .....	2,462,660	10,317,922	2,506,806	15,287,388	10,256,475
	13 .....	1,961,553	9,352,062	2,285,644	13,599,259	9,436,356
	20 .....	2,166,743	10,866,244	2,299,453	15,332,440	10,365,650
Totals.....		19,043,827	87,284,190	24,863,503	131,191,520	152,006,246
Average similar period:						
1952-61.....		11,428,020	59,299,276	24,668,097	95,395,394	

1/ Includes receipts at country, interior private and mill elevators, interior semi-public terminals and platform loadings.

General Quota Position By December 2, 1963 out of a total of 1,921 shipping points in the Western Division, the Canadian Wheat Board had placed 287 points on a delivery quota of 5 bushels per specified acre, 463 points on a 4-bushel quota and 519 points on a 3-bushel quota. Of the remainder 441 points were on a 2-bushel quota, 168 points on a 1-bushel quota and 36 points were on the initial unit quota. Seven stations were reported as "closed".

Summary of Elevator Shipping Points in the Western Division  
as at December 2, 1963

Province	Initial Unit Quota	General Quota in Bushels per Specified Acre					Closed	Total
		One	Two	Three	Four	Five		
Ontario.....	-	-	-	-	-	1	-	1
Manitoba.....	-	-	3	32	153	155	2	345
Saskatchewan.....	1	37	218	402	270	109	5	1,042
Alberta.....	35	131	220	85	40	17	-	528
British Columbia.....	-	-	-	-	-	5	-	5
All Provinces.....	36	168	441	519	463	287	7	1,921

Visible Supply of Canadian Wheat, November 20, 1963  
Compared with Approximately the Same Date, 1961 and 1962

Position	1961	1962	1963
- thousand bushels -			
Country elevators - Manitoba.....	31,475	22,823	19,263
Saskatchewan.....	126,996	116,827	118,853
Alberta.....	66,101	58,179	60,429
Totals.....	224,572	197,830	198,544
Interior private and mill.....	6,926	7,979	7,120
Interior terminals.....	10,678	6,826	6,276
Vancouver-New Westminster.....	9,394	12,810	6,837
Victoria.....	466	970	386
Prince Rupert.....	-	271	654
Churchill.....	4,829	4,845	4,759
Fort William-Port Arthur.....	35,661	35,860	34,885
In transit rail (Western Division).....	18,214	18,446	21,791
Bay, Lake and Upper St. Lawrence ports..	34,122	31,282	30,699
Lower St. Lawrence and Maritime ports...	31,583	33,120	21,610
In transit lake.....	11,049	12,431	11,133
In transit rail (Eastern Division).....	1,303	322	1,904
Totals.....	388,798	362,991	346,597

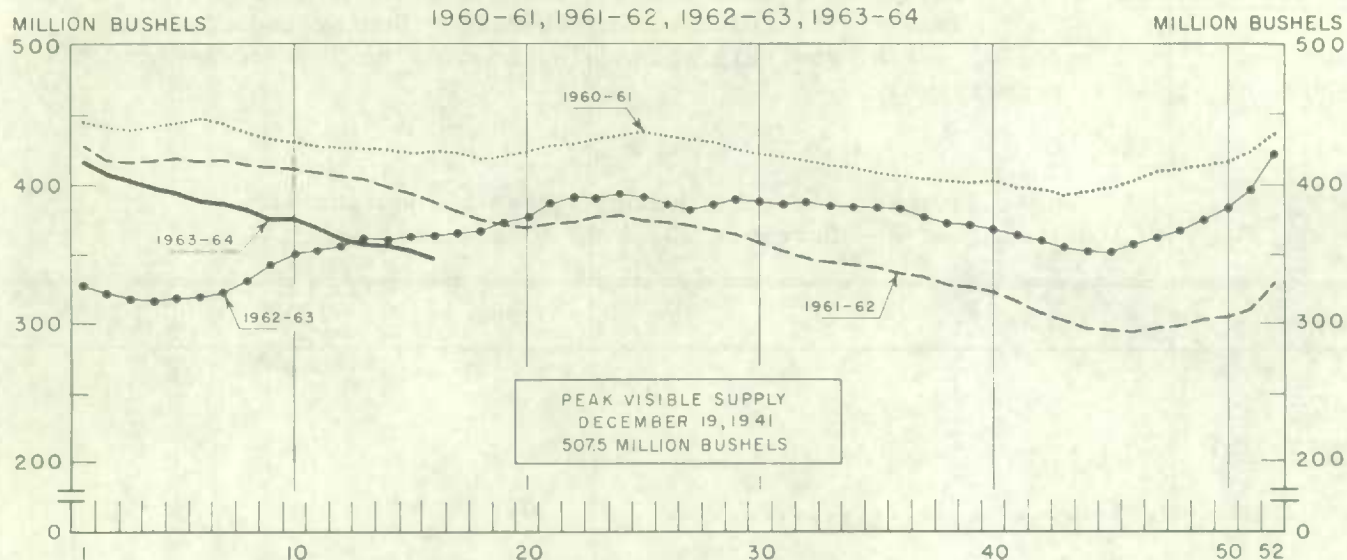
Grading of Wheat Inspected, August-October 1963 with Comparisons

Grade	Crop Year		August - October			
	Average					
	1957-58	1962-63	1962		1963	
	1961-62					
	per cent	per cent	cars	per cent	cars	per cent
No. 1 Hard.....	1/	1/	2	1/	1	1/
No. 1 Man. Northern.....	5.3	12.1	10,872	22.1	3,751	5.6
No. 2 Man. Northern.....	34.4	38.4	19,699	40.0	25,252	37.7
No. 3 Man. Northern.....	26.0	14.9	6,039	12.3	12,893	19.2
No. 4 Man. Northern.....	12.1	11.4	2,378	4.8	9,109	13.6
No. 5 Wheat.....	5.5	5.7	894	1.8	4,285	6.4
No. 6 Wheat.....	1.1	0.9	147	0.3	679	1.0
Feed Wheat.....	1/	1/	3	1/	5	1/
Others Red Spring.....	9.4	8.0	2,718	5.5	4,621	6.9
C.W. Garnet.....	0.1	0.1	52	0.1	415	0.6
C.W. White Spring.....	0.1	0.1	90	0.2	67	0.1
C.W. Mixed Wheat.....	1/	1/	28	0.1	25	1/
Alberta Winter.....	0.2	0.2	357	0.7	1,216	1.8
Nos. 1-6 C.W. Amber Durum...	5.6	7.7	5,745	11.7	4,573	6.8
Others C.W. Amber Durum.....	0.2	0.5	166	0.3	126	0.2
Totals.....	100.0	100.0	49,190	100.0	67,018	100.0
Gross bushels (approx.).....			93,834,000		129,180,000	

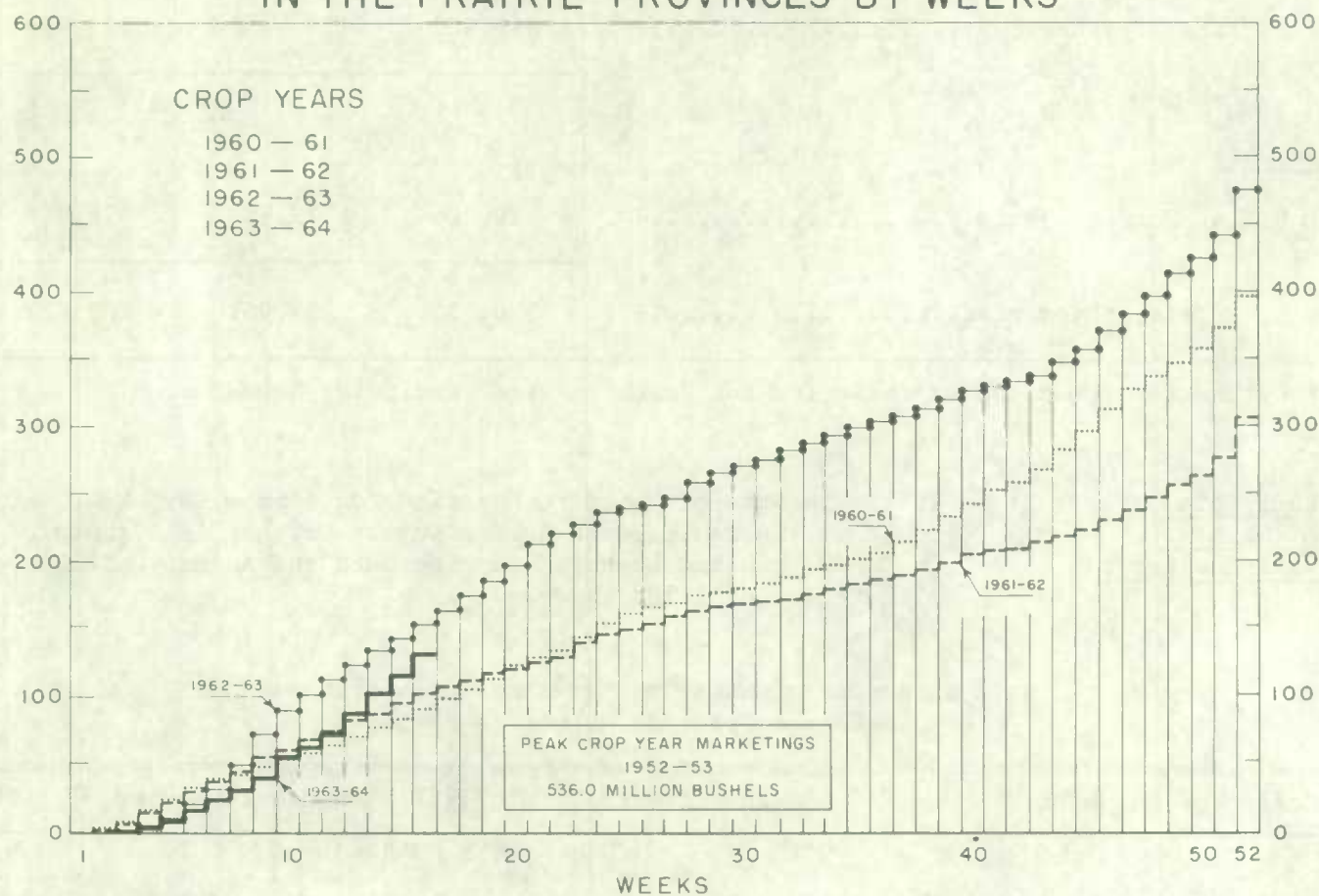
1/ Less than .05 per cent.



## WEEKLY VISIBLE SUPPLY OF CANADIAN WHEAT



## CUMULATIVE RECORD OF WHEAT MARKETINGS IN THE PRAIRIE PROVINCES BY WEEKS



( Data in both charts for crop years beginning August 1 )



Wheat Shipments to  
the United States  
by Destination

Total vessel and rail shipments of wheat to the United States, either for re-export or retention for domestic use, from the beginning of the current crop year to November 20, 1963 amounted to 203 thousand bushels. During the comparable periods of 1962 and 1961 vessel and rail shipments amounted to 30 thousand and 521 thousand bushels, respectively.

Wheat Shipments\* to the United States by Destination  
August 1 - November 20, 1963 with Comparisons

Destination	1961	1962	1963
	- bushels -		
<u>By Vessel</u>			
Duluth-Superior.....	399,926	-	123,729
Chicago.....	100,000	-	-
Totals, Vessel.....	499,926	-	123,729
<u>By Rail</u>			
U.S.A. Domestic Points.....	20,706	29,967	78,998
Totals, Shipments.....	520,632	29,967	202,727

\* Either for re-export or retention for domestic use. Excluding bagged seed.

Rail Shipments  
of Wheat to  
Maritime Ports

Rail shipments of wheat to Maritime Ports from Bay, Lake and Upper St. Lawrence Ports during August-October 1963 amounted to 3,650 thousand bushels compared with the August-October 1962 figure of 1,383 thousand.

Rail Shipments of Wheat to Maritime Ports from Bay  
Lake and Upper St. Lawrence Ports

Origin of Shipment	August 1-October 31, 1962	August 1-October 31, 1963
	- bushels -	
Goderich.....	-	535,194
Port McNicoll.....	1,122,135	1,764,177
Midland, Tiffin.....	260,720	664,939
Owen Sound.....	-	685,714
Totals.....	1,382,855	3,650,024

Rail Shipments of Wheat from Fort William-Port Arthur, 1960-61--1963-64

Month	1960-61	1961-62	1962-63	1963-64
- bushels -				
August.....	14,717	20,648	13,933	5,500
September.....	19,227	14,598	11,657	9,104
October.....	5,417	33,944	22,716	25,355
November.....	24,000	22,915	12,024	
December.....	17,500	60,167	12,778	
January.....	71,335	126,533	39,534	
February.....	135,339	68,421	22,967	
March.....	28,073	37,000	86,398	
April.....	9,833	37,777	69,067	
May.....	15,805	11,203	11,851	
June.....	17,563	16,022	15,746	
July.....	10,940	17,315	11,158	
Totals.....	369,749	466,543	329,829	

Distribution of Rail Shipments of Wheat from Fort William-Port Arthur, October 1963

Grade	Quebec	Ontario
- bushels -		
4 Northern.....	-	1,500
5 Wheat.....	8,833	-
Durum.....	4,000	10,000
Others.....	-	1,022
Totals.....	12,833	12,522

Overseas Exports of Canadian Grain by Ports of Loading, August 1 - November 20, 1963  
with Comparisons

Port	Wheat 1/	Durum Wheat 1/	Oats 1/	Barley	Rye	Flaxseed	Rapeseed 2/
- bushels -							
<u>Pacific Seaboard</u>							
Van.-New West. ....	46,149,172	-	2,158,160	3,240,443	197,000	1,186,339	1,662,228
Victoria.....	2,039,335	-	-	-	-	-	-
Prince Rupert.....	1,278,667	-	-	-	-	-	-
Churchill.....	21,680,276	-	-	-	-	-	-
Lakehead Direct.....	2,618,182	677,170	1,330,355	1,871,408	620,519	461,908	-
Kingston Direct.....	655,201	-	-	-	-	-	-
<u>St. Lawrence</u>							
Montreal.....	37,350,462	7,132,977	412,692	95,177	341,299	934,624	-
Sorel.....	9,526,766	1,514,329	-	-	-	206,698	-
Three Rivers.....	6,659,698	1,808,096	-	-	-	359,133	-
Quebec.....	8,788,622	-	-	-	-	-	-
Baie Comeau.....	17,913,104	205,763	-	-	89,887	283,961	-
<u>Maritime</u>							
Saint John.....	729,633	-	-	-	-	-	-
West Saint John.....	4,694,355	13,953	-	-	-	-	-
Halifax.....	3,555,386	-	-	-	-	-	-
Totals.....	163,638,859	11,352,288	3,901,207	5,207,028	1,248,705	3,432,663	1,662,228
Aug. 1-Nov. 21, 1962..	92,441,343	7,315,532	1,331,809	2,172,959	4,111,067	4,384,374	1,083,727

1/ Excluding bagged seed.

2/ In bushels of 50 pounds.



Freight Assistance Shipments Claims filed for payment up to October 31, 1963 represent the movement of 2,745 thousand bushels of wheat from the Prairie Provinces to Eastern Canada and British Columbia under the freight assistance policy during the August-September period of the 1963-64 crop year. During the same months last year claims had been filed for a total of 1,480 thousand bushels, indicating on the assumption of approximately the same rate of submission of claims during both the current and preceding crop years that the August-September shipments of wheat under the policy were running about 85 per cent above those of 1962. Revised data on the August-September 1962 shipments of wheat based on claims submitted up to October 31, 1963 place the two-month total at 1,752 thousand bushels. The bulk of the shipments during the current two months under review went to destinations in Ontario and Quebec, with these two provinces accounting for 42 per cent and 39 per cent of the total, respectively.

Provincial Distribution of Wheat Shipments under the Freight Assistance Policy  
August - September 1963 and 1962

Month	Nfld.	P.E.I.	N.S.	N.B.	Que.	Ont.	B.C.	Total
- thousand bushels -								
August, 1963 .....	12	12	130	38	537	515	81	1,326
September .....	9	9	143	53	534	627	44	1,419
Totals <u>1/</u> .....	22	21	273	91	1,071	1,143	125	2,745
Same period 1962:								
Preliminary <u>2/</u> .....	12	19	72	42	646	537	153	1,480
Revised <u>1/</u> .....	17	20	76	50	716	588	284	1,752

Preliminary data on millfeed shipments under the freight assistance policy indicate shipments of 62,844 tons during the August-September period of the current crop year. During the same two months of 1962 claims had been filed for a total of 60,989 tons, indicating on the assumption of approximately the same rate of submission of claims during both the current and preceding crop years that the August-September shipments of millfeeds under the policy were running about 3 per cent above those of 1962. Revised data on the 1962 August-September shipments of millfeeds based on claims submitted up to October 31, 1963 place the two-month total at 77,974 tons. As with freight-assisted shipments of wheat, the greater portion of the millfeed shipments during the period under review went to destinations in Quebec and Ontario.

Provincial Distribution of Millfeed Shipments under the Freight Assistance Policy  
August - September 1963 and 1962

Province	1962		1963
	Preliminary <u>2/</u>	Revised <u>1/</u>	Preliminary <u>1/</u>
- tons -			
Newfoundland.....	871	1,183	536
Prince Edward Island.....	1,229	1,420	1,103
Nova Scotia.....	4,302	4,798	3,716
New Brunswick.....	3,821	4,666	3,723
Quebec.....	30,080	38,174	31,666
Ontario.....	16,574	20,778	19,147
British Columbia.....	4,112	6,955	2,953
Totals.....	60,989	77,974	62,844

1/ Based on claims filed up to October 31, 1963.

2/ Based on claims filed up to October 31, 1962.



Monthly Exports of Canadian Wheat and Wheat Flour

Year and Month	Wheat in Bulk <u>1/</u>	Bagged Seed Wheat <u>2/</u>	Total Wheat	Wheat Flour <u>2/</u> <u>3/</u>	Total <u>3/</u> Wheat and Wheat Flour
- thousand bushels -					
<u>1961-62</u>					
August.....	35,625	89	35,714	3,123	38,837
September.....	28,966	242	29,209	2,786	31,995
October.....	32,910	86	32,996	2,391	35,386
November.....	40,823	377	41,200	3,150	44,351
December.....	19,966	392	20,359	2,643	23,002
January.....	17,534	458	17,992	2,304	20,295
February.....	23,739	433	24,173	2,546	26,719
March.....	20,482	574	21,056	2,968	24,023
April.....	24,981	539	25,520	2,389	27,909
May.....	35,150	77	35,227	2,486	37,713
June.....	23,559	5	23,564	2,456	26,020
July.....	19,016	44	19,060	2,711	21,772
Totals.....	322,752	3,317	326,069	31,953	358,022
<u>1962-63</u>					
August.....	21,944	157	22,101	2,852	24,953
September.....	25,040	200	25,240	2,604	27,844
October.....	29,705	31	29,737	2,181	31,917
November.....	33,309	144	33,452	2,176	35,628
December.....	20,949	451	21,399	2,305	23,705
January.....	21,486	473	21,959	1,586	23,545
February.....	18,779	743	19,522	1,811	21,333
March.....	19,246	1,251	20,496	2,454	22,950
April.....	28,916	422	29,338	2,330	31,669
May.....	35,355	14	35,369	2,186	37,555
June.....	24,512	<u>4/</u>	24,513	2,837	27,350
July.....	20,854	-	20,854	1,943	22,798
Totals.....	300,095	3,884	303,980	27,265	331,245
<u>1963-64 <u>5/</u></u>					
August.....	29,204	160	29,364	3,039	32,403
September.....	42,556	155	42,711	1,645	44,356
October.....	59,020	7	59,027	2,384	61,411
Totals.....	130,780	322	131,102	7,068	138,170

1/ Export clearances including shipments to the United States compiled by the Statistics Branch, Board of Commissioners for Canada.

2/ Compiled from Canadian Customs returns, 1961-62 and 1962-63 adjusted to remove effect of time lag in reporting.

3/ In terms of wheat equivalent. Wheat flour conversion rate: 2.3 bushels per cwt.

4/ Less than 500 bushels.

5/ Preliminary.

Exports of Canadian Wheat and Wheat Flour by Destination, Crop Years 1962-63 and 1961-62

Destination	Wheat 1/	Durum Wheat 1/	Wheat Flour 2/	Total Wheat 1/ and Wheat Flour 2/	Total Same Period Last Year
- bushels -					
<u>COMMONWEALTH AND PREFERENTIAL COUNTRIES</u>					
<u>Western Europe</u>					
Britain.....	77,241,015	254,463	12,127,233	89,622,711	85,958,679
Gibraltar.....	-	-	35,806	35,806	64,290
Ireland.....	3,462,927	7,467	-	3,470,394	2,318,131
Malta and Gozo.....	1,094,987	-	-	1,094,987	1,237,867
<u>Middle East</u>					
Kuwait.....	-	-	77,484	77,484	24,730
Qatar.....	-	-	2,107	2,107	1,842
British Middle East, nes ....	-	-	27,614	27,614	32,434
<u>Other Africa</u>					
Ghana.....	-	-	1,798,115	1,798,115	1,955,681
Mauritius and Dependencies...	-	-	460	460	-
Nigeria.....	666,593	-	550,473	1,217,066	2,025,950
Republic of South Africa.....	7,883,218	-	-	7,883,218	504,000
Rhodesia and Nyasaland.....	8,244	-	37,838	46,082	107,801
Sierra Leone.....	-	-	553,355	553,355	520,136
Tanganyika.....	-	-	14,708	14,708	33,115
British Africa, nes .....	-	-	78,131	78,131	61,364
<u>Other Asia</u>					
Ceylon.....	-	-	1,150	1,150	384,008
Hong Kong.....	579,227	-	934,323	1,513,550	1,512,972
India.....	703,612	-	-	703,612	3,554,104
Malaya and Singapore.....	124,133	-	663,357	787,490	645,399
Pakistan.....	361,664	-	-	361,664	1,856,325
British East Indies, nes ....	-	-	12,385	12,385	10,373
<u>Oceania</u>					
Australia.....	-	-	182	182	-
Fiji.....	-	-	3,898	3,898	6,141
<u>South America</u>					
British Guiana.....	-	-	23,157	23,157	31,298
<u>Central America and Antilles</u>					
Bahamas.....	-	-	299,163	299,163	286,281
Bermuda.....	-	-	120,428	120,428	128,690
British Honduras.....	-	-	36,618	36,618	36,317
Barbados.....	40	-	151,207	151,247	143,331
Jamaica.....	11,348	-	1,311,202	1,322,550	1,525,039
Leeward and Windward Islands.	-	-	943,428	943,428	1,044,414
Trinidad and Tobago.....	-	-	1,279,200	1,279,200	1,412,389
Totals, Com. and Pref. Countries...	92,137,008	261,930	21,083,022	113,481,960	107,423,101



Exports of Canadian Wheat and Wheat Flour by Destination, Crop Years 1962-63 and 1961-62

Destination	Wheat 1/	Durum Wheat 1/	Wheat Flour 2/	Total Wheat 1/ and Wheat Flour 2/	Total Same Period Last Year
- bushels -					
<u>OTHER COUNTRIES</u>					
<u>Western Europe</u>					
Austria.....	871,919	682,385	-	1,554,304	1,626,021
Belgium and Luxembourg.....	9,611,728	368,942	167,934	10,148,604	11,650,226
Denmark.....	22,624	-	11,226	33,850	14,420
Finland.....	1,681,491	-	-	1,681,491	2,456,002
France.....	406,324	6,470,860	-	6,877,184	1,036,314
Germany, Federal Republic....	17,946,660	10,043,991	6,463	27,997,114	43,945,071
Greece.....	-	10	30,415	30,425	7,121
Iceland.....	-	-	14,573	14,573	24,438
Italy.....	4,915,154	-	4,996	4,920,150	3,896,999
Netherlands.....	4,749,124	-	4,671	4,753,795	3,599,079
Norway.....	1,827,543	-	115	1,827,658	1,731,491
Portugal.....	-	-	77,413	77,413	54,429
Sweden.....	150,266	18,667	1,771	170,704	31,571
Switzerland.....	1,121,347	1,839,225	7,974	2,968,546	8,033,244
<u>Eastern Europe</u>					
Albania.....	-	-	-	-	2,101,643
Czechoslovakia.....	4,393,895	-	-	4,393,895	-
Germany, East.....	-	-	-	-	8,040,229
Poland.....	14,183,656	-	-	14,183,656	12,293,711
Yugoslavia.....	3,919,975	-	-	3,919,975	-
<u>Middle East</u>					
Iran.....	-	-	4,519	4,519	2,429
Iraq.....	-	-	948	948	-
Israel.....	1,789,369	-	13,588	1,802,957	829,355
Jordan.....	-	-	1,235	1,235	110,059
Lebanon.....	-	-	363,457	363,457	573,420
Saudi Arabia.....	647,966	-	6,955	654,921	556,603
Syria.....	-	-	5,529	5,529	2,266
U.A.R.-Egypt.....	-	-	87,970	87,970	634,997
<u>Other Africa</u>					
Algeria.....	-	-	-	-	1,359,639
Angola.....	-	-	3,680	3,680	575
Congo-Leo.....	-	-	95,018	95,018	180,526
French West Africa.....	-	-	23,442	23,442	24,281
Katanga.....	9,186	-	-	9,186	-
Liberia.....	-	-	65,491	65,491	36,515
Mozambique.....	562,438	-	26,781	589,219	702,313
Portuguese Africa, nes.....	-	-	106,306	106,306	89,964
Togo.....	-	-	61,042	61,042	-
Tunisia.....	-	-	-	-	189,905
<u>Other Asia</u>					
Burma.....	-	-	-	-	221,978
China, Communist.....	56,443,819	-	-	56,443,819	71,977,630
Indonesia.....	-	-	152,885	152,885	390,368
Japan.....	44,108,769	-	516,389	44,625,158	49,124,116
Philippines.....	6,741,156	-	11,040	6,752,196	4,945,763
Portuguese India.....	-	-	-	-	67,944
Portuguese Asia.....	-	-	10,221	10,221	15,686
Taiwan.....	115,701	-	-	115,701	171,610
Thailand.....	-	-	357,922	357,922	362,749
Viet-Nam.....	-	-	44,576	44,576	-

Exports of Canadian Wheat and Wheat Flour by Destination, Crop Years 1962-63 and 1961-62

Destination	Wheat <u>1/</u>	Durum Wheat <u>1/</u>	Wheat Flour <u>2/</u>	Total Wheat <u>1/</u> and Wheat Flour <u>2/</u>	Total Same Period Last Year
- bushels -					
<u>OTHER COUNTRIES (concluded)</u>					
<u>Oceania</u>					
French Oceania.....	-	-	1,886	1,886	943
United States Oceania.....	480,554	-	3,450	484,004	475,928
<u>South America</u>					
Chile.....	-	-	12,133	12,133	8,050
Colombia.....	-	-	-	-	267,138
Ecuador.....	1,199,696	-	-	1,199,696	1,157,040
Peru.....	535,174	-	40,871	576,045	21,765
Surinam.....	-	-	66,599	66,599	75,617
Venezuela.....	6,677,046	-	1,748	6,678,794	4,747,461
<u>Central America and Antilles</u>					
Costa Rica.....	-	-	901,890	901,890	833,619
Dominican Republic.....	1,155,778	-	143,212	1,298,990	1,762,573
El Salvador.....	579,677	-	83,060	662,737	599,460
French West Indies.....	-	-	3,841	3,841	2,369
Guatemala.....	255,000	-	52,463	307,463	127,222
Haiti.....	-	-	28,507	28,507	-
Honduras.....	-	-	68,091	68,091	104,565
Netherlands Antilles.....	-	-	257,883	257,883	208,058
Nicaragua.....	-	-	489,387	489,387	463,227
Panama.....	-	-	418,881	418,881	440,378
<u>North America</u>					
St. Pierre and Miquelon.....	-	-	15,709	15,709	10,371
United States:					
Flour in terms of wheat.....	-	-	1,306,076	1,306,076	1,376,198
Wheat for domestic use <u>3/</u> ...	1,169,390	-	-	1,169,390	1,487,496
Totals, Other Countries.....	188,272,425	19,424,080	6,182,232	213,878,737	247,282,178
Sub-Totals, All Countries....	280,409,433	19,686,010	27,265,254	327,360,697	354,705,279
Bagged Seed wheat <u>4/</u> .....				3,884,474	3,316,543
Totals, All Countries.....	280,409,433	19,686,010	27,265,254	331,245,171	358,021,822

nes - not elsewhere specified.

- 1/ Overseas clearances as reported by the Statistics Branch, Board of Grain Commissioners for Canada, for all countries except the United States.
- 2/ Adjusted to remove effect of time lag in the returns made by Customs. In terms of wheat equivalent. Source: Canadian Customs returns. Conversion rate: 2.3 bushels per cwt.
- 3/ Compiled from returns of Canadian elevator licensees and shippers and advice from American grain correspondents.
- 4/ Adjusted to remove effect of time lag in the returns made by Customs.



Exports of Canadian Wheat 1/ by Destination, October 1963 and 1962

Destination	Wheat (Except Durum)	Durum Wheat	All Wheat	
			October 1963	October 1962
COMMONWEALTH AND PREFERENTIAL COUNTRIES				
- bushels -				
<u>Western Europe</u>				
Britain.....	8,413,913	-	8,413,913	6,560,971
Ireland.....	510,533	-	510,533	320,600
<u>Other Africa</u>				
Rhodesia and Nyasaland.....	-	-	-	8,244
<u>Other Asia</u>				
Hong Kong.....	73,173	-	73,173	37,333
<u>Central America and Antilles</u>				
Jamaica.....	499	-	499	1,193
Totals, Com. and Pref. Countries...	8,998,118	-	8,998,118	6,928,341
<u>OTHER COUNTRIES</u>				
<u>Western Europe</u>				
Austria.....	-	-	-	546,016
Belgium and Luxembourg.....	3,098,873	234,838	3,333,711	745,434
Denmark.....	20,543	-	20,543	-
France.....	47,040	573,604	620,644	431,200
Germany, Federal Republic.....	3,591,068	2,856,470	6,447,538	2,684,476
Italy.....	458,528	-	458,528	939,822
Netherlands.....	1,250,886	129,352	1,380,238	139,383
Switzerland.....	372,671	884,124	1,256,795	315,818
<u>Eastern Europe</u>				
Czechoslovakia.....	1,430,240	-	1,430,240	-
Poland.....	1,252,720	-	1,252,720	6,536,757
U.S.S.R. (Russia).....	23,862,107	1,608,810	25,470,917	-
<u>Middle East</u>				
Israel.....	530,208	-	530,208	-
Saudi Arabia.....	181,689	-	181,689	176,114
<u>Other Africa</u>				
Mozambique.....	24,105	-	24,105	21,421
<u>Other Asia</u>				
China, Communist.....	3,094,725	-	3,094,725	3,881,360
Japan.....	3,106,673	-	3,106,673	4,432,995
Philippines.....	-	-	-	839,067
<u>Oceania</u>				
United States Oceania.....	54,320	-	54,320	-
<u>South America</u>				
Ecuador.....	-	-	-	362,126
Venezuela.....	627,130	-	627,130	536,189
<u>Central America and Antilles</u>				
Cuba.....	520,000	-	520,000	-
Dominican Republic.....	193,106	-	193,106	176,612
<u>North America</u>				
United States for domestic use 2/.....	17,834	-	17,834	12,167
Totals, Other Countries.....	43,734,466	6,287,198	50,021,664	22,776,957
Sub-Totals, All Countries.....	52,732,584	6,287,198	59,019,782	29,705,298
Bagged seed 3/.....			7,182	31,267
Totals, All Countries.....	52,732,584	6,287,198	59,026,964	29,736,565

NOTE: See footnotes on page 23.

Cumulative Exports of Canadian Wheat<sup>1/</sup> by Destination

Destination	August-October 1963			Aug.-Oct. 1962
	Wheat (Except Durum)	Durum Wheat	Total Wheat	Total Wheat
- bushels -				
<u>COMMONWEALTH AND PREFERENTIAL COUNTRIES</u>				
<u>Western Europe</u>				
Britain.....	24,121,179*	-	24,121,179*	19,544,733
Ireland.....	1,638,000	-	1,638,000	331,630
Malta and Gozo.....	281,294	-	281,294	449,867
<u>Other Africa</u>				
Nigeria.....	96,533	-	96,533	142,240
Rhodesia and Nyasaland.....	-	-	-	8,244
<u>Other Asia</u>				
Hong Kong.....	187,599	-	187,599	147,467
Malaya and Singapore.....	58,800	-	58,800	-
<u>Central America and Antilles</u>				
Jamaica.....	2,492	-	2,492	3,581
Totals, Com. and Pref. Countries...	26,385,897*	-	26,385,897*	20,627,762

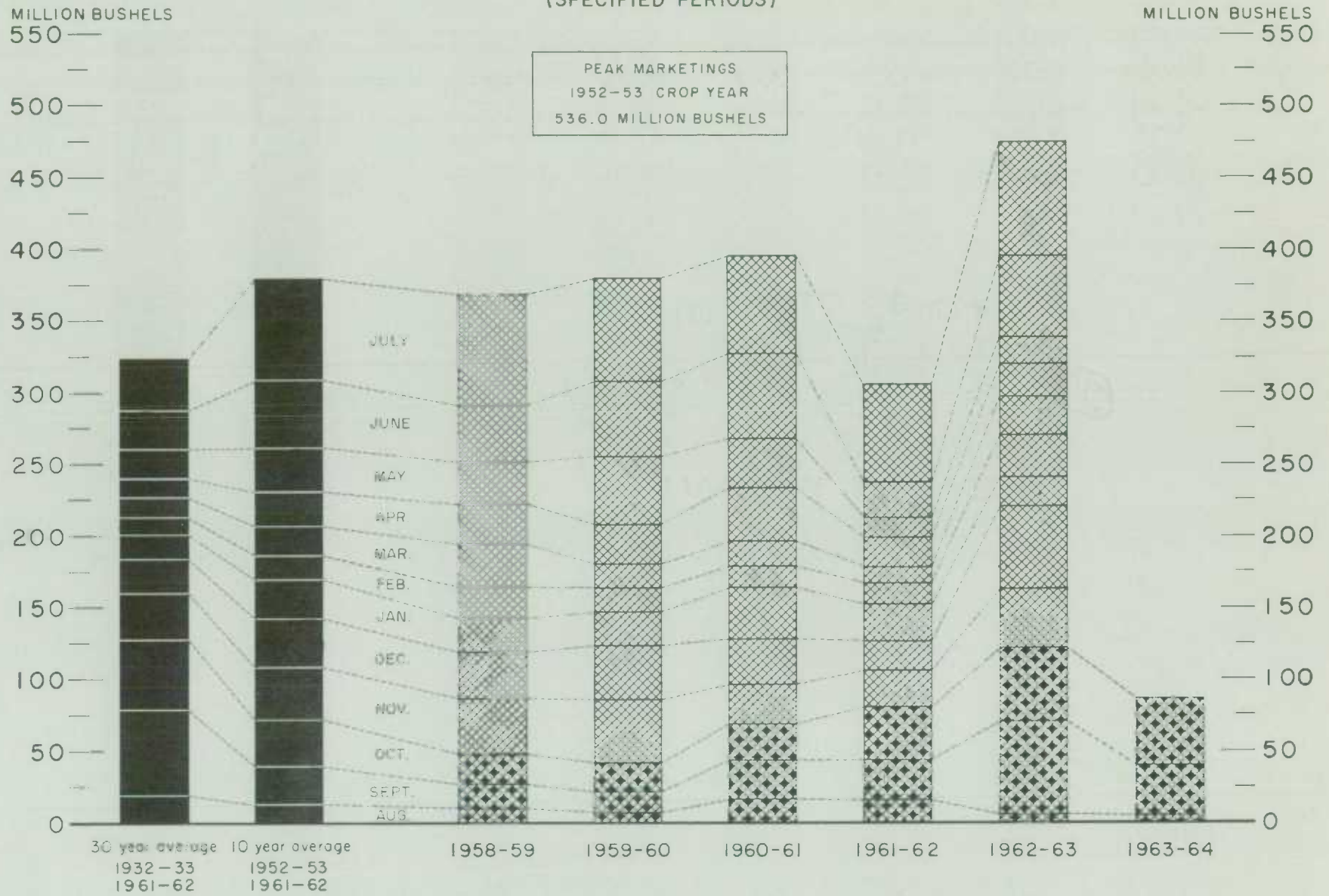
OTHER COUNTRIES

<u>Western Europe</u>				
Austria.....	-	-	-	546,016
Belgium and Luxembourg.....	7,509,852*	356,346*	7,866,198*	2,981,743
Denmark.....	20,543	-	20,543	-
France.....	1,266,690*	802,691	2,069,381*	438,318
Germany, Federal Republic.....	9,032,025*	4,062,559	13,094,584*	5,872,689
Greece.....	-	-	-	10
Italy.....	2,612,979	-	2,612,979	2,442,293
Netherlands.....	2,317,181*	283,520*	2,600,701*	2,138,591
Norway.....	1,667,203	-	1,667,203	1,568,267
Sweden.....	22,400	-	22,400	-
Switzerland.....	1,787,462*	1,246,694	3,034,156*	1,116,592
<u>Eastern Europe</u>				
Czechoslovakia.....	1,430,240	-	1,430,240	-
Poland.....	7,300,247	-	7,300,247	11,927,360
U.S.S.R. (Russia).....	28,939,478	1,608,810	30,548,288	-
Yugoslavia.....	3,501,866	-	3,501,866	-
<u>Middle East</u>				
Israel.....	1,067,248	-	1,067,248	835,000
Saudi Arabia.....	622,007	-	622,007	246,312
<u>Other Africa</u>				
Katanga.....	-	-	-	9,186
Mozambique.....	53,772	11,200	64,972	172,395



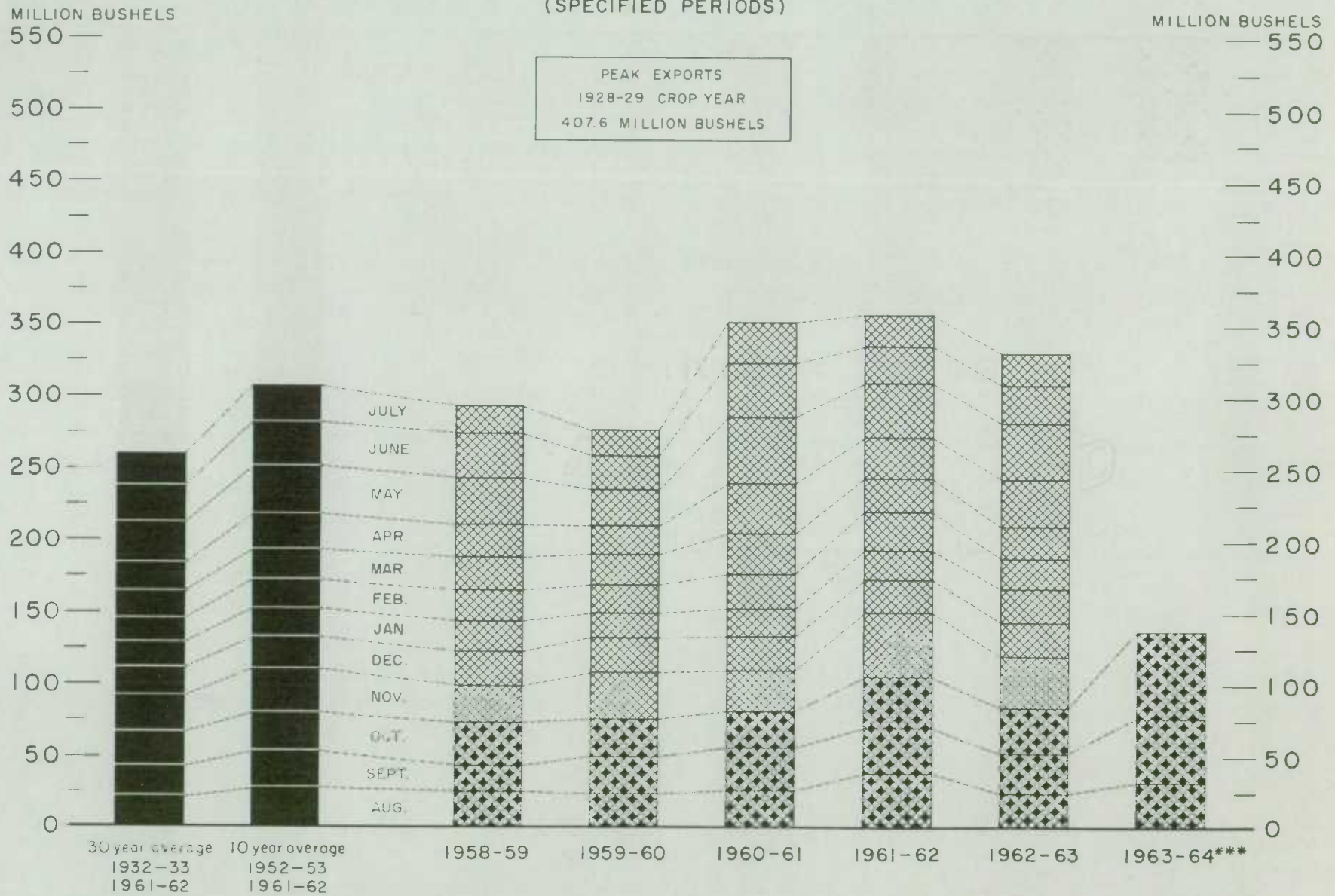
# FARMERS' MARKETINGS OF WHEAT, PRAIRIE PROVINCES

(SPECIFIED PERIODS)



## EXPORTS OF CANADIAN WHEAT\* AND WHEAT FLOUR\*\*

(SPECIFIED PERIODS)



\* Beginning with 1956-57 includes bagged seed wheat.

\*\* In terms of wheat equivalent.

\*\*\* Preliminary.

Agriculture Division D.B.S.



# FARMERS' MARKETINGS OF BARLEY, PRAIRIE PROVINCES

(SPECIFIED PERIODS)

MILLION BUSHEL

140 —

MILLION BUSHEL

140 —

120 —

120 —

100 —

100 —

80 —

80 —

60 —

60 —

40 —

40 —

20 —

20 —

0

0

30 year average

1932-33

1961-62

10 year average

1952-53

1961-62

1958-59

1959-60

1960-61

1961-62

1962-63

1963-64

JULY

JUNE

MAY

APR.

MAR.

FEB.

JAN.

DEC.

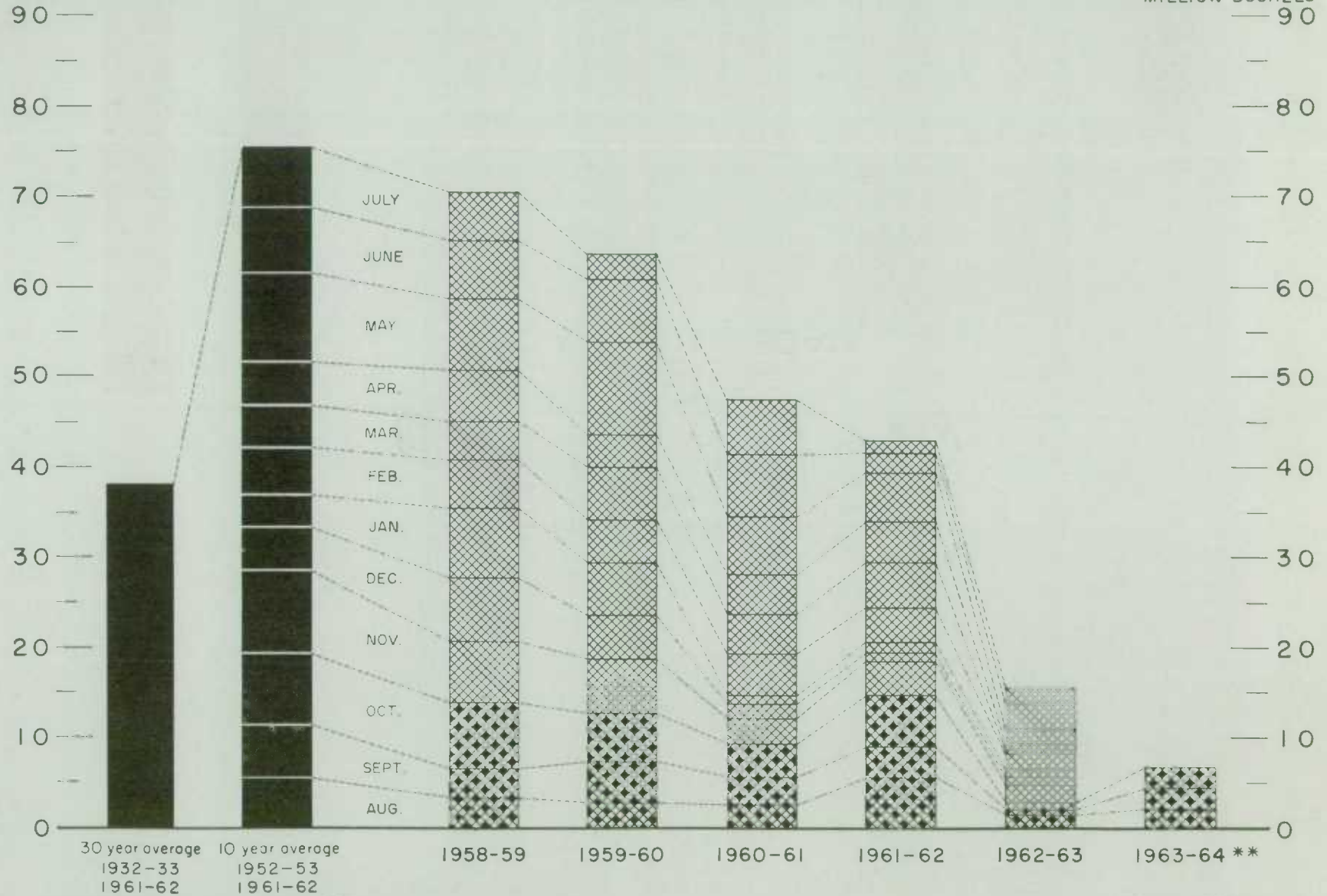
NOV.

OCT.

SEPT.

AUG.

MILLION BUSHELS



\* In terms of grain equivalent.      \*\* Preliminary.

Agriculture Division D B S



# FARMERS' MARKETINGS OF OATS, PRAIRIE PROVINCES

(SPECIFIED PERIODS)

MILLION BUSHELS

100 —

90 —

80 —

70 —

60 —

50 —

40 —

30 —

20 —

10 —

0

MILLION BUSHELS

100 —

90 —

80 —

70 —

60 —

50 —

40 —

30 —

20 —

10 —

0

JULY

JUN.

M.

A.

M.

F.

J.

D.

NOV.

OCT.

SEPT.

AUG.

30 year average

1932-33

1961-62

10 year average

1952-53

1961-62

1958-59

1959-60

1960-61

1961-62

1962-63

1963-64

# EXPORTS OF CANADIAN OATS\* AND OAT PRODUCTS\*\*

(SPECIFIED PERIODS)

MILLION BUSHELS

45 —

40 —

35 —

30 —

25 —

20 —

15 —

10 —

5 —

0 —

MILLION BUSHELS

45 —

40 —

35 —

30 —

25 —

20 —

15 —

10 —

5 —

0 —

30 year average 10 year average  
1932-33 1952-53  
1961-62 1961-62

1958-59

1959-60

1960-61

1961-62

1962-63

1963-64\*\*\*

\*Beginning with 1960-61 includes relatively small quantity of bagged seed. \*\*In terms of grain equivalent. \*\*\*Preliminary.

Agriculture Division D.B.S.

J  
J  
M  
A  
M  
F  
J  
D  
N  
O  
S  
A



# FARMERS' MARKETINGS OF CANADA'S FIVE MAJOR GRAINS,\* PRAIRIE PROVINCES

MILLION BUSHELS

900 —

800 —

700 —

600 —

500 —

400 —

300 —

200 —

100 —

0

900 —

800 —

700 —

600 —

500 —

400 —

300 —

200 —

100 —

0

MILLION BUSHELS

900 —

800 —

700 —

600 —

500 —

400 —

300 —

200 —

100 —

0

900 —

800 —

700 —

600 —

500 —

400 —

300 —

200 —

100 —

0

30 year average 10 year average  
1932-33 1952-53  
1961-62 1961-62

1958-59

1959-60

1960-61

1961-62

1962-63

1963-64

JULY

JUNE

MAY

APR.

MAR.

FEB.

JAN.

DEC.

NOV.

OCT.

SEPT.

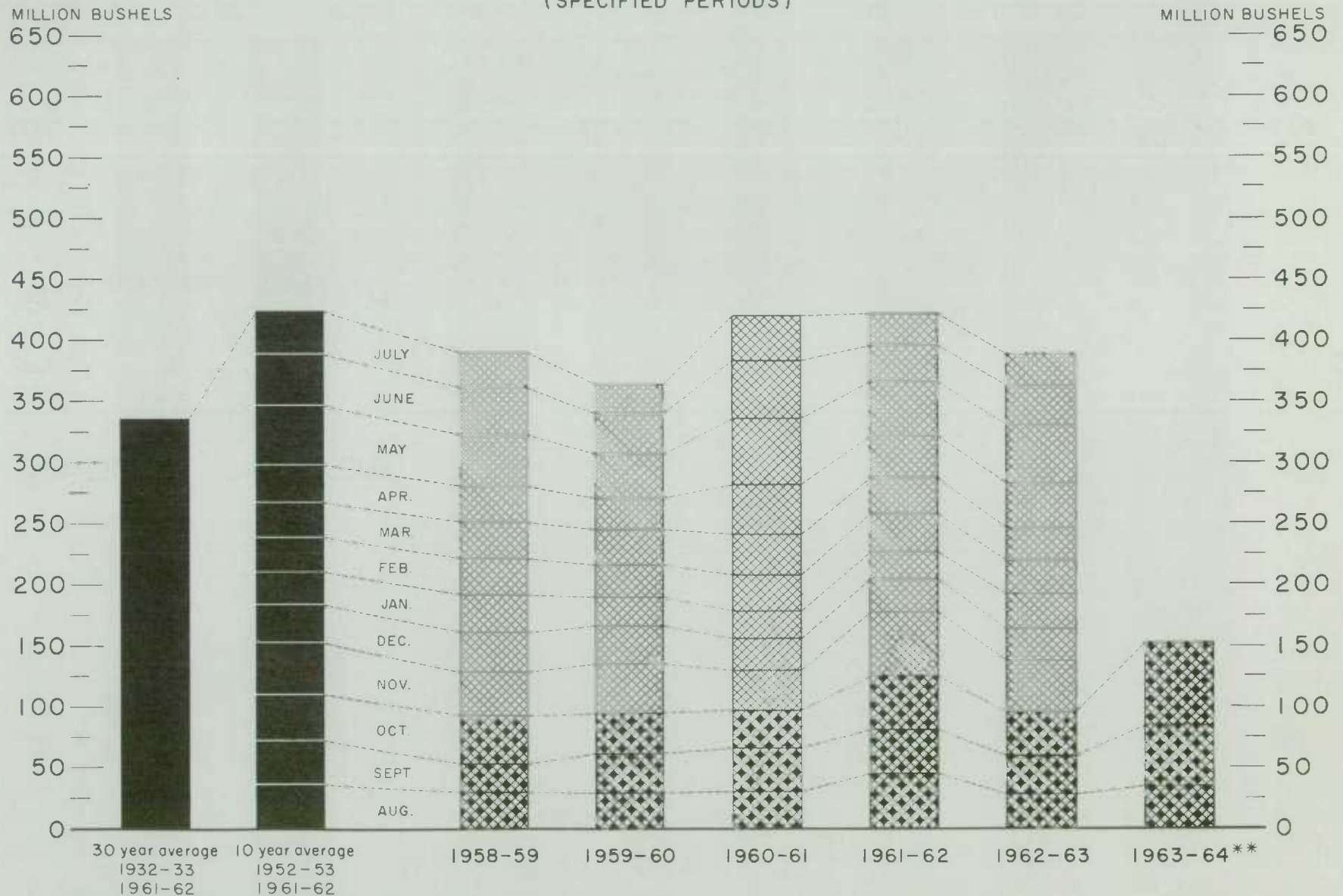
AUG.

\* Wheat, oats, barley, rye and flaxseed.

Agriculture Division D.B.S.

## EXPORTS OF CANADA'S FIVE MAJOR GRAINS AND PRODUCTS\*

(SPECIFIED PERIODS)



\* Wheat, bagged seed wheat, and wheat flour; oats, bagged seed oats, and oatmeal and rolled oats; barley, malt and pot and pearl; rye and flaxseed.

\*\* Preliminary.

Agriculture Division D.B.S.



Cumulative Exports of Canadian Wheat<sup>1/</sup> by Destination

Destination	August-October 1963			Aug.-Oct. 1962
	Wheat (Except Durum)	Durum Wheat	Total Wheat	Total Wheat
- bushels -				
<u>OTHER COUNTRIES (concluded)</u>				
<u>Other Asia</u>				
Burma.....	78,931	-	78,931	-
China, Communist.....	6,017,365	-	6,017,365	8,740,294
Japan.....	12,776,086	-	12,776,086	12,234,870
Korea.....	511,467	-	511,467	-
Philippines.....	2,455,476	-	2,455,476	2,459,969
Taiwan.....	77,781	-	77,781	-
<u>Oceania</u>				
United States Oceania.....	109,349	-	109,349	120,773
<u>South America</u>				
Ecuador.....	312,548	-	312,548	362,126
Peru.....	730,614	-	730,614	-
Venezuela.....	1,971,703	-	1,971,703	1,528,287
<u>Central America and Antilles</u>				
Cuba.....	894,080	-	894,080	-
Dominican Republic.....	349,906	-	349,906	176,612
El Salvador.....	300,533	-	300,533	119,840
Guatemala.....	100,000	-	100,000	-
<u>North America</u>				
United States for domestic use <sup>2/</sup> .....	185,427	-	185,427	24,267
Totals, Other Countries.....	96,022,459*	8,371,820	104,394,279*	56,061,810
Sub-Totals, All Countries.....	122,408,356	8,371,820	130,780,176	76,689,572
Bagged seed <sup>3/</sup> .....			321,720	388,241
Totals, All Countries.....	122,408,356	8,371,820	131,101,896	77,077,813

\* Revisions in data for September have been taken into account in the August-October cumulative totals.

<sup>1/</sup> Overseas clearances as reported by the Statistics Branch, Board of Grain Commissioners for Canada, for all countries except the United States. Excluding bagged seed.

<sup>2/</sup> Compiled from returns of Canadian elevator licensees and shippers and advice from American grain correspondents.

<sup>3/</sup> Compiled from Canadian Customs returns, 1962 adjusted for time lag.

Customs Exports of Canadian Wheat Flour by Countries of Consignment

Destination	July 1963 <u>1/</u>	October 1963 <u>2/</u>	August-October	
			1963 <u>2/</u>	1962 <u>1/</u>
- bushels -				
<u>COMMONWEALTH AND PREFERENTIAL COUNTRIES</u>				
<u>Western Europe</u>				
Britain.....	1,096,065	1,356,795	3,294,414	3,263,284
Gibraltar.....	-	-	8,308	8,243
<u>Middle East</u>				
Kuwait.....	-	2,576	7,873	19,320
Qatar.....	-	-	258	527
British Middle East, nes .....	3,915	2,318	9,273	5,152
<u>Other Africa</u>				
Ghana.....	17,823	57,845	180,690	642,930
Nigeria.....	226	184	13,699	479,506
Rhodesia and Nyasaland.....	4,140	1,150	14,529	7,714
Sierra Leone.....	47,495	22,648	118,162	154,868
Tanganyika.....	-	-	690	2,300
British Africa, nes .....	10,235	103	16,560	10,001
<u>Other Asia</u>				
Ceylon.....	-	-	586,056	-
Hong Kong.....	80,567	47,927	258,913	249,000
Malaya and Singapore.....	63,188	55,271	198,154	142,262
British East Indies, nes.....	329	874	3,991	2,029
<u>Oceania</u>				
Australia.....	127	-	124	-
Fiji.....	-	69	1,518	1,173
<u>South America</u>				
British Guiana.....	520	1,916	4,041	5,097
<u>Central America and Antilles</u>				
Bahamas.....	25,881	18,442	81,480	75,951
Bermuda.....	10,063	10,118	30,121	29,051
British Honduras.....	1,881	4,294	9,379	4,899
Barbados.....	9,403	15,852	37,090	37,663
Jamaica.....	81,514	124,858	328,284	338,233
Leeward and Windward Islands.....	83,876	85,397	283,020	212,586
Trinidad and Tobago.....	91,707	132,356	369,049	301,475
Totals, Com. and Pref. Countries...	1,628,955	1,940,993	5,855,676	5,993,264

OTHER COUNTRIES

<u>Western Europe</u>				
Belgium and Luxembourg.....	-	16,691	16,691	58,013
Denmark.....	1,009	-	1,470	2,006
Germany, Federal Republic.....	-	-	-	6,463
Greece.....	-	929	2,217	3,298
Iceland.....	-	-	1,610	6,440
Italy.....	-	-	-	4,996
Netherlands.....	826	713	2,992	874
Norway.....	-	-	-	115
Portugal.....	12,169	7,705	33,907	23,437
Sweden.....	506	759	1,265	506
Switzerland.....	-	-	39	6,900



Customs Exports of Canadian Wheat Flour by Countries of Consignment

Destination	July 1963 1/	October 1963 2/	August-October	
			1963 2/	1962 1/
- bushels -				
OTHER COUNTRIES (concluded)				
Middle East				
Iran.....	186	338	1,900	1,838
Israel.....	-	-	5,152	8,436
Jordan.....	-	-	356	258
Lebanon.....	9,101	805	11,286	158,353
Saudi Arabia.....	276	-	276	-
Syria.....	-	-	-	1,513
U.A.R. - Egypt.....	-	-	-	1,610
Other Africa				
Angola.....	920	-	460	-
Congo-Leo.....	6,670	-	16,445	37,444
French West Africa.....	-	-	-	15,116
Liberia.....	11,829	7,153	30,050	4,872
Mozambique.....	4,009	-	9,934	5,725
Portuguese Africa, nes .....	13,593	2,933	25,381	14,766
Togo.....	11,385	12,259	43,863	-
Other Asia				
Burma.....	-	48,686	48,686	-
Indonesia.....	-	-	-	64
Japan.....	32,034	-	73,669	94,691
Philippines.....	-	-	- *	9,200
Portuguese Asia.....	1,012	1,518	6,090	4,085
Thailand.....	9,200	29,620	85,496	101,699
Viet-Nam.....	-	-	-	44,576
Oceania				
French Oceania.....	161	357	713	793
United States Oceania.....	-	-	-	1,150
South America				
Chile.....	1,150	1,150	4,628	2,760
Peru.....	1,840	8,464	15,019	7,291
Surinam.....	3,494	6,173	17,305	12,710
Venezuela.....	-	-	-	1,610
Central America and Antilles				
Costa Rica.....	37,485	27,259	150,392	285,863
Dominican Republic.....	14,389	4,600	16,689	16,776
El Salvador.....	88	3,516	3,997	36,356
French West Indies.....	230	230	460	1,748
Guatemala.....	2,990	3,222	4,832	5,637
Haiti.....	9,430	6,900	20,700	115
Honduras.....	2,836	4,830	10,120	25,056
Netherlands Antilles.....	22,991	26,890	72,287	56,660
Nicaragua.....	34,150	118,266	199,132	142,961
Panama.....	12,126	8,572	59,673	140,242
North America				
St. Pierre and Miquelon.....	1,150	1,606	4,423	2,383
United States.....	55,189	90,986	212,831	286,042
Totals, Other Countries.....	314,424	443,130	1,212,436	1,643,447
Totals, All Countries.....	1,943,379	2,384,123	7,068,112	7,636,711

nes - not elsewhere specified. \* Revised.

<sup>1/</sup> In terms of wheat equivalent. Adjusted to remove effect of time lag in the returns made by Customs. Conversion rate: 2.3 bushels per cwt. <sup>2/</sup> In terms of wheat equivalent. Preliminary and unadjusted for time lag. Conversion rate: 2.3 bushels per cwt.

Canadian Wheat Board Weekly Average Cash Wheat Prices  
Basis in Store Fort William-Port Arthur

Class and Grade	Week Ending				
	Nov. 1	Nov. 8	Nov. 15	Nov. 22	Nov. 29

- cents and eighths per bushel -

Initial Payment to Producers

1 Northern.....	150	150	150	150	150
2 Northern.....	146	146	146	146	146
3 Northern.....	142	142	142	142	142
4 Northern.....	135	135	135	135	135
5 Wheat.....	118	118	118	118	118
6 Wheat.....	112	112	112	112	112
Feed Wheat.....	108	108	108	108	108
1 C.W. Garnet.....	135	135	135	135	135
2 C.W. Garnet.....	130	130	130	130	130
3 C.W. Garnet.....	125	125	125	125	125
1 Alberta Red Winter.....	134	134	134	134	134
2 Alberta Winter.....	129	129	129	129	129
3 Alberta Winter.....	123	123	123	123	123
1 C.W. Amber Durum.....	150	150	150	150	150
2 C.W. Amber Durum.....	146	146	146	146	146
3 C.W. Amber Durum.....	142	142	142	142	142

International Wheat Agreement

and Domestic Sales

1 Northern.....	204	204	204	204	204
2 Northern.....	201	201	201	201	201
3 Northern.....	198	198	198	198	198
4 Northern.....	191	191	191	191	191
5 Wheat.....	185	185	185	185	185
6 Wheat.....	180	180	180	180	180
Feed Wheat.....	177	177	177	177	177
1 C.W. Garnet.....	187	187	187	187	187
2 C.W. Garnet.....	185	185	185	185	185
3 C.W. Garnet.....	184	184	184	184	184
1 Alberta Red Winter.....	190	190	190	190	190
2 Alberta Winter.....	188	188	188	188	188
3 Alberta Winter.....	187	187	187	187	187
1 C.W. Amber Durum.....	222	222	222	222	222
2 C.W. Amber Durum.....	221	221	221	221	221
3 C.W. Amber Durum.....	213	213	213	213	213

Export - Class II

1 Northern.....	204	204	204	204	204
2 Northern.....	201	201	201	201	201
3 Northern.....	198	198	198	198	198
4 Northern.....	191	191	191	191	191
5 Wheat.....	185	185	185	185	185
6 Wheat.....	180	180	180	180	180
Feed Wheat.....	177	177	177	177	177
1 C.W. Garnet.....	187	187	187	187	187
2 C.W. Garnet.....	185	185	185	185	185
3 C.W. Garnet.....	184	184	184	184	184
1 C.W. Amber Durum.....	222	222	222	222	222
2 C.W. Amber Durum.....	221	221	221	221	221
3 C.W. Amber Durum.....	213	213	213	213	213



Canadian Wheat Board Weekly Average Cash Wheat Prices  
Basis in Store Vancouver

Class and Grade	Week Ending				
	Nov. 1	Nov. 8	Nov. 15	Nov. 22	Nov. 29
- cents and eighths per bushel -					
<u>Initial Payment to Producers</u>					
1 Northern.....	150	150	150	150	150
2 Northern.....	146	146	146	146	146
3 Northern.....	142	142	142	142	142
4 Northern.....	135	135	135	135	135
5 Wheat.....	118	118	118	118	118
6 Wheat.....	112	112	112	112	112
Feed Wheat.....	108	108	108	108	108
1 C.W. Garnet.....	135	135	135	135	135
2 C.W. Garnet.....	130	130	130	130	130
3 C.W. Garnet.....	125	125	125	125	125
1 Alberta Red Winter.....	134	134	134	134	134
2 Alberta Winter.....	129	129	129	129	129
3 Alberta Winter.....	123	123	123	123	123
1 C.W. Amber Durum.....	150	150	150	150	150
2 C.W. Amber Durum.....	146	146	146	146	146
3 C.W. Amber Durum.....	142	142	142	142	142
<u>International Wheat Agreement</u>					
<u>and Domestic Sales</u>					
1 Northern.....	208/2	208/2	208/2	208/2	208/2
2 Northern.....	204/2	204/2	204/2	204/2	204/2
3 Northern.....	203/2	203/2	203/2	203/2	203/2
4 Northern.....	196/2	196/2	196/2	196/2	196/2
5 Wheat.....	187/2	187/2	187/2	187/2	187/2
6 Wheat.....	185/2	185/2	185/2	185/2	185/2
Feed Wheat.....	182/2	182/2	182/2	182/2	182/2
1 C.W. Garnet.....	187/2	187/7	188/2	188/2	188/2
2 C.W. Garnet.....	185/2	186/4	187/2	187/2	187/2
3 C.W. Garnet.....	184/2	185/4	186/2	186/2	186/2
1 Alberta Red Winter.....	187/2	187/7	188/2	188/2	188/2
2 Alberta Winter.....	185/2	186/4	187/2	187/2	187/2
3 Alberta Winter.....	184/2	185/4	186/2	186/2	186/2
<u>Export - Class II</u>					
1 Northern.....	208/2	208/2	208/2	218/2	208/2
2 Northern.....	204/2	204/2	204/2	204/2	204/2
3 Northern.....	203/2	203/2	203/2	203/2	203/2
4 Northern.....	196/2	196/2	196/2	196/2	196/2
5 Wheat.....	187/2	187/2	187/2	187/2	187/2
6 Wheat.....	185/2	185/2	185/2	185/2	185/2
Feed Wheat.....	182/2	182/2	182/2	182/2	182/2
1 C.W. Garnet.....	187/2	187/7	188/2	188/2	188/2
2 C.W. Garnet.....	185/2	186/4	187/2	187/2	187/2
3 C.W. Garnet.....	184/2	185/4	186/2	186/2	186/2
1 Alberta Red Winter.....	187/2	187/7	188/2	188/2	188/2
2 Alberta Winter.....	185/2	186/4	187/2	187/2	187/2
3 Alberta Winter.....	184/2	185/4	186/2	186/2	186/2

CANADIAN FLOUR MILLING SITUATION

Production Wheat flour production by Canadian mills during October 1963 amounted to 4,668,000 hundredweight, representing an increase of 35 per cent over the September output of 3,459,000 hundredweight, 43 per cent above the October 1962 figure of 3,268,000 hundredweight and 29 per cent more than the ten-year (1953-62) average production for the month of October of 3,626,000 hundredweight. Mills reporting operations during October 1963 had a total rated capacity of 166,000 hundredweight per 24-hour day and on the basis of a 26-day working period 107.9 per cent of this rated capacity was effective. Many mills, because of the large volume of forward commitments, were operating at more than the standard 26 working days in the month.

Wheat milled for flour during October 1963 amounted to 10,423,000 bushels, 35 per cent more than the 7,712,000 bushels milled during the preceding month and 44 per cent higher than the 7,256,000 bushels milled during October 1962. Of the wheat milled for flour during October 1963 some 9,540,000 bushels were Western Canadian spring wheat (other than Durum) while the remainder consisted of Ontario winter wheat (605,000 bushels); Durum (148,000 bushels); and all other (130,000 bushels).

Exports According to preliminary Customs returns, exports of Canadian wheat flour during October 1963 amounted to 1,037,000 hundredweight (some 2,384,000 bushels of wheat equivalent), 45 per cent above the 1,645,000 bushels exported during the previous month and 9 per cent over the adjusted October 1962 exports of 2,181,000 bushels. Flour shipments during the month went to forty-nine countries with exports to Britain amounting to 1,357,000 bushels of wheat equivalent and accounting for 57 per cent of the October 1963 total. Other principal markets for Canadian wheat flour during the month with shipments in thousands of bushels of wheat equivalent were as follows: Trinidad and Tobago, 132; Jamaica, 125; Nicaragua, 118; United States, 91; Leeward and Windward Islands, 85; Ghana, 58; and Malaya and Singapore, 55.

Wheat Milled for Flour, and Production and Exports of Wheat Flour, Canada

Crop Year	Wheat Milled for Flour bushels	Wheat Flour	
		Production	Exports <sup>1/</sup>
		- cwt. -	
1935-36--1939-40 average.....	67,845,114	29,405,451	9,603,941
1940-41--1944-45 average.....	99,704,638	43,908,245	23,699,546
1945-46--1949-50 average.....	107,330,372	47,011,540	25,819,721
1950-51--1954-55 average.....	100,446,328	43,847,894	21,812,041
1955-56--1959-60 average.....	90,148,211	39,752,589	16,349,156
1960-61 .....	89,731,155	39,914,644	15,513,836
1961-62 .....	88,240,580	39,539,651	13,892,676
1962-63 .....	78,789,332	35,505,220	11,854,458
1963-64 <sup>2/</sup>			
August.....	6,719,665	3,003,765	1,321,208 <sup>3/</sup>
September.....	7,712,078	3,459,156	715,309
October.....	10,422,696	4,667,613	1,036,575
Totals.....	24,854,439	11,130,534	3,073,092 <sup>3/</sup>
Same months 1962-63 <sup>3/</sup> .....	20,179,556	9,087,938	3,320,309

<sup>1/</sup> Based on Customs returns. Exports for the crop years 1945-46--1962-63 revised to remove effect of time lag in the returns made by Customs.

<sup>2/</sup> Subject to revision.

<sup>3/</sup> Revised.



UNITED STATES SITUATION

Supply Position Domestic supplies of wheat in the United States for the 1963-64 crop year are estimated at 2,328.4 million bushels, consisting of the July 1, 1963 carryover of 1,195.4 million and the 1963 crop, estimated as of November 1, at 1,133.0 million bushels. Domestic supplies of the size indicated would be 4 per cent less than last year's total of 2,414.4 million and 13 per cent smaller than the record 1960-61 figure of 2,670.8 million bushels. Imports of wheat from Canada during July-October of the current United States crop year amounted to 0.8 million bushels. Domestic disappearance during 1963-64 is estimated at about 602.0 million bushels, one per cent more than the 595.1 million last year. After deducting anticipated domestic requirements for the current United States crop year some 1,727.2 million remained available for export and for carryover, a decrease of 5 per cent from the 1,820.2 million in 1962-63.

Exports of wheat, wheat flour and other products in terms of grain equivalent during July-October 1963 amounted to 251.0 million bushels, 35 per cent above the 185.3 million exported during the same months last year. The balance remaining on November 1, 1963 for export and for carryover was estimated at 1,476.2 million bushels compared with 1,634.9 million on the same date a year ago.

United States Wheat Supplies

Item	1962-63 <u>1/</u>	1963-64 <u>2/</u>
	- million bushels -	
Carryover at beginning of crop year (July 1).....	1,321.9	1,195.4 <u>1/</u>
Production.....	1,092.6	1,133.0
Total estimated domestic supplies.....	2,414.4	2,328.4
Imports of wheat and wheat flour in terms of wheat for domestic use, July-October.....	0.8	0.8
Total estimated supplies <u>3/</u> .....	2,415.2	2,329.2
Less estimated domestic requirements for crop year <u>4/</u>	595.1	602.0
Available for export and for carryover.....	1,820.2	1,727.2
Deduct:		
Exports of wheat as grain, July-October.....	154.2	223.3
Exports of wheat flour and products in terms of wheat, July-October <u>5/</u> .....	31.0	27.7
Total exports of wheat, wheat flour and products <u>6/</u>	185.3	251.0
Balance on November 1 for export and for carryover..	1,634.9	1,476.2

1/ Revised. 2/ Preliminary. 3/ Excluding imports for November-June. 4/ Includes shipments to United States Territories and wheat for military food use at home and abroad. 5/ Flour exports exclude "Milled in bond". 6/ These figures now include all shipments under relief programs which formerly were not available from Census data.

Winter Wheat Outlook  
Varies Widely

According to the November 12, 1963 issue of Crop Production published by the United States Department of Agriculture, seeding of winter wheat for 1964 harvest was practically complete in the major producing States by November 1. Moisture supplies were spotty in the Plains areas with delayed seeding and slow germination resulting in unfavourable stands in drier areas. Kansas and Nebraska wheat has a good start in the western two-thirds of the States but moisture is short in the East. Central Oklahoma has fair moisture supplies, but the remainder of the Oklahoma-Texas area urgently needed rain at the end of October. Even in the more favourable areas of the southern and central plains States, a good rain is needed to aid the development of crown roots. From western Kansas northward, winter wheat made excellent growth with the abnormally high October temperatures. The freeze at the end of October was welcomed to halt the moisture-draining growth and stop development before the winter dormant period.

Seeding of winter grains in the Corn Belt made good progress after the early harvest of soybeans, but germination has been slow and stands are spotty. In the South Atlantic and South Central States, dry soils hampered preparation and seeding activity. However, many farmers, faced with winter roughage shortages, seeded wheat and other winter pasture crops in dry soils. Early November rains provided favourable moisture for the germination and development of these acreages. In the Pacific Northwest, seeding of wheat was nearing completion in most areas with emerged plantings showing generally good stands.

Outlook for  
Wheat in 1964

According to a report presented by Mr. William R. Askew at the 41st Annual Agricultural Outlook Conference.....

Outlook for 1964 The outlook for most of the current 1963-64 year is characterized by a good demand and a tight privately held supply, conditions that indicate strong prices. However, toward the end of the 1963-64 marketing year the approaching 1964 crop and its much lower price support rate will have a pronounced effect on the wheat economy. Uncertainty in the long run outlook stems from the fact that wheat farmers for a number of years have not faced the same conditions and alternatives they now have open to them. For the last 10 years, they have operated under a mandatory control program with individual farm acreage allotments and a support price for all production on their allotment. Under the 1964 program, effectuated by last May's wheat referendum, price support will be lower than for many years. Farmers may ignore their allotments and forego price support without the direct financial penalties that were in effect under a marketing quota program. However, should they exceed allotments, they will lose part of their acreage history and any payments they may be receiving under Soil Bank contracts. Any loss of acreage history will be reflected in 1966 acreage allotments.

The first real measure of the extent of noncompliance with acreage allotments will come when the official winter wheat seeding report is issued in mid-December. A sharp drop in prices in 1964 is likely since price support for the 1964 crop under present legislation is to be 50 per cent of the July 1964 parity. Based on present parity, this would be about \$1.25 per bushel. Price support will be available only to those farmers complying with allotments.

The Current Situation The 1963-64 marketing year started off with a supply substantially less than the record level of 1960 and the third consecutive reduction. Heavy exports during the last few years and special wheat stabilization programs for both the 1962 and 1963 crops contributed to the decline in the supply for 1963-64. As a result, the total supply of wheat in the United States during the current year is 2,333 million bushels, 87 million below the supply a year earlier. Domestic disappearance in 1963-64 is expected to be somewhat larger than in



most recent years, due entirely to an anticipated increase in the quantity of wheat used for seed. Such an increase in seed use is based on the assumption that some farmers will increase their wheat seedings to the absence of a mandatory wheat control program.

Reports at this time provide no basis for estimating the acreages seeded. They do indicate, however, that in the important Southwest-producing States and to some extent in the Corn Belt, seeding operations ran behind schedule as a result of moisture deficiency. Crop development was also delayed by continued moisture shortage and unseasonable high temperatures during much of October. For the present, we will assume that farmers will plant about 60 million acres to wheat and will use approximately 70 million bushels of seed wheat. An acreage of this size would be about 5 million more than was normally planted under the old 55-million-acre allotment program and would be about 10 million acres above the 1964 allotment of 49.5 million acres. Use of wheat for food in the U.S. is placed at 500 million bushels and that for feed at about 33 million. Both of these are at about the same level as in 1962-63. Food, seed, and feed uses place total domestic disappearance at about 600 million bushels.

Based on current world demand and including an allowance for sales to the Soviet Union and Eastern Europe, U.S. wheat exports are expected to total a billion bushels during 1963-64. This would be substantially above last year's 639 million bushels and present record export of 720 million established in 1961-62. The sharp increase in exports anticipated this year is due to a poor harvest in Europe and the Soviet Union. Western European crops have been harvested under extremely wet conditions and much of the wheat will not be suitable even for blending with imported wheats for bread flour. In the Soviet Union, severe weather conditions in the Ukraine Region drastically reduced the yields of winter wheat and the fourth successive year of drought in the New Lands cut production of spring wheat. As a result, the USSR has shifted from an exporting nation to become a major importer of wheat. After first taking large quantities from both Canada and Australia, they indicated a desire to purchase U.S. wheat. On October 9, the President stated that the United States would sell wheat to the Soviet Union and Eastern European Bloc countries, our first such sales to these countries since World War II. Exports to the Soviet Bloc will be handled by the private trade and the transactions will follow the same procedures as other commercial sales.

With a total disappearance of about 1,600 million bushels, the carryover on July 1, 1964, will be substantially reduced. The expected reduction will be 465 million bushels and would place the ending carryover at 730 million. This would be the smallest carryover level since 1953.

Prices Prices of most classes of wheat at Major markets have registered new strength, reflecting a relatively short supply of privately-held wheat, the recent surge in export demand, and the apparent tight holding by farmers. Through September 1963, 114 million bushels of new-crop wheat had been placed under price support loan and purchase agreement. This was about 21 million bushels below the quantity of 1962-crop under loan through September 1962. Prices at many locations, including some terminal markets, have risen to the CCC minimum resale price. This has resulted in the Commodity Credit Corporation selling substantial amounts of wheat under the formula resale provision, compared with only negligible amounts a year earlier. Farm prices have also been strong, reflecting the increased market activity. The average price received by farmers in October was \$1.94 per bushel, 10 cents above the price received in September. The price received in October was 12 cents above the national average loan rate of \$1.82. However, the average price received by farmers during July-October this year was 16 cents per bushel below the same period last year.

Continued on page 44.

U.S. Wheat and Flour  
Exports Increase  
17 Per Cent

U.S. wheat and flour exports during July-September 1963, totalled 174 million bushels - an increase of 17 per cent over the 148 million bushels for the similar period in 1962. This increase compares to the 22 per cent increase of July-August 1963 over the 94 million bushels exported during July-August 1962, and the 33 per cent shipped during July 1963 over the 45 million bushels of July 1962. Shipments of wheat as grain increased 30.3 million bushels or 24 per cent over the 124 million bushels during July-September 1962. However, shipments of flour decreased 18 per cent during the same periods of comparison.

Table A shows country destination for wheat and flour during July-September 1963 compared with the same period in 1962. Shipments of wheat to Canada include a substantial quantity for transshipment to other destinations. Table B shows the quantities and destinations of U.S. wheat inspected for export from Canadian ports and exports for specified countries adjusted to a new total which includes these inspections during July-September 1963 as compared to July-September 1962.

Substantial increases are evident in shipments to Venezuela, the Common Market countries (except the Netherlands), Poland, Spain, India, Japan, Korea, Taiwan, Algeria and the Republic of South Africa. These countries alone account for almost 60 per cent of the total exports during July-September 1963. Losses in production due to a severe winter in Europe have resulted in greater exports of U.S. wheat. This situation is expected to continue until the harvest of the new crop. Increased shipments to Japan resulted from a damaged crop in 1963 - 56 per cent less than the 1962 crop. Prolonged rains just prior to and during the harvest brought about this decline in production. Japanese imports are now estimated to be 41 per cent over the previous year. The greatest reduction took place in exports to Brazil, Chile, Peru, Turkey, British East Africa and Tunisia. Of the 20 million bushels of flour exported during July-September 1963, Egypt, Sudan and the Republic of the Congo received 34 per cent. Total wheat and flour exports for July-October 1963 are estimated to be approximately 36 per cent more than the 185 million bushels shipped during the same months of 1962.

Table A. United States Exports of Wheat and Flour by Country of Destination  
July-September 1962 and 1963 1/

Destination	July-September 1962			July-September 1963		
	Wheat	Flour 2/	Total	Wheat	Flour 2/	Total
- thousand bushels -						
<u>Western Hemisphere</u>						
Canada 3/.....	5,261	30	5,291	12,817	78	12,895
Mexico.....	-	311	311	-	253	253
Central America.....	1,180	691	1,871	1,220	431	1,651
Haiti.....	129	4/	129	348	4/	348
Trinidad and Tobago....	17	360	377	2	215	217
Bolivia.....	274	747	1,021	-	576	576
Brazil.....	16,304	119	16,423	9,223	139	9,362
British Guiana.....	-	271	271	-	231	231
Chile.....	2,418	395	2,813	980	163	1,143
Colombia.....	1,411	3	1,414	1,592	133	1,725
Paraguay.....	-	-	-	155	103	258
Peru.....	2,449	75	2,524	774	43	817
Venezuela.....	793	2	795	2,516	122	2,638
Others.....	212	997	1,209	337	366	703
Totals.....	30,448	4,001	34,449	29,964	2,853	32,817



Table A. United States Exports of Wheat and Flour by Country of Destination  
July-September 1962 and 1963 <sup>1/</sup>

Destination	July-September 1962			July-September 1963		
	Wheat	Flour <sup>2/</sup>	Total	Wheat	Flour <sup>2/</sup>	Total
- thousand bushels -						
<u>Europe</u>						
EEC						
Belgium-Luxembourg...	965	1	966	1,657	10	1,667
France.....	317	14	331	642	-	642
Germany, West.....	1,377	2	1,379	1,959	2	1,961
Italy.....	37	479	516	37	935	972
Netherlands.....	2,988	338	3,326	2,817	319	3,136
EEC sub-totals.....	5,684	834	6,518	7,112	1,266	8,378
Greece.....	-	492	492	15	670	685
Norway.....	544	1	545	69	9	78
Poland.....	-	127	127	2,639	211	2,850
Portugal.....	917	217	1,134	-	144	144
Spain.....	-	-	-	2,916	-	2,916
Switzerland.....	1,454	-	1,454	2,394	-	2,394
United Kingdom.....	1,460	65	1,525	584	21	605
Yugoslavia.....	1,161	449	1,610	931	94	1,025
Others.....	1,341	123	1,464	497	132	629
Totals.....	12,561	2,308	14,869	17,157	2,547	19,704
<u>Asia</u>						
India.....	30,428	175	30,603	41,098	39	41,137
Indonesia.....	-	4	4	-	436	436
Iran.....	2	473	475	90	152	242
Israel.....	2,833	98	2,931	2,462	23	2,485
Japan.....	11,152	739	11,891	19,907	774	20,681
Jordan.....	1	647	648	436	897	1,333
Korea.....	4,242	269	4,511	9,012	260	9,272
Lebanon.....	-	202	202	-	189	189
Pakistan.....	12,036	422	12,458	12,161	15	12,176
Philippines.....	1,313	132	1,445	1,847	89	1,936
Saudi Arabia.....	7	901	908	-	657	657
Taiwan.....	1,896	372	2,268	3,621	256	3,877
Turkey.....	2,851	242	3,093	978	14	992
Vietnam, Laos and Cambodia.....	55	1,173	1,228	6	1,065	1,071
Others.....	182	1,206	1,388	921	941	1,862
Totals.....	66,998	7,055	74,053	92,539	5,807	98,346

Table A. United States Exports of Wheat and Flour by Country of Destination  
July-September 1962 and 1963 <sup>1/</sup>

Destination	July-September 1962			July-September 1963		
	Wheat	Flour <sup>2/</sup>	Total	Wheat	Flour <sup>2/</sup>	Total
- thousand bushels -						
<u>Africa</u>						
Algeria.....	928	808	1,736	2,642	378	3,020
British East Africa....	1,078	8	1,086	112	26	138
Congo (Leopoldville)...	4	785	789	28	2,036	2,064
Egypt.....	8,565	7,440	16,005	8,871	3,237	12,108
Morocco.....	125	519	644	66	860	926
Nigeria.....	302	181	483	357	10	367
Sudan.....	-	404	404	748	1,352	2,100
Tunisia.....	2,295	43	2,338	154	65	219
South Africa, Republic of.....	-	-	-	1,069	-	1,069
Others.....	730	432	1,162	608	520	1,128
Totals.....	14,027	10,620	24,647	14,655	8,484	23,139
Oceania.....	-	11	11	-	11	11
Totals, All Countries.....	124,034	23,995	148,029	154,315	19,702	174,017

<sup>1/</sup> Data includes shipment for relief or charity. <sup>2/</sup> Grain equivalent. <sup>3/</sup> The bulk of exports to Canada are for transshipment to other destinations - see Table B.

<sup>4/</sup> Less than 500 bushels.

Table B. United States Exports of Wheat and Flour as Adjusted for Transshipment  
Through Canadian Ports. July-September 1962 and 1963

Destination	July-September 1962		July-September 1963	
	Wheat in- spected for export from Canadian ports	Adjusted totals for listed countries	Wheat in- spected for export from Canadian ports	Adjusted totals for listed countries
- thousand bushels -				
<u>EEC</u>				
Belgium-Luxembourg.....	19	985	1,987	3,654
France.....	506	837	-	642
Germany, West.....	788	2,167	115	2,076
Italy.....	-	516	-	972
Netherlands.....	1,366	4,692	3,655	6,791
EEC sub-totals.....	2,679	9,197	5,757	14,135
Brazil.....	-	16,423	108	9,470
United Kingdom.....	468	1,993	417	1,023
Ireland.....	28	202	194	235
Spain.....	-	-	230	3,146
Portugal.....	506	1,640	331	475
Egypt.....	-	16,005	1,971	14,079
Canary Islands.....	-	13	255	259
Nigeria.....	397	880	197	564
Mozambique.....	224	336	413	536
Totals.....	4,302	46,689	9,873	43,922



Cash Wheat Prices on the Kansas City and Minneapolis Markets

No. 2 Hard Winter, Kansas City			No. 1 Northern Spring, Minneapolis		
Date		Price	Date		Price
		- cents per bushel -			- cents per bushel -
November 1, 1963.....		218 3/4 - 243 3/4 <u>1/</u>	November 1, 1963.....		233 7/8 - 235 7/8
4 .....		222 1/2 - 224 1/2	4 .....		233 3/4 - 235 3/4
5 .....		225 1/2	5 .....		233 1/8 - 235 1/8
6 .....		218 1/2	6 .....		233 1/2 - 235 1/2
7 .....		221 1/2	7 .....		234 1/2 - 235 1/2
8 .....		220	8 .....		234 - 235
11 .....		221 3/4 - 222	11 .....		233 7/8 - 234 7/8
12 .....		233 3/4	12 .....		231 5/8 - 233 5/8
13 .....		217 - 241 <u>1/</u>	13 .....		230 - 232
14 .....		217 1/4 - 241 <u>1/</u>	14 .....		229 3/8 - 231 3/8
15 .....		214 1/2 - 240 1/4 <u>1/</u>	15 .....		229 1/8 - 231 1/8
18 .....		213 1/2 - 238 1/2 <u>1/</u>	18 .....		227 3/8 - 229 3/8
19 .....		217 1/2 - 224 1/2	19 .....		228 1/8 - 231 1/8
20 .....		213 1/2 - 238 <u>1/</u>	20 .....		228 1/2 - 232 1/2
21 .....		213 1/4 - 238 <u>1/</u>	21 .....		227 5/8 - 231 5/8
22 .....		218	22 .....		227 1/4 - 231 1/4
25 .....		Market Closed	25 .....		Market Closed
26 .....		215 1/4 - 221 3/4	26 .....		229 1/4 - 233 1/4
27 .....		220 1/2 - 221	27 .....		231 - 234
28 .....		Thanksgiving Day	28 .....		Thanksgiving Day
29 .....		215 1/2 - 239 1/2 <u>1/</u>	29 .....		232 3/8 - 234 3/8

1/ Nominal.

Chicago Wheat Futures, High Points of Closing

Date	December	March	May	July	September
		- cents and eighths per bushel -			
November 1, 1963.....	216/3	217/2	213/4	176/5	178/2
4 .....	215/5	216/4	212/3	174/2	175/5
5 .....	214	214/6	211/1	174	175/3
6 .....	215/1	215/6	211/6	174	175/2
7 .....	217/5	218	213/7	174	175
8 .....	217/6	217/7	214/2	174/2	175/4
11 .....	217/6	218/1	214/5	174/6	176
12 .....	217/4	218/1	214/4	175	176/2
13 .....	217/5	218/3	214/5	175/6	176/6
14 .....	216/7	217/4	213/7	175	176/4
15 .....	214/6	216/3	212/6	173/4	174/6
18 .....	213/3	214/4	210/2	172/2	173/6
19 .....	212/3	213/6	209/6	172/2	173/2
20 .....	212/4	214/4	210/2	171/3	173
21 .....	209/3	211/6	208	167/2	168/4
22 .....	208	210/2	207	163	164/2
25 .....		Market Closed			
26 .....	211/6	214/1	211/2	168/4	169/6
27 .....	212/6	215/2	211/5	169	170/2
28 .....		Thanksgiving Day			
29 .....	213/4	216/4	212/2	170/2	171/4

AUSTRALIAN SITUATION

Supply Position Estimated supplies of wheat in Australia for the current (December-November) crop year consisting of the December 1, 1962 carryover of 18.2 million and the 1962-63 crop, estimated at a record 307.2 million bushels, amount to some 325.4 million bushels. Supplies of the size indicated, reflect a substantially larger production which more than offset a decline in carryover, and represent an increase of 20 per cent over the 1961-62 total of 271.8 million bushels. After deducting 73.0 million for anticipated domestic requirements, an estimated 252.4 million are available for export and for carryover during the 1962-63 crop year, 29 per cent above the 195.5 million in 1961-62.

Combined exports of wheat as grain and wheat flour in terms of grain equivalent during the period December 1-October 26 of the current Australian crop year amounted to 201.5 million bushels compared with 169.1 million exported during the corresponding period of 1961-62. The balance remaining on October 27, 1963 for export and for carryover, at 50.9 million bushels, was nearly double the comparable 1962 total of 26.4 million.

Australian Wheat Supplies

Item	1961-62	1962-63 <sup>1/</sup>
	- million bushels -	
Carryover, including flour as wheat, at beginning of crop year (December 1).....	24.6	18.2
Production.....	247.2	307.2
Total estimated domestic supplies.....	271.8	325.4
Less estimated domestic requirements for crop year....	76.3	73.0
Available for export and for carryover.....	195.5	252.4
Deduct:		
Exports of wheat as grain, December 1-October 26....	145.9	180.2
Exports of wheat flour in terms of wheat, December 1-October 26.....	23.2	21.3
Total exports of wheat and wheat flour.....	169.1	201.5
Balance on October 27 for export and for carryover....	26.4	50.9

<sup>1/</sup> Preliminary.

The following information relative to the Australian situation has been extracted from a report from Mr. H.A. Gilbert, Commercial Counsellor for Canada, Melbourne, under date of November 18, 1963 and is reproduced with the permission of the Trade Commissioner Service, Department of Trade and Commerce.



Crop Position

In a statement issued during the period under review, Mr. C.F. Adermann, Minister for Primary Industry, said that deliveries from the 1963-64 wheat crop in Australia are expected to be high. The latest Wheat Board estimate is for 270 million bushels, which is not very much below last season's record delivery figure of 285 million. If these estimates are realised, said Mr. Adermann, it will be the fourth successive year in which deliveries have been considerably greater than 200 million bushels. Mr. Adermann went on to say that fortunately the market outlook is quite favourable; prices are rising, part of the incoming crop has already been sold and the satisfactory disposal of the remainder is virtually assured.

Harvesting has already commenced in the northern wheat growing areas of Australia, northern New South Wales and Queensland. It is expected to start very shortly in south and western Australia while in Victoria it should begin around the beginning of December. Prospects remain fairly good and the total wheat harvest may be near 290 million bushels, of which approximately 20 million bushels will remain on the farms for local use.

Winter water-logging in parts of the four major producing States caused shallow root development, leaving the crops more than usually dependent on regular spring rains. These, however, were deficient in some areas in eastern Australia while in the west fairly serious outbreaks of rust together with poor conditions from too much moisture are estimated to have cost 5 million bushels. In addition, the quality of up to 10 million bushels has been lowered.

Marketing Position

The Australian Wheat Board expects to have a carryover of some 19 million bushels at the end of the current crop year. This figure is dependent on the shipment of wheat and flour, already sold, being maintained at its present level. If achieved, the carryover will not be as low as last season's 18.2 million bushels.

There have been no announcements of any sales during the period under review. A Chinese delegation visited western Australia during the month and were mainly interested in inspecting the wheat growing districts. It is suspected that wheat sales were discussed when the delegation arrived in Melbourne after their western Australia tour.

Exports of Australian Wheat and Wheat Flour in Terms of Wheat  
December 1-October 26, 1962-63 and Corresponding Period 1961-62

Destination	Wheat		Wheat Flour	
	1961-62	1962-63	1961-62	1962-63
- thousand bushels -				
<u>Europe</u>				
Albania.....	-	2,294	-	-
Britain.....	18,776	20,383	2,760	1,908
Eastern Europe.....	-	1,714	-	-
Eire.....	1,306	1,962	-	-
France.....	456	-	-	-
Italy.....	4,917	-	-	-
Malta.....	747	445	-	-
Norway.....	2,609	3,209	-	-
Spain and Canary Islands.....	11,697	1,236	-	-
Switzerland.....	50	-	-	-

Exports of Australian Wheat and Wheat Flour in Terms of Wheat  
December 1-October 26, 1962-63 and Corresponding Period 1961-62

Destination	Wheat		Wheat Flour	
	1961-62	1962-63	1961-62	1962-63
- thousand bushels -				
<u>Europe (concluded)</u>				
West Germany.....	8,988	1,341	-	-
Others.....	-	-	12	15
<u>Middle East</u>				
Aden.....	911	1,011	-	-
Aden and Aden I/T.....	-	-	1,068	1,198
Aden Atta.....	-	-	440	480
Arabian Gulf.....	-	-	196	181
Arabian Gulf Atta.....	-	-	1,252	1,062
Egypt.....	1,910	-	-	-
Iran.....	439	1,025	-	-
Iraq.....	744	1,440	-	-
Lebanon, Jordan, Syria.....	3,964	2,725	-	-
Saudi Arabia.....	-	-	282	371
Others.....	557	461	21	19
<u>Africa</u>				
Africa South.....	2,049	-	-	-
Algeria.....	452	-	-	-
Kenya.....	895	343	-	-
Mauritius.....	-	-	712	513
Nyasaland.....	-	-	241	295
Port. East Africa.....	262	-	-	-
Rhodesia.....	3,018	3,219	-	-
Zanzibar.....	-	-	123	178
Others.....	16	17	83	77
<u>Asia</u>				
British North Borneo.....	-	-	220	156
Brunei.....	-	-	41	41
Burma.....	171	876	299	119
Ceylon.....	19	7	5,711	3,508
China.....	38,788	98,896	-	-
Hong Kong.....	3,055	1,814	344	198
India.....	11,773	5,519	-	-
Indonesia.....	-	-	236	355
Irian.....	-	-	84	7
Japan.....	16,879	11,687	-	-
Korea, North.....	-	4,987	-	-
Korea, South.....	-	1,539	-	-
Malaya.....	529	365	3,137	3,131
Malaya Atta.....	-	-	82	87
Pakistan.....	3,290	3,890	-	-
Sarawak.....	-	-	278	235
Singapore.....	59	338	2,612	2,722
Singapore Atta.....	-	-	12	12
Singapore a/c War Office.....	-	-	27	36
Thailand.....	-	-	610	711
Others.....	336	851	204	1,000



Exports of Australian Wheat and Wheat Flour in Terms of Wheat  
December 1-October 26, 1962-63 and Corresponding Period 1961-62

Destination	Wheat		Wheat Flour	
	1961-62	1962-63	1961-62	1962-63
- thousand bushels -				
<u>Pacific Area and Sundries</u>				
Chile.....	362	-	-	-
Cuba.....	-	457	-	-
New Zealand.....	5,770	6,103	-	-
Pacific Islands etc. ....	46	49	1,964	2,209
Peru.....	57	-	11	14
Royal Navy.....	2	-	-	-
Ships' Stores and Sundries.....	-	-	137	460
Totals.....	145,900	180,200	23,200	21,300

ARGENTINE SITUATION

Supply Position Estimated total supplies of wheat in the Argentine for the 1962-63 (December-November) crop year amount to 193.3 million bushels, consisting of the December 1, 1962 carryover of 8.9 million and a production of 184.5 million. Indicated supplies for the current Argentine crop year, reflecting decreases in both carryover stocks and production, are about 19 per cent less than the 1961-62 total of 237.4 million bushels. After making an allowance of 127.1 million bushels for anticipated domestic requirements, an estimated 66.2 million are available for export and for carryover in 1962-63, in contrast to 109.7 million the previous year.

Argentine Wheat Supplies

Item	1961-62 <u>1/</u>	1962-63 <u>2/</u>
- million bushels -		
Carryover at beginning of crop year (December 1) <u>3/</u> ....	35.3	8.9
Production <u>4/</u> .....	202.1	184.5
Total estimated domestic supplies.....	237.4	193.3
Less estimated domestic requirements for crop year.....	127.7	127.1 <u>1/</u>
Available for export and for carryover.....	109.7	66.2
Deduct:		
Exports of wheat as grain, December-October.....	97.8	60.5
Exports of wheat flour in terms of wheat, December-October.....	0.4	0.4
Total exports of wheat and wheat flour.....	98.2	60.9
Balance on November 1 for export and for carryover.....	11.5	5.3

1/ Revised. 2/ Preliminary. 3/ Includes allowances for farm stocks. 4/ Official estimate.

Exports of wheat and wheat flour in terms of grain equivalent during December 1962-October 1963 amounted to 60.9 million bushels, 38 per cent below the 98.2 million exported during the same months in 1961-62. The balance remaining on November 1, 1963 for export and for carryover was estimated at 5.3 million bushels, compared with the November 1, 1962 total of 11.5 million.

The following account of the Argentine situation has been extracted from a report from Mr. M.B. Bursey, Commercial Counsellor, Buenos Aires, under date of November 22, 1963 and is reproduced with the permission of the Trade Commissioner Service, Department of Trade and Commerce. Where possible, conversions from Argentine to Canadian measures have been made for the convenience of our readers. Currency conversions have been made at the rates of 133.83 pesos per Canadian dollar and £1 equals \$3.0155 (Canadian) the quotations in effect on November 15, 1963.

Weather and Crops The period under review has been characterized by unseasonal heavy rains and cold weather. The rainfall has benefitted the former drought areas in the Provinces of Cordoba and Santa Fe but has been excessive in many regions of Buenos Aires Province. To date, there have been no reports of damage to the growing crops, however, the poor weather has delayed seeding operations in several corn growing areas. In some areas of Buenos Aires Province excessive rainfall has affected adversely the potato and other vegetable crops.

Wheat There is general agreement in government and trading circles that the new wheat crop will amount to at least 6 million metric tons (220.5 million bushels), and many traders are predicting a 6,200,000 metric ton crop (227.8 million bushels). Recent rainfall has resulted in the recovery of many stands in the Province of Cordoba, although some lodging has been reported in the southern grain belt. It seems evident that there will be a bumper crop in the southern grain belt. The final official acreage estimate for the current crop year of 5,400,000 hectares (13.3 million acres) represents a 17.1 per cent increase over the previous year.

Prices for wheat during the period under review have been remunerative and have been well above the former minimum producer prices, in spite of the ban imposed on exports of new crop wheat by the National Grain Board. This trend in prices is illustrated by the following table showing recent prices in the Buenos Aires Futures Market:

	<u>Oct. 23</u>	<u>Oct. 30</u>	<u>Nov. 6</u>	<u>Nov. 20</u>
For delivery in:	- dollars per bushel -			
November	1.64	1.72		
December	1.58	1.66	1.67	1.70
January	1.59	1.67	1.67	1.69
February	1.60	1.71	1.71	1.74
March				1.78

At the end of October, prices for wheat were as follows: Buenos Aires Cereal Exchange - 830 pesos per 100 kilos (\$1.69 per bushel); Rosario Cereal Exchange - 840 pesos (\$1.71 per bushel). At the time of writing this report, prices in the Buenos Aires Cereal Exchange are as follows: Hard wheat - 845 pesos (\$1.72 per bushel); semi-hard - 820 pesos (\$1.67 per bushel); durums - 850 pesos (\$1.73 per bushel).

From October 3 up to the present, the Grain Board sold for export 214,400 metric tons (7,878,000 bushels) of 1962-63 wheat at an average price of 890 pesos per 100 kilos (\$1.81 per bushel) f.o.r. Buenos Aires or up-river ports. During this period, Brazil bought 25,000 metric tons (919,000 bushels) at \$US 64.25



(\$1.75 per bushel) f.o.b. for Oct. 15-Nov. 15 shipments, and 50,000 metric tons (1,837,000 bushels) at between \$US 64.45 and \$US 64.62 (\$1.75 and \$1.76 per bushel) for Nov. 10-Dec. 10 shipments. Italy also purchased some quantities at prices ranging up to \$US 85.00 per metric tons (\$2.31 per bushel) c.i.f. for October-November shipment, but recently the price has declined to \$US 79.00 (\$2.15 per bushel). These purchases were for old crop wheat. For new crop wheat Britain paid some £28.10.0 per metric tons (\$2.34 per bushel) c.i.f. for southern wheat (mainly hard) for December-January shipments, while prices for the Continent were averaging around \$US 78.00 (\$2.12 per bushel) c.i.f.

Wheat export shipments totalled 145,136 metric tons (5,333,000 bushels) during October, of which 64,224 tons (2,360,000 bushels) went to Brazil; 39,265 tons (1,443,000 bushels) to Italy; 20,965 tons (770,000 bushels) to Peru; 5,500 tons (202,000 bushels) to West Germany; 5,490 tons (202,000 bushels) to Czechoslovakia; 4,995 tons (184,000 bushels) to Belgium; and 4,700 tons (173,000 bushels) to the Netherlands.

The high prices being paid for wheat during recent weeks, coupled with a desire to protect the Argentine wheat producer against any further devaluation of the Argentine peso, prompted the government decree dated October 25, establishing new increased minimum official producers' prices for wheat for the 1963-64 crop year, as follows: (Prices in pesos per hundred kilos f.o.r. Buenos Aires port in bags or bulk).

	dollars per bushel
<u>Hard wheat</u> , grade 1, basis 64 pounds per bushel	
from the present date up to January 31, 1964.....	1.67
as from February 1, 1964.....	1.71
as from March 1, 1964.....	1.75
as from April 1, 1964.....	1.79
Former price.....	1.44
<u>Semi-hard wheat</u> , grade 1, basis 64 pounds per bushel	
from the present date up to January 31, 1964.....	1.63
as from February 1, 1964.....	1.67
as from March 1, 1964.....	1.71
as from April 1, 1964.....	1.75
Former price.....	1.40
Durums (Candeal and Taganrock), grade 2, basis 78 kilos per hectolitre (62 pounds per bushel) 850 pesos (\$1.73 per bushel) former price 750 pesos (\$1.53 per bushel).	

In the meantime, the export ban on new crop grain continues, although a change has occurred with respect to exports of old crop wheat. Formerly, shipments of old crop wheat were required to be concluded by November 15, but the Grain Board will now permit later shipments, provided the wheat being shipped was stored in National Grain Board elevators prior to November 15.

Wheat Standards of Quality Official Argentine grain and oilseed standards came into being with the establishment of the Grain Board in 1935. Since that date, there has been a great many changes and additions to these regulations, but a recent government decree has, for the first time, consolidated all existing rules and regulations. This recent decree also instituted a few additional changes. The Argentine Government, years ago, established that there would be four grain marketing regions, namely:

- 1 - Rosafe region, including all areas in the Provinces of Buenos Aires, Cordoba and Santa Fe, which channel their output through up-river ports in the Province of Santa Fe.
- 2 - Buenos Aires region.
- 3 - Bahia Blanca region.
- 4 - Entre Rios region.

The new decree establishes that, in future, greater emphasis will be placed on keeping separate grain from the different producing areas.

Argentine Wheat Exports December-September 1962-63 with Comparisons

Destination	Wheat	Destination	Wheat
	'000 bushels		'000 bushels
Africa, North.....	198	Netherlands.....	4,768
Algeria.....	1,516	Norway.....	725
Belgium.....	4,241	Paraguay.....	495
Bolivia.....	73	Peru.....	9,423
Brazil.....	14,376	Portugal.....	821
Britain.....	6,472	Sweden.....	53
Finland.....	147	Switzerland.....	368
France.....	2,788	Venezuela.....	373
Germany.....	1,773		
Italy.....	6,759	Total.....	55,370
Compared with:			
December-September 1961-62.....			95,341
1960-61.....			33,994
1959-60.....			76,921
1958-59.....			87,845
1957-58.....			56,206

FRENCH SITUATION

Supply Position Total estimated commercial domestic supplies of wheat in France for the crop year (July-June) 1963-64, consisting of the July 1 carryover of 100.4 million bushels and anticipated marketings of 246.3 million amount to some 346.7 million bushels, 19 per cent less than the 1962-63 total of 429.8 million. Imports of wheat during the July-October period of 1963 amounted to 4.0 million bushels. After deducting 208.7 million bushels for estimated domestic use, including normal feed wheat requirements, the surplus available for export and for carryover is about 142 million bushels compared with 211.5 million last year.

Combined exports of wheat and wheat flour in terms of grain equivalent during the first four months of the 1963-64 crop year amounted to 27.0 million bushels, and represented an increase of 3 per cent over the comparable 1962-63 total of 26.4 million. The balance of commercial supplies remaining on November 1, 1963 for export and for carryover amounted to 114.9 million bushels in contrast to the November 1, 1962 total of 185.1 million.



# French Supplies of Soft Wheat

Item	1962-63	1963-64 <u>1/</u>
	- million bushels -	
Commercial carryover, July 1.....	58.7	100.4
Deliveries to Grain Board.....	371.1	246.3 <u>2/</u>
Total estimated domestic supplies.....	429.8	346.7
Imports, July-October.....	0.7	4.0
Total estimated commercial supplies.....	430.5	350.7
Less domestic requirements for crop year.....	219.0	208.7 <u>3/</u>
Available for export and for carryover.....	211.5	142.0
Deduct:		
Exports of wheat as grain July-October.....	18.5	22.7
Exports of wheat flour in terms of wheat, July-October.....	7.9	4.3
Total exports of wheat and wheat flour.....	26.4	27.0
Balance on November 1 for export and for carryover	185.1	114.9

1/ Preliminary. 2/ Revised. 3/ Includes allowances for denatured wheat sold as feed.

The following account of the current crop situation in France has been extracted from a report by Mr. R.G. Woolham, Assistant Commercial Secretary, Canadian Embassy, Paris, under date of November 26, 1963, and is reproduced with the permission of the Trade Commissioner Service, Department of Trade and Commerce. Where possible, conversions from French to Canadian measures have been made and rounded for the convenience of our readers.

Market Situation Generally the market situation in France during the past month has been relatively quite both from the point of view of imports and exports. More recent estimates of quality of the French wheat crop confirm that quality of the major proportion of this year's harvest is very high in moisture content and down considerably in terms of specific weight. Although the quantity suitable for milling is slightly higher than previous estimates, the French flour industry is still faced with the problem of obtaining satisfactory results without incorporating imported wheats. During last month import certificates have been authorized up to a total of 162,000 tons (5,952,000 bushels) compared with 110,000 tons (4,042,000 bushels) of hard wheat registered one month earlier. This trend towards blending imported wheat to improve the quality of French flour will probably continue during this crop year, which confirms that a high proportion of this years French wheat crop will be exported as feed wheat. Further, French wheat supplies sold as milling wheat will increase the domestic demand for replacement quantities of imported hard wheats. As concerns durum wheat, the French Semolina industry apparently have their requirements covered until the end of this year. In addition, a small purchase of 3,000 tons (110,000 bushels) of durum wheat from Israel has been concluded and a further 10,000 tons (367,000 bushels) has been negotiated for importation from Algeria.

Crop Situation

The final cereal production estimates, as of November 1, 1963 have been issued as follows in thousand of bushels:

Soft wheat	349,381
Durum wheat	2,278
Rye	13,373
Barley	334,401
Oats	182,230
Corn <u>1/</u>	146,271

1/ Preliminary.

Weather conditons during last month have improved considerably and have been characterized by above-average temperature conditions with well spaced periods of precipitation. Conditions have been ideal for seeding of winter cereals and this operation is about 75 per cent completed. No official acreage estimates have yet been issued but apparently acreage sown to winter wheat is up considerably, partly because of the prospect of higher prices next year. With the prospect of higher wheat prices next year within common market, and favourable seeding conditions, it would appear that the 1964 French wheat production is off to a good start.

Continued from page 31.

With a high level of demand, the season average price received by farmers in 1963-64 probably will be moderately above the national average loan rate of \$1.82. It should be remembered that a high but effective ceiling is put on prices through CCC's large stocks and their statutory minimum selling authority. For this reason, farmers will enjoy increased benefits from the excellent demand but cannot expect an unlimited price rise.

CALENDAR OF WHEAT EVENTS

- November 6 Based on conditions at October 15, Canada's 1963 wheat crop was estimated at a record 723.4 million bushels, 28 per cent greater than last year's estimate of 565.6 million and 51 per cent more than the ten-year (1952-1961) average of 479.8 million bushels.
- 18 A report received from Mr. H.A. Gilbert, Commercial Counsellor for Canada, Melbourne, indicates that the current Australian wheat crop prospects remain fairly good and the total harvest may be near 290 million bushels.
- 22 According to a report received from Mr. M.B. Bursey, Commercial Counsellor for Canada, Buenos Aires, there is general agreement in government and trading circles that the new wheat crop will amount to at least 6 million metric tons (220.5 million bushels).
- December 4 The Canadian Wheat Board announced that a sales contract had been signed to provide for the export to China of 500 thousand long tons or approximately 18.7 million bushels of wheat from Pacific ports during the period February 1, 1964 to June 30, 1964.

According to a report published by the Bureau of the Census, United States Department of Commerce, wheat flour production in the United States during October 1963 amounted to 24,649,000 hundredweight, an average of 1,072,000 hundredweight per working day.

---











STATISTICS CANADA LIBRARY  
BIBLIOTHÈQUE STATISTIQUE CANADA



1010686748