

CATALOGUE No.

22-005

MONTHLY

DOES NOT CIRCULATE

NE PAS PRÊTER



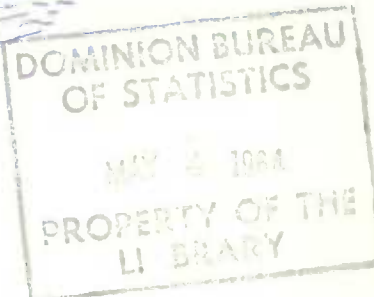
CANADA

DOMINION BUREAU OF STATISTICS
AGRICULTURE DIVISION

THE WHEAT REVIEW



MARCH 1964



DOMINION BUREAU OF STATISTICS

THE
WHEAT REVIEW

MARCH 1964

Published by Authority of
The Minister of Trade and Commerce

Prepared in the Crops Section, Agriculture Division
Dominion Bureau of Statistics, Ottawa

TABLE OF CONTENTS

	<u>Page</u>
World Wheat Situation	
Wheat Exports One Quarter Above Previous Record	1
Wheat Supplies of Four Major Exporters 4 Per Cent Below a Year Ago	1
Near Record 1963 World Bread Grain Crop Confirmed	2
I.W.C. Cumulative Totals of Commercial Purchases	3
Canadian Situation	
Supplies Remain at Record Level	4
Exports 11 Per Cent Ahead of Record	4
February 1964 Exports of Wheat and Flour Total 28.9 Million Bushels	5
Visible Supplies Record Gradual Decline	6
General Quota Position	6
Area Intended for Wheat 1964	7
Farmers' Marketings of Wheat	8
Visible Supply of Canadian Wheat	9
Grading of Wheat Inspected, August-February 1963-64 with Comparisons	9
Weekly Visible Supply and Farmers' Marketings (Charts)	10
Wheat Shipments to the United States by Destination	11
Rail Shipments of Wheat to Maritime Ports	11
Rail Shipments of Wheat from Fort William-Port Arthur	12
Overseas Exports of Canadian Grain by Ports of Loading	12
Freight Assistance Shipments	13
Monthly Exports of Canadian Wheat and Wheat Flour	14
Exports of Canadian Wheat by Destination	15
Customs Exports of Canadian Wheat Flour by Countries of Consignment	18
Canadian Wheat Board Weekly Average Cash Wheat Prices	20
Canadian Flour Milling Situation	
Production and Exports	22
United States Situation	
Domestic Supplies 13 Per Cent Below Record	23
July-February Exports at Record Level	23
Prospective Plantings of Spring Wheat	24
Crop and Weather Conditions	24
Cash Wheat Prices on the Kansas City and Minneapolis Markets	26
Chicago Wheat Futures, High Points of Closing	26
Australian Situation	27
Argentine Situation	30
French Situation	32
Calendar of Wheat Events	34

WORLD WHEAT SITUATION

Wheat Exports One Quarter Above Previous Record

The tempo of wheat shipments from the four traditional major exporters has gradually increased and as a result, the margin between current crop year exports and the previous record level continues to widen. The total of 991.9 million bushels of wheat and flour exported from Canada, United States, Argentina and Australia during the August-February period of the current Canadian crop year, represents an increase of 25 per cent over the previous record level of 794.1 million exported during the same period in 1961-62. This year's August-February shipments of wheat and flour also surpassed last year's comparable level of 622.5 million and the ten-year (1952-53-1961-62) average for the period of 526.8 million by the wide margins of 59 per cent and 88 per cent, respectively. Exports from each of the four major exporting countries were at higher levels this year than last although the bulk of the increase was accounted for by the large volume of shipments from United States and Canada, with these two countries accounting for 48 per cent and 32 per cent of the total, respectively. Exports of Australian wheat, accounting for 16 per cent of the current total, are almost double last season's comparable level. Shipments from Argentina are 4 per cent above those of a year ago.

Exports of Wheat and Flour in Terms of Wheat, August 1963-February 1964 with Comparisons

August-February	United States	Canada	Argentina	Australia	Total
- million bushels -					
1950-51	160.2	119.6	42.6	70.0	392.4
1951-52	280.4	177.6	23.8	56.2	538.0
1952-53	197.7	207.8	3.2	45.9	454.6
1953-54	111.0	152.7	69.2	34.7	367.6
1954-55	154.8	152.3	78.2	53.9	439.2
1955-56	145.2	138.9	72.8	48.6	405.5
1956-57	300.7	160.6	51.2	81.9	594.4
1957-58	224.8	173.4	42.1	42.8	483.1
1958-59	254.5	165.9	52.4	43.9	516.7
1959-60	256.3	170.0	31.0	69.3	526.6
1960-61	374.1	177.4	46.7	87.9	686.1
1961-62	413.2	220.6	34.5	125.8	794.1
1962-63 1/	312.2	188.9	42.5	78.9	622.5
1963-64 2/	473.9	319.6	44.1	154.3	991.9

1/ Revised. 2/ Preliminary.

Wheat Supplies of Four Major Exporters 4 Per Cent Below a Year Ago

Supplies of wheat held by the four traditional major exporters at March 1, 1964 for export and for carryover at the end of their respective crop years amounted to 2,273.7 million bushels compared with 2,363.4 million at the same time a year ago. Reduced supplies in United States and Australia more than offset larger totals in Canada and Argentina. Supplies at March 1, 1964, in millions of bushels, were held as follows, with last year's comparable figures in brackets: United States, 1,200.7 (1,472.8); Canada, 736.1 (629.6); Argentina, 140.3 (55.8); and Australia, 196.6 (205.2).

Near Record 1963
World Bread Grain
Crop Confirmed

According to the March 1964 edition of World Agricultural Production and Trade, published by the United States Department of Agriculture revised estimates place 1963 world breadgrain production at 282 million short tons, slightly above the previous estimate. Latest information available to the Foreign Agricultural Service shows larger outturns than had been expected for Southern Hemisphere countries; this accounts for most of the increase. Upward revisions in wheat were especially marked in Argentina and Australia.

The present total of 282 million tons of breadgrains has been exceeded only twice. The high level is due to a near-record wheat harvest, which is only partially offset by a small rye harvest, the smallest of many years.

World wheat production is now estimated at 8,270 million bushels; only in 1958 and 1962 have there been larger world outturns. In both those years large harvests in the Soviet Union contributed to the high levels of the world total. In 1963, in contrast, the Soviet Union's crop was poor, while the total for the remainder of the world was at an all-time high.

World rye production has been declining for a number of years and reached a low point of 1,195 million bushels in 1963. This contrasts with the 1955-59 average of 1,440 million bushels and the high of 1,730 million during 1935-39.

North America's wheat production of 1,927 million bushels is at a new high, with record harvests in Canada and Mexico and well above average in the United States. Some increase in acreage is reported for each of the three leading producers. Canada and Mexico reported higher per-acre yields than in 1962 while U.S. yields remained the same both years. Rye production in North America is reported at 42 million bushels, compared with 53 million in 1962 and the low 1955-59 average of 36 million.

Western Europe's wheat crop of 1,340 million bushels is 17 per cent below the record 1962 harvest but is still above the 1955-59 average despite a somewhat smaller acreage. Both acreage and per acre yields were below the high level of 1962. Reductions were greatest in France, Italy, and the United Kingdom. West Germany is the only country showing a significant increase. Total rye production in Western Europe, as estimated at 225 million bushels, is slightly below the 1962 harvest and about 16 per cent less than during 1955-59. Acreage has declined 22 per cent since that period.

Wheat production in Eastern Europe is estimated at 620 million bushels, slightly above the large 1962 outturn and 14 per cent above the 1955-59 average. Larger outturns than last year in Yugoslavia and Poland were the principal gains and these were partly offset by reductions in most other countries of the area. The rye harvest was only slightly above the poor 1962 crop in Eastern Europe. Increased production reported for Poland was offset by reductions elsewhere.

Poor crops of both wheat and rye were harvested in the Soviet Union. Unfavourable weather in the winter and spring wheat areas brought yields to the lowest point of many years. A succession of drought years in the important spring wheat area of the "new lands" had reduced soil moisture to a point that yields there were disastrously low. Production is estimated to be only three fourths of the 1962 crop of 2 billion bushels. Rye production was also down, although the reduction was moderate compared with the sharp reduction in wheat.

International Wheat Council
Cumulative Totals of Commercial Purchases by Importing Countries from Exporting Countries
Crop Year 1963-64 — Through February 29, 1964

Importing Countries	EXPORTING COUNTRIES								Total Purchases
	Canada	Argentina	Australia	France	Italy	Sweden	U.S.S.R.	U.S.A.	
- thousand bushels -									
Austria.....	525	-	-	655	-	-	-	116	1,296
Belgium & Luxembourg.....	14,150	1,009	-	5,374	-	7	110	4,349	24,999
Brazil.....	-	11,207	-	-	-	-	-	7,197	18,404
Costa Rica.....	571	-	-	-	-	-	-	855	1,426
Cuba.....	-	-	-	67	-	-	-	-	67
Dominican Republic.....	726	-	-	-	-	-	-	605	1,331
El Salvador.....	963	-	-	1	-	-	-	853	1,817
Finland.....	357	-	-	-	-	-	-	224	581
Germany, Federal Republic.	37,199	7,225	7,833	4,371	-	92	-	18,076	74,796
Greece.....	15	-	-	-	-	-	-	191	206
Guatemala.....	493	-	-	-	-	-	-	1,373	1,866
Iceland.....	-	-	-	5	-	-	-	75	80
India.....	-	-	7,033	1	-	-	-	1	7,035
Indonesia.....	-	-	168	-	-	-	-	1	169
Ireland.....	2,291	-	2,190	14	-	-	-	272	4,767
Israel.....	1,590	-	148	-	-	-	-	2,167	3,905
Japan.....	38,340	-	14,569	-	-	-	-	53,801	106,710
Korea.....	511	-	1,539	-	-	-	-	3,649	5,699
Liberia.....	54	-	-	-	824	-	-	63	941
Libya.....	-	-	-	89	-	-	-	277	366
Netherlands.....	3,305	2,959	1	1,910	-	110	2,719	19,506	30,510
Netherlands Territories.	193	-	16	11	-	-	-	561	781
New Zealand.....	-	-	5,041	-	-	-	-	-	5,041
Nigeria.....	523	-	-	13	-	-	-	1,877	2,413
Norway.....	1,667	-	4,188	115	-	688	-	3,851	10,509
Peru.....	1,174	7,677	7	24	-	-	-	3,397	12,279
Philippines.....	8,118	-	2,138	-	-	-	-	7,287	17,543
Portugal.....	29	411	12	334	-	-	-	4,847	5,633
Portuguese Territories..	342	-	979	-	-	-	-	1,155	2,476
Rhodesia & Nyasaland.....	58	-	2,462	2	-	-	-	112	2,634
Saudi Arabia.....	824	-	658	2	1	-	-	2,774	4,259
Sierra Leone.....	385	-	-	3	-	-	-	55	443
South Africa.....	3,061	-	-	-	-	-	-	3,036	6,097
Switzerland.....	8,203	179	-	1,313	31	20	-	1,785	11,531
Tunisia.....	-	-	-	-	-	-	-	-	-
United Arab Republic.....	-	-	-	-	-	-	1,867	6	1,873
United Kingdom.....	94,669	5,738	26,264	9,116	4	240	-	18,968	154,999
U.K. Territories.....	3,227	-	4,195	299	-	-	-	1,605	9,326
Vatican City.....	205	-	-	-	-	-	-	-	205
Venezuela.....	6,808	-	-	-	-	-	-	8,031	14,839
Western Samoa.....	-	-	84	-	-	-	-	1	85
To Orders.....	-	8,165	-	5,570	-	-	-	-	13,735
Totals.....	230,576	44,570	79,525	29,289	860	1,157	4,696	172,999	563,672
Percentage of Total Sales by Exporting Countries....	40.91	7.91	14.11	5.20	.15	.21	.83	30.68	100.00

NOTE: Mexico - no sales reported to October 31, 1963.
Spain - no sales reported.

Argentina - quantities cover period ending January 31, 1964.
Italy - quantities cover period ending February 15, 1964.
U.S.S.R. - quantities cover period ending September 14, 1963.

CANADIAN SITUATION

Supplies Remain at Record Level Total estimated supplies of wheat for the 1963-64 crop year are placed at an all-time high of 1,210.7 million bushels, consisting of the August 1 carryover of 487.2 million and the 1963 crop, estimated at a record 723.4 million bushels. Supplies of the size indicated represent a 27 per cent increase over the 956.6 million of a year ago and surpass by 5 per cent the previous peak of 1,152.8 million bushels established in 1956-57. After making an allowance of 155.0 million bushels for anticipated domestic requirements, supplies available for export and for carryover during 1963-64 amount to 1,055.7 million bushels, 29 per cent above the 818.5 million in 1962-63.

Exports 11 Per Cent Ahead of Record Total exports of wheat and flour during the August-February period of the current crop year amounted to the unprecedented level of 319.6 million bushels, exceeding by 11 per cent the previous peak of 287.7 million shipped during the same period in 1928-29 and surpassing by 69 per cent last season's comparable total of 188.9 million. Of the current total, shipments of wheat as grain accounted for some 289.9 million bushels as against 173.4 million a year ago. The equivalent of 29.7 million bushels was exported in the form of wheat flour compared with 15.5 million during the August-February period last year. The balance remaining on March 1, 1964 for export and for carryover amounted to 736.1 million bushels, 17 per cent larger than the March 1, 1963 total of 629.6 million.

Canadian Wheat Supplies

Item	1962-63 <u>1/</u>	1963-64 <u>2/</u>
	- million bushels -	
Carryover in North America at beginning of crop year (August 1).....	391.1	487.2
Production.....	565.6	723.4
Imports of wheat for domestic use, August-February..	<u>3/</u>	<u>4/</u>
Total estimated supplies.....	956.6	1,210.7
Less estimated domestic requirements for crop year..	138.1	155.0 <u>1/</u>
Available for export and for carryover.....	818.5	1,055.7
Deduct:		
Exports of wheat in bulk, August-February <u>5/</u>	171.2	288.0
Exports of bagged seed wheat, August-February <u>6/</u> ..	2.2	1.9
Total exports of wheat as grain.....	173.4	289.9
Exports of wheat flour in terms of wheat, August - February <u>6/</u>	15.5	29.7
Total exports of wheat and wheat flour.....	188.9	319.6
Balance on March 1 for export and for carryover.....	629.6	736.1

1/ Revised. 2/ Preliminary. 3/ Less than 50,000 bushels. 4/ Not available.

5/ As reported by the Board of Grain Commissioners. (Includes overseas clearances and imports into the United States). 6/ Customs returns, 1962-63 adjusted for time lag.

February 1964 Exports of
Wheat and Flour Total
28.9 Million Bushels

Total exports of wheat in bulk, bagged seed wheat and wheat flour in terms of grain equivalent during February 1964 amounted to 28.9 million bushels, 35 per cent above the 21.3 million exported a year ago, 45 per cent greater

than the ten-year (1953-62) average for the month of February of 20.0 million, but 19 per cent below the January 1964 level of 35.5 million bushels. Exports of wheat in bulk (as reported by the Board of Grain Commissioners) during February 1964 totalled 21.7 million bushels, 31 per cent above the ten-year average for the month of 16.5 million, 15 per cent more than the 18.8 million of February last year but 24 per cent less than the January 1964 total of 28.5 million bushels. Exports of bagged seed wheat during February 1964, based on Canadian Customs returns, amounted to 501 thousand bushels compared with the January figure of 482 thousand and the February 1963 total (adjusted to remove time lag) of 743 thousand bushels. Customs returns also indicate that the equivalent of 6.7 million bushels of wheat was exported in the form of flour during February 1964 the largest total ever recorded for that month. In addition the February 1964 exports of wheat flour were in sharp contrast to the adjusted February 1963 total of 1.8 million and 2 per cent above the January 1964 figure of 6.6 million bushels equivalent.

Cumulative exports of wheat in bulk during the period August 1963-February 1964 amounted to 288.0 million bushels, representing an increase of 68 per cent over the comparable 1962-63 total of 171.2 million and nearly double the ten-year average for the period of 147.1 million. Clearances to the U.S.S.R. totalled 6.6 million bushels during the month of February 1964 and raised the cumulative crop year total to that destination to 104.5 million. This total represented 36 per cent of the seven-month total exports of Canadian wheat in bulk form. Shipments of wheat to Britain amounted to 45.3 million bushels and accounted for 16 per cent of the August-February 1963-64 total. During the same period of 1962-63 there were no shipments of wheat to the U.S.S.R. while those to Britain amounted to 44.2 million bushels and represented 26 per cent of the August-February total. Other principal markets for Canadian wheat in bulk during the first seven months of the current crop year, with figures for the same period of the preceding crop year in brackets, were as follows, in millions of bushels: Japan, 28.8 (24.2); Federal Republic of Germany, 25.0 (18.8); China Communist, 19.8 (30.6); Belgium and Luxembourg, 13.1 (6.4); Poland, 7.3 (14.2); Switzerland, 4.3 (1.7); and Venezuela, 4.0 (4.1). Cumulative exports of bagged seed wheat during August-February of the current crop year, based on Canadian Customs returns, amounted to 1,947 thousand bushels compared with last year's comparable total (adjusted to remove time lag) of 2,198 thousand.

Cumulative exports of wheat flour during the first seven months of the 1963-64 crop year, based on Customs returns, were the equivalent of 29.7 million bushels, nearly double the adjusted August 1962-February 1963 total of 15.5 million bushels. U.S.S.R. (Russia) and Britain were the two major markets for Canadian wheat flour during the period under review. Shipments of wheat flour to the U.S.S.R. during the August-February period of the current crop year amounted to the equivalent of 11.2 million bushels and accounted for 38 per cent of the seven-month total while those to Britain, at 7.1 million bushels, represented 24 per cent of the August 1963-February 1964 exports of wheat flour. During the same months of the 1962-63 crop year there were no shipments of flour to the U.S.S.R. but shipments of wheat flour to Britain amounted to the equivalent of 6.7 million bushels and represented 43 per cent of the total. Other leading markets for Canadian wheat flour in terms of grain equivalent during the August-February period of the 1963-64 crop year, with revised data for the same months of the preceding crop year in brackets, were as follows, in thousands of bushels: Cuba, 3,147 (nil); Jamaica, 931 (816); Trinidad, 837 (754); Hong Kong, 651 (582); Leeward and Windward Islands, 625 (533); Ghana, 605 (1,103); Ceylon, 586 (1); and United States, 560 (752).

Visible Supplies During the five-week period February 20 to March 25, 1964, deliveries of wheat from farms have been exceeded by the combined
Record Gradual export and domestic disappearance and as a result, the visible
Decline supply of Canadian wheat has recorded a slight downward trend.

Primary marketings (east and west) amounted to some 26.1 million bushels during the five-week period under review as opposed to 40.8 million entering domestic and export channels and, as a result, the total visible supply of Canadian wheat decreased from a level of 368.5 million bushels at February 19 to 353.3 million at March 25.

The total visible supply of Canadian wheat at March 25 this year represented a decrease of 9 per cent from the 1963 comparable total of 386.4 million but 3 per cent more than the 1962 figure of 342.6 million. Stocks in country elevators amounted to 205.3 million bushels compared with 212.0 million in this position a year ago and 173.6 million two years ago. This year's supplies in country elevators at March 25 accounted for 58 per cent of the total visible wheat supply compared with the 1963 and 1962 corresponding percentages of 55 per cent and 51 per cent, respectively. Interior terminal stocks, at 5.6 million bushels were slightly above the 1963 figure of 5.3 million but considerably less than the 10.2 million of 1962. The 18.7 million bushels "in transit rail" (Western Division) represented increases over both the 1963 total of 16.4 million and the 1962 figure of 16.0 million. Supplies at the Canadian Lakehead, at March 25 this year, amounted to 66.0 million bushels, 14 per cent above last year's comparable total of 58.2 million and 17 per cent more than the 56.5 million bushels in this position two years ago. Supplies in Bay, Lake and Upper St. Lawrence ports, at 9.7 million bushels, were sharply below both the 28.4 million of last year and the 29.0 million of 1962. Stocks of Canadian wheat in "Storage Afloat" at March 25, 1964, amounted to 10.4 million bushels as against 16.6 million the previous year and 12.5 million in 1962. The 13.4 million bushels in Lower St. Lawrence and Maritime ports were sharply reduced from both the 22.3 million of last year and the 20.7 million of two years ago. On the west coast, total supplies in Vancouver-New Westminster, Victoria and Prince Rupert at March 25, 1964, at 8.8 million bushels, were lower than the previous years' corresponding total of 11.2 million but above the 8.5 million bushels in 1962.

General Quota By March 30, 1964 out of a total of 1,921 shipping points in the
Position Western Division, the Canadian Wheat Board had placed 386 points on a delivery quota of 7 bushels per specified acre, 897 on a 6-bushel quota and 603 on a 5-bushel quota. Of the remainder 26 points were on a 4-bushel quota and nine stations were reported as "closed".

Summary of Elevator Shipping Points in the Western Division
as at March 30, 1964

Province	General Quota in Bushels per Specified Acre				Closed	Total
	Four	Five	Six	Seven		
Ontario.....	-	-	-	1	-	1
Manitoba.....	-	53	172	118	2	345
Saskatchewan.....	8	408	515	105	6	1,042
Alberta.....	18	142	210	157	1	528
British Columbia.....	-	-	-	5	-	5
All Provinces.....	26	603	897	386	9	1,921

Area Intended
for Wheat 1964

On the basis of farmers' intentions at March 1, Canadian farmers plan to plant a record 29.1 million acres to all classes of wheat in 1964. Other major land use changes include a prospective 61 per cent increase in the acreage seeded to rape-seed and 11 per cent increases in acreage planted to flaxseed and corn for grain.

Intended Acreage of Spring Wheat in Canada, as at March 1, 1964
Compared with Acreages in 1963

Province	Acreage Seeded in 1963 ^{1/} acres	Acreage Intended to be Seeded in 1964		
		Per Cent of 1963	Area 1964 ^{1/} acres	Indicated Change acres
Prince Edward Island.....	5,300	100	5,300	unchanged
Nova Scotia.....	1,000	100	1,000	unchanged
New Brunswick.....	2,300	109	2,500	+ 200
Quebec.....	8,300	97	8,100	- 200
Ontario.....	17,000	100	17,000	unchanged
Manitoba.....	3,153,000	107	3,375,000	+ 222,000
Saskatchewan.....	17,910,000	105	18,800,000	+ 890,000
Alberta.....	5,933,000	107	6,330,000	+ 397,000
British Columbia.....	94,300	105	99,000	+ 4,700
Totals.....	27,124,200	106	28,637,900	+ 1,513,700

^{1/} For provinces other than Ontario includes relatively small acreages of winter wheat for which annual estimates are not available.

Based on farmers' intentions at March 1 the acreage seeded to all classes of wheat will be 29.1 million acres an increase of six per cent over the 1963 seedings, and 4.4 million acres or 18 per cent above the 1958-62 average. In Manitoba the increase in acreage may be 7 per cent, in Saskatchewan 5 per cent, and in Alberta 7 per cent.

Prospective plantings of spring wheat of 28.6 million acres are up 6 per cent over the 1963 acreage and 19 per cent above the 1958-62 average. Durum wheat is included with the spring wheat figures, but in view of the interest shown by Prairie farmers in this crop, intended acreage was obtained separately. The results indicate that a 5 per cent decrease in acreage is planned for this spring. If the acreage intentions are carried out Prairie farmers will plant 2,053,000 acres to this crop compared with 2,170,000 grown in 1963 and the 1958-62 average of 1,658,400 acres. All Canada spring wheat acreage excluding durum may total 26.6 million in 1964 compared with 25.0 million planted in 1963 and the 1958-62 average of 22.5 million. The 0.5 million acres seeded to winter wheat last fall in Ontario is some 4 per cent greater than the previous year but 9 per cent below the 1958-62 average.

Intended Acreage of Spring Wheat ^{1/} in the Prairie Provinces
As at March 1, 1964, Compared with Estimated Acreage 1963

Crop	Manitoba		Saskatchewan		Alberta		Prairie Provinces	
	1963	1964	1963	1964	1963	1964	1963	1964
- thousand acres -								
Wheat, all spring....	3,153	3,375	17,910	18,800	5,933	6,330	26,996	28,505
Durum.....	140	123	1,796	1,700	234	230	2,170	2,053
Other spring.....	3,013	3,252	16,114	17,100	5,699	6,100	24,826	26,452

^{1/} Includes a relatively small acreage of winter wheat.

Farmers' Marketings ^{1/} of Wheat in the Prairie Provinces 1963-64

Week Ending		Manitoba	Saskatchewan	Alberta	Total	Last Year
- bushels -						
August	7, 1963...	5,607	49,346	16	54,969	64,682
	14	107,808 ^{2/}	180,957	199,749	488,514 ^{2/}	217,040
	21	171,927	507,568	134,487	813,982	1,215,068
	28	418,689	2,215,916	324,163	2,958,768	3,806,243
September	4	1,180,171	1,906,057	583,877	3,670,105	5,053,798
	11	1,505,137 ^{2/}	4,022,800	1,886,765	7,414,702 ^{2/}	10,029,156
	18	923,910 ^{2/}	5,604,941	2,449,570	8,978,421 ^{2/}	11,586,794
	25	527,179	4,091,520	1,672,602	6,291,301	17,353,283
October	2	897,896	5,940,764	2,766,137	9,604,797	21,147,418
	9	991,898	7,917,939	2,398,902	11,308,739	18,454,109
	16	1,229,961	6,090,935	1,468,255	8,789,151	11,545,726
	23	1,757,450 ^{2/}	7,878,678	1,922,268	11,558,396	11,158,617
	30	2,684,196 ^{2/}	10,340,541	1,964,809	14,989,546 ^{2/}	10,315,831
November	6	2,456,981 ^{2/}	10,317,922	2,506,806	15,281,709 ^{2/}	10,256,475
	13	1,961,553	9,352,062	2,285,644	13,599,259	9,436,356
	20	2,166,743	10,866,244	2,299,453	15,332,440	10,365,650
	27	1,634,110	8,450,399	1,763,585	11,848,094	11,322,633
December	4	1,675,155	12,895,482	2,958,327	17,528,964	10,629,305
	11	1,834,277	14,091,997	3,430,903	19,357,177	11,135,337
	18	809,924	7,114,341	2,176,998	10,101,263	13,430,250
	23	772,650	4,685,432	1,834,729	7,292,811	13,641,722
	30	896,593	8,228,088	2,114,472	11,239,153	8,379,852
January	8, 1964...	1,960,032 ^{2/}	9,382,077	4,457,844	15,799,953	6,527,399
	15	1,095,206 ^{2/}	11,147,003	4,478,272	16,720,481 ^{2/}	8,831,404
	22	1,004,626	11,046,582	4,216,919	16,268,127	3,745,528
	29	328,145	3,172,189	2,195,060	5,695,394	1,829,980
February	5	653,099	6,699,397	3,687,396 ^{2/}	11,039,892	5,498,303
	12	505,890	4,774,844	2,681,419 ^{2/}	7,962,153 ^{2/}	10,798,166
	19	327,771	4,464,188	2,792,607	7,584,566	8,158,602
	26	263,900	3,439,055	2,116,665	5,819,620	4,298,682
March	4	188,991	2,706,690	2,328,892	5,224,573	5,870,916
	11	315,807	2,515,004	2,137,479	4,968,290	6,205,965
	18	350,340	3,011,709	2,160,895	5,522,944	5,202,224
	25	176,886	2,839,918	1,377,878	4,394,682	5,737,707
Totals.....		33,780,508	207,948,585	73,773,843	315,502,936	293,250,221

Average similar period:

1952-53--1961-62.. 21,342,495 122,266,296 60,268,353 203,877,144

^{1/} Includes receipts at country, interior private and mill elevators, interior semi-public terminals and platform loadings. ^{2/} Revised.

Visible Supply of Canadian Wheat, March 25, 1964
Compared with Approximately the Same Date, 1962 and 1963

Position	1962	1963	1964
- thousand bushels -			
Country elevators - Manitoba.....	24,872	28,905	20,266
Saskatchewan.....	92,035	121,718	126,204
Alberta.....	56,664	61,395	58,819
Totals.....	173,570	212,017	205,289
Interior private and mill.....	7,499	7,950	7,715
Interior terminals.....	10,214	5,326	5,565
Vancouver-New Westminster.....	8,241	10,261	7,786
Victoria.....	233	507	499
Prince Rupert.....	-	389	551
Churchill.....	4,829	4,857	4,759
Fort William-Port Arthur.....	56,452	58,181	66,047
Storage afloat.....	681	-	-
In transit rail (Western Division).....	16,025	16,394	18,690
Bay, Lake and Upper St. Lawrence ports.....	29,046	28,418	9,744
Lower St. Lawrence and Maritime ports.....	20,732	22,279	13,413
Storage afloat.....	12,532	16,566	10,409
In transit rail (Eastern Division).....	2,513	3,219	2,835
Totals.....	342,566	386,365	353,303

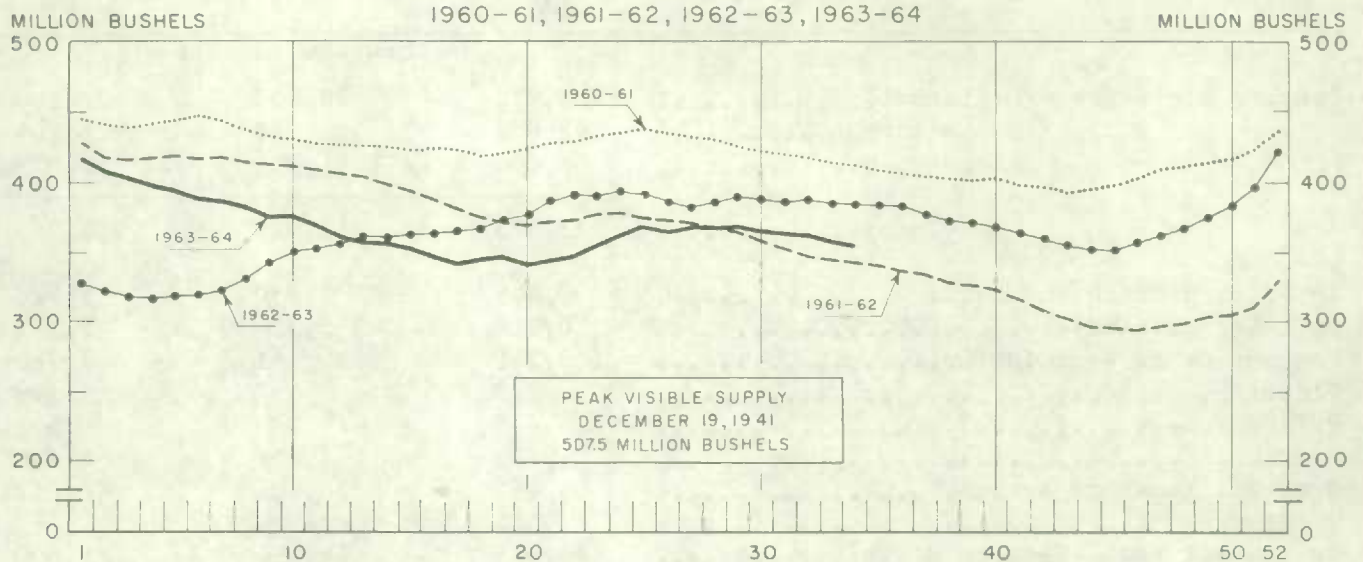
Grading of Wheat Inspected, August 1963 - February 1964 with Comparisons

Grade	Crop Year		August-February			
	Average					
	1957-58	1962-63	1962-63		1963-64	
	1961-62					
	per cent	per cent	cars	per cent	cars	per cent
No. 1 Hard.....	1/	1/	11	1/	1	1/
No. 1 Man. Northern.....	5.3	12.1	15,782	13.5	7,084	4.1
No. 2 Man. Northern.....	34.4	38.4	45,133	38.5	72,810	42.3
No. 3 Man. Northern.....	26.0	14.9	16,146	13.8	44,839	26.0
No. 4 Man. Northern.....	12.1	11.4	11,731	10.0	15,871	9.2
No. 5 Wheat.....	5.5	5.7	5,282	4.5	9,080	5.3
No. 6 Wheat.....	1.1	0.9	1,353	1.2	1,403	0.8
Feed Wheat.....	1/	1/	14	1/	14	1/
Others Red Spring.....	9.4	8.0	7,537	6.4	7,213	4.2
C.W. Garnet.....	0.1	0.1	117	0.1	700	0.4
C.W. White Spring.....	0.1	0.1	172	0.1	128	0.1
C.W. Mixed Wheat.....	1/	1/	41	1/	83	1/
Alberta Winter.....	0.2	0.2	426	0.4	1,847	1.1
Nos. 1-6 C.W. Amber Durum....	5.6	7.7	12,703	10.8	10,689	6.2
Others C.W. Amber Durum.....	0.2	0.5	711	0.6	404	0.2
Totals.....	100.0	100.0	117,159	100.0	172,166	100.0

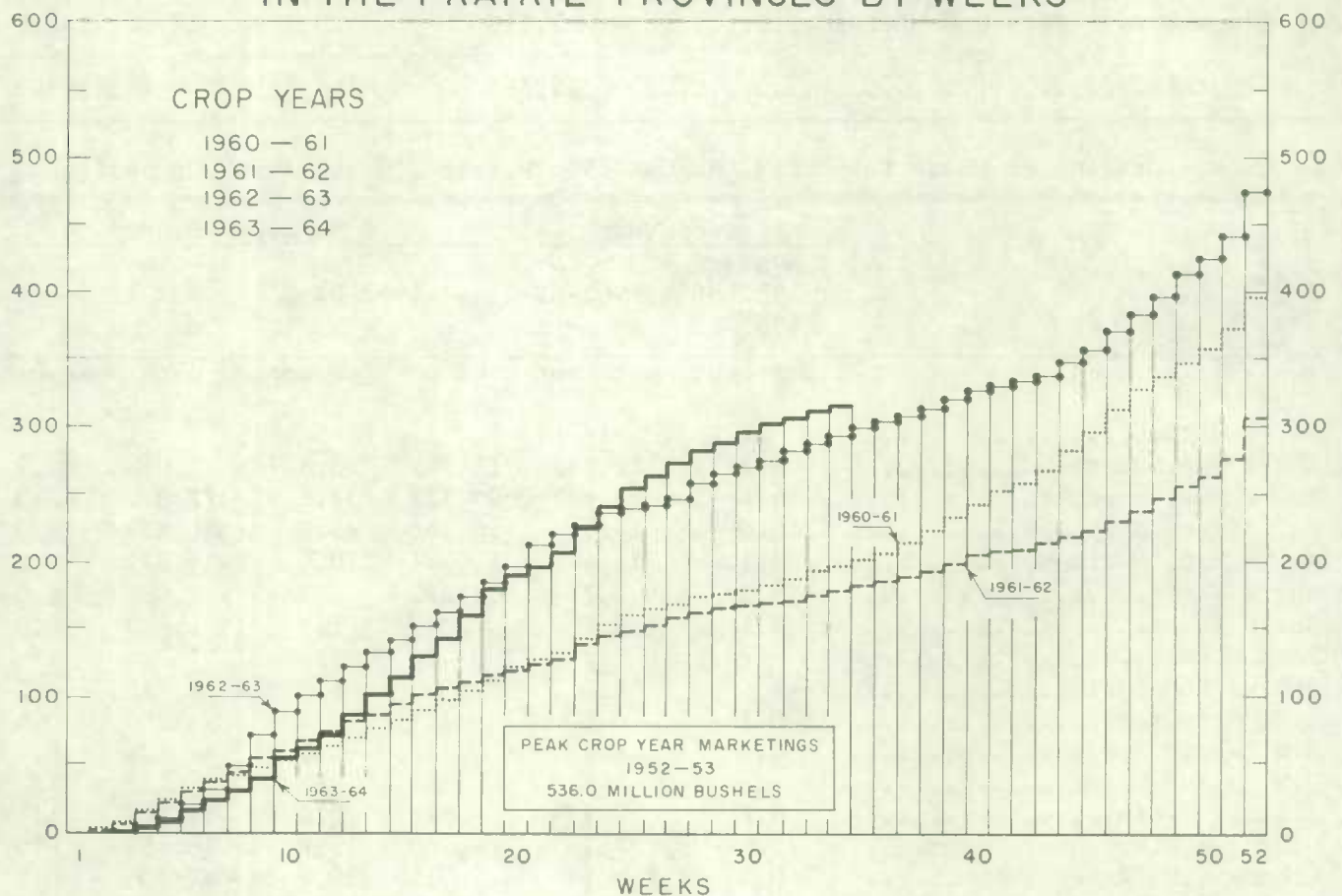
Gross bushels (approx.)..... 223,437,000 330,860,000

1/ Less than .05 per cent.

WEEKLY VISIBLE SUPPLY OF CANADIAN WHEAT



CUMULATIVE RECORD OF WHEAT MARKETINGS IN THE PRAIRIE PROVINCES BY WEEKS



(Data in both charts for crop years beginning August 1)

Wheat Shipments to the United States by Destination Total rail and vessel shipments of wheat to the United States, either for re-export or retention for domestic use, from the beginning of the current crop year to March 25, 1964 amounted to 213 thousand bushels. During the comparable periods of 1962-63 and 1961-62 shipments amounted to 286 thousand and 578 thousand bushels, respectively. Of this season's total to date some 58 per cent has been shipped by vessel.

Wheat Shipments* to the United States by Destination
August 1, 1963 - March 25, 1964
with Comparisons

Destination	1961-62	1962-63	1963-64
- bushels -			
<u>By Vessel</u>			
Chicago.....	100,000	84,750	-
Duluth-Superior.....	420,978	115,208	123,729
Totals, Vessel.....	520,978	199,958	123,729
<u>By Rail</u>			
U.S.A. Domestic Points.....	56,636	85,959	88,840
Totals, Shipments.....	577,614	285,917	212,569

* Either for re-export or retention for domestic use. Excluding bagged seed.

Rail Shipments of Wheat to Maritime Ports Rail shipments of wheat to Maritime Ports from Bay, Lake and Upper St. Lawrence Ports during the first seven months of the current crop year totalled 31.4 million bushels in contrast to the August 1962 - February 1963 figure of 14.7 million.

Rail Shipments of Wheat to Maritime Ports from Bay, Lake
and Upper St. Lawrence Ports

Origin of Shipments	August 1, 1962- February 28, 1963	August 1, 1963- February 29, 1964
- bushels -		
Port McNicoll.....	5,802,391	9,654,600
Midland, Tiffin.....	5,271,244	10,765,633
Collingwood.....	97,646	910,969
Owen Sound.....	1,651,851	3,737,000
Goderich.....	233,210	2,384,278
Sarnia.....	1,658,054	2,847,132
Port Colborne.....	-	254,500
Peterborough.....	-	841,367
Totals.....	14,714,396	31,395,479

Rail Shipments of Wheat from Fort William-Port Arthur, 1960-61--1963-64

Month	1960-61	1961-62	1962-63	1963-64
- bushels -				
August.....	14,717	20,648	13,933	5,500
September.....	19,227	14,598	11,657	9,104
October.....	5,417	33,944	22,716	25,355
November.....	24,000	22,915	12,024	13,500
December.....	17,500	60,167	12,778	23,047
January.....	71,335	126,533	39,534	58,772
February.....	135,339	68,421	22,967	28,768
March.....	28,073	37,000	86,398	
April.....	9,833	37,777	69,067	
May.....	15,805	11,203	11,851	
June.....	17,563	16,022	15,746	
July.....	10,940	17,315	11,158	
Totals.....	369,749	466,543	329,829	

Distribution of Rail Shipments of Wheat from Fort William-Port Arthur, February 1964

Grade	New Brunswick	Quebec	Ontario
- bushels -			
5 Wheat.....	-	1,500	-
6 Wheat.....	4,500	7,500	-
Durum.....	-	6,000	-
Others.....	-	6,000	3,268
Totals.....	4,500	21,000	3,268

Overseas Exports of Canadian Grain by Ports of Loading, August 1, 1963-March 25, 1964
with Comparisons

Port	Wheat <u>1/</u>	Durum Wheat <u>1/</u>	Oats <u>1/</u>	Barley	Rye	Flaxseed	Rapeseed <u>2/</u>
- bushels -							
<u>Pacific Seaboard</u>							
Van.-New West.	100,494,731	-	10,668,246	9,199,665	1,322,354	4,420,726	3,549,612
Victoria.....	4,852,640	-	-	-	-	-	-
Prince Rupert.....	6,154,775	-	-	-	-	-	-
<u>Churchill</u>	21,680,276	-	-	-	-	-	-
<u>Lakehead Direct</u>	2,618,182	724,245	1,525,363	1,913,096	620,519	866,221	-
<u>Kingston Direct</u>	818,460	-	-	-	-	-	-
<u>St. Lawrence</u>							
Montreal.....	53,205,230	8,832,080	475,939	180,145	364,809	1,595,720	-
Sorel.....	12,286,544	1,514,329	-	-	-	206,698	-
Three Rivers.....	12,489,472	2,633,978	228,193	-	-	359,133	-
Quebec.....	10,365,548	-	-	-	439,707	-	-
Baie Comeau.....	25,551,764	205,763	-	-	89,887	283,961	-
<u>Maritime</u>							
Saint John.....	2,420,229	-	185,010	-	-	-	-
West Saint John.....	22,122,069	1,790,059	-	-	-	379,550	-
Halifax.....	15,935,485	156,591	-	-	-	-	-
Totals.....	290,995,405	15,857,045	13,082,751	11,292,906	2,837,276	8,112,009	3,549,612
Aug. 1, 1962-Mar. 27, 1963.	175,692,502	13,207,537	9,216,507	4,140,179	5,473,280	8,499,430	4,049,231

1/ Excluding bagged seed.

2/ In bushels of 50 pounds.

Freight Assistance Shipments Claims filed for payment up to February 29, 1964 represent the movement of 8,264 thousand bushels of wheat from the Prairie Provinces to Eastern Canada and British Columbia under the freight assistance policy during the August-January period of the 1963-64 crop year. During the same months last year claims had been filed for a total of 4,988 thousand bushels, indicating on the assumption of approximately the same rate of submission of claims during both the current and preceding crop years that the August-January shipments of wheat under the policy were running about 66 per cent above those of 1962-63. Revised data on the August-January 1962-63 shipments of wheat based on claims submitted up to February 29, 1964 place the six-month total at 5,279 thousand bushels. The bulk of the shipments during the current six months under review went to destinations in Quebec and Ontario with these two provinces accounting for 39 per cent and 34 per cent of the total, respectively.

Provincial Distribution of Wheat Shipments under the Freight Assistance Policy
August - January 1963-64 and 1962-63

Month	Nfld.	P.E.I.	N.S.	N.B.	Que.	Ont.	B.C.	Total
- thousand bushels -								
August, 1963.....	18	15	143	43	591	515	99	1,424
September.....	17	12	155	57	620	685	181	1,728
October.....	21	14	187	73	650	631	230	1,806
November.....	70	12	157	46	532	378	134	1,330
December.....	14	12	133	42	440	336	98	1,075
January, 1964.....	7	10	140	37	396	291	20	901
Totals 1/.....	147	75	914	299	3,230	2,836	763	8,264
Same period 1962-63:								
Preliminary 2/.....	43	45	255	127	2,113	1,630	774	4,988
Revised 1/.....	57	49	273	148	2,171	1,682	898	5,279

Preliminary data on millfeed shipments under the freight assistance policy indicate shipments of 248,131 tons during the August-January period of the current crop year. During the same six months of 1962-63 claims had been filed for a total of 218,566 tons, indicating on the assumption of approximately the same rate of submission of claims during both the current and preceding crop years that the August-January shipments of millfeeds under the policy were running about 14 per cent above those of 1962-63. Revised data on the 1962-63 August-January shipments of millfeeds based on claims submitted up to February 29, 1964 place the six-month total at 238,816 tons. As with freight-assisted shipments of wheat, the greater portion of the millfeed shipments during the period under review went to destinations in Quebec and Ontario.

Provincial Distribution of Millfeed Shipments under the Freight Assistance Policy
August-January 1963-64 and 1962-63

Province	1962-63		1963-64
	Preliminary 2/	Revised 1/	Preliminary 1/
- tons -			
Newfoundland.....	3,026	4,082	3,034
Prince Edward Island.....	3,680	3,863	3,921
Nova Scotia.....	16,039	16,840	15,463
New Brunswick.....	12,252	14,357	13,935
Quebec.....	109,502	117,853	120,320
Ontario.....	57,095	62,425	75,936
British Columbia.....	16,972	19,396	15,522
Totals.....	218,566	238,816	248,131

1/ Based on claims filed up to February 29, 1964.

2/ Based on claims filed up to February 28, 1963.

Monthly Exports of Canadian Wheat and Wheat Flour

Year and Month	Wheat in Bulk <u>1/</u>	Bagged Seed Wheat <u>2/</u>	Total Wheat	Wheat Flour <u>2/</u> <u>3/</u>	Total <u>3/</u> Wheat and Wheat Flour
- thousand bushels -					
<u>1961-62</u>					
August.....	35,625	89	35,714	3,123	38,837
September.....	28,966	242	29,209	2,786	31,995
October.....	32,910	86	32,996	2,391	35,386
November.....	40,823	377	41,200	3,150	44,351
December.....	19,966	392	20,359	2,643	23,002
January.....	17,534	458	17,992	2,304	20,295
February.....	23,739	433	24,173	2,546	26,719
March.....	20,482	574	21,056	2,968	24,023
April.....	24,981	539	25,520	2,389	27,909
May.....	35,150	77	35,227	2,486	37,713
June.....	23,559	5	23,564	2,456	26,020
July.....	19,016	44	19,060	2,711	21,772
Totals.....	322,752	3,317	326,069	31,953	358,022
<u>1962-63</u>					
August.....	21,944	157	22,101	2,852	24,953
September.....	25,040	200	25,240	2,604	27,844
October.....	29,705	31	29,737	2,181	31,917
November.....	33,309	144	33,452	2,176	35,628
December.....	20,949	451	21,399	2,305	23,705
January.....	21,486	473	21,959	1,586	23,545
February.....	18,779	743	19,522	1,811	21,333
March.....	19,246	1,251	20,496	2,454	22,950
April.....	28,916	422	29,338	2,330	31,669
May.....	35,355	14	35,369	2,186	37,555
June.....	24,512	<u>4/</u>	24,513	2,837	27,350
July.....	20,854	-	20,854	1,943	22,798
Totals.....	300,095	3,884	303,980	27,265	331,245
<u>1963-64</u> <u>5/</u>					
August.....	29,204	160	29,364	3,039	32,403
September.....	42,556	155	42,711	1,645	44,356
October.....	59,020	7	59,027	2,384	61,411
November.....	65,296	245	65,541	3,881	69,422
December.....	41,763	397	42,160	5,393	47,553
January.....	28,451	482	28,933	6,607	35,541
February.....	21,675	501	22,176	6,709	28,885
Totals.....	287,965	1,947	289,912	29,658	319,571

1/ Export clearances including shipments to the United States compiled by the Statistics Branch, Board of Grain Commissioners for Canada. 2/ Compiled from Canadian Customs returns, 1961-62 and 1962-63 adjusted to remove effect of time lag in reporting. 3/ In terms of wheat equivalent. Wheat flour conversion rate: 2.3 bushels per cwt. 4/ Less than 500 bushels. 5/ Preliminary.

Exports of Canadian Wheat 1/ by Destination, February 1963 and 1964

Destination	February 1964			February 1963
	Wheat (Except Durum)	Durum Wheat	Total All Wheat	Total All Wheat
- bushels -				
<u>COMMONWEALTH AND PREFERENTIAL COUNTRIES</u>				
<u>Western Europe</u>				
Britain.....	3,210,107	-	3,210,107	5,916,442
Ireland.....	-	-	-	498,027
<u>Other Africa</u>				
Nigeria.....	298,667	-	298,667	-
Northern Rhodesia.....	18,667	-	18,667	-
Republic of South Africa.....	-	-	-	1,471,680
<u>Other Asia</u>				
Hong Kong.....	53,200	-	53,200	36,027
Malaysia.....	54,133	-	54,133	-
Totals, Com. and Pref. Countries..	3,634,774	-	3,634,774	7,922,176
<u>OTHER COUNTRIES</u>				
<u>Western Europe</u>				
Austria.....	-	-	-	121,379
Belgium and Luxembourg.....	151,430	-	151,430	1,294,543
Denmark.....	-	-	-	11,200
France.....	162,472	-	162,472	-
Germany, Federal Republic.....	2,104,666	-	2,104,666	86,389
Netherlands.....	301,289	-	301,289	63,467
Sweden.....	-	-	-	22,400
Switzerland.....	74,667	-	74,667	74,667
<u>Eastern Europe</u>				
Bulgaria.....	378,933	-	378,933	-
U.S.S.R. (Russia).....	5,638,270	1,006,700	6,644,970	-
<u>Middle East</u>				
Saudi Arabia.....	-	-	-	78,333
<u>Other Africa</u>				
Mozambique.....	-	-	-	14,833
<u>Other Asia</u>				
China, Communist.....	2,120,907	-	2,120,907	5,685,539
Japan.....	3,696,021	-	3,696,021	2,428,977
Philippines.....	345,334	-	345,334	219,233
Taiwan.....	94,080	-	94,080	-
<u>South America</u>				
Venezuela.....	829,360	-	829,360	742,000
<u>Central America and Antilles</u>				
Cuba.....	642,027	-	642,027	-
Dominican Republic.....	308,933	-	308,933	-
El Salvador.....	143,733	-	143,733	-
Guatemala.....	33,333	-	33,333	5,000
<u>North America</u>				
<u>United States</u>				
for domestic use 2/.....	7,947	-	7,947	9,133
Totals, Other Countries.....	17,033,402	1,006,700	18,040,102	10,857,093
Sub-Totals, All Countries.....	20,668,176	1,006,700	21,674,876	18,779,269
Bagged seed 3/.....			501,110	742,624
Totals, All Countries.....	20,668,176	1,006,700	22,175,986	19,521,893

NOTE: See footnotes on page 17.

Cumulative Exports of Canadian Wheat 1/ by Destination

Destination	August 1963-February 1964			Aug/62-Feb/63
	Wheat (Except Durum)	Durum Wheat	Total All Wheat	Total All Wheat
- bushels -				
<u>COMMONWEALTH AND PREFERENTIAL COUNTRIES</u>				
<u>Western Europe</u>				
Britain.....	45,239,720	84,408	45,324,128	44,218,600
Ireland.....	2,030,000	-	2,030,000	1,550,190
Malta and Gozo.....	709,294	-	709,294	693,654
<u>Other Africa</u>				
Nigeria.....	520,218	-	520,218	543,953
Northern Rhodesia.....	18,667	-	18,667	8,244 ^{4/}
Republic of South Africa.....	-	-	-	1,471,680
<u>Other Asia</u>				
Hong Kong.....	427,839	-	427,839	316,027
India.....	-	-	-	698,133
Malaysia.....	112,933	-	112,933	-
<u>Central America and Antilles</u>				
Barbados.....	40	-	40	-
Jamaica.....	6,038	-	6,038	6,566
Totals, Com. and Pref. Countries..	49,064,749	84,408	49,149,157	49,507,047

OTHER COUNTRIES

<u>Western Europe</u>				
Austria.....	524,904	-	524,904	802,434
Belgium and Luxembourg.....	12,734,687*	411,167	13,145,854*	6,444,610
Denmark.....	20,543	-	20,543	11,200
Finland.....	356,533	-	356,533	350,933
France.....	2,104,507*	802,691	2,907,198*	4,245,726
Germany, Federal Republic.....	19,682,179	5,335,899	25,018,078	18,816,516
Greece.....	-	-	-	10
Italy.....	3,758,777	-	3,758,777	3,474,826
Netherlands.....	2,868,401*	154,168	3,022,569*	3,802,521
Norway.....	1,667,203	-	1,667,203	1,568,267
Sweden.....	22,400	-	22,400	89,600
Switzerland.....	2,782,361*	1,543,096	4,325,457*	1,675,305
<u>Eastern Europe</u>				
Albania.....	1,476,534	-	1,476,534	-
Bulgaria.....	378,933	-	378,933	-
Czechoslovakia.....	2,052,968	-	2,052,968	-
Poland.....	7,300,247	-	7,300,247	14,183,656
U.S.S.R. (Russia).....	97,276,047	7,257,823	104,533,870	-
Yugoslavia.....	3,501,866	-	3,501,866	-
<u>Middle East</u>				
Israel.....	1,067,248	-	1,067,248	835,000
Saudi Arabia.....	640,377	-	640,377	516,321

FARMERS' MARKETINGS OF WHEAT, PRAIRIE PROVINCES

(SPECIFIED PERIODS)

MILLION BUSHEL

550

500

450

400

350

300

250

200

150

100

50

0

MILLION BUSHEL

550

500

450

400

350

300

250

200

150

100

50

0

PEAK MARKETINGS
1952-53 CROP YEAR
536.0 MILLION BUSHEL

30 year average 1932-33
1961-62

10 year average 1952-53
1961-62

1958-59

1959-60

1960-61

1961-62

1962-63

1963-64

JULY

JUNE

MAY

APR.

MAR.

FEB.

JAN.

DEC.

NOV.

OCT.

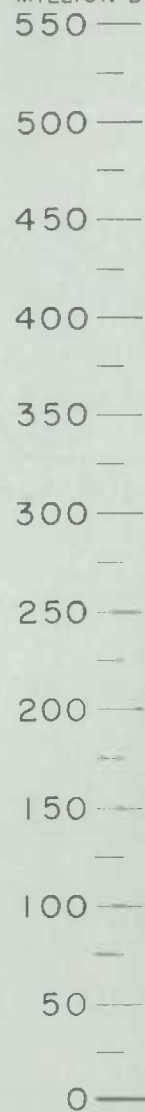
SEPT.

AUG.

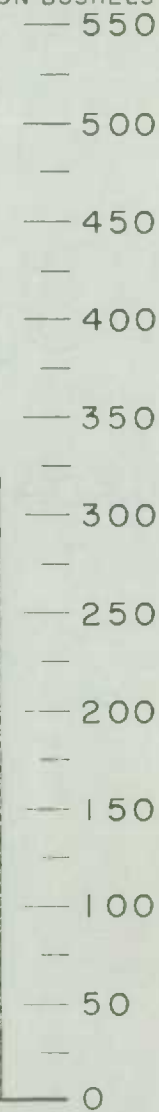
EXPORTS OF CANADIAN WHEAT* AND WHEAT FLOUR**

(SPECIFIED PERIODS)

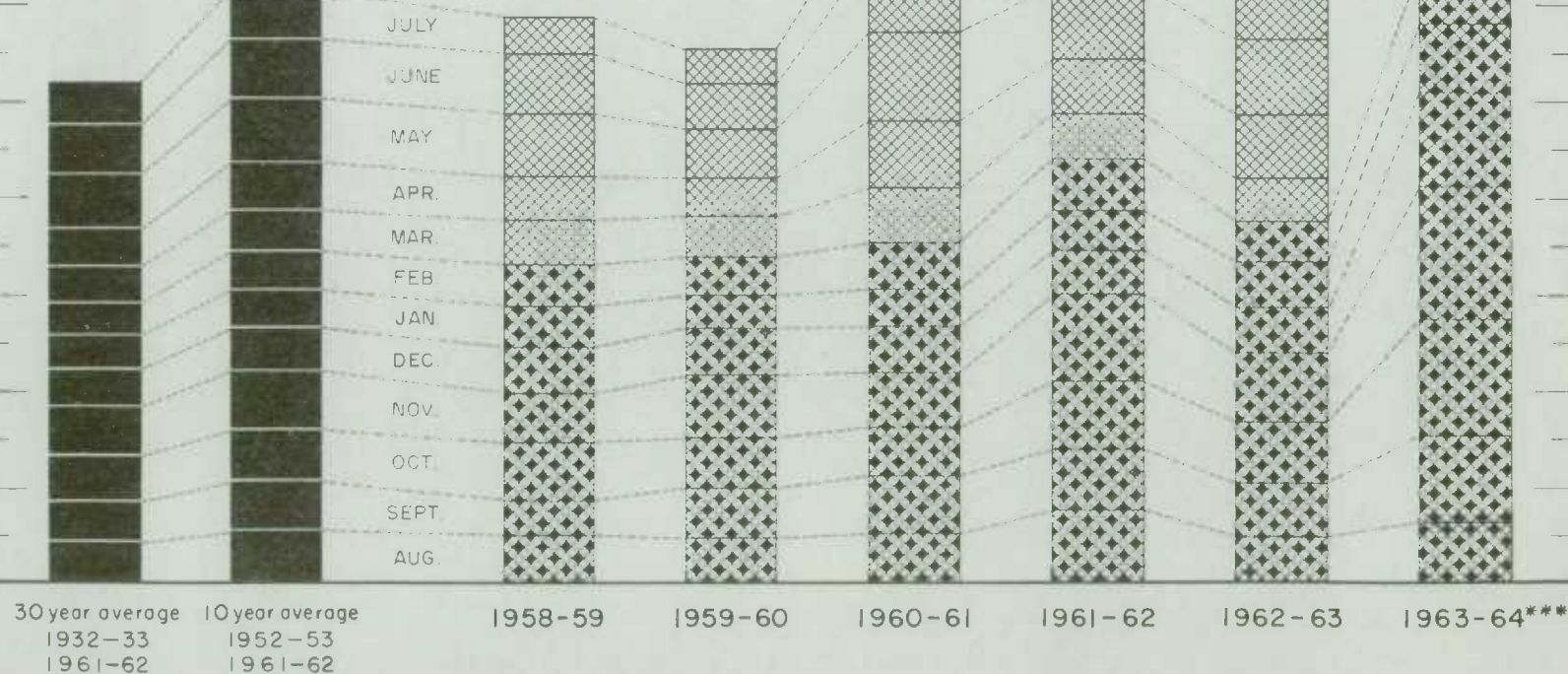
MILLION BUSHEL



MILLION BUSHEL



PEAK EXPORTS
1928-29 CROP YEAR
407.6 MILLION BUSHEL



*Beginning with 1956-57 includes bagged seed wheat.

Terms of wheat equivalent. *Preliminary.

Agriculture Division D.B.S.

FARMERS' MARKETINGS OF BARLEY, PRAIRIE PROVINCES

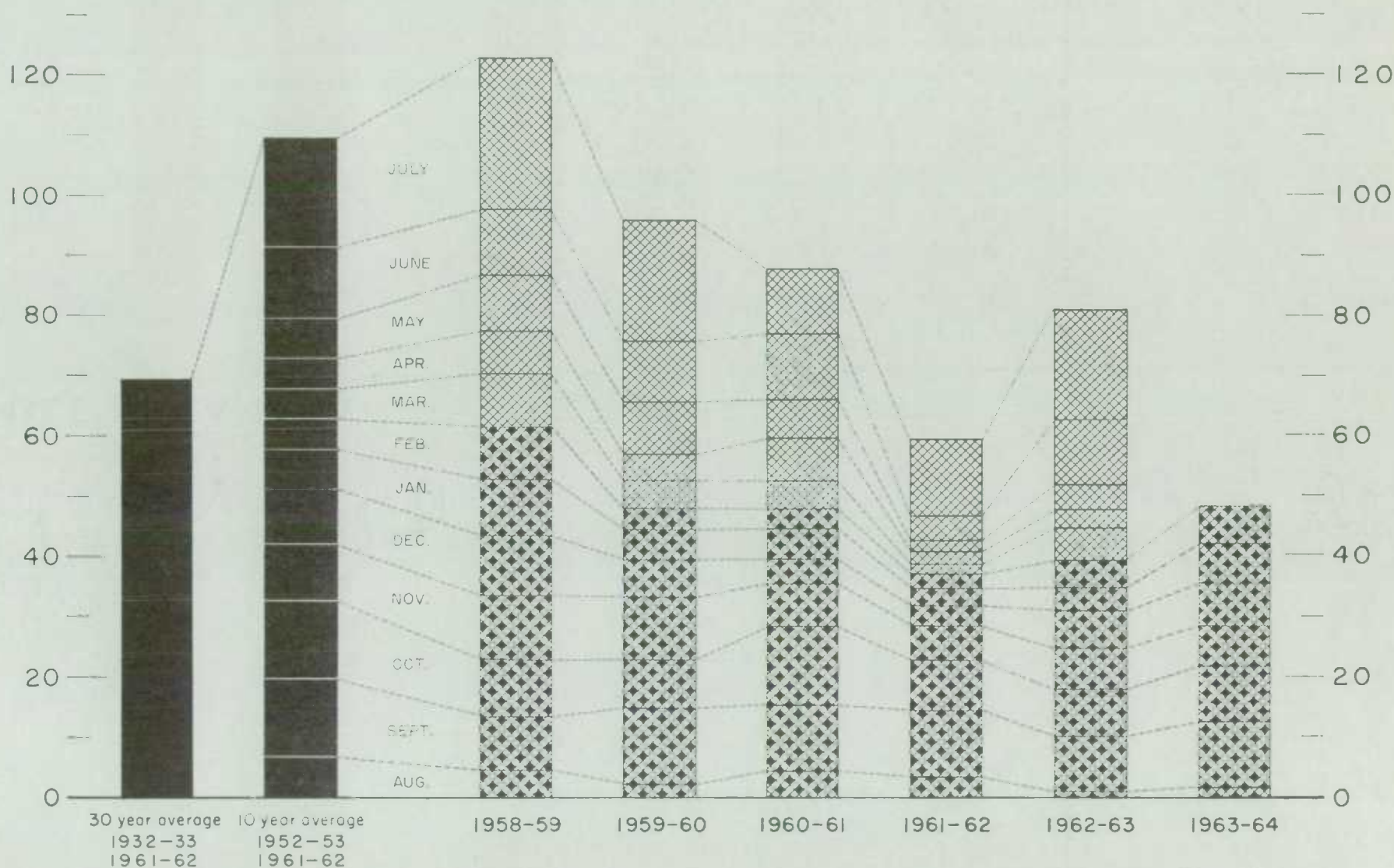
(SPECIFIED PERIODS)

MILLION BUSHELS

140 —

MILLION BUSHELS

140 —

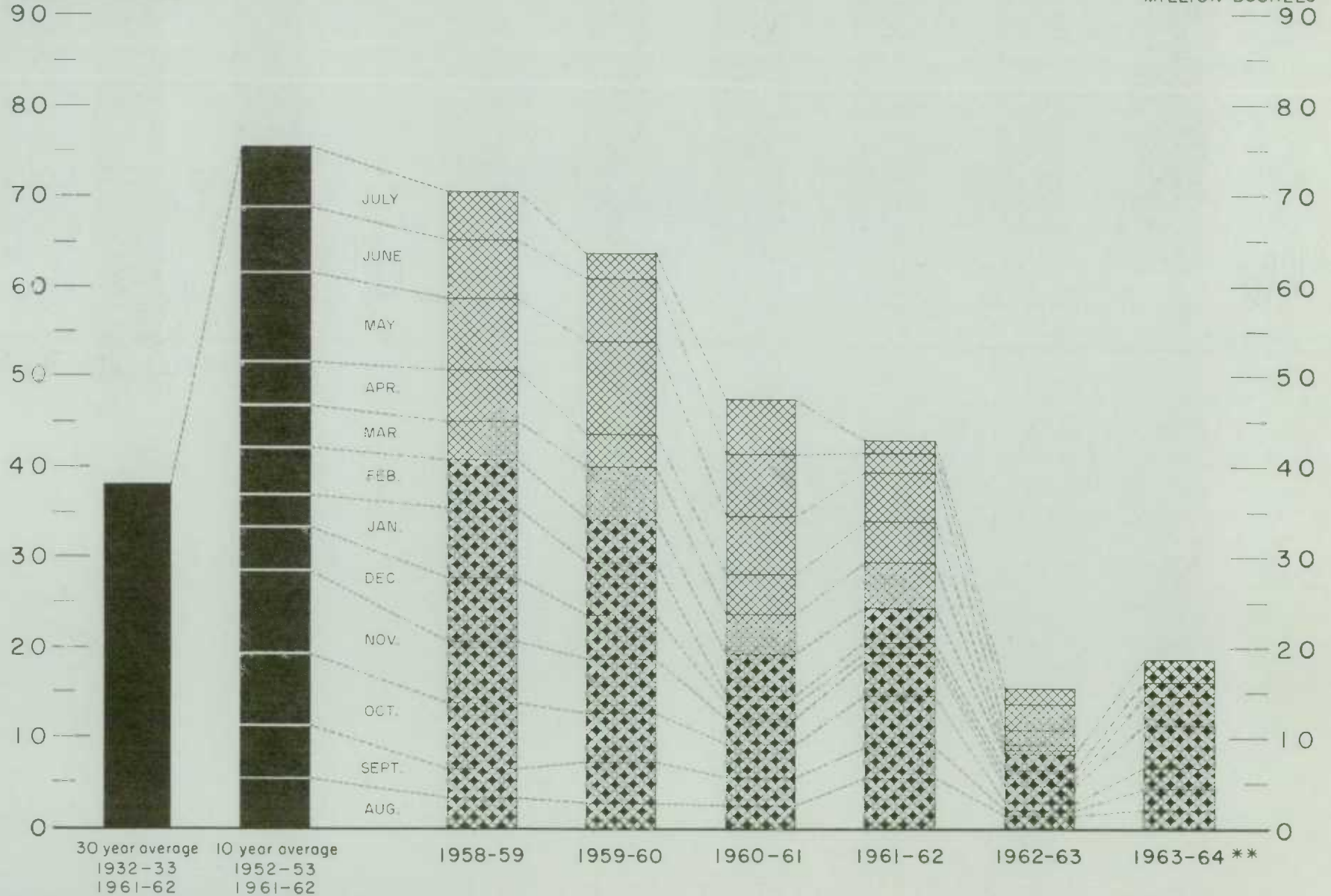


EXPORTS OF CANADIAN BARLEY AND BARLEY PRODUCTS*

(SPECIFIED PERIODS)

MILLION BUSHELS

MILLION BUSHELS



* In terms of grain equivalent.

** Preliminary.

FARMERS' MARKETINGS OF OATS, PRAIRIE PROVINCES

(SPECIFIED PERIODS)

MILLION BUSHELS

100 —
—
90 —
—
80 —
—
70 —
—
60 —
—
50 —
—
40 —
—
30 —
—
20 —
—
10 —
—
0

MILLION BUSHELS

100 —
—
90 —
—
80 —
—
70 —
—
60 —
—
50 —
—
40 —
—
30 —
—
20 —
—
10 —
—
0

30 year average

1932-33
1961-62

10 year average

1952-53
1961-62

JULY
JUN
M
A
M
F
J
O
NOV
OCT
SEPT
AUG

1958-59

1959-60

1960-61

1961-62

1962-63

1963-64

EXPORTS OF CANADIAN OATS* AND OAT PRODUCTS**

(SPECIFIED PERIODS)

MILLION BUSHELS

45 —

40 —

35 —

30 —

25 —

20 —

15 —

10 —

5 —

0 —

MILLION BUSHELS

45 —

40 —

35 —

30 —

25 —

20 —

15 —

10 —

5 —

0 —

30 year average
1932-33
1961-62

10 year average
1952-53
1961-62

1958-59

1959-60

1960-61

1961-62

1962-63

1963-64***

J
J
M
A
M
F
J
O
N
O
S
A

*Beginning with 1960-61 includes relatively small quantity of bagged seed. **In terms of grain equivalent ***Preliminary.

Agriculture Division D.B.S.

FARMERS' MARKETINGS OF CANADA'S FIVE MAJOR GRAINS*, PRAIRIE PROVINCES

(SPECIFIED PERIODS)

MILLION BUSHELS

900 —

800 —

700 —

600 —

500 —

400 —

300 —

200 —

100 —

0

MILLION BUSHELS

900 —

800 —

700 —

600 —

500 —

400 —

300 —

200 —

100 —

0

JULY

JUNE

MAY

APR

MAR

FEB

JAN

DEC

NOV

OCT

SEPT

AUG

30 year average 1932-33
10 year average 1952-53
1961-62 1961-62

1958-59

1959-60

1960-61

1961-62

1962-63

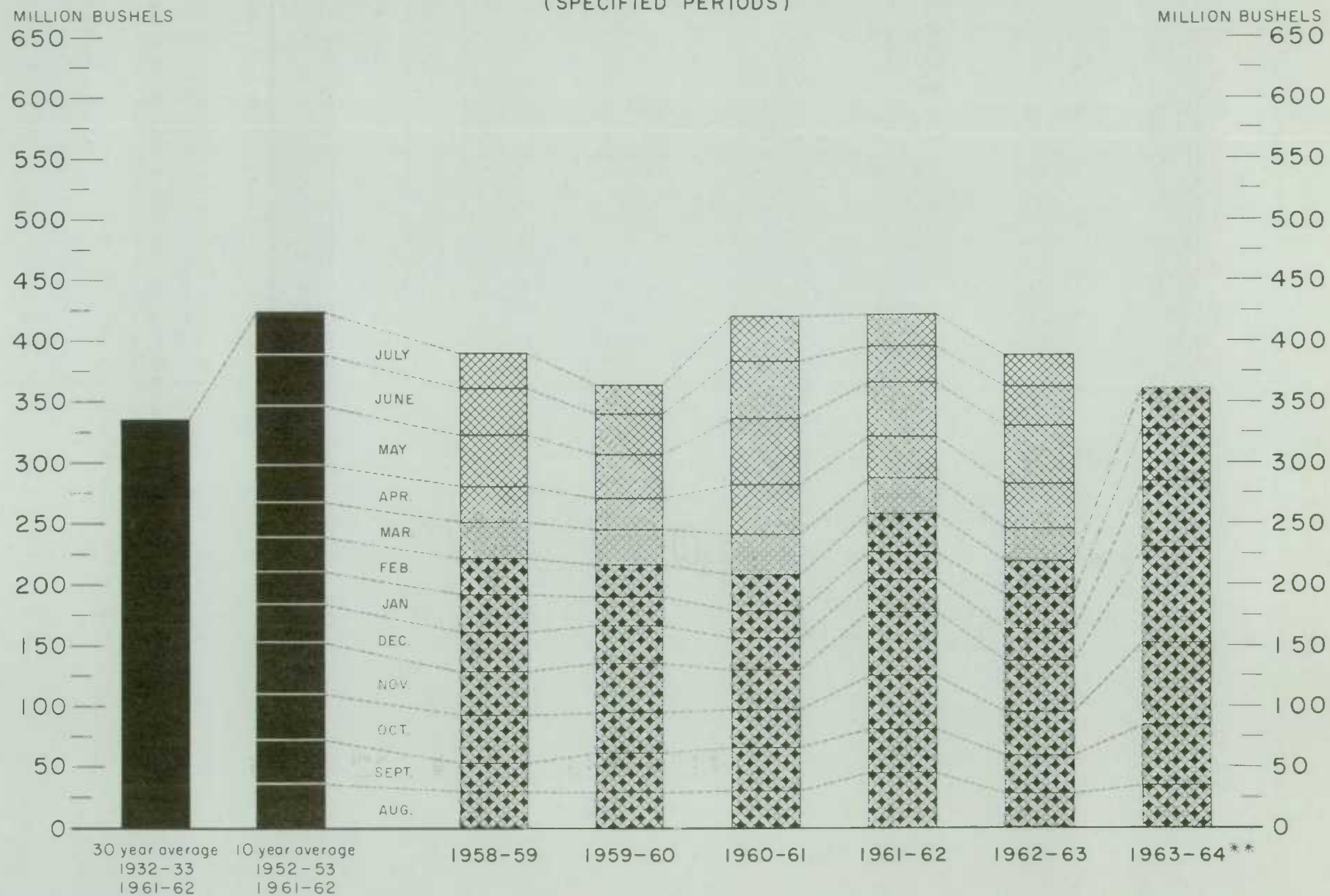
1963-64

* Wheat, oats, barley, rye and flaxseed.

Agriculture Division D. B. S.

EXPORTS OF CANADA'S FIVE MAJOR GRAINS AND PRODUCTS*

(SPECIFIED PERIODS)



* Wheat, bagged seed wheat, and wheat flour; oats, bagged seed oats, and oatmeal and rolled oats; barley, malt and pot and pearl; rye and flaxseed.
 ** Preliminary.

Agriculture Division D.B.S.

Cumulative Exports of Canadian Wheat ^{1/} by Destination

Destination	August 1963-February 1964			Aug/62-Feb/63
	Wheat (Except Durum)	Durum Wheat	Total All Wheat	Total All Wheat
- bushels -				
<u>OTHER COUNTRIES (concluded)</u>				
<u>Other Africa</u>				
Katanga.....	-	-	-	9,186
Mozambique.....	90,857	11,200	102,057	343,478
<u>Other Asia</u>				
Burma.....	78,931	-	78,931	-
China, Communist.....	19,760,907	-	19,760,907	30,565,240
Japan.....	28,755,048	-	28,755,048	24,245,771
Korea.....	511,467	-	511,467	-
Philippines.....	3,286,516	-	3,286,516	3,362,141
Taiwan.....	313,684	-	313,684	53,972
<u>Oceania</u>				
United States Oceania.....	257,189	-	257,189	298,479
<u>South America</u>				
Ecuador.....	366,681	-	366,681	527,830
Peru.....	730,614	-	730,614	-
Venezuela.....	4,018,503	-	4,018,503	4,112,551
<u>Central America and Antilles</u>				
Cuba.....	3,368,347	-	3,368,347	-
Dominican Republic.....	658,839	-	658,839	539,746
El Salvador.....	539,395	-	539,395	414,514
Guatemala.....	133,333	-	133,333	148,334
<u>North America</u>				
United States for domestic use ^{2/}	212,533	-	212,533	267,066
Totals, Other Countries.....	223,299,559	15,516,044	238,815,603	121,705,233
Sub-Totals, All Countries.....	272,364,308	15,600,452	287,964,760	171,212,280
Bagged seed ^{3/}			1,947,345	2,197,569
Totals, All Countries.....	272,364,308	15,600,452	289,912,105	173,409,849

* Revisions in data for previous months have been taken into account in the August-February cumulative totals.

^{1/} Overseas clearances as reported by the Statistics Branch, Board of Grain Commissioners for Canada, for all countries except the United States. Excluding bagged seed.

^{2/} Compiled from returns of Canadian elevator licensees and shippers and advice from American grain correspondents.

^{3/} Compiled from Canadian Customs returns, 1962-63 adjusted for time lag.

^{4/} Rhodesia-Nyasaland.

Customs Exports of Canadian Wheat Flour by Countries of Consignment

Destination	November 1963 <u>1/</u>	February 1964 <u>2/</u>	August-February	
			1963-64 <u>2/</u>	1962-63 <u>1/</u>
- bushels -				
<u>COMMONWEALTH AND PREFERENTIAL COUNTRIES</u>				
<u>Western Europe</u>				
Britain.....	1,135,101	962,251	7,087,602	6,690,007
Gibraltar.....	4,379	4,379	21,638	24,987
<u>Middle East</u>				
Kuwait*.....	-	-	13,255	53,095
Qatar.....	345	-	603	1,849
British Middle East, nes	4,122	3,606	20,092	13,395
<u>Other Africa</u>				
Gambia.....	-	1,288	1,288	-
Ghana.....	257,982	38,605	605,054	1,102,811
Nigeria.....	389	927	21,754	521,178
Nyasaland.....	5,462	789	23,127	17,738
Sierra Leone.....	74,071	23,575	259,838	255,673
Southern Rhodesia.....	-	-	1,380	-
Tanganyika.....	-	-	5,290	6,888
British Africa, nes	18,860	-	35,420	44,724
<u>Other Asia</u>				
Ceylon.....	-	-	586,056	1,150
Hong Kong.....	61,491	80,997	651,347	581,558
Malaysia.....	37,089	47,912	435,652	386,927
<u>Oceania</u>				
Australia.....	-	-	124	55
Fiji.....	1,046	414	3,439	2,955
<u>South America</u>				
British Guiana.....	1,083	4,262	15,665	18,526
<u>Central America and Antilles</u>				
Bahamas.....	22,862	17,901	191,466	180,311
Bermuda.....	3,211	14,587	69,851	63,756
British Honduras.....	2,045	1,962	21,659	23,124
Barbados.....	12,397	14,186	93,867	82,204
Jamaica.....	151,874	189,598	930,656	815,544
Leeward and Windward Islands.....	86,117	66,268	624,802	532,533
Trinidad.....	128,710	96,372	836,797	754,428
Totals, Com. and Pref. Countries..	2,008,636	1,569,879	12,557,722	12,175,416
<u>OTHER COUNTRIES</u>				
<u>Western Europe</u>				
Belgium and Luxembourg.....	-	-	114,885	97,683
Denmark.....	1,371	-	3,761	5,557
Germany, Federal Republic.....	-	-	-	6,463
Greece.....	2,026	1,520	10,202	22,312
Iceland.....	-	-	3,220	12,799
Italy.....	-	-	-	4,996
Netherlands.....	269	-	4,020	1,753
Norway.....	-	-	-	115
Portugal.....	11,827	3,388	74,502	44,852
Sweden.....	-	-	1,265	1,265
Switzerland.....	-	-	39	6,900
<u>Eastern Europe</u>				
U.S.S.R. (Russia).....	1,496,284	4,007,840	11,224,412	-

Customs Exports of Canadian Wheat Flour by Countries of Consignment

Destination	November 1963 <u>1/</u>	February 1964 <u>2/</u>	August-February 1963-64 <u>2/</u> 1962-63 <u>1/</u>	
<u>OTHER COUNTRIES (concluded)</u> - bushels -				
<u>Middle East</u>				
Ethiopia.....	253	-	253	-
Iran.....	-	292	2,477	2,834
Iraq.....	-	-	-	948
Israel.....	-	-	5,152	8,436
Jordan.....	-	-	356	651
Kuwait*.....	-	1,776	2,006	-
Lebanon.....	8,232	287	23,000	169,671
Saudi Arabia.....	564	-	840	1,104
Syria.....	-	998	998	4,791
U.A.R. - Egypt.....	-	-	-	27,692
<u>Other Africa</u>				
Angola.....	2,530	1,610	4,600	1,840
Congo-Leo.....	-	14,375	30,820	62,737
French West Africa.....	-	-	-	23,442
Liberia.....	9,227	690	46,600	19,412
Mozambique.....	2,461	632	18,301	9,876
Portuguese Africa, nes.....	11,178	1,150	63,717	59,053
Togo.....	9,660	13,779	100,369	11,788
<u>Other Asia</u>				
Burma.....	10,304	10,304	76,404	-
Indonesia.....	-	-	-	64
Japan.....	3,450	4,370	94,937	191,549
Philippines.....	1,150	-	6,900	9,200
Portuguese Asia.....	4,315	1,012	18,308	6,661
Thailand.....	37,918	74,331	283,003	209,659
Viet-Nam.....	-	41,476	41,476	44,576
<u>Oceania</u>				
French Oceania.....	357	-	1,070	1,299
United States Oceania.....	-	184	1,306	2,300
<u>South America</u>				
Chile.....	1,150	-	6,928	5,118
Peru.....	3,335	3,910	40,756	18,216
Surinam.....	6,709	6,921	49,814	38,143
Venezuela.....	230	-	230	1,610
<u>Central America and Antilles</u>				
Costa Rica.....	42,205	69,782	350,469	473,544
Cuba.....	695,755	765,983	3,147,412	-
Dominican Republic.....	4,600	9,200	30,489	109,089
El Salvador.....	1,704	-	10,187	63,795
French West Indies.....	230	230	1,725	2,380
Guatemala.....	2,300	805	10,239	27,508
Haiti.....	11,785	12,126	63,715	619
Honduras.....	11,845	2,300	36,294	33,796
Netherlands Antilles.....	18,046	6,141	120,915	157,049
Nicaragua.....	2,415	1,254	288,662	277,520
Panama.....	14,986	12,869	113,211	296,445
<u>North America</u>				
St. Pierre and Miquelon.....	1,000	-	10,709	8,636
United States.....	97,658	67,668	559,806	751,504
Totals, Other Countries.....	2,529,329	5,139,203	17,100,760	3,339,250
Totals, All Countries.....	4,537,965	6,709,082	29,658,482	15,514,666

* Kuwait included in Commonwealth and Preferential Countries from August to December 1963 and in Other Countries from January 1, 1964.
nes - not elsewhere specified.

1/ In terms of wheat equivalent. Adjusted to remove effect of time lag in the returns made by Customs. Conversion rate: 2.3 bushels per cwt. 2/ In terms of wheat equivalent. Preliminary and unadjusted for time lag. Conversion rate: 2.3 bushels per cwt.

Canadian Wheat Board Weekly Average Cash Wheat Prices
Basis in Store Fort William-Port Arthur

Class and Grade	Week Ending			
	March 6	March 13	March 20	March 27

- cents and eighths per bushel -

Initial Payment to Producers

1 Northern.....	150	150	150	150
2 Northern.....	146	146	146	146
3 Northern.....	142	142	142	142
4 Northern.....	135	135	135	135
5 Wheat.....	118	118	118	118
6 Wheat.....	112	112	112	112
Feed Wheat.....	108	108	108	108
1 C.W. Garnet.....	135	135	135	135
2 C.W. Garnet.....	130	130	130	130
3 C.W. Garnet.....	125	125	125	125
1 Alberta Red Winter.....	134	134	134	134
2 Alberta Winter.....	129	129	129	129
3 Alberta Winter.....	123	123	123	123
1 C.W. Amber Durum.....	150	150	150	150
2 C.W. Amber Durum.....	146	146	146	146
3 C.W. Amber Durum.....	142	142	142	142

International Wheat Agreement

and Domestic Sales

1 Northern.....	208	208	208	208
2 Northern.....	205	205	205	205
3 Northern.....	202	202	202	202
4 Northern.....	195	195	195	195
5 Wheat.....	189	189	189	189
6 Wheat.....	184	184	184	184
Feed Wheat.....	181	181	181	181
1 C.W. Garnet.....	191	191	191	191
2 C.W. Garnet.....	189	189	189	189
3 C.W. Garnet.....	188	188	188	188
1 Alberta Red Winter.....	194	194	194	194
2 Alberta Winter.....	192	192	192	192
3 Alberta Winter.....	191	191	191	191
1 C.W. Amber Durum.....	219	219	218/2	217
2 C.W. Amber Durum.....	218	218	217/2	216
3 C.W. Amber Durum.....	208	208	207/2	206

Export - Class II

1 Northern.....	208	208	208	208
2 Northern.....	205	205	205	205
3 Northern.....	202	202	202	202
4 Northern.....	195	195	195	195
5 Wheat.....	189	189	189	189
6 Wheat.....	184	184	184	184
Feed Wheat.....	181	181	181	181
1 C.W. Garnet.....	191	191	191	191
2 C.W. Garnet.....	189	189	189	189
3 C.W. Garnet.....	188	188	188	188
1 C.W. Amber Durum.....	219	219	218/2	217
2 C.W. Amber Durum.....	218	218	217/2	216
3 C.W. Amber Durum.....	208	208	207/2	206

Canadian Wheat Board Weekly Average Cash Wheat Prices
Basis in Store Vancouver

Class and Grade	Week Ending			
	March 6	March 13	March 20	March 27
- cents and eighths per bushel -				
<u>Initial Payment to Producers</u>				
1 Northern.....	150	150	150	150
2 Northern.....	146	146	146	146
3 Northern.....	142	142	142	142
4 Northern.....	135	135	135	135
5 Wheat.....	118	118	118	118
6 Wheat.....	112	112	112	112
Feed Wheat.....	108	108	108	108
1 C.W. Garnet.....	135	135	135	135
2 C.W. Garnet.....	130	130	130	130
3 C.W. Garnet.....	125	125	125	125
1 Alberta Red Winter.....	134	134	134	134
2 Alberta Winter.....	129	129	129	129
3 Alberta Winter.....	123	123	123	123
1 C.W. Amber Durum.....	150	150	150	150
2 C.W. Amber Durum.....	146	146	146	146
3 C.W. Amber Durum.....	142	142	142	142
<u>International Wheat Agreement</u>				
<u>and Domestic Sales</u>				
1 Northern.....	212/2	212/2	212/2	212/2
2 Northern.....	209/2	209/2	209/2	209/2
3 Northern.....	207/2	207/2	207/2	207/2
4 Northern.....	200/2	200/2	200/2	200/2
5 Wheat.....	193/2	193/2	193/2	193/2
6 Wheat.....	190/2	190/2	190/2	190/2
Feed Wheat.....	187/2	187/2	187/2	187/2
1 C.W. Garnet.....	194/2	194/2	194/2	194/2
2 C.W. Garnet.....	193/2	193/2	193/2	193/2
3 C.W. Garnet.....	192/2	192/2	192/2	192/2
1 Alberta Red Winter.....	194/2	194/2	194/2	194/2
2 Alberta Winter.....	193/2	193/2	193/2	193/2
3 Alberta Winter.....	192/2	192/2	192/2	192/2
<u>Export - Class II</u>				
1 Northern.....	212/2	212/2	212/2	212/2
2 Northern.....	209/2	209/2	209/2	209/2
3 Northern.....	207/2	207/2	207/2	207/2
4 Northern.....	200/2	200/2	200/2	200/2
5 Wheat.....	193/2	193/2	193/2	193/2
6 Wheat.....	190/2	190/2	190/2	190/2
Feed Wheat.....	187/2	187/2	187/2	187/2
1 C.W. Garnet.....	194/2	194/2	194/2	194/2
2 C.W. Garnet.....	193/2	193/2	193/2	193/2
3 C.W. Garnet.....	192/2	192/2	192/2	192/2
1 Alberta Red Winter.....	194/2	194/2	194/2	194/2
2 Alberta Winter.....	193/2	193/2	193/2	193/2
3 Alberta Winter.....	192/2	192/2	192/2	192/2

CANADIAN FLOUR MILLING SITUATION

Production Wheat flour production by Canadian mills during February 1964 amounted to 4,495,000 hundredweight, indicating a decrease of 5 per cent from the 4,718,000 hundredweight produced during January 1964 but substantially higher than both the February 1963 figure of 2,815,000 hundredweight and the ten-year (1954-63) average production for the month of February of 3,061,000 hundredweight. Mills reporting operations during February 1964 had a total rated capacity of 175,000 hundredweight per 24-hour day and on the basis of a 25-day working period 102.8 per cent of this rated capacity was effective. Many mills because of forward commitments, continue to operate at more than the standard 25 working days in the month.

Wheat milled for flour during February 1964 amounted to 10,043,000 bushels, 3 per cent lower than the 10,404,000 bushels milled during the preceding month, but exceeding by a wide margin the 6,250,000 bushels milled during February 1963. Of the wheat milled for flour during February 1964 some 9,203,000 bushels were Western Canadian spring wheat (other than Durum) while the remainder consisted of Ontario winter wheat (513,000 bushels); Durum (228,000 bushels); and all other (99,000 bushels).

Exports According to preliminary Customs returns, exports of Canadian wheat flour during February 1964 amounted to 2,917,000 hundredweight (some 6,709,000 bushels of wheat equivalent) representing an increase of 2 per cent above the 6,607,000 bushels exported during the previous month, and in sharp contrast to the adjusted February 1963 total of 1,811,000 bushels. Flour shipments during the month went to fifty-one countries with exports to the U.S.S.R. amounting to 4,008,000 bushels of wheat equivalent and accounting for 60 per cent of the February 1964 total. Shipments of Canadian wheat flour during February to Britain, at 962,000 bushels equivalent, and to Cuba, at 766,000 bushels equivalent, accounted for 14 per cent and 11 per cent of the total, respectively. Other leading markets for Canadian wheat flour during February this year with shipments in thousands of bushels of wheat equivalent were as follows: Jamaica, 190; Trinidad, 96; Hong Kong, 81; and Thailand, 74.

Wheat Milled for Flour, and Production and Exports of Wheat Flour, Canada

Crop Year	Wheat Milled for Flour bushels	Wheat Flour	
		Production	Exports ^{1/}
		- cwt. -	
1935-36--1939-40 average.....	67,845,114	29,405,451	9,603,941
1940-41--1944-45 average.....	99,704,638	43,908,245	23,699,546
1945-46--1949-50 average.....	107,330,372	47,011,540	25,819,721
1950-51--1954-55 average.....	100,446,328	43,847,894	21,812,041
1955-56--1959-60 average.....	90,148,211	39,752,589	16,349,156
1960-61.....	89,731,155	39,914,644	15,513,836
1961-62.....	88,240,580	39,539,651	13,892,676
1962-63.....	78,789,332	35,505,220	11,854,458
1963-64 ^{2/}			
August.....	6,719,665	3,003,765	1,321,208
September.....	7,712,078	3,459,156	715,309
October.....	10,422,696	4,667,613	1,036,575
November.....	10,564,882	4,737,321	1,687,554
December.....	10,234,008	4,585,013	2,344,686
January.....	10,404,242	4,718,375	2,872,668
February.....	10,043,366	4,494,554	2,916,992
Totals.....	66,100,937	29,665,797	12,894,992
Same months 1962-63 ^{3/}	44,983,750	20,261,807	6,745,507

^{1/} Based on Customs returns. Exports for the crop years 1945-46--1962-63 revised to remove effect of time lag in the returns made by Customs.

^{2/} Subject to revision.

^{3/} Revised.

UNITED STATES SITUATION

Domestic Supplies
13 Per Cent
Below Record

Domestic supplies of wheat in the United States for the 1963-64 crop year (July-June) are estimated at 2,333.0 million bushels, consisting of the July 1, 1963 carryover of 1,195.4 million and the 1963 crop, placed at 1,137.6 million bushels. Domestic supplies of the size indicated would be 3 per cent less than last year's total of 2,415.5 million and 13 per cent smaller than the record 1960-61 figure of 2,670.8 million bushels. Imports of wheat from Canada during July-February of the current United States crop year amounted to 2.5 million bushels. Domestic disappearance during 1963-64 is estimated at about 602.0 million bushels, 2 per cent more than the 588.6 million last year. After deducting anticipated domestic requirements for the current United States crop year some 1,733.6 million remained available for export and for carryover, a decrease of 5 per cent from the 1,830.1 million in 1962-63.

July-February
Exports at
Record Level

Exports of wheat and flour in terms of grain equivalent during the July-February period of the 1963-64 crop year, amounted to a record 532.9 million bushels, surpassing by a considerable margin the previous peak of some 472.3 million exported in July-February 1961-62, and exceeding last year's comparable total of 357.3 million bushels by 49 per cent. The balance remaining on March 1, 1964 for export and for carryover was estimated at 1,200.7 million bushels compared with 1,472.8 million on the same date a year ago.

United States Wheat Supplies

Item	1962-63 1/	1963-64 2/
	- million bushels -	
Carryover at beginning of crop year (July 1)	1,321.9	1,195.4
Production	1,093.7	1,137.6
Total estimated domestic supplies	2,415.5	2,333.0
Imports of wheat and wheat flour in terms of wheat for domestic use, July-February	3.1	2.5
Total estimated supplies 3/	2,418.6	2,335.6
Less estimated domestic requirements for crop year 4/	588.6	602.0
Available for export and for carryover	1,830.1	1,733.6
Deduct:		
Exports of wheat as grain, July-February	298.1	471.5
Exports of wheat flour in terms of wheat, July- February 5/	59.1	61.4
Total exports of wheat and wheat flour 6/	357.3	532.9
Balance on March 1 for export and for carryover	1,472.8	1,200.7

1/ Revised. 2/ Preliminary. 3/ Excluding imports for March-June. 4/ Includes shipments to United States Territories and wheat for military food use at home and abroad. 5/ Flour exports exclude "Milled in bond". 6/ These figures now include all shipments under relief programs which formerly were not available from Census data.

Prospective Plantings
of Spring Wheat

The following report on prospective plantings of spring wheat in the United States was taken from the March 18 report of the Crop Reporting Board, United States Department of Agriculture. Based on March 1 intentions, farmers plan to seed 11.7 million acres to all spring wheat in 1964, 6 per cent above 1963 but 3 per cent below the 1958-62 average. Growers reported their intended seeded acres without the enactment of wheat legislation for the 1964 crop. Should such legislation be passed, the extent of grower participation in the program could result in a shift in the acreage finally planted.

All wheat plantings are indicated at 54.7 million acres based on March 1 intentions for spring wheat and the December estimates of winter wheat seeded last fall. This would be 3 per cent above the 1963 plantings and slightly above average.

The acreage of durum wheat to be planted this spring is indicated at 2.3 million acres, 16 per cent above 1963 and 44 per cent above average. All durum producing States show sharp acreage increases from a year earlier. The prospective exports to the Soviet Union, based on recent sales, apparently encouraged growers to sharply increase their planted acreage.

Other spring wheat plantings are expected to total 9.4 million acres, 4 per cent more than in 1963 but 10 per cent below average. Of the four major producing States - North Dakota, South Dakota, Minnesota, and Montana - only Montana expects an acreage reduction from last year. These four States account for 91 per cent of the intended other spring wheat acreage. Washington and Oregon are the only other States showing increases over last year. Washington shows the most substantial change with growers in this State expecting to nearly double their spring wheat acreage. This increase was caused by unfavourable weather conditions last fall which prevented seeding of some winter wheat.

If growers plant their intended acreage and yields are about average with an allowance for trend, the 1964 production of all spring wheat would total 262 million bushels. A 1964 winter wheat crop of 959 million bushels was indicated by conditions as of December 1, 1963. Combining the projected spring wheat crop with the December winter wheat forecast indicates a total wheat crop of 1,221 million bushels. This compares with the 1963 crop of 1,138 million bushels and the 1958-62 average of 1,253 million bushels.

Crop and
Weather Conditions

The following extract has been taken from the Weekly Weather and Crop Bulletin, published jointly by the United States Department of Commerce and United States Department of Agriculture for the week ending March 30, 1964. In the Central and Southern Great Plains States, winter wheat continued to respond favourably to the previous week's rain and the condition of small grains improved. In Texas, winter wheat prospects were favourable except for the dryland wheat in the High Plains area of the State. Over two-thirds of the wheat in Oklahoma was in good condition and improving. Spring oats and barley in the State were in fair to good condition although there was some freeze damage to oats. Winter small grains in Kansas were generally "greening up" and the winter wheat crop was responding well to the recent rains. Strong winds caused light to severe damage to small grains in the western part of the State. Small grains in Nebraska made little progress because of low temperatures. In the Northern Plains and Mountain States, well below normal temperatures slowed the "greening up" of small grains. Fall-seeded small grains in Wyoming continued to need moisture. Strong winds caused considerable wind erosion in the State. Fall-sown small grains were greening over most of the Eastern Plains area of Colorado.

In the Corn Belt States, small grains were beginning to grow although the growth was slowed by the cold weather. Early seeded spring oats in Missouri were beginning to come up. Stands of fall-seeded small grains in Iowa appeared to be normal. The seeding of spring oats was underway in Ohio. In Kentucky, the cold weather slowed the growth of small grain crops. In the lower Mississippi River Delta States, fall-sown small grains continued to show progress - rapid growth was being made in Louisiana. The seeding of spring oats was active in Arkansas.

In the Southeastern States, small grains continued to make good to excellent progress. Topdressing continued to be delayed by wet soils in some States but was past peak in other States in the area. Winter grains were in fair to excellent condition in the mid-Atlantic States. The seeding of spring oats made good progress in Virginia and the topdressing of fall-seeded grains was active. Growth was evident in some small grain fields in Pennsylvania.

In the West, the growth of small grains was generally good in Arizona where many fields were headed. Many of the winter wheat areas of Utah were still under snow. Very little planting of spring small grains had been done in Nevada. California's irrigated small grain acreage was making excellent progress. Rains during the week were beneficial for dryland acreage but did not alleviate the effects of the prolonged dry conditions that had prevailed. In the Northwest, the development of small grains was slow as below normal temperatures prevailed. The seeding of spring grains continued in the area.

Continued from page 2.

Asia's 1963 wheat total has been reduced from the previous estimate mainly because of India's revised estimate. The present estimated total of 1,975 million bushels for Asia is moderately below the high level of 1962. Lower production in Japan as well as India adds to the decline. Turkey's outturn of both wheat and rye was well above the 1962 production. Rye is of minor importance in other countries of Asia.

The harvest in South America is now completed and conditions varied throughout the area. A larger total is now estimated because of Argentina's unexpectedly large outturn. This is partly offset, however, by a poor harvest in Uruguay and a smaller crop than last year in Chile. The present estimated total of 330 million bushels is 50 million above the 1962 harvest. Rye production in Argentina is getting back toward normal after the very small harvest last year. The present estimate of 24.8 million bushels contrasts with 6.5 million for 1962.

Australia's wheat crop turned out even better than expected and set a new high of 334 million bushels. Earlier predictions were that it would approximate the record crop of 307 million bushels harvested in 1962-63. The present high level of production is attributed to a combination of near record yields and acreage that has been surpassed only twice. Rye is of minor importance in Australia.

Editor's Note: The 1963-64 wheat crops in Australia and Argentina are now estimated at 328.0 million and 281.5 million bushels, respectively.

Cash Wheat Prices on the Kansas City and Minneapolis Markets

No. 2 Hard Winter, Kansas City			No. 1 Northern Spring, Minneapolis		
Date	Price		Date	Price	
	- cents per bushel -			- cents per bushel -	
March 2, 1964.....	213 3/4 - 237	1/	March 2, 1964.....	224 3/8 - 226 3/8	
3	216 1/2 - 219 1/2		3	225 - 227	
4	213 - 237 1/2	1/	4	224 - 226	
5	217 1/2 - 218 1/4		5	223 7/8 - 225 7/8	
6	203 3/4 - 229 1/2		6	223 3/8 - 225 3/8	
9	206 1/2		9	222 3/4 - 224 3/4	
10	208 1/2		10	222 3/4 - 224 3/4	
11	208 1/4 - 229 3/4	1/	11	222 1/4 - 224 1/4	
12	206 1/2 - 227 3/4	1/	12	219 5/8 - 221 5/8	
13	211 - 234 1/2	1/	13	218 1/2 - 220 1/2	
16	213 - 233 1/2	1/	16	212 - 214	
17	215 1/2		17	204 1/4 - 206 1/4	
18	226 1/2		18	210 1/4 - 212 1/4	
19	212 - 233 1/2	1/	19	212 1/4 - 214 1/4	
20	212 1/4 - 235 1/2	1/	20	211 1/2 - 213 1/2	
23	213 - 235	1/	23	211 3/4 - 213 3/4	
24	212 1/2 - 238 1/2	1/	24	214 5/8 - 216 5/8	
25	221		25	218 7/8 - 220 7/8	
26	217 1/4 - 241	1/	26	219 1/2 - 221 1/2	
27	Good Friday		27	Good Friday	
30	224 3/4 - 228 1/4		30	222 3/8 - 224 3/8	
31	221 - 226		31	221 5/8 - 223 5/8	

1/ Nominal.

Chicago Wheat Futures, High Points of Closing

Date	March	May	July	September	December
	- cents and eighths per bushel -				
March 2, 1964.....	206/6	202/2	161/6	163/5	168/6
3	206/6	203/4	162/3	164/2	169/4
4	201/3	200/3	162/1	163/7	168/6
5	200/2	199/4	162/1	164/1	169/2
6	198	196/2	161/6	163/4	168/7
9	196	195	157/3	159	164/4
10	197/6	196	158	160/1	165/1
11	197/2	195/4	156/1	158/4	163/4
12	198	196	156/1	158/4	163/4
13	201/6	198/7	158	160/2	165/1
16	200/2	195/5	157	159	164
17	196/2	192/1	156/6	158/7	163/4
18	199/4	193/7	156/2	158/1	162/7
19	202/4	196/2	156/1	158	162/6
20		196/4	157/3	159/2	164/1
23		193/4	157/6	160	164/6
24		195/6	157/3	159/2	163/6
25		197/4	156/7	158/6	163/3
26		201/2	157/6	159/4	164/3
27			Good Friday		
30		205/4	160	161/7	166/6
31		204/3	158/7	160	164/5

AUSTRALIAN SITUATION

Production and Estimated supplies of wheat in Australia for the 1963-64
Total Supplies (December-November) crop year are placed at an all-time high of
Set New Records 351.5 million bushels, exceeding by 8 per cent the previous year's
 peak total of 325.4 million. Indicated supplies for the current
 Australian crop year reflect an increase in carryover stocks from 18.2 million
 bushels at December 1, 1962 to 23.5 million in 1963 while production, now estimated
 at 328.0 million bushels, represents a record crop for the second consecutive year.
 After deducting 75.0 million for anticipated domestic requirements, an estimated
 276.5 million are available for export and for carryover in 1963-64, an increase of
 10 per cent over the 252.1 million the previous year.

Combined exports of wheat as grain and wheat flour in terms of
 grain equivalent during the period December 1-February 29 of the current Australian
 crop year amounted to 79.9 million bushels, 70 per cent greater than the 46.9
 million exported during the corresponding period of 1962-63. The balance remaining
 on March 1, 1964 for export and for carryover, at 196.6 million bushels, is 4 per
 cent below the comparable 1963 total of 205.2 million.

Australian Wheat Supplies

Item	1962-63 <u>1/</u>	1963-64 <u>2/</u>
	- million bushels -	
Carryover, including flour as wheat, at beginning of crop year (December 1).....	18.2	23.5 <u>1/</u>
Production.....	307.2	328.0 <u>1/</u>
Total estimated domestic supplies.....	325.4	351.5
Less estimated domestic requirements for crop year....	73.3 <u>1/</u>	75.0 <u>1/</u>
Available for export and for carryover.....	252.1	276.5
Deduct:		
Exports of wheat as grain, December 1-February 29...	42.9	70.7
Exports of wheat flour in terms of wheat, December 1-February 29.....	4.0	9.2
Total exports of wheat and wheat flour.....	46.9	79.9
Balance on March 1 for export and for carryover.....	205.2	196.6

1/ Revised.

2/ Preliminary.

The following information relative to the Australian situation
 has been extracted from a report from Mr. H.A. Gilbert, Commercial Counsellor for
 Canada, Melbourne, under date of March 16, 1964 and is reproduced with the per-
 mission of the Trade Commissioner Service, Department of Trade and Commerce.

Crop Position The Australian Wheat Board has announced that the 1963-64 wheat crop has been revised to 328 million bushels, an increase of 5 million bushels over the previous official forecast. Deliveries by growers to the Board are now almost complete with some 303.5 million bushels being delivered up to the end of February. The deliveries on a State basis are as follows:

	<u>million bushels</u>
New South Wales	107.5
Victoria	77.0
South Australia	51.5
Western Australia	47.0
Queensland	20.25
Tasmania	0.25

It is expected that a further 2 million bushels will be delivered and about 23 million bushels to be retained on the farms for seed and feed, to take the total to 328 million bushels.

This figure is easily a record crop and it is noteworthy that but for unfavourable growing conditions in Western Australia and poor harvesting conditions in parts of New South Wales the total would have been better still. Since 1960-61, when a record harvest of 274 million bushels was established, two successive crops in 1962-63 and 1963-64, have easily surpassed this previous high level.

The Wheat Board states that there is every indication that the 1964-65 wheat crop may well establish another new production record. This promise is based on reports about growers planting preparations combined with the hope that seasonal conditions during the forthcoming year are favourable.

Marketing Position The Chairman of the Australian Wheat Board, Mr. J.V. Moroney, recently returned from an overseas trip during which he concluded a substantial bulk sales contract with India. This was for the shipment of 171,000 tons (6,384,000 bushels) of wheat by June 1964.

Since December 1, 1963 the Board has shipped a total of 1.8 million tons (67,200,000 bushels) of wheat to overseas countries and has a heavy shipping programme in its hands for some months ahead. Included in the programme is a lift of some 28,000 tons (1,045,000 bushels) by one ship due to load at Fremantle next May. This will be a record quantity for a single wheat cargo from any Australian port.

Commenting on the record harvest from the 1963-64 crop, Mr. Moroney said that from a marketing point of view the situation in Australia this year is comfortable. A considerable portion of the latest crop has been sold in advance and apart from the quantities reserved for traditional and regular customers, including home consumption, the balance for which sales have still to be negotiated is relatively small.

However, should the 1964-65 crop prove to be another bumper harvest, he added, the satisfactory disposal of the increased exportable surplus could possibly present a marketing problem next year. The future of international wheat trading for even a year or two ahead is unpredictable, said Mr. Moroney, but the Wheat Board is well equipped to handle to the greatest advantage possible, any situation that may arise.

Exports of Australian Wheat and Wheat Flour in Terms of Wheat
December 1 - February 29, 1963-64 and Corresponding Period 1962-63

Destination	Wheat		Wheat Flour	
	1962-63	1963-64	1962-63	1963-64
- thousand bushels -				
<u>Europe</u>				
Britain.....	4,933	6,635	343	428
Eastern Europe.....	-	21,338	-	2,505
Eire.....	937	375	-	-
Malta.....	205	437	-	-
Norway.....	1,159	1,859	-	-
Western Germany.....	696	3,279	-	-
Others.....	-	-	4	-
<u>Middle East</u>				
Aden.....	162	373	-	-
Aden and Aden I/T.....	-	-	232	282
Aden and Aden I/T Atta	-	-	76	139
Arabian Gulf.....	-	-	38	93
Arabian Gulf Atta.....	-	-	223	483
Iran.....	107	53	-	-
Iraq.....	-	1,116	-	-
Lebanon, Jordan, Syria.....	1,439	1,402	-	-
Saudi Arabia.....	-	-	121	10
Others.....	53	256	1	10
<u>Africa</u>				
Mauritius.....	-	-	146	409
Nyasaland.....	-	-	64	58
Portuguese East Africa.....	-	462	-	-
Rhodesia.....	961	1,109	-	-
Zanzibar.....	-	-	46	45
Others.....	3	7	16	15
<u>Asia</u>				
Brunei.....	-	-	8	8
Burma.....	290	-	31	-
Ceylon.....	-	4	43	1,512
China.....	25,009	23,609	-	-
Hong Kong.....	664	680	48	28
India.....	1,765	348	-	-
Indonesia.....	-	-	255	25
Japan.....	1,519	5,217	-	-
Pakistan.....	1,328	-	-	-
Philippines.....	56	211	132	729
Thailand.....	20	1/	130	201
Malaysia				
Malaya.....	103	21	754	918
Malaya Atta.....	-	-	3	30
Sabah.....	-	-	23	48
Sarawak.....	-	-	33	40
Singapore.....	6	372	569	544
Singapore Atta.....	-	-	23	2

Exports of Australian Wheat and Wheat Flour in Terms of Wheat
December 1 - February 29, 1963-64 and Corresponding Period 1962-63

Destination	Wheat		Wheat Flour	
	1962-63	1963-64	1962-63	1963-64
- thousand bushels -				
<u>Asia</u>				
Singapore A/C B.W.O.	-	-	6	8
Others.....	-	-	18	29
<u>Pacific Area and Sundries</u>				
New Zealand.....	1,475	1,519	-	-
Pacific Islands and Sundries.....	10	20	539	418
Peru.....	-	-	2	2
Ships' Stores and Sundries.....	-	-	72	180
Totals.....	42,900	70,700	4,000	9,200

1/ Less than 500 bushels.

ARGENTINE SITUATION

Supply Position Estimated total supplies of wheat in the Argentine for the 1963-64 (December-November) crop year amount to 300.0 million bushels, consisting of the December 1, 1963 carryover of 18.5 million and the new crop, officially estimated at 281.5 million. Indicated supplies for the current Argentine crop year, reflecting a substantial increase in production as well as slightly larger opening stocks are about 41 per cent more than the 1962-63 total of 212.6 million bushels. After making an allowance of 132.3 million bushels for anticipated domestic requirements, an estimated 167.7 million are available for export and for carryover in 1963-64, in contrast to 84.6 million the previous year.

Argentine Wheat Supplies

Item	1962-63 1/	1963-64 2/
- million bushels -		
Carryover at beginning of crop year (December 1) 3/....	18.0	18.5
Production 4/.....	194.5	281.5 1/
Total estimated domestic supplies.....	212.6	300.0
Less estimated domestic requirements for crop year.....	128.0	132.3
Available for export and for carryover.....	84.6	167.7
Deduct:		
Exports of wheat as grain, December-February.....	28.8	27.1
Exports of wheat flour in terms of wheat, December-February.....	0.1	0.2
Total exports of wheat and wheat flour.....	28.9	27.4
Balance on March 1 for export and for carryover.....	55.8	140.3

1/ Revised. 2/ Preliminary. 3/ Includes allowances for farm stocks. 4/ Official estimate.

Exports of wheat and wheat flour in terms of grain equivalent during December 1963-February 1964 amounted to 27.4 million bushels, 5 per cent below the 28.9 million exported during the same months in 1962-63. The balance remaining on March 1, 1964 for export and for carryover was estimated at 140.3 million bushels, considerably higher than the March 1, 1963 total of 55.8 million.

The following account of the Argentine situation has been extracted from a report from Mr. M.B. Bursey, Commercial Counsellor, Buenos Aires, under date of March 20, 1964 and is reproduced with the permission of the Trade Commissioner Service, Department of Trade and Commerce. Where possible, conversions from Argentine to Canadian measures have been made for the convenience of our readers. Currency conversions have been made at the rate of 121.72 pesos per Canadian dollar the quotation in effect on March 9, 1964.

Weather
and Crops

Much of February and early March was characterized by insufficient rainfall and below-normal temperatures and certain crops, particularly corn and sunflower seed, suffered in the northern grain belt. Downpours occurred in a few areas toward the end of February, and in many more areas around mid-March, and reports are that these proved most beneficial, although sub-normal temperatures still prevail in most areas. The harvesting of the wheat crop, including durum, is now, for all intents and purposes, complete. The flax harvest is also complete in the northern grain belt and practically complete in the southern belt, and the yields of flax in both areas have been rather disappointing.

Wheat

The third official production estimate for wheat of 7,660,000 metric tons (281.5 million bushels) confirms the previous optimism of the trade and represents a 52.6 per cent increase over the production of the previous season, and a 43.8 per cent and 30.5 per cent increase over the average production of the past 5 and 10-year periods, respectively.

During the period under review, most wheat sales were made to the National Grain Board who up to the end of February had purchased some 1,660,000 metric tons (60,994,000 bushels) of the new crop. Exporters claim that they are having difficulty in competing with the Board, as the minimum official price was out of line with world prices.

Exports of wheat to all destinations between the beginning of the current crop year (December 1, 1963) to March 19, 1964, have totalled some 1,106,800 tons (40,667,000 bushels), but export business during the past two or three weeks has been rather sluggish. The third official production estimate, which was 560,000 tons (20.6 million bushels) larger than the record, would indicate that the exportable surplus for the current year should be in the neighbourhood of 4,500,000 tons (165,345,000 bushels). Wheat shipments to Mainland China during the period under review were particularly large.

During late February Brazil purchased 40,000 metric tons (1,470,000 bushels) for shipment March 10 - April 10 at a price of from between \$US 68.75 and \$US 68.82 per metric ton (\$US 1.87 per bushel) f.o.b. Sales of Argentine wheat to European markets remained sluggish, as exporters claim that the minimum official producers price is too high, and the price they must pay producers does not permit them to market wheat at international prices. Some sales to the Continent have been reported at around \$US 77.60 (\$US 2.11 per bushel) c.i.f.

Prices in the Buenos Aires Futures Market during the past months have, as during the previous month, remained at the level of the minimum official producers prices. Present prices for wheat in the Buenos Aires Cereal Exchange are exactly at the minimum official producers price for the month of March, which is 860 pesos per 100 kilos (\$1.92 per bushel) for hard wheat and 840 pesos per 100 kilos (\$1.88 per bushel) for semi-hard wheat.

Argentine Wheat Exports December-January 1963-64 with Comparisons

Destination	Wheat	Destination	Wheat
	'000 bushels		'000 bushels
Belgium.....	321	Germany.....	1,810
Bolivia.....	73	Italy.....	999
Brazil.....	4,126	Netherlands.....	465
Britain.....	1,734	Paraguay.....	217
China, Communist.....	3,743	Peru.....	1,824
Czechoslovakia.....	366	Switzerland.....	29
France.....	429	Total.....	16,136
Compared with:			
December-January 1962-63.....			17,215
1961-62.....			13,802
1960-61.....			10,289
1959-60.....			6,180
1958-59.....			16,676

FRENCH SITUATION

Supply Position

French Supplies of Soft Wheat

Item	1962-63	1963-64 ^{1/}
	- million bushels -	
Commercial carryover, July 1.....	58.7	100.4
Deliveries to Grain Board.....	371.1	246.3
Total estimated domestic supplies.....	429.8	346.7
Imports, July-February.....	2.7	10.7
Total estimated commercial supplies.....	432.5	357.4
Less domestic requirements for crop year.....	219.0	210.7
Available for export and for carryover.....	213.5	146.7
Deduct:		
Exports of wheat as grain, July-February.....	56.5	51.3
Exports of wheat flour in terms of wheat, July-February.....	15.8	13.2
Total exports of wheat and wheat flour.....	72.3	64.5
Balance on March 1 for export and for carryover.	141.2	82.2

^{1/} Preliminary.

Total estimated commercial domestic supplies of wheat in France for the crop year (July-June) 1963-64, consisting of the July 1 carryover of 100.4 million bushels and anticipated marketings of 246.3 million amount to some 346.7 million bushels, 19 per cent less than the 1962-63 total of 429.8 million. Imports of wheat during the July-February period of the current crop year amounted to 10.7 million bushels as against only 2.7 million imported during the same period in 1962-63. After deducting 210.7 million bushels for estimated domestic use, including normal feed wheat requirements, the surplus available for export and for carryover amounts to 146.7 million bushels in contrast to 213.5 million last year.

Combined exports of wheat and wheat flour in terms of grain equivalent during the first eight months of the 1963-64 crop year amounted to 64.5 million bushels, and represented a decrease of 11 per cent from the comparable 1962-63 total of 72.3 million. The balance of commercial supplies remaining on March 1, 1964 for export and for carryover amounted to 82.2 million bushels 42 per cent below the March 1, 1963 total of 141.2 million.

The following account of the current crop situation in France has been extracted from a report by Mr. R.G. Woolham, Assistant Commercial Secretary, Canadian Embassy, Paris, under date of March 26, 1964, and is reproduced with the permission of the Trade Commissioner Service, Department of Trade and Commerce. Where possible, conversions from French to Canadian measures have been made and rounded for the convenience of our readers.

Market
Situation

Local market activity in wheat has been reported as being particularly calm during the last month, especially since quantities of domestic milling wheat are almost completely depleted. On the other hand, import certificates for imported hard wheats now total over 300,000 tons (11,023,000 bushels) since the beginning of this crop year and represents a post-war record. No new contracts for sales of feed wheat have been announced this month, although an East German buying mission has been reported as being in Paris to discuss cereal requirements with the French authorities.

To the end of February, durum wheat receipts totalled 231,000 tons (8,488,000 bushels) from all sources including 44,000 tons (1,617,000 bushels) from Canada and 52,000 tons (1,911,000 bushels) from the U.S.A. Import certificates for durum wheat to March 20, 1964, totalled 346,700 tons (12,739,000 bushels). The purchase of a cargo of Canadian Western Amber Durum (half No. 4 and half No. 5) by Marseilles millers has been reported this month for May delivery.

French Wheat Exports July 1, 1963 - February 29, 1964

Destination	Wheat	Destination	Wheat
	'000 bushels		'000 bushels
Germany.....	3,926	China.....	3,254
Belgium.....	5,233	Poland.....	11,700
Italy.....	2,061	Hungary.....	1,782
Holland.....	1,737	Other Markets.....	15,810
E.E.C.	12,956	Total, All Markets..	45,503

Weather
and Crops

After a dry, mild period during the first half of February, followed by considerable rain and continuing above-average temperatures during the latter half, rainfall levels approached normal averages. March brought a return of winter and cold weather including light snow in some areas, with a gradual return to cool temperatures and continuing rains. By the end of March mild weather and some sunshine moved the cereal crop condition forecasts upwards to "very satisfactory". Cereal acreage estimates as of March 1, 1964 were reported as follows, with comparisons:

	<u>5 yr. Average</u> <u>(actual)</u>	<u>March 1</u> <u>1963</u>	<u>March 1</u> <u>1964</u>
	- thousand acres -		
Wheat	10,455	9,468	10,492
Wheat and Rye	42	25	27
Rye	676	597	594
Barley	5,442	638	773
Oats	3,457	597	777
Mixed Cereals	263	90	98

CALENDAR OF WHEAT EVENTS

- March 16 According to a report received from Mr. H.A. Gilbert, Commercial Counsellor for Canada, Melbourne, the 1963-64 Australian wheat crop has been revised to a record 328 million bushels.
- 18 Based on farmers' intention at March 1, the acreage seeded to all classes of wheat in Canada in 1964 will be a record 29.1 million acres, an increase of 6 per cent over the 1963 seedings and 18 per cent above the 1958-62 average.
- 18 According to a report published by the Crop Reporting Board, United States Department of Agriculture, prospective plantings of all spring wheat in the United States in 1964 are expected to total 11.7 million acres, 6 per cent more than the acreage planted in 1963 but 3 per cent less than the 1958-62 average.
- 20 According to a report received from Mr. M.B. Bursey, Commercial Counsellor for Canada, Buenos Aires, the third official production estimate place the 1963-64 Argentine wheat crop at 7,660,000 metric tons [281.5 million bushels].
- April 1 According to the Bureau of the Census, United States Department of commerce, wheat flour production in the United States in February 1964 amounted to 21,218,000 hundredweight, an average of 1,061,000 hundredweight per working day.
- 2 The 1964 season of navigation opened at the Canadian Lakehead.

STATISTICS CANADA LIBRARY
BIBLIOTHEQUE STATISTIQUE CANADA



1010686753

THE WHEAT REVIEW - MARCH 1964