

CATALOGUE No.

22-005

MONTHLY

DOES NOT CIRCULATE

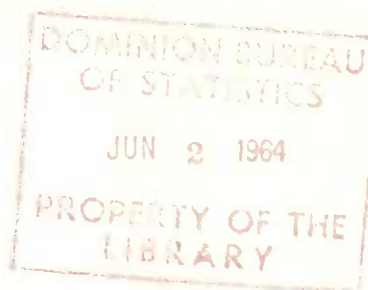
NE PAS PRÊTER



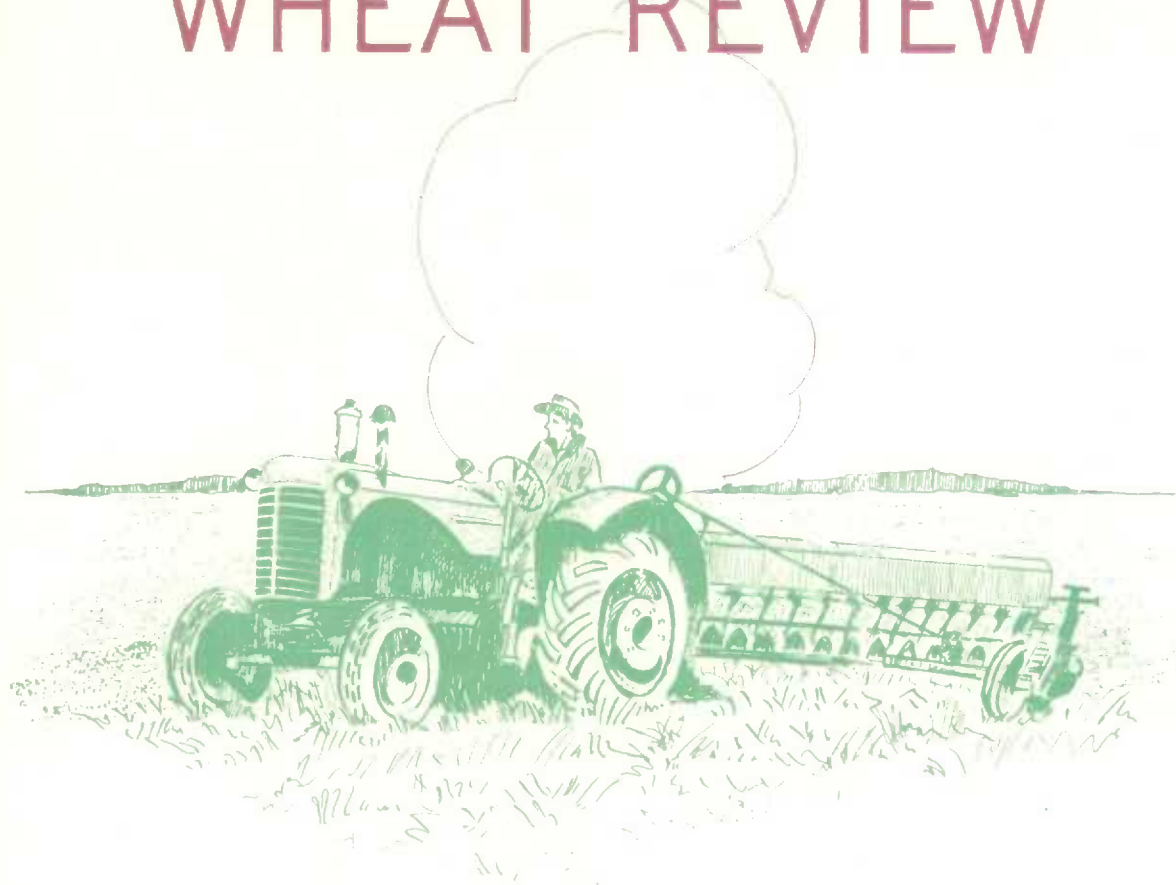
CANADA

DOMINION BUREAU OF STATISTICS

AGRICULTURE DIVISION



# THE WHEAT REVIEW



APRIL 1964



DOMINION BUREAU OF STATISTICS

---

# THE WHEAT REVIEW

APRIL 1964

*Published by Authority of*  
The Minister of Trade and Commerce

Prepared in the Crops Section, Agriculture Division  
Dominion Bureau of Statistics, Ottawa

May 1964  
5502-502

Price \$3 per year

Vol. 34—No. 9

## TABLE OF CONTENTS

	<u>Page</u>
World Wheat Situation	
Wheat Exports Exceed Billion Bushel Level.....	1
Wheat Supplies of Four Major Exporters Continue to Decline.....	1
I.W.A. Cumulative Totals of Commercial Purchases.....	2
Canadian Situation	
Supplies Remain at Record Level.....	3
Exports 10 Per Cent Ahead of Record.....	3
March 1964 Exports of Wheat and Flour Total 28.4 Million Bushels.....	4
Visible Supply Continues Decline.....	5
General Quota Position.....	5
Lake Shipments of Canadian Grain.....	6
Crop and Weather Conditions.....	6
Canadian Wheat Stocks at March 31, 1964.....	7
Farmers' Marketings of Wheat.....	8
Visible Supply of Canadian Wheat.....	9
Grading of Wheat Inspected, August-March 1963-64 with Comparisons.....	9
Weekly Visible Supply and Farmers' Marketings (Charts).....	10
Wheat Shipments to the United States by Destination.....	11
Rail Shipments of Wheat to Maritime Ports.....	11
Rail Shipments of Wheat from Fort William-Port Arthur.....	12
Overseas Exports of Canadian Grain by Ports of Loading.....	12
Freight Assistance Shipments.....	13
Monthly Exports of Canadian Wheat and Wheat Flour.....	14
Exports of Canadian Wheat by Destination.....	15
Customs Exports of Canadian Wheat Flour by Countries of Consignment.....	18
Canadian Wheat Board Weekly Average Cash Wheat Prices.....	20
Canadian Flour Milling Situation	
Production and Exports.....	22
United States Situation	
Domestic Supplies 3 Per Cent Below Previous Year.....	23
July-March Exports Maintain Record Level.....	23
U.S. Wheat and Flour Approaching Record Level.....	24
Winter Wheat Crop Estimated at 1,011 Million Bushels.....	27
Stocks of Wheat in All Positions April 1, 1964.....	28
USDA Announces 1964 Wheat Program.....	29
USDA Announces Further Certificate Provisions on Old Crop Wheat.....	30
Cash Wheat Prices on the Kansas City and Minneapolis Markets.....	31
Chicago Wheat Futures, High Points of Closing.....	31
Australian Situation.....	32
Argentine Situation.....	34
French Situation.....	37
Calendar of Wheat Events.....	40

---



# WORLD WHEAT SITUATION

## Wheat Exports Exceed Billion Bushel Level

Exports of wheat and flour in terms of wheat, from the four traditional major exporters, after slackening somewhat during the mid-winter months of December and January, have gained new momentum and reached a peak of 171.3 million bushels in March alone. The total of 1,163.1 million bushels of wheat and flour exported from Canada, United States, Argentina and Australia during the August-March period of the current Canadian crop year, was 27 per cent higher than the previous record of 917.1 million exported during the same months in 1961-62 and marked the first time that this figure surpassed the billion bushel level at this stage of the crop year. This year's August-March shipments of wheat and flour also registered a margin of 59 per cent over last year's comparable level of 733.4 million and surpassed by 89 per cent the ten-year (1952-53-1961-62) average for the period of 613.9 million bushels. Present indications are that the total world trade in wheat and flour will reach close to the two billion bushel level when the 1963-64 crop year is completed.

Canadian wheat shipments, moving in unprecedented volume from Pacific and Maritime ports will be enhanced, by the early opening of Lakehead and Seaway navigation. United States exports of wheat, also pushing to a new peak, represent almost one half of the total August-March shipments from the four traditional major exporters. Both Argentina and Australia have recently harvested large wheat crops and, as a result, exports from these two countries will add considerably to the total world trade in this commodity. Recent unofficial reports indicate that negotiations are proceeding for several relatively substantial sales of Argentine wheat. Australia has just reported another large sale to Mainland China.

## Exports of Wheat and Flour in Terms of Wheat, August 1963-March 1964 with Comparisons

August-March	United States	Canada	Argentina	Australia	Total
- million bushels -					
1950-51.....	198.3	135.9	54.4	80.3	468.9
1951-52.....	333.4	200.1	23.9	62.8	620.2
1952-53.....	233.0	224.7	6.0	56.7	520.4
1953-54.....	125.7	170.9	78.0	40.2	414.8
1954-55.....	188.1	172.7	92.2	62.8	515.8
1955-56.....	185.5	160.8	80.4	63.5	490.2
1956-57.....	356.3	178.0	62.8	97.6	694.7
1957-58.....	255.5	197.6	48.5	46.4	548.0
1958-59.....	297.2	188.5	61.7	50.4	597.8
1959-60.....	309.7	190.9	41.5	80.1	622.2
1960-61.....	447.8	205.8	55.4	108.6	817.6
1961-62.....	476.1	244.6	54.5	141.9	917.1
1962-63 1/.....	379.1	211.9	45.9	96.5	733.4
1963-64 2/.....	566.2	348.0	67.4	181.5	1,163.1

1/ Revised. 2/ Preliminary.

## Wheat Supplies of Four Major Exporters Continue to Decline

Supplies of wheat, for export and for carryover, held by the four traditional major exporters at April 1, 1964, (less estimated domestic requirements to the end of their respective crop years) amounted to 2,103.1 million bushels, representing a decline of 7 per cent from the 2,253.8 million at the same time a year ago. The relative supply situation among the four major exporters remains unchanged with reduced supplies in the United States and Australia more than offsetting larger totals in Canada and Argentina. Supplies at April 1, 1964, in millions of bushels, were held as follows, with last year's comparable figures in brackets: United States, 1,109.0 (1,407.2); Canada, 707.7 (606.6); Argentina, 117.0 (52.4); and Australia, 169.4 (187.6).

International Wheat Council  
Cumulative Totals of Commercial Purchases by Importing Countries from Exporting Countries  
Crop Year 1963-64 -- Through March 28, 1964

Importing Countries	EXPORTING COUNTRIES								Total Purchases
	Canada	Argentina	Australia	France	Italy	Sweden	U.S.S.R.	U.S.A.	
- thousand bushels -									
Austria.....	525	-	-	655	-	-	-	116	1,296
Belgium & Luxembourg.....	14,154	1,008	-	5,959	-	7	55	4,366	25,549
Brazil.....	-	15,616	-	-	-	-	-	8,578	24,194
Costa Rica.....	608	-	-	68	-	-	-	960	1,636
Cuba.....	-	-	-	-	-	-	-	-	-
Dominican Republic.....	726	-	-	-	-	-	-	607	1,333
El Salvador.....	1,014	-	-	1	-	-	-	901	1,916
Finland.....	357	-	-	-	-	1	-	224	582
Germany, Federal Republic	37,268	7,768	8,135	4,601	-	606	-	18,831	77,209
Greece.....	15	-	-	-	-	-	-	194	209
Guatemala.....	494	-	-	-	-	-	-	1,432	1,926
Iceland.....	-	-	-	6	-	-	-	80	86
India.....	-	-	7,034	1	-	-	-	3	7,038
Indonesia.....	-	-	173	-	-	-	-	1	174
Ireland.....	2,123	-	2,194	14	-	-	-	271	4,602
Israel.....	1,590	-	148	-	-	-	-	2,167	3,905
Japan.....	39,297	-	15,738	-	-	-	-	61,077	116,112
Korea.....	511	-	1,539	-	-	-	-	3,662	5,712
Liberia.....	57	-	-	-	-	-	-	68	125
Libya.....	-	-	-	89	903	-	-	277	1,269
Netherlands.....	3,189	2,845	1	2,112	-	110	735	20,112	29,104
Netherlands Territories	199	-	16	181	-	-	-	613	1,009
New Zealand.....	-	-	5,041	-	-	-	-	-	5,041
Nigeria.....	523	-	-	13	-	-	-	1,980	2,516
Norway.....	1,667	-	4,188	115	-	688	-	3,860	10,518
Peru.....	1,178	7,709	7	24	-	-	-	3,498	12,416
Philippines.....	7,955	-	2,174	-	-	-	-	7,393	17,522
Portugal.....	29	411	12	334	-	-	-	4,922	5,708
Portuguese Territories.	345	-	988	-	-	-	-	1,171	2,504
Rhodesia & Nyasaland.....	58	-	1,768	2	-	-	-	112	1,940
Saudi Arabia.....	824	-	736	2	1	-	-	3,042	4,605
Sierra Leone.....	394	-	-	3	-	-	-	63	460
South Africa.....	3,061	-	-	-	-	-	-	3,036	6,097
Switzerland.....	8,203	226	-	1,313	32	22	-	1,793	11,589
Tunisia.....	-	-	-	-	-	-	-	-	-
United Arab Republic.....	-	-	-	-	-	-	-	6	6
United Kingdom.....	95,114	5,601	26,423	9,116	4	240	874	20,364	157,736
U.K. Territories.....	3,291	-	4,224	299	-	-	-	1,697	9,511
Vatican City.....	205	-	-	-	-	-	-	-	205
Venezuela.....	7,280	-	-	-	-	-	-	8,866	16,146
Western Samoa.....	-	-	91	-	-	-	-	3	94
To Orders.....	-	7,746	-	5,571	-	-	-	-	13,317
Totals.....	232,254	48,930	80,630	30,479	940	1,674	1,664	186,346	582,917
Percentage of Total Sales by Exporting Countries...	39.84	8.39	13.83	5.23	.16	.29	.29	31.97	100.00

NOTE: Mexico - no sales reported to October 31, 1963.  
Spain - no sales reported.  
Argentina - quantities cover period ending March 13, 1964.  
France - quantities cover period ending March 21, 1964.  
Italy - quantities cover period ending March 7, 1964.  
U.S.S.R. - quantities cover period ending September 14, 1963.



# CANADIAN SITUATION

Supplies Remain at Record Level Total estimated supplies of wheat for the 1963-64 crop year are placed at an all-time high of 1,210.7 million bushels, consisting of the August 1 carryover of 487.2 million and the 1963 crop, estimated at a record 723.4 million bushels. Supplies of the size indicated represent a 27 per cent increase over the 956.6 million of a year ago and surpass by 5 per cent the previous peak of 1,152.8 million bushels established in 1956-57. After making an allowance of 155.0 million bushels for anticipated domestic requirements, supplies available for export and for carryover during 1963-64 amount to 1,055.7 million bushels, 29 per cent above the 818.5 million in 1962-63.

Exports 10 Per Cent Ahead of Record Total exports of wheat and flour during the August-March period of the current crop year amounted to the unprecedented level of 348.0 million bushels, exceeding by 10 per cent the previous peak of 315.3 million shipped during the same period in 1928-29 and surpassing by 64 per cent last season's comparable total of 211.9 million. Of the current total, shipments of wheat as grain accounted for some 313.0 million bushels as against 193.9 million a year ago. The equivalent of 34.9 million bushels was exported in the form of wheat flour compared with 18.0 million during the August-March period last year. The balance remaining on April 1, 1964 for export and for carryover amounted to 707.7 million bushels, 17 per cent larger than the April 1, 1963 total of 606.6 million.

## Canadian Wheat Supplies

Item	1962-63 <u>1/</u>	1963-64 <u>2/</u>
	- million bushels -	
Carryover in North America at beginning of crop year (August 1).....	391.1	487.2
Production.....	565.6	723.4
Imports of wheat for domestic use, August-March.....	<u>3/</u>	<u>4/</u>
Total estimated supplies.....	956.6	1,210.7
Less estimated domestic requirements for crop year...	138.1	155.0
Available for export and for carryover.....	818.5	1,055.7
Deduct:		
Exports of wheat in bulk, August-March <u>5/</u> .....	190.5	310.5
Exports of bagged seed wheat, August-March <u>6/</u> .....	3.4	2.6
Total exports of wheat as grain.....	193.9	313.0
Exports of wheat flour in terms of wheat, August - March <u>6/</u> .....	18.0	34.9
Total exports of wheat and wheat flour.....	211.9	348.0
Balance on April 1 for export and for carryover.....	606.6	707.7

1/ Revised. 2/ Preliminary. 3/ Less than 50,000 bushels. 4/ Not available.

5/ As reported by the Board of Grain Commissioners. (Includes overseas clearances and imports into the United States). 6/ Customs returns, 1962-63 adjusted for time lag.

March 1964 Exports of  
Wheat and Flour Total  
28.4 Million Bushels

Total exports of wheat in bulk, bagged seed wheat and wheat flour in terms of grain equivalent during March 1964 amounted to 28.4 million bushels, 24 per cent above the 22.9 million exported last year, 32 per cent more than the ten-year (1953-62) average for the month of March of 21.5 million, but 2 per cent less than the February 1964 total of 28.9 million bushels. Exports of wheat in bulk (as reported by the Board of Grain Commissioners) during March 1964 totalled 22.5 million bushels, 4 per cent above the February 1964 figure of 21.7 million, 17 per cent more than the 19.2 million of March last year and 29 per cent greater than the 10-year (1953-62) average for the month of March of 17.4 million. Exports of bagged seed wheat during March 1964, based on Canadian Customs returns, amounted to 605 thousand bushels compared with the February figure of 501 thousand and the March 1963 total (adjusted to remove time lag) of 1,251 thousand bushels. Customs returns also indicate that the equivalent of 5.3 million bushels of wheat was exported in the form of flour during March 1964 below the 6.7 million recorded last month and in sharp contrast to the adjusted March 1963 total of 2.5 million bushels.

Cumulative exports of wheat in bulk during the period August 1963-March 1964 amounted to 310.5 million bushels, representing increases of 63 per cent over the comparable 1962-63 total of 190.5 million and 89 per cent more than the ten-year average for the period of 164.5 million. Clearances to the U.S.S.R. (Russia) totalled 6.9 million bushels during the month of March 1964 and raised the cumulative crop year total to that destination to 111.5 million. This total represented 36 per cent of the eight-month total exports of Canadian wheat in bulk form. Shipments of wheat to Britain amounted to 47.6 million bushels and accounted for 15 per cent of the August-March 1963-64 total. During the same period of 1962-63 there were no shipments of wheat to the U.S.S.R. while those to Britain amounted to 49.5 million bushels and represented 26 per cent of the August-March total. Other principal markets for Canadian wheat in bulk during the first eight months of the current crop year, with figures for the same period of the preceding crop year in brackets, were as follows, in millions of bushels: Japan, 32.3 (28.1); Federal Republic of Germany, 25.2 (18.8); China Communist, 24.8 (37.2); Belgium and Luxembourg, 13.1 (6.4); Poland, 7.3 (14.2); Switzerland, 4.3 (1.7); Venezuela, 4.5 (4.4); and Philippines, 4.3 (4.3). Cumulative exports of bagged seed wheat during August-March of the current crop year, based on Canadian Customs returns, amounted to 2,553 thousand bushels compared with last year's comparable total (adjusted to remove time lag) of 3,448 thousand.

Cumulative exports of wheat flour during the first eight months of the 1963-64 crop year, based on Customs returns, were the equivalent of 34.9 million bushels, nearly double the adjusted August 1962-March 1963 total of 18.0 million bushels. The U.S.S.R. (Russia) and Britain were the two major markets for Canadian wheat flour during the period under review. Shipments of wheat flour to the U.S.S.R. during the August-March period of the current crop year amounted to the equivalent of 13.7 million bushels and accounted for 39 per cent of the eight-month total while those to Britain, at 8.2 million bushels, represented 24 per cent of the August 1963-March 1964 exports of wheat flour. During the same months of the 1962-63 crop year there were no shipments of flour to the U.S.S.R. but shipments of wheat flour to Britain amounted to the equivalent of 7.9 million bushels and represented 44 per cent of the total. Other leading markets for Canadian wheat flour in terms of grain equivalent during the August-March period of the 1963-64 crop year, with revised data for the same months of the preceding crop year in brackets, were as follows, in thousands of bushels: Cuba, 3,981 (nil); Jamaica, 1,114 (944); Trinidad, 914 (869); Leeward and Windward Islands, 711 (626); Hong Kong, 710 (660); Ghana, 659 (1,209); United States, 619 (877); and Ceylon, 586 (1).



Visible Supply  
Continues Decline

With the volume of Canadian wheat entering domestic and export channels exceeding farmers' marketings by a considerable margin, the total visible supply of Canadian wheat maintained a relatively sharp decline during the period March 26 to April 22, 1964. The combined total of 40.8 million bushels moving into export and domestic markets was sharply above the 22.2 million bushels delivered from farms and, as a result, the total visible supply of Canadian wheat decreased from 353.3 million bushels at March 25 to a level of 334.5 million at April 22.

The total visible supply of Canadian wheat at April 22 this year represented a decrease of 10 per cent from the 1963 comparable total of 373.2 million but 2 per cent more than the 1962 figure of 328.3 million. Stocks in country elevators amounted to 189.4 million bushels compared with 208.2 million in this position a year ago and 159.9 million two years ago. This year's supplies in country elevators at April 22 accounted for 57 per cent of the total visible wheat supply compared with the 1963 and 1962 corresponding percentages of 56 per cent and 49 per cent, respectively. Interior terminal stocks, at 5.6 million bushels were slightly above the 1963 figure of 5.4 million but considerably less than the 9.9 million of 1962. The 24.7 million bushels "in transit rail" (Western Division) represented relatively substantial increases over both the 1963 total of 18.4 million and the 1962 figure of 20.6 million. Supplies at the Canadian Lakehead, at April 22 this year, amounted to 60.1 million bushels, 17 per cent above last year's comparable total of 51.5 million but 1 per cent less than the 60.7 million bushels in this position two years ago. Supplies in Bay, Lake and Upper St. Lawrence ports, at 8.4 million bushels, were in sharp contrast to both the 29.0 million of last year and the 28.1 million of 1962. Stocks of Canadian wheat "in transit lake" at April 22, 1964, amounted to 5.6 million bushels as against 10.2 million the previous year and 3.4 million in 1962. The 18.8 million bushels in Lower St. Lawrence and Maritime ports were reduced from both the 23.1 million of last year and the 19.6 million of two years ago. On the west coast, total supplies in Vancouver-New Westminster, Victoria and Prince Rupert at April 22, 1964, at 8.3 million bushels, were lower than both the previous year's corresponding total of 12.8 million and the 1962 figure of 11.4 million bushels.

General Quota  
Position

By April 27, 1964 out of a total of 1,921 shipping points in the Western Division, the Canadian Wheat Board had placed 388 points on a delivery quota of 8 bushels per specified acre, 725 on a 7-bushel quota and 746 on a 6-bushel quota. Of the remainder 52 points were on a 5-bushel quota and ten stations were reported as "closed".

Summary of Elevator Shipping Points in the Western Division  
as at April 27, 1964

Province	General Quota in Bushels per Specified Acre				Closed	Total
	Five	Six	Seven	Eight		
Ontario.....	-	-	-	1	-	1
Manitoba.....	1	117	127	98	2	345
Saskatchewan.....	26	505	440	64	7	1,042
Alberta.....	25	124	158	220	1	528
British Columbia.....	-	-	-	5	-	5
All Provinces.....	52	746	725	388	10	1,921

Lake Shipments of Canadian Grain Total shipments of the five major grains out of Lakehead terminals from the opening of navigation to April 22 this year amounted to 26.5 million bushels, 35 per cent greater than the 14.3 million during the comparable period of 1963. In 1964 the season of navigation opened on April 2 while the 1963 season opened on April 19. Shipments of wheat, at 20.6 million bushels accounted for 78 per cent of the current total. Shipments of each of the five grains were above last year's corresponding levels.

Lake Shipments of Canadian Grain from the Opening of Navigation to April 22, 1964 and to Approximately the Same Date 1954 to 1963

Year	Wheat	Oats	Barley	Rye	Flaxseed	Total
- thousand bushels -						
1954 .....	-	-	-	-	-	-
1955 .....	1,870	549	3,049	1,051	-	6,518
1956 .....	30,983	2,888	9,256	685	368	44,180
1957 .....	17,798	1,892	2,362	16	1,266	23,335
1958 .....	8,446	2,490	7,363	250	203	18,752
1959 .....	4,011	386	587	-	87	5,071
1960 .....	13,270	726	1,127	413	288	15,824
1961 .....	16,025	2,159	3,138	300	589	22,212
1962 .....	2,421	1,452	1,170	-	292	5,335
1963 .....	10,552	2,306	1,056	136	278	14,327
1964 .....	20,586	2,989	2,318	154	433	26,479

Crop and Weather Conditions The telegraphic crop report, published by the Dominion Bureau of Statistics on May 6, 1964 summarized crop conditions in each of the Prairie Provinces as follows:

Rain last week delayed field operations in Manitoba. There is enough moisture to start the crop but subsoil reserves are only fair in much of the province. Little seeding has been done yet, even in southern and western areas. Seeding and tillage will resume shortly and could be general in one week. Pasture, hay and weed growth has been slow due to cool, cloudy weather. Farmers are planning to sow more wheat, flax, rapeseed and some other special crops than last year. Less oats and barley will be sown.

General weekend rains in Saskatchewan greatly improved the moisture situation in that province and conditions are now favourable to start crops and also to promote grass growth in pastures and haylands. The rains also eased the threat of serious soil drifting in many regions. Crop and grass growth to date has been slow due to cool temperatures. Seeding is underway in southern and central districts and will be general in these areas as soon as field conditions permit. Operations in northern districts are expected to commence next week.

In Alberta, seasonally cold, windy weather together with dry surface soils, and some snow in the south, have delayed spring soil preparation and seeding operations. Field work is just now becoming general in all regions, but seeding to date is still very limited in the south, and only occasional fields have been sown at widely scattered points in other areas.



Canadian Wheat  
Stocks at  
March 31, 1964

Total stocks of Canadian wheat at March 31, 1964 were estimated at 784.3 million bushels compared with 669.0 million on the same date in 1963 and the record 904.4 million in 1957. The ten-year (1954-63) average was 745.4 million bushels. Data for these estimates were obtained from the Dominion Bureau of Statistics' annual March 31 survey of grain held on farms, from mill returns, and from information supplied by the Board of Grain Commissioners for Canada relative to grain in commercial positions at the close of business on April 1. An estimated 431.6 million bushels, representing 55 per cent of the total were held on farms, 54 per cent more than last year's total of 280.8 million and 83 per cent greater than the 235.9 million at March 31, 1962. All but 5.6 million bushels of the total farm stocks of wheat were held on farms in the Prairie Provinces. Farm-held stocks in Saskatchewan were placed at 320.0 million while those in Alberta and Manitoba were estimated at 78.0 million and 28.0 million bushels, respectively. Of the 352.7 million bushels held in off-farm positions, 201.8 million were in country elevators compared with 210.8 million a year ago and 173.6 million two years ago. Stocks in Lakehead positions amounted to 66.7 million bushels, 14 per cent above last year's corresponding total of 58.6 million and 18 per cent more than the 1962 level of 56.5 million. Supplies in eastern elevators, at 21.3 million bushels represented sharp decreases from both the 51.6 million of 1963 and the 49.8 million of 1962.

Stocks of Canadian Wheat at March 31, 1962-64 1/

Position	1962	1963	1964
- thousand bushels -			
<u>In Canada</u>			
On farms.....	235,900	280,800	431,600
Country elevators.....	173,570	210,807	201,761
Interior private and mill elevators.	7,499	8,061	7,866
Interior terminal elevators.....	10,214	5,352	5,634
Vancouver-New Westminster elevators.	8,241	10,984	8,765
Victoria elevator.....	233	687	700
Prince Rupert elevator.....	-	607	713
Churchill elevator.....	4,829	4,857	4,759
Fort William-Port Arthur elevators..	56,452	58,626	66,668
Storage afloat (Lakehead).....	681	-	-
In transit rail (Western Division)..	16,025	16,956	19,877
Eastern elevators.....	49,778	51,637	21,262
Storage afloat (Eastern Division)...	12,532	13,669	10,034
In transit rail (Eastern Division)...	2,513	3,695	1,935
Eastern mills (mill bins only) <u>3/</u> ...	2,060	1,983 <u>2/</u>	2,380
Western mills (mill bins only) <u>3/</u> ...	181	259 <u>2/</u>	328
Totals, in Canada.....	580,707	668,982 <u>2/</u>	784,279
<u>In United States</u> .....	-	-	-
Totals, in Canada and United States	580,707	668,982 <u>2/</u>	784,279

1/ Stocks other than on farms and in mills compiled by the Statistics Branch, Board of Grain Commissioners for Canada, as at the close of business on March 28, 1962, April 3, 1963 and April 1, 1964.

2/ Revised.

3/ Small quantities of grain going into ground feeds have been excluded.



Farmers' Marketings <sup>1/</sup> of Wheat in the Prairie Provinces 1963-64

Week Ending		Manitoba	Saskatchewan	Alberta	Total	Last Year
- bushels -						
August	7, 1963...	5,607	49,346	16	54,969	64,682
	14 .....	107,808	180,957	199,749	488,514	217,040
	21 .....	171,927	507,568	134,487	813,982	1,215,068
	28 .....	418,689	2,215,916	324,163	2,958,768	3,806,243
September	4 .....	1,180,171	1,906,057	583,877	3,670,105	5,053,798
	11 .....	1,505,137	4,022,800	1,886,765	7,414,702	10,029,156
	18 .....	923,910	5,604,941	2,449,570	8,978,421	11,586,794
	25 .....	527,179	4,091,520	1,672,602	6,291,301	17,353,283
October	2 .....	897,896	5,940,764	2,766,137	9,604,797	21,147,418
	9 .....	991,898	7,917,939	2,398,902	11,308,739	18,454,109
	16 .....	1,229,961	6,090,935	1,468,255	8,789,151	11,545,726
	23 .....	1,757,450	7,878,678	1,922,268	11,558,396	11,158,617
	30 .....	2,684,196	10,340,541	1,964,809	14,989,546	10,315,831
November	6 .....	2,456,981	10,317,922	2,506,806	15,281,709	10,256,475
	13 .....	1,961,553	9,352,062	2,285,644	13,599,259	9,436,356
	20 .....	2,166,743	10,866,244	2,299,453	15,332,440	10,365,650
	27 .....	1,634,110	8,450,399	1,763,585	11,848,094	11,322,633
December	4 .....	1,675,155	12,895,482	2,958,327	17,528,964	10,629,305
	11 .....	1,834,277	14,091,997	3,430,903	19,357,177	11,135,337
	18 .....	809,924	7,114,341	2,176,998	10,101,263	13,430,250
	23 .....	772,650	4,685,432	1,834,729	7,292,811	13,641,722
	30 .....	896,593	8,228,088	2,114,472	11,239,153	8,379,852
January	8, 1964...	1,960,032	9,382,077	4,457,844	15,799,953	6,527,399
	15 .....	1,095,206	11,147,003	4,478,272	16,720,481	8,831,404
	22 .....	1,004,626	11,046,582	4,216,919	16,268,127	3,745,528
	29 .....	328,145	3,172,189	2,195,060	5,695,394	1,829,980
February	5 .....	653,099	6,699,397	3,687,396	11,039,892	5,498,303
	12 .....	505,890	4,774,844	2,681,419	7,962,153	10,798,166
	19 .....	327,771	4,464,188	2,792,607	7,584,566	8,158,602
	26 .....	263,900	3,439,055	2,116,665	5,819,620	4,298,682
March	4 .....	188,991	2,706,690	2,328,892	5,224,573	5,870,916
	11 .....	315,807	2,515,004	2,137,479	4,968,290	6,205,965
	18 .....	350,340	3,011,709	2,160,895	5,522,944	5,202,224
	25 .....	176,886	2,839,918	1,377,878	4,394,682	5,737,707
April	1 .....	101,817	1,150,086	1,255,507	2,507,410	4,336,791
	8 .....	504,172	3,318,296	2,039,248	5,861,716	6,047,481
	15 .....	416,259	3,586,827	1,987,624	5,990,710	3,574,920
	22 .....	671,027	4,623,698	2,446,817	7,741,542	4,686,728
Totals.....		35,473,783	220,627,492	81,503,039	337,604,314	311,896,141

Average similar period:

1952-53--1961-62.. 23,094,912 134,137,968 65,828,093 223,060,973

<sup>1/</sup> Includes receipts at country, interior private and mill elevators, interior semi-public terminals and platform loadings.

Visible Supply of Canadian Wheat, April 22, 1964  
Compared with Approximately the Same Date, 1962 and 1963

Position	1962	1963	1964
- thousand bushels -			
Country elevators - Manitoba.....	23,622	29,006	18,608
Saskatchewan.....	85,409	119,836	111,350
Alberta.....	50,908	59,396	59,440
Totals.....	159,939	208,238	189,398
Interior private and mill.....	8,071	7,780	7,742
Interior terminals.....	9,925	5,384	5,599
Vancouver-New Westminster.....	10,628	11,553	7,383
Victoria.....	768	540	399
Prince Rupert.....	-	733	554
Churchill.....	4,829	4,857	4,759
Fort William-Port Arthur.....	60,657	51,540	60,109
In transit rail (Western Division).....	20,627	18,412	24,673
Bay, Lake and Upper St. Lawrence ports.....	28,110	29,037	8,449
Lower St. Lawrence and Maritime ports.....	19,575	23,106	18,782
In transit lake.....	3,406	10,157	5,635
In transit rail (Eastern Division).....	1,797	1,910	1,057
Totals.....	328,332	373,248	334,539

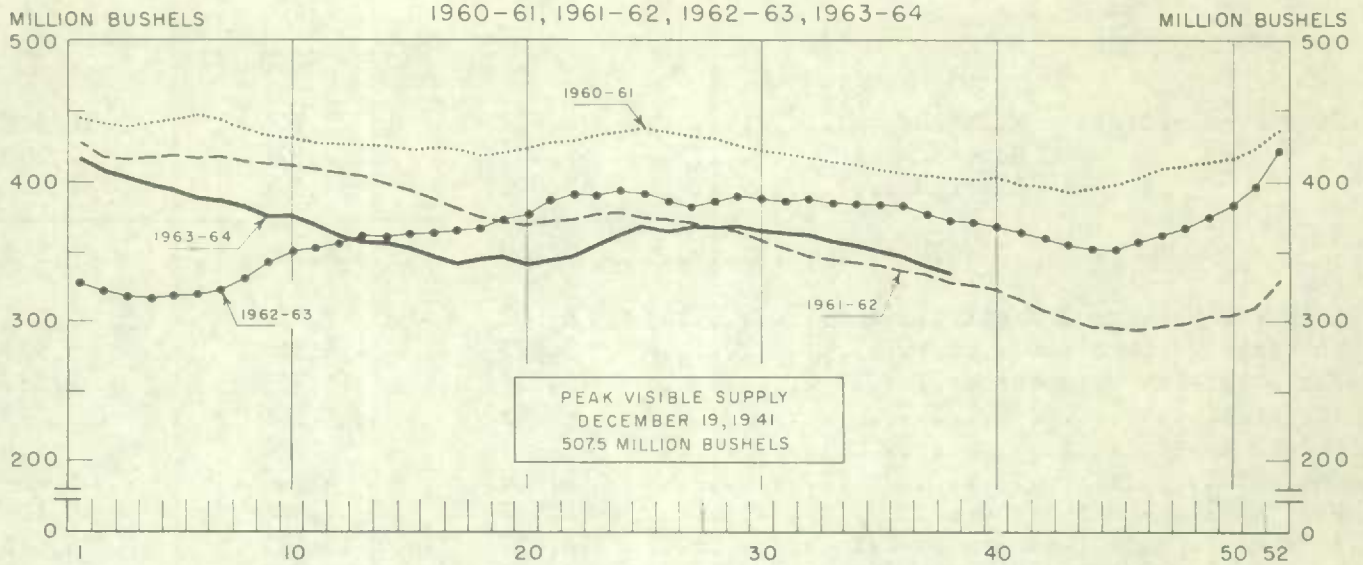
Grading of Wheat Inspected, August 1963 - March 1964 with Comparisons

Grade	Crop Year		August-March			
	Average					
	1957-58 1961-62	1962-63	1962-63		1963-64	
	per cent	per cent	cars	per cent	cars	per cent
No. 1 Hard.....	1/	1/	11	1/	1	1/
No. 1 Man. Northern.....	5.3	12.1	17,522	13.5	7,783	4.2
No. 2 Man. Northern.....	34.4	38.4	49,477	38.1	79,263	42.8
No. 3 Man. Northern.....	26.0	14.9	18,655	14.4	48,260	26.1
No. 4 Man. Northern.....	12.1	11.4	13,689	10.5	16,571	9.0
No. 5 Wheat.....	5.5	5.7	6,428	5.0	9,612	5.2
No. 6 Wheat.....	1.1	0.9	1,392	1.1	1,413	0.8
Feed Wheat.....	1/	1/	16	1/	14	1/
Others Red Spring.....	9.4	8.0	8,201	6.3	7,537	4.1
C.W. Garnet.....	0.1	0.1	118	0.1	869	0.5
C.W. White Spring.....	0.1	0.1	187	0.1	165	0.1
C.W. Mixed Wheat.....	1/	1/	45	1/	94	0.1
Alberta Winter.....	0.2	0.2	426	0.3	2,174	1.2
Nos. 1-6 C.W. Amber Durum....	5.6	7.7	12,876	9.9	10,901	5.9
Others C.W. Amber Durum.....	0.2	0.5	730	0.6	410	0.2
Totals.....	100.0	100.0	129,773	100.0	185,067	100.0
Gross bushels (approx.).....			247,593,000		355,836,000	

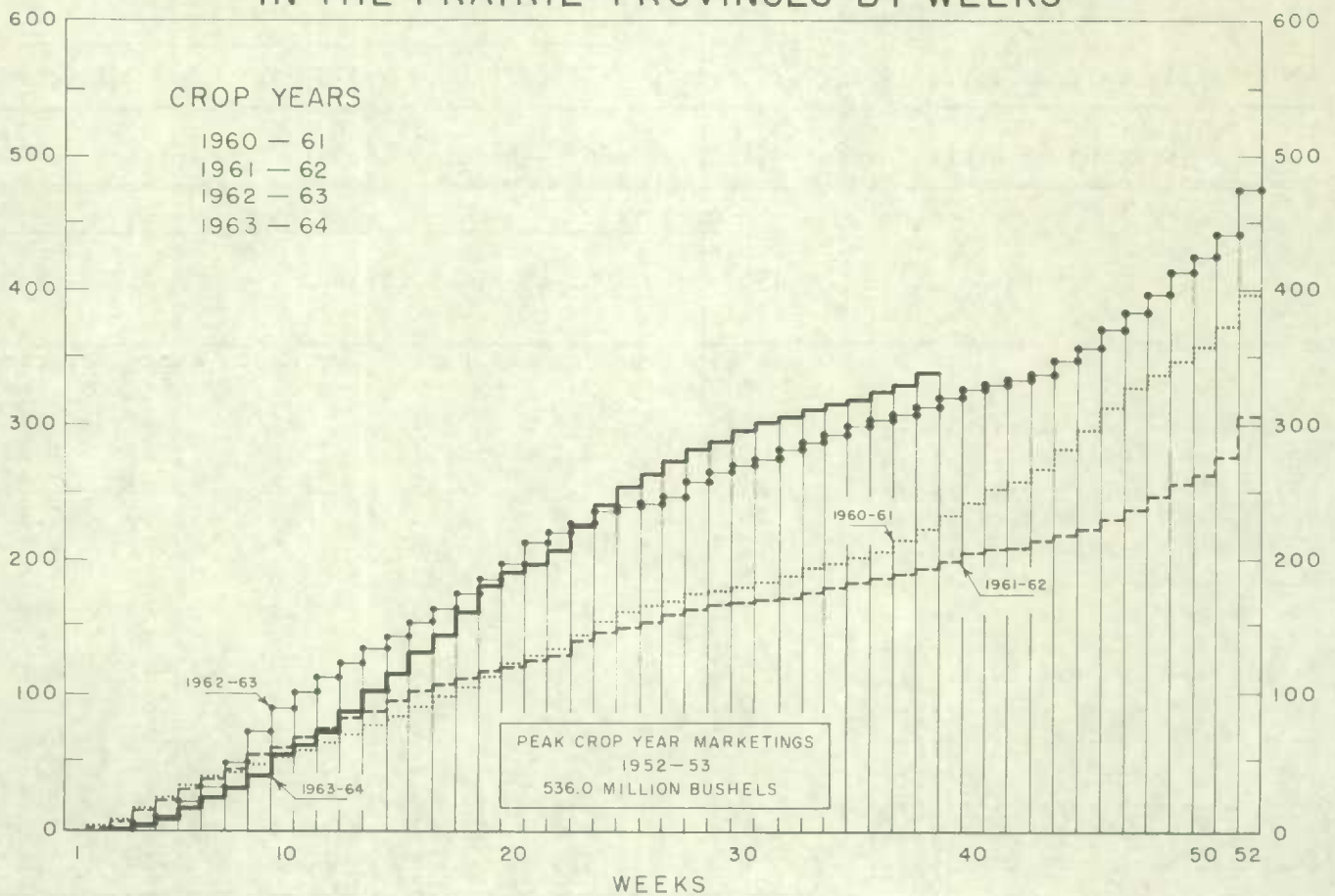
1/ Less than .05 per cent.



## WEEKLY VISIBLE SUPPLY OF CANADIAN WHEAT



## CUMULATIVE RECORD OF WHEAT MARKETINGS IN THE PRAIRIE PROVINCES BY WEEKS



( Data in both charts for crop years beginning August 1 )



Wheat Shipments to the United States by Destination      Total rail and vessel shipments of wheat to the United States, either for re-export or retention for domestic use, from the beginning of the current crop year to April 22, 1964 amounted to 231 thousand bushels. During the comparable periods of 1962-63 and 1961-62 shipments amounted to 291 thousand and 602 thousand bushels, respectively. Of this season's total to date some 54 per cent has been shipped by vessel.

Wheat Shipments\* to the United States by Destination  
August 1, 1963-April 22, 1964 with Comparisons

Destination	1961-62	1962-63	1963-64
- bushels -			
<u>By Vessel</u>			
Chicago.....	100,000	84,750	-
Duluth-Superior.....	420,978	115,208	123,729
Totals, Vessel.....	520,978	199,958	123,729
<u>By Rail</u>			
U.S.A. Domestic Points.....	80,828	91,156	107,166
Totals, Shipments.....	601,806	291,114	230,895

\* Either for re-export or retention for domestic use. Excluding bagged seed.

Rail Shipments of Wheat to Maritime Ports      Rail shipments of wheat to Maritime Ports from Bay, Lake and Upper St. Lawrence Ports during the first eight months of the current crop year totalled 38.9 million bushels in contrast to the August 1962 - March 1963 figure of 16.1 million.

Rail Shipments of Wheat to Maritime Ports from Bay, Lake  
and Upper St. Lawrence Ports

Origin of Shipments	August 1, 1962- March 31, 1963	August 1, 1963- March 31, 1964
- bushels -		
Port McNicoll.....	5,802,391	11,638,560
Midland, Tiffin.....	5,957,659	14,065,126
Collingwood.....	464,910	983,027
Owen Sound.....	1,892,103	5,198,432
Goderich.....	233,210	2,454,278
Sarnia.....	1,788,756	3,421,239
Lakefield.....	-	254,500
Peterborough.....	-	841,367
Totals.....	16,139,029	38,856,529

Rail Shipments of Wheat from Fort William-Port Arthur, 1960-61--1963-64

Month	1960-61	1961-62	1962-63	1963-64
- bushels -				
August.....	14,717	20,648	13,933	5,500
September.....	19,227	14,598	11,657	9,104
October.....	5,417	33,944	22,716	25,355
November.....	24,000	22,915	12,024	13,500
December.....	17,500	60,167	12,778	23,047
January.....	71,335	126,533	39,534	58,772
February.....	135,339	68,421	22,967	28,768
March.....	28,073	37,000	86,398	21,268
April.....	9,833	37,777	69,067	
May.....	15,805	11,203	11,851	
June.....	17,563	16,022	15,746	
July.....	10,940	17,315	11,158	
Totals.....	369,749	466,543	329,829	

Distribution of Rail Shipments of Wheat from Fort William-Port Arthur, March 1964

Grade	New Brunswick	Quebec	Ontario
- bushels -			
3 Northern.....		-	6,000
5 Wheat.....	-		3,000
Durum.....	-	6,000	-
Others.....	1,262	1,500	3,506
Totals.....	1,262	7,500	12,506

Overseas Exports of Canadian Grain by Ports of Loading, August 1, 1963-April 22, 1964  
with Comparisons

Port	Wheat 1/	Durum Wheat 1/	Oats 1/	Barley	Rye	Flaxseed	Rapeseed 2/
- bushels -							
<u>Pacific Seaboard</u>							
Van.-New West. ....	111,304,636	-	11,414,791	11,556,003	1,322,354	5,036,380	3,934,960
Victoria.....	5,619,280	-	-	-	-	-	-
Prince Rupert.....	7,103,041	-	-	-	-	-	-
<u>Churchill.....</u>	21,680,276	-	-	-	-	-	-
<u>Lakehead Direct.....</u>	2,618,182	724,245	1,525,363	1,913,096	620,519	866,221	-
<u>Kingston Direct.....</u>	818,460	-	-	-	-	-	-
<u>St. Lawrence</u>							
Montreal.....	57,988,739	8,832,080	485,821	180,145	365,529	1,840,852	-
Sorel.....	15,252,752	1,514,329	-	-	-	206,698	-
Three Rivers.....	13,125,072	2,633,978	228,193	-	-	359,133	-
Quebec.....	11,946,990	-	-	-	439,707	-	-
Baie Comeau.....	26,576,034	205,763	-	-	89,887	283,961	-
<u>Maritime</u>							
Saint John.....	2,662,229	-	185,010	-	-	-	-
West Saint John....	26,437,114	1,989,681	-	-	-	379,550	-
Halifax.....	18,430,005	438,095	-	-	-	-	-
Totals.....	321,562,810	16,338,171	13,839,178	13,649,244	2,837,996	8,972,795	3,934,960
Aug.1/62-Apr.24/63...	199,257,899	14,894,805	9,818,283	4,201,779	5,634,069	9,103,025	4,349,583

1/ Excluding bagged seed.

2/ In bushels of 50 pounds.



Freight Assistance Shipments Claims filed for payment up to March 31, 1964 represent the movement of some 9.2 million bushels of wheat from the Prairie Provinces to Eastern Canada and British Columbia under the freight assistance policy during the August-February period of the 1963-64 crop year. During the same months last year claims had been filed for a total of 5.8 million bushels, indicating on the assumption of approximately the same rate of submission of claims during both the current and preceding crop years that the August-February shipments of wheat under the policy were running about 59 per cent above those of 1962-63. Revised data on the August-February 1962-63 shipments of wheat based on claims submitted up to March 31, 1964 place the seven-month total at 6.0 million bushels. The bulk of the shipments during the current seven-month period under review went to destinations in Quebec and Ontario with these two provinces accounting for 40 per cent and 33 per cent of the total, respectively.

Provincial Distribution of Wheat Shipments under the Freight Assistance Policy  
August - February 1963-64 and 1962-63

Month	Nfld.	P.E.I.	N.S.	N.B.	Que.	Ont.	B.C.	Total
- thousand bushels -								
August, 1963.....	18	15	143	43	594	515	99	1,427
September.....	17	12	155	57	620	685	183	1,730
October.....	21	14	187	73	658	631	230	1,814
November.....	70	12	157	46	534	378	143	1,341
December.....	16	12	133	42	454	336	143	1,136
January, 1964.....	15	13	153	51	448	323	91	1,095
February.....	7	9	102	28	353	202	2	701
Totals 1/.....	164	88	1,030	340	3,662	3,069	890	9,243
Same period 1962-63:								
Preliminary 2/.....	53	55	329	172	2,369	1,900	928	5,806
Revised 1/.....	64	55	334	177	2,411	1,923	1,044	6,008

Preliminary data on millfeed shipments under the freight assistance policy indicate shipments of 294,609 tons during the August-February period of the current crop year. During the same seven months of 1962-63 claims had been filed for a total of 261,255 tons, indicating on the assumption of approximately the same rate of submission of claims during both the current and preceding crop years that the August-February shipments of millfeeds under the policy were running about 13 per cent above those of 1962-63. Revised data on the 1962-63 August-February shipments of millfeeds based on claims submitted up to March 31, 1964 place the seven-month total at 277,163 tons. As with freight-assisted shipments of wheat, the greater portion of the millfeed shipments during the period under review went to destinations in Quebec and Ontario.

Provincial Distribution of Millfeed Shipments under the Freight Assistance Policy  
August-February 1963-64 and 1962-63

Province	1962-63		1963-64
	Preliminary 2/	Revised 1/	Preliminary 1/
- tons -			
Newfoundland.....	3,756	4,553	3,702
Prince Edward Island.....	4,226	4,355	4,701
Nova Scotia.....	18,816	19,405	18,479
New Brunswick.....	15,659	16,391	16,337
Quebec.....	129,294	138,042	145,099
Ontario.....	69,354	72,512	88,991
British Columbia.....	20,150	21,905	17,300
Totals.....	261,255	277,163	294,609

1/ Based on claims filed up to March 31, 1964.

2/ Based on claims filed up to March 31, 1963.



Monthly Exports of Canadian Wheat and Wheat Flour

Year and Month	Wheat in Bulk <u>1/</u>	Bagged Seed Wheat <u>2/</u>	Total Wheat	Wheat Flour <u>2/</u> <u>3/</u>	Total <u>3/</u> Wheat and Wheat Flour
- thousand bushels -					
<u>1961-62</u>					
August.....	35,625	89	35,714	3,123	38,837
September.....	28,966	242	29,209	2,786	31,995
October.....	32,910	86	32,996	2,391	35,386
November.....	40,823	377	41,200	3,150	44,351
December.....	19,966	392	20,359	2,643	23,002
January.....	17,534	458	17,992	2,304	20,295
February.....	23,739	433	24,173	2,546	26,719
March.....	20,482	574	21,056	2,968	24,023
April.....	24,981	539	25,520	2,389	27,909
May.....	35,150	77	35,227	2,486	37,713
June.....	23,559	5	23,564	2,456	26,020
July.....	19,016	44	19,060	2,711	21,772
Totals.....	322,752	3,317	326,069	31,953	358,022
<u>1962-63</u>					
August.....	21,944	157	22,101	2,852	24,953
September.....	25,040	200	25,240	2,604	27,844
October.....	29,705	31	29,737	2,181	31,917
November.....	33,309	144	33,452	2,176	35,628
December.....	20,949	451	21,399	2,305	23,705
January.....	21,486	473	21,959	1,586	23,545
February.....	18,779	743	19,522	1,811	21,333
March.....	19,246	1,251	20,496	2,454	22,950
April.....	28,916	422	29,338	2,330	31,669
May.....	35,355	14	35,369	2,186	37,555
June.....	24,512	<u>4/</u>	24,513	2,837	27,350
July.....	20,854	-	20,854	1,943	22,798
Totals.....	300,095	3,884	303,980	27,265	331,245
<u>1963-64 5/</u>					
August.....	29,204	160	29,364	3,039	32,403
September.....	42,556	155	42,711	1,645	44,356
October.....	59,020	7	59,027	2,384	61,411
November.....	65,296	245	65,541	3,881	69,422
December.....	41,763	397	42,160	5,393	47,553
January.....	28,451	482	28,933	6,607	35,541
February.....	21,675	501	22,176	6,709	28,885
March.....	22,510	605	23,115	5,278	28,393
Totals.....	310,475	2,553	313,028	34,936	347,964

1/ Export clearances including shipments to the United States compiled by the Statistics Branch, Board of Grain Commissioners for Canada. 2/ Compiled from Canadian Customs returns, 1961-62 and 1962-63 adjusted to remove effect of time lag in reporting. 3/ In terms of wheat equivalent. Wheat flour conversion rate: 2.3 bushels per cwt. 4/ Less than 500 bushels. 5/ Preliminary.

Exports of Canadian Wheat 1/ by Destination, March 1963 and 1964

Destination	March 1964			March 1963
	Wheat (Except Durum)	Durum Wheat	Total All Wheat	Total All Wheat
- bushels -				
<u>COMMONWEALTH AND PREFERENTIAL COUNTRIES</u>				
<u>Western Europe</u>				
Britain.....	2,272,139	-	2,272,139	5,305,003
Ireland.....	112,000	-	112,000	260,213
<u>Other Africa</u>				
Republic of South Africa.....	-	-	-	954,613
<u>Other Asia</u>				
Hong Kong.....	56,933	-	56,933	57,867
Malaysia.....	74,667	-	74,667	-
Totals, Com. and Pref. Countries...	2,515,739	-	2,515,739	6,577,696
<u>OTHER COUNTRIES</u>				
<u>Western Europe</u>				
Belgium and Luxembourg.....	74,667	-	74,667	-
France.....	-	-	-	59,733
Germany, Federal Republic.....	42,933	-	42,933	-
Italy.....	-	-	-	224,000
Netherlands.....	203,467	-	203,467	162,773
Sweden.....	-	-	-	38,080
<u>Eastern Europe</u>				
Albania.....	239,000	-	239,000	-
Bulgaria.....	855,867	-	855,867	-
Czechoslovakia.....	710,453	-	710,453	-
U.S.S.R. (Russia).....	6,573,037	371,284	6,944,321	-
<u>Middle East</u>				
Israel.....	-	-	-	144,480
Saudi Arabia.....	36,652	-	36,652	-
<u>Other Africa</u>				
Mozambique.....	-	-	-	33,040
<u>Other Asia</u>				
China, Communist.....	5,062,587	-	5,062,587	6,624,626
Japan.....	3,584,020	-	3,584,020	3,819,766
Philippines.....	994,971	-	994,971	986,907
Taiwan.....	19,600	-	19,600	-
<u>Oceania</u>				
United States Oceania.....	-	-	-	56,560
<u>South America</u>				
Ecuador.....	194,507	-	194,507	217,730
Venezuela.....	527,646	-	527,646	279,181
<u>Central America and Antilles</u>				
Cuba.....	411,173	-	411,173	-
El Salvador.....	50,960	-	50,960	-
Guatemala.....	41,667	-	41,667	-
<u>North America</u>				
United States for domestic use <u>2/</u> .....	-	-	-	21,197
Totals, Other Countries.....	19,623,207	371,284	19,994,491	12,668,073
Sub-Totals, All Countries.....	22,138,946	371,284	22,510,230	19,245,769
Bagged seed <u>3/</u> .....			605,184	1,250,663
Totals, All Countries.....	22,138,946	371,284	23,115,414	20,496,432

NOTE: See footnotes on page 17.



Cumulative Exports of Canadian Wheat 1/ by Destination

Destination	August 1963-March 1964			Aug/62-Mar/63
	Wheat (Except Durum)	Durum Wheat	Total All Wheat	Total All Wheat
- bushels -				
<u>COMMONWEALTH AND PREFERENTIAL COUNTRIES</u>				
<u>Western Europe</u>				
Britain.....	47,511,859	84,408	47,596,267	49,523,603
Ireland.....	2,142,000	-	2,142,000	1,810,403
Malta and Gozo.....	709,294	-	709,294	693,654
<u>Other Africa</u>				
Nigeria.....	520,218	-	520,218	543,953
Northern Rhodesia.....	18,667	-	18,667	8,244 <sup>4/</sup>
Republic of South Africa.....	-	-	-	2,426,293
<u>Other Asia</u>				
Hong Kong.....	484,772	-	484,772	373,894
India.....	-	-	-	698,133
Malaysia.....	187,600	-	187,600	-
<u>Central America and Antilles</u>				
Barbados.....	40	-	40	-
Jamaica.....	6,038	-	6,038	6,566
Totals, Com. and Pref. Countries..	51,580,488	84,408	51,664,896	56,084,743

OTHER COUNTRIES

<u>Western Europe</u>				
Austria.....	524,904	-	524,904	802,434
Belgium and Luxembourg.....	12,712,287*	411,167	13,123,454*	6,444,610
Denmark.....	20,543	-	20,543	11,200
Finland.....	356,533	-	356,533	350,933
France.....	2,128,013*	802,691	2,930,704*	4,305,459
Germany, Federal Republic.....	19,822,179*	5,335,899	25,158,078*	18,816,516
Greece.....	-	-	-	10
Italy.....	3,758,777	-	3,758,777	3,698,826
Netherlands.....	3,048,362*	154,168	3,202,530*	3,965,294
Norway.....	1,667,203	-	1,667,203	1,568,267
Sweden.....	22,400	-	22,400	127,680
Switzerland.....	2,782,361	1,543,096	4,325,457	1,675,305
<u>Eastern Europe</u>				
Albania.....	1,715,534	-	1,715,534	-
Bulgaria.....	1,234,800	-	1,234,800	-
Czechoslovakia.....	2,763,421	-	2,763,421	-
Poland.....	7,300,247	-	7,300,247	14,183,656
U.S.S.R. (Russia).....	103,849,084	7,629,107	111,478,191	-
Yugoslavia.....	3,501,866	-	3,501,866	-
<u>Middle East</u>				
Israel.....	1,067,248	-	1,067,248	979,480
Saudi Arabia.....	677,029	-	677,029	516,321

Cumulative Exports of Canadian Wheat 1/ by Destination

Destination	August 1963-March 1964			Aug/62-Mar/63
	Wheat (Except Durum)	Durum Wheat	Total Wheat	Total All Wheat
- bushels -				
<u>OTHER COUNTRIES</u> (concluded)				
<u>Other Africa</u>				
Katanga.....	-	-	-	9,186
Mozambique.....	90,857	11,200	102,057	376,518
<u>Other Asia</u>				
Burma.....	78,931	-	78,931	-
China, Communist.....	24,823,494	-	24,823,494	37,189,866
Japan.....	32,339,068	-	32,339,068	28,065,537
Korea.....	511,467	-	511,467	-
Philippines.....	4,281,487	-	4,281,487	4,348,048
Taiwan.....	333,284	-	333,284	53,972
<u>Oceania</u>				
United States Oceania.....	257,189	-	257,189	355,039
<u>South America</u>				
Ecuador.....	561,188	-	561,188	745,560
Peru.....	730,614	-	730,614	-
Venezuela.....	4,546,149	-	4,546,149	4,391,732
<u>Central America and Antilles</u>				
Cuba.....	3,779,520	-	3,779,520	-
Dominican Republic.....	658,839	-	658,839	539,746
El Salvador.....	590,355	-	590,355	414,514
Guatemala.....	175,000	-	175,000	148,334
<u>North America</u>				
United States for domestic use <u>2/</u> .....	212,533	-	212,533	288,263
Totals, Other Countries.....	242,922,766	15,887,328	258,810,094	134,373,306
Sub-Totals, All Countries....	294,503,254	15,971,736	310,474,990	190,458,049
Bagged seed <u>3/</u> .....			2,552,529	3,448,232
Totals, All Countries.....	294,503,254	15,971,736	313,027,519	193,906,281

\* Revisions in data for previous months have been taken into account in the August-March cumulative totals.

1/ Overseas clearances as reported by the Statistics Branch, Board of Grain Commissioners for Canada, for all countries except the United States. Excluding bagged seed.

2/ Compiled from returns of Canadian elevator licensees and shippers and advice from American grain correspondents.

3/ Compiled from Canadian Customs returns, 1962-63 adjusted for time lag.

4/ Rhodesia and Nyasaland.



Customs Exports of Canadian Wheat Flour by Countries of Consignment

Destination	December 1963 <u>1/</u>	March 1964 <u>2/</u>	August-March	
			1963-64 <u>2/</u>	1962-63 <u>1/</u>
- bushels -				
<u>COMMONWEALTH AND PREFERENTIAL COUNTRIES</u>				
<u>Western Europe</u>				
Britain.....	799,625	1,131,892	8,219,494	7,942,215
Gibraltar.....	-	5,154	26,792	24,987
<u>Middle East</u>				
Kuwait*.....	5,382	-	13,255	62,541
Qatar.....	-	235	838	1,849
British Middle East, nes .....	3,091	4,895	24,987	13,395
<u>Other Africa</u>				
Gambia.....	138	-	1,288	-
Ghana.....	72,551	53,717	658,771	1,208,827
Nigeria.....	780	225	21,979	525,525
Nyasaland.....	1,150	1,150	24,277	23,311
Sierra Leone.....	33,909	317	260,155	320,022
Southern Rhodesia.....	1,380	1,150	2,530	-
Tanganyika.....	-	1,725	7,015	9,188
British Africa, nes .....	-	-	35,420	56,914
<u>Other Asia</u>				
Ceylon.....	-	-	586,056	1,150
Hong Kong.....	136,583	58,900	710,247	659,592
Malaysia.....	67,832	49,220	484,872	427,899
British East Indies, nes .....	-	-	-	7,544
<u>Oceania</u>				
Australia.....	-	-	124	55
Fiji.....	-	644	4,083	2,955
<u>South America</u>				
British Guiana.....	2,542	1,205	16,870	21,433
<u>Central America and Antilles</u>				
Bahamas.....	42,145	26,652	218,118	209,638
Bermuda.....	6,320	7,395	77,246	73,308
British Honduras.....	3,498	3,556	25,215	25,121
Barbados.....	12,409	9,913	103,780	95,655
Jamaica.....	137,218	183,213	1,113,869	943,817
Leeward and Windward Islands.....	101,508	86,365	711,167	626,164
Trinidad.....	122,362	77,494	914,291	868,986
Totals, Com. and Pref. Countries..	1,550,423	1,705,017	14,262,739	14,152,091

OTHER COUNTRIES

<u>Western Europe</u>				
Belgium and Luxembourg.....	36,062	-	114,885	108,065
Denmark.....	-	460	4,221	6,707
Germany, Federal Republic.....	-	-	-	6,463
Greece.....	4,810	1,268	11,470	24,847
Iceland.....	1,610	-	3,220	14,573
Italy.....	-	-	-	4,996
Netherlands.....	759	423	4,443	2,316
Norway.....	-	-	-	115
Portugal.....	16,594	11,709	86,211	47,440
Sweden.....	-	-	1,265	1,265
Switzerland.....	-	-	39	6,900
<u>Eastern Europe</u>				
U.S.S.R. (Russia).....	2,974,139	2,458,675	13,683,087	-

Customs Exports of Canadian Wheat Flour by Countries of Consignment

Destination	December 1963 1/	March 1964 2/	August-March	
			1963-64 2/	1962-63 1/
<b>OTHER COUNTRIES (concluded)</b> - bushels -				
<b>Middle East</b>				
Ethiopia.....	-	-	253	-
Iran.....	285	35	2,512	2,834
Iraq.....	-	-	-	948
Israel.....	-	-	5,152	8,436
Jordan.....	-	-	356	651
Kuwait*.....	-	-	2,006	-
Lebanon.....	200	5,152	28,152	174,823
Saudi Arabia.....	-	276	1,116	1,104
Syria.....	-	-	998	5,529
U.A.R. - Egypt.....	-	-	-	27,692
<b>Other Africa</b>				
Angola.....	-	-	4,600	1,840
Congo-Leo.....	-	2,875	33,695	65,670
French West Africa.....	-	-	-	23,442
Liberia.....	2,990	442	47,042	25,111
Mozambique.....	1,990	2,909	21,210	12,866
Portuguese Africa, nes .....	14,467	1,299	65,016	68,966
Togo.....	24,419	26,910	127,279	24,185
<b>Other Asia</b>				
Burma.....	-	-	76,404	-
Indonesia.....	-	-	-	64
Japan.....	5,267	5,672	100,609	199,937
Philippines.....	-	690	7,590	10,350
Portuguese Asia.....	3,827	2,024	20,332	7,691
Thailand.....	45,306	43,493	326,496	241,302
Viet-Nam.....	-	-	41,476	44,576
<b>Oceania</b>				
French Oceania.....	-	-	1,070	1,299
United States Oceania.....	1,122	575	1,881	2,875
<b>South America</b>				
Chile.....	-	-	6,928	6,268
Colombia.....	-	589	589	-
Peru.....	10,005	6,900	47,656	22,126
Surinam.....	8,441	2,645	52,459	50,064
Venezuela.....	-	-	230	1,748
<b>Central America and Antilles</b>				
Costa Rica.....	39,905	59,547	410,016	572,109
Cuba.....	1,329,634	833,886	3,981,298	-
Dominican Republic.....	4,600	9,331	39,820	109,089
El Salvador.....	3,450	1,035	11,222	66,325
French West Indies.....	460	-	1,725	2,380
Guatemala.....	1,150	-	10,239	37,982
Haiti.....	11,500	5,750	69,465	619
Honduras.....	7,935	7,130	43,424	45,498
Netherlands Antilles.....	9,619	5,097	126,012	176,877
Nicaragua.....	64,747	1,380	290,042	327,030
Panama.....	7,316	13,774	126,985	335,963
<b>North America</b>				
St. Pierre and Miquelon.....	1,169	1,368	12,077	8,862
United States.....	99,799	59,662	619,468	877,312
<hr/>				
Totals, Other Countries.....	4,733,577	3,572,981	20,673,741	3,816,130
<hr/>				
Totals, All Countries.....	6,284,000	5,277,998	34,936,480	17,968,221

\* Kuwait included in Commonwealth and Preferential Countries from August to December 1963 and in Other Countries from January 1, 1964.  
nes - not elsewhere specified.

1/ In terms of wheat equivalent. Adjusted to remove effect of time lag in the returns made by Customs. Conversion rate: 2.3 bushels per cwt. 2/ In terms of wheat equivalent. Preliminary and unadjusted for time lag. Conversion rate: 2.3 bushels per cwt.



Canadian Wheat Board Weekly Average Cash Wheat Prices  
Basis in Store Port William-Port Arthur

Class and Grade	Week Ending				
	April 3	April 10	April 17	April 24	May 1

- cents and eighths per bushel -

Initial Payment to Producers

1 Northern .....	150	150	150	150	150
2 Northern .....	146	146	146	146	146
3 Northern .....	142	142	142	142	142
4 Northern .....	135	135	135	135	135
5 Wheat .....	118	118	118	118	118
6 Wheat .....	112	112	112	112	112
Feed Wheat .....	108	108	108	108	108
1 C.W. Garnet .....	135	135	135	135	135
2 C.W. Garnet .....	130	130	130	130	130
3 C.W. Garnet .....	125	125	125	125	125
1 Alberta Red Winter .....	134	134	134	134	134
2 Alberta Winter .....	129	129	129	129	129
3 Alberta Winter .....	123	123	123	123	123
1 C.W. Amber Durum .....	150	150	150	150	150
2 C.W. Amber Durum .....	146	146	146	146	146
3 C.W. Amber Durum .....	142	142	142	142	142

International Wheat Agreement

and Domestic Sales

1 Northern .....	207/4	206/5	206/5	206/5	206/7
2 Northern .....	204/4	203/5	203/5	203/5	203/7
3 Northern .....	201/4	200/5	200/5	200/5	200/7
4 Northern .....	194/4	193/5	193/5	193/5	193/7
5 Wheat .....	183/4	187/5	187/5	187/5	187/7
6 Wheat .....	183/4	182/5	182/5	182/5	182/7
Feed Wheat .....	180/4	179/5	179/5	179/5	179/7
1 C.W. Garnet .....	190/4	189/5	189/5	189/5	189/7
2 C.W. Garnet .....	188/4	187/5	187/5	187/5	187/7
3 C.W. Garnet .....	187/4	186/5	186/5	186/5	186/7
1 Alberta Red Winter .....	193/4	192/5	192/5	192/5	192/7
2 Alberta Winter .....	191/4	190/5	190/5	190/5	190/7
3 Alberta Winter .....	190/4	189/5	189/5	189/5	189/7
1 C.W. Amber Durum .....	216/4	215/5	215/5	215/5	215/7
2 C.W. Amber Durum .....	215/4	214/5	214/5	214/5	214/7
3 C.W. Amber Durum .....	205/4	204/5	204/5	204/5	204/7

Export - Class II

1 Northern .....	207/4	206/5	206/5	206/5	206/7
2 Northern .....	204/4	203/5	203/5	203/5	203/7
3 Northern .....	201/4	200/5	200/5	200/5	200/7
4 Northern .....	194/4	193/5	193/5	193/5	193/7
5 Wheat .....	183/4	187/5	187/5	187/5	187/7
6 Wheat .....	183/4	182/5	182/5	182/5	182/7
Feed Wheat .....	180/4	179/5	179/5	179/5	179/7
1 C.W. Garnet .....	190/4	189/5	189/5	189/5	189/7
2 C.W. Garnet .....	188/4	187/5	187/5	187/5	187/7
3 C.W. Garnet .....	187/4	186/5	186/5	186/5	186/7
1 C.W. Amber Durum .....	216/4	215/5	215/5	215/5	215/7
2 C.W. Amber Durum .....	215/4	214/5	214/5	214/5	214/7
3 C.W. Amber Durum .....	205/4	204/5	204/5	204/5	204/7

# FARMERS' MARKETINGS OF WHEAT, PRAIRIE PROVINCES

(SPECIFIED PERIODS)

MILLION BUSHELS

550 —

500 —

450 —

400 —

350 —

300 —

250 —

200 —

150 —

100 —

50 —

0

MILLION BUSHELS

550 —

500 —

450 —

400 —

350 —

300 —

250 —

200 —

150 —

100 —

50 —

0

PEAK MARKETINGS  
1952-53 CROP YEAR  
536.0 MILLION BUSHELS

JULY

JUNE

MAY

APR

MAR

FEB

JAN

DEC

NOV

OCT

SEPT

AUG

30 year average

1932-33

1961-62

10 year average

1952-53

1961-62

1958-59

1959-60

1960-61

1961-62

1962-63

1963-64



## EXPORTS OF CANADIAN WHEAT\* AND WHEAT FLOUR\*\*

(SPECIFIED PERIODS)

MILLION BUSHEL

550 —

500 —

450 —

400 —

350 —

300 —

250 —

200 —

150 —

100 —

50 —

0

30 year average

1932-33

1961-62

10 year average

1952-53

1961-62

1958-59

1959-60

1960-61

1961-62

1962-63

1963-64\*\*\*

JULY

JUNE

MAY

APR.

MAR.

FEB.

JAN.

DEC.

NOV.

OCT.

SEPT.

AUG.

PEAK EXPORTS  
1928-29 CROP YEAR  
407.6 MILLION BUSHEL

MILLION BUSHEL

550 —

500 —

450 —

400 —

350 —

300 —

250 —

200 —

150 —

100 —

50 —

0

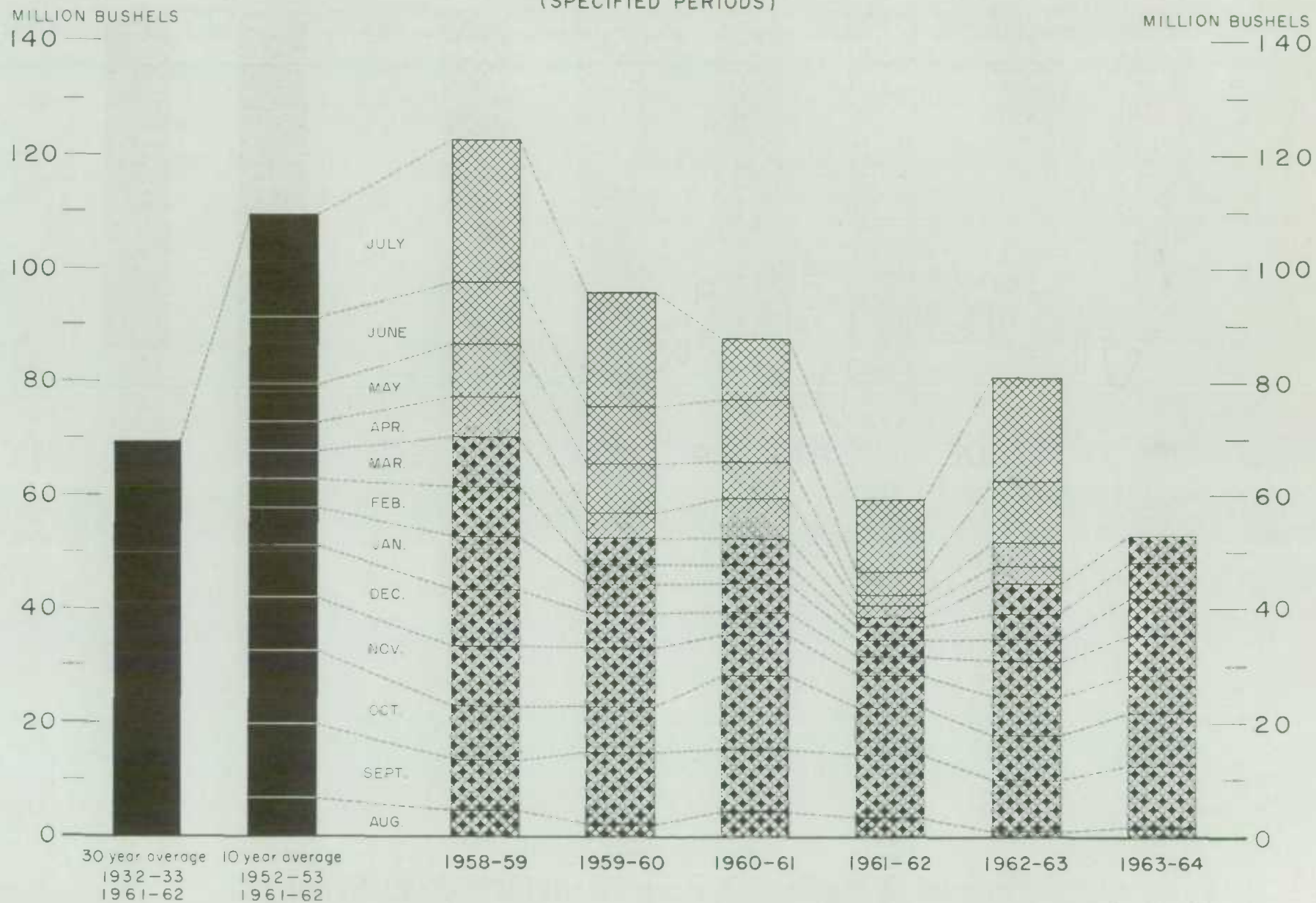
\* Beginning with 1956-57 includes bagged seed wheat.

\*\* In terms of wheat equivalent.

\*\*\* Preliminary.

Agriculture Division D.B.S.

# FARMERS' MARKETINGS OF BARLEY, PRAIRIE PROVINCES (SPECIFIED PERIODS)





## EXPORTS OF CANADIAN BARLEY AND BARLEY PRODUCTS \*

(SPECIFIED PERIODS)

MILLION BUSHEL

90 —

80 —

70 —

60 —

50 —

40 —

30 —

20 —

10 —

0

30 year average 10 year average  
 1932-33 1952-53  
 1961-62 1961-62

\* In terms of grain equivalent.

\*\* Preliminary.

MILLION BUSHEL

90 —

80 —

70 —

60 —

50 —

40 —

30 —

20 —

10 —

0

1958-59

1959-60

1960-61

1961-62

1962-63

1963-64 \*\*

JULY

JUNE

MAY

APR.

MAR.

FEB.

JAN.

DEC.

NOV.

OCT.

SEPT.

AUG.

# FARMERS' MARKETINGS OF OATS, PRAIRIE PROVINCES

(SPECIFIED PERIODS)

MILLION BUSHELS

100 —

90 —

80 —

70 —

60 —

50 —

40 —

30 —

20 —

10 —

0 —

MILLION BUSHELS

100 —

90 —

80 —

70 —

60 —

50 —

40 —

30 —

20 —

10 —

0 —

JULY

JUN.

M.

A.

M.

F.

J.

D.

NOV.

OCT.

SEPT.

AUG.

30 year average

1932-33

1961-62

10 year average

1952-53

1961-62

1958-59

1959-60

1960-61

1961-62

1962-63

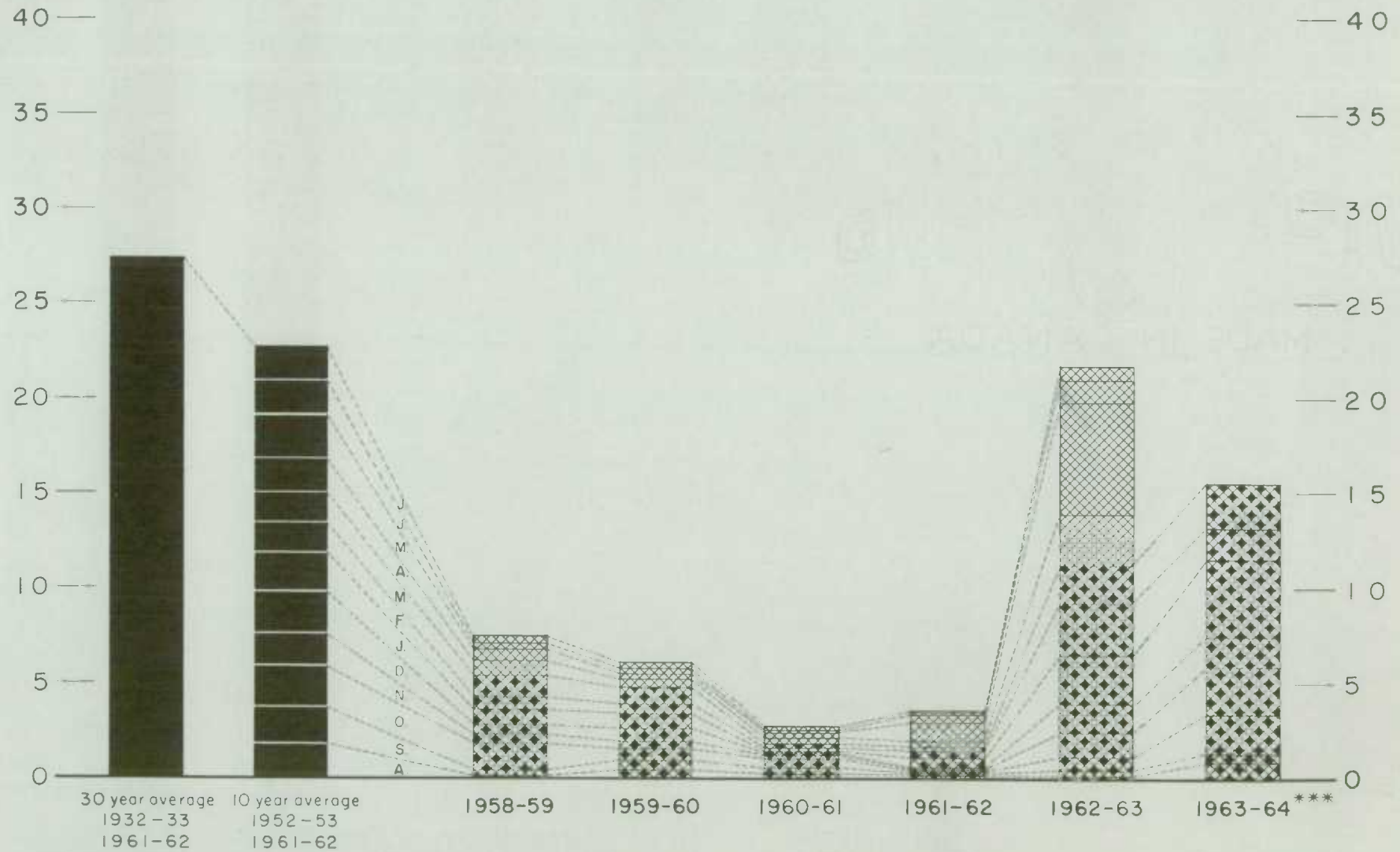
1963-64



# EXPORTS OF CANADIAN OATS\* AND OAT PRODUCTS\*\* (SPECIFIED PERIODS)

MILLION BUSHELS  
45 —

MILLION BUSHELS  
— 45



\*Beginning with 1960-61 includes relatively small quantity of bagged seed. \*\*In terms of grain equivalent. \*\*\*Preliminary.

# FARMERS' MARKETINGS OF CANADA'S FIVE MAJOR GRAINS\*, PRAIRIE PROVINCES

MILLION BUSHEL  
900 —

800 —

700 —

600 —

500 —

400 —

300 —

200 —

100 —

0

MILLION BUSHEL  
900 —

800 —

700 —

600 —

500 —

400 —

300 —

200 —

100 —

0

JULY

JUNE

MAY

APR.

MAR.

FEB.

JAN.

DEC.

NOV.

OCT.

SEPT.

AUG.

30 year average 10 year average

1932-33 1952-53

1961-62 1961-62

1958-59

1959-60

1960-61

1961-62

1962-63

1963-64

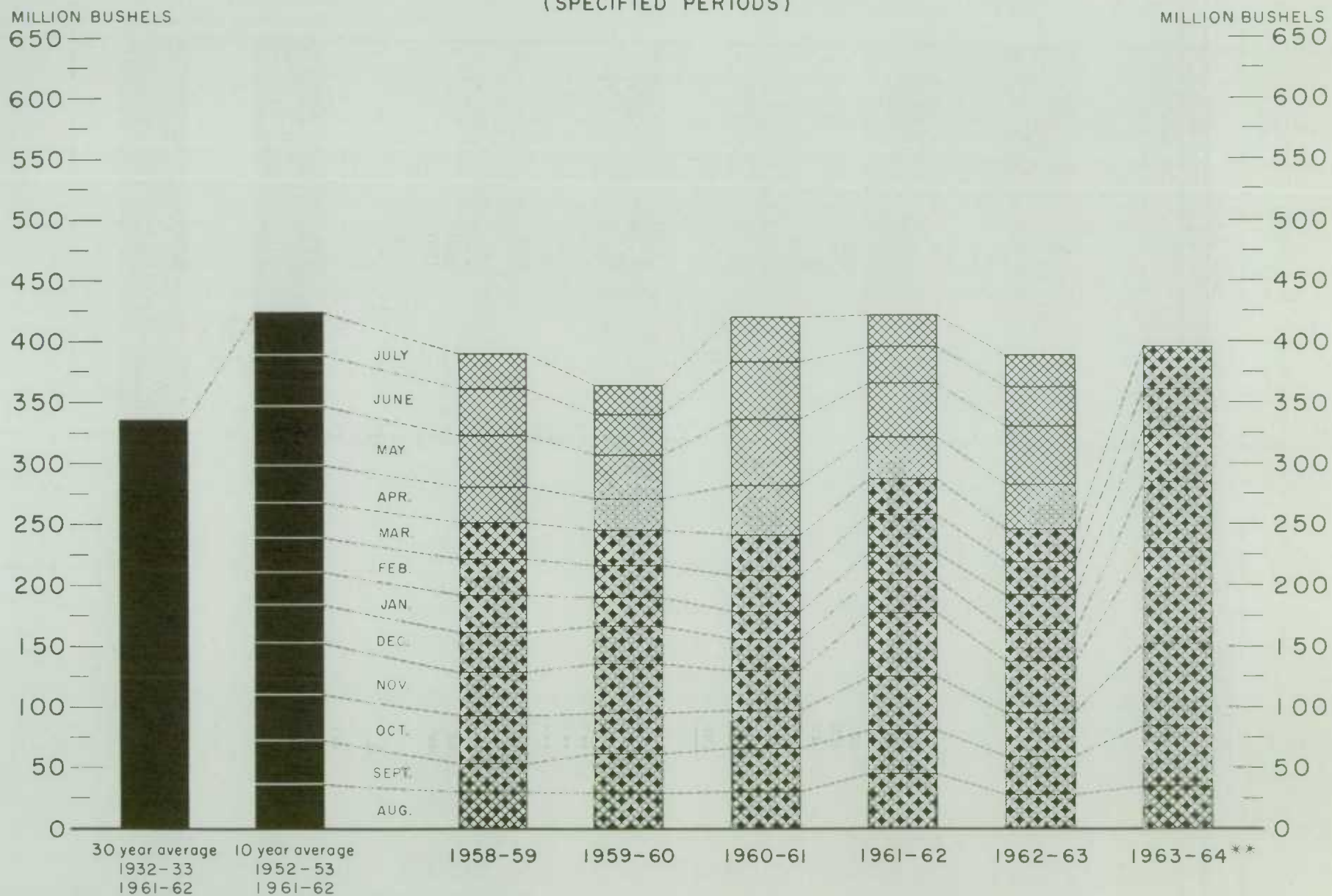
\* Wheat, oats, barley, rye and flaxseed.

Agriculture Division D.B.S.



## EXPORTS OF CANADA'S FIVE MAJOR GRAINS AND PRODUCTS\*

(SPECIFIED PERIODS)



\* Wheat, bagged seed wheat, and wheat flour; oats, bagged seed oats, and oatmeal and rolled oats; barley, malt and pot and pearl; rye and flaxseed  
 \*\* Preliminary.

Agriculture Division D. B. S.

Canadian Wheat Board Weekly Average Cash Wheat Prices  
Basis in Store Vancouver

Class and Grade	Week Ending				
	April 3	April 10	April 17	April 24	May 1

- cents and eighths per bushel -

Initial Payment to Producers

1 Northern .....	150	150	150	150	150
2 Northern .....	146	146	146	146	146
3 Northern .....	142	142	142	142	142
4 Northern .....	135	135	135	135	135
5 Wheat .....	118	118	118	118	118
6 Wheat .....	112	112	112	112	112
Feed Wheat .....	108	108	108	108	108
1 C.W. Garnet .....	135	135	135	135	135
2 C.W. Garnet .....	130	130	130	130	130
3 C.W. Garnet .....	125	125	125	125	125
1 Alberta Red Winter .....	134	134	134	134	134
2 Alberta Winter .....	129	129	129	129	129
3 Alberta Winter .....	123	123	123	123	123
1 C.W. Amber Durum .....	150	150	150	150	150
2 C.W. Amber Durum .....	146	146	146	146	146
3 C.W. Amber Durum .....	142	142	142	142	142

International Wheat Agreement

and Domestic Sales

1 Northern .....	212/3	212/3	212/3	212/3	212/5
2 Northern .....	209/3	209/3	209/3	209/3	209/5
3 Northern .....	207/3	207/3	207/3	207/3	207/5
4 Northern .....	200/3	200/3	200/3	200/3	200/5
5 Wheat .....	193/3	193/3	193/3	193/3	193/5
6 Wheat .....	190/3	190/3	190/3	190/3	190/5
Feed Wheat .....	187/3	187/3	187/3	187/3	187/5
1 C.W. Garnet .....	194/3	194/3	194/3	194/3	194/5
2 C.W. Garnet .....	193/3	193/3	193/3	193/3	193/5
3 C.W. Garnet .....	192/3	192/3	192/3	192/3	192/5
1 Alberta Red Winter .....	194/3	194/3	194/3	194/3	194/5
2 Alberta Winter .....	193/3	193/3	193/3	193/3	193/5
3 Alberta Winter .....	192/3	192/3	192/3	192/3	192/5

Export - Class II

1 Northern .....	212/3	212/3	212/3	212/3	212/5
2 Northern .....	209/3	209/3	209/3	209/3	209/5
3 Northern .....	207/3	207/3	207/3	207/3	207/5
4 Northern .....	200/3	200/3	200/3	200/3	200/5
5 Wheat .....	193/3	193/3	193/3	193/3	193/5
6 Wheat .....	190/3	190/3	190/3	190/3	190/5
Feed Wheat .....	187/3	187/3	187/3	187/3	187/5
1 C.W. Garnet .....	194/3	194/3	194/3	194/3	194/5
2 C.W. Garnet .....	193/3	193/3	193/3	193/3	193/5
3 C.W. Garnet .....	192/3	192/3	192/3	192/3	192/5
1 Alberta Red Winter .....	194/3	194/3	194/3	194/3	194/5
2 Alberta Winter .....	193/3	193/3	193/3	193/3	193/5
3 Alberta Winter .....	192/3	192/3	192/3	192/3	192/5



CANADIAN FLOUR MILLING SITUATION

Production Wheat flour production by Canadian mills during March 1964 amounted to 4,725,000 hundredweight, indicating an increase of 5 per cent over the 4,495,000 hundredweight produced during February 1964 and substantially higher than both the March 1963 figure of 2,952,000 hundredweight and the ten-year (1954-63) average production for the month of March of 3,340,000 hundredweight. Mills reporting operations during March 1964 had a total rated capacity of 175,000 hundredweight per 24-hour day and on the basis of a 25-day working period 108.1 per cent of this rated capacity was effective. Many mills because of forward commitments, continue to operate at more than the standard 25 working days in the month.

Wheat milled for flour during March 1964 amounted to 10,505,000 bushels, 5 per cent more than the 10,043,000 bushels milled during the preceding month, and exceeding by a wide margin the 6,548,000 bushels milled during March 1963. Of the wheat milled for flour during March 1964 some 9,657,000 bushels were Western Canadian spring wheat (other than Durum) while the remainder consisted of Ontario winter wheat (515,000 bushels); Durum (231,000 bushels); and all other (103,000 bushels).

Exports According to preliminary Customs returns, exports of Canadian wheat flour during March 1964 amounted to 2,295,000 hundredweight (some 5,278,000 bushels of wheat equivalent) representing a decrease of 21 per cent from the 6,709,000 bushels exported during the previous month, but in sharp contrast to the adjusted March 1963 total of 2,454,000 bushels. Flour shipments during the month went to fifty-three countries with exports to the U.S.S.R. amounting to 2,459,000 bushels of wheat equivalent and accounting for 47 per cent of the March 1964 total. Shipments of Canadian wheat flour during March to Britain, at 1,132,000 bushels equivalent, and to Cuba, at 834,000 bushels equivalent, accounted for 21 per cent and 16 per cent of the total, respectively. Other leading markets for Canadian wheat flour during March this year with shipments in thousands of bushels of wheat equivalent were as follows: Jamaica, 183; Leeward and Windward Islands, 86; Trinidad, 77; United States, 60; Costa Rica, 60; Hong Kong, 59; and Ghana, 54.

Wheat Milled for Flour, and Production and Exports of Wheat Flour, Canada

Crop Year	Wheat Milled for Flour bushels	Wheat Flour	
		Production	Exports <sup>1/</sup>
		- cwt. -	
1935-36—1939-40 average.....	67,845,114	29,405,451	9,603,941
1940-41—1944-45 average.....	99,704,638	43,908,245	23,699,546
1945-46—1949-50 average.....	107,330,372	47,011,540	25,819,721
1950-51—1954-55 average.....	100,446,328	43,847,894	21,812,041
1955-56—1959-60 average.....	90,148,211	39,752,589	16,349,156
1960-61.....	89,731,155	39,914,644	15,513,836
1961-62.....	88,240,580	39,539,651	13,892,676
1962-63.....	78,789,332	35,505,220	11,854,458
1963-64 <sup>2/</sup>			
August.....	6,719,665	3,003,765	1,321,208
September.....	7,712,078	3,459,156	715,309
October.....	10,422,696	4,667,613	1,036,575
November.....	10,564,882	4,737,321	1,687,554
December.....	10,234,008	4,585,013	2,344,686
January.....	10,404,242	4,718,375	2,872,668
February.....	10,043,366	4,494,554	2,916,992
March.....	10,505,354	4,725,459	2,294,782
Totals.....	76,606,291	34,391,256	15,189,774
Same months 1962-63 <sup>3/</sup> .....	51,531,508	23,214,160	7,812,270

<sup>1/</sup> Based on Customs returns. Exports for the crop years 1945-46—1962-63 revised to remove effect of time lag in the returns made by Customs.

<sup>2/</sup> Subject to revision.

<sup>3/</sup> Revised.

UNITED STATES SITUATION

Domestic Supplies  
3 Per Cent Below  
Previous Year

Domestic supplies of wheat in the United States for the 1963-64 crop year (July-June) are estimated at 2,333.0 million bushels, consisting of the July 1, 1963 carryover of 1,195.4 million and the 1963 crop, placed at 1,137.6 million bushels. Domestic supplies of the size indicated would be 3 per cent less than last year's total of 2,415.5 million and 13 per cent smaller than the record 1960-61 figure of 2,670.8 million bushels. Imports of wheat from Canada during July-March of the current United States crop year amounted to 3.2 million bushels. Domestic disappearance during 1963-64 is estimated at about 602.0 million bushels, 2 per cent more than the 588.6 million last year. After deducting anticipated domestic requirements for the current United States crop year some 1,734.2 million remained available for export and for carryover, a decrease of 5 per cent from the 1,831.4 million in 1962-63.

July-March  
Exports Maintain  
Record Level

Exports of wheat and flour in terms of grain equivalent during the July-March period of the 1963-64 crop year, amounted to a record 625.2 million bushels, surpassing by a considerable margin the previous peak of some 535.2 million exported in July-March 1961-62, and exceeding last year's comparable total of 424.2 million bushels by 47 per cent. The balance remaining on April 1, 1964 for export and for carryover was estimated at 1,109.0 million bushels compared with 1,407.2 million on the same date a year ago.

United States Wheat Supplies

Item	1962-63 <u>1/</u>	1963-64 <u>2/</u>
	- million bushels -	
Carryover at beginning of crop year (July 1).....	1,321.9	1,195.4
Production.....	1,093.7	1,137.6
Total estimated domestic supplies.....	2,415.5	2,333.0
Imports of wheat and wheat flour in terms of wheat for domestic use, July-March.....	4.5	3.2
Total estimated supplies <u>3/</u> .....	2,420.0	2,336.2
Less estimated domestic requirements for crop year <u>4/</u>	588.6	602.0
Available for export and for carryover.....	1,831.4	1,734.2
Deduct:		
Exports of wheat as grain, July-March.....	353.4	554.9
Exports of wheat flour in terms of wheat, July- March <u>5/</u> .....	70.8	70.4
Total exports of wheat and wheat flour <u>6/</u> .....	424.2	625.2
Balance on April 1 for export and for carryover.....	1,407.2	1,109.0

1/ Revised. 2/ Preliminary. 3/ Excluding imports for April-June. 4/ Includes shipments to United States Territories and wheat for military food use at home and abroad. 5/ Flour exports exclude "Milled in bond". 6/ These figures now include all shipments under relief programs which formerly were not available from Census data.



United States Wheat and  
Flour Approaching  
Record Level

Exports of U.S. wheat and flour (grain equivalent) reached a total of 533 million bushels during July 1963-February 1964 or 49 per cent more than in a similar period last year. Increased shipments of wheat and flour occurred in all areas, particularly those to the Common Market countries and to the Eastern European countries. U.S. wheat went to Czechoslovakia for the first time since October 1948 and to East Germany as a separate entity for the first time in history. Shipments to Eastern European countries totalled 124 million bushels or 23 per cent of the U.S. total. Larger exports to the EEC countries - 43 million bushels - were 127 per cent higher than at the same time last year. This was principally due to winter kill and heavy rains at harvest which reduced the quality of wheat. This was also the reason for increased shipments to other Western European countries. Japan, plagued by severe crop losses due to bad weather, took almost twice as much wheat and flour as it did between July 1962 and February 1963.

Wheat shipped as grain increased 58 per cent in the first 8 months of the marketing year over the 298 million bushels shipped during a similar 8 month period last year. The Soviet Union has been the third or fourth largest exporter of wheat during the past several years, but is now one of the world's largest importers. This reversal is also reflected in the needs of satellite countries who have turned to the Free World to supply their requirements. Exports to EEC and other Western European countries increased because much of the harvested wheat was so heavily damaged that it was suitable only for livestock feed. India was by far the greatest single buyer of U.S. wheat, taking 101 million bushels during the first 8 months of the 1963-64 marketing year. Even the high exports to Pakistan and Japan totalled less than those to India. Even though total production in Asia is at a near record level, bad weather sharply reduced Japan's crop. Also, exports to Asia increased by 46 per cent, with India, Pakistan, and Japan receiving 41 per cent of the U.S. total.

Flour shipments of 61 million bushels during the July 1963-February 1964 period were only slightly greater than those last year. Almost a third of this commodity or 19 million bushels was consigned to Egypt. Exports of wheat and flour by country of destination for July 1962-February 1964 are shown in Table A. Shipments of wheat to Canada are principally for transshipment to other destinations. United States wheat inspections for export from Canadian ports as shown in Table B were almost four times greater than those for July 1963-February 1964. Exports for specified countries as adjusted to include these inspections, also shown in Table B, were 80 per cent higher in the same period. Total exports of wheat and flour are expected to reach 625 million bushels by the end of March 1964 as compared to 424 million bushels for July-March 1962-63. This amount will represent an all-time high for any July-March period.

Table A. United States Exports of Wheat and Flour by Country of Destination  
July-February 1962-63 and 1963-64 1/

Destination	July 1962-February 1963			July 1963-February 1964		
	Wheat	Flour <u>2/</u>	Total	Wheat	Flour <u>2/</u>	Total
- thousand bushels -						
<u>Western Hemisphere</u>						
Canada <u>3/</u> .....	8,333	136	8,469	23,231	174	23,405
Mexico.....	36	610	646	22	1,113	1,135
Central America.....	1,891	1,674	3,565	3,498	1,361	4,859
Haiti.....	932	59	991	808	101	909
Trinidad and Tobago..	17	916	933	4	810	814
Bolivia.....	572	2,097	2,669	64	2,361	2,425
Brazil.....	33,264	259	33,523	25,246	506	25,752

Table A. United States Exports of Wheat and Flour by Country of Destination  
July-February 1962-63 and 1963-64 1/

Destination	July 1962-February 1963			July 1963-February 1964		
	Wheat	Flour <u>2/</u>	Total	Wheat	Flour <u>2/</u>	Total
- thousand bushels -						
<u>Western Hemisphere (continued)</u>						
British Guiana.....	-	744	744	-	711	711
Chile.....	5,600	858	6,458	1,217	506	1,723
Colombia.....	2,131	390	2,521	3,077	415	3,492
Paraguay.....	563	24	587	848	130	978
Peru.....	4,093	243	4,336	568	192	760
Venezuela.....	3,117	81	3,198	6,278	211	6,489
Others.....	1,004	1,095	2,099	3,678	1,261	4,939
Totals.....	61,553	9,186	70,739	68,539	9,852	78,391
<u>Western Europe</u>						
EEC						
Belgium-Luxembourg...	2,030	3	2,033	3,805	17	3,822
France.....	1,136	129	1,265	9,184	-	9,184
Germany, West.....	4,735	6	4,741	9,908	9	9,917
Italy.....	857	2,965	3,822	4,170	2,208	6,378
Netherlands.....	6,284	844	7,128	12,732	988	13,720
EEC sub-totals.....	15,042	3,947	18,989	39,799	3,222	43,021
<u>Other Western Europe</u>						
Greece.....	791	1,247	2,038	1,294	1,341	2,635
Norway.....	716	13	729	2,514	19	2,533
Portugal.....	1,441	408	1,849	2,201	423	2,624
Spain.....	-	14	14	3,792	9	3,801
Switzerland.....	2,508	<u>4/</u>	2,508	6,475	-	6,475
United Kingdom.....	2,172	219	2,391	13,239	130	13,369
Yugoslavia.....	11,581	1,280	12,861	1,902	839	2,741
Others.....	1,536	283	1,819	1,473	250	1,723
Sub-totals.....	35,787	7,411	43,198	72,689	6,233	78,922
<u>Eastern Europe</u>						
Czechoslovakia.....	-	-	-	657	-	657
East Germany.....	-	-	-	2,639	-	2,639
Hungary.....	-	-	-	6,002	457	6,459
Poland.....	454	516	970	19,147	-	19,147
U.S.S.R. ....	-	-	-	15,913	-	15,913
Sub-totals.....	454	516	970	44,358	457	44,815
Totals, Europe.....	36,241	7,927	44,168	117,047	6,690	123,737



Table A. United States Exports of Wheat and Flour by Country of Destination  
July-February 1962-63 and 1963-64 <sup>1/</sup>

Destination	July 1962-February 1963			July 1963-February 1964		
	Wheat	Flour <sup>2/</sup>	Total	Wheat	Flour <sup>2/</sup>	Total
- thousand bushels -						
<b>Asia</b>						
India.....	81,127	343	81,470	101,026	151	101,177
Indonesia.....	5	10	15	-	456	456
Iran.....	3,577	1,482	5,059	843	508	1,351
Israel.....	6,417	102	6,519	5,445	50	5,495
Japan.....	20,505	3,305	23,810	45,490	1,884	47,374
Jordan.....	691	2,036	2,727	913	3,133	4,046
Korea.....	12,440	635	13,075	16,607	818	17,425
Lebanon.....	-	785	785	45	1,106	1,151
Pakistan.....	26,185	548	26,733	47,608	28	47,636
Philippines.....	3,899	550	4,449	7,012	362	7,374
Saudi Arabia.....	7	2,287	2,294	73	2,561	2,634
Taiwan.....	5,905	1,272	7,177	6,251	855	7,106
Turkey.....	4,943	366	5,309	5,740	196	5,936
Vietnam, Laos and Cambodia.....	223	2,845	3,068	10	1,697	1,707
Others.....	907	3,895	4,802	6,649	3,338	9,987
Totals.....	166,831	20,461	187,292	243,712	17,143	260,855
<b>Africa</b>						
Algeria.....	799	1,877	2,676	8,312	864	9,176
British East Africa....	1,252	24	1,276	134	88	222
Congo (Leopoldville)...	21	1,550	1,571	119	2,575	2,694
Egypt.....	14,743	14,761	29,504	21,506	18,614	40,120
Morocco.....	799	1,558	2,357	2,441	2,283	4,724
Nigeria.....	313	198	511	1,361	48	1,409
Sudan.....	1,031	404	1,435	1,643	1,352	2,995
Tunisia.....	8,637	146	8,783	2,073	137	2,210
South Africa, Republic of.....	-	-	-	3,045	32	3,077
Others.....	5,900	1,008	6,908	1,561	1,658	3,219
Totals.....	33,495	21,526	55,021	42,195	27,651	69,846
<b>Oceania.....</b>						
	-	31	31	7	45	52
<b>Totals, All Countries.....</b>						
	298,120	59,131	357,251	471,500	61,381	532,881

<sup>1/</sup> Data includes shipment for relief or charity. <sup>2/</sup> Grain equivalent. <sup>3/</sup> The bulk of exports to Canada are for transshipment to other destinations - see Table B.  
<sup>4/</sup> Less than 500 bushels.

Table B. United States Exports of Wheat and Flour as Adjusted for Transshipment Through Canadian Ports, July-February 1962-63 and 1963-64

Destination	July 1962-February 1963		July 1963-February 1964	
	Wheat in-spected for export from Canadian ports	Adjusted totals for listed countries	Wheat in-spected for export from Canadian ports	Adjusted totals for listed countries
- thousand bushels -				
EEC				
Belgium-Luxembourg...	221	2,254	3,146	6,968
France.....	1,495	2,760	269	9,453
Germany, West.....	827	5,568	1,323	11,240
Italy.....	-	3,822	-	6,378
Netherlands.....	1,993	9,121	8,569	22,289
Totals.....	4,536	23,525	13,307	56,328
Brazil.....	-	33,523	108	25,860
Venezuela.....	-	3,198	742	7,231
United Kingdom.....	1,179	3,570	986	14,355
Ireland.....	28	304	194	385
Poland.....	-	970	1,363	20,510
Spain.....	-	14	230	4,031
Portugal.....	981	2,830	781	3,405
Hungary.....	-	-	661	7,120
Egypt.....	-	29,504	5,921	46,070
Canary Islands.....	-	486	708	713
Nigeria.....	442	953	507	1,916
Madeira Islands.....	-	539	331	667
Mozambique.....	224	495	413	538
Totals.....	7,390	99,911	26,252	189,129

Winter Wheat Crop  
Estimated at  
1,011 Million Bushels

In a report released on April 10, 1964 the Crop Reporting Board of the United States Department of Agriculture stated that the Nation's winter wheat crop prospects are for a production of 1,011 million bushels, 12 per cent more than the 1963 crop but 1 per cent below the 5-year average. Production is forecast 5 per cent above that indicated on December 1. Estimates of production and acreage for harvest relate to growers appraisal of the crop and plans as of April 1, prior to passage of wheat legislation pertaining to the 1964 crop and do not reflect changes that may result from grower participation in the program.

The 1964 winter wheat crop season to date points to an excellent crop. Planting conditions last fall were no better than average with many areas short of both surface and sub-soil moisture. Early development progressed slowly and the crop entered dormancy with limited top growth and root development. The winter was relatively mild with limited moisture but winterkill was a minimum. Late winter precipitation arrived in abundance in the area starting along the Atlantic Coast and working westward to the Mississippi River Valley. Moisture supplies remain limited across much of the Plains States and the eastern Rocky Mountain slopes but the late March and early April rains should be beneficial. Rocky Mountain and Pacific Coast States had limited moisture at seeding time, but received sufficient winter moisture for satisfactory crop progress.



The indicated yield is 23.5 bushels per seeded acre compared with 21.5 bushels in 1963. This forecast is based on growing conditions about April 1 as reported by crop correspondents. In addition to the usual factors of weather, insects, and disease the final outturn will be dependent on the growers' participation in the 1964 wheat program enacted after April 1. In the last ten years, the average of increases or decreases in the United States production estimate from April 1 to harvest has been 77 million bushels ranging from a maximum change of 210 million bushels to a minimum of 22 million bushels.

The acreage expected to be harvested for grain, at 38.6 million acres, is 89.7 per cent of the seeded acreage compared with 82.3 per cent harvested in 1963 and the 5-year average of 91.8 per cent.

Prospects in the Central and Southern Great Plains about April 1 were much brighter than a year earlier. In contrast to last year, wheat entered the winter showing much less growth and appeared vulnerable to serious winter losses. However, moderate winter weather protected the crop with only limited losses due to cold temperature and soil blowing. Welcome late winter moisture stimulated the crop and added to production prospects. However, considerable acreage has limited soil moisture supplies and will require timely moisture to insure present prospects. This acreage is largely centered around the 5 State juncture in the Oklahoma Panhandle area. Fields are "greening" throughout the Central and Southern Plains with development reaching the "boot" stage in north Texas.

Wheat prospects in the Corn Belt lag behind the outstanding yields obtained in 1963. Much of the Belt experienced short soil moisture supplies at seeding time which limited fall growth. Light winter moisture along with favourable temperatures carried the crop through the winter in fair condition. The arrival of rains in early March over much of the Belt maintained or improved yield prospects. Loss of some acreage by flooding occurred adjacent to the Ohio River.

The Pacific Coast and Northern Rocky Mountain States expect yields below the level of 1963. Soil moisture supplies are limited in some areas and cool weather in late March slowed plant development. During winter an abundance of snow fell in eastern Oregon and Washington with some acreage still covered. The lack of frost in the ground permitted maximum soil absorption of the snow melt. Drying March winds caused heavy depletion of soil moisture in Coastal States with some areas needing added moisture to maintain current prospects.

The Atlantic and Gulf Coast States received generous amounts of winter moisture that largely restored surface and sub-soil moisture supplies. Clear skies and warming temperatures will promote plant growth. The crop wintered well and yields are expected to equal or exceed last year for most States.

Stocks of Wheat  
in All Positions  
April 1, 1964

On April 24, 1964 the United States Department of Agriculture reported that all wheat stocks in storage on April 1 totalled 1,207 million bushels - 20 per cent less than a year earlier and the smallest April 1 stocks since 1958. Current stocks are 500 million bushels below the record April 1, 1961 holdings. Both farm and off-farm stocks were down sharply from April 1 a year ago, with declines of 22 and 20 per cent, respectively.

Durum wheat stocks on April 1 totalled 44.6 million bushels. Farm stocks totalled 10.5 million bushels, while off-farm holdings were 34.1 million bushels.

U.S. Wheat Stocks by Positions, April 1, 1964 with Comparisons

Position	April 1 Average 1958-62	April 1 1963	January 1 1964	April 1 1964
- thousand bushels -				
<u>All Wheat</u>				
On Farms <u>1/</u> .....	226,962	194,999	308,576	152,869
Commodity Credit Corp. <u>2/</u> ....	69,134	46,903	30,633	14,379
Mills, Elev. & Whses. <u>1/ 3/</u> ..	1,218,899	1,262,190	1,273,455	1,039,440
Totals.....	1,514,995	1,504,092	1,612,664	1,206,688
<u>Durum Wheat 4/</u>				
On Farms <u>1/</u> .....	-	40,256	39,119	10,498
Commodity Credit Corp. <u>2/</u> ....	-	-	4,226	1,879
Mills, Elev. & Whses. <u>1/ 3/</u> ..	-	18,162	28,134	32,236
Totals.....	-	58,418	71,479	44,613

1/ Estimates of Crop Reporting Board.

2/ Owned by CCC and stored in bins or other storages owned or controlled by CCC; other CCC-owned grain is included in the estimates by positions.

3/ All off-farm storages not otherwise designated, including flour mills, terminal elevators, and processing plants.

4/ Totals included in all wheat.

USDA Announces 1964  
Wheat Program

On April 11, 1964, the United States Department of Agriculture announced the price support loan level, certificate values and acreage diversion payment rates for the 1964 Wheat Program.

Signup to qualify for the new program will take place from May 1 through May 15 in ASCS offices throughout the Nation.

The program is entirely voluntary. A farmer, whether he agrees to participate in the program or not, is free to sell his entire production to anyone, at any time, at such prices as he can get. There are no restrictions on sales of 1964-crop wheat.

A producer desiring to receive a price-support loan, certificates and acreage diversion payment, can voluntarily sign up to participate and become a co-operator. He can co-operate by:

1. Staying within his 1964 acreage allotment which already has had the minimum qualifying acreage diversion deducted. (He can divert additional acreage if he wishes.) (Growers were notified of 1964 allotments last spring.)
2. Devoting to conserving use all the diverted land (in addition to maintaining the normal acreage in conserving use;)
3. Not exceeding acreage on any other allotment crop on the farm, and
4. Not exceeding the wheat allotment on any other farm in which he has interest in the wheat.



A co-operating wheat producer will be eligible for price-support loans at a national average of \$1.30 per bushel on his entire production. In addition, he will receive negotiable certificates based on the normal production of his eligible acreage planted for harvest. The certificates will have fixed face values - 70 cents per bushel for the domestic marketing certificates, covering the producer's share in the national marketing allocation for U.S. food wheat production, and 25 cents per bushel for the export marketing certificates, covering his share of the export marketing allocation.

Forty-five per cent of the normal wheat production of the farm allotment if planted will be covered by domestic wheat marketing certificates and up to 45 per cent by export wheat marketing certificates. In case of underplanting or extra diversion, certificates will be issued first on the "domestic" portion and then on the remaining "export" portion covered by certificates.

Growers last year were notified of their 1964 allotments along with their farm's normal yield figures. Farm allotments were based on the national allotment of 49-1/2 million acres. Thus, individual allotments now are already reduced by the acreage required to be diverted for minimum participation in the wheat program for 1964 recently enacted by the Congress. (The reduction is the equivalent of 11.11 per cent of the 1964 allotment.)

There will be an acreage diversion payment of 20 per cent of the county's wheat loan rate multiplied by the farm normal yield on the 11.11 per cent minimum qualifying diversion and on additional diversion of up to 20 per cent of the allotment or up to a total of 15 acres if this is larger.

If growers comply with the requirements for minimum acreage diversion but don't keep their agreement on extra diversion, they lose all diversion payments but still can receive certificates and be eligible for price support loans.

Price support on wheat by loans and purchases will be made available to eligible producers. Commodity Credit Corporation, through ASC county committees, will assist producers to market their wheat certificates. No advance acreage diversion payments will be made. Payments covering acreage diversion and purchase of certificates will begin after July 1. Detailed program explanations and regulations are being issued to all State and county ASCS offices.

Final date for application for price support loans will be January 31, 1965. Unless demand is made earlier, price support loans will mature on February 28, 1965, in some States and on March 31, 1965, in others.

Since the new legislation provides for continuing the voluntary wheat program for the 1965 crop, this supersedes previous law which required the Secretary of Agriculture to consider the need for 1965-crop wheat marketing quotas and make his decision prior to April 15.

#### USDA Announces Further Certificate Provisions on Old Crop Wheat

which are aimed at maintaining normal wheat processing and milling activities during the transition period.

On April 24, 1964 the United States Department of Agriculture announced further operating provisions of the wheat certificate program

provisions of the wheat certificate program

Continued on page 40.

Cash Wheat Prices on the Kansas City and Minneapolis Markets

No. 2 Hard Winter, Kansas City			No. 1 Northern Spring, Minneapolis		
Date	Price		Date	Price	
	- cents per bushel -			- cents per bushel -	
April 1, 1964.....	220 1/2	- 242 1/	April 1, 1964.....	220 1/2	- 222 1/2
2 .....	222 1/2		2 .....	218	- 220
3 .....	220	- 240 1/4 1/	3 .....	215 1/4	- 217 1/4
6 .....	219 1/4	- 241 1/	6 .....	214 3/8	- 216 3/8
7 .....	226		7 .....	214 3/4	- 216 3/4
8 .....	221 3/4	- 241 1/4 1/	8 .....	218	- 220
9 .....	212 1/2	- 245 1/2 1/	9 .....	222	- 224
10 .....	221 3/4	- 244 1/	10 .....	221 3/8	- 223 3/8
13 .....	224	- 226 1/2	13 .....	228	- 230
14 .....	224 1/2		14 .....	226 7/8	- 227 7/8
15 .....	223 1/2	- 224 1/2	15 .....	222 3/4	- 225 3/4
16 .....	227	- 232	16 .....	225 1/2	- 227 1/2
17 .....	223	- 245 1/2 1/	17 .....	224 1/2	- 226 1/2
20 .....	224	- 244 1/2 1/	20 .....	223 1/2	- 225 1/2
21 .....	225	- 231	21 .....	225 3/8	- 227 3/8
22 .....	224	- 244 1/2 1/	22 .....	225 3/4	- 227 3/4
23 .....	227 1/2		23 .....	230 1/4	- 232 1/4
24 .....	226	- 247 3/4 1/	24 .....	228 1/2	- 230 1/2
27 .....	228		27 .....	230 7/8	- 232 7/8
28 .....	226		28 .....	231 7/8	- 233 7/8
29 .....	223	- 243 3/4 1/	29 .....	231 1/2	- 233 1/2
30 .....	222	- 243 1/4 1/	30 .....	230 5/8	- 232 5/8

1/ Nominal.

Chicago Wheat Futures, High Points of Closing

Date		May	July		September		December		March
			Old	New	Old	New	Old	New	
- cents and eighths per bushel -									
April	1, 1964.....	204	158/1		160		165		
	2 .....	203	158/1		160		165		
	3 .....	202	157/2		158/6		163/7		
	6 .....	201/3	155/3		157/2		162		
	7 .....	202/7	155/2		156/7		161/6		
	8 .....	204/6	156/3		157/6		162/4		
	9 .....	206/4	152		154		158/2		
	10 .....	204/5	152/5		154/2		158/6		
	13 .....	208	151/4		153/1		157/7		
	14 .....	208/2	151/7		153/5		158/4		
	15 .....	203	151/5		153/2		157/6		161/5
	16 .....	204/4	152/2		154		158/3		161/7
	17 .....	203/7	150/1		151/7		156/2		160/2
	20 .....	199/5	150/4		152/2		157		161
	21 .....	201/2	151/6		153/3		158		162
	22 .....	201/2	151/4	152/5	153/3	154/4	158	159	162/1
	23 .....	204	152/2	153/2	154	155	158/4	159/4	162/5
	24 .....	205/1	151/3	152/3	153/2	154/2	157/6	158/5	161/6
	27 .....	202/1	151/6	152/5	153/4	154/2	157/6	158/6	161/5
	28 .....	201/5	151/5	152/4	153/3	154/2	158	159	161/7
	29 .....	200/2	151/7	152/7	153/4	154/4	158	159	162
	30 .....	200/2	150/6	151/6	152/4	153/4	157	158	161/2



AUSTRALIAN SITUATION

Supply Position      Estimated supplies of wheat in Australia for the 1963-64 (December-November) crop year are placed at an all-time high of 351.5 million bushels, exceeding by 8 per cent the previous year's peak total of 325.4 million. Indicated supplies for the current Australian crop year reflect an increase in carryover stocks from 18.2 million bushels at December 1, 1962 to 23.5 million in 1963 while production, now estimated at 328.0 million bushels, represents a record crop for the second consecutive year. After deducting 75.0 million for anticipated domestic requirements, an estimated 276.5 million are available for export and for carryover in 1963-64, an increase of 10 per cent over the 252.1 million the previous year.

Combined exports of wheat as grain and wheat flour in terms of grain equivalent during the period December 1-March 28 of the current Australian crop year amounted to 107.1 million bushels, 66 per cent more than the 64.5 million exported during the corresponding period of 1962-63. The balance remaining on March 29, 1964 for export and for carryover, at 169.4 million bushels, is 10 per cent below the comparable 1963 total of 187.6 million.

Australian Wheat Supplies

Item	1962-63 <u>1/</u>	1963-64 <u>2/</u>
	- million bushels -	
Carryover, including flour as wheat, at beginning of crop year (December 1).....	18.2	23.5
Production.....	307.2	328.0
Total estimated domestic supplies.....	325.4	351.5
Less estimated domestic requirements for crop year....	73.3	75.0
Available for export and for carryover.....	252.1	276.5
Deduct:		
Exports of wheat as grain, December 1-March 28.....	57.1	95.2
Exports of wheat flour in terms of wheat, December 1-March 28.....	7.4	11.9
Total exports of wheat and wheat flour.....	64.5	107.1
Balance on March 29 for export and for carryover.....	187.6	169.4

1/ Revised. 2/ Preliminary.

The following information relative to the Australian situation has been extracted from a report from Mr. H.A. Gilbert, Commercial Counsellor for Canada, Melbourne, under date of April 15, 1964 and is reproduced with the permission of the Trade Commissioner Service, Department of Trade and Commerce. Currency conversions have been made at the rate of £1 equals \$2.4197 (Canadian) the quotation in effect on April 6, 1964.

Crop Position As Australian wheat farmers are now preparing the ground for their next sowing there is very little to report at this stage. Indications are, however, that an increased acreage will be sown and that another heavy crop can be expected, should the results of the previous harvests be any guide.

A sense of security and confidence highlights the wheat situation in this country due primarily to the new stabilization plan and attractive economic conditions on the world market. Consequently, more land is being used for wheat production each year. Another factor which produces confidence is the negligible carryover of exportable surplus wheat in spite of a run of record-breaking crops.

Marketing Position During the period under review Mainland China purchased an additional 21 million bushels of wheat from Australia. This new contract is estimated to be worth £16 million (\$38.7 million) and is on identical credit terms as previous sales.

In announcing the latest sale, the Wheat Board chairman (Mr. J.V. Moroney) explained that it was not the Board's policy to publicly announce its selling prices for bulk contracts. He said that more than 8 million bushels of off-grade wheat, damaged by unfavourable growing and harvesting conditions in several States were included in this contract.

China has now purchased more than 62 million bushels of wheat from the 1963-64 Australian crop. The Board's ability to enter into this new contract stemmed from the fact that total deliveries from New South Wales and Victoria had considerably exceeded official crop forecasts made some months ago when a tentative export programme was drawn up.

It is unlikely that any further big bulk sales will be considered by the Board until more is known regarding the 1964-65 wheat crop.

Exports of Australian Wheat and Wheat Flour in Terms of Wheat  
December 1 - March 28, 1963-64 and Corresponding Period 1962-63

Destination	Wheat		Wheat Flour	
	1962-63	1963-64	1962-63	1963-64
- thousand bushels -				
<u>Europe</u>				
Britain.....	6,113	9,418	535	552
Eastern Europe.....	-	25,582	-	3,511
Eire.....	937	685	-	-
Malta.....	205	437	-	-
Norway.....	1,668	2,419	-	-
Western Germany.....	697	6,027	-	-
Others.....	-	-	4	1/
<u>Middle East</u>				
Aden.....	227	408	-	-
Aden and Aden I/T.....	-	-	334	345
Aden and Aden I/T Atta .....	-	-	121	177
Arabian Gulf.....	-	-	43	93
Arabian Gulf Atta .....	-	-	381	528
Iran.....	210	129	-	-
Iraq.....	-	2,595	-	-
Lebanon, Jordan, Syria.....	1,876	1,906	-	-
Saudi Arabia.....	-	-	127	10
Others.....	74	324	3	13



Exports of Australian Wheat and Wheat Flour in Terms of Wheat  
December 1 - March 28, 1963-64 and Corresponding Period 1962-63

Destination	Wheat		Wheat Flour	
	1962-63	1963-64	1962-63	1963-64
- thousand bushels -				
<u>Africa</u>				
Mauritius.....	-	-	228	508
Nyasaland.....	-	-	113	79
Portuguese East Africa.....	-	462	-	-
Rhodesia.....	961	1,439	-	-
Zanzibar.....	-	-	69	75
Others.....	6	7	22	20
<u>Asia</u>				
Brunei.....	-	-	11	9
Burma.....	290	-	63	-
Ceylon.....	-	7	1,689	2,011
China.....	35,690	32,287	-	-
Hong Kong.....	880	809	80	38
India.....	1,765	867	-	-
Indonesia.....	-	-	256	57
Japan.....	1,852	7,008	-	-
Pakistan.....	1,329	-	-	-
Philippines.....	56	211	193	851
Thailand.....	-	-	235	255
Malaysia				
Malaya.....	183	23	1,102	1,077
Malaya Atta.....	-	-	28	36
Sabah.....	-	-	39	62
Sarawak.....	-	-	53	59
Singapore.....	14	423	834	657
Singapore Atta.....	-	-	5	3
Singapore A/C B.W.O. ....	-	-	8	16
Others.....	20	1	27	33
<u>Pacific Area and Sundries</u>				
New Zealand.....	2,035	1,706	-	-
Pacific Islands and Sundries.....	13	22	678	618
Peru.....	-	-	6	2
Ships' Stores and Sundries.....	-	-	114	204
Totals.....	57,100	95,200	7,400	11,900

1/ Less than 500 bushels.

ARGENTINE SITUATION

Supply Position Estimated total supplies of wheat in the Argentine for the 1963-64 (December-November) crop year amount to 300.0 million bushels, consisting of the December 1, 1963 carryover of 18.5 million and the new crop, estimated at 281.5 million. Indicated supplies for the current Argentine crop year, reflecting a substantial increase in production as well as slightly larger opening stocks are about 41 per cent more than the 1962-63 total of 212.6 million bushels. After making an allowance of 132.3 million bushels for anticipated domestic requirements, an estimated 167.7 million are available for export and for carryover in 1963-64, in contrast to 84.6 million the previous year.

Exports of wheat and wheat flour in terms of grain equivalent during December 1963-March 1964 amounted to 50.7 million bushels, sharply above the 32.2 million exported during the same months in 1962-63. The balance remaining on April 1, 1964 for export and for carryover was estimated at 117.0 million bushels, more than double the April 1, 1963 total of 52.4 million.

### Argentine Wheat Supplies

Item	1962-63 <u>1/</u>	1963-64 <u>2/</u>
	- million bushels -	
Carryover at beginning of crop year (December 1) <u>3/</u> .....	18.0	18.5
Production <u>4/</u> .....	194.5	281.5
Total estimated domestic supplies.....	212.6	300.0
Less estimated domestic requirements for crop year.....	128.0	132.3
Available for export and for carryover.....	84.6	167.7
Deduct:		
Exports of wheat as grain, December-March.....	32.1	50.4
Exports of wheat flour in terms of wheat, December-March.....	0.1	0.3
Total exports of wheat and wheat flour.....	32.2	50.7
Balance on April 1 for export and for carryover.....	52.4	117.0

1/ Revised.

2/ Preliminary.

3/ Includes allowances for farm stocks.

4/ Official estimate.

The following account of the Argentine situation has been extracted from a report from Mr. J.G. Ireland, Assistant Commercial Secretary, Buenos Aires, under date of April 20, 1964 and is reproduced with the permission of the Trade Commissioner Service, Department of Trade and Commerce. Where possible, conversions from Argentine to Canadian measures have been made for the convenience of our readers.

### Weather and Crops

There was widespread rainfall throughout Argentina during the end of the first half of March, and although conditions were mostly dry during the second half of the month, heavy storms occurred in the southern areas towards the end of the month. Unusually heavy frosts occurred in several of the Andean Provinces in early April, causing losses in vineyard and orchard crops, particularly in the Provinces of Mendoza, Rio Negro and San Juan. Widespread rainfall also occurred during the first two weeks of April; but at present the weather is fine and settled and on the cool side. These conditions are normal for the early autumn in Argentina.

The wheat and flax crops are now in, and the recent rainfall has proved very beneficial for the sowing of winter pastures and for soil moisture build-up for the coming season. In some areas, however, excessive rainfall caused damage to the grain and oilseed crops being harvested at present, namely, corn, sorghum, sunflower seed and peanuts.



### Wheat

Export sales of wheat are practically at a standstill at present, as exporters claim that the high prices they are forced to pay producers do not permit them to sell abroad at international prices. Shipments of wheat during the first 4 months of the 1963-64 crop year (December 1, 1963 to March 31, 1964) were 1,372,083 metric tons (50,415,000 bushels) compared to 868,790 tons (31,922,000 bushels) shipped during the same period of the previous crop year. However, this year's figure includes nearly half a million metric tons (18,372,000 bushels) shipped to Mainland China, as well as other sales to Poland and to Russia. Just two days ago, the Secretary of Transport announced that wheat shipments to Mainland China were being made on a normal basis and will be concluded by the end of May.

As Argentina, like other wheat exporting nations, must sell her wheat at international prices, the exchange rate of the Argentine peso has a very direct influence on exports. For several months, up to around the third week of March, the Argentine peso held firm at approximately 132 pesos to the US dollar, and it was during the latter part of this period that exporters claimed that they were unable to sell wheat at a profit. Towards the end of the third week of March, the peso began to weaken on the Free Exchange Market and, apparently, stabilizing at a level of somewhere between 138 and 140 pesos per US dollar. On April 13, 1964, the Government brought into effect a partial control of foreign exchange, which in essence forces exporters to bring into the country all foreign currency obtained from the export of Argentine products and negotiate it on the exchange market here within a specified period. At the same time, the new regulations permit only very nominal amounts of foreign exchange to be purchased by Argentines for travel and other purposes, and they subject purchases of forward exchange to a prior deposit of 50 per cent, with certain exemptions. The new regulations are designed to slow down the exodus from the country of foreign exchange and gold, but they have already had the effect of creating a "parallel" market, for the first time since 1958, when a free exchange market was reinstated. The legal selling rate for US dollars at the present time is approximately 138 pesos, while the current "parallel" rate is approximately 143 pesos. It is not yet known how these new exchange regulations will affect the export of wheat, but to-date, most individuals, associations, etc. involved in any way with grain exports have spoken out loudly against the new regulations.

At the present time, the National Grain Board is, by far, the most important buyer of wheat, despite the fact that the Board has delayed payments to producers in many cases. Such delays, of course, are contrary to the Argentine system of marketing wheat, but the fact is that the Board simply does not have sufficient funds to meet its obligations. It is reported that the Grain Board, so far, has purchased more than 3 million tons (110.2 million bu.) of wheat. The Minister of Economy has just announced, however, that the financial problems facing the Grain Board "have now been solved", but no further details are given. It is estimated, however, that at the present time, total Argentine wheat stocks are not in excess of available storage facilities, hence the Grain Board will no longer be under pressure to make export sales in order to make space for further purchases from producers.

At present, millers are sporadic buyers, and when they buy from producers, payment terms are usually 25 per cent every 30 days. Despite the fact that, at the present time, durumms are being offered by producers at prices even less than the minimum official producers price, buyers are still very hesitant.

The only important export sale reported during the period under review is 80,000 metric tons (2,939,000 bushels) bought by Brazil at \$US 68.74 per metric ton (\$1.87 per bushel) f.o.b., for April shipment. A few days ago, however, it was reported in the press that negotiations are being carried out for the sale of some 500,000 tons (18,372,000 bushels) to Russia, 200,000 tons (7,349,000 bushels) to East Germany, 140,000 tons (5,144,000 bushels) to Britain, 70,000 tons (2,572,000 bushels) to Uruguay, and some 120,000 tons (4,409,000 bushels) to Chile. No information of any kind has been forthcoming from official circles on these reported negotiations.

Prices in both the Buenos Aires Futures Market and Buenos Aires Cereal Exchange during the period under review have been right at the minimum official producers price level.

#### FRENCH SITUATION

Supply Position Total estimated commercial domestic supplies of wheat in France for the crop year (July-June) 1963-64, consisting of the July 1 carryover of 100.4 million bushels and anticipated marketings, now revised to 260.9 million, amount to some 361.3 million bushels, 16 per cent less than the 1962-63 total of 429.8 million. Imports of wheat during the July-March period of the current crop year amounted to 11.6 million bushels as against only 3.2 million imported during the same period in 1962-63. After deducting 210.7 million bushels for estimated domestic use, including normal feed wheat requirements, the surplus available for export and for carryover amounts to 162.1 million bushels in contrast to 214.0 million last year.

#### French Supplies of Soft Wheat

Item	1962-63	1963-64 <u>1/</u>
	- million bushels -	
Commercial carryover, July 1.....	58.7	100.4
Deliveries to Grain Board.....	371.1	260.9 <u>2/</u>
Total estimated domestic supplies.....	429.8	361.3
Imports, July-March.....	3.2	11.6
Total estimated commercial supplies.....	433.0	372.9
Less domestic requirements for crop year.....	219.0	210.7
Available for export and for carryover.....	214.0	162.1
Deduct:		
Exports of wheat as grain, July-March.....	69.4	58.3
Exports of wheat flour in terms of wheat, July-March.....	17.9	15.1
Total exports of wheat and wheat flour.....	87.4	73.4
Balance on April 1 for export and for carryover....	126.6	88.7

1/ Preliminary. 2/ Revised.



Combined exports of wheat and wheat flour in terms of grain equivalent during the first nine months of the 1963-64 crop year amounted to 73.4 million bushels, and represented a decrease of 16 per cent from the comparable 1962-63 total of 87.4 million. The balance of commercial supplies remaining on April 1, 1964 for export and for carryover amounted to 88.7 million bushels 30 per cent below the April 1, 1963 total of 126.6 million.

The following account of the current crop situation in France has been extracted from a report by Mr. R.G. Woolham, Assistant Commercial Secretary, Canadian Embassy, Paris, under date of April 21, 1964, and is reproduced with the permission of the Trade Commissioner Service, Department of Trade and Commerce. Where possible, conversions from French to Canadian measures have been made and rounded.

Farmers' Marketings Heavy wheat movements from farms to commercial positions during the month of March brought total deliveries to 6,754,000 tons (248,164,000 bushels) as of April 1, 1964. Original forecasts of total deliveries for the crop year therefore have had to be revised upwards, and it is now expected wheat supplies entering commercial channels will total about 7,100,000 tons (260,877,000 bushels) or approximately 400,000 tons (14,697,000 bushels) more than earlier forecasts.

Farm Deliveries of Cereals - France as of April 1

<u>Grain</u>	<u>1963</u>	<u>1964</u>
	- thousand bushels -	
Wheat	349,208	248,164
Barley	117,625	175,955
Oats	17,442	24,030
Corn	17,637	39,289

Stocks of wheat reported as of April 1, 1964, amounted to 2,652,000 tons (97,443,000 bushels) and about 400,000 tons (14,697,000 bushels) less than at the same date a year ago.

Cereal Stocks Reported in Commercial Positions as of April 1

<u>Grain</u>	<u>1963</u>	<u>1964</u>
	- thousand bushels -	
Wheat	111,883	97,443
Barley	37,570	49,420
Oats	5,382	9,272
Corn	5,669	5,236

Market Situation Commercial activity has continued at moderate levels for most cereals during the past month, and only the surplus in low quality wheat would appear to present a problem in disposal before the end of June. Since last month, gains in export sales as indicated by export certificate registrations, were 213,000 metric tons (7,826,000 bushels) for wheat, 373,000 tons (17,132,000 bushels) for barley and 140,000 tons (5,512,000 bushels) for corn. These new registrations were made almost entirely to E.E.C. and Third country destinations rather than under "Special" sales to East European countries or to China. Slightly higher export subsidies and somewhat more attractive prices to E.E.C. markets helped maintain a steady level of export business during recent weeks.

France and East Germany have also been negotiating a three-year wheat contract involving 400,000 tons (14,697,000 bushels) per year. Contract details however, have yet to be concluded.

Imports of hard milling wheats reached a record of over 350,000 tons, (12,860,000 bushels) and durum wheat purchases totalled 375,000 tons (13,779,000 bushels) as of April 10, 1964.

Exports of wheat have developed satisfactorily despite below-average quality considerations of the crop. Sales, especially to France's E.E.C. markets, have shown considerable improvement over last year, and special sales to East European countries have been substantial. Exports as indicated by applications for export certificates, are given below to April 10, 1964.

<u>Soft Wheat</u>	thousand bushels
E.E.C.	16,356
3rd Markets	25,508
Special sales	16,868
Exchange sales	3,761
Total	62,493

#### Weather and Crops

Weather conditions during April were excellent and considerably superior to those of the previous month. Spring arrived, characterized with plenty of sunshine and elevated temperatures, although occasional heavy rainstorms were reported in some areas. Growing conditions were therefore very satisfactory during the past month.

The wheat acreage as of April 1, 1964, was reported at 4,343,000 hectares (10,727,000 acres) considerably above the figure registered a year ago, although last year's acreage was affected by the severe winter. This year's wheat seedings are therefore only slightly higher than the last five year average. Spring barley seedings are progressing well and will likely be close to, or slightly better than average levels.

#### Estimated Area Seeded to Cereals

Grain	5-yr. Average Actual	April 1 1963	April 1 1964
- thousand acres -			
Wheat.....	10,455	8,355	10,728
Wheat and rye.....	42	25	28
Rye.....	676	584	592
Barley.....	5,442	1,556	2,066
Oats.....	3,457	914	1,488
Mixed Cereals.....	263	162	128



Continued from page 30.

These new provisions are designed particularly to meet the problem of processors of types and qualities of wheat that will not be readily available during the transition period from new crop supplies or from Commodity Credit Corporation stocks.

Under these provisions, sales of wheat by CCC during the transition period will be reduced to a minimum because flour millers and other wheat processors will be enabled to carry their own inventories of old-crop wheat after July 1.

CALENDAR OF WHEAT EVENTS

- April 10 According to a report published by the Crop Reporting Board, United States Department of Agriculture, the 1964 winter wheat crop in United States is forecast at 1,011 million bushels.
- 11 The United States Department of Agriculture announced price support loan level, certificate values and acreage diversion payment rates for the 1964 Wheat Program. Signup to qualify for the new program will take place from May 1 through May 15 in ASCS offices throughout the nation.
- 17 Total stocks of Canadian wheat at March 31, 1964 were estimated at 784.3 million bushels compared with 669.0 million on the same date in 1963 and the record 904.4 million in 1957.
- 24 The United States Department of Agriculture announced further operating provisions of the wheat certificate program. These new provisions are designed particularly to meet the problem of processors of types and qualities of wheat that will not be readily available during the transition period from new crop supplies or from Commodity Credit Corporation stocks.
- Wheat stocks in all positions in the United States on April 1, 1964 were estimated at 1,207 million bushels, 20 per cent less than a year earlier and the smallest April 1 stocks since 1958.
- May 4 According to the Bureau of the Census, United States Department of Commerce, wheat flour production in the United States in March 1964 amounted to 21,956,000 hundredweight, an average of 998,000 hundredweight per working day.
-











STATISTICS CANADA LIBRARY  
BIBLIOTHEQUE STATISTIQUE CANADA



1010686754