

CATALOGUE No.

22-005

MONTHLY

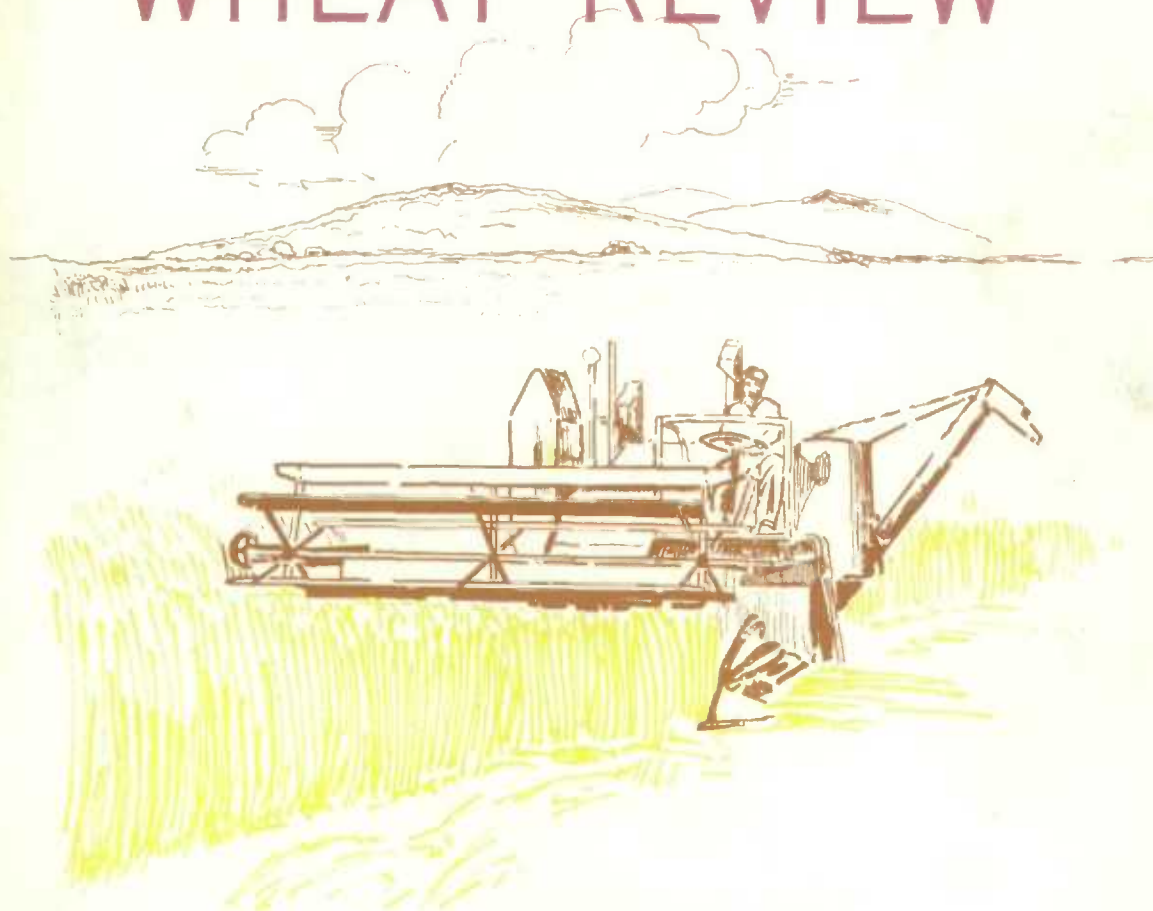


CANADA

DOMINION BUREAU OF STATISTICS

AGRICULTURE DIVISION

THE ⁵³ WHEAT REVIEW



AUGUST 1964

DOMINION BUREAU OF STATISTICS

THE
WHEAT REVIEW

AUGUST 1964

Published by Authority of
The Minister of Trade and Commerce

Prepared in the Crops Section, Agriculture Division
Dominion Bureau of Statistics, Ottawa

TABLE OF CONTENTS

	Page
World Wheat Situation	
Wheat Shipments from Four Major Exporters Highest on Record	1
Wheat Supplies of Four Major Exporters 7 Per Cent Below a Year Ago	1
Bumper 1964 World Wheat Harvest Forecast	2
I.W.C. Cumulative Totals of Commercial Purchases	3
Canadian Situation	
Canadian Wheat Supplies Decline from Record Level of Previous Year	4
1963-64 Exports of Wheat and Flour Set New Record	5
August Forecast of Production of Canada's 1964 Grain Crops	6
Lake Shipments of Canadian Grain	8
Wheat Sales to Poland and Bulgaria	8
Crop Conditions in the Prairie Provinces	9
Wheat Production in Canada and the Prairie Provinces 1910-64	10
Carryover Stocks of Canadian Grain at July 31, 1964	11
Canadian Wheat Carryover 1933-64	12
Farmers' Marketings of Wheat	13
Visible Supply of Canadian Wheat	14
Grading of Wheat Inspected, August 1963-July 1964 with Comparisons	14
Weekly Visible Supply and Farmers' Marketings (Charts)	15
Wheat Shipments to the United States by Destination	16
Rail Shipments of Wheat to Maritime Ports	16
Rail Shipments of Wheat from Fort William-Port Arthur	17
Overseas Exports of Canadian Grain by Ports of Loading	17
Freight Assistance Shipments	18
Monthly Exports of Canadian Wheat and Wheat Flour	19
Exports of Canadian Wheat, by Destination	20
Customs Exports of Canadian Wheat Flour by Countries of Consignment	24
Initial Payment to Producers	26
Canadian Wheat Board Weekly Average Cash Wheat Prices	27
Canadian Flour Milling Situation	
Production and Exports	29
United States Situation	
Supply Position	30
1964 Wheat Crop Forecast at 1,285 Million Bushels	31
United States Wheat and Flour Exports Setting New Records	32
Cash Wheat Prices on the Kansas City and Minneapolis Markets	36
Chicago Wheat Futures, High Points of Closing	36
Australian Situation	37
Argentine Situation	40
Wheat Situation in Italy	42
Calendar of Wheat Events	44
Highlights 1963-64 Crop Year	45

WORLD WHEAT SITUATION

Wheat Shipments from Four Major Exporters Highest on Record

The total of 1,822.3 million bushels shipped from United States, Canada, Argentina and Australia during the 1963-64 Canadian crop year (August-July) was some 32 per cent greater than the previous record of 1,377.5 million set in 1961-62, 48 per cent higher than the 1962-63 figure of 1,234.3 million and an impressive 89 per cent greater than the ten-year (1952-53—1961-62) crop year average of 961.7 million bushels. When final figures for the crop year are compiled for the total world trade in wheat, the volume traded in 1963-64 will be quite close to the 2-billion bushel level, a record which will most likely prevail for many years. Shipments from the four traditional major wheat exporters during the 1963-64 crop year, with comparisons, appear in the accompanying table.

Exports of Wheat and Flour in Terms of Wheat, August-July 1963-64 with Comparisons

August-July	United States	Canada	Argentina	Australia	Total
- million bushels -					
1950-51	375.3	241.0	94.5	127.8	838.6
1951-52	466.6	355.8	24.1	93.4	939.9
1952-53	322.6	385.5	38.9	107.0	854.0
1953-54	211.4	255.1	110.3	63.4	640.2
1954-55	280.4	251.9	134.5	94.3	761.1
1955-56	359.4	312.3	108.6	107.5	887.8
1956-57	539.5	264.4	100.6	120.2	1,024.7
1957-58	396.4	320.3	77.6	61.9	856.2
1958-59	455.6	294.5	106.2	82.7	939.0
1959-60	513.1	277.3	76.5	117.8	984.7
1960-61	677.5	353.2	62.9	198.0	1,291.6
1961-62	704.2	358.0	95.5	219.8 <u>1/</u>	1,377.5 <u>1/</u>
1962-63 <u>1/</u>	650.6	331.2	66.3	186.2	1,234.3
1963-64 <u>2/</u>	849.5	594.1	104.7	274.0	1,822.3

1/ Revised. 2/ Preliminary.

Although world wheat production in 1963-64 was at near record levels, sharp contrasts occurred in output in the various areas. While the four traditional major exporting countries were favoured by large crops, the U.S.S.R. experienced a near failure and European crops were well below the level of recent years. As a result of this unusual distribution, shipments from the traditional exporters to meet these deficits were exceptionally heavy. The most significant factor in the increase in world trade was the unusually large wheat shipments to the U.S.S.R. In addition, countries in Eastern Europe which normally draw some supplies from the U.S.S.R., transferred their purchases to the four traditional major exporters. Imports into Western Europe, particularly to EEC countries, and to Asia, mainly to Japan and India also registered substantial increases.

Wheat Supplies of Four Major Exporters 7 Per Cent Below a Year Ago

At the close of the Canadian crop year, total supplies of wheat remaining in United States, Canada, Argentina and Australia, for export and for carryover at the end of their respective crop years, amounted to 2,160.3 million bushels compared with 2,314.3 million at the same time a year ago. This decrease reflected smaller amounts for United States, Canada and Australia which more than offset a substantial increase in wheat stocks in Argentina. Supplies on or about August 1, 1964, in millions of bushels, were held as follows, with last year's comparable figures in brackets: United States, 1,493.0 (1,689.8); Canada, 461.4 (487.2); Argentina, 127.5 (39.4); and Australia, 78.4 (97.9).

Estimates for both years include on-farm stocks as well as those in commercial positions. It is to be noted that the 1964 United States crop estimated at 1,285 million bushels is now included. The supply figures for Canada represent crop-year-end carryover only, as the new crop will not be taken into account until September 1 in these calculations. The new Australian and Argentine production for 1964-65 will be included at January 1.

Bumper 1964 World
Wheat Harvest Forecast

According to the August 1964 issue of "World Agricultural Production and Trade" published by the United States Department of Agriculture, Foreign Agricultural Service, the present outlook for 1964 world wheat production indicates a record or near-record harvest. Production, in Northern Hemisphere countries promises to be the largest of record. Although it is too early for a reliable measure of Southern Hemisphere harvests, which will not be underway until November, conditions to date have been mainly favourable in the principal producing countries.

If, as now seems likely, the prior wheat record of 8.7 billion bushels in 1962 is exceeded, the largest factor in the increase will be the gain in North America; production is up in each of the three principal producers of the area. The total for Western Europe, though large, is estimated to be moderately below the record achieved there in 1962. The Soviet Union may also be below its 1962 figure. Indicated differences in other continents are of minor significance.

A near-record outturn in North America this year does not mean larger surpluses for export. Following the heavy export movement from the United States and Canada during 1963-64, supplies are somewhat smaller in both countries for the current marketing season. U.S. supplies for 1964-65 are estimated at 2,190 million bushels, 148 million below supplies a year earlier, despite a production increase of 147 million bushels. Canada's supply is lower because of reductions from the high 1963 level in both production and carryover. Mexico reports a record outturn and plans to export about 18 million bushels.

World import demand is expected to be well below the high 1963-64 level, with larger production over most of Western Europe and in Japan playing a part, as well as reduced needs expected to follow better harvests in the Soviet Union and Mainland China.

Present estimates indicate that Western Europe's total production this year may be second only to the 1962 record. Good crops are reported everywhere except on the Iberian Peninsula; there, production is somewhat smaller than last year in both Spain and Portugal.

A slightly smaller crop than last year is expected in Eastern Europe, mainly because of a reduction in Yugoslavia. Early-season forecasts of a record crop in that country were not realized as a heat wave in late June, followed by heavy rains, delayed harvesting and lowered conditions of the crop. The outlook is for an average crop in the Soviet Union, following the poor outturn of 1963. The area for harvest is estimated larger than last year and yield prospects for spring wheat in the "New Lands" area are much better. Yields are disastrously low in this area last year because of prolonged drought. Moisture supplies have been unusually good this year, but a late start this spring makes the crop vulnerable if the growing season should be cut short.

Conditions in Asia vary widely, with better conditions than last year in some parts offset by poorer conditions in others. The crop in Turkey is reported smaller than in 1963 while other Near East countries report better crops. Japan's production approaches average after last year's failure. Conditions appear generally better in Mainland China, in contrast with reduced outturns in India and Pakistan.

International Wheat Council
Cumulative Totals of Commercial Purchases by Importing Countries from Exporting Countries
Crop Year 1964-65 — Through August 1, 1964

Importing Countries	E X P O R T I N G C O U N T R I E S					Total
	Canada	Argentina	Australia	Sweden	U.S.A.	Purchases
- thousand bushels -						
Austria	-	-	-	-	-	-
Belgium & Luxembourg	1,792	-	-	-	-	1,792
Brazil	-	2,939	-	-	-	2,939
Costa Rica	21	-	-	-	45	66
Cuba	-	-	-	-	-	-
Dominican Republic	30	-	-	-	2	32
Ecuador	334	-	-	-	-	334
El Salvador	148	-	-	-	92	240
Finland	-	-	-	-	-	-
Germany, Federal Republic	4,513	-	36	-	242	4,791
Greece	-	-	-	-	5	5
Guatemala	3	-	-	-	141	144
Iceland	-	-	-	-	1	1
India	-	-	-	-	-	-
Indonesia	-	-	52	-	-	52
Ireland	-	-	299	-	-	299
Israel	523	-	-	-	3	526
Japan	9,651	-	4,000	-	6,479	20,130
Korea	-	-	-	-	-	-
Liberia	3	-	-	-	11	14
Libya	-	-	1	-	-	1
Netherlands	1,008	-	-	-	965	1,973
Netherlands Territories	7	-	-	-	61	68
New Zealand	-	-	560	-	-	560
Nigeria	-	-	-	-	373	373
Norway	1,680	-	1,062	228	-	2,970
Peru	378	-	3	-	35	416
Philippines	2,113	-	265	-	392	2,770
Portugal	2	-	-	-	24	26
Portuguese Territories	6	-	1	-	9	16
Saudi Arabia	278	-	85	-	423	786
Sierra Leone	13	-	-	-	5	18
South Africa	956	-	-	-	-	956
Switzerland	1,692	-	-	-	-	1,692
Tunisia	-	-	-	-	-	-
United Arab Republic	-	-	-	-	6	6
United Kingdom	20,599	-	3,581	-	321	24,501
U.K. Territories	497	-	575	-	196	1,268
Vatican City	-	-	-	-	-	-
Venezuela	2,896	-	-	-	1,639	4,535
Western Samoa	-	-	-	-	-	-
To Orders	-	-	-	-	-	-
Totals	49,143	2,939	10,520	228	11,470	74,300
Percentage of Total Sales by Exporting Countries	66.14	3.96	14.16	0.31	15.43	100.00

NOTE: France, Italy, Mexico, Spain and U.S.S.R. - no sales reported.

CANADIAN SITUATION

Canadian Wheat Supplies
Decline from Record Level
of Previous Year

Assuming realization of the August forecast of production, Canadian wheat supplies for the crop year 1964-65 will amount to 1,057.5 million bushels, representing a decline of 13 per cent from the record 1,210.7 million of the previous year. Supplies of the size indicated for the current crop year reflect a reduction in carryover stocks (from 487.2 million bushels in 1963 to 461.4 million in 1964), combined with an 18 per cent decline in production, from a record 723.4 million a year ago to 596.1 million this year.

Revised Total Supply and Disposition of Canadian Wheat 1958-59—1963-64
and Estimated Supply, 1964-65
(Crop Years August 1 - July 31)

Item	1958-59	1959-60	1960-61	1961-62	1962-63	1963-64 <u>1/</u>	1964-65 <u>2/</u>
- million bushels -							
<u>Supplies</u>							
Carryover, at beginning of crop year	648.5	588.0	599.6	607.8	391.1	487.2	461.4
Production	398.1	445.1	518.4	283.4	565.6	723.4	596.1 <u>3/</u>
Imports wheat and flour	<u>4/</u>	<u>4/</u>	<u>4/</u>	<u>4/</u>	<u>4/</u>	<u>4/</u>	
Totals	1,046.5	1,033.1	1,118.0	891.2	956.6	1,210.7	1,057.5
<u>Disposition</u>							
Exports wheat and flour	294.5	277.3	353.2	358.0	331.2	594.1	
Human consumption	53.7	55.0	56.3	58.9	53.0	58.9	
Seed	34.7	34.7	35.9	37.7	39.1	42.1	
Industrial use	1.3	1.5	1.5	1.5	1.5	1.6 <u>5/</u>	
Carryover, at end of crop year	588.0	599.6	607.8	391.1	487.2	461.4	
Residual item <u>6/</u>	74.3	65.1	63.2	44.0	44.6	52.6	
Totals	1,046.5	1,033.1	1,118.0	891.2	956.6	1,210.7	

- 1/ Subject to further revision.
2/ Subject to further revision pending receipts of Board of Grain Commissioners' final data on commercial stocks at July 31, 1964.
3/ Based on conditions as at August 15 and subject to revision as later estimates become available.
4/ Less than 50,000 bushels.
5/ Estimated.
6/ Includes feed for livestock and waste but also reflects the effect of any estimating errors in other components of the balance sheet.

Realization of the 1964 production forecast for wheat will be dependent upon how weather and other developments affect the crop between August 15 and completion of harvesting. The second official forecast of production, to be released on October 7 will give greater effect to actual harvesting conditions and outturns.

1963-64 Exports of
Wheat and Flour Set
New Record

According to preliminary data, combined exports of wheat in bulk, bagged seed wheat and wheat flour in terms of wheat equivalent amounted to a record 594.1 million bushels during 1963-64, surpassing by 46 per cent the previous high of 407.6 million set in 1928-29, 79 per cent greater than the 1962-63 crop year total of 331.2 million and 93 per cent more than the ten-year (1952-53—1961-62) average of 307.3 million bushels. Exports of wheat in bulk (as reported by the Board of Grain Commissioners for Canada), at 536.7 million bushels, were also a record, exceeding by 51 per cent the previous peak of 354.4 million set in 1928-29, 79 per cent greater than the 300.1 million exported in 1962-63 and more than double the ten-year average of 264.3 million. Exports of bagged seed wheat, based on preliminary Customs' data amounted to 3.0 million bushels compared with the 1962-63 adjusted figure of 3.9 million. Wheat flour exports, also based on preliminary data, were the equivalent of 54.4 million bushels, almost double the 1962-63 revised total of 27.3 million and the highest figure since 1952-53.

The 1963-64 total for exports of wheat in bulk is compiled from overseas clearances and exports to the United States as recorded by the Board of Grain Commissioners for Canada, while data on exports of wheat flour and bagged seed wheat are obtained from Canadian Customs returns. Adjusted data on wheat flour exports for the 1963-64 crop year, removing the effect of time lag in reporting Customs returns, will be included in a subsequent issue of this publication.

Monthly exports of wheat in bulk, bagged seed wheat and wheat flour in terms of wheat during the crop year recently completed ranged from a high of 69.7 million bushels in June to a low of 28.4 million in March.

Overseas clearances and United States imports of bulk wheat, the major component of the total exports of wheat, bagged seed wheat and flour, ranged between 65.3 million bushels in November and 21.7 million in February.

The increase of 236.6 million bushels recorded in wheat shipments during 1963-64, as compared with 1962-63, primarily reflected the export of some 212.2 million bushels to the U.S.S.R. as this country did not import any wheat from Canada during the previous year.

Although wheat shipments to Mainland China declined from 56.4 million in 1962-63 to 41.3 million in 1963-64, increases were recorded over the same period to the following major markets, with quantities in millions of bushels, 1962-63 figures in brackets: Britain, 79.0 (77.5); Japan, 49.7 (44.1); Federal Republic of Germany, 37.3 (28.0); Belgium and Luxembourg, 15.5 (10.0); Poland, 14.9 (14.2); Switzerland, 8.1 (3.0); Venezuela, 7.9 (6.7); the Philippines, 7.3 (6.7); and Czechoslovakia, 6.6 (4.4).

In addition, shipments of Canadian wheat went to the following destinations in 1963-64, where none were recorded the previous year: Bulgaria, 7.6 million; Cuba, 7.5 million; Albania, 3.7 million; South Korea, 0.5 million; Portugal, 0.4 million; Burma, 79 thousand and Panama, 78 thousand bushels.

Exports of wheat flour during 1963-64 went to seventy-eight countries with shipments to the U.S.S.R. amounting to the equivalent of 21.8 million bushels and representing 40 per cent of the crop year total. In 1962-63, there were no shipments to the U.S.S.R. Exports of Canadian wheat flour to Britain in 1963-64 were the equivalent of 12.0 million bushels and accounted for 22 per cent of the total, practically unchanged from the revised 12.1 million shipped during 1962-63

Other leading markets for Canadian wheat flour in 1963-64 were as follows, in millions of bushels of wheat equivalent, with revised 1962-63 data in brackets: Cuba, 7.0 (nil); Jamaica, 1.6 (1.3); Trinidad, 1.4 (1.3); Ghana, 1.1 (1.8); Ceylon, 1.1 (.001); Leeward and Windward Islands, 1.0 (0.9); United States, 0.9 (1.3); and Hong Kong, 0.9 (0.9).

Of the 3.0 million bushels of bagged seed wheat exported during 1963-64, shipments to the United States, at 2.5 million accounted for 82 per cent of the crop year total.

August Forecast of
Production of Canada's
1964 Grain Crops

With the exception of winter wheat and fall rye, production of each of the major Canadian grains will be below last year's levels on the basis of yields indicated at August 15.

Realization of the 1964 yield and production forecasts in the accompanying table is dependent on the existence of satisfactory weather conditions throughout the remainder of the growing and harvesting season. By mid-August only a limited acreage of spring-sown grains had been threshed in the Prairie Provinces and the harvest has been delayed since that time due to cool weather, and heavy precipitation in some areas. In the Peace River region of Alberta and British Columbia, stands are exceptionally heavy, but the crop is later than normal.

August Forecast of the 1964 Production of Principal Grain Crops
Canada and Prairie Provinces, Compared with 1963

Province and Crop	Area		Yield per Acre		Production	
	1963	1964	1963 <u>1/</u>	1964 <u>2/</u>	1963 <u>1/</u>	1964 <u>2/</u>
	- acres -		- bushels -		- bushels -	
<u>CANADA</u>						
Winter wheat	442,000	455,000	40.2	40.8	17,748,000	18,573,000
Spring wheat <u>3/</u> ..	27,124,200	29,230,800	26.0	19.8	705,694,000	577,546,000
All wheat	27,566,200	29,685,800	26.2	20.1	723,442,000	596,119,000
Oats for grain ..	9,487,800	8,308,000	47.8	42.9	453,102,000	356,756,000
Barley	6,160,100	5,454,700	35.8	31.0	220,664,000	169,081,000
Fall rye	552,800	578,900	19.9	19.7	11,018,000	11,388,000
Spring rye	98,800	100,900	18.5	13.9	1,830,000	1,400,000
All rye	651,600	679,800	19.7	18.8	12,848,000	12,788,000
Flaxseed	1,682,400 <u>1/</u>	1,916,500	12.6	10.2	21,116,000	19,598,000
Mixed grains	1,411,300	1,431,300	48.2	45.8	67,987,000	65,544,000
<u>PRAIRIE PROVINCES</u>						
Wheat <u>3/</u>	26,996,000	29,080,000	26.0	19.7	703,000,000	573,000,000
Oats	6,260,000 <u>4/</u>	5,171,000 <u>4/</u>	48.6	39.8	304,000,000	206,000,000
Barley	5,922,000	5,217,000	36.0	30.5	213,000,000	159,000,000
Rye	582,800	619,900	19.2	18.1	11,180,000	11,200,000
Flaxseed	1,629,000	1,855,000	12.5	10.0	20,300,000	18,600,000

1/ Revised.

2/ As indicated on basis of conditions on or about August 15.

3/ Includes Durum wheat.

4/ Estimated area for harvest as oats.

Although the Prairie Provinces received only limited moisture in the fall and winter of 1963-64, spring rains over most of the region provided sufficient moisture to make a good seed bed for spring-sown crops. The main exceptions occurred over a considerable area of northern and central Saskatchewan where drought conditions persisted for much of the growing season. As the summer progressed, Manitoba and Eastern Saskatchewan received adequate rains to properly advance all crops, but in the northwest quarter of Saskatchewan and the adjacent area in Alberta, moisture was limited to local showers and as a result stands were thin. Early season prospects were very promising in the southwest quarter of Saskatchewan, and southeastern Alberta, but hot, dry weather in the latter part of June and early July reduced prospects considerably. Western sections of Alberta experienced about normal growing conditions while the Peace River area received adequate to excessive moisture.

Canada's 1964 wheat crop, currently forecast at 596.1 million bushels is 18 per cent smaller than last year's crop of 723.4 million, but 24 per cent above the ten-year (1952-61) average of 479.8 million. Average yields decreased from 26.2 bushels in 1963 to 20.1 bushels per acre this year, as compared with the 1952-61 average of 19.9 bushels per acre.

The 1964 crop of spring wheat, forecast at 577.5 million bushels is being harvested from a seeded area of 29.2 million acres and yielding an indicated 19.8 bushels per acre. The 1963 spring wheat crop of 705.7 million bushels were produced on 27.1 million acres and yielded an average of 26.0 bushels per acre. The 1964 yield for Ontario's winter wheat crop is placed at 40.8 bushels per acre as compared with 40.2 bushels in 1963. A 3 per cent increase in acreage and a one per cent increase in yields, raised the production to 18.6 million bushels in 1964 compared with 17.7 million in 1963.

August Forecast of the 1964 Production of Wheat, Canada and Provinces
Compared with 1963

Province	Area		Yield per Acre		Production	
	1963	1964	1963 <u>1/</u>	1964 <u>2/</u>	1963 <u>1/</u>	1964 <u>2/</u>
	- acres -		- bushels -		- bushels -	
All wheat -						
Canada	27,566,200	29,685,800	26.2	20.1	723,442,000	596,119,000
Ontario	459,000	472,000	39.6	40.3	18,185,000	19,007,000
Spring wheat -						
Canada <u>3/</u>	27,124,200	29,230,800	26.0	19.8	705,694,000	577,546,000
Prince Ed. Is. .	5,300	4,000	28.9	30.7	153,000	123,000
Nova Scotia	1,000	900	30.0	35.4	30,000	32,000
New Brunswick ..	2,300	3,000	25.2	29.7	58,000	89,000
Quebec	8,300	10,900	26.0	24.6	216,000	268,000
Ontario	17,000	17,000	25.7	25.5	437,000	434,000
Manitoba <u>3/</u>	3,153,000	3,385,000	19.3	25.7	61,000,000	87,000,000
Saskatchewan <u>3/</u> ..	17,910,000	19,200,000	27.5	18.2	493,000,000	350,000,000
Alberta <u>3/</u>	5,933,000	6,495,000	25.1	20.9	149,000,000	136,000,000
Br. Columbia ...	94,300	115,000	19.1	31.0	1,800,000	3,600,000
Winter wheat -						
Canada <u>4/</u>	442,000	455,000	40.2	40.8	17,748,000	18,573,000

1/ Revised. 2/ As indicated on basis of conditions on or about August 15. 3/ Includes Durum wheat. 4/ Winter wheat estimates apply to Ontario only. The western wheat crop contains a relatively small proportion of winter wheat but, due to difficulties encountered in obtaining acreage data required for a separate winter wheat estimate in the Prairie Provinces, all western wheat is currently included under spring wheat.

In the Prairie Provinces, the 1964 wheat crop is forecast at 573.0 million bushels, some 18 per cent below last year's crop of 703.0 million, but 25 per cent above the ten-year (1952-61) average of 456.6 million. The forecasted average yield per seeded acre in the Prairie Provinces, on the basis of conditions at August 15, is 19.7 bushels per acre, with Manitoba averaging 25.7, Saskatchewan 18.2 and Alberta 20.9 bushels per acre. Production in each of these provinces in millions of bushels, with last year's estimate in brackets, is as follows: Manitoba, 87.0 (61.0); Saskatchewan, 350.0 (493.0); and Alberta, 136.0 (149.0). Relatively small amounts of winter wheat are included in these forecasts for the Prairie Provinces.

The indicated production of durum wheat, which is included in the above forecast of spring wheat is 34.5 million bushels compared with last year's estimate of 53.4 million. Forecasts of 1964 production in each of the Prairie Provinces in millions of bushels, with last year's estimates in brackets are: Manitoba, 2.7 (2.4); Saskatchewan, 27.0 (46.0); and Alberta, 4.8 (5.0). The acreage seeded to this crop was 13 per cent smaller than in 1963 and this coupled with a 26 per cent decrease in average yields, reduced production by 35 per cent. Yields per acre in 1964, with 1963 figures in brackets are: Manitoba, 22.5 (17.1); Saskatchewan, 17.5 (25.6); Alberta, 21.1 (21.4); and the Prairie Provinces, 18.3 (24.6).

Lake Shipments of Canadian Grain

Reflecting a record movement of wheat, total shipments of the five major grains out of Lakehead terminals from the opening of navigation to August 19 this year amounted to 248.9 million bushels, 83 per cent greater than the 135.8 million shipped during the comparable period of 1963 and the highest figure since 268.2 million were shipped during the corresponding period of 1953. In 1964 the season of navigation opened on April 2 while the 1963 season opened on April 19. Shipments of wheat, at 206.4 million bushels accounted for 83 per cent of the current total. During the period under review shipments of wheat, barley, rye and flaxseed were above last year's corresponding levels, while those of oats were lower.

Lake Shipments of Canadian Grain from the Opening of Navigation to August 19, 1964 and to Approximately the Same Date, 1953 to 1963

Year	Wheat	Oats	Barley	Rye	Flaxseed	Total
- thousand bushels -						
1953	147,933	47,410	63,353	6,700	2,777	268,174
1954	63,639	31,306	35,898	4,255	1,985	137,083
1955	88,873	18,425	34,325	6,850	3,271	151,744
1956	139,049	23,426	49,097	9,828	3,535	224,936
1957	96,319	23,391	25,967	3,723	6,609	156,008
1958	113,799	24,615	43,655	4,576	3,115	189,759
1959	105,680	14,726	24,768	3,424	3,474	152,071
1960	107,195	11,368	26,134	2,934	4,228	151,859
1961	137,121	15,270	24,857	1,462	3,729	182,439
1962	70,729	8,267	13,572	1,960	3,295	97,823
1963	96,442	21,409	12,963	1,548	3,481	135,842
1964	206,430	16,029	19,196	2,283	4,929	248,867

Wheat Sales to Poland and Bulgaria

In a press release dated August 13, 1964 the Canadian Wheat Board stated that the Canadian Wheat Board has negotiated contracts for the sale of approximately 200,000 metric tons of wheat for shipment to Poland and 50,000 metric tons of wheat for shipment to Bulgaria.

The sale to Poland totalling about 7.4 million bushels is for shipment during the period August to November 1964. This is the third sale made to Poland under the provisions of a long term agreement signed on November 5, 1963 and represents pre-shipment of part of the wheat Poland has agreed to buy during the second year of the three year agreement.

The sale to Bulgaria totalling about 1.8 million bushels is for shipment during the period August to October 1964. This is the third sale made to Bulgaria under the provisions of the long term agreement signed on October 8, 1963, and completes the quantities Bulgaria had agreed to buy during the first year of the three year agreement.

In the case of both of these sales payment for the wheat is to be made on the basis of 10 per cent at time of shipment with the remaining balance to be paid in equal installments plus interest at 2, 2 1/2 and 3 years, respectively. These credit arrangements were authorized by the Government of Canada under the provisions of the Export Credits Insurance Act.

Crop Conditions
in the Prairie
Provinces

According to the Telegraphic Crop Report published under date of September 16, 1964 crop conditions in each of the Prairie Provinces were summarized as follows: Harvesting is 55 per cent completed in Manitoba and good progress has been made since September 12 after earlier delays. In many areas more of the coarse grains than wheat has been threshed. Wheat harvesting is almost complete in the southern areas and progress varies from 15 to 60 per cent elsewhere. Yields of all crops are holding up well but quality has been reduced due to uneven growth during the season, weathering and sprouting in the swath and by frost. Frost damaged kernels are most evident in the northwest quarter of the province. Wheat is grading mostly No. 3 to No. 5 Northern. Killing frosts on September 10 and 14 damaged corn, sunflowers, buckwheat, flax and rapeseed. Buckwheat production has been cut two-thirds from frosts which have occurred since early August. Only early corn has a chance; the rest is poor silage. Extent of damage to other crops mentioned is still uncertain. Sunflowers are not fully mature and much rapeseed is still green in the north. Less than 10 per cent of the flax could be affected by frost, the remainder being one-third harvested or nearly ready for harvest.

Harvesting resumed in Saskatchewan at the week-end in most parts of southern and central districts, and increased activity is expected in all areas during the current week if the present weather continues. Presently about 40 per cent of the wheat acreage has been harvested while 33 per cent of the crop is still standing and 27 per cent is in the swath. About 40 per cent of the oats, barley and rapeseed has been harvested. The most advanced areas include southern and central crop districts, with remaining areas unable to make any rapid progress due to frequent light, to heavy rain. Dry weather is urgently needed in the east, west-central and northern districts.

After two weeks of wet weather, harvesting is slowly getting under way in Alberta. Wet ground is still a problem in some districts. Swathing is becoming general in central and northern areas and harvesting operations in the Peace River area have been resumed. Combining is being done in the south but moisture content varies from 14 to 17 per cent. Very little coarse grains have been threshed in the central regions. Wet ground and cool nights are delaying the drying of swaths.

Wheat Production in
Canada and the Prairie
Provinces 1910-64

The first forecast of the 1964 wheat crop in Canada, based on conditions at August 15, placed the probable outturn at 596.1 million bushels, of which the Prairie Provinces accounted for 573.0 million. If a crop of this size is realized, it would be 18 per cent smaller than last year's record harvest of 723.4 million but 28 per cent larger than the ten-year (1953-62) average of 466.1 million.

Wheat Production in Canada and the Prairie Provinces, 1910-64

Year	Canada	Manitoba	Saskatchewan	Alberta	Three Prairie Provinces
- thousand bushels -					
1910	132,078	34,127	66,979	9,060	110,167
1911	231,237	62,820	109,323	36,554	208,697
1912	224,159	63,017	106,960	34,303	204,280
1913	231,717	53,331	121,559	34,372	209,262
1914	161,280	38,605	73,494	28,859	140,958
1915	393,543	69,337	224,312	66,538	360,187
1916	262,781	29,667	147,559	65,088	242,314
1917	233,743	41,040	117,921	52,992	211,953
1918	189,075	48,191	92,493	23,752	164,436
1919	193,260	40,975	89,994	34,575	165,544
1920	263,189	37,542	113,135	83,461	234,138
1921	300,858	39,054	188,000	53,044	280,098
1922	399,786	60,051	250,167	64,976	375,194
1923	474,199	35,804	271,622	144,834	452,260
1924	262,097	41,464	132,918	61,312	235,694
1925	395,475	33,624	235,472	97,962	367,058
1926	407,136	47,133	219,646	113,986	380,765
1927	479,665	30,773	252,500	171,286	454,559
1928	566,726	52,383	321,215	171,000	544,598
1929	302,192	28,565	160,565	90,206	279,336
1930	420,672	43,600	206,700	147,000	397,300
1931	321,325	28,112	132,466	140,603	301,181
1932	443,061	44,041	211,551	167,355	422,947
1933	281,892	32,666	128,004	102,334	263,004
1934	275,849	37,100	114,200	112,500	263,800
1935	281,935	23,250	142,198	98,648	264,096
1936	219,218	26,000	110,000	66,000	202,000
1937	180,210	45,100	36,000	75,700	156,800
1938	360,010	50,000	137,800	148,200	336,000
1939	520,623	61,300	271,300	161,400	494,000
1940	540,190	66,400	266,700	180,700	513,800
1941	314,710	51,000	147,000	98,000	296,000
1942	556,067	53,000	305,000	171,000	529,000
1943	282,377	39,000	146,000	82,800	267,800
1944	414,859	50,300	242,100	99,300	391,700
1945	316,320	38,800	168,100	87,700	294,600
1946	411,601	58,000	208,000	127,000	393,000
1947	338,506	42,000	173,000	105,000	320,000
1948	381,413	50,000	191,000	115,000	356,000
1949	366,028	52,000	186,000	103,000	341,000
1950	466,490	50,000	272,000	117,000	439,000
1951	553,678	53,000	325,000	152,000	530,000
1952	701,973	57,000	449,000	172,000	678,000
1953	634,040	48,000	391,000	165,000	604,000
1954	331,981	29,000	169,000	107,000	305,000
1955	519,178	42,000	320,000	135,000	497,000
1956	573,040	56,000	355,000	140,000	551,000
1957	392,719	49,000	229,000	93,000	371,000
1958	398,077	61,000	213,000	98,000	372,000
1959	445,077	62,000	253,000	115,000	430,000
1960	518,379	66,000	327,000	105,000	498,000
1961	283,394	34,000	137,000	89,000	260,000
1962	565,554	80,000	354,000	112,000	546,000
1963 ^{1/}	723,442	61,000	493,000	149,000	703,000
1964 ^{2/}	596,119	87,000	350,000	136,000	573,000

^{1/} Revised.

^{2/} Based on conditions on or about August 15, 1964.

Carryover Stocks
of Canadian Grain
at July 31, 1964

Total carryover stocks of the five major Canadian grains in all North American positions at July 31, 1964 were estimated at 772.0 million bushels, 5 per cent above last year's revised total of 734.9 million, but 8 per cent less than the ten-year (1954-63) average of 835.4 million bushels. Total stocks of wheat were estimated at 461.4 million bushels, compared with last year's revised estimate of 487.2 million. Stocks of oats in all positions were estimated at 179.4 million bushels, 19 per cent larger than last year's 150.3 million. Barley stocks, at 117.5 million bushels, were up 32 per cent from the 89.2 million held in 1963. Carryover stocks of rye in all positions, estimated at 7.1 million bushels, were 69 per cent more than last year's 4.2 million. July-end carryover stocks of flaxseed, at 6.6 million bushels, were 66 per cent above last year's 4.0 million.

Stocks of Canadian Grain at July 31, 1964

Position	Wheat	Oats	Barley	Rye	Flaxseed
- thousand bushels -					
In Canada					
On Farms	120,640	128,800	60,000	1,650	1,300
Country elevators	196,571	39,033	37,943	2,485	1,932
Interior private and mill elevators	7,384	455	1,900	17	53
Interior terminal elevators	5,436	166	67	-	-
Pacific Coast terminals	10,742	64	3,209	89	782
Churchill elevator	4,759	-	-	-	1/
Fort William-Port Arthur elevators	54,115	5,843	9,840	1,750	1,387
In transit - lake	7,817	587	430	-	54
In transit - rail	29,400	2,393	1,779	243	510
Eastern elevators	22,373	1,839	2,321	453	592
Eastern mills (mill bins only)	1,781	193	-	-	-
Western mills (mill bins only)	358	4	2	3	-
Totals in Canada 2/.....	461,377	179,376	117,490	6,691	6,609
In United States	-	-	-	428	-
Totals, Canadian Grain in Canada and United States, July 31, 1964 2/	461,377	179,376	117,490	7,118	6,609
<u>Comparative Stocks, July 31, 1963 3/</u>					
In Canada	487,247	150,278	89,245	4,159	3,988
In United States	-	-	-	-	-
Totals in Canada and United States.	487,247	150,278	89,245	4,159	3,988
Average stocks, July 31, 1954-63	579,073	127,228	112,854	11,169	5,049

1/ Less than 500 bushels.

2/ Preliminary revised - subject to further revision.

3/ Revised.

Farm-held stocks of wheat, oats, barley, rye and flaxseed at July 31, 1964 amounted to 286.9 million bushels, an increase of 80 per cent over the July-end 1963 total of 159.3 million. Since the bulk of farm stocks of grain is held in Western Canada, stocks in the Prairie Provinces have been segregated from the above table for ease in comparison with last year's totals.

Estimated Farm Stocks in the Prairie Provinces, July 31, 1964 and 1963

Province	Wheat	Oats	Barley	Rye	Flaxseed
- thousand bushels -					
Manitoba	3,000	10,000	3,000	100	150
Saskatchewan	95,000	60,000	30,000	1,000	1,000
Alberta	20,000	38,000	25,000	500	150
Totals, July 31, 1964 1/.....	118,000	108,000	58,000	1,600	1,300
Totals, July 31, 1963	63,000	68,000	27,000	530	800

1/ Subject to revision.

Canadian Wheat
Carryover
1933-64

Preliminary estimates place total stocks of Canadian wheat in all North American positions at July 31, 1964 at 461.4 million bushels compared with last year's revised estimate of 487.2 million and the record high at July 31, 1957 of 733.5 million bushels. An estimated 120.6 million bushels of this year's total were held on farms, while 196.6 million of the off-farm stocks were in country elevators. The next largest amounts, 54.1 million bushels, were in store in Fort William-Port Arthur elevators and 29.4 million bushels were in rail transit positions.

It should be pointed out that the figures in the table below are not strictly comparable because of certain omissions in the earlier years. Stocks of Canadian wheat held in bond by United States flour mills were omitted each year until 1940-41 when they were included for the first time. The carryover totals now include all Canadian wheat in North American positions whether on farms, in store or in transit.

Carryover of Canadian Wheat in Canada and the United States, July 31, 1933-64

Year	Carryover of Wheat in Canada	Stocks of Canadian Wheat in U.S. Positions	Total Carryover of Canadian Wheat in Canada and U.S.
- thousand bushels -			
1933	209,969	7,688	217,657
1934	192,948	9,954	202,902
1935	202,148	11,705	213,852
1936	108,094	19,268	127,363
1937	32,938	4,111	37,049
1938	23,553	983	24,536
1939	94,632	8,279	102,911
1940	272,928	27,546	300,473
1941	448,338	31,792	480,129
1942	404,897	18,856	423,752
10-year average 1933-42	199,044	14,018	213,062
1943	579,371	15,255	594,626
1944	338,138	18,394	356,531
1945	238,480	19,593	258,073
1946	73,466	134	73,600
1947	86,055	87	86,141
1948	77,676	35	77,710
1949	102,343	68	102,411
1950	112,200	-	112,200
1951	187,190	2,013	189,203
1952	214,934	2,244	217,178
10-year average 1943-52	200,985	5,782	206,767
1953	382,546	640	383,185
1954	618,568	107	618,675
1955	536,302	446	536,748
1956	578,803	771	579,574
1957	733,335	211	733,546
1958	648,454	-	648,454
1959	587,842	159	588,001
1960	599,588	-	599,588
1961	607,841	-	607,841
1962	391,058	-	391,058
10-year average 1953-62	568,434	233	568,667
1963 <u>1/</u>	487,247	-	487,247
1964 <u>2/</u>	461,377	-	461,377

1/ Revised.
2/ Preliminary.

Farmers' Marketings ^{1/} of Wheat in the Prairie Provinces 1963-64

Week Ending		Manitoba	Saskatchewan	Alberta	Total	Last Year ^{2/}
- bushels -						
August	7, 1963	5,607	49,346	16	54,969	58,509
	14	107,808	180,957	199,749	488,514	218,639
	21	171,927	507,568	134,487	813,982	1,214,985
	28	418,689	2,215,916	324,163	2,958,768	3,806,243
September	4	1,180,171	1,906,057	583,877	3,670,105	5,053,798
	11	1,505,137	4,022,800	1,886,765	7,414,702	10,029,156
	18	923,910	5,604,941	2,449,570	8,978,421	11,586,794
	25	527,179	4,091,520	1,672,602	6,291,301	17,353,283
October	2	897,896	5,940,764	2,766,137	9,604,797	21,147,418
	9	991,898	7,917,939	2,398,902	11,308,739	18,452,593
	16	1,229,961	6,090,935	1,468,255	8,789,151	11,545,726
	23	1,757,450	7,878,678	1,922,268	11,558,396	11,158,617
November	30	2,684,196	10,340,541	1,964,809	14,989,546	10,315,831
	6	2,456,981	10,317,922	2,506,806	15,281,709	10,256,475
	13	1,961,553	9,352,062	2,285,644	13,599,259	9,436,356
	20	2,166,743	10,866,244	2,299,453	15,332,440	10,365,650
December	27	1,634,110	8,450,399	1,763,585	11,848,094	11,322,633
	4	1,675,155	12,895,482	2,958,327	17,528,964	10,629,522
	11	1,834,277	14,091,997	3,430,903	19,357,177	11,135,337
	18	809,924	7,114,341	2,176,998	10,101,263	13,430,250
January	23	772,650	4,685,432	1,834,729	7,292,811	13,643,942
	30	896,593	8,228,088	2,114,472	11,239,153	8,377,415
	8, 1964	1,960,032	9,382,077	4,457,844	15,799,953	6,527,399
	15	1,095,206	11,147,003	4,478,272	16,720,481	8,831,404
February	22	1,004,626	11,046,582	4,216,919	16,268,127	3,745,528
	29	328,145	3,172,189	2,195,060	5,695,394	1,829,980
	5	653,099	6,699,397	3,687,396	11,039,892	5,498,303
	12	505,890	4,774,844	2,681,419	7,962,153	10,798,166
March	19	327,771	4,464,188	2,792,607	7,584,566	8,158,602
	26	263,900	3,439,055	2,116,665	5,819,620	4,298,682
	4	188,991	2,706,690	2,328,892	5,224,573	5,870,916
	11	315,807	2,515,004	2,137,479	4,968,290	6,205,965
April	18	350,340	3,011,709	2,160,895	5,522,944	5,202,224
	25	176,886	2,839,918	1,377,878	4,394,682	5,737,707
	1	101,817	1,150,086	1,255,507	2,507,410	4,336,791
	8	504,172	3,318,296	2,039,248	5,861,716	6,047,481
May	15	416,259	3,586,827	1,987,624	5,990,710	3,574,920
	22	671,027	4,623,698	2,446,817	7,741,542	4,686,728
	29	962,356	10,384,726	2,024,977	13,372,059	7,898,375
	6	737,787	10,747,928	1,735,424	13,221,139	5,564,556
June	13	495,199	5,388,389	1,322,253	7,205,841	3,806,201
	20	801,168	5,119,387	2,125,054	8,045,609	3,401,965
	27	329,669	5,384,032	1,489,915	7,203,616	5,711,434
	3	1,130,943	9,435,314	2,116,878	12,683,135	8,687,483
July	10	1,996,757	22,567,498	3,092,663	27,656,918	8,421,348
	17	1,480,907	18,549,515	3,394,093	23,424,515	14,812,302
	24	916,045	9,706,671	2,830,910	13,453,626	12,493,892
	1	1,219,380	13,880,981	3,514,687	18,615,048	12,797,664
August	8	1,000,523	12,227,543	2,573,969	15,802,035	15,748,655
	15	785,268	11,221,275	2,781,343	14,787,886	13,289,487
	22	800,800	9,920,777	2,665,574	13,387,151	16,175,788
	31	2,532,325	32,617,502	7,923,914	43,073,741	33,593,951
Totals		50,662,910	397,779,030	121,094,693	569,536,633	474,293,069
Average similar period:						
1952-53-1961-62		39,636,213	240,873,658	98,904,500	379,414,371	

^{1/} Includes receipts at country, interior private and mill elevators, interior semi-public terminals and platform loadings.

^{2/} Revised.

Visible Supply of Canadian Wheat, August 19, 1964
Compared with Approximately the Same Date, 1962 and 1963

Position	1962	1963	1964
- thousand bushels -			
Country elevators - Manitoba	14,552	24,026	13,413
Saskatchewan	83,953	127,332	109,106
Alberta	45,016	64,754	51,653
Totals	143,520	216,113	174,172
Interior private and mill	6,503	7,483	6,968
Interior terminals	8,239	5,573	5,178
Vancouver-New Westminster	11,584	12,646	10,976
Victoria	684	879	649
Prince Rupert	-	762	404
Churchill	3,168	3,048	3,949
Fort William-Port Arthur	67,302	55,486	48,486
In transit rail (Western Division)	15,936	17,511	17,314
Bay, Lake and Upper St. Lawrence ports	29,939	40,777	13,557
Lower St. Lawrence and Maritime ports	28,801	36,466	22,355
In transit lake	1,437	4,190	8,772
In transit rail (Eastern Division)	221	205	339
Totals	317,334	401,138	313,118

Grading of Wheat Inspected, August 1963-July 1964 with Comparisons

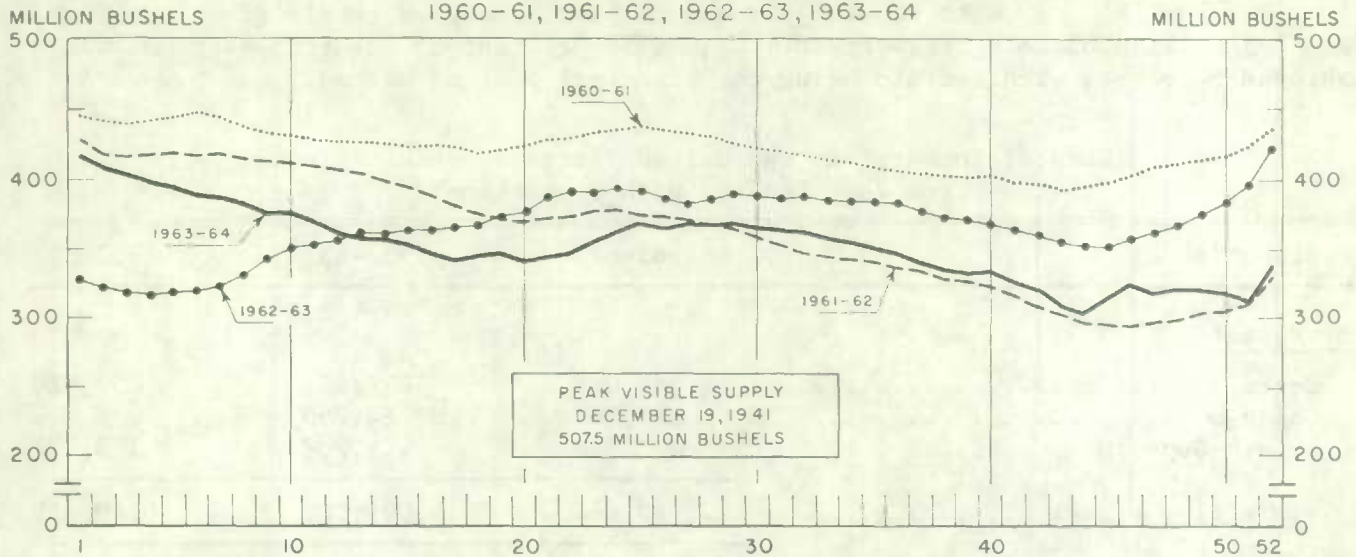
Grade	C R O P Y E A R				
	Average	1962-63		1963-64	
	1957-58 1961-62				
	per cent	cars	per cent	cars	per cent
No. 1 Hard	1/	66	1/	1	1/
No. 1 Man. Northern	5.3	25,127	12.1	15,160	4.8
No. 2 Man. Northern	34.4	79,509	38.4	154,386	49.2
No. 3 Man. Northern	26.0	30,796	14.9	78,578	25.1
No. 4 Man. Northern	12.1	23,583	11.4	20,739	6.6
No. 5 Wheat	5.5	11,813	5.7	10,512	3.4
No. 6 Wheat	1.1	1,804	0.9	1,536	0.5
Feed Wheat	1/	20	1/	15	1/
Others Red Spring	9.4	16,524	8.0	9,496	3.0
C.W. Garnet	0.1	127	0.1	1,184	0.4
C.W. White Spring	0.1	294	0.1	269	0.1
C.W. Mixed Wheat	1/	68	1/	163	0.1
Alberta Winter	0.2	456	0.2	2,953	0.9
Nos. 1-6 C.W. Amber Durum .	5.6	15,956	7.7	17,917	5.7
Others C.W. Amber Durum ...	0.2	940	0.5	583	0.2
Totals	100.0	207,083	100.0	313,492	100.0
Gross bushels (approx.) ...		398,424,000 2/		604,632,000	

1/ Less than .05 per cent.

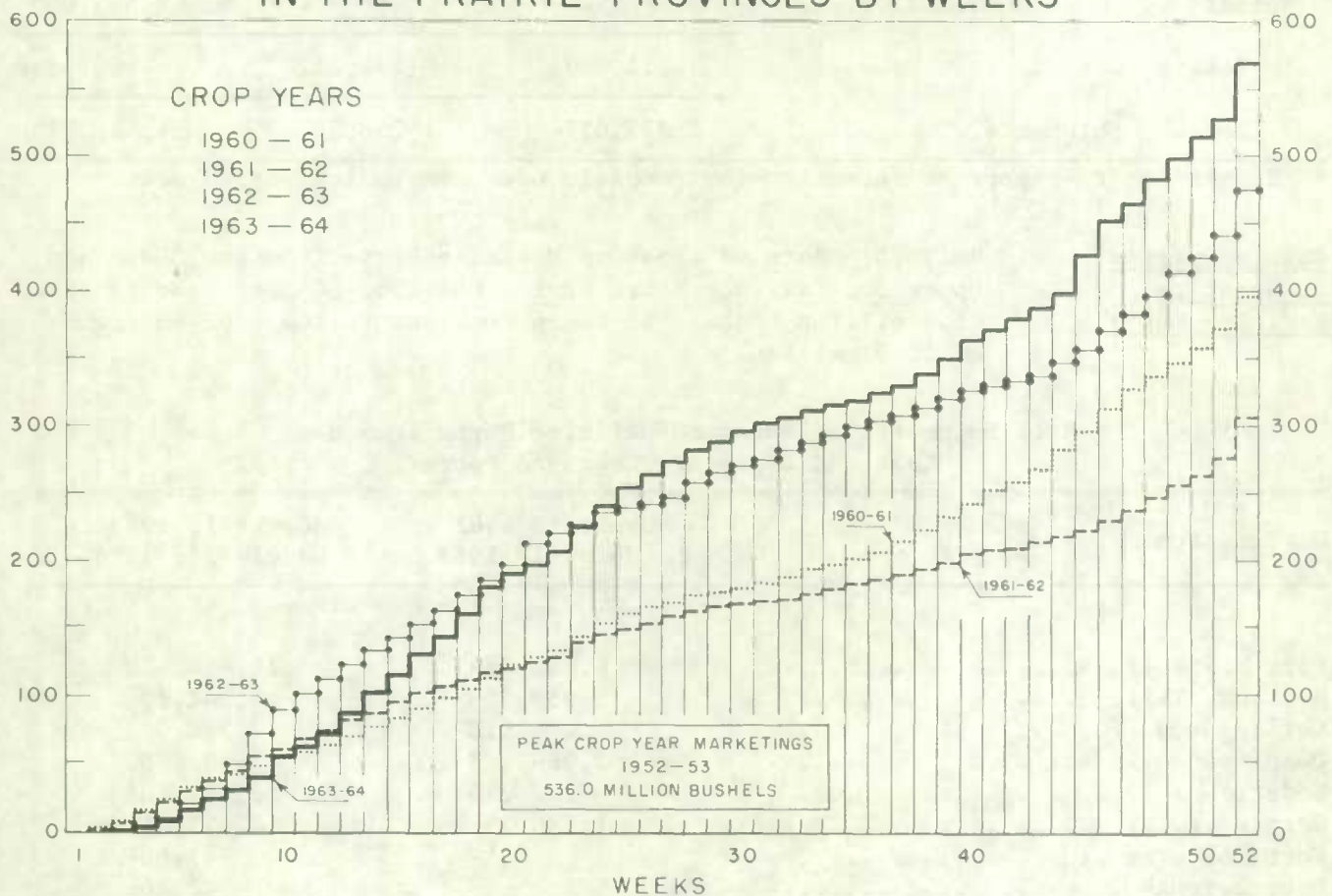
2/ Revised.

WEEKLY VISIBLE SUPPLY OF CANADIAN WHEAT

1960-61, 1961-62, 1962-63, 1963-64



CUMULATIVE RECORD OF WHEAT MARKETINGS IN THE PRAIRIE PROVINCES BY WEEKS



(Data in both charts for crop years beginning August 1)

Wheat Shipments to the United States by Destination Total rail and vessel shipments of wheat to the United States, either for re-export or retention for domestic use, during the crop year 1963-64 amounted to 1.4 million bushels compared with the 1962-63 and 1961-62 crop year totals of 1.3 million and 2.3 million bushels, respectively. Some 54 per cent of the 1963-64 total was shipped by vessel with Buffalo being the principal port of unload.

Wheat Shipments* to the United States by Destination
Crop Year 1963-64 with Comparisons

Destination	1961-62	1962-63	1963-64
- bushels -			
<u>By Vessel</u>			
Buffalo	1,582,086	897,127	657,020
Chicago	160,000	84,750	-
Duluth-Superior	420,978	115,208	123,729
Totals, Vessel	2,163,064	1,097,085	780,749
<u>By Rail</u>			
U.S.A. Domestic Points	111,957	161,212	107,166
Buffalo	-	-	553,000
Totals, Rail	111,957	161,212	660,166
Totals, Shipments	2,275,021	1,258,297	1,440,915

* Either for re-export or retention for domestic use. Excluding bagged seed.

Rail Shipments of Wheat to Maritime Ports Rail shipments of wheat to Maritime Ports from Bay, Lake and Upper St. Lawrence Ports during the 1963-64 crop year totalled 41.9 million bushels in sharp contrast to the 1962-63 figure of 17.3 million.

Rail Shipments of Wheat to Maritime Ports from Bay
Lake and Upper St. Lawrence Ports

Destination	August 1, 1962 to July 31, 1963	August 1, 1963 to July 31, 1964
- bushels -		
Port McNicoll	6,682,789	11,854,674
Midland, Tiffin	5,957,659	14,242,201
Collingwood	464,910	1,388,393
Owen Sound	2,069,103	5,667,783
Goderich	333,210	3,463,804
Sarnia	1,788,756	4,155,019
Port Colborne	-	747,601
Peterborough	-	348,266
Totals	17,296,427	41,867,741

Rail Shipments of Wheat from Fort William-Port Arthur, 1960-61-1963-64

Month	1960-61	1961-62	1962-63	1963-64
- bushels -				
August	14,717	20,648	13,933	5,500
September	19,227	14,598	11,657	9,104
October	5,417	33,944	22,716	25,355
November	24,000	22,915	12,024	13,500
December	17,500	60,167	12,778	23,047
January	71,335	126,533	39,534	58,772
February	135,339	68,421	22,967	28,768
March	28,073	37,000	86,398	21,268
April	9,833	37,777	69,067	26,063
May	15,805	11,203	11,851	7,941
June	17,563	16,022	15,746	20,518
July	10,940	17,315	11,158	12,707
Totals	369,749	466,543	329,829	252,543

Distribution of Rail Shipments of Wheat from Fort William-Port Arthur, July 1964

Grade	Quebec	Ontario
- bushels -		
5 Wheat	-	2,833
6 Wheat	1,500	-
Durum	2,000	-
Others	-	6,374
Totals	3,500	9,207

Overseas Exports of Canadian Grain by Ports of Loading, August 1, 1963-July 31, 1964 ^{1/}
with Comparisons

Port	Wheat ^{2/}	Durum Wheat ^{2/}	Oats ^{2/}	Barley	Rye	Flaxseed	Rapeseed ^{3/}
- bushels -							
<u>Pacific Seaboard</u>							
Van.-New West.	153,438,805	-	12,795,689	28,130,552	1,594,906	6,373,395	5,087,644
Victoria	7,937,494	-	-	-	-	-	-
Prince Rupert	10,474,613	-	-	-	-	-	-
<u>Churchill</u>	21,680,277	-	-	-	-	-	-
<u>Lakehead Direct</u>	6,349,966	1,219,097	2,042,015	4,129,577	1,887,262	1,898,324	-
<u>Kingston Direct</u>	818,460	-	-	-	-	-	-
<u>St. Lawrence</u>							
Montreal	114,667,416	13,192,245	707,835	502,145	843,450	3,630,247	-
Sorel	32,637,268	1,514,329	-	-	-	206,698	-
Three Rivers	29,215,279	2,748,924	228,193	-	-	866,297	-
Quebec	24,474,975	-	-	-	439,707	-	-
Baie Comeau	61,151,450	268,230	-	88,854	89,887	283,961	-
<u>Maritime</u>							
Saint John	2,978,508	-	185,010	-	-	-	-
West Saint John ...	26,636,009	1,989,681	-	-	-	379,550	-
Halifax	18,504,084	3,802,549	-	-	-	-	-
Totals	510,964,604	24,735,055	15,958,742	32,851,128	4,855,212	13,638,472	5,087,644
August 1, 1962- July 31, 1963 ^{1/} ...	279,240,043	19,686,010	18,089,109	8,300,976	6,739,982	12,565,941	6,916,858

^{1/} Revised.

^{2/} Excluding bagged seed.

^{3/} In bushels of 50 pounds.

Freight Assistance Shipments Claims filed for payment up to July 31, 1964 represent the movement of some 13.4 million bushels of wheat from the Prairie Provinces to Eastern Canada and British Columbia under the freight assistance policy during the August-June period of the 1963-64 crop year. During the same months of the 1962-63 crop year claims had been filed for a total of 9.3 million bushels, indicating on the assumption of approximately the same rate of submission of claims during both crop years that the 1963-64 August-June shipments of wheat under the policy were running about 44 per cent above those of 1962-63. Revised data on the 1962-63 August-June shipments of wheat based on claims submitted up to July 31, 1964 place the eleven-month total at 9.7 million bushels. The bulk of the 1963-64 shipments during the eleven-month period under review went to destinations in Quebec and Ontario with these two provinces accounting for 40 per cent and 31 per cent of the total, respectively.

Provincial Distribution of Wheat Shipments under the Freight Assistance Policy
August-June 1963-64 and 1962-63

Month	Nfld.	P.E.I.	N.S.	N.B.	Que.	Ont.	B.C.	Total
- thousand bushels -								
August, 1963	19	15	143	43	606	515	99	1,440
September	20	12	155	57	634	685	183	1,748
October	21	14	187	74	675	631	234	1,836
November	72	12	157	46	550	378	149	1,365
December	17	12	133	43	471	336	162	1,173
January, 1964	15	13	153	51	471	326	157	1,187
February	11	12	132	38	388	247	109	935
March	12	17	136	37	380	291	71	944
April	38	13	132	44	438	260	132	1,057
May	8	13	124	37	406	260	82	929
June	3	10	99	25	396	214	28	775
Totals <u>1/</u>	237	144	1,551	495	5,413	4,143	1,406	13,391
Same period 1962-63:								
Preliminary <u>2/</u>	85	87	633	284	3,781	2,984	1,449	9,302
Revised <u>1/</u>	97	89	641	292	3,879	3,040	1,617	9,656

Preliminary data on millfeed shipments under the freight assistance policy indicate shipments of 486,148 tons during the August-June period of the 1963-64 crop year. During the same eleven months of 1962-63 claims had been filed for a total of 421,124 tons, indicating on the assumption of approximately the same rate of submission of claims during both crop years that the 1963-64 August-June shipments of millfeeds under the policy were running about 12 per cent above those of 1962-63. Revised data on the 1962-63 August-June shipments of millfeeds based on claims submitted up to July 31, 1964 place the eleven-month total at 442,402 tons. As with freight-assisted shipments of wheat, the greater portion of the millfeed shipments during the period under review went to destinations in Quebec and Ontario.

Provincial Distribution of Millfeed Shipments under the Freight Assistance Policy
August-June 1963-64 and 1962-63

Province	1962-63		1963-64
	Preliminary <u>2/</u>	Revised <u>1/</u>	Preliminary <u>1/</u>
- tons -			
Newfoundland	6,117	6,547	5,558
Prince Edward Island	6,942	7,096	8,566
Nova Scotia	30,074	30,554	28,943
New Brunswick	25,436	26,583	26,726
Quebec	211,853	222,848	235,416
Ontario	112,103	117,602	145,643
British Columbia	28,599	31,172	35,296
Totals	421,124	442,402	486,148

1/ Based on claims filed up to July 31, 1964.

2/ Based on claims filed up to July 31, 1963.

Monthly Exports of Canadian Wheat and Wheat Flour

Year and Month	Wheat in Bulk <u>1/</u>	Bagged Seed Wheat <u>2/</u>	Total Wheat	Wheat Flour <u>2/</u> <u>3/</u>	Total <u>3/</u> Wheat and Wheat Flour
- thousand bushels -					
<u>1961-62</u>					
August	35,625	89	35,714	3,123	38,837
September	28,966	242	29,209	2,786	31,995
October	32,910	86	32,996	2,391	35,386
November	40,823	377	41,200	3,150	44,351
December	19,966	392	20,359	2,643	23,002
January	17,534	458	17,992	2,304	20,295
February	23,739	433	24,173	2,546	26,719
March	20,482	574	21,056	2,968	24,023
April	24,981	539	25,520	2,389	27,909
May	35,150	77	35,227	2,486	37,713
June	23,559	5	23,564	2,456	26,020
July	19,016	44	19,060	2,711	21,772
Totals	322,752	3,317	326,069	31,953	358,022
<u>1962-63</u>					
August	21,944	157	22,101	2,852	24,953
September	25,040	200	25,240	2,604	27,844
October	29,705	31	29,737	2,181	31,917
November	33,309	144	33,452	2,176	35,628
December	20,949	451	21,399	2,305	23,705
January	21,486	473	21,959	1,586	23,545
February	18,779	743	19,522	1,811	21,333
March	19,246	1,251	20,496	2,454	22,950
April	28,916	422	29,338	2,330	31,669
May	35,355	14	35,369	2,186	37,555
June	24,512	<u>4/</u>	24,513	2,837	27,350
July	20,854	-	20,854	1,943	22,798
Totals	300,095	3,884	303,980	27,265	331,245
<u>1963-64 <u>5/</u></u>					
August	29,204	160	29,364	3,039	32,403
September	42,556	155	42,711	1,645	44,356
October	59,020	7	59,027	2,384	61,411
November	65,296	245	65,541	3,881	69,422
December	41,763	397	42,160	5,393	47,553
January	28,451	482	28,933	6,607	35,541
February	21,675	501	22,176	6,709	28,885
March	22,510	605	23,115	5,278	28,393
April	43,211	261	43,472	6,361	49,833
May	56,992	38	57,030	4,066	61,096
June	65,036	146	65,182	4,485	69,667
July	61,012	35	61,047	4,539	65,586
Totals	536,726	3,033	539,758	54,388	594,146

1/ Export clearances including shipments to the United States compiled by the Statistics Branch, Board of Grain Commissioners for Canada. 2/ Compiled from Canada Customs returns, 1961-62 and 1962-63 adjusted to remove effect of time lag in reporting. 3/ In terms of wheat equivalent. Wheat flour conversion rate: 2.3 bushels per cwt. 4/ Less than 500 bushels. 5/ Preliminary.

Exports of Canadian Wheat 1/ by Destination, July 1964 and 1963

Destination	July 1964			July 1963
	Wheat (Except Durum)	Durum Wheat	Total All Wheat	Total All Wheat
- bushels -				
<u>COMMONWEALTH AND PREFERENTIAL COUNTRIES</u>				
<u>Western Europe</u>				
Britain	8,664,905	37,333	8,702,238	5,883,078
Ireland	-	-	-	497,820
Malta and Gozo	451,733	-	451,733	-
<u>Other Africa</u>				
Nigeria	130,671	-	130,671	122,640
Northern Rhodesia	9,028	-	9,028	-
Republic of South Africa	1,925,653	-	1,925,653	407,307
<u>Other Asia</u>				
Hong Kong	54,507	-	54,507	57,867
Malaysia	98,000	-	98,000	124,133
<u>Central America and Antilles</u>				
Barbados	60	-	60	-
Jamaica	1,197	-	1,197	1,197
Totals, Com. and Pref. Countries ..	11,335,754	37,333	11,373,087	7,094,042

OTHER COUNTRIES

Western Europe

Belgium and Luxembourg.....	848,002	94,612	942,614	1,012,550
France	-	607,917	607,917	1,098,294
Germany, Federal Republic	2,437,685	283,832	2,721,517	1,585,799
Italy	-	-	-	246,400
Netherlands	18,667	-	18,667	369,356
Switzerland	994,933	-	994,933	335,556

Eastern Europe

Albania	756,467	-	756,467	-
Bulgaria	1,829,333	-	1,829,333	-
Poland	3,058,573	-	3,058,573	-
U.S.S.R. (Russia)	24,981,255	-	24,981,255	-
Yugoslavia	-	-	-	3,919,975

Exports of Canadian Wheat 1/ by Destination, July 1964 and 1963

Destination	July 1964			July 1963
	Wheat (Except Durum)	Durum Wheat	Total All Wheat	Total All Wheat
- bushels -				
<u>OTHER COUNTRIES (concluded)</u>				
<u>Middle East</u>				
Israel	535,808	-	535,808	128,053
Saudi Arabia	61,936	-	61,936	82,146
<u>Other Africa</u>				
Mozambique	-	-	-	122,877
<u>Other Asia</u>				
China, Communist	4,854,827	-	4,854,827	489,440
Japan	4,646,184	-	4,646,184	2,907,102
Philippines	710,827	-	710,827	812,747
<u>Oceania</u>				
United States Oceania	113,792	-	113,792	53,200
<u>South America</u>				
Ecuador	-	-	-	58,388
Venezuela	1,196,160	-	1,196,160	321,778
<u>Central America and Antilles</u>				
Cuba	1,125,537	-	1,125,537	-
Dominican Republic	192,902	-	192,902	196,000
El Salvador	144,107	-	144,107	-
Guatemala	66,667	-	66,667	-
Panama	78,400	-	78,400	-
<u>North America</u>				
United States for domestic use <u>2/</u>	-	-	-	20,440
Totals, Other Countries	48,652,062	986,361	49,638,423	13,760,101
Sub-Totals, All Countries	59,987,816	1,023,694	61,011,510	20,854,143
Bagged seed <u>3/</u>			35,276	-
Totals, All Countries	59,987,816	1,023,694	61,046,786	20,854,143

NOTE: See footnotes on page 23.

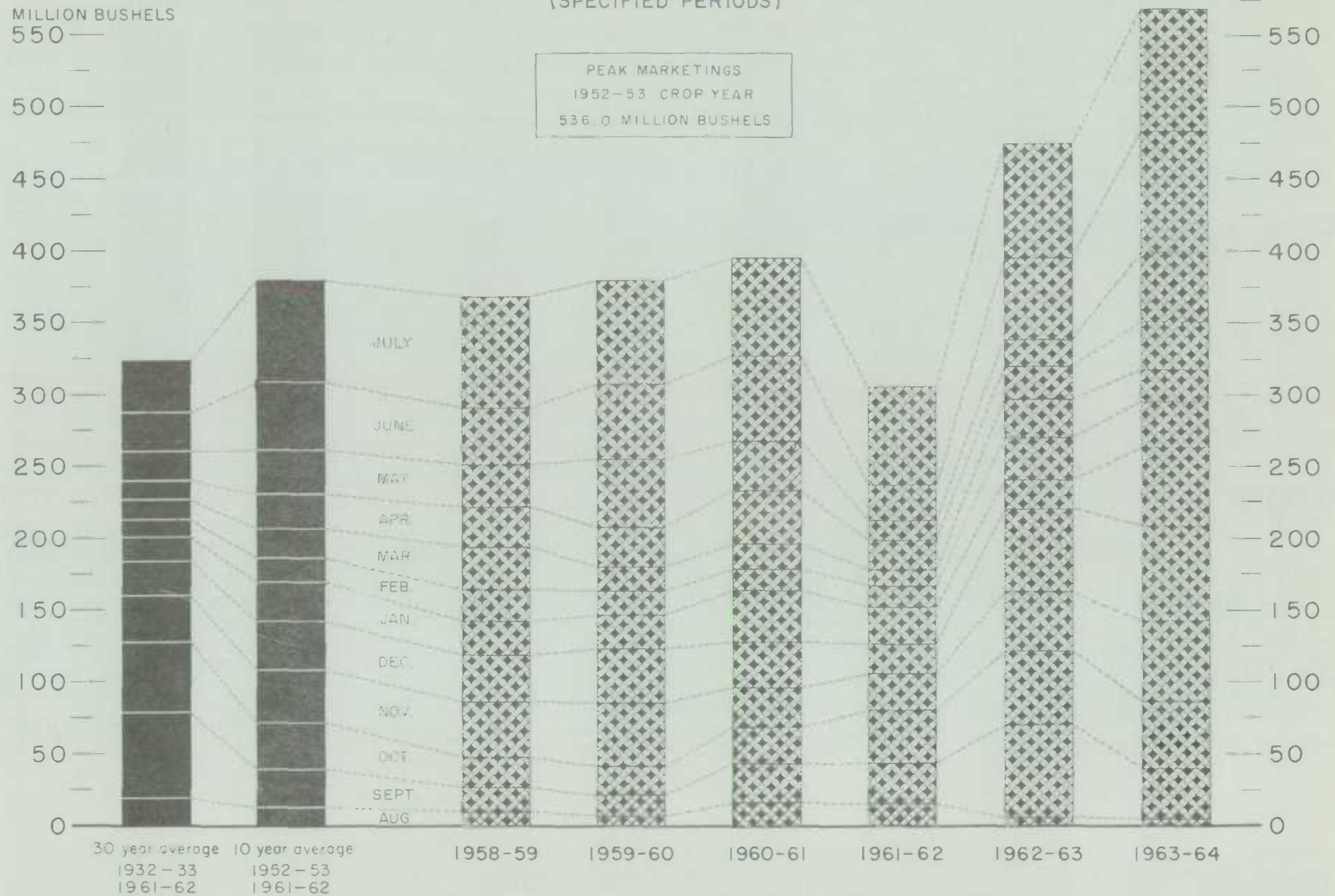
Cumulative Exports of Canadian Wheat 1/ by Destination

Destination	August 1963-July 1964			Aug/62-July/63
	Wheat (Except Durum)	Durum Wheat	Total All Wheat	Total All Wheat
- bushels -				
<u>COMMONWEALTH AND PREFERENTIAL COUNTRIES</u>				
<u>Western Europe</u>				
Britain	78,730,658	224,594	78,955,252	77,495,478
Ireland	2,235,333	-	2,235,333	3,470,394
Malta and Gozo	1,545,560	-	1,545,560	1,094,987
<u>Other Africa</u>				
Nigeria	650,889	-	650,889	666,593
Northern Rhodesia	37,334	-	37,334	8,244
Republic of South Africa	3,038,286	-	3,038,286	7,883,218
<u>Other Asia</u>				
Hong Kong	667,706	-	667,706	579,227
India	721,373	-	721,373	703,612
Malaysia	453,413	-	453,413	124,133
Pakistan	354,984	-	354,984	361,664
<u>Central America and Antilles</u>				
Barbados	100	-	100	40
Jamaica	10,222	-	10,222	11,348
Totals, Com. and Pref. Countries ...	88,445,858	224,594	88,670,452	92,398,938

OTHER COUNTRIES

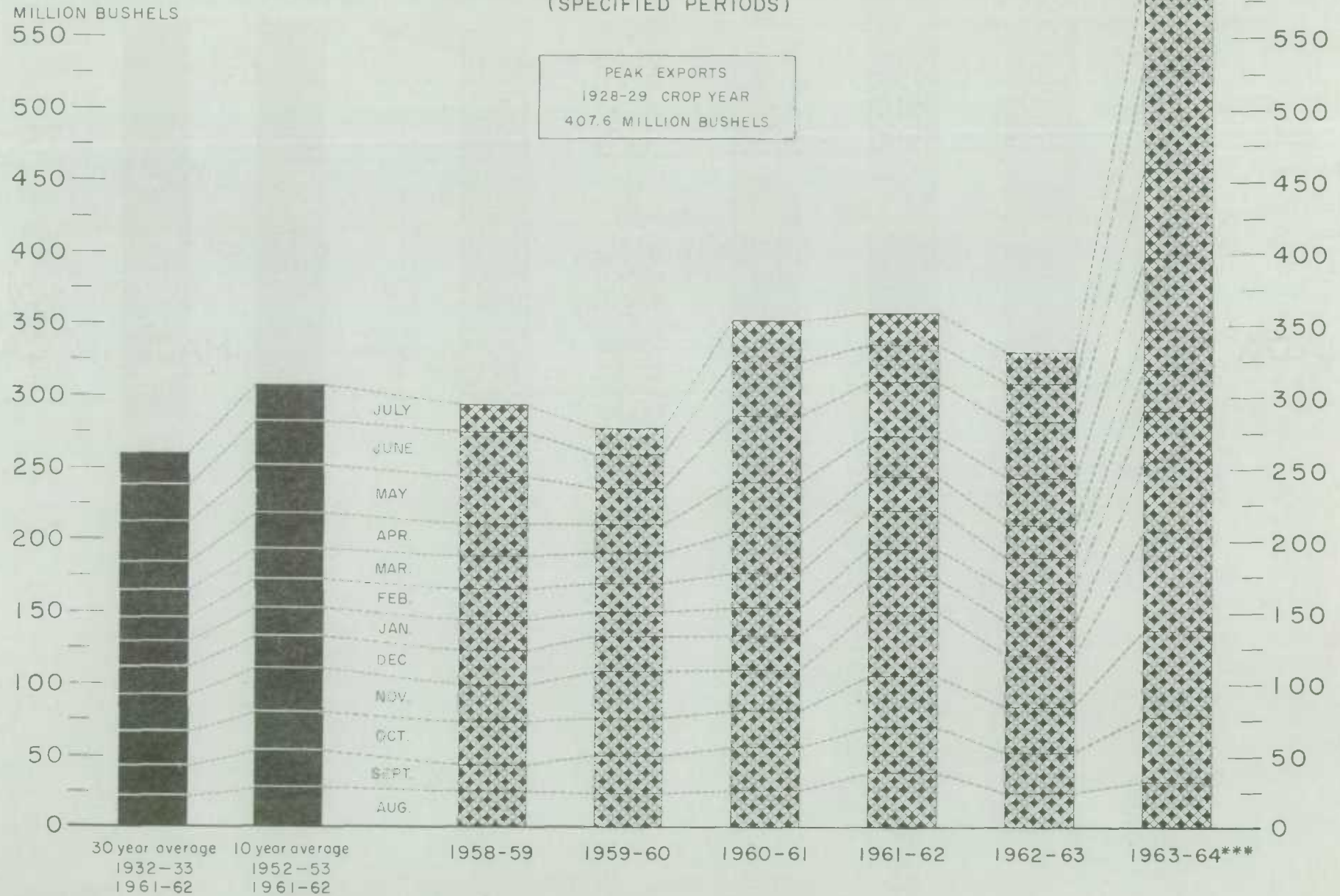
<u>Western Europe</u>				
Austria	855,613	335,418	1,191,031	1,554,304
Belgium and Luxembourg	14,922,794	572,979	15,495,773	9,980,670
Denmark	20,543	-	20,543	22,624
Finland.....	726,133	-	726,133	1,681,491
France	2,185,769	2,697,827	4,883,596	6,877,184
Germany, Federal Republic	29,288,776	7,988,123	37,276,899	27,990,651
Greece	-	-	-	10
Italy	3,758,777	115,733	3,874,510	4,915,154
Netherlands	3,039,610	154,168	3,193,778	4,749,124
Norway	1,702,670	-	1,702,670	1,827,543
Portugal	-	410,667	410,667	-
Sweden	22,400	-	22,400	168,933
Switzerland	5,481,597	2,590,340	8,071,937	2,960,572
<u>Eastern Europe</u>				
Albania	3,696,468	-	3,696,468	-
Bulgaria	7,586,165	-	7,586,165	-
Czechoslovakia	6,570,483	-	6,570,483	4,393,895
Poland	14,937,653	-	14,937,653	14,183,656
U.S.S.R. (Russia)	202,569,521	9,634,007	212,203,528	-
Yugoslavia	3,501,866	-	3,501,866	3,919,975
<u>Middle East</u>				
Israel	1,603,056	-	1,603,056	1,789,369
Saudi Arabia	782,686	-	782,686	647,966

FARMERS' MARKETINGS OF WHEAT, PRAIRIE PROVINCES (SPECIFIED PERIODS)



EXPORTS OF CANADIAN WHEAT* AND WHEAT FLOUR**

(SPECIFIED PERIODS)



* Beginning with 1956-57 includes bagged seed wheat.

** In terms of wheat equivalent.

*** Preliminary.

Agriculture Division D.B.S.

FARMERS' MARKETINGS OF BARLEY, PRAIRIE PROVINCES

(SPECIFIED PERIODS)

MILLION BUSHELS

140 —

120 —

100 —

80 —

60 —

40 —

20 —

0

MILLION BUSHELS

140 —

120 —

100 —

80 —

60 —

40 —

20 —

0

30 year average

1932-33

1961-62

10 year average

1952-53

1961-62

1958-59

1959-60

1960-61

1961-62

1962-63

1963-64

JULY

JUNE

MAY

APR

MAR

FEB

JAN

DEC

NOV

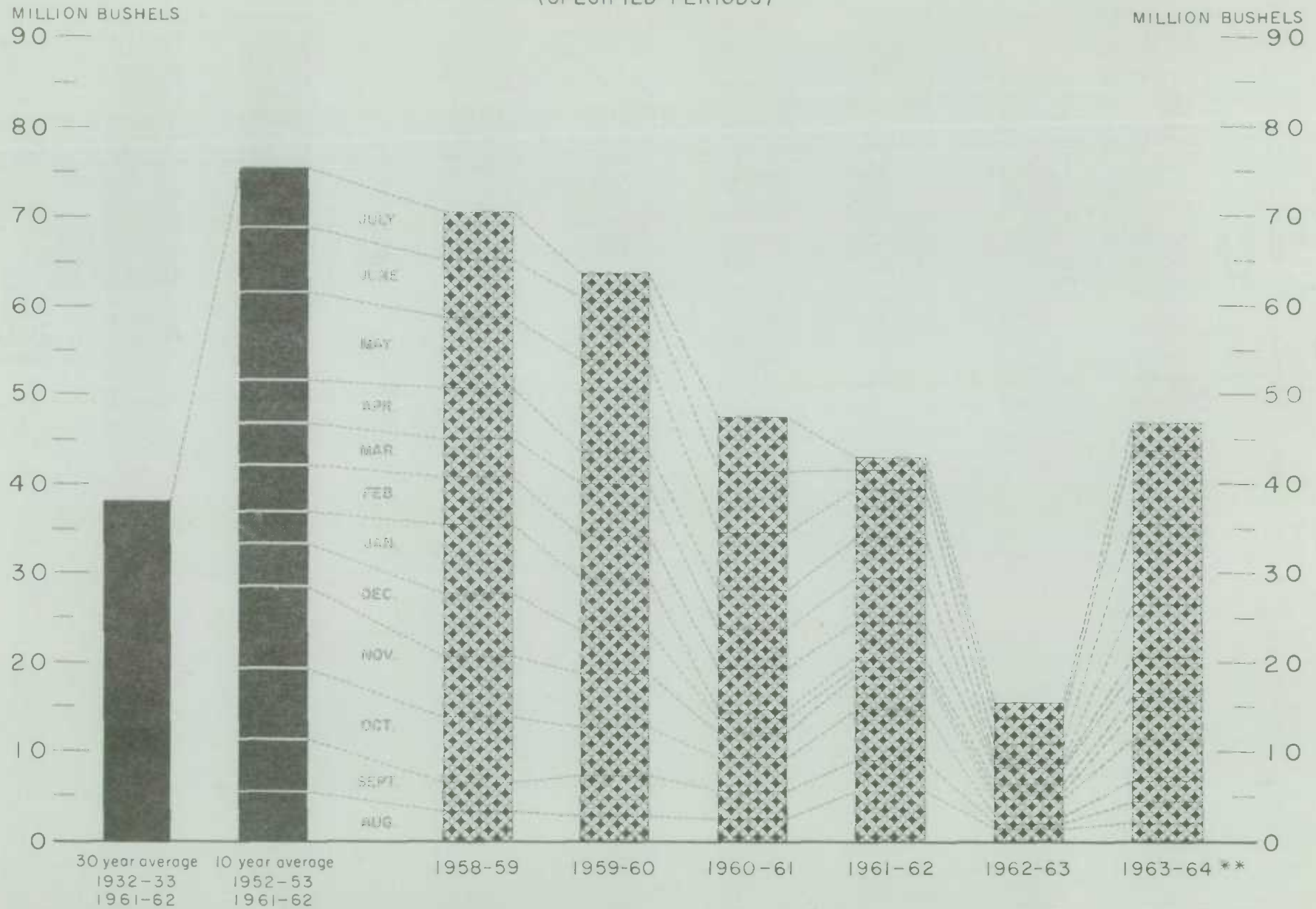
OCT

SEPT

AUG

EXPORTS OF CANADIAN BARLEY AND BARLEY PRODUCTS*

(SPECIFIED PERIODS)



FARMERS' MARKETINGS OF OATS, PRAIRIE PROVINCES

(SPECIFIED PERIODS)

MILLION BUSHEL

100 —

90 —

80 —

70 —

60 —

50 —

40 —

30 —

20 —

10 —

0

MILLION BUSHEL

100 —

90 —

80 —

70 —

60 —

50 —

40 —

30 —

20 —

10 —

0

JULY

JUN

MAY

APR

MAR

FEB

JAN

NOV

OCT

SEPT

AUG

30 year average

1932-33

1961-62

10 year average

1952-53

1961-62

1958-59

1959-60

1960-61

1961-62

1962-63

1963-64

EXPORTS OF CANADIAN OATS* AND OAT PRODUCTS** (SPECIFIED PERIODS)

MILLION BUSHEL
45 —

MILLION BUSHEL
— 45

40 —

— 40

35 —

— 35

30 —

— 30

25 —

— 25

20 —

— 20

15 —

— 15

10 —

— 10

5 —

— 5

0 —

— 0

30 year average

10 year average

1932-33

1952-53

1961-62

1961-62

1958-59

1959-60

1960-61

1961-62

1962-63

1963-64***

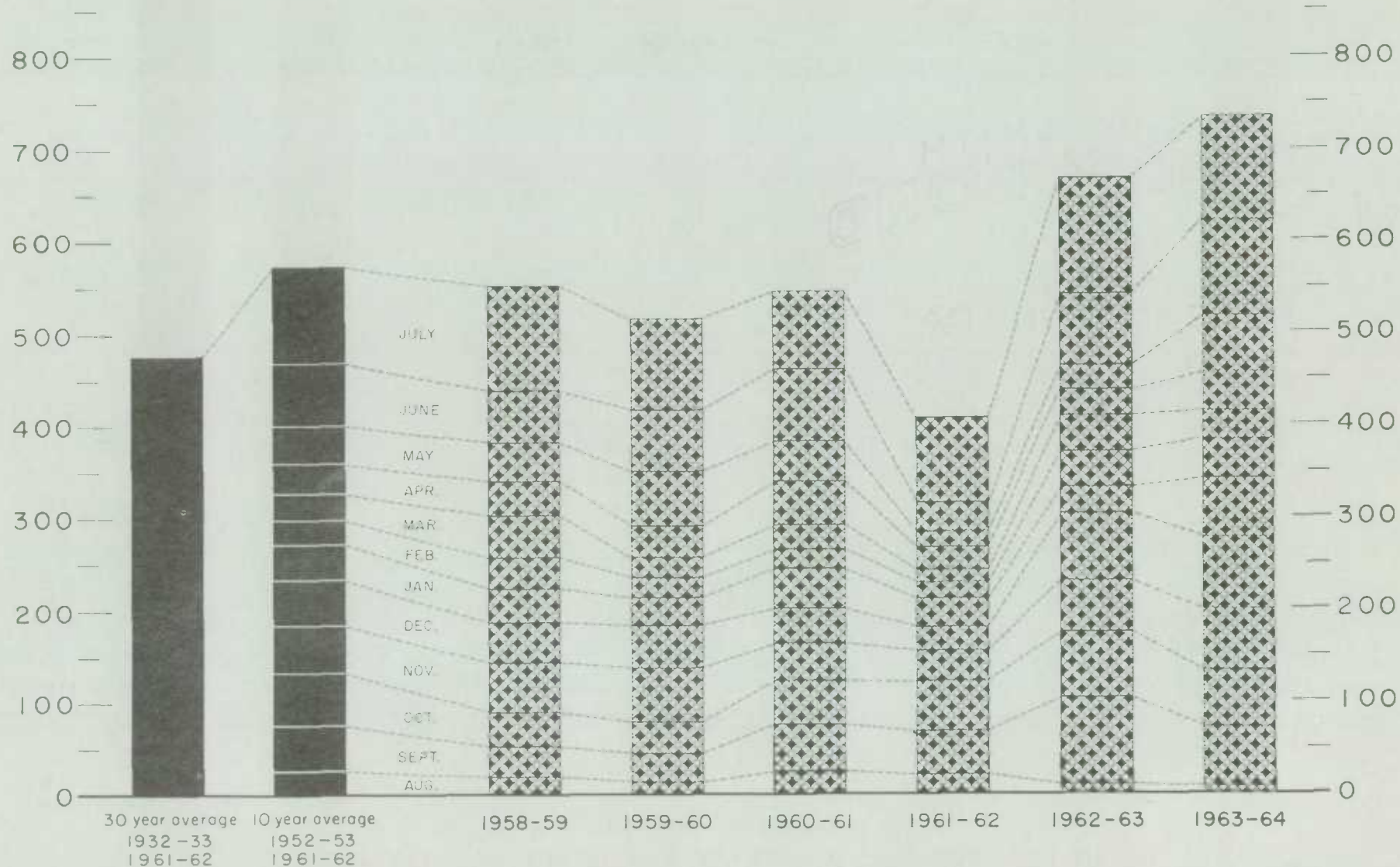
*Beginning with 1960-61 includes relatively small quantity of bagged seed. **In terms of grain equivalent ***Preliminary.

Agriculture Division D.B.S.

FARMERS' MARKETINGS OF CANADA'S FIVE MAJOR GRAINS*, PRAIRIE PROVINCES (SPECIFIED PERIODS)

MILLION BUSHELS
900 —

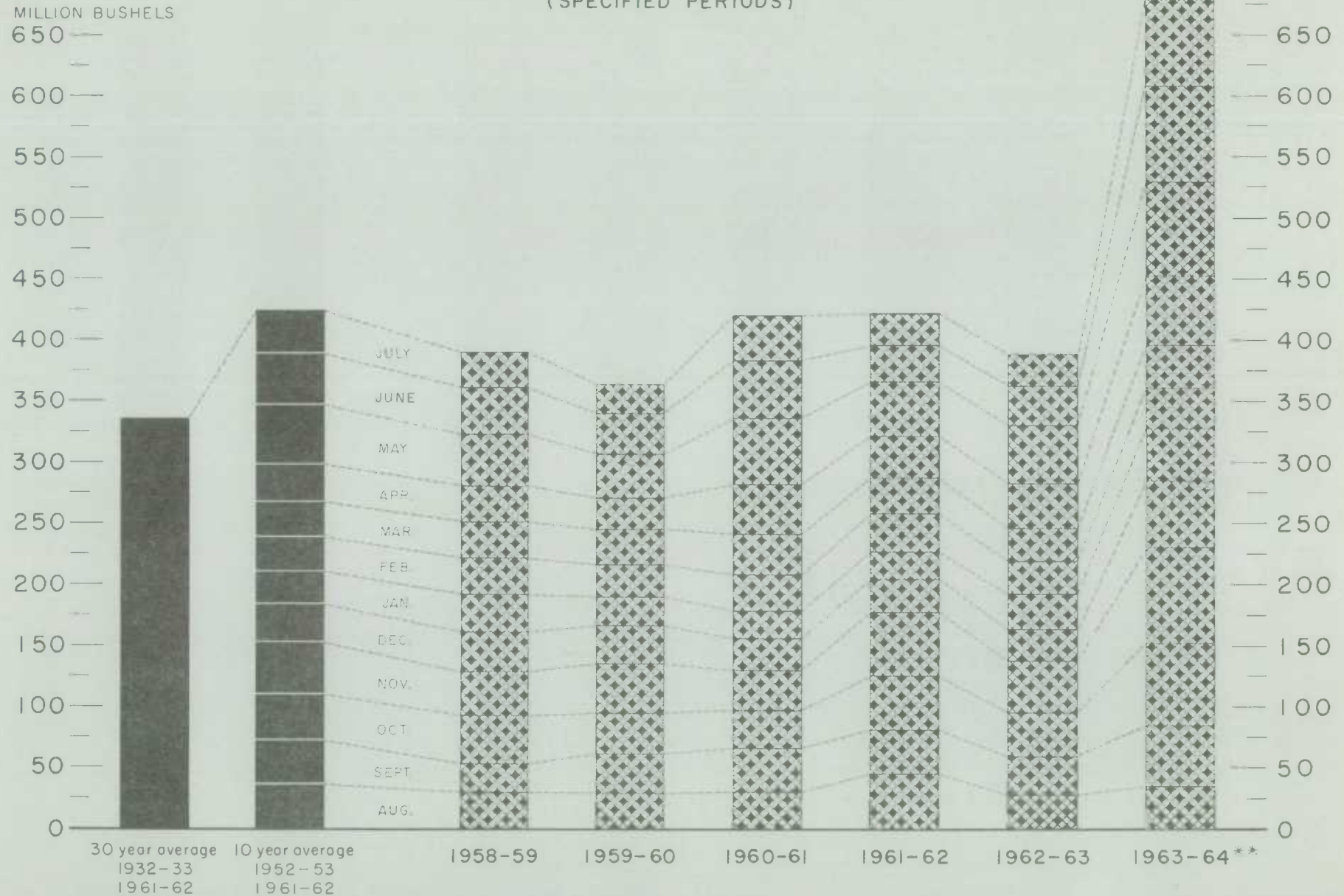
MILLION BUSHELS
900 —



* Wheat, oats, barley, rye and flaxseed.

Agriculture Division D.B.S.

EXPORTS OF CANADA'S FIVE MAJOR GRAINS AND PRODUCTS* (SPECIFIED PERIODS)



* Wheat, bagged seed wheat, and wheat flour; oats, bagged seed oats, and oatmeal and rolled oats; barley, malt and pot and pearl; rye and flaxseed.
** Preliminary.

Agriculture Division D. B. S.

Cumulative Exports of Canadian Wheat 1/ by Destination

Destination	August 1963-July 1964			Aug/62-July/63
	Wheat (Except Durum)	Durum Wheat	Total All Wheat	Total All Wheat
- bushels -				
<u>OTHER COUNTRIES (concluded)</u>				
<u>Other Africa</u>				
Katanga	-	-	-	9,186
Mozambique	90,857	11,200	102,057	562,438
<u>Other Asia</u>				
Burma	78,931	-	78,931	-
China, Communist	41,286,001	-	41,286,001	56,443,819
Japan	49,726,319	-	49,726,319	44,108,769
Korea	511,467	-	511,467	-
Philippines	7,300,821	-	7,300,821	6,741,156
Taiwan	411,061	-	411,061	115,701
<u>Oceania</u>				
United States Oceania	461,514	-	461,514	480,554
<u>South America</u>				
Ecuador	1,087,114	-	1,087,114	1,199,696
Peru	730,614	-	730,614	535,174
Venezuela	7,903,550	-	7,903,550	6,677,046
<u>Central America and Antilles</u>				
Cuba	7,454,393	-	7,454,393	-
Dominican Republic	851,741	-	851,741	1,155,778
El Salvador	1,018,382	-	1,018,382	579,677
Guatemala	275,000	-	275,000	255,000
Panama	78,400	-	78,400	-
<u>North America</u>				
United States for domestic use <u>2/</u>	1,025,859	-	1,025,859	1,169,390
Totals, Other Countries	423,544,604	24,510,462	448,055,066	207,696,505
Sub-Totals, All Countries	511,990,462	24,735,056	536,725,518	300,095,443
Bagged seed <u>3/</u>			3,032,942	3,884,474
Totals, All Countries	511,990,462	24,735,056	539,758,460	303,979,917

1/ Overseas clearances as reported by the Statistics Branch, Board of Grain Commissioners for Canada, for all countries except the United States. Excluding bagged seed.

2/ Compiled from returns of Canadian elevator licensees and shippers and advice from American grain correspondents.

3/ Compiled from Canadian Customs returns, 1962-63 adjusted for time lag.

Customs Exports of Canadian Wheat Flour by Countries of Consignment

Destination	April 1964 <u>1/</u>	July 1964 <u>2/</u>	August-July	
			1963-64 <u>2/</u>	1962-63 <u>1/</u>
<u>COMMONWEALTH AND PREFERENTIAL COUNTRIES</u> - bushels -				
<u>Western Europe</u>				
Britain	1,570,946	1,127,488	11,993,805	12,127,233
Gibraltar	5,152	-	31,944	35,806
<u>Middle East</u>				
Kuwait*	-	-	13,255	77,484
Qatar	-	-	1,068	2,107
British Middle East, nes	3,864	2,603	36,487 <u>3/</u>	27,614
<u>Other Africa</u>				
Gambia	55	-	5,161	-
Ghana	91,207	30,006	1,100,315	1,798,115
Mauritius and Dependencies	-	-	-	460
Nigeria	46	115	22,655	550,473
Nyasaland	2,631	-	29,866	37,838
Sierra Leone	49,390	28,039	458,010	553,355
Southern Rhodesia	2,300	-	4,830	-
Tanganyika	2,300	2,300	11,615	14,708
British Africa, nes	-	-	35,420 <u>3/</u>	78,131
<u>Other Asia</u>				
Ceylon	26,365	-	1,068,596	1,150
Hong Kong	33,854	71,942	892,842	934,323
Malaysia	19,470	43,822	631,527	663,357
British East Indies, nes	-	-	-	12,385
<u>Oceania</u>				
Australia	-	-	124	182
Fiji	-	-	6,394	3,898
<u>South America</u>				
British Guiana	2,921	3,063	36,094	23,157
<u>Central America and Antilles</u>				
Bahamas	39,877	13,924	310,162	299,163
Bermuda	14,327	11,486	121,288	120,428
British Honduras	3,317	3,149	38,498	36,618
Barbados	15,463	18,260	167,509	151,207
Jamaica	77,882	110,805	1,630,944	1,311,202
Leeward and Windward Islands	104,093	79,077	1,044,104	943,428
Trinidad	81,381	109,620	1,413,311	1,279,200
Totals, Com. and Pref. Countries .	2,146,841	1,655,699	21,105,824	21,083,022
<u>OTHER COUNTRIES</u>				
<u>Western Europe</u>				
Belgium and Luxembourg	26,379	17,671	213,185	167,934
Denmark	805	460	5,486	11,226
Germany, Federal Republic	-	-	-	6,463
Greece	-	497	13,653	30,415
Iceland	-	-	4,996	14,573
Italy	-	-	805	4,996
Netherlands	920	-	6,580	4,671
Norway	-	-	115	115
Portugal	11,026	12,344	115,706	77,413
Sweden	506	-	1,771	1,771
Switzerland	-	-	39	7,974
<u>Eastern Europe</u>				
U.S.S.R. (Russia)	2,829,961	1,198,587	21,800,205	-
<u>Middle East</u>				
Ethiopia	-	-	253	-
Iran	410	575	4,198	4,519
Iraq	-	-	-	948
Israel	-	-	5,152	13,588
Jordan	-	-	1,012	1,235

Customs Exports of Canadian Wheat Flour by Countries of Consignment

Destination	April 1964 <u>1/</u>	July 1964 <u>2/</u>	August-July	
			1963-64 <u>2/</u>	1962-63 <u>1/</u>
<u>OTHER COUNTRIES</u> (concluded)				
- bushels -				
<u>Middle East</u>				
Kuwait*	6,642	2,576	15,346	-
Lebanon	-	244,152	273,339	363,457
Saudi Arabia	-	-	3,818	6,955
Syria	-	-	1,410	5,529
U.A.R. - Egypt	-	-	-	87,970
<u>Other Africa</u>				
Angola	-	1,150	5,750	3,680
Congo-Leo	23,000	6,900	63,595	95,018
French West Africa	-	-	-	23,442
Ivory Coast	1,380	-	2,990	-
Liberia	4,768	2,185	68,250	65,491
Mozambique	7,440	3,956	37,586	26,781
Portuguese Africa, nes	2,668	9,096	84,801	106,306
Togo	2,530	5,907	150,873	61,042
<u>Other Asia</u>				
Burma	-	-	76,404	-
Indonesia	-	126,224	126,224	152,885
Japan	3,450	4,830	117,318	516,389
Philippines	-	-	7,590	11,040
Portuguese Asia	2,024	-	22,356	10,221
Thailand	7,360	13,105	367,967	357,922
Viet-Nam	-	-	43,776	44,576
<u>Oceania</u>				
French Oceania	-	-	1,426	1,886
United States Oceania	-	-	1,881	3,450
<u>South America</u>				
Chile	-	-	6,928	12,133
Colombia	-	575	1,164	-
Peru	3,915	5,060	63,876	40,871
Surinam	7,740	5,594	74,865	66,599
Venezuela	-	-	230	1,748
<u>Central America and Antilles</u>				
Costa Rica	31,970	64,400	656,001	901,890
Cuba	280,241	1,083,647	6,987,733	-
Dominican Republic	9,487	3,565	66,212	143,212
El Salvador	-	-	12,577	83,060
French West Indies	-	-	2,185	3,841
Guatemala	1,725	1,153	15,879	52,463
Haiti	9,315	4,830	110,290	28,507
Honduras	8,754	4,301	64,540	68,091
Netherlands Antilles	9,225	17,411	157,994	257,883
Nicaragua	2,300	-	293,032	489,387
Panama	7,928	5,262	156,420	418,881
<u>North America</u>				
St. Pierre and Miquelon	2,756	690	20,148	15,709
United States	76,682	36,752	945,923	1,306,076
Totals, Other Countries	3,383,307	2,883,455	33,281,853	6,182,232
Totals, All Countries	5,530,148	4,539,154	54,387,677	27,265,254

* Kuwait included in Commonwealth and Preferential Countries from August to December 1963 and in Other Countries from January 1, 1964.

nes - not elsewhere specified.

^{1/} In terms of wheat equivalent. Adjusted to remove effect of time lag in the returns made by Customs. Conversion rate: 2.3 bushels per cwt. ^{2/} In terms of wheat equivalent. Preliminary and unadjusted for time lag. Conversion rate: 2.3 bushels per cwt. ^{3/} Revised.

Initial Payment
to Producers

The Canadian Wheat Board in its Instructions to the Trade No. 19 announced the fixed minimum carlot prices for wheat basis in store Fort William-Port Arthur or Vancouver. The amount to be paid in respect of wheat of the grade No. 1 Northern was fixed by Order-in-Council P.C. 1964-890 of the 18th day of June, 1964. The amount to be paid in respect of each other grade of wheat referred to in the following table was fixed by the Board and approved by Order-in-Council P.C. 1964-1345 of the 27th day of August, 1964, pursuant to the Canadian Wheat Board Act, as amended.

Canadian Wheat Board Price List for Specified Grades of Wheat, Crop Year 1964-65
(In Carload Lots, Basis in Store Fort William-Port Arthur or Vancouver)

Grade	Straight	Tough	Damp
- dollars per bushel -			
No. 1 Hard	1.50	1.46	
No. 1 Northern	1.50	1.46	1.34
No. 2 Northern	1.46	1.42	1.30
No. 3 Northern	1.42	1.38	1.26
No. 4 Northern	1.35	1.31	1.19
No. 5 Wheat	1.21	1.17	1.05
No. 6 Wheat	1.17	1.13	1.03
Feed Wheat	1.13	1.09	.99
No. 4 Special	1.35	1.31	1.19
No. 5 Special	1.21	1.17	1.05
No. 6 Special	1.17	1.13	1.03
No. 1 C.W. Amber Durum	1.50	1.46	1.34
No. 2 C.W. Amber Durum	1.46	1.42	1.30
No. 3 C.W. Amber Durum	1.42	1.38	1.26
Extra No. 4 C.W. Amber Durum	1.42	1.38	1.26
No. 4 C.W. Amber Durum	1.35	1.31	1.19
No. 5 C.W. Amber Durum	1.21	1.17	1.05
No. 6 C.W. Amber Durum	1.17	1.13	1.03
No. 1 C.W. Garnet	1.35	1.31	1.19
No. 2 C.W. Garnet	1.30	1.26	1.14
No. 3 C.W. Garnet	1.25	1.21	1.09
No. 4 C.W. Garnet	1.19	1.15	1.03
No. 1 Alberta Red Winter	1.34	1.30	1.18
No. 2 Alberta Winter	1.29	1.25	1.13
No. 3 Alberta Winter	1.23	1.19	1.07
No. 4 Alberta Winter	1.17	1.13	1.01
No. 1 Soft White Spring	1.40	1.36	1.24
No. 2 Soft White Spring	1.37	1.33	1.21
No. 3 Soft White Spring	1.33	1.29	1.17
No. 4 Soft White Spring	1.30	1.26	1.14
No. 1 Mixed Wheat	1.21	1.17	1.07
No. 2 Mixed Wheat	1.18	1.14	1.04
No. 3 Mixed Wheat	1.18	1.14	1.04
No. 4 Mixed Wheat	1.13	1.09	.99
No. 5 Mixed Wheat	1.21	1.17	1.07
No. 6 Mixed Wheat	1.18	1.14	1.04
No. 1 C.W. Mixed Grain	1.08	1.04	.94

Canadian Wheat Board Weekly Average Cash Wheat Prices
Basis in Store Fort William-Port Arthur

Class and Grade	Week Ending			
	August 7	August 14	August 21	August 28
- cents and eighths per bushel -				
<u>Initial Payment to Producers</u>				
1 Northern	150	150	150	150
2 Northern	146	146	146	146
3 Northern	142	142	142	142
4 Northern	135	135	135	135
5 Wheat	121	121	121	121
6 Wheat	117	117	117	117
Feed Wheat	113	113	113	113
1 C.W. Garnet	135	135	135	135
2 C.W. Garnet	130	130	130	130
3 C.W. Garnet	125	125	125	125
1 Alberta Red Winter	134	134	134	134
2 Alberta Winter	129	129	129	129
3 Alberta Winter	123	123	123	123
1 C.W. Amber Durum	150	150	150	150
2 C.W. Amber Durum	146	146	146	146
3 C.W. Amber Durum	142	142	142	142
<u>International Wheat Agreement</u>				
<u>and Domestic Sales</u>				
1 Northern	205/4	205/2	205/1	205
2 Northern	202/4	202/2	202/1	202
3 Northern	200/4	200/2	200/1	200
4 Northern	195/4	195/2	195/1	195
5 Wheat	188/4	188/2	188/1	188
6 Wheat	183/4	183/2	183/1	183
Feed Wheat	180/4	180/2	180/1	180
1 C.W. Garnet	188/4	188/2	188/1	188
2 C.W. Garnet	186/4	186/2	186/1	186
3 C.W. Garnet	185/4	185/2	185/1	185
1 Alberta Red Winter	191/4	191/2	191/1	191
2 Alberta Winter	189/4	189/2	189/1	189
3 Alberta Winter	188/4	188/2	188/1	188
1 C.W. Amber Durum	213/4	213/2	209/1	209
2 C.W. Amber Durum	212/4	212/2	208/1	208
3 C.W. Amber Durum	200/4	200/2	200/1	200
<u>Export - Class II</u>				
1 Northern	205/4	205/2	205/1	205
2 Northern	202/4	202/2	202/1	202
3 Northern	200/4	200/2	200/1	200
4 Northern	195/4	195/2	195/1	195
5 Wheat	188/4	188/2	188/1	188
6 Wheat	183/4	183/2	183/1	183
Feed Wheat	180/4	180/2	180/1	180
1 C.W. Garnet	188/4	188/2	188/1	188
2 C.W. Garnet	186/4	186/2	186/1	186
3 C.W. Garnet	185/4	185/2	185/1	185
1 C.W. Amber Durum	213/4	213/2	209/1	209
2 C.W. Amber Durum	212/4	212/2	208/1	208
3 C.W. Amber Durum	200/4	200/2	200/1	200

Canadian Wheat Board Weekly Cash Wheat Prices
Basis in Store Vancouver

Class and Grade	Week Ending			
	August 7	August 14	August 21	August 28

- cents and eighths per bushel -

Initial Payment to Producers

1 Northern	150	150	150	150
2 Northern	146	146	146	146
3 Northern	142	142	142	142
4 Northern	135	135	135	135
5 Wheat	121	121	121	121
6 Wheat	117	117	117	117
Feed Wheat	113	113	113	113
1 C.W. Garnet	135	135	135	135
2 C.W. Garnet	130	130	130	130
3 C.W. Garnet	125	125	125	125
1 Alberta Red Winter	134	134	134	134
2 Alberta Winter	129	129	129	129
3 Alberta Winter	123	123	123	123
1 C.W. Amber Durum	150	150	150	150
2 C.W. Amber Durum	146	146	146	146
3 C.W. Amber Durum	142	142	142	142

International Wheat Agreement

and Domestic Sales

1 Northern	210/6	210/4	210/3	209/6
2 Northern	207/6	207/4	207/3	207/6
3 Northern	206/2	206	205/7	206/2
4 Northern	199/2	199	198/7	199/2
5 Wheat	190/6	190/4	190/3	190/6
6 Wheat	188/6	188/4	188/3	188/6
Feed Wheat	185/6	185/4	185/3	185/6
1 C.W. Garnet	191/6	191/4	191/3	191/6
2 C.W. Garnet	190/6	190/4	190/3	190/6
3 C.W. Garnet	189/6	189/4	189/3	189/6
1 Alberta Red Winter	191/6	191/4	191/3	191/6
2 Alberta Winter	190/6	190/4	190/3	190/6
3 Alberta Winter	189/6	189/4	189/3	189/6

Export - Class II

1 Northern	210/6	210/4	210/3	209/6
2 Northern	207/6	207/4	207/3	207/6
3 Northern	206/2	206	205/7	206/2
4 Northern	199/2	199	198/7	199/2
5 Wheat	190/6	190/4	190/3	190/6
6 Wheat	188/6	188/4	188/3	188/6
Feed Wheat	185/6	185/4	185/3	185/6
1 C.W. Garnet	191/6	191/4	191/3	191/6
2 C.W. Garnet	190/6	190/4	190/3	190/6
3 C.W. Garnet	189/6	189/4	189/3	189/6
1 Alberta Red Winter	191/6	191/4	191/3	191/6
2 Alberta Winter	190/6	190/4	190/3	190/6
3 Alberta Winter	189/6	189/4	189/3	189/6

CANADIAN FLOUR MILLING SITUATION

Production Wheat flour production by Canadian mills during July 1964 amounted to 3,902,000 hundredweight, indicating a decrease of 2 per cent from the June 1964 output of 3,971,000 hundredweight, but 36 per cent greater than the July 1963 figure of 2,860,000 hundredweight and 22 per cent higher than the ten-year (1954-63) average production for the month of July of 3,201,000 hundredweight. Mills reporting operations during July 1964 had a total rated capacity of 176,000 hundredweight per 24-hour day and on the basis of a 26-day working period 85.2 per cent of this rated capacity was effective.

Wheat milled for flour during July 1964 amounted to 8,723,000 bushels, 2 per cent below the 8,893,000 bushels milled during the preceding month, but 37 per cent above the 6,350,000 bushels milled during July 1963. Of the wheat milled for flour during July 1964 some 7,906,000 bushels were Western Canadian spring wheat (other than Durum) while the remainder consisted of Ontario winter wheat (552,000 bushels); Durum (140,000 bushels); and all other (125,000 bushels).

Exports According to preliminary Customs returns, exports of Canadian wheat flour during July 1964 amounted to 1,974,000 hundredweight (some 4,539,000 bushels of wheat equivalent) representing an increase of 1 per cent over the 4,485,000 bushels exported during the previous month, and in sharp contrast to the adjusted July 1963 total of 1,943,000 bushels. Flour shipments during the month went to forty-six countries with exports to the U.S.S.R. amounting to 1,199,000 bushels of wheat equivalent and accounting for 26 per cent of the July 1964 total. Shipments of Canadian wheat flour during July to Britain, at 1,127,000 bushels equivalent, and to Cuba, at 1,084,000 bushels equivalent, accounted for 25 per cent and 24 per cent of the total, respectively. Other principal markets for Canadian wheat flour during July this year, with shipments in thousands of bushels of wheat equivalent were as follows: Lebanon, 244; Indonesia, 126; Jamaica, 111 and Trinidad, 110.

Wheat Milled for Flour, and Production and Exports of Wheat Flour, Canada

Crop Year	Wheat Milled for Flour	Wheat Flour	
		Production	Exports ^{1/}
	bushels	- cwt. -	
1935-36--1939-40 average	67,845,114	29,405,451	9,603,941
1940-41--1944-45 average	99,704,638	43,908,245	23,699,546
1945-46--1949-50 average	107,330,372	47,011,540	25,819,721
1950-51--1954-55 average	100,446,328	43,847,894	21,812,041
1955-56--1959-60 average	90,148,211	39,752,589	16,349,156
1960-61	89,731,155	39,914,644	15,513,836
1961-62	88,240,580	39,539,651	13,892,676
1962-63	78,789,332	35,505,220	11,854,458
1963-64 ^{2/}			
August	6,719,665	3,003,765	1,321,208
September	7,712,078	3,459,156	715,309
October	10,422,696	4,667,613	1,036,575
November	10,564,882	4,737,321	1,687,554
December	10,234,008	4,585,013	2,344,686
January	10,404,242	4,718,375	2,872,668
February	10,043,366	4,494,554	2,916,992
March	10,505,354	4,725,459	2,294,782
April	8,817,797	3,960,091	2,765,548
May	8,634,667	3,881,329	1,767,818
June	8,892,806	3,970,827	1,950,131
July	8,722,992	3,901,744	1,973,545
Totals	111,674,553	50,105,247	23,646,816
Same months 1962-63 ^{3/}	78,789,332	35,505,220	11,854,458

^{1/} Based on Customs returns. Exports for the crop years 1945-46--1962-63 revised to remove effect of time lag in the returns made by Customs.

^{2/} Subject to revision.

^{3/} Revised.

UNITED STATES SITUATION

Supply Position Domestic supplies of wheat in the United States for the 1964-65 crop year, at 2,185.1 million bushels, are 6 per cent less than the previous year's total of 2,332.6 million, with a decline in carryover stocks more than offsetting a 13 per cent increase in production. This carryover is the smallest since 1958. In addition, current crop year domestic supplies may be supplemented by imports of about 5 million bushels, composed mostly of wheat for seed and feeding quality wheat.

Total disappearance in 1964-65 is currently estimated at 1,310 million bushels with exports accounting for 675 million. Domestic disappearance may rise to an estimated 635 million bushels. This is somewhat above that of recent years due to an expected moderate increase in the use of wheat for feed. The decline in per capita consumption of wheat in the United States is expected to continue in 1964-65, holding the total quantity of wheat used for food at the 500-million-bushel level. With total disappearance of wheat slightly larger than the current crop forecast, carryover stocks on July 1, 1965 may be reduced slightly.

Exports of wheat, wheat flour and other products in terms of grain equivalent during July 1964 amounted to 57.1 million bushels, practically unchanged from the 57.0 million exported during the same month last year. The balance remaining on August 1, 1964 for export and for carryover was estimated at 1,493.0 million bushels compared with 1,689.8 million on the same date a year ago.

United States Wheat Supplies

Item	1963-64 <u>1/</u>	1964-65 <u>2/</u>
	- million bushels -	
Carryover at beginning of crop year (July 1)	1,194.9	899.8
Production	1,137.6	1,285.3
Total estimated domestic supplies	2,332.6	2,185.1
Imports of wheat and wheat flour in terms of wheat for domestic use, July	0.1	<u>3/</u>
Total estimated supplies <u>4/</u>	2,332.7	2,185.1
Less estimated domestic requirements for crop year <u>5/</u> ...	585.9	635.0
Available for export and for carryover	1,746.7	1,550.1
Deduct:		
Exports of wheat as grain, July	51.5	53.1
Exports of wheat flour in terms of wheat, July <u>6/</u>	5.4	4.0
Total exports of wheat and wheat flour <u>7/</u>	57.0	57.1
Balance on August 1 for export and for carryover	1,689.8	1,493.0

1/ Revised. 2/ Preliminary. 3/ Less than 50,000 bushels. 4/ Excluding imports for August-June. 5/ Includes shipments to United States Territories and wheat for military food use at home and abroad. 6/ Flour exports exclude "Milled in bond". 7/ These figures now include all shipments under relief programs which formerly were not available from Census data.

1964 Wheat Crop
Forecast at 1,285
Million Bushels

In a report released on August 11, the Crop Reporting Board of the United States Department of Agriculture stated in part that production of all wheat is expected to total 1,285 million bushels, 10 million bushels above the forecast a month ago and 13 per cent above last year. The indicated yield per harvested acre at 26.2 bushels is more than a bushel above both last year and average. This would equal the second highest yield of record, exceeded only by the 27.5 bushel yield of 1958.

Production of winter wheat showed a minor loss during July as the August 1 forecast of 1,012 million bushels remained 12 per cent above 1963 but was 1 per cent below average. Production levels of the previous month generally held in the Southern States but losses in the North Central States more than offset increased production throughout the Western States. Clear skies and high temperatures prevailed during July in most States east of the Rocky Mountains, pushing winter wheat to maturity and permitting rapid harvest. Rains in the East North Central States during early July caught much of the acreage ready for harvest and along with high temperatures reduced yields in central and northern areas. Western areas enjoyed favourable July moisture supplies and yield prospects improved with favourable late maturing conditions. Harvest was complete or in the wrap-up stage by August 1 in all except the Northern and Mountain States.

The 1964 crop produced uniformly good to excellent yields as all Regions show above average yields. Probably most distinctive of the 1964 crop were the excellent yields in the eastern half of the Nation, an area largely devoted to soft red winter varieties. Record high yields were established in a majority of the States east of the Mississippi River with the remaining States well above average. Record yields also occurred in Missouri and Arkansas, important soft red winter producing States. The combination of high yields and increased acreage pushed soft red winter production to nearly 7 per cent above last year and a fourth above average.

Production changes from the previous month were most marked in Ohio, Indiana, Illinois, and Missouri with yields declining as much as 3 bushels. High temperatures at the time of head filling along with rains at harvest time resulted in an outturn below expectations a month earlier. Yields in the Central and Southern Great Plains held or showed minor gains with the clean-up of harvest. Winter wheat production registered rather consistent gains during the month in the Western States as favourable temperatures produced good head fill. Harvest is complete or well advanced at lower elevations and getting underway at higher elevations.

Production of durum wheat is expected to total 60 million bushels, 10 million bushels more than in 1963 and nearly double the 5-year average of 33 million bushels. The August 1 production estimate is up 5 per cent from the July 1 forecast. Indicated yield of 26.5 bushels per acre is nearly a bushel above last year and the second highest of record.

Production of spring wheat other than durum is now forecast at 213 million bushels, 16 per cent more than the 183 million bushels produced in 1963 and 7 per cent more than the 1958-62 average.

Production prospects improved during July in all major producing States except Minnesota. Favourable moisture conditions prevailed in Montana, North Dakota, and Idaho on July 1, while South Dakota and Minnesota were relatively dry. Hot, dry weather and generally light rainfall in Montana, the Dakotas, and Minnesota during July hastened maturity of the crop. In Idaho and the far Northwestern States growing conditions were favourable most of the month.

United States Wheat
and Flour Exports
Setting New Records

United States exports of wheat and flour reached a record high of 849 million bushels for the 1963-64 fiscal year compared with 637 million bushels during the 1962-63 fiscal year. This was largely brought about by the increased need for wheat created by poor crops in Western Europe and the Soviet Union. Prolonged rains just prior to and during the harvest season brought about a similar decline in Japanese production. Japan became our top dollar market during the year with the Soviet Union a close second. The largest percentage increase was in shipments to the European countries which more than doubled the 107 million bushels exported during 1962-63. With the exception of Poland, shipments to the Eastern European countries were made for the first time in many months. Russia received 56 per cent or 62 million bushels, and Poland 34 per cent or 38 million bushels of the entire 111 million bushels going to these countries. The remainder of the Soviet Bloc shipments went to Czechoslovakia, East Germany, and Hungary. Wheat and flour exports to the EEC countries increased from 26 million bushels during the 1962-63 fiscal year to 55 million bushels, 35 per cent of which went to the Netherlands. Shipments to other Western European countries were 1 per cent less than 61 million bushels exported during 1962-63. This was due mainly to considerably less wheat being exported to Yugoslavia, while all other countries in Western Europe showed an increase. The increased volume of exports to the countries in Western Europe in the 1963-64 fiscal year is not expected to continue during 1964-65 due to larger crops being harvested. This will lower the import requirements for U.S. wheat, as will increased competition from the major exporters—Canada, Australia, and Argentina. France which expects to have over 100 million bushels of wheat for export during the 1964-65 marketing year will also enter into the competition. The satellite countries of Eastern Europe will probably require as much as or more wheat than before, but can be expected to shift from sources in the Western Hemisphere back to the Soviet Union and other European countries.

Wheat and flour exports to countries in the Western Hemisphere were up 19 per cent as compared with the previous twelve months. Exports to Venezuela almost doubled and smaller increases were noted in shipments to most other countries in this area. However, this was partly offset by less shipments to Bolivia, Brazil, and Chile. U.S. exports of wheat and flour to the Asiatic countries aggregated 388 million bushels in this fiscal year compared with 320 million bushels last year, an increase of 21 per cent. India, Japan, Pakistan, and Korea, largest markets for U.S. wheat and flour, were recipients for 163 million bushels, 75 million bushels, 59 million bushels, and 26 million bushels, respectively. In the forthcoming year Japan may require less wheat than in the 1963-64 year because of better crops, while requirements for India and Pakistan will probably remain at a high level. Shipments of these commodities increased from 100 million bushels during 1962-63 to 105 million bushels during 1963-64. Almost 60 per cent went to the United Arab Republic. A smaller wheat crop in Africa for 1964 may increase the need for U.S. wheat and flour. Of the total 849 million bushels, almost 89 per cent was exported in the form of wheat as grain, with India receiving over 21 per cent or 163 million bushels. Over-all shipments of grain totalled 755 million bushels in 1963-64 as compared with 535 million bushels in the previous fiscal year. Flour shipments dropped from 102 million bushels between July 1962 and June 1963 to 94 million bushels during July 1963 - June 1964. Approximately 35 per cent or 33 million bushels (grain equivalent) of this flour was exported to Egypt. During the 1963-64 fiscal year the United States also exported over 2 million bushels of wheat products which included semolina, macaroni and spaghetti products, bakery products, cereal foods ready to eat or ready to be cooked, and prepared mixes. The above-mentioned 2 million bushels represented an increase of 42 per cent over the amount of products shipped during the 1962-63 fiscal year.

Table A shows exports of wheat and flour by country of destination comparing the July 1963-June 1964 period with July 1962-June 1963. Shipments of wheat to Canada are predominately for transshipment to other destinations. Table B shows the quantities and destination of wheat inspected for export from Canadian ports and exports from Table A adjusted to a new total which reflects transshipments during July 1963-June 1964 compared with the same period a year earlier. These inspections were almost 3 times greater this year than in the previous twelve months, primarily due to the substantially increased amounts inspected for export to the Netherlands, Hungary, Poland, the Soviet Union, Egypt, and the Canary Islands. These were partially offset by decreased amounts to France, the United Kingdom, Spain, Yugoslavia, and Turkey. United States exports of wheat and flour are expected to reach 57 million bushels during July 1964. This is approximately the same volume shipped during the month of July 1963.

Table A. United States Exports of Wheat and Flour ^{1/} by Country of Destination
July-June 1962-63 and 1963-64

Destination	July 1962-June 1963			July 1963-June 1964		
	Wheat	Flour ^{2/}	Total	Wheat	Flour ^{2/}	Total
- thousand bushels -						
<u>Western Hemisphere</u>						
Canada ^{3/}	12,271	186	12,457	32,501	210	32,711
Mexico	36	1,275	1,311	36	1,809	1,845
Central America	3,337	2,714	6,051	5,273	2,273	7,546
Haiti	1,375	77	1,452	1,490	189	1,679
Trinidad and Tobago ..	20	1,523	1,543	6	1,255	1,261
Bolivia	689	4,211	4,900	114	3,447	3,561
Brazil	51,220	483	51,703	45,549	388	45,937
British Guiana	-	1,110	1,110	-	1,127	1,127
Chile	7,654	1,090	8,744	3,195	836	4,031
Colombia	3,499	752	4,251	5,559	543	6,102
Paraguay	1,512	100	1,612	999	150	1,149
Peru	4,848	377	5,225	5,931	333	6,264
Venezuela	5,310	130	5,440	10,419	262	10,681
Others	1,276	1,890	3,166	2,437	2,806	5,243
Totals	93,047	15,918	108,965	113,509	15,628	129,137
<u>Western Europe</u>						
EEC						
Belgium-Luxembourg .	2,710	17	2,727	4,770	19	4,789
France	1,275	130	1,405	10,659	4	10,663
Germany, West	6,872	8	6,880	13,473	12	13,485
Italy	1,239	3,983	5,222	4,170	2,737	6,907
Netherlands	8,763	1,127	9,890	18,208	1,182	19,390
Totals	20,859	5,265	26,124	51,280	3,954	55,234

Table A. United States Exports of Wheat and Flour ^{1/} by Country of Destination
July-June 1962-63 and 1963-64

Destination	July 1962-June 1963			July 1963-June 1964		
	Wheat	Flour ^{2/}	Total	Wheat	Flour ^{2/}	Total
- thousand bushels -						
<u>Other Western Europe</u>						
Greece	795	1,706	2,501	1,990	2,266	4,256
Norway	773	27	800	4,608	20	4,628
Portugal	1,556	697	2,253	5,235	451	5,686
Spain	246	14	260	3,792	9	3,801
Switzerland	4,425	4/	4,425	9,207	-	9,207
United Kingdom	2,765	310	3,075	17,374	231	17,605
Yugoslavia	43,319	1,559	44,878	10,197	1,286	11,483
Others	2,234	431	2,665	3,000	419	3,419
Totals	56,113	4,744	60,857	55,403	4,682	60,085
<u>Eastern Europe</u>						
Czechoslovakia	-	-	-	1,313	-	1,313
East Germany	-	-	-	4,460	-	4,460
Hungary	-	-	-	6,002	-	6,002
Poland	19,652	731	20,383	36,725	775	37,500
U.S.S.R.	-	-	-	61,940	-	61,940
Totals	19,652	731	20,383	110,440	775	111,215
Totals, Europe	96,624	10,740	107,364	217,123	9,411	226,534
<u>Asia</u>						
Afghanistan	-	1	1	4,031	78	4,109
India	130,096	359	130,455	162,894	188	163,082
Indonesia	8	2,944	2,952	14	486	500
Iran	5,803	2,004	7,807	904	1,174	2,078
Iraq	-	5	5	5,868	141	6,009
Israel	9,744	137	9,881	7,278	77	7,355
Japan	33,840	3,079	36,919	72,146	2,652	74,798
Jordan	1,820	3,090	4,910	987	3,997	4,984
Korea	23,503	1,012	24,515	24,740	1,138	25,878
Lebanon	-	1,405	1,405	45	1,195	1,240
Pakistan	50,130	893	51,023	59,462	29	59,491
Philippines	6,509	383	6,892	8,506	546	9,052
Saudi Arabia	7	3,401	3,408	140	3,513	3,653
Taiwan	11,742	1,483	13,225	9,151	1,193	10,344
Turkey	15,328	490	15,818	6,029	436	6,465
Vietnam, Laos, and Cambodia	359	3,452	3,811	10	3,121	3,131
Others	999	6,468	7,467	1,219	4,241	5,460
Totals	289,888	30,606	320,494	363,424	24,205	387,629

Table A. United States Exports of Wheat and Flour ^{1/} by Country of Destination
July-June 1962-63 and 1963-64

Destination	July 1962-June 1963			July 1963-June 1964		
	Wheat	Flour ^{2/}	Total	Wheat	Flour ^{2/}	Total
- thousand bushels -						
Africa						
Algeria	7,415	2,550	9,965	13,708	1,086	14,794
British East Africa	1,257	57	1,314	132	88	220
Congo (Leopoldville)	84	2,145	2,229	127	3,064	3,191
Egypt	26,718	33,772	60,490	29,402	33,222	62,624
Morocco	4,471	2,616	7,087	2,759	2,823	5,582
Nigeria	1,540	218	1,758	1,809	54	1,863
Sudan	1,143	1,377	2,520	2,044	1,856	3,900
Tunisia	9,140	183	9,323	3,014	195	3,209
South Africa, Republic of	-	-	-	5,222	42	5,264
Others	3,571	1,933	5,504	3,053	2,073	5,126
Totals	55,339	44,851	100,190	61,270	44,503	105,773
Oceania	-	59	59	7	74	81
Totals, All Countries.	534,898	102,174	637,072	755,333	93,821	849,154
Other Products ^{2/5/} ...	1,601	-	1,601	2,267	-	2,267
Grand Totals	536,499	102,174	638,673	757,600	93,821	851,421

^{1/} Data includes shipments for relief or charity. ^{2/} Grain equivalent. ^{3/} The bulk of exports to Canada are for transshipment to other destinations - see Table B.

^{4/} Less than 500 bushels. ^{5/} Includes wheat semolina, macaroni and spaghetti products, bakery products, cereal foods ready to eat and ready to cook, and prepared mixes.

Table B. United States Exports of Wheat and Flour as Adjusted for Transshipment Through Canadian Ports, July-June 1962-63 and 1963-64

Destination	July 1962-June 1963		July 1963-June 1964	
	Wheat inspected for export from Canadian ports	Adjusted totals for listed countries	Wheat inspected for export from Canadian ports	Adjusted totals for listed countries
- thousand bushels -				
EEC				
Belgium-Luxembourg ...	389	3,116	3,421	8,210
France	1,495	2,900	551	11,214
Germany, West	1,023	7,903	1,253	14,738
Italy	-	5,222	-	6,907
Netherlands	2,757	12,647	10,499	29,889
Totals	5,664	31,788	15,724	70,958
Dominican Republic	116	1,121	-	1,766
Venezuela	328	5,768	742	11,423
Brazil	-	51,703	108	46,045
United Kingdom	1,869	4,944	1,636	19,241
Ireland	57	528	194	616
Spain	1,057	1,317	230	4,031
Portugal	981	3,234	781	6,467
Yugoslavia	2,958	47,836	-	11,483
Turkey	903	16,721	-	6,465
Hungary	-	-	661	6,663
Poland	889	21,272	3,003	40,503
U.S.S.R.	-	-	2,443	64,383
Egypt	-	60,490	5,921	68,545
Canary Islands	-	784	1,163	1,173
Nigeria	442	2,200	758	2,621
Madeira Islands	-	335	331	1,121
Mozambique	224	1,475	413	540
Totals	15,488	251,516	34,108	364,044

Cash Wheat Prices on the Kansas City and Minneapolis Markets

No. 2 Hard Winter, Kansas City		No. 1 Northern Spring, Minneapolis	
Date	Price	Date	Price
	- cents per bushel -		- cents per bushel -
August 3, 1964	152 1/2 - 164 3/4	August 3, 1964	161 - 162
4	157 3/4	4	159 1/2 - 161 1/2
5	153 1/4 - 154 3/4	5	160 5/8 - 162 5/8
6	154 1/2 - 158	6	160 1/8 - 163 1/8
7	164 1/4	7	161 1/8 - 163 1/8
10	155 - 156	10	160 7/8 - 162 7/8
11	155 - 159	11	164 3/4 - 167 3/4
12	155 1/4	12	163 7/8 - 165 7/8
13	153 3/4 - 179 3/4 1/	13	166 - 168
14	154 3/4 - 180 1/2 1/	14	166 1/4 - 168 1/4
17	163 1/2	17	167 3/8 - 169 3/8
18	156 1/2 - 181 1/4 1/	18	169 5/8 - 171 5/8
19	158 1/4	19	171 1/8 - 173 1/8
20	157 1/4	20	171 - 173
21	157 3/4 - 162	21	172 1/8 - 174 1/8
24	157 3/4 - 164 1/4	24	171 5/8 - 173 5/8
25	156 3/4 - 163	25	172 3/8 - 174 3/8
26	159 1/4	26	173 7/8 - 175 7/8
27	160 1/2	27	175 1/4 - 176 1/4
28	161 1/4 - 165 1/4	28	173 5/8 - 175 5/8
31	156 3/4 - 166 3/4	31	174 3/4 - 176 3/4

1/ Nominal.

Chicago Wheat Futures, High Points of Closing

Date	September		December		March	May	July
	New	Old	New	Old			
- cents and eighths per bushel -							
August 3, 1964	142	140	147/5	145/5	150/5	151/5	
4	140/5	139	145/6	145/3	148/6	149	143
5	142/6	140/6	147/7	146/2	151/2	151/4	146
6	140/7	139/2	146/1	146/2	149/4	149/7	144/3
7	141/3	140/2	146/2	146/2	149/4	150	144/4
10	140/5	139/4	145/6	145/2	149	149/3	144/4
11	140/2	139	145/4	144/4	148/4	149/2	145
12	141/4	140/1	146/6	145/3	149/7	150/4	146/1
13	141/4	140/6	146/6	145/2	149/6	150/1	146/2
14	142/4	141	147/4	146/2	150/4	150/6	146/7
17	143/1	142	148/1	147	151/2	151/6	148/2
18	143	142	148	147	151	151/6	148/2
19	144/2	142/7	149/2	147/6	152/1	153	149
20	143/7	142/4	149	147/6	152	153	148/7
21	143/7	142/3	148/6	147/6	151/7	152/6	148/2
24	143/5	142/2	148/6	147/6	151/6	152/3	147/6
25	143/3	142	148/3	147/6	151/5	152/4	148/1
26	143/4	142	148/4	147/2	151/4	152/2	148/2
27	144/3	143/2	149/5	147/3	152/7	153/4	149/2
28	144	142/5	149/3	148/6	152/4	153/2	149/2
31	143/1	141/5	148/3	147/3	152	152/6	148/7

AUSTRALIAN SITUATION

Supplies for 1963-64 Crop Year at Record Level

Total estimated supplies of wheat in Australia for the 1963-64 (December-November) crop year are placed at an all-time high of 354.5 million bushels, reflecting an increase in carryover stocks, from 18.2 million at December 1, 1962 to 23.5 million in 1963, combined with the record 1963 production now revised to 331.0 million bushels. The 1963 crop represented a record outturn for the second consecutive year. After deducting 76.5 million for anticipated domestic requirements, an estimated 278.0 million are available for export and for carryover in 1963-64, an increase of 10 per cent over the 252.1 million the previous year.

Combined exports of wheat as grain and wheat flour in terms of grain equivalent during the period December 1-August 1 of the current Australian crop year amounted to 199.6 million bushels, 29 per cent more than the 154.2 million exported during the corresponding period of 1962-63. The balance remaining on August 2, 1964 for export and for carryover, at 78.4 million bushels, is 20 per cent below the comparable 1963 total of 97.9 million.

Australian Wheat Supplies

Item	1962-63 <u>1/</u>	1963-64 <u>2/</u>
- million bushels -		
Carryover, including flour as wheat, at beginning of crop year (December 1)	18.2	23.5
Production	307.2	331.0 <u>1/</u>
Total estimated domestic supplies	325.4	354.5
Less estimated domestic requirements for crop year .	73.3	76.5 <u>1/</u>
Available for export and for carryover	252.1	278.0
Deduct:		
Exports of wheat as grain, December 1-August 1 ...	138.9	176.8
Exports of wheat flour in terms of wheat, December 1-August 1	15.3	22.8
Total exports of wheat and wheat flour	154.2	199.6
Balance on August 2 for export and for carryover ..	97.9	78.4

1/ Revised. 2/ Preliminary.

The following information relative to the Australian situation has been extracted from a report from Mr. D. I. Campbell, Assistant Commercial Secretary for Canada, Canberra, under date of August 13, 1964 and is reproduced with the permission of the Trade Commissioner Service, Department of Trade and Commerce.

Crop Position The Australian Wheat Board has estimated that the 1964-65 crop could reach 282 million bushels, however the Board emphasized that the estimate could vary by 35 million bushels depending upon seasonal growing conditions. While crop prospects in Queensland and New South Wales continue to be good, the outlook in both South Australia and Victoria has improved due to an increase in rainfall. Western Australia, however, has been unable to sow its intended acreage for the second successive year due to excess moisture. Authorities have estimated that only 85 per cent of an intended 5 million acres was sown.

Marketing Position The Chairman of the Australian Wheat Board said, "there appeared to be little opportunity for the sale of much wheat to Europe this year due to the extremely good crop prospects in the United Kingdom, Italy, France and Germany". While a tough selling year is forecast, the Wheat Board is unlikely to have any firm view of the marketing outlook for the 1964-65 crop before October. Japan is reported to have purchased a considerable quantity of Australian wheat in July due to an easing in price.

Miscellaneous The Australian Wheatgrower's Federation has proposed that the Australian Wheat Board provide an allowance of 3d. (3 cents) per bushel for wheat stored on farms for two months or more. This request follows on grower's concern due to lack of adequate elevator storage capacity. One grain storage firm has recently announced plans to construct elevators with total capacity of 4,100,000 bushels next year.

Exports of Australian Wheat and Wheat Flour in Terms of Wheat
December 1-August 1, 1963-64 and Corresponding Period 1962-63

Destination	Wheat		Wheat Flour	
	1962-63	1963-64	1962-63	1963-64
- thousand bushels -				
<u>Europe</u>				
Albania	1,393	-	-	-
Britain	14,351	16,867	1,242	1,128
Eire	1,810	1,353	-	-
Malta	446	437	-	-
Norway	3,209	3,609	-	-
Spain	1,235	-	-	-
Western Germany	1,212	7,800	-	-
Others	-	-	10	1
<u>U.S.S.R.</u>	-	47,882	-	6,614
<u>Middle East</u>				
Aden	678	1,184	-	-
Aden and Aden I/T	-	-	1,011	952
Aden and Aden I/T Atta	-	-	378	496
Arabian Gulf	-	-	77	106
Arabian Gulf Atta	-	-	730	692
Iran	835	580	-	-
Iraq	-	3,513	-	-
Lebanon, Jordan, Syria	1,874	3,871	-	-
Saudi Arabia	-	-	172	169
Others	214	561	14	17

Exports of Australian Wheat and Wheat Flour in Terms of Wheat
December 1-August 1, 1963-64 and Corresponding Period 1962-63

Destination	Wheat		Wheat Flour	
	1962-63	1963-64	1962-63	1963-64
- thousand bushels -				
<u>Africa</u>				
Mauritius	-	-	359	910
Nyasaland	-	-	236	167
Portuguese East Africa	-	945	-	-
Rhodesia	2,329	2,240	-	-
Zanzibar	-	-	138	120
Others	12	37	48	46
<u>Asia</u>				
Brunei	-	-	32	13
Burma	551	-	102	-
Ceylon	7	7	2,797	4,312
China	81,456	59,051	-	-
Formosa	96	79	-	-
Hong Kong	1,455	1,456	155	78
India	5,336	7,021	-	-
Indonesia and Irian	-	-	289	154
Japan	8,340	11,881	-	-
Korea North	4,988	-	-	-
Pakistan	1,847	-	-	-
Philippines	333	242	349	1,362
Thailand	4	321	559	364
Malaysia				
Malaya	295	25	2,138	1,798
Malaya Atta	-	-	66	66
Sabah	-	-	115	105
Sarawak	-	-	168	120
Singapore	210	1,527	1,979	1,101
Singapore Atta	-	-	9	6
Singapore A/C B.W.O.	-	-	29	33
Others (Okinawa)	91	-	284	54
<u>Pacific Area and Sundries</u>				
New Zealand	4,255	4,269	-	-
Pacific Islands	37	44	1,528	1,487
Peru	-	-	10	4
Ships' Stores and Sundries	-	-	277	327
Totals	138,900	176,800	15,300	22,800

ARGENTINE SITUATION

Supply Position Estimated total supplies of wheat in the Argentine for the 1963-64 (December-November) crop year amount to 338.2 million bushels, consisting of the December 1, 1963 carryover of 25.9 million and the 1963-64 crop now estimated, unofficially, at 312.3 million. Indicated supplies for the current Argentine crop year, reflecting a substantial increase in production as well as slightly larger opening stocks are about 54 per cent more than the 1962-63 total of 220.1 million bushels. After making an allowance of 122.6 million bushels for anticipated domestic requirements, an estimated 215.6 million are available for export and for carryover in 1963-64, considerably more than double the 92.0 million of the previous year.

Exports of wheat and wheat flour in terms of grain equivalent during December 1963-July 1964 amounted to 88.0 million bushels, 67 per cent greater than the 52.6 million exported during the same months in 1962-63. The balance remaining on August 1, 1964 for export and for carryover was estimated at 127.5 million bushels, in sharp contrast to the August 1, 1963 total of only 39.4 million.

Argentine Wheat Supplies

Item	1962-63 <u>1/</u>	1963-64 <u>2/</u>
	- million bushels -	
Carryover at beginning of crop year (December 1) <u>3/</u>	25.4	25.9
Production	194.8 <u>4/</u>	312.3 <u>5/</u>
Total estimated domestic supplies	220.1	338.2
Less estimated domestic requirements for crop year	128.2	122.6 <u>1/</u>
Available for export and for carryover	92.0	215.6
Deduct:		
Exports of wheat as grain, December-July	52.0	87.3
Exports of wheat flour in terms of wheat, December-July	0.6	0.7
Total exports of wheat and wheat flour	52.6	88.0
Balance on August 1 for export and for carryover	39.4	127.5

1/ Revised. 2/ Preliminary. 3/ Includes allowances for farm stocks. 4/ Official estimates. 5/ Revised, unofficial estimate.

The following account of the Argentine situation has been extracted from a report from Mr. M. B. Bursey, Commercial Counsellor, Buenos Aires, under date of August 20, 1964 and is reproduced with the permission of the Trade Commissioner Service, Department of Trade and Commerce. Where possible, conversions to Canadian measures and currency have been made for the convenience of our readers.

Weather
and Crops

Weather conditions during the month of July were far from ideal; an almost total lack of rainfall, coupled with low temperatures and heavy frosts combined to produce one of the most severe winters of the past few years. The poor moisture conditions delayed seeding and retarded growth. In the Province of Cordoba, conditions were further aggravated by a drought which began early in the year. However, the dry spell has been broken with recent rains falling throughout most of the northern and southern grain belt. This rain was very timely and will greatly benefit winter crops now growing (wheat, oats, barley and rye).

Wheat

Early in the present crop year, it was known that 1963-64 production would be large. However, even now, estimates are being revised and the final (fourth) figure of the Secretariat of Agriculture and Livestock is expected to exceed the 7,660,000 metric tons (281.5 million bushels) earlier released. Trade and Grain Board officials speak in terms of an 8,500,000 metric ton (312.3 million bushels) production which would have been the largest wheat crop in Argentina during the past quarter century.

With a slightly increased carryover added to the heavy crop, a considerable increase in marketings is necessary if a large surplus is to be avoided. To date, exports have considerably exceeded those of the previous year. Increased sales have occurred in many Latin American countries as well as in Mainland China, fulfilling respective sale contracts. July shipments equalled 167,400 metric tons (6,151,000 bushels), going mainly to Brazil, Britain and the Netherlands. Aggregate exports to the end of July were 2,380,000 metric tons (87,449,000 bushels) compared with 1,416,312 metric tons (52,040,000 bushels) during the same period in 1962-63..

In July the National Grain Board offered 100,000 tons (3,674,000 bushels) of bread wheat and 50,000 tons (1,837,000 bushels) of durums for export, but only 15,000 tons (551,000 bushels) of durums were sold, at a price of 810 pesos per 100 kilos (\$1.75 per bushel), f.o.b. except for export taxes. Shipment from Necochea will occur from August on to September. Continental sales averaged U\$S 71.50 per ton (\$2.10 per bushel) c.i.f., August-September shipment. For Britain, prices averaged £26.17.6 per metric ton (\$2.20 per bushel). Brazil in its usual monthly tender picked up 80,000 tons (2,939,000 bushels) at prices ranging between U\$S 68.20 and 68.35 per metric ton (\$2.00 and \$2.01 per bushel) f.o.b. A sale of 80,000 tons (2,939,000 bushels) to Uruguay has now been confirmed at U\$S 68.30 per metric ton (\$2.01 per bushel). Also, it has been stated officially that the Grain Board is negotiating with Japan, but no details are available.

In the northern wheat belt, there are reported to be only small stocks remaining in the hands of producers, as most of the crop has been sold to the Grain Board and to millers. The latter, who picked up 500,000 tons (18,372,000 bushels) of wheat from the Board during July are said to have a fairly low inventory at present, and will be in the market for larger quantities in coming months. The July purchases were made at the official producers price of 880 pesos per 100 kilos (\$1.90 per bushel) and on credit terms. In the southern wheat belt sizeable stocks remain on farms. Prices in the Buenos Aires Futures Market and the Cereal Exchange have been equal to the minimum official price level during the period under review.

As the 1963-64 crop year moves towards its final quarter, it would appear, notwithstanding improved exports, that there will be a sizeable increase in carryover into the coming year. The National Grain Board does not seem unduly concerned with this situation and appear quite confident that exports will continue to grow and that the surplus will be kept in line with levels of the past few years. It is still too early to estimate seeding intentions, as while planting is under way, the dry spell mentioned earlier delayed producers in many areas. With the recent

rain, late planting will likely be large. There is no reason to believe that final wheat acreage will differ significantly from the 5,400,000 hectares (13.3 million acres) sown last year.

Argentine Wheat Exports December-June 1963-64 with Comparisons

Destination	Wheat	Destination	Wheat
	'000 bushels		'000 bushels
Belgium	909	Germany, West	8,659
Bolivia	73	Italy	3,176
Brazil	15,891	Netherlands	2,383
Britain	2,886	Paraguay	639
China, Communist	36,303	Peru	5,518
Czechoslovakia	982	Poland	415
France	2,144	Russia	354
Germany, East	646	Switzerland	164
		Total	81,143
Compared with:			
December-June 1962-63			44,776
1961-62			77,427
1960-61			30,256
1959-60			48,458
1958-59			66,727

WHEAT SITUATION IN ITALY

The following account of the current crop situation in Italy has been extracted from a report by Miss M. D. Johnson, Commercial Assistant, Canadian Embassy, Rome, under date of August 13, 1964, and is reproduced with the permission of the Trade Commissioner Service, Department of Trade and Commerce. Where possible, conversions from Italian to Canadian measures have been made and rounded for the convenience of our readers. Currency conversions have been made at the rate of 579.04 lire per Canadian dollar, the quotation in effect on August 10, 1964.

The latest official estimated figure as to the 1964 wheat crop is 9.2 million metric tons (338.0 million bushels), an increase of 13 per cent on last year's final figure of 8.1 million tons (297.6 million bushels). Of this total it is unofficially estimated that around 1.5 million to 1.6 million tons (55.1 million to 58.8 million bushels) will be durum, last year's durum wheat crop amounted to over 1.8 million tons (66.1 million bushels). More recent unofficial estimates as to the total wheat crop are, however, less optimistic, as it is alleged that excessive rain at harvesting time has caused damage. According to these estimates, the total wheat crop will not exceed 9 million tons (330.7 million bushels). In some areas the quality is not too satisfactory, particularly that of the durum wheat in Sicily and Sardinia.

At the end of the 1963-64 crop year (June 30, 1964) stocks with the Intervention (Government Controlled) Organization were as follows:

Domestic non-durum wheat	272,645 metric tons	(10,018,000 bushels)
Domestic durum wheat	137,448 metric tons	(5,050,000 bushels)

Before the end of June, intervention prices, at which wheat is bought - as and when offered by producers - by the intervention organization, and indicative, or target prices, at which such wheat is subsequently sold to millers and other consumers, were established in accordance with Common Market regulations.

For non-durum wheat ten basic intervention prices ranging, according to production areas, from Lire 61,600 to 66,000 per metric ton (\$2.90 to \$3.10 per bushel), in the previous year these prices ranged from Lire 61,250 to 65,500 (\$2.88 to \$3.08 per bushel) and ten target prices ranging from Lire 65,000 to 71,000 (\$3.06 to \$3.34 per bushel), last year's prices ranged from Lire 64,000 to 71,000 (\$3.01 to \$3.34 per bushel) were established.

For durum wheat instead, seven areas have been established for the regional marketing centres considered as the most representative of the production zones. Intervention basic prices go from Lire 73,000 to Lire 85,500 per metric ton (\$3.43 to \$4.02 per bushel) and include production bonuses to farmers in certain areas as provided for by Common Market regulations. These prices are the same as last year's. Durum wheat basic target prices range this year from Lire 72,000 to 89,500 per metric ton (\$3.38 to \$4.21 per bushel), last year Lire 73,000 to 89,000 (\$3.43 to \$4.18 per bushel).

The above prices are being increased per month by Lire 500 per metric ton (2 cents per bushel) for non-durum and Lire 550 (3 cents per bushel) for durum wheat, starting August 1 and for a period of 9 months. Last year the increase was of Lire 500 per metric ton (2 cents per bushel) for both non-durum and durum wheat and for eight months, starting September 1.

Threshold prices have also been established. For imports from third countries these are as follows: (per bushel)

Non-durum wheat	\$3.31	(last year \$3.29)
Durum wheat	\$4.47	(last year \$4.35)

Also in this connection prices are, this year, being increased monthly by Lire 500 (2 cents per bushel) for non-durum and 550 (3 cents per bushel) for durum, for 9 months, starting August 1, 1964.

The E.E.C. authority with regard to a supplementary levy applicable on the importation of hard and semi-hard wheats has been extended for another year, until June 30, 1965.

At the end of July 1964 the levy on the importation of non-durum wheat from third countries amounted to Lire 30,750 per metric ton (\$1.45 per bushel) and that on durum wheat to Lire 48,500 (\$2.28 per bushel). The supplementary levy above stated, which is applicable on the importation of Manitoba 1, 2 & 3, U.S. Dark Hard Winter 1 & 2 and Dark Northern Spring 1 & 2, Argentina Southern, U.S.S.R. 431, Australia Semihard, Morocco Florence Aurore and U.S. Hard Winter 1 & 2 (this latter a recent addition), was Lire 14,000 per metric ton (66 cents per bushel). Consequently the total levy on the above mentioned hard and semihard wheats amounted to Lire 44,750 (30,750 + 14,000) (\$2.10 per bushel - \$1.44 + 66 cents per bushel).

From July 1, 1963, to April 30, 1964, imports of wheat totalled over 418,655 metric tons (15,383,000 bushels), as compared to 180,991 tons (6,650,000 bushels) during the same period in the previous crop year. From April 4, 1963, to June 13, 1964, 99,541 metric tons (3,657,000 bushels) of durum and 218,739 tons (8,037,000 bushels) non-durum wheat were imported under the draw-back system, to replace exports of wheat products.

Prices of wheat on the open market (Milan) on August 5, 1964 were as follows: (in dollars per bushel).

	<u>Minimum</u>	<u>Maximum</u>
Domestic non-durum wheat (according to qualities)	\$2.91	\$3.38
Domestic durum wheat	\$4.23	\$4.37
Foreign wheat: Manitoba	\$4.70	\$4.79
Plata	\$4.32	\$4.37

In view of the high prices for domestic wheat easily obtainable on the open market, only limited quantities of wheat have so far been delivered by farmers to the intervention organization.

If the less optimistic estimate on this year's wheat crop proves to be correct, and also in view of the unsatisfactory quality of some of the wheat crop, it is expected that imports of both durum and non-durum wheat in appreciable quantities will be made during the current crop year. Imports to replace wheat used in the production of flour, semolina and pasta exported will, in any event, continue to take place.

Continued from page 2

Total production in Africa is expected to be less than last year mainly because of a sharp reduction in Algeria from last year's bumper crop. Some reduction is also reported for Tunisia, but larger harvests in Egypt and Morocco more than offset that decrease. The outlook for the growing wheat crop in Southern Hemisphere countries is generally promising. Seeding took place under favourable conditions in most parts and increased acreage is reported in Argentina and Australia, the largest wheat producers. Growing conditions up to November will govern final outturns.

CALENDAR OF WHEAT EVENTS

- | | | |
|-----------|----|-----------------------------------------------------------------------------------------------------------------------------------------------------------------------------------------------------------------------------------------------------------------------------------------------|
| July | 27 | According to the Bureau of the Census, United States Department of Commerce total commercial production of wheat flour in 1963 amounted to 263.9 million cwt., about 1.8 million cwt. above the previous year's production. Production in 1963 was at 92.6 per cent of total annual capacity. |
| August | 13 | The Canadian Wheat Board announced that it had negotiated contracts for the sale of approximately 200,000 metric tons of wheat for shipment to Poland and 50,000 metric tons of wheat for shipment to Bulgaria. |
| | 27 | According to the August 1964 edition of World Agricultural Production and Trade published by the Foreign Agricultural Service, U.S.D.A. the present outlook for the 1964 world wheat production indicates a record or near-record harvest. |
| September | 1 | According to the Bureau of the Census, United States Department of Commerce, wheat flour production in the United States in July 1964 amounted to 14,953,000 hundredweight, an average of 650,000 hundredweight per working day. |
| | 4 | Based on conditions at August 15, Canada's 1964 wheat crop was forecast at 596.1 million bushels, well below last year's record outturn of 723.4 million but still the fourth largest on record. |

HIGHLIGHTS 1963-64 CROP YEAR

Supplies and Utilization

Total supplies of Canadian wheat in 1963-64 reached an all-time high of 1,210.7 million bushels, consisting of a carryover of 487.2 million and a record 1963 crop of 723.4 million. Exports at a record 594.1 million bushels and domestic use, at 155.2 million, totalled 749.3 million which was 25.9 million greater than the record crop and, as a result, stocks at the end of the crop year, were reduced by this amount.

Country Elevator Handlings

Receipts of wheat at country elevators amounted to a record 564.5 million bushels as against the previous record of 529.2 million in 1952-53.

Shipments of wheat from country elevators, at 601.0 million bushels, exceeded by a wide margin the previous high of 474.9 million set in 1952-53.

Terminal Handlings

Receipts of wheat at terminal points climbed to 589.8 million bushels as against the previous high of 422.6 million in 1952-53.

Shipments from terminal points at 547.0 million bushels of wheat were also in sharp contrast to the 1952-53 figure of 397.9 million.

Exports

Crop year exports of wheat, amounting to 594.1 million bushels (including 54.4 million of flour equivalent) were 46 per cent greater than the previous record of the 407.6 million set in 1928-29.

Clearances

Pacific Ports set a new crop year record, shipping 220.7 million bushels all grains (171.9 million wheat) and exceeding the previous high of 180.9 million (149.9 million wheat) cleared in 1961-62.

St. Lawrence Ports cleared a record 288.6 million bushels almost all of which was wheat (280.7 million). This was the highest since 240.8 million bushels, including 156.2 million of wheat, were shipped in 1952-53.

Maritime Ports moved out 54.5 million bushels (53.9 million of wheat) considerably less than the 1941-42 total of 71.5 million bushels (71.3 million of wheat).

Flour Milling

Operating at near capacity the Canadian flour milling industry experienced its best season since 1946-47. Some 111.7 million bushels were milled during 1963-64 and flour production amounted to 50.1 million hundredweight.

I.W.A. Quotations Reach Peak

The highest quotation ever attained for No. 1 Northern I.W.A. wheat on the Canadian market was reached during the latter half of March, 1964, at \$2.08 1/8 per bushel.

STATISTICS CANADA LIBRARY
BIBLIOTHÈQUE STATISTIQUE CANADA



1010687022