

CATALOGUE No.

22-005

MONTHLY

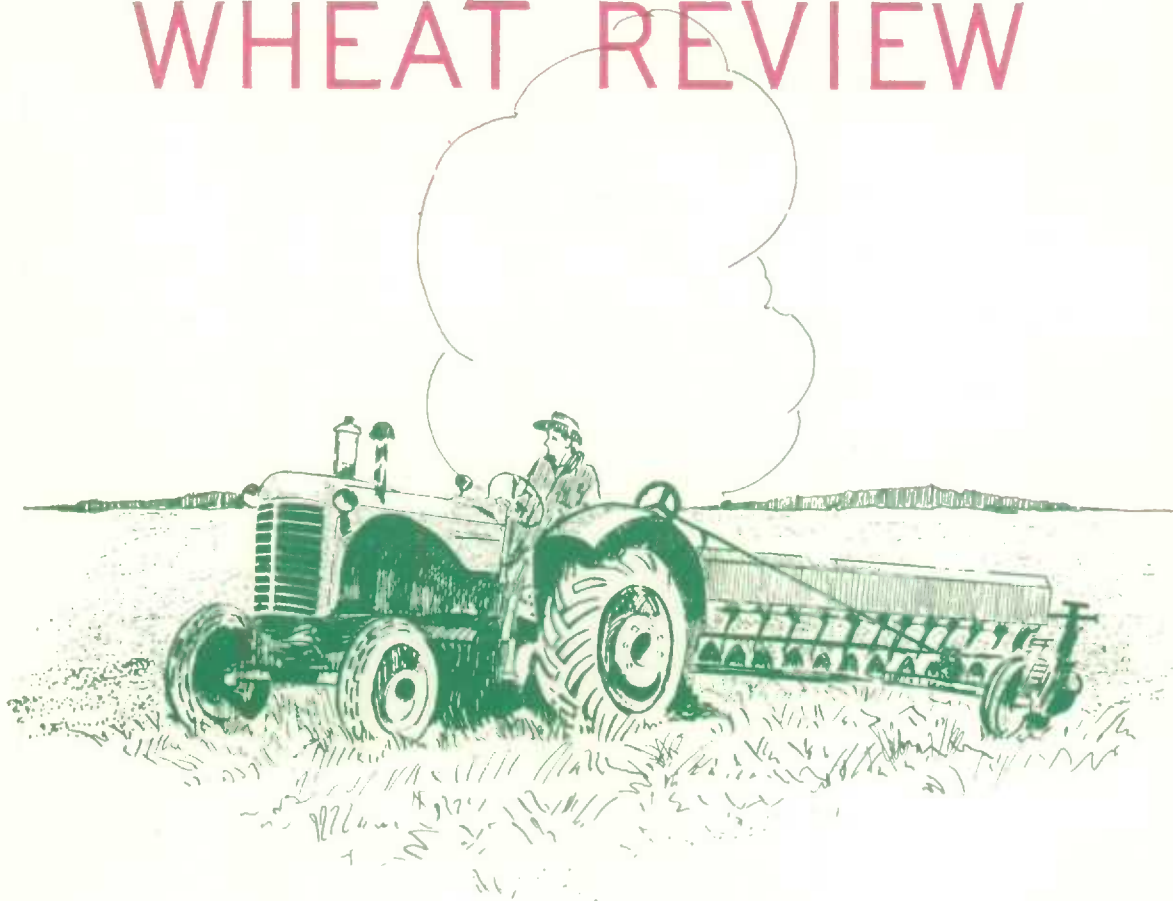


CANADA

DOMINION BUREAU OF STATISTICS

AGRICULTURE DIVISION

# THE WHEAT REVIEW



JUNE 1965



DOMINION BUREAU OF STATISTICS

---

THE  
WHEAT REVIEW

JUNE 1965

*Published by Authority of*  
The Minister of Trade and Commerce

Prepared in the Crops Section, Agriculture Division  
Dominion Bureau of Statistics, Ottawa

## TABLE OF CONTENTS

	<u>Page</u>
World Wheat Situation	
August-May Exports Below Record of Previous Year but Remain Well Above Average .....	1
Wheat Supplies of Four Major Exporters Above a Year Ago .....	1
I.W.C. Cumulative Totals of Commercial Purchases .....	2
Canadian Situation	
1964-65 Wheat Supplies Decline from Previous Year's Record Level .....	3
August-May Exports Well Above Average .....	3
Marketings, Disappearance and Visible Supplies .....	4
May 1965 Exports of Wheat and Flour Total 37.7 Million Bushels .....	4
Quota Position .....	5
Preliminary Estimates of Specified Crop and Summerfallow Acreages, Prairie Provinces, 1965 .....	5
Crop and Weather Conditions .....	8
Rust Report for the Prairie Provinces .....	8
Farmers' Marketings of Wheat .....	9
Visible Supply of Canadian Wheat .....	10
Grading of Wheat Inspected, August-May 1964-65 with Comparisons .....	10
Weekly Visible Supply and Farmers' Marketings (Charts) .....	11
Lake Shipments of Canadian Grain .....	12
Wheat Shipments to the United States by Destination .....	12
Rail Shipments of Wheat to Maritime Ports .....	12
Rail Shipments of Wheat from Fort William-Port Arthur .....	13
Overseas Exports of Canadian Grain by Ports of Loading .....	13
Monthly Exports of Canadian Wheat and Wheat Flour .....	14
Exports of Canadian Wheat by Destination .....	15
Customs Exports of Canadian Wheat Flour by Countries of Consignment .....	18
Canadian Wheat Board Weekly Average Cash Wheat Prices .....	20
Canadian Flour Milling Situation	
Production and Exports .....	22
United States Situation	
Domestic Supplies 6 Per Cent Lower Than Previous Year .....	23
1965 Wheat Crop Forecast at 1,283 Million Bushels .....	24
Cash Wheat Prices on Kansas City and Minneapolis Markets .....	25
Chicago Wheat Futures, High Points of Closing .....	25
Argentine Situation .....	26
Australian Situation .....	28
Calendar of Wheat Events .....	32

---



## WORLD WHEAT SITUATION

August-May Exports  
Below Record of  
Previous Year but Remain  
Well Above Average

The total of 1,269.0 million bushels of wheat and flour exported from Canada, United States, Argentina and Australia during the August-May period of the current Canadian crop year, represents a decrease of 17 per cent from the previous record level of 1,524.2 million exported during the same period in 1963-64 but is 25 per cent above the 1,015.9 million of two years ago and 54 per cent greater than the ten-year (1953-54-1962-63) average for the period of 825.2 million. As indicated in the accompanying table, based on the Canadian crop year, wheat shipments from Argentina at 133.7 million bushels are sharply higher than the 91.0 million shipped at the same date last year while exports from United States, Canada and Australia were lower than the previous year's comparable levels.

### Exports of Wheat and Flour in Terms of Wheat, August 1964-May 1965 with Comparisons

August-May	United States	Canada	Argentina	Australia	Total
- million bushels -					
1950-51 .....	304.6	178.8	75.8	106.5	665.7
1951-52 .....	413.5	268.5	24.1	81.1	787.2
1952-53 .....	279.8	297.5	19.2	84.8	681.3
1953-54 .....	170.7	209.1	94.1	52.2	526.1
1954-55 .....	226.4	209.7	112.0	81.8	629.9
1955-56 .....	267.7	236.9	97.9	84.6	687.1
1956-57 .....	448.4	216.8	82.9	108.9	857.0
1957-58 .....	327.1	263.7	63.4	53.3	707.5
1958-59 .....	380.6	243.8	85.5	61.6	771.5
1959-60 .....	426.5	235.4	61.3	92.8	816.0
1960-61 .....	566.8	286.3	59.2	148.4	1,060.7
1961-62 .....	603.8	310.2	80.2	186.0	1,180.2
1962-63 <u>1/</u> .....	542.9	281.2	55.7	136.1	1,015.9
1963-64 <u>1/</u> .....	730.7	460.3	91.0	242.2	1,524.2
1964-65 <u>2/</u> .....	597.7	336.2	133.7	201.4	1,269.0

1/ Revised.

2/ Preliminary.

Wheat Supplies of  
Four Major Exporters  
Above a Year Ago

Supplies of wheat held by the four traditional major exporters at June 1, 1965 for export and for carryover at the end of their respective crop years amounted to 1,854.2 million bushels, 3 per cent more than the 1,802.7 million at the comparable period a year ago. Larger supplies in Argentina and Australia more than offset reduced supplies in United States and Canada. Supplies at June 1, 1965, in millions of bushels, were held as follows, with last year's comparable figures in brackets: United States, 922.8 (964.1); Canada, 568.7 (593.7); Argentina, 201.8 (138.8); and Australia, 160.9 (106.1).

International Wheat Council  
Cumulative Totals of Commercial Purchases by Importing Countries from Exporting Countries  
Crop Year 1964-65 — Through May 29, 1965

Importing Countries	EXPORTING COUNTRIES								Total
	Canada	Argentina	Australia	France	Italy	Sweden	U.S.S.R.	U.S.A.	Purchases
	- thousand bushels -								
Austria .....	1,660	-	-	-	-	-	-	-	1,660
Belgium & Luxembourg ....	11,872	4,419	-	921	-	3	-	1,525	18,740
Brazil .....	-	37,896	-	-	-	-	-	799	38,695
Costa Rica .....	777	-	-	145	-	-	-	960	1,882
Cuba .....	-	-	-	-	-	-	-	-	-
Dominican Republic .....	717	147	-	-	-	-	-	842	1,706
Ecuador .....	1,333	4	-	-	-	-	-	194	1,531
El Salvador .....	700	-	-	4	-	-	-	912	1,616
Finland .....	343	-	-	-	-	143	2,572	209	3,267
Germany, Federal Republic	17,938	5,551	166	2,491	24	3,572	-	6,736	36,478
Greece .....	16	-	-	-	-	-	-	43	59
Guatemala .....	271	-	-	-	-	-	-	1,643	1,914
Iceland .....	-	-	-	8	-	-	-	124	132
India .....	-	-	9,117	1	-	-	-	3	9,121
Indonesia .....	-	-	298	19	-	-	-	1	318
Ireland .....	1,344	318	1,417	348	-	29	-	653	4,109
Israel .....	529	404	-	-	-	-	-	2,406	3,339
Japan .....	50,724	81	16,204	981	-	-	-	59,157	127,147
Korea .....	-	-	-	-	-	-	-	2	2
Liberia .....	82	-	-	-	-	-	-	101	183
Libya .....	-	-	16	127	1,083	-	-	1	1,227
Netherlands .....	2,565	14,771	-	4,724	-	-	-	13,841	35,901
Netherlands Territories	316	-	1	24	-	-	-	613	954
New Zealand .....	-	-	5,568	-	-	-	-	-	5,568
Nigeria .....	468	140	-	-	-	-	-	2,158	2,766
Norway .....	1,601	1,377	3,237	1,755	-	3,181	-	4	11,155
Peru .....	1,017	8,322	9	1	-	-	-	2,668	12,017
Philippines .....	6,446	-	1,078	956	153	-	-	7,836	16,469
Portugal .....	64	1,805	-	3,031	-	-	-	3,318	8,218
Portuguese Territories.	222	1,120	36	384	-	-	-	496	2,258
Saudi Arabia .....	601	274	880	56	1	-	-	5,127	6,939
Sierra Leone .....	425	-	-	11	-	-	-	117	553
South Africa .....	944	-	-	-	-	-	-	-	944
Southern Rhodesia .....	1	-	1,032	-	-	-	-	396	1,429
Switzerland .....	3,078	281	-	5,547	42	-	-	880	9,828
Tunisia .....	-	-	-	1,565	-	-	-	-	1,565
United Arab Republic ....	-	-	-	2,860	3,908	-	-	20	6,788
United Kingdom .....	73,916	15,925	21,790	6,042	-	447	-	8,437	126,557
U.K. Territories .....	2,945	-	4,871	335	-	-	-	1,788	9,939
Vatican City .....	-	-	-	-	-	-	-	-	-
Venezuela .....	9,054	1,268	-	420	-	-	-	9,704	20,446
Western Samoa .....	-	-	111	-	-	-	-	1	112
To Orders .....	-	11,385	-	-	-	-	-	-	11,385
Totals .....	191,969	105,488	65,831	32,756	5,211	7,375	2,572	133,715	544,917
Percentage of Total Sales by Exporting Countries ..	35.23	19.36	12.08	6.01	0.96	1.35	0.47	24.54	100.00

NOTE: Mexico and Spain - no sales reported.

Argentina and France - Quantities cover period ending May 22, 1965.

Italy - Quantities cover period ending May 14, 1965.

U.S.S.R. - Exemption granted.



# CANADIAN SITUATION

## 1964-65 Wheat Supplies Decline from Previous Year's Record Level

The 1964-65 total supplies of wheat are placed at 1,059.9 million bushels, a decline of 12 per cent from the previous year's record total of 1,210.7 million.

Production for the 1964-65 crop year dropped by some 17 per cent, while the other component of the supplies, carryover stocks, recorded a decrease of 6 per cent. However, total supplies of the size indicated are still the fifth largest on record. After deducting 155.0 million bushels for anticipated domestic requirements, supplies available for export and for carryover during 1964-65 amounted to 904.9 million bushels, about 14 per cent below the 1963-64 total of 1,054.0 million.

## August-May Exports Well Above Average

Total exports of wheat and wheat flour amounted to 336.2 million bushels during the August-May period of the current crop year, surpassing the ten-year (1953-54—

1962-63) average of 249.3 million by 35 per cent. However, this year's volume represented a decline of 27 per cent from the record high level of 460.3 million shipped during the same months a year ago. Of the current total, some 312.4 million bushels were exported as wheat, as compared with 413.4 million the preceding year, while 23.8 million bushels were flour, in terms of wheat equivalent, only about half of the 46.9 million shipped in the same period of 1963-64. The balance remaining for export and for carryover on June 1, 1965 amounted to 568.7 million bushels, some 4 per cent less than the June 1, 1964 total of 593.7 million.

## Canadian Wheat Supplies

Item	1963-64 <u>1/</u>	1964-65 <u>2/</u>
	- million bushels -	
Carryover in North America at beginning of crop year (August 1) .....	487.2	459.4
Production .....	723.4	600.4
Imports of wheat for domestic use, August-May .....	<u>3/</u>	<u>4/</u>
Total estimated supplies .....	1,210.7	1,059.9
Less estimated domestic requirements for crop year .....	156.7	155.0
Available for export and for carryover .....	1,054.0	904.9
Deduct:		
Exports of wheat in bulk, August-May <u>5/</u> .....	410.7	311.3
Exports of bagged seed wheat, August-May <u>6/</u> .....	2.7	1.1
Total exports of wheat as grain .....	413.4	312.4
Exports of wheat flour in terms of wheat, August-May <u>6/</u> .....	46.9	23.8
Total exports of wheat and wheat flour .....	460.3	336.2
Balance on June 1 for export and for carryover .....	593.7	568.7

1/ Revised. 2/ Preliminary. 3/ Less than 50,000 bushels. 4/ Not available.

5/ As reported by the Board of Grain Commissioners. (Includes overseas clearances and imports into the United States). 6/ Customs returns, 1963-64 adjusted for time lag.

Marketings, Disappearance  
and Visible Supplies

Total primary deliveries of wheat (both East and West) up to June 23 of the current crop year have amounted to 411.7 million bushels compared with 469.3

million marketed during the same period of the previous crop year. During the five-week period May 20 to June 23, 1965, primary marketings (East and West) amounted to some 58.7 million bushels as opposed to 45.8 million entering domestic and export channels and, as a result, the total visible supply of Canadian wheat increased from a level of 315.0 million bushels at May 19 to 327.7 million at June 23, 1965.

The total visible supply of Canadian wheat at June 23 this year represented an increase over the comparable 1964 total of 318.9 million but below the 1963 figure of 362.3 million. Country elevator stocks, amounting to 190.5 million, were 2 per cent above the 186.0 million the previous year but one per cent below the 193.2 million of two years ago. Wheat stocks at interior terminals, at June 23, 1965, totalled 5.0 million bushels and recorded declines from the 1964 and 1963 comparable levels of 5.5 million and 5.4 million bushels, respectively. Wheat stocks "in transit rail" (Western Division) amounted to 11.8 million bushels in contrast to 21.9 million a year ago and 16.6 million two years ago. Supplies at the Canadian Lakehead, totalling some 33.8 million bushels were considerably lower than both the 52.8 million of last year and the 61.6 million of two years ago. The 9.1 million bushels "in transit lake" were less than the 13.3 million of last year but considerably more than the 1963 figure of 5.8 million bushels. The 26.8 million bushels in Bay, Lake and Upper St. Lawrence ports were sharply above the 7.2 million bushels in these same ports a year ago but below the 29.6 million of two years ago. Supplies in Lower St. Lawrence and Maritime ports, at June 23, 1965, at 29.6 million bushels, exceeded the 1964 total of 9.3 million by a wide margin and was 13 per cent over the 1963 volume of 26.2 million bushels. The 7.3 million bushels in West Coast ports (Vancouver-New Westminster, Prince Rupert and Victoria) registered decreases from both the 1964 comparable total of 10.0 million and the 1963 figure of 10.7 million bushels.

May 1965 Exports of  
Wheat and Flour Total  
37.7 Million Bushels

Combined exports of wheat in bulk, bagged seed wheat and wheat flour in terms of grain equivalent amounted to 37.7 million bushels during May 1965. This volume is 12 per cent above last month's total of 33.8 million,

16 per cent above the ten-year (1954-63) May average of 32.4 million but 39 per cent below the May 1964 figure of 61.8 million. Exports of wheat in bulk (as reported by the Board of Grain Commissioners) during May 1965 totalled 34.8 million bushels, some 10 per cent more than the 31.8 million recorded for April and 20 per cent above the ten-year (1954-63) average for the month of May of 29.1 million but 39 per cent below the May 1964 total of 57.0 million bushels. Based on Canadian Customs returns, the equivalent of 2.8 million bushels of wheat was exported in the form of flour during May 1965, some 56 per cent more than the previous month's figure of 1.8 million but sharply lower than the May 1964 adjusted total of 4.7 million. Customs exports of bagged seed wheat during May 1965 amounted to 114 thousand compared with the May 1964 total (adjusted to remove time lag) of only 14 thousand bushels.

Cumulative exports of wheat in bulk during the August-May period of the current crop year amounted to 311.3 million bushels, some 24 per cent less than the comparable 1963-64 total of 410.7 million, but sharply above the ten-year (1953-54-1962-63) average for the period of 214.5 million. The principal markets for Canadian wheat in bulk during the first ten months of the current crop year, with figures for the same period of the preceding crop year in brackets, were as follows, in millions of bushels: Britain, 59.6 (61.1); China Communist, 56.0 (35.1); Japan, 43.4 (40.4); Czechoslovakia, 21.9 (5.1); Federal



Republic of Germany, 17.5 (32.3); Poland, 14.7 (8.1); Belgium and Luxembourg, 12.5 (14.4); East Germany, 8.6 (nil); and Venezuela, 8.3 (6.2).

Cumulative exports of bagged seed wheat during August-May of the current crop year, based on Canadian Customs returns, amounted to 1.1 million bushels, sharply below last year's comparable total (adjusted to remove time lag) of 2.7 million.

Cumulative exports of wheat flour during the first ten months of the 1964-65 crop year, based on Customs returns, were the equivalent of 23.8 million bushels, below both the adjusted August 1963-May 1964 total of 46.9 million bushels and the ten-year average for the period of 31.0 million. The leading markets for Canadian wheat flour in terms of wheat equivalent during the August-May period of the 1964-65 crop year, with revised data for the same months of the preceding crop year in brackets, were as follows, in millions of bushels: Britain, 8.1 (10.0); Cuba, 2.9 (6.1); U.S.S.R. (Russia), 1.7 (19.2); Ghana, 1.4 (0.9); Jamaica, 1.4 (1.4); Trinidad and Tobago, 1.2 (1.3); Leeward and Windward Islands, 0.8 (0.9); United States, 0.8 (0.9); Costa Rica, 0.7 (0.5); Ceylon, 0.6 (1.1); and Hong Kong, 0.6 (0.7).

Quota  
Position

By July 5, 1965, the Canadian Wheat Board had placed 1,902 of the 1,907 shipping points in the Western Division on a quota of 6 bushels per specified acre.

Only five stations were "closed". In addition, the Board had established supplementary quotas based on acreage seeded to wheat, for delivery of wheat other than Durum. As at July 5, there were 1,427 shipping points on a supplementary quota of 9 bushels per seeded acre and 465 points on a supplementary quota of 4 bushels per seeded acre.

Summary of Elevator Shipping Points in the Western Division  
as at July 5, 1965

Province	Supplementary Wheat (Except Durum)		General Quota in Bushels per Specified Acre	Closed	Total
	4 bu.	9 bu.			
Ontario .....	-	1	1	-	1
Manitoba .....	111	231	342	-	342
Saskatchewan .....	321	698	1,029	3	1,032
Alberta .....	33	492	525	2	527
British Columbia .....	-	5	5	-	5
All Provinces .....	465	1,427	1,902	5	1,907

Preliminary Estimates  
of Specified Crop  
and Summerfallow Acreages  
Prairie Provinces, 1965

The 1965 acreage estimates are based on returns from the Dominion Bureau of Statistics' annual June survey. Due to the delay in seeding, questionnaires were sent to farmers at a later date than normal and in addition, many correspondents delayed returning reports until seeding plans were finalized. Thus for some districts where seeding was delayed the sample used to make these estimates includes returns received in Ottawa up to June 28 and should reflect changes due to the late seeding season. Agricultural statisticians in each of the provinces have co-operated in determining the estimates.

Preliminary Estimates of Crop and Summerfallow Acreages  
1965 with Comparisons - Prairie Provinces

Crops	Average 1953-62	1963	1964	1965	1965 as % of 1964
- acres -					%
<u>PRAIRIE PROVINCES</u>					
Wheat (incl. durum) ..	23,534,900	26,996,000	29,080,000	27,790,000	96
Oats .....	7,888,700	7,385,000	6,544,000	6,610,000	101
Barley .....	7,713,700	5,922,000	5,217,000	5,741,000	110
Fall rye .....	440,200	484,000	519,000	601,000	116
Spring rye .....	170,600	98,800	100,900	103,000	102
All rye .....	610,800	582,800	619,900	704,000	114
Flaxseed .....	2,081,700	1,629,000	1,916,000 <u>2/</u>	2,184,000	114
Rapeseed .....	386,100 <u>1/</u>	478,000	791,000 <u>2/</u>	1,485,000	188
Summerfallow .....	25,754,200	27,211,000	26,375,000	26,580,000	101
<u>MANITOBA</u>					
Wheat (incl. durum) ..	2,481,900	3,153,000	3,385,000	3,240,000	96
Oats .....	1,727,100	1,742,000	1,764,000	1,630,000	92
Barley .....	1,497,700	584,000	497,000	601,000	121
Fall rye .....	81,700	104,000	146,000	148,000	101
Spring rye .....	8,000	3,000	3,000	3,000	100
All rye .....	89,700	107,000	149,000	151,000	101
Flaxseed .....	629,600	820,000	1,025,000 <u>2/</u>	1,160,000	113
Rapeseed .....	20,500	45,000	84,000 <u>2/</u>	145,000	173
Summerfallow .....	3,154,300	3,260,000	2,880,000	2,900,000	101
<u>SASKATCHEWAN</u>					
Wheat (incl. durum) ..	15,513,900	17,910,000	19,200,000	18,500,000	96
Oats .....	3,201,800	2,619,000	2,040,000	2,330,000	114
Barley .....	2,840,000	1,930,000	1,400,000	1,750,000	125
Fall rye .....	234,700	206,000	216,000	263,000	122
Spring rye .....	128,400	69,400	73,000	77,000	105
All rye .....	363,100	275,400	289,000	340,000	118
Flaxseed .....	1,040,800	506,000	521,000	610,000	117
Rapeseed .....	278,700	210,000	303,000 <u>2/</u>	555,000	183
Summerfallow .....	15,363,900	16,898,000	16,815,000	16,800,000	100
<u>ALBERTA</u>					
Wheat (incl. durum) ..	5,539,100	5,933,000	6,495,000	6,050,000	93
Oats .....	2,959,800	3,024,000	2,740,000	2,650,000	97
Barley .....	3,376,000	3,408,000	3,320,000	3,390,000	102
Fall rye .....	123,800	174,000	157,000	190,000	121
Spring rye .....	34,300	26,400	24,900	23,000	92
All rye .....	158,100	200,400	181,900	213,000	117
Flaxseed .....	411,300	303,000	370,000 <u>2/</u>	414,000	112
Rapeseed .....	86,900	223,000	404,000 <u>2/</u>	785,000	194
Summerfallow .....	7,236,000	7,053,000	6,680,000	6,880,000	103

1/ Composed of 10 year 1953-62 average in Manitoba and Saskatchewan and 8 year 1955-62 average in Alberta.

2/ Revised.



After five years when acreage increased consecutively, all wheat acreage in the Prairie Provinces declined to 27,790,000 acres from the 1964 peak of 29,080,000, a reduction of 4 per cent. The decrease was common to all three provinces, with the 1965 acreage in Manitoba at 3,240,000 and Saskatchewan at 18,500,000, both down 4 per cent, while the Alberta acreage at 6,050,000 was reduced by 7 per cent. Practically all of the reduction was due to a sharp decrease in durum wheat plantings. Prairie acreage in this crop totalled 840,000 acres in 1965 in contrast to 1,888,000 in 1964, a reduction of 56 per cent. The 1965 durum acreage is 41 per cent below the average seeded in the 1953-62 period.

Preliminary Estimate of Durum Wheat Acreages  
1965 with Comparisons - Prairie Provinces

Province	Average 1953-62	1963	1964	1965	1965 as % of 1964
		- acres -			%
Manitoba .....	71,000	140,000	120,000	40,000	33
Saskatchewan .....	1,144,700	1,796,000	1,541,000	725,000	47
Alberta .....	198,100	234,000	227,000	75,000	33
Prairie Provinces ....	1,413,800	2,170,000	1,888,000	840,000	44

The acreage seeded to oats for all purposes totalled 6,610,000 acres, some one per cent above the 1964 level of 6,544,000 but 16 per cent below the 10-year average of 7,888,700. All of the increase in 1965 acreage over the year previous was due to a 14 per cent jump in the Saskatchewan area to a level of 2,330,000 from 2,040,000 in 1964. The acreage in Manitoba at 1,630,000 in 1965 registered an 8 per cent decline from the 1,764,000 acres the previous year while the Alberta acreage at 2,650,000 this year declined by 3 per cent from the 2,740,000 seeded in 1964. The increase in the area seeded to barley in 1965 was much sharper than that registered for oats and all provinces participated in the increase. The Prairie barley acreage at 5,741,000 in 1965 is 10 per cent larger than the 1964 acreage of 5,217,000. However, this level is still 26 per cent below the 1953-1962 average. In Manitoba current barley acreage at 601,000 is 21 per cent larger than the 1964 acreage of 497,000 while the current Saskatchewan acreage of 1,750,000 registered an increase of 25 per cent over the 1964 level of 1,400,000. In Alberta the 1965 acreage of 3,390,000 is only 2 per cent above the 3,320,000 acres of the previous year.

Fall and spring sown rye were planted on 704,000 acres which represents an increase of 14 per cent over the 1964 acreage of 619,900 and is 15 per cent above the 1953-1962 average of 610,800.

Significant increases also occurred in the acreage seeded to flaxseed and especially rapeseed. The 1965 flaxseed area at 2,184,000 is 14 per cent above the 1,916,000 acres seeded in 1964 and 5 per cent above the 10-year average of 2,081,700. An increase was registered in each of the Prairie Provinces with the 1965 Manitoba acreage at 1,160,000 up 13 per cent, the Saskatchewan area at 610,000 up 17 per cent and the Alberta acreage at 414,000 up 12 per cent from that seeded in 1964. The Manitoba acreage established a new record by exceeding the 1948 level of 1,000,000 acres and is double the barley acreage sown in that province thus maintaining its position as the third most important cash crop after wheat and oats in terms of area.



The Prairie rapeseed area at a record 1,485,000 registered an increase of 88 per cent over the previous record of 791,000 seeded in 1964 and is approaching an area nearly four times as large as the 1953-62 average of 386,100 acres. The large increase in seeded area was shared by all three provinces. The Alberta acreage at 785,000 is up 94 per cent from the 1964 level of 404,000. In Saskatchewan 555,000 acres were planted this spring which represents an increase of 83 per cent over the 1964 level of 303,000, while in Manitoba the increase was 73 per cent bringing the current level to 145,000 acres in contrast to 84,000 the previous season.

The area of improved land to be summerfallowed in 1965 at 26,580,000 is a moderate one per cent above the 1964 level of 26,375,000 and 3 per cent above the ten-year average. This reverses the downward trend of summerfallow acreage of the past four seasons and probably reflects difficulties in planting all of the intended crop land because of the late spring. The Alberta acreage at 6,880,000 is 3 per cent larger than the preceding year while the Saskatchewan level of 16,800,000 is virtually unchanged. The Manitoba acreage at 2,900,000 for 1965 is up one per cent from the previous year.

#### Crop and Weather Conditions

The telegraphic crop report, published by the Dominion Bureau of Statistics on July 14, 1965 summarized crop conditions in the Prairie Provinces as follows: In general, the crop outlook in Manitoba is favourable. Early crops are headed in southern districts and in the heading stage throughout other parts of the province. Haying is well advanced in some areas, but is being delayed by damp weather. Sugar-beet thinning has been completed and canning of peas commenced last week. Moisture supplies are generally adequate, but additional amounts will be needed to support the heavy growth.

The weather has resulted in good crop growth in Saskatchewan during the past week but the stage of development continues to be about a week to ten days late. At this time, the general appearance of crops and yield prospects are excellent. About 20 per cent of the wheat is headed compared with 55 per cent last year. Moisture conditions are favourable in all districts but warmer temperatures, coupled with frequent showers, are needed to advance grains and to maintain heavy growth.

Crop prospects in Alberta are generally very good, with much of the crop now headed. In central, northern and Peace River regions, early-sown crops are doing better with late crops needing warm weather to hasten development. The canning pea harvest will begin by the week end. Potatoes will not be dug before the end of the month and other vegetable crops are late. Wet weather has seriously delayed haying operations with considerable volumes having to be put up as silage in the Red Deer district. Pastures are good. As a result of the weather, summerfallows are weedy and some flooding and soil erosion is reported.

#### Rust Report for the Prairie Provinces

The Canada Department of Agriculture at Winnipeg reports that wheat leaf rust is the most prevalent type and small amounts are present in Manitoba and southeastern and north-central Saskatchewan. Near Winnipeg the earliest wheat fields which are now headed have scattered pustules on the lower leaves and late fields have mere traces on bottom leaves. In Saskatchewan, surveys at Alameda and Langenburg showed

Continued on page 32.

Farmers' Marketings 1/ of Wheat in the Prairie Provinces 1964-65

Week Ending		Manitoba	Saskatchewan	Alberta	Total	Last Year <u>2/</u>
- bushels -						
August	12, 1964 .....	75,662	409,500	98,247	583,409	543,483
	19 .....	165,645	350,728	200,845	717,218	814,732
	26 .....	606,652	1,186,624	360,697	2,153,973	2,958,768
September	2 .....	259,162	1,731,216	542,073	2,532,451	3,670,105
	9 .....	626,938	2,337,139	282,197	3,246,274	7,414,702
	16 .....	2,861,693	3,000,932	736,446	6,599,071	8,966,278
	23 .....	4,677,736	10,134,664	3,309,300	18,121,700	6,291,301
	30 .....	2,253,868	11,072,846	2,974,796	16,301,510	9,604,797
October	7 .....	1,436,956	6,617,924	3,090,763	11,145,643	11,308,739
	14 .....	1,575,017	7,043,761	6,481,794	15,100,572	8,789,151
	21 .....	1,816,060	11,532,537	6,007,602	19,356,199	11,558,396
	28 .....	2,311,743	10,169,173	4,069,997	16,550,913	15,015,073
November	4 .....	2,583,044	6,802,878	3,630,412	13,016,334	15,281,709
	11 .....	2,063,739	7,630,517	3,107,184	12,801,440	13,599,259
	18 .....	1,836,676	6,766,380	2,980,075	11,583,131	15,332,440
	25 .....	1,534,854	7,469,802	3,168,692	12,173,348	11,869,874
December	2 .....	1,521,191	5,254,805	2,029,339	8,805,335	17,528,964
	9 .....	1,305,493	5,003,945	2,325,113	8,634,551	19,357,177
	16 .....	2,964,986	13,588,764	3,746,693	20,300,443	10,101,263
	23 .....	794,134	6,484,116	1,408,499	8,686,749	7,292,811
	30 .....	648,303	2,405,338	1,012,360	4,066,001	11,252,775
January	6, 1965 .....	695,986	5,748,287	1,301,676	7,745,949	15,799,953
	13 .....	1,034,504	1,584,566	1,118,931	3,738,001	16,553,644
	20 .....	616,905	4,983,638	4,339,605	9,940,148	16,268,127
	27 .....	1,739,531	12,925,263	5,343,141	20,007,935	5,700,105
February	3 .....	447,871	1,452,759	2,483,788	4,384,418	11,039,892
	10 .....	379,082	1,169,508	1,690,970	3,239,560	7,962,153
	17 .....	674,240	2,265,066	1,731,833	4,671,139	7,584,566
	24 .....	845,577	3,127,348	1,954,646	5,927,571	5,825,207
March	3 .....	607,664	1,916,304	2,241,044	4,765,012	5,224,573
	10 .....	910,214	3,338,276	3,033,095	7,281,585	4,968,290
	17 .....	1,307,400	4,348,768	2,221,656	7,877,824	5,522,944
	24 .....	410,263	1,504,214	2,148,172	4,062,649	4,396,596
	31 .....	557,938	1,117,843	1,828,357	3,504,138	2,507,410
April	7 .....	761,892	2,275,722	2,262,045	5,299,659	5,861,716
	14 .....	473,538	1,419,500	1,426,640	3,319,678	5,945,568
	21 .....	446,305	1,050,800	748,739	2,245,844	7,741,542
	28 .....	882,147	5,910,227	2,242,148	9,034,522	13,377,654
May	5 .....	908,461	10,844,618	2,767,246	14,520,325	13,218,916
	12 .....	523,922	5,864,165	2,107,298	8,495,385	7,205,841
	19 .....	594,178	2,625,856	1,258,028	4,478,062	8,045,609
	26 .....	390,002	2,556,139	1,164,159	4,110,300	7,203,616
June	2 .....	508,347	4,508,222	1,874,530	6,891,099	12,683,135
	9 .....	941,931	9,893,734	2,458,680	13,294,345	27,656,918
	16 .....	1,895,601	13,313,094	3,211,463	18,420,158	23,424,515
	23 .....	3,141,556	9,501,651	3,330,913	15,974,120	13,453,626
Totals .....		55,614,607	242,239,157	107,851,927	405,705,691	463,723,913
Average similar period:						
1953-54--1962-63 .....		33,079,354	181,353,368	78,736,273	293,168,995	

1/ Includes receipts at country, interior private and mill elevators, interior semi-public terminals and platform loadings. 2/ Revised.



Visible Supply of Canadian Wheat, June 23, 1965  
Compared with Approximately the Same Date, 1963 and 1964

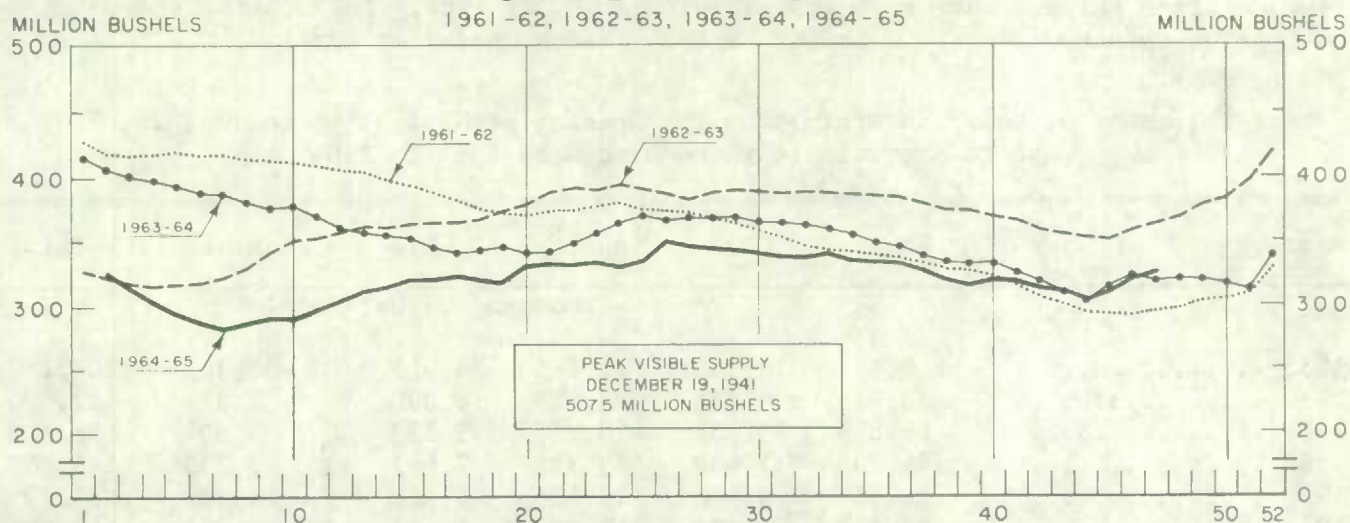
Position	1963	1964	1965
- thousand bushels -			
Country elevators - Manitoba .....	23,522	17,905	25,284
Saskatchewan .....	110,273	112,792	109,250
Alberta .....	59,439	55,349	55,936
Totals .....	193,234	186,046	190,470
Interior private and mill .....	7,804	7,590	7,613
Interior terminals .....	5,436	5,516	4,951
Vancouver-New Westminster .....	9,991	8,648	6,598
Victoria .....	434	660	522
Prince Rupert .....	268	710	167
Churchill .....	4,857	4,759	4,700
Fort William-Port Arthur .....	61,633	52,825	33,830
In transit rail (Western Division) .....	16,552	21,876	11,826
Bay, Lake and Upper St. Lawrence ports .....	29,645	7,192	26,752
Lower St. Lawrence and Maritime ports .....	26,211	9,303	29,620
In transit lake .....	5,760	13,319	9,131
In transit rail (Eastern Division) .....	435	475	1,540
Totals .....	362,260	318,917	327,720

Grading of Wheat Inspected, August 1964-May 1965 with Comparisons

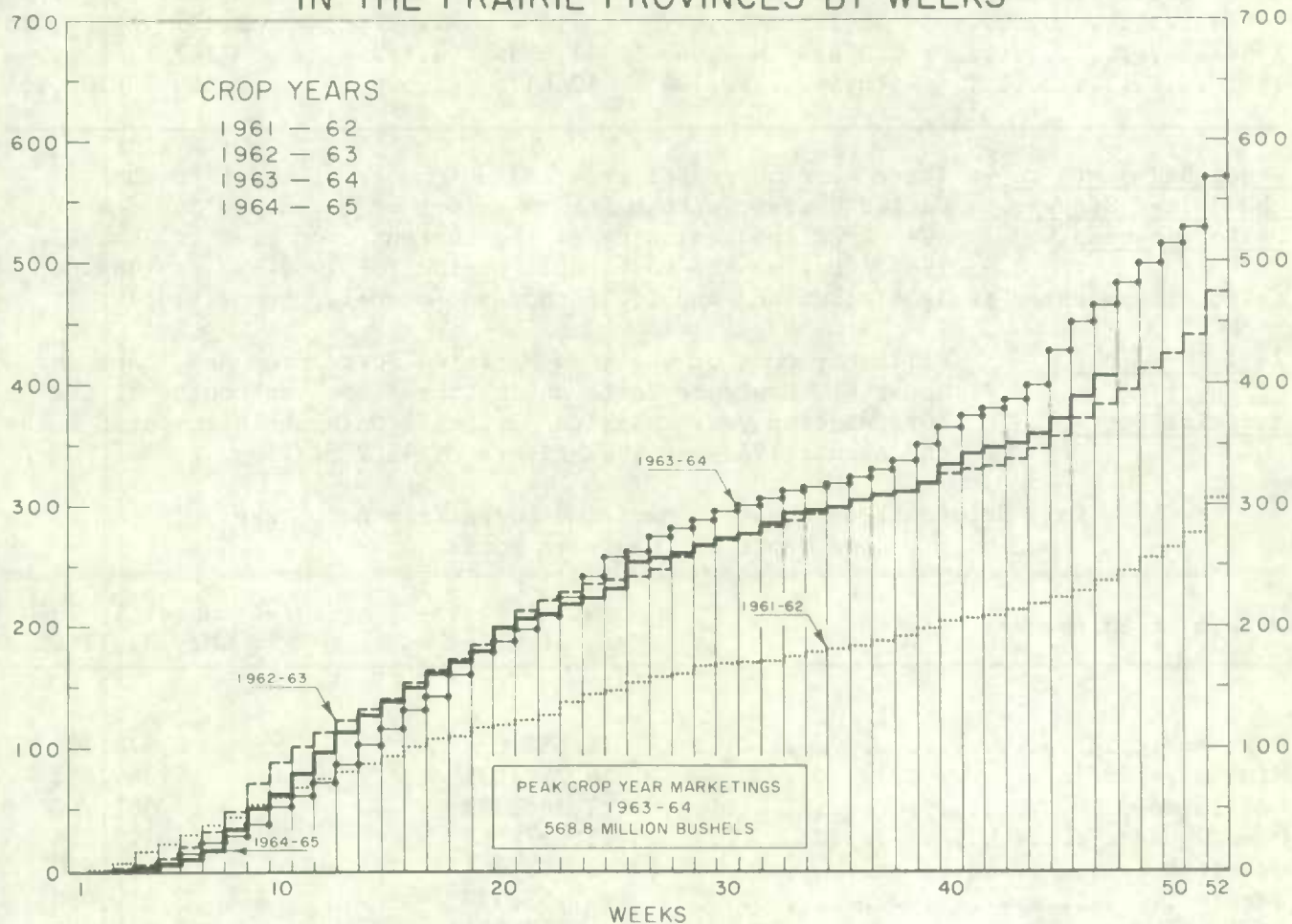
Grade	Crop Year		August-May			
	Average					
	1958-59	1963-64	1963-64		1964-65	
	1962-63					
	per cent	per cent	cars	per cent	cars	per cent
No. 1 Man. Northern .....	7.6	4.8	10,424	4.3	5,502	2.7
No. 2 Man. Northern .....	38.0	49.2	108,717	45.3	72,697	35.2
No. 3 Man. Northern .....	22.6	25.1	63,336	26.4	46,952	22.8
No. 4 Man. Northern .....	10.0	6.6	18,973	7.9	17,422	8.4
No. 5 Wheat .....	4.4	3.4	10,074	4.2	11,092	5.4
No. 6 Wheat .....	0.6	0.5	1,468	0.6	1,161	0.6
Feed Wheat .....	1/	1/	15	1/	43	1/
Others Red Spring .....	10.1	3.0	8,516	3.5	37,224	18.0
C.W. Garnet .....	0.1	0.4	1,068	0.4	169	0.1
C.W. White Spring .....	0.1	0.1	212	0.1	233	0.1
C.W. Mixed Wheat .....	1/	0.1	120	1/	107	0.1
Alberta Winter .....	0.2	0.9	2,635	1.1	1,172	0.6
Nos. 1-6 C.W. Amber Durum ..	6.0	5.7	13,963	5.8	11,807	5.7
Others C.W. Amber Durum ....	0.2	0.2	509	0.2	766	0.4
Totals .....	100.0	100.0	240,030	100.0	206,347	100.0
Gross bushels (approx.) ....			462,051,000		399,560,000	
1/ Less than .05 per cent.						



# WEEKLY VISIBLE SUPPLY OF CANADIAN WHEAT



## CUMULATIVE RECORD OF WHEAT MARKETINGS IN THE PRAIRIE PROVINCES BY WEEKS



(Data in both charts for crop years beginning August 1)

Lake Shipments of  
Canadian Grain

Total shipments of the five major grains out of Lakehead terminals from the opening of navigation to June 23 this year amounted to 106.3 million bushels, 27 per cent less than the 146.3 million shipped during the comparable period of 1964. In 1965 the season of navigation opened on April 20 while the 1964 season opened on April 2.

Lake Shipments of Canadian Grain from the Opening of Navigation to June 23, 1965  
and to Approximately the Same Date 1955 to 1964

Year	Wheat	Oats	Barley	Rye	Flaxseed	Total
- thousand bushels -						
1955 .....	64,123	10,963	25,876	4,965	2,321	108,249
1956 .....	78,954	9,281	25,929	6,339	1,917	122,420
1957 .....	66,639	13,536	18,255	3,252	4,894	106,576
1958 .....	86,832	17,658	33,337	3,947	2,235	144,009
1959 .....	56,157	9,460	17,485	1,121	1,509	85,733
1960 .....	73,827	7,308	18,927	1,523	1,996	103,581
1961 .....	96,690	10,016	15,018	1,272	2,431	125,429
1962 .....	44,299	5,932	8,936	154	1,385	60,704
1963 .....	52,198	15,997	7,696	1,007	2,177	79,075
1964 .....	120,653	9,043	11,649	1,789	3,207	146,342
1965 .....	78,349	12,744	10,617	1,506	3,064	106,281

Wheat Shipments to  
the United States  
by Destination

There were no vessel and rail shipments of wheat to the United States, either for re-export or retention for domestic use, from the beginning of the current crop year to June 23, 1965. During the comparable periods of 1962-63 and 1963-64, shipments amounted to 1,441 thousand and 1,226 thousand bushels, respectively.

Rail Shipments  
of Wheat to  
Maritime Ports

Rail shipments of wheat to Maritime Ports from Bay, Lake and Upper St. Lawrence Ports during the first ten months of the current crop year totalled 32.1 million bushels compared with the August 1963-May 1964 figure of 41.9 million.

Rail Shipments of Wheat to Maritime Ports from Bay, Lake  
and Upper St. Lawrence Ports

Origin of Shipments	August 1, 1963- May 31, 1964	August 1, 1964- May 31, 1965
- bushels -		
Port McNicoll .....	11,854,674	6,478,328
Midland, Tiffin .....	14,242,201	9,649,652
Collingwood .....	1,388,393	581,750
Owen Sound .....	5,667,783	6,123,206
Goderich .....	3,463,804	3,453,640
Sarnia .....	4,155,019	3,159,960
Port Colborne .....	747,601	2,524,027
Peterborough .....	348,266	-
Walkerville .....	-	144,399
Totals .....	41,867,741	32,114,962



Rail Shipments of Wheat from Fort William-Port Arthur, 1961-62--1964-65

Month	1961-62	1962-63	1963-64	1964-65
- bushels -				
August .....	20,648	13,933	5,500	7,786
September .....	14,598	11,657	9,104	19,564
October .....	33,944	22,716	25,355	12,135
November .....	22,915	12,024	13,500	13,167
December .....	60,167	12,778	23,047	26,961
January .....	126,533	39,534	58,772	10,703
February .....	68,421	22,967	28,768	17,214
March .....	37,000	86,398	21,268	112,296
April .....	37,777	69,067	26,063	17,506
May .....	11,203	11,851	7,941	8,207
June .....	16,022	15,746	20,518	
July .....	17,315	11,158	12,707	
Totals .....	466,543	329,829	252,543	

Distribution of Rail Shipments of Wheat from Fort William-Port Arthur, May 1965

Grade	Quebec	Ontario
- bushels -		
5 Wheat .....	1,500	-
Tough .....	-	2,707
Durum .....	4,000	-
Totals .....	5,500	2,707

Overseas Exports of Canadian Grain by Ports of Loading, August 1, 1964-June 23, 1965  
with Comparisons

Port	Wheat <u>1/</u>	Durum Wheat <u>1/</u>	Oats <u>1/</u>	Barley	Rye	Flaxseed	Rapeseed <u>2/</u>
- bushels -							
<u>Pacific Seaboard</u>							
Van.-New West. ....	118,157,776	10,547,693	3,740,374	18,410,504	1,045,406	6,039,369	8,048,239
Victoria .....	7,397,628	-	-	-	-	-	160,520
Prince Rupert .....	8,686,646	-	-	-	-	-	-
<u>Churchill</u> .....	21,644,772	-	-	-	-	-	-
<u>Lakehead Direct</u> .....	2,394,962	907,549	4,199,589	4,047,939	893,499	3,444,863	475,002
<u>Kingston Direct</u> .....	343,541	-	-	-	-	-	-
<u>St. Lawrence</u>							
Montreal .....	40,840,708	8,148,314	646,368	197,795	62,710	2,482,650	-
Sorel .....	12,464,132	413,060	-	-	-	42,629	-
Three Rivers .....	10,647,466	1,485,947	-	-	176,600	313,037	-
Quebec .....	10,731,663	1,392,907	-	-	-	117,439	-
Baie Comeau .....	38,006,674	5,098,056	-	-	-	152,995	-
<u>Maritime</u>							
Saint John .....	1,465,488	-	-	-	-	-	-
West Saint John .....	16,283,847	1,664,245	164,620	-	-	39,963	66,799
Halifax .....	14,043,499	489,424	-	-	-	144,500	-
Totals .....	303,108,802	30,147,195	8,750,951	22,656,238	2,178,215	12,777,445	8,750,560
Aug. 1, 1963-June 24, 1964.	436,045,633	23,511,886	15,454,601	29,695,610	4,302,772	11,837,411	4,695,736

1/ Excluding bagged seed.

2/ In bushels of 50 pounds.



Monthly Exports of Canadian Wheat and Wheat Flour

Year and Month	Wheat in Bulk <u>1/</u>	Bagged Seed Wheat <u>2/</u>	Total Wheat	Wheat Flour <u>2/</u> <u>3/</u>	Total <u>3/</u> Wheat and Wheat Flour
- thousand bushels -					
<u>1962-63</u>					
August .....	21,944	157	22,101	2,852	24,953
September .....	25,040	200	25,240	2,604	27,844
October .....	29,705	31	29,737	2,181	31,917
November .....	33,309	144	33,452	2,176	35,628
December .....	20,949	451	21,399	2,305	23,705
January .....	21,486	473	21,959	1,586	23,545
February .....	18,779	743	19,522	1,811	21,333
March .....	19,246	1,373	20,618	2,454	23,072
April .....	28,916	422	29,338	2,330	31,669
May .....	35,355	14	35,369	2,186	37,555
June .....	24,512	<u>4/</u>	24,513	2,837	27,350
July .....	20,854	-	20,854	1,943	22,798
Totals .....	300,095	4,007	304,102	27,265	331,367
<u>1963-64</u>					
August .....	29,204	187	29,391	2,819	32,210
September .....	42,556	129	42,686	2,106	44,791
October .....	59,020	15	59,035	3,520	62,555
November .....	65,296	204	65,499	4,538	70,037
December .....	41,763	388	42,151	6,284	48,435
January .....	28,451	535	28,987	5,829	34,816
February .....	21,675	562	22,237	5,800	28,037
March .....	22,510	484	22,995	5,697	28,692
April .....	43,211	213	43,423	5,530	48,954
May .....	56,992	14	57,006	4,744	61,750
June .....	65,036	144	65,180	3,768	68,948
July .....	61,012	35	61,047	4,275	65,322
Totals .....	536,726	2,912	539,637	54,910	594,548
<u>1964-65</u> <u>5/</u>					
August .....	42,226	44	42,270	4,073	46,343
September .....	42,792	145	42,937	2,133	45,069
October .....	40,120	27	40,147	2,037	42,184
November .....	30,976	44	31,020	2,523	33,543
December .....	27,720	72	27,792	2,522	30,314
January .....	18,098	73	18,171	2,421	20,591
February .....	19,337	118	19,455	1,332	20,787
March .....	23,376	272	23,648	2,201	25,849
April .....	31,798	228	32,026	1,783 <u>6/</u>	33,809 <u>6/</u>
May .....	34,822	114	34,937	2,777	37,714
Totals .....	311,266	1,137	312,403	23,801	336,204

1/ Export clearances including shipments to the United States compiled by the Statistics Branch, Board of Grain Commissioners for Canada. 2/ Compiled from Canadian Customs returns, 1962-63 and 1963-64 adjusted to remove effect of time lag in reporting. 3/ In terms of wheat equivalent. Wheat flour conversion rate: 2.3 bushels per cwt. 4/ Less than 500 bushels. 5/ Preliminary, subject to revision. 6/ Revised.

Exports of Canadian Wheat 1/ by Destination, May 1965 and 1964

Destination	Wheat	Durum	All Wheat	
	(Except Durum)	Wheat	May 1965	May 1964 2/
- bushels -				
<u>Western Europe</u>				
<u>EEC</u>				
Belgium and Luxembourg .....	282,786	227,475	510,261	561,556
France .....	731,714	156,800	888,514	408,762
Germany, Federal Republic .....	724,707	1,176,984	1,901,691	5,010,044
Italy .....	95,000	-	95,000	-
Netherlands .....	625,176	229,678	854,854	106,533
Sub-totals .....	2,459,383	1,790,937	4,250,320	6,086,895
<u>Other Western Europe</u>				
Austria .....	-	-	-	445,655
Britain .....	5,986,357	48,534	6,034,891	6,363,404
Finland .....	-	-	-	369,600
Ireland .....	566,421	-	566,421	50,400
Malta and Gozo .....	189,094	12,320	201,414	-
Norway .....	-	-	-	35,467
Portugal .....	-	-	-	410,667
Sweden .....	11,200	22,400	33,600	-
Switzerland .....	58,520	99,181	157,701	942,194
Sub-totals .....	6,811,592	182,435	6,994,027	8,617,387
Totals .....	9,270,975	1,973,372	11,244,347	14,704,282
<u>Eastern Europe</u>				
Albania .....	280,000	104,533	384,533	-
Bulgaria .....	1,136,972	-	1,136,972	2,214,645
Czechoslovakia .....	3,214,400	-	3,214,400	1,564,300
Germany, East .....	393,158	385,827	778,985	-
U.S.S.R. (Russia) .....	2,918,612	-	2,918,612	26,972,516
Totals .....	7,943,142	490,360	8,433,502	30,751,461
<u>Africa</u>				
Nigeria .....	93,333	-	93,333	-
<u>Asia</u>				
China, Communist .....	4,230,689	3,418,037	7,648,726	4,281,116
Hong Kong .....	74,293	-	74,293	38,267
India .....	757,056	-	757,056	-
Japan .....	4,858,230	27,005	4,885,235	4,020,368
Malaysia .....	94,640	-	94,640	39,200
Pakistan .....	-	-	-	354,984
Philippines .....	-	-	-	712,525
Saudi Arabia .....	128,195	-	128,195	-
Taiwan .....	73,509	-	73,509	39,200
Totals .....	10,216,612	3,445,042	13,661,654	9,485,660
<u>Oceania</u>				
United States Oceania .....	37,333	-	37,333	-
<u>Western Hemisphere</u>				
Cuba .....	720,533	-	720,533	678,011
Ecuador .....	144,428	-	144,428	287,094
El Salvador .....	147,131	-	147,131	-
Guatemala .....	32,533	-	32,533	-
Jamaica .....	1,197	-	1,197	1,793
Nicaragua .....	86,240	-	86,240	-
Peru .....	179,200	-	179,200	-
Venezuela .....	41,000	-	41,000	1,084,101
Totals .....	1,352,262	-	1,352,262	2,050,999
Sub-totals, All Countries .....	28,913,657	5,908,774	34,822,431	56,992,402
Bagged seed 4/ .....			114,297	13,640
Totals, All Countries .....	28,913,657	5,908,774	34,936,728	57,006,042

NOTE: See footnotes on page 17.

Cumulative Exports of Canadian Wheat 1/ by Destination

Destination	August 1964-May 1965			Total
	Wheat (Except Durum)	Durum Wheat	Total Wheat	Same Period Last Year <u>2/</u>
- bushels -				
<u>Western Europe</u>				
<u>EEC</u>				
Belgium and Luxembourg .....	11,328,914*	1,132,832*	12,461,746*	14,396,185
France .....	1,991,690*	3,065,981*	5,057,671*	3,956,876
Germany, Federal Republic ...	10,981,792*	6,553,185*	17,534,977*	32,306,044
Italy .....	3,432,427	-	3,432,427	3,758,777
Netherlands .....	3,173,171*	334,585*	3,507,756*	3,175,111
Sub-totals .....	30,907,994	11,086,583	41,994,577	57,592,993
<u>Other Western Europe</u>				
Austria .....	1,082,293	578,000	1,660,293	970,559
Britain .....	59,366,141	234,080	59,600,221	61,095,158
Denmark .....	-	-	-	20,543
Finland .....	343,467	-	343,467	726,133
Ireland .....	1,687,164	13,067	1,700,231	2,192,400
Malta and Gozo .....	599,761	14,187	613,948	1,093,827
Norway .....	1,601,120	-	1,601,120	1,702,670
Portugal .....	-	-	-	410,667
Sweden .....	11,200	33,600	44,800	22,400
Switzerland .....	1,102,682	2,030,543	3,133,225	5,326,076
Sub-totals .....	65,793,828	2,903,477	68,697,305	73,560,433
Totals .....	96,701,822	13,990,060	110,691,882	131,153,426
<u>Eastern Europe</u>				
Albania .....	3,949,569	308,914	4,258,483	1,954,401
Bulgaria .....	5,752,853	-	5,752,853	5,374,165
Czechoslovakia .....	21,902,798	-	21,902,798	5,099,326
Germany, East .....	8,188,703	385,827	8,574,530	-
Hungary .....	3,614,420	-	3,614,420	-
Poland .....	10,932,980	3,784,181	14,717,161	8,074,354
U.S.S.R. (Russia) .....	3,889,592	-	3,889,592	154,478,215
Yugoslavia .....	-	-	-	3,501,866
Totals .....	58,230,915	4,478,922	62,709,837	178,482,327
<u>Africa</u>				
Mozambique .....	24,105	-	24,105	102,057
Nigeria .....	433,357	-	433,357	520,218
Republic of South Africa .....	944,533	-	944,533	-
Rhodesia .....	48,210	-	48,210	18,667
Totals .....	1,450,205	-	1,450,205	640,942



# FARMERS' MARKETINGS OF WHEAT, PRAIRIE PROVINCES

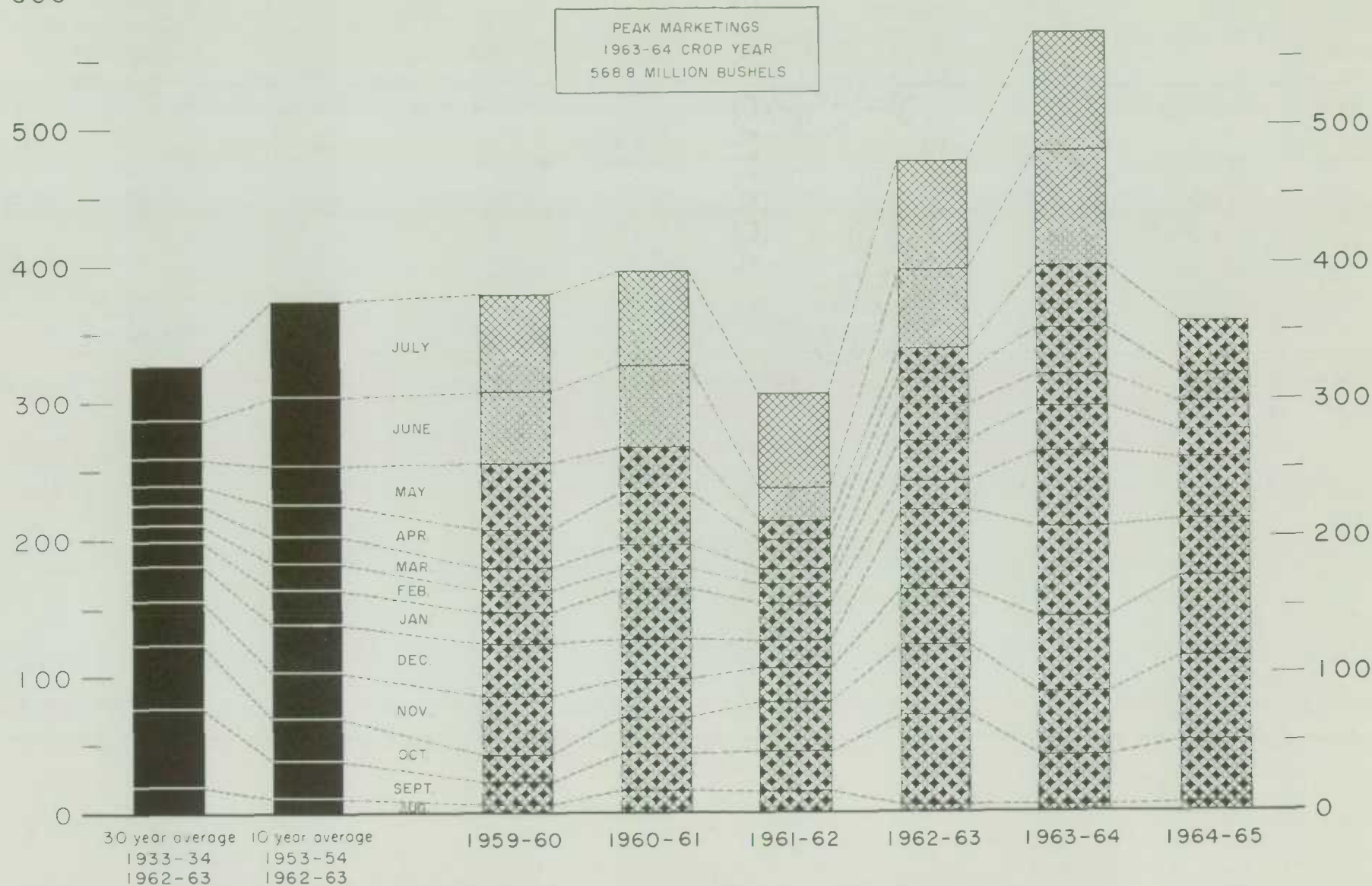
(SPECIFIED PERIODS)

MILLION BUSHELS

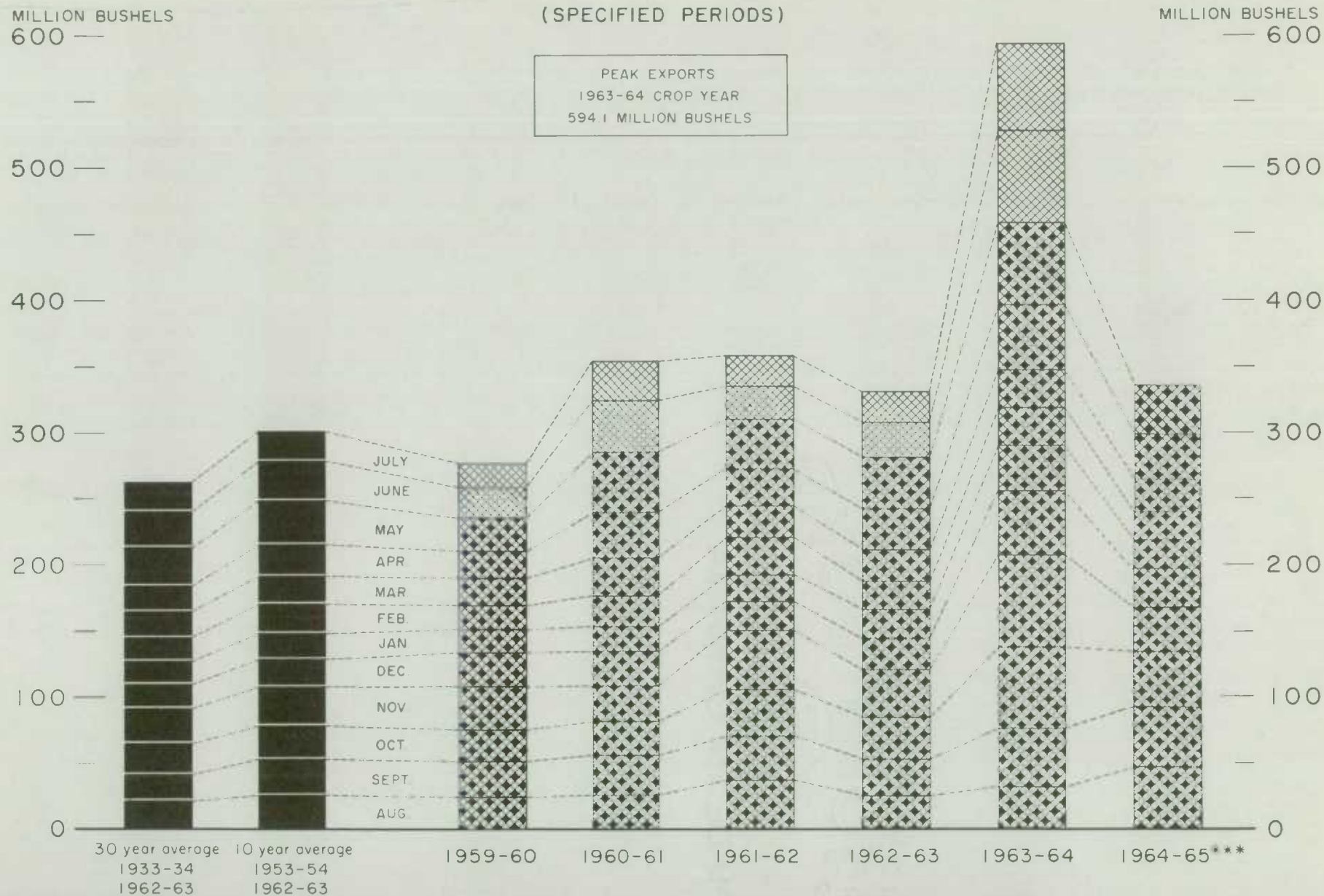
600 —

MILLION BUSHELS

600 —



# EXPORTS OF CANADIAN WHEAT\* AND WHEAT FLOUR\*\*



\*Beginning with 1956-57 includes bagged seed wheat

\*\*in terms of wheat equivalent

\*\*\*Preliminary

Agriculture Division D. B. S.

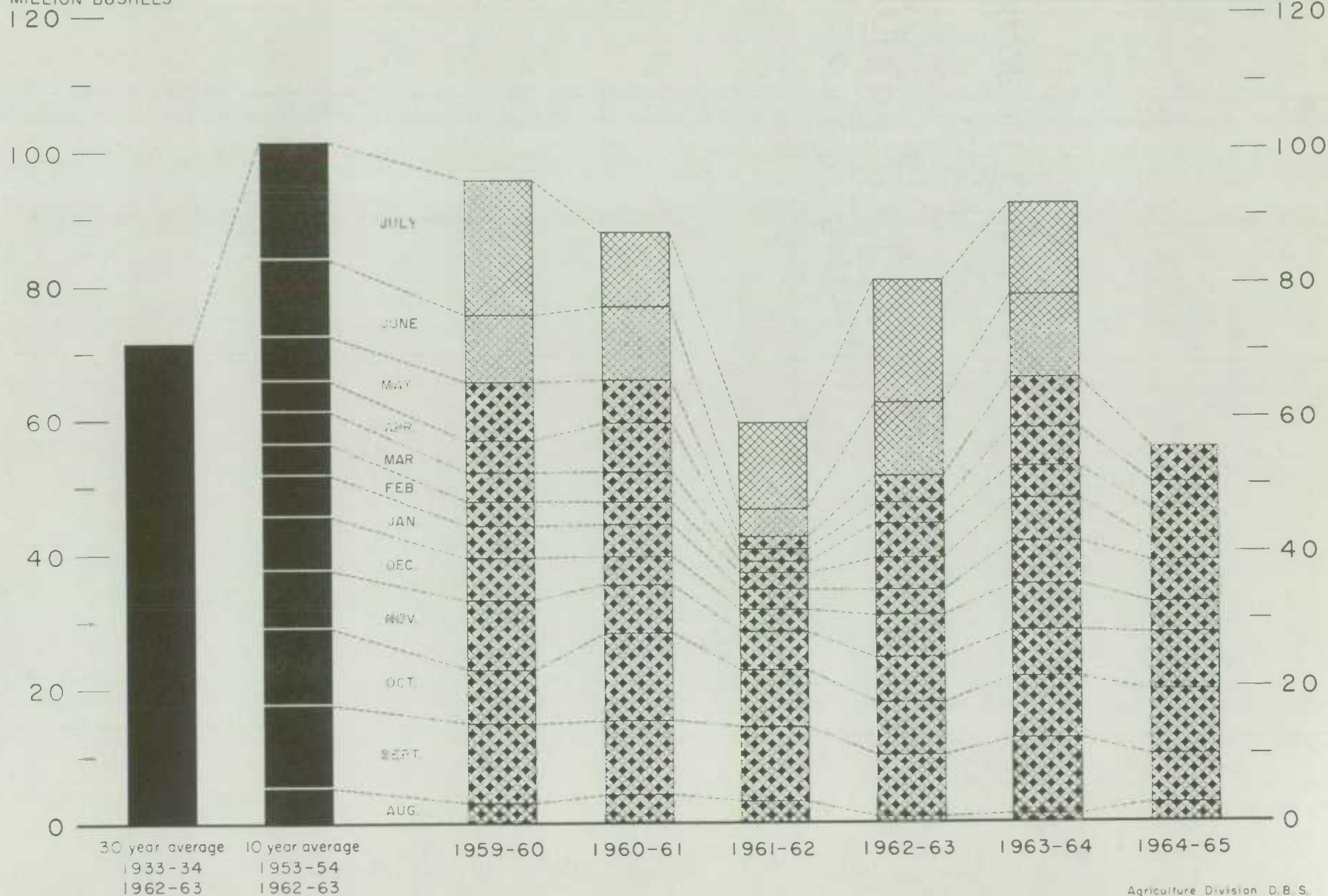


# FARMERS' MARKETINGS OF BARLEY, PRAIRIE PROVINCES

(SPECIFIED PERIODS)

MILLION BUSHEL  
120 —

MILLION BUSHEL  
120 —

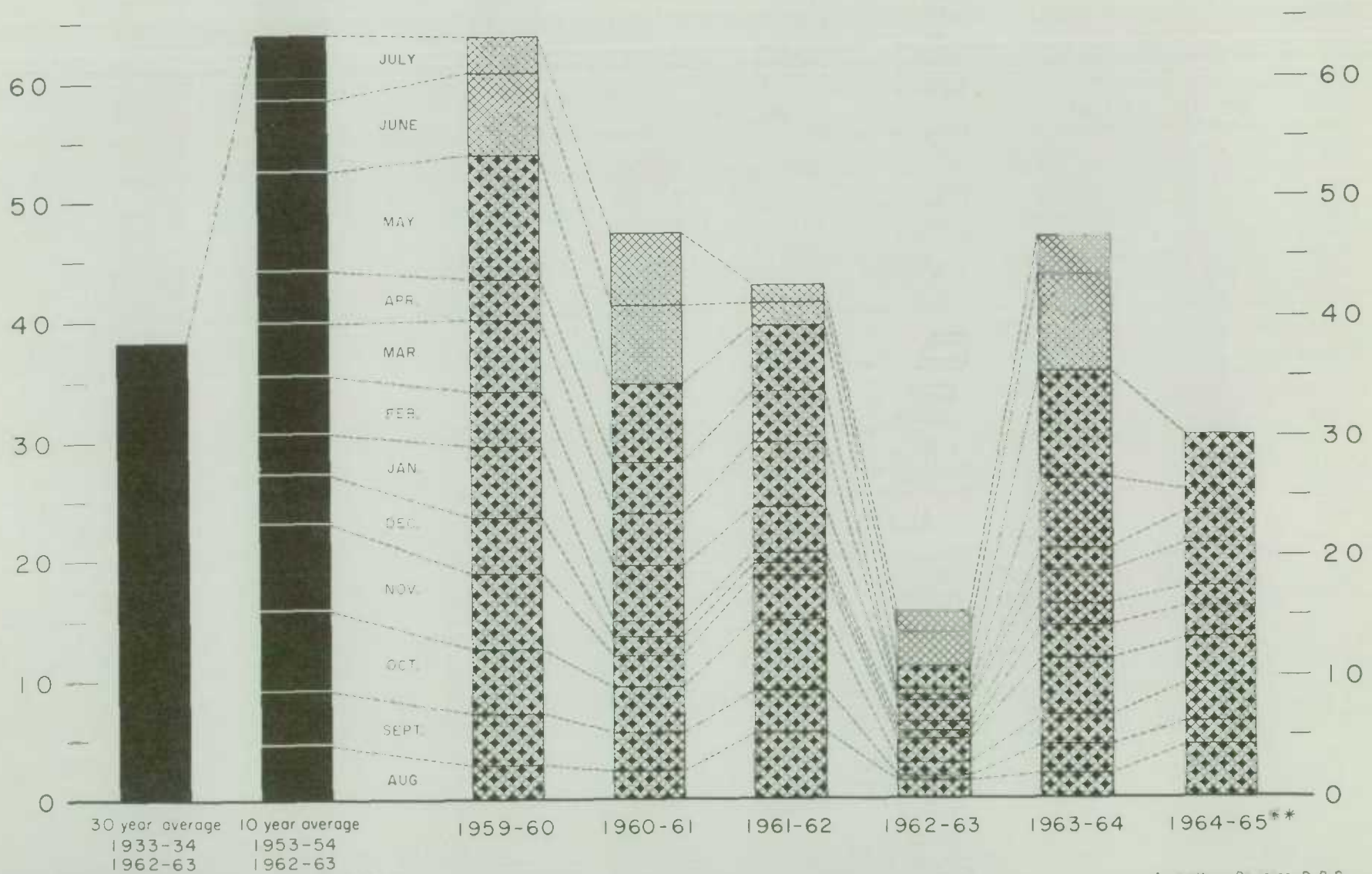


# EXPORTS OF CANADIAN BARLEY AND BARLEY PRODUCTS\*

(SPECIFIED PERIODS)

MILLION BUSHELS  
70 —

MILLION BUSHELS  
— 70





# FARMERS' MARKETINGS OF OATS, PRAIRIE PROVINCES

(SPECIFIED PERIODS)

MILLION BUSHELS

90  
—  
80  
—  
70  
—  
60  
—  
50  
—  
40  
—  
30  
—  
20  
—  
10  
—  
0

MILLION BUSHELS

90  
—  
80  
—  
70  
—  
60  
—  
50  
—  
40  
—  
30  
—  
20  
—  
10  
—  
0

30 year average 10 year average  
1933-34 1953-54  
1962-63 1962-63

JULY  
JUN  
M  
A  
M  
F  
J  
D  
NOV  
OCT  
SEPT  
AUG

1959-60

1960-61

1961-62

1962-63

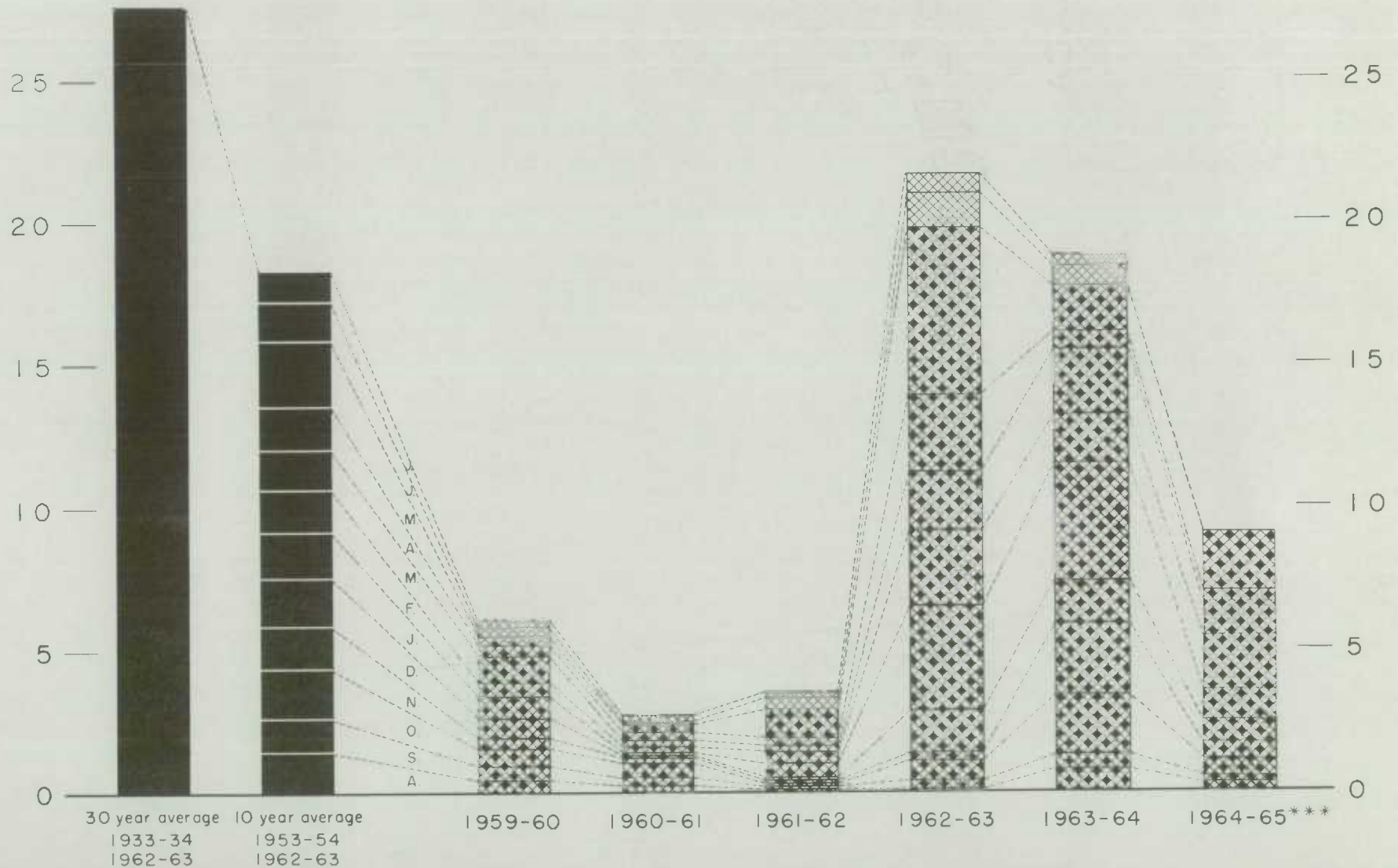
1963-64

1964-65

# EXPORTS OF CANADIAN OATS\* AND OAT PRODUCTS\*\* (SPECIFIED PERIODS)

MILLION BUSHEL  
30 —

MILLION BUSHEL  
— 30



\* Beginning with 1960-61 includes relatively small quantity of bogged seed.

\*\* In terms of grain equivalent.

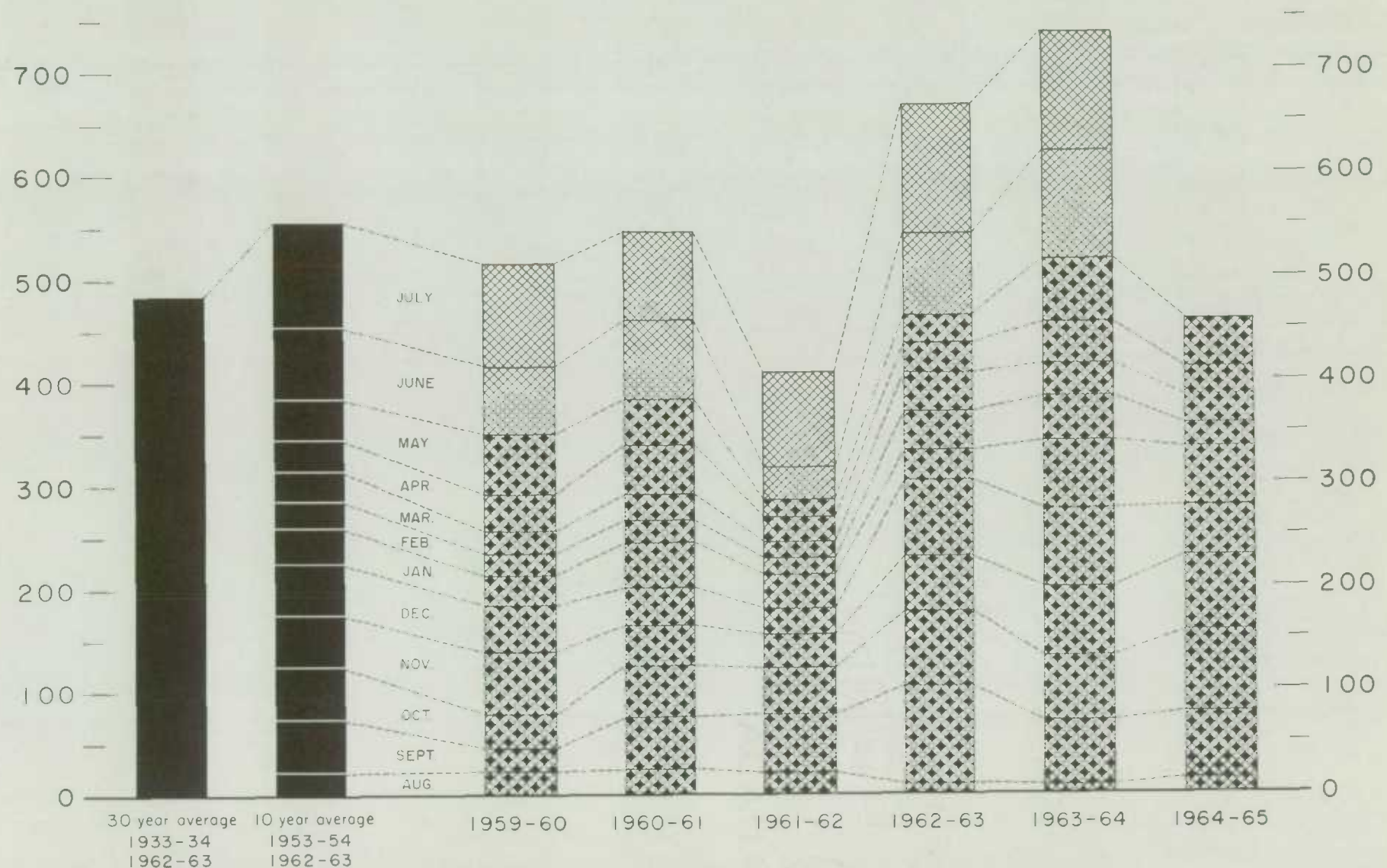
\*\*\* Preliminary.

# FARMERS' MARKETINGS OF CANADA'S FIVE MAJOR GRAINS\*, PRAIRIE PROVINCES

MILLION BUSHELS  
800 —

(SPECIFIED PERIODS)

MILLION BUSHELS  
800 —



\*Wheat, oats, barley, rye and flaxseed

Agriculture Division D.B.S.



# EXPORTS OF CANADA'S FIVE MAJOR GRAINS AND PRODUCTS\*

(SPECIFIED PERIODS)

MILLION BUSHEL

700 —

600 —

500 —

400 —

300 —

200 —

100 —

0

MILLION BUSHEL

700 —

600 —

500 —

400 —

300 —

200 —

100 —

0

30 year average 10 year average 1959-60 1960-61 1961-62 1962-63 1963-64 1964-65\*\*

1933-34 1953-54

1962-63 1962-63

\* Wheat, bagged seed wheat, and wheat flour, oats, bagged seed oats, and oatmeal and rolled oats; barley, malt and pot and pearl; rye and flaxseed.

\*\* Preliminary

Agriculture Division D. B. S.

JULY  
JUNE  
MAY  
APR.  
MAR.  
FEB.  
JAN.  
DEC.  
NOV.  
OCT.  
SEPT.  
AUG.

Cumulative Exports of Canadian Wheat 1/ by Destination

Destination	August 1964-May 1965			Total
	Wheat (Except Durum)	Durum Wheat	Total Wheat	Same Period Last Year <u>2/</u>
- bushels -				
<u>Asia</u>				
Burma .....	171,464	-	171,464	78,931
China, Communist .....	46,920,533	9,051,656	55,972,189	35,072,801
Hong Kong .....	740,134	-	740,134	542,639
India .....	6,807,757	-	6,807,757	-
Israel .....	529,200	-	529,200	1,067,248
Japan .....	43,316,778	46,297	43,363,075	40,367,872
Korea .....	-	-	-	511,467
Kuwait .....	350,000	-	350,000	-
Malaysia .....	709,147	-	709,147	282,053
Pakistan .....	1,836,800	-	1,836,800	354,984
Philippines .....	5,438,048	-	5,438,048	5,468,706
Saudi Arabia .....	590,299	-	590,299	677,029
Taiwan .....	550,156	-	550,156	372,484
Totals .....	107,960,316	9,097,953	117,058,269	84,796,214
<u>Oceania</u>				
United States Oceania .....	75,898	-	75,898	347,722
<u>Western Hemisphere</u>				
Barbados .....	5,079	-	5,079	40
Colombia .....	367,454	-	367,454	-
Cuba .....	6,564,092	-	6,564,092	5,647,187
Dominican Republic .....	704,386	-	704,386	658,839
Ecuador .....	1,183,357	-	1,183,357	848,282
El Salvador .....	699,796	-	699,796	732,035
Guatemala .....	223,366	-	223,366	175,000
Honduras Republic .....	53,200	-	53,200	-
Jamaica .....	6,048	-	6,048	8,427
Nicaragua .....	415,146	-	415,146	-
Peru .....	792,400	-	792,400	730,614
Venezuela .....	8,265,245	-	8,265,245	6,226,090
United States Domestic <u>3/</u> ....	-	-	-	230,859
Totals .....	19,279,569	-	19,279,569	15,257,373
Sub-totals, All Countries	283,698,725	27,566,935	311,265,660	410,678,004
Bagged seed <u>4/</u> .....			1,137,116	2,732,698
Totals, All Countries ...	283,698,725	27,566,935	312,402,776	413,410,702

\* Revisions in data for the previous month have been taken into account in the August-May cumulative totals.

1/ Overseas clearances as reported by the Statistics Branch, Board of Grain Commissioners for Canada, for all countries except the United States. Excluding bagged seed. 2/ Revised. 3/ Compiled from returns of Canadian elevator licensees and shippers and advice from American grain correspondents. 4/ Compiled from Canadian Customs returns, 1963-64 adjusted for time lag.

Customs Exports of Canadian Wheat Flour by Countries of Consignment

Destination	February 1965 <u>1/</u>	May 1965 <u>2/</u>	August-May	
			1964-65 <u>2/</u>	1963-64 <u>1/</u>
- bushels -				
<u>Western Europe</u>				
<u>EEC</u>				
Belgium and Luxembourg .....	-	-	141,351	195,514
Italy .....	920	-	7,245	-
Netherlands .....	-	1,948	5,566	4,940
Sub-totals .....	920	1,948	154,162	200,454
<u>Other Western Europe</u>				
Britain .....	784,229	900,572	8,070,613*	10,029,732
Denmark .....	-	-	1,840	4,476
Gibraltar .....	-	-	2,622	31,944
Greece .....	-	2,026	14,934	13,156
Iceland .....	-	-	3,220	4,995
Norway .....	-	-	-	115
Portugal .....	22,552	4,600	99,532	92,667
Sweden .....	-	506	1,771	1,265
Switzerland .....	-	28	28	-
Sub-totals .....	806,781	907,732	8,194,560*	10,178,350
Totals .....	807,701	909,680	8,348,722*	10,378,804
<u>Eastern Europe</u>				
U.S.S.R. (Russia) .....	-	-	1,729,796	19,249,820
<u>Africa</u>				
Angola .....	-	1,725	5,221	4,600
Cameroun Republic .....	9,016	11,914	35,321	-
British Africa nes .....	-	-	-	25,185
Congo-Leopoldville .....	-	9,200	130,587	50,025
Ethiopia .....	-	-	230	253
French Africa nes .....	-	4,634	20,293	-
Gambia .....	-	966	56,888	5,161
Ghana .....	85,880	293,411	1,445,364	906,812
Guinea Republic .....	-	-	920	-
Ivory Coast Republic .....	-	1,495	3,565	2,760
Liberia .....	1,265	5,943	67,475	51,757
Malawi .....	-	2,300	14,766	-
Mozambique .....	578	819	35,857	27,954
Nigeria .....	-	380	6,210	17,703
Nyasaland .....	-	-	6,693	23,917
Portuguese Africa nes .....	11,479	14,633	83,704	62,341
Rhodesia .....	-	1,150	3,450	4,830
Sierra Leone .....	8,165	69,635	447,251	349,623
Tanganyika .....	-	-	-	8,625
Togo .....	-	2,875	134,803	130,868
Totals .....	116,383	421,080	2,498,598	1,672,414
<u>Asia</u>				
Aden .....	1,996	230	14,058	-
British Middle East nes .....	-	-	22,153	32,200
Burma .....	-	-	159,043	76,404
Ceylon .....	-	148,616	586,552	1,068,596
Hong Kong .....	38,667	49,427	577,417	730,835
Indonesia .....	-	-	16,693	-
Iran .....	-	-	1,831	3,623
Japan .....	-	4,577	30,109	72,404
Jordan .....	-	-	9,998	1,012
Kuwait .....	172	-	12,706	26,540



Customs Exports of Canadian Wheat Flour by Countries of Consignment

Destination	February 1965 <u>1/</u>	May 1965 <u>2/</u>	August-May	
			1964-65 <u>2/</u>	1963-64 <u>1/</u>
- bushels -				
<u>Asia (concluded)</u>				
Lebanon .....	142	-	29,422	27,462
Malaysia .....	34,597	18,129	320,765	527,846
Philippines .....	-	-	978	7,590
Portuguese Asia .....	1,012	515	12,153	21,344
Qatar .....	-	-	230	1,068
Saudi Arabia .....	-	-	3,370	1,518
Syria .....	-	-	708	1,410
Thailand .....	12,192	34,387	323,777	338,418
Viet-Nam .....	-	115,800	115,800	41,476
Totals .....	88,778	371,681	2,237,763	2,979,746
<u>Oceania</u>				
Australia .....	-	-	-	28
Fiji .....	690	1,955	6,417	5,359
French Oceania .....	-	-	931	1,426
United States Oceania .....	-	-	4,370	1,881
Totals .....	690	1,955	11,718	8,694
<u>Western Hemisphere</u>				
Bahamas .....	21,712	31,501	256,482	269,504
Barbados .....	10,748	28,575	152,483	142,331
Bermuda .....	5,127	8,864	103,437	99,958
British Guiana .....	4,653	4,618	46,724	33,127
British Honduras .....	5,759	2,206	36,317	35,236
Chile .....	-	-	920	5,778
Colombia .....	-	-	-	589
Costa Rica .....	85,100	45,844	731,743	519,501
Cuba .....	-	428,994	2,882,728	6,094,899
Dominican Republic .....	18,400	14,260	71,944	57,458
El Salvador .....	775	85	1,435	11,134
French Guiana .....	-	-	460	-
French West Indies .....	1,336	-	5,373	1,725
Guatemala .....	4,308	3,749	33,992	14,727
Haiti Republic .....	2,498	-	22,421	100,630
Honduras Republic .....	5,649	2,185	36,782	54,719
Jamaica .....	144,976	161,775	1,386,668	1,433,098
Leeward and Windward Islands .....	69,393	88,106	810,637	875,396
Netherlands Antilles .....	17,749	19,976	222,079	127,850
Nicaragua .....	-	-	690	276,851
Panama .....	3,519	6,670	76,379	142,404
Peru .....	18,377	7,130	65,092	54,331
St. Pierre and Miquelon .....	633	3,862	19,107	16,818
Surinam .....	9,069	2,086	58,880	64,202
Trinidad and Tobago .....	96,901	147,152	1,169,902	1,279,706
Venezuela .....	460	-	1,035	230
United States .....	96,071	65,331	780,951	865,347
Totals .....	623,213	1,072,969	8,974,661	12,577,549
Totals, All Countries .....	1,636,765	2,777,365	23,801,258*	46,867,027

nes - not elsewhere specified. \*Revised.

1/ In terms of wheat equivalent. Adjusted to remove effect of time lag in the returns made by Customs. Conversion rate: 2.3 bushels per cwt. 2/ In terms of wheat equivalent. Preliminary and unadjusted for time lag. Conversion rate: 2.3 bushels per cwt.

Canadian Wheat Board Weekly Average Cash Wheat Prices  
Basis in Store Fort William-Port Arthur

Class and Grade	Week Ending				
	June 4	June 11	June 18	June 25	July 2
- cents and eighths per bushel -					
<u>Initial Payment to Producers</u>					
1 Northern .....	150	150	150	150	150
2 Northern .....	146	146	146	146	146
3 Northern .....	142	142	142	142	142
4 Northern .....	135	135	135	135	135
5 Wheat .....	121	121	121	121	121
6 Wheat .....	117	117	117	117	117
Feed Wheat .....	113	113	113	113	113
1 C.W. Garnet .....	135	135	135	135	135
2 C.W. Garnet .....	130	130	130	130	130
3 C.W. Garnet .....	125	125	125	125	125
1 Alberta Red Winter .....	134	134	134	134	134
2 Alberta Winter .....	129	129	129	129	129
3 Alberta Winter .....	123	123	123	123	123
1 C.W. Amber Durum .....	150	150	150	150	150
2 C.W. Amber Durum .....	146	146	146	146	146
3 C.W. Amber Durum .....	142	142	142	142	142
<u>International Wheat Agreement</u>					
<u>and Domestic Sales</u>					
1 Northern .....	193	193/2	193/3	193/3	193/4
2 Northern .....	190	190/2	190/3	190/3	190/4
3 Northern .....	183	183/2	183/3	183/3	183/4
4 Northern .....	177/5	178/2	178/3	178/3	178/4
5 Wheat .....	173/3	173/2	173/3	173/3	173/4
6 Wheat .....	171	171/2	171/3	171/3	171/4
Feed Wheat .....	168	168/2	168/3	168/3	168/4
1 C.W. Garnet .....	179	179/2	179/3	179/3	179/4
2 C.W. Garnet .....	178	178/2	178/3	178/3	178/4
3 C.W. Garnet .....	177	177/2	177/3	177/3	177/4
1 Alberta Red Winter .....	179	179/2	179/3	179/3	179/4
2 Alberta Winter .....	178	178/2	178/3	178/3	178/4
3 Alberta Winter .....	177	177/2	177/3	177/3	177/4
1 C.W. Amber Durum .....	193	193/2	193/3	193/3	193/4
2 C.W. Amber Durum .....	190	190/2	190/3	190/3	190/4
3 C.W. Amber Durum .....	185	185/2	185/3	185/3	185/4
<u>Export - Class II</u>					
1 Northern .....	193	193/2	193/3	193/3	193/4
2 Northern .....	190	190/2	190/3	190/3	190/4
3 Northern .....	183	183/2	183/3	183/3	183/4
4 Northern .....	177/5	178/2	178/3	178/3	178/4
5 Wheat .....	173/3	173/2	173/3	173/3	173/4
6 Wheat .....	171	171/2	171/3	171/3	171/4
Feed Wheat .....	168	168/2	168/3	168/3	168/4
1 C.W. Garnet .....	179	179/2	179/3	179/3	179/4
2 C.W. Garnet .....	178	178/2	178/3	178/3	178/4
3 C.W. Garnet .....	177	177/2	177/3	177/3	177/4
1 C.W. Amber Durum .....	193	193/2	193/3	193/3	193/4
2 C.W. Amber Durum .....	190	190/2	190/3	190/3	190/4
3 C.W. Amber Durum .....	185	185/2	185/3	185/3	185/4



Canadian Wheat Board Weekly Average Cash Wheat Prices  
Basis in Store Vancouver

Class and Grade	Week Ending				
	June 4	June 11	June 18	June 25	July 2
- cents and eighths per bushel -					
<u>Initial Payment to Producers</u>					
1 Northern .....	150	150	150	150	150
2 Northern .....	146	146	146	146	146
3 Northern .....	142	142	142	142	142
4 Northern .....	135	135	135	135	135
5 Wheat .....	121	121	121	121	121
6 Wheat .....	117	117	117	117	117
Feed Wheat .....	113	113	113	113	113
1 C.W. Garnet .....	135	135	135	135	135
2 C.W. Garnet .....	130	130	130	130	130
3 C.W. Garnet .....	125	125	125	125	125
1 Alberta Red Winter .....	134	134	134	134	134
2 Alberta Winter .....	129	129	129	129	129
3 Alberta Winter .....	123	123	123	123	123
1 C.W. Amber Durum .....	150	150	150	150	150
2 C.W. Amber Durum .....	146	146	146	146	146
3 C.W. Amber Durum .....	142	142	142	142	142
<u>International Wheat Agreement</u>					
<u>and Domestic Sales</u>					
1 Northern .....	196/7	197/1	197/2	197/2	197/3
2 Northern .....	191/7	192/1	192/2	192/2	192/3
3 Northern .....	186/7	187/1	187/2	187/2	187/3
4 Northern .....	178/7	179/1	179/2	179/2	179/3
5 Wheat .....	173/7	174/1	174/2	174/2	174/3
6 Wheat .....	170/7	171/1	171/2	171/2	171/3
Feed Wheat .....	167/7	168/1	168/2	168/2	168/3
1 C.W. Garnet .....	178/7	179/1	179/2	179/2	179/3
2 C.W. Garnet .....	177/7	178/1	178/2	178/2	178/3
3 C.W. Garnet .....	176/7	177/1	177/2	177/2	177/3
1 Alberta Red Winter .....	178/7	179/1	179/2	179/2	179/3
2 Alberta Winter .....	177/7	178/1	178/2	178/2	178/3
3 Alberta Winter .....	176/7	177/1	177/2	177/2	177/3
<u>Export - Class II</u>					
1 Northern .....	196/7	197/1	197/2	197/2	197/3
2 Northern .....	191/7	192/1	192/2	192/2	192/3
3 Northern .....	186/7	187/1	187/2	187/2	187/3
4 Northern .....	178/7	179/1	179/2	179/2	179/3
5 Wheat .....	173/7	174/1	174/2	174/2	174/3
6 Wheat .....	170/7	171/1	171/2	171/2	171/3
Feed Wheat .....	167/7	168/1	168/2	168/2	168/3
1 C.W. Garnet .....	178/7	179/1	179/2	179/2	179/3
2 C.W. Garnet .....	177/7	178/1	178/2	178/2	178/3
3 C.W. Garnet .....	176/7	177/1	177/2	177/2	177/3
1 Alberta Red Winter .....	178/7	179/1	179/2	179/2	179/3
2 Alberta Winter .....	177/7	178/1	178/2	178/2	178/3
3 Alberta Winter .....	176/7	177/1	177/2	177/2	177/3



# CANADIAN FLOUR MILLING SITUATION

**Production** Wheat flour production by Canadian mills during May 1965 amounted to 3,083,000 hundredweight, representing a decrease of 7 per cent from the April 1965 output of 3,319,000 hundredweight, 21 per cent lower than the May 1964 total of 3,881,000 hundredweight and 9 per cent less than the ten-year (1955-64) average production for the month of May of 3,396,000 hundredweight. Mills reporting operations during May 1965 had a total rated capacity of 165,000 hundredweight per 24-hour day and on the basis of a 25-day working period 74.9 per cent of this rated capacity was effective.

Wheat milled for flour during May 1965 amounted to 6,884,000 bushels, 7 per cent less than the 7,419,000 bushels milled during the preceding month and 20 per cent lower than the 8,635,000 bushels milled during May 1964. Of the wheat milled for flour during May 1965 some 5,993,000 bushels were Western Canadian spring wheat (other than Durum) while the remainder consisted of Ontario winter wheat (572,000 bushels); Durum (262,000 bushels); and all other (57,000 bushels).

**Exports** According to preliminary Customs returns, exports of Canadian wheat flour during May 1965 amounted to 1,208,000 hundredweight (some 2,777,000 bushels of wheat equivalent), representing an increase of 56 per cent over the 1,783,000 bushels exported during the previous month, but 41 per cent below the adjusted May 1964 total of 4,744,000 bushels. Flour shipments during the month went to fifty countries with exports to Britain amounting to 901,000 bushels of wheat equivalent and accounting for 32 per cent of the May 1965 total. Other leading markets for Canadian wheat flour during the month, with shipments in thousands of bushels of wheat equivalent were as follows: Cuba, 429; Ghana, 293; Jamaica, 162; Ceylon, 149; Trinidad and Tobago, 147; and Viet-Nam, 116.

## Wheat Milled for Flour, and Production and Exports of Wheat Flour, Canada

Crop Year	Wheat Milled for Flour bushels	Wheat Flour	
		Production	Exports <u>1/</u>
		- cwt. -	
1935-36—1939-40 average .....	67,845,114	29,405,451	9,603,941
1940-41—1944-45 average .....	99,704,638	43,908,245	23,699,546
1945-46—1949-50 average .....	107,330,372	47,011,540	25,819,721
1950-51—1954-55 average .....	100,446,328	43,847,894	21,812,041
1955-56—1959-60 average .....	90,148,211	39,752,589	16,349,156
1960-61 .....	89,731,155	39,914,644	15,513,836
1961-62 .....	88,240,580	39,539,651	13,892,676
1962-63 .....	78,789,332	35,505,220	11,854,458
1963-64 .....	111,670,577	50,103,569	23,873,978
1964-65 <u>2/</u>			
August .....	7,027,526	3,144,719	1,770,810
September .....	7,500,251	3,372,989	927,240
October .....	7,609,236	3,389,458	885,628
November .....	7,518,363	3,385,358	1,097,107
December .....	7,075,639	3,186,560	1,096,365
January .....	6,613,815	2,974,051	1,052,409
February .....	7,680,179	3,455,461	579,202
March .....	7,589,178	3,407,616	956,749
April .....	7,419,350	3,319,301	775,313 <u>3/</u>
May .....	6,884,028	3,082,589	1,207,550
Totals .....	72,917,565	32,718,102	10,348,373
Same months 1963-64 <u>3/</u> .....	94,057,049	42,231,959	20,376,968

1/ Based on Customs returns. Exports for the crop years 1945-46--1963-64 revised to remove effect of time lag in the returns made by Customs. 2/ Subject to revision. 3/ Revised figures.

UNITED STATES SITUATION

Domestic Supplies  
6 Per Cent Lower  
Than Previous Year

Reflecting a decline in carryover stocks which more than offset an increase in production, total domestic supplies of wheat in the United States for the 1964-65 crop year are estimated at some 2,191.7 million bushels compared with

2,336.9 million in 1963-64. Carryover stocks, at 901.2 million bushels, were at their lowest level since 1958 while the 1964 production of 1,290.5 million was 13 per cent greater than the 1963 crop of 1,142.0 million. Imports of wheat from Canada during the July-May period of 1964-65 have amounted to 1.6 million bushels. Domestic disappearance during 1964-65 is estimated at about 615.0 million bushels, 4 per cent more than the 588.9 million last year. After deducting anticipated domestic requirements for the current United States crop year, some 1,578.2 million remain available for export and for carryover, a decrease of 10 per cent from the 1,751.8 million in 1963-64.

Exports of wheat, wheat flour and other products in terms of grain equivalent during the July-May period of the 1964-65 crop year amounted to 655.4 million bushels, 17 per cent below the record 787.7 million exported during the same months last year. The balance remaining on June 1, 1965 for export and for carryover was estimated at 922.8 million bushels compared with 964.1 million on the same date a year ago.

United States Wheat Supplies

Item	1963-64 <u>1/</u>	1964-65 <u>2/</u>
	- million bushels -	
Carryover at beginning of crop year (July 1) .....	1,194.9	901.2
Production .....	1,142.0	1,290.5
Total estimated domestic supplies .....	2,336.9	2,191.7
Imports of wheat and wheat flour in terms of wheat for domestic use, July-May .....	3.7	1.6
Total estimated supplies <u>3/</u> .....	2,340.7	2,193.2
Less estimated domestic requirements for crop year <u>4/</u> .	588.9	615.0
Available for export and carryover .....	1,751.8	1,578.2
Deduct:		
Exports of wheat as grain, July-May .....	699.8	578.0
Exports of wheat flour in terms of wheat, July-May <u>5/</u> .....	87.8	77.4
Total exports of wheat and wheat flour <u>6/</u> .....	787.7	655.4
Balance on June 1 for export and for carryover .....	964.1	922.8

1/ Revised. 2/ Preliminary. 3/ Excluding imports for June. 4/ Includes shipments to United States Territories and wheat for military food use at home and abroad. 5/ Flour exports include "Milled in bond". 6/ These figures now include all shipments under relief programs which formerly were not available from Census data.



1965 Wheat Crop  
Forecast at 1,283  
Million Bushels

In a report released on June 10, 1965 the Crop Reporting Board of the United States Department of Agriculture stated in part that all wheat production in 1965 is forecast at 1,283 million bushels, 1 per cent below last year but 8 per cent

above average.

Winter wheat production is forecast at 1,017 million bushels, 1 per cent less than 1964 but 5 per cent above average. The June 1 forecast is 39 million bushels above the May 1 estimate. Weather during May was favourable for wheat development in nearly all producing areas. Yield per harvested acre is now indicated at 27.2 bushels, equal to last year and 1.6 bushels above average. In the past 10 years, the average change in the United States production estimate from June 1 to harvest has been 55 million bushels, ranging between 23 million bushels and 105 million bushels.

Timely May rains throughout the Plains States boosted yield prospects sharply in this area. The rains came during a critical period of development and provided nearly ideal conditions for filling of heads. Yield prospects on non-irrigated acreage in the western Plains, which survived the prolonged drought, also improved sharply. Maturity of the Plains crops was about average with harvest extended into central Oklahoma by June 1. Combining was expected to start in south central Kansas about June 10.

Warm May weather stimulated growth of the Corn Belt wheat and by June 1 most of the crop was headed. Fields with thin stands have overcome part of the early poor prospects by extensive tillering. However, weeds are a problem in thinly populated wheat fields. In the Northeast, the crop responded well to warm, dry May weather, overcoming the slow early development. Late May rains further improved prospects. In the Southeast, prospects declined slightly as a result of a hot, dry May but above average yields are still expected. Harvest was well along in the Gulf Coast States and had extended into South Carolina. The Montana and Pacific Northwest crop made favourable development during the month but temperatures were too cool for best growth. In Montana, the crop was just starting to boot while in the more advanced areas of the Northwest, wheat was heading.

All spring wheat production is forecast at 266 million bushels based on conditions to June 1. A crop of this size would be nearly the same as produced in 1964 but 19 per cent more than the 1959-63 average. Indicated production on June 1 is based on current yield prospects by States applied to the March 1 intended acreage and allows for possible changes in acreages since that time. Seeding of spring wheat got off to a very late start due to cool, wet weather in most of the spring wheat area. Seeding was nearly completed in South Dakota by June 1 but considerable acreage still remained to be seeded in the Red River Valley of North Dakota and Minnesota. The condition of the crop is generally good due to adequate top soil moisture. Favourable weather will be needed to permit seeding of the remaining acreage.

Production of durum wheat is estimated at 59.7 million bushels, compared with 65.7 million last year, and the average of 39.3 million bushels. Some of the acreage is still to be seeded but that which is up looks very good. Moisture supplies are generally adequate in the main producing areas. Spring wheat production, other than durum, is indicated at 206.7 million bushels compared with 200 million produced in 1964 and the average of 184 million bushels.



Cash Wheat Prices on the Kansas City and Minneapolis Markets

No. 2 Hard Winter, Kansas City			No. 1 Northern Spring, Minneapolis		
Date	Price		Date	Price	
	- cents per bushel -			- cents per bushel -	
June 1, 1965 .....	148 3/4	- 149 1/4	June 1, 1965 .....	168 1/2	- 185 1/2
2 .....	146	- 152 1/4	2 .....	166	- 183
3 .....	145 1/2		3 .....	166	- 183
4 .....	146 1/4		4 .....	166	- 183
7 .....	142 1/4	- 165 3/4 1/	7 .....	166 1/8	- 183 1/8
8 .....	143	- 146	8 .....	166 5/8	- 169 5/8
9 .....	145 1/2		9 .....	166 1/2	- 183 1/2
10 .....	144 1/4	- 167 1/2 1/	10 .....	167 7/8	- 185 7/8
11 .....	143	- 167 1/	11 .....	169 7/8	- 187 7/8
14 .....	145	- 169 1/	14 .....	173 3/4	- 191 3/4
15 .....	142 1/2	- 168 1/2 1/	15 .....	172 3/4	- 188 3/4
16 .....	143 1/2	- 168 1/4 1/	16 .....	172 3/4	- 188 3/4
17 .....	143 1/2	- 168 1/4 1/	17 .....	172 5/8	- 188 5/8
18 .....	141 1/2	- 168 3/4 1/	18 .....	172 3/8	- 187 3/8
21 .....	140 1/2	- 168 1/4 1/	21 .....	172 1/8	- 187 1/8
22 .....	142	- 142 1/4	22 .....	171 1/4	- 187 1/4
23 .....	141 1/4	- 146 1/4	23 .....	171 1/4	- 187 1/4
24 .....	143 3/4		24 .....	171 3/4	- 187 3/4
25 .....	142 1/4	- 146 1/4	25 .....	171 3/8	- 187 3/8
28 .....	141 3/4	- 150 1/2	28 .....	172 1/8	- 188 1/8
29 .....	148		29 .....	172 1/4	- 187 1/4
30 .....	147	- 154	30 .....	171 3/4	- 186 3/4

1/ Nominal.

Chicago Wheat Futures, High Points of Closing

Date	July		September		December		March	May
	New	Old	New	Old	New	Old		
- cents and eighths per bushel -								
June 1, 1965 .....	140	140	142/2	142/2	146/4	146/4	149/1	149/3
2 .....	139	139	141/3	141/2	145/4	145/4	148	148/2
3 .....	138/6	138/6	141/1	141	145/2	145/2	147/7	148/1
4 .....	138/4	138/4	140/4	140/5	144/6	144/6	147/4	147/7
7 .....	139/1	139/1	141	141	145/3	145/2	147/6	148
8 .....	139/5	139/6	141/7	141/7	145/5	145/6	148/2	148/4
9 .....	139/6	139/7	141/5	141/4	145/6	145/4	148/2	148/2
10 .....	140/1	140/2	142/2	142/2	146/4	146/3	149	149
11 .....	139/5	139/7	141/7	141/7	146/1	146/2	149	148/7
14 .....	140/4	140/4	142/3	142/3	146/6	146/7	149/4	149/5
15 .....	140/1	140/1	142	142/1	146/3	146/3	149/1	149/1
16 .....	139/6	140	141/6	141/6	146	146/1	148/7	148/6
17 .....	139/4	140	141/5	141/5	145/7	146	148/5	148/5
18 .....	139	139/5	140/7	141/2	145/2	146/1	148	148/2
21 .....	140	138/3	141/3	140/5	146/2	144/6	147/3	147/3
22 .....	138/7	138/2	141	140/2	146	144/5	147/3	147/1
23 .....	139/7	139/3	142/1	141/3	146/4	145/6	148/4	148/4
24 .....	139/4	139/4	141/4	141/6	146	147/1	148/6	148/6
25 .....	139/2	139/5	141/2	141/5	146	147	148/6	148/6
28 .....	140/2	140	142	141/6	148	146/4	149/3	149/2
29 .....	141/2	141	145/5	142/7	148/7	147/6	150/3	150/3
30 .....	142/1	142/2	143/5	145/4	148/5	150/4	151/3	151/3

# ARGENTINE SITUATION

## 1964-65 Wheat Supplies Largest Since 1938-39

Reflecting the combined effect of substantially larger carryover stocks as well as an increase in production, total supplies of wheat in Argentina for the 1964-65 (December-November) crop year are estimated at some 424.4 million bushels, 22 per cent more than the 1963-64 figure of 348.7 million and the largest total since 1938-39 when wheat supplies were close to 450 million bushels. Current crop year supplies consist of the December 1 carryover of 88.2 million, in contrast to only 25.9 million the year before, and the 1964-65 production of 336.2 million, the third largest wheat crop ever harvested in Argentina. After making an allowance of 128.6 million bushels for anticipated domestic requirements, an estimated 295.8 million are available for export and for carryover in 1964-65, 37 per cent greater than the 215.9 million the previous year.

## December-May Exports 22 Per Cent Above Same Period of Previous Year

Exports of wheat and wheat flour in terms of grain equivalent during December 1964-May 1965 amounted to 94.0 million bushels, exceeding by 22 per cent the total of 77.2 million exported during the same months in 1963-64. The balance remaining on June 1, 1965 for export and for carryover was estimated at 201.8 million bushels, in sharp contrast to the June 1, 1964 figure of 138.8 million.

## Argentine Wheat Supplies

Item	1963-64 <u>1/</u>	1964-65 <u>2/</u>
	- million bushels -	
Carryover at beginning of crop year (December 1) <u>3/</u> .....	25.9	88.2
Production .....	322.8	336.2 <u>4/</u>
Total estimated domestic supplies .....	348.7	424.4
Less estimated requirements for crop year .....	132.8	128.6
Available for export and for carryover .....	215.9	295.8
Deduct:		
Exports of wheat as grain, December-May .....	76.8	93.7
Exports of wheat flour in terms of wheat, December-May.	0.4	0.3
Total exports of wheat and wheat flour .....	77.2	94.0
Balance of June 1 for export and for carryover .....	138.8	201.8

1/ Revised. 2/ Preliminary. 3/ Includes allowances for farm stocks. 4/ Second official estimate.

The following account of the Argentine situation has been extracted from a report from Mr. H.E. Ryan, Assistant Commercial Secretary (Agriculture), Buenos Aires, under date of June 23, 1965 and is reproduced with the permission of the Trade Commissioner Service, Department of Trade and Commerce. Where possible, conversions to Canadian measures and currency have been made for the convenience of our readers.



Weather  
and Crops

While some rainfall occurred during the month of May, it was inadequate for the needs of most crops in the Pampas region and did little to alleviate the dry conditions existing in many areas of Santa Fe and Cordoba. There was also a period of cold weather and frost which further deteriorated growing conditions. By the end of the month, weather conditions were near normal, but more moisture will be required, especially in the Province of La Pampa, if there is to be a good growing season for the early crops.

Wheat

The official minimum support price for 1965-66 wheat has recently been announced at 820 pesos per 100 kilos (\$1.40 per bushel). This represented an increase of 40 pesos (7 cents per bushel) over the price of the previous year. Also, for the coming year, administration expenses and commissions, previously applied against producers, are going to be absorbed by the National Grain Board. These costs, while differing from area to area, average approximately 30 pesos per 100 kilos (5 cents per bushel). Thus, during the 1965-66 crop year, the minimum price producers will actually receive will be some 70 pesos per 100 kilos (12 cents per bushel) higher than that of the previous year.

In spite of the increase in the minimum price level, producers to-date do not appear overly enthusiastic with respect to wheat plantings. The unfavourable soil conditions in some areas of the Provinces of Santa Fe, Cordoba and Entre Rios tend to affect producers' intentions. The official Crop and Weather Report, issued at the end of May, has stated: "There is an uncertain outlook in the drought areas of the Provinces of Cordoba, Santa Fe and Entre Rios, while in the rest of the wheat belts ploughing has been carried out under normal moisture conditions".

The National Grain Board, with the assistance of the Argentine Government, has been fairly successful in its efforts to dispose of the large stocks of wheat existing this year. Besides the one million ton (36,743,000 bushels) sale to both China and Russia and the annual one million ton (36,743,000 bushels) agreement with Brazil, the Government recently concluded a bilateral trade agreement with Italy, under which 250,000 tons (9,186,000 bushels) of durum are to be exchanged for aluminum, machinery, and equipment. Besides these markets, West-European customers have increased their purchases and may actually double their takings by the end of the crop year. In total, it would now appear that upwards to 6 million tons (220,460,000 bushels) of wheat could be sold during the current crop year, as compared to the 3.4 million tons (124,927,000 bushels) last year. As a result of the above sales, near the end of May, there was a slackening in the wheat activity, and sales by the Grain Board were lessened. The Board now indicates, keeping in mind upwards to 1 million tons (36,743,000 bushels) are required as a carry-over, that only one half to three quarters of one million tons (18,372,000 to 27,557,000 bushels) of wheat remain for sale.

Total wheat shipments for the first six months of the 1964-65 crop year amounted to 2,550,000 metric tons (93,695,000 bushels), as compared to the 2,089,723 tons (76,783,000 bushels) of the same period last year. During the month of May, important customers for Argentine wheat were: Britain, 92,000 metric tons (3,380,000 bushels); the Netherlands, 89,000 (3,270,000 bushels); Brazil, 75,000 (2,756,000 bushels); and Italy, 46,000 (1,690,000 bushels). European c.i.f. prices maintained the level of US\$ 65.00 Continental ports (\$1.92 per bushel) and £ 25.5.0 per ton (\$2.08 per bushel) for Britain. Prices rose slightly on the Buenos Aires Futures Market, October deliveries were quoted at 800 pesos per 100 kilos (\$1.37 per bushel), 20 pesos (3 cents per bushel) above the minimum price of 780 pesos



(\$1.34 per bushel). The spot price in the Buenos Aires Cereal Exchange remains at 780 pesos per 100 kilos (\$1.34 per bushel). Local millers continue to purchase at around the minimum level and on deferred payment terms of 30 per cent cash with the remainder in different periods of up to 180 days.

Argentina recently negotiated an agreement with the U.A.R. under which U\$S 15 million (\$16 million) of wheat will be exchanged for petroleum products. The wheat represents approximately 300,000 metric tons (11,023,000 bushels) and is to be shipped over a six month period, with the date of commencement yet to be established.

### AUSTRALIAN SITUATION

#### Supplies Set New Record

A decline in carryover stocks was more than offset by another record crop and as a result total estimated supplies of wheat in Australia for the 1964-65 (December-November) crop year are placed at an all-time high of 390.5 million bushels, 10 per cent greater than the previous year's peak total of 354.5 million. The current production, of 370.0 million bushels, represented a substantial increase over the 1963-64 level of 331.0 million and was the third consecutive year in which a record outturn was harvested. Carryover stocks recorded only a moderate decline, from 23.5 million at December 1, 1963 to 20.5 million at the same date in 1964. After deducting 82.0 million for anticipated domestic requirements, an estimated 308.5 million are available for export and for carryover in 1964-65, an increase of 13 per cent over the 273.9 million the previous year.

Combined exports of wheat as grain and wheat flour in terms of grain equivalent during the period December 1-June 6 of the current Australian crop year amounted to 147.6 million bushels in contrast to 167.8 million exported during the corresponding period of 1963-64. The balance remaining on June 7, 1965 for export and for carryover, at 160.9 million bushels, exceeded by 52 per cent the comparable 1964 total of 106.1 million.

### Australian Wheat Supplies

Item	1963-64 <u>1/</u>	1964-65 <u>2/</u>
	- million bushels -	
Carryover, including flour as wheat, at beginning of crop year (December 1) .....	23.5	20.5
Production .....	331.0	370.0
Total estimated domestic supplies .....	354.5	390.5
Less estimated domestic requirements for crop year .....	80.6	82.0
Available for export and for carryover .....	273.9	308.5
Deduct:		
Exports of wheat as grain, December 1-June 6 .....	149.6	134.5
Exports of wheat flour in terms of wheat, December 1-June 6 .....	18.2	13.1
Total exports of wheat and wheat flour .....	167.8	147.6
Balance of June 7 for export and for carryover .....	106.1	160.9

1/ Revised. 2/ Preliminary.

The following information relative to the Australian situation has been extracted from a report from Mr. D.I. Campbell, Assistant Commercial Secretary for Canada, Canberra, under date of June 15, 1965 and is reproduced with the permission of the Trade Commissioner Service, Department of Trade and Commerce.

#### Crop Position

The drought continues to be very serious in most of New South Wales and southern Queensland. As a result, the new wheat crop is not expected to approach last year's record, even though prospects for a good West Australian harvest have improved in recent weeks.

In New South Wales, no useful rain has fallen for some time. There has been little growth of crops in any region other than the southwest and the position in drought areas has become a little worse with the Central Coast in an extremely serious position. Stock generally are still holding fair condition but they are certain to show fairly rapid deterioration during the cold months ahead. Supplementary feeding has shown a big increase on a great number of properties and already this year, one million bushels of wheat have been released by the Wheat Board for stock feeding. If the drought continues, it is anticipated that this figure will increase to at least five million bushels by the end of November.

There is no drought in the southwest slopes and Riverina, and widespread sowing of wheat is continuing. Little wheat is being sown in the northwest, but in the north wheat may be sown several weeks later than in the south. Even if sufficient rain does fall and it is followed by favourable growing weather for the remainder of the sowing season, New South Wales's wheat acreages are sure to be well below the 5.8 million acres sown last year. However, a fair estimate of total acreages will not be possible before the end of July. Yield per acre is also sure to be affected by weed growth which is a problem when wheat is hurriedly sown after restricted cultivation.

In Queensland, planting of winter cereal crops followed the late April rains in many central areas, but further rain will be needed to complete the sowing of land already ploughed. Light rains on the Darling Downs have not been sufficient for the major planting of cereal crops and heavy rain is urgently needed in this region to allow normal planting to take place.

In Victoria, there was light rain in the Mallee during the week. General wheat sowing is progressing in all districts other than those which normally sow a little later. Conditions in the wheat belt indicate that it will be possible to obtain a very good grain yield provided average rainfall is received in the months ahead.

There has been a fairly good general opening to the wheat season in all districts of South Australia with the exception of the northern and eastern parts of Eyre Peninsula. Wheat is being sown in all districts, including the Murray Mallee which until recently, had been short of rain. The southern half of Eyre Peninsula, and Yorke Peninsula, have received the best rains in the cereal districts, and in the Southeast there has been more rain than required.

In Western Australia, good general rain fell during recent weeks over the whole of the agricultural areas of the State. The season is now good in all districts and widespread wheat sowing is very well advanced. The season started early, was consolidated by good follow-up rains, making the cereal position now above average and good crop yields are indicated. It is now anticipated that at least 5.5 million acres of wheat will be sown but this figure could well approach 6 million.



Marketing

The Australian Wheat Board released statistics, effective May 8, on supplies and export sales. At the outset of 1964-65 crop year on December 1, 1964, carryover was 20,517,000 bushels and combined with estimated deliveries of 345,360,000 bushels, 365,877,000 bushels were available for export and carryover during the crop year.

Exports of Australian Wheat and Wheat Flour in Terms of Wheat  
December 1-June 6, 1964-65 and Corresponding Period 1963-64

Destination	Wheat		Wheat Flour	
	1963-64	1964-65	1963-64	1964-65
- thousand bushels -				
<u>Western Europe</u>				
<u>EEC</u>				
Germany, Federal Republic .....	7,785	-	-	-
<u>Other Western Europe</u>				
Britain .....	14,786	11,124	637	1,011
Ireland .....	1,353	821	-	-
Malta .....	437	446	-	-
Norway .....	3,021	2,164	-	-
Others .....	-	-	1	1
Sub-totals .....	19,597	14,555	638	1,012
Totals .....	27,382	14,555	638	1,012
<u>Eastern Europe</u>				
U.S.S.R. (Russia) .....	41,971	23,769	5,808	-
<u>Africa</u>				
Kenya .....	-	41	-	-
Malawi .....	-	-	127	209
Mauritius .....	-	-	659	285
Portuguese East Africa .....	945	-	-	-
Rhodesia .....	2,240	1,912	-	-
Zanzibar .....	-	-	90	74
Others .....	10	7	34	55
Totals .....	3,195	1,960	910	623
<u>Asia</u>				
Aden .....	580	549	-	-
Aden and Aden I/T .....	-	-	609	825
Aden and Aden I/T Atta .....	-	-	296	276
Arabian Gulf .....	-	-	99	84
Arabian Gulf Atta .....	-	-	634	700
Brunei .....	-	-	12	5
Ceylon .....	7	11	3,572	5,205
China .....	48,887	54,113	-	-
Formosa .....	79	500	-	-
Hong Kong .....	1,036	848	49	45



Exports of Australian Wheat and Wheat Flour in Terms of Wheat  
December 1-June 6, 1964-65 and Corresponding Period 1963-64

Destination	Wheat		Wheat Flour	
	1963-64	1964-65	1963-64	1964-65
- thousand bushels -				
<u>Asia (concluded)</u>				
India .....	3,567	11,913	-	-
Indonesia .....	-	-	74	66
Iran .....	169	6,349	-	-
Iraq .....	3,100	1,831	-	-
Japan .....	10,505	8,802	-	-
Korea North .....	-	1,097	-	-
Kuwait .....	-	373	-	-
Lebanon .....	3,871	1,959	-	-
Pakistan .....	-	473	-	-
Philippines .....	242	-	1,061	239
Saudi Arabia .....	-	-	36	117
Thailand .....	320	291	301	199
Malaysia				
Malaya .....	23	1	1,446	1,319
Malaya Atta .....	-	-	48	44
Sabah .....	-	-	86	84
Sarawak .....	-	-	90	93
Singapore .....	1,040	1,949	903	412
Singapore Atta .....	-	-	5	1
Singapore A/C B.W.O. ....	-	-	32	29
Others .....	422	406	61	44
Totals .....	73,848	91,465	9,414	9,787
<u>Oceania</u>				
New Zealand .....	3,171	2,777	-	-
<u>Western Hemisphere</u>				
Peru .....	-	-	4	3
<u>Pacific Area and Sundries</u>				
Pacific Islands .....	37	29	1,124	1,326
Ships' Stores and Sundries .....	-	-	303	357
Totals .....	37	29	1,427	1,683
Totals, All Countries .....	149,600	134,555	18,200	13,108

Continued from page 8.

wheat leaf rust to be scarce or absent in most fields but considerable infestation was found on one early-sown field of Selkirk wheat. At Regina, there are traces of leaf rust on all plants and traces have also been reported at Saskatoon, Scott and Biggar. Trace amounts of wheat stem rust are widely distributed on susceptible varieties in Manitoba and Saskatchewan. A trace of oat crown rust was found near Winnipeg on July 12.

CALENDAR OF WHEAT EVENTS

- June 10      According to a report published by the Crop Reporting Board, United States Department of Agriculture, wheat production in that country in 1965, based on conditions at June 1, was forecast at 1,283 million bushels.
- 15            A report from Mr. D.I. Campbell, Assistant Commercial Secretary for Canada, Canberra, indicates that the drought situation continues to be very serious in most parts of Australia. Even though prospects for a good West Australian harvest have recently improved, the new wheat crop is not expected to approach last year's record of 370.0 million bushels.
- 23            According to a report received from Mr. H.E. Ryan, Assistant Commercial Secretary (Agriculture), Buenos Aires, some rainfall occurred in Argentina during the month of May, but it was inadequate for the needs of most crops in the Pampas region and did little to alleviate the dry conditions existing in many areas of Santa Fe and Cordoba.
- In Argentina the official minimum support price for 1965-66 wheat has recently been announced at 820 pesos per 100 kilos (\$1.40 per bushel).
- July 15      Agriculture Minister Harry Hays announced the appointment of Charles Lemington Shuttleworth, Winnipeg, to the Board of Grain Commissioners.
-









STATISTICS CANADA LIBRARY  
BIBLIOTHÈQUE STATISTIQUE CANADA



1010687032