

CATALOGUE No.

22-005

MONTHLY



CANADA

DOMINION BUREAU OF STATISTICS

AGRICULTURE DIVISION

THE WHEAT REVIEW



JULY 1965

DOMINION BUREAU OF STATISTICS

THE
WHEAT REVIEW

JULY 1965

Published by Authority of
The Minister of Trade and Commerce

Prepared in the Crops Section, Agriculture Division
Dominion Bureau of Statistics, Ottawa

TABLE OF CONTENTS

	<u>Page</u>
World Wheat Situation	
August-June Exports 53 Per Cent Above Average	1
Wheat Supplies of Four Major Exporters 1 Per Cent Above a Year Ago	1
World Wheat Crop Outlook Favourable	2
I.W.A. Extended for One Year	2
I.W.C. Cumulative Totals of Commercial Purchases	3
Canadian Situation	
1964-65 Wheat Supplies Decline from Previous Year's Record Level	4
August-June Exports Well Above Average	4
Marketings, Disappearance and Visible Supplies	5
June 1965 Exports of Wheat and Flour Total 33.4 Million Bushels	5
Preliminary Estimates of Specified Crop and Summerfallow Acreages, 1965 ..	6
Initial Payments Announcement	8
Wheat and Flour Sale to U.S.S.R.	8
Additional Wheat Sale to China	8
Assistant Chief Commissioner of The Canadian Wheat Board Retires	9
Delivery Quota Policy 1965-66	9
Farmers' Marketings of Wheat	11
Visible Supply of Canadian Wheat	12
Grading of Wheat Inspected, August-June 1964-65 with Comparisons	12
Weekly Visible Supply and Farmers' Marketings (Charts)	13
Lake Shipments of Canadian Grain	14
Wheat Shipments to United States by Destination	14
Rail Shipments of Wheat to Maritime Ports	14
Rail Shipments of Wheat from Fort William-Port Arthur	15
Overseas Exports of Canadian Grain by Ports of Loading	15
Freight-Assisted Shipments	16
Monthly Exports of Canadian Wheat and Wheat Flour	17
Exports of Canadian Wheat by Destination	18
Customs Exports of Canadian Wheat Flour by Countries of Consignment	21
Canadian Wheat Board Weekly Average Cash Wheat Prices	23
Canadian Flour Milling Situation	
Production and Exports	25
United States Situation	
Disappearance of United States Wheat Decreases 5 Per Cent from 1963-64 Level	26
Stocks of Wheat in All Positions July 1, 1965	27
1965 Wheat Crop Forecast at 1,354 Million Bushels	27
Announcements for 1966-67 Current Provisions	29
Trends in United States Wheat Production by Classes	29
Cash Wheat Prices on the Kansas City and Minneapolis Markets	30
Chicago Wheat Futures, High Points of Closing	30
Australian Situation	31
Argentine Situation	34
Calendar of Wheat Events	38

WORLD WHEAT SITUATION

August-June Exports 53 Per Cent Above Average

Exports of wheat and flour in terms of wheat from the four traditional major exporters amounted to some 137.8 million bushels during June 1965. Total wheat shipments from the United States, Canada, Argentina and Australia during the August-June period of the current Canadian crop year, at a next-to-record level of 1,406.9 million bushels, represents an increase of 53 per cent over the ten-year (1953-54 — 1962-63) average for the period of 917.6 million but is 16 per cent below the record 1,681.8 million shipped in 1963-64.

Of the current August-June exports, wheat shipments from the United States represent 47 per cent of the total while those from Canada have accounted for 26 per cent. Clearances from Australia and Argentina were equivalent to 16 per cent and 11 per cent, respectively.

Exports of Wheat and Flour in Terms of Wheat, August 1964-June 1965 with Comparisons

August-June	United States	Canada	Argentina	Australia	Total
- million bushels -					
1950-51	346.4	209.1	87.5	119.7	762.7
1951-52	446.1	312.9	24.1	86.4	869.5
1952-53	296.7	341.4	29.3	94.8	762.2
1953-54	190.7	234.3	101.2	57.0	583.2
1954-55	253.2	231.9	123.0	88.6	696.7
1955-56	317.8	284.1	103.3	96.3	801.5
1956-57	507.2	241.9	93.2	115.6	957.9
1957-58	370.0	294.6	70.2	57.2	792.0
1958-59	416.3	274.7	95.7	71.5	858.2
1959-60	470.1	259.7	67.5	103.9	901.2
1960-61	618.4	324.4	60.7	170.2	1,173.7
1961-62	659.2	336.2	85.2	206.2	1,286.8
1962-63 <u>1/</u> ...	593.6	308.6	58.8	163.6	1,124.6
1963-64 <u>1/</u> ...	794.4	529.2	98.4	259.8	1,681.8
1964-65 <u>2/</u> ...	661.2	369.6	150.9	225.2	1,406.9

1/ Revised. 2/ Preliminary.

Wheat Supplies of Four Major Exporters 1 Per Cent Above a Year Ago

Supplies of wheat held by the four traditional major exporters at July 1, 1965, for export and for carry-over at the end of their respective crop years amounted to 1,668.4 million bushels, 1 per cent more than the 1,645.9 million available at the same time a year ago. As indicated by the accompanying figures, larger supplies in Canada, Argentina, and Australia more than offset a smaller total in United States. Supplies at July 1, 1965, in millions of bushels, were held as follows, with last year's comparable figures in brackets: United States, 818.9 (901.2); Canada, 535.3 (524.8); Argentina, 184.6 (131.4); and Australia, 129.6 (88.5).

World Wheat Crop
Outlook Favourable

According to the July 1965 issue of The Wheat Situation published by the United States Department of Agriculture, the outlook is favourable for a large world wheat crop in 1965. Record and near-record crops are in prospect in the principal wheat countries of the Northern Hemisphere. In the Southern Hemisphere, prospects are less optimistic. Cool, wet weather has prevailed in more countries than in any recent year. This has generally delayed crops, but the plentiful moisture and advent of warm weather has resulted in good growing conditions.

North America is expecting good wheat crops. On the basis of July 1 conditions, the U.S. harvest will be larger than in 1964. With continued favourable weather, Canada's crop could exceed the record 1963 output. Production in Mexico, however, was forecast at below the 1964 crop because of late frost.

Wheat production in Europe is expected to approximate the high level of 1964. Acreage is not expected to vary greatly from that of last year, but favourable conditions, except in southeastern and southwestern areas, are expected to bring record or near-record production. France, Western Europe's largest producer, is expecting a record-large crop--possibly totalling 515 million bushels. Record harvests are also likely in West Germany, the United Kingdom, and The Netherlands. The Italian wheat crop, although below average, may exceed last year's production. The wheat crops in Spain and Portugal, having been reduced by drought, are below average, as was also the case in 1964. Excessive rains, resulting in floods, have caused trouble in the Danube Basin countries. Some wheat losses have occurred, but the high moisture levels could improve yields on lands not hurt by floods. Bad weather last fall brought reduced plantings of winter wheat in Yugoslavia.

U.S.S.R. winter wheat production is estimated to be 12 to 15 per cent higher than in 1964. A late spring in the New Lands--a spring wheat area--puts an element of uncertainty into Soviet production, since the spring crop is the larger of the two wheat crops. Because of the short growing season, any spring planting delays increase the possibility of crop loss. Good wheat harvests are expected in the Eastern Mediterranean area, including Turkey, Syria, Iraq, and Jordan. In the North African countries of Algeria, Morocco, and Tunisia, crops are much improved over the poor harvest of 1964. India and Pakistan recently harvested record wheat crops.

Wheat production in the Southern Hemisphere likely will be considerably below the bumper crops of 1964-65. Less acreage is expected in Argentina. Wheat production is expected to be seriously affected in Australia, where drought has sharply reduced plantings.

I.W.A. Extended
for One Year

According to a press release issued by the I.W.C. under date of July 21, 1965, the International Wheat Council which met under the Chairmanship of Dr. S.C. Hudson (Canada) at its headquarters in London from July 19 to 21, 1965, decided that the requirements for the entry into force of the Protocol for the extension of the 1962 Agreement had been satisfied. The Protocol extends the Agreement to July 31, 1966. The Council conducted an extensive preliminary exploration of possible action affecting the future of the Agreement on the expiry of the Protocol but recognized that it would be premature to take any decision at this stage and empowered the Executive Committee to keep the matter under review and report back to the next meeting of the Council in November. The Council agreed that its next Session would be held in London from November 17 to 23, 1965.

International Wheat Council
Cumulative Totals of Commercial Purchases by Importing Countries from Exporting Countries
Crop Year 1964-65 - Through July 3, 1965

Importing Countries	EXPORTING COUNTRIES								Total
	Canada	Argentina	Australia	France	Italy	Sweden	U.S.S.R.	U.S.A.	Purchases
	- thousand bushels -								
Austria	1,789	-	-	-	-	-	-	-	1,789
Belgium & Luxembourg	13,392	4,419	-	921	-	3	-	1,701	20,436
Brazil	-	37,896	-	-	-	-	-	799	38,695
Costa Rica	827	-	-	187	-	-	-	972	1,986
Cuba	-	-	-	-	-	-	-	-	-
Dominican Republic	880	147	-	-	-	-	-	973	2,000
Ecuador	1,333	4	-	-	-	-	-	257	1,594
El Salvador	702	-	-	4	-	-	-	914	1,620
Finland	343	-	-	-	-	143	2,572	209	3,267
Germany, Federal Republic	20,534	6,193	166	2,673	24	3,572	-	6,783	39,945
Greece	16	-	-	-	-	-	-	341	357
Guatemala	335	-	-	-	-	-	-	1,832	2,167
Iceland	-	-	-	8	-	-	-	126	134
India	-	-	9,117	1	-	-	-	3	9,121
Indonesia	-	-	334	19	-	-	-	1	354
Ireland	1,372	318	1,420	437	-	29	-	728	4,304
Israel	529	404	-	-	-	-	-	2,406	3,339
Japan	51,879	81	16,239	981	-	-	-	63,165	132,345
Korea	-	-	-	-	-	-	-	6	6
Liberia	86	-	-	-	-	-	-	106	192
Libya	-	-	16	173	1,224	-	-	1	1,414
Netherlands	3,192	15,875	-	4,771	-	-	-	12,908	36,746
Netherlands Territories	337	-	1	39	-	-	-	691	1,068
New Zealand	-	-	5,559	-	-	-	-	-	5,559
Nigeria	610	140	-	-	-	-	-	2,843	3,593
Norway	1,601	2,319	3,237	1,872	-	3,181	-	4	12,214
Peru	1,016	9,310	9	1	-	-	-	2,832	13,168
Philippines	6,513	-	1,094	956	153	-	-	9,205	17,921
Portugal	66	1,805	-	3,031	-	-	-	4,520	9,422
Portuguese Territories.	247	1,583	45	388	-	-	-	508	2,771
Saudi Arabia	612	274	987	70	1	-	-	5,655	7,599
Sierra Leone	482	-	-	15	-	-	-	136	633
South Africa	944	-	-	-	-	-	-	-	944
Southern Rhodesia	1	-	1,049	-	1	-	-	395	1,446
Switzerland	3,554	318	-	7,287	43	-	-	888	12,090
Tunisia	-	-	-	1,565	-	-	-	-	1,565
United Arab Republic	-	-	-	6,754	4,560	-	-	20	11,334
United Kingdom	77,478	18,226	22,450	6,574	-	477	-	8,651	133,856
U.K. Territories	3,139	-	5,409	378	-	-	-	1,893	10,819
Vatican City	-	-	-	-	-	-	-	-	-
Venezuela	8,975	1,268	-	420	-	-	-	10,247	20,910
Western Samoa	-	-	131	-	-	-	-	1	132
To Orders	-	21,140	-	-	-	-	-	-	21,140
Totals	202,784	121,720	67,263	39,525	6,006	7,405	2,572	142,720	589,995
Percentage of Total Sales by Exporting Countries ..	34.37	20.63	11.40	6.70	1.02	1.25	0.44	24.19	100.00

NOTE: Mexico and Spain - no sales reported.

Argentina - Quantities cover period ending June 11, 1965.

France - Quantities cover period ending June 26, 1965.

Italy - Quantities cover period ending June 19, 1965.

U.S.S.R. - Exemption granted.

CANADIAN SITUATION

1964-65 Wheat Supplies Decline from Previous Year's Record Level

The 1964-65 total supplies of wheat are placed at 1,059.9 million bushels, a decline of 12 per cent from the previous year's record total of 1,210.7 million.

Production for the 1964-65 crop year dropped by some 17 per cent, while the other component of the supplies, carryover stocks, recorded a decrease of 6 per cent. However, total supplies of the size indicated are still the fifth largest on record. After deducting 155.0 million bushels for anticipated domestic requirements, supplies available for export and for carryover during 1964-65 amounted to 904.9 million bushels, about 14 per cent below the 1963-64 total of 1,054.0 million.

August-June Exports Well Above Average

Total exports of wheat and wheat flour amounted to 369.6 million bushels during the August-June period of the current crop year, surpassing the ten-year (1953-54—

1962-63) average of 279.0 million by 32 per cent. However, this year's volume represented a decline of 30 per cent from the record high level of 529.2 million shipped during the same months a year ago. Of the current total, some 343.1 million bushels were exported as wheat, as compared with 478.6 million the preceding year while 26.5 million bushels were flour, in terms of wheat equivalent, only about half of the 50.6 million shipped in the same period of 1963-64. The balance remaining for export and for carryover on July 1, 1965 amounted to 535.3 million bushels, some 2 per cent more than the July 1, 1964 total of 524.8 million.

Canadian Wheat Supplies

Item	1963-64 <u>1/</u>	1964-65 <u>2/</u>
	- million bushels -	
Carryover in North America at beginning of crop year (August 1)	487.2	459.4
Production	723.4	600.4
Imports of wheat for domestic use, August-June	<u>3/</u>	<u>3/</u>
Total estimated supplies	1,210.7	1,059.9
Less estimated domestic requirements for crop year	156.7	155.0
Available for export and for carryover	1,054.0	904.9
Deduct:		
Exports of wheat in bulk, August-June <u>4/</u>	475.7	341.9
Exports of bagged seed wheat, August-June <u>5/</u>	2.9	1.2
Total exports of wheat as grain	478.6	343.1
Exports of wheat flour in terms of wheat, August-June <u>5/</u>	50.6	26.5
Total exports of wheat and wheat flour	529.2	369.6
Balance on July 1 for export and for carryover	524.8	535.3

1/ Revised. 2/ Preliminary. 3/ Less than 50,000 bushels. 4/ As reported by the Board of Grain Commissioners. (Includes overseas clearances and imports into the United States). 5/ Customs returns, 1963-64 adjusted for time lag.

Marketings, Disappearance
and Visible Supplies

Total primary deliveries of wheat (both East and West) up to July 21 of the current crop year have amounted to 488.9 million bushels compared with 532.2 million marketed during the same period of the previous crop year. During the four-week period June 24 to July 21, 1965, primary marketings (East and West) amounted to some 77.2 million bushels as opposed to 29.2 million entering domestic and export channels and, as a result, the total visible supply of Canadian wheat increased from a level of 327.7 million bushels at June 23 to 375.7 million at July 21, 1965.

The total visible supply of Canadian wheat at July 21 this year represented an increase over the comparable 1964 total of 312.0 million but was below the 1963 figure of 396.3 million. Country elevator stocks, amounting to 220.4 million, were 20 per cent above the 183.7 million the previous year and 3 per cent over the 213.4 million of two years ago. Wheat stocks at interior terminals, at July 21, 1965, totalled 4.9 million bushels and recorded declines from both the 1964 and 1963 comparable levels of 5.4 million in each of these years. Wheat stocks "in transit rail" (Western Division) amounted to 16.6 million bushels in contrast to 23.4 million a year ago and 21.3 million two years ago. Supplies at the Canadian Lakehead, totalling some 45.2 million bushels were lower than the 52.9 million of both last year and two years ago. The 7.2 million bushels "in transit lake" were less than the 7.4 million of last year but slightly more than the 1963 figure of 5.4 million bushels. The 30.4 million bushels in Bay, Lake and Upper St. Lawrence ports were sharply above the 7.4 million bushels in these same ports a year ago but below the 36.9 million of two years ago. Supplies in Lower St. Lawrence and Maritime ports, at July 21, 1965, at 29.2 million bushels, exceeded the 1964 total of 10.1 million by a wide margin but was 11 per cent less than the 1963 volume of 33.0 million bushels. The 8.1 million bushels in West Coast ports (Vancouver-New Westminster, Prince Rupert and Victoria) registered decreases from both the 1964 comparable total of 9.1 million and the 1963 figure of 15.0 million bushels.

June 1965 Exports of
Wheat and Flour Total
33.4 Million Bushels

Combined exports of wheat in bulk, bagged seed wheat and wheat flour in terms of grain equivalent amounted to 33.4 million bushels during June 1965. Shipments totalling this volume represented an increase of 12 per cent over the ten-year (1954-63) average for the month of June of 29.7 million bushels but a decline of 11 per cent from the May 1965 figure of 37.7 million. The June 1965 total was in sharp contrast to the unusually high export of 68.9 million bushels shipped during the same month a year ago. Exports of wheat in bulk (as reported by the Board of Grain Commissioners) totalled 30.6 million bushels during June 1965, some 15 per cent more than the ten-year average for the month of June, of 26.6 million, but registering a decline of 12 per cent from the 34.8 million exported the previous month and little more than one-half the June 1964 total of 65.0 million bushels. Based on Canadian Customs returns, the equivalent of 2.7 million bushels of wheat was exported in the form of flour during June 1965, some 3 per cent less than the previous month's figure of 2.8 million and 29 per cent lower than the June 1964 adjusted total of 3.8 million. Customs exports of bagged seed wheat during June 1965 amounted to 97 thousand compared with the June 1964 total (adjusted to remove time lag) of 144 thousand bushels.

Cumulative exports of wheat in bulk during the August-June period of the current crop year amounted to 341.9 million bushels, some 28 per cent less than the comparable 1963-64 total of 475.7 million, but sharply above the ten-year (1953-54-1962-63) average for the period of 241.5 million. The principal markets for Canadian wheat in bulk during the first eleven months of the

current crop year, with figures for the same period of the preceding crop year in brackets, were as follows, in millions of bushels: Britain, 64.1 (70.3); China Communist, 59.7 (36.4); Japan, 48.0 (45.1); Czechoslovakia, 26.2 (6.6); Federal Republic of Germany, 19.8 (34.6); Poland, 14.8 (11.9); Belgium and Luxembourg, 14.4 (14.6); East Germany, 10.1 (nil); and Venezuela, 8.4 (6.7).

Cumulative exports of bagged seed wheat during August-June of the current crop year, based on Canadian Customs returns, amounted to 1.2 million bushels, sharply below last year's comparable total (adjusted to remove time lag) of 2.9 million.

Cumulative exports of wheat flour during the first eleven months of the 1964-65 crop year, based on Customs returns, were the equivalent of 26.5 million bushels, below both the adjusted August 1963-June 1964 total of 50.6 million bushels and the ten-year average for the period of 34.1 million. The leading markets for Canadian wheat flour in terms of wheat equivalent during the August-June period of the 1964-65 crop year, with revised data for the same months of the preceding crop year in brackets, were as follows, in millions of bushels: Britain, 9.0 (10.8); Cuba, 3.4 (6.1); U.S.S.R. (Russia), 1.7 (21.2); Ghana, 1.6 (1.0); Jamaica, 1.5 (1.6); Trinidad and Tobago, 1.3 (1.4); United States, 1.0 (0.9); and Leeward and Windward Islands, 0.9 (1.0).

Preliminary Estimates of
Specified Crop and
Summerfallow Acreages, 1965

The acreage estimates for 1965 are, with some exceptions, based on returns from the Dominion Bureau of Statistics' annual June survey of seeded acreages and have been made in consultation with the officials

responsible for agricultural statistics in each of the provinces. As in former years, current estimates are subject to revision in the light of further information received during the season and when marketing and other check data become available after the end of the crop year.

Preliminary Estimates of Crop and Summerfallow Acreages, 1965
with Comparisons - Canada 1/

Crops	1964	1965	1965 as % of 1964
	- acres -		per cent
Winter wheat	455,000	362,000	80
Spring wheat <u>2/</u>	29,230,800	27,920,200	96
All wheat	29,685,800	28,282,200	95
Oats for grain <u>3/</u>	9,681,000	9,621,000	99
Barley	5,454,700	6,037,600	111
Fall rye <u>4/</u>	578,900	642,500	111
Spring rye	100,900	103,000	102
All rye	679,800	745,500	110
Flaxseed	1,977,500 <u>5/</u>	2,239,000	113
Rapeseed	791,000 <u>5/</u>	1,435,000	181
Summerfallow	26,375,000	26,580,000	101

- 1/ In some provinces the area seeded to certain crops is too small to permit reliable estimates. Acreages in such crops have not been included in the totals for Canada. 2/ Includes relatively small acreages of winter wheat in all provinces other than Ontario. 3/ Includes oats for grain and for hay in the Prairie Provinces. 4/ Includes small acreages of spring rye in Quebec, Ontario and British Columbia. 5/ Revised.

Total wheat acreage in Canada in 1965, estimated at 28.3 million acres, is 5 per cent smaller than last year's record 29.7 million, but is 17 per cent above the ten-year (1953-62) average of 24.2 million acres. In the Prairie Provinces, where most of Canada's wheat is grown, acreage is estimated at 27.8 million, a decrease of 4 per cent from last year's record 29.1 million but 18 per cent above the ten-year average of 23.5 million.

Preliminary estimates of durum wheat acreage in the Prairie Provinces at 0.8 million acres indicate a 56 per cent decrease in acreage this year compared with 1964.

Preliminary Estimate of Durum Wheat Acreages, 1965
with Comparisons - Prairie Provinces

Province	1964	1965	1965 as % of 1964
	- acres -		per cent
Manitoba	120,000	40,000	33
Saskatchewan	1,541,000	725,000	47
Alberta	227,000	75,000	33
Prairie Provinces	1,888,000	840,000	44

The area seeded to oats in Canada in 1965 is estimated at 9.6 million acres, some one per cent smaller than that of 1964 and 14 per cent below the ten-year average area of 11.2 million acres. In the Prairie Provinces the oats acreage, at 6.6 million acres, is one per cent more than that of 1964. Canadian barley acreage for 1965 at 6.0 million acres increased 11 per cent over the 1964 level of 5.5 million but is 24 per cent below the ten-year average of 7.9 million. Barley acreage in the Prairies is placed at 5.7 million, up 10 per cent over the 1964 level.

Rye acreage at 745,500 is 10 per cent above the 1964 level, and 8 per cent more than the ten-year (1953-62) average. Fall seedings of rye were up 11 per cent, and spring rye increased by 2 per cent. The greater part of Canada's rye is grown in the Prairie Provinces where the 1965 acreage is estimated at 691,000 acres as compared with 619,900 in 1964.

Preliminary Estimates of Crop and Summerfallow Acreages, 1965
with Comparisons - Prairie Provinces

Crop	1964	1965	1965 as % of 1964
	- acres -		per cent
Spring wheat (including durum)	29,080,000	27,790,000	96
Oats (including oats for hay)	6,544,000	6,610,000	101
Barley	5,217,000	5,741,000	110
Fall rye	519,000	588,000	113
Spring rye	100,900	103,000	102
All rye	619,900	691,000 ^{1/}	111
Flaxseed	1,916,000	2,184,000	114
Rapeseed	791,000	1,435,000 ^{1/}	181
Summerfallow	26,375,000	26,580,000	101

Initial Payments
Announcement

On July 19, 1965, the Honourable Mitchell Sharp, Minister of Trade and Commerce, announced that The Canadian Wheat Board's initial payments to producers for the basic grades of western wheat, oats and barley delivered during the 1965-66 crop year effective August 1st, 1965, will be at the same level as for the 1964-65 crop year, and are as follows:

Wheat:	No. 1 Manitoba Northern, basis in store Fort William/Port Arthur or Vancouver	\$1.50 per bushel
Oats:	No. 2 C.W. Oats, basis in store Fort William/Port Arthur	60 cents per bushel
Barley:	No. 3 C.W. Six-Row Barley, basis in store Fort William/Port Arthur	96 cents per bushel

Wheat and Flour
Sale to U.S.S.R.

On August 11, 1965, The Canadian Wheat Board announced the sale of 4.6 million tons of wheat and 400 thousand tons of wheat in the form of flour to the U.S.S.R. This sale amounts to the equivalent of approximately 187 million bushels of wheat.

The wheat and flour have been purchased for cash, and delivery is to be made during the period August, 1965 to July, 1966 inclusive. Shipment of the entire quantity will be made from St. Lawrence River Ports and Canadian Atlantic Ports.

This contract is in addition to the sale of 700 thousand tons of wheat and 20,000 tons of flour to the U.S.S.R. announced on August 5th and to smaller contract quantities announced earlier this year but for shipment during the period August-December, 1965. In total, purchases of wheat from Canada by the U.S.S.R. for delivery in the current crop year now amount to approximately 222 million bushels.

Representatives of Exportkhleb will be in Winnipeg this week to complete the necessary commercial contracts with export agents of The Canadian Wheat Board and the Canadian milling companies for the quantities of wheat and flour involved in this sale.

Additional Wheat Sale
to China

On July 21, 1965, The Canadian Wheat Board issued the following press release:

"On May 26, 1965, The Canadian Wheat Board announced that under the provisions of the Second Long-Term Wheat Agreement with China a sales contract had been signed to provide for the export of 1,500,000 long tons, 5% more or less, of wheat. At the time this contract was negotiated consideration was given to supplying a larger quantity but any increase was subject to the Board's review of its supply position. Current supplies and crop prospects now indicate that a quantity increase is warranted and the contract for 1,500,000 long tons, 5% more or less, has been increased by 625,000 long tons resulting in a total sale of 2,125,000 long tons, 5% more or less. Of this amount 2,075,000 tons will be shipped from Pacific Coast ports, July, 1965 through July, 1966, and the balance of 50,000 tons from St. Lawrence River or Atlantic ports, September, 1965 through January, 1966. The bulk of the sale consists of the lower grades of wheat (Four Northern and Five Wheat) and Durum grades. A limited quantity of Three Northern is included. Assuming the full tolerance is taken a total of 83.3 million bushels of wheat is involved.

"Including the amended sale covered by this announcement total sales under the Second Long-Term Agreement signed in August, 1963 amount to 5,000,000 tons or approximately 186.7 million bushels, which is the maximum quantity provided therein.

"As in the previous sales contracts, payment terms for sales under the Long-Term Agreement are 25% cash when each vessel is loaded, and the balance of 75% in eighteen months, with interest. The deferred payment provision is made possible by a guarantee to The Canadian Wheat Board by the Government of Canada."

Assistant Chief Commissioner
of The Canadian Wheat Board
Retires

On August 13, 1965, the Honourable Mitchell Sharp, Minister of Trade and Commerce, announced the retirement of William Riddel, Assistant Chief Commissioner of The Canadian Wheat Board, effective September 30, 1965, and the appointment of J.B. Lawrie to the post, effective October 1. At the same time, Mr. Sharp announced that D.H. Treleaven and Dr. R.L. Kristjanson had been appointed Commissioners of the Board, effective October 1.

Delivery Quota
Policy 1965-66

The Canadian Wheat Board in its Instructions to the Trade re Quotas (General) No. 2 under date of July 28, 1965, announced in part that the Board wishes to advise that all delivery quotas in effect in the 1964-65 crop year, including open quotas, supplementary quotas, special permits, etc., will automatically expire as at the close of business July 31st, 1965.

Effective on and after August 1st, 1965, the quota policy for the Board for the 1965-66 crop year will be as follows:

Flaxseed Effective August 1st, at all delivery points within the designated area a quota of three (3) bushels per seeded acre to flaxseed as shown in the individual producer's permit book or one hundred and fifty (150) bushels, whichever is the larger.

All deliveries made under this quota must be properly recorded in the producer's permit book on one of the pages provided for deliveries made under seeded acreages and as in the previous crop year, producers may deliver flaxseed within existing quotas to any delivery point selected by them at which elevator space for flaxseed is available.

Rapeseed Effective August 1st, at all delivery points within the designated area a quota of three (3) bushels per seeded acre to rapeseed as shown in the individual producer's permit book or one hundred and fifty (150) bushels, whichever is the larger.

All deliveries made under this quota must be properly recorded in the producer's permit book on one of the pages provided for deliveries made under seeded acreages and as in the previous crop year, producers may deliver rapeseed within existing quotas to any delivery point selected by them at which elevator space for rapeseed is available.

Malting, Pot and Pearling Barley The Board will again consider applications on behalf of producers of malting, pot and/or pearling barley, for permission to deliver, in excess of the established quotas, one carlot of such barley provided:-

- (a) A representative sample of such carlot has been submitted to and accepted by a maltster or shipper as suitable for malting, pot and/or pearling; and
- (b) A premium is to be paid to the producer for the carlot of barley so accepted.

Full details under the foregoing provisions have been announced in Instructions to the Trade re Quotas (General) No. 1 of July 28th, 1965.

Initial Delivery Quota 1965-66 Crop Year - Wheat (including Durum), Oats, Barley, and Rye Effective at all delivery points on and after August 1st, 1965, the following initial quota is hereby authorized in respect of the above grains:

An initial delivery quota applicable to all permit holders regardless of the acreage shown on their 1965 permit books of the equivalent of one hundred (100) units. Each such unit shall be the equivalent of three (3) bushels of Wheat or ten (10) bushels of Oats or five (5) bushels of Barley or five (5) bushels of Rye.

As space becomes available each permit holder will be entitled to deliver at his option any of the above grains or any combination of the above grains calculated on the unit basis, but his total deliveries under the initial quota must not exceed the equivalent of one hundred (100) units.

Under the above policy a permit holder will be entitled to deliver a maximum of 300 bushels of Wheat or 1,000 bushels of Oats or 500 bushels of Barley or 500 bushels of Rye, or any combination of these grains which, when calculated on the unit basis outlined above, does not exceed one hundred (100) units.

All deliveries to be made under the initial quota must be entered in the producer's delivery permit book at the time of delivery. Such entries are to be made commencing on Page 1, with the quantity being entered in the appropriate column for the kind of grain delivered. The unit value of the delivery is to be determined by dividing the bushel quantity by three (3) in the case of Wheat, or ten (10) in the case of Oats, or five (5) in the case of Barley and Rye, calculating same to one decimal point. The total units delivered, as determined above, should then be entered in the "Total Delivery" column. For example, a load of 151.4 bushels would be entered as 50.4 units in the case of Wheat, 15.1 units in the case of Oats or 30.2 units if it consisted of Barley or Rye.

General Delivery Quotas 1965-66 Crop Year Following the initial quota, the Board will establish general quotas at individual delivery points.

Comment

The Canadian Wheat Board Act provides that:-

- (a) the person delivering the grain is the actual producer or is entitled as a producer to the grain.
- (b) the grain was produced on the lands described in the permit book.

It is expected that the past experience of producers and elevator agents, especially in regard to the initial quota, will be helpful in the administration of delivery quotas during the present crop year and that the available storage space will be handled this fall and throughout the crop year in the best interests of all concerned.

Farmers' Marketings 1/ of Wheat in the Prairie Provinces 1964-65

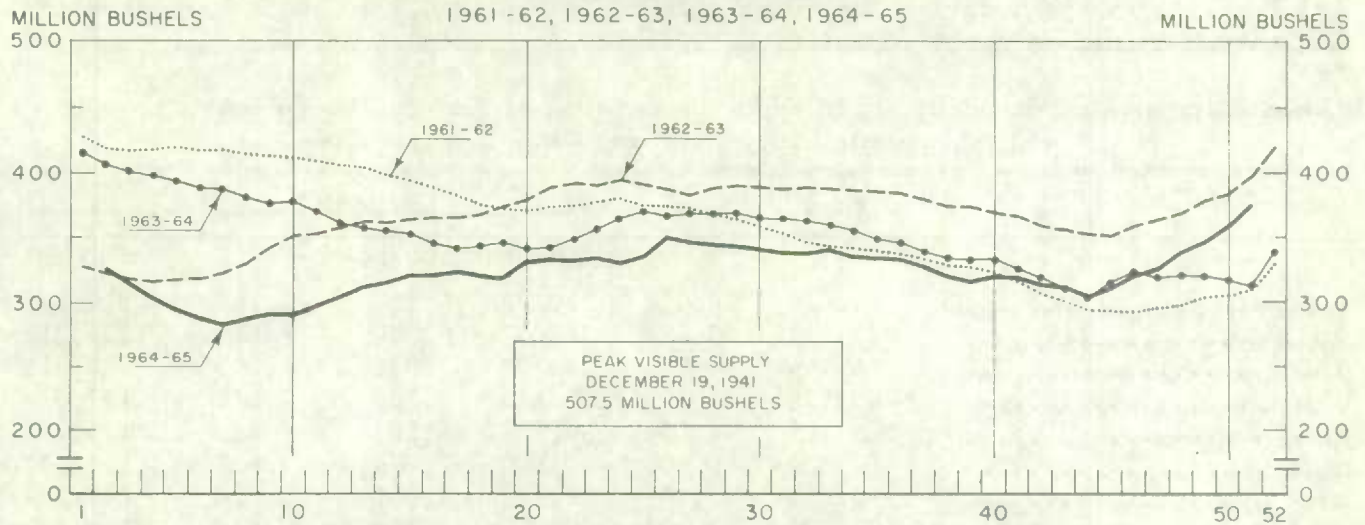
Week Ending		Manitoba	Saskatchewan	Alberta	Total	Last Year <u>2/</u>
- bushels -						
August	12, 1964	75,662	409,500	98,247	583,409	543,483
	19	165,645	350,728	200,845	717,218	814,732
	26	606,652	1,186,624	360,697	2,153,973	2,958,768
September	2	259,162	1,731,216	542,073	2,532,451	3,670,105
	9	626,938	2,337,139	282,197	3,246,274	7,414,702
	16	2,861,693	3,000,932	736,446	6,599,071	8,966,278
	23	4,677,736	10,134,664	3,309,300	18,121,700	6,291,301
	30	2,253,868	11,072,846	2,974,796	16,301,510	9,604,797
October	7	1,436,956	6,617,924	3,090,763	11,145,643	11,308,739
	14	1,575,017	7,043,761	6,481,794	15,100,572	8,789,151
	21	1,816,060	11,532,537	6,007,602	19,356,199	11,558,396
	28	2,311,743	10,169,173	4,069,997	16,550,913	15,015,073
November	4	2,583,044	6,802,878	3,630,412	13,016,334	15,281,709
	11	2,063,739	7,630,517	3,107,184	12,801,440	13,599,259
	18	1,836,676	6,766,380	2,980,075	11,583,131	15,332,440
	25	1,534,854	7,469,802	3,168,692	12,173,348	11,869,874
December	2	1,521,191	5,254,805	2,029,339	8,805,335	17,528,964
	9	1,305,493	5,003,945	2,325,113	8,634,551	19,357,177
	16	2,964,986	13,588,764	3,746,693	20,300,443	10,101,263
	23	794,134	6,484,116	1,408,499	8,686,749	7,292,811
	30	648,303	2,405,338	1,012,360	4,066,001	11,252,775
January	6, 1965	695,986	5,748,287	1,301,676	7,745,949	15,799,953
	13	1,034,504	1,584,566	1,118,931	3,738,001	16,553,644
	20	616,905	4,983,638	4,339,605	9,940,148	16,268,127
	27	1,739,531	12,925,263	5,343,141	20,007,935	5,700,105
February	3	447,871	1,452,759	2,483,788	4,384,418	11,039,892
	10	379,082	1,169,508	1,690,970	3,239,560	7,962,153
	17	674,240	2,265,066	1,731,833	4,671,139	7,584,566
	24	845,577	3,127,348	1,954,646	5,927,571	5,825,207
March	3	607,664	1,916,304	2,241,044	4,765,012	5,224,573
	10	910,214	3,338,276	3,033,095	7,281,585	4,968,290
	17	1,307,400	4,348,768	2,221,656	7,877,824	5,522,944
	24	410,263	1,504,214	2,148,172	4,062,649	4,396,596
	31	557,938	1,117,843	1,828,357	3,504,138	2,507,410
April	7	761,892	2,275,722	2,262,045	5,299,659	5,861,716
	14	473,538	1,419,500	1,426,640	3,319,678	5,945,568
	21	446,305	1,050,800	748,739	2,245,844	7,741,542
	28	882,147	5,910,227	2,242,148	9,034,522	13,377,654
May	5	908,461	10,844,618	2,767,246	14,520,325	13,218,916
	12	523,922	5,864,165	2,107,298	8,495,385	7,205,841
	19	594,178	2,625,856	1,258,028	4,478,062	8,045,609
	26	390,002	2,556,139	1,164,159	4,110,300	7,203,616
June	2	508,347	4,508,222	1,874,530	6,891,099	12,683,135
	9	941,931	9,893,734	2,458,680	13,294,345	27,656,918
	16	1,895,601	13,313,094	3,211,463	18,420,158	23,424,515
	23	3,141,556	9,501,651	3,330,913	15,974,120	13,453,626
	30	3,051,434	13,747,837	3,571,118	20,370,389	18,615,048
July	7	1,646,354	10,295,594	2,770,858	14,712,806	15,802,035
	14	1,662,678	14,441,459	3,438,656	19,542,793	14,787,886
	21	1,921,349	17,012,786	3,615,226	22,549,361	13,387,151
Totals		63,896,422	297,736,833	121,247,785	482,881,040	526,316,033
Average similar period:						
1953-54-1962-63		37,943,998	212,510,272	87,403,486	337,857,756	

1/ Includes receipts at country, interior private and mill elevators, interior semi-public terminals and platform loadings. 2/ Revised.

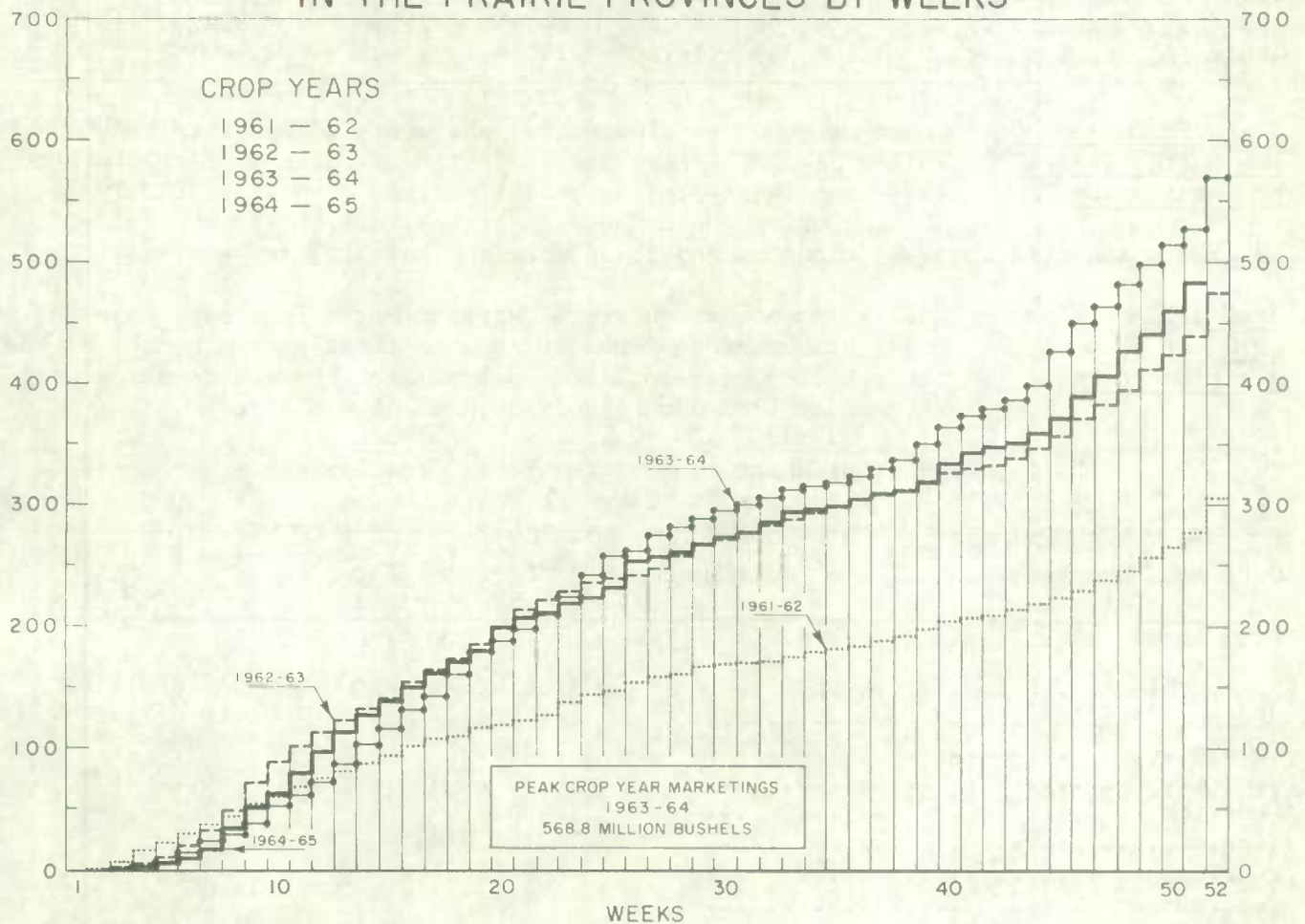
Grading of Wheat Inspected, August 1964-June 1965 with Comparisons

	<u>Crop Year</u>		<u>August-June</u>			
Grade	Average 1958-59	1963-64	1963-64		1964-65	
	- 1962-63					
	per cent	per cent	cars	per cent	cars	per cent
No. 1 Man. Northern	7.6	4.8	12,679	4.6	5,829	2.5
No. 2 Man. Northern	38.0	49.2	130,359	47.2	79,178	34.6
No. 3 Man. Northern	22.6	25.1	71,393	25.9	50,855	22.2
No. 4 Man. Northern	10.0	6.6	19,815	7.2	19,482	8.5
No. 5 Wheat	4.4	3.4	10,200	3.7	12,709	5.6
No. 6 Wheat	0.6	0.5	1,498	0.5	1,416	0.6
Feed Wheat	<u>1/</u>	<u>1/</u>	15	<u>1/</u>	63	<u>1/</u>
Others Red Spring	10.1	3.0	8,885	3.2	42,163	18.4
C.W. Garnet	0.1	0.4	1,154	0.4	169	0.1
C.W. White Spring	0.1	0.1	240	0.1	247	0.1
C.W. Mixed Wheat	<u>1/</u>	0.1	142	0.1	117	0.1
Alberta Winter	0.2	0.9	2,860	1.0	1,232	0.5
Nos. 1-6 C.W. Amber Durum .	6.0	5.7	16,281	5.9	14,567	6.4
Others C.W. Amber Durum ...	0.2	0.2	563	0.2	927	0.4
Totals	100.0	100.0	276,084	100.0	228,954	100.0
Gross bushels (approx.) ...			531,964,000		443,738,000	
1/ Less than .05 per cent.						

WEEKLY VISIBLE SUPPLY OF CANADIAN WHEAT



CUMULATIVE RECORD OF WHEAT MARKETINGS IN THE PRAIRIE PROVINCES BY WEEKS



(Data in both charts for crop years beginning August 1)

Lake Shipments of
Canadian Grain

Total shipments of the five major grains out of Lakehead terminals from the opening of navigation to July 21 this year amounted to 138.9 million bushels, 30 per cent less than the 197.1 million shipped during the comparable period of 1964. In 1965 the season of navigation opened on April 20 while the 1964 season opened on April 2.

Lake Shipments of Canadian Grain from the Opening of Navigation to July 21, 1965 and to Approximately the Same Date 1954 to 1964

Year	Wheat	Oats	Barley	Rye	Flaxseed	Total
- thousand bushels -						
1954	56,476	26,630	27,795	4,127	1,765	116,793
1955	79,727	15,449	31,037	6,214	2,884	135,311
1956	116,444	14,067	34,792	7,338	2,275	174,916
1957	86,178	19,264	22,115	3,703	5,815	137,074
1958	108,202	21,866	39,259	4,157	2,653	176,137
1959	84,834	11,506	20,500	2,066	2,627	121,531
1960	90,846	9,109	22,395	2,301	3,176	127,827
1961	123,825	12,395	20,069	1,388	2,878	160,555
1962	61,052	6,586	10,705	1,031	2,367	81,743
1963	80,953	19,329	10,077	1,485	2,839	114,683
1964	164,866	11,159	14,401	2,215	4,421	197,061
1965	100,393	18,457	14,183	1,948	3,947	138,928

Wheat Shipments to
the United States
by Destination

There were no vessel and rail shipments of wheat to the United States, either for re-export or retention for domestic use, from the beginning of the current crop year to July 21, 1965. During the comparable periods of 1962-63 and 1963-64, shipments amounted to 1,441 thousand and 1,258 thousand bushels, respectively.

Rail Shipments
of Wheat to
Maritime Ports

Rail shipments of wheat to Maritime Ports from Bay, Lake and Upper St. Lawrence Ports during the first eleven months of the current crop year totalled 33.1 million bushels compared with the August 1963-June 1964 figure of 41.9 million.

Rail Shipments of Wheat to Maritime Ports from Bay, Lake and Upper St. Lawrence Ports

Origin of Shipments	August 1, 1963- June 30, 1964	August 1, 1964- June 30, 1965
- bushels -		
Port McNicoll	11,854,674	6,478,328
Midland, Tiffin	14,242,201	10,027,328
Collingwood	1,388,393	581,750
Owen Sound	5,667,783	6,620,135
Goderich	3,463,804	3,570,940
Sarnia	4,155,019	3,159,960
Port Colborne	747,601	2,524,027
Peterborough	348,266	-
Walkerville	-	144,399
Totals	41,867,741	33,106,867

Rail Shipments of Wheat from Fort William-Port Arthur, 1961-62-1964-65

Month	1961-62	1962-63	1963-64	1964-65
- bushels -				
August	20,648	13,933	5,500	7,786
September	14,598	11,657	9,104	19,564
October	33,944	22,716	25,355	12,135
November	22,915	12,024	13,500	13,167
December	60,167	12,778	23,047	26,961
January	126,533	39,534	58,772	10,703
February	68,421	22,967	28,768	17,214
March	37,000	86,398	21,268	112,296
April	37,777	69,067	26,063	17,506
May	11,203	11,851	7,941	8,207
June	16,022	15,746	20,518	4,965
July	17,315	11,158	12,707	
Totals	466,543	329,829	252,543	

Distribution of Rail Shipments of Wheat from Fort William-Port Arthur, June 1965

Grade	Quebec	Ontario
- bushels -		
5 Wheat	-	1,500
Rejected	1,465	-
Durum	2,000	-
Totals	3,465	1,500

Overseas Exports of Canadian Grain by Ports of Loading, August 1, 1964-July 21, 1965
with Comparisons

Port	Wheat ^{1/}	Durum Wheat ^{1/}	Oats ^{1/}	Barley	Rye	Flaxseed	Rapeseed ^{2/}
- bushels -							
<u>Pacific Seaboard</u>							
Van.-New West,	121,898,214	11,397,554	3,740,374	19,368,849	1,045,406	6,095,768	8,048,239
Victoria	7,969,108	-	-	-	-	-	160,520
Prince Rupert	9,132,406	-	-	-	-	-	-
<u>Churchill</u>	21,644,772	-	-	-	-	-	-
<u>Lakehead Direct</u>	2,923,362	907,549	6,466,379	4,967,880	893,499	4,038,293	613,032
<u>Kingston Direct</u>	343,541	-	-	-	-	-	-
<u>Prescott Direct</u>	402,000	16,667	-	-	-	-	-
<u>St. Lawrence</u>							
Montreal	40,964,058	8,148,314	646,368	197,795	62,710	2,539,642	-
Sorel	16,521,132	648,990	-	-	40,000	42,629	-
Three Rivers	12,381,491	1,630,838	-	-	176,600	313,037	-
Quebec	13,621,247	1,392,907	-	-	-	304,007	-
Baie Comeau	43,219,543	6,267,694	-	-	-	152,995	-
<u>Maritime</u>							
Saint John	1,465,488	-	-	-	-	-	-
West Saint John ..	16,283,847	1,664,245	164,620	-	-	39,963	66,799
Halifax	14,043,499	489,424	-	-	-	144,500	-
Totals	322,813,708	32,564,182	11,017,741	24,534,524	2,218,215	13,670,834	8,888,590

August 1, 1963-

July 22, 1964 496,735,531 24,515,538 15,892,059 31,063,337 4,855,208 12,981,020 4,984,259

^{1/} Excluding bagged seed.

^{2/} In bushels of 50 pounds.

Freight-Assisted Shipments Claims filed for payment up to July 31, 1965 represent the movement of some 9.6 million bushels of wheat from the Prairie Provinces to Eastern Canada and British Columbia under the freight assistance policy during the August-June period of the 1964-65 crop year. During the same months last year claims had been filed for a total of 13.4 million bushels, indicating on the assumption of approximately the same rate of submission of claims during both the current and preceding crop years that the August-June shipments of wheat under the policy were running about 28 per cent below those of 1963-64. Revised data on the August-June 1963-64 shipments of wheat based on claims submitted up to July 31, 1965 place the eleven-month total at 13.8 million bushels. The bulk of the shipments during the current eleven-month period under review went to destinations in Quebec and Ontario with these two provinces accounting for 44 per cent and 25 per cent of the total, respectively.

Provincial Distribution of Wheat Shipments under the Freight Assistance Policy
August-June 1964-65 and 1963-64

Month	Nfld.	P.E.I.	N.S.	N.B.	Que.	Ont.	B.C.	Total
- thousand bushels -								
August, 1964	64	9	107	39	463	237	64	984
September	36	15	91	40	456	239	102	980
October	8	12	104	35	446	234	172	1,010
November	6	10	117	35	426	216	196	1,007
December	10	7	76	37	435	220	134	919
January, 1965	10	10	86	29	395	191	212	933
February	7	10	85	28	323	199	134	786
March	9	15	99	36	371	220	160	908
April	3	9	131	30	354	218	123	869
May	1	8	64	27	424	259	124	906
June	5	3/	8	7	94	207	2	323
Totals 1/	161	104	969	342	4,187	2,439	1,424	9,625
Same period 1963-64:								
Preliminary 2/	237	144	1,551	495	5,413	4,143	1,406	13,391
Revised 1/	245	150	1,639	506	5,564	4,221	1,494	13,819

Preliminary data on millfeed shipments under the freight assistance policy indicate shipments of 397,816 tons during the August-June period of the current crop year. During the same eleven months of 1963-64 claims had been filed for a total of 486,148 tons, indicating on the assumption of approximately the same rate of submission of claims during both the current and preceding crop years that the August-June shipments of millfeeds under the policy were running about 18 per cent below those of 1963-64. Revised data on the 1963-64 August-June shipments of millfeeds based on claims submitted up to July 31, 1965 place the eleven-month total at 517,726 tons. As with freight-assisted shipments of wheat, the greater portion of the millfeed shipments during the period under review went to destinations in Quebec and Ontario.

Provincial Distribution of Millfeed Shipments under the Freight Assistance Policy
August-June 1964-65 and 1963-64

Province	1963-64		1964-65
	Preliminary 2/	Revised 1/	Preliminary 1/
- tons -			
Newfoundland	5,558	6,471	4,655
Prince Edward Island	8,566	8,883	6,791
Nova Scotia	28,943	30,239	27,238
New Brunswick	26,726	27,721	23,497
Quebec	235,416	251,784	196,109
Ontario	145,643	154,390	115,260
British Columbia	35,296	38,238	24,266
Totals	486,148	517,726	397,816

1/ Based on claims filed up to July 31, 1965.

2/ Based on claims filed up to July 31, 1964.

3/ Less than 500 bushels.

Monthly Exports of Canadian Wheat and Wheat Flour

Year and Month	Wheat in Bulk <u>1/</u>	Bagged Seed Wheat <u>2/</u>	Total Wheat	Wheat Flour <u>2/</u> <u>3/</u>	Total <u>3/</u> Wheat and Wheat Flour
- thousand bushels -					
<u>1962-63</u>					
August	21,944	157	22,101	2,852	24,953
September	25,040	200	25,240	2,604	27,844
October	29,705	31	29,737	2,181	31,917
November	33,309	144	33,452	2,176	35,628
December	20,949	451	21,399	2,305	23,705
January	21,486	473	21,959	1,586	23,545
February	18,779	743	19,522	1,811	21,333
March	19,246	1,373	20,618	2,454	23,072
April	28,916	422	29,338	2,330	31,669
May	35,355	14	35,369	2,186	37,555
June	24,512	<u>4/</u>	24,513	2,837	27,350
July	20,854	-	20,854	1,943	22,798
Totals	300,095	4,007	304,102	27,265	331,367
<u>1963-64</u>					
August	29,204	187	29,391	2,819	32,210
September	42,556	129	42,686	2,106	44,791
October	59,020	15	59,035	3,520	62,555
November	65,296	204	65,499	4,538	70,037
December	41,763	388	42,151	6,284	48,435
January	28,451	535	28,987	5,829	34,816
February	21,675	562	22,237	5,800	28,037
March	22,510	484	22,995	5,697	28,692
April	43,211	213	43,423	5,530	48,954
May	56,992	14	57,006	4,744	61,750
June	65,036	144	65,180	3,768	68,948
July	61,012	35	61,047	4,275	65,322
Totals	536,726	2,912	539,637	54,910	594,548
<u>1964-65</u> <u>5/</u>					
August	42,226	44	42,270	4,073	46,343
September	42,792	145	42,937	2,133	45,069
October	40,120	27	40,147	2,037	42,184
November	30,976	44	31,020	2,523	33,543
December	27,720	72	27,792	2,522	30,314
January	18,098	73	18,171	2,421	20,591
February	19,337	118	19,455	1,332	20,787
March	23,376	272	23,648	2,201	25,849
April	31,798	228	32,026	1,783	33,809
May	34,822	114	34,937	2,777	37,713 <u>6/</u>
June	30,631	97	30,728	2,680	33,408
Totals	341,896	1,235	343,131	26,481	369,612

1/ Export clearances including shipments to the United States compiled by the Statistics Branch, Board of Grain Commissioners for Canada. 2/ Compiled from Canadian Customs returns, 1962-63 and 1963-64 adjusted to remove effect of time lag in reporting. 3/ In terms of wheat equivalent. Wheat flour conversion rate: 2.3 bushels per cwt. 4/ Less than 500 bushels. 5/ Preliminary, subject to revision. 6/ Revised.

Exports of Canadian Wheat 1/ by Destination, June 1965 and 1964

Destination	Wheat	Durum	All Wheat	
	(Except Durum)	Wheat	June 1965	June 1964 <u>2/</u>
- bushels -				
<u>Western Europe</u>				
<u>EEC</u>				
Belgium and Luxembourg	1,838,541*	123,200*	1,961,741*	156,974
France	287,938*	59,380	347,318*	318,803
Germany, Federal Republic	1,483,729*	630,198*	2,113,927*	2,249,338
Italy	440,101	21,280	461,381	115,733
Netherlands	231,873*	177,221*	409,094*	-
Sub-totals	4,282,182*	1,011,279*	5,293,461*	2,840,848
<u>Other Western Europe</u>				
Austria	-	-	-	220,472
Britain	4,363,151*	36,587*	4,399,738*	9,157,856
Ireland	205,333	-	205,333	42,933
Malta and Gozo	361,947	3,990	365,937	-
Switzerland	41,067	134,400*	175,467*	1,750,928
Sub-totals	4,971,498*	174,977*	5,146,475*	11,172,189
Totals	9,253,680	1,186,256	10,439,936	14,013,037
<u>Eastern Europe</u>				
Albania	276,864	106,960	383,824	985,600
Bulgaria	-	-	-	382,667
Czechoslovakia	4,342,053	-	4,342,053	1,471,157
Germany, East	1,561,840	-	1,561,840	-
Poland	66,000	-	66,000	3,804,726
U.S.S.R. (Russia)	3,025,570	-	3,025,570	32,744,058
Totals	9,272,327	106,960	9,379,287	39,388,208
<u>Africa</u>				
Mozambique	11,125	-	11,125	-
Nigeria	32,853	-	32,853	-
Republic of South Africa	-	-	-	1,112,633
Rhodesia	-	-	-	9,639
Totals	43,978	-	43,978	1,122,272
<u>Asia</u>				
China, Communist	1,928,623	1,848,058	3,776,681	1,358,373
Hong Kong	42,560	-	42,560	70,560
India	61,750	-	61,750	721,373
Japan	4,617,670	-	4,617,670	4,712,263
Malaysia	91,467	-	91,467	73,360
Pakistan	792,000	-	792,000	-
Philippines	164,519	-	164,519	1,121,288
Saudi Arabia	-	-	-	43,721
Taiwan	88,219	-	88,219	38,577
Totals	7,786,808	1,848,058	9,634,866	8,139,515
<u>Western Hemisphere</u>				
Barbados	40	-	40	-
Cuba	754,207	-	754,207	681,669
Ecuador	-	-	-	238,832
El Salvador	-	-	-	142,240
Guatemala	45,000	16,667	61,667	33,333
Jamaica	598	-	598	598
Peru	145,413	-	145,413	-
Venezuela	170,733	-	170,733	481,300
United States Domestic <u>3/</u>	-	-	-	795,000
Totals	1,115,991	16,667	1,132,658	2,372,972
Sub-totals, all countries	27,472,784	3,157,941	30,630,725	65,036,004
Bagged seed <u>4/</u>	-	-	97,470	143,989
Totals, all countries	27,472,784	3,157,941	30,728,195	65,179,993

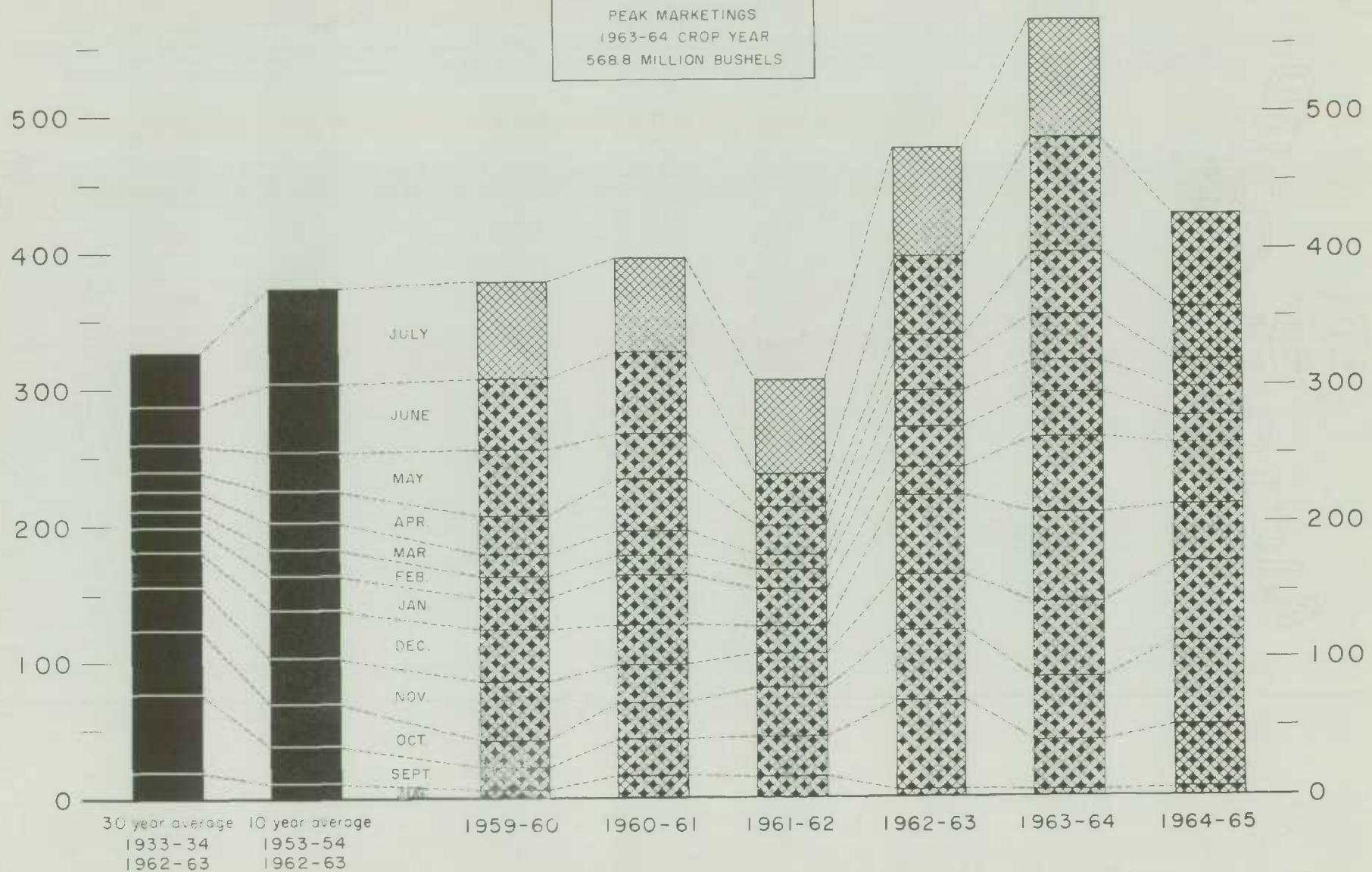
NOTE: See footnotes on page 20.

FARMERS' MARKETINGS OF WHEAT, PRAIRIE PROVINCES (SPECIFIED PERIODS)

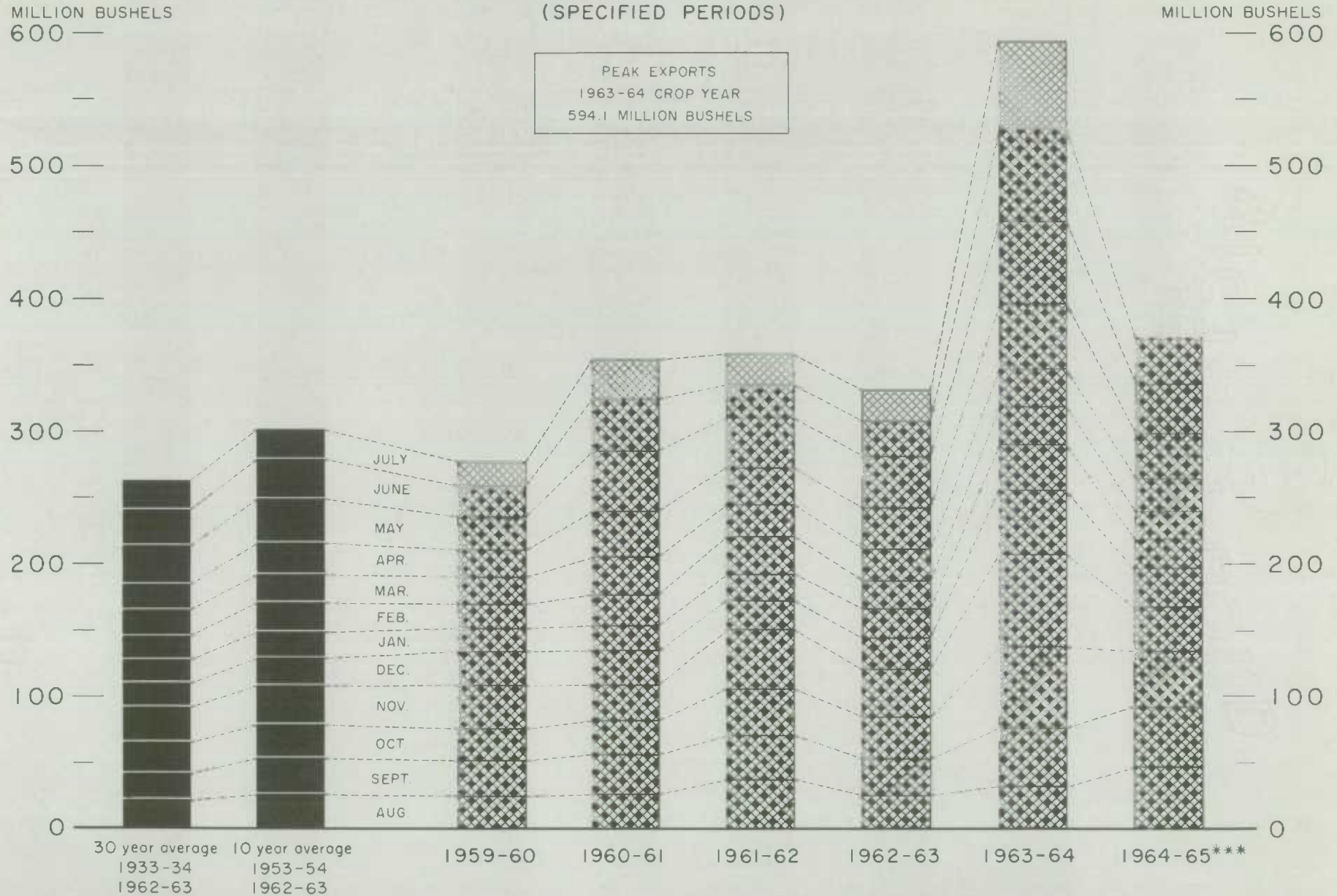
MILLION BUSHELS
600 —

MILLION BUSHELS
— 600

PEAK MARKETINGS
1963-64 CROP YEAR
568.8 MILLION BUSHELS



EXPORTS OF CANADIAN WHEAT* AND WHEAT FLOUR**



*Beginning with 1956-57 includes bagged seed wheat

**In terms of wheat equivalent.

***Preliminary.

Agriculture Division D. B. S.

FARMERS' MARKETINGS OF BARLEY, PRAIRIE PROVINCES

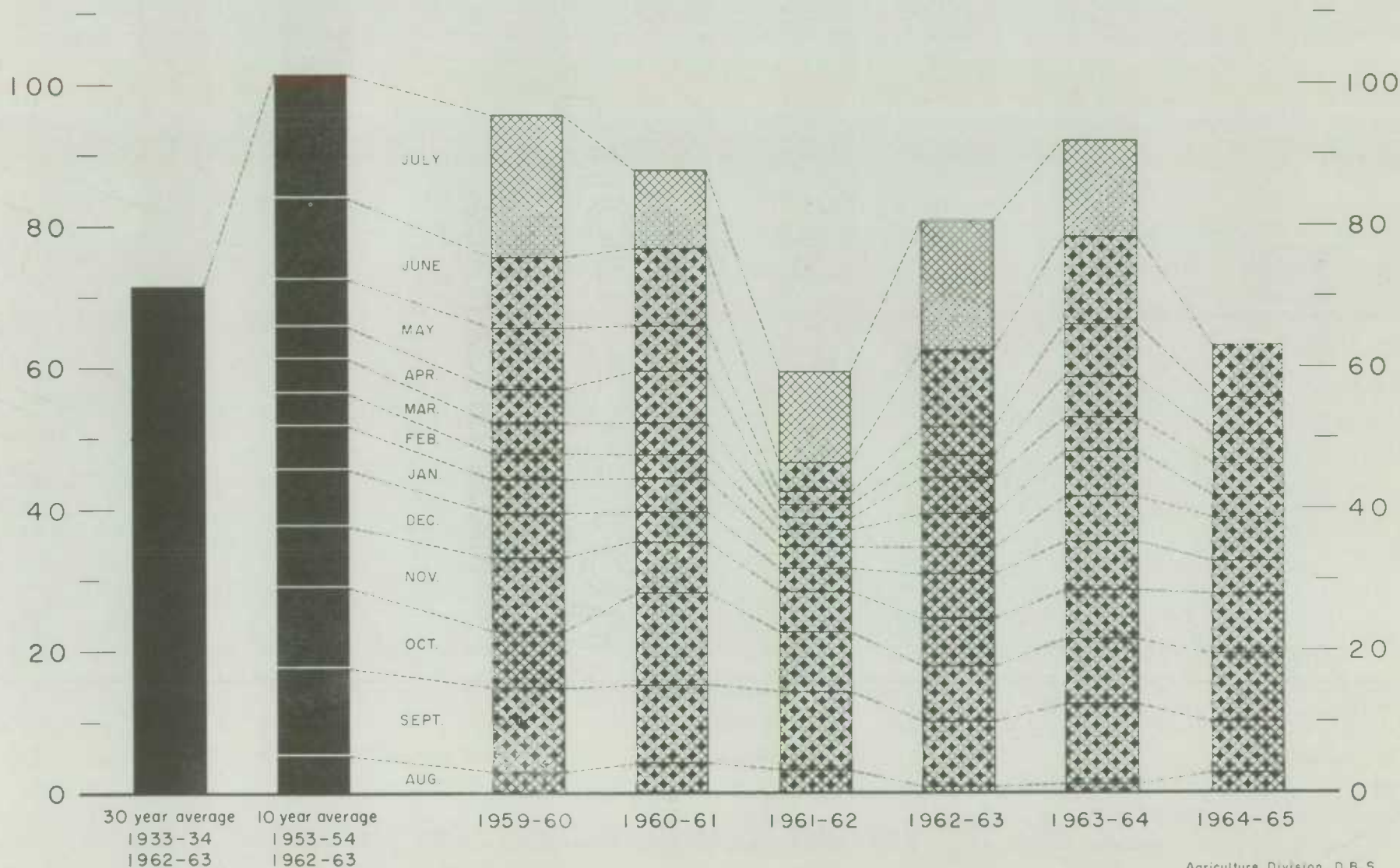
(SPECIFIED PERIODS)

MILLION BUSHELS

120 —

MILLION BUSHELS

— 120

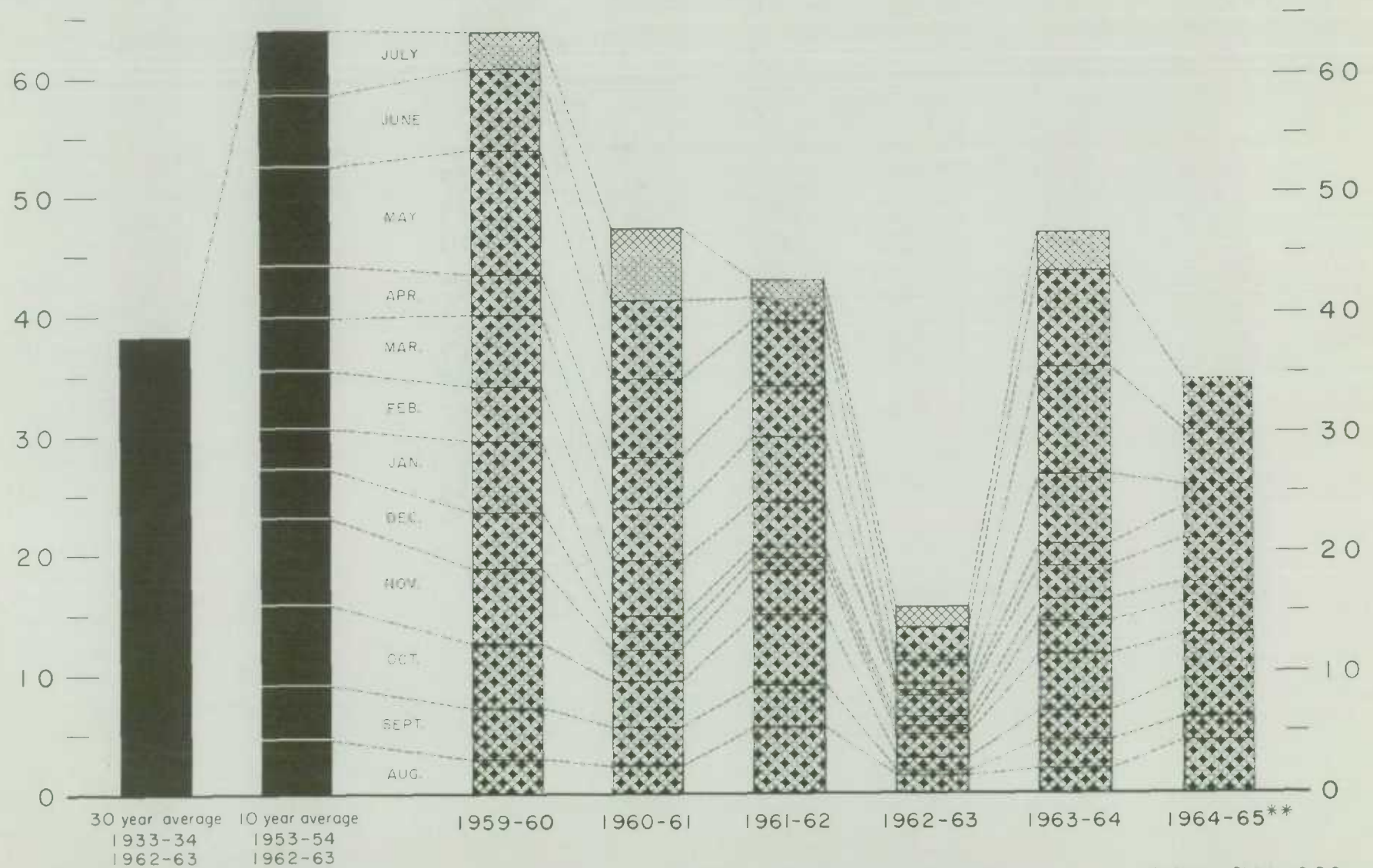


EXPORTS OF CANADIAN BARLEY AND BARLEY PRODUCTS*

(SPECIFIED PERIODS)

MILLION BUSHELS
70 —

MILLION BUSHELS
— 70



*In terms of grain equivalent.

**Preliminary.

FARMERS' MARKETINGS OF OATS, PRAIRIE PROVINCES

(SPECIFIED PERIODS)

MILLION BUSHELS

90 —
—
80 —
—
70 —
—
60 —
—
50 —
—
40 —
—
30 —
—
20 —
—
10 —
—
0

MILLION BUSHELS

90 —
—
80 —
—
70 —
—
60 —
—
50 —
—
40 —
—
30 —
—
20 —
—
10 —
—
0

30 year average 10 year average
1933-34 1953-54
1962-63 1962-63

JULY
JUN
M
A
M
F
J
D
NOV
OCT
SEPT
AUG

1959-60

1960-61

1961-62

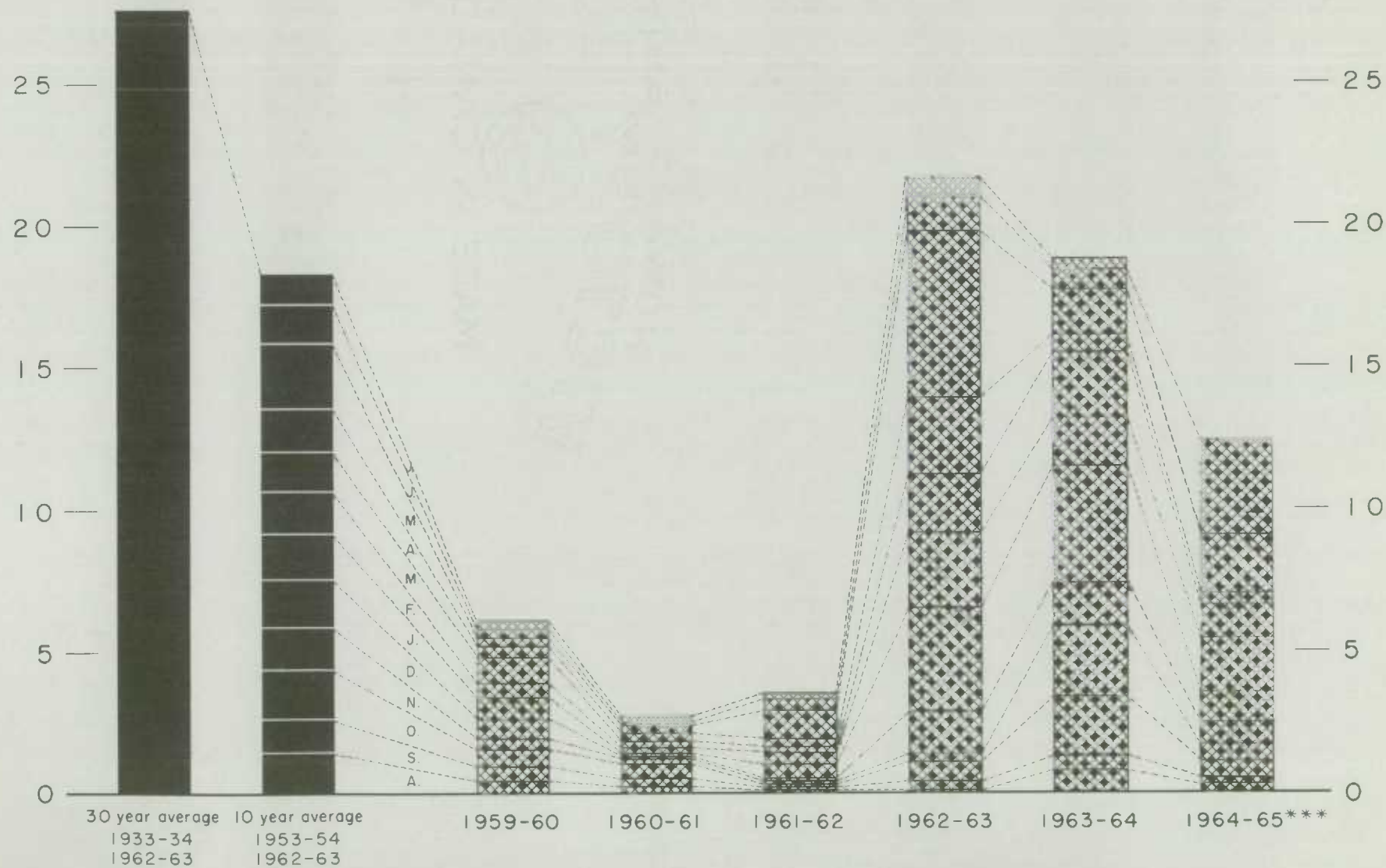
1962-63

1963-64

1964-65

EXPORTS OF CANADIAN OATS* AND OAT PRODUCTS**

(SPECIFIED PERIODS)

MILLION BUSHELS
30 —MILLION BUSHELS
— 30

*Beginning with 1960-61 includes relatively small quantity of bagged seed.

**In terms of grain equivalent.

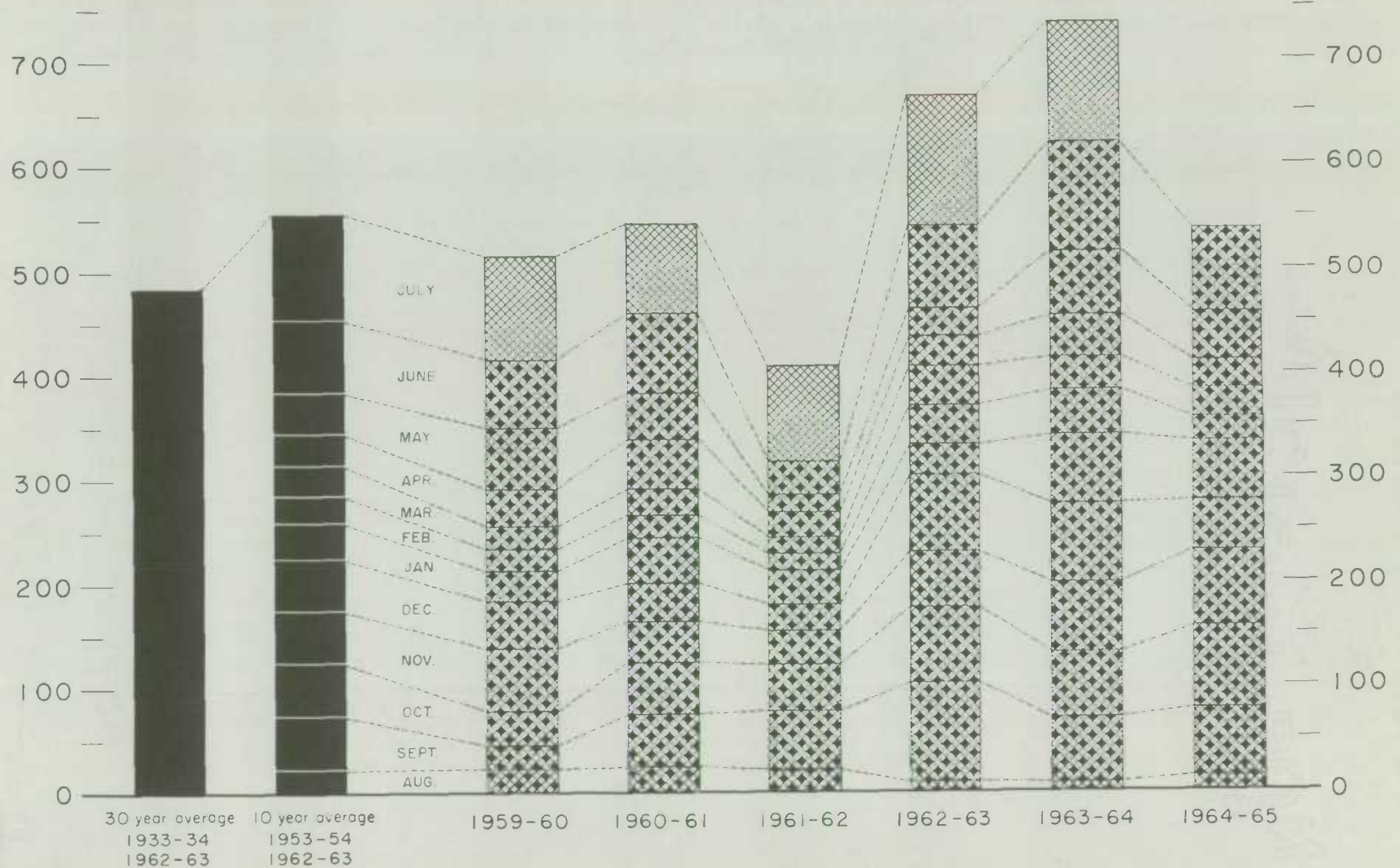
***Preliminary.

Agriculture Division D.B.S.

FARMERS' MARKETINGS OF CANADA'S FIVE MAJOR GRAINS*, PRAIRIE PROVINCES (SPECIFIED PERIODS)

MILLION BUSHEL
800 —

MILLION BUSHEL
800 —

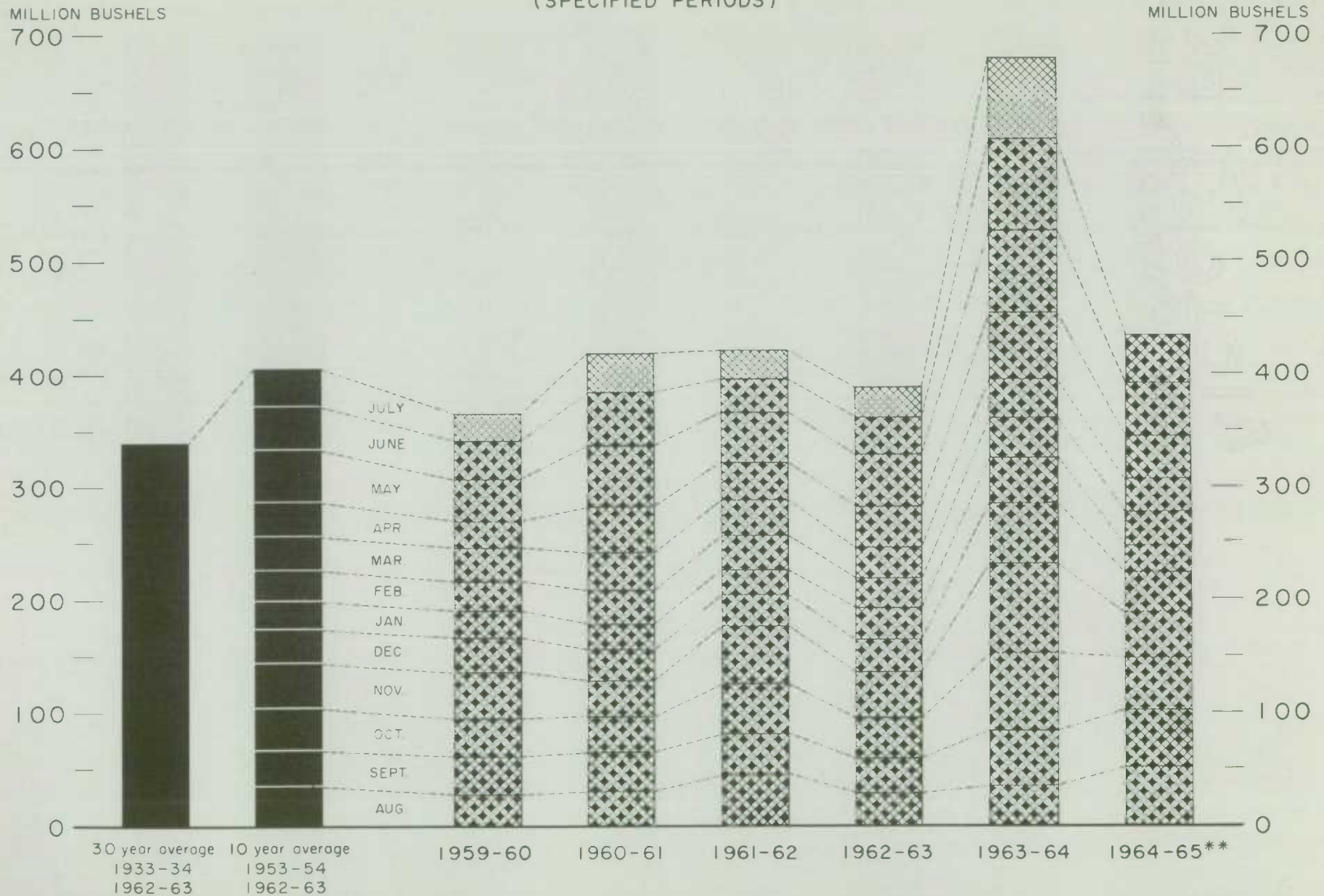


*Wheat, oats, barley, rye and flaxseed.

Agriculture Division D.B.S.

EXPORTS OF CANADA'S FIVE MAJOR GRAINS AND PRODUCTS*

(SPECIFIED PERIODS)



* Wheat, bagged seed wheat, and wheat flour; oats, bagged seed oats, and oatmeal and rolled oats; barley, malt and pot and pearl; rye and flaxseed.

** Preliminary

Agriculture Division D.B.S.

Cumulative Exports of Canadian Wheat 1/ by Destination

Destination	August 1964-June 1965			Total
	Wheat (Except Durum)	Durum Wheat	Total Wheat	Same Period Last Year 2/
- bushels -				
Western Europe				
EEC				
Belgium and Luxembourg	13,270,722*	1,151,499*	14,422,221*	14,553,159
France	2,299,153*	3,125,361	5,424,514*	4,275,679
Germany, Federal Republic .	12,553,411*	7,230,277*	19,783,688*	34,555,382
Italy	3,872,528	21,280	3,893,808	3,874,510
Netherlands	3,056,229*	427,579*	3,483,808*	3,175,111
Sub-totals	35,052,043*	11,955,996*	47,008,039*	60,433,841
Other Western Europe				
Austria	1,082,293	578,000	1,660,293	1,191,031
Britain	63,867,425*	233,333*	64,100,758*	70,253,014
Denmark.....	-	-	-	20,543
Finland	343,467	-	343,467	726,133
Ireland	1,892,497	13,067	1,905,564	2,235,333
Malta and Gozo	961,708	18,177	979,885	1,093,827
Norway	1,601,120	-	1,601,120	1,702,670
Portugal	-	-	-	410,667
Sweden	11,200	33,600	44,800	22,400
Switzerland	1,143,749	2,344,143*	3,487,892*	7,077,004
Sub-totals	70,903,459*	3,220,320*	74,123,779*	84,732,622
Totals	105,955,502	15,176,316	121,131,818	145,166,463
Eastern Europe				
Albania	4,226,433	415,874	4,642,307	2,940,001
Bulgaria	5,752,853	-	5,752,853	5,756,832
Czechoslovakia	26,244,851	-	26,244,851	6,570,483
Germany, East	9,750,543	385,827	10,136,370	-
Hungary	3,614,420	-	3,614,420	-
Poland	10,998,980	3,784,181	14,783,161	11,879,080
U.S.S.R. (Russia)	6,915,162	-	6,915,162	187,222,273
Yugoslavia	-	-	-	3,501,866
Totals	67,503,242	4,585,882	72,089,124	217,870,535
Africa				
Mozambique	35,230	-	35,230	102,057
Nigeria	466,210	-	466,210	520,218
Republic of South Africa	944,533	-	944,533	1,112,633
Rhodesia	48,210	-	48,210	28,306
Totals	1,494,183	-	1,494,183	1,763,214

Cumulative Exports of Canadian Wheat 1/ by Destination - Concluded

Destination	August 1964 - June 1965			Total
	Wheat (Except Durum)	Durum Wheat	Total Wheat	Same Period Last Year <u>2/</u>
- bushels -				
<u>Asia</u>				
Burma	171,464	-	171,464	78,931
China, Communist	48,849,156	10,899,714	59,748,870	36,431,174
Hong Kong	782,694	-	782,694	613,199
India	6,869,507	-	6,869,507	721,373
Israel	529,200	-	529,200	1,067,248
Japan	47,934,448	46,297	47,980,745	45,080,135
Korea	-	-	-	511,467
Kuwait	350,000	-	350,000	-
Malaysia	800,614	-	800,614	355,413
Pakistan	2,628,800	-	2,628,800	354,984
Philippines	5,602,567	-	5,602,567	6,589,994
Saudi Arabia	590,299	-	590,299	720,750
Taiwan	638,375	-	638,375	411,061
Totals	115,747,124	10,946,011	126,693,135	92,935,729
<u>Oceania</u>				
United States Oceania	75,898	-	75,898	347,722
<u>Western Hemisphere</u>				
Barbados	5,119	-	5,119	40
Colombia	367,454	-	367,454	-
Cuba	7,318,299	-	7,318,299	6,328,856
Dominican Republic	704,386	-	704,386	658,839
Ecuador	1,183,357	-	1,183,357	1,087,114
El Salvador	699,796	-	699,796	874,275
Guatemala	268,366	16,667	285,033	208,333
Honduras Republic	53,200	-	53,200	-
Jamaica	6,646	-	6,646	9,025
Nicaragua	415,146	-	415,146	-
Peru	937,813	-	937,813	730,614
Venezuela	8,435,978	-	8,435,978	6,707,390
United States Domestic <u>3/</u>	-	-	-	1,025,859
Totals	20,395,560	16,667	20,412,227	17,630,345
Sub-totals, all countries ..	311,171,509	30,724,876	341,896,385	475,714,008
Bagged seed <u>4/</u>			1,234,586	2,876,687
Totals, all countries	311,171,509	30,724,876	343,130,971	478,590,695

*Revisions in data for the previous month have been taken into account in the August-June cumulative totals.

1/ Overseas clearances as reported by the Statistics Branch, Board of Grain Commissioners for Canada, for all countries except the United States. Excluding bagged seed. 2/ Revised. 3/ Compiled from returns of Canadian elevator licensees and shippers and advice from American grain correspondents. 4/ Compiled from Canadian Customs returns, 1963-64 adjusted for time lag.

Customs Exports of Canadian Wheat Flour by Countries of Consignment

Destination	March 1965 <u>1/</u>	June 1965 <u>2/</u>	August-June	
			1964-65 <u>2/</u>	1963-64 <u>1/</u>
			- bushels -	
<u>Western Europe</u>				
<u>EEC</u>				
Belgium and Luxembourg	44,049	1,150	142,501	195,514
Italy	920	-	7,245	805
Netherlands	2,119	230	5,796	5,754
Sub-totals	47,088	1,380	155,542	202,073
<u>Other Western Europe</u>				
Britain	935,617	937,089	9,007,702	10,784,638
Denmark	-	-	1,840	4,476
Gibraltar	-	-	2,622	31,944
Greece	4,241	2,047	16,981	13,653
Iceland	-	-	3,220	4,995
Norway	-	115	115	115
Portugal	18,678	5,205	104,737	104,167
Sweden	-	-	1,771	1,265
Switzerland	-	-	28	-
Sub-totals	958,536	944,456	9,139,016	10,945,253
Totals	1,005,624	945,836	9,294,558	11,147,326
<u>Eastern Europe</u>				
U.S.S.R. (Russia)	-	-	1,729,796	21,210,595
<u>Africa</u>				
Angola	-	-	5,221	4,600
Cameroun Republic	5,382	-	35,321	-
British Africa nes	-	-	-	25,185
Congo-Leopoldville	20,700	9,200	139,787	56,925
Ethiopia	-	-	230	253
French Africa nes	8,312	184	20,477	-
Gambia	22,126	6,210	63,098	5,161
Ghana	174,926	130,235	1,575,599	1,034,499
Guinea Republic	-	-	920	-
Ivory Coast Republic	1,495	-	3,565	2,990
Liberia	17,193	13,485	80,960	56,421
Malawi	2,608	3,758	18,524	-
Mozambique	3,749	1,242	37,099	33,578
Nigeria	138	-	6,210	17,818
Nyasaland	-	-	6,693	25,725
Portuguese Africa nes	25,884	14,950	98,654	69,241
Rhodesia	-	-	3,450	4,830
Sierra Leone	85,562	38,985	486,236	407,668
Tanganyika	-	-	-	10,925
Tanzania	-	2,300	2,300	138,568
Togo	14,651	15,284	150,087	-
Totals	382,726	235,833	2,734,431	1,894,387
<u>Asia</u>				
Aden	3,091	12,102	26,160	-
British Middle East nes	-	-	22,153	35,429
Burma	-	-	159,043	76,404
Ceylon	-	-	586,552	1,068,596
Hong Kong	42,895	55,143	632,560	783,183
Indonesia	-	-	16,693	89,079
Iran	228	-	1,831	3,623
Japan	909	324	30,433	80,454
Jordan	-	-	9,998	1,012
Kuwait	1,546	-	12,706	28,831

Customs Exports of Canadian Wheat Flour by Countries of Consignment

Destination	March 1965 <u>1/</u>	June 1965 <u>2/</u>	August-June	
			1964-65 <u>2/</u>	1963-64 <u>1/</u>
- bushels -				
<u>Asia (concluded)</u>				
Lebanon	1,748	9,366	38,788	53,298
Malaysia	23,453	26,167	346,932	580,277
Philippines	-	-	978	7,590
Portuguese Asia	1,012	1,012	13,165	21,344
Qatar	-	-	230	1,068
Saudi Arabia	-	276	3,646	3,818
Syria	-	-	708	1,410
Thailand	9,775	33,120	356,897	349,458
Viet-Nam	-	-	115,800	43,776
Totals	84,657	137,510	2,375,273	3,228,650
<u>Oceania</u>				
Australia	-	-	-	28
Fiji	322	-	6,417	6,394
French Oceania	230	230	1,161	1,426
United States Oceania	4,025	4,025	8,395	1,881
Totals	4,577	4,255	15,973	9,729
<u>Western Hemisphere</u>				
Argentina	-	690	690	-
Bahamas	27,996	21,054	277,536	288,254
Barbados	18,796	19,723	172,206	158,300
Bermuda	15,493	12,802	116,239	112,169
British Guiana	7,406	2,875	49,599	35,505
British Honduras	4,195	3,457	39,774	37,173
Chile	-	-	920	5,778
Colombia	-	-	-	589
Costa Rica	82,800	72,358	804,101	580,911
Cuba	-	565,046	3,447,774	6,094,899
Dominican Republic	9,200	-	71,944	61,023
El Salvador	460	527	1,962	12,489
French Guiana	-	-	460	-
French West Indies	2,714	1,345	6,718	1,955
Guatemala	5,748	3,220	37,212	14,727
Haiti Republic	-	-	22,421	105,460
Honduras Republic	7,484	6,785	43,567	60,239
Jamaica	218,624	146,232	1,532,578*	1,576,330
Leeward and Windward Islands	82,087	105,632	916,269	983,183
Netherlands Antilles	43,748	18,901	240,612*	133,048
Nicaragua	-	1,159	1,849	276,851
Panama	13,064	230	76,609	148,858
Peru	9,239	11,776	76,868	58,816
St. Pierre and Miquelon	1,046	828	19,935	18,308
Surinam	14,849	7,813	66,693	69,957
Trinidad and Tobago	139,988	171,743	1,341,645	1,392,270
Venezuela	-	-	1,035	230
United States	106,837	182,344	963,295	917,267
Totals	811,774	1,356,540	10,330,511*	13,144,589
Totals, All Countries	2,289,358	2,679,974	26,480,542*	50,635,276

nes - not elsewhere specified. *Revised.

1/ In terms of wheat equivalent. Adjusted to remove effect of time lag in the returns made by Customs. Conversion rate: 2.3 bushels per cwt. 2/ In terms of wheat equivalent. Preliminary and unadjusted for time lag. Conversion rate: 2.3 bushels per cwt.

Canadian Wheat Board Weekly Average Cash Wheat Prices
Basis in Store Fort William-Port Arthur

Class and Grade	Week Ending			
	July 9	July 16	July 23	July 30

- cents and eighths per bushel -

Initial Payment to Producers

1 Northern	150	150	150	150
2 Northern	146	146	146	146
3 Northern	142	142	142	142
4 Northern	135	135	135	135
5 Wheat	121	121	121	121
6 Wheat	117	117	117	117
Feed Wheat	113	113	113	113
1 C.W. Garnet	135	135	135	135
2 C.W. Garnet	130	130	130	130
3 C.W. Garnet	125	125	125	125
1 Alberta Red Winter	134	134	134	134
2 Alberta Winter	129	129	129	129
3 Alberta Winter	123	123	123	123
1 C.W. Amber Durum	150	150	150	150
2 C.W. Amber Durum	146	146	146	146
3 C.W. Amber Durum	142	142	142	142

International Wheat Agreement

and Domestic Sales

1 Northern	193/5	193/6	193/5	193/2
2 Northern	190/5	190/6	190/5	190/2
3 Northern	183/5	183/6	183/5	183/2
4 Northern	178/5	178/6	178/5	178/2
5 Wheat	173/5	173/6	173/5	173/2
6 Wheat	171/5	171/6	171/5	171/2
Feed Wheat	168/5	168/6	168/5	168/2
1 C.W. Garnet	179/5	179/6	179/5	179/2
2 C.W. Garnet	178/5	178/6	178/5	178/2
3 C.W. Garnet	177/5	177/6	177/5	177/2
1 Alberta Red Winter	179/5	179/6	179/5	179/2
2 Alberta Winter	178/5	178/6	178/5	178/2
3 Alberta Winter	177/5	177/6	177/5	177/2
1 C.W. Amber Durum	193/5	193/6	193/5	193/2
2 C.W. Amber Durum	190/5	190/6	190/5	190/2
3 C.W. Amber Durum	185/5	185/6	185/5	185/2

Export - Class II

1 Northern	193/5	193/6	193/5	193/2
2 Northern	190/5	190/6	190/5	190/2
3 Northern	183/5	183/6	183/5	183/2
4 Northern	178/5	178/6	178/5	178/2
5 Wheat	173/5	173/6	173/5	173/2
6 Wheat	171/5	171/6	171/5	171/2
Feed Wheat	168/5	168/6	168/5	168/2
1 C.W. Garnet	179/5	179/6	179/5	179/2
2 C.W. Garnet	178/5	178/6	178/5	178/2
3 C.W. Garnet	177/5	177/6	177/5	177/2
1 C.W. Amber Durum	193/5	193/6	193/5	193/2
2 C.W. Amber Durum	190/5	190/6	190/5	190/2
3 C.W. Amber Durum	185/5	185/6	185/5	185/2

Canadian Wheat Board Weekly Average Cash Wheat Prices
Basis in Store Vancouver

Class and Grade	Week Ending			
	July 9	July 16	July 23	July 30
- cents and eighths per bushel -				
<u>Initial Payment to Producers</u>				
1 Northern	150	150	150	150
2 Northern	146	146	146	146
3 Northern	142	142	142	142
4 Northern	135	135	135	135
5 Wheat	121	121	121	121
6 Wheat	117	117	117	117
Feed Wheat	113	113	113	113
1 C.W. Garnet	135	135	135	135
2 C.W. Garnet	130	130	130	130
3 C.W. Garnet	125	125	125	125
1 Alberta Red Winter	134	134	134	134
2 Alberta Winter	129	129	129	129
3 Alberta Winter	123	123	123	123
1 C.W. Amber Durum	150	150	150	150
2 C.W. Amber Durum	146	146	146	146
3 C.W. Amber Durum	142	142	142	142
<u>International Wheat Agreement</u>				
<u>and Domestic Sales</u>				
1 Northern	197/4	197/5	197/4	197/1
2 Northern	192/4	192/5	192/4	192/1
3 Northern	187/4	187/5	187/4	187/1
4 Northern	179/4	179/5	179/4	179/1
5 Wheat	174/4	174/5	174/4	174/1
6 Wheat	171/4	171/5	171/4	171/1
Feed Wheat	168/4	168/5	168/4	168/1
1 C.W. Garnet	179/4	179/5	179/4	179/1
2 C.W. Garnet	178/4	178/5	178/4	178/1
3 C.W. Garnet	177/4	177/5	177/4	177/1
1 Alberta Red Winter	179/4	179/5	179/4	179/1
2 Alberta Winter	178/4	178/5	178/4	178/1
3 Alberta Winter	177/4	177/5	177/4	177/1
<u>Export - Class II</u>				
1 Northern	197/4	197/5	197/4	197/1
2 Northern	192/4	192/5	192/4	192/1
3 Northern	187/4	187/5	187/4	187/1
4 Northern	179/4	179/5	179/4	179/1
5 Wheat	174/4	174/5	174/4	174/1
6 Wheat	171/4	171/5	171/4	171/1
Feed Wheat	168/4	168/5	168/4	168/1
1 C.W. Garnet	179/4	179/5	179/4	179/1
2 C.W. Garnet	178/4	178/5	178/4	178/1
3 C.W. Garnet	177/4	177/5	177/4	177/1
1 Alberta Red Winter	179/4	179/5	179/4	179/1
2 Alberta Winter	178/4	178/5	178/4	178/1
3 Alberta Winter	177/4	177/5	177/4	177/1

CANADIAN FLOUR MILLING SITUATION

Production Wheat flour production by Canadian mills during June 1965 amounted to 3,153,000 hundredweight, indicating an increase of 2 per cent over the 3,083,000 hundredweight produced during May 1965, but 21 per cent lower than the June 1964 figure of 3,971,000 hundredweight and 6 per cent less than the ten-year (1955-64) average production for the month of June of 3,343,000 hundredweight. Mills reporting operations during June 1965 had a total rated capacity of 167,000 hundredweight per 24-hour day and on the basis of a 26-day working period, 72.5 per cent of this rated capacity was effective.

Wheat milled for flour during June 1965 amounted to 7,053,000 bushels, 2 per cent more than the 6,884,000 bushels milled during the preceding month, but 21 per cent below the 8,893,000 bushels milled during June 1964. Of the wheat milled for flour during June 1965 some 6,112,000 bushels were Western Canadian spring wheat (other than Durum) while the remainder consisted of Ontario winter wheat (600,000 bushels); Durum (246,000 bushels); and all other (95,000 bushels).

Exports According to preliminary Customs returns, exports of Canadian wheat flour during June 1965 amounted to 1,165,000 hundredweight (some 2,680,000 bushels of wheat equivalent) indicating a decrease of 3 per cent from the 2,777,000 bushels exported during the previous month and 29 per cent below the adjusted June 1964 total of 3,768,000 bushels. Flour shipments during the month went to forty-nine countries with exports to Britain amounting to 937,000 bushels of wheat equivalent and accounting for 35 per cent of the June 1965 total. Other principal markets for Canadian wheat flour during the month, with shipments in thousands of bushels of wheat equivalent were as follows: Cuba, 565; United States, 182; Trinidad and Tobago, 172; Jamaica, 146; Ghana, 130; and Leeward and Windward Islands, 106.

Wheat Milled for Flour, and Production and Exports of Wheat Flour, Canada

Crop Year	Wheat Milled for Flour bushels	Wheat Flour	
		Production	Exports ^{1/}
		- cwt. -	
1935-36 — 1939-40 average	67,845,114	29,405,451	9,603,941
1940-41 — 1944-45 average	99,704,638	43,908,245	23,699,546
1945-46 — 1949-50 average	107,330,372	47,011,540	25,819,721
1950-51 — 1954-55 average	100,446,328	43,847,894	21,812,041
1955-56 — 1959-60 average	90,148,211	39,752,589	16,349,156
1960-61	89,731,155	39,914,644	15,513,836
1961-62	88,240,580	39,539,651	13,892,676
1962-63	78,789,332	35,505,220	11,854,458
1963-64	111,670,577	50,103,569	23,873,978
1964-65 ^{2/}			
August	7,027,526	3,144,719	1,770,810
September	7,500,251	3,372,989	927,240
October	7,609,236	3,389,458	885,628
November	7,518,363	3,385,358	1,097,107
December	7,075,639	3,186,560	1,096,365
January	6,613,815	2,974,051	1,052,409
February	7,680,179	3,455,461	579,202
March	7,589,178	3,407,616	956,749
April	7,419,350	3,319,301	775,313
May	6,884,028	3,082,589	1,207,250 ^{3/}
June	7,052,632	3,152,833	1,165,206
Totals	79,970,197	35,870,935	11,513,279
Same months 1963-64 ^{3/}	102,949,855	46,202,786	22,015,337

^{1/} Based on Customs returns. Exports for the crop years 1945-46-1963-64 revised to remove effect of time lag in the returns made by Customs. ^{2/} Subject to revision. ^{3/} Revised figures.

UNITED STATES SITUATION

Disappearance of
United States Wheat
Decreases 5 Per Cent
From 1963-64 Level

Total disappearance (exports plus domestic use) of United States wheat during the crop year (July-June) 1964-65 amounted to 1,375 million bushels and represented a decrease of 5 per cent from the comparable 1963-64 total of 1,440 million. This decline reflects a reduction in exports which more than offset an increase in domestic requirements. Preliminary data indicate that the 1964-65 exports of wheat, wheat flour and products in terms of grain equivalent amounted to 718.9 million bushels, 16 per cent smaller than the record 1963-64 figure of 851.3 million. Domestic requirements in the crop year recently completed increased from an estimated 589.0 million bushels in 1963-64 to 655.6 million in 1964-65 largely due to a higher level of wheat used for feeding purposes.

With total disappearance into domestic and export channels in 1964-65 exceeding the 1964 production by 7 per cent, year-end stocks declined from 901 million at June 30, 1964 to 819 million at the same date in 1965.

United States Wheat Supplies

Item	1963-64 <u>1/</u>	1964-65 <u>2/</u>
	- million bushels -	
Carryover at beginning of crop year (July 1)	1,194.9	901.2
Production	1,142.0	1,290.5
Total estimated domestic supplies	2,336.9	2,191.7
Imports of wheat and wheat flour in terms of wheat for domestic use, July-June	4.6	1.8
Total estimated supplies	2,341.5	2,193.4
Less estimated domestic requirements for crop year <u>3/</u> .	589.0	655.6
Available for export and for carryover	1,752.5	1,537.8
Deduct:		
Exports of wheat as grain, July-June	754.7	634.8
Exports of wheat flour and products in terms of wheat, July-June <u>4/</u>	96.7	84.1
Total exports of wheat and wheat flour <u>5/</u>	851.3	718.9
Balance on July 1 for export and for carryover	901.2	818.9

1/ Revised. 2/ Preliminary. 3/ Includes shipments to the United States Territories and wheat for military food use at home and abroad. 4/ Flour exports include "Milled in bond". 5/ These figures now include all shipments under relief programs which formerly were not available from Census data.

Stocks of Wheat
in All Positions
July 1, 1965

On July 23, the United States Department of Agriculture reported that all wheat in storage on July 1 totalled 819 million bushels, the smallest July 1 stocks in 12 years.

July 1 stocks were 9 per cent less than a year earlier and 37 per cent below the 1959-63 average. The decline in stocks occurred in off-farm holdings which totalled 686 million bushels, 17 per cent less than a year earlier. Farm stocks, at 133 million bushels, were 76 per cent larger than July 1, 1964. July 1 stocks indicate a disappearance during the crop year — July 1, 1964 to June 30, 1965 — of 1,373 million bushels, 4 per cent below the record 1963-1964 crop year disappearance.

Durum wheat stocks on July 1 totalled 66.5 million bushels, 62 per cent above a year earlier. Farm stocks, at 19.0 million bushels, were 10 times greater than the small July 1, 1964 holdings. Off-farm stocks, at 47.5 million bushels, were 21 per cent larger. July 1 stocks indicate a disappearance during the crop year ended June 30, 1965 of 40.2 million bushels, compared with previous crop year disappearance of 56.2 million bushels.

U.S. Wheat Stocks by Positions, July 1, 1965 with Comparisons

Position	July 1 Average 1959-63	July 1 1964	April 1 1965	July 1 1965
- thousand bushels -				
<u>All Wheat</u>				
On Farms <u>1/</u>	109,069	75,477	264,243	133,037
Commodity Credit Corp. <u>2/</u> ..	62,588	12,719	10,577	11,148
Mills, Elev. & Whses. <u>1/</u> <u>3/</u>	1,135,655	812,997	871,161	674,728
Totals	1,307,313	901,193	1,145,981	818,913
<u>Durum Wheat</u> <u>4/</u>				
On Farms <u>1/</u>	-	1,828	38,806	18,966
Commodity Credit Corp. <u>2/</u> ..	-	1,664	1,665	1,805
Mills, Elev. & Whses. <u>1/</u> <u>3/</u>	-	37,514	40,548	45,742
Totals	-	41,006	81,019	66,513

1/ Estimates of the Crop Reporting Board.

2/ Owned by C.C.C. and stored in bins or other storages owned or controlled by C.C.C.; other C.C.C.-owned grain is included in the estimates by positions.

3/ All off-farm storages not otherwise designated, including flour mills, terminal elevators, and processing plants.

4/ Totals included in all wheat.

1965 Wheat Crop
Forecast at 1,354
Million Bushels

In a report released on July 9, 1965, the Crop Reporting of the United States Department of Agriculture stated in part that production of all wheat is forecast at 1,354 million bushels, 5 per cent above last year and 14 per cent above

average. Yield per harvested acre is estimated at 27.2 bushels, 1.8 bushel above 1964 and 2.7 bushels above average. The acreage of all wheat for harvest as grain is expected to total 49.8 million acres, 1 per cent above a year earlier and 2 per cent above average.

The winter wheat crop is now estimated at 1,070 million bushels, 5 per cent above the June 1 forecast, 4 per cent above 1964 and 11 per cent above average. Yield per harvested acre is indicated at 28.2 bushels, the second highest of record. Acreage for harvest as grain is expected to total 37.9 million acres, slightly more than in 1964 and average. June rains slowed harvest and combining was well behind the fast 1964 pace and slightly behind average. By July 1, combining was about half done in Kansas, well along in Illinois, and becoming general in southern Ohio and Indiana. Harvest was virtually complete in Texas and Oklahoma, except in the Panhandle where wet fields caused delays.

The Plains States, where winter wheat made a spectacular recovery as a result of abundant rainfall in May and June, accounted for most of the increase from the June 1 forecast. The rains, which revived some stands that were thought lost, also were very beneficial for filling of heads. Floods and wet field conditions, which promote the spread of stem rust, partially offset the beneficial effects of the rains. Floods along the Arkansas River caused some loss of acreage in Colorado and Kansas, although farmers in Kansas harvested some fields ahead of the on-rushing water. By July 1, rust was becoming apparent in wheat fields from northern Kansas and Colorado, through Nebraska into South Dakota, but it was too early to determine its effect on yields. Early reports on quality of Kansas wheat indicated test weight well above last year, and average. Protein content was below 1964, and average.

A 1965 crop of 223 million bushels is forecast for spring wheat other than durum, 12 per cent more than last year and 21 per cent above average. Production prospects for the 1965 spring wheat crop are uniformly good in all States. The crop developed well, with nearly ideal moisture and temperatures, after some delay in planting because of wet soils. Spring wheat in North Dakota, although late, made excellent growth with ideal moisture and weather. The Minnesota crop is late but developing well with good moisture supplies. In Montana about fifteen per cent of the crop was heading, somewhat less than a year ago. Wet soils delayed planting although development has been very good. Precipitation has been adequate and timely. The Idaho crop also was planted later than usual but is developing well under favourable moisture and temperatures. Acreage of spring wheat other than durum for grain harvest in 1965 is estimated at 9.7 million compared with 9.1 million acres in 1964 and the average of 9.4 million acres.

Production of durum wheat for 1965 is estimated at 60 million bushels, 8 per cent below 1964 but 54 per cent above average. Production prospects for durum wheat in 1965 are good to excellent throughout the major producing areas of the Dakotas and Montana. The North Dakota and Minnesota crops were planted later than usual because of wet soils. Growth has been rapid with favourable growing conditions. The 1965 crop will be harvested from an estimated 2.2 million acres, 6 per cent less than 1964 but 27 per cent above average. All of the durum wheat producing States expect to harvest fewer acres than in 1964. The yield per harvested acre is expected to be 27.3 bushels, compared with 28.0 bushels in 1964 and the average of 21.4 bushels.

Announcements

for 1966-67

Current Provisions

According to the July 1965 issue of The Wheat Situation published by the United States Department of Agriculture, the current wheat program applies only to the 1964 and 1965 crops. Under present law, the Food and Agriculture Act of

1962, the Secretary of Agriculture is required to proclaim a national wheat marketing quota and a national acreage allotment and to conduct a referendum of producers. The proclamation of the allotment and marketing quota for the 1966 crop was made on April 14. Under the formula provided by the Law, a 47.8-million-acre national allotment was established. This acreage was considered necessary to produce the national marketing quota of 1,292 million bushels. The determination of the acreage allotment takes into consideration underplantings and other factors, as well as small farm increases, which tend to offset underplantings.

Under the existing Law, a referendum was required to be held before August 1, 1965, for a producer vote on marketing quotas for 1966. By joint resolution of Congress, the referendum was suspended until 30 days after adjournment of the current legislative session because new legislation is being considered to continue the same type of program that was applicable for the 1964 and 1965 crops. The present program is not mandatory and does not employ the marketing quota principle, so no referendum was required.

At present, no announcement is planned on support levels, national reserves, State and county allotments, or domestic and export allocations as authorized by the Food and Agriculture Act of 1962. If no new legislation is enacted, these provisions will be announced prior to the referendum.

Trends in U.S.

Wheat Production

by Classes

Hard red winter comprises the largest percentage of total production and has shown the most noticeable changes. During 1920-24, hard winter accounted for an average 37.8 per cent and by 1961 it had reached a high of 61.0 per cent but has

declined somewhat during recent years. Since 1962, hard red winter has comprised around 50 per cent of total production. Soft red winter--second only to hard red winter in production--accounted for an average of 26.9 per cent of the total in the 1920-24 period, but has averaged less than 20 per cent of the crop since 1940. Despite the decline in percentage of total, production of soft red winter in 1963 and 1964 was near the 221 million bushels of 1920-24. Based on the July crop report, 1965 production is estimated at 191 million bushels, or only 14 per cent of the total. Hard red spring, as a percentage of the total crop, has been declining since the 1920-24 average. From the 19.0 per cent in 1920-24, hard red spring dropped to only 13.2 per cent in 1960-64. Weather conditions in 1961 dropped production to 116 million bushels, or 9.4 per cent of the total. Hard spring production for 1965 accounts for about 15 per cent of the total crop, based on the July crop report. Production of durum wheat declined from 1920-24 through 1961, from an average of 59 million bushels or 7.2 per cent of total production to 21 million or 1.7 per cent in 1961. Since 1961, production has averaged about 62 million bushels, or about 5.3 per cent. Production of white wheat has more closely followed the trends of hard winter than any other class. From the average of 75 million bushels, or 9.1 per cent of the total crop, in 1920-24, it increased to 174 million or 15.9 per cent in 1950-54. After the high of 1950-54, production declined until 1962, at which time it started an uptrend. During the past 4 years, white accounted for about 14 per cent of the total.

Cash Wheat Prices on the Kansas City and Minneapolis Markets

No. 2 Hard Winter, Kansas City			No. 1 Northern Spring, Minneapolis		
Date	Price		Date	Price	
	- cents per bushel -			- cents per bushel -	
July 1, 1965	146 3/4	- 160	July 1, 1965	172 5/8	- 187 5/8
2	146	- 148 1/4	2	172 5/8	- 175 5/8
5	Independence Day		5	Independence Day	
6	146 1/2	- 163 3/4	6	173 3/8	- 188 3/8
7	147 3/4	- 156	7	175 1/4	- 190 1/4
8	147 1/4	- 155 3/4	8	176 5/8	- 191 5/8
9	148	- 151 1/2	9	178 1/2	- 193 1/2
12	147 1/2	- 153 1/2	12	177 5/8	- 192 5/8
13	145 1/2	- 162 3/4	13	177 3/4	- 192 3/4
14	146 1/2	- 152 1/2	14	179 3/8	- 194 3/8
15	156 3/4	- 165 1/2	15	181 1/4	- 196 1/4
16	149 1/2	- 158	16	181 7/8	- 196 7/8
19	148 1/2	- 159 3/4	19	180 1/4	- 195 1/4
20	149 1/4	- 153 1/4	20	178 1/4	- 194 1/4
21	149 3/4	- 157 1/4	21	176 7/8	- 192 7/8
22	149	- 150 3/4	22	174	- 191
23	150	- 156 1/2	23	171	- 189
26	150 1/4	- 159 1/4	26	169 3/8	- 189 3/8
27	151 1/4	- 164 1/2	27	170 1/4	- 190 1/4
28	152 1/4	- 157 1/4	28	168 1/8	- 190 1/8
29	150 1/2	- 157 3/4	29	168 3/8	- 189 3/8
30	150 1/2	- 157 1/2	30	168	- 189 5/8

Chicago Wheat Futures, High Points of Closing

Date		July		September		December		March	May
		New	Old	New	Old	New	Old		
- cents and eighths per bushel -									
July	1, 1965	141/6	143/1	143/2	144/1	148	149/6	151	150/7
	2	142/5	143	144/2	146	148/6	149/7	151/7	151/6
	5					Independence Day			
	6	143/4	144	145/2	146	149/7	150/6	152/4	152/4
	7	143/2	143/6	144/5	145/6	149/3	149/7	152/1	152/1
	8	142	142/1	143/2	144	148/1	148/6	150/7	150/5
	9	142/6	143	144	144	148/6	149/2	151/4	151/4
	12	139/4	141	142/1	143/4	147/2	147/7	149/6	149/4
	13	139/7	140/2	141/3	143	146/4	147/7	149/1	149/1
	14	141/4	141/7	142	143/6	147	148/7	149/6	149/5
	15	142/7	142/7	143/1	144/2	148	149/2	150/5	150/4
	16	143/3	143/4	143/7	145	148/6	149/6	151/4	151/2
	19	144/4	145/4	145/4	145/6	150	150	152/5	151/7
	20	143/6	144	144/6	145/2	149/1	150/4	151/4	150/6
	21	144/5	144/4	145/6	146	150/6	150/4	152/6	152
	22			146/6	147/1	151/2	151/4	153/5	152/5
	23			146/3		151/2		153/4	152/4
	26			147		152/1		154/6	153/6
	27			147/2		152		154/7	154/4
	28			146/7		151/6		154/4	154/1
	29			146/4		151/4		154/4	153/5
	30			147/6		152/5		155/4	154/4

AUSTRALIAN SITUATION

Supplies Set A decline in carryover stocks was more than offset by another
New Record record crop and as a result total estimated supplies of wheat in
Australia for the 1964-65 (December-November) crop year are placed
at an all-time high of 390.5 million bushels, 10 per cent greater than the previous
year's peak total of 354.5 million. The current production, of 370.0 million
bushels, represented a substantial increase over the 1963-64 level of 331.0 million
and was the third consecutive year in which a record outturn was harvested.
Carryover stocks recorded only a moderate decline, from 23.5 million at December 1,
1963 to 20.5 million at the same date in 1964. After deducting 89.5 million for
anticipated domestic requirements, an estimated 301.0 million are available for
export and for carryover in 1964-65, an increase of 10 per cent over the 273.9
million the previous year.

Combined exports of wheat as grain and wheat flour in terms of
grain equivalent during the period December 1-July 3 of the current Australian crop
year amounted to 171.4 million bushels in contrast to 185.4 million exported during
the corresponding period of 1963-64. The balance remaining on July 4, 1965 for
export and for carryover, at 129.6 million bushels, exceeded by 46 per cent the
comparable 1964 total of 88.5 million.

Australian Wheat Supplies

Item	1963-64 <u>1/</u>	1964-65 <u>2/</u>
	- million bushels -	
Carryover, including flour as wheat, at beginning of crop year (December 1)	23.5	20.5
Production	331.0	370.0
Total estimated domestic supplies	354.5	390.5
Less estimated domestic requirements for crop year	80.6	89.5 <u>1/</u>
Available for export and for carryover	273.9	301.0
Deduct:		
Exports of wheat as grain, December 1-July 3	164.5	156.2
Exports of wheat flour in terms of wheat, December 1-July 3	20.9	15.2
Total exports of wheat and wheat flour	185.4	171.4
Balance on July 4 for export and for carryover	88.5	129.6

1/ Revised.

2/ Preliminary.

The following information relative to the Australian situation has
been extracted from a report from Mr. D.J. Campbell, Assistant Commercial Secretary
for Canada, Canberra, under date of July 14, 1965 and is reproduced with the
permission of the Trade Commissioner Service, Department of Trade and Commerce.

Crop Position New South Wales No beneficial rain fell in the drought-affected areas of the mid-coast, the Northern Tablelands and the north-west where drought conditions are, serious and becoming much worse.

The sowing of the intended wheat acreage has been almost completed in the Riverina and a large proportion of the southwest slopes. In the lower parts of the central New South Wales wheat areas it is estimated that about 85 per cent of the intended wheat acreage has been sown. In the remainder of the central west only about a quarter of the wheat has been sown and in all wheat districts further north practically no wheat has yet been seeded. However, about 80 to 85 per cent of land intended for wheat in the northwest has already been cultivated in preparation for seeding.

It is estimated that the total area sown is about 3 million acres. Last year 5.8 million acres of wheat were seeded in New South Wales. About 2 inches of rain is urgently needed over the whole of the northwestern wheat areas and normal sowing cannot commence until this takes place.

Queensland Showers during the last two weeks have made it possible for wheat to be sown over fairly wide areas and it is expected that, including the wheat "sown dry", it will be possible to complete the sowing of about 50 per cent of the intended Queensland acreage during the next two or three weeks. This wheat will be sown under unfavourable conditions and a very good rain will be needed in the near future to germinate the crop and stimulate early growth.

Victoria About 90 per cent of the State intended wheat acreage has already been sown and it is expected that the final acreage will be much the same as the 3.2 million acres sown last year. Sowing took place under good conditions and germination of early crops has been good.

South Australia The sowing of the intended acreage of wheat has almost been completed. Seeding conditions were good but more rain is needed. Total area sown is expected to be about 3 million acres.

Western Australia General rains fell over the whole of the wheat areas. Seeding has been completed under very favourable conditions and the season has been the best for many years.

Warm and moist conditions throughout June have been ideal for land preparation and it is estimated that the area sown will be between 5.8 and 6 million acres. Yield per acre expectations are very good and it appears that the total production could well exceed 90 million bushels. Due to a relatively dry summer in most areas rust is not likely to be a problem this season.

In summary wheat plantings are: Western Australia 5.8 to 6 million acres compared with last year's record area of 5 million acres. All wheat was sown under excellent conditions. In South Australia it is estimated that about 3 million acres has been sown. This was sown under very good conditions and is a little more than was sown last year. In Victoria about 90 per cent of the crop has already been sown. Conditions for seeding were satisfactory and the final acreage should be at least equal to the 3.2 million acres sown last year. In New South Wales about 3 million acres are being sown under satisfactory conditions in the southern half of the state. Land prepared for sowing in the northwest must have a good rain to allow seeding to commence. Last year a record area of 5.8 million acres was sown in New South Wales. In Queensland about half of the State's intended one million acre wheat acreage has been sown. Moisture conditions were most unsatisfactory for seeding.

Exports of Australian Wheat and Wheat Flour in Terms of Wheat
December 1-July 3, 1964-65 and Corresponding Period 1963-64

Destination	Wheat		Wheat Flour	
	1963-64	1964-65	1963-64	1964-65
- thousand bushels -				
<u>Western Europe</u>				
EEC				
Germany, Federal Republic	7,785	-	-	-
<u>Other Western Europe</u>				
Britain	15,559	13,885	864	1,106
Ireland	1,353	821	-	-
Malta	437	446	-	-
Norway	3,609	2,275	-	-
Others	-	-	1	1
Sub-totals	20,958	17,427	865	1,107
Totals	28,743	17,427	865	1,107
<u>Eastern Europe</u>				
U.S.S.R. (Russia)	45,983	28,654	6,621	-
<u>Africa</u>				
Kenya	-	41	-	-
Malawi	-	-	153	221
Mauritius	-	-	658	434
Portuguese East Africa	945	-	-	-
Rhodesia	2,240	1,912	-	-
Zanzibar	-	-	113	87
Others	11	9	39	64
Totals	3,196	1,962	963	806
<u>Asia</u>				
Aden	806	708	-	-
Aden and Aden I/T	-	-	774	897
Aden and Aden I/T Atta	-	-	352	341
Arabian Gulf	-	-	99	86
Arabian Gulf Atta	-	-	635	708
Brunei	-	-	13	5
Ceylon	7	11	4,298	6,221
China	54,431	62,521	-	-
Formosa	79	500	-	-
Hong Kong	1,301	1,090	65	47
India	4,709	11,909	-	-
Indonesia	-	-	97	82
Iran	434	6,388	-	-
Iraq	3,100	1,831	-	-
Japan	11,749	9,346	-	-
Korea, North	-	3,272	-	-
Kuwait	-	373	-	-
Lebanon	3,870	1,958	-	-
Pakistan	-	2,020	-	-

Exports of Australian Wheat and Wheat Flour in Terms of Wheat
December 1-July 3, 1964-65 and Corresponding Period 1963-64

Destination	Wheat		Wheat Flour	
	1963-64	1964-65	1963-64	1964-65
- thousand bushels -				
<u>Asia Cont'd</u>				
Philippines	242	-	1,110	243
Saudi Arabia	-	-	170	170
Thailand	321	291	328	221
<u>Malaysia</u>				
Malaya	24	1	1,600	1,492
Malaya Atta	-	-	58	48
Sabah	-	-	105	91
Sarawak	-	-	106	95
Singapore	1,229	2,231	1,001	422
Singapore Atta	-	-	5	1
Singapore A/C B.W.O.	-	-	32	28
Others	521	525	69	47
Totals	82,823	104,975	10,917	11,245
<u>Oceania</u>				
New Zealand	3,717	3,150	-	-
<u>Western Hemisphere</u>				
Peru	-	-	4	3
<u>Pacific Area and Sundries</u>				
Pacific Islands	42	31	1,217	1,611
Ships' Stores and Sundries	-	-	315	430
Totals	42	31	1,532	2,041
Totals, All Countries.....	164,500	156,200	20,900	15,200

ARGENTINE SITUATION

1964-65 Wheat Supplies
Largest Since 1938-39

Reflecting the combined effect of substantially larger carryover stocks as well as an increase in production, total supplies of wheat in Argentina for the 1964-65 (December-November) crop year are estimated at some 424.4 million bushels, 22 per cent more than the 1963-64 figure of 348.7 million and the largest total since 1938-39 when wheat supplies were close to 450 million bushels. Current crop year supplies consist of the December 1 carryover of 88.2 million, in contrast to only 25.9 million the year before, and the 1964-65 production of 336.2 million, the third largest wheat crop ever harvested in Argentina. After making an allowance of 128.6 million bushels for anticipated domestic requirements, an estimated 295.8 million are available for export and for carryover in 1964-65, 37 per cent greater than the 215.9 million the previous year.

December-June Exports
52 Per Cent Above Same
Period of Previous Year

Exports of wheat and wheat flour in terms of grain equivalent during December 1964-June 1965 amounted to 111.2 million bushels, exceeding by 32 per cent the total of 84.5 million exported during the same months in 1963-64. The balance remaining on July 1, 1965 for export and for carryover was estimated at 184.6 million bushels, in sharp contrast to the July 1, 1964 figure of 131.4 million.

Argentine Wheat Supplies

Item	1963-64 <u>1/</u>	1964-65 <u>2/</u>
	- million bushels -	
Carryover at beginning of crop year (December 1) <u>3/</u>	25.9	88.2
Production	322.8	336.2 <u>4/</u>
Total estimated domestic supplies	348.7	424.4
Less estimated requirements for crop year	132.8	128.6
Available for export and for carryover	215.9	295.8
Deduct:		
Exports of wheat as grain, December-June	84.1	110.8
Exports of wheat flour in terms of wheat, December-June	0.4	0.4
Total exports of wheat and wheat flour	84.5	111.2
Balance on July 1 for export and for carryover	131.4	184.6

1/ Revised. 2/ Preliminary. 3/ Includes allowances for farm stocks. 4/ Second official estimate.

The following account of the Argentine situation has been extracted from a report from Mr. H.E. Ryan, Assistant Commercial Secretary (Agriculture), Buenos Aires, under date of July 21, 1965 and is reproduced with the permission of the Trade Commissioner Service, Department of Trade and Commerce. Where possible, conversions to Canadian measures and currency have been made for the convenience of our readers.

Weather
and Crops

Lack of rainfall during May and part of June hindered the sowing of new winter crops. However, widespread precipitations from June 24 onwards, covering practically the whole country, changed conditions completely, and there is now adequate soil moisture in most of the grain regions, including the very dry areas which previously existed in the south central part of Buenos Aires Province, in Entre Rios, central Santa Fe and north western Cordoba. During the month of June, temperatures were considerably higher than normal, and there was practically no frost. The combined effect of moisture and temperature has left the soil in a very good condition with crops progressing favourably. By the end of June, the hot spell was broken by a cold front which moved across most of the area and will assist in proper maturity and increase the hardiness of the grains.

Wheat

The weather conditions mentioned above have resulted in the wheat crop growing somewhat better than normal, both in terms of the early sown grains and the recently seeded lots. Because of the warm weather, seeding continued longer than usual, as there was a feeling of optimism among wheat producers, due to the large sales made during the past months, and the remunerative minimum price level set for the 1965-66 crop. This does not mean, however, that acreage will exceed that of last year. It is now anticipated that the new crop will likely be approximately 5 per cent less in area than that of 1964-65. The area sown to durums is expected to increase, as the producers have been receiving fairly strong prices for last year's crop.

It is reported that, as of the end of June, 6,600,000 metric tons (242,506,000 bushels) of wheat had been purchased by the National Grain Board. Further bi-lateral agreements have been signed with Iran and with the United Arab Republic. In the case of Iran, a letter of intent has been signed, whereby Argentina will send 350,000 tons (12,860,000 bushels) of wheat and receive 350,000 cubic mts. of crude oil in exchange. In the case of the UAR, 250,000 tons (9,186,000 bushels) of wheat are to be traded for crude oil.

During the month of June, no further sales were made by the Grain Board, although some exporters were in the market, offering 780 pesos per 100 kilos (\$1.34 per bushel) for delivery in Buenos Aires, and 800 pesos per 100 kilos (\$1.37 per bushel) for delivery at Bahia Blanca. The exporters, in turn, were offering wheat to Continental Europe at U\$S 65.80 per metric ton (\$1.94 per bushel) cif, July-October delivery; £ 25.5.0 (\$2.08 per bushel) for July-October delivery to Britain. Small quantities of durums were being purchased by exporters at 830 pesos per 100 kilos (\$1.42 per bushel) at Buenos Aires, and Bahia Blanca. Italy was paying, at mid-June, U\$S 67.25 per metric ton (\$1.99 per bushel) cif, prompt shipment, and same sales for October delivery were concluded at U\$S 68.00 per ton (\$2.01 per bushel).

Millers are now rather active in the market and paying for their supplies in cash, as their stocks purchased during the early months of the year, mainly from the Grain Board, are now diminishing. The fact that millers are again paying on a cash basis is a new source of encouragement to producers, as payments have, in the past, often involved the extension of credit.

Prices in the Buenos Aires Futures Market were at the minimum level for July delivery, and at 815 pesos (\$1.40 per bushel) for August-September delivery. The present spot price on the Cereal Exchange is 800 pesos per 100 kilos (\$1.37 per bushel).

The port problem continues to be the most serious factor affecting the grain trade to-day, the handling and shipping of wheat being slowed down due to lack of facilities. This is further complicated by the fact that there is, at present, a tendency to ship larger quantities to terminal positions, particularly in the southern ports. While the Government has announced a programme for improving river channels, so that larger draft vessels can fill at many of the ports, no action has yet occurred, and it will be some time before any dredging begins.

The National Grain Board has announced that during the month of June, a total of 936,632 metric tons of grain has been exported, the highest movement in the past 25 years. This would indicate that a maximum effort is being made to move all the grain sold during the present year; but due to somewhat slower shipments during the early months of the year, it is unlikely that the total quantity will increase greatly over last year's level. Total exports so far this year, at 4,896,997 metric tons, exceed shipments for the same period last year by 670,000 tons.

Argentine Wheat Exports December-June 1963-64 and 1964-65

Destination	1963-64	1964-65
<u>Western Europe</u>	- thousand bushels -	
<u>EEC</u>		
Belgium	909	2,467
France	2,144	4,788
Germany, Federal Republic	8,659	5,996
Italy	-	9,269
Netherlands	2,383	13,812
Sub-totals	14,095	36,332
<u>Other Western Europe</u>		
Britain	2,886	14,321
Norway	-	2,545
Portugal	-	1,443
Spain	-	2,245
Sweden	-	38
Switzerland	164	216
Sub-totals	3,050	20,808
Totals	17,145	57,140
<u>Eastern Europe</u>		
Czechoslovakia	982	-
Germany, East	646	114
Poland	415	-
U.S.S.R. (Russia)	354	592
Totals	2,397	706
<u>Africa</u>		
Mozambique	-	1,411
Nigeria	-	138
Total	-	1,549
<u>Asia</u>		
China, Communist	36,303	20,004
Cyprus	-	365
Japan	-	81
Israel	3,176	432
Lebanon	-	257
Singapore	-	16
Saudi Arabia	-	247
Totals	39,479	21,402
<u>Western Hemisphere</u>		
Barbados	-	4
Bolivia	73	690
Brazil	15,987	20,183
Chile	-	771
Colombia	-	817
Dominican Republic	-	154
Paraguay	639	83
Peru	5,518	6,233
Venezuela	-	1,025
Totals	22,217	29,960
Totals, All Countries	81,240	110,757

CALENDAR OF WHEAT EVENTS

- July 9 According to a report published by the Crop Reporting Board, United States Department of Agriculture, all wheat production in the United States in 1965 is forecast at 1,354 million bushels, 5 per cent more than last year and 14 per cent more than the 1959-63 average.
- 19 The Hon. Mitchell Sharp, Minister of Trade and Commerce, announced that the initial payment for wheat, effective August 1, 1965, would be \$1.50 per bushel, basis No. 1 Northern in store Fort William-Port Arthur or Vancouver.
- 23 United States Department of Agriculture reported that all wheat stocks in storage on July 1, 1965, totalled 819 million bushels, the smallest July 1 stocks in twelve years.
- August 6 According to a report published by the Dominion Bureau of Statistics, total wheat acreage in Canada in 1965 is estimated at 28.3 million acres, 5 per cent smaller than last year's 29.7 million.
- 10 Grain Handlers returned to work at Montreal, thus ending a strike which lasted 57 days, and was the longest in the history of that port.
- 11 The Canadian Wheat Board announced the sale of 4.6 million tons of wheat and 400 thousand tons of wheat in the form of flour to the U.S.S.R. This sale amounts to the equivalent of approximately 187 million bushels of wheat.
- 13 The Hon. Mitchell Sharp, Minister of Trade and Commerce, announced the retirement of William Riddel, Assistant Chief Commissioner of The Canadian Wheat Board, effective September 30, 1965, and the appointment of J.B. Lawrie to the post, effective October 1.
- 16 Grain Handlers at the port of Vancouver returned to work, thus ending a strike which had lasted 72 days.
- 25 According to a telegraphic crop report published by the Dominion Bureau of Statistics, crop conditions in the Prairie Provinces were summarized as follows: High temperatures have hastened crop maturity in the Prairie Provinces and harvesting is now well under way. In southern areas a considerable proportion has been swathed and some combining has been done. Swathing is under way in northern districts. Yield prospects still range from good to excellent, despite the effects of high temperatures and rust. Hay yields have been good and special crops are doing well.
-

STATISTICS CANADA LIBRARY
BIBLIOTHÈQUE STATISTIQUE CANADA



1010687033