

CATALOGUE No.

22-005

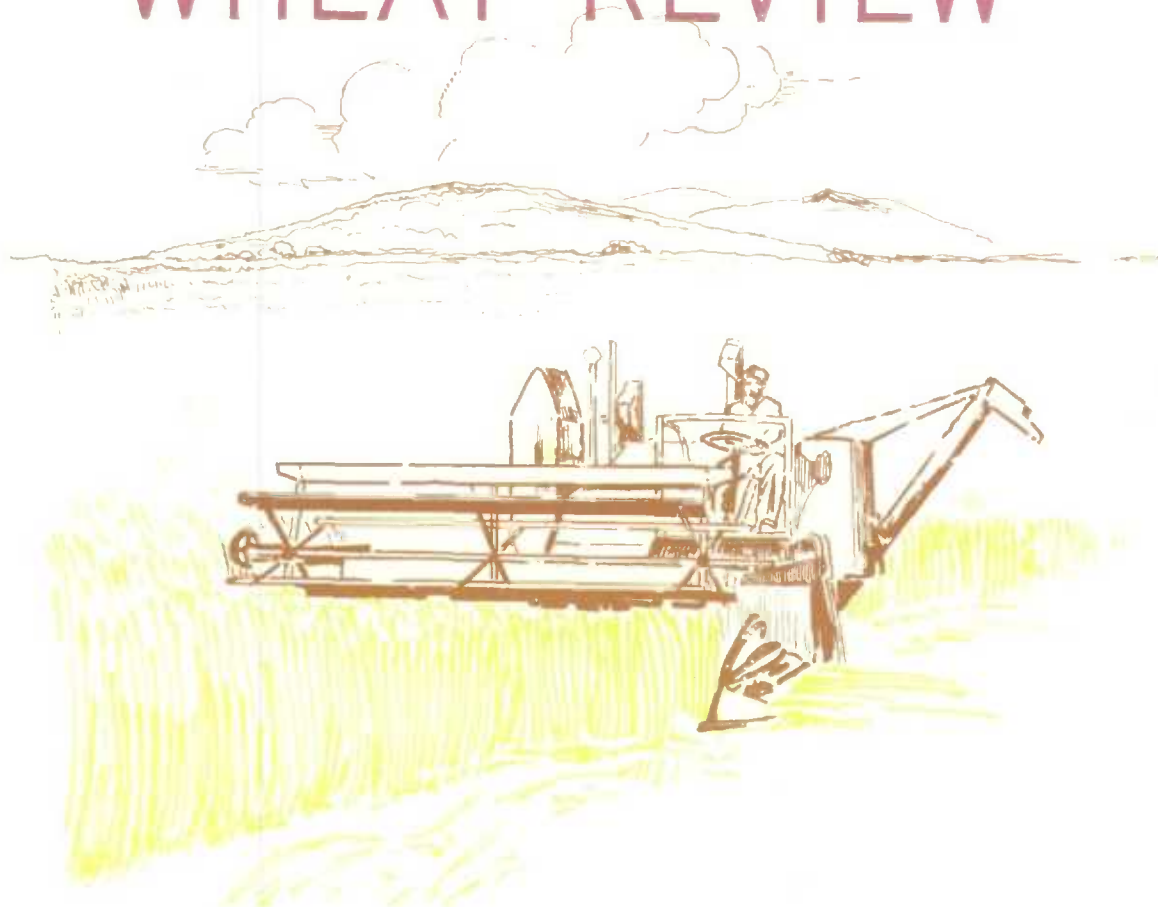
MONTHLY



CANADA

DOMINION BUREAU OF STATISTICS  
AGRICULTURE DIVISION

# THE WHEAT REVIEW



SEPTEMBER 1964



DOMINION BUREAU OF STATISTICS

---

THE  
WHEAT REVIEW

SEPTEMBER 1964

*Published by Authority of*  
The Minister of Trade and Commerce

Prepared in the Crops Section, Agriculture Division  
Dominion Bureau of Statistics, Ottawa

## TABLE OF CONTENTS

|  | <u>Page</u> |
|--|-------------|
| World Wheat Situation  |             |
| World Wheat Trade Expected to Decline in 1964-65 .....                     | 1           |
| Wheat Supplies of Four Major Exporters 10 Per Cent Below a Year Ago .....  | 1           |
| I.W.C. Cumulative Totals of Commercial Purchases .....                     | 2           |
| Canadian Situation   |             |
| Supply Position .....  | 3           |
| Marketings, Disappearance and Visible Supplies .....                       | 4           |
| August 1964 Exports of Wheat and Flour Total Record 46.3 Million Bushels . | 4           |
| Production of Canada's 1964 Grain Crops .....                              | 5           |
| Licensed Storage Capacity of Canadian Grain Elevators .....                | 7           |
| General Quota Position .....   | 8           |
| Farmers' Marketings .....  | 8           |
| Lake Shipments of Canadian Grain .....                                     | 9           |
| Wheat Shipments from Churchill during 1964 Season .....                    | 9           |
| Wheat Shipments to the United States by Destination .....                  | 10          |
| Rail Shipments of Wheat to Maritime Ports .....                            | 10          |
| Protein Content of Western Canadian 1964 Spring Wheat .....                | 11          |
| Visible Supply of Canadian Wheat .....                                     | 12          |
| Grading of Wheat Inspected, August 1964 with Comparisons .....             | 12          |
| Rail Shipments of Wheat from Fort William-Port Arthur .....                | 13          |
| Overseas Exports of Canadian Grain by Ports of Loading .....               | 13          |
| Freight Assistance Shipments .....   | 14          |
| Monthly Exports of Canadian Wheat and Wheat Flour .....                    | 15          |
| Exports of Canadian Wheat by Destination .....                             | 16          |
| Customs Exports of Canadian Wheat Flour by Countries of Consignment .....  | 17          |
| Canadian Wheat Board Weekly Average Cash Wheat Prices .....                | 19          |
| Canadian Flour Milling Situation   |             |
| Production and Exports .....   | 21          |
| United States Situation  |             |
| Supply Position .....  | 22          |
| July Exports of U.S. Wheat and Flour Slightly Above Previous Year .....    | 23          |
| Cash Wheat Prices on the Kansas City and Minneapolis Markets .....         | 26          |
| Chicago Wheat Futures, High Points of Closing .....                        | 26          |
| Australian Situation .....   | 27          |
| Argentine Situation .....  | 30          |
| French Situation .....   | 34          |
| Calendar of Wheat Events .....   | 34          |

---

# WORLD WHEAT SITUATION

## World Wheat Trade Expected to Decline in 1964-65

With the 1964-65 world production of wheat rising to a record level and the distribution of this crop returning to a more normal pattern, it appears evident that the 1964-65 trade in this commodity will decline considerably from the peak volume set in 1963-64. However, it is anticipated that the current crop year exports of wheat and flour in terms of wheat will still be well above-average. Present indications are that shipments from the traditional exporters may be close to one and a quarter billion bushels and that the total world trade may approximate the 1962-63 volume of 1.6 billion, which was the third highest export total on record. Shipments from each of the four traditional major wheat exporters during August 1964, with comparisons, appear in the accompanying table.

## Exports of Wheat and Flour in Terms of Wheat, August 1964 with Comparisons

| August              | United States | Canada | Argentina | Australia | Total |
|---------------------|---------------|--------|-----------|-----------|-------|
| - million bushels - |               |        |           |           |       |
| 1950 .....          | 14.8          | 15.5   | 7.0       | 11.7      | 49.0  |
| 1951 .....          | 42.7          | 21.7   | 7.1       | 11.5      | 83.0  |
| 1952 .....          | 26.1          | 32.7   | -         | 2.5       | 61.3  |
| 1953 .....          | 20.5          | 28.7   | 9.9       | 5.0       | 64.1  |
| 1954 .....          | 17.8          | 19.2   | 10.7      | 5.8       | 53.5  |
| 1955 .....          | 25.0          | 23.4   | 10.4      | 6.5       | 65.3  |
| 1956 .....          | 42.7          | 29.4   | 9.1       | 16.0      | 97.2  |
| 1957 .....          | 35.8          | 27.6   | 5.8       | 9.5       | 78.7  |
| 1958 .....          | 38.1          | 25.8   | 5.6       | 8.2       | 77.7  |
| 1959 .....          | 33.4          | 24.5   | 5.6       | 9.0       | 72.5  |
| 1960 .....          | 41.7          | 26.9   | 12.1      | 8.6       | 89.3  |
| 1961 .....          | 51.2          | 38.8   | 1.2       | 20.6      | 111.8 |
| 1962 .....          | 44.2          | 25.0   | 5.2       | 8.3       | 82.7  |
| 1963 1/.....        | 54.9          | 32.2   | 4.2       | 17.4      | 108.7 |
| 1964 2/.....        | 53.3          | 46.3   | 6.3       | 11.9      | 117.8 |

1/ Revised.      2/ Preliminary.

## Wheat Supplies of Four Major Exporters 10 Per Cent Below a Year Ago

Total supplies of wheat remaining in United States, Canada, Argentina and Australia, for export and for carryover at the end of their respective crop years, amounted to 2,491.0 million bushels compared with 2,773.4 million at the same time a year ago. This decrease reflected smaller amounts for United States, Canada and Australia which more than offset a substantial increase in wheat stocks in Argentina. Supplies on or about September 1, 1964, in millions of bushels, were held as follows, with last year's comparable figures in brackets: United States, 1,444.0 (1,635.2); Canada, 859.9 (1,022.5); Argentina, 121.4 (35.2); and Australia, 65.7 (80.5).



International Wheat Council  
Cumulative Totals of Commercial Purchases by Importing Countries from Exporting Countries  
Crop Year 1964-65—Through August 29, 1964

| Importing<br>Countries                                    | EXPORTING COUNTRIES |           |           |        |       |        |        | Total     |
|---|---------------------|-----------|-----------|--------|-------|--------|--------|-----------|
|   | Canada              | Argentina | Australia | France | Italy | Sweden | U.S.A. | Purchases |
| - thousand bushels -                                      |                     |           |           |        |       |        |        |           |
| Austria .....   | -                   | -         | -         | -      | -     | -      | -      | -         |
| Belgium & Luxembourg .....                                | 3,668               | 349       | -         | 15     | -     | -      | 2      | 4,034     |
| Brazil .....  | -                   | 6,246     | -         | -      | -     | -      | 4      | 6,250     |
| Costa Rica .....  | 115                 | -         | -         | -      | -     | -      | 115    | 230       |
| Cuba .....  | -                   | -         | -         | -      | -     | -      | -      | -         |
| Dominican Republic .....                                  | 30                  | -         | -         | -      | -     | -      | 18     | 48        |
| Ecuador .....   | 427                 | -         | -         | -      | -     | -      | 45     | 472       |
| El Salvador .....   | 296                 | -         | -         | -      | -     | -      | 138    | 434       |
| Finland .....   | -                   | -         | -         | -      | -     | 1      | -      | 1         |
| Germany, Federal Republic ..                              | 5,161               | -         | 36        | 188    | -     | 24     | 318    | 5,727     |
| Greece .....  | -                   | -         | -         | -      | -     | -      | 6      | 6         |
| Guatemala .....   | 12                  | -         | -         | -      | -     | -      | 271    | 283       |
| Iceland .....   | -                   | -         | -         | -      | -     | -      | 8      | 8         |
| India .....   | -                   | -         | 2,800     | -      | -     | -      | -      | 2,800     |
| Indonesia .....   | -                   | -         | 223       | -      | -     | -      | -      | 223       |
| Ireland .....   | -                   | -         | 300       | -      | -     | -      | -      | 300       |
| Israel .....  | 529                 | -         | -         | -      | -     | -      | 3      | 532       |
| Japan .....   | 13,780              | -         | 4,541     | -      | -     | -      | 6,706  | 25,027    |
| Korea .....   | -                   | -         | -         | -      | -     | -      | -      | -         |
| Liberia .....   | 13                  | -         | -         | -      | -     | -      | 15     | 28        |
| Libya .....   | -                   | -         | 3         | -      | 76    | -      | -      | 79        |
| Netherlands .....   | 2,501               | 626       | -         | -      | -     | -      | 1,868  | 4,995     |
| Netherlands Territories ..                                | 35                  | -         | -         | -      | -     | -      | 116    | 151       |
| New Zealand .....   | -                   | -         | 1,120     | -      | -     | -      | -      | 1,120     |
| Nigeria .....   | 48                  | -         | -         | -      | -     | -      | 546    | 594       |
| Norway .....  | 1,680               | -         | 1,079     | -      | -     | 266    | -      | 3,025     |
| Peru .....  | 379                 | -         | 6         | -      | -     | -      | 135    | 520       |
| Philippines .....   | 2,058               | -         | 455       | -      | -     | -      | 868    | 3,381     |
| Portugal .....  | 5                   | -         | -         | -      | -     | -      | 352    | 357       |
| Portuguese Territories ..                                 | 18                  | 276       | 1         | -      | -     | -      | 22     | 317       |
| Saudi Arabia .....  | 293                 | -         | 113       | -      | 1     | -      | 955    | 1,362     |
| Sierra Leone .....  | 84                  | -         | -         | -      | -     | -      | 10     | 94        |
| South Africa .....  | 944                 | -         | -         | -      | -     | -      | -      | 944       |
| Switzerland .....   | 2,421               | -         | -         | 111    | -     | -      | -      | 2,532     |
| Tunisia .....   | -                   | -         | -         | -      | -     | -      | -      | -         |
| United Arab Republic .....                                | -                   | -         | -         | -      | 121   | -      | 6      | 127       |
| United Kingdom .....                                      | 29,030              | 75        | 3,725     | 138    | -     | -      | 531    | 33,499    |
| U.K. Territories .....                                    | 735                 | -         | 1,053     | -      | -     | -      | 417    | 2,205     |
| Vatican City .....  | -                   | -         | -         | -      | -     | -      | -      | -         |
| Venezuela .....   | 6,618               | -         | -         | -      | -     | -      | 2,572  | 9,190     |
| Western Samoa .....                                       | -                   | -         | 9         | -      | -     | -      | 1      | 10        |
| To Orders .....   | -                   | -         | -         | -      | -     | -      | -      | -         |
| Totals .....  | 70,880              | 7,572     | 15,464    | 452    | 198   | 291    | 16,048 | 110,905   |
| Percentage of Total Sales<br>by Exporting Countries ..... | 63.91               | 6.83      | 13.94     | 0.41   | 0.18  | 0.26   | 14.47  | 100.00    |

NOTE: Mexico, Spain and U.S.S.R. - no sales.

Argentina - quantities cover period ending August 8, 1964.

Italy - quantities cover period ending August 22, 1964.

CANADIAN SITUATION

Supply Position      Total estimated supplies of wheat for the 1964-65 (August-July) crop year are placed at 1,056.2 million bushels, consisting of the August 1 carryover of 460.6 million and the 1964 crop, forecast on the basis of conditions at September 15, at 595.7 million bushels. Supplies of the size indicated represent a decrease of 13 per cent from the 1963-64 total of 1,210.7 million bushels. Assuming realization of the September forecast of production and after making an allowance of 160.0 million bushels for anticipated domestic requirements, supplies available for export and for carryover during 1964-65 would amount to 896.2 million bushels, 15 per cent below the 1,054.7 million in 1963-64.

Exports of wheat and flour in terms of wheat equivalent, during August 1964 amounted to some 46.3 million bushels, 44 per cent above the 32.2 million exported during the same month a year ago. This year's August total wheat exports consisted of 42.2 million bushels of wheat in bulk, 44 thousand of bagged seed and 4.1 million of flour in terms of wheat.

Subject to realization of current production and utilization estimates, the balance remaining on September 1, 1964 for export and for carryover, amounted to 849.9 million bushels, 17 per cent lower than the September 1, 1963 total of 1,022.5 million.

Canadian Wheat Supplies

| Item  | 1963-64 <u>1/</u>   | 1964-65 <u>2/</u> |
|---|---------------------|-------------------|
|   | - million bushels - |                   |
| Carryover in North America at beginning of crop year (August 1) ..... | 487.2               | 460.6             |
| Production .....  | 723.4               | 595.7 <u>3/</u>   |
| Imports of wheat for domestic use, August .....                       | <u>4/</u>           | <u>5/</u>         |
| Total estimated supplies .....  | 1,210.7             | 1,056.2           |
| Less estimated domestic requirements for crop year .                  | 156.0               | 160.0             |
| Available for export and for carryover .....                          | 1,054.7             | 896.2             |
| Deduct:   |                     |                   |
| Exports of wheat in bulk, August <u>6/</u> .....                      | 29.2                | 42.2              |
| Exports of bagged seed wheat, August <u>7/</u> .....                  | 0.2                 | <u>4/</u>         |
| Total exports of wheat as grain .....                                 | 29.4                | 42.2              |
| Exports of wheat flour in terms of wheat, August <u>7/</u> .          | 2.8                 | 4.1               |
| Total exports of wheat and wheat flour .....                          | 32.2                | 46.3              |
| Balance on September 1 for export and for carryover.                  | 1,022.5             | 849.9             |

1/ Subject to revision. 2/ Preliminary. 3/ Based on September forecast of production. 4/ Less than 50,000 bushels. 5/ Not available. 6/ As reported by the Board of Grain Commissioners. (Includes overseas clearances and imports into the United States). 7/ Customs returns, 1963-64 adjusted for time lag.



Marketings, Disappearance  
and Visible Supplies

Total primary deliveries of wheat (both east and west) up to September 23 of the current crop year have amounted to 38.9 million bushels compared with 35.1 million marketed during the same period of the previous year. Disappearance of Canadian wheat into export and domestic channels up to September 23, 1964 has amounted to a combined total of some 90.7 million bushels. With shipments to domestic and export markets more than double the quantity delivered during the period under review, the total visible supply of Canadian wheat declined from 336.8 million bushels at August 1 to a level of 287.3 million at September 23.

The total visible supply of Canadian wheat at September 23 this year represented a decrease of 25 per cent from the 1963 comparable total of 381.9 million and was 13 per cent less than the 1962 figure of 330.4 million. The bulk of the decrease over a year ago was accounted for by substantially smaller stocks in country elevators, with stocks in this position amounting to 144.8 million bushels compared with the 1963 comparable total of 207.0 million, and the 1962 figure of 160.6 million.

Wheat stocks at interior terminals at September 23, 1964 totalled 4.8 million bushels as against 6.0 million a year ago and 7.3 million two years ago. The 14.6 million bushels "in transit rail" (Western Division) were below the 1963 total of 16.1 million but above the 1962 figure of 14.3 million. Supplies at the Lakehead, totalling some 27.5 million bushels, were considerably below both last year's comparable level of 44.7 million and the 1962 figure of 58.5 million. Stocks "in transit lake", amounting to 12.3 million bushels were larger than the 1963 level of 9.6 million and sharply above the 2.9 million of two years ago. The 27.8 million bushels in Bay, Lake and Upper St. Lawrence ports were lower than both the 39.1 million of a year ago and the 29.5 million of two years ago. Supplies in Lower St. Lawrence and Maritime ports at September 23, 1964 at 32.8 million bushels, were below the 1963 total 36.6 million but slightly above the 32.3 million at the corresponding period in 1962. The 12.8 million bushels in West Coast ports (Vancouver-New Westminster, Prince Rupert and Victoria) registered decreases from both the 1963 and 1962 comparable totals of 13.4 million and 14.6 million bushels, respectively. Wheat supplies at the port of Churchill amounted to 1.9 million bushels compared with the 1963 total of 2.0 million and unchanged from the 1.9 million of two years ago.

August 1964 Exports of  
Wheat and Flour Total Record  
46.3 Million Bushels

Combined exports of wheat in bulk, bagged seed wheat and wheat flour in terms of grain equivalent during August 1964 amounted to 46.3 million bushels, the highest total on record for that month, 14 per cent more than the previous high of 40.7 million in August 1945, 44 per cent more than the August 1963 figure of 32.2 million and 72 per cent above the ten-year (1953-62) average for the month of August of 26.9 million bushels.

Exports of wheat in bulk (as reported by the Board of Grain Commissioners), at 42.2 million bushels were 45 per cent more than the 29.2 million exported during August 1963, 78 per cent above the ten-year (1953-62) average for the month of August of 23.8 million but 31 per cent below the July 1964 total of 61.0 million. Exports of bagged seed wheat during August 1964, based on Canadian Customs returns, amounted to 44 thousand bushels compared with the August 1963 total (adjusted to remove time lag) of 187 thousand bushels. Customs returns also indicate that the equivalent of 4.1 million bushels of wheat was exported in the form of flour during August 1964, 44 per cent greater than the adjusted August



1963 total of 2.8 million but 10 per cent lower than the 4.5 million of the previous month. Communist China, Canada's leading purchaser of wheat in bulk, received shipments amounting to 8.8 million bushels during August and accounted for 21 per cent of the export movement of wheat in bulk form during the month under review. Exports of wheat to Britain amounted to 6.8 million and accounted for 16 per cent of the total. During the same month of 1963, there were no shipments of wheat to China while those to Britain amounted to 7.5 million bushels and represented 26 per cent of the August 1963 total. Other principal markets for Canadian wheat in bulk during August 1964 with totals for the same month of the preceding crop year in brackets, were as follows, in million of bushels: Czechoslovakia, 5.0 (nil); Poland, 4.7 (2.1); Federal Republic of Germany, 2.9 (1.5); Japan, 2.8 (5.7); Belgium and Luxembourg, 1.8 (2.1); Germany, Democratic Republic, 1.5 (nil); and Norway, 1.1 (0.6). (Comparable information on exports of Canadian wheat as flour may be found on page 17-18 of this publication).

Production of  
Canada's 1964  
Grain Crops

On the basis of yields indicated at September 15, production of the five major grains this year, with the 1963 totals and the ten-year 1953-62 averages, respectively, in brackets, in millions of bushels, is as follows: all wheat, 595.7 (723.4, 466.1); oats, 353.8 (453.1, 377.0); barley, 164.6 (220.7, 209.9); all rye, 12.3 (12.8, 11.7); and flaxseed, 19.0 (21.1, 18.7).

September Forecast of the 1964 Production of Principal Grain Crops  
Canada and Prairie Provinces, Compared with Latest Estimates for 1963

| Province<br>and crop       | Area       |            | Yield per Acre |                | Production  |                |
|----------------------------|------------|------------|----------------|----------------|-------------|----------------|
|                            | 1963       | 1964       | 1963           | 1964 <u>1/</u> | 1963        | 1964 <u>1/</u> |
|                            | - acres -  |            | - bushels -    |                | - bushels - |                |
| <u>CANADA</u>              |            |            |                |                |             |                |
| Winter wheat .....         | 442,000    | 455,000    | 40.2           | 40.7           | 17,748,000  | 18,518,000     |
| Spring wheat <u>2/</u> ... | 27,124,200 | 29,230,800 | 26.0           | 19.7           | 705,694,000 | 577,162,000    |
| All wheat .....            | 27,566,200 | 29,685,800 | 26.2           | 20.1           | 723,442,000 | 595,680,000    |
| Oats for grain ...         | 9,487,800  | 8,308,000  | 47.8           | 42.6           | 453,102,000 | 353,837,000    |
| Barley .....               | 6,160,100  | 5,454,700  | 35.8           | 30.2           | 220,664,000 | 164,607,000    |
| Fall rye .....             | 552,800    | 578,900    | 19.9           | 19.2           | 11,018,000  | 11,143,000     |
| Spring rye .....           | 98,800     | 100,900    | 18.5           | 11.9           | 1,830,000   | 1,200,000      |
| All rye .....              | 651,600    | 679,800    | 19.7           | 18.2           | 12,848,000  | 12,343,000     |
| Flaxseed .....             | 1,682,400  | 1,916,500  | 12.6           | 9.9            | 21,116,000  | 18,995,000     |
| Mixed grains .....         | 1,411,300  | 1,431,300  | 48.2           | 45.4           | 67,987,000  | 65,044,000     |
| <u>PRAIRIE PROVINCES</u>   |            |            |                |                |             |                |
| Spring wheat <u>2/</u> ... | 26,996,000 | 29,080,000 | 26.0           | 19.7           | 703,000,000 | 573,000,000    |
| Oats for grain ...         | 6,260,000  | 5,171,000  | 48.6           | 39.4           | 304,000,000 | 204,000,000    |
| Barley .....               | 5,922,000  | 5,217,000  | 36.0           | 29.7           | 213,000,000 | 155,000,000    |
| Rye .....                  | 582,800    | 619,900    | 19.2           | 17.4           | 11,180,000  | 10,800,000     |
| Flaxseed .....             | 1,629,000  | 1,855,000  | 12.5           | 9.7            | 20,300,000  | 18,000,000     |

<sup>1/</sup> As indicated on basis of conditions on or about September 15.

<sup>2/</sup> Includes durum wheat in the Prairie Provinces where Canada's commercial production of this crop is concentrated and also relatively small quantities of Winter wheat in provinces other than Ontario.

Canada's 1964 wheat crop now placed at 595.7 million bushels is 18 per cent below last year's record 723.4 million bushels but 28 per cent above the ten-year (1953-62) average of 466.1 million. Although there was an 8 per cent increase in acreage, production is lower than the previous year's due to a 23 per cent decrease in yield. The average yield at 20.1 bushels per acre is 4 per cent above the ten-year (1953-62) average of 19.3 bushels per acre. This year's all Canada crop of spring wheat, including durum, is forecast at 577.2 million bushels compared with the 1963 crop of 705.7 million and the ten-year (1953-62) average of 446.2 million bushels. Ontario's winter wheat crop is estimated at 18.5 million bushels, an increase of 4 per cent over last year's crop of 17.7 million.

In the Prairie Provinces the 1964 wheat crop is now placed at 573.0 million bushels, some 130.0 million bushels or 18 per cent below the 1963 crop. The current crop is above that of 1963 in Manitoba where production is forecast at 87.0 million bushels compared with 61.0 million last year. Production in Saskatchewan, which accounts for about 58 per cent of this year's all Canada wheat crop, is estimated at 348.0 million bushels, some 29 per cent less than last year's outturn of 493.0 million. The Alberta crop, forecast at 138.0 million bushels, is down 7 per cent from last year's production of 149.0 million. The indicated average yield per seeded acre in the Prairie Provinces, on the basis of conditions at mid-September, is 19.7 bushels, with Manitoba averaging 25.7, Saskatchewan 18.1 and Alberta 21.2 bushels. Current estimates of production in the Prairie Provinces include relatively small quantities of winter wheat principally in Alberta, and an estimated 33.7 million bushels of durum wheat.

The acreage in durum wheat in the Prairie Provinces in 1964 was 13 per cent less than that seeded in 1963, and the average yield estimated at 17.8 bushels per acre is 28 per cent below the 1963 outturn of 24.6 bushels. Mid-September indications are for a crop of 33.7 million bushels compared with the 1963 crop of 53.4 million. Estimated production by provinces, in millions of bushels, is as follows: Manitoba, 2.7; Saskatchewan, 26.0; and Alberta, 5.0.

September Forecast of the 1964 Production of Durum Wheat 1/  
in the Prairie Provinces Compared with 1963

| Province       | Area      |           | Yield per Acre |                | Production  |                |
|----------------|-----------|-----------|----------------|----------------|-------------|----------------|
|                | 1963      | 1964      | 1963           | 1964 <u>2/</u> | 1963        | 1964 <u>2/</u> |
|                | - acres - |           | - bushels -    |                | - bushels - |                |
| Manitoba ..... | 140,000   | 120,000   | 17.1           | 22.5           | 2,400,000   | 2,700,000      |
| Saskatchewan . | 1,796,000 | 1,541,000 | 25.6           | 17.1           | 46,000,000  | 26,000,000     |
| Alberta .....  | 234,000   | 227,000   | 21.4           | 22.0           | 5,000,000   | 5,000,000      |
| Totals .....   | 2,170,000 | 1,888,000 | 24.6           | 17.8           | 53,400,000  | 33,700,000     |

1/ Acreage and production included with spring wheat.

2/ As indicated on the basis of conditions on or about September 15.

Licensed Storage Capacity  
of Canadian Grain Elevators

Total licensed grain storage capacity as at August 1, 1964, according to records of the Board of Grain Commissioners for Canada, amounted to 669.2 million bushels. Storage capacity in the 5,168 public country elevators in the Western Division accounted for 376.4 million bushels and represented 56 per cent of the total. Most of the remainder was accounted for by the storage capacity of semi-public terminal elevators, 151.4 million bushels, and eastern elevators, 120.3 million.

On a regional basis, storage capacity amounting to some 412.4 million bushels and accounting for 62 per cent of the total, was located in the Prairie Provinces.

Licensed Storage Capacity 1/ of Canadian Grain Elevators  
as at August 1, 1964

| Province<br>Number<br>and<br>Capacity | Public<br>Country | Private<br>Country | Semi-Public<br>Terminal | Private<br>Terminal | Mill       | Eastern     | Total<br>Licensed<br>Elevators |
|---------------------------------------|-------------------|--------------------|-------------------------|---------------------|------------|-------------|--------------------------------|
| <u>Manitoba</u>                       |                   |                    |                         |                     |            |             |                                |
| Number .....                          | 674               | 3                  | 2                       | 2                   | 6          | -           | 687                            |
| Capacity ....                         | 48,497,600        | 72,000             | 6,000,000               | 3,602,800           | 2,088,200  | -           | 60,260,600                     |
| <u>Saskatchewan</u>                   |                   |                    |                         |                     |            |             |                                |
| Number .....                          | 2,855             | 1                  | 2                       | -                   | 5          | -           | 2,863                          |
| Capacity ....                         | 198,616,200       | 25,000             | 11,000,000              | -                   | 4,941,500  | -           | 214,582,700                    |
| <u>Alberta</u>                        |                   |                    |                         |                     |            |             |                                |
| Number .....                          | 1,618             | 2                  | 3                       | 1                   | 9          | -           | 1,633                          |
| Capacity ....                         | 125,787,900       | 75,000             | 6,100,000               | 1,490,000           | 4,117,000  | -           | 137,569,900                    |
| <u>British<br/>Columbia</u>           |                   |                    |                         |                     |            |             |                                |
| Number .....                          | 19                | -                  | 9                       | -                   | 2          | -           | 30                             |
| Capacity ....                         | 2,101,000         | -                  | 24,846,500              | -                   | 188,300    | -           | 27,135,800                     |
| <u>Ontario</u>                        |                   |                    |                         |                     |            |             |                                |
| Number .....                          | 2                 | -                  | 24                      | 2                   | 3          | 18          | 49                             |
| Capacity ....                         | 1,439,000         | -                  | 103,447,210             | 2,973,900           | 1,480,000  | 56,666,000  | 166,006,110                    |
| <u>Quebec</u>                         |                   |                    |                         |                     |            |             |                                |
| Number .....                          | -                 | -                  | -                       | -                   | -          | 10          | 10                             |
| Capacity ....                         | -                 | -                  | -                       | -                   | -          | 56,440,000  | 56,440,000                     |
| <u>Maritimes</u>                      |                   |                    |                         |                     |            |             |                                |
| Number .....                          | -                 | -                  | -                       | -                   | -          | 4           | 4                              |
| Capacity ....                         | -                 | -                  | -                       | -                   | -          | 7,229,300   | 7,229,300                      |
| <u>Totals</u>                         |                   |                    |                         |                     |            |             |                                |
| Number .....                          | 5,168             | 6                  | 40                      | 5                   | 25         | 32          | 5,276                          |
| Capacity ....                         | 376,441,700       | 172,000            | 151,393,710             | 8,066,700           | 12,815,000 | 120,335,300 | 669,224,410                    |

Source: Board of Grain Commissioners for Canada.

1/ Capacity in terms of bushels.



General Quota Position By October 13, 1964, out of a total of 1,905 shipping points in the Western Division, the Canadian Wheat Board had placed 218 points on a quota of four bushels per specified acre, 396 points on a 3-bushel quota, 758 points on a 2-bushel quota and 523 points on a 1-bushel quota. Only 6 points remained on the Initial Unit Quota while 4 stations were reported as "closed".

Summary of Elevator Shipping Points in the Western Division  
as at October 13, 1964

| Province               | Initial Unit Quota | General Quota in Bushels per Specified Acre |     |       |      | Closed | Total |
|------------------------|--------------------|---|-----|-------|------|--------|-------|
|                        |                    | One   | Two | Three | Four |        |       |
| Ontario .....          | -                  | -   | -   | -     | 1    | -      | 1     |
| Manitoba .....         | 2                  | 69  | 126 | 83    | 62   | -      | 342   |
| Saskatchewan .....     | -                  | 240   | 436 | 247   | 105  | 4      | 1,032 |
| Alberta .....          | 4                  | 214   | 196 | 66    | 45   | -      | 525   |
| British Columbia ..... | -                  | -   | -   | -     | 5    | -      | 5     |
| All Provinces .....    | 6                  | 523   | 758 | 396   | 218  | 4      | 1,905 |

Farmers' Marketings Deliveries of wheat from farms in the Prairie Provinces up to September 23 of the current crop year amounted to 33.9 million bushels, representing an increase of 11 per cent over the comparable 1963 total of 30.7 million and 6 per cent above the ten-year (1953-62) average for the period of 32.1 million bushels.

Farmers' Marketings 1/ of Wheat in the Prairie Provinces 1964-65

| Week Ending            |              | Manitoba  | Saskatchewan | Alberta   | Total      | Last Year <u>2/</u> |
|------------------------|--------------|-----------|--------------|-----------|------------|---------------------|
| - bushels -            |              |           |              |           |            |                     |
| August                 | 12, 1964 ... | 75,662    | 409,500      | 98,247    | 583,409    | 543,483             |
|                        | 19 .....     | 165,645   | 350,728      | 200,845   | 717,218    | 813,982             |
|                        | 26 .....     | 606,652   | 1,186,624    | 360,697   | 2,153,973  | 2,958,768           |
| September              | 2 .....      | 259,162   | 1,731,216    | 542,073   | 2,532,451  | 3,670,105           |
|                        | 9 .....      | 626,938   | 2,337,139    | 282,197   | 3,246,274  | 7,414,702           |
|                        | 16 .....     | 2,861,693 | 3,000,932    | 736,446   | 6,599,071  | 8,978,421           |
|                        | 23 .....     | 4,677,736 | 10,134,664   | 3,294,066 | 18,106,466 | 6,291,301           |
| Totals .....           |              | 9,273,488 | 19,150,803   | 5,514,571 | 33,938,862 | 30,670,762          |
| Average similar period |              |           |              |           |            |                     |
| 1953-62 .....          |              | 4,411,717 | 20,435,926   | 7,224,067 | 32,071,710 |                     |

1/ Includes receipts at country, interior private and mill elevators, interior semi-public terminals and platform loadings.  
2/ Revised.

Lake Shipments of Canadian Grain

Reflecting a record movement of wheat, total shipments of the five major grains out of Lakehead terminals from the opening of navigation to September 23 this year amounted to 315.9

million bushels, 79 per cent greater than the 176.9 million shipped during the comparable period of 1963 and the highest figure since 326.2 million were shipped during the corresponding period of 1945.

Lake Shipments of Canadian Grain from the Opening of Navigation to September 23, 1964 and to Approximately the Same Date, 1953 to 1963

| Year                 | Wheat   | Oats   | Barley | Rye   | Flaxseed | Total   |
|----------------------|---------|--------|--------|-------|----------|---------|
| - thousand bushels - |         |        |        |       |          |         |
| 1953 .....           | 160,034 | 58,042 | 76,437 | 9,912 | 3,434    | 307,859 |
| 1954 .....           | 85,221  | 35,480 | 45,592 | 5,149 | 2,413    | 173,855 |
| 1955 .....           | 98,704  | 21,243 | 37,703 | 8,412 | 3,448    | 169,510 |
| 1956 .....           | 156,630 | 26,216 | 59,548 | 9,894 | 3,842    | 256,129 |
| 1957 .....           | 107,717 | 26,915 | 30,361 | 3,792 | 8,158    | 176,944 |
| 1958 .....           | 124,383 | 27,857 | 49,118 | 4,966 | 3,811    | 210,135 |
| 1959 .....           | 122,694 | 18,417 | 29,329 | 3,928 | 4,121    | 178,488 |
| 1960 .....           | 126,366 | 14,223 | 30,853 | 3,159 | 4,883    | 179,484 |
| 1961 .....           | 156,176 | 15,988 | 27,215 | 1,723 | 4,610    | 205,713 |
| 1962 .....           | 89,541  | 11,420 | 16,501 | 2,946 | 3,805    | 124,214 |
| 1963 .....           | 124,903 | 27,234 | 19,281 | 1,656 | 3,875    | 176,949 |
| 1964 .....           | 261,497 | 20,696 | 24,826 | 3,532 | 5,313    | 315,864 |

Wheat Shipments from Churchill during 1964 Season

Shipments of wheat from the port of Churchill during the 1964 season of navigation amounted to 21.6 million bushels compared with last year's record of 22.9 million. The 1964 season opened on August 4, one of the latest openings in recent years, and closed on October 11. This year's total was moved out in 41 overseas cargoes.

Ocean Shipments of Wheat from Churchill, Season of Navigation, 1931-64

| Year       | Shipments <sup>1/</sup><br>bushels | Year       | Shipments <sup>1/</sup><br>bushels |
|------------|------------------------------------|------------|------------------------------------|
| 1931 ..... | 545,000                            | 1948 ..... | 5,314,000                          |
| 1932 ..... | 2,736,000                          | 1949 ..... | 5,528,000                          |
| 1933 ..... | 2,708,000                          | 1950 ..... | 6,768,000                          |
| 1934 ..... | 4,050,000                          | 1951 ..... | 7,278,000                          |
| 1935 ..... | 2,407,000                          | 1952 ..... | 8,585,000                          |
| 1936 ..... | 4,294,000                          | 1953 ..... | 10,784,000                         |
| 1937 ..... | 604,000                            | 1954 ..... | 12,485,000                         |
| 1938 ..... | 917,000                            | 1955 ..... | 13,078,000                         |
| 1939 ..... | 1,772,000                          | 1956 ..... | 16,250,000                         |
| 1940 ..... | -                                  | 1957 ..... | 16,577,000                         |
| 1941 ..... | -                                  | 1958 ..... | 19,599,000                         |
| 1942 ..... | -                                  | 1959 ..... | 21,787,000                         |
| 1943 ..... | 740,000                            | 1960 ..... | 19,582,000                         |
| 1944 ..... | -                                  | 1961 ..... | 19,353,000                         |
| 1945 ..... | -                                  | 1962 ..... | 21,525,000                         |
| 1946 ..... | 2,929,000                          | 1963 ..... | 22,864,000                         |
| 1947 ..... | 4,976,000                          | 1964 ..... | 21,645,000                         |

<sup>1/</sup> To nearest thousand bushels.

Wheat Shipments to  
the United States  
by Destination

There were no vessel and rail shipments of wheat to the United States, either for re-export or retention for domestic use, from the beginning of the current crop year to September 23, 1964. During the comparable periods of 1963 and 1962 rail and vessel shipments amounted to 158 thousand and 10 thousand bushels, respectively.

Wheat Shipments\* to the United States by Destination  
August 1-September 23, 1964 with Comparisons

| Destination                  | 1962   | 1963    | 1964 |
|------------------------------|--------|---------|------|
| - bushels -                  |        |         |      |
| <u>By Vessel</u>             |        |         |      |
| Duluth-Superior .....        | -      | 123,729 | -    |
| <u>By Rail</u>               |        |         |      |
| U.S.A. Domestic Points ..... | 10,100 | 33,900  | -    |
| Totals, Shipments .....      | 10,100 | 157,629 | -    |

\* Either for re-export or retention for domestic use. Excluding bagged seed.

Rail Shipments  
of Wheat to  
Maritime Ports

Rail shipments of wheat to Maritime Ports from Bay, Lake and Upper St. Lawrence Ports during August 1964 amounted to 286,858 bushels in contrast to nil during August 1963.

Rail Shipments of Wheat to Maritime Ports from Bay  
Lake and Upper St. Lawrence Ports

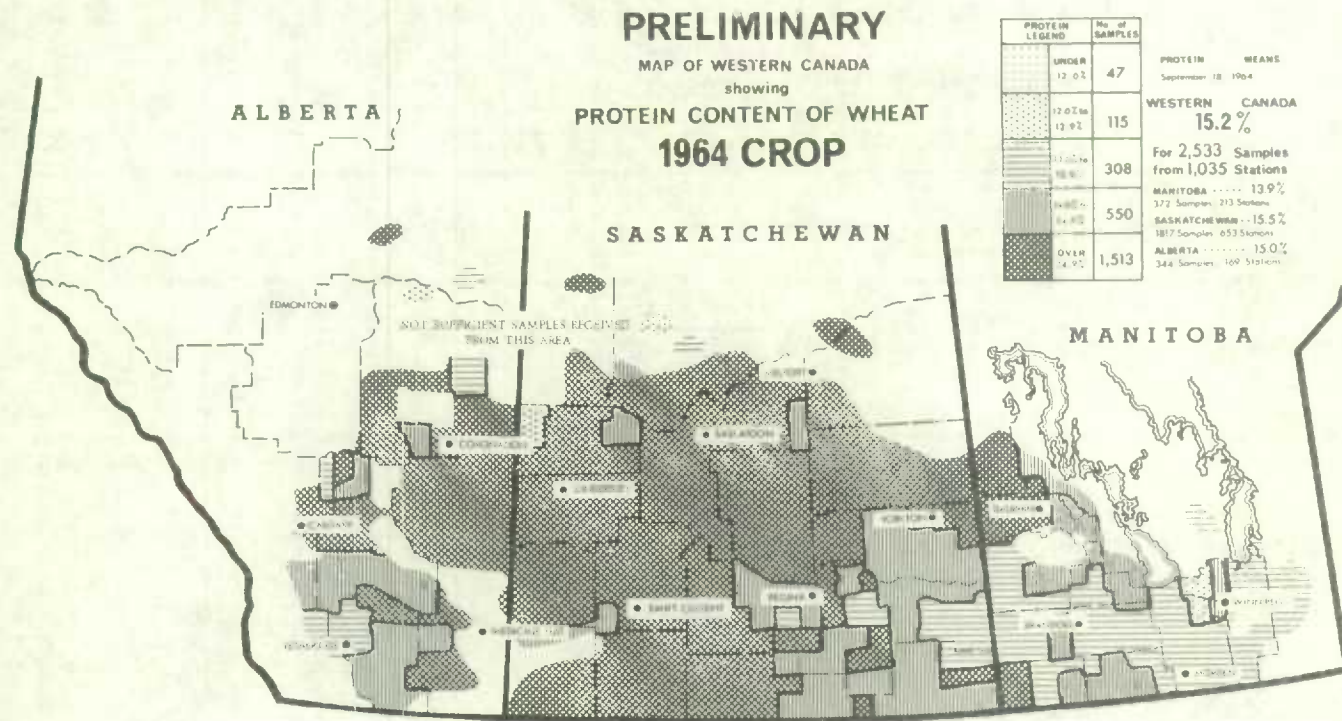
| Origin of Shipment    | August 1963 | August 1964 |
|-----------------------|-------------|-------------|
| - bushels -           |             |             |
| Midland, Tiffin ..... | -           | 55,300      |
| Goderich .....        | -           | 51,328      |
| Owen Sound .....      | -           | 180,230     |
| Total .....           | -           | 286,858     |



Protein Content of  
Western Canadian  
1964 Spring Wheat

The preliminary protein map released by the Board of Grain Commissioners' Laboratory on September 21 shows an average of 15.2 per cent for the 1964 red spring wheat crop. This level will probably go down about 0.2 per cent when a better sampling of the lower-protein areas, especially the northern area of Alberta, can be made and the results are included in the survey. Despite this, the average protein content of the 1964 crop will probably equal the highest level recorded since the Laboratory started protein surveys in 1927, that is, 15.1 per cent in 1941 and 14.9 per cent in 1936; the long-term average is 13.6 per cent. Protein levels for Western Canada for the previous seven years have been well above average. The last below-average level was in 1956 when average protein content was 12.4 per cent.

Up to September 18, the Laboratory has tested 2,533 samples from 1,035 stations in Western Canada. Provincial protein averages, with the number of stations represented in brackets, are: Manitoba 13.9 per cent (213); Saskatchewan 15.5 per cent (653); and Alberta 15.0 per cent (169). Compared with last year's final survey levels, Manitoba is 0.2 per cent lower, Saskatchewan is 0.9 per cent higher, and Alberta is 1.2 per cent higher. The average protein level for Alberta will probably be reduced substantially when more samples from the northern areas are included in the survey.



The 1964 map shows the geographic distribution of wheat of different protein levels. Except for the southeastern corner of Saskatchewan, the whole province is covered by protein areas which average over 14.9 per cent. This high-protein area extends into central Alberta while a large lower-protein area (13.0 to 13.9 per cent) covers most of Manitoba.

Visible Supply of Canadian Wheat, September 23, 1964  
Compared with Approximately the Same Date, 1962 and 1963

| Position                                     | 1962    | 1963    | 1964    |
|--|---------|---------|---------|
| - thousand bushels -                         |         |         |         |
| Country elevators - Manitoba .....           | 19,099  | 23,132  | 17,261  |
| Saskatchewan .....                           | 93,285  | 121,453 | 82,782  |
| Alberta .....                                | 48,213  | 62,443  | 44,709  |
| Totals .....                                 | 160,597 | 207,027 | 144,752 |
| Interior private and mill .....              | 8,075   | 6,840   | 7,441   |
| Interior terminals .....                     | 7,310   | 6,050   | 4,770   |
| Vancouver-New Westminster .....              | 13,894  | 11,932  | 11,959  |
| Victoria .....                               | 695     | 665     | 78      |
| Prince Rupert .....                          | -       | 835     | 719     |
| Churchill .....                              | 1,940   | 1,951   | 1,923   |
| Fort William-Port Arthur .....               | 58,525  | 44,718  | 27,453  |
| In transit rail (Western Division) .....     | 14,313  | 16,091  | 14,625  |
| Bay, Lake and Upper St. Lawrence ports ..... | 29,492  | 39,081  | 27,787  |
| Lower St. Lawrence and Maritime ports .....  | 32,320  | 36,615  | 32,766  |
| In transit lake .....                        | 2,923   | 9,601   | 12,321  |
| In transit rail (Eastern Division) .....     | 343     | 471     | 709     |
| Totals .....                                 | 330,427 | 381,878 | 287,301 |

Grading of Wheat Inspected, August 1964 with Comparisons

| Grade                             | Crop Year |           | August     |           |            |           |
|-----------------------------------|-----------|-----------|------------|-----------|------------|-----------|
|                                   | Average   |           |            |           |            |           |
|                                   | 1958-59   | 1963-64   | 1963       |           | 1964       |           |
|                                   | 1962-63   |           |            |           |            |           |
|                                   | per cent  | per cent  | cars       | per cent  | cars       | per cent  |
| No. 1 Man. Northern .....         | 7.6       | 4.8       | 1,078      | 5.8       | 1,637      | 5.4       |
| No. 2 Man. Northern .....         | 38.0      | 49.2      | 7,406      | 39.9      | 17,531     | 57.5      |
| No. 3 Man. Northern .....         | 22.6      | 25.1      | 2,596      | 14.0      | 7,167      | 23.5      |
| No. 4 Man. Northern .....         | 10.0      | 6.6       | 2,743      | 14.8      | 1,052      | 3.4       |
| No. 5 Wheat .....                 | 4.4       | 3.4       | 1,221      | 6.6       | 490        | 1.6       |
| No. 6 Wheat .....                 | 0.6       | 0.5       | 127        | 0.7       | 170        | 0.6       |
| Feed Wheat .....                  | <u>1/</u> | <u>1/</u> | 1          | <u>1/</u> | -          | -         |
| Others Red Spring .....           | 10.1      | 3.0       | 1,789      | 9.6       | 641        | 2.1       |
| C.W. Garnet .....                 | 0.1       | 0.4       | 25         | 0.1       | 91         | 0.3       |
| C.W. White Spring .....           | 0.1       | 0.1       | 58         | 0.3       | 11         | <u>1/</u> |
| C.W. Mixed Wheat .....            | <u>1/</u> | 0.1       | 7          | <u>1/</u> | 16         | 0.1       |
| Alberta Winter .....              | 0.2       | 0.9       | 671        | 3.6       | 311        | 1.0       |
| Nos. 1-6 C.W. Amber Durum ..      | 6.0       | 5.7       | 822        | 4.4       | 1,296      | 4.2       |
| Others C.W. Amber Durum ....      | 0.2       | 0.2       | 38         | 0.2       | 81         | 0.3       |
| Totals .....                      | 100.0     | 100.0     | 18,582     | 100.0     | 30,494     | 100.0     |
| Gross bushels (approx.) ....      |           |           | 35,956,000 |           | 59,260,000 |           |
| <u>1/</u> Less than .05 per cent. |           |           |            |           |            |           |

Rail Shipments of Wheat from Fort William-Port Arthur, 1961-62-1964-65

| Month           | 1961-62 | 1962-63 | 1963-64 | 1964-65 |
|-----------------|---------|---------|---------|---------|
| - bushels -     |         |         |         |         |
| August .....    | 20,648  | 13,933  | 5,500   | 7,786   |
| September ..... | 14,598  | 11,657  | 9,104   |         |
| October .....   | 33,944  | 22,716  | 25,355  |         |
| November .....  | 22,915  | 12,024  | 13,500  |         |
| December .....  | 60,167  | 12,778  | 23,047  |         |
| January .....   | 126,533 | 39,534  | 58,772  |         |
| February .....  | 68,421  | 22,967  | 28,768  |         |
| March .....     | 37,000  | 86,398  | 21,268  |         |
| April .....     | 37,777  | 69,067  | 26,063  |         |
| May .....       | 11,203  | 11,851  | 7,941   |         |
| June .....      | 16,022  | 15,746  | 20,518  |         |
| July .....      | 17,315  | 11,158  | 12,707  |         |
| Totals .....    | 466,543 | 329,829 | 252,543 |         |

Distribution of Rail Shipments of Wheat from Fort William-Port Arthur, August 1964

| Grade         | Quebec | Ontario |
|---------------|--------|---------|
| - bushels -   |        |         |
| 5 Wheat ..... | -      | 1,333   |
| Durum .....   | 4,000  | -       |
| Others .....  | -      | 2,453   |
| Totals .....  | 4,000  | 3,786   |

Overseas Exports of Canadian Grain by Ports of Loading, August 1-September 23, 1964  
with Comparisons

| Port                    | Wheat 1/   | Durum<br>Wheat 1/ | Oats 1/ | Barley    | Rye     | Flaxseed  | Rapeseed 2/ |
|-------------------------|------------|-------------------|---------|-----------|---------|-----------|-------------|
| - bushels -             |            |                   |         |           |         |           |             |
| <u>Pacific Seaboard</u> |            |                   |         |           |         |           |             |
| Van.-New West. ....     | 22,382,970 | -                 | -       | 2,280,777 | -       | 880,321   | 280,961     |
| Victoria .....          | 1,888,870  | -                 | -       | -         | -       | -         | -           |
| Prince Rupert .....     | 1,158,676  | -                 | -       | -         | -       | -         | -           |
| Churchill .....         | 15,783,614 | -                 | -       | -         | -       | -         | -           |
| Lakehead Direct .....   | 545,281    | 379,645           | 65,882  | 801,145   | 437,500 | 153,316   | -           |
| <u>St. Lawrence</u>     |            |                   |         |           |         |           |             |
| Montreal .....          | 9,215,503  | 2,081,858         | 171,321 | 46,667    | 10,720  | 601,219   | -           |
| Sorel .....             | 3,043,992  | -                 | -       | -         | -       | -         | -           |
| Three Rivers .....      | 1,284,669  | 37,333            | -       | -         | 176,600 | 56,684    | -           |
| Quebec .....            | 2,818,999  | 1,392,907         | -       | -         | -       | -         | -           |
| Baie Comeau .....       | 12,168,855 | 1,866,291         | -       | -         | -       | 152,995   | -           |
| Totals .....            | 70,291,429 | 5,758,034         | 237,203 | 3,128,589 | 624,820 | 1,844,535 | 280,961     |
| Aug. 1-Sept. 25, 1963 . | 59,439,460 | 1,562,207         | 669,116 | 2,717,150 | 324,493 | 1,325,881 | 432,900     |

1/ Excluding bagged seed.

2/ In bushels of 50 pounds.



Freight Assistance Shipments Claims filed for payment up to August 31, 1964 represent the movement of some 14.4 million bushels of wheat from the Prairie Provinces to Eastern Canada and British Columbia under the freight assistance policy during the 1963-64 crop year. During the 1962-63 crop year claims had been filed for a total of 10.6 million bushels, indicating on the assumption of approximately the same rate of submission of claims during both crop years that the 1963-64 shipments of wheat under the policy were running about 36 per cent above those of 1962-63. Revised data on the 1962-63 shipments of wheat based on claims submitted up to August 31, 1964 place the twelve-month total at 11.0 million bushels. The bulk of the 1963-64 shipments during the crop year went to destinations in Quebec and Ontario with these two provinces accounting for 41 per cent and 31 per cent of the total, respectively.

Provincial Distribution of Wheat Shipments under the Freight Assistance Policy  
August-July 1963-64 and 1962-63

| Month                       | Nfld. | P.E.I. | N.S.  | N.B. | Que.  | Ont.  | B.C.  | Total  |
|-----------------------------|-------|--------|-------|------|-------|-------|-------|--------|
| - thousand bushels -        |       |        |       |      |       |       |       |        |
| August, 1963 .....          | 19    | 15     | 143   | 43   | 606   | 515   | 99    | 1,440  |
| September .....             | 20    | 12     | 155   | 57   | 634   | 685   | 183   | 1,748  |
| October .....               | 21    | 14     | 187   | 74   | 675   | 631   | 234   | 1,836  |
| November .....              | 72    | 12     | 157   | 46   | 550   | 378   | 149   | 1,365  |
| December .....              | 17    | 12     | 133   | 43   | 473   | 354   | 162   | 1,193  |
| January, 1964 .....         | 15    | 13     | 153   | 51   | 473   | 326   | 157   | 1,189  |
| February .....              | 11    | 12     | 132   | 38   | 407   | 247   | 109   | 956    |
| March .....                 | 12    | 17     | 136   | 37   | 391   | 291   | 71    | 955    |
| April .....                 | 38    | 13     | 141   | 44   | 452   | 266   | 133   | 1,088  |
| May .....                   | 9     | 16     | 131   | 39   | 420   | 264   | 84    | 962    |
| June .....                  | 5     | 10     | 104   | 28   | 411   | 251   | 55    | 865    |
| July .....                  | 3     | 14     | 96    | 28   | 390   | 221   | 60    | 811    |
| Totals <u>1/</u> .....      | 244   | 161    | 1,668 | 529  | 5,881 | 4,430 | 1,495 | 14,409 |
| Same period 1962-63:        |       |        |       |      |       |       |       |        |
| Preliminary <u>2/</u> ..... | 95    | 96     | 769   | 316  | 4,264 | 3,437 | 1,639 | 10,617 |
| Revised <u>1/</u> .....     | 109   | 100    | 781   | 333  | 4,408 | 3,500 | 1,795 | 11,026 |

Preliminary data on millfeed shipments under the freight assistance policy indicate shipments of 542,591 tons during the 1963-64 crop year. During 1962-63 claims had been filed for a total of 462,189 tons, indicating on the assumption of approximately the same rate of submission of claims during both crop years that the 1963-64 shipments of millfeeds under the policy were running about 17 per cent above those of 1962-63. Revised data on the 1962-63 shipments of millfeeds based on claims submitted up to August 31, 1964 place the twelve-month total at 479,722 tons. As with freight-assisted shipments of wheat, the greater portion of the millfeed shipments during the year under review went to destinations in Quebec and Ontario.

Provincial Distribution of Millfeed Shipments under the Freight Assistance Policy  
August-July 1963-64 and 1962-63

| Province                   | 1962-63               |                   | 1963-64               |
|----------------------------|-----------------------|-------------------|-----------------------|
|                            | Preliminary <u>2/</u> | Revised <u>1/</u> | Preliminary <u>1/</u> |
| - tons -                   |                       |                   |                       |
| Newfoundland .....         | 6,558                 | 6,930             | 6,216                 |
| Prince Edward Island ..... | 7,502                 | 7,659             | 9,278                 |
| Nova Scotia .....          | 31,853                | 32,328            | 31,370                |
| New Brunswick .....        | 27,583                | 28,334            | 29,050                |
| Quebec .....               | 232,522               | 240,968           | 265,946               |
| Ontario .....              | 125,155               | 130,074           | 162,277               |
| British Columbia .....     | 31,016                | 33,429            | 38,454                |
| Totals .....               | 462,189               | 479,722           | 542,591               |

1/ Based on claims filed up to August 31, 1964.

2/ Based on claims filed up to August 31, 1963.

Monthly Exports of Canadian Wheat and Wheat Flour

| Year<br>and<br>Month | Wheat<br>in Bulk <u>1/</u> | Bagged<br>Seed<br>Wheat <u>2/</u> | Total<br>Wheat   | Wheat<br>Flour <u>2/</u> <u>3/</u> | Total <u>3/</u><br>Wheat and<br>Wheat Flour |
|----------------------|----------------------------|-----------------------------------|------------------|------------------------------------|---|
| - thousand bushels - |                            |                                   |                  |                                    |   |
| <u>1962-63</u>       |                            |                                   |                  |                                    |   |
| August .....         | 21,944                     | 157                               | 22,101           | 2,852                              | 24,953                                      |
| September .....      | 25,040                     | 200                               | 25,240           | 2,604                              | 27,844                                      |
| October .....        | 29,705                     | 31                                | 29,737           | 2,181                              | 31,917                                      |
| November .....       | 33,309                     | 144                               | 33,452           | 2,176                              | 35,628                                      |
| December .....       | 20,949                     | 451                               | 21,399           | 2,305                              | 23,705                                      |
| January .....        | 21,486                     | 473                               | 21,959           | 1,586                              | 23,545                                      |
| February .....       | 18,779                     | 743                               | 19,522           | 1,811                              | 21,333                                      |
| March .....          | 19,246                     | 1,373 <u>4/</u>                   | 20,618 <u>4/</u> | 2,454                              | 23,072 <u>4/</u>                            |
| April .....          | 28,916                     | 422                               | 29,338           | 2,330                              | 31,669                                      |
| May .....            | 35,355                     | 14                                | 35,369           | 2,186                              | 37,555                                      |
| June .....           | 24,512                     | <u>5/</u>                         | 24,513           | 2,837                              | 27,350                                      |
| July .....           | 20,854                     | -                                 | 20,854           | 1,943                              | 22,798                                      |
| Totals ...           | 300,095                    | 4,007                             | 304,102          | 27,265                             | 331,367                                     |
| <u>1963-64 6/</u>    |                            |                                   |                  |                                    |   |
| August .....         | 29,204                     | 160                               | 29,364           | 3,039                              | 32,403                                      |
| September .....      | 42,556                     | 155                               | 42,711           | 1,645                              | 44,356                                      |
| October .....        | 59,020                     | 7                                 | 59,027           | 2,384                              | 61,411                                      |
| November .....       | 65,296                     | 245                               | 65,541           | 3,881                              | 69,422                                      |
| December .....       | 41,763                     | 397                               | 42,160           | 5,393                              | 47,553                                      |
| January .....        | 28,451                     | 482                               | 28,933           | 6,607                              | 35,541                                      |
| February .....       | 21,675                     | 501                               | 22,176           | 6,709                              | 28,885                                      |
| March .....          | 22,510                     | 605                               | 23,115           | 5,278                              | 28,393                                      |
| April .....          | 43,211                     | 261                               | 43,472           | 6,361                              | 49,833                                      |
| May .....            | 56,992                     | 38                                | 57,030           | 4,066                              | 61,096                                      |
| June .....           | 65,036                     | 146                               | 65,182           | 4,485                              | 69,667                                      |
| July .....           | 61,012                     | 35                                | 61,047           | 4,539                              | 65,586                                      |
| Totals ...           | 536,726                    | 3,033                             | 539,758          | 54,388                             | 594,146                                     |
| <u>1964-65 6/</u>    |                            |                                   |                  |                                    |   |
| August .....         | 42,226                     | 44                                | 42,270           | 4,073                              | 46,343                                      |

1/ Export clearances including shipments to the United States compiled by the Statistics Branch, Board of Grain Commissioners for Canada.

2/ Compiled from Canadian Customs returns, 1962-63 adjusted to remove effect of time lag in reporting.

3/ In terms of wheat equivalent. Wheat flour conversion rate: 2.3 bushels per cwt.

4/ Revised.

5/ Less than 500 bushels.

6/ Preliminary.



Exports of Canadian Wheat <sup>1/</sup> by Destination, August 1964 and 1963

| Destination                                | Wheat          | Durum     | All Wheat   |             |
|--|----------------|-----------|-------------|-------------|
|  | (Except Durum) | Wheat     | August 1964 | August 1963 |
| - bushels -                                |                |           |             |             |
| <u>Western Europe</u>                      |                |           |             |             |
| <u>EEC</u>                                 |                |           |             |             |
| Belgium and Luxembourg .....               | 1,740,996      | 55,706    | 1,796,702   | 2,050,971   |
| France .....                               | -              | 37,333    | 37,333      | 299,976     |
| Germany, Federal Republic .....            | 2,461,068      | 418,627   | 2,879,695   | 1,548,728   |
| Italy .....                                | 453,600        | -         | 453,600     | 485,464     |
| Netherlands .....                          | 155,813        | -         | 155,813     | 814,472     |
| Sub-totals .....                           | 4,811,477      | 511,666   | 5,323,143   | 5,199,611   |
| <u>Other Western Europe</u>                |                |           |             |             |
| Britain .....                              | 6,834,345      | -         | 6,834,345   | 7,501,308   |
| Ireland .....                              | -              | -         | -           | 828,800     |
| Malta and Gozo .....                       | -              | -         | -           | 281,294     |
| Norway .....                               | 1,096,000      | -         | 1,096,000   | 606,936     |
| Sweden .....                               | -              | -         | -           | 22,400      |
| Switzerland .....                          | 144,928        | -         | 144,928     | 145,842     |
| Sub-totals .....                           | 8,075,273      | -         | 8,075,273   | 9,386,580   |
| Totals .....                               | 12,886,750     | 511,666   | 13,398,416  | 14,586,191  |
| <u>Eastern Europe</u>                      |                |           |             |             |
| Albania .....                              | 630,616        | -         | 630,616     | -           |
| Czechoslovakia .....                       | 4,953,919      | -         | 4,953,919   | -           |
| Germany, Democratic Republic .....         | 1,507,501      | -         | 1,507,501   | -           |
| Poland .....                               | 1,979,067      | 2,690,933 | 4,670,000   | 2,097,267   |
| U.S.S.R. (Russia) .....                    | 908,480        | -         | 908,480     | -           |
| Yugoslavia .....                           | -              | -         | -           | 2,837,333   |
| Totals .....                               | 9,979,583      | 2,690,933 | 12,670,516  | 4,934,600   |
| <u>Africa</u>                              |                |           |             |             |
| Mozambique .....                           | -              | -         | -           | 24,600      |
| Nigeria .....                              | 47,512         | -         | 47,512      | 56,933      |
| Republic of South Africa .....             | 944,533        | -         | 944,533     | -           |
| Southern Rhodesia .....                    | 48,210         | -         | 48,210      | -           |
| Totals .....                               | 1,040,255      | -         | 1,040,255   | 81,533      |
| <u>Asia</u>                                |                |           |             |             |
| Burma .....                                | -              | -         | -           | 78,931      |
| China, Communist .....                     | 8,841,876      | -         | 8,841,876   | -           |
| Hong Kong .....                            | 106,400        | -         | 106,400     | 77,093      |
| India .....                                | 821,333        | -         | 821,333     | -           |
| Israel .....                               | 529,200        | -         | 529,200     | 537,040     |
| Japan .....                                | 2,811,984      | -         | 2,811,984   | 5,668,533   |
| Malaysia .....                             | 72,987         | -         | 72,987      | 58,800      |
| Philippines .....                          | 72,240         | -         | 72,240      | 1,082,356   |
| Saudi Arabia .....                         | 67,321         | -         | 67,321      | 145,743     |
| Taiwan .....                               | 165,759        | -         | 165,759     | 38,581      |
| Totals .....                               | 13,489,100     | -         | 13,489,100  | 7,687,077   |
| <u>Oceania</u>                             |                |           |             |             |
| U.S. Oceania .....                         | -              | -         | -           | 5,712       |
| <u>Western Hemisphere</u>                  |                |           |             |             |
| Cuba .....                                 | 705,600        | -         | 705,600     | -           |
| Dominican Republic .....                   | -              | -         | -           | 156,800     |
| El Salvador .....                          | -              | -         | -           | 300,533     |
| Guatemala .....                            | -              | -         | -           | 50,000      |
| Jamaica .....                              | 1,257          | -         | 1,257       | 997         |
| Peru .....                                 | 384,533        | -         | 384,533     | 354,667     |
| Venezuela .....                            | 536,107        | -         | 536,107     | 1,014,916   |
| United States Domestic <sup>2/</sup> ..... | -              | -         | -           | 31,033      |
| Totals .....                               | 1,627,497      | -         | 1,627,497   | 1,908,946   |
| Sub-totals, All Countries .....            | 39,023,185     | 3,202,599 | 42,225,784  | 29,204,059  |
| Bagged Seed <sup>3/</sup> .....            | -              | -         | 43,876      | 309,236     |
| Totals, All Countries .....                | 39,023,185     | 3,202,599 | 42,269,660  | 29,513,295  |

<sup>1/</sup> Overseas clearances as reported by the Statistics Branch, Board of Grain Commissioners for Canada, for all countries except the United States. Excluding bagged seed. <sup>2/</sup> Compiled from returns of Canadian elevator licensees and shippers and advice from American grain correspondents.

<sup>3/</sup> Compiled from Canadian Customs returns, 1963 adjusted for time lag.



# FARMERS' MARKETINGS OF WHEAT, PRAIRIE PROVINCES

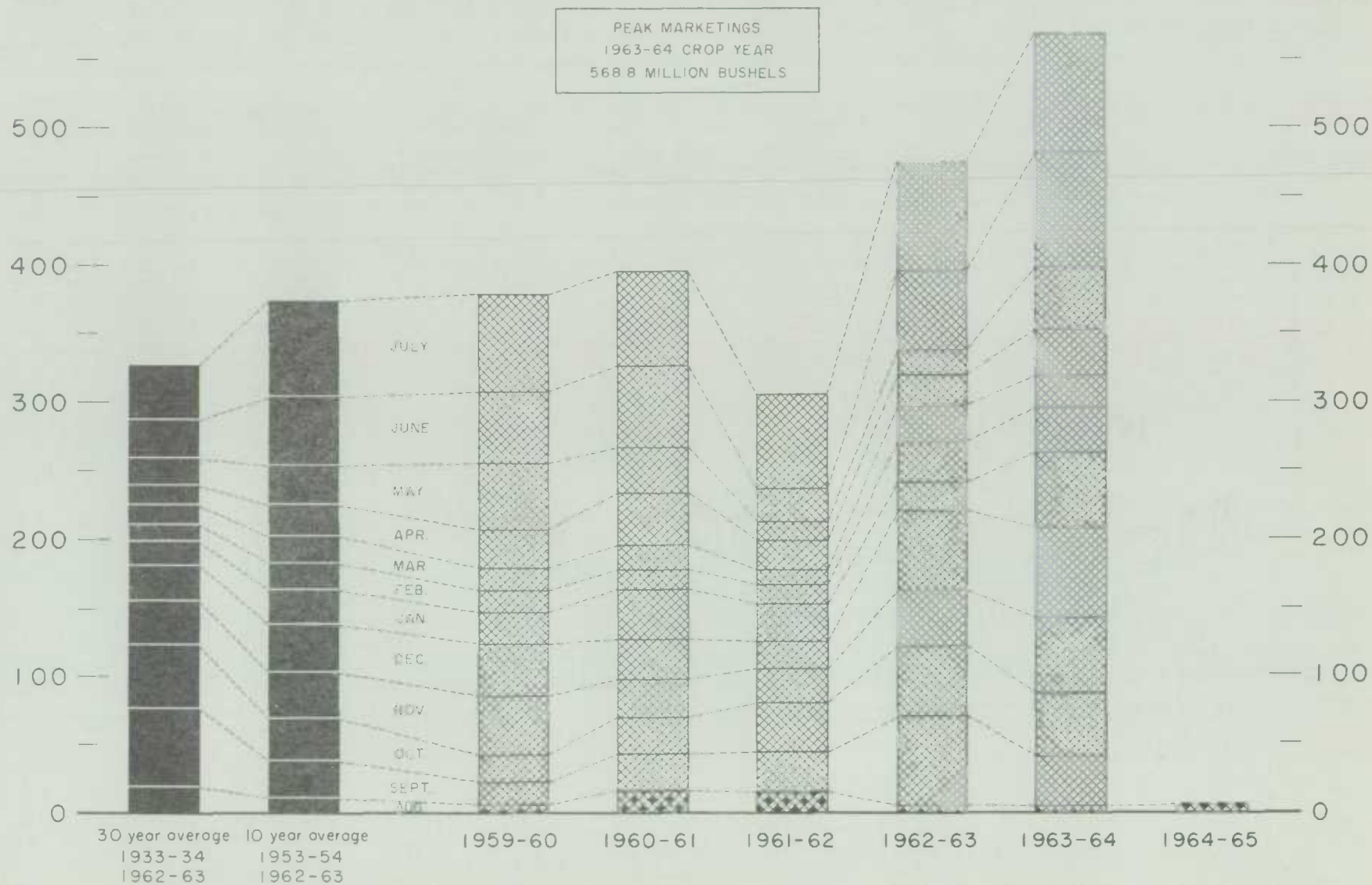
(SPECIFIED PERIODS)

MILLION BUSHELS

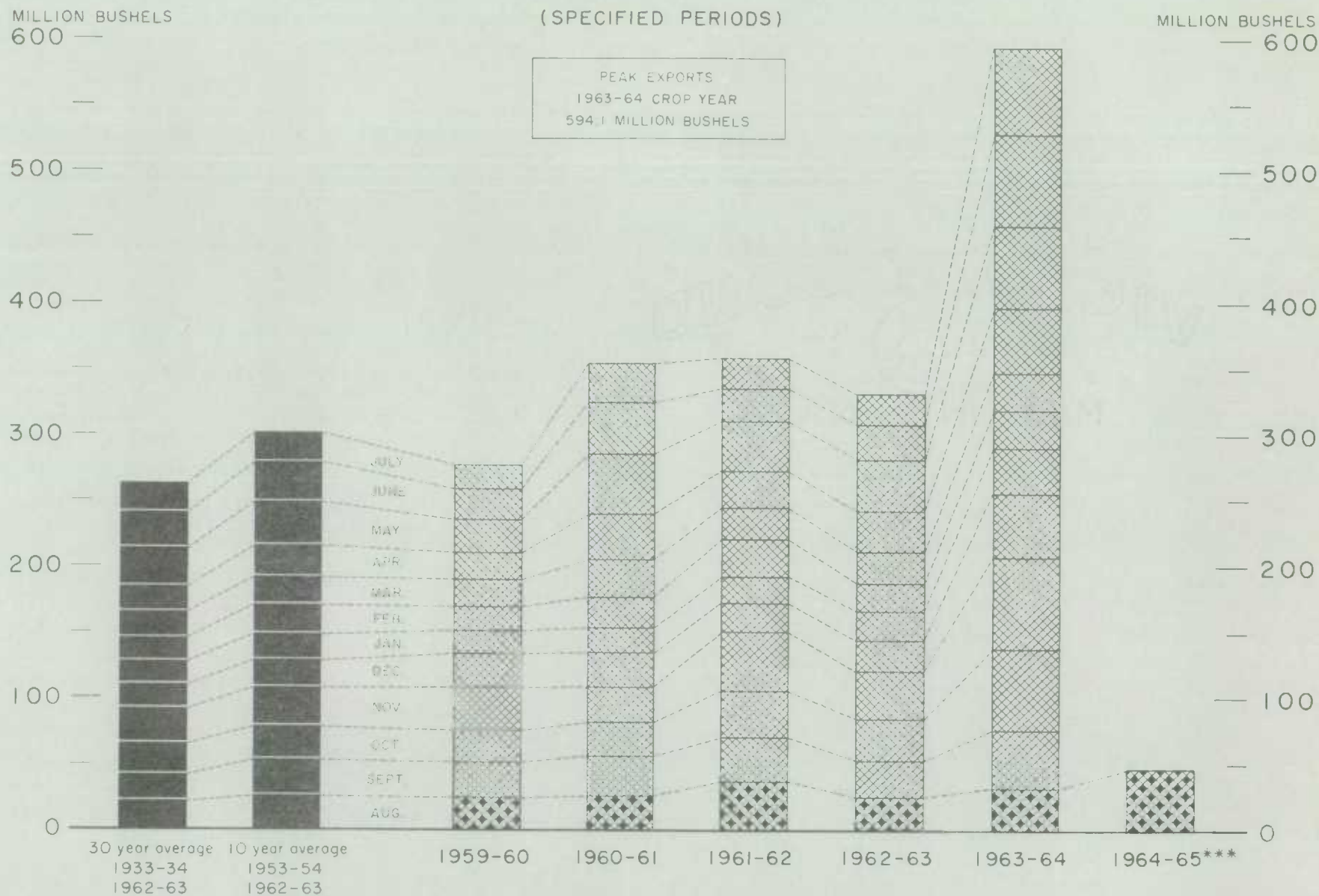
600 —

MILLION BUSHELS

— 600



# EXPORTS OF CANADIAN WHEAT\* AND WHEAT FLOUR\*\*



\*Beginning with 1956-57 includes bagged seed wheat

\*\*In terms of wheat equivalent.

\*\*\*Preliminary.

# FARMERS' MARKETINGS OF BARLEY, PRAIRIE PROVINCES

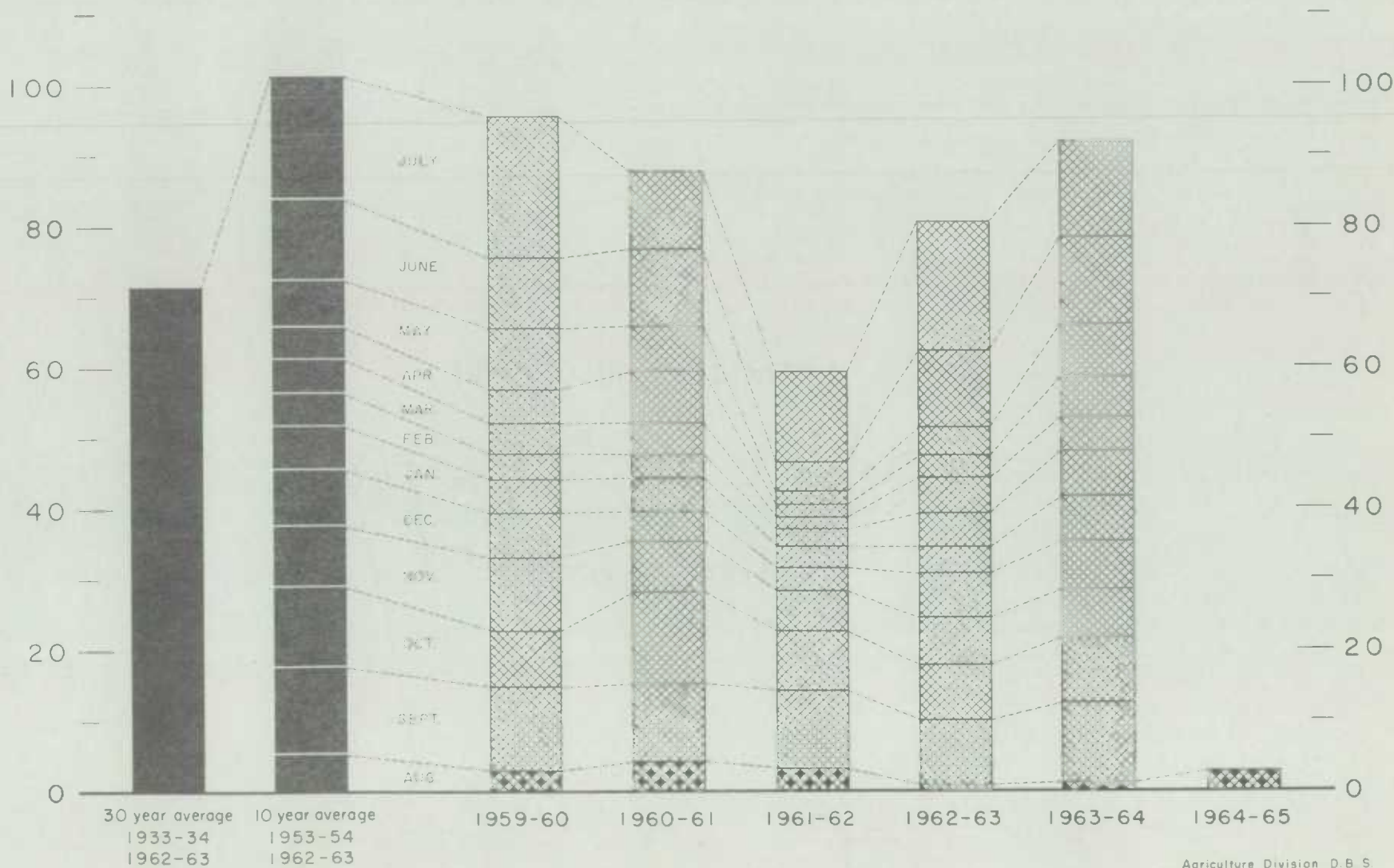
(SPECIFIED PERIODS)

MILLION BUSHELS

120 —

MILLION BUSHELS

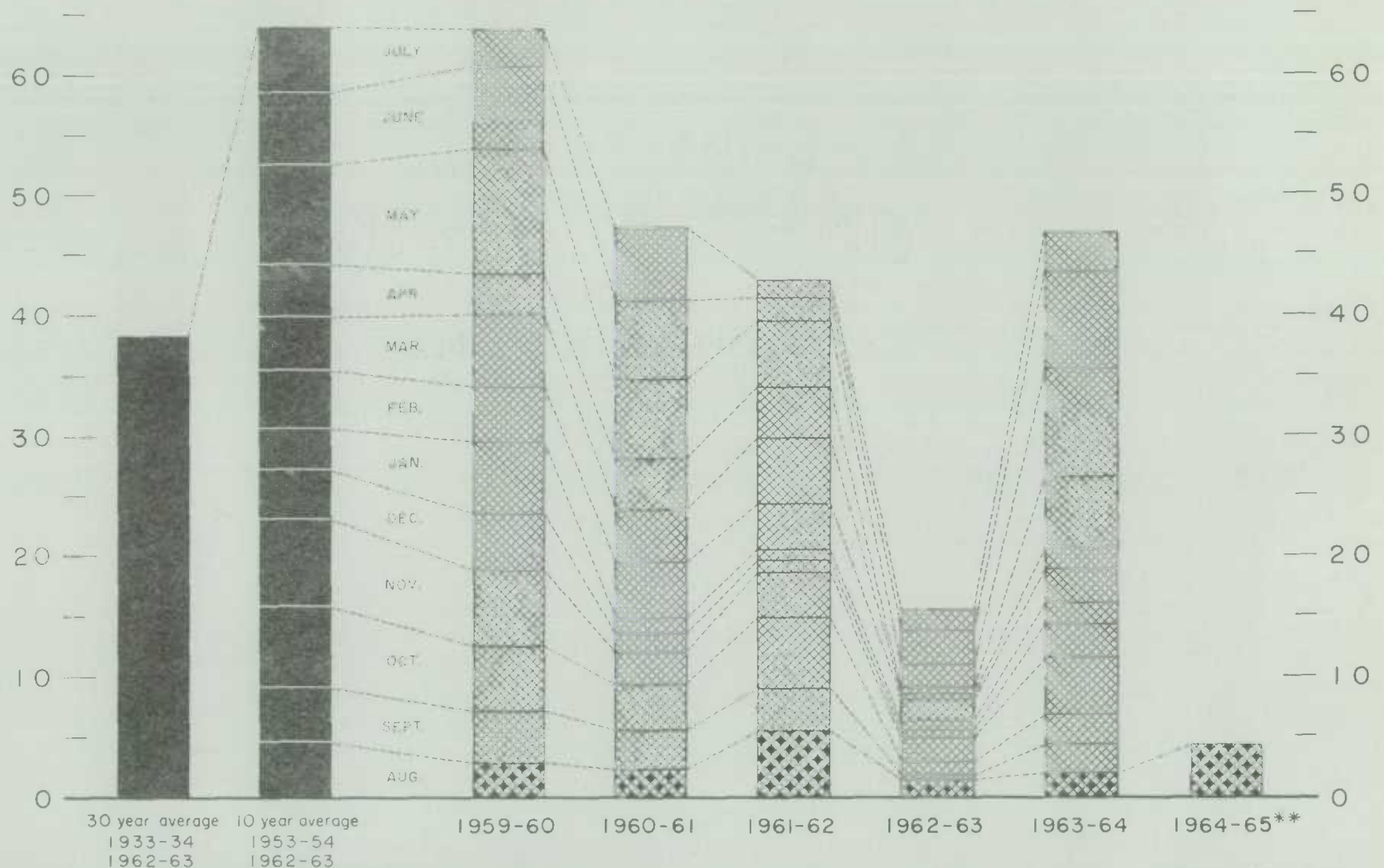
— 120





## EXPORTS OF CANADIAN BARLEY AND BARLEY PRODUCTS\*

(SPECIFIED PERIODS)

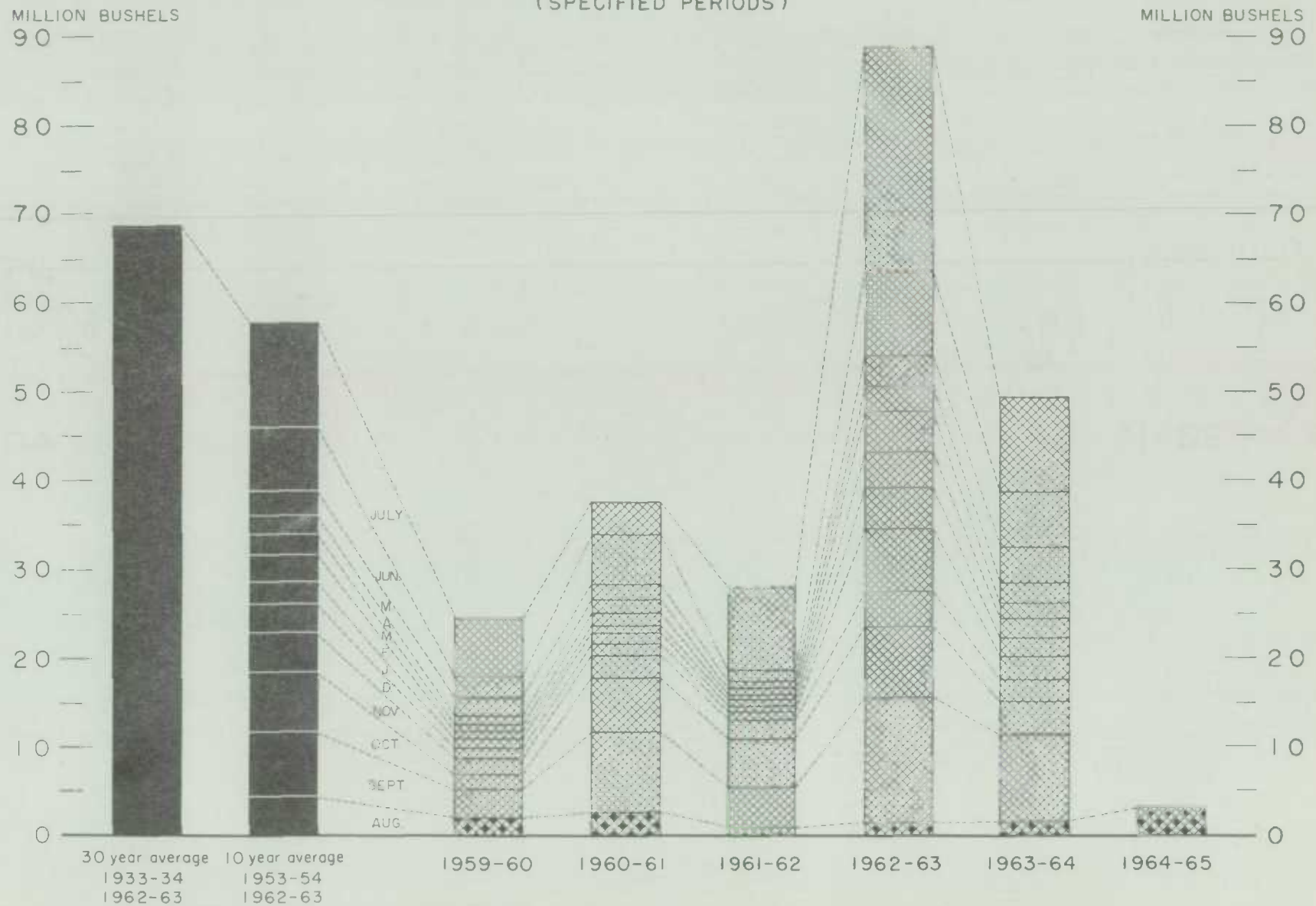
MILLION BUSHELS  
70 —MILLION BUSHELS  
— 70

\*In terms of grain equivalent.

\*\*Preliminary.

Agriculture Division D.B.S.

# FARMERS' MARKETINGS OF OATS, PRAIRIE PROVINCES (SPECIFIED PERIODS)



# EXPORTS OF CANADIAN OATS\* AND OAT PRODUCTS\*\*

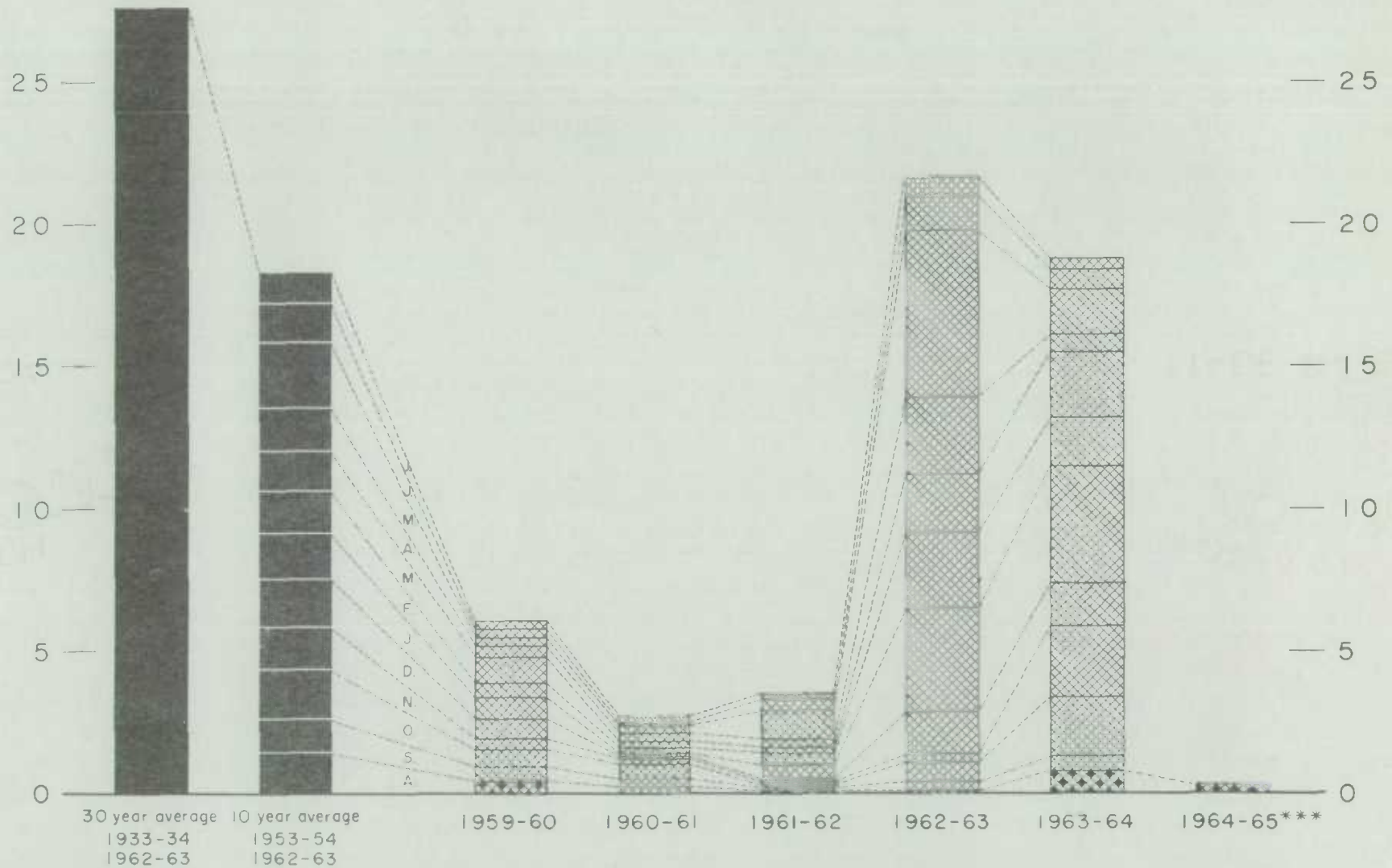
(SPECIFIED PERIODS)

MILLION BUSHELS

30 —

MILLION BUSHELS

— 30



\* Beginning with 1960-61 includes relatively small quantity of bagged seed

\*\* in terms of grain equivalent

\*\*\* Preliminary

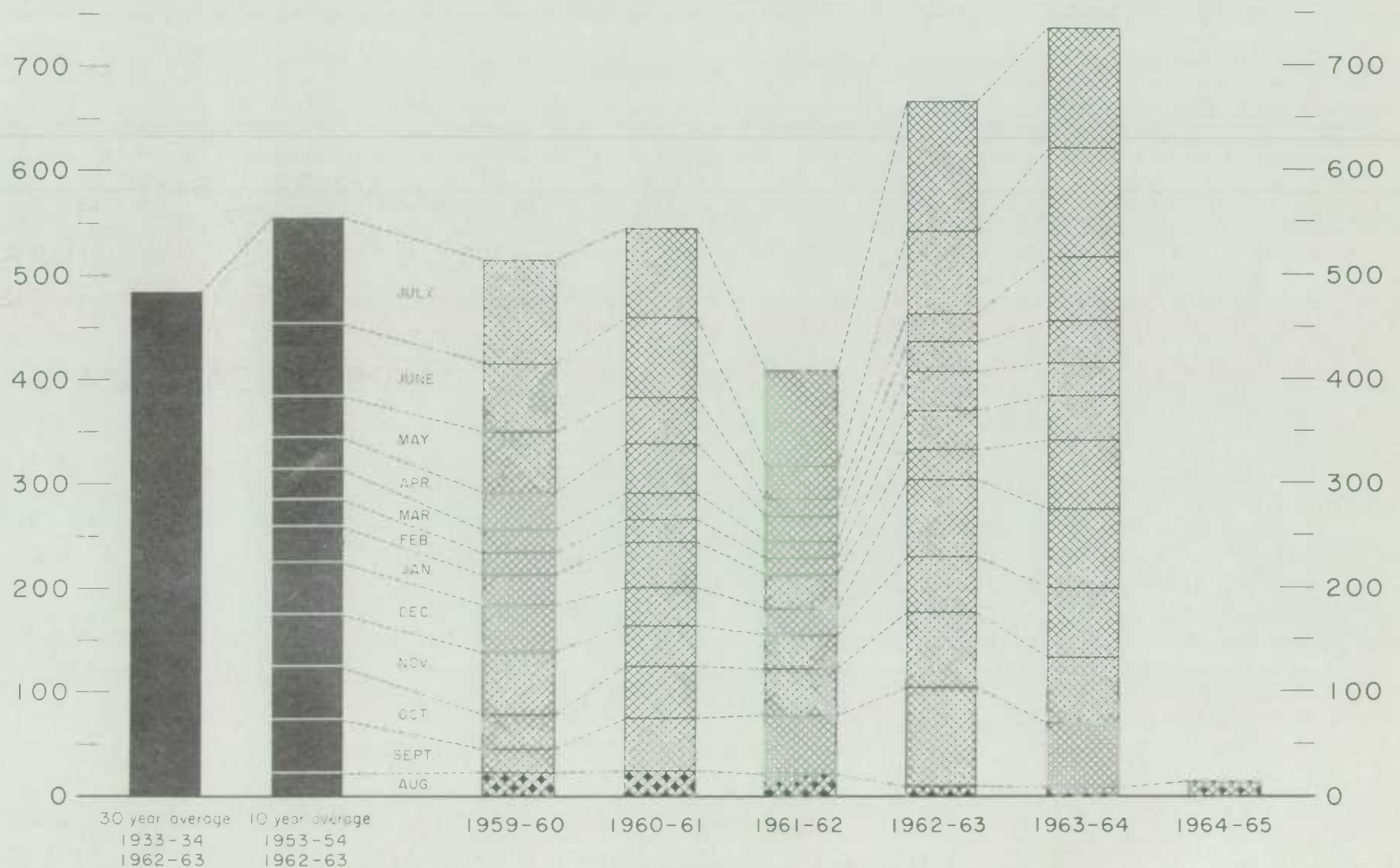


# FARMERS' MARKETINGS OF CANADA'S FIVE MAJOR GRAINS\*, PRAIRIE PROVINCES

(SPECIFIED PERIODS)

MILLION BUSHELS  
800 —

MILLION BUSHELS  
800 —



\*Wheat, oats, barley, rye and flaxseed

Agriculture Division D.B.S.

# EXPORTS OF CANADA'S FIVE MAJOR GRAINS AND PRODUCTS\*

(SPECIFIED PERIODS)

MILLION BUSHELS

700 —

600 —

500 —

400 —

300 —

200 —

100 —

0

MILLION BUSHELS

700 —

600 —

500 —

400 —

300 —

200 —

100 —

0

30 year average  
1933-3410 year average  
1953-54

1962-63

1962-63

1959-60

1960-61

1961-62

1962-63

1963-64

1964-65\*\*

JULY

JUNE

MAY

APR

MAR

FEB

JAN

DEC

NOV

OCT

SEPT.

AUG.

\* Wheat, bagged seed wheat, and wheat flour; oats, bagged seed oats, and oatmeal and rolled oats; barley, malt and pot and pearl; rye and flaxseed.

\*\* Preliminary

Agriculture Division D. B. S.

Customs Exports of Canadian Wheat Flour by Countries of Consignment

| Destination                   | May 1964 <u>1/</u> | August         |                |
|-------------------------------|--------------------|----------------|----------------|
|                               |                    | 1964 <u>2/</u> | 1963 <u>1/</u> |
|                               |                    | - bushels -    |                |
| <u>Western Europe</u>         |                    |                |                |
| <u>E.E.C.</u>                 |                    |                |                |
| Belgium and Luxembourg .....  | 24,368             | -              | 12,880         |
| Italy .....                   | -                  | 805            | -              |
| Netherlands .....             | 402                | -              | 1,661          |
| Sub-totals .....              | 24,770             | 805            | 14,541         |
| <u>Other Western Europe</u>   |                    |                |                |
| Britain .....                 | 716,906            | 916,164        | 1,159,115      |
| Denmark .....                 | -                  | -              | 920            |
| Gibraltar .....               | -                  | -              | 5,732          |
| Greece .....                  | 1,520              | 2,281          | 1,288          |
| Iceland .....                 | 1,775              | -              | -              |
| Norway .....                  | 115                | -              | -              |
| Portugal .....                | 1,491              | 3,174          | 14,920         |
| Sub-totals .....              | 721,807            | 921,619        | 1,181,975      |
| Totals .....                  | 746,577            | 922,424        | 1,196,516      |
| <u>Eastern Europe</u>         |                    |                |                |
| U.S.S.R. (Russia) .....       | 1,799,290          | 1,423,505      | -              |
| <u>Africa</u>                 |                    |                |                |
| Angola .....                  | -                  | 1,150          | -              |
| British Africa nes .....      | -                  | -              | 6,221          |
| Gambia .....                  | -                  | 3,220          | -              |
| Ghana .....                   | 105,508            | 120,403        | 78,430         |
| Ivory Coast .....             | 690                | -              | -              |
| Liberia .....                 | 6,394              | 5,601          | 11,068         |
| Mozambique .....              | 3,312              | 1,437          | 4,660          |
| Nigeria .....                 | -                  | 508            | 8,678          |
| Nyasaland .....               | -                  | -              | 5,255          |
| Portuguese Africa nes .....   | 8,020              | 5,750          | 6,900          |
| Sierra Leone .....            | 51,290             | 101,775        | 67,259         |
| Tanganyika .....              | -                  | -              | 1,840          |
| Togo .....                    | 5,428              | 9,062          | 20,219         |
| Totals .....                  | 180,642            | 248,906        | 210,530        |
| <u>Asia</u>                   |                    |                |                |
| British Middle East nes ..... | 3,349              | 6,311          | 6,955          |
| Ceylon .....                  | 456,175            | -              | 586,056        |
| Hong Kong .....               | 23,805             | 74,817         | 76,613         |
| Iran .....                    | 702                | 1,000          | 1,355          |
| Japan .....                   | 379                | 4,119          | 3,685          |
| Jordan .....                  | 656                | -              | 103            |



Customs Exports of Canadian Wheat Flour by Countries of Consignment

| Destination                        | May 1964 <u>1/</u> | August         |                |
|------------------------------------|--------------------|----------------|----------------|
|                                    |                    | 1964 <u>2/</u> | 1963 <u>1/</u> |
|                                    |                    | - bushels -    |                |
| <u>Asia (concluded)</u>            |                    |                |                |
| Kuwait .....                       | 4,637              | 2,576          | 2,721          |
| Lebanon .....                      | 1,035              | 4,830          | 4,409          |
| Malaysia .....                     | 29,339             | 48,666         | 59,988         |
| Portuguese Asia .....              | -                  | 1,012          | 506            |
| Qatar .....                        | 230                | -              | 258            |
| Saudi Arabia .....                 | 402                | -              | -              |
| Syria .....                        | 412                | -              | -              |
| Thailand .....                     | 5,826              | 31,701         | 36,671         |
| Totals .....                       | 526,947            | 175,032        | 779,320        |
| <u>Oceania</u>                     |                    |                |                |
| Australia .....                    | -                  | -              | 28             |
| Fiji .....                         | 1,047              | 1,058          | 874            |
| French Oceania .....               | 356                | 356            | -              |
| Totals .....                       | 1,403              | 1,414          | 902            |
| <u>Western Hemisphere</u>          |                    |                |                |
| Bahamas .....                      | 23,830             | 13,220         | 34,725         |
| Barbados .....                     | 18,129             | 1,707          | 16,466         |
| Bermuda .....                      | 7,010              | 12,183         | 9,849          |
| British Guiana .....               | 9,197              | 2,898          | 2,206          |
| British Honduras .....             | 6,152              | 3,609          | 5,315          |
| Chile .....                        | -                  | -              | 1,150          |
| Costa Rica .....                   | 77,855             | 114,310        | 3,450          |
| Cuba .....                         | 647,006            | 788,840        | -              |
| Dominican Republic .....           | 8,740              | -              | 11,500         |
| El Salvador .....                  | -                  | 200            | 168            |
| French West Indies .....           | 230                | 230            | -              |
| Guatemala .....                    | 2,763              | 3,450          | 2,760          |
| Haiti .....                        | 21,850             | 4,830          | 6,900          |
| Honduras .....                     | 2,541              | 5,198          | 1,610          |
| Jamaica .....                      | 148,698            | 106,311        | 108,606        |
| Leeward and Windward Islands ..... | 106,074            | 63,103         | 102,644        |
| Netherlands Antilles .....         | 4,564              | 13,289         | 20,884         |
| Nicaragua .....                    | 690                | -              | 32,623         |
| Panama .....                       | 11,090             | 13,398         | 31,209         |
| Peru .....                         | 2,760              | 3,507          | 2,990          |
| St. Pierre and Miquelon .....      | 2,721              | 2,978          | 230            |
| Surinam .....                      | 5,221              | 4,255          | 5,630          |
| Trinidad .....                     | 223,509            | 82,858         | 171,801        |
| United States .....                | 158,705            | 61,208         | 58,836         |
| Totals .....                       | 1,489,335          | 1,301,582      | 631,552        |
| Totals, All Countries .....        | 4,744,194          | 4,072,863      | 2,818,820      |

nes - not elsewhere specified.

1/ In terms of wheat equivalent. Adjusted to remove effect of time lag in the returns made by Customs. Conversion rate: 2.3 bushels per cwt.

2/ In terms of wheat equivalent. Preliminary and unadjusted for time lag. Conversion rate: 2.3 bushels per cwt.

Canadian Wheat Board Weekly Average Cash Wheat Prices  
Basis in Store Fort William-Port Arthur

| Class and Grade | Week Ending |          |          |          |        |
|-----------------|-------------|----------|----------|----------|--------|
|                 | Sept. 4     | Sept. 11 | Sept. 18 | Sept. 25 | Oct. 2 |

- cents and eighths per bushel -

Initial Payment to Producers

|                            |     |     |     |     |     |
|----------------------------|-----|-----|-----|-----|-----|
| 1 Northern .....           | 150 | 150 | 150 | 150 | 150 |
| 2 Northern .....           | 146 | 146 | 146 | 146 | 146 |
| 3 Northern .....           | 142 | 142 | 142 | 142 | 142 |
| 4 Northern .....           | 135 | 135 | 135 | 135 | 135 |
| 5 Wheat .....              | 121 | 121 | 121 | 121 | 121 |
| 6 Wheat .....              | 117 | 117 | 117 | 117 | 117 |
| Feed Wheat .....           | 113 | 113 | 113 | 113 | 113 |
| 1 C.W. Garnet .....        | 135 | 135 | 135 | 135 | 135 |
| 2 C.W. Garnet .....        | 130 | 130 | 130 | 130 | 130 |
| 3 C.W. Garnet .....        | 125 | 125 | 125 | 125 | 125 |
| 1 Alberta Red Winter ..... | 134 | 134 | 134 | 134 | 134 |
| 2 Alberta Winter .....     | 129 | 129 | 129 | 129 | 129 |
| 3 Alberta Winter .....     | 123 | 123 | 123 | 123 | 123 |
| 1 C.W. Amber Durum .....   | 150 | 150 | 150 | 150 | 150 |
| 2 C.W. Amber Durum .....   | 146 | 146 | 146 | 146 | 146 |
| 3 C.W. Amber Durum .....   | 142 | 142 | 142 | 142 | 142 |

International Wheat Agreement

and Domestic Sales

|                            |     |       |       |       |       |
|----------------------------|-----|-------|-------|-------|-------|
| 1 Northern .....           | 205 | 204/6 | 204/5 | 204/5 | 204/4 |
| 2 Northern .....           | 202 | 201/6 | 201/5 | 201/5 | 201/4 |
| 3 Northern .....           | 200 | 199/6 | 199/5 | 199/5 | 199/4 |
| 4 Northern .....           | 195 | 194/6 | 194/5 | 194/5 | 194/4 |
| 5 Wheat .....              | 188 | 187/6 | 187/5 | 187/5 | 187/4 |
| 6 Wheat .....              | 183 | 182/6 | 182/5 | 182/5 | 182/4 |
| Feed Wheat .....           | 180 | 179/6 | 179/5 | 179/5 | 179/4 |
| 1 C.W. Garnet .....        | 188 | 187/6 | 187/5 | 187/5 | 187/4 |
| 2 C.W. Garnet .....        | 186 | 185/6 | 185/5 | 185/5 | 185/4 |
| 3 C.W. Garnet .....        | 185 | 184/6 | 184/5 | 184/5 | 184/4 |
| 1 Alberta Red Winter ..... | 191 | 190/6 | 190/5 | 190/5 | 190/4 |
| 2 Alberta Winter .....     | 189 | 188/6 | 188/5 | 188/5 | 188/4 |
| 3 Alberta Winter .....     | 188 | 187/6 | 187/5 | 187/5 | 187/4 |
| 1 C.W. Amber Durum .....   | 209 | 208/6 | 208/5 | 208/5 | 208/4 |
| 2 C.W. Amber Durum .....   | 208 | 207/6 | 207/5 | 206/5 | 205/4 |
| 3 C.W. Amber Durum .....   | 200 | 199/6 | 199/5 | 199/5 | 199/4 |

Export - Class II

|                          |     |       |       |       |       |
|--------------------------|-----|-------|-------|-------|-------|
| 1 Northern .....         | 205 | 204/6 | 204/5 | 204/5 | 204/4 |
| 2 Northern .....         | 202 | 201/6 | 201/5 | 201/5 | 201/4 |
| 3 Northern .....         | 200 | 199/6 | 199/5 | 199/5 | 199/4 |
| 4 Northern .....         | 195 | 194/6 | 194/5 | 194/5 | 194/4 |
| 5 Wheat .....            | 188 | 187/6 | 187/5 | 187/5 | 187/4 |
| 6 Wheat .....            | 183 | 182/6 | 182/5 | 182/5 | 182/4 |
| Feed Wheat .....         | 180 | 179/6 | 179/5 | 179/5 | 179/4 |
| 1 C.W. Garnet .....      | 188 | 187/6 | 187/5 | 187/5 | 187/4 |
| 2 C.W. Garnet .....      | 186 | 185/6 | 185/5 | 185/5 | 185/4 |
| 3 C.W. Garnet .....      | 185 | 184/6 | 184/5 | 184/5 | 184/4 |
| 1 C.W. Amber Durum ..... | 209 | 208/6 | 208/5 | 208/5 | 208/4 |
| 2 C.W. Amber Durum ..... | 208 | 207/6 | 207/5 | 206/5 | 205/4 |
| 3 C.W. Amber Durum ..... | 200 | 199/6 | 199/5 | 199/5 | 199/4 |

Canadian Wheat Board Weekly Cash Wheat Prices  
Basis in Store Vancouver

| Class and Grade                     | Week Ending |          |          |          |        |
|-------------------------------------|-------------|----------|----------|----------|--------|
|                                     | Sept. 4     | Sept. 11 | Sept. 18 | Sept. 25 | Oct. 2 |
| - cents and eighths per bushel -    |             |          |          |          |        |
| <u>Initial Payment to Producers</u> |             |          |          |          |        |
| 1 Northern .....                    | 150         | 150      | 150      | 150      | 150    |
| 2 Northern .....                    | 146         | 146      | 146      | 146      | 146    |
| 3 Northern .....                    | 142         | 142      | 142      | 142      | 142    |
| 4 Northern .....                    | 135         | 135      | 135      | 135      | 135    |
| 5 Wheat .....                       | 121         | 121      | 121      | 121      | 121    |
| 6 Wheat .....                       | 117         | 117      | 117      | 117      | 117    |
| Feed Wheat .....                    | 113         | 113      | 113      | 113      | 113    |
| 1 C.W. Garnet .....                 | 135         | 135      | 135      | 135      | 135    |
| 2 C.W. Garnet .....                 | 130         | 130      | 130      | 130      | 130    |
| 3 C.W. Garnet .....                 | 125         | 125      | 125      | 125      | 125    |
| 1 Alberta Red Winter .....          | 134         | 134      | 134      | 134      | 134    |
| 2 Alberta Winter .....              | 129         | 129      | 129      | 129      | 129    |
| 3 Alberta Winter .....              | 123         | 123      | 123      | 123      | 123    |
| 1 C.W. Amber Durum .....            | 150         | 150      | 150      | 150      | 150    |
| 2 C.W. Amber Durum .....            | 146         | 146      | 146      | 146      | 146    |
| 3 C.W. Amber Durum .....            | 142         | 142      | 142      | 142      | 142    |

International Wheat Agreement  
and Domestic Sales

|                            |       |       |       |       |       |
|----------------------------|-------|-------|-------|-------|-------|
| 1 Northern .....           | 209/2 | 209   | 208/7 | 208/7 | 208/6 |
| 2 Northern .....           | 208/2 | 208   | 207/7 | 207/7 | 207/6 |
| 3 Northern .....           | 206/6 | 206/4 | 206/3 | 206/3 | 206/2 |
| 4 Northern .....           | 199/6 | 199/4 | 199/3 | 199/3 | 199/2 |
| 5 Wheat .....              | 191/2 | 191   | 190/7 | 190/7 | 190/6 |
| 6 Wheat .....              | 189/2 | 189   | 188/7 | 188/7 | 188/6 |
| Feed Wheat .....           | 186/2 | 186   | 185/7 | 185/7 | 185/6 |
| 1 C.W. Garnet .....        | 192/2 | 192   | 191/7 | 191/7 | 191/6 |
| 2 C.W. Garnet .....        | 191/2 | 191   | 190/7 | 190/7 | 190/6 |
| 3 C.W. Garnet .....        | 190/2 | 190   | 189/7 | 189/7 | 189/6 |
| 1 Alberta Red Winter ..... | 192/2 | 192   | 191/7 | 191/7 | 191/6 |
| 2 Alberta Winter .....     | 191/2 | 191   | 190/7 | 190/7 | 190/6 |
| 3 Alberta Winter .....     | 190/2 | 190   | 189/7 | 189/7 | 189/6 |

Export - Class II

|                            |       |       |       |       |       |
|----------------------------|-------|-------|-------|-------|-------|
| 1 Northern .....           | 209/2 | 209   | 208/7 | 208/7 | 208/6 |
| 2 Northern .....           | 208/2 | 208   | 207/7 | 207/7 | 207/6 |
| 3 Northern .....           | 206/6 | 206/4 | 206/3 | 206/3 | 206/2 |
| 4 Northern .....           | 199/6 | 199/4 | 199/3 | 199/3 | 199/2 |
| 5 Wheat .....              | 191/2 | 191   | 190/7 | 190/7 | 190/6 |
| 6 Wheat .....              | 189/2 | 189   | 188/7 | 188/7 | 188/6 |
| Feed Wheat .....           | 186/2 | 186   | 185/7 | 185/7 | 185/6 |
| 1 C.W. Garnet .....        | 192/2 | 192   | 191/7 | 191/7 | 191/6 |
| 2 C.W. Garnet .....        | 191/2 | 191   | 190/7 | 190/7 | 190/6 |
| 3 C.W. Garnet .....        | 190/2 | 190   | 189/7 | 189/7 | 189/6 |
| 1 Alberta Red Winter ..... | 192/2 | 192   | 191/7 | 191/7 | 191/6 |
| 2 Alberta Winter .....     | 191/2 | 191   | 190/7 | 190/7 | 190/6 |
| 3 Alberta Winter .....     | 190/2 | 190   | 189/7 | 189/7 | 189/6 |



CANADIAN FLOUR MILLING SITUATION

Production Wheat flour production by Canadian mills during August 1964 amounted to 3,145,000 hundredweight, representing a decrease of 19 per cent lower than the July output of 3,902,000 hundredweight, 3 per cent below the ten-year (1954-63) average production for the month of August of 3,256,000 hundredweight, but 5 per cent above the August 1963 figure of 3,004,000 hundredweight. Mills reporting operations during August 1964 had a total rated capacity of 171,000 hundredweight per 24-hour day and on the basis of a 26-day working period 70.9 per cent of this rated capacity was effective.

Wheat milled for flour during August 1964 amounted to 7,028,000 bushels, 19 per cent less than the 8,723,000 bushels milled during the preceding month but 5 per cent higher than the 6,720,000 bushels milled during August 1963. Of the wheat milled for flour during August 1964, some 6,144,000 bushels were Western Canadian spring wheat (other than Durum) while the remainder consisted of Ontario winter wheat (594,000 bushels); Durum (216,000 bushels); and all other (74,000 bushels).

Exports According to preliminary Customs returns, exports of Canadian wheat flour during August 1964 amounted to 1,771,000 hundredweight (some 4,073,000 bushels of wheat equivalent), representing a decrease of 10 per cent lower than the 4,539,000 bushels exported during the previous month but 44 per cent greater than the adjusted August 1963 exports of 2,819,000 bushels. Flour shipments during the month went to forty-seven countries with exports to the U.S.S.R. amounting to 1,424,000 bushels of wheat equivalent and accounting for 35 per cent of the August 1964 total. Shipments of Canadian wheat flour during August to Britain, at 916,000 bushels equivalent accounted for 22 per cent of the total. Other principal markets for Canadian flour in terms of wheat equivalent during the month under review, with August 1963 totals in brackets, in thousands of bushels were as follows: Cuba, 789 (nil); Ghana, 120 (78); Costa Rica, 114 (3); Jamaica, 106 (109); and Sierra Leone, 102 (67).

Wheat Milled for Flour, and Production and Exports of Wheat Flour, Canada

| Crop Year                          | Wheat Milled<br>for Flour<br>bushels | Wheat Flour |                   |
|------------------------------------|--------------------------------------|-------------|-------------------|
|                                    |                                      | Production  | Exports <u>1/</u> |
|                                    |                                      | - cwt. -    |                   |
| 1935-36—1939-40 average .....      | 67,845,114                           | 29,405,451  | 9,603,941         |
| 1940-41—1944-45 average .....      | 99,704,638                           | 43,908,245  | 23,699,546        |
| 1945-46—1949-50 average .....      | 107,330,372                          | 47,011,540  | 25,819,721        |
| 1950-51—1954-55 average .....      | 100,446,328                          | 43,847,894  | 21,812,041        |
| 1955-56—1959-60 average .....      | 90,148,211                           | 39,752,589  | 16,349,156        |
| 1960-61 .....                      | 89,731,155                           | 39,914,644  | 15,513,836        |
| 1961-62 .....                      | 88,240,580                           | 39,539,651  | 13,892,676        |
| 1962-63 .....                      | 78,789,332                           | 35,505,220  | 11,854,458        |
| 1963-64 <u>2/</u> .....            | 111,674,553                          | 50,105,247  | 23,646,816        |
| 1964-65 <u>2/</u>                  |                                      |             |                   |
| August .....                       | 7,027,526                            | 3,144,719   | 1,770,810         |
| Same month 1963-64 <u>3/</u> ..... | 6,719,832                            | 3,003,861   | 1,225,574         |

1/ Based on Customs returns. Exports for the crop years 1945-46—1962-63 revised to remove effect of time lag in the returns made by Customs.

2/ Subject to revision.

3/ Revised.

UNITED STATES SITUATION

Supply Position Domestic supplies of wheat in the United States for the 1964-65 crop year, at 2,189.8 million bushels, are 6 per cent less than the previous year's total of 2,332.6 million, with a decline in carryover stocks more than offsetting a 13 per cent increase in production. This carryover is the smallest since 1958. In addition, current crop year domestic supplies may be supplemented by imports of about 5 million bushels, composed mostly of wheat for seed and feeding quality wheat. Imports of wheat from Canada during July-August 1964 have amounted to 0.1 million bushels.

Domestic disappearance during 1964-65 is estimated at about 635.0 million bushels, 8 per cent more than the 585.9 million last year. After deducting anticipated domestic requirements for the current United States crop year, some 1,554.9 million remain available for export and for carryover, a decrease of 11 per cent from the 1,747.0 million in 1963-64.

Exports of wheat, wheat flour and other products in terms of grain equivalent during July-August 1964 amounted to 111.0 million bushels, practically unchanged from the 111.9 million exported during the same months last year. The balance remaining on September 1, 1964 for export and for carryover was estimated at 1,444.0 million bushels compared with 1,635.2 million on the same date a year ago.

United States Wheat Supplies

| Item  | 1963-64 <u>1/</u>   | 1964-65 <u>2/</u> |
|---|---------------------|-------------------|
|   | - million bushels - |                   |
| Carryover at beginning of crop year (July 1) .....  | 1,194.9             | 899.8             |
| Production .....  | 1,137.6             | 1,290.0 <u>1/</u> |
| Total estimated domestic supplies .....   | 2,332.6             | 2,189.8           |
| Imports of wheat and wheat flour in terms of wheat<br>for domestic use, July-August ..... | 0.4                 | 0.1               |
| Total estimated supplies <u>3/</u> .....  | 2,332.9             | 2,189.9           |
| Less estimated domestic requirements for crop year <u>4/</u> ....                         | 585.9               | 635.0             |
| Available for export and for carryover .....  | 1,747.0             | 1,554.9           |
| Deduct:   |                     |                   |
| Exports of wheat as grain, July-August .....  | 99.4                | 100.0             |
| Exports of wheat flour in terms of wheat, July-August <u>5/</u>                           | 12.5                | 11.0              |
| Total exports of wheat and wheat flour <u>6/</u> .....                                    | 111.9               | 111.0             |
| Balance on September 1 for export and for carryover .....                                 | 1,635.2             | 1,444.0           |

1/ Revised. 2/ Preliminary. 3/ Excluding imports for September-June. 4/ Includes shipments to United States Territories and wheat for military food use at home and abroad. 5/ Flour exports exclude "Milled in bond". 6/ These figures now include all shipments under relief programs which formerly were not available from Census data.



July Exports of  
U.S. Wheat and Flour  
Slightly Above  
Previous Year

Exports of United States wheat and flour (grain equivalent) totalled 58 million bushels during July 1964. This represented only a 1 per cent increase over those reported for July 1963. Increased shipments to the Western Hemisphere, the EEC countries, Eastern Europe, and Asia were

mainly responsible for this increase. However, shipments to the other Western European and African countries were substantially under those for July 1963 by 62 per cent. Wheat and flour shipments to European countries were 14 per cent higher this year than they were at the same time last year, due largely to the amount going to Eastern Europe. Yugoslavia received 5 million bushels of wheat and flour in the first month of this fiscal year as compared with less than 1 million last year. Exports to Yugoslavia amounted to 51 per cent of the over-all European total. An estimated decrease of about 15 per cent in the 1964 crop caused by high temperatures followed by heavy rainfall will result in larger imports to supply their needs. These will be needed earlier than last year for mixing with domestically produced wheat, which is of a very poor quality. Shipments to the EEC countries accounted for another 26 per cent of the European total, with France and Italy showing sizeable increases.

Exports of wheat and flour to countries in the Western Hemisphere aggregated 14 million bushels between July 1 and July 31, 1964 as compared with 10 million bushels last July. Increases were most noticeable in shipments going to countries in South America, particularly to Bolivia, Brazil, Colombia, Peru and Venezuela. Wheat and flour exports to the Asiatic countries were substantially the same in July 1964 as they were in July 1963. Over 60 per cent of the total 30 million bushels forwarded to this area went to India alone, with another 29 per cent being exported to Pakistan, Japan and Korea. Shipments to African countries dropped considerably this year. Only 3 million bushels were exported during July 1964 as compared with 8 million bushels during the same time last year. This decrease was evidenced in exports to most countries. A larger increase was shown in the exports to the Canary Islands.

Wheat grain exports amounted to 53 million bushels in July 1964 which was a slight increase over the same month of 1963. Eighteen million bushels or 34 per cent were shipped to India, Pakistan, Brazil, and Yugoslavia, accounting for another 26 per cent. Flour shipments to all destinations were 10 per cent lower in July 1964 than in the same month a year ago. For the past several years, the United Arab Republic (Egypt) has been the chief market for United States flour. However, for the month of July 1964, Bolivia has taken over this spot, with approximately 21 per cent of the total exports. Shipments to Egypt accounted for about 9 per cent.

Shipments of wheat to Canada are predominately for transshipment to other destinations. However, a separate table showing quantities and destinations of wheat inspected for export from Canadian ports is omitted this month. The only transshipment through Canadian ports of United States wheat during July 1964 was approximately 2 million bushels for the U.S.S.R. Inspections for transshipment during July 1963 were less than 1 million bushels which was destined for the Netherlands, the United Kingdom, and Nigeria.

It is anticipated that United States exports of wheat and flour will reach 111 million bushels by August 31, 1964 as compared with 112 million bushels in the first 2 months of the 1963-64 fiscal year.



United States Exports of Wheat and Flour by Country of Destination  
July 1963 and 1964 1/

| Destination                    | July 1963 |                 |           | July 1964 |                 |        |
|--------------------------------|-----------|-----------------|-----------|-----------|-----------------|--------|
|                                | Wheat     | Flour <u>2/</u> | Total     | Wheat     | Flour <u>2/</u> | Total  |
| - thousand bushels -           |           |                 |           |           |                 |        |
| <u>Western Hemisphere</u>      |           |                 |           |           |                 |        |
| Canada <u>3/</u> .....         | 2,590     | 23              | 2,613     | 3,606     | 19              | 3,625  |
| Mexico .....                   | -         | 18              | 18        | 10        | 39              | 49     |
| Central America .....          | 378       | 150             | 528       | 331       | 172             | 503    |
| Bahamas .....                  | <u>4/</u> | -               | <u>4/</u> | -         | 3               | 3      |
| Barbados .....                 | 10        | 2               | 12        | -         | 21              | 21     |
| Dominican Republic .....       | 226       | -               | 226       | 355       | 2               | 357    |
| Haiti .....                    | -         | 5               | 5         | 101       | 7               | 108    |
| Jamaica .....                  | -         | 24              | 24        | -         | 91              | 91     |
| Leeward and Windward Islands . | -         | <u>4/</u>       | <u>4/</u> | -         | 11              | 11     |
| Netherlands Antilles .....     | -         | 20              | 20        | -         | 31              | 31     |
| Trinidad and Tobago .....      | -         | 2               | 2         | -         | 81              | 81     |
| Bolivia .....                  | -         | 118             | 118       | -         | 1,041           | 1,041  |
| Brazil .....                   | 3,631     | 98              | 3,729     | 4,940     | 19              | 4,959  |
| British Guiana .....           | -         | 15              | 15        | -         | 102             | 102    |
| Chile .....                    | 969       | 70              | 1,039     | -         | 181             | 181    |
| Colombia .....                 | 735       | <u>4/</u>       | 735       | 1,468     | 2               | 1,470  |
| Paraguay .....                 | 154       | 30              | 184       | -         | -               | -      |
| Peru .....                     | 367       | 10              | 377       | 742       | 23              | 765    |
| Surinam .....                  | -         | 26              | 26        | -         | 33              | 33     |
| Venezuela .....                | 237       | 39              | 276       | 528       | 6               | 534    |
| Totals .....                   | 9,297     | 650             | 9,947     | 12,081    | 1,884           | 13,965 |
| <u>Western Europe</u>          |           |                 |           |           |                 |        |
| EEC                            |           |                 |           |           |                 |        |
| Belgium-Luxembourg .....       | 364       | -               | 364       | 66        | -               | 66     |
| France .....                   | 46        | -               | 46        | 269       | -               | 269    |
| Italy .....                    | 1         | 131             | 132       | 1,061     | 9               | 1,070  |
| Netherlands .....              | 1,320     | 95              | 1,415     | 807       | 61              | 868    |
| West Germany .....             | 673       | 2               | 675       | 493       | 1               | 494    |
| Totals .....                   | 2,404     | 228             | 2,632     | 2,696     | 71              | 2,767  |
| <u>Other Western Europe</u>    |           |                 |           |           |                 |        |
| Greece .....                   | -         | 216             | 216       | -         | 4               | 4      |
| Iceland .....                  | 1         | 37              | 38        | 1         | 69              | 70     |
| Portugal .....                 | -         | 6               | 6         | 720       | 211             | 931    |
| Spain .....                    | 2,261     | -               | 2,261     | -         | -               | -      |
| Switzerland .....              | 265       | -               | 265       | 37        | -               | 37     |
| Turkey .....                   | 57        | -               | 57        | 39        | <u>4/</u>       | 39     |
| United Kingdom .....           | 331       | 7               | 338       | 405       | 8               | 413    |
| Totals .....                   | 2,915     | 266             | 3,181     | 1,202     | 292             | 1,494  |

United States Exports of Wheat and Flour by Country of Destination  
July 1963 and 1964 1/

| Destination                 | July 1963 |                 |        | July 1964 |                 |        |
|-----------------------------|-----------|-----------------|--------|-----------|-----------------|--------|
|                             | Wheat     | Flour <u>2/</u> | Total  | Wheat     | Flour <u>2/</u> | Total  |
| - thousand bushels -        |           |                 |        |           |                 |        |
| <u>Eastern Europe</u>       |           |                 |        |           |                 |        |
| Poland .....                | 2,639     | 123             | 2,762  | 913       | 15              | 928    |
| Yugoslavia .....            | 745       | -               | 745    | 5,391     | 31              | 5,422  |
| Totals .....                | 3,384     | 123             | 3,507  | 6,304     | 46              | 6,350  |
| Totals, Europe .....        | 8,703     | 617             | 9,320  | 10,202    | 409             | 10,611 |
| <u>Asia</u>                 |           |                 |        |           |                 |        |
| India .....                 | 15,369    | 1               | 15,370 | 18,184    | 53              | 18,237 |
| Iran .....                  | -         | 3               | 3      | 1,565     | 93              | 1,658  |
| Israel .....                | 833       | 3               | 836    | -         | 16              | 16     |
| Jordan .....                | -         | 288             | 288    | -         | 241             | 241    |
| Kuwait .....                | -         | 54              | 54     | 11        | 79              | 90     |
| Lebanon .....               | -         | 21              | 21     | -         | 211             | 211    |
| Pakistan .....              | 577       | -               | 577    | 3,527     | 49              | 3,576  |
| Philippines .....           | 562       | 35              | 597    | 38        | 100             | 138    |
| Saudi Arabia .....          | -         | 248             | 248    | 7         | 333             | 340    |
| Vietnam .....               | 6         | 226             | 232    | 73        | 181             | 254    |
| Japan .....                 | 7,368     | 170             | 7,538  | 2,845     | 96              | 2,941  |
| Korea .....                 | 3,013     | 96              | 3,109  | 2,150     | 76              | 2,226  |
| Taiwan .....                | 507       | -               | 507    | -         | 59              | 59     |
| Other .....                 | 109       | 124             | 233    | -         | 364             | 364    |
| Totals .....                | 28,344    | 1,269           | 29,613 | 28,400    | 1,951           | 30,351 |
| <u>Africa</u>               |           |                 |        |           |                 |        |
| Algeria .....               | 681       | 2               | 683    | -         | 7               | 7      |
| Sudan .....                 | 367       | 959             | 1,326  | 110       | -               | 110    |
| United Arab Republic .....  | 3,462     | 825             | 4,287  | 1,249     | 459             | 1,708  |
| Angola .....                | 309       | 2               | 311    | 147       | 6               | 153    |
| Cameroon .....              | -         | 5               | 5      | -         | 6               | 6      |
| Canary Islands .....        | -         | 4               | 4      | 449       | -               | 449    |
| Congo (Leopoldville) .....  | 4         | 793             | 797    | -         | 103             | 103    |
| Ghana .....                 | -         | 12              | 12     | -         | 5               | 5      |
| Liberia .....               | -         | 4               | 4      | -         | 12              | 12     |
| Madeira Islands .....       | 92        | 3               | 95     | 111       | -               | 111    |
| Nigeria .....               | 191       | -               | 191    | -         | 6               | 6      |
| Other .....                 | 68        | 294             | 362    | 12        | 97              | 109    |
| Totals .....                | 5,174     | 2,903           | 8,077  | 2,078     | 701             | 2,779  |
| Oceania .....               | -         | 3               | 3      | -         | 7               | 7      |
| Totals, All Countries ..... | 51,518    | 5,442           | 56,960 | 52,761    | 4,952           | 57,713 |

1/ Data includes shipments for relief or charity. 2/ Grain equivalent. 3/ The bulk of exports to Canada are for transshipment to other destinations. 4/ Less than 500 bushels.

Cash Wheat Prices on the Kansas City and Minneapolis Markets

| No. 2 Hard Winter, Kansas City |                      |              | No. 1 Northern Spring, Minneapolis |                      |           |
|--------------------------------|----------------------|--------------|------------------------------------|----------------------|-----------|
| Date                           | Price                |              | Date                               | Price                |           |
|                                | - cents per bushel - |              |                                    | - cents per bushel - |           |
| September 1, 1964              | 158                  | - 165 3/4    | September 1, 1964                  | 173 1/2              | - 175 1/2 |
| 2                              | 156                  | - 181 1/2 1/ | 2                                  | 173 1/2              | - 175 1/2 |
| 3                              | 162                  | - 164        | 3                                  | 173 1/2              | - 175 1/2 |
| 4                              | 158 1/2              | - 159 1/2    | 4                                  | 173 5/8              | - 175 5/8 |
| 7                              | LABOUR DAY           |              | 7                                  | LABOUR DAY           |           |
| 8                              | 158 1/2              |              | 8                                  | 175                  | - 177     |
| 9                              | 161 3/4              |              | 9                                  | 173 3/4              | - 175 3/4 |
| 10                             | 161                  |              | 10                                 | 174 1/4              | - 176 1/4 |
| 11                             | 158                  | - 183 1/     | 11                                 | 174 3/4              | - 177 3/4 |
| 14                             | 159                  | - 161 1/2    | 14                                 | 173 5/8              | - 176 5/8 |
| 15                             | 169                  | - 170 1/4    | 15                                 | 173 3/8              | - 176 3/8 |
| 16                             | 163 1/2              |              | 16                                 | 173 1/4              | - 176 1/4 |
| 17                             | 158 1/2              | - 183 1/     | 17                                 | 173 3/4              | - 176 3/4 |
| 18                             | 158 3/4              | - 183 1/2 1/ | 18                                 | 173 7/8              | - 176 7/8 |
| 21                             | 159 1/2              | - 183 1/4 1/ | 21                                 | 172 5/8              | - 175 5/8 |
| 22                             | 168                  | - 171 1/2    | 22                                 | 172                  | - 175     |
| 23                             | 161                  |              | 23                                 | 171 7/8              | - 174 7/8 |
| 24                             | 158                  | - 182 1/     | 24                                 | 172                  | - 175     |
| 25                             | 168                  |              | 25                                 | 172 3/8              | - 175 3/8 |
| 28                             | 168                  |              | 28                                 | 172 3/8              | - 175 3/8 |
| 29                             | 161 1/4              |              | 29                                 | 172 3/4              | - 175 3/4 |
| 30                             | 157 3/4              | - 168 1/2 1/ | 30                                 | 173 3/8              | - 176 3/8 |

1/ Nominal.

Chicago Wheat Futures, High Points of Closing

| Date                             | September |       | December   |       | March | May   | July  |
|----------------------------------|-----------|-------|------------|-------|-------|-------|-------|
|                                  | New       | Old   | New        | Old   |       |       |       |
| - cents and eighths per bushel - |           |       |            |       |       |       |       |
| September 1, 1964 .....          | 143/4     | 142   | 148/5      | 147/4 | 151/6 | 152/6 | 148/7 |
| 2 .....                          | 143/5     | 142/3 | 148/6      | 147/3 | 152   | 152/7 | 149   |
| 3 .....                          | 143/4     | 142/5 | 148/7      | 147/6 | 151/7 | 152/5 | 148/7 |
| 4 .....                          | 142/6     | 141/4 | 147/6      | 146/6 | 151   | 151/5 | 148   |
| 7 .....                          |           |       | LABOUR DAY |       |       |       |       |
| 8 .....                          | 143/2     | 141/6 | 148        | 146/4 | 151/2 | 153/7 | 148   |
| 9 .....                          | 143/3     | 142/2 | 148        | 146/6 | 151   | 151/6 | 148   |
| 10 .....                         | 143/6     | 142/4 | 148/1      | 146/6 | 151/1 | 151/6 | 147/7 |
| 11 .....                         | 144/7     | 143/3 | 149/1      | 147/5 | 152/2 | 152/6 | 148/7 |
| 14 .....                         | 145/5     | 144   | 149/6      | 148   | 152/6 | 153/5 | 149/4 |
| 15 .....                         | 147/7     | 146/6 | 151/5      | 149/1 | 154/6 | 155/2 | 150/4 |
| 16 .....                         | 147/7     | 147   | 151/3      | 150/7 | 154/2 | 154/6 | 150   |
| 17 .....                         | 149/4     | 149   | 152/2      | 151   | 155/2 | 155/3 | 149/6 |
| 18 .....                         | 149/5     | 149/1 | 152/4      | 150/5 | 155/4 | 155/6 | 150/6 |
| 21 .....                         | 148       | 147/4 | 151/1      | 150/2 | 154/2 | 154/5 | 150/1 |
| 22 .....                         |           |       | 150/3      | 149/2 | 153/4 | 154/2 | 149/6 |
| 23 .....                         |           |       | 149/2      | 148/2 | 153   | 153/5 | 149/3 |
| 24 .....                         |           |       | 148/2      | 147   | 152/2 | 152/7 | 149   |
| 25 .....                         |           |       | 148        | 147   | 151/7 | 152/7 | 148/6 |
| 28 .....                         |           |       | 148/2      | 147/4 | 152   | 153   | 148/6 |
| 29 .....                         |           |       | 148/2      | 147/2 | 152   | 152/6 | 148/3 |
| 30 .....                         |           |       | 147/7      | 146/6 | 151/5 | 152/2 | 148   |



# AUSTRALIAN SITUATION

## Supplies for 1963-64 Crop Year at Record Level

Total estimates supplies of wheat in Australia for the 1963-64 (December-November) crop year are placed at an all-time high of 354.5 million bushels, reflecting an increase in carryover stocks, from 18.2 million at December 1, 1962 to 23.5 million in 1963, combined with the record 1963 production revised to 331.0 million bushels. The 1963 crop represented a record outturn for the second consecutive year. After deducting 77.3 million for anticipated domestic requirements, an estimated 277.2 million are available for export and for carryover in 1963-64, an increase of 10 per cent over the 252.1 million the previous year.

Combined exports of wheat as grain and wheat flour in terms of grain equivalent during the period December 1-August 29 of the current Australian crop year amounted to 211.5 million bushels, 23 per cent more than the 171.6 million exported during the corresponding period of 1962-63. The balance remaining on August 30, 1964 for export and for carryover, at 65.7 million bushels, is 18 per cent below the comparable 1963 total of 80.5 million.

## Australian Wheat Supplies

| Item   | 1962-63 <u>1/</u>   | 1963-64 <u>2/</u> |
|--|---------------------|-------------------|
|  | - million bushels - |                   |
| Carryover, including flour as wheat, at beginning of<br>crop year (December 1) ..... | 18.2                | 23.5              |
| Production .....   | 307.2               | 331.0             |
| Total estimated domestic supplies .....  | 325.4               | 354.5             |
| Less estimated domestic requirements for crop year ..                                | 73.3                | 77.3 <u>1/</u>    |
| Available for export and for carryover .....   | 252.1               | 277.2             |
| Deduct:  |                     |                   |
| Exports of wheat as grain, December 1-August 29 ...                                  | 154.4               | 186.6             |
| Exports of wheat flour in terms of wheat,<br>December 1-August 29 .....              | 17.2                | 24.9              |
| Total exports of wheat and wheat flour .....   | 171.6               | 211.5             |
| Balance on August 30 for export and for carryover ...                                | 80.5                | 65.7              |

1/ Revised.      2/ Preliminary.

The following information relative to the Australian situation has been extracted from a report from Mr. D. I. Campbell, Assistant Commercial Secretary for Canada, Canberra, under date of September 11, 1964 and is reproduced with the permission of the Trade Commissioner Service, Department of Trade and Commerce.

Crop Position The Australian Wheat Board has now revised earlier production estimates for the 1964-65 crop year commencing December 1 to 300 million bushels. This compares with 331 million bushels harvested in 1963-64. Growing conditions throughout Australia are generally good with the exception being Western Australia, where excess moisture still persists in the grain belt. New South Wales is expected to harvest the largest crop ever grown in any one Australian State, due to continued fine weather. Prospects in Victoria and South Australia continue to be normal.

Marketing Position Prospects for disposing of the 1964-65 Australian wheat crop do not appear to be as favourable as those experienced in this past year. The Wheat Board has announced that all of the 1963-64 crop will be disposed of by December 1 excepting the normal safe carryover figure, believed to have been revised to 25 million bushels. Final shipment of the 64 million bushels contracted in 1963 to the U.S.S.R. was effected in August.

The Chairman of the Australian Wheat Board said on his return from the U.S.S.R., that Russian requirements would not be known until September when harvesting had been completed. As reported in parliament, the most the goodwill engendered by the visit could be expected to receive would be "reasonable participation by Australia in any imports the U.S.S.R. may make".

Recently two wheat sales were announced. Nationalist China purchased 10,000 tons (373,000 bushels) for the first time in some while. India purchased 75,000 tons (2,800,000 bushels) on a six months credit basis for delivery in September and October. Shipments of 174,000 tons (6,496,000 bushels) from the contract signed in February have been completed.

Miscellaneous The Australian Wheat Board has designated September 15 as the final date at which deliveries of the 1963-64 crop may be made without deduction of 1d. per bushel (about one cent per bushel).

Exports of Australian Wheat and Wheat Flour in Terms of Wheat  
December 1-August 29, 1963-64 and Corresponding Period 1962-63

| Destination                  | Wheat   |         | Wheat Flour |         |
|------------------------------|---------|---------|-------------|---------|
|                              | 1962-63 | 1963-64 | 1962-63     | 1963-64 |
| - thousand bushels -         |         |         |             |         |
| <u>Western Europe</u>        |         |         |             |         |
| <u>EEC</u>                   |         |         |             |         |
| Germany, Federal Republic .. | 1,212   | 7,800   | -           | -       |
| <u>Other Western Europe</u>  |         |         |             |         |
| Britain .....                | 16,955  | 18,778  | 1,453       | 1,240   |
| Ireland .....                | 1,810   | 1,653   | -           | -       |
| Malta .....                  | 446     | 437     | -           | -       |
| Norway .....                 | 3,210   | 3,755   | -           | -       |
| Spain .....                  | 1,236   | -       | -           | -       |
| Others .....                 | -       | -       | 10          | 1       |
| Sub-totals .....             | 23,657  | 24,623  | 1,463       | 1,241   |
| Totals .....                 | 24,869  | 32,423  | 1,463       | 1,241   |
| <u>Eastern Europe</u>        |         |         |             |         |
| Albania .....                | 2,295   | -       | -           | -       |
| U.S.S.R. (Russia) .....      | -       | 48,554  | -           | 6,603   |
| Totals .....                 | 2,295   | 48,554  | -           | 6,603   |

Exports of Australian Wheat and Wheat Flour in Terms of Wheat  
December 1-August 29, 1963-64 and Corresponding Period 1962-63

| Destination                      | Wheat   |         | Wheat Flour |         |
|----------------------------------|---------|---------|-------------|---------|
|                                  | 1962-63 | 1963-64 | 1962-63     | 1963-64 |
| - thousand bushels -             |         |         |             |         |
| <u>Africa</u>                    |         |         |             |         |
| Mauritius .....                  | -       | -       | 397         | 909     |
| Nyasaland .....                  | -       | -       | 254         | 207     |
| Portuguese East Africa .....     | -       | 945     | -           | -       |
| Rhodesia .....                   | 2,330   | 2,240   | -           | -       |
| Zanzibar .....                   | -       | -       | 154         | 129     |
| Others .....                     | 15      | 38      | 49          | 49      |
| Totals .....                     | 2,345   | 3,223   | 854         | 1,294   |
| <u>Asia</u>                      |         |         |             |         |
| Aden .....                       | 760     | 1,483   | -           | -       |
| Aden and Aden I/T .....          | -       | -       | 1,055       | 1,057   |
| Aden and Aden I/T Atta .....     | -       | -       | 411         | 553     |
| Arabian Gulf .....               | -       | -       | 127         | 139     |
| Arabian Gulf Atta .....          | -       | -       | 897         | 905     |
| Brunei .....                     | -       | -       | 34          | 14      |
| Burma .....                      | 876     | -       | 106         | -       |
| Ceylon .....                     | 7       | 11      | 3,017       | 4,811   |
| China .....                      | 89,411  | 62,742  | -           | -       |
| Formosa .....                    | 96      | 79      | -           | -       |
| Hong Kong .....                  | 1,597   | 1,719   | 171         | 82      |
| India .....                      | 5,337   | 7,022   | -           | -       |
| Indonesia and Irian .....        | -       | -       | 420         | 1,562   |
| Iran .....                       | 835     | 711     | -           | -       |
| Iraq .....                       | -       | 3,513   | -           | -       |
| Japan .....                      | 10,597  | 13,658  | -           | -       |
| Korea North .....                | 4,988   | -       | -           | -       |
| Lebanon, Jordan, Syria .....     | 2,315   | 3,871   | -           | -       |
| Pakistan .....                   | 1,847   | -       | -           | -       |
| Philippines .....                | 425     | 242     | 343         | 159     |
| Saudi Arabia .....               | -       | -       | 200         | 216     |
| Thailand .....                   | 5       | 321     | 586         | 395     |
| Malaysia                         |         |         |             |         |
| Malaya .....                     | 335     | 25      | 2,460       | 2,090   |
| Malaya Atta .....                | -       | -       | 70          | 71      |
| Sabah .....                      | -       | -       | 128         | 125     |
| Sarawak .....                    | -       | -       | 182         | 132     |
| Singapore .....                  | 298     | 1,713   | 2,233       | 1,216   |
| Singapore Atta .....             | -       | -       | 10          | 6       |
| Singapore A/C B.W.O. ....        | -       | -       | 29          | 33      |
| Others .....                     | 305     | 606     | 302         | 71      |
| Totals .....                     | 120,034 | 97,716  | 12,781      | 13,637  |
| <u>Oceania</u>                   |         |         |             |         |
| New Zealand .....                | 4,815   | 4,638   | -           | -       |
| <u>Western Hemisphere</u>        |         |         |             |         |
| Peru .....                       | -       | -       | 10          | 7       |
| <u>Pacific Area and Sundries</u> |         |         |             |         |
| Pacific Islands .....            | 42      | 49      | 1,721       | 1,717   |
| Ships' Stores and Sundries ....  | -       | -       | 372         | 401     |
| Totals .....                     | 42      | 49      | 2,093       | 2,118   |
| Totals, All Countries ....       | 154,400 | 186,600 | 17,200      | 24,900  |



ARGENTINE SITUATION

Supply Position      Estimated total supplies of wheat in the Argentine for the 1963-64 (December-November) crop year amount to 338.2 million bushels, consisting of the December 1, 1963 carryover of 25.9 million and a production of 312.3 million. Indicated supplies for the current Argentine crop year, reflecting a substantial increase in production as well as slightly larger opening stocks are about 54 per cent more than the 1962-63 total of 220.1 million bushels. After making an allowance of 122.6 million bushels for anticipated domestic requirements, an estimated 215.6 million are available for export and for carryover in 1963-64, considerably more than double the 92.0 million of the previous year.

Exports of wheat and wheat flour in terms of grain equivalent during December 1963-August 1964 amounted to 94.3 million bushels, 66 per cent greater than the 56.7 million exported during the same months in 1962-63. The balance remaining on September 1, 1964 for export and for carryover was estimated at 121.4 million bushels, in sharp contrast to the September 1, 1963 total of only 35.2 million.

Argentine Wheat Supplies

| Item  | 1962-63 <u>1/</u>   | 1963-64 <u>2/</u> |
|---|---------------------|-------------------|
|   | - million bushels - |                   |
| Carryover at beginning of crop year (December 1) <u>3/</u> .... | 25.4                | 25.9              |
| Production <u>4/</u> .....                                      | 194.8               | 312.3             |
| Total estimated domestic supplies .....                         | 220.1               | 338.2             |
| Less estimated domestic requirements for crop year ....         | 128.2               | 122.6             |
| Available for export and for carryover .....                    | 92.0                | 215.6             |
| Deduct:   |                     |                   |
| Exports of wheat as grain, December-August .....                | 56.1                | 93.5              |
| Exports of wheat flour in terms of wheat, December-August ..... | 0.6                 | 0.8               |
| Total exports of wheat and wheat flour .....                    | 56.7                | 94.3              |
| Balance on September 1 for export and for carryover ...         | 35.2                | 121.4             |

1/ Revised. 2/ Preliminary. 3/ Includes allowances for farm stocks. 4/ Official estimates.

The following account of the Argentine situation has been extracted from a report from Mr. H. E. Ryan, Assistant Commercial Secretary (Agriculture), Buenos Aires, under date of September 24, 1964 and is reproduced with the permission of the Trade Commissioner Service, Department of Trade and Commerce. Where possible, conversions to Canadian measures and currency have been made for the convenience of our readers.

Weather  
and Crops

In contrast to the heavy rainfall which occurred in the previous crop year, the Pampas regions of Argentina have experienced a rather dry winter and lack of moisture exists in certain areas. The northern grain belt is most affected by the drought, and in the Province of Entre Rios seeding intentions for flax have been changed substantially due to the climatic conditions. The Province of Buenos Aires is the exception, as substantial rainfall has occurred and wheat seeding has, to a certain extent, been hindered by excessive soil moisture.

During the month of August, the general climatic pattern remained unchanged, with many areas in the Provinces of Cordoba, Entre Rios, La Pampa and San Luis suffering on account of drought. Conditions improved slightly in Buenos Aires, southern Santa Fe and eastern Cordoba. Thus, at the end of the month, the northern and western areas continued dry while the southern and south-eastern Pampas, including southern Santa Fe and Cordoba, showed better prospects.

Wheat The second official acreage estimate for 1964-65 was published during the period under review and increased to 5,673,000 hectares (14.0 million acres). While this was an increase over the previous estimate, it remains 6.2 per cent below last year's acreage, although 16 per cent and 7.9 per cent, respectively, over the last five and ten-year average sowings. In spite of the unfavourable weather conditions, Argentine wheat growers remain keenly interested in the crop, and it would appear that given improved weather conditions, plantings would have been greater. With normal yields the current crop will be fairly large despite the reduced acreage. For instance, if an average yield of 1,200 kilos per hectare (18 bushels per acre) were harvested, then the production would reach 6.8 million metric tons (249.9 million bushels) compared to 8,500,000 metric tons (312.3 million bushels) the unofficial estimate for 1963.

The Government has yet to indicate what will be the new official minimum price level. It would appear that if the stocks on hand plus a higher than normal crop are to be shipped into international markets, there may be pressure brought to bear to lower the minimum price from that existing last year. Exporters are already offering to buy the new crop at 775 pesos per 100 kilos (\$1.60 per bushel), as compared with the current minimum price for hard wheat of 880 pesos per 100 kilos (\$1.81 per bushel). At present, the Board has been obliged to sell wheat in international markets at lower prices than the minimum level, which it apparently prefers to do, absorbing the loss rather than to stock the grain and risk deterioration through physical losses, insect infestation and exchange rate fluctuations. If the value of the peso continues to fall, this may assist the Board in reducing its losses.

Existing stocks of wheat are a preoccupation both to Government and to the trade. The Chairman of the National Grain Board, however, was able to present a somewhat more encouraging picture recently after his return from the Far East. He indicated that another wheat contract had been signed with Mainland China for 400,000 metric tons (14,697,000 bushels) and that, in addition, that country had agreed to purchase at least another 300,000 metric tons (11,023,000 bushels) during 1965 and again in 1966. Although prices were not divulged, payment will be in sterling against shipment certification.

As well, the Chairman reported that during the month of August, 223,000 metric tons (8,194,000 bushels) had been sold to the following countries: Brazil, 90,000 metric tons (3,307,000 bushels); Uruguay, 65,000 metric tons (2,388,000 bushels), (listed as an estimated 80,000 metric tons (2,939,000 bushels) in our last report); Great Britain, 35,000 metric tons (1,286,000 bushels); U.S.S.R., 10,000 metric tons (367,000 bushels); Mozambique, 4,500 metric tons (165,000 bushels); Paraguay, 1,000 metric tons (37,000 bushels); and other countries in Continental



Europe, 17,500 metric tons (643,000 bushels). Thus shipments to the end of August have totalled 2,545,000 metric tons (93,512,000 bushels), an increase of over 1 million metric tons (36,743,000 bushels) from the 1,527,395 metric tons (56,122,000 bushels) shipped during the same period last year. With the above sales, the main purchasers of Argentine wheat so far this year included Mainland China, 990,000 metric tons (36,376,000 bushels); Brazil, 602,000 metric tons (22,119,000 bushels); West Germany, 232,000 metric tons (8,524,000 bushels); and Peru, 212,000 metric tons (7,790,000 bushels).

So far, during the month of September, 512,464 metric tons (18,830,000 bushels) have been sold, which include the Chinese sale, plus 30,000 metric tons (1,102,000 bushels) to Brazil; 30,000 metric tons (1,102,000 bushels) for Colombia; 30,564 metric tons (1,123,000 bushels) for Britain; 1,300 metric tons (48,000 bushels) for Paraguay; and 20,600 metric tons (757,000 bushels) to Continental Europe.

With respect to price, the Uruguayan sale was concluded at U\$S 68.30 per metric ton (\$2.00 per bushel) f.o.b. The Brazilian shipment, part of the annual agreement, was 9 cents per ton higher at U\$S 68.39 per metric ton (\$2.01 per bushel) f.o.b. Prices c.i.f. for Britain have averaged £ 26.17.6 (\$2.19 per bushel) for September loading. Continental shipments also for September were averaging U\$S 71.00 per metric ton (\$2.08 per bushel). Present prices in the Buenos Aires Futures Market and Buenos Aires Cereal Exchange continue low at the minimum official level. Grain Board sales to exporters have in some cases approximated 817.50 pesos per 100 kilos (\$1.69 per bushel) for bread wheat (price is f.o.b. less taxes), while some durums have been purchased at 830 pesos (\$1.71 per bushel). These latter prices indicate the Board's interest in disposing of its stocks at lower than minimum existing price levels, although certain quantities of the previous crop purchased at 650 pesos per 100 kilos (\$1.34 per bushel) still remain and sales may have been made from this account.

To summarize, while stocks are somewhat larger than normal, the Argentine Grain Board has been actively marketing the wheat as indicated by the Chinese sales, and the recent talks held with Japan. Also, the country is showing much greater interest in Latin American markets than has been the case in the past and should be able to move substantial quantities of wheat into these countries.

#### Argentine Wheat Exports December-July 1962-63 and 1963-64

| Destination                     | 1962-63 | 1963-64 |
|---------------------------------|---------|---------|
| - thousand bushels -            |         |         |
| <u>Western Europe</u>           |         |         |
| <u>EEC</u>                      |         |         |
| Belgium .....                   | 4,241   | 909     |
| France .....                    | 2,788   | 2,649   |
| Germany, Federal Republic ..... | 1,700   | 8,677   |
| Italy .....                     | 5,729   | 3,747   |
| Netherlands .....               | 4,381   | 3,297   |
| Sub-totals .....                | 18,839  | 19,279  |



Argentine Wheat Exports December-July 1962-63 and 1963-64

| Destination                        | 1962-63 | 1963-64 |
|------------------------------------|---------|---------|
| - thousand bushels -               |         |         |
| <u>Other Western Europe</u>        |         |         |
| Britain .....                      | 6,421   | 3,405   |
| Finland .....                      | 147     | -       |
| Norway .....                       | 725     | -       |
| Portugal .....                     | 411     | -       |
| Spain .....                        | -       | 14      |
| Sweden .....                       | 53      | -       |
| Switzerland .....                  | 368     | 164     |
| Sub-totals .....                   | 8,125   | 3,583   |
| Totals .....                       | 26,964  | 22,862  |
| <u>Eastern Europe</u>              |         |         |
| Czechoslovakia .....               | -       | 982     |
| Germany, Democratic Republic ..... | -       | 646     |
| Poland .....                       | -       | 415     |
| U.S.S.R. (Russia) .....            | -       | 354     |
| Totals .....                       | -       | 2,396   |
| <u>Africa</u>                      |         |         |
| Algeria .....                      | 1,516   | -       |
| Others, North Africa .....         | 198     | -       |
| Totals .....                       | 1,714   | -       |
| <u>Asia</u>                        |         |         |
| China, Communist .....             | -       | 36,303  |
| <u>Western Hemisphere</u>          |         |         |
| Bolivia .....                      | -       | 73      |
| Brazil .....                       | 11,096  | 19,538  |
| Paraguay .....                     | 495     | 785     |
| Peru .....                         | 7,724   | 6,199   |
| Venezuela .....                    | 373     | -       |
| Totals .....                       | 19,688  | 26,595  |
| Totals, All Countries .....        | 48,365  | 88,158  |

FRENCH SITUATION

The following account of the current wheat situation in France has been extracted from a report by Mr. J. E. Montgomery, Assistant Commercial Secretary, Canadian Embassy, Paris, under date of September 16, 1964, and is reproduced with the permission of the Trade Commissioner Service, Department of Trade and Commerce. Where possible, conversions from French to Canadian measures have been made and rounded.

Wheat            The crop has confirmed previous predictions both for quality and quantity and is likely to reach 13.5 million metric tons (496.0 million bushels). The Permanent Committee of the French Cereal Office (ONIC) on July 22 announced their policy of intervention as follows: 700,000 tons (25,720,000 bushels) approved for Governmental storage at the lowest support price of francs 43.89 (\$2.62 per bushel) in August with a maximum allowance of francs 1.20 (7 cents per bushel) for specific weight and moisture, fixed the support price for exports to the countries with which France has Trade Agreements at francs 45.09 (\$2.69 per bushel) allowance for quality included. In the export campaign, 350,000 tons (12,860,000 bushels) have been sold to China, delivery September-November; 25,000 tons (919,000 bushels) to Japan, delivery September-October, and 170,000 tons (6,246,000 bushels) to Poland. An agreement has been signed with Morocco, under which France will provide 120,000 to 150,000 tons (4,409,000 to 5,511,000 bushels) for the end of December, the same Agreement covers deliveries in 1965, 1966 and 1967 of 50,000 to 150,000 tons (1,837,000 to 5,511,000 bushels) per year. At the end of August, export certificates had been issued up to 650,000 tons (23,883,000 bushels) with an expiry date of November 30.

Estimated area seeded to cereals at August 1, 1964 with comparable figures for 1963 in brackets, were as follows, in thousand of acres: wheat, 10,875 (9,177); durum wheat, 79 (81); wheat and rye, 30 (42); rye, 567 (559); barley, 5,755 (6,222); oats, 2,801 (3,159); and mixed cereals, 322 (403).

CALENDAR OF WHEAT EVENTS

- |             |   |
|-------------|---|
| September 2 | The preliminary protein map, published by the Board of Grain Commissioners Laboratory shows an average of 15.2 per cent for the 1964 red spring wheat crop. |
| October 7   | On the basis of conditions at September 15, Canada's 1964 wheat crop was forecast at 597.7 million bushels.   |
| 11          | The 1964 season of navigation closed at the Port of Churchill.  |
-





STATISTICS CANADA LIBRARY  
BIBLIOTHEQUE STATISTIQUE CANADA



1010687023