

CATALOGUE No.

22-005

MONTHLY



CANADA

DOMINION BUREAU OF STATISTICS
AGRICULTURE DIVISION

THE WHEAT REVIEW



OCTOBER 1964

DOMINION BUREAU OF STATISTICS

THE
WHEAT REVIEW

OCTOBER 1964

Published by Authority of
The Minister of Trade and Commerce

Prepared in the Crops Section, Agriculture Division
Dominion Bureau of Statistics, Ottawa

TABLE OF CONTENTS

| | <u>Page</u> |
|---|-------------|
| World Wheat Situation | |
| August-September 1964 World Wheat Trade Reaches Record Level | 1 |
| Wheat Supplies of Four Major Exporters 11 per cent Below a Year Ago | 1 |
| Canadian Situation | |
| Supplies Down 12 per cent from Last Year's Record | 2 |
| Exports 19 per cent Above Previous Year's Record | 2 |
| Marketings, Disappearance and Visible Supplies | 3 |
| September 1964 Exports of Wheat and Flour Total 45.1 Million Bushels | 3 |
| Sales of Wheat and Flour to the U.S.S.R. | 4 |
| Wheat Sale to Hungary | 4 |
| Quality of 1964 Western Canadian Wheat | 5 |
| Protein Survey of Western Canada's 1964 Hard Red Spring Wheat | 6 |
| Canada's 1964 Wheat Crop Estimated at 600.4 Million Bushels | 7 |
| Lake Shipments of Canadian Grain | 8 |
| General Quota Position | 9 |
| Farmers' Marketings | 9 |
| Visible Supply of Canadian Wheat | 10 |
| Grading of Wheat Inspected, August-September 1964 with Comparisons | 10 |
| Weekly Visible Supply and Farmers' Marketings (Charts) | 11 |
| Wheat Shipments to the United States by Destination | 12 |
| Rail Shipments of Wheat to Maritime Ports | 12 |
| Rail Shipments of Wheat from Fort William-Port Arthur | 13 |
| Overseas Exports of Canadian Grain by Ports of Loading | 13 |
| Freight Assistance Shipments | 14 |
| Monthly Exports of Canadian Wheat and Wheat Flour | 15 |
| Exports of Canadian Wheat by Destination | 16 |
| Customs Exports of Canadian Wheat Flour by Countries of Consignment | 19 |
| Canadian Wheat Board Weekly Average Cash Wheat Prices | 21 |
| Canadian Flour Milling Situation | |
| Production and Exports | 23 |
| United States Situation | |
| Supply Position | 24 |
| United States Exports of Wheat and Flour Show Slight Increase | 25 |
| 1964 Wheat Crop Forecast at 1,286 Million Bushels | 29 |
| Stocks of Wheat in All Positions October 1, 1964 | 30 |
| Cash Wheat Prices on the Kansas City and Minneapolis Markets | 31 |
| Chicago Wheat Futures, High Points of Closing | 31 |
| Argentine Situation | 32 |
| Australian Situation | 36 |
| Crop Situation in Britain | 39 |
| Wheat Situation in Italy | 39 |
| Grain Situation in West Germany | 39 |
| Calendar of Wheat Events | 40 |

WORLD WHEAT SITUATION

August-September 1964 World Wheat Trade Reaches Record Level

On the basis of preliminary estimates, world wheat production in 1964-65 is expected to reach a new record of about 8,985 million bushels, 8 per cent greater than the 8,325 million harvested a year ago and 3 per cent above the previous high of 8,760 million in 1962-63. Reflecting a combination of larger production and more-normal distribution this season compared with a year ago, total trade in wheat and flour is expected to drop sharply from the peak level attained in 1963-64. However, it is anticipated that exports in the current crop year will approximate the 1962-63 volume of 1.6 billion bushels, which was the third largest on record, and carryover stocks in the major exporting countries are expected to increase by about 10 per cent. The volume of wheat exported during the first two months of the crop year are at record levels with shipments from Canada, the United States and Argentina exceeding those of the same period a year earlier. However, these gains are not expected to be maintained throughout the season as the heavy volume of shipments to the U.S.S.R., a major factor in last seasons record trade, did not commence until October. Shipments from the four major traditional wheat exporters during August-September 1964 with comparisons appear in the following table.

Exports of Wheat and Flour in Terms of Wheat August-September, 1964 with Comparisons

| August-September | United States | Canada | Argentina | Australia | Total |
|---------------------|---------------|--------|-----------|-----------|-------|
| - million bushels - | | | | | |
| 1950 | 31.6 | 31.8 | 11.6 | 21.5 | 96.5 |
| 1951 | 82.4 | 44.0 | 12.3 | 21.2 | 159.9 |
| 1952 | 52.4 | 62.1 | - | 12.6 | 127.1 |
| 1953 | 41.9 | 53.2 | 19.2 | 9.0 | 123.3 |
| 1954 | 33.1 | 48.8 | 22.5 | 11.1 | 115.5 |
| 1955 | 42.9 | 42.5 | 19.6 | 16.8 | 121.8 |
| 1956 | 76.7 | 57.3 | 17.2 | 29.1 | 180.3 |
| 1957 | 68.1 | 52.0 | 14.8 | 18.2 | 153.1 |
| 1958 | 69.9 | 44.4 | 11.0 | 11.9 | 137.2 |
| 1959 | 68.9 | 50.1 | 10.7 | 17.8 | 147.5 |
| 1960 | 98.4 | 56.6 | 19.5 | 18.4 | 192.9 |
| 1961 | 106.2 | 70.8 | 2.3 | 40.4 | 219.7 |
| 1962 | 102.9 | 52.8 | 8.2 | 13.7 | 177.6 |
| 1963 1/..... | 114.4 | 77.0 | 7.0 | 34.5 | 232.9 |
| 1964 2/..... | 123.3 | 91.4 | 20.3 | 26.1 | 261.1 |

1/ Revised.

2/ Preliminary.

Wheat Supplies of Four Major Exporters 11 per cent Below a Year Ago

Latest available estimates indicate that supplies of wheat remaining on or about October 1, 1964 in the four major exporting countries for export and for carryover at the end of their respective crop years amounted to 2,355.4 million bushels, a decrease of 11 per cent from the 2,650.6 million

available a year ago. This decline reflected smaller amounts for United States, Canada and Australia which more than offset a substantial increase in wheat stocks in Argentina. Supplies on or about October 1, 1964, in millions of bushels, were held as follows, with last year's comparable figures in brackets: United States, 1,391.2 (1,577.1); Canada, 809.6 (977.7); Argentina, 104.0 (32.4) and Australia, 50.6 (63.4).

CANADIAN SITUATION

Supplies Down 12 per cent from Last Year's Record

October 15, at 600.4 million bushels. Supplies of the size indicated represent a decrease of 12 per cent from the 1963-64 total of 1,210.7 million bushels. After making an allowance of 160.0 million bushels for anticipated domestic requirements, supplies available for export and for carryover during 1964-65 would amount to 901.0 million bushels, 15 per cent below the 1,054.7 million in 1963-64.

Exports 19 per cent Above Previous Year's Record

Exports of wheat as grain during the August-September period of the current crop year amounted to a record 85.2 million bushels, 18 per cent above the previous high of 72.1 million exported during the same months a year ago. Exports of wheat flour, in terms of wheat, during August-September this year were estimated at 6.2 million bushels, bringing total exports of wheat and flour during the same two months, to the unprecedented record of 91.4 million bushels, 19 per cent more than the next-to-record 77.0 million exported during the comparable period of last year. It should be noted, however, that exports are not expected to be maintained at a level higher than the year previous since the massive shipment of wheat to the U.S.S.R. in the 1963-64 season did not get fully underway until October. The balance remaining on October 1, 1964 for export and for carryover, amounted to 809.6 million bushels, 17 per cent below the October 1, 1963 total of 977.7 million.

Canadian Wheat Supplies

| Item | 1963-64 <u>1/</u> | 1964-65 <u>2/</u> |
|--|---------------------|-------------------|
| | - million bushels - | |
| Carryover in North America at beginning of crop year (August 1) | 487.2 | 460.6 |
| Production | 723.4 | 600.4 <u>3/</u> |
| Imports of wheat for domestic use, August-September. | <u>4/</u> | <u>5/</u> |
| Total estimated supplies | 1,210.7 | 1,061.0 |
| Less estimated domestic requirements for crop year . | 156.0 | 160.0 |
| Available for export and for carryover | 1,054.7 | 901.0 |
| Deduct: | | |
| Exports of wheat in bulk, August-September <u>6/</u> | 71.8 | 85.0 |
| Exports of bagged seed wheat, August-September <u>6/</u> . | 0.3 | 0.2 |
| Total exports of wheat as grain | 72.1 | 85.2 |
| Exports of wheat flour in terms of wheat, August-September <u>7/</u> | 4.9 | 6.2 |
| Total exports of wheat and wheat flour | 77.0 | 91.4 |
| Balance on October 1 for export and for carryover .. | 977.7 | 809.6 |

1/ Subject to revision. 2/ Preliminary. 3/ Based on October forecast of production.
4/ Less than 50,000 bushels. 5/ Not available. 6/ As reported by the Board of Grain Commissioners. (Includes overseas clearances and imports into the United States). 7/ Customs returns, 1963-64 adjusted for time lag.

Marketings, Disappearance
and Visible Supplies

Total primary deliveries of wheat (both east and west) up to October 21 of the current crop year have amounted to 101.6 million bushels compared with 76.7 million marketed during the same period of the previous year. Some 62.7 million bushels of this year's total were delivered during the four weeks September 24 to October 21. During the same period the volume of Canadian wheat entering domestic and export channels amounted to 43.6 million bushels. As a result, the total visible supply of Canadian wheat increased from 287.3 million at September 23 to a level of 305.2 million at October 21, 1964.

The total visible supply of Canadian wheat at October 21 this year represented a decrease of 15 per cent from the 1963 comparable total of 360.3 million and was 14 per cent less than the 1962 figure of 356.4 million. The bulk of the decrease over a year ago was accounted for by substantially smaller stocks in country elevators, with stocks in this position amounting to 154.7 million bushels compared with the 1963 comparable total of 200.7 million, and the 1962 figure of 190.5 million. Wheat stocks at interior terminals at October 21, 1964 totalled 4.6 million bushels as against 6.2 million a year ago and 6.9 million two years ago. The 15.6 million bushels "in transit rail" (Western Division) was also below both the 1963 and 1962 totals of 17.9 million and 16.2 million bushels, respectively. Supplies at the Lakehead, totalling some 31.5 million bushels, were below both last year's comparable level of 40.7 million and the 1962 figure of 46.2 million. Stocks "in transit lake", amounting to 5.5 million bushels were larger than the 1963 level of 5.1 million but sharply below the 11.1 million of two years ago. The 36.4 million bushels in Bay, Lake and Upper St. Lawrence ports were lower than the 37.1 million of a year ago but above the 30.5 million of two years ago. Supplies in Lower St. Lawrence and Maritime ports at October 21, 1964 at 35.9 million bushels, were larger than both the 1963 total of 30.8 million and the 1962 volume of 31.2 million. The 11.5 million bushels in West Coast ports (Vancouver-New Westminster, Prince Rupert and Victoria) registered an increase over the 1963 comparable total of 9.0 million but was smaller than the 13.5 million of 1962. Wheat supplies at the port of Churchill amounted to 1.8 million bushels compared with the 1963 total of 3.5 million and the 2.3 million of two years ago.

September 1964 Exports of
Wheat and Flour Total
45.1 Million Bushels

Combined exports of wheat in bulk, bagged seed wheat and wheat flour in terms of grain equivalent during September 1964 amounted to 45.1 million bushels, the highest total on record for that month, 74 per cent more than the ten-year (1953-62) average for the month of September of 25.9 million, one per cent above the September 1963 figure of 44.8 million but 3 per cent below the August 1964 total of 46.3 million. Exports of wheat in bulk (as reported by the Board of Grain Commissioners), during September 1964, at 42.8 million bushels were one per cent above both the 42.2 million of the previous month and the 42.6 million of September 1963 and 88 per cent greater than the ten-year (1953-62) September average of 22.7 million. Exports of bagged seed wheat during September 1964 based on Canadian Customs returns, amounted to 145 thousand bushels compared with the September 1963 total (adjusted to remove time lag) of 129 thousand bushels. Customs returns also indicate that the equivalent of 2.1 million bushels of wheat was exported in the form of flour during September 1964, practically unchanged from the adjusted September 1963 total of 2.1 million but 48 per cent lower than the 4.1 million of the previous month.

Cumulative exports of wheat in bulk during the August-September 1964 period amounted to 85.0 million bushels, representing an increase of 18 per cent over the comparable 1963 total of 71.8 million and 83 per cent larger than the ten-year average for the period of 46.5 million. Britain, in its position as Canada's leading market for wheat, received shipments amounting to 14.3 million bushels and representing 17 per cent of the two-month total. During August-September 1963 shipments of wheat to Britain amounted to 15.5 million bushels and accounted for 22 per cent of the total. Other principal markets for Canadian wheat in bulk during the first two months of the current crop year, with figures for the same period of the preceding crop year in brackets, were as follows, in millions of bushels: Communist China, 13.3 (2.9); Czechoslovakia, 10.3 (nil); Japan, 10.2 (9.7); Poland, 9.0 (6.0); Federal Republic of Germany, 4.9 (6.6); Democratic Republic of Germany, 3.1 (nil); Belgium and Luxembourg, 2.9 (4.6); India, 2.4 (nil); Pakistan, 1.8 (nil); Norway, 1.6 (1.7); Venezuela, 1.6 (1.3); and Albania, 1.0 (nil).

Cumulative exports of wheat flour during the first two months of the 1964-65 crop year, based on Customs returns, were the equivalent of 6.2 million bushels, 20 per cent above the adjusted August-September 1963 total of 4.9 million bushels. As with bulk wheat, Britain was also the major market for Canadian wheat flour. Shipments of wheat flour to that country during the period under review amounted to the equivalent of 1,759 thousand bushels and accounted for 28 per cent of the August-September 1964 total. During the same months of the 1963-64 crop year shipments of wheat flour to Britain amounted to the equivalent of 2,113 thousand bushels and represented 43 per cent of the total. Other leading markets for Canadian wheat flour in terms of grain equivalent during the August-September period of the 1964-65 crop year, with revised data for the same months of the preceding crop year in brackets, were as follows, in thousands of bushels: U.S.S.R. (Russia), 1,689 (nil); Cuba, 789 (nil); Jamaica, 291 (256); Trinidad, 234 (289); Ghana, 166 (84); Leeward and Windward Islands, 165 (191); Costa Rica, 153 (101); Sierra Leone, 148 (71); Hong Kong, 145 (160); United States, 134 (130); and Malaysia, 100 (130).

Sale of Wheat
and Flour to
the U.S.S.R.

On October 26, 1964 the Canadian Wheat Board announced that it had entered into a contract covering the sale of 250,000 long tons of wheat and 25,000 long tons of flour to the U.S.S.R. This amounts to the equivalent of approximately 10.6 million bushels of wheat. The wheat and flour has been purchased for cash and will be shipped from St. Lawrence and Atlantic ports commencing in November and continuing through the crop year. The contract provides for the shipments of the wheat and flour to the U.S.S.R. and/or Cuba similar to a contract entered into in 1963.

Wheat Sale
to Hungary

On November 2, 1964 the Canadian Wheat Board announced that a contract had been negotiated for the sale of approximately 100,000 long tons of wheat to Hungary. This sale, totalling about 3.7 million bushels, is for shipment during the period December through March, 1965, from Canadian East Coast ports. This is the first sale made to Hungary under the provisions of the Long Term Agreement signed on June 11th, 1964, whereby Hungary had agreed to purchase 250,000 long tons of wheat during the three years of the Agreement. Payment for the wheat is to be made on the basis of 10 per cent at time of shipment, with the remaining balance to be paid in equal instalments, plus interest, at 2, 2 1/2 and 3 years, respectively. These credit arrangements were authorized by the Government of Canada under the provisions of the Export Credits Insurance Act. The buyer has the right to divert the wheat to any other Eastern European Socialist country.

Quality of 1964
Western Canadian
Wheat

The following information relative to the quality of this year's wheat crop in the Prairie Provinces is taken from a press release issued on October 28, by the Grain Research Laboratory of the Board of Grain Commissioners.

Western Canada's red spring wheat crop (including durum) is well above average in milling and baking quality according to studies made by the Board of Grain Commissioners' Laboratory. Red spring wheat production is estimated at 549 million bushels compared with the 10-year average production of 422 million bushels. However, the 1964 crop suffered from an early frost and from continued wet weather during the harvesting period. Accordingly, it is estimated that about 40 per cent of the crop will grade No. 4 Northern and lower. The wheat will be somewhat higher in moisture content this year and there will be a wide range of degrading factors principally frosted, mildewed, stained, sprouted and thin kernels.

Average bushel weights (Avery equivalent) for the new crop No. 1 to No. 4 Northern are 65.2, 63.5, 63.1 and 63.2 lb., respectively, and corresponding protein levels are 15.1, 15.1, 14.8 and 14.6 per cent. These high-protein levels are reflected in a high baking strength and supporting value. Compared with last year's crop, the new crop is somewhat higher in milling yield, lower in ash and about the same in flour colour; baking quality and supporting value are higher. Comparison of the 1964 grades with one another shows that the first three grades are much the same in milling and baking quality.

Tests made on 6,048 samples of the statutory grades of wheat obtained from 1,666 shipping points in the Prairie Provinces shows that average protein content of the 1964 crop of red spring wheat is 14.9 per cent, equal to the second highest level on record, reached in 1936; the highest level, 15.1 per cent, was recorded in 1941. The 1964 level is 0.6 per cent higher than last year and is 1.3 per cent higher than the long-term average of 13.6 per cent. Average protein levels are 14.0 per cent for Manitoba, 15.3 per cent for Saskatchewan and 14.4 per cent for Alberta. The most significant changes are in Saskatchewan and Alberta where protein levels show an increase of 0.7 and 0.6 per cent, respectively, over last year; Manitoba is virtually unchanged. A large high-protein area (over 14.9 per cent) begins in east-central Saskatchewan, covers all of western Saskatchewan and extends into eastern Alberta.

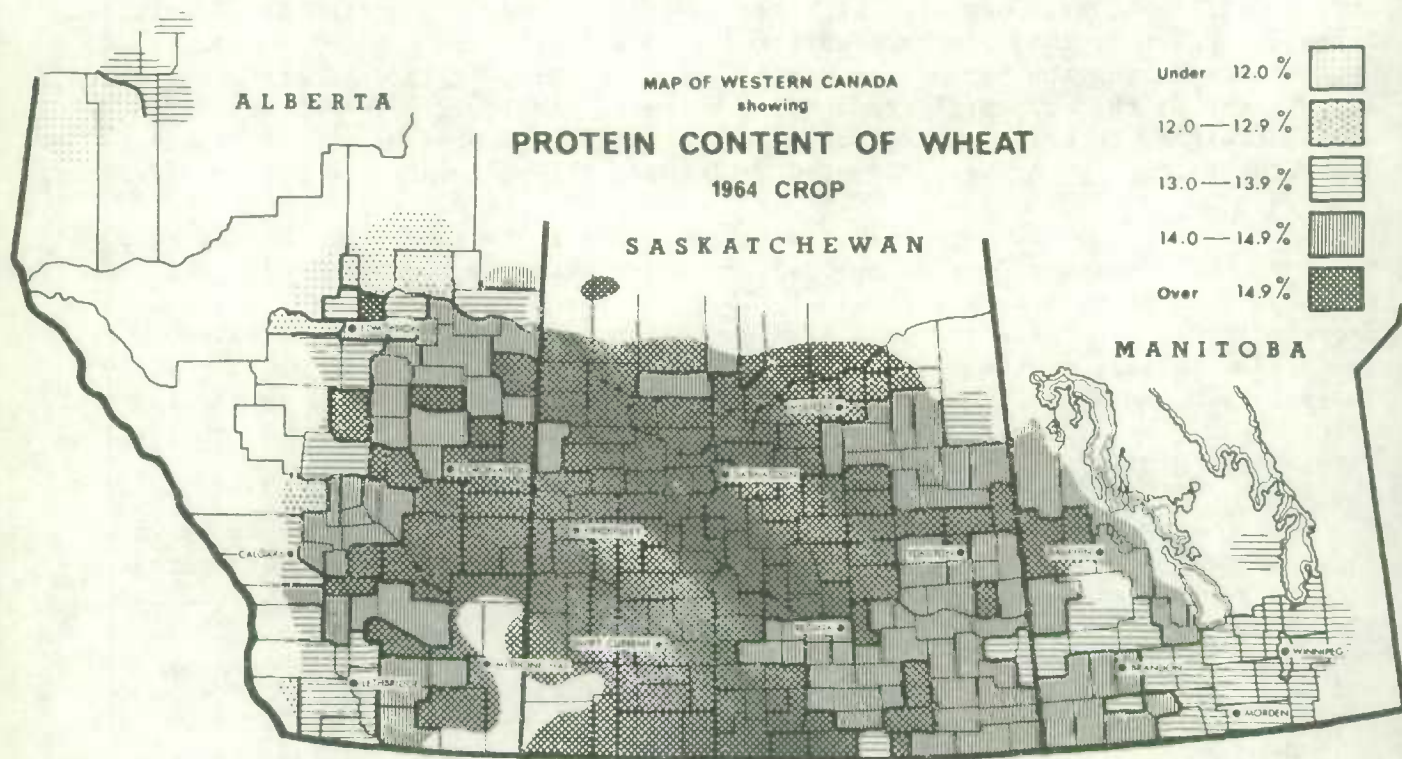
This year the amber durum wheat crop is estimated at 33.6 million bushels compared with 53.4 million bushels last year. About 60 per cent of the crop will grade No. 2 and No. 3 C.W. Average protein content of the new crop is 15.0 per cent and average bushel weight is 65.3 lb. (Avery equivalent). Compared with last year's crop, the new crop is higher in protein content and generally higher in percentage vitreous kernels; bushel weight and kernel weight are somewhat lower for the higher grades. Wheat ash is lower while semolina yield is much the same. Macaroni quality is equal to that of last year's wheat.

The 1964 Western Canada red spring and amber durum wheat crop will assure a large supply of high quality grades. As the new crop moves into export positions the quality of present shipments will be maintained and even improved.

Protein Survey of
Western Canada's 1964
Hard Red Spring Wheat

level, 15.1 per cent, was recorded in 1941. The 1964 level is 0.6 per cent higher than last year and is 1.3 per cent higher than the long-term average of 13.6 per cent. This is the eighth consecutive year that protein levels have been well above the long-term average. The Laboratory's study of the 1964 crop is based on 6,048 samples of No. 1 Hard, No. 1 Northern to No. 4 Northern, No. 4 Special and the Garnet grades obtained from 1,666 shipping points in the Prairie Provinces during the harvest season.

According to Crop Bulletin No. 91 "Canadian Wheat 1964", published by the Grain Research Laboratory, Board of Grain Commissioners for Canada, the mean protein content of the 1964 crop of hard red spring wheat is 14.9 per cent, equal to the second highest level on record, reached in 1936; the highest



The above map shows the geographic distribution of the 1964 crop for five levels of protein. A large high-protein area (over 14.9 per cent) begins in east-central Saskatchewan covers all western Saskatchewan and extends into eastern Alberta. Lower average protein areas (under 13.9 per cent) are mostly in eastern Manitoba, western and northern Alberta and in the Peace River district.

Protein Contents of Grades of Hard Red Spring Wheat
1964 Values for Each Province and 1964 and 1963 Values for Western Canada

| Grade | 1964 Crop | | | Western Canada | |
|--------------------|-----------|--------------|---------|----------------|------|
| | Manitoba | Saskatchewan | Alberta | 1964 | 1963 |
| - per cent - | | | | | |
| No. 1 Hard | - | 15.4 | 14.0 | 14.6 | - |
| No. 1 Northern ... | 13.5 | 15.4 | 14.4 | 15.1 | 14.3 |
| No. 2 Northern ... | 13.7 | 15.4 | 15.0 | 15.1 | 14.2 |
| No. 3 Northern ... | 14.1 | 15.3 | 14.5 | 14.8 | 14.4 |
| No. 4 Northern ... | 14.0 | 15.1 | 14.1 | 14.6 | 14.8 |
| No. 4 Special | - | 17.5 | 17.9 | 17.6 | 14.3 |
| Garnet Grades | - | - | 13.5 | 13.5 | 12.8 |
| Weighted Mean | 14.0 | 15.3 | 14.4 | 14.9 | 14.3 |

Canada's 1964 Wheat Crop
Estimated at
600.4 Million Bushels

Based on conditions at October 15 Canada's 1964 wheat crop now estimated at 600.4 million bushels is 17 per cent below last year's all-time record of 723.4 million bushels but 29 per cent above the ten-year average of 466.1 million bushels and the fourth largest on record. The decrease in production compared with last year is due to a 23 per cent decrease in yields which more than offset an 8 per cent increase in seeded acreage. The average yield at 20.2 bushels per acre is 5 per cent above the ten-year (1953-62) average of 19.3 bushels per acre. This year's all Canada crop of spring wheat, including durum, is estimated at 582.2 million bushels compared with the 1963 crop of 705.7 million and the ten-year average of 446.2 million bushels. Ontario's winter wheat crop is estimated at 18.2 million bushels, an increase of 3 per cent from last year's crop of 17.7 million.

November Estimate of the 1964 Production of Spring and Winter Wheat in Canada
Compared with 1963

| Crop | Area | | Yield Per Acre | | Production | |
|--------------------------|------------|------------|----------------|----------------|-------------|----------------|
| | 1963 | 1964 | 1963 | 1964 <u>1/</u> | 1963 | 1964 <u>1/</u> |
| | - acres - | | - bushels - | | - bushels - | |
| <u>CANADA</u> | | | | | | |
| Spring wheat <u>2/</u> | 27,124,200 | 29,230,800 | 26.0 | 19.9 | 705,694,000 | 582,178,000 |
| Winter wheat ... | 442,000 | 455,000 | 40.2 | 40.1 | 17,748,000 | 18,246,000 |
| All wheat | 27,566,200 | 29,685,800 | 26.2 | 20.2 | 723,442,000 | 600,424,000 |
| <u>PRAIRIE PROVINCES</u> | | | | | | |
| Manitoba | 3,153,000 | 3,385,000 | 19.3 | 25.1 | 61,000,000 | 85,000,000 |
| Saskatchewan ... | 17,910,000 | 19,200,000 | 27.5 | 18.1 | 493,000,000 | 348,000,000 |
| Alberta | 5,933,000 | 6,495,000 | 25.1 | 22.3 | 149,000,000 | 145,000,000 |
| Totals <u>2/</u> | 26,996,000 | 29,080,000 | 26.0 | 19.9 | 703,000,000 | 578,000,000 |

^{1/} As indicated on basis of conditions on or about October 15.

^{2/} Includes durum wheat and relatively small quantities of winter wheat in all provinces except Ontario.

In the Prairie Provinces the 1964 wheat crop is now placed at 578.0 million bushels, some 125.0 million bushels or 18 per cent below the 1963 record crop of 703.0 million bushels. Production in Saskatchewan, accounts for 58 per cent of this year's all Canada wheat crop and is estimated at 348.0 million bushels, some 29 per cent less than last year's record 493.0 million bushels. The Alberta crop, estimated at 145.0 million bushels, is down 3 per cent from last year's production of 149.0 million while the Manitoba crop of 85.0 million is 39 per cent larger than the 1963 outturn. The indicated average yield per seeded acre in the Prairie Provinces is 19.9 bushels, with Manitoba averaging 25.1; Saskatchewan, 18.1; and Alberta, 22.3 bushels per acre. Current estimates of production in the Prairie Provinces include relatively small quantities of winter wheat principally in Alberta, and an estimated 33.6 million bushels of durum wheat.

November Estimate of the 1964 Production of Durum Wheat 1/
in the Prairie Provinces Compared with 1963

| Province | Area | | Yield Per Acre | | Production | |
|--------------------|-----------|-----------|----------------|----------------|-------------|----------------|
| | 1963 | 1964 | 1963 | 1964 <u>2/</u> | 1963 | 1964 <u>2/</u> |
| | - acres - | | - bushels - | | - bushels - | |
| Manitoba | 140,000 | 120,000 | 17.1 | 21.7 | 2,400,000 | 2,600,000 |
| Saskatchewan | 1,796,000 | 1,541,000 | 25.6 | 17.1 | 46,000,000 | 26,000,000 |
| Alberta | 234,000 | 227,000 | 21.4 | 22.0 | 5,000,000 | 5,000,000 |
| Totals | 2,170,000 | 1,888,000 | 24.6 | 17.8 | 53,400,000 | 33,600,000 |

1/ Acreage and production included with spring wheat.

2/ As indicated on the basis of conditions on or about October 15.

The acreage in durum wheat in the Prairie Provinces in 1964 was 13 per cent smaller than that seeded in 1963, and average yields estimated at 17.8 bushels per acre, are 28 per cent below the 1963 outturn of 24.6 bushels. Mid-October indications are for a crop of 33.6 million bushels compared with the 1963 crop of 53.4 million. Estimated production by provinces, in millions of bushels, is as follows: Manitoba, 2.6; Saskatchewan, 26.0; and Alberta, 5.0.

Lake Shipments of Canadian Grain

Reflecting a record movement of wheat, total shipments of the five major grains out of Lakehead terminals from the opening of navigation to October 21 this year amounted to 356.7 million bushels, 68 per cent greater than the 212.6 million shipped during the comparable period of 1963 and the highest figure since 374.5 million were shipped during the corresponding period of 1945.

Lake Shipments of Canadian Grain from the Opening of Navigation to October 21, 1964
and to Approximately the Same Date, 1953 to 1963

| Year | Wheat | Oats | Barley | Rye | Flaxseed | Total |
|------------|----------------------|--------|--------|--------|----------|---------|
| | - thousand bushels - | | | | | |
| 1953 | 172,595 | 70,211 | 89,587 | 10,805 | 4,223 | 347,422 |
| 1954 | 98,086 | 39,712 | 58,272 | 5,667 | 2,745 | 204,481 |
| 1955 | 104,619 | 24,561 | 46,121 | 9,352 | 5,102 | 189,755 |
| 1956 | 166,114 | 34,032 | 70,092 | 10,122 | 5,753 | 286,112 |
| 1957 | 115,954 | 33,191 | 38,838 | 4,103 | 9,458 | 201,545 |
| 1958 | 140,651 | 33,205 | 54,227 | 5,080 | 5,791 | 238,954 |
| 1959 | 136,075 | 22,782 | 36,421 | 4,401 | 5,098 | 204,777 |
| 1960 | 144,402 | 18,682 | 36,831 | 3,242 | 6,167 | 209,325 |
| 1961 | 174,789 | 18,701 | 32,144 | 2,090 | 5,228 | 232,951 |
| 1962 | 115,332 | 15,006 | 19,338 | 4,258 | 4,866 | 158,801 |
| 1963 | 149,497 | 32,723 | 23,930 | 1,844 | 4,630 | 212,625 |
| 1964 | 287,652 | 27,024 | 30,622 | 4,679 | 6,762 | 356,740 |

General Quota Position By October 26, 1964, out of a total of 1,905 shipping points in the Western Division, the Canadian Wheat Board had placed 163 points on a quota of five bushels per specified acre, 285 points on a four-bushel quota and 519 points on a three-bushel quota. Of the remainder 749 points were on a two-bushel quota and 185 were on a one-bushel quota per specified acre. Only four stations were reported as "closed".

Summary of Elevator Shipping Points in the Western Division
as at October 26, 1964

| Province | General Quota in Bushels per Specified Acre | | | | | Closed | Total |
|------------------------|--|-----|-------|------|------|--------|-------|
| | One | Two | Three | Four | Five | | |
| Ontario | - | - | - | - | 1 | - | 1 |
| Manitoba | 15 | 93 | 117 | 67 | 50 | - | 342 |
| Saskatchewan | 48 | 437 | 303 | 167 | 73 | 4 | 1,032 |
| Alberta | 122 | 219 | 99 | 51 | 34 | - | 525 |
| British Columbia | - | - | - | - | 5 | - | 5 |
| All Provinces | 185 | 749 | 519 | 285 | 163 | 4 | 1,905 |

Farmers' Marketings Deliveries of wheat from farms in the Prairie Provinces up to October 21 of the current crop year amounted to 96.3 million bushels, representing an increase of 34 per cent over the comparable 1963 total of 71.9 million and 61 per cent above the ten-year (1953-62) average for the period of 59.8 million bushels.

Farmers' Marketings 1/ of Wheat in the Prairie Provinces 1964-65

| Week Ending | | Manitoba | Saskatchewan | Alberta | Total | Last Year <u>2/</u> |
|-------------------------|---------------|------------|--------------|------------|------------|---------------------|
| - bushels - | | | | | | |
| August | 12, 1964 | 75,662 | 409,500 | 98,247 | 583,409 | 543,483 |
| | 19 | 165,645 | 350,728 | 200,845 | 717,218 | 813,982 |
| | 26 | 606,652 | 1,186,624 | 360,697 | 2,153,973 | 2,958,768 |
| September | 2 | 259,162 | 1,731,216 | 542,073 | 2,532,451 | 3,670,105 |
| | 9 | 626,938 | 2,337,139 | 282,197 | 3,246,274 | 7,414,702 |
| | 16 | 2,861,693 | 3,000,932 | 736,446 | 6,599,071 | 8,978,421 |
| | 23 | 4,677,736 | 10,134,664 | 3,294,066 | 18,106,466 | 6,291,301 |
| | 30 | 2,253,868 | 11,072,846 | 2,963,155 | 16,289,869 | 9,604,797 |
| October | 7 | 1,436,956 | 7,197,702 | 3,074,723 | 11,709,381 | 11,308,739 |
| | 14 | 1,575,017 | 7,043,761 | 6,446,258 | 15,065,036 | 8,789,151 |
| | 21 | 1,816,060 | 11,532,537 | 5,933,770 | 19,282,367 | 11,558,396 |
| Totals | | 16,355,389 | 55,997,649 | 23,932,477 | 96,285,515 | 71,931,845 |
| Average similar period: | | | | | | |
| 1953-62 | | 7,213,260 | 37,800,188 | 14,822,392 | 59,835,839 | |

1/ Includes receipts at country, interior private and mill elevators, interior semi-public terminals and platform loadings.

2/ Revised.

Visible Supply of Canadian Wheat, October 21, 1964
Compared with Approximately the Same Date, 1962 and 1963

| Position | 1962 | 1963 | 1964 |
|--|---------|---------|---------|
| - thousand bushels - | | | |
| Country elevators - Manitoba | 21,816 | 20,448 | 15,826 |
| Saskatchewan | 112,664 | 118,640 | 86,323 |
| Alberta | 56,005 | 61,645 | 52,545 |
| Totals | 190,485 | 200,733 | 154,694 |
| Interior private and mill | 7,517 | 6,843 | 7,045 |
| Interior terminals | 6,869 | 6,248 | 4,627 |
| Vancouver-New Westminster | 12,612 | 7,541 | 10,519 |
| Victoria | 896 | 924 | 474 |
| Prince Rupert | - | 560 | 486 |
| Churchill | 2,301 | 3,505 | 1,753 |
| Fort William-Port Arthur | 46,177 | 40,660 | 31,528 |
| In transit rail (Western Division) | 16,189 | 17,874 | 15,608 |
| Bay, Lake and Upper St. Lawrence ports | 30,461 | 37,066 | 36,361 |
| Lower St. Lawrence and Maritime ports | 31,224 | 30,819 | 35,891 |
| In transit lake | 11,143 | 5,119 | 5,480 |
| In transit rail (Eastern Division) | 561 | 2,374 | 784 |
| Totals | 356,435 | 360,265 | 305,248 |

Grading of Wheat Inspected, August-September 1964, with Comparisons

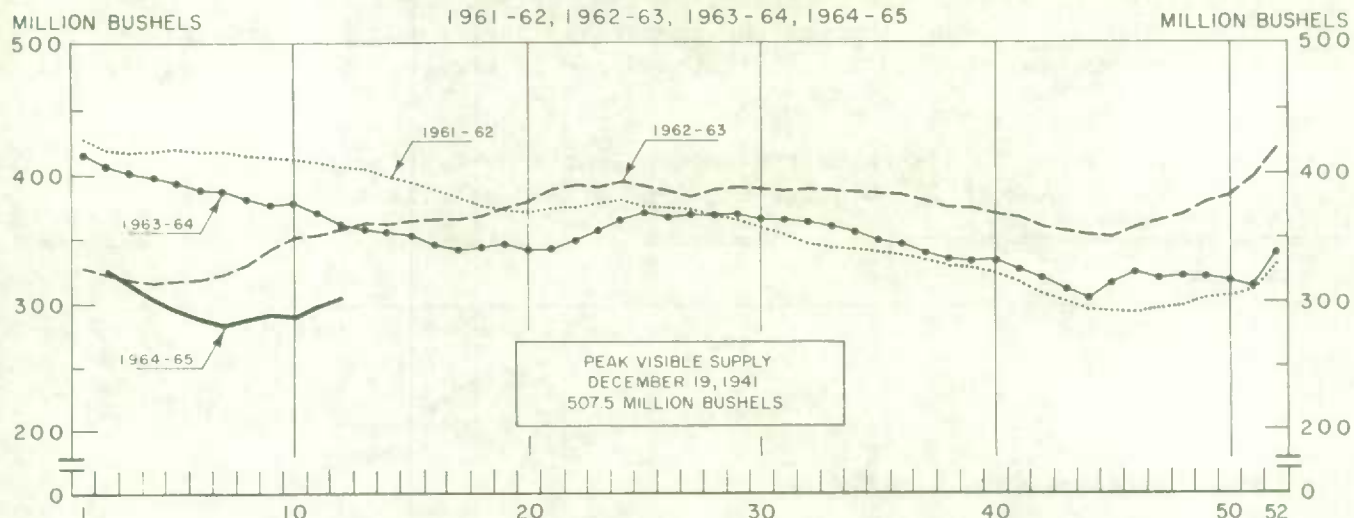
| Grade | Crop Year | | August-September | | | |
|-----------------------------|--------------------|-----------|------------------|-----------|--------|-----------|
| | Average | 1963-64 | 1963 | | 1964 | |
| | 1958-59 1962-63 | | | | | |
| | per cent | per cent | cars | per cent | cars | per cent |
| No. 1 Man. Northern | 7.6 | 4.8 | 2,439 | 6.5 | 2,562 | 4.3 |
| No. 2 Man. Northern | 38.0 | 49.2 | 13,741 | 36.7 | 33,635 | 56.7 |
| No. 3 Man. Northern | 22.6 | 25.1 | 5,632 | 15.0 | 14,102 | 23.8 |
| No. 4 Man. Northern | 10.0 | 6.6 | 5,842 | 15.6 | 2,269 | 3.8 |
| No. 5 Wheat | 4.4 | 3.4 | 2,737 | 7.3 | 1,133 | 1.9 |
| No. 6 Wheat | 0.6 | 0.5 | 369 | 1.0 | 320 | 0.5 |
| Feed Wheat | <u>1/</u> | <u>1/</u> | 2 | <u>1/</u> | 2 | <u>1/</u> |
| Others Red Spring | 10.1 | 3.0 | 3,365 | 9.0 | 1,767 | 3.0 |
| C.W. Garnet | 0.1 | 0.4 | 246 | 0.7 | 154 | 0.3 |
| C.W. White Spring | 0.1 | 0.1 | 67 | 0.2 | 32 | 0.1 |
| C.W. Mixed Wheat | <u>1/</u> | 0.1 | 15 | <u>1/</u> | 34 | 0.1 |
| Alberta Winter | 0.2 | 0.9 | 1,053 | 2.8 | 549 | 0.9 |
| Nos. 1-6 C.W. Amber Durum . | 6.0 | 5.7 | 1,885 | 5.0 | 2,627 | 4.4 |
| Others C.W. Amber Durum ... | 0.2 | 0.2 | 79 | 0.2 | 142 | 0.2 |
| Totals | 100.0 | 100.0 | 37,472 | 100.0 | 59,328 | 100.0 |

Gross bushels (approx.) ... 72,337,000 115,197,000

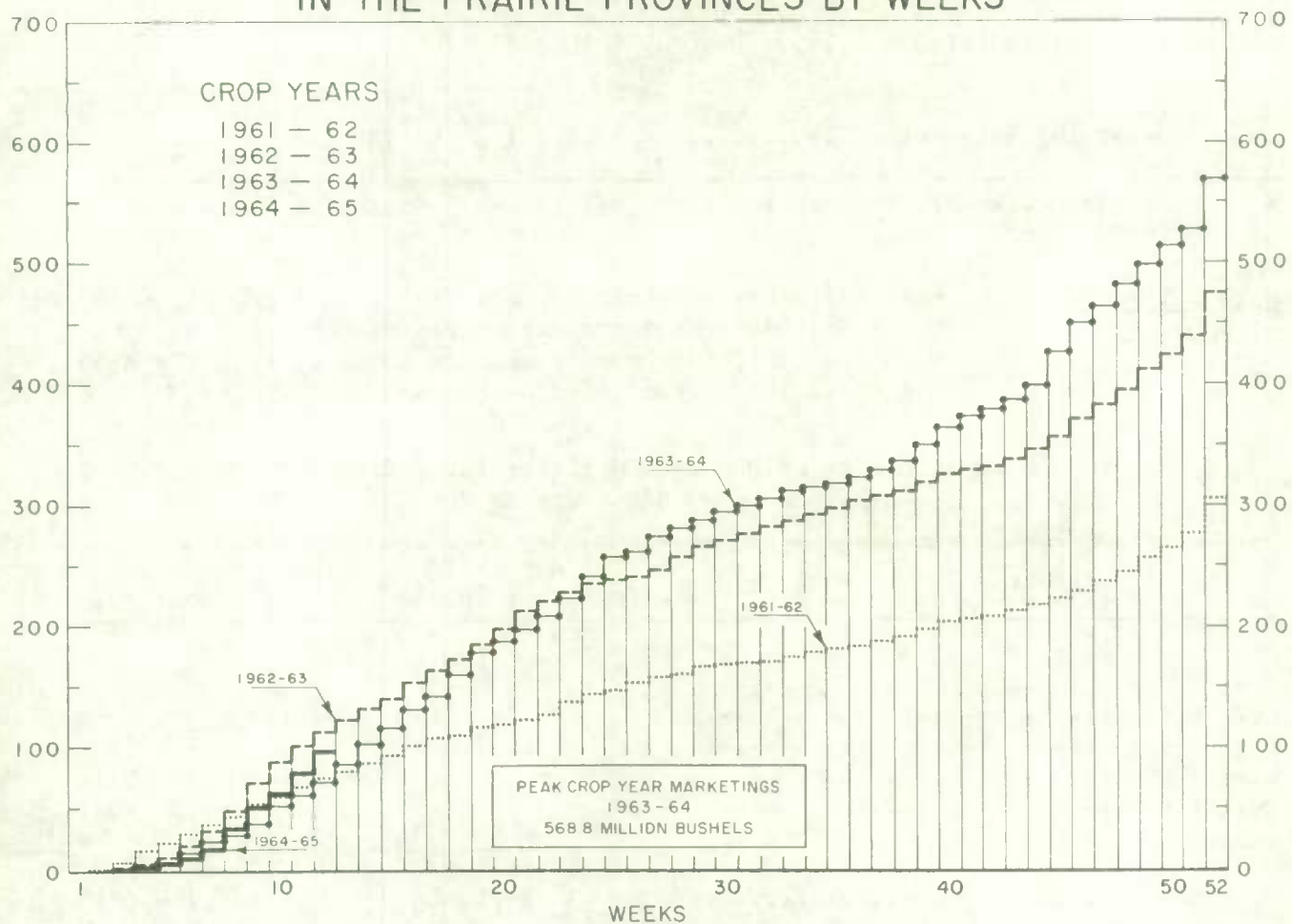
1/ Less than .05 per cent.

WEEKLY VISIBLE SUPPLY OF CANADIAN WHEAT

1961-62, 1962-63, 1963-64, 1964-65



CUMULATIVE RECORD OF WHEAT MARKETINGS IN THE PRAIRIE PROVINCES BY WEEKS



(Data in both charts for crop years beginning August 1)

Wheat Shipments to
the United States
by Destination

There were no vessel and rail shipments of wheat to the United States, either for re-export or retention for domestic use, from the beginning of the current crop year to October 21, 1964. During the comparable periods of 1963 and 1962 rail and vessel shipments amounted to 181 thousand and 17 thousand bushels, respectively.

Wheat Shipments to the United States by Destination
August 1 - October 21, 1964 with Comparisons

| Destination | 1962 | 1963 | 1964 |
|------------------------------|--------|-------------|------|
| | | - bushels - | |
| <u>By Vessel</u> | | | |
| Duluth-Superior | - | 123,729 | - |
| <u>By Rail</u> | | | |
| U.S.A. Domestic Points | 16,767 | 57,034 | - |
| Totals, Shipments | 16,767 | 180,763 | - |

* Either for re-export or retention for domestic use. Excluding bagged seed.

Rail Shipments
of Wheat to
Maritime Ports

Rail shipments of wheat to Maritime Ports from Bay, Lake and Upper St. Lawrence Ports during August-September 1964 amounted to 1,249 thousand bushels compared with the August-September 1963 figure of 334 thousand.

Rail Shipments of Wheat to Maritime Ports from Bay
Lake and Upper St. Lawrence Ports

| Origin of Shipment | August 1- September 30, 1963 | August 1- September 30, 1964 |
|-----------------------|---------------------------------|---------------------------------|
| | - bushels - | |
| Port McNicoll | 277,726 | - |
| Midland, Tiffin | 56,423 | 406,546 |
| Owen Sound | - | 240,671 |
| Goderich | - | 601,804 |
| Totals | 334,149 | 1,249,021 |

Rail Shipments of Wheat from Fort William-Port Arthur, 1961-62--1964-65

| Month | 1961-62 | 1962-63 | 1963-64 | 1964-65 |
|-----------------|---------|---------|---------|---------|
| - bushels - | | | | |
| August | 20,648 | 13,933 | 5,500 | 7,786 |
| September | 14,598 | 11,657 | 9,104 | 19,564 |
| October | 33,944 | 22,716 | 25,355 | |
| November | 22,915 | 12,024 | 13,500 | |
| December | 60,167 | 12,778 | 23,047 | |
| January | 126,533 | 39,534 | 58,772 | |
| February | 68,421 | 22,967 | 28,768 | |
| March | 37,000 | 86,398 | 21,268 | |
| April | 37,777 | 69,067 | 26,063 | |
| May | 11,203 | 11,851 | 7,941 | |
| June | 16,022 | 15,746 | 20,518 | |
| July | 17,315 | 11,158 | 12,707 | |
| Totals | 466,543 | 329,829 | 252,543 | |

Distribution of Rail Shipments of Wheat from Fort William-Port Arthur, September 1964

| Grade | Quebec | Ontario |
|---------------|--------|---------|
| - bushels - | | |
| 5 Wheat | 1,500 | 2,000 |
| Durum | 6,000 | - |
| Others | - | 10,064 |
| Totals | 7,500 | 12,064 |

Overseas Exports of Canadian Grain by Ports of Loading, August 1-October 21, 1964
with Comparisons

| Port | Wheat <u>1/</u> | Durum Wheat <u>1/</u> | Oats <u>1/</u> | Barley | Rye | Flaxseed | Rapeseed <u>2/</u> |
|------------------------------|-----------------|--------------------------|----------------|-----------|---------|-----------|--------------------|
| - bushels - | | | | | | | |
| <u>Pacific Seaboard</u> | | | | | | | |
| Van.-New West. | 34,260,649 | - | - | 2,345,177 | 81,520 | 1,261,488 | 323,248 |
| Victoria | 1,931,355 | - | - | - | - | - | - |
| Prince Rupert | 2,092,010 | - | - | - | - | - | - |
| <u>Churchill</u> | 21,644,772 | - | - | - | - | - | - |
| <u>Lakehead Direct</u> | 979,707 | 482,991 | 191,058 | 927,515 | 437,500 | 819,728 | - |
| <u>St. Lawrence</u> | | | | | | | |
| Montreal | 13,041,258 | 2,251,188 | 181,335 | 46,667 | 10,720 | 715,219 | - |
| Sorel | 4,694,324 | 208,457 | - | - | - | 42,629 | - |
| Three Rivers | 2,167,117 | 37,333 | - | - | 176,600 | 56,684 | - |
| Quebec | 5,219,666 | 1,392,907 | - | - | - | - | - |
| Baie Comeau | 19,016,861 | 2,741,956 | - | - | - | 152,995 | - |
| Totals | 105,047,719 | 7,114,832 | 372,393 | 3,319,359 | 706,340 | 3,048,743 | 323,248 |
| Aug. 1-Oct. 23, 1963 .. | 106,890,664 | 6,127,864 | 2,149,013 | 3,698,317 | 598,559 | 2,136,105 | 764,303 |

1/ Excluding bagged seed.

2/ In bushels of 50 pounds.

Freight Assistance Shipments Claims filed for payment up to September 30, 1964 represent the movement of 736 thousand bushels of wheat from the Prairie Provinces to Eastern Canada and British Columbia under the freight assistance policy during August 1964. During the same month last year claims had been filed for a total of 1,139 thousand bushels, indicating on the assumption of approximately the same rate of submission of claims during both months, that August shipments of wheat under the policy were running about 35 per cent below those of last year. Revised data on August 1963 shipments of wheat based on claims submitted up to September 30, 1964 place the one-month total at 1,440 thousand bushels. The bulk of the shipments during the month under review went to destinations in Quebec and Ontario, with these two provinces accounting for 50 per cent and 25 per cent of the total, respectively.

Provincial Distribution of Wheat Shipments under the Freight Assistance Policy
August 1964 and 1963

| Month | Nfld. | P.E.I. | N.S. | N.B. | Que. | Ont. | B.C. | Total |
|------------------------------|-------|--------|------|------|------|------|------|-------|
| - thousand bushels - | | | | | | | | |
| August, 1964 <u>1</u> /..... | 57 | 4 | 87 | 22 | 368 | 182 | 16 | 736 |
| Same period 1963: | | | | | | | | |
| Preliminary <u>2</u> /..... | 3 | 12 | 127 | 30 | 507 | 436 | 24 | 1,139 |
| Revised <u>1</u> /..... | 19 | 15 | 143 | 43 | 606 | 515 | 99 | 1,440 |

Preliminary data on millfeed shipments under the freight assistance policy indicate shipments of 22,883 tons during the first month of the current crop year. During August 1963 claims had been filed for a total of 23,334 tons, indicating on the assumption of approximately the same rate of submission of claims during August 1964 and August 1963, that this year's shipments of millfeeds under the policy were running about 2 per cent below those of 1963. Revised data on August 1963 shipments of millfeeds based on claims submitted up to September 30, 1964 place the one-month total at 37,854 tons. Shipments of 12,946 tons to Quebec and 4,958 tons to Ontario, accounted for 57 per cent and 22 per cent, respectively, of the August movement of freight-assisted millfeeds.

Provincial Distribution of Millfeed Shipments under the Freight Assistance Policy
August 1964 and 1963

| Province | 1963 | | 1964 |
|----------------------------|------------------------|--------------------|------------------------|
| | Preliminary <u>2</u> / | Revised <u>1</u> / | Preliminary <u>1</u> / |
| - tons - | | | |
| Newfoundland | 149 | 540 | 98 |
| Prince Edward Island | 484 | 585 | 681 |
| Nova Scotia | 1,864 | 2,514 | 2,431 |
| New Brunswick | 1,663 | 2,283 | 1,679 |
| Quebec | 12,673 | 18,844 | 12,946 |
| Ontario | 6,128 | 10,497 | 4,958 |
| British Columbia | 373 | 2,591 | 90 |
| Totals | 23,334 | 37,854 | 22,883 |

1/ Based on claims filed up to September 30, 1964.

2/ Based on claims filed up to September 30, 1963.

Monthly Exports of Canadian Wheat and Wheat Flour

| Year and Month | Wheat in Bulk <u>1/</u> | Bagged Seed Wheat <u>2/</u> | Total Wheat | Wheat Flour <u>2/</u> <u>3/</u> | Total <u>3/</u> Wheat and Wheat Flour |
|----------------------|----------------------------|-----------------------------------|----------------|------------------------------------|---|
| - thousand bushels - | | | | | |
| <u>1962-63</u> | | | | | |
| August | 21,944 | 157 | 22,101 | 2,852 | 24,953 |
| September | 25,040 | 200 | 25,240 | 2,604 | 27,844 |
| October | 29,705 | 31 | 29,737 | 2,181 | 31,917 |
| November | 33,309 | 144 | 33,452 | 2,176 | 35,628 |
| December | 20,949 | 451 | 21,399 | 2,305 | 23,705 |
| January | 21,486 | 473 | 21,959 | 1,586 | 23,545 |
| February | 18,779 | 743 | 19,522 | 1,811 | 21,333 |
| March | 19,246 | 1,373 | 20,618 | 2,454 | 23,072 |
| April | 28,916 | 422 | 29,338 | 2,330 | 31,669 |
| May | 35,355 | 14 | 35,369 | 2,186 | 37,555 |
| June | 24,512 | <u>4/</u> | 24,513 | 2,837 | 27,350 |
| July | 20,854 | - | 20,854 | 1,943 | 22,798 |
| Totals ... | 300,095 | 4,007 | 304,102 | 27,265 | 331,367 |
| <u>1963-64 5/</u> | | | | | |
| August | 29,204 | 160 | 29,364 | 3,039 | 32,403 |
| September | 42,556 | 155 | 42,711 | 1,645 | 44,356 |
| October | 59,020 | 7 | 59,027 | 2,384 | 61,411 |
| November | 65,296 | 245 | 65,541 | 3,881 | 69,422 |
| December | 41,763 | 397 | 42,160 | 5,393 | 47,553 |
| January | 28,451 | 482 | 28,933 | 6,607 | 35,541 |
| February | 21,675 | 501 | 22,176 | 6,709 | 28,885 |
| March | 22,510 | 605 | 23,115 | 5,278 | 28,393 |
| April | 43,211 | 261 | 43,472 | 6,361 | 49,833 |
| May | 56,992 | 38 | 57,030 | 4,066 | 61,096 |
| June | 65,036 | 146 | 65,182 | 4,485 | 69,667 |
| July | 61,012 | 35 | 61,047 | 4,539 | 65,586 |
| Totals ... | 536,726 | 3,033 | 539,758 | 54,388 | 594,146 |
| <u>1964-65 5/</u> | | | | | |
| August | 42,226 | 44 | 42,270 | 4,073 | 46,343 |
| September | 42,792 | 145 | 42,937 | 2,133 | 45,069 |
| Totals ... | 85,018 | 189 | 85,206 | 6,206 | 91,412 |

1/ Export clearances including shipments to the United States compiled by the Statistics Branch, Board of Grain Commissioners for Canada.

2/ Compiled from Canadian Customs returns, 1962-63 adjusted to remove effect of time lag in reporting.

3/ In terms of wheat equivalent. Wheat flour conversion rate: 2.3 bushels per cwt.

4/ Less than 500 bushels.

5/ Preliminary.

Exports of Canadian Wheat 1/ by Destination, September 1964 and 1963

| Destination | Wheat | Durum | All Wheat | |
|------------------------------------|----------------|-----------|----------------|-------------------|
| | (Except Durum) | Wheat | September 1964 | September 1963 2/ |
| - bushels - | | | | |
| <u>Western Europe</u> | | | | |
| EEC | | | | |
| Belgium and Luxembourg | 698,200 | 428,400 | 1,126,600 | 2,581,173 |
| France | 140,787 | 7,245 | 148,032 | 1,209,134 |
| Germany, Federal Republic | 1,234,205 | 796,058 | 2,030,263 | 5,098,318 |
| Italy | 331,334 | - | 331,334 | 1,668,987 |
| Netherlands | 431,440 | - | 431,440 | 405,991 |
| Sub-totals | 2,835,966 | 1,231,703 | 4,067,669 | 10,963,603 |
| <u>Other Western Europe</u> | | | | |
| Britain | 7,469,236 | - | 7,469,236 | 8,029,978 |
| Ireland | - | - | - | 298,667 |
| Norway | 505,120 | - | 505,120 | 1,060,267 |
| Switzerland | - | 421,699 | 421,699 | 1,647,469 |
| Sub-totals | 7,974,356 | 421,699 | 8,396,055 | 11,036,381 |
| Totals | 10,810,322 | 1,653,402 | 12,463,724 | 21,999,984 |
| <u>Eastern Europe</u> | | | | |
| Albania | 400,400 | - | 400,400 | - |
| Bulgaria | 539,467 | - | 539,467 | - |
| Czechoslovakia | 5,379,241 | - | 5,379,241 | - |
| Germany, Democratic Republic | 1,625,157 | - | 1,625,157 | - |
| Poland | 3,276,871 | 1,093,248 | 4,370,119 | 3,950,260 |
| U.S.S.R. (Russia) | - | - | - | 5,077,371 |
| Yugoslavia | - | - | - | 664,533 |
| Totals | 11,221,136 | 1,093,248 | 12,314,384 | 9,692,164 |
| <u>Africa</u> | | | | |
| Mozambique | - | - | - | 16,267 |
| Nigeria | - | - | - | 39,600 |
| Total | - | - | - | 55,867 |
| <u>Asia</u> | | | | |
| China, Communist | 4,483,191 | - | 4,483,191 | 2,922,640 |
| Hong Kong | 72,800 | - | 72,800 | 37,333 |
| India | 1,582,597 | - | 1,582,597 | - |
| Japan | 7,342,059 | - | 7,342,059 | 4,000,880 |
| Korea | - | - | - | 511,467 |
| Malaysia | 58,800 | - | 58,800 | - |
| Pakistan | 1,836,800 | - | 1,836,800 | - |
| Philippines | 633,621 | - | 633,621 | 1,373,120 |
| Saudi Arabia | 109,859 | - | 109,859 | 294,575 |
| Taiwan | 57,871 | - | 57,871 | 39,200 |
| Totals | 16,177,598 | - | 16,177,598 | 9,179,215 |
| <u>Oceania</u> | | | | |
| U.S. Oceania | 38,565 | - | 38,565 | 49,317 |
| <u>Western Hemisphere</u> | | | | |
| Barbados | 60 | - | 60 | - |
| Cuba | 254,645 | - | 254,645 | 374,080 |
| Ecuador | 443,950 | - | 443,950 | 312,548 |
| Guatemala | - | - | - | 50,000 |
| Jamaica | - | - | - | 996 |
| Nicaragua | 51,333 | - | 51,333 | - |
| Peru | - | - | - | 375,947 |
| Venezuela | 1,047,574 | - | 1,047,574 | 329,651 |
| United States Domestic 3/..... | - | - | - | 136,560 |
| Totals | 1,797,562 | - | 1,797,562 | 1,579,788 |
| Sub-totals, All Countries ... | 40,045,183 | 2,746,650 | 42,791,833 | 42,556,335 |
| Bagged seed 4/..... | - | - | 144,706 | 129,475 |
| Totals, All Countries | 40,045,183 | 2,746,650 | 42,936,539 | 42,685,810 |

NOTE: See footnotes on page 18.

Cumulative Exports of Canadian Wheat 1/ by Destination

| Destination | August-September 1964 | | | Total |
|------------------------------|-------------------------|----------------|----------------|------------------------------------|
| | Wheat (Except Durum) | Durum Wheat | Total Wheat | Same Period Last Year <u>2/</u> |
| - bushels - | | | | |
| <u>Western Europe</u> | | | | |
| <u>EEC</u> | | | | |
| Belgium and Luxembourg ... | 2,439,196 | 484,106 | 2,923,302 | 4,632,144 |
| France | 140,787 | 44,578 | 185,365 | 1,509,110 |
| Germany, Federal Republic. | 3,695,273 | 1,214,685 | 4,909,958 | 6,647,046 |
| Italy | 784,934 | - | 784,934 | 2,154,451 |
| Netherlands | 587,253 | - | 587,253 | 1,220,463 |
| Sub-totals | 7,647,443 | 1,743,369 | 9,390,812 | 16,163,214 |
| <u>Other Western Europe</u> | | | | |
| Britain | 14,303,581 | - | 14,303,581 | 15,531,286 |
| Ireland | - | - | - | 1,127,467 |
| Malta and Gozo | - | - | - | 281,294 |
| Norway | 1,601,120 | - | 1,601,120 | 1,667,203 |
| Sweden | - | - | - | 22,400 |
| Switzerland | 144,928 | 421,699 | 566,627 | 1,793,311 |
| Sub-totals | 16,049,629 | 421,699 | 16,471,328 | 20,422,961 |
| Totals | 23,697,072 | 2,165,068 | 25,862,140 | 36,586,175 |
| <u>Eastern Europe</u> | | | | |
| Albania | 1,031,016 | - | 1,031,016 | - |
| Bulgaria | 539,467 | - | 539,467 | - |
| Czechoslovakia | 10,333,160 | - | 10,333,160 | - |
| Germany, Democratic Republic | 3,132,658 | - | 3,132,658 | - |
| Poland | 5,255,938 | 3,784,181 | 9,040,119 | 6,047,527 |
| U.S.S.R. (Russia) | 908,480 | - | 908,480 | 5,077,371 |
| Yugoslavia | - | - | - | 3,501,866 |
| Totals | 21,200,719 | 3,784,181 | 24,984,900 | 14,626,764 |
| <u>Africa</u> | | | | |
| Mozambique | - | - | - | 40,867 |
| Nigeria | 47,512 | - | 47,512 | 96,533 |
| Republic of South Africa ... | 944,533 | - | 944,533 | - |
| Southern Rhodesia | 48,210 | - | 48,210 | - |
| Totals | 1,040,255 | - | 1,040,255 | 137,400 |

Cumulative Exports of Canadian Wheat 1/ by Destination

| Destination | August-September 1964 | | | Total |
|---------------------------------------|-------------------------|----------------|----------------|------------------------------------|
| | Wheat (Except Durum) | Durum Wheat | Total Wheat | Same Period Last Year <u>2/</u> |
| - bushels - | | | | |
| <u>Asia</u> | | | | |
| Burma | - | - | - | 78,931 |
| China, Communist | 13,325,067 | - | 13,325,067 | 2,922,640 |
| Hong Kong | 179,200 | - | 179,200 | 114,426 |
| India | 2,403,930 | - | 2,403,930 | - |
| Israel | 529,200 | - | 529,200 | 537,040 |
| Japan | 10,154,043 | - | 10,154,043 | 9,669,413 |
| Korea | - | - | - | 511,467 |
| Malaysia | 131,787 | - | 131,787 | 58,800 |
| Pakistan | 1,836,800 | - | 1,836,800 | - |
| Philippines | 705,861 | - | 705,861 | 2,455,476 |
| Saudi Arabia | 177,180 | - | 177,180 | 440,318 |
| Taiwan | 223,630 | - | 223,630 | 77,781 |
| Totals | 29,666,698 | - | 29,666,698 | 16,866,292 |
| <u>Oceania</u> | | | | |
| U.S. Oceania | 38,565 | - | 38,565 | 55,029 |
| <u>Western Hemisphere</u> | | | | |
| Barbados | 60 | - | 60 | - |
| Cuba | 960,245 | - | 960,245 | 374,080 |
| Dominican Republic | - | - | - | 156,800 |
| Ecuador | 443,950 | - | 443,950 | 312,548 |
| El Salvador | - | - | - | 300,533 |
| Guatemala | - | - | - | 100,000 |
| Jamaica | 1,257 | - | 1,257 | 1,993 |
| Nicaragua | 51,333 | - | 51,333 | - |
| Peru | 384,533 | - | 384,533 | 730,614 |
| Venezuela | 1,583,681 | - | 1,583,681 | 1,344,573 |
| United States Domestic <u>3/</u> | - | - | - | 167,593 |
| Totals | 3,425,059 | - | 3,425,059 | 3,488,734 |
| Sub-totals, All Countries. | 79,068,368 | 5,949,249 | 85,017,617 | 71,760,394 |
| Bagged seed <u>4/</u> | | | 188,582 | 316,664 |
| Totals, All Countries | 79,068,368 | 5,949,249 | 85,206,199 | 72,077,058 |

1/ Overseas clearances as reported by the Statistics Branch, Board of Grain Commissioners for Canada, for all countries except the United States. Excluding bagged seed. 2/ Revised. 3/ Compiled from returns of Canadian elevator licensees and shippers and advice from American grain correspondents. 4/ Compiled from Canadian Customs returns, 1963 adjusted for time lag.

Customs Exports of Canadian Wheat Flour by Countries of Consignment

| Destination | June 1964 <u>1/</u> | September 1964 <u>2/</u> | August-September | |
|-------------------------------|---------------------|--------------------------|------------------|----------------|
| | | | 1964 <u>2/</u> | 1963 <u>1/</u> |
| - bushels - | | | | |
| <u>Western Europe</u> | | | | |
| <u>E.E.C.</u> | | | | |
| Belgium and Luxembourg | - | 16,861 | 16,861 | 29,571 |
| Italy | 805 | - | 805 | - |
| Netherlands | 814 | - | - | 2,167 |
| Sub-totals | 1,619 | 16,861 | 17,666 | 31,738 |
| <u>Other Western Europe</u> | | | | |
| Britain | 754,906 | 842,816 | 1,758,980 | 2,113,419 |
| Denmark | - | - | - | 920 |
| Gibraltar | - | - | - | 8,308 |
| Greece | 497 | - | 2,281 | 3,367 |
| Iceland | - | - | - | 1,610 |
| Portugal | 11,500 | 5,412 | 8,586 | 24,845 |
| Sweden | - | 506 | 506 | 759 |
| Sub-totals | 766,903 | 848,734 | 1,770,353 | 2,153,228 |
| Totals | 768,522 | 865,595 | 1,788,019 | 2,184,966 |
| <u>Eastern Europe</u> | | | | |
| U.S.S.R. (Russia) | 1,960,775 | 265,213 | 1,688,718 | - |
| <u>Africa</u> | | | | |
| Angola | - | - | 1,150 | 460 |
| British Africa nes | - | - | - | 6,221 |
| Congo-Leo. | 6,900 | 28,060 | 28,060 | 9,775 |
| Ethiopia | - | 230 | 230 | - |
| Gambia | - | 8,970 | 12,190 | - |
| Ghana | 127,687 | 45,370 | 165,773 | 83,773 |
| Ivory Coast | 230 | - | - | - |
| Liberia | 4,664 | 6,125 | 11,726 | 14,288 |
| Mozambique | 5,624 | 6,440 | 7,877 | 5,925 |
| Nigeria | 115 | - | 508 | 8,793 |
| Nyasaland | 1,808 | 3,611 | 3,611 | 10,389 |
| Portuguese Africa nes | 6,900 | 3,680 | 9,430 | 18,572 |
| Sierra Leone | 58,045 | 45,972 | 147,747 | 70,560 |
| Tanganyika | 2,300 | - | - | 1,840 |
| Togo | 7,700 | 17,526 | 26,588 | 28,568 |
| Totals | 221,973 | 165,984 | 414,890 | 259,164 |
| <u>Asia</u> | | | | |
| British Middle East nes | 3,229 | - | 6,311 | 6,955 |
| Burma | - | - | - | 66,100 |
| Ceylon | - | - | - | 586,056 |
| Hong Kong | 52,348 | 69,943 | 144,760 | 159,698 |
| Indonesia | 89,079 | - | - | - |
| Iran | - | - | 1,000 | 1,562 |
| Japan | 8,050 | 6,074 | 10,193 | 41,635 |
| Jordan | - | 110 | 110 | 356 |

Customs Exports of Canadian Wheat Flour by Countries of Consignment

| Destination | June 1964 <u>1/</u> | September 1964 <u>2/</u> | August-September | |
|-----------------------------------|---------------------|--------------------------|------------------|----------------|
| | | | 1964 <u>2/</u> | 1963 <u>1/</u> |
| - bushels - | | | | |
| <u>Asia (concluded)</u> | | | | |
| Kuwait | 2,291 | 5,663 | 8,239 | 7,873 |
| Lebanon | 25,836 | 5,152 | 9,982 | 9,561 |
| Malaysia | 52,431 | 51,373 | 100,039 | 130,232 |
| Portuguese Asia | - | 1,012 | 2,024 | 3,560 |
| Qatar | - | - | - | 258 |
| Saudi Arabia | 2,300 | 518 | 518 | 276 |
| Thailand | 11,040 | 46,747 | 78,448 | 71,235 |
| Viet-Nam | 2,300 | - | - | - |
| Totals | 248,904 | 186,592 | 361,624 | 1,085,357 |
| <u>Oceania</u> | | | | |
| Australia | - | - | - | 28 |
| Fiji | 1,035 | 414 | 1,472 | 1,449 |
| French Oceania | - | - | 356 | 356 |
| United States Oceania | - | 115 | 115 | - |
| Totals | 1,035 | 529 | 1,943 | 1,833 |
| <u>Western Hemisphere</u> | | | | |
| Bahamas | 18,750 | 22,989 | 36,209 | 58,296 |
| Barbados | 15,969 | 21,675 | 23,382 | 30,691 |
| Bermuda | 12,211 | 6,136 | 18,319 | 20,606 |
| British Guiana | 2,378 | 2,811 | 5,709 | 4,669 |
| British Honduras | 1,937 | 596 | 4,205 | 9,078 |
| Chile | - | 920 | 920 | 2,328 |
| Costa Rica | 61,410 | 38,983 | 153,293 | 101,402 |
| Cuba | - | - | 788,840 | - |
| Dominican Republic | 3,565 | 2,300 | 2,300 | 11,500 |
| El Salvador | 1,355 | - | 200 | 1,592 |
| French West Indies | 230 | 230 | 460 | 230 |
| Guatemala | - | - | 3,450 | 3,680 |
| Haiti | 4,830 | 4,830 | 9,660 | 13,800 |
| Honduras | 5,520 | 2,185 | 7,383 | 6,900 |
| Jamaica | 143,232 | 184,267 | 290,578 | 256,404 |
| Leeward and Windward Islands | 107,787 | 102,108 | 165,211 | 190,831 |
| Netherlands Antilles | 5,198 | 20,284 | 33,573 | 42,810 |
| Nicaragua | - | - | - | 149,590 |
| Panama | 6,454 | 7,300 | 20,698 | 51,279 |
| Peru | 4,485 | 1,725 | 5,232 | 6,555 |
| St. Pierre and Miquelon | 1,490 | 1,380 | 4,358 | 1,667 |
| Surinam | 5,755 | 3,519 | 7,774 | 11,100 |
| Trinidad | 112,564 | 151,297 | 234,155 | 288,521 |
| United States | 51,920 | 73,204 | 134,412 | 129,653 |
| Totals | 567,040 | 648,739 | 1,950,321 | 1,393,182 |
| Totals, All Countries | 3,768,249 | 2,132,652 | 6,205,515 | 4,924,502 |

nes - not elsewhere specified.

1/ In terms of wheat equivalent. Adjusted to remove effect of time lag in the returns made by Customs. Conversion rate: 2.3 bushels per cwt.

2/ In terms of wheat equivalent. Preliminary and unadjusted for time lag. Conversion rate: 2.3 bushels per cwt.

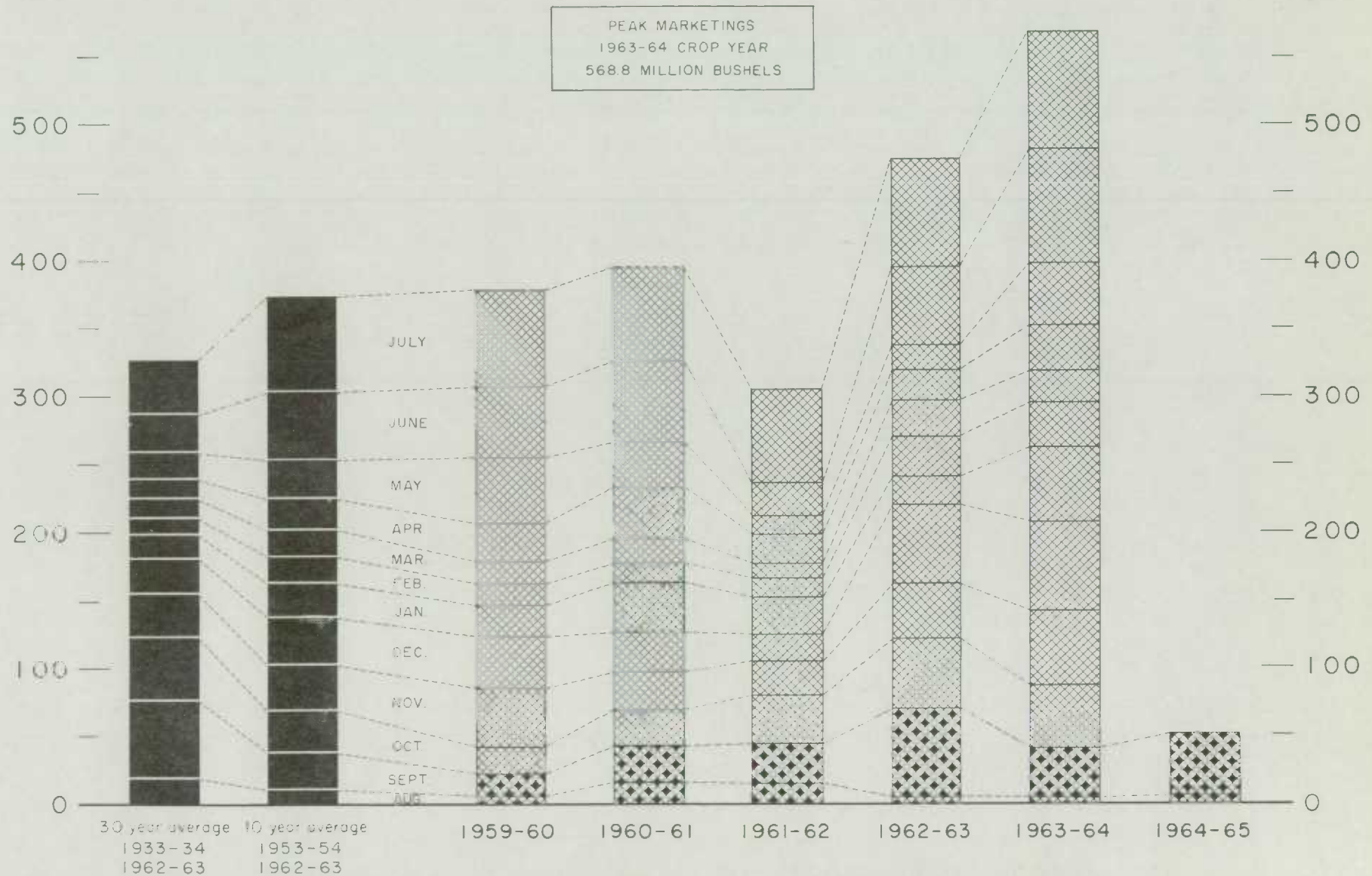
FARMERS' MARKETINGS OF WHEAT, PRAIRIE PROVINCES

(SPECIFIED PERIODS)

MILLION BUSHELS
600 —

MILLION BUSHELS
600 —

PEAK MARKETINGS
1963-64 CROP YEAR
568.8 MILLION BUSHELS

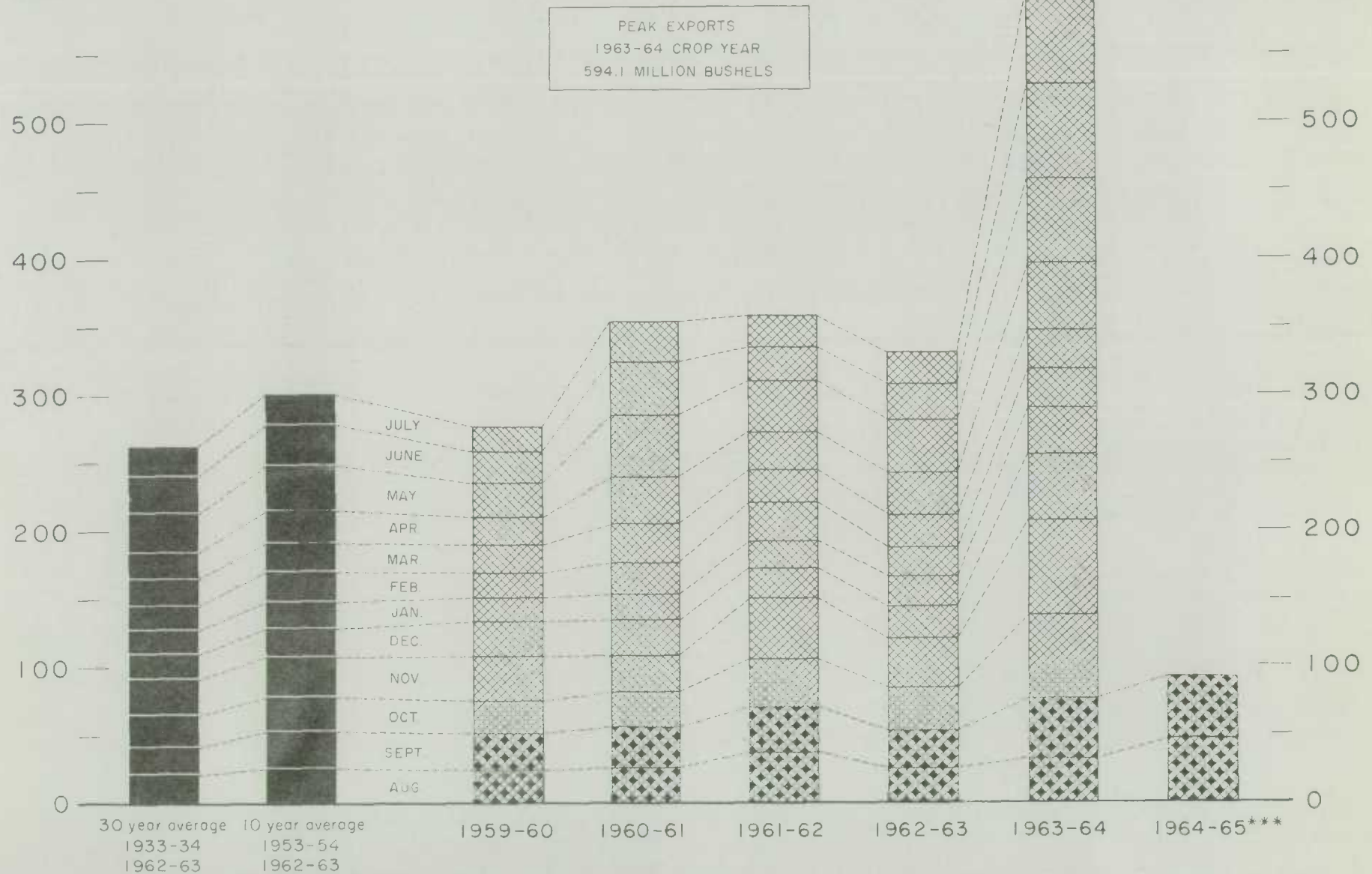


EXPORTS OF CANADIAN WHEAT* AND WHEAT FLOUR**

MILLION BUSHELS
600 —

(SPECIFIED PERIODS)

MILLION BUSHELS
— 600



*Beginning with 1956-57 includes bagged seed wheat

**in terms of wheat equivalent

***Preliminary.

FARMERS' MARKETINGS OF BARLEY, PRAIRIE PROVINCES

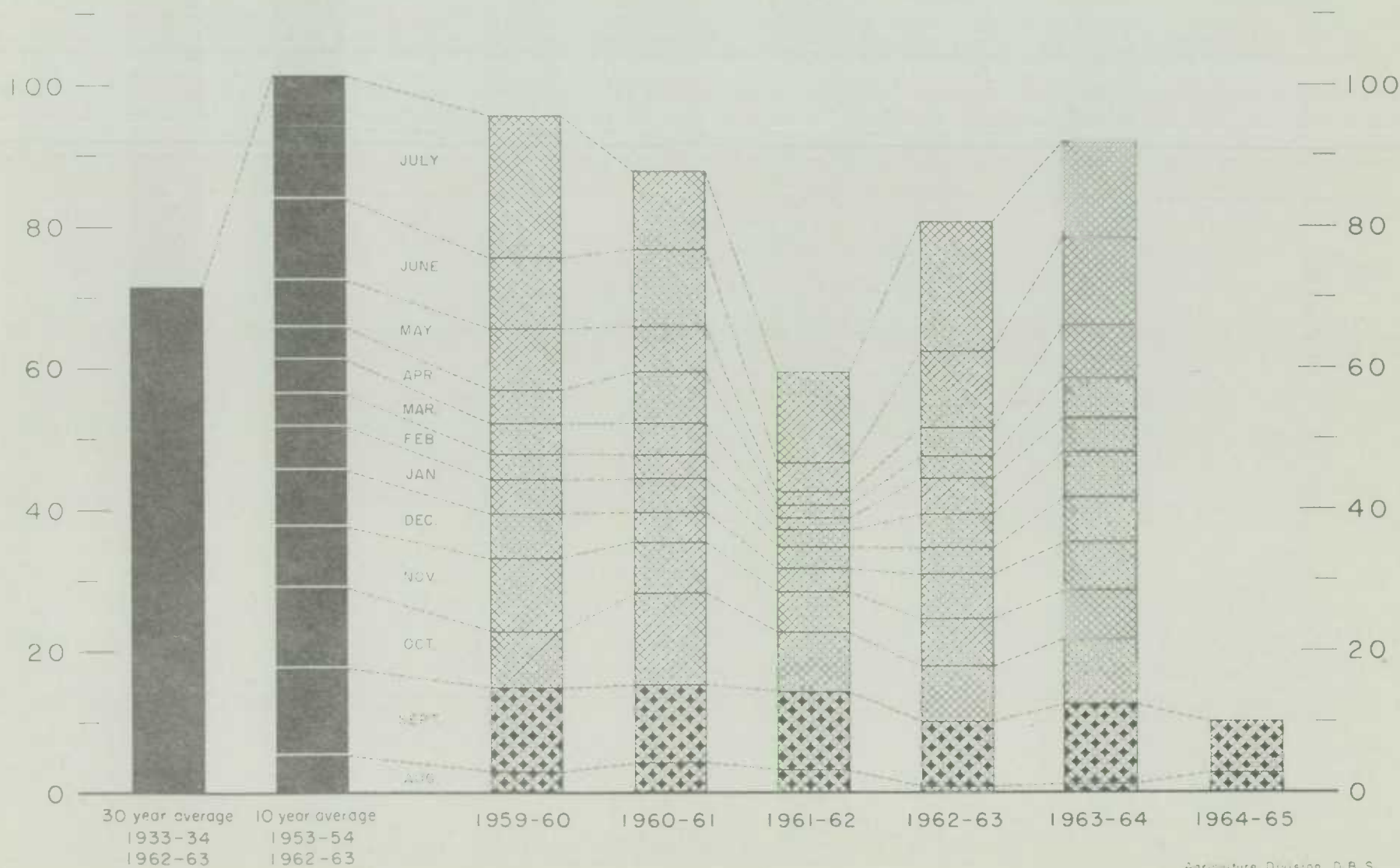
(SPECIFIED PERIODS)

MILLION BUSHELS

120 —

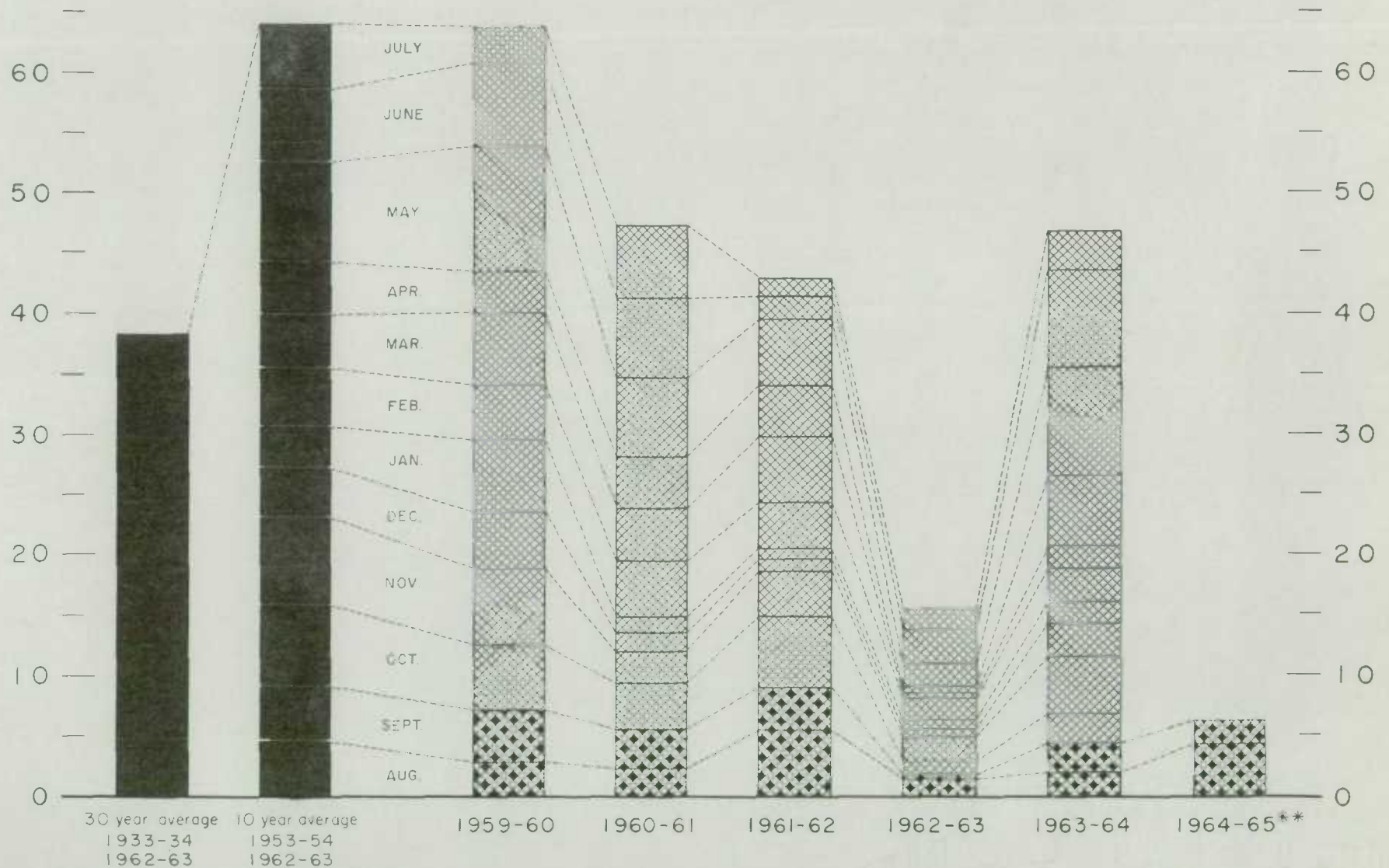
MILLION BUSHELS

— 120



EXPORTS OF CANADIAN BARLEY AND BARLEY PRODUCTS*

(SPECIFIED PERIODS)

MILLION BUSHELS
70 —MILLION BUSHELS
— 70

*In terms of grain equivalent.

**Preliminary

Agriculture Division D B S

FARMERS' MARKETINGS OF OATS, PRAIRIE PROVINCES (SPECIFIED PERIODS)

MILLION BUSHELS

90 —
—
80 —
—
70 —
—
60 —
—
50 —
—
40 —
—
30 —
—
20 —
—
10 —
—
0

MILLION BUSHELS

90 —
—
80 —
—
70 —
—
60 —
—
50 —
—
40 —
—
30 —
—
20 —
—
10 —
—
0

30 year average
1933-34
1962-63

10 year average
1953-54
1962-63

AUG
SEPT
OCT
NOV
DEC
JAN
FEB
MAR
APR
MAY
JUN
JULY

1959-60

1960-61

1961-62

1962-63

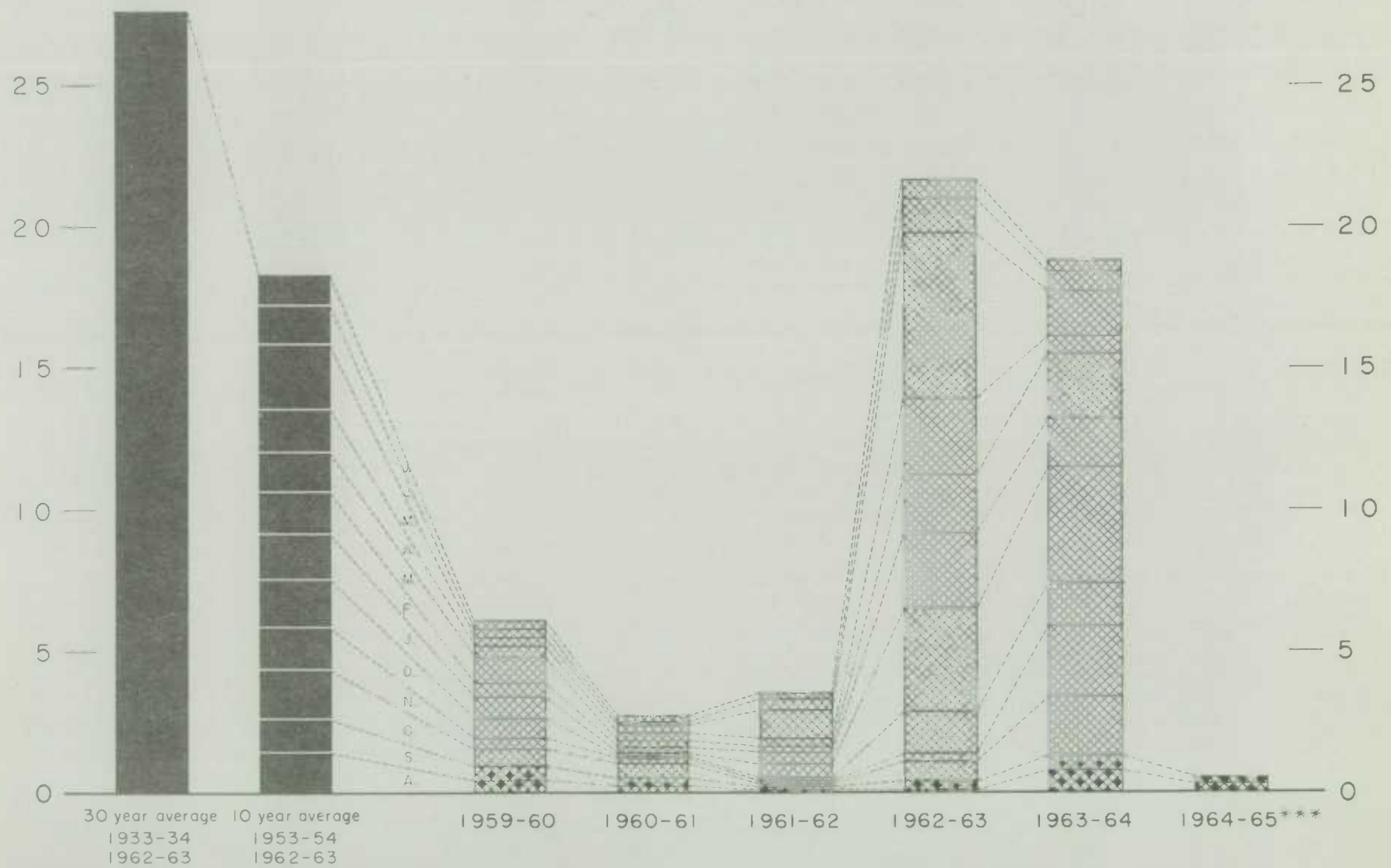
1963-64

1964-65

EXPORTS OF CANADIAN OATS* AND OAT PRODUCTS** (SPECIFIED PERIODS)

MILLION BUSHEL
30 —

MILLION BUSHEL
— 30



* Beginning with 1960-61 includes relatively small quantity of bagged seed.

** In terms of grain equivalent.

*** Preliminary.

Agriculture Division D.B.S.

FARMERS' MARKETINGS OF CANADA'S FIVE MAJOR GRAINS*, PRAIRIE PROVINCES

MILLION BUSHELS

800 —

—

700 —

—

600 —

—

500 —

—

400 —

—

300 —

—

200 —

—

100 —

—

0

30 year average

1933-34

1962-63

10 year average

1953-54

1962-63

JULY

JUNE

MAY

APR

MAR

FEB

JAN

DEC

NOV

OCT

SEPT

AUG

1959-60

1960-61

1961-62

1962-63

1963-64

1964-65

MILLION BUSHELS

800 —

—

700 —

—

600 —

—

500 —

—

400 —

—

300 —

—

200 —

—

100 —

—

0

*Wheat, oats, barley, rye and flaxseed

Agriculture Division D.B.S.

EXPORTS OF CANADA'S FIVE MAJOR GRAINS AND PRODUCTS*

(SPECIFIED PERIODS)

MILLION BUSHELS

700 —

—

600 —

—

500 —

—

400 —

—

300 —

—

200 —

—

100 —

—

0

MILLION BUSHELS

— 700

—

600 —

—

500 —

—

400 —

—

300 —

—

200 —

—

100 —

—

0

JULY
JUNE
MAY
APR.
MAR.
FEB.
JAN.
DEC.
NOV.
OCT.
SEPT.
AUG.

30 year average 10 year average
1933-34 1953-54
1962-63 1962-63

1959-60

1960-61

1961-62

1962-63

1963-64

1964-65**

* Wheat, bagged seed wheat, and wheat flour; oats, bagged seed oats, and oatmeal and rolled oats; barley, malt and pot and pearl; rye and flaxseed.

** Preliminary

Agriculture Division D. B. S.

Canadian Wheat Board Weekly Average Cash Wheat Prices
Basis in Store Fort William-Port Arthur

| Class and Grade | Week Ending | | | |
|--------------------------------------|-------------|------------|------------|------------|
| | October 9 | October 16 | October 23 | October 30 |
| - cents and eighths per bushel- | | | | |
| <u>Initial Payment to Producers</u> | | | | |
| 1 Northern | 150 | 150 | 150 | 150 |
| 2 Northern | 146 | 146 | 146 | 146 |
| 3 Northern | 142 | 142 | 142 | 142 |
| 4 Northern | 135 | 135 | 135 | 135 |
| 5 Wheat | 121 | 121 | 121 | 121 |
| 6 Wheat | 117 | 117 | 117 | 117 |
| Feed Wheat | 113 | 113 | 113 | 113 |
| 1 C.W. Garnet | 135 | 135 | 135 | 135 |
| 2 C.W. Garnet | 130 | 130 | 130 | 130 |
| 3 C.W. Garnet | 125 | 125 | 125 | 125 |
| 1 Alberta Red Winter | 134 | 134 | 134 | 134 |
| 2 Alberta Winter | 129 | 129 | 129 | 129 |
| 3 Alberta Winter | 123 | 123 | 123 | 123 |
| 1 C.W. Amber Durum | 150 | 150 | 150 | 150 |
| 2 C.W. Amber Durum | 146 | 146 | 146 | 146 |
| 3 C.W. Amber Durum | 142 | 142 | 142 | 142 |
| <u>International Wheat Agreement</u> | | | | |
| <u>and Domestic Sales</u> | | | | |
| 1 Northern | 204/5 | 204/4 | 204/4 | 204/4 |
| 2 Northern | 201/5 | 201/4 | 201/4 | 201/4 |
| 3 Northern | 199/5 | 199/4 | 199/2 | 198/4 |
| 4 Northern | 194/5 | 194/4 | 194/1 | 192/4 |
| 5 Wheat | 187/5 | 187/4 | 187/4 | 187/4 |
| 6 Wheat | 182/5 | 182/4 | 182/4 | 182/4 |
| Feed Wheat | 179/5 | 179/4 | 179/4 | 179/4 |
| 1 C.W. Garnet | 187/5 | 188/4 | 189/4 | 189/4 |
| 2 C.W. Garnet | 185/5 | 186/4 | 187/4 | 187/4 |
| 3 C.W. Garnet | 184/5 | 185/4 | 186/4 | 186/4 |
| 1 Alberta Red Winter | 190/5 | 190/4 | 190/4 | 190/4 |
| 2 Alberta Winter | 188/5 | 188/4 | 188/4 | 188/4 |
| 3 Alberta Winter | 187/5 | 187/4 | 187/4 | 187/4 |
| 1 C.W. Amber Durum | 208/5 | 208/4 | 208/4 | 206/7 |
| 2 C.W. Amber Durum | 205/5 | 205/4 | 205/1 | 203/4 |
| 3 C.W. Amber Durum | 199/5 | 199/4 | 199/2 | 198/4 |
| <u>Export - Class II</u> | | | | |
| 1 Northern | 204/5 | 204/4 | 204/4 | 204/4 |
| 2 Northern | 201/5 | 201/4 | 201/4 | 201/4 |
| 3 Northern | 199/5 | 199/4 | 199/2 | 198/4 |
| 4 Northern | 194/5 | 194/4 | 194/1 | 192/4 |
| 5 Wheat | 187/5 | 187/4 | 187/4 | 187/4 |
| 6 Wheat | 182/5 | 182/4 | 182/4 | 182/4 |
| Feed Wheat | 179/5 | 179/4 | 179/4 | 179/4 |
| 1 C.W. Garnet | 187/5 | 188/4 | 189/4 | 189/4 |
| 2 C.W. Garnet | 185/5 | 186/4 | 187/4 | 187/4 |
| 3 C.W. Garnet | 184/5 | 185/4 | 186/4 | 186/4 |
| 1 C.W. Amber Durum | 208/5 | 208/4 | 208/4 | 206/7 |
| 2 C.W. Amber Durum | 205/5 | 205/4 | 205/1 | 203/4 |
| 3 C.W. Amber Durum | 199/5 | 199/4 | 199/2 | 198/4 |

Canadian Wheat Board Weekly Average Cash Wheat Prices
Basis in Store Vancouver

| Class and Grade | Week Ending | | | |
|--------------------------------------|-------------|------------|------------|------------|
| | October 9 | October 16 | October 23 | October 30 |
| - cents and eighths per bushel - | | | | |
| <u>Initial Payment to Producers</u> | | | | |
| 1 Northern | 150 | 150 | 150 | 150 |
| 2 Northern | 146 | 146 | 146 | 146 |
| 3 Northern | 142 | 142 | 142 | 142 |
| 4 Northern | 135 | 135 | 135 | 135 |
| 5 Wheat | 121 | 121 | 121 | 121 |
| 6 Wheat | 117 | 117 | 117 | 117 |
| Feed Wheat | 113 | 113 | 113 | 113 |
| 1 C.W. Garnet | 135 | 135 | 135 | 135 |
| 2 C.W. Garnet | 130 | 130 | 130 | 130 |
| 3 C.W. Garnet | 125 | 125 | 125 | 125 |
| 1 Alberta Red Winter | 134 | 134 | 134 | 134 |
| 2 Alberta Winter | 129 | 129 | 129 | 129 |
| 3 Alberta Winter | 123 | 123 | 123 | 123 |
| 1 C.W. Amber Durum | 150 | 150 | 150 | 150 |
| 2 C.W. Amber Durum | 146 | 146 | 146 | 146 |
| 3 C.W. Amber Durum | 142 | 142 | 142 | 142 |
| <u>International Wheat Agreement</u> | | | | |
| <u>and Domestic Sales</u> | | | | |
| 1 Northern | 208/7 | 208/6 | 208/6 | 208/6 |
| 2 Northern | 207/7 | 207/6 | 207/6 | 207/6 |
| 3 Northern | 206/3 | 206/2 | 206/2 | 206/2 |
| 4 Northern | 199/3 | 199/2 | 199/2 | 199/2 |
| 5 Wheat | 190/7 | 190/6 | 190/6 | 190/6 |
| 6 Wheat | 188/7 | 188/6 | 188/6 | 188/6 |
| Feed Wheat | 185/7 | 185/6 | 185/6 | 185/6 |
| 1 C.W. Garnet | 191/7 | 191/6 | 191/6 | 191/6 |
| 2 C.W. Garnet | 190/7 | 190/6 | 190/6 | 190/6 |
| 3 C.W. Garnet | 189/7 | 189/6 | 189/6 | 189/6 |
| 1 Alberta Red Winter | 191/7 | 191/6 | 191/6 | 191/6 |
| 2 Alberta Winter | 190/7 | 190/6 | 190/6 | 190/6 |
| 3 Alberta Winter | 189/7 | 189/6 | 189/6 | 189/6 |
| <u>Export - Class II</u> | | | | |
| 1 Northern | 208/7 | 208/6 | 208/6 | 208/6 |
| 2 Northern | 207/7 | 207/6 | 207/6 | 207/6 |
| 3 Northern | 206/3 | 206/2 | 206/2 | 206/2 |
| 4 Northern | 199/3 | 199/2 | 199/2 | 199/2 |
| 5 Wheat | 190/7 | 190/6 | 190/6 | 190/6 |
| 6 Wheat | 188/7 | 188/6 | 188/6 | 188/6 |
| Feed Wheat | 185/7 | 185/6 | 185/6 | 185/6 |
| 1 C.W. Garnet | 191/7 | 191/6 | 191/6 | 191/6 |
| 2 C.W. Garnet | 190/7 | 190/6 | 190/6 | 190/6 |
| 3 C.W. Garnet | 189/7 | 189/6 | 189/6 | 189/6 |
| 1 Alberta Red Winter | 191/7 | 191/6 | 191/6 | 191/6 |
| 2 Alberta Winter | 190/7 | 190/6 | 190/6 | 190/6 |
| 3 Alberta Winter | 189/7 | 189/6 | 189/6 | 189/6 |

CANADIAN FLOUR MILLING SITUATION

Production Wheat flour production by Canadian mills during September 1964 amounted to 3,373,000 hundredweight, indicating an increase of 7 per cent over the August output of 3,145,000 hundredweight, 1 per cent more than the ten-year (1954-63) average production for the month of September of 3,350,000 hundredweight but 3 per cent less than the September 1963 figure of 3,459,000 hundredweight. Mills reporting operations during September 1964 had a total rated capacity of 169,000 hundredweight per 24-hour day and on the basis of a 25-day working period 80.0 per cent of this rated capacity was effective.

Wheat milled for flour during September 1964 amounted to 7,500,000 bushels, 7 per cent above the 7,028,000 bushels milled during the preceding month, but 3 per cent below the 7,712,000 bushels milled during September 1963. Of the wheat milled for flour during September 1964 some 6,589,000 bushels were Western Canadian spring wheat (other than Durum) while the remainder consisted of Ontario winter wheat (566,000 bushels); Durum (271,000 bushels); and all other (74,000 bushels).

Exports According to preliminary Customs returns, exports of Canadian wheat flour during September 1964 amounted to 927,000 hundredweight (some 2,133,000 bushels of wheat equivalent), representing a decrease of 48 per cent from the 4,073,000 bushels exported during the previous month but 1 per cent above the adjusted September 1963 total of 2,106,000 bushels. Flour shipments during the month went to forty-six countries with exports to Britain amounting to 843,000 bushels of wheat equivalent and accounting for 40 per cent of the September 1964 total. Other leading markets for Canadian wheat flour during the month, with shipments in thousands of bushels of wheat equivalent were as follows: U.S.S.R. (Russia), 265; Jamaica, 184; Trinidad, 151; and Leeward and Windward Islands, 102.

Wheat Milled for Flour, and Production and Exports of Wheat Flour, Canada

| Crop Year | Wheat Milled for Flour bushels | Wheat Flour | |
|-------------------------------|--------------------------------------|-------------|-------------------------------|
| | | Production | Exports <u>1/</u> - cwt. - |
| 1935-36—1939-40 average | 67,845,114 | 29,405,451 | 9,603,941 |
| 1940-41—1944-45 average | 99,704,638 | 43,908,245 | 23,699,546 |
| 1945-46—1949-50 average | 107,330,372 | 47,011,540 | 25,819,721 |
| 1950-51—1954-55 average | 100,446,328 | 43,847,894 | 21,812,041 |
| 1955-56—1959-60 average | 90,148,211 | 39,752,589 | 16,349,156 |
| 1960-61 | 89,731,155 | 39,914,644 | 15,513,836 |
| 1961-62 | 88,240,580 | 39,539,651 | 13,892,676 |
| 1962-63 | 78,789,332 | 35,505,220 | 11,854,458 |
| 1963-64 <u>2/</u> | 111,674,553 | 50,105,247 | 23,646,816 |
| 1964-65 <u>2/</u> | | | |
| August | 7,027,526 | 3,144,719 | 1,770,810 |
| September | 7,500,251 | 3,372,989 | 927,240 |
| Totals..... | 14,527,777 | 6,517,708 | 2,698,050 |
| Same month 1963-64 <u>3/</u> | 14,431,743 | 6,462,921 | 2,141,088 |

1/ Based on Customs returns. Exports for the crop years 1945-46—1962-63 revised to remove effect of time lag in the returns made by Customs.

2/ Subject to revision.

3/ Revised.

UNITED STATES SITUATION

Supply Position Domestic supplies of wheat in the United States for the 1964-65 crop year, at 2,186.9 million bushels, are 6 per cent less than the previous year's total of 2,332.6 million, with a decline in carryover stocks more than offsetting a 13 per cent increase in production. This carryover is the smallest since 1958. In addition, current crop year domestic supplies may be supplemented by imports of about 5 million bushels, composed mostly of wheat for seed and feeding quality wheat. Imports of wheat from Canada during July-September 1964 have amounted to 0.3 million bushels.

Domestic disappearance during 1964-65 is estimated at about 615.0 million bushels, 5 per cent more than the 584.8 million last year. After deducting anticipated domestic requirements for the current United States crop year, some 1,572.2 million remain available for export and for carryover, a decrease of 10 per cent from the 1,748.4 million in 1963-64.

Exports of wheat, wheat flour and other products in terms of grain equivalent during July-September 1964 amounted to 181.0 million bushels, an increase of 6 per cent over the 171.4 million exported during the same months last year. The balance remaining on October 1, 1964 for export and for carryover was estimated at 1,391.2 million bushels compared with 1,577.1 million on the same date a year ago.

United States Wheat Supplies

| Item | 1963-64 <u>1/</u> | 1964-65 <u>2/</u> |
|--|---------------------|-------------------|
| | - million bushels - | |
| Carryover at beginning of crop year (July 1) | 1,194.9 | 900.9 <u>1/</u> |
| Production | 1,137.6 | 1,286.0 <u>1/</u> |
| Total estimated domestic supplies | 2,332.6 | 2,186.9 |
| Imports of wheat and wheat flour in terms of wheat for domestic use, July-September | 0.7 | 0.3 |
| Total estimated supplies <u>3/</u> | 2,333.3 | 2,187.2 |
| Less estimated domestic requirements for crop year <u>4/</u> ... | 584.8 | 615.0 <u>1/</u> |
| Available for export and for carryover | 1,748.4 | 1,572.2 |
| Deduct: | | |
| Exports of wheat as grain, July-September | 151.7 | 158.8 |
| Exports of wheat flour in terms of wheat, July- September <u>5/</u> | 19.7 | 22.2 |
| Total exports of wheat and wheat flour <u>6/</u> | 171.4 | 181.0 |
| Balance on October 1 for export and for carryover | 1,577.1 | 1,391.2 |

1/ Revised. 2/ Preliminary. 3/ Excluding imports for October-June. 4/ Includes shipments to United States Territories and wheat for military food use at home and abroad. 5/ Flour exports exclude "Milled in bond". 6/ These figures now include all shipments under relief programs which formerly were not available from Census data.

United States Exports
of Wheat and Flour
Show Slight Increase

United States exports of wheat and flour (grain equivalent) totalled 112 million bushels during the first two months of the 1964-65 fiscal year, an increase of less than 1 per cent over shipments for the same two months of the previous

fiscal year. This increase was brought about largely by greater shipments to countries in the Western Hemisphere, particularly to those in the Bermuda-Caribbean area and in South America. Exports to Europe were somewhat higher, but those to other parts of the world were significantly less. U.S. exports to the European countries increased only one per cent over those of last year at this time. Of the EEC countries, only France and Italy took more wheat and flour. Amounts going to Belgium-Luxembourg, the Netherlands, and West Germany were substantially less. Exports to the other Western European countries were less than half those for the previous year. The trend in Eastern Europe, however, was exactly the reverse because of the large amount of wheat and flour going to Yugoslavia, almost 8 million bushels during the current July-August period as compared with less than 4 million in July-August 1963. On the other hand, however, Poland, the only other Eastern European market at this time, took only one-third as much wheat and flour as in the first two months of the previous fiscal year.

July-August 1964 shipments of U.S. wheat and flour to countries in the Western Hemisphere were 36 per cent greater than those reported in July-August 1963. Of the 26 million bushels going to this area, over half was destined for Brazil. Most of the countries in the Bermuda-Caribbean area and in South America also took much larger amounts of wheat and flour this year than before. Over half of the U.S. wheat and flour exported during July-August 1964 went to the Asiatic countries. The over-all amount going to this area, however, decreased from 62 million bushels during July-August 1963 to 58 million bushels during July-August 1964. Over half of the 58 million bushels, or 30 million bushels, went to the Indian market. Japan, one of the largest markets for U.S. wheat and flour in this area last year only took 68 per cent as much in the first two months of this fiscal year as in the same period of 1963-64.

Wheat and flour exports to the African countries dropped from 15 million bushels in the first two months of the previous fiscal year to 12 million bushels this year. Over three-fourths of this amount went to the United Arab Republic. The bulk of the remainder went to Sudan, The Canary Islands, Morocco, and the Congo (Leopoldville). Shipments of wheat as grain dropped from 99 million bushels during July-August 1963 to 97 million bushels in July-August 1964. Of this amount, 54 per cent went to Asiatic countries, 24 per cent to countries in the Western Hemisphere, and 15 per cent to Europe, with the other 7 per cent going to Africa. Over 30 per cent of the U.S. grain went to India, and another 14 per cent to Brazil. Flour shipments reversed a long-time trend downward. These exports increased 18 per cent in the first two months of the 1965 fiscal year as compared with the same two months of the 1964 fiscal year. This was chiefly because of the shipments to Bolivia which were 3 times greater this year, to Portugal which were 6 times greater, and Korea which were almost 9 times greater.

Table A shows exports of wheat and flour by country of destination comparing the July-August 1963 period with July-August 1964. Shipments of wheat to Canada are predominantly for transshipment to other destinations. Table B shows the quantities and destination of wheat inspected for export from Canadian ports and exports from Table A adjusted to a new total which reflects transshipments during July-August 1964 compared with the same period a year earlier. These inspections were 15 per cent less this year than during July-August 1964.

It is anticipated that United States exports of wheat and flour will reach 178 million bushels by September 30, 1964 as compared with 171 million bushels in the first three months of the 1963-64 fiscal year.

Table A. United States Exports of Wheat and Flour ^{1/} by Country of Destination
July-August 1963 and 1964

| Destination | July-August 1963 | | | July-August 1964 | | |
|-------------------------------|------------------|---------------------|-----------|------------------|---------------------|--------|
| | Wheat | Flour ^{2/} | Total | Wheat | Flour ^{2/} | Total |
| - thousand bushels - | | | | | | |
| <u>Western Hemisphere</u> | | | | | | |
| Canada ^{3/} | 5,144 | 41 | 5,185 | 4,498 | 33 | 4,531 |
| Mexico | - | 40 | 40 | 10 | 40 | 50 |
| British Honduras | - | 47 | 47 | - | 27 | 27 |
| Canal Zone | - | <u>4/</u> | <u>4/</u> | - | 5 | 5 |
| Costa Rica | - | 89 | 89 | - | 132 | 132 |
| El Salvador | 238 | 16 | 254 | 170 | 29 | 199 |
| Guatemala | 402 | 9 | 411 | 347 | 21 | 368 |
| Honduras | 146 | 15 | 161 | 144 | 18 | 162 |
| Nicaragua | 63 | 61 | 124 | 97 | 9 | 106 |
| Panama | 134 | 87 | 221 | 121 | 38 | 159 |
| Bahamas | <u>4/</u> | 1 | 1 | - | 3 | 3 |
| Barbados | 10 | 8 | 18 | 9 | 23 | 32 |
| Dominican Republic | 253 | 25 | 278 | 360 | 44 | 404 |
| Haiti | - | 5 | 5 | 415 | 18 | 433 |
| Jamaica | - | 57 | 57 | - | 213 | 213 |
| Leeward & Windward Islands .. | - | 11 | 11 | - | 17 | 17 |
| Netherlands Antilles | - | 46 | 46 | - | 58 | 58 |
| Trinidad and Tobago | - | 91 | 91 | - | 156 | 156 |
| Bolivia | - | 302 | 302 | - | 1,149 | 1,149 |
| Brazil | 6,836 | 98 | 6,934 | 13,315 | 182 | 13,497 |
| British Guiana | - | 128 | 128 | 11 | 168 | 179 |
| Chile | 969 | 154 | 1,123 | - | 266 | 266 |
| Colombia | 1,184 | 129 | 1,313 | 1,532 | 4 | 1,536 |
| Ecuador | - | 3 | 3 | 222 | 5 | 227 |
| Paraguay | 155 | 97 | 252 | - | 1 | 1 |
| Peru | 738 | 61 | 799 | 909 | 68 | 977 |
| Surinam | - | 55 | 55 | - | 58 | 58 |
| Uruguay | - | - | - | - | 10 | 10 |
| Venezuela | 1,275 | 99 | 1,374 | 1,341 | 71 | 1,412 |
| Totals | 17,547 | 1,775 | 19,322 | 23,501 | 2,866 | 26,367 |
| <u>Western Europe</u> | | | | | | |
| <u>EEC</u> | | | | | | |
| Belgium-Luxembourg | 816 | 10 | 826 | 85 | - | 85 |
| France | 232 | - | 232 | 269 | - | 269 |
| Italy | 37 | 670 | 707 | 1,062 | 269 | 1,331 |
| Netherlands | 1,960 | 271 | 2,231 | 1,500 | 80 | 1,580 |
| West Germany | 1,038 | 2 | 1,040 | 586 | 1 | 587 |
| Totals | 4,083 | 953 | 5,036 | 3,502 | 350 | 3,852 |

Table A. United States Exports of Wheat and Flour ^{1/} by Country of Destination
July-August 1963 and 1964

| Destination | July-August 1963 | | | July-August 1964 | | |
|-------------------------------|------------------|---------------------|-----------|------------------|---------------------|--------|
| | Wheat | Flour ^{2/} | Total | Wheat | Flour ^{2/} | Total |
| - thousand bushels - | | | | | | |
| <u>Other Western Europe</u> | | | | | | |
| Cyprus | 377 | - | 377 | - | - | - |
| Denmark | - | - | - | - | 1 | 1 |
| Finland | - | <u>4/</u> | <u>4/</u> | - | - | - |
| Gibraltar | - | - | - | - | 3 | 3 |
| Gozo | - | - | - | - | - | - |
| Greece | 7 | 594 | 601 | - | 14 | 14 |
| Iceland | 3 | 94 | 97 | 1 | 105 | 106 |
| Norway | 69 | 9 | 78 | - | - | - |
| Portugal | - | 65 | 65 | 2,230 | 425 | 2,655 |
| Spain | 2,916 | - | 2,916 | - | - | - |
| Sweden | - | 3 | 3 | - | 4 | 4 |
| Switzerland | 1,620 | - | 1,620 | 86 | - | 86 |
| Turkey | 978 | 14 | 992 | 40 | <u>4/</u> | 40 |
| United Kingdom | 391 | 15 | 406 | 405 | 62 | 467 |
| Totals | 6,361 | 794 | 7,155 | 2,762 | 614 | 3,376 |
| <u>Eastern Europe</u> | | | | | | |
| Poland | 2,639 | 183 | 2,822 | 913 | 15 | 928 |
| Yugoslavia | 745 | 15 | 760 | 7,775 | 32 | 7,807 |
| Totals | 3,384 | 198 | 3,582 | 8,688 | 47 | 8,735 |
| Totals, Europe | 13,828 | 1,945 | 15,773 | 14,952 | 1,011 | 15,963 |
| <u>Asia</u> | | | | | | |
| Aden | - | - | - | - | 14 | 14 |
| Afghanistan | 598 | 1 | 599 | 40 | <u>4/</u> | 40 |
| Arabia Peninsula States | - | 12 | 12 | - | 5 | 5 |
| Bahrein | - | 38 | 38 | - | 62 | 62 |
| Cambodia | - | 8 | 8 | - | - | - |
| Ceylon | - | 23 | 23 | - | 222 | 222 |
| India | 25,168 | 9 | 25,177 | 29,449 | 90 | 29,539 |
| Indonesia | - | 206 | 206 | - | 2 | 2 |
| Iran | 89 | 152 | 241 | 2,654 | 94 | 2,748 |
| Iraq | - | <u>4/</u> | <u>4/</u> | - | - | - |
| Israel | 833 | 22 | 855 | 823 | 45 | 868 |
| Jordan | 436 | 549 | 985 | - | 648 | 648 |
| Kuwait | - | 107 | 107 | 15 | 149 | 164 |
| Laos | - | 30 | 30 | - | 8 | 8 |
| Lebanon | - | 86 | 86 | - | 211 | 211 |
| Macao | - | 33 | 33 | - | 6 | 6 |
| Malaysia | 47 | 18 | 65 | - | 32 | 32 |
| Pakistan | 7,097 | 10 | 7,107 | 6,178 | 50 | 6,228 |
| Philippines | 1,117 | 67 | 1,184 | 395 | 160 | 555 |

Table A. United States Exports of Wheat and Flour 1/ by Country of Destination
July-August 1963 and 1964

| Destination | July-August 1963 | | | July-August 1964 | | |
|--|------------------|-----------------|-----------|------------------|-----------------|-----------|
| | Wheat | Flour <u>2/</u> | Total | Wheat | Flour <u>2/</u> | Total |
| - thousand bushels - | | | | | | |
| <u>Asia (concluded)</u> | | | | | | |
| Saudi Arabia | - | 395 | 395 | 26 | 639 | 665 |
| Thailand | - | 5 | 5 | - | 9 | 9 |
| Vietnam | 6 | 807 | 813 | 74 | 435 | 509 |
| Hong Kong | 19 | 153 | 172 | 19 | 101 | 120 |
| Japan | 11,816 | 516 | 12,332 | 8,268 | 165 | 8,433 |
| Korea | 8,565 | 238 | 8,803 | 2,367 | 2,170 | 4,537 |
| Nansei & Nanpo Islands | 126 | 95 | 221 | - | 161 | 161 |
| Taiwan | 1,994 | 109 | 2,103 | 1,792 | 66 | 1,858 |
| Totals | 57,911 | 3,689 | 61,600 | 52,100 | 5,544 | 57,644 |
| <u>Africa</u> | | | | | | |
| Algeria | 2,156 | 50 | 2,206 | - | 9 | 9 |
| Libya | - | <u>4/</u> | <u>4/</u> | - | <u>4/</u> | <u>4/</u> |
| Morocco | 66 | 668 | 734 | 75 | 339 | 414 |
| Sudan | 368 | 1,352 | 1,720 | 349 | 484 | 833 |
| Tunisia | - | 37 | 37 | 3 | 96 | 99 |
| United Arab Republic | 6,440 | 885 | 7,325 | 5,478 | 3,763 | 9,241 |
| Angola | 309 | 2 | 311 | 147 | 12 | 159 |
| Burundi and Rwanda | - | - | - | - | 3 | 3 |
| Cameroon | - | 9 | 9 | - | 23 | 23 |
| Canary Islands | - | 4 | 4 | 449 | - | 449 |
| Congo (Leopoldville) | 22 | 1,947 | 1,969 | 1 | 398 | 399 |
| Gabon | - | - | - | - | 2 | 2 |
| Ghana | 4 | 14 | 18 | - | 17 | 17 |
| Guinea | - | 4 | 4 | - | <u>4/</u> | <u>4/</u> |
| Liberia | 2 | 17 | 19 | 1 | 25 | 26 |
| Madeira Islands | 92 | 13 | 105 | 180 | 12 | 192 |
| Mauritania | - | - | - | - | 3 | 3 |
| Nigeria | 342 | 6 | 348 | 232 | 9 | 241 |
| Sierra Leone | 6 | 7 | 13 | - | 25 | 25 |
| Senegal | - | - | - | <u>4/</u> | 15 | 15 |
| Togo | 30 | 10 | 40 | - | - | - |
| Western Portuguese Africa .. | - | 8 | 8 | - | 8 | 8 |
| Ethiopia | 7 | 10 | 17 | - | - | - |
| French Somaliland | - | 10 | 10 | - | 11 | 11 |
| Kenya | - | - | - | - | 1 | 1 |
| Mozambique | 123 | <u>4/</u> | 123 | - | <u>4/</u> | <u>4/</u> |
| Somali Republic | 1 | - | 1 | - | <u>4/</u> | <u>4/</u> |
| Tanganyika | 115 | 19 | 134 | - | - | - |
| Northern Rhodesia, Southern Rhodesia and Nyasaland ... | 11 | - | 11 | 23 | - | 23 |
| South Africa | 8 | - | 8 | - | - | - |
| Totals | 10,102 | 5,072 | 15,174 | 6,938 | 5,255 | 12,193 |

Table A. United States Exports of Wheat and Flour 1/ by Country of Destination
July-August 1963 and 1964

| Destination | July-August 1963 | | | July-August 1964 | | |
|--------------------------------------|------------------|-----------------|---------|------------------|-----------------|---------|
| | Wheat | Flour <u>2/</u> | Total | Wheat | Flour <u>2/</u> | Total |
| - thousand bushels - | | | | | | |
| <u>Oceania</u> | | | | | | |
| Australia | - | 3 | 3 | - | 4 | 4 |
| Trust Territory of the Pacific | - | 1 | 1 | - | 27 | 27 |
| Totals | - | 4 | 4 | - | 31 | 31 |
| Totals, All Countries ... | 99,388 | 12,485 | 111,873 | 97,491 | 14,707 | 112,198 |

1/ Data includes shipments for relief or charity. 2/ Grain equivalent. 3/ The bulk of exports to Canada are for transshipment to other destinations - see Table B. 4/ Less than 500 bushels.

Table B. United States Exports of Wheat and Flour as Adjusted for Transshipment Through Canadian Ports, July-August 1963 and 1964

| Destination | July-August 1963 | | July-August 1964 | |
|--------------------------|--|--------------------------------------|--|--------------------------------------|
| | Wheat inspected for export from Canadian ports | Adjusted totals for listed countries | Wheat inspected for export from Canadian ports | Adjusted totals for listed countries |
| - thousand bushels - | | | | |
| Belgium-Luxembourg | 815 | 1,641 | - | 85 |
| Netherlands | 1,695 | 3,926 | - | 1,580 |
| Brazil | 108 | 7,042 | - | 13,497 |
| United Kingdom | 398 | 804 | 329 | 796 |
| Ireland | 52 | 52 | 28 | 28 |
| Spain | 230 | 3,146 | 579 | 579 |
| U.S.S.R. | - | - | 1,677 | 1,677 |
| Canary Islands | - | - | 436 | 436 |
| Nigeria | 197 | 545 | - | 241 |
| Totals | 3,495 | 17,156 | 3,049 | 18,919 |

1964 Wheat Crop
Forecast at 1,286
Million Bushels

In a report released on October 9, the Crop Reporting Board of the United States Department of Agriculture stated that production of all wheat is estimated at 1,286 million bushels, down slightly from last month, but 13 per cent above last year.

Durum and other spring wheat each decreased slightly from prospects last month but production of each is well above last year. The yield per acre of all wheat, at 26.2 bushels, equals the second highest of record.

Durum wheat production is estimated at 61 million bushels, 23 per cent above last year's crop, and nearly double the 5-year average production. The yield of 27.0 bushels is 6 bushels above average and the second highest of record. By October 1, durum harvest was complete, except for a few fields in northeast North Dakota and northwest Minnesota.

Production of other spring wheat is estimated at 206 million bushels, 13 per cent above 1963 and 3 per cent above average. The yield per acre is 22.1 bushels compared with 21.0 bushels last year and the average of 20.5 bushels. The current estimate of production is 2 per cent below a month ago primarily because of yield losses in Idaho, North Dakota, and Minnesota. In Idaho, September frosts damaged late planted spring wheat seeded to abandoned winter wheat fields causing lower yields. In North Dakota and Minnesota, rains during harvest caused some grain in windrows to sprout, which increased harvest losses. Spring wheat harvest was hampered during most of September because of cool, damp weather, but by October 1 harvest was nearly complete except for late maturing fields at higher elevations and in eastern Idaho.

Stocks of Wheat
in All Positions
October 1, 1964

United States wheat in all storage positions on October 1 totalled 1,806 million bushels, the smallest for that date since 1957. The October 1 holdings were 7 per cent smaller than a year earlier and 18 per cent less than the October 1 1958-62 average. The decline in total stocks occurred in mill, elevator and warehouse, and Government owned storages. Farm stocks totalled 500 million bushels, 22 per cent larger than a year ago while off-farm holdings of 1,306 million bushels were 15 per cent less than the previous year. Slightly over half of the total stocks either was owned by the Government or under Government loan. Disappearance of wheat from all storage positions during the July-September quarter was 381 million bushels, 3 per cent less than the same period a year earlier. Durum wheat in all storage positions on October 1 totalled 98.9 million bushels compared with 88.1 million bushels a year earlier. Farm stocks totalled 53.3 million bushels and off-farm holdings were 45.6 million bushels.

Stocks of Grains, October 1, 1964 with Comparisons

| Grain and Position | October 1 Average 1958-62 | October 1 1963 | July 1 1964 | October 1 1964 |
|---|---------------------------------|-------------------|----------------|-------------------|
| - thousand bushels - | | | | |
| <u>All Wheat</u> | | | | |
| On Farms <u>1/</u> | 503,639 | 408,667 | 75,218 | 500,066 |
| Commodity Credit Corp. <u>2/</u> | 69,708 | 34,028 | 12,719 | 12,586 |
| Mills, Elev. & Whses. <u>1/</u> <u>3/</u> | 1,627,144 | 1,498,593 | 812,997 | 1,293,343 |
| Totals | 2,200,491 | 1,941,288 | 900,934 | 1,805,995 |
| <u>Durum Wheat</u> <u>4/</u> | | | | |
| On Farms <u>1/</u> | - | 52,419 | 1,783 | 53,277 |
| Commodity Credit Corp. <u>2/</u> | - | 4,168 | 1,664 | 1,660 |
| Mills, Elev. & Whses. <u>1/</u> <u>3/</u> | - | 31,481 | 37,514 | 43,933 |
| Totals | - | 88,068 | 40,961 | 98,870 |

1/ Estimates of the Crop Reporting Board. 2/ Owned by C.C.C. and stored in bins or other storages owned or controlled by C.C.C.; other C.C.C.-owned is included in the estimates by positions. 3/ All off-farm storages not otherwise designated, including flour mills, terminal elevators, and processing plants. 4/ Totals included in all wheat.

Cash Wheat Prices on the Kansas City and Minneapolis Markets

| No. 2 Hard Winter, Kansas City | | | No. 1 Northern Spring, Minneapolis | | |
|--------------------------------|----------------------|--------------|------------------------------------|----------------------|-----------|
| Date | Price | | Date | Price | |
| | - cents per bushel - | | | - cents per bushel - | |
| October 1, 1964 | 166 3/4 | - 167 | October 1, 1964 | 173 5/8 | - 176 5/8 |
| 2 | 164 3/4 | | 2 | 173 5/8 | - 176 5/8 |
| 5 | 160 | - 161 | 5 | 173 5/8 | - 176 5/8 |
| 6 | 158 1/4 | - 178 1/ | 6 | 174 7/8 | - 176 7/8 |
| 7 | 161 3/4 | | 7 | 175 | - 177 1/4 |
| 8 | 159 1/4 | - 179 1/4 1/ | 8 | 174 | - 176 |
| 9 | 164 | - 170 1/2 | 9 | 172 5/8 | - 174 5/8 |
| 12 | 160 | - 176 1/4 1/ | 12 | 172 7/8 | - 174 7/8 |
| 13 | 161 1/2 | - 170 | 13 | 174 1/4 | - 176 1/4 |
| 14 | 161 3/4 | | 14 | 174 3/8 | - 176 3/8 |
| 15 | 160 | - 177 1/2 1/ | 15 | 174 5/8 | - 176 5/8 |
| 16 | 161 1/4 | - 178 1/ | 16 | 174 1/2 | - 176 1/2 |
| 19 | 166 | - 174 | 19 | 177 5/8 | - 179 5/8 |
| 20 | 171 | - 174 | 20 | 177 1/2 | - 179 1/2 |
| 21 | 164 1/2 | - 178 1/2 1/ | 21 | 177 | - 179 |
| 22 | 166 | | 22 | 175 3/4 | - 177 3/4 |
| 23 | 166 | | 23 | 175 5/8 | - 177 5/8 |
| 26 | 162 1/2 | - 172 3/4 | 26 | 174 1/2 | - 176 1/2 |
| 27 | 163 | - 167 | 27 | 175 1/2 | - 177 1/2 |
| 28 | 164 | | 28 | 174 7/8 | - 176 7/8 |
| 29 | 165 3/4 | - 166 1/2 | 29 | 175 3/8 | - 177 3/8 |
| 30 | 165 1/2 | | 30 | 175 1/4 | - 177 1/4 |

1/ Nominal.

Chicago Wheat Futures, High Points of Closing

| Date | December | | March | May | July | September |
|----------------------------------|----------|-------|-------|-------|-------|-----------|
| | New | Old | | | | |
| - cents and eighths per bushel - | | | | | | |
| October 1, 1964 | 148/2 | 147/6 | 152/2 | 153 | 148/6 | |
| 2 | 148/5 | 148/4 | 152/4 | 153 | 148/6 | |
| 5 | 148/5 | 147/6 | 152/1 | 152/6 | 148/4 | |
| 6 | 149 | 148 | 152/4 | 152/7 | 148/6 | |
| 7 | 150 | 149/1 | 153/2 | 153/5 | 149/3 | |
| 8 | 150/1 | 149/4 | 153/3 | 153/3 | 149/2 | 151/2 |
| 9 | 151/1 | 150/4 | 154/4 | 154/6 | 150 | 151/7 |
| 12 | 150/4 | 150/3 | 153/6 | 154/3 | 149/6 | 152 |
| 13 | 148/7 | 148 | 152/3 | 153 | 148/3 | 150/5 |
| 14 | 148/4 | 147/6 | 152 | 152/6 | 149 | 151/1 |
| 15 | 149/1 | 148/2 | 152/2 | 153/1 | 149/5 | 151/6 |
| 16 | 149/2 | 148/4 | 152/5 | 153/2 | 149/5 | 152 |
| 19 | 150/4 | 150/1 | 154 | 154/5 | 150/7 | 153 |
| 20 | 151/5 | 150/6 | 154/6 | 155 | 151 | 153/2 |
| 21 | 151/6 | 151 | 154/5 | 154/7 | 150/5 | 152/6 |
| 22 | 151/5 | 150 | 151/2 | 153/2 | 149/7 | 152 |
| 23 | 150/5 | 150 | 153/4 | 153/6 | 150/4 | 152/4 |
| 26 | 151/1 | 150 | 154/1 | 154/3 | 151 | 153/2 |
| 27 | 150/2 | 150 | 153/2 | 153/4 | 149/5 | 151/6 |
| 28 | 149/6 | 149/2 | 152/6 | 153/1 | 149/4 | 151/5 |
| 29 | 150/4 | 150 | 153/3 | 153/6 | 150/2 | 152/2 |
| 30 | 151/4 | 151 | 154/4 | 154/5 | 150/4 | 152/4 |

ARGENTINE SITUATION

Supply Position Estimated total supplies of wheat in the Argentine for the 1963-64 (December-November) crop year amount to 338.2 million bushels, consisting of the December 1, 1963 carryover of 25.9 million and a production of 312.3 million. Indicated supplies for the current Argentine crop year, reflecting a substantial increase in production as well as slightly larger opening stocks are about 54 per cent more than the 1962-63 total of 220.1 million bushels and the largest supplies since the 1954-55 crop year total of 339.4 million. After making an allowance of 125.8 million bushels for anticipated domestic requirements, an estimated 212.3 million are available for export and for carryover in 1963-64, considerably more than double the 92.0 million of the previous year.

Exports of wheat and wheat flour in terms of grain equivalent during December 1963-September 1964 amounted to 108.3 million bushels, 82 per cent greater than the 59.6 million exported during the same months in 1962-63. The balance remaining on October 1, 1964 for export and for carryover was estimated at 104.0 million bushels, in sharp contrast to the October 1, 1963 total of only 32.4 million.

Argentine Wheat Supplies

| Item | 1962-63 <u>1/</u> | 1963-64 <u>2/</u> |
|--|---------------------|-------------------|
| | - million bushels - | |
| Carryover at beginning of crop year (December 1) <u>3/</u> ... | 25.4 | 25.9 |
| Production <u>4/</u> | 194.8 | 312.3 |
| Total estimated domestic supplies | 220.1 | 338.2 |
| Less estimated domestic requirements for crop year ... | 128.2 | 125.8 <u>1/</u> |
| Available for export and for carryover | 92.0 | 212.3 |
| Deduct: | | |
| Exports of wheat as grain, December-September | 58.8 | 107.4 |
| Exports of wheat flour in terms of wheat, December-September | 0.7 | 0.9 |
| Total exports of wheat and wheat flour | 59.6 | 108.3 |
| Balance on October 1 for export and for carryover | 32.4 | 104.0 |

1/ Revised. 2/ Preliminary. 3/ Includes allowances for farm stocks.
4/ Official estimates.

The following account of the Argentine situation has been extracted from a report from Mr. H. E. Ryan, Assistant Commercial Secretary (Agriculture), Buenos Aires, under date of October 22, 1964 and is reproduced with the permission of the Trade Commissioner Service, Department of Trade and Commerce. Where possible, conversions to Canadian measures and currency have been made for the convenience of our readers.

Weather
and Crops

General rainfalls have occurred during the past few weeks throughout the Pampas region and the outlook for crops has greatly improved.

The Provinces of Cordoba, Santa Fe, San Luis, La Pampa and Entre Rios previously suffering from dry conditions but now have ample moisture and crops are progressing favourably. In many areas prospects are for an excellent harvest, although it is somewhat early, especially in the southern areas, to make a firm prediction. Late frosts, excessive rainfall and other factors could still prove detrimental.

Wheat

Local trade circles continue to predict a 1964-65 crop of at least 6.5 million metric tons (238.8 million bushels) which, if realized, is above average although not as large as the previous harvest.

Exports during the month of September totalled some 300,000 metric tons (11,023,000 bushels), 70,000 tons (2,572,000 bushels) more than during the previous month. For the first half of October, shipments declined to approximately 64,000 tons (2,352,000 bushels). Home consumption, according to data provided by the National Grain Board, rose noticeably during the month of July, approximating 328,238 metric tons (12,061,000 bushels). For the previous months of May and June, domestic disappearance equalled 224,175 and 217,783 metric tons (8,237,000 and 8,002,000 bushels), respectively, somewhat below our estimated monthly average of 240,000 metric tons (8,818,000 bushels). The July increase was due to factors which presumably will also have affected August consumption, although the statistics have yet to be released. There was, of course, the normal increase in seasonal consumption, which occurs each winter. As well, with the price of beef rising rapidly, due to a decrease in supply, some sectors of the population turned to cheaper foods, especially potatoes and wheat flour products such as spaghetti.

With respect to export sales concluded by the Grain Board during September, there are no indications of increases over the 512,464 metric tons (18,830,000 bushels) reported in our last Review. The Grain Board, however, is undertaking a greater promotional campaign in hopes of reducing the rather sizeable surplus which exists due to last year's large crop. Depending upon the success of the Board's activities, our forecasted 1.9 million metric tons (69,812,000 bushels) carry-over may be reduced. The Chinese sale, as reported earlier, concluded at a price of U\$S 62.30 per metric ton (\$1.82 per bushel) f.o.b. Buenos Aires, payable in sterling, has been a great boost to Argentine wheat movements. Some of this grain has already left and the full 400,000 metric tons (14,697,000 bushels) are to be shipped by the end of January. Brazil, under the present Brazilian-Argentine Agreement, purchased 30,000 metric tons (1,102,000 bushels) at U\$S 68.45 per ton (\$2.00 per bushel) f.o.b. Buenos Aires, and a further 50,000 tons (1,837,000 bushels) at approximately U\$S 68.00 per ton (\$1.99 per bushel). At the moment, meetings are being held in this city to re-negotiate the current Agreement, signed in December 1961, applicable for the three-year period up to December 1964. Argentine officials are hopeful of negotiating a further agreement somewhat in excess of the 1,000,000 tons (36,743,000 bushels) per year 1961 agreement, but as yet no definite figures have been mentioned. During the period under review, prices for Plate wheat in Europe averaged U\$S 70.65 per ton (\$2.07 per bushel) c.i.f., September shipment, and U\$S 71.00 per ton (\$2.08 per bushel) for November shipment. Recent British purchases have been made at around £26.12.0 per ton (\$2.17 per bushel).

The system of export quotas for bread wheat from the 1963-64 crop established in October 1963 has now been cancelled by the Grain Board, and this wheat can now be exported freely.

On September 28, new minimum official price levels were announced for Argentine grains (including wheat, barley, oats, rye, sorghum, corn and millet) and for oilseeds (sunflower, peanuts and flax). With respect to grain, all are at the level of the previous year, except for wheat and sorghum. The price for hard wheat for the 1964-65 crop year basis grade 1, 80 kgs per hectolitre (64 pounds per bushel), f.o.r. Buenos Aires Port is 780 pesos per 100 kilos (\$1.61 per bushel). Durums, basis grade 2, 78 kgs per hectolitre (62 pounds per bushel), f.o.r. Buenos Aires Port, are also priced at 780 pesos per 100 kilos (\$1.61 per bushel). No price level has yet been announced for semi-hard wheat, but it is expected that a similar differential will exist as during 1963-64. During the current year, there will not be a sliding scale applicable to minimum prices. Last year, the Grain Board established early in the crop year a minimum price of 820 pesos per 100 kilos (\$1.69 per bushel) for hard wheat, later increasing this in stages of 20 pesos (4 cents per bushel) to a final level of 880 pesos (\$1.81 per bushel), but most was sold at 820 and 840 pesos (\$1.69 and \$1.73 per bushel). Thus, the new price level will be for the most part from 40 to 60 pesos (8 to 12 cents per bushel) less than the previous level.

During the new crop year, the Argentine National Grain Board has been given freedom to compete with private companies in the grain market. Previously, the Board was allowed to purchase only when grain was offered to it at the minimum price level. Under such a system, the stocks it obtained were regulated by producer decisions. Now, if the Grain Board, as in the case of the Chinese sale, wishes to obtain supplies to fulfill contracts, it can enter the market and compete for producer stocks.

There has already been some trade in new wheat in the Buenos Aires Futures Market, prices being slightly above the recently established minimum. The present price in the Buenos Aires Cereal Exchange for 1964-65 wheat is equal to the official price of 880 pesos per 100 kilos (\$1.81 per bushel).

Recently, the Government released a draft of its Five-Year Programme for Economic Development. With respect to this programme, one of the prime considerations is a shift land from livestock to cereal production, particularly in the Pampas region of the country. Although no programmes have been finalized, the feeling of the National Development Council is that an increase in crop land acreage of some 24 per cent would be justified, given a strong international wheat market and a growing need in Argentina and elsewhere for feed grains. If this policy is to be pursued, it can be expected that during the next two or three years, wheat acreage will increase and probably result in larger output.

Argentine Wheat Exports December-August 1962-63 and 1963-64

| Destination | 1962-63 | 1963-64 |
|---------------------------------|---------|---------|
| - thousand bushels - | | |
| Western Europe | | |
| EEC | | |
| Belgium | 4,241 | 1,530 |
| France | 2,788 | 3,428 |
| Germany, Federal Republic | 1,773 | 8,799 |
| Italy | 6,238 | 3,980 |
| Netherlands | 4,611 | 5,181 |
| Sub-totals | 19,651 | 22,918 |

Argentine Wheat Exports December-August 1962-63 and 1963-64

| Destination | 1962-63 | 1963-64 |
|------------------------------------|---------|---------|
| - thousand bushels - | | |
| <u>Other Western Europe</u> | | |
| Britain | 6,472 | 3,885 |
| Finland | 147 | - |
| Norway | 725 | 262 |
| Portugal | 821 | - |
| Spain | - | 14 |
| Sweden | 53 | - |
| Switzerland | 368 | 164 |
| Sub-totals | 8,586 | 4,325 |
| Totals | 28,237 | 27,243 |
| <u>Eastern Europe</u> | | |
| Czechoslovakia | - | 982 |
| Germany, Democratic Republic | - | 646 |
| Poland | - | 415 |
| U.S.S.R.(Russia) | - | 354 |
| Total | - | 2,397 |
| <u>Africa</u> | | |
| Algeria | 1,516 | - |
| Others, North Africa | 198 | - |
| Total | 1,714 | - |
| <u>Asia</u> | | |
| China, Communist | - | 36,303 |
| <u>Western Hemisphere</u> | | |
| Bolivia | 73 | 73 |
| Brazil | 13,165 | 22,000 |
| Paraguay | 495 | 869 |
| Peru | 8,389 | 7,508 |
| Venezuela | 373 | - |
| Totals | 22,495 | 30,450 |
| Totals, All Countries | 52,447 | 96,395 |

AUSTRALIAN SITUATION

Supplies for 1963-64 Crop Year at Record Level

Total estimated supplies of wheat in Australia for the 1963-64 (December-November) crop year are placed at an all-time high of 354.5 million bushels, reflecting an increase in carryover stocks, from 18.2 million at December 1, 1962 to 23.5 million in 1963, combined with the 1963 production of 331.0 million bushels. The 1963 crop represented a record outturn for the second consecutive year. After deducting 78.2 million for anticipated domestic requirements, an estimated 276.3 million are available for export and for carryover in 1963-64, an increase of 10 per cent over the 252.1 million the previous year.

Combined exports of wheat as grain and wheat flour in terms of grain equivalent during the period December 1-September 26 of the current Australian crop year amounted to 225.7 million bushels, 20 per cent more than the 188.7 million exported during the corresponding period of 1962-63. The balance remaining on September 27, 1964 for export and for carryover, at 50.6 million bushels, is 20 per cent below the comparable 1963 total of 63.4 million.

Australian Wheat Supplies

| Item | 1962-63 <u>1/</u> | 1963-64 <u>2/</u> |
|--|---------------------|-------------------|
| | - million bushels - | |
| Carryover, including flour as wheat, at beginning of crop year (December 1)..... | 18.2 | 23.5 |
| Production | 307.2 | 331.0 |
| Total estimated domestic supplies | 325.4 | 354.5 |
| Less estimated domestic requirements for crop year .. | 73.3 | 78.2 <u>1/</u> |
| Available for export and for carryover | 252.1 | 276.3 |
| Deduct: | | |
| Exports of wheat as grain, December 1-September 26. | 169.1 | 199.0 |
| Exports of wheat flour in terms of wheat, December 1-September 26 | 19.6 | 26.7 |
| Total exports of wheat and wheat flour | 188.7 | 225.7 |
| Balance on September 27 for export and for carryover. | 63.4 | 50.6 |

1/ Revised. 2/ Preliminary.

The following information relative to the Australian situation has been extracted from a report from Mr. D. I. Campbell, Assistant Commercial Secretary for Canada, Canberra, under date of October 13, 1964 and is reproduced with the permission of the Trade Commissioner Service, Department of Trade and Commerce.

Crop Position

Australian farmers may produce another large crop due to an improvement in growing conditions during the past few weeks.

Prospects in Western Australia, where conditions were unpromising due to excessive moisture, improved with three weeks of sunny weather. In contrast, eastern states were lacking rain, but successive falls have occurred in past weeks. New South Wales in particular looks forward to a record year with 5 3/4 million acres sown compared with the previous record of 5 2/3 million acres in 1930-31.

Marketing Position

An Australian Wheat Board delegation is currently in Peking negotiating sales from the 1964-65 crop. China has purchased

40 per cent of Australia's wheat exports during the past four years. A member of the Australian Wheat Board stated recently that "The Australian Board is still holding to its policy of selling wheat at no longer than 12-month terms. Of course, should the situation arise where we cannot dispose of the large and increasing quantities of grain which Australian wheat growers are providing, then the Board may have to review its credit selling policy."

Australian sales to the United Kingdom are forecast at 23 million bushels. It was recently announced that the Ceylon Government had agreed to purchase at least 100,000 short tons of flour (4,600,000 bushels of wheat equivalent) from Australia on a fair commercial basis, in 1965 and 1966. This agreement is a further extension of undertakings first concluded in 1958.

Exports of Australian Wheat and Wheat Flour in Terms of Wheat December 1-September 26, 1963-64 and Corresponding Period 1962-63

| Destination | Wheat | | Wheat Flour | |
|---------------------------------|----------------------|---------|-------------|---------|
| | 1962-63 | 1963-64 | 1962-63 | 1963-64 |
| | - thousand bushels - | | | |
| <u>Western Europe</u> | | | | |
| <u>EEC</u> | | | | |
| Germany, Federal Republic | 1,341 | 7,832 | - | - |
| <u>Other Western Europe</u> | | | | |
| Britain | 18,082 | 17,514 | 1,724 | 1,353 |
| Ireland | 1,809 | 1,652 | - | - |
| Malta | 445 | 841 | - | - |
| Norway | 3,208 | 3,753 | - | - |
| Spain | 1,235 | - | - | - |
| Others | - | - | 10 | 1 |
| Sub-totals | 24,779 | 23,760 | 1,734 | 1,354 |
| Totals | 26,120 | 31,592 | 1,734 | 1,354 |
| <u>Eastern Europe</u> | | | | |
| Albania | 2,294 | - | - | - |
| U.S.S.R. (Russia) | - | 48,530 | - | 6,498 |
| Totals | 2,294 | 48,530 | - | 6,498 |
| <u>Africa</u> | | | | |
| Kenya | 343 | 25 | - | - |
| Malawi | - | - | 272 | 231 |
| Mauritius | - | - | 397 | 1,044 |
| Portuguese East Africa | - | 944 | - | - |
| Rhodesia | 3,137 | 2,239 | - | - |

Exports of Australian Wheat and Wheat Flour in Terms of Wheat
December 1-September 26, 1963-64 and Corresponding Period 1962-63

| Destination | Wheat | | Wheat Flour | |
|----------------------------------|---------|---------|-------------|---------|
| | 1962-63 | 1963-64 | 1962-63 | 1963-64 |
| - thousand bushels - | | | | |
| <u>Africa (concluded)</u> | | | | |
| Zanzibar | - | - | 166 | 146 |
| Others | 16 | 14 | 68 | 59 |
| Totals | 3,496 | 3,222 | 903 | 1,480 |
| <u>Asia</u> | | | | |
| Aden | 944 | 1,527 | - | - |
| Aden and Aden I/T | - | - | 1,110 | 1,072 |
| Aden and Aden I/T Atta | - | - | 444 | 554 |
| Arabian Gulf | - | - | 138 | 204 |
| Arabian Gulf Atta | - | - | 1,021 | 1,106 |
| Brunei | - | - | 39 | 14 |
| Burma | 876 | - | 119 | - |
| Ceylon | 7 | 11 | 3,485 | 5,220 |
| China | 95,889 | 68,488 | - | - |
| Formosa | 96 | 448 | - | - |
| Hong Kong | 1,720 | 1,874 | 190 | 86 |
| India | 5,335 | 8,385 | - | - |
| Indonesia | - | - | 359 | 314 |
| Iran | 834 | 1,219 | - | - |
| Iraq | 314 | 3,511 | - | - |
| Japan | 11,410 | 16,408 | - | - |
| Korea North..... | 4,986 | - | - | - |
| Korea South | 1,024 | - | - | - |
| Lebanon, Jordan, Syria | 2,725 | 3,869 | - | - |
| Pakistan | 3,481 | 1,342 | - | - |
| Philippines | 658 | 242 | 608 | 1,737 |
| Saudi Arabia | - | - | 340 | 212 |
| Thailand | 5 | 321 | 637 | 429 |
| <u>Malaysia</u> | | | | |
| Malaya | 361 | 26 | 2,773 | 2,352 |
| Malaya Atta | - | - | 81 | 85 |
| Sabah | - | - | 134 | 123 |
| Sarawak | - | - | 202 | 140 |
| Singapore | 299 | 2,121 | 2,461 | 1,325 |
| Singapore Atta | - | - | 11 | 5 |
| Singapore A/C B.W.O. | - | - | 36 | 34 |
| Others | 448 | 611 | 305 | 70 |
| Totals | 131,412 | 110,403 | 14,493 | 15,082 |
| <u>Oceania</u> | | | | |
| New Zealand | 5,733 | 5,193 | - | - |
| <u>Western Hemisphere</u> | | | | |
| Peru | - | - | 14 | 7 |
| <u>Pacific Area and Sundries</u> | | | | |
| Pacific Islands | 46 | 59 | 2,009 | 1,875 |
| Ships' Stores and Sundries | - | - | 448 | 404 |
| Totals | 46 | 59 | 2,457 | 2,279 |
| Totals, All Countries | 169,100 | 199,000 | 19,600 | 26,700 |

CROP SITUATION IN BRITAIN

The following account of the current crop situation in Britain has been extracted from a report received from Mr. G. E. Woollam, Agricultural Counsellor for Canada, London, and is reproduced with the permission of the Trade Commissioner Service, Department of Trade and Commerce.

Crop and Weather Conditions Although predictions of an exceptional harvest did not materialize cereal crops have nevertheless been the heaviest for some six years. By mid-September three weeks ahead of normal, the harvest was virtually completed with an estimated production likely to exceed 10,425,000 long tons (389.2 million bushels), an increase of some 800,000 tons (29.9 million bushels) over 1963. For the first time in recent years home grown grain will account for some 60 per cent of anticipated requirements. The increased supply over 1963 resulted in the main, from higher acreage - up 425,000 acres to 7.2 million in 1964, coupled with above-average yields.

Widespread good weather prevailed through August and continued into September giving ideal harvesting conditions. The quality of all grain has been good with a low moisture content as little as 13 per cent in some cases. The wheat crop, in particular, showed to advantage with yield and quality good and little drying required. Barley was also harvested in a good dry condition and although generally good quality, yields were somewhat less than anticipated.

WHEAT SITUATION IN ITALY

The following account of the current wheat situation in Italy has been extracted from a report by Miss M. D. Johnson, Commercial Assistant, Canadian Embassy, Rome, under date of September 30, 1964, and is reproduced with the permission of the Trade Commissioner Service, Department of Trade and Commerce.

The 1964 wheat crop amounted to 8.6 million metric tons (316.0 million bushels) which, though considerably lower than the first provisional estimate 9.5 million tons (349.1 million bushels), is still 500,000 tons (18.4 million bushels) more than the yield last year and 400,000 tons (14.7 million bushels) more than the average for the last five years of 8.2 million tons (301.3 million bushels). As the carryover from last year was 400,000 tons (14.7 million bushels), there are 9 million tons (330.7 million bushels) available for the coming year, which is sufficient to cover domestic needs, apart from the usual imports of durum and hard wheat.

GRAIN SITUATION IN WEST GERMANY

The following account of the grain situation in West Germany has been extracted from a report supplied by Mr. W. F. Hillhouse, Agricultural Counsellor, Canadian Embassy, Bad Godesberg, Germany, under date of October 21, 1964 and is reproduced with the permission of the Trade Commissioner Service, Department of Trade and Commerce. Where possible, conversions to Canadian measures have been made and rounded for the convenience of our readers.

Grain Production At an estimated 16.55 million metric tons (727.7 million
Sets Post-War Record bushels) this year's West German grain crop is 7 per cent above last year's final estimate and more than 15 per cent above the 1958-63 average. It is also more than 1 million tons (52.2 million bushels) higher than the previous record established in 1960 and is reported to be of unusually high quality.

Increased production resulted almost entirely from the higher yields realized in most types of bread and feed grains. Geographically most major grain producing areas shared in the improvement over last year but the greatest advances were registered in the north.

In comparison with last year, winter bread grains showed the greatest gain, whereas in relation to 1960 and the long-term average feed grains registered the larger advances. On a percentage basis corn for grain showed by far the greatest increase although total production at 63,000 tons (2.5 million bushels) is still insignificant.

The following table gives estimated 1964 production figures by major types and compares them with recent years.

German Grain Production

| Grain | Average 1958-63 | 1960 | 1963 | 1964 <u>1/</u> |
|-----------------------------------|--------------------|---------|---------|----------------|
| - thousand bushels - | | | | |
| Wheat | 163,471 | 182,430 | 178,425 | 191,161 |
| Rye | 132,249 | 149,401 | 127,505 | 142,071 |
| Totals, Bread Grains <u>2/</u> .. | 295,720 | 331,831 | 305,930 | 333,232 |
| Barley | 141,738 | 147,938 | 163,581 | 179,831 |
| Oats | 140,018 | 141,224 | 150,496 | 149,647 |
| Mixed Grains | 53,631 | 53,694 | 60,279 | 62,527 |
| Corn | 1,063 | 787 | 1,890 | 2,480 |
| Totals, Feed Grains | 336,450 | 343,643 | 376,246 | 394,485 |
| Totals, Grains | 632,170 | 675,474 | 682,176 | 727,717 |

1/ Preliminary. 2/ Includes winter mixed grains.

CALENDAR OF WHEAT EVENTS

- October 9 According to a report published by the Crop Reporting Board, U.S.D.A. production of all wheat in the United States in 1964, based on conditions at October 1, was forecast at 1,286 million bushels.
- 23 Wheat stocks in positions in the United States on October 1, 1964 were estimated at 1,806 million bushels, 7 per cent smaller than the previous year and 18 per cent less than the 1958-62 average.
- 26 The Canadian Wheat Board announced that it had entered into a contract covering the sale of 250,000 long tons of wheat and 25,000 long tons of flour to the U.S.S.R.
- November 2 The Canadian Wheat Board announced that a contract had been negotiated for the sale of approximately 100,000 long tons of wheat to Hungary.
- 6 Based on conditions at October 15, Canada's 1964 wheat crop was estimated at 600.4 million bushels, 17 per cent less than last year's all-time record of 723.4 million but 29 per cent more than the ten-year (1953-62) average of 466.1 million bushels.

STATISTICS CANADA LIBRARY
BIBLIOTHÈQUE STATISTIQUE CANADA



1010687024