

CATALOGUE No.

22-005

MONTHLY



CANADA

DOMINION BUREAU OF STATISTICS
AGRICULTURE DIVISION

THE WHEAT REVIEW



FEBRUARY 1965

DOMINION BUREAU OF STATISTICS

THE
WHEAT REVIEW

FEBRUARY 1965

Published by Authority of
The Minister of Trade and Commerce

Prepared in the Crops Section, Agriculture Division
Dominion Bureau of Statistics, Ottawa

March 1965
5502-502

Price \$3 per year

Vol. 35—No. 7

TABLE OF CONTENTS

	<u>Page</u>
World Wheat Situation	
Wheat Exports 15 Per Cent Below Previous Record	1
Wheat Supplies of Four Major Exporters 3 Per Cent Below a Year Ago	1
1965 Winter Wheat Crop Conditions	1
Canadian Situation	
1964-65 Wheat Supplies Decline from Previous Year's Record Level	2
August-January Exports Below Previous Year's Record But Well Above Average.	2
Marketings, Disappearance and Visible Supplies	3
January 1965 Exports of Wheat and Flour Total 20.6 Million Bushels	3
Final Payment 1963-64 Wheat Pool	4
Quota Position	5
Wheat Shipments to the United States by Destination	5
Rail Shipments of Wheat to Maritime Ports	5
Farmers' Marketings of Wheat	6
Visible Supply of Canadian Wheat	7
Grading of Wheat Inspected, August-January 1964-65 with Comparisons	7
Weekly Visible Supply and Farmers' Marketings (Charts)	8
Rail Shipments of Wheat from Fort William-Port Arthur	9
Overseas Exports of Canadian Grain by Ports of Loading	9
Freight Assistance Shipments	10
Monthly Exports of Canadian Wheat and Wheat Flour	11
Exports of Canadian Wheat by Destination	12
Customs Exports of Canadian Wheat Flour by Countries of Consignment	15
Canadian Wheat Board Weekly Average Cash Wheat Prices	17
Canadian Flour Milling Situation	
Production and Exports	19
United States Situation	
Domestic Supplies 6 Per Cent Below Last Year	20
Crop and Weather Conditions	21
United States Exports of Wheat and Flour Continue Slight Gain	22
Cash Wheat Prices on the Kansas City and Minneapolis Markets	26
Chicago Wheat Futures, High Points of Closing	26
Australian Situation	27
Argentine Situation	30
French Situation	33
Grain Situation in West Germany	34
Wheat Situation in Italy	36
Wheat Situation in Japan	39
Crop Situation in Britain	40
Calendar of Wheat Events	41

WORLD WHEAT SITUATION

Wheat Exports

15 Per Cent

Below Previous Record

At the halfway mark of the current Canadian crop year shipments of wheat (including flour in terms of wheat) from the four traditional major exporters amounted to 726.2 million bushels, exceeded only by the record total of 853.6 million exported during the same months last year. In addition, this year's August-January total represents a 57 per cent margin over the average (1953-54--1962-63) shipments of 462.8 million bushels for the same six months. As indicated in the accompanying table, based on the Canadian crop year, wheat shipments from Argentina at 62.6 million bushels were more than double the 30.9 million shipped at the same date last year while exports from United States, Canada and Australia were lower than the previous year's comparable levels.

Exports of Wheat and Flour in Terms of Wheat, August 1964-January 1965 with Comparisons

August-January	United States	Canada	Argentina	Australia	Total
- million bushels -					
1950-51	121.5	104.7	33.7	61.5	321.4
1951-52	234.1	154.9	23.1	50.1	462.2
1952-53	168.7	190.3	1.1	40.8	400.9
1953-54	94.8	138.7	60.8	30.2	324.5
1954-55	126.2	134.9	66.4	45.4	372.9
1955-56	119.5	117.8	63.3	42.5	343.1
1956-57	252.7	145.4	45.9	74.5	518.5
1957-58	196.1	151.3	40.2	39.7	427.3
1958-59	220.6	144.2	45.0	33.3	443.1
1959-60	207.5	150.1	25.2	57.8	440.6
1960-61	306.9	153.5	41.3	66.5	568.2
1961-62	357.1	193.9	21.8	110.4	683.2
1962-63	250.0	167.6	30.8 <u>1/</u>	58.5	506.9 <u>1/</u>
1963-64 <u>1/</u>	401.9	292.8	30.9	128.0	853.6
1964-65 <u>2/</u>	359.1	218.0	62.6	86.5	726.2

1/ Revised.

2/ Preliminary.

Wheat Supplies of Four Major Exporters

3 Per Cent Below

a Year Ago

Supplies of wheat held by the four traditional major exporters at February 1, 1965 for export and for carryover at the end of their respective crop years amounted to 2,390.9 million bushels compared with 2,461.8 million at the same time a year ago. Reduced supplies in United States and Canada more than offset larger totals in Argentina and Australia. Supplies at February 1, 1965, in millions of bushels, were held as follows, with last year's comparable figures in brackets: United States, 1,160.3 (1,291.0); Canada, 681.1 (761.1); Argentina, 272.9 (189.6); and Australia, 276.6 (220.1).

1965 Winter Wheat Crop Conditions

According to the March 6, 1965 issue of the Wheat Situation, published by the Economic Research Service, U.S.D.A., in Western Europe grain crops have generally wintered well, and conditions for fall planting were favourable. Moisture conditions have been favourable and large acreages of winter wheat are reported; another large harvest is indicated. In France, the area planted to winter wheat was unusually large, estimated at about 10.6 million acres, 6 per cent larger than a year earlier. Growth is reported as well advanced. Production of winter wheat accounts for 90 to 95 per

Continued on page 21

CANADIAN SITUATION

1964-65 Wheat Supplies
Decline from Previous
Year's Record Level

Reflecting declines in both carryover stocks and production, total supplies of wheat for the 1964-65 crop year, at 1,059.9 million bushels, are 12 per cent less than the 1963-64 record total of 1,210.7 million.

Supplies of the size indicated are, however, still the fifth largest on record. After making an allowance of 155.0 million bushels for anticipated domestic requirements, supplies available for export and for carryover during 1964-65 amount to 904.9 million bushels, about 14 per cent below the 1963-64 total of 1,054.0 million.

August-January Exports
Below Previous Year's Record
But Well Above Average

Total exports of wheat and wheat flour in terms of wheat amounted to 218.0 million bushels during the August-January period of the current crop year.

This volume, although representing a decline of 25 per cent from the record high level of 292.8 million shipped during the same months a year ago, still surpasses by 46 per cent the ten-year (1953-54-1962-63) August-January average of 149.7 million. Of the current total, some 202.3 million bushels were exported as wheat and 15.7 million were flour in terms of wheat equivalent. The balance, remaining on February 1, 1965 for export and for carryover, amounted to 686.8 million bushels, 10 per cent less than the February 1, 1964 total of 761.1 million.

Canadian Wheat Supplies

Item	1963-64 <u>1/</u>	1964-65 <u>2/</u>
	- million bushels -	
Carryover in North America at beginning of crop year (August 1)	487.2	459.4
Production	723.4	600.4
Imports of wheat for domestic use, August-January	<u>3/</u>	<u>4/</u>
Total estimated supplies	1,210.7	1,059.9
Less estimated domestic requirements for crop year	156.7	155.0 <u>1/</u>
Available for export and for carryover	1,054.0	904.9
Deduct:		
Exports of wheat in bulk, August-January <u>5/</u>	266.3	201.9
Exports of bagged seed wheat, August-January <u>6/</u>	1.5	0.4
Total exports of wheat as grain	267.7	202.3
Exports of wheat flour in terms of wheat, August- January <u>6/</u>	25.1	15.7
Total exports of wheat and wheat flour	292.8	218.0
Balance on February 1 for export and for carryover	761.1	686.8

1/ Revised. 2/ Preliminary. 3/ Less than 50,000 bushels. 4/ Not available.

5/ As reported by the Board of Grain Commissioners. (Includes overseas clearances and imports into the United States). 6/ Customs returns, 1963-64 adjusted for time lag.

Marketings, Disappearance
and Visible Supplies

Total primary deliveries of wheat (both east and west) up to February 17 of the current crop year have amounted to 271.6 million bushels compared with 294.4 million marketed during the same period of the previous crop year. Some 32.4 million bushels of this year's total were delivered during the four weeks January 21, to February 17, 1965. During the same period the volume of Canadian wheat entering domestic and export channels amounted to 25.3 million bushels. As a result, the total visible supply of Canadian wheat increased from 336.2 million at January 20 to a level of 343.1 million at February 17, 1965.

The total visible supply of Canadian wheat at February 17 this year represented declines of 7 per cent and 12 per cent from the comparable 1964 total of 368.5 million and the 1963 figure of 389.9 million bushels, respectively. The largest reduction continued in country elevator stocks, with wheat in this position amounting to 177.6 million bushels, 15 per cent below both the 208.3 million the previous year and the 210.0 million two years ago. Wheat stocks at interior terminals, at February 17, 1965, totalled 4.2 million bushels and also recorded declines from the 1964 and 1963 comparable levels of 5.4 million and 5.2 million bushels, respectively. Wheat stocks "in transit rail" (Western Division) amounted to 11.2 million bushels in contrast to 19.2 million a year ago and 20.9 million two years ago. Supplies at the Canadian Lakehead, totalling some 59.7 million bushels, declined by 3 per cent from last year's comparable level of 61.4 million but surpassed by 11 per cent the 1963 figure of 54.0 million bushels. Stocks in "Storage Afloat", amounting to 17.5 million bushels, were slightly higher than the 1964 level of 16.4 million but below the 1963 total of 23.3 million. The 28.2 million bushels in Bay, Lake and Upper St. Lawrence ports were sharply above the 18.0 million bushels in these same ports a year ago but fractionally below the 28.6 million of two years ago. Supplies in Lower St. Lawrence and Maritime ports, at February 17, 1965, at 21.7 million bushels, exceeded the 1964 total of 13.5 million by a wide margin but were 12 per cent lower than the 1963 volume of 24.6 million bushels. The 7.7 million bushels in West Coast ports (Vancouver-New Westminster, Prince Rupert and Victoria) registered a considerable decrease from the 1964 comparable total of 10.7 million but were above the 1963 figure of 7.3 million.

January 1965 Exports of
Wheat and Flour Total
20.6 Million Bushels

Combined exports of wheat in bulk, bagged seed wheat and wheat flour in terms of grain equivalent amounted to 20.6 million bushels during January 1965. This volume was 30 per cent less than the December total of 30.3 million and sharply reduced from the high level of 34.8 million cleared in January 1964, but still exceeded by a margin of 3 per cent the ten-year (1954-63) January average of 20.0 million bushels. Exports of wheat in bulk (as reported by the Board of Grain Commissioners) during January 1965 totalled 18.1 million bushels, some 7 per cent more than the ten-year average for January of 16.9 million but substantially below both the December 1964 figure of 27.7 million and the January 1964 total of 28.5 million bushels. Exports of bagged seed wheat during January 1965 based on Canadian Customs returns, amounted to 74 thousand bushels in contrast to the January 1964 total (adjusted to remove time lag) of 535 thousand. Customs returns also indicate that the equivalent of 2.4 million bushels of wheat was exported in the form of flour during January 1965, 4 per cent below the previous month but considerably less than the unusually high January 1964 adjusted figure of 5.8 million.

Cumulative exports of wheat in bulk during the first half (August-January) of the current crop year amounted to 201.9 million bushels, some 24 per cent less than the comparable 1963-64 total of 266.3 million, but sharply

above the ten-year average for the period of 129.7 million. The principal markets for Canadian wheat in bulk during the first six months of the current crop year, with figures for the same period of the preceding crop year in brackets, were as follows, in millions of bushels: Britain, 37.5 (41.9); China Communist, 31.3 (17.6); Japan, 24.8 (25.1); Czechoslovakia, 18.7 (2.1); Poland, 14.7 (7.3); Federal Republic of Germany, 11.9 (22.9); Belgium and Luxembourg, 9.4 (13.2); Democratic Republic of Germany, 7.4 (nil); and Venezuela, 5.8 (3.2).

Cumulative exports of bagged seed wheat during August-January of the current crop year, based on Canadian Customs returns, amounted to 405 thousand bushels, sharply below last year's comparable total (adjusted to remove time lag) of 1,459 thousand.

Cumulative exports of wheat flour during the first half of the 1964-65 crop year, based on Customs returns, were the equivalent of 15.7 million bushels, 37 per cent below the adjusted August 1963-January 1964 total of 25.1 million bushels and 15 per cent less than the ten-year average for the period of 18.5 million. The leading markets for Canadian wheat flour in terms of wheat equivalent during the August-January period of the 1964-65 crop year, with revised data for the same months of the preceding crop year in brackets, were as follows, in thousands of bushels: Britain, 4,722 (5,731); Cuba, 2,454 (3,191); U.S.S.R. (Russia), 1,689 (8,970); Ghana, 1,002 (544); Jamaica, 725 (822); Trinidad, 692 (778); Leeward and Windward Islands, 522 (520); Ceylon, 438 (586); Costa Rica, 438 (258); United States, 427 (490); and Hong Kong, 394 (544).

Final Payment 1963-64 Wheat Pool

On March 2, 1965 the Canadian Wheat Board announced the final payment on wheat delivered to the Board during the crop year 1963-64.

Including 43,425,117 bushels of Durum Wheat, producers delivered a total of 563,875,208 bushels of wheat to the Board in the 1963-64 crop year. This is the largest volume of wheat ever delivered by producers to the Board in a crop year. The amount of the final payment to be distributed to producers is \$271,964,204.00. This final payment is a record in the history of Board operations. This is not a payment by the Government of Canada, but represents the net returns of the Canadian Wheat Board in the marketing of Western Canadian Wheat for the 1963-64 crop year. Of the total payment, \$18,376,022.00 will be distributed to producers of Durum Wheat. The average final payment for wheat other than Durum is 48.725¢ per bushel, which is also a record. The average final payment for Durum Wheat is 42.317¢ per bushel. These average payments compare with 40.181¢ per bushel for grades of wheat other than Durum and 64.780¢ per bushel for Durum Wheat delivered by producers in the 1962-63 crop year. The Board will commence issuing final payment cheques to producers on March 8th, 1965. The final payment is being made on a grade basis as prescribed in the Canadian Wheat Board Act. The rates of final payment for the principal grades of wheat are as follows:

<u>Red Spring Wheat Grades</u>	<u>Final Payment</u> (cents per bushel)	<u>Amber Durum Grades</u>	<u>Final Payment</u> (cents per bushel)
No. 1 Northern	46.893	No. 1 C.W.	42.793
No. 2 Northern	47.832	No. 2 C.W.	44.340
No. 3 Northern	49.339	No. 3 C.W.	40.255
No. 4 Northern	50.076	Extra No. 4 C.W.	41.177
No. 5 Wheat	60.272	No. 4 C.W.	44.926
No. 6 Wheat	63.334	No. 5 C.W.	60.272
Feed Wheat	64.222	No. 6 C.W.	63.334

Quota Position By March 1, 1965 the Canadian Wheat Board had placed 459 delivery points on the supplementary quota of four bushels of wheat (other than Durum) basis acreage seeded to wheat, or 200 bushels, whichever is the larger. Of the total of 1,907 shipping points in the Western Division, the Board had placed 1,167 points on a delivery quota of 6 bushels per specified acre, 555 on a 5-bushel quota and 175 on a 4-bushel quota. Only 6 points were on a 3-bushel quota while 4 stations were "closed".

Summary of Elevator Shipping Points in the Western Division
as at March 1, 1965

Province	Supplementary 4 bushels Wheat (except durum)	General Quota in Bushels per Specified Acre				Closed	Total
		Three	Four	Five	Six		
Ontario	1	-	-	-	1	-	1
Manitoba	99	-	-	74	268	-	342
Saskatchewan	220	6	123	331	569	3	1,032
Alberta	134	-	52	150	324	1	527
British Columbia	5	-	-	-	5	-	5
All Provinces	459	6	175	555	1,167	4	1,907

Wheat Shipments to the United States by Destination There were no vessel and rail shipments of wheat to the United States, either for re-export or retention for domestic use, from the beginning of the current crop year to February 17, 1965. During the comparable periods of 1962-63 and 1963-64 shipments amounted to 211 thousand and 268 thousand bushels, respectively.

Rail Shipments of Wheat to Maritime Ports Rail shipments of wheat to Maritime Ports from Bay, Lake and Upper St. Lawrence Ports during the first six months of the current crop year totalled 15.3 million bushels compared with the August 1963-January 1964 figure of 26.0 million.

Rail Shipments of Wheat to Maritime Ports from Bay, Lake
and Upper St. Lawrence Ports

Origin of Shipments	August 1, 1963 - January 31, 1964	August 1, 1964 - January 31, 1965
	- bushels -	
Port McNicoll	8,971,283	3,998,373
Midland, Tiffin	8,579,006	4,398,504
Collingwood	557,964	254,551
Owen Sound	2,971,607	2,616,686
Goderich	1,893,726	2,316,278
Sarnia	2,062,058	920,599
Port Colborne	747,601	818,272
Peterborough	254,500	-
Totals	26,037,745	15,323,263

Farmers' Marketings 1/ of Wheat in the Prairie Provinces 1964-65

Week Ending		Manitoba	Saskatchewan	Alberta	Total	Last Year <u>2/</u>
- bushels -						
August	12, 1964	75,662	409,500	98,247	583,409	543,483
	19	165,645	350,728	200,845	717,218	813,982
	26	606,652	1,186,624	360,697	2,153,973	2,958,768
September	2	259,162	1,731,216	542,073	2,532,451	3,670,105
	9	626,938	2,337,139	282,197	3,246,274	7,414,702
	16	2,861,693	3,000,932	736,446	6,599,071	8,978,421
	23	4,677,736	10,134,664	3,309,300	18,121,700	6,291,301
	30	2,253,868	11,072,846	2,974,796	16,301,510	9,604,797
October	7	1,436,956	6,617,924	3,090,763	11,145,643	11,308,739
	14	1,575,017	7,043,761	6,481,794	15,100,572	8,789,151
	21	1,816,060	11,532,537	6,007,602	19,356,199	11,558,396
	28	2,311,743	10,169,173	4,069,997	16,550,913	14,989,546
November	4	2,583,044	6,802,878	3,630,412	13,016,334	15,281,709
	11	2,063,739	7,630,517	3,107,184	12,801,440	13,599,259
	18	1,836,676	6,766,380	2,980,075	11,583,131	15,332,440
	25	1,534,854	7,469,802	3,168,692	12,173,348	11,848,094
December	2	1,521,191	5,254,805	2,029,339	8,805,335	17,528,964
	9	1,305,493	5,003,945	2,325,113	8,634,551	19,357,177
	16	2,964,986	13,588,764	3,746,693	20,300,443	10,101,263
	23	794,134	6,484,116	1,408,499	8,686,749	7,292,811
	30	648,303	2,405,338	1,012,360	4,066,001	11,239,153
January	6, 1965	695,986	5,748,287	1,301,676	7,745,949	15,799,953
	13	1,034,504	1,584,566	1,118,931	3,738,001	16,720,481
	20	616,905	4,983,638	4,339,605	9,940,148	16,268,127
	27	1,739,531	12,925,263	5,343,141	20,007,935	5,695,394
February	3	447,871	1,452,759	2,483,788	4,384,418	11,039,892
	10	379,082	1,169,508	1,690,970	3,239,560	7,962,153
	17	674,240	2,265,066	1,731,833	4,671,139	7,584,566
Totals		39,507,671	157,122,676	69,573,068	266,203,415	289,572,827

Average similar period:

1953-54--1962-63 . 20,126,500 108,462,754 48,677,806 177,267,060

1/ Includes receipts at country, interior private and mill elevators, interior semi-public terminals and platform loadings.

2/ Revised.

Visible Supply of Canadian Wheat, February 17, 1965
Compared with Approximately the Same Date, 1963 and 1964

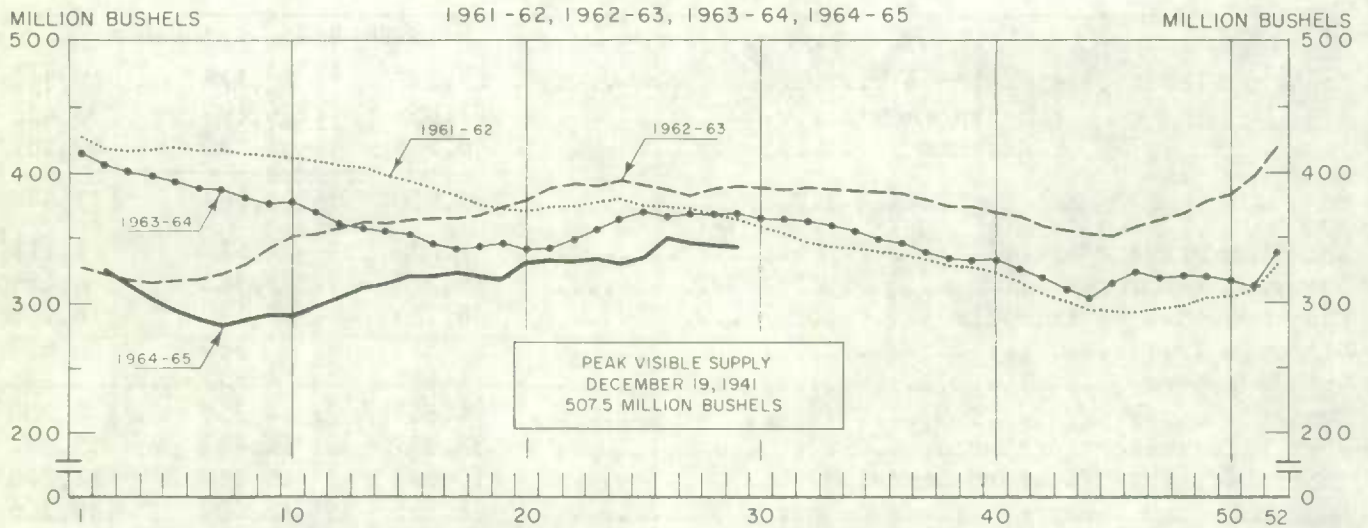
Position	1963	1964	1965
- thousand bushels -			
Country elevators - Manitoba	27,137	20,178	18,843
Saskatchewan	121,959	126,699	98,452
Alberta	60,853	61,390	60,351
Totals	209,950	208,267	177,646
Interior private and mill	7,532	7,620	7,111
Interior terminals	5,228	5,363	4,189
Vancouver-New Westminster	6,153	9,130	6,113
Victoria	511	686	659
Prince Rupert	682	841	896
Churchill	4,857	4,759	4,700
Fort William-Port Arthur	53,977	61,423	59,652
In transit rail (Western Division)	20,938	19,240	11,248
Bay, Lake and Upper St. Lawrence ports	28,595	18,004	28,206
Lower St. Lawrence and Maritime ports	24,559	13,466	21,696
Storage afloat	23,304	16,359	17,513
In transit rail (Eastern Division)	3,648	3,346	3,474
Totals	389,934	368,504	343,103

Grading of Wheat Inspected, August 1964-January 1965 with Comparisons

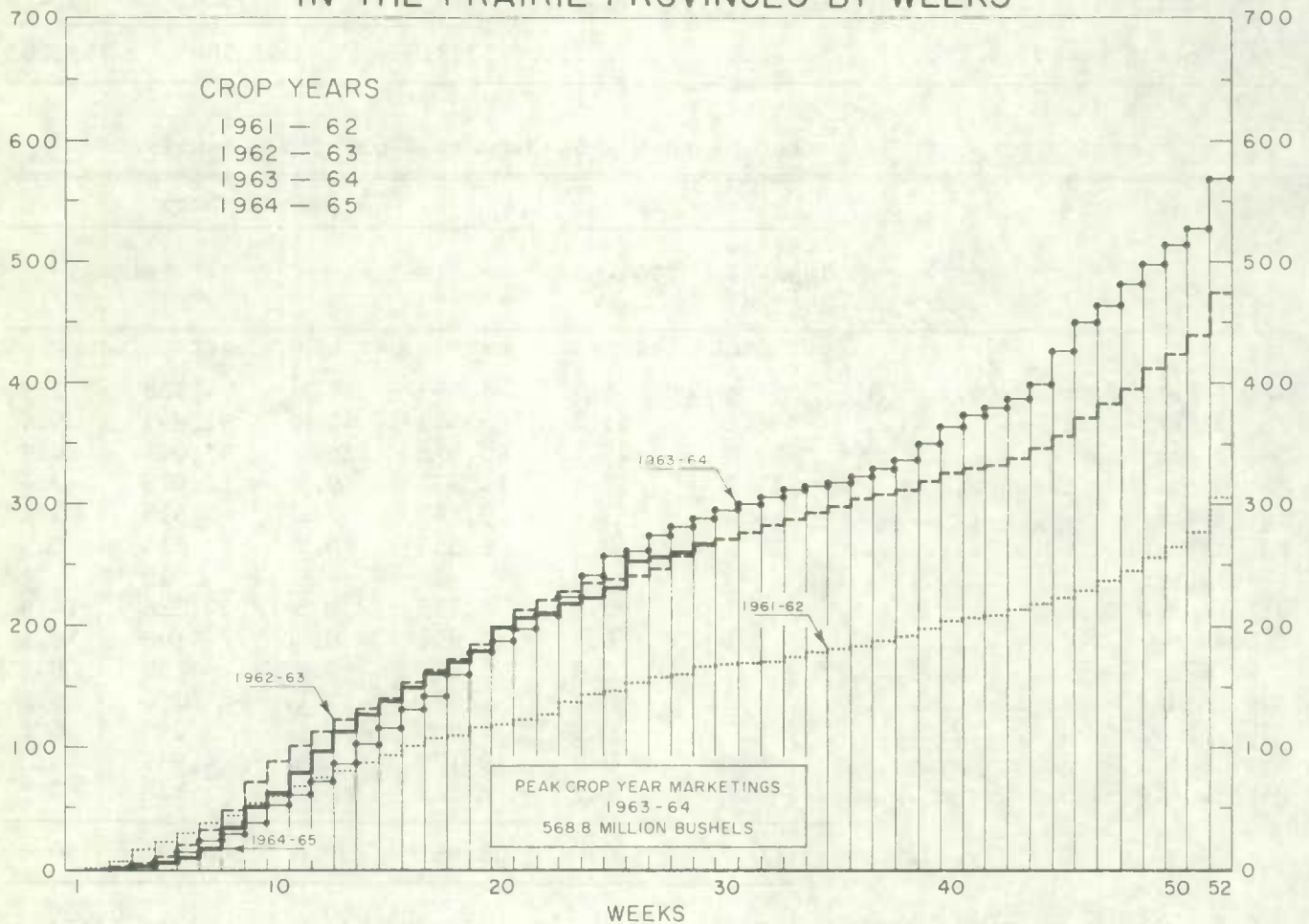
Grade	Crop Year		August-January			
	Average		1963-64		1964-65	
	1958-59 1962-63	1963-64	1963-64		1964-65	
	per cent	per cent	cars	per cent	cars	per cent
No. 1 Man. Northern	7.6	4.8	6,467	4.1	4,388	2.9
No. 2 Man. Northern	38.0	49.2	65,449	41.8	61,893	41.6
No. 3 Man. Northern	22.6	25.1	40,672	26.0	37,011	24.9
No. 4 Man. Northern	10.0	6.6	14,837	9.5	11,013	7.4
No. 5 Wheat	4.4	3.4	8,192	5.2	4,815	3.2
No. 6 Wheat	0.6	0.5	1,358	0.9	811	0.5
Feed Wheat	<u>1/</u>	<u>1/</u>	14	<u>1/</u>	20	<u>1/</u>
Others Red Spring	10.1	3.0	6,715	4.3	22,236	14.9
C.W. Garnet	0.1	0.4	604	0.4	168	0.1
C.W. White Spring	0.1	0.1	110	0.1	152	0.1
C.W. Mixed Wheat	<u>1/</u>	0.1	78	<u>1/</u>	78	0.1
Alberta Winter	0.2	0.9	1,650	1.1	965	0.6
Nos. 1-6 C.W. Amber Durum ..	6.0	5.7	10,150	6.5	4,969	3.3
Others C.W. Amber Durum	0.2	0.2	385	0.2	378	0.3
Totals	100.0	100.0	156,681	100.0	148,897	100.0
Gross bushels (approx.)			301,061,000		288,540,000	

1/ Less than .05 per cent.

WEEKLY VISIBLE SUPPLY OF CANADIAN WHEAT



CUMULATIVE RECORD OF WHEAT MARKETINGS IN THE PRAIRIE PROVINCES BY WEEKS



(Data in both charts for crop years beginning August 1)

Rail Shipments of Wheat from Fort William-Port Arthur, 1961-62--1964-65

Month	1961-62	1962-63	1963-64	1964-65
- bushels -				
August	20,648	13,933	5,500	7,786
September	14,598	11,657	9,104	19,564
October	33,944	22,716	25,355	12,135
November	22,915	12,024	13,500	13,167
December	60,167	12,778	23,047	26,961
January	126,533	39,534	58,772	10,703
February	68,421	22,967	28,768	
March	37,000	86,398	21,268	
April	37,777	69,067	26,063	
May	11,203	11,851	7,941	
June	16,022	15,746	20,518	
July	17,315	11,158	12,707	
Totals	466,543	329,829	252,543	

Distribution of Rail Shipments of Wheat from Fort William-Port Arthur, January 1965

Grade	Nova Scotia	Quebec	Ontario
- bushels -			
2 Northern	1,200	-	-
5 Wheat	-	1,500	-
Feed	-	145	-
Rejected	-	-	250
Durum	-	2,000	-
Others	-	5,608	-
Totals	1,200	9,253	250

Overseas Exports of Canadian Grain by Ports of Loading, August 1, 1964-February 17, 1965
with Comparisons

Port	Wheat ^{1/}	Durum Wheat ^{1/}	Oats ^{1/}	Barley	Rye	Flaxseed	Rapeseed ^{2/}
- bushels -							
<u>Pacific Seaboard</u>							
Van.-New West.	78,777,280	-	2,194,122	10,279,142	313,504	4,296,075	3,874,251
Victoria	4,164,785	-	-	-	-	-	-
Prince Rupert	3,967,077	-	-	-	-	-	-
<u>Churchill</u>	21,644,772	-	-	-	-	-	-
<u>Lakehead Direct</u>	1,056,868	521,071	451,739	1,341,237	457,500	1,892,239	58,659
<u>Kingston Direct</u>	343,541	-	-	-	-	-	-
<u>St. Lawrence</u>							
Montreal	25,016,040	5,341,918	356,951	46,667	11,440	1,690,817	-
Sorel	9,043,694	208,457	-	-	-	42,629	-
Three Rivers	7,601,783	937,446	-	-	176,600	179,084	-
Quebec	6,925,000	1,392,907	-	-	-	-	-
Baie Comeau	24,698,610	4,199,435	-	-	-	152,995	-
<u>Maritime</u>							
Saint John	496,013	-	-	-	-	-	-
West Saint John	8,336,391	1,274,467	98,739	-	-	39,963	-
Halifax	6,881,463	382,686	-	-	-	144,500	-
Totals	198,953,317	14,258,387	3,101,551	11,667,046	959,044	8,438,302	3,932,910
Aug. 1, 1963-Feb. 19, 1964.	263,780,784	15,482,754	11,276,839	8,357,920	2,414,676	6,905,309	3,197,929

^{1/} Excluding bagged seed.

^{2/} In bushels of 50 pounds.

Freight Assistance Shipments Claims filed for payment up to January 31, 1965 represent the movement of 4,300 thousand bushels of wheat from the Prairie Provinces to Eastern Canada and British Columbia under the freight assistance policy during the August-December period of the 1964-65 crop year. During the same months last year claims had been filed for a total of 7,032 thousand bushels, indicating on the assumption of approximately the same rate of submission of claims during both the current and preceding crop years that the August-December shipments of wheat under the policy were running about 39 per cent below those of 1963-64. Revised data on the August-December 1963 shipments of wheat based on claims submitted up to January 31, 1965 place the five-month total at 7,609 thousand bushels. The bulk of the shipments during the current five months under review went to destinations in Quebec and Ontario with these two provinces accounting for 47 per cent and 25 per cent of the total, respectively.

Provincial Distribution of Wheat Shipments under the Freight Assistance Policy
August-December 1964 and 1963

Month	Nfld.	P.E.I.	N.S.	N.B.	Que.	Ont.	B.C.	Total
- thousand bushels -								
August, 1964	63	9	105	37	452	236	62	965
September	35	14	86	39	445	239	84	943
October	2	11	100	33	411	225	100	882
November	4	9	110	33	404	207	159	927
December	<u>3/</u>	3	54	21	321	170	12	583
Totals <u>1/</u>	105	47	456	163	2,034	1,078	417	4,300
Same period 1963:								
Preliminary <u>2/</u>	75	61	755	245	2,776	2,470	649	7,032
Revised <u>1/</u>	150	66	802	263	2,938	2,563	827	7,609

Preliminary data on millfeed shipments under the freight assistance policy indicate shipments of 169,129 tons during the August-December period of the current crop year. During the same five months of 1963 claims had been filed for a total of 198,751 tons, indicating on the assumption of approximately the same rate of submission of claims during both the current and preceding crop years that the August-December shipments of millfeeds under the policy were running about 15 per cent below those of 1963. Revised data on the 1963 August-December shipments of millfeeds based on claims submitted up to January 31, 1965 place the five-month total at 235,600 tons. As with freight-assisted shipments of wheat, the greater portion of the millfeed shipments during the period under review went to destinations in Quebec and Ontario.

Provincial Distribution of Millfeed Shipments under the Freight Assistance Policy
August-December 1964 and 1963

Province	1 9 6 3		1 9 6 4
	Preliminary <u>2/</u>	Revised <u>1/</u>	Preliminary <u>1/</u>
- tons -			
Newfoundland	2,195	3,225	1,910
Prince Edward Island	2,892	3,284	3,076
Nova Scotia	11,914	13,140	11,360
New Brunswick	10,220	12,089	10,465
Quebec	98,919	119,112	84,744
Ontario	60,820	67,944	50,710
British Columbia	11,791	16,806	6,864
Totals	198,751	235,600	169,129

1/ Based on claims filed up to January 31, 1965.

2/ Based on claims filed up to January 31, 1964.

3/ Less than 500 bushels.

Monthly Exports of Canadian Wheat and Wheat Flour

Year and Month	Wheat in Bulk <u>1/</u>	Bagged Seed Wheat <u>2/</u>	Total Wheat	Wheat Flour <u>2/</u> <u>3/</u>	Total <u>3/</u> Wheat and Wheat Flour
- thousand bushels -					
<u>1962-63</u>					
August	21,944	157	22,101	2,852	24,953
September	25,040	200	25,240	2,604	27,844
October	29,705	31	29,737	2,181	31,917
November	33,309	144	33,452	2,176	35,628
December	20,949	451	21,399	2,305	23,705
January	21,486	473	21,959	1,586	23,545
February	18,779	743	19,522	1,811	21,333
March	19,246	1,373	20,618	2,454	23,072
April	28,916	422	29,338	2,330	31,669
May	35,355	14	35,369	2,186	37,555
June	24,512	<u>4/</u>	24,513	2,837	27,350
July	20,854	-	20,854	1,943	22,798
Totals	300,095	4,007	304,102	27,265	331,367
<u>1963-64</u>					
August	29,204	187	29,391	2,819	32,210
September	42,556	129	42,686	2,106	44,791
October	59,020	15	59,035	3,520	62,555
November	65,296	204	65,499	4,538	70,037
December	41,763	388	42,151	6,284	48,435
January	28,451	535	28,987	5,829	34,816
February	21,675	562	22,237	5,800	28,037
March	22,510	484	22,995	5,697	28,692
April	43,211	213	43,423	5,530	48,954
May	56,992	14	57,006	4,744	61,750
June	65,036	144	65,180	3,768	68,948
July	61,012	35	61,047	4,275	65,322
Totals	536,726	2,912	539,637	54,910	594,548
<u>1964-65 <u>5/</u></u>					
August	42,226	44	42,270	4,073	46,343
September	42,792	145	42,937	2,133	45,069
October	40,120	27	40,147	2,037	42,184
November	30,976	44	31,020	2,523	33,543
December	27,720	72	27,792	2,522	30,314
January	18,098	74	18,172	2,417	20,589
Totals	201,932	405	202,337	15,705	218,042

1/ Export clearances including shipments to the United States compiled by the Statistics Branch, Board of Grain Commissioners for Canada.

2/ Compiled from Canadian Customs returns, 1962-63 and 1963-64 adjusted to remove effect of time lag in reporting.

3/ In terms of wheat equivalent. Wheat flour conversion rate: 2.3 bushels per cwt.

4/ Less than 500 bushels.

5/ Preliminary, subject to revision.

Exports of Canadian Wheat 1/ by Destination, January 1965 and 1964

Destination	Wheat (Except Durum)	Durum Wheat	All Wheat	
			January 1965	January 1964 2/
- bushels -				
<u>Western Europe</u>				
<u>EEC</u>				
Belgium and Luxembourg	1,644,467	245,342	1,889,809	1,306,373
France	126,239	664,281	790,520	145,936
Germany, Federal Republic	903,920	74,716	978,636	2,654,405
Netherlands	716,232	29,867	746,099	680,953
Sub-totals	3,390,858	1,014,206	4,405,064	4,787,667
<u>Other Western Europe</u>				
Britain	5,040,992	-	5,040,992	6,773,396
Ireland	72,360	-	72,360	-
Switzerland	22,213	239,727	261,940	217,700
Sub-totals	5,135,565	239,727	5,375,292	6,991,096
Totals	8,526,423	1,253,933	9,780,356	11,778,763
<u>Eastern Europe</u>				
Albania	337,767	-	337,767	457,334
Bulgaria	1,010,166	-	1,010,166	-
Hungary	422,000	-	422,000	-
U.S.S.R. (Russia)	889,433	-	889,433	6,272,305
Totals	2,659,366	-	2,659,366	6,729,639
<u>Asia</u>				
China, Communist	536,339	-	536,339	4,363,893
Hong Kong	71,680	-	71,680	55,440
Japan	2,781,968	-	2,781,968	3,737,125
Malaysia	57,867	-	57,867	-
Philippines	-	-	-	347,760
Taiwan	101,808	-	101,808	44,010
Totals	3,549,662	-	3,549,662	8,548,228
<u>Oceania</u>				
U.S. Oceania	-	-	-	53,573
<u>Western Hemisphere</u>				
Cuba	377,664	-	377,664	639,520
Dominican Republic	205,333	-	205,333	-
Peru	228,667	-	228,667	-
Venezuela	1,297,333	-	1,297,333	700,228
United States Domestic 3/.....	-	-	-	1,353
Totals	2,108,997	-	2,108,997	1,341,101
Sub-totals, All Countries	16,844,448	1,253,933	18,098,381	28,451,304
Bagged seed 4/.....			73,584	535,463
Totals, All Countries	16,844,448	1,253,933	18,171,965	28,986,767

NOTE: See footnotes on page 14.

Cumulative Exports of Canadian Wheat 1/ by Destination

Destination	August 1964-January 1965			Total
	Wheat (Except Durum)	Durum Wheat	Total Wheat	Same Period Last Year <u>2/</u>
- bushels -				
<u>Western Europe</u>				
<u>EEC</u>				
Belgium and Luxembourg	8,528,567*	891,643	9,420,210*	13,170,404
France	822,783	2,555,577	3,378,360	2,777,117
Germany, Federal Republic ...	7,885,395*	4,019,037	11,904,432*	22,913,412
Italy	2,432,093	-	2,432,093	3,758,777
Netherlands	2,395,457	67,573	2,463,030	2,688,889
Sub-totals	22,064,295	7,533,830	29,598,125	45,308,599
<u>Other Western Europe</u>				
Austria	970,293	225,200	1,195,493	524,904
Britain	37,400,588*	131,413	37,532,001*	41,938,041
Denmark	-	-	-	20,543
Finland	343,467	-	343,467	356,533
Ireland	350,680	5,600	356,280	2,030,000
Malta and Gozo	410,667	1,867	412,534	709,294
Norway	1,601,120	-	1,601,120	1,667,203
Sweden	-	11,200	11,200	22,400
Switzerland	466,042*	1,931,362	2,397,404*	4,250,790
Sub-totals.....	41,542,857	2,306,642	43,849,499	51,519,708
Totals	63,607,152	9,840,472	73,447,624	96,828,307
<u>Eastern Europe</u>				
Albania	2,341,417	-	2,341,417	1,476,534
Bulgaria	3,359,614	-	3,359,614	-
Czechoslovakia	18,688,398	-	18,688,398	2,052,968
Germany, Democratic Republic ..	7,404,212	-	7,404,212	-
Hungary	1,328,940	-	1,328,940	-
Poland	10,932,980	3,784,181	14,717,161	7,300,247
U.S.S.R. (Russia)	970,980	-	970,980	97,888,900
Yugoslavia	-	-	-	3,501,866
Totals	45,026,541	3,784,181	48,810,722	112,220,515
<u>Africa</u>				
Mozambique	24,105	-	24,105	102,057
Nigeria	284,024	-	284,024	221,551
Republic of South Africa	944,533	-	944,533	-
Southern Rhodesia	48,210	-	48,210	-
Totals	1,300,872	-	1,300,872	323,608

Cumulative Exports of Canadian Wheat 1/ by Destination

Destination	August 1964-January 1965			Total
	Wheat (Except Durum)	Durum Wheat	Total Wheat	Same Period Last Year <u>2/</u>
- bushels -				
<u>Asia</u>				
Burma	-	-	-	78,931
China, Communist	31,317,103	-	31,317,103	17,640,000
Hong Kong	470,587	-	470,587	374,639
India	3,225,263	-	3,225,263	-
Israel	529,200	-	529,200	1,067,248
Japan	24,816,650	-	24,816,650	25,059,027
Korea	-	-	-	511,467
Malaysia	372,587	-	372,587	58,800
Pakistan	1,836,800	-	1,836,800	-
Philippines	3,206,261	-	3,206,261	2,941,182
Saudi Arabia	251,964	-	251,964	640,377
Taiwan	341,836	-	341,836	219,604
Totals	66,368,251	-	66,368,251	48,591,275
<u>Oceania</u>				
U.S. Oceania	38,565	-	38,565	257,189
<u>Western Hemisphere</u>				
Barbados	60	-	60	40
Cuba	3,255,090	-	3,255,090	2,726,320
Dominican Republic	704,386	-	704,386	349,906
Ecuador	893,142	-	893,142	366,681
El Salvador	294,934	-	294,934	395,662
Guatemala	135,833	-	135,833	100,000
Honduras	53,200	-	53,200	-
Jamaica	3,654	-	3,654	6,038
Nicaragua	204,960	-	204,960	-
Peru	613,200	-	613,200	730,614
Venezuela	5,807,719	-	5,807,719	3,189,143
United States Domestic <u>3/</u>	-	-	-	204,586
Totals	11,966,178	-	11,966,178	8,068,990
Sub-totals, All Countries	188,307,559	13,624,653	201,932,212	266,289,884
Bagged seed <u>4/</u>			405,138	1,459,360
Totals, All Countries ...	188,307,559	13,624,653	202,337,350	267,749,244

* Revisions in data for previous months have been taken into account in the August-January cumulative totals.

1/ Overseas clearances as reported by the Statistics Branch, Board of Grain Commissioners for Canada, for all countries except the United States. Excluding bagged seed.

2/ Revised.

3/ Compiled from returns of Canadian elevator licensees and shippers and advice from American grain correspondents.

4/ Compiled from Canadian Customs returns, 1963-64 adjusted for time lag.

Customs Exports of Canadian Wheat Flour by Countries of Consignment

Destination	September 1964 1/	January 1965 2/	August-January	
			1964-65 2/	1963-64 1/
			- bushels -	
<u>Western Europe</u>				
<u>EEC</u>				
Belgium and Luxembourg	2,300	3,335	41,197	114,885
Italy	-	920	4,945	-
Netherlands	-	-	867	3,195
Sub-totals	2,300	4,255	47,009	118,080
<u>Other Western Europe</u>				
Britain	774,541	784,321	4,722,197*	5,730,974
Denmark	-	-	1,380	3,211
Gibraltar	-	2,622	2,622	21,638
Greece	2,024	2,024	10,548	10,203
Iceland	-	-	3,220	3,220
Portugal	4,221	3,381	34,872	67,089
Sweden	-	-	1,265	759
Sub-totals	780,786	792,348	4,776,104*	5,837,094
Totals	783,086	796,603	4,823,113*	5,955,174
<u>Eastern Europe</u>				
U.S.S.R. (Russia)	-	-	1,688,718	8,970,232
<u>Africa</u>				
Angola	46	-	1,196	2,990
Cameroun Republic	-	6,203	9,009	-
British Africa nes	-	-	-	25,185
Congo-Leo.	13,800	29,886	75,387	9,775
Ethiopia	-	-	230	253
French Africa nes	-	-	5,782	-
Gambia	8,050	11,270	34,730	1,288
Ghana	92,524	92,819	1,002,053	543,734
Guinea	-	-	920	-
Ivory Coast	-	-	690	-
Liberia	4,565	15,794	46,718	37,570
Malawi	-	3,353	3,353	-
Mozambique	2,323	4,784	25,217	14,177
Nigeria	253	4,372	5,784	16,917
Nyasaland	3,611	-	6,693	19,347
Portuguese Africa nes	4,899	11,684	35,657	50,124
Rhodesia	-	1,150	2,300	1,380
Sierra Leone	39,397	30,832	309,951*	233,560
Tanganyika	-	-	-	4,600
Togo	22,471	18,455	121,118	89,215
Totals	191,939	230,602	1,686,788*	1,050,115
<u>Asia</u>				
Aden	-	2,429	2,429	-
British Middle East nes	4,251	-	22,153	17,259
Burma	159,043	-	159,043	76,404
Ceylon	-	-	437,936	586,056
Hong Kong	57,293	45,223	393,924	544,422
Iran	-	-	1,603	2,185
Japan	10,099	347	20,598	58,878
Jordan	-	-	9,998	356
Kuwait	281	2,576	10,987	15,031
Lebanon	-	8,524	26,715	21,275

Customs Exports of Canadian Wheat Flour by Countries of Consignment

Destination	September 1964 <u>1/</u>	January 1965 <u>2/</u>	August-January	
			1964-65 <u>2/</u>	1963-64 <u>1/</u>
			- bushels -	
<u>Asia (concluded)</u>				
Malaysia	42,610	23,053	231,081	382,460
Philippines	-	978	978	6,900
Portuguese Asia	1,012	-	5,566	17,296
Qatar	-	-	230	60
Saudi Arabia	-	-	3,370	1,116
Syria	-	708	708	998
Thailand	47,322	14,087	242,468	233,956
Viet-Nam	-	-	-	41,476
Totals	321,911	97,925	1,569,787	2,006,671
<u>Oceania</u>				
Australia	-	-	-	28
Fiji	414	989	3,450	3,024
French Oceania	-	-	701	1,070
United States Oceania	115	230	345	1,122
Totals	529	1,219	4,496	5,244
<u>Western Hemisphere</u>				
Bahamas	40,922	27,738	159,507	169,981
Barbados	14,009	17,236	90,652	82,214
Bermuda	4,733	7,316	59,388	59,906
British Guiana	3,565	5,069	23,416	15,042
British Honduras	1,412	2,196	18,476	21,659
Chile	920	-	920	5,778
Costa Rica	61,410	25,047	437,824	257,807
Cuba	344,805	736,499	2,453,734	3,191,059
Dominican Republic	4,945	6,440	37,904	25,300
El Salvador	-	-	200	10,099
French West Indies.....	230	345	1,150	1,495
Guatemala	1,725	3,912	15,874	9,434
Haiti	4,830	-	19,463	51,589
Honduras	2,185	-	16,875	34,224
Jamaica	154,056	137,071	724,533	822,299
Leeward and Windward Islands	77,105	99,668	522,171	519,800
Netherlands Antilles	14,952	17,807	108,397	107,026
Nicaragua	690	-	690	271,228
Panama	5,147	5,607	50,499	95,972
Peru	2,300	9,016	27,694	36,846
St. Pierre and Miquelon	2,075	801	11,399	9,674
Surinam	2,817	9,810	31,650	41,880
Trinidad	138,686	138,679	691,521	778,230
Venezuela	-	-	575	230
United States	77,333	40,825	427,462	489,642
Totals	960,852	1,291,082	5,931,974	7,108,414
Totals, All Countries	2,258,317	2,417,431	15,704,876*	25,095,850

nes - not elsewhere specified. * Revised.

1/ In terms of wheat equivalent. Adjusted to remove effect of time lag in the returns made by Customs. Conversion rate: 2.3 bushels per cwt.

2/ In terms of wheat equivalent. Preliminary and unadjusted for time lag. Conversion rate: 2.3 bushels per cwt.

Canadian Wheat Board Weekly Average Cash Wheat Prices
Basis in Store Fort William-Port Arthur

Class and Grade	Week Ending			
	February 5	February 12	February 19	February 26

- cents and eighths per bushel -

Initial Payment to Producers

1 Northern	150	150	150	150
2 Northern	146	146	146	146
3 Northern	142	142	142	142
4 Northern	135	135	135	135
5 Wheat	121	121	121	121
6 Wheat	117	117	117	117
Feed Wheat	113	113	113	113
1 C.W. Garnet	135	135	135	135
2 C.W. Garnet	130	130	130	130
3 C.W. Garnet	125	125	125	125
1 Alberta Red Winter	134	134	134	134
2 Alberta Winter	129	129	129	129
3 Alberta Winter	123	123	123	123
1 C.W. Amber Durum	150	150	150	150
2 C.W. Amber Durum	146	146	146	146
3 C.W. Amber Durum	142	142	142	142

International Wheat Agreement

and Domestic Sales

1 Northern	191/3	191/3	191/5	192/1
2 Northern	188/3	188/3	188/5	189/1
3 Northern	181/3	181/3	181/5	182/1
4 Northern	173/3	173/3	173/5	174/1
5 Wheat	172/3	172/3	172/5	173/1
6 Wheat	169/3	169/3	169/5	170/1
Feed Wheat	166/3	166/3	166/5	167/1
1 C.W. Garnet	177/3	177/3	177/5	178/1
2 C.W. Garnet	176/3	176/3	176/5	177/1
3 C.W. Garnet	175/3	175/3	175/5	176/1
1 Alberta Red Winter	177/3	177/3	177/5	178/1
2 Alberta Winter	176/3	176/3	176/5	177/1
3 Alberta Winter	175/3	175/3	175/5	176/1
1 C.W. Amber Durum	191/3	191/3	191/5	192/1
2 C.W. Amber Durum	188/3	188/3	188/5	189/1
3 C.W. Amber Durum	183/3	183/3	183/5	184/1

Export - Class II

1 Northern	191/3	191/3	191/5	192/1
2 Northern	188/3	188/3	188/5	189/1
3 Northern	181/3	181/3	181/5	182/1
4 Northern	173/3	173/3	173/5	174/1
5 Wheat	172/3	172/3	172/5	173/1
6 Wheat	169/3	169/3	169/5	170/1
Feed Wheat	166/3	166/3	166/5	167/1
1 C.W. Garnet	177/3	177/3	177/5	178/1
2 C.W. Garnet	176/3	176/3	176/5	177/1
3 C.W. Garnet	175/3	175/3	175/5	176/1
1 C.W. Amber Durum	191/3	191/3	191/5	192/1
2 C.W. Amber Durum	188/3	188/3	188/5	189/1
3 C.W. Amber Durum	183/3	183/3	183/5	184/1

Canadian Wheat Board Weekly Average Cash Wheat Prices
Basis in Store Vancouver

Class and Grade	Week Ending			
	February 5	February 12	February 19	February 26

- cents and eighths per bushel -

Initial Payment to Producers

1 Northern	150	150	150	150
2 Northern	146	146	146	146
3 Northern	142	142	142	142
4 Northern	135	135	135	135
5 Wheat	121	121	121	121
6 Wheat	117	117	117	117
Feed Wheat	113	113	113	113
1 C.W. Garnet	135	135	135	135
2 C.W. Garnet	130	130	130	130
3 C.W. Garnet	125	125	125	125
1 Alberta Red Winter	134	134	134	134
2 Alberta Winter	129	129	129	129
3 Alberta Winter	123	123	123	123
1 C.W. Amber Durum	150	150	150	150
2 C.W. Amber Durum	146	146	146	146
3 C.W. Amber Durum	142	142	142	142

International Wheat Agreement
and Domestic Sales

1 Northern	195/5	195/5	195/7	196/3
2 Northern	191/5	191/5	191/7	192/3
3 Northern	185/5	185/5	185/7	186/3
4 Northern	177/5	177/5	177/7	178/3
5 Wheat	172/5	172/5	172/7	173/3
6 Wheat	169/5	169/5	169/7	170/3
Feed Wheat	166/5	166/5	166/7	167/3
1 C.W. Garnet	177/5	177/5	177/7	178/3
2 C.W. Garnet	176/5	176/5	176/7	177/3
3 C.W. Garnet	175/5	175/5	175/7	176/3
1 Alberta Red Winter	177/5	177/5	177/7	178/3
2 Alberta Winter	176/5	176/5	176/7	177/3
3 Alberta Winter	175/5	175/5	175/7	176/3

Export - Class II

1 Northern	195/5	195/5	195/7	196/3
2 Northern	191/5	191/5	191/7	192/3
3 Northern	185/5	185/5	185/7	186/3
4 Northern	177/5	177/5	177/7	178/3
5 Wheat	172/5	172/5	172/7	173/3
6 Wheat	169/5	169/5	169/7	170/3
Feed Wheat	166/5	166/5	166/7	167/3
1 C.W. Garnet	177/5	177/5	177/7	178/3
2 C.W. Garnet	176/5	176/5	176/7	177/3
3 C.W. Garnet	175/5	175/5	175/7	176/3
1 Alberta Red Winter	177/5	177/5	177/7	178/3
2 Alberta Winter	176/5	176/5	176/7	177/3
3 Alberta Winter	175/5	175/5	175/7	176/3

CANADIAN FLOUR MILLING SITUATION

Production Wheat flour production by Canadian mills during January 1965 amounted to 2,974,000 hundredweight, representing a decrease of 7 per cent from the December 1964 output of 3,187,000 hundredweight, 37 per cent lower than the January 1964 output of 4,723,000 hundredweight and 8 per cent below the ten-year (1955-64) average production for the month of January of 3,231,000 hundredweight. Mills reporting operations during January 1965 had a total rated capacity of 166,000 hundredweight per 24-hour day and on the basis of a 25-day working period 71.8 per cent of this rated capacity was effective.

Wheat milled for flour during January 1965 amounted to 6,614,000 bushels, 7 per cent below the 7,076,000 bushels milled during the preceding month and 36 per cent lower than the 10,414,000 bushels milled during January 1964. Of the wheat milled for flour during January 1965 some 5,689,000 bushels were Western Canadian spring wheat (other than Durum) while the remainder consisted of Ontario winter wheat (573,000 bushels); Durum (278,000 bushels); and all other (74,000 bushels).

Exports According to preliminary Customs returns, exports of Canadian wheat flour during January 1965 amounted to 1,051,000 hundredweight (some 2,417,000 bushels of wheat equivalent), representing a decrease of 4 per cent from the 2,522,000 bushels exported during the previous month and 59 per cent lower than the unusually high January 1964 adjusted exports of 5,829,000 bushels. Flour shipments during the month went to forty-eight countries with exports to Britain amounting to 784,000 bushels of wheat equivalent and accounting for 32 per cent of the January 1965 total. Other principal markets for Canadian wheat flour during the month, with shipments in thousands of bushels of wheat equivalent, were as follows: Cuba, 736; Trinidad, 139; Jamaica, 137; Leeward and Windward Islands, 100; and Ghana, 93.

Wheat Milled for Flour, and Production and Exports of Wheat Flour, Canada

Crop Year	Wheat Milled for Flour bushels	Wheat Flour	
		Production	Exports ^{1/}
		- cwt. -	
1935-36—1939-40 average	67,845,114	29,405,451	9,603,941
1940-41—1944-45 average	99,704,638	43,908,245	23,699,546
1945-46—1949-50 average	107,330,372	47,011,540	25,819,721
1950-51—1954-55 average	100,446,328	43,847,894	21,812,041
1955-56—1959-60 average	90,148,211	39,752,589	16,349,156
1960-61	89,731,155	39,914,644	15,513,836
1961-62	88,240,580	39,539,651	13,892,676
1962-63	78,789,332	35,505,220	11,854,458
1963-64 ^{2/}	111,670,577	50,103,569	23,873,978
1964-65 ^{3/}			
August	7,027,526	3,144,719	1,770,810
September	7,500,251	3,372,989	927,240
October	7,609,236	3,389,458	885,628
November	7,518,363	3,385,358	1,097,107
December	7,075,639	3,186,560	1,096,365 ^{2/}
January	6,613,815	2,974,051	1,051,057 ^{4/}
Totals	43,344,830	19,453,135	6,828,207
Same months 1963-64 ^{2/}	56,067,927	25,175,961	10,911,239

^{1/} Based on Customs returns. Exports for the crop years 1945-46—1963-64 revised to remove effect of time lag in the returns made by Customs.

^{2/} Revised.

^{3/} Subject to revision.

^{4/} Preliminary.

UNITED STATES SITUATION

Domestic Supplies
6 Per Cent Below
Last Year

Domestic supplies of wheat in the United States for the 1964-65 crop year (July-June) are estimated at 2,191.4 million bushels, 6 per cent less than the previous year's total of 2,336.9 million. Supplies of the size indicated reflect a decline in carryover stocks which more than offset a 13 per cent increase in production. Carryover stocks are the smallest since 1958. Imports of wheat from Canada during July 1964-January 1965 have amounted to 0.7 million bushels. Domestic disappearance during 1964-65 is estimated at about 615.0 million bushels, 4 per cent more than the 589.2 million last year. After deducting anticipated domestic requirements for the current United States crop year, some 1,577.1 million remain available for export and for carryover, a decrease of 10 per cent from the 1,749.8 million in 1963-64.

Exports of wheat, wheat flour and other products in terms of grain equivalent during the July-January period of the 1964-65 crop year amounted to 416.8 million bushels, 9 per cent below the record 458.8 million exported during the same months last year. The balance remaining on February 1, 1965 for export and for carryover was estimated at 1,160.3 million bushels compared with 1,291.0 million on the same date a year ago.

United States Wheat Supplies

Item	1963-64 <u>1/</u>	1964-65 <u>2/</u>
	- million bushels -	
Carryover at beginning of crop year (July 1)	1,194.9	900.9
Production	1,142.0	1,290.5
Total estimated domestic supplies	2,336.9	2,191.4
Imports of wheat and wheat flour in terms of wheat for domestic use, July-January	2.1	0.7
Total estimated supplies <u>3/</u>	2,339.0	2,192.1
Less estimated domestic requirements for crop year <u>4/</u> ...	589.2	615.0
Available for export and for carryover	1,749.8	1,577.1
Deduct:		
Exports of wheat as grain, July-January	405.1	364.7
Exports of wheat flour in terms of wheat, July January <u>5/</u>	53.7	52.1
Total exports of wheat and wheat flour <u>6/</u>	458.8	416.8
Balance on February 1 for export and for carryover	1,291.0	1,160.3

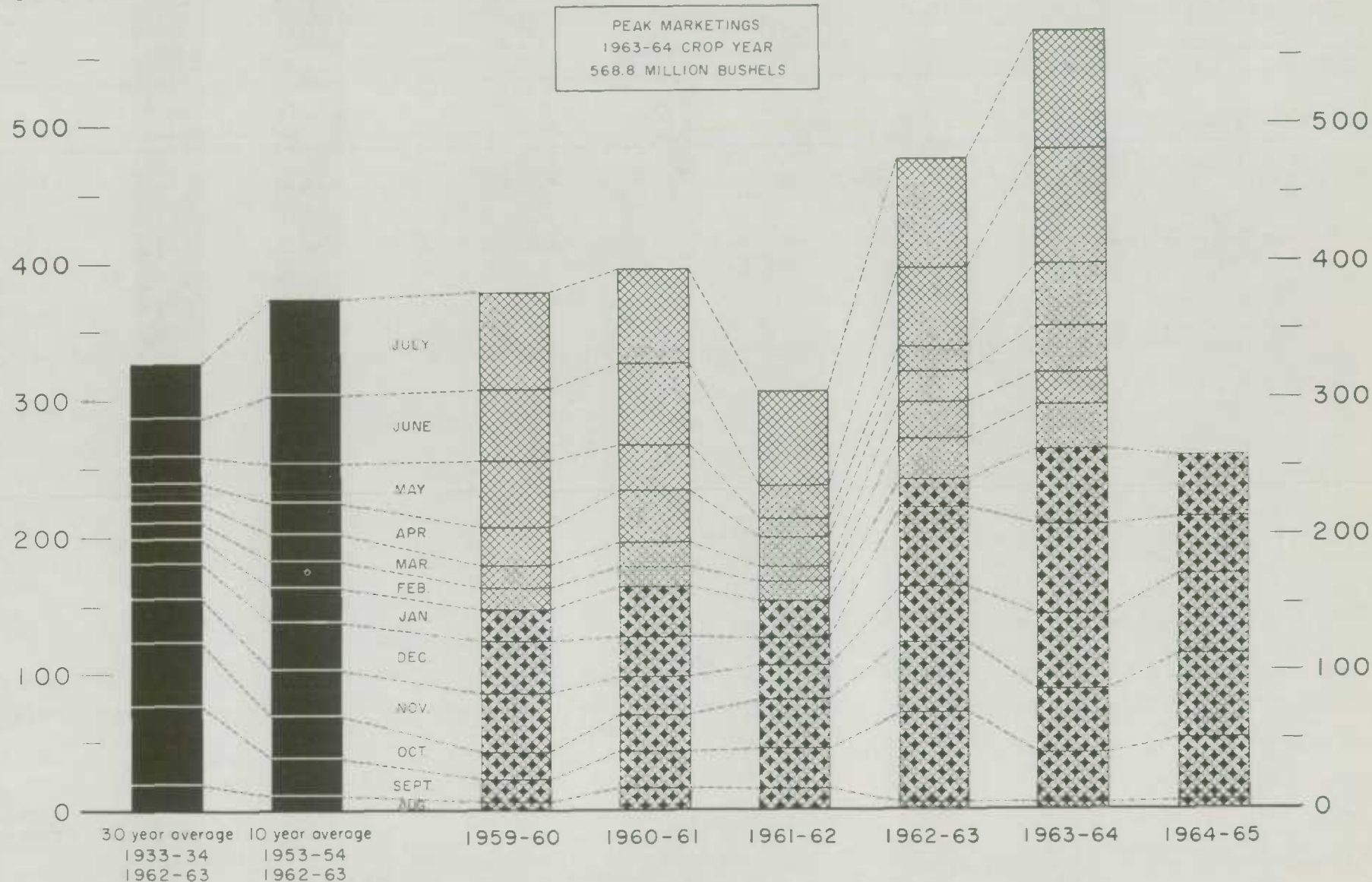
1/ Revised. 2/ Preliminary. 3/ Excluding imports for February-June. 4/ Includes shipments to United States Territories and wheat for military food use at home and abroad. 5/ Flour exports exclude "Milled in bond". 6/ These figures now include all shipments under relief programs which formerly were not available from Census data.

FARMERS' MARKETINGS OF WHEAT, PRAIRIE PROVINCES (SPECIFIED PERIODS)

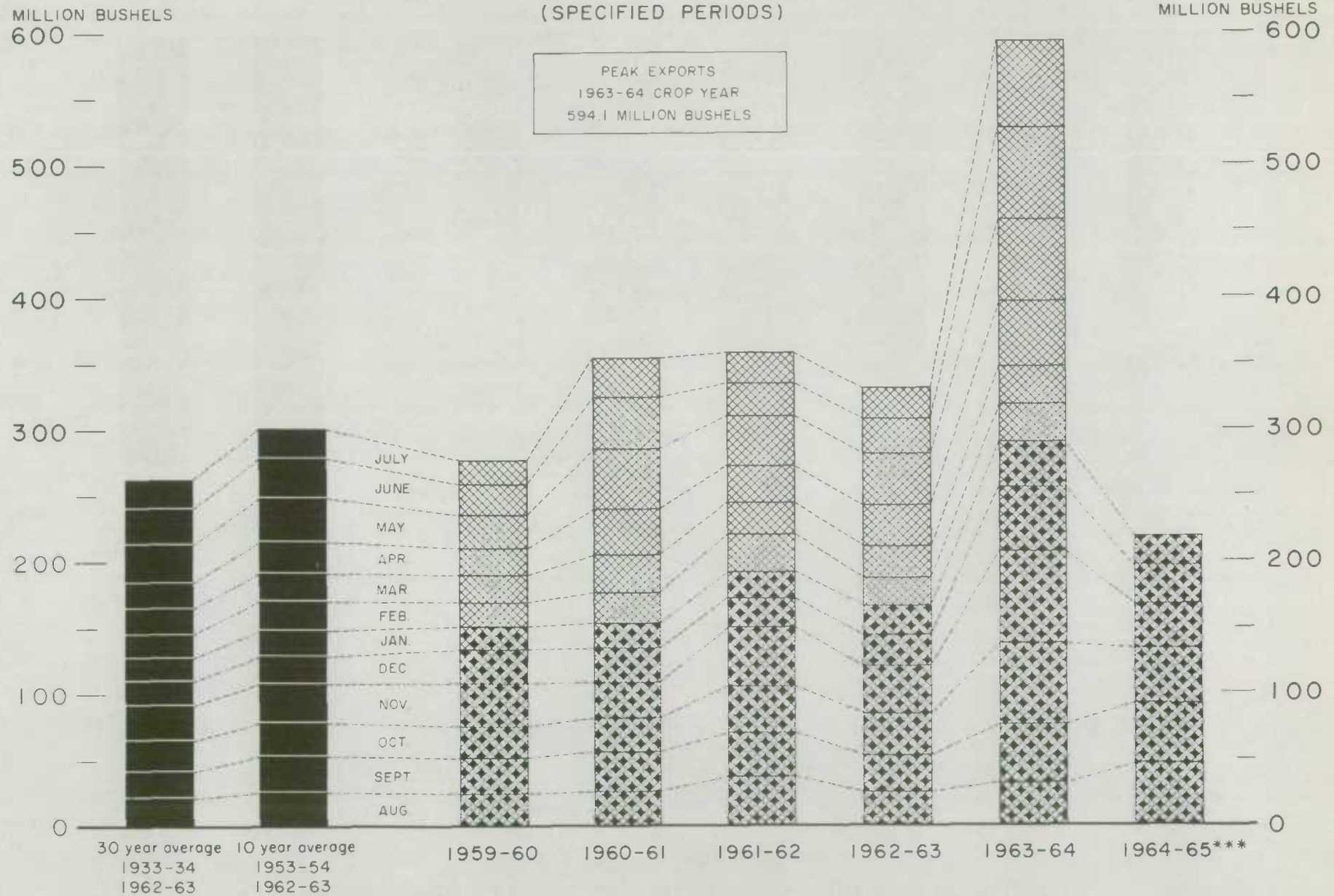
MILLION BUSHELS
600 —

MILLION BUSHELS
— 600

PEAK MARKETINGS
1963-64 CROP YEAR
568.8 MILLION BUSHELS



EXPORTS OF CANADIAN WHEAT* AND WHEAT FLOUR**



*Beginning with 1956-57 includes bagged seed wheat.

**In terms of wheat equivalent.

***Preliminary.

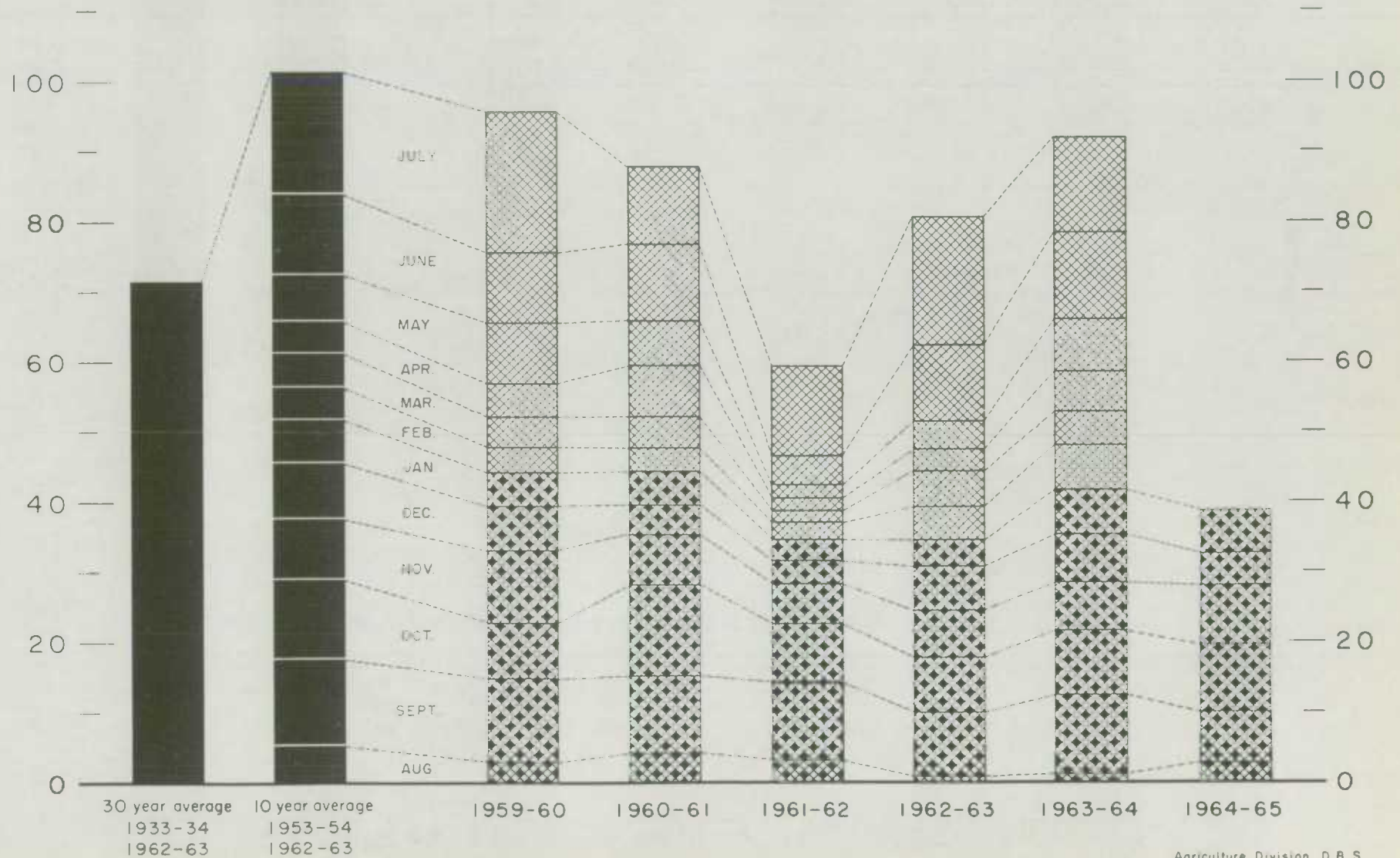
Agriculture Division D. B. S.

FARMERS' MARKETINGS OF BARLEY, PRAIRIE PROVINCES

(SPECIFIED PERIODS)

MILLION BUSHEL
120 —

MILLION BUSHEL
— 120



EXPORTS OF CANADIAN BARLEY AND BARLEY PRODUCTS*

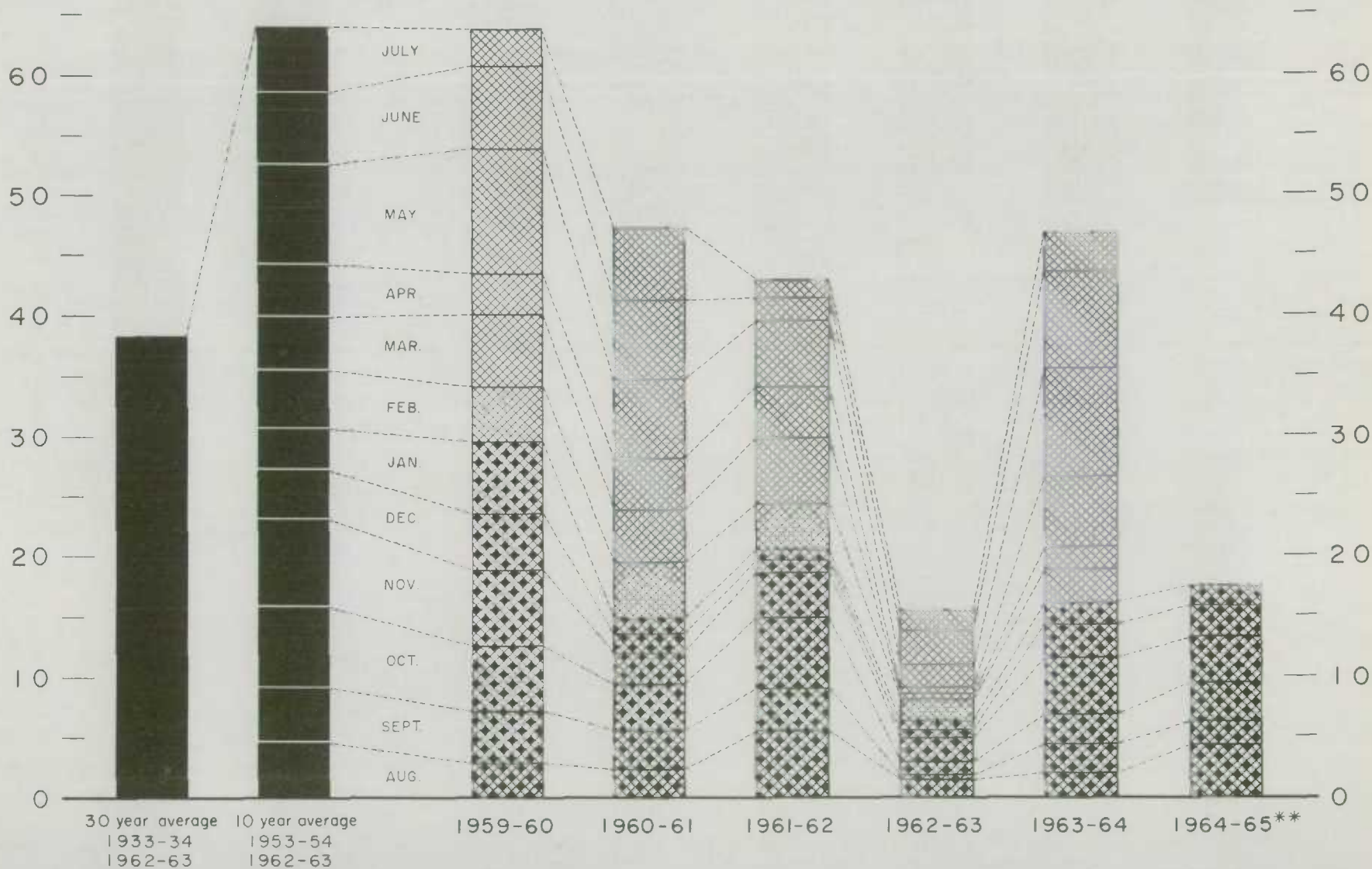
(SPECIFIED PERIODS)

MILLION BUSHEL

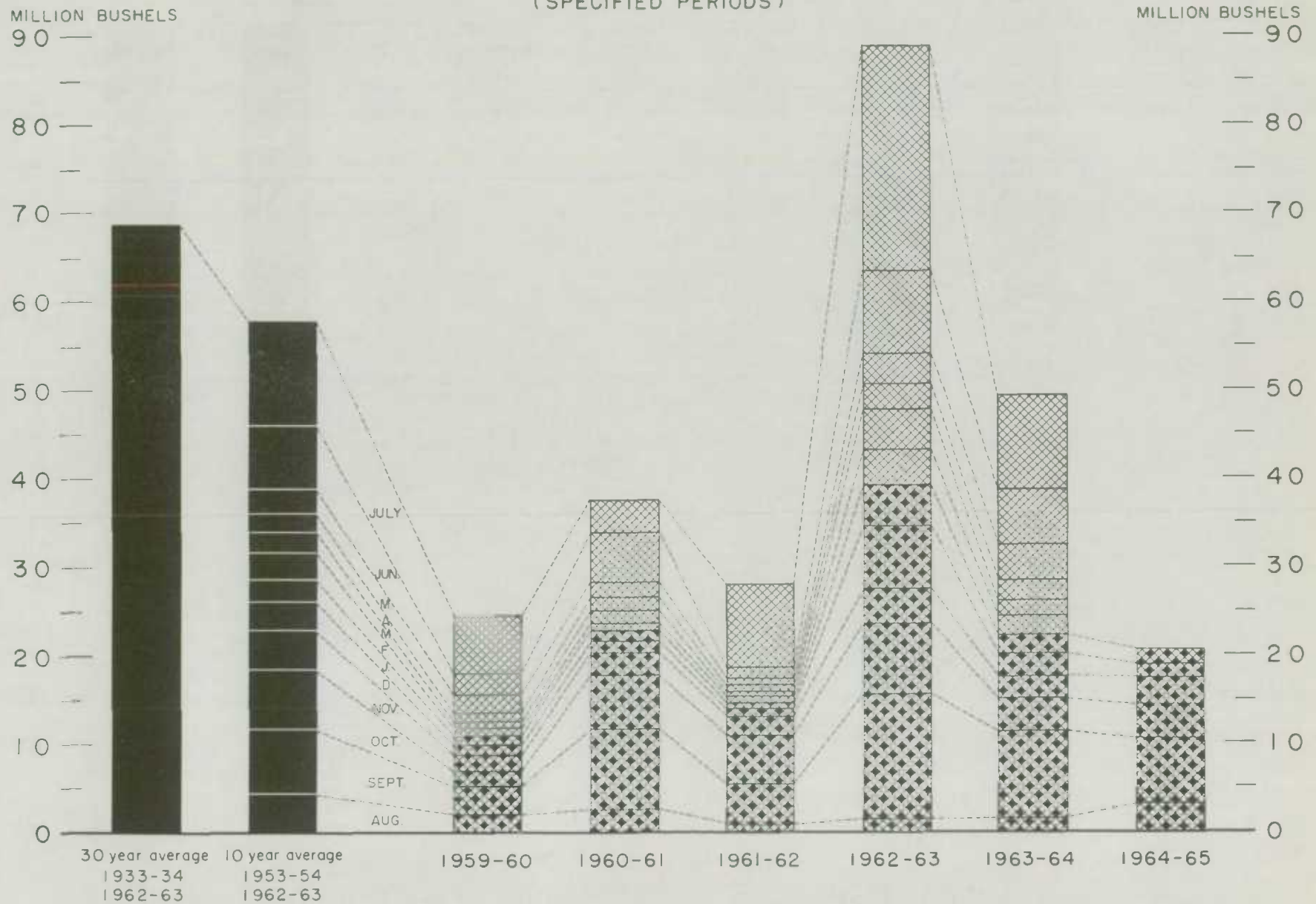
70 —

MILLION BUSHEL

— 70



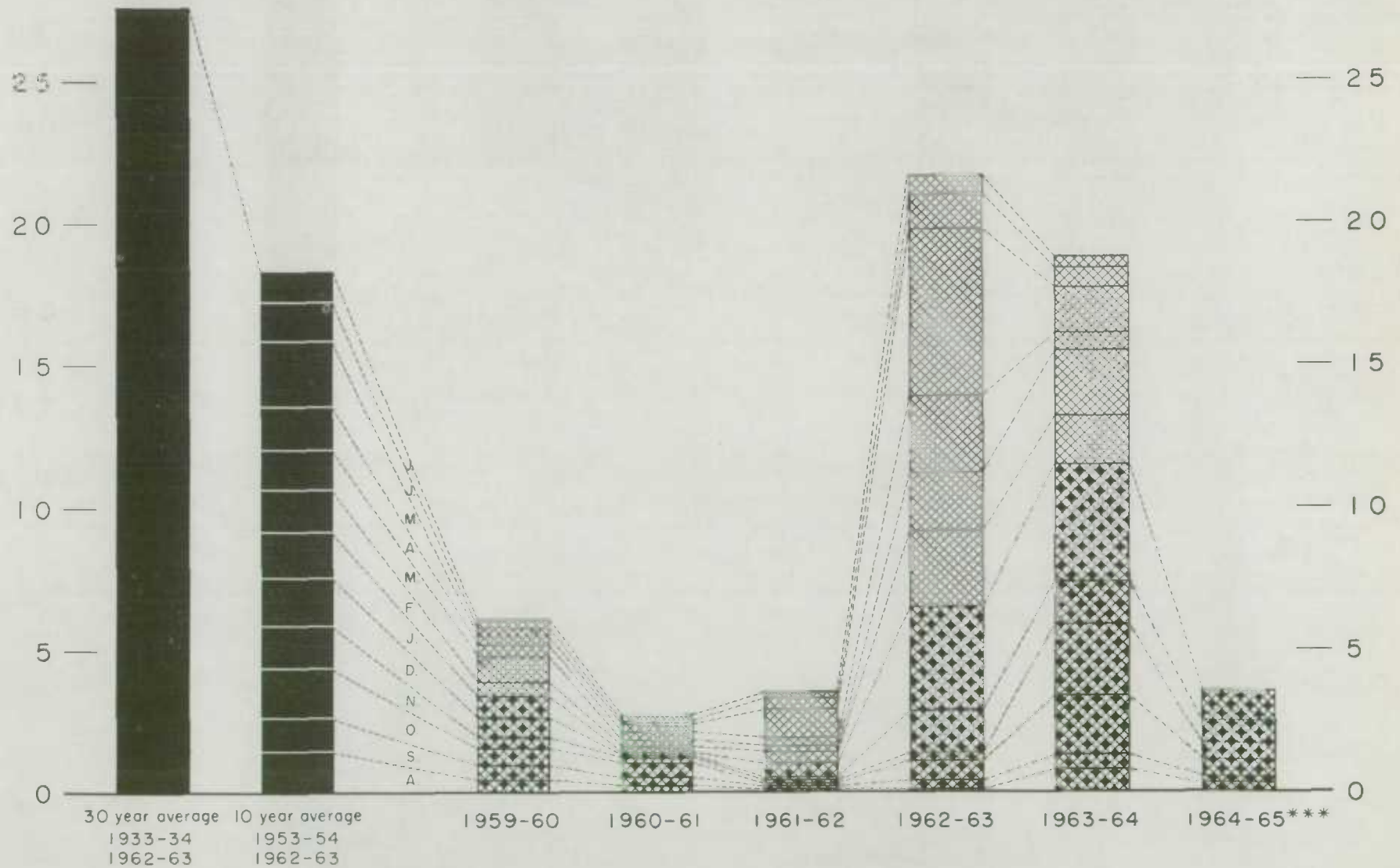
FARMERS' MARKETINGS OF OATS, PRAIRIE PROVINCES (SPECIFIED PERIODS)



EXPORTS OF CANADIAN OATS* AND OAT PRODUCTS** (SPECIFIED PERIODS)

MILLION BUSHELS
30 —

MILLION BUSHELS
— 30



*Beginning with 1960-61 includes relatively small quantity of bagged seed.

**In terms of grain equivalent.

***Preliminary.

FARMERS' MARKETINGS OF CANADA'S FIVE MAJOR GRAINS*, PRAIRIE PROVINCES

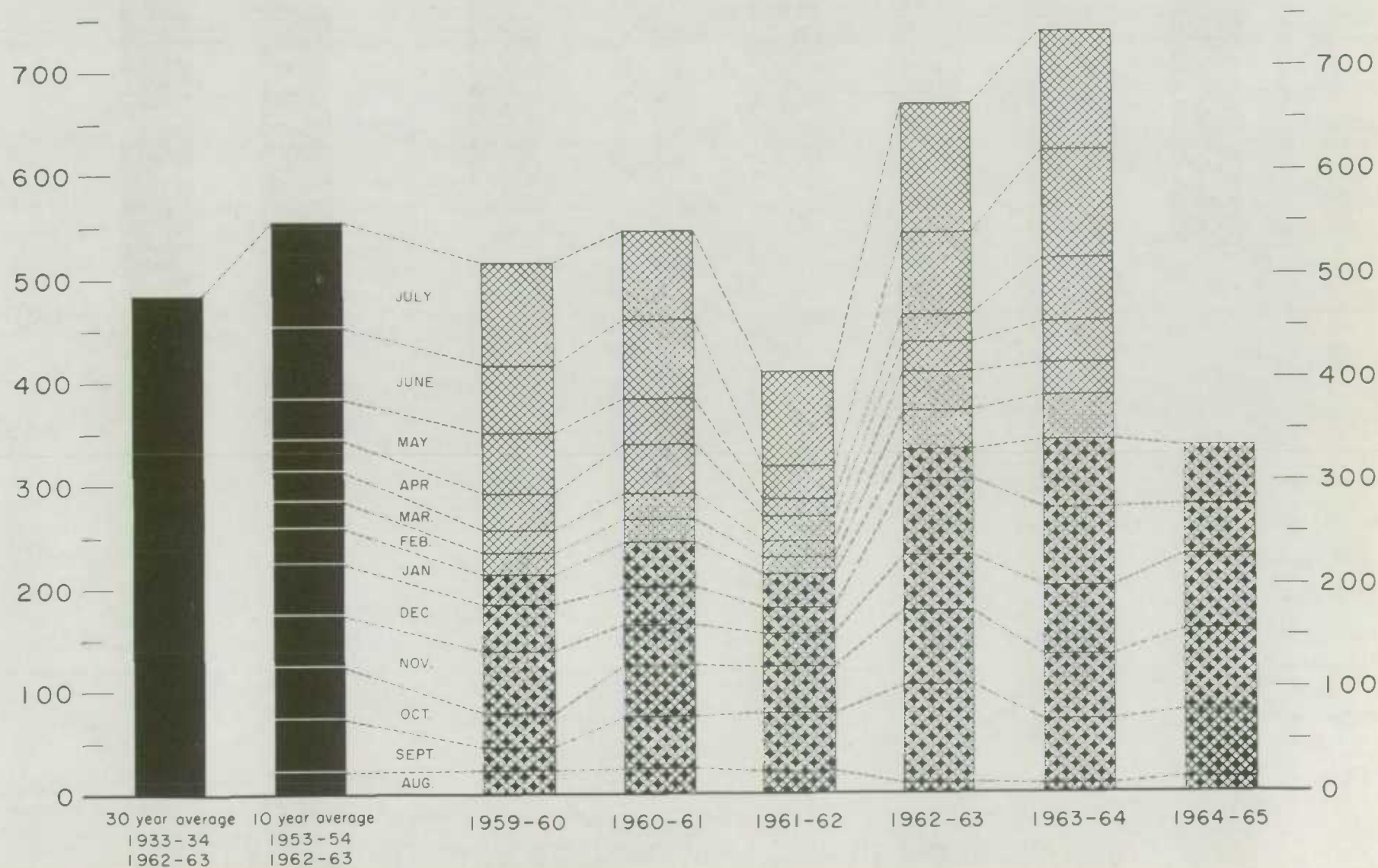
MILLION BUSHELS

800 —

(SPECIFIED PERIODS)

MILLION BUSHELS

— 800



*Wheat, oats, barley, rye and flaxseed

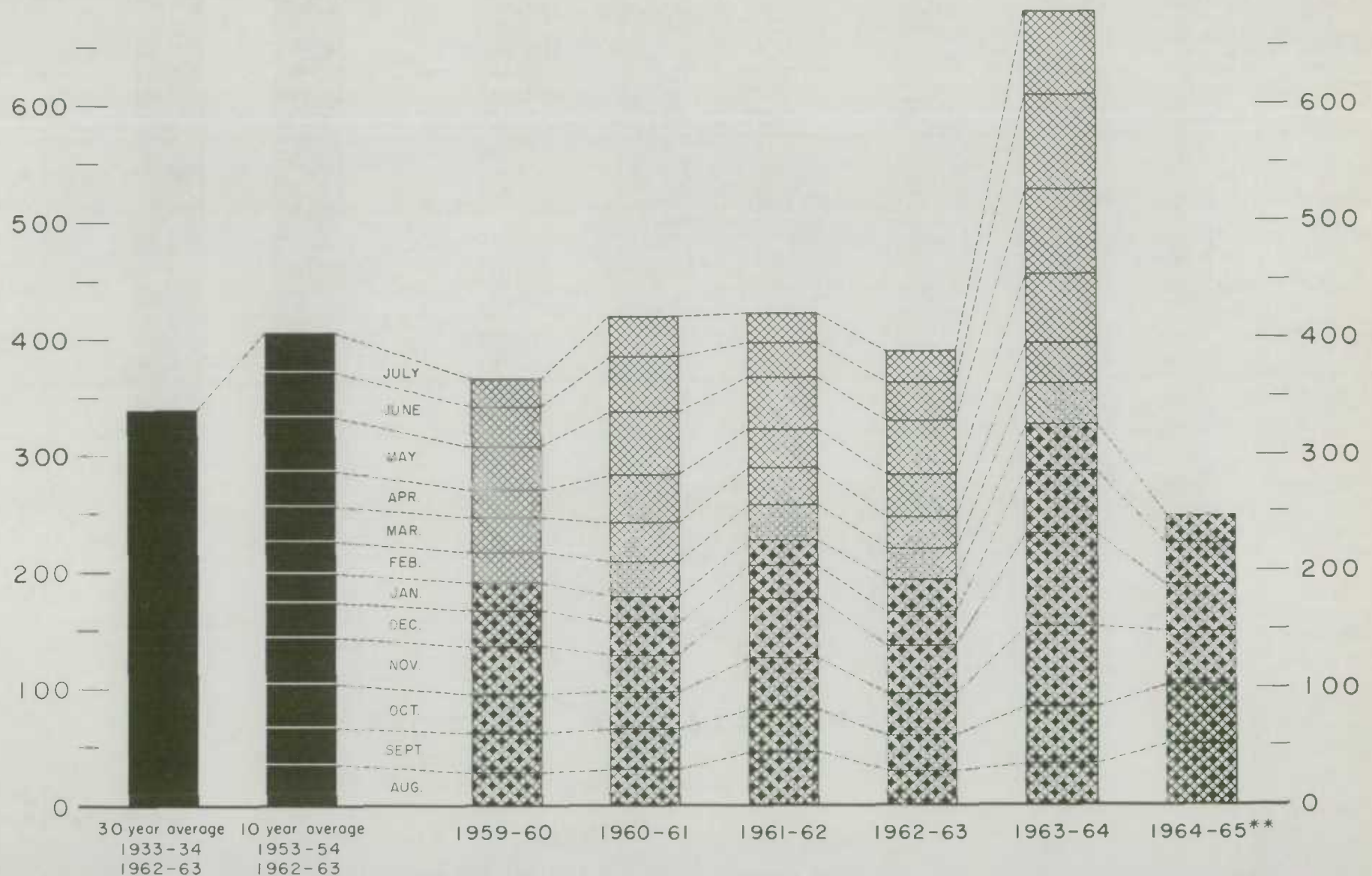
Agriculture Division D.B.S.

EXPORTS OF CANADA'S FIVE MAJOR GRAINS AND PRODUCTS*

(SPECIFIED PERIODS)

MILLION BUSHEL
700 —

MILLION BUSHEL
700 —



* Wheat, bagged seed wheat, and wheat flour; oats, bagged seed oats, and oatmeal and rolled oats; barley, malt and pat and pearl; rye and flaxseed.
** Preliminary

Agriculture Division D.B.S.

Crop and Weather
Conditions

The following extract has been taken from the Weekly Weather and Crop Bulletin published jointly by the United States Department of Commerce and the United States Department of Agriculture for the week ending March 1, 1965. Unfavourable weather, strong winds and low temperatures was detrimental to fall-seeded small grain crops throughout most of the Great Plains area. Precipitation over the Plains winter wheat areas was generally light.

In the central and southern Plains areas, strong winds caused soil blowing and damaged the winter wheat crop. Wheat in the central and western areas of Nebraska, extreme western Kansas, eastern Colorado, Panhandle of Oklahoma, and High Plains of Texas was generally most affected by the winds. Severe damage occurred in some parts of the wind-swept area. Nebraska farmers were also concerned about possible damage to wheat from low temperatures that occurred. Winter wheat made only a minimum of growth in the southern Plains areas because of the below normal temperatures. Topdressing was underway but made only limited progress.

Spring oat planting in Oklahoma advanced to 57 per cent completion and about 19 per cent of the acreage planted had emerged to a stand. Generally, condition of the Oklahoma wheat crop remained good to excellent, except in the western part of the Panhandle. Extent of the wind damage in the Plains area of Texas was not known. Much of the Plains area of Texas remained dry, although most of the eastern part of the State received more precipitation to add to an already adequate moisture supply. The New Mexico irrigated winter wheat crop was generally in fair to good condition, but has made only limited growth recently. Early-planted barley in Arizona was beginning to head. Winter wheat prospects remained favourable in Utah.

Warmer weather over the Northwest was resulting in new growth of fall-seeded small grains. Seeding of spring crops continued. In California, planting continued and growth of early seedings was good.

Most small grains in the southeastern third of the Nation were in fair to good condition. Considerable topdressing was done early in the week, but rains and wet soils kept farmers out of the fields toward the end of the period. In some instances, water-soaked soils along with the low temperatures caused a decline in plant condition.

Continued from page 1

cent of the total French harvest. Assuming normal winterkill, the 1965 harvest is now expected to be about equal to the 509-million-bushel record crop of 1962. In West Germany, winter crops were protected by snowcover during cold weather in December. January rains balanced the limited moisture condition that existed in some areas last fall and crops appear in favourable condition. Good weather has prevailed in Italy and fall-sown grains appear promising. In Greece, rainfall has been below average and wheat acreage is reported 10 per cent lower than last year. In Spain and Portugal, recent rains have been beneficial after a prolonged dry period and average crops are expected. Belgium has had recent precipitation and crops are generally in satisfactory condition. In The Netherlands, a large wheat acreage is estimated for this year and the winter crop is developing well. The area sown to winter wheat in the United Kingdom is substantially larger than a year ago. After periods of heavy rain and snow, drier weather has facilitated fieldwork.

Continued on page 41

United States Exports
of Wheat and Flour
Continue Slight Gain

United States exports of wheat and wheat flour (grain equivalent) totalled 389 million bushels during the first 6 months of the 1964-65 fiscal year. This represented an increase of only 1 per cent over exports in the same 6-month period of 1963. The acute slow-down for exports is reflected by the increased availability of wheat supplies in Western Europe, and the East Coast dock strike in the U.S. Shipments to this area were less than half of those during July-December 1963. Only exports of wheat and flour to Finland, Gibraltar, Iceland, and Portugal were larger this year than in the same period last year. Exports of wheat and flour to Soviet satellite countries, however, were still increasing. The 15 million bushels shipped to these countries during July-December 1964 represented an increase of 13 per cent over those exported during July-December 1963. Of the total shipment to this area, 92 per cent went to Yugoslavia and the remainder to Poland and Rumania. The Asiatic countries required approximately 16 per cent more wheat and flour during July-December 1964 than during July-December 1963. Greater shipments to India accounted largely for this increase, 63 per cent more than last year. Exports to the African countries were approximately 2 per cent lower during the last 6 months of 1964 than in 1963. Of the 50 million bushels exported to this area over 73 per cent went to the United Arab Republic.

Grain shipments increased less than 1 per cent between July 1-December 31, 1964, in comparison with the period July 1-December 31, 1963. Over 36 per cent of the total 340 million bushels went to India. Shipments to Brazil and Pakistan totalled another 22 per cent. Exports of flour were 6 per cent higher in the first half of fiscal year 1964-65 as compared with the first half of 1963-64. Over 35 per cent or 17 million bushels were destined for the United Arab Republic. Shipments of wheat to Canada are predominantly for transshipment to other destinations. A separate table showing quantities and destinations of wheat inspected for export from Canadian ports is omitted this month. The only transshipment during December 1964 was approximately 1 million bushels to Yugoslavia. This compares with transshipment during December 1963 of 701,000 bushels destined for West Germany. It is anticipated that United States exports of wheat and flour will only reach 417 million bushels by January 31, 1965 as compared with 459 million bushels in the first 7 months of the 1963-64 fiscal year. This sudden decline is attributed to the continued dock strike on the East Coast of the United States.

United States Exports of Wheat and Flour 1/ by Country of Destination
July-December 1963 and 1964

Destination	July-December 1963			July-December 1964		
	Wheat	Flour <u>2/</u>	Total	Wheat	Flour <u>2/</u>	Total
- thousand bushels -						
<u>Western Hemisphere</u>						
Canada <u>3/</u>	23,231	139	23,370	8,399	118	8,517
Mexico	2	595	597	23	580	603
British Honduras	-	113	113	-	107	107
Canal Zone	-	4	4	-	5	5
Costa Rica	2	393	395	2	390	392
El Salvador	700	55	755	412	45	457
Guatemala	1,092	45	1,137	1,005	56	1,061
Honduras	326	61	387	476	55	531
Nicaragua	118	116	234	255	71	326
Panama, Republic of	414	159	573	510	109	619
Bahamas	<u>4/</u>	14	14	-	12	12
Barbados	20	49	69	9	54	63

United States Exports of Wheat and Flour ^{1/} by Country of Destination
July-December 1963 and 1964

Destination	July-December 1963			July-December 1964		
	Wheat	Flour ^{2/}	Total	Wheat	Flour ^{2/}	Total
- thousand bushels -						
<u>Western Hemisphere (concluded)</u>						
Dominican Republic	801	71	872	520	94	614
Haiti	808	78	886	883	50	933
Jamaica	6	379	385	-	667	667
Leeward and Windward Islands .	-	33	33	-	44	44
Netherlands Antilles	-	147	147	-	169	169
French West Indies	-	-	-	-	2	2
Trinidad and Tobago	2	628	630	<u>4/</u>	560	560
Argentina	-	13	13	-	5	5
Bolivia	-	2,380	2,380	1	3,106	3,107
Brazil	20,626	143	20,769	38,216	429	38,645
British Guiana	-	497	497	11	652	663
Chile	994	356	1,350	5,058	915	5,973
Colombia	2,447	361	2,808	2,571	160	2,731
Ecuador	332	74	406	633	73	706
Paraguay	155	126	281	778	13	791
Peru	2,558	140	2,698	1,249	186	1,435
Surinam	-	164	164	-	209	209
Uruguay	-	21	21	-	20	20
Venezuela	4,762	147	4,909	5,042	126	5,168
Totals	59,396	7,501	66,897	66,053	9,082	75,135
<u>Western Europe</u>						
<u>EEC</u>						
Belgium-Luxembourg	3,076	17	3,093	316	4	320
France	6,550	-	6,550	892	3	895
Italy	3,293	1,416	4,709	2,693	967	3,660
Netherlands	8,552	759	9,311	4,608	510	5,118
West Germany	6,208	8	6,216	998	6	1,004
Totals	27,679	2,200	29,879	9,507	1,490	10,997
<u>Other Western Europe</u>						
Azores	44	-	44	232	-	232
Cyprus	377	11	388	-	<u>4/</u>	<u>4/</u>
Denmark	19	-	19	-	2	2
Finland	-	<u>4/</u>	<u>4/</u>	209	<u>4/</u>	209
Gibraltar	-	3	3	-	5	5
Greece	909	970	1,879	1	463	464
Iceland	6	185	191	6	198	204
Ireland	102	-	102	75	-	75
Malta	-	-	-	-	18	18
Norway	1,338	10	1,348	-	-	-
Portugal	1,234	401	1,635	2,229	579	2,808
Spain	3,352	-	3,352	-	241	241
Sweden	438	6	444	20	4	24
Switzerland	4,385	-	4,385	455	<u>4/</u>	455

United States Exports of Wheat and Flour 1/ by Country of Destination
July-December 1963 and 1964

Destination	July-December 1963			July-December 1964		
	Wheat	Flour <u>2/</u>	Total	Wheat	Flour <u>2/</u>	Total
- thousand bushels -						
<u>Other Western Europe (concluded)</u>						
Turkey	5,739	161	5,900	4,397	79	4,476
United Kingdom	7,903	103	8,006	938	151	1,089
Totals	25,846	1,850	27,696	8,562	1,740	10,302
<u>Eastern Europe</u>						
Hungary	4,564	-	4,564	-	-	-
Poland	5,552	429	5,981	913	325	1,238
Rumania	-	-	-	41	-	41
Yugoslavia	1,902	748	2,650	13,615	359	13,974
Totals	12,018	1,177	13,195	14,569	684	15,253
Totals, Europe	65,543	5,227	70,770	32,638	3,914	36,552
<u>Asia</u>						
Aden	-	-	-	-	14	14
Afghanistan	1,286	1	1,287	40	1	41
Arabia Peninsula States	110	33	143	-	76	76
Bahrein	-	264	264	-	275	275
Cambodia	-	8	8	-	-	-
Ceylon	-	932	932	-	628	628
India	74,800	105	74,905	121,812	166	121,978
Indonesia	-	447	447	-	10	10
Iran	843	320	1,163	7,183	100	7,283
Iraq	1,847	19	1,866	31	567	598
Israel	4,086	34	4,120	3,902	90	3,992
Jordan	912	2,365	3,277	-	1,721	1,721
Kuwait	11	509	520	24	485	509
Laos	4	57	61	-	34	34
Lebanon	45	704	749	-	680	680
Macao	-	77	77	-	57	57
Malaysia	47	80	127	36	55	91
Pakistan	37,789	26	37,815	36,696	51	36,747
Philippines	5,739	253	5,992	2,676	280	2,956
Saudi Arabia	46	1,649	1,695	121	2,166	2,287
Syrian Arab Republic	-	-	-	-	35	35
Thailand	-	26	26	-	41	41
Vietnam	6	1,172	1,178	111	1,642	1,753
Hong Kong	98	371	469	101	215	316
Japan	35,779	1,419	37,198	25,048	368	25,416
Korea	13,251	553	13,804	8,344	3,052	11,396
Nansei and Nanpo Islands	425	310	735	429	293	722
Taiwan	6,198	646	6,844	6,680	319	6,999
Totals	183,322	12,380	195,702	213,234	13,421	226,655

United States Exports of Wheat and Flour 1/ by Country of Destination
July-December 1963 and 1964

Destination	July-December 1963			July-December 1964		
	Wheat	Flour <u>2/</u>	Total	Wheat	Flour <u>2/</u>	Total
- thousand bushels -						
<u>Africa</u>						
Algeria	5,348	661	6,009	3,176	235	3,411
Libya	-	182	182	-	2	2
Morocco	1,438	1,340	2,778	75	1,682	1,757
Sudan	1,178	1,352	2,530	1,318	1,424	2,742
Tunisia	1,297	88	1,385	382	176	558
United Arab Republic	15,771	13,806	29,577	19,585	17,258	36,843
Angola	456	47	503	471	46	517
Burundi and Rwanda	-	-	-	-	5	5
Cameroon, Federal Republic of.	-	33	33	-	37	37
Canary Islands	-	5	5	449	-	449
Congo (Leopoldville)	72	3,203	3,275	63	1,388	1,451
Gabon	-	-	-	-	4	4
Ghana	4	86	90	-	78	78
Guinea	-	-	-	-	1	1
Liberia	3	53	56	1	74	75
Madeira Islands	287	32	319	275	17	292
Mauritania	-	-	-	-	3	3
British East Africa	116	62	178	-	-	-
Nigeria	839	36	875	1,503	11	1,514
Sierra Leone	-	77	77	-	60	60
Senegal	-	-	-	<u>4/</u>	15	15
Togo	239	-	239	-	4	4
Western Africa nec	19	34	53	-	11	11
Western Portuguese Africa	-	32	32	-	27	27
Ethiopia	-	20	20	-	14	14
French Somaliland	8	33	41	-	30	30
Kenya	-	-	-	3	6	9
Malagasy Republic	2	9	11	17	10	27
Mozambique	123	<u>4/</u>	123	-	1	1
Somali Republic	1	-	1	-	18	18
South Africa, Republic of	3,045	32	3,077	-	1	1
North Rhodesia, South Rhodesia and Nyasaland	52	-	52	438	-	438
Totals	30,298	21,223	51,521	27,756	22,638	50,394
<u>Oceania</u>						
Australia	-	3	3	-	5	5
British West Pacific Islands .	-	2	2	-	5	5
New Zealand	-	1	1	-	2	2
Trust Territory of the Pacific	-	21	21	-	37	37
Totals	-	27	27	-	49	49
Totals, All Countries ...	338,559	46,358	384,917	339,681	49,104	388,785

1/ Data includes shipments for relief or charity. 2/ Grain equivalent. 3/ The bulk of exports to Canada are for transshipment to other destinations. 4/ Less than 500 bushels.

Cash Wheat Prices on the Kansas City and Minneapolis Markets

No. 2 Hard Winter, Kansas City			No. 1 Northern Spring, Minneapolis		
Date	Price		Date	Price	
	- cents per bushel -			- cents per bushel -	
February 1, 1965	162	- 164	February 1, 1965	179 1/8	- 185 1/8
2	161 3/4	- 162	2	179	- 185
3	160	- 168 <u>1/</u>	3	179 3/4	- 185 3/4
4	163 3/4		4	179 7/8	- 185 7/8
5	162 1/2	- 165 1/2	5	177 3/4	- 183 3/4
8	159 3/4	- 178 3/4 <u>1/</u>	8	176 7/8	- 182 7/8
9	160 1/2	- 162 1/4	9	176 3/8	- 183 3/8
10	159	- 162	10	176 1/8	- 183 1/8
11	162 3/4		11	176 1/8	- 183 1/8
12	160 1/2	- 161 1/2	12	175 3/4	- 182 3/4
15	161 1/2		15	174 5/8	- 181 5/8
16	161 1/2		16	175 3/8	- 182 3/8
17	158 3/4	- 160 1/2	17	175 5/8	- 182 5/8
18	157 3/4	- 176 1/4 <u>1/</u>	18	175 1/4	- 182 1/4
19	157 3/4		19	175 5/8	- 182 5/8
22	Washington's Birthday		22	Washington's Birthday	
23	156 3/4	- 159 3/4	23	175	- 182
24	156		24	175 1/8	- 182 1/8
25	N.A.		25	176 3/4	- 183 3/4
26	155 3/4	- 174 1/4 <u>1/</u>	26	176 5/8	- 183 5/8

1/ Nominal. N.A. Not available.

Chicago Wheat Futures, High Points of Closing

Date	March	May	July	September	December
	- cents and eighths per bushel -				
February 1, 1965	150/3	151/2	145/4	147/5	151/7
2	149/7	150/5	145/2	147/2	151/4
3	150/6	151/3	145/6	147/6	152/1
4	151/3	152	146/7	148/7	153/1
5	150/7	151/7	146/4	148/4	153
8	151/1	151/7	146/6	148/7	153/4
9	150/6	151/4	146/2	148/4	153
10	150/3	151/3	146/1	148/2	153
11	150	151	145/6	148	152/6
12	149/4	150/7	145/6	147/6	152/4
15	149/1	150/5	145/4	147/6	152/2
16	149/7	151/5	146/1	148	152/6
17	149/1	151	146	148/2	152/6
18	148/7	150/7	145/6	148	152/4
19	149	150/7	145/5	148	152/1
22	Washington's Birthday				
23	148/6	150/4	145/2	147/2	151/7
24	148/7	150/4	145	147/2	151/6
25	148/7	151	145/2	147/3	151/6
26	149/1	151/6	145/4	147/6	152/2

AUSTRALIAN SITUATION

Supplies Set Record for Third Consecutive Year

Although carryover stocks declined, this decrease was more than offset by another record crop and as a result total estimated supplies of wheat in Australia for the 1964-65 (December-November) crop year are placed at an all-time high of 390.3 million bushels, 10 per cent greater than the previous year's peak total of 354.5 million. The current production, of 370.0 million bushels, represented a substantial increase over the 1963-64 level of 331.0 million and was the third consecutive year in which a record outturn was harvested. Carryover stocks recorded only a moderate decline, from 23.5 million at December 1, 1963 to 20.3 million at the same date in 1964. After deducting 81.0 million for anticipated domestic requirements, an estimated 309.3 million are available for export and for carryover in 1964-65, an increase of 12 per cent over the 273.7 million the previous year.

Combined exports of wheat as grain and wheat flour in terms of grain equivalent during the period December 1-January 30 of the current Australian crop year amounted to 32.7 million bushels in contrast to 53.6 million exported during the corresponding period of 1963-64. The balance remaining on January 31, 1965 for export and for carryover, at 276.6 million bushels, exceeded by 26 per cent the comparable 1964 total of 220.1 million.

Australian Wheat Supplies

Item	1963-64 <u>1/</u>	1964-65 <u>2/</u>
	- million bushels -	
Carryover, including flour as wheat, at beginning of crop year (December 1)	23.5	20.3
Production	331.0	370.0 <u>1/</u>
Total estimated domestic supplies	354.5	390.3
Less estimated domestic requirements for crop year ...	80.8	81.0 <u>1/</u>
Available for export and for carryover	273.7	309.3
Deduct:		
Exports of wheat as grain, December 1-January 30 ...	46.7	28.3
Exports of wheat flour in terms of wheat, December 1-January 30	6.9	4.4
Total exports of wheat and wheat flour	53.6	32.7
Balance on January 31 for export and for carryover ...	220.1	276.6

1/ Revised.

2/ Preliminary.

The following information relative to the Australian situation has been extracted from a report from Mr. D. I. Campbell, Assistant Commercial Secretary for Canada, Canberra, under date of February 18, 1965 and is reproduced with the permission of the Trade Commissioner Service, Department of Trade and Commerce.

Crop Position

The Australian Wheat Board now expects growers to deliver 356 million bushels of wheat from the 1964-65 crop. The official delivery figure at January 16 was 258 million bushels. The breakdown of expected delivery figures was New South Wales, 140 million bushels; Victoria, 80 million; Western Australia, 58 million; South Australia, 58 million; and Queensland, 20 million bushels.

The area sown to wheat for grain in Australia is estimated to have risen to 17.8 million acres compared with 16.5 million acres in 1963-64. Increased plantings were recorded in all states except South Australia. The average yield per acre is also estimated to have improved markedly in 1964-65, rising to a new record of 21.6 bushels compared with 19.9 bushels a year earlier.

Marketing Forecast

Australia's exports of wheat and flour in the financial year 1964-65 (July-June) are estimated at 210 million bushels, substantially below the record 285.4 million bushels shipped in 1963-64. The large shipments in the latter year included the export of a record quantity of 93.4 million bushels to Mainland China, some 56.5 million bushels to the U.S.S.R. as well as extremely large sales to traditional markets in Western Europe and Japan. Exports of Australian wheat to Western Europe in 1964-65 will be reduced appreciably by improved harvests in this region in 1964. Shipments to Mainland China and Japan, however, are expected to continue at a high level, while the latest sale of 28 million bushels to the U.S.S.R. will be of considerable help in disposing of the record 1964-65 crop.

The value of wheat and flour exports is estimated at £145 million (\$348.4 million) for 1964-65 compared with £202.3 million (\$486.1 million) in the previous year.

Prices

The Australian Wheat Board has cut its offering price in London by 12/6 a ton (5 cents per bushel) in response to the recent drop in the price of Canadian and United States wheat.

The revised price of £24/12/6 a long ton (\$1.98 per bushel) was posted in London last Thursday, the same day on which the board announced a 750,000 long ton (28.0 million bushels) sale to Russia. It brings the offering price of Australian f.a.q. wheat to within 2/6 (1 cent per bushel) of the minimum figure set in last year's cereal agreement with Britain.

The London price, which is the only indication of overseas prices for Australian wheat, is now equivalent to 13/6 (\$2.03) a bushel f.o.b. This is 1/1 (16 cents) a bushel below the guaranteed price of 14/7 (\$2.19) a bushel f.o.b. bulk basis set by the Commonwealth Government on 150 million bushels of this year's exports.

The London price is now 12.5 per cent below the peak price of £28/7/6 a long ton (\$2.28 per bushel) in February last year.

Exports of Australian Wheat and Wheat Flour in Terms of Wheat
December 1-January 30, 1964-65 and Corresponding Period 1963-64

Destination	Wheat		Wheat Flour	
	1963-64	1964-65	1963-64	1964-65
- thousand bushels -				
<u>Western Europe</u>				
<u>EEC</u>				
Germany, Federal Republic	2,128	-	-	-
<u>Other Western Europe</u>				
Britain	4,771	2,627	311	448
Ireland	376	383	-	-
Malta	437	-	-	-
Norway	750	597	-	-
Sub-totals	6,334	3,607	311	448
Totals	8,462	3,607	311	448
<u>Eastern Europe</u>				
U.S.S.R. (Russia)	13,633	-	1,829	-
<u>Africa</u>				
Kenya	-	41	-	-
Malawi	-	-	40	34
Mauritius	-	-	305	128
Portuguese East Africa	462	-	-	-
Rhodesia	717	713	-	-
Zanzibar	-	-	44	9
Others	5	2	11	16
Totals	1,184	756	400	187
<u>Asia</u>				
Aden	220	83	-	-
Aden and Aden I/T	-	-	208	182
Aden and Aden I/T Atta	-	-	105	104
Arabian Gulf	-	-	39	37
Arabian Gulf Atta	-	-	271	335
Brunei	-	-	6	2
Ceylon	4	6	1,503	1,594
China	16,036	13,470	-	-
Formosa	-	39	-	-
Hong Kong	480	351	19	22
India	184	-	-	-
Indonesia	-	-	23	1
Iran	53	5,616	-	-
Iraq	621	-	-	-
Japan	3,371	3,171	-	-
Lebanon	975	-	-	-
Philippines	175	-	539	128
Saudi Arabia	-	-	8	-
Thailand	1/	156	174	68

Exports of Australian Wheat and Wheat Flour in Terms of Wheat
December 1-January 30, 1964-65 and Corresponding Period 1963-64

Destination	Wheat		Wheat Flour	
	1963-64	1964-65	1963-64	1964-65
- thousand bushels -				
<u>Asia (concluded)</u>				
Malaysia				
Malaya	19	1	601	487
Malaya Atta	-	-	21	15
Sabah	-	-	30	32
Sarawak	-	-	26	38
Singapore	180	400	380	227
Singapore Atta	-	-	1	1/
Singapore A/C B.W.O.	-	-	8	9
Others	116	83	34	20
Totals	22,434	23,376	3,996	3,301
<u>Oceania</u>				
New Zealand	968	557	-	-
<u>Western Hemisphere</u>				
Peru	-	-	2	3
<u>Pacific Area and Sundries</u>				
Pacific Islands	17	6	225	352
Ships' Stores and Sundries	-	-	136	109
Totals	17	6	361	461
Totals, All Countries	46,700	28,300	6,900	4,400

1/ Less than 500 bushels.

ARGENTINE SITUATION

1964-65 Wheat Supplies
at Near Record Level

Reflecting the combined effect of substantially larger carryover stocks as well as an increase in production, total supplies of wheat in Argentina for the 1964-65 (December-November) crop year are estimated at some 424.4 million bushels, 25 per cent greater than the 1963-64 figure of 338.2 million and the largest total since 1938-39 when a record production combined with stocks resulted in a supply of close to 450 million bushels. Current crop year supplies consist of the December 1 carry-over of 88.2 million, in contrast to only 25.9 million the year before, and the 1964-65 production of 336.2 million, the third largest wheat crop ever harvested in Argentina. After making an allowance of 128.6 million bushels for anticipated domestic requirements, an estimated 295.8 million are available for export and for carryover in 1964-65, 43 per cent greater than the 206.6 million the previous year.

Exports of wheat and wheat flour in terms of grain equivalent during December 1964-January 1965 amounted to 22.9 million bushels, exceeding by a considerable margin the total of 17.0 million exported during the same months in 1963-64. The balance remaining on February 1, 1965 for export and for carryover was estimated at 272.9 million bushels, in sharp contrast to the February 1, 1964 total of 189.6 million.

Argentine Wheat Supplies

Item	1963-64 <u>1/</u>	1964-65 <u>2/</u>
	- million bushels -	
Carryover at beginning of crop year (December 1) <u>3/</u>	25.9	88.2 <u>1/</u>
Production	312.3	336.2 <u>4/</u>
Total estimated domestic supplies	338.2	424.4
Less estimated domestic requirements for crop year	131.6	128.6
Available for export and for carryover	206.6	295.8
Deduct:		
Exports of wheat as grain, December-January	16.9	22.8
Exports of wheat flour in terms of wheat, December-January	0.1	0.1
Total exports of wheat and wheat flour	17.0	22.9
Balance on February 1 for export and for carryover	189.6	272.9

1/ Revised. 2/ Preliminary. 3/ Includes allowances for farm stocks. 4/ Second official estimate.

The following account of the Argentine situation has been extracted from a report from Mr. H. E. Ryan, Assistant Commercial Secretary (Agriculture), Buenos Aires, under date of February 18, 1965 and is reproduced with the permission of the Trade Commissioner Service, Department of Trade and Commerce. Where possible, conversions to Canadian measures and currency have been made for the convenience of our readers.

Weather and Crops

As the wheat and flax harvests are practically completed, weather is now not an overly important factor. During the period under review there was insufficient rainfall for growing summer crops in several areas of the northern grain belt. However, this facilitated harvesting and the wheat crop has now been taken off and the flax crop is almost completed.

Wheat

There has been no change in the official wheat estimate of 9.1 million tons (336.2 million bushels), third highest in Argentine history. Trade circles, however, are now talking in terms of 9.3 to 9.5 million tons (341.7 to 349.1 million bushels) of wheat. Producers are now facing a storage problem. Much wheat has been stored on farms, where facilities in

many instances are poor although improvements are being made. Because the northern ports had been virtually cleared of last year's crop, there was considerable space available before harvesting began and in this region the problem is somewhat less than in the southern ports. In the south, old stocks still remained in large quantities after the new wheat began flowing into terminal positions. At the present time, the National Grain Board indicate that about 370,000 tons (13.6 million bushels) of old crop remain unsold, and much of this is in the southern region.

A few weeks ago, agitation amongst producers reached fairly significant levels, as they claimed the National Grain Board would be unable to pay for new wheat. As a result, the Board made several public statements, indicating it is in a position to purchase the new crop and that the Argentine Government has so guaranteed and is making the necessary funds available. The Board stated that, if there had been short delays involved in payment, this was due to the fact that, so far this year, they had purchased almost ten times more tonnage than at similar dates the previous year. As of February 16, the Grain Board had bought 3.7 million tons (135,950,000 bushels). In a press release, the National Grain Board indicated that it would be physically impossible to negotiate purchase of the entire 1964-65 wheat crop during the first few weeks after harvest because of the volume involved and that producers should recognize this and not become overly impatient. It said it was doing its best and hoped producers would co-operate. As a result of these statements, producers have become less skeptical, at present, appearing more inclined to sell to the Government than to the private trade, as the trade itself, in some cases, is paying over a period of 150 to 180 days.

Notwithstanding the sluggish market, the National Grain Board has been actively promoting sales of Argentine wheat and remained optimistic about the future. This optimism is not fully shared by the trade. During the period under review, approximately 330,000 metric tons (12,125,000 bushels) of wheat were shipped, as compared with 274,000 metric tons (10,068,000 bushels) during January 1964. Major buyers included Mainland China 169,000 tons (6,210,000 bushels), the Netherlands 56,000 tons (2,058,000 bushels), and Brazil 35,000 tons (1,286,000 bushels).

There has been talk of several barter sales being considered at the moment, particularly a wheat-jute deal with India for 250,000 tons (9,186,000 bushels). However, to-date, nothing has been concluded. Millers and exporters have not been active in the wheat market during the past few weeks, although some lots of southern wheat were purchased for export at the minimum price of 780 pesos per 100 kilos (\$1.43 per bushel).

The National Grain Board has sold wheat for export at 790 to 800 pesos per 100 kilos (\$1.45 to \$1.47 per bushel) put on board (f.a.s. plus loading expenses less export taxes), in bulk, January-March shipment. Sales to Continental Europe were very slow with exporters offering at U\$S 64.50 per ton (\$1.89 per bushel) c.i.f., March shipment, and U\$S 64.00 (\$1.87 per bushel) for April-June shipment. Some sales of durums were made by the Board at 800 pesos per 100 kilos (\$1.47 per bushel), put on board, bulk, January-February shipment from Bahia Blanca. Durum sales to Europe averaged U\$S 66.50 per ton (\$1.95 per bushel), c.i.f. March-April shipment. Futures prices have remained at the floor level of 780 pesos per 100 kilos (\$1.43 per bushel).

FRENCH SITUATION

The following account of the current crop situation in France has been extracted from a report by Mr. J. E. Montgomery, Assistant Commercial Secretary, Canadian Embassy, Paris, under date of February 12, 1965, and is reproduced with the permission of the Trade Commissioner Service, Department of Trade and Commerce. Where possible, conversions from French to Canadian measures have been made and rounded for the convenience of our readers.

1965 Crop Acreage On January 1 the estimates of Winter cereals seeding were as follows:

<u>Grain</u>	<u>5-Year Average</u>	<u>1964</u>	<u>1965</u>
- thousand acres -			
Wheat	8,167	9,992 <u>1/</u>	10,636 <u>2/</u>
Mixed Wheat and Grain	32	28	26
Rye	675	581	553
Barley	736	707	674
Oats	782	682	571
Mixed Cereal	79	99	92
Totals	10,470	12,088	12,553

1/ Includes 73,000 acres of durum wheat.

2/ Includes 54,000 acres of durum wheat.

Wheat seeded, therefore, indicates an increase of 6 per cent over January 1, 1964, and 30 per cent more than the 5-year average.

Weather and Growth Due to the mild winter up until February growth is about fifteen days in advance in comparison with normal years. During early February temperatures became more seasonal being at freezing or near freezing. If there is no substantial frost damage during February and early March, the 1965 wheat crop could again be a bumper one. Sufficient rain and snow has been recorded in most growing areas which indicates that subsoil moisture reserves are good.

Commercial Disposition The latest official estimates are as follows:
of 1964-65 Crop Wheat

	thousand bushels
Total deliveries	361,922
Imports (except durum)	5,511
Total Commercial Supply	367,433
Total French domestic consumption (including overseas provinces)	220,460
Surplus available for export	146,973

This export surplus might be increased by 400,000 to 500,000 metric tons (14,697,000 to 18,372,000 bushels) and, as a result, stocks at the end of the crop year may be reduced to 700,000 to 800,000 metric tons (25,720,000 to 29,395,000 bushels) rather than the 1,200,000 tons (44,092,000 bushels) predicted earlier.

Exports

Up to January 1965 export sales contracts amounted to 3,300,000 metric tons (121,253,000 bushels) of which about 300,000 metric tons (11,023,000 bushels) consisted of flour (wheat equivalent). The major export markets were as follows:

	bushels
China	12,860,000
Poland	10,288,000
United Kingdom	5,879,000
Iran	6,614,000
Morocco	4,960,000
East Germany	11,023,000
Algeria	8,084,000
U.S.S.R.	9,186,000

In addition, France is expected to export approximately 500,000 tons (18,372,000 bushels) of wheat to neighbouring E.E.C. countries during the current crop year.

The sale of this balance is not expected to present any problems. In addition to long-term contracts outstanding there are sales possibilities in Portugal for 50,000 metric tons (1,837,000 bushels) Morocco, where PL480 shipments have been delayed by the U.S. dock strike, E.E.C. countries and Iran. Talks between France and China are expected to open again but deliveries are not likely before next crop year.

At the end of January the French cereals office ONIC released 150,000 metric tons (5,511,000 bushels) from stocks in order to stabilize prices which had increased rapidly during the last few weeks.

GRAIN SITUATION IN WEST GERMANY

The following account of the grain situation in West Germany has been extracted from a report supplied by Mr. W. F. Hillhouse, Agricultural Counsellor, Canadian Embassy, Bad Godesberg, Germany, under date of February 19, 1965 and is reproduced with the permission of the Trade Commissioner Service, Department of Trade and Commerce. Where possible, conversions to Canadian measures have been made and rounded for the convenience of our readers.

Weather and Crops

The weather during the past three months has continued to be very satisfactory and the outlook for winter crops remains good.

West Germany has had an exceptionally mild winter to-date and abundant rainfalls in November and January have brought soil moisture reserves to a high level. During the few times the temperature levels have dropped there has been adequate snow cover almost everywhere. There is as yet no evidence of winterkill or damage from disease or insects.

There have been some slight changes in the estimates of area sown to winter grain. In relation to the 1963 figures these now stand at rye 101 per cent, wheat 103 per cent and barley 109 per cent. Preliminary forecasts of area to be seeded to summer grains in 1965 are wheat 84 per cent, barley 104 per cent, mixed grain 96 per cent and oats 101 per cent, also expressed as a percentage of last year's figures.

Wheat During the first five months of the crop year farmers sold 2,467,230 tons (90,646,000 bushels) of wheat compared with 2,247,085 tons (82,558,000 bushels) during the same period in 1963. Most of the increase came from the central provinces.

Wheat milling for food at 1,776,300 tons (65,261,000 bushels) was almost identical with the figure for the previous year. However, due to the higher quality of the 1964 crop wheat milling for feed was down to 84,800 tons (3,116,000 bushels) compared with 142,300 tons (5,228,000 bushels) last year.

During the five-month period German wheat imports at 511,751 tons (18,802,000 bushels) were down sharply from the 738,081 tons (27,117,000 bushels) imported during the same period last year and the five-year 1959-60-1963-64 average of 863,000 tons (31,707,000 bushels). Imports from Canada at 281,911 tons (10,357,000 bushels) were much reduced but accounted for 55 per cent of the total. This very high percentage is second only to the exceptional 62 per cent share of the market Canada obtained during the first five months of last year. Imports from Sweden and Argentina increased in absolute as well as relative terms. France obtained a slightly larger share but imports from the U.S.A. dropped drastically. Wheat imports by sources for the first five months of each of the last three years are shown in the accompanying table.

West German Imports of Wheat by Countries of Origin

Countries	July-November		
	1962-63	1963-64	1964-65
- thousand bushels -			
Canada	9,706	16,752	10,357
United States	3,697	6,369	2,121
Argentina	1,052	542	1,742
France	2,119	2,366	2,024
Australia	1,666	243	69
Sweden	740	227	2,049
U.S.S.R.	1,099	100	-
Other countries	3,246	518	439
Totals	23,324	27,117	18,802

On December 1, 1964, commercial stocks of wheat and wheat products at 2,014,402 tons (74,009,000 bushels) grain equivalent, totalled almost the same as one year earlier, although the quantity of finished products - mostly flour - at 243,623 tons was substantially higher than the 183,581 tons on hand at December 1, 1963.

Flour Exports

Germany's flour exports during the first five months of this crop year at 117,283 tons were less than half the 256,195 tons registered during the same period last year. German flour exports to Communist Bloc countries and to Britain and Ireland have been almost non-existent this year, whereas in the first five months of last year exports to these markets totalled 160,000 tons divided almost equally between the two areas. The United Arab Republic and Libya together account for 60 per cent of this year's exports to-date. Somewhat surprisingly German shipments to the Caribbean area have continued to increase: for the five-month period this crop year they totalled 13,217 tons compared with 9,075 tons in the same period of the previous year. On the other hand exports to other South American markets have almost disappeared.

Flour Export Subsidies

Germany has not yet taken advantage of the cash flour export subsidies authorized by the EEC regulations and paid partly from Community Funds. Pressure on the Government has been mounting and the trade now seems confident that action will be taken within the next few months to authorize such subsidies and thereby improve their competitive position as a flour exporter.

Rye

Rye is considered a bread grain in Germany even though much of it is fed on the farm. Practically all rye that is sold off farms is milled for food. During the first five months of this crop year farmers sold 1,147,100 tons (45,161,000 bushels) of rye compared with 946,200 tons (37,252,000 bushels) during the same months of the previous year. During the same periods milling of rye for food and feed respectively, were 460,500 tons and 30,400 tons (18,130,000 and 1,197,000 bushels) in 1964 and 468,400 and 24,200 tons (18,441,000 and 953,000 bushels) in 1963. Rye imports during the same period were 37,699 tons (1,484,000 bushels) in 1964 compared with 54,765 tons (2,156,000 bushels) the previous year. Imports from Canada however at 15,709 tons (618,000 bushels) were markedly above the previous year's figure of 542 tons (21,000 bushels).

WHEAT SITUATION IN ITALY

The following account of the current wheat situation in Italy has been extracted from a report by Miss M. D. Johnson, Commercial Assistant, Canadian Embassy, Rome, under date of February 15, 1965, and is reproduced with the permission of the Trade Commissioner Service, Department of Trade and Commerce.

Weather conditions have been favourable to the sowing of wheat, and although no figures are yet available it is believed that the area sown is approximately the same as last year. A cold wave has, however, recently struck Italy, especially in the central and southern part of the peninsula, and this may adversely affect growing crops. The following table gives comparative figures of the areas sown and the crops harvested in the last two years.

Area Sown and Crops

Grain	1963	1964 ^{1/}	Difference in Acreages and Crops
- thousand acres -			
<u>Area Sown</u>			
Wheat	10,854	10,888	+ 34
<u>Crops</u>			
Wheat (excluding durum)	230,627	262,347	+ 31,720
Durum wheat	67,979	53,278	+ 14,701
Totals	298,606	315,625	+ 17,019

^{1/} Subject to revision.

The agreement on the common cereal prices, agreed upon at Brussels by the six Common Market Countries on December 15, 1964, is the most important event of the last quarter. In accordance with this agreement, the basic target prices to be effective from July 1, 1967, for the first marketing year, are to be as follows:

Soft wheat ... US \$106.25 = Lire 66,400 per metric ton (\$3.11 per bushel)
Durum wheat .. US \$125.60 = Lire 78,500 per metric ton (\$3.67 per bushel)

In addition, farmers are to be guaranteed a minimum wholesale price for durum wheat, established for the first marketing year at

US \$145.00 = Lire 90,600 per metric ton (\$4.24 per bushel)

the difference between target and guaranteed price to be met by the Community. The above prices may be revised by the E.E.C. before July 1, 1966.

As regards Italy, if it is taken into consideration that the basic target prices for the 1964-65 crop year established in June last ranged as follows:

Wheat(excluding durum) from Lire 65,000 to 71,000 per metric ton
(\$3.04 to \$3.32 per bushel)
Durum wheat from Lire 72,000 to 89,500 per metric ton
(\$3.37 to \$4.19 per bushel)

it will be seen that wheat marketing in Italy should not be seriously affected by the new prices.

On January 30, 1964 the position as regards wheat purchased from farmers at intervention prices and sold to millers at target prices by the Intervention Organization was as follows:

Stocks with Intervention Organization

Grain	Purchases	Sales	Stocks Left as at January 1, 1965
- thousand bushels -			
Wheat (excluding durum) ...	22,197	13,865	8,332
Durum wheat	6,980	6,038	942
Totals	29,177	19,903	9,274

In addition to the above, 86,570.7 metric tons (3,181,000 bushels) of wheat, excluding durum, remain in the stocks of the voluntary collective pools. However, millers are getting most of their supplies from the open market and some through imports.

From July 1 to October 31, 1964, about 100,000 tons (3,674,000 bushels) of both durum and other wheat were imported from various origins, in part under the "Replacement Plan" with respect to wheat products exported, and in part for domestic consumption. A considerable portion of this wheat was Manitoba Northern from Canada.

Some French wheat was also imported in recent months, but following sales made by France to other countries (Russia, Poland, North Africa) the price of this wheat has gone up and imports into Italy have decreased. Since December 1964, sales of durum wheat from Argentina and Algeria have been recorded. At their present reduced prices these wheats are competitive with Italian durums notwithstanding the heavy levy applicable.

Prices on the open market in Milan at end of January and beginning of February 1965, ranged as follows:

Open Market Prices

Type of Wheat	Minimum Price	Maximum Price
- dollars per bushel -		
<u>Domestic Wheat (excluding durum)</u>		
Fine grade	3.44	3.58
Good mercantile grade	3.28	3.35
Mercantile grade	3.21	3.25
<u>Domestic Durum</u>		
Good mercantile grade	4.49	4.63
<u>Foreign Wheat</u>		
Manitoba	4.47	4.52 ^{1/}
Plata	4.24	4.28
French	3.30	3.44 ^{2/}

^{1/} This refers to No. 1 Atlantic.

^{2/} The lower type is for ordinary grade and the higher for fine grade wheat.

Because of the monthly increase of Lire 500 per ton (2 cents per bushel) for wheat other than durum and Lire 550 (3 cents per bushel) for durum in respect of basic intervention and target prices, these now range as follows:

Intervention and Target Prices as of February 1, 1965

Type of Wheat	Intervention Price Range		Target Price Range	
	From	To	From	To
- dollars per bushel -				
Wheat (excluding durum)	3.05	3.25	3.21	3.49
Durum wheat	3.60	4.18	3.55	4.37

The same monthly increases apply to threshold prices for imports from third countries which, as from February 1, 1965, have been as follows:

for wheat (excluding durum) Lire 74,000 per metric ton (\$3.46 per bushel)
for durum wheat Lire 98,850 per metric ton (\$4.63 per bushel)

On February 3, 1965, levies for imports from third countries were as follows:

for soft wheat Lire 38,375 per metric ton (\$1.80 per bushel)
for durum wheat Lire 55,644 per metric ton (\$2.60 per bushel)

while the supplementary levy for hard and semi-hard wheats, including Manitobas Nos. 1, 2 and 3, was Lire 13,663 per metric ton (64 cents per bushel) which, added to the soft wheat levy, made a total for such wheats of Lire 52,038 per metric ton (\$2.44 per bushel).

It is reported by the trade that up to a total of 250,000 metric tons (9,186,000 bushels) of durum wheat will be imported into Italy before the end of the present crop year. At present it would appear that Candeal-Taganrog is the type to which preference is given. Some imports of hard and semi-hard wheats can also be expected to include high grade Manitobas for which interest is shown because of recent price reductions.

WHEAT SITUATION IN JAPAN

The following account of the wheat situation in Japan has been extracted from a report from Mr. P. A. Savard, Commercial Counsellor, Canadian Embassy, Tokyo, under date of February 12, 1965 and is reproduced with the permission of the Trade Commissioner Service, Department of Trade and Commerce. Where possible, conversions to Canadian measures have been made for the convenience of our readers.

Domestic Outturn Confirming earlier estimates of the Department of Agriculture and Forestry, final figures for the 1964 crop are now placed at 1,245,000 metric tons (45.7 million bushels) as compared with the 1960-63 average of 1,492,000 metric tons (54.8 million bushels). At the end of November, the Food Agency had purchased 709,202 metric tons (26,058,000 bushels) of the above tonnage.

Imports At the end of the year, the Food Agency purchased 2,400 metric tons of Argentine wheat. This was the first time in ten years that any such purchases had been made. Thorough tests will be made of its milling qualities which will determine the future import policy of the Food Agency.

For the first half of fiscal year 1964 (April-September) wheat imports, on a customs clearance basis, were as follows:

United States...	961,339 metric tons (35,323,000 bushels)
Canada.....	688,934 metric tons (25,314,000 bushels)
Australia.....	235,769 metric tons (8,663,000 bushels)

For the calendar year 1964, Japanese purchases of Canadian wheat amounted to 1,352,585 metric tons (49,698,000 bushels).

Factors Bearing on Imports The recent weakening of United States and Canadian wheat prices will have no great effect on the volume of Japanese imports. Lower prices, however, will ease substantially the cost of the domestic grain subsidy program by strengthening the Food Control Special Account. The recent reduction will mean an average C.I.F. price of Y26 to 27 thousand per metric ton (\$2.12 to \$2.21 per bushel) to the Food Agency for imported wheat as against Y29 to 30 thousand (\$2.37 to \$2.45 per bushel) previously, which it has been selling for Y35,200 per metric ton (\$2.88 per bushel), for the past two years.

Whether or not Argentina is successful in gaining a foothold may have some bearing on the individual shares maintained heretofore by other suppliers. It should not, however, greatly affect the Canadian position if at all.

CROP SITUATION IN BRITAIN

The following account of the current crop situation and grain prices in Britain has been extracted from a report received from Mr. J. E. Woollam, Agricultural Counsellor for Canada, London, under date of February 5, 1965 and is reproduced with the permission of the Trade Commissioner Service, Department of Trade and Commerce.

Weather and Crops Unsettled conditions prevailed throughout the month with rain and high winds alternating with cold spells. Temperatures were generally below average. In most areas cultivations and sowing were well advanced and autumn-sown cereals were generally making good progress. Incidence of pest and disease was slight with only isolated reports of slug and rabbit damage.

Minimum Import Price and Levy Arrangements The prospective rate of general levy on wheat (other than denatured or durum wheat), was increased on January 9 shipments from 10s. Od. (\$1.49) to 20s. Od. (\$2.99) per long ton and applies to shipments up to July. On January the prospective rate of country levy for Argentine wheat was also increased for January to May shipments from 5s. Od. (75¢) to 20s. Od. (\$2.99) per long ton but subsequently reduced on January 13 to 5s. Od. (75¢) per long ton and extended to June shipments. The prospective rate of general levy for rolled, flaked, crushed or bruised wheat was increased from 70s. Od. (\$10.46) to 75s. Od. (\$11.21) per long ton for January to May shipments with effect from January 8 and both current and prospective rates were raised to 80s. Od. (\$11.96) per long ton as from February 4 and extended to June shipment. Removal of the 10s. Od. (\$1.49) per long ton general levy on maize meal was announced on February 4 but at the same time a prospective rate of general levy of 5s. Od. (75¢) per long ton was introduced for rolled, flaked, crushed or bruised barley February-May shipments.

Belgium has agreed to co-operate with the United Kingdom in the minimum import price arrangements and the list of co-operating countries therefore now numbers twenty. These countries will provide over 90 per cent of the United Kingdom's imported supplies of cereals and cereal products.

An amendment order to the Schedule to the Price Stability of Imported Products (Minimum Import Price Levels) Order 1964, operative from January 12, 1965, has been issued introducing an additional sub-division and minimum import price level to cover second and first quality "clear" grades of wheat flour containing chalk. This new sub-division will enable "clear" grades containing chalk which can be used in human foodstuffs, to be imported at the minimum import price level applying to the lowest priced ordinary flours.

Grain Markets The domestic wheat market is reported very steady with fair to good demand and prices higher than last month. Barley prices show the same trend. Working party comparative value for millable wheat ex farm for January-February delivery is £22 (\$66.44) per long ton.

Comparative Market Prices are:

	<u>Per long ton</u>	<u>Dollars per bushel</u>
Hard Milling Wheat U.K. (London)	£21 18s. Od.	1.76
Feeding Wheat French (Liverpool)	£24 5s. Od.*	1.94

	<u>Per long ton</u>	<u>Dollars per bushel</u>
Feeding Barley U.K. (London)	£20 2s. 0d.	1.29
Feeding Barley Canada (Bristol)	£24 10s. 0d.	1.57
Feeding Oats U.K. (London)	£20 18s. 0d.	0.95
Feeding Oats Canada Mixed (London)	£20 0s. 0d.	0.91

Continued from page 21

Because of a mild winter with little snowcover in Eastern Europe, crop prospects appear somewhat less favourable than a year ago. Winter wheat acreages are slightly larger in Poland, East Germany and Czechoslovakia, while they are about the same in Hungary, Rumania, and Bulgaria. However, in Yugoslavia plantings are about 15 per cent below those of last year. In the Soviet Union a normal winter wheat crop appears likely, based on current indications. In the Ukraine, a large proportion of the crop entered the winter in good condition and fertilizer was applied to a much larger area than previously. In most of the spring wheat area, soil moisture is at a less favourable level than last year although better than in most recent years.

CALENDAR OF WHEAT EVENTS

- | | | |
|----------|----|--|
| February | 12 | According to a report received from Mr. P. A. Savard, Commercial Counsellor for Canada, Tokyo, final figures for the 1964 wheat harvest in Japan place the crop at 1,245,000 metric tons (45.7 million bushels) compared with the 1960-63 average of 1,492,000 tons (54.8 million bushels). |
| | 18 | According to a report received from Mr. D. I. Campbell, Assistant Commercial Secretary for Canada, Canberra, the average yield of wheat in Australia in 1964-65 is estimated to have increased to a record 21.6 bushels compared with 19.9 bushels a year previous. |
| | 19 | According to a report received from Mr. W. F. Hillhouse, Agricultural Counsellor for Canada, Bad Godesberg, Germany, the weather during the past three months has continued to be very satisfactory and the outlook for winter crops remains good. Preliminary forecasts indicate that the area to be seeded to spring wheat will be about 84 per cent of the 1964 acreage. |
| March | 2 | The Canadian Wheat Board announced the final payment on wheat delivered to the Board during the 1963-64 crop year. The average final payment to producers amounted to 48.23 cents per bushel. |
| | 4 | The United States Department of Agriculture announced that farmers whose wheat allotment acreages total 69 per cent of the entire national allotment for the current crop year have signed up to participate in the voluntary 1965 wheat program. State reports as of February 25 show 797,893 farms have been signed up whose wheat allotments total 36,773,776 acres. The current program signup period, which began February 8, will continue through March 26. |

STATISTICS CANADA LIBRARY
BIBLIOTHEQUE STATISTIQUE CANADA



1010687028