

CATALOGUE No.

22-005

MONTHLY



CANADA

DOMINION BUREAU OF STATISTICS
AGRICULTURE DIVISION

THE WHEAT REVIEW



MARCH 1965

DOMINION BUREAU OF STATISTICS

THE
WHEAT REVIEW

MARCH 1965

Published by Authority of
The Minister of Trade and Commerce

Prepared in the Crops Section, Agriculture Division
Dominion Bureau of Statistics, Ottawa

TABLE OF CONTENTS

	<u>Page</u>
World Wheat Situation	
August-February Exports Decline from Record of Previous Year but Remain Well Above Average	1
Wheat Supplies of Four Major Exporters Almost Unchanged from a Year Ago ..	1
1964 World Bread Grain Harvest Shows 10 Per Cent Gain	2
I.W.C. Cumulative Totals of Commercial Purchases	3
Canadian Situation	
1964-65 Wheat Supplies Decline from Previous Year's Record Level	4
August-February Exports Below Previous Year's Comparable Record but Well Above Average	4
Marketings, Disappearance and Visible Supplies	5
February 1965 Exports of Wheat and Flour Total 20.7 Million Bushels	5
Quota Position	6
Sale of Flour to Russia and Wheat to Bulgaria	6
Area Intended for Wheat 1965	7
Farmers' Marketings by Crop Districts 1963-64	8
Farmers' Marketings of Wheat, Prairie Provinces 1964-65	10
Visible Supply of Canadian Wheat	11
Grading of Wheat Inspected, August-February 1964-65 with Comparisons	11
Weekly Visible Supply and Farmers' Marketings (Charts)	12
Rail Shipments of Wheat from Fort William-Port Arthur	13
Overseas Exports of Canadian Grain by Ports of Loading	13
Freight Assistance Shipments	14
Monthly Exports of Canadian Wheat and Wheat Flour	15
Export of Canadian Wheat by Destination	16
Customs Exports of Canadian Wheat Flour by Countries of Consignment	19
Canadian Wheat Board Weekly Average Cash Wheat Prices	21
Canadian Flour Milling Situation	
Production and Export	23
United States Situation	
Domestic Supplies 6 Per Cent Below Last Year	24
Prospective Plantings of Spring Wheat	25
Crop and Weather Conditions	25
Cash Wheat Prices on the Kansas City and Minneapolis Markets	27
Chicago Wheat Futures, High Points of Closing	27
Australian Situation	28
Argentine Situation	31
Crop Situation in Britain	34
Calendar of Wheat Events	36

WORLD WHEAT SITUATION

August-February Exports Decline from Record of Previous Year but Remain Well Above Average

The total of 810.2 million bushels of wheat and flour exported from Canada, United States, Argentina and Australia during the August-February period of the current Canadian crop year, represents a decrease of 18 per cent from the previous record level of 992.8 million exported during the same period in 1963-64 but is 30 per cent above the 618.8 million of two years ago and 85 per cent greater than the ten-year (1953-54—1962-63) average for the period of 543.2 million. As indicated in the accompanying table, based on the Canadian crop year, wheat shipments from Argentina at 79.4 million bushels are nearly double the 41.2 million shipped at the same date last year while exports from United States, Canada and Australia were lower than the previous year's comparable levels.

Exports of Wheat and Flour in Terms of Wheat, August 1964-February 1965 with Comparisons

August-February	United States	Canada	Argentina	Australia	Total
- million bushels -					
1950-51	160.2	119.6	42.6	70.0	392.4
1951-52	280.4	177.6	23.8	56.2	538.0
1952-53	197.7	207.8	3.2	45.9	454.6
1953-54	111.0	152.7	69.2	34.7	367.6
1954-55	154.8	152.3	78.2	53.9	439.2
1955-56	145.2	138.9	72.8	48.6	405.5
1956-57	300.7	160.6	51.2	81.9	594.4
1957-58	224.8	173.4	42.1	42.8	483.1
1958-59	254.5	165.9	52.4	43.9	516.7
1959-60	256.3	170.0	31.0	69.3	526.6
1960-61	374.1	177.4	46.7	87.9	686.1
1961-62	413.2	220.6	34.5	125.8	794.1
1962-63	312.2	188.9	38.8 ^{1/}	78.9	618.8 ^{1/}
1963-64 ^{1/}	476.4	320.9	41.2	154.3	992.8
1964-65 ^{2/}	379.1	238.7	79.4	113.0	810.2

^{1/} Revised.

^{2/} Preliminary.

Wheat Supplies of Four Major Exporters Almost Unchanged from a Year Ago

Supplies of wheat held by the four traditional major exporters at March 1, 1965 for export and for carryover at the end of their respective crop years amounted to 2,312.0 million bushels compared with 2,323.6 million at the same time a year ago. Reduced supplies in United States and Canada more than offset larger totals in Argentina and Australia. Supplies at March 1, 1965, in millions of bushels, were held as follows, with last year's comparable figures in brackets: United States, 1,140.6 (1,217.4); Canada, 666.2 (733.1); Argentina, 256.1 (179.3); and Australia, 249.1 (193.8).

1964 World Bread
Grain Harvest Shows
10 Per Cent Gain

According to the March 1965 edition of World Agricultural Production and Trade, published by the United States Department of Agriculture revised estimates place the world's 1964 production of wheat and rye at a record high of 309 million short tons, according to latest information available to the Foreign Agricultural Service. This exceeds the combined 1963 crop of these bread grains by 27 million tons--or 10 per cent.

The increase is principally in wheat, although rye production showed a small gain of 4 per cent. Totals for both grains reflect improved production in North and South America, Western Europe, and Oceania and a recovery to normal crop levels in the Soviet Union.

World wheat production of 9,170 million bushels is a new record and compares with that of 8,315 million bushels a year earlier and the previous record of 8,760 million bushels in 1962. The world rye crop, at 1,230 million bushels, while being 50 million bushels above that of 1963, is slightly below the 1962 total and 15 per cent lower than the 1955-59 average.

Wheat production in North America totalled 1,970 million bushels, second only to the 2,026 million-bushel crop of 1952. U.S. production was 1,290 million bushels, largest since 1960. Larger harvested acreage plus higher yields accounted for the good crop. Canada's production of 600 million bushels, although 17 per cent below the 1963 record, was well above the 1955-59 average of 466 million bushels. An increase of 2 million acres in harvested area was outweighed by a sharp drop in yield. Mexico's record crop of 77 million bushels was 19 per cent above the 1963 outturn and 73 per cent over the 1955-59 average.

North America's rye production of 45.7 million bushels was up 3.6 million bushels from 1963 and 26 per cent over the 5-year average. The principal change was a 4.3 million-bushel increase in the U.S. crop.

Western Europe's wheat production at 1,570 million bushels was 204 million bushels higher than the 1963 crop and second only to the 1,620 million-bushel total of 1962. The largest gains occurred in France, Greece, the United Kingdom and Italy. Spain's crop was off 34 million bushels. Acreage and yield were both close to those of the 1962 record year.

Rye production in Western Europe totalled 240 million bushels, up 15 million bushels. Western Germany accounted for most of the gain.

In Eastern Europe wheat production is estimated at 650 million bushels, slightly above the 1963 crop and 18 per cent over the 1955-59 average. Hungary registered an increase of 20 million bushels, and Yugoslavia a 9 million-bushel decline.

Rye production at 385 million bushels was down 10 million bushels. Poland's large crop was 6 million bushels below that of 1963.

The wheat crop in the Soviet Union was similar to that of 1962 and is estimated at 2 billion bushels. This represents a generally good crop in the principal producing regions in contrast to the disastrous spring wheat harvest of 1963. Soviet rye production is estimated at 500 million bushels, up moderately from the previous year's crop, but well below the 5-year average of 635 million bushels.

International Wheat Council
Cumulative Totals of Commercial Purchases by Importing Countries from Exporting Countries
Crop Year 1964-65 — Through February 27, 1965

Importing Countries	EXPORTING COUNTRIES								Total Purchases
	Canada	Argentina	Australia	France	Italy	Sweden	U.S.S.R.	U.S.A.	
	- thousand bushels -								
Austria	1,195	-	-	-	-	-	-	-	1,195
Belgium & Luxembourg	9,847	3,050	-	900	-	3	-	990	14,790
Brazil	-	19,842	-	-	-	-	-	739	20,581
Costa Rica	595	-	-	73	-	-	-	771	1,439
Cuba	-	-	-	-	-	-	-	-	-
Dominican Republic	696	-	-	-	-	-	-	557	1,253
Ecuador	893	4	-	-	-	-	-	84	981
El Salvador	541	-	-	1	-	-	-	623	1,165
Finland	343	-	-	-	-	143	2,572	202	3,260
Germany, Federal Republic	14,298	1,360	36	1,773	15	3,432	-	3,652	24,566
Greece	16	-	-	-	-	-	-	19	35
Guatemala	162	-	-	-	-	-	-	1,426	1,588
Iceland	-	-	-	8	-	-	-	109	117
India	-	-	9,232	-	-	-	-	3	9,235
Indonesia	-	-	254	19	-	-	-	1	274
Ireland	770	318	982	18	-	-	-	653	2,741
Israel	529	-	-	-	-	-	-	1,283	1,812
Japan	40,277	81	13,256	981	-	-	-	42,840	97,435
Korea	-	-	-	-	-	-	-	2	2
Liberia	66	-	-	-	-	-	-	77	143
Libya	-	-	9	80	565	-	-	1	655
Netherlands	3,727	10,045	-	2,201	-	-	-	9,890	25,863
Netherlands Territories	226	-	-	3	-	-	-	444	673
New Zealand	-	-	3,525	-	-	-	-	-	3,525
Nigeria	285	140	-	-	-	-	-	1,855	2,280
Norway	1,601	700	3,237	1,185	-	2,849	-	4	9,576
Peru	666	6,171	9	-	-	-	-	1,157	8,003
Philippines	5,312	-	1,044	896	51	-	-	5,819	13,122
Portugal	46	-	-	1,194	-	-	-	1,499	2,739
Portuguese Territories	149	441	26	28	-	-	-	456	1,100
Saudi Arabia	253	-	585	37	1	-	-	4,201	5,077
Sierra Leone	321	-	-	7	-	-	-	41	369
South Africa	944	-	-	-	-	-	-	-	944
Southern Rhodesia	-	-	498	-	-	-	-	-	498
Switzerland	3,107	62	-	3,129	41	-	-	261	6,600
Tunisia	-	-	-	1,182	-	-	-	-	1,182
United Arab Republic	-	-	-	-	2,773	-	-	17	2,790
United Kingdom	60,594	9,721	14,026	4,405	-	-	-	2,848	91,594
U.K. Territories	2,030	-	3,520	225	-	-	-	1,435	7,210
Vatican City	-	-	-	-	-	-	-	-	-
Venezuela	8,920	1,195	-	-	-	-	-	7,331	17,446
Western Samoa	-	-	82	-	-	-	-	1	83
To Orders	-	12,865	-	-	-	-	-	-	12,865
Totals	158,409	65,995	50,321	18,345	3,446	6,427	2,572	91,291	396,806
Percentage of Total Sales by Exporting Countries ...	39.92	16.63	12.68	4.62	0.87	1.62	0.65	23.01	100.00

NOTE: Mexico and Spain - no sales reported.

Argentina - Quantities cover the period ending February 6, 1965.

Italy - Quantities cover the period ending February 13, 1965.

U.S.S.R. - Exemption granted.

CANADIAN SITUATION

1964-65 Wheat Supplies
Decline from Previous
Year's Record Level

Reflecting declines in both carryover stocks and production, total supplies of wheat for the 1964-65 crop year are placed at 1,059.9 million bushels, some 12 per cent less than the 1963-64 record total of 1,210.7

million. Supplies of the size indicated are, however, still the fifth largest on record. After making an allowance of 155.0 million bushels for anticipated domestic requirements, supplies available for export and for carryover during 1964-65 amount to 904.9 million bushels, about 14 per cent below the 1963-64 total of 1,054.0 million.

August-February Exports
Below Previous Year's
Comparable Record
But Well Above Average

Total exports of wheat and wheat flour in terms of wheat amounted to 238.7 million bushels during the August-February period of the current crop year. This volume, although representing a decline of 26 per cent from the record high level of 320.9 million shipped during the

same months a year ago, still surpasses by 40 per cent the ten-year (1953-54--1962-63) August-February average of 170.1 million. Of the current total, some 221.7 million bushels were exported as wheat and 17.0 million were flour in terms of wheat equivalent. The balance, remaining on March 1, 1965 for export and for carryover, amounted to 666.2 million bushels, 9 per cent less than the March 1, 1964 total of 733.1 million.

Canadian Wheat Supplies

Item	1963-64 <u>1/</u>	1964-65 <u>2/</u>
	- million bushels -	
Carryover in North America at beginning of crop year (August 1)	487.2	459.4
Production	723.4	600.4
Imports of wheat for domestic use, August-February ...	<u>3/</u>	<u>4/</u>
Total estimated supplies	1,210.7	1,059.9
Less estimated domestic requirements for crop year ...	156.7	155.0
Available for export and for carryover	1,054.0	904.9
Deduct:		
Exports of wheat in bulk, August-February <u>5/</u>	288.0	221.3
Exports of bagged seed wheat, August-February <u>6/</u>	2.0	0.4
Total exports of wheat as grain	290.0	221.7
Exports of wheat flour in terms of wheat, August- February <u>6/</u>	30.9	17.0
Total exports of wheat and wheat flour	320.9	238.7
Balance on March 1 for export and for carryover	733.1	666.2

1/ Revised. 2/ Preliminary. 3/ Less than 50,000 bushels. 4/ Not available.
5/ As reported by the Board of Grain Commissioners. (Includes overseas clearances and imports into the United States). 6/ Customs returns, 1963-64 adjusted for time lag.

Marketings, Disappearance
and Visible Supplies

Total primary deliveries of wheat (both east and west) up to March 24 of the current crop year have amounted to 301.7 million bushels compared with 320.5 million marketed during the same period of the previous crop year. During the five-week period February 18 to March 24, 1965, primary marketings (east and west) amounted to some 30.1 million bushels as opposed to 36.0 million entering domestic and export channels and, as a result, the total visible supply of Canadian wheat decreased from a level of 343.1 million bushels at February 17 to 337.1 million at March 24.

The total visible supply of Canadian wheat at March 24 this year represented declines of 5 per cent and 13 per cent from the comparable 1964 total of 353.3 million and the 1963 figure of 386.4 million bushels, respectively. The largest reduction continued in country elevator stocks, with wheat in this position amounting to 183.1 million bushels, 11 per cent below the 205.3 million the previous year and 14 per cent less than the 212.0 million two years ago. Wheat stocks at interior terminals, at March 24, 1965, totalled 4.8 million bushels and also recorded declines from the 1964 and 1963 comparable levels of 5.6 million and 5.3 million bushels, respectively. Wheat stocks "in transit rail" (Western Division) amounted to 8.3 million bushels in contrast to 18.7 million a year ago and 16.4 million two years ago. Supplies at the Canadian Lakehead, totalling some 64.4 million bushels, declined by 2 per cent from last year's comparable level of 66.0 million but surpassed by 11 per cent the 1963 figure of 58.2 million bushels. Stocks in "Storage Afloat", amounting to 12.7 million bushels, were slightly higher than the 1964 level of 10.4 million but below the 1963 total of 16.6 million. The 17.8 million bushels in Bay, Lake and Upper St. Lawrence ports were sharply above the 9.7 million bushels in these same ports a year ago but considerably below the 28.4 million of two years ago. Supplies in Lower St. Lawrence and Maritime ports, at March 24, 1965, at 20.5 million bushels, exceeded the 1964 total of 13.4 million by a wide margin but were 8 per cent lower than the 1963 volume of 22.3 million bushels. The 9.5 million bushels in West Coast ports (Vancouver-New Westminster, Prince Rupert and Victoria) registered a 7 per cent increase over the 1964 comparable total of 8.8 million but was 15 per cent below the 1963 figure of 11.2 million.

February 1965 Exports of
Wheat and Flour Total
20.7 Million Bushels

Combined exports of wheat in bulk, bagged seed wheat and wheat flour in terms of grain equivalent amounted to 20.7 million bushels during February 1965. This volume is practically unchanged from last month's total of 20.6 million, 2 per cent above the ten-year (1954-63) February average of 20.3 million but 26 per cent below the February 1964 figure of 28.0 million. Exports of wheat in bulk (as reported by the Board of Grain Commissioners) during February 1965 totalled 19.3 million bushels, some 7 per cent more than the 18.1 million recorded for January, 14 per cent above the ten-year (1954-63) average for the month of February of 17.0 million but 11 per cent less than the February 1964 total of 21.7 million bushels. Based on Canadian Customs returns, the equivalent of 1.3 million bushels of wheat was exported in the form of flour during February 1965, 45 per cent below the previous month and considerably less than the unusually high February 1964 adjusted figure of 5.8 million.

Cumulative exports of wheat in bulk during the August-February period of the current crop year amounted to 221.3 million bushels, some 23 per cent less than the comparable 1963-64 total of 288.0 million, but sharply above the ten-year average for the period of 146.7 million. The principal markets for Canadian wheat in bulk during the first seven months of the current crop year, with

figures for the same period of the preceding crop year in brackets, were as follows, in millions of bushels: Britain, 43.6 (45.1); China Communist, 33.9 (19.8); Japan, 27.4 (28.8); Czechoslovakia, 18.7 (2.1); Poland, 14.7 (7.3); Belgium and Luxembourg, 10.5 (13.2); Federal Republic of Germany, 13.2 (25.1); and Democratic Republic of Germany, 7.4 (nil).

Cumulative exports of bagged seed wheat during August-February of the current crop year, based on Canadian Customs returns, amounted to 404 thousand bushels, sharply below last year's comparable total (adjusted to remove time lag) of 2,022 thousand.

Cumulative exports of wheat flour during the first seven months of the 1964-65 crop year, based on Customs returns, were the equivalent of 17.0 million bushels, below both the adjusted August 1963-February 1964 total of 30.9 million bushels and the ten-year average for the period of 21.3 million. The leading markets for Canadian wheat flour in terms of wheat equivalent during the August-February period of the 1964-65 crop year, with revised data for the same months of the preceding crop year in brackets, were as follows, in thousands of bushels: Britain, 5,451 (6,722); Cuba, 2,454 (3,981); U.S.S.R. (Russia), 1,730 (12,112); Ghana, 1,006 (614); Jamaica, 843 (969); Trinidad, 729 (870); Leeward and Windward Islands, 558 (612); United States, 506 (566); Costa Rica, 500 (328); Ceylon, 438 (586); and Hong Kong, 433 (608).

Quota Position By March 29, 1965 the Canadian Wheat Board had placed 780 delivery points on the supplementary quota of four bushels of wheat (other than Durum) basis acreage seeded to wheat, or 200 bushels, whichever is the larger. Of the total of 1,907 shipping points in the Western Division, the Board had placed 1,435 points on a delivery quota of 6 bushels per specified acre, 378 on a 5-bushel quota and 85 on a 4-bushel quota. Only 5 points were on a 3-bushel quota while 4 stations were "closed".

Summary of Elevator Shipping Points in the Western Division
as at March 29, 1965

Province	Supplementary 4 bushels Wheat (Except Durum)	General Quota in Bushels per Specified Acre				Closed	Total
		Three	Four	Five	Six		
Ontario	1	-	-	-	1	-	1
Manitoba	127	-	-	56	286	-	342
Saskatchewan	350	5	81	261	682	3	1,032
Alberta	297	-	4	61	461	1	527
British Columbia	5	-	-	-	5	-	5
All Provinces	780	5	85	378	1,435	4	1,907

Sale of Flour to Russia and Wheat to Bulgaria On March 12, 1965 the Canadian Wheat Board announced a sale to the U.S.S.R. of 50,000 long tons of flour and a sale to Bulgaria of 50,000 long tons of wheat. The two separate sales involve a total of approximately 4.3 million bushels of wheat. The sale of flour for cash to the U.S.S.R. provides for the shipment of the flour to Cuba from the St. Lawrence ports during the period May through July, 1965. The sale to Bulgaria for shipment from the St. Lawrence ports during May, 1965, completes the second year of a three-year Agreement signed in October, 1963, by which Bulgaria agreed to purchase 3.7 million bushels of wheat annually during the period of the Agreement. The sale to Bulgaria is on a credit basis as authorized by the Government of Canada under the provisions of the Export Credits Insurance Act.

Area Intended
for Wheat 1965

Canadian farmers intend to plant 28.3 million acres to all classes of wheat in 1965 according to plans as of March 1. This area is 5 per cent less than the record 29.7 million seeded in 1964 and reverses a seven-year upward trend in wheat acreage.

In contrast, oats acreage, which declined for the past two years, is expected to increase by 5 per cent and total 10.1 million acres compared with 9.7 million in 1964. The area seeded to barley is expected to increase by 12 per cent and may total 6.1 million compared with 5.5 million in 1964. Mixed grain acreage may total 1.5 million, some 7 per cent larger than the previous year and corn for grain acreage forecast at a record 684,600 is 4 per cent larger than in 1964. A further very large increase is expected in the area seeded to rapeseed as farmers intend to plant a record 1,385,000 acres to this crop in 1965, nearly double the 699,800 planted in 1964 and about four times as much as was seeded in 1962. Flaxseed acreage may reach 2.2 million, some 14 per cent more than the previous year and is the third consecutive yearly increase. Soybean acreage, forecast at 238,000 acres, is three per cent larger than in the previous year and marks the fourth consecutive increase.

Intended Acreage of Spring Wheat in Canada, as at March 1, 1965
Compared with Acreages in 1964

Province	Acreage Seeded in 1964 <u>1/</u>	Acreage Intended to be Seeded in 1965		
		Per Cent of 1964	Area 1965 <u>1/</u>	Indicated Change
	acres		acres	acres
Prince Edward Island	4,000	100	4,000	unchanged
Nova Scotia	900	100	900	unchanged
New Brunswick	3,000	103	3,100	+ 100
Quebec	10,900	100	10,900	unchanged
Ontario	17,000	100	17,000	unchanged
Manitoba	3,385,000	93	3,164,000	- 221,000
Saskatchewan	19,200,000	96	18,400,000	- 800,000
Alberta	6,495,000	95	6,150,000	- 345,000
British Columbia	115,000	97	112,000	- 3,000
Totals	29,230,800	95	27,861,900	- 1,368,900

1/ For provinces other than Ontario includes relatively small acreages of winter wheat for which annual estimates are not available.

The 28.3 million acres to be seeded to all classes of wheat represents a decrease of 5 per cent from the 1964 seedings but 2.6 million acres or 10 per cent above the 1959-63 average. In Manitoba the decrease in acreage may be 7 per cent, in Saskatchewan 4 per cent and in Alberta 5 per cent.

Prospective plantings of spring wheat including durum of 27.9 million acres are down 5 per cent from the 1964 acreage but 10 per cent above the 1959-63 average. Durum wheat acreage is expected to decline sharply as farmers intend to decrease acreage by 49 per cent. If the acreage intentions are carried out, Prairie farmers will plant 953,600 acres to this crop compared with 1,888,000 grown in 1964 and the 1959-63 average of 1,879,400 acres. Spring wheat acreage excluding durum may total 26.9 million in 1965 compared with 27.3 million planted in 1964 and the 1959-63 average of 23.4 million. The 456,000 acres seeded to winter wheat last fall in Ontario is slightly larger than the previous year but 5 per cent below the 1959-63 average.

Intended Acreage of Spring Wheat 1/ in the Prairie Provinces
As at March 1, 1965, Compared with Estimated Acreage 1964

Crop	Manitoba		Saskatchewan		Alberta		Prairie Provinces	
	1964	1965	1964	1965	1964	1965	1964	1965
- thousand acres -								
Wheat, all spring	3,385	3,164	19,200	18,400	6,495	6,150	29,080	27,714
Durum	120	34	1,541	830	227	90	1,888	954
Other spring	3,265	3,130	17,659	17,570	6,268	6,060	27,192	26,760

1/ Includes a relatively small acreage of winter wheat.

Farmers' Marketings by Crop Districts 1963-64 Farmers in the Prairie Provinces and certain areas of British Columbia marketed a record 568.6 million bushels of wheat during the 1963-64 crop year according to revised figures compiled by the Statistics Branch of the Board of Grain Commissioners.

In the following tables, farmers' deliveries are shown by the marketing channel employed, i.e., through country elevators, directly to interior private and mill elevators, etc. Deliveries to country elevators are, in turn, broken down by provinces and crop districts.

Farmers' Marketings of Wheat in the Western Division, 1963-64

Marketing Channel	Total Wheat - bushels -
Country elevators	564,582,134
Interior private and mill elevators	3,888,036
Interior semi-public terminals	103,705
Platform loadings	46,344
Total	568,620,219

Farmers' Marketings through Country Elevators, 1963-64

Province and District	Wheat (Other than Durum)	Durum Wheat	Total Wheat - bushels -
<u>Manitoba</u>			
Crop District 1	3,704,626	441,565	4,146,191
2	6,742,286	253,549	6,995,835
3	6,246,213	454,580	6,700,793
4	645,932	38,327	684,259
5	771,565	7,359	778,924
6	123,565	2,875	126,440
7	7,896,421	203,383	8,099,804
8	4,187,043	168,508	4,355,551
9	3,317,575	79,617	3,397,192
10	6,906,356	90,179	6,996,535
11	4,211,554	94,146	4,305,700
12	388,371	1,294	389,665
13	2,582,342	25,015	2,607,357
14	713,931	10,370	724,301
Totals	48,437,780	1,870,767	50,308,547

Ontario

Country elevators in the Western Division	96,369	-	96,369
Totals <u>1/</u>	48,534,149	1,870,767	50,404,916

Farmers' Marketings through Country Elevators, 1963-64

Province and District		Wheat (Other than Durum)	Durum Wheat	Total Wheat
		- bushels -		
<u>Saskatchewan</u>				
Crop District	1A	14,237,885	1,935,990	16,173,875
	1B	13,777,006	592,700	14,369,706
	2A	14,832,238	2,352,867	17,185,105
	2B	23,250,280	5,533,102	28,783,382
	3A North	11,392,279	2,656,443	14,048,722
	3A South	20,532,377	4,827,026	25,359,403
	3B North	16,624,366	3,908,925	20,533,291
	3B South	12,934,063	3,190,885	16,124,948
	4A	3,937,800	672,401	4,610,201
	4B	7,929,073	3,609,186	11,538,259
	5A	25,826,760	931,417	26,758,177
	5B	27,504,913	174,556	27,679,469
	6A	31,763,710	2,890,265	34,653,975
	6B	21,104,995	1,063,380	22,168,375
	7A	22,217,876	2,865,582	25,083,458
	7B	19,634,002	130,849	19,764,851
	8A	16,341,791	31,189	16,372,980
	8B	19,680,517	59,166	19,739,683
	9A	17,757,166	40,825	17,797,991
	9B	15,597,288	37,999	15,635,287
Totals		356,876,385	37,504,753	394,381,138
<u>Alberta</u>				
Crop District	1	13,192,894	983,086	14,175,980
	2	31,514,739	2,574,053	34,088,792
	3	10,912,384	383,586	11,295,970
	4	41,683,037	58,396	41,741,433
	5	5,446,991	2,403	5,449,394
	6	6,824,466	10,309	6,834,775
	7	4,454,993	11,110	4,466,103
Totals		114,029,504	4,022,943	118,052,447
<u>British Columbia</u>				
Crop District	1	1,718,407	25,226	1,743,633
Totals <u>2/</u>		115,747,911	4,048,169	119,796,080
Totals Marketed		521,158,445	43,423,689	564,582,134

1/ Manitoba figures include points in Ontario west of Fort William-Port Arthur

2/ Alberta figures include country points in British Columbia.

Farmers' Marketings 1/ of Wheat in the Prairie Provinces 1964-65

Week Ending		Manitoba	Saskatchewan	Alberta	Total	Last Year <u>2/</u>
		- bushels -				
August	12, 1964	75,662	409,500	98,247	583,409	543,483
	19	165,645	350,728	200,845	717,218	813,982
	26	606,652	1,186,624	360,697	2,153,973	2,958,768
September	2	259,162	1,731,216	542,073	2,532,451	3,670,105
	9	626,938	2,337,139	282,197	3,246,274	7,414,702
	16	2,861,693	3,000,932	736,446	6,599,071	8,978,421
	23	4,677,736	10,134,664	3,309,300	18,121,700	6,291,301
	30	2,253,868	11,072,846	2,974,796	16,301,510	9,604,797
October	7	1,436,956	6,617,924	3,090,763	11,145,643	11,308,739
	14	1,575,017	7,043,761	6,481,794	15,100,572	8,789,151
	21	1,816,060	11,532,537	6,007,602	19,356,199	11,558,396
	28	2,311,743	10,169,173	4,069,997	16,550,913	14,989,546
November	4	2,583,044	6,802,878	3,630,412	13,016,334	15,281,709
	11	2,063,739	7,630,517	3,107,184	12,801,440	13,599,259
	18	1,836,676	6,766,380	2,980,075	11,583,131	15,332,440
	25	1,534,854	7,469,802	3,168,692	12,173,348	11,848,094
December	2	1,521,191	5,254,805	2,029,339	8,805,335	17,528,964
	9	1,305,493	5,003,945	2,325,113	8,634,551	19,357,177
	16	2,964,986	13,588,764	3,746,693	20,300,443	10,101,263
	23	794,134	6,484,116	1,408,499	8,686,749	7,292,811
	30	648,303	2,405,338	1,012,360	4,066,001	11,239,153
January	6, 1965	695,986	5,748,287	1,301,676	7,745,949	15,799,953
	13	1,034,504	1,584,566	1,118,931	3,738,001	16,720,481
	20	616,905	4,983,638	4,339,605	9,940,148	16,268,127
	27	1,739,531	12,925,263	5,343,141	20,007,935	5,695,394
February	3	447,871	1,452,759	2,483,788	4,384,418	11,039,892
	10	379,082	1,169,508	1,690,970	3,239,560	7,962,153
	17	674,240	2,265,066	1,731,833	4,671,139	7,584,566
	24	845,577	3,127,348	1,954,646	5,927,571	5,819,620
March	3	607,664	1,916,304	2,241,044	4,765,012	5,224,573
	10	910,214	3,338,276	3,033,095	7,281,585	4,968,290
	17	1,307,400	4,348,768	2,221,656	7,877,824	5,522,944
	24	410,263	1,504,214	2,148,172	4,062,649	4,394,682
Totals		43,588,789	171,357,586	81,171,681	296,118,056	315,502,936
Average similar period:						
1953-54--1962-63		21,842,970	118,553,738	57,341,664	197,738,373	

1/ Includes receipts at country, interior private and mill elevators, interior semi-public terminals and platform loadings.

2/ Revised.

Visible Supply of Canadian Wheat, March 24, 1965
Compared with Approximately the Same Date, 1963 and 1964

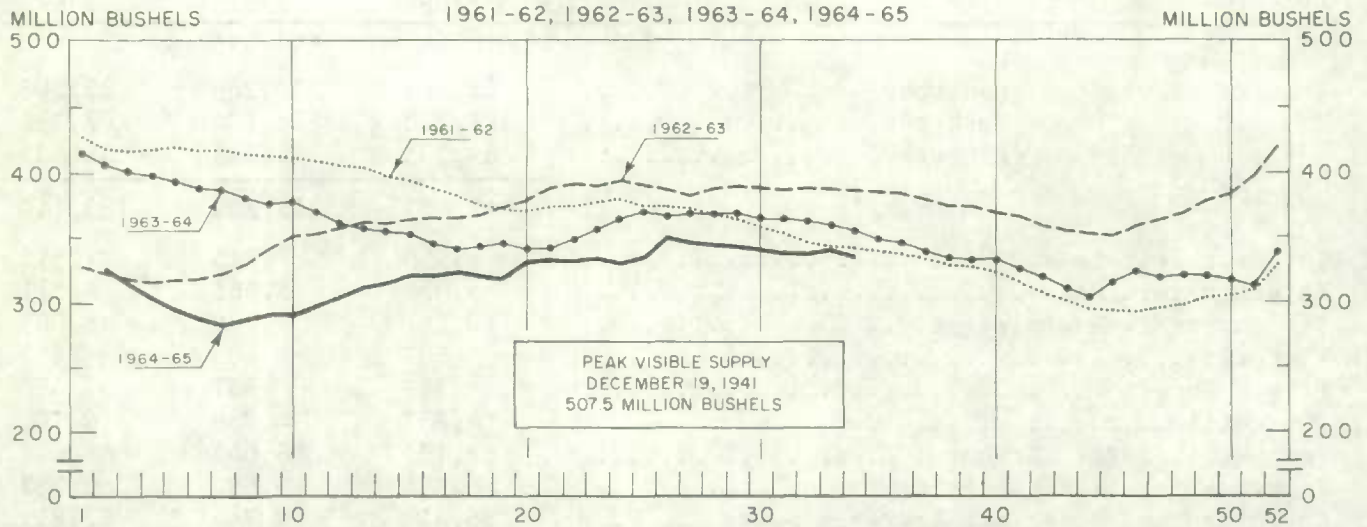
Position	1963	1964	1965
- thousand bushels -			
Country elevators - Manitoba	28,905	20,266	22,208
Saskatchewan	121,718	126,204	102,294
Alberta	61,395	58,819	58,639
Totals	212,017	205,289	183,140
Interior private and mill	7,950	7,715	7,518
Interior terminals	5,326	5,565	4,811
Vancouver-New Westminster	10,261	7,786	8,805
Victoria	507	499	252
Prince Rupert	389	551	400
Churchill	4,857	4,759	4,700
Fort William-Port Arthur	58,181	66,047	64,447
In transit rail (Western Division)	16,394	18,690	8,287
Bay, Lake and Upper St. Lawrence ports	28,418	9,744	17,811
Lower St. Lawrence and Maritime ports	22,279	13,413	20,509
Storage afloat	16,566	10,409	12,732
In transit rail (Eastern Division)	3,219	2,835	3,702
Totals	386,365	353,303	337,113

Grading of Wheat Inspected, August 1964-February 1965 with Comparisons

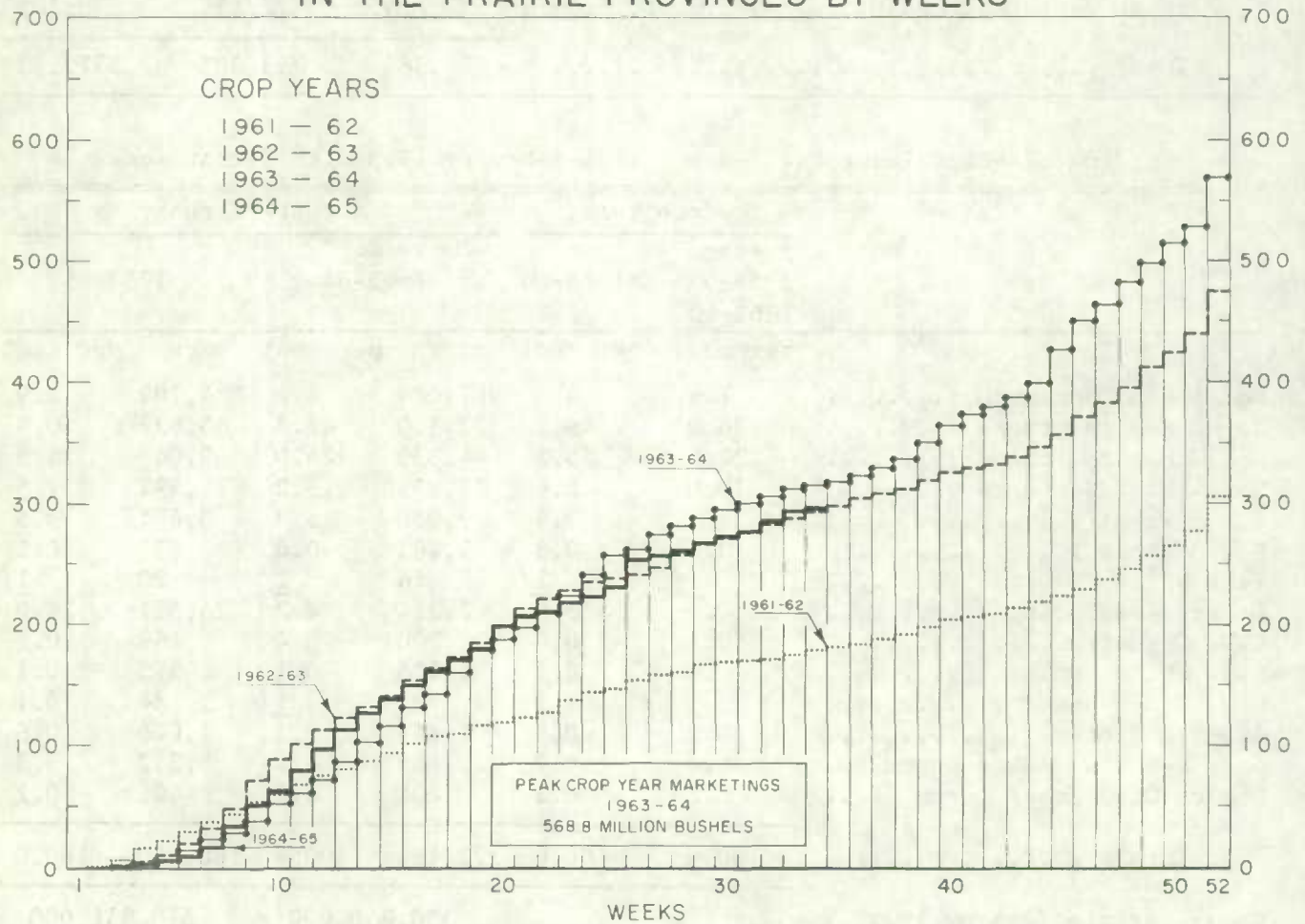
Grade	Crop Year		August-February			
	Average					
	1958-59	1963-64	1963-64		1964-65	
	1962-63					
	per cent	per cent	cars	per cent	cars	per cent
No. 1 Man. Northern	7.6	4.8	7,084	4.1	4,709	2.9
No. 2 Man. Northern	38.0	49.2	72,810	42.3	65,638	40.9
No. 3 Man. Northern	22.6	25.1	44,839	26.0	39,047	24.3
No. 4 Man. Northern	10.0	6.6	15,871	9.2	11,992	7.5
No. 5 Wheat	4.4	3.4	9,080	5.3	5,601	3.5
No. 6 Wheat	0.6	0.5	1,403	0.8	831	0.5
Feed Wheat	<u>1/</u>	<u>1/</u>	14	<u>1/</u>	20	<u>1/</u>
Others Red Spring	10.1	3.0	7,214	4.2	25,527	15.9
C.W. Garnet	0.1	0.4	700	0.4	169	0.1
C.W. White Spring	0.1	0.1	128	0.1	173	0.1
C.W. Mixed Wheat	<u>1/</u>	0.1	83	<u>1/</u>	84	0.1
Alberta Winter	0.2	0.9	1,847	1.1	1,026	0.6
Nos. 1-6 C.W. Amber Durum ...	6.0	5.7	10,689	6.2	5,352	3.3
Others C.W. Amber Durum	0.2	0.2	404	0.2	401	0.2
Totals	100.0	100.0	172,166	100.0	160,570	100.0
Gross bushels (approx.)			330,860,000		310,931,000	

1/ Less than .05 per cent.

WEEKLY VISIBLE SUPPLY OF CANADIAN WHEAT



CUMULATIVE RECORD OF WHEAT MARKETINGS IN THE PRAIRIE PROVINCES BY WEEKS



(Data in both charts for crop years beginning August 1)

Rail Shipments of Wheat from Fort William-Port Arthur, 1961-62--1964-65

Month	1961-62	1962-63	1963-64	1964-65
- bushels -				
August	20,648	13,933	5,500	7,786
September	14,598	11,657	9,104	19,564
October	33,944	22,716	25,355	12,135
November	22,915	12,024	13,500	13,167
December	60,167	12,778	23,047	26,961
January	126,533	39,534	58,772	10,703
February	68,421	22,967	28,768	17,214
March	37,000	86,398	21,268	
April	37,777	69,067	26,063	
May	11,203	11,851	7,941	
June	16,022	15,746	20,518	
July	17,315	11,158	12,707	
Totals	466,543	329,829	252,543	

Distribution of Rail Shipments of Wheat from Fort William-Port Arthur, February 1965

Grade	Nova Scotia	Quebec	Ontario
- bushels -			
2 Northern	1,200	-	-
5 Wheat	-	2,833	1,500
Rejected	2,836	-	-
Durum	-	2,000	-
Others	-	4,345	2,500
Totals	4,036	9,178	4,000

Overseas Exports of Canadian Grain by Ports of Loading, August 1, 1964-March 24, 1965
with Comparisons

Port	Wheat ^{1/}	Durum Wheat ^{1/}	Oats ^{1/}	Barley	Rye	Flaxseed	Rapeseed ^{2/}
- bushels -							
<u>Pacific Seaboard</u>							
Van.-New West.	88,673,593	2,016,209	3,028,588	14,202,432	695,548	4,850,804	5,577,700
Victoria	5,347,281	-	-	-	-	-	160,520
Prince Rupert	5,619,152	-	-	-	-	-	-
<u>Churchill</u>	21,644,772	-	-	-	-	-	-
<u>Lakehead Direct</u>	1,056,868	521,071	451,739	1,341,237	457,500	1,892,239	58,659
<u>Kingston Direct</u>	343,541	-	-	-	-	-	-
<u>St. Lawrence</u>							
Montreal	25,016,040	5,341,918	356,951	46,667	11,440	1,690,817	-
Sorel	9,043,694	208,457	-	-	-	42,629	-
Three Rivers	7,601,783	937,446	-	-	176,600	179,084	-
Quebec	6,925,000	1,392,907	-	-	-	-	-
Baie Comeau	24,698,610	4,199,435	-	-	-	152,995	-
<u>Maritime</u>							
Saint John	686,873	-	-	-	-	-	-
West Saint John	14,116,740	1,664,245	98,739	-	-	39,963	66,799
Halifax	11,332,561	489,424	-	-	-	144,500	-
Totals	222,106,508	16,771,112	3,936,017	15,590,336	1,341,088	8,993,031	5,863,678
Aug. 1, 1963-Mar. 25, 1964.	290,995,405	15,857,045	13,082,751	11,292,906	2,837,276	8,112,009	3,549,612

^{1/} Excluding bagged seed.

^{2/} In bushels of 50 pounds.

Freight Assistance Shipments Claims filed for payment up to February 28, 1965 represent the movement of 5,133 thousand bushels of wheat from the Prairie Provinces to Eastern Canada and British Columbia under the freight assistance policy during the August-January period of the 1964-65 crop year. During the same months last year claims had been filed for a total of 8,264 thousand bushels, indicating on the assumption of approximately the same rate of submission of claims during both the current and preceding crop years that the August-January shipments of wheat under the policy were running about 38 per cent below those of 1963-64. Revised data on the August-January 1963-64 shipments of wheat based on claims submitted up to February 28, 1965 place the six-month total at 8,807 thousand bushels. The bulk of the shipments during the current six months under review went to destinations in Quebec and Ontario with these two provinces accounting for 47 per cent and 25 per cent of the total, respectively.

Provincial Distribution of Wheat Shipments under the Freight Assistance Policy
August-January 1964-65 and 1963-64

Month	Nfld.	P.E.I.	N.S.	N.B.	Que.	Ont.	B.C.	Total
- thousand bushels -								
August, 1964	63	9	105	37	452	236	62	965
September	35	14	87	39	445	239	84	944
October	7	11	101	33	416	233	109	910
November	4	9	112	33	413	214	174	961
December	8	6	68	34	382	218	88	803
January, 1965	2	6	58	10	301	168	6	551
Totals <u>1/</u>	119	56	530	186	2,409	1,307	524	5,133
Same period 1963-64:								
Preliminary <u>2/</u>	147	75	914	299	3,230	2,836	763	8,264
Revised <u>1/</u>	165	80	962	315	3,411	2,890	985	8,807

Preliminary data on millfeed shipments under the freight assistance policy indicate shipments of 204,988 tons during the August-January period of the current crop year. During the same six months of 1963-64 claims had been filed for a total of 248,131 tons, indicating on the assumption of approximately the same rate of submission of claims during both the current and preceding crop years that the August-January shipments of millfeeds under the policy were running about 17 per cent below those of 1963-64. Revised data on the 1963-64 August-January shipments of millfeeds based on claims submitted up to February 28, 1965 place the six-month total at 281,674 tons. As with freight-assisted shipments of wheat, the greater portion of the millfeed shipments during the period under review went to destinations in Quebec and Ontario.

Provincial Distribution of Millfeed Shipments under the Freight Assistance Policy
August-January 1964-65 and 1963-64

Province	1 9 6 3 - 6 4		1 9 6 4 - 6 5
	Preliminary <u>2/</u>	Revised <u>1/</u>	Preliminary <u>1/</u>
- tons -			
Newfoundland	3,034	3,881	2,446
Prince Edward Island	3,921	4,237	3,618
Nova Scotia	15,463	16,467	13,623
New Brunswick	13,935	14,908	12,289
Quebec	120,320	139,222	99,560
Ontario	75,936	82,175	64,193
British Columbia	15,522	20,784	9,259
Totals	248,131	281,674	204,988

1/ Based on claims filed up to February 28, 1965.

2/ Based on claims filed up to February 29, 1964.

Monthly Exports of Canadian Wheat and Wheat Flour

Year and Month	Wheat in Bulk <u>1/</u>	Bagged Seed Wheat <u>2/</u>	Total Wheat	Wheat Flour <u>2/</u> <u>3/</u>	Total <u>3/</u> Wheat and Wheat Flour
- thousand bushels -					
<u>1962-63</u>					
August	21,944	157	22,101	2,852	24,953
September	25,040	200	25,240	2,604	27,844
October	29,705	31	29,737	2,181	31,917
November	33,309	144	33,452	2,176	35,628
December	20,949	451	21,399	2,305	23,705
January	21,486	473	21,959	1,586	23,545
February	18,779	743	19,522	1,811	21,333
March	19,246	1,373	20,618	2,454	23,072
April	28,916	422	29,338	2,330	31,669
May	35,355	14	35,369	2,186	37,555
June	24,512	<u>4/</u>	24,513	2,837	27,350
July	20,854	-	20,854	1,943	22,798
Totals	300,095	4,007	304,102	27,265	331,367
<u>1963-64</u>					
August	29,204	187	29,391	2,819	32,210
September	42,556	129	42,686	2,106	44,791
October	59,020	15	59,035	3,520	62,555
November	65,296	204	65,499	4,538	70,037
December	41,763	388	42,151	6,284	48,435
January	28,451	535	28,987	5,829	34,816
February	21,675	562	22,237	5,800	28,037
March	22,510	484	22,995	5,697	28,692
April	43,211	213	43,423	5,530	48,954
May	56,992	14	57,006	4,744	61,750
June	65,036	144	65,180	3,768	68,948
July	61,012	35	61,047	4,275	65,322
Totals	536,726	2,912	539,637	54,910	594,548
<u>1964-65 <u>5/</u></u>					
August	42,226	44	42,270	4,073	46,343
September	42,792	145	42,937	2,133	45,069
October	40,120	27	40,147	2,037	42,184
November	30,976	44	31,020	2,523	33,543
December	27,720	72	27,792	2,522	30,314
January	18,098	73 <u>6/</u>	18,171 <u>6/</u>	2,421 <u>6/</u>	20,591 <u>6/</u>
February	19,337	-	19,337	1,329	20,666
Totals	221,269	404	221,673	17,037	238,711

1/ Export clearances including shipments to the United States compiled by the Statistics Branch, Board of Grain Commissioners for Canada. 2/ Compiled from Canadian Customs returns, 1962-63 and 1963-64 adjusted to remove effect of time lag in reporting. 3/ In terms of wheat equivalent. Wheat flour conversion rate: 2.3 bushels per cwt. 4/ Less than 500 bushels. 5/ Preliminary, subject to revision. 6/ Revised.

Exports of Canadian Wheat 1/ by Destination, February 1965 and 1964

Destination	Wheat (Except Durum)	Durum Wheat	All Wheat	
			February 1965	February 1964 <u>2/</u>
- bushels -				
<u>Western Europe</u>				
<u>EEC</u>				
Belgium and Luxembourg	1,309,056	204,143	1,513,199	54,363
France	-	-	-	162,472
Germany, Federal Republic	442,058	556,640	998,698	2,201,733
Italy	102,667	-	102,667	-
Netherlands	1,267,327	-	1,267,327	301,289
Sub-totals	3,121,108	760,783	3,881,891	2,719,857
<u>Other Western Europe</u>				
Britain	6,041,929	-	6,041,929	3,210,107
Ireland	385,537	-	385,537	-
Switzerland	448,000	-	448,000	74,667
Sub-totals	6,875,466	-	6,875,466	3,284,774
Totals	9,996,574	760,783	10,757,357	6,004,631
<u>Eastern Europe</u>				
Albania	534,667	-	534,667	-
Bulgaria	405,067	-	405,067	378,933
Hungary	795,133	-	795,133	-
U.S.S.R. (Russia)	-	-	-	6,644,970
Totals	1,734,867	-	1,734,867	7,023,903
<u>Africa</u>				
Nigeria	-	-	-	298,667
Rhodesia	-	-	-	18,667
Total	-	-	-	317,334
<u>Asia</u>				
China, Communist	2,556,317	-	2,556,317	2,120,907
Hong Kong	54,880	-	54,880	53,200
Japan	2,569,653	-	2,569,653	3,696,021
Malaysia	38,080	-	38,080	54,133
Philippines	610,774	-	610,774	345,334
Taiwan	-	-	-	94,080
Totals	5,829,704	-	5,829,704	6,363,675
<u>Western Hemisphere</u>				
Colombia	367,454	-	367,454	-
Cuba	294,933	-	294,933	642,027
Dominican Republic	-	-	-	308,933
El Salvador	96,451	-	96,451	143,733
Guatemala	-	-	-	33,333
Nicaragua	50,773	-	50,773	-
Venezuela	205,632	-	205,632	829,360
United States Domestic <u>3/</u>	-	-	-	7,947
Totals	1,015,243	-	1,015,243	1,965,333
Sub-totals, All Countries	18,576,388	760,783	19,337,171	21,674,876
Bagged seed <u>4/</u>			-	562,375
Totals, All Countries	18,576,388	760,783	19,337,171	22,237,251

NOTE: See footnotes on page 18.

Cumulative Exports of Canadian Wheat 1/ by Destination

Destination	August 1964-February 1965			Total
	Wheat (Except Durum)	Durum Wheat	Total Wheat	Same Period Last Year <u>2/</u>
- bushels -				
<u>Western Europe</u>				
<u>EEC</u>				
Belgium and Luxembourg	9,626,986*	910,001*	10,536,987*	13,224,767
France	898,380*	2,555,577	3,453,957*	2,939,589
Germany, Federal Republic .	8,474,626*	4,742,795*	13,217,421*	25,115,145
Italy	2,534,760	-	2,534,760	3,758,777
Netherlands	3,638,339*	86,240*	3,724,579*	2,990,178
Sub-totals	25,173,091*	8,294,613*	33,467,704*	48,028,456
<u>Other Western Europe</u>				
Austria	970,293	225,200	1,195,493	524,904
Britain	43,454,829*	131,413	43,586,242*	45,148,148
Denmark	-	-	-	20,543
Finland	343,467	-	343,467	356,533
Ireland	736,217	5,600	741,817	2,030,000
Malta and Gozo	410,667	1,867	412,534	709,294
Norway	1,601,120	-	1,601,120	1,667,203
Sweden	-	11,200	11,200	22,400
Switzerland	914,042	1,931,362	2,845,404	4,325,457
Sub-totals	48,430,635*	2,306,642*	50,737,277*	54,804,482
Totals	73,603,726	10,601,255	84,204,981	102,832,938
<u>Eastern Europe</u>				
Albania	2,876,084	-	2,876,084	1,476,534
Bulgaria	3,764,681	-	3,764,681	378,933
Czechoslovakia	18,688,398	-	18,688,398	2,052,968
Germany, Democratic Republic.	7,404,212	-	7,404,212	-
Hungary	2,124,073	-	2,124,073	-
Poland	10,932,980	3,784,181	14,717,161	7,300,247
U.S.S.R. (Russia)	970,980	-	970,980	104,533,870
Yugoslavia	-	-	-	3,501,866
Totals	46,761,408	3,784,181	50,545,589	119,244,418
<u>Africa</u>				
Mozambique	24,105	-	24,105	102,057
Nigeria	284,024	-	284,024	520,218
Republic of South Africa	944,533	-	944,533	-
Rhodesia	48,210	-	48,210	18,667
Totals	1,300,872	-	1,300,872	640,942

Cumulative Exports of Canadian Wheat 1/ by Destination

Destination	August 1964-February 1965			Total
	Wheat (Except Durum)	Durum Wheat	Total Wheat	Same Period Last Year <u>2/</u>
- bushels -				
<u>Asia</u>				
Burma	-	-	-	78,931
China, Communist	33,873,420	-	33,873,420	19,760,907
Hong Kong	525,467	-	525,467	427,839
India	3,225,263	-	3,225,263	-
Israel	529,200	-	529,200	1,067,248
Japan	27,386,303	-	27,386,303	28,755,048
Korea	-	-	-	511,467
Malaysia	410,667	-	410,667	112,933
Pakistan	1,836,800	-	1,836,800	-
Philippines	3,817,035	-	3,817,035	3,286,516
Saudi Arabia	251,964	-	251,964	640,377
Taiwan	341,836	-	341,836	313,684
Totals	72,197,955	-	72,197,955	54,954,950
<u>Oceania</u>				
United States Oceania	38,565	-	38,565	257,189
<u>Western Hemisphere</u>				
Barbados	60	-	60	40
Colombia	367,454	-	367,454	-
Cuba	3,550,023	-	3,550,023	3,368,347
Dominican Republic	704,386	-	704,386	658,839
Ecuador	893,142	-	893,142	366,681
El Salvador	391,385	-	391,385	539,395
Guatemala	135,833	-	135,833	133,333
Honduras	53,200	-	53,200	-
Jamaica	3,654	-	3,654	6,038
Nicaragua	255,733	-	255,733	-
Peru	613,200	-	613,200	730,614
Venezuela.....	6,013,351	-	6,013,351	4,018,503
United States Domestic <u>3/</u>	-	-	-	212,533
Totals	12,981,421	-	12,981,421	10,034,323
Sub-totals, All Countries.	206,883,947	14,385,436	221,269,383	287,964,760
Bagged seed <u>4/</u>			404,112*	2,021,735
Totals, All Countries	206,883,947	14,385,436	221,673,495	289,986,495

* Revisions in data for the previous month have been taken into account in the August-February cumulative totals.

1/ Overseas clearances as reported by the Statistics Branch, Board of Grain Commissioners for Canada, for all countries except the United States. Excluding bagged seed.

2/ Revised.

3/ Compiled from returns of Canadian elevator licensees and shippers and advice from American grain correspondents.

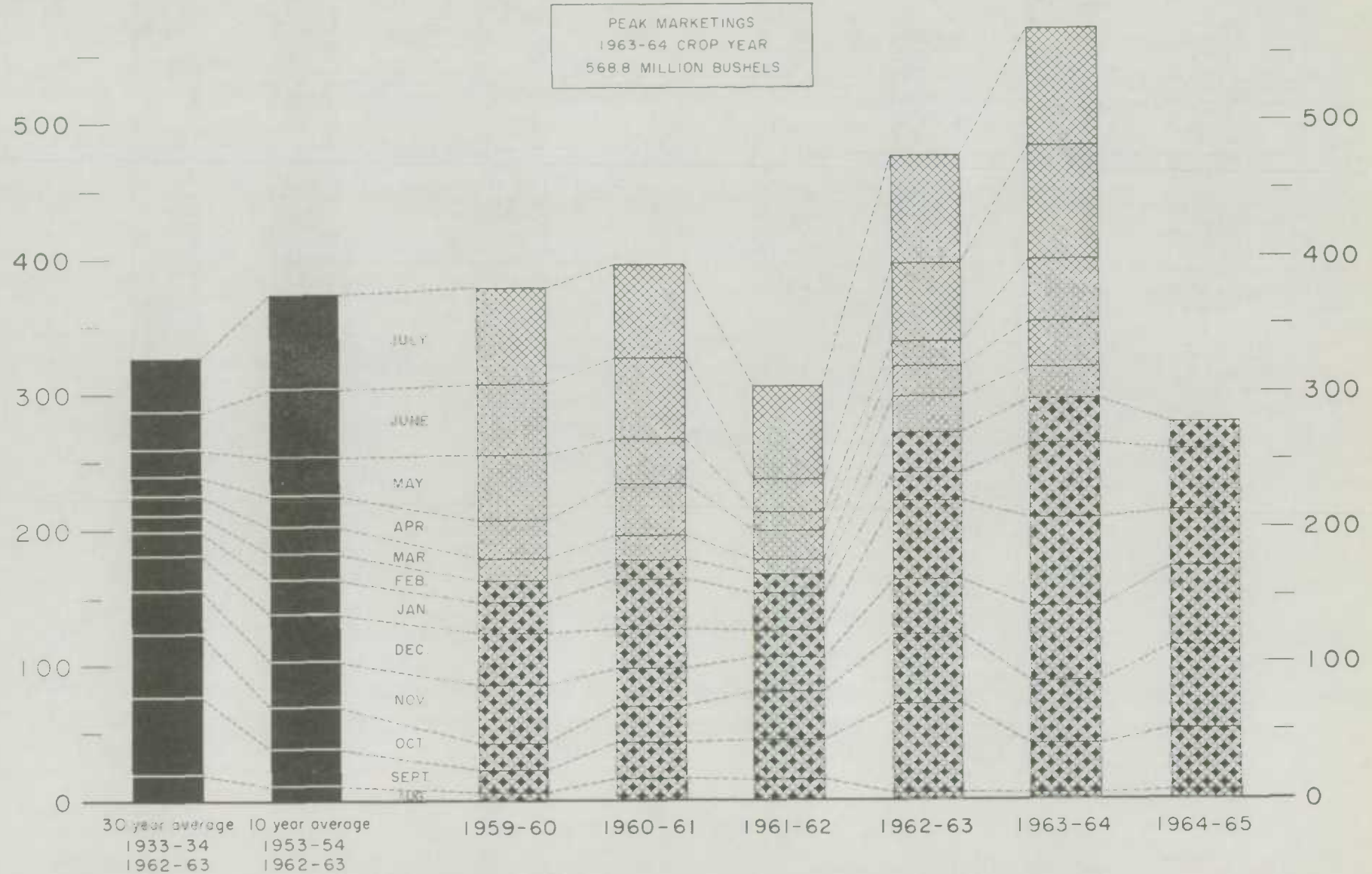
4/ Compiled from Canadian Customs returns, 1963-64 adjusted for time lag.

FARMERS' MARKETINGS OF WHEAT, PRAIRIE PROVINCES (SPECIFIED PERIODS)

MILLION BUSHELS
600 —

MILLION BUSHELS
— 600

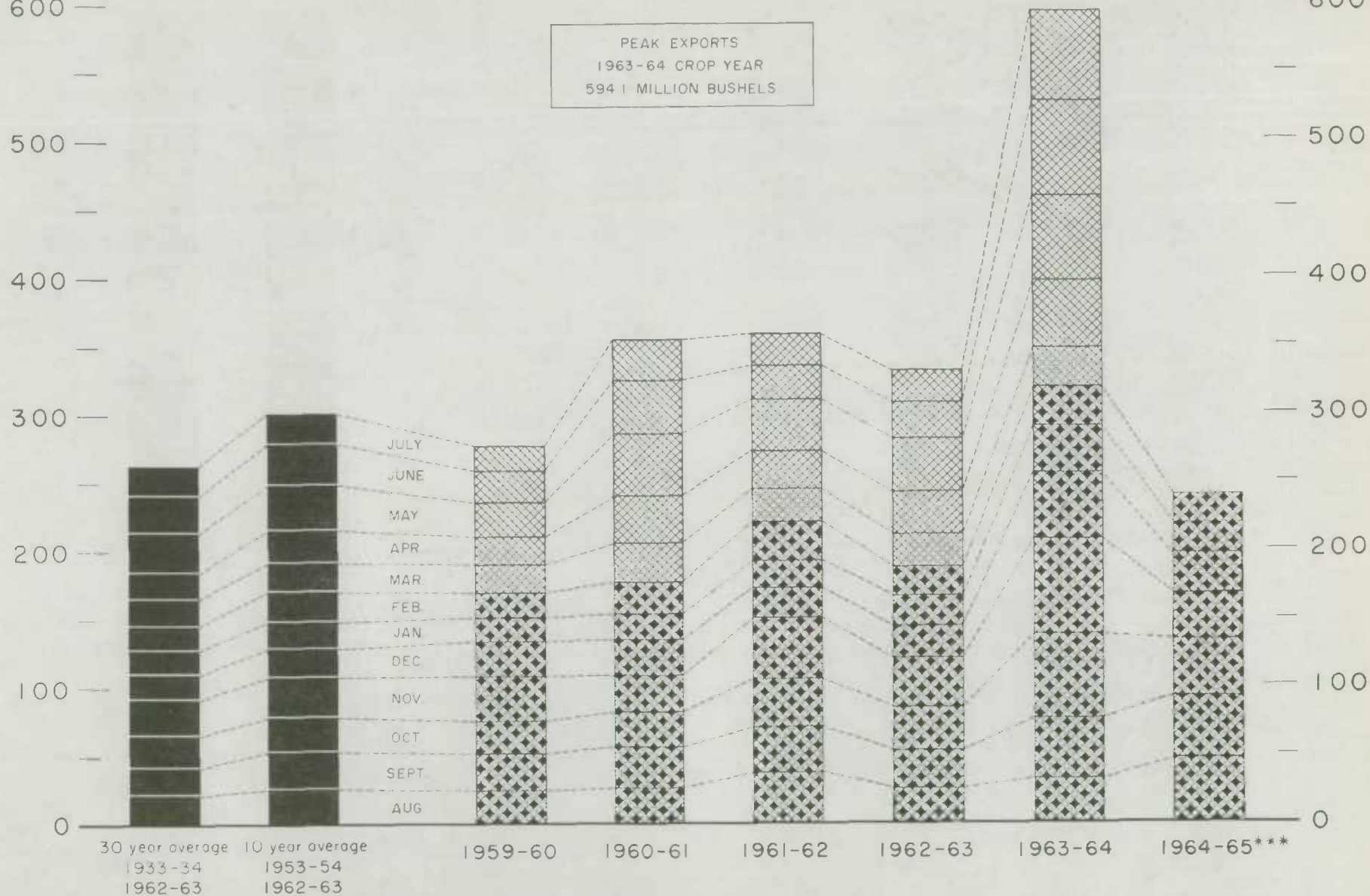
PEAK MARKETINGS
1963-64 CROP YEAR
568.8 MILLION BUSHELS



EXPORTS OF CANADIAN WHEAT* AND WHEAT FLOUR**

MILLION BUSHELS
600 —

(SPECIFIED PERIODS)

MILLION BUSHELS
— 600

*Beginning with 1956-57 includes bagged seed wheat.

**In terms of wheat equivalent.

***Preliminary.

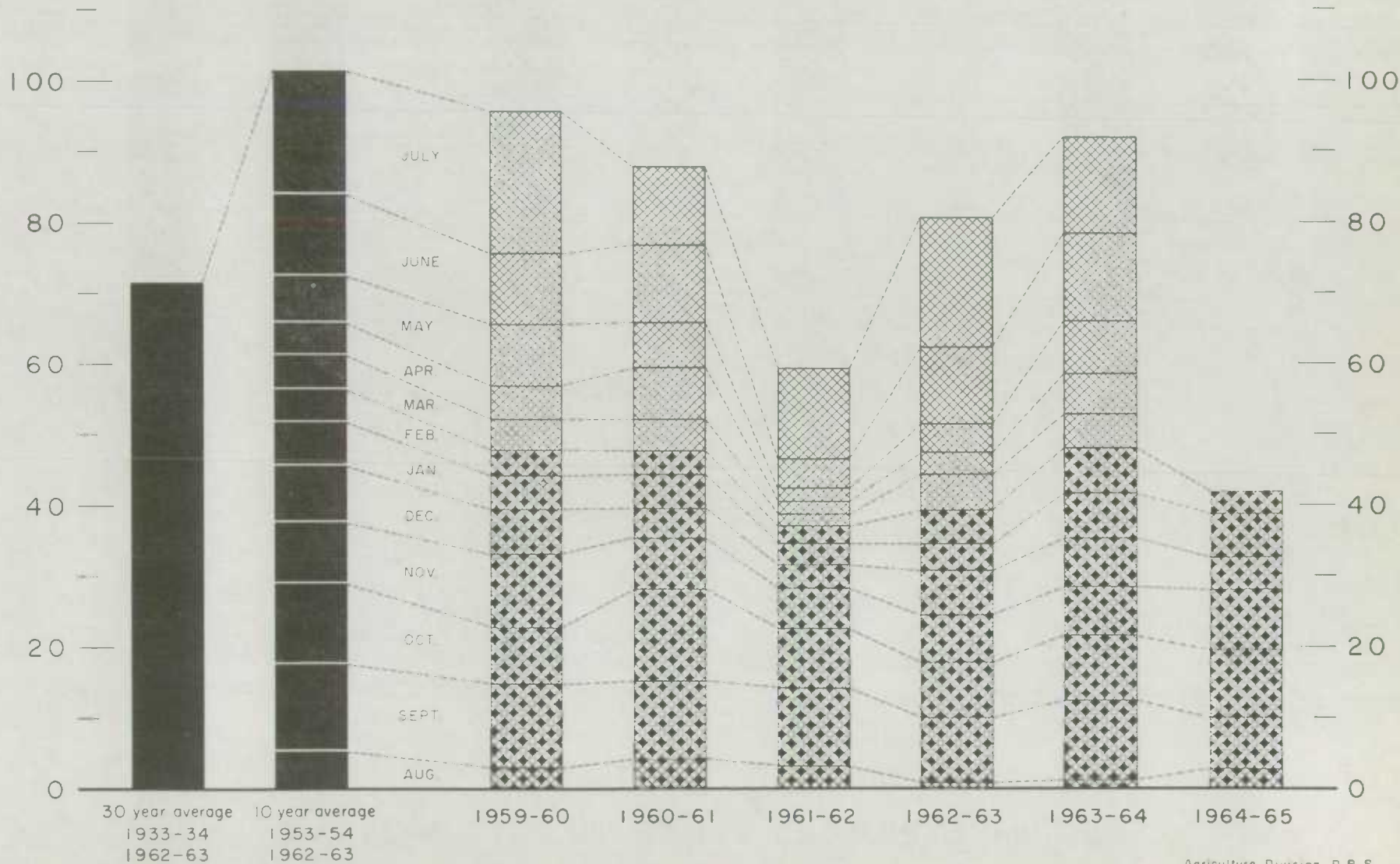
Agriculture Division D.B.S.

FARMERS' MARKETINGS OF BARLEY, PRAIRIE PROVINCES

(SPECIFIED PERIODS)

MILLION BUSHELS
120 —

MILLION BUSHELS
120 —



EXPORTS OF CANADIAN BARLEY AND BARLEY PRODUCTS*

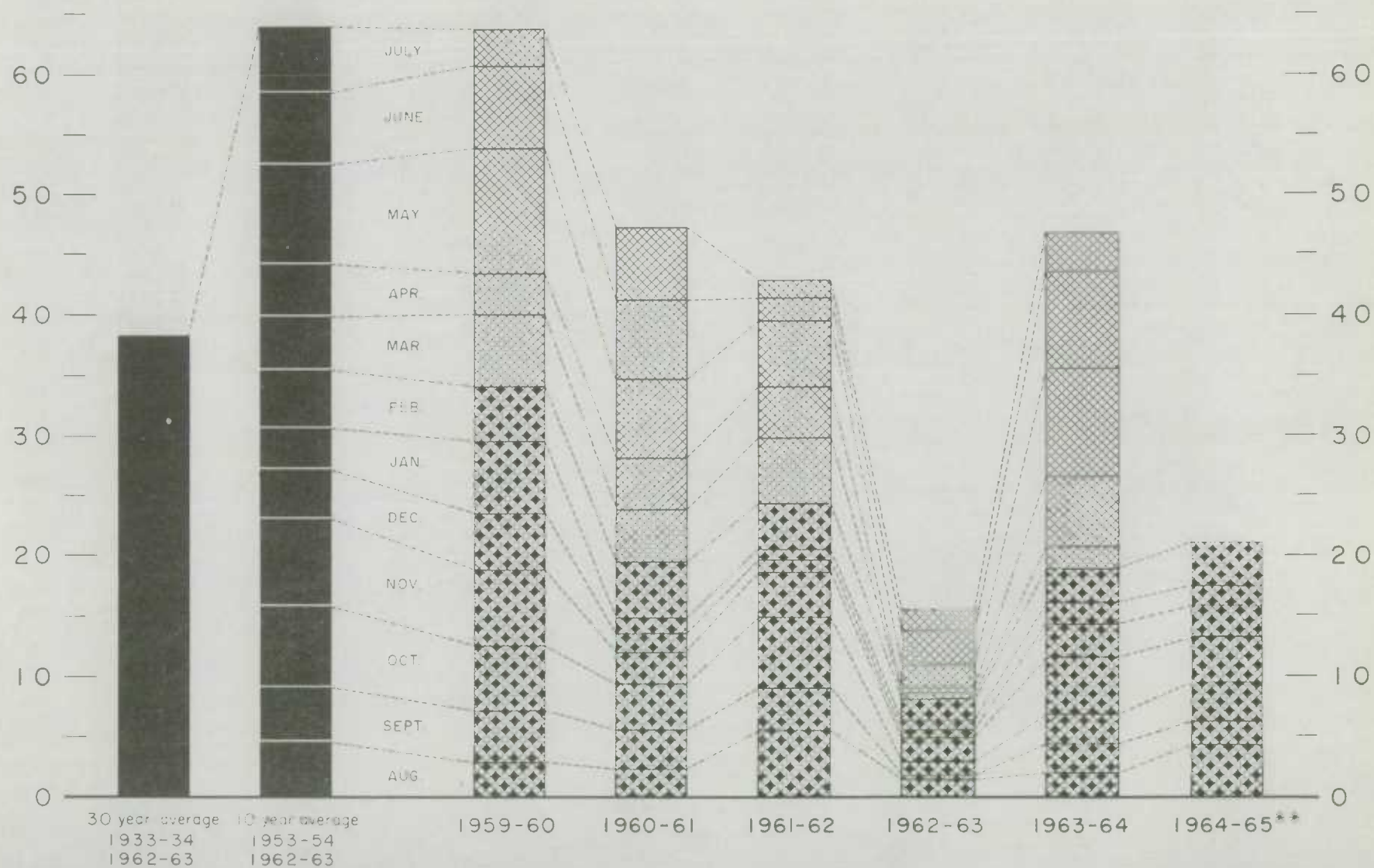
(SPECIFIED PERIODS)

MILLION BUSHELS

70 —

MILLION BUSHELS

— 70 —



*In terms of grain equivalent.

***Preliminary.

FARMERS' MARKETINGS OF OATS, PRAIRIE PROVINCES (SPECIFIED PERIODS)

MILLION BUSHELS

90
80
70
60
50
40
30
20
10
0

MILLION BUSHELS

90
80
70
60
50
40
30
20
10
0

30 year average
1933-34
1962-63

10 year average
1953-54
1962-63

1959-60

1960-61

1961-62

1962-63

1963-64

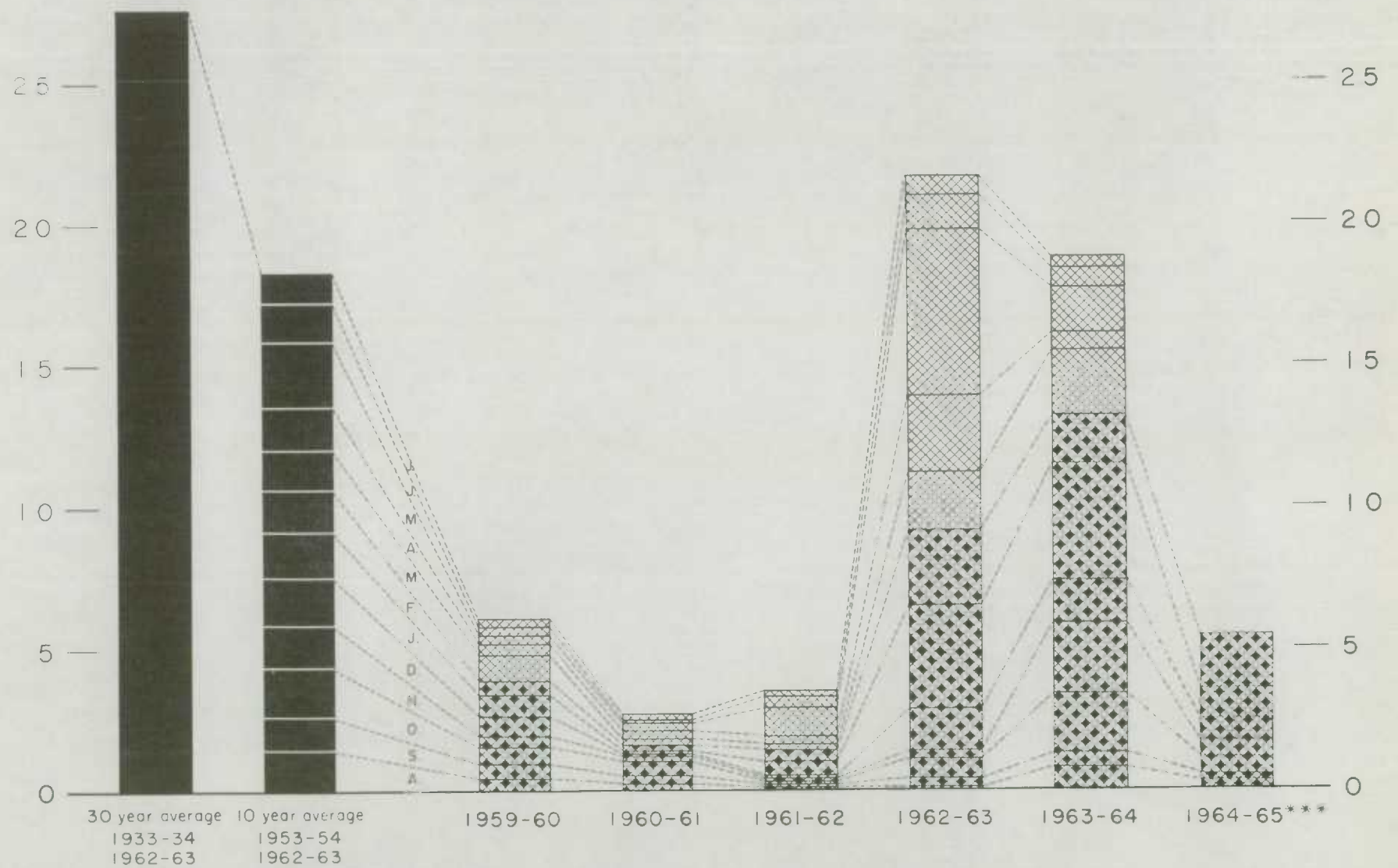
1964-65

AUG
SEPT
OCT
NOV
D
J
F
M
A
M
JUN
JULY

EXPORTS OF CANADIAN OATS* AND OAT PRODUCTS** (SPECIFIED PERIODS)

MILLION BUSHELS
30 —

MILLION BUSHELS
— 30



* Beginning with 1960-61 includes relatively small quantity of bagged seed.

** In terms of grain equivalent.

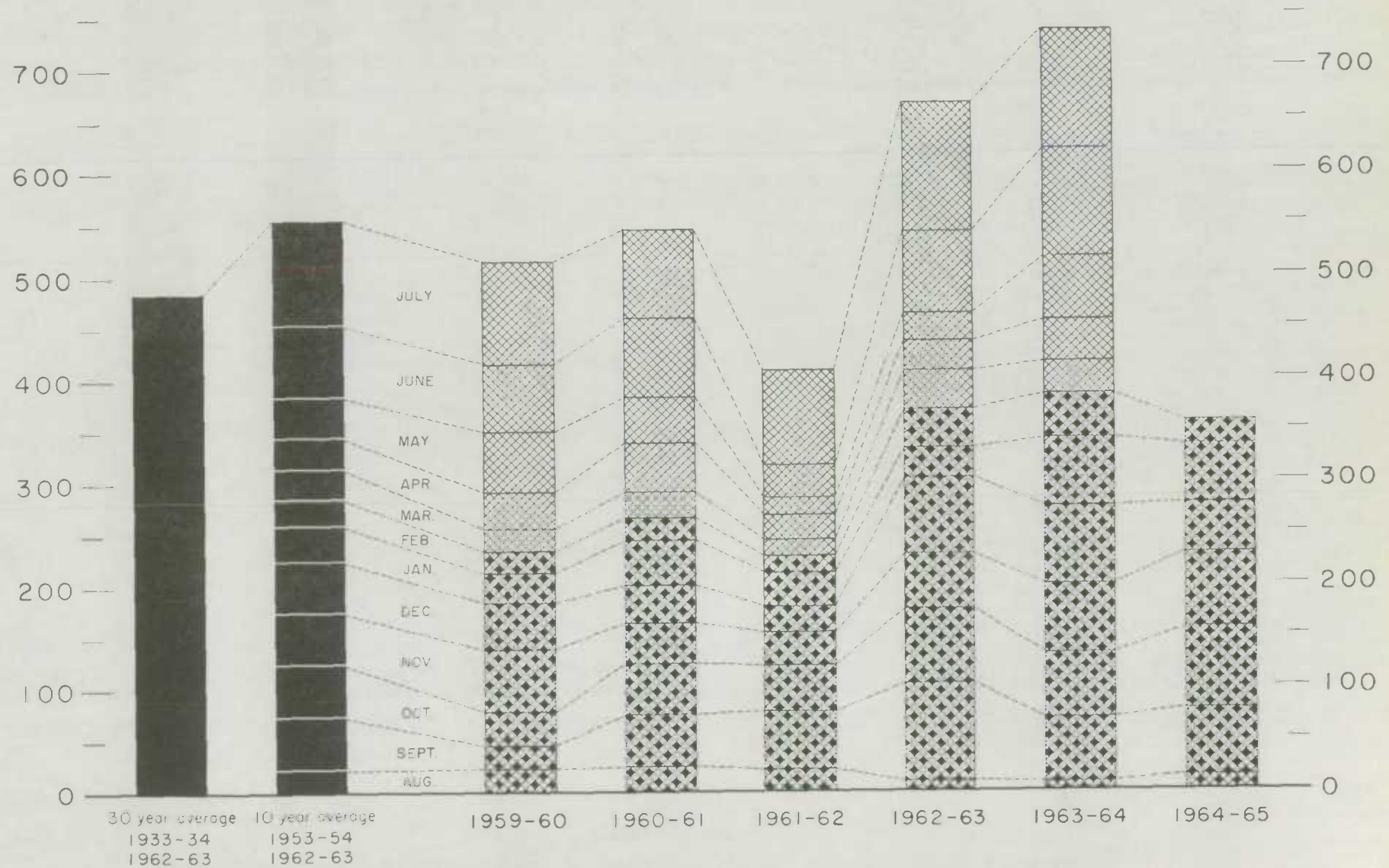
*** Preliminary.

FARMERS' MARKETINGS OF CANADA'S FIVE MAJOR GRAINS*, PRAIRIE PROVINCES

(SPECIFIED PERIODS)

MILLION BUSHELS
800 —

MILLION BUSHELS
800 —



*Wheat, oats, barley, rye and flaxseed.

Agriculture Division D.B.S.

EXPORTS OF CANADA'S FIVE MAJOR GRAINS AND PRODUCTS*

(SPECIFIED PERIODS)

MILLION BUSHELS

700 —

600 —

500 —

400 —

300 —

200 —

100 —

0

MILLION BUSHELS

— 700

— 600

— 500

— 400

— 300

— 200

— 100

0

30 year average 10 year average
 1933-34 1953-54
 1962-63 1962-63

1959-60

1960-61

1961-62

1962-63

1963-64

1964-65**

JULY

JUNE

MAY

APR.

MAR.

FEB.

JAN.

DEC.

NOV.

OCT.

SEPT.

AUG.

* Wheat, bagged seed wheat, and wheat flour; oats, bagged seed oats, and oatmeal and rolled oats; barley, malt and pot and pearl; rye and flaxseed
 ** Preliminary

Customs Exports of Canadian Wheat Flour by Countries of Consignment

Destination	October 1964 <u>1/</u>	February 1965 <u>2/</u>	August-February	
			1964-65 <u>2/</u>	1963-64 <u>1/</u>
			- bushels -	
<u>Western Europe</u>				
<u>EEC</u>				
Belgium and Luxembourg	21,001	16,022	57,219	114,885
Italy	1,150	920	5,865	-
Netherlands	-	633	1,500	3,195
Sub-totals	22,151	17,575	64,584	118,080
<u>Other Western Europe</u>				
Britain	777,391	728,454	5,450,651	6,721,642
Denmark	920	460	1,840	3,211
Gibraltar	-	-	2,622	26,792
Greece	2,026	166	10,714	10,203
Iceland	1,610	-	3,220	3,220
Portugal	770	14,962	49,834	75,861
Sweden	-	-	1,265	759
Sub-totals	782,717	744,042	5,520,146	6,841,688
Totals	804,868	761,617	5,584,730	6,959,768
<u>Eastern Europe</u>				
U.S.S.R. (Russia)	-	41,078	1,729,796	12,111,687
<u>Africa</u>				
Angola	-	-	1,196	4,600
Cameroun Republic	230	-	9,009	-
British Africa nes	-	-	-	25,185
Congo-Leo.	6,831	4,600	79,987	24,150
Ethiopia	-	-	230	253
French Africa nes	-	-	5,782	-
Gambia	11,270	32	34,762	1,288
Ghana	358,016	1,209	1,005,912*	614,355
Guinea	920	-	920	-
Ivory Coast	690	-	690	690
Liberia	11,546	230	46,948	38,012
Malawi	-	3,432	6,785	-
Mozambique	4,809	3,832	29,049	15,557
Nigeria	53	-	5,784	17,142
Nyasaland	-	-	6,693	20,136
Portuguese Africa nes	9,575	6,511	42,168	50,354
Rhodesia	4,232	-	2,300	1,380
Sierra Leone	54,988	3,392	313,343	233,878
Tanganyika	-	-	-	6,325
Togo	6,348	-	121,118	116,125
Totals	469,508	23,238	1,712,676*	1,169,430
<u>Asia</u>				
Aden	3,349	3,542	5,971	-
British Middle East nes	-	-	22,153	22,153
Burma	-	-	159,043	76,404
Ceylon	437,936	-	437,936	586,056
Hong Kong	56,863	39,125	433,049	608,224
Indonesia	-	16,693	16,693	-
Iran	603	-	1,603	2,477
Japan	168	-	20,598	68,487
Jordan	-	-	9,998	356
Kuwait	-	173	11,160	15,261

Customs Exports of Canadian Wheat Flour by Countries of Consignment

Destination	October 1964 <u>1/</u>	February 1965 <u>2/</u>	August-February	
			1964-65 <u>2/</u>	1963-64 <u>1/</u>
- bushels -				
<u>Asia (concluded)</u>				
Lebanon	5,672	959	27,674	21,275
Malaysia	40,818	27,363	258,444	418,597
Philippines	-	-	978	6,900
Portuguese Asia	-	1,012	6,578	18,308
Qatar	-	-	230	603
Saudi Arabia	-	-	3,370	1,116
Syria	709	-	708	998
Thailand	55,315	7,590	250,058	281,049
Viet-Nam	-	-	-	41,476
Totals	601,433	96,457	1,666,244	2,169,740
<u>Oceania</u>				
Australia	-	-	-	28
Fiji	759	575	4,025	3,438
French Oceania	345	-	701	1,070
United States Oceania	-	-	345	1,881
Totals	1,104	575	5,071	6,417
<u>Western Hemisphere</u>				
Bahamas	31,464	11,960	171,467	194,405
Barbados	24,638	2,070	92,722	94,824
Bermuda	20,932	7,698	67,086	67,864
British Guiana	7,689	4,782	28,198	17,271
British Honduras	4,193	2,928	21,404	22,124
Chile	-	-	920	5,778
Costa Rica	38,479	62,235	500,059	327,589
Cuba	-	-	2,453,734	3,981,298
Dominican Republic	3,335	-	37,904	30,031
El Salvador	-	-	200	10,099
French West Indies	115	-	1,150	1,495
Guatemala	2,762	288	16,162	10,239
Haiti	-	198	19,661	63,715
Honduras	1,847	1,265	18,140	37,904
Jamaica	71,173	118,500	843,033	968,779
Leeward and Windward Islands	93,343	35,411	558,042*	612,444
Netherlands Antilles	25,422	19,899	128,296	111,911
Nicaragua	-	-	690	273,171
Panama	9,630	3,560	54,059	110,336
Peru	1,610	17,533	45,227	40,756
St. Pierre and Miquelon	2,714	1,879	13,278	11,042
Surinam	6,682	-	31,650	48,596
Trinidad	133,542	37,090	728,611	870,173
Venezuela	-	-	575	230
United States	103,882	79,005	506,467	566,280
Totals	583,452	406,301	6,338,735*	8,478,354
Totals, All Countries	2,460,365	1,329,266	17,037,252*	30,895,396

nes - not elsewhere specified. *Revised.

1/ In terms of wheat equivalent. Adjusted to remove effect of time lag in the returns made by Customs. Conversion rate: 2.3 bushels per cwt.

2/ In terms of wheat equivalent. Preliminary and unadjusted for time lag. Conversion rate: 2.3 bushels per cwt.

Canadian Wheat Board Weekly Average Cash Wheat Prices
Basis in Store Fort William-Port Arthur

Class and Grade	Week Ending				
	March 5	March 12	March 19	March 26	April 2

- cents and eighths per bushel -

Initial Payment to Producers

1 Northern	150	150	150	150	150
2 Northern	146	146	146	146	146
3 Northern	142	142	142	142	142
4 Northern	135	135	135	135	135
5 Wheat	121	121	121	121	121
6 Wheat	117	117	117	117	117
Feed Wheat	113	113	113	113	113
1 C.W. Garnet	135	135	135	135	135
2 C.W. Garnet	130	130	130	130	130
3 C.W. Garnet	125	125	125	125	125
1 Alberta Red Winter	134	134	134	134	134
2 Alberta Winter	129	129	129	129	129
3 Alberta Winter	123	123	123	123	123
1 C.W. Amber Durum	150	150	150	150	150
2 C.W. Amber Durum	146	146	146	146	146
3 C.W. Amber Durum	142	142	142	142	142

International Wheat Agreement

and Domestic Sales

1 Northern	192/4	192/6	192/5	193	192/5
2 Northern	189/4	189/6	189/5	190	189/5
3 Northern	182/4	182/6	182/5	183	182/5
4 Northern	175/4	175/6	175/5	176	175/5
5 Wheat	173/4	173/6	173/5	174	173/5
6 Wheat	170/4	170/6	170/5	171	170/5
Feed Wheat	167/4	167/6	167/5	168	167/5
1 C.W. Garnet	178/4	178/6	178/5	179	178/5
2 C.W. Garnet	177/4	177/6	177/5	178	177/5
3 C.W. Garnet	176/4	176/6	176/5	177	176/5
1 Alberta Red Winter	178/4	178/6	178/5	179	178/5
2 Alberta Winter	177/4	177/6	177/5	178	177/5
3 Alberta Winter	176/4	176/6	176/5	177	176/5
1 C.W. Amber Durum	192/4	192/6	192/5	193	192/5
2 C.W. Amber Durum	189/4	189/6	189/5	190	189/5
3 C.W. Amber Durum	184/4	184/6	184/5	185	184/5

Export - Class II

1 Northern	192/4	192/6	192/5	193	192/5
2 Northern	189/4	189/6	189/5	190	189/5
3 Northern	182/4	182/6	182/5	183	182/5
4 Northern	175/4	175/6	175/5	176	175/5
5 Wheat	173/4	173/6	173/5	174	173/5
6 Wheat	170/4	170/6	170/5	171	170/5
Feed Wheat	167/4	167/6	167/5	168	167/5
1 C.W. Garnet	178/4	178/6	178/5	179	178/5
2 C.W. Garnet	177/4	177/6	177/5	178	177/5
3 C.W. Garnet	176/4	176/6	176/5	177	176/5
1 C.W. Amber Durum	192/4	192/6	192/5	193	192/5
2 C.W. Amber Durum	189/4	189/6	189/5	190	189/5
3 C.W. Amber Durum	184/4	184/6	184/5	185	184/5

Canadian Wheat Board Weekly Average Cash Wheat Prices
Basis in Store Vancouver

Class and Grade	Week Ending				
	March 5	March 12	March 19	March 26	April 2

- cents and eighths per bushel -

Initial Payment to Producers

1 Northern	150	150	150	150	150
2 Northern	146	146	146	146	146
3 Northern	142	142	142	142	142
4 Northern	135	135	135	135	135
5 Wheat	121	121	121	121	121
6 Wheat	117	117	117	117	117
Feed Wheat	113	113	113	113	113
1 C.W. Garnet	135	135	135	135	135
2 C.W. Garnet	130	130	130	130	130
3 C.W. Garnet	125	125	125	125	125
1 Alberta Red Winter	134	134	134	134	134
2 Alberta Winter	129	129	129	129	129
3 Alberta Winter	123	123	123	123	123
1 C.W. Amber Durum	150	150	150	150	150
2 C.W. Amber Durum	146	146	146	146	146
3 C.W. Amber Durum	142	142	142	142	142

International Wheat Agreement

and Domestic Sales

1 Northern	196/6	197	196/7	197/2	196/6
2 Northern	192/6	193	192/7	193/2	192/6
3 Northern	186/6	187	186/7	187/2	186/6
4 Northern	178/6	179	178/7	179/2	178/6
5 Wheat	173/6	174	173/7	174/2	173/6
6 Wheat	170/6	171	170/7	171/2	170/6
Feed Wheat	167/6	168	167/7	168/2	167/6
1 C.W. Garnet	178/6	179	178/7	179/2	178/6
2 C.W. Garnet	177/6	178	177/7	178/2	177/6
3 C.W. Garnet	176/6	177	176/7	177/2	176/6
1 Alberta Red Winter	178/6	179	178/7	179/2	178/6
2 Alberta Winter	177/6	178	177/7	178/2	177/6
3 Alberta Winter	176/6	177	176/7	177/2	176/6

Export - Class II

1 Northern	196/6	197	196/7	197/2	196/6
2 Northern	192/6	193	192/7	193/2	192/6
3 Northern	186/6	187	186/7	187/2	186/6
4 Northern	178/6	179	178/7	179/2	178/6
5 Wheat	173/6	174	173/7	174/2	173/6
6 Wheat	170/6	171	170/7	171/2	170/6
Feed Wheat	167/6	168	167/7	168/2	167/6
1 C.W. Garnet	178/6	179	178/7	179/2	178/6
2 C.W. Garnet	177/6	178	177/7	178/2	177/6
3 C.W. Garnet	176/6	177	176/7	177/2	176/6
1 Alberta Red Winter	178/6	179	178/7	179/2	178/6
2 Alberta Winter	177/6	178	177/7	178/2	177/6
3 Alberta Winter	176/6	177	176/7	177/2	176/6

CANADIAN FLOUR MILLING SITUATION

Production Wheat flour production by Canadian mills during February 1965 amounted to 3,455,000 hundredweight, representing an increase of 16 per cent above the January 1965 output of 2,974,000 hundredweight, 9 per cent more than the ten-year (1955-64) average production for the month of February of 3,174,000 hundredweight, but 23 per cent below the February 1964 total of 4,491,000 hundredweight. Mills reporting operations during February 1965 had a total rated capacity of 166,000 hundredweight per 24-hour day and on the basis of a 24-day working period 86.8 per cent of this rated capacity was effective.

Wheat milled for flour during February 1965 amounted to 7,680,000 bushels, 16 per cent higher than the 6,614,000 bushels milled during the preceding month, but 23 per cent lower than the 10,036,000 bushels milled during February 1964. Of the wheat milled for flour during February 1965 some 6,763,000 bushels were Western Canadian spring wheat (other than Durum) while the remainder consisted of Ontario winter wheat (533,000 bushels); Durum (300,000 bushels); and all other (84,000 bushels).

Exports According to preliminary Customs returns, exports of Canadian wheat flour during February 1965 amounted to 578,000 hundredweight (some 1,329,000 bushels of wheat equivalent), representing relatively sharp decreases from both the 2,421,000 bushels exported during the previous month and the unusually high February 1964 adjusted exports of 5,800,000 bushels. Flour shipments during the month went to forty-two countries with exports to Britain amounting to 728,000 bushels of wheat equivalent and accounting for 55 per cent of the February 1965 total. Other leading markets for Canadian wheat flour during the month, with shipments in thousands of bushels of wheat equivalent, were as follows: Jamaica, 118; United States, 79; Costa Rica, 62; U.S.S.R., 41; Hong Kong, 39; Trinidad, 37; and Leeward and Windward Islands, 35.

Wheat Milled for Flour, and Production and Exports of Wheat Flour, Canada

Crop Year	Wheat Milled for Flour bushels	Wheat Flour	
		Production	Exports <u>1/</u>
		- cwt. -	
1935-36--1939-40 average	67,845,114	29,405,451	9,603,941
1940-41--1944-45 average	99,704,638	43,908,245	23,699,546
1945-46--1949-50 average	107,330,372	47,011,540	25,819,721
1950-51--1954-55 average	100,446,328	43,847,894	21,812,041
1955-56--1959-60 average	90,148,211	39,752,589	16,349,156
1960-61	89,731,155	39,914,644	15,513,836
1961-62	88,240,580	39,539,651	13,892,676
1962-63	78,789,332	35,505,220	11,854,458
1963-64 <u>2/</u>	111,670,577	50,103,569	23,873,978
1964-65 <u>3/</u>			
August	7,027,526	3,144,719	1,770,810
September	7,500,251	3,372,989	927,240
October	7,609,236	3,389,458	885,628
November	7,518,363	3,385,358	1,097,107
December	7,075,639	3,186,560	1,096,365
January	6,613,815	2,974,051	1,052,409 <u>2/</u>
February	7,680,179	3,455,461	577,942 <u>4/</u>
Totals	51,025,009	22,908,596	7,407,501
Same months 1963-64 <u>2/</u>	66,104,186	29,667,195	13,432,781

1/ Based on Customs returns. Exports for the crop year 1945-46--1963-64 revised to remove effect of time lag in the returns made by Customs.

2/ Revised.

3/ Subject to revision.

4/ Preliminary.

UNITED STATES SITUATION

Domestic Supplies
6 Per Cent Below
Last Year

Domestic supplies of wheat in the United States for the 1964-65 crop year (July-June) are estimated at 2,191.7 million bushels, 6 per cent less than the previous year's total of 2,336.9 million. Supplies of the size indicated reflect a decline in carryover stocks which more than offset a 13 per cent increase in production. Carryover stocks are the smallest since 1958. Imports of wheat from Canada during July 1964-February 1965 have amounted to 0.8 million bushels. Domestic disappearance during 1964-65 is estimated at about 615.0 million bushels, 4 per cent more than the 588.9 million last year. After deducting anticipated domestic requirements for the current United States crop year, some 1,577.5 million remain available for export and for carryover, a decrease of 10 per cent from the 1,750.7 million in 1963-64.

Exports of wheat, wheat flour and other products in terms of grain equivalent during the July-February period of the 1964-65 crop year amounted to 436.8 million bushels, 18 per cent below the record 533.3 million exported during the same months last year. The balance remaining on March 1, 1965 for export and for carryover was estimated at 1,140.6 million bushels compared with 1,217.4 million on the same date a year ago.

United States Wheat Supplies

Item	1963-64 <u>1/</u>	1964-65 <u>2/</u>
	- million bushels -	
Carryover at beginning of crop year (July 1)	1,194.9	901.2 <u>1/</u>
Production	1,142.0	1,290.5
Total estimated domestic supplies	2,336.9	2,191.7
Imports of wheat and wheat flour in terms of wheat for domestic use, July-February	2.7	0.8
Total estimated supplies <u>3/</u>	2,339.7	2,192.5
Less estimated domestic requirements for crop year <u>4/</u> ..	588.9	615.0
Available for export and for carryover	1,750.7	1,577.5
Deduct:		
Exports of wheat as grain, July-February	471.6	382.2
Exports of wheat flour in terms of wheat, July-February <u>5/</u>	61.7	54.6
Total exports of wheat and wheat flour <u>6/</u>	533.3	436.8
Balance on March 1 for export and for carryover	1,217.4	1,140.6

1/ Revised. 2/ Preliminary. 3/ Excluding imports for March-June. 4/ Includes shipments to United States Territories and wheat for military food use at home and abroad. 5/ Flour exports exclude "Milled in bond". 6/ These figures now include all shipments under relief programs which formerly were not available from Census data.

Prospective Plantings
of Spring Wheat

The following report on prospective plantings of spring wheat in the United States is taken from the March 19, 1965 report of the Crop Reporting Board, United States Department of Agriculture. The acreage of all spring wheat planted in 1965 is expected to total 11.8 million acres, slightly below 1964. Because growers reported their intended spring wheat acreage during the sign-up period for the 1965 Spring Wheat and Feed Grain Programs, farmers' final plans could result in a shift in the acreage planted.

All wheat plantings total 56.9 million acres based on March 1 intentions for spring wheat and the December estimate of winter wheat. If realized, this would be 3 per cent more acreage than last year and 6 per cent above the 1959-63 average.

The intended acreage of durum wheat is indicated to be 2.4 million acres, 2 per cent less than 1964 but 29 per cent above average. North Dakota, the major durum producer, anticipates a 2 per cent larger acreage than in 1964. Declines in Montana, South Dakota, and Minnesota were more than offsetting.

Other spring wheat plantings are expected to total 9.4 million acres, the same as in 1964. North Dakota, with half the other spring wheat acreage, expects an 8 per cent increase from last year. This increase was offset by acreage reductions in Montana, Idaho, and Minnesota. Montana and Idaho anticipate sharp declines in spring wheat acreage because of substantial shifts from spring wheat to winter wheat. Also, loss of fall seeded acreage is expected to be smaller than a year earlier, indicating less reseeding to spring wheat. Minnesota shows a 2 per cent decline in other spring wheat acreage while South Dakota's intended acreage is equal to last year's plantings.

If yields are about average with an allowance for trend, the intended acreage of all spring wheat could produce a crop of about 261 million bushels. Adding this projection to the December 1 estimate of winter wheat, a total wheat crop of 1,303 million bushels is indicated for 1965. A crop of this size would be 1 per cent larger than 1964 and 10 per cent above average.

Crop and
Weather Conditions

The following extract has been taken from the Weekly Weather and Crop Bulletin, published jointly by the United States Department of Commerce and United States Department of Agriculture for the week ending March 29, 1965. Another week of colder than normal weather over the Great Plains limited spring planting and slowed the growth of fall-seeded grains.

In the important central Plains area, some greening of winter wheat was evident in Kansas and Colorado, but in Nebraska and Wyoming fall-sown crops generally remained dormant. Early season growth has been limited by the prolonged period of unusually cold weather. Light precipitation helped to improve the soil moisture situation over the central Plains area. Wind erosion caused some further damage to winter wheat in western Kansas. Besides affecting the early season growth of fall-seeded grains the prolonged period of cold weather has delayed spring seeding. Spring oat planting in Kansas was only 15 per cent completed compared with an average completion of 60 per cent by this date. Spring barley planting was also lagging about the same extent with 7 per cent planted to date compared with an average of 46 per cent. In Nebraska, spring seeding has yet to begin, when normally about 20 per cent of the spring oat crop would have been in the ground. A few fields of spring grains were planted in Colorado, even though the unseasonal weather limited fieldwork.

Growth of fall-seeded small grains in the southern Plains area was also halted by the unseasonable cold. Wheat and oats made only limited growth. Winter wheat in Oklahoma remained in good condition except in the Panhandle and isolated areas. Some loss of spring-seeded oats and barley was expected from recent freezes. Moisture continued to be needed in the dryland Plains areas of Texas, but prospects continued promising in east Texas where the soil moisture supply remained adequate. Planting of spring grains was underway in New Mexico although soil moisture supplies continued short in most areas.

In the Northwest, spring planting continued. Below normal temperatures curtailed the growth of fall-seeded grains throughout the area. Light rains over part of the area were helpful. In California, irrigated and dryland grains, where moisture supplies were ample, were in good condition. Crops were making good growth in most areas of Arizona, except in some localities where cold nights have slowed plant growth.

Across the Corn Belt, early season growth was again held in check by the continuation of considerably colder than normal weather. In some localities of the Corn Belt, a lack of moisture when the crops were seeded in the fall and alternate freezing and thawing has resulted in poor looking crops.

In Arkansas and Louisiana, and eastward to the Atlantic coast, small grains were generally making satisfactory growth, although below normal temperatures were slowing development. Topdressing continued in some parts of the area as field conditions permitted. Generally wet fields have delayed the application of spring fertilizer. Northward along the Atlantic coast, fall-seeded grains in Maryland and New Jersey were coming out of the winter in good condition. Fertilizer was being applied.

Continued from page 2

Asia's wheat production is estimated at 1,940 million bushels. This is moderately below the 1963 outturn, due principally to smaller crops in Turkey and India. Rye production in Turkey, the only important producer in Asia, is placed at 26.6 million bushels, 6.9 million bushels lower than a year earlier but above the 5-year average.

Wheat production in Africa is an estimated 220 million bushels. This is lower than in 1963 largely because of smaller crops in Algeria and Tunisia.

In South America wheat production is placed at 430 million bushels, up from 375 million a year ago. The Argentine crop, estimated at 340 million bushels, is their largest since 1938. The outturns in Uruguay and Brazil recovered sharply from low levels in 1963.

Australia's record wheat harvest is now estimated at 380 million bushels, well over last year's high. Both increased acreage and yield contributed to the large current crop.

Editor's Note: The 1964-65 wheat crops in Australia and Argentina are now estimated at 370.0 million and 336.2 million bushels, respectively.

Cash Wheat Prices on the Kansas City and Minneapolis Markets

No. 2 Hard Winter, Kansas City			No. 1 Northern Spring, Minneapolis		
Date	Price		Date	Price	
	- cents per bushel -			- cents per bushel -	
March 1, 1965	158 3/4	- 160 1/4	March 1, 1965	177 1/2	- 184 1/2
2	159		2	177 7/8	- 184 7/8
3	155 1/2	- 174 1/2 <u>1/</u>	3	177 1/4	- 184 1/4
4	157	- 161	4	177 1/4	- 184 1/4
5	158		5	177 1/2	- 184 1/2
8	157 3/4		8	177 3/8	- 184 3/8
9	158	- 161 1/4	9	177 5/8	- 185 5/8
10	156 1/4	- 174 3/4 <u>1/</u>	10	177 1/4	- 185 1/4
11	157 1/2	- 158	11	175 1/4	- 184 1/4
12	157 1/2		12	173 1/2	- 183 1/2
15	156 1/2	- 158 1/4	15	172 5/8	- 182 5/8
16	155		16	172 3/4	- 182 3/4
17	151 3/4	- 171 1/2 <u>1/</u>	17	172 3/4	- 182 3/4
18	153	- 154 1/2	18	172 5/8	- 182 5/8
19	150	- 168 3/4 <u>1/</u>	19	172 3/4	- 183 3/4
22	152 3/4	- 154	22	173	- 184
23	155 1/4	- 155 3/4	23	174 1/4	- 186 1/4
24	152 1/4	- 170 <u>1/</u>	24	173 3/4	- 185 3/4
25	155 1/2	- 157 1/4	25	173 1/2	- 186 3/4
26	153 3/4	- 157 1/4	26	173 3/4	- 186 3/4
29	155 3/4	- 157	29	173 1/4	- 186 1/4
30	153 1/4	- 169 1/4 <u>1/</u>	30	173 1/2	- 186 1/2
31	154		31	173 1/4	- 186 1/4

1/ Nominal.

Chicago Wheat Futures, High Points of Closing

Date	March	May	July	September	December
	- cents and eighths per bushel -				
March 1, 1965	149	151/5	145/4	147/4	152/1
2	149/2	151/3	145/4	147/5	152/2
3	149/4	151/1	145/4	147/3	151/7
4	151	151/7	145/4	147/5	152/1
5	150/7	151/3	144/3	146/3	150/7
8	150/6	151/4	143/5	145/5	150/2
9	150/7	151/7	143/7	145/6	150/4
10	151	151/6	144/2	146/2	151
11	148/2	150/2	143/6	145/6	150/4
12	148/2	150	143/6	145/6	150/4
15	148/4	150/4	144	145/6	150/4
16	149/3	150/5	143/4	145/5	150/2
17	148/6	149/4	143	145	149/4
18	146/2	148/3	142/4	144/2	149
19	146/1	148/2	141/6	143/7	148/5
22	147/1	149	142/1	144	149
23		149/5	142/3	144/2	149/2
24		149/5	142/2	144/2	149/1
25		149/4	142/2	144/1	149/1
26		149/4	142/6	144/7	149/6
29		149/6	142/2	144/3	149/2
30		149/2	142/4	144/5	149/2
31		148/6	142/3	144/6	149/2

AUSTRALIAN SITUATION

Supplies Set Record
for Third
Consecutive Year

With a decline in carryover stocks more than offset by another record crop total estimated supplies of wheat in Australia for the 1964-65 (December-November) crop year are placed at an all-time high of 390.3 million bushels, 10 per cent greater than the previous year's peak total of 354.5 million. The current production, of 370.0 million bushels, represented a substantial increase over the 1963-64 level of 331.0 million and was the third consecutive year in which a record outturn was harvested. Carryover stocks recorded only a moderate decline, from 23.5 million at December 1, 1963 to 20.3 million at the same date in 1964. After deducting 82.0 million for anticipated domestic requirements, an estimated 308.3 million are available for export and for carryover in 1964-65, an increase of 13 per cent over the 273.7 million the previous year.

Combined exports of wheat as grain and wheat flour in terms of grain equivalent during the period December 1-February 27 of the current Australian crop year amounted to 59.2 million bushels in contrast to 79.9 million exported during the corresponding period of 1963-64. The balance remaining on February 28, 1965 for export and for carryover, at 249.1 million bushels, exceeded by 29 per cent the comparable 1964 total of 193.8 million.

Australian Wheat Supplies

Item	1963-64 <u>1</u> /	1964-65 <u>2</u> /
	- million bushels -	
Carryover, including flour as wheat, at beginning of crop year (December 1)	23.5	20.3
Production	331.0	370.0
Total estimated domestic supplies	354.5	390.3
Less estimated domestic requirements for crop year ...	80.8	82.0
Available for export and for carryover	273.7	308.3
Deduct:		
Exports of wheat as grain, December 1-February 27 ..	70.7	52.8
Exports of wheat flour in terms of wheat, December 1-February 27	9.2	6.4
Total exports of wheat and wheat flour	79.9	59.2
Balance on February 28 for export and for carryover ..	193.8	249.1

1/ Revised.

2/ Preliminary.

The following information relative to the Australian situation has been extracted from a report from Mr. D. I. Campbell, Assistant Commercial Secretary for Canada, Canberra, under date of March 12, 1965 and is reproduced with the permission of the Trade Commissioner Service, Department of Trade and Commerce.

Crop Position The volume of the 1964-65 Australian wheat crop has not yet been agreed upon by the Australian Wheat Board and the Bureau of Census and Statistics. The Wheat Board continues to estimate 370 million bushels while the Bureau has a figure of 385 million bushels.

Recently the Chairman of the Australian Wheat Board made the following statement:- "Most of the wheat from this current crop has already been delivered to the Australian Wheat Board and the Board's estimate of final deliveries is 346 million bushels - an all time record. Allowing say 24 million bushels for retention on the farms for feed and seed purposes the total crop will be in the vicinity of 370 million bushels - also a record".

Grain Storage The New South Wales Government, has approved a £10 million (\$24.1 million) programme to increase wheat storage facilities by 32 million bushels. £6 million (\$14.5 million) will be spent on new storage and £4 million (\$9.7 million) for improving terminal facilities at Sydney and Newcastle.

Exports of Australian Wheat and Wheat Flour in Terms of Wheat
December 1-February 27, 1964-65 and Corresponding Period 1963-64

Destination	Wheat		Wheat Flour	
	1963-64	1964-65	1963-64	1964-65
- thousand bushels -				
<u>Western Europe</u>				
<u>EEC</u>				
Germany, Federal Republic	3,279	-	-	-
<u>Other Western Europe</u>				
Britain	6,635	4,153	428	596
Ireland	375	785	-	-
Malta	437	-	-	-
Norway	1,859	1,298	-	-
Sub-totals	9,306	6,236	428	596
Totals	12,585	6,236	428	596
<u>Eastern Europe</u>				
U.S.S.R. (Russia)	21,338	1,187	2,505	-
<u>Africa</u>				
Kenya	-	41	-	-
Malawi	-	-	58	66
Mauritius	-	-	409	207
Portuguese East Africa	462	-	-	-
Rhodesia	1,109	713	-	-
Zanzibar	-	-	45	32
Others	7	4	15	22
Totals	1,578	758	527	327

Exports of Australian Wheat and Wheat Flour in Terms of Wheat
December 1-February 27, 1964-65 and Corresponding Period 1963-64

Destination	Wheat		Wheat Flour	
	1963-64	1964-65	1963-64	1964-65
- thousand bushels -				
<u>Asia</u>				
Aden	373	178	-	-
Aden and Aden I/T	-	-	282	291
Aden and Aden I/T Atta	-	-	139	128
Arabian Gulf	-	-	93	69
Arabian Gulf Atta	-	-	483	530
Brunei	-	-	8	3
Ceylon	4	6	1,512	2,209
China	23,609	27,084	-	-
Formosa	-	39	-	-
Hong Kong	680	413	28	29
India	348	4,069	-	-
Indonesia	-	-	25	22
Iran	53	6,099	-	-
Iraq	1,116	-	-	-
Japan	5,217	3,553	-	-
Kuwait	-	372	-	-
Lebanon	1,402	667	-	-
Philippines	211	-	729	173
Saudi Arabia	-	-	10	43
Thailand	1/	158	201	120
<u>Malaysia</u>				
Malaya	21	1	918	719
Malaya Atta	-	-	30	19
Sabah	-	-	48	44
Sarawak	-	-	40	54
Singapore	372	751	544	300
Singapore Atta	-	-	2	1
Singapore A/C B.W.O.	-	-	8	17
Others	256	291	39	24
Totals	33,662	43,682	5,139	4,795
<u>Oceania</u>				
New Zealand	1,519	930	-	-
<u>Western Hemisphere</u>				
Peru	-	-	2	3
<u>Pacific Area and Sundries</u>				
Pacific Islands	20	9	418	499
Ships' Stores and Sundries	-	-	180	180
Totals	20	9	598	679
Totals, All Countries	70,700	52,800	9,200	6,400

1/ Less than 500 bushels.

ARGENTINE SITUATION

1964-65 Wheat Supplies at Near Record Level

Reflecting the combined effect of substantially larger carryover stocks as well as an increase in production, total supplies of wheat in Argentina for the 1964-65

(December-November) crop year are estimated at some 424.4 million bushels, 25 per cent greater than the 1963-64 figure of 338.2 million and the largest total since 1938-39 when wheat supplies were close to 450 million bushels. Current crop year supplies consist of the December 1 carryover of 88.2 million, in contrast to only 25.9 million the year before, and the 1964-65 production of 336.2 million, the third largest wheat crop ever harvested in Argentina. After making an allowance of 128.6 million bushels for anticipated domestic requirements, an estimated 295.8 million are available for export and for carryover in 1964-65, 43 per cent greater than the 206.6 million the previous year.

Exports of wheat and wheat flour in terms of grain equivalent during December 1964-February 1965 amounted to 39.7 million bushels, exceeding by 45 per cent the total of 27.3 million exported during the same months in 1963-64. The balance remaining on March 1, 1965 for export and for carryover was estimated at 256.1 million bushels, in sharp contrast to the March 1, 1964 figure of 179.3 million.

Argentine Wheat Supplies

Item	1963-64 <u>1/</u>	1964-65 <u>2/</u>
	- million bushels -	
Carryover at beginning of crop year (December 1) <u>3/</u>	25.9	88.2
Production	312.3	336.2 <u>4/</u>
Total estimated domestic supplies	338.2	424.4
Less estimated domestic requirements for crop year	131.6	128.6
Available for export and for carryover	206.6	295.8
Deduct:		
Exports of wheat as grain, December-February	27.1	39.5
Exports of wheat flour in terms of wheat, December-February	0.1	0.2
Total exports of wheat and wheat flour	27.3	39.7
Balance on March 1 for export and for carryover	179.3	256.1

1/ Revised. 2/ Preliminary. 3/ Includes allowances for farm stocks. 4/ Second official estimate.

The following account of the Argentine situation has been extracted from a report from Mr. H. E. Ryan, Assistant Commercial Secretary (Agriculture), Buenos Aires, under date of March 19, 1965 and is reproduced with the permission of the Trade Commissioner Service, Department of Trade and Commerce. Where possible, conversions to Canadian measures and currency have been made for the convenience of our readers.

Weather
and Crops

As both the wheat and flax crops have been harvested, weather conditions now are of less importance than previously, although excessively damp conditions could affect storage of the new crop. Rains during February did hinder threshing of some late lots of southern wheat, but there was little damage involved. In the northern areas conditions remained dry, especially in the Province of Entre Rios. This will affect summer crops, and possibly fall stubble ploughing and preparation of next year's wheat land as well.

Wheat

There has been no further change in the established 1964-65 wheat crop of 9.1 million metric tons (336.2 million bushels), although the trade is estimating a crop of some 9.5 million metric tons (349.1 million bushels). As explained previously, the increased output this year results not from an increase in area sown, as in fact there was a five per cent decrease in area from last year, but rather from a very high yield. In 1959-60, average wheat yields in the Province of Buenos Aires were 1,228 kilos per hectare (18 bushels per acre); last year the average was 1,704 kilos (25 bushels per acre) and in 1964-65 the average reached 1,743 kilos per hectare (26 bushels per acre). The Province of La Pampa, a marginal wheat area, subject to great fluctuations in both rainfall and yields, during 1964-65 averaged 1,134 kilos per hectare (17 bushels per acre), as compared to the very low yield of 535 kilos (8 bushels per acre) in 1962-63.

Southern storage space still remains tight, and the northern up-river ports will soon experience similar difficulties, as the new corn crop reaches terminal positions, and the National Grain Board, which usually purchases at terminal points, now is buying on-farm stocks, as deliveries become more difficult. By mid-March the Board had purchased 4,966,664 metric tons (182,492,000 bushels) of new crop wheat at 7,800 pesos per metric ton (\$1.54 per bushel) compared to the same date last year, the Grain Board had purchased the following: 546,878 tons (20,094,000 bushels) at 8,200 pesos per ton (\$1.62 per bushel); 1,115,182 tons (40,975,000 bushels) at 8,200 pesos (\$1.62 per bushel), and 823,335 tons (30,252,000 bushels) at 8,600 pesos (\$1.70 per bushel); a total of 2,485,395 metric tons (91,322,000 bushels). The Grain Board continues to be the major buyer this year, as millers are still required to purchase at least 50 per cent of their requirements from old stock wheat, and exporters continue to have difficulty in moving new wheat over the minimum price level.

Exports during the month under review of 307,000 metric tons (11,280,000 bushels) went mainly to the following markets: Mainland China, 67,000 (2,462,000 bushels); Brazil, 56,000 (2,058,000 bushels); the Netherlands, 51,000 (1,874,000 bushels); and Britain, 40,000 (1,470,000 bushels). February shipments were down slightly from the 340,447 metric tons (12,509,000 bushels) shipped during January, but bring total shipments this crop year to 1,074,461 metric tons (39,479,000 bushels). During February, sales were made by the Board to exporters of some 93,000 tons (3,417,000 bushels), at prices of 720 to 746 pesos per 100 kilos (\$1.42 to \$1.47 per bushel), put on board, considerably below the 780 pesos per 100 kilos (\$1.54 per bushel) minimum price level, basis free on rail, at terminal. Continental prices cif averaged U\$S 65.50 per ton (\$1.93 per bushel) for March shipment, and U\$S 65.80 (\$1.94 per bushel) for April-June shipment. British prices for March shipment continued at £ 25.5.0 (\$2.07 per bushel) cif British ports.

No accurate data is available on durum production in Argentina, but according to the trade this type of wheat, used mainly for spaghetti, usually accounts for some 350,000 to 500,000 tons (12,860,000 to 18,372,000 bushels) of production. Durum is grown mainly in the southern grain belt. For the current crop year, production is estimated at between 400,000 and 450,000 metric tons

(14,697,000 and 16,534,000 bushels), most of which will be available for export. During February, durums were offered by the Grain Board at 755 pesos per 100 kilos (\$1.49 per bushel) put on board, in bulk, Buenos Aires; and 750 pesos (\$1.48 per bushel), same basis, Necochea, for March shipment. During February, 8,000 tons (294,000 bushels) of durum were sold. Continental cif durum prices averaged U\$S 67.00 per ton (\$1.97 per bushel), April-June shipment.

Prices on the Buenos Aires Futures Market remained at the 780 pesos per 100 kilos (\$1.54 per bushel) floor level as did the Cereal Exchange spot price. These prices, however, will be affected by the new Government pricing policy for wheat exports to Europe.

In late February, the National Grain Board established new prices for wheat destined to Continental Europe and Britain. Exporters can now purchase wheat destined for Britain at U\$S 55.00 per metric ton (\$1.62 per bushel) fob Argentine port, and U\$S 53.00 per metric ton (\$1.56 per bushel) for Continental shipments. These prices include the various export taxes levied by the Argentine Government applicable to wheat shipments. The change in prices from previous levels has been made to assist exporters in moving wheat, but means that export prices are now below the minimum official price level. The differential between Continental and British ports was established in light of the British policy of setting minimum prices at which wheat can be imported. In the case of Plate wheat, this price is £ 25.5.0 (\$2.07 per bushel). The new level has been received with considerable favour by the local trade, although they still feel that the best interests of Argentina will be served if the Government refrained from taking as active a role in wheat marketing as they are currently doing.

Argentine Wheat Exports December-January 1963-64 and 1964-65

Destination	1963-64	1964-65
	- thousand bushels -	
<u>Western Europe</u>		
<u>EEC</u>		
Belgium	321	560
France	429	944
Germany, Federal Republic	1,810	1,410
Italy	999	507
Netherlands	1,262	3,667
Sub-totals	4,821	7,088
<u>Other Western Europe</u>		
Britain	1,734	3,186
Norway	-	194
Portugal	-	338
Spain	-	430
Sweden	-	37
Switzerland	29	22
Sub-totals	1,763	4,207
Totals	6,584	11,295

Argentine Wheat Exports December-January 1963-64 and 1964-65

Destination	1963-64	1964-65
- thousand bushels -		
<u>Eastern Europe</u>		
Czechoslovakia	366	-
Germany, Democratic Republic	-	114
Totals	366	114
<u>Africa</u>		
Mozambique	-	463
<u>Asia</u>		
China, Communist	3,743	9,524
Japan	-	81
Totals	3,743	9,605
<u>Western Hemisphere</u>		
Bolivia	73	184
Brazil	4,126	4,307
Paraguay	217	35
Peru	1,824	1,592
Venezuela	-	604
Totals	6,240	6,722
Totals, All Countries	16,933	28,199

CROP SITUATION IN BRITAIN

The following account of the current crop situation and grain prices in Britain has been extracted from a report received from Mr. W. M. Miner, Agricultural Secretary for Canada, London, under date of March 12, 1965 and is reproduced with the permission of the Trade Commissioner Service, Department of Trade and Commerce.

Weather and Crops The spring months have been dry and cool in Britain with some snow and rain in late February and early March. Field conditions are generally dry permitting farmers to proceed with spring cultivation including drilling of cereals. Autumn sown crops continue to look good despite limited growth in recent weeks; and pastures and livestock feed supplies are reported generally in good shape.

Minimum Import Price and Levy Arrangements Under the Minimum Import Regulations introduced in Britain last July there are three types of levies which may be applied to imports of cereals and cereal products. A general levy may be applied against imports from countries whose governments have not signed agreements to co-operate with the United Kingdom to respect the minimum import price levels. These may be current rates of general levy or prospective rates at which

forward contracts can be registered. The general levy in effect for wheat is 4 cents per bushel.

There are current and prospective rates of general levy in effect for barley meal and rolled, flaked, crushed or bruised wheat and barley.

Country levies may be applied to imports from co-operating countries. At present there are no current rates of country levy in effect but the following prospective rates are in effect for specified wheats from the Argentine and the U.S.A.:

	<u>Period of Shipment</u>					
	<u>March</u>	<u>April</u>	<u>May</u>	<u>June</u>	<u>July</u>	<u>August</u>
	- cents per bushel -					
<u>Argentine wheat</u> (other than denatured wheat and other than durum wheat)	2	2	2	2	2	N.Q.
<u>United States wheats</u> which are subject to a minimum import price level of £23 10s. 0d. (\$1.90 per bushel) ... i.e. U.S. Soft White No. 2 U.S. Soft Red Winter and U.S. wheats of comparable quality	2	4	5	6	6	N.Q.

N.Q. No prospective rate of general or country levy quoted.

The third type of levy which may be applied under the new British regulations is a consignment levy. This may be instituted against specific cargoes or lots from any source and up to this time no consignment levies have been imposed.

Cereals Deficiency Payments Scheme Under the British scheme for cereals, wheat, barleys, oats, and rye, are supported by a system of guaranteed prices and deficiency payments. For 1964-65 crop year, the guaranteed price for wheat is 26s. 6d. per long cwt. (\$2.13 per bushel). This price, known as the standard price is converted into a rising scale of seasonal prices to encourage orderly marketing through the crop year. A target indicator price of 20s. per long cwt. (\$1.61 per bushel) was established last year which is directly related to the minimum import price for comparable qualities of wheat. A price deficiency payment is determined by taking the difference between the guaranteed (standard) price (seasonally adjusted) and the target indicator price, or the average market price whichever is the higher. Finally, this deficiency payment is adjusted depending upon the level of domestic production related to the standard quantity. The standard quantity for wheat in 1964-65 is 3.3 million long tons (123.2 million bushels), based on the last 3 year average.

For the second accounting period (October 1 to November 30, 1964) the deficiency payment on wheat was 3s. 4d. per long cwt. (27 cents per bushel) arrived at as follows:

	<u>- dollars per bushel -</u>
Guaranteed (standard) price	2.13
Seasonally adjusted price	2.05
Average "at the farm" price	1.67

- dollars per bushel -

Target indicator price	1.61
Price deficiency (difference between seasonally adjusted price and average price, as it is higher than target price).	0.38
Further adjustment as production exceeded standard quantity and any other relevant adjustments	0.11
Final advance deficiency payment	0.27

Grain Markets Prices remain generally firm with slightly decreased supplies. Demand only moderate for milling grades but better for feeding grains.

Working Party comparative value for millable wheat ex farm for March-April delivery is 21s. 6d. per long cwt. (\$1.73 per bushel).

Comparative Market Prices are:

- dollars per bushel -

Hard Milling Wheat U.K. (London)	1.76
Feeding Wheat French (Liverpool)	1.96
Feeding Barley U.K. (London)	1.42
Feeding Barley (Estimated Average) (Imported)	1.57
Feeding Oats U.K. (London)	1.00
Feeding Oats Canadian Mixed (London)	0.99

CALENDAR OF WHEAT EVENTS

- March 12 The Canadian Wheat Board announced a sale to the U.S.S.R. of 50,000 long tons of flour and a sale to Bulgaria of 50,000 long tons of wheat. The two separate sales involve a total of approximately 4.3 million bushels of wheat.
- 17 Based on farmers' intentions at March 1, the acreage seeded to all classes of wheat in Canada in 1965 will be 28.3 million acres, a decrease of 5 per cent from the 1964 seedings but 2.6 million acres or 10 per cent above the 1959-63 average.
- 19 According to a report published by the Crop Reporting Board, United States Department of Agriculture, prospective plantings of all spring wheat in the United States in 1965 are expected to total 11.8 million acres, slightly below both last year's total and the 1959-63 average.
- 25 According to World Agricultural Production and Trade, published by the United States Department of Agriculture, world wheat production of 9,170 million bushels is a new record and compares with that of 8,315 million bushels a year earlier and the previous record of 8,760 million bushels in 1962.
- April 2 According to the Bureau of the Census, United States Department of Commerce, wheat flour production in the United States in January 1965 amounted to 20,166,000 hundredweight, an average of 1,008,000 hundredweight per working day.

STATISTICS CANADA LIBRARY
BIBLIOTHÈQUE STATISTIQUE CANADA



1010687029