

CATALOGUE No.

22-005

MONTHLY

DOES NOT CIRCULATE

NE PAS PRÊTER



CANADA

DOMINION BUREAU OF STATISTICS

AGRICULTURE DIVISION

DOMINION BUREAU  
OF STATISTICS

OCT 12 1965

PROPERTY OF THE  
LIBRARY

# THE WHEAT REVIEW



AUGUST 1965



DOMINION BUREAU OF STATISTICS

---

THE  
WHEAT REVIEW

AUGUST 1965

*Published by Authority of*  
The Minister of Trade and Commerce

Prepared in the Crops Section, Agriculture Division  
Dominion Bureau of Statistics, Ottawa

## TABLE OF CONTENTS

	<u>Page</u>
World Wheat Situation	
Wheat Shipments from Four Major Exporters Second Highest on Record .....	1
Wheat Supplies of Four Major Exporters 6 Per Cent Above a Year Ago .....	1
World Wheat Crop Below 1964 Record .....	2
I.W.C. Cumulative Totals of Commercial Purchases, Crop Year 1964-65 .....	3
I.W.C. Cumulative Totals of Commercial Purchases, Crop Year 1965-66 .....	4
Canadian Situation	
Canadian Wheat Supplies Reach New Record Level .....	5
1964-65 Exports of Wheat and Flour Third Highest on Record .....	6
August Forecast of Production of Canada's 1965 Grain Crops .....	7
Crop Conditions in the Prairie Provinces .....	9
Wheat Production in Canada and the Prairie Provinces 1910-65 .....	10
Carryover Stocks of Canadian Grain at July 31, 1965 .....	11
Canadian Wheat Carryover 1934-65 .....	12
Farmers' Marketings of Wheat in the Prairie Provinces .....	13
Visible Supply of Canadian Wheat .....	14
Grading of Wheat Inspected, Crop Year 1964-65 with Comparisons .....	14
Weekly Visible Supply and Farmers' Marketings (Charts) .....	15
Lake Shipments of Canadian Grain .....	16
Wheat Shipments to the United States by Destination .....	16
Rail Shipments of Wheat to Maritime Ports .....	16
Rail Shipments of Wheat from Fort William-Port Arthur .....	17
Overseas Exports of Canadian Grain by Ports of Loading .....	17
Monthly Exports of Canadian Wheat and Wheat Flour .....	18
Exports of Canadian Wheat, by Destination .....	19
Customs Exports of Canadian Wheat Flour by Countries of Consignment .....	22
Initial Payment to Producers .....	24
Canadian Wheat Board Weekly Average Cash Wheat Prices .....	25
Canadian Flour Milling Situation	
Production and Exports .....	27
United States Situation	
Supply Position .....	28
1965 Wheat Crop Forecast at 1,376 Million Bushels .....	29
Cash Wheat Prices on the Kansas City and Minneapolis Markets .....	30
Chicago Wheat Futures, High Points of Closing .....	30
Australian Situation .....	31
Argentine Situation .....	34
Wheat Situation in Italy .....	37
Calendar of Wheat Events .....	41

---



## WORLD WHEAT SITUATION

### Wheat Shipments from Four Major Exporters Second Highest on Record

Total shipments of wheat, and flour in terms of wheat, from United States, Canada, Argentina and Australia amounted to some 1,544.2 million bushels during the 1964-65 crop year (August-July). Although this volume represented a decline of 16 per cent from the all-time high of 1,827.3 million shipped in 1963-64, it was still the second largest total on record and surpassed by 54 per cent the ten-year (1953-54—1962-63) average of 999.7 million. Shipments from the four traditional major exporters during the 1964-65 crop year, with comparisons, appear in the accompanying table.

### Exports of Wheat and Flour in Terms of Wheat, August-July 1964-65 with Comparisons

August-July	United States	Canada	Argentina	Australia	Total
million bushels					
1950-51 .....	375.3	241.0	94.5	127.8	838.6
1951-52 .....	466.6	355.8	24.1	93.4	939.9
1952-53 .....	322.6	385.5	38.9	107.0	854.0
1953-54 .....	211.4	255.1	110.3	63.4	640.2
1954-55 .....	280.4	251.9	134.5	94.3	761.1
1955-56 .....	359.4	312.3	108.6	107.5	887.8
1956-57 .....	539.5	264.4	100.6	120.2	1,024.7
1957-58 .....	396.4	320.3	77.6	61.9	856.2
1958-59 .....	455.6	294.5	106.2	82.7	939.0
1959-60 .....	513.1	277.3	76.5	117.8	984.7
1960-61 .....	677.5	353.2	62.9	198.0	1,291.6
1961-62 .....	704.2	358.0	95.5	219.8	1,377.5
1962-63 .....	650.6	331.4	66.3	186.2	1,234.5
1963-64 (1) .....	852.3	594.5	106.5	274.0	1,827.3
1964-65 (2) .....	725.2	399.4	174.5	245.1	1,544.2

(1) Revised. (2) Preliminary.

The relatively high level of world trade in wheat and flour in 1964-65 was maintained despite a record harvest of wheat. Although most areas registered production increases over the previous year, import requirements remained large in Asia, particularly in China, Japan, India and Pakistan. Eastern Europe, also absorbed substantial quantities although shipments to the U.S.S.R. were sharply reduced from the exceptionally high level of 1963-64. Both the E.E.C. and Britain continued to account for substantial quantities.

### Wheat Supplies of Four Major Exporters 6 Per Cent Above a Year Ago

At the close of the Canadian crop year, total supplies of wheat remaining in the United States, Canada, Argentina and Australia, for export and for carryover at the end of their respective crop years, amounted to 2,273.6 million bushels compared with 2,139.1 million at the same time a year ago. This increase reflected larger supplies in Canada, Argentina and Australia which more than offset a slight decrease in United States carryover stocks. Supplies on or about August 1, 1965, in millions of bushels, were held as follows, with last year's comparable figures in brackets: United States, 1,461.1 (1,478.2); Canada, 514.9 (459.4); Argentina, 195.9 (127.2); and Australia, 101.7 (74.3).

Estimates for both years include on-farm stocks as well as those in commercial positions. It is to be noted that the 1965 United States crop estimated at 1,376 million bushels is now included. The supply figures for Canada represent crop-year-end carryover only, as the new crop will not be taken into account until September 1 in these calculations. The new Australian and Argentine production for 1965-66 will be included at January 1.

World Wheat Crop  
Below 1964 Record

According to the August 1965 issue of "World Agricultural Production and Trade" published by the United States Department of Agriculture, Foreign Agricultural Service, world wheat production in 1965 — with harvesting now well under way — will be less than the bumper crop of 1964, despite excellent crops in a number of the principal wheat growing countries. Barring unforeseen bad weather in the remainder of the season, production could reach the near-record level of 1962.

Record and near-record crops are in prospect in the main wheat countries of North America, Europe, and Africa and in some countries of Asia. Offsetting these good crops, however, are sharp decreases in the harvests of the Soviet Union and Communist China -- two of the three largest world producers of wheat -- and also in Australia.

Production in the Soviet Union may be from 10 to 15 per cent below the good 1964 harvest. Insufficient moisture seriously reduced the spring crop, which normally makes up about 60 per cent of the annual production. Early forecasts were for a winter crop well above that of 1964, but as the season progressed, crop returns failed to meet the reported volume.

Communist China's wheat crop also is significantly below last year's harvest. Growers were unable to plant all the intended winter wheat acreage, and yields are believed to be below the large outturn of 1964. The winter crop comprises about 90 per cent of China's wheat production.

Cool, wet weather has been more prevalent in a greater degree and in more countries of the Northern Hemisphere than in any recent years. This delayed crops of many countries generally from 10 days to two weeks. Although floods destroyed comparatively small acreages in a number of countries, the over all moisture resulted in very good crops over larger areas. Recently, continued cool, wet weather in some countries of Europe reportedly is reducing yields to some extent.

Wheat production of Western Europe may exceed the high level of 1964 and preliminary data indicate it is comparable with the record crop of 1962. France, the United Kingdom, and the Netherlands are harvesting record crops, and West Germany has big crop. Italy's outturn, larger than first expected, has reached a near-record volume. Crops of Spain and Portugal were better than expected and are forecast larger than last year.

Production of Eastern Europe, excluding the Soviet Union, is still uncertain, but is expected to be less than the record harvest of 1964. Too much rain, resulting in floods, has been a problem in the Danube countries. While high levels of moisture apparently improved yields on lands not hurt by floods, harvesting operations have been hampered by excessive moisture. Production is reported substantially increased in Poland while in Rumania and Bulgaria it appears at this time to be about on the level of average

Continued on page 40



International Wheat Council  
Cumulative Totals of Commercial Purchases by Importing Countries from Exporting Countries  
Crop Year 1964-65 — Through July 31, 1965

Importing Countries	EXPORTING COUNTRIES									Total Purchases
	Canada	Argentina	Australia	France	Italy	Spain	Sweden	U.S.S.R.	U.S.A.	
	thousand bushels									
Austria .....	2,500	-	-	-	-	-	-	-	-	2,500
Belgium & Luxembourg .....	14,870	5,092	-	921	-	-	3	-	1,861	22,747
Brazil .....	-	39,374	-	-	-	-	-	-	776	40,150
Costa Rica .....	854	-	-	187	-	-	-	-	974	2,015
Cuba .....	-	-	-	-	-	-	-	-	-	-
Dominican Republic .....	948	147	-	-	-	-	-	-	973	2,068
Ecuador .....	1,370	4	-	-	-	-	-	-	257	1,631
El Salvador .....	779	-	-	4	-	-	-	-	1,056	1,839
Finland .....	343	-	-	-	-	-	144	2,572	209	3,268
Germany, Federal Republic .....	20,691	6,616	159	2,673	24	-	3,572	-	7,333	41,068
Greece .....	16	-	-	-	-	-	-	-	344	360
Guatemala .....	406	-	-	-	-	-	-	-	1,864	2,270
Iceland .....	-	-	-	8	-	-	-	-	126	134
India .....	-	-	9,117	1	-	-	-	-	4	9,122
Indonesia .....	-	-	329	19	-	-	-	-	1	349
Ireland .....	2,024	471	1,046	437	-	-	29	-	743	4,750
Israel .....	529	473	-	-	-	-	-	-	2,366	3,368
Japan .....	51,657	88	16,225	981	-	-	-	-	63,126	132,077
Korea .....	-	-	-	-	-	-	-	-	6	6
Liberia .....	94	-	-	-	-	-	-	-	107	201
Libya .....	-	-	18	173	1,426	-	-	-	1	1,618
Netherlands .....	3,357	17,818	-	4,771	-	-	-	-	12,719	38,665
Netherlands Territories ...	341	-	1	38	-	-	-	-	704	1,084
New Zealand .....	-	-	5,559	-	-	-	-	-	-	5,559
Nigeria .....	605	140	-	-	-	-	-	-	2,971	3,716
Norway .....	1,601	3,269	3,042	1,873	-	-	3,181	-	4	12,970
Peru .....	1,018	11,712	9	1	-	-	-	-	2,991	15,731
Philippines .....	6,393	-	1,096	956	153	-	-	-	9,759	18,357
Portugal .....	74	1,805	-	3,031	-	-	-	-	4,915	9,825
Portuguese Territories ...	253	1,877	45	388	-	-	-	-	510	3,073
Saudi Arabia .....	612	274	879	70	1	-	-	-	5,659	7,495
Sierra Leone .....	519	-	-	15	-	-	-	-	141	675
South Africa .....	944	-	-	-	-	-	-	-	-	944
Southern Rhodesia .....	2	-	1,073	-	1	-	-	-	374	1,450
Switzerland .....	3,900	414	-	7,287	45	-	-	-	893	12,539
Tunisia .....	-	-	-	1,565	-	-	-	-	-	1,565
United Arab Republic .....	-	-	-	6,754	4,860	2,406	-	-	20	14,040
United Kingdom ....	78,807	22,424	22,107	6,574	-	-	477	-	9,570	139,959
U.K. Territories .....	3,256	6	5,354	378	-	-	-	-	1,897	10,891
Vatican City .....	-	-	-	-	-	-	-	-	-	-
Venezuela .....	9,218	1,689	-	420	-	-	-	-	10,369	21,696
Western Samoa .....	-	-	141	-	-	-	-	-	1	142
To Orders .....	-	5,928	-	-	-	-	-	-	-	5,928
Totals .....	207,981	119,621	66,200	39,525	6,510	2,406	7,406	2,572	145,624	597,845
Percentage of Total Sales by Exporting Countries .....	34.79	20.01	11.07	6.61	1.09	0.40	1.24	0.43	24.36	100.00

NOTE: Mexico - no sales reported.  
France - quantities cover period ending June 26, 1965.  
Italy - quantities cover period ending July 17, 1965.  
U.S.S.R.-exemption granted.

International Wheat Council  
Cumulative Totals of Commercial Purchases by Importing Countries from Exporting Countries  
Crop Year 1965-66 — Through August 28, 1965

Importing Countries	EXPORTING COUNTRIES						Total Purchases
	Canada	Argentina	Australia	France	Italy	U.S.A.	
	thousand bushels						
Austria .....	530	-	-	-	-	-	530
Belgium & Luxembourg .....	7,491	22	-	-	-	1,651	9,164
Brazil .....	-	-	-	-	-	5,515	5,515
Costa Rica .....	384	-	-	-	-	99	483
Cuba .....	-	-	-	-	-	-	-
Dominican Republic .....	129	-	-	-	-	36	165
Ecuador .....	147	-	-	-	-	73	220
El Salvador .....	77	-	-	-	-	4	81
Finland .....	-	-	-	-	-	-	-
Germany, Federal Republic .....	17,386	-	234	263	-	3,471	21,354
Greece .....	5	-	-	-	-	8	13
Guatemala .....	33	-	-	-	-	303	336
Iceland .....	-	-	-	-	-	2	2
India .....	-	-	-	-	-	82	82
Ireland .....	386	-	702	-	-	159	1,247
Israel .....	-	-	-	-	-	2	2
Japan .....	12,278	-	3,746	-	-	14,523	30,547
Liberia .....	29	-	-	-	-	4	33
Libya .....	-	-	1	-	17	-	18
Netherlands .....	1,785	-	-	221	-	9,921	11,927
Netherlands Territories .....	53	-	-	-	-	120	173
New Zealand .....	-	-	1,120	-	-	-	1,120
Nigeria .....	(1)	-	-	-	-	2,174	2,174
Norway .....	1,680	-	183	-	-	-	1,863
Peru .....	6	1,745	-	-	-	571	2,322
Philippines .....	1,998	-	22	-	-	4,553	6,573
Portugal .....	8	-	-	-	-	20	28
Portuguese Territories .....	74	441	3	-	-	31	549
Saudi Arabia .....	93	-	262	-	-	1,324	1,679
Sierra Leone .....	58	-	-	-	-	62	120
Southern Rhodesia .....	2	-	590	-	-	-	592
Switzerland .....	7,530	-	-	-	-	582	8,112
United Arab Republic .....	-	-	-	-	132	4	136
United Kingdom .....	64,501	373	6,098	-	-	7,158	78,130
U.K. Territories .....	2,003	-	1,497	-	-	536	4,036
Venezuela .....	6,545	-	-	-	-	4,125	10,670
Western Samoa .....	(1)	-	10	-	-	-	10
To Orders .....	-	5,861	-	-	-	-	5,861
Totals .....	125,211	8,442	14,468	484	149	57,113	205,867
Percentage of Total Sales by Exporting Countries ...	60.82	4.10	7.03	0.24	0.07	27.74	100.00

(1) Less than 500 bushels.

NOTE: Mexico, Spain and Sweden - no sales reported.  
Argentina - quantities cover period ending August 7, 1965.  
France - quantities cover period ending July 31, 1965.  
Italy - quantities cover period ending July 14, 1965.  
U.S.S.R. - exemption granted.



CANADIAN SITUATION

Canadian Wheat Supplies  
Reach New Record Level

Assuming realization of the August forecast of production, Canadian wheat supplies for the crop year 1965-66 will amount to an all-time high of 1,274.7 million bushels,

exceeding by 27 per cent the 1964-65 total of 1,059.9 million and surpassing the peak of 1,210.7 million established in the crop year 1963-64. Supplies of the size indicated for the current crop year reflect a rise in carryover stocks (from 459.4 million bushels in 1964 to 514.9 million in 1965), combined with a 27 per cent increase in production, from 600.4 million a year ago to a record 759.8 million this year.

Revised Total Supply and Disposition of Canadian Wheat 1959-60—1964-65  
and Estimated Supply, 1965-66  
(Crop Years August 1 - July 31)

Item	1959-60	1960-61	1961-62	1962-63	1963-64(1)	1964-65(1)	1965-66(2)
	million bushels						
<u>Supplies</u>							
Carryover, at beginning of crop year .....	588.0	599.6	607.8	391.1	487.2	459.4	514.9
Production .....	445.1	518.4	283.4	565.6	723.4	600.4	759.8(3)
Imports wheat and flour .....	(4)	(4)	(4)	(4)	(4)	(4)	
Totals .....	1,033.1	1,118.0	891.2	956.6	1,210.7	1,059.9	1,274.7
<u>Disposition</u>							
Exports wheat and flour .....	277.3	353.2	358.0	331.4	594.5	399.5	
Human consumption	55.0	56.3	58.9	53.0	59.1	58.0	
Seed .....	34.7	35.9	37.7	39.1	42.1	40.0	
Industrial use ..	1.5	1.5	1.5	1.5	1.5	1.6(5)	
Carryover, at end of crop year ...	599.6	607.8	391.1	487.2	459.4	514.9	
Residual item (6) .	65.1	63.2	44.0	44.4	54.0	45.9	
Totals .....	1,033.1	1,118.0	891.2	956.6	1,210.7	1,059.9	

- (1) Revised.
- (2) Subject to further revision pending receipt of Board of Grain Commissioners final data on commercial stocks at July 31, 1965.
- (3) Based on conditions as at August 15 and subject to revision as later estimates become available.
- (4) Less than 50,000 bushels.
- (5) Estimated.
- (6) Includes feed for livestock and waste but also reflects the effect of any estimating errors in other components of the balance sheet.

Realization of the 1965 production forecast for wheat will be dependent upon how weather and other developments affect the crop between August 15 and completion of harvesting. The second official forecast of production, to be released on October 6 will give greater effect to actual harvesting conditions and outturns.

1964-65 Exports of  
Wheat and Flour  
Third Highest  
on Record

According to preliminary data, combined exports of wheat in bulk, bagged seed wheat and wheat flour in terms of wheat equivalent amounted to 399.5 million bushels during the crop year 1964-65, substantially below the record 594.5 million set in 1963-64, but 32 per cent more than the ten-year (1953-54-1962-63) average of 301.8 million bushels. The 1964-65 crop year exports have been exceeded only twice before — in 1963-64 — and in 1928-29 when a total of 407.6 million bushels of wheat (including flour) were shipped. Exports of wheat in bulk (as reported by the Board of Grain Commissioners for Canada), at 366.7 million bushels, were second only to the record 1963-64 figure of 536.7 million and 40 per cent more than the ten-year average of 261.4 million. Exports of bagged seed wheat, based on preliminary Customs' data amounted to 1.3 million bushels compared with the 1963-64 adjusted figure of 2.9 million. Wheat flour exports, based on preliminary data, were the equivalent of 31.4 million bushels, considerably below last year's adjusted total of 54.9 million and 15 per cent less than the ten-year average of 37.0 million.

The 1964-65 total for exports of wheat in bulk is compiled from overseas clearances (and exports to the United States) as recorded by the Board of Grain Commissioners for Canada, while data on exports of wheat flour and bagged seed wheat are obtained from Canadian Customs returns. Adjusted data on wheat flour exports for the 1964-65 crop year, removing the effect of time lag in reporting Customs returns, will be included in a subsequent issue of this publication.

Monthly exports of wheat in bulk, bagged seed wheat and wheat flour in terms of wheat during the crop year recently completed ranged from a high of 46.3 million bushels in August 1964 to a low of 20.6 million in January 1965. Overseas clearances of bulk wheat, the major component of the total exports of wheat, bagged seed wheat and flour, ranged between 42.8 million bushels in September and 18.1 million in January.

With shipments to Britain totalling 70.4 million bushels, that country was the leading market for wheat in bulk and accounted for 19 per cent of the 1964-65 total compared with 79.0 million a year ago and represented 15 per cent of the 1963-64 figure. Other leading markets during the 1964-65 crop year with quantities in millions of bushels, with the 1963-64 crop year figures in brackets were as follows: China Communist, 62.4 (41.3); Japan, 50.1 (49.7); Czechoslovakia, 26.2 (28.7); Federal Republic of Germany, 20.5 (37.3); Poland, 18.9 (16.8); Belgium and Luxembourg, 15.1 (15.1); Germany East, 10.5 (14.5); Venezuela, 9.1 (7.9); U.S.S.R. (Russia), 8.8 (162.2); and Cuba, 8.1 (7.5).

Exports of wheat flour during 1964-65 went to eighty-one countries with shipments to Britain amounting to the equivalent of 9.7 million bushels and representing 31 per cent of the crop year total. Exports of Canadian wheat flour to Britain in 1963-64 were the equivalent of 11.9 million bushels and accounted for 22 per cent of the total. Other leading markets for Canadian wheat flour in 1964-65 were as follows, in millions of bushels of wheat equivalent, with revised 1963-64 data in brackets: Cuba, 6.5 (7.4); U.S.S.R. (Russia), 1.7 (22.2); Ghana, 1.7 (1.1); Jamaica, 1.6 (1.7); Trinidad and Tobago, 1.4 (1.5); United States, 1.0 (0.9); and Leeward and Windward Islands, 1.0 (1.1).

Of the 1.3 million bushels of bagged seed wheat exported during 1964-65, shipments to the United States, at 0.8 million and Saudi Arabia at 0.6 million accounted for 58 per cent and 42 per cent, respectively, of the crop year total.



August Forecast of  
Production of Canada's  
1965 Grain Crops

With the exception of winter wheat, production of each of the major Canadian grains will be above last year's levels on the basis of yields indicated at August 15. Realization of the 1965 yield and production forecasts in the accompanying table is dependent on the existence of satisfactory weather conditions throughout the remainder of the growing and harvesting season. By mid-August, when the survey was undertaken, only a very limited acreage of spring-sown grains had been harvested in the Prairie Provinces. Inclement weather and heavy rains in some areas during the last week of August brought most harvesting operations to a halt and as a result, the bulk of the crop remains to be threshed and the need now is for warm dry weather so that operations can proceed quickly.

After some delay in seeding, growing conditions in practically all areas of the Prairies were nearly ideal with the main exception being part of the Peace River area in Alberta which suffered from drought. However, the crop was about ten days late and hot dry weather towards the end of July and early August caused some deterioration in the exceptionally heavy crop stands.

August Forecast of the 1965 Production of Principal Grain Crops  
Canada and Prairie Provinces, Compared with 1964

Province and Crop	Area		Yield per Acre		Production	
	1964	1965	1964(1)	1965(2)	1964 (1)	1965 (2)
	acres		bushels		bushels	
<u>CANADA</u>						
Winter wheat ...	455,000	362,000	40.1	36.4	18,246,000	13,160,000
Spring wheat (3)	29,230,800	27,920,200	19.9	26.7	582,178,000	746,644,000
All wheat ....	29,685,800	28,282,200	20.2	26.9	600,424,000	759,804,000
Oats for grain .	8,191,000	8,656,000	43.6	49.7	357,178,000	430,559,000
Barley .....	5,454,700	6,037,600	30.6	39.4	166,816,000	237,663,000
Fall rye .....	578,900	642,500	19.2	23.6	11,120,000	15,153,000
Spring rye .....	100,900	103,000	10.9	20.0	1,100,000	2,060,000
All rye .....	679,800	745,500	18.0	23.1	12,220,000	17,213,000
Flaxseed .....	1,977,500	2,239,000	10.3	13.0	20,313,000	29,150,000
Mixed grains ...	1,431,300	1,505,700	46.4	49.4	66,395,000	74,411,000
Rapeseed .....	791,000	1,435,000	16.7	19.5	13,230,000	28,000,000
<u>PRAIRIE PROVINCES</u>						
Wheat .....	29,080,000	27,790,000	19.9	26.7	578,000,000	743,000,000
Oats .....	5,054,000(4)	5,645,000(4)	40.8	50.0	206,000,000	282,000,000
Barley .....	5,217,000	5,741,000	30.1	39.2	157,000,000	225,000,000
Rye .....	619,900	691,000	17.3	22.9	10,700,000	15,800,000
Flaxseed .....	1,916,000	2,184,000	10.1	12.9	19,400,000	28,200,000
Rapeseed .....	791,000	1,435,000	16.7	19.5	13,230,000	28,000,000

(1) Revised.

(2) As indicated on basis of conditions on or about August 15.

(3) Includes Durum wheat.

(4) Estimated areas for harvest as oats.



Canada's 1965 wheat crop, currently forecast at a record 759.8 million bushels is 27 per cent larger than last year's crop of 600.4 million, and 60 per cent above the ten-year (1954-63) average of 475.1 million. Average yields increased from 20.2 bushels in 1964 to 26.9 bushels per acre this year, and are well above the 1954-63 average of 19.5 bushels per acre.

The 1965 crop of spring wheat, forecast at 746.6 million bushels is being harvested from a seeded area of 27.9 million acres and yielding an indicated 26.7 bushels per acre. The 1964 spring wheat crop of 582.2 million bushels was produced on 29.2 million acres and yielded an average of 19.9 bushels per acre. The 1965 yield for Ontario's winter wheat crop is placed at 36.4 bushels per acre as compared with 40.1 bushels in 1964. A 20 per cent decrease in harvested acreage and a 9 per cent decrease in yields, reduced the production to 13.2 million bushels in 1965 compared with 18.2 million in 1964.

August Forecast of the 1965 Production of Wheat, Canada and Provinces  
Compared with 1964

Province	Area		Yield per Acre		Production	
	1964	1965	1964 (1)	1965 (2)	1964 (1)	1965 (2)
	acres		bushels		bushels	
All wheat						
Canada .....	29,685,000	28,282,200	20.2	26.9	600,424,000	759,804,000
Ontario .....	472,000	376,000	39.6	35.9	18,685,000	13,496,000
Spring wheat						
Canada (3) ....	29,230,800	27,920,200	19.9	26.7	582,178,000	746,644,000
Prince Edward						
Island .....	4,000	3,800	33.1	23.5	132,000	89,000
Nova Scotia ...	900	1,200	32.1	34.6	29,000	42,000
New Brunswick .	3,000	6,000	31.8	26.9	95,000	161,000
Quebec .....	10,900	12,200	26.0	25.9	283,000	316,000
Ontario .....	17,000	14,000	25.8	24.0	439,000	336,000
Manitoba(3) ...	3,385,000	3,240,000	25.1	26.5	85,000,000	86,000,000
Saskatchewan(3)	19,200,000	18,500,000	18.1	25.7	348,000,000	476,000,000
Alberta(3) ....	6,495,000	6,050,000	22.3	29.9	145,000,000	181,000,000
Br. Columbia ..	115,000	93,000	27.8	29.0	3,200,000	2,700,000
Winter wheat						
Canada(4) .....	455,000	362,000	40.1	36.4	18,246,000	13,160,000

(1) Revised. (2) As indicated on basis of conditions on or about August 15. (3) Includes Durum wheat. (4) Winter wheat estimates apply to Ontario only. The western wheat crop contains a relatively small proportion of winter wheat but, due to difficulties encountered in obtaining acreage data required for a separate winter wheat estimate in the Prairie Provinces, all western wheat is currently included under spring wheat.

In the Prairie Provinces, the 1965 wheat crop is forecast at 743.0 million bushels, some 29 per cent above last year's crop of 578.0 million, and 64 per cent above the ten-year (1954-63) average of 453.3 million. The forecasted average yield per seeded acre in the Prairie Provinces, on the basis of conditions at August 15, is 26.7 bushels per acre, with Manitoba averaging 26.5; Saskatchewan 25.7 and Alberta 29.9 bushels per acre. Production in each of these provinces in

million of bushels, with last year's estimate in brackets, is as follows: Manitoba, 86.0 (85.0); Saskatchewan, 476.0 (348.0); and Alberta, 181.0 (145.0). Relatively small amounts of winter wheat are included in these forecasts for the Prairie Provinces.

The indicated production of durum wheat, which is included in the above forecast of spring wheat is 20.1 million bushels compared with last year's estimate of 33.6 million. Forecasts of 1965 production in each of the Prairie Provinces in millions of bushels, with last year's estimates in brackets are: Manitoba, 0.9 (2.6); Saskatchewan, 17.0 (26.0); and Alberta, 2.2 (5.0). The acreage seeded to this crop was 56 per cent smaller than in 1964. Yields per acre in 1965, with 1964 figures in brackets are: Manitoba, 22.5 (21.7); Saskatchewan, 23.4 (17.1); Alberta, 29.3 (22.0); and the Prairie Provinces, 23.9 (17.8).

Crop Conditions  
in the Prairie  
Provinces

According to the Telegraphic Crop Report published under date of September 15, 1965, crop conditions in each of the Prairie Provinces were summarized as follows:

Not much over 10 per cent of the harvesting has been completed in Manitoba, with most progress in the south and almost none in parts of the north. Only brief scattered progress was made on one or two days last week and at present it is wet. Almost three-quarters of the wheat has been swathed and the grades are dropping to 3 and 4 Northern. Most of the flax is standing but prospects are good except for late-sown fields. Ten per cent is still green. There has been frost damage to rapeseed, flax and late cereals in parts of the north. Over all prospects continue good for crop yields. Sugar beet and sunflower outturns appear to be average. Farmers are making silage from frozen and salvage corn.

Wet conditions continue to slow harvesting in practically all areas of Saskatchewan. Some 80 per cent of the wheat and 85 per cent of the coarse grains have been swathed, with most of the progress during the past week in central and northern districts. However, damp conditions have curtailed combining and only 20 per cent of the wheat and 35 per cent of the oats and barley have been threshed. Some 25 per cent of the rapeseed has been threshed but very little flax has been combined. Warm, dry weather is urgently needed to advance the harvest. Yield prospects are being fairly well maintained with reports indicating a slight loss of quality at some points. The effects of frost are not serious so far, except on some late crops.

With the recent bad weather the crop situation continues to deteriorate in Alberta. During the past week some progress was made with swathing but threshing is at a standstill. Widespread frost over the week end terminated the growing season for most crops. Yields of all crops will be below the earlier estimates. Approximately 15 per cent of the barley and rapeseed, 10 per cent of the wheat, and 5 per cent of the oats are threshed. Some of the early barley samples qualified for malting. Weathering, sprouting and frost will reduce grades of all crops remaining in the field. Swathing is almost completed in the southeast but only about one-third of the crop is threshed.



Wheat Production in  
Canada and the Prairie  
Provinces 1910-65

The first forecast of the 1965 wheat crop in Canada, based on conditions at August 15, placed the probable outturn at a new record of 759.8 million bushels, of which the Prairie Provinces accounted for 743.0 million. If a crop this size is realized, it would be 27 per cent larger than last year's harvest of 600.4 million, 5 per cent more than the previous high of 723.4 million in 1963 and 60 per cent larger than the ten-year (1954-63) average of 475.1 million.

Wheat Production in Canada and the Prairie Provinces, 1910-65

Year	Canada	Manitoba	Saskatchewan	Alberta	Three Prairie Provinces
- thousand bushels -					
1910 .....	132,078	34,127	66,979	9,060	110,167
1911 .....	231,237	62,820	109,323	36,554	208,697
1912 .....	224,159	63,017	106,960	34,303	204,280
1913 .....	231,717	53,331	121,559	34,372	209,262
1914 .....	161,280	38,605	73,494	28,859	140,958
1915 .....	393,543	69,337	224,312	66,538	360,187
1916 .....	262,781	29,667	147,559	65,088	242,314
1917 .....	233,743	41,040	117,921	52,992	211,953
1918 .....	189,075	48,191	92,493	23,752	164,436
1919 .....	193,260	40,975	89,994	34,575	165,544
1920 .....	263,189	37,542	113,135	83,461	234,138
1921 .....	300,858	39,054	188,000	53,044	280,098
1922 .....	399,786	60,051	250,167	64,976	375,194
1923 .....	474,199	35,804	271,622	144,834	452,260
1924 .....	262,097	41,464	132,918	61,312	235,694
1925 .....	395,475	33,624	235,472	97,962	367,058
1926 .....	407,136	47,133	219,646	113,986	380,765
1927 .....	479,665	30,773	252,500	171,286	454,559
1928 .....	566,726	52,383	321,215	171,000	544,598
1929 .....	302,192	28,565	160,565	90,206	279,336
1930 .....	420,672	43,600	206,700	147,000	397,300
1931 .....	321,325	28,112	132,466	140,603	301,181
1932 .....	443,061	44,041	211,551	167,355	422,947
1933 .....	281,892	32,666	128,004	102,334	263,004
1934 .....	275,849	37,100	114,200	112,500	263,800
1935 .....	281,935	23,250	142,198	98,648	264,096
1936 .....	219,218	26,000	110,000	66,000	202,000
1937 .....	180,210	45,100	36,000	75,700	156,800
1938 .....	360,010	50,000	137,800	148,200	336,000
1939 .....	520,623	61,300	271,300	161,400	494,000
1940 .....	540,190	66,400	266,700	180,700	513,800
1941 .....	314,710	51,000	147,000	98,000	296,000
1942 .....	556,067	53,000	305,000	171,000	529,000
1943 .....	282,377	39,000	146,000	82,800	267,800
1944 .....	414,859	50,300	242,100	99,300	391,700
1945 .....	316,320	38,800	168,100	87,700	294,600
1946 .....	411,601	58,000	208,000	127,000	393,000
1947 .....	338,506	42,000	173,000	105,000	320,000
1948 .....	381,413	50,000	191,000	115,000	356,000
1949 .....	366,028	52,000	186,000	103,000	341,000
1950 .....	466,490	50,000	272,000	117,000	439,000
1951 .....	553,678	53,000	325,000	152,000	530,000
1952 .....	701,973	57,000	449,000	172,000	678,000
1953 .....	634,040	48,000	391,000	165,000	604,000
1954 .....	331,981	29,000	169,000	107,000	305,000
1955 .....	519,178	42,000	320,000	135,000	497,000
1956 .....	573,040	56,000	355,000	140,000	551,000
1957 .....	392,719	49,000	229,000	93,000	371,000
1958 .....	398,077	61,000	213,000	98,000	372,000
1959 .....	445,077	62,000	253,000	115,000	430,000
1960 .....	518,379	66,000	327,000	105,000	498,000
1961 .....	283,394	34,000	137,000	89,000	260,000
1962 .....	565,554	80,000	354,000	112,000	546,000
1963 .....	723,442	61,000	493,000	149,000	703,000
1964(1) .....	600,424	85,000	348,000	145,000	578,000
1965(2) .....	759,804	86,000	476,000	181,000	743,000

(1) Revised.

(2) Based on conditions on or about August 15, 1965.



Carryover Stocks  
of Canadian Grain  
at July 31, 1965

Total carryover stocks of the five major Canadian grains in all North American positions at July 31, 1965 were estimated at 749.2 million bushels, 3 per cent below last year's revised total of 770.7 million, and 9 per cent less than the ten-year (1955-64) average of 820.8 million bushels. Total stocks of wheat were estimated at 514.9 million bushels, compared with last year's revised estimate of 459.4 million. Stocks of oats in all positions estimated at 129.9 million bushels, were 28 per cent below last year's 179.4 million. Barley stocks, at 89.0 million bushels, were down 25 per cent from the 118.3 million held in 1964. Carryover stocks of rye in all positions, estimated at 8.3 million bushels, were 17 per cent more than last year's 7.1 million. July-end carryover stocks of flaxseed, at 7.1 million bushels, were 9 per cent above last year's 6.6 million.

Stocks of Canadian Grain at July 31, 1965

Position	Wheat	Oats	Barley	Rye	Flaxseed
thousand bushels					
In Canada					
On Farms .....	109,100	90,700	35,800	1,700	1,000
Country elevators .....	240,584	23,878	35,399	2,538	2,228
Interior private and mill elevators .....	7,387	547	1,847	33	57
Interior terminal elevators .....	4,971	98	472	26	5
Pacific Coast terminals .....	6,958	307	901	192	548
Churchill elevator .....	4,393	-	-	-	-
Fort William-Port Arthur elevators .....	49,664	7,182	9,225	2,165	1,894
In transit - lake .....	6,776	1,550	1,143	64	457
In transit - rail .....	20,878	2,766	1,809	540	593
Eastern elevators .....	62,100	2,759	2,429	647	330
Eastern mills (mill bins only) .....	1,783	112	-	-	-
Western mills (mill bins only) .....	299	4	2	4	-
Totals in Canada (1) .....	514,892	129,903	89,027	7,908	7,112
In United States .....	-	-	-	374	-
Totals, Canadian Grain in Canada and United States, July 31, 1965 (1).	514,892	129,903	89,027	8,282	7,112
Comparative Stocks, July 31, 1964 (2)					
In Canada .....	459,440	179,408	118,270	6,624	6,551
In United States .....	-	-	-	428	-
Totals in Canada and United States ....	459,440	179,408	118,270	7,052	6,551
Average stocks, July 31, 1955-64 .....	563,150	132,592	110,090	9,651	5,355

(1) Preliminary revised - subject to further revision.

(2) Revised.

Farm-held stocks of wheat, oats, barley, rye and flaxseed at July 31, 1965 amounted to 211.7 million bushels, a decrease of 26 per cent from the July-end 1964 total of 286.9 million. Since the bulk of farm stocks of grain is held in Western Canada, stocks in the Prairie Provinces have been segregated from the above table for ease in comparison with last year's totals.

Estimated Farm Stocks in the Prairie Provinces, July 31, 1965 and 1964

Province	Wheat	Oats	Barley	Rye	Flaxseed
thousand bushels					
Manitoba .....	7,000	16,000	2,000	200	100
Saskatchewan .....	79,000	29,000	12,000	700	750
Alberta .....	21,000	23,000	20,000	800	150
Totals, July 31, 1965 (1) .....	107,000	68,000	34,000	1,700	1,000
Totals, July 31, 1964 .....	118,000	108,000	58,000	1,600	1,300

(1) Subject to revision.

Canadian Wheat  
Carryover  
1934-65

Preliminary estimates place total stocks of Canadian wheat in all North American positions at July 31, 1965 at 514.9 million bushels compared with last year's revised estimate of 459.4 million and the record high at July 31, 1957 of 733.5 million bushels. An estimated 109.1 million bushels of this year's total were held on farms, while 240.6 million of the off-farm stocks were in country elevators. The next largest amounts, 62.1 million bushels, were in store in Eastern elevators and 49.7 million bushels were in Fort William-Port Arthur elevators.

It should be pointed out that the figures in the table below are not strictly comparable because of certain omissions in the earlier years. Stocks of Canadian wheat held in bond by United States flour mills were omitted each year until 1940-41 when they were included for the first time. The carryover totals now include all Canadian wheat in North American positions whether on farms, in store or in transit.

Carryover of Canadian Wheat in Canada and the United States, July 31, 1934-65

Year	Carryover of Wheat in Canada	Stocks of Canadian Wheat in U.S. Positions	Total Carryover of Canadian Wheat in Canada and U.S.
		thousand bushels	
1934 .....	192,948	9,954	202,902
1935 .....	202,148	11,705	213,852
1936 .....	108,094	19,268	127,363
1937 .....	32,938	4,111	37,049
1938 .....	23,553	983	24,536
1939 .....	94,632	8,279	102,911
1940 .....	272,928	27,546	300,473
1941 .....	448,338	31,792	480,129
1942 .....	404,897	18,856	423,752
1943 .....	579,371	15,255	594,626
10-year average 1934-43 .....	235,985	14,775	250,759
1944 .....	338,138	18,394	356,531
1945 .....	238,480	19,593	258,073
1946 .....	73,466	134	73,600
1947 .....	86,055	87	86,141
1948 .....	77,676	35	77,710
1949 .....	102,343	68	102,411
1950 .....	112,200	-	112,200
1951 .....	187,190	2,013	189,203
1952 .....	214,934	2,244	217,178
1953 .....	382,546	640	383,185
10-year average 1944-53 .....	181,303	4,321	185,623
1954 .....	618,568	107	618,675
1955 .....	536,302	446	536,748
1956 .....	578,803	771	579,574
1957 .....	733,335	211	733,546
1958 .....	648,454	-	648,454
1959 .....	587,842	159	588,001
1960 .....	599,588	-	599,588
1961 .....	607,841	-	607,841
1962 .....	391,058	-	391,058
1963 .....	487,247	-	487,247
10-year average 1954-63 .....	578,904	169	579,073
1964 (1) .....	459,440	-	459,440
1965 (2) .....	514,892	-	514,892

(1) Revised.

(2) Preliminary.



Farmers' Marketings (1) of Wheat in the Prairie Provinces, 1964-65

Week Ending		Manitoba	Saskatchewan	Alberta	Total	Last Year (1)
		bushels				
August	12, 1964 .....	75,662	409,500	98,247	583,409	543,483
	19 .....	165,645	350,728	200,845	717,218	814,732
	26 .....	606,652	1,186,624	360,697	2,153,973	2,958,768
September	2 .....	259,162	1,731,216	542,073	2,532,451	3,670,105
	9 .....	626,938	2,337,139	282,197	3,246,274	7,414,702
	16 .....	2,861,693	3,000,932	736,446	6,599,071	8,966,278
	23 .....	4,677,736	10,134,664	3,309,300	18,121,700	6,291,301
	30 .....	2,253,868	11,072,846	2,974,796	16,301,510	9,604,797
October	7 .....	1,436,956	6,617,924	3,090,763	11,145,643	11,308,739
	14 .....	1,575,017	7,043,761	6,481,794	15,100,572	8,789,151
	21 .....	1,816,060	11,532,537	6,007,602	19,356,199	11,558,396
	28 .....	2,311,743	10,169,173	4,069,997	16,550,913	15,015,073
November	4 .....	2,583,044	6,802,878	3,630,412	13,016,334	15,281,709
	11 .....	2,063,739	7,630,517	3,107,184	12,801,440	13,599,259
	18 .....	1,836,676	6,766,380	2,980,075	11,583,131	15,332,440
	25 .....	1,534,854	7,469,802	3,168,692	12,173,348	11,869,874
December	2 .....	1,521,191	5,254,805	2,029,339	8,805,335	17,528,964
	9 .....	1,305,493	5,003,945	2,325,113	8,634,551	19,357,177
	16 .....	2,964,986	13,588,764	3,746,693	20,300,443	10,101,263
	23 .....	794,134	6,484,116	1,408,499	8,686,749	7,292,811
	30 .....	648,303	2,405,338	1,012,360	4,066,001	11,252,775
January	6, 1965 .....	695,986	5,748,287	1,301,676	7,745,949	15,799,953
	13 .....	1,034,504	1,584,566	1,118,931	3,738,001	16,553,644
	20 .....	616,905	4,983,638	4,339,605	9,940,148	16,268,127
	27 .....	1,739,531	12,925,263	5,343,141	20,007,935	5,700,105
February	3 .....	447,871	1,452,759	2,483,788	4,384,418	11,039,892
	10 .....	379,082	1,169,508	1,690,970	3,239,560	7,962,153
	17 .....	674,240	2,265,066	1,731,833	4,671,139	7,584,566
	24 .....	845,577	3,127,348	1,954,646	5,927,571	5,825,207
March	3 .....	607,664	1,916,304	2,241,044	4,765,012	5,224,573
	10 .....	910,214	3,338,276	3,033,095	7,281,585	4,968,290
	17 .....	1,307,400	4,348,768	2,221,656	7,877,824	5,522,944
	24 .....	410,263	1,504,214	2,148,172	4,062,649	4,396,596
	31 .....	557,938	1,117,843	1,828,357	3,504,138	2,507,410
April	7 .....	761,892	2,275,722	2,262,045	5,299,659	5,861,716
	14 .....	473,538	1,419,500	1,426,640	3,319,678	5,945,568
	21 .....	446,305	1,050,800	748,739	2,245,844	7,741,542
	28 .....	882,147	5,910,227	2,242,148	9,034,522	13,377,654
May	5 .....	908,461	10,844,618	2,767,246	14,520,325	13,218,916
	12 .....	523,922	5,864,165	2,107,298	8,495,385	7,205,841
	19 .....	594,178	2,625,856	1,258,028	4,478,062	8,045,609
	26 .....	390,002	2,556,139	1,164,159	4,110,300	7,203,616
June	2 .....	508,347	4,508,222	1,874,530	6,891,099	12,683,135
	9 .....	941,931	9,893,734	2,458,680	13,294,345	27,656,918
	16 .....	1,895,601	13,313,094	3,211,463	18,420,158	23,424,515
	23 .....	3,141,556	9,501,651	3,330,913	15,974,120	13,453,626
	30 .....	3,051,434	13,747,837	3,571,118	20,370,389	18,615,048
July	7 .....	1,646,354	10,295,594	2,770,858	14,712,806	15,802,035
	14 .....	1,662,678	14,441,459	3,438,656	19,542,793	14,787,886
	21 .....	1,921,349	17,012,786	3,615,226	22,549,361	13,387,151
	31 .....	4,520,540	28,352,616	9,317,813	42,190,969	42,304,186
Totals .....		68,416,962	326,089,449	130,565,598	525,072,009	568,620,219
Average similar period:						
1953-54-1962-63 .....		41,259,749	236,853,390	95,131,688	373,244,827	

(1) Includes receipts at country, interior private and mill elevators, interior semi-public terminals and platform loadings. (2) Revised.



Visible Supply of Canadian Wheat, August 25, 1965  
Compared with Approximately the Same Date, 1963 and 1964

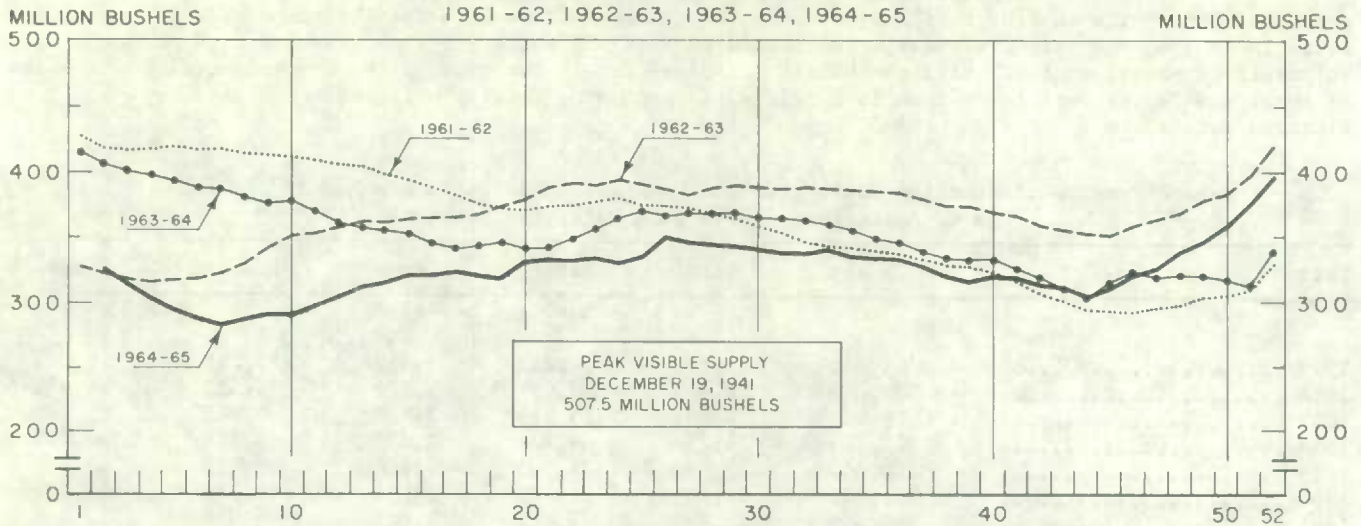
Position	1963	1964	1965
	thousand bushels		
Country elevators - Manitoba .....	22,928	13,227	26,062
Saskatchewan .....	127,038	97,840	125,464
Alberta .....	63,163	48,275	64,209
Totals .....	213,130	159,343	215,735
Interior private and mill .....	7,386	6,925	6,961
Interior terminals .....	5,730	5,026	5,855
Vancouver-New Westminster .....	13,956	11,062	6,433
Victoria .....	924	824	366
Prince Rupert .....	769	510	219
Churchill .....	3,426	3,293	1,354
Fort William-Port Arthur .....	54,149	46,269	39,586
In transit rail (Western Division) .....	15,990	20,740	11,180
Bay, Lake and Upper St. Lawrence ports .....	41,568	15,653	35,697
Lower St. Lawrence and Maritime ports .....	35,364	23,516	33,150
In transit lake .....	5,466	9,163	9,847
In transit rail (Eastern Division) .....	185	434	1,390
Totals .....	398,041	302,758	367,773

Grading of Wheat Inspected, August 1964-July 1965 with Comparisons

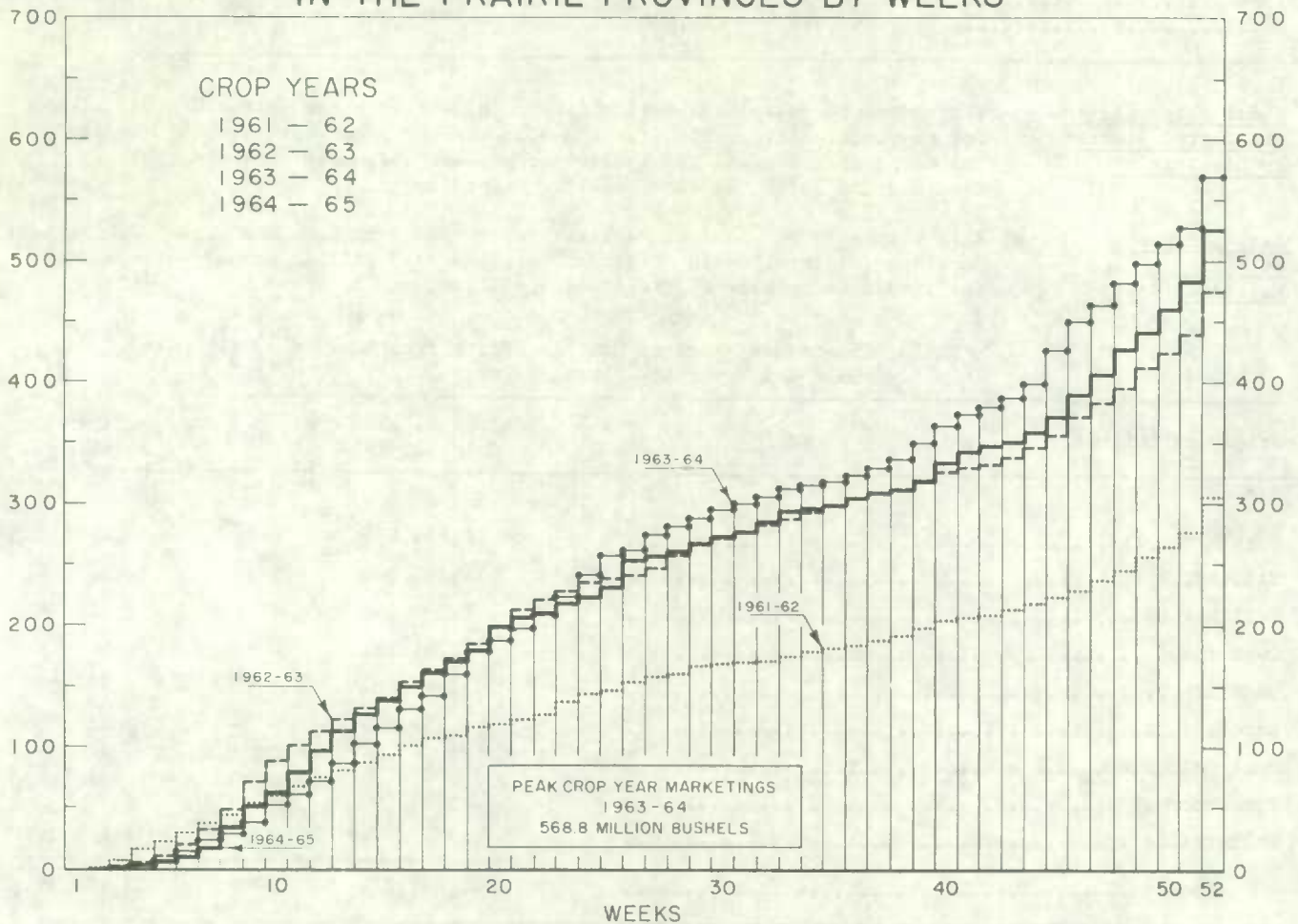
Grade	C R O P   Y E A R					
	Average	1963-64		1964-65		
	1958-59					
	1962-63					
	per cent	cars	per cent	cars	per cent	
No. 1 Man. Northern .....	7.6	15,160	4.8	6,184	2.4	
No. 2 Man. Northern .....	38.0	154,386	49.2	85,974	34.0	
No. 3 Man. Northern .....	22.6	78,578	25.1	55,572	22.0	
No. 4 Man. Northern .....	10.0	20,739	6.6	21,749	8.6	
No. 5 Wheat .....	4.4	10,512	3.4	14,383	5.7	
No. 6 Wheat .....	0.6	1,536	0.5	1,526	0.6	
Feed Wheat .....	(1)	15	(1)	67	(1)	
Others Red Spring .....	10.1	9,497	3.0	47,710	18.9	
C.W. Garnet .....	0.1	1,184	0.4	169	0.1	
C.W. White Spring .....	0.1	269	0.1	273	0.1	
C.W. Mixed Wheat .....	(1)	163	0.1	120	(1)	
Alberta Winter .....	0.2	2,953	0.9	1,273	0.5	
Nos. 1-6 C.W. Amber Durum .....	6.0	17,917	5.7	16,668	6.6	
Others C.W. Amber Durum .....	0.2	583	0.2	1,050	0.4	
Totals .....	100.0	313,492	100.0	252,718	100.0	
Gross bushels (approx.) .....		604,629,000(2)		490,336,000		

(1) Less than .05 per cent. (2) Revised.

# WEEKLY VISIBLE SUPPLY OF CANADIAN WHEAT



## CUMULATIVE RECORD OF WHEAT MARKETINGS IN THE PRAIRIE PROVINCES BY WEEKS



(Data in both charts for crop years beginning August 1)



Lake Shipments of Canadian Grain

Total shipments of the five major grains out of Lakehead terminals from the opening of navigation to August 25 this year amounted to 196.3 million bushels, 25 per cent smaller than the 261.2 million shipped during the comparable period of 1964. The current total is, however, the largest since 1956 for the comparable period under review. In 1965 the season of navigation opened on April 20 while the 1964 season opened on April 2. Shipments of wheat, at 140.5 million bushels accounted for 72 per cent of the current total. Shipments of wheat and barley were lower than last year's corresponding levels, while those of oats, rye and flaxseed were above.

Lake Shipments of Canadian Grain from the Opening of Navigation to August 25, 1965  
and to Approximately the Same Date, 1955 to 1964

Year	Wheat	Oats	Barley	Rye	Flaxseed	Total
	thousand bushels					
1955 .....	91,740	19,201	34,515	7,426	3,271	156,153
1956 .....	139,049	23,426	49,097	9,828	3,535	224,935
1957 .....	98,649	24,201	26,485	3,739	6,811	159,885
1958 .....	115,324	24,759	44,332	4,576	3,364	192,355
1959 .....	108,640	15,455	26,091	3,424	3,519	157,130
1960 .....	112,001	12,109	27,404	2,951	4,228	158,693
1961 .....	140,656	15,486	25,487	1,462	4,043	187,134
1962 .....	70,729	8,267	13,572	1,960	3,295	97,823
1963 .....	100,956	22,056	14,082	1,548	3,481	142,123
1964 .....	216,258	17,084	20,221	2,432	5,200	261,195
1965 .....	140,496	26,668	20,150	2,447	6,499	196,259

Wheat Shipments to the United States by Destination

There were no vessel and rail shipments of wheat to the United States, either for re-export or retention for domestic use for crop year 1964-65. During the comparable 1962-63 and 1963-64 crop years shipments amounted to 1,441 thousand and 1,258 thousand bushels, respectively.

Rail Shipments of Wheat to Maritime Ports

Rail shipments of wheat to Maritime Ports from Bay, Lake and Upper St. Lawrence Ports during the 1964-65 crop year totalled 33.3 million bushels as against the 1963-64 crop year figure of 41.9 million.

Rail Shipments of Wheat to Maritime Ports from Bay,  
Lake and Upper St. Lawrence Ports

Origin of Shipment	August 1, 1963 - July 31, 1964	August 1, 1964 - July 31, 1965
	bushels	
Port McNicoll .....	11,854,674	6,478,328
Midland, Tiffin .....	14,242,201	10,132,102
Collingwood .....	1,388,393	620,243
Owen Sound .....	5,667,783	6,620,135
Goderich .....	3,463,804	3,596,200
Sarnia .....	4,155,019	3,159,960
Port Colborne .....	747,601	2,524,027
Peterborough .....	348,266	-
Walkerville .....	-	144,399
Totals .....	41,867,741	33,275,394



Rail Shipments of Wheat from Fort William-Port Arthur, 1961-62—1964-65

Month	1961-62	1962-63	1963-64	1964-65
bushels				
August .....	20,648	13,933	5,500	7,786
September .....	14,598	11,657	9,104	19,564
October .....	33,944	22,716	25,355	12,135
November .....	22,915	12,024	13,500	13,167
December .....	60,167	12,778	23,047	26,961
January .....	126,533	39,534	58,772	10,703
February .....	68,421	22,967	28,768	17,214
March .....	37,000	86,398	21,268	112,296
April .....	37,777	69,067	26,063	17,506
May .....	11,203	11,851	7,941	8,207
June .....	16,022	15,746	20,518	4,965
July .....	17,315	11,158	12,707	13,872
Totals .....	466,543	329,829	252,543	264,376

Distribution of Rail Shipments of Wheat from Fort William-Port Arthur, July 1965

Grade	Quebec	Ontario
bushels		
5 Wheat .....	1,500	3,000
Rejected .....	-	167
Durum .....	7,000	-
Others .....	-	2,205
Totals .....	8,500	5,372

Overseas Exports of Canadian Grain by Ports of Loading, August 1, 1964-July 31, 1965  
with Comparisons

Port	Wheat (1)	Durum Wheat (1)	Oats (1)	Barley	Rye	Flaxseed	Rapeseed (2)
bushels							
<u>Pacific Seaboard</u>							
Van.-New West ....	124,232,407	12,038,951	3,740,374	19,834,116	1,193,326	6,275,659	8,267,793
Victoria .....	8,704,575	-	-	-	-	-	160,520
Prince Rupert ....	10,123,500	-	-	-	-	-	-
<u>Churchill</u> .....	22,060,292	-	-	-	-	-	-
<u>Lakehead Direct</u> ....	3,200,441	907,549	7,632,860	4,967,880	897,531	4,038,293	613,032
<u>Kingston Direct</u> ....	343,541	-	-	-	-	-	-
<u>Prescott Direct</u> ....	872,143	16,667	-	-	-	-	-
<u>St. Lawrence</u>							
Montreal .....	40,964,058	8,148,314	646,368	197,795	62,710	2,539,642	-
Sorel .....	17,140,792	648,990	-	-	40,000	526,905	-
Three Rivers .....	13,053,491	1,696,712	-	-	176,600	313,037	-
Quebec .....	14,232,033	1,392,907	-	-	-	304,007	-
Baie Comeau .....	45,886,129	7,131,674	-	-	-	152,995	-
<u>Maritime</u>							
Saint John .....	1,465,488	-	-	-	-	-	-
West Saint John ..	16,283,847	1,664,245	164,620	-	-	39,963	66,799
Halifax .....	14,043,499	489,424	-	-	-	144,500	-
Totals .....	332,606,236	34,135,433	12,184,222	24,999,791	2,370,167	14,335,001	9,108,144
August 1, 1963 -							
July 31, 1964 ....	510,964,603	24,735,056	15,958,742	32,851,128	4,855,212	13,638,472	5,087,644

(1) Excluding bagged seed. (2) In bushels of 50 pounds.

Monthly Exports of Canadian Wheat and Wheat Flour

Year and Month	Wheat in Bulk (1)	Bagged Seed Wheat (2)	Total Wheat	Wheat Flour (2) (3)	Total (3) Wheat and Wheat Flour
thousand bushels					
<u>1962-63</u>					
August .....	21,944	157	22,101	2,852	24,953
September .....	25,040	200	25,240	2,604	27,844
October .....	29,705	31	29,737	2,181	31,917
November .....	33,309	144	33,452	2,176	35,628
December .....	20,949	451	21,399	2,305	23,705
January .....	21,486	473	21,959	1,586	23,545
February .....	18,779	743	19,522	1,811	21,333
March .....	19,246	1,373	20,618	2,454	23,072
April .....	28,916	422	29,338	2,330	31,669
May .....	35,355	14	35,369	2,186	37,555
June .....	24,512	(4)	24,513	2,837	27,350
July .....	20,854	-	20,854	1,943	22,798
Totals ....	300,095	4,007	304,102	27,265	331,367
<u>1963-64</u>					
August .....	29,204	187	29,391	2,819	32,210
September .....	42,556	129	42,686	2,106	44,791
October .....	59,020	15	59,035	3,520	62,555
November .....	65,296	204	65,499	4,538	70,037
December .....	41,763	388	42,151	6,284	48,435
January .....	28,451	535	28,987	5,829	34,816
February .....	21,675	562	22,237	5,800	28,037
March .....	22,510	484	22,995	5,697	28,692
April .....	43,211	213	43,423	5,530	48,954
May .....	56,992	14	57,006	4,744	61,750
June .....	65,036	144	65,180	3,768	68,948
July .....	61,012	35	61,047	4,275	65,322
Totals ....	536,726	2,912	539,637	54,910	594,548
<u>1964-65 (5)</u>					
August .....	42,226	44	42,270	4,073	46,343
September .....	42,792	145	42,937	2,133	45,069
October .....	40,120	27	40,147	2,037	42,184
November .....	30,976	44	31,020	2,523	33,543
December .....	27,720	72	27,792	2,522	30,314
January .....	18,098	73	18,171	2,421	20,591
February .....	19,337	118	19,455	1,332	20,787
March .....	23,376	272	23,648	2,201	25,849
April .....	31,798	228	32,026	1,783	33,809
May .....	34,822	114	34,937	2,777	37,713
June .....	30,631	97	30,728	2,680	33,408
July .....	24,843	76	24,919	4,920	29,839
Totals ....	366,740	1,310	368,050	31,400	399,451

(1) Export clearances including shipments to the United States compiled by the Statistics Branch, Board of Grain Commissioners for Canada. (2) Compiled from Canadian Customs returns, 1962-63 and 1963-64 adjusted to remove effect of time lag in reporting. (3) In terms of wheat equivalent. Wheat flour conversion rate: 2.3 bushels per cwt. (4) Less than 500 bushels. (5) Preliminary, subject to revision.



Exports of Canadian Wheat (1) by Destination, July 1965 and 1964

Destination	Wheat	Durum	All Wheat	
	(Except Durum)	Wheat	July 1965	July 1964 (2)
	bushels			
<u>Western Europe</u>				
<u>EEC</u>				
Belgium and Luxembourg .....	1,050,054	96,233	1,146,287	942,614
France .....	68,714	-	68,714	607,917
Germany, Federal Republic .....	287,168	398,021	685,189	2,721,517
Italy .....	20,907	-	20,907	-
Netherlands .....	7,467	-	7,467	18,667
Sub-totals .....	1,434,310	494,254	1,928,564	4,290,715
<u>Other Western Europe</u>				
Britain .....	6,275,217	18,667	6,293,884	8,702,238
Ireland .....	318,267	-	318,267	-
Malta and Gozo .....	-	-	-	451,733
Sweden .....	22,400	-	22,400	-
Switzerland .....	214,667	190,228	404,895	994,933
Sub-totals .....	6,830,551	208,895	7,039,446	10,148,904
Totals .....	8,264,861	703,149	8,968,010	14,439,619
<u>Eastern Europe</u>				
Albania .....	276,864	105,840	382,704	756,467
Bulgaria .....	-	-	-	1,829,333
Germany, East .....	385,827	-	385,827	-
Poland .....	2,586,169	1,529,910	4,116,079	3,058,573
U.S.S.R. (Russia) .....	1,928,627	-	1,928,627	24,981,255
Totals .....	5,177,487	1,635,750	6,813,237	30,625,628
<u>Africa</u>				
Nigeria .....	136,903	-	136,903	130,671
Republic of South Africa .....	-	-	-	1,925,653
Rhodesia .....	-	-	-	9,028
Totals .....	136,903	-	136,903	2,065,352
<u>Asia</u>				
China, Communist .....	1,549,667	1,071,665	2,621,332	4,854,827
Hong Kong .....	122,453	-	122,453	54,507
India .....	396,733	-	396,733	-
Israel .....	-	-	-	535,808
Japan .....	2,144,465	-	2,144,465	4,646,184
Malaysia .....	128,427	-	128,427	98,000
Pakistan .....	570,667	-	570,667	-
Philippines .....	914,941	-	914,941	710,827
Saudi Arabia .....	-	-	-	61,936
Taiwan .....	61,512	-	61,512	-
Totals .....	5,888,865	1,071,665	6,960,530	10,962,089
<u>Oceania</u>				
United States Oceania .....	-	-	-	113,792
<u>Western Hemisphere</u>				
Barbados .....	-	-	-	60
Cuba .....	802,480	-	802,480	1,125,537
Dominican Republic .....	-	-	-	192,902
Ecuador .....	186,771	-	186,771	-
El Salvador .....	76,720	-	76,720	144,107
Guatemala .....	123,333	-	123,333	66,667
Jamaica .....	-	-	-	1,197
Panama .....	-	-	-	78,400
Nicaragua .....	89,600	-	89,600	-
Venezuela .....	685,693	-	685,693	1,196,160
Totals .....	1,964,597	-	1,964,597	2,805,030
Sub-totals, All Countries .....	21,432,713	3,410,564	24,843,277	61,011,510
Bagged seed (3) .....			75,907	35,276
Totals, All Countries .....	21,432,713	3,410,564	24,919,184	61,046,786

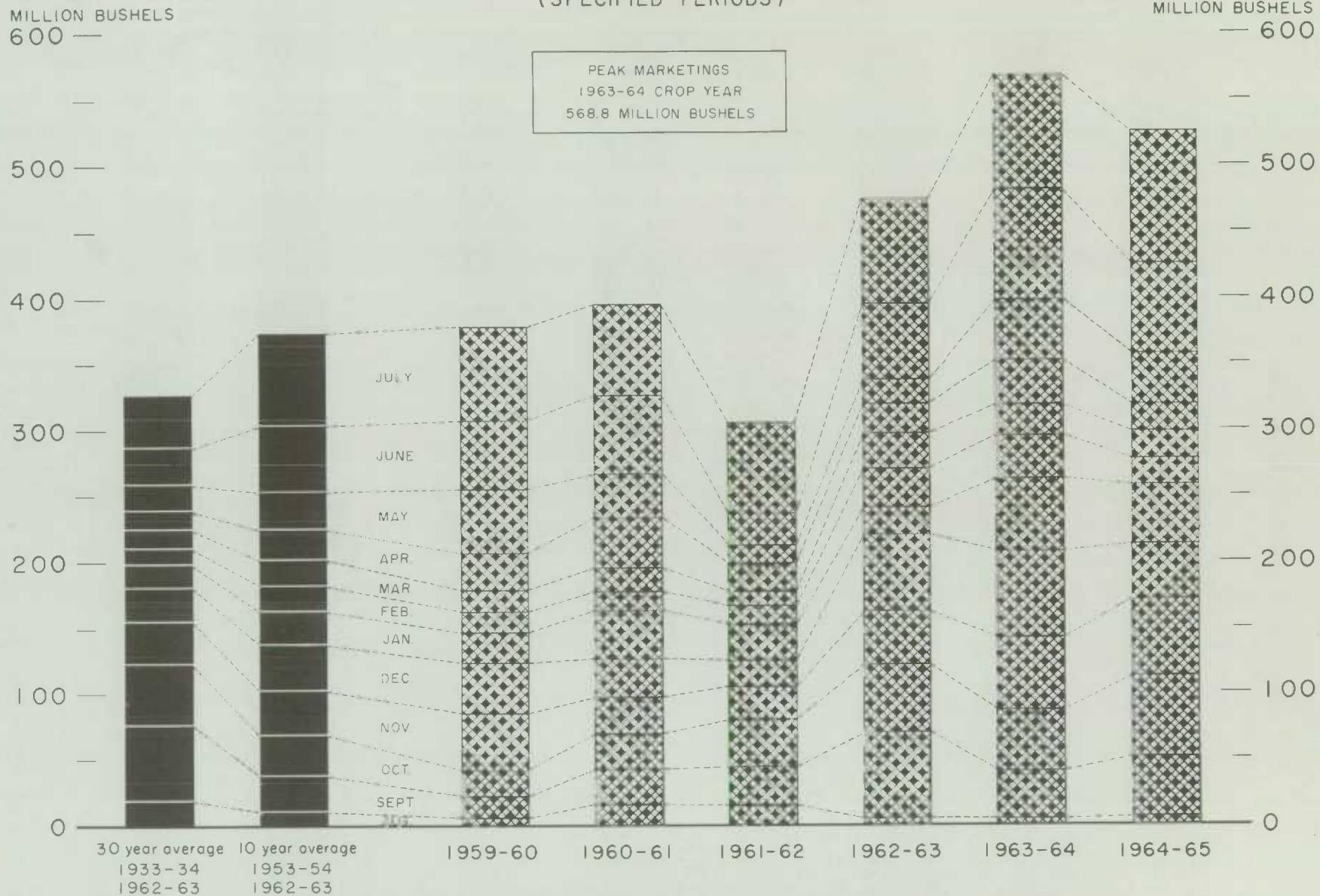
See footnotes on page 21.

Cumulative Exports of Canadian Wheat (1) by Destination

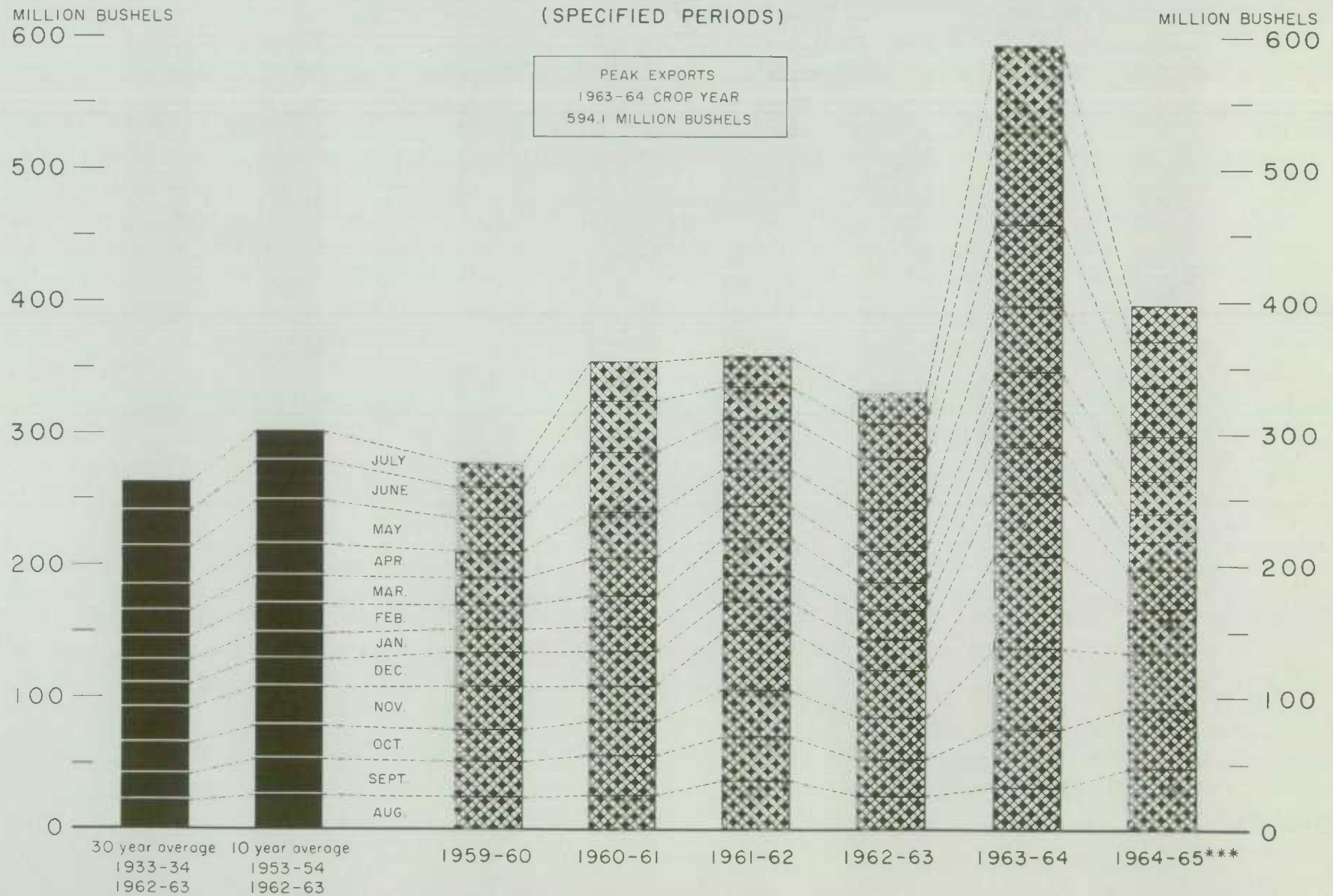
Destination	August 1964 - July 1965			Total
	Wheat (Except Durum)	Durum Wheat	Total Wheat	Same Period Last Year (2)
bushels				
<u>Western Europe</u>				
<u>EEC</u>				
Belgium and Luxembourg ...	14,280,284(4)	1,247,732	15,528,016(4)	15,495,773
France .....	2,427,394(4)	3,125,361	5,552,755(4)	4,883,596
Germany, Federal Republic.	12,825,352(4)	7,683,416(4)	20,508,768(4)	37,276,899
Italy .....	3,893,435	21,280	3,914,715	3,874,510
Netherlands .....	3,063,696	346,155(4)	3,409,851(4)	3,193,778
Sub-totals .....	36,490,161(4)	12,423,944(4)	48,914,105(4)	64,724,556
<u>Other Western Europe</u>				
Austria .....	1,082,293	578,000	1,660,293	1,191,031
Britain .....	70,138,834(4)	252,000	70,390,834(4)	78,955,252
Denmark .....	-	-	-	20,543
Finland .....	343,467	-	343,467	726,133
Ireland .....	2,210,764	13,067	2,223,831	2,235,333
Malta and Gozo .....	961,708	18,177	979,885	1,545,560
Norway .....	1,601,120	-	1,601,120	1,702,670
Portugal .....	-	-	-	410,667
Sweden .....	33,600	33,600	67,200	22,400
Switzerland .....	1,358,416	2,560,677(4)	3,919,093(4)	8,071,937
Sub-totals .....	77,730,202(4)	3,455,521(4)	81,185,723(4)	94,881,526
Totals .....	114,220,363	15,879,465	130,099,828	159,606,082
<u>Eastern Europe</u>				
Albania .....	4,503,297	521,714	5,025,011	3,696,468
Bulgaria .....	5,752,853	-	5,752,853	9,551,989
Czechoslovakia .....	26,244,851	-	26,244,851	28,661,587
Germany, East .....	10,136,370	385,827	10,522,197	14,473,349
Hungary .....	3,614,420	-	3,614,420	-
Poland .....	13,585,149	5,314,091	18,899,240	16,766,576
Rumania .....	-	-	-	9,670,565
U.S.S.R. (Russia) .....	8,843,789	-	8,843,789	162,173,763
Yugoslavia .....	-	-	-	3,501,866
Totals .....	72,680,729	6,221,632	78,902,361	248,496,163
<u>Africa</u>				
Mozambique .....	35,230	-	35,230	102,057
Nigeria .....	603,113	-	603,113	650,889
Republic of South Africa ...	944,533	-	944,533	3,038,286
Rhodesia .....	48,210	-	48,210	37,334
Totals .....	1,631,086	-	1,631,086	3,828,566



# FARMERS' MARKETINGS OF WHEAT, PRAIRIE PROVINCES (SPECIFIED PERIODS)



## EXPORTS OF CANADIAN WHEAT\* AND WHEAT FLOUR\*\*



\*Beginning with 1956-57 includes bagged seed wheat.

\*\*In terms of wheat equivalent.

\*\*\*Preliminary.

Agriculture Division D. B. S.

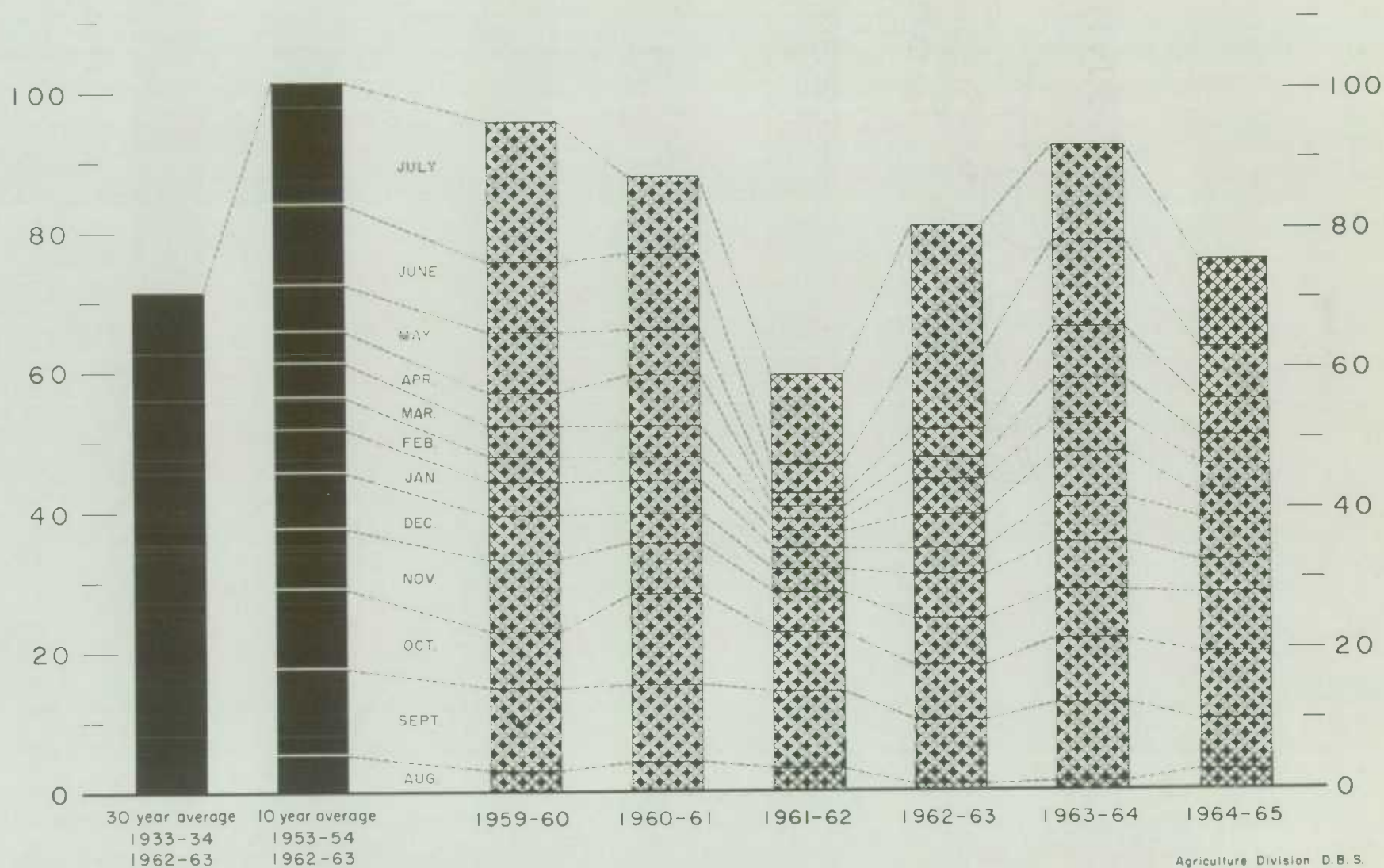


# FARMERS' MARKETINGS OF BARLEY, PRAIRIE PROVINCES

(SPECIFIED PERIODS)

MILLION BUSHELS  
120 —

MILLION BUSHELS  
120 —



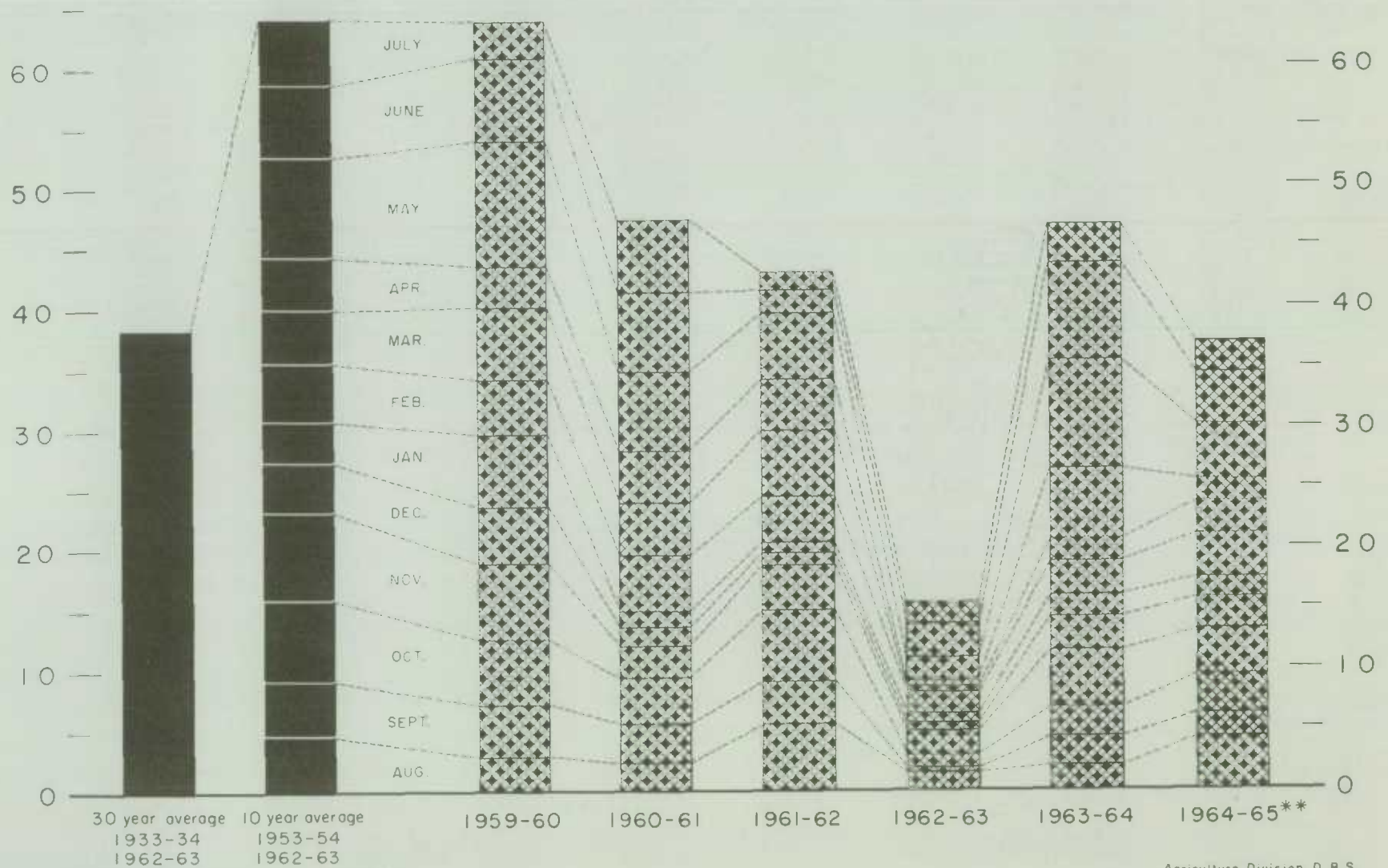
Agriculture Division D.B.S.

# EXPORTS OF CANADIAN BARLEY AND BARLEY PRODUCTS\*

(SPECIFIED PERIODS)

MILLION BUSHEL  
70 —

MILLION BUSHEL  
— 70



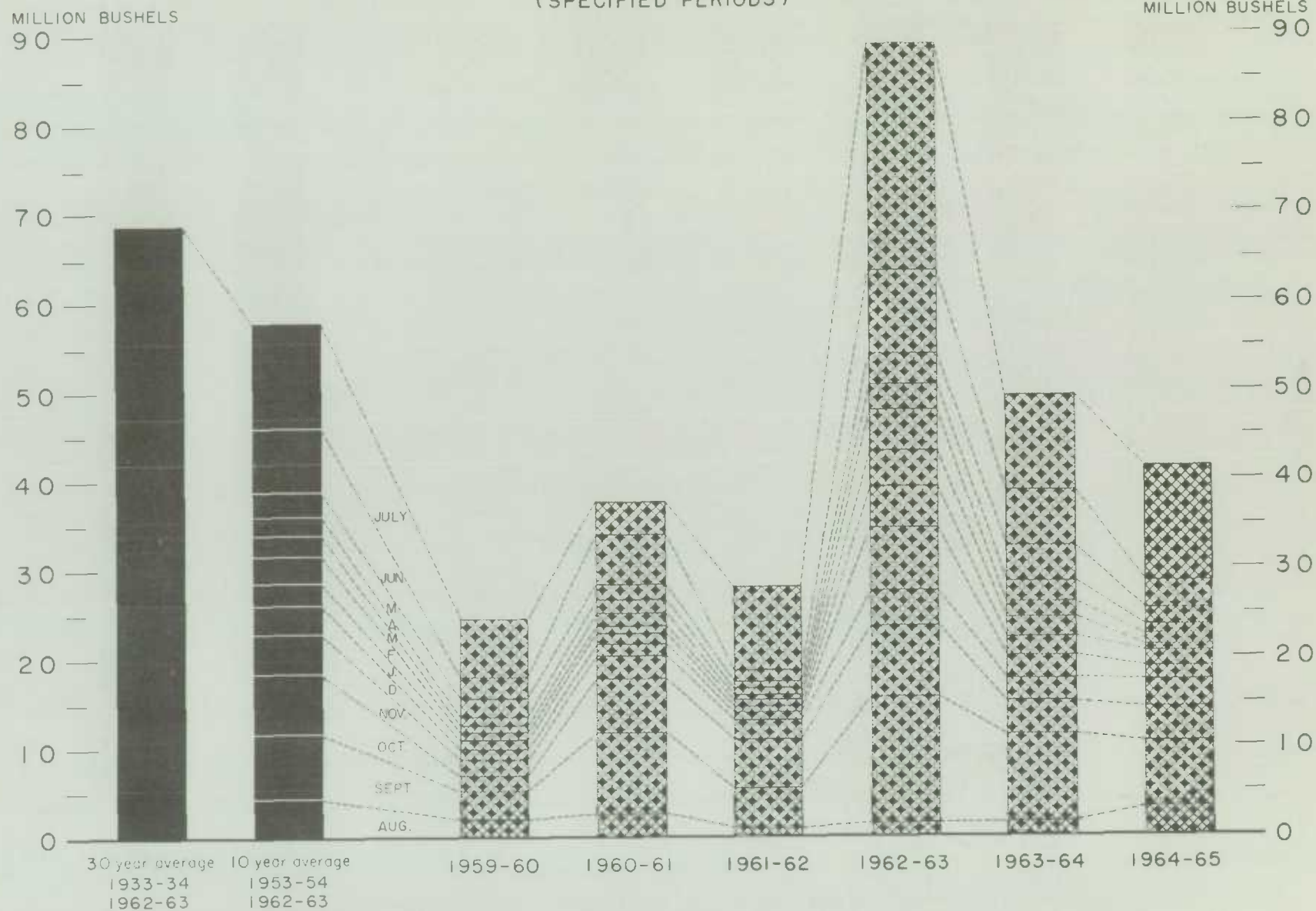
\*In terms of grain equivalent.

\*\*Preliminary.

Agriculture Division D. B. S.



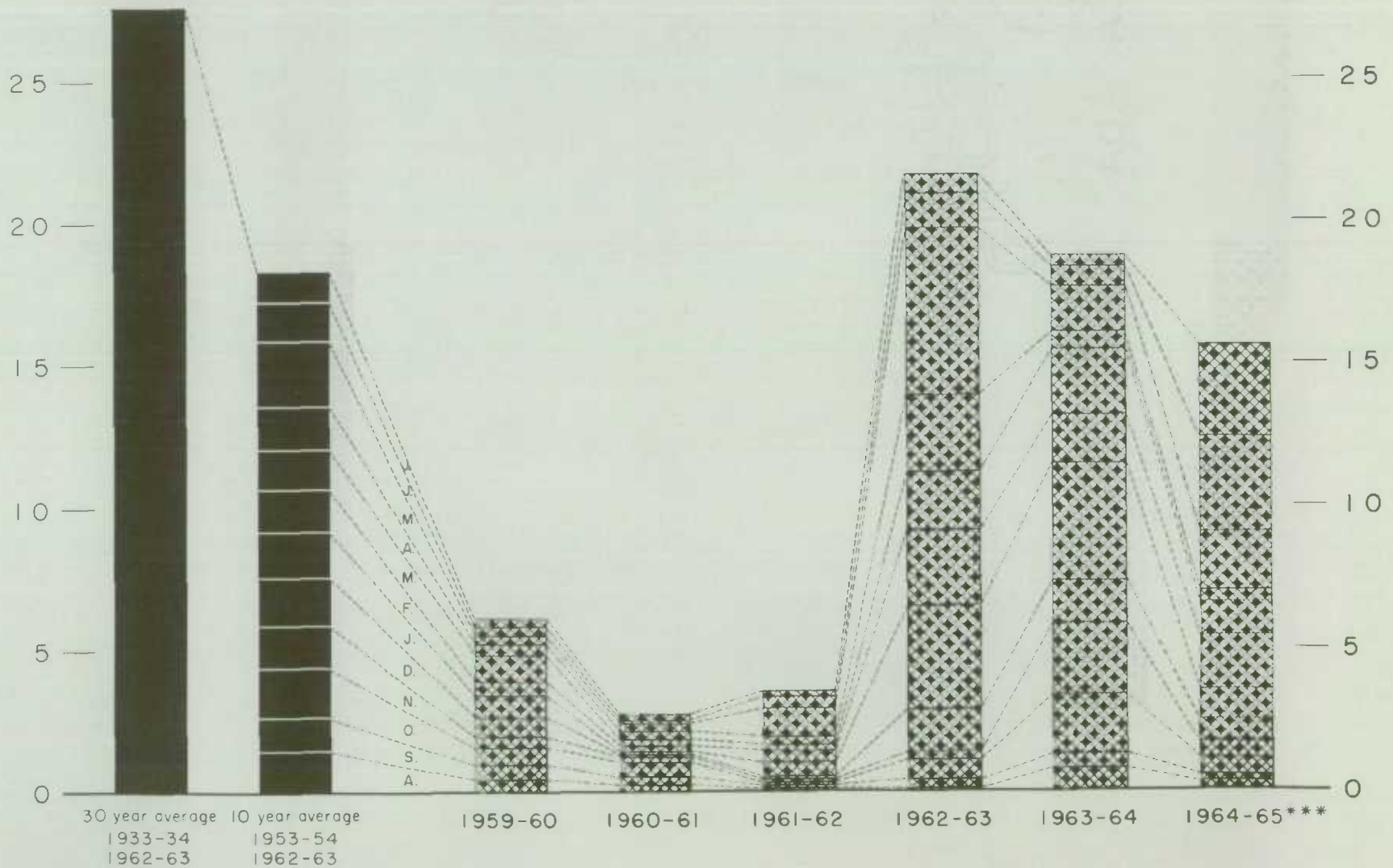
# FARMERS' MARKETINGS OF OATS, PRAIRIE PROVINCES (SPECIFIED PERIODS)



# EXPORTS OF CANADIAN OATS\* AND OAT PRODUCTS\*\* (SPECIFIED PERIODS)

MILLION BUSHELS  
30 —

MILLION BUSHELS  
— 30



\* Beginning with 1960-61 includes relatively small quantity of bagged seed.

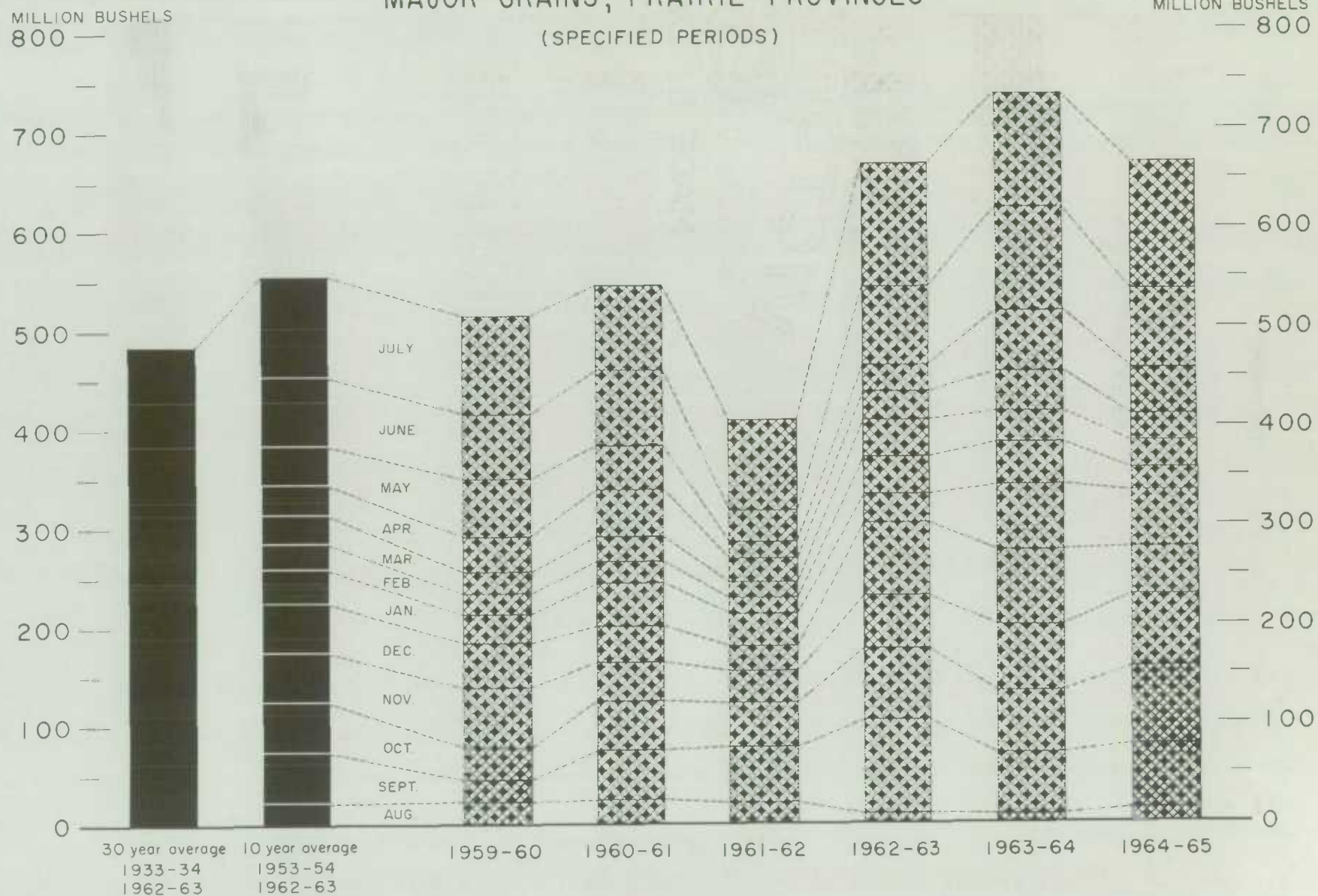
\*\* In terms of grain equivalent.

\*\*\* Preliminary.

Agriculture Division D.B.S.



# FARMERS' MARKETINGS OF CANADA'S FIVE MAJOR GRAINS\*, PRAIRIE PROVINCES



\*Wheat, oats, barley, rye and flaxseed.

Agriculture Division D.B.S.

# EXPORTS OF CANADA'S FIVE MAJOR GRAINS AND PRODUCTS\*

(SPECIFIED PERIODS)

MILLION BUSHELS

700 —

600 —

500 —

400 —

300 —

200 —

100 —

0

MILLION BUSHELS

— 700

— 600

— 500

— 400

— 300

— 200

— 100

0

30 year average 10 year average

1933-34 1953-54

1962-63 1962-63

1959-60

1960-61

1961-62

1962-63

1963-64

1964-65\*\*

JULY

JUNE

MAY

APR.

MAR.

FEB.

JAN.

DEC.

NOV.

OCT.

SEPT.

AUG.

\* Wheat, bagged seed wheat, and wheat flour; oats, bagged seed oats, and oatmeal and rolled oats; barley, malt and pot and pearl; rye and flaxseed.

\*\* Preliminary

Agriculture Division D.B.S.



Cumulative Exports of Canadian Wheat (1) by Destination - Concluded

Destination	August 1964 - July 1965			Total
	Wheat (Except Durum)	Durum Wheat	Total Wheat	Same Period Last Year (2)
bushels				
<u>Asia</u>				
Burma .....	171,464	-	171,464	78,931
China, Communist .....	50,398,823	11,971,379	62,370,202	41,286,001
Hong Kong .....	905,147	-	905,147	667,706
India .....	7,266,240	-	7,266,240	721,373
Israel .....	529,200	-	529,200	1,603,056
Japan .....	50,078,913	46,297	50,125,210	49,726,319
Korea .....	-	-	-	511,467
Kuwait .....	350,000	-	350,000	-
Malaysia .....	929,041	-	929,041	453,413
Pakistan .....	3,199,467	-	3,199,467	354,984
Philippines .....	6,517,508	-	6,517,508	7,300,821
Saudi Arabia .....	590,299	-	590,299	782,686
Taiwan .....	699,887	-	699,887	411,061
Totals .....	121,635,989	12,017,676	133,653,665	103,897,818
<u>Oceania</u>				
United States Oceania .....	75,898	-	75,898	461,514
<u>Western Hemisphere</u>				
Barbados .....	5,119	-	5,119	100
Colombia .....	367,454	-	367,454	-
Cuba .....	8,120,779	-	8,120,779	7,454,393
Dominican Republic .....	704,386	-	704,386	851,741
Ecuador .....	1,370,128	-	1,370,128	1,087,114
El Salvador .....	776,516	-	776,516	1,018,382
Guatemala .....	391,699	16,667	408,366	275,000
Honduras Republic .....	53,200	-	53,200	-
Jamaica .....	6,646	-	6,646	10,222
Nicaragua .....	504,746	-	504,746	-
Panama .....	-	-	-	78,400
Peru .....	937,813	-	937,813	730,614
Venezuela .....	9,121,671	-	9,121,671	7,903,550
United States Domestic (5) .	-	-	-	1,025,859
Totals .....	22,360,157	16,667	22,376,824	20,435,375
Sub-totals,				
All Countries .....	332,604,222	34,135,440	366,739,662	536,725,518
Bagged seed (3) .....			1,310,493	2,911,963
Totals, All Countries .	332,604,222	34,135,440	368,050,155	539,637,481

(1) Overseas clearances as reported by the Statistics Branch, Board of Grain Commissioners for Canada, for all countries except the United States. Excluding bagged seed. (2) Revised. (3) Compiled from Canadian Customs returns, 1963-64 adjusted for time lag. (4) Revisions in data for the previous month have been taken into account in the August-July cumulative totals. (5) Compiled from returns of Canadian elevator licensees and shippers and advice from American grain correspondents.

Customs Exports of Canadian Wheat Flour by Countries of Consignment

Destination	April 1965 (1)	July 1965 (2)	August-July	
			1964-65 (2)	1963-64 (1)
bushels				
<u>Western Europe</u>				
<u>EEC</u>				
Belgium				
and Luxembourg ...	-	-	142,501	213,185
Italy .....	460	-	7,245	805
Netherlands .....	1,948	1,518	7,314	5,754
Sub-totals ....	2,408	1,518	157,060	219,744
<u>Other Western Europe</u>				
Britain .....	837,110	725,141	9,732,843	11,876,970
Denmark .....	-	920	2,760	4,936
Gibraltar .....	-	-	2,622	31,944
Greece .....	2,027	1,523	18,504	16,100
Iceland .....	-	-	3,220	4,995
Norway .....	-	-	115	115
Portugal .....	13,448	21,001	125,738	109,692
Sweden .....	506	-	1,771	1,265
Switzerland .....	27	-	28	-
Sub-totals .....	853,118	748,585	9,887,601	12,046,017
Totals .....	855,526	750,103	10,044,661	12,265,761
<u>Eastern Europe</u>				
U.S.S.R. (Russia) ....	-	-	1,729,796	22,174,622
<u>Africa</u>				
Algeria .....	2,300	-	-	-
Angola .....	-	2,185	7,406	5,750
Cameroun Republic ....	1,610	5,152	40,473	-
British Africa nes ...	-	-	-	25,185
Congo-Leopoldville ...	29,900	-	139,787	56,925
Ethiopia .....	-	-	230	253
French Africa nes ....	1,564	4,901	25,378	-
Gambia .....	-	2,070	65,168	8,381
Ghana .....	1,840	133,092	1,708,691	1,060,459
Guinea Republic .....	-	-	920	-
Ivory Coast Republic..	-	-	3,565	2,990
Liberia .....	736	6,773	87,733	61,447
Malawi .....	5,373	2,558	21,082	-
Mozambique .....	2,758	2,999	40,098	33,578
Nigeria .....	288	1,918	8,128	18,044
Nyasaland .....	-	-	6,693	25,725
Portuguese Africa nes.	9,718	19,320	117,974	76,038
Rhodesia .....	1,150	-	3,450	4,830
Sierra Leone .....	15,882	58,938	545,174	453,123
Tanganyika .....	-	-	-	10,925
Tanzania .....	-	-	2,300	-
Togo .....	-	13,547	163,634	150,850
Totals .....	73,119	253,453	2,987,884	1,994,503
<u>Asia</u>				
Aden .....	3,965	6,215	32,375	-
British Middle East nes	-	-	22,153	38,419
Burma .....	-	-	159,043	76,404
Ceylon .....	-	-	586,552	1,068,596
Hong Kong .....	37,893	48,118	680,678	846,844
Indonesia .....	-	-	16,693	126,224
Iran .....	-	632	2,463	4,198



Customs Exports of Canadian Wheat Flour by Countries of Consignment

Destination	April 1965 (1)	July 1965 (2)	August-July	
			1964-65 (2)	1963-64 (1)
bushels				
<u>Asia (concluded)</u>				
Japan .....	4,255	16,312	46,745	85,284
Jordan .....	-	-	9,998	1,122
Kuwait .....	-	310	13,016	31,407
Lebanon .....	-	-	38,788	274,834
Malaysia .....	14,313	20,261	367,193	619,699
Philippines .....	-	-	978	7,590
Portuguese Asia .....	3,036	-	13,165	21,344
Qatar .....	-	-	230	1,068
Saudi Arabia .....	-	-	3,646	6,118
Syria .....	-	-	708	1,410
Thailand .....	18,515	22,543	379,440	363,943
Viet-Nam .....	115,800	-	115,800	43,776
Totals .....	197,777	114,391	2,489,664	3,618,280
<u>Oceania</u>				
Australia .....	-	-	-	28
Fiji .....	1,955	978	7,395	6,394
French Oceania .....	-	-	1,161	1,426
United States Oceania ..	-	4,025	12,420	1,881
Totals .....	1,955	5,003	20,976	9,729
<u>Western Hemisphere</u>				
Argentina .....	-	-	690	-
Bahamas .....	25,762	25,673	303,209	306,171
Barbados .....	25,359	12,174	184,380	165,747
Bermuda .....	10,193	7,340	123,579	121,346
British Guiana .....	4,683	4,262	53,861	38,932
British Honduras .....	5,918	3,937	43,711	39,678
Chile .....	-	-	920	5,778
Colombia .....	-	-	-	1,164
Costa Rica .....	44,735	61,594	865,695	653,591
Cuba .....	2,297,626	3,082,487	6,530,261	7,355,662
Dominican Republic .....	-	154,100	226,044	64,772
El Salvador .....	-	460	2,422	12,489
French Guiana .....	460	-	460	-
French West Indies .....	1,346	1,369	8,087	2,185
Guatemala .....	5,635	690	37,902	15,879
Haiti Republic .....	460	-	22,421	110,290
Honduras Republic .....	3,243	6,870	50,437	64,540
Jamaica .....	100,740	99,088	1,631,666	1,677,827
Leeward and Windward Islands .....	102,396	113,724	1,029,993	1,052,606
Netherlands Antilles ..	26,218	20,700	261,312	152,488
Nicaragua .....	-	-	1,849	276,851
Panama .....	3,620	4,027	80,636	155,395
Peru .....	1,840	460	77,328	63,876
St. Pierre and Miquelon	3,218	66	20,001	20,803
Surinam .....	1,380	9,764	76,457	73,648
Trinidad and Tobago ...	173,250	107,525	1,449,170	1,466,475
Venezuela .....	-	115	1,150	230
United States .....	80,787	80,548	1,043,843	948,832
Totals .....	2,918,869	3,796,973	14,127,484	14,847,255
Totals,				
All Countries ..	4,047,246	4,919,923	31,400,465	54,910,150

nes - not elsewhere specified.

(1) In terms of wheat equivalent. Adjusted to remove effect of time lag in the returns made by Customs. Conversion rate: 2.3 bushels per cwt. (2) In terms of wheat equivalent. Preliminary and unadjusted for time lag. Conversion rate: 2.3 bushels per cwt.

Initial Payment  
to Producers

The Canadian Wheat Board in its Instructions to the Trade No. 17 announced the fixed minimum carlot prices for wheat basis in store Fort William-Port Arthur or Vancouver. The amount to be paid in respect of wheat of the grade No. 1 Northern was fixed by Order-in-Council P.C. 1965 - 1300 of the 16th day of July, 1965. The amount to be paid in respect of each other grade of wheat referred to in the following table was fixed by the Board and approved by Order-in-Council P.C. 1965-1382 of the 28th day of July, 1965, pursuant to the Canadian Wheat Board Act, as amended.

Canadian Wheat Board Price List for Specified Grades of Wheat, Crop Year 1965-66  
(In Carload Lots, Basis in Store Fort William-Port Arthur or Vancouver)

Grade	Straight	Tough	Damp
dollars per bushel			
No. 1 Hard .....	1.50	1.46	
No. 1 Northern .....	1.50	1.46	1.34
No. 2 Northern .....	1.46	1.42	1.30
No. 3 Northern .....	1.42	1.38	1.26
No. 4 Northern .....	1.35	1.31	1.19
No. 5 Wheat .....	1.21	1.17	1.05
No. 6 Wheat .....	1.17	1.13	1.03
Feed Wheat .....	1.13	1.09	.99
No. 4 Special .....	1.35	1.31	1.19
No. 5 Special .....	1.21	1.17	1.05
No. 6 Special .....	1.17	1.13	1.03
No. 1 C.W. Amber Durum .....	1.50	1.46	1.34
No. 2 C.W. Amber Durum .....	1.46	1.42	1.30
No. 3 C.W. Amber Durum .....	1.42	1.38	1.26
Extra No. 4 C.W. Amber Durum .....	1.42	1.38	1.26
No. 4 C.W. Amber Durum .....	1.35	1.31	1.19
No. 5 C.W. Amber Durum .....	1.21	1.17	1.05
No. 6 C.W. Amber Durum .....	1.17	1.13	1.03
No. 1 C.W. Garnet .....	1.35	1.31	1.19
No. 2 C.W. Garnet .....	1.30	1.26	1.14
No. 3 C.W. Garnet .....	1.25	1.21	1.09
No. 4 C.W. Garnet .....	1.19	1.15	1.03
No. 1 Alberta Red Winter .....	1.34	1.30	1.18
No. 2 Alberta Winter .....	1.29	1.25	1.13
No. 3 Alberta Winter .....	1.23	1.19	1.07
No. 4 Alberta Winter .....	1.17	1.13	1.01
No. 1 Soft White Spring .....	1.40	1.36	1.24
No. 2 Soft White Spring .....	1.37	1.33	1.21
No. 3 Soft White Spring .....	1.33	1.29	1.17
No. 4 Soft White Spring .....	1.30	1.26	1.14
No. 1 Mixed Wheat .....	1.21	1.17	1.07
No. 2 Mixed Wheat .....	1.18	1.14	1.04
No. 3 Mixed Wheat .....	1.18	1.14	1.04
No. 4 Mixed Wheat .....	1.13	1.09	.99
No. 5 Mixed Wheat .....	1.21	1.17	1.07
No. 6 Mixed Wheat .....	1.18	1.14	1.04
No. 1 C.W. Mixed Grain .....	1.08	1.04	.94



Canadian Wheat Board Weekly Average Cash Wheat Prices  
Basis in Store Fort William-Port Arthur

Class and Grade	Week Ending			
	August 6	August 13	August 20	August 27
	cents and eighths per bushel			
<u>Initial Payment to Producers</u>				
1 Northern .....	150	150	150	150
2 Northern .....	146	146	146	146
3 Northern .....	142	142	142	142
4 Northern .....	135	135	135	135
5 Wheat .....	121	121	121	121
6 Wheat .....	117	117	117	117
Feed Wheat .....	113	113	113	113
1 C.W. Garnet .....	135	135	135	135
2 C.W. Garnet .....	130	130	130	130
3 C.W. Garnet .....	125	125	125	125
1 Alberta Red Winter .....	134	134	134	134
2 Alberta Winter .....	129	129	129	129
3 Alberta Winter .....	123	123	123	123
1 C.W. Amber Durum .....	150	150	150	150
2 C.W. Amber Durum .....	146	146	146	146
3 C.W. Amber Durum .....	142	142	142	142
<u>International Wheat Agreement</u> <u>and Domestic Sales</u>				
1 Northern .....	193/2	193/2	193/2	193/2
2 Northern .....	190/2	190/2	190/2	190/2
3 Northern .....	183/2	183/2	183/2	183/2
4 Northern .....	178/2	178/2	178/2	178/2
5 Wheat .....	173/2	173/2	173/2	173/2
6 Wheat .....	171/2	171/2	171/2	171/2
Feed Wheat .....	168/2	168/2	168/2	168/2
1 C.W. Garnet .....	179/2	179/2	179/2	179/2
2 C.W. Garnet .....	178/2	178/2	178/2	178/2
3 C.W. Garnet .....	177/2	177/2	177/2	177/2
1 Alberta Red Winter .....	179/2	179/2	179/2	179/2
2 Alberta Winter .....	178/2	178/2	178/2	178/2
3 Alberta Winter .....	177/2	177/2	177/2	177/2
1 C.W. Amber Durum .....	193/2	193/2	193/2	193/2
2 C.W. Amber Durum .....	190/2	190/2	190/2	190/2
3 C.W. Amber Durum .....	185/2	185/2	185/2	185/2
<u>Export - Class II</u>				
1 Northern .....	193/2	193/2	193/2	193/2
2 Northern .....	190/2	190/2	190/2	190/2
3 Northern .....	183/2	183/2	183/2	183/2
4 Northern .....	178/2	178/2	178/2	178/2
5 Wheat .....	173/2	173/2	173/2	173/2
6 Wheat .....	171/2	171/2	171/2	171/2
Feed Wheat .....	168/2	168/2	168/2	168/2
1 C.W. Garnet .....	179/2	179/2	179/2	179/2
2 C.W. Garnet .....	178/2	178/2	178/2	178/2
3 C.W. Garnet .....	177/2	177/2	177/2	177/2
1 C.W. Amber Durum .....	193/2	193/2	193/2	193/2
2 C.W. Amber Durum .....	190/2	190/2	190/2	190/2
3 C.W. Amber Durum .....	185/2	185/2	185/2	185/2

Canadian Wheat Board Weekly Average Cash Wheat Prices  
Basis in Store Vancouver

Class and Grade	Week Ending			
	August 6	August 13	August 20	August 27
	cents and eighths per bushel			
<u>Initial Payment to Producers</u>				
1 Northern .....	150	150	150	150
2 Northern .....	146	146	146	146
3 Northern .....	142	142	142	142
4 Northern .....	135	135	135	135
5 Wheat .....	121	121	121	121
6 Wheat .....	117	117	117	117
Feed Wheat .....	113	113	113	113
1 C.W. Garnet .....	135	135	135	135
2 C.W. Garnet .....	130	130	130	130
3 C.W. Garnet .....	125	125	125	125
1 Alberta Red Winter .....	134	134	134	134
2 Alberta Winter .....	129	129	129	129
3 Alberta Winter .....	123	123	123	123
1 C.W. Amber Durum .....	150	150	150	150
2 C.W. Amber Durum .....	146	146	146	146
3 C.W. Amber Durum .....	142	142	142	142
<u>International Wheat Agreement</u> <u>and Domestic Sales</u>				
1 Northern .....	197	197	197	197
2 Northern .....	192	192	192	192
3 Northern .....	187	187	187	187
4 Northern .....	179	179	179	179
5 Wheat .....	174	174	174	174
6 Wheat .....	171	171	171	171
Feed Wheat .....	168	168	168	168
1 C.W. Garnet .....	179	179	179	179
2 C.W. Garnet .....	178	178	178	178
3 C.W. Garnet .....	177	177	177	177
1 Alberta Red Winter .....	179	179	179	179
2 Alberta Winter .....	178	178	178	178
3 Alberta Winter .....	177	177	177	177
<u>Export - Class II</u>				
1 Northern .....	197	197	197	197
2 Northern .....	192	192	192	192
3 Northern .....	187	187	187	187
4 Northern .....	179	179	179	179
5 Wheat .....	174	174	174	174
6 Wheat .....	171	171	171	171
Feed Wheat .....	168	168	168	168
1 C.W. Garnet .....	179	179	179	179
2 C.W. Garnet .....	178	178	178	178
3 C.W. Garnet .....	177	177	177	177
1 Alberta Red Winter .....	179	179	179	179
2 Alberta Winter .....	178	178	178	178
3 Alberta Winter .....	177	177	177	177



CANADIAN FLOUR MILLING SITUATION

**Production** Wheat flour production by Canadian mills during July 1965 amounted to 3,232,000 hundredweight, representing an increase of 2 per cent above the June 1965 output of 3,153,000 hundredweight, but 17 per cent lower than the July 1964 figure of 3,901,000 hundredweight and 1 per cent less than the ten-year (1955-64) average production for the month of July of 3,279,000 hundredweight. Mills reporting operations during July 1965 had a total rated capacity of 168,000 hundredweight per 24-hour day and on the basis of a 26-day working period 73.8 per cent of this rated capacity was effective.

Wheat milled for flour during July 1965 amounted to 7,229,000 bushels, 2 per cent more than the 7,053,000 bushels milled during the preceding month but 17 per cent below the 8,721,000 bushels milled during July 1964. Of the wheat milled for flour during July 1965 some 6,426,000 bushels were Western Canadian spring wheat (other than Durum) while the remainder consisted of Ontario winter wheat (553,000 bushels); Durum (172,000 bushels); and all other (78,000 bushels).

**Exports** According to preliminary Customs returns, exports of Canadian wheat flour during July 1965 amounted to 2,139,000 hundredweight (some 4,920,000 bushels of wheat equivalent) representing an increase of 84 per cent greater than the 2,680,000 bushels exported during the previous month and 15 per cent above the adjusted July 1964 total of 4,275,000 bushels. Flour shipments during the month went to forty-eight countries with exports to Cuba amounting to 3,082,000 bushels of wheat equivalent and accounting for 63 per cent of the July 1965 total. Shipments to Britain amounted to 725,000 bushels of wheat equivalent and accounted for 15 per cent of the total. Other principal markets for Canadian wheat flour during the month, with shipments in thousands of bushels of wheat equivalent were as follows: Dominican Republic, 154; Ghana, 133; Leeward and Windward Islands, 114; Trinidad and Tobago, 108; Jamaica, 99; and United States, 81.

Wheat Milled for Flour, and Production and Exports of Wheat Flour, Canada

Crop Year	Wheat Milled for Flour	Wheat Flour	
		Production	Exports (1)
	bushels	cwt.	
1935-36—1939-40 average .....	67,845,114	29,405,451	9,603,941
1940-41—1944-45 average .....	99,704,638	43,908,245	23,699,546
1945-46—1949-50 average .....	107,330,372	47,011,540	25,819,721
1950-51—1954-55 average .....	100,446,328	43,847,894	21,812,041
1955-56—1959-60 average .....	90,148,211	39,752,589	16,349,156
1960-61 .....	89,731,155	39,914,644	15,513,836
1961-62 .....	88,240,580	39,539,651	13,892,676
1962-63 .....	78,789,332	35,505,220	11,854,458
1963-64 .....	111,670,577	50,103,569	23,873,978
1964-65 (2)			
August .....	7,027,526	3,144,719	1,770,810
September .....	7,500,251	3,372,989	927,240
October .....	7,609,236	3,389,458	885,628
November .....	7,518,363	3,385,358	1,097,107
December .....	7,075,639	3,186,560	1,096,365
January .....	6,613,815	2,974,051	1,052,409
February .....	7,680,179	3,455,461	579,202
March .....	7,589,178	3,407,616	956,749
April .....	7,419,350	3,319,301	775,313
May .....	6,884,028	3,082,589	1,207,250
June .....	7,052,632	3,152,833	1,165,206
July .....	7,228,878	3,231,879	2,139,405
Totals .....	87,199,075	39,102,814	13,652,684
Same months 1963-64 (3) .....	111,670,577	50,103,569	23,873,978

(1) Based on Customs returns. Exports for the crop years 1945-46—1963-64 revised to remove effect of time lag in the returns made by Customs. (2) Subject to revision. (3) Revised figures.

UNITED STATES SITUATION

Supply Position Total domestic supplies of wheat in the United States for the 1965-66 crop year are currently placed at 2,195.1 million bushels, slightly above the previous year's total of 2,191.7 million, with an increase in production more than offsetting a decline in carryover stocks. The 818.9 million bushels carried over at July 1, 1965 were the lowest stocks in twelve years and the fourth consecutive decline since July 1, 1961. In addition, current crop year domestic supplies may be supplemented by imports of about 2 million bushels.

Total disappearance in 1965-66 is currently estimated at about 1,395 million bushels compared with some 1,374 million the previous year. Estimated domestic requirements are expected to increase to 670 million while exports are expected to account for 725 million. Food use of wheat in 1965-66 is estimated at 510 million bushels, about the same as a year earlier and in line with the food-use trend of recent years. The quantity of wheat to be used for feeding purposes in 1965-66 is currently estimated at 95 million bushels compared with 72 million the previous year. Use of wheat for seed in 1965-66 is placed at 65 million bushels, about the same as in 1964-65. Reflecting some increase in commercial exports and continued large Food for Peace shipments, the level of wheat and flour exports is expected to be well maintained in 1965-66. With total disappearance of wheat slightly larger than the current crop forecast, carryover stocks on July 1, 1966, would record a moderate decline.

United States Wheat Supplies

Item	1964-65(1)	1965-66(2)
	million bushels	
Carryover at beginning of crop year (July 1) .....	901.2	818.9
Production .....	1,290.5	1,376.2
Total estimated domestic supplies .....	2,191.7	2,195.1
Imports of wheat and wheat flour in terms of wheat for domestic use, July .....	(3)	0.1
Total estimated supplies (4) .....	2,191.7	2,195.2
Less estimated domestic requirements for crop year (5) ..	655.6	670.0
Available for export and for carryover .....	1,536.1	1,525.2
Deduct:		
Exports of wheat as grain, July .....	52.9	58.1
Exports of wheat flour in terms of wheat, July (6) ..	5.0	6.0
Total exports of wheat and wheat flour (7) .....	57.9	64.1
Balance on August 1 for export and for carryover .....	1,478.2	1,461.1

(1) Revised. (2) Preliminary. (3) Less than 50,000 bushels. (4) Excluding imports for August-June. (5) Includes shipments to United States Territories and wheat for military food use at home and abroad. (6) Flour exports exclude "Milled in bond". (7) These figures now include all shipments under relief programs which formerly were not available from Census data.



Exports of wheat, wheat flour and other products in terms of grain equivalent during July 1965 amounted to 64.1 million bushels, 11 per cent more than the 57.9 million exported during the same month last year. The balance remaining on August 1, 1965 for export and for carryover was estimated at 1,461.1 million bushels compared with 1,478.2 million on the same date a year ago.

1965 Wheat Crop  
Forecast 1,376  
Million Bushels

In a report released on August 10, the Crop Reporting Board of the United States Department of Agriculture stated that production of all wheat is estimated at 1,376 million bushels, 2 per cent more than a month ago and 7 per cent above last year. The yield per harvested acre is indicated at 27.6 bushels, the highest of record.

Production of winter wheat is forecast at 1,048 million bushels, down 2 per cent from the July 1 forecast, but 2 per cent above 1964 and 8 per cent above average. A heavy infestation of black stem rust on crops extending from northern Kansas through Nebraska, the Dakotas and into Wyoming caused most of the decline. However, improved yields in the Pacific Northwest tempered the drop in the U.S. estimate. The U.S. yield per harvested acre is now indicated at 27.7 bushels, compared with 27.2 bushels in 1964 and the average of 25.6 bushels.

Harvest of the 1965 crop had lagged somewhat behind the usual pace but made good progress during July and by August 1 was nearly complete except in the more northerly States. Combining was nearing completion in the northern Plains but just starting in Montana. In the Northwest, harvest was active at lower elevations. Black stem rust, favoured by wet and cool July weather, reached epidemic proportions in Nebraska and South Dakota, sharply reducing yields and test weights. On August 1, the Nebraska yield was down 3 bushels from July 1 with the South Dakota yield showing a 9-bushel decline. Late maturing fields in northern Kansas, northern Colorado and Wyoming also suffered lower yields because of the rust. Rust also was prevalent in Montana by late July. Yields in the central Corn Belt States were generally below earlier expectations. Harvest was virtually complete in this area by August 1, except in Michigan where about one-fourth of the crop remained to be combined. July weather was favourable for development of the Pacific Northwest crop and prospects increased 5 per cent during July. Harvest was just starting in Idaho but was active at lower elevations in Oregon and Washington.

Production of durum wheat is expected to total 71 million bushels. This would be 8 per cent above the 1964 production and 81 per cent above average. The indicated yield of 32.1 bushels per acre is 2.4 bushels above the record high established in 1962. Growing conditions during July were excellent and yield prospects improved in all major States. Cool weather slowed maturity of the crop but has been beneficial for filling of heads. Sufficient soil moisture is available in all States. Although some rust is present in Montana fields, no serious damage has been reported. Harvesting in Minnesota began about August 1. Production of spring wheat other than durum is forecast at 257 million bushels, 15 per cent above the July 1 forecast, 29 per cent more than produced in 1964, and 40 per cent above average. The indicated yield of 26.4 bushels per acre is 4.5 bushels above last year, but 0.3 bushel below the 1962 record high. Excellent weather conditions during July improved yield prospects in all major States. With cooler weather prevailing, the crop is maturing more slowly than normal. Harvest is well along in eastern Colorado, but little grain has been combined in other States. Although leaf and stem rust were reported in Montana, North Dakota, South Dakota, and Minnesota, and lesser amounts in Wyoming and Colorado, there has been no heavy damage, nor have yields been significantly affected. Adequate soil moisture and irrigation water supplies exist in all States.

Cash Wheat Prices on the Kansas City and Minneapolis Markets

No. 2 Hard Winter, Kansas City			No. 1 Northern Spring, Minneapolis		
Date	Price		Date	Price	
	cents per bushel			cents per bushel	
August 2, 1965 .....	155		August 2, 1965 .....	166 1/2 - 189 1/2	
3 .....	152	- 159	3 .....	165 1/4 - 190 1/4	
4 .....	153 1/2 - 155 1/2		4 .....	166 3/8 - 191 3/8	
5 .....	152 3/4 - 159 1/4		5 .....	165 5/8 - 190 5/8	
6 .....	153 1/2 - 159		6 .....	166 1/2 - 191 1/2	
9 .....	155 3/4 - 166 1/4		9 .....	168 - 193	
10 .....	155 3/4 - 164		10 .....	163 3/4 - 194 3/4	
11 .....	162 1/4		11 .....	170 3/4 - 196 3/4	
12 .....	158 - 160 1/2		12 .....	170 - 196	
13 .....	157 1/4 - 161 1/4		13 .....	170 1/4 - 196 1/4	
16 .....	164		16 .....	163 1/4 - 192 1/4	
17 .....	158 3/4 - 177 3/4		17 .....	163 1/2 - 192 1/2	
18 .....	154 3/4 - 189 1/2 (1)		18 .....	163 3/8 - 192 3/8	
19 .....	153 3/4 - 188 1/2 (1)		19 .....	163 3/8 - 192 3/8	
20 .....	158 3/4 - 165 1/4		20 .....	163 1/2 - 192 1/2	
23 .....	157		23 .....	164 5/8 - 189 5/8	
24 .....	161 3/4		24 .....	164 1/4 - 191 1/4	
25 .....	155 3/4 - 162 3/4		25 .....	164 3/8 - 191 3/8	
26 .....	156 5/8 - 165 1/2		26 .....	165 1/2 - 192 1/2	
27 .....	157 - 169 1/4		27 .....	165 3/4 - 191 3/4	
30 .....	162 1/2 - 168		30 .....	166 1/2 - 193 1/2	
31 .....	165 1/4 - 166 3/4		31 .....	169 1/4 - 197 1/4	

(1) Nominal.

Chicago Wheat Futures, High Points of Closing

Date	September	December	March	May	July
	cents and eighths per bushel				
August 2, 1965 .....	147/4	152/3	155/3	154/3	146/2
3 .....	148/2	153/2	155/7	154/6	146/6
4 .....	149/2	154/1	156/5	154/5	146
5 .....	149/4	154/1	156/1	154/5	145/7
6 .....	150/4	154/3	156/3	156/4	146/4
9 .....	151/6	155/6	157/7	156	147/6
10 .....	151/6	156	157/7	156/1	148/2
11 .....	154/6	158/3	160	158/2	148/4
12 .....	153/3	156/7	158/5	156/7	147/5
13 .....	153/5	157/7	159/7	158	148/5
16 .....	153/6	158/1	160/2	158/1	146/6
17 .....	153/7	157/3	159/5	157/4	146
18 .....	151/3	155/4	157/5	155/7	145/3
19 .....	151/1	154/7	157	154/7	145
20 .....	152	156/4	158/7	156/5	145/6
23 .....	151/6	155/6	158/1	155/7	144/6
24 .....	152/5	156/4	158/7	156/5	145/6
25 .....	151/4	155/6	157/7	155/7	145/3
26 .....	152/4	156/4	158/6	156/4	145/7
27 .....	154/2	158/2	160/2	157/6	146/2
30 .....	154/6	158/6	160/5	158	146/2
31 .....	155/4	159/4	161/2	158/5	146/4



AUSTRALIAN SITUATION

Supplies Set      A decline in carryover stocks was more than offset by another record  
New Record      crop and as a result total estimated supplies of wheat in Australia  
for the 1964-65 (December-November) crop year are placed at an all-time high of 390.5 million bushels, 10 per cent greater than the previous year's peak total of 354.5 million. The current production, of 370.0 million bushels, represented a substantial increase over the 1963-64 level of 331.0 million and was the third consecutive year in which a record outturn was harvested. Carryover stocks recorded only a moderate decline, from 23.5 million at December 1, 1963 to 20.5 million at the same date in 1964. After deducting 97.5 million for anticipated domestic requirements, an estimated 293.0 million are available for export and for carryover in 1964-65, an increase of 7 per cent over the 273.9 million the previous year.

Combined exports of wheat as grain and wheat flour in terms of grain equivalent during the period December 1-July 31 of the current Australian crop year amounted to 191.3 million bushels in contrast to 199.6 million exported during the corresponding period of 1963-64. The balance remaining on August 1, 1965 for export and for carryover, at 101.7 million bushels, exceeded by 37 per cent the comparable 1964 total of 74.3 million.

Australian Wheat Supplies

Item	1963-64 (1)	1964-65 (2)
	million bushels	
Carryover, including flour as wheat, at beginning of crop year (December 1) .....	23.5	20.5
Production .....	331.0	370.0
Total estimated domestic supplies .....	354.5	390.5
Less estimated domestic requirements for crop year ....	80.6	97.5 (3)
Available for export and for carryover .....	273.9	293.0
Deduct:		
Exports of wheat as grain, December 1-July 31 .....	176.8	174.3
Exports of wheat flour in terms of wheat, December 1-July 31 .....	22.8	17.0
Total exports of wheat and wheat flour .....	199.6	191.3
Balance on August 1 for export and for carryover .....	74.3	101.7

(1) Revised. (2) Preliminary. (3) Revised upwards due to drought conditions and the need for wheat as livestock feed.

The following information relative to the Australian situation has been extracted from a report from Mr. D.I. Campbell, Assistant Commercial Secretary for Canada, Canberra, under date of August 18, 1965 and is reproduced with the permission of the Trade Commissioner Service, Department of Trade and Commerce.

Crop Position It is now probable that Australia's wheat crop for 1965-66 will reach 300 million bushels. This total will be greater than all years except 1962-63, 1963-64 and 1964-65. While New South Wales and Queensland are still affected by drought, Victoria is experiencing an average season, South Australia a good season and Western Australia an excellent season.

In New South Wales, serious drought exists in the north and north-west. The Department of Agriculture has estimated that 3.5 million acres were sown by the end of July of which only 170,000 acres were in the north. On the assumption of normal rainfall in August, the total area of wheat expected to be sown in the state for all purposes was estimated at not less than 4.5 million acres. Last year there was a record planting of 5.8 million acres.

In Queensland the position in the grain growing regions is satisfactory with some exceptions in the areas adjacent to New South Wales. Estimated acreage of wheat, oats and barley is 1.3 million acres although the late season has resulted in a switch from wheat to barley.

Wheat Storage Wheat terminals capable of handling 200 million bushels have been announced for Sydney and Melbourne.

Exports of Australian Wheat and Wheat Flour in Terms of Wheat  
December 1-July 31, 1964-65 and Corresponding Period 1963-64

Destination	Wheat		Wheat Flour	
	1963-64	1964-65	1963-64	1964-65
thousand bushels				
<u>Western Europe</u>				
<u>EEC</u>				
Germany, Federal Republic .....	7,800	123	-	-
<u>Other Western Europe</u>				
Britain .....	16,867	15,081	1,128	1,177
Ireland .....	1,353	821	-	-
Malta .....	437	446	-	-
Norway .....	3,609	2,559	-	-
Others .....	-	-	1	1
Sub-totals .....	22,266	18,907	1,129	1,178
Totals .....	30,066	19,030	1,129	1,178
<u>Eastern Europe</u>				
U.S.S.R. (Russia) .....	47,882	33,453	6,614	-
<u>Africa</u>				
Kenya .....	-	41	-	-
Malawi .....	-	-	167	246
Mauritius .....	-	-	910	435
Portuguese East Africa .....	945	-	-	-
Rhodesia .....	2,240	2,323	-	-
Zanzibar .....	-	-	120	87
Others .....	37	9	46	70
Totals .....	3,222	2,373	1,243	838



Exports of Australian Wheat and Wheat Flour in Terms of Wheat  
December 1-July 31, 1964-65 and Corresponding Period 1963-64

Destination	Wheat		Wheat Flour	
	1963-64	1964-65	1963-64	1964-65
	thousand bushels			
<u>Asia</u>				
Aden .....	1,184	969	-	-
Aden and Aden I/T .....	-	-	952	983
Aden and Aden I/T Atta .....	-	-	496	378
Arabian Gulf .....	-	-	106	89
Arabian Gulf Atta .....	-	-	692	785
Brunei .....	-	-	13	6
Ceylon .....	7	11	4,312	7,202
China .....	59,051	70,595	-	-
Formosa .....	79	500	-	-
Hong Kong .....	1,456	1,254	78	57
India .....	7,021	11,915	-	-
Indonesia .....	-	-	154	101
Iran .....	580	6,480	-	-
Iraq .....	3,513	1,832	-	-
Japan .....	11,881	10,303	-	-
Korea, North .....	-	4,323	-	-
Kuwait .....	-	373	-	-
Lebanon .....	3,871	1,959	-	-
Pakistan .....	-	2,021	-	-
Philippines .....	242	(1)	1,362	253
Saudi Arabia .....	-	-	169	169
Thailand .....	321	301	364	237
<u>Malaysia</u>				
Malaya .....	25	1	1,798	1,685
Malaya Atta .....	-	-	66	56
Sabah .....	-	-	105	108
Sarawak .....	-	-	120	105
Singapore .....	1,527	2,694	1,101	438
Singapore Atta .....	-	-	6	1
Singapore A/C B.W.O. ....	-	-	33	34
Others .....	561	538	71	56
Totals .....	91,319	116,069	11,998	12,743
<u>Oceania</u>				
New Zealand .....	4,269	3,335	-	-
<u>Western Hemisphere</u>				
Peru .....	-	-	4	3
<u>Pacific Area and Sundries</u>				
Pacific Islands .....	44	37	1,487	1,791
Ships' Stores and Sundries .....	-	-	327	448
Totals .....	44	37	1,814	2,239
Totals, All Countries .....	176,800	174,300	22,800	17,000

(1) Less than 500 bushels.

ARGENTINE SITUATION

1964-65 Wheat Supplies  
Largest Since 1938-39

Reflecting the combined effect of substantially larger carryover stocks as well as a next-to-record production, total supplies of wheat in Argentina for the 1964-65 (December-November) crop year are estimated at some 459.3 million bushels, 32 per cent more than the 1963-64 figure of 348.7 million and the largest total since 1938-39 when wheat supplies were close to 450 million bushels. Current crop year supplies consist of the December 1 carryover of 88.2 million, in contrast to only 25.9 million the year before, and the 1964-65 revised production of 371.1 million, the second largest wheat crop ever harvested in Argentina. After making an allowance of 128.6 million bushels for anticipated domestic requirements, an estimated 330.7 million are available for export and for carryover in 1964-65, 53 per cent greater than the 215.9 million the previous year.

December-July Exports  
54 Per Cent Above Same  
Period of Previous Year

Exports of wheat and wheat flour in terms of grain equivalent during December 1964-July 1965 amounted to 134.8 million bushels, exceeding by 52 per cent the total of 88.7 million exported during the same months in 1963-64. The balance remaining on August 1, 1965 for export and for carryover was estimated at 195.9 million bushels, in sharp contrast to the August 1, 1964 figure of 127.2 million.

Argentine Wheat Supplies

Item	1963-64 (1)	1964-65 (2)
	million bushels	
Carryover at beginning of crop year (December 1) (3) ..	25.9	88.2
Production .....	322.8	371.1 (4)
Total estimated domestic supplies .....	348.7	459.3
Less estimated domestic requirements for crop year ....	132.8	128.6
Available for export and for carryover .....	215.9	330.7
Deduct:		
Exports of wheat as grain, December-July .....	88.3	134.3
Exports of wheat flour in terms of wheat, December-July .....	0.4	0.5
Total exports of wheat and wheat flour .....	88.7	134.8
Balance on August 1 for export and for carryover .....	127.2	195.9

(1) Revised. (2) Preliminary. (3) Includes allowances for farm stocks. (4) Third official estimate.

The following account of the Argentine situation has been extracted from a report from Mr. H.E. Ryan, Assistant Commercial Secretary (Agriculture), Buenos Aires, under date of September 3, 1965 and is reproduced with the permission of the Trade Commissioner Service, Department of Trade and Commerce. Where possible, conversions to Canadian measures and currency have been made for the convenience of our readers.



Weather  
and Crops

During July, the weather in Argentina changed rapidly with cold fronts covering most of the country, causing considerable damage to fruit and horticultural crops. However, this did not appear to have a great effect on wheat and other grains, although the flax crop, especially in Entre Rios (where heavy frosts occurred), may have suffered from the frosts and from over-grazing, due to lack of pastures.

Wheat

By the end of July, seeding was nearly completed in the northern wheat belt, late varieties were still being sown in the southern belt of Buenos Aires and La Pampa. In early August, the first official acreage forecast was published at 5,800,000 hectares (14.3 million acres), a decrease of 6.6 per cent from 1964-65 seeded area. This reduction was partly due to the lack of rainfall during May and early June which hindered soil preparation as well as the seeding of the crop.

As of the end of July, the National Grain Board had purchased 6,825,000 metric tons (250,773,000 bushels) of wheat, 225,000 tons (8,267,000 bushels) more than the previous month. On July 7, the Grain Board withdrew from the market after exporters had purchased approximately 90,000 tons (3,307,000 bushels), primarily for South American countries at a Board price of 824 pesos per 100 kilos (\$1.41 per bushel). After the Board suspended sales, exporters moved into the open market to obtain their supplies, and prices rose to 840 pesos (\$1.44 per bushel), free alongside Bahia Blanca. Sales to the Continent averaged US\$ 65.70 per metric ton (\$1.93 per bushel) c.i.f. August-December shipment. Italian shipments reached US\$ 66.00 per ton (\$1.94 per bushel), sales to Britain remained £ 25.5.0 per ton (\$2.07 per bushel) c.i.f., London.

Small lots of durum remained for sale, and the Board sold to exporters 15,000 tons (551,00 bushels) for Italy at 897.50 pesos per 100 kilos (\$1.54 per bushel) c.i.f. Durum prices for August-September shipments to Italy reached US\$ 69.50 per ton (\$2.04 per bushel), a small parcel to Sicily for November shipment reached US\$ 72.50 per ton (\$2.13 per bushel). With the sale of durum during the past weeks, stocks have now all been placed, and Argentina will remain out of the durum market until the new crop is harvested in late December.

Prices on the Buenos Aires Futures Market as of the end of July averaged 831 pesos (\$1.42 per bushel) for August delivery; 847 pesos (\$1.45 per bushel) for September delivery; and 865 pesos (\$1.48 per bushel) for October. At the end of August, futures prices were somewhat lower at 815 pesos (\$1.39 per bushel) for September delivery; 835 pesos (\$1.43 per bushel) for October, and 838 pesos (\$1.43 per bushel) for December delivery. On the Cereal Exchange, prices by the end of July averaged 820 pesos (\$1.40 per bushel) at Buenos Aires, and 800 pesos (\$1.37 per bushel) at southern ports. By the end of August, the prices had dropped slightly to 800 pesos (\$1.37 per bushel) in Buenos Aires, and 790 pesos (\$1.35 per bushel) in the southern terminals.

Shipments during the month of July totalled 640,223 tons (23,524,000 bushels). The major customers were: Mainland China, 235,322 tons (8,647,000 bushels); Brazil, 109,049 tons (4,007,000 bushels); Russia, 105,083 tons (3,861,000 bushels); and Britain, 45,397 tons (1,668,000 bushels). Shipments during 1964-65 as of the end of July equalled 3,654,581 tons (134,281,000 bushels), up substantially from the 2,401,928 tons (88,255,000 bushels) of last year. In mid-August, the National Grain Board announced a sale of 1.1 million tons (40,418,000 bushels) of wheat to Russia, shipments to be concluded before March, 1966.

The final production estimate for the 1964-65 crop has now been released by the Secretariat of Agriculture and Livestock at 10.1 million tons (371.1 million bushels). This is one of the highest levels in Argentine history, surpassed only by the 1938-39 crop of 10.3 million tons (378.5 million bushels). In fact, the trade estimated that the 1964-65 figure will exceed 11 million tons (404.2 million bushels), and if this proves to be the case, then Argentina will have had its largest crop in history.

Yields per hectare have increased substantially, with the 1938-39 crop harvested from 8,620,970 hectares (21.3 million acres), while the present crop was harvested from 6,207,300 hectares (15.3 million acres).

Argentine Wheat Exports December-July 1963-64 and 1964-65

Destination	1963-64	1964-65
	thousand bushels	
<u>Western Europe</u>		
<u>EEC</u>		
Belgium .....	909	2,467
France .....	2,649	5,087
Germany, Federal Republic .....	8,677	6,110
Italy .....	3,747	9,905
Netherlands .....	3,297	14,152
Sub-totals .....	19,279	37,721
<u>Other Western Europe</u>		
Britain .....	3,405	15,990
Norway .....	-	2,799
Portugal .....	-	1,443
Spain .....	14	2,629
Sweden .....	-	38
Switzerland .....	164	216
Sub-totals .....	3,583	23,115
Totals .....	22,862	60,836
<u>Eastern Europe</u>		
Czechoslovakia .....	982	-
Germany, East .....	646	114
Poland .....	415	-
U.S.S.R. (Russia) .....	354	4,453
Totals .....	2,397	4,567
<u>Africa</u>		
Angola .....	-	314
Mozambique .....	-	1,411
Nigeria .....	-	138
Total .....	-	1,863
<u>Asia</u>		
China, Communist .....	36,303	28,651
Cyprus .....	-	365
Japan .....	-	81
Israel .....	-	432
Lebanon .....	-	257
Singapore .....	-	16
Saudi Arabia .....	-	247
Totals .....	36,303	30,049



Argentine Wheat Exports December-July 1963-64 and 1964-65

Destination	1963-64	1964-65
	thousand bushels	
<u>Western Hemisphere</u>		
Barbados .....	-	6
Bolivia .....	73	763
Brazil .....	19,634	24,190
Chile .....	-	1,680
Colombia .....	-	817
Dominican Republic .....	-	154
Paraguay .....	785	83
Peru .....	6,199	8,249
Venezuela .....	-	1,025
Totals .....	26,691	36,967
Totals, All Countries .....	88,255	134,281

WHEAT SITUATION IN ITALY

The following account of the current crop situation in Italy has been extracted from a report by Miss M.D. Johnson, Commercial Assistant, Canadian Embassy, Rome, under date of July 30, 1965, and is reproduced with the permission of the trade Commissioner Service, Department of Trade and Commerce. Where possible, conversions from Italian to Canadian measures have been made and rounded for the convenience of our readers. Currency conversions have been made at the rate of 579.37 lire per Canadian dollar, the quotation in effect on August 19, 1965.

The total Italian wheat crop for the current year is unofficially predicted at between 9.1 and 9.2 million metric tons (334.4 and 338.0 million bushels), about 6.7 per cent higher than last year's 8.5 million tons (312.3 million bushels). Of this, at least 1.7 million tons (62.5 million bushels) will be durum wheat, compared to 1.4 million tons (51.4 million bushels) in 1964. No recent official crop predictions have been released. Stocks of wheat with the intervention organization totalled 13,912 metric tons (511,000 bushels) at the end of May 1965.

Imports of wheat during the first 4 months of 1965, compared with the same period in 1964, were:

Imports of Wheat, January-April, 1964 and 1965

Item	1964	1965
	thousand bushels	
Wheat excluding durum .....	8,138	8,556
Durum wheat .....	1,111	2,005
Totals, wheat .....	9,249	10,561

In both years the most important supplier of non-durum wheat was France with 152,636 metric tons (5,608,000 bushels), in 1965 and 78,181 tons (2,873,000 bushels) in 1964. Canada supplied 48,077 metric tons (1,767,000 bushels)

in 1965 and 44,180 tons (1,623,000 bushels) in 1964. Much of the wheat imported was to replace that used in the production of exported flour, semolina and pasta. These exports, during the first four months of 1965 and 1964 were:

Exports of Flour, Semolina and Pasta, January-April, 1964 and 1965

Item	1964	1965
	thousand bushels	
Wheat flour .....	1,680	3,482
Durum wheat semolina .....	8	24
Pasta .....	502	580
Totals .....	2,190	4,086

In June, as in previous years, the Interministerial Price Committee established intervention, target and threshold prices for the current crop year in accordance with EEC regulations. For wheat, excluding durum, 14 different basic intervention and target prices, according to areas, have been established (last year there were 10), whereas for durum wheat the areas established are 7, the same as for last year. The basic price ranges for this year and last year are given in the following table.

Intervention and Target Basic Prices

Product	Intervention prices range for		Target prices range for	
	1964-65	1965-66	1964-65	1965-66
dollars per bushel				
Wheat (excluding durum) .....	2.89 - 3.10	2.88 - 3.10	3.05 - 3.34	3.04 - 3.34
Durum wheat ** .....	3.43 - 4.02*	3.90 - 4.02*	3.38 - 4.20	3.85 - 4.20

\* This higher intervention price is comprehensive of production bonuses to farmers (applicable to certain areas), as provided by Common Market regulations.

\*\* Intervention and target prices are established for durum wheat of the "Cappelli" and similar varieties. A deduction of Lire 5,000 per ton (23 cents per bushel) is made for the "Grifoni" variety and of Lire 10,000 per ton (47 cents per bushel) for the "Marzuoli", "Timilie" and "Neri di Sicilia" varieties.

As in previous years the above basic prices are increased monthly by Lire 500 per ton (2 cents per bushel) with respect to wheat excluding durum and Lire 550 per ton (3 cents per bushel) with respect to durum wheat, starting August 1, 1965, and for 9 months.

Basic threshold prices have also been established for the current crop year, these are as follows:

Wheat excluding durum-\$3.31 per bushel (last year \$3.31)

Durum wheat -\$4.32 per bushel (last year \$4.46 initially, later reduced to \$4.32 per bushel).



Threshold prices also increased monthly by Lire 500 per ton (2 cents per bushel) for wheat excluding durum and Lire 550 per ton (3 cents per bushel) for durum wheat, starting August 1, 1965, for nine months.

In addition to the Intervention Organization acting on behalf of the Government for the purchase of wheat from farmers at intervention prices, and the sale of same to millers at target prices, voluntary provincial wheat collecting pools have also been organized to ensure the orderly marketing of this product. Farmers delivering wheat to these pools may request an advance payment equal to the basic intervention price established for the product in question in the area concerned. When all the wheat delivered to each provincial pool has been sold, the total amount obtained, less advances made and expenses incurred, is distributed proportionally amongst all supplying farmers.

The supplementary levy on the importation of hard and semi-hard wheats from third countries has been renewed for a further year, from July 1, 1965.

On July 21, 1965, the levy with respect to the importation of soft wheat from third countries amounted to Lire 34,406 per metric ton (\$1.62 per bushel) and that for durum wheat to Lire 47,781 per ton (\$2.24 per bushel). As from July 10, 1965, until further notice the supplementary levy for the importation of hard and semi-hard wheats from third countries, mentioned above, and applicable to Manitoba 1, 2 and 3 (Canada); Dark Hard Winter 1 and 2 and Dark Northern Spring 1 and 2 (U.S.A.); Southern (Argentina); 431 (U.S.S.R.); Semi-Hard (Australia); Florence Aurore (Morocco); Hard Winter 1 and 2 is Lire 10,875 per ton (51 cents per bushel). This amount, added to the normal soft wheat levy indicated above, totals Lire 45,281 per ton (\$2.13 per bushel), representing the levy applicable on the above-mentioned hard and semi-hard wheats on July 21, 1965.

Prices of wheat on the open market (Milan) on July 21, 1965, are shown in the following table.

Prices of Wheat on Milan Open Market - July 21, 1965

Product	Minimum	Maximum
	dollars per bushel	
Domestic wheat (excluding durum)		
High grade .....	3.24	3.43
Good, mercantile .....	3.08	3.12
Mercantile .....	3.03	3.05
Domestic durum wheat		
Good mercantile .....	4.37	4.56
Foreign wheat		
Manitoba .....	4.49	4.53*
Plata .....	4.04	4.09

\* This price is for Manitoba No. 1 from Atlantic ports.

From present crop estimates it would appear that Italy's wheat harvest will be sufficient this year to cover all domestic requirements although, as present stocks are practically depleted, there may not be enough to build up new stocks. In any event, some quality wheat and, perhaps, durums, will no doubt be imported, on a temporary basis, for processing on behalf of third parties, and if, as it is expected,

the importation of wheat free of levy will be allowed to replace that used in the production of flour and semolina exported - as was done in previous years - imports of both durum and hard wheats could very well amount to considerable quantities.

Continued from page 2

output during recent years. East Germany, Czechoslovakia, and Hungary have been particularly beset with moisture problems during the harvest which will result in reduced yields. Bad weather last fall brought reduced plantings of winter wheat in Yugoslavia, and latest reports are that 1965 production is down about 15 per cent.

North America is harvesting bumper wheat crops. On the basis of August 1 conditions, the United States -- the second largest world producer -- will be 7 per cent larger than the high 1964 level. With adequate moisture over more than the usual area, yields are the highest on record.

Editor's Note

Canada's prospects are for a record crop, although wet cool weather has delayed harvesting operations.

Production in Mexico is reported down from the 1964 record, but nevertheless will be a near-record crop. Production of several of Asia's principal wheat countries, other than Communist China, increased markedly over 1964. The crops of India and Pakistan are forecast at about 19 and 11 per cent, respectively, over 1964. Good harvests are forecast in the Eastern Mediterranean area, including Turkey, Iraq, and Jordan.

Total production of the African nations is forecast at about 10 per cent more than in 1964. In the North African countries of Algeria, Morocco, and Tunisia, crops are much improved over the poor harvests of 1964. Production of Egypt is down moderately from the high level of last year.

Although too early to determine the outcome of the South American crops, it is doubtful if wheat production this year would come up to the large volume of 1964. Argentina's acreage, contrary to pre-season predictions of a decline in acreage, is now forecast nearly as large, or perhaps as much, as in 1964, when yields were unusually high.

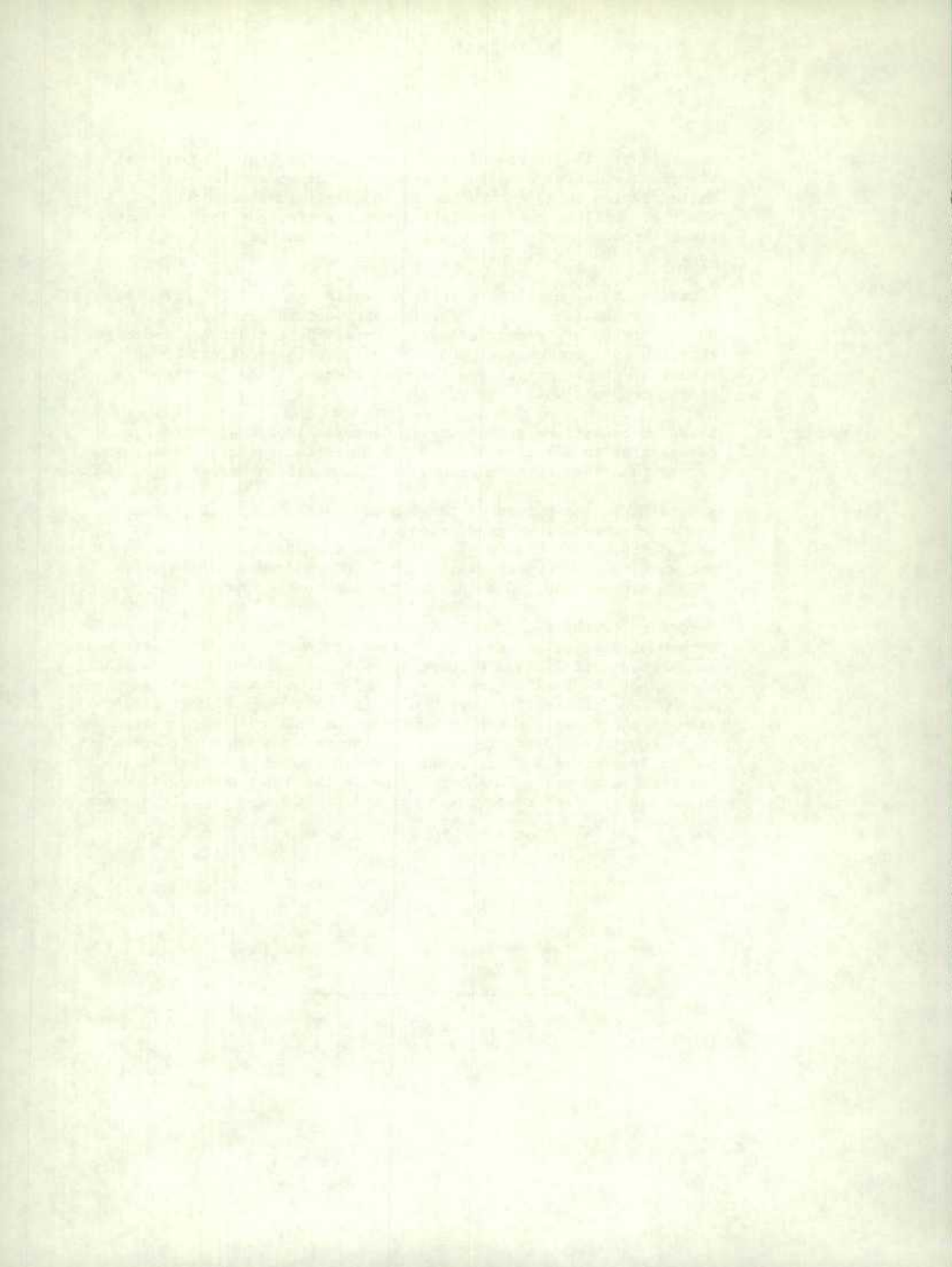
Drought has sharply reduced plantings of Australian wheat. New South Wales, which last year produced 41 per cent of the total crop, suffered a sharp cut in acreage. The drought was most severe in Queensland, producer of 6 per cent of last year's wheat. Offsetting the drought in eastern Australia is a million-acre increase in Western Australia, and conditions in the western states are reported to be very favourable.

Apparently, wheat production in the principal exporting countries of the world may exceed that of 1964. Harvesting of the bumper U.S. winter wheat crop -- 76 per cent of the U.S. crop -- was nearly completed by August 1, except in the more northerly states. Prospects are for a record Canadian production and France's crop is also expected to be larger than in 1964. Although it is too early to know the outcome of production in Australia and Argentina, it now appears that only in Australia is production expected to be seriously below the high level of 1964.



CALENDAR OF WHEAT EVENTS

- August 10      According to the Bureau of the Census, United States Department of Commerce, total commercial production of wheat flour in United States in 1964 amounted to 265.6 million hundredweight, about 1.7 million hundredweight above the previous year's production. Production in 1964 was at 92.2 per cent of total annual capacity.
- 26      According to August 1965 edition of World Agricultural Production and Trade published by the Foreign Agricultural Service, United States Department of Agriculture, present outlook indicates that the 1965 world wheat production, despite excellent crops in a number of the principal growing countries, will be less than the bumper crop of 1964.
- September 3      Based on conditions at August 15, Canada's 1965 wheat crop was forecast at an all-time high of 759.8 million bushels, 5 per cent larger than the previous record of 723.4 million harvested in 1963.
- 3      According to the Bureau of the Census, United States Department of Commerce, wheat flour production in the United States in July 1965 was 18,689,000 hundredweight, an average of 890,000 hundredweight per working day compared with 14,947,000 hundredweight in July 1964 averaging 650,000 hundredweight per working day.
- 15      According to the Telegraphic Crop Report published by the Dominion Bureau of Statistics, crop conditions in the Prairie Provinces were summarized as follows: Harvesting is being delayed by wet weather throughout the Prairie Provinces and little threshing has been accomplished during the past two weeks. Although a large proportion of the cereals has been swathed, the bulk of the crop remains to be combined. Grade losses are being reported from all areas but yield prospects still remain favourable. Crop deterioration has been more severe in Alberta than in the other two provinces. Frost has occurred over wide areas and has damaged some late maturing crops.
-







STATISTICS CANADA LIBRARY  
BIBLIOTHEQUE STATISTIQUE CANADA



1010686758