

CATALOGUE No.

22-005

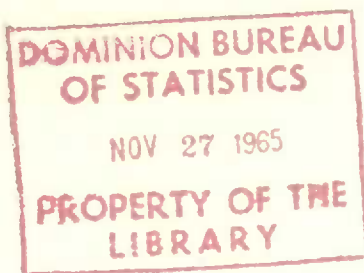
MONTHLY

DOES NOT CIRCULATE
NE PAS PRÊTER



CANADA

DOMINION BUREAU OF STATISTICS
AGRICULTURE DIVISION



THE WHEAT REVIEW



OCTOBER 1965

DOMINION BUREAU OF STATISTICS

THE
WHEAT REVIEW

OCTOBER 1965

Published by Authority of
The Minister of Trade and Commerce

Prepared in the Crops Section, Agriculture Division
Dominion Bureau of Statistics, Ottawa

TABLE OF CONTENTS

Page

World Wheat Situation

August-September Exports Set Record Level	1
Wheat Supplies of Four Major Exporters 4 Per Cent Above a Year Ago	1
I.W.C. Cumulative Totals of Commercial Purchases, Crop Year 1965-66	2

Canadian Situation

Supplies Reached a Next-to-Record Level	3
August-September Exports Highest on Record	3
Marketings, Disappearance and Visible Supplies	4
September 1965 Exports of Wheat and Flour Set New Record	4
Canada's 1965 Wheat Crop Estimated at 677.9 Million Bushels	5
Wheat Agreement With China	6
General Quota Position	7
Farmers' Marketings	7
Visible Supply of Canadian Wheat	8
Grading of Wheat Inspected August-September 1965 with Comparisons	8
Weekly Visible Supply and Farmers' Marketings (Charts)	9
Lake Shipments of Canadian Grain	10
Rail Shipments of Wheat to Maritime Ports	10
Rail Shipments of Wheat from Fort William-Port Arthur	11
Overseas Exports of Canadian Grain by Ports of Loading	11
Freight Assistance Shipments	12
Monthly Exports of Canadian Wheat and Wheat Flour	13
Exports of Canadian Wheat by Destination	14
Customs Exports of Canadian Wheat Flour by Countries of Consignment	17
Canadian Wheat Board Weekly Average Cash Wheat Prices	19

Canadian Flour Milling Situation

Production and Exports	21
------------------------------	----

United States Situation

Total Domestic Supplies One Per Cent Less than Previous Year	22
United States Exports of Wheat and Wheat Flour by Country of Destination ..	23
Stocks of Wheat in All Positions October 1, 1965	26
1965 Wheat Crop Forecast at 1,354 Million Bushels	27
Cash Wheat Prices on the Kansas City and Minneapolis Markets	28
Chicago Wheat Futures, High Points of Closing	28

Australian Situation	29
----------------------------	----

Argentine Situation	32
---------------------------	----

Calendar of Wheat Events	36
--------------------------------	----

WORLD WHEAT SITUATION

August-September Exports Set Record Level

Total exports of wheat and wheat flour in terms of grain from the four major exporting countries during the August-September period of the current Canadian crop year amounted to 338.5 million bushels and exceeded by 32 per cent the previous record total of 257.1 million exported during the same months a year ago. In addition, this year's August-September exports of wheat and flour were more than double the ten-year (1954-63) average shipments for the first two months of the crop year, of some 167.7 million bushels. Each of the four traditional major wheat exporting countries, United States, Canada, Argentina and Australia, shared in the increase.

Shipments from these same four countries during August-September 1965 with comparisons appear in the accompanying table.

Exports of Wheat and Flour in Terms of Wheat August-September, 1965 with Comparisons

August-September	United States	Canada	Argentina	Australia	Total
million bushels					
1950	31.6	31.8	11.6	21.5	96.5
1951	82.4	44.0	12.3	21.2	159.9
1952	52.4	62.1	-	12.6	127.1
1953	41.9	53.2	19.2	9.0	123.3
1954	33.1	48.8	22.5	11.1	115.5
1955	42.9	42.5	19.6	16.8	121.8
1956	76.7	57.3	17.2	29.1	180.3
1957	68.1	52.0	14.8	18.2	153.1
1958	69.9	44.4	11.0	11.9	137.2
1959	68.9	50.1	10.7	17.8	147.5
1960	98.4	56.6	19.5	18.4	192.9
1961	106.2	70.8	2.3	40.4	219.7
1962	102.9	52.8	6.2 (1)	13.7	175.6
1963	114.7 (1)	77.0	7.2 (1)	34.5	233.4
1964 (1)	123.3	91.2	16.5	26.1	257.1
1965 (2)	133.9	112.7	49.9	42.0	338.5

(1) Revised. (2) Preliminary.

Wheat Supplies of Four Major Exporters 4 Per Cent Above a Year Ago

Latest available estimates indicate that supplies of wheat remaining on or about October 1, 1965 in the four major exporting countries, for export and for carry-over at the end of their respective crop years, amounted to 2,420.0 million bushels, about 4 per cent greater than the 2,337.2 million available a year ago. Larger supplies in Canada, Argentina and Australia more than offset a smaller total for United States. Supplies on or about October 1, 1965, in millions of bushels, were held as follows, with last year's comparable figures in brackets: United States, 1,292.9 (1,355.2); Canada, 930.1 (823.1); Argentina, 140.8 (110.7); and Australia, 56.2 (48.2).

International Wheat Council
Cumulative Totals of Commercial Purchases by Importing Countries from Exporting Countries
Crop Year 1965-66 — Through October 2, 1965

Importing Countries	EXPORTING COUNTRIES							Total Purchases
	Canada	Argentina	Australia	France	Italy	Sweden	U.S.A.	
	thousand bushels							
Austria	1,031	-	-	-	-	-	-	1,031
Belgium & Luxembourg	8,840	72	-	-	-	-	2,285	11,197
Brazil	-	8,083	-	-	-	-	5,515	13,598
Costa Rica	442	-	-	-	-	-	166	608
Cuba	-	-	-	-	-	-	-	-
Dominican Republic	209	-	-	-	-	-	52	261
Ecuador	423	-	-	-	-	-	72	495
El Salvador	250	-	-	-	-	-	78	328
Finland	367	-	-	-	-	-	-	367
Germany, Federal Rep. ...	20,454	682	227	263	-	970	5,968	28,564
Greece	6	-	-	-	-	-	9	15
Guatemala	118	-	-	-	-	-	374	492
Iceland	-	-	-	-	-	-	6	6
India	-	-	1	-	-	-	3,513	3,514
Ireland	850	-	1,043	-	-	-	227	2,120
Israel	485	-	-	-	-	-	674	1,159
Japan	17,267	-	5,280	-	-	-	20,523	43,070
Korea	-	-	-	-	-	-	-	-
Liberia	48	-	-	-	-	-	7	55
Libya	-	-	2	-	117	-	-	119
Netherlands	2,366	315	-	221	-	-	12,903	15,805
Netherlands Territories.	78	-	-	-	-	-	177	255
New Zealand	-	-	3,448	-	-	-	-	3,448
Nigeria	243	-	-	-	-	-	2,359	2,602
Norway	1,680	243	161	-	-	220	1,140	3,444
Peru	205	3,472	1	-	-	-	1,364	5,042
Philippines	2,081	-	24	-	-	-	5,302	7,407
Portugal	8	-	-	-	-	-	936	944
Portuguese Territories .	91	441	22	-	-	-	66	620
Saudi Arabia	196	-	435	-	-	-	1,889	2,520
Sierra Leone	112	-	-	-	-	-	74	186
South Africa	-	-	-	-	-	-	-	-
Southern Rhodesia	2	-	598	-	-	-	-	600
Switzerland	8,646	48	-	-	-	-	915	9,609
Tunisia	-	-	-	-	-	-	-	-
United Arab Republic	-	-	2,113	-	1,129	-	1,722	4,964
United Kingdom	73,485	1,842	9,286	-	-	-	8,955	93,568
U.K. Territories	2,196	-	2,124	-	-	-	762	5,082
Vatican City	-	-	-	-	-	-	-	-
Venezuela	6,691	-	-	-	-	-	5,460	12,151
Western Samoa	(1)	-	44	-	-	-	-	44
To Orders	-	10,086	-	-	-	1,837	-	11,923
Totals	148,870	25,284	24,809	484	1,246	3,027	83,493	287,213
Percentage of Total Sales by Exporting Countries ..	51.84	8.80	8.64	0.17	0.43	1.05	29.07	100.00

(1) Less than 500 bushels.

NOTE: Mexico and Spain - no sales reported.
Argentina - quantities cover period ending September 25, 1965.
France - quantities cover period ending August 2, 1965.
Italy - quantities cover period ending September 18, 1965.
U.S.S.R. - exemption granted.

CANADIAN SITUATION

Supplies Reach a
Next-to-Record Level

Total estimated supplies of wheat for the 1965-66 (August-July) crop year are placed at 1,192.8 million bushels, consisting of the August 1 carryover of 514.9 million and the 1965 crop, estimated on the basis of conditions at October 15, at 677.9 million bushels. Supplies of the size indicated represent an increase of 13 per cent over the 1964-65 total of 1,059.9 million bushels and are only one per cent less than the 1963-64 record of 1,210.7 million. After making an allowance of 150.0 million bushels for anticipated domestic requirements, supplies available for export and for carryover during 1965-66 amount to 1,042.8 million bushels, 14 per cent above the 914.3 million in 1964-65.

August-September Exports
Highest on Record

Exports of wheat and flour, in terms of wheat equivalent, during August-September 1965 amounted to a record 112.7 million bushels, 24 per cent above the previous high of 91.2 million exported during the same two months of 1964. This year's exports consisted of 107.8 million bushels of wheat in bulk, 149 thousand of bagged seed and 4.7 million of flour in terms of wheat. During the August-September period last year these figures were 85.0 million of wheat in bulk, 189 thousand of bagged seed and 6.0 million of flour in wheat equivalent. The balance remaining on October 1, 1965 for export and for carryover amounted to 930.1 million bushels, 13 per cent above the October 1, 1964 total of 823.1 million.

Canadian Wheat Supplies

Item	1964-65 (1)	1965-66 (2)
	million bushels	
Carryover in North America at beginning of crop year (August 1)	459.4	514.9
Production	600.4	677.9 (3)
Imports of wheat for domestic use, August-September	(4)	(5)
Total estimated supplies	1,059.9	1,192.8
Less estimated domestic requirements for crop year	145.6	150.0
Available for export and for carryover	914.3	1,042.8
Deduct:		
Exports of wheat in bulk, August-September (6)	85.0	107.8
Exports of bagged seed wheat, August-September (7) ...	0.2	0.1
Total exports of wheat as grain	85.2	108.0
Exports of wheat flour in terms of wheat, August- September (7)	6.0	4.7
Total exports of wheat and wheat flour	91.2	112.7
Balance on October 1 for export and for carryover	823.1	930.1

(1) Subject to revision. (2) Preliminary. (3) Based on October forecast of production. (4) Less than 50,000 bushels. (5) Not available. (6) As reported by the Board of Grain Commissioners. (7) Customs returns, 1964-65 adjusted for time lag.

Marketings, Disappearance
and Visible Supplies

Total primary deliveries of wheat (both east and west) up to October 20 of the current crop year have amounted to 72.9 million bushels compared with 101.6 million marketed during the same period of the previous year. Some 52.3 million bushels of this year's total were delivered during the four weeks September 23 to October 20. During the same period the volume of Canadian wheat entering domestic and export channels amounted to 77.8 million bushels. As a result, the total visible supply of Canadian wheat decreased from 324.4 million at September 22 to a level of 299.1 million at October 20, 1965.

The total visible supply of Canadian wheat at October 20 this year represented a decrease of 2 per cent from the 1964 comparable total of 305.2 million and was 17 per cent less than the 1963 figure of 360.3 million. Country elevator stocks, amounting to 181.3 million bushels, were 17 per cent above the 1964 comparable total of 154.7 million, but were 10 per cent lower than the 200.7 million of two years ago. Wheat stocks at interior terminals at October 20, 1965 totalled 2.9 million bushels as against 4.6 million a year ago and 6.2 million two years ago. The 14.1 million bushels "in transit rail" (western division) was also below both the 1964 and 1963 totals of 15.6 million and 17.9 million bushels, respectively. Supplies at the Lakehead, totalling some 19.1 million bushels, were sharply below both last year's comparable level of 31.5 million and the 1963 figure of 40.7 million. Stocks "in transit lake", amounting to 8.6 million bushels were substantially larger than both the 1964 level of 5.5 million and the 1963 figure of 5.1 million. The 28.6 million bushels in Bay, Lake and Upper St. Lawrence ports were considerably lower than the 36.4 million of a year ago and the 37.1 million of two years ago. Supplies in Lower St. Lawrence and Maritime ports at October 20, 1965, at 29.3 million bushels, registered decreases from both the comparable 1964 figure of 35.9 million and the 1963 total of 30.8 million. The 7.0 million bushels in West Coast ports (Vancouver-New Westminster, Prince Rupert and Victoria) were also smaller than both the 11.5 million at October 21, 1964 and the 9.0 million at October 23, 1963.

September 1965 Exports
of Wheat and Flour
Set New Record

Combined exports of wheat in bulk, bagged seed wheat wheat and wheat flour in terms of grain equivalent during September 1965 amounted to 67.3 million bushels, the highest total on record for that month and surpassing by a margin of 49 per cent the previous high of 45.2 million bushels set in September 1964. This year's September total also exceeded the August figure of 45.4 million bushels by some 48 per cent and was about two and one half times greater than the ten-year (1954-63) average for the month of September of 28.0 million bushels. Exports of wheat in bulk (as reported by the Board of Grain Commissioners) reached 64.4 million bushels, a record volume for the month of September, and surpassed by 47 per cent the previous high of 42.8 million bushels set in September a year ago and 49 per cent more than the August 1965 figure of 43.4 million. Exports of bagged seed wheat during September 1965 based on Canadian Customs returns, amounted to 87 thousand bushels compared with the September 1964 total (adjusted to remove time lag) of 121 thousand bushels. Customs returns also indicate that the equivalent of 2.8 million bushels of wheat was exported in the form of flour during September 1965, representing increases of 43 per cent and 23 per cent, respectively, over the 1.9 million of the previous month and the 2.3 million (adjusted to remove time lag) of September 1964.

Cumulative exports of wheat in bulk during the August-September 1965 period amounted to an all-time high 107.8 million bushels, representing an increase of 27 per cent over the comparable 1964 record total of 85.0 million and

more than twice the ten-year average for the period of 49.1 million. Shipments of wheat to the U.S.S.R. (Russia) totalled some 32.3 million bushels and accounted for 30 per cent of the two-month total exports of wheat in bulk form. Shipments of wheat to Britain amounted to 15.0 million and accounted for 14 per cent of the August-September total. During the same period of 1964 shipments to Britain amounted to 14.3 million and accounted for 17 per cent of the August-September total. Other principal markets for Canadian wheat in bulk during the first two months of the current crop year, with figures for the same period of the preceding crop year in brackets, were as follows, in millions of bushels: Communist China, 9.4 (13.3); Poland, 7.0 (9.0); Japan, 6.9 (10.2); Czechoslovakia, 6.2 (10.3); Federal Republic of Germany, 4.8 (4.3); India, 4.0 (2.4); Belgium and Luxembourg, 3.8 (3.1); Italy, 2.8 (0.8); and East Germany, 2.3 (4.0).

Cumulative exports of wheat flour during the first two months of the 1965-66 crop year, based on Customs returns, were the equivalent of 4.7 million bushels, 21 per cent below the adjusted August-September 1964 total of 6.0 million bushels. Britain was the major market for Canadian wheat flour with shipments of wheat flour to that country during the period under review amounting to the equivalent of 1,772 thousand bushels and accounting for 38 per cent of the August-September 1965 total. During the same months of the 1964-65 crop year shipments of wheat flour to Britain amounted to the equivalent of 1,605 thousand bushels and represented 27 per cent of the total. Other leading markets for Canadian wheat flour in terms of grain equivalent during the August-September period of the 1965-66 crop year, with revised data for the same months of the preceding crop year in brackets, were as follows, in thousands of bushels: Cuba, 908 (834); Jamaica, 251 (258); Trinidad and Tobago, 249 (223); Costa Rica, 191 (171); Lebanon, 190 (7); United States, 153 (142); Dominican Republic, 130 (17); Hong Kong, 117 (152); and Leeward and Windward Islands, 116 (148).

Canada's 1965 Wheat Crop
Estimated at
677.9 Million Bushels

Based on conditions at October 15 Canada's 1965 wheat crop now estimated at 677.9 million bushels is 13 per cent above last year's 600.4 million bushels and 43 per cent above the ten-year average of 475.1 million

bushels. The increase in production compared with last year is due to a 19 per cent increase in yields which more than offset a 5 per cent decrease in seeded acreage. The average yield at 24.0 bushels per acre is 23 per cent above the ten-year (1954-63) average of 19.5 bushels per acre. This year's all Canada crop of spring wheat, including durum, is estimated at 664.6 million bushels compared with the 1964 crop of 582.2 million and the ten-year average of 456.0 million bushels. Ontario's winter wheat crop is estimated at 13.4 million bushels, a decrease of 27 per cent from last year's crop of 18.2 million.

In the Prairie Provinces the 1965 wheat crop is now placed at 661.0 million bushels, some 83.0 million bushels or 14 per cent above the 1964 crop of 578.0 million bushels. Production in Saskatchewan, accounts for 62 per cent of this year's all Canada wheat crop and is estimated at 420.0 million bushels, some 21 per cent more than last year's 348.0 million bushels. The Alberta crop, estimated at 158.0 million bushels, is up 9 per cent from last year's production of 145.0 million while the Manitoba crop of 83.0 million is 2 per cent smaller than the 1964 outturn. The indicated average yield per seeded acre in the Prairie Provinces is 23.8 bushels, with Manitoba averaging 25.6; Saskatchewan, 22.7; and Alberta, 26.1 bushels per acre. Current estimates of production in the Prairie Provinces include relatively small quantities of winter wheat principally in Alberta, and an estimated 17.9 million bushels of durum wheat.

November Estimate of the 1965 Production of Spring and Winter Wheat in Canada
Compared with 1964

Crop	Area		Yield Per Acre		Production	
	1964	1965	1964	1965(1)	1964	1965(1)
	acres		bushels		bushels	
<u>CANADA</u>						
Spring wheat (2)	29,230,800	27,920,200	19.9	23.8	582,178,000	664,559,000
Winter wheat ...	455,000	362,000	40.1	36.9	18,246,000	13,358,000
All Wheat	29,685,800	28,282,200	20.2	24.0	600,424,000	677,917,000
<u>PRAIRIE PROVINCES</u>						
Manitoba	3,385,000	3,240,000	25.1	25.6	85,000,000	83,000,000
Saskatchewan ...	19,200,000	18,500,000	18.1	22.7	348,000,000	420,000,000
Alberta	6,495,000	6,050,000	22.3	26.1	145,000,000	158,000,000
Totals (2)	29,080,000	27,790,000	19.9	23.8	578,000,000	661,000,000

(1) As indicated on basis of conditions on or about October 15.

(2) Includes durum wheat and relatively small quantities of winter wheat in all provinces except Ontario.

The acreage in durum wheat in the Prairie Provinces in 1965 was 56 per cent smaller than that seeded in 1964, but average yields estimated at 21.3 bushels per acre, are 20 per cent above the 1964 outturn of 17.8 bushels. Mid-October indications are for a crop of 17.9 million bushels, compared with the 1964 crop of 33.6 million. Estimated production by provinces, in millions of bushels, is as follows: Manitoba, 0.9; Saskatchewan, 15.0; and Alberta, 2.0.

November Estimate of the 1965 Production of Durum Wheat (1)
in the Prairie Provinces Compared with 1964

Province	Area		Yield Per Acre		Production	
	1964	1965	1964	1965(2)	1964	1965(2)
	acres		bushels		bushels	
Manitoba	120,000	40,000	21.7	22.5	2,600,000	900,000
Saskatchewan	1,541,000	725,000	17.1	20.7	26,000,000	15,000,000
Alberta	227,000	75,000	22.0	26.7	5,000,000	2,000,000
Totals	1,888,000	840,000	17.8	21.3	33,600,000	17,900,000

(1) Acreage and production included with spring wheat.

(2) As indicated on the basis of conditions on or about October 15.

Wheat Agreement
With China

On October 28, 1965 the Canadian Wheat Board issued the following press release: "The Canadian Wheat Board is pleased to announce the conclusion of a Long-Term Agreement with the China National Cereals, Oils and Foodstuffs Import and Export Corporation. This agreement is similar to the existing agreement, that is, under the Agreement, the Chinese Corporation has declared its intention to purchase from Canada 3 to 5 million long tons (112.0 to 186.7 million bushels) of wheat over

Continued on page 36

General Quota Position By October 25, 1965, out of a total of 1,908 shipping points in the Western Division, the Canadian Wheat Board had placed 138 points on a quota of four bushels per specified acre, 344 points on a 3-bushel quota, 704 points on a 2-bushel quota and 568 points on a 1-bushel quota. Some 146 points remained on the Initial Unit Quota while 8 stations were reported as "closed".

Summary of Elevator Shipping Points in the Western Division
as at October 25, 1965

Province	Initial Unit Quota	General Quota in Bushels per Specified Acre				Closed	Total
		One	Two	Three	Four		
Ontario	-	-	-	-	1	-	1
Manitoba	4	83	105	86	63	2	343
Saskatchewan	22	272	473	207	54	4	1,032
Alberta	120	213	126	51	15	2	527
British Columbia	-	-	-	-	5	-	5
All Provinces	146	568	704	344	138	8	1,908

Farmers' Marketings Deliveries of wheat from farms in the Prairie Provinces up to October 20 of the current crop year amounted to 70.4 million bushels, representing a decrease of 27 per cent from the comparable 1964 total of 95.9 million but 32 per cent more than the ten-year (1954-63) average for the period of 53.2 million bushels.

Farmers' Marketings (1) of Wheat in the Prairie Provinces 1965-66

Week Ending		Manitoba	Saskatchewan	Alberta	Total	Last Year (2)
		bushels				
August	11, 1965	72,373	307,415	32,092	411,880	583,409
	18	58,125	171,644	99,666	329,435	717,218
	25	531,497	1,248,691	299,652	2,079,840	2,153,973
September	1	582,609	2,681,424	581,410	3,845,443	2,532,451
	8	243,029	2,073,379	639,041	2,955,449	3,246,274
	15	508,944	4,387,021	610,973	5,506,938	6,599,071
	22	364,600	2,366,634	384,426	3,115,660	18,121,700
	29	769,182	1,845,073	513,968	3,128,223	16,301,510
October	6	2,277,366	3,985,118	2,047,455	8,309,939	11,145,643
	13	4,037,753	9,938,485	4,877,036	18,853,274	15,100,572
	20	2,622,535	14,354,967	4,871,472	21,848,974	19,356,199
Totals		12,068,013	43,359,851	14,957,191	70,385,055	95,858,020
Average similar period:						
1954-63		6,528,651	33,976,101	12,680,336	53,185,088	

(1) Includes receipts at country, interior private and mill elevators, interior semi-public terminals and platform loadings.

(2) Revised.

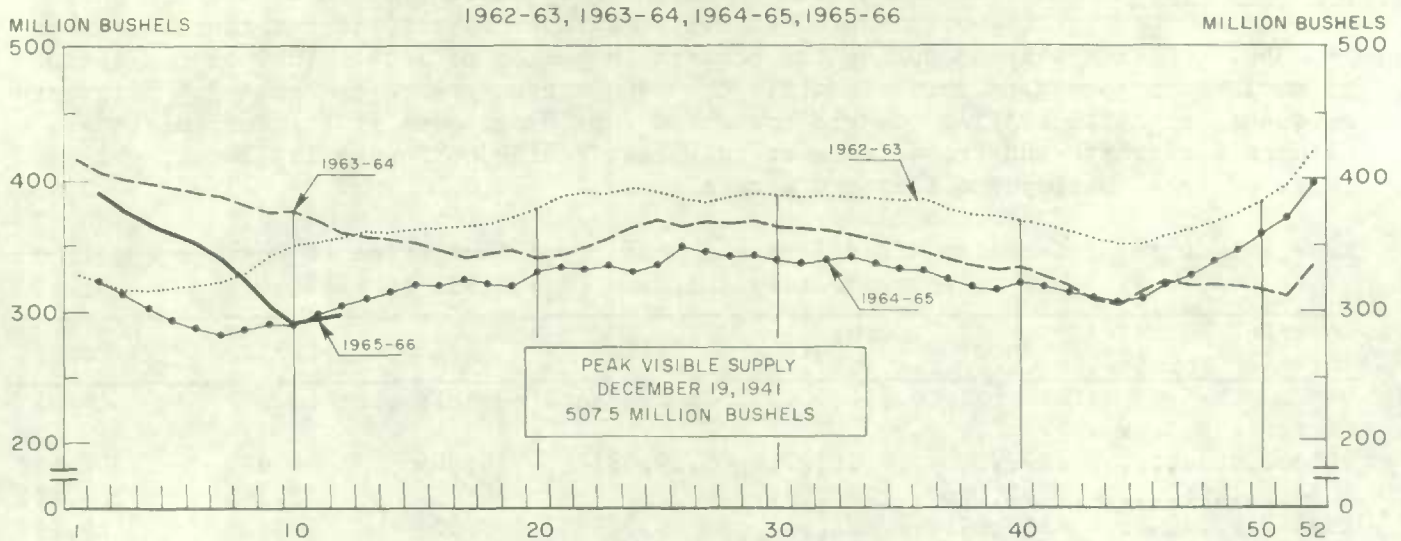
Visible Supply of Canadian Wheat, October 20, 1965
Compared with Approximately the Same Date, 1963 and 1964

Position	1963	1964	1965
	thousand bushels		
Country elevators - Manitoba	20,448	15,826	20,490
Saskatchewan.....	118,640	86,323	102,427
Alberta	61,645	52,545	58,373
Totals	200,733	154,694	181,290
Interior private and mill	6,843	7,045	6,195
Interior terminals	6,248	4,627	2,852
Vancouver-New Westminster	7,541	10,519	6,016
Victoria	924	474	442
Prince Rupert	560	486	568
Churchill	3,505	1,753	739
Fort William-Port Arthur	40,660	31,528	19,105
In transit rail (western division)	17,874	15,608	14,095
Bay, Lake and Upper St. Lawrence ports	37,066	36,361	28,602
Lower St. Lawrence and Maritime ports	30,819	35,891	29,346
In transit lake	5,119	5,480	8,576
In transit rail (eastern division)	2,374	784	1,275
Totals	360,265	305,248	299,101

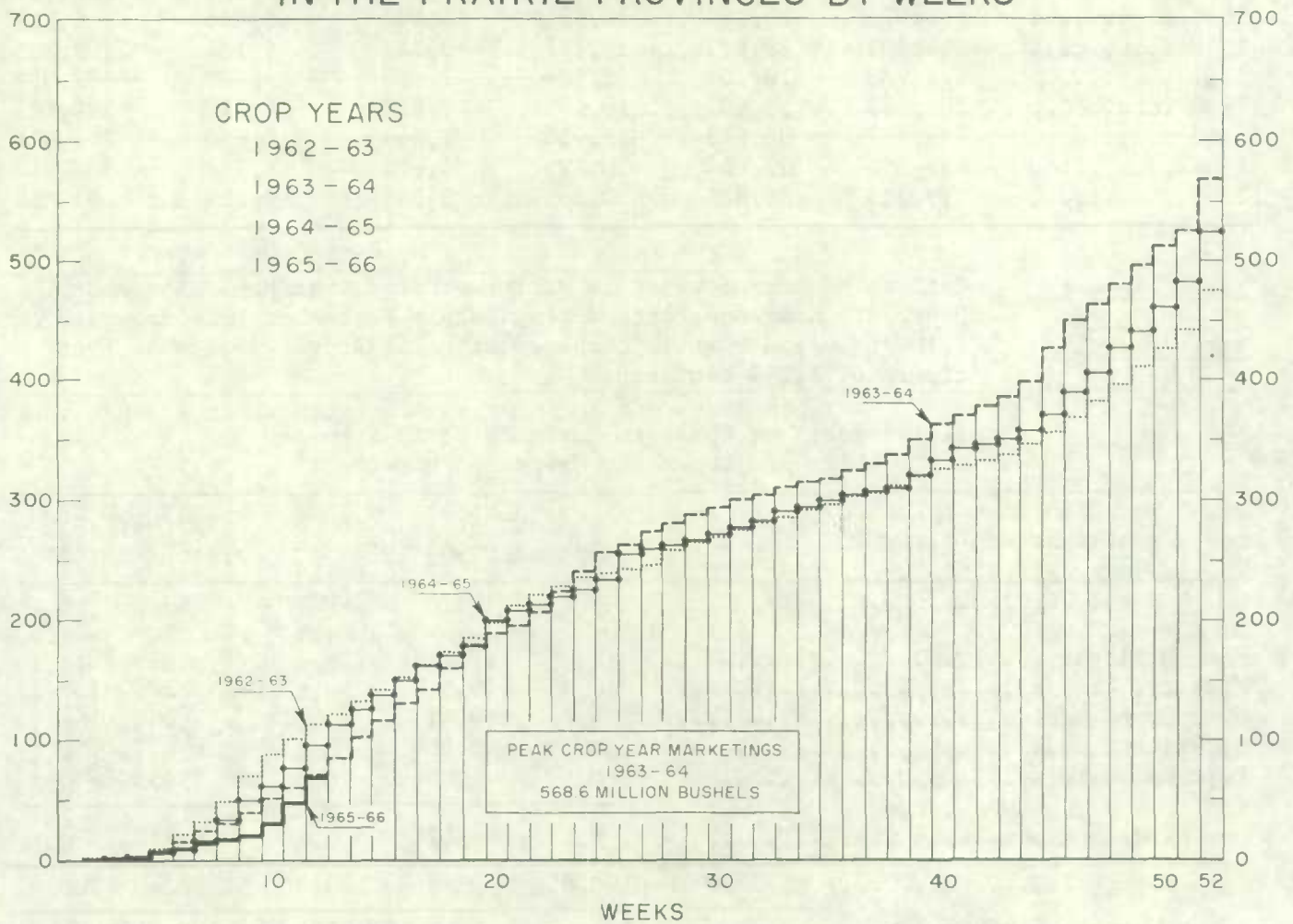
Grading of Wheat Inspected, August-September 1965 with Comparisons

Grade	Crop Year		August-September			
	Average	1964-65	1964		1965	
	1959-60					
	1963-64					
	per cent	per cent	cars	per cent	cars	per cent
No. 1 Man. Northern	8.2	2.4	2,562	4.3	1,038	2.0
No. 2 Man. Northern	41.5	34.0	33,635	56.7	17,993	34.7
No. 3 Man. Northern	22.1	22.0	14,102	23.8	11,733	22.6
No. 4 Man. Northern	8.1	8.6	2,269	3.8	6,184	11.9
No. 5 Wheat	3.7	5.7	1,133	1.9	2,544	4.9
No. 6 Wheat	0.5	0.6	320	0.5	67	0.1
Feed Wheat	(1)	(1)	2	(1)	2	(1)
Others Red Spring	8.6	18.9	1,767	3.0	8,846	17.1
C.W. Garnet	0.2	0.1	154	0.3	-	-
C.W. White Spring	0.1	0.1	32	0.1	24	(1)
C.W. Mixed Wheat	(1)	(1)	34	0.1	26	0.1
Alberta Winter	0.4	0.5	549	0.9	350	0.7
Nos. 1-6 C.W. Amber Durum ..	6.3	6.6	2,627	4.4	2,814	5.4
Others C.W. Amber Durum	0.2	0.4	142	0.2	241	0.5
Totals	100.0	100.0	59,328	100.0	51,862	100.0
Gross bushels (approx.)			115,197,000		100,642,000	
(1) Less than .05 per cent.						

WEEKLY VISIBLE SUPPLY OF CANADIAN WHEAT



CUMULATIVE RECORD OF WHEAT MARKETINGS IN THE PRAIRIE PROVINCES BY WEEKS



(Data in both charts for crop years beginning August 1)

Lake Shipments of Canadian Grain Total shipments of the five major grains out of Lakehead terminals from the opening of navigation to October 20 this year amounted to 291.9 million bushels, 18 per cent less than the 356.7 million shipped during the comparable period of 1964. In 1965 the season of navigation opened on April 20 while the 1964 season opened on April 2. Shipments of wheat, at 213.3 million bushels accounted for 73 per cent of the current total. Shipments of wheat and rye were lower than last year's corresponding level, while those of oats, barley and flaxseed were above.

Lake Shipments of Canadian Grain from the Opening of Navigation to October 20, 1965 and to Approximately the Same Date, 1953 to 1964

Year	Wheat	Oats	Barley	Rye	Flaxseed	Total
thousand bushels						
1953	172,595	70,211	89,587	10,805	4,223	347,422
1954	98,086	39,712	58,272	5,667	2,745	204,481
1955	104,619	24,561	46,121	9,352	5,102	189,755
1956	166,114	34,032	70,092	10,122	5,753	286,112
1957	115,954	33,191	38,838	4,103	9,458	201,545
1958	140,651	33,205	54,227	5,080	5,791	238,954
1959	136,075	22,782	36,421	4,401	5,098	204,777
1960	144,402	18,682	36,831	3,242	6,167	209,325
1961	174,789	18,701	32,144	2,090	5,228	232,951
1962	106,645	13,601	18,409	4,210	4,740	147,605
1963	149,497	32,723	23,930	1,844	4,630	212,625
1964	287,652	27,024	30,622	4,679	6,762	356,740
1965	213,325	36,826	30,863	3,345	7,510	291,869

Rail Shipments of Wheat to Maritime Ports Rail shipments of wheat to Maritime Ports from Bay, Lake and Upper St. Lawrence Ports during August-September 1965 amounted to 1,164 thousand bushels compared with the August-September 1964 figure of 1,249 thousand.

Rail Shipments of Wheat to Maritime Ports from Bay Lake and Upper St. Lawrence Ports

Origin of Shipment	August 1- September 30, 1964	August 1- September 30, 1965
bushels		
Port McNicoll	-	377,702
Midland, Tiffin	406,546	120,973
Owen Sound	240,671	518,094
Goderich	601,804	30,000
Port Colborne	-	116,943
Totals	1,249,021	1,163,712

Rail Shipments of Wheat from Fort William-Port Arthur, 1962-63--1965-66

Month	1962-63	1963-64	1964-65	1965-66
bushels				
August	13,933	5,500	7,786	10,458
September	11,657	9,104	19,564	10,500
October	22,716	25,355	12,135	
November	12,024	13,500	13,167	
December	12,778	23,047	26,961	
January	39,534	58,772	10,703	
February	22,967	28,768	17,214	
March	86,398	21,268	112,296	
April	69,067	26,063	17,506	
May	11,851	7,941	8,207	
June	15,746	20,518	4,965	
July	11,158	12,707	13,872	
Totals	329,829	252,543	264,376	

Distribution of Rail Shipments of Wheat from Fort William-Port Arthur, September 1965

Grade	Quebec	Ontario
bushels		
5 Wheat	1,500	3,000
Others	6,000	-
Totals	7,500	3,000

Overseas Exports of Canadian Grain by Ports of Loading, August 1-October 20, 1965
with Comparisons

Port	Wheat (1)	Durum Wheat (1)	Oats (1)	Barley	Rye	Flaxseed	Rapeseed
thousand bushels							
<u>Pacific Seaboard</u>							
Van.-New West.	26,525	1,042	33	3,857	641	949	635
Victoria	2,499	-	-	-	-	-	-
Prince Rupert	3,191	-	-	-	-	-	-
<u>Churchill</u>	24,291	-	-	-	-	-	-
<u>Lakehead Direct</u>	1,859	445	2,653	1,448	320	2,513	-
<u>Prescott Direct</u>	380	-	-	-	10	-	-
<u>St. Lawrence</u>							
Montreal	29,262	4,087	339	1,814	-	275	-
Sorel	13,764	1,334	230	-	-	80	-
Three Rivers	8,949	1,450	-	-	-	256	-
Quebec	6,653	875	-	-	-	-	-
Baie Comeau	18,442	2,584	-	-	-	-	-
<u>Maritime</u>							
West Saint John	1,464	692	-	-	-	-	-
Halifax	1,517	36	-	-	-	-	-
Totals	138,796	12,545	3,255	7,119	971	4,073	635
August 1 - October 21, 1964	105,047	7,114	372	3,319	706	3,048	323

(1) Excluding bagged seed.

Freight Assistance Shipments Claims filed for payment up to September 30, 1965 represent the movement of some 12.3 million bushels of wheat from the Prairie Provinces to Eastern Canada and British Columbia under the freight assistance policy during the 1964-65 crop year. During the 1963-64 crop year claims had been filed for a total of 14.4 million bushels, indicating on the assumption of approximately the same rate of submission of claims during both crop years that the 1964-65 shipments of wheat under the policy were running about 15 per cent below those of 1963-64. Revised data on the 1963-64 shipments of wheat based on claims submitted up to September 30, 1965 place the twelve-month total at 14.8 million bushels. The bulk of the 1964-65 shipments during the crop year went to destinations in Quebec and Ontario with these two provinces accounting for 43 per cent and 25 per cent of the total, respectively.

Provincial Distribution of Wheat Shipments under the Freight Assistance Policy
August-July 1964-65 and 1963-64

Month	Nfld.	P.E.I.	N.S.	N.B.	Que.	Ont.	B.C.	Total
thousand bushels								
August, 1964	64	9	107	39	463	237	64	984
September	36	15	91	40	456	239	102	980
October	8	12	104	35	446	234	172	1,010
November	6	10	117	35	426	216	196	1,007
December	10	7	76	37	435	220	134	919
January, 1965	10	10	87	29	395	191	220	942
February	7	10	86	28	323	199	144	797
March	9	15	101	36	379	220	174	933
April	6	9	140	30	369	225	134	914
May	5	10	95	34	508	282	184	1,117
June	64	9	110	37	536	441	213	1,410
July	2	3	101	25	530	409	234	1,305
Totals (1)	228	118	1,218	404	5,266	3,113	1,972	12,319
Same period 1963-64:								
Preliminary (2)	244	161	1,668	529	5,881	4,430	1,495	14,409
Revised (1)	253	168	1,753	543	5,994	4,473	1,635	14,818

Preliminary data on millfeed shipments under the freight assistance policy indicate shipments of 484,201 tons during the 1964-65 crop year. During 1963-64 claims had been filed for a total of 542,591 tons, indicating on the assumption of approximately the same rate of submission of claims during both crop years that the 1964-65 shipments of millfeeds under the policy were running about 11 per cent below those of 1963-64. Revised data on the 1963-64 shipments of millfeeds based on claims submitted up to September 30, 1965 place the twelve-month total at 562,617 tons. As with freight-assisted shipments of wheat, the greater portion of the millfeed shipments during the year under review went to destinations in Quebec and Ontario.

Provincial Distribution of Millfeed Shipments under the Freight Assistance Policy
August-July 1964-65 and 1963-64

Province	1963-64		1964-65
	Preliminary (2)	Revised (1)	Preliminary (1)
tons			
Newfoundland	6,216	6,811	5,337
Prince Edward Island	9,278	9,691	7,737
Nova Scotia	31,370	32,183	32,927
New Brunswick	29,050	30,012	27,697
Quebec	265,946	275,175	239,944
Ontario	162,277	167,040	139,909
British Columbia	38,454	41,705	30,650
Totals	542,591	562,617	484,201

(1) Based on claims filed up to September 30, 1965.

(2) Based on claims filed up to August 31, 1964.

Monthly Exports of Canadian Wheat and Wheat Flour

Year and Month	Wheat in Bulk (1)	Bagged Seed Wheat (2)	Total Wheat	Wheat Flour (2)(3)	Total (3) Wheat and Wheat Flour
thousand bushels					
<u>1963-64</u>					
August	29,204	187	29,391	2,819	32,210
September	42,556	129	42,686	2,106	44,791
October	59,020	15	59,035	3,520	62,555
November	65,296	204	65,499	4,538	70,037
December	41,763	388	42,151	6,284	48,435
January	28,451	535	28,987	5,829	34,816
February	21,675	562	22,237	5,800	28,037
March	22,510	484	22,995	5,697	28,692
April	43,211	213	43,423	5,530	48,954
May	56,992	14	57,006	4,744	61,750
June	65,036	144	65,180	3,768	68,948
July	61,012	35	61,047	4,275	65,322
Totals	536,726	2,912	539,637	54,910	594,548
<u>1964-65 (4)</u>					
August	42,226	44	42,270	4,073	46,343
September	42,792	145	42,937	2,133	45,069
October	40,120	27	40,147	2,037	42,184
November	30,976	44	31,020	2,523	33,543
December	27,720	72	27,792	2,522	30,314
January	18,098	73	18,171	2,421	20,591
February	19,337	118	19,455	1,332	20,787
March	23,376	272	23,648	2,201	25,849
April	31,798	228	32,026	1,783	33,809
May	34,822	114	34,937	2,777	37,713
June	30,631	97	30,728	2,665	33,393
July	24,843	76	24,919	4,919	29,838
Totals	366,740	1,310	368,050	31,384	399,434
<u>1965-66 (4)</u>					
August (5)	43,377	62	43,439	1,937	45,376
September	64,447	87	64,534	2,769	67,303
Totals	107,824	149	107,973	4,707	112,680

(1) Export clearances including shipments to the United States compiled by the Statistics Branch, Board of Grain Commissioners for Canada. (2) Compiled from Canadian Customs returns, 1963-64 adjusted to remove effect of time lag in reporting. (3) In terms of wheat equivalent. Wheat flour conversion rate: 2.3 bushels per cwt. (4) Preliminary, subject to revision. (5) Revised.

Exports of Canadian Wheat (1) by Destination, September 1965 and 1964

Destination	Wheat (Except Durum)	Durum Wheat	All Wheat	
			September 1965	September 1964(2)
thousand bushels				
<u>Western Europe</u>				
<u>EEC</u>				
Belgium and Luxembourg	1,672	223	1,895	766
France	433	19	452	509
Germany, Federal Republic	1,633	290	1,923	2,007
Italy	133	134	267	331
Netherlands	898	410	1,308	431
Sub-totals	4,769	1,076	5,845	4,044
<u>Other Western Europe</u>				
Britain	6,752	45	6,797	7,469
Ireland	241	-	241	-
Norway	-	-	-	505
Switzerland	676	263	939	422
Sub-totals	7,669	308	7,977	8,396
Totals	12,438	1,384	13,822	12,440
<u>Eastern Europe</u>				
Albania	605	162	767	400
Bulgaria	-	-	-	539
Czechoslovakia	3,159	963	4,122	5,379
Germany, East	1,163	-	1,163	1,625
Poland	1,304	-	1,304	4,370
U.S.S.R. (Russia)	27,613	2,523	30,136	-
Totals	33,844	3,648	37,492	12,313
<u>Africa</u>				
Nigeria	-	-	-	23
<u>Asia</u>				
China, Communist	5,058	172	5,230	4,483
Hong Kong	55	-	55	73
India	763	-	763	1,583
Japan	4,302	-	4,302	7,342
Malaysia and Singapore	35	-	35	59
Pakistan	-	-	-	1,837
Philippines	967	-	967	634
Saudi Arabia	57	-	57	110
Taiwan	-	-	-	58
Totals	11,237	172	11,409	16,179
<u>Oceania</u>				
United States Oceania	-	-	-	39
<u>Western Hemisphere</u>				
Barbados	(3)	-	(3)	(3)
Cuba	848	-	848	255
Ecuador	-	-	-	444
El Salvador	173	-	173	-
Guatemala	69	-	69	-
Jamaica	1	-	1	-
Nicaragua	78	-	78	51
Venezuela	555	-	555	1,048
Totals	1,724	-	1,724	1,798
Sub-totals, All Countries	59,243	5,204	64,447	42,792
Bagged seed (4)			87	121
Totals, All Countries	59,243	5,204	66,534	42,913

See footnotes on page 16.

Cumulative Exports of Canadian Wheat (1) by Destination

Destination	August-September 1965			Total
	Wheat (Except Durum)	Durum Wheat	Total Wheat	Same Period Last Year (2)
thousand bushels				
<u>Western Europe</u>				
<u>EEC</u>				
Belgium and Luxembourg	3,443	310 (5)	3,753 (5)	3,120
France	666	46	712	546
Germany, Federal Republic ...	3,092 (5)	1,666 (5)	4,758 (5)	4,301
Italy	2,651	176	2,827	785
Netherlands	1,302	429 (5)	1,731 (5)	608
Sub-totals	11,154	2,627	13,781	9,360
<u>Other Western Europe</u>				
Austria	525	140	665	-
Britain	14,917 (5)	45	14,962 (5)	14,311
Ireland	327 (5)	-	327 (5)	-
Norway	1,066	-	1,066	1,601
Switzerland	951 (5)	624 (5)	1,575 (5)	567
Sub-totals.....	17,786	809	18,595	16,479
Totals	28,940	3,436	32,376	25,839
<u>Eastern Europe</u>				
Albania	1,167	390	1,557	1,031
Bulgaria	-	-	-	539
Czechoslovakia	5,216 (5)	963	6,179 (5)	10,333
Germany, East	2,328	-	2,328	3,960
Poland	5,641 (5)	1,357	6,998 (5)	9,040
U.S.S.R. (Russia)	29,784	2,523	32,307	82
Totals	44,136	5,233	49,369	24,985
<u>Africa</u>				
Ethiopia	147	-	147	-
Mozambique	11	-	11	-
Nigeria	-	-	-	71
Republic of South Africa	-	-	-	945
Rhodesia	-	-	-	48
Totals	158	-	158	1,064

Cumulative Exports of Canadian Wheat (1) by Destination - Concluded

Destination	August-September 1965			Total
	Wheat (Except Durum)	Durum Wheat	Total Wheat	Same Period Last Year (2)
thousand bushels				
<u>Asia</u>				
China, Communist	8,915	497	9,412	13,325
Hong Kong	169	-	169	179
India	3,992	-	3,992	2,404
Israel	-	-	-	529
Japan	6,921	-	6,921	10,154
Malaysia and Singapore	160	-	160	132
Pakistan	492	-	492	1,837
Philippines	1,057	-	1,057	706
Saudi Arabia	150	-	150	177
Taiwan	-	-	-	224
Thailand	37	-	37	-
Totals	21,893	497	22,390	29,667
<u>Oceania</u>				
United States Oceania	-	-	-	39
<u>Western Hemisphere</u>				
Barbados	(3)	-	(3)	(3)
Cuba	1,684	-	1,684	960
Ecuador	275	-	275	444
El Salvador	250	-	250	-
Guatemala	97 (5)	-	97 (5)	-
Jamaica	2	-	2	1
Nicaragua	155	-	155	51
Peru	-	-	-	385
Venezuela	1,068 (5)	-	1,068 (5)	1,584
Totals	3,531	-	3,531	3,425
Sub-totals, All Countries .	98,658	9,166	107,824	85,018
Bagged seed (4)			149	189
Totals, All Countries	98,658	9,166	107,973	85,207

(1) Overseas clearances as reported by the Statistics Branch, Board of Grain Commissioners for Canada, for all countries except the United States. Excluding bagged seed. (2) Revised. (3) Less than 500 bushels. (4) Compiled from Canadian Customs returns, 1964-65 adjusted for time lag. (5) Revisions in data for the previous month have been taken into account in the August-September cumulative totals.

Customs Exports of Canadian Wheat Flour by Countries of Consignment

Destination	September 1965 (1)	August-September	
		1965 (1)	1964 (2)
		bushels	
<u>Western Europe</u>			
<u>EEC</u>			
Belgium and Luxembourg	-	1,150	16,861
Italy	1,150	1,150	805
Netherlands	-	954	-
Sub-totals	1,150	3,254	17,666
<u>Other Western Europe</u>			
Britain	1,304,049	1,772,003 (3)	1,604,698
Denmark	460	460	-
Gibraltar	1,288	1,288	-
Greece	221	221	2,024
Norway	46	46	-
Portugal	3,910	6,815	8,460
Sweden	506	506	506
Sub-totals	1,310,480	1,781,339 (3)	1,615,688
Totals	1,311,630	1,784,593 (3)	1,633,354
<u>Eastern Europe</u>			
U.S.S.R. (Russia)	-	-	1,314,300
<u>Africa</u>			
Angola	1,380	3,105	1,196
Cameroun Republic	690	8,349	-
Congo (Leopoldville)	29,900	31,050	28,060
Ethiopia	-	-	230
French Africa nes	5,398	5,398	-
Gambia	69	1,265	8,970
Ghana	66,815	76,480	236,704
Ivory Coast Republic	-	460	-
Liberia	10,070	12,595	9,195
Malawi	3,539	6,458	-
Mozambique	9,740	14,126	9,000
Nigeria	74	74	536
Nyasaland	-	-	3,611
Portuguese Africa nes	7,976	14,299	8,349
Rhodesia	1,150	1,150	-
Sierra Leone	42,964	62,762	148,964
Togo	14,260	23,885	34,937
Totals	194,025	261,456	489,752
<u>Asia</u>			
Aden	12,742	16,091	-
British Middle East nes	-	-	8,630
Burma	-	-	159,043
Hong Kong	51,964	117,470	152,120
Iran	1,736	2,079	1,000
Japan	-	297	14,218
Jordan	-	255	-
Korea	-	27,881	-
Kuwait	-	-	5,433
Lebanon	90,351	189,925	6,762

Customs Exports of Canadian Wheat Flour by Countries of Consignment

Destination	September 1965 (1)	August-September	
		1965 (1)	1964 (2)
		bushels	
<u>Asia (concluded)</u>			
Malaysia	18,331	41,605	108,213
Portuguese Asia	2,291	4,315	2,024
Saudi Arabia	-	-	518
Syria	3,549	3,549	-
Thailand	8,165	50,600	79,598
Totals	189,129	454,067	537,559
<u>Oceania</u>			
Australia	-	14	-
British Oceania nes	-	115	-
Fiji	1,392	2,254	1,472
French Oceania	230	230	356
United States Oceania	-	3,910	115
Totals.....	1,622	6,523	1,943
<u>Western Hemisphere</u>			
Bahamas	21,540	34,224	59,195
Barbados	15,633	24,527	26,811
Bermuda	19,782	25,863 (3)	11,125
British Guiana	4,620	9,671	6,376
British Honduras	2,898	4,423	3,841
Chile	-	-	920
Costa Rica	102,258	190,509	171,118
Cuba	446,131	908,466	834,107
Dominican Republic.....	14,311	129,771	17,480
El Salvador	-	460	200
French West Indies	-	-	460
Guatemala	4,296	10,048	6,785
Haiti Republic	-	338	9,660
Honduras Republic	7,705	15,870	7,383
Jamaica	112,040	250,555	258,269
Leeward and Windward Islands	61,169	116,463 (3)	148,134
Netherlands Antilles	18,556	37,244 (3)	29,460
Nicaragua	6,440	6,440	690
Panama	1,656	3,036	18,416
Peru	6,164	13,524	5,808
St. Pierre and Miquelon	2,852	5,929	3,248
Surinam	4,761	11,109	8,050
Trinidad and Tobago	132,172	248,711 (3)	223,480
United States	87,929	152,856	141,646
Totals	1,072,913	2,200,037 (3)	1,992,662
Totals, All Countries	2,769,319	4,706,676 (3)	5,969,570

nes - not elsewhere specified.

- (1) In terms of wheat equivalent. Preliminary and unadjusted for time lag. Conversion rate: 2.3 bushels per cwt.
- (2) In terms of wheat equivalent. Adjusted to remove effect of time lag in the returns made by Customs. Conversion rate: 2.3 bushels per cwt.
- (3) Revised.

FARMERS' MARKETINGS OF WHEAT, PRAIRIE PROVINCES

(SPECIFIED PERIODS)

MILLION BUSHEL

700 —

600 —

500 —

400 —

300 —

200 —

100 —

0

MILLION BUSHEL

700 —

600 —

500 —

400 —

300 —

200 —

100 —

0

PEAK MARKETINGS
1963-64 CROP YEAR
568.6 MILLION BUSHEL

JULY

JUNE

MAY

APR.

MAR.

FEB.

JAN.

DEC.

NOV.

OCT.

SEPT.

30 year average
1934-35
1963-64

10 year average
1954-55
1963-64

1960-61

1961-62

1962-63

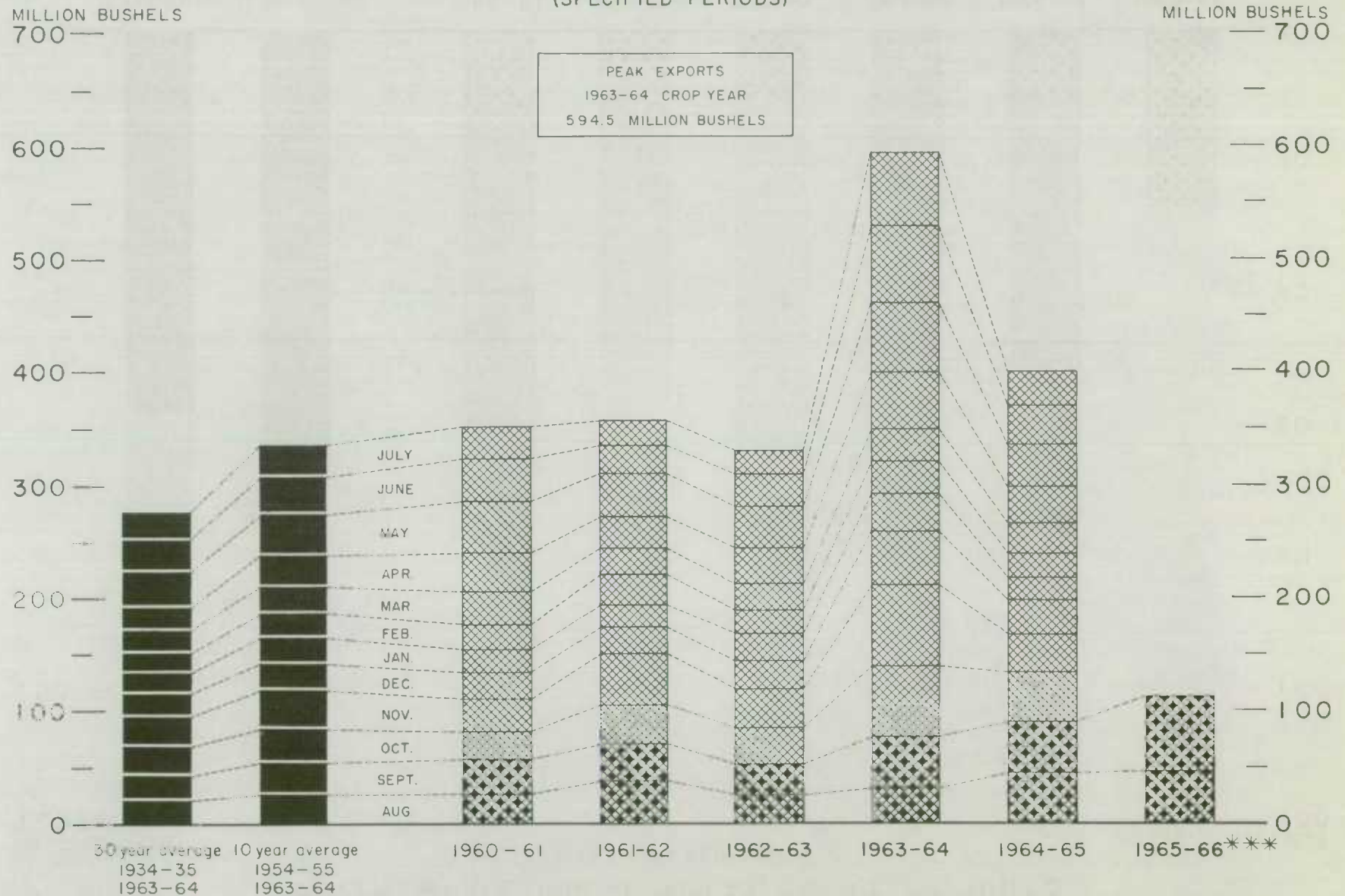
1963-64

1964-65

1965-66

EXPORTS OF CANADIAN WHEAT* AND WHEAT FLOUR**

(SPECIFIED PERIODS)



*Beginning with 1956-57 includes bagged seed wheat **In terms of wheat equivalent. ***Preliminary.

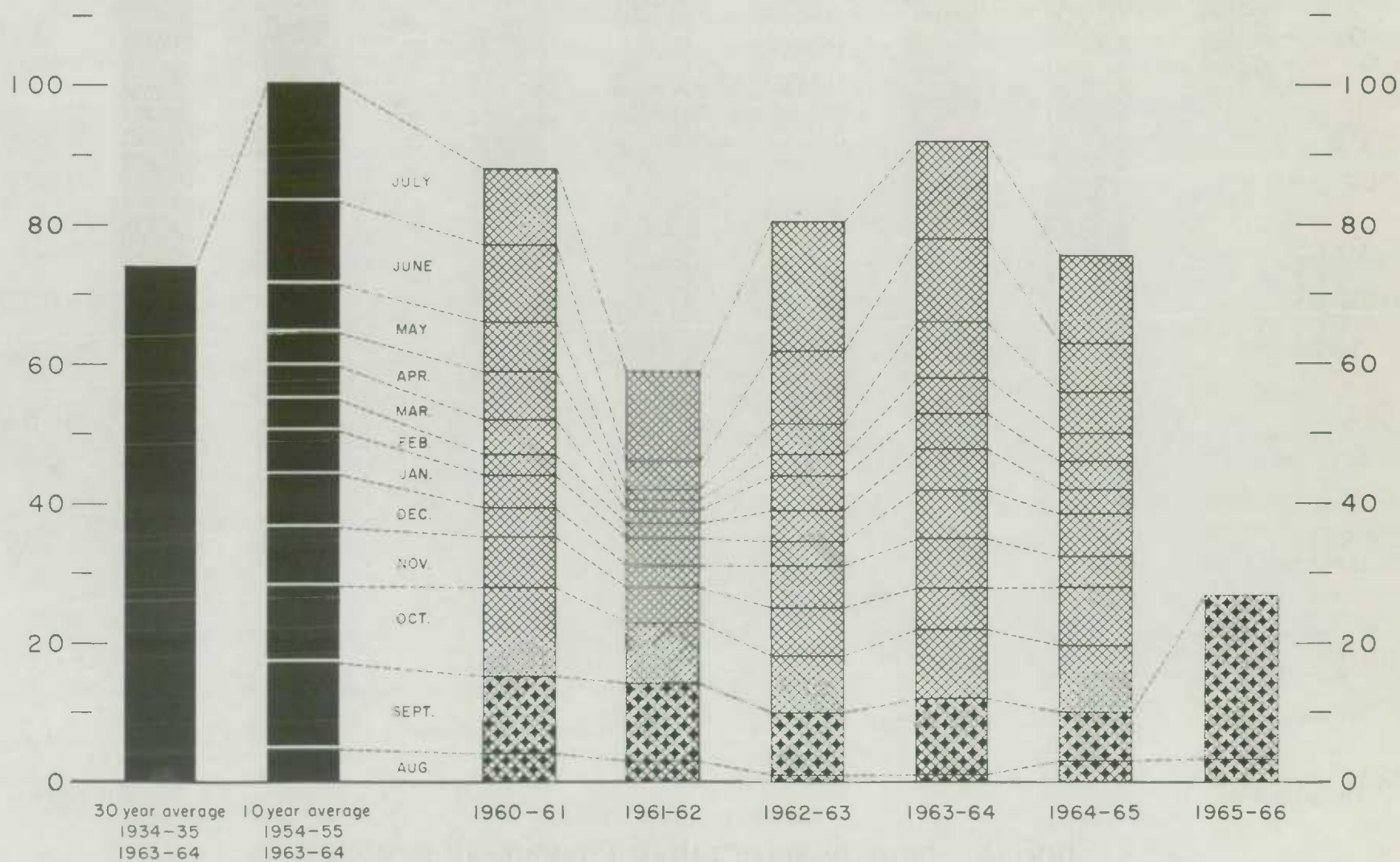
Agriculture Division D.B.S.

FARMERS' MARKETINGS OF BARLEY, PRAIRIE PROVINCES

(SPECIFIED PERIODS)

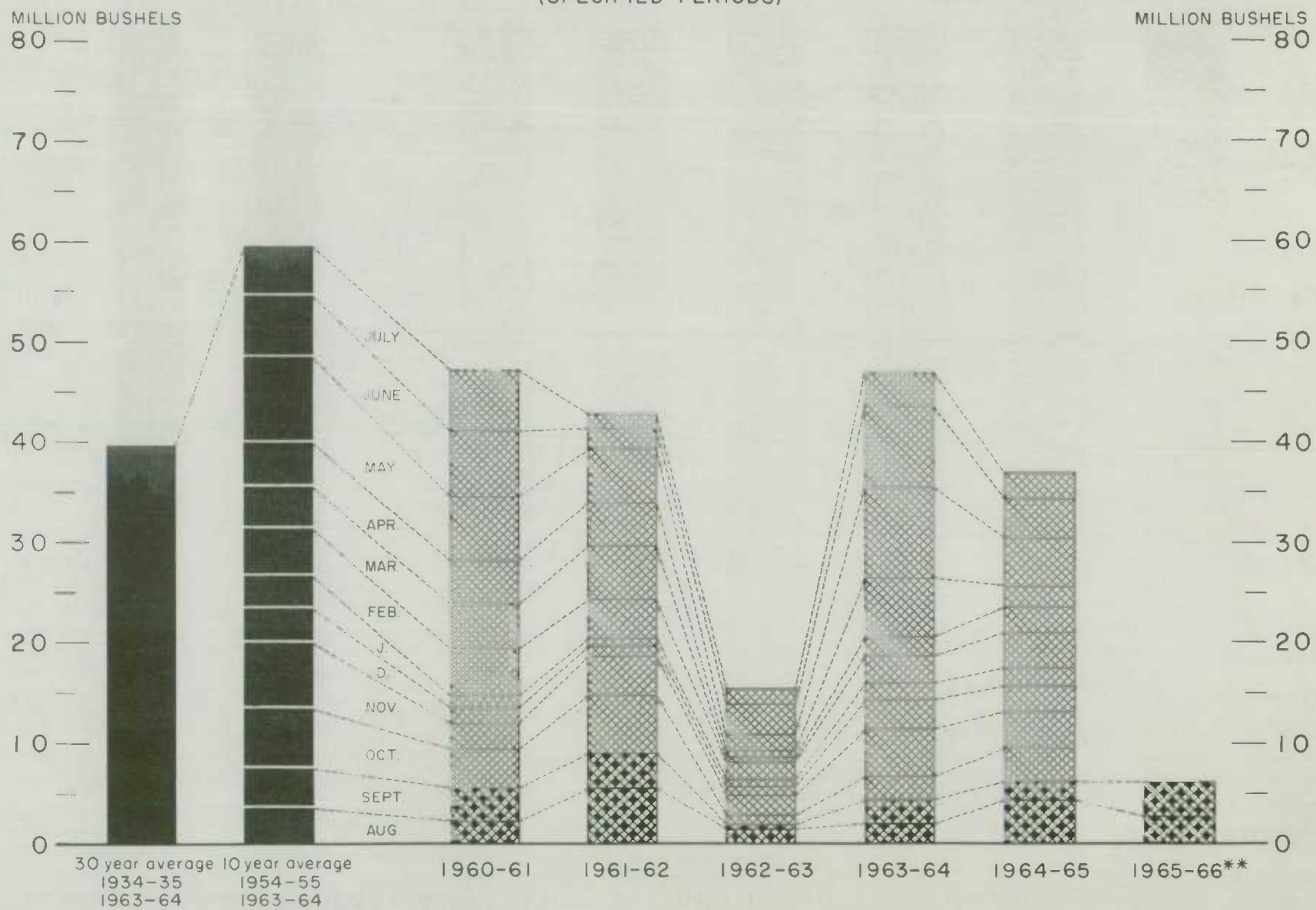
MILLION BUSHEL
120 —

MILLION BUSHEL
120 —



EXPORTS OF CANADIAN BARLEY AND BARLEY PRODUCTS*

(SPECIFIED PERIODS)

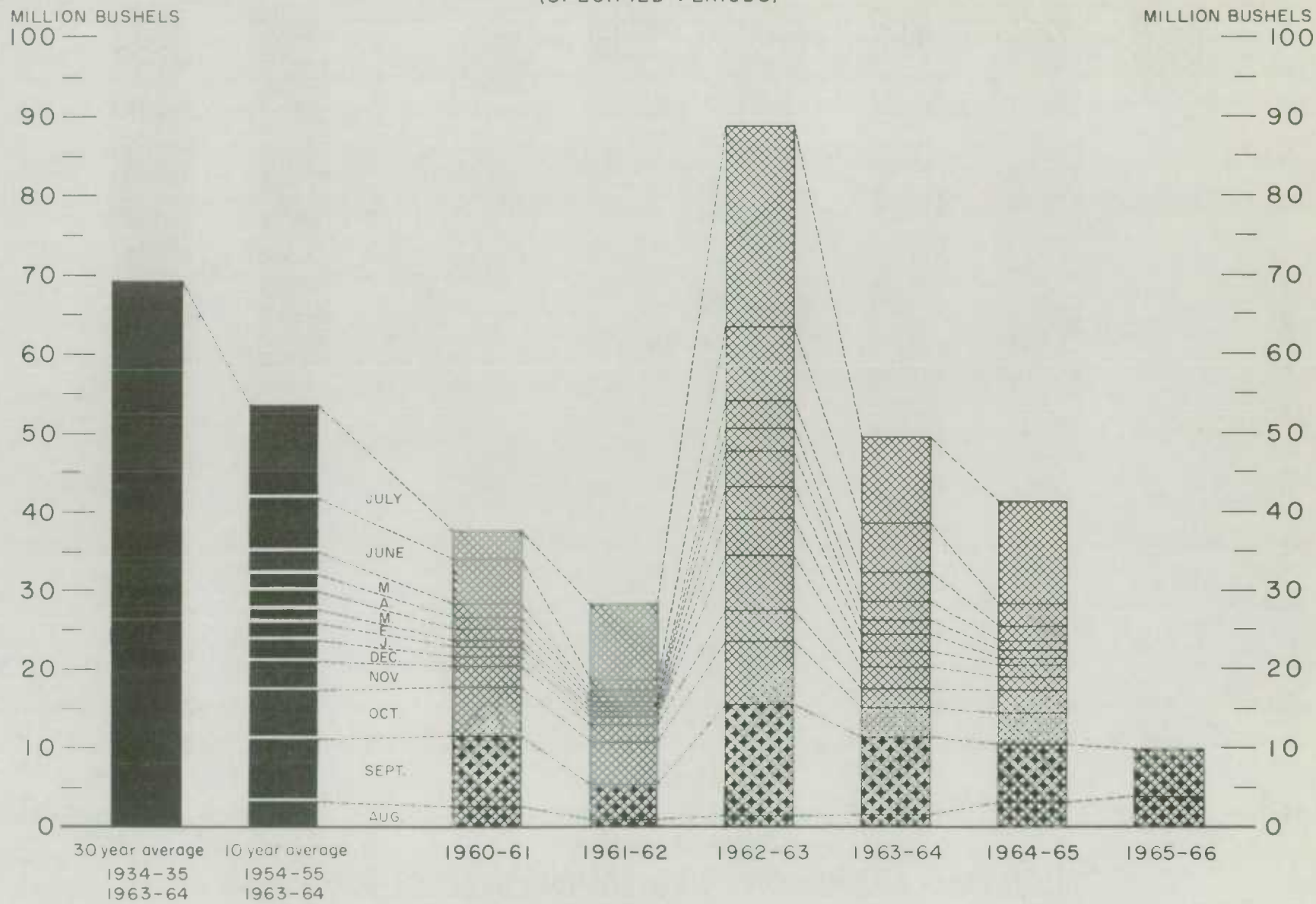


*In terms of grain equivalent. **Preliminary.

Agriculture Division D.B.S

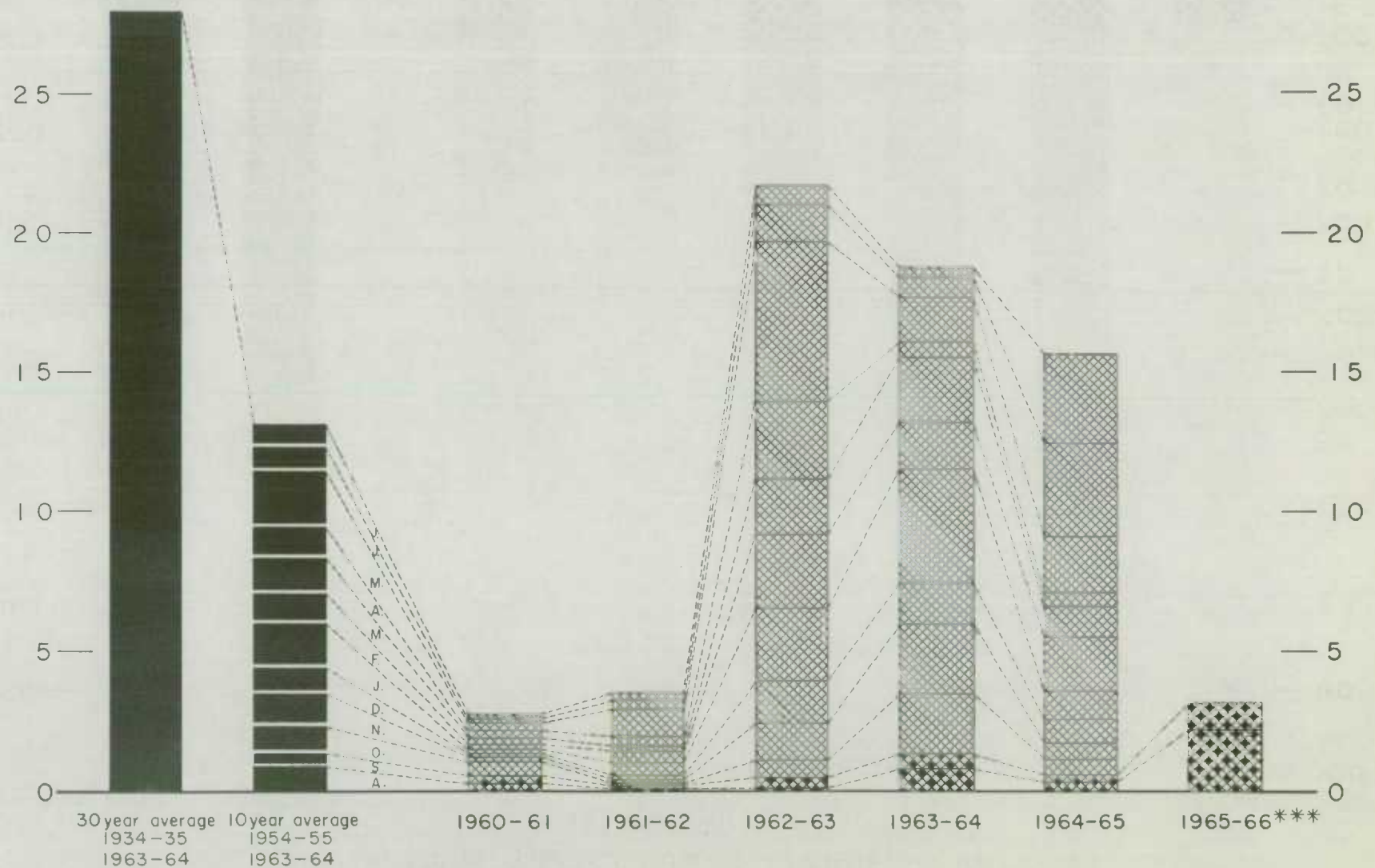
FARMERS' MARKETINGS OF OATS, PRAIRIE PROVINCES

(SPECIFIED PERIODS)



EXPORTS OF CANADIAN OATS* AND OAT PRODUCTS**

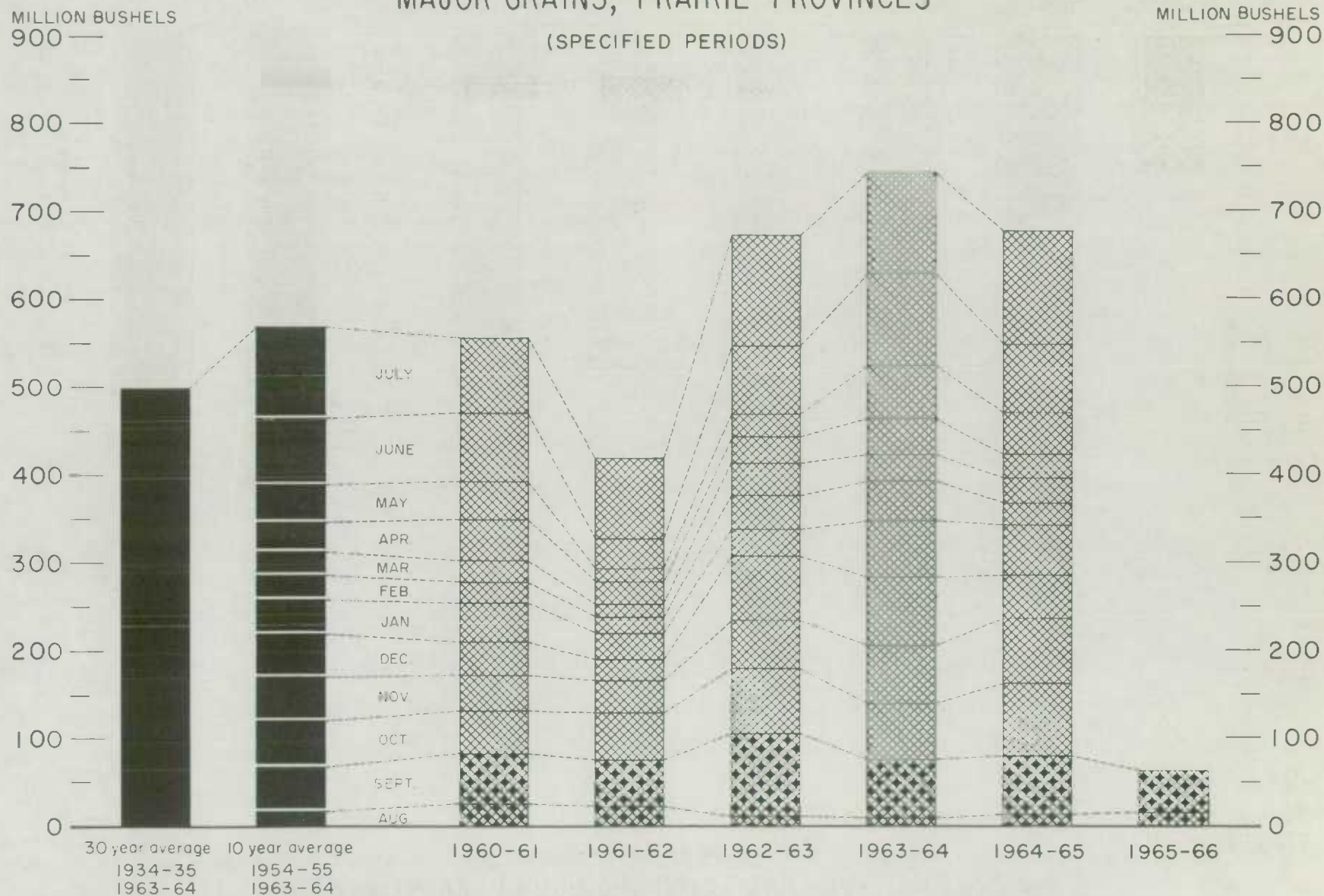
(SPECIFIED PERIODS)

MILLION BUSHEL
30 —MILLION BUSHEL
— 30

*Beginning with 1960-61 includes relatively small quantity of bagged seed. **In terms of grain equivalent. ***Preliminary.

Agriculture Division D.B.S.

FARMERS' MARKETINGS OF CANADA'S SIX MAJOR GRAINS*, PRAIRIE PROVINCES



* Wheat, oats, barley, rye, flaxseed and from 1960-61 rapeseed.

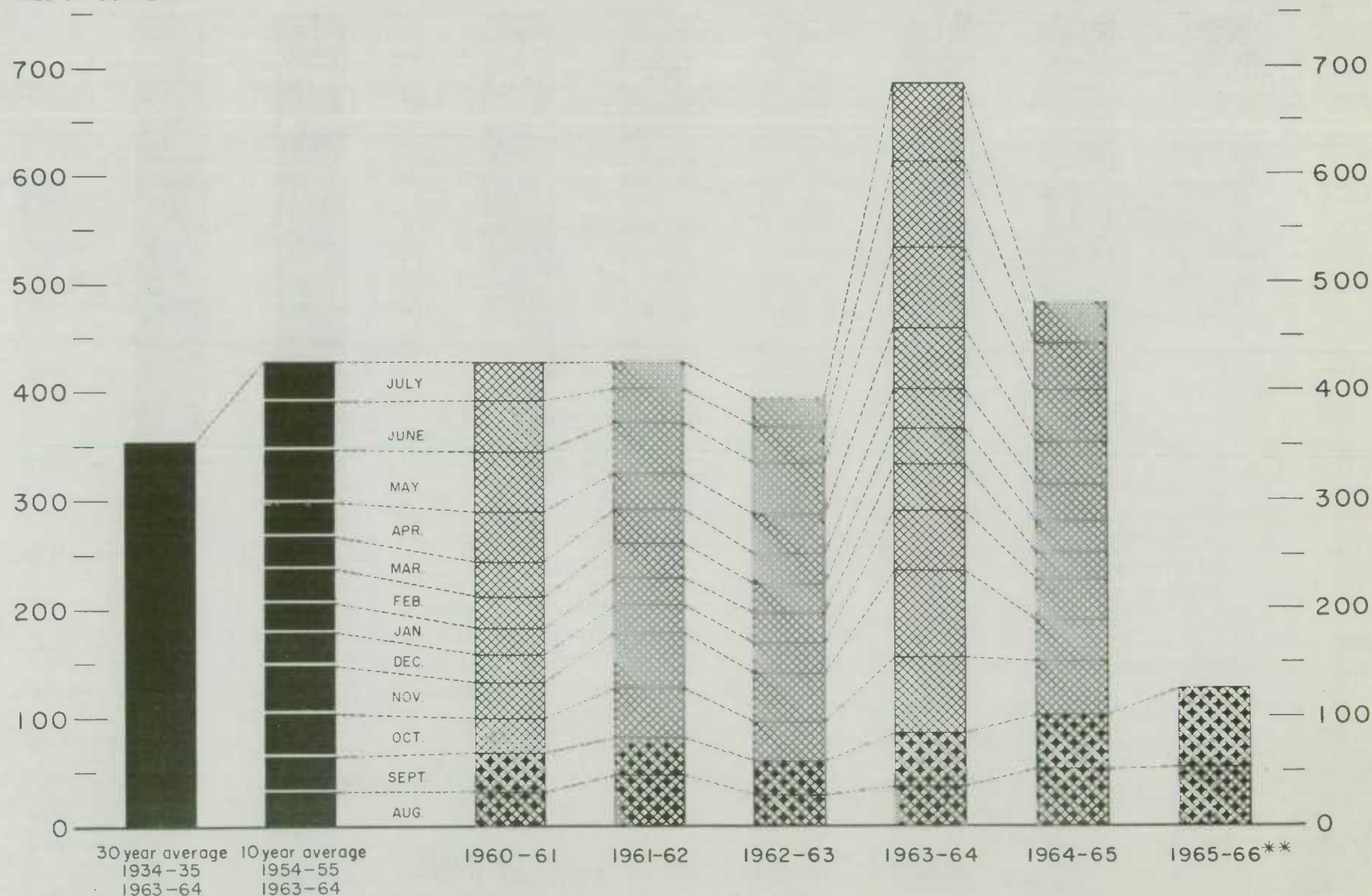
Agriculture Division D.B.S.

EXPORTS OF CANADA'S SIX MAJOR GRAINS AND PRODUCTS*

(SPECIFIED PERIODS)

MILLION BUSHELS

MILLION BUSHELS



*Wheat, bagged seed wheat, and wheat flour; oats, bagged seed oats, and oatmeal and rolled oats; barley, malt and pot and pearl; rye, flaxseed and from 1960-61 rapeseed.

**Preliminary.

Agriculture Division D.B.S.

Canadian Wheat Board Weekly Average Cash Wheat Prices
Basis in Store Fort William-Port Arthur

Class and Grade	Week Ending			
	October 8	October 15	October 22	October 29
	cents and eighths per bushel			
<u>Initial Payment to Producers</u>				
1 Northern	150	150	150	150
2 Northern	146	146	146	146
3 Northern	142	142	142	142
4 Northern	135	135	135	135
5 Wheat	121	121	121	121
6 Wheat	117	117	117	117
Feed Wheat	113	113	113	113
1 C.W. Garnet	135	135	135	135
2 C.W. Garnet	130	130	130	130
3 C.W. Garnet	125	125	125	125
1 Alberta Red Winter	134	134	134	134
2 Alberta Winter	129	129	129	129
3 Alberta Winter	123	123	123	123
1 C.W. Amber Durum	150	150	150	150
2 C.W. Amber Durum	146	146	146	146
3 C.W. Amber Durum	142	142	142	142
<u>International Wheat Agreement</u> <u>and Domestic Sales</u>				
1 Northern	194/1	194/4	194/7	194/7
2 Northern	191/1	191/4	191/7	191/7
3 Northern	183/1	183	182/7	182/7
4 Northern	178/1	178	177/7	177/7
5 Wheat	173/1	173	172/7	172/7
6 Wheat	171/1	171	170/7	170/7
Feed Wheat	168/1	168	167/7	167/7
1 C.W. Garnet	179/1	179	178/7	178/7
2 C.W. Garnet	178/1	178	177/7	177/7
3 C.W. Garnet	177/1	177	176/7	176/7
1 Alberta Red Winter	179/1	179	178/7	178/7
2 Alberta Winter	178/1	178	177/7	177/7
3 Alberta Winter	177/1	177	176/7	176/7
1 C.W. Amber Durum	194/1	194/4	194/7	194/7
2 C.W. Amber Durum	191/1	191/4	191/7	191/7
3 C.W. Amber Durum	185/1	185	184/7	184/7
<u>Export - Class II</u>				
1 Northern	194/1	194/4	194/7	194/7
2 Northern	191/1	191/4	191/7	191/7
3 Northern	183/1	183	182/7	182/7
4 Northern	178/1	178	177/7	177/7
5 Wheat	173/1	173	172/7	172/7
6 Wheat	171/1	171	170/7	170/7
Feed Wheat	168/1	168	167/7	167/7
1 C.W. Garnet	179/1	179	178/7	178/7
2 C.W. Garnet	178/1	178	177/7	177/7
3 C.W. Garnet	177/1	177	176/7	176/7
1 C.W. Amber Durum	194/1	194/4	194/7	194/7
2 C.W. Amber Durum	191/1	191/4	191/7	191/7
3 C.W. Amber Durum	185/1	185	184/7	184/7

Canadian Wheat Board Weekly Average Cash Wheat Prices
Basis in Store Vancouver

Class and Grade	Week Ending			
	October 8	October 15	October 22	October 29
	cents and eighths per bushel			
<u>Initial Payment to Producers</u>				
1 Northern	150	150	150	150
2 Northern	146	146	146	146
3 Northern	142	142	142	142
4 Northern	135	135	135	135
5 Wheat	121	121	121	121
6 Wheat	117	117	117	117
Feed Wheat	113	113	113	113
1 C.W. Garnet	135	135	135	135
2 C.W. Garnet	130	130	130	130
3 C.W. Garnet	125	125	125	125
1 Alberta Red Winter	134	134	134	134
2 Alberta Winter	129	129	129	129
3 Alberta Winter	123	123	123	123
1 C.W. Amber Durum	150	150	150	150
2 C.W. Amber Durum	146	146	146	146
3 C.W. Amber Durum	142	142	142	142
<u>International Wheat Agreement</u> <u>and Domestic Sales</u>				
1 Northern	197/7	198/2	198/5	198/5
2 Northern	192/7	193/2	193/5	193/5
3 Northern	186/7	186/6	186/5	186/5
4 Northern	178/7	178/6	178/5	178/5
5 Wheat	173/7	173/6	173/5	173/5
6 Wheat	170/7	170/6	170/5	170/5
Feed Wheat	167/7	167/6	167/5	167/5
1 C.W. Garnet	178/7	178/6	178/5	178/5
2 C.W. Garnet	177/7	177/6	177/5	177/5
3 C.W. Garnet	176/7	176/6	176/5	176/5
1 Alberta Red Winter	178/7	178/6	178/5	178/5
2 Alberta Winter	177/7	177/6	177/5	177/5
3 Alberta Winter	176/7	176/6	176/5	176/5
<u>Export - Class II</u>				
1 Northern	197/7	198/2	198/5	198/5
2 Northern	192/7	193/2	193/5	193/5
3 Northern	186/7	186/6	186/5	186/5
4 Northern	178/7	178/6	178/5	178/5
5 Wheat	173/7	173/6	173/5	173/5
6 Wheat	170/7	170/6	170/5	170/5
Feed Wheat	167/7	167/6	167/5	167/5
1 C.W. Garnet	178/7	178/6	178/5	178/5
2 C.W. Garnet	177/7	177/6	177/5	177/5
3 C.W. Garnet	176/7	176/6	176/5	176/5
1 Alberta Red Winter	178/7	178/6	178/5	178/5
2 Alberta Winter	177/7	177/6	177/5	177/5
3 Alberta Winter	176/7	176/6	176/5	176/5

CANADIAN FLOUR MILLING SITUATION

Production Wheat flour production by Canadian mills during September 1965 amounted to 3,861,000 hundredweight and represented an increase of 13 per cent over the August 1965 total of 3,419,000 hundredweight, 14 per cent above the September 1964 figure of 3,377,000 hundredweight and 17 per cent greater than the ten-year (1955-64) average production for the month of September of 3,309,000 hundredweight. Mills reporting operations during September 1965 had a total rated capacity of 170,000 hundredweight per 24-hour day and on the basis of a 25-day working period 90.8 per cent of this rated capacity was effective.

Wheat milled for flour during September 1965 amounted to 8,627,000 bushels, 12 per cent more than the 7,676,000 bushels milled during the preceding month and 15 per cent greater than the 7,509,000 bushels milled during September 1964. Of the wheat milled for flour during September 1965 some 7,630,000 bushels were Western Canadian spring wheat (other than Durum) while the remainder consisted of Ontario winter wheat (631,000 bushels); Durum (259,000 bushels); and all other (106,000 bushels).

Exports According to preliminary Customs returns, exports of Canadian wheat flour during September 1965 amounted to 1,204,000 hundredweight (some 2,769,000 bushels of wheat equivalent), representing an increase of 43 per cent above the 1,937,000 bushels exported during the previous month and 23 per cent more than the adjusted September 1964 exports of 2,258,000 bushels. Flour shipments during the month went to fifty-two countries with exports to Britain amounting to 1,304,000 bushels and accounted for 47 per cent of the September 1965 total. Other leading markets for Canadian wheat flour in terms of wheat during the month, with shipments in thousands of bushels were as follows: Cuba, 446; Trinidad and Tobago, 132; Jamaica, 112; Costa Rica, 102; Lebanon, 90; and United States, 88.

Wheat milled for Flour, and Production and Exports of Wheat Flour, Canada

Crop Year	Wheat Milled for Flour	Wheat Flour	
		Production	Exports (1)
	bushels		cwt.
1935-36--1939-40 average	67,845,114	29,405,451	9,603,941
1940-41--1944-45 average	99,704,638	43,908,245	23,699,546
1945-46--1949-50 average	107,330,372	47,011,540	25,819,721
1950-51--1954-55 average	100,446,328	43,847,894	21,812,041
1955-56--1959-60 average	90,148,211	39,752,589	16,349,156
1960-61	89,731,155	39,914,644	15,513,836
1961-62	88,240,580	39,539,651	13,892,676
1962-63	78,789,332	35,505,220	11,854,458
1963-64	111,670,577	50,103,569	23,873,978
1964-65 (2)	87,212,056	39,108,631	13,645,219
1965-66 (2)			
August	7,675,899	3,419,083	842,329(3)
September	8,626,816	3,861,212	1,204,052
Totals	16,302,715	7,280,295	2,046,381
Same month 1964-65 (3)	14,536,844	6,521,644	2,595,465

(1) Based on Customs returns. Exports for the crop years 1945-46--1963-64 revised to remove effect of time lag in the returns made by Customs.

(2) Subject to revision.

(3) Revised figures.

UNITED STATES SITUATION

Total Domestic Supplies 1 Per Cent Less Than Previous Year

Total domestic supplies of wheat in the United States for the 1965-66 crop year are currently placed at 2,172.8 million bushels, slightly below the previous year's total of 2,191.7 million, with a decrease in carryover stocks more than offsetting an increase in production. The 818.9 million bushels carried over at July 1, 1965 were the lowest stocks in twelve years and the fourth consecutive decline since July 1, 1961. The 1965 production, estimated at 1,353.9 million bushels, is 5 per cent greater than the 1964 crop and 14 per cent larger than the 1959-63 average of 1,189.8 million. In addition, current crop year domestic supplies may be supplemented by imports of about 2 million bushels.

Domestic disappearance during 1965-66 is estimated at about 675.0 million bushels, 3 per cent more than the 655.6 million last year. After deducting anticipated domestic requirements for the current United States crop year, some 1,498.1 million remain available for export and for carryover, a decrease of 2 per cent from the 1,536.4 million in 1964-65.

Exports of wheat and wheat flour in terms of grain equivalent during the period July-September 1965 amounted to 205.3 million bushels, 13 per cent above the 181.2 million exported during the same months last year. The balance remaining on October 1, 1965 for export and for carryover was estimated at 1,292.9 million bushels compared with 1,355.2 million on the same date a year ago.

United States Wheat Supplies

Item	1964-65 (1)	1965-66 (2)
	million bushels	
Carryover at beginning of crop year (July 1)	901.2	818.9
Production	1,290.5	1,353.9 (1)
Total estimated domestic supplies	2,191.7	2,172.8
Imports of wheat and wheat flour in terms of wheat for domestic use, July-September	0.3	0.3
Total estimated supplies (3)	2,192.0	2,173.1
Less estimated domestic requirements for crop year (4) ..	655.6	675.0
Available for export and for carryover	1,536.4	1,498.1
Deduct:		
Exports of wheat as grain, July-September	159.0	186.4
Exports of wheat flour in terms of wheat, July- September (5)	22.2	18.9
Total exports of wheat and wheat flour (6)	181.2	205.3
Balance on October 1 for export and for carryover	1,355.2	1,292.9

(1) Revised. (2) Preliminary. (3) Excluding imports for October-June. (4) Includes shipments to United States Territories and wheat for military food use at home and abroad. (5) Flour exports exclude "Milled in bond". (6) These figures now include all shipments under relief programs which formerly were not available from Census data.

United States Exports of Wheat and Flour (1, 2) by Country of Destination
July-June 1963-64 and 1964-65

Destination	July-June 1963-64			July-June 1964-65		
	Wheat	Flour(3)	Total	Wheat	Flour(3)	Total
thousand bushels						
<u>Western Hemisphere</u>						
Canada	(2)	210	210	-	220	220
Mexico	2	1,809	1,811	25	901	926
British Honduras	5	275	280	-	212	212
Canal Zone	-	3	3	-	5	5
Costa Rica	3	1,124	1,127	2	958	960
El Salvador	1,037	155	1,192	973	140	1,113
Guatemala	2,026	104	2,130	1,824	98	1,922
Honduras	775	127	902	892	114	1,006
Nicaragua	533	202	735	481	135	616
Panama Republic	900	283	1,183	1,042	168	1,210
Bahamas	(4)	16	16	2	13	15
Barbados	27	127	154	14	89	103
Bermuda	-	-	-	-	1	1
Dominican Republic	1,586	180	1,766	893	333	1,226
French West Indies	-	-	-	-	5	5
Haiti	1,489	200	1,689	1,766	73	1,839
Jamaica	10	1,152	1,162	1	1,067	1,068
Leeward & Windward Islands .	-	93	93	-	75	75
Netherlands Antilles	1	412	413	2	294	296
Trinidad and Tobago	5	1,255	1,260	26	1,046	1,072
Argentina	-	13	13	-	5	5
Bolivia	114	3,783	3,897	1	4,941	4,942
Brazil	45,656	388	46,044	39,826	880	40,706
British Guiana	-	1,128	1,128	11	1,152	1,163
Chile	3,195	836	4,031	5,112	1,776	6,888
Colombia	5,559	543	6,102	4,974	476	5,450
Ecuador	813	332	1,145	849	91	940
Paraguay	1,000	150	1,150	1,238	25	1,263
Peru	5,931	333	6,264	3,011	411	3,422
Surinam	-	432	432	-	389	389
Uruguay	-	40	40	-	39	39
Venezuela	11,161	262	11,423	10,096	238	10,334
Totals	81,828	15,967	97,795	73,061	16,370	89,431
<u>Western Europe</u>						
<u>EEC</u>						
Belgium-Luxembourg	8,191	19	8,210	1,381	7	1,388
France	11,210	4	11,214	6,534	9	6,543
Germany, West	14,726	12	14,738	3,410	8	3,418
Italy	4,170	2,737	6,907	3,184	2,248	5,432
Netherlands	28,707	1,183	29,890	11,633	861	12,494
Totals	67,004	3,955	70,959	26,142	3,133	29,275

United States Exports of Wheat and Flour (1, 2) by Country of Destination
July-June 1963-64 and 1964-65

Destination	July-June 1963-64			July-June 1964-65		
	Wheat	Flour(3)	Total	Wheat	Flour(3)	Total
thousand bushels						
<u>Other Western Europe</u>						
Austria	116	-	116	-	-	-
Azores	332	-	332	501	-	501
Cyprus	1,538	47	1,585	-	-	-
Denmark	19	1	20	(4)	4	4
Finland	209	(4)	209	959	-	959
Gibraltar	-	3	3	-	7	7
Greece	1,989	2,100	4,089	792	1,124	1,916
Iceland	11	356	367	10	369	379
Ireland	385	-	385	783	-	783
Malta	-	-	-	-	32	32
Norway	4,608	20	4,628	-	6	6
Portugal	6,017	452	6,469	4,479	850	5,329
Spain	4,022	9	4,031	1,508	577	2,085
Sweden	583	13	596	42	17	59
Switzerland	9,207	-	9,207	1,305	(4)	1,305
Trieste	-	-	-	-	16	16
Turkey	6,028	437	6,465	11,727	261	11,988
United Kingdom	19,010	231	19,241	8,512	532	9,044
Totals	54,074	3,669	57,743	30,618	3,795	34,413
<u>Eastern Europe</u>						
Czechoslovakia	1,312	-	1,312	-	-	-
East Germany	4,460	-	4,460	-	-	-
Hungary	6,663	-	6,663	-	-	-
Poland	39,728	775	40,503	1,246	805	2,051
Rumania	-	-	-	41	-	41
U.S.S.R.	64,383	-	64,383	1,677	-	1,677
Yugoslavia	10,196	1,285	11,481	47,982	2,044	50,026
Totals	126,742	2,060	128,802	50,946	2,849	53,795
Totals, Europe	247,820	9,684	257,504	107,706	9,777	117,483
<u>Asia</u>						
Aden	10	24	34	-	15	15
Afghanistan	4,031	1	4,032	1,901	1	1,902
Arabia Peninsula States	110	90	200	55	136	191
Bahrein	-	384	384	-	447	447
Burma	-	-	-	-	(4)	(4)
Cambodia	-	8	8	-	-	-
Ceylon	-	1,438	1,438	2	1,400	1,402
India	162,893	188	163,081	215,605	321	215,926
Indonesia	14	478	492	9	25	34
Iran	904	1,174	2,078	10,339	199	10,538
Iraq	5,869	140	6,009	31	596	627

United States Exports of Wheat and Flour (1, 2), by Country of Destination
July-June 1963-64 and 1964-65

Destination	July-June 1963-64			July-June 1964-65		
	Wheat	Flour(3)	Total	Wheat	Flour(3)	Total
thousand bushels						
<u>Asia (concluded)</u>						
Israel	7,278	77	7,355	6,474	152	6,626
Jordan	987	3,997	4,984	-	3,385	3,385
Kuwait	32	794	826	26	821	847
Laos	4	96	100	-	122	122
Lebanon	45	1,195	1,240	624	1,110	1,734
Macao	-	152	152	-	105	105
Malaysia	122	125	247	36	88	124
Pakistan	59,734	29	59,763	64,546	61	64,607
Palestine	-	-	-	-	(4)	(4)
Philippines	8,506	546	9,052	7,541	493	8,034
Saudi Arabia	140	3,514	3,654	591	4,279	4,870
Syrian Arab Republic	-	-	-	-	56	56
Thailand	-	87	87	-	95	95
Vietnam	6	3,018	3,024	111	3,565	3,676
Nepal	-	-	-	3	(4)	3
Hong Kong	196	669	865	138	532	670
Japan	72,146	2,652	74,798	60,392	371	60,763
Korea	23,807	1,138	24,945	15,328	3,956	19,284
Nansei and Nanpo Islands ...	749	557	1,306	755	546	1,301
Taiwan	9,151	1,193	10,344	13,073	641	13,714
Totals	356,734	23,764	380,498	397,580	23,518	421,098
<u>Africa</u>						
Algeria	13,708	1,086	14,794	4,360	310	4,670
Libya	276	277	553	-	2	2
Morocco	2,759	2,823	5,582	8,311	3,603	11,914
Sudan	2,044	1,856	3,900	2,827	2,735	5,562
Tunisia	3,014	195	3,209	5,500	400	5,900
U.A.R. (Egypt)	35,323	33,222	68,545	33,095	19,417	52,512
Angola	1,063	87	1,150	794	99	893
Gambia	19	99	118	-	9	9
Burundi and Rwanda	-	4	4	-	11	11
Cameroon	-	62	62	-	84	84
Canary Islands	1,163	6	1,169	1,333	-	1,333
Congo (Leopoldville)	127	3,127	3,254	63	1,979	2,042
Gabon	-	7	7	-	7	7
Ghana	19	172	191	-	82	82
Guinea	-	14	14	-	669	669
Liberia	7	120	127	1	133	134
Madeira	1,060	60	1,120	669	33	702
Mauritania	-	-	-	-	3	3
Nigeria	2,567	54	2,621	2,734	25	2,759
Sierra Leone	12	58	70	-	207	207
Senegal	45	1	46	(4)	28	28
Spanish Africa n.e.c.	-	(4)	(4)	-	1	1

United States Exports of Wheat and Flour (1, 2) by Country of Destination
July-June 1963-64 and 1964-65

Destination	July-June 1963-64			July-June 1964-65		
	Wheat	Flour (3)	Total	Wheat	Flour (3)	Total
thousand bushels						
<u>Africa (concluded)</u>						
Togo	-	14	14	-	9	9
Western Africa n.e.c.	247	815	1,062	-	23	23
Western Portuguese Africa ..	-	104	104	-	40	40
British East Africa	116	62	178	-	41	41
Ethiopia	17	40	57	-	-	-
French Somaliland	-	55	55	-	39	39
Kenya	11	-	11	3	6	9
Malagasy Republic	7	20	27	17	30	47
Mozambique	537	3	540	-	13	13
Somali Republic	1	-	1	-	44	44
Tanzania	6	26	32	10	-	10
Republic of South Africa ...	5,222	41	5,263	-	40	40
Zambia	485	-	485	1,196	1	1,197
Totals	69,855	44,510	114,365	60,913	30,123	91,036
<u>Oceania</u>	7	75	82	-	101	101
Totals, All Countries .	756,244	94,000	850,244	639,260	79,889	719,149

- (1) Include exports for relief or charity by individuals and private agencies.
 (2) Transshipments through Canada have been included in data for countries of ultimate destination.
 (3) Flour wholly of U.S. wheat; grain equivalent.
 (4) Less than 500 bushels.

Stocks of Wheat
in All Positions
October 1, 1965

United States wheat in all storage positions on October 1 totalled 1,715 million bushels, 5 per cent less than a year earlier and 27 per cent below the record October 1, 1960 stocks. The decline in stocks occurred in off-farm holdings which totalled 1,146 million bushels, the smallest in 12 years. Farm stocks at 569 million bushels were the largest since 1958. Disappearance from all storage positions during the July-September quarter was indicated at 457 million bushels. About 47 per cent of the total stocks were either owned by the Government or under Government loan compared to 53 per cent a year earlier.

Durum wheat in all positions on October 1 totalled 119 million bushels, 16 per cent more than a year earlier. Farm stocks totalled 71 million bushels and off-farm holdings were 48 million bushels. Disappearance during the July-September quarter was indicated at 14 million bushels.

Stocks of Grains, October 1, 1965 with Comparisons

Grain and Position	October 1 Average 1959-63	October 1 1964	July 1 1965	October 1 1965
thousand bushels				
<u>All Wheat</u>				
On Farms (1)	456,955	506,308	133,037	568,743
Commodity Credit Corp. (2)	59,767	12,586	11,049	10,818
Mills, Elev. & Whses. (1) (3)	1,644,177	1,293,069	673,691	1,135,279
Totals	2,160,899	1,811,963	817,777	1,714,840
<u>Durum Wheat (4)</u>				
On Farms (1)	-	55,138	18,966	71,092
Commodity Credit Corp. (2)	-	1,665	1,805	1,931
Mills, Elev. & Whses. (1) (3)	-	45,670	46,444	45,712
Totals	-	102,473	67,215	118,735

- (1) Estimates of the Crop Reporting Board.
- (2) Owned by C.C.C. and stored in bins or other storages owned or controlled by C.C.C.; other C.C.C.-owned grain is included in the estimates by positions.
- (3) All off-farm storages not otherwise designated, including flour mills, terminal elevators, and processing plants.
- (4) Totals included in all wheat.

1965 Wheat Crop
Forecast at 1,354
Million Bushels

In a report released on October 11, the Crop Reporting Board of the United States Department of Agriculture stated that production of all wheat is estimated at 1,354 million bushels, down 4 million bushels from September 1 prospects but 5 per cent above 1964 and 14 per cent above average. Durum and other spring wheat each decreased slightly from last month but record to near record yields are still expected in most States. The yield per acre of all wheat, at 27.2 bushels, is the second highest of record.

Production of durum wheat is estimated at 65 million bushels, 1 per cent below 1964 but 66 per cent above average. The yield per acre of 29.5 bushels, although slightly lower than anticipated a month earlier, is the second highest of record. Continuous cold, rainy weather during September curtailed harvest operations and by October 1 nearly half of the North Dakota durum still remained to be combined. Quality and test weight of the unharvested grain has been lowered by the inclement weather. Most of the unharvested grain is in the swath, and some has sprouted.

Production of other spring wheat is estimated at 236 million bushels, 18 per cent above 1964. The yield per acre of 24.3 bushels is 2.4 bushels above last year and the second highest of record. A cold, rainy September limited combining operations and caused a decline in test weight and quality of unharvested grain. By October 1, about one-fourth of the other spring wheat acreage in North Dakota and Montana and half of the acreage in the Red River Valley of Minnesota remained to be combined. Also some acreage at higher elevations in the Pacific Northwest still was unharvested.

Cash Wheat Prices on the Kansas City and Minneapolis Markets

No. 2 Hard Winter, Kansas City			No. 1 Northern Spring, Minneapolis		
Date		Price	Date		Price
		cents per bushel			cents per bushel
October 1, 1965	160	- 166	October 1, 1965	176	- 214
4	158 3/4	- 161 3/4	4	173 1/2	- 212 1/2
5	177 3/4	- 165 3/4	5	173 1/4	- 211 1/4
6	155 1/2	- 190 1/4 (1)	6	172 1/8	- 210 1/8
7	155 1/2	- 189 1/2 (1)	7	171 1/8	- 209 1/8
8	160 3/4		8	171 1/4	- 209 1/4
11	160 3/4	- 164	11	169 3/4	- 207 3/4
12	162 3/4		12	170 1/2	- 208 1/2
13	159 1/2	- 163	13	171 1/2	- 209 1/2
14	155	- 189 (1)	14	172 1/2	- 210 1/2
15	155	- 189 (1)	15	172 7/8	- 210 7/8
18	158 3/4	- 163 1/4	18	172 5/8	- 210 5/8
19	159 1/4	- 168 1/4	19	173	- 211
20	161 3/4	- 162 1/4	20	174 1/2	- 212 1/4
21	161		21	174	- 221
22	166 1/4		22	172	- 213
25	159 3/4	- 174 3/4 (1)	25	173 1/2	- 212 1/2
26	163 1/2		26	172	- 214
27	161 3/4	- 172 3/4 (1)	27	175 7/8	- 214 7/8
28	165 1/2		28	175 5/8	- 214 5/8
29	162 3/4	- 166 3/4	29	175 1/4	- 215 1/4

(1) Nominal.

Chicago Wheat Futures, High Points of Closing

Date	December	March	May	July	September
cents and eighths per bushel					
October 1, 1965	161/4	164/4	161/7	150/2	
4	162/2	165/2	162/5	150/2	152/4
5	161/4	164/5	162	150	152/4
6	159/7	163/2	161	149/1	151
7	159/6	163	160/4	148/6	151
8	160/1	163/4	161	149/1	151
11	158/6	162/1	159/4	147/2	149/5
12	157/5	161/1	158/6	147/3	149/5
13	158/6	161/7	159/6	148/1	150/4
14	158/1	161/4	159/1	148/2	149/7
15	158/6	161/7	159/5	148/1	149/7
18	158/2	162/4	159/7	147/5	149/5
19	159/6	162/7	160/5	147/5	149/6
20	161	164	162	148	149/6
21	161/4	164/6	162/2	148/3	150/2
22	161/4	164/4	162/4	148/3	150/3
25	160/6	163/7	162	184/4	150/2
26	160/6	164	162	148/5	150/4
27	162/2	163/4	163/6	149/2	151
28	162/7	166/3	164/7	149/6	151/6
29	163/2	166/6	165/2	150/1	152/1

AUSTRALIAN SITUATION

1964-65 Crop Year
Supplies Set
New Record

A decline in carryover stocks was more than offset by another record crop and as a result total estimated supplies of wheat in Australia for the 1964-65 (December-November) crop year are placed at an all-time high of 390.5 million bushels, 10 per cent greater than the previous year's peak total of 354.5 million. The current production, of 370.0 million bushels, represented a substantial increase over the 1963-64 level of 331.0 million and was the third consecutive year in which a record outturn was harvested. Carryover stocks recorded only a moderate decline, from 23.5 million at December 1, 1963 to 20.5 million at the same date in 1964. After deducting 101.0 million for anticipated domestic requirements, an estimated 289.5 million are available for export and for carryover in 1964-65, an increase of 6 per cent over the 273.9 million the previous year.

Combined exports of wheat as grain and wheat flour in terms of grain equivalent during the period December 1-September 25 of the current Australian crop year amounted to 233.3 million bushels, 3 per cent more than the 225.7 million exported during the corresponding period of 1963-64. The balance remaining on September 26, 1965 for export and for carryover, at 56.2 million bushels, exceeded by 17 per cent the comparable 1964 total of 48.2 million.

Australian Wheat Supplies

Item	1963-64 (1)	1964-65 (2)
	million bushels	
Carryover, including flour as wheat, at beginning of crop year (December 1)	23.5	20.5
Production.....	331.0	370.0
Total estimated domestic supplies	354.5	390.5
Less estimated domestic requirements for crop year ...	80.6	101.0 (1)
Available for export and for carryover	273.9	289.5
Deduct:		
Exports of wheat as grain, December 1-September 25 .	199.0	214.0
Exports of wheat flour in terms of wheat, December 1-September 25	26.7	19.3
Total exports of wheat and wheat flour	225.7	233.3
Balance on September 26 for export and for carryover .	48.2	56.2

(1) Revised. (2) Preliminary.

The following information relative to the Australian situation has been extracted from a report from Mr. D. I. Campbell, Assistant Commercial Secretary for Canada, Canberra, under date of October 15, 1965 and is reproduced with the permission of the Trade Commissioner Service, Department of Trade and Commerce.

Crop Position A New South Wales grower-member of the Australian Wheat Board has predicted total deliveries to the Board of only 250 - 260 million bushels, in the 1965-66 crop year. This is about 90 million bushels less than was delivered from the 1964-65 crop.

The grower-member, Mr. J. P. Cass, said excellent conditions were continuing in West Australia where a record crop is predicted. The West Australian crop is expected to compensate in some measure for the greatly reduced yield in New South Wales and Queensland.

In South Australia, the crop is expected to be the same as last season. However, Victoria's production is forecast at less than last year's record harvest.

Crop prospects over all of New South Wales have deteriorated drastically in recent weeks due to unseasonably hot weather accompanied by strong drying winds.

Pool Payments The General Manager of the Australian Wheat Board has announced a further payment on 1963-64 wheat of 7d. (7 cents) per bushel. Australian wheatgrowers will have received 13/11d. (\$1.68) per bushel less freight, for bagged wheat and 13/4d. (\$1.61) per bushel, less freight, for bulk wheat. The balance from the 1963-64 pool will be paid out in early 1966.

Exports of Australian Wheat and Wheat Flour in Terms of Wheat
December 1-September 25, 1964-65 and Corresponding Period 1963-64

Destination	Wheat		Wheat Flour	
	1963-64	1964-65	1963-64	1964-65
thousand bushels				
<u>Western Europe</u>				
<u>EEC</u>				
Germany, Federal Republic	7,832	351	-	-
<u>Other Western Europe</u>				
Britain	17,514	18,171	1,353	1,436
Ireland	1,652	1,510	-	-
Malta	841	852	-	-
Norway	3,753	2,719	-	-
Others	-	-	1	1
Sub-totals	23,760	23,252	1,354	1,437
Totals	31,592	23,603	1,354	1,437
<u>Eastern Europe</u>				
U.S.S.R. (Russia)	48,530	41,034	6,498	-
<u>Africa</u>				
Egypt	-	1,378	-	-
Kenya	25	41	-	-

Exports of Australian Wheat and Wheat Flour in Terms of Wheat
December 1-September 25, 1964-65 and Corresponding Period 1963-64

Destination	Wheat		Wheat Flour	
	1963-64	1964-65	1963-64	1964-65
thousand bushels				
<u>Africa (concluded)</u>				
Malawi	-	-	231	281
Mauritius	-	-	1,044	514
Portuguese East Africa	944	-	-	-
Rhodesia	2,239	2,801	-	-
Zanzibar	-	-	146	87
Others	14	12	59	80
Totals	3,222	4,232	1,480	962
<u>Asia</u>				
Aden	1,527	1,285	-	-
Aden and Aden I/T	-	-	1,072	1,097
Aden and Aden I/T Atta	-	-	554	423
Arabian Gulf	-	-	204	98
Arabian Gulf Atta	-	-	1,106	861
Brunei	-	-	14	6
Ceylon	11	11	5,220	7,707
China	68,488	89,426	-	-
Formosa	448	500	-	-
Hong Kong	1,874	1,917	86	68
India	8,385	11,911	-	-
Indonesia	-	-	314	121
Iran	1,219	6,686	-	-
Iraq	3,511	1,831	-	-
Japan	16,408	12,730	-	-
Korea North	-	4,800	-	-
Kuwait	-	373	-	-
Lebanon	3,869	2,746	-	-
Pakistan	1,342	2,020	-	-
Philippines	242	1	1,737	263
Saudi Arabia	-	-	212	244
Thailand	321	447	429	271
<u>Malaysia</u>				
Malaya	26	1	2,352	1,961
Malaya Atta	-	-	85	67
Sabah	-	-	123	124
Sarawak	-	-	140	121
Singapore	2,121	3,380	1,325	459
Singapore Atta	-	-	5	1
Singapore A/C B.W.O.	-	-	34	50
Others	611	663	70	60
Totals	110,403	140,726	15,082	14,002

Exports of Australian Wheat and Wheat Flour in Terms of Wheat
December 1-September 25, 1964-65 and Corresponding Period 1963-64

Destination	Wheat		Wheat Flour	
	1963-64	1964-65	1963-64	1964-65
thousand bushels				
<u>Oceania</u>				
New Zealand	5,193	4,358	-	-
<u>Western Hemisphere</u>				
Peru	-	-	7	4
West Indies Area	-	-	292	457
Totals	-	-	299	461
<u>Pacific Area and Sundries</u>				
Pacific Islands	59	49	1,875	2,328
Ships' Stores and Sundries	-	-	112	111
Totals	59	49	1,987	2,439
Totals, All Countries	199,000	214,000	26,700	19,300

ARGENTINE SITUATION

1964-65 Wheat Supplies
Largest Since 1938-39

Reflecting the combined effect of substantially larger carryover stocks as well as a next-to-record production, total supplies of wheat in Argentina for the 1964-65 (December-November) crop year are estimated at some 459.3 million bushels, 32 per cent more than the 1963-64 figure of 348.7 million and the largest total since 1938-39 when wheat supplies were close to 450 million bushels. Current crop year supplies consist of the December 1 carryover of 88.2 million, in contrast to only 25.9 million the year before, and the 1964-65 revised production of 371.1 million, the second largest wheat crop ever harvested in Argentina. After making an allowance of 133.8 million bushels for anticipated domestic requirements, an estimated 325.5 million are available for export and for carryover in 1964-65, 51 per cent greater than the 215.9 million the previous year.

December-September Exports
76 Per Cent Above Same
Period of Previous Year

Exports of wheat and wheat flour in terms of grain equivalent during December 1964-September 1965 amounted to 184.7 million bushels, exceeding by 76 per cent the total of 105.2 million exported during the same months in 1963-64. The balance remaining on October 1, 1965 for export and for carryover was estimated at 140.8 million bushels, in sharp contrast to the October 1, 1964 figure of 110.7 million.

Argentine Wheat Supplies

Item	1963-64 (1)	1964-65 (2)
	million bushels	
Carryover at beginning of crop year (December 1) (3) ...	25.9	88.2
Production	322.8	371.1 (4)
Total estimated domestic supplies	348.7	459.3
Less estimated domestic requirements for crop year	132.8	133.8 (1)
Available for export and for carryover	215.9	325.5
Deduct:		
Exports of wheat as grain, December-September	104.2	184.0
Exports of wheat flour in terms of wheat, December-September	1.0	0.6
Total exports of wheat and wheat flour	105.2	184.7
Balance on October 1 for export and for carryover	110.7	140.8

(1) Revised. (2) Preliminary. (3) Includes allowances for farm stocks.
(4) Third official estimate.

The following account of the Argentine situation has been extracted from a report from Mr. H. E. Ryan, Assistant Commercial Secretary (Agriculture), Buenos Aires, under date of October 28, 1965 and is reproduced with the permission of the Trade Commissioner Service, Department of Trade and Commerce. Where possible, conversions to Canadian measures and currency have been made for the convenience of our readers.

Weather and Crops During September, weather conditions were again unfavourable, with lack of rainfall, drying winds, and sudden temperature changes all contributing to the worsening of ecological conditions, particularly in the Province of La Pampa. In mid-October, there were widespread rains, but in certain areas these have come too late for growing crops.

Wheat The second official estimate for wheat has now been published at 5.5 million hectares (13.6 million acres), considerably below the previous forecast and last year's area of 6.2 million hectares (15.3 million acres). The decrease was primarily due to lack of adequate rainfall which altered seeding plans in many regions. The crop is now well up and looks promising in the Provinces of Buenos Aires, Entre Rios, Santa Fe, and parts of Cordoba. The recent rains in Cordoba and La Pampa, previously very dry, have partially alleviated the drought, but it would appear that many hectares will be affected and some losses will occur. The trade are thinking in terms of a 5.7 million hectare crop (14.1 million acres), and a harvest of near 6.4 million metric tons (235.2 million bushels).

During the month under review, the National Grain Board sold 150,000 tons (5,511,000 bushels) to Brazil. This is further to the 1,000,000 ton

(36,743,000 bushels) annual agreement currently in effect. Preliminary discussions have occurred between the Board and Brazilian officials over increasing the next agreement to 1.4 million tons (51,441,000 bushels), but to-date no agreement has been concluded.

A mission from Mainland China recently visited Buenos Aires to discuss wheat purchases with the Board. No agreement has been concluded to-date. There has been some speculation, however, that China will exercise its option, contained in the last 1,000,000 metric ton (36,743,000 bushels) agreement to pick up a further 100,000 tons (3,674,000 bushels).

For the first time in many years, Bolivia is again purchasing Argentine wheat, and 5,000 tons (184,000 bushels) have been shipped so far this year. From 1942 to 1945, Bolivia purchased annually approximately 50,000 tons (1,837,000 bushels) of Argentine wheat.

Shipments during September totalled 690,378 metric tons (25,367,000 bushels), bringing the combined shipments for 1965-66 to 5,013,493 metric tons (184,212,000 bushels). Main destinations included, Mainland China, 249,840 tons (9,180,000 bushels); Russia, 163,617 tons (6,012,000 bushels); Brazil, 89,564 tons (3,291,000 bushels); Italy, 47,671 tons (1,752,000 bushels); and Peru, 32,242 tons (1,185,000 bushels).

Prices paid to producers by exporters during September averaged 820 pesos (\$1.34 per bushel) in Rosario, and 835 pesos (\$1.37 per bushel) in Buenos Aires. Millers were paying up to 850 pesos (\$1.39 per bushel). The Buenos Aires Futures Market at the end of September was quoting 852 pesos per 100 kilos (\$1.40 per bushel) for December delivery, 857 pesos (\$1.40 per bushel) for January, and 867 pesos (\$1.42 per bushel) for February. By mid-October, these prices had fallen to 836 pesos (\$1.37 per bushel) for December delivery, 845 pesos (\$1.39 per bushel) for January, and 862 pesos (\$1.41 per bushel) for February delivery. Present prices in the Buenos Aires Cereal Exchange are, 850 pesos (\$1.39 per bushel) for hard wheat, 825 pesos (\$1.35 per bushel) for semi-hard, and 860 pesos (\$1.41 per bushel) for durum, f.o.r. Buenos Aires.

During September, c.i.f. prices to Continental Europe averaged U\$S 66.50 per ton (\$1.95 per bushel) and £ 25.5.0 per ton (\$2.07 per bushel) to Britain. Durum prices c.i.f. Italy averaged U\$S 71.50 per ton (\$2.09 per bushel) for February-March shipment.

Argentine Wheat Exports December-September 1963-64 and 1964-65

Destination	1963-64	1964-65
	thousand bushels	
<u>Western Europe</u>		
<u>EEC</u>		
Belgium	1,530	2,512
France	3,808	5,663
Germany, Federal Republic	8,799	6,444
Italy	4,341	12,967
Netherlands	5,838	14,912
Sub-totals	24,316	42,498

Argentine Wheat Exports December-September 1963-64 and 1964-65

Destination	1963-64	1964-65
thousand bushels		
<u>Other Western Europe</u>		
Britain	4,225	18,163
Norway	262	3,131
Portugal	-	1,443
Spain	14	3,463
Sweden	-	38
Switzerland	164	253
Sub-totals	4,665	26,491
Totals	28,981	68,989
<u>Eastern Europe</u>		
Czechoslovakia	982	-
Germany, East	1,437	114
Poland	415	-
U.S.S.R. (Russia)	354	16,229
Totals	3,188	16,343
<u>Africa</u>		
Angola	-	314
Mozambique	-	1,830
Nigeria	-	138
South Africa	441	-
Totals	441	2,282
<u>Asia</u>		
China, Communist	36,514	46,429
Cyprus	-	743
Formosa	-	209
Japan	-	81
Israel	-	432
Lebanon	-	257
Singapore	-	16
Saudi Arabia	-	247
Totals	36,514	48,414
<u>Western Hemisphere</u>		
Barbados	-	6
Bolivia	74	837
Brazil	25,024	31,760
Chile	-	3,200
Colombia	-	817
Dominican Republic	-	154
Paraguay	992	116
Peru	8,368	10,104
Uruguay	252	-
Venezuela	373	1,025
Totals	35,083	48,019
Totals, All Countries	104,207	184,047

Continued from page 6.

a three year period, August 1st, 1966 to July 31st, 1969. The Canadian Wheat Board has undertaken to make such supplies available to the Chinese Corporation concerned, with specific quantities, prices and shipping periods to be negotiated periodically.

The Chinese Corporation and The Canadian Wheat Board further agreed, that prior to May 1st, 1966, consideration will be given to increasing the quantities involved in the new three-year agreement to a minimum of 4 1/2 and a maximum of 7 1/2 million tons (168 to 280 million bushels), or alternatively, extending the three-year Agreement to five years, involving a minimum quantity of 7 1/2 million and a maximum of 12 1/2 million tons (280 to 466 million bushels).

The terms of payment for sales under the new Long-Term Agreement are 25 per cent cash when each vessel is loaded and the balance of 75 per cent in 18 months, with interest. The deferred payment provision is made possible by guarantees provided by the Government of Canada."

CALENDAR OF WHEAT EVENTS

- October 11 According to a report published by the Crop Reporting Board, U.S.D.A. production of all wheat in the United States in 1965, based on conditions at October 1, was estimated at 1,354 million bushels, 5 per cent above the 1964 harvest and 14 per cent above average.
- 25 Wheat stocks in all positions in the United States on October 1, 1965 were estimated at 1,715 million bushels, 5 per cent less than a year earlier. The decline in stocks occurred in off-farm holdings which totalled 1,146 million bushels, the smallest in 12 years. Farm stocks at 569 million bushels were the largest since 1958.
- 28 The Canadian Wheat Board announced the conclusion of a Long-Term Agreement with the China National Cereals, Oils and Foodstuffs Import and Export Corporation. This agreement is similar to the existing agreement, that is, under the Agreement, the Chinese Corporation has declared its intention to purchase from Canada 3 to 5 million long tons (112.0 to 186.7 million bushels) of wheat over a three year period, August 1st, 1966 to July 31st, 1969. The Chinese Corporation and The Canadian Wheat Board further agreed, that prior to May 1st, 1966, consideration will be given to increasing the quantities involved in the new three-year agreement to a minimum of 4 1/2 and a maximum of 7 1/2 million tons (168 to 280 million bushels), or alternatively, extending the three-year Agreement to five years, involving a minimum quantity of 7 1/2 million and a maximum of 12 1/2 million tons (280 to 466 million bushels).
- According to a report received from Mr. H. E. Ryan, Assistant Commercial Secretary (Agriculture) Buenos Aires, the second official estimate for the 1965 wheat acreage in Argentina places the area at some 13.6 million acres compared with last year's 15.3 million.
- November 5 Based on conditions at October 15, Canada's 1965 wheat crop was estimated at 677.9 million bushels, 13 per cent more than last year's 600.4 million and 45 per cent greater than the 1954-63 average of 475.1 million.

STATISTICS CANADA LIBRARY
BIBLIOTHÈQUE STATISTIQUE CANADA



1010686760