

CATALOGUE No.

22-005

MONTHLY



DOES NOT CIRCULATE

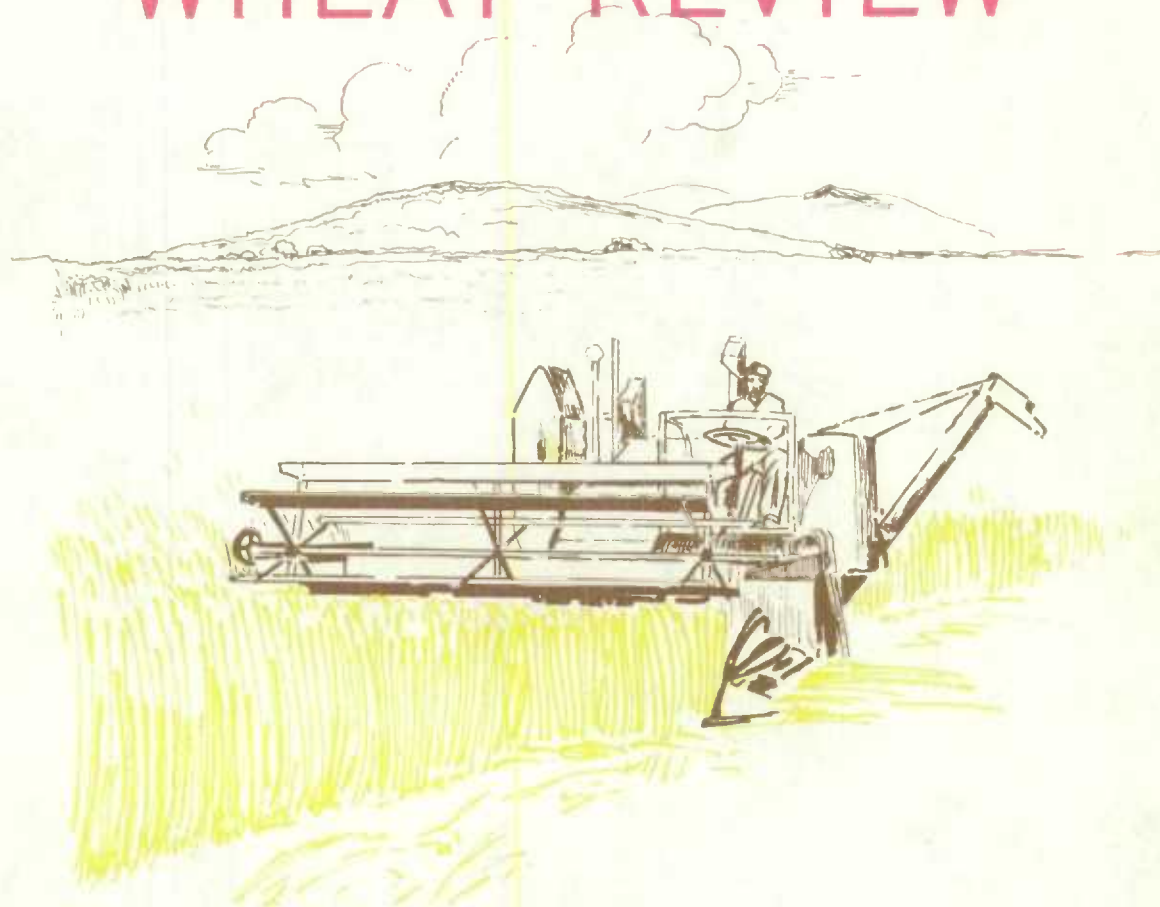
NE PAS PRÊTER

CANADA

DOMINION BUREAU OF STATISTICS

AGRICULTURE DIVISION

THE WHEAT REVIEW



AUGUST 1966

3117

1875

1875

1875

1875

1875

1875

1875

1875

DOMINION BUREAU OF STATISTICS

THE
WHEAT REVIEW

AUGUST 1966

Published by Authority of
The Minister of Trade and Commerce

Prepared in the Crops Section, Agriculture Division
Dominion Bureau of Statistics, Ottawa

TABLE OF CONTENTS

	<u>Page</u>
World Wheat Situation	
Wheat Shipments from Four Major Exporters Highest on Record	1
Wheat Supplies of Four Major Exporters 25 Per Cent Below a Year Ago	1
I.W.C. Cumulative Totals of Commercial Purchases, Crop Year 1965-66	2
Canadian Situation	
Canadian Wheat Supplies Reach New Record Level	3
1965-66 Exports of Wheat and Flour Close to Record Level	4
August Forecast of Production of Canada's 1966 Grain Crops	5
Crop Conditions in the Prairie Provinces	7
Lake Shipments of Canadian Grain	8
General Quota Position	8
Deliveries to Feed Mills	8
Wheat Production in Canada and Prairie Provinces 1910-66	9
Carryover Stocks of Canadian Grain at July 31, 1966	10
Canadian Wheat Carryover 1935-66	11
Farmers' Marketings of Wheat in the Prairie Provinces	12
Visible Supply of Canadian Wheat	13
Grading of Wheat Inspected, Crop Year 1965-66 with Comparisons	13
Weekly Visible Supply and Farmers' Marketings (Charts)	14
Wheat Shipments to the United States by Destination	15
Rail Shipments of Wheat to Maritime Ports	15
Rail Shipments of Wheat from Fort William - Port Arthur	16
Overseas Exports of Canadian Grain by Ports of Loading	16
Freight-assisted Shipments	17
Monthly Exports of Canadian Wheat and Wheat Flour	18
Exports of Canadian Wheat, by Destination	19
Customs Exports of Canadian Wheat Flour by Countries of Consignment	22
Initial Payment to Producers	24
Canadian Wheat Board Weekly Average Cash Wheat Prices	25
Canadian Flour Milling Situation	
Production and Exports	27
United States Situation	
Supply Position	28
1966 Wheat Crop Forecast at 1,286 Million Bushels	29
National Wheat Acreage Allotment Increased	30
Cash Wheat Prices on the Kansas City and Minneapolis Markets	32
Chicago Wheat Futures, High Points of Closing	32
Australian Situation	33
Argentine Situation	37
Calendar of Wheat Events	41

WORLD WHEAT SITUATION

Wheat Shipments from Four Major Exporters Highest on Record

Total shipments of wheat and flour in terms of wheat, from United States, Canada, Argentina and Australia amounted to some 1,918.1 million bushels during the 1965-66 crop year (August-July) some 5 per cent more than the previous record level of 1,827.3 million in 1963-64, 23 per cent above the 1964-65 figure of 1,555.9 million and 72 per cent greater than the ten-year (1954-55—1963-64) average of 1,117.9 million. Each of the four major exporters, with the exception of Australia, shared in the increase. Shipments from the four traditional major exporters during the 1964-65 crop year, with comparisons, appear in the accompanying table.

Exports of Wheat and Flour in Terms of Wheat, August-July 1965-66 with Comparisons

August-July	United States	Canada	Argentina	Australia	Total
	million bushels				
1950-51	375.3	241.0	94.5	127.8	838.6
1951-52	466.6	355.8	24.1	93.4	939.9
1952-53	322.6	385.5	38.9	107.0	854.0
1953-54	211.4	255.1	110.3	63.4	640.2
1954-55	280.4	251.9	134.5	94.3	761.1
1955-56	359.4	312.3	108.6	107.5	887.8
1956-57	539.5	264.4	100.6	120.2	1,024.7
1957-58	396.4	320.3	77.6	61.9	856.2
1958-59	455.6	294.5	106.2	82.7	939.0
1959-60	513.1	277.3	76.5	117.8	984.7
1960-61	677.5	353.2	62.9	198.0	1,291.6
1961-62	704.2	358.0	95.5	219.8	1,377.5
1962-63	650.6	331.4	60.7 (1)	186.2	1,228.9 (1)
1963-64	852.3	594.5	106.5	274.0	1,827.3
1964-65 (1)	736.9	399.6	174.3	245.1	1,555.9
1965-66 (2)	859.0	582.8	283.0	193.3	1,918.1

(1) Revised. (2) Preliminary.

Wheat Supplies of Four Major Exporters 25 Per Cent Below a Year Ago

At the close of the Canadian crop year, total supplies of wheat remaining in the United States, Canada, Argentina and Australia, for export and for carryover at the end of their respective crop years, amounted to 1,630.0 million bushels compared with 2,175.9 million at the same time a year ago and the smallest July 31 stocks since 1953. Decreases were registered in each of the four major exporters. Supplies on or about August 1, 1966, in millions of bushels, were held as follows, with last year's comparable figures in brackets: United States, 1,105.1 (1,332.6); Canada, 422.9 (513.0); Argentina, 30.2 (230.2); and Australia, 71.8 (100.1).

Estimates for both years include on-farm stocks as well as those in commercial positions. It is to be noted that the 1966 United States crop estimated at 1,286 million bushels is now included. The supply figures for Canada represent crop-year-end carryover only, as the new crop will not be taken into account until September 1 in these calculations. The new Australian and Argentine production for 1966-67 will be included at January 1.

International Wheat Council
Cumulative Totals of Commercial Purchases by Importing Countries from Exporting Countries
Crop Year 1965-66 — Through July 30, 1966

Importing Countries	EXPORTING COUNTRIES								Total Purchases
	Canada	Argentina	Australia	France	Italy	Mexico	Sweden	U.S.A.	
	thousand bushels								
Austria	1,589	-	-	799	-	-	6	-	2,394
Belgium & Luxembourg	10,962	916	-	4,892	-	-	6	5,896	22,672
Brazil	-	47,422	-	-	-	-	-	27,068	74,490
Costa Rica	1,108	-	13	202	-	-	-	641	1,964
Dominican Republic	278	-	-	-	-	-	-	1,297	1,575
Ecuador	988	-	-	-	-	-	-	967	1,955
El Salvador	454	-	-	-	-	-	-	1,198	1,652
Finland	680	-	-	5	-	-	5	680	1,370
Germany, Federal Republic	23,936	4,023	227	6,961	83	-	1,174	16,174	52,578
Greece	19	-	-	58	3	-	-	349	429
Guatemala	221	-	-	-	-	-	-	2,087	2,308
Iceland	-	-	-	124	-	-	-	128	252
India	2	-	3,621	4	-	-	-	5,482	9,109
Ireland	1,451	243	3,482	1,469	-	-	-	1,058	7,703
Israel	468	-	-	-	-	-	-	4,820	5,288
Japan	49,910	-	14,874	1	-	-	-	75,574	140,359
Korea	-	-	-	-	-	-	-	1,235	1,235
Liberia	174	-	-	1	-	-	-	26	201
Libya	-	-	25	137	1,528	-	-	2	1,692
Netherlands	4,180	4,483	-	2,924	1	-	-	39,356	50,944
Netherlands Territories	255	-	-	30	-	-	-	812	1,097
New Zealand	-	-	5,635	9	-	-	-	-	5,644
Nigeria	819	-	-	147	-	-	-	4,629	5,595
Norway	1,576	1,769	934	1,956	-	-	1,518	6,296	14,049
Peru	340	14,717	2	-	-	-	-	8,679	23,738
Philippines	2,804	-	56	706	220	-	-	14,429	18,215
Portugal	33	-	-	2,428	-	-	-	3,842	6,303
Portuguese Territories	230	1,512	1,136	157	-	-	-	510	3,545
Saudi Arabia	230	-	1,719	90	12	-	-	5,288	7,339
Sierra Leone	579	-	-	19	-	-	-	105	703
South Africa	840	919	1,929	-	-	-	-	7,751	11,439
Southern Rhodesia	13	-	1,688	-	-	-	-	692	2,393
Switzerland	8,167	599	9	6,469	19	-	55	3,353	18,671
Tunisia	-	-	-	656	-	-	-	958	1,614
United Arab Republic	-	-	2,102	6,352	4,808	11,571	-	9,603	34,436
United Kingdom	81,653	7,518	22,975	11,634	-	-	2,135	35,056	160,971
U.K. Territories	3,734	19	5,096	1,149	-	-	-	2,506	12,504
Vatican City	-	371	-	-	-	-	-	-	371
Venezuela	6,682	-	-	-	-	-	-	15,267	21,949
Western Samoa	1	-	276	-	-	-	-	-	277
Totals	204,376	84,511	65,799	49,379	6,674	11,571	4,899	303,814	731,023
Percentage of Total Sales by Exporting Countries ..	27.97	11.56	9.00	6.75	0.91	1.58	0.67	41.56	100.00

NOTE: Australia, Canada & U.S.A. - quantities include amendments for the week ending August 6, 1966.
France - quantities cover period ending May 31, 1966.
Italy - quantities cover period ending July 16, 1966.
Mexico - quantities cover period ending January 26, 1966.
Spain - no sales reported.
U.S.S.R. - exemption granted.

CANADIAN SITUATION

Canadian Wheat Supplies
Reach New Record Level

Assuming realization of the August forecast of production, Canadian wheat supplies for the crop year 1966-67 will amount to an all-time high of 1,222.8 million bushels, exceeding by 5 per cent the 1965-66 total of 1,161.9 million and surpassing by 1 per cent the peak of 1,210.7 million established in the crop year 1963-64. Supplies of the size indicated for the 1966-67 crop year reflect a sharp rise in production which more than offset a substantial decline in opening stocks. Stocks of wheat in all positions at July 31 decreased from 513.0 million bushels in 1965 to a level of 422.9 million in 1966 with most of the decline reflecting reductions in country elevator stocks and in eastern elevators. The 1966 production, based on conditions as at August 15 was forecast at a record 799.8 million bushels, 23 per cent larger than the 1965 outturn of 648.9 million due to the combined effect of increases in both seeded acreage and the average yield per acre.

Total Supply and Disposition of Canadian Wheat 1960-61--1965-66
and Estimated Supply, 1966-67
(Crop Years August 1 - July 31)

Item	1960-61	1961-62	1962-63	1963-64	1964-65(1)	1965-66(1)	1966-67(2)
	million bushels						
<u>Supplies</u>							
Carryover, at beginning of crop year	599.6	607.8	391.1	487.2	459.4	513.0	422.9
Production	518.4	283.4	565.6	723.4	600.4	648.9	799.8(3)
Imports wheat and flour	(4)	(4)	(4)	(4)	(4)	(4)	
Totals	1,118.0	891.2	956.6	1,210.7	1,059.9	1,161.9	1,222.8(3)
<u>Disposition</u>							
Exports wheat and flour	353.2	358.0	331.4	594.5	399.6	582.8	
Human consumption	56.3	58.9	53.0	59.1	57.5	58.8	
Seed	35.9	37.7	39.1	42.1	40.0	41.9	
Industrial use ..	1.5	1.5	1.5	1.5	1.9	1.9(5)	
Carryover, at end of crop year ...	607.8	391.1	487.2	459.4	513.0	422.9	
Residual item (6) .	63.2	44.0	44.4	54.0	47.8	53.6	
Totals	1,118.0	891.2	956.6	1,210.7	1,059.9	1,161.9	

- (1) Revised.
- (2) Subject to further revision pending receipt of Board of Grain Commissioners final data on commercial stocks at July 31, 1966.
- (3) Based on conditions as at August 15 and subject to revision as later estimates become available.
- (4) Less than 50,000 bushels.
- (5) Estimated.
- (6) Includes feed for livestock and waste but also reflects the effect of any estimating errors in other components of the balance sheet.

Realization of the 1966 production forecast for wheat will be dependent upon how weather and other developments affect the crop between August 15 and completion of harvesting. The second official forecast of production, to be released on October 5 will give greater effect to actual harvesting conditions and outturns.

1965-66 Exports of
Wheat and Flour
Close to Record
Level

According to preliminary data, combined exports of wheat in bulk, bagged seed wheat and wheat flour in terms of wheat equivalent amounted to 582.8 million bushels during the crop year 1965-66, only 2 per cent less than the record 594.5 million set in 1963-64 but surpassing the 1964-65 total of 399.6 million by 46 per cent and exceeding by 74 per cent the ten-year (1954-55-1963-64) average exports of 335.8 million bushels.

Exports of wheat in bulk (as reported by the Board of Grain Commissioners for Canada) amounted to an all-time high of 546.0 million bushels, some 2 per cent more than the previous peak of 536.7 million in 1963-64, 49 per cent higher than the 366.7 million shipped in 1964-65 and 86 per cent larger than the 10-year average of 294.2 million bushels. Exports of bagged seed wheat, based on preliminary Customs' data amounted to 0.8 million bushels compared with the 1964-65 adjusted figure of 1.3 million. Wheat flour exports, based on preliminary data, were the equivalent of 36.0 million bushels, 14 per cent more than the adjusted 31.5 million cleared during 1964-65 but 5 per cent less than the ten-year average of 37.8 million.

The 1965-66 total for exports of wheat in bulk is compiled from overseas clearances (and exports to the United States) as recorded by the Board of Grain Commissioners for Canada, while data on exports of wheat flour and bagged seed wheat are obtained from Canadian Customs returns. Adjusted data on wheat flour exports for the 1965-66 crop year, removing the effect of time lag in reporting Customs returns, will be included in a subsequent issue of this publication.

Monthly exports of wheat in bulk, bagged seed wheat and wheat flour in terms of wheat during the crop year recently completed ranged from a high of 67.3 million bushels in September 1965 to a low of 27.2 million in February 1966. Overseas clearances of bulk wheat, the major component of the total exports of wheat, bagged seed wheat and flour, ranged between 64.5 million bushels in October and 23.5 million in January.

The increase of 179.2 million bushels recorded in wheat shipments during 1965-66, as compared with 1964-65, primarily reflected the exports of some 198.4 million bushels to the U.S.S.R. as against 8.8 million during the previous year. Shipments to Communist China, at 77.9 million bushels, surpassed by 8 per cent the previous record total of Canadian wheat exports to that country when 72.0 million were cleared in 1961-62. Wheat exports to Britain in 1965-66 totalled 69.9 million bushels and accounted for 13 per cent of the crop year total compared with 70.4 million and 19 per cent of the total in 1964-65. Other leading markets during the 1965-66 crop year with quantities in millions of bushels, with the 1964-65 crop year figures in brackets were as follows: Japan, 49.6 (50.1); India, 26.0 (7.3); Federal Republic of Germany, 22.8 (20.5); Poland, 13.3 (18.9); Cuba, 11.4 (8.1); Belgium and Luxembourg, 10.8 (15.5); Switzerland, 8.1 (3.9); and East Germany, 8.1 (10.5).

Exports of wheat flour during 1965-66 went to seventy-nine countries with shipments to Cuba amounting to the equivalent of 10.3 million bushels and representing 29 per cent of the crop year total. Exports of Canadian wheat flour to Cuba in 1964-65 were the equivalent of 6.6 million bushels and accounted for 21 per cent of the total. Other leading markets for Canadian wheat flour in 1965-66 were as follows, in millions of bushels of wheat equivalent, with revised 1964-65 data in brackets: Britain, 8.7 (9.8); U.S.S.R. (Russia), 3.1 (1.4); Jamaica, 1.6 (1.7); India, 1.5 (nil); Trinidad and Tobago, 1.4 (1.5); Costa Rica, 1.1 (0.9); Leeward and Windward Islands, 1.0 (1.0); Ceylon, 0.9 (0.6); and United States, 0.9 (1.0). Of the 0.8 million bushels of bagged seed wheat exported during 1965-66, shipments to the United States, at 0.5 million and Saudi Arabia at 0.3 million accounted for 67 per cent and 33 per cent, respectively, of the crop year total.

August Forecast of
Production of Canada's
1966 Grain Crops

With the exception of oats for grain, fall rye, flaxseed and mixed grains, production of each of the major Canadian grains will be above last year's levels on the basis of yields indicated at August 15. Realization of

the 1966 yield and production forecasts in the accompanying table is dependent on the existence of satisfactory weather conditions throughout the remainder of the growing and harvesting season. Soil moisture reserves throughout the Prairie Provinces were generally good at seeding time. This was followed by a period of relatively dry weather until the third week in June. From this time to the end of the growing season and during the period when moisture requirements are heaviest rainfall was adequate in most areas. However, the dry weather persisted much longer in the Peace River area and parts of northeastern Alberta. In contrast, parts of Manitoba especially sections of the Red River Valley, suffered from flooded fields towards the end of the growing season, the bulk of the crop matured before serious losses resulted from this source.

At the present only a small proportion of the wheat, but a considerably larger percentage of the coarse grains have been threshed. However, with the main exception of some areas in the northern half of Alberta, swathing and combining are now general, weather permitting.

August Forecast of the 1966 Production of Principal Grain Crops
Canada and Prairie Provinces, Compared with 1965

Province and Crop	Area		Yield per Acre		Production	
	1965	1966	1965(1)	1966(2)	1965 (1)	1966 (2)
	acres		bushels		bushels	
<u>CANADA</u>						
Winter wheat ..	362,000	370,000	36.9	44.8	13,358,000	16,576,000
Spring wheat(3)	27,920,200	29,928,100	22.8	26.2	635,559,000	783,257,000
All wheat ...	28,282,200	30,298,100	22.9	26.4	648,917,000	799,833,000
Oats for grain	8,656,000	8,216,000	47.9	47.0	414,957,000	386,149,000
Barley	6,037,600	7,212,900	35.5	39.1	214,555,000	282,242,000
Fall rye	642,500	535,300	23.2	24.3	14,885,000	13,003,000
Spring rye	103,000	100,000	17.6	19.6	1,810,000	1,956,000
All rye	745,500	635,300	22.4	23.5	16,695,000	14,959,000
Flaxseed	2,320,000	2,070,400	12.6	11.6	29,254,000	23,954,000
Mixed grains ..	1,505,700	1,583,200	49.3	45.3	74,170,000	71,652,000
Rapeseed	1,435,000	1,388,000	15.7	17.9	22,600,000	24,900,000
<u>PRAIRIE PROVINCES</u>						
Wheat(3)	27,790,000	29,780,000	22.7	26.2	632,000,000	779,000,000
Oats(4)	5,645,000	5,340,000	48.2	47.0	272,000,000	251,000,000
Barley	5,741,000	6,870,000	35.2	39.0	202,000,000	268,000,000
Rye	691,000	583,000	22.1	23.0	15,300,000	13,400,000
Flaxseed	2,265,000	2,029,000	12.5	11.5	28,400,000	23,300,000
Rapeseed	1,435,000	1,388,000	15.7	17.9	22,600,000	24,900,000

(1) Revised.

(2) As indicated on basis of conditions on or about August 15.

(3) Includes Durum wheat.

(4) Estimated areas for harvest as oats.

Canada's 1966 wheat crop, currently forecast at a record 799.8 million bushels is 23 per cent larger than last year's 648.9 million, and 59 per cent above the ten-year (1955-64) average of 501.9 million. Average yields increased from 22.9 bushels in 1965 to 26.4 bushels per acre this year, and are well above the 1955-64 average of 20.2 bushels per acre.

The 1966 crop of spring wheat, forecast at 783.3 million bushels is being harvested from a seeded area of 29.9 million acres and yielding an indicated 26.2 bushels per acre. The 1965 spring wheat crop of 635.6 million bushels was produced on 27.9 million acres and yielded an average of 22.8 bushels per acre. The 1966 yield for Ontario's winter wheat crop is placed at a record 44.8 bushels per acre as compared with 36.9 bushels in 1965. A 2 per cent increase in harvested acreage and a 21 per cent increase in yields, increased the production to 16.6 million bushels in 1966 compared with 13.4 million in 1965.

August Forecast of the 1966 Production of Wheat, Canada and Provinces
Compared with 1965

Province	Area		Yield per Acre		Production	
	1965	1966	1965 (1)	1966 (2)	1965 (1)	1966 (2)
	acres		bushels		bushels	
All wheat						
Canada	28,282,200	30,298,100	22.9	26.4	648,917,000	799,833,000
Ontario	376,000	381,000	36.5	44.3	13,723,000	16,877,000
Spring wheat						
Canada (3)	27,920,200	29,928,100	22.8	26.2	635,559,000	783,257,000
Prince Edward Island	3,800	3,600	25.4	34.7	97,000	125,000
Nova Scotia ...	1,200	2,000	27.0	40.0	32,000	80,000
New Brunswick .	6,000	7,500	27.8	32.7	167,000	245,000
Quebec	12,200	11,000	24.4	27.8	298,000	306,000
Ontario	14,000	11,000	26.1	27.4	365,000	301,000
Manitoba(3) ...	3,240,000	3,480,000	24.4	24.1	79,000,000	84,000,000
Saskatchewan(3)	18,500,000	19,700,000	21.6	25.9	400,000,000	511,000,000
Alberta(3)	6,050,000	6,600,000	25.3	27.9	153,000,000	184,000,000
Br. Columbia ..	93,000	113,000	28.0	28.3	2,600,000	3,200,000
Winter wheat						
Canada(4)	362,000	370,000	36.9	44.8	13,358,000	16,576,000

(1) Revised. (2) As indicated on basis of conditions on or about August 15. (3) Includes Durum wheat. (4) Winter wheat estimates apply to Ontario only. The western wheat crop contains a relatively small proportion of winter wheat but, due to difficulties encountered in obtaining acreage data required for a separate winter wheat estimate in the Prairie Provinces, all western wheat is currently included under spring wheat.

In the Prairie Provinces, the 1966 wheat crop is forecast at 779.0 million bushels, some 23 per cent above last year's crop of 632.0 million, and 62 per cent above the ten-year (1955-64) average of 480.6 million. The forecasted average yield per seeded acre in the Prairie Provinces, on the basis of conditions at August 15, is 26.2 bushels per acre, with the Manitoba average 24.1; Saskatchewan 25.9 and Alberta 27.9 bushels per acre. Production in each of these provinces in million of bushels, with last year's estimate in brackets, is as follows: Manitoba, 84.0 (79.0);

Saskatchewan, 511.0 (400.0); and Alberta, 184.0 (153.0). Relatively small amounts of winter wheat are included in these forecasts for the Prairie Provinces.

The indicated production of durum wheat, which is included in the above forecast of spring wheat is 28.9 million bushels compared with last year's estimate of 16.9 million. Forecasts of 1966 production in each of the Prairie Provinces in millions of bushels, with last year's estimates in brackets are: Manitoba, 1.3 (0.9); Saskatchewan, 24.6 (14.0); and Alberta, 3.0 (2.0). The acreage seeded to this crop was 35 per cent larger than in 1965. Yields per acre in 1966 in bushels, with 1965 figures in brackets are: Manitoba, 21.7 (22.5); Saskatchewan, 25.2 (19.3); Alberta, 30.0 (26.7) and the Prairie Provinces 25.5 (20.1).

<u>Crop Conditions</u> <u>in the Prairie</u> <u>Provinces</u>	According to the Telegraphic Crop Report published under date of September 14, 1966, crop conditions in each of the Prairie Provinces were summarized as follows:
---	---

Swathing of early-seeded cereals has been completed in Manitoba but late-seeded fields are slow in maturing. Swathing of early flax is under way in southern areas. In general combining of cereals is about 75 per cent completed with southern and central areas about 90 per cent or better completed, the north-west 60 per cent, the Interlake area, 80 per cent, the southeast 30 per cent, and low areas in the Red River Valley about 60 per cent completed. Yields and grades of all crops are average or better, with late-seeded crops outyielding those which were seeded early. Yields of flax are varying widely. Field corn and sunflowers are ripening rapidly. Seeding of fall rye is about 75 per cent completed. Spraying of stubble fields for weed growth is quite common this year. If good weather prevails, over 95 per cent of the harvest should be completed by the end of September.

Good progress has been made with harvesting operations in Saskatchewan. Some 75 per cent of the wheat has been combined in southern districts, 45 per cent in central areas, and 15 per cent in northern districts. For the province as a whole about 55 per cent has been threshed. In addition, approximately 65 per cent of the coarse grains, 45 per cent of the rapeseed, and 15 per cent of the flaxseed has been combined. Swathing is well advanced, with 85 per cent of the wheat and 90 per cent of the coarse grains and rapeseed completed, while 20 per cent of the flax has been cut. Since the bulk of the crop is now swathed, the threat of frost damage is considerably lessened. Yield prospects remain excellent at near-record levels.

Harvesting of the grain crop is well advanced in southern Alberta, but cool, damp weather continues to delay operations in the west-central and northern regions of the province. Ninety to 100 per cent of the grain is swathed in the Medicine Hat, Lethbridge, Bassano district and two more weeks of good harvest weather in the south will see most of the grain in the bin. A fairly high percentage of the grain is swathed in the area between Calgary and Edmonton, but little threshing has been done due to poor drying weather. In the area north of Edmonton to Westlock, the grain is ripe enough to swath but the ground is too damp to commence swathing. Some barley has been swathed in the Peace River but, most of the grain is too green, and as yet no threshing has been done. Generally, two more weeks of frost-free weather are needed in the northern part of the province if the harvest is to be completed without serious damage from frost. The grain, rapeseed and flaxseed threshed up to the present are grading quite well, particularly in the south. Pastures are in good condition and are greener than normal for this time of year.

Lake Shipments of Canadian Grain Total shipments of the six major grains out of Lakehead terminals from the opening of navigation to August 24 this year amounted to 270.1 million bushels, 37 per cent above the comparable 1965 figure of 196.8 million and 56 per cent larger than the 10-year (1955-64) average for the period of 172.7 million. In 1966 the season of navigation opened on April 3 while the 1965 season opened on April 20. Shipments of wheat, at 222.3 million were 58 per cent more than the 1965 figure of 140.5 million bushels and accounted for 82 per cent of the total six grains.

Lake Shipments of Canadian Grain from the Opening of Navigation to August 24, 1966
and to Approximately the Same Date, 1955 to 1965

Year	Wheat	Oats	Barley	Rye	Flaxseed	Rapeseed	Total
thousand bushels							
1955	91,740	19,201	34,515	7,426	3,271	-	156,153
1956	139,049	23,426	49,097	9,828	3,535	-	224,936
1957	96,319	23,391	25,967	3,723	6,609	-	156,008
1958	115,324	24,759	44,332	4,576	3,364	-	192,355
1959	108,640	15,455	26,091	3,424	3,519	-	157,130
1960	112,001	12,109	27,404	2,951	4,228	-	158,693
1961	140,656	15,486	25,487	1,462	4,043	-	187,134
1962	70,729	8,267	13,572	1,960	3,295	-	97,823
1963	96,442	21,409	12,963	1,548	3,481	-	135,842
1964	216,258	17,084	20,221	2,432	5,200	-	261,195
1965	140,496	26,668	20,150	2,447	6,499	559	196,818
1966	222,285	15,430	19,943	4,416	7,441	555	270,071

General Quota Position By August 31, 1966 out of a total of 1,900 shipping points in the Western Division, the Canadian Wheat Board had placed 115 points on a delivery quota of two bushels per specified acre and 224 points on a one-bushel quota. Some 1,559 points remained on the Initial Unit Quota while only 2 stations were reported as "closed".

Summary of Elevator Shipping Points in the Western Division
as at August 31, 1966

Province	Initial Unit Quota	General Quota in Bushels per Specified Acre			Total
		One	Two	Closed	
Ontario	-	-	1	-	1
Manitoba	280	34	26	-	340
Saskatchewan	805	159	63	2	1,029
Alberta	474	31	20	-	525
British Columbia	-	-	5	-	5
All Provinces	1,559	224	115	2	1,900

Deliveries to Feed Mills The Canadian Wheat Board in its Instructions to the Trade No. 11 under date of July 28, 1966 stated in part that the Board hereby announces provisions whereby 1966-67 delivery permit holders will be authorized to deliver, outside delivery quota regulations, supplies of wheat, oats and barley to designated feed mills. The extension to July 31st, 1967, of the feed mill policy announced by the Board on November 30th, 1960, in Instructions to the Trade No. 41, has been recommended by the Board and approved by the Honourable Mitchell Sharp, Minister of Finance. The designated feed mills will be those mills which complete an Agreement with the Board, effective until July 31st, 1967, and which will be named in an Order of the Board to be issued at an early date.

Wheat Production in
Canada and the Prairie
Provinces 1910-66

The first forecast of the 1966 wheat crop in Canada, based on conditions at August 15, placed the probable outturn at a new record of 799.8 million bushels, of which the Prairie Provinces accounted for 779.0 million. If a crop this size is realized, it would be 23 per cent larger than last year's harvest of 648.9 million, 11 per cent more than the previous high of 723.4 million in 1963 and 59 per cent larger than the ten-year (1955-64) average of 501.9 million.

Wheat Production in Canada and the Prairie Provinces, 1910-66

Year	Canada	Manitoba	Saskatchewan	Alberta	Three Prairie Provinces
- thousand bushels -					
1910	132,078	34,127	66,979	9,060	110,167
1911	231,237	62,820	109,323	36,554	208,697
1912	224,159	63,017	106,960	34,303	204,280
1913	231,717	53,331	121,559	34,372	209,262
1914	161,280	38,605	73,494	28,859	140,958
1915	393,543	69,337	224,312	66,538	360,187
1916	262,781	29,667	147,559	65,088	242,314
1917	233,743	41,040	117,921	52,992	211,953
1918	189,075	48,191	92,493	23,752	164,436
1919	193,260	40,975	89,994	34,575	165,544
1920	263,189	37,542	113,135	83,461	234,138
1921	300,858	39,054	188,000	53,044	280,098
1922	399,786	60,051	250,167	64,976	375,194
1923	474,199	35,804	271,622	144,834	452,260
1924	262,097	41,464	132,918	61,312	235,694
1925	395,475	33,624	235,472	97,962	367,058
1926	407,136	47,133	219,646	113,986	380,765
1927	479,665	30,773	252,500	171,286	454,559
1928	566,726	52,383	321,215	171,000	544,598
1929	302,192	28,565	160,565	90,206	279,336
1930	420,672	43,600	206,700	147,000	397,300
1931	321,325	28,112	132,466	140,603	301,181
1932	443,061	44,041	211,551	167,355	422,947
1933	281,892	32,666	128,004	102,334	263,004
1934	275,849	37,100	114,200	112,500	263,800
1935	281,935	23,250	142,198	98,648	264,096
1936	219,218	26,000	110,000	66,000	202,000
1937	180,210	45,100	36,000	75,700	156,800
1938	360,010	50,000	137,800	148,200	336,000
1939	520,623	61,300	271,300	161,400	494,000
1940	540,190	66,400	266,700	180,700	513,800
1941	314,710	51,000	147,000	98,000	296,000
1942	556,067	53,000	305,000	171,000	529,000
1943	282,377	39,000	146,000	82,800	267,800
1944	414,859	50,300	242,100	99,300	391,700
1945	316,320	38,800	168,100	87,700	294,600
1946	411,601	58,000	208,000	127,000	393,000
1947	338,506	42,000	173,000	105,000	320,000
1948	381,413	50,000	191,000	115,000	356,000
1949	366,028	52,000	186,000	103,000	341,000
1950	466,490	50,000	272,000	117,000	439,000
1951	553,678	53,000	325,000	152,000	530,000
1952	701,973	57,000	449,000	172,000	678,000
1953	634,040	48,000	391,000	165,000	604,000
1954	331,981	29,000	169,000	107,000	305,000
1955	519,178	42,000	320,000	135,000	497,000
1956	573,040	56,000	355,000	140,000	551,000
1957	392,719	49,000	229,000	93,000	371,000
1958	398,077	61,000	213,000	98,000	372,000
1959	445,077	62,000	253,000	115,000	430,000
1960	518,379	66,000	327,000	105,000	498,000
1961	283,394	34,000	137,000	89,000	260,000
1962	565,554	80,000	354,000	112,000	546,000
1963	723,442	61,000	493,000	149,000	703,000
1964	600,424	85,000	348,000	145,000	578,000
1965(1)	648,917	79,000	400,000	153,000	632,000
1966(2)	799,833	84,000	511,000	184,000	779,000

(1) Revised.

(2) Based on conditions on or about August 15, 1966.

Carryover Stocks
of Canadian Grain
at July 31, 1966

Total carryover stocks of the five major Canadian grains in all North American positions at July 31, 1966 were estimated at 671.7 million bushels, 10 per cent below last year's revised total of 747.4 million, and 18 per cent less than the ten-year (1956-65) average of 822.1 million bushels. Total stocks of wheat were estimated 422.9 million bushels, compared with last year's revised estimate of 513.0 million. Stocks of oats in all positions estimated at 129.0 million bushels, were one per cent below last year's 130.1 million. Barley stocks, at 98.1 million bushels, were up 10 per cent from the 88.8 million held in 1965. Carryover stocks of rye in all positions, estimated at 10.8 million bushels, were 30 per cent more than last year's 8.3 million. July-end carryover stocks of flaxseed, at 11.0 million bushels, were 53 per cent larger than last year's 7.1 million.

Stocks of Canadian Grain at July 31, 1966

Position	Wheat	Oats	Barley	Rye	Flaxseed
thousand bushels					
In Canada					
On Farms	100,000	91,000	33,000	2,400	1,900
Country elevators (1)	183,140	21,238	44,612	3,295	3,498
Interior private & mill elevators	6,734	763	56	27	28
Interior terminal elevators	2,227	10	1,481	-	-
Pacific Coast terminals	11,249	16	1,552	249	963
Churchill elevator	4,131	5	-	-	-
Fort William-Port Arthur elevators	36,627	8,245	11,383	3,058	2,920
In transit - lake	8,953	537	581	64	304
In transit - rail (1)	28,701	2,754	1,742	603	732
Eastern elevators	38,519	3,999	3,647	734	613
Eastern mills (mill bins only)	2,370	392	-	-	-
Western mills (mill bins only)	283	7	1	1	-
Totals in Canada(1)	422,934	128,966	98,055	10,431	10,958
In United States	-	-	-	352	-
Totals, Canadian Grain in Canada and United States, July 31, 1966(1) .	422,934	128,966	98,055	10,783	10,958
Comparative Stocks, July 31, 1965(2)					
In Canada	513,024	130,121	88,776	7,928	7,141
In United States	-	-	-	374	-
Totals in Canada and United States	513,024	130,121	88,776	8,302	7,141
Average stocks, July 31, 1956-65	560,777	137,207	109,819	8,488	5,811

(1) Preliminary revised - subject to further revision.

(2) Revised.

In the Prairie Provinces farm-held stocks of wheat, oats, barley, rye and flaxseed at July 31, 1966 amounted to 200.3 million bushels, a decrease of 5 per cent from the July-end 1965 total of 211.7 million. Since the bulk of farm stocks of grain is held in Western Canada, stocks in the Prairie Provinces have been segregated from the above table for ease in comparison with last year's totals.

Estimated Farm Stocks in the Prairie Provinces, July 31, 1966 and 1965

Province	Wheat	Oats	Barley	Rye	Flaxseed
thousand bushels					
Manitoba	5,000	12,000	2,000	400	300
Saskatchewan	70,000	30,000	9,000	1,000	1,200
Alberta	23,000	25,000	20,000	1,000	400
Totals, July 31, 1966 (1)	98,000	67,000	31,000	2,400	1,900
Totals, July 31, 1965	107,000	68,000	34,000	1,700	1,000

(1) Subject to revision.

Canadian Wheat Preliminary estimates place total stocks of Canadian wheat in all North American positions at July 31, 1966 at 422.9 million bushels compared with last year's revised estimate of 513.0 million and the record high at July 31, 1957 of 733.5 million bushels. An estimated 100.0 million bushels of this year's total were held on farms, while 183.1 million of the off-farm stocks were in country elevators. The next largest amounts, 38.5 million bushels, were in store in Eastern elevators and 36.6 million bushels were in Fort William-Port Arthur elevators.

It should be pointed out that the figures in the table below are not strictly comparable because of certain omissions in the earlier years. Stocks of Canadian wheat held in bond by United States flour mills were omitted each year until 1940-41 when they were included for the first time. The carryover totals now include all Canadian wheat in North American positions whether on farms, in store or in transit.

Carryover of Canadian Wheat in Canada and the United States, July 31, 1935-66

Year	Carryover of Wheat in Canada	Stocks of Canadian Wheat in U.S. Positions	Total Carryover of Canadian Wheat in Canada and U.S.
		thousand bushels	
1935	202,148	11,705	213,852
1936	108,094	19,268	127,363
1937	32,938	4,111	37,049
1938	23,553	983	24,536
1939	94,632	8,279	102,911
1940	272,928	27,546	300,473
1941	448,338	31,792	480,129
1942	404,897	18,856	423,752
1943	579,371	15,255	594,626
1944	338,138	18,394	356,531
10-year average 1935-44	250,504	15,619	266,122
1945	238,480	19,593	258,073
1946	73,466	134	73,600
1947	86,055	87	86,141
1948	77,676	35	77,710
1949	102,343	68	102,411
1950	112,200	-	112,200
1951	187,190	2,013	189,203
1952	214,934	2,244	217,178
1953	382,546	640	383,185
1954	618,568	107	618,675
10-year average 1945-54	209,346	2,492	211,838
1955	536,302	446	536,748
1956	578,803	771	579,574
1957	733,335	211	733,546
1958	648,454	-	648,454
1959	587,842	159	588,001
1960	599,588	-	599,588
1961	607,841	-	607,841
1962	391,058	-	391,058
1963	487,247	-	487,247
1964	459,440	-	459,440
10-year average 1955-64	562,991	159	563,150
1965 (1)	513,024	-	513,024
1966 (2)	422,934	-	422,934

(1) Revised.

(2) Preliminary.

Farmers' Marketings (1) of Wheat in the Prairie Provinces 1965-66

Week Ending	Manitoba	Saskatchewan	Alberta	Total	Last Year (2)
	bushels				
August 1 - 11, 1965	72,373	307,415	32,092	411,880	583,409
18	58,125	171,644	99,666	329,435	717,218
25	531,497	1,248,691	299,652	2,079,840	2,153,973
September 1	582,609	2,681,424	581,410	3,845,443	2,522,451
8	243,029	2,073,379	639,041	2,955,449	3,246,274
15	508,944	4,387,021	610,973	5,506,938	6,599,071
22	364,600	2,366,634	384,426	3,115,660	18,106,700
29	769,182	1,845,073	513,968	3,128,223	16,301,510
October 6	2,277,366	3,985,118	2,047,455	8,309,939	11,144,456
13	4,037,753	9,938,485	4,877,036	18,853,274	15,097,572
20	2,622,535	14,354,967	4,871,472	21,848,974	19,356,199
27	1,999,638	10,383,566	3,323,365	15,706,569	16,550,913
November 3	1,585,786	7,128,714	2,309,350	11,023,850	13,016,334
10	2,379,134	9,236,326	2,222,102	13,837,562	12,801,440
17	2,142,387	8,381,642	1,815,821	12,339,850	11,583,131
24	2,063,870	8,267,245	1,912,400	12,243,515	12,173,348
December 1	1,893,856	9,344,779	1,893,792	13,132,427	8,805,335
8	2,483,454	10,370,729	2,936,028	15,790,211	8,634,551
15	2,826,634	13,347,318	3,310,970	19,484,922	20,300,443
22	2,724,598	13,372,399	3,969,470	20,066,467	8,686,749
29	1,803,602	8,593,690	2,848,423	13,245,715	4,066,001
January 5, 1966	832,437	6,310,526	1,067,977	8,210,940	7,745,949
12	232,352	2,050,378	816,703	3,099,433	3,728,001
19	751,276	1,402,910	3,381,590	5,535,776	9,940,148
26	749,247	2,788,527	1,539,695	5,077,469	20,007,935
February 2	264,993	1,263,054	656,558	2,184,605	4,384,418
9	1,687,263	2,253,553	3,591,616	7,532,432	3,239,560
16	1,419,621	4,840,812	3,352,247	9,612,680	4,671,140
23	277,367	2,681,228	1,724,409	4,683,004	5,927,571
March 2	870,199	2,130,966	2,915,506	5,916,671	4,765,012
9	829,571	4,594,471	2,625,770	8,049,812	7,281,585
16	641,411	3,213,908	2,708,702	6,564,021	7,877,824
23	1,555,971	4,542,060	2,607,889	8,705,920	4,062,649
30	1,974,805	4,507,134	3,421,241	9,903,180	3,504,138
April 6	847,153	3,501,446	2,332,445	6,681,044	5,299,659
13	735,133	5,221,413	2,534,166	8,490,712	3,319,678
20	663,562	7,615,847	3,259,866	11,539,275	2,245,844
27	1,114,052	12,823,179	3,756,587	17,693,818	9,034,522
May 4	574,879	6,535,042	2,336,644	9,446,565	14,520,325
11	922,958	7,821,134	2,386,065	11,130,157	8,495,385
18	1,070,461	4,099,805	1,430,952	6,601,218	4,478,062
25	545,424	3,250,052	1,173,722	4,969,198	4,110,300
June 1	342,635	8,377,934	2,429,058	11,149,627	6,891,099
8	882,070	12,902,148	4,112,663	17,896,881	13,294,345
15	2,484,974	17,415,994	4,263,597	24,164,565	18,420,158
22	2,644,561	12,764,918	4,587,729	19,997,208	15,974,120
29	1,640,991	9,240,359	3,544,331	14,425,681	20,370,389
July 6	914,188	9,106,235	3,612,276	13,632,699	14,712,806
13	898,230	10,773,064	3,368,012	15,039,306	19,542,793
20	909,504	11,721,753	3,957,731	16,588,988	22,549,361
31	5,698,632	38,258,296	11,610,210	55,567,138	41,672,876
Totals	68,946,892	365,794,405	132,604,869	567,346,166	524,514,730
10-year average 1954-55--1963-64	42,715,464	251,230,806	96,464,519	390,410,788	

(1) Includes receipts at country, interior private and mill elevators, interior semi-public terminals and platform loadings. (2) Revised.

Visible Supply of Canadian Wheat, August 24, 1966
Compared with Approximately the Same Date, 1964 and 1965

Position	1964	1965	1966
	thousand bushels		
Country elevators - Manitoba	13,227	26,062	15,519
Saskatchewan	97,840	125,464	98,809
Alberta	48,275	64,209	51,254
Totals	159,343	215,735	165,582
Interior private and mill	6,925	6,961	6,397
Interior terminals	5,026	5,855	2,356
Vancouver-New Westminster	11,062	6,433	9,090
Victoria	824	366	224
Prince Rupert	510	219	476
Churchill	3,293	1,354	3,774
Fort William-Port Arthur	46,269	39,586	28,265
In transit rail (western division)	20,740	11,180	18,391
Bay, Lake and Upper St. Lawrence ports	15,653	35,697	16,170
Lower St. Lawrence and Maritime ports	23,516	33,150	30,351
In transit lake	9,163	9,847	16,918
In transit rail (eastern division)	434	1,390	1,614
Totals	302,758	367,773	299,608

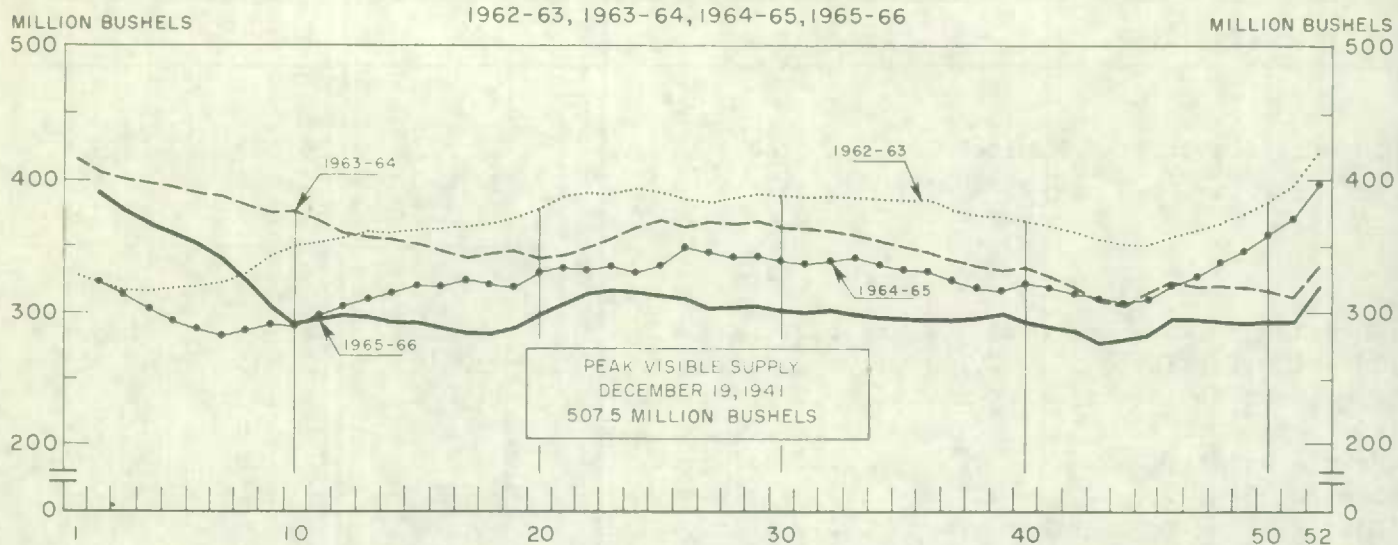
Grading of Wheat Inspected, August 1965-July 1966 with Comparisons

Grade	C R O P Y E A R				
	Average	1964-65		1965-66	
	1959-60 1963-64				
	per cent	cars	per cent	cars	per cent
No. 1 Man. Northern	8.2	6,184	2.4	4,672	1.4
No. 2 Man. Northern	41.5	85,974	34.0	70,914	21.7
No. 3 Man. Northern	22.1	55,572	22.0	77,167	23.7
No. 4 Man. Northern	8.1	21,749	8.6	59,738	18.3
No. 5 Wheat	3.7	14,383	5.7	15,968	4.9
No. 6 Wheat	0.5	1,526	0.6	679	0.2
Feed Wheat	(1)	67	(1)	53	(1)
Others Red Spring	8.6	47,710	18.9	78,868	24.2
C.W. Garnet	0.2	169	0.1	20	(1)
C.W. White Spring	0.1	273	0.1	268	0.1
C.W. Mixed Wheat	(1)	120	(1)	193	0.1
Alberta Winter	0.4	1,273	0.5	1,054	0.3
Nos. 1-6 C.W. Amber Durum	6.3	16,668	6.6	15,226	4.7
Others C.W. Amber Durum	0.2	1,050	0.4	1,421	0.4
Totals	100.0	252,718	100.0	326,241	100.0
Gross bushels (approx.)		490,273,000(2)		629,000,000	

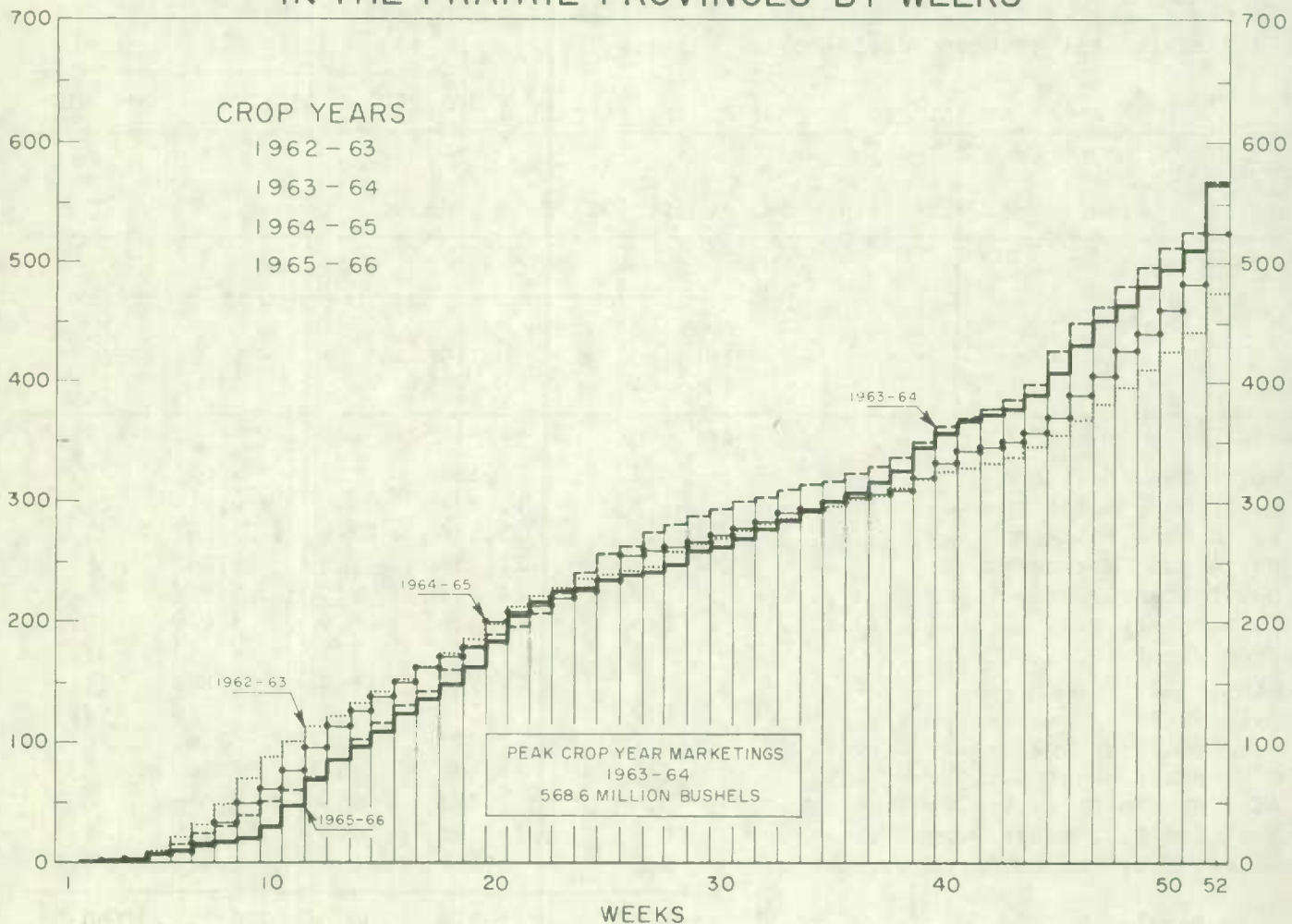
(1) Less than .05 per cent.

(2) Revised.

WEEKLY VISIBLE SUPPLY OF CANADIAN WHEAT



CUMULATIVE RECORD OF WHEAT MARKETINGS IN THE PRAIRIE PROVINCES BY WEEKS



(Data in both charts for crop years beginning August 1)

Wheat Shipments to
the United States
by Destination

1.4 million bushels.

Vessel shipments of wheat to the United States either for re-export or retention for domestic use during the crop year 1965-66 amounted to 0.7 million bushels. There were no shipments during the crop year 1964-65 but during the crop year 1963-64 total vessel and rail shipments amounted to 1.4 million bushels. All of the 1965-66 total was shipped from Buffalo.

Wheat Shipments* to the United States by Destination
Crop Year 1965-66 with Comparisons

Destination	1963-64	1964-65	1965-66
		bushels	
<u>By Vessel</u>			
Buffalo	657,020	-	735,668
Duluth-Superior	123,729	-	-
Totals, Vessel	780,749	-	735,668
<u>By Rail</u>			
U.S.A. Domestic Points	107,166	-	-
Buffalo	553,000	-	-
Total, Rail	660,166	-	-
Totals, Shipments	1,440,915	-	735,668

* Either for re-export or retention for domestic use. Excluding bagged seed.

Rail Shipments
of Wheat to
Maritime Ports

Rail shipments of wheat to Maritime Ports from Bay, Lake and Upper St. Lawrence Ports during the 1965-66 crop year totalled 34.5 million bushels 4 per cent more than the 1964-65 crop year figure of 33.3 million.

Rail Shipments of Wheat to Maritime Ports from Bay,
Lake and Upper St. Lawrence Ports

Origin of Shipments	August 1, 1964 - July 31, 1965	August 1, 1965 - July 31, 1966
		bushels
Port McNicoll	6,478,328	9,149,869
Midland, Tiffin	10,132,102	12,345,838
Collingwood	620,243	1,356,044
Owen Sound	6,620,135	5,401,709
Goderich	3,596,200	1,346,276
Sarnia	3,159,960	2,622,844
Port Colborne	2,524,027	2,083,165
Peterborough	-	206,211
Walkerville	144,399	-
Totals	33,275,394	34,511,956

Rail Shipments of Wheat from Fort William-Port Arthur, 1962-63--1965-66

Month	1962-63	1963-64	1964-65	1965-66
bushels				
August	13,933	5,500	7,786	10,458
September	11,657	9,104	19,564	10,500
October	22,716	25,355	12,135	4,500
November	12,024	13,500	13,167	10,205
December	12,778	23,047	26,961	7,500
January	39,534	58,772	10,703	46,108
February	22,967	28,768	17,214	26,712
March	86,398	21,268	112,296	98,598
April	69,067	26,063	17,506	71,701
May	11,851	7,941	8,207	89,166
June	15,746	20,518	4,965	178,183
July	11,158	12,707	13,872	82,282
Totals	329,829	252,543	264,376	635,913

Distribution of Rail Shipments of Wheat from Fort William-Port Arthur, July 1966

Grade	Nova Scotia	New Brunswick	Quebec	Ontario
bushels				
5 Wheat	2,000	5,333	-	-
6 Wheat	12,000	39,333	1,500	4,450
Tough	-	2,000	6,000	1,333
Rejected	-	4,000	-	-
Durum	-	-	3,000	1,333
Totals	14,000	50,666	10,500	7,116

Overseas Exports of Canadian Grain by Ports of Loading, August 1, 1965-July 31, 1966
with Comparisons

Port	Wheat(1)	Durum Wheat(1)	Oats(1)	Barley	Rye	Flaxseed	Rapeseed
thousand bushels							
<u>Pacific Seaboard</u>							
Van.-New Westminster	157,076	3,179	8,457	15,305	3,669	6,560	12,336
Victoria	11,050	-	-	-	-	-	-
Prince Rupert	17,100	-	-	-	-	-	-
<u>Churchill</u>	25,077	-	-	-	-	-	-
<u>Lakehead Direct</u>	4,650	520	4,554	4,813	1,482	8,710	1,136
<u>Kingston Direct</u>	323	-	-	-	294	-	-
<u>Prescott Direct</u>	661	-	-	-	10	-	-
<u>St. Lawrence</u>							
Montreal	91,532	16,197	616	6,987	973	1,966	101
Sorel	47,287	3,740	432	-	49	80	48
Trois-Rivieres	28,138	2,229	-	168	-	256	-
Quebec	21,621	903	-	1,768	-	-	-
Baie Comeau	69,716	5,472	-	-	-	-	-
<u>Maritime</u>							
Saint John	1,922	-	-	-	-	-	-
West Saint John	20,124	1,564	66	-	-	867	-
Halifax	15,139	36	-	-	-	491	-
Totals	511,416	33,840	14,125	29,041	6,477	18,930	13,621
Aug. 1, 1964-July 31, 1965(2)	332,606	34,135	12,184	25,000	2,370	14,346	9,108

(1) Excluding bagged seed.

(2) Revised.

Freight-assisted Shipments Claims filed for payment up to July 31, 1966 represent the movement of some 15.4 million bushels of wheat from the Prairie Provinces to Eastern Canada and British Columbia under the freight assistance policy during the August-June period of the 1965-66 crop year. During the same months last year claims had been filed for a total of 9.6 million bushels, indicating on the assumption of approximately the same rate of submission of claims during the current and preceding crop years that the August-June shipments of wheat under the policy were running about 60 per cent above those of 1964-65. Revised data on the August-June 1964-65 shipments of wheat based on claims submitted up to July 31, 1966, place the eleven-month total at 11.2 million bushels. The bulk of the shipments during the current eleven-month period under review went to destinations in Quebec and Ontario with these two provinces accounting for 44 per cent and 25 per cent of the total, respectively.

Provincial Distribution of Wheat Shipments under the Freight Assistance Policy
August-June 1965-66 and 1964-65

Month	Nfld.	P.E.I.	N.S.	N.B.	Que.	Ont.	B.C.	Total
thousand bushels								
August, 1965	34	17	181	59	719	449	139	1,598
September	124	22	190	70	701	496	181	1,785
October	43	10	204	54	656	382	277	1,626
November	11	18	171	65	661	312	276	1,513
December	12	39	283	62	581	361	109	1,447
January, 1966	11	29	131	58	506	304	226	1,265
February	7	36	145	53	621	286	147	1,295
March	5	32	173	50	650	319	176	1,406
April	7	26	151	61	470	332	170	1,217
May	72	20	143	45	694	308	113	1,395
June	-	15	95	26	462	260	35	893
Totals (1)	328	264	1,868	603	6,720	3,809	1,848	15,439
Same period 1964-65:								
Preliminary (2)	161	104	969	342	4,187	2,439	1,424	9,625
Revised (1)	230	120	1,149	388	4,891	2,715	1,739	11,232

Preliminary data on millfeed shipments under the freight assistance policy indicate shipments of 467,834 tons during the August-June period of the 1965-66 crop year. During the same eleven months of 1964-65 claims had been filed for a total of 397,821 tons, indicating on the assumption of approximately the same rate of submission of claims during both the current and preceding crop years that the August-June shipments of millfeeds under the policy were running about 18 per cent above those of 1964-65. Revised data on the 1964-65 August-June shipments of millfeeds based on claims submitted up to July 31, 1966 place the eleven-month total at 452,935 tons. As with freight-assisted shipments of wheat, the greater portion of the millfeed shipments during the period under review went to destinations in Quebec and Ontario.

Provincial Distribution of Millfeed Shipments under the Freight Assistance Policy
August-June 1965-66 and 1964-65

Province	1964-65		1965-66
	Preliminary (2)	Revised (1)	Preliminary (1)
tons			
Newfoundland	4,655	5,303	4,812
Prince Edward Island	6,792	7,582	9,812
Nova Scotia	27,238	31,666	31,842
New Brunswick	23,499	26,308	24,944
Quebec	196,110	223,653	237,228
Ontario	115,260	129,313	131,607
British Columbia	24,267	29,110	27,589
Totals	397,821	452,935	467,834

(1) Based on claims filed up to July 31, 1966.

(2) Based on claims filed up to July 31, 1965.

Monthly Exports of Canadian Wheat and Wheat Flour

Year and Month	Wheat in Bulk (1)	Bagged Seed Wheat (2)	Total Wheat	Wheat Flour (2)(3)	Total (3) Wheat and Wheat Flour
thousand bushels					
<u>1963-64</u>					
August	29,204	187	29,391	2,819	32,210
September	42,556	129	42,686	2,106	44,791
October	59,020	15	59,035	3,520	62,555
November	65,296	204	65,499	4,538	70,037
December	41,763	388	42,151	6,284	48,435
January	28,451	535	28,987	5,829	34,816
February	21,675	562	22,237	5,800	28,037
March	22,510	484	22,995	5,697	28,692
April	43,211	213	43,423	5,530	48,954
May	56,992	14	57,006	4,744	61,750
June	65,036	144	65,180	3,768	68,948
July	61,012	35	61,047	4,275	65,322
Totals	536,726	2,912	539,637	54,910	594,548
<u>1964-65</u>					
August	42,226	68	42,294	3,711	46,005
September	42,792	121	42,913	2,258	45,172
October	40,120	27	40,147	2,460	42,607
November	30,976	45	31,021	2,534	33,556
December	27,720	79	27,799	2,220	30,020
January	18,098	85	18,183	2,263	20,446
February	19,337	147	19,484	1,637	21,121
March	23,376	281	23,657	2,289	25,946
April	31,798	212	32,010	4,047	36,057
May	34,822	126	34,949	3,515	38,464
June	30,631	59	30,690	2,176	32,866
July	24,843	61	24,905	2,430	27,335
Totals	366,740	1,312	368,052	31,542	399,594
<u>1965-66 (4)</u>					
August	43,377	62	43,439	1,937	45,377
September	64,447	94	64,541	2,755	67,296
October	64,517	82	64,599	2,660	67,259
November	55,652	38	55,691	3,848	59,539
December	33,201	56	33,258	2,542	35,799
January	23,483	45	23,527	5,278	28,805
February	23,502	44	23,545	3,661	27,206
March	32,395	191	32,586	2,885	35,471
April	37,794	128	37,922	3,437	41,360
May	44,357	14	44,371	3,451	47,821
June	60,245	5	60,251	1,585	61,836
July	63,017	35	63,053	2,001	65,054
Totals	545,988	795	546,783	36,039	582,822

(1) Export clearances including shipments to the United States compiled by the Statistics Branch, Board of Grain Commissioners for Canada. (2) Compiled from Canadian Customs returns, 1963-64-1964-65 adjusted to remove effect of time lag in reporting. (3) In terms of wheat equivalent. Wheat flour conversion rate: 2.3 bushels per cwt. (4) Preliminary, subject to revision.

Exports of Canadian Wheat(1) by Destination, July 1966 and 1965

Destination	Wheat (Except Durum)	Durum Wheat	All Wheat	
			July 1966	July 1965(2)
		bushels		
<u>Western Europe</u>				
<u>EEC</u>				
Belgium and Luxembourg	888,217	281,970	1,170,187	1,146,287
France	-	15,373	15,373	68,714
Germany, Federal Republic	1,914,056	2,084,646	3,998,702	685,189
Italy	1,236,411	164,000	1,400,411	20,907
Netherlands	320,480	14,493	334,973	7,467
Sub-totals	4,359,164	2,560,482	6,919,646	1,928,564
<u>Other Western Europe</u>				
Britain	7,047,604	56,000	7,103,604	6,293,884
Ireland	427,467	-	427,467	318,267
Norway	414,000	-	414,000	-
Sweden	-	-	-	22,400
Switzerland	676,978	630,465	1,307,443	404,895
Sub-totals	8,566,049	686,465	9,252,514	7,039,446
Totals	12,925,213	3,246,947	16,172,160	8,968,010
<u>Eastern Europe</u>				
Albania	-	-	-	382,704
Germany, East	2,269,823	-	2,269,823	385,827
Poland	3,279,528	1,202,399	4,481,927	4,116,079
U.S.S.R. (Russia)	11,418,127	-	11,418,127	1,928,627
Totals	16,967,478	1,202,399	18,169,877	6,813,237
<u>Africa</u>				
Nigeria	315,800	-	315,800	136,903
<u>Asia</u>				
China, Communist	4,952,959	171,733	5,124,692	2,621,332
Hong Kong	17,733	-	17,733	122,453
India	16,564,916	-	16,564,916	396,733
Japan	4,500,839	-	4,500,839	2,144,465
Malaysia and Singapore	35,467	-	35,467	128,427
Pakistan	-	-	-	570,667
Philippines	227,733	-	227,733	879,941
Taiwan	-	-	-	96,512
Totals	26,299,647	171,733	26,471,380	6,960,530
<u>Oceania</u>				
United States Oceania	36,773	-	36,773	-
<u>Western Hemisphere</u>				
Cuba	878,080	-	878,080	802,480
Ecuador	-	-	-	186,771
El Salvador	-	-	-	76,720
Guatemala	-	-	-	123,333
Nicaragua	56,336	-	56,336	89,600
Venezuela	181,675	-	181,675	685,693
United States Domestic(3)	735,668	-	735,668	-
Totals	1,851,759	-	1,851,759	1,964,597
Sub-totals, All Countries	58,396,670	4,621,079	63,017,749	24,843,277
Bagged seed(4)			34,906	61,491
Totals, All Countries	58,396,670	4,621,079	63,052,655	24,904,768

See footnotes on page 21.

Cumulative Exports of Canadian Wheat(1) by Destination

Destination	August 1965 - July 1966			Total Same Period Last Year (2)
	Wheat (Except Durum)	Durum Wheat	Total Wheat	
bushels				
Western Europe				
EEC				
Belgium and Luxembourg ..	9,909,878	887,158	10,797,036	15,528,016
France	1,878,490	896,036(2)	2,774,526(2)	5,552,755
Germany, Federal Republic	14,344,642(2)	8,467,817	22,812,459(2)	20,508,768
Italy	7,048,937	615,709	7,664,646	3,914,715
Netherlands	3,804,554	137,692	3,942,246	3,409,851
Sub-totals	36,986,501(2)	11,004,412(2)	47,990,913(2)	48,914,105
Other Western Europe				
Austria	1,111,235(2)	612,689(2)	1,723,924(2)	1,660,293
Britain	69,507,988(2)	396,839	69,904,827(2)	70,390,834
Finland	680,356	-	680,356	343,467
Ireland	1,344,981	26,068	1,371,049	2,223,831
Malta and Gozo	693,653	-	693,653	979,885
Norway	1,989,540	-	1,989,540	1,601,120
Sweden	-	18,666	18,666	67,200
Switzerland	4,046,118	4,063,473	8,109,591	3,919,093
Sub-totals	79,373,871(2)	5,117,735(2)	84,491,606(2)	81,185,723
Totals	116,360,372	16,122,147	132,482,519	130,099,828
Eastern Europe				
Albania	3,292,773	947,398	4,240,171	5,025,011
Bulgaria	-	-	-	5,752,853
Czechoslovakia	6,451,200	1,095,866	7,547,066	26,244,851
Germany, East	8,069,842	-	8,069,842	10,522,197
Hungary	-	-	-	3,614,420
Poland	10,736,176	2,559,907	13,296,083	18,899,240
U.S.S.R. (Russia)	188,504,901	9,937,158	198,442,059	8,843,789
Totals	217,054,892	14,540,329	231,595,221	78,902,361
Africa				
Ethiopia	146,976	-	146,976	-
Mozambique	11,125	-	11,125	35,230
Nigeria	808,600	-	808,600	603,113
Republic of South Africa .	-	-	-	944,533
Rhodesia	-	-	-	48,210
Totals	966,701	-	966,701	1,631,086

FARMERS' MARKETINGS OF WHEAT, PRAIRIE PROVINCES

(SPECIFIED PERIODS)

MILLION BUSHELS

700 —

MILLION BUSHELS

— 700

—

600 —

500 —

400 —

300 —

200 —

100 —

0 —

—

600 —

500 —

400 —

300 —

200 —

100 —

0 —

PEAK MARKETINGS
1963-64 CROP YEAR
568.6 MILLION BUSHELS

JULY

JUNE

MAY

APR.

MAR.

FEB.

JAN.

DEC.

NOV.

OCT.

SEPT.

30 year average

1934-35

1963-64

10 year average

1954-55

1963-64

1960-61

1961-62

1962-63

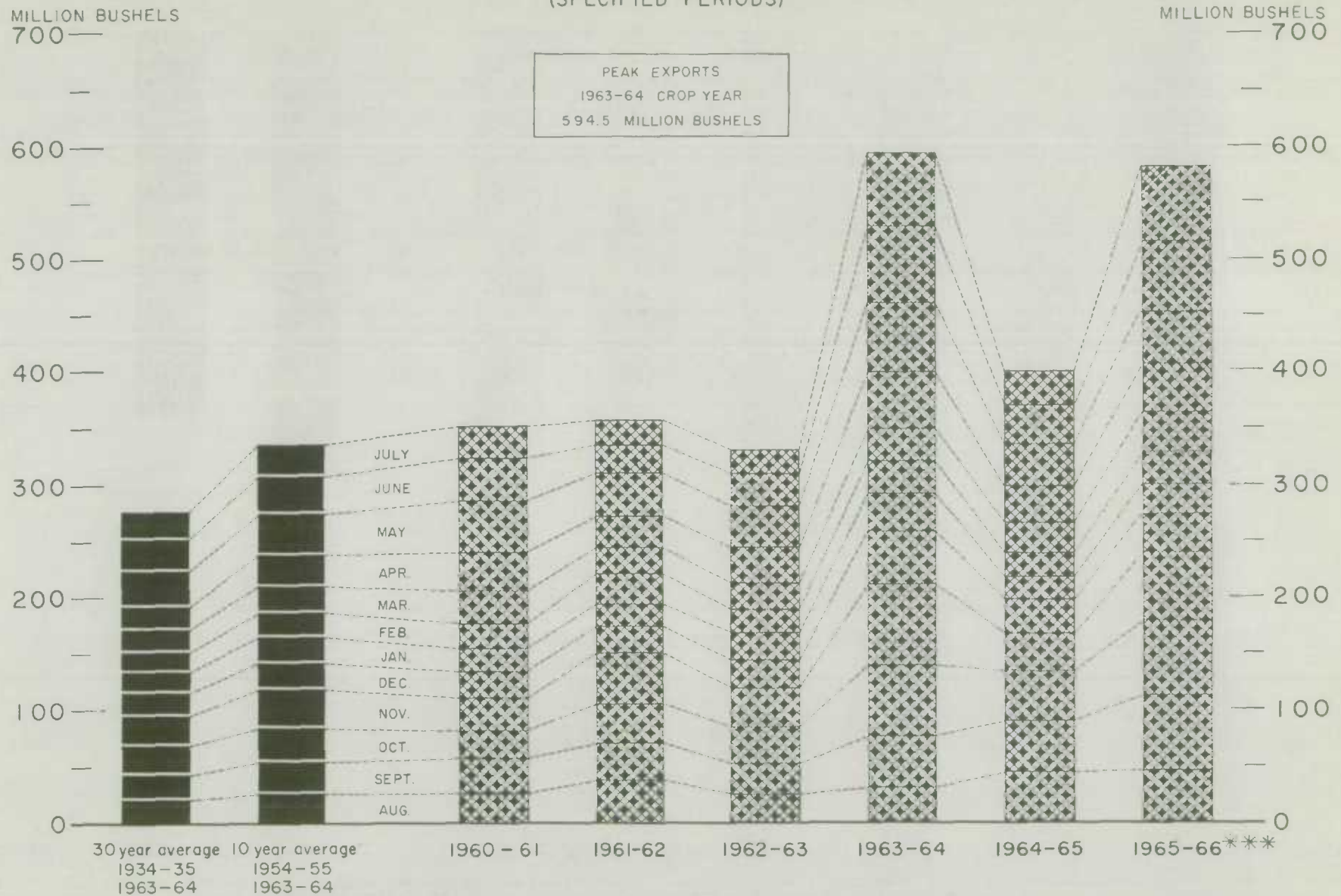
1963-64

1964-65

1965-66

EXPORTS OF CANADIAN WHEAT* AND WHEAT FLOUR**

(SPECIFIED PERIODS)



*Beginning with 1956-57 includes bagged seed wheat. ***In terms of wheat equivalent. ***Preliminary.

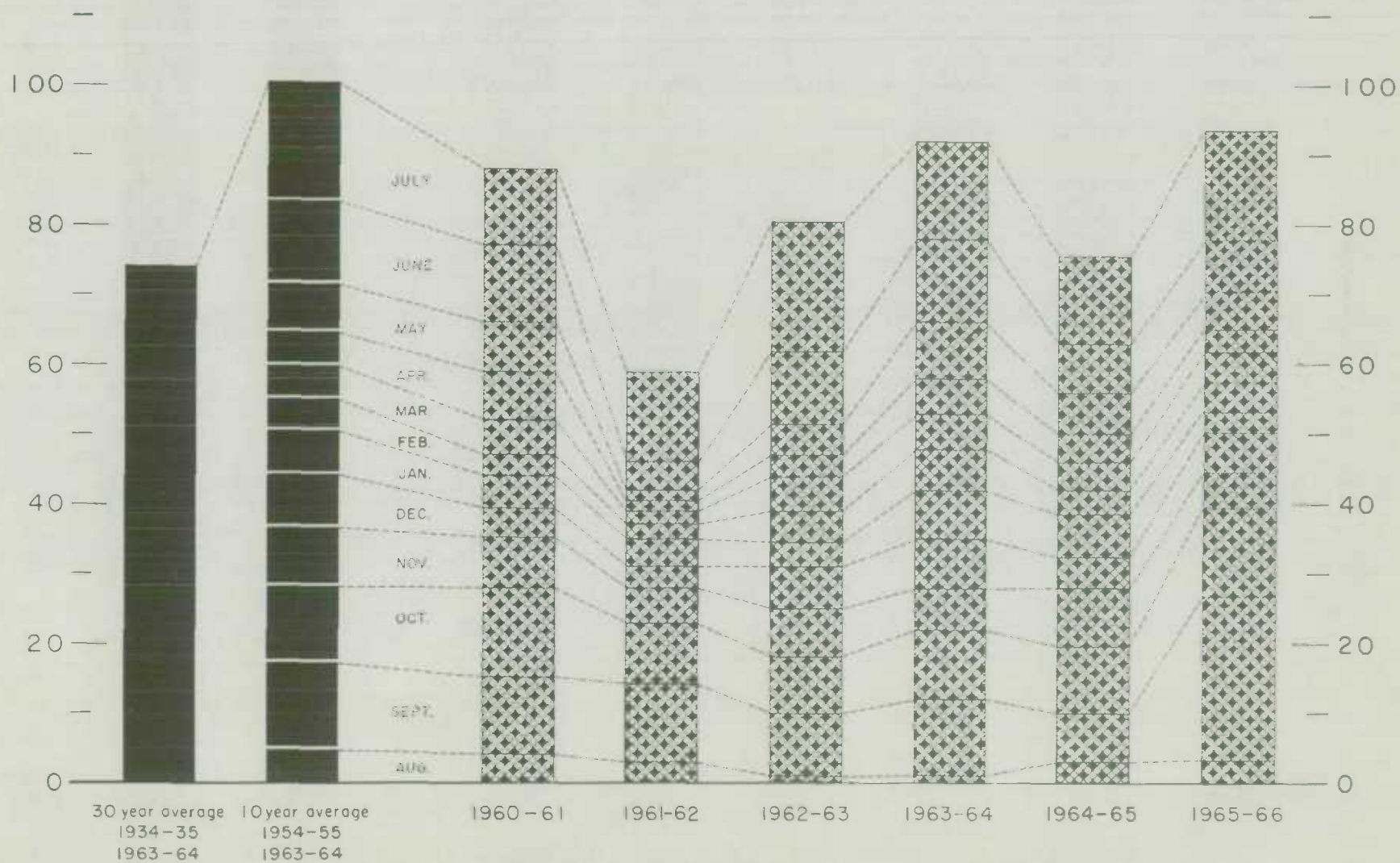
Agriculture Division D.B.S.

FARMERS' MARKETINGS OF BARLEY, PRAIRIE PROVINCES

(SPECIFIED PERIODS)

MILLION BUSHELS
120 —

MILLION BUSHELS
120 —



EXPORTS OF CANADIAN BARLEY AND BARLEY PRODUCTS*

(SPECIFIED PERIODS)

MILLION BUSHEL

80 —

70 —

60 —

50 —

40 —

30 —

20 —

10 —

0

MILLION BUSHEL

80 —

70 —

60 —

50 —

40 —

30 —

20 —

10 —

0

30 year average 10 year average
 1934-35 1954-55
 1963-64 1963-64

1960-61

1961-62

1962-63

1963-64

1964-65

1965-66**

JULY

JUNE

MAY

APR

MAR

FEB.

J.

D.

NOV.

OCT.

SEPT.

AUG.

*In terms of grain equivalent. **Preliminary.

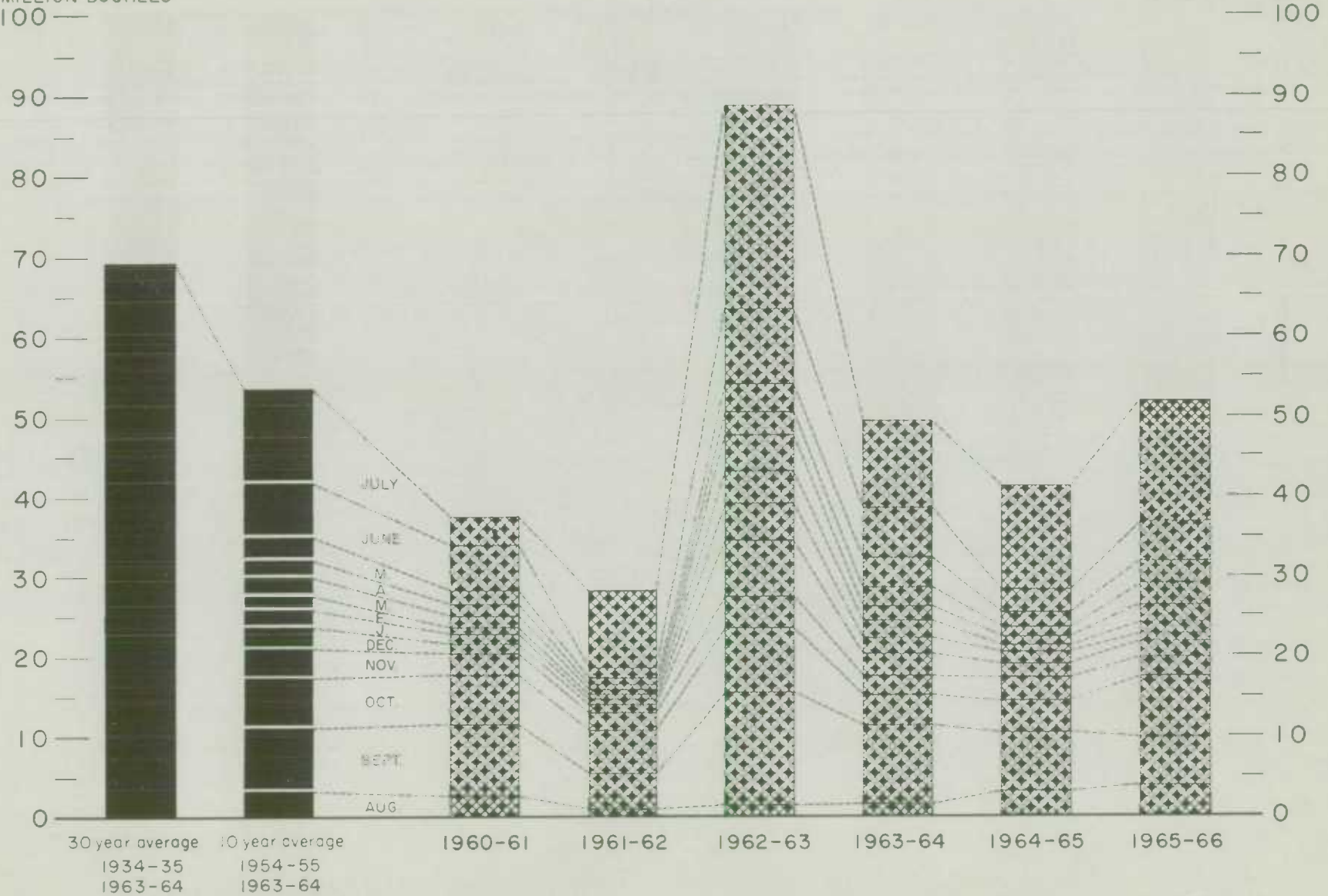
Agriculture Division D.B.S.

FARMERS' MARKETINGS OF OATS, PRAIRIE PROVINCES

(SPECIFIED PERIODS)

MILLION BUSHEL
100

MILLION BUSHEL
100



Agriculture Division D.B.S.

EXPORTS OF CANADIAN OATS* AND OAT PRODUCTS**

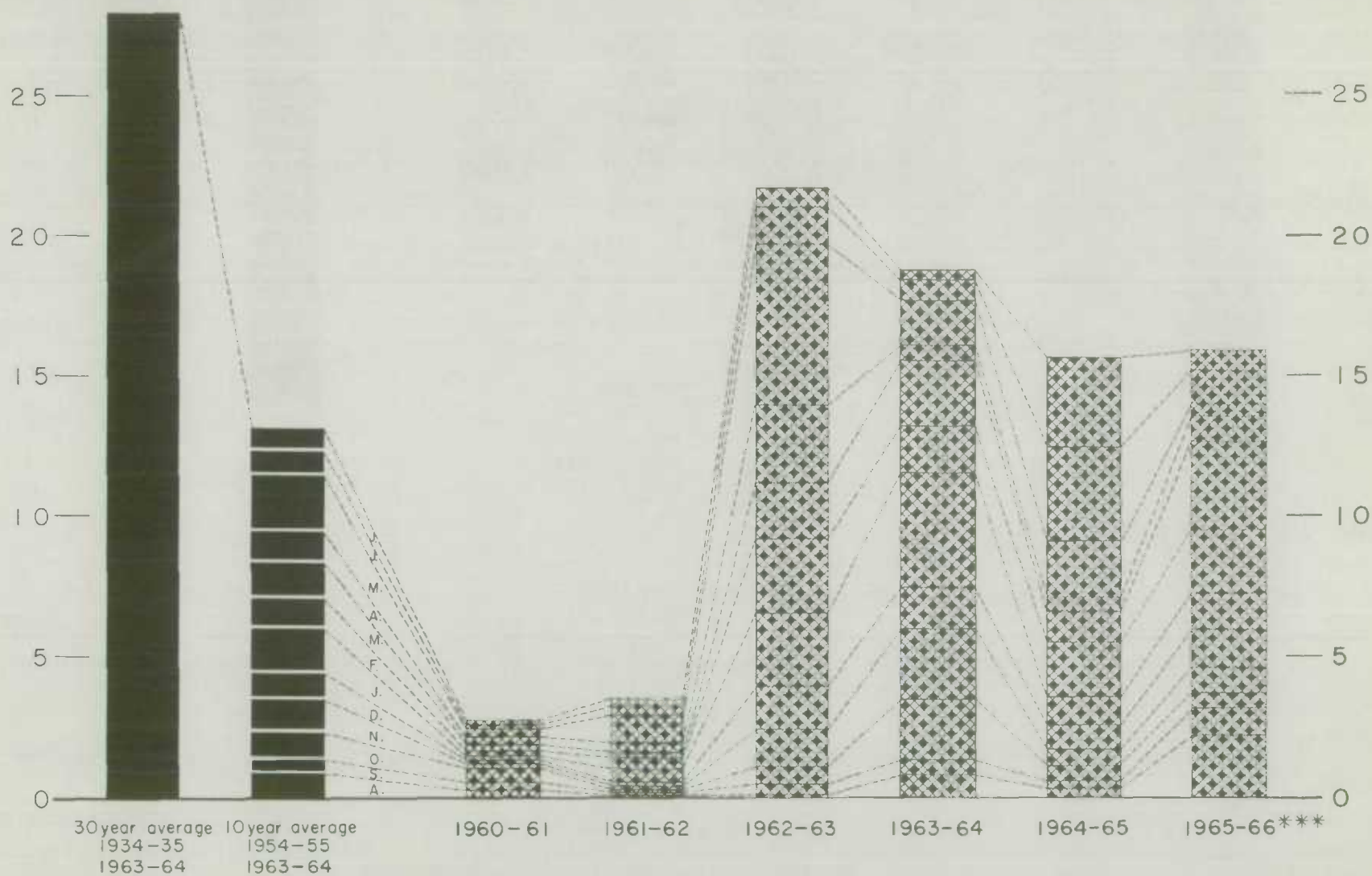
(SPECIFIED PERIODS)

MILLION BUSHEL

30 —

MILLION BUSHEL

— 30



*Beginning with 1960-61 includes relatively small quantity of bagged seed. **In terms of grain equivalent. ***Preliminary.

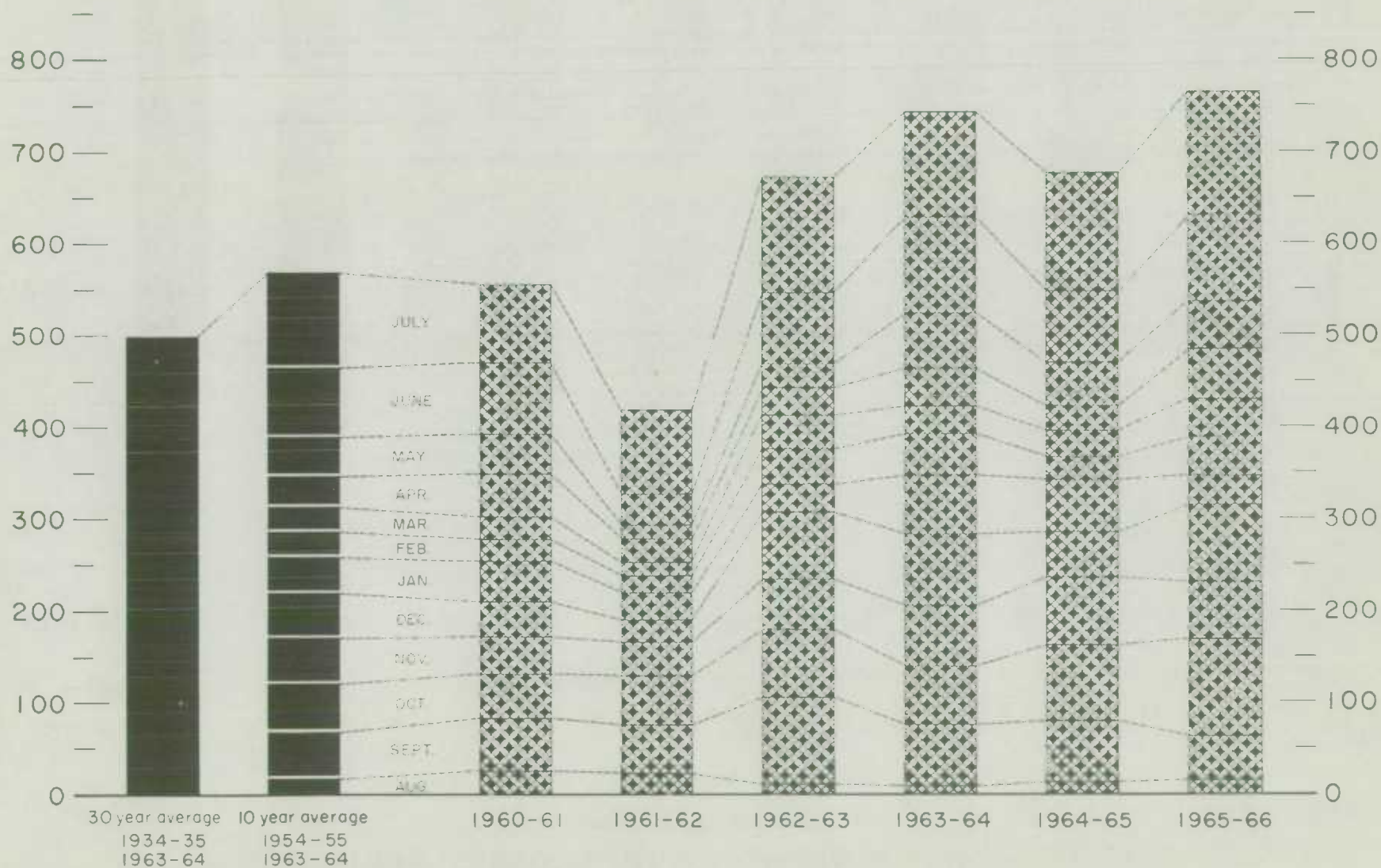
Agriculture Division D.B.S.

FARMERS' MARKETINGS OF CANADA'S SIX MAJOR GRAINS*, PRAIRIE PROVINCES

MILLION BUSHEL
900 —

(SPECIFIED PERIODS)

MILLION BUSHEL
900 —

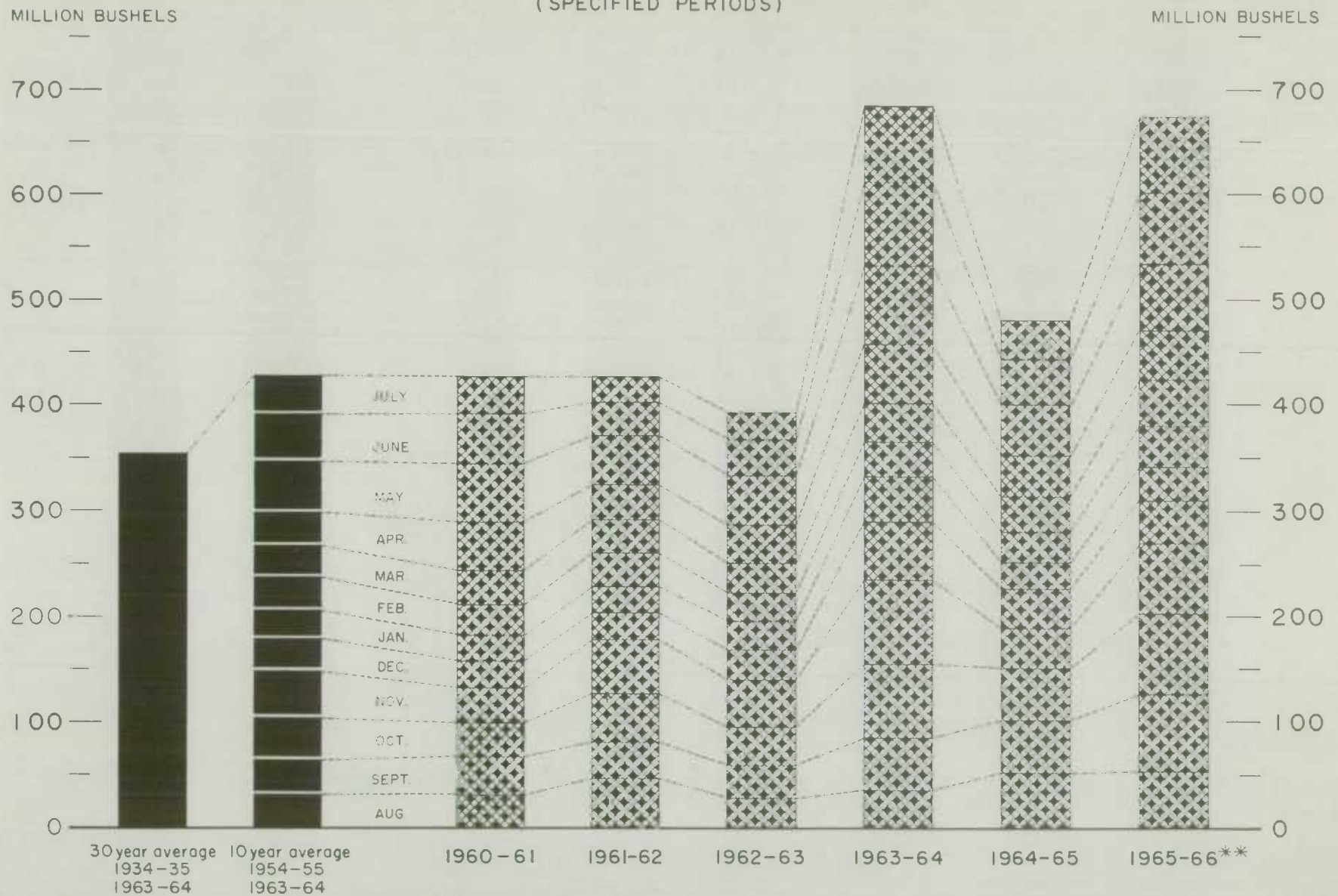


*Wheat, oats, barley, rye, flaxseed and from 1960-61 rapeseed

Agriculture Division D.B.S.

EXPORTS OF CANADA'S SIX MAJOR GRAINS AND PRODUCTS*

(SPECIFIED PERIODS)



*Wheat, bagged seed wheat, and wheat flour; oats, bagged seed oats, and oatmeal and rolled oats; barley, malt and pot and pearl; rye, flaxseed and from 1960-61 rapeseed.

** Preliminary.

Agriculture Division D.B.S.

Cumulative Exports of Canadian Wheat(1) by Destination

Destination	August 1965 - July 1966			Total Same Period Last Year (2)
	Wheat (Except Durum)	Durum Wheat	Total Wheat	
bushels				
Asia				
Burma	-	-	-	171,464
China, Communist	74,930,106	3,005,581	77,935,687	62,370,202
Hong Kong	1,084,083	-	1,084,083	905,147
India	25,954,588	-	25,954,588	7,266,240
Israel	467,600	-	467,600	529,200
Japan	49,383,771	173,600	49,557,371	50,125,210
Kuwait	-	-	-	350,000
Malaysia and Singapore	1,099,619	-	1,099,619	929,041
Pakistan	671,847	-	671,847	3,199,467
Philippines	2,561,999	-	2,561,999	6,482,508
Saudi Arabia	229,531	-	229,531	590,299
Taiwan	-	-	-	734,887
Thailand	271,413	-	271,413	-
Totals	156,654,557	3,179,181	159,833,738	133,653,665
Oceania				
United States Oceania	73,360	-	73,360	75,898
Western Hemisphere				
Barbados	200	-	200	5,119
Colombia	-	-	-	367,454
Cuba	11,395,299	-	11,395,299	8,120,779
Dominican Republic	-	-	-	704,386
Ecuador	988,450	-	988,450	1,370,128
El Salvador	452,667	-	452,667	776,516
Guatemala	195,939	-	195,939	408,366
Honduras	-	-	-	53,200
Jamaica	10,039	-	10,039	6,646
Leeward and Windward Islands	4	-	4	-
Nicaragua	506,359	-	506,359	504,746
Peru	298,667	-	298,667	937,813
Trinidad and Tobago	129,472	-	129,472	-
Venezuela	6,323,548	-	6,323,548	9,121,671
United States Domestic (3) .	735,668	-	735,668	-
Totals	21,036,312	-	21,036,312	22,376,824
Sub-totals, All Countries	512,146,194	33,841,657	545,987,851	366,739,662
Bagged seed(4)			794,827	1,312,295
Totals, All Countries	512,146,194	33,841,657	546,782,678	368,051,957

(1) Overseas clearances are reported by the Statistics Branch, Board of Grain Commissioners for Canada, for all countries except the United States.

Excluding bagged seed.

(2) Revised.

(3) Compiled from returns of Canadian elevator licensees and shippers and advice from American grain correspondents.

(4) Compiled from Canadian Customs returns, 1964-65 adjusted for time lag.

Customs Exports of Canadian Wheat Flour by Countries of Consignment

Destination	March 1966 (1)	July 1966 (2)	August-July	
			1965-66 (2)	1964-65 (1)
			bushels	
<u>Western Europe</u>				
<u>EEC</u>				
Belgium and Luxembourg	20,622	-	102,065	143,651
Italy	-	-	14,950	7,245
Netherlands	324	1,518	9,253	8,073
Sub-totals	20,946	1,518	126,268	158,969
<u>Other Western Europe</u>				
Britain	825,440	556,798	8,702,554	9,756,809
Denmark	-	-	2,070	2,760
Gibraltar	5,152	-	15,971	2,622
Greece	-	-	16,408	16,277
Iceland	1,776	-	3,551	3,220
Norway	-	-	46	161
Portugal	1,610	8,625	61,267	126,808
Sweden	-	-	1,265	1,771
Switzerland	-	-	-	27
Sub-totals	833,978	565,423	8,803,132	9,910,455
Totals	854,924	566,941	8,929,400	10,069,424
<u>Eastern Europe</u>				
U.S.S.R. (Russia)	68,611	- (3)	3,090,816 (3)	1,355,378
<u>Africa</u>				
Angola	-	1,380	15,410	7,406
Cameroun Republic	8,892	1,150	41,727	48,132
Congo (Leopoldville)	17,020	4,600	110,170	150,137
Ethiopia	-	-	-	230
French Africa nes	9,955	1,914	40,795	25,378
Gambia	21,160	1,219	57,914	63,144
Ghana	47,152	48,806	754,182	1,741,028
Guinea Republic	-	-	-	920
Ivory Coast	-	-	2,645	4,025
Liberia	19,281	1,932	131,417	85,234
Malagasy Republic	-	-	3,795	-
Malawi	3,788	4,299	29,031	20,647
Mozambique	5,099	5,982	49,868	42,829
Nigeria	4,228	1,348	26,436	8,202
Portuguese Africa nes	13,432	1,012	95,142 (4)	121,371
Rhodesia	-	1,150	11,500	13,497
Sierra Leone	93,251	19,663	469,069	539,615
Tanzania	2,300	-	16,215	2,300
Togo	13,913	16,560	188,851	162,472
U.A.R. - Egypt	-	-	1,656	-
Totals	259,471	111,015	2,045,823 (4)	3,036,567
<u>Asia</u>				
Aden	4,894	4,572	53,153	47,997
Burma	-	-	161,566	159,043
Ceylon	315,118	-	897,906	586,553
Cyprus	-	1,033	1,033	-
Hong Kong	30,360	76,468	675,234	695,563
India	462	-	1,512,919	-
Indonesia	-	-	-	16,694
Iran	-	-	4,457	2,463
Japan	649	759	4,782	46,984
Jordan	-	-	10,596	10,143
Korea	-	-	60,978	-

Customs Exports of Canadian Wheat Flour by Countries of Consignment

Destination	March 1966 (1)	July 1966 (2)	August-July	
			1965-66 (2)	1964-65 (1)
bushels				
Asia (concluded)				
Kuwait	-	-	-	10,210
Lebanon	2,534	1,520	393,141 (4)	209,137
Malaysia and Singapore	3,075	14,893	116,141	369,672
Philippines	-	-	-	977
Portuguese Asia	1,784	3,059	25,029	14,177
Qatar	-	-	547	230
Saudi Arabia	-	-	697 (4)	1,346
Syria	-	-	9,025	709
Thailand	13,343	36,110	243,920	383,465
Viet-Nam	920	-	920	115,800
Totals	373,139	138,414	4,172,044 (4)	2,671,163
Oceania				
Australia	-	-	14	14
British Oceania nes	-	-	345	-
Fiji	840	184	7,809	7,739
French Oceania	-	-	483	1,161
United States Oceania	4,025	7,015	51,750	13,570
Totals	4,865	7,199	60,401	22,484
Western Hemisphere				
Argentina	-	-	-	690
Bahamas	26,135	27,439	291,667	308,364
Barbados	20,569	10,488	207,600	193,352
Bermuda	11,866	4,517	112,166 (4)	123,915
British Guiana	10,417	1,265	66,024	56,746
British Honduras	6,723	-	49,052	42,952
Chile	-	-	-	920
Costa Rica	117,001	60,117	1,085,216	909,763
Cuba	1,194,730	803,385	10,342,016 (4)	6,624,667
Dominican Republic	24,610	-	295,776	231,879
El Salvador	-	-	6,736	2,422
French Guiana	-	-	230	460
French West Indies	1,654	2,907	12,015	7,857
Guatemala	1,955	1,612	32,368	46,338
Haiti Republic	-	-	1,801	22,421
Honduras	7,015	3,432	97,948	50,437
Jamaica	175,253	117,592	1,576,939	1,662,479
Leeward and Windward Islands	81,454	28,501	952,692	1,010,898
Netherlands Antilles	16,967	3,655	187,940	267,743
Nicaragua	-	690	9,200	1,849
Panama	757	803	25,128	79,591
Peru	3,795	2,645	40,032	75,095
St. Pierre and Miquelon	2,955	1,300	23,628	20,916
Surinam	7,838	621	61,417	79,872
Trinidad and Tobago	267,794	69,989	1,381,456	1,516,461
United States Virgin Islands	-	-	67	-
Venezuela	-	-	166	1,150
United States	43,477	36,455	881,235	1,048,106
Totals	2,022,965	1,177,413	17,740,515	14,387,343
Totals, All Countries	3,583,975	2,000,982	36,038,999 (3)	31,542,359

nes - not elsewhere specified.

(1) In terms of wheat equivalent. Adjusted to remove effect of time lag in the returns made by Customs. Conversion rate: 2.3 bushels per cwt.

(2) In terms of wheat equivalent. Preliminary and unadjusted for time lag. Conversion rate: 2.3 bushels per cwt.

(3) Source - Canadian National Millers Association.

(4) Revised.

Initial Payment
to Producers

The Canadian Wheat Board in its Instructions to the Trade No. 15 announced the fixed minimum carlot prices for wheat basis in store Fort William-Port Arthur or Vancouver. The amount to be paid in respect of wheat of the grade No. 1 Northern was fixed by Order-in-Council P.C. 1966 - 1341 of the 14th day of July, 1966. The amount to be paid in respect of each other grade of wheat referred to in the following table was fixed by the Board and approved by Order-in-Council P.C. 1966-1355 of the 21st day of July, 1966, pursuant to the Canadian Wheat Board Act, as amended.

Canadian Wheat Board Price List for Specified Grades of Wheat, Crop Year 1966-67
(In Carload Lots, Basis in Store Fort William-Port Arthur or Vancouver)

Grade	Straight	Tough	Damp
dollars per bushel			
No. 1 Hard	1.50	1.46	
No. 1 Northern	1.50	1.46	1.34
No. 2 Northern	1.46	1.42	1.30
No. 3 Northern	1.42	1.38	1.26
No. 4 Northern	1.35	1.31	1.19
No. 5 Wheat	1.21	1.17	1.05
No. 6 Wheat	1.17	1.13	1.03
Feed Wheat	1.13	1.09	.99
No. 4 Special	1.35	1.31	1.19
No. 5 Special	1.21	1.17	1.05
No. 6 Special	1.17	1.13	1.03
No. 1 C.W. Amber Durum	1.50	1.46	1.34
No. 2 C.W. Amber Durum	1.46	1.42	1.30
No. 3 C.W. Amber Durum	1.42	1.38	1.26
Extra No. 4 C.W. Amber Durum	1.42	1.38	1.26
No. 4 C.W. Amber Durum	1.35	1.31	1.19
No. 5 C.W. Amber Durum	1.21	1.17	1.05
No. 6 C.W. Amber Durum	1.17	1.13	1.03
No. 1 C.W. Garnet	1.35	1.31	1.19
No. 2 C.W. Garnet	1.30	1.26	1.14
No. 3 C.W. Garnet	1.25	1.21	1.09
No. 4 C.W. Garnet	1.19	1.15	1.03
No. 1 Alberta Red Winter	1.34	1.30	1.18
No. 2 Alberta Winter	1.29	1.25	1.13
No. 3 Alberta Winter	1.23	1.19	1.07
No. 4 Alberta Winter	1.17	1.13	1.01
No. 1 Soft White Spring	1.40	1.36	1.24
No. 2 Soft White Spring	1.37	1.33	1.21
No. 3 Soft White Spring	1.33	1.29	1.17
No. 4 Soft White Spring	1.30	1.26	1.14
No. 1 Mixed Wheat	1.21	1.17	1.07
No. 2 Mixed Wheat	1.18	1.14	1.04
No. 3 Mixed Wheat	1.18	1.14	1.04
No. 4 Mixed Wheat	1.13	1.09	.99
No. 5 Mixed Wheat	1.21	1.17	1.07
No. 6 Mixed Wheat	1.18	1.14	1.04
No. 1 C.W. Mixed Grain	1.08	1.04	.94

Canadian Wheat Board Weekly Average Cash Wheat Prices
Basis in Store Fort William-Port Arthur

Class and Grade	Week Ending				
	Aug. 5	Aug. 12	Aug. 19	Aug. 26	Sept. 2

cents and eighths per bushel

Initial Payment to Producers

1 Northern	150	150	150	150	150
2 Northern	146	146	146	146	146
3 Northern	142	142	142	142	142
4 Northern	135	135	135	135	135
5 Wheat	121	121	121	121	121
6 Wheat	117	117	117	117	117
Feed Wheat	113	113	113	113	113
1 C.W. Garnet	135	135	135	135	135
2 C.W. Garnet	130	130	130	130	130
3 C.W. Garnet	125	125	125	125	125
1 Alberta Red Winter	134	134	134	134	134
2 Alberta Winter	129	129	129	129	129
3 Alberta Winter	123	123	123	123	123
1 C.W. Amber Durum	150	150	150	150	150
2 C.W. Amber Durum	146	146	146	146	146
3 C.W. Amber Durum	142	142	142	142	142

International Wheat Agreement

and Domestic Sales

1 Northern	210/1	210/3	210/7	212/3	212/3
2 Northern	207/1	207/3	207/7	209/3	209/3
3 Northern	202/1	202/3	202/7	204/3	204/3
4 Northern	196/1	196/3	196/7	198/3	198/3
5 Wheat	191/1	191/3	191/7	193/3	193/3
6 Wheat	190/1	190/3	190/7	192/3	192/3
Feed Wheat	186/1	186/3	186/7	188/3	188/3
1 C.W. Garnet	196/1	196/3	196/7	198/3	198/3
2 C.W. Garnet	195/1	195/3	195/7	197/3	197/3
3 C.W. Garnet	194/1	194/3	194/7	196/3	196/3
1 Alberta Red Winter	196/1	196/3	196/7	198/3	198/3
2 Alberta Winter	195/1	195/3	195/7	197/3	197/3
3 Alberta Winter	194/1	194/3	194/7	196/3	196/3
1 C.W. Amber Durum	222/5	224/3	224/7	226/3	226/3
2 C.W. Amber Durum	219/5	221/3	221/7	223/3	223/3
3 C.W. Amber Durum	214/5	216/3	216/7	218/3	218/3

Export - Class II

1 Northern	210/1	210/3	210/7	212/3	212/3
2 Northern	207/1	207/3	207/7	209/3	209/3
3 Northern	202/1	202/3	202/7	204/3	204/3
4 Northern	196/1	196/3	196/7	198/3	198/3
5 Wheat	191/1	191/3	191/7	193/3	193/3
6 Wheat	190/1	190/3	190/7	192/3	192/3
Feed Wheat	186/1	186/3	186/7	188/3	188/3
1 C.W. Garnet	196/1	196/3	196/7	198/3	198/3
2 C.W. Garnet	195/1	195/3	195/7	197/3	197/3
3 C.W. Garnet	194/1	194/3	194/7	196/3	196/3
1 C.W. Amber Durum	222/5	224/3	224/7	226/3	226/3
2 C.W. Amber Durum	219/5	221/3	221/7	223/3	223/3
3 C.W. Amber Durum	214/5	216/3	216/7	218/3	218/3

Canadian Wheat Board Weekly Average Cash Wheat Prices
Basis in Store Vancouver

Class and Grade	Week Ending				
	Aug. 5	Aug. 12	Aug. 19	Aug. 26	Sept. 2
cents and eighths per bushel					
<u>Initial Payment to Producers</u>					
1 Northern	150	150	150	150	150
2 Northern	146	146	146	146	146
3 Northern	142	142	142	142	142
4 Northern	135	135	135	135	135
5 Wheat	121	121	121	121	121
6 Wheat	117	117	117	117	117
Feed Wheat	113	113	113	113	113
1 C.W. Garnet	135	135	135	135	135
2 C.W. Garnet	130	130	130	130	130
3 C.W. Garnet	125	125	125	125	125
1 Alberta Red Winter	134	134	134	134	134
2 Alberta Winter	129	129	129	129	129
3 Alberta Winter	123	123	123	123	123
1 C.W. Amber Durum	150	150	150	150	150
2 C.W. Amber Durum	146	146	146	146	146
3 C.W. Amber Durum	142	142	142	142	142
<u>International Wheat Agreement</u>					
<u>and Domestic Sales</u>					
1 Northern	215/1	215/3	215/5	216/3	216/3
2 Northern	212/1	212/3	212/5	213/3	213/3
3 Northern	207/1	207/3	207/7	209/3	209/3
4 Northern	201/1	201/3	201/7	203/3	203/3
5 Wheat	196/1	196/3	196/7	198/3	198/3
6 Wheat	195/1	195/3	195/7	197/3	197/3
Feed Wheat	191/1	191/3	191/7	193/3	193/3
1 C.W. Garnet	201/1	201/3	201/7	203/3	203/3
2 C.W. Garnet	200/1	200/3	200/7	202/3	202/3
3 C.W. Garnet	199/1	199/3	199/7	201/3	201/3
1 Alberta Red Winter	201/1	201/3	201/7	203/3	203/3
2 Alberta Winter	200/1	200/3	200/7	202/3	202/3
2 Alberta Winter	199/1	199/3	199/7	201/3	201/3
<u>Export - Class II</u>					
1 Northern	215/1	215/3	215/5	216/3	216/3
2 Northern	212/1	212/3	212/5	213/3	213/3
3 Northern	207/1	207/3	207/7	209/3	209/3
4 Northern	201/1	201/3	201/7	203/3	203/3
5 Wheat	196/1	196/3	196/7	198/3	198/3
6 Wheat	195/1	195/3	195/7	197/3	197/3
Feed Wheat	191/1	191/3	191/7	193/3	193/3
1 C.W. Garnet	201/1	201/3	201/7	203/3	203/3
2 C.W. Garnet	200/1	200/3	200/7	202/3	202/3
3 C.W. Garnet	199/1	199/3	199/7	201/3	201/3
1 Alberta Red Winter	201/1	201/3	201/7	203/3	203/3
2 Alberta Winter	200/1	200/3	200/7	202/3	202/3
3 Alberta Winter	199/1	199/3	199/7	201/3	201/3

CANADIAN FLOUR MILLING SITUATION

Production

Wheat flour production by Canadian mills during July 1966 amounted to 3,384,000 hundredweight representing an increase of 3 per cent above the June 1966 output of 3,292,000 hundredweight 5 per cent over the July 1965 figure of 3,217,000 hundredweight and 2 per cent greater than the ten-year (1956-65) average production for the month of July of 3,323,000 hundredweight. Mills reporting operations during July 1966 had a total rated capacity of 170,000 hundredweight per 24-hour day and on the basis of a 25-day working period 79.8 per cent of this rated capacity was effective.

Wheat milled for flour during July 1966 amounted to 7,674,000 bushels, 2 per cent more than the 7,519,000 bushels milled during the preceding month and 7 per cent above the 7,194,000 bushels milled during July 1965. Of the wheat milled for flour during July 1966 some 6,747,000 bushels were Western Canadian spring wheat (other than Durum) while the remainder consisted of Ontario winter wheat (581,000 bushels); Durum (232,000 bushels); and all other (114,000 bushels).

Exports

According to preliminary Customs returns, exports of Canadian wheat flour during July 1966 amounted to 870,000 hundredweight (some 2,000,982 bushels of wheat equivalent) representing an increase of 26 per cent over the 1,585,000 bushels exported during the previous month but 18 per cent below the adjusted July 1965 total of 2,430,000 bushels. Flour shipments during the month went to forty-six countries with exports to Cuba amounting to 803,000 bushels of wheat equivalent and accounting for 40 per cent of the July 1966 total. Shipments to Britain amounted to 557,000 bushels of wheat equivalent and accounted for 28 per cent of the total. Other principal markets for Canadian wheat flour during the month, with shipments in thousands of bushels of wheat equivalent were as follows: Jamaica, 118; Hong Kong, 76; Trinidad and Tobago, 70; and Costa Rica, 60.

Wheat Milled for Flour, and Production and Exports of Wheat Flour, Canada

Crop Year	Wheat Milled for Flour bushels	Wheat Flour	
		Production	Exports (1)
		cwt.	
1935-36--1939-40 average	67,845,114	29,405,451	9,603,941
1940-41--1944-45 average	99,704,638	43,908,245	23,699,546
1945-46--1949-50 average	107,330,372	47,011,540	25,819,721
1950-51--1954-55 average	100,446,328	43,847,894	21,812,041
1955-56--1959-60 average	90,148,211	39,752,589	16,349,156
1960-61	89,731,155	39,914,644	15,513,836
1961-62	88,240,580	39,539,651	13,892,676
1962-63	78,789,332	35,505,220	11,854,458
1963-64	111,670,577	50,103,569	23,873,978
1964-65	87,209,242	39,107,358	13,714,069
1965-66 (2)			
August	7,675,899	3,419,083	842,329
September	8,626,816	3,861,212	1,197,912
October	9,220,674	4,114,703	1,156,309
November	8,757,570	3,901,780	1,673,066
December	8,529,115	3,786,893	1,105,101
January	8,257,251	3,703,388	2,294,690
February	8,374,182	3,732,617	1,591,704
March	9,092,207	4,056,398	1,254,217
April	7,443,331	3,314,804	1,494,414
May	6,759,508	3,009,624	1,500,308
June	7,518,797	3,292,307	689,088
July	7,674,454	3,384,353	869,992
Totals	97,929,804	43,577,162	15,669,130
Same months 1964-65 (3)	87,209,242	39,107,358	13,714,069

(1) Based on Customs returns. Exports for the crop years 1945-46--1964-65 revised to remove effect of time lag in the returns made by Customs.

(2) Subject to revision.

(3) Revised figures.

UNITED STATES SITUATION

Supply Position Total domestic supplies of wheat in the United States for the 1966-67 crop year are currently placed at 1,822.3 million bushels, 15 per cent less than the previous year's total of 2,144.4 million due to declines in both carryover stocks and production. The 536.0 million bushels carried over at July 1, 1966 were the lowest stocks since 1952 while the current crop, estimated at 1,286.3 million bushels, represents a decrease of 3 per cent from last year's outturn of 1,326.7 million. In addition, current crop year domestic supplies may be supplemented by imports of about 1 million bushels.

United States Wheat Supplies

Item	1965-66(1)	1966-67(2)
	million bushels	
Carryover at beginning of crop year (July 1)	817.7	536.0
Production	1,326.7	1,286.3
Total estimated domestic supplies	2,144.4	1,822.3
Imports of wheat and wheat flour in terms of wheat for domestic use, July	0.1	0.8
Total estimated supplies (3)	2,144.5	1,823.1
Less estimated domestic requirements for crop year (4) .	740.5	657.0
Available for export and for carryover	1,404.0	1,166.1
Deduct:		
Exports of wheat as grain, July	65.1	55.0
Exports of wheat flour in terms of wheat, July (5) ...	6.2	6.0
Total exports of wheat and wheat flour (6)	71.3	61.0
Balance on August 1 for export and for carryover	1,332.6	1,105.1

(1) Revised. (2) Preliminary. (3) Excluding imports for August-June. (4) Includes shipments to United States Territories and wheat for military food use at home and abroad. (5) Flour exports exclude "Milled in bond". (6) Data include shipments for relief.

According to the July 1966 issue of the "Wheat Situation" published by the United States Department of Agriculture domestic disappearance in 1966-67 is likely to decline somewhat from the high level registered in 1965-66, with all of the decline coming in the use of wheat for feed. Last year the use of wheat for feed rose substantially to 156 million bushels, sharply above the 66 million in 1964-65. In 1966-67, wheat feeding likely will return to the approximate level reported for 1964-65, although wheat and feed grain price relationships could alter this significantly. During the May-July period, the price of 100 pounds of wheat was substantially above that of any feed grain and sharply above wheat prices for the same months in 1965. For this reason, less wheat probably was or will be fed during the wheat harvest period--a time when wheat prices are normally low and corn prices are high--than is usually the case.

Use of wheat for food and use for seed in 1966-67 are placed at 525 million and 72 million bushels, respectively. Food use of wheat is unchanged from the previous year's level, while the quantity allocated for seed is somewhat larger because of the 15 percent larger allotment for the 1967 crop announced on May 5, 1966. Based on these individual domestic items, total domestic disappearance is placed at 657 million bushels, 85 million below 1965-66 but 60 million above the 1959-63 average. (Editor's Note--An additional increase of 8.9 million acres in the 1967 wheat acreage allotment was announced on August 8, 1966 and as a result the estimated quantity of wheat to be used for seed will exceed the 72 million bushel level).

The quantity of wheat available for export and carryover in 1966-67 is considerably smaller than a year earlier and well below the 1959-63 average. Exports for 1966-67 are estimated in the range of 720 to 745 million bushels. While substantially below the record and near-record exports of 1963-64 and 1965-66, this is at the same level as in 1964-65 and somewhat above average. With total disappearance of wheat exceeding the current production forecast, carryover stocks at July 1, 1967 would again record a decline.

Exports of wheat and wheat flour in terms of grain equivalent during July 1966 amounted to 61.0 million bushels, 14 per cent less than the 71.3 million exported during the same month last year. The balance remaining on August 1, 1966 for export and for carryover was estimated at 1,105.1 million bushels compared with 1,332.6 million on the same date a year ago.

1966 Wheat Crop In a report released on August 10, the Crop Reporting Board of
Forecast 1,286 the United States Department of Agriculture stated that prospective
Million Bushels production of all wheat increased 4 per cent during July. The 1966 crop is now forecast at 1,286 million bushels--3 per cent less than last year but 5 per cent above average. The yield per harvested acre is indicated at 26.2 bushels compared with 26.9 bushels last year and the average of 25.4 bushels.

A winter wheat crop of 1,033 million bushels is now forecast--nearly one per cent above last year and 5 per cent above average. The August 1 estimate is up 5 per cent from the July 1 forecast as a result of yields turning out higher than expected--particularly in Nebraska, northern Kansas, and other North Central States. In Nebraska wheat turned out to be almost a miracle crop--recovering from earlier drought conditions to produce the highest yield of record. Quality of the 1966 crop is especially good with test weights in Kansas averaging the highest of record.

The U.S. average yield per acre is estimated at 27.2 bushels which would be the third highest on record. The yield in 1965 was 27.3 bushels and the average is 26.4 bushels. Compared with last year, production varies widely by areas. The heaviest reductions were in Kansas and Oklahoma and there were substantial declines in Texas, Montana, and Idaho. Production is up sharply from 1965 in Colorado and Nebraska, higher than 1965 in the Corn Belt, where greatest increases were in Ohio and Missouri. In the Pacific Northwest production prospects about equal last year's crops. Weather during most of July favored harvest--part of the reason for high yields in many States. By August 1 combining was nearly complete except in the northerly States. Harvest was active in the Pacific Northwest and well underway in Montana.

Production of durum wheat is expected to total 65 million bushels, down 6 per cent from 1965 but 34 per cent above average. The August 1 forecast was

3 per cent above a month earlier. The indicated yield of 27.9 bushels per acre is 2.9 bushels below last year's record high but 4.4 bushels above average. July moisture supplies in the main durum area were generally plentiful, offsetting possible damage from high temperatures. The warm weather hastened maturity, and development is ahead of 1965. In North Dakota combining was just starting on August 1. Some 3 per cent of the acreage was in the swath and 37 per cent turning or ripe. Production of spring wheat other than durum is forecast at 189 million bushels, down 3 per cent from the July 1 forecast and 19 per cent below last year, but 1 per cent above average. The indicated yield is 21.3 bushels per acre compared with 24.3 bushels last year and the average of 21.1 bushels. Hot, dry weather during July through the northern Great Plains reduced yields in much of the major spring wheat area. The Dakotas were down 1 bushel and Minnesota was down 2 bushels from the July 1 estimate. Northern Montana received good moisture during July and prospects improved in that area. Prospective yields in Idaho were unchanged. Harvest is later than usual in Minnesota but is about normal or a little earlier than usual in most other areas. By August 1 about 15 per cent of the acreage had been cut in Minnesota, 40 per cent in South Dakota, but harvest was just starting in North Dakota.

National Wheat Acreage
Allotment Increased

According to an announcement by the United States Department of Agriculture, under date of August 8, 1966 Secretary of Agriculture Orville L. Freeman

increased the 1967 national wheat acreage allotment 8.9 million acres to a total of 68.2 million acres. With the 7.7 million acre increase announced May 5, the allotment for 1967 is now 16.6 million acres greater than for 1966.

This action offers farmers the opportunity to plant more land to wheat where wheat production is profitable while maintaining their eligibility for program benefits, the Secretary said. We expect wheat prices, even with the larger acreage, to be well above support levels next year because of strong commercial demand at home, continued export expansion, and large food assistance requirements. Therefore, farmers can expect increased income from increased production. Weather variations can change a deficit into a surplus very quickly, but with wise use of the new authority in the Food and Agriculture Act of 1965 the United States can avoid both of the twin evils of shortage and surplus. No one can be positive how much wheat we will need or how much the world will produce between now and July 1, 1968. I have increased the wheat acreage allotment so that farmers who want to produce more can help make sure that we don't run short.

Secretary Freeman said acreage allotments for future years will depend on the wheat situation at the time the allotment is determined. The Secretary emphasized that wheat to be produced during the year covered by this program will not be harvested until June 1967 and represents our main supply until June 1968. Secretary Freeman pointed out that the action today does not constitute a request for additional production but will enable those farmers who believe increased production will be profitable to plant more land to wheat while maintaining their eligibility for program benefits. Producers who plant within farm acreage allotments are eligible for price support loans on all of their production and for price-supplementing certificate payments on the farm's share of the domestic food market for wheat.

Farm soil conserving base acreages will be reduced to correspond with today's increase in wheat acreage allotments. (When wheat allotments were increased 15 per cent recently, the Secretary announced that the 1966 program provision that called for diversion of 15 per cent of the allotments as a condition of eligibility for program benefits would not be part of the 1967 program.) The land made available for cropping by this reduction in conserving acreages will make it possible for many farmers to plant more wheat for 1967 harvest.

Secretary Freeman said the program changes were needed because:

The former wheat surplus has been put to use, making increased production desirable;

Wheat stocks are being reduced below a desirable reserve level this year;

With feed grain stocks declining, the need for adequate wheat stocks is even more pressing;

Domestic and world demand for wheat continue to be strong;

Export expansion can continue if we have adequate supplies at competitive prices;

Grain requirements for foreign assistance programs, while not completely predictable at this time, are almost certain to continue to be large.

The Secretary emphasized that this action probably will not bring the wheat carryover in one year to the 600-million bushel level generally regarded as desirable but said he expects some increase in 1968 stocks. The Secretary indicated that the larger acreage allotment is expected to produce a crop of approximately 1.6 billion bushels in 1967, assuming normal weather. He pointed out also that if drought reduced U.S. yields by 3 bushels an acre in 1967, production would be about 200 million bushels less than with a normal yield. The larger allotment will help assure enough wheat in the event of drought in the U.S. or abroad, the Secretary said. As announced previously, 1967 program benefits will not be conditioned upon diversion of any wheat acreage, and there will be no wheat diversion payments. The new effective wheat allotment of 68.2 million acres is made up of a regular allotment of 63.3 million acres and a small farm allotment of 4.9 million acres.

The effective wheat allotment for 1967 announced May 5 was 59.3 million acres (regular allotment of 55 million plus a small farm allotment of 4.3 million). The 1966 effective allotment was 51.6 million (47.8 million plus 3.8 million). A farmer can figure his new 1967 allotment by multiplying the 1967 allotment recently established for his farm by 1.15. County committees will send new allotment notices to farmers shortly. Today's action does not change either the price support level or the number of bushels on which a farmer will qualify for certificate payments in accordance with the general wheat program announcement of June 9. The price support loan level for 1967 will be \$1.25. Domestic marketing certificates as required by law will be issued on approximately 520 million bushels of wheat, and the value of certificates will be the difference between the parity price of wheat on July 1, 1967, and the \$1.25 loan value. This year's certificate value is \$1.32 per bushel.

The Secretary also announced that barley will not be included in the 1967 feed grain acreage diversion program. The barley announcement was made at this time because barley, like wheat, is a fall-seeded crop in many parts of the country. Farmers cooperating in both wheat and feed grain programs next year may again plant wheat on regular barley acreage and on other feed grain acreage if they wish. The level of price support for barley and other feed grains will be announced later. Farmers will also be able to plant wheat on their oats-rye base as in 1966. There will be no oats-rye diversion requirements or payments. In the Cropland Adjustment Program for 1967, Secretary Freeman announced today wheat, rice, and barley acreages are no longer eligible at a special payment rate related to wheat program benefits but are eligible only at the rate for non-allotment crops.

Cash Wheat Prices on the Kansas City and Minneapolis Markets

No. 2 Hard Winter, Kansas City			No. 1 Northern Spring, Minneapolis		
Date	Price		Date	Price	
	cents per bushel			cents per bushel	
August 1, 1966	197	- 200 1/2	August 1, 1966	195 1/4	- 212 1/4
2	194 1/2	- 196 1/2	2	197 3/8	- 213 3/8
3	194	- 197 1/2	3	197 7/8	- 212 7/8
4	196	- 197 1/2	4	197 3/8	- 211 3/8
5	196		5	197 3/8	- 210 3/8
8	192 1/4	- 217 3/4 (1)	8	194 7/8	- 208 7/8
9	197	- 200 3/4	9	195	- 209
10	193 3/4	- 217 1/2 (1)	10	201	- 215
11	213 3/4		11	204 5/8	- 218 5/8
12	197	- 201 1/4	12	203 1/2	- 217 1/2
15	195 1/2	- 201 1/4	15	202 1/2	- 215 1/2
16	197 1/2	- 201 1/2	16	203 7/8	- 216 7/8
17	200 1/2		17	204 3/4	- 217 3/4
18	198	- 209 1/2	18	204 1/2	- 217 1/2
19	195	- 199 3/4	19	204 3/8	- 216 3/8
22	195	- 199 1/2	22	203 5/8	- 212 5/8
23	194	- 195	23	199 7/8	- 205 7/8
24	190 1/2	- 206 1/2 (1)	24	203 5/8	- 206 5/8
25	195 1/4		25	204 1/2	- 207 1/2
26	193 1/2	197 1/2	26	204	- 208
29	192 1/2	- 208 (1)	29	207 7/8	- 211 7/8
30	194	- 196	30	203 3/4	- 205 3/4
31	190	- 206 (1)	31	206 1/8	- 208 1/8

(1) Nominal.

Chicago Wheat Futures, High Points of Closing

Date	September	December	March	May	July
	cents and eighths per bushel				
August 1, 1966	187/1	193/6	198/2	195	182
2	187/3	194	198/2	195/2	182/2
3	186	192/5	197/2	194/3	181/2
4	185	191/6	196/2	193/1	179/6
5	187	193/6	198	194/7	180/4
8	186/2	192/4	196/6	194	178
9	187/7	194/1	198/3	195/4	181/6
10	188/4	195	199/4	197	184/6
11	189/6	196/6	201	199	187/2
12	189/2	196	200/3	198/4	186/4
15	189/4	196/2	200/7	199/5	189
16	190/2	197	201/3	200	188/5
17	192/1	199/2	203/7	202/6	190/4
18	191/5	198/5	203/2	202	188/5
19	190/6	197/2	202	200/5	187/2
22	189/5	196/4	201/2	199/6	186/5
23	188	194/4	199/4	198/4	185/2
24	188	195	200/1	199/2	186
25	187/3	194/3	199/2	197/6	185/2
26	185/6	192/6	198	197	185
29	188	194/7	200	198/7	186
30	186/5	193/5	198/7	198/1	186/6
31	186/3	194/4	201	199/4	187/6

AUSTRALIAN SITUATION

1965-66 Wheat Supplies Sharply Lower Than Previous Year

In contrast to the record crops harvested in the three preceding years, the 1965-66 wheat harvest in Australia at 258.0 million, declined by some 30 per cent from the all-time peak of 370.0 million bushels harvested in

1964-65. This decrease reflected the combined effect of reductions in both acreage and yield in each of the five states with the exception of Western Australia. Although stocks at the beginning of the crop year 1965-66 were moderately higher than a year previous, this increase was sharply offset by the decrease in production. As a result, total supplies for the current crop year are placed at an estimated 282.4 million bushels as against 390.5 million in 1964-65. After deducting 93.0 million bushels for anticipated domestic requirements, an estimated 189.4 million are available for export and for carryover in 1965-66, representing a decrease of 35 per cent from the 291.4 million of the previous year.

Exports 39 Per Cent Below Previous Year

Combined exports of wheat as grain and wheat flour in terms of grain equivalent during the period December 1-July 30 of the current Australian crop year amounted to 117.6 million

bushels, sharply below the 191.3 million shipped during the corresponding period of 1964-65. The balance remaining on July 31, 1966 for export and for carryover was estimated at 71.8 million bushels, as against the July 31, 1965 comparable total of 100.1 million.

Australian Wheat Supplies

Item	1964-65(1)	1965-66(2)
	million bushels	
Carryover, including flour as wheat, at beginning of crop year (December 1)	20.5	24.4
Production	370.0	258.0
Total estimated domestic supplies	390.5	282.4
Less estimated domestic requirements for crop year	99.1	93.0(1)
Available for export and for carryover	291.4	189.4
Deduct:		
Exports of wheat as grain, December 1-July 30	174.3	105.9
Exports of wheat flour in terms of wheat, December 1-July 30	17.0	11.7
Total exports of wheat and wheat flour	191.3	117.6
Balance on July 31 for export and for carryover	100.1	71.8

(1) Revised.

(2) Preliminary.

The following information relative to the Australian situation has been extracted from a report from Mr. D.I. Campbell, Assistant Commercial Secretary for Canada, Canberra, under date of August 15, 1966 and is reproduced with the permission of the Trade Commissioner Service, Department of Trade and Commerce.

Crop Prospects Australia's 1966-67 wheat crop has now been fully planted with the possible exception of areas in Northern New South Wales where fast maturing varieties may still be planted if useful rains continue. The crop is likely to exceed 20 million acres as compared with the 16.8 million acres sown in 1965-66 and 17.9 million acres sown in 1964-65.

On August 8, the New South Wales Department of Agriculture issued its official estimate of the area sown to wheat in the State. The total is set at 6.4 million acres as compared with the previous record set in 1964-65 of 5.9 million acres. With the report the Department of Agriculture indicated that the outlook for the forthcoming harvest was becoming critical in most parts of the State's wheat belt due to lack of moisture. It was forecast that unless substantial rains were received within the next few weeks the potential of the harvest would decline quickly. Wheat prospects did improve markedly however, as many districts received up to 1 1/2 inches of rain on August 10. As a result, most New South Wales wheat could go into spring conditions in very good shape.

In Victoria where an estimated 3.25 million acres were planted rain also fell and alleviated drought conditions prevailing in the north west section of the State. Conditions in South Australia are also good as a result of recent rain falls.

In Queensland, where one million acres have been sown in wheat, perfect growing weather is being experienced. Recent cold weather has slowed down growth and reduced danger of crop damage by frost.

In Western Australia nearly 7 million acres have been planted and it is possible that late seeding would further increase the total. Apparently some sections of the Western Australian wheat belt are being affected by insects. With a normal season Western Australia's wheat crop should exceed 90 million bushels. This estimate compares with last season's harvest which was in excess of 100 million bushels from 500,000 acres less.

Depending on rain in the next three months in New South Wales the yield is expected to be between 18 and 20 bushels per acre. If this forecast proves valid then Australia should harvest an all time record crop from the 20.65 million acres now planted.

Australian Wheat Board Financing The Minister for Trade and Industry in a speech in Perth recently revealed that the Australian Wheat Board is financed through loans from the Reserve Bank of Australia which bear interest at the rate of 4 1/4 per cent per annum.

Market Prospects It is interesting to note that with a record crop forecast in Australia, as much as 180 to 200 million bushels would need to be disposed of in markets other than Australia's traditional ones. The Australian domestic market normally takes about 77 million bushels excepting, as in the season just past, where additional quantities are required for stock food. Australia's traditional overseas markets such as Britain, Japan, New Zealand and the Persian Gulf countries normally take between 110 and 120 million bushels. With a crop approaching 400 million bushels now forecast there would be 180 to 200 million bushels available for export to the U.S.S.R., Mainland China and Eastern Europe.

Cost of Production The Australian Government's cost of production price guarantee which applies to 150 million bushels of wheat exported, is now \$A.1.517 (\$1.82 Canadian). Due to a recent rise in the basic wage in Australia, it is expected that

the cost of production will increase as the basic wage is a factor in determining the cost of production. It is forecast that the total subsidy to wheat growers for the 1966-67 crop will be between \$A.7 million and \$A.10 million (\$8.4 million and \$12 million) compared with \$A.18.9 million (\$22.7 million) last year.

Exports of Australian Wheat and Wheat Flour in Terms of Wheat
December 1-July 30, 1965-66 and Corresponding Period 1964-65

Destination	Wheat		Wheat Flour	
	1964-65	1965-66	1964-65	1965-66
thousand bushels				
<u>Western Europe</u>				
<u>EEC</u>				
Germany, Federal Republic	123	-	-	-
<u>Other Western Europe</u>				
Britain	15,081	15,100	1,177	925
Ireland	821	2,426	-	-
Malta	446	681	-	-
Norway	2,559	773	-	-
Others	-	-	1	-
Sub-totals	18,907	18,980	1,178	925
Totals	19,030	18,980	1,178	925
<u>Eastern Europe</u>				
Germany, East	-	438	-	-
U.S.S.R. (Russia)	33,453	6,002	-	-
Totals	33,453	6,440	-	-
<u>Africa</u>				
Kenya	41	-	-	-
Malawi	-	-	246	220
Mauritius	-	-	435	238
Portuguese East Africa	-	989	-	76
Rhodesia	2,323	1,619	-	-
South Africa	-	1,929	-	-
Zambia	-	544	-	-
Tanzania (Zanzibar)	-	-	87	7
Others	9	18	70	168
Totals	2,373	5,099	838	709
<u>Asia</u>				
Aden	969	1,533	-	-
Aden and Aden I/T	-	-	983	482
Aden and Aden I/T Atta	-	-	378	336
Arabian Gulf	-	-	89	62
Arabian Gulf Atta	-	-	785	526

Exports of Australian Wheat and Wheat Flour in Terms of Wheat
December 1-July 30, 1965-66 and Corresponding Period 1964-65

Destination	Wheat		Wheat Flour	
	1964-65	1965-66	1964-65	1965-66
thousand bushels				
<u>Asia (cont'd)</u>				
Brunei	-	-	6	(1)
Ceylon	11	7	7,202	5,471
China	70,595	33,807	-	-
Formosa (Taiwan)	-	-	-	-
Hong Kong	1,254	1,654	57	33
India	11,915	8,292	-	-
Indonesia	-	-	101	79
Iran	6,480	6,185	-	-
Iraq	1,832	-	-	-
Japan	10,303	8,751	-	-
Korea North	4,323	1,116	-	-
Kuwait	373	910	-	-
Lebanon	1,959	370	-	-
Pakistan	2,021	380	-	-
Philippines	(1)	1	253	31
Saudi Arabia	466	773	169	239
Taiwan	500	918	-	-
Thailand	301	667	237	223
Malaysia				
Malaya	1	3,082	1,685	381
Malaya Atta	-	-	56	24
Sabah	-	-	108	68
Sarawak	-	-	105	34
Singapore	2,694	3,891	438	42
Singapore Atta	-	-	1	1
Singapore A/C B.W.O.	-	-	34	31
Others	72	57	56	73
Totals	116,069	72,394	12,743	8,136
<u>Oceania</u>				
New Zealand	3,335	2,949	-	-
<u>Western Hemisphere</u>				
Peru	-	-	3	1
West Indies Area	-	-	361	198
Totals	-	-	364	199
<u>Pacific Area and Sundries</u>				
Pacific Islands, Ships' Stores and Sundries	37	38	1,878	1,730
Totals, All Countries	174,300	105,900	17,000	11,700

(1) Less than 500 bushels.

ARGENTINE SITUATION

1965-66 Wheat Supplies
Sharply Lower Than
Previous Year

Reflecting a sharp decline in production which more than offset an increase in carryover stocks, total supplies of wheat in Argentina for the current crop year are placed at some 350.5 million bushels, about 30 per cent less than the previous year's level of 502.4 million. December 1 carryover stocks increased from 88.6 million in 1964 to 130.1 million in 1965 while production dropped from 413.7 million in 1964-65 to only 220.5 million in 1965-66. After making an allowance of 134.1 million bushels for anticipated domestic requirements, an estimated 216.4 million are available for export and for carryover as against 365.3 million in 1964-65.

Exports At
Record Level

Preliminary exports of wheat and wheat flour in terms of wheat equivalent during December 1965-July 1966 amounted to 186.2 million bushels, 38 per cent more than the previous high of 135.1 million exported during the same months in 1964-65. The balance remaining on August 1, 1966 for export and for carryover was estimated at 30.2 million bushels, in sharp contrast to the August 1, 1965 total of 230.2 million.

Argentine Wheat Supplies

Item	1964-65(1)	1965-66(2)
	million bushels	
Carryover at beginning of crop year (December 1) (3)	88.6	130.1
Production	413.7	220.5
Total estimated domestic supplies	502.4	350.5
Less estimated domestic requirements for crop year	137.1	134.1
Available for export and for carryover	365.3	216.4
Deduct:		
Exports of wheat as grain, December-July	134.4	185.6
Exports of wheat flour in terms of wheat, December-July	0.6	0.6
Total exports of wheat and wheat flour	135.1	186.2
Balance on August 1 for export and for carryover	230.2	30.2

(1) Revised.

(2) Preliminary.

(3) Includes allowances for farm stocks.

The following account of the Argentine situation has been extracted from a report from Mr. H.E. Ryan, Assistant Commercial Secretary (Agriculture), Buenos Aires, under date of August 22, 1966 and is reproduced with the permission of the Trade Commissioner Service, Department of Trade and Commerce. Where possible, conversions to Canadian measures and currency have been made for the convenience of our readers.

Weather
and Crops

During the month of July little rain fell through the Argentine grain belt with the exception of southern Buenos Aires where precipitation was slightly excessive and hindered seeding operations for a short time. During the latter days of the month, rainfall was general and was followed by cold frosty weather which assisted in hardening and developing the new growing crops.

Wheat

There has been a strong steady market for wheat during the month under review with both exporters and millers requiring supplies. Exporters were paying 1,150 pesos per 100 kilos (\$1.56 per bushel) at the end of the month for grain delivered in Buenos Aires and 1,040 pesos (\$1.42 per bushel) at Bahia Blanca. Millers in spite of the fact that supplies had been offered by the National Grain Board, continued to buy from producers at approximately 1,170 pesos per 100 kilos (\$1.59 per bushel). At the end of the month, exporters were bidding for new crop wheat (1966-67) at 1,120 pesos per 100 kilos (\$1.52 per bushel).

Prices in the Buenos Aires Futures Market at the end of July were quoted at 1,278 pesos per 100 kilos (\$1.74 per bushel) August delivery; 1,295 pesos (\$1.76 per bushel) for September; 1,325 pesos (\$1.80 per bushel) for October and 1,320 pesos (\$1.80 per bushel) for November delivery. By mid-August, 1,233 pesos per 100 kilos (\$1.68 per bushel) were being quoted for September delivery; 1,265 pesos (\$1.72 per bushel) for October; 1,235 pesos (\$1.68 per bushel) for November and 1,185 pesos (\$1.61 per bushel) for December-January. At present, these prices are again slightly stronger at 1,260 per 100 kilos (\$1.71 per bushel) for September; 1,293 pesos (\$1.76 per bushel) for October; 1,255 pesos (\$1.71 per bushel) for November and 1,213 pesos (\$1.65 per bushel) for December. In the Buenos Aires Cereal Exchange prices presently average 1,200 pesos (\$1.63 per bushel) for hard wheat, Grade 1, f.o.r. Buenos Aires; 1,070 pesos (\$1.46 per bushel) in Bahia Blanca; 1,070 pesos (\$1.46 per bushel) in Quequen; and 1,200 pesos (1.63 per bushel) in Rosario.

Export sales during the period were negligible; however, some shippers were offering lots of new crop wheat to the United Kingdom at a c.i.f. price of £26.7.6 per metric ton (\$2.15 per bushel) for January-February shipment and U\$S 71 per metric ton (\$2.08 per bushel) for January-February shipment c.i.f. Continental ports.

There is little durum left in the country and a strong market continued for this grain. Exporters have been paying some 1,420 pesos for 100 kilos (\$1.93 per bushel) in Buenos Aires and 1,360 pesos (\$1.85 per bushel) in Bahia Blanca. There have been some offers for new crop durum at 1,350 pesos per 100 kilos (\$1.84 per bushel) January-February delivery, southern ports. A few sales of durum took place in the period under review at U\$S 87 per metric ton (\$2.55 per bushel) c.i.f. Italy August shipment and at U\$S 90 (\$2.63 per bushel) for September-October delivery. With respect to the new crop, buyers could be found offering U\$S 85 (\$2.49 per bushel) for January-February delivery to Italy but exporters were asking up to U\$S 2 (6 cents per bushel) more. Present prices for durum in the Buenos Aires Cereal Exchange are 1,390 pesos (\$1.89 per bushel) f.o.r. Buenos Aires and 1,340 pesos (\$1.82 per bushel) in Bahia Blanca.

Wheat shipments during the month of July totalled some 450,000 metric tons (16,534,000 bushels) almost the equivalent of shipments last month. While no detailed statistics are yet available, Mainland China and Brazil again took most of the delivery, this coming under their respective contracts. At the time of writing, shipments to China are practically completed, the last three vessels are now loading

in Bahia Blanca. By August 11 some 1,402,252 metric tons (51,523,000 bushels) had actually been exported to Mainland China. With this contract now completed, the remaining supplies of wheat, which are small, will likely flow primarily to Peru, United Kingdom and Italy, as well of course as to Brazil. As of mid-August, Brazil had picked up 685,589 metric tons (25,191,000 bushels) of its million-ton (36,743,000 bushels) contract.

The new two-price system recently announced has been extremely well received by producers and the grain trade in general. Under the new system, prices paid by the Grain Board will be 20 per cent higher than those paid by the private trade. However, with strengthening wheat markets, international prices may raise above the floor level. This, coupled with the fact that the trade normally pays cash whereas the Board will again pay basis 70 per cent within 10 days of delivery, the balance up to 180 days with interest, may mean that Argentine producers this year will revert to dealing with the private trade rather than with the Grain Board, as has been the case during the past two years.

The Government announced the new price policy in time for producers to increase their sowings and this has had an effect on the official area, now estimated at 6.2 million hectares (15.3 million acres), 14 per cent more than in the previous season. This first estimate is also 11 per cent and 15 per cent, respectively, above the averages for the past five and ten-year periods. It is, however, below the area during 1963-64 of 6,276,000 hectares (15.5 million acres) and 1964-65 of 6,496,700 hectares (16.0 million acres). The private trade are now forecasting an area of 6.5 million hectares (16.1 million acres).

It is also reported that there is a considerable interest in the production of durum this year and the area will increase although no data is yet available.

As is the past the province of Buenos Aires is again the most important wheat producing region, representing 53 per cent or 3.3 million hectares (8.2 million acres); Cordoba accounts for 15 per cent; Santa Fe for 13 per cent and La Pampa for 12 per cent. If weather and soil conditions continue to be favourable, yield this year could reach 1,500 kilos per hectare (22 bushels per acre) which could mean a crop near to 10 million tons (367.4 million bushels).

Argentine Wheat Exports December-June 1965-66 and 1964-65

Destination	June		December - June	
	1965	1966	1964-65	1965-66
thousand bushels				
<u>Western Europe</u>				
<u>EEC</u>				
Belgium	88	-	2,467	631
France	143	-	4,788	1,927
Germany, Federal Republic	420	-	5,996	1,898
Italy	110	254	9,269	10,259
Netherlands	1,541	-	13,812	3,599
Sub-totals	2,302	254	36,332	18,314

Argentine Wheat Exports December-June 1965-66 and 1964-65

Destination	June		December-June	
	1965	1966	1964-54	1965-66
thousand bushels				
<u>Other Western Europe</u>				
Britain	1,891	935	14,321	6,436
Norway	601	-	2,544	1,463
Portugal	-	-	1,443	-
Spain	1,119	-	2,245	-
Sweden	-	-	38	-
Switzerland	26	-	216	238
Sub-totals	3,637	935	20,807	8,137
Totals	5,939	1,189	57,139	26,451
<u>Eastern Europe</u>				
Czechoslovakia	-	-	-	184
Germany, East	-	-	114	-
Poland	-	73	-	3,753
U.S.S.R. (Russia)	592	380	592	51,816
Totals	592	453	706	55,753
<u>Africa</u>				
Angola	-	-	-	329
Mozambique	463	-	1,411	420
Nigeria	-	-	138	-
Tanzania	-	-	-	377
Totals	463	-	1,549	1,126
<u>Asia</u>				
China, Communist	4,581	9,086	20,004	42,591
China, Nationalist	-	-	-	6,615
Cyprus	365	-	365	-
Iran	-	-	-	1,864
Israel	432	-	432	-
Japan	-	-	81	-
Korea, North	-	-	-	738
Lebanon	-	-	257	-
Saudi Arabia	-	-	247	-
Singapore	-	-	16	-
Totals	5,378	9,086	21,402	51,808
<u>Western Hemisphere</u>				
Barbados	4	-	4	3
Bolivia	-	-	690	146
Brazil	3,835	2,781	20,183	24,962
Chile	679	55	771	128

Argentine Wheat Exports December-June 1965-66 and 1964-65

Destination	June		December-June	
	1965	1966	1964-65	1965-66
thousand bushels				
<u>Western Hemisphere (cont'd)</u>				
Colombia	-	-	817	-
Dominican Republic	-	-	154	-
Paraguay	-	447	83	1,026
Peru	874	1,867	6,233	7,001
Puerto Rico	-	-	-	55
Venezuela	-	-	1,025	-
Totals	5,388	5,150	29,960	33,321
Totals, All Countries	17,765	15,879	110,757	168,456

CALENDAR OF WHEAT EVENTS

- August 8 The United States Secretary of Agriculture, Orville L. Freeman announced an increase of 8.9 million acres in the national wheat acreage allotment, bringing the total acreage allotment to 68.2 million acres.
- 10 According to a report published by the crop Reporting Board, United States Department of Agriculture, all wheat production in the United States in 1966 is forecast at 1,286 million bushels, 3 per cent less than last year but 5 per cent above average.
- 15 According to a report from Mr. D.I. Campbell, Assistant Commercial Secretary for Canada, Canberra, Australia the 1966-67 wheat acreage in Australia is likely to exceed 20 million acres as compared with the 16.8 million sown in 1965-66.
- September 2 Based on conditions at August 15, Canada's 1966 wheat crop was forecast at an all-time high of 799.8 million bushels, 23 per cent larger than last year's 648.9 million and 11 per cent greater than the previous record of 723.4 million harvested in 1963.
- According to the Bureau of the Census, United States Department of Commerce, wheat flour production in the United States in July 1966 was 20,000,000 hundredweight, an average of 997,000 hundredweight per working day compared with 1,016,000 hundredweight last month and 890,000 hundredweight in July 1965.
- 14 According to the Telegraphic Crop Report published by the Dominion Bureau of Statistics, crop conditions in the Prairie Provinces were summarized as follows: Good progress has been made with harvesting operations in the Prairie Provinces. The bulk of the crop has been combined in southern areas but generally only a small proportion has been taken off in northern districts. Most of the remaining acreage has been swathed in both Manitoba and Saskatchewan but progress has been much slower in the northern half of Alberta because of excess rain. Yield prospects have been well maintained in all provinces and grades so far have been good.

STATISTICS CANADA LIBRARY
BIBLIOTHÈQUE STATISTIQUE CANADA



1010687042