

CATALOGUE No.

22-005

MONTHLY

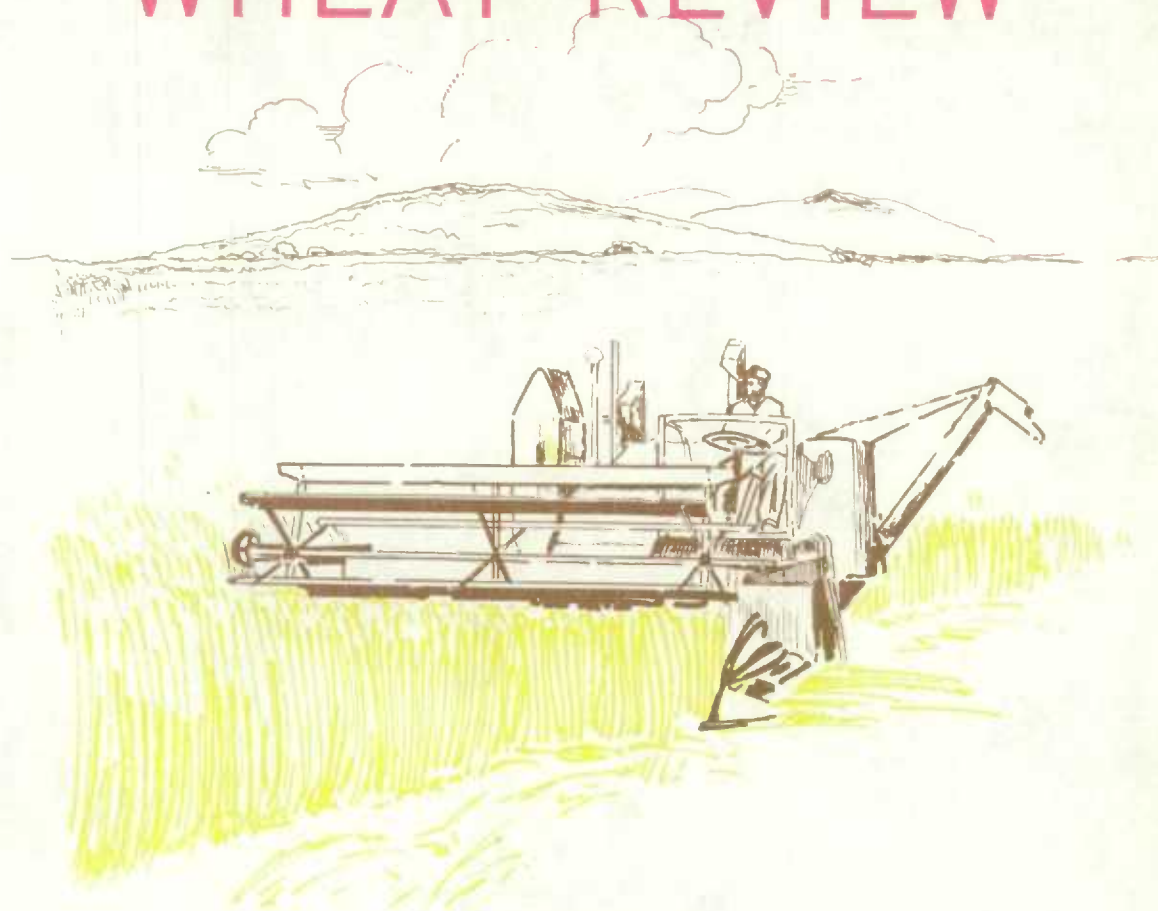


CANADA

DOMINION BUREAU OF STATISTICS

AGRICULTURE DIVISION

THE WHEAT REVIEW



JULY 1967

DOMINION BUREAU OF STATISTICS

THE WHEAT REVIEW

JULY 1967

Published by Authority of
The Minister of Trade and Commerce

Prepared in the Crops Section, Agriculture Division
Dominion Bureau of Statistics, Ottawa

TABLE OF CONTENTS

	<u>Page</u>
World Wheat Situation	
World Wheat Exports Lower than Previous Year.....	3
Wheat Supplies of Four Major Exporters Above a Year Ago.....	3
I.W.C. Cumulative Totals of Commercial Purchases.....	4
Canadian Situation	
Decline in Carryover Offset by Record Production.....	5
August-June Exports 16 Per Cent Below Record.....	5
Marketings, Disappearance and Visible Supplies.....	6
June 1967 Exports of Wheat and Flour Total 50.3 Million Bushels.....	6
Wheat Agreement with Russia.....	7
Delivery Quota 1967-68 Crop Year.....	8
Feed Mills.....	9
Rust in Western Canada in 1967.....	10
Preliminary Estimates of Specified Crop and Summerfallow Acreages, 1967....	10
Carryover Stocks of Canadian Grain at July 31, 1967.....	12
Farmers' Marketings of Wheat.....	13
Visible Supply of Canadian Wheat.....	14
Grading of Wheat Inspected August-June 1966-67 with Comparisons.....	14
Visible Supply and Farmers' Marketings (charts).....	15
Lake Shipments of Canadian Grain.....	16
Wheat Shipments to the United States.....	16
Rail Shipments of Wheat to Maritime Ports.....	16
Rail Shipments of Wheat from Fort William-Port Arthur.....	17
Overseas Exports of Canadian Grain by Ports of Loading.....	17
Freight-Assisted Shipments.....	18
Monthly Exports of Canadian Wheat and Wheat Flour.....	19
Exports of Canadian Wheat by Destination.....	20
Customs Exports of Canadian Wheat Flour by Countries of Consignment.....	23
Canadian Wheat Board Weekly Average Cash Wheat Prices.....	25
Initial Payment to Producers.....	27
Canadian Flour Milling Situation	
Production and Exports.....	28
United States Situation	
Disappearance of United States Wheat.....	29
1967 Wheat Crop Forecast at 1,596 Million Bushels.....	30
Stocks of Wheat in All Positions July 1, 1967.....	31
Flour Production.....	31
Cash Wheat Prices on the Kansas City and Minneapolis Markets.....	32
Chicago Wheat Futures, High Points of Closing.....	32
Australian Situation.....	33
Argentine Situation.....	37
Calendar of Wheat Events.....	41

WORLD WHEAT SITUATION

World Wheat Exports
Lower than Previous
Year

Total exports of wheat and wheat flour in terms of wheat from the four traditional major exporters during the August-June period of the current crop year have amounted to 1,476.1 million bushels, a decrease of 16 per cent from the previous peak of 1,762.7 million bushels exported during the same eleven months in 1965-66 but exceeding by a margin of 34 per cent the ten-year (1955-56-1964-65) average shipments for the same eleven months of some 1,099.0 million bushels. As indicated in the accompanying table, based on the Canadian crop year, Australia was the only one of the four major exporters with shipments higher this year than last.

Exports of Wheat and Flour in Terms of Wheat, August 1966-June 1967 with Comparisons

August-June	United States	Canada	Argentina	Australia	Total
million bushels					
1950-51	346.4	209.1	87.5	119.7	762.7
1951-52	446.1	312.9	24.1	86.4	869.5
1952-53	296.7	341.4	29.3	94.8	762.2
1953-54	190.7	234.3	101.2	57.0	583.2
1954-55	253.2	231.9	123.0	88.6	696.7
1955-56	317.8	284.1	103.3	96.3	801.5
1956-57	507.2	241.9	93.2	115.6	957.9
1957-58	370.0	294.6	70.2	57.2	792.0
1958-59	416.3	274.7	95.7	71.5	858.2
1959-60	470.1	259.7	67.5	103.9	901.2
1960-61	618.4	324.4	60.7	170.2	1,173.7
1961-62	659.2	336.2	85.2	206.2	1,286.8
1962-63	593.6	308.6	56.9	163.6	1,122.7
1963-64	794.4	529.2	99.4	259.8	1,682.8
1964-65	665.5	372.3	150.7	225.2	1,413.7
1965-66 (1)	798.0	519.5	265.4	179.8	1,762.7
1966-67 (2)	671.0	480.4	81.5	243.2	1,476.1

(1) Revised. (2) Preliminary.

Wheat Supplies of
Four Major Exporters
Above a Year Ago

Supplies of wheat held by the four traditional major exporters at July 1, 1967, for export and for carryover at the end of their respective crop years amounted to 1,307.9 million bushels compared with 1,158.0 million at the same time a year ago. Although supplies were smaller in United States and Argentina these decreases were more than offset by increases in the totals for Canada and Australia. Supplies at July 1, 1967, in millions of bushels, were held as follows, with last year's comparable figures in brackets: United States, 425.7 (535.2); Canada, 629.2 (485.5); Argentina, 45.8 (50.2); and Australia, 207.2 (87.1).

International Wheat Council
Cumulative Totals of Commercial Purchases by Importing Countries from Exporting Countries
Crop Year 1966-67-Through July 1, 1967

Importing Countries	EXPORTING COUNTRIES										Total Purchases
	Canada	Argentina	Australia	France	Italy	Mexico	Spain	Sweden	U.S.A.	USSR	
	thousand bushels										
Austria.....	1,677	—	—	4	—	—	—	—	131	—	1,812
Barbados(1).....	1	—	—	—	—	—	—	—	1	—	2
Belgium & Luxembourg	13,033	805	205	1,600	—	—	—	2	5,458	—	21,103
Brazil.....	—	41,982	3,825	—	—	—	—	—	27,391	—	73,198
Costa Rica.....	884	—	—	39	—	—	—	—	1,276	—	2,199
Dominican Republic..	—	—	—	—	—	—	—	—	2,527	—	2,527
Ecuador.....	409	—	—	—	—	—	—	—	1,700	—	2,109
El Salvador.....	630	—	—	—	—	—	—	—	1,429	—	2,059
Finland.....	1,053	—	—	—	—	—	—	2	323	—	1,378
Germany, Fed. Rep.	22,918	1,681	1,409	4,887	36	—	—	165	18,734	—	49,830
Greece.....	117	—	—	65	27	—	—	—	63	—	272
Guatemala.....	50	—	—	—	—	—	—	—	2,380	—	2,430
Haiti(2).....	—	—	—	—	—	—	—	—	300	—	300
Iceland.....	4	—	—	14	—	—	—	—	201	—	219
India.....	1	—	14,578	1	—	652	—	—	24,191	—	39,423
Ireland.....	1,962	31	2,540	260	—	—	—	—	933	—	5,726
Israel.....	—	—	—	—	—	—	—	—	3,565	—	3,565
Japan.....	60,863	—	15,079	—	—	—	—	—	85,580	—	161,522
Korea, Rep. of.....	—	—	—	—	—	—	—	—	14,360	—	14,360
Lebanon.....	17	—	5,330	30	56	—	—	—	684	—	6,117
Libya.....	—	—	61	154	1,718	—	—	—	3	397	2,333
Netherlands.....	2,418	5,349	1,723	376	—	—	—	—	23,322	1,102	34,290
Netherlands Terr.	130	—	—	23	—	—	—	—	932	—	1,085
New Zealand.....	—	—	3,499	16	—	—	—	—	—	—	3,515
Nigeria.....	836	—	—	132	—	—	—	—	5,561	—	6,529
Norway.....	1,955	574	2,787	34	—	—	—	1,980	3,059	—	10,389
Peru.....	52	17,543	887	4	—	—	—	—	8,376	—	26,862
Philippines.....	477	—	943	558	746	—	—	—	14,095	—	16,819
Portugal.....	594	358	—	1,849	—	—	5,201	—	4,729	—	12,731
Portuguese Terr.	232	1,151	1,551	108	21	—	—	—	226	—	3,289
Saudi Arabia.....	74	—	2,866	178	221	—	—	—	6,108	—	9,447
Sierra Leone.....	419	—	—	34	—	—	—	—	212	—	665
South Africa.....	10,230	—	8,643	—	—	—	—	—	12,875	—	31,748
Southern Rhodesia...	3	—	1,590	—	—	—	—	—	—	—	1,593
Switzerland.....	4,580	419	—	1,886	153	—	—	—	2,028	—	9,066
Tunisia.....	—	—	—	634	—	—	—	—	1,667	—	2,301
United Arab Republic	—	—	—	—	8,419	—	2,493	—	26,457	15	37,384
United Kingdom.....	75,186	7,771	17,375	1,717	—	—	—	349	21,515	—	123,913
U.K. Territories..	3,354	6	5,058	947	14	—	—	—	1,331	—	10,710
Vatican City.....	1,000	—	—	—	—	—	—	—	—	—	1,000
Venezuela.....	5,415	735	—	—	—	—	—	—	16,981	—	23,131
Western Samoa.....	2	—	147	—	—	—	—	—	—	—	149
To Orders.....	—	556	—	—	—	—	—	1,307	—	—	1,863
Totals.....	210,576	78,961	90,096	15,550	11,411	652	7,694	3,805	340,704	1,514	760,963
Percentage of Total Sales by Exporting Countries.....	27.67	10.38	11.84	2.04	1.50	0.09	1.01	0.50	44.77	0.20	100.00

NOTE: Argentina and Spain - quantities cover period ending June 24, 1967.
France - quantities cover period ending March 31, 1967.
Italy - quantities cover period ending June 3, 1967.
USSR - quantities cover period ending April 8, 1967.

(1) Purchases made since June 15, 1967, date of accession.
(2) Purchases made since April 3, 1967, date of accession.

CANADIAN SITUATION

Decline in Carryover
Offset by Record
Production

Stocks of Canadian wheat carried into the 1966-67 crop year were the smallest since 1962 and represented a decline of some 92.9 million bushels from the July 31, 1965 total. This decrease in stocks of Canadian wheat was offset by a wide margin by the unprecedented 1966 harvest. The 1966 Canadian wheat crop was estimated at an all-time high of 844.4 million bushels and reflected a combination of record average yields per acre and record seeded acreage. The 1966 wheat production was in sharp contrast to both the 1965 figure of 648.9 million bushels and the previous record of 723.4 million in 1963. As a consequence, total supplies, at 1,264.6 million bushels, are some 4 per cent above the previous peak of 1,210.7 million in 1963-64 and 9 per cent larger than the 1965-66 total of 1,161.9 million bushels. After making an allowance of 155.0 million bushels for anticipated domestic requirements, supplies available for export and for carryover during 1966-67 amounted to 1,109.6 million bushels, 10 per cent larger than the 1,005.0 million in 1965-66.

August-June Exports
16 Per Cent Below
Record

During the August-June period of the current Canadian crop year, exports of wheat and flour in terms of wheat equivalent amounted to 480.4 million bushels. This was 16 per cent below the previous high of 519.5 million exported during the same period a year ago. This year's exports consisted of 447.7 million bushels of wheat in bulk, 699 thousand of bagged seed and 32.0 million of flour in terms of wheat. These figures were 483.0 million of wheat in bulk, 758 thousand of bagged seed and 35.8 million of flour in wheat equivalent during the comparable period of last year. On July 1, 1967, the balance remaining for export and for carryover amounted to 629.2 million bushels, some 30 per cent above the July 1, 1966 total of 485.5 million.

Canadian Wheat Supplies

Item	1965-66(1)	1966-67(2)
	million bushels	
Carryover in North America at beginning of crop year (August 1).....	513.0	420.1
Production.....	648.9	844.4
Imports of wheat for domestic use, August-June.....	(3)	(3)
Total estimated supplies.....	1,161.9	1,264.6
Less estimated domestic requirements for crop year..	156.9	155.0
Available for export and for carryover.....	1,005.0	1,109.6
Deduct:		
Exports of wheat in bulk, August-June(4).....	483.0	447.7
Exports of bagged seed wheat, August-June(5).....	0.8	0.7
Total exports of wheat as grain.....	483.7	448.4
Exports of wheat flour in terms of wheat, August-June(5).....	35.8	32.0
Total exports of wheat and wheat flour.....	519.5	480.4
Balance on July 1 for export and for carryover.....	485.5	629.2

(1) Revised. (2) Preliminary. (3) Less than 50,000 bushels. (4) As reported by the Board of Grain Commissioners. (5) Customs returns, 1965-66 adjusted for time lag.

Marketings, Disappearance
and Visible Supplies

Total primary deliveries of wheat (both east and west) up to July 19 of the current crop year have amounted to 595.4 million bushels as against 514.6 million marketed during the same period of the previous year and the highest marketings on record. Some 69.1 million bushels of this year's total were delivered during the four weeks June 22 to July 19, 1967. During the same period the volume of Canadian wheat entering domestic and export channels amounted to 47.1 million bushels. As a result, the total visible supply of Canadian wheat increased to 340.5 million at July 19 from a level of 318.7 million at June 21, 1967.

The total visible supply of Canadian wheat at July 19 this year represented a 16 per cent increase over the 1966 comparable total of 294.3 million bushels but was 9 per cent less than the 1965 figure of 373.1 million. Country elevator stocks, amounting to 182.9 million bushels, were 15 per cent above the 1966 comparable total of 159.0 million but 17 per cent below the 220.4 million of 1965. Wheat stocks at interior terminals, at July 19, 1967 totalled 13.5 million bushels, in contrast to the 2.1 million of the previous year and the 4.9 million of two years ago. Wheat stocks "in transit rail" (western division) amounted to 18.1 million bushels, 11 per cent less than the 20.4 million of a year ago but 16 per cent more than the 15.6 million of two years ago. Supplies at the Canadian Lakehead, totalling some 41.3 million bushels, were above the 36.6 million at July 20, 1966 but slightly lower than the 45.2 in 1965. The 1.6 million bushels "in transit lake" this year were 87 per cent lower than the comparable 12.4 million of 1966 and 78 per cent less than the 7.2 million of two years ago. The 31.0 million bushels in Bay, Lake and Upper St. Lawrence ports, were considerably higher than the 9.4 million of the previous year and slightly above the 30.4 million of 1965. Supplies in Lower St. Lawrence and Maritime ports, at July 19, 1967, at 31.9 million bushels, were above both the 28.3 million of 1966 and the 29.2 million of 1965. The 9.4 million bushels in West Coast ports (Vancouver-New Westminster, Prince Rupert and Victoria) registered a decline from the 13.4 million of the previous year but was above the 6.6 million in these positions in 1965.

June 1967 Exports of
Wheat and Flour Total
50.3 Million Bushels

Combined exports of wheat in bulk, bagged seed wheat and wheat flour in terms of grain equivalent, amounted to 50.3 million bushels during June 1967.

This volume was 16 per cent below last month's total of 59.7 million, 21 per cent less than the June 1966 total of 63.6 million but 43 per cent above the ten-year (1956-65) June average of 35.2 million. Exports of wheat in bulk (as reported by the Board of Grain Commissioners) during June 1967 totalled 47.5 million bushels, 17 per cent lower than the May 1967 total of 57.1 million, 21 per cent less than the 60.2 million of a year ago but 48 per cent more than the ten-year average of 32.1 million. Based on Canadian Customs returns, the equivalent of 2.8 million bushels of wheat was exported in the form of flour during June 1967, an increase of 10 per cent over the previous month's figure of 2.5 million but below both the June 1966 adjusted total of 3.3 million and the ten-year average of 3.0 million bushels.

Cumulative exports of wheat in bulk during the August-June period of the current crop year amounted to 447.7 million bushels, a decrease of 7 per cent from the record 1965-66 comparable figure of 483.0 million, but sharply above the ten-year average for the period of 284.8 million. This year's shipment of wheat to the U.S.S.R. (Russia) totalled some 88.2 million bushels and to China Communist 85.9 million and accounted for 20 per cent and 19 per cent, respectively, of the ten-month total exports of wheat in bulk form. Shipments of wheat to

Britain amounted to 60.4 million and accounted for 13 per cent of the August-July 1966-67 total. During the same period of 1965-66 shipments to the U.S.S.R. (Russia) amounted to 187.0 million and accounted for 39 per cent of the August-June total, while China Communist received shipments of 69.3 million or 14 per cent of the total and Britain, at 62.8 million accounted for 13 per cent of the total. Other principal markets for Canadian wheat in bulk during the first eleven months of the current crop year, with figures for the same period of the preceding crop year in brackets, were as follows, in millions of bushels: Japan, 55.0 (45.1); India, 40.4 (9.4); Federal Republic of Germany, 21.5 (18.8); Belgium and Luxembourg, 13.7 (9.6); and Poland, 12.3 (8.8).

Cumulative exports of bagged seed wheat during August-June 1966-67, based on Canadian Customs returns, amounted to 699 thousand bushels compared with the 1965-66 corresponding total (adjusted to remove time lag) of 758 thousand.

Cumulative exports of wheat flour during the first eleven months of the 1966-67 crop year, based on Customs returns, were the equivalent of 32.0 million bushels, a decrease of 11 per cent from the adjusted August 1965-June 1966 total of 35.8 million. The leading markets for Canadian wheat flour in terms of wheat equivalent during the August-June period of the 1966-67 crop year, with revised data for the same months of the preceding crop year in brackets, were as follows, in thousands of bushels: Cuba, 12,250 (11,343); Britain, 5,436 (7,942); Jamaica, 1,547 (1,502); India, 1,501 (1,513); Ghana, 1,291 (820); Ceylon, 1,049 (898); Leeward and Windward Islands, 1,013 (917); and Trinidad and Tobago, 932 (1,225).

Wheat Agreement with Russia

Trade Minister Robert Winters announced on August 1, 1967, that the Soviet Union had purchased from Canada a minimum of 75 million bushels of Canadian wheat and flour for shipment during the period August 1, 1967 to July 1, 1968. The contract, amounting to about \$150 million, was concluded by the Canadian Wheat Board and Exportkhleb, the Soviet wheat agency. This contract between the two agencies is part of a 9 million ton three-year wheat agreement concluded last June in Moscow at the time of the renewal of the Canada-U.S.S.R. Trade Agreement signed by Mr. Winters and N.S. Patolichev, Soviet Minister of Foreign Trade.

The two Ministers, who concluded this important arrangement between the two countries, toured Expo together this morning. Mr. Patolichev is in Canada from July 31 to August 9 as the guest of the Minister of Trade and Commerce who extended the invitation during their meeting in Moscow last year.

The long term wheat agreement provides for negotiation of specific contracts to a total of 9 million tons over a three year period commencing August 1, 1966. The sale announced today brings total U.S.S.R. purchases under the Agreement to 5 million long tons.

In making this announcement, Trade Minister Winters commented on the valued market for Canadian wheat represented by U.S.S.R. grain purchases. In his discussion, he looked forward to the Soviet Union as a continuing market for Canadian wheat. Both Ministers pledged their efforts to the expansion of mutually advantageous trade.

Delivery Quota
1967-68 Crop Year

The Canadian Wheat Board in its Instructions to the Trade re Quotas (General) No. 1 under date of July 26, 1967, announced that all delivery quotas in effect in the 1966-67 crop year, including open quotas, supplementary quotas, special permits, etc., will automatically expire as at the close of business July 31st, 1967.

Effective on and after August 1st, 1967, the Board's quota policy for the 1967-68 crop year will be as follows:

Wheat (including Durum), Oats, Barley and Rye effective at all delivery points on and after August 1st, 1967, the following initial quota is hereby authorized in respect of the above grains:

An initial delivery quota applicable to all permit holders regardless of the acreage shown on their 1967 permit books of the equivalent of one hundred (100) units. Each such unit shall be the equivalent of four (4) bushels of Wheat or ten (10) bushels of Oats or six (6) bushels of Barley or six (6) bushels of Rye.

As space becomes available each permit holder will be entitled to deliver at his option any of the above grains or any combination of the above grains calculated on the unit basis, but his total deliveries under the initial quota must not exceed the equivalent of one hundred (100) units.

Under the above policy a permit holder will be entitled to deliver a maximum of 400 bushels of Wheat or 1,000 bushels of Oats or 600 bushels of Barley or 600 bushels of Rye, or any combination of these grains which, when calculated on the unit basis outlined herein, does not exceed one hundred (100) units.

All deliveries to be made under the initial quota must be entered in the producer's delivery permit book at the time of delivery. Such entries are to be made on page 1, with the quantity being entered in the appropriate column for the kind of grain delivered. The unit value of the delivery is to be determined by dividing the bushel quantity by four (4) in the case of Wheat, or ten (10) in the case of Oats, or six (6) in the case of Barley and Rye, calculating same to one decimal point. The total units delivered, as determined above, should then be entered in the "Total Units Delivered" column; for example, a load of 151.4 bushels would be entered as 37.8 units in the case of Wheat, 15.1 units in the case of Oats or 25.2 units if it consisted of Barley or Rye.

Flaxseed Effective August 1st, at all delivery points within the designated area a quota of five (5) bushels per acre seeded to flaxseed as shown in the individual producer's permit book or two hundred and fifty (250) bushels, whichever is the larger.

All deliveries made under this quota must be properly recorded in the producer's permit book on page 6 and as in the previous crop year, producers may deliver flaxseed within existing quotas to any delivery point selected by them at which elevator space for flaxseed is available.

Rapeseed Effective August 1st, at all delivery points within the designated area a quota of five (5) bushels per acre seeded to rapeseed as shown in the individual producer's permit book or two hundred and fifty (250) bushels, whichever is the larger.

All deliveries made under this quota must be properly recorded in the producer's permit book on page 7 and as in the previous crop year, producers may deliver rapeseed within existing quotas to any delivery point selected by them at which elevator space for rapeseed is available

Malting, Pot and Pearling Barley Effective August 1st, 1967, the Board will consider applications on behalf of producers of malting, pot and/or pearling barley, for permission to deliver, in excess of the established quotas, one carlot of such barley provided:

- (a) a representative sample of such carlot has been submitted to and accepted by a maltster or shipper as suitable for malting, pot and/or pearling; and
- (b) a premium is to be paid to the producer for the carlot of barley so accepted.

Full details covering the foregoing provisions are outlined in Instructions to the Trade re Quotas (General) No. 2 of July 26th, 1967.

General Delivery Quotas 1967-68 Crop Year Following the initial quota the Board will establish general quotas at individual delivery points as elevator space becomes available, based on the specified acreage shown in each producer's delivery permit book. General quotas do not apply to flaxseed or rapeseed.

Comment The Canadian Wheat Board Act provides that:

- (a) the person delivering the grain is the actual producer or is entitled as a producer to the grain.
- (b) the grain was produced on the lands described in the permit book.

It is expected that the past experience of producers and elevator agents will be helpful in the administration of delivery quotas during the present crop year and that the available storage space will be handled this fall and throughout the crop year in the best interests of all concerned

Feed Mills

On July 28, 1967 the Canadian Wheat Board in its Instructions to the Trade announced provisions whereby 1967-68 delivery permit holders will be authorized to deliver, outside delivery quota regulations, supplies of wheat, oats and barley to designated feed mills. The extension to July 31st, 1968, of the feed mill policy announced by the Board on November 30th, 1960, in Instructions to the Trade No. 41, has been recommended by the Board and approved by the Honourable Robert H. Winters, Minister of Trade and Commerce.

The designated feed mills will be those mills which complete an Agreement with the Board, effective until July 31st, 1968, and which will be named in an Order of the Board to be issued at an early date.

Rust in Western
Canada in 1967

According to a release from the Canada Department of Agriculture Research Station, Winnipeg, Manitoba, on August 4, 1967, cereal rust development continues to be slow in Western Canada. On August 3, moderate amounts of leaf rust were observed on wheat in the Red River Valley of Manitoba but westwards there was much less rust. Stem rust was not found on cultivated varieties but it was easily found on wild barley across southern Manitoba. Only traces of stem rust and crown rust have been found on oats. At present it seems unlikely that the cereal rusts will affect the yield of most fields in 1967.

Preliminary Estimates
of Specified Crop and
Summerfallow Acreages
1967

The acreage estimates for 1967 are, with some exceptions, based on returns from the Dominion Bureau of Statistics' annual June survey of seeded acreages and have been made in consultation with the officials responsible for agricultural statistics in each of the provinces. Current estimates are subject to revision in the light of further information received during the season and when marketing and other check data become available after the end of the crop year.

Preliminary Estimates of Crop and Summerfallow Acreages, 1967
with Comparisons - Canada (1)

Crops	1966 (2)	1967	1967 as % of 1966
	acres		per cent
Winter wheat.....	341,000	400,000	117
Spring wheat (3)	29,351,300	29,720,800	101
All wheat.....	29,692,300	30,120,800	101
Oats for grain (4).....	8,823,900	8,376,100	95
Barley.....	7,461,300	8,115,000	109
Fall rye (5).....	623,200	674,000	108
Spring rye.....	102,600	84,300	82
All rye.....	725,800	758,300	104
Flaxseed.....	1,917,700	1,107,400	58
Rapeseed.....	1,525,000	1,726,000	113
Summerfallow.....	25,224,000	25,950,000	103

(1) In some provinces the area seeded to certain crops is too small to permit reliable annual estimates. Acreages in such crops have not been included in the totals for Canada. (2) Revised. (3) Includes relatively small acreages of winter wheat in all provinces other than Ontario. (4) Includes oats for grain and for hay in the Prairie Provinces. (5) Includes small acreages of spring rye in Quebec, Ontario and British Columbia.

Total wheat acreage in Canada in 1967, estimated at a record 30.1 million acres, is one per cent larger than last year's 29.7 million. In the Prairie Provinces, where most of Canada's wheat is grown, acreage is estimated at a record 29.6 million, an increase of one per cent over last year's 29.2 million.

Preliminary estimates of durum wheat acreage in the Prairie Provinces at 1.3 million acres indicate a 24 per cent increase in acreage this year compared with 1966.

Preliminary Estimate of Durum Wheat Acreages, 1967
with Comparisons - Prairie Provinces

Province	1966 (1)	1967	1967 as % of 1966
	acres		per cent
Manitoba.....	43,000	53,000	123
Saskatchewan.....	905,000	1,130,000	125
Alberta.....	116,000	139,000	120
Prairie Provinces..	1,064,000	1,322,000	124

(1) Revised.

The area seeded to oats in Canada in 1967 is estimated at 8.4 million acres, some 5 per cent smaller than that of 1966. In the Prairie Provinces the oats acreage, at 6.0 million acres, is also 5 per cent less than that of 1966. Canadian barley acreage for 1967, at 8.1 million acres increased 9 per cent over the 1966 level of 7.5 million. Barley acreage in the Prairies is placed at 7.6 million, 8 per cent above the 1966 level.

Rye acreage at 758,300 is 4 per cent above the 1966 level of 725,800 acres. Fall seedings of rye were up 8 per cent but spring rye decreased by 18 per cent. The greater part of Canada's rye is grown in the Prairie Provinces where the 1967 acreage is estimated at 701,300 acres as compared with 671,100 in 1967.

Preliminary Estimates of Crop and Summerfallow Acreages, 1967
with Comparisons - Prairie Provinces

Crop	1966 (1)	1967	1967 as % of 1966
	acres		per cent
Spring wheat (including durum)...	29,166,000	29,570,000	101
Oats (including oats for hay)....	6,350,000	6,030,000	95
Barley.....	7,010,000	7,600,000	108
Fall rye.....	568,500	617,000	109
Spring rye.....	102,600	84,300	82
All rye.....	671,100	701,300	104
Flaxseed.....	1,883,000	1,082,000	57
Rapeseed.....	1,525,000	1,726,000	113
Summerfallow.....	25,224,000	25,950,000	103

(1) Revised.

Carryover Stocks
of Canadian Grain
at July 31, 1967

Total carryover stocks of the five major Canadian grains in all North American positions at July 31, 1967 were estimated at 834.5 million bushels, 25 per cent above last year's revised total of 666.7 million. Total stocks of wheat were estimated 573.7 million bushels, compared with last year's revised estimate of 420.1 million. Stocks of oats in all positions estimated at 109.6 million bushels, were 14 per cent below last year's 127.2 million. Barley stocks, at 131.1 million bushels, were up 34 per cent from the 97.8 million held in 1966. Carryover stocks of rye in all positions, estimated at 8.2 million bushels, were 23 per cent less than last year's 10.6 million. July-end carryover stocks of flaxseed, at 11.9 million bushels, were 7 per cent more than last year's 11.2 million.

Stocks of Canadian Grain at July 31, 1967

Position	Wheat	Oats	Barley	Rye	Flaxseed
thousand bushels					
In Canada					
On Farms	205,000	81,000	67,000	2,200	1,500
Country elevators (1)	196,376	18,580	40,615	2,312	3,035
Interior private & mill elevators	6,356	343	116	20	21
Interior terminal elevators	13,466	10	2,433	—	—
Pacific Coast terminals	10,474	40	1,240	375	1,509
Churchill elevator	4,478	4	—	—	—
Fort William-Port Arthur elevators	44,523	3,743	11,593	1,721	3,661
In transit - lake	7,015	821	1,235	68	197
In transit - rail (1)	21,399	1,895	3,694	366	1,031
Eastern elevators	62,014	3,072	3,176	663	922
Eastern mills (mill bins only)	2,342	95	—	—	—
Western mills (mill bins only)	241	13	3	(2)	—
Totals in Canada(1)	573,684	109,616	131,105	7,725	11,876
In United States	—	—	—	461	—
Totals, Canadian Grain in Canada and United States, July 31, 1967(1).	573,684	109,616	131,105	8,186	11,876
Comparative Stocks, July 31, 1966(3)					
In Canada	420,122	127,163	97,752	10,215	11,141
In United States	—	—	—	352	—
Totals in Canada and United States	420,122	127,163	97,752	10,567	11,141

(1) Preliminary revised - subject to further revision.

(2) Less than 500 bushels.

(3) Revised.

In the Prairie Provinces farm-held stocks of wheat, oats, barley, rye and flaxseed at July 31, 1967 amounted to 333.7 million bushels, an increase of 67 per cent over the July-end 1966 total of 200.3 million. Since the bulk of farm stocks of grain is held in Western Canada, stocks in the Prairie Provinces have been segregated from the above table for ease in comparison with last year's totals.

Estimated Farm Stocks in the Prairie Provinces, July 31, 1967 and 1966

Province	Wheat	Oats	Barley	Rye	Flaxseed
thousand bushels					
Manitoba	7,000	8,000	3,000	300	100
Saskatchewan	155,000	32,000	29,000	1,200	1,000
Alberta	40,000	25,000	31,000	700	400
Totals, July 31, 1967 (1)	202,000	65,000	63,000	2,200	1,500
Totals, July 31, 1966	98,000	67,000	31,000	2,400	1,900

(1) Subject to revision.

Farmers' Marketings(1) of Wheat in the Prairie Provinces 1966-67

Week Ending		Manitoba	Saskatchewan	Alberta	Total	Last Year(2)
				bushels		
August	10, 1966	243,118	1,658,010	481,054	2,382,182	411,880
	17	498,937	4,128,580	2,472,753	7,100,270	329,435
	24	2,778,073	12,246,890	4,152,056	19,177,019	2,079,840
	31	1,558,989	2,716,717	926,540	5,202,246	3,845,443
September	7	826,995	2,988,616	345,781	4,161,392	2,955,449
	14	2,389,549	8,028,487	1,206,440	11,624,476	5,506,938
	21	2,261,900	10,854,448	2,585,009	15,701,357	3,115,660
	28	1,835,740	14,745,505	4,440,432	21,021,677	3,128,223
October	5	1,471,390	10,240,244	3,050,295	14,761,929	8,306,749
	12	1,336,779	6,934,271	2,335,253	10,606,303	18,853,274
	19	1,660,272	7,858,719	2,918,639	12,437,630	21,848,974
	28	1,945,672	8,849,806	3,282,188	14,077,666	15,706,569
November	2	2,354,759	11,089,086	4,316,877	17,760,722	11,023,850
	9	1,962,148	8,780,570	3,209,617	13,952,335	13,837,562
	16	1,466,866	6,598,105	2,092,147	10,157,118	12,339,850
	23	1,598,120	7,310,131	3,082,022	11,990,273	12,243,515
	30	1,304,798	12,113,832	2,993,405	16,912,035	13,132,427
December	7	1,050,100	6,737,972	3,452,000	11,240,072	15,790,211
	14	1,169,227	8,185,010	2,516,699	11,870,936	19,484,922
	21	3,175,073	20,591,575	6,437,391	30,204,039	20,066,467
	28	1,332,023	11,856,350	4,215,235	17,903,608	13,245,715
January	4, 1967	909,920	7,905,119	2,984,452	11,799,491	8,210,940
	11	1,242,862	6,975,871	4,565,055	12,783,788	3,099,433
	18	1,682,049	7,432,126	5,106,972	14,221,147	5,535,776
	25	101,002	1,400,148	1,907,148	3,408,298	5,077,469
February	1	237,768	344,726	1,374,724	1,957,218	2,184,605
	8	365,241	2,020,799	4,176,995	6,563,035	7,532,432
	15	338,619	2,353,006	3,673,449	6,365,074	9,612,680
	22	148,722	1,160,243	1,619,193	2,928,158	4,683,004
March	1	368,947	1,926,933	2,251,089	4,546,969	5,916,671
	8	926,961	6,218,204	3,858,438	11,003,603	8,049,812
	15	475,801	2,312,024	2,516,814	5,304,639	6,564,021
	22	686,075	1,900,632	1,803,372	4,390,079	8,705,920
	28	1,065,768	5,414,416	2,439,188	8,919,372	9,903,180
April	5	1,378,549	3,149,726	3,010,757	7,539,032	6,681,044
	12	1,698,103	3,546,994	3,149,906	8,395,003	8,490,712
	19	760,972	3,160,163	2,355,026	6,276,161	11,539,275
	26	413,443	5,060,004	1,391,024	6,864,471	17,693,818
May	3	415,011	6,800,262	1,434,513	8,649,786	9,446,565
	10	1,159,501	12,025,910	2,534,383	15,719,794	11,130,157
	17	942,754	12,464,197	2,663,995	16,070,946	6,601,218
	24	573,023	3,973,901	2,371,796	6,918,720	4,969,198
	31	393,343	4,709,361	1,339,479	6,442,183	11,149,627
June	7	856,046	10,560,115	2,270,085	13,686,246	17,896,881
	14	2,031,196	19,229,426	3,829,443	25,090,065	24,164,565
	21	2,024,767	18,272,055	5,353,524	25,650,346	19,997,208
	28	1,950,241	14,043,113	4,900,685	20,894,039	14,425,681
July	6	1,446,354	10,926,118	3,604,698	15,977,170	13,632,699
	12	1,039,486	11,549,789	4,006,542	16,595,817	15,039,306
	19	1,062,208	11,099,725	3,414,578	15,576,511	16,588,988
Totals		61,915,260	382,448,030	146,419,156	590,782,446	511,775,838

Average

Similar Period:

1955-56-1964-65 42,646,877 233,131,484 90,566,558 366,344,919

(1) Includes receipts at country, interior private and mill elevators, interior semi-public terminals and platform loadings.

(2) Revised.

Visible Supply of Canadian Wheat, July 19, 1967
Compared with Approximately the Same Date, 1965 and 1966

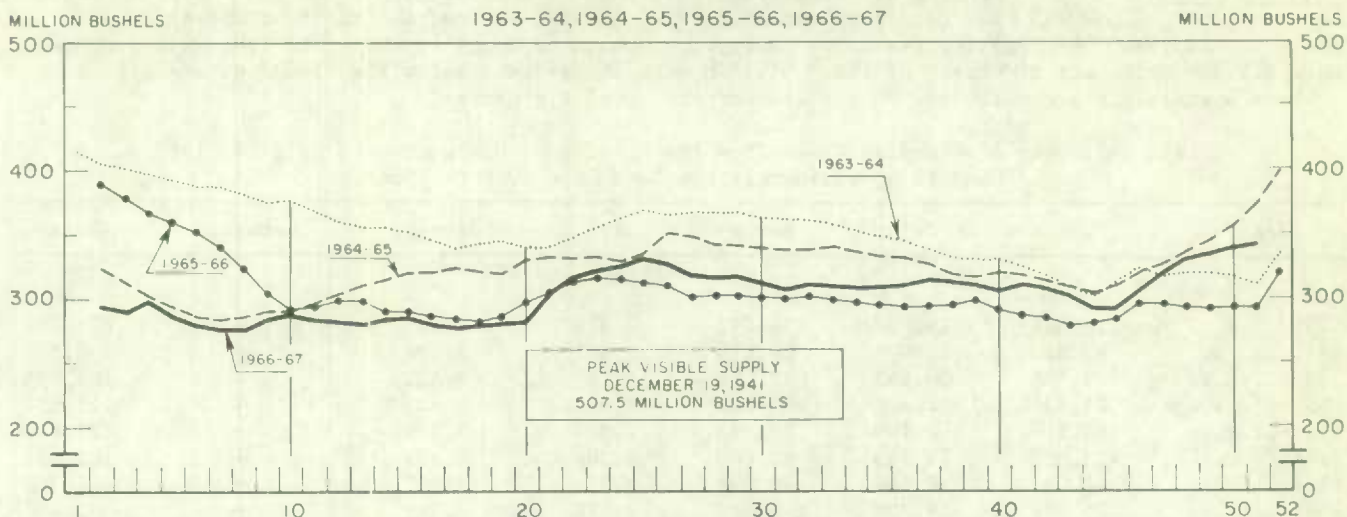
Position	1965	1966	1967
	thousand bushels		
Country elevators - Manitoba.....	27,651	14,852	16,970
Saskatchewan.....	129,451	95,181	108,002
Alberta.....	63,278	48,956	57,926
Totals.....	220,380	158,989	182,898
Interior private and mill.....	7,549	6,831	5,923
Interior terminals.....	4,903	2,057	13,466
Vancouver-New Westminster.....	5,592	11,970	8,280
Victoria.....	659	643	540
Prince Rupert.....	301	803	544
Churchill.....	4,700	4,249	3,950
Fort William-Port Arthur.....	45,247	36,623	41,272
In transit rail (western division).....	15,631	20,426	18,147
Bay, Lake and Upper St. Lawrence ports...	30,418	9,420	31,046
Lower St. Lawrence and Maritime ports....	29,230	28,258	31,902
In transit lake.....	7,234	12,433	1,561
In transit rail (eastern division).....	1,265	1,642	1,007
Totals.....	373,107	294,344	340,536

Grading of Wheat Inspected, August 1966-June 1967 with Comparisons

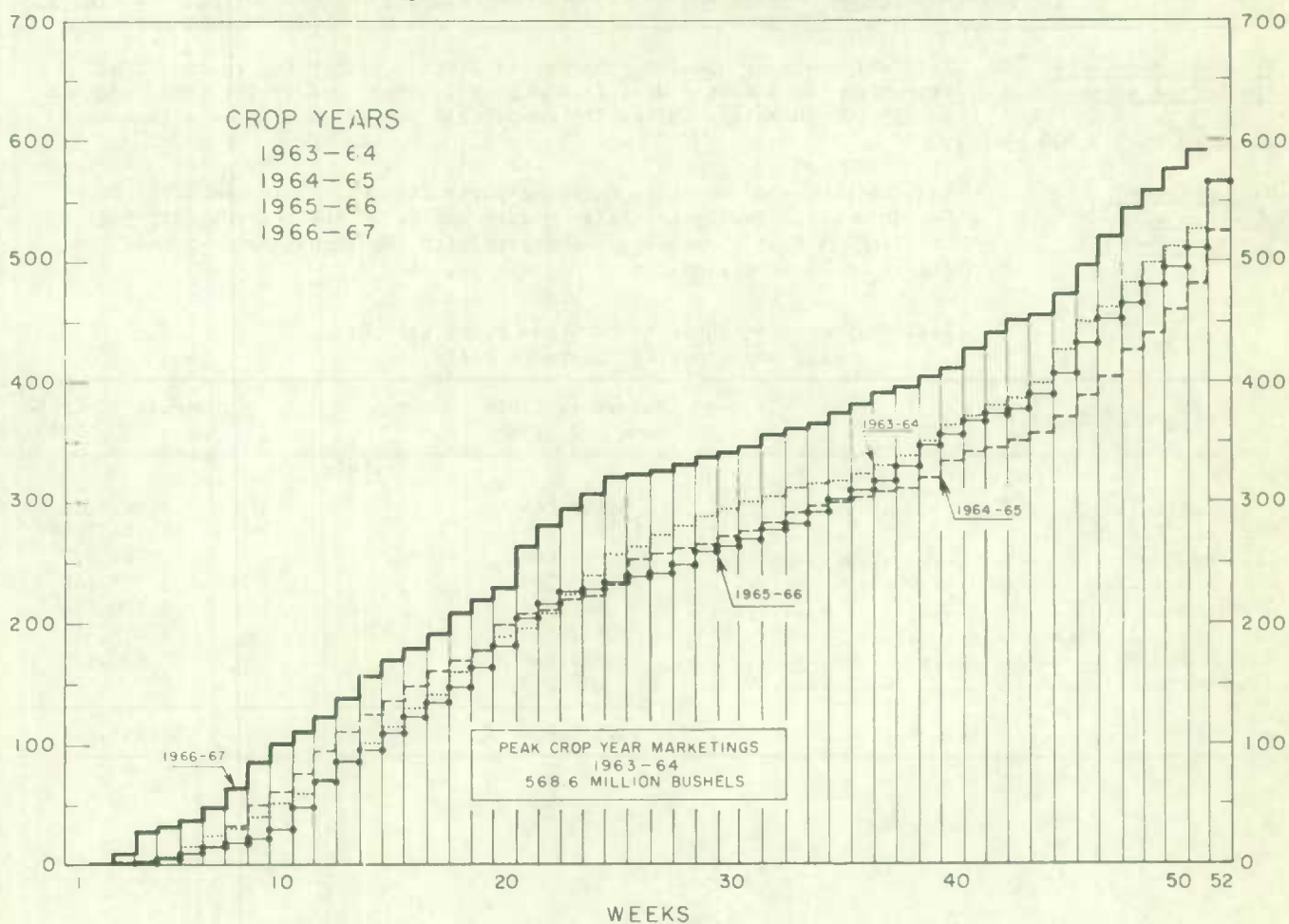
Grade	Crop Year		August-June			
	Average	1965-66	1965-66		1966-67	
	1960-61		cars	per cent	cars	per cent
	1964-65					
	per cent	per cent				
No. 1 Man. Northern.....	8.4	1.4	4,164	1.4	17,841	6.1
No. 2 Man. Northern.....	43.1	21.7	64,178	21.9	99,225	34.0
No. 3 Man. Northern.....	20.6	23.7	69,733	23.8	82,644	28.3
No. 4 Man. Northern.....	7.7	18.3	53,683	18.3	23,824	8.2
No. 5 Wheat.....	4.1	4.9	13,901	4.7	8,419	2.9
No. 6 Wheat.....	0.6	0.2	447	0.2	1,956	0.7
Feed Wheat.....	(1)	(1)	30	(1)	214	0.1
Others Red Spring.....	8.1	24.2	70,903	24.2	38,243	13.1
C.W. Garnet.....	0.2	(1)	18	(1)	242	0.1
C.W. White Spring.....	0.1	0.1	240	0.1	403	0.1
C.W. Mixed Wheat.....	(1)	0.1	169	0.1	244	0.1
Alberta Winter.....	0.4	0.3	665	0.2	4,638	1.6
Nos. 1-6 C.W. Amber Durum	6.3	4.7	14,005	4.8	12,845	4.4
Others C.W. Amber Durum...	0.3	0.4	1,254	0.4	991	0.3
Totals.....	100.0	100.0	293,390	100.0	291,729	100.0
Gross bushels (approx.)...			566,225,000		566,590,000	

(1) Less than .05 per cent.

WEEKLY VISIBLE SUPPLY OF CANADIAN WHEAT



CUMULATIVE RECORD OF WHEAT MARKETINGS IN THE PRAIRIE PROVINCES BY WEEKS



(Data in both charts for crop years beginning August 1)

Lake Shipments of Canadian Grain

Total shipments of the six major grains out of Lakehead terminals from the opening of navigation to July 19 this year amounted to 189.8 million bushels, six per cent below the 202.5 million shipped during the comparable period of the previous year. In 1967 the season of navigation opened on April 13 while the 1966 season opened on April 3. Shipments of wheat, at 132.7 million were 18 per cent below the 1966 figure of 161.9 million bushels and accounted for 70 per cent of the total six grains.

Lake Shipments of Canadian Grain from the Opening of Navigation to July 19, 1967 and to Approximately the Same Date 1956 to 1966

Year	Wheat	Oats	Barley	Rye	Flaxseed	Rapeseed	Total
thousand bushels							
1956	116,444	14,067	34,792	7,338	2,275	—	174,916
1957	82,810	17,905	20,638	3,687	5,538	—	130,577
1958	103,336	20,637	38,084	4,157	2,522	—	168,735
1959	84,834	11,506	20,500	2,066	2,627	—	121,531
1960	90,846	9,109	22,395	2,301	3,176	—	127,827
1961	123,825	12,395	20,069	1,388	2,878	—	160,555
1962	61,052	6,586	10,705	1,031	2,367	—	81,743
1963	75,481	18,328	9,571	1,312	2,715	—	107,407
1964	164,866	11,159	14,401	2,215	4,421	—	197,061
1965	100,392	18,456	14,183	1,948	3,947	559	139,486
1966	161,940	13,419	16,704	3,818	6,084	555	202,521
1967	132,665	14,867	34,863	2,563	4,351	530	189,840

Wheat Shipments to the United States

Rail shipments of wheat to the United States, either for re-export or retention for domestic use, from August 1, 1966 to July 19, 1967 amounted to 155,000 bushels. During the comparable period of 1965-66 shipments amounted to 255,000 bushels.

Rail Shipments of Wheat to Maritime Ports

Rail shipments of wheat to Maritime ports from Bay, Lake and Upper St. Lawrence ports during the first eleven months of the current crop year totalled 31.6 million bushels compared with the August 1965 - June 1966 figure of 34.5 million.

Rail Shipments of Wheat to Maritime Ports from Bay, Lake and Upper St. Lawrence Ports

Origin of Shipments	August 1, 1965- June 30, 1966	August 1, 1966- June 30, 1967
bushels		
Port McNicoll	9,149,869	7,922,136
Midland, Tiffin	12,345,838	11,144,781
Collingwood	1,356,044	724,477
Owen Sound	5,401,709	5,107,148
Goderich	1,346,276	2,829,854
Sarnia	2,622,844	3,075,343
Port Colborne	2,083,165	830,125
Peterborough	206,211	—
Totals	34,511,956	31,633,864

Rail Shipments of Wheat from Fort William-Port Arthur, 1963-64-1966-67

Month	1963-64	1964-65	1965-66	1966-67
	bushels			
August.....	5,500	7,786	10,458	118,973
September.....	9,104	19,564	10,500	83,333
October.....	25,355	12,135	4,500	89,384
November.....	13,500	13,167	10,205	163,332
December.....	23,047	26,961	7,500	106,833
January.....	58,772	10,703	46,108	145,889
February.....	28,768	17,214	26,712	120,334
March.....	21,268	112,296	98,598	177,393
April.....	26,063	17,506	71,701	133,699
May.....	7,941	8,207	89,166	207,038
June.....	20,518	4,965	178,183	154,139
July.....	12,707	13,872	82,282	
Totals.....	252,543	264,376	635,913	

Distribution of Rail Shipments of Wheat from Fort William-Port Arthur, June 1967

Grade	Prince Edward Island	Nova Scotia	New Brunswick	Quebec	Ontario
	bushels				
5 Wheat.....	3,500	12,833	9,000	—	1,500
6 Wheat.....	4,833	50,000	64,000	—	—
Durum.....	—	—	—	2,000	4,334
Others.....	—	—	—	2,139	—
Totals.....	8,333	62,833	73,000	4,139	5,834

Overseas Exports of Canadian Grain by Ports of Loading, August 1, 1966-July 19, 1967
with Comparisons

Port	Wheat(1)	Durum Wheat(1)	Oats(1)	Barley	Rye	Flaxseed	Rapeseed
	thousand bushels						
<u>Pacific Seaboard</u>							
Van.-New West.	154,291	842	432	21,877	5,207	6,341	11,587
Victoria.....	11,103	—	—	—	—	—	—
Prince Rupert.....	10,553	—	—	—	—	—	—
Churchill.....	21,031	—	—	—	—	—	—
Lakehead Direct.....	7,657	340	1,457	10,940	2,435	6,705	745
Kingston Direct.....	739	55	—	—	91	—	—
<u>St. Lawrence</u>							
Montreal.....	89,506	16,238	486	571	248	1,712	—
Sorel.....	28,347	721	—	—	—	—	—
Trois-Rivières.....	17,662	248	—	—	—	325	—
Quebec.....	21,784	843	—	1,331	158	476	322
Baie Comeau.....	52,618	5,269	—	4,743	—	640	—
<u>Maritime</u>							
Saint John.....	1,835	—	—	—	—	—	—
West Saint John....	15,657	1,328	—	—	40	—	—
Halifax.....	14,074	—	—	—	—	—	—
Totals.....	445,857	25,885	2,375	39,463	8,179	16,199	12,654
August 1, 1965—							
July 20, 1966.....	487,877	30,651	14,125	28,895	6,409	18,411	13,621

(1) Excluding bagged seed.

Freight-Assisted Shipments Up to June 30, 1967, claims filed for payment represent the movement of 13.7 million bushels of wheat from the Prairie Provinces to Eastern Canada and British Columbia under the freight assistance policy during the August - May period of the 1966-67 crop year. During the same period last year, claims had also been filed for a total of 13.7 million bushels; this indicated, on the assumption of approximately the same rate of submission of claims during the current and preceding crop years, that the August - May shipments of wheat under the policy were proceeding at about the same rate as in 1965-66. Based on claims submitted up to June 30, 1967, revised data on the August - May 1965-66 shipments of wheat place the ten-month total at 14.7 million bushels. During the current ten months under review, the bulk of the shipments went to destinations in Quebec and Ontario; these two provinces accounted for 51 per cent and 20 per cent of the total, respectively.

Provincial Distribution of Wheat Shipments under the Freight Assistance Policy
August - May 1966-67 and 1965-66

Month	Nfld.	P.E.I.	N.S.	N.B.	Que.	Ont.	B.C.	Total
thousand bushels								
August, 1966	28	21	180	45	681	323	189	1,467
September	93	38	154	66	713	350	187	1,601
October	33	13	156	40	690	301	271	1,504
November	7	17	129	41	696	366	322	1,580
December	6	15	126	47	627	321	236	1,379
January, 1967	6	17	177	43	1,328	273	178	2,022
February	22	13	76	30	600	176	164	1,080
March	11	16	163	31	675	225	142	1,264
April	4	13	114	32	482	209	78	931
May	2	4	86	23	535	206	2	857
Totals (1)	213	166	1,361	397	7,027	2,751	1,770	13,684
Same period 1965-66:								
Preliminary (2)	236	203	1,496	523	6,229	3,398	1,573	13,658
Revised (1)	328	248	1,776	577	6,321	3,563	1,871	14,685

During the August - May period of the current crop year, preliminary data on millfeed shipments under the freight assistance policy indicate shipments of 403,585 tons. During the same ten months of 1965-66, claims had been filed for a total of 390,375 tons; this indicated on the assumption of approximately the same rate of submission of claims during both the current and preceding crop years that the August - May shipments of millfeeds under the policy were running about 3 per cent more than those of 1965-66. Based on claims submitted up to June 30, 1967, revised data on the 1965-66 August - May shipments of millfeeds place the ten-month total at 453,579 tons. As with freight-assisted shipments of wheat, the greater portion of the millfeed shipments during the period under review went to destinations in Quebec and Ontario.

Provincial Distribution of Millfeed Shipments under the Freight Assistance Policy
August - May 1966-67 and 1965-66

Province	1965-66		1966-67
	Preliminary(2)	Revised(1)	Preliminary(1)
tons			
Newfoundland	3,518	4,799	3,573
Prince Edward Island	8,001	9,549	7,188
Nova Scotia	24,174	30,837	25,940
New Brunswick	11,731	24,099	21,001
Quebec	208,374	229,627	206,535
Ontario	113,889	126,890	117,080
British Columbia	20,689	27,778	22,268
Totals	390,375	453,579	403,585

(1) Based on claims filed up to June 30, 1967.

(2) Based on claims filed up to June 30, 1966.

Monthly Exports of Canadian Wheat and Wheat Flour

Year and Month	Wheat in Bulk(1)	Bagged Seed Wheat(2)	Total Wheat	Wheat Flour(2)(3)	Total(3) Wheat and Wheat Flour
thousand bushels					
<u>1964-65</u>					
August.....	42,226	68	42,294	3,711	46,005
September.....	42,792	121	42,913	2,258	45,172
October.....	40,120	27	40,147	2,460	42,607
November.....	30,976	45	31,021	2,534	33,556
December.....	27,720	79	27,799	2,220	30,020
January.....	18,098	85	18,183	2,263	20,446
February.....	19,337	147	19,484	1,637	21,121
March.....	23,376	281	23,657	2,289	25,946
April.....	31,798	212	32,010	4,047	36,057
May.....	34,822	126	34,949	3,515	38,464
June.....	30,631	59	30,690	2,176	32,866
July.....	24,843	61	24,905	2,430	27,335
Totals.....	366,740	1,312	368,052	31,542	399,594
<u>1965-66</u>					
August.....	43,377	81	43,459	2,548	46,006
September.....	64,447	73	64,521	2,679	67,199
October.....	64,517	84	64,601	3,674	68,275
November.....	55,652	37	55,690	2,625	58,314
December.....	33,201	64	33,265	4,261	37,526
January.....	23,483	49	23,532	3,402	26,933
February.....	23,502	74	23,576	3,924	27,501
March.....	32,395	192	32,587	3,695	36,282
April.....	37,794	88	37,882	4,431	42,313
May.....	44,357	11	44,367	1,241	45,608
June.....	60,245	5	60,250	3,325	63,576
July.....	63,017	35	63,053	2,320	65,373
Totals.....	545,988	793	546,781	38,125	584,906
<u>1966-67(4)</u>					
August.....	64,233	105	64,338	2,921	67,260
September.....	47,357	130	47,487	2,368	49,856
October.....	51,659	39	51,699	3,520	55,219
November.....	48,942	52	48,993	2,779	51,773
December.....	33,477	17	33,493	3,960	37,453
January.....	27,719	76	27,795	3,276	31,071
February.....	20,102	50	20,152	1,786	21,938
March.....	21,718	100	21,818	3,040	24,858
April.....	27,847	98	27,945	2,940	30,884
May.....	57,134	25	57,159	2,550	59,709
June.....	47,517	7	47,523	2,818	50,341
Totals.....	447,704	699	448,403	31,958	480,361

(1) Export clearances including shipments to the United States compiled by the Statistics Division, Board of Grain Commissioners for Canada. (2) Compiled from Canadian Customs returns, 1964-65 and 1965-66 adjusted to remove effect of time lag in reporting. (3) In terms of wheat equivalent. Wheat flour conversion rate: 2.3 bushels per cwt. (4) Preliminary, subject to revision.

Exports of Canadian Wheat(1) by Destination, June 1967 and 1966

Destination	Wheat (except durum)	Durum wheat	All wheat	
			June 1967	June 1966(2)
bushels				
Western Europe:				
EEC				
Belgium and Luxembourg	1,460,104	57,361	1,517,465	469,907
France	—	44,800	44,800	256,777
Germany, Federal Republic	1,675,528	751,384	2,426,912	655,201
Italy	1,700,347	—	1,700,347	709,780
Netherlands	242,555	134,400	376,955	108,117
Sub-totals	5,078,534	987,945	6,066,479	2,199,782
Other Western Europe:				
Austria	—	—	—	502,216
Britain	6,351,757	57,039	6,408,796	5,650,324
Finland	—	—	—	282,672
Ireland	211,680	—	211,680	—
Malta and Gozo	—	—	—	125,450
Switzerland	244,795	336,000	580,795	735,291
Sub-totals	6,808,232	393,039	7,201,271	7,295,953
Totals	11,886,766	1,380,984	13,267,750	9,495,735
Eastern Europe:				
Albania	—	—	—	765,408
Czechoslovakia	2,380,373	—	2,380,373	—
Germany, Democratic Republic	561,431	—	561,431	385,827
Poland	965,000	769,345	1,734,345	1,146,507
U.S.S.R. (Russia)	6,830,664	535,020	7,365,684	29,356,252
Totals	10,737,468	1,304,365	12,041,833	31,653,994
Africa:				
Nigeria	229,467	—	229,467	117,600
Republic of South Africa	841,867	—	841,867	—
Sudan	11,512	—	11,512	—
Totals	1,082,846	—	1,082,846	117,600
Asia:				
China, Communist	5,115,610	—	5,115,610	10,619,633
Hong Kong	78,400	—	78,400	96,133
India	9,243,642	—	9,243,642	—
Japan	5,451,569	—	5,451,569	6,330,821
Korea, North	—	—	—	458,267
Malaysia and Singapore	39,200	—	39,200	92,400
Pakistan	869,867	—	869,867	—
Philippines	—	—	—	—
Saudi Arabia	19,648	—	19,648	—
Syria	13,338	—	13,338	—
Totals	20,831,274	—	20,831,274	17,597,254
Western Hemisphere:				
Barbados	—	—	—	—
Cuba	—	—	—	957,840
Ecuador	—	—	—	191,849
Guatemala	—	—	—	24,500
Jamaica	997	—	997	559
Venezuela	244,792	47,040	291,832	205,945
Totals	245,789	47,040	292,829	1,380,693
Sub-totals, all countries	44,784,143	2,732,389	47,516,532	60,245,276
Bagged seed(4)	—	—	6,520	5,090
Totals, all countries	44,784,143	2,732,389	47,523,052	60,250,366

See footnotes on page 22.

Cumulative Exports of Canadian Wheat(1) by Destination

Destination	August 1966 - June 1967			Total
	Wheat (except durum)	Durum wheat	Total wheat	same period last year(2)
	bushels			
Western Europe:				
EEC				
Belgium and Luxembourg	13,021,142	650,209	13,671,351	9,626,849
France	1,258,056	534,710	1,792,766	2,759,153
Germany, Federal Republic ..	12,422,105	9,053,213(2)	21,475,318(2)	18,813,759
Italy	6,533,199	1,880,328	8,413,527	6,264,235
Netherlands	2,252,399	291,639(2)	2,544,038(2)	3,607,275
Sub-totals	35,486,901	12,410,099	47,897,000	41,071,271
Other Western Europe:				
Austria	966,992	606,299	1,573,291	1,723,924
Britain	59,915,267	527,722	60,442,989	62,801,223
Denmark	—	22,400	22,400	—
Finland	1,052,576	—	1,052,576	680,356
Ireland	1,725,546	—	1,725,546	943,582
Malta and Gozo	290,528	—	290,528	693,653
Norway	970,133	—	970,133	1,575,540
Portugal	571,200	—	571,200	—
Sweden	—	12,133	12,133	18,666
Switzerland	1,527,163	2,467,490	3,994,653	6,802,146
Sub-totals	67,019,405	3,636,044	70,655,449	75,239,090
Totals	102,506,306	16,046,143	118,552,449	116,310,361
Eastern Europe:				
Albania	2,802,948	657,440	3,460,388	4,240,171
Bulgaria	3,800,320	—	3,800,320	—
Czechoslovakia	2,932,533	355,040	3,287,573	7,547,066
Germany, Democratic Republic..	4,460,835	—	4,460,835	5,800,019
Poland	9,905,935	2,434,290	12,340,225	8,814,156
U.S.S.R. (Russia)	83,714,705	4,495,900	88,210,605	187,023,932
Totals	107,617,276	7,942,670	115,559,946	213,425,344
Africa:				
Algeria	716,495	—	716,495	—
Ethiopia	—	—	—	146,976
Mozambique	—	—	—	11,125
Nigeria	836,134	—	836,134	492,800
Republic of South Africa	6,780,826	—	6,780,826	—
Sudan	36,194	—	36,194	—
Totals	8,369,649	—	8,369,649	650,901

Cumulative Exports of Canadian Wheat(1) by Destination

Destination	August 1966 - June 1967			Total same period last year(2)
	Wheat (except durum)	Durum wheat	Total wheat	
bushels				
Asia:				
China, Communist	85,476,415	409,920	85,886,335	69,340,301
Hong Kong	946,090	—	946,090	1,066,350
India	40,353,490	—	40,353,490	9,389,672
Israel	—	—	—	467,600
Japan	54,645,029	384,895	55,029,924	45,056,532
Korea, North	940,426	—	940,426	3,470,694
Malaysia and Singapore	479,734	—	479,734	1,064,152
Pakistan	7,572,687	—	7,572,687	671,847
Philippines	515,200	—	515,200	2,334,266
Saudi Arabia	92,397	—	92,397	229,531
Syria.....	13,338	—	13,338	—
Taiwan	74,074	—	74,074	—
Thailand	—	—	—	271,413
Turkey	331,034	—	331,034	—
Totals	191,439,912	794,815	192,234,729	133,362,358
Oceania:				
United States Oceania	—	—	—	36,587
Western Hemisphere:				
Barbados	120	—	120	200
Costa Rica	138,960	—	138,960	—
Cuba	6,503,670	—	6,503,670	10,517,219
Ecuador	409,346	—	409,346	988,450
El Salvador	629,466	—	629,466	452,667
Guatemala	28,294	—	28,294	195,939
Jamaica	10,966	—	10,966	10,039
Leeward and Windward Islands	—	—	—	4
Nicaragua	249,579	—	249,579	450,023
Peru	39,200	—	39,200	298,667
St. Lucia	187	—	187	—
Trinidad and Tobago	—	—	—	129,472
Venezuela	4,775,580	47,040	4,822,620	6,141,873
United States Domestic(3) ..	154,913	—	154,913	—
Totals	12,940,281	47,040	12,987,321	19,184,553
Sub-totals, all countries ..	422,873,426	24,830,668	447,704,094	482,970,104
Bagged Seed(4)			698,599	758,119
Totals, all countries	422,873,426	24,830,668	448,402,693	483,728,223

(1) Overseas Clearances as reported by the Statistics Division, Board of Grain Commissioners for Canada, for all countries except the United States. Excluding bagged seed. (2) Revised. (3) Compiled from returns of Canadian elevator licensees and shippers and advice from American grain correspondents.

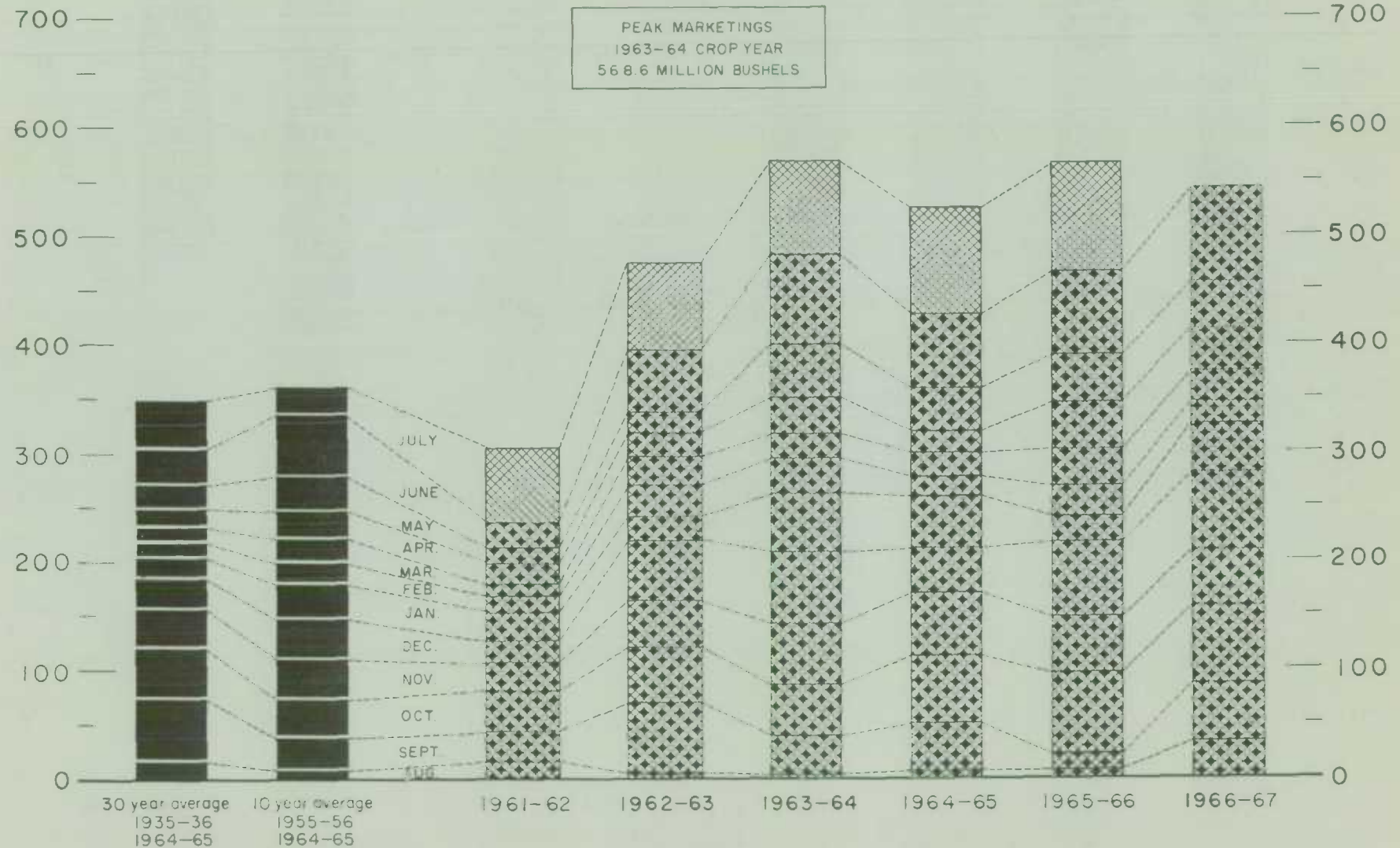
(4) Compiled from Canadian Customs returns, 1965-66 adjusted for time lag.

FARMERS' MARKETINGS OF WHEAT, PRAIRIE PROVINCES

MILLION BUSHELS

(SPECIFIED PERIODS)

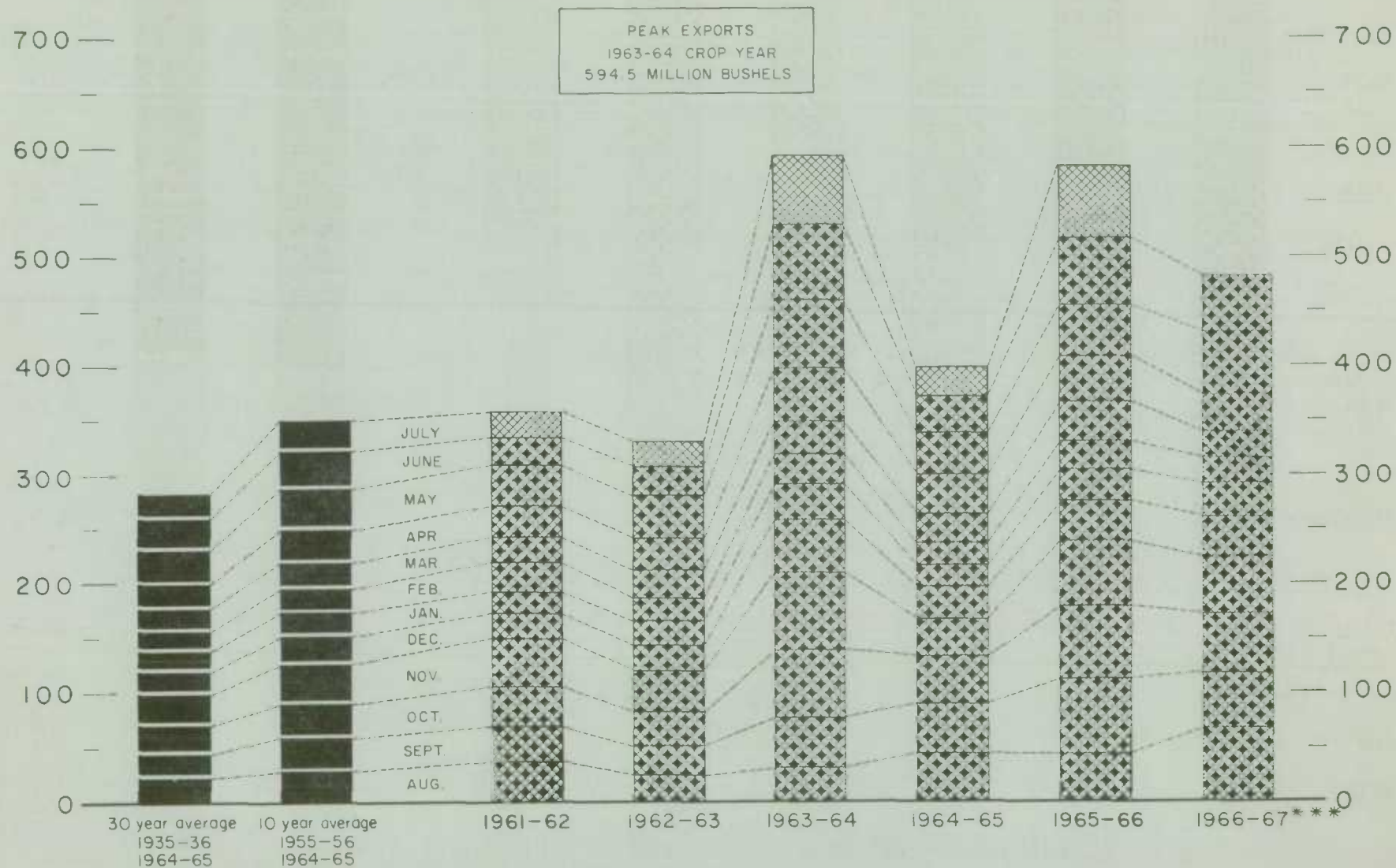
MILLION BUSHELS



EXPORTS OF CANADIAN WHEAT* AND WHEAT FLOUR** (SPECIFIED PERIODS)

MILLION BUSHEL

MILLION BUSHEL



* Beginning with 1956-57 includes bagged seed wheat.

** In terms of wheat equivalent. *** Preliminary.

Agriculture Division D.B.S.

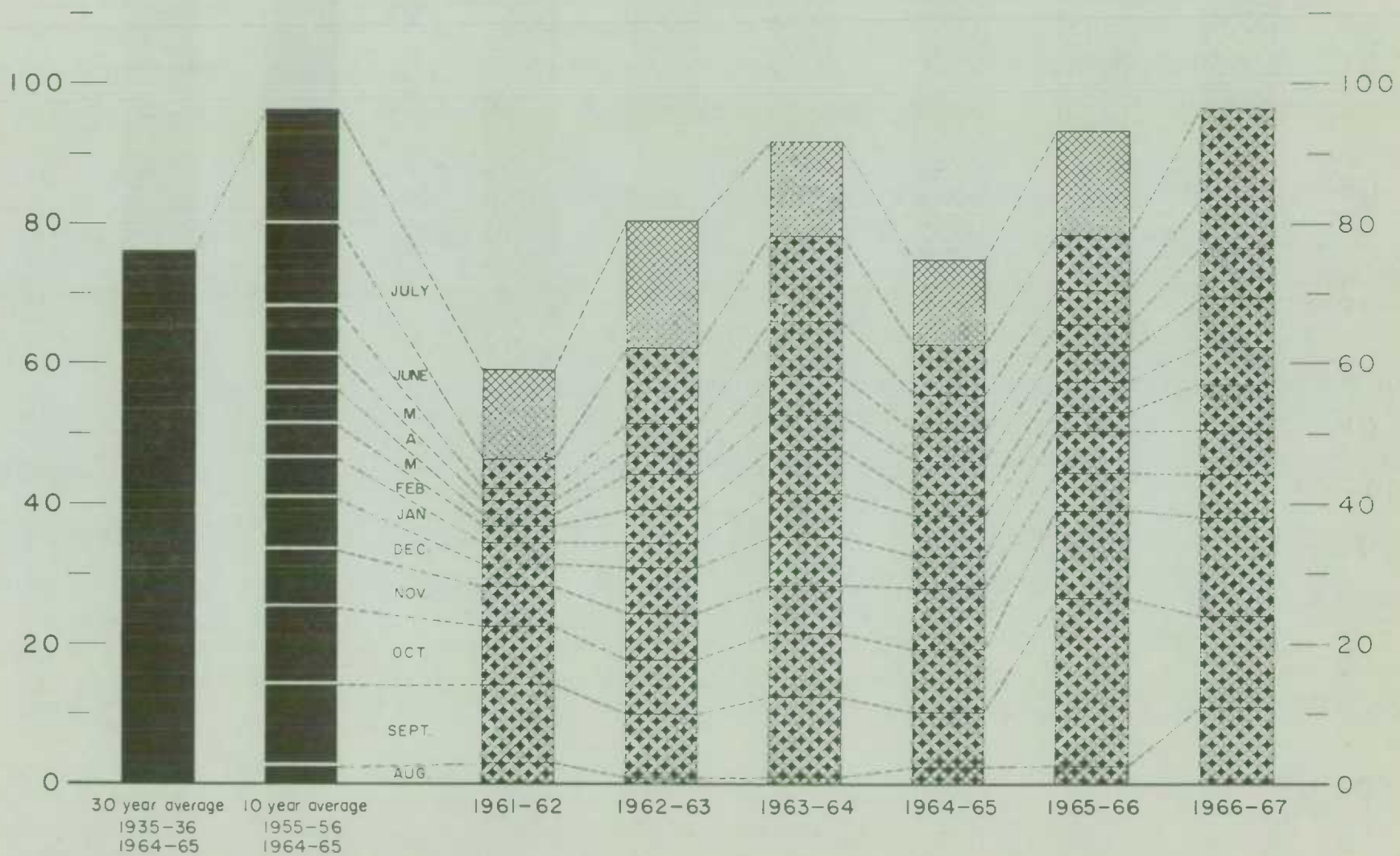
FARMERS' MARKETINGS OF BARLEY, PRAIRIE PROVINCES (SPECIFIED PERIODS)

MILLION BUSHELS

120 —

MILLION BUSHELS

120 —



EXPORTS OF CANADIAN BARLEY AND BARLEY PRODUCTS*

(SPECIFIED PERIODS)

MILLION BUSHEL

70 —

60 —

50 —

40 —

30 —

20 —

10 —

0

MILLION BUSHEL

70 —

60 —

50 —

40 —

30 —

20 —

10 —

0

30 year average 10 year average
 1935-36 1955-56
 1964-65 1964-65

1961-62

1962-63

1963-64

1964-65

1965-66

1966-67**

JULY
 JUNE
 MAY
 APR
 MAR
 FEB
 JAN
 DEC
 NOV
 OCT
 SEPT
 AUG

* In terms of grain equivalent.

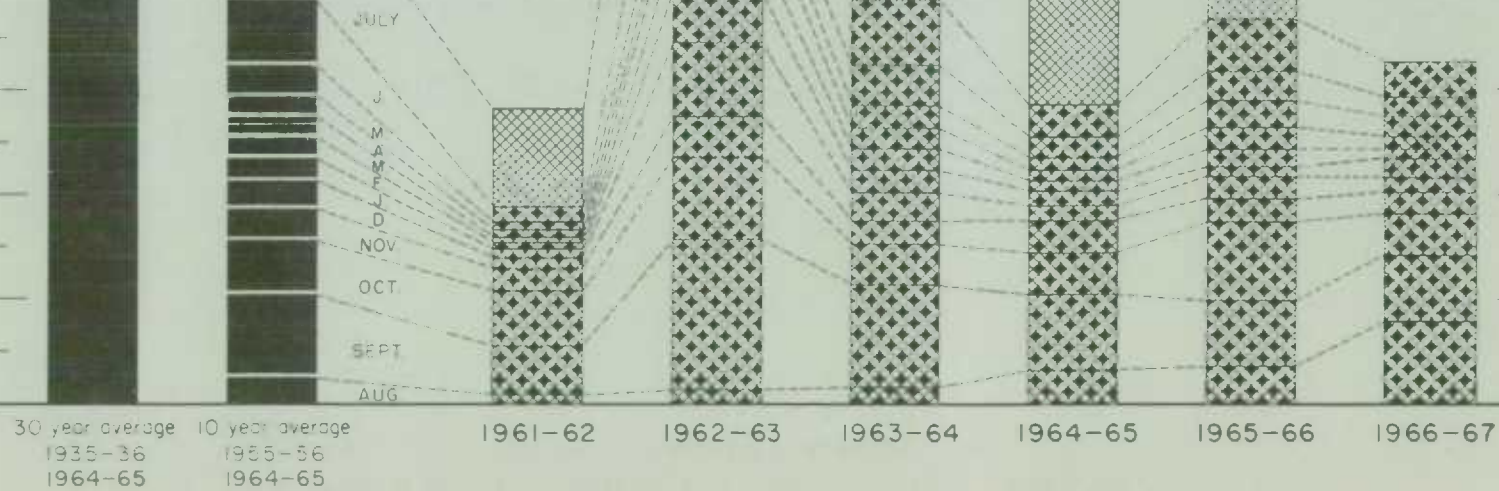
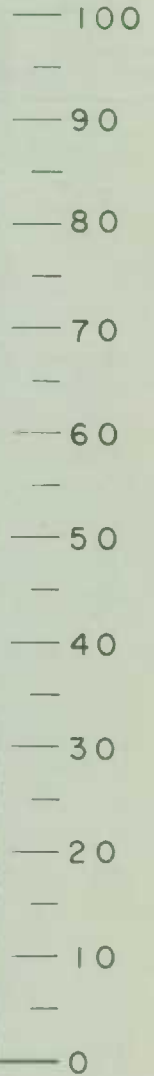
** Preliminary.

FARMERS' MARKETINGS OF OATS, PRAIRIE PROVINCES (SPECIFIED PERIODS)

MILLION BUSHELS



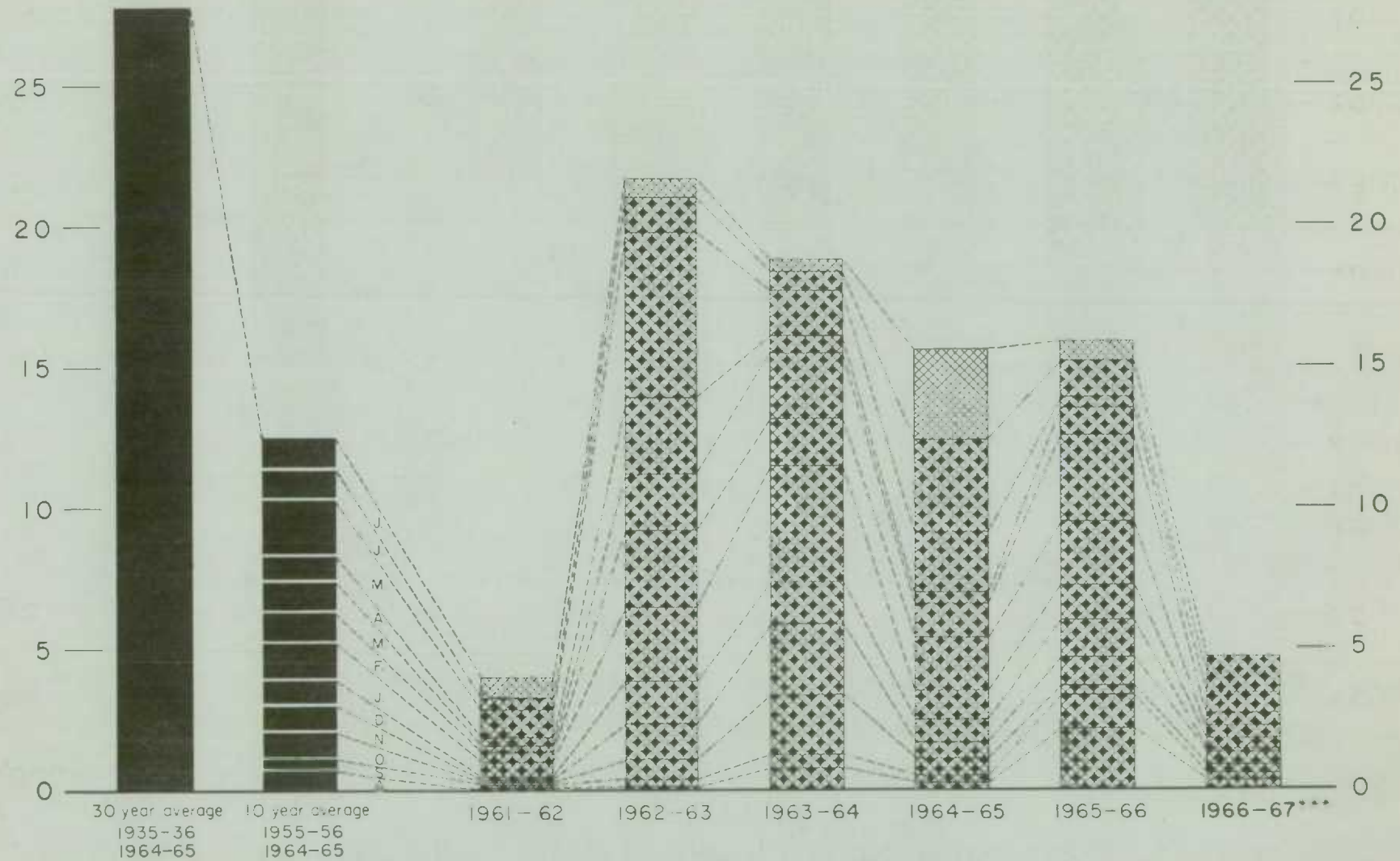
MILLION BUSHELS



EXPORTS OF CANADIAN OATS* AND OAT PRODUCTS** (SPECIFIED PERIODS)

MILLION BUSHELS
30 —

MILLION BUSHELS
— 30



* Beginning with 1960-61 includes relatively small quantity of bagged seed.

** In terms of grain equivalent.

*** Preliminary.

FARMERS' MARKETINGS OF CANADA'S SIX MAJOR GRAINS* PRAIRIE PROVINCES

MILLION BUSHEL

1,000 —

MILLION BUSHEL

1,000 —

(SPECIFIED PERIODS)

900 —

800 —

700 —

600 —

500 —

400 —

300 —

200 —

100 —

0

900 —

800 —

700 —

600 —

500 —

400 —

300 —

200 —

100 —

0

JULY

JUNE

MAY

APR

M

FEB

JAN

DEC

NOV

OCT

SEPT

AUG

30 year average

1935-36

1964-65

10 year average

1955-56

1964-65

1961-62

1962-63

1963-64

1964-65

1965-66

1966-67

* Wheat, oats, barley, rye, flaxseed and from 1960-61 rapeseed

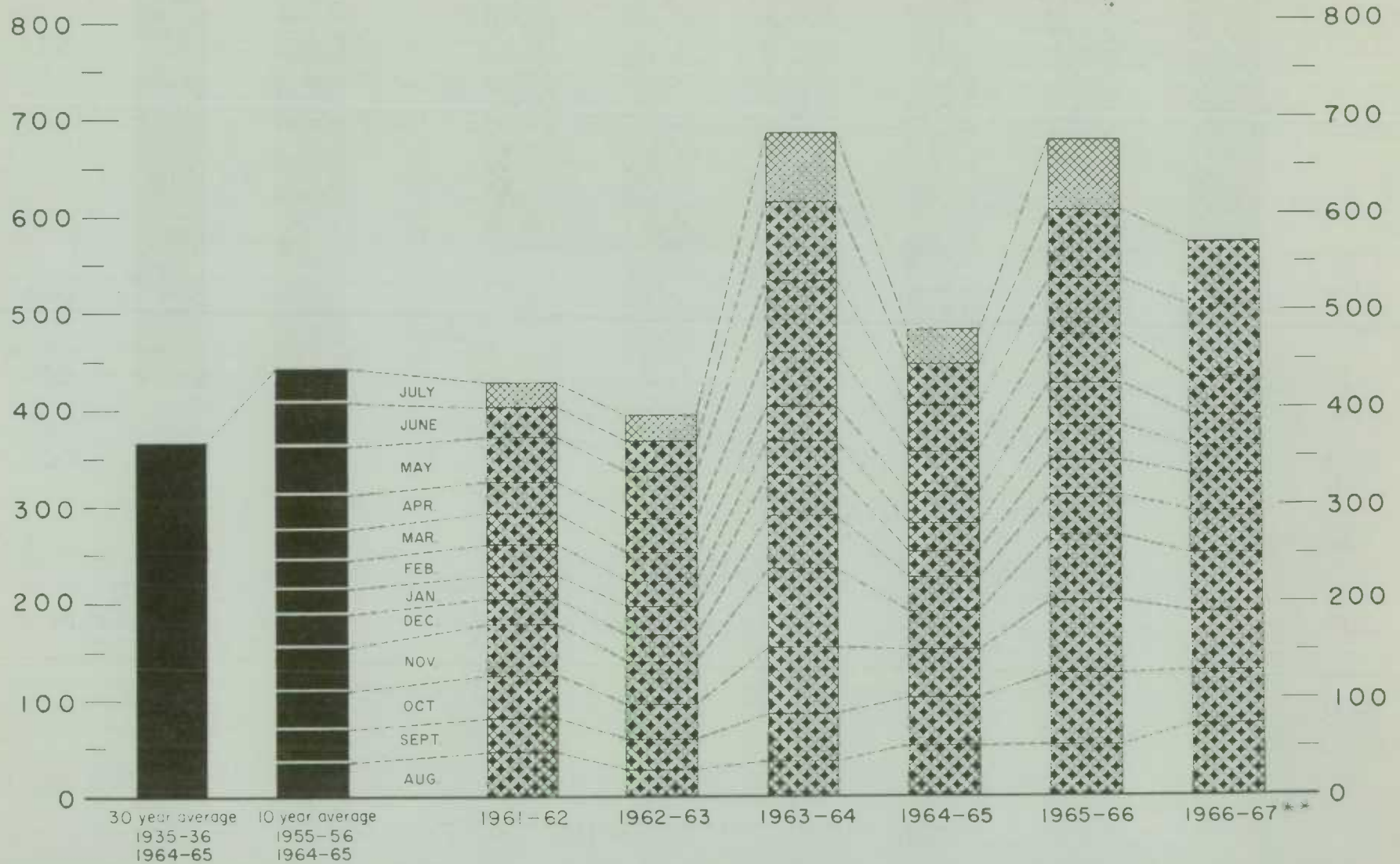
Agriculture Division D.B.S.

EXPORTS OF CANADA'S SIX MAJOR GRAINS AND PRODUCTS*

(SPECIFIED PERIODS)

MILLION BUSHELS

MILLION BUSHELS



*Wheat, bagged seed wheat, and wheat flour; oats, bagged seed oats, and oatmeal and rolled oats; barley, malt and pot and pearl; rye, flaxseed and from 1960-61 rapeseed

**Preliminary.

Agriculture Division D.B.S.

Customs Exports of Canadian Wheat Flour by Countries of Consignment

Destination	February	June	August-June	
	1966(1)	1967(2)	1966-67(2)	1965-66(1)
	- bushels -			
<u>Western Europe</u>				
<u>EEC</u>				
Belgium and Luxembourg	591	345	87,416	100,915
Italy	1,495	1,495	14,720	14,950
Netherlands	—	1,518	11,375	6,976
Sub-totals	2,086	3,358	113,511	122,841
<u>Other Western Europe</u>				
Britain	248,326	319,997	5,436,142(4)	7,942,042
Denmark	—	—	2,070	2,070
Gibraltar	—	—	23,442	15,971
Greece	4,531	12,119	116,150	17,337
Iceland	—	1,614	8,050	3,552
Ireland	—	—	966(4)	—
Norway	—	—	230	—
Portugal	4,637	4,025	70,518	49,710
Sweden	—	—	2,516	1,265
Sub-totals	257,494	337,755	5,660,084	8,031,947
Totals	259,580	341,113	5,773,595	8,154,788
<u>Eastern Europe</u>				
U.S.S.R. (Russia)(3)	—	—	—	3,163,870
Yugoslavia	—	—	1,545	—
Totals	—	—	1,545	3,163,870
<u>Africa</u>				
Algeria	8,280	12,172	481,724	—
Angola	1,840	2,070	19,688	14,030
Cameroun Republic	—	3,795	37,706	34,068
Congo-Kinshasa	5,513	—	38,518	99,820
Dahomey	3,349	2,967	22,358	—
French Africa nes	—	—	31,395	46,672
Gambia	—	3,519	76,993	80,937
Ghana	15,410	172,155	1,290,746	819,580
Guinea Republic	—	—	460	—
Ivory Coast	—	—	1,380	2,185
Liberia	9,064	18,759	184,041	146,027
Malagasy Republic	—	—	—	3,795
Malawi	9,917	—	61,083	26,489
Morocco	—	611,239	632,877	—
Mozambique	7,342	—	74,568	48,408
Nigeria	—	—	30,164	50,572
Portuguese Africa nes.	2,210	1,654	29,224	86,133
Rhodesia	—	—	1,150	11,500
Senegal	—	19,281	198,762	—
Sierra Leone	33,226	3,505	547,269	513,778
Tanzania	3,015	1,840	7,845	16,215
Togo	1,725	13,340	179,996	194,175
U.A.R. - Egypt	—	—	89,100	47,656
Totals	100,891	866,296	4,037,047	2,242,040
<u>Asia</u>				
Aden	5,787	4,121	61,341	49,482
Bahrain	—	—	143	—
Burma	—	—	—	161,566
Ceylon	—	—	1,049,260	897,906
Cyprus	—	—	831	—
Hong Kong	61,445	41,147	616,126	604,810
India	345	552	1,500,681	1,512,919
Indonesia	29,408	—	108,208	—
Iran	777	—	4,607	4,457
Japan	88	575	4,648	4,543
Jordan	—	—	55,849	10,341

Customs Exports of Canadian Wheat Flour by Countries of Consignment

Destination	February	June	August - June	
	1966 (1)	1967(2)	1966-67(2)	1965-66(1)
bushels				
<u>Asia (concluded)</u>				
Korea.....	14,547	—	32,294	60,978
Lebanon.....	—	5,152	173,749	219,572
Malaysia and Singapore.....	—	—	6,130	94,061
Portuguese Asia.....	4,692	—	31,087	21,993
Qatar.....	—	—	347	547
Saudi Arabia.....	—	—	9,423	697
Syria.....	—	—	7,606	9,025
Thailand.....	25,415	—	201,135	219,539
Trucial States.....	—	—	18	—
Viet-Nam.....	—	—	—	920
Totals.....	142,504	51,547	3,863,483	3,873,356
<u>Oceania</u>				
British Oceania nes.....	—	345	1,380	345
Fiji.....	805	345	6,060	7,464
French Oceania.....	—	—	497	483
United States Oceania.....	8,050	8,050	43,700	47,150
Totals.....	8,855	8,740	51,637	55,442
<u>Western Hemisphere</u>				
Argentina.....	—	—	5,120	—
Bahamas.....	25,640	15,775	292,268	259,695
Barbados.....	13,278	18,138	220,384	201,560
Bermuda.....	9,828	6,233	121,548	110,986
British Honduras.....	697	1,870	57,155	51,655
Costa Rica.....	149,270	—	861,741	1,036,336
Cuba.....	558,203	1,107,441(3)	12,249,607(3)	11,343,455
Dominican Republic.....	828	—	1,272	286,191
Ecuador.....	1,380	—	3,105	—
El Salvador.....	—	113	600	6,736
French Guiana.....	—	—	1,610	230
French West Indies.....	—	—	3,379	9,108
Guatemala.....	7,935	460	26,018	23,931
Guyana.....	4,423	5,860	83,382	65,302
Haiti Republic.....	—	—	1,044	1,801
Honduras Republic.....	3,349	9,731	51,216	97,373
Jamaica.....	158,953	115,554	1,547,474	1,502,266
Leeward and Windward Islands	64,687	100,791	1,012,964	917,254
Netherlands Antilles.....	14,175	3,811	109,485	172,678
Nicaragua.....	—	—	1,380	9,200
Panama.....	2,528	1,143	34,323	22,025
Peru.....	805	—	12,061	38,076
St. Pierre and Miquelon....	1,047	801	21,770	20,907
Surinam.....	812	182	10,026	69,191
Trinidad and Tobago.....	47,951	29,544	932,094	1,224,525
Venezuela.....	—	—	402	166
United States Virgin Islands	—	—	—	67
United States.....	38,490	132,576	569,411	844,774
Totals.....	1,104,279	1,550,023	18,230,839	18,315,488
Totals, all countries	1,616,109	2,817,719	31,958,146	35,804,984

nes - not elsewhere specified.

(1) In terms of wheat equivalent. Adjusted to remove effect of time lag in the returns made by Customs.
Conversion rate: 2.3 bushels per cwt.

(2) In terms of wheat equivalent. Preliminary and unadjusted for time lag. Conversion rate: 2.3
bushels per cwt.

(3) Source - Canadian National Millers Association.

(4) Revised.

Canadian Wheat Board Weekly Average Cash Wheat Prices
Basis in Store Fort William-Port Arthur

Class and Grade	Week Ending			
	July 7	July 14	July 21	July 28
cents and eighths per bushel				
<u>Initial Payment to Producers</u>				
1 Northern.....	150	150	150	150
2 Northern.....	146	146	146	146
3 Northern.....	142	142	142	142
4 Northern.....	135	135	135	135
5 Wheat.....	121	121	121	121
6 Wheat.....	117	117	117	117
Feed Wheat.....	113	113	113	113
1 C.W. Garnet.....	135	135	135	135
2 C.W. Garnet.....	130	130	130	130
3 C.W. Garnet.....	125	125	125	125
1 Alberta Red Winter.....	134	134	134	134
2 Alberta Winter.....	129	129	129	129
3 Alberta Winter.....	123	123	123	123
1 C.W. Amber Durum.....	150	150	150	150
2 C.W. Amber Durum.....	146	146	146	146
3 C.W. Amber Durum.....	142	142	142	142
<u>International Wheat Agreement</u>				
<u>and Domestic Sales</u>				
1 Northern.....	207/6	206/7	206/1	206
2 Northern.....	204/6	203/7	203/1	203
3 Northern.....	201/6	200/7	200/1	200
4 Northern.....	198/6	197/7	197/1	197
5 Wheat.....	195/6	194/7	194/1	194
6 Wheat.....	192/6	191/7	191/1	191
Feed Wheat.....	188/6	187/7	187/1	187
1 C.W. Garnet.....	198/6	197/7	197/1	197
2 C.W. Garnet.....	197/6	196/7	196/1	196
3 C.W. Garnet.....	196/6	195/7	195/1	195
1 Alberta Red Winter.....	198/6	197/7	197/1	197
2 Alberta Winter.....	197/6	196/7	196/1	196
3 Alberta Winter.....	196/6	195/7	195/1	195
1 C.W. Amber Durum.....	221/6	220/7	221/4	224
2 C.W. Amber Durum.....	218/6	217/7	218/4	221
3 C.W. Amber Durum.....	213/6	212/7	213/4	216
<u>Export - Class II</u>				
1 Northern.....	207/6	206/7	206/1	206
2 Northern.....	204/6	203/7	203/1	203
3 Northern.....	201/6	200/7	200/1	200
4 Northern.....	198/6	197/7	197/1	197
5 Wheat.....	195/6	194/7	194/1	194
6 Wheat.....	192/6	191/7	191/1	191
Feed Wheat.....	188/6	187/7	187/1	187
1 C.W. Garnet.....	198/6	197/7	197/1	197
2 C.W. Garnet.....	197/6	196/7	196/1	196
3 C.W. Garnet.....	196/6	195/7	195/1	195
1 C.W. Amber Durum.....	221/6	220/7	221/4	224
2 C.W. Amber Durum.....	218/6	217/7	218/4	221
3 C.W. Amber Durum.....	213/6	212/7	213/4	216

Canadian Wheat Board Weekly Average Cash Wheat Prices
Basis in Store Vancouver

Class and Grade	Week Ending			
	July 7	July 14	July 21	July 28
cents and eighths per bushel				
<u>Initial Payment to Producers</u>				
1 Northern.....	150	150	150	150
2 Northern.....	146	146	146	146
3 Northern.....	142	142	142	142
4 Northern.....	135	135	135	135
5 Wheat.....	121	121	121	121
6 Wheat.....	117	117	117	117
Feed Wheat.....	113	113	113	113
1 C.W. Garnet.....	135	135	135	135
2 C.W. Garnet.....	130	130	130	130
3 C.W. Garnet.....	125	125	125	125
1 Alberta Red Winter.....	134	134	134	134
2 Alberta Winter.....	129	129	129	129
3 Alberta Winter.....	123	123	123	123
1 C.W. Amber Durum.....	150	150	150	150
2 C.W. Amber Durum.....	146	146	146	146
3 C.W. Amber Durum.....	142	142	142	142
<u>International Wheat Agreement</u>				
<u>and Domestic Sales</u>				
1 Northern.....	214/2	213/3	211/7	211/4
2 Northern.....	212/2	211/3	209/7	209/4
3 Northern.....	210/2	209/3	207/7	207/4
4 Northern.....	206/2	205/3	203/7	203/4
5 Wheat.....	203/2	202/3	200/7	200/4
6 Wheat.....	200/2	199/3	197/7	197/4
Feed Wheat.....	196/2	195/3	193/7	193/4
1 C.W. Garnet.....	206/2	205/3	203/7	203/4
2 C.W. Garnet.....	205/2	204/3	202/7	202/4
3 C.W. Garnet.....	204/2	203/3	201/7	201/4
1 Alberta Red Winter.....	206/2	205/3	203/7	203/4
2 Alberta Winter.....	205/2	204/3	202/7	202/4
3 Alberta Winter.....	204/2	203/3	201/7	201/4
<u>Export - Class II</u>				
1 Northern.....	214/2	213/3	211/7	211/4
2 Northern.....	212/2	211/3	209/7	209/4
3 Northern.....	210/2	209/3	207/7	207/4
4 Northern.....	206/2	205/3	203/7	203/4
5 Wheat.....	203/2	202/3	200/7	200/4
6 Wheat.....	200/2	199/3	197/7	197/4
Feed Wheat.....	196/2	195/3	193/7	193/4
1 C.W. Garnet.....	206/2	205/3	203/7	203/4
2 C.W. Garnet.....	205/2	204/3	202/7	202/4
3 C.W. Garnet.....	204/2	203/3	201/7	201/4
1 Alberta Red Winter.....	206/2	205/3	203/7	203/4
2 Alberta Winter.....	205/2	204/3	202/7	202/4
3 Alberta Winter.....	204/2	203/3	201/7	201/4

Initial Payment
to Producers

The Canadian Wheat Board in its Instructions to the Trade No. 13 announced the fixed minimum carlot prices for wheat basis in store Fort William-Port Arthur or Vancouver. The amount to be paid in respect of wheat of the grade No. 1 Northern was fixed by Order-in-Council P.C. 1967 - 1340 of the 18th day of July, 1967. The amount to be paid in respect of each other grade of wheat referred to in the following table was fixed by the Board and approved by Order-in-Council P.C. 1967-1495 of the 26th day of July, 1967, pursuant to the Canadian Wheat Board Act, as amended.

Canadian Wheat Board Price List for Specified Grades of Wheat, Crop Year 1967-68
(In Carload Lots, Basis in Store Fort William-Port Arthur or Vancouver)

Grade	Straight	Tough	Damp
dollars per bushel			
No. 1 Hard	1.70	1.66	
No. 1 Northern	1.70	1.66	1.54
No. 2 Northern	1.66	1.62	1.50
No. 3 Northern	1.62	1.58	1.46
No. 4 Northern	1.55	1.51	1.39
No. 5 Wheat	1.41	1.37	1.25
No. 6 Wheat	1.37	1.33	1.23
Feed Wheat	1.33	1.29	1.19
No. 4 Special	1.55	1.51	1.39
No. 5 Special	1.41	1.37	1.25
No. 6 Special	1.37	1.33	1.23
No. 1 C.W. Amber Durum	1.70	1.66	1.54
No. 2 C.W. Amber Durum	1.66	1.62	1.50
No. 3 C.W. Amber Durum	1.62	1.58	1.46
Extra No. 4 C.W. Amber Durum	1.62	1.58	1.46
No. 4 C.W. Amber Durum	1.55	1.51	1.39
No. 5 C.W. Amber Durum	1.41	1.37	1.25
No. 6 C.W. Amber Durum	1.37	1.33	1.23
No. 1 C.W. Garnet	1.55	1.51	1.39
No. 2 C.W. Garnet	1.50	1.46	1.34
No. 3 C.W. Garnet	1.45	1.41	1.29
No. 4 C.W. Garnet	1.39	1.35	1.23
No. 1 Alberta Red Winter	1.54	1.50	1.38
No. 2 Alberta Winter	1.49	1.45	1.33
No. 3 Alberta Winter	1.43	1.39	1.27
No. 4 Alberta Winter	1.37	1.33	1.21
No. 1 Soft White Spring	1.60	1.56	1.44
No. 2 Soft White Spring	1.57	1.53	1.41
No. 3 Soft White Spring	1.53	1.49	1.37
No. 4 Soft White Spring	1.50	1.46	1.34
No. 1 Mixed Wheat	1.41	1.37	1.27
No. 2 Mixed Wheat	1.38	1.34	1.24
No. 3 Mixed Wheat	1.38	1.34	1.24
No. 4 Mixed Wheat	1.33	1.29	1.19
No. 5 Mixed Wheat	1.41	1.37	1.27
No. 6 Mixed Wheat	1.38	1.34	1.24
No. 1 C.W. Mixed Grain	1.28	1.24	1.14

CANADIAN FLOUR MILLING SITUATION

Production

Wheat flour production by Canadian mills during June 1967 amounted to 3,111,000 hundredweight, indicating an increase of 4 per cent over the May 1967 output of 2,989,000 hundredweight, but 6 per cent lower than the June 1966 total of 3,292,000 hundredweight and 7 per cent below the ten-year (1957-66) average production for the month of June of 3,338,000 hundredweight. Mills reporting operations during June 1967 had a total rated capacity of 165,000 hundredweight per 24-hour day and on the basis of a 26-day working period 72.7 per cent of this rated capacity was effective.

Wheat milled for flour during June 1967 amounted to 7,020,000 bushels, 5 per cent over the 6,707,000 bushels milled during the preceding month, but 7 per cent less than the 7,519,000 bushels milled during June 1966. Of the wheat milled for flour during June 1967 some 6,060,000 bushels were Western Canadian spring wheat (other than Durum) while the remainder consisted of Ontario winter wheat (591,000 bushels); Durum (295,000 bushels); and all other (75,000 bushels).

Exports

According to preliminary Customs returns, exports of Canadian wheat flour during June 1967 amounted to 1,225,000 hundredweight (some 2,818,000 bushels of wheat equivalent) 10 per cent higher than the 2,550,000 bushels exported during the previous month, but 15 per cent below the adjusted June 1966 exports of 3,325,000 bushels. Flour shipments during the month went to forty-five countries with exports to Cuba amounting to 1,107,000 bushels of wheat equivalent and accounting for 39 per cent of the June total. Other principal markets for Canadian wheat flour in terms of wheat during the month, with shipments in thousands of bushels were as follows: Morocco, 611; Britain, 320; Ghana, 172; United States, 133; Jamaica, 116; and Leeward and Windward Islands, 101.

Wheat Milled for Flour, and Production and Exports of Wheat Flour, Canada

Crop Year	Wheat Milled for Flour bushels	Wheat Flour	
		Production	Exports(1)
			cwt.
1935-36-1939-40 average.....	67,845,114	29,405,451	9,603,941
1940-41-1944-45 average.....	99,704,638	43,908,245	23,699,546
1945-46-1949-50 average.....	107,330,372	47,011,540	25,819,721
1950-51-1954-55 average.....	100,446,328	43,847,894	21,812,041
1955-56-1959-60 average.....	99,148,211	39,752,589	16,349,156
1960-61.....	89,731,155	39,914,644	15,513,836
1961-62.....	88,240,580	39,539,651	13,892,676
1962-63.....	78,789,332	35,505,220	11,854,458
1963-64.....	111,670,577	50,103,569	23,873,978
1964-65.....	87,209,242	39,107,358	13,714,069
1965-66.....	97,925,995	43,531,263	16,576,117
1966-67(2)			
August.....	8,035,126	3,526,010	1,270,083
September.....	8,247,036	3,634,468	1,029,778
October.....	8,365,845	3,694,079	1,530,557
November.....	8,809,679	3,895,960	1,208,417
December.....	7,122,105	3,171,307	1,721,614
January.....	7,262,906	3,241,894	1,424,192
February.....	6,792,921	3,015,934	776,515
March.....	8,442,301	3,808,825	1,321,818
April.....	6,570,943	2,922,704	1,278,107
May.....	6,707,261	2,989,097	1,108,670
June.....	7,019,903	3,110,819	1,225,095
Totals.....	83,376,026	37,011,097	13,894,846
Same months 1965-66(3).....	90,246,680	40,145,325	15,567,385

(1) Based on Customs returns. Exports for the crop years 1945-46-1965-66 revised to remove effect of time lag in the returns made by Customs.

(2) Subject to revision.

(3) Revised figures.

UNITED STATES SITUATION

Disappearance of
United States Wheat

During the crop year (July-June) 1966-67, total disappearance (exports plus domestic use) of United States wheat amounted to 1,422 million bushels; this was some 11 per cent less than the all-time high of 1,599 million set in 1965-66. However, the 1966-67 total disappearance was some 3 per cent more than the comparable 1964-65 level of 1,376 million. As compared with the 1965-66 total disappearance, the 1966-67 figure reflected lower use of wheat for feeding purposes as well as lower exports of both wheat and wheat flour. Preliminary data show that the 1966-67 exports of wheat, wheat flour and products in terms of grain equivalent amounted to 742.4 million bushels; this was some 15 per cent less than the previous high of 869.3 in 1965-66 but 3 per cent larger than the 723.4 million exported in 1964-65. In the 1966-67 crop year, domestic requirements decreased from an estimated 729.8 million bushels in 1965-66 to 679.6 million in the year recently completed.

Total disappearance into domestic and export channels in 1966-67 exceeded the 1966 production by 8 per cent and, as a consequence, year-end stocks declined from 535.2 million at June 30, 1966, to 425.7 million bushels at the same date in 1967.

United States Wheat Supplies

Item	1965-66(1)	1966-67(2)
	million bushels	
Carryover at beginning of crop year (July 1).....	817.3	535.2
Production.....	1,315.6	1,310.6
Total estimated domestic supplies.....	2,132.9	1,845.8
Imports of wheat and wheat flour in terms of wheat for domestic use, July-June.....	1.5	1.9
Total estimated supplies (3).....	2,134.3	1,847.7
Less estimated domestic requirements for crop year(3)	729.8	679.6
Available for export and for carryover.....	1,404.5	1,168.1
Deduct:		
Exports of wheat as grain, July-June.....	786.1	674.4
Exports of wheat flour and products in terms of wheat, July-June (4).....	83.3	68.0
Total exports of wheat and wheat flour(5).....	869.3	742.4
Balance on July 1 for export and for carryover.....	535.2	425.7

(1) Revised. (2) Preliminary.

(3) Includes shipments to United States Territories and wheat for military food use at home and abroad. (4) Flour exports exclude "Milled in bond".

(5) Data include shipments for relief.

1967 Wheat Crop
Forecast at 1,596
Million Bushels

In a report released on July 11, 1967, the Crop Reporting Board of the United States Department of Agriculture stated in part that production of all wheat is forecast at a record 1,596 million bushels, 139 million bushels above the previous high established in 1958. The yield per harvested acre is 26.6 bushels - second highest in history. The acreage of all wheat for harvest as grain is 60.0 million, the largest since 1953.

A record winter wheat crop of 1,274 million bushels is in prospect. The July 1 estimate is 3 per cent above a month earlier and 21 per cent above last year. A larger acreage for harvest than expected earlier and improved yields in most western states contributed mostly to the larger production. The U.S. yield per acre is indicated at 27.5 bushels, compared with 27.4 bushels in 1966 and the average of 26.2 bushels. Acreage for harvest as grain is expected to total 46.3 million, up 20 per cent from 1966 and 25 per cent above average. The acreage for harvest in the Central and Southern Plains is now estimated to be larger than expected earlier. Rains during late May and June revived some acreage thought to be beyond recovery. However, yields in most of this area are down slightly from prospects a month ago.

Wheat harvest progressed slowly in the Plains area during June, because of wet soils. By July 1, some acreage was still to be harvested in the Texas Panhandle and northern Oklahoma. In Kansas, wheat harvest was only 26 per cent complete compared to the usual 65 per cent by July 1. Reports on quality of the Oklahoma and Kansas wheat indicate protein content above last year but test weight below 1966. In the Corn Belt, wheat prospects continue good, but harvest has been slowed because of wet soils. By July 1, harvest was about 35 per cent complete in Illinois, 10 per cent in Indiana but just starting in Ohio. Abundant winter and spring moisture has provided nearly ideal growing conditions in the Pacific Northwest and record yields are in the offing. Some early maturing fields are being harvested in Washington. Development of Montana wheat is later than usual, but yield prospects continue good to excellent.

Spring wheat other than durum is forecast at 244 million bushels, 28 per cent above last year and 30 per cent above average. Production prospects are up from last year in practically all areas. The largest increase occurred in North Dakota. The hard spring wheat in North Dakota and Montana was seeded late and development is slower than usual. Subsoil moisture is generally adequate because of earlier rains, but topsoil moisture was becoming short over much of North Dakota by July 1. Yield is forecast at 22.7 bushels per acre, up 1.1 bushels from last year and above the average of 21.3 bushels. Planted acreage of spring wheat other than durum is estimated at 11.0 million acres. This compares with 9.1 million last year and the average of 9.4 million acres. Acres for harvest in 1967 is expected to total 10.7 million, up 22 per cent from 1966.

Production of durum wheat in 1967 is estimated at a record of 78 million bushels, up 24 per cent from 1966, and 39 per cent above average. Rainfall was light during June over the main durum area but good earlier moisture helped to maintain favourable prospects. Subsoil moisture supplies are still adequate over most of the area, but rain is needed to replenish surface moisture. The 1967 crop will be harvested from 2.9 million acres, 18 per cent more than 1966, and 34 per cent above average. All durum States expect to harvest more acreage. The expected yield of 27.3 bushels compares with 25.9 bushels in 1966.

Stocks of Wheat
in All Positions
July 1, 1967

On July 24, the United States Department of Agriculture reported that all wheat in storage on July 1 totalled 426 million bushels, the smallest carryover since 1952.

July 1 holdings were 20 per cent less than a year earlier and 62 per cent below average. The decline in total stocks occurred in off-farm holdings. Wheat stored off-farm totalled 279 million bushels compared with 404 million a year earlier and the average of 1,021 million bushels. Farm stocks of 147 million bushels were up 16 million from a year ago and 38 million above average.

Durum wheat stocks in all storage positions on July 1 totalled 28.6 million bushels, 47 per cent below a year earlier and the smallest July 1 holdings in 5 years. Farm stocks, at 18.5 million bushels, were 23 per cent less than last year while off-farm stocks of 10.1 million bushels were 67 per cent below holdings a year earlier.

U.S. Wheat Stocks by Positions, July 1, 1967 with Comparisons

Position	July 1 Average 1961-65	July 1 1966	April 1 1967	July 1 1967
thousand bushels				
<u>All Wheat</u>				
On farms (1).....	108,654	130,771	240,933	147,066
Commodity Credit Corp. (2).....	38,438	9,521	1,539	1,122
Mills, Elev. & Whses. (1)(3).....	982,349	394,878	459,545	277,472
Totals.....	1,129,442	535,170	702,017	425,660
<u>Durum Wheat (4)</u>				
On Farms (1).....	10,200	24,029	28,896	18,529
Commodity Credit Corp. (2).....	1,752	1,686	281	151
Mills, Elev. & Whses. (1)(3).....	28,002	28,702	16,365	9,970
Totals.....	39,953	54,417	45,542	28,650

(1) Estimates of the Crop Reporting Board.

(2) C.C.C.-owned grain at bin sites.

(3) All off-farm storages not otherwise designated, including terminals and processing plants. Includes C.C.C.-owned grain in these storages.

(4) Included in all wheat, July 1 average 1962-65 only.

Flour Production

hundredweight.

The Bureau of the Census, Department of Commerce, estimated wheat flour production in June at 20,000,000

Flour mills in June ground 46,000,000 bushels of wheat, compared with 45,000,000 bushels in the previous month. Wheat offal output was 369,000 tons.

Cash Wheat Prices on the Kansas City and Minneapolis Markets

No. 2 Hard Winter, Kansas City		No. 1 Northern Spring, Minneapolis	
Date	Price	Date	Price
	cents per bushel		cents per bushel
July 3, 1967	165 3/4	July 3, 1967	179 1/2 - 181 1/2
4	Independence Day	4	Independence Day
5	160 3/4 - 168 1/4	5	183 5/8 - 185 5/8
6	161 1/2 - 168 3/4	6	184 5/8 - 186 5/8
7	159 1/2 - 162	7	188 - 190
10	NA	10	191 3/8 - 193 3/8
11	NA	11	191 1/2 - 193 1/2
12	161 1/2	12	190 3/8 - 192 3/8
13	161 1/2 - 163	13	189 1/2 - 191 1/2
14	158 1/2 - 162	14	187 1/4 - 189 1/4
17	158 - 160 1/2	17	190 1/2 - 192 1/2
18	166	18	191 5/8 - 193 5/8
19	164 3/4	19	193 5/8 - 195 5/8
20	161 1/2 - 167 1/2	20	195 5/8 - 197 5/8
21	161 - 168	21	196 1/2 - 198 1/2
24	NA	24	193 5/8 - 195 5/8
25	159 1/2 - 168 3/4	25	194 1/2 - 197 1/2
26	161 1/4 - 170 1/2	26	193 3/4 - 197 3/4
27	161 1/2 - 166 1/2	27	195 - 199
28	160 - 167	28	190 1/4 - 196 1/4
31	157 1/2 - 167 3/4	31	183 5/8 - 188 5/8

NA Not available.

Chicago Wheat Futures, High Points of Closing

Date	July	September	December	March	May
	cents and eighths per bushel				
July 3, 1967	148/6	152/5	159/2	164/3	166
4			Independence Day		
5	150/7	154/4	161/1	166/1	167/6
6	149/7	153/4	160	164/7	166/4
7	149/7	153/5	160/1	165/1	166/4
10	150/3	154	160/5	165/4	167
11	150/7	154/2	160/6	165/6	167/1
12	149	152/4	159/4	164/2	165/6
13	148/2	151/3	158/2	162/6	164
14	147/1	149/7	156/6	161/2	162/6
17	149/1	152	159	163/5	164/4
18	150/5	153/2	159/7	164/7	166
19	151/3	154	160/6	165/3	166/5
20	151/3	153/2	159/7	164/4	165/6
21		155/4	162/2	167	168/4
24		153/7	160/5	165/5	166/6
25		154/6	161/5	166/6	168/2
26		156/3	163	167/7	169/6
27		155/3	162/1	167	168/5
28		153/7	160/4	165/2	166/7
31		153/6	160/3	165/1	166/6

AUSTRALIAN SITUATION

Wheat Supplies at
Record Level Due
To Record Production

For the 1966-67 marketing year, total supplies of wheat in Australia are estimated at an all-time high of 478.4 million bushels in contrast to the previous year's total of 284.1 million. The crop recently harvested, at some 461.8 million bushels, is approximately 25 per cent larger than the previous record of 370.0 million harvested in 1964-65. Carryover stocks declined from 24.4 million bushels at December 1, 1965, to 16.5 million in 1966. As a result, an estimated 393.6 million bushels are available for export and for carryover during 1966-67 after deducting some 84.8 million for anticipated domestic requirements; these available supplies are sharply above the comparable total of 191.2 million in 1965-66.

During the period December 1 - July 1 of the current Australian crop year, combined exports of wheat as grain and wheat flour in terms of grain equivalent amounted to a record 186.4 million bushels and was 79 per cent larger than the 104.1 million exported during the corresponding period of 1965-66. On July 2, 1967, the balance remaining for export and for carryover at 207.2 million bushels exceeds by a wide margin the comparable 1966 total of 87.1 million.

Australian Wheat Supplies

Item	1965-66(1)	1966-67(2)
	million bushels	
Carryover, including flour as wheat, at beginning of crop year (December 1)	24.4	16.5
Production	259.7	461.8
Total estimated domestic supplies	284.1	478.4
Less estimated domestic requirements for crop year	92.9	84.8(1)
Available for export and for carryover	191.2	393.6
Deduct:		
Exports of wheat as grain, December 1-July 1 ...	93.8	175.5
Exports of wheat flour in terms of wheat, December 1-July 1	10.3	10.9
Total exports of wheat and wheat flour	104.1	186.4
Balance on July 2 for export and for carryover ...	87.1	207.2

(1) Revised.

(2) Preliminary.

The following information relative to the Australian situation has been extracted from a report from Mr. J.E.G. Gibson, Assistant Commercial Secretary for Canada, Canberra, under date of July 17, 1967 and is reproduced with the permission of the Trade Commissioner Service, Department of Trade and Commerce.

Overseas Marketing

During the second half of June, the Australian Wheat Board recorded two separate wheat sales of 50,000 tons (1,867,000 bushels) each to India. Most of this wheat will be "No. 1 Off-Grade" and all will be for immediate delivery. Apart from the statement that these sales were made at "commercial prices", no other indication of the terms of these sales was given. Thus to date in this calendar year, India has purchased 325,000 tons (12,133,000 bushels) of Australian wheat and has received a further 150,000 tons (5,600,000 bushels) as a food gift from the Australian government.

Meanwhile, a senior official from the Ministry of Food and Agriculture in New Delhi is currently in Australia seeking emergency wheat supplies. On his arrival here the official stated that the closure of the Suez Canal has caused delivery delays. He said that "Wheat that would have arrived in India in August and September will now be delayed and other supplies will be needed to fill the gap of some 100,000 to 300,000 tons (3,733,000 to 11,200,000 bushels)." While the official did not indicate any quantities which he might purchase, he did expose his hope that a substantial gift might be forthcoming.

Following the recent sales to India, Dr. Callaghan, Chairman of the Australian Wheat Board, released a statement outlining export sales from the 1966-67 crop. His remarks follow:

"Export wheat sales made last week by the Australian Wheat Board brought the total overseas sales for the season to 277 million bushels. With another five months to go before the end of the crop year on November 30, and with prospects for further sales quite promising, the Board is now confident that the season's carryover will not be excessive, but of reasonable and manageable proportions, except in New South Wales. Here, because of internal movement and shipping limitations, it is estimated that the carryover from the unprecedented deliveries of about 185 million bushels, will be of the order of 40 million bushels.

Only on four previous occasions has Australia shipped for export over 200 million bushels in any one crop year - the record being 267,043,000 bushels in 1964-65. The other years have been -

1960-61	231,465,000 bushels
1962-63	228,614,000 "
1963-64	253,327,000 "

Of this year's record crop of 462 million bushels, the Board expects to receive 438,500,000 bushels which is 92 million bushels or 26.5 per cent above the previous record receipts of 346,500,000 bushels in 1964-65.

If we add to the receipts last season's carryover of 16.6 million bushels, make allowance for home consumption requirements this year of 60.5 million bushels, and a normal carryover of 20 million bushels, the Board was faced with the mammoth task of selling on overseas markets approximately 375 million bushels. Not only had the wheat to be sold, but it had to be sold expeditiously so as to be certain that maximum internal movement and shipments throughout the season would be maintained at satisfactory levels. On present values, 10 million tons (373,333,000 bushels) for export would bring an export income of over \$A. 500 million (\$600 million Canadian).

Apart from the record contracts with China totalling 122,930,000 bushels for shipment by the end of November, the Board has been

singularly successful in its efforts to diversify sales, not only by seeking out new markets such as in South America, but by regaining or increasing access to others. These results reflect the Board's policy of offering wheat according to quality, and of taking advantage of more efficient shipping services especially to Europe, where marked success has been achieved by the adoption of transshipment arrangements. The availability of high grade wheats of the Prime Hard and Hard classes in addition to fair average quality grades is enabling the Board to increase its access to many markets.

Indicative of the success of these efforts are the following regional figures on sales made so far this season.

People's Republic of China	122,930,000 bushels
Other Asian markets	
(including Pakistan, India & Japan)	81,380,000 "
Europe	
(including the U.K. & Ireland)	26,660,000 "
Middle East	
(including Iraq & Lebanon)	17,080,000 "
Africa	
(including South Africa & Rhodesia)	15,410,000 "
South America	
(Chile, Brazil & Peru)	9,660,000 "
New Zealand	1,830,000 "
Others - wheat and flour	2,570,000 "

The recent sale of 100,000 tons or 3,733,000 bushels of wheat to India has brought the total disposal to India for the season to 17,060,000 bushels. Sales to Pakistan total 18,510,000 bushels which is a record sale to this country.

Wheat Research Allocations

The Commonwealth Government's contribution for wheat research in 1967-68 has been set at \$A.1,016,402

(\$1,220,000 Canadian). In addition to this a wheat tax

of one quarter of a cent per bushel provided by growers is used to finance additional research in each State. Thus during the forthcoming year more than \$A.2,000,000 (\$2,400,000) will be available for wheat research in Australia. Included in research to be undertaken in the near future are investigations into the immobilization of soil nitrogen by wheat straw, a study of soil fertility directed to improve fertilizer practices, the effect of environment, particularly drought, on seed wheat and subsequent plant growth, a study into methods of reducing moisture in harvested grain and the establishment of an Australian National Wheat Variety Collection to service the needs of research workers.

Exports of Australian Wheat and Wheat Flour in Terms of Wheat December 1 - July 1, 1966-67 and Corresponding Period 1965-66

Destination	Wheat		Wheat Flour	
	1965-66	1966-67	1965-66	1966-67
thousand bushels				
<u>Western Europe</u>				
<u>EEC</u>				
Belgium and Luxembourg	—	219	—	—
Germany, Federal Republic..	—	1,245	—	—
Netherlands	—	1,336	—	—
Sub-total	—	2,800	—	—

Exports of Australian Wheat and Wheat Flour in Terms of Wheat
December 1-July 1, 1966-67 and Corresponding Period 1965-66

Destination	Wheat		Wheat Flour	
	1965-66	1966-67	1965-66	1966-67
thousand bushels				
<u>Other Western Europe</u>				
Britain	13,053	9,998	797	429
Ireland	2,127	1,149	—	—
Malta	270	367	—	—
Norway	258	3,098	—	—
Switzerland	—	57	—	—
Sub-totals	15,708	14,669	797	429
Totals	15,708	17,469	797	429
<u>Eastern Europe</u>				
Germany, East	439	—	—	—
U.S.S.R. (Russia)	6,004	—	—	—
Totals	6,443	—	—	—
<u>Africa</u>				
Malawi	—	—	195	183
Mauritius	—	—	236	242
Mozambique	989	970	50	41
Rhodesia	1,619	1,608	—	—
South Africa	1,930	9,280	—	—
Zambia	484	840	—	198
Others	18	5	171	84
Totals	5,040	12,703	652	748
<u>Asia</u>				
Aden	1,378	1,448	—	—
Aden and Aden I/T	—	—	431	298
Aden and Aden I/T Atta	—	—	315	261
Arabian Gulf	—	—	59	32
Arabian Gulf Atta	—	—	456	361
Ceylon	7	7	4,895	5,037
China	31,562	65,427	—	—
Hong Kong	1,305	2,202	28	20
India	7,089	12,034	—	—
India Atta	—	—	—	777
Indonesia	—	—	78	949
Iran	6,187	830	—	—
Iraq	—	3,801	—	—
Japan	6,426	9,215	—	—
Korea, North	1,116	3,952	—	—
Kuwait	910	1,870	—	—
Lebanon	370	4,566	—	—

Exports of Australian Wheat and Wheat Flour in Terms of Wheat
December 1-July 1, 1966-67 and Corresponding Period 1965-66

Destination	Wheat		Wheat Flour	
	1965-66	1966-67	1965-66	1966-67
thousand bushels				
<u>Asia</u>				
Pakistan	380	18,508	—	—
Philippines	1	91	26	66
Saudi Arabia	664	1,241	236	25
Taiwan	462	—	—	—
Thailand	380	544	204	188
<u>Malaysia</u>				
Malaya	2,263	5,623	223	—
Malaya Atta	—	—	22	—
Sabah	—	—	51	13
Sarawak	—	—	31	20
Singapore	3,441	5,086	36	19
Singapore Atta	—	—	1	1
Singapore A/C B.W.O.	—	—	27	—
Others	55	451	69	69
Totals	63,996	136,896	7,188	8,136
<u>Oceania</u>				
New Zealand	2,582	1,641	—	—
<u>Western Hemisphere</u>				
Brazil	—	3,825	—	—
Chile	—	1,975	—	—
Peru	—	848	1	1
West Indies Area	—	—	178	175
Totals	—	6,648	179	176
<u>Pacific Area and Sundries</u>				
Pacific Islands Ships' Stores and Sundries	31	139	1,487	1,412
Totals, all countries	93,800	175,500	10,300	10,900

ARGENTINE SITUATION

Total Supplies
Considerably
Below Previous
Year

The 1966-67 Argentine production of wheat is estimated at 234.4 million bushels; this is 6 per cent larger than the 220.5 million harvested in 1965-66. A sharp reduction in opening stocks from 130.1 million bushels at December 1, 1965 to only 13.8 million in 1966 offset the increased 1966

production. As a consequence, total supplies are estimated at 248.2 million bushels and some 20 per cent less than the level of 350.5 million of the previous year. After making an allowance of 140.0 million bushels for anticipated domestic requirements, an estimated 108.2 million remain available for export and for carryover in 1966-67 in contrast to 219.0 million in 1965-66.

During December 1966 - June 1967, based on preliminary data exports of wheat and wheat flour in terms of wheat amounted to 62.4 million bushels. This was in sharp contrast to the 168.9 million exported during the same months in 1965-66. On July 1, 1967, the balance remaining for export and for carryover was estimated at 45.8 million bushels in contrast to the July 1, 1966 total of 50.2 million.

Argentine Wheat Supplies

Item	1965-66(1)	1966-67(2)
	million bushels	
Carryover at beginning of crop year (December 1)(3)....	130.1	13.8
Production.....	220.5	234.4
Total estimated domestic supplies.....	350.5	248.2
Less estimated domestic requirements for crop year.....	131.5	140.0(1)
Available for export and for carryover.....	219.0	108.2
Deduct:		
Exports of wheat as grain, December-June.....	168.5	62.1
Exports of wheat flour in terms of wheat, December - June.....	0.4	0.3
Total exports of wheat and wheat flour.....	168.9	62.4
Balance on July 1 for export and for carryover.....	50.2	45.8

(1) Revised.

(2) Preliminary.

(3) Includes allowances for farm stocks.

The following account of the Argentine situation has been extracted from a report from Mr. H.E. Ryan, Assistant Commercial Secretary (Agriculture), Buenos Aires, under date of July 25, 1967 and is reproduced with the permission of the Trade Commissioner Service, Department of Trade and Commerce. Where possible, conversions to Canadian measures and currency have been made for the convenience of our readers.

Weather

June was characterized by extremely cold weather throughout most of the grain belt. In some regions, temperatures reached their lowest levels in over forty years. Heavy frosts occurred in many regions, sometimes causing widespread damage to the crops, particularly those of horticulture in the provinces of Buenos Aires and orchards in northeastern Buenos Aires and Entre Rios. More recently, excessive rainfall in the province of Entre Rios has caused delays in sowing cereals, particularly of the dual purpose lots.

Wheat

Seeding was well advanced by the end of June in the provinces of Buenos Aires and La Pampa. However, in Santa Fé and Cordoba drought hindered planting and in Entre Rios excessive moisture caused similar delays. Because of the fluctuating weather conditions, it is too early to provide a forecast of what the actual seeded area will be. Some traders are suggesting that the wheat area may be some 10 per cent greater than the 6.3 million hectares (15.6 million acres) of last year. It now seems unlikely that the 8 million hectares (19.8 million acres) set as an objective by the Secretary of Agriculture will be achieved. However, as has been reported on many occasions, the Argentine crop often is affected more by changes in yield than by changes in acreage and, therefore, the size of the crop will only be known some months hence.

The supply situation continues to be serious; the ban on exports placed in mid-June continues in effect, but there is considerable controversy over whether or not Argentina will in fact have to import. After the ban, millers were obliged to declare actual stocks as of June 15 and it is hoped that this supply plus the wheat held in other private hands will provide sufficient for domestic requirements and seeds. Last week-end, however, the Ministry of Economy announced that wheat will be imported, although details were not made available. With the Brazilian contract as mentioned in our last report and domestic consumption maintaining its usual normal level, it would appear that there may possibly be a need for importing 100,000 to 200,000 tons (3,674,000 to 7,349,000 bushels).

Closing prices for bread wheat at the end of June were 1,700 pesos (\$1.43 per bushel) delivered Buenos Aires and 1,500 (\$1.26 per bushel) in Bahia Blanca. During the first half of July, these increased by 100 pesos (8 cents per bushel) and on July 19 prices increased to a level of 2,040 pesos (\$1.72 per bushel) f.o.r. Buenos Aires for hard wheat and 2,000 pesos (\$1.69 per bushel) for semi-hard. Millers were primarily responsible for this increase, as they attempted to hedge against possible shortages, notwithstanding government announcements that imports would be made if they were found necessary. The National Grain Board still has some stocks remaining which it has been offering to millers at prices ranging from 1,500 pesos to 1,650 (\$1.26 to \$1.39 per bushel), but this has not greatly affected the high prices existing on the open market as Grain Board stocks are limited.

The Government has yet to announce minimum prices for the new crop, the reason being that with the highly inflated prices at present, it is felt this is providing stimulus to increased production and that any announcement of official prices will tend to dampen rather than encourage sowings.

During the period under review, prices in the Buenos Aires Futures Market reflected the shortage. In late June, July-October deliveries were being quoted at a rather stable level of 1,770 - 1,780 pesos (\$1.49 - \$1.50 per bushel). By early July, these increased slightly and reached by mid-month a level of 1,842 pesos (\$1.55 per bushel) for August delivery; 1,860 (\$1.57 per bushel) for September and 1,898 (\$1.60 per bushel) for October. At present, prices are quoted at 2,015 pesos (\$1.70 per bushel) for August; 2,025 (\$1.71 per bushel) for September and 2,040 pesos (\$1.72 per bushel) per 100 kilos f.o.r. Buenos Aires October delivery. The present price in the Cereal Exchange for hard wheat, Grade 1, 80 kilos per hectolitre (64 pounds per bushel) is 2,080 pesos (\$1.75 per bushel); semi-hard is quoted at 2,040 pesos (\$1.72 per bushel). At Bahia Blanca for similar grades, the prices are 1,880 and 1,840 pesos (\$1.58 and \$1.55 per bushel).

Durums continued firm during the month. At the end of June, 1,770 pesos (\$1.49 per bushel) were being paid to farmers for delivery Buenos Aires and 1,610 (\$1.36 per bushel) for delivery Bahia Blanca. It has been reported that only small stocks remained by mid-July. During June, some exports of durums occurred at US\$ 80.00 per metric ton (\$2.35 per bushel) c.i.f. Rotterdam and in July, prices were being quoted at US\$ 72.00 per metric ton (\$2.11 per bushel) f.o.b. southern ports. Durums are quoted in the Cereal Exchange at present at 1,820 pesos (\$1.53 per bushel) f.o.r. Buenos Aires, Grade 2, 70 kilos per hectolitre (56 pounds per bushel) and in Bahia Blanca at 1,650 pesos (\$1.39 per bushel).

Argentine Wheat Exports December-May 1966-67 and 1965-66

Destination	May		December-May	
	1966	1967	1965-66	1966-67
thousand bushels				
<u>Western Europe</u>				
<u>EEC</u>				
Belgium	276	26	631	756
France.....	—	406	1,927	2,505
Germany, Federal Republic...	—	—	1,898	799
Italy.....	2,064	423	10,005	9,006
Netherlands.....	589	330	3,599	6,381
Sub-totals.....	2,929	1,185	18,060	19,447
<u>Other Western Europe</u>				
Britain.....	1,025	427	5,501	7,856
Norway.....	157	—	1,463	498
Portugal.....	—	259	—	1,144
Switzerland.....	—	11	238	375
Sub-totals.....	1,182	697	7,202	9,873
Totals.....	4,111	1,882	25,262	29,320
<u>Eastern Europe</u>				
Czechoslovakia.....	—	—	184	—
Hungary.....	—	—	—	480
Poland.....	385	—	3,679	—
U.S.S.R. (Russia).....	6,762	—	51,436	—
Totals.....	7,147	—	55,299	480
<u>Africa</u>				
Algeria.....	—	—	—	795
Angola.....	—	—	329	459
Mozambique.....	—	—	420	—
Tanzania.....	—	—	377	—
Totals.....	—	—	1,126	1,254
<u>Asia</u>				
China, Communist.....	9,270	—	39,438	—
China, Nationalist.....	—	—	806	—
Cyprus.....	—	—	—	381
India.....	—	—	—	184
Iran.....	—	—	1,864	—
Korea, North.....	—	—	738	—
Totals.....	9,270	—	42,846	565

Argentine Wheat Exports December-May 1966-67 and 1965-66

Destination	May		December-May	
	1966	1967	1965-66	1966-67
thousand bushels				
<u>Western Hemisphere</u>				
Barbados.....	—	—	3	—
Bolivia.....	—	77	146	280
Brazil.....	3,569	5,684	22,181	27,187
Chile.....	—	776	73	1,217
Colombia.....	—	634	—	1,576
Paraguay.....	—	246	579	937
Peru.....	902	147	5,134	6,940
Puerto Rico.....	—	—	55	—
Totals.....	4,471	7,564	28,171	38,137
Totals, all countries	24,999	9,446	152,702	69,755

CALENDAR OF WHEAT EVENTS

- July 11 According to a report published by the Crop Reporting Board, United States Department of Agriculture, all wheat production in the United States in 1967 is forecast at a record 1,596 million bushels; this is 22 per cent more than last year's production and 31 per cent above the average.
- July 24 The United States Department of Agriculture reported that all wheat stocks in storage on July 1, 1967, totalled 426 million bushels; this is the smallest July 1 stocks since 1952.
- July 25 According to a report received from Mr. H.E. Ryan, Assistant Commercial Secretary (Agriculture) for Canada, Buenos Aires, seeding was well advanced by the end of June in the provinces of Buenos Aires and La Pampa. However, it was too early to provide a forecast of what the actual seeded area would be due to the fluctuating weather conditions.
- August 1 Trade Minister Robert Winters announced that the Soviet Union had purchased from Canada a minimum of 75 million bushels of Canadian wheat and flour for shipment during the period August 1, 1967 to July 1, 1968. The contract, amounting to about \$150 million, was concluded by the Canadian Wheat Board and Exportkhleb, the Soviet wheat agency.
- August 4 Total wheat acreage in Canada in 1967 is estimated at a record 30.1 million acres; this is 1 per cent larger than last year's 29.7 million acres, according to a report published by the Dominion Bureau of Statistics.
- According to a report issued by the Canada Department of Agriculture Research Station, Winnipeg, Manitoba, it seems unlikely that the cereal rusts will affect the yield of most fields in 1967.
- August 7 According to the 1968 Wheat Situation Outlook Issue released by the Economic Research Service — United States Department of Agriculture, the supply of wheat in the United States in 1967-68 is expected to exceed 2 billion bushels about 10 per cent larger than that of a year earlier.



1010687053