

CATALOGUE No.

22-005

MONTHLY

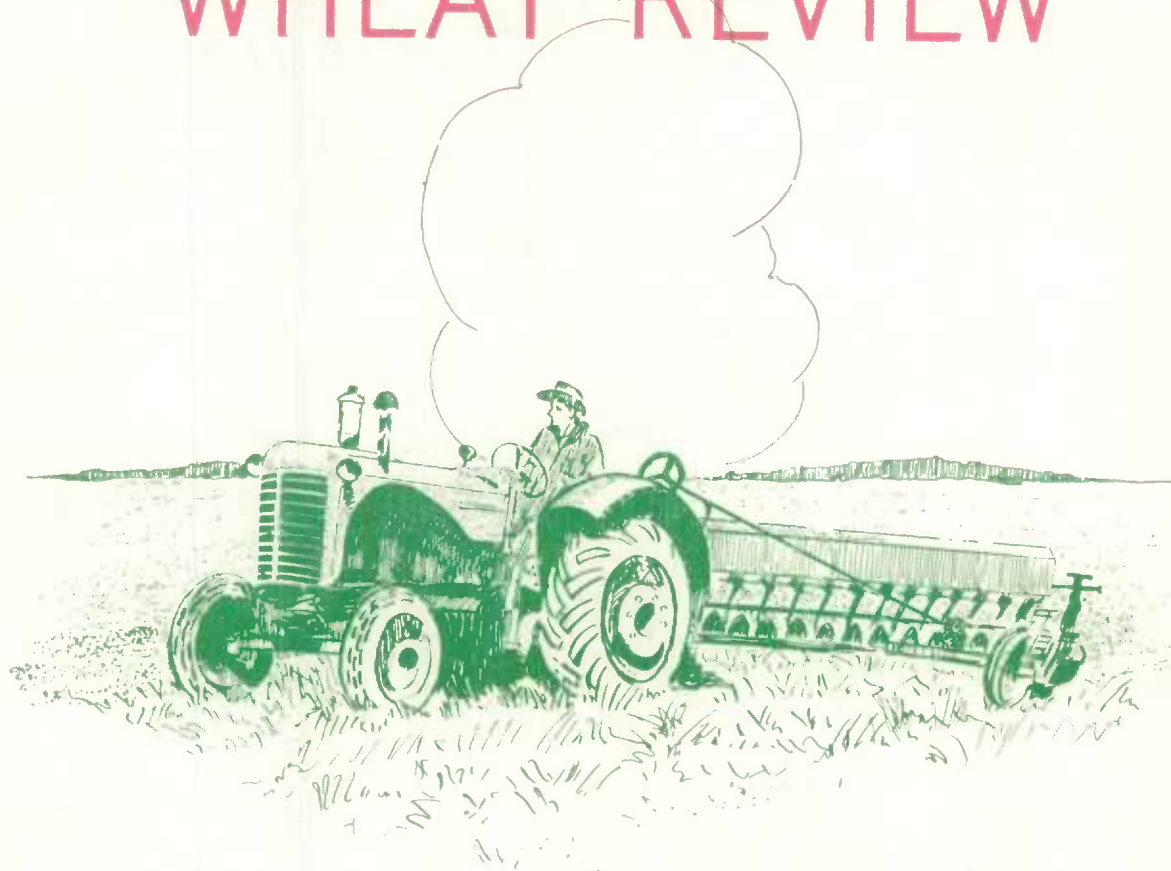


CANADA

DOMINION BUREAU OF STATISTICS

AGRICULTURE DIVISION

THE WHEAT REVIEW



APRIL 1967

DOMINION BUREAU OF STATISTICS

THE WHEAT REVIEW

APRIL 1967

Published by Authority of
The Minister of Trade and Commerce

Prepared in the Crops Section, Agriculture Division
Dominion Bureau of Statistics, Ottawa

TABLE OF CONTENTS

	<u>Page</u>
World Wheat Situation	
1966-67 Wheat Exports Third Highest on Record	3
World Wheat Supplies Slightly Above Previous Year	3
I.W.C. Report	4
I.W.C. Cumulative Totals of Commercial Purchases	6
Canadian Situation	
Record Production Results in Record Supplies	7
August-March Exports 8 Per Cent Below Record	7
Marketings, Disappearance and Visible Supplies	8
March 1967 Exports of Wheat and Flour Total 24.8 Million Bushels	8
Delivery Quota on Alberta Winter Wheat	9
Trade Agreement With Bulgaria	9
General Quota Position	10
Wheat Shipments to the United States	10
Rail Shipments of Wheat to Maritime Ports	10
Canadian Wheat Stocks at March 31, 1967	11
Farmers' Marketings of Wheat	12
Visible Supply of Canadian Wheat	13
Grading of Wheat Inspected, August-March, 1966-67 with Comparisons	13
Weekly Visible Supply and Farmers' Marketings (Charts)	14
Rail Shipments of Wheat from Fort William-Port Arthur	15
Overseas Exports of Canadian Grain by Ports of Loading	15
Freight-Assisted Shipments	16
Monthly Exports of Canadian Wheat and Wheat Flour	17
Exports of Canadian Wheat by Destination	18
Customs Exports of Canadian Wheat Flour by Countries of Consignment	21
Canadian Wheat Board Weekly Average Cash Wheat Prices	23
Canadian Flour Milling Situation	
Production and Exports	25
United States Situation	
Current Crop Year Supplies 13 Per Cent Less than Year Previous	26
Exports 5 Per Cent Below Previous Year	26
Crop and Weather Conditions	27
Wheat Stocks on Farms	27
Flour Production	27
Cash Wheat Prices on the Kansas City and Minneapolis Markets	28
Chicago Wheat Futures, High Points of Closing	28
Argentine Situation	29
Australian Situation	32
Grain Situation in Britain	36
Calendar of Wheat Events	37

WORLD WHEAT SITUATION

1966-67 Wheat Exports Third Highest on Record

Total exports of wheat and wheat flour in terms of wheat from the four traditional major exporters during the August-March period of the current crop year have amounted to 1,073.2 million bushels, 14 per cent below the previous peak of 1,244.6 million bushels exported during the same eight months in 1965-66 but exceeding by a margin of 42 per cent the ten-year (1955-56-1964-65) average shipments for the same period of 754.1 million. As indicated in the accompanying table, based on the Canadian crop year, Australia was the only one of the four major exporters with shipments higher this year than last, while those from Argentina were sharply down from the previous year and shipments from the United States and Canada decreased moderately.

Exports of Wheat Flour in Terms of Wheat, August 1966-March 1967 with Comparisons

August-March	United States	Canada	Argentina	Australia	Total
million bushels					
1950-51	198.3	135.9	54.4	80.3	468.9
1951-52	333.4	200.1	23.9	62.8	620.2
1952-53	233.0	224.7	6.0	56.7	520.4
1953-54	125.7	170.9	78.0	40.2	414.8
1954-55	188.1	172.7	92.2	62.8	515.8
1955-56	185.5	160.8	80.4	63.5	490.2
1956-57	356.3	178.0	62.8	97.6	694.7
1957-58	255.5	197.6	48.5	46.4	548.0
1958-59	297.2	188.5	61.7	50.4	597.8
1959-60	309.7	190.9	41.5	80.1	622.2
1960-61	447.8	205.8	55.4	108.6	817.6
1961-62	476.1	244.6	54.5	141.9	917.1
1962-63	379.1	212.0	43.8	96.5	731.4
1963-64	566.5	349.6	69.5	181.5	1,167.1
1964-65	454.4(1)	264.9	102.8	132.6	954.7(1)
1965-66 (1).....	546.6	368.0	198.3	131.7	1,244.6
1966-67 (2).....	512.7	340.1	63.5	156.9	1,073.2

(1) Revised. (2) Preliminary.

World Wheat Supplies Slightly Above Previous Year

Supplies of wheat held by the four traditional major exporters at April 1, 1967 for export and for carry-over at the end of their respective crop years amounted to 1,697.6 million bushels compared with 1,677.6 million at the same time a year ago. Although supplies were smaller in United States and Argentina these decreases were more than offset by increases in the totals for Canada and Australia. Supplies at April 1, 1967, in millions of bushels, were held as follows, with last year's comparable figures in brackets: United States, 576.0 (787.1); Canada, 769.4 (637.0); Argentina, 78.4 (118.3); and Australia, 273.8 (135.2).

I.W.C. Report

In its report on the Wheat Market for January-March, the International Wheat Council stated in part as follows:

Sowings and Crop Prospects for 1967-68 On the basis of the first indications of sowings or sowing intentions for a number of the main producing countries which are now available, it seems likely that the world wheat area for the 1967-68 harvest will equal or perhaps even exceed the area sown for the record crop of 1966-67.

In the United States, the U.S.D.A. April 1 production estimate forecast a winter wheat harvest of 1,162 million bushels (31.6 million metric tons). This compares with 1,057 million bushels (28.8 million metric tons) last year but is 120 million bushels (3 1/4 million metric tons) below the December 1966 forecast. On the basis of a 20 per cent increase in spring sowings 2.2 million acres (0.9 million hectares) the overall United States wheat crop may thus reach 1,500 million bushels (40.8 million metric tons), compared with the final estimate of the 1966 total crop of 1,310.6 million bushels (35.7 million metric tons). The Dominion Bureau of Statistics reports that Canadian farmers intend to plant a record 31.1 million acres (12.6 million hectares) to all classes of wheat during 1967 - 3 per cent more than last year. It is reported that winter wheat was sown under dry conditions in some parts of the U.S.S.R. and that these areas may be partly re-sown with spring wheat.

Mild conditions in Europe have enabled farmers in many countries to bring their total winter wheat sowings to levels comparable with those for the previous crop, although in a number of cases, winter wheat areas are well below the average levels of the early 1960's. In France the area sown to March 1, 1967 was equal to that of a year earlier, although still 1.5 million acres (0.6 million hectares) below the corresponding figure for 1965. Mainly as a result of last autumn's severe flooding Italian winter wheat areas have been reduced by 10 per cent 1.0 million acres (400,000 hectares). In the Federal Republic of Germany where winter wheat sowings were 6 per cent greater than last year, spring areas are expected to fall by 10 per cent, leading to an overall increase of 3 per cent 0.1 million acres (about 50,000 hectares). Wheat areas are also expected to increase in Spain, Sweden, Yugoslavia and the Netherlands, but will probably be lower in Denmark and Greece. Winter wheat sowings were sharply lower in the United Kingdom and these reductions may not be wholly offset by spring plantings.

Good rains have fallen over wide areas in both Argentina and Australia, providing a favourable environment for the forthcoming sowings. Areas of wheat are likely to be again extensive in Australia, and in Argentina the government has asked growers to sow 19.8 million acres (8 million hectares) with wheat, compared with sown area of 15.6 million acres (6.3 million hectares) in 1966-67, in order to reach a target production of 477.7 million bushels (13 million metric tons).

Trade Commercial trade between member exporting and member importing countries in January-February 1967 was about 18.4 million bushels (0.5 million tons) larger than in November-December 1966 and in January-February 1966. Up to the end of February 1967 the cumulative total of this trade for the crop year 1966-67 amounted to 606.3 million bushels (16.5 million tons), an increase of 55.1 million bushels (1.5 million tons) over that for the same period in the previous crop year.

Commercial Purchases of Wheat and Flour(1) by Member Importing Countries from
Member Exporting Countries

Importing Regions	January-February		August-February	
	1965-66	1966-67	1965-66	1966-67
thousand metric tons				
Western Europe....	1,267	826	7,828	6,399
E.E.C.	447	333	2,698	2,397
Others.....	820	493	5,130	4,002
Central America..	67	58	221	239
South America....	463	852	2,031	2,547
Near East.....	22	105	214	422
Far East.....	706	1,474	3,157	4,556
Africa.....	453	148	927	1,986
Oceania.....	10	8	164	118
Unspecified.....	(55)	(31)	458	222
Totals.....	2,933	3,440	15,000	16,489

(1) Wheat equivalent.

SOURCE: I.W.C. records.

() Net (minus) adjustment.

As can be seen in the accompanying table the main regional increases in the August-February period occurred in trade with the Far East, Japan 29.4 million and India 18.4 million bushels (0.8 and 0.5 million tons) and with Africa, South Africa 25.7 million and U.A.R. 18.4 million bushels (0.7 and 0.5 million tons). The increase in sales to South America is mainly due to higher sales to Peru. Transactions reported to Western Europe showed a decline of about 51.4 million bushels (1.4 million tons) of which those to the U.K. accounted for 25.7 million bushels (0.7 million tons).

Reports to the Council of the total trade of member countries, available at present up to the end of January 1967, indicate that in this period commercial and special transactions together were 165.3 million bushels (4.5 million tons) less than in the same period in 1965-66. The main factors underlying this decline were reduced purchases by the U.S.S.R. and western Europe of 191.1 million and 77.2 million bushels (5.2 and 2.1 million tons), respectively. Africa, on the other hand, increased its purchases considerably by just over 73.5 million bushels (2 million tons), which reflected not only substantially higher sales to South Africa but also the larger needs of countries in North Africa whose crops had been badly affected by drought. Algeria, Morocco and Tunisia, for example, have together taken 36.7 million bushels (1 million tons) more than in the previous year. An analysis of trade by type of transactions shows that total commercial purchases dropped by 136.0 million bushels (3.7 million tons) and special transactions by 29.4 million bushels (0.8 million tons). A decline in the special transactions of the U.S.A. of 106.6 million bushels (2.9 million tons) was partly offset by increased trade in this sector by Canada, Australia and U.S.S.R.

International Wheat Council
Cumulative Totals of Commercial Purchases by Importing Countries from Exporting Countries
Crop Year 1966-67-Through April 1, 1967

Importing Countries	EXPORTING COUNTRIES									Total Purchases
	Canada	Argentina	Australia	France	Italy	Mexico	Sweden	U.S.A.	USSR	
	thousand bushels									
Austria.....	1,523	—	—	4	—	—	—	131	—	1,658
Belgium & Luxembourg	13,343	799	—	1,367	—	—	2	4,978	—	20,489
Brazil.....	—	27,284	—	—	—	—	—	19,734	—	47,018
Costa Rica.....	931	—	—	39	—	—	—	855	—	1,821
Dominican Republic..	—	—	—	—	—	—	—	1,844	—	1,844
Ecuador.....	218	—	—	—	—	—	—	1,116	—	1,334
El Salvador.....	630	—	—	—	—	—	—	1,027	—	1,657
Finland.....	1,053	—	—	—	—	—	2	323	—	1,378
Germany, Fed. Rep. .	19,143	1,891	1,109	4,552	36	—	55	15,469	—	42,255
Greece.....	106	—	—	65	—	—	—	51	—	222
Guatemala.....	50	—	—	—	—	—	—	1,628	—	1,678
Iceland.....	3	—	—	12	—	—	—	122	—	137
India.....	1	—	7,597	1	—	652	—	4,392	—	12,643
Ireland.....	1,962	—	2,263	184	—	—	—	715	—	5,124
Israel.....	—	—	—	—	—	—	—	3,563	—	3,563
Japan.....	49,661	—	9,816	—	—	—	—	74,259	—	133,736
Korea, Rep. of	—	—	—	—	—	—	—	9,985	—	9,985
Lebanon.....	16	—	5,150	30	15	—	—	669	—	5,880
Liberia.....	127	—	—	2	—	—	—	26	—	155
Libya.....	—	—	34	147	1,306	—	—	2	397	1,886
Netherlands	2,010	3,889	605	376	—	—	—	21,291	1,102	29,273
Netherlands Terr..	105	—	—	20	—	—	—	699	—	824
New Zealand.....	—	—	3,154	16	—	—	—	—	—	3,170
Nigeria.....	528	—	—	99	—	—	—	4,358	—	4,985
Norway.....	1,247	429	4,143	27	—	—	1,245	1,935	—	9,026
Peru.....	47	20,614	747	—	—	—	—	6,157	—	27,565
Philippines.....	477	—	108	480	350	—	—	10,445	—	11,860
Portugal.....	589	—	—	1,849	—	—	—	4,737	—	7,175
Portuguese Terr. .	216	239	1,035	108	—	—	—	178	—	1,776
Saudi Arabia.....	74	—	1,835	166	80	—	—	5,216	—	7,371
Sierra Leone.....	375	—	—	28	—	—	—	63	—	466
South Africa.....	10,203	—	9,121	—	—	—	—	12,145	—	31,469
Southern Rhodesia...	3	—	1,043	—	—	—	—	—	—	1,046
Switzerland.....	4,425	301	—	1,616	87	—	—	1,862	—	8,291
Tunisia.....	—	—	—	634	—	—	—	1,855	—	2,489
United Arab Republic	—	—	—	—	3,572	—	—	26,457	—	30,029
United Kingdom.....	75,486	8,726	15,189	1,403	—	—	349	17,800	—	118,953
U.K. Territories..	2,944	6	4,149	783	9	—	—	1,120	—	9,011
Venezuela.....	5,348	735	—	—	—	—	—	13,721	—	19,804
Western Samoa.....	1	—	126	—	—	—	—	—	—	127
To Orders.....	—	8,394	—	—	—	—	—	—	—	8,394
Totals.....	192,845	73,307	67,224	14,008	5,455	652	1,653	270,928	1,499	627,571
Percentage of Total Sales by Exporting Countries.....	30.73	11.68	10.71	2.23	0.87	0.10	0.26	43.18	0.24	100.00

NOTE: Argentina - quantities cover period ending March 25, 1967.
France - quantities cover period ending February 28, 1967.
Italy - quantities cover period ending March 11, 1967.
Mexico & Spain report only when sales are made.

CANADIAN SITUATION

Record Production Results in Record Supplies

The 1966 wheat crop in Canada was estimated at an all-time high of 844.4 million bushels due to a combination of a record seeded acreage and record average yields per acre. The 1966 harvest exceeded by wide margins both the 1965 outturn of 648.9 million bushels and the previous record of 723.4 million harvested in 1963. Although carryover stocks declined by some 92.9 million bushels to a level of 420.1 million, total supplies are estimated at a record 1,264.6 million bushels. Supplies of the size indicated represent an increase of 4 per cent above the previous peak of 1,210.7 million of 1963-64 and 9 per cent over the 1965-66 total of 1,161.9 million bushels. After making an allowance of 155.0 million bushels for anticipated domestic requirements, supplies available for export and for carryover during 1966-67 amounted to 1,109.6 million bushels, 10 per cent larger than the 1,005.0 million in 1965-66.

August-March Exports 8 Per Cent Below Record

Exports of wheat and flour, in terms of wheat equivalent, during the August-March period of the current Canadian crop year, amounted to 340.1 million bushels, 8 per cent below the previous high of 368.0 million exported during the same period a year ago. This year's exports consisted of 315.2 million bushels of wheat in bulk, 569 thousand of bagged seed and 24.4 million of flour in terms of wheat. During the comparable period of last year these figures were 340.6 million of wheat in bulk, 654 thousand of bagged seed and 26.8 million of flour in wheat equivalent. The balance remaining on April 1, 1967 for export and for carryover amounted to 769.4 million bushels, 21 per cent above the April 1, 1966 total of 637.0 million.

Canadian Wheat Supplies

Item	1965-66(1)	1966-67(2)
	million bushels	
Carryover in North America at beginning of crop year (August 1).....	513.0	420.1
Production.....	648.9	844.4
Imports of wheat for domestic use, August-March.....	(3)	(3)
Total estimated supplies.....	1,161.9	1,264.6
Less estimated domestic requirements for crop year..	156.9	155.0
Available for export and for carryover.....	1,005.0	1,109.6
Deduct:		
Exports of wheat in bulk, August-March(4).....	340.6	315.2
Exports of bagged seed wheat, August-March(5).....	0.7	0.6
Total exports of wheat as grain.....	341.2	315.8
Exports of wheat flour in terms of wheat, August-March(5).....	26.8	24.4
Total exports of wheat and wheat flour.....	368.0	340.1
Balance on April 1 for export and for carryover.....	637.0	769.4

(1) Revised. (2) Preliminary. (3) Less than 50,000 bushels. (4) As reported by the Board of Grain Commissioners. (5) Customs returns, 1965-66 adjusted for time lag.

Marketings, Disappearance
and Visible Supplies

Total primary deliveries of wheat (both east and west) up to April 19 of the current crop year have amounted to 401.2 million bushels compared with 331.8 million marketed during the same period of the previous year and the highest marketings for that period since 1928-29. Some 30.8 million bushels of this year's total were delivered during the four weeks March 23 to April 19, 1967. During the same period the volume of Canadian wheat entering domestic and export channels amounted to 29.6 million bushels. As a result, the total visible supply of Canadian wheat increased from 311.2 million at March 22 to a level of 314.2 million at April 19, 1967.

The total visible supply of Canadian wheat at April 19 this year represented a 6 per cent increase over the 1966 comparable total of 296.1 million bushels but was 2 per cent less than the 1965 figure of 319.8 million. Country elevator stocks, amounting to 159.3 million bushels, were below both the 1966 comparable total of 182.3 million and the 176.4 million of 1965. Wheat stocks at interior terminals, at April 19, 1967 totalled 13.5 million bushels, in contrast to the 0.9 million of the previous year and more than double the 1965 total of 5.1 million. Wheat stocks "in transit rail" (western division) amounted to 17.3 million bushels, 67 per cent above the 10.4 million of a year ago and 76 per cent more than the 9.8 million of two years ago. Supplies at the Canadian Lakehead, totalling some 66.3 million bushels, were above both the 38.8 million at April 20, 1966 and the 65.2 million at April 21, 1965. The 2.1 million bushels "in transit lake" this year were in sharp contrast to the comparable 15.3 million of 1966 but slightly above the 1.1 million of two years ago. The 11.8 million bushels in Bay, Lake and Upper St. Lawrence ports, were higher than the 8.7 million of 1966 but less than the 13.5 million of 1965. Supplies in Lower St. Lawrence and Maritime ports, at April 19, 1967, at 23.8 million bushels, were above the 21.3 million of 1966 but below the 26.4 million of 1965. The 11.5 million bushels in West Coast ports (Vancouver-New Westminster, Prince Rupert and Victoria) exceeded both the 8.8 million of the previous year and the 9.2 million in these positions in 1965.

March 1967 Exports of
Wheat and Flour Total
24.8 Million Bushels

Combined exports of wheat in bulk, bagged seed wheat and wheat flour in terms of grain equivalent, amounted to 24.8 million bushels during March 1967. This volume, while above last month's total of 22.7 million and the ten-year (1956-65) March average of 23.7 million was well below the March 1966 total of 36.3 million. Exports of wheat in bulk (as reported by the Board of Grain Commissioners) during March 1967 totalled 21.7 million bushels, 8 per cent above the February 1967 total of 20.1 million and 11 per cent more than the ten-year average of 19.6 million but one-third less than the 32.4 million of March 1966. Based on Canadian Customs returns, the equivalent of 3.0 million bushels of wheat was exported in the form of flour during March 1967, an increase of 21 per cent over the previous month's figure of 2.5 million but 18 per cent below the March 1966 adjusted total of 3.7 million.

Cumulative exports of wheat in bulk during the August-March period of the current crop year amounted to 315.2 million bushels, a decrease of 7 per cent from the record 1965-66 comparable figure of 340.6 million, but sharply above the ten-year average for the period of 191.7 million. This year's shipments of wheat to China Communist totalled some 70.5 million bushels and to the U.S.S.R. (Russia), 66.9 million and accounted for 22 per cent and 21 per cent, respectively, of the eight-month total exports of wheat in bulk form. Shipments of

wheat to Britain amounted to 42.2 million and accounted for 13 per cent of the August-March 1966-67 total. During the same period of 1965-66 shipments to China Communist amounted to 43.5 million and accounted for 13 per cent of the August-March total, while U.S.S.R.(Russia) received shipments of 118.8 million or 35 per cent of the total and Britain, at 47.8 million accounted for 14 per cent of total. Other principal markets for Canadian wheat in bulk during the first eight months of the current crop year, with figures for the same period of the preceding crop year in brackets, were as follows, in millions of bushels: Japan, 39.4 (30.6); India, 17.6 (8.6); Federal Republic of Germany, 12.5 (16.1); Belgium and Luxembourg, 10.6 (8.7); Poland, 8.3 (7.7); Italy, 5.8 (4.7); and Cuba, 5.6 (7.7).

Cumulative exports of bagged seed wheat during August-March of the current crop year, based on Canadian Customs returns, amounted to 569 thousand bushels compared with last year's corresponding total (adjusted to remove time lag) of 654 thousand.

Cumulative exports of wheat flour during the first eight months of the 1966-67 crop year, based on Customs returns, were the equivalent of 24.4 million bushels, a decrease of 9 per cent from the adjusted August 1965-March 1966 total of 26.8 million. The leading markets for Canadian wheat flour in terms of wheat equivalent during the August-March period of the 1966-67 crop year, with revised data for the same months of the preceding crop year in brackets, were as follows, in thousands of bushels: Cuba, 9,771 (8,515); Britain, 4,543 (6,299); Jamaica, 1,155 (1,104); Ceylon, 1,049 (814); India, 921 (1); Ghana, 879 (624); Trinidad and Tobago, 797 (951); Costa Rica, 776 (684); and Leeward and Windward Islands, 750 (671).

Delivery Quota on Alberta Winter Wheat

The Canadian Wheat Board, in its Instructions to the Trade, re Quotas (General), No. 25 under date of May 2, 1967, announced in part that, "effective immediately and until June 15, 1967, the delivery quota on Alberta Winter Wheat is declared open at all delivery points. The purpose of temporarily opening the quota is to meet overseas requirements for Alberta Winter Wheat and the Board is anxious to have as much of this wheat as possible at Vancouver in time to meet the demand."

Trade Agreement With Bulgaria

On April 26, 1967, Trade and Commerce Minister Winters signed, on behalf of the Canadian Government, a renewal of the Trade Agreement with the People's Republic of Bulgaria providing for a three-year extension of the most-favoured-nation treatment between the two countries and for further sales of Canadian wheat.

Bulgaria has undertaken to purchase a minimum of 7.4 million bushels of wheat during the next three years with an option, subject to Wheat Board's ability to supply, on a further 3.7 million bushels. The basic quantity together with the additional option would represent about \$24 million of trade at current prices. Purchases of wheat under the present Agreement will be facilitated by the extension of credit arrangements under the Export Credits Insurance Act, providing for payment over three years. During the three-year period of the previous Agreement, Canada was able to provide 17.1 million bushels reflecting the particularly short supply situation in Bulgaria in 1964. The Agreement was signed for Bulgaria by Mr. Dimitar Kostov, Chairman of the Trade Delegation of the People's Republic of Bulgaria.

General Quota
Position

By April 24, 1967 out of a total of 1,895 shipping points in the Western Division, the Canadian Wheat Board had placed 1,256 points on a delivery quota of 8 bushels per specified acre, 559 points on a 6-bushel quota and 67 points were on a 5-bushel quota. Thirteen stations were reported as "closed".

Summary of Elevator Shipping Points in the Western Division
as at April 24, 1967

Province	General Quota in Bushels per Specified Acre			Closed	Total
	Five	Six	Eight(1)		
Ontario	—	—	1	—	1
Manitoba	—	39	291	4	334
Saskatchewan	67	437	518	7	1,029
Alberta	—	83	440	2	525
British Columbia.....	—	—	6	—	6
All Provinces.....	67	559	1,256	13	1,895

(1) In addition, 147 of these stations in Manitoba, 135 of the stations in Saskatchewan, 260 of these stations in Alberta and the 6 stations in British Columbia have a supplementary quota on wheat of 5 bushels per seeded acre.

Wheat Shipments to
the United States

Rail shipments of wheat to the United States, either for re-export or retention for domestic use, from August 1, 1966 to April 19, 1967 amounted to 55,000 bushels. No shipments of wheat were reported during the corresponding periods of 1965-66 and 1964-65.

Rail Shipments
of Wheat to
Maritime Ports

Rail shipments of wheat to Maritime ports from Bay, Lake and Upper St. Lawrence ports during the first eight months of the current crop year totalled 30.1 million bushels compared with the August 1965-March 1966 figure of 33.0 million.

Rail Shipments of Wheat to Maritime Ports from Bay,
Lake and Upper St. Lawrence Ports

Origin of Shipments	Aug. 1, 1965 - March 31, 1966	Aug. 1, 1966 - March 31, 1967
	bushels	
Port McNicoll.....	9,149,869	7,922,136
Midland, Tiffin.....	12,036,940	11,140,797
Collingwood.....	1,310,880	724,477
Owen Sound.....	5,093,871	3,917,842
Goderich.....	1,219,950	2,514,476
Sarnia.....	2,375,805	3,075,343
Port Colborne.....	1,592,535	830,125
Peterborough.....	206,211	—
Totals.....	32,986,061	30,125,196

Canadian Wheat
Stocks at
March 31, 1967

Total stocks of Canadian wheat at March 31, 1967 were estimated at 848.3 million bushels compared with 750.2 million on the same date in 1966 and the record 904.4 million in 1957. The ten-year (1957-66) average was 748.1 million bushels. Data for these estimates were obtained from the Dominion Bureau of Statistics' annual March 31 survey of grain held on farms, from mill returns, and from information supplied by the Board of Grain Commissioners for Canada relative to grain in commercial positions at the close of business on March 29. An estimated 532.8 million bushels, representing 63 per cent of the total were held on farms, 18 per cent above last year's total of 450.4 million and 40 per cent more than the 381.0 million at March 31, 1965. All but 5.8 million bushels of the total farm stocks of wheat were held on farms in the Prairie Provinces. Farm-held stocks in Saskatchewan were placed at 377.0 million while those in Alberta and Manitoba were estimated at 108.0 million and 42.0 million bushels, respectively. Of the 315.5 million bushels held in off-farm positions, 159.2 million were in country elevators compared with 181.6 million a year ago and 182.1 million two years ago. Stocks in Lakehead positions amounted to 66.0 million bushels, 15 per cent above last year's corresponding total of 57.4 million and only one per cent more than the 1965 level of 65.0 million. Supplies in eastern elevators, at 31.3 million bushels were sharply above the 20.0 million of 1966 but less than the 37.1 million of 1965.

Stocks of Canadian Wheat at March 31, 1965-67(1)

Position	1965	1966	1967
	thousand bushels		
<u>In Canada</u>			
On farms	381,000	450,400	532,800
Country elevators.....	182,068	181,650	159,225
Interior private and mill elevators	7,468	6,772	6,384
Interior terminal elevators.....	4,956	769	11,006
Vancouver-New Westminster elevators.....	8,517	7,592	10,306
Victoria elevator.....	476	597	847
Prince Rupert elevator.....	764	957	379
Churchill elevator.....	4,700	824	944
Ft. William-Pt. Arthur elevators.....	65,021	57,364	65,995
In transit rail (western division).....	8,623	13,607	9,598
Eastern elevators.....	37,092	20,043	31,321
Storage afloat (eastern division)	12,216	4,457	13,436
In transit rail (eastern division).....	2,392	2,263	2,910
Eastern mills (mill bins only) (2).....	2,036	2,583(3)	2,962
Western mills (mill bins only) (2).....	348	338(3)	141
Totals in Canada (2)	717,677	750,216 (3)	848,254
<u>In United States</u>	—	—	—
Totals in Canada and United States....	717,677	750,216 (3)	848,254

(1) Stocks other than on farms and in mills compiled by the Statistics Division, Board of Grain Commissioners for Canada, as at the close of business on March 31, 1965, March 30, 1966 and March 29, 1967.

(2) Small quantities of grain going into ground feeds have been excluded.

(3) Revised.

Farmers' Marketings(1) of Wheat in the Prairie Provinces 1966-67

Week Ending		Manitoba	Saskatchewan	Alberta	Total	Last Year(2)
		bushels				
August	10, 1966	243,118	1,658,010	481,054	2,382,182	411,880
	17	498,937	4,128,580	2,472,753	7,100,270	329,435
	24	2,778,073	12,246,890	4,152,056	19,177,019	2,079,840
	31	1,558,989	2,716,717	926,540	5,202,246	3,845,443
September	7	826,995	2,988,616	345,781	4,161,392	2,955,449
	14	2,389,549	8,028,487	1,206,440	11,624,476	5,506,938
	21	2,261,900	10,854,448	2,585,009	15,701,357	3,115,660
	28	1,835,740	14,745,505	4,440,432	21,021,677	3,128,223
October	5	1,471,390	10,240,244	3,050,295	14,761,929	8,306,749
	12	1,336,779	6,934,271	2,335,253	10,606,303	18,853,274
	19	1,660,272	7,858,719	2,918,639	12,437,630	21,848,974
	28	1,945,672	8,849,806	3,282,188	14,077,666	15,706,569
November	2	2,354,759	11,089,086	4,316,877	17,760,722	11,023,850
	9	1,962,148	8,780,570	3,209,617	13,952,335	13,837,562
	16	1,466,866	6,598,105	2,092,147	10,157,118	12,339,850
	23	1,598,120	7,310,131	3,082,022	11,990,273	12,243,515
	30	1,804,798	12,113,832	2,993,405	16,912,035	13,132,427
December	7	1,050,100	6,737,972	3,452,000	11,240,072	15,790,211
	14	1,169,227(2)	8,185,010(2)	2,516,699	11,870,936(2)	19,484,922
	21	3,175,073	20,591,575	6,437,391	30,204,039	20,066,467
	28	1,832,023	11,856,350	4,215,235	17,903,608	13,245,715
January	4, 1967	909,920	7,905,119	2,984,452	11,799,491	8,210,940
	11	1,242,862	6,975,871	4,565,055	12,783,788	3,099,433
	18	1,682,049	7,432,126	5,106,972	14,221,147	5,535,776
	25	101,002	1,400,148	1,907,148	3,408,298	5,077,469
February	1	237,768	344,726	1,374,724	1,957,218	2,184,605
	8	365,241	2,020,799	4,176,995	6,563,035	7,532,432
	15	338,619	2,353,006	3,673,449	6,365,074	9,612,680
	22	148,722	1,160,243	1,619,193	2,928,158	4,683,004
March	1	368,947	1,926,933	2,251,089	4,546,969	5,916,671
	8	926,961	6,218,204	3,858,438	11,003,603	8,049,812
	15	475,801	2,312,024	2,516,814	5,304,639	6,564,021
	22	686,075	1,900,632	1,803,372	4,390,079	8,705,920
	28	1,065,768	5,414,416	2,439,188	8,919,372	9,903,180
April	5	1,378,549	3,149,726	3,010,757	7,539,032	6,681,044
	12	1,698,103	3,546,994	3,149,906	8,395,003	8,490,712
	19	760,972	3,160,163	2,355,026	6,276,161	11,539,275
Totals		47,607,887	241,734,054	107,304,411	396,646,352	329,039,927

Average

Similar Period:

1955-56--1964-65 . 27,354,268 141,276,064 65,040,996 233,671,329

(1) Includes receipts at country, interior private and mill elevators, interior semi-public terminals and platform loadings.

(2) Revised.

Visible Supply of Canadian Wheat, April 19, 1967
Compared with Approximately the Same Date, 1965 and 1966

Position	1965	1966	1967
thousand bushels			
Country elevators - Manitoba	23,493	20,018	14,530
Saskatchewan.....	98,473	108,201	94,957
Alberta.....	54,422	54,094	49,785
Totals.....	176,388	182,311	159,272
Interior private and mill.....	7,379	7,216	6,366
Interior terminals.....	5,137	941	13,454
Vancouver-New Westminster.....	8,073	8,389	10,652
Victoria	673	268	571
Prince Rupert.....	483	159	240
Churchill.....	4,700	824	944
Fort William-Port Arthur.....	65,177	38,797	66,295
In transit rail (western division).....	9,824	10,382	17,319
Bay, Lake and Upper St. Lawrence ports	13,514	8,683	11,784
Lower St. Lawrence and Maritime ports.....	26,422	21,335	23,768
In transit lake.....	1,069	15,257	2,066
In transit rail (eastern division).....	922	1,493	1,477
Totals.....	319,760	296,055	314,208

Grading of Wheat Inspected, August 1966-March 1967 with Comparisons

Grade	Crop Year		August - March			
	Average 1960-61 — 1964-65	1965-66	1965-66		1966-67	
			cars	per cent	cars	per cent
No. 1 Man. Northern.....	8.4	1.4	3,209	1.6	7,908	3.6
No. 2 Man. Northern.....	43.1	21.7	47,670	24.2	62,917	29.0
No. 3 Man. Northern.....	20.6	23.7	48,383	24.5	65,961	30.4
No. 4 Man. Northern.....	7.7	18.3	34,309	17.4	22,583	10.4
No. 5 Wheat.....	4.1	4.9	7,944	4.0	8,134	3.8
No. 6 Wheat.....	0.6	0.2	168	0.1	1,671	0.8
Feed Wheat.....	(1)	(1)	4	(1)	202	0.1
Others Red Spring.....	8.1	24.2	46,060	23.4	32,425	15.0
C.W. Garnet.....	0.2	(1)	16	(1)	175	0.1
C.W. White Spring.....	0.1	0.1	147	0.1	268	0.1
C.W. Mixed Wheat.....	(1)	0.1	115	0.1	197	0.1
Alberta Winter.....	0.4	0.3	565	0.3	3,587	1.7
Nos. 1-6 C.W. Amber Durum..	6.3	4.7	7,927	4.0	9,855	4.5
Others C.W. Amber Durum....	0.3	0.4	664	0.3	837	0.4
Totals.....	100.0	100.0	197,181	100.0	216,720	100.0

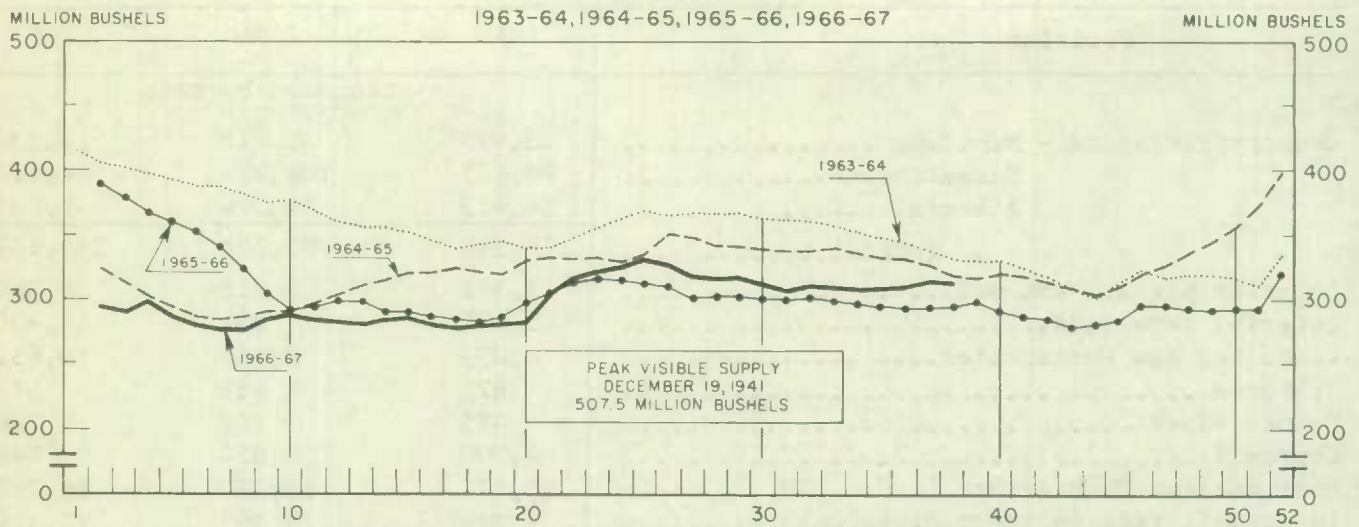
Gross bushels (approx.) ...

379,725,000

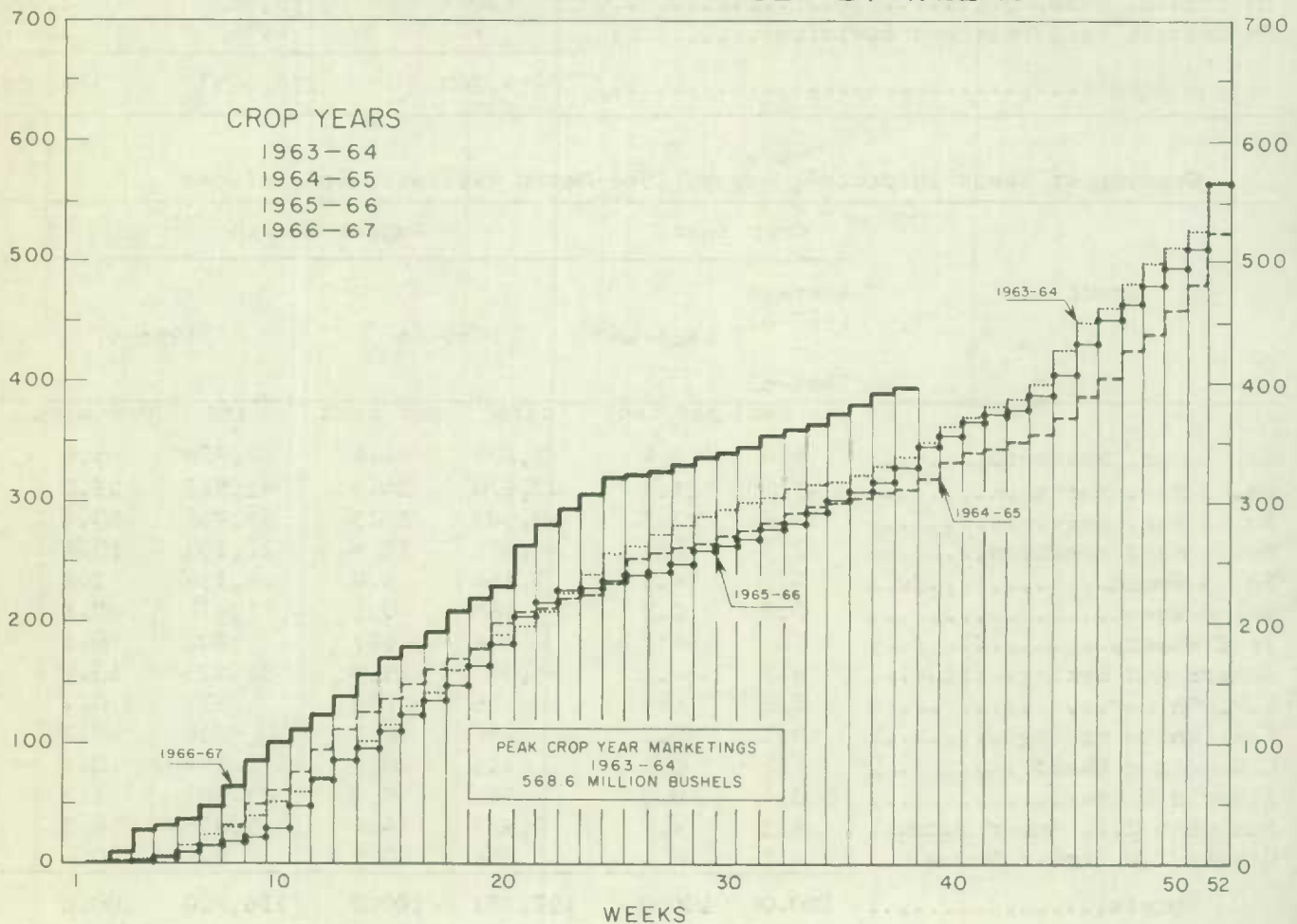
419,045,000

(1) Less than .05 per cent.

WEEKLY VISIBLE SUPPLY OF CANADIAN WHEAT



CUMULATIVE RECORD OF WHEAT MARKETINGS IN THE PRAIRIE PROVINCES BY WEEKS



(Data in both charts for crop years beginning August 1)

Rail Shipments of Wheat from Fort William-Port Arthur, 1963-64-1966-67

Month	1963-64	1964-65	1965-66	1966-67
bushels				
August.....	5,500	7,786	10,458	118,973
September.....	9,104	19,564	10,500	83,333
October.....	25,355	12,135	4,500	89,384
November.....	13,500	13,167	10,205	163,332
December.....	23,047	26,961	7,500	106,833
January.....	58,772	10,703	46,108	145,889
February.....	28,768	17,214	26,712	120,334
March.....	21,268	112,296	98,598	177,393
April.....	26,063	17,506	71,701	
May.....	7,941	8,207	89,166	
June.....	20,518	4,965	178,183	
July.....	12,707	13,872	82,282	
Totals.....	252,543	264,376	635,913	

Distribution of Rail Shipments of Wheat from Fort William-Port Arthur, March 1967

Grade	Prince Edward Island	Nova Scotia	New Brunswick	Quebec	Ontario
bushels					
5 Wheat.....	1,500	2,000	5,000	13,500	2,833
6 Wheat.....	3,333	6,000	56,000	31,333	—
Feed.....	—	—	—	9,500	—
Tough.....	—	—	—	13,933	1,000
Rejected.....	—	—	—	1,666	—
Durum.....	—	—	—	10,000	17,795
Others.....	—	—	—	—	2,000
Totals.....	4,833	8,000	61,000	79,932	23,628

Overseas Exports of Canadian Grain by Ports of Loading, August 1, 1966-April 19, 1967
with Comparisons

Port	Wheat(1)	Durum Wheat(1)	Oats(1)	Barley	Rye	Flaxseed	Rapeseed
thousand bushels							
<u>Pacific Seaboard</u>							
Van.-New West.....	106,372	737	216	15,300	4,390	5,390	8,901
Victoria.....	7,970	—	—	—	—	—	—
Prince Rupert.....	7,537	—	—	—	—	—	—
Churchill.....	21,031	—	—	—	—	—	—
<u>Lakehead Direct</u>	3,059	228	559	1,021	1,410	4,696	537
<u>Kingston Direct</u>	590	55	—	—	91	—	—
<u>St. Lawrence</u>							
Montreal.....	65,489	8,500	189	—	248	1,480	—
Sorel.....	20,382	721	—	—	—	—	—
Trois-Rivières.....	12,691	248	—	—	—	325	—
Quebec.....	12,358	—	—	—	—	—	—
Baie Comeau.....	24,205	3,440	—	1,387	—	217	—
<u>Maritime</u>							
Saint John.....	1,835	—	—	—	—	—	—
West Saint John.....	15,657	1,328	—	—	40	—	—
Halifax.....	14,074	—	—	—	—	—	—
Totals.....	313,250	15,257	964	17,708	6,179	12,108	9,438

August 1, 1965—

April 20, 1966..... 336,360 23,108 11,949 17,571 3,536 12,353 9,132

(1) Excluding bagged seed.

Freight-
Assisted
Shipments

Claims filed for payment up to March 31, 1967 represent the movement of 10.3 million bushels of wheat from the Prairie Provinces to Eastern Canada and British Columbia under the freight assistance policy during the August-February period of the 1966-67 crop year. During the same months last year claims had been filed for a total of 10.2 million bushels, indicating on the assumption of approximately the same rate of submission of claims during both the current and preceding crop years that the August-February shipments of wheat under the policy were running about 2 per cent above those of 1965-66. Revised data on the August-February 1965-66 shipments of wheat based on claims submitted up to March 31, 1967 place the seven-month total at 10.5 million bushels. The bulk of the shipments during the current seven months under review went to destinations in Quebec and Ontario, with these two provinces accounting for 51 per cent and 20 per cent of the total, respectively.

Provincial Distribution of Wheat Shipments under the Freight Assistance Policy
August-February 1966-67 and 1965-66

Month	Nfld.	P.E.I.	N.S.	N.B.	Que.	Ont.	B.C.	Total
thousand bushels								
August, 1966.....	28	21	180	45	681	323	189	1,467
September.....	93	38	154	66	713	350	187	1,601
October.....	33	13	156	40	690	301	271	1,504
November.....	7	17	129	41	696	363	309	1,563
December.....	6	15	126	47	627	319	236	1,376
January, 1967.....	6	17	172	40	1,315	261	160	1,971
February.....	20	10	73	19	525	164	50	861
Totals (1)	194	131	990	299	5,246	2,081	1,402	10,343
Same period 1965-66:								
Preliminary (2)	237	160	1,277	398	4,306	2,538	1,268	10,186
Revised (1).....	243	171	1,305	421	4,444	2,589	1,354	10,528

Preliminary data on millfeed shipments under the freight assistance policy indicate shipments of 293,327 tons during the August-February period of the current crop year. During the same seven months of 1965-66 claims had been filed for a total of 307,477 tons, indicating on the assumption of approximately the same rate of submission of claims during both the current and preceding crop years that the August-February shipments of millfeeds under the policy were running about 5 per cent less than those of 1965-66. Revised data on the 1965-66 August-February shipments of millfeeds based on claims submitted up to March 31, 1967 place the seven-month total at 323,020 tons. As with freight-assisted shipments of wheat, the greater portion of the millfeed shipments during the period under review went to destinations in Quebec and Ontario.

Provincial Distribution of Millfeed Shipments under the Freight Assistance Policy
August-February 1966-67 and 1965-66

Province	1965-66		1966-67
	Preliminary(2)	Revised(1)	Preliminary(1)
tons			
Newfoundland.....	3,487	3,689	3,082
Prince Edward Island.....	6,355	6,712	5,350
Nova Scotia	21,665	22,541	18,422
New Brunswick.....	16,057	16,863	15,298
Quebec.....	157,099	162,942	149,416
Ontario.....	85,378	90,663	84,708
British Columbia	17,436	19,610	17,051
Totals.....	307,477	323,020	293,327

(1) Based on claims filed up to March 31, 1967.

(2) Based on claims filed up to March 31, 1966.

Monthly Exports of Canadian Wheat and Wheat Flour

Year and Month	Wheat in Bulk(1)	Bagged Seed Wheat(2)	Total Wheat	Wheat Flour(2)(3)	Total(3) Wheat and Wheat Flour
thousand bushels					
<u>1964-65</u>					
August	42,226	68	42,294	3,711	46,005
September	42,792	121	42,913	2,258	45,172
October	40,120	27	40,147	2,460	42,607
November	30,976	45	31,021	2,534	33,556
December	27,720	79	27,799	2,220	30,020
January	18,098	85	18,183	2,263	20,446
February	19,337	147	19,484	1,637	21,121
March	23,376	281	23,657	2,289	25,946
April	31,798	212	32,010	4,047	36,057
May	34,822	126	34,949	3,515	38,464
June	30,631	59	30,690	2,176	32,866
July	24,843	61	24,905	2,430	27,335
Totals	366,740	1,312	368,052	31,542	399,594
<u>1965-66</u>					
August	43,377	81	43,459	2,548	46,006
September	64,447	73	64,521	2,679	67,199
October	64,517	84	64,601	3,674	68,275
November	55,652	37	55,690	2,625	58,314
December	33,201	64	33,265	4,261	37,526
January	23,483	49	23,532	3,402	26,933
February	23,502	74	23,576	3,924	27,501
March	32,395	192	32,587	3,695	36,282
April	37,794	88	37,882	4,431	42,313
May	44,357	11	44,367	1,241	45,608
June	60,245	5	60,250	3,325	63,576
July	63,017	35	63,053	2,320	65,373
Totals	545,988	793	546,781	38,125	584,906
<u>1966-67(4)</u>					
August	64,233	105	64,338	2,921	67,260
September	47,357	130	47,487	2,368	49,856
October	51,659	39	51,699	3,520	55,219
November	48,942	52	48,993	2,779	51,773
December	33,477	17	33,493	3,960	37,453
January	27,719	76	27,795	3,276	31,071
February(5)	20,102	50	20,152	2,512	22,664
March	21,718	100	21,818	3,031	24,848
Totals	315,207	569	315,776	24,367	340,143

(1) Export clearances including shipments to the United States compiled by the Statistics Division, Board of Grain Commissioners for Canada. (2) Compiled from Canadian Customs returns, 1964-65 and 1965-66 adjusted to remove effect of time lag in reporting. (3) In terms of wheat equivalent. Wheat flour conversion rate: 2.3 bushels per cwt. (4) Preliminary, subject to revision. (5) Revised.

Exports of Canadian Wheat(1) by Destination, March 1967 and 1966

Destination	Wheat (except durum)	Durum wheat	All wheat	
			March 1967	March 1966
bushels				
<u>Western Europe</u>				
<u>EEC</u>				
Belgium and Luxembourg.....	862,514	—	862,514	757,254
France.....	—	—	—	93,333
Germany, Federal Republic.....	282,256	—	282,256	2,082,633
Italy.....	—	—	—	42,000
Netherlands.....	91,467	—	91,467	—
Sub-totals.....	1,236,237	—	1,236,237	2,975,220
<u>Other Western Europe</u>				
Britain.....	4,095,467	—	4,095,467	5,544,809
Switzerland.....	—	—	—	115,626
Sub-totals.....	4,095,467	—	4,095,467	5,660,435
Totals.....	5,331,704	—	5,331,704	8,635,655
<u>Eastern Europe</u>				
Poland.....	691,985	—	691,985	—
U.S.S.R. (Russia).....	3,324,845	462,544	3,787,389	7,685,957
Totals.....	4,016,830	462,544	4,479,374	7,685,957
<u>Africa</u>				
Nigeria.....	39,200	—	39,200	—
<u>Asia</u>				
China, Communist.....	5,613,578	—	5,613,578	8,219,670
Hong Kong.....	98,000	—	98,000	74,480
India.....	—	—	—	1,356,588
Japan.....	4,758,087	—	4,758,087	3,612,958
Korea, North.....	—	—	—	945,467
Malaysia and Singapore.....	—	—	—	34,907
Pakistan.....	678,119	—	678,119	137,368
Totals.....	11,147,784	—	11,147,784	14,381,438
<u>Western Hemisphere</u>				
Barbados.....	40	—	40	—
Cuba.....	—	—	—	1,284,040
Ecuador.....	—	—	—	144,427
Jamaica.....	498	—	498	1,496
Nicaragua.....	—	—	—	33,973
Peru.....	—	—	—	112,000
Venezuela.....	718,942	—	718,942	115,741
Totals.....	719,480	—	719,480	1,691,677
Sub-totals, all countries.....	21,254,998	462,544	21,717,542	32,394,727
Bagged seed(4).....			100,035	191,940
Totals, all countries.....	21,254,998	462,544	21,817,577	32,586,667

See footnotes on page 20.

Cumulative Exports of Canadian Wheat(1) by Destination

Destination	August 1966 - March 1967			Total same period last year(2)
	Wheat (except durum)	Durum wheat	Total wheat bushels	
<u>Western Europe</u>				
<u>EEC</u>				
Belgium and Luxembourg.....	10,067,749	551,692(2)	10,619,441(2)	8,683,582
France.....	1,258,056	489,910	1,747,966	2,395,043
Germany, Federal Republic..	7,782,081	4,717,678(2)	12,499,759(2)	16,098,757
Italy.....	3,923,463	1,880,328	5,803,791	4,681,394
Netherlands.....	1,629,138	82,572(2)	1,711,710(2)	3,405,825
Sub-totals.....	24,660,487	7,722,180	32,382,667	35,264,601
<u>Other Western Europe</u>				
Austria.....	929,659	220,472	1,150,131	1,221,708
Britain.....	41,803,622	409,137	42,212,759	47,847,672
Denmark.....	—	22,400	22,400	—
Finland.....	1,052,576	—	1,052,576	377,684
Ireland.....	1,065,866	—	1,065,866	943,582
Malta and Gozo.....	290,528	—	290,528	283,733
Norway.....	832,933	—	832,933	1,575,540
Portugal.....	571,200	—	571,200	—
Sweden.....	—	12,133	12,133	18,666
Switzerland.....	740,434	1,661,774	2,402,208	4,994,522
Sub-totals.....	47,286,818	2,325,916	49,612,734	57,263,107
Totals.....	71,947,305	10,048,096	81,995,401	92,527,708
<u>Eastern Europe</u>				
Albania.....	2,176,122	386,400	2,562,522	3,474,763
Bulgaria.....	3,800,320	—	3,800,320	—
Czechoslovakia.....	—	—	—	7,547,066
Germany, Democratic Republic	1,956,607	—	1,956,607	5,019,952
Poland.....	6,665,144	1,664,945	8,330,089	7,667,649
U.S.S.R. (Russia).....	64,466,036	2,422,815	66,888,851	118,809,292
Totals.....	79,064,229	4,474,160	83,538,389	142,518,722
<u>Africa</u>				
Algeria.....	716,495	—	716,495	—
Ethiopia.....	—	—	—	146,976
Mozambique.....	—	—	—	11,125
Nigeria.....	528,267	—	528,267	302,400
Republic of South Africa.....	3,483,200	—	3,483,200	—
Totals.....	4,727,962	—	4,727,962	460,501

Cumulative Exports of Canadian Wheat(1) by Destination

Destination	August 1966 - March 1967			Total same period last year(2)
	Wheat (except durum)	Durum wheat	Total wheat	
bushels				
<u>Asia</u>				
China, Communist.....	70,081,019	409,920	70,490,939	43,471,451
Hong Kong.....	623,717	—	623,717	879,684
India.....	17,639,223	—	17,639,223	8,583,176
Israel.....	—	—	—	467,600
Japan.....	39,179,553	258,257	39,437,810	30,591,942
Korea, North.....	940,426	—	940,426	2,010,400
Malaysia and Singapore.....	347,947	—	347,947	780,605
Pakistan.....	4,057,156	—	4,057,156	671,847
Philippines.....	515,200	—	515,200	2,053,520
Saudi Arabia.....	72,749	—	72,749	229,531
Taiwan.....	74,074	—	74,074	—
Thailand.....	—	—	—	154,000
Turkey.....	331,034	—	331,034	—
Totals.....	133,862,098	668,177	134,530,275	89,893,756
<u>Oceania</u>				
United States Oceania.....	—	—	—	36,587
<u>Western Hemisphere:</u>				
Barbados.....	80	—	80	160
Costa Rica.....	138,960	—	138,960	—
Cuba.....	5,638,134	—	5,638,134	7,698,655
Ecuador.....	218,270	—	218,270	729,774
El Salvador.....	629,466	—	629,466	452,667
Guatemala.....	28,294	—	28,294	148,106
Jamaica.....	7,976	—	7,976	7,984
Leeward and Windward Islands	—	—	—	4
Nicaragua.....	210,999	—	210,999	450,023
Peru.....	39,200	—	39,200	298,667
Trinidad and Tobago.....	—	—	—	129,472
Venezuela.....	3,448,287	—	3,448,287	5,221,368
United States Domestic(3)...	54,915	—	54,915	—
Totals.....	10,414,581	—	10,414,581	15,136,880
Sub-totals, all countries	300,016,175	15,190,433	315,206,608	340,574,154
Bagged Seed(4).....			569,189(2)	654,352
Totals, all countries.....	300,016,175	15,190,433	315,775,797	341,228,506

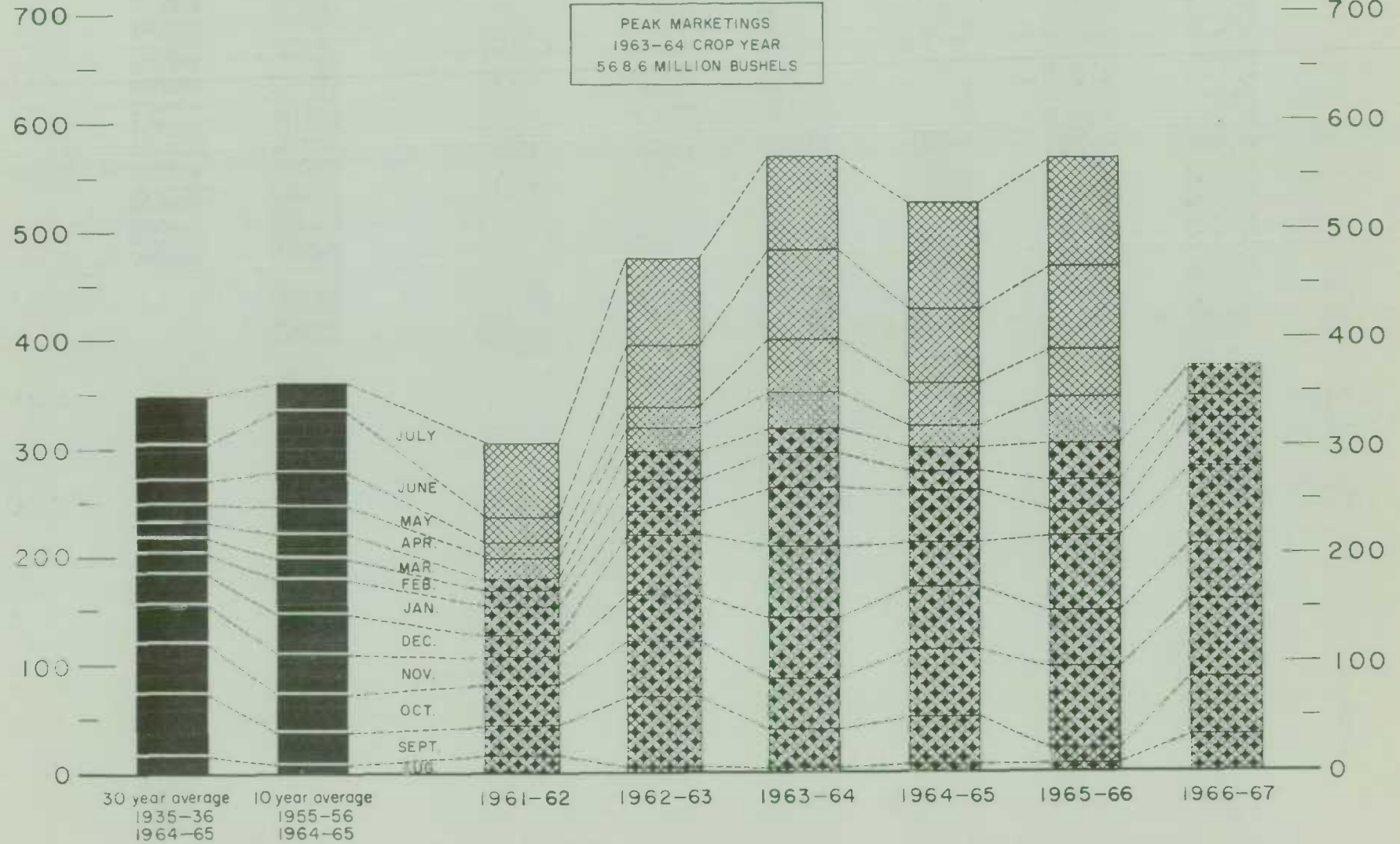
- (1) Overseas clearances as reported by the Statistics Division, Board of Grain Commissioners for Canada, for all countries except the United States. Excluding bagged seed. (2) Revised. (3) Compiled from returns of Canadian elevator licensees and shippers and advice from American grain correspondents. (4) Compiled from Canadian Customs returns, 1965-66 adjusted for time lag.

FARMERS' MARKETINGS OF WHEAT, PRAIRIE PROVINCES

MILLION BUSHEL

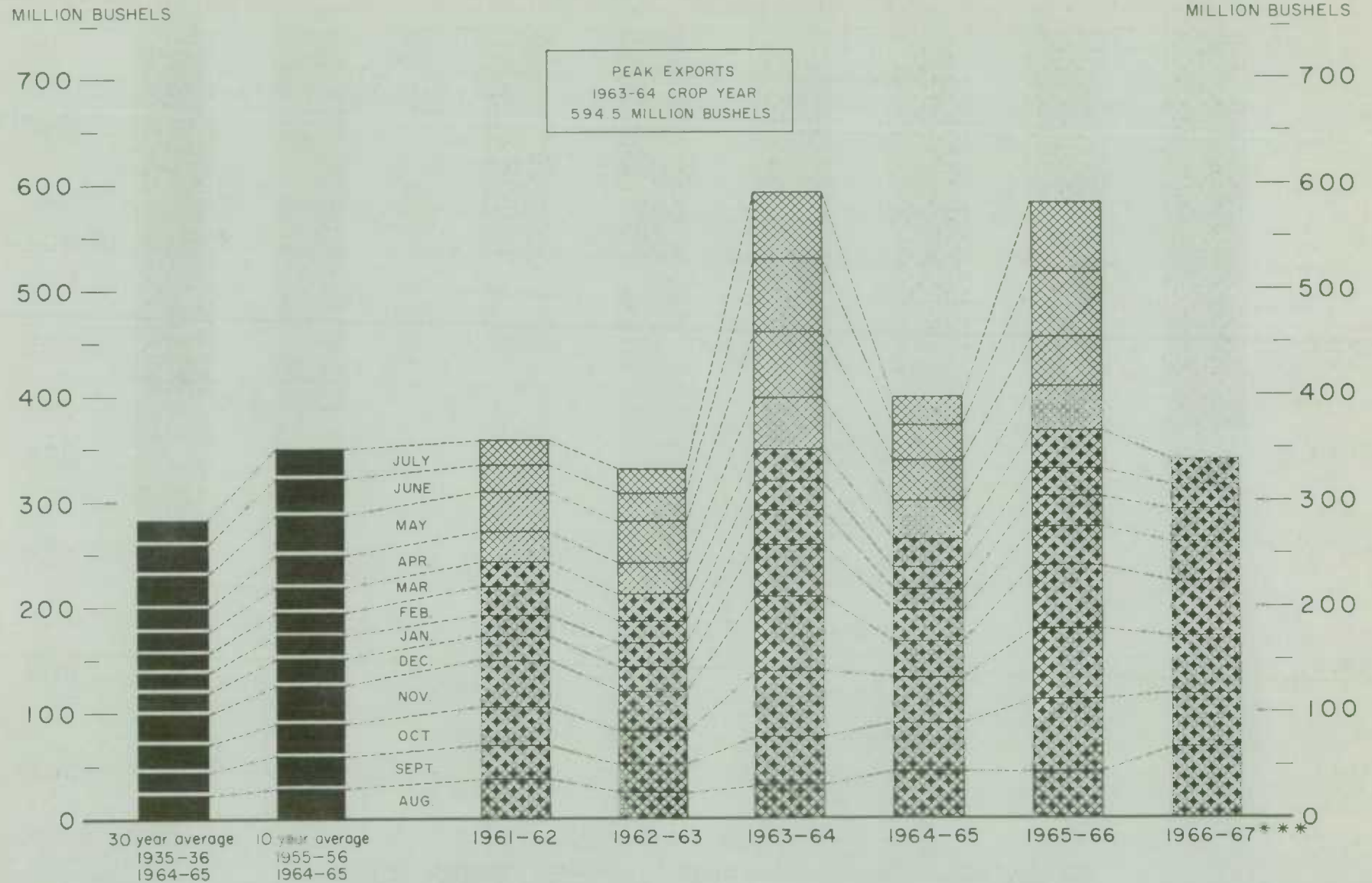
(SPECIFIED PERIODS)

MILLION BUSHEL



Agriculture Division D.B.S.

EXPORTS OF CANADIAN WHEAT* AND WHEAT FLOUR** (SPECIFIED PERIODS)



* Beginning with 1956-57 includes bagged seed wheat. ** In terms of wheat equivalent *** Preliminary.

Agriculture Division D.B.S.

FARMERS' MARKETINGS OF BARLEY, PRAIRIE PROVINCES

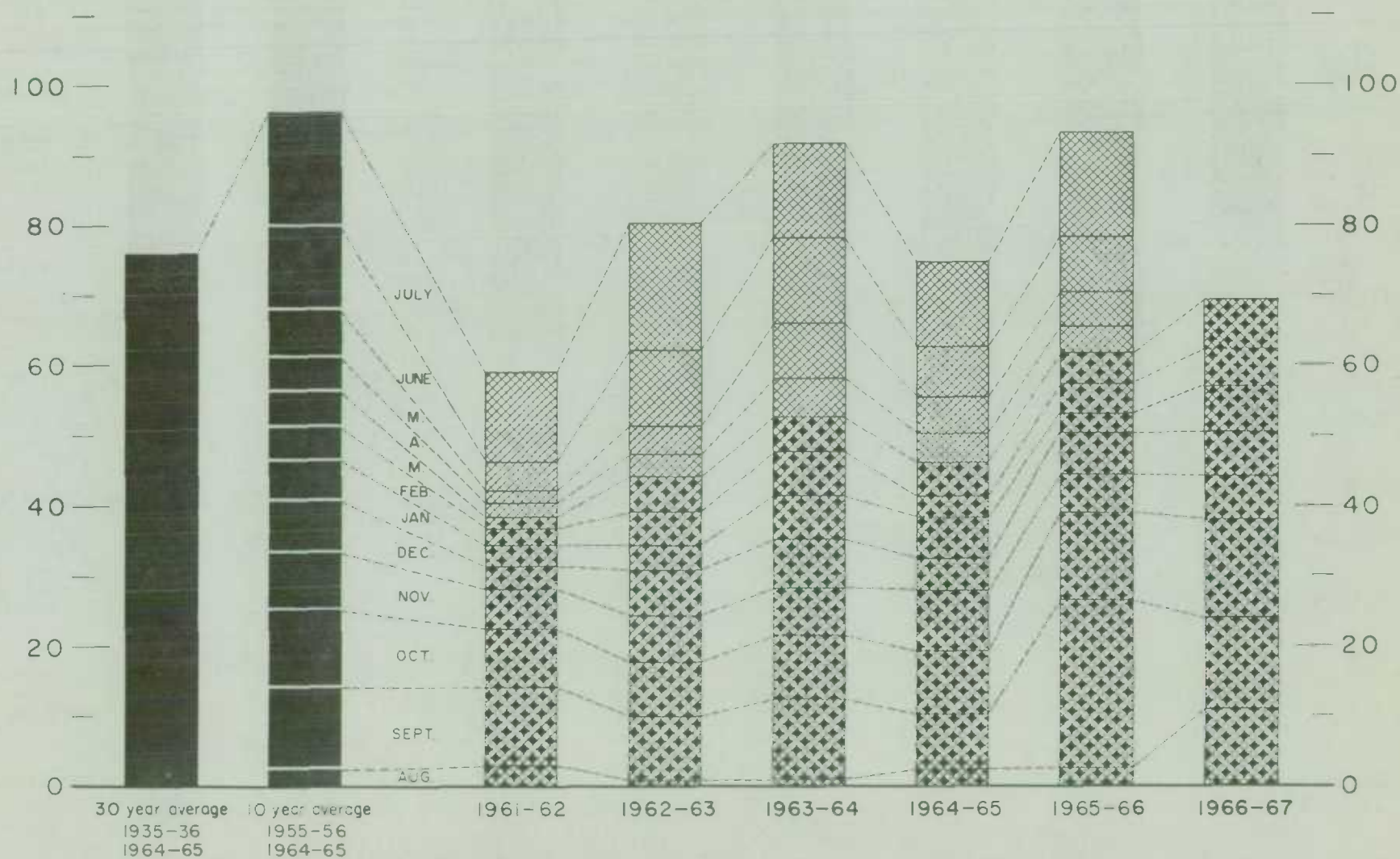
(SPECIFIED PERIODS)

MILLION BUSHEL

120 —

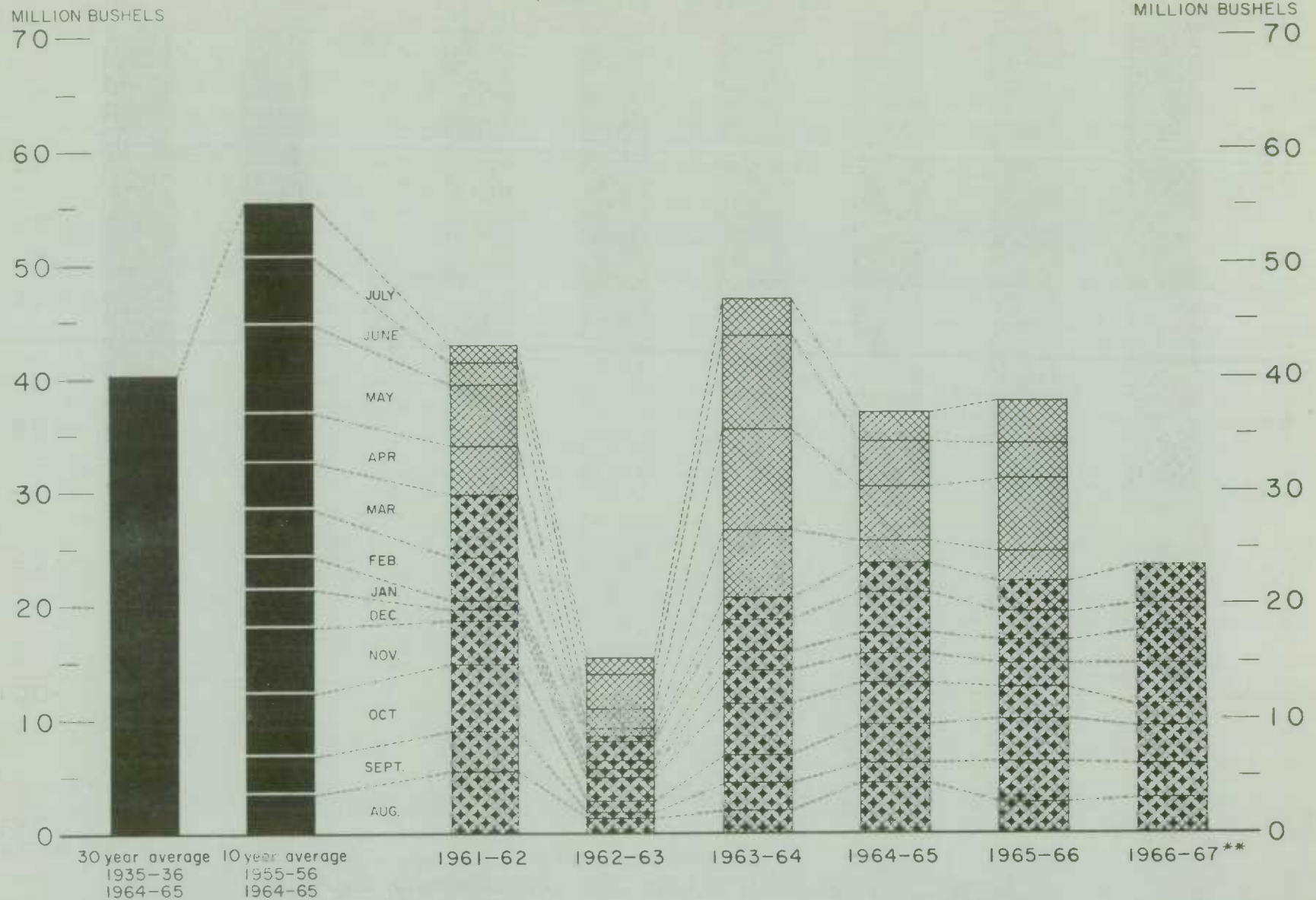
MILLION BUSHEL

120 —



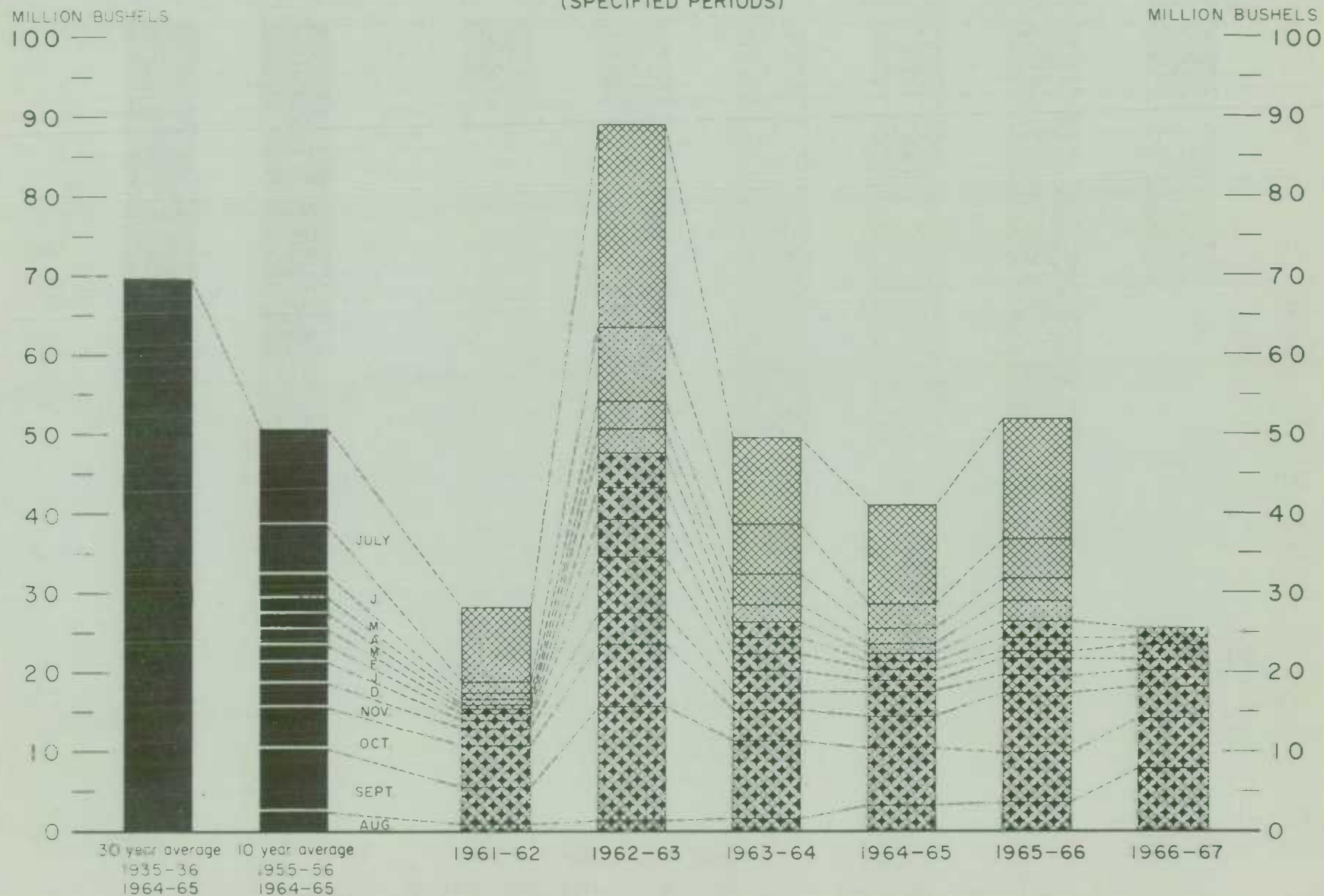
EXPORTS OF CANADIAN BARLEY AND BARLEY PRODUCTS*

(SPECIFIED PERIODS)



* In terms of grain equivalent. ** Preliminary.

FARMERS' MARKETINGS OF OATS, PRAIRIE PROVINCES (SPECIFIED PERIODS)

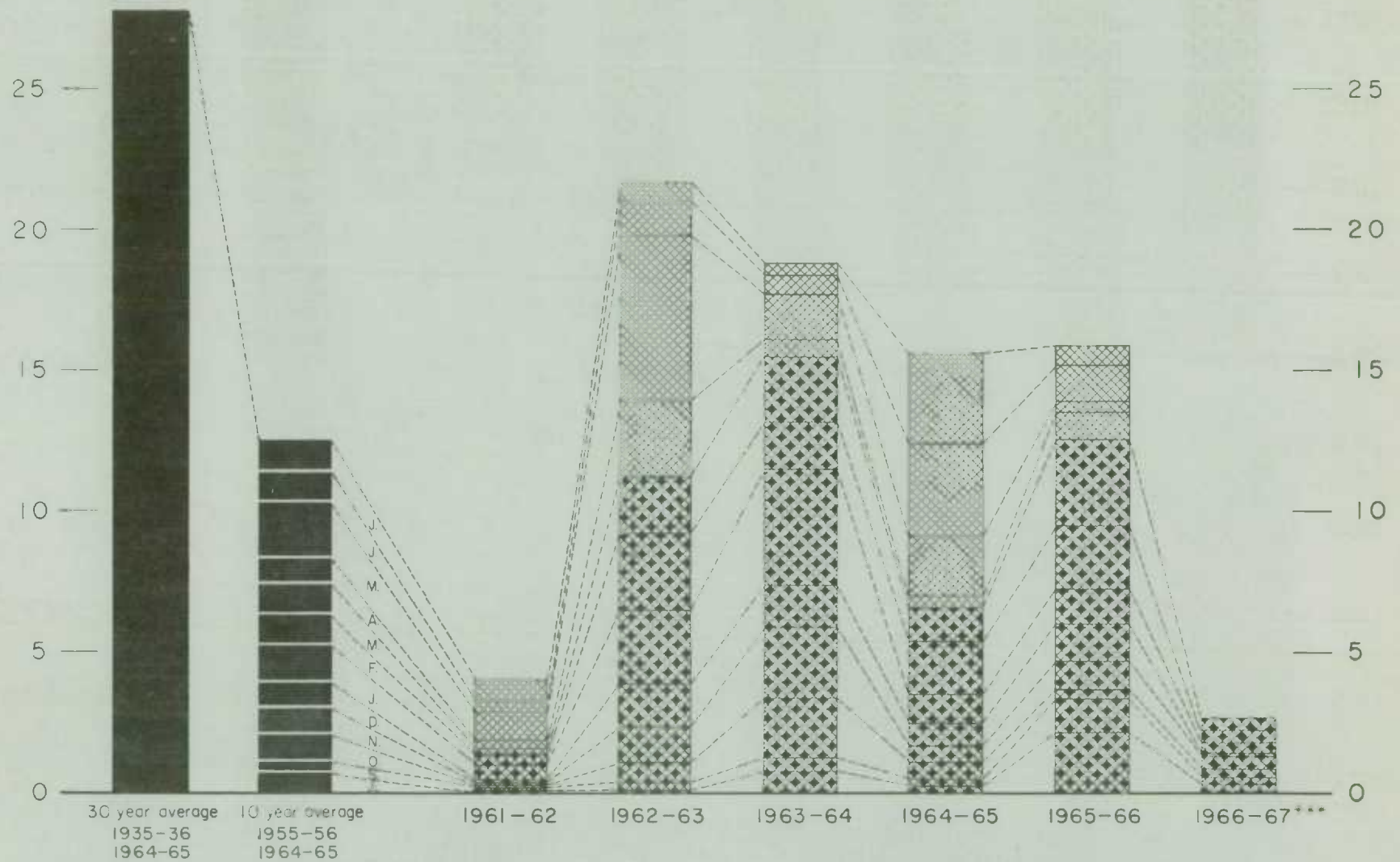


EXPORTS OF CANADIAN OATS* AND OAT PRODUCTS**

(SPECIFIED PERIODS)

MILLION BUSHELS
30 —

MILLION BUSHELS
30 —



* Beginning with 1960-61 includes relatively small quantity of bagged seed

** In terms of grain equivalent

*** Preliminary

FARMERS' MARKETINGS OF CANADA'S SIX MAJOR GRAINS*, PRAIRIE PROVINCES

MILLION BUSHELS

1,000 —

900 —

800 —

700 —

600 —

500 —

400 —

300 —

200 —

100 —

0

(SPECIFIED PERIODS)

MILLION BUSHELS

1,000 —

900 —

800 —

700 —

600 —

500 —

400 —

300 —

200 —

100 —

0

JULY

JUNE

MAY

APR

M

FEB

JAN

DEC

NOV

OCT

SEPT

AUG

30 year average 10 year average
1935-36 1955-56
1964-65 1964-65

1961-62

1962-63

1963-64

1964-65

1965-66

1966-67

* Wheat, oats, barley, rye, flaxseed and from 1960-61 rapeseed

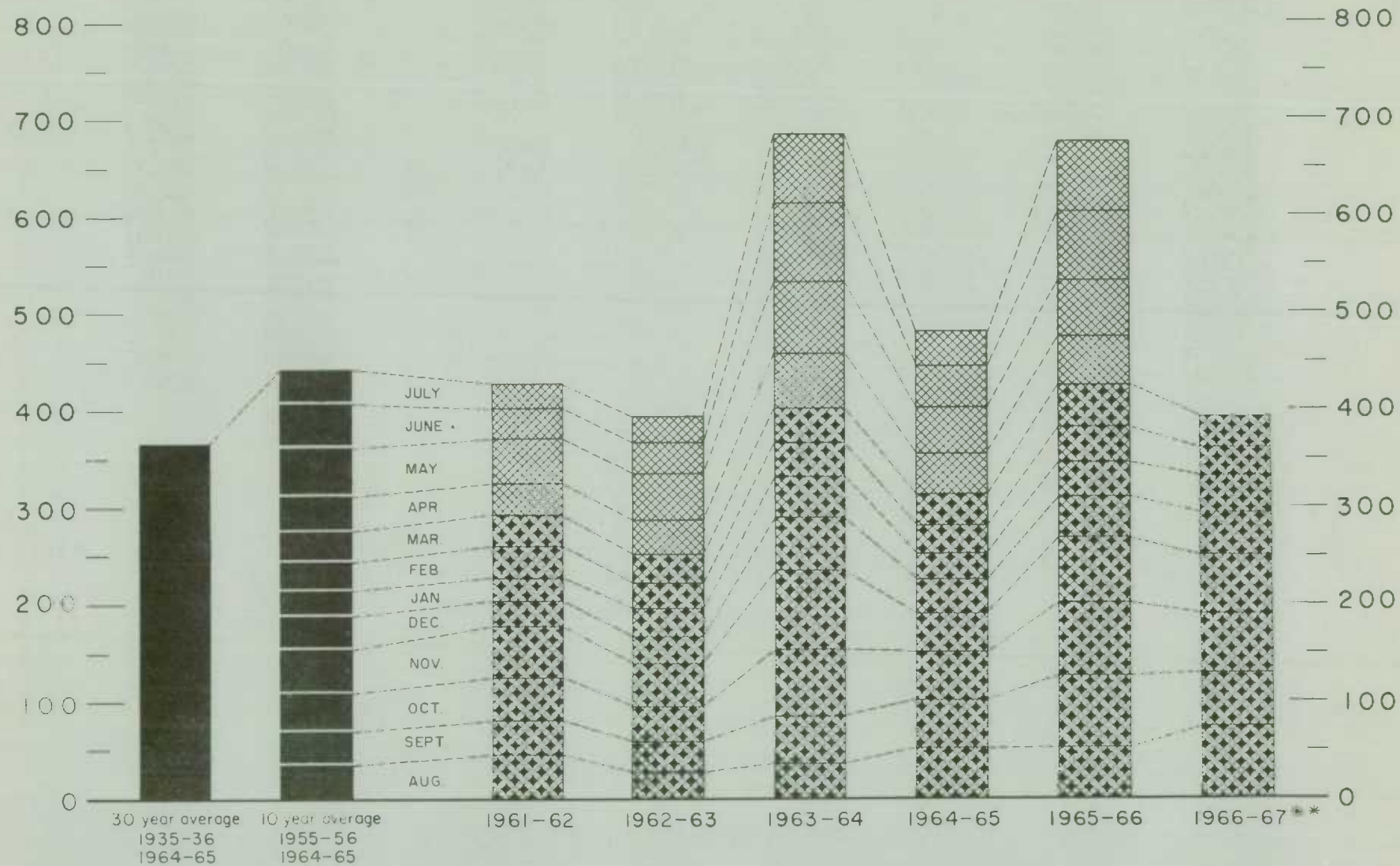
Agriculture Division DBS

EXPORTS OF CANADA'S SIX MAJOR GRAINS AND PRODUCTS*

(SPECIFIED PERIODS)

MILLION BUSHELS

MILLION BUSHELS



*Wheat, bagged seed wheat, and wheat flour; oats, bagged seed oats, and oatmeal and rolled oats; barley, malt and pot and pearl; rye, flaxseed and from 1960-61 rapeseed

**Preliminary.

Agriculture Division D.B.S.

Customs Exports of Canadian Wheat Flour by Countries of Consignment

Destination	November 1966(1)	March 1967(2)	August-March	
			1966-67(2)	1965-66(1)
bushels				
<u>Western Europe</u>				
<u>EEC</u>				
Belgium and Luxembourg	8,524	1,127	66,978	67,641
Italy	-	-	8,740	5,290
Netherlands	-	453	4,482	3,544
Sub-totals	8,524	1,580	80,200	76,475
<u>Other Western Europe</u>				
Britain	596,629	229,729	4,543,218	6,298,573
Denmark	-	-	1,610	1,380
Gibraltar	7,470	-	23,442	15,971
Greece	3,450	4,531	44,604	16,187
Iceland	1,776	-	4,660	3,552
Ireland	966	-	966	-
Norway	-	-	230	-
Portugal	8,637	1,955	52,873(4)	42,814
Sweden	258	-	2,001	1,265
Sub-totals	619,186	236,215	4,673,604(4)	6,379,742
Totals	627,710	237,795	4,753,804(4)	6,456,217
<u>Eastern Europe</u>				
U.S.S.R. (Russia)(3)	-	-	-	3,163,870
<u>Africa</u>				
Algeria	-	-	317,906	-
Angola	-	1,840	13,708	12,075
Cameroon Republic	8,395	-	30,461	27,973
Congo-Kinshasa	1,150	5,513	30,576	83,720
Dahomey	-	920	7,809	-
French Africa nes	5,458	-	31,395	37,732
Gambia	10,695	-	50,014	55,499
Ghana	182,588	17,296	879,140	623,514
Guinea Republic	-	-	460	-
Ivory Coast	1,380	-	1,380	2,185
Liberia	17,103	13,183	141,459	116,762
Malagasy Republic	-	-	-	3,795
Malawi	7,202	8,101	41,016	17,222
Morocco	-	-	21,638	-
Mozambique	1,380	7,342	60,366	33,879
Nigeria	127	-	30,164	22,936
Portuguese Africa nes	5,109	2,231	18,520	69,529
Rhodesia	-	-	1,150	8,050
Sierra Leone	40,112	20,498	421,942	320,302
Tanzania	-	3,015	6,005	6,900
Togo	16,142	2,185	140,491	154,615
U.A.R. - Egypt	-	-	89,100	1,656
Totals	296,841	82,124	2,334,700	1,598,344
<u>Asia</u>				
Aden	2,576	9,467	50,007	35,894
Bahrain	-	-	51	-
Ceylon	-	-	1,049,260	814,140
Cyprus	-	-	831	-
Hong Kong	59,397	69,805	407,038	435,013
India	-	914,762	921,329	646
Iran	518	-	3,682	3,365
Japan	1,070	778	3,395	3,128
Jordan	1,481	-	2,408	10,341

Customs Exports of Canadian Wheat Flour by Countries of Consignment

Destination	November	March	August - March	
	1966 (1)	1967 (2)	1966-67(2)	1965-66 (1)
	bushels			
Asia (concluded)				
Korea	—	14,547	32,294	60,978
Lebanon	10,421	2,535	168,597	216,531
Malaysia and Singapore	—	—	5,095	90,264
Portuguese Asia	4,664	2,852	24,095	14,490
Qatar	87	—	260	547
Saudi Arabia	—	—	9,147	421
Syria	—	—	—	9,025
Thailand	21,620	18,055	166,175	150,080
Trucial States	—	18	18	—
Viet-Nam	—	—	—	920
Totals	101,834	1,032,819	2,843,682	1,845,783
Oceania				
British Oceania nes	—	115	690	345
Fiji	—	287	4,864	6,578
French Oceania	—	—	497	483
United States Oceania	4,025	4,600	32,200	36,110
Totals	4,025	5,002	38,251	43,516
Western Hemisphere				
Bahamas	7,709	21,871	200,972	184,770
Barbados	20,780	18,961	173,043	144,447
Bermuda	9,064	7,220	88,164	81,041
British Honduras	3,091	2,318	43,835	41,733
Costa Rica	74,635	131,215	776,296	684,296
Cuba	936,169(3)	1,206,237(3)	9,771,423(3)	8,515,444
Dominican Republic	—	828	1,272	285,271
Ecuador	—	1,380	1,725	—
El Salvador	—	—	487	6,649
French Guiana	—	1,610	1,610	230
French West Indies	—	—	1,760	5,964
Guatemala	2,070	6,670	22,108	16,452
Guyana	8,406	7,123	66,859	48,728
Haiti Republic	—	—	676	1,460
Honduras Republic	1,035	5,212	33,550	69,426
Jamaica	129,163	80,670	1,154,995	1,104,131
Leeward and Windward Islands	66,408	69,127	750,258	670,696
Netherlands Antilles	7,997	7,508	79,601	133,101
Nicaragua	—	—	1,380	7,820
Panama	8,280	3,335	28,943	21,558
Peru	2,530	—	6,845	32,441
St. Pierre and Miquelon	2,127	1,150	13,984	15,134
Surinam	1,069	812	8,788	57,102
Trinidad and Tobago	122,008	58,337	796,908	950,555
Venezuela	—	402	402	115
United States Virgin Islands	—	—	—	67
United States	37,996	40,802	370,530	621,159
Totals	1,440,537	1,672,788	14,396,414	13,699,790
Totals, All Countries	2,470,947	3,030,528	24,366,851(4)	26,807,520

nes - not elsewhere specified.

(1) In terms of wheat equivalent. Adjusted to remove effect of time lag in the returns made by Customs. Conversion rate: 2.3 bushels per cwt.

(2) In terms of wheat equivalent. Preliminary and unadjusted for time lag. Conversion rate: 2.3 bushels per cwt.

(3) Source - Canadian National Millers Association. (4) Revised.

Canadian Wheat Board Weekly Average Cash Wheat Prices
Basis in Store Fort William-Port Arthur

Class and Grade	Week Ending				
	March 31	April 7	April 14	April 21	April 28
cents and eighths per bushel					
<u>Initial Payment to Producers</u>					
1 Northern	150	150	150	150	150
2 Northern	146	146	146	146	146
3 Northern	142	142	142	142	142
4 Northern	135	135	135	135	135
5 Wheat	121	121	121	121	121
6 Wheat	117	117	117	117	117
Feed Wheat	113	113	113	113	113
1 C.W. Garnet	135	135	135	135	135
2 C.W. Garnet	130	130	130	130	130
3 C.W. Garnet	125	125	125	125	125
1 Alberta Red Winter	134	134	134	134	134
2 Alberta Winter	129	129	129	129	129
3 Alberta Winter	123	123	123	123	123
1 C.W. Amber Durum	150	150	150	150	150
2 C.W. Amber Durum	146	146	146	146	146
3 C.W. Amber Durum	142	142	142	142	142
<u>International Wheat Agreement</u> <u>and Domestic Sales</u>					
1 Northern	212/6	213	212/6	212/6	212/7
2 Northern	209/6	210	209/6	209/6	209/7
3 Northern	206/6	207	206/6	206/6	206/7
4 Northern	201/6	202	201/6	201/6	201/7
5 Wheat	198/6	199	198/6	198/6	198/7
6 Wheat	195/6	196	195/6	195/6	195/7
Feed Wheat	191/6	192	191/6	191/6	191/7
1 C.W. Garnet	201/6	202	201/6	201/6	201/7
2 C.W. Garnet	200/6	201	200/6	200/6	200/7
3 C.W. Garnet	199/6	200	199/6	199/6	199/7
1 Alberta Red Winter	201/6	202	201/6	201/6	201/7
2 Alberta Winter	200/6	201	200/6	200/6	200/7
3 Alberta Winter	199/6	200	199/6	199/6	199/7
1 C.W. Amber Durum	225/6	224	223/6	223/6	223/7
2 C.W. Amber Durum	222/6	221	220/6	220/6	220/7
3 C.W. Amber Durum	217/6	216	215/6	215/6	215/7
<u>Export - Class II</u>					
1 Northern	212/6	213	212/6	212/6	212/7
2 Northern	209/6	210	209/6	209/6	209/7
3 Northern	206/6	207	206/6	206/6	206/7
4 Northern	201/6	202	201/6	201/6	201/7
5 Wheat	198/6	199	198/6	198/6	198/7
6 Wheat	195/6	196	195/6	195/6	195/7
Feed Wheat	191/6	192	191/6	191/6	191/7
1 C.W. Garnet	201/6	202	201/6	201/6	201/7
2 C.W. Garnet	200/6	201	200/6	200/6	200/7
3 C.W. Garnet	199/6	200	199/6	199/6	199/7
1 C.W. Amber Durum	225/6	224	223/6	223/6	223/7
2 C.W. Amber Durum	222/6	221	220/6	220/6	220/7
3 C.W. Amber Durum	217/6	216	215/6	215/6	215/7

Canadian Wheat Board Weekly Average Cash Wheat Prices
Basis in Store Vancouver

Class and Grade	Week Ending				
	March 31	April 7	April 14	April 21	April 28
cents and eighths per bushel					
<u>Initial Payment to Producers</u>					
1 Northern	150	150	150	150	150
2 Northern	146	146	146	146	146
3 Northern	142	142	142	142	142
4 Northern	135	135	135	135	135
5 Wheat	121	121	121	121	121
6 Wheat	117	117	117	117	117
Feed Wheat	113	113	113	113	113
1 C.W. Garnet	135	135	135	135	135
2 C.W. Garnet	130	130	130	130	130
3 C.W. Garnet	125	125	125	125	125
1 Alberta Red Winter	134	134	134	134	134
2 Alberta Winter	129	129	129	129	129
3 Alberta Winter	123	123	123	123	123
1 C.W. Amber Durum	150	150	150	150	150
2 C.W. Amber Durum	146	146	146	146	146
3 C.W. Amber Durum	142	142	142	142	142
<u>International Wheat Agreement and Domestic Sales</u>					
1 Northern	216/6	217	216/6	216/6	216/7
2 Northern	213/6	214	213/6	213/6	213/7
3 Northern	211/6	212	211/6	211/6	211/7
4 Northern	206/6	207	206/6	206/6	206/7
5 Wheat	203/6	204	203/6	203/6	203/7
6 Wheat	200/6	201	200/6	200/6	200/7
Feed Wheat	196/6	197	196/6	196/6	196/7
1 C.W. Garnet	206/6	207	206/6	206/6	206/7
2 C.W. Garnet	205/6	206	205/6	205/6	205/7
3 C.W. Garnet	204/6	205	204/6	204/6	204/7
1 Alberta Red Winter	206/6	207	206/6	206/6	206/7
2 Alberta Winter	205/6	206	205/6	205/6	205/7
3 Alberta Winter	204/6	205	204/6	204/6	204/7
<u>Export — Class II</u>					
1 Northern	216/6	217	216/6	216/6	216/7
2 Northern	213/6	214	213/6	213/6	213/7
3 Northern	211/6	212	211/6	211/6	211/7
4 Northern	206/6	207	206/6	206/6	206/7
5 Wheat	203/6	204	203/6	203/6	203/7
6 Wheat	200/6	201	200/6	200/6	200/7
Feed Wheat	196/6	197	196/6	196/6	196/7
1 C.W. Garnet	206/6	207	206/6	206/6	206/7
2 C.W. Garnet	205/6	206	205/6	205/6	205/7
3 C.W. Garnet	204/6	205	204/6	204/6	204/7
1 Alberta Red Winter	206/6	207	206/6	206/6	206/7
2 Alberta Winter	205/6	206	205/6	205/6	205/7
3 Alberta Winter	204/6	205	204/6	204/6	204/7

CANADIAN FLOUR MILLING SITUATION

Production

Wheat flour production by Canadian mills during March 1967 amounted to 3,809,000 hundredweight, representing an increase of 26 per cent greater than the February 1967 total of 3,016,000 hundredweight, 9 per cent above the ten-year (1957-66) average production for the month of March of 3,494,000 hundredweight, but 6 per cent less than the adjusted March 1966 figure of 4,056,000 hundredweight. Mills reporting operations during March 1967 had a total rated capacity of 168,000 hundredweight per 24-hour day and on the basis of a 26-day working period 86.9 per cent of this rated capacity was effective.

Wheat milled for flour during March 1967 amounted to 8,442,000 bushels, 24 per cent over the 6,793,000 bushels milled during the preceding month, but 7 per cent below the 9,092,000 bushels milled during March 1966. Of the wheat milled for flour during March 1967 some 6,583,000 bushels were Western Canadian spring wheat (other than durum) while the remainder consisted of Ontario winter wheat (1,403,000 bushels); durum (352,000 bushels); and all other (105,000 bushels).

Exports

According to preliminary Customs returns, exports of Canadian wheat flour during March 1967 amounted to 1,318,000 hundredweight (some 3,031,000 bushels of wheat equivalent) 21 per cent greater than the 2,512,000 bushels exported during the previous month, but 18 per cent below the adjusted March 1966 exports of 3,695,000 bushels. Flour shipments during the month went to forty-nine countries. Exports to Cuba, at 1,206,000 bushels accounted for 40 per cent of the March total while shipments to India totalled some 915,000 bushels and accounted for 30 per cent of the March 1967 exports of wheat flour. Other leading markets for Canadian wheat flour in terms of wheat during the month, with shipments in thousands of bushels were as follows: Britain, 230; Costa Rica, 131; Jamaica, 81; Hong Kong, 70; Leeward and Windward Islands, 69; and Trinidad and Tobago, 58.

Wheat Milled for Flour, and Production and Exports of Wheat Flour, Canada

Crop Year	Wheat Milled for Flour bushels	Wheat Flour	
		Production	Exports(1) cwt.
1935-36-1939-40 average.....	67,845,114	29,405,451	9,603,941
1940-41-1944-45 average.....	99,704,638	43,908,245	23,699,546
1945-46-1949-50 average.....	107,330,372	47,011,540	25,819,721
1950-51-1954-55 average.....	100,446,328	43,847,894	21,812,041
1955-56-1959-60 average.....	99,148,211	39,752,589	16,349,156
1960-61.....	89,731,155	39,914,644	15,513,836
1961-62.....	88,240,580	39,539,651	13,892,676
1962-63.....	78,789,332	35,505,220	11,854,458
1963-64.....	111,670,577	50,103,569	23,873,978
1964-65.....	87,209,242	39,107,358	13,714,069
1965-66.....	97,925,995	43,531,263	16,576,117
1966-67(2)			
August.....	8,035,126	3,526,010	1,270,083
September.....	8,247,036	3,634,468	1,029,778
October.....	8,365,845	3,694,079	1,530,557
November.....	8,809,679	3,895,960	1,208,417
December.....	7,122,105	3,171,307	1,721,614
January.....	7,262,906	3,241,894	1,424,192
February.....	6,792,921	3,015,934	1,092,021
March.....	8,442,301	3,808,825	1,317,621
Totals.....	63,077,919	27,988,477	10,594,283
Same months 1965-66(3).....	68,525,014	30,528,577	11,655,444

(1) Based on Customs returns. Exports for the crop years 1945-46-1965-66 revised to remove effect of time lag in the returns made by Customs.

(2) Subject to revision.

(3) Revised figures.

UNITED STATES SITUATION

Current Crop Year
Supplies 13 Per
Cent Less than
Year Previous

Total domestic supplies of wheat in the United States for the 1966-67 crop year are estimated at 1,846.7 million bushels compared with 2,133.3 million the year previous. Opening stocks, at 536.0 million bushels, represented the lowest opening stocks in thirteen years and the fifth consecutive decline since July 1, 1961. The 1966 harvest, estimated at 1,310.6 million bushels, was some 5.0 million less than the 1965 production. Anticipated domestic requirements during 1966-67 are placed at 688.0 million compared with 729.4 million last year. After deducting anticipated domestic requirements for the current United States crop year, some 1,160.1 million remain available for export and for carryover, a decrease of 17 per cent from the 1,405.0 million in 1965-66.

Exports 5 Per Cent
Below Previous
Year

Exports of wheat and wheat flour in terms of grain equivalent during the period July 1966-March 1967 amounted to 584.2 million bushels, a decrease of 5 per cent from the 618.0 million exported during the same months last year. The balance remaining on April 1, 1967 for export and for carryover was estimated at 576.0 million bushels as against 787.1 million on the same date a year ago.

United States Wheat Supplies

Item	1965-66(1)	1966-67(2)
	million bushels	
Carryover at beginning of crop year (July 1).....	817.7	536.0
Production.....	1,315.6	1,310.6
Total estimated domestic supplies.....	2,133.3	1,846.7
Imports of wheat and wheat flour in terms of wheat for domestic use, July-March.....	1.1	1.5
Total estimated supplies (3)	2,134.4	1,848.1
Less estimated domestic requirements for crop year (4)	729.4	688.0
Available for export and for carryover.....	1,405.0	1,160.1
Deduct:		
Exports of wheat as grain, July-March.....	566.5	533.8
Exports of wheat flour in terms of wheat, July- March (5)	51.5	50.4
Total exports of wheat and wheat flour (6) ..	618.0	584.2
Balance on April 1 for export and for carryover.....	787.1	576.0

(1) Revised. (2) Preliminary. (3) Excluding imports for April-June.

(4) Includes shipments to United States Territories and wheat for military food use at home and abroad. (5) Flour exports exclude "Milled in bond".

(6) Data include shipments for relief.

In a report released on April 10, 1967 the Crop Reporting Board of the United States Department of Agriculture stated that.....

Crop and Weather
Conditions

Continued dry weather in the Central and Southern Great Plains caused a rather sharp reduction in winter wheat prospects since last December. Winter wheat production is now forecast at 1,162 million bushels, 121 million bushels below the December 1 forecast, but 10 per cent above 1966 and 20 per cent above average. The indicated yield per seeded acre is 21.5 bushels compared with 24.6 in 1966 and the average of 22.7 bushels. The expected acreage for harvest as grain, 43.9 million, is 81.1 per cent of the seeded acreage, compared with 90.0 per cent in 1966 and the average of 86.7 per cent.

Conditions generally favoured seeding 1967 winter wheat, except in the Great Plains, from central Kansas southward, where seeding was completed ahead of usual, but very little precipitation has been received since planting. The crop deteriorated rapidly in March because mild temperatures and winds sapped the already critically short supplies of moisture. April 1 prospects were poor from central Kansas and eastern Colorado southward. Moisture is urgently needed to halt further deterioration.

Winter and spring precipitation also has been below normal in Nebraska and South Dakota. However, the crop was still mostly in good condition due to reserves of subsoil moisture. More moisture will be needed soon to maintain current prospects. In the eastern half of the Nation, the crop wintered well and April 1 prospects are favourable.

The Montana crop was just starting to emerge; moisture is adequate and growers are mostly optimistic about yield potentials. Much of the crop in the Pacific Northwest was seeded in dry soils last fall but is now in good to excellent condition because of abundant late fall and winter rains. Nearly all of precipitation was absorbed with little run-off, but the mild, moist conditions have caused some concern over a possible outbreak of striped rust.

Wheat Stocks
on Farms

Stocks of all wheat on U.S. farms on April 1 totalled 241 million bushels, down 6 per cent from a year earlier but 11 per cent above average. April 1 stocks were 18.4 per cent of total 1966 production. Disappearance of wheat from farms during January-March totalled 168 million bushels, the largest of recent years and about 17 per cent above average.

Durum wheat stocks on farms in Minnesota, the Dakotas, and Montana totalled 29 million bushels on April 1, only 59 per cent of those a year earlier but 17 per cent more than average. Most of the stocks were in North Dakota. Disappearance of durum wheat from farms in the January-March quarter totalled 11 million bushels, about 1/3 more than a year earlier and the second largest January-March disappearance in a 6-year record.

Flour Production

The Bureau of the Census, Department of Commerce, estimated wheat flour production in March at 22,000,000 hundredweight, averaging 948,000 hundredweight per working day. This compared with an average output per working day of 970,000 hundredweight last month and 1,001,000 hundredweight in March 1966. Wheat flour mills during March operated at 83.4 per cent of capacity compared with 86.1 and 90.7 per cent, respectively, for the previous month and the same month a year ago. Flour mills in March ground 49,000,000 bushels of wheat, compared with 44,000,000 bushels in the previous month. Wheat offal output was 377,000 tons.

Cash Wheat Prices on the Kansas City and Minneapolis Markets

No. 2 Hard Winter, Kansas City			No. 1 Northern Spring, Minneapolis		
Date	Price		Date	Price	
	cents per bushel			cents per bushel	
April 3, 1967	179 1/4	- 181 1/4	April 3, 1967	192 1/4	- 196 1/4
4	182 1/2	- 184	4	193 1/2	- 197 1/2
5	178 3/4	- 198 1/2 (1)	5	194 3/4	- 198 3/4
6	186	- 187 1/2	6	194 5/8	- 198 5/8
7	179 1/4	- 199 1/2 (1)	7	191 3/8	- 195 3/8
10	182 1/2	- 184 1/4	10	190 7/8	- 194 7/8
11	183		11	188 5/8	- 192 5/8
12	171	- 187 1/2 (1)	12	182 1/2	- 186 1/2
13	174	- 174 1/2	13	185 3/8	- 189 3/8
14	174 1/2	- 175 1/2	14	187 3/4	- 191 3/4
17	175	- 176 1/2	17	186 1/2	- 190 1/2
18	176 1/2		18	188 1/2	- 192 1/2
19			19	188 1/4	- 192 1/4
20			20	188 3/8	- 192 3/8
21			21	189	- 193
24	Not available		24	191 3/4	- 195 3/4
25			25	193 1/4	- 197 1/4
26			26	190 3/4	- 194 3/4
27			27	189 7/8	- 193 7/8
28			28	191	- 195

(1) Nominal.

Chicago Wheat Futures, High Points of Closing

Date	May	July	September	December	March
	cents and eighths per bushel				
April 3, 1967	177/5	177/5	180/7	186/2	189/6
4	177/2	178	181/3	186/6	190/5
5	180/6	179/7	183/2	188/5	192/2
6	181/3	180/2	183/5	189/3	193/1
7	179	177/4	180/6	186/3	190/2
10	177/7	176/6	180	185/5	189/4
11	176/4	175/1	178/2	184	187/6
12	169/4	167/7	171/1	176/5	180/4
13	170/4	168/6	172	177/6	181/5
14	170/3	168/7	172	177/7	181/6
17	169/3	167/3	170/3	175/7	179/6
18	169/3	167/7	170/7	176/4	179/7
19	166/3	165/2	168/3	173/7	177/6
20	165/2	166/5	168/6	174/3	178
21	166/4	166/1	169/2	175	178/4
24	166/6	166/5	170	175/5	179/4
25	167/3	167	170/3	176	179/6
26	164/2	164/6	167/6	173/4	177
27	162/3	163/4	166/6	172/6	176/2
28	164	165/2	168/7	174/7	178/7

ARGENTINE SITUATION

Stocks Decline But Production Increases

Total supplies of wheat in Argentina for the 1966-67 (December-November) crop year are presently estimated at 261.0 million bushels, representing a decline of some 26 per cent from the level of 350.5 million of the previous year. Opening stocks, at 14.9 million bushels, reflected a sharp decline from the December 1, 1965 total of 130.1 million and were the lowest carryover stocks since 1952. The current harvest is presently estimated at 246.2 million bushels or an increase of 12 per cent over the 1965-66 outturn of 220.5 million. After making an allowance of 138.2 million bushels for anticipated domestic requirements, an estimated 122.9 million remain available for export and for carryover in 1966-67 in contrast to 220.1 million in 1965-66.

Based on preliminary data exports of wheat and wheat flour in terms of wheat during December 1966-March 1967 amounted to 44.5 million bushels, in sharp contrast to the 101.8 million exported during the same months in 1965-66. The balance remaining on April 1, 1967 for export and for carryover was estimated at 78.4 million bushels, as against the April 1, 1966 total of 118.3 million.

Argentine Wheat Supplies

Item	1965-66(1)	1966-67(2)
	million bushels	
Carryover at beginning of crop year (December 1)(3).	130.1	14.9
Production.....	220.5	246.2
Total estimated domestic supplies.....	350.5	261.0
Less estimated domestic requirements for crop year..	130.4	138.2
Available for export and for carryover.....	220.1	122.9
Deduct:		
Exports of wheat as grain, December-March.....	101.6	44.3
Exports of wheat flour in terms of wheat, December-March.....	0.3	0.2
Total exports of wheat and wheat flour.....	101.8	44.5
Balance on April 1 for export and for carryover.....	118.3	78.4

(1) Revised.

(2) Preliminary.

(3) Includes allowances for farm stocks.

The following account of the Argentine situation has been extracted from a report from Mr. H.E. Ryan, Assistant Commercial Secretary (Agriculture), Buenos Aires, under date of April 28, 1967 and is reproduced with the permission of the Trade Commissioner Service, Department of Trade and Commerce. Where possible, conversions to Canadian measures and currency have been made for the convenience of our readers.

Weather and Crops

Dry weather during the first half of March coupled with abnormally high temperatures caused some alarm among producers who were beginning to prepare for winter crops and were already sowing dual-purpose lots to be used as winter pasture. During latter March, however, the situation changed significantly with abundant rainfall occurring throughout most of the cereal area. With this rainfall and temperature returning to normal, conditions can be considered favourable.

Wheat

The final official production estimate for 1966-67 has yet to be published and it is now felt that the crop approximated 6.7 million tons (246.2 million bushels). Exporters showed limited interest in purchasing during the month in accordance with discussions held with the National Grain Board in which the Board requested that future contracts be postponed until the existing stock position became known. In early April it was announced that with the exception of a shipment of 50,000 metric tons (1,837,000 bushels) to Chile and normal shipments to Brazil under the existing contract, no further exports were to take place.

The Grain Board announced recently that under the existing contract with Brazil a further 400,000 metric tons (14,697,000 bushels) had been negotiated for April-June shipment at US\$ 62.15 per metric ton (\$1.83 per bushel Canadian) f.o.b. Buenos Aires in bulk. The Interventor of the Board in making this announcement indicated that, although the price was somewhat lower than that realized for sales to other countries, it had been contracted in the spirit of a three-year agreement which necessitated a steady and stable demand and price. During the first quarter of 1967, 250,000 metric tons (9,186,000 bushels) were exported to Brazil, making a total of 650,000 tons (23,883,000 bushels), and likely the final figure with the above contract will exceed the one-million-ton figure (36,743,000 bushels).

While further sales by the private trade are being curtailed, the Board also announced during the period under review a sale to South Africa of 90,000 metric tons (3,307,000 bushels), although the prices were not revealed.

The local market remained active during March as millers continued to ensure their requirements and by the end of the month prices remained unchanged at 1,350 pesos per 100 kilos (\$1.14 per bushel) with deferred payment. Durum prices remained at the same level during the month with no contracts reported as concluded. Exporters were offering 1,460 pesos (\$1.23 per bushel) at the end of March in Buenos Aires and 1,465 pesos (\$1.23 per bushel) in Bahia Blanca. Prices for durums to Italy were US\$ 66.50 per ton (\$1.96 per bushel) f.o.b. Necochea, April-May shipment, with buyers reported to be interested only at US\$ 63.00 (\$1.86 per bushel). For the rest of the Continent offers of durums were made at US\$ 77.50 (\$2.28 per bushel) c.i.f., also for April-May shipment.

Prices in the Buenos Aires Futures Market were at the end of March 1,335 pesos (\$1.12 per bushel) for April delivery; 1,393 (\$1.17 per bushel) for May; 1,442 (\$1.22 per bushel) for June and 1,495 pesos (\$1.26 per bushel) for July per 100 kilos. By mid-April prices had strengthened and at present are: 1,588 (\$1.34 per bushel) for May delivery; 1,610 (\$1.36 per bushel) for June; 1,644 (\$1.39 per bushel) for July and 1,678 (\$1.41 per bushel) for August. Present prices in the Buenos Aires Cereal Exchange are quoted at 1,575 pesos (\$1.33 per bushel) for hard; 1,535 (\$1.29 per bushel) for semi-hard and 1,530 (\$1.29 per bushel) for Grade 2 durums, all basis f.o.b. Buenos Aires. In Bahia Blanca these prices were 1,450 (\$1.22 per bushel); 1,410 and 1,510 (\$1.19 and \$1.27 per bushel), respectively.

The Secretary of Agriculture reiterated the Government's interest in promoting an expanded wheat production with the target of 8 million hectares (19.8 million acres) set for the coming season. However, the Grain Board has yet to establish minimum prices for the coming year and this will have a considerable effect on actual sowings.

The Argentine Government is not only interested in improving acreage but also yield and the marketing structure. The National Grain Board recently announced a reduction of 80 per cent in its rates charged to farmers for use of government grain storage facilities. Also a credit policy has recently been implemented to assist in the construction of silos and the purchase of grain driers and other equipment.

During the month of March total wheat shipments were 314,798 metric tons (11,567,000 bushels) destined mainly to Brazil. During April exports are declining and it is likely that less than 200,000 tons (7,349,000 bushels) will be shipped. Total purchases of wheat by the National Grain Board as of April 13 amounted to 185,515 metric tons (6,816,000 bushels).

Argentine Wheat Exports December-January 1966-67 and 1965-66

Destination	January		December-January	
	1966	1967	1965-66	1966-67
thousand bushels				
<u>Western Europe</u>				
<u>EEC</u>				
Belgium.....	83	75	182	178
France.....	521	414	1,701	414
Germany, Federal Republic ...	99	524	409	524
Italy.....	1,710	2,715	2,324	3,167
Netherlands	106	2,209	356	2,302
Sub-totals.....	2,519	5,937	4,972	6,585
<u>Other Western Europe</u>				
Britain.....	1,636	1,560	2,700	2,678
Norway.....	93	55	357	55
Portugal.....	—	528	—	785
Switzerland.....	—	88	—	88
Sub-totals.....	1,729	2,231	3,057	3,606
Totals.....	4,248	8,168	8,029	10,191
<u>Eastern Europe</u>				
Poland.....	485	—	834	—
U.S.S.R. (Russia).....	4,380	—	11,960	—
Totals.....	4,865	—	12,794	—
<u>Africa</u>				
Mozambique.....	—	—	420	—
Tanzania.....	133	—	377	—
Totals.....	133	—	797	—

Argentine Wheat Exports December-January 1966-67 and 1965-66

Destination	January		December-January	
	1966	1967	1965-66	1966-67
thousand bushels				
<u>Asia (Concluded)</u>				
China, Communist.....	5,809	—	9,388	—
China, Nationalist.....	—	—	640	—
Cyprus.....	—	—	—	381
Iran.....	387	—	1,399	—
Totals.....	6,196	—	11,427	381
<u>Western Hemisphere</u>				
Barbados.....	—	—	3	—
Bolivia.....	73	—	73	—
Brazil.....	1,037	3,745	7,555	8,320
Chile.....	—	—	18	—
Colombia.....	—	129	—	129
Paraguay.....	231	—	507	—
Peru.....	267	1,315	1,344	1,830
Totals.....	1,608	5,189	9,500	10,279
Totals, all countries.....	17,051	13,356	42,548	20,852

AUSTRALIAN SITUATION

Wheat Supplies at
Record Level Due
to Record Production

Total supplies of wheat in Australia for the 1966-67 marketing year are estimated at an all-time high of 469.5 million bushels as against the previous year's total of 284.1 million. Although carryover stocks declined from 24.4 million bushels at December 1, 1965 to 16.5 million in 1966, the crop recently harvested, at some 453.0 million bushels, is about 22 per cent greater than the previous record of 370.0 million harvested in 1964-65. After deducting some 85.6 million bushels for anticipated domestic requirements, an estimated 383.9 million are available for export and for carryover during 1966-67, sharply above the 191.2 million in 1965-66.

Combined exports of wheat as grain and wheat flour in terms of grain equivalent during the period December 1 - March 25 of the current Australian crop year amounted to a record 100.1 million bushels, 79 per cent larger than the 56.0 million exported during the corresponding period of the 1965-66 crop year. The balance remaining on March 26, 1967 for export and for carryover, at 273.8 million bushels, exceeds by a wide margin the comparable 1966 total of 135.2 million.

Australian Wheat Supplies

Item	1965-66(1)	1966-67(2)
	million bushels	
Carryover, including flour as wheat, at beginning of crop year (December 1).....	24.4	16.5
Production.....	259.7	453.0(1)
Total estimated domestic supplies.....	284.1	469.5
Less estimated domestic requirements for crop year	92.9	85.6
Available for export and for carryover.....	191.2	383.9
Deduct:		
Exports of wheat as grain, December 1-March 25..	50.4	95.2
Exports of wheat flour in terms of wheat, December 1-March 25.....	5.6	4.9
Total exports of wheat and wheat flour.....	56.0	100.1
Balance on March 26 for export and for carryover..	135.2	273.8

(1) Revised.

(2) Preliminary.

The following information relative to the Australian situation has been extracted from a report from Mr. J.E.G. Gibson, Assistant Commercial Secretary for Canada, Canberra, under date of April 14, 1967 and is reproduced with the permission of the Trade Commissioner Service, Department of Trade and Commerce.

1966-67 Crop

The latest estimate for the 1966-67 wheat harvest is 453 million bushels according to the Australian Wheat Board. Of this total the Board expects to receive 434 million bushels of which 350 million bushels will be available for export.

Exports

To date, total export sales from the current crop have exceeded 180 million bushels. During the past month the Wheat Board announced a major break-through in Latin American markets when 3,670,000 bushels were sold to Brazil and 750,000 bushels to Peru. The announcement of these sales followed hard on the recent sale of 2,760,000 bushels to Chile. All of these sales resulted from a Wheat Board Sales Mission to South America.

Another new customer this year is Norway which to date has purchased 3,630,000 bushels of f.a.q. wheat. According to the Wheat Board, further sales are expected in the Norwegian market. Pakistan has become Australia's second most important wheat customer as their total purchases from the current crop now amount to 18,670,000 bushels on the strength of a recent sale of 1,865,000 bushels.

It will be recalled that the Australian Wheat Board recently announced its first consignment of wheat sold under the trans-shipment arrangements to buyers in the United Kingdom and Western Europe. These included sales to Holland of 770,000 bushels and to West Germany of 880,000 bushels. In addition significant quantities were subsequently delivered to small ports in Britain which in the past it had not been practical to supply on a direct shipment basis.

With wheat exports now in excess of half this year's total availability the Wheat Board remains confident about further sales during the coming months.

1966-67 Wheat Standards

Wheat standards for the current crop were recently announced by the Australian Wheat Board. The standards cover each of the five main wheat producing States of Australia and include for the first time, as a separate heading, wheat from the State of Queensland. The following are the wheat standards for 1966-67:

<u>Classification</u>	<u>Weight per bushel</u> (Schopper)	<u>Classification</u>	<u>Weight per bushel</u> (Schopper)
New South Wales Prime Hard.....	63 pounds	South Australian Hard.....	64 pounds
New South Wales Northern F.A.Q.	63 "	South Australian F.A.Q.	62 "
New South Wales Southern/Western F.A.Q.	62 3/4 "	South Australian No. 1 Off-Grade.....	57 3/4 "
New South Wales Northern No. 1 Off-Grade.....	59 1/2 "	Western Australian F.A.Q.....	63 1/2 "
New South Wales Southern/Western No. 1 Off-Grade.....	59 "	Western Australian No. 1 Off-Grade.....	60 1/2 "
Victorian F.A.Q.	63 1/4 "	Central Queensland Prime Hard.....	64 1/2 "
Victorian No. 1 Off-Grade.....	59 "	Southern Queensland Prime Hard.....	64 1/4 "
		Central Queensland F.A.Q. ...	62 1/2 "
		Southern Queensland F.A.Q. ..	63 1/2 "

Exports of Australian Wheat and Wheat Flour in Terms of Wheat
December 1-March 25, 1966-67 and Corresponding Period 1965-66

Destination	Wheat		Wheat Flour	
	1965-66	1966-67	1965-66	1966-67
thousand bushels				
<u>Other Western Europe</u>				
Britain.....	8,014	4,799	509	238
Ireland.....	751	403	—	—
Malta.....	270	—	—	—
Norway.....	258	1,934	—	—
Totals.....	9,293	7,136	509	238
<u>Eastern Europe</u>				
U.S.S.R. (Russia).....	6,002	—	—	—
<u>Africa</u>				
Malawi.....	—	—	91	117
Mauritius.....	—	—	78	81
Mozambique.....	517	463	25	41
Rhodesia.....	791	749	—	—
South Africa.....	1,543	5,462	—	—
Zambia.....	360	448	—	63
Others.....	8	4	74	48
Totals.....	3,219	7,126	268	350
<u>Asia</u>				
Aden.....	715	657	—	—
Aden and Aden I/T.....	—	—	237	212
Aden and Aden I/T Atta.....	—	—	151	141
Arabian Gulf.....	—	—	50	14
Arabian Gulf Atta.....	—	—	386	191
Ceylon.....	4	7	2,463	2,220
China.....	14,862	32,174	—	—
Hong Kong.....	724	1,484	18	9
India.....	911	10,522	—	—
Indonesia.....	—	—	62	497
Iran.....	6,062	703	—	—
Iraq.....	—	2,633	—	—
Japan.....	2,320	2,254	—	—
Korea, North.....	560	2,851	—	—
Kuwait.....	—	1,362	—	—
Lebanon.....	—	2,138	—	—
Pakistan.....	—	16,559	—	—
Philippines.....	(1)	90	10	26
Saudi Arabia.....	188	444	129	25
Taiwan.....	462	—	—	—
Thailand.....	355	270	119	77
<u>Malaysia</u>				
Malaya.....	1,052	2,528	197	—
Malaya Atta.....	—	—	17	—
Sabah.....	—	—	23	10
Sarawak.....	—	—	20	9
Singapore.....	1,950	2,705	17	1
Singapore Atta.....	—	—	(1)	(1)
Singapore A/C B.W.O.	—	—	10	—
Others.....	48	236	34	32
Totals.....	30,213	79,617	3,943	3,464
<u>Oceania</u>				
New Zealand.....	1,656	1,279	—	—
<u>Western Hemisphere</u>				
Peru.....	—	—	(1)	1
West Indies Area.....	—	—	90	115
Totals.....	—	—	90	116
<u>Pacific Area and Sundries</u>				
Pacific Islands Ships' Stores and Sundries.....	16	42	790	734
Totals, all countries....	50,400	95,200	5,600	4,900

(1) Less than 500 bushels.

GRAIN SITUATION IN BRITAIN

The following account of the current situation and grain markets in Britain has been extracted from a report received from Mr. G.E. Woollam, Agricultural Counsellor for Canada, London, under date of April 28, 1967 and is reproduced with the permission of the Trade Commissioner Service, Department of Trade and Commerce.

Weather and Crops

Weather during April was very changeable with cold wet conditions and below average temperatures interspersed by warm sunny periods. Conditions however have enabled spring cultivations and sowing to proceed well particularly in areas with lighter soils. Autumn sown crops have made good growth generally although some later sown crops of wheat are somewhat backward due to waterlogging and cold winds. Germination of early sown crops has generally been satisfactory. Some pest damage has been reported but attack by wheat bulb fly has been below normal.

Requirements and Supplies

The Home Grown Cereals Authority in their sixth statistical statement as at the end of February 1967, announced a reduction of 100,000 long tons (3,733,000 bushels) in estimated wheat imports attributed to 50,000 long ton (1,867,000 bushels) decreases, respectively, in anticipated requirements for human consumption and animal feed. The domestic supply position for both wheat and coarse grains shows no change but barley exports are expected to increase by 100,000 long tons (4,667,000 bushels) to an estimated 950,000 (44,333,000 bushels) for the total year. Exports of barley to date are at 760,000 long tons (35,467,000 bushels), 490,000 long tons (22,867,000 bushels) higher than at the same time last year and the February return of 169,000 long tons (7,887,000 bushels) exceeds the high January figure.

Both wheat and barley imports for the period July 1966 to February 1967 are down on the comparable period for the previous year. Wheat imports are 275,000 long tons (10,267,000 bushels) lower at 2,815,000 (105,093,000 bushels) and coarse grains down by 240,000 long tons to 2,600,000. Cumulative intake of wheat by flour millers at 1.12 million long tons (41,813,000 bushels) is 70,000 long tons (2,613,000 bushels) more than the comparable period in the previous year and by other processors 270,000 long tons (10,080,000 bushels) less at 780,000 long tons (29,120,000 bushels). Intake of barley and other coarse grains by maltsters and distillers is up by 45,000 long tons at 1.1 million and by other processors higher by 245,000 long tons at 1.57 million.

Grain Markets

Offers of grain on the markets have been generally light but there is a good demand for wheats particularly of feed grade and prices are averaging between £22 10 Od and £23 0 Od per long ton (\$1.82 to \$1.87 per bushel) on the farm. The outlook is firm with prices tending to rise. The market for malting barleys has improved averaging £24 10 Od per long ton (\$1.58 per bushel) on the farm. Prices of feed barleys are firm at £22 10 Od per long ton (\$1.45 per bushel) ex farm. Final figures have been published by the Home Grown Cereals Authority in respect of forward contract registrations for the current year. These indicate that a total of 1.5 million long tons (56,000,000 bushels) of wheat and 2.5 million long tons (116,667,000 bushels) of barley has been contracted for delivery between November 1966 and June 1967. This compares with 1.7 and 2.2 million long tons (63,467,000 and 102,667,000 bushels), respectively, for 1965-66 but account should be taken of the fact that the 1965-66 Bonus Scheme did not include November 1965 deliveries. The reduction of some

15 per cent in wheat production and the increase of about 9 per cent in barley production in the current year has also contributed considerably to the decreased tonnage estimated for wheat.

There has been increasing interest in offers of Canadian No.2 barley following higher prices for the home produced crop. Forward sales ranging from £23 12 6d to £23 15 0d per long ton c.i.f. have been made for May-June shipment.

CALENDAR OF WHEAT EVENTS

- April 10 According to a report published by the Crop Reporting Board, U.S.D.A. the 1967 winter wheat crop in the United States is forecast at 1,162 million bushels, 121 million bushels below the December 1 forecast, but 10 per cent above 1966 and 20 per cent above average.
- 13 The 1967 season of navigation opened at the Canadian Lakehead.
- 14 Total Stocks of Canadian wheat at March 31, 1967 were estimated at 848.3 million bushels compared with 750.2 million at the same date in 1966 and the record of 904.4 million in 1957.
- 26 Trade and Commerce Minister Winters signed, on behalf of the Canadian Government, a renewal of the Trade Agreement with the People's Republic of Bulgaria providing for a three-year extension of the most-favoured-nation treatment between the two countries and for further sales of Canadian wheat. The Agreement was signed for Bulgaria by Mr. Dimitar Kostov, Chairman of the Trade Delegation of the People's Republic of Bulgaria.
- May 2 The Canadian Wheat Board announced that "effective immediately and until June 15, 1967 the delivery quota on Alberta Winter Wheat is declared open at all delivery points."
- 17 According to a telegraphic crop report, published by the Dominion Bureau of Statistics, seeding operations are now in progress in many areas of south and central Saskatchewan in Central Alberta and Southwestern Manitoba. In most parts of the prairies, field work should be general by the week-end given favourable weather conditions. Exceptions are the heavier soils in the eastern half of Manitoba and parts of southern Alberta where further delay is anticipated. Pasture and hay growth has been slow due to low temperatures.
-

STATISTICS CANADA LIBRARY
BIBLIOTHÈQUE STATISTIQUE CANADA



1010687050