

CATALOGUE No.

22-005

MONTHLY



FOR REVIEW

CANADA

DOMINION BUREAU OF STATISTICS

AGRICULTURE DIVISION

THE WHEAT REVIEW



DECEMBER 1967

DOMINION BUREAU OF STATISTICS

THE WHEAT REVIEW

DECEMBER 1967

Published by Authority of
The Minister of Trade and Commerce

Prepared in the Crops Section, Agriculture Division
Dominion Bureau of Statistics, Ottawa

TABLE OF CONTENTS

	<u>Page</u>
World Wheat Situation	
August-November Exports Above Average.....	3
Wheat Supplies of Four Major Exporters Above a Year Ago.....	3
I.W.C. Cumulative Totals of Commercial Purchases.....	4
Canadian Situation	
Smaller 1967 Crop Reflected in Reduced Supplies.....	5
August-November Exports Sharply Below Previous Year.....	5
Marketings, Disappearance and Visible Supplies.....	6
November 1967 Exports of Wheat and Flour Total 23.9 Million Bushels.....	6
Great Lakes - 1967 Seaway Shipping Review.....	7
General Quota Position.....	8
1967 Season of Navigation Closed at Lakeshead.....	9
Rail Shipments of Wheat to Maritime Ports.....	9
The Effect of 1966 Census Acreage on Prior Year's Estimates, All Wheat Acreage , Production and Farm Stocks - Prairie Provinces, 1962-66.	10
Farmers' Marketings.....	12
Visible Supply of Canadian Wheat.....	13
Grading of Wheat Inspected August - November 1967 with Comparisons.....	13
Weekly Visible Supply and Farmers' Marketings (Charts).....	14
Rail Shipments of Wheat from Fort William-Port Arthur.....	15
Overseas Exports of Canadian Grain by Ports of Loading.....	15
Freight-Assisted Shipments.....	16
Monthly Exports of Canadian Wheat and Wheat Flour.....	17
Wheat Shipments from Four Major Exporters by Regions (Chart).....	18
Canadian Wheat and Flour Exports by Regions (Chart).....	19
Exports of Canadian Wheat and Wheat Flour by Destination Crop Years 1966-67 and 1965-66.....	20
Exports of Canadian Wheat by Destination.....	23
Customs Exports of Canadian Wheat Flour by Countries of Consignment.....	26
Canadian Wheat Board Weekly Average Cash Wheat Prices.....	28
Canadian Flour Milling Situation	
Production and Exports.....	30
United States Situation	
Supplies Above 1966-67 Level.....	31
Exports Below Previous Year.....	31
1967 Wheat Crop Estimated at 1,524 Million Bushels.....	32
Acreage and Production of Winter Wheat and Rye.....	33
Cash Wheat Prices on the Kansas City and Minneapolis Markets.....	34
Chicago Wheat Futures, High Points of Closing.....	34
Australian Situation.....	35
Argentine Situation.....	39
Calendar of Wheat Events.....	42

WORLD WHEAT SITUATION

August-November Exports Above Average

Total exports of wheat and wheat flour in terms of grain from the four major exporting countries during the August-November period of the current Canadian crop year amounted to 461.9 million bushels, a decrease of 25 per cent from the 613.2 million exported during the same four months in 1966 but 11 per cent more than the ten-year (1956-65) average shipments for the same period of the crop year, of some 417.3 million bushels. Australia was the only one of the four exporting countries registering an increase over their 1966 comparable totals.

Shipments from these same four countries during August-November 1967 with comparisons appear in the accompanying table.

Exports of Wheat and Flour in Terms of Wheat, August-November 1967
with Comparisons

August-November	United States	Canada	Argentina	Australia	Total
million bushels					
1950.....	70.2	72.8	20.2	39.7	202.9
1951.....	155.2	115.0	20.3	39.2	329.7
1952.....	104.7	138.3	-	27.4	270.4
1953.....	70.0	103.4	43.2	22.0	238.6
1954.....	75.3	97.5	45.2	26.8	244.8
1955.....	73.9	81.0	43.4	29.7	228.0
1956.....	152.7	105.9	32.0	52.5	343.1
1957.....	131.3	104.9	31.5	31.6	299.3
1958.....	141.2	99.4	28.0	21.0	289.6
1959.....	128.3	109.2	19.0	34.4	290.9
1960.....	203.0	109.8	31.0	40.5	384.3
1961.....	246.2	150.6	8.0	73.9	478.7
1962.....	175.7	120.3	11.8	32.0	339.8
1963.....	257.3	209.6	17.8	74.4	559.1
1964.....	257.0	167.3	39.2	53.8	517.3
1965.....	258.5(1)	239.8	96.5	75.7	670.5(1)
1966(1).....	311.6	223.4	21.1	57.1	613.2
1967(2).....	257.5	95.0	3.0	106.4	461.9

(1) Revised. (2) Preliminary.

Wheat Supplies of Four Major Exporters Above a Year Ago

Latest available estimates indicate that as at December 1, 1967 supplies of wheat remaining in United States and Canada for export and for carryover at the end of their respective crop years plus the year-end (November 30) carryover stocks in both Argentina and Australia, amounted to 1,954.7 million bushels and represented an increase of about 16 per cent over the 1,684.8 million available a year ago. Supplies at December 1, 1967 in millions of bushels, were held as follows, with last year's comparable figures in brackets: United States, 933.3 (785.9); Canada, 914.6 (868.6); Argentina, 26.0 (13.8); and Australia, 80.8 (16.5). Estimates for both years include on-farm stocks as well as those in commercial positions.

The supply data to appear in the January issue of this publication will include the 1967-68 production estimates for wheat in Argentina and Australia.

International Wheat Council
Cumulative Totals of Commercial Purchases by Importing Countries from Exporting Countries
Crop Year 1967-68 — Through December 2, 1967

Importing Countries	EXPORTING COUNTRIES							Total Purchases
	Canada	Argentina	Australia	France	Italy	Sweden	U.S.A.	
	thousand bushels							
Austria	404	—	—	—	—	—	—	404
Barbados	98	—	85	—	—	—	39	222
Belgium & Luxembourg ..	4,922	48	—	1,853	—	—	2,297	9,120
Brazil.....	—	30	3,675	—	—	—	6,386	10,091
Costa Rica.....	3	—	—	—	—	—	646	649
Cuba.....	(1)	—	—	—	—	—	—	(1)
Dominican Republic.....	—	—	—	—	—	—	549	549
Ecuador.....	151	—	—	—	—	—	1,009	1,160
El Salvador.....	57	—	—	—	—	—	598	655
Finland.....	305	—	—	—	—	—	134	439
Germany, Fed. Rep.	9,569	—	682	1,174	—	—	6,309	17,734
Greece.....	41	—	—	—	—	—	19	60
Guatemala.....	2	—	—	—	—	—	1,084	1,086
Haiti.....	(1)	—	—	—	—	—	410	410
Iceland.....	—	—	—	4	—	—	13	17
India.....	(1)	—	8,946	—	—	—	7,611	16,557
Ireland.....	392	—	588	33	—	—	47	1,060
Israel.....	—	—	225	—	—	—	3,403	3,628
Japan.....	13,221	—	10,811	—	—	—	34,570	58,602
Korea, Rep. of	—	—	—	—	—	—	11,723	11,723
Lebanon.....	6	—	2,497	7	—	—	39	2,549
Libya.....	—	—	37	185	436	—	1	659
Netherlands.....	2,924	32	2,641	686	—	—	9,021	15,304
Netherlands Terr.	87	—	—	4	—	—	362	453
Nigeria.....	301	—	—	—	—	—	1,040	1,341
Norway.....	1,195	—	1,449	3	—	3,307	463	6,417
Peru.....	16	441	3,235	—	—	—	6,965	10,657
Portugal.....	6	358	—	—	3	—	79	446
Portuguese Territories	77	—	904	39	10	—	601	1,631
Saudi Arabia.....	53	—	1,584	31	—	—	3,062	4,730
Sierra Leone.....	4	—	—	42	—	—	382	428
South Africa.....	902	—	—	—	—	—	—	902
Southern Rhodesia.....	—	—	523	—	—	—	—	523
Switzerland.....	1,535	—	—	1,411	—	—	1,521	4,467
Trinidad.....	224	—	—	33	—	—	1,193	1,450
Tunisia.....	—	—	—	1,280	—	—	4,024	5,304
United Arab Republic...	—	—	—	426	335	—	864	1,625
United Kingdom.....	30,288	10	8,522	1,200	—	—	4,046	44,066
U.K. Territories.....	1,148	—	1,485	352	—	—	580	3,565
Venezuela.....	1,368	—	—	—	—	—	10,559	11,927
Western Samoa.....	1	—	60	—	—	—	—	61
To Orders.....	—	832	—	—	—	4,777	—	5,609
Totals.....	69,300	1,751	47,949	8,763	784	8,084	121,649	258,280
Percentage of Total Sales by Exporting Countries...	26.84	0.68	18.56	3.39	0.30	3.13	47.10	100.00

(1) Less than 500 bushels.

NOTE: Argentina - quantities cover period ending November 25, 1967.
 France - quantities cover period ending September 30, 1967.
 Italy - quantities cover period ending November 18, 1967.
 Mexico and Spain report only when sales are made.
 U.S.S.R. - no reports have been received.

CANADIAN SITUATION

Smaller 1967 Crop Reflected in Reduced Supplies

Total estimated supplies of wheat for the 1967-68 (August-July) crop year, are placed at 1,169.7 million bushels, representing a 6 per cent decrease from the 1966-67 total of 1,247.5 million bushels. This decrease occurred as a result of lower production which more than offset an increase in carryover stocks. For the 1967-68 crop year, production was estimated at 592.9 million bushels, reflecting a 28 per cent decrease from the previous year's outturn of 827.3 million. The 1967-68 crop year revised carryover of 576.8 million bushels is 37 per cent larger than the previous year's carryover of 420.1 million. After making an allowance of 160.0 million bushels for anticipated domestic requirements, supplies available for export and for carryover during 1967-68 amount to 1,009.7 million bushels, 8 per cent less than the 1,092.1 million in 1966-67.

August-November Exports Sharply Below Previous Year

Exports of wheat and flour, in terms of wheat equivalent, during August-November 1967 amounted to 95.0 million bushels, in contrast to the previous year's comparable total of 223.4 million. This year's exports consisted of 86.5 million bushels of wheat in bulk, 268 thousand of bagged seed and 8.3 million of flour in terms of wheat. During the August-November period last year these figures were 212.2 million of wheat in bulk, 328 thousand of bagged seed and 10.9 million of flour in wheat equivalent. The balance remaining on December 1, 1967 for export and for carryover amounted to 914.6 million bushels, 5 per cent above the December 1, 1966 total of 868.6 million.

Canadian Wheat Supplies

Item	1966-67(1)	1967-68(2)
	million bushels	
Carryover in North America at beginning of crop year (August 1).....	420.1	576.8(1)
Production.....	827.3	592.9
Imports of wheat for domestic use, August-November..	(3)	(4)
Total estimated supplies.....	1,247.5	1,169.7
Less estimated domestic requirements for crop year..	155.4	160.0
Available for export and for carryover	1,092.1	1,009.7
Deduct:		
Exports of wheat in bulk, August-November(5).....	212.2	86.5
Exports of bagged seed wheat, August-November(6)..	0.3	0.3
Total exports of wheat as grain.....	212.5	86.7
Exports of wheat flour in terms of wheat, August-November(6).....	10.9	8.3
Total exports of wheat and wheat flour	223.4	95.0
Balance on December 1 for export and for carryover..	868.6	914.6

- (1) Revised. (2) Preliminary. (3) Less than 50,000 bushels.
 (4) Not available. (5) As reported by the Board of Grain Commissioners.
 (6) Customs returns, 1966-67 adjusted for time lag.

Marketing, Disappearance
and Visible Supplies

Total primary deliveries of wheat (both east and west) up to December 20 of the current crop year have amounted to 192.2 million bushels in contrast to 269.0 million marketed during the same period of the previous year. Some 48.5 million bushels of this year's total were delivered during the four weeks November 23 to December 20. During the same period the volume of Canadian wheat entering domestic and export channels amounted to 23.2 million bushels. As a result, the total visible supply of Canadian wheat increased from 403.1 million at November 22 to a level of 428.2 million at December 20, 1967.

The total visible supply of Canadian wheat at December 20 this year represented an increase of 40 per cent over the 1966 comparable total of 305.3 million and was 39 per cent more than the 1965 figure of 307.0 million. Country elevator stocks, amounting to 237.6 million bushels, were 46 per cent above the 1966 comparable total of 162.7 million, and 21 per cent more than the 195.8 million of two years ago. Wheat stocks at interior terminals at December 20, 1967, totalled 12.9 million bushels as against 2.4 million a year ago and 1.5 million two years ago. The 16.2 million bushels "in transit rail" (western division) were above both the 1966 and 1965 totals of 15.1 million and 10.1 million bushels, respectively. Supplies at the Lakehead, totalling some 37.3 million bushels, were substantially above the last two years' comparable levels of 15.4 million and 15.1 million. With the 1967 season of navigation closed at the Canadian Lakehead there were 28.2 million bushels "in storage afloat" compared with 19.9 million in this position in 1965 and 29.7 million "in transit lake" at December 21, 1966. The 34.8 million bushels in Bay, Lake and Upper St. Lawrence ports were higher than both the 33.4 million of a year ago and 30.3 million of two years ago. Supplies in Lower St. Lawrence and Maritime ports at December 20, 1967, at 39.7 million bushels, registered a 38 per cent increase over the comparable 1966 figure of 28.8 million and more than double the 19.3 million of 1965. The 10.6 million bushels in West Coast ports (Vancouver-New Westminster, Prince Rupert and Victoria) were above both the 8.0 million at December 21, 1966, and the 5.7 million at December 22, 1965.

November 1967 Exports
of Wheat and Flour Total
23.9 Million Bushels

Combined exports of wheat in bulk, bagged seed wheat and wheat flour in terms of grain equivalent, during November 1967 amounted to 23.9 million bushels, 10 per cent above the 21.7 million of the previous month, but sharply below the 51.5 million of November 1966 and 38 per cent smaller than the ten-year (1956-65) average for the month of November of 38.4 million. Exports of wheat in bulk (as reported by the Board of Grain Commissioners) during November 1967 totalled 22.0 million bushels, 11 per cent more than the October 1967 total of 19.9 million, considerably less than the 48.9 million of a year ago and a decrease of 37 per cent from the ten-year average of 34.9 million. Based on Canadian Customs returns, the equivalent of 1.9 million bushels of wheat was exported in the form of flour during November 1967, 2 per cent above the previous month's figure of 1.8 million, but 24 per cent smaller than the adjusted total of 2.5 million of November 1966 and 42 per cent less than the ten-year average of 3.2 million bushels.

Cumulative exports of wheat in bulk during the August-November period of the current crop year amounted to 86.5 million bushels, sharply below the 212.2 million shipped during the first four months of 1966-67 and 33 per cent less than the ten-year average for the period of 129.0 million. This year's shipment of wheat to Britain totalled some 23.5 million bushels and accounted for 27 per cent of the current four-month total as compared to 24.7 million the previous year and accounted for 12 per cent of the August-November total. Other principal markets for Canadian wheat in bulk during the first four months of the current crop

year, with figures for the same period of the preceding crop year in brackets, were as follows, in millions of bushels: U.S.S.R. (Russia), 12.8 (45.2); Japan, 10.6 (18.3); Federal Republic of Germany, 9.9 (11.1); Italy, 5.5 (5.5); Belgium and Luxembourg, 4.9 (7.9); Netherlands, 3.7 (1.6); Communist China, 3.0 (49.5); and Poland, 2.5 (7.6).

Cumulative exports of bagged seed wheat during August-November of the current crop year, based on Canadian Customs returns, amounted to 268 thousand bushels compared with last year's comparable total (adjusted to remove time lag) of 328 thousand.

Cumulative exports of wheat flour during the first four months of the 1967-68 crop year, based on Customs returns, were the equivalent of 8.3 million bushels of wheat, 24 per cent less than the adjusted August-November 1966 total of 10.9 million bushels. Cuba's purchases, the leading market for Canadian wheat flour during the period under review, amounted to the equivalent of 2.6 million bushels and accounted for 31 per cent of the August-November 1967 total. During the comparable period of 1966 shipments to Cuba amounted to 4.4 million and accounted for 40 per cent of the four-month total. Other principal markets for Canadian wheat flour in terms of grain equivalent during the August-November period of the 1967-68 crop year, with revised data for the same months of the preceding crop year in brackets, were as follows, in thousands of bushels: Britain, 1,123 (2,864); Ceylon, 860 (nil); Ghana, 660 (464); Israel, 544 (nil); and Jamaica, 505 (427).

Great Lakes - 1967 Seaway Shipping Review

The following review of the 1967 Great Lakes - Seaway grain shipments was extracted from the Weekly Bulletin "Canadian Grain Position" published by the Statistics

Division of the Board of Grain Commissioners for Canada, for the week ending December 27, 1967.

Total Vessel Shipments Revised vessel clearances of the six principal grains and oilseeds amounted to 361.0 million bushels - some 133 million below the 1966 season's figure. Shipments of the individual grains included (1966 in brackets) 238.9 (391.8) million of wheat, 37.2 (33.0) million of oats, 67.8 (44.9) million of barley, 5.5 (8.7) million of rye, 10.7 (14.0) million of flaxseed and .9 (1.2) million of rapeseed.

Direct Overseas Shipments of the principal Canadian grains to overseas destinations direct from the Canadian Lakehead elevators totalled 33.3 million bushels, during the season just concluded - surpassing the previous record of 1965 (31.6 million bushels). There were 114 individual overseas cargoes in 1967 - compared to 80 in 1966 - with 18 of these topping off at St. Lawrence ports in comparison to 8 in 1966.

Direct Vessel to St. Lawrence Ports Vessel shipments to the lower river ports - 220.7 million bushels - representing 61 per cent of the principal grains moved from Lakehead terminals and is substantially less than in 1966 (340.1 million).

Direct Vessel to Maritimes The volume of the principal grains moved on an all water basis to Maritime ports amounted to 6.4 million bushels during the past season - 1.0 million below the 7.4 million shipped in the previous year.

To United States Ports Vessel shipments of Canadian grains to United States lake ports of 6.7 million bushels indicate a 1 million decline from the prior season's total (7.8 million). Barley at 5.8 million was the principal grain involved in this movement with the remaining .9 million being rye.

United States Grain Movement Receipts of United States grains at licensed eastern elevators - 67.6 million bushels - represent a decline of 36.2 million from the 1966 season. Transhipments for export amounted to 45.0 million bushels (down 38.7 million) while the Canadian domestic market absorbed 16.8 million (up 4.6 million). United States corn remained the largest single grain involved in this movement with receipts totalling 37.7 million, exports of 17.2 million and domestic usage of 14.9 million bushels.

General Quota
Position

By January 15, 1968 out of a total of 1,880 shipping points in the Western Division, the Canadian Wheat Board had placed 641 points on a delivery quota of four bushels per specified acre, 991 points on a three-bushel quota and 223 points on a two-bushel quota per specified acre. Only one bushel was on delivery quota of one bushel per specified acre while 24 stations were reported as "closed".

Summary of Elevator Shipping Points in the Western Division
as at January 15, 1968

Province	General Quota in Bushels per Specified Acre					Total
	One	Two	Three	Four	Closed	
Ontario.....	—	—	—	1	—	1
Manitoba.....	—	1	136	189	5	331
Saskatchewan.....	—	64	629	315	12	1,020
Alberta.....	1	158	226	130	7	522
British Columbia.....	—	—	—	6	—	6
All Provinces.....	1	223	991	641	24	1,880

1967 Season of
Navigation Closed
at Lakehead

The 1967 season of navigation at the Canadian Lakehead opened on April 13 and closed on December 20. Preliminary reports for the 1967 season place the lake shipping total for the six major grains at 361.0 million bushels, 27 per cent less than the previous peak of 494.5 million bushels shipped in 1966. Shipments of wheat, rye, flaxseed and rapeseed moved in smaller volumes in 1967 than a year previous while shipments of oats and barley were higher.

Lake Shipments of Canadian Grain from Fort William-Port Arthur
Season of Navigation, 1956-67

Year	Wheat	Oats	Barley	Rye	Flaxseed	Rapeseed	Total
thousand bushels							
1956.....	206,136	47,517	91,990	11,070	10,292	-	367,005
1957.....	157,217	48,788	56,706	4,274	11,533	-	278,517
1958.....	191,957	41,833	74,322	5,310	8,683	-	322,105
1959.....	187,103	32,097	55,686	4,707	6,617	-	286,209
1960.....	184,480	27,100	54,981	3,645	8,421	-	278,627
1961.....	243,777	23,784	46,255	4,284	8,002	-	326,102
1962.....	182,915	22,923	29,735	6,123	7,965	-	249,660
1963.....	251,087	42,479	43,702	3,725	7,359	-	348,351
1964.....	349,300	33,559	42,711	4,922	9,513	59	440,064
1965.....	300,934	46,058	46,344	4,203	11,041	1,337	409,918
1966(1).....	392,367	33,104	45,010	8,512	14,258	1,250	494,500
1967.....	238,928	37,169	67,793	5,505	10,669	929	360,994

(1) Revised.

Rail Shipments
of Wheat to
Maritime Ports

Rail shipments of wheat to Maritime ports from Bay, Lake and Upper St. Lawrence ports during August-November 1967 amounted to 609 thousand bushels in contrast to the August-November 1966 figure of 1,686 thousand.

Rail Shipments of Wheat to Maritime Ports from Bay, Lake
and Upper St. Lawrence Ports

Origin of Shipments	August 1 - November 30, 1966	August 1 - November 30, 1967
bushels		
Port McNicoll.....	566,189	204,963
Midland, Tiffin.....	249,483	99,240
Owen Sound.....	401,107	205,793
Goderich.....	469,406	99,446
Totals.....	1,686,185	609,442

The Effect of 1966 Census Acreage on Prior Year's Estimates.
All Wheat Acreage, Production and Farm Stocks
Prairie Provinces, 1962-1966

One of the main objectives of the quinquennial census of Agriculture is to provide benchmark data to serve as new starting points for the annual estimates (based on mail questionnaire surveys) made in the Agriculture Division of the Dominion Bureau of Statistics. As a result of Census findings it is not uncommon to adjust the annual estimates to bring these in line with the new benchmarks derived from more complete data available from the Agricultural Census.

The Agriculture Division's estimate for the 1966 wheat acreage for the Prairie Provinces was approximately two per cent above the Census figure. This difference was not cumulative over the intercensal period but occurred as an overestimation in acreage sown to wheat in 1966 only. The 1966 Census acreage was 29,166,000 acres compared to the Division's estimate of 29,780,000 acres. Although the difference of 2 per cent took place in one year the results for the intercensal period as a whole are remarkably good with 4 out of 5 years requiring no adjustments to wheat crop acreages in the three Prairie Provinces.

The basis for determining the Division's annual acreage estimates during the 1962 - 1966 period has been the percentage change from one year to the next with the 1961 Census acreage as the benchmark. In turn the source information for these calculations was derived from reports returned by farmers on acreage seeded to wheat on their farms in two successive seasons.

Where changes in acreage estimates occur as they did in 1966, these are reflected in estimates of stocks, seed and the feed, waste, and dockage components of the supply-disposition balance sheet. Except for the crop year 1966-67 no change was made in previously published estimates for the intercensal years 1962 to 1965 in respect to acreage, yield and production for all wheat. However, minor changes did occur in the different components on the disposition side of the balance sheet. This was primarily due to revised marketing data supplied by the Board of Grain Commissioners from time to time during the intercensal period. As a result, it may be observed on the accompanying table that adjustments in disposition were relatively small as indicated by a comparison of "Preliminary" and "Revised" estimates.

Estimates of yield per acre were unchanged except for the crop year 1966-67 wherein the rounding of the production estimates caused minor adjustments in average yield per acre for Manitoba and Alberta although the average yield for the Prairie Provinces as a whole remained unchanged. It is felt that these estimates are relatively accurate and this view is borne out by numerous independent annual yield surveys which seldom fail to check closely with the Agriculture Division's estimates.

In addition to estimates of acreage, yield and production, the Agriculture Division publishes estimates of grain stocks on farms at March 31 and at July 31, the close of the crop year. These estimates are determined partly on the basis of balance sheet data, similar to that shown in the following table and partly on the basis of a mailed questionnaire survey of the Division's crop correspondents. The farm stocks as noted on the table satisfy balance sheet requirements in that disposals for seed, feed, waste and dockage (Items 7 and 8) can be supported by other survey data. Farm stocks also correspond to those obtained from the mailed questionnaire survey sample indications.

Interannual Revisions of Wheat Acreage, Farm Supply and Disposition - Prairie Provinces, 1961-62 to 1966-67
Compared with Previously Published Estimates Together with Preliminary Estimates of Farm Supplies for 1967-68
(Crop Years, Beginning August 1)

Item	1961-62 Revised	1962-63		1963-64		1964-65		1965-66		1966-67		1967-68 ^{1/} Preliminary
		Preliminary	Revised	Preliminary	Revised	Preliminary	Revised	Preliminary	Revised	Preliminary	Revised	
1. Acreage ('000 acres)												
Manitoba	2,914 ^{2/}	3,042	3,042	3,153	3,153	3,385	3,385	3,240	3,240	3,480	3,255 ^{3/}	3,520
Saskatchewan	16,082 ^{3/}	17,388	17,388	17,910	17,910	19,200	19,200	18,500	18,500	19,700	19,405 ^{2/}	19,670
Alberta	5,631 ^{3/}	5,807	5,807	5,933	5,933	6,495	6,495	6,050	6,050	6,600	6,306 ^{2/}	6,380
Prairie Provinces	24,627 ^{3/}	26,237	26,237	26,996	26,996	29,080	29,080	27,790	27,790	29,780	29,166 ^{2/}	29,570
2. Yield per acre (bushels) (3 ± 1)												
Manitoba	11.7	26.3	26.3	19.3	19.3	25.1	25.1	24.4	24.4	24.4	24.3	25.6
Saskatchewan	8.5	20.4	20.4	27.5	27.5	18.1	18.1	21.6	21.6	27.7	27.7	17.2
Alberta	15.8	19.3	19.3	25.1	25.1	22.3	22.3	25.3	25.3	29.2	29.4	22.7
Prairie Provinces	10.6	20.8	20.8	26.0	26.0	19.9	19.9	22.7	22.7	27.7	27.7	19.4
3. Production												
Manitoba	34.0	80.0	80.0	61.0	61.0	85.0	85.0	79.0	79.0	85.0	79.0	90.0
Saskatchewan	137.0	354.0	354.0	493.0	493.0	348.0	348.0	400.0	400.0	546.0	537.0	339.0
Alberta	89.0	112.0	112.0	149.0	149.0	145.0	145.0	153.0	153.0	193.0	191.0	145.0
Prairie Provinces	260.0	546.0	546.0	703.0	703.0	578.0	578.0	632.0	632.0	824.0	807.0	574.0
4. Farm stocks at beginning of Crop Year												
Manitoba	13.5	2.0	2.0	6.0	6.0	3.0	3.0	7.0	7.0	5.0	5.0	7.0
Saskatchewan	127.0	39.0	39.0	45.0	45.0	95.0	95.0	79.0	79.0	70.0	70.0	155.0
Alberta	28.0	15.0	15.0	12.0	12.0	20.0	20.0	21.0	21.0	23.0	23.0	40.0
Prairie Provinces	168.5	56.0	56.0	63.0	63.0	118.0	118.0	107.0	107.0	98.0	98.0	202.0
5. Farm Supplies (3 + 4)												
Manitoba	47.5	82.0	82.0	67.0	67.0	88.0	88.0	86.0	86.0	90.0	84.0	97.0
Saskatchewan	264.0	393.0	393.0	538.0	538.0	443.0	443.0	479.0	479.0	616.0	607.0	494.0
Alberta	117.0	127.0	127.0	161.0	161.0	165.0	165.0	174.0	174.0	214.0	214.0	185.0
Prairie Provinces	428.5	602.0	602.0	766.0	766.0	696.0	696.0	739.0	739.0	922.0	905.0	776.0
Less Disposition:												
6. Deliveries from Farms ^{3/} (Board of Grain Commissioners' Marketing, plus deliveries of Registered seed)												
Manitoba	35.6	64.8	64.8	52.6	52.6	68.8	68.8	69.0	69.1	65.6 ^{1/}	65.6 ^{1/}	409.9 ^{1/}
Saskatchewan	189.3	312.8	312.8	397.7	397.7	326.3	326.3	365.9	366.9	409.9 ^{1/}	409.9 ^{1/}	136.2 ^{1/}
Alberta	81.7	98.3	98.3	119.5	119.5	130.9	130.9	133.1	131.6	131.6	131.6	631.7 ^{1/}
Prairie Provinces	306.6	475.9	475.9	572.3	572.3	526.0	526.0	568.0	567.6	607.2	607.2	631.7 ^{1/}
7. Farm Seed Requirements												
Manitoba	4.6	4.7	4.7	5.1	5.1	4.9	4.9	5.2	4.9	4.9	4.9	4.9
Saskatchewan	24.0	25.1	25.1	26.9	26.9	25.9	25.9	27.6	27.2	25.6	25.6	25.6
Alberta	8.1	8.3	8.3	9.1	9.1	8.5	8.5	9.2	9.1	8.9	8.9	8.9
Prairie Provinces	36.7	38.1	38.1	41.1	41.1	39.3	39.3	42.0	41.2	39.4	39.4	39.4
8. Feed, Waste and Dockage												
Manitoba	5.3	6.5	6.5	6.3	6.3	7.3	7.4	6.8	7.0	6.5	6.5	6.5
Saskatchewan	11.7	10.1	9.7	17.5	18.4	11.8	11.8	15.5	14.9	16.5	16.5	16.5
Alberta	12.2	8.4	9.7	10.6	12.4	4.6	7.6	8.7	10.3	8.9	8.9	8.9
Prairie Provinces	29.2	25.0	26.1	34.4	37.1	23.7	26.8	31.0	32.2	31.9	31.9	31.9
9. Total Disposition (6 + 7 + 8)												
Manitoba	45.5	76.0	76.0	64.0	64.0	81.0	81.0	81.0	81.0	81.0	77.0	77.0
Saskatchewan	225.0	348.0	348.0	443.0	443.0	364.0	364.0	409.0	409.0	452.0	452.0	452.0
Alberta	102.0	115.0	115.0	141.0	141.0	144.0	144.0	151.0	151.0	174.0	174.0	174.0
Prairie Provinces	372.5	539.0	539.0	648.0	648.0	589.0	589.0	641.0	641.0	703.0	703.0	703.0
10. Farm Stocks at end of Crop Year (5 - 9)												
Manitoba	2.0	6.0	6.0	3.0	3.0	7.0	7.0	5.0	5.0	7.0	7.0	7.0
Saskatchewan	39.0	45.0	45.0	95.0	95.0	79.0	79.0	70.0	70.0	155.0	155.0	155.0
Alberta	15.0	12.0	12.0	20.0	20.0	21.0	21.0	23.0	23.0	23.0	23.0	40.0
Prairie Provinces	56.0	63.0	63.0	118.0	118.0	107.0	107.0	98.0	98.0	202.0	202.0	202.0

^{1/} Subject to further revision.

^{2/} Census benchmark.

^{3/} These figures do not agree exactly with the Board of Grain Commissioners' reports of total deliveries from western farms due to the exclusion of British Columbia marketings for this series. In addition these figures include marketings of registered seed wheat which are not included in the Board of Grain Commissioners' data.

Farmers' Marketings Deliveries of wheat from farms in the Prairie Provinces up to December 20 of the current crop year amounted to 186.0 million bushels, 29 per cent less than the comparable 1966 total of 262.3 million but 25 per cent larger than the ten-year (1956-65) average for the period of 148.6 million bushels.

Farmers' Marketings (1) of Wheat in the Prairie Provinces 1967-68

Week Ending	Manitoba	Saskatchewan	Alberta	Total	Last Year(2)
			bushels		
August 9, 1967..	419,070	2,254,674	100,523	2,774,267	2,382,182
16.....	47,536	164,146	198,795	410,477	7,100,270
23.....	387,096	1,563,697	377,834	2,328,627	19,177,019
30.....	1,411,474	3,905,746	576,513	5,893,733	5,202,246
September 6.....	2,737,126	8,975,599	2,792,553	14,505,278	4,161,392
13.....	2,942,073	11,237,586	4,987,198	19,166,857	11,624,476
20.....	1,420,455	6,273,227	4,308,564	12,002,246	15,701,357
27.....	1,213,339	8,347,053	2,701,990	12,262,382	21,021,677
October 4.....	850,438	6,371,203	1,765,606	8,987,247	14,761,929
11.....	665,118	3,354,294	1,332,517	5,351,929	10,606,303
18.....	587,720	5,250,020	1,410,018	7,247,758	12,437,630
25.....	1,006,615	4,689,191	1,866,696	7,562,502	14,077,666
November 1.....	1,393,296	5,883,585	1,985,761	9,262,642	17,760,722
8.....	1,750,186	5,823,860	2,143,755	9,717,801	13,952,335
15.....	1,883,245	4,603,356	2,354,197	8,840,798	10,157,118
22.....	1,765,680	6,805,735	2,645,966	11,217,381	11,990,273
29.....	1,901,542	6,236,697	1,893,780	10,032,019	16,912,035
December 6.....	2,558,884	8,137,172	2,574,242	13,270,298	11,240,072
13.....	2,193,095	11,249,740	2,394,102	15,836,937	11,870,936
20.....	1,773,952	5,495,637	2,042,302	9,311,891	30,204,039
Totals.....	28,907,940	116,622,218	40,452,912	185,983,070	262,341,677

Average similar period: 1956-65.. 20,094,218 94,960,183 33,581,900 148,636,301

(1) Includes receipts at country, interior private and mill elevators, interior semi-public terminals and platform loadings.

(2) Revised.

Visible Supply of Canadian Wheat, December 20, 1967
Compared with Approximately the Same Date, 1965 and 1966

Position	1965	1966	1967
thousand bushels			
Country elevators - Manitoba.....	20,353	9,958	27,519
Saskatchewan.....	113,850	100,049	134,936
Alberta.....	61,628	52,736	75,162
Totals.....	195,831	162,743	237,617
Interior private and mill.....	5,433	6,068	5,549
Interior terminals.....	1,533	2,413	12,858
Vancouver-New Westminster.....	4,547	7,103	9,431
Victoria.....	572	514	905
Prince Rupert.....	601	394	308
Churchill.....	824	944	4,581
Fort William-Port Arthur.....	15,113	15,415	37,268
In transit rail (western division).....	10,142	15,071	16,239
Bay, Lake and Upper St. Lawrence ports.....	30,314	33,440	34,777
Lower St. Lawrence and Maritime ports.....	19,300	28,756	39,733
Storage afloat.....	19,863	—	28,231
In transit lake.....	—	29,661	—
In transit rail (eastern division).....	2,918	2,785	658
Totals.....	306,991	305,307	428,155

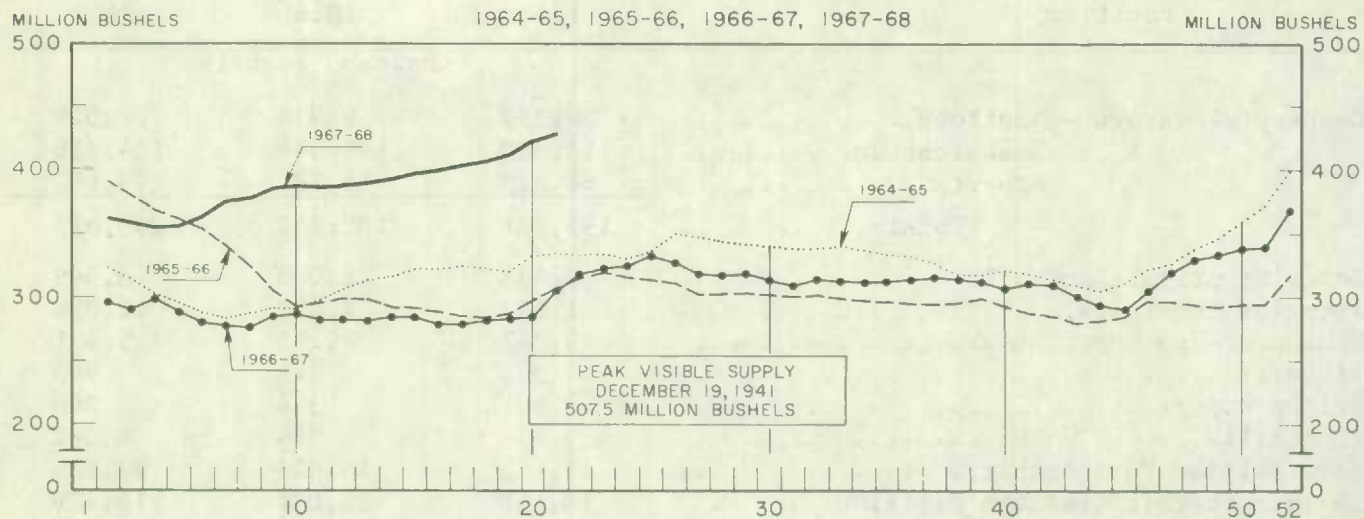
Grading of Wheat Inspected, August - November 1967 with Comparisons

Grade	Crop Year		August - November			
	Average					
	1961-62- 1965-66	1966-67	1966		1967	
	per cent	per cent	cars	per cent	cars	per cent
No. 1 Man. Northern.....	8.3	6.8	2,925	2.2	7,954	12.3
No. 2 Man. Northern.....	39.2	35.7	30,702	23.1	32,143	49.7
No. 3 Man. Northern.....	20.3	27.7	43,016	32.3	10,582	16.4
No. 4 Man. Northern.....	9.7	7.6	18,237	13.7	2,422	3.7
No. 5 Wheat.....	4.1	2.6	7,126	5.4	336	0.5
No. 6 Wheat.....	0.5	0.6	1,094	0.8	203	0.3
Feed Wheat.....	(1)	0.1	114	0.1	25	(1)
Others Red Spring.....	11.5	12.4	22,261	16.7	3,635	5.6
C.W. Garnet.....	0.2	0.1	12	(1)	7	(1)
C.W. White Spring.....	0.1	0.1	174	0.1	129	0.2
C.W. Mixed Wheat.....	(1)	0.1	137	0.1	65	0.1
Alberta Winter.....	0.4	1.6	1,720	1.3	423	0.7
Nos. 1-6 C.W. Amber Durum	5.4	4.3	4,881	3.7	6,447	10.0
Others C.W. Amber Durum..	0.3	0.3	614	0.5	250	0.4
Totals.....	100.0	100.0	133,013	100.0	64,621	100.0

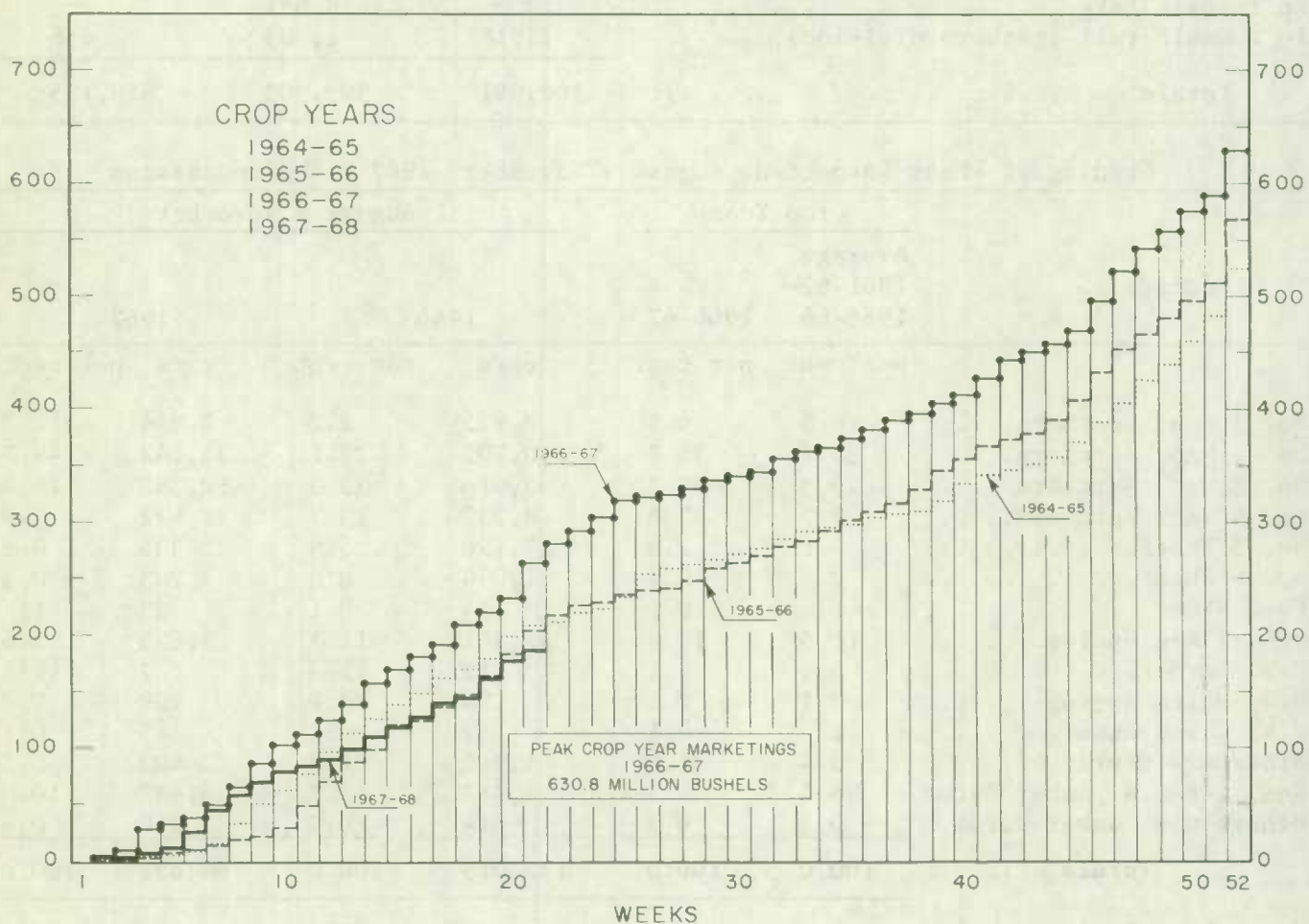
Gross bushels (approx.).. 257,350,000 126,620,000

(1) Less than .05 per cent.

WEEKLY VISIBLE SUPPLY OF CANADIAN WHEAT



CUMULATIVE RECORD OF WHEAT MARKETINGS IN THE PRAIRIE PROVINCES BY WEEKS



(Data in both charts for crop years beginning August 1)

Rail Shipments of Wheat from Fort William-Port Arthur, 1964-65 - 1967-68

Month	1964-65	1965-66	1966-67	1967-68
	bushels			
August.....	7,786	10,458	118,973	133,651
September.....	19,564	10,500	83,333	182,051
October.....	12,135	4,500	89,384	152,009
November.....	13,167	10,205	163,332	50,475
December.....	26,961	7,500	106,833	
January.....	10,703	46,108	145,889	
February.....	17,214	26,712	120,334	
March.....	112,296	98,598	177,393	
April.....	17,506	71,701	133,699	
May.....	8,207	89,166	207,038	
June.....	4,965	178,183	154,139	
July.....	13,872	82,282	93,094	
Totals.....	264,376	635,913	1,593,441	

Distribution of Rail Shipments of Wheat from Fort William-Port Arthur, November 1967

Grade	Prince Edward Island	Nova Scotia	New Brunswick	Quebec	Ontario
	bushels				
5 Wheat.....	2,833	13,000	14,833	4,333	2,833
Durum.....	—	—	—	3,000	4,500
Others.....	—	—	—	1,524	3,619
Totals.....	2,833	13,000	14,833	8,857	10,952

Overseas Exports of Canadian Grain by Ports of Loading, August 1 - December 20, 1967
with Comparisons

Port	Wheat(1)	Durum Wheat(1)	Oats(1)	Barley	Rye	Flaxseed	Rapeseed
	thousand bushels						
<u>Pacific Seaboard</u>							
Van.-New Westminster	27,019	176	66	7,705	1,192	1,289	4,023
Victoria.....	1,894	—	—	—	—	—	—
Prince Rupert.....	891	—	—	—	—	—	—
<u>Churchill</u>	20,639	—	—	—	—	—	—
<u>Lakehead Direct</u>	7,448	—	687	932	472	2,965	113
<u>Kingston Direct</u>	196	—	—	—	—	—	—
<u>St. Lawrence</u>							
Montreal.....	15,198	6,191	271	111	—	795	—
Sorel.....	4,543	30	—	—	—	—	—
Trois-Rivières.....	3,710	—	—	747	—	—	—
Quebec.....	5,381	297	—	612	174	477	—
Baie Comeau.....	570	209	—	38	—	42	—
Port Cartier.....	181	—	—	—	—	—	—
<u>Maritime Ports</u>							
West Saint John.....	136	—	—	—	—	—	—
Halifax.....	23	—	—	—	—	—	—
Totals.....	87,829	6,903	1,024	10,145	1,838	5,568	4,136
August 1 - December 21, 1966.....	222,822	13,718	857	7,697	3,572	8,378	3,547

(1) Excluding bagged seed.

Freight-
Assisted
Shipments

Claims filed for payment up to November 30, 1967 represent the movement of 2,901 thousand bushels of wheat from the Prairie Provinces to Eastern Canada and British Columbia under the freight assistance policy during August-October 1967. During the same three months last year claims had been filed for a total of 4,103 thousand bushels, indicating on the assumption of approximately the same rate of submission of claims during both the current and preceding crop years, that the August-October shipments of wheat under the policy were running about 29 per cent below those of 1966. Revised data on the August-October 1966 shipments of wheat based on claims submitted up to November 30, 1967 place the three-month total at 4,572 thousand bushels. The bulk of the shipments during the current three months under review went to destinations in Quebec and Ontario, with these two provinces accounting for 50 per cent and 18 per cent of the total, respectively.

Provincial Distribution of Wheat Shipments under the Freight Assistance Policy
August-October 1967 and 1966

Month	Nfld.	P.E.I.	N.S.	N.B.	Que.	Ont.	B.C.	Total
thousand bushels								
August, 1967.....	3	13	119	45	550	243	142	1,115
September.....	2	21	91	28	447	174	161	923
October.....	(3)	14	115	19	454	119	142	863
Totals(1).....	6	48	325	92	1,450	535	445	2,901
Same period 1966:								
Preliminary(2)....	149	54	461	135	2,000	867	437	4,103
Revised(1).....	154	72	490	151	2,084	974	647	4,572

Preliminary data on millfeed shipments under the freight assistance policy indicate shipments of 105,882 tons during the first three months of the current crop year. During August-October 1966 claims had been filed for a total of 113,952 tons, indicating on the assumption of approximately the same rate of submission of claims during both periods, that this year's shipments of millfeeds under the policy were running about 7 per cent below those of 1966. Revised data on the August-October 1966 shipments of millfeeds based on claims submitted up to November 30, 1967 place the three-month total at 136,669 tons. As with freight-assisted shipments of wheat, the greater portion of the millfeed shipments during the period under review went to destinations in Quebec and Ontario.

Provincial Distribution of Millfeed Shipments under the Freight Assistance Policy
August-October 1967 and 1966

Province	1966		1967
	Preliminary(2)	Revised(1)	Preliminary(1)
tons			
Newfoundland.....	1,721	2,032	423
Prince Edward Island.....	1,700	2,675	2,016
Nova Scotia.....	7,109	8,155	5,312
New Brunswick.....	6,275	7,185	5,708
Quebec.....	61,370	69,942	54,522
Ontario.....	31,737	38,347	33,483
British Columbia.....	4,040	8,333	4,418
Totals.....	113,952	136,669	105,882

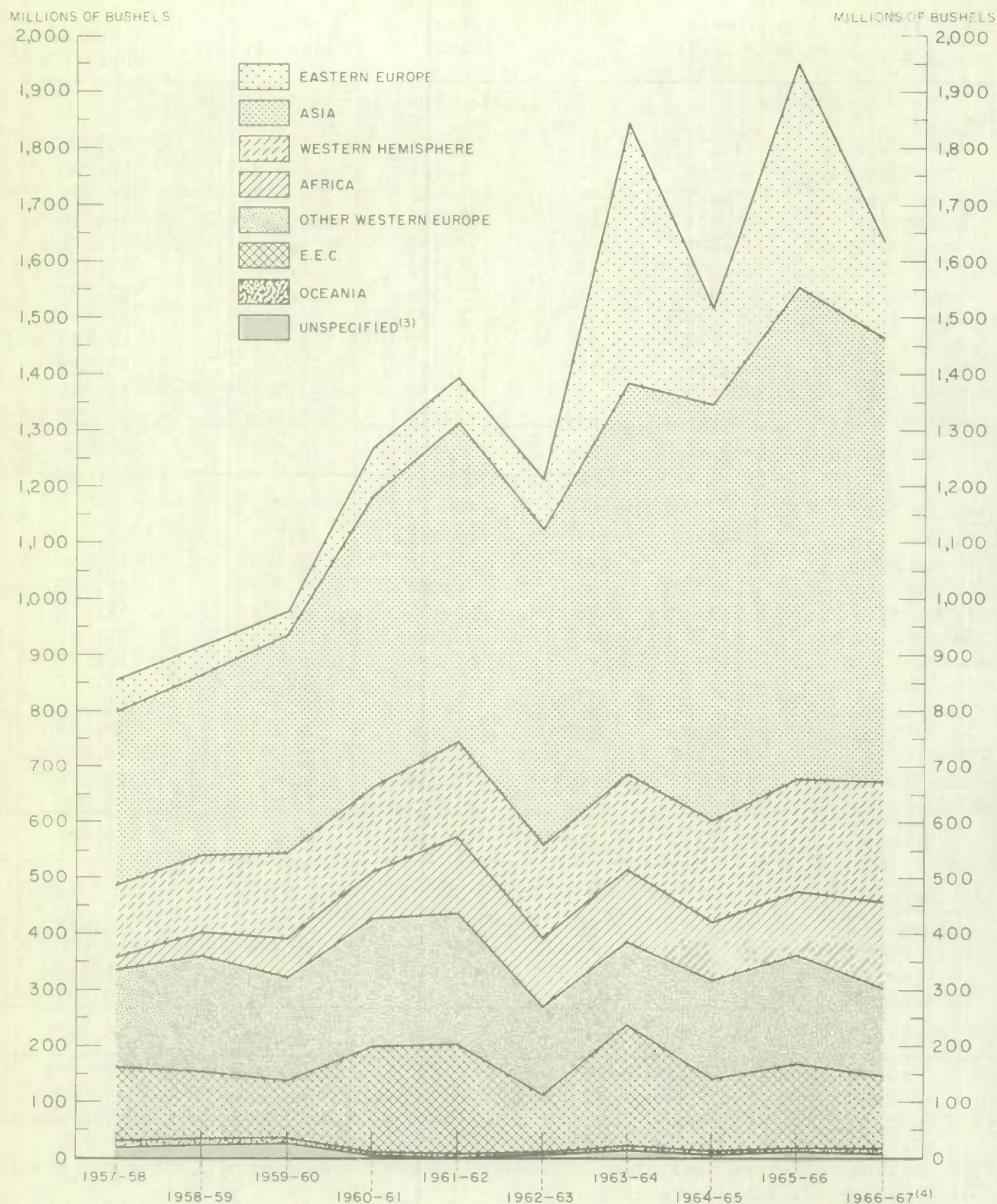
(1) Based on claims filed up to November 30, 1967. (2) Based on claims filed up to November 30, 1966. (3) Less than 500 bushels.

Monthly Exports of Canadian Wheat and Wheat Flour

Year and Month	Wheat in Bulk(1)	Bagged Seed Wheat(2)	Total Wheat	Wheat Flour (2) (3)	Total(3) Wheat and Wheat Flour
thousand bushels					
<u>1965-66</u>					
August	43,377	81	43,459	2,548	46,006
September ...	64,447	73	64,521	2,679	67,199
October	64,517	84	64,601	3,674	68,275
November	55,652	37	55,690	2,625	58,314
December	33,201	64	33,265	4,261	37,526
January	23,483	49	23,532	3,402	26,933
February	23,502	74	23,576	3,924	27,501
March	32,395	192	32,587	3,695	36,282
April	37,794	88	37,882	4,431	42,313
May	44,357	11	44,367	1,241	45,608
June	60,245	5	60,250	3,325	63,576
July	63,017	35	63,053	2,320	65,373
Totals ...	545,988	793	546,781	38,125	584,906
<u>1966-67</u>					
August	64,233	132	64,365	2,753	67,118
September ...	47,357	103	47,460	2,122	49,582
October	51,659	39	51,698	3,551	55,250
November	48,942	53	48,995	2,471	51,466
December	33,477	47	33,523	3,889	37,412
January	27,719	48	27,767	3,004	30,771
February	20,102	52	20,154	1,616	21,771
March	21,718	128	21,845	3,663	25,508
April	27,847	81	27,928	2,475	30,403
May	57,134	11	57,145	2,502	59,647
June	47,517	6	47,522	2,812	50,334
July	35,033	18	35,051	993	36,044
Totals ...	482,737	719	483,456	31,851	515,307
<u>1967-68(4)</u>					
August	24,424	48	24,472	2,286	26,758
September ...	20,211	64	20,275	2,325	22,600
October	19,851	66	19,916	1,832	21,748
November	21,967	91	22,057	1,874	23,932
Totals ...	86,453	268	86,721	8,316	95,037

- (1) Export clearances including shipments to the United States compiled by the Statistics Division, Board of Grain Commissioners for Canada.
- (2) Compiled from Canadian Customs returns, 1965-66 and 1966-67 adjusted to remove effect of time lag in reporting.
- (3) In terms of wheat equivalent. Wheat flour conversion rate: 2.3 bushels per cwt.
- (4) Preliminary, subject to revision.

WHEAT⁽¹⁾ SHIPMENTS FROM FOUR MAJOR EXPORTERS⁽²⁾ BY REGIONS 1957-58 TO 1966-67



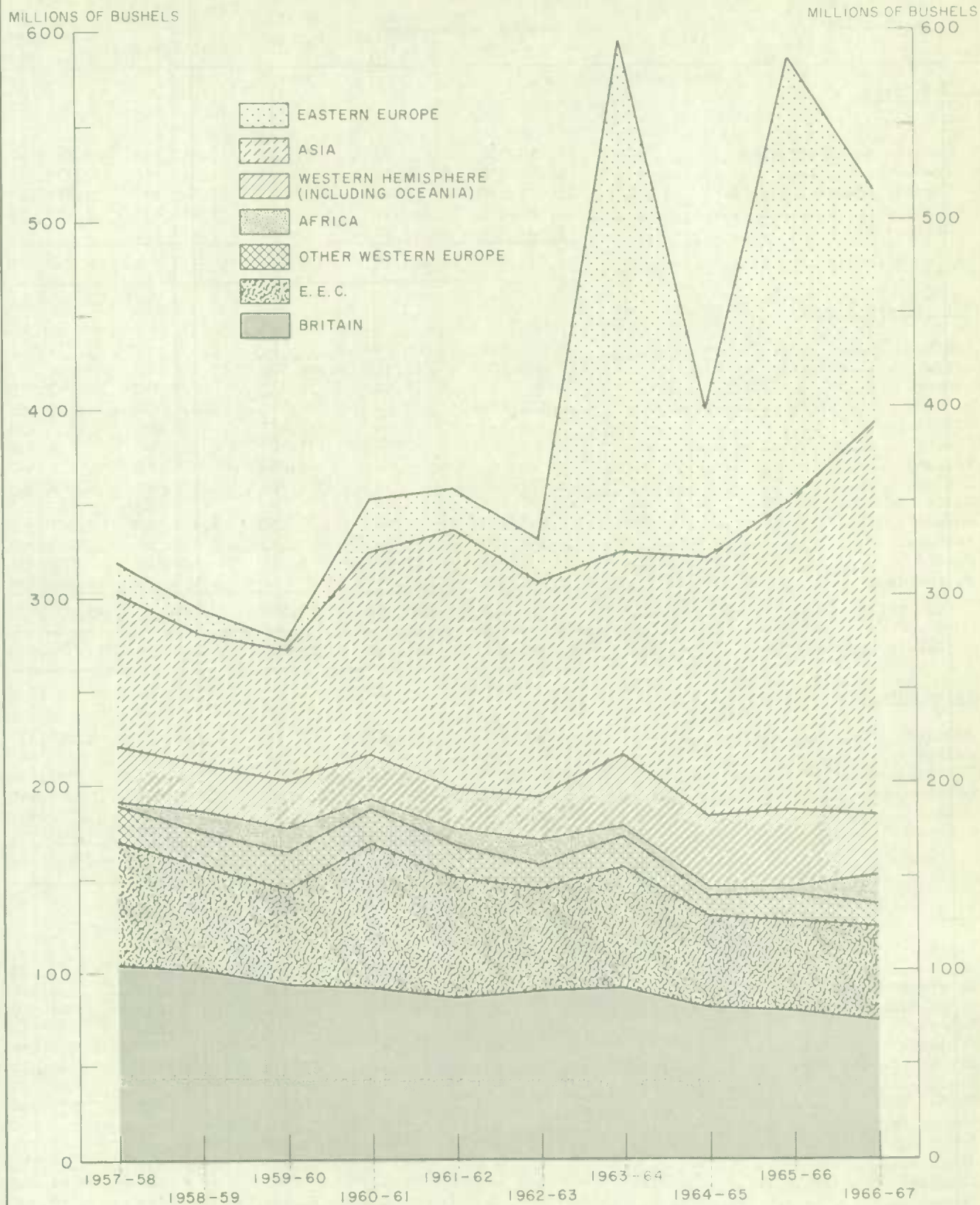
(1) INCLUDES FLOUR AS WHEAT EQUIVALENT

(3) INCLUDES SHIPMENTS UNDER RELIEF PROGRAMMES

(2) UNITED STATES, CANADA, ARGENTINA AND AUSTRALIA

(4) PRELIMINARY

CANADIAN WHEAT AND FLOUR EXPORTS BY REGIONS 1957-58 TO 1966-67



Exports of Canadian Wheat and Wheat Flour by Destination, Crop Years 1966-67 and 1965-66

Destination	Wheat(1)	Durum Wheat(1)	Wheat Flour(2)	Total Wheat(1) and Wheat Flour(2)	Total Same Period Last Year
bushels					
<u>Western Europe</u>					
<u>EEC</u>					
Belgium and Luxembourg	13,129,312	652,075	81,452	13,862,839	10,787,962
France	1,258,056	489,910	—	1,747,966	2,774,526
Germany, Federal Republic	13,492,890	9,089,425	—	22,582,315	22,899,623
Italy	7,588,092	1,880,328	16,215	9,484,635	7,679,596
Netherlands	2,543,786	82,573	11,091	2,637,450	4,026,633
Sub-totals	38,012,136	12,194,311	108,758	50,315,205	48,168,340
<u>Other Western Europe</u>					
Austria	966,992	606,299	—	1,573,291	1,723,924
Britain	67,098,200	649,312	5,386,973	73,134,485	78,505,271
Denmark	—	22,400	2,530	24,930	2,070
Finland	1,052,576	—	—	1,052,576	680,356
Gibraltar	—	—	26,017	26,017	15,971
Greece	—	—	113,907	113,907	18,430
Iceland	—	—	8,050	8,050	3,552
Ireland	1,725,546	—	3,381	1,728,927	1,371,049
Malta and Gozo	577,995	—	—	577,995	693,653
Norway	1,547,710	—	230	1,547,940	1,989,540
Portugal	571,200	—	64,386	635,586	69,393
Sweden	—	12,133	2,516	14,649	19,931
Switzerland	1,888,229	3,001,355	—	4,889,584	8,109,590
Sub-totals	75,428,448	4,291,499	5,607,990	85,327,937	93,202,730
Totals	113,440,584	16,485,810	5,716,748	135,643,142	141,371,070
<u>Eastern Europe</u>					
Albania	2,884,148	1,336,795	—	4,220,943	4,240,171
Bulgaria	3,800,320	—	—	3,800,320	—
Czechoslovakia	3,269,317	932,708	—	4,202,025	7,547,066
Germany, East	4,460,835	—	—	4,460,835	8,069,842
Poland	11,348,347	2,434,290	—	13,782,637	13,296,083
U.S.S.R. (Russia)	88,736,526	4,495,901	—	93,232,427	201,605,930
Totals	114,499,493	9,199,694	—	123,699,187	234,759,092
<u>Africa</u>					
Algeria	716,495	—	481,724	1,198,219	—
Angola	—	—	22,448	22,448	15,410
Cameroun Republic	—	—	44,845	44,845	35,218
Congo-Kinshasa	—	—	36,218	36,218	109,020
Dahomey	—	—	23,002	23,002	—
Ethiopia	—	—	—	—	146,976
French Africa, nes	—	—	34,438	34,438	46,672
Gambia	—	—	56,569	56,569	80,937
Ghana	—	—	1,278,908	1,278,908	876,240
Guinea Republic	—	—	—	—	460
Ivory Coast	—	—	1,380	1,380	2,185
Liberia	—	—	194,915	194,915	153,251
Malagasy Republic	—	—	—	—	3,795
Malawi	—	—	70,651	70,651	27,706
Morocco	—	—	643,015	643,015	—

Exports of Canadian Wheat and Wheat Flour by Destination, Crop Years 1966-67 and 1965-66

Destination	Wheat(1)	Durum Wheat(1)	Wheat Flour(2)	Total Wheat(1) and Wheat Flour(2)	Total Same Period Last Year
			busbels		
<u>Africa (concluded)</u>					
Mozambique.....	—	—	72,542	72,542	65,934
Nigeria.....	953,734	—	4,844	958,578	860,058
Portuguese Africa, nes	—	—	41,276	41,276	88,295
Republic of South Africa.....	9,433,397	—	—	9,433,397	—
Rhodesia.....	—	—	—	—	12,650
Senegal.....	—	—	198,761	198,761	—
Sierra Leone.....	—	—	438,198	438,198	580,131
Sudan.....	36,194	—	—	36,194	—
Tanzania.....	—	—	7,845	7,845	16,215
Togo.....	—	—	165,529	165,529	212,897
U.A.R. - Egypt.....	—	—	43,100	43,100	47,656
Zambia.....	—	—	2,300	2,300	—
Totals.....	11,139,820	—	3,862,508	15,002,328	3,381,706
<u>Asia</u>					
Aden.....	—	—	56,704	56,704	55,986
Afghanistan.....	360,268	—	—	360,268	—
Bahrain.....	—	—	143	143	—
Burma.....	—	—	—	—	161,566
Ceylon.....	—	—	1,049,260	1,049,260	897,906
China, Communist.....	90,049,835	409,920	—	90,459,755	74,023,713
Cyprus.....	—	—	831	831	1,033
Hong Kong.....	985,290	—	595,978	1,581,268	1,743,741
India.....	41,961,250	—	1,623,288	43,584,538	27,473,039
Indonesia.....	—	—	108,208	108,208	—
Iran.....	—	—	5,325	5,325	4,457
Israel.....	—	—	—	—	467,600
Japan.....	59,854,065	384,896	5,223	60,244,184	49,561,914
Jordan.....	—	—	55,892	55,892	10,615
Korea, North.....	940,426	—	—	940,426	3,911,974
Korea, South.....	—	—	32,294	32,294	60,978
Lebanon.....	28,131	—	52,596	80,727	340,950
Malaysia and Singapore.....	575,867	—	3,830	579,697	1,210,355
Pakistan.....	7,572,687	—	—	7,572,687	671,847
Philippines.....	515,200	—	—	515,200	2,561,999
Portuguese Asia.....	—	—	35,456	35,456	24,017
Qatar.....	—	—	462	462	547
Saudi Arabia.....	92,397	—	9,423	101,820	230,228
Syria.....	29,285	—	7,606	36,891	9,025
Taiwan.....	74,074	—	—	74,074	—
Thailand.....	—	—	228,850	228,850	512,457
Trucial States.....	—	—	18	18	—
Turkey.....	331,034	—	—	331,034	—
Viet-Nam.....	—	—	—	—	920
Totals.....	203,369,809	794,816	3,871,387	208,036,012	163,936,867
<u>Oceania</u>					
British Oceania, nes	—	—	1,380	1,380	460
Fiji.....	—	—	6,843	6,843	8,384
French Oceania.....	—	—	497	497	483
United States Oceania.....	—	—	43,930	43,930	123,960
Totals.....	—	—	52,650	52,650	133,287

Exports of Canadian Wheat and Wheat Flour by Destination, Crop Years 1966-67 and 1965-66

Destination	Wheat(1)	Durum Wheat(1)	Wheat Flour(2)	Total Wheat(1) and Wheat Flour(2)	Total Same Period Last Year
			bushels		
<u>Western Hemisphere</u>					
Argentina.....	—	—	5,120	5,120	—
Bahamas.....	—	—	322,773	322,773	281,692
Barbados.....	120	—	231,490	231,610	221,779
Bermuda.....	—	—	130,348	130,348	119,708
Bolivia.....	—	—	18,255	18,255	—
Brazil.....	—	—	5,122	5,122	—
British Honduras.....	—	—	59,582	59,582	52,364
Costa Rica.....	138,960	—	832,752	971,712	1,085,768
Cuba.....	7,080,483	87,500	12,349,362(3)	19,517,345	23,377,085
Dominican Republic.....	—	—	2,254	2,254	286,635
Ecuador.....	409,346	—	4,485	413,831	988,450
El Salvador.....	629,466	—	600	630,066	459,573
French Guiana.....	—	—	3,335	3,335	230
French West Indies.....	—	—	3,379	3,379	12,015
Guatemala.....	28,294	—	26,567	54,861	221,482
Guyana.....	—	—	83,614	83,614	71,484
Haiti Republic.....	—	—	4,048	4,048	1,801
Honduras Republic.....	—	—	47,902	47,902	105,906
Jamaica.....	11,464	—	1,518,122	1,529,586	1,643,147
Leeward and Windward Islands...	—	—	986,362	986,362	1,025,098
Netherlands Antilles.....	—	—	123,283	123,283	182,600
Nicaragua.....	249,579	—	690	250,269	516,249
Panama.....	—	—	36,161	36,161	22,828
Peru.....	39,200	—	12,751	51,951	338,698
St. Lucia.....	187	—	—	187	—
St. Pierre and Miquelon.....	—	—	21,501	21,501	21,981
Surinam.....	—	—	11,006	11,006	70,888
Trinidad and Tobago.....	—	—	912,806	912,806	1,481,610
United States Virgin Islands...	—	—	—	—	67
Venezuela.....	4,930,559	47,040	690	4,978,289	6,323,714
<u>United States:</u>					
Flour in terms of wheat.....	—	—	593,225	593,225	882,379
Wheat for domestic use (4)...	154,913	—	—	154,913	735,668
Totals.....	13,672,571	134,540	18,347,585	32,154,696	40,530,899
Sub-totals, all countries	456,122,277	26,614,860	31,850,878	514,588,015	584,112,921
Bagged Seed wheat (5).....	—	—	—	718,593	793,025
Totals, all countries.....	456,122,277	26,614,860	31,850,878	515,306,608	584,905,946

nes - not elsewhere specified.

- (1) Overseas clearances as reported by the Statistics Division, Board of Grain Commissioners for Canada, for all countries except the United States. Excluding bagged seed.
- (2) Adjusted to remove effect of time lag in the returns made by Customs. In terms of wheat equivalent. Source: Canadian Customs returns. Conversion rate: 2.3 bushels per cwt.
- (3) Source - Canadian National Millers Association.
- (4) Compiled from returns of Canadian elevator licensees and shippers and advice from American grain correspondents.
- (5) Adjusted to remove effect of time lag in the returns made by Customs.

FARMERS' MARKETINGS OF WHEAT, PRAIRIE PROVINCES

(SPECIFIED PERIODS)

MILLION BUSHELS

800 —

700 —

600 —

500 —

400 —

300 —

200 —

100 —

0

MILLION BUSHELS

800 —

700 —

600 —

500 —

400 —

300 —

200 —

100 —

0

PEAK MARKETINGS
1966-67 CROP YEAR
630.8 MILLION BUSHELS

JULY

JUNE

MAY

APR

MAR

FEB

JAN

DEC

NOV

OCT

SEPT

30 year average
1936-37
1965-66

10 year average
1956-57
1965-66

1962-63

1963-64

1964-65

1965-66

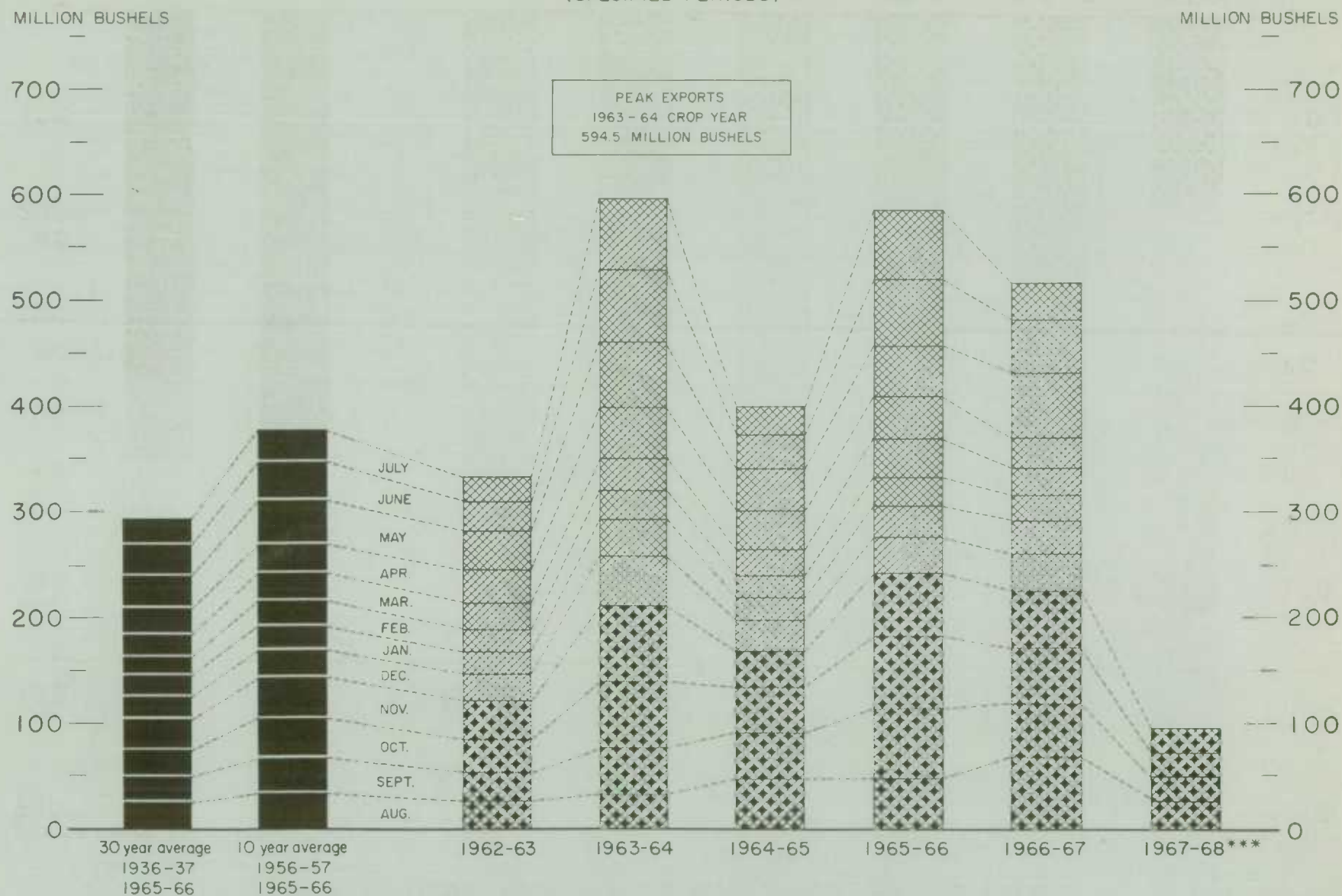
1966-67

1967-68

Agriculture Division D.B.S

EXPORTS OF CANADIAN WHEAT* AND WHEAT FLOUR**

(SPECIFIED PERIODS)



* Beginning with 1955-56 includes bagged wheat.

** In terms of wheat equivalent.

*** Preliminary.

FARMERS' MARKETINGS OF BARLEY, PRAIRIE PROVINCES

(SPECIFIED PERIODS)

MILLION BUSHELS

140 —

120 —

100 —

80 —

60 —

40 —

20 —

0

MILLION BUSHELS

— 140

— 120

— 100

— 80

— 60

— 40

— 20

0

30 year average
1936-37
1965-66

10 year average
1956-57
1965-66

1962-63

1963-64

1964-65

1965-66

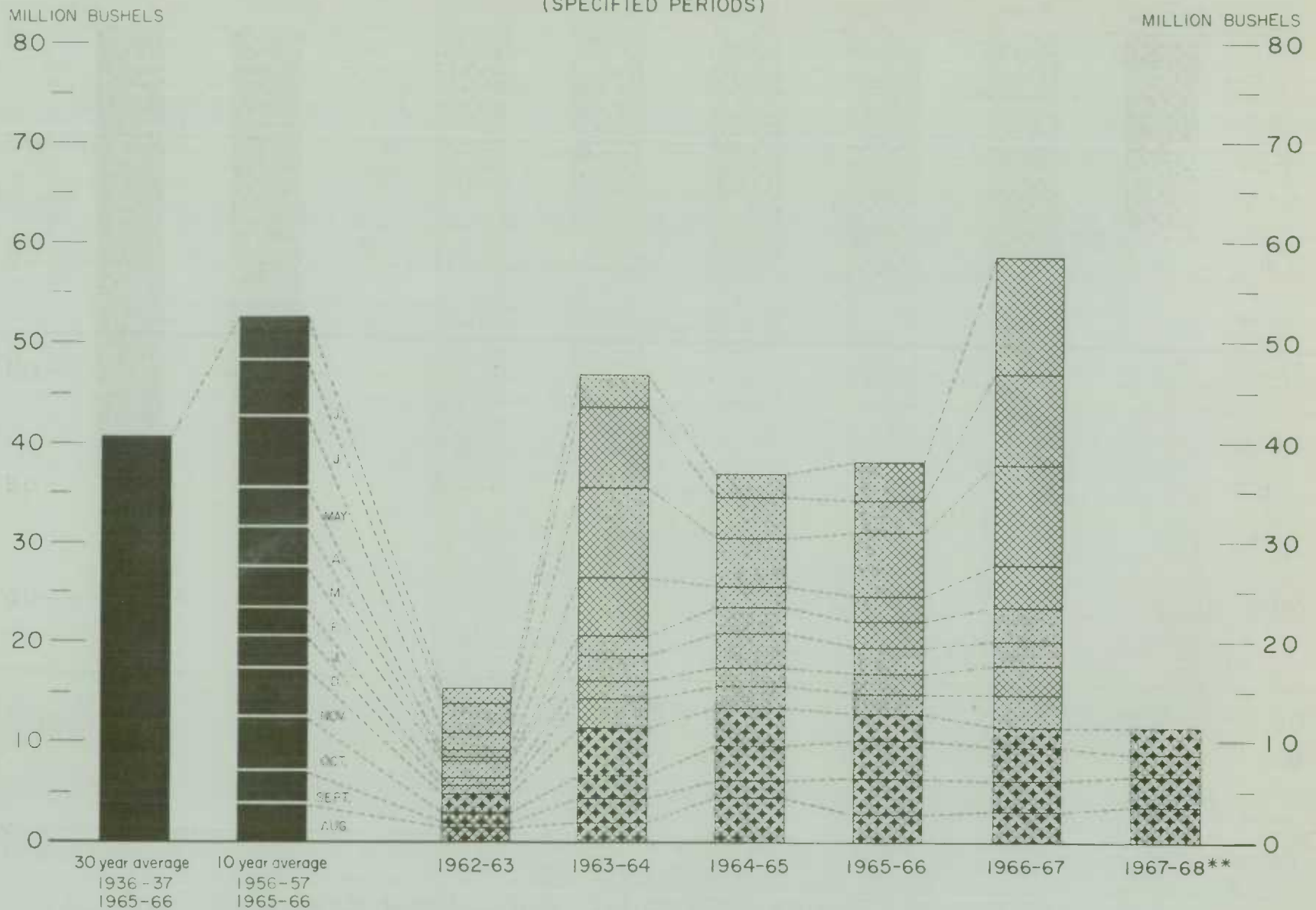
1966-67

1967-68

AUG
SEPT
OCT
NOV
DEC
JAN
FEB
MAR
A
MAY
JUNE
JULY

EXPORTS OF CANADIAN BARLEY AND BARLEY PRODUCTS*

(SPECIFIED PERIODS)



* In terms of grain equivalent. ** Preliminary

FARMERS' MARKETINGS OF OATS, PRAIRIE PROVINCES

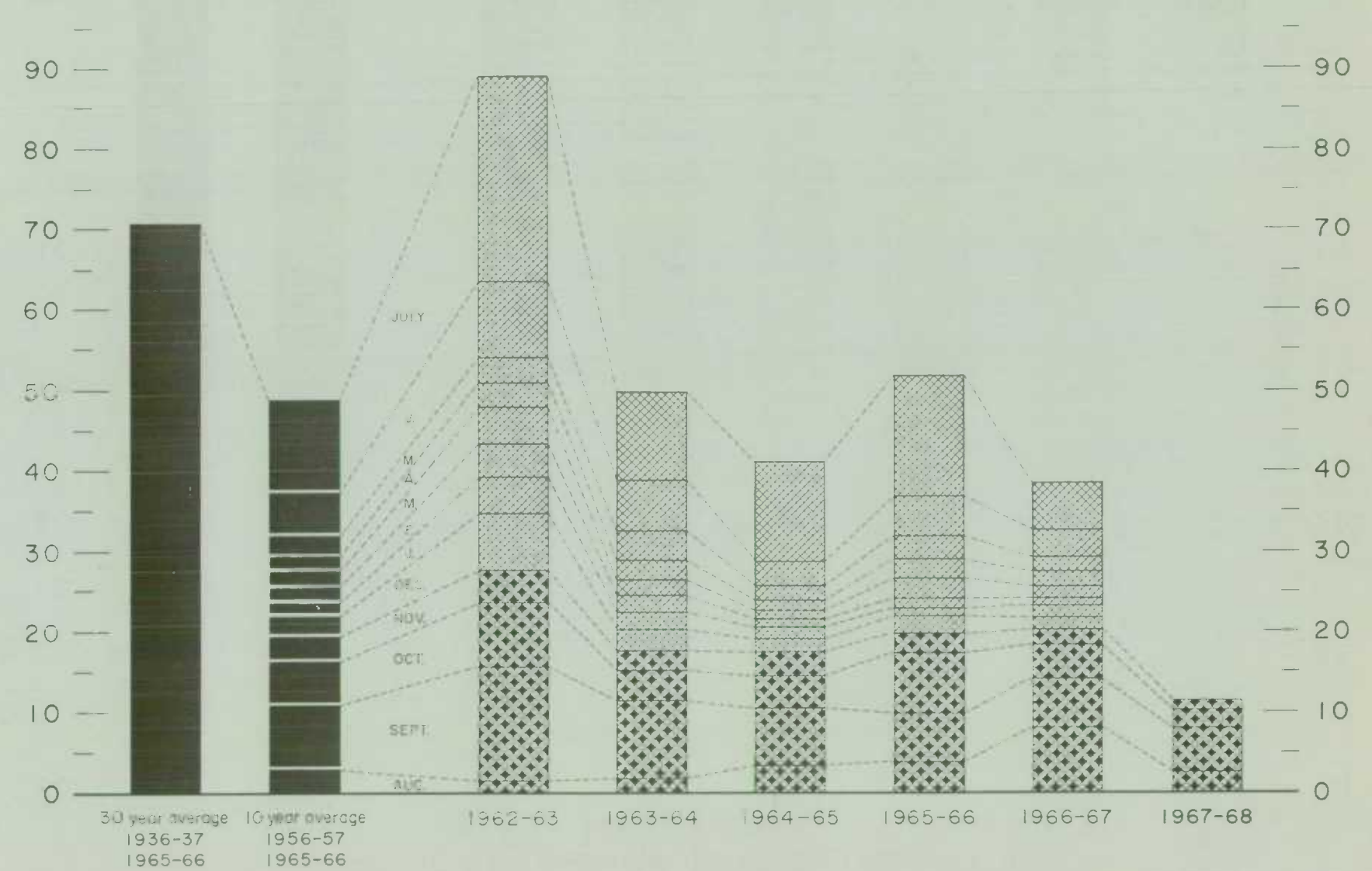
(SPECIFIED PERIODS)

MILLION BUSHELS

100 —

MILLION BUSHELS

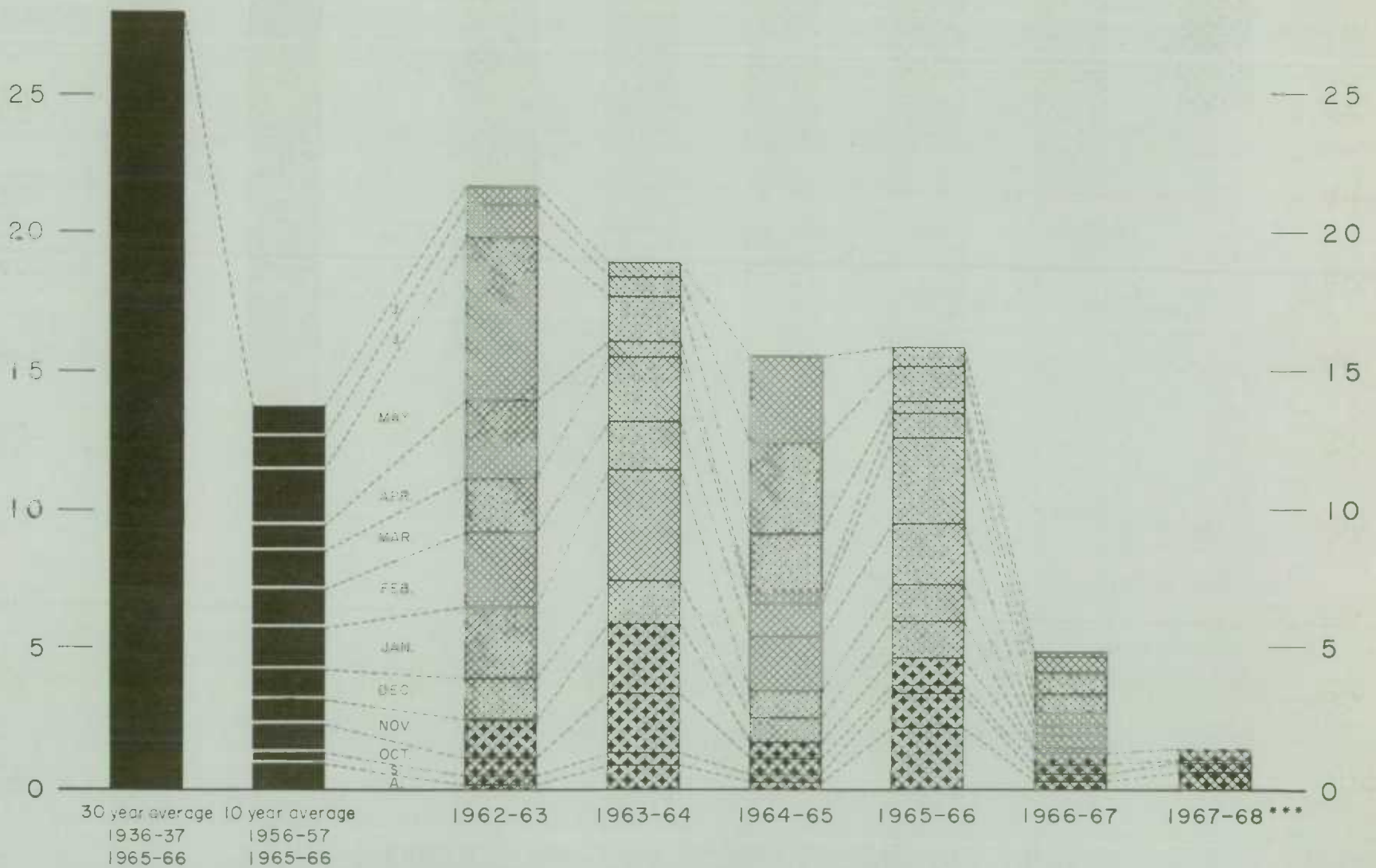
100 —



Agriculture Division D. B. S.

EXPORTS OF CANADIAN OATS* AND OAT PRODUCTS**

(SPECIFIED PERIODS)

MILLION BUSHEL
30 —MILLION BUSHEL
— 30

*Beginning with 1960-61 includes relatively small quantity of bagged seed.

**In terms of grain equivalent.

***Preliminary.

Agriculture Division D. B. S.

FARMERS' MARKETINGS OF CANADA'S SIX MAJOR GRAINS*, PRAIRIE PROVINCES

MILLION BUSHELS

1,000 —

900 —

800 —

700 —

600 —

500 —

400 —

300 —

200 —

100 —

0

(SPECIFIED PERIODS)

MILLION BUSHELS

1,000 —

900 —

800 —

700 —

600 —

500 —

400 —

300 —

200 —

100 —

0

JULY

JUNE

MAY

APR

MAR

FEB

JAN

DEC

NOV

OCT

SEPT

AUG

30 year average

1936-37

1965-66

10 year average

1956-57

1965-66

1962-63

1963-64

1964-65

1965-66

1966-67

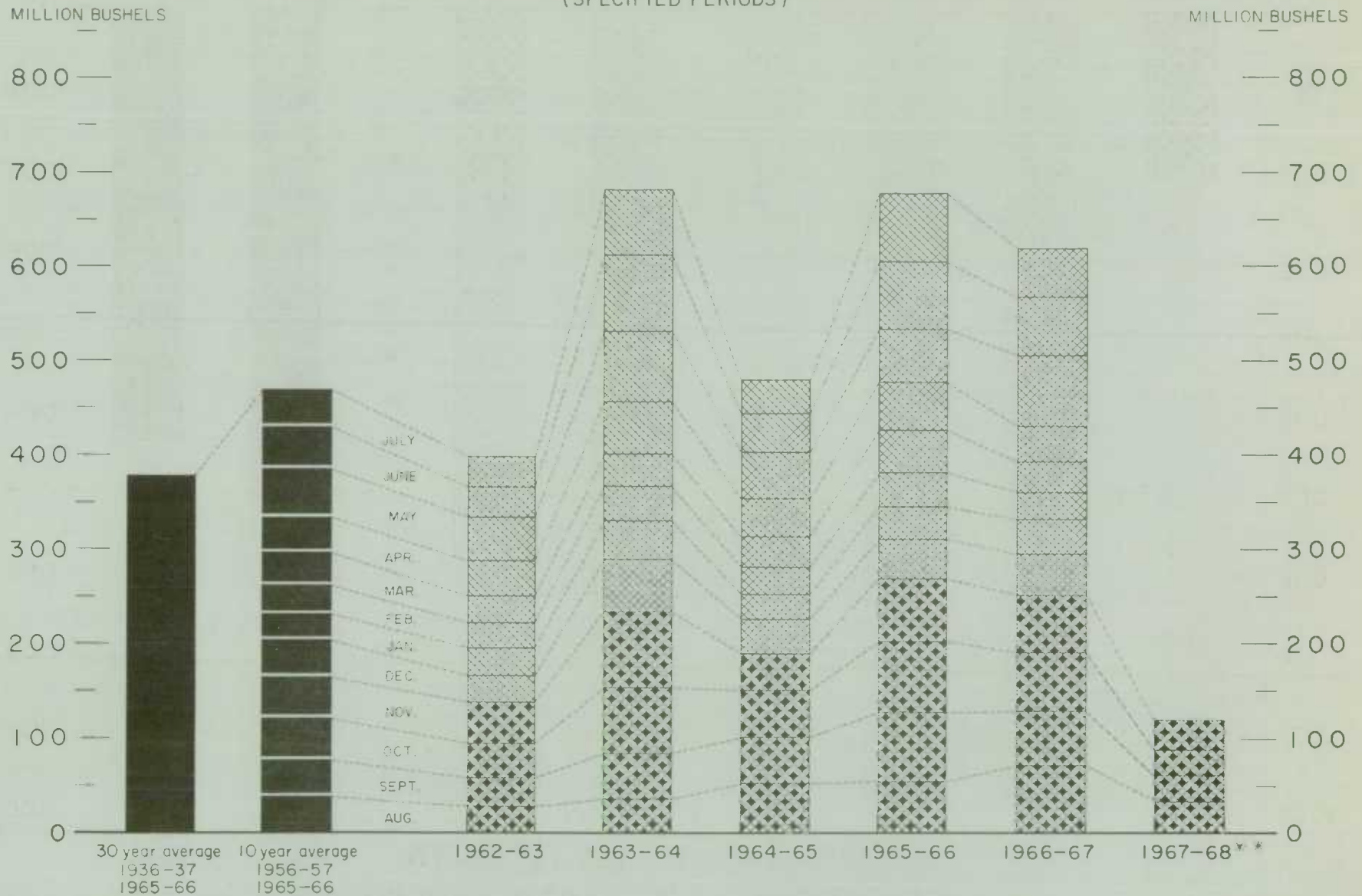
1967-68

* Wheat, oats, barley, rye, flaxseed and from 1960-61 rapeseed.

Agriculture Division D.B.S.

EXPORTS OF CANADA'S SIX MAJOR GRAINS AND PRODUCTS*

(SPECIFIED PERIODS)



* Wheat, bagged seed wheat and wheat flour; oats, bagged seed oats, and oatmeal and rolled oats; barley, malt and pot and pearl; rye, and rye flour; flaxseed and from 1960-61 rapeseed.

** Preliminary.

Exports of Canadian Wheat(1) by Destination, November 1967 and 1966

Destination	Wheat (except durum)	Durum wheat	All Wheat	
			November 1967	November 1966 (2)
<u>Western Europe:</u>				
<u>EEC</u>				
Belgium and Luxembourg	1,065,046	146,533	1,211,579	2,607,261
France	—	—	—	126,316
Germany, Federal Republic	2,933,177	1,915,952	4,849,129	4,399,708
Italy	1,630,691	—	1,630,691	—
Netherlands	824,435	498,400	1,322,835	586,972
Sub-totals	6,453,349	2,560,885	9,014,234	7,720,257
<u>Other Western Europe:</u>				
Britain	6,658,698	37,334	6,696,032	7,015,330
Denmark	—	—	—	22,400
Finland	347,200	—	347,200	345,408
Ireland	82,466	—	82,466	235,200
Malta and Gozo	—	—	—	290,528
Switzerland	62,859	149,333	212,192	1,173,338
Sub-totals	7,151,223	186,667	7,337,890	9,082,204
Totals	13,604,572	2,747,552	16,352,124	16,802,461
<u>Eastern Europe:</u>				
Albania	—	—	—	362,133
Bulgaria	—	—	—	2,748,443
Germany, East	—	—	—	764,293
Poland	—	—	—	2,578,200
U.S.S.R. (Russia)	3,438,542	—	3,438,542	9,895,681
Totals	3,438,542	—	3,438,542	16,348,750
<u>Africa:</u>				
Tanzania	5,580	—	5,580	—
<u>Asia:</u>				
China, Communist	—	—	—	8,519,923
Hong Kong	113,867	—	113,867	40,880
India	—	—	—	973,438
Japan	1,992,376	—	1,992,376	4,345,780
Malaysia	17,733	—	17,733	78,400
Pakistan	—	—	—	439,024
Singapore	45,546	—	45,546	—
Turkey	—	—	—	331,034
Totals	2,169,522	—	2,169,522	14,728,479
<u>Western Hemisphere:</u>				
Barbados	—	—	—	40
Cuba	—	—	—	738,640
Ecuador	—	—	—	87,087
El Salvador	—	—	—	123,088
Guatemala	—	—	—	—
Jamaica	997	—	997	997
Nicaragua	—	—	—	38,580
St. Lucia	—	—	—	—
Venezuela	—	—	—	73,491
Totals	997	—	997	1,061,923
Sub-totals, all countries	19,219,213	2,747,552	21,966,765	48,941,613
Bagged seed(4)			90,671	53,364
Totals, all countries	19,219,213	2,747,552	22,057,436	48,994,977

See footnotes on page 25.

Cumulative Exports of Canadian Wheat(1) by Destination

Destination	August - November 1967			Total same period last year(2)
	Wheat (except durum)	Durum wheat	Total wheat	
bushels				
Western Europe:				
LLC				
Belgium and Luxembourg ...	4,628,489(2)	292,132(2)	4,920,621(2)	7,905,074
France	339,880(2)	54,880	394,760(2)	1,747,966
Germany, Federal Republic	7,371,180(2)	2,575,593(2)	9,946,773(2)	11,099,857
Italy	5,485,455	—	5,485,455	5,527,495
Netherlands	2,822,977(2)	883,387(2)	3,706,364(2)	1,620,243
Sub-totals	20,647,981(2)	3,805,992(2)	24,453,973(2)	27,900,635
Other Western Europe:				
Austria	—	404,200	404,200	624,672
Britain	23,371,745(2)	164,267(2)	23,536,012(2)	24,694,786
Denmark	—	—	—	22,400
Finland	651,840	—	651,840	705,376
Ireland	468,932(2)	—	468,932(2)	1,056,533
Malta and Gozo	263,200	—	263,200	290,528
Norway	1,194,667	—	1,194,667	832,933
Portugal	—	—	—	571,200
Sweden	—	—	—	12,133
Switzerland	189,793	987,914	1,177,707	2,254,590
Sub-totals	26,140,177(2)	1,556,381(2)	27,696,558(2)	31,065,151
Totals	46,788,158	5,362,373	52,150,531	58,965,786
Eastern Europe:				
Albania	—	—	—	1,493,445
Bulgaria	—	—	—	3,303,291
Germany, East	—	—	—	1,956,607
Poland	1,922,204	578,740	2,500,944	7,638,104
U.S.S.R. (Russia)	12,338,043	426,496	12,764,539	45,167,741
Totals	14,260,247	1,005,236	15,265,483	59,559,188
Africa:				
Nigeria	300,533	—	300,533	410,667
Republic of South Africa ...	901,600	—	901,600	3,483,200
Sudan	36,195	—	36,195	—
Tanzania	112,005	—	112,005	—
Totals	1,350,333	—	1,350,333	3,893,867

Cumulative Exports of Canadian Wheat(1) by Destination

Destination	August - November 1967			Total same period last year(2)
	Wheat (except durum)	Durum wheat	Total wheat	
	bushels			
Asia:				
China, Communist	2,956,091	—	2,956,091	49,507,788
Hong Kong	411,413	—	411,413	301,344
India	128,592	—	128,592	11,173,675
Japan	10,467,328	120,404	10,587,732	18,344,196
Jordan	12,860	—	12,860	—
Korea, North	—	—	—	940,426
Lebanon	8,613	—	8,613	—
Malaysia	147,839	—	147,839	213,174
Pakistan	875,609	—	875,609	2,833,970
Philippines	196,000	—	196,000	515,200
Saudi Arabia	—	—	—	72,749
Singapore	81,013	—	81,013	—
Syria	29,174	—	29,174	—
Turkey	—	—	—	331,034
Totals	15,314,532	120,404	15,434,936	84,233,556
Western Hemisphere:				
Barbados	40	—	40	40
Cuba	939,930	130,401	1,120,331	3,607,382
Ecuador	150,656	—	150,656	87,087
El Salvador	56,933	—	56,933	123,088
Guatemala	—	—	—	28,294
Jamaica	3,539	—	3,539	3,989
Nicaragua	—	—	—	125,693
Peru	—	—	—	39,200
St. Lucia	373	—	373	—
Venezuela	920,082	—	920,082	1,468,744
United States Domestic(3)..	—	—	—	54,915
Totals	2,121,553	130,401	2,251,954	5,538,432
Sub-totals, all countries..	79,834,823	6,618,414	86,453,237	212,190,829
Bagged Seed(4)			267,522	328,264
Totals, all countries	79,834,823	6,618,414	86,720,759	212,519,093

- (1) Overseas clearances as reported by the Statistics Division, Board of Grain Commissioners for Canada, for all countries except the United States. Excluding bagged seed. (2) Revised. (3) Compiled from returns of Canadian elevator licensees and shippers and advice from American grain correspondents. (4) Compiled from Canadian Customs returns, 1966 adjusted for time lag.

Customs Exports of Canadian Wheat Flour by Countries of Consignment

Destination	July	November	August - November	
	1967(1)	1967(2)	1967(2)	1966(1)
bushels				
<u>Western Europe</u>				
<u>EEC</u>				
Belgium and Luxembourg.....	12,744	10,256	26,556	35,839
Italy.....	1,495	1,955	6,900	2,760
Netherlands.....	—	3,036	5,534	1,771
Sub-totals.....	14,239	15,247	38,990	40,370
<u>Other Western Europe</u>				
Britain.....	284,223	320,774	1,123,094(4)	2,864,117
Denmark.....	460	—	460	805
Gibraltar.....	2,576	5,152	7,728	23,441
Greece.....	—	18,306	25,760	7,829
Iceland.....	—	—	—	3,549
Ireland.....	—	3,703	4,347	966
Norway.....	—	—	—	115
Portugal.....	2,799	8,791	29,406	26,662
Sweden.....	—	—	—	1,486
Sub-totals.....	290,058	356,726	1,190,795(4)	2,928,970
Totals.....	304,297	371,973	1,229,785(4)	2,969,340
<u>Africa</u>				
Angola.....	2,760	1,380	7,820	6,095
Cameroun Republic.....	5,060	4,715	15,235	25,461
Congo-Kinshasa.....	5,175	1,725	9,430	9,660
Dahomey.....	—	5,773	10,583	—
French Africa nes.....	8,919	—	6,619	25,519
Gambia.....	—	10,810	27,819	15,824
Ghana.....	40,308	2,346	659,537	464,430
Ivory Coast.....	—	—	1,840	1,380
Liberia.....	26,850	10,677	76,783	89,636
Malawi.....	6,790	7,682	23,143	20,898
Morocco.....	—	17,494	17,494	—
Mozambique.....	3,091	6,113	12,903	24,003
Nigeria.....	—	—	—	4,384
Portuguese Africa nes.....	2,392	2,185	10,476	10,249
Sierra Leone.....	1,817	715	11,486	178,508
Tanzania.....	—	—	5,672	—
Togo.....	18,630	18,844	52,509	68,140
U.A.R. - Egypt.....	—	—	—	43,100
Zambia.....	1,150	1,150	3,450	—
Totals.....	122,942	91,609	952,799	987,287
<u>Asia</u>				
Aden.....	—	4,379	4,379	21,831
Afghanistan.....	—	—	517	—
Bahrain.....	—	117	117	51
Ceylon.....	—	846,949	859,627	—
Cyprus.....	—	—	—	58
Hong Kong.....	48,990	49,933	152,909	210,997
India.....	—	274	134,670	483
Iran.....	718	—	322	2,905
Israel.....	—	41,492	543,837	—
Japan.....	575	586	2,132	1,387

Customs Exports of Canadian Wheat Flour by Countries of Consignment

Destination	July	November	August - November	
	1967(1)	1967(2)	1967(2)	1966(1)
bushels				
<u>Asia (concluded)</u>				
Jordan	-	-	5,071	2,134
Korea	-	-	-	17,747
Lebanon	-	8,986	182,843(4)	44,171
Malaysia	-	-	-	2,795
Portuguese Asia	2,530	1,012	2,024	14,250
Qatar	115	-	287	260
Saudi Arabia	-	-	58,128	9,147
Thailand	14,490	19,665	94,544	80,615
Totals	67,418	973,393	2,041,407(4)	408,831
<u>Oceania</u>				
British Oceania nes	115	-	1,150	230
Fiji	1,702	299	1,251	1,403
French Oceania	-	-	-	497
United States Oceania	230	4,600	23,000	15,525
Totals	2,047	4,899	25,401	17,655
<u>Western Hemisphere</u>				
Bahamas	25,480	28,108	95,261	105,066
Barbados	21,795	26,057	75,491(4)	71,594
Bermuda	14,559	10,569	39,305	40,530
British Honduras	4,704	1,923	13,131	27,770
Chile	-	205	205	-
Costa Rica	460	-	1,835	336,193
Cuba(3)	99,756	-	2,571,927	4,394,877
Dominican Republic	391	-	1,081	-
Ecuador	1,380	-	-	345
El Salvador	170	143	313	170
French Guiana	1,725	-	-	-
French West Indies	-	-	3,839	1,760
Guatemala	1,702	-	2,852	5,660
Guyana	7,755	8,455	26,140	31,123
Haiti Republic	58	-	57	338
Honduras Republic	6,900	2,530	19,288	10,925
Jamaica	145,049	175,396	504,572	427,397
Leeward and Windward Islands ..	63,590	86,712	280,588	371,908
Netherlands Antilles	12,832	18,607	67,119	39,438
Nicaragua	-	-	-	690
Panama	1,725	5,421	21,121	19,147
Peru	690	-	11,270	3,703
Puerto Rico	-	-	97	-
St. Pierre and Miquelon	966	3,277	8,751	9,025
Surinam	1,642	237	5,140	4,545
Trinidad and Tobago	49,312	23,219	182,680(4)	410,267
Venezuela	-	-	230	-
United States	33,501	41,510	134,729	201,664
Totals	496,142	432,369	4,067,022(4)	6,514,135
Totals, All Countries	992,846	1,874,243	8,316,414(4)	10,897,248

nes - not elsewhere specified.

(1) In terms of wheat equivalent. Adjusted to remove effect of time lag in the returns made by Customs. Conversion rate: 2.3 bushels per cwt.

(2) In terms of wheat equivalent. Preliminary and unadjusted for time lag. Conversion rate: 2.3 bushels per cwt.

(3) Source - Canadian National Millers Association.

(4) Revised.

Canadian Wheat Board Weekly Average Cash Wheat Prices
Basis in Store Fort William-Port Arthur

Class and Grade	Week Ending			
	December 8	December 15	December 22	December 29
	cents and eighths per bushel			
<u>Initial Payment to Producers</u>				
1 Northern.....	170	170	170	170
2 Northern.....	166	166	166	166
3 Northern.....	162	162	162	162
4 Northern.....	155	155	155	155
5 Wheat.....	141	141	141	141
6 Wheat.....	137	137	137	137
Feed Wheat.....	133	133	133	133
1 C.W. Garnet.....	155	155	155	155
2 C.W. Garnet.....	150	150	150	150
3 C.W. Garnet.....	145	145	145	145
1 Alberta Red Winter.....	154	154	154	154
2 Alberta Winter.....	149	149	149	149
3 Alberta Winter.....	143	143	143	143
1 C.W. Amber Durum.....	170	170	170	170
2 C.W. Amber Durum.....	166	166	166	166
3 C.W. Amber Durum.....	162	162	162	162
<u>International Wheat Agreement and Domestic Sales</u>				
1 Northern.....	191/3	191/3	191/3	191/4
2 Northern.....	190/3	190/3	190/3	190/4
3 Northern.....	189/3	189/3	189/3	189/4
4 Northern.....	185/3	185/3	185/3	185/4
5 Wheat.....	182/3	182/3	182/3	182/4
6 Wheat.....	179/3	179/3	179/3	179/4
Feed Wheat.....	175/3	175/3	175/3	175/4
1 C.W. Garnet.....	185/3	185/3	185/3	185/4
2 C.W. Garnet.....	184/3	184/3	184/3	184/4
3 C.W. Garnet.....	183/3	183/3	183/3	183/4
1 Alberta Red Winter.....	185/3	185/3	185/3	185/4
2 Alberta Winter.....	184/3	184/3	184/3	184/4
3 Alberta Winter.....	183/3	183/3	183/3	183/4
1 C.W. Amber Durum.....	223/3	223/3	223/3	223/4
2 C.W. Amber Durum.....	221/3	221/3	221/3	221/4
3 C.W. Amber Durum.....	217/3	217/3	217/3	217/4
<u>Export - Class II</u>				
1 Northern.....	191/3	191/3	191/3	191/4
2 Northern.....	190/3	190/3	190/3	190/4
3 Northern.....	189/3	189/3	189/3	189/4
4 Northern.....	185/3	185/3	185/3	185/4
5 Wheat.....	182/3	182/3	182/3	182/4
6 Wheat.....	179/3	179/3	179/3	179/4
Feed Wheat.....	175/3	175/3	175/3	175/4
1 C.W. Garnet.....	185/3	185/3	185/3	185/4
2 C.W. Garnet.....	184/3	184/3	184/3	184/4
3 C.W. Garnet.....	183/3	183/3	183/3	183/4
1 C.W. Amber Durum.....	223/3	223/3	223/3	223/4
2 C.W. Amber Durum.....	221/3	221/3	221/3	221/4
3 C.W. Amber Durum.....	217/3	217/3	217/3	217/4

Canadian Wheat Board Weekly Average Cash Wheat Prices
Basis in Store Vancouver

Class and Grade	Week Ending			
	December 8	December 15	December 22	December 29
cents and eighths per bushel				
<u>Initial Payment to Producers</u>				
1 Northern.....	170	170	170	170
2 Northern.....	166	166	166	166
3 Northern.....	162	162	162	162
4 Northern.....	155	155	155	155
5 Wheat.....	141	141	141	141
6 Wheat.....	137	137	137	137
Feed Wheat.....	133	133	133	133
1 C.W. Garnet.....	155	155	155	155
2 C.W. Garnet.....	150	150	150	150
3 C.W. Garnet.....	145	145	145	145
1 Alberta Red Winter.....	154	154	154	154
2 Alberta Winter.....	149	149	149	149
3 Alberta Winter.....	143	143	143	143
1 C.W. Amber Durum.....	170	170	170	170
2 C.W. Amber Durum.....	166	166	166	166
3 C.W. Amber Durum.....	162	162	162	162
<u>International Wheat Agreement and Domestic Sales</u>				
1 Northern.....	197/3	197/3	197/3	197/4
2 Northern.....	196/7	196/7	196/7	197
3 Northern.....	195/7	195/7	195/7	196
4 Northern.....	191/7	191/7	191/7	192
5 Wheat.....	188/7	188/7	188/7	189
6 Wheat.....	185/7	185/7	185/7	186
Feed Wheat.....	181/7	181/7	181/7	182
1 C.W. Garnet.....	191/7	191/7	191/7	192
2 C.W. Garnet.....	190/7	190/7	190/7	191
3 C.W. Garnet.....	189/7	189/7	189/7	190
1 Alberta Red Winter.....	191/7	191/7	191/7	192
2 Alberta Winter.....	190/7	190/7	190/7	191
3 Alberta Winter.....	189/7	189/7	189/7	190
<u>Export - Class II</u>				
1 Northern.....	197/3	197/3	197/3	197/4
2 Northern.....	196/7	196/7	196/7	197
3 Northern.....	195/7	195/7	195/7	196
4 Northern.....	191/7	191/7	191/7	192
5 Wheat.....	188/7	188/7	188/7	189
6 Wheat.....	185/7	185/7	185/7	186
Feed Wheat.....	181/7	181/7	181/7	182
1 C.W. Garnet.....	191/7	191/7	191/7	192
2 C.W. Garnet.....	190/7	190/7	190/7	191
3 C.W. Garnet.....	189/7	189/7	189/7	190
1 Alberta Red Winter.....	191/7	191/7	191/7	192
2 Alberta Winter.....	190/7	190/7	190/7	191
3 Alberta Winter.....	189/7	189/7	189/7	190

CANADIAN FLOUR MILLING SITUATION

Production

Wheat flour production by Canadian mills during November 1967 amounted to 3,188,000 hundredweight, 1 per cent less than the October 1967 output of 3,229,000 hundredweight, 18 per cent lower than the November 1966 figure of 3,895,000 hundredweight and 16 per cent below the ten-year (1957-66) average production for the month of November of 3,775,000 hundredweight. Mills reporting operations during November 1967 had a total rated capacity of 156,000 hundredweight per 24-hour day and on the basis of a 25-day working period 80.0 per cent of this rated capacity was effective.

Wheat milled for flour during November 1967 amounted to 7,165,000 bushels, 1 per cent less than the 7,249,000 bushels milled during the preceding month and 19 per cent below the 8,807,000 bushels milled during November 1966. Of the wheat milled for flour during November 1967, some 6,050,000 bushels were Western Canadian spring wheat (other than Durum) while the remainder consisted of Ontario winter wheat (637,000 bushels); Durum (398,000 bushels); and all other (80,000 bushels).

Exports

According to preliminary Customs returns, exports of Canadian wheat flour during November 1967 amounted to 815,000 hundredweight (some 1,874,000 bushels of wheat equivalent) 2 per cent above the 1,832,000 bushels exported during the previous month but 24 per cent lower than the adjusted November 1966 total of 2,471,000 bushels. Flour shipments during the month went to fifty countries with exports to Ceylon amounting to 847,000 bushels of wheat equivalent and accounting for 45 per cent of the November 1967 total. Other leading markets for Canadian wheat flour during the month, with shipments in thousands of bushels of wheat equivalent were as follows: Britain, 321; Jamaica, 175; Leeward and Windward Islands, 87; Hong Kong, 50; United States, 42; and Israel, 41.

Wheat Milled for Flour, and Production and Exports of Wheat Flour, Canada

Crop Year	Wheat Milled for Flour	Wheat Flour	
		Production	Exports(1)
	bushels	cwt.	
1935-36-1939-40 average.....	67,845,114	29,405,451	9,603,941
1940-41-1944-45 average.....	99,704,638	43,908,245	23,699,546
1945-46-1949-50 average.....	107,330,372	47,011,540	25,819,721
1950-51-1954-55 average.....	100,446,328	43,847,894	21,812,041
1955-56-1959-60 average.....	99,148,211	39,752,589	16,349,156
1960-61-1964-65 average.....	91,128,177	40,834,088	15,769,803
1965-66.....	97,925,995	43,531,263	16,576,117
1966-67.....	90,084,646	39,978,571	13,848,208
1967-68(2)			
August.....	7,483,754	3,323,075	993,703
September.....	7,498,099	3,329,572	1,010,923
October.....	7,248,717	3,229,128	796,318
November.....	7,164,572	3,188,285	814,888
Totals.....	29,395,142	13,070,060	3,615,832
Same Months 1966-67(3).....	33,456,931	14,750,802	4,737,934

(1) Based on Customs returns. Exports for the crop years 1945-46-1966-67 revised to remove effect of time lag in the returns made by Customs.

(2) Subject to revision.

(3) Revised figures.

UNITED STATES SITUATION

Supplies Above
1966-67 Level

Total domestic supplies of wheat in the United States for the 1967-68 crop year are currently placed at 1,950.6 million bushels, 5 per cent above the previous year's total of 1,846.9 million reflecting an increase in production which more than offset a decrease in carryover stocks. The 426.3 million bushels carried over at July 1, 1967 were the lowest stocks in 15 years, while the current crop, estimated at 1,524.3 million bushels, represents an increase of 16 per cent over last year's outturn of 1,311.7 million. Domestic disappearance during 1967-68 is estimated at about 700.0 million bushels, 3 per cent more than the 680.1 million last year. After deducting anticipated domestic requirements for the current United States crop year, some 1,250.9 million remain available for export and for carryover, an increase of 7 per cent over the 1,168.0 million in 1966-67.

Exports Below
Previous Year

Exports of wheat and wheat flour in terms of grain equivalent during the period July-November 1967 amounted to 317.6 million bushels, 17 per cent less than the 382.1 million exported during the same months last year. The balance remaining on December 1, 1967 for export and for carryover was estimated at 933.3 million bushels compared with 785.9 million on the same date a year ago.

United States Wheat Supplies

Item	1966-67(1)	1967-68(2)
	million bushels	
Carryover at beginning of crop year (July 1).....	535.2	426.3
Production.....	1,311.7	1,524.3(1)
Total estimated domestic supplies.....	1,846.9	1,950.6
Imports of wheat and wheat flour in terms of wheat for domestic use, July-November.....	1.2	0.2
Total estimated supplies(3).....	1,848.1	1,950.9
Less estimated domestic requirements for crop year(4)	680.1	700.0
Available for export and for carryover....	1,168.0	1,250.9
Deduct:		
Exports of wheat as grain, July-November.....	348.2	304.3
Exports of wheat flour in terms of wheat, July- November(5).....	33.9	13.3
Total exports of wheat and wheat flour(6).	382.1	317.6
Balance on December 1 for export and for carryover...	785.9	933.3

(1) Revised. (2) Preliminary. (3) Excluding imports for December-June.

(4) Includes shipments to United States Territories and wheat for military food use at home and abroad. (5) Flour exports exclude "Milled in bond". (6) Data include shipments for relief.

1967 Wheat Crop
Estimated at 1,524
Million Bushels

In a report released on December 19, 1967 the Crop Reporting Board of the United States Department of Agriculture stated in part production of all wheat was a record 1,524 million bushels, 67 million above the previous high in 1958. The record production was due to increased acreage harvested, since yield per harvested acre, at 25.8 bushels, was 0.5 bushel below 1966. The 1967 all wheat acreage allotment was increased to 68.2 million acres, 32 per cent greater than for 1966, with no acreage diversion provisions. This encouraged farmers to plant 25 per cent more acreage to wheat. Acres planted to wheat total 68.0 million, the largest since 1953- the last crop seeded without acreage allotments. Growers harvested 59.0 million acres, 18 per cent above 1966 and 23 per cent above average.

Record winter wheat production totalled 1,212 million bushels in 1967, 3 per cent more than the previous record high in 1958, 14 per cent above 1966 and 25 per cent above average. Yield per harvested acre of 26.6 bushels was the lowest in four years but just above the average of 26.2 bushels. The 1967 crop was seeded to 54.3 million acres, the largest since 1953. Acreage harvested for grain totalled 45.6 million acres, 18 per cent above 1966 and 23 per cent above average.

Production of spring wheat other than durum in 1967 totalled 249 million bushels, 34 per cent above 1966 and 33 per cent above average. Each State showed an increase from a year earlier. North Dakota accounted for nearly half the total U.S. production.

This year's crop yielded 23.5 bushels per harvested acre, the fourth highest yield of record. This compared with 21.6 bushels in 1966 and the average of 21.3 bushels. Harvested acreage totalled 10,624,000. This was 23 per cent more than a year earlier and 20 per cent above average. Acreage planted in 1967 totalled 10,854,000 acres, an increase of 22 per cent from last year. Abandonment of 2.1 per cent compared with 3.4 per cent in 1966.

Production of durum wheat in 1967 totalled 63.0 million bushels, 1 per cent more than the 1966 crop and 12 per cent above average. Production in North Dakota, the leading State, was 6 per cent below a year earlier. Acreage harvested in North Dakota was up 11 per cent, but yield per acre was 4.0 bushel lower. Output in all other durum States increased due principally to acreage increases. Seeding was later than usual in the main durum area. Rainfall was light during June but prospects were favourable on July 1 because of good moisture earlier. Prospects during the critical growing period in July declined as rainfall was deficient. A cool August permitted the crop to make maximum use of available moisture. Harvest started later than usual, but progressed rapidly under near optimum weather. By September 5, about 91 per cent of the North Dakota acreage had been combined compared with the average of 77 per cent for this date. The yield per harvested acre was 22.9 bushels, 3.0 bushels below 1966 and 2.4 bushels below average. Acreage harvested totalled 2,754,000 acres compared with 2,423,000 acres in 1966 and the average of 2,151,000 acres. Acreage seeded was 2,826,000 acres, an increase of 13 per cent from last year. Abandonment of the 1967 planted acreage was 2.5 per cent compared with 2.7 per cent in 1966.

Acreage and Production
of Winter Wheat and Rye

According to a report on "Winter Wheat and Rye", released by the Crop Reporting Board on December 20, 1967, acreage seeded to winter wheat this fall for 1968 harvest totalled 49.7 million acres, 8 per cent less than last year but otherwise the largest fall seedings since 1952. Farmers reduced winter wheat plantings but not as much as the reduction in the 1968 all wheat acreage allotment. The 1968 all wheat acreage allotment is 59.3 million acres, 13 per cent below a year earlier. Except in Montana, the major winter wheat producing States planted less acreage than a year earlier. Montana planted the same acreage as last year. The Corn Belt and Northeast, where a wet fall restricted plantings, showed the largest percentage decline in acreage. Several Southern and Western States, with small allotments, increased acreages from a year earlier.

The indicated winter wheat crop for 1968 is 1,204 million bushels, based on conditions as of December 1. This would be 1 per cent less than the 1967 crop, but the second largest of record. Winter wheat on December 1 was in uniformly fair to good condition across much of the Nation. There were no large areas where wheat was under severe stress or in excellent condition. In the past decade, the average change in estimates of U.S. production from December 1 to harvest has been 93 million bushels, ranging from 3 million to 267 million bushels in individual years. The yield per seeded acre of 24.2 bushels is 1.9 bushels above 1967 and 1.5 bushels above average. December 1 conditions indicate 86.0 per cent of the acreage seeded will be harvested for grain, compared with 84.0 per cent in 1967 and the average of 86.0 per cent.

Seeding of winter wheat in the Great Plains started slowly because of dry soils but gained momentum after September rains. The crop germinated well and got off to a good start but dry soils in the western Great Plains limited fall growth. In eastern Kansas and Nebraska, excessive moisture delayed seeding and retarded top growth. Wheat enters winter in generally fair to good condition throughout the Great Plains. Prospects are better than a year earlier from central Kansas southward, but not quite equal to year-earlier good to excellent prospects from central Kansas northward. In Montana, seeding progressed slowly because of dry soils until late September rains. Seeding was nearly completed by October 20, a little later than usual. The crop enters winter mostly in good condition, although soil moisture is still short in some local areas. Rainfall was very light in the Pacific Northwest during the summer and early fall and many farmers "dusted" in their wheat hoping for rain. Rain during October and November, although generally light in major wheat areas, provided moisture for germination. Some stands are still "spotty" in southern Washington and eastern Oregon.

Wet soils delayed harvest of fall crops in the Corn Belt and Northeast, and some wheat to be seeded following corn and soybeans could not be sown. Stands of wheat that were seeded are good, soil moisture is more than adequate, and the crop is entering winter in good condition. In the Southern States, dry soils slowed early development but moisture in late November and early December brought sharp improvement.

Cash Wheat Prices on the Kansas City and Minneapolis Markets

No. 2 Hard Winter, Kansas City		No. 1 Northern Spring, Minneapolis	
Date	Price cents per bushel	Date	Price cents per bushel
December 1, 1967	156	December 1, 1967	159 1/4 - 195 1/4
4	155 3/4 - 163 1/2	4	159 1/4 - 195 1/4
5	N.A.	5	164 1/4 - 197 1/4
6	156 1/2 - 164 1/2	6	162 - 198
7	162 1/2	7	161 5/8 - 197 5/8
8	161 1/4	8	161 5/8 - 197 5/8
11	157	11	157 1/8 - 195 1/8
12	160 1/4 - 161 3/4	12	158 - 195
13	159 3/4 - 163 1/2(1)	13	157 3/4 - 194 3/4
14	152 3/4	14	157 3/4 - 194 3/4
15	159 1/4 - 160 1/4	15	159 1/8 - 196 1/8
18	160 1/4	18	158 3/8 - 195 3/8
19	159 1/2	19	158 3/4 - 195 3/4
20	154 1/2 - 162 1/2	20	158 1/4 - 195 1/4
21	154 1/2	21	158 5/8 - 195 5/8
22	154 - 162	22	158 3/8 - 193 3/8
25	Christmas Day	25	Christmas Day
26	155 1/2 - 154	26	158 1/2 - 195 1/2
27	158 1/2	27	157 1/2 - 194 1/2
28	158 3/4	28	158 3/8 - 195 3/8
29	153-160 1/2	29	158 1/2 - 195 1/2

(1) Nominal. N.A. Not available.

Chicago Wheat Futures, High Points of Closing

Date	December	March	May	July	September
	cents and eighths per bushel				
December 1, 1967.....	145/5	150/4	154/2	154/3	157/2
4	145	150/5	154/2	154/1	157
5	145/7	151/4	155	154/5	157/3
6	146/6	152	155/5	155	158
7	146/3	151/6	155/4	155	158
8	145/7	151/4	155/2	155/2	158/2
11	144/4	150	153/6	154	157
12	145/4	151	154/4	155/1	152/4
13	144	149/7	153/5	154/2	157/4
14	145/6	150/6	154/3	154/4	157/6
15	146/2	151/6	155/3	155/6	159/1
18	145/6	150/5	154/2	154/2	157/6
19	146/3	151/4	155	154/4	157/4
20		150/4	154	153/3	156/4
21		150	153/5	152/6	155/7
22		150/4	154	153	156/2
25		Christmas Day			
26		149/3	152/6	152/1	155/2
27		147/6	151	151	154/2
28		148/5	152	151/5	154/7
29		148	151/2	151/1	154/4

AUSTRALIAN SITUATION

Supplies at an All Time High

Disposition of Australian wheat supplies during the crop years (December-November) 1965-66 and 1966-67 is set out in the accompanying table. Total estimated supplies in the crop year recently completed, reflecting a record crop which more than offset a relatively small decrease in carryover stocks, amounted to 483.1 million bushels, in sharp contrast to the previous year's total of 284.1 million. The all-time high 1966 production, at 466.6 million bushels, exceeded the 1965 level of 259.7 million by a wide margin while the carryover at December 1, 1966, at 16.5 million, registered a decline from the 24.4 million at December 1, 1965. After deducting 89.0 million for domestic requirements, some 394.1 million were available for export and for carryover during 1966-67, more than double the 1965-66 total of 191.2 million.

Exports Reach Record Level

Combined exports of wheat as grain and wheat flour in terms of grain equivalent during the 1966-67 crop year amounted to 313.3 million bushels, 79 per cent more than the 174.7 million exported during 1965-66. The preliminary estimate places carryover stocks at December 1, 1967 at 80.8 million bushels in contrast to 16.5 million at the same date a year ago.

Australian Wheat Supplies

Item	1965-66(1)	1966-67(2)
	million bushels	
Carryover, including flour as wheat, at beginning of crop year (December 1).....	24.4	16.5
Production.....	259.7	466.6(1)
Total estimated domestic supplies.....	284.1	483.1
Less estimated domestic requirements for crop year	92.9	89.0(1)
Available for export and for carryover....	191.2	394.1
Deduct:		
Exports of wheat as grain, December 1-November 30	158.1	294.0
Exports of wheat flour in terms of wheat, December 1 - November 30.....	16.6	19.3
Total exports of wheat and wheat flour....	174.7	313.3
Balance on December 1 for export and for carryover	16.5	80.8

(1) Revised. (2) Preliminary.

The following information relative to the Australian situation has been extracted from a report from Mr. J.E.G. Gibson, Assistant Commercial Secretary for Canada, Canberra, under date of December 14, 1967, and is reproduced with the permission of the Trade Commissioner Service, Department of Trade and Commerce. Where possible conversions to Canadian currency has been made for the convenience of our readers.

Production

Dry conditions have continued to prevail over most wheat growing regions in Australia. Although no change has been made in the Australian Wheat Board forecast of 260 million bushels, by piecing together estimates received from the Departments of Agriculture in the States of Australia it seems possible that the final crop will be on the order of 285 million bushels.

There has been a slight improvement in scattered wheat areas in the state of New South Wales with the result that the total crop for that state is now estimated at 104 million bushels. As a matter of interest the Chairman of the Grain Elevators Board of New South Wales stated recently that apart from a few late areas, nearly all wheat should be received by Christmas. This is due to the good harvest conditions and fewer delays in handling resulting from a smaller crop throughout the state. New South Wales wheat is reported to be of good quality and the grain condition is stated to be excellent. The Chairman of the Grain Elevators Board, commenting on wheat deliveries said, 'Its general appearance including colour, brightness and cleanliness, plus its high protein content should make it a readily marketable product and its dryness will ensure safe storage'.

In Western Australia a revised official estimate of this season's wheat crop has just been increased to 96 million bushels. Severe drought conditions continue to prevail in South Australia and it now appears that the harvest in that state will not exceed 25 million bushels. Similar conditions prevail in the state of Victoria, whose crop is also estimated at 25 million bushels. The latest estimate which we have been able to obtain from Queensland calls for a harvest of 30 million bushels.

In spite of the small increase in the total Australian harvest it seems unlikely that there will be a commensurate increase in deliveries to the Australian Wheat Board, as the drought conditions will likely dictate the necessity of retaining additional wheat on farms for feed and seed purposes.

Devaluation Losses

The first effect to be felt by Australian primary industry from the recent devaluation of the pound sterling came in the wheat industry. Australia's wheat sales contracts with China in recent years have been written on a sterling basis with deferred payments over a twelve month period. Similar contracts have been written for smaller amounts with India and Pakistan. As a result, the immediate effect of devaluation was a loss of approximately Australian Dollars 30 million (\$36.4 million Canadian) on the Wheat Board's current contractual commitments. At the present it has not been decided who will bear the brunt of this set back but it is probable that the Commonwealth Government will be obliged to cover this loss, primarily because of its insistence that the Wheat Board write its contracts in sterling. A political decision to resolve this matter is expected shortly. In the meantime the Australian Wheat Board has adjusted its sterling prices so that the F.O.B. return to growers will be restored to a level similar to that which applied prior to devaluation.

On the effects of devaluation the following is an extract from a statement issued by two grower members of the Australian Wheat Board following a recent meeting of the Board. 'On a number of occasions since 1950, the Australian Wheat Board has approached the Commonwealth Government seeking provision for forward control insurance against the possibility of sterling devaluation but these considerations have always been declined. The consequent serious impact that devaluation has had on the wheat growing industry as a direct result of a major crisis in the international monetary system, must be regarded as a matter of national responsibility'.

In the meantime, the Australian Wheat Board has adjusted the price in sterling so that the F.O.B. return to growers will be restored to a level similar to that applying prior to devaluation.

The Minister for Primary Industry announced on November 30, that the guaranteed price for fair average quality wheat of the 1967-68 season will be A.\$1.64 (\$1.99 Canadian) per bushel, bulk basis, free on rails at ports of export. This price, he said, had been determined under the Wheat Industry Stabilization Plan and is nine cents (11 cents) per bushel above the guaranteed price for the 1966-67 season. It will apply in respect of 150 million bushels of wheat to be exported from the 1967-68 crop.

He explained that the adjustment follows an assessment by the Bureau of Agricultural Economics of changes in production costs, and an estimate by the Australian Wheat Board of changes in handling, storage and transport costs applicable to the current wheat crop.

The Minister also announced that as from 1st December, 1967 the home consumption price for wholesale sales of bulk wheat of fair average quality will be A.\$1.65 1/2 (\$2.01) per bushel free on rails at ports of export. This price was made up of the guaranteed price plus an amount of one and one-half cents (2 cents) per bushel to meet the cost of shipment of wheat from mainland ports to Tasmania.

The Minister pointed out that the revision of the guaranteed price was part of the normal operation of the Wheat Stabilization arrangement, and was in no way connected with any problems arising out of sterling devaluation.

Exports of Australian Wheat and Wheat Flour in Terms of Wheat
December 1 - November 30, 1966-67 and Corresponding Period 1965-66

Destination	Wheat		Wheat Flour	
	1965-66	1966-67	1965-66	1966-67
thousand bushels				
<u>Western Europe</u>				
EEC				
Belgium and Luxembourg.....	-	605	-	691
Germany, Federal Republic...	-	1,719	-	-
Netherlands.....	-	3,348	-	-
Sub-totals.....	-	5,672	-	691
<u>Other Western Europe</u>				
Britain.....	19,312	18,425	1,285	-
Ireland.....	3,669	1,528	-	-
Malta.....	1,051	367	-	-
Norway.....	1,302	4,370	-	-
Switzerland.....	-	83	-	-
Sub-totals.....	25,334	24,773	1,285	-
Totals.....	25,334	30,445	1,285	691

Exports of Australian Wheat and Wheat Flour in Terms of Wheat
December 1 - November 30, 1966-67 and Corresponding Period 1965-66

Destination	Wheat		Wheat Flour	
	1965-66	1966-67	1965-66	1966-67
thousand bushels				
<u>Eastern Europe</u>				
Germany, East.....	438	-	-	-
U.S.S.R. (Russia).....	6,002	-	-	-
Total.....	6,440	-	-	-
<u>Africa</u>				
Malawi.....	-	-	359	306
Mauritius.....	-	-	554	766
Mozambique.....	1,446	1,856	107	41
Rhodesia.....	1,977	2,458	-	-
South Africa.....	2,463	9,282	-	-
Sudan.....	-	951	-	-
Zambia.....	864	1,379	-	381
Others.....	49	20	265	117
Totals.....	6,799	15,946	1,285	1,611
<u>Asia</u>				
Aden.....	2,544	2,023	-	-
Aden and Aden I/T.....	-	-	700	583
Aden and Aden I/T Atta.....	-	-	547	373
Arabian Gulf.....	-	-	83	82
Arabian Gulf Atta.....	-	-	898	964
Ceylon.....	7	11	6,699	8,482
China.....	52,069	112,209	-	-
Hong Kong.....	2,615	3,145	48	39
India.....	10,836	28,273	-	-
India Atta.....	-	-	-	777
Indonesia.....	-	-	236	1,837
Iran.....	7,433	1,107	-	-
Iraq.....	1,100	8,717	-	-
Japan.....	13,487	18,091	-	-
Korea, North.....	1,116	3,953	-	-
Kuwait.....	1,389	2,859	-	-
Lebanon.....	1,892	6,243	-	-
Pakistan.....	3,418	19,277	-	-
Philippines.....	1	938	68	117
Saudi Arabia.....	1,562	3,819	589	172
Taiwan.....	1,694	769	-	-
Thailand.....	916	1,139	328	280
<u>Malaysia</u>				
Malaya.....	5,483	8,927	538	-
Malaya Atta.....	-	-	24	-
Sabah.....	-	-	85	28
Sarawak.....	-	-	49	31

Exports of Australian Wheat and Wheat Flour in Terms of Wheat
December 1 - November 30, 1966-67 and Corresponding Period 1965-66

Destination	Wheat		Wheat Flour	
	1965-66	1966-67	1965-66	1966-67
thousand bushels				
<u>Asia (concluded)</u>				
Singapore.....	6,498	7,372	53	20
Singapore Atta.....	-	-	1	1
Singapore A/C B.W.O.....	-	-	31	-
Others.....	192	1,074	107	128
Totals.....	114,252	229,946	11,084	13,914
<u>Oceania</u>				
New Zealand.....	4,798	2,369	-	-
United States Oceania.....	-	41	-	-
Totals.....	4,798	2,410	-	-
<u>Western Hemisphere</u>				
Brazil.....	-	7,513	-	-
Chile.....	411	5,818	-	-
Peru.....	-	1,844	1	1
West Indies Area.....	-	-	299	377
Totals.....	411	15,175	300	378
<u>Pacific Area and Sundries</u>				
Pacific Islands, Ships' Stores and Sundries.....	66	73	2,646	2,707
Totals, all countries.	158,100	294,000	16,600	19,300

ARGENTINE SITUATION

Wheat Supplies
Lower Than
Previous Year

Disposition of Argentine wheat for the crop years (December-November) 1965-66 and 1966-67 appears in the accompanying table. Reflecting a sharp decline in opening stocks which more than offset a relatively small increase in production,

total supplies of wheat in Argentina for the 1966-67 crop year were estimated at some 248.2 million bushels, 29 per cent less than the previous year's level of 350.5 million. December 1 carryover stocks decreased from 130.1 million in 1965 to only 13.8 million at December 1, 1966 while production increased from 220.5 million in 1965-66 to 234.4 million in 1966-67. After making an allowance of 139.4 million bushels for anticipated domestic requirements, an estimated 108.8 million were available for export and for carryover as against 219.1 million in 1965-66.

Exports Sharply
Below Last Year

Exports of wheat and wheat flour in terms of wheat equivalent during the 1966-67 crop year amounted to 82.8 million bushels, in contrast to 205.3 million exported in the 1965-66 crop year. The preliminary estimate places carryover stocks at December 1, 1967 at some 26.0 million bushels, almost double the December 1, 1966 figure of 13.8 million.

Argentine Wheat Supplies

Item	1965-66(1) 1966-67(2)	
	million bushels	
Carryover at beginning of crop year (December 1) (3).....	130.1	13.8
Production.....	220.5	234.4
Total estimated domestic supplies.....	350.5	248.2
Less estimated domestic requirements for crop year.....	131.5	139.4
Available for export and for carryover	219.1	108.8
Deduct:		
Exports of wheat as grain, December-November.....	204.7	82.2
Exports of wheat flour in terms of wheat, December-November.....	0.6	0.6
Total exports of wheat and wheat flour..	205.3	82.8
Balance on December 1 for export and for carryover.....	13.8	26.0

(1) Revised. (2) Preliminary. (3) Includes allowances for farm stocks.

The following account of the Argentine situation has been extracted from a report from Mr. A.G. Glade, Agricultural Assistant Canadian Embassy, Buenos Aires, under date of December 29, 1967 and is reproduced with the permission of the Trade Commissioner Service, Department of Trade and Commerce. Where possible conversions to Canadian measures and currency have been made for the convenience of our readers.

Weather

There has been dry weather throughout the Argentine grain regions since the beginning of November. The last general rainfall occurred at that time, but since then extensive areas in the Provinces of Cordoba, Entre Rios, Santa Fé and Buenos Aires have been suffering from drought and this situation continues at present.

Wheat

There is not a very promising outlook for production of wheat this year in the Northern grain belts. With the exception of the Province of El Chaco and Northern Santa Fé, where there has been a good crop both in quantity and quality, the grain harvested in Southern Santa Fé, Centre and Southern Cordoba and Northern Buenos Aires is low in quantity and poor in quality.

In all these areas, wheat lots were subject to a series of unfavourable weather conditions since seeding time, drought to start with, then late frosts, excessive rainfalls which, in turn, lead to a serious outbreak of fungus diseases especially Septoria and Fusarium, which have finally resulted in a reduced harvest and grains with very low hectolitre weight and poor in quality.

On the other hand, conditions in the Southern grain belt have been favourable and a large crop has been harvested in South and Southeastern Buenos Aires and in the Province of La Pampa.

The second official production estimate recently released by the Secretariat of Agriculture and Livestock estimates a total crop of 7,800,000 metric tons (286.6 million bushels), of which some 64 per cent has been harvested in the Province of Buenos Aires, 12 per cent in Cordoba, 11 per cent in Santa Fé, 9 per cent in La Pampa, and the rest in other Provinces. A larger crop had been expected earlier in the season, but the successive unfavourable weather conditions and accompanying insect pests and fungus diseases resulted in this decreased output.

Local mills were active in the local market during the month of November, offering generally higher prices than exporters, as they needed new crop grain to mix with the imported Spanish and Bulgarian grain which is of too poor quality to be milled by itself. Prices, however, were not too high as shippers were still not bidding, waiting for the results of the negotiations with Brazil, which seem to have been delayed for the time being. Closing prices at the end of the month averaged 1450 pesos per hundred kilograms (\$1.21 per bushel) f.o.r. Buenos Aires, and 1420 pesos (\$1.19 per bushel) at Bahia Blanca.

There was also a limited demand for Durums through lack of demand in Europe, and exporters were paying some 1570 pesos (\$1.31 per bushel) both in Buenos Aires and Bahia Blanca during the last days of the month.

No export trade with bread wheat was reported during November, but some cargoes of Durums found their way to Italy, at the price of US\$ 77.75 per metric ton (\$2.29 per bushel) CIF November-December shipment, while new crop grain was offered for January shipment at US\$ 75.00 and 74.50 (\$2.20 and \$2.19 per bushel) for January-February. Some lots were traded earlier in the month in Necochea at US\$ 63.50 per metric ton (\$1.87 per bushel) FOB for January loading, but the price declined during the month to US\$ 62.00 (\$1.82 per bushel).

By mid November prices in the Buenos Aires Futures Market, for hard wheat Grade I 80 kgs. per hectolitre (64 pounds per bushel) averaged 1460 pesos per 100 kilos (\$1.22 per bushel) for December delivery, 1455 pesos (\$1.21 per bushel) for January, 1470 (\$1.23 per bushel) for February, and 1500 (\$1.25 per bushel) for March, f.o.r. Buenos Aires. By the end of the month, prices had increased somewhat to 1464 pesos (\$1.22 per bushel) for December delivery, 1470 pesos (\$1.23 per bushel) for January, 1495 pesos (\$1.25 per bushel) for February, 1531 pesos (\$1.28 per bushel) for March and 1437 pesos (\$1.20 per bushel) for April. There was a slight decline in the prices early in December, and present prices are as follows: 1389 pesos (\$1.16 per bushel) for January, 1443 pesos (\$1.20 per bushel) for February, 1485 pesos (\$1.24 per bushel) for March and 1510 pesos (\$1.26 per bushel) for April.

Present prices in the Buenos Aires Cereals Exchange are for Grade I hard type, 80 kgs. per hectolitre (64 pounds per bushel), 1395 pesos (\$1.16 per bushel) for semi-hard 1355 pesos (\$1.13 per bushel) and for Durums 1570 pesos (\$1.31 per bushel). Respective prices in Bahia Blanca are 1390, 1350 and 1370 pesos (\$1.16, \$1.13 and \$1.14 per bushel).

Shipments during November totalled just 16,972 metric tons, (624,000 bushels) including 9,230 tons (339,000 bushels) exported to Algeria, 3,962 tons (146,000 bushels) to Paraguay, 3,300 tons (121,000 bushels) to Italy and 480 tons (18,000 bushels) to the Netherlands.

CALENDAR OF WHEAT EVENTS

December 14, 1967

According to a report received from Mr. J.E.G. Gibson, Assistant Commercial Secretary for Canada, Canberra, although no change has been made in the Australian Wheat Board forecast of 260 million bushels it seems possible that the final crop will be on the order of 285 million bushels.

20

The 1967 season of navigation closed at the Canadian Lakehead. Preliminary reports for the 1967 season place the lake shipping total for the six major grains at 361.0 million bushels.

29

According to a report received from Mr. A.G. Glade, Agricultural Assistant for Canada, Buenos Aires, the second official production estimate places the 1967-68 wheat crop in Argentina at 7,800,000 metric tons (286.6 million bushels). A larger crop had been expected but unfavourable weather conditions, insect pests and fungus diseases resulted in this decreased output.

January 2, 1968

According to the Bureau of the Census, United States Department of Commerce, wheat flour production in the United States in November 1967 was 21,238,000 hundredweight compared with 21,925,000 hundredweight the previous month and 21,134,000 hundredweight for November 1966. Flour mills in November ground 47,441,000 bushels of wheat compared with 49,645,000 bushels in the previous month. Wheat offal output was 376,000 tons.

STATISTICS CANADA LIBRARY
BIBLIOTHÈQUE STATISTIQUE CANADA



1010687060