

DOES NOT CIRCULATE
NE PAS PRÊTER

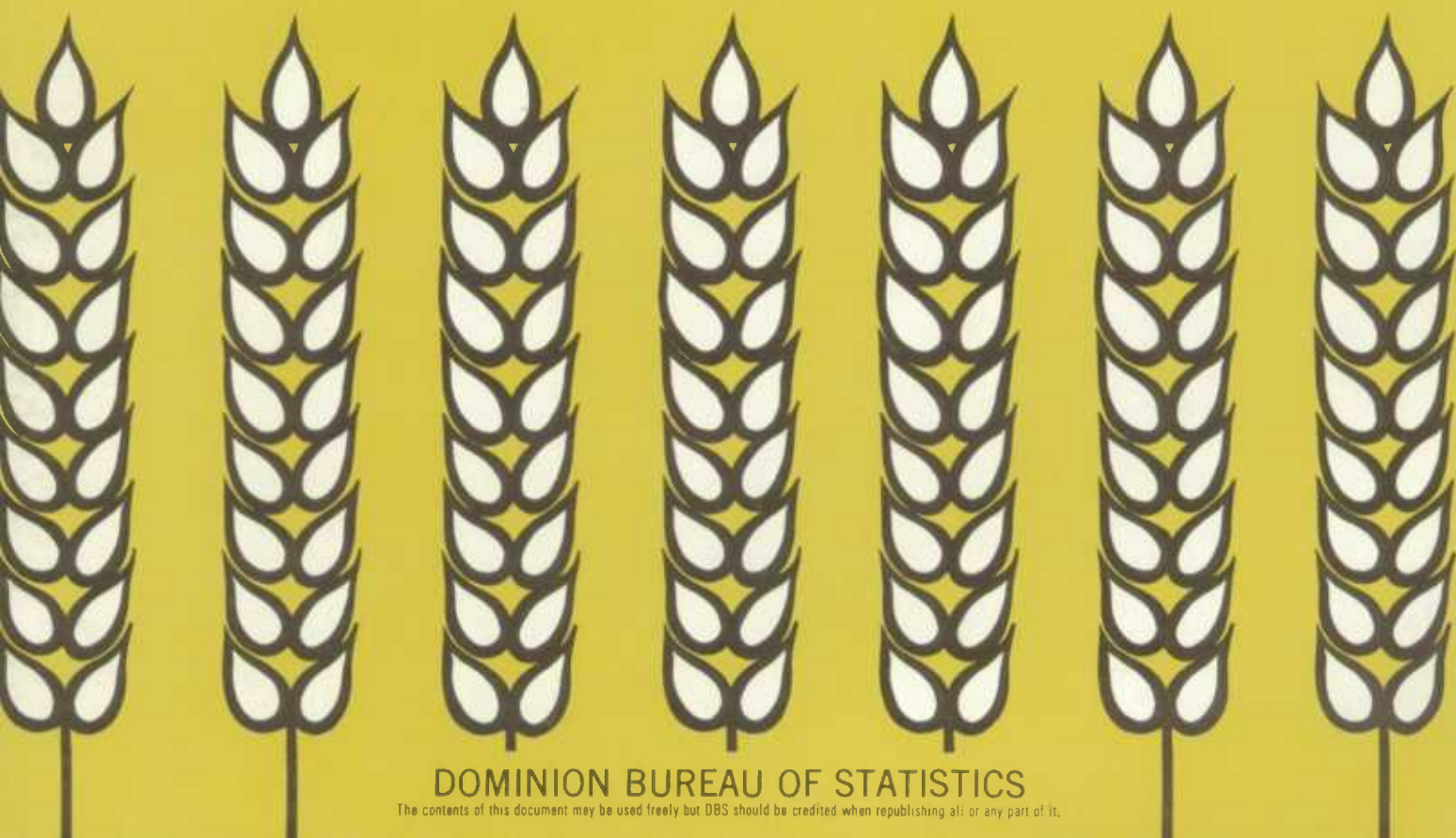
DOMINION BUREAU
OF STATISTICS

NOV 29 1968

PROPERTY OF THE
LIBRARY

The Wheat Review

OCTOBER 1968



DOMINION BUREAU OF STATISTICS

The contents of this document may be used freely but DBS should be credited when republishing all or any part of it.

DOMINION BUREAU OF STATISTICS

Agriculture Division

Crops Section

THE WHEAT REVIEW

OCTOBER 1968

Published by Authority of
The Minister of Trade and Commerce

October 1968
5502-502

Price: 30 cents
\$3.00 a year

Vol. 39—No. 3

TABLE OF CONTENTS

	<u>Page</u>
<u>World Wheat Situation</u>	
August-September Exports Below Last Year's Level	5
Wheat Supplies of Four Major Exporters Above a Year Ago	5
<u>Canadian Situation</u>	
Supplies Above Previous Year	6
August-September Exports Higher than Previous Year	6
Marketings, Disappearance and Visible Supplies	7
September 1968 Exports of Wheat and Flour Total 32.5 Million Bushels	7
Exchange of Board Wheat, Oats and Barley for Seeding Purposes	
1968-69 Crop Year	8
General Quota Position	9
Farmers' Marketings	9
Lake Shipments of Canadian Grain	10
Wheat Shipments from Churchill During 1968 Season	10
Visible Supply of Canadian Wheat	11
Grading of Wheat Inspected, August-September 1968 with Comparisons	11
Visible Supply and Farmers' Marketings (Charts)	12
Rail Shipments of Wheat from Fort William-Port Arthur	13
Overseas Exports of Canadian Grain by Ports of Loading	13
Monthly Exports of Canadian Wheat and Wheat Flour	14
Exports of Canadian Wheat by Destination	15
Customs Exports of Canadian Wheat Flour by Countries of Consignment	17
Canadian Wheat Board Weekly Average Cash Wheat Prices	19
<u>Canadian Flour Milling Situation</u>	
Production and Exports	20
<u>United States Situation</u>	
Supply Above Previous Year	21
Exports Below Previous Year	21
1968 Wheat Crop Forecast at 1,598 Million Bushels	22
Wheat Stocks on Farms	22
Stocks of Wheat in all Positions October 1, 1968	22
Cash Wheat Prices on the Kansas City and Minneapolis Markets	23
Chicago Wheat Futures, High Points of Closing	23
<u>Australian Situation</u>	24
<u>Argentine Situation</u>	29
<u>Calendar of Wheat Events</u>	33

WORLD WHEAT SITUATION

August-September Exports Below Last Year's Level

Total exports of wheat and wheat flour in terms of wheat from the four traditional major exporters during August - September 1968 have amounted to 191.0 million bushels, a decrease of 20 per cent from the 239.4 million shipped during the comparable first two months of the 1967-68 crop year, and 8 per cent less than the ten-year (1957-66) average shipments for the same two months of some 207.4 million bushels. As indicated in the accompanying table, based on the Canadian crop year, United States and Australia's shipments were at lower levels this year than last while Canada and Argentina were higher.

Exports of Wheat and Flour in Terms of Wheat August - September, 1968 with Comparisons

August - September	United States	Canada	Argentina	Australia	Total
million bushels					
1950	31.6	31.8	11.6	21.5	96.5
1951	82.4	44.0	12.3	21.2	159.9
1952	52.4	62.1	—	12.6	127.1
1953	41.9	53.2	19.2	9.0	123.3
1954	33.1	48.8	22.5	11.1	115.5
1955	42.9	42.5	19.6	16.8	121.8
1956	76.7	57.3	17.2	29.1	180.3
1957	68.1	52.0	14.8	18.2	153.1
1958	69.9	44.4	11.0	11.9	137.2
1959	68.9	50.1	10.7	17.8	147.5
1960	98.4	56.6	19.5	18.4	192.9
1961	106.2	70.8	2.3	40.4	219.7
1962	102.9	52.8	6.2	13.7	175.6
1963	114.7	77.0	7.2	34.5	233.4
1964	123.3	91.2	16.5	26.1	257.1
1965	135.1	113.2	50.6	42.0	340.9
1966	157.9 ^r	116.7	16.4	25.1	316.1 ^r
1967 ^r	136.5	49.6	1.4	51.9	239.4
1968 ^p	81.8	65.9	10.5	32.8	191.0

p Preliminary figures.

r Revised figures.

Wheat Supplies of Four Major Exporters Above a Year Ago

Total supplies of wheat remaining in United States, Canada, Argentina and Australia at October 1, 1968 for export and for carryover at the end of their respective crop years, amounted to 2,530.3 million bushels, 15 per cent above the 2,206.9 million at the same time a year ago. This increase reflected larger supplies for United States, Canada and Argentina which more than offset a decrease in Australia. Supplies on or about October 1, 1968, in millions of bushels, were held as follows, with last year's comparable figures in brackets: United States, 1,317.7 (1,100.8); Canada, 1,064.6 (953.6); Argentina, 65.9 (17.6); and Australia, 82.1 (134.9).

CANADIAN SITUATION

Supplies Above Total estimated supplies of wheat for the 1968-69 (August-July)
Previous Year crop year are placed at 1,295.5 million bushels consisting of the August 1 carryover of 667.5 million and the 1968 crop now estimated at 627.9 million bushels. Supplies of the size indicated represent an increase of 11 per cent over the 1,169.7 million of 1967-68. After making an allowance of 165.0 million bushels for anticipated domestic requirements, supplies available for export and for carryover during 1968-69 amount to 1,130.5 million bushels, 13 per cent more than the 1,003.2 million in 1967-68.

August-September Exports Exports of wheat and flour, in terms of wheat
Higher than Previous Year equivalent, during August-September 1968 amounted to 65.9 million bushels, 33 per cent more than the 49.6 million exported during the same two months of 1967. This year's exports consisted of 61.1 million bushels of wheat in bulk, 45 thousand of seed and 4.7 million of flour in terms of wheat. During the August-September period last year these figures were 44.6 million of wheat in bulk, 113 thousand of seed and 4.8 million of flour in wheat equivalent. The balance remaining on October 1, 1968 for export and for carryover amounted to 1,064.6 million bushels, 12 per cent above the October 1, 1967 total of 953.6 million.

Canadian Wheat Supplies

Item	1967-68 ^r	1968-69 ^P
million bushels		
Carryover in North America at beginning of crop year (August 1)	576.8	667.5
Production	592.9	627.9
Total estimated supplies	1,169.7	1,295.5
Less estimated domestic requirements for crop year	166.5	165.0
Available for export and for carryover	1,003.2	1,130.5
<u>Deduct</u>		
Exports of wheat in bulk, August - September (1)	44.6	61.1
Exports of seed wheat, August - September (2)	0.1	(3)
Total exports of wheat as grain	44.7	61.2
Exports of wheat flour in terms of wheat, August - September (2)	4.8	4.7
Total exports of wheat and wheat flour	49.6	65.9
Balance on October 1 for export and for carryover	953.6	1,064.6

(1) As reported by the Board of Grain Commissioners.

(2) Customs returns, 1967-68 adjusted for time lag.

(3) Less than 50,000 bushels.

^P Preliminary figures.

^r Revised figures.

Marketings, Disappearance
and Visible Supplies

Total primary deliveries of wheat (both east and west) up to October 23 of the current crop year have amounted to 64.0 million bushels compared with 104.5

million marketed during the same period of the previous year. Some 39.9 million bushels of this year's total were delivered during the five weeks September 19 to October 23. During the same period the volume of Canadian wheat entering domestic and export channels amounted to 46.4 million bushels. As a result, the total visible supply of Canadian wheat decreased from 399.6 million at September 18 to a level of 392.4 million at October 23, 1968.

The total visible supply of Canadian wheat at October 23 this year represented a slight increase over the 1967 comparable total of 389.1 million and was 39 per cent above the 1966 figure of 281.3 million. Country elevator stocks, amounting to 237.7 million bushels, were 4 per cent above the 1967 comparable total of 227.9 million, and 50 per cent more than the 158.1 million of two years ago. Wheat stocks at interior terminals at October 23, 1968, totalled 13.0 million bushels compared with 12.4 million a year ago and considerably above the 2.0 million of two years ago. The 12.1 million bushels "in transit rail" (western division) were 45 per cent above the 1967 figure of 8.3 million but 7 per cent less than the 12.9 million in this position in 1966. Supplies at the Lakehead, totalling some 38.3 million bushels, registered a decrease from last year's comparable level of 45.4 million but were considerably higher than the 20.6 million of 1966. Stocks "in transit lake", amounting to 6.4 million bushels were smaller than both the 1967 level of 7.8 million and the 1966 figure of 10.5 million. The 27.8 million bushels in Bay, Lake and Upper St. Lawrence ports were lower than the 33.5 million of a year ago but above the 26.7 million of two years ago. Supplies in Lower St. Lawrence and Maritime ports at October 23, 1968, at 39.7 million bushels, registered increases of 17 per cent and 11 per cent, respectively, over the 33.9 million of 1967 and the 35.7 million at the same date in 1966. The 10.2 million bushels in West Coast ports (Vancouver-New Westminster, Prince Rupert and Victoria) were smaller than the 10.4 million at October 25, 1967 but above the 6.7 million at the comparable date in 1966.

September 1968 Exports
of Wheat and Flour Total
32.5 Million Bushels

Combined exports of wheat in bulk, seed wheat and wheat flour in terms of grain equivalent, during September 1968 amounted to 32.5 million bushels, 3 per cent below the 33.4 million of the previous month,

11 per cent less than the ten-year (1957-66) average for the month of September of 36.5 million but 46 per cent above the 22.3 million of September 1967. Exports of wheat in bulk (as reported by the Board of Grain Commissioners) during the month of September 1968 at 30.0 million bushels represented declines of 4 per cent and 11 per cent, respectively, from the August 1968 total of 31.1 million and the ten-year average of 33.8 million but was 49 per cent larger than the September 1967 figure of 20.2 million. Based on Canadian Customs returns, the equivalent of 2.4 million bushels of wheat was exported in the form of flour during September 1968, 7 per cent above the 2.3 million of the previous month, 19 per cent larger than the September 1967 adjusted total of 2.0 million but 4 per cent lower than the ten-year average of 2.5 million bushels.

Cumulative exports of wheat in bulk during the August-September period of the current crop year amounted to 61.1 million bushels, sharply above the 44.6 million shipped during the first two months of the 1967-68 crop year but 8 per cent smaller than the ten-year average for the period of 66.7 million. Communist China and Britain were the two leading markets for Canadian wheat in bulk during the first two months of the current crop year with shipments to these countries amounting to

16.4 million and 14.7 million bushels, and accounted for 27 per cent and 24 per cent, respectively, of the August-September total. During the same period last year Communist China accounted for 6 per cent and Britain 29 per cent of the August-September 1967 total. Other principal importers of Canadian wheat for the first two months of the current crop year with figures for the same period of the preceding crop year in brackets, were as follows, in millions of bushels: Japan, 8.9 (5.0); Italy, 4.7 (2.6); Poland, 3.4 (2.5); Federal Republic of Germany, 1.9 (2.2); Belgium and Luxembourg, 1.5 (2.9); Cuba, 1.3 (1.0); Netherlands, 1.2 (1.2); and Switzerland, 1.2 (0.7). Cumulative exports of seed wheat during August-September of the current crop year, based on Canadian Customs returns, amounted to 45 thousand bushels compared with last year's comparable total (adjusted to remove time lag) of 113 thousand.

Cumulative exports of wheat flour during the first two months of the 1968-69 crop year, based on Customs returns, were the equivalent of 4.7 million bushels of wheat, 2 per cent less than the adjusted August-September 1967 total of 4.8 million bushels. Cuba's purchases, the leading market for Canadian wheat flour during the period under review, amounted to the equivalent of 1.7 million bushels and accounted for 36 per cent of the August-September 1968 total. Other principal markets for Canadian wheat flour in terms of grain equivalent during the August-September period of the 1968-69 crop year, with revised data for the same months of the preceding crop year in brackets, were as follows, in thousands of bushels: Ceylon, 828 (13); Britain, 507 (521); Ghana, 421 (300); Leeward and Windward Islands, 166 (151); Trinidad and Tobago, 114 (77); and United States, 102 (72).

Exchange of Board Wheat,
Oats and Barley
for Seeding Purposes
1968-69 Crop Year

The Canadian Wheat Board in its Instructions to the Trade No. 27 under date of October 30 stated in part that to enable producers to secure their seed requirements, the Board will allow companies, effective immediately, to exchange Board stocks of wheat, oats and barley for lower grades of such grain without regard to quota regulations on the following basis:

- (a) Any grade of wheat (excluding Durum) for a lower grade of wheat.
- (b) Any grade of Durum for a lower grade of Durum.
- (c) Any grade of oats for a lower grade of oats.
- (d) Any grade of barley for a lower grade of barley.

The grain delivered by producers and the grain received by producers in exchange must both be delivered and received at the same time. All grain delivered by producers must be entered in the producer's permit book on page 9. The letters "S.G.E." should be shown in the column headed "grain" as well as particulars of that grain. The exchange will be on a bushel-for-bushel basis and cash settlement must be made for the difference in grade, basis the Board's initial payment prices plus elevator charges for such services as may be assessed.

Where it is necessary for producers to exchange their wheat, oats or barley at a point other than their regular delivery point, it is in order for them to do so without obtaining special permission from the Board. However, entries must be made in the delivery permit book at the time the exchange is completed and in all other respects the exchange must be completed on the basis outlined herein.

General Quota Position By October 28, 1968 out of a total of 1,827 shipping points in the Western Division, the Canadian Wheat Board had placed 794 points on a delivery quota of one bushel per specified acre and 246 points on a two-bushel quota. Some 779 points remained on the Initial Unit Quota while only 8 stations were reported as "closed".

Summary of Elevator Shipping Points in the Western Division
as at October 28, 1968

Province	Initial unit quota	General quota in bushels per specified acre		Closed	Total
		One	Two		
Ontario	-	-	1	-	1
Manitoba	254	66	4	-	324
Saskatchewan	387	479	118	6	990
Alberta	138	249	117	2	506
British Columbia ..	-	-	6	-	6
All provinces ...	779	794	246	8	1,827

Farmers' Marketings Deliveries of wheat from farms in the Prairie Provinces up to October 23 per cent of the current crop year amounted to 57.8 million bushels, 41 per cent less than the comparable 1967 total of 98.5 million and 23 below the ten-year (1957-66) average for the period of 75.2 million bushels.

Farmers' Marketings (1) of Wheat in the Prairie Provinces 1968-69

Week ending		Manitoba	Saskatchewan	Alberta	Total	Last year
		bushels				
August	7, 1968	12,286	343,145	1,256	356,687	2,774,267
	14	54,003	433,143	19,546	506,692	410,477
	21	701,320	618,402	734,805	2,054,527	2,328,627
	28	319,028	1,772,613	649,209	2,740,850	5,893,733
September	4	248,115	2,325,413	840,579	3,414,107	14,505,278
	11	146,995	1,597,665	749,639	2,494,299	19,166,857
	18	386,716	4,847,811	2,241,941	7,476,468	12,002,246
	25	560,570	4,814,363	1,744,398	7,119,331	12,262,382
October	2	578,728	4,171,612	1,148,224	5,898,564	8,987,247
	9	1,412,243	6,689,883	3,152,542	11,254,668	5,351,929
	16	914,936	4,950,252	1,904,238	7,769,426	7,247,758
	23	827,874	4,038,282	1,889,876	6,756,032	7,562,502
Totals		6,162,814	36,602,584	15,076,253	57,841,651	98,493,303

Average similar
period: 1957-66 10,176,027 47,720,969 17,334,953 75,231,949

(1) Includes receipts at country, interior private and mill elevators, interior semi-public terminals and platform loadings.

Lake Shipments of Canadian Grain Total shipments of the six major grains out of Lakehead terminals from the opening of navigation to October 23 this year amounted to 171.0 million bushels, 38 per cent less than the 273.9 million shipped during the comparable period of 1967 and 32 per cent lower than the 10-year (1957-66) average for the period of 249.9 million. In 1968 the season of navigation opened on April 10 while the 1967 season opened on April 13. Shipments of wheat, at 133.2 million bushels accounted for 78 per cent of the total six grains.

Lake Shipments of Canadian Grain from the Opening of Navigation to October 23, 1968 and to Approximately the Same Date, 1957 to 1967

Year	Wheat	Oats	Barley	Rye	Flaxseed	Rapeseed	Total
thousand bushels							
1957	115,954	33,191	38,838	4,103	9,458	—	201,545
1958	140,651	33,205	54,227	5,080	5,791	—	238,954
1959	136,075	22,782	36,421	4,401	5,098	—	204,777
1960	148,026	19,902	38,226	3,405	6,654	—	216,212
1961	178,696	18,802	33,531	3,117	5,421	—	239,566
1962	115,332	15,006	19,338	4,258	4,866	—	158,801
1963	149,497	32,723	23,930	1,844	4,630	—	212,625
1964	287,652	27,024	30,622	4,679	6,762	34	356,774
1965	213,325	36,826	30,863	3,345	7,510	559	292,428
1966	304,880	22,881	32,296	6,569	10,304	653	377,582
1967	178,938	28,727	53,224	4,786	7,345	862	273,882
1968	133,172	12,981	19,033	1,845	3,608	326	170,965

Wheat Shipments from Churchill During 1968 Season Shipments of wheat from the port of Churchill during the 1968 season of navigation amounted to 22.5 million bushels compared with last year's figure of 20.6 million and ten-year 1957-66 average of 20.9 million. The first grain shipment of the 1968 season ex Churchill, began loading July 29, and the last vessel completed loading on October 17.

Ocean Shipments of Wheat from Churchill Season of Navigation, 1933-68

Year	Wheat	Year	Wheat
thousand bushels		thousand bushels	
1933	2,708	1951	7,278
1934	4,050	1952	8,585
1935	2,407	1953	10,784
1936	4,294	1954	12,485
1937	604	1955	13,078
1938	917	1956	16,250
1939	1,772	1957	16,577
1940	—	1958	19,599
1941	—	1959	21,787
1942	—	1960	19,582
1943	740	1961	19,353
1944	—	1962	21,525
1945	—	1963	22,864
1946	2,929	1964	21,645
1947	4,976	1965	24,707
1948	5,314	1966	21,817
1949	5,528	1967	20,639
1950	6,768	1968	22,516

Visible Supply of Canadian Wheat, October 23, 1968
Compared with Approximately the Same Date, 1966 and 1967

Position	1966	1967	1968
thousand bushels			
Country elevators — Manitoba	11,599	27,690	34,265
Saskatchewan	95,819	128,866	136,560
Alberta	50,661	71,318	66,904
Sub-totals	158,079	227,874	237,729
Interior private and mill	5,983	6,163	4,885
Interior terminals	2,045	12,399	13,022
Vancouver-New Westminster	5,832	9,172	8,826
Victoria	519	895	943
Prince Rupert	367	308	444
Churchill	883	3,192	1,903
Fort William-Port Arthur	20,610	45,363	38,314
In transit rail (western division)	12,911	8,336	12,120
Bay, Lake and Upper St. Lawrence ports	26,700	33,495	27,833
Lower St. Lawrence and Maritime ports	35,692	33,928	39,722
In transit lake	10,502	7,841	6,430
In transit rail (eastern division)	1,194	163	202
Totals	281,317	389,129	392,373

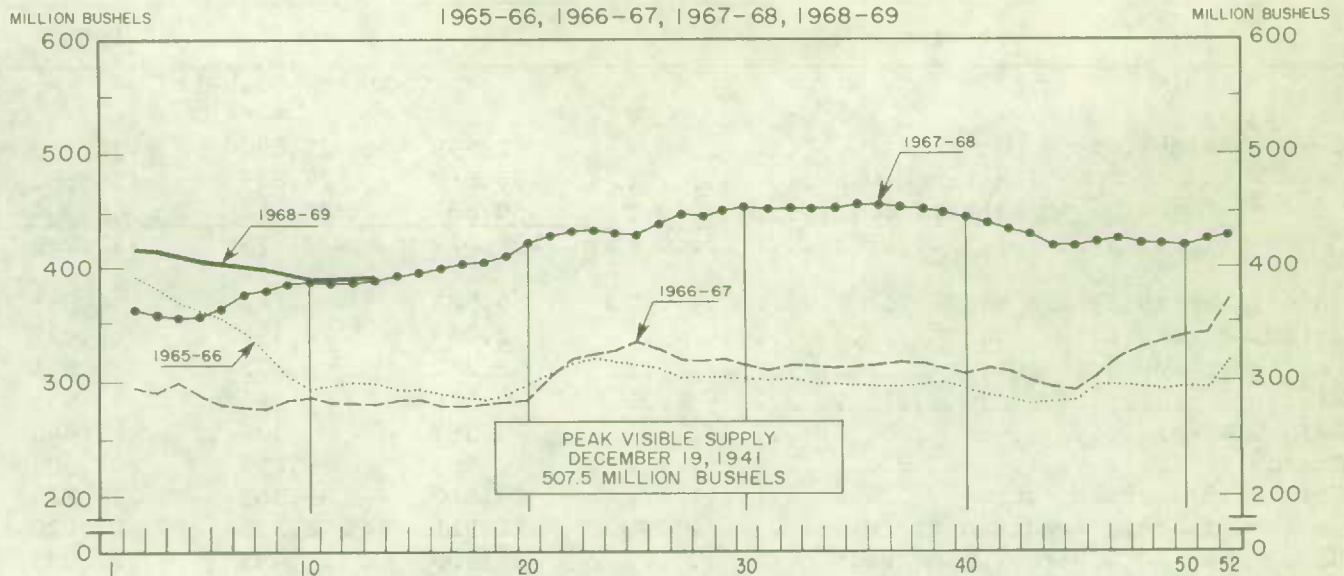
Grading of Wheat Inspected, August-September 1968 with Comparisons

Grade	Crop year		August — September			
	Average	1967-68	1967		1968	
	1962-63					
	1966-67					
	per cent	per cent	cars	per cent	cars	per cent
No. 1 Man. Northern	5.1	27.9	3,482	10.6	13,562	41.3
No. 2 Man. Northern	35.8	43.4	18,259	55.8	16,061	48.9
No. 3 Man. Northern	22.7	14.8	6,564	20.0	1,908	5.8
No. 4 Man. Northern	10.5	3.0	880	2.7	413	1.3
No. 5 Wheat	4.5	0.4	71	0.2	30	0.1
No. 6 Wheat	0.6	0.1	24	0.1	35	0.1
Feed Wheat	(1)	(1)	2	(1)	—	—
Others Red Spring	13.3	4.0	1,777	5.4	491	1.5
C.W. Garnet	0.2	0.3	1	(1)	13	(1)
C.W. White Spring	0.1	0.1	36	0.1	10	(1)
C.W. Mixed Wheat	0.1	0.1	16	0.1	15	(1)
Alberta Winter	0.7	1.0	175	0.5	38	0.1
Nos. 1-6 C.W. Amber Durum	5.8	4.7	1,406	4.3	253	0.8
Others C.W. Amber Durum..	0.4	0.2	55	0.2	16	(1)
Totals	100.0	100.0	32,748	100.0	32,845	100.0

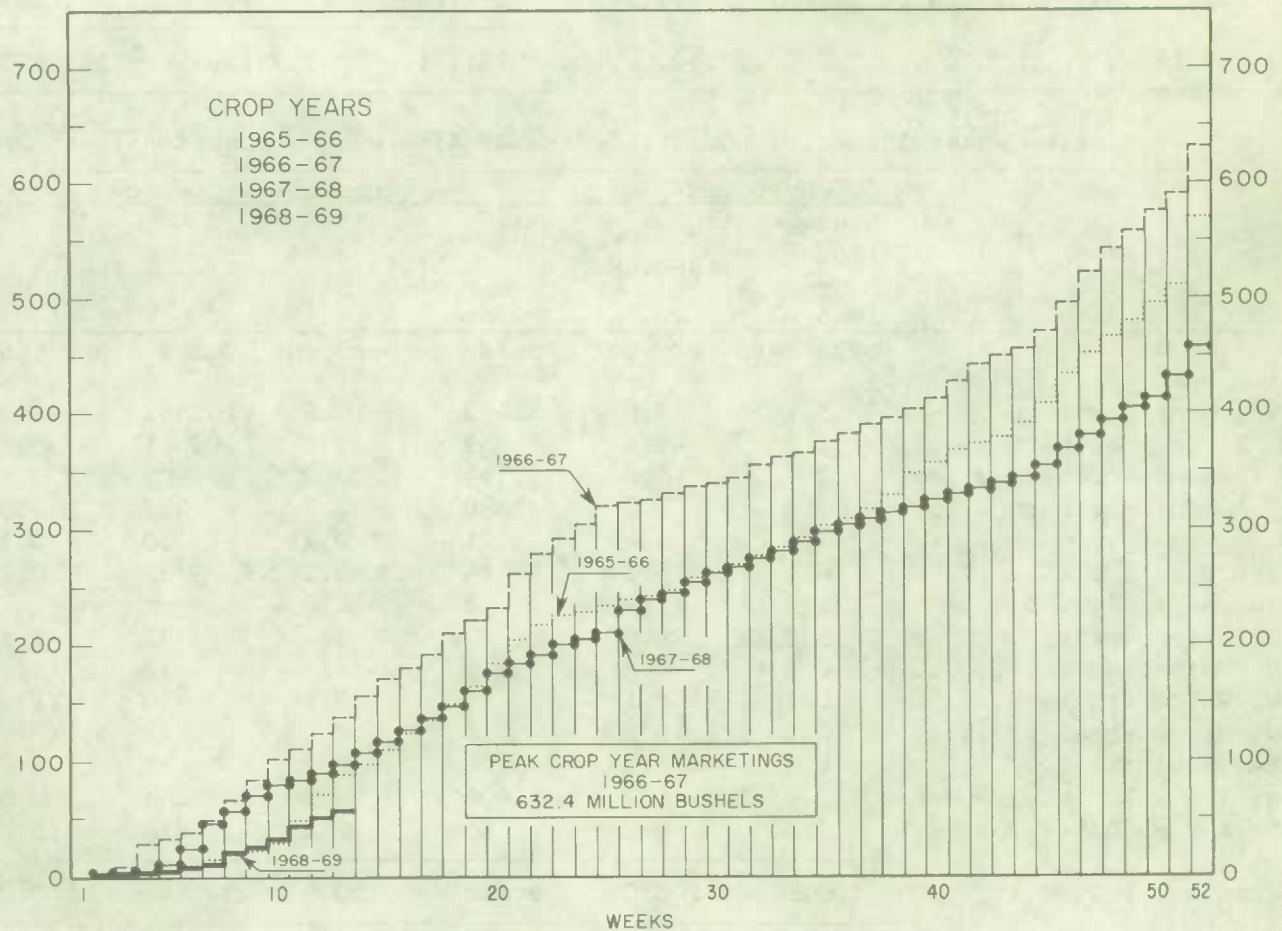
Gross bushels (approx.).. 64,590,000 63,428,000

(1) Less than .05 per cent.

WEEKLY VISIBLE SUPPLY OF CANADIAN WHEAT



CUMULATIVE RECORD OF WHEAT MARKETINGS IN THE PRAIRIE PROVINCES BY WEEKS



(Data in both charts for crop years beginning August 1)

Rail Shipments of Wheat from Fort William-Port Arthur, 1965-66 — 1968-69

Month	1965-66	1966-67	1967-68	1968-69
bushels				
August	10,458	118,973	133,651	—
September	10,500	83,333	182,051	23,084
October	4,500	89,384	152,009	
November	10,205	163,332	50,475	
December	7,500	106,833	143,833	
January	46,108	145,889	160,214	
February	26,712	120,334	143,884	
March	98,598	177,393	274,690	
April	71,701	133,699	123,167	
May	89,166	207,038	61,460	
June	178,183	154,139	101,950	
July	82,282	93,094	88,500	
Totals	635,913	1,593,441	1,615,884	

Distribution of Rail Shipments of Wheat from Fort William-Port Arthur, September 1968

Grade	Nova Scotia	New Brunswick	Quebec	Ontario
bushels				
5 Wheat	—	3,333	—	—
Tough	1,333	—	—	—
Rejected	—	—	3,100	1,800
Durum	—	—	3,000	4,500
Others	—	—	4,003	2,015
Totals	1,333	3,333	10,103	8,315

Overseas Exports of Canadian Grain by Ports of Loading, August 1 — October 23, 1968
with Comparisons

Port	Wheat(1)	Durum wheat(1)	Oats(1)	Barley	Rye	Flaxseed	Rapeseed
thousand bushels							
<u>Pacific Seaboard</u>							
Van.-New West.	31,712	116	—	1,214	759	843	3,100
Victoria	1,927	—	—	—	—	—	—
Prince Rupert	1,963	—	—	—	—	—	—
<u>Churchill</u>	21,613	—	—	—	—	—	—
<u>Lakehead direct</u>	1,815	636	264	569	559	496	—
<u>Prescott direct</u>	336	—	—	—	—	—	—
<u>St. Lawrence</u>							
Montreal	4,400	2,654	—	—	51	22	—
Sorel	1,724	—	—	—	—	—	—
Trois Rivières	1,020	175	—	—	—	6	—
Quebec	2,480	58	—	—	—	—	—
Baie Comeau	2,706	230	—	—	—	238	—
Port Cartier	3,648	923	—	—	—	—	—
<u>Maritime</u>							
Halifax	37	—	—	—	—	—	—
Totals	75,382	4,792	264	1,783	1,369	1,605	3,100
August 1 — October 25, 1967 ..	58,152	3,269	612	6,063	1,265	2,980	2,684

(1) Excluding seed.

Monthly Exports of Canadian Wheat and Wheat Flour

Year and month	Wheat in bulk(1)	Seed wheat(2)	Total wheat	Wheat flour(2,3)	Total wheat and wheat flour(3)
thousand bushels					
<u>1966-67</u>					
August	64,233	132	64,365	2,753	67,118
September	47,357	103	47,460	2,122	49,582
October	51,659	39	51,698	3,551	55,250
November	48,942	53	48,995	2,471	51,466
December	33,477	47	33,523	3,889	37,412
January	27,719	48	27,767	3,004	30,771
February	20,102	52	20,154	1,616	21,771
March	21,718	128	21,845	3,663	25,508
April	27,847	81	27,928	2,475	30,403
May	57,134	11	57,145	2,502	59,647
June	47,517	6	47,522	2,812	50,334
July	35,033	18	35,051	993	36,044
Totals	482,737	719	483,456	31,851	515,307
<u>1967-68(4)</u>					
August	24,424	48	24,472	2,286	26,758
September	20,211	64	20,275	2,325	22,600
October	19,851	66	19,916	1,832	21,748
November	21,967	91	22,057	1,882	23,940
December	12,921	40	12,960	2,166	15,127
January	19,259	73	19,332	1,989	21,321
February	18,903	49	18,952	2,086	21,038
March	21,388	184	21,573	2,025	23,598
April	26,661	109	26,770	2,503	29,273
May	42,310	19	42,330	1,935	44,265
June	40,798	1	40,799	1,359	42,159
July	41,975	18	41,993	1,825	43,818
Totals	310,669	761	311,430	24,213	335,643
<u>1968-69(4)</u>					
August	31,127	1	31,128	2,270	33,398
September	30,019	45	30,064	2,427	32,491
Totals	61,146	45	61,192	4,697	65,888

- (1) Export clearances including shipments to the United States compiled by the Statistics Division, Board of Grain Commissioners for Canada.
- (2) Compiled from Canadian Customs returns, 1966-67 adjusted to remove effect of time lag in reporting.
- (3) In terms of wheat equivalent. Wheat flour conversion rate: 2.3 bushels per cwt.
- (4) Preliminary, subject to revision.

Exports of Canadian Wheat(1) by Destination, September 1968 and 1967

Destination	Wheat (except durum)	Durum wheat	All wheat	
			September 1968	September 1967 ^r
bushels				
<u>Western Europe</u>				
EEC:				
Belgium and Luxembourg	476,661	75,346	552,007	1,108,796
France	—	—	—	185,197
Germany, Federal Republic	978,805	170,683	1,149,488	985,578
Italy	2,206,787	1,527,109	3,733,896	650,421
Netherlands	397,633	478,227	875,860	840,854
Sub-totals	4,059,886	2,251,365	6,311,251	3,770,846
<u>Other Western Europe</u>				
Britain	6,493,222	46,853	6,540,075	7,163,431
Ireland	78,400	—	78,400	149,333
Norway	588,000	—	588,000	—
Switzerland	442,400	91,467	533,867	487,648
Sub-totals	7,602,022	138,320	7,740,342	7,800,412
Totals	11,661,908	2,389,685	14,051,593	11,571,258
<u>Eastern Europe</u>				
Poland	1,295,467	—	1,295,467	1,825,747
U.S.S.R. (Russia)	—	—	—	2,195,009
Totals	1,295,467	—	1,295,467	4,020,756
<u>Africa</u>				
Ghana	37,333	—	37,333	—
Sudan	—	—	—	16,270
Totals	37,333	—	37,333	16,270
<u>Asia</u>				
China, Communist	7,472,782	—	7,472,782	682,454
Hong Kong	74,667	—	74,667	95,013
India	89,000	—	89,000	128,592
Indonesia	29,394	—	29,394	—
Japan	4,192,976	57,871	4,250,847	3,162,992
Jordan	—	—	—	12,860
Malaysia	—	—	—	73,173
Pakistan	909,104	—	909,104	—
Syria	548,800	—	548,800	4,152
Totals	13,316,723	57,871	13,374,594	4,159,236
<u>Western Hemisphere</u>				
Barbados	40	—	40	40
Cuba	852,600	—	852,600	—
Jamaica	182,671	—	182,671	498
Venezuela	224,823	—	224,823	443,333
Totals	1,260,134	—	1,260,134	443,871
Sub-totals, all countries	27,571,565	2,447,556	30,019,121	20,211,391
Seed wheat(2)	—	—	44,708	60,217
Totals, all countries	25,571,565	2,447,556	30,063,829	20,271,608

(1) Overseas clearances as reported by the Statistics Division, Board of Grain Commissioners for Canada, for all countries except the United States.

(2) Compiled from Canadian returns, 1967 adjusted for time lag.

† Revised figures.

Cumulative Exports of Canadian Wheat(1) by Destination

Destination	August - September 1968			Total same period last year ^r
	Wheat (except durum)	Durum wheat	Total wheat	
bushels				
<u>Western Europe</u>				
EEC:				
Belgium and Luxembourg	1,467,454 ^r	80,946 ^r	1,548,400 ^r	2,944,282
France	94,112 ^r	165,938 ^r	260,050 ^r	308,041
Germany, Federal Republic	1,468,110 ^r	411,435	1,879,545 ^r	2,189,111
Italy	2,460,854 ^r	2,226,309	4,687,163	2,591,183
Netherlands	659,702 ^r	496,894 ^r	1,156,596 ^r	1,161,846
Sub-totals	6,150,232 ^r	3,381,522 ^r	9,531,754 ^r	9,194,463
<u>Other Western Europe</u>				
Austria	-	261,333	261,333	404,200
Britain	14,664,620 ^r	68,376	14,732,996 ^r	12,826,462
Ireland	153,067	-	153,067	373,333
Malta and Gozo	-	-	-	263,200
Norway	588,000	-	588,000	1,194,667
Sweden	22,400	-	22,400	-
Switzerland	647,733 ^r	507,671 ^r	1,155,404 ^r	685,748
Sub-totals	16,075,820 ^r	837,380 ^r	16,913,200 ^r	15,747,610
Totals	22,226,052	4,218,902	26,444,954	24,942,073
<u>Eastern Europe</u>				
Poland	3,267,960	146,981	3,414,941	2,500,944
U.S.S.R. (Russia)	884,041	-	884,041	5,206,913
Totals	4,152,001	146,981	4,298,982	7,707,857
<u>Africa</u>				
Algeria	371,108	-	371,108	-
Congo	36,500	-	36,500	-
Ghana	37,333	-	37,333	-
Republic of South Africa	-	-	-	901,600
Sudan	-	-	-	36,195
Totals	444,941	-	444,941	937,795
<u>Asia</u>				
China, Communist	16,422,736	-	16,422,736	2,739,371
Hong Kong	135,147	-	135,147	206,453
India	863,853	-	863,853	128,592
Indonesia	29,394	-	29,394	-
Iraq	12,860	-	12,860	-
Japan	8,777,226	115,742	8,892,968	4,973,690
Jordan	-	-	-	12,860
Lebanon	-	-	-	8,613
Malaysia	35,467	-	35,467	73,173
Pakistan	909,104	-	909,104	875,609
Philippines	-	-	-	196,000
Syria	548,800	-	548,800	29,174
Turkey	32,518	-	32,518	-
Totals	27,767,105	115,742	27,882,847	9,243,535
<u>Western Hemisphere</u>				
Barbados	40	-	40	40
Cuba	1,289,400	-	1,289,400	1,049,398
Jamaica	183,169	-	183,169	1,545
Venezuela	601,911	-	601,911	753,383
Totals	2,074,520	-	2,074,520	1,804,366
Sub-totals, all countries	56,664,619	4,481,625	61,146,244	44,635,626
Seed wheat(2)			45,473	112,593
Totals, all countries	56,664,619	4,481,625	61,191,717	44,748,219

See footnotes on page 15.

Customs Exports of Canadian Wheat Flour by Countries of Consignment

Destination	June 1968(1)	September 1968(2)	August — September	
			1968(2)	1967(1)
bushels				
<u>Western Europe</u>				
EEC:				
Belgium and Luxembourg	12,233	9,154	11,254	16,178
Italy	1,955	2,070	2,070	2,990
Netherlands	—	58	58	2,024
Sub-totals	14,188	11,282	13,382	21,192
<u>Other Western Europe</u>				
Britain	139,258	249,824	506,881	520,964
Gibraltar	—	—	2,576	—
Greece	—	1,656	1,656	14,453
Iceland	—	1,776	1,776	—
Ireland	—	—	2,576	644
Portugal	—	—	6,272	17,510
Sub-totals	139,258	253,256	521,737	553,571
Totals	153,446	264,538	535,119	574,763
<u>Africa</u>				
Angola	1,840	2,070	4,370	3,105
Cameroun Republic	—	17,262	17,262	8,703
Congo-Kinshasa	6,900	—	—	4,255
Dahomey	—	1,691	3,071	4,166
Gambia	—	7,475	7,981	13,214
Ghana	185,095	256,098	421,215	299,547
Guinea Republic	—	76,774	76,774	—
Ivory Coast Republic	—	—	—	1,840
Liberia	16,043	23,775	50,347	39,095
Malawi	1,711	9,959	10,095	8,671
Mozambique	3,409	5,428	5,428	4,140
Portuguese Africa n.e.s.	506	9,775	11,040	4,117
Sierra Leone	—	1,208	5,104	1,056
Tanzania	—	—	—	3,450
Togo	9,225	22,772	33,764	20,785
Tunisia	—	—	—	2,222
U.A.R. — Egypt	36,963	—	—	—
Zambia	—	—	—	1,150
Totals	261,692	434,287	646,451	419,516
<u>Asia</u>				
Bahrain	—	—	—	117
Ceylon	—	—	827,871	12,678
Cyprus	—	—	412	—
Hong Kong	28,267	42,959	67,661	56,424
India	—	—	—	78,386
Indonesia	—	—	57,502	—
Iran	85	—	637	322
Iraq	—	15,721	15,721	—
Israel	—	78,046	78,046	543,837
Japan	633	253	253	971
Jordan	—	—	—	5,072

See footnotes at end of table.

Customs Exports of Canadian Wheat Flour by Countries of Consignment

Destination	June 1968(1)	September 1968(2)	August — September	
			1968(2)	1967(1)
bushels				
<u>Asia — Concluded</u>				
Lebanon	—	5,380	5,380	177,006
Portuguese Asia	1,012	863	2,887	1,012
Qatar	—	281	396	115
Saudi Arabia	—	—	—	58,128
Syria	32,492	—	45,545	—
Thailand	8,050	16,834	31,559	43,024
Totals	70,539	160,337	1,133,870	977,092
<u>Oceania</u>				
British Oceania n.e.s.	460	—	2,236	575
Fiji	1,196	276	943	952
United States Oceania	4,600	6,909	6,909	13,800
Totals	6,256	7,185	10,088	15,327
<u>Western Hemisphere</u>				
Bahamas	16,459	35,330	55,310	51,428
Barbados	14,483	26,751	50,489	25,353
Bermuda	5,237	12,705	21,215	19,106
British Honduras	1,615	6,265	7,875	3,561
Costa Rica	—	—	—	1,835
Cuba(3)	577,594	1,135,884	1,676,258	2,120,165
Dominican Republic	23	—	23	690
Ecuador	—	345	345	—
French West Indies	115	1,727	1,842	3,838
Guatemala	690	—	1,150	1,150
Guyana	2,128	9,177	16,364	11,905
Haiti Republic	17,710	70,904	70,904	—
Honduras Republic	2,650	200	6,640	12,273
Jamaica	62,868	40,883	47,265	221,324
Leeward and Windward Is.	57,992	91,791	165,786	150,824
Netherlands Antilles	5,440	13,618	21,486	31,349
Panama	621	922	922	4,048
Peru	690	8,050	8,050	8,280
St. Pierre and Miquelon	3,047	690	1,794	4,784
Surinam	81	186	1,649	1,902
Trinidad and Tobago	22,997	47,787	113,689	76,634
Venezuela	368	368	368	230
United States	66,072	57,051	101,823	72,220
Totals	858,880	1,560,634	2,371,247	2,822,899
Totals, all countries	1,350,813	2,426,981	4,696,775	4,809,597

(1) In terms of wheat equivalent. Adjusted to remove effect of time lag in the returns made by Customs. Conversion rate: 2.3 bushels per cwt.

(2) In terms of wheat equivalent. Preliminary and unadjusted for time lag. Conversion rate: 2.3 bushels per cwt.

(3) Source — Canadian National Millers Association.
n.e.s. — Not elsewhere specified.

FARMERS' MARKETINGS OF WHEAT, PRAIRIE PROVINCES

(SPECIFIED PERIODS)

MILLION BUSHELS

MILLION BUSHELS

800 —

800 —

700 —

700 —

600 —

600 —

500 —

500 —

400 —

400 —

300 —

300 —

200 —

200 —

100 —

100 —

0

0

PEAK MARKETINGS
1966-67 CROP YEAR
632.4 MILLION BUSHELS

JULY

JUNE

MAY

APR.

MAR.

FEB.

JAN.

DEC.

NOV.

OCT.

SEPT.

30 year average
1937-38
1966-67

10 year average
1957-58
1966-67

1963-64

1964-65

1965-66

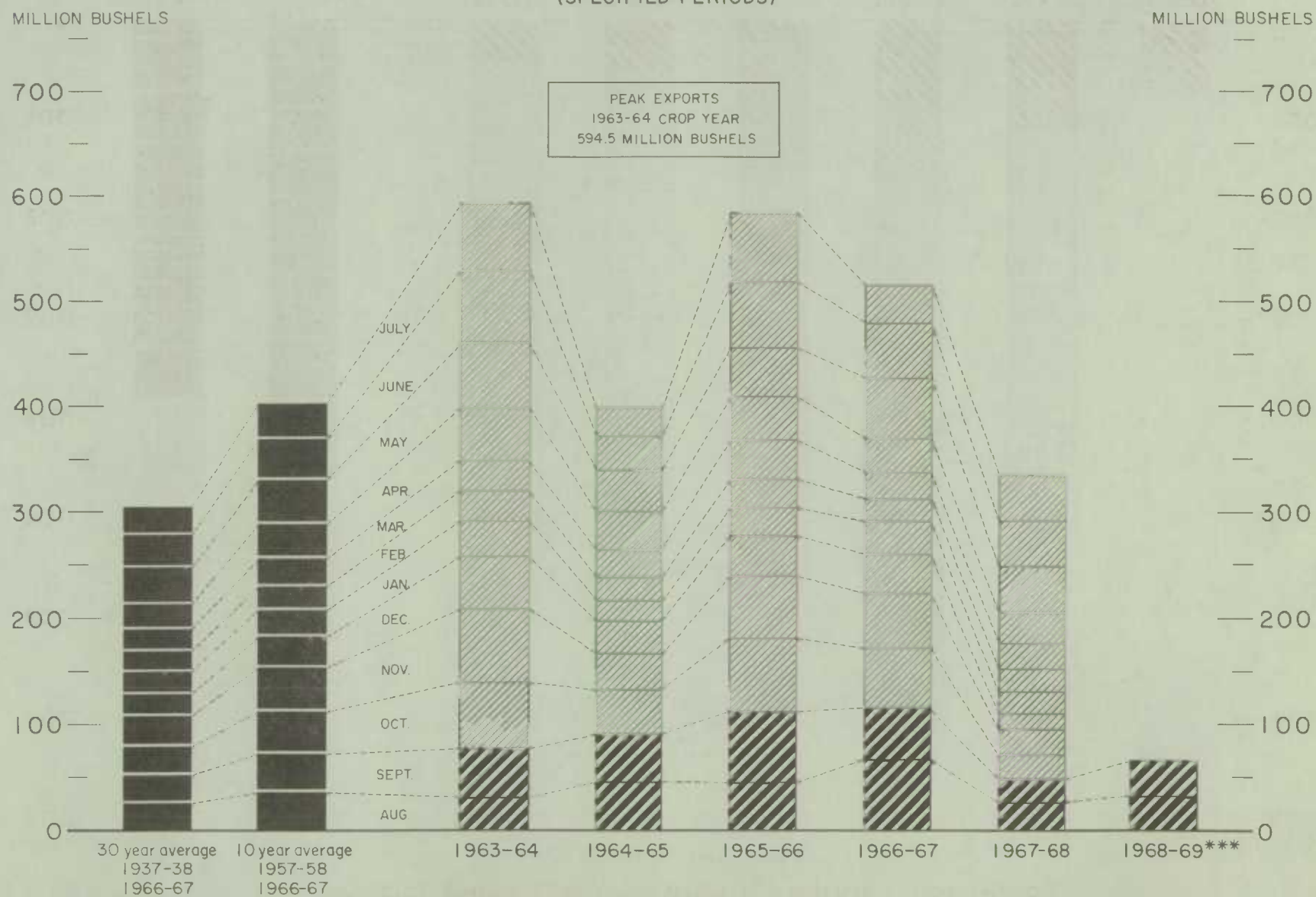
1966-67

1967-68

1968-69

EXPORTS OF CANADIAN WHEAT* AND WHEAT FLOUR**

(SPECIFIED PERIODS)



* Beginning with 1955-56 includes seed wheat.

** In terms of wheat equivalent.

*** Preliminary.

Agriculture Division D.B.S.

FARMERS' MARKETINGS OF BARLEY, PRAIRIE PROVINCES

(SPECIFIED PERIODS)

MILLION BUSHELS

140 —

120 —

100 —

80 —

60 —

40 —

20 —

0

30 year average
1937-38
1966-67

10 year average
1957-58
1966-67

1963-64

1964-65

1965-66

1966-67

1967-68

1968-69

JULY

JUNE

MAY

APR

MAR.

FEB.

JAN.

DEC.

NOV.

OCT.

SEPT.

AUG.

MILLION BUSHELS

140 —

120 —

100 —

80 —

60 —

40 —

20 —

0

Agriculture Division D.B.S.

EXPORTS OF CANADIAN BARLEY AND BARLEY PRODUCTS*

(SPECIFIED PERIODS)

MILLION BUSHEL

80

70

60

50

40

30

20

10

0

MILLION BUSHEL

80

70

60

50

40

30

20

10

0

30 year average 10 year average
 1937-38 1957-58
 1966-67 1966-67

1963-64

1964-65

1965-66

1966-67

1967-68

1968-69**

JULY

JUNE

MAY

APR.

MAR.

FEB.

JAN.

DEC.

NOV.

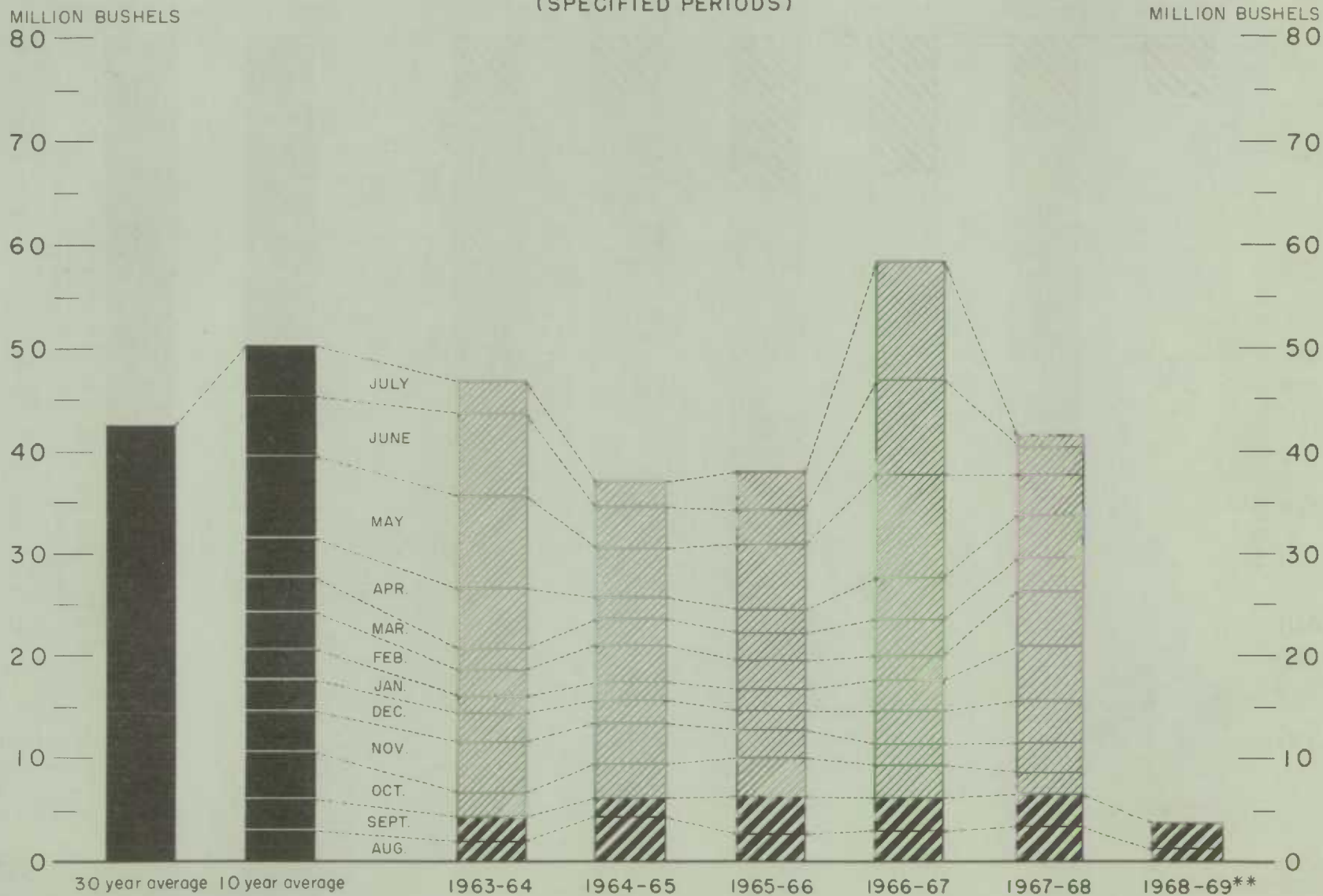
OCT.

SEPT.

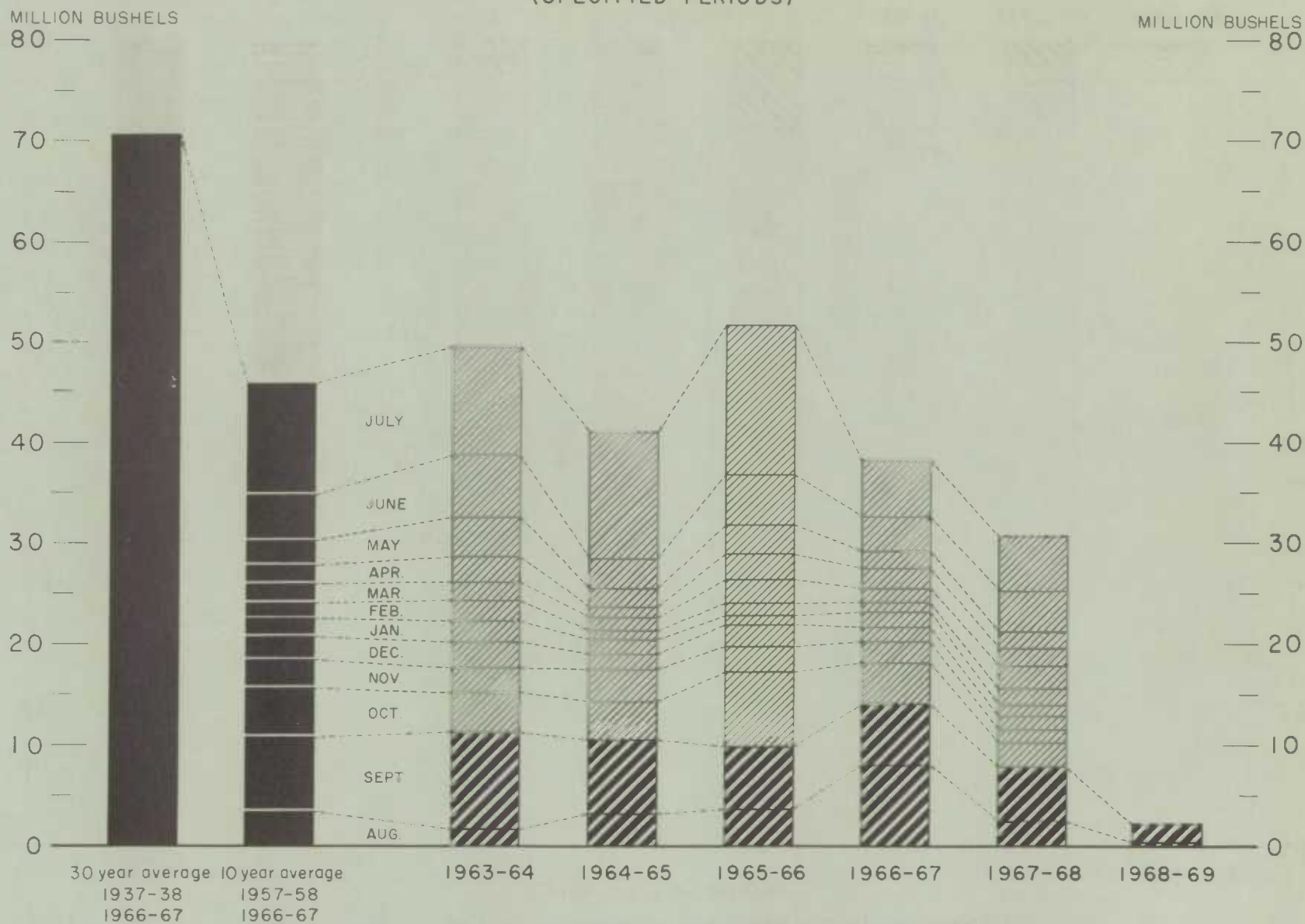
AUG.

* In terms of grain equivalent. ** Preliminary.

Agriculture Division D.B.S.

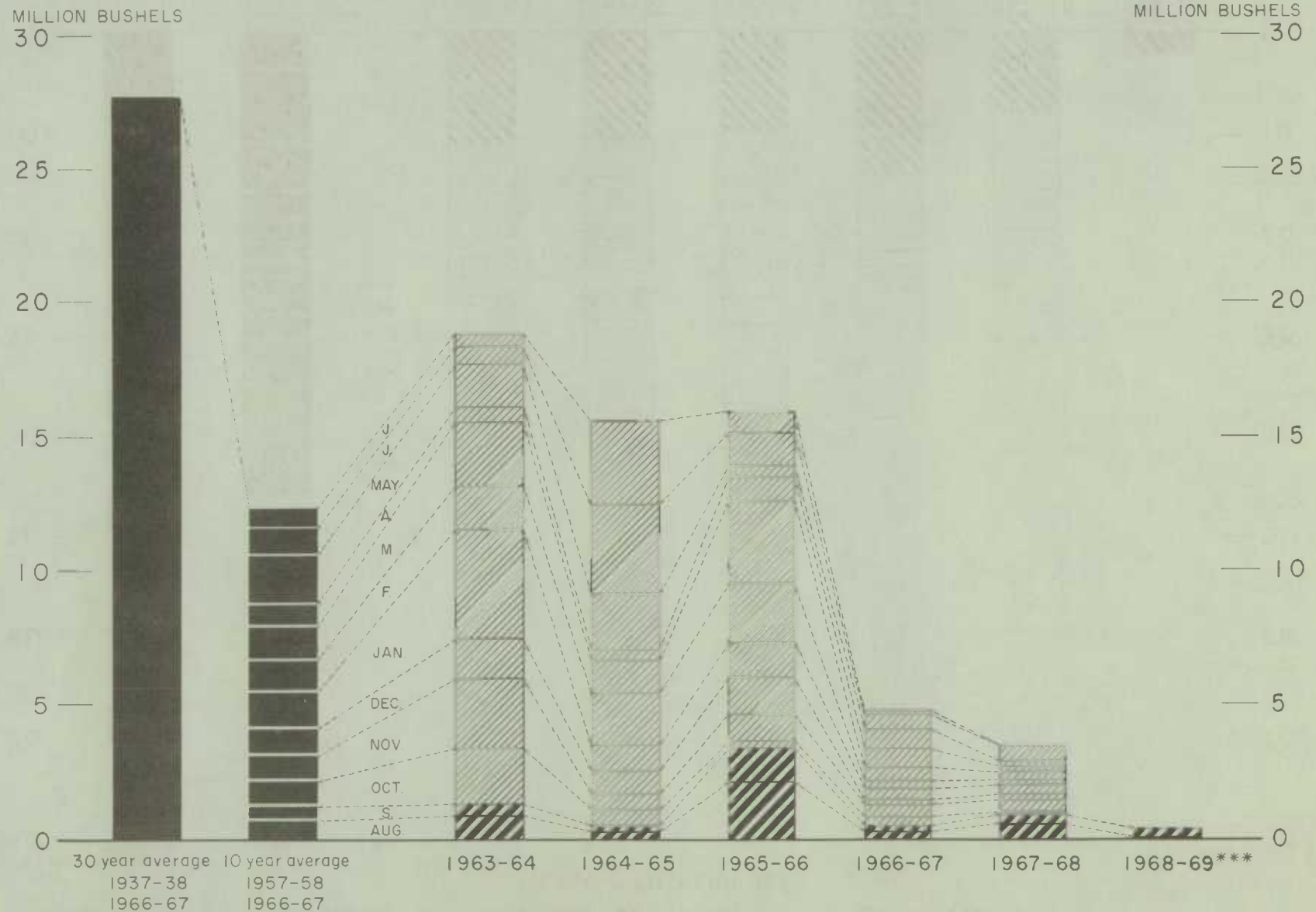


FARMERS' MARKETINGS OF OATS, PRAIRIE PROVINCES (SPECIFIED PERIODS)



EXPORTS OF CANADIAN OATS* AND OAT PRODUCTS**

(SPECIFIED PERIODS)



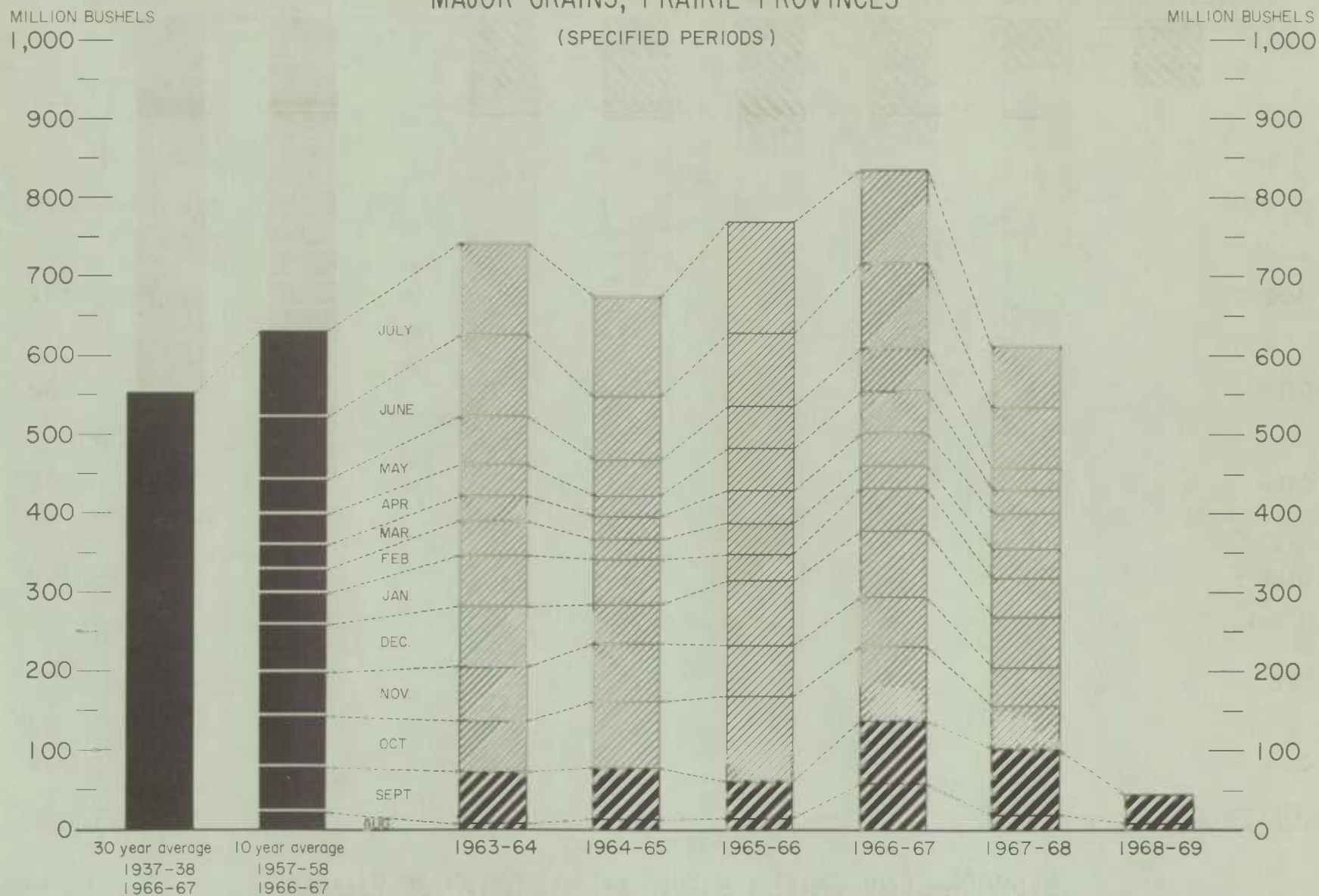
* Beginning with 1960-61 includes relatively small quantity of seed oats.

** In terms of grain equivalent.

*** Preliminary.

Agriculture Division D.B.S.

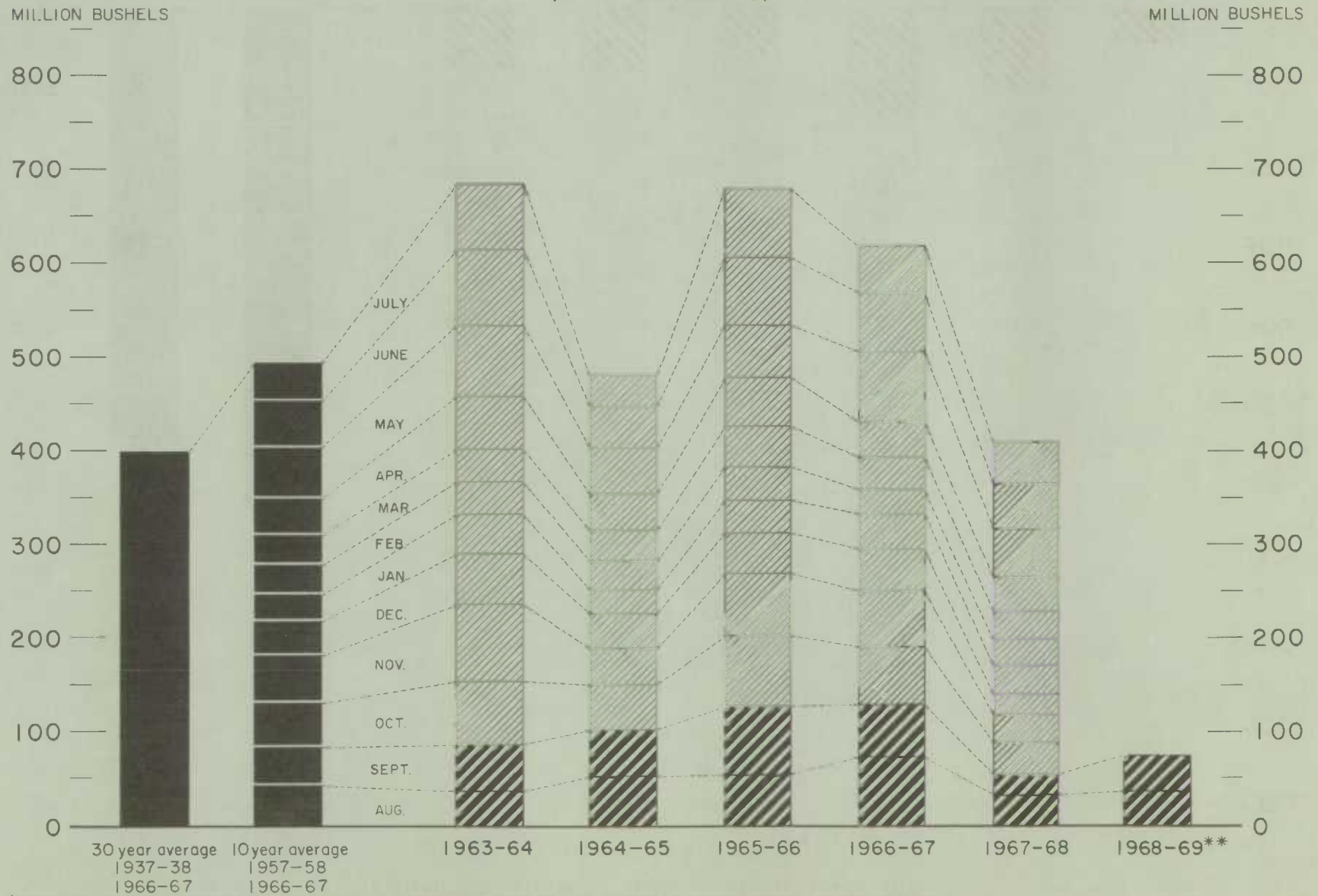
FARMERS' MARKETINGS OF CANADA'S SIX MAJOR GRAINS*, PRAIRIE PROVINCES



* Wheat, oats, barley, rye, flaxseed and from 1960-61 rapeseed

EXPORTS OF CANADA'S SIX MAJOR GRAINS AND PRODUCTS*

(SPECIFIED PERIODS)



Canadian Wheat Board Weekly Average Cash Wheat Prices
Basis in Store Fort William-Port Arthur

Class and grade	Week ending				
	Oct. 5	Oct. 12	Oct. 19	Oct. 26	Nov. 1
cents and eighths per bushel					
<u>Initial payment to producers</u>					
1 Northern	170	170	170	170	170
2 Northern	166	166	166	166	166
3 Northern	162	162	162	162	162
4 Northern	155	155	155	155	155
5 Wheat	141	141	141	141	141
6 Wheat	137	137	137	137	137
Feed Wheat	133	133	133	133	133
1 C.W. Garnet	155	155	155	155	155
2 C.W. Garnet	150	150	150	150	150
3 C.W. Garnet	145	145	145	145	145
1 Alberta Red Winter	154	154	154	154	154
2 Alberta Winter	149	149	149	149	149
3 Alberta Winter	143	143	143	143	143
1 C.W. Amber Durum	170	170	170	170	170
2 C.W. Amber Durum	166	166	166	166	166
3 C.W. Amber Durum	162	162	162	162	162
<u>International Grains Arrangement and domestic sales</u>					
1 Northern	198/7	198/7	197/1	195/7	195/5
2 Northern	194/3	194/3	192/5	191/3	191/1
3 Northern	193	193	191/2	190	189/6
4 Northern	187/1	186/7	185/1	183/7	183/5
5 Wheat	184/1	183/7	182/1	180/7	180/5
6 Wheat	179/4	178/7	177/1	175/7	175/5
Feed Wheat	175/4	174/7	173/1	171/7	171/5
1 C.W. Garnet	186/5	185/7	184/1	182/7	182/5
2 C.W. Garnet	185/5	184/7	183/1	181/7	181/5
3 C.W. Garnet	184/4	183/7	182/1	180/7	180/5
1 Alberta Red Winter	186/5	185/7	184/1	182/7	182/5
2 Alberta Winter	185/5	184/7	183/1	181/7	181/5
3 Alberta Winter	184/5	183/7	182/1	180/7	180/5
1 C.W. Amber Durum	206/4	207/7	213	213/5	214
2 C.W. Amber Durum	204/4	205/7	211	211/5	212
3 C.W. Amber Durum	202/4	203/4	207	207	207
<u>(Basis in store Vancouver)</u>					
1 Northern	198/5	198/5	198/5	198/7	199/5
2 Northern	194	194	194	194/2	195
3 Northern	192/6	192/6	192/6	193	193/6
4 Northern	189/6	189/6	189/6	189/6	189/6
5 Wheat	187/6	187/6	187/6	187/6	187/6
6 Wheat	184/6	184/6	184/6	184/6	184/6
Feed Wheat	180/6	180/6	180/6	180/6	180/6
1 C.W. Garnet	189/6	189/6	189/6	189/6	189/6
2 C.W. Garnet	188/6	188/6	188/6	188/6	188/6
3 C.W. Garnet	187/6	187/6	187/6	187/6	187/6
1 Alberta Red Winter	189/6	189/6	189/6	189/6	189/6
2 Alberta Winter	188/6	188/6	188/6	188/6	188/6
3 Alberta Winter	187/6	187/6	187/6	187/6	187/6

CANADIAN FLOUR MILLING SITUATION

Production Wheat flour production by Canadian mills during September 1968 amounted to 3,099,000 hundredweight representing a decrease of 4 per cent from the August 1968 total of 3,240,000 hundredweight, 7 per cent below the adjusted September 1967 figure of 3,330,000 hundredweight and 8 per cent lower than the ten-year (1958-67) average production for the month of September of 3,381,000 hundredweight. Mills reporting operations during September 1968 had a total rated capacity of 156,000 hundredweight per 24-hour day and on the basis of a 24-day working period 82.5 per cent of this rated capacity was effective.

Wheat milled for flour during September 1968 amounted to 6,999,000 bushels, 5 per cent less than the 7,337,000 bushels milled during the preceding month and 6 per cent below the 7,498,000 bushels milled during September 1967. Of the wheat milled for flour during September 1968 some 5,607,000 bushels were Western Canadian spring wheat (other than Durum) while the remainder consisted of Ontario winter wheat (955,000 bushels); Durum (318,000 bushels); and all other (118,000 bushels).

Exports According to preliminary Customs returns, exports of Canadian wheat flour during September 1968 amounted to 1,055,000 hundredweight (some 2,427,000 bushels of wheat equivalent) 7 per cent above the 2,270,000 bushels exported in August 1968 and 19 per cent greater than the adjusted September 1967 exports of 2,037,000 bushels. Flour shipments during the month went to forty-eight countries with exports to Cuba amounting to 1,136,000 bushels and accounted for 46 per cent of the September total. Other leading markets for Canadian wheat flour in terms of wheat during the month, with shipments in thousand of bushels were as follows: Ghana, 256; Britain, 250; Leeward and Windward Islands, 92; Israel, 78; Guinea Republic, 77; and Haiti Republic, 71.

Wheat Milled for Flour, and Production and Exports of Wheat Flour, Canada

Crop year	Wheat Milled for flour	Wheat flour	
		Production	Exports(1)
	bushels	cwt.	
1935-36-1939-40 average	67,845,114	29,405,451	9,603,941
1940-41-1944-45 "	99,704,638	43,908,245	23,699,546
1945-56-1949-50 "	107,330,372	47,011,540	25,819,721
1950-51-1954-55 "	100,446,328	43,847,894	21,812,041
1955-56-1959-60 "	99,148,211	39,752,589	16,349,156
1960-61-1964-65 "	91,128,177	40,834,088	15,769,803
1965-66	97,925,995	43,531,263	16,576,117
1966-67	90,084,646	39,978,571	13,848,208
1967-68(2)	84,769,150	37,755,841	10,454,466
1968-69(2)			
August	7,337,239	3,240,492	986,867
September	6,998,651	3,098,523	1,055,209
Totals	14,335,890	6,339,015	2,042,076
Same months 1967-68 ^r	14,968,555	6,646,651	2,091,129

(1) Based on Customs returns. Exports for the crop year 1945-46-1966-67 revised to remove effect of time lag in the returns made by Customs.

(2) Subject to revision.

^r Revised figures.

UNITED STATES SITUATION

Supply Above
Previous Year Total domestic supplies of wheat in the United States for the 1968-69 crop year are currently placed at 2,135.0 million bushels, 10 per cent above the previous year's total of 1,949.4 million reflecting increases in both production and carryover stocks. The 537.2 million bushels carried over at July 1, 1968 were 26 per cent above the 1967 stocks of 425.0 million while the current crop now estimated at 1,597.9 million, exceeded by 5 per cent the 1,524.3 million of last year's outturn. In addition, current crop year domestic supplies may be supplemented by imports of about 1 million bushels. Domestic disappearance during 1968-69 is estimated at about 685.0 million bushels, 5 per cent more than the 652.2 million last year. After deducting anticipated domestic requirements for the current United States crop year, some 1,450.2 million remain available for export and for carryover, an increase of 12 per cent over the 1,297.3 million in 1967-68.

Exports Below
Previous Year Exports of wheat and wheat flour in terms of grain equivalent during the period July-September 1968 amounted to 132.5 million bushels, 33 per cent less than the 196.5 million exported during the same months last year. The balance remaining on October 1, 1968 for export and for carryover was estimated at 1,317.7 million bushels compared with 1,100.8 million on the same date a year ago.

United States Wheat Supplies

Item	1967-68 ^r	1968-69 ^P
	million bushels	
Carryover at beginning of crop year (July 1)	425.0	537.2
Production	1,524.3	1,597.9 ^r
Total estimated domestic supplies	1,949.4	2,135.0
Imports of wheat and wheat flour in terms of wheat for domestic use, July - September	0.1	0.2
Total estimated supplies(1)	1,949.5	2,135.2
Less estimated domestic requirements for crop year(2)	652.2	685.0
Available for export and for carryover	1,297.3	1,450.2
<u>Deduct</u>		
Exports of wheat as grain, July - September	188.3	120.8
Exports of wheat flour in terms of wheat, July - September(3)	8.2	11.8
Total exports of wheat and wheat flour(4)	196.5	132.5
Balance on October 1 for export and for carryover	1,100.8	1,317.7

(1) Excludes imports for October-June.

(2) Includes shipments to United States Territories and wheat for military food use at home and abroad.

(3) Flour exports exclude "Milled in bond".

(4) Data include shipments for relief.

P Preliminary figures.

r Revised figures.

1968 Wheat Crop Forecast
at 1,598 Million Bushels

In a report released on October 10, the Crop Reporting Board of the United States Department of Agriculture stated that production of all wheat is estimated at a record 1,598 million bushels, up 1 million bushels from September 1, 5 per cent above 1967 and 30 per cent above average. An increase in other spring wheat from a month earlier more than offset a slight decline in durum. Yield per acre of all wheat, at 28.5 bushels per acre, is record high and 2.7 bushels above 1967. During the past decade, changes in production estimates between October 1 and the final production estimate have averaged 15 million bushels, ranging from 1 to 38 million bushels.

Durum wheat production is estimated at 101 million bushels, 61 per cent above 1967 and 57 per cent above average. The yield per acre of 28.5 bushels has been exceeded by only two previous crops—1965 with 30.4 and 1962 at 29.7 bushels.

Harvest of durum was delayed and quality reduced by rain and snow during September. Combining was 85 per cent complete in North Dakota by October 1, considerably later than in most recent years. Some acreage remained to be harvested in the North Central counties of Montana.

Production of other spring wheat is estimated at 245 million bushels, 2 per cent below the 1967 crop but 24 per cent above average. Yield per acre, at 25.9 bushels, is 0.2 bushel above a month earlier, well above the 23.5 bushels of 1967 and the 5-year average of 22.7 bushels.

Combining of other spring wheat progressed slowly during September in several important producing States because of rain and snow. Considerable loss of colour, reduced test weight, and overall quality reduction occurred. However, some late maturing fields benefited from the rain in late August and early September. Harvest in North Dakota was 93 per cent complete by October 1 whereas in 1967 combining was virtually finished by September 10. The Montana crop was 90 per cent harvested by October 1, much of the remaining acreage was at higher elevations. In Minnesota, harvest was not yet complete in the northern part of the Red River Valley where some acreage may be abandoned.

Wheat Stocks
on Farms

Stocks of all wheat on farms totalled 744 million bushels, 24 per cent above a year earlier and a record high for this date. The previous high for October 1 wheat stocks was 1958. Disappearance from farms during the July-September quarter was 1,083 million bushels compared with 1,068 million a year earlier. Montana, North Dakota, South Dakota, Nebraska, and Kansas accounted for 71 per cent of the U.S. farm wheat stocks. Farm stocks estimated include grain to be harvested remaining in the field on October 1.

Durum wheat stocks on farms, at 93 million bushels, were up 67 per cent from last year. Disappearance from farms in the July-September quarter was 26 million bushels, about the same as a year earlier.

Stocks of Wheat
in all Positions
October 1, 1968

In a report released on October 24, 1968 the Crop Reporting Board of the United States Department of Agriculture stated in part that all wheat in storage October 1 totalled 1,690 million bushels, 9 per cent more than a year earlier but 6 per cent below the 1962-66 October 1 average. Off-farm stocks at 946 million bushels were 1 per cent lower than a year earlier but farm holdings, at 744 million bushels were up 24 per cent. Disappearance from all storage positions during the July-September quarter is indicated at 446 million bushels compared with 393 million for

Continued on page 33.

Cash Wheat Prices on the Kansas City and Minneapolis Markets

No. 2 Hard Winter, Kansas City		No. 1 Northern Spring, Minneapolis	
Date	Price	Date	Price
	cents per bushel		cents per bushel
October 1, 1968	134 3/4 - 154 3/4	October 1, 1968	155 1/4 - 209 1/4
2	133 1/2 - 142 3/4	2	156 1/4 - 210 1/4
3	N.A.	3	155 3/4 - 209 3/4
4	135	4	155 1/2 - 209 1/2
7	137 1/2 - 150 1/4	7	156 1/8 - 211 1/8
8	N.A.	8	156 1/4 - 211 1/4
9	153 - 154 1/2	9	157 1/4 - 212 1/4
10	142 3/4 - 154 1/2	10	156 7/8 - 211 7/8
11	157 1/4	11	156 - 211
14	143 1/4 - 163 3/4	14	156 1/4 - 211 1/4
15	150 1/2 - 161 3/4	15	155 3/8 - 209 3/8
16	136 3/4 - 167 1/2(1)	16	156 1/8 - 210 1/8
17	154 3/4	17	155 1/2 - 209 1/2
18	135 1/2 - 165 1/2	18	156 1/8 - 201 1/8
21	N.A.	21	156 - 210
22	161	22	156 3/8 - 210 3/8
23	136 - 166 1/2(1)	23	157 1/2 - 211 1/2
24	136 3/4 - 167(1)	24	156 7/8 - 211 7/8
25	157 1/4	25	157 3/8 - 212 3/8
28	159 - 162	28	156 3/4 - 211 3/4
29	138	29	158 1/8 - 213 1/8
30	137 1/4 - 168 1/2(1)	30	158 3/8 - 213 3/8
31	138 1/2 - 168 1/2(1)	31	158 3/8 - 212 3/8

(1) Nominal

N.A. - Not available.

Chicago Wheat Futures, High Points of Closing

Date	December	March	May	July	September
	cents and eighths per bushel				
October 1, 1968	121	126/7	130/4	132/4	135/4
2	121	126/7	130/1	131/6	134/6
3	121/1	127	130/2	131/4	134/4
4	121/7	127/7	131/1	132/3	135/4
7	122	127/7	131/3	132/4	135/4
8	122/6	128/5	132/2	133/4	136/2
9	124/6	130/6	134/2	135/3	138/2
10	124	130	133/3	134/3	137/2
11	125	130/7	134/4	135/4	138/4
14	126/7	132/7	136/2	137	139/7
15	125/4	131/3	134/6	135/6	138/5
16	126/3	132/3	135/7	136/4	139/2
17	125/3	131/4	134/7	135/6	138/6
18	125/6	131/4	134/6	135/6	138/6
21	125/6	131/5	135	136/1	139/2
22	125/7	131/7	135	136/2	139/3
23	126/4	132/4	135/5	136/7	139/6
24	124/7	130/6	133/7	135/2	138/1
25	126/4	132/2	135/1	136/1	138/7
28	125/7	131/5	134/5	135/4	138/2
29	128/6	135	139	138/3	141
30	129/5	135/2	138/3	138/5	141/3
31	128/6	134/4	137/4	138	140/6

AUSTRALIAN SITUATION

Wheat Supplies Total supplies of wheat in Australia for the 1967-68 crop year
Lower Than are estimated at 357.8 million bushels as against 483.2 million
Previous Year in 1966-67, reflecting the effect of a sharp decline in production,
which more than offset a substantial increase in carryover stocks.

The current harvest, now estimated at 277.4 million bushels, is 41 per cent below the previous record of 466.6 million bushels harvested in 1966-67. Carryover stocks, at a record 80.4 million bushels, exceeded by a wide margin the 16.6 million at December 1, 1966. After deducting some 102.0 million bushels for anticipated domestic requirements, an estimated 255.8 million are available for export and for carryover during 1967-68, some 35 per cent below the 393.7 million in 1966-67.

Exports Decline Combined exports of wheat as grain and wheat flour in terms
from Previous Year of grain equivalent during the period December 1 — September 21
of the current Australian crop year amounted to 173.7 million
bushels, 33 per cent less than the 258.8 million exported during the corresponding
ten months of the 1966-67 crop year. The balance remaining on September 22, 1968 for
export and for carryover, at 82.1 million bushels, was in sharp contrast to the
comparable 1967 total of 134.9 million.

Australian Wheat Supplies

Item	1966-67 ^r	1967-68 ^p
	million bushels	
Carryover, including flour as wheat, at beginning of crop year (December 1)	16.6	80.4
Production	466.6	277.4
Total estimated domestic supplies	483.2	357.8
Less estimated domestic requirements for crop year	89.5	102.0 ^r
Available for export and for carryover	393.7	255.8
<u>Deduct</u>		
Exports of wheat as grain, December 1 — September 21	244.4	158.0
Exports of wheat flour in terms of wheat, December 1 — September 21	14.4	15.7
Total exports of wheat and wheat flour	258.8	173.7
Balance on September 22 for export and for carryover ..	134.9	82.1

p Preliminary figures.

r Revised figure.

The following information relative to the Australian situation has been extracted from a report from Mr. W. Boychuk, Assistant Commercial Secretary for Canada, Canberra, under date of October 16, 1968 and is reproduced with the permission of the Trade Commissioner Service, Department of Trade and Commerce. Where possible, conversions to Canadian measures and currency have been made for the convenience of our readers.

Crop Outlook for 1968-69. — Seasonal developments of the last 30 days (end October 10) have led to some downward revision in the 1968-69 official crop forecasts and the likelihood of some deterioration in the quality of the New South Wales harvest.

Overall prospects for the New South Wales crop are still good despite the marked deterioration in western areas of the wheat belt due to the dry September and reports of a moderate setback in some districts caused by late frosts. Mr. C.W. Brown, Cereal Specialist of the State Department of Agriculture said recently that useful light to moderate rainfall since the end of September, accompanied by cool weather improved the position. More rain was needed in most districts by late October or early November to stabilize crop prospects in the State. Primary Industry officials have confirmed that reports from the area indicate 'some frost damage' although not serious, is likely, whereas sources from the Wheat Board are more pessimistic. Wheat infestation and water logging continues to be a problem in some areas of the southern district. Previous estimates for the State wheat crop of 240 to 250 million bushels are now being revised downward to between 220 and 230 million bushels.

In Queensland the dry conditions have been limited to some outlying areas of the wheat belt. Western Australia has reported limited waterlogging but the prospects for a record 115 to 120 million bushel harvest are excellent. Dry windy conditions around the Murray Plain in South Australia have not affected the State's limited wheat acreage. Victoria has reported continued satisfactory conditions.

Recent official estimates indicate a slight downward revision in the 550 million bushels being mentioned in early September. Trade and Industry officials indicate that estimates within the Department and from Wheat Board members are at 530 to 535 million bushels.

Wheat Payment. — A further payment will be distributed on wheat delivered into No. 30 pool (season 1966-67). The payment will cover 425.6 million bushels of bulk wheat and 13.6 million bushels of bagged wheat, both at A.10 cents (12 cents Canadian) a bushel, bringing payments to A.\$1.30 (\$1.55) a bushel, (less freight) for bulk wheat and A.\$1.37 (\$1.64) a bushel (less freight) for bagged. This will mean a payment of approximately A.\$43.9 million (\$52.5 million) to growers and will bring total disbursements for No. 30 pool to A.\$495.4 million (\$592.5 million) after deducting A.\$76.5 million (\$91.5 million) for rail freight.

As this payment was announced by the Wheat Board, Mr. Anthony denied in parliament that there was any delay in announcing the first advance payment for wheat grown this season. Some wheat industry spokesmen are reported to be concerned that the advance may be reduced, first to deter growers from continuing to plant larger acreages next season in view of tight world markets and secondly to limit the total advance in the face of the record crop expected this harvest. The first payment has been A\$1.10 (\$1.32 Canadian) for 11 successive years with the exception of 1960-61 when the government chose for deflationary measures to pay A.90 cents (\$1.08) a bushel for bulk wheat. In the normal course the government will not announce its decision until November 30.

The New Wheat Stabilization Scheme. — The September 1968 report outlined the principal features of the new scheme which Mr. Anthony, the Minister for Primary Industry, publicly announced as the 'final offer' to the wheat growers. After unsuccessful last minute appeals to both the Prime Minister and the Minister for

Primary Industry, the Australian Wheat Growers Federation (A.W.F.) accepted the 68 million five-year scheme on September 20. The Federation later issued a statement praising the scheme as one which would ensure the industry of rising stability.

Following acceptance by the A.W.F., all States except Victoria have agreed to pass the necessary legislation. The Victorian Farmers' Union is the one wheat-growing organization still opposed to the Government's new stabilization scheme and the Victorian Government has assured the V.F.U. it would not agree to the scheme until it is acceptable to the Union. Recently the V.F.U.'s grains division carried a resolution rejecting the proposed two-tier system of wheat pricing and insisting on a one-price plan as well as certain changes in the cost of production formula for determining guaranteed prices.

Mr. Anthony has attacked the Union publicly:

'a few irresponsible men at the head of the Victorian Farmers' Union grains division were leading Victorian wheatgrowers astray and could lead the whole Australian wheat industry into disaster.'

The Wheat Industry Stabilization Bill 1968 was given second reading in parliament on October 10, 1968. In introducing the Bill Mr. Anthony stated again as he has done in the past that the basic profitability of wheatgrowing and increasing land value were important considerations in the Government's decision to break with the old scheme. He pointed out in the House that the average net income of wheat farmers in the three years 1964-65 to 1966-67 was A.\$9,400 (\$11,260 Canadian) and that three per cent of this income or A.\$330 (\$395) per farm per year was represented by Commonwealth subvention.

Mr. Anthony went on to explain that in the first year of the new scheme (1968-69) the export guaranteed price of A.\$1.45 (\$1.73) per bushel f.o.b. will return about A.\$1.41 1/2 cents (\$1.69) per bushel f.o.r. on 200 million bushels and home consumption sales, nearly about 60 million bushels a year, will return the grower A.\$1.70 (\$2.03) per bushel f.o.r. so that in 1968-69 Australian wheat growers are provided by legislation with a minimum average return of just over A.\$1.48 (\$1.77) f.o.r. per bushel or an aggregate of A.\$355 million (\$425 million).

In addition to the price and guarantee provisions, the Bill contains several significant administrative changes:

- (1) The Wheat Board's marketing powers will be extended for two seasons beyond the five-year duration of the scheme (in the past the Board's powers have been limited to 5 years). According to the Minister this change will improve the Board's powers for receiving and marketing of new season's wheat in the final year of the wheat stabilization plan and will put the Board in a better position to enter into long term contracts up to the final year of the five-year scheme.
- (2) Several loopholes in the Act debarring trading outside the Wheat Board have been closed. The wide gap between the home consumption price and the guaranteed export price necessitates stricter controls of private trading to ensure orderly marketing. (Flour millers and feed manufacturers have been criticized in the past of taking advantage of the provisions under section 92 of the

Commonwealth Constitution which guarantees freedom of inter-State trading. At the moment the amount traded outside the Board, mostly destined for the feed trade, is estimated at 5 to 8 million bushels.)

Production Controls on Wheat. — The Australian Wheatgrowers' Federation representative of the nation's 55,000 wheat growers has appointed a special committee to examine the future of wheat and the possible need for restrictions to be placed upon Australian wheat production. The mere fact that restrictions will be considered is being interpreted as a startling about-face on the part of the wheatgrowing industry's leadership which has in the past objected strenuously any suggestion of production controls.

In view of the rate of expansion of wheat acreage in recent years and the record crop predicted this year, this move by the Wheatgrowers' Federation has been described in the national press as 'revealing a realistic and intelligent appreciation of the present situation'. To date the biggest crop Australia has harvested was 466.6 million bushels in 1966-67. This season, short of an unexpected change in seasonal conditions, a crop in excess of 500 million bushels is almost certain. This will face the Australian Wheat Board with the task of selling almost 50 per cent more wheat than it has ever sold in a single season. It has been suggested that with the heavy crops in other countries-world wheat production this year is expected to reach 294 million metric tons (10.8 billion bushels), 6 per cent above last year-and with wheat prices at or marginally above the international minimum, a substantial unsold carryover approaching 150 million bushels is likely at the start of 1969-70 crop season. Another big crop would present substantial problems of transport, shipping and particularly storage.

The Special Committee will bring out its report after the wheat harvest in late December. However, even if the Australian Wheatgrowers' Federation requests it, what form, if any, production controls could take is highly debatable. The Commonwealth Government has in the past flatly rejected all moves for restrictions on food production on the grounds that such action would rouse strong feelings in Asia. State rivalries would probably result in strong political opposition to production contract in any particular state. Separate Commonwealth and State Legislation would be required as the powers to implement acreage control do not exist under the stabilization scheme. In the circumstances it has been suggested that the A.W.F. move will result in nothing more concrete than a warning by the Federation to wheatgrowers against over-production.

Exports of Australian Wheat and Wheat Flour in Terms of Wheat
December 1 - September 21, 1967-68 and Corresponding Period 1966-67

Destination	Wheat		Wheat flour	
	1966-67	1967-68	1966-67	1967-68
thousand bushels				
<u>Western Europe</u>				
EEC:				
Belgium	605	203	-	-
Germany, Federal Republic .	1,564	80	-	-
Netherlands	1,802	3,069	-	-
Sub-totals	3,971	3,352	-	-

Exports of Australian Wheat and Wheat Flour in Terms of Wheat
December 1 - September 21, 1967-68 and Corresponding Period 1966-67

Destination	Wheat		Wheat flour	
	1966-67	1967-68	1966-67	1967-68
thousand bushels				
<u>Other Western Europe</u>				
Britain	15,007	18,232	586	365
Ireland	1,461	1,199	-	-
Malta	367	737	-	-
Norway	3,613	2,050	-	-
Switzerland	83	10	-	-
Sub-totals	20,531	22,228	586	365
Totals	24,502	25,580	586	365
<u>Africa</u>				
Malawi	-	-	262	235
Mauritius	-	-	558	475
Mozambique	1,393	537	41	-
Rhodesia	2,458	2,957	-	-
South Africa	9,280	-	-	-
Sudan	439	422	-	-
Zambia	972	1,755	278	104
Others	8	11	99	285
Totals	14,550	5,682	1,238	1,100
<u>Asia</u>				
Aden	1,630	756	-	-
Aden and Aden I/T	-	-	449	255
Aden and Aden I/T Atta	-	-	317	143
Arabian Gulf	-	-	61	55
Arabian Gulf Atta	-	-	612	574
Ceylon	7	4	6,182	6,817
China	89,371	60,520	-	-
Hong Kong	2,667	3,685	28	70
India	27,163	7,553	-	-
India Atta	-	-	780	-
Indonesia	-	-	1,154	2,596
Iran	1,000	-	-	-
Iraq	7,098	2,770	-	-
Japan	14,107	19,508	-	-
Korea North	3,952	-	-	-
Kuwait	2,375	1,978	-	-
Lebanon	5,420	1,763	-	-
Pakistan	18,508	-	-	-
Philippines	938	306	88	108
Saudi Arabia	2,618	320	64	241
Taiwan	768	771	-	-
Thailand	956	1,328	244	209
<u>Malaysia</u>				
Malaya	7,570	9,268	-	-
Sabah	-	-	21	18
Sarawak	-	-	24	26
Singapore	6,475	8,285	19	1
Others	723	404	96	117
Totals	193,346	119,219	10,139	11,230

Exports of Australian Wheat and Wheat Flour in Terms of Wheat
December 1 - September 21, 1967-68 and Corresponding Period 1966-67

Destination	Wheat		Wheat flour	
	1966-67	1967-68	1966-67	1967-68
thousand bushels				
<u>Oceania</u>				
New Zealand	2,005	1,101	-	-
<u>Western Hemisphere</u>				
Brazil	4,426	-	-	-
Chile	4,217	3,354	-	-
Peru	1,292	3,001	1	-
West Indies Area	-	-	298	417
Totals	9,935	6,355	299	417
<u>Pacific Area and Sundries</u>				
Pacific Islands	59	66	2,027	2,477
Ships' Stores and Sundries ..	-	-	112	109
Totals	59	66	2,139	2,586
Totals, all countries ...	244,400	158,000	14,400	15,700

ARGENTINE SITUATION

Wheat Supplies
Above Previous Year

Total estimated supplies of wheat in Argentina for the 1967-68 (December-November) crop year are placed at some 288.3 million bushels some 18 per cent above the previous season's total of 243.3 million. Current crop year supplies consist of the December 1 carryover of 16.4 million compared with 13.8 million the year before, while the 1967 production, at 271.9 million, registered an increase over the 229.5 million harvested in 1966. After making an allowance of 156.1 million for anticipated domestic requirements, an estimated 132.1 million are available for export and for carryover in 1967-68, some 33 per cent more than the 99.1 million the previous year.

Exports Decline
from Last Year

Preliminary exports of wheat and wheat flour in terms of wheat equivalent during December 1967 - September 1968 amounted to 66.2 million bushels, some 19 per cent less than the 81.5 million exported during the same ten months in 1966-67. The balance remaining on October 1, 1968 for export and for carryover was estimated at 65.9 million bushels, in sharp contrast to the October 1, 1967 total of 17.6 million.

Argentine Wheat Supplies

Item	1966-67 ^r	1967-68 ^p
	thousand bushels	
Carryover at beginning of crop year (December 1)(1)	13.8	16.4
Production	229.5	271.9
Total estimated domestic supplies	243.3	288.3
Less estimated domestic requirements for crop year	144.2	156.1
Available for export and for carryover	99.1	132.1
<u>Deduct</u>		
Exports of wheat as grain, December-September	81.1	65.7
Exports of wheat flour in terms of wheat, December - September	0.4	0.5
Total exports of wheat and wheat flour	81.5	66.2
Balance on October 1 for export and for carryover	17.6	65.9

(1) Includes allowances for farm stocks.

^p Preliminary figures.

^r Revised figures.

The following account of the Argentine situation has been extracted from a report from Mr. S.E. Kidd, Assistant Commercial Secretary (Agriculture) Buenos Aires, under date of October 21, 1968 and is reproduced with the permission of the Trade Commissioner Service, Department of Trade and Commerce. Where possible conversions to Canadian measures and currency have been made for the convenience of our readers.

Wheat. — Crop conditions are satisfactory throughout the wheat growing areas and a good harvest is expected. Weather conditions were very unsettled during September. Abrupt changes in temperature including some frosts, strong drying winds and a lack of rain caused some damage, particularly in the north. However, the general condition of the crop was helped by abundant rains throughout the grain area early in October.

Early in October, the traditional ceremony of selling the first lot of wheat from the new crop took place at the Buenos Aires Cereals Exchange. The first sale was of 22 metric tons (800 bushels) of wheat produced in the northern province of Santiago del Estero.

Harvesting operations have commenced in Chaco province but yields are only fair. Yields are expected to be better in Santa Fe, Cordoba and Entre Rios where the harvest commences early November. Farther south, in Buenos Aires and La Pampa provinces, crop conditions are good to excellent but harvesting does not begin until early December.

The condition of the Durum crop is also excellent at this time but harvesting will not begin until late December.

Rumours persist that the export taxes on wheat will be reduced and this may account, in part, for the general weakness in the market. Hard bread wheat prices during September fell to only 1,500 pesos per 100 kilos (\$1.26 per bushel) f.o.r.

Buenos Aires compared with 1,540 pesos (\$1.29 per bushel) at the end of August. This is the fourth month in a row in which a decrease has been recorded in the price of wheat. At Bahia Blanca, prices firmed slightly to 1,460 pesos per 100 kilos (\$1.22 per bushel) from 1,440 pesos (\$1.21 per bushel) at the end of August. It is reported that a small parcel was sold to Italy during the last week of September at U\$S 58.00 per metric ton (\$1.69 per bushel) f.o.b. Necochea, for shipment in October. By October 15, prices at Buenos Aires had fallen to 1,410 pesos (\$1.18 per bushel) but recovered to 1,450 pesos (\$1.21 per bushel) by the 19th. Prices at Bahia Blanca were also 1,450 pesos per 100 kilos (\$1.21 per bushel) at October 19. At the same date, prices on the Buenos Aires Futures Exchange were 1,500 pesos per 100 kilos (\$1.26 per bushel) for November delivery; 1,510 (\$1.26 per bushel) for December; 1,513 (\$1.27 per bushel) for January; 1,518 (\$1.27 per bushel) for February; and 1,540 (\$1.29 per bushel) for March.

Candeal (Durums) prices were somewhat firmer in September, closing at 1,920 pesos per 100 kilos (\$1.61 per bushel) f.o.r. Buenos Aires and 1,950 (\$1.63 per bushel) f.o.r. Bahia Blanca compared with 1,880 and 1,780 pesos (\$1.57 and \$1.49 per bushel), respectively, at the end of August. However, stocks are almost depleted and very little was sold. At October 19, Durum prices were 1,920 and 1,970 pesos per 100 kilos (\$1.61 and \$1.65 per bushel) f.o.r. Buenos Aires and Bahia Blanca, respectively. Prices for Durums from the new crop were firmer at U\$S 68 per metric ton, (\$1.99 per bushel) f.o.b. Necochea for February shipment and U\$S 69.50 per ton (\$2.03 per bushel) for March shipment to Italy.

During September, the Argentines signed the third and concluding contract under their agreement with Brazil for one million metric tons (36,743,000 bushels) of wheat. This contract was for 343,000 metric tons (12,603,000 bushels) for shipment in October to December period at a price of U\$S 55.75 per ton (\$1.63 per bushel) f.o.b. Buenos Aires. The first contract under this agreement was for 350,000 tons (12,860,000 bushels) for shipment in April - June at U\$S 57.52 (\$1.68 per bushel) and the second was for 307,000 tons (11,280,000 bushels) for shipment in July - September at U\$S 57.05 (\$1.67 per bushel). This agreement is expected to be renewed in 1969.

The Japanese Food Agency has purchased a sample lot of 3,600 metric tons (132,000 bushels) of Argentine wheat. One lot of 2,400 tons (88,000 bushels) is of 11.5 per cent protein content and sold for U\$S 70.30 (\$2.05 per bushel). The second lot of 1,200 tons (44,000 bushels) of 12.5 per cent protein, sold for U\$S 73.30 (\$2.14 per bushel). This was the first sale of Argentine wheat to Japan since 1950.

Argentine Wheat Exports December-August 1967-68 and 1966-67

Destination	August		December-August	
	1967	1968	1966-67	1967-68
thousand bushels				
<u>Western Europe</u>				
EEC:				
Belgium	-	-	756	176
France	-	-	2,737	1,148
Germany, Federal Republic .	-	-	799	33
Italy	368	190	9,882	15,299
Netherlands	33	-	6,468	853
Sub-totals	401	190	20,642	17,509

Argentine Wheat Exports December-August 1967-68 and 1966-67

Destination	August		December-August	
	1967	1968	1966-67	1967-68
thousand bushels				
<u>Other Western Europe</u>				
Britain	-	-	7,856	1,609
Denmark	-	-	-	16
Norway	-	-	498	37
Portugal	-	-	1,144	376
Sweden	-	-	-	29
Switzerland	-	-	375	7
Sub-totals	-	-	9,873	2,074
Totals	401	190	30,515	19,583
<u>Eastern Europe</u>				
Hungary	-	-	480	22
<u>Africa</u>				
Algeria	-	-	795	351
Angola	-	-	459	-
Totals	-	-	1,254	351
<u>Asia</u>				
China, Communist	-	-	-	370
Cyprus	-	-	381	-
India	-	-	184	-
Viet-Nam	-	-	-	184
Totals	-	-	565	554
<u>Western Hemisphere</u>				
Bolivia	-	-	280	855
Brazil	7	3,468	33,154	21,334
Chile	-	246	2,083	3,138
Colombia	-	-	1,575	1,521
Paraguay	364	-	1,721	1,517
Peru	-	1,094	8,838	9,370
Uruguay	-	-	1	523
Totals	371	4,808	47,652	38,258
Totals, all countries ...	773	4,998	80,465	58,769

Continued from page 22.

the same quarter last year. Of the total October 1 wheat stocks 102 million bushels were owned by the Commodity Credit Corporation and CCC loans were outstanding on an additional 473 million bushels.

Durum wheat stocks in all positions on October 1 totalled 110.0 million bushels, 47 per cent above last year. Farm holdings of about 92.6 million were 67 per cent above last year while off-farm stocks at 17.4 million were down 11 per cent. Disappearance during the July-September quarter is indicated at 14.8 million bushels compared with 17.2 million bushels for the comparable period in 1967.

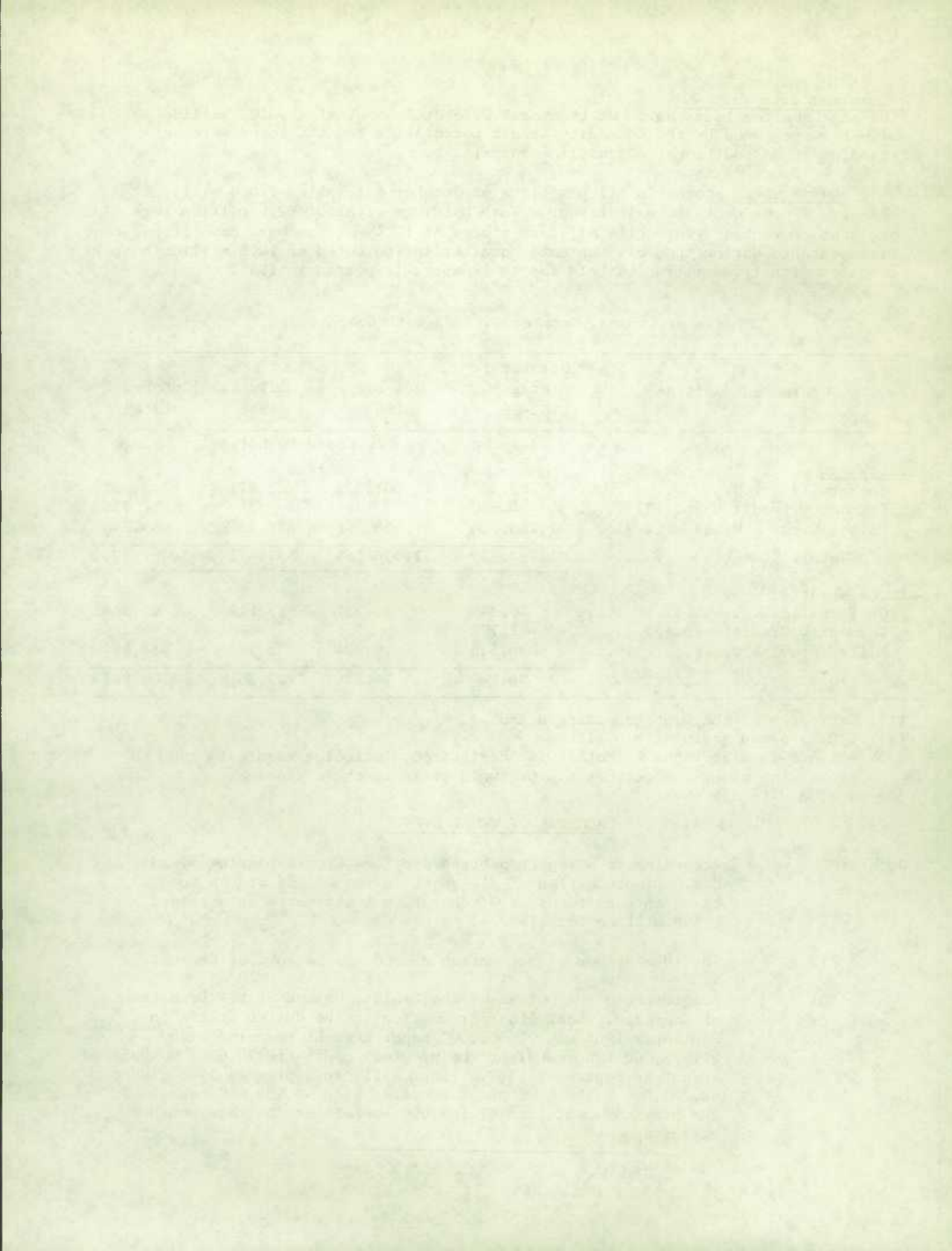
Stocks of Grains, October 1, 1968 with Comparisons

Grain and position	October 1 Average 1962-66	October 1967	July 1 1968	October 1 1968
thousand bushels				
<u>All Wheat</u>				
On Farm(1)	483,886	601,522	228,471	743,822
Commodity Credit Corp. (2)	24,810	969	749	756
Mills, Elev. & Whses. (1, 3) ...	1,284,024	953,698	308,251	945,248
Totals	1,792,720	1,556,189	537,471	1,689,826
<u>Durum Wheat(4)</u>				
On Farms(1)	60,340	55,251	17,118	92,544
Commodity Credit Corp.(2)	1,777	151	170	169
Mills, Elev. & Whses.(1, 3)	34,526	19,324	5,973	17,254
Totals	96,644	74,726	23,261	109,967

- (1) Estimates of the Crop Reporting Board.
- (2) C.C.C.-owned grain at bin sites.
- (3) All off-farm storages not otherwise designated, including terminals and processing plants. Includes C.C.C.-owned grain in these storages.
- (4) Included in all wheat.

CALENDAR OF WHEAT EVENTS

- October 10 According to a report published by the Crop Reporting Board U.S.D.A., production of all wheat in the United States in 1968, based on conditions at October 1, was estimated at a record 1,598 million bushels.
- 17 The 1968 season of navigation closed at the port of Churchill.
- 31 According to the Bureau of the Census, United States Department of Commerce, wheat flour production in the United States in September 1968 was 21,402,000 hundredweight compared with 21,873,000 hundredweight the previous month and 20,990,000 hundredweight in September 1967. Flour mills in September 1968 ground 48,203,000 bushels of wheat compared with 48,950,000 bushels in the previous month and 47,180,000 bushels at the same month a year ago.



STATISTICS CANADA LIBRARY
BIBLIOTHÈQUE STATISTIQUE CANADA



1010686896