

**DOES NOT CIRCULATE**  
**NE PAS PRÊTER**

DOMINION BUREAU  
OF STATISTICS

MAR 28 1969

PROPERTY OF THE  
LIBRARY

# The Wheat Review

FEBRUARY 1969



DOMINION BUREAU OF STATISTICS

The contents of this document may be used freely but DBS should be credited when republishing all or any part of it.



DOMINION BUREAU OF STATISTICS

Agriculture Division

Crops Section

## THE WHEAT REVIEW

FEBRUARY 1969

*Published by Authority of*  
The Minister of Trade and Commerce

March 1969  
5502-502

Price: 30 cents  
\$3.00 a year

Vol. 39—No. 7





## TABLE OF CONTENTS

	<u>Page</u>
<u>World Wheat Situation</u>	
Wheat Exports Down from Previous Year .....	5
Wheat Supplies of Four Major Exporters Higher than Previous Year .....	5
<u>Canadian Situation</u>	
Supplies Above Previous Year .....	6
August-January Exports 20 per cent Above Previous Year .....	6
Marketings, Disappearance and Visible Supplies .....	7
January 1969 Exports of Wheat and Flour Total 20.4 Million Bushels .....	7
General Quota Position .....	8
Farmers' Marketings by Crop Districts 1967-68 .....	9
Farmers' Marketings 1968-69 Crop Year .....	11
Visible Supply of Canadian Wheat .....	12
Grading of Wheat Inspected, August 1968-January 1969 with Comparisons .....	12
Weekly Visible Supply and Farmers' Marketings (Charts) .....	13
Wheat Shipments to the United States .....	14
Rail Shipments of Wheat to Maritime Ports .....	14
Rail Shipments of Wheat from Fort William-Port Arthur .....	15
Overseas Exports of Canadian Grain by Ports of Loading .....	15
Shipments Under Feed Grain Assistance Regulations .....	16
Monthly Exports of Canadian Wheat and Wheat Flour .....	17
Exports of Canadian Wheat by Destination .....	18
Customs Exports of Canadian Wheat Flour by Countries of Consignment .....	21
Canadian Wheat Board Weekly Average Cash Wheat Prices .....	23
<u>Canadian Flour Milling Situation</u>	
Production and Exports .....	24
<u>United States Situation</u>	
1968-69 Wheat Supplies 8 Per Cent Above Previous Year .....	25
Exports Below Previous Year .....	25
United States Wheat and Flour Exports Decline 22 Per Cent During July- December 1968 .....	26
Third Report on 1969 Wheat Program Signup Issued by U.S.D.A. ....	28
Cash Wheat Prices on the Kansas City and Minneapolis Markets .....	29
Chicago Wheat Futures, High Points of Closing .....	29
<u>Australian Situation</u> .....	30
<u>Argentine Situation</u> .....	37
<u>Calendar of Wheat Events</u> .....	40

---



# WORLD WHEAT SITUATION

## Wheat Exports Down from Previous Year

At the halfway mark of the current Canadian crop year shipments of wheat (including flour in terms of wheat) from the four traditional major exporters amounted to 566.7 million bushels, 18 per cent below the previous year's total of 693.5 million exported during the same six months in 1967-68 and 12 per cent less than the ten-year (1957-58-1966-67) August-January average of 643.4 million. Based on the Canadian crop year, Canada and Argentina registered increases over their 1967-68 comparable totals while exports from United States and Australia were lower.

Shipments from the four traditional major wheat exporters during August 1968-January 1969 with comparisons appear in the accompanying table.

Exports of Wheat and Flour in Terms of Wheat, August 1968-January 1969  
with Comparisons

August-January	United States	Canada	Argentina	Australia	Total
			million bushels		
1950-51.....	121.5	104.7	33.7	61.5	321.4
1951-52.....	234.1	154.9	23.1	50.1	462.2
1952-53.....	168.7	190.3	1.1	40.8	400.9
1953-54.....	94.8	138.7	60.8	30.2	324.5
1954-55.....	126.2	134.9	66.4	45.4	372.9
1955-56.....	119.5	117.8	63.3	42.5	343.1
1956-57.....	252.7	145.4	45.9	74.5	518.5
1957-58.....	196.1	151.3	40.2	39.7	427.3
1958-59.....	220.6	144.2	45.0	33.3	443.1
1959-60.....	207.5	150.1	25.2	57.8	440.6
1960-61.....	306.9	153.5	41.3	66.5	568.2
1961-62.....	357.1	193.9	21.8	110.4	683.2
1962-63.....	250.0	167.6	28.9	58.5	505.0
1963-64.....	402.0	292.8	34.8	128.0	857.6
1964-65.....	354.2	217.8	67.6	86.5	726.1
1965-66.....	380.6	304.3	139.2	103.5	927.6
1966-67.....	414.2 <sup>r</sup>	291.6	42.1	107.2	855.1 <sup>r</sup>
1967-68 <sup>r</sup> .....	396.2	131.3	15.1	150.9	693.5
1968-69P.....	259.9	157.9	54.9	94.0	566.7

P Preliminary figures.

r Revised figures.

## Wheat Supplies of Four Major Exporters Higher than Previous Year

Supplies of wheat held by the four traditional major exporters at February 1, 1969 for export and for carry-over at the end of their respective crop years amounted to 2,593.3 million bushels, an increase of 27 per cent over

the 2,042.1 million at the same time a year ago. Supplies were larger in United States, Canada and Australia than those of the previous year while Argentina was the only country registering a decrease. Supplies at February 1, 1969, in millions of bushels, were held as follows, with last year's comparable figures in brackets: United States, 1,047.2 (841.4); Canada, 992.4 (870.2); Argentina, 75.7 (118.1); and Australia, 478.0 (212.4).



CANADIAN SITUATION

Supplies Above Previous Year      Total estimated supplies of wheat for the 1968-69 (August-July) crop year are placed at 1,315.4 million bushels consisting of the August 1 carryover of 665.5 million and the 1968 crop, estimated at 649.8 million bushels. Supplies of the size indicated represent an increase of 12 per cent over the 1,169.7 million of 1967-68. After making an allowance of 165.0 million bushels for anticipated domestic requirements, supplies available for export and for carryover during 1968-69 amount to 1,150.4 million bushels, 15 per cent more than the 1,001.5 million in 1967-68.

August - January Exports      Exports of wheat and flour in terms of wheat  
20 per cent Above Previous Year      equivalent amounted to 157.9 million bushels during the first half of the current crop year compared with the previous year's corresponding total of 131.3 million and the ten-year (1957-58-1966-67) average for the period of 206.7 million bushels. This year's exports consisted of 145.4 million bushels of wheat in bulk, 173 thousand of seed and 12.3 million of flour in terms of wheat. During the comparable period last year these figures were 118.6 million of wheat in bulk, 391 thousand of seed and 12.3 million of flour in wheat equivalent. The balance remaining on February 1, 1969 for export and for carryover amounted to 992.4 million bushels, 14 per cent above the February 1, 1968 total of 870.2 million.

Canadian Wheat Supplies

Item	1967-68 <sup>r</sup>	1968-69 <sup>P</sup>
	million bushels	
Carryover in North America at beginning of crop year (August 1) .....	576.8	665.5
Production .....	592.9	649.8
Total estimated supplies .....	1,169.7	1,315.4
Less estimated domestic requirements for crop year ...	168.2	165.0
Available for export and for carryover .....	1,001.5	1,150.4
<u>Deduct</u>		
Exports of wheat in bulk, August - January (1) .....	118.6	145.4
Exports of seed wheat, August - January (2) .....	0.4	0.2
Total exports of wheat as grain .....	119.0	145.6
Exports of wheat flour in terms of wheat, August - January(2) .....	12.3	12.3
Total exports of wheat and wheat flour .....	131.3	157.9
Balance on February 1 for export and for carryover ...	870.2	992.4

(1) As reported by the Board of Grain Commissioners.

(2) Customs returns, 1967-68 adjusted for time lag.

<sup>P</sup> Preliminary figures.

<sup>r</sup> Revised figures.



Marketings, Disappearance  
and Visible Supplies

Total primary deliveries of wheat (both east and west) up to February 19 of the current crop year have amounted to 182.1 million bushels in contrast to 270.2 million marketed during the same period of the previous year. Some 15.1 million bushels of this year's total were delivered during the four weeks January 23 to February 19, 1969. During the same period the volume of Canadian wheat entering domestic and export channels amounted to 24.6 million bushels. As a result, the total visible supply of Canadian wheat decreased from 411.9 million at January 22, 1969 to a level of 401.7 million at February 19, 1969.

The total visible supply of Canadian wheat at February 19 this year represented a decrease of 12 per cent from the 1968 comparable total of 454.2 million but was 28 per cent more than the 1967 figure of 313.1 million. Country elevator stocks, amounting to 248.0 million bushels, were 2 per cent less than the 1968 comparable total of 253.1 million but 66 per cent more than the 149.1 million of two years ago. Wheat stocks at interior terminals at February 19, 1969, totalled 7.7 million bushels considerably below the 13.1 million of a year ago but sharply above the 4.8 million of two years ago. The 11.9 million bushels "in transit rail" (western division) were below both the 1968 figure of 15.8 million and the 14.3 million of 1967. Supplies at the Lakehead, totalling some 39.1 million bushels, were 43 per cent smaller than the 68.2 million at February 21, 1968 and 38 per cent lower than the 62.6 million at February 22, 1967. The 14.3 million bushels "in storage afloat" were below both the 22.1 million in this position in 1968 and the 16.6 million at the same date in 1967. The 26.5 million bushels in Bay, Lake and Upper St. Lawrence ports were less than the 29.4 million of a year ago but above the 20.2 million of two years ago. Supplies in Lower St. Lawrence and Maritime ports at February 19, 1969, at 31.0 million bushels, registered a 2 per cent decrease from the comparable 1968 figure of 31.6 million but 47 per cent more than the 21.0 million of 1967. The 11.7 million bushels in West Coast ports (Vancouver-New Westminster, Prince Rupert and Victoria) were higher than the 9.3 million at February 21, 1968 but lower than the 12.6 million at February 22, 1967.

January 1969 Exports  
of Wheat and Flour Total  
20.4 Million Bushels

Combined exports of wheat in bulk, seed wheat and wheat flour in terms of grain equivalent, during January 1969 amounted to 20.4 million bushels, 13 per cent above the 18.0 million of the previous month, but 3 per cent below the 21.1 million of January 1968 and 14 per cent smaller than the ten-year (1958-67) average for the month of January of 23.7 million. Exports of wheat in bulk (as reported by the Board of Grain Commissioners) during January 1969 totalled 18.8 million bushels, 17 per cent more than the December 1968 total of 16.1 million, but registered decreases of 2 per cent and 7 per cent, respectively, from the 19.3 million of the previous month and the ten-year average of 20.3 million. Based on Canadian Customs returns, the equivalent of 1.6 million bushels of wheat was exported in the form of flour during January 1969, some 19 per cent below the previous month's figure of 1.9 million, 9 per cent smaller than the adjusted total of 1.7 million of January 1968 and 46 per cent less than the ten-year average of 2.9 million bushels.

Cumulative exports of wheat in bulk during the August-January period of the current crop year amounted to 145.4 million bushels, 23 per cent more than the 118.6 million shipped during the first six months of 1967-68 but 22 per cent less than the ten-year average for the period of 187.0 million. Communist China and Britain were the two leading markets for Canadian wheat in bulk during the first half of the current crop year with shipments to these countries amounting to 35.9 million and 32.2 million bushels, and accounted for 25 per cent and 22 per cent, respectively,

of the August-January total. During the same period last year Communist China accounted for 3 per cent and Britain 30 per cent of the August 1967-January 1968 total. Other principal importers of Canadian wheat for the first six months of the current crop year with figures for the same period of the preceding crop year in brackets, were as follows, in millions of bushels: Japan, 18.8 (18.1); Italy, 9.0 (5.5); Federal Republic of Germany, 7.5 (11.2); Belgium and Luxembourg, 4.3 (6.3); India, 4.3 (0.1); Netherlands, 4.0 (4.1); Switzerland, 3.8 (1.2); and Poland, 3.4 (2.5). Cumulative exports of seed wheat during August-January of the current crop year, based on Canadian Customs returns, amounted to 173 thousand bushels compared with last year's comparable total (adjusted to remove time lag) of 391 thousand.

Cumulative exports of wheat flour during the first half of the 1968-69 crop year, based on Customs returns, were the equivalent of 12.3 million bushels of wheat, unchanged from the adjusted August-January 1967-68 total. Cuba's purchases, the leading market for Canadian wheat flour during the period under review, amounted to the equivalent of 5.3 million bushels and accounted for 43 per cent of the August 1968-January 1969 total. During the comparable period of 1967-68 shipments to Cuba amounted to 4.9 million and accounted for 40 per cent of the six-month total. Other principal markets for Canadian wheat flour in terms of grain equivalent during the August-January period of the 1968-69 crop year, with revised data for the same months of the preceding crop year in brackets, were as follows, in thousands of bushels: Britain, 1,401 (1,549); Ceylon, 839(860); Ghana, 781 (819); U.A.R.-Egypt, 676 (nil); Leeward and Windward Islands, 367 (423); and Indonesia, 362 (nil).

General Quota By February 24, 1969 out of a total of 1,827 shipping points in the  
Position Western Division, the Canadian Wheat Board had placed 208 points on a delivery quota of four bushels per specified acre, 418 points on a three-bushel quota, 554 points on a two-bushel quota and 449 points on a one-bushel quota. Some 188 points remained on the initial unit quota while only 10 stations were reported as "closed".

Summary of Elevator Shipping Points in the Western Division  
as at February 24, 1969

Province	Initial unit quota	General quota in bushels per specified acre				Closed	Total
		One	Two	Three	Four		
Ontario .....	—	—	—	—	—	1	1
Manitoba .....	129	121	56	12	6	—	324
Saskatchewan .....	59	260	319	204	142	6	990
Alberta .....	—	68	179	202	54	3	506
British Columbia .....	—	—	—	—	6	—	6
All provinces .....	188	449	554	418	208	10	1,827



Farmers' Marketings by  
Crop Districts 1967-68

compiled by the Statistics

Farmers in the Prairie Provinces and certain areas of British Columbia marketed 456.0 million bushels of wheat during the 1967-68 crop year according to revised figures  
Division of the Board of Grain Commissioners.

In the following tables, farmers' deliveries are shown by the marketing channel employed, i.e., through country elevators, directly to interior private and mill elevators, etc. Deliveries to country elevators are, in turn, broken down by provinces and crop districts.

Farmers' Marketings of Wheat in the Western Division, 1967-68

Marketing channel	Total wheat bushels
Country elevators .....	452,811,285
Interior private and mill elevators .....	3,182,896
Interior semi-public terminals .....	—
Platform loadings .....	21,099
Total .....	456,015,280

Farmers' Marketings through Country Elevators, 1967-68

Province and district	Wheat (other than durum)	Durum wheat	Total wheat bushels
<u>Manitoba</u>			
Crop District 1 .....	3,270,342	209,861	3,480,203
2 .....	8,336,331	75,823	8,412,154
3 .....	13,073,988	453,063	13,527,051
4 .....	2,051,855	61,373	2,113,228
5 .....	2,735,440	10,845	2,746,285
6 .....	402,203	1,286	403,489
7 .....	7,410,024	76,348	7,486,372
8 .....	5,618,426	88,842	5,707,268
9 .....	4,156,911	51,592	4,208,503
10 .....	6,532,211	16,529	6,548,740
11 .....	4,520,693	28,266	4,548,959
12 .....	1,401,133	—	1,401,133
13 .....	3,067,169	1,707	3,068,876
14 .....	817,887	3,967	821,854
Totals .....	63,394,613	1,079,502	64,474,115
<u>Ontario</u>			
Country elevators in the western division .....	—	—	—
Totals (1) .....	63,394,613	1,079,502	64,474,115



Farmers' Marketings through Country Elevators, 1967-68

Province and district	Wheat (other than durum)	Durum wheat	Total wheat
		bushels	
<u>Saskatchewan</u>			
Crop District 1A .....	11,068,277	812,590	11,880,867
1B .....	10,246,624	157,271	10,403,895
2A .....	9,647,791	879,254	10,527,045
2B .....	16,721,494	2,230,331	18,951,825
3A North .....	7,681,002	1,026,998	8,708,000
3A South .....	13,616,323	1,922,443	15,538,766
3B North .....	14,605,969	2,125,625	16,731,594
3B South .....	10,347,147	785,226	11,132,373
4A .....	3,560,751	194,424	3,755,175
4B .....	8,979,149	1,839,557	10,818,706
5A .....	18,735,253	163,179	18,898,432
5B .....	19,435,966	18,877	19,454,843
6A .....	21,900,723	830,517	22,731,240
6B .....	15,957,746	532,843	16,490,589
7A .....	17,461,640	1,169,765	18,631,405
7B .....	13,296,668	43,293	13,339,961
8A .....	10,195,110	—	10,195,110
8B .....	14,058,795	4,292	14,063,087
9A .....	14,186,143	24,656	14,210,799
9B .....	11,187,210	1,846	11,189,056
Totals .....	262,889,781	14,762,987	277,652,768
<u>Alberta</u>			
Crop District 1 .....	15,082,936	594,735	15,677,671
2 .....	32,226,005	1,304,075	33,530,080
3 .....	10,344,522	176,277	10,520,799
4 .....	30,663,198	21,268	30,684,466
5 .....	5,206,226	3,333	5,209,559
6 .....	6,482,101	56	6,482,157
7 .....	6,483,578	—	6,483,578
Totals .....	106,488,566	2,099,744	108,588,310
<u>British Columbia</u>			
Crop District 1 .....	2,096,092	—	2,096,092
Totals (2) .....	108,584,658	2,099,744	110,684,402
Totals marketed .....	434,869,052	17,942,233	452,811,285

(1) Manitoba figures include points in Ontario west of Fort William-Port Arthur.

(2) Alberta figures include country points in British Columbia.

Farmers' Marketings Deliveries of wheat from farms in the Prairie Provinces up to February 19 of the current crop year amounted to 175.9 million bushels, 33 per cent less than the comparable 1967-68 total of 263.9 million and 21 per cent below the ten-year (1957-58-1966-67) average for the period of 224.0 million bushels.

Farmers' Marketings (1) of Wheat in the Prairie Provinces 1968-69

Week ending	Manitoba	Saskatchewan	Alberta	Total	Last year
bushels					
August 7, 1968 .	12,286	343,145	1,256	356,687	2,774,267
14 .....	54,003	433,143	19,546	506,692	410,477
21 .....	701,320	618,402	734,805	2,054,527	2,328,627
28 .....	319,028	1,772,613	649,209	2,740,850	5,893,733
September 4 .....	248,115	2,325,413	840,579	3,414,107	14,505,278
11 .....	146,995	1,597,665	749,639	2,494,299	19,166,857
18 .....	386,716	4,847,811	2,241,941	7,476,468	12,002,246
25 .....	560,570	4,814,363	1,744,398	7,119,331	12,262,382
October 2 .....	578,728	4,171,612	1,148,224	5,898,564	8,987,247
9 .....	1,412,243	6,689,883	3,152,542	11,254,668	5,351,929
16 .....	914,936	4,950,252	1,904,238	7,769,426	7,247,758
23 .....	827,874	4,038,282	1,889,876	6,756,032	7,562,502
30 .....	831,989	5,268,762	4,080,886	10,181,637	9,262,642
November 6 .....	1,653,791	7,100,994	4,580,760	13,335,545	9,717,801
13 .....	2,037,836	9,768,838	3,876,116	15,682,790	8,840,798
20 .....	2,099,771	7,917,084	3,227,126	13,243,981	11,217,381
27 .....	1,661,638	5,918,922	2,334,940	9,915,500	10,032,019
December 4 .....	1,454,530	5,283,400	2,524,710	9,262,640	13,270,298
11 .....	924,844	3,683,325	1,936,615	6,544,784	15,836,937
18 .....	886,759	3,627,473	1,257,373	5,771,605	9,311,891
23 .....	819,810	3,417,705	1,647,864	5,885,379	6,742,989
31 .....	405,023	1,773,314	1,050,722	3,229,059	7,572,454
January 8, 1969 .	367,174	2,544,883	1,452,240	4,364,297	4,968,322
15 .....	416,690	1,351,887	1,047,114	2,815,691	5,554,999
22 .....	567,950	1,139,430	1,019,662	2,727,042	18,411,991
29 .....	280,390	814,599	587,479	1,682,468	10,550,843
February 5 .....	255,056	465,482	703,518	1,424,056	5,548,689
12 .....	485,168	2,509,965	2,902,341	5,897,474	10,319,185
19 .....	544,539	3,121,188	2,416,389	6,082,116	8,222,761
Totals .....	21,855,772	102,309,835	51,722,108	175,887,715	263,875,303
Average similar period: 1957-58-1966-67 .....	28,021,054	139,742,667	56,278,061	224,041,783	

(1) Includes receipts at country, interior private and mill elevators, interior semi-public terminals and platform loadings.

Visible Supply of Canadian Wheat, February 19, 1969  
Compared with Approximately the Same Date, 1967 and 1968

Position	1967	1968	1969
	thousand bushels		
Country elevators - Manitoba .....	9,569	31,342	34,432
Saskatchewan .....	91,105	144,380	142,812
Alberta .....	48,421	77,339	70,754
Sub-totals .....	149,095	253,061	247,998
Interior private and mill .....	6,467	5,956	4,356
Interior terminals .....	4,797	13,129	7,663
Vancouver-New Westminster .....	11,031	8,256	10,115
Victoria .....	715	579	798
Prince Rupert .....	862	474	784
Churchill .....	944	4,581	4,694
Fort William-Port Arthur .....	62,616	68,198	39,128
In transit rail (western division) .....	14,326	15,767	11,926
Bay, Lake and Upper St. Lawrence ports ...	20,219	29,433	26,454
Lower St. Lawrence and Maritime ports ....	21,048	31,646	30,966
Storage afloat .....	16,617	22,121	14,280
In transit rail (eastern division) .....	4,365	983	2,510
Totals .....	313,102	454,184	401,672

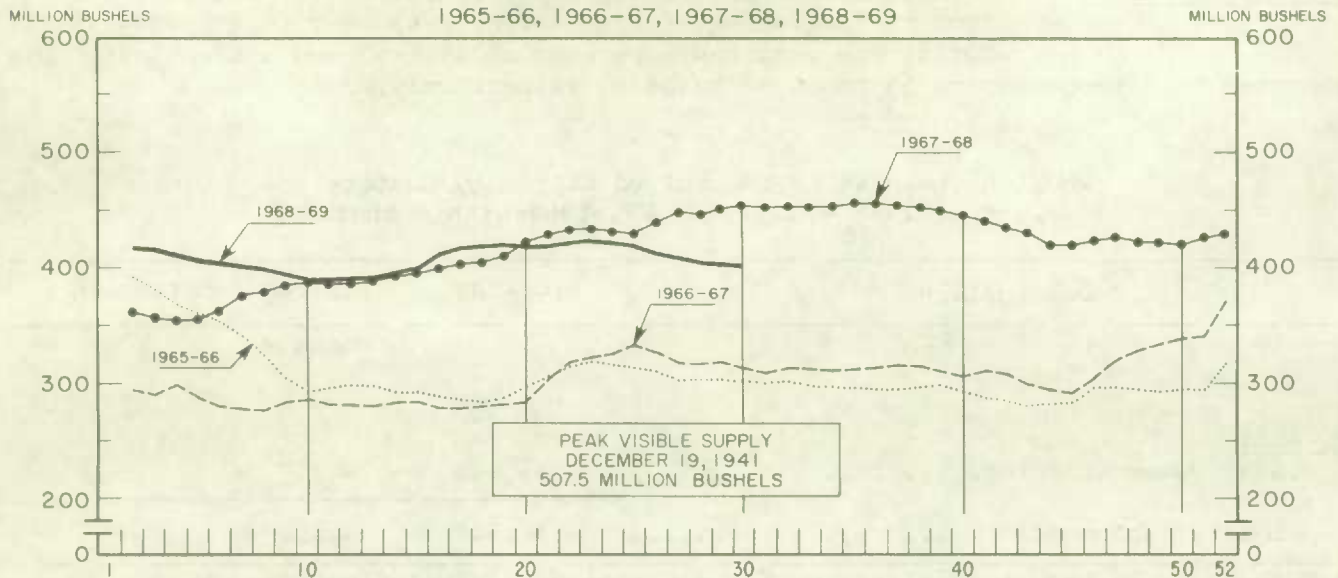
Grading of Wheat Inspected, August 1968-January 1969 with Comparisons

Grade	Crop year		August - January			
	Average					
	1962-63	1967-68	1967-68		1968-69	
	—					
	1966-67					
	per cent	per cent	cars	per cent	cars	per cent
No. 1 Man. Northern .....	5.1	27.9	19,188	18.9	19,301	18.9
No. 2 Man. Northern .....	35.8	43.4	48,571	47.7	35,441	34.7
No. 3 Man. Northern .....	22.7	14.8	15,305	15.0	9,315	9.1
No. 4 Man. Northern .....	10.5	3.0	3,657	3.6	1,554	1.5
No. 5 Wheat .....	4.5	0.4	458	0.5	628	0.6
No. 6 Wheat .....	0.6	0.1	242	0.2	106	0.1
Feed Wheat .....	(1)	(1)	33	(1)	16	(1)
Others Red Spring .....	13.3	4.0	5,242	5.2	26,173	25.6
C.W. Garnet .....	0.2	0.3	44	(1)	99	0.1
C.W. White Spring .....	0.1	0.1	189	0.2	107	0.1
C.W. Mixed Wheat .....	0.1	0.1	85	0.1	64	0.1
Alberta Winter .....	0.7	1.0	494	0.5	633	0.6
Nos. 1-6 C.W. Amber Durum.	5.8	4.7	7,923	7.8	4,486	4.4
Others C.W. Amber Durum ..	0.4	0.2	292	0.3	4,253	4.2
Totals .....	100.0	100.0	101,723	100.0	102,176	100.0
Gross bushels (approx.) ..			198,657,000		195,255,000	

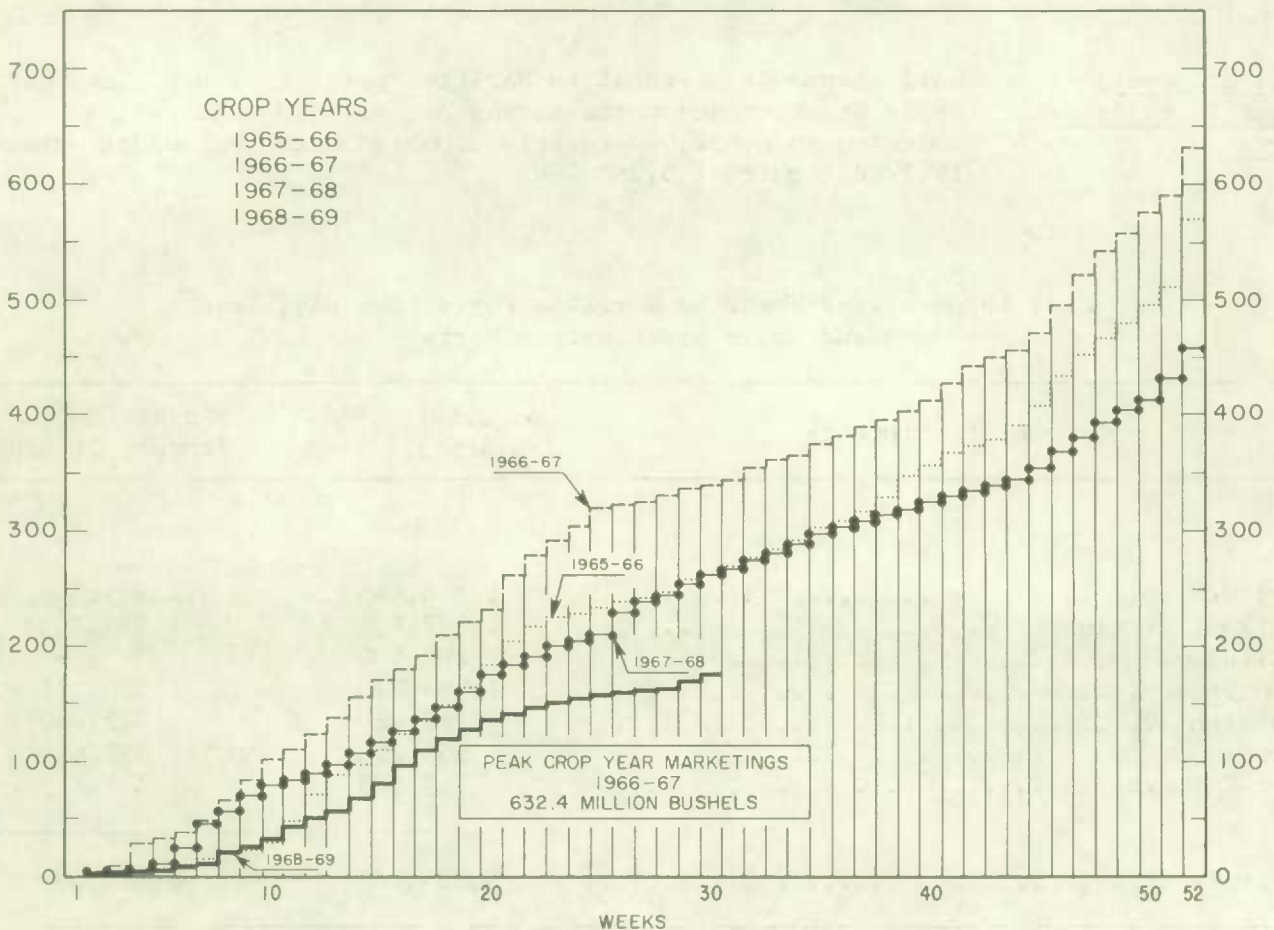
(1) Less than .05 per cent.



# WEEKLY VISIBLE SUPPLY OF CANADIAN WHEAT



## CUMULATIVE RECORD OF WHEAT MARKETINGS IN THE PRAIRIE PROVINCES BY WEEKS



(Data in both charts for crop years beginning August 1)

Wheat Shipments to  
the United States

There were no vessel and rail shipments of wheat to the United States, either for re-export or retention for domestic use, from the beginning of the current crop year to February 19, 1969. During the comparable periods of 1966-67 and 1967-68 shipments amounted to 4 thousand and 55 thousand bushels, respectively.

Wheat Shipments\* to the United States by Destination  
August 1, 1968 — February 19, 1969 with Comparisons

Destination	1966-67	1967-68	1968-69
		bushels	
<u>By Rail</u>			
U.S.A. Domestic Points .....	54,915	4,357	—
Totals, shipments .....	54,915	4,357	—

\* Either for re-export or retention for domestic use. Excluding seed wheat.

Rail Shipments of  
Wheat to Maritime  
Ports

Rail shipments of wheat to Maritime ports from Bay, Lake and Upper St. Lawrence ports during August 1968-January 1969 amounted to 6,952,000 bushels compared with the August-January 1967-68 figure of 5,285,000.

Rail Shipments of Wheat to Maritime Ports from Bay, Lake  
and Upper St. Lawrence Ports

Origin of shipments	August 1, 1967- January 31, 1968	August 1, 1968 - January 31, 1969
		bushels
Port McNicoll .....	1,724,945	1,911,446
Midland, Tiffin .....	1,107,154	1,649,709
Collingwood .....	200,000	—
Owen Sound .....	1,094,779	1,330,351
Goderich .....	789,489	829,240
Sarnia .....	359,113	459,450
Port Colborne .....	9 383	771,413
Totals .....	5,284,863	6,951,609

Rail Shipments of Wheat from Fort William-Port Arthur, 1965-66 — 1968-69

Month	1965-66	1966-67	1967-68	1968-69
bushels				
August .....	10,458	118,973	133,651	—
September .....	10,500	83,333	182,051	23,084
October .....	4,500	89,384	152,009	57,458
November .....	10,205	163,332	50,475	101,966
December .....	7,500	106,833	143,833	44,136
January .....	46,108	145,889	160,214	131,034
February .....	26,712	120,334	143,884	
March .....	98,598	177,393	274,690	
April .....	71,701	133,699	123,167	
May .....	89,166	207,038	61,460	
June .....	178,183	154,139	101,950	
July .....	82,282	93,094	88,500	
Totals .....	635,913	1,593,441	1,615,884	

Distribution of Rail Shipments of Wheat from Fort William-Port Arthur, January 1969

Grade	Prince Edward Island	Nova Scotia	New Brunswick	Quebec	Ontario
bushels					
5 Wheat .....	1,500	1,333	12,167	18,000	5,500
6 Wheat .....	—	5,500	2,000	4,000	—
Rejected .....	—	—	—	—	2,000
Durum .....	—	—	—	2,000	1,500
Others .....	2,000	—	4,000	56,133	13,401
Totals .....	3,500	6,833	18,167	80,133	22,401

Overseas Exports of Canadian Grain by Ports of Loading, August 1, 1968 — February 19, 1969  
with Comparisons

Port	Wheat(1)	Durum wheat(1)	Oats(1)	Barley	Rye	Flaxseed	Rapeseed
thousand bushels							
<u>Pacific Seaboard</u>							
Van.-New West. ....	71,345	236	132	4,570	1,329	3,054	7,198
Victoria .....	4,401	—	—	—	—	—	—
Prince Rupert .....	2,349	—	—	—	—	—	—
Churchill .....	21,613	—	—	—	—	—	—
Lakehead direct .....	2,297	688	378	1,048	1,190	1,657	91
Prescott direct .....	336	—	—	—	—	—	—
<u>St. Lawrence</u>							
Montreal .....	10,111	6,700	336	—	100	214	—
Sorel .....	3,193	—	—	—	—	—	—
Trois Rivières .....	1,697	259	—	—	—	6	—
Quebec .....	4,081	344	—	—	—	160	—
Baie Comeau .....	7,577	282	—	—	—	820	—
Port Cartier .....	6,807	2,776	—	—	—	—	—
<u>Maritime</u>							
Saint John .....	474	—	—	—	—	—	—
West Saint John .....	4,414	328	53	—	—	490	—
Halifax .....	5,618	—	—	—	—	—	—
Totals .....	146,315	11,613	899	5,618	2,619	6,401	7,289
August 1, 1967 — February 21, 1968 .....	124,147	7,146	1,144	17,742	2,423	7,280	6,532

(1) Excluding seed.



Shipments Under Feed  
Grain Assistance Regulations

Claims filed for payment up to December 31, 1968 represent the movement of 2,319 thousand bushels of wheat from the Prairie Provinces to Eastern Canada and British Columbia under the Feed Grain Assistance Regulations during August-November 1968. During the same four months last year claims had been filed for a total of 4,214 thousand bushels, indicating on the assumption of approximately the same rate of submission of claims during both the current and preceding crop years, that the August-November shipments of wheat under the policy were running about 45 per cent below those of 1967. Revised data on the August-November 1967 shipments of wheat based on claims submitted up to December 31, 1968 place the four-month total at 4,729 thousand bushels. The bulk of the shipments during the current four months under review went to destinations in Quebec followed by smaller shipments to British Columbia and Ontario.

Provincial Distribution of Wheat Shipments under the Feed Grain Assistance Regulations  
August-December 1968 and 1967

Month	Nfld.	P.E.I.	N.S.	N.B.	Que.	Ont.	B.C.	Total	Eastern wheat to Quebec
thousand bushels									
August 1968 .....	4	20	111	32	326	70	71	635	34
September .....	3	8	40	13	280	92	139	575	39
October .....	4	5	64	13	360	82	153	683	21
November .....	3	12	46	14	278	69	5	426	11
Totals(1) .....	14	44	262	72	1,245	314	368	2,319	105
<u>Same period 1967:</u>									
Preliminary(2)	23	67	455	125	2,018	836	691	4,214	-
Revised(1) .....	123	68	467	131	2,135	898	906	4,729	-

(1) Based on claims filed up to December 31, 1968.

(2) Based on claims filed up to December 31, 1967.

Preliminary data on millfeed shipments under the Feed Grain Assistance Regulations indicate shipments of 150,413 tons during the first four months of the current crop year. During August-November 1967 claims had been filed for a total of 156,503 tons, indicating on the assumption of approximately the same rate of submission of claims during both periods, that this year's shipments of millfeeds under the policy were running about 4 per cent below those of 1967. Revised data on the August-November 1967 shipments of millfeeds based on claims submitted up to December 31, 1968 place the four-month total at 182,530 tons. The greater portion of the millfeed shipments during the period under review went to destinations in Quebec and Ontario.

Provincial Distribution of Millfeed Shipments under  
the Feed Grain Assistance Regulations  
August-December 1968 and 1967

Province	1967		1968
	Preliminary(2)	Revised(1)	Preliminary(1)
tons			
Newfoundland .....	1,356	2,211	2,677
Prince Edward Island .....	2,981	3,107	2,938
Nova Scotia .....	8,629	10,786	11,672
New Brunswick .....	9,484	10,253	10,168
Quebec .....	80,398	90,883	76,757
Ontario .....	46,840	54,163	38,998
British Columbia .....	6,815	11,127	7,203
Totals .....	156,503	182,530	150,413

(1) Based on claims filed up to December 31, 1968.

(2) Based on claims filed up to December 31, 1967.

Monthly Exports of Canadian Wheat and Wheat Flour

Year and month	Wheat in bulk(1)	Seed wheat(2)	Total wheat	Wheat flour(2,3)	Total Wheat and wheat flour(3)
thousand bushels					
<u>1966-67</u>					
August .....	64,233	132	64,365	2,753	67,118
September .....	47,357	103	47,460	2,122	49,582
October .....	51,659	39	51,698	3,551	55,250
November .....	48,942	53	48,995	2,471	51,466
December .....	33,477	47	33,523	3,889	37,412
January .....	27,719	48	27,767	3,004	30,771
February .....	20,102	52	20,154	1,616	21,771
March .....	21,718	128	21,845	3,663	25,508
April .....	27,847	81	27,928	2,475	30,403
May .....	57,134	11	57,145	2,502	59,647
June .....	47,517	6	47,522	2,812	50,334
July .....	35,033	18	35,051	993	36,044
Totals .....	482,737	719	483,456	31,851	515,307
<u>1967-68</u>					
August .....	24,424	52	24,477	2,773	27,249
September .....	20,211	60	20,272	2,037	22,309
October .....	19,851	67	19,917	1,581	21,498
November .....	21,967	99	22,066	1,811	23,877
December .....	12,920	56	12,976	2,355	15,332
January .....	19,259	56	19,315	1,737	21,052
February .....	18,903	62	18,965	2,394	21,359
March .....	21,388	169	21,557	2,621	24,178
April .....	26,661	5	26,666	2,036	28,702
May .....	42,311	7	42,317	2,061	44,378
June .....	40,798	1	40,799	1,349	42,148
July .....	41,975	18	41,993	1,937	43,930
Totals .....	310,669	651	311,320	24,690	336,010
<u>1968-69(4)</u>					
August .....	31,127	1	31,128	2,270	33,398
September .....	30,019	45	30,064	2,437	32,500
October .....	25,995	(5)	25,996	2,079	28,074
November .....	23,338	68	23,406	2,053	25,459
December .....	16,061	50 <sup>r</sup>	16,112 <sup>r</sup>	1,934	18,045 <sup>r</sup>
January .....	18,843	9	18,853	1,574	20,427
Totals .....	145,384	173	145,558	12,346	157,903

(1) Export clearances including shipments to the United States compiled by the Statistics Division, Board of Grain Commissioners for Canada.

(2) Compiled from Canadian Customs returns, 1966-67 and 1967-68 adjusted to remove effect of time lag in reporting.

(3) In terms of wheat equivalent. Wheat flour conversion rate: 2.3 bushels per cwt.

(4) Preliminary, subject to revision.

(5) Less than 500 bushels.

<sup>r</sup> Revised figures.

Exports of Canadian Wheat(1) by Destination, January 1969 and 1968

Destination	Wheat (except durum)	Durum wheat	All wheat	
			January 1969	January 1968 <sup>r</sup>
bushels				
<u>Western Europe</u>				
EEC:				
Belgium and Luxembourg .....	825,597	—	825,597	407,494
Netherlands .....	1,851,963	—	1,851,963	1,027,040
Sub-totals .....	2,677,560	—	2,677,560	1,434,534
<u>Other Western Europe</u>				
Britain .....	3,803,073	—	3,803,073	5,813,730
Denmark .....	22,027	—	22,027	—
Ireland .....	—	—	—	112,000
Switzerland .....	28,000	—	28,000	—
Sub-totals .....	3,853,100	—	3,853,100	5,925,730
Totals .....	6,530,660	—	6,530,660	7,360,264
<u>Eastern Europe</u>				
Hungary .....	1,094,299	—	1,094,299	—
U.S.S.R. (Russia) .....	—	—	—	2,975,836
Totals .....	1,094,299	—	1,094,299	2,975,836
<u>Africa</u>				
Algeria .....	—	—	—	404,177
Ghana .....	91,465	—	91,465	—
Sierra Leone .....	141,866	—	141,866	—
Tanzania .....	32,318	—	32,318	37,335
Totals .....	265,649	—	265,649	441,512
<u>Asia</u>				
China, Communist .....	5,013,508	—	5,013,508	667,137
Hong Kong .....	120,773	—	120,773	97,440
India .....	3,359,661	—	3,359,661	—
Japan .....	1,726,234	—	1,726,234	5,639,618
Malaysia .....	42,933	—	42,933	37,147
Philippines .....	—	—	—	448,000
Singapore .....	39,200	—	39,200	—
Taiwan .....	137,200	—	137,200	367,433
Totals .....	10,439,509	—	10,439,509	7,256,775
<u>Western Hemisphere</u>				
Cuba .....	—	—	—	422,000
Guatemala .....	16,667	—	16,667	—
Jamaica .....	121,449	—	121,449	997
Trinidad and Tobago .....	220,133	—	220,133	—
Venezuela .....	155,120	—	155,120	797,569
United States .....	—	—	—	4,357
Totals .....	513,369	—	513,369	1,224,923
Sub-totals, all countries ....	18,843,486	—	18,843,486	19,259,310
Seed wheat(2).....	—	—	9,333	55,837
Totals, all countries .....	18,843,486	—	18,852,819	19,315,147

(1) Overseas clearances as reported by the Statistics Division, Board of Grain Commissioners for Canada, for all countries except the United States. Excluding seed wheat.

(2) Compiled from Canadian Customs returns, 1968 adjusted for time lag, 1969 preliminary.

<sup>r</sup> Revised figures.



Cumulative Exports of Canadian Wheat(1) by Destination

Destination	August 1968 - January 1969			Total same period last year <sup>r</sup>
	Wheat (except durum)	Durum wheat	Total wheat	
bushels				
<u>Western Europe</u>				
EEC:				
Belgium and Luxembourg ..	4,277,392	71,934	4,349,326	6,302,009
France .....	767,848	430,505	1,198,353	451,832
Germany, Federal Republic	4,496,161 <sup>r</sup>	2,975,512 <sup>r</sup>	7,471,673 <sup>r</sup>	11,194,134
Italy .....	5,438,631	3,528,780	8,967,411	5,485,455
Netherlands .....	3,530,480 <sup>r</sup>	423,600 <sup>r</sup>	3,954,080 <sup>r</sup>	4,069,971
Sub-totals .....	18,510,512	7,430,331	25,940,843	27,503,401
<u>Other Western Europe</u>				
Austria .....	—	393,643	393,643	404,200
Britain .....	31,964,991 <sup>r</sup>	194,127 <sup>r</sup>	32,159,118 <sup>r</sup>	35,240,801
Denmark .....	22,027	—	22,027	22,400
Finland .....	638,500	—	638,500	651,840
Ireland .....	395,734 <sup>r</sup>	—	395,734 <sup>r</sup>	655,599
Malta and Gozo .....	297,504	—	297,504	263,200
Norway .....	588,000	—	588,000	1,194,667
Sweden .....	59,957	—	59,957	—
Switzerland .....	1,619,345	2,189,695 <sup>r</sup>	3,809,040 <sup>r</sup>	1,158,369
Sub-totals .....	35,586,058	2,777,465	38,363,523	39,591,076
Totals .....	54,096,570	10,207,796	64,304,366	67,094,477
<u>Eastern Europe</u>				
Hungary .....	2,939,633	—	2,939,633	—
Poland .....	3,267,960	146,981	3,414,941	2,500,944
U.S.S.R. (Russia) .....	1,734,881	—	1,734,881	17,526,348
Totals .....	7,942,474	146,981	8,089,455	20,027,292
<u>Africa</u>				
Algeria .....	1,796,005	—	1,796,005	818,577
Congo .....	36,500	—	36,500	—
Ghana .....	504,689	—	504,689	89,600
Mauritania .....	771	—	771	—
Niger (Ivory Coast) .....	687,344	—	687,344	—
Nigeria .....	—	—	—	300,533
Republic of South Africa ..	—	—	—	901,600
Sierra Leone .....	141,866	—	141,866	—
Sudan .....	—	—	—	36,195
Tanzania .....	36,745	—	36,745	186,675
Tunisia .....	—	692,139	692,139	—
Totals .....	3,203,920	692,139	3,896,059	2,333,180

See footnotes at end of table.

Cumulative Exports of Canadian Wheat(1) by Destination

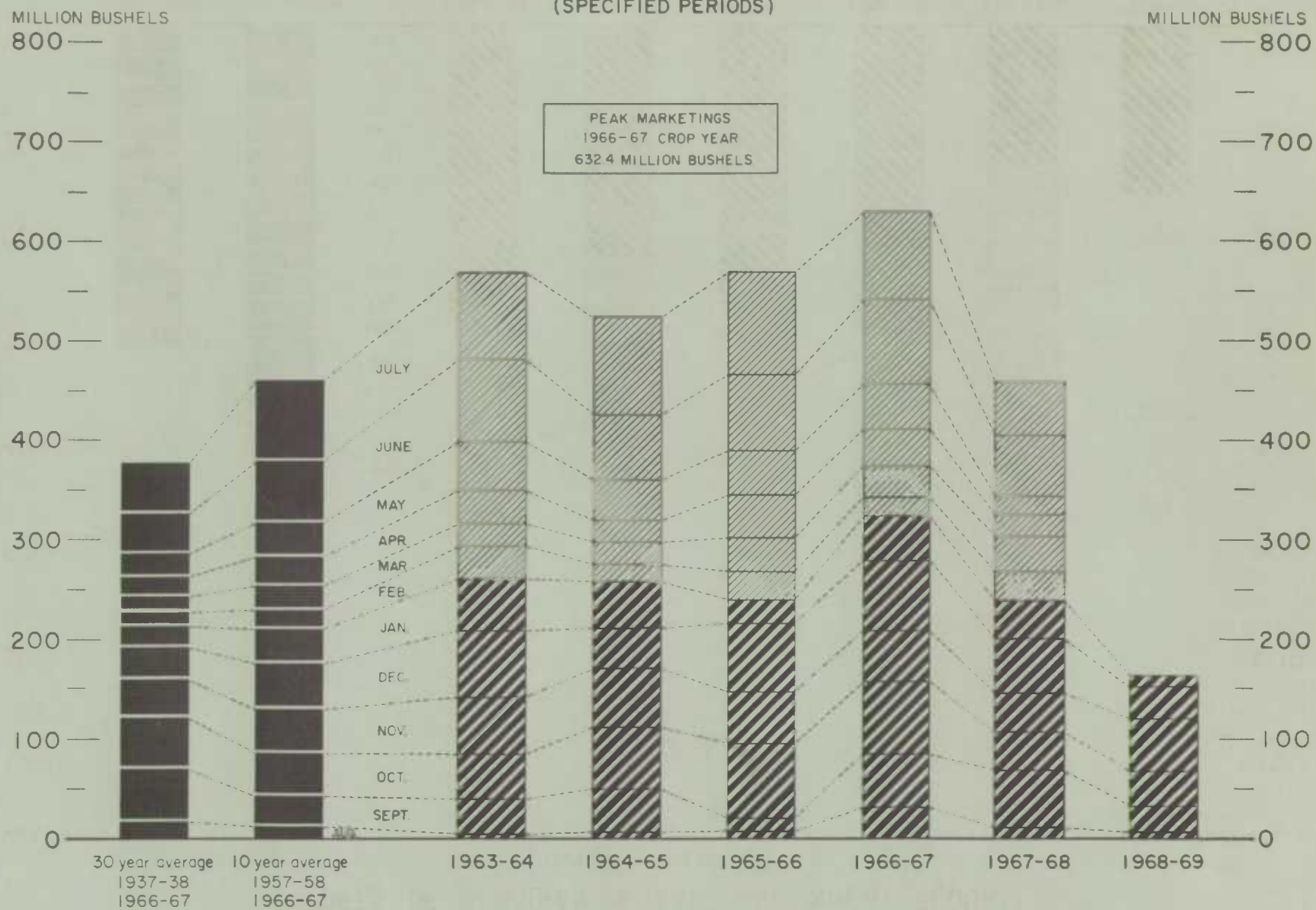
Destination	August 1968 - January 1969			Total same period last year <sup>r</sup>
	Wheat (except durum)	Durum wheat	Total wheat	
	bushels			
<u>Asia</u>				
China, Communist .....	35,854,319	—	35,854,319	3,623,228
Hong Kong .....	472,454	—	472,454	508,853
India .....	4,250,903	—	4,250,903	128,592
Indonesia .....	29,394	—	29,394	—
Iraq .....	12,860	—	12,860	—
Japan .....	18,652,175	173,612	18,825,787	18,095,024
Jordan .....	—	—	—	12,860
Lebanon .....	—	—	—	8,613
Malaysia .....	155,680	—	155,680	220,453
Pakistan .....	2,753,926	—	2,753,926	875,609
Philippines .....	—	—	—	927,733
Saudi Arabia .....	—	—	—	102,041
Singapore .....	77,467	—	77,467	81,013
Syria .....	2,020,883	—	2,020,883	32,848
Taiwan .....	137,200	—	137,200	389,001
Turkey .....	32,518	—	32,518	—
Totals .....	64,449,779	173,612	64,623,391	25,005,868
<u>Western Hemisphere</u>				
Bahamas .....	40	—	40	—
Barbados .....	40	—	40	40
Cuba .....	1,712,200	—	1,712,200	2,051,259
Ecuador .....	254,145	—	254,145	150,656
El Salvador .....	—	—	—	167,488
Guatemala .....	16,667	—	16,667	3,685
Jamaica .....	516,047	—	516,047	6,034
Paraguay .....	1,727	—	1,727	—
St. Lucia .....	187	—	187	373
Trinidad and Tobago .....	220,133	—	220,133	—
Venezuela .....	1,748,179	1,823	1,750,002	1,788,024
United States .....	—	—	—	4,357
Totals .....	4,469,365	1,823	4,471,188	4,171,916
Sub-totals, all countries	134,162,108	11,222,351	145,384,459	118,632,733
Seed wheat(3) .....			173,499	390,526
Totals, all countries	134,162,108	11,222,351	145,557,958	119,023,259

- (1) Overseas clearances as reported by the Statistics Division, Board of Grain Commissioners for Canada, for all countries except the United States. Excluding seed wheat.
- (2) Compiled from returns of Canadian elevator licensees and shippers and advice from American grain correspondents.
- (3) Compiled from Canadian Customs returns, 1967-68 adjusted for time lag.

<sup>r</sup> Revised figures.

# FARMERS' MARKETINGS OF WHEAT, PRAIRIE PROVINCES

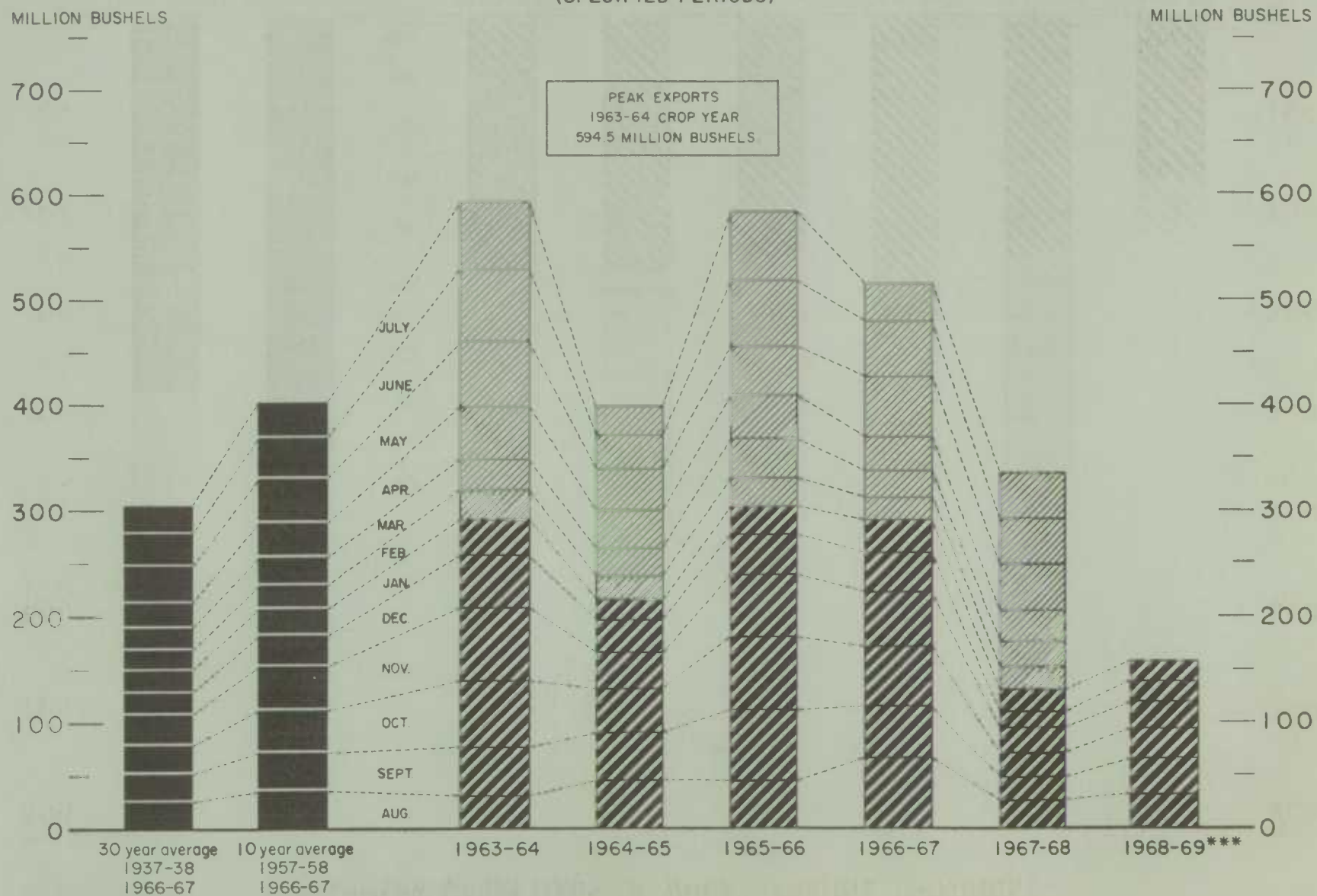
(SPECIFIED PERIODS)





## EXPORTS OF CANADIAN WHEAT\* AND WHEAT FLOUR\*\*

(SPECIFIED PERIODS)



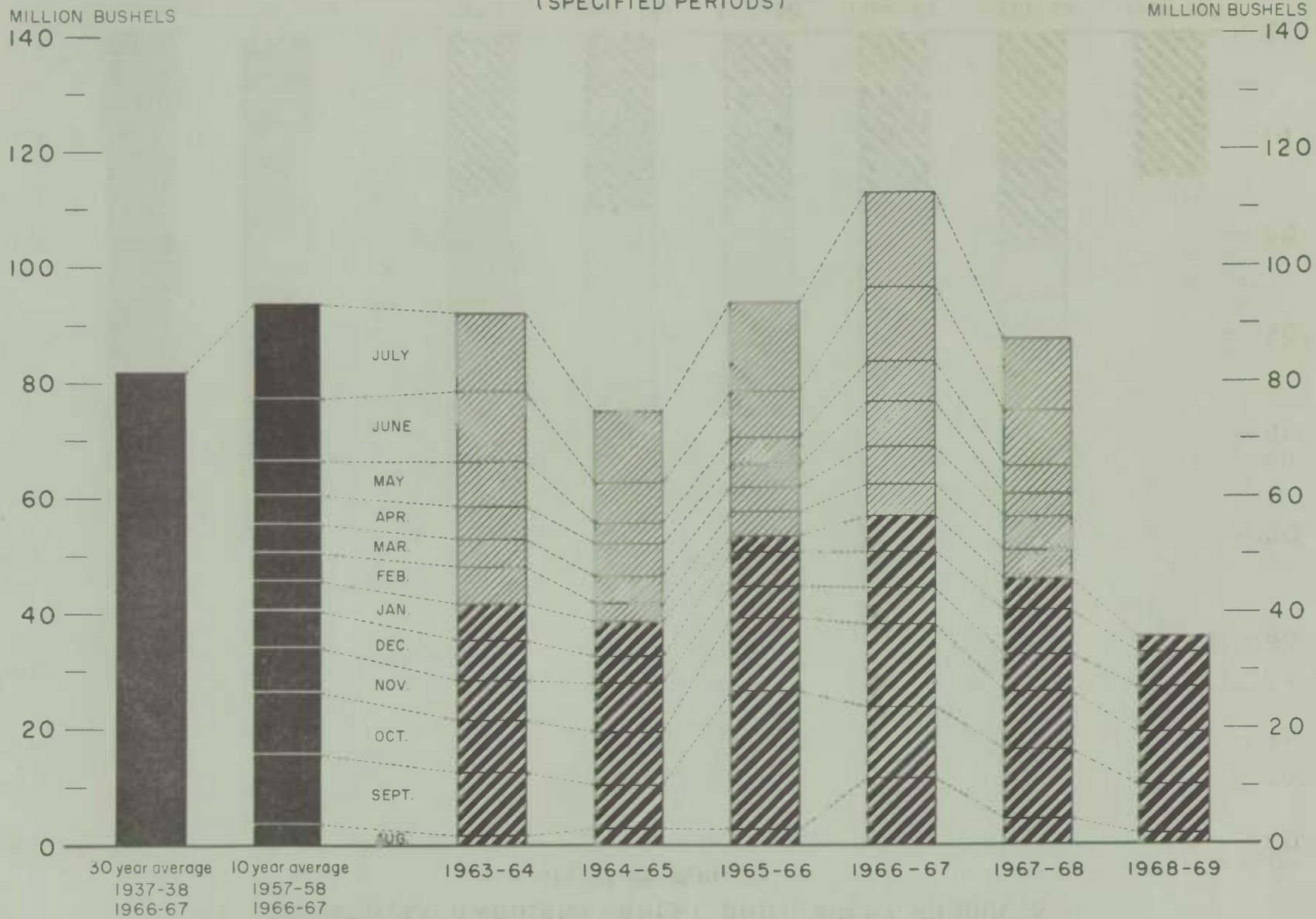
\* Beginning with 1955-56 includes seed wheat.

\*\* In terms of wheat equivalent.

\*\*\* Preliminary.

Agriculture Division D.B.S.

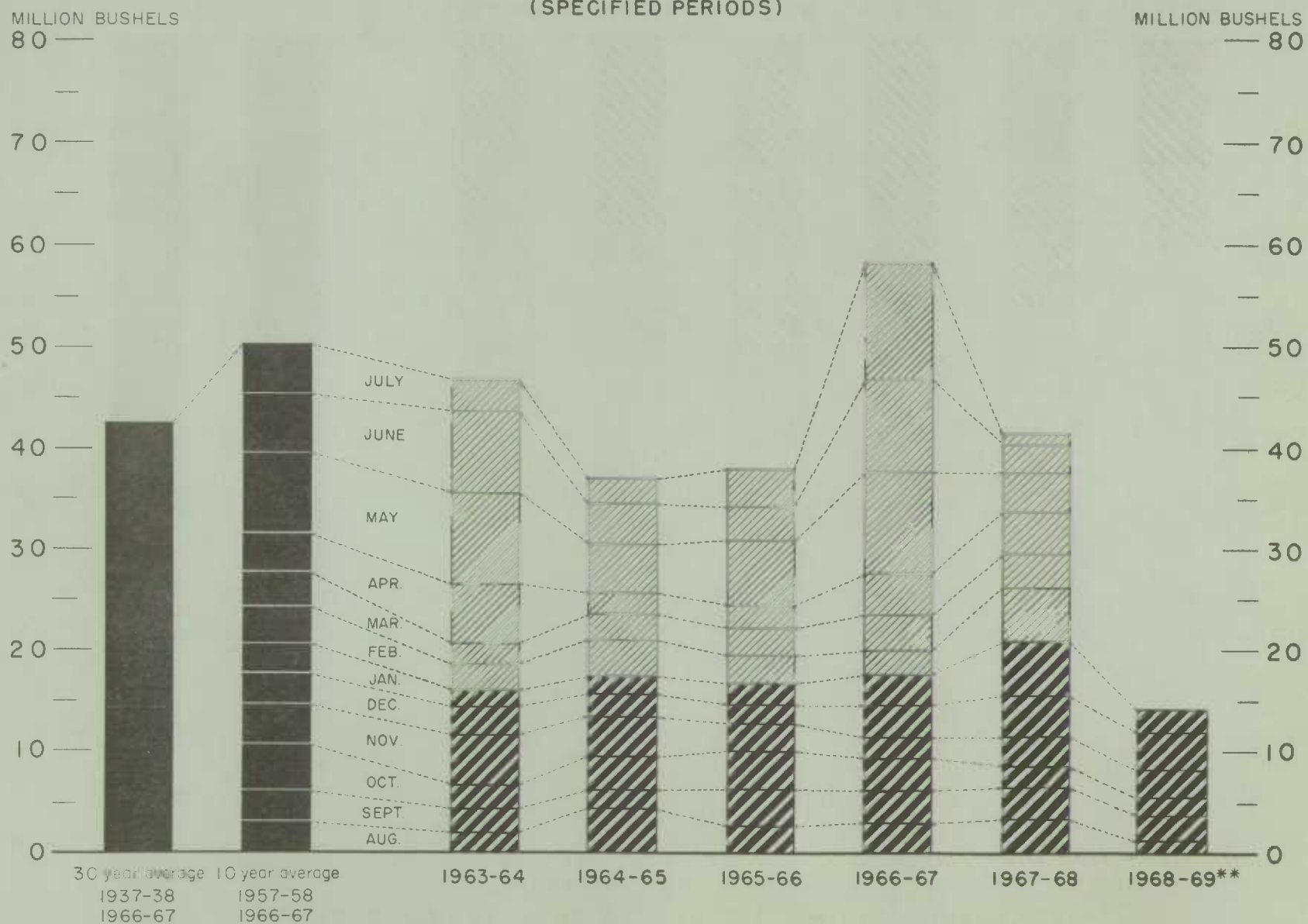
# FARMERS' MARKETINGS OF BARLEY, PRAIRIE PROVINCES (SPECIFIED PERIODS)



Agriculture Division D.B.S.

# EXPORTS OF CANADIAN BARLEY AND BARLEY PRODUCTS\*

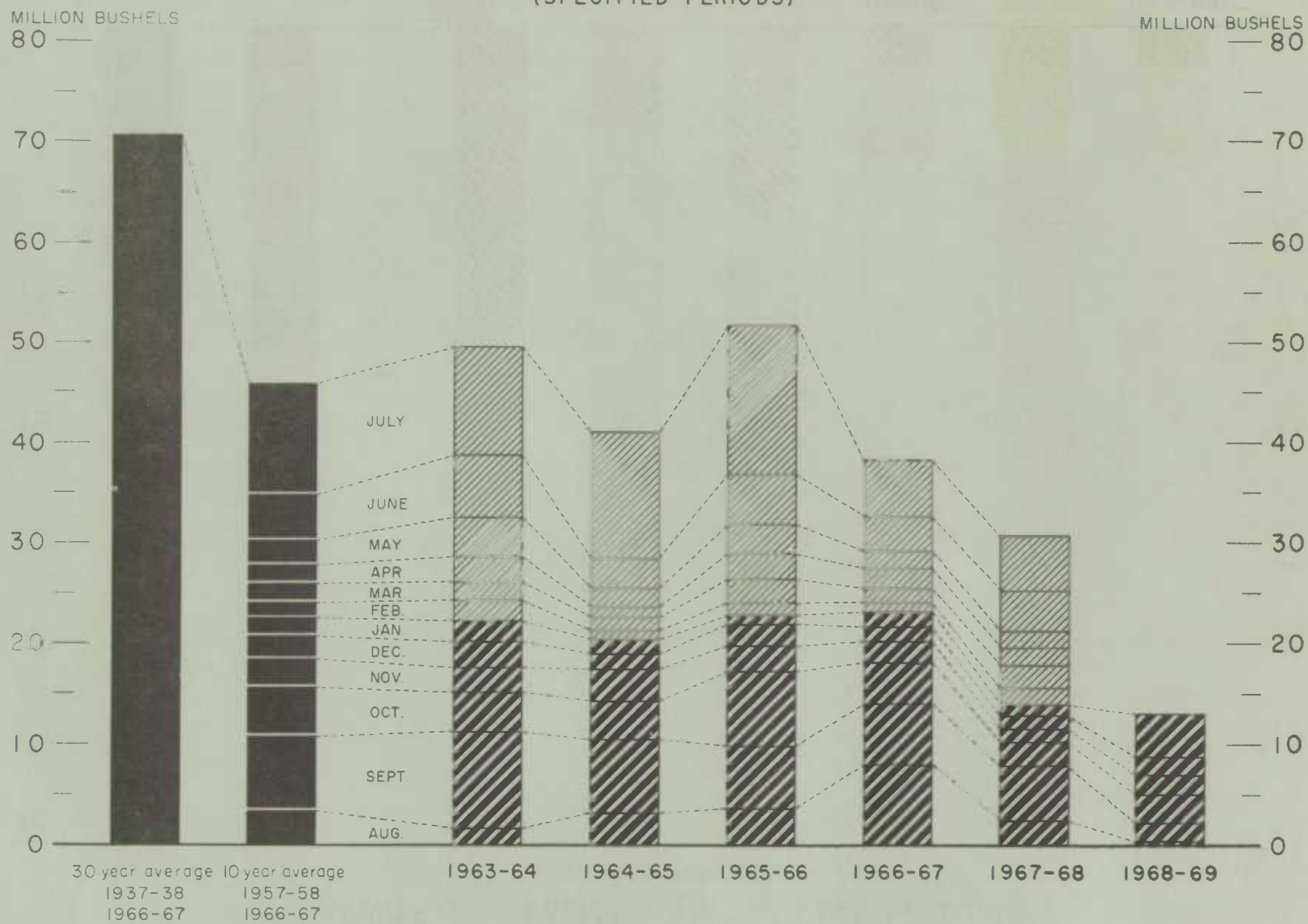
(SPECIFIED PERIODS)



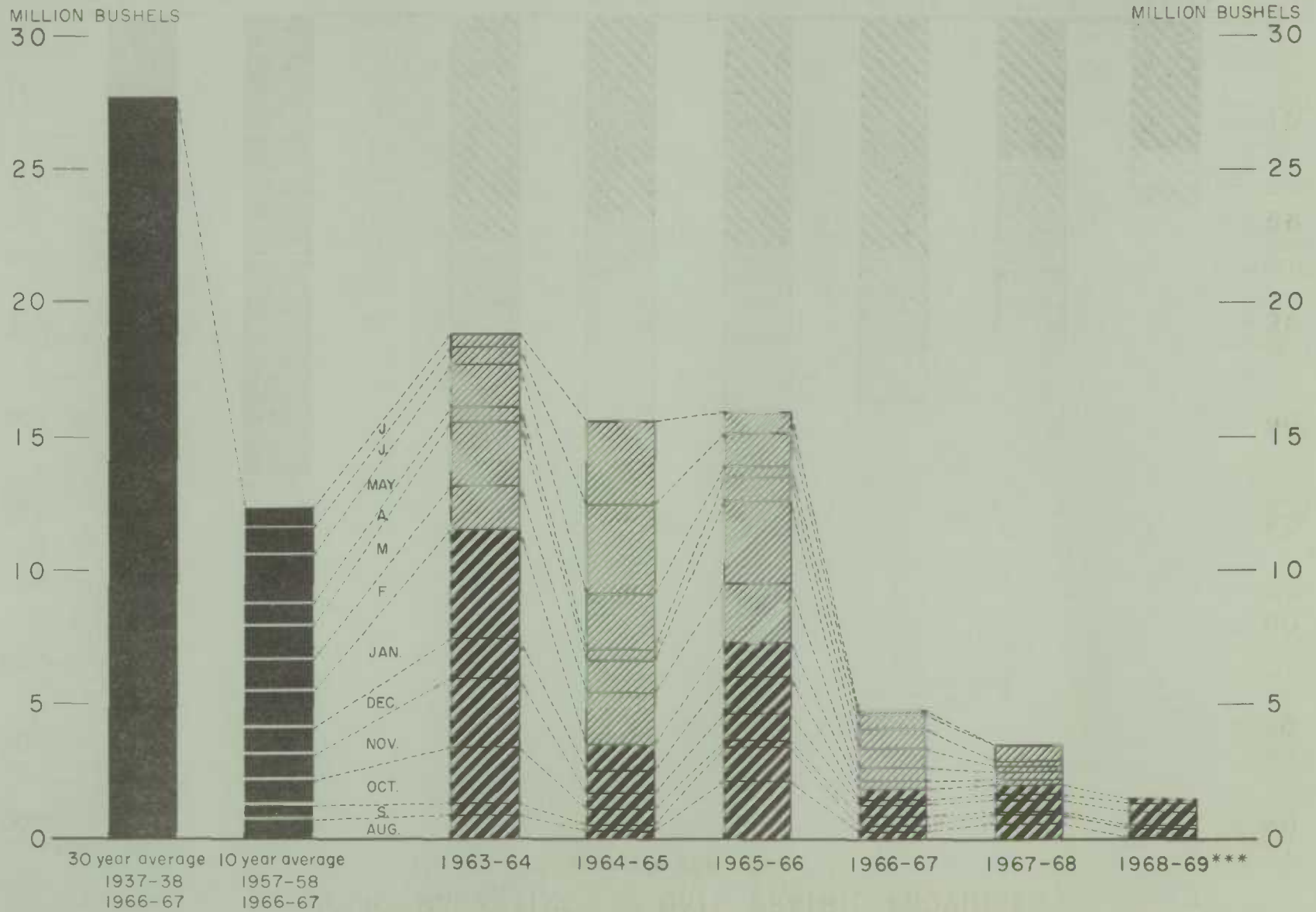
\* In terms of grain equivalent. \*\* Preliminary.



# FARMERS' MARKETINGS OF OATS, PRAIRIE PROVINCES (SPECIFIED PERIODS)



# EXPORTS OF CANADIAN OATS\* AND OAT PRODUCTS\*\* (SPECIFIED PERIODS)

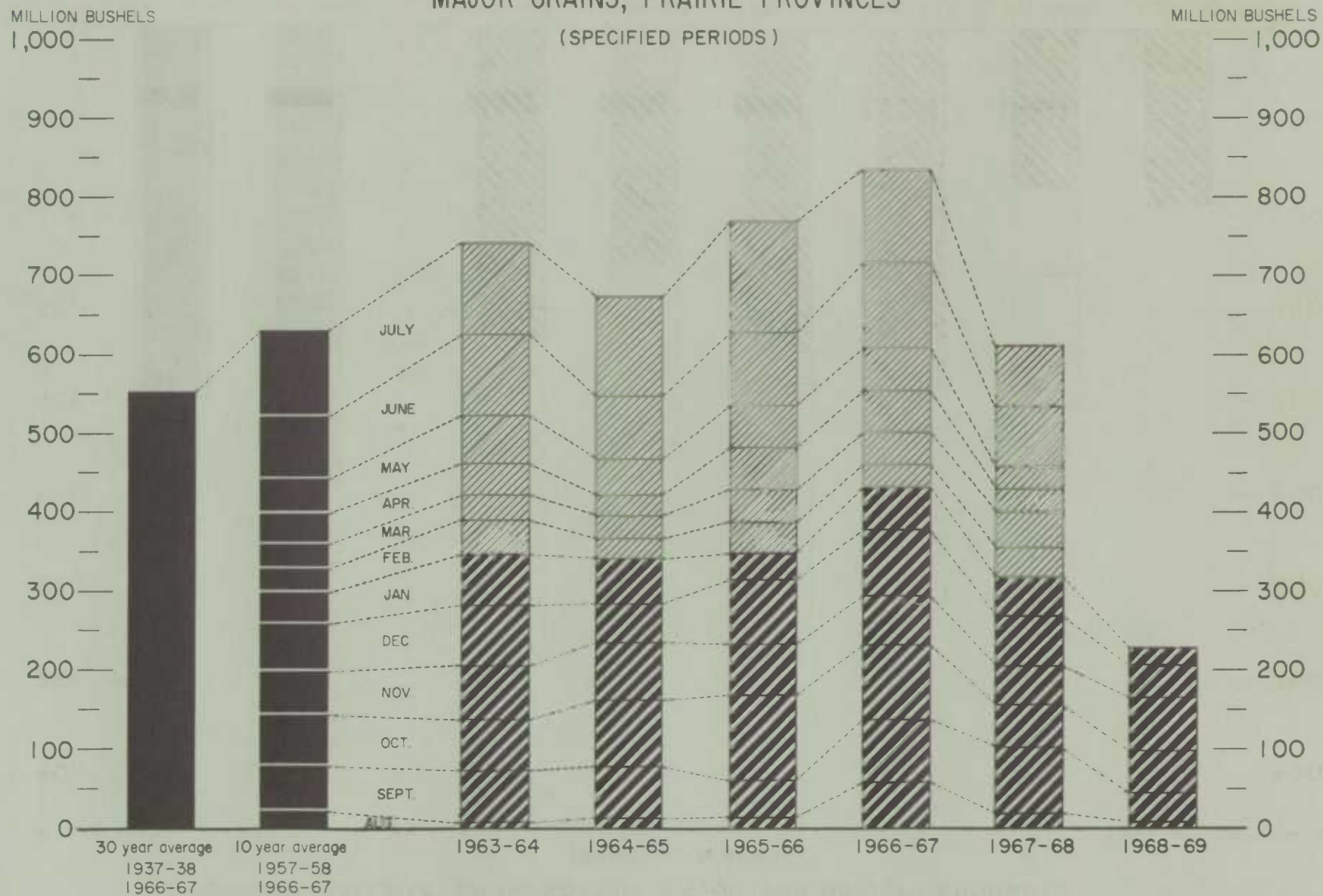


\* Beginning with 1960-61 includes relatively small quantity of seed oats.

\*\* In terms of grain equivalent.

\*\*\* Preliminary.

# FARMERS' MARKETINGS OF CANADA'S SIX MAJOR GRAINS\*, PRAIRIE PROVINCES



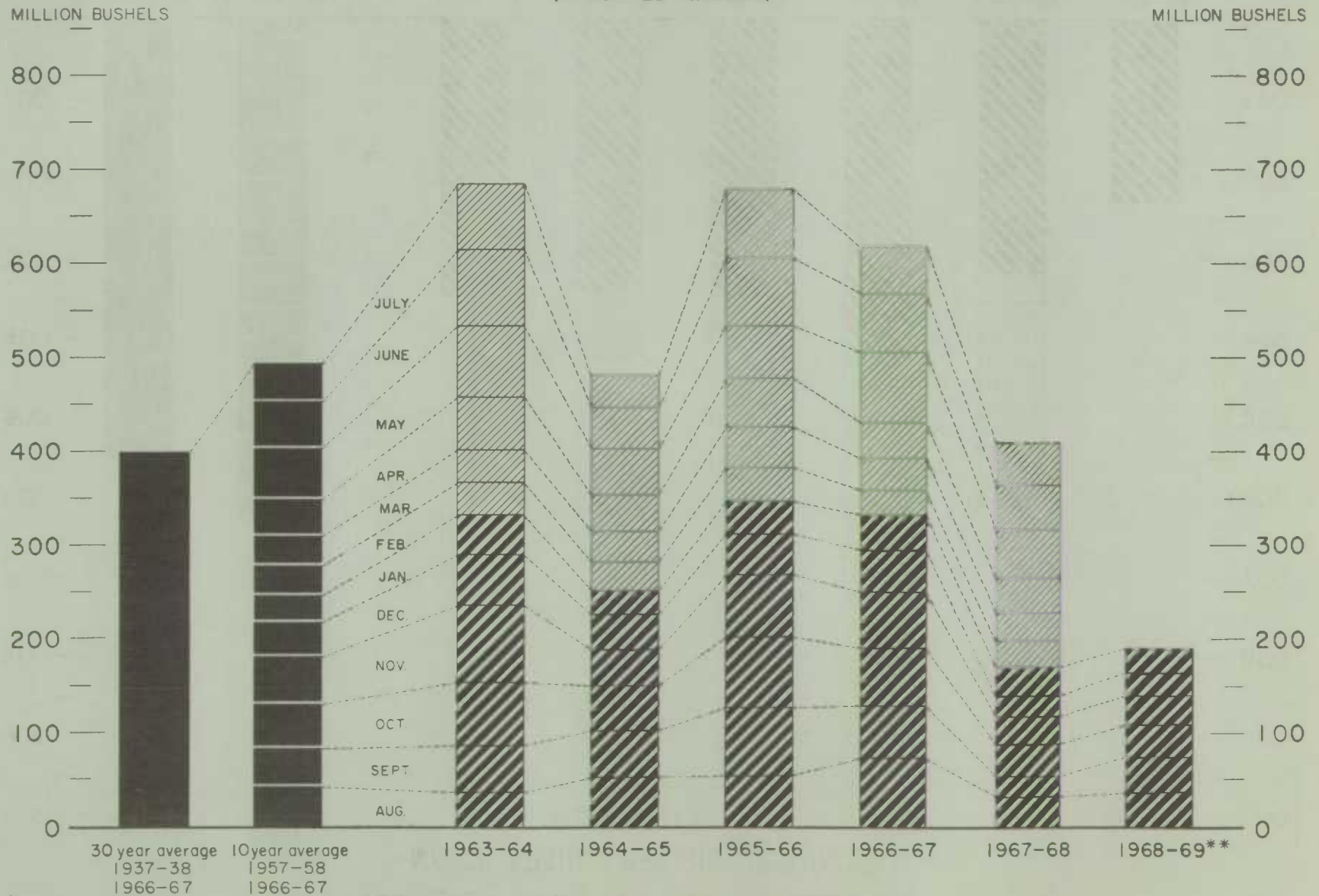
\*Wheat, oats, barley, rye, flaxseed and from 1960-61 rapeseed

Agriculture Division D.B.S.



# EXPORTS OF CANADA'S SIX MAJOR GRAINS AND PRODUCTS\*

(SPECIFIED PERIODS)



Customs Exports of Canadian Wheat Flour by Countries of Consignment

Destination	October	January	August — January	
	1968(1)	1969(2)	1968-69(2)	1967-68(1)
bushels				
<u>Western Europe</u>				
EEC:				
Belgium and Luxembourg .....	10,302	26,376	49,882	46,246
Italy .....	2,070	2,070	8,280	10,350
Netherlands .....	2,300	—	2,696	12,802
Sub-totals .....	14,672	28,446	60,858	69,398
<u>Other Western Europe</u>				
Britain .....	199,042	236,440	1,401,057	1,548,698
Denmark .....	460	—	460	460
Gibraltar .....	—	2,576	5,152	9,660
Greece .....	18,526	16,627	36,809	43,557
Iceland .....	1,610	—	3,386	1,615
Ireland .....	322	—	2,898	5,957
Norway .....	—	115	115	115
Portugal .....	3,501	3,680	16,903	45,103
Spain .....	—	—	—	1,967
Sweden .....	—	—	515	515
Sub-totals .....	223,461	259,438	1,467,295	1,657,647
Totals .....	238,133	287,884	1,528,153	1,727,045
<u>Africa</u>				
Algeria .....	20,266	—	65,870	52,130
Angola .....	—	—	4,370	11,155
Cameroun Republic .....	460	1,150	21,402	16,753
Congo-Kinshasa .....	—	11,500	25,300	48,364
Dahomey .....	8,462	2,953	15,426	29,281
French Africa nes .....	3,450	—	8,285	—
Gambia .....	11,638	—	28,819	46,474
Ghana .....	287,031	14,695	781,034	819,150
Guinea Republic .....	—	—	88,893	—
Ivory Coast .....	3,220	—	3,795	3,220
Liberia .....	27,729	8,266	98,467	89,312
Libya .....	—	—	—	225
Malawi .....	—	7,993	25,392	37,347
Morocco .....	—	—	—	53,243
Mozambique .....	6,760	14,945	32,862	21,967
Nigeria .....	230	—	230	—
Portuguese Africa nes .....	2,019	1,150	38,141	15,686
Republic of South Africa .....	—	—	—	2,151
Sierra Leone .....	1,403	90	7,091	4,363
Tanzania .....	—	1,150	1,150	5,750
Togo .....	35,979	6,325	91,503	69,262
Tunisia .....	—	—	—	2,222
U.A.R. - Egypt .....	—	308,101	676,140	—
Zambia .....	—	—	—	5,750
Totals .....	408,647	378,318	2,014,170	1,333,805
<u>Asia</u>				
Aden .....	—	—	—	6,440
Afghanistan .....	—	—	621	517
Bahrain .....	—	—	—	218
Ceylon .....	2,219	—	839,015	859,628
Cyprus .....	55	55	467	—
Hong Kong .....	29,891	20,443	185,065	211,053
India .....	230	—	230	78,660
Indonesia .....	214,434	—	361,857	—
Iran .....	895	—	1,822	322
Iraq .....	—	—	15,721	—

See footnotes at end of table.

Customs Exports of Canadian Wheat Flour by Countries of Consignment

Destination	October 1968(1)	January 1969(2)	August - January	
			1968-69(2)	1967-68(1)
			bushels	
<u>Asia (concluded)</u>				
Israel .....	144,272	88,612	228,390	543,837
Japan .....	402	3,852	5,485	3,270
Jordan .....	—	—	—	5,072
Korea, South .....	—	—	—	19,470
Lebanon .....	—	6,157	188,384	183,069
Philippines .....	—	—	1,012	354
Portuguese Asia .....	2,162	1,012	10,247	5,152
Qatar .....	—	—	396	425
Saudi Arabia .....	—	—	—	124,425
Syria .....	—	—	45,545	—
Thailand .....	16,748	16,790	92,524	130,079
Trucial States .....	943	—	1,886	138
Totals .....	412,251	136,921	1,978,667	2,172,129
<u>Oceania</u>				
British Oceania nes .....	—	—	5,575	1,265
Fiji .....	—	1,323	4,071	3,149
New Zealand .....	460	—	460	173
United States Oceania .....	3,450	—	17,259	31,280
Totals .....	3,910	1,323	27,365	35,867
<u>Western Hemisphere</u>				
Bahamas .....	27,535	21,098	134,378	157,734
Barbados .....	28,394	18,639	143,536	97,249
Bermuda .....	11,332	6,098	59,554	52,168
Bolivia .....	—	—	—	18,462
Brazil .....	—	—	—	110
British Honduras .....	6,019	—	21,001	28,987
Chile .....	—	—	—	205
Costa Rica .....	—	—	—	1,835
Cuba(3) .....	1,108,919	599,139	5,265,303	4,861,305
Dominican Republic .....	1,725	1,725	1,748	803
Ecuador .....	—	—	345	—
El Salvador .....	—	—	487	143
French West Indies .....	—	—	1,842	3,976
Guatemala .....	—	5,290	6,440	2,300
Guyana .....	6,944	8,590	44,700	40,581
Haiti Republic .....	17,388	—	105,177	1,403
Honduras Republic .....	745	4,151	13,188	18,685
Jamaica .....	12,027	6,233	85,797	709,345
Leeward and Windward Islands	83,796	29,523	366,530	423,430
Netherlands Antilles .....	10,994	18,140	65,292	77,386
Panama .....	564	—	1,486	37,453
Peru .....	1,552	—	9,602	19,168
Puerto Rico .....	—	—	—	96
St. Pierre and Miquelon .....	460	2,134	10,294	12,144
Surinam .....	851	1,577	6,320	4,646
Trinidad and Tobago .....	19,058	23,184	212,934	225,927
Venezuela .....	—	—	483	230
United States Virgin Islands	—	—	126	—
United States .....	43,686	24,049	240,670	228,910
Totals .....	1,381,989	769,570	6,797,233	7,024,681
Totals, all countries ....	2,444,930	1,574,016	12,345,588	12,293,527

(1) In terms of wheat equivalent. Adjusted to remove effect of time lag in the returns made by Customs. Conversion rate: 2.3 bushels per cwt.

(2) In terms of wheat equivalent. Preliminary and unadjusted for time lag. Conversion rate: 2.3 bushels per cwt.

(3) Source - Canadian National Millers Association.  
nes - not elsewhere specified.



Canadian Wheat Board Weekly Average Cash Wheat Prices  
Basis in Store Fort William-Port Arthur

Class and grade	Week ending			
	February 7	February 14	February 21	February 28
	cents and eighths per bushel			
<u>Initial payment to producers</u>				
1 Northern .....	170	170	170	170
2 Northern .....	166	166	166	166
3 Northern .....	162	162	162	162
4 Northern .....	155	155	155	155
5 Wheat .....	141	141	141	141
6 Wheat .....	137	137	137	137
Feed Wheat .....	133	133	133	133
1 C.W. Garnet .....	155	155	155	155
2 C.W. Garnet .....	150	150	150	150
3 C.W. Garnet .....	145	145	145	145
1 Alberta Red Winter .....	154	154	154	154
2 Alberta Winter .....	149	149	149	149
3 Alberta Winter .....	143	143	143	143
1 C.W. Amber Durum .....	170	170	170	170
2 C.W. Amber Durum .....	166	166	166	166
3 C.W. Amber Durum .....	162	162	162	162
<u>International Grains Arrangement</u> <u>and domestic sales</u>				
1 Northern .....	196/3	196/4	196/7	197/1
2 Northern .....	191/7	192	192/3	192/5
3 Northern .....	190/4	190/5	191	191/2
4 Northern .....	180/3	179/3	177/5	177/1
5 Wheat .....	176/3	175/3	173/5	172/3
6 Wheat .....	169/3	168/3	166/5	165/3
Feed Wheat .....	165/3	164/3	162/5	161/3
1 C.W. Garnet .....	179/3	178/3	177/5	177/1
2 C.W. Garnet .....	178/3	177/3	176/5	176/1
3 C.W. Garnet .....	177/3	176/3	175/5	175/1
1 Alberta Red Winter .....	179/3	178/3	177/5	177/1
2 Alberta Winter .....	178/3	177/3	176/5	176/1
3 Alberta Winter .....	177/3	176/3	175/5	175/1
1 C.W. Amber Durum .....	214	214/1	214/4	214/6
2 C.W. Amber Durum .....	212	212/1	212/4	212/6
3 C.W. Amber Durum .....	207	207/1	207/4	207/6
<u>(Basis in store Vancouver)</u>				
1 Northern .....	198/5	198/6	199/1	199/3
2 Northern .....	194	194/1	194/4	194/6
3 Northern .....	192/6	192/7	193/2	193/4
4 Northern .....	186/6	186/7	187/2	187/4
5 Wheat .....	184/6	184/7	185/2	185/4
6 Wheat .....	178/6	178/7	179/2	179/4
Feed Wheat .....	174/6	174/7	175/2	175/4
1 C.W. Garnet .....	186/6	186/7	187/2	187/4
2 C.W. Garnet .....	185/6	185/7	186/2	186/4
3 C.W. Garnet .....	184/6	184/7	185/2	185/4
1 Alberta Red Winter .....	186/6	186/7	187/2	187/4
2 Alberta Winter .....	185/6	185/7	186/2	186/4
3 Alberta Winter .....	184/6	184/7	185/2	185/4

# Canadian Flour Milling Situation

Production Wheat flour production by Canadian mills during January 1969 amounted to 3,488,000 hundredweight indicating an increase of 22 per cent over the December 1968 total of 2,869,000 hundredweight, 11 per cent greater than the adjusted January 1968 figure of 3,149,000 hundredweight and 7 per cent above the ten-year (1959-68) average production for the month of January of 3,264,000 hundredweight. Mills reporting operations during January 1969 had a total rated capacity of 168,000 hundredweight per 24-hour day and on the basis of a 26-day working period 80.0 per cent of this rated capacity was effective.

Wheat milled for flour during January 1969 amounted to 7,849,000 bushels, 21 per cent greater than the 6,487,000 bushels milled during the preceding month and 11 per cent more than the 7,044,000 bushels milled during January 1968. Of the wheat milled for flour some 6,752,000 bushels were Western Canadian spring wheat (other than Durum) while the remainder consisted of Ontario winter wheat (566,000 bushels); Durum (425,000 bushels); and all other (106,000 bushels).

Exports According to preliminary Customs returns, exports of Canadian wheat flour during January 1969 amounted to the equivalent of 1,574,000 bushels (some 684,000 hundredweight of flour) 19 per cent lower than the 1,934,000 bushels exported in December 1968 and 9 per cent less than the adjusted January 1968 exports of 1,737,000 bushels. Flour shipments during the month went to forty-two countries with exports to Cuba amounting to 599,000 bushels and accounted for 38 per cent of the January total. Other principal markets for Canadian wheat flour in terms of wheat during the month, with shipments in thousands of bushels were as follows: U.A.R.- Egypt, 308; Britain, 236; and Israel, 89.

## Wheat Milled for Flour, and Production and Exports of Wheat Flour, Canada

Crop year	Wheat milled for flour bushels	Wheat flour	
		Production	Exports(1)
			cwt.
1935-36-1939-40 average .....	67,845,114	29,405,451	9,603,941
1940-41-1944-45 " .....	99,704,638	43,908,245	23,699,546
1945-46-1949-50 " .....	107,330,372	47,011,540	25,819,721
1950-51-1954-55 " .....	100,446,328	43,847,894	21,812,041
1955-56-1959-60 " .....	99,148,211	39,752,589	16,349,156
1960-61-1964-65 " .....	91,128,177	40,834,088	15,769,803
1965-66 .....	97,925,995	43,531,263	16,576,117
1966-67 .....	90,084,646	39,978,571	13,848,208
1967-68 .....	84,769,150	37,755,841	10,734,857
1968-69(2)			
August .....	7,337,239	3,240,492	986,867
September .....	6,998,651	3,098,523	1,059,361
October .....	8,172,604	3,620,231	903,816
November .....	7,184,220	3,178,288	892,595
December .....	6,486,592	2,869,465	840,653
January .....	7,849,053	3,488,490	684,355
Totals .....	44,028,359	19,495,489	5,367,647
Same months 1967-68 <sup>r</sup> .....	43,184,324	19,229,966	5,345,012

(1) Based on Customs returns. Exports for the crop year 1945-46-1967-68 revised to remove effect of time lag in the returns made by Customs.

(2) Subject to revision.

r Revised figures.

UNITED STATES SITUATION

1968-69 Wheat Supplies  
8 Per Cent Above  
Previous Year

Reflecting increases in both production and carryover stocks, total domestic supplies of wheat in the United States for the 1968-69 crop year are placed at 2,107.6 million bushels, 8 per cent above the previous year's total of 1,947.4 million. The 537.2 million bushels carried over at July 1, 1968 were 26 per cent above the 1967 stocks of 425.0 million while the current crop estimated at 1,570.4 million, exceeded by 3 per cent the 1,522.4 million of last year's outturn. With increased use of wheat for feeding, domestic use this marketing year may total about 750.0 million bushels up sharply from last year's 650.1 million. After deducting anticipated domestic requirements for the current United States crop year, some 1,357.9 million remain available for export and for carryover, an increase of 5 per cent over the 1,297.6 million in 1967-68.

Exports Below  
Previous Year

Exports of wheat and wheat flour in terms of grain equivalent during the period July 1968 - January 1969 amounted to 310.7 million bushels, 10 per cent less than the 456.2 million exported during the same months last year. The balance remaining on February 1, 1969 for export and for carryover was estimated at 1,047.2 million bushels compared with 841.4 million on the same date a year ago.

United States Wheat Supplies

Item	1967-68 <sup>r</sup>	1968-69 <sup>p</sup>
	million bushels	
Carryover at beginning of crop year (July 1) .....	425.0	537.2
Production .....	1,522.4	1,570.4
Total estimated domestic supplies .....	1,947.4	2,107.6
Imports of wheat and wheat flour in terms of wheat for domestic use, July - January .....	0.4	0.3
Total estimated supplies (1) .....	1,947.8	2,107.9
Less estimated domestic requirements for crop year(2)	650.1	750.0
Available for export and for carryover .....	1,297.6	1,357.9
<u>Deduct</u>		
Exports of wheat as grain, July - January .....	431.0	277.2
Exports of wheat flour in terms of wheat, July - January(3) .....	25.2	33.5
Total exports of wheat and wheat flour(4) ....	456.2	310.7
Balance on February 1 for export and for carryover .	841.4	1,047.2

(1) Excludes imports for February - June.

(2) Includes shipments to United States Territories and wheat for military food use at home and abroad.

(3) Flour exports exclude "Milled in bond".

(4) Data include shipments for relief.

p

Preliminary figures.

r

Revised figures.



United States Wheat and Flour  
Exports Decline 22 Per Cent  
During July-December, 1968

United States wheat and flour (grain equivalent) exports for July-December 1968 totalled 302 million bushels, 22 per cent below the same period of 1967. Most of the decline occurred to food aid recipient

countries.

Wheat exports of 270 million bushels were 95 million below last season. Smaller shipments to India and Pakistan contributed largely to the decrease. These countries have been major food aid markets in recent years, however, they had record wheat crops last year and import requirements were not as great. Partially offsetting these declines were increased shipments to all Common Market countries (except West Germany) Israel and Republic of Korea. Exports to Japan, the major market for U.S. wheat, were off 8 million bushels. Shipments to both Brazil and Yugoslavia were about 10 million less than for the same months last year.

Wheat flour exports increased 63 per cent during July-December 1968 compared with the same months a year earlier. Out of the 32 million bushels (grain equivalent) shipped, 74 per cent went to Asian countries. The major markets were Ceylon, Indonesia, and South Vietnam, most of which moved under the PL 480 program.

United States Exports of Wheat and Flour (1) by Country of Destination,  
July-December 1967 and 1968

Country of destination	July-December 1967			July-December 1968		
	Wheat	Flour(2)	Total	Wheat	Flour(2)	Total
thousand bushels						
<u>Western Hemisphere</u>						
Canada .....	(3)	8	8	(3)	18	18
Mexico .....	4	3	7	60	5	65
Costa Rica .....	798	51	849	1,547	19	1,566
El Salvador .....	971	48	1,019	1,227	43	1,270
Guatemala .....	1,205	111	1,316	1,248	89	1,337
Other Central America .....	1,825	311	2,136	2,020	254	2,274
Dominican Republic .....	1,314	15	1,329	2,043	86	2,129
Jamaica .....	9	529	538	232	316	548
Trinidad and Tobago .....	1,442	1	1,443	1,401	2	1,403
Other Bermuda and Caribbean .	608	341	949	—	1,089	1,089
Bolivia .....	309	1,448	1,757	493	1,873	2,366
Brazil .....	30,757	378	31,135	20,174	364	20,538
Chile .....	2,694	282	2,976	3,416	330	3,746
Colombia .....	1,909	143	2,052	4,522	267	4,789
Peru .....	6,957	306	7,263	2,789	134	2,923
Surinam .....	107	165	272	141	170	311
Uruguay .....	—	2	2	3,698	—	3,698
Venezuela .....	12,337	4	12,341	13,706	10	13,716
Other South America .....	971	632	1,603	1,298	546	1,844
Totals .....	64,217	4,778	68,995	60,015	5,615	65,630

See footnotes at end of table.

United States Exports of Wheat and Flour (1) by Country of Destination  
July-December 1967 and 1968

Country of destination	July-December 1967			July-December 1968		
	Wheat	Flour(2)	Total	Wheat	Flour(2)	Total
	thousand bushels					
<u>Western Europe</u>						
EEC:						
Belgium and Luxembourg ....	3,352	2	3,354	5,386	1	5,387
France .....	3,541	3	3,544	5,796	—	5,796
Germany, West .....	8,423	—	8,423	8,224	2	8,226
Italy .....	3,680	7	3,687	11,023	5	11,028
Netherlands .....	11,628	300	11,928	16,415	322	16,737
Totals .....	30,624	312	30,936	46,844	330	47,174
<u>Other Western Europe</u>						
Norway .....	702	4	706	645	5	650
Switzerland .....	1,599	—	1,599	2,933	—	2,933
United Kingdom .....	7,398	67	7,465	3,499	21	3,520
Others .....	498	386	884	1,109	377	1,486
Totals .....	10,197	457	10,654	8,186	403	8,589
<u>Eastern Europe</u>						
Poland .....	8	176	184	—	128	128
Yugoslavia .....	9,999	44	10,043	—	1	1
Totals .....	10,007	220	10,227	—	129	129
Totals, Europe .....	50,828	989	51,817	55,030	862	55,892
<u>Asia</u>						
Ceylon .....	—	2,143	2,143	—	7,581	7,581
India .....	97,146	395	97,541	37,886	—	37,886
Indonesia .....	—	10	10	71	5,366	5,437
Israel .....	2,689	1,327	4,016	8,171	1,263	9,434
Japan .....	45,156	2	45,158	37,167	25	37,192
Korea, Republic of .....	18,304	738	19,042	25,520	1,970	27,490
Lebanon .....	18	1,095	1,113	55	1,186	1,241
Pakistan .....	50,641	2	50,643	18,006	9	18,015
Philippines .....	10,054	248	10,302	9,614	268	9,882
Saudi Arabia .....	592	2,381	2,973	2	1,855	1,857
Republic of China (Taiwan) ..	10,098	96	10,194	7,109	—	7,109
Syria .....	3,102	—	3,102	—	—	—
Vietnam, South .....	—	2,354	2,354	—	3,091	3,091
Others .....	2,493	1,422	3,915	2,492	1,334	3,826
Totals .....	240,293	12,213	252,506	146,093	23,948	170,041

See footnotes at end of table.

United States Exports of Wheat and Flour (1) by Country of Destination  
July-December 1967 and 1968

Country of destination	July-December 1967			July-December 1968		
	Wheat	Flour(2)	Total	Wheat	Flour(2)	Total
thousand bushels						
<u>Africa</u>						
Algeria .....	2,933	—	2,933	2,625	—	2,625
Congo (Kinshasa) .....	1	507	508	—	548	548
Morocco .....	586	352	938	16	797	813
Nigeria .....	1,688	5	1,693	2,711	23	2,734
Tunisia .....	3,101	166	3,267	2,853	200	3,053
Others .....	1,743	635	2,378	618	178	796
Totals .....	10,052	1,665	11,717	8,823	1,746	10,569
<u>Oceania</u> .....	—	64	64	—	53	53
Totals, all countries .....	365,390	19,709	385,099	269,961	32,224	302,185

(1) Data includes shipments for relief.

(2) Grain equivalent.

(3) Transshipments through Canada have been included in data for countries of ultimate destination.

Third Report on 1969  
Wheat Program Signup  
Issued by USDA

A release from the United States Department of Agriculture, March 5, 1969 reported that with three weeks remaining in the seven-week signup period for participation in the 1969 wheat program, 35 per cent of the national acreage allotment is represented on the 433,387 farms enrolled through February 28.

The signed farms have 1969 allotments totalling 18,161,997 acres.

Intended diversion of wheat allotment acreage for payment increased 604,000 acres during the week ending February 28. Total now is 2,113,307 acres.

Today's report covers returns from 2,725 out of 2,731 counties with wheat allotments. Direct comparisons with the 1968 signup progress are not being made in this report because of a difference in time involved and a great difference in weather conditions.

Under the voluntary 1969 wheat program, farmers can request the establishment of oats and rye base acreages upon which they can substitute wheat in place of feed grain production. This third signup report has a total of 142,588 acres in such requested bases.

Wheat farmers also can request up to 50 per cent overseeding of their allotment, with storage, under bond, of the production from their excess acres. This makes it possible for some farmers in high crop risk areas to spread the stored excess production over ensuing years of possible under-production. In this third report, such requests were received from farms having allotments totalling 222,909 acres.



Cash Wheat Prices in the Kansas City and Minneapolis Markets

No. 2 Hard Winter, Kansas City			No. 1 Northern Spring, Minneapolis		
Date		Price	Date		Price
cents per bushel			cents per bushel		
February	3, 1969	N.A.	February	3, 1969	158 1/2 - 214 1/2
	4	141 1/2 - 161 3/4		4	158 1/4 - 214 1/4
	5	N.A.		5	157 1/2 - 213 1/2
	6	139 3/4 - 161 1/2(1)		6	157 1/4 - 213 1/4
	7	148 - 159		7	156 5/8 - 212 5/8
	10	140 1/2 - 151 1/2		10	156 - 212
	11	138 1/4 - 163 3/4(1)		11	155 1/2 - 211 1/2
	12	138 - 163 (1)		12	155 3/8 - 210 3/8
	13	138 3/4 - 165 1/2(1)		13	155 1/2 - 209 1/2
	14	N.A.		14	155 1/4 - 208 1/4
	17	138 3/4 - 165 1/2(1)		17	155 5/8 - 208 5/8
	18	138 - 164 3/4(1)		18	154 7/8 - 205 7/8
	19	137 3/4 - 164 1/4(1)		19	154 1/4 - 205 1/4
	20	137 3/4 - 163 1/2(1)		20	154 - 205
	21	Washington's birthday		21	Washington's birthday
	24	136 1/4 - 163 1/4(1)		24	153 1/8 - 204 1/8
	25	136 - 161 1/2(1)		25	153 7/8 - 204 7/8
	26	136 1/2 - 161 3/4(1)		26	155 1/8 - 206 1/8
	27	137 - 162 (1)		27	155 - 206
	28	137 - 161 1/2(1)		28	156 1/2 - 207 1/2

(1) Nominal. N.A. Not available.

Chicago Wheat Futures, High Points of Closing

	Date	March	May	July	September	December

# AUSTRALIAN SITUATION

## Wheat Supplies at Record Level

Total supplies of wheat in Australia for the 1968-69 crop year are estimated at an all-time high of 592.4 million bushels, compared with 357.8 million in 1967-68, reflecting the effect of a sharp increase in production, which more than offset a substantial decrease in carryover stocks. The 1968 latest production, estimated at 541.0 million bushels almost doubled the 277.4 million bushels harvested in 1967-68, while carryover stocks, at December 1, 1968, at 51.4 million bushels, declined by a wide margin from the 80.4 million at the same time a year ago. After deducting some 85.0 million bushels for anticipated domestic requirements, an estimated 507.4 million are available for export and for carryover during 1968-69, considerably above the 256.9 million in 1967-68.

## Exports Decline from Previous Year

Combined exports of wheat as grain and wheat flour in terms of grain equivalent during the period December 1 - January 25 of the current Australian crop year amounted to 29.4 million bushels, some 34 per cent less than the 44.5 million exported during the corresponding two months of the 1967-68 crop year. The balance remaining on January 26, 1969 for export and for carryover, at 478.0 million bushels, was in sharp contrast to the comparable 1968 total of 212.4 million.

## Australian Wheat Supplies

Item	1967-68 <sup>r</sup>	1968-69 <sup>p</sup>
	million bushels	
Carryover, including flour as wheat, at beginning of crop year (December 1) .....	80.4	51.4
Production .....	277.4	541.0 <sup>r</sup>
Total estimated domestic supplies .....	357.8	592.4
Less estimated domestic requirements for crop year .....	100.9	85.0 <sup>r</sup>
Available for export and for carryover .....	256.9	507.4
<u>Deduct</u>		
Exports of wheat as grain, December 1 - January 25 ....	41.3	28.0
Exports of wheat flour in terms of wheat, December 1 - January 25 .....	3.2	1.4
Total exports of wheat and wheat flour .....	44.5	29.4
Balance on January 26 for export and for carryover .....	212.4	478.0

<sup>p</sup> Preliminary figures.

<sup>r</sup> Revised figures.

The following information relative to the Australian situation has been extracted from a report from Mr. W. Boychuk, Assistant Commercial Secretary for Canada, Canberra, under date of February 14, 1969 and is reproduced with the permission of the Trade Commissioner Service, Department of Trade and Commerce. Where possible, conversions to Canadian measures and currency have been made for the convenience of our readers.

Final Crop Estimates - 1968-69. — The final production estimates for this year's crop are based on latest reports from state agricultural offices and Bureau of Agricultural Economics (B.A.E.) district officers.

State	1968-69 crop final estimates	Held on farms	Estimate of final deliveries
million bushels			
New South Wales .....	212	12	200
Victoria .....	90	7	83
South Australia .....	83	6	77
Western Australia .....	114	8	106
Queensland .....	42	3	39
Totals .....	541	36	505

This record crop then, will be 75 million bushels over the previous peak production of 466 million bushels reported in 1966-67, and 227 million bushels above the second best year recorded in 1964-65. All five wheat producing states will make record deliveries to the Wheat Board, with the largest increase in receivals from South Australia (77 million bushels as compared to previous peak of 51 million bushels in 1963-64).

In addition to the record quantity harvested, this crop is outstanding for its quality. The New South Wales Department of Agriculture reported the following deliveries:

F.A.Q. ....	135,750,000 bushels
Premium .....	29,000,000 bushels
Off-grade .....	14,000,000 bushels
Total .....	178,750,000 bushels

The above figures do not reflect normal deliveries of N.S.W. wheat into the Victorian Grain Elevators, from southern districts which grow predominantly soft wheat.

The classification 'Premium' as used above would include the Wheat Board classifications 'Hard' and 'Prime Hard' and in addition a small quantity of soft bisquit wheat for which growers are paid a premium above the normal home consumption price. Figures on Queensland Premium wheat deliveries are not available at this time.

It would appear from the above figures that deliveries of Premium wheat in N.S.W. and Queensland will be about the same level as those recorded last year, i.e. 36.3 million bushels for N.S.W. (including 30.6 million bushels of Prime Hard) and 17.0 million bushels for Queensland in 1967-68.

However, the above figures do not indicate the actual production of wheat which could be classed as Premium. Our informants in the Department of Primary Industry have indicated that due to quick ripening conditions during the dry period between August and December 1968 and as result of more widespread sowing of better quality wheat (such as Falcon and Heron in N.S.W.) this year's crop produced probably in



excess of 100 million bushels of wheat which would be classed as Hard and Prime Hard. About 60 million bushels of this would come from northern N.S.W. and 40 million bushels from Queensland. Due to the very large size of the crop and the resultant rush to the silos, some growers would have preferred to deliver their premium crop to F.A.Q. delivery points in order to get their first payment quickly. In view of last year's drought, quick cash payment would be a significant incentive. In addition to the quantity of premium grade wheat, the crop in general is reported to be of better baking quality and higher protein content. Quantities of off-grade wheat are very minimal.

Our contacts in Primary Industry, however, reminded us that the conditions this year were ideal and that in view of the past record of diversity in Australian growing conditions from season to season (Australian wheat is grown mainly under dry-land conditions) it is very unlikely Australian growers could sustain the same quality and quantity in future seasons.

Prospects for 1969-70. — With the harvest essentially completed, the Australian wheatgrower, and particularly those many grazier-wheatgrowers who have expanded their wheat acreage in the last few years, are no doubt calculating at this moment how much of their land they will sow to wheat this season.

Agronomic and economic factors must be considered. In the first place, the explosion in wheat acreage to over 26 million acres this year, is no doubt partly due to more intensive cropping of prepared land. All officials in Primary Industry with whom we have discussed the question of probable 1969-70 acreage agree that many growers will be forced to put more land to fallow this year after the last three or four seasons of continual wheat cropping. This is particularly true for growers in the traditional wheat belt in New South Wales.

On the economic side, every grower is no doubt aware of the possibility of a large surplus, perhaps as much as 250-300 million bushels, at the start of the next marketing year, December 1, 1969. He has no doubt read public warnings of over-production in face of limited storage by the Chairman of the Wheat Board, Mr Stott, the past Secretary of the Australian Wheatgrowers' Federation (A.W.F.) who resigned recently, and Mr T.S. Julek, economic advisor to the A.W.F. Of more direct significance, every wheatgrower had no doubt realized the importance of a statement made by Mr Anthony, the Minister for Primary Industry on January 28, 1969:

'The Industry cannot expect unlimited finance to be made available to it and must face up to the possibility that the first advance on 1969-70 crop wheat will be below what has become the norm of recent years.'

The Minister has very plainly warned the growers that, on present indication and depending on the level of the next wheat acreage, the traditional first advance of A.\$1.10 (\$1.32 Canadian) which is the greatest incentive to wheat cropping may be cut significantly. Unofficial spokesmen have suggested that the Wheat Board may have to adopt a 'sliding scale' first payment with perhaps A.\$1.10 (\$1.32 Canadian) on the first given quantity and A.50 cents (66 cents Canadian) on additional deliveries. The possibility of a cut in the first advance is considered more likely than the adoption of the 'Stott Plan' for the imposition of quotas on wheat deliveries.

All these considerations are receiving wide publicity at the moment as result of growers meetings of many N.S.W. regional wheatgrower associations. (The decision

to refer the matter of production restrictions for deliberation by State and regional organization was made at the recent executive meeting of the A.W.F. in Melbourne. It appears from press reports that only the N.S.W. State committee has encouraged such discussion in its State).

There is an additional factor in favour of reduced wheat acreage in 1969-70: Wool prices have improved considerably in the last 6 months and recently the B.A.E. was quite optimistic in reviewing prospects for the wool industry over the next year. Significantly, although wool is by far Australia's biggest rural export earner A.\$762 million (\$912 million Canadian) in 1967-68, it receives no direct assistance from the Government and therefore the woolgrower must look very carefully at prevailing and projected world prices. It is generally agreed that the depressed world wool prices during 1967-68 contributed in no small way to the jump in wheat acreage sown in 1968. This year, the grazier-wheatgrower is likely to look more favourably on wool (and lamb) production. Admittedly his investment in expensive cropping machinery will mitigate any dramatic shift from wheat to wool. However, it should be noted that in contrast to Canadian farms, plant and machinery on Australian wheatgrowing farms represents only 9.1 per cent of the total capital structure whereas land represents 66 per cent.

One highly respected agronomist in B.A.E., who has a notable record in past prediction of wheat acreage, suggested to us that in the absence of any dramatic developments between now and May, the 1969-70 wheat acreage will be down by about 1 million acres from this year, i.e. about 25.5 million acres. This means, given satisfactory seasonal conditions (long term seasonal forecasts point to 'nearly ideal' conditions during 1969-70) the 1969/70 crop should be about 500 million bushels.

Production Restrictions Discussed in N.S.W. — Grower associations in New South Wales are rejecting any plan to impose production quotas or restrict acreage. This is becoming apparent after four separate meetings in various N.S.W. districts called by the United Farmers and Woolgrowers Association which represents primarily the small farmers in the traditional wheat belt. However, the consensus at all the meetings was that if some form of wheat restriction was necessary by the end of this marketing year the first advance payment could be reduced to growers producing a crop above a given base amount.

The N.S.W. Graziers Association has, on the other hand, called on the Federal Government to clarify its attitude towards the wheat industry. A spokesman of the Association stated recently:

'It is quite useless for any grower body to formulate any realistic policy of wheat production and marketing until the Commonwealth's position is clarified.

'At the end of the war, the Commonwealth Government urged wheatgrowers to increase production. Are we now to go into reverse gear? We also need to know the Government's attitude to such questions as long-term credit to customers, financial aid to the industry and the provision of finance for extension of bulk wheat storage space.'

The meetings follow the postponement by the Australian Wheatgrowers' Federation of their consideration of a plan for restricting wheat acreage proposed by the former



general Secretary of the federation, Mr T.C. Stott.

The federation decided at a meeting in Melbourne two weeks ago to suspend judgment on the proposal pending its consideration by wheatgrowers throughout Australia. Their decisions, along with those of other industry groups, will be considered by the Wheatgrowers' Federation at its annual meeting in Perth on March 11 and 12.

While the debate about production controls is aired publicly in N.S.W., the South Australian Government has, with minimum publicity, passed an amendment to the legislative act which governs the operation of the State Grain Elevator Board. This amendment will in practice give the Board the power to impose quota restriction on wheat receivals. The act now reads that the Board has authority to 'from time to time as occasion requires, establish a scheme for the rationalization of delivery of grain of any kind offered to it, whether as a licensed receiver or other'.

This amendment was passed for a specific purpose. The Board has used its new power to impose a restriction on deliveries of this season's wheat which permits each grower to deliver up to 75 per cent of his estimated 1968-69 crop. We have confirmed that the restriction is still in force. B.A.E. officials have suggested the restriction will apply until more wheat is cleared from the silos.

It is also interesting to note that two other state bulk handling authorities - N.S.W. and Queensland - have equivalent powers to 'rationalize deliveries'. The Queensland legislation dates back to 1956 and the N.S.W. Act was amended accordingly in 1967.

It is our opinion that when and if the Australian Government decides to put the brakes on wheat production, the vehicle will be these State Acts which empower bulk handling authorities to 'rationalize' deliveries. The other wheat states would have to pass similar legislation before overall restrictions could be applied. This action could be co-ordinated by the Commonwealth through the Australian Agriculture Council, which meets regularly once a year, and includes the Ministers of Agriculture from every state under the Chairmanship of the Minister of Primary Industry.

Record Wheat Sale to China. - The Australian Wheat Board announced on January 28, 1968 the sale of 2.2 million metric tons (80.8 million bushels) of wheat to Communist China. This is the Board's largest ever single sale. It was a sale of utmost importance to the Australian wheat industry coming as it did at a time when record receivals (expected at 505 million bushels) were clogging the storage system in all states. Shipments will be made between February this year and March 1970 and according to the Wheat Board press statement payment will be made on terms usual for Australian sales to China of 10 per cent cash, 20 per cent in six months, 20 per cent in nine months, and the balance of 50 per cent in twelve months, with interest charge on the deferred payments.

While the sale should bring considerable relief to the industry, it will not solve the problem of an expected carryover at the end of the 1969 season of about 200 million bushels. This figure is based on current deliveries of 500 million bushels, and expected sales of about 350 million bushels during the current marketing year.

The general manager of the Australian Wheat Board, Mr L.H. Dorman, told a special meeting of the Australian Wheatgrowers Federation in Melbourne recently that



Australia would be faced with a wheat surplus of 315 million bushels in December.

The contract with China will reduce Mr Dorman's forecast surplus to 260 million bushels - still the largest in the history of the Australian wheat industry.

In New South Wales, Mr Hodgson, the Chairman of the Grain Elevators Board stated that in spite of the sale to China he still expects about 80 to 100 million bushels of wheat will be left in the N.S.W. silo system by the end of the year, the capacity of the N.S.W. silos is about 160 million bushels.

Major Sales Announced to Chile, Peru and Ceylon. - In addition to the China sale, the Australian Wheat Board announced the following major contracts signed since our last report:

Chile: 100,000 tons.  
Peru: Sale for shipment this season total 65,000 tons.  
Ceylon: 60,000 tons of flour and 50,000 tons of wheat.

Exports of Australian Wheat and Wheat Flour in Terms of Wheat  
December 1 - January 25, 1968-69 and Corresponding Period 1967-68

Destination	Wheat		Wheat flour	
	1967-68	1968-69	1967-68	1968-69
thousand bushels				
<u>Western Europe</u>				
EEC:				
Germany, Federal Republic .	72	179	-	-
Netherlands and I/T .....	834	1,787	-	-
Sub-totals .....	906	1,966	-	-
<u>Other Western Europe</u>				
Britain .....	4,696	4,032	66	67
Ireland .....	419	62	-	-
Malta .....	392	391	-	-
Norway .....	848	718	-	-
Sub-totals .....	6,355	5,203	66	67
Totals .....	7,261	7,169	66	67
<u>Africa</u>				
Malawi .....	-	-	62	34
Mauritius .....	-	-	54	116
Rhodesia .....	384	-	-	-
Sudan .....	422	-	-	-
Zambia .....	463	425	79	-
Others .....	(1)	1	39	90
Totals .....	1,269	426	234	240
<u>Asia</u>				
Aden .....	-	110	-	-
Aden and Aden I/T .....	-	-	29	27

Exports of Australian Wheat and Wheat Flour in Terms of Wheat  
December 1 - January 25, 1968-69 and Corresponding Period 1967-68

Destination	Wheat		Wheat flour	
	1967-68	1968-69	1967-68	1968-69
	thousand bushels			
<u>Asia (concluded)</u>				
Aden and Aden I/T Atta .....	-	-	70	3
Arabian Gulf .....	-	-	6	34
Arabian Gulf Atta .....	-	-	124	191
Ceylon .....	-	-	1,298	1
China .....	14,629	-	-	-
Hong Kong .....	426	195	8	2
India .....	7,104	917	-	-
Indonesia .....	-	-	829	101
Iraq .....	1,182	-	-	-
Japan .....	3,313	11,369	-	-
Korea South .....	-	369	-	-
Kuwait .....	507	-	-	-
Lebanon .....	-	1,116	-	-
Pakistan .....	-	863	-	-
Philippines .....	20	-	16	18
Saudi Arabia .....	-	159	-	12
Taiwan .....	-	755	-	-
Thailand .....	367	327	53	23
Malaysia .....	1,716	1,649	-	-
Sabah .....	-	-	2	4
Sarawak .....	-	-	5	2
Singapore .....	1,811	510	1	(1)
Others .....	33	152	17	25
Totals .....	31,108	18,491	2,458	443
<u>Oceania</u>				
New Zealand .....	732	-	-	-
<u>Western Hemisphere</u>				
Colombia .....	-	484	-	-
Peru .....	921	1,425	-	-
West Indies Area .....	-	-	77	3
Totals .....	921	1,909	77	3
<u>Pacific Area and Sundries</u>				
Pacific Islands .....	10	6	347	624
Ships' Stores and Sundries .	-	-	20	21
Totals .....	10	6	367	645
Totals, all countries ..	41,300	28,000	3,200	1,400

(1) Less than 500 bushels.

# ARGENTINE SITUATION

1968-69 Wheat Supplies Lower Than Previous Year Estimated total supplies of wheat in Argentina for the 1968-69 (December-November) crop year amount to 261.2 million bushels, consisting of the December 1, 1968 carryover of 44.4 million bushels and the new crop placed at 216.8 million. Indicated supplies for the current Argentine crop year, reflecting a substantial decline in production which more than offset a sharp increase in carryover stocks, are about 8 per cent less than the 1967-68 total of 285.3 million bushels. After making an allowance of 158.0 million bushels for anticipated domestic requirements, an estimated 103.2 million are available for export and for carryover as against 127.5 million in 1967-68.

Exports Sharply Above Last Year Preliminary exports of wheat and wheat flour in terms of wheat equivalent during December 1968 - January 1969 amounted to 27.5 million bushels, considerably above the 9.4 million exported during the same months in 1967-68. The balance remaining on February 1, 1969 for export and for carryover was estimated at 75.7 million bushels, substantially below the February 1, 1968 total of 118.1 million.

## Argentine Wheat Supplies

Item	1967-68 <sup>r</sup>	1968-69 <sup>p</sup>
	million bushels	
Carryover at beginning of crop year (December 1) (1) ....	16.4	44.4
Production .....	269.0	216.8
Total estimated domestic supplies .....	285.3	261.2
Less estimated domestic requirements for crop year .....	157.8	158.0 <sup>r</sup>
Available for export and for carryover .....	127.5	103.2
<u>Deduct</u>		
Exports of wheat as grain, December - January .....	9.3	27.3
Exports of wheat flour in terms of wheat, December - January .....	(2)	0.2
Total exports of wheat and wheat flour .....	9.4	27.5
Balance on February 1 for export and for carryover .....	118.1	75.7

(1) Includes allowances for farm stocks.

(2) Less than 50,000 bushels.

<sup>p</sup> Preliminary figures.

<sup>r</sup> Revised figures.

The following account of the Argentine situation has been extracted from a report from Mr. S.E. Kidd, Assistant Commercial Secretary (Agriculture) Buenos Aires, under date of February 20, 1969 and is reproduced with the permission of the Trade Commission Service, Department of Trade and Commerce. Where possible conversions to Canadian measures and currency have been made for the convenience of our readers.



Abnormally high temperatures during December, in a critical period of the development of the plants, damaged the crop severely. Later, intense rains hindered the harvest. As a result, both the quantity and the quality of the crop has suffered. It is now estimated that as much as 20 per cent of the crop may fall into the Grade 4 class, which is for wheat with a weight of less than 72 kilograms per hectolitre (58 pounds per bushel).

On January 28, the Secretariat of Agriculture and Livestock issued the second official estimate of 1968-69 wheat production of 5.9 million metric tons (216.8 million bushels). This second estimate is 2.3 million metric tons (84.5 million bushels) less than the first official estimate of 8.2 million metric tons (301.3 million bushels).

The estimated production of 5.9 million tons (216 million bushels) is on a seeded area of 6,679,500 hectares (16.5 million acres) of which 5,943,800 hectares (14.7 million acres) have been harvested. Average yields per harvested hectare are therefore 993 kilograms (15 bushels per acre).

Candeal and Taganrock (Durum) varieties account for an estimated 470,000 metric tons (17.3 million bushels) of the total production. An estimated 413,500 hectares (1,021,000 acres) were sown to Durums and 394,700 hectares (975,000 acres) were harvested. Average yields were therefore, 1,191 kilograms per harvested hectare (18 bushels per acre). About 50,000 tons (1,837,000 bushels) of Durums are generally used domestically.

The official estimates of wheat production, by province are as follows:

Province	1967-68	1968-69	
	Last official estimate	First official estimate	Second official estimate
		thousand bushels	
Buenos Aires .....	177,838	180,042	129,336
Santa Fe .....	29,468	35,200	24,985
Cordoba .....	27,668	34,318	23,516
La Pampa .....	22,891	32,077	22,046
Entre Rios .....	6,504	14,881	12,493
Other .....	4,593	4,777	4,409
Totals .....	268,961	301,295	216,785

The second official estimate is in accord with the estimates of the private grain trade.

There was a significant increase in sowings of wheat in Entre Rios, which was reflected in increased production, but the important wheat growing provinces all had smaller crops than last year.

It has been reported that the support prices of the fine grains are to be increased by 6 per cent within a few days but these increases have not yet materialized. The support prices for the 1968-69 wheat crops were established in May 1968, at the following levels for each 100 kilos f.o.r. Buenos Aires:

Hard wheat ..... \$1.38 per bushel  
Semi-hard wheat ..... \$1.34 per bushel  
Candeal or Taganrock (Durums) ... \$1.38 per bushel

Late in January, Argentina sold 45,000 metric tons (1,653,000 bushels) of wheat to Paraguay at a price of U\$S60.90 per ton (\$1.78 per bushel) f.o.b. Buenos Aires. The Japanese are reported to have purchased 14,700 tons (540,000 bushels) after several years of excluding Argentine wheat from their tenders.

Hard wheat prices during January rose from 1,600 pesos per 100 kilos, (\$1.34 per bushel) f.o.r. Buenos Aires, to 1,650 pesos (\$1.38 per bushel) before settling back to 1,620 pesos (\$1.35 per bushel) by the end of the month. At Bahia Blanca, prices rose from 1,600 to 1,640 pesos (\$1.34 to \$1.37 per bushel) during January. By February 20, wheat prices at both Buenos Aires and Bahia Blanca had climbed to 1,650 pesos (\$1.38 per bushel). Also at February 20, prices on the Buenos Aires Futures Exchange were 1,655 pesos per 100 kilos (\$1.38 per bushel) for March delivery; 1,700 (\$1.42 per bushel) for April; 1,759 (\$1.47 per bushel) for May and 1,765 (\$1.47 per bushel) for June.

Candeal (Durum) prices during January rose sharply from 2,080 to 2,240 pesos per 100 kilos (\$1.74 to \$1.87 per bushel), f.o.r. Buenos Aires, and from 2,180 to 2,260 pesos (\$1.82 to \$1.89 per bushel) at Bahia Blanca. By February 20, Durum prices were 2,250 and 2,260 pesos per 100 kilos (\$1.88 and \$1.89 per bushel) at Buenos Aires and Bahia Blanca, respectively.

Argentine Wheat Exports December 1967 and 1968

Destination	1967	1968
	thousand bushels	
<u>Western Europe</u>		
EEC:		
Belgium .....	—	162
France .....	—	55
Germany, Federal Republic .....	—	37
Italy .....	542	184
Netherlands .....	—	336
Sub-totals .....	542	774
<u>Other Western Europe</u>		
Britain .....	—	235
Sub-total .....	—	235
Totals .....	542	1,009
<u>Asia</u>		
Cyprus .....	—	472
India .....	—	1,508
Mozambique .....	—	426
Totals .....	—	2,406

Argentine Wheat Exports December 1967 and 1968

Destination	1967	1968
	thousand bushels	
<u>Western Hemisphere</u>		
Bolivia .....	116	—
Brazil .....	—	3,491
Chile .....	—	445
Colombia .....	470	—
Paraguay .....	371	167
Peru .....	428	359
Totals .....	1,385	4,462
Totals, all countries .....	1,926	7,878

CALENDAR OF WHEAT EVENTS

- February 14 According to a report received from Mr. W. Boychuk, Assistant Commercial Secretary, Canberra, the 1968-69 Australian record crop at 541 million bushels will be 75 million bushels over the previous peak production of 466 million reported in 1966-67, and 227 million bushels above the second best year recorded in 1964-65.
- 19 The Canadian Wheat Board Instructions to the Trade re Quotas (General) No. 27 announced in part that effective immediately at all delivery points in the designated area the quota of ten(10) bushels per seeded acre to Soft White Spring Wheat as authorized in our Instructions to the Trade re Quotas (General) No. 18 of December 5th, 1968, is hereby increased to fifteen (15) bushels per acre seeded to Soft White Spring Wheat.
- The Canadian Wheat Board Instructions to the Trade No. 47 announced that effective immediately Instructions to the Trade No. 37 of December 5th, 1968, is hereby cancelled.
- Elevator companies are requested to instruct their managers that Shipping Order No. 500 is no longer to be used for the shipment of No. 2 Northern Wheat ex delivery points in Saskatchewan and Alberta to the Pacific Coast. Shipments of No. 2 Northern Wheat must be made in accordance with Instructions to the Trade No. 22 of October 15th, 1968.
- 20 A report prepared by Mr. S.E. Kidd, Assistant Commercial Secretary (Agriculture) for Canada, Buenos Aires, stated that on January 28, the Secretariat of Agriculture and Livestock issued the second official estimate of 1968-69 Argentine wheat production of 5.9 million metric tons (216.8 million bushels).





STATISTICS CANADA LIBRARY  
BIBLIOTHÈQUE STATISTIQUE CANADA



1010686900