

cluzo



The Wheat Review

JANUARY 1970



DOMINION BUREAU OF STATISTICS

The contents of this document may be used freely but DBS should be credited when republishing all or any part of it.



DOMINION BUREAU OF STATISTICS

Agriculture Division

Crops Section

THE WHEAT REVIEW

JANUARY 1970

Published by Authority of
The Minister of Industry, Trade and Commerce

February 1970
5502-502

Price: 30 cents
\$3.00 a year

Vol. 40—No. 6

TABLE OF CONTENTS

	<u>Page</u>
<u>World Wheat Situation</u>	
August-December Exports Lower than Previous Year	5
Wheat Supplies of Four Major Exporters Above a Year Ago	5
1969 World Breadgrain Crop Down 5.4 Per Cent Due to Reduced Acreage and Lower Yield	6
<u>Canadian Situation</u>	
Prairie Grain Shipments to Reach Near-Record Levels	8
Supplies at Record Level	8
August-December Exports Decrease from Previous Year	9
Marketings, Disappearance and Visible Supplies	10
December 1969 Exports of Wheat and Flour Total 24.9 Million Bushels	10
General Quota Position	11
Farmers' Marketings by Crop Districts 1968-69	12
Farmers' Marketings 1969-70 Crop Year	14
Visible Supply of Canadian Wheat	15
Grading of Wheat Inspected, August-December 1969 with Comparisons	15
Weekly Visible Supply and Farmers' Marketings (Charts)	16
Wheat Shipments to the United States by Destination	17
Rail Shipments of Wheat to Maritime Ports	17
Rail Shipments of Wheat from Fort William-Port Arthur	18
Overseas Exports of Canadian Grain by Ports of Loading	18
Shipments Under Feed Grain Assistance Regulations	19
Supply and Disposition of Wheat and Rye, Canada, Crop Year 1968-69	20
Monthly Exports of Canadian Wheat and Wheat Flour	21
Exports of Canadian Wheat by Destination	22
Customs Exports of Canadian Wheat Flour by Countries of Consignment	25
Canadian Wheat Board Weekly Average Cash Wheat Prices	27
<u>Canadian Flour Milling Situation</u>	
Production and Exports	28
<u>United States Situation</u>	
Supplies Higher in 1969-70	29
Exports Lower than a Year Ago	29
Stocks of Wheat in All Positions January 1, 1970	30
Flour Production	30
<u>Australian Situation</u>	31
<u>French Situation</u>	36
<u>Argentine Situation</u>	39
<u>Calendar of Wheat Events</u>	42

WORLD WHEAT SITUATION

August-December Exports Lower than Previous Year

Total exports of wheat and wheat flour in terms of grain from the four major exporting countries during the August-December period of the current Canadian crop year amounted to 463.7 million bushels, a decrease of 4 per cent from the total of 484.1 million exported during the same five months in 1968 and 19 per cent below the ten-year (1958-67) average shipments for the same period of the crop year, of some 570.6 million bushels. Based on the Canadian crop year, Australia was the only country registering an increase over the 1968 comparable total while exports from United States, Canada and Argentina were lower.

Shipments from the four traditional major wheat exporters during August-December 1969 with comparisons appear in the accompanying table.

Exports of Wheat and Flour in Terms of Wheat, August-December 1969 with Comparisons

August-December	United States	Canada	Argentina	Australia	Total
million bushels					
1950	93.0	87.1	25.2	51.5	256.8
1951	189.6	135.5	21.8	44.2	391.1
1952	134.2	168.1	0.2	33.4	335.9
1953	82.8	121.1	53.8	26.5	284.2
1954	101.8	116.9	53.2	37.5	309.4
1955	94.4	94.9	52.7	39.8	281.8
1956	204.2	127.4	38.6	63.0	433.2
1957	161.9	128.5	37.5	34.7	362.6
1958	177.8	122.9	39.6	26.3	366.6
1959	166.4	133.5	21.3	48.2	369.4
1960	246.7	134.2	34.9	54.8	470.6
1961	308.6	173.6	12.3	93.4	587.9
1962	232.8	144.0	19.8	42.9	439.5
1963	328.0	258.0	24.7	99.1	709.8
1964	331.1	197.4	55.0	66.7	650.2
1965	320.6	277.3	122.1	88.7	808.7
1966	361.1	260.8	28.6	77.8	728.3
1967	331.2	110.3	7.7	126.0	575.2
1968 ^r	242.8	137.8	28.3	75.2	484.1
1969 ^p	217.8	107.6	26.4	111.9	463.7

^p Preliminary figures.

^r Revised figures.

Wheat Supplies of Four Major Exporters Above a Year Ago

Supplies of wheat held by the four traditional major exporters at January 1, 1970 for export and for carryover at the end of their respective crop years amounted to 3,148.8 million bushels, 18 per cent above the 2,674.7 million at the same time a year ago. The newly harvested 1969-70 wheat crops in the Argentine and Australia are taken into consideration in these totals. Supplies in United States, Canada, Argentina and Australia were larger than those of the previous year. Supplies at January 1, 1970, in millions of bushels, were held as follows, with last year's comparable figures in brackets: United States, 1,229.8 (1,066.3); Canada, 1,263.5 (1,019.8); Argentina, 102.0 (90.6); and Australia, 553.5 (498.0).

1969 World Breadgrain Crop
Down 5.4 Per Cent Due to
Reduced Acreage and Lower Yield

According to the January 31, 1970 edition of World Agricultural Production and Trade published by the United States Department of Agriculture the second estimate for world production of wheat

and rye during 1969 totals 322 million metric tons, on the basis of the latest information available to the Foreign Agricultural Service. A harvest at this level would be 5.4 per cent below the record 341 million tons for 1968. World breadgrain area decreased 22 million acres, or 3.6 per cent less than the previous year's high of 53 million acres. Yields of both grains set new records in 1968 — wheat at 20.5 bushels per acre and rye at 23.0 bushels. The 1969 yields while slightly below 1968, did equal or exceed previous records.

World wheat production. — Production in 1969 is currently estimated at 293 million metric tons, 5.1 per cent below the record 308 million tons of 1968, but 5.7 per cent above the 277 million-ton crop of 1967. World wheat area is estimated at 533 million acres during 1969. This compares to the 553 million for 1968 and 531 million for 1967. Total production in the five major exporting countries — Argentina, Australia, Canada, France, and the United States — is estimated at 91 million tons compared to 96 million in 1968. The major reduction occurred in the Australian crop — 20.1 per cent. Harvests in the United States and France also dropped — by 7.4 and 3.0 per cent, respectively. These declines were not recovered in the anticipated increased harvests by Canada (5.3 per cent) and Argentina (12.4 per cent). Acreage for each of these 5 countries declined with a composite reduction of 15 million acres. However, yields for Argentina, Canada, and the United States showed increases. The estimated yield of 30.7 bushels is a new record for the United States.

West European production totalled 45 million tons, a decline of 4.9 per cent. The Common Market countries make up almost 70 per cent of the total, and are also down slightly. Only Greece shows any sizeable increase over the previous year — 15.9 per cent. The main factor that caused the reduction was adverse weather conditions; however, governmental policies in certain countries were another factor. The East European crop is estimated at 26 million tons, only 388,000 tons more than 1968. In the northern countries, particularly East Germany and Poland, 1969 prospects were estimated below the record levels of 1968, because of a late and cold spring with below normal rainfall. The situation was greatly improved over the previous year for most of the southern countries which were particularly affected by drought. Yugoslavia is expecting a record crop of 4.9 million tons as a result of continued increase in acreage and improved farm methods.

The Soviet Union produced its second largest crop in 1968 — 76.6 million tons, or 19.7 per cent greater than 1967. The crop of 1969 is estimated at 65 million, a reduction of 15.1 per cent. The reduced prospects are attributed to a severe winter, a late spring, lack of adequate precipitation, and a shortage of manpower and machinery at time of harvest.

Asia's crop, estimated at 68 million tons, shows a continued upward trend. The 4.6 per cent increase over 1968 is due mainly to record harvests in India and Pakistan. Some increase is also indicated for Mainland China. Total acreage in Asia is down by only 1 million acres. However, the 7 per cent increase in India was almost offset by the decrease in Mainland China. The increase in production on less acreage reflects the greater use of improved varieties and better cultural methods, which in turn resulted in considerably higher yields.

Production in Africa was down 944,000 tons from 1968 due mainly to the one-third decline in Morocco's crop. Most other countries are estimated to have the same or smaller harvests. The exception is in the Republic of South Africa which anticipates another record crop.

The South American 1969 wheat crop is estimated at 9.5 million tons, an increase of 10.3 per cent over the previous year. Omitting the Argentine crop, the other countries still show an increase of 6.0 per cent with Brazil anticipating a record.

World rye production. — Production in 1969 is estimated at 29.7 million metric tons, a decline of 7.9 per cent. Acreage is also down by 3.7 per cent to 53 million. These reductions resulted in decreased world yield at 22.0 bushels per acre.

The crops of Canada and the United States totalled 1.2 million tons compared to 924,000 tons in 1968. Soil moisture and growing conditions were very favourable which resulted in a 31.7 per cent increase from 568,000 acres more than the previous year.

Western Europe's crop is placed at 5.5 million tons, a decrease of 8.0 per cent. Acreage declined 7.0 per cent and yields were just under the record 38.8 bushels per acre of 1968. The Common Market countries produced 3.6 million tons — 9.4 per cent less than the previous year. Austria and Finland were the only countries to show an increase in harvest.

Production in East Europe is estimated at 15.4 million tons — a decline of 10.1 per cent. Poland and East Germany are the major producers, but drought took a severe toll of their crops. The USSR indicates a reduction of slightly over one million tons due to substitution of spring grains as a result of the severe winter.

Turkey's rye crop is placed at 770,000 tons, down 1.3 per cent, on an increase of 25,000 acres.

Production in Argentina is estimated at 346,000 tons — a decrease of 3.9 per cent.

CANADIAN SITUATION

Prairie Grain Shipments
to Reach Near-Record Levels

Total grain shipments from country elevators will reach near-record levels during the remaining months of the present crop year, according to a statement by

W.C. McNamara, Chief Commissioner of the Canadian Wheat Board on January 22, 1970.

Mr. McNamara made the statement during a special session at the annual meeting of the Canadian Co-operative Wheat Producers in Winnipeg. Appearing with Mr. McNamara were Wheat Board Commissioners R.L. Kristjanson and C.W. Gibbings.

Mr. McNamara said a substantial increase in wheat and barley exports is expected during the last seven months of the 1969-70 crop year. Total wheat and barley exports for the entire crop year are expected to be more than a 100 million bushels higher than in 1968-69.

"If our sales requirements are to be met, shipments from country elevators will have to reach exceptionally high levels between now and the end of the crop year," Mr. McNamara said.

"But I am confident the job can be done," he said. "We have been assured the full co-operation of the grain handling and transportation companies and I am sure our shipping targets will be met. We have definite assurance from both railway companies that terminals of the Lakehead will be filled to their capacity of 90 million bushels prior to the opening of navigation."

An accelerated forward movement of grain is now being planned under the block shipping system. The new shipping system developed by the Grain Transportation Technical Group, a body representing the grain industry, will be fully implemented throughout the western grain growing area by mid February.

While producer marketings of wheat so far in the present crop year are well below those in the same period last year, total deliveries of all grains compare favourably with those in the 1968-69 crop year.

Producer deliveries of all grains from August 1, 1969, to January 14, 1970, totalled 187.3 million bushels as against 211.8 million bushels for the same period in the 1968-69 crop year. Shipments out of country elevators during this period amounted to 209.7 million bushels.

A significant increase has taken place in the domestic disappearance of wheat. The increase, amounting to 38 per cent, was due largely to the increased use of lower grades of wheat as feed. Combined with the expected increase, in exports, total wheat disappearance is expected to reach 525 million bushels.

Supplies at
Record Level

Total estimated supplies of wheat in Canada, for the 1969-70 crop year reached a new high of 1,536.1 million bushels, 17 per cent greater than last year's previous peak of 1,315.4 million. The August 1, 1969, carryover of 851.8 million bushels exceeds by 28 per cent the comparable figure of 665.5 million at the same date in 1968. The 1969 harvest estimated at 684.3 million bushels, was the fourth largest wheat crop on record and represents an increase of 5 per cent over the previous year's outturn of 649.8 million. After making an allowance of 165.0 million bushels for anticipated domestic requirements,

supplies available for export and for carryover during 1969-70 amount to 1,371.1 million bushels. This was an 18 per cent increase over the 1,157.7 million of the previous year.

August-December Exports
Decrease from Previous Year

During August-December 1969, exports of wheat and flour, in terms of wheat amounted to 107.6 million bushels, 22 per cent smaller than the 137.8 million exported during the same five months of 1968. This year's exports consisted of 97.9 million bushels of wheat in bulk, 358 thousand of seed and 9.3 million of flour in terms of wheat. During the August-December period last year, exports constituted 126.5 million of wheat in bulk, 164 thousand of seed and 11.1 million of flour in wheat equivalent. On January 1, 1970 the balance remaining for export and for carryover amounted to 1,263.5 million bushels, 24 per cent above the January 1, 1969 total of 1,019.8 million.

Canadian Wheat Supplies

Item	1968-69 ^r	1969-70 ^p
	million bushels	
Carryover in North America at beginning of crop year (August 1)	665.5	851.8 ^r
Production	649.8	684.3
Total estimated supplies	1,315.4	1,536.1
Less estimated domestic requirements for crop year	157.7	165.0
Available for export and for carryover	1,157.7	1,371.1
<u>Deduct</u>		
Exports of wheat in bulk, August - December (1)	126.5	97.9
Exports of seed wheat, August - December (2)	0.2	0.4
Total exports of wheat as grain	126.7	98.3
Exports of wheat flour in terms of wheat, August - December (2)	11.1	9.3
Total exports of wheat and wheat flour	137.8	107.6
Balance on January 1 for export and for carryover	1,019.8	1,263.5

(1) As reported by the Board of Grain Commissioners.

(2) Customs returns, 1968-69 adjusted for time lag.

P Preliminary figures.

r Revised figures.

Marketings, Disappearance
and Visible Supplies

Total primary deliveries of wheat (both east and west) up to January 21 of the current crop year have amounted to 97.4 million bushels in contrast to 167.0 million marketed during the same period of the previous year. Some 25.3 million bushels of this year's total were delivered during the five weeks December 18, 1969 to January 21, 1970. During the same period the volume of Canadian wheat entering domestic and export channels amounted to 39.9 million bushels. As a result, the total visible supply of Canadian wheat decreased from 425.6 million at December 17, 1969 to a level of 410.7 million at January 21, 1970.

The total visible supply of Canadian wheat at January 21 this year represented a slight decrease from the 1969 comparable total of 411.9 million and was 8 per cent less than the 1968 figure of 444.6 million. Country elevator stocks, amounting to 254.9 million bushels, were some 3 per cent above the 1969 comparable total of 248.0 million and 4 per cent more than the 244.4 million of two years ago. Wheat stocks at interior terminals at January 21, 1970, totalled 12.3 million bushels, 7 per cent more than the 11.5 of a year ago but 6 per cent less than the 13.1 million of 1968. The 13.3 million bushels "in transit rail" (western division) were below both the 1969 figure of 15.4 million and the 16.6 million of two years ago. Supplies at Thunder Bay totalling some 23.0 million bushels, were 28 per cent below the 32.0 million at January 22, 1969 and 61 per cent smaller than the 58.6 million at January 24, 1968. The 22.3 million bushels "in storage afloat" were larger than the 17.3 million in this position in 1969 but smaller than the 25.6 million at same date in 1968. The 30.6 million bushels in Bay, Lake and Upper St. Lawrence ports were lower than both the 31.6 million of a year ago and the 31.4 million of two years ago. Supplies in Lower St. Lawrence and Maritime ports at January 21, 1970, at 34.8 million bushels, registered a 7 per cent increase over the comparable 1969 figure of 32.6 million but were slightly less than the 35.1 million of 1968. The 7.6 million bushels in West Coast ports (Vancouver-New Westminster, Prince Rupert and Victoria) were below both the 11.9 million at January 22, 1969 and the 8.3 million at January 24, 1968.

December 1969 Exports
of Wheat and Flour Total
24.9 Million Bushels

Combined exports of wheat in bulk, seed wheat and wheat flour in terms of grain equivalent, during December 1969 amounted to 24.9 million bushels, 4 per cent above the 24.0 million of the previous month, 40 per cent more than the 17.8 million of December 1968 but 13 per cent below the ten-year (1958-67) average for the month of December of 28.8 million bushels. Exports of wheat in bulk (as reported by the Board of Grain Commissioners) during the month of December 1969, at 22.3 million bushels, represented declines of 2 per cent and 11 per cent, respectively, from the November 1969 total of 22.8 million and the ten-year average of 25.0 million but was 39 per cent more than the December 1968 figure of 16.1 million. Based on Canadian Customs returns, the equivalent of 2.6 million bushels of wheat was exported in the form of flour during December 1969 more than double the 1.1 million of the previous month, 56 per cent larger than the December 1968 adjusted figure of 1.7 million but 23 per cent below the ten-year average of 3.4 million.

Cumulative exports of wheat in bulk during the August-December period of the current crop year amounted to 97.9 million bushels, 23 per cent below the 126.5 million shipped during the first five months of the 1968-69 crop year and 41 per cent smaller than the ten-year average for the period of 165.4 million. Britain and Japan were the two leading markets for Canadian wheat in bulk during the first five months of the current crop year with shipments to these countries amounting to 21.4 million and 13.3 million bushels, and accounted for 22 per cent and 14 per cent, respectively, of the August-December total. During the same period last year Britain accounted for 22 per cent and Japan 14 per cent of the August-December 1968 total. Other principal

importers of Canadian wheat for the first five months of the current crop year with figures for the same period of the preceding crop year in brackets, were as follows, in million of bushels: People's Republic of China, 12.4 (30.8); Italy, 8.6 (9.0); India, 7.1 (0.9); Federal Republic of Germany, 6.4 (7.5); Belgium and Luxembourg, 3.5 (3.5); Poland, 2.6 (3.4); Netherlands, 2.5 (2.1); Pakistan, 2.3 (2.8); France, 2.2 (1.2); and Peru, 2.1 (nil). Cumulative exports of seed wheat during August-December of the current crop year, based on Canadian Customs returns, amounted to 358 thousand bushels compared with last year's comparable total (adjusted to remove time lag) of 164 thousand.

Cumulative exports of wheat flour during the first five months of the 1969-70 crop year, based on Customs returns, were the equivalent of 9.3 million bushels of wheat, 16 per cent below the adjusted August-December 1968 total of 11.1 million bushels. Cuba's purchases, the leading market for Canadian wheat flour during the period under review, amounted to the equivalent of 5.4 million bushels and accounted for 58 per cent of the August-December 1969 total compared with 4.7 million bushels and accounted for 42 per cent of the August-December 1968 total. Other principal markets for Canadian wheat flour in terms of grain equivalent during the August-December period of the 1969-70 crop year, with revised data for the same months of the preceding crop year in brackets, were as follows, in thousands of bushels: Britain, 916 (1,097); Trinidad and Tobago, 366 (138); Burma, 317 (nil); Leeward and Windward Islands, 307 (342); Indonesia, 294 (362); Ghana, 211 (868); United States, 142 (211); Liberia, 138 (78); Iraq, 118 (16); Bahamas, 110 (111); and Lebanon, 101 (183).

General Quota By January 19, 1970 out of a total of 1,801 shipping points in the
Position Western Division, the Canadian Wheat Board had placed 893 points on a delivery quota of one bushel per specified acre. Some 894 points remained on the initial unit quota while only 14 stations were reported as "closed".

Summary of Elevator Shipping Points in the Western Division
as at January 19, 1970

Province	Initial unit quota	General quota in bushels per specified acre	Closed	Total
		One		
Ontario	—	—	1	1
Manitoba	193	129	1	323
Saskatchewan	540	419	9	968
Alberta	161	339	3	503
British Columbia	—	6	—	6
All provinces	894	893	14	1,801

Farmers' Marketings by
Crop Districts 1968-69

Farmers in the Prairie Provinces and certain areas of British Columbia marketed 423.2 million bushels of wheat during the 1968-69 crop year according to revised figures compiled by the Statistics Division of the Board of Grain Commissioners.

In the following tables, farmers' deliveries are shown by the marketing channel employed, i.e., through country elevators, directly to interior private and mill elevators, etc. Deliveries to country elevators are, in turn, broken down by provinces and crop districts.

Farmers' Marketings of Wheat in the Western Division, 1968-69

Marketing channel	Total wheat bushels
Country elevators	419,448,432
Interior private and mill elevators	3,661,273
Interior semi-public terminals	—
Platform loadings	51,145
Total	423,160,850

Farmers' Marketings through Country Elevators, 1968-69

Province and district	Wheat (other than durum)	Durum wheat	Total wheat bushels
<u>Manitoba</u>			
Crop District 1	3,062,133	329,147	3,391,280
2	7,491,256	197,669	7,688,925
3	11,638,851	606,660	12,245,511
4	2,081,586	55,314	2,136,900
5	2,266,081	16,757	2,282,838
6	453,064	3,967	457,031
7	6,306,747	120,176	6,426,923
8	5,374,522	90,409	5,464,931
9	4,163,528	77,567	4,241,095
10	5,360,104	30,577	5,390,681
11	4,219,841	46,151	4,265,992
12	1,389,128	—	1,389,128
13	3,075,650	4,409	3,080,059
14	856,147	4,813	860,960
Totals	57,738,638	1,583,616	59,322,254
<u>Ontario</u>			
Country elevators in the western division	62	—	62
Totals (1)	57,738,700	1,583,616	59,322,316

Farmers' Marketings through Country Elevators, 1968-69

Province and district	Wheat (other than durum)	Durum wheat	Total wheat
		bushels	
<u>Saskatchewan</u>			
Crop District 1A	8,934,584	753,553	9,688,137
1B	8,617,926	152,199	8,770,125
2A	7,622,298	840,225	8,462,523
2B	14,215,782	2,606,623	16,822,405
3A North	7,072,875	1,340,489	8,413,364
3A South	11,450,873	2,003,168	13,454,041
3B North	12,276,298	2,787,097	15,063,395
3B South	8,544,093	1,410,646	9,954,739
4A	3,500,723	451,330	3,952,053
4B	7,904,632	2,597,889	10,502,521
5A	16,249,872	258,800	16,508,672
5B	18,630,255	42,045	18,672,300
6A	18,746,037	1,177,392	19,923,429
6B	14,227,817	904,807	15,132,624
7A	14,615,447	2,032,355	16,647,802
7B	11,812,027	106,025	11,918,052
8A	10,160,206	7,763	10,167,969
8B	12,919,368	22,729	12,942,097
9A	12,983,457	22,044	13,005,501
9B	10,221,699	21,026	10,242,725
Totals	230,706,269	19,538,205	250,244,474
<u>Alberta</u>			
Crop District 1	14,274,412	942,091	15,216,503
2	29,612,880	2,163,025	31,775,905
3	11,015,618	358,309	11,373,927
4	27,578,782	18,691	27,597,473
5	5,303,589	2,834	5,306,423
6	6,181,150	124	6,181,274
7	7,951,051	20	7,951,071
Totals	101,917,482	3,485,094	105,402,576
<u>British Columbia</u>			
Crop District 1	4,479,066	—	4,479,066
Totals (2)	106,396,548	3,485,094	109,881,642
Totals marketed	394,841,517	24,606,915	419,448,432

(1) Manitoba figures include points in Ontario west of Fort William-Port Arthur.

(2) Alberta figures include country points in British Columbia.

Farmers' Marketings Deliveries of wheat from farms in the Prairie Provinces up to January 21 of the current crop year amounted to 92.2 million bushels, 43 per cent less than the comparable 1968-69 total of 160.8 million and 56 per cent below the ten-year (1958-59-1967-68) average for the period of 209.1 million bushels.

Farmers' Marketings (1) of Wheat in the Prairie Provinces 1969-70

Week ending		Manitoba	Saskatchewan	Alberta	Total	Last year
		bushels				
August	6, 1969 ..	—	64,196	—	64,196	356,687
	13	18,143	194,594	8,459	221,196	506,692
	20	57,997	466,356	552,473	1,076,826	2,054,527
	27	440,791	1,693,171	657,276	2,791,238	2,740,850
September	3	379,366	2,728,975	1,085,227	4,193,568	3,414,107
	10	304,101	4,374,050	1,188,274	5,866,425	2,494,299
	17	438,786	6,733,978	1,300,186	8,472,950	7,476,468
	24	412,387	5,845,630	899,106	7,157,123	7,119,331
October	1	280,465	2,801,798	718,730	3,800,993	5,898,564
	8	283,252	1,439,062	830,719	2,553,033	11,254,668
	15	273,007	1,055,557	783,999	2,112,563	7,769,426
	22	112,287	1,906,251	592,955	2,611,493	6,756,032
	29	143,049	2,682,424	730,696	3,556,169	10,181,637
November	5	205,791	2,209,205	732,405	3,147,401	13,335,545
	12	156,692	2,068,665	833,016	3,058,373	15,682,790
	19	273,042	1,986,452	863,346	3,122,840	13,243,981
	26	457,162	2,052,724	720,962	3,230,848	9,915,500
December	3	389,757	2,127,178	875,998	3,392,933	9,262,640
	10	404,960	1,805,857	963,249	3,174,066	6,544,784
	17	491,749	1,881,209	935,918	3,308,876	5,771,605
	22	703,608	4,128,964	1,202,402	6,034,974	5,885,379
	29	492,693	3,750,992	1,099,484	5,343,169	3,229,059
January	7, 1970 ..	675,907	6,194,908	1,260,193	8,131,008	4,364,297
	14	1,019,434	405,299	949,753	2,374,486	2,815,691
	21	790,651	1,284,634	1,351,650	3,426,935	2,727,042
Totals		9,205,077	61,882,129	21,136,476	92,223,682	160,801,601
Average similar period: 1958-59 —						
1967-68		27,779,248	132,642,051	48,700,936	209,122,235	

(1) Includes receipts at country, interior private and mill elevators, interior semi-public terminals and platform loadings.

Visible Supply of Canadian Wheat, January 21, 1970
Compared with Approximately the Same Date, 1968 and 1969

Position	1968	1969	1970
thousand bushels			
Country elevators — Manitoba	29,675	35,351	32,471
Saskatchewan	138,049	142,032	152,003
Alberta	76,716	70,611	70,415
Sub-totals	244,440	247,994	254,889
Interior private and mill	5,590	4,731	4,239
Interior terminals	13,101	11,485	12,290
Vancouver-New Westminster	7,172	10,871	6,203
Victoria	416	461	712
Prince Rupert	678	532	699
Churchill	4,581	4,694	4,659
Thunder Bay	58,612	31,989	23,050
In transit rail (western division)	16,566	15,400	13,338
Bay, Lake and Upper St. Lawrence ports	31,408	31,566	30,580
Lower St. Lawrence and Maritime ports	35,118	32,563	34,831
Storage afloat	25,580	17,272	22,349
In transit rail (eastern division)	1,298	2,319	2,886
Totals	444,560	411,877	410,725

Grading of Wheat Inspected, August-December 1969 with Comparisons

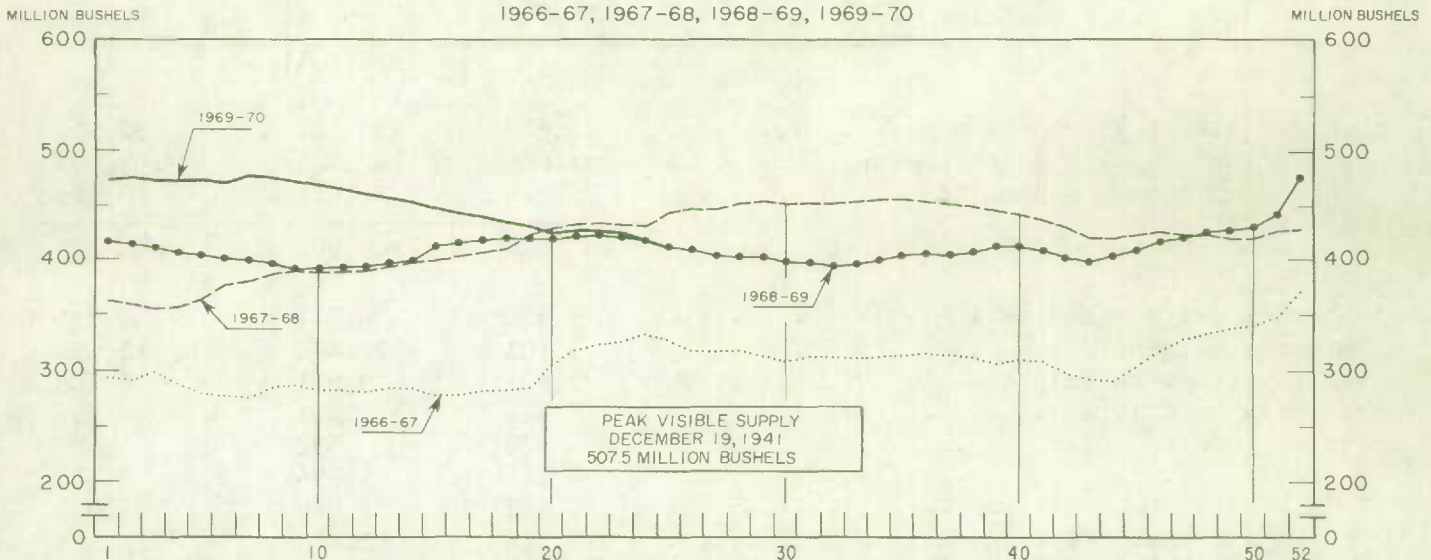
Grade	Crop year		August — December			
	Average					
	1963-64	1968-69	1968		1969	
	— 1967-68					
	per cent	per cent	cars	per cent	cars	per cent
No. 1 Man. Northern	8.7	12.1	18,877	21.2	5,418	8.0
No. 2 Man. Northern	36.8	31.9	31,538	35.4	28,378	41.9
No. 3 Man. Northern	22.6	10.3	8,622	9.7	7,290	10.8
No. 4 Man. Northern	8.8	4.1	1,411	1.6	4,023	5.9
No. 5 Wheat	3.4	2.9	316	0.4	1,454	2.1
No. 6 Wheat	0.4	0.2	98	0.1	142	0.2
Feed Wheat	(1)	(1)	12	(1)	28	(1)
Others Red Spring	12.5	32.1	19,618	22.0	11,177	16.5
C.W. Garnet	0.2	0.1	70	0.1	2	(1)
C.W. White Spring	0.1	0.2	80	0.1	147	0.2
C.W. Mixed Wheat	0.1	(1)	52	0.1	35	0.1
Alberta Winter	0.9	0.4	534	0.6	653	1.0
Nos. 1-6 C.W. Amber Durum .	5.2	2.9	4,191	4.7	8,101	12.0
Others C.W. Amber Durum ...	0.3	2.8	3,794	4.3	932	1.4
Totals	100.0	100.0	89,213	100.0	67,780	100.0

Gross bushels (approx.) ... 170,330,000^r 131,500,000

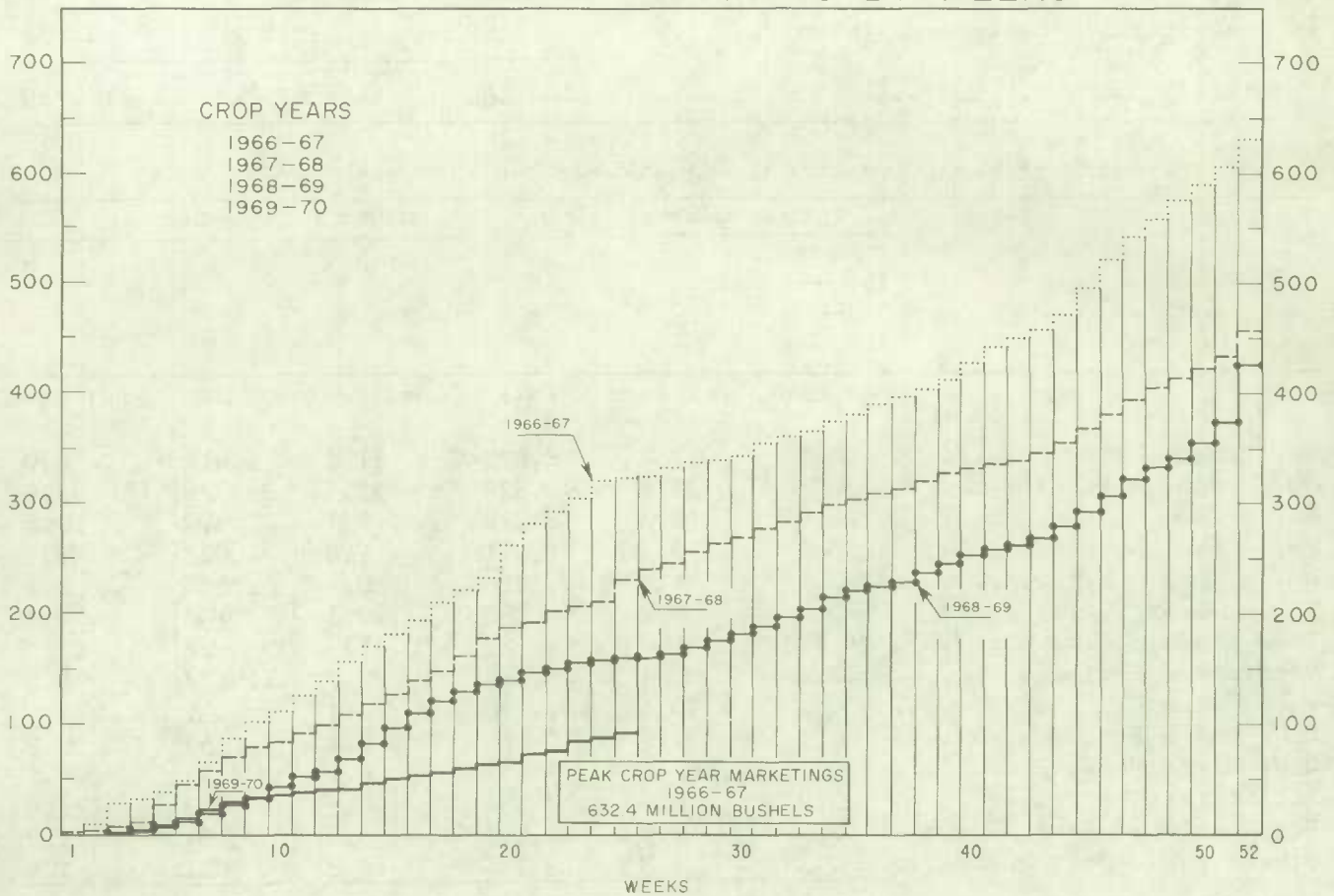
(1) Less than .05 per cent.

^r Revised figure.

WEEKLY VISIBLE SUPPLY OF CANADIAN WHEAT



CUMULATIVE RECORD OF WHEAT MARKETINGS IN THE PRAIRIE PROVINCES BY WEEKS



(Data in both charts for crop years beginning August 1)

Wheat Shipments to
the United States
by Destination

Total vessel and rail shipments of wheat to the United States, either for re-export or retention for domestic use, from the beginning of the current crop year to January 21, 1970 amounted to 789,000 bushels. There were no shipments during the comparable period of 1968-69 and only 4,000 bushels were shipped in 1967-68.

Wheat Shipments(1) to the United States by Destination
August 1, 1969 - January 21, 1970 with Comparisons

Destination	1967-68	1968-69	1969-70
		bushels	
<u>By Vessel</u>			
Buffalo	—	—	558,780
<u>By Rail</u>			
U.S.A. domestic points	4,357	—	180,000
Buffalo	—	—	50,000
Totals, rail	4,357	—	230,000 ^r
Totals, shipments	4,357	—	788,780 ^r

(1) Either for re-export or retention for domestic use. Excluding seed wheat.

^r Revised figures.

Rail Shipments of
Wheat to Maritime
Ports

Rail shipments of wheat to Maritime ports from Bay, Lake and Upper St. Lawrence ports during August-December 1969 amounted to 5,399,000 bushels compared with the August-December 1968 figure of 1,811,000.

Rail Shipments of Wheat to Maritime Ports from Bay, Lake
and Upper St. Lawrence Ports

Origin of shipments	August 1 - December 31, 1968	August 1 - December 31, 1969
		bushels
Port McNicoll	426,900	1,606,685
Midland, Tiffin	217,750	2,398,706
Owen Sound	686,329	525,529
Goderich.....	156,785	212,118
Sarnia	—	462,000
Port Colborne	323,698	193,686
Totals	1,811,462	5,398,724

Rail Shipments of Wheat from Fort William-Port Arthur, 1966-67 - 1969-70

Month	1966-67	1967-68	1968-69	1969-70
	bushels			
August	118,973	133,651	—	132,953
September	83,333	182,051	23,084	134,053
October	89,384	152,009	57,458	149,076
November	163,332	50,475	101,966	126,319
December	106,833	143,833	44,136	179,384
January	145,889	160,214	131,034	
February	120,334	143,884	99,776	
March	177,393	274,690	153,067	
April	133,699	123,167	79,899	
May	207,038	61,460	108,339	
June	154,139	101,950	120,532	
July	93,094	88,500	137,404	
Totals	1,593,441	1,615,884	1,056,695	

Distribution of Rail Shipments of Wheat from Fort William-Port Arthur, December 1969

Grade	Prince Edward Island	Nova Scotia	New Brunswick	Quebec	Ontario
	bushels				
5 Wheat	—	8,000	—	—	—
6 Wheat	16,833	33,333	87,833	—	—
Durum	—	—	—	2,000	7,460
Others	—	—	—	6,000	17,925
Totals	16,833	41,333	87,833	8,000	25,385

Overseas Exports of Canadian Grain by Ports of Loading, August 1, 1969-January 21, 1970
with Comparisons

Port	Wheat(1)	Durum wheat(1)	Oats(1)	Barley	Rye	Flaxseed	Rapeseed
	thousand bushels						
<u>Pacific Seaboard</u>							
Van.-New West	42,135	—	—	10,498	788	3,370	7,078
Victoria	1,462	—	—	—	—	—	—
Prince Rupert	2,488	—	—	—	—	—	—
<u>Churchill</u>	20,905	—	—	—	—	—	—
<u>Lakehead direct</u>	698	—	214	651	145	906	662
<u>Toronto direct</u>	152	—	—	—	—	—	—
<u>St. Lawrence</u>							
Montreal	7,098	6,087	130	1,783	140	207	—
Sorel	4,592	—	—	—	—	—	—
Trois Rivières	6,049	256	68	—	—	242	—
Quebec	2,599	269	—	—	229	1,348	752
Baie Comeau	3,172	443	—	—	—	1,119	—
Port Cartier	8,598	3,307	—	1,310	—	749	—
<u>Maritime</u>							
Saint John	189	—	—	—	—	—	—
West Saint John ...	3,042	220	—	—	—	305	—
Halifax	4,088	—	—	—	—	—	—
Totals	107,267	10,583	412	14,240	1,302	8,247	8,494
August 1, 1968 — January 22, 1969 ..	128,811	11,223	846	5,153	2,579	5,121	6,984

(1) Excluding seed.

Shipments Under

Feed Grain

Assistance Regulations

Freight assistance shipments of wheat from the Prairie Provinces to Eastern Canada and British Columbia during August-December 1969, amounted to 10,816,000 bushels, sharply above the 3,627,000 shipped during the comparable period of 1968. The bulk of the shipments during the current five months under review went to destinations in Quebec and Ontario with these two provinces accounting for a combined 72 per cent of the total. During August-December last year Quebec and British Columbia accounted for 74 per cent of the total.

Provincial Distribution of Wheat Shipments under the Feed Grain Assistance Regulations
August - December 1969 and 1968

Month	Nfld.	P.E.I.	N.S.	N.B.	Que.	Ont.	B.C.	Total	Eastern wheat to Quebec
thousand bushels									
August 1969	1	5	141	79	659	548	207	1,639	19
September	25	8	175	80	753	761	305	2,107	28
October	94	5	173	93	729	783	266	2,142	7
November	35	15	173	88	1,052	746	342	2,450	—
December	104	19	201	65	961	803	326	2,477	—
Totals	258	52	863	404	4,154	3,640	1,445	10,816	54
Same months 1968 ^r ...	21	50	318	82	1,671	484	1,002	3,627	145

^r Revised figures.

Millfeed shipments under the Feed Grain Assistance Regulations indicate the movement of 210,788 tons during August-December 1969. Revised data on the August-December 1968 shipments of millfeeds place the five-month total at 217,888 tons. The greater portion of the millfeed shipments during the five months under review went to destinations in Quebec and Ontario.

Provincial Distribution of Millfeed Shipments under the Feed Grain Assistance
Regulations August-December 1969 and 1968

Province	August - December	
	1968 ^r	1969
tons		
Newfoundland	3,908	1,422
Prince Edward Island	3,843	2,629
Nova Scotia	16,541	9,728
New Brunswick	12,763	6,264
Quebec	103,321	97,182
Ontario	62,862	76,861
British Columbia	14,650	16,702
Totals	217,888	210,788

^r Revised figures.

Supply and Disposition of Wheat and Rye, Canada, Crop Year 1968-69

Item	Wheat	Rye
	thousand bushels	
Stocks at commencement of crop year —		
On farms	236,000	1,900
Pacific coast elevators	10,223	590
Western country elevators	255,325	2,279
Fort William-Port Arthur	63,026	1,782
Eastern elevators	46,702	293
In transit rail	26,737	384
In transit lake	1,965	—
Other Canadian positions	25,532	33
U.S.A. positions	—	198
Totals, in store July 31, 1968	665,510	7,458
1968 Production	649,844	13,049
Imports	N.A.	N.A.
Totals, supplies	1,315,354	20,507
Exports (1)	305,838	4,248
Consumed in Canada —		
Human food (2)	59,884	450
Seed requirements	33,395	1,065
Industrial use (3)	2,400	2,600
Loss in handling (4)	4,667	33
Animal feed, waste and dockage (5)	57,342	3,438
Totals, domestic use	157,688	7,586
Stocks at end of crop year —		
On farms	372,200	5,000
Pacific coast elevators	11,936	268
Western country elevators	286,226	1,651
Fort William-Port Arthur	52,580	847
Eastern elevators	72,279	266
In transit rail	29,661	573
In transit lake	3,262	6
Other Canadian positions	23,684	61
U.S.A. positions	—	—
Totals, in store July 31, 1969	851,828	8,673
Totals, disposition	1,315,354	20,507

(1) Export data for wheat includes seed wheat, wheat flour in terms of wheat and rye flour and meal in terms of rye. (2) Food uses estimated as follows: Wheat - wheat flour and breakfast foods; rye - breakfast foods. (3) Estimated.

(4) Includes drying loss, outturn loss (lake and rail), fire loss, storage loss, etc.

(5) Residual after estimating for other uses. N.A. Not available.

Monthly Exports of Canadian Wheat and Wheat Flour

Year and month	Wheat in bulk(1)	Seed wheat(2)	Total wheat	Wheat flour(2,3)	Total wheat and wheat flour(3)
thousand bushels					
<u>1967-68</u>					
August	24,424	52	24,477	2,773	27,249
September	20,211	60	20,272	2,037	22,309
October	19,851	67	19,917	1,581	21,498
November	21,967	99	22,066	1,811	23,877
December	12,920	56	12,976	2,355	15,332
January	19,259	56	19,315	1,737	21,052
February	18,903	62	18,965	2,394	21,359
March	21,388	169	21,557	2,621	24,178
April	26,661	5	26,666	2,036	28,702
May	42,311	7	42,317	2,061	44,378
June	40,798	1	40,799	1,349	42,148
July	41,975	18	41,993	1,937	43,930
Totals	310,669	651	311,320	24,690	336,010
<u>1968-69</u>					
August	31,127	1	31,128	2,586	33,714
September	30,019	45	30,064	2,134	32,198
October	25,995	50	26,045	2,445	28,490
November	23,338	23	23,361	2,305	25,666
December	16,061	46	16,107	1,662	17,770
January	18,843	12	18,856	1,224	20,079
February	24,149	45	24,194	2,077	26,271
March	19,857	148	20,005	2,760	22,764
April	10,278	138	10,416	1,044	11,460
May	30,350	51	30,401	1,432	31,833
June	24,016	10	24,026	1,835	25,861
July	26,506	107	26,612	3,119	29,731
Totals	280,541	674	281,216	24,623	305,838
<u>1969-70(4)</u>					
August	13,012	121	13,133	2,182	15,315
September	20,949	74	21,024	1,252	22,276
October	18,838	—	18,838	2,237	21,075
November	22,835	108	22,943	1,059	24,002
December	22,294	54	22,348	2,592	24,940
Totals	97,928	358	98,286	9,322	107,608

- (1) Export clearances including shipments to the United States compiled by the Statistics Division, Board of Grain Commissioners for Canada.
- (2) Compiled from Canadian Customs returns, 1967-68 and 1968-69 adjusted to remove effect of time lag in reporting.
- (3) In terms of wheat equivalent. Wheat flour conversion rate: 2.3 bushels per cwt.
- (4) Preliminary, subject to revision.
- (5) Less than 500 bushels.

Exports of Canadian Wheat(1) by Destination, December 1969 and 1968

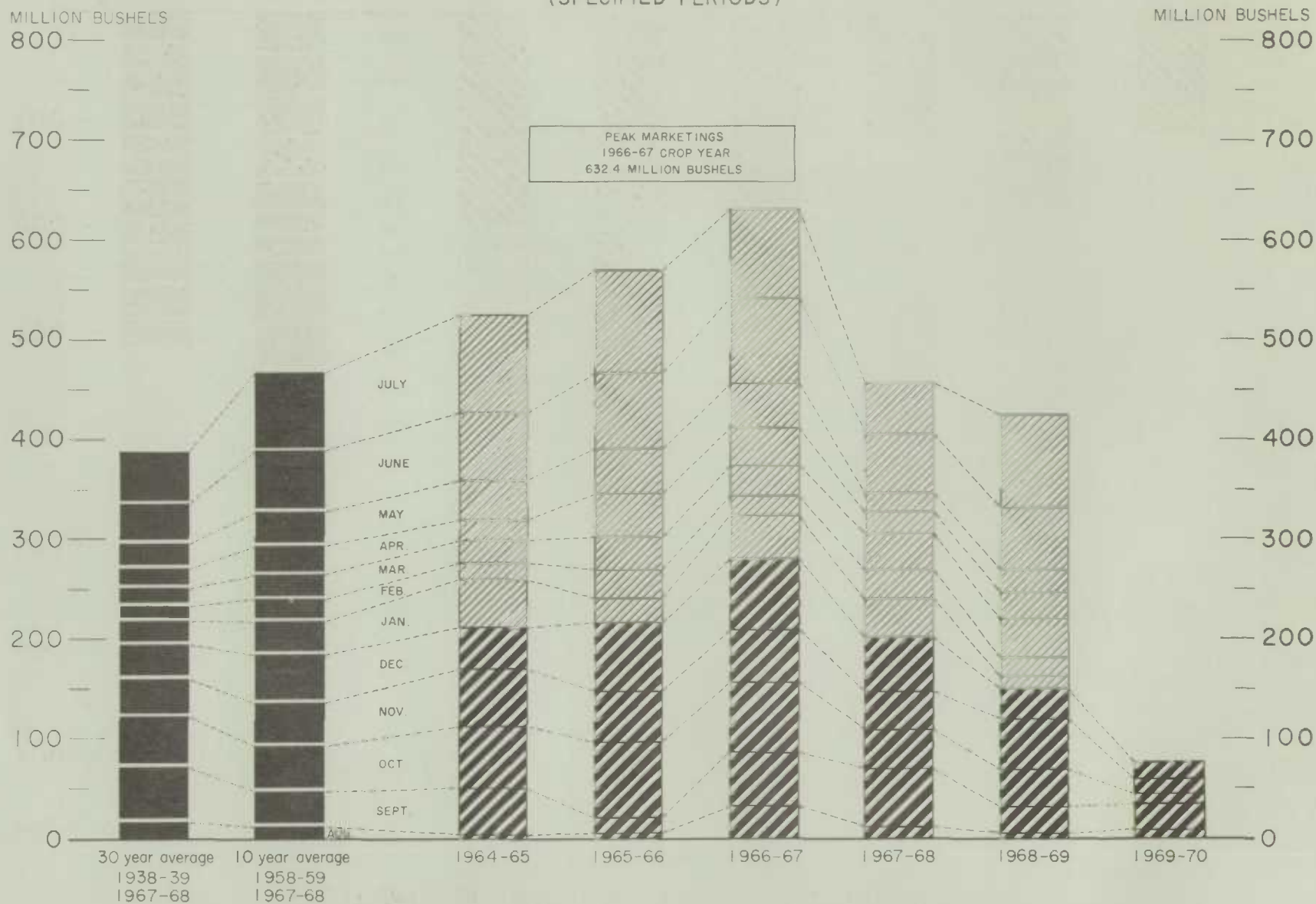
Destination	Wheat (except durum)	Durum wheat	All wheat	
			December 1969	December 1968 ^r
bushels				
<u>Western Europe</u>				
EEC:				
Belgium and Luxembourg	—	—	—	882,527
France	20,577	648,155	668,732	269,322
Germany, Federal Republic	272,995	—	272,995	1,578,697
Italy	971,670	651,920	1,623,590	—
Netherlands	1,286,933	89,591	1,376,524	418,749
Sub-totals	2,552,175	1,389,666	3,941,841	3,149,295
<u>Other Western Europe</u>				
Britain	3,770,349	—	3,770,349	3,275,570
Finland	—	—	—	330,500
Ireland	48,533	—	48,533	168,000
Switzerland	64,455	95,209	159,664	1,155,986
Sub-totals	3,883,337	95,209	3,978,546	4,930,056
Totals	6,435,512	1,484,875	7,920,387	8,079,351
<u>Eastern Europe</u>				
Hungary	—	—	—	678,535
Poland	1,232,000	—	1,232,000	—
U.S.S.R. (Russia)	1,350,729	—	1,350,729	—
Totals	2,582,729	—	2,582,729	678,535
<u>Africa</u>				
Ghana	—	—	—	192,267
Mauritania	55,114	—	55,114	—
Tanzania	54,133	—	54,133	4,427
Tunisia	661,380	—	661,380	692,139
Totals	770,627	—	770,627	888,833
<u>Asia</u>				
Hong Kong	115,173	—	115,173	19,600
Japan	3,399,289	—	3,399,289	1,580,165
Malaysia	—	—	—	39,200
People's Republic of China	6,503,305	—	6,503,305	4,528,468
Singapore	43,307	—	43,307	—
Syria	176,400	—	176,400	—
Totals	10,237,474	—	10,237,474	6,167,433
<u>Western Hemisphere</u>				
Bahamas	—	—	—	40
Cuba	347,200	—	347,200	—
Ecuador	—	—	—	99,212
Jamaica	279,994	—	279,994	400
Paraguay	—	—	—	1,727
Venezuela	155,230	—	155,230	145,787
Totals	782,424	—	782,424	247,166
Sub-totals, all countries ..	20,808,766	1,484,875	22,293,641	16,061,318
Seed wheat(2)			54,168	45,925
Totals, all countries	20,808,766	1,484,875	22,347,809	16,107,243

(1) Overseas clearances as reported by the Statistics Division, Board of Grain Commissioners for Canada, for all countries except the United States. Excluding seed wheat.

(2) Compiled from Canadian Customs returns, 1968 adjusted for time lag, 1969 preliminary.
^f Revised figures.

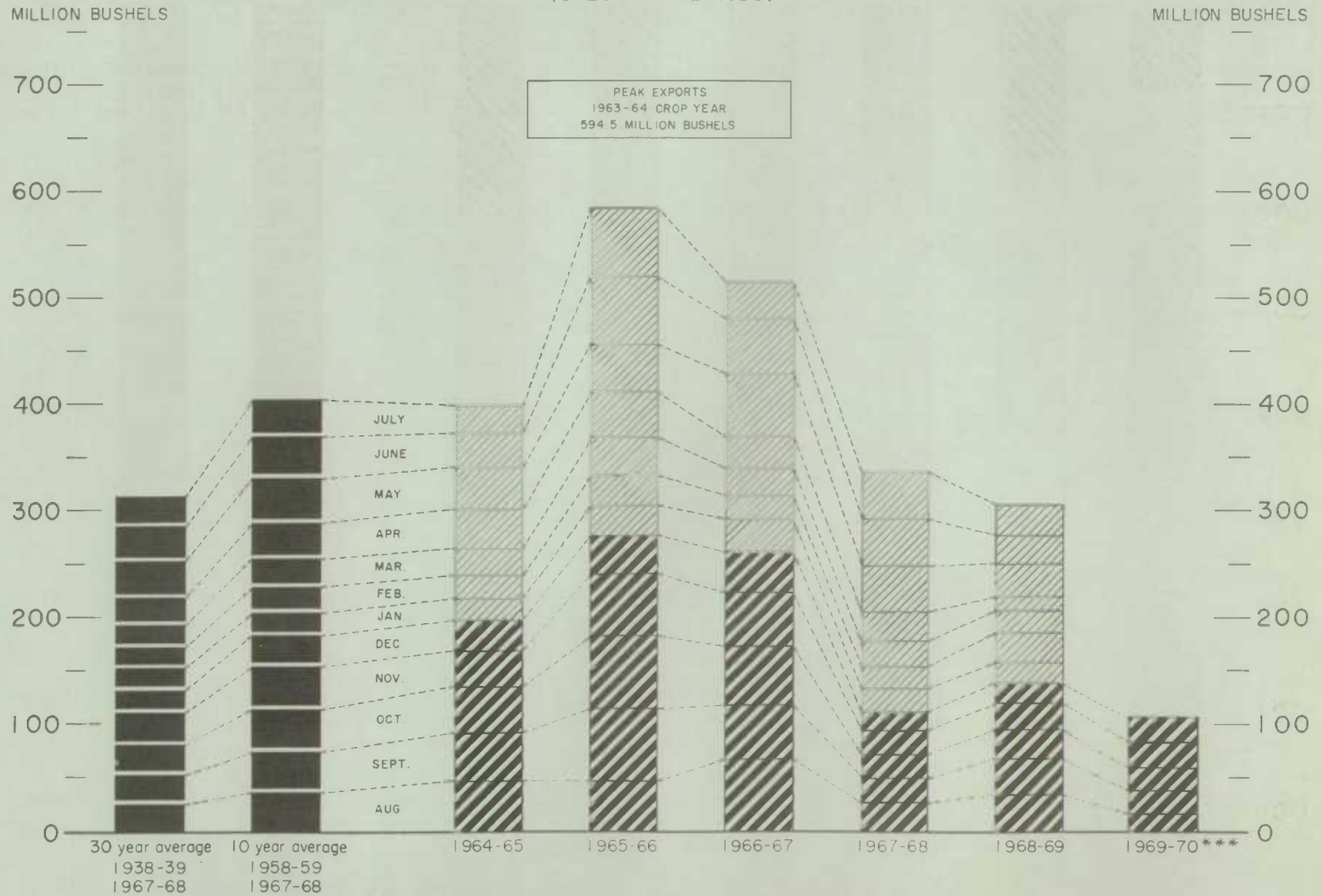
FARMERS' MARKETINGS OF WHEAT, PRAIRIE PROVINCES

(SPECIFIED PERIODS)



EXPORTS OF CANADIAN WHEAT* AND WHEAT FLOUR**

(SPECIFIED PERIODS)



*Beginning with 1955-56 includes seed wheat.

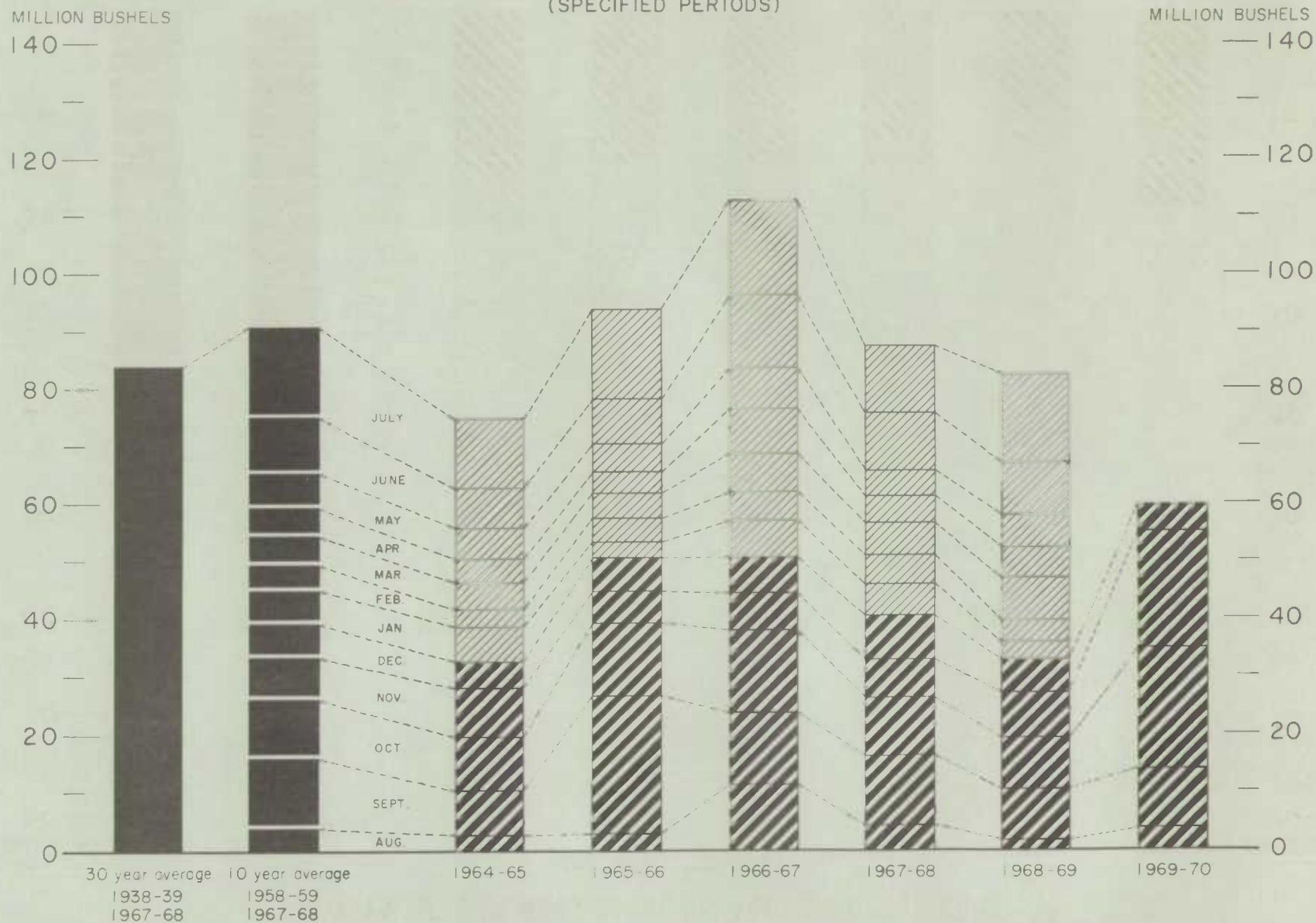
**In terms of wheat equivalent.

***Preliminary.

Agriculture Division D.B.S.

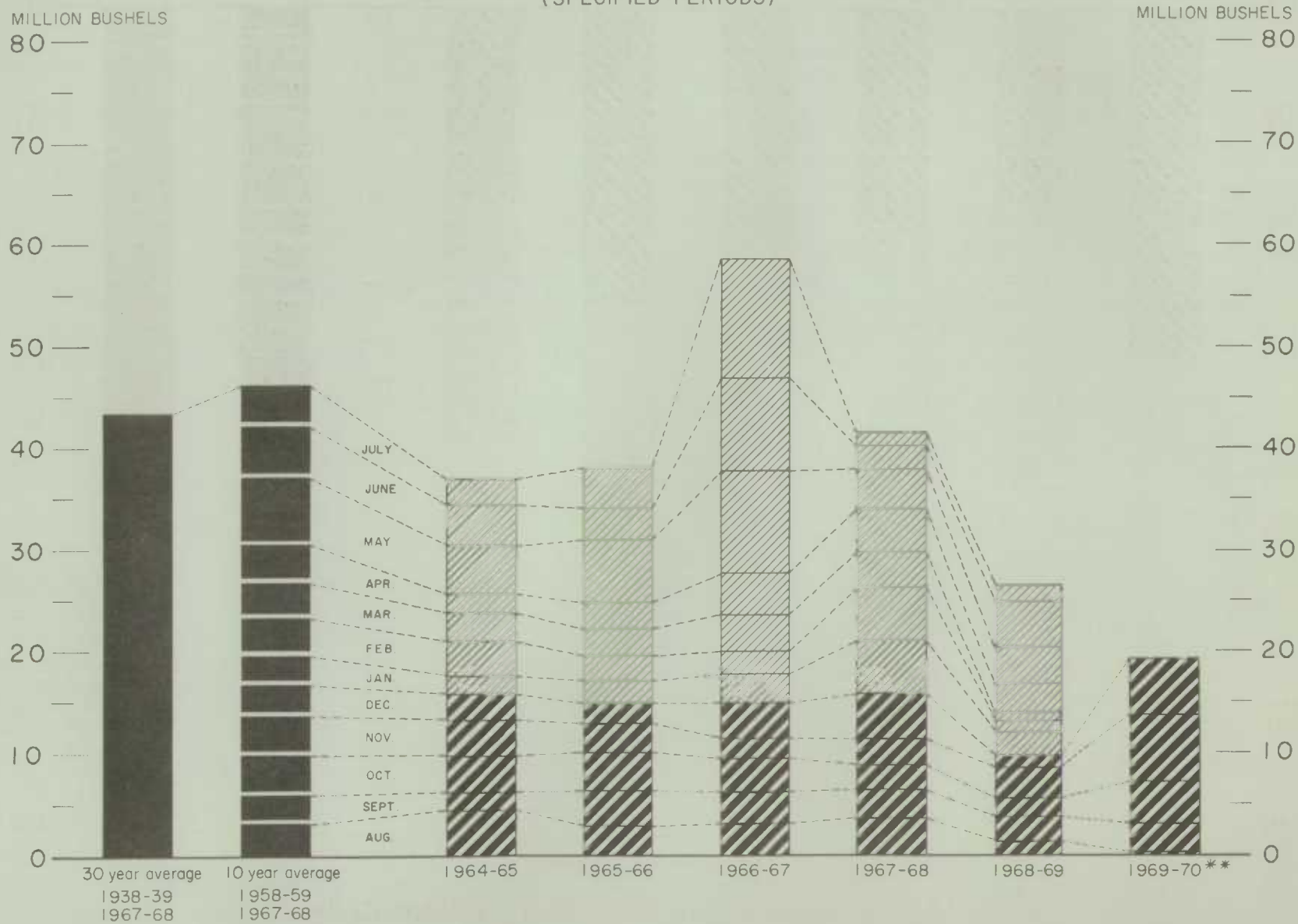
FARMERS' MARKETINGS OF BARLEY, PRAIRIE PROVINCES

(SPECIFIED PERIODS)



EXPORTS OF CANADIAN BARLEY AND BARLEY PRODUCTS*

(SPECIFIED PERIODS)

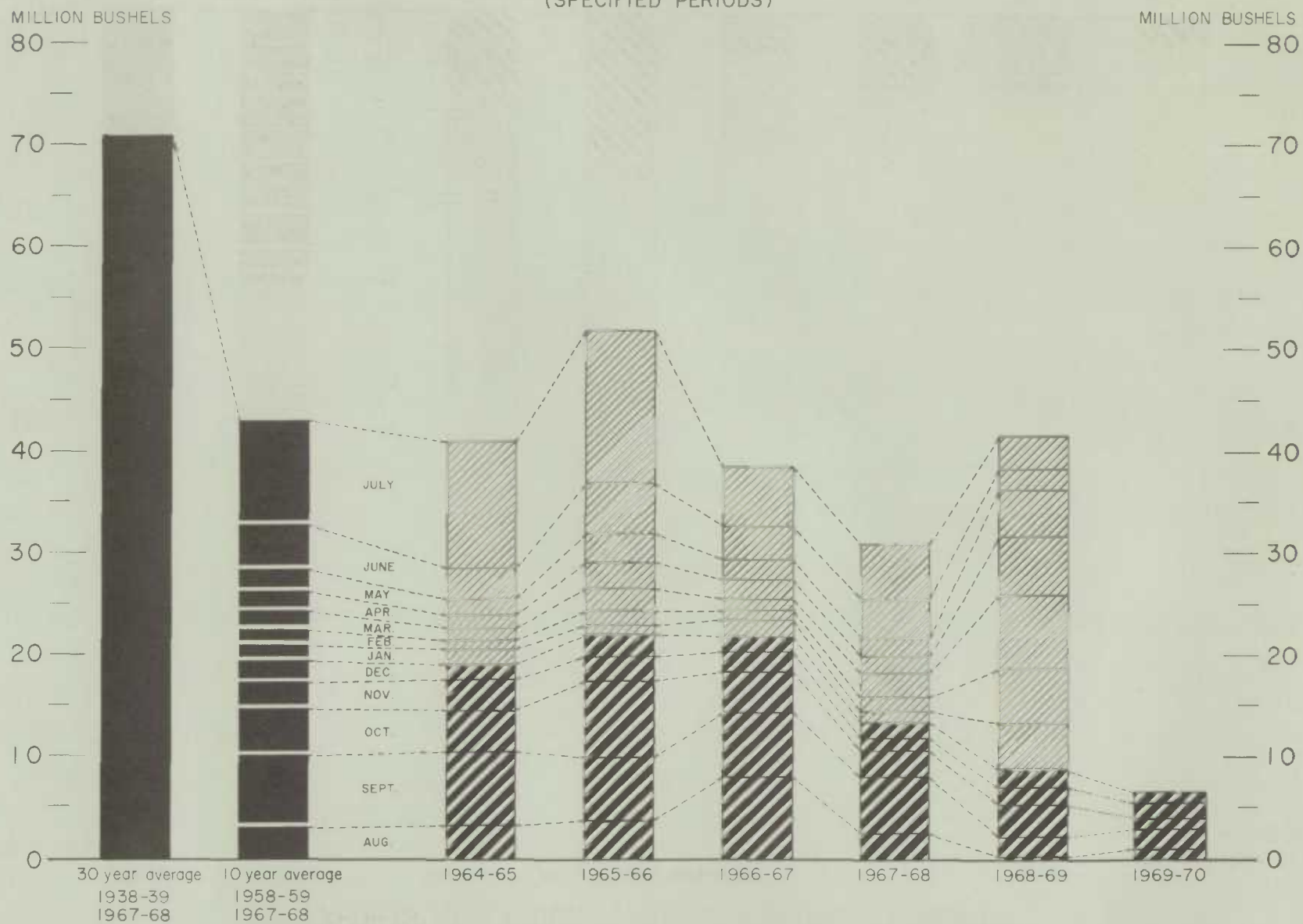


*In terms of grain equivalent. **Preliminary.

Agriculture Division D.B.S.

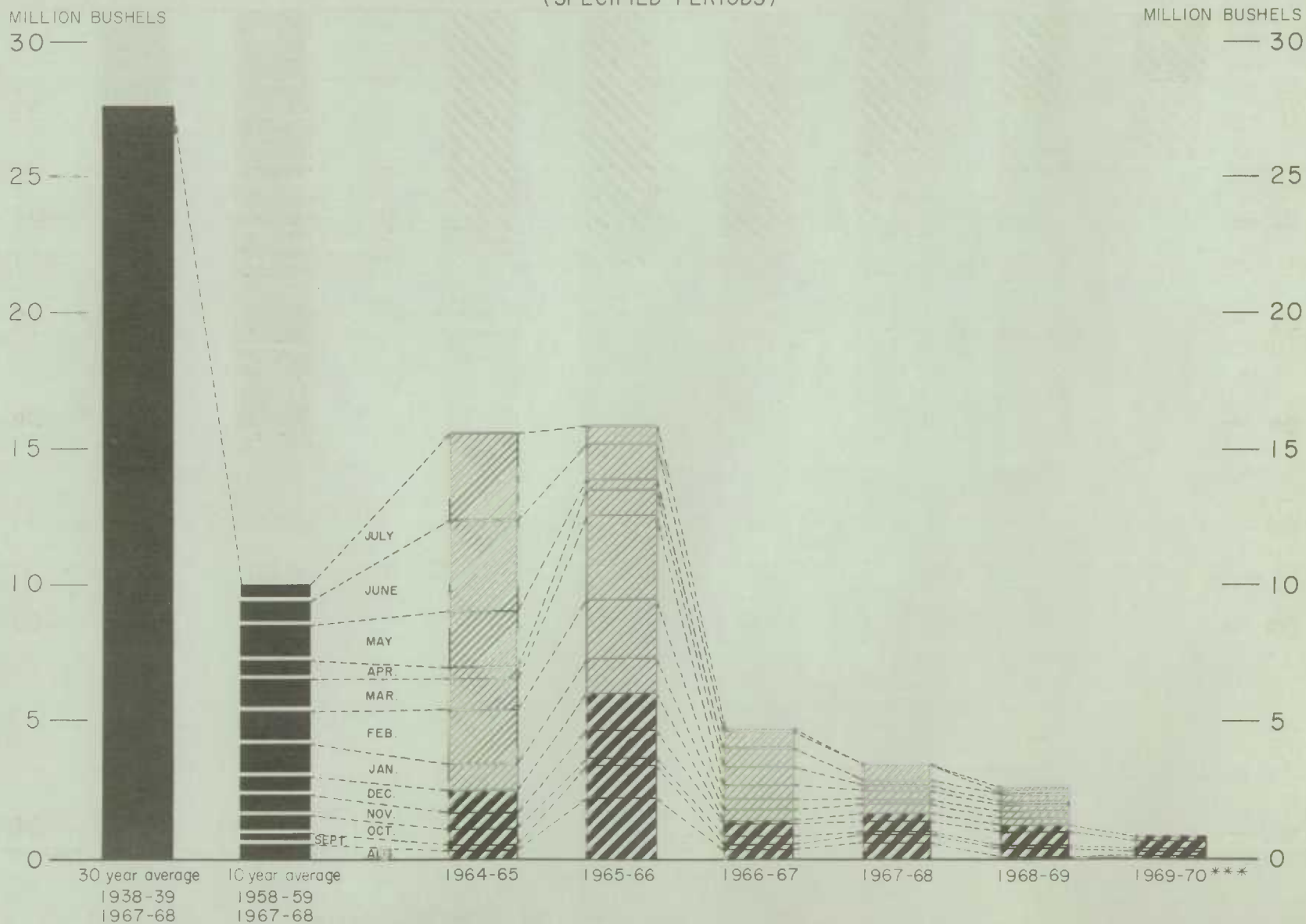
FARMERS' MARKETINGS OF OATS, PRAIRIE PROVINCES

(SPECIFIED PERIODS)



EXPORTS OF CANADIAN OATS* AND OAT PRODUCTS**

(SPECIFIED PERIODS)



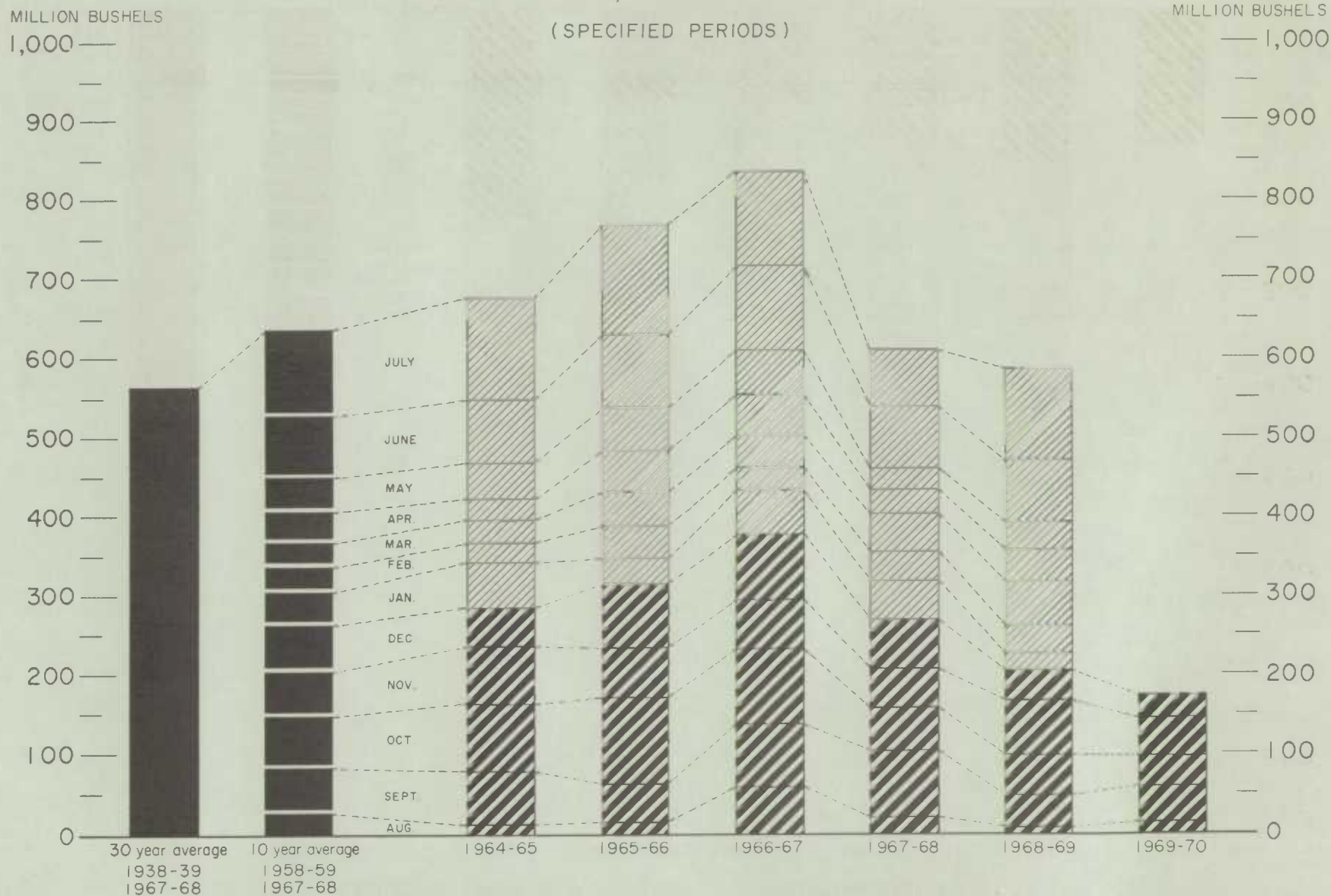
* Beginning with 1960-61 includes relatively small quantity of seed oats

** In terms of grain equivalent.

*** Preliminary.

Agriculture Division D.B.S.

FARMERS' MARKETINGS OF CANADA'S SIX MAJOR GRAINS,* PRAIRIE PROVINCES

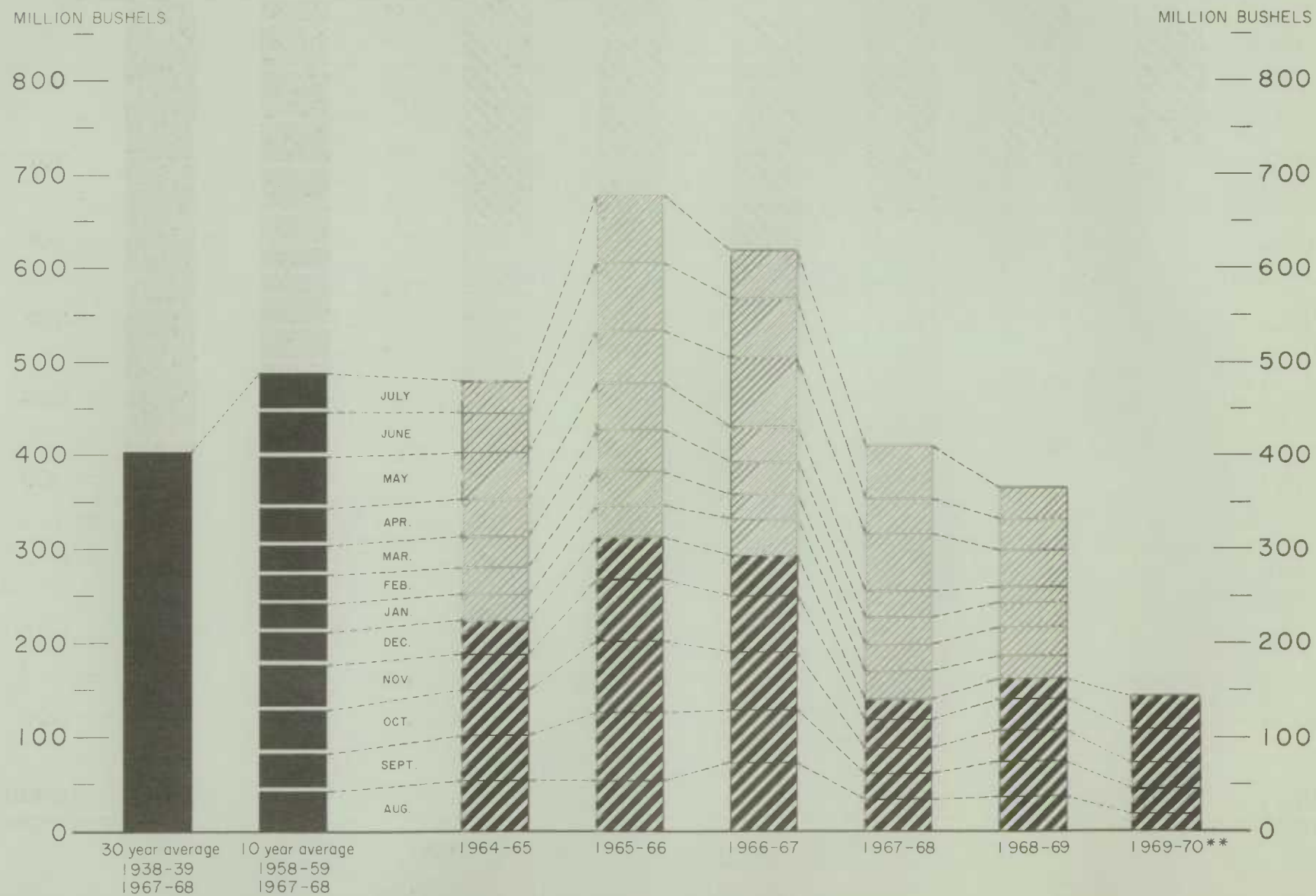


* Wheat, oats, barley, rye, flaxseed and from 1960-61 rapeseed.

Agriculture Division D.B.S.

EXPORTS OF CANADA'S SIX MAJOR GRAINS AND PRODUCTS*

(SPECIFIED PERIODS)



* Wheat, seed wheat, and wheat flour; oats, seed oats and oatmeal and rolled oats; barley and malt; rye; flaxseed and from 1960-61 rapeseed
 ** Preliminary.

Cumulative Exports of Canadian Wheat(1) by Destination

Destination	August-December 1969			Total same period last year ^r
	Wheat (except durum)	Durum wheat	Total wheat	
bushels				
<u>Western Europe</u>				
EEC:				
Belgium and Luxembourg ...	3,344,613 ^r	203,815	3,548,428 ^r	3,523,730
France	343,734 ^r	1,824,321	2,168,055 ^r	1,198,353
Germany, Federal Republic.	3,628,994 ^r	2,778,766 ^r	6,407,760 ^r	7,471,673
Italy	6,347,296	2,286,347	8,633,643	8,967,411
Netherlands	1,653,389 ^r	872,908 ^r	2,526,297 ^r	2,102,118
Sub-totals	15,318,026 ^r	7,966,157 ^r	23,284,183 ^r	23,263,285
<u>Other Western Europe</u>				
Austria	—	—	—	393,643
Britain	21,289,170	93,333	21,382,503	28,356,045
Finland	—	—	—	638,500
Ireland	265,067	—	265,067	395,734
Malta and Gozo	302,773	18,666	321,439	297,504
Norway	1,460,853	—	1,460,853	588,000
Portugal	—	841,750	841,750	—
Sweden	56,776	—	56,776	59,957
Switzerland	1,130,357 ^r	708,476 ^r	1,838,833 ^r	3,781,040
Sub-totals	24,504,996 ^r	1,662,225 ^r	26,167,221 ^r	34,510,423
Totals	39,823,022	9,628,382	49,451,404	57,773,708
<u>Eastern Europe</u>				
Albania	343,504	—	343,504	—
Hungary	—	—	—	1,845,334
Poland	2,624,533	—	2,624,533	3,414,941
U.S.S.R. (Russia)	1,350,729	—	1,350,729	1,734,881
Totals	4,318,766	—	4,318,766	6,995,156
<u>Africa</u>				
Algeria	—	—	—	1,796,005
Congo	122,379	—	122,379	36,500
Ghana	733,530 ^r	—	733,530 ^r	413,224
Mauritania	55,114	—	55,114	771
Mozambique	37,336 ^r	—	37,336 ^r	—
Niger	—	—	—	687,344
Nigeria	18,667	—	18,667	—
Sudan	170,932	—	170,932	—
Tanzania	54,133	—	54,133	4,427
Tunisia	1,028,834	734,867	1,763,701	692,139
Totals	2,220,925	734,867	2,955,792	3,630,410

See footnote(s) at end of table.

Cumulative Exports of Canadian Wheat(1) by Destination - Con.

Destination	August - December 1969			Total same period ^r last year
	Wheat (except durum)	Durum wheat	Total wheat	
bushels				
<u>Asia</u>				
Hong Kong	396,853	—	396,853	351,681
India	7,133,429	—	7,133,429	891,242
Indonesia	—	—	—	29,394
Iraq	13,228 ^r	—	13,228 ^r	12,860
Japan	13,291,872	—	13,291,872	17,099,553
Malaysia	167,701	—	167,701	112,747
Pakistan	2,262,475	—	2,262,475	2,753,926
People's Republic of China ..	12,413,823	—	12,413,823	30,840,811
Singapore	181,627	—	181,627	38,267
Syria	176,400	—	176,400	2,020,883
Turkey	—	—	—	32,518
Totals	36,037,408 ^r	—	36,037,408 ^r	54,183,882
<u>Western Hemisphere</u>				
Bahamas	—	—	—	40
Barbados	29	—	29	40
Cuba	347,200	—	347,200	1,712,200
Ecuador	158,005	—	158,005	254,145
Haiti Republic	352,800	—	352,800	—
Jamaica	561,825	—	561,825	394,598
Paraguay	—	—	—	1,727
Peru	2,110,979	—	2,110,979	—
St. Lucia	—	—	—	187
Venezuela	845,070	—	845,070	1,594,882
United States (2)	788,780	—	788,780	—
Totals	5,164,688	—	5,164,688	3,957,819
Sub-totals, all countries .	87,564,809 ^r	10,363,249	97,928,058 ^r	126,540,975
Seed wheat (3)			357,972	164,166
Totals, all countries ...	87,564,809 ^r	10,363,249	98,286,030 ^r	126,705,141

(1) Overseas clearances as reported by the Statistics Division, Board of Grain Commissioners for Canada, for all countries except the United States. Excluding seed wheat.

(2) Compiled from returns of Canadian elevator licensees and shipments and advice from American grain correspondents.

(3) Compiled from Canadian Customs returns, 1968 adjusted for time lag.

^r Revised figures.

Customs Exports of Canadian Wheat Flour by Countries of Consignment

Destination	September	December	August - December	
	1969(1)	1969(2)	1969(2)	1968(1)
bushels				
<u>Western Europe</u>				
EEC:				
Belgium and Luxembourg	—	1,035	36,828	41,600
France	—	—	644	—
Germany, Federal Republic ...	—	—	283	—
Italy	2,070	4,140	8,280	6,210
Netherlands	—	—	1,895	2,696
Sub-totals	2,070	5,175	47,930	50,506
<u>Other Western Europe</u>				
Britain	85,585	129,534	915,534	1,096,548
Denmark	—	—	—	460
Gibraltar	2,576	—	2,576	2,576
Greece	—	—	15,971	48,045
Iceland	—	—	—	3,386
Ireland	—	—	—	322
Portugal	2,300	—	20,944	15,615
Sweden	—	—	515	515
Sub-totals	90,461	129,534	955,540	1,167,467
Totals	92,531	134,709	1,003,470	1,217,973
<u>Africa</u>				
Algeria	—	—	—	65,870
Angola	—	—	690	3,910
Cameroun Republic	—	—	—	22,080
Congo-Kinshasa	11,500	8,280	22,080	16,100
Dahomey	2,937	2,760	18,807	13,471
French Africa nes	—	—	—	8,285
Gambia	18,494	4,600	34,790	16,480
Ghana	26,758	1,874	211,034	868,388
Guinea Republic	—	33,014	44,514	76,243
Ivory Coast	—	920	1,610	3,795
Liberia	38,628	7,289	137,857	77,657
Malawi	5,301	2,208	13,881	19,978
Mozambique	8,388	4,653	20,670	27,441
Nigeria	—	—	—	230
Portuguese Africa nes	4,232	17,768	35,303	38,209
Sierra Leone	801	687	915	5,656
Tanzania	1,035	—	3,335	—
Togo	24,744	6,753	99,211	85,477
U.A.R.-Egypt	—	—	—	676,140
Totals	142,818	90,806	644,697	2,025,410
<u>Asia</u>				
Afghanistan	—	690	690	621
Burma	—	316,639	316,639	—
Ceylon	—	2,537	2,537	839,014
Cyprus	129	—	541	55
Hong Kong	22,213	32,232	76,767	155,422
India	219	223	442	230
Indonesia	—	272,964	294,255	361,857
Iran	152	—	1,426	1,822
Iraq	—	117,790	117,790	15,720
Israel	—	—	—	228,390
Japan	230	115	2,300	1,633

See footnote(s) at end of table.

Customs Exports of Canadian Wheat Flour by Countries of Consignment - Con.

Destination	September	December	August - December	
	1969(1)	1969(2)	1969(2)	1968(1)
	bushels			
<u>Asia (concluded)</u>				
Jordan	1,617	1,617	4,853	—
Lebanon	62,967	68,752	101,354	183,312
Philippines	1,663	—	1,663	1,012
Portuguese Asia	1,012	2,783	4,301	8,222
Qatar	115	—	345	396
Saudi Arabia	—	35,747	36,023	—
Syria	—	—	—	9,432
Thailand	14,773	21,087	53,082	72,285
Trucial States	1,387	—	2,178	1,886
Totals	106,477	873,176	1,017,186	1,881,309
<u>Oceania</u>				
British Oceania nes	460	460	2,710	5,576
Fiji	1,196	1,012	2,645	2,748
New Zealand	—	—	—	460
United States Oceania	3,450	3,680	14,030	17,259
Totals	5,106	5,152	19,385	26,043
<u>Western Hemisphere</u>				
Bahamas	20,974	30,074	109,912	111,010
Barbados	25,125	32,397	99,201	117,383
Bermuda	11,868	9,428	45,333	51,446
Bolivia	—	—	—	18,257
British Honduras	2,760	7,109	23,598	21,001
Cuba(3)	562,858	1,154,402	5,377,931	4,666,164
Dominican Republic	—	—	—	1,725
Ecuador	—	—	—	345
El Salvador	—	—	—	487
French West Indies	—	—	1,966	1,612
Guatemala	—	—	805	1,150
Guyana	2,776	1,897	16,808	37,088
Haiti Republic	—	—	16,440	89,077
Honduras Republic	575	4,772	5,030	13,188
Jamaica	9,131	17,581	44,362	73,437
Leeward and Windward Islands ..	66,226	82,080	306,760	341,872
Netherlands Antilles	10,656	23,759	61,366	64,518
Panama	—	435	435	1,254
Peru	—	—	—	9,602
St. Pierre and Miquelon	978	1,139	9,023	7,114
Surinam	883	1,493	9,423	5,547
Trinidad and Tobago	123,814	80,091	366,470	137,561
United States Virgin Islands ..	—	—	—	127
Venezuela	255	—	396	115
United States	32,798	41,978	141,839	211,022
Totals	871,677	1,488,635	6,637,098	5,982,102
Totals, all countries	1,218,609	2,592,478	9,321,836	11,132,837

- (1) In terms of wheat equivalent. Adjusted to remove effect of time lag in the returns made by Customs. Conversion rate: 2.3 bushels per cwt.
- (2) In terms of wheat equivalent. Preliminary and unadjusted for time lag. Conversion rate: 2.3 bushels per cwt.
- (3) Source - Canadian National Millers Association.
- nes not elsewhere specified.

Canadian Wheat Board Weekly Average Cash Wheat Prices, Crop Year 1969-70
Basis in Store Thunder Bay

Class and grade	Week ending			
	January 9	January 16	January 23	January 30
cents and eighths per bushel				
<u>Initial payment to producers</u>				
1 Northern	150	150	150	150
2 Northern	146	146	146	146
3 Northern	141	141	141	141
4 Northern	133	133	133	133
5 Wheat	119	119	119	119
6 Wheat	115	115	115	115
Feed Wheat	110	110	110	110
1 C.W. Garnet	133	133	133	133
2 C.W. Garnet	128	128	128	128
3 C.W. Garnet	123	123	123	123
1 Alberta Red Winter	132	132	132	132
2 Alberta Winter	127	127	127	127
3 Alberta Winter	121	121	121	121
1 C.W. Amber Durum	150	150	150	150
2 C.W. Amber Durum	146	146	146	146
3 C.W. Amber Durum	141	141	141	141
<u>International Grains Arrangement and domestic sales</u>				
<u>(Basis in store Thunder Bay)</u>				
1 Northern	181/7	181/7	181/7	181/7
2 Northern	178/7	178/7	178/7	178/7
3 Northern	168/3	168/3	168/3	168/3
4 Northern	151/3	151/3	151/3	151/3
5 Wheat	148/3	148/3	148/3	148/3
6 Wheat	143/3	143/3	143/3	143/3
Feed Wheat	138/3	138/3	138/3	138/3
1 C.W. Garnet	149/3	149/3	149/3	149/3
2 C.W. Garnet	148/3	148/3	148/3	148/3
3 C.W. Garnet	147/3	147/3	147/3	147/3
1 Alberta Red Winter	149/3	149/3	149/3	149/3
2 Alberta Winter	148/3	148/3	148/3	148/3
3 Alberta Winter	147/3	147/3	147/3	147/3
1 C.W. Amber Durum	196/3	195/2	193/3	193/3
2 C.W. Amber Durum	194/3	193/2	191/3	191/3
3 C.W. Amber Durum	183/4	182/3	180/4	180/4
<u>(Basis in store Vancouver)</u>				
1 Northern	182/6	183/3	182/6	182/2
2 Northern	180/2	180/7	180/2	179/6
3 Northern	171/3	171/3	171/3	171/3
4 Northern	165/3	165/3	165/3	165/3
5 Wheat	163/3	163/3	163/3	163/3
6 Wheat	156/3	156/3	156/3	156/3
Feed Wheat	153/3	153/3	153/3	153/3
1 C.W. Garnet	165/3	165/3	165/3	165/3
2 C.W. Garnet	164/3	164/3	164/3	164/3
3 C.W. Garnet	163/3	163/3	163/3	163/3
1 Alberta Red Winter	165/3	165/3	165/3	165/3
2 Alberta Winter	164/3	164/3	164/3	164/3
3 Alberta Winter	163/3	163/3	163/3	163/3

CANADIAN FLOUR MILLING SITUATION

Production Wheat flour production by Canadian mills during December 1969 amounted to 3,220,000 hundredweight representing a decrease of 1 per cent less than the November 1969 total of 3,268,000 hundredweight, but 11 per cent over the adjusted December 1968 figure of 2,891,000 hundredweight and relatively unchanged from the ten-year (1959-68) average production for the month of December of 3,243,000 hundredweight. Mills reporting operations during December 1969 had a total rated capacity of 168,000 hundredweight per 24-hour day and on the basis of a 26-day working period 73.8 per cent of this rated capacity was effective.

Wheat milled for flour during December 1969 amounted to 7,323,000 bushels, 3 per cent below the 7,549,000 bushels milled during the preceding month but 12 per cent above the 6,538,000 bushels milled during December 1968. Of the wheat milled for flour during December 1969 some 6,360,000 bushels were Western Canadian spring wheat (other than Durum) while the remainder consisted of Ontario winter wheat (538,000 bushels); Durum (298,000 bushels); and all other (128,000 bushels).

Exports According to preliminary Customs returns, exports of Canadian wheat flour during December 1969 amounted to the equivalent of 2,592,000 bushels (some 1,127,000 hundredweight of flour) more than double the 1,059,000 bushels exported in November 1969 and 56 per cent greater than the adjusted December 1968 exports of 1,662,000 bushels. Flour shipments during the month went to forty-five countries with exports to Cuba amounting to 1,154,000 bushels and accounted for 44 per cent of the December 1969 total. Other leading markets for Canadian wheat flour in terms of wheat during the month with shipments in thousands of bushels were as follows: Burma, 317; Indonesia, 273; Britain, 130; and Iraq, 118.

Wheat Milled for Flour, and Production and Exports of Wheat Flour, Canada

Crop year	Wheat milled for flour bushels	Wheat flour	
		Production	Exports(1)
			cwt.
1935-36 - 1939-40 average	67,845,114	29,405,451	9,603,941
1940-41 - 1944-45 "	99,704,638	43,908,245	23,699,546
1945-56 - 1949-50 "	107,330,372	47,011,540	25,819,721
1950-51 - 1954-55 "	100,446,328	43,847,894	21,812,041
1955-56 - 1959-60 "	99,148,211	39,752,589	16,349,156
1960-61 - 1964-65 "	91,128,177	40,834,088	15,769,803
1965-66	97,925,995	43,531,263	16,576,117
1966-67	90,084,646	39,978,571	13,848,208
1967-68	84,769,150	37,755,841	10,734,857
1968-69	85,048,591	37,621,151	10,705,452
1969-70 (2)			
August	7,383,987	3,231,729	948,508
September	7,736,641	3,411,564	544,562
October	8,112,737	3,562,014	972,463
November	7,548,659	3,267,598	460,275
December	7,323,425	3,219,994	1,127,164
Totals	38,105,449	16,692,899	4,052,972
Same months 1968-69 ^r	36,239,728	16,032,818	4,840,364

(1) Based on Customs returns. Exports for the crop years 1945-46 - 1968-69 revised to remove effect of time lag in the returns made by Customs.

(2) Subject to revision.

^r Revised figures.

UNITED STATES SITUATION

Supplies Higher in 1969-70

Total domestic supplies of wheat in the United States for the 1969-70 crop year are currently placed at 2,276.4 million bushels, 8 per cent more than the previous year's total of 2,115.6 million, reflecting a sharp increase in carryover stocks, which more than offset a slight decrease in production. The 817.6 million bushels carried over at July 1, 1969 were 52 per cent larger than the 1968 stocks, while the current crop, estimated at 1,458.9 million bushels, represents a decline of 7 per cent from last year's outturn of 1,576.3 million. Domestic disappearance during 1969-70 is estimated at about 780.0 million bushels, 3 per cent more than the 754.1 million last year. After deducting anticipated domestic requirements for the current United States crop year, some 1,497.5 million remain available for export and for carryover, an increase of 10 per cent over the 1,361.8 million in 1968-69.

Exports Lower than a Year Ago

Exports of wheat and wheat flour in terms of grain equivalent during the period July-December 1969 amounted to 267.7 million bushels, 9 per cent below the 295.5 million exported during the same months last year. The balance remaining on January 1, 1970 for export and for carryover was estimated at 1,229.8 million bushels compared with 1,066.3 million on the same date a year ago.

United States Wheat Supplies

Item	1968-69 ^r	1969-70 ^P
	million bushels	
Carryover at beginning of crop year (July 1)	539.4	817.6 ^r
Production	1,576.3	1,458.9
Total estimated domestic supplies	2,115.6	2,276.4
Imports of wheat and wheat flour in terms of wheat for domestic use, July - December	0.3	1.0
Total estimated supplies (1)	2,115.9	2,277.5
Less estimated domestic requirements for crop year (2)	754.1	780.0 ^r
Available for export and for carryover	1,361.8	1,497.5
<u>Deduct</u>		
Exports of wheat as grain, July - December	263.3	236.2
Exports of wheat flour in terms of wheat, July - December (3)	32.2	31.5
Total exports of wheat and wheat flour (4)	295.5	267.7
Balance on January 1 for export and for carryover	1,066.3	1,229.8

(1) Excludes imports for January-June.

(2) Includes shipments to United States Territories and wheat for military food use at home and abroad.

(3) Flour exports exclude "Milled in bond".

(4) Data include shipments for relief.

P Preliminary figures. ^r Revised figures.

Stocks of Wheat
in All Positions
January 1, 1970

On January 22, 1970 the United States Department of Agriculture reported that all wheat in storage on January 1, 1970 totalled 1,527 million bushels, 13 per cent above a year earlier and the largest for the date since 1964. Farm stocks were record large at 608 million bushels and nearly 5 per cent above January 1, 1969. Off-farm stocks at 919 million bushels were 20 per cent above a year earlier and the largest for the date since 1966. Disappearance from all storage positions during the 1969 October-December quarter is indicated at 344 million bushels compared with 339 million a year earlier. Of the total January wheat stocks, the Commodity Credit Corporation owned 169 million bushels and had loans outstanding on 706 million more.

Durum wheat stocks in all positions on January 1, 1970 totalled 111.9 million bushels, 30 per cent above a year earlier and the largest January stocks on record since estimates began in 1962. Stocks on farms at 90.9 million bushels were up 40 per cent from a year earlier but off-farm stocks of 21.0 million bushels were slightly lower. Disappearance during the 1969 October-December quarter totalled 17.3 million bushels compared with 23.4 million bushels a year earlier.

United States Wheat Stocks by Positions, January 1, 1970 with comparisons

Grain and position	January 1, 1968	January 1, 1969	October 1, 1969	January 1, 1970
thousand bushels				
<u>All wheat</u>				
On farms(1)	507,611	581,287	751,745	608,077
Commodity Credit Corp.(2) ..	761	758	913	941
Mills, elev. & whses.(1) (3)	703,729	763,653	1,117,821	917,740
Totals	1,212,101	1,345,698	1,870,479	1,526,758
<u>Durum wheat(4)</u>				
On farms(1)	49,015	64,864	106,031	90,951
Commodity Credit Corp.(2) ..	170	138	172	156
Mills, elev. & whses.(1) (3)	14,168	20,892	23,015	20,809
Totals	63,353	85,894	129,218	111,916

(1) Estimates of the Crop Reporting Board. January 1, 1969 on farm stocks are interpolations.

(2) C.C.C.-owned grain at bin sites.

(3) All off-farm storages not otherwise designated, including terminals and processing plants. Includes C.C.C.-owned grain in these storages.

(4) Included in all wheat.

Flour Production

According to the Bureau of the Census, United States Department of Commerce, wheat flour production in the United States in December 1969 amounted to 22,989,000 hundredweight, averaging 1,045,000 hundredweight per working day. This compared with an average output per working day of 1,167,000 hundredweight last month and 1,013,000 hundredweight in December 1968. Wheat flour mills during December operated at 103.2 per cent of capacity, compared with 115.8 per cent and 101.1 per cent, respectively, for the previous month and the same month a year ago. Flour mills in December 1969 ground 51,068,000 bushels of wheat compared with 49,344,000 bushels the previous month and 47,667,000 bushels in December 1968.

AUSTRALIAN SITUATION

Wheat Supplies
Set New Record

Reflecting the effect of a sharp increase in carryover stocks which more than offset a substantial decrease in production, total supplies of wheat in Australia for the 1969-70 crop year are estimated at an all-time high of 646.5 million bushels as against 591.0 million in 1968-69. The current harvest, presently forecast at 380.0 million bushels, is 30 per cent below the previous record of 539.6 million bushels harvested in 1968-69 while the carryover stocks, at December 1, 1969, at 266.5 million bushels, increased sharply over the 51.4 million at the same date a year ago. After deducting some 77.0 million bushels for anticipated domestic requirements, an estimated 569.5 million are available for export and for carryover during 1969-70, 12 per cent above the 510.2 million in 1968-69.

Exports Above
Last Year

Combined exports of wheat as grain and wheat flour in terms of grain equivalent during December amounted to 16.0 million bushels, 31 per cent more than the 12.2 million exported during the corresponding month of 1968. The balance remaining on January 1, 1970 for export and for carryover, at 553.5 million bushels, exceeded the comparable 1969 total of 498.0 million.

Australian Wheat Supplies

Item	1968-69 ^r	1969-70 ^P
	million bushels	
Carryover, including flour as wheat, at beginning of crop year (December 1)	51.4	266.5
Production	539.6	380.0
Total estimated domestic supplies	591.0	646.5
Less estimated domestic requirements for crop year ..	80.8	77.0
Available for export and for carryover	510.2	569.5
<u>Deduct</u>		
Exports of wheat as grain, December	11.5	15.0
Exports of wheat flour in terms of wheat, December	0.7	1.0
Total exports of wheat and wheat flour	12.2	16.0
Balance on January 1 for export and for carryover ..	498.0	553.5

^P Preliminary figures.

^r Revised figures.

The following information relative to the Australian situation has been extracted from a report from Mr. R.A. Groundwater, Assistant Commercial Secretary for Canada, Melbourne, under date of January 14, 1970 and is reproduced with the permission of the Trade Commissioner Service, Department of Industry, Trade and Commerce. Where possible, conversions to Canadian measures and currency have been made for the convenience of our readers.

Crop estimates for the 1969-70 season. — The harvest is nearing completion in most parts of Australia, although actual figures for the crop are extremely slow in being made available. One of the major reasons is that the over-quota wheat is being delivered in some areas but held on farms in others. This creates untold difficulties for the various bodies to decipher and provide accurate details. No official statement has been released on the crop estimates, but the total will probably decrease by a few million bushels from the December figures.

Wheat Production Estimates for 1969-70

State	Total production	Probable deliveries	Quota level (1)
million bushels			
Queensland	16	13	31
New South Wales	178	164(2)	130
Victoria	85	81	65
South Australia	63	58	45
Western Australia	68	60(3)	86
Totals	410	376	

- (1) Including Prime Hard quota allocation.
 (2) Including 8 million bushels delivered to Grain Elevators Board (Victoria).
 (3) This figure might be high as receivals are only 48.9 million bushels.

The special Prime Hard quotas in both Queensland and New South Wales will not be met. Queensland had a basic quota of 25 million bushels plus 6 million bushels for Prime Hard wheat. Production of the Hard Prime has only reached 1.1 million bushels in Queensland and only a few more bushels of this designation can be expected. New South Wales has a basic quota of 123 million bushels plus 7 million bushels of Prime Hard quota. The total harvest to date has only produced 3.5 million bushels of Prime Hard and again only a few more bushels can be expected as both states have finished harvesting in areas where such a grade can be expected. The quota provisions do not allow transference of this quota to F.A.Q. wheat, providing a maximum quota of 126.5 million bushels and 26.1 million bushels (which cannot be met) for New South Wales and Queensland, respectively.

The Australian Wheat Board thus has very little Prime Hard wheat which is available for export. This is causing some concern for it is the most readily saleable wheat in Australia.

Crop conditions by state. — The harvest is basically completed in Queensland although deliveries are not as yet finished. The delivery pattern is altered somewhat as some wheat might be held on farms for stockfeed, resulting from the prolonged drought. A more complete analysis of wheat production, deliveries and grades is expected shortly.

The harvest is quite prolonged in New South Wales as only 97.2 million bushels have been received to January 5, by the Grain Elevators Board, 70 million bushels less than the same time last year. Over-quota wheat is being accepted at several points,

dependent on available space in relation to expected deliverable quota wheat. The grades received by January 5, with 1968-69 in brackets, were as follows in millions of bushels: F.A.Q. 51.8 (128.0); off grade, 40.6 (11.8); Prime Hard 3.5 (26.9); Soft Biscuit 1.3 (1.1).

The harvest will rapidly be completed in the state as satisfactory weather has been prevailing, except in the Riverina.

Victoria's harvest is over 50 per cent completed but rain in the major wheat growing areas plus the Riverina in New South Wales is creating difficulties. As the moisture content must be 11.9 per cent or less, rain greatly hampers harvesting, because the roots bring moisture up to the head for several days after a rain. A period of hot weather is required for completion of the harvest but as yet no such weather is expected. The harvest is being delayed by those farmers, with over-quota wheat, who are waiting for elevator space before completing their harvest.

Average climatic conditions have prevailed in South Australia. Drying winds have followed any rain, providing reasonably good harvesting weather.

The harvest is virtually completed in Western Australia with an abnormally short harvest period. Most of the silos have closed, and late deliveries would be accepted providing a sample is submitted, together with a written declaration that the grain was free of insects, stored in new or treated containers, plus the trade name of the insect control agent and the application rate if used. The total deliveries of wheat to January 7, were 48.9 million bushels, which may indicate that the provisional figure is too high. The dry conditions throughout the season, including the absence of finishing rains, have resulted in an average yield of some 10 bushels to the acre but has possibly contributed to the high protein content (average of 11.1 per cent as compared to the usual level of 9.5 per cent).

Wheat sale to China. — The wheat sale to China came at an opportune time for Australia. The sale, which contains a large proportion of off-grade wheat (no exact figure as yet has been obtained), provided a ready market for the off-grade New South Wales wheat. This is true in the other states also. The price per bushel appears below A.\$1.45 (\$1.75 Canadian), new export price under the stabilization scheme, but no price has been made available for off-grade wheat, making it difficult to pinpoint the price of the F.A.Q. wheat.

The buying of F.A.Q. wheat by China has improved the market outlook considerably for Victoria (including the Riverina). This may have been the reason for the favourable quota Victoria received. Nevertheless, the problem is still that of selling additional F.A.Q. wheat from Victoria, and only few other markets look favourable.

Wheat quotas — 1970-71. — The Minister for Primary Industry, Mr. Anthony, said today that the Australian Wheatgrowers' Federation has acted with responsibility in a difficult situation by recommending a national wheat quota reduction for the 1970-71 season. But he said the Federation's decision did not alter the fact that the industry was likely to have the biggest carryover of wheat in its history at the beginning of the 1970-71 harvest — the harvest to which the new quotas would apply.

Mr. Anthony was commenting on the decision yesterday by the Federation that the basic national quota should be 288 million bushels plus supplementary quotas for New South Wales and Queensland Prime Hard and Northern Hard wheats totalling 20 million bushels. He said the carryover at December 1, 1970 was estimated a few weeks

ago at a little over 400 million bushels, but new estimates based on revised crop and sales figures show a likely carryover at that date of about 346 million bushels. This is almost 80 million bushels more than the carryover at December 1, 1969.

It is obvious that unless there is a strong and unexpected increase in wheat sales, or unless some other factor not at present in view comes into play, it is going to take a considerable time for stocks to be reduced to more manageable levels. The world wheat supply situation is such that it would be unrealistic to assume any significant increase in the present sales level in the foreseeable future. It may well be difficult even to hold the present position. The new quotas proposed by the Federation would not, of course, have any effect on the carryover situation at December 1, 1970.

Mr. Anthony said deliveries for the current season were at present expected to total about 362 million bushels, comprising 306 million bushels of quota wheat and 56 million bushels of over-quota wheat. Sales were optimistically estimated at 283 million bushels. This meant that with the current harvest added to the start-of-season carryover, total availability of wheat would be approximately 629 million bushels.

Mr. Anthony said he expected the Federation would want to meet him to discuss the condition of its proposals that the Commonwealth Government guarantee finance for a first advance on quota wheat. It was likely that a meeting for this purpose would take place in Sydney next week.

Mr. Anthony said the responsibility for acceptance and implementation of the Federation's proposals rested with the State Governments. He hoped to join in discussions on the proposals with State Ministers for Agriculture at the earliest opportunity.

Exports of Australian Wheat and Wheat Flour in Terms of Wheat
December 1 — December 27, 1969-70 and Corresponding Period 1968-69

Destination	Wheat		Wheat flour	
	1968-69	1969-70	1968-69	1969-70
thousand bushels				
<u>Western Europe</u>				
EEC:				
Netherlands	680	206	—	—
<u>Other Western Europe</u>				
Britain	2,092	1,513	32	31
Ireland	62	—	—	—
Malta	391	146	—	—
Norway	718	928	—	—
Sweden	—	37	—	—
Switzerland	—	91	—	—
Sub-totals	3,263	2,715	32	31
Totals	3,943	2,921	32	31

See footnote(s) at end of table.

Exports of Australian Wheat and Wheat Flour in Terms of Wheat
December 1 — December 27, 1969-70 and Corresponding Period 1968-69 — Con.

Destination	Wheat		Wheat flour	
	1968-69	1969-70	1968-69	1969-70
thousand bushels				
<u>Africa</u>				
Malawi	—	—	19	37
Mauritius	—	—	(1)	3
Zambia	—	169	—	—
Others	(1)	1	13	73
Totals	(1)	170	32	113
<u>Asia</u>				
Aden	108	139	—	—
Aden and Aden I/T	—	—	25	2
Aden and Aden I/T Atta	—	—	3	17
Arabian Gulf	—	—	17	17
Arabian Gulf Atta	—	—	135	154
Ceylon	—	581	1	2
China	—	3,222	—	—
Hong Kong	27	19	2	5
India	917	1,142	—	—
Indonesia	—	—	93	210
Japan	2,353	1,703	—	—
Kuwait	—	574	—	—
Lebanon	1,115	—	—	—
Malaysia	679	925	—	—
Pakistan	—	1,730	—	—
Philippines	—	—	6	18
Sabah	—	—	4	(1)
Sarawak	—	—	1	(1)
Saudi Arabia	82	263	11	13
Singapore	294	567	(1)	(1)
Taiwan	755	—	—	—
Thailand	149	4	14	24
Others	136	228	18	75
Totals	6,615	11,097	330	537
<u>Western Hemisphere</u>				
Chile	—	280	—	—
Colombia	484	—	—	—
Peru	454	531	—	—
West Indies Area	—	—	—	7
Totals	938	811	—	7
<u>Pacific Area and Sundries</u>				
Pacific Islands	3	2	295	299
Ships' Stores and Sundries ..	—	—	11	12
Totals	3	2	306	311
Totals, all countries ..	11,500	15,000	700	1,000

(1) Less than 500 bushels.

FRENCH SITUATION

Supplies Slightly Lower
than Previous Year

Total estimated commercial domestic supplies of soft wheat in France for the crop year (August-July) 1969-70, consisting of the August 1 carryover of 103.9 million bushels and anticipated marketings of 404.2 million amount to some 508.1 million, about 2 per cent less than the 1968-69 total of 516.3 million. Imports of wheat during August-November 1969 amounted to 3.3 million bushels, 8 per cent below the previous year's comparable total of 3.6 million. After deducting 222.3 million bushels for estimated domestic use, including normal feed wheat requirements, the surplus available for export and for carryover is placed at 289.1 million bushels compared with 291.5 million last year.

Exports Increase
Over Last Year

Combined exports of wheat and wheat flour in terms of grain equivalent during the first four months of the 1969-70 crop year amounted to 71.4 million bushels, and represented an increase of 27 per cent above the comparable August-November 1968 total of 56.1 million. The balance of commercial supplies remaining on December 1, 1969 for export and for carryover amounted to 217.7 million compared with December 1, 1968 total of 235.4 million bushels.

French Soft Wheat Supplies

Item	1968-69 ^r	1969-70 ^p
million bushels		
Commercial carryover, August 1	93.2	103.9
Anticipated deliveries to Grain Board	423.1	404.2 ^r
Total estimated commercial domestic supplies ..	516.3	508.1
Imports, August-November	3.6	3.3
Total commercial supplies	519.9	511.4
Less domestic requirements for crop year	228.4	222.3 ^r
Available for export and for carryover	291.5	289.1
<u>Deduct</u>		
Exports of wheat, August-November	45.1	60.9
Exports of wheat flour, August-November	11.1	10.5
Total exports of wheat and wheat flour	56.1	71.4
Balance on December 1 for export and for carryover	235.4	217.7

^p Preliminary figures.

^r Revised figures.

The following account of the wheat situation in France has been extracted from a report from Mr. F.G. Beaudette, Agricultural Secretary, Canadian Embassy, Paris, under date of January 14, 1970 and is reproduced with the permission of the Trade Commissioner Service, Department of Industry, Trade and Commerce. Where possible, conversions to Canadian measures have been made for the convenience of our readers.

Weather and crops. — The dry sunny weather of October continued into the first week of November. Then temperatures lowered considerably with early morning frosts; rain fell generously in all areas except the Mediterranean region. During the last week of the month, winter set in with general freezing temperatures and snowfalls. The November rainfall did help soil preparation activities which had been hampered by earlier dry conditions, but in many areas the excessive rain continued to prevent growers from planting as intended, and the result could well be a change in the wheat-barley-corn equilibrium of recent years. There is a 14 per cent drop in the estimated wheat seedings at December 1, 1969 compared to 1968, and the condition of the sown fields is not as good as usual for the period. Following are the Ministry of Agriculture's first estimates of areas sown in wheat at December 1, 1967 to 1969.

Plantings at December 1

	<u>1967</u>	<u>1968</u>	<u>1969</u>
	thousand acres		
Soft wheat	8,771	8,200	7,054
Durum wheat	72	104	121
Totals, wheat ..	8,843	8,304	7,175

Soft wheat supply-utilization. — November soft wheat deliveries by growers only come to 227,900 tons (8,374,000 bushels), bringing the August-November 1969 total to 6,458,400 tons (237,303,000 bushels) and the total for the 1969 crop to 8,336,500 tons (306,311,000 bushels). This compares to 278,600; 7,029,900 and 8,685,700 tons (10,237,000; 258,302,000 and 319,141,000 bushels), respectively, for 1968. December deliveries are also reported to be lower than expected, but ONIC is sticking to its estimate that 11 million tons (404,176,000 bushels) of 1969 crop wheat will be marketed. Denaturation for feed use has continued to surge ahead in November with 116,000 tons (4,262,000 bushels) compared to 54,000 tons (1,984,000 bushels) in November 1968. ONIC expects that the target of 1.3 million tons (47,766,000 bushels) denatured in 1969-70 will be met if present trends continue. Stocks of soft wheat in all positions (except in millers' hands) at December 1, 1969 were 5.54 million tons (203,558,000 bushels) or 800,000 tons (29,395,000 bushels) less than at December 1, 1968.

Durum wheat situation. — Durum wheat marketings by growers reached 10,600 tons (389,000 bushels) in November as against 10,300 (378,000 bushels) a year ago, bringing the August-November 1969 total to 126,900 tons (4,663,000 bushels) compared with 137,200 (5,041,000 bushels) in 1968 and the 1969 crop total to 225,100 tons (8,271,000 bushels) 227,600 (8,263,000 bushels) in 1968. Again it is apparent that producers are holding back deliveries of durum this crop year.

Commercial stocks of durum further decreased during November from 123,000 to 110,000 tons (4,519,000 to 4,042,000 bushels) at December 1, 1969. The mills bought 19,500 tons (716,000 bushels) in November and exports reached only 1,500 tons (55,000 bushels). The industry which held stocks of 42,600 tons (1,565,000 bushels) at November 1, took delivery of 20,500 tons (753,000 bushels) of domestic and 59,600 tons (2,168,000 bushels) of imported durum, and milled 45,500 tons (1,672,000 bushels) during November to end the month with stocks of 77,200 tons (2,837,000 bushels).

Trade. — France imported nearly 60,000 tons (2,205,000 bushels) of durum wheat

in November, but imports of quality wheats at 9,600 tons (353,000 bushels) were very low. On the other hand, exports continued at a high level in November of 1969. The November shipments of 356,000 tons (13,081,000 bushels) brought the 1969-70 crop year total to end of November to 1.46 million tons (53,645,000 bushels) compared to 1.13 tons (41,520,000 bushels) for the first 4 months of 1968-69. The EEC partners remain extremely good customers for French wheat this year, a surprising development since the ONIC expected export levels to member countries to drop in 1969-70. The United Kingdom has also become a very important outlet.

ONIC has had to release further substantial quantities of 1968 crop wheat from its stocks to help exporters meet their commitments to China. Although the preliminary export statistics indicate that less than 1/4 of the 800,000 ton contract (29,395,000 bushels) with China has been shipped to end of November, the trade believes that much more than that has already gone forward. The market has as usual been very quiet during the holiday and the only new substantial business announced to a third country is a 400,000 ton sale (1,470,000 bushels) to Portugal for early delivery.

Wheat grading system introduced. — The ONIC has introduced a wheat grading system for 1969-70, after studying at length the Canadian and American systems. It is considered experimental in this first year as grading is voluntary and may reach one million tons (36,743,000 bushels) of soft wheat or less than 10 per cent of the marketed 1969 crop. The grading takes place at the first marketing level (co-ops and merchants) who receive a small premium as incentive for grading.

The system includes 3 classes based on the kernel protein and sedimentation qualities, as follows:

<u>Class</u>	<u>Minimum protein</u> per cent	<u>Minimum sedimentation</u>	<u>Weight</u> pounds
I	13	38	240
II	12	30	140
III	10	16	110

Each of these classes is subdivided into 4 grades based on specific weight (77-76-75-74 kgs), humidity, impurities and germination.

Classes I and II could include 20 per cent to 25 per cent of the marketed French crop; class III about 50 per cent; the remainder (25 per cent to 30 per cent) cannot be used for bread when used above.

The avowed purpose of the system in France is to obtain more homogeneous lots of the various bread wheats to assist French production in replacing imports of quality wheats in the EEC (particularly Germany) and later perhaps, in the United Kingdom as well.

ARGENTINE SITUATION

Wheat Supplies Slightly Higher than a Year Ago

Total estimated domestic supplies of wheat in Argentina for the 1969-70 (December-November) crop year are placed at some 255.8 million bushels little changed from the 255.3 million of the previous year, reflecting an increase in production which more than offset a decrease in carryover stocks. The current harvest estimated at 237.0 million bushels is 12 per cent above the 210.9 million produced in 1968-69. Carry-over stocks, at 18.8 million are considerably less than the 44.4 million at December 1, 1968. After making an allowance of 150.0 million for anticipated domestic requirements, an estimated 105.8 million are available for export and for carryover in 1969-70, some 7 per cent more than the 98.6 million the previous year.

Exports Decrease from Previous Year

Preliminary exports of wheat and wheat flour in terms of wheat equivalent during December 1969 amounted to 3.9 million bushels, sharply below the 8.0 million exported during the same month in 1968. The balance remaining on January 1, 1970 for export and for carryover was estimated at 102.0 million bushels, compared with 90.6 million on the same date a year ago.

Argentine Wheat Supplies

Item	1968-69 ^r	1969-70 ^p
	million bushels	
Carryover at beginning of crop year (December 1)(1) ...	44.4	18.8
Production	210.9	237.0
Total estimated domestic supplies	255.3	255.8
Less estimated requirements for crop year	156.7	150.0
Available for export and for carryover	98.6	105.8
<u>Deduct</u>		
Exports of wheat as grain, December	7.9	3.7
Exports of wheat flour in terms of wheat, December ..	0.1	0.1
Total exports of wheat and wheat flour	8.0	3.9
Balance on January 1 for export and for carryover	90.6	102.0

(1) Includes allowances for farm stocks.

^p Preliminary figures.

^r Revised figures.

The following account of the Argentine situation has been extracted from a report from Mr. S.E. Kidd, Assistant Commercial Secretary (Agriculture) Buenos Aires, under date of January 28, 1970 and is reproduced with the permission of the Trade Commissioner Service, Department of Industry, Trade and Commerce. Where possible conversions to Canadian measures and currency have been made for the convenience of our readers.

On December 30, the Secretariat of Agriculture and Livestock issued the second official estimate of production of Argentine wheat in 1969-70 of 6,450,000 metric tons (237.0 million bushels) including 680,000 tons (25.0 million bushels) of Durums. This is a considerable increase from the first estimate, issued on December 11, of 5,700,000 tons (209.4 million bushels), including 600,000 tons (22.0 million bushels) of Durums.

This estimate was issued following the very rapid improvement in the outlook for the wheat crop in the last two weeks of December. The development of the plants was late, particularly in central and southern Buenos Aires, where a considerable proportion of the crop is grown, as sowings took place later than usual because of heavy rains. However, the weather conditions have remained exceptionally favourable and a very good crop is now being harvested.

The wheats in southern Santa Fe, southeastern Cordoba, northern La Pampa and eastern Entre Rios also reacted favourably to good weather conditions after a long period of drought.

The main producing province is Buenos Aires, with 4,550,000 tons (167.2 million bushels), 70.5 per cent; followed by La Pampa with 560,000 tons (20.6 million bushels), 8.7 per cent; Cordoba 540,000 tons (19.8 million bushels), 8.4 per cent; Santa Fe 510,000 tons (18.7 million bushels), 7.9 per cent; Entre Rios 210,000 tons (7.7 million bushels), 3.3 per cent; and other provinces 80,000 tons (2.9 million bushels), 1.2 per cent. The wheat crop in far northern areas was almost completely destroyed by drought and only the late recovery of the plants in southern regions is allowing a normal crop to be harvested.

This second estimate of production is 12.4 per cent or 710,000 tons (26.1 million bushels) larger than the 1968-69 crop of 5,740,000 tons (210.9 million bushels) but 12 per cent and 3.8 per cent lower than the averages of the last five- and ten-year periods, respectively.

The Durum crop, at 680,000 tons (25.0 million bushels) is much larger than the final estimate for 1968-69 of 470,000 tons (17.3 million bushels). About 50,000 tons (1,837,000 bushels) of Durums are used for seed and only 30,000 tons (1,102,000 bushels) for food purposes in Argentina. Thus, there will be a surplus for export of about 600,000 tons (22,046,000 bushels) of Durums. The bulk of Argentina's Durum exports moves to Italy.

A crop of 6,450,000 tons (237.0 million bushels), of which 5,770,000 tons (212.0 million bushels) would be bread wheat, could be sufficient to allow Argentina to meet its domestic and export commitments. However, Argentina had only a negligible carryover of wheat into the 1969-70 crop year and would again be left without stocks for carryover into 1970-71.

Hard bread wheat prices again fell sharply during December, dropping from 17.20 new pesos (\$1.44 per bushel) to 15.80 new pesos per 100 kilos (\$1.32 per bushel) f.o.r. Buenos Aires and from 16.20 new pesos (\$1.36 per bushel) to 15.70 new pesos (\$1.31 per bushel) at Bahia Blanca. At January 27, hard bread wheat prices were 15.90 new pesos (\$1.33 per bushel) and 15.60 new pesos per 100 kilos (\$1.31 per bushel) at Buenos Aires and Bahia Blanca, respectively. These prices are below the support price of 16.50 new pesos per 100 kilos (\$1.38 per bushel) and so almost all purchases are being made by the National Grain Board.

Prices on the Buenos Aires Futures Exchange on January 27 were 15.95 new pesos per 100 kilos (\$1.34 per bushel) for February delivery; 16.35 new pesos (\$1.37 per bushel) for March; 16.75 new pesos (\$1.40 per bushel) for April and 17.24 new pesos (\$1.44 per bushel) for May.

Candeal (Durum) prices also continued to fall. December prices dropped from 19.00 new pesos per 100 kilos (\$1.59 per bushel) to 17.90 new pesos (\$1.50 per bushel) f.o.r. Buenos Aires and from 18.70 new pesos (\$1.57 per bushel) to 17.90 new pesos (\$1.50 per bushel) at Bahia Blanca. By January 27, Candeal prices were down to 17.00 new pesos per 100 kilos (\$1.42 per bushel) at both Buenos Aires and Bahia Blanca.

Argentine Wheat Exports December-November 1968-69 and 1967-68

Destination	November		December-November	
	1968	1969	1967-68	1968-69
thousand bushels				
<u>Western Europe</u>				
EEC:				
Belgium	327	—	728	1,204
France	—	—	1,279	647
Germany, Federal Republic	—	—	33	37
Italy	128	181	16,885	13,339
Netherlands	—	—	1,003	3,124
Sub-totals	455	181	19,928	18,351
<u>Other Western Europe</u>				
Britain	—	—	1,609	4,844
Denmark	—	—	16	—
Norway	—	—	37	486
Portugal	—	—	376	—
Sweden	—	—	29	—
Switzerland	18	—	26	355
Sub-totals	18	—	2,093	5,685
Totals	473	181	22,021	24,036
<u>Eastern Europe</u>				
Hungary	—	—	22	—
<u>Africa</u>				
Algeria	—	—	351	1,817
Mozambique	—	—	—	426
Totals	—	—	351	2,243

Argentine Wheat Exports December-November 1968-69 and 1967-68 — Con.

Destination	November		December-November	
	1968	1969	1967-68	1968-69
thousand bushels				
<u>Asia</u>				
China, Communist	—	—	370	—
Cyprus	—	—	—	472
India	—	—	—	4,364
Japan	—	—	149	527
Turkey	—	—	—	456
Viet-Nam	—	—	184	—
Totals	—	—	703	5,819
<u>Western Hemisphere</u>				
Bolivia	446	808	1,301	1,051
Brazil	4,478	2,846	34,522	37,392
Chile	180	522	4,313	4,841
Colombia	—	—	1,521	—
El Salvador	—	147	—	147
Honduras	—	147	—	147
Paraguay	273	—	1,790	2,475
Peru	1,673	193	13,288	10,375
Uruguay	—	—	523	—
Totals	7,050	4,663	57,258	56,428
Totals, all countries	7,524	4,843	80,356	88,526

CALENDAR OF WHEAT EVENTS

- December 30 The Secretariat of Agriculture and Livestock in Argentina issued the second official estimate of 1969-70 wheat production of 6,450,000 metric tons (237.0 million bushels) including 680,000 tons (25.0 million bushels) of Durums.
- January 14 According to a report from Mr. R.A. Groundwater, Assistant Commercial Secretary for Canada, Melbourne, the harvest is nearing completion in most parts of Australia although actual figures for the new crop are not yet available.
- 22 According to a statement by W.C. McNamara, Chief Commissioner of the Canadian Wheat Board, total grain shipments from country elevators will reach near-record levels during the remaining months of the present crop year.
- 31 In a report released by the Foreign Agricultural Service, United States Department of Agriculture, world wheat production in 1969 is estimated at 293 million metric tons, 5.1 per cent below the record 308 million tons of 1968, but 5.7 per cent above the 277 million-ton crop of 1967.

STATISTICS CANADA LIBRARY
BIBLIOTHÈQUE STATISTIQUE CANADA



1010686887