

# The Wheat Review

APRIL 1970



DOMINION BUREAU OF STATISTICS

The contents of this document may be used freely but DBS should be credited when republishing all or any part of it.



DOMINION BUREAU OF STATISTICS

Agriculture Division

Crops Section

# THE WHEAT REVIEW

APRIL 1970

*Published by Authority of*

The Minister of Industry, Trade and Commerce

May 1970  
5502-502

Price: 30 cents  
\$3.00 a year

Vol. 40—No. 9

The Queen's Printer, Ottawa





## TABLE OF CONTENTS

	<u>Page</u>
<u>World Wheat Situation</u>	
World Wheat Exports Increase Over Year Ago .....	5
World Wheat Supplies Above Previous Year .....	5
<u>Canadian Situation</u>	
Supplies at All-Time High .....	6
August-March Exports Decline from Year Ago .....	6
Marketings, Disappearance and Visible Supplies .....	7
March 1970 Exports of Wheat and Flour Total 24.3 Million Bushels .....	7
Sale of Wheat to Syria .....	8
Meeting to Discuss Wheat Surplus .....	8
General Quota Position .....	9
Lake Shipments of Canadian Grain .....	9
Wheat Shipments to the United States by Destination .....	10
Rail Shipments of Wheat to Maritime Ports .....	10
Farmers' Marketings of Wheat .....	11
Visible Supply of Canadian Wheat .....	12
Grading of Wheat Inspected, August 1969-March 1970 with Comparisons .....	12
Weekly Visible Supply and Farmers' Marketings (charts) .....	13
Rail Shipments of Wheat from Thunder Bay .....	14
Overseas Exports of Canadian Grain by Ports of Loading .....	14
Monthly Exports of Canadian Wheat and Wheat Flour .....	15
Exports of Canadian Wheat by Destination .....	16
Customs Exports of Canadian Wheat Flour by Countries of Consignment .....	19
Canadian Wheat Board Weekly Average Cash Wheat Prices .....	21
<u>Canadian Flour Milling Situation</u>	
Production and Exports .....	22
<u>United States Situation</u>	
Wheat Supplies Above Year Ago .....	23
Exports Up from Previous Year .....	23
Winter Wheat .....	24
Flour Production .....	24
<u>Australian Situation</u> .....	25
<u>French Situation</u> .....	31
<u>Argentine Situation</u> .....	34
<u>Calendar of Wheat Events</u> .....	37

---





# WORLD WHEAT SITUATION

## World Wheat Exports Increase Over Year Ago

Total exports of wheat and wheat flour in terms of wheat from the four traditional major exporters during the August-March period of the current crop year have amounted to 801.6 million bushels, 10 per cent above the 730.3 million bushels exported during the same eight months in 1968-69 but 11 per cent lower than the ten-year (1958-59-1967-68) average shipments for the same period of 904.3 million. As indicated in the accompanying table, based on the Canadian crop year, shipments from Australia and United States were higher this year than last, while exports from Canada and Argentina were below those of the previous year. In addition exports of wheat and wheat flour from France during the period August-February have amounted to some 143.3 million bushels.

## Exports of Wheat and Flour in Terms of Wheat, August 1969-March 1970 with Comparisons

August-March	Canada	Australia	United States	Argentina	Total	France
			million bushels			
1950-51 .....	135.9	80.3	198.3	54.4	468.9	
1951-52 .....	200.1	62.8	333.4	23.9	620.2	
1952-53 .....	224.7	56.7	233.0	6.0	520.4	
1953-54 .....	170.9	40.2	125.7	78.0	414.8	
1954-55 .....	172.7	62.8	188.1	92.2	515.8	
1955-56 .....	160.8	63.5	185.5	80.4	490.2	
1956-57 .....	178.0	97.6	356.3	62.8	694.7	
1957-58 .....	197.6	46.4	255.5	48.5	548.0	
1958-59 .....	188.5	50.4	297.2	61.7	597.8	
1959-60 .....	190.9	80.1	309.7	41.5	622.2	
1960-61 .....	205.8	108.6	447.8	55.4	817.6	
1961-62 .....	244.6	141.9	476.1	54.5	917.1	
1962-63 .....	212.0	96.5	379.1	43.8	731.4	
1963-64 .....	349.6	181.5	566.5	69.5	1,167.1	
1964-65 .....	264.9	132.6	454.4	102.8	954.7	
1965-66 .....	368.0	131.7	546.6	198.3	1,244.6	
1966-67 .....	338.9	157.2	508.0	70.3	1,074.4	73.5
1967-68 .....	176.9	176.6	532.4	30.2	916.1	93.7
1968-69 <sup>r</sup> .....	207.0	127.2	328.2	67.9	730.3	123.9
1969-70 <sup>p</sup> .....	182.4	166.9	398.5	53.8	801.6	143.3(1)

<sup>p</sup> Preliminary figures.

<sup>r</sup> Revised figures.

(1) August-February only.

## World Wheat Supplies Above Previous Year

Supplies of wheat held by the four traditional major exporters at April 1, 1970 for export and for carryover at the end of their respective crop years amounted to 2,835.4 million bushels 17 per cent above the 2,429.1 million at the same time a year ago. Supplies were higher in each of the four exporting countries compared to the same date a year ago. Supplies at April 1, 1970, in millions of bushels, were held as follows, with last year's comparable figures in brackets: Canada, 1,188.7 (950.7); Australia, 509.3 (446.2); United States, 1,049.9 (981.2); and Argentina, 87.5 (51.0). Stocks of soft wheat in France at March 1, 1970, totalled some 147.6 million bushels as against 189.7 million at the same time a year ago.



# CANADIAN SITUATION

Supplies at All-Time High Total estimated supplies of wheat for the 1969-70 (August-July) crop year are placed at a record 1,536.1 million bushels consisting of the August 1 carryover of 851.8 million and the 1969 crop, estimated at 684.3 million bushels. Supplies of the size indicated represent an increase of 17 per cent over the 1,315.4 million of 1968-69. After making an allowance of 165.0 million bushels for anticipated domestic requirements, supplies available for export and for carryover during 1969-70 amount to 1,371.1 million bushels, 18 per cent more than the 1,157.7 million in 1968-69.

August - March Exports Decline from Year Ago Exports of wheat and flour in terms of wheat equivalent amounted to 182.4 million bushels during the first eight months of the current crop year, 12 per cent below the previous year's corresponding total of 207.0 million and 28 per cent lower than the ten-year (1958-59-1967-68) average for the period of 254.0 million bushels. This year's exports consisted of 164.8 million bushels of wheat in bulk 935 thousand of seed and 16.6 million of flour in terms of wheat. During the comparable period last year these figures were 189.4 million of wheat in bulk, 369 thousand of seed and 17.2 million of flour in wheat equivalent. The balance remaining on April 1, 1970, for export and for carryover amounted to 1,188.7 million bushels, 25 per cent above the April 1, 1969, total of 950.7 million.

## Canadian Wheat Supplies

Item	1968-69 <sup>r</sup>	1969-70 <sup>p</sup>
	million bushels	
Carryover in North America at beginning of crop year (August 1) .....	665.5	851.8
Production .....	649.8	684.3
Total estimated supplies .....	1,315.4	1,536.1
Less estimated domestic requirements for crop year .....	157.7	165.0
Available for export and for carryover .....	1,157.7	1,371.1
<u>Deduct</u>		
Exports of wheat in bulk, August - March (1) .....	189.4	164.8
Exports of seed wheat, August - March (2) .....	0.4	0.9
Total exports of wheat as grain .....	189.8	165.8
Exports of wheat flour in terms of wheat, August - March (2) .....	17.2	16.6
Total exports of wheat and wheat flour .....	207.0	182.4
Balance on April 1 for export and for carryover .....	950.7	1,188.7

(1) As reported by the Board of Grain Commissioners.

(2) Customs returns, 1968-69 adjusted for time lag.

<sup>p</sup> Preliminary figures.

<sup>r</sup> Revised figures.



Marketings, Disappearance  
and Visible Supplies

Total primary deliveries of wheat (both east and west) up to April 22 of the current crop year have amounted to 189.4 million bushels in contrast to 243.0 million marketed during the same period of the previous year. Some 29.9 million bushels of this year's total were delivered during the five weeks March 19 to April 22, 1970. During the same period the volume of Canadian wheat entering domestic and export channels amounted to 39.7 million bushels. As a result, the total visible supply of Canadian wheat decreased from 415.7 million at March 18, 1970 to a level of 406.0 million at April 22, 1970.

The total visible supply of Canadian wheat at April 22 this year showed little change from the 1969 comparable total of 406.6 million and was 10 per cent less than the 1968 figure of 450.1 million. Country elevator stocks, amounting to 259.5 million bushels, were above both the 1969 comparable total of 253.2 million and the 258.8 million of 1968. Wheat stocks at interior terminals at April 22, 1970, totalled 13.0 million bushels considerably more than the 8.7 million of a year ago but below the 13.4 million of two years ago. The 12.0 million bushels "in transit rail" (western division) were below both the 1969 figure of 14.1 million and the 20.1 million of 1968. Supplies at the Lakehead, totalling some 49.0 million bushels, were 14 per cent larger than the 43.1 million at April 23, 1969 but 24 per cent lower than the 64.7 million at April 24, 1968. The 8.7 million bushels "in transit lake" were above both the 4.8 million in this position in 1969 and the 5.3 million at the same date in 1968. The 13.3 million bushels in Bay, Lake and Upper St. Lawrence ports were less than both the 24.1 million of a year ago and the 25.4 million of two years ago. Supplies in lower St. Lawrence and Maritime ports at April 22, 1970, at 30.5 million also registered decreases from the comparable 1969 figure of 31.9 million and the 41.2 million of 1968. The 10.1 million bushels in West Coast ports (Vancouver-New Westminster, Prince Rupert and Victoria) were 38 per cent below the 16.1 million at April 23, 1969 and 7 per cent less than the 10.8 million at the same date in 1968.

March 1970 Exports  
of Wheat and Flour Total  
24.3 Million Bushels

Combined exports of wheat in bulk, seed wheat and wheat flour in terms of grain equivalent, during March 1970 amounted to 24.3 million bushels, 17 per cent above the 20.7 million of the previous month, 7 per cent more

than the 22.8 million of March 1969 but 6 per cent smaller than the ten-year (1959-68) average for the month of March of 25.9 million. Exports of wheat in bulk (as reported by the Board of Grain Commissioners) during March 1970 totalled 22.0 million bushels, 18 per cent more than the February 1970 total of 18.6 million, 11 per cent above the 19.9 of the same month a year ago but unchanged from the ten-year average. Based on Canadian Customs returns, the equivalent of 2.0 million bushels of wheat was exported in the form of flour during March 1970, some 6 per cent above the previous month's figure of 1.9 million, but 26 per cent smaller than the adjusted total of 2.8 million of March 1969 and 36 per cent less than the ten-year average of 3.2 million bushels.

Cumulative exports of wheat in bulk during the August-March period of the current crop year amounted to 164.8 million bushels, 13 per cent less than the 189.4 million shipped during the first eight months of 1968-69 and 28 per cent less than the ten-year average for the period of 227.9 million. Britain was the leading market for Canadian wheat in bulk during the August-March period of the current crop year with shipments amounting to 33.3 million and accounted for 20 per cent of total. People's

Republic of China and Japan imported 30.1 million and 24.3 million bushels, respectively, and accounted for 18 per cent and 15 per cent of the August-March total. During the same period last year Britain accounted for 23 per cent, People's Republic of China 24 per cent, and Japan 14 per cent of the August-March 1968-69 total. Other principal importers of Canadian wheat for the first eight months of the current crop year with figures for the same period of the preceding crop year in brackets, were as follows, in millions of bushels: U.S.S.R. (Russia), 11.0 (1.7); Italy, 10.3 (9.0); India, 7.2 (10.4); Federal Republic of Germany, 6.6 (8.7); Netherlands, 5.1 (4.9); and Belgium and Luxembourg, 5.0 (5.2). Cumulative exports of seed wheat during August-March of the current crop year, based on Canadian Customs returns, amounted to 935 thousand bushels compared with last year's August-March total (adjusted to remove time lag) of 369 thousand.

Cumulative exports of wheat flour during the first eight months of the 1969-70 crop year, based on Customs returns, were the equivalent of 16.6 million bushels of wheat, 3 per cent below the adjusted August-March 1968-69 total of 17.2 million. Cuba's purchases, the leading market for Canadian wheat flour during the period under review, amounted to the equivalent of 7.5 million bushels and accounted for 45 per cent of the August 1969-March 1970 total. During the comparable period of 1968-69 shipments to Cuba amounted to 8.0 million and accounted for 46 per cent of the eight-month total. Other principal markets for Canadian wheat flour in terms of grain equivalent during the August-March period of the 1969-70 crop year, with revised data for the same months of the preceding crop year in brackets, were as follows, in thousands of bushels: Britain, 1,579 (1,689); Ceylon, 1,286 (841); Burma, 804 (nil); Indonesia, 675 (619); Trinidad and Tobago, 650 (403); and Leeward and Windward Islands, 536 (534).

Sale of Wheat to Syria      On April 17, 1970 The Honourable Otto Lang, Minister Responsible for the Canadian Wheat Board announced the sale of 200,000 metric tons (7.4 million bushels) of wheat to Syria. Approximate value of the contract is \$15 million.

This sale was negotiated by Northern Sales (1963) Limited of Winnipeg, agents of the Canadian Wheat Board selling grain abroad. The first shipment is now loading at Sorel, Quebec and shipping will continue through January, 1971. Mr. Lang said that the sale was made possible only through the Government's revised and expanded credit program which stems from the Prime Minister's undertaking in June 1968 that the Government would review and amend credit facilities available for wheat sales in order to improve the competitive position of Canadian wheat in world markets.

"This is the first substantial sale of western wheat ever made to Syria, and is an indication of the far-ranging efforts of the Wheat Board and its accredited agents," Mr. Lang said.

Meeting to Discuss Wheat Surplus      On April 18, 1970 The Honourable Otto Lang, Minister Responsible for the Canadian Wheat Board made the following statement: The problem of surplus wheat production is to be discussed in Ottawa by leaders of the world's major wheat exporting countries on May 4 and 5. The meeting of representatives from the United States, Australia, Argentina and the European Economic Community with Canadian officials was called following the introduction of Canada's acreage limitation program (Operation LIFT). Leaders of the delegations include Mr. Lang for Canada; Clifford M. Hardin, Secretary of Agriculture for the United States; The Honourable J.D. Anthony, Australia's Minister of Primary Industry, and Dr. Sicco Mansholt of the E.E.C. The leader of the Argentinian delegation has not yet been named.



General Quota Position By April 20, 1970 out of a total of 1,800 shipping points in the western division, the Canadian Wheat Board had placed 156 points on a delivery quota of three bushels per specified acre, 976 points on a two-bushel quota and 619 points on a one-bushel quota. Some 28 points remained on the initial unit quota while only 21 stations were reported as "closed".

Summary of Elevator Shipping Points in the Western Division  
as at April 20, 1970

Province	Initial unit quota	General quota in bushels per specified acre			Closed	Total
		One	Two	Three		
Manitoba .....	9	133	159	21	1	323
Saskatchewan .....	19	432	460	43	14	968
Alberta .....	—	54	357	86	6	503
British Columbia .....	—	—	—	6	—	6
All provinces .....	28	619	976	156	21	1,800

Lake Shipments of Canadian Grain Total shipments of the six major grains out of Lakehead terminals from the opening of navigation to April 22 this year amounted to 21.6 million bushels, 11 per cent above the 19.5 million shipped during the same period in 1969. In 1970 the season of navigation opened on April 8 while the 1969 season opened on April 11. Shipments of wheat, at 12.6 million were 16 per cent below the 1969 figure of 15.0 million bushels and accounted for 58 per cent of the total.

Lake Shipments of Canadian Grain from the Opening of Navigation to April 22, 1970  
and to Approximately the Same Date 1959 to 1969

	Wheat	Oats	Barley	Rye	Flaxseed	Rapeseed	Total
	thousand bushels						
1959 .....	4,011	386	587	—	87	—	5,071
1960 .....	13,270	726	1,127	413	288	—	15,824
1961 .....	16,025	2,159	3,138	300	589	—	22,212
1962 .....	2,421	1,452	1,170	—	292	—	5,335
1963 .....	10,552	2,306	1,056	136	278	—	14,327
1964 .....	20,586	2,989	2,318	154	433	—	26,479
1965 .....	—	—	—	—	—	—	—
1966 .....	31,910	3,154	2,567	1,335	1,016	—	39,981
1967 .....	—	—	—	—	—	—	—
1968 .....	10,504	1,620	1,770	75	—	—	13,969
1969 <sup>r</sup> .....	14,966	1,763	2,301	186	264	—	19,479
1970 .....	12,600	2,200	4,900	100	1,000	800	21,600

<sup>r</sup> Revised figures.



Wheat Shipments to the United States by Destination      Total vessel and rail shipments of wheat to the United States, either for re-export or retention for domestic use, from the beginning of the current crop year to April 22, 1970 amounted to 789,000 bushels. There were no shipments during the comparable period of 1968-69 and only 4,000 bushels were shipped in 1967-68.

Wheat Shipments(1) to the United States by Destination  
August 1, 1969 - April 22, 1970 with Comparisons

Destination	1967-68	1968-69	1969-70
	bushels		
<u>By Vessel</u>			
Buffalo .....	—	—	558,780
<u>By Rail</u>			
U.S.A. domestic points .....	4,357	—	180,000
Buffalo .....	—	—	50,000
Totals, rail .....	4,357	—	230,000
Totals, shipments .....	4,357	—	788,780

(1) Either for re-export or retention for domestic use. Excluding seed wheat.

Rail Shipments of Wheat to Maritime Ports      Rail shipments of wheat to Maritime ports from Bay, Lake and Upper St. Lawrence ports during August 1969-March 1970 amounted to 23,213,000 bushels as against the August-March 1968-69 figure of 16,044,000.

Rail Shipments of Wheat to Maritime Ports from Bay, Lake and Upper St. Lawrence Ports

Origin of shipments	August 1, 1968- March 31, 1969	August 1, 1969- March 31, 1970
	bushels	
Port McNicoll .....	4,305,831	7,507,613
Midland, Tiffin .....	4,563,424	8,701,020
Collingwood .....	63,817	111,660
Owen Sound .....	2,315,547	1,878,710
Goderich .....	1,686,526	1,262,768
Sarnia .....	1,265,504	2,384,491
Port Colborne .....	1,843,418	1,366,242
Totals .....	16,044,067	23,212,504

Farmers' Marketings (1) of Wheat in the Prairie Provinces 1969-70

Week ending		Manitoba	Saskatchewan	Alberta	Total	Last year <sup>r</sup>
		bushels				
August	6, 1969 ..	—	64,196	—	64,196	356,687
	13 .....	18,143	194,594	8,459	221,196	506,692
	20 .....	57,997	466,356	552,473	1,076,826	2,054,527
	27 .....	440,791	1,693,171	657,276	2,791,238	2,740,850
September	3 .....	379,366	2,728,975	1,085,227	4,193,568	3,414,107
	10 .....	304,101	4,374,050	1,188,274	5,866,425	2,494,299
	17 .....	438,786	6,733,978	1,300,186	8,472,950	7,476,468
	24 .....	412,387	5,845,630	899,106	7,157,123	7,119,331
October	1 .....	280,465	2,801,798	718,730	3,800,993	5,898,564
	8 .....	283,252	1,439,062	830,719	2,553,033	11,254,668
	15 .....	273,007	1,055,557	783,999	2,112,563	7,769,426
	22 .....	112,287	1,906,251	592,955	2,611,493	6,756,032
	29 .....	143,049	2,682,424	730,696	3,556,169	10,181,637
November	5 .....	205,791	2,209,205	732,405	3,147,401	13,335,545
	12 .....	156,692	2,068,665	833,016	3,058,373	15,682,790
	19 .....	273,042	1,986,452	863,346	3,122,840	13,243,981
	26 .....	457,162	2,052,724	720,962	3,230,848	9,915,500
December	3 .....	389,757	2,127,178	875,998	3,392,933	9,262,640
	10 .....	404,960	1,805,857	963,249	3,174,066	6,544,784
	17 .....	491,749	1,881,209	935,918	3,308,876	5,771,605
	22 .....	703,608	4,128,964	1,202,402	6,034,974	5,885,379
	29 .....	492,693	3,750,992	1,099,484	5,343,169	3,229,059
January	7, 1970 ..	675,907	6,194,908	1,260,193	8,131,008	4,364,297
	14 .....	1,019,434	405,299	949,753	2,374,486	2,815,691
	21 .....	790,651	1,284,634	1,351,650	3,426,935	2,727,042
	28 .....	1,263,267	5,460,421	4,019,093	10,742,781	1,682,468
February	4 .....	1,038,008	4,170,545	3,341,895	8,550,448	1,424,056
	11 .....	626,515	3,376,214	2,185,069	6,187,798	5,897,474
	18 .....	798,024	3,245,078	2,222,884	6,265,986	6,082,116
	25 .....	827,134	2,997,246	1,194,830	5,019,210	6,917,310
March	4 .....	1,741,488	7,322,076	2,262,679	11,326,243	5,848,923
	11 .....	798,639	3,221,531	1,596,188	5,616,358	8,596,035
	18 .....	1,062,813	4,854,702	1,920,555	7,838,070	8,242,536
	25 .....	1,289,480	5,399,480	2,370,046	9,059,006	8,659,049
April	1 .....	898,597	3,247,402	1,433,292	5,579,291	6,587,108
	8 .....	802,100	3,123,004	1,917,156	5,842,260	4,825,896
	15 .....	905,399	2,028,856	1,465,696	4,399,951	4,006,041
	22 .....	615,632	2,731,801	1,435,524	4,782,957	7,123,508
Totals .....		21,872,173	113,060,485	48,501,383	183,434,041	236,777,635
Average similar period:						
1958-59-1967-68 .....		35,439,739	171,148,439	75,378,167	281,966,346	

(1) Includes receipts at country, interior private and mill elevators, interior semi-public terminals and platform loadings.

<sup>r</sup> Revised figures.

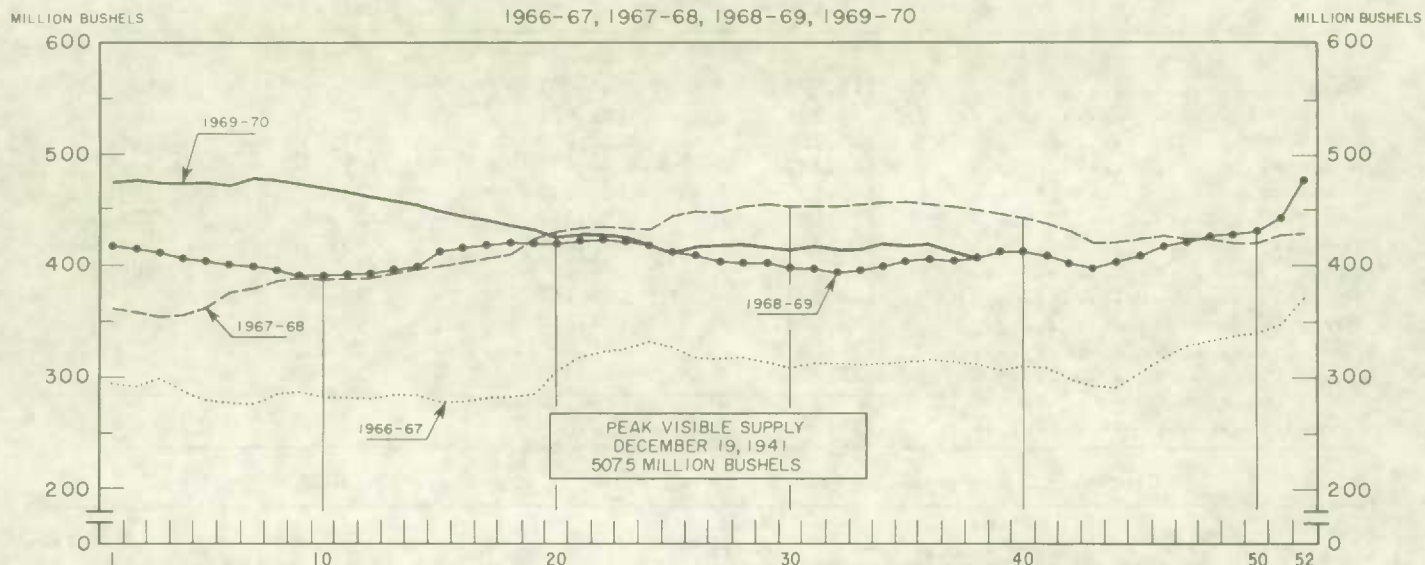
Position	1968	1969	1970
	thousand bushels		
Country elevators - Manitoba .....	33,778	34,466	33,134
Saskatchewan .....	150,725	146,870	151,594
Alberta .....	74,281	71,842	74,728
Sub-totals .....	258,784	253,178	259,456
Interior private and mill .....	5,719	5,320	4,426
Interior terminals .....	13,450	8,730	13,049
Vancouver-New Westminster .....	9,186	13,856	8,563
Victoria .....	873	911	365
Prince Rupert .....	791	1,372	1,125
Churchill .....	4,593	4,694	4,659
Thunder Bay .....	64,663	43,096	49,022
In transit rail (western division) .....	20,112	14,121	12,049
Bay, Lake and Upper St. Lawrence ports ....	25,392	24,099	13,329
Lower St. Lawrence and Maritime ports ....	41,202	31,888	30,510
In transit lake .....	5,277	4,809	8,696
In transit rail (eastern division) .....	107	508	742
Totals .....	450,149	406,582	405,991

## Grading of Wheat Inspected, August 1969-March 1970 with Comparisons

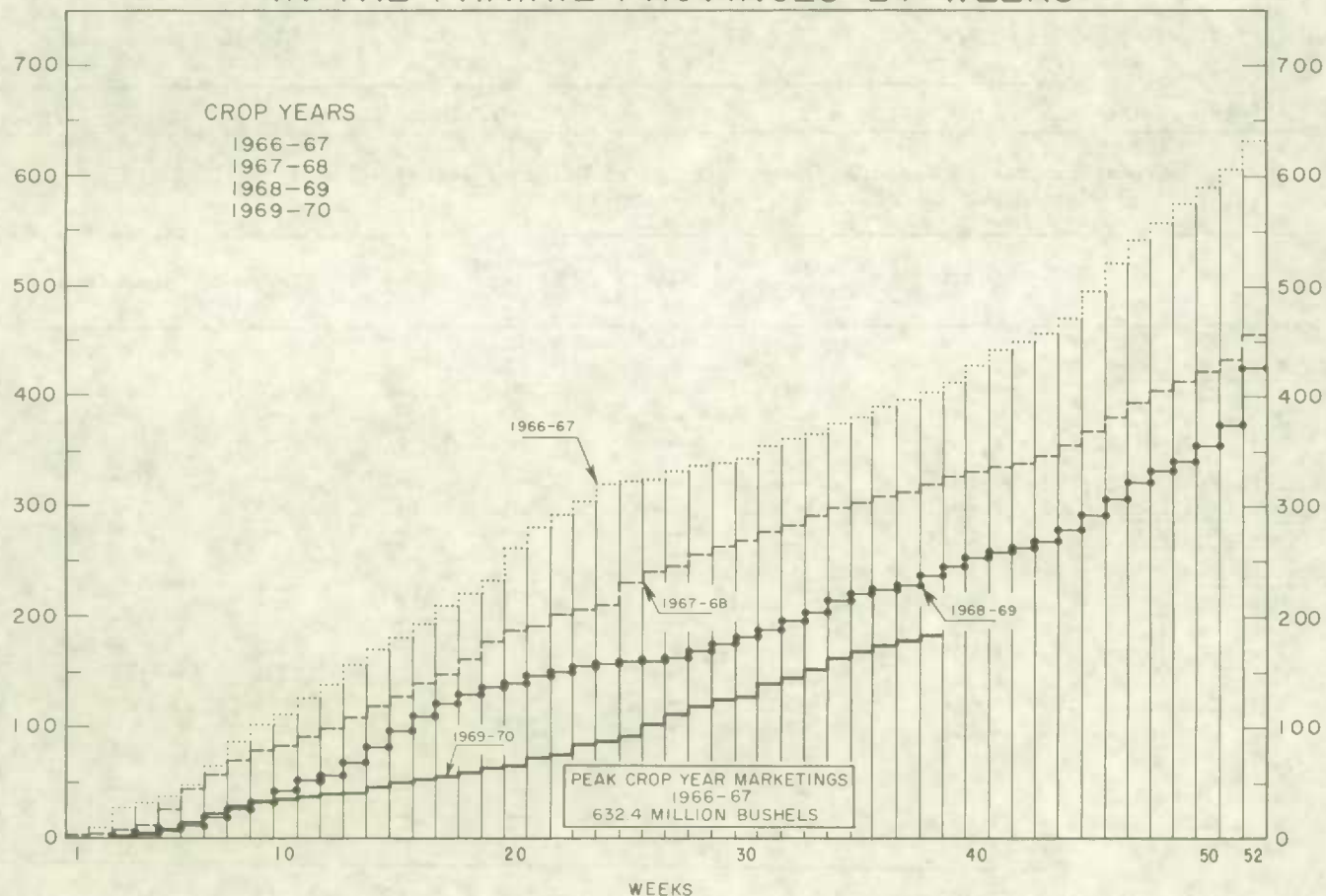
Grade	Crop year		August - March			
	Average	1968-69				
	1963-64					
	—		1968-69		1969-70	
	1967-68					
	per cent	per cent	cars	per cent	cars	per cent
No. 1 Man. Northern .....	8.7	12.1	20,544	15.6	6,655	6.0
No. 2 Man. Northern .....	36.8	31.9	45,823	34.8	40,471	36.5
No. 3 Man. Northern .....	22.6	10.3	10,969	8.3	15,682	14.1
No. 4 Man. Northern .....	8.8	4.1	2,549	1.9	10,326	9.3
No. 5 Wheat .....	3.4	2.9	1,923	1.5	3,780	3.4
No. 6 Wheat .....	0.4	0.2	118	0.1	339	0.3
Feed Wheat .....	(1)	(1)	18	(1)	87	0.1
Others Red Spring .....	12.5	32.1	38,631	29.4	19,960	18.0
C.W. Garnet .....	0.2	0.1	123	0.1	3	(1)
C.W. White Spring .....	0.1	0.2	167	0.1	286	0.3
C.W. Mixed Wheat .....	0.1	(1)	80	0.1	75	0.1
Alberta Winter .....	0.9	0.4	748	0.6	903	0.8
Nos. 1-6 C.W. Amber Durum.	5.2	2.9	5,067	3.9	11,209	10.1
Others C.W. Amber Durum ..	0.3	2.8	4,831	3.7	1,175	1.1
Totals .....	100.0	100.0	131,591	100.0	110,951	100.0
Gross bushels (approx.) ..			251,311,000		214,242,000	
(1) Less than .05 per cent.						



# WEEKLY VISIBLE SUPPLY OF CANADIAN WHEAT



## CUMULATIVE RECORD OF WHEAT MARKETINGS IN THE PRAIRIE PROVINCES BY WEEKS



(Data in both charts for crop years beginning August 1)

Rail Shipments of Wheat from Thunder Bay 1966-67 — 1969-70

Month	1966-67	1967-68	1968-69	1969-70
	bushels			
August .....	118,973	133,651	—	132,953
September .....	83,333	182,051	23,084	134,053
October .....	89,384	152,009	57,458	149,076
November .....	163,332	50,475	101,966	126,319
December .....	106,833	143,833	44,136	179,384
January .....	145,889	160,214	131,034	272,300
February .....	120,334	143,884	99,776	403,541
March .....	177,393	274,690	153,067	298,335
April .....	133,699	123,167	79,899	
May .....	207,038	61,460	108,339	
June .....	154,139	101,950	120,532	
July .....	93,094	88,500	137,404	
Totals .....	1,593,441	1,615,884	1,056,695	

Distribution of Rail Shipments of Wheat from Thunder Bay, March 1970

Grade	Prince Edward Island	Nova Scotia	New Brunswick	Quebec	Ontario
	bushels				
5 Wheat .....	3,333	11,333	23,333	4,000	2,333
Tough .....	—	—	—	—	1,508
Rejected .....	3,500	77,000	58,000	81,956	2,083
Durum .....	—	—	2,156	26,000	1,800
Totals .....	6,833	88,333	83,489	111,956	7,724

Overseas Exports of Canadian Grain by Ports of Loading, August 1, 1969-April 22, 1970  
with Comparisons

Port	Wheat(1)	Durum wheat(1)	Oats(1)	Barley	Rye	Flaxseed	Rapeseed
	thousand bushels						
<u>Pacific Seaboard</u>							
Van.-New West .....	72,314	119	—	23,794	1,548	6,014	12,243
Victoria .....	3,665	—	—	—	—	—	—
Prince Rupert .....	4,993	—	—	—	—	—	—
Churchill .....	20,904	—	—	—	—	—	—
Lakehead direct .....	698	—	214	651	145	906	662
Toronto direct .....	152	—	—	—	—	—	—
<u>St. Lawrence</u>							
Montreal .....	8,115	6,455	130	2,301	140	219	—
Sorel .....	5,730	—	—	—	—	—	—
Trois Rivières ....	6,049	256	68	—	—	242	—
Quebec .....	2,599	269	—	—	229	1,348	752
Baie Comeau .....	7,240	443	—	—	—	1,119	—
Port Cartier .....	10,019	3,307	—	1,310	—	749	—
<u>Maritime</u>							
Saint John .....	485	—	—	—	—	—	—
West Saint John ...	13,857	2,459	50	—	—	305	—
Halifax .....	13,641	—	—	1,293	—	215	167
Totals .....	170,463	13,308	462	29,349	2,062	11,118	13,826
August 1, 1968 — April 23, 1969 ...	184,957	11,871	965	6,220	2,815	8,408	9,872

(1) Excluding seed.

Monthly Exports of Canadian Wheat and Wheat Flour

Year and month	Wheat in bulk(1)	Seed wheat(2)	Total wheat	Wheat flour(2,3)	Total wheat and wheat flour(3)
thousand bushels					
<u>1967-68</u>					
August .....	24,424	52	24,477	2,773	27,249
September .....	20,211	60	20,272	2,037	22,309
October .....	19,851	67	19,917	1,581	21,498
November .....	21,967	99	22,066	1,811	23,877
December .....	12,920	56	12,976	2,355	15,332
January .....	19,259	56	19,315	1,737	21,052
February .....	18,903	62	18,965	2,394	21,359
March .....	21,388	169	21,557	2,621	24,178
April .....	26,661	5	26,666	2,036	28,702
May .....	42,311	7	42,317	2,061	44,378
June .....	40,798	1	40,799	1,349	42,148
July .....	41,975	18	41,993	1,937	43,930
Totals .....	310,669	651	311,320	24,690	336,010
<u>1968-69</u>					
August .....	31,127	1	31,128	2,586	33,714
September .....	30,019	45	30,064	2,134	32,198
October .....	25,995	50	26,045	2,445	28,490
November .....	23,338	23	23,361	2,305	25,666
December .....	16,061	46	16,107	1,662	17,770
January .....	18,843	12	18,856	1,224	20,079
February .....	24,149	45	24,194	2,077	26,271
March .....	19,857	148	20,005	2,760	22,764
April .....	10,278	138	10,416	1,044	11,460
May .....	30,350	51	30,401	1,432	31,833
June .....	24,016	10	24,026	1,835	25,861
July .....	26,506	107	26,612	3,119	29,731
Totals .....	280,541	674	281,216	24,623	305,838
<u>1969-70(4)</u>					
August .....	13,012	121	13,133	2,182	15,315
September .....	20,949	74	21,024	1,252	22,276
October .....	18,838	—	18,838	2,237	21,075
November .....	22,835	108	22,943	1,059	24,002
December .....	22,294	54	22,348	2,592	24,940
January .....	26,351	73	26,424	3,351	29,774
February .....	18,597	201	18,799	1,929	20,728
March .....	21,958	303	22,261	2,041	24,302
Totals .....	164,834	935	165,769	16,643	182,412

- (1) Export clearances including shipments to the United States compiled by the Statistics Division, Board of Grain Commissioners for Canada.
- (2) Compiled from Canadian Customs returns, 1967-68 and 1968-69 adjusted to remove effect of time lag in reporting.
- (3) In terms of wheat equivalent. Wheat flour conversion rate: 2.3 bushels per cwt.
- (4) Preliminary, subject to revision.



Exports of Canadian Wheat(1) by Destination, March 1970 and 1969

Destination	Wheat (except durum)	Durum wheat	All Wheat	
			March 1970	March 1969 <sup>r</sup>
bushels				
<u>Western Europe</u>				
EEC:				
Belgium and Luxembourg .....	—	—	—	230,070
France .....	—	—	—	38,216
Germany, Federal Republic .....	—	—	—	1,082,778
Italy .....	485,333	186,667	672,000	—
Netherlands .....	543,053	128,947	672,000	901,600
Sub-totals .....	1,028,386	315,614	1,344,000	2,252,664
<u>Other Western Europe</u>				
Britain .....	3,344,230	—	3,344,230	4,932,925
Ireland .....	168,000	—	168,000	149,333
Switzerland .....	—	—	—	500,473
Sub-totals .....	3,512,230	—	3,512,230	5,582,731
Totals .....	4,540,616	315,614	4,856,230	7,835,395
<u>Eastern Europe</u>				
Albania .....	803,608	—	803,608	746,741
U.S.S.R. (Russia) .....	4,308,350	—	4,308,350	—
Totals .....	5,111,958	—	5,111,958	746,741
<u>Africa</u>				
Algeria .....	—	1,543,221	1,543,221	—
Ghana .....	170,291	—	170,291	322,583
Tanzania .....	—	—	—	36,745
Totals .....	170,291	1,543,221	1,713,512	359,328
<u>Asia</u>				
Afghanistan .....	—	—	—	1,010
Hong Kong .....	118,907	—	118,907	103,227
India .....	—	—	—	4,842,813
Japan .....	1,098,323	—	1,098,323	2,116,207
Malaysia .....	53,200	—	53,200	39,200
People's Republic of China .....	7,518,971	—	7,518,971	3,653,450
Totals .....	8,789,401	—	8,789,401	10,755,907
<u>Western Hemisphere</u>				
Barbados .....	—	—	—	30
Cuba .....	708,333	61,000	769,333	—
Ecuador .....	—	—	—	158,005
Haiti Republic .....	278,800	—	278,800	—
Jamaica .....	797	—	797	1,195
Peru .....	365,867	—	365,867	—
Venezuela .....	71,792	—	71,792	—
Totals .....	1,425,589	61,000	1,486,589	159,230
Sub-totals, all countries .....	20,037,855	1,919,835	21,957,690	19,856,601
Seed wheat(2) .....			303,071	148,191
Totals, all countries ..	20,037,855	1,919,835	22,260,761	20,004,792

(1) Overseas clearances as reported by the Statistics Division, Board of Grain Commissioners for Canada, excluding seed. (2) Compiled from Canadian Customs returns, 1969 adjusted for time lag, 1970 preliminary. r Revised figures.

Cumulative Exports of Canadian Wheat(1) by Destination

Destination	August 1969 — March 1970			Total same period <sup>r</sup> last year
	Wheat (except durum)	Durum wheat	Total wheat	
bushels				
<u>Western Europe</u>				
EEC:				
Belgium and Luxembourg .....	4,824,083	203,815	5,027,898	5,154,064
France .....	445,795	1,824,321	2,270,116	1,236,569
Germany, Federal Republic ..	3,745,180 <sup>r</sup>	2,894,146	6,639,326 <sup>r</sup>	8,721,704
Italy .....	7,854,709	2,473,014	10,327,723	8,967,411
Netherlands .....	4,472,699 <sup>r</sup>	663,724 <sup>r</sup>	5,136,423 <sup>r</sup>	4,855,681
Sub-totals .....	21,342,466 <sup>r</sup>	8,059,020 <sup>r</sup>	29,401,486 <sup>r</sup>	28,935,429
<u>Other Western Europe</u>				
Austria .....	—	—	—	393,643
Britain .....	33,217,850 <sup>r</sup>	112,000	33,329,850 <sup>r</sup>	42,864,950
Denmark .....	48,160	—	48,160	22,027
Finland .....	—	—	—	638,500
Ireland .....	614,517	—	614,517	638,400
Malta and Gozo .....	302,773	18,666	321,439	297,504
Norway .....	1,460,853	—	1,460,853	588,000
Portugal .....	—	841,750	841,750	—
Sweden .....	56,776	19,488	76,264	59,957
Switzerland .....	1,268,490 <sup>r</sup>	1,322,405 <sup>r</sup>	2,590,895 <sup>r</sup>	4,465,672
Sub-totals .....	36,969,419 <sup>r</sup>	2,314,309 <sup>r</sup>	39,283,728 <sup>r</sup>	49,968,653
Totals .....	58,311,885	10,373,329	68,685,214	78,904,082
<u>Eastern Europe</u>				
Albania .....	1,526,120	—	1,526,120	746,741
Hungary .....	—	—	—	2,939,633
Poland .....	2,624,533	—	2,624,533	3,414,941
U.S.S.R. (Russia) .....	10,988,732	—	10,988,732	1,734,881
Totals .....	15,139,385	—	15,139,385	8,836,196
<u>Africa</u>				
Algeria .....	—	1,543,221	1,543,221	1,796,005
Congo .....	122,379	—	122,379	36,500
Ghana .....	1,141,888	—	1,141,888	827,272
Mauritania .....	56,694	—	56,694	771
Mozambique .....	37,336	—	37,336	—
Niger .....	—	—	—	687,344
Nigeria .....	18,667	—	18,667	—
Sierra Leone .....	—	—	—	141,866
Sudan .....	187,469	—	187,469	—
Tanzania .....	54,133	—	54,133	110,235
Tunisia .....	1,028,834	734,867	1,763,701	692,139
Totals .....	2,647,400	2,278,088	4,925,488	4,292,132

See footnote(s) at end of table.



Cumulative Exports of Canadian Wheat(1) by Destination — Con.

Destination	August 1969 — March 1970			Total
	Wheat (except durum)	Durum wheat	Total wheat	same period last year <sup>r</sup>
bushels				
Asia				
Afghanistan .....	—	—	—	1,010
Hong Kong .....	645,493	—	645,493	652,961
India .....	7,235,514	—	7,235,514	14,390,423
Indonesia .....	—	—	—	29,394
Iraq .....	13,228	—	13,228 <sup>r</sup>	12,860
Japan .....	24,257,101 <sup>r</sup>	—	24,257,101 <sup>r</sup>	25,868,944
Malaysia .....	315,168	—	315,168	194,880
Pakistan .....	2,262,475	—	2,262,475	2,753,926
People's Republic of China ...	30,103,723	—	30,103,723	45,336,137
Singapore .....	217,094	—	217,094	77,467
Syria .....	176,400	—	176,400	2,020,883
Taiwan .....	520,837	—	520,837	520,837
Turkey .....	—	—	—	32,518
Totals .....	65,747,033 <sup>r</sup>	—	65,747,033 <sup>r</sup>	91,892,240
Western Hemisphere				
Bahamas .....	—	—	—	40
Barbados .....	59	—	59	70
Cuba .....	1,875,233	170,675	2,045,908	1,712,200
Ecuador .....	158,005	—	158,005	412,150
Guatemala .....	—	—	—	16,667
Haiti Republic .....	901,683	—	901,683	—
Jamaica .....	839,716	—	839,716	741,806
Paraguay .....	—	—	—	1,727
Peru .....	4,608,580	—	4,608,580	—
St. Lucia .....	—	—	—	187
Trinidad and Tobago .....	—	—	—	220,133
Venezuela .....	993,955	—	993,955	2,360,775
United States (2) .....	788,780	—	788,780	—
Totals .....	10,166,011	170,675	10,336,686	5,465,755
Sub-totals, all countries.	152,011,714	12,822,092	164,833,806	189,390,405
Seed wheat (3) .....			935,488	369,251
Totals, all countries ..	152,011,714	12,822,092	165,769,294	189,759,656

(1) Overseas clearances as reported by the Statistics Division, Board of Grain Commissioners for Canada, for all countries except the United States, excluding seed wheat.

(2) Compiled from returns of Canadian elevator licensees and shippers and advice from American grain correspondents.

(3) Compiled from Canadian Customs returns, 1968-69 adjusted for time lag.

<sup>r</sup> Revised figures.



Customs Exports of Canadian Wheat Flour by Countries of Consignment

Destination	December 1969(1)	March 1970(2)	August - March	
			1969-70(2)	1968-69(1)
bushels				
<u>Western Europe</u>				
EEC:				
Belgium and Luxembourg .....	—	3,441	41,561	84,210
France .....	—	—	544	—
Germany, Federal Republic .....	—	—	283	—
Italy .....	4,140	2,070	16,560	10,350
Netherlands .....	—	2,300	4,195	3,094
Sub-totals .....	4,140	7,811	63,243	97,654
<u>Other Western Europe</u>				
Britain .....	196,684	186,988	1,578,718	1,688,796
Denmark .....	—	—	—	460
Gibraltar .....	2,576	—	5,152	2,576
Greece .....	12,712	—	31,876	49,459
Iceland .....	—	—	—	3,386
Ireland .....	—	—	—	2,962
Norway .....	—	—	—	115
Portugal .....	1,380	13,714	51,731	28,120
Sweden .....	—	—	515	515
Sub-totals .....	213,352	200,702	1,667,992	1,776,389
Totals .....	217,492	208,513	1,731,235	1,874,043
<u>Africa</u>				
Algeria .....	—	—	—	65,870
Angola .....	—	2,300	2,990	15,870
Cameroun Republic .....	115	—	7,015	22,080
Congo-Kinshasa .....	5,980	5,060	33,345	42,780
Dahomey .....	3,450	6,799	34,735	30,358
Ethiopia .....	—	—	175	—
French Africa n.e.s. ....	—	—	—	8,285
Gambia .....	—	—	47,440	41,780
Ghana .....	3,105	—	218,672	1,179,468
Guinea Republic .....	—	—	74,683	76,243
Ivory Coast .....	1,380	230	4,600	4,657
Liberia .....	14,023	20,567	194,249	112,626
Malawi .....	4,750	5,830	32,257	36,770
Mauritania .....	—	—	7,910	—
Morocco .....	—	4,705	4,705	—
Mozambique .....	5,909	7,245	39,169	41,814
Nigeria .....	—	—	—	230
Portuguese Africa n.e.s. ....	6,799	3,542	60,715	61,577
Sierra Leone .....	—	—	4,352	5,769
Sudan .....	—	146,740	146,740	—
Tanzania .....	2,231	8,222	16,088	5,750
Togo .....	12,263	3,335	123,361	93,803
U.A.R. - Egypt .....	237,112	1,552	272,605	752,199
Totals .....	297,117	216,127	1,325,806	2,597,929
<u>Asia</u>				
Afghanistan .....	690	—	1,208	621
Burma .....	316,639	—	803,717	—
Ceylon .....	—	129,555	1,285,806	840,935
Cyprus .....	—	—	952	55
Hong Kong .....	19,440	17,020	156,536	246,355
India .....	223	—	442	453
Indonesia .....	91,271	91,271	674,726	618,748
Iran .....	—	408	2,781	3,896

See footnote(s) at end of table.

Customs Exports of Canadian Wheat Flour by Countries of Consignment - Con.

Destination	December 1969(1)	March 1970(2)	August - March	
			1969-70(2)	1968-69(1)
			bushels	
<u>Asia — Concluded</u>				
Iraq .....	—	—	117,790	46,522
Israel .....	—	—	—	228,390
Japan .....	115	3,852	13,363	6,751
Jordan .....	—	—	7,565	122
Korea, South .....	—	—	—	7,81
Lebanon .....	226	220,880	323,596	199,223
Malaysia .....	—	—	138	—
Philippines .....	—	—	1,663	1,012
Portuguese Asia .....	1,012	1,012	6,831	13,328
Qatar .....	—	—	575	798
Saudi Arabia .....	19,216	194,426	289,211	28,412
Syria .....	—	—	—	9,432
Thailand .....	18,188	9,487	107,904	125,346
Trucial States .....	—	—	2,383	2,829
Totals .....	467,020	667,911	3,797,187	2,381,043
<u>Oceania</u>				
British Oceania n.e.s. ....	460	460	3,630	6,496
Fiji .....	1,012	230	3,404	4,071
New Zealand .....	—	—	—	460
United States Oceania .....	3,680	—	14,030	20,709
Totals .....	5,152	690	21,064	31,736
<u>Western Hemisphere</u>				
Bahamas .....	13,531	30,944	165,929	199,433
Barbados .....	26,038	38,727	194,596	188,177
Bermuda .....	9,775	11,592	80,983	78,414
Bolivia .....	—	—	—	18,257
British Honduras .....	3,825	3,643	36,356	31,604
Chile .....	24,856	—	24,856	—
Cuba(3) .....	1,154,402	607,182	7,515,480	7,970,023
Dominican Republic .....	—	—	—	2,139
Ecuador .....	—	—	—	345
El Salvador .....	—	—	228	487
French West Indies .....	—	—	1,966	3,224
Guatemala .....	—	—	805	7,130
Guyana .....	1,292	57	20,847	52,021
Haiti Republic .....	—	—	16,440	245,461
Honduras Republic .....	4,453	759	7,337	14,285
Jamaica .....	13,804	17,929	113,006	109,528
Leeward and Windward Islands .....	77,853	83,449	535,838	533,766
Netherlands Antilles .....	21,135	22,660	137,264	130,348
Panama .....	435	322	757	1,652
Paraguay .....	—	—	—	2,383
Peru .....	—	—	—	10,065
St. Pierre and Miquelon .....	966	3,772	16,003	13,386
Surinam .....	1,438	189	11,429	6,288
Trinidad and Tobago .....	61,564	93,863	650,421	403,406
United States Virgin Islands .....	—	—	115	253
Venezuela .....	—	46	499	115
United States .....	31,556	32,449	236,224	286,072
Totals .....	1,446,923	947,583	9,767,379	10,308,262
Totals, all countries .....	2,433,704	2,040,824	16,642,671	17,193,013

(1) In terms of wheat equivalent. Adjusted to remove effect of time lag in the returns made by Customs. Conversion rate: 2.3 bushels per cwt. (2) In terms of wheat equivalent. Preliminary and unadjusted for time lag. Conversion rate: 2.3 bushels per cwt. (3) Source - Canadian National Millers Association. n.e.s. - Not elsewhere specified.

# FARMERS' MARKETINGS OF WHEAT, PRAIRIE PROVINCES

(SPECIFIED PERIODS)

MILLION BUSHELS

800—

700—

600—

500—

400—

300—

200—

100—

0

30 year average  
1938-39  
1967-68

10 year average  
1958-59  
1967-68

JULY

JUNE

MAY

APR

MAR

FEB

JAN

DEC

NOV

OCT

SEPT

1964-65

1965-66

1966-67

1967-68

1968-69

1969-70

PEAK MARKETINGS  
1966-67 CROP YEAR  
632.4 MILLION BUSHELS

MILLION BUSHELS

800—

700—

600—

500—

400—

300—

200—

100—

0



## EXPORTS OF CANADIAN WHEAT\* AND WHEAT FLOUR\*\*

(SPECIFIED PERIODS)

MILLION BUSHELS

700—

600—

500—

400—

300—

200—

100—

0

30 year average  
1938-39  
1967-68

10 year average  
1958-59  
1967-68

JULY

JUNE

MAY

APR.

MAR.

FEB.

JAN.

DEC.

NOV.

OCT.

SEPT.

AUG.

1964-65

1965-66

1966-67

1967-68

1968-69

1969-70\*\*\*

PEAK EXPORTS  
1963-64 CROP YEAR  
594.5 MILLION BUSHELS

MILLION BUSHELS

700—

600—

500—

400—

300—

200—

100—

0

\*Beginning with 1955-56 includes seed wheat.

\*\*In terms of wheat equivalent.

\*\*\*Preliminary

Agriculture Division D.B.S.

# FARMERS' MARKETINGS OF BARLEY, PRAIRIE PROVINCES

(SPECIFIED PERIODS)

MILLION BUSHEL

MILLION BUSHEL

140—

140—

120—

120—

100—

100—

80—

80—

60—

60—

40—

40—

20—

20—

0—

0—

30 year average  
1938-39  
1967-68

10 year average  
1958-59  
1967-68

JULY

JUNE

MAY

APR

MAR

FEB

JAN

DEC

NOV

OCT

SEPT

AUG

1964-65

1965-66

1966-67

1967-68

1968-69

1969-70

## EXPORTS OF CANADIAN BARLEY AND BARLEY PRODUCTS\*

(SPECIFIED PERIODS)

MILLION BUSHELS

80 —

70 —

60 —

50 —

40 —

30 —

20 —

10 —

0

MILLION BUSHELS

80 —

70 —

60 —

50 —

40 —

30 —

20 —

10 —

0

30 year average

1938-39

1967-68

10 year average

1958-59

1967-68

1964-65

1965-66

1966-67

1967-68

1968-69

1969-70\*\*

JULY

JUNE

MAY

APR.

MAR

FEB

JAN

DEC

NOV

OCT

SEPT

AUG

\*In terms of grain equivalent.

\*\*Preliminary.

Agriculture Division D.B.S.



# FARMERS' MARKETINGS OF OATS, PRAIRIE PROVINCES

(SPECIFIED PERIODS)

MILLION BUSHELS

80 —

70 —

60 —

50 —

40 —

30 —

20 —

10 —

0 —

MILLION BUSHELS

80 —

70 —

60 —

50 —

40 —

30 —

20 —

10 —

0 —

30 year average  
1938-39  
1967-68

10 year average  
1958-59  
1967-68

1964-65

1965-66

1966-67

1967-68

1968-69

1969-70

JULY

JUNE

MAY

APR

MAR

FEB

JAN

DEC

NOV

OCT

SEPT

AUG

# EXPORTS OF CANADIAN OATS\* AND OAT PRODUCTS\*\*

(SPECIFIED PERIODS)

MILLION BUSHELS

30 —

MILLION BUSHELS

— 30

25 —

— 25

20 —

— 20

15 —

— 15

10 —

— 10

5 —

— 5

0 —

— 0

30 year average

10 year average

1964-65

1965-66

1966-67

1967-68

1968-69

1969-70\*\*\*

1938-39

1958-59

1967-68

1967-68

JULY  
JUNE  
MAY  
APR  
MAR  
FEB  
JAN  
DEC  
NOV  
OCT  
SEPT

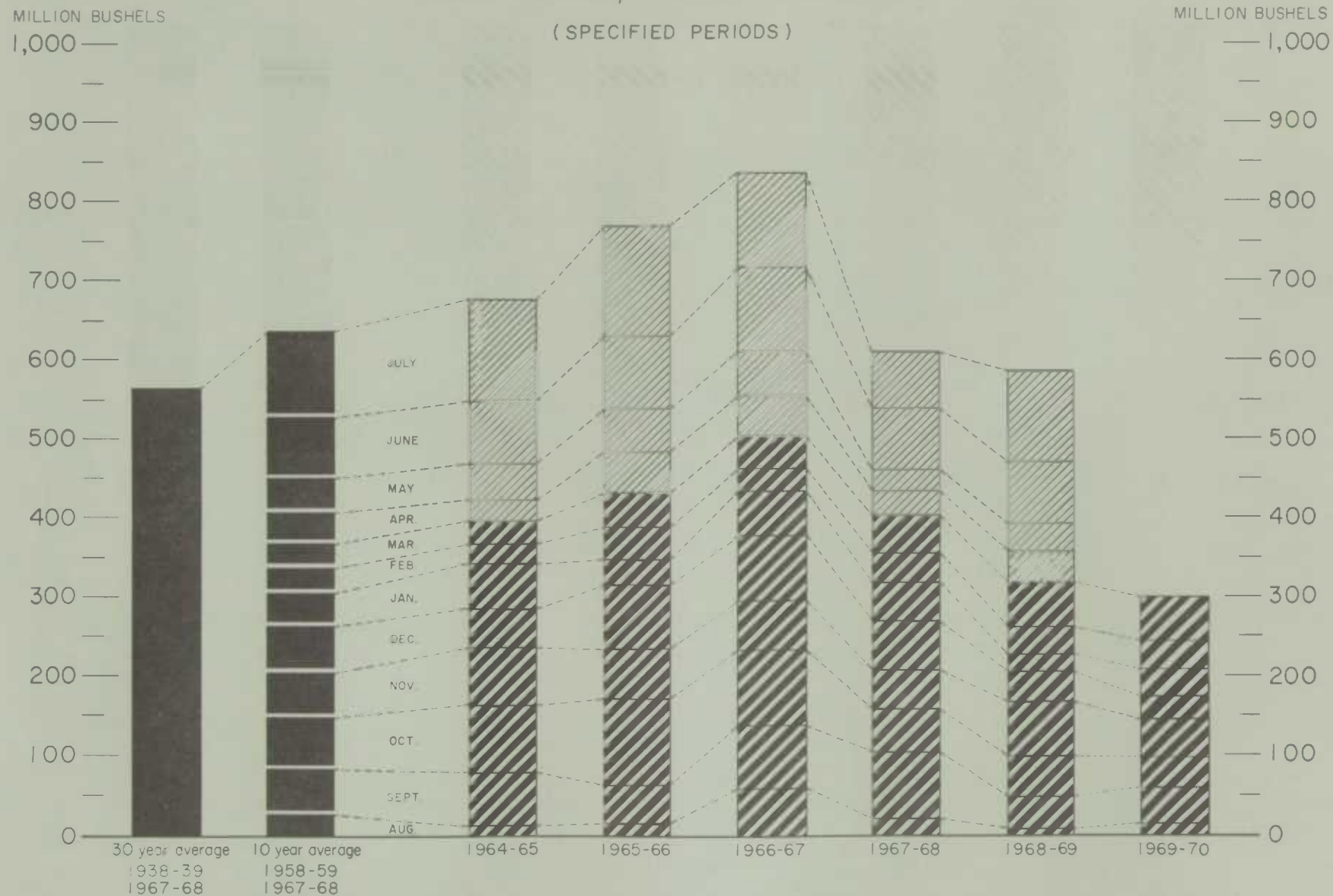
\* Beginning with 1960-61 includes relatively small quantity of seed oats.

\*\* In terms of grain equivalent.

\*\*\* Preliminary

Agriculture Division D.B.S.

# FARMERS' MARKETINGS OF CANADA'S SIX MAJOR GRAINS,\* PRAIRIE PROVINCES



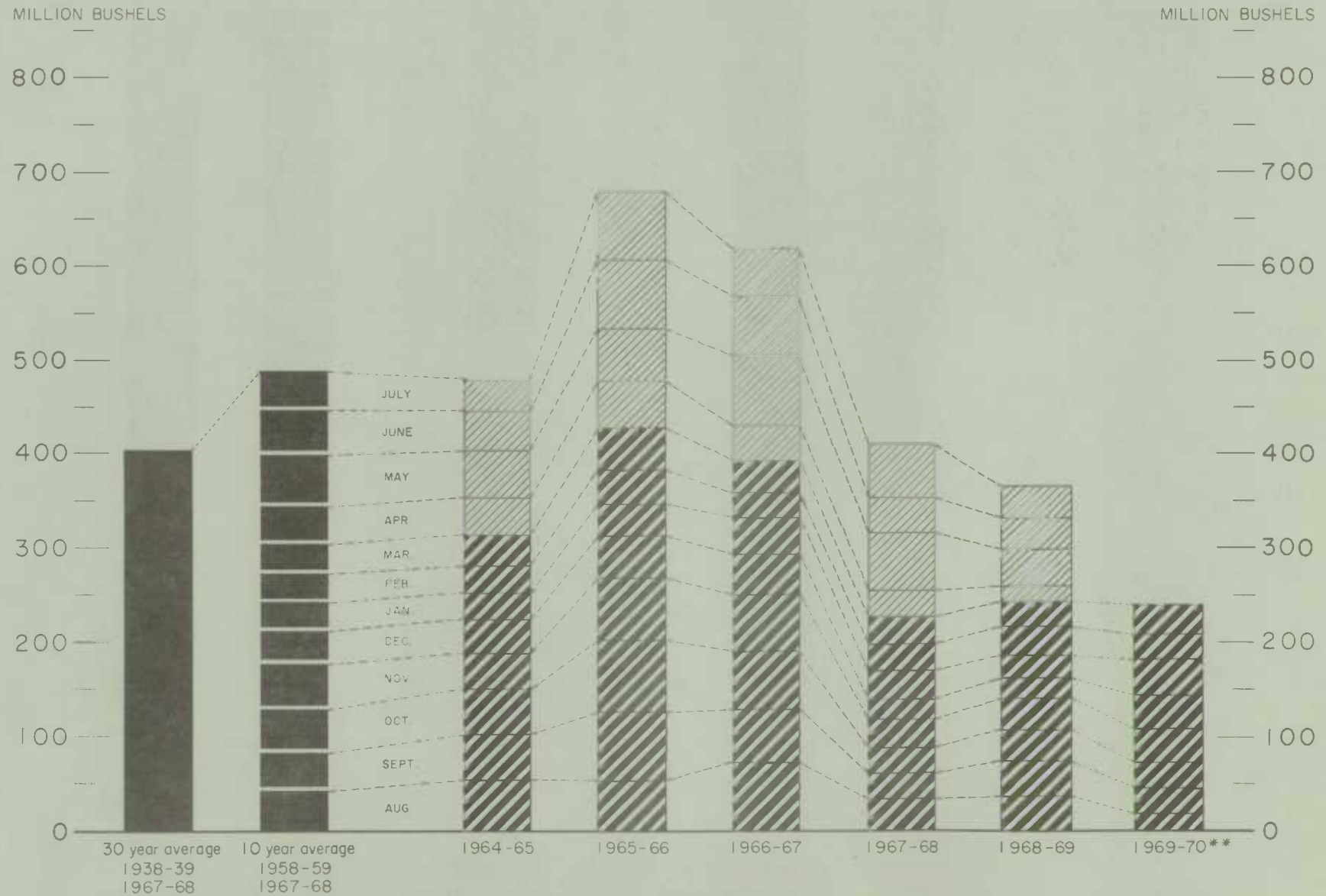
\* Wheat, oats, barley, rye, flaxseed and from 1960-61 rapeseed

Agriculture Division D.B.S.



# EXPORTS OF CANADA'S SIX MAJOR GRAINS AND PRODUCTS\*

(SPECIFIED PERIODS)



\* Wheat, seed wheat, and wheat flour; oats, seed oats and oatmeal and rolled oats; barley and malt; rye; flaxseed and from 1960-61 rapeseed  
 \*\* Preliminary.

Canadian Wheat Board Weekly Average Cash Wheat Prices, Crop Year 1969-70  
Basis in Store Thunder Bay and Vancouver

Class and grade	Week ending			
	April 3	April 10	April 17	April 24
cents and eighths per bushel				
<u>Initial payment to producers</u>				
1 Northern .....	150	150	150	150
2 Northern .....	146	146	146	146
3 Northern .....	141	141	141	141
4 Northern .....	133	133	133	133
5 Wheat .....	119	119	119	119
6 Wheat .....	115	115	115	115
Feed Wheat .....	110	110	110	110
1 C.W. Garnet .....	133	133	133	133
2 C.W. Garnet .....	128	128	128	128
3 C.W. Garnet .....	123	123	123	123
1 Alberta Red Winter .....	132	132	132	132
2 Alberta Winter .....	127	127	127	127
3 Alberta Winter .....	121	121	121	121
1 C.W. Amber Durum .....	150	150	150	150
2 C.W. Amber Durum .....	146	146	146	146
3 C.W. Amber Durum .....	141	141	141	141
<u>International Grains Arrangement</u>				
<u>(Basis in store Thunder Bay)</u>				
1 Northern .....	180/1	179/7	179/7	179/7
2 Northern .....	177/1	176/7	176/7	176/7
3 Northern .....	168/3	168/3	168/3	168/3
4 Northern .....	151/3	151/3	151/3	151/3
5 Wheat .....	148/3	148/3	148/3	148/3
6 Wheat .....	143/3	143/3	143/3	143/3
Feed Wheat .....	138/3	138/3	138/3	138/3
1 C.W. Garnet .....	151/3	151/3	151/3	151/3
2 C.W. Garnet .....	150/3	150/3	150/3	150/3
3 C.W. Garnet .....	149/3	149/3	149/3	149/3
1 Alberta Red Winter .....	151/3	151/3	151/3	151/3
2 Alberta Winter .....	150/3	150/3	150/3	150/3
3 Alberta Winter .....	149/3	149/3	149/3	149/3
1 C.W. Amber Durum .....	183/3	183/3	183/3	183/3
2 C.W. Amber Durum .....	180/3	180/3	180/3	180/3
3 C.W. Amber Durum .....	170/4	170/4	170/4	170/4
<u>(Basis in store Vancouver)</u>				
1 Northern .....	180/6	180/4	180/2	180/2
2 Northern .....	178/2	178	177/6	177/6
3 Northern .....	171/3	171/3	171/3	171/3
4 Northern .....	165/3	165/3	165/3	165/3
5 Wheat .....	163/3	163/3	163/3	163/3
6 Wheat .....	156/3	156/3	156/3	156/3
Feed Wheat .....	153/3	153/3	153/3	153/3
1 C.W. Garnet .....	165/3	165/3	165/3	165/3
2 C.W. Garnet .....	164/3	164/3	164/3	164/3
3 C.W. Garnet .....	163/3	163/3	163/3	163/3
1 Alberta Red Winter .....	165/3	165/3	165/3	165/3
2 Alberta Winter .....	164/3	164/3	164/3	164/3
3 Alberta Winter .....	163/3	163/3	163/3	163/3



# CANADIAN FLOUR MILLING SITUATION

**Production** Wheat flour production by Canadian mills during March 1970 amounted to 3,233,000 hundredweight representing an increase of 7 per cent more than the February 1970 total of 3,030,000 hundredweight, 6 per cent above the adjusted March 1969 figure of 3,036,000 hundredweight but 9 per cent below the ten-year (1960-69) average production for the month of March of 3,568,000 hundredweight. Mills reporting operations during March 1970 had a total rated capacity of 167,000 hundredweight per 24-hour day and on the basis of a 25-day working period 77.3 per cent of this rated capacity was effective.

Wheat milled for flour during March 1970 amounted to 7,402,000 bushels, 7 per cent over the 6,932,000 bushels milled during the preceding month and 8 per cent higher than the 6,853,000 bushels milled during March 1969. Of the wheat milled for flour during March 1970 some 6,217,000 bushels were Western Canadian spring wheat (other than Durum) while the remainder consisted of Ontario winter wheat (698,000 bushels); Durum (373,000 bushels); and all other (114,000 bushels).

**Exports** According to preliminary Customs returns, exports of Canadian wheat flour during March 1970 amounted to the equivalent of 2,041,000 bushels (some 887,000 hundredweight of flour) 6 per cent over the February 1970 exports of 1,929,000 bushels but 26 per cent lower than the adjusted March 1969 exports of 2,760,000 bushels. Flour shipments during the month went to forty-five countries with exports to Cuba amounting to 607,000 bushels or 30 per cent of the March total. Other principal markets for Canadian wheat flour in terms of wheat during the month with shipments in thousands of bushels were as follows: Lebanon, 221; Saudi Arabia, 194; Britain, 187; Sudan, 147; and Ceylon, 130.

## Wheat Milled for Flour, and Production and Exports of Wheat Flour, Canada

Crop year	Wheat milled for flour	Wheat flour	
		Production	Exports(1)
	bushels	cwt.	
1935-36 - 1939-40 average .....	67,845,114	29,405,451	9,603,941
1940-41 - 1944-45 " .....	99,704,638	43,908,245	23,699,546
1945-46 - 1949-50 " .....	107,330,372	47,011,540	25,819,721
1950-51 - 1954-55 " .....	100,446,328	43,847,894	21,812,041
1955-56 - 1959-60 " .....	99,148,211	39,752,589	16,349,156
1960-61 - 1964-65 " .....	91,128,177	40,834,088	15,769,803
1965-66 .....	97,925,995	43,531,263	16,576,117
1966-67 .....	90,084,646	39,978,571	13,848,208
1967-68 .....	84,769,150	37,755,841	10,734,857
1968-69 .....	85,048,591	37,621,151	10,705,452
1969-70(2) .....			
August .....	7,383,987	3,231,729	948,508
September .....	7,736,641	3,411,564	544,562
October .....	8,112,737	3,562,014	972,463
November .....	7,548,659	3,267,598	460,275
December .....	7,323,425	3,219,994	1,127,164
January .....	8,053,192	3,529,240	1,456,776
February .....	6,931,583	3,029,985	838,881
March .....	7,402,364	3,233,355	887,315
Totals .....	60,492,588	26,485,479	7,235,944
Same months 1968-69 <sup>r</sup> .....	57,797,351	25,577,061	7,475,223

(1) Based on Customs returns. Exports for the crop years 1945-46 - 1968-69 revised to remove effect of time lag in the returns made by Customs.

(2) Subject to revision.

r Revised figures.

# UNITED STATES SITUATION

Wheat Supplies Above Year Ago Reflecting an increase in carryover stocks which more than offset a decrease in production, total domestic supplies of wheat in the United States for the 1969-70 crop year are placed at 2,276.4 million bushels, 8 per cent above the previous year's total of 2,115.6 million. The 817.6 million bushels carried over at July 1, 1969 were sharply above the 1968 stocks of 539.4 million while the current crop estimated at 1,458.9 million, declined 7 per cent from the 1,576.3 million of last year's outturn. Domestic disappearance during 1969-70 is estimated at about 780.0 million bushels, 3 per cent more than the 754.1 million of last year. After deducting anticipated domestic requirements for the current United States crop year, some 1,498.2 million remain available for export and for carryover, an increase of 10 per cent over the 1,362.1 million in 1968-69.

Exports Up from Previous Year Exports of wheat and wheat flour in terms of grain equivalent during the period July 1, 1969 - April 3, 1970 amounted to 448.4 million bushels, 21 per cent above the 380.9 million exported during the comparable date last year. The balance remaining on April 4, 1970 for export and for carryover was estimated at 1,049.9 million bushels compared with 981.2 million on the same date a year ago.

## United States Wheat Supplies

Item	1968-69 <sup>r</sup>	1969-70 <sup>P</sup>
	million bushels	
Carryover at beginning of crop year (July 1) .....	539.4	817.6
Production .....	1,576.3	1,458.9
Total estimated domestic supplies .....	2,115.6	2,276.4
Imports of wheat and wheat flour in terms of wheat for domestic use, July - March .....	0.6	1.8
Total estimated supplies(1) .....	2,116.2	2,278.2
Less estimated domestic requirements for crop year (2).	754.1	780.0
Available for export and for carryover .....	1,362.1	1,498.2
<u>Deduct</u>		
Exports of wheat as grain, July 1 - April 3 .....	332.2	391.6
Exports of wheat flour in terms of wheat, July 1 - April 3 (3) .....	48.7	56.7
Total exports of wheat and wheat flour (4) .....	380.9	448.4
Balance on April 4 for export and for carryover .....	981.2	1,049.9

(1) Excludes imports for April - June.

(2) Includes shipments to United States Territories and wheat for military food use at home and abroad.

(3) Flour exports exclude "Milled in bond".

(4) Data include shipments for relief.

<sup>P</sup> Preliminary figures.

<sup>r</sup> Revised figures.



### Winter Wheat

A report released on April 10, 1970 by the Crop Reporting Board of the United States Department of Agriculture stated that winter wheat prospects are favourable — winter losses were minimal and March precipitation replenished dry topsoils in the Great Plains. Winter wheat production is forecast at 1,065 million bushels, 3 per cent above the December 1 forecast, but 7 per cent below the 1969 crop and 14 per cent below the 1968 crop. In the past decade, the average change in U.S. production from the April 1 forecast to harvest has been 42 million bushels, ranging from 8 to 134 million bushels.

April 1 conditions pointed to a yield of 27.8 bushels per seeded acre. Seeded yield in 1969 averaged 26.6 bushels and in 1968 averaged 25.1 bushels. New, high yielding varieties are increasing average wheat yields in some parts of the country. Acreage for harvest is estimated at 33.7 million acres or 88.1 per cent of the seeded acreage. This compares with 85.1 per cent harvested in 1969 and 86.1 per cent in 1968.

Wheat entered winter in good condition across most of the Nation. A few dry areas existed in the Northern Plains, the Pacific Northwest, and the Southeast. Generally, winter grains made sufficient fall growth and survived the winter with only minor loss from winterkill and wind erosion. Precipitation in the major wheat area of the Great Plains was very light during December, January and February; however, snow and rain fell the latter half of March and early April bringing surface moisture back to an adequate level. Recent precipitation has stimulated growth in Kansas, Oklahoma, and Texas, but below average temperatures throughout the Great Plains during March somewhat limited development. In Texas, dryland wheat on the Northern High Plains would benefit from precipitation, although recent rain and snow have improved moisture supplies. Dry topsoils a month earlier on the Eastern Slope in Colorado were largely alleviated and prospects are good. Wheat is heading in southern areas of Texas, Arizona and California. In the Dakotas and Montana wheat is breaking dormancy with soil moisture less than ample in much of this area. Soil moisture supplies are excellent in Washington and Oregon and fall-seeded grain came into spring with strong, even stands.

Wheat in the Corn Belt and eastern parts of the country is in mostly good condition. Extreme winter cold was common in Ohio, Pennsylvania, and New York; however, snow cover was plentiful and melting snow greatly improved soil moisture. Growth has been minimal from the Appalachian and Middle Atlantic States northward as cool weather retarded plant development. Soil moisture is ample in the Southeast and South Central States and wheat is now making favourable development.

### Flour Production

According to the Bureau of the Census, United States Department of Commerce, wheat flour production in the United States in February 1970 amounted to 21,003,000 hundredweight, averaging 1,105,000 hundredweight per working day. This compared with an average output per working day of 1,046,000 hundredweight last month and 949,000 hundredweight in February 1969. Wheat flour mills during February operated at 109.1 per cent of capacity, compared with 103.2 per cent and 94.7 per cent, respectively, for the previous month and the same month a year ago.



# AUSTRALIAN SITUATION

Wheat Supplies at an All-time High Although wheat production in Australia declined considerably from the high level of 544.0 million bushels in 1968-69 to 393.6 million in 1969-70 this effect was more than offset by a very sharp increase in carryover stocks from 51.8 million bushels at December 1, 1968 to 266.7 million in 1969. As a result, total supplies of wheat in Australia for the 1969-70 crop year are estimated at a record level of 660.3 million bushels, compared with 595.8 million a year previous. After deducting some 80.0 million bushels for anticipated domestic requirements, an estimated 580.3 million are available for export and for carryover during 1969-70, some 14 per cent above the 510.4 million in 1968-69.

Exports Above Previous Year Combined exports of wheat as grain and wheat flour in terms of grain equivalent during the period December 1 - March 21 of the current Australian crop year amounted to 71.0 million bushels, some 11 per cent more than the 64.2 million exported during the corresponding four months of the 1968-69 crop year. The balance remaining on March 22, 1970 for export and for carryover, at 509.3 million bushels, was 14 per cent more than the comparable 1969 total of 446.2 million.

## Australian Wheat Supplies

Item	1968-69 <sup>r</sup>	1969-70 <sup>p</sup>
	million bushels	
Carryover, including flour as wheat, at beginning of crop year (December 1) .....	51.8	266.7 <sup>r</sup>
Production .....	544.0	393.6 <sup>r</sup>
Total estimated domestic supplies .....	595.8	660.3
Less estimated domestic requirements for crop year ..	85.4	80.0
Available for export and for carryover .....	510.4	580.3
<u>Deduct</u>		
Exports of wheat as grain, December 1 - March 21 ..	61.4	65.4
Exports of wheat flour in terms of wheat December 1 - March 21 .....	2.8	5.6
Total exports of wheat and wheat flour .....	64.2	71.0
Balance on March 22 for export and for carryover ....	446.2	509.3

<sup>p</sup> Preliminary figures.  
<sup>r</sup> Revised figures.

The following information relative to the Australian situation has been extracted from a report from Mr. R.A. Groundwater, Assistant Commercial Secretary for Canada, Melbourne, under date of April 17, 1970 and is reproduced with the permission of the Trade Commissioner Service, Department of Industry, Trade and Commerce. Where possible, conversions to Canadian measures and currency have been made for the convenience of our readers.

Australian wheat production 1969-70. — Total production of wheat for grain in Australia for 1969-70 has been estimated at 393,631,000 bushels by the Commonwealth Bureau of Census and Statistics which is shown in the accompanying table. The table includes the past three seasons indicating the subsequent increase in production that took place, with a small reduction in the past season. The six-year production average is 384,989,000 bushels, very close to this year's production. Total deliveries to the Australian Wheat Board as of April 4, 1970 were 349.5 million bushels.

The table also provides the acreage and average yield for the past three seasons. The average total acreage is still above the average for the six seasons 1964-65 - 1969-70 (21,466,000 acres) being 23,303,000 acres. This provided an average yield of 16.9 bushels per acre in 1969-70 as compared to the past six seasons average of 17.9 bushels to the acre. The lower yield was greatly influenced by a severe drought in Western Australia where the yield fell to 9.7 bushels per acre as well as in Queensland where the yield dropped to 12.9 bushels per acre.

Given the total Australian quota for 1970-71 and the average yield of 17.9 bushels per acre, the total acreage required is about 17 1/2 million acres. This is a reduction of about six million acres or over 25 per cent reduction in acreage, an accomplishment not likely to be achieved.

Wheat for Grain Area, Yield per Acre and Production

<u>Season</u>	<u>N.S.W.</u>	<u>Vic.</u>	<u>Qld.</u>	<u>S.A.</u>	<u>W.A.</u>	<u>Tas.</u>	<u>A.C.T.</u>	<u>Aust.</u>
<u>Area sown — thousand acres</u>								
1967-68	8,215	3,224	1,477	2,864	6,647	12	2	22,441
1968-69	9,959	3,984	1,789	3,748	7,295	17	4	26,797
1969-70	8,500	3,434	1,200	3,249	6,900	17	3	23,303
<u>Yield per acre — bushels</u>								
1967-68	10.6	8.8	18.6	9.4	16.1	26.3	17.8	12.4
1968-69	21.6	22.8	23.5	22.2	15.4	23.6	20.1	20.3
1969-70	19.2	24.8	12.9	19.3	9.7	25.6	32.0	16.9
<u>Production — thousand bushels</u>								
1967-68	87,323	28,317	27,417	26,899	106,975	316	42	277,289
1968-69	215,119	90,728	42,000	83,160	112,450	410	84	543,950
1969-70	163,000	85,000	15,500	62,600	67,000	435	96	393,631

1970-71 wheat quotas. — An error was incorporated into last month's report by not including ten million bushels, which provides a total quota of 318 million bushels. The quotas for the 1970-71 season have been set as follows, in millions of bushels:

<u>Basic</u>	New South Wales....	92
	Victoria .....	52
	Queensland .....	25
	South Australia ...	36
	Western Australia .	83
	Sub-total .....	288



<u>Additional</u>	New South Wales	
	Prime Hard .....	12
	Northern Hard .....	7
	Queensland	
	Prime Hard .....	11
	Sub-total .....	30
	Grand total ...	318

The extra 10 million bushels of Prime Hard wheat which is to be shared between New South Wales and Queensland is to build up stocks of hard prime wheat in light of the shortage of the grade in the 1969-70 season.

Details to determine the method of allocating state quotas to farmers are being discussed and should be known shortly. It is unlikely that radical changes will be made, however, details maybe somewhat different than in the previous season.

An interesting dialogue was carried on in Western Australia regarding quotas. A report in an official paper of the Farmers Union in that State indicated that there have been suggestions that wheat growers be paid for not growing wheat by selling their quotas back to the Government for a season. The suggestion was to sell their remaining entitlement of the 1970-71 quota, i.e. total 1970-71 quota less over-quota wheat delivered in 1969-70 against the 1970-71 quota, by determining what it is worth to the industry to prevent the growing of a bushel of wheat. The approximate value mentioned was \$A0.20 (24 cents Canadian) per bushel, given a reduction of 68 million bushels, which included the value gained by distributing the funds required under the stabilization fund among fewer bushels, the reduction in carrying and handling charges and the reduction of capital funds required for additional storages if less wheat was grown.

Recent wheat sales. — Contracts for the sale of 80,000 tons (2,987,000 bushels) of wheat to Peru and 100,000 tons (3,733,000 bushels) of wheat to Chile were concluded by the Australian Wheat Board in March 1970. The Chairman of the Board, Dr. Allan R. Callaghan, said in a press release that the contracts had been achieved after a long and difficult period of negotiation.

At the same time, Dr. A.R. Callaghan announced the sale of 29,000 tons (1,083,000 bushels) of wheat to Sudan, 23,000 tons (859,000 bushels) to Lebanon, and 10,000 tons (373,000 bushels) to New Zealand. Commercial sales of 50,000 tons (1,867,000 bushels) and 75,000 tons (2,800,000 bushels) to India and Pakistan, respectively, were also announced which were in addition to Australian Food Aid shipments. These sales amount to a little over 13 1/2 million bushels.

Domestic market sales have been made with a majority of stockfeed merchants in New South Wales to purchase weather damaged wheat in that State. Dr. A.R. Callaghan stated that black market sales had been largely contained although a certain amount of wheat was sold across the borders of States under the protection of Section 92 of the Commonwealth Constitution.

Wheat industry must look at stocks cost. — The Minister for Primary Industry, Mr. Anthony, indicated that the industry must give more attention to the implications of the cost of holding excessive stocks, as the wheat stocks in Australia were too high and require reduction. It was also indicated that delivery quotas must continue



and be tightened to bring supplies into line with outlets before production could again be matched with outlets. These points were made at a symposium called "Future of the Wheat Industry" held in Queensland. Some of the conclusions of his paper were:

1. What growers would have to be prepared to accept restraints for some time;
2. The market situation did not offer the prospect of great or rapid expansion but, in the long term, some growth could be expected;
3. An early substantial firming of wheat prices in world trade was not in prospect;
4. Wheat stocks must be held to manageable proportions providing reasonable supplies for fortuitous demands for any grade or quality of wheat.

Wheat standard bushel weights. — Wheat standard bushel weights determined this season are as follows along with the weights for 1968-69.

	<u>1968-69</u>	<u>1969-70</u>
	pounds	per bushel
Western Australia FAQ .....	64.25	63
South Australia Hard .....	63.75	62.75
"    "    FAQ .....	63.75	63
Victorian FAQ .....	65	65.5
Victorian Off-grade .....	—	60.5
New South Wales Prime Hard .....	61	62.25
"    "    "    Northern Hard .....	—	62.50
"    "    "    Northern weather damaged .....	—	59
"    "    "    Southwestern FAQ .....	63.5	63
"    "    "    Off-grade .....	—	60
Queensland southern FAQ .....	64.25	63.5
"    "    "    Prime Hard .....	63.5	64.5
"    "    "    Off-grade .....	—	60.25

The previous grade New South Wales Northern f.a.q. wheat will be designated in 1970-71 as Northern Hard with some wheat being designated as such this year. The reason was that such wheat was well received on world markets. The grade must be of certain varieties and grown in the Northern environmental area. The wheat must meet the Australian Wheat Board's FAQ specifications, contain less than 10 per cent mottled or bleached grain and be of the varieties Festiquay, Gala, Gamut, Windibri, Mendos, Spica, Timgalen, or Winglen.

Crop conditions by state. — Less than normal rainfall has fallen in Queensland, thus requiring soaking rains to provide adequate soil moisture. Land operations are beginning but plantings will not begin until May.

Land preparation in New South Wales is proceeding, but considerably less fallow has been prepared than last year with a large proportion of the area to be sown on stubble land.

Sub-soil moisture varies with the southern part of New South Wales having relatively good stocks of moisture whereas the northern areas are quite dry.

Isolated plantings have been made, largely depending upon sufficient rain. However, full scale plantings will not begin until after the next good rains, which hopefully occur as to be able to plant in May.

There appears to be interest in the central and southern parts of the wheat belt to produce hard wheat varieties.

It is expected that there will be a reduction in acreage, with the greatest proportion being in the central and southern districts. The northern areas may indeed increase acreage in order to take advantage of the additional Northern and Prime hard wheat.

These two States are the most important in Australia in providing wheat which directly competes with Canadian type of wheat. The States of Victoria and South Australia are in a relatively good position for planting with Western Australia having variable conditions. Although Western Australia does not have perfect conditions, the situation is somewhat better in the wheat growing areas than had been expected.

Japanese sales. — Sales of Australian Wheat to Japanese Food Agency are as follows:

	<u>July 1, 1968 to</u> <u>March 11, 1969</u>	<u>July 1, 1969 to</u> <u>March 11, 1970</u>
	thousand bushels	
Queensland Prime Hard .....	16,124	6,093
Western Australia FAQ .....	15,667	15,129
New South Wales FAQ .....	2,762	2,695
South Australia Hard .....	560	1,075
New South Wales Off-grade .....	—	1,127
Western Australia Off-grade .....	—	283
Totals .....	35,114	26,402

The total supply of Western Australia off-grade wheat totalled 1.29 million bushels in the 1969-70 season, an amount much greater than the shipments to Japan. However, all of the off-grade wheat produced has been sold although not shipped. The most dramatic change in the Japan market is the reduction of Queensland wheat bought with increases shown in purchases of South Australian hard wheat as well as off-grade wheats. Nevertheless, total shipments to Japan are down over the corresponding period of last year.

Exports of Australian Wheat and Wheat Flour in Terms of Wheat  
December 1 — March 2, 1969-70 and Corresponding Period 1968-69

Destination	Wheat		Wheat flour	
	1968-69	1969-70	1968-69	1969-70
thousand bushels				
<u>Western Europe</u>				
EEC:				
Germany, Federal Republic ....	675	—	—	—
Netherlands and I/T .....	3,954	811	—	—
Sub-totals .....	4,629	811	—	—
<u>Other Western Europe</u>				
Britain .....	9,723	6,418	117	127
Ireland .....	143	243	—	—
Malta .....	392	146	—	—
Norway .....	1,415	870	—	—
Sweden .....	—	94	—	—
Switzerland .....	84	102	—	—
Sub-totals .....	11,757	7,873	117	127
Totals .....	16,386	8,684	117	127
<u>Africa</u>				
Malawi .....	—	—	112	141
Mauritius .....	—	—	183	185
Mozambique .....	—	1,080	—	—
Rhodesia .....	1,045	1,567	—	—
Sudan .....	—	2,102	—	—
Zambia .....	777	1,104	—	—
Others .....	4	33	159	147
Totals .....	1,826	5,886	454	473
<u>Asia</u>				
Aden .....	210	648	—	—
Aden and Aden I/T .....	—	—	57	71
Aden and Aden I/T Atta .....	—	—	29	34
Arabian Gulf .....	—	—	62	58
Arabian Gulf Atta .....	—	—	326	374
Ceylon .....	440	1,045	4	1,659
China .....	5,414	21,859	—	—
Hong Kong .....	811	621	9	11
India .....	919	2,017	—	—
Indonesia .....	—	—	213	1,448
Iraq .....	—	2,046	—	—
Japan .....	21,665	9,348	—	—
Korea South .....	369	—	—	—
Kuwait .....	1,027	1,078	—	—
Lebanon .....	1,117	—	—	—
Pakistan .....	865	2,835	—	—
Philippines .....	160	—	40	55

See footnote(s) at end of table.



Exports of Australian Wheat and Wheat Flour in Terms of Wheat  
December 1 - March 2, 1969-70 and Corresponding Period 1968-69 - Con.

Destination	Wheat		Wheat flour	
	1968-69	1969-70	1968-69	1969-70
thousand bushels				
<u>Asia (concluded)</u>				
Saudi Arabia .....	303	773	76	145
Taiwan .....	756	136	—	—
Thailand .....	475	568	65	77
Malaya .....	1,901	3,159	—	—
Sabah .....	—	—	11	4
Sarawak .....	—	—	8	3
Singapore .....	762	2,872	1	(1)
Others .....	271	436	58	98
Totals .....	37,465	49,441	959	4,037
<u>Western Hemisphere</u>				
Chile .....	2,062	279	—	—
Colombia .....	1,294	—	—	—
Peru .....	2,345	1,053	—	—
West Indies Area .....	—	—	86	11
Totals .....	5,701	1,332	86	11
<u>Pacific Area and Sundries</u>				
Pacific Islands .....	20	22	1,123	883
Ships' Stores and Sundries .....	—	—	61	39
Totals .....	20	22	1,184	922
Totals, all countries .....	61,400	65,367	2,800	5,570

(1) Less than 500 bushels.

FRENCH SITUATION

Supplies Down                      Total estimated commercial domestic supplies of soft wheat in  
from Previous Year                  France for the crop year (August-July) 1969-70, consisting of  
the August 1 carryover of 103.9 million bushels and anticipated  
marketings of 404.2 million amount to some 508.1 million, slightly less than the  
1968-69 total of 516.3 million. Imports of wheat during August 1969 - February 1970  
amounted to 5.1 million bushels, 5 per cent less than the previous year's comparable  
total of 5.3 million. After deducting 222.3 million bushels for estimated domestic  
use, including normal feed wheat requirements, the surplus available for export and  
for carryover is placed at 290.9 million bushels compared with 293.2 million last  
year.

Exports Higher  
than Last Year

Combined exports of wheat and wheat flour in terms of grain equivalent during the first seven months of the 1969-70 crop year amounted to 143.3 million bushels, and represented an increase of 38 per cent over the comparable August-February 1968-69 total of 103.5 million. The balance of commercial supplies remaining on March 1, 1970 for export and for carry-over amounted to 147.6 million compared with the March 1, 1969 total of 189.7 million bushels.

French Soft Wheat Supplies

Item	1968-69 <sup>r</sup>	1969-70 <sup>P</sup>
	million bushels	
Commercial carryover, August 1 .....	93.2	103.9
Anticipated deliveries to Grain Board .....	423.1	404.2
Total estimated commercial domestic supplies .....	516.3	508.1
Imports, August-February .....	5.3	5.1
Total commercial supplies .....	521.6	513.2
Less domestic requirements for crop year .....	228.4	222.3
Available for export and for carryover .....	293.2	290.9
<u>Deduct</u>		
Exports of wheat, August-February .....	85.4	123.3
Exports of wheat flour, August-February .....	18.1	20.0
Total exports of wheat and wheat flour .....	103.5	143.3
Balance on March 1 for export and for carryover .....	189.7	147.6

<sup>P</sup> Preliminary figures.

<sup>r</sup> Revised figures.

The following account of the wheat situation in France has been extracted from a report from Mr. F.G. Beaudette, Agricultural Secretary, Canadian Embassy, Paris, under date of April 14, 1970 and is reproduced with the permission of the Trade Commissioner Service, Department of Industry, Trade and Commerce. Where possible, conversions to Canadian measures have been made for the convenience of our readers.

Weather and crops. — The first half of February was mild and wet and included some hail in many parts of France. By mid-month the weather had turned colder and there were snow falls and frequent early morning frosts. Waterlogged fields permitted little activity and there was very little wheat seeding during the month. Winter sown crops are generally in fairly good condition, though there will undoubtedly be a delay in the vegetative growth. Also there is damage from waterlogging in lower areas.



In comparison with March 1, 1969 for official estimates for durum wheat seedings at March 1, 1970 are down 9.3 per cent, while soft wheat plantings are down 9 per cent. It had been expected that spring wheat would to a large extent make up the winter wheat deficit of some 300,000 hectares (741,000 acres), but by end of March not much progress had been made with spring wheat and it is now thought that corn will benefit most from the areas left unseeded with wheat. There could also be some increase in barley acreage but this was not yet apparent by early March.

Estimated Wheat Seedings at March 1

	Average 1966-69	1968	1969	1970
		thousand acres		
Soft wheat .....	9,277	9,633	9,181	8,358
Durum wheat .....	109	136	148	134

Soft wheat supply utilization. — February 1970 soft wheat marketing by growers reached the exceptional level of 845,000 metric tons (31,048,000 bushels), bringing the August 1969-February 1970 total to 8.2 million tons (301,295,000 bushels) and the total 1969 crop wheat to 10.08 million tons (370,372,000 bushels). This compares with 615,000 tons (22,597,000 bushels) in February 1969; 8.45 million (310,481,000 bushels) for August 1968 to February 1969 and total 1968 crop wheat to end of February 1969 at 10.1 million tons (371,107,000 bushels). There had been an obvious holdback by growers in previous months of this crop year and it seems that high market prices prevailing since February had encouraged the upswing in deliveries. Despite the higher prices for wheat, large quantities were again denatured in February bringing the seven-month total for 1969-70 over the 800,000 ton mark (29,395,000 bushels). The authorities expect another half million tons (18,372,000 bushels) to be denatured before the new crop year. February 1970 sales to millers at 403,000 tons (14,808,000 bushels) were about average although slightly above those of February 1969. Total exports of soft wheat during the month amounted to 502,000 tons (18,445,000 bushels) bringing March 1, 1970 stocks to 3.9 million tons (143,299,000 bushels) or some 25 per cent less than 12 months earlier.

Durum wheat situation. — February marketing by growers totalled 19,400 tons (713,000 bushels) bringing the August 1969 to February 1970 figure to 194,000 tons (7,128,000 bushels) and the 1969 crop total to 292,000 tons (10,729,000 bushels). The comparable figures for the previous crop year are 11,000, 174,000 and 264,000 tons (404,000, 6,393,000 and 9,700,000 bushels).

Commercial stocks of French durum decreased from 109,000 tons (4,005,000 bushels) at February 1, 1970 to 99,000 tons (3,638,000 bushels) at March 1. The mills bought 24,500 tons (900,000 bushels) during February and exports reached 3,900 tons (143,000 bushels) all to EEC partners. The industry which held stocks of 64,000 tons (2,352,000 bushels) at February 1 took delivery of 23,000 tons (845,000 bushels) of domestic and 23,500 tons (863,000 bushels) of imported durum, milled 50,000 tons (1,837,000 bushels) during the month and ended February with stocks of 52,000 tons (1,911,000 bushels); the 8,000 tons (294,000 bushels) discrepancy of the above figures being accounted for by the sale of 8,000 tons (294,000 bushels) by the milling industry to an exporter; a rare occurrence.



Trade. — French imports in February were some 17,000 tons (625,000 bushels) 2/3 durum, compared to over 25,000 tons (919,000 bushels) in February 1969. Total for the 7 months August 1969-February 1970 reaches 338,000 tons (12,419,000 bushels) compared to 363,000 tons (13,338,000 bushels) for the equivalent period 1968-69.

Denatured wheat exports were high this month reaching 62,684 tons (2,303,000 bushels) mostly to Belgium, Holland and Germany; in comparison February 1969 denatured wheat exports were only 44,331 tons (1,629,000 bushels).

Durum wheat sales are still down with only 22,737 tons (835,000 bushels) in the first seven months this year compared to 62,447 tons (2,295,000 bushels) in the same 1968-69 period.

Milling soft wheat exports amounted to 434,400 tons (15,961,000 bushels) during February 1970 in comparison with 425,700 (15,642,000 bushels) in February 1969. This brings the total August 1969 — February 1970 exports to 2,971,700 (109,190,000 bushels) against 2,101,600 tons (77,220,000 bushels) during the same period last year.

Flour exports again rose in February 1970 to 57,170 tons bringing the total August — February to 341,093 tons in comparison with 323,173 tons for the same period last year.

#### ARGENTINE SITUATION

<u>Wheat Supplies</u> <u>Above Year Ago</u>	Reflecting an increase in production which more than offset a decrease in carryover stock, total estimated domestic supplies of wheat in Argentina for the 1969-70 (December-November) crop year are placed at some 268.7 million bushels, an increase of 5 per cent over the previous season's total of 255.3 million. The 1969 production estimated at 249.9 million bushels is 18 per cent above the 210.9 million produced in 1968, while the December 1, 1969 carryover stocks at 18.8 million are sharply below the 44.4 million at the same date a year ago. After making an allowance of 150.0 million bushels for anticipated domestic requirements, an estimated 118.7 million are available for export and for carryover in 1969-70, some 20 per cent more than the 98.6 million the previous year.
--	--

<u>Exports Decline</u> <u>from Year Ago</u>	Preliminary exports of wheat and wheat flour in terms of wheat equivalent during December 1969 — March 1970 amounted to 31.2 million bushels, 35 per cent lower than the 47.7 million exported during the same four months in 1968-69. The balance remaining on April 1, 1970 for export and for carryover was estimated at 87.5 million bushels, in contrast to the April 1, 1969 total of 51.0 million.
--	---

# Argentine Wheat Supplies

Item	1968-69 <sup>r</sup>	1969-70 <sup>p</sup>
	thousand bushels	
Carryover at beginning of crop year (December 1) (1) ....	44.4	18.8
Production .....	210.9	249.9
Total estimated domestic supplies .....	255.3	268.7
Less estimated domestic requirements for crop year .....	156.7	150.0
Available for export and for carryover .....	98.6	118.7
<u>Deduct</u>		
Exports of wheat as grain, December - March .....	46.8	29.1 <sup>r</sup>
Exports of wheat flour in terms of wheat, December - March .....	0.9	2.1 <sup>r</sup>
Total exports of wheat and wheat flour .....	47.7	31.2
Balance on April 1 for export and for carryover .....	51.0	87.5

(1) Includes allowances for farm stocks.

<sup>p</sup> Preliminary figures.  
<sup>r</sup> Revised figures.

The following account of the Argentine situation has been extracted from a report from Mr. S.E. Kidd, Assistant Commercial Secretary (Agriculture) Buenos Aires, under date of April 17, 1970 and is reproduced with the permission of the Trade Commissioner Service, Department of Industry, Trade and Commerce. Where possible conversions to Canadian measures and currency have been made for the convenience of our readers.

The estimate of wheat production for Argentina of 6.8 million metric tons (249.9 million bushels), including 740,000 tons (27.2 million bushels) of durums, remains unchanged.

The domestic consumption of bread wheat in Argentina for milling, seeding and feed has averaged about 4.2 million metric tons (154,322,000 bushels) in recent years. Total supplies of bread wheat in 1969-70, including the 300,000 ton carryover (11,023,000 bushels), are estimated at 6,362,000 tons (233,761,000 bushels). Thus supplies available for export total slightly more than 2.0 million tons (73,487,000 bushels), of which 1.0 million tons (36,743,000 bushels) has been committed for export to Brazil and perhaps 300,000 tons (11,023,000 bushels) have been committed elsewhere, mainly to neighbouring countries. Argentina hopes to be able to carry stocks into 1970-71 of perhaps 500,000 tons (18,372,000 bushels) and so is not expected to enter the export market on a large scale for the remainder of the crop year.

Argentina has sold 30,000 tons (1,102,000 bushels) of bread wheat to Paraguay at u\$s 56.65 per metric ton (\$1.65 per bushel Canadian). Paraguay is presently negotiating the purchase of 50,000 metric tons (1,837,000 bushels) of wheat from the U.S.A. These purchases will satisfy Paraguay's wheat import requirements for the year.



The quantities of durum wheat available for export are much larger than usual. Total supplies of durums, including stocks of 10,000 tons (367,000 bushels), are estimated to be 750,000 tons (27,557,000 bushels). About 50,000 tons (1,837,000 bushels) are required for seeding while only about 30,000 tons (1,102,000 bushels) are milled for domestic consumption. An estimated 670,000 tons (24,618,000 bushels) is therefore available for export or carryover. The main export market for Argentine durums is Italy.

Business in durums has been very slow, other than for sporadic sales mainly to Italy. In late February, the Secretariat of Trade announced a reduction in the base index value for these wheats from u\$s 62.00 to u\$s 60.00 per metric ton (\$1.81 to \$1.75 per bushel). Then, on April 4, the base index value for Durums was again reduced this time from u\$s 60.00 to u\$s 57,000 per metric ton (\$1.75 to \$1.66 per bushel). The base index value is the price on which the export taxes on Durums are levied. These taxes currently total 11 per cent. Therefore, the export taxes on Durums are currently u\$s 6.44 per metric ton (19 cents per bushel). The lowering of the base index value has very little effect on encouraging export sales.

On March 10, the freighter "Progreso Argentino", built to carry grains and minerals in bulk, was launched. This ship is the first grain transporting freighter and one of the highest gross tonnage vessels, at 13,300 tons, ever built in Argentina.

Hard bread wheat prices in March rose from 16.20 pesos per 100 kilos (\$1.36 per bushel) to 16.80 pesos (\$1.41 per bushel) f.o.r. Buenos Aires during March. Prices at Bahia Blanca were stable at 15.50 pesos (\$1.30 per bushel). By April 16, prices at Buenos Aires had strengthened to 17.10 pesos (\$1.43 per bushel) but weakened to 15.30 pesos (\$1.28 per bushel) at Bahia Blanca in view of the lack of demand from exporters. Also at April 16, prices on the Buenos Aires Futures Exchange were 17.14 pesos per 100 kilos (\$1.44 per bushel) for May delivery, 17.15 pesos (\$1.44 per bushel) for June and 17.80 pesos (\$1.49 per bushel) for July. Durum prices settled back from 16.20 pesos per 100 kilos (\$1.36 per bushel) to 15.90 pesos (\$1.33 per bushel) at Buenos Aires and from 16.20 to 15.50 pesos (\$1.36 to \$1.30 per bushel) at Bahia Blanca by the end of March in the face of the bumper crop and limited demand. By April 16, durum was offered at 16.00 pesos (\$1.34 per bushel) at Buenos Aires and 15.80 pesos (\$1.32 per bushel) at Bahia Blanca. These are the lowest levels durums have reached in some years.

# Argentine Wheat Exports December - February 1968-69 and 1969-70

Destination	February		December-February	
	1969	1970	1968-69	1969-70
thousand bushels				
<u>Western Europe</u>				
EEC:				
Belgium .....	20	723	788	723
France .....	—	601	647	601
Germany, Federal Republic .....	—	239	37	239
Italy .....	3,095	4,781	9,348	7,123
Netherlands .....	605	152	2,001	497
Sub-totals .....	3,720	6,496	12,821	9,183



Argentine Wheat Exports December - February 1968-69 and 1969-70

Destination	February		December-February	
	1969	1970	1968-69	1969-70
thousand bushels				
<u>Other Western Europe</u>				
Britain .....	329	205	2,386	396
Norway .....	314	—	486	—
Portugal .....	—	—	—	596
Switzerland .....	110	—	228	—
Sub-totals .....	753	205	3,100	992
Totals .....	4,473	6,701	15,921	10,175
<u>Africa</u>				
Algeria .....	444	—	444	537
<u>Asia</u>				
Cyprus .....	—	—	472	—
India .....	—	—	4,364	—
Japan .....	518	—	518	—
Mozambique .....	—	—	426	—
Totals .....	518	—	5,780	—
<u>Western Hemisphere</u>				
Brazil .....	3,737	3,367	9,738	7,091
Chile .....	1,128	409	2,283	1,739
Paraguay .....	290	—	917	—
Peru .....	437	878	3,197	1,321
Totals .....	5,592	4,654	16,135	10,151
Totals, all countries .....	11,026	11,356	38,279	20,862

CALENDAR OF WHEAT EVENTS

- April 2 According to a report from Mr. M.J. Hladik, Assistant Commercial Secretary for Canada, Wellington, New Zealand, the 1969-70 wheat crop in that country is estimated at 10.6 million bushels of wheat, a reduction of 37 per cent from the 1968-69 levels.
- 17 A report received from Mr. R.A. Groundwater, Assistant Commercial Secretary, Melbourne, stated that the Commonwealth Bureau of Census and Statistics has estimated total production of wheat for grain in Australia at 393.6 million bushels.











STATISTICS CANADA LIBRARY  
BIBLIOTHÈQUE STATISTIQUE CANADA



1010686890