

DOES NOT CIRCULATE
NE PAS PRÊTER
The wheat review

JULY 1972

STATISTICS STATISTIQUE
CANADA CANADA

AUG 11 1972

LIBRARY
BIBLIOTHÈQUE



STATISTICS CANADA

Agriculture Division

Crops Section

THE WHEAT REVIEW

JULY 1972

Published by Authority of

The Minister of Industry, Trade and Commerce

August 1972
5502-502

Price: 30 cents
\$3.00 a year

Vol. 42—No. 12

Statistics Canada should be credited when republishing all or any part of this document

Information Canada
Ottawa

TABLE OF CONTENTS

	<u>Page</u>
<u>World Wheat Situation</u>	
World Wheat Exports Lower than Previous Year	5
World Wheat Supplies Down from a Year Ago	5
<u>Canadian Situation</u>	
Supplies Lower than Year Ago	6
August-June Exports Increase Over Last Year	6
Marketings, Disappearance and Visible Supplies	7
June 1972 Exports of Wheat and Flour Total 47.8 Million Bushels	8
General Quotas	9
Special Quotas	9
General Quotas 1971-72 C.N.R. and C.P.R. Blocks	10
Opening Quotas Announced for Major Grains	12
Re Quotas — All Other Wheat	13
Producers Asked to Gear for Heavy Grain Deliveries	13
More Opening Grain Quotas Announced	14
U.S.S.R. Buys More Canadian Grain	15
Delivery of Board Grain 1971-72 Crop Year	15
Rye Quota Increased	15
Lake Shipments of Canadian Grain	15
Advances Issued Under the Prairie Grain Advance Payments Act	16
Increase Delivery Points for Grain Producers	17
Crop Conditions in the Prairie Provinces	17
Advanced Preliminary Estimates of Specified Crop and Summerfallow Acreages.	18
Farmers' Marketings	19
Visible Supply of Canadian Wheat	20
Grading of Wheat Inspected, August 1971 — June 1972 with Comparisons	20
Weekly Visible and Farmers' Marketings (charts)	21
Wheat Shipments to the United States by Destination	22
Rail Shipments of Wheat to Maritime Ports	22
Rail Shipments of Wheat from Thunder Bay	23
Overseas Exports of Canadian Grain by Ports of Loading	23
Shipments Under Feed Grain Assistance Regulations	24
Monthly Exports of Canadian Wheat and Wheat Flour	25
Exports of Canadian Wheat by Destination	26
Customs Exports of Canadian Wheat Flour by Countries of Consignment	29
Canadian Wheat Board Weekly Average Cash Wheat Prices	31
<u>Canadian Flour Milling Situation</u>	
Production and Exports	32
<u>United States Situation</u>	
Disappearance of United States Wheat	33
1972 Wheat Crop Forecast at 1,551 Million Bushels	34
<u>Argentine Situation</u>	36
<u>Australian Situation</u>	37
<u>Wheat Situation in Greece</u>	38
<u>Calendar of Wheat Events</u>	38

S Y M B O L S

The following standard symbols are used in Statistics Canada publications:

..	figures not available
—	nil or zero.
p	preliminary figures.
r	revised figures.

Due to rounding, the sums of individual items may not agree exactly with the totals.

WORLD WHEAT SITUATION

World Wheat Exports Lower than Previous Year

Total exports of wheat and wheat flour in terms of wheat from the four traditional major exporters during the August-June period of the current crop year have amounted to 1,348.4 million bushels, 7 per cent below the 1,445.5 million bushels exported during the same eleven months in 1970-71 slightly less than the ten-year (1960-61 - 1969-70) average shipments for the period of some 1,344.7 million bushels. As indicated in the accompanying table, based on the Canadian crop year, exports from Canada were at a much higher level this year than last while those from Australia, United States and Argentina were lower than those of the previous year.

Exports of Wheat and Flour in Terms of Wheat, August 1971-June 1972 with Comparisons

August-June	Canada	Australia	United States	Argentina	Total	France
million bushels						
1950-51	209.1	119.7	346.4	87.5	762.7	
1951-52	312.9	86.4	446.1	24.1	869.5	
1952-53	341.4	94.8	296.7	29.3	762.2	
1953-54	234.3	57.0	190.7	101.2	583.2	
1954-55	231.9	88.6	253.2	123.0	696.7	
1955-56	284.1	96.3	317.8	103.3	801.5	
1956-57	241.9	115.6	507.2	93.2	957.9	
1957-58	294.6	57.2	370.0	70.2	792.0	
1958-59	274.7	71.5	416.3	95.7	858.2	
1959-60	259.7	103.9	470.1	67.5	901.2	
1960-61	324.4	170.2	618.4	60.7	1,173.7	
1961-62	336.2	206.2	659.2	85.2	1,286.8	
1962-63	308.6	163.6	593.6	56.9	1,122.7	
1963-64	529.2	259.8	794.4	99.4	1,682.8	
1964-65	372.3	225.2	665.5	150.7	1,413.7	
1965-66	519.5	179.8	798.0	265.4	1,762.7	
1966-67	479.2	243.5	672.6	98.9	1,494.2	103.9
1967-68	292.1	233.9	702.2	62.3	1,290.5	145.9
1968-69	276.1	189.4	491.1	85.9	1,042.5	193.2
1969-70 ^r	300.7	248.1	557.0	71.7	1,177.5	197.0
1970-71 ^r	378.4	327.0	687.4	52.7	1,445.5	117.6
1971-72 ^p	447.1	284.0	569.1	48.2	1,348.4	..

World Wheat Supplies Down from a Year Ago

Latest available estimates indicate that total supplies of wheat remaining on or about July 1, 1972 in the four traditional major exporting countries for export and for carryover, at the end of their respective crop years amounted to 1,807.0 million bushels, one per cent below the 1,823.7 million available a year ago. Declines were registered in Canada and Australia from those of the previous year while increases occurred in United States and Argentina. Supplies at July 1, 1972, in millions of bushels, were held as follows, with last year's comparable figures in brackets: Canada, 663.8 (801.0); Australia, 163.5 (255.3); United States, 926.8 (730.2); and Argentina, 52.9 (37.2).

Exports of Wheat and Flour in Terms of Wheat, August 1971-June 1972
with Comparisons

August — June	Canada	Australia	United States	Argentina	Total	France
million metric tons						
1950-51	5,691	3,258	9,428	2,381	20,758	
1951-52	8,516	2,351	12,141	656	23,664	
1952-53	9,291	2,580	8,075	797	20,744	
1953-54	6,377	1,551	5,190	2,754	15,872	
1954-55	6,311	2,411	6,891	3,348	18,961	
1955-56	7,732	2,621	8,649	2,811	21,814	
1956-57	6,584	3,146	13,804	2,537	26,070	
1957-58	8,018	1,557	10,070	1,911	21,555	
1958-59	7,476	1,946	11,330	2,605	23,357	
1959-60	7,068	2,828	12,794	1,837	24,527	
1960-61	8,829	4,632	16,830	1,652	31,943	
1961-62	9,150	5,612	17,941	2,319	35,021	
1962-63	8,399	4,453	16,155	1,549	30,555	
1963-64	14,403	7,071	21,620	2,705	45,799	
1964-65	10,132	6,129	18,112	4,101	38,475	
1965-66	14,139	4,893	21,718	7,223	47,973	
1966-67	13,042	6,627	18,305	2,692	40,666	2,828
1967-68	7,950	6,366	19,138	1,696	35,122	3,971
1968-69	7,514	5,155	13,366	2,338	28,373	5,258
1969-70	8,184	6,752	15,159	1,951	32,047	5,362
1970-71	10,298	8,900	18,708	1,434	39,341	3,201
1971-72 ^P	12,168	7,729	15,489	1,312	36,670	..

CANADIAN SITUATION

Supplies Lower than Year Ago Reflecting a 26 per cent decline in carryover stocks which more than offset a sharp increase in production, total estimated supplies of Canadian wheat for the 1971-72 (August-July) crop year are placed at 1,267.8 million bushels consisting of the August 1 carryover of 744.2 million and the 1971 crop, placed at 523.7 million bushels. Supplies of the size indicated represent a decrease of 5 per cent from the 1970-71 total of 1,340.2 million. After making an allowance of 157.0 million bushels for anticipated domestic requirements, supplies available for export and for carryover during 1971-72 amount to 1,110.8 million bushels, 6 per cent less than the 1,179.4 million in 1970-71.

August-June Exports Increase Over Last Year Exports of wheat and flour in terms of wheat equivalent during the first eleven months of the current crop year amounted to 447.1 million bushels 18 per cent above the August 1970-June 1971 total of 378.4 million but 20 per cent below the ten-year (1960-61 — 1969-70) average for the period of 373.8 million bushels. This year's exports consisted of 423.1 million bushels of wheat in bulk, 911 thousand of seed and 23.0 million of flour in terms of wheat. During the comparable period last year these figures were 354.7 million of wheat in bulk, 870 thousand of seed and 22.8 million of flour in wheat equivalent. The balance remaining on July 1, 1972 for export and for carryover amounted to 663.8 million bushels, 17 per cent below the July 1, 1971 total of 801.0 million.

Canadian Wheat Supplies

Item	1970-71 ^r	1971-72 ^P
	million bushels	
Carryover in North America at beginning of crop year (August 1)	1,008.7	744.2
Production	331.5	523.7
Total estimated supplies	1,340.2	1,267.8
Less estimated domestic requirements for crop year	160.8	157.0
Available for export and for carryover	1,179.4	1,110.8
<u>Deduct</u>		
Exports of wheat in bulk, August-June (1)	354.7	423.1
Exports of seed wheat, August-June(2)	0.9	0.9
Total exports of wheat as grain	355.6	424.1
Exports of wheat flour in terms of wheat, August - June (2)	22.8	23.0
Total exports of wheat and wheat flour	378.4	447.1
Balance on July 1 for export and for carryover	801.0	663.8

(1) As reported by the Canadian Grain Commission.

(2) Customs returns, 1970-71 adjusted for time lag.

Marketings, Disappearance and Visible Supplies

Total primary deliveries of wheat (both east and west) up to July 12 of the current crop year have amounted to 489.5 million bushels compared with 348.4 million

marketed during the same period of the previous year. Some 97.5 million bushels of this year's total were delivered during the five weeks June 8 to July 12, 1972. During the same period the volume of Canadian wheat entering domestic and export channels amounted to 63.7 million bushels. As a result, the total visible supply of Canadian wheat increased from 255.1 million at June 7, 1972 to a level of 289.1 million at July 12, 1972.

The total visible supply of Canadian wheat at July 12 this year represented declines of 13 per cent and 29 per cent, respectively, from the 333.8 million of the previous year and the 407.8 million of two years ago. Country elevator stocks, amounting to 164.5 million bushels, were 28 per cent less than the 1971 comparable total of 227.3 million and 37 per cent below the 1970 figure of 262.8 million. Wheat stocks at interior terminals at July 12, 1972, totalled 4.1 million bushels, considerably lower than both the 6.9 million of a year ago and the 13.0 million of two years ago. The 22.4 million bushels "in transit rail" (western division) this year, were 27 per cent more than the 17.6 million in 1971 but registered a sharp decline from the 41.4 million in 1970. Supplies at the Lakehead, totalling some 28.5 million bushels, were sharply above both the 17.0 million of the previous year and the 9.7 million of two years ago. The 10.9 million bushels "in transit lake" were 6 per cent above the 10.3 million in this position in 1971 and 28 per cent more than the 8.5 million of 1970. The 23.7 million bushels in Bay, Lake and Upper St. Lawrence ports

more than doubled the 10.2 million of a year ago but declined by 6 per cent from 25.3 million of two years ago. Supplies in Lower St. Lawrence and Maritime ports at July 12, 1972, at 20.7 million bushels, registered decreases from both the comparable 1971 figure of 27.9 million and the 26.5 million of 1970. The 7.5 million bushels in West Coast ports, (Vancouver-New Westminster, Prince Rupert and Victoria) were smaller than both the 7.7 million at July 14, 1971 and the 10.7 million at July 15, 1970.

June 1972 Exports
of Wheat and Flour Total
47.8 Million Bushels

Combined exports of wheat in bulk, seed wheat and wheat flour in terms of grain equivalent, during June 1972 amounted to 47.8 million bushels, 16 per cent above the 41.3 million of the previous month, 14 per cent more than the ten-year (1961-70) average for the month of June of 41.8 million but 4 per cent smaller than the month of May 1972 of 41.3 million. Exports of wheat in bulk (as reported by the Canadian Grain Commission) during June 1972 totalled 45.5 million bushels, up 16 per cent from both the May 1972 total of 39.3 million and the ten-year average of 39.2 million but 5 per cent lower than the previous year's total of 47.9 million. It is estimated that the equivalent of 2.2 million bushels of wheat was exported in the form of flour during June 1972, some 10 per cent above the previous month's figure of 2.0 million and 11 per cent more than those exported in June 1971, but 15 per cent lower than the ten-year average of 2.6 million bushels.

Cumulative exports of wheat in bulk during the August-June period of the current crop year amounted to 423.1 million bushels, 19 per cent above the 354.7 million shipped during the first eleven months of 1970-71 and 24 per cent more than the ten-year average for the period of 341.2 million. The People's Republic of China and the U.S.S.R.(Russia) were the leading markets for wheat in bulk during the first eleven months of the current crop year with shipments amounting to 97.8 million and 96.5 million bushels, respectively, and each accounting for 23 per cent of the August-June 1971-72 total. During the same months of 1970-71 shipments to the People's Republic of China were 77.1 million bushels (22 per cent of total) and the U.S.S.R. (Russia) 4.9 million bushels (one per cent of total). Other principal importers of Canadian wheat for the first eleven months of the current crop year with figures for the same period of the preceding crop year in brackets, were as follows, in millions of bushels: Japan, 45.8 (34.8); Britain, 42.6 (55.4); India, 23.0 (17.1); Italy, 13.6 (10.6); Brazil, 10.3 (14.0); Netherlands, 9.8 (7.4); Algeria, 9.4 (12.1); and Germany West, 9.1 (21.1).

Cumulative exports of seed wheat during August-June of the current crop year, based on Canadian Customs returns, amounted to 0.9 million bushels unchanged from last year's August-June total (adjusted to remove time lag) of 0.9 million.

Cumulative exports of wheat flour during the August-June period of the 1971-72 crop year, based on Customs returns, were the equivalent of 23.0 million bushels of wheat, some one per cent above the adjusted August-June 1970-71 total but 24 per cent less than the 10-year average for the period of 30.4 million.

Exports of wheat flour by countries for August-June 1971-72 based on Customs data, are not available at this time.

General Quotas 1971-72 as at Monday, July 10, 1972

		bushels per quota acre				
		<u>C</u>	<u>D</u>	<u>E</u>	<u>F</u>	
Hercules Durum		5(1)	5	—	—	All blocks
Soft White Springs		—	5(2)	5(2)	15	All blocks
Alberta Red Winter		2(3)	2(3)	1	—	All blocks
Rye	25					All blocks
Flaxseed	15(4)					All blocks
Rapeseed	10(5)					All blocks

- (1) Effective Friday, July 14, 1972 at all delivery points within the designated area, the "C" Quota for Hercules Durum is hereby cancelled.
- (2) Effective Friday, July 14, 1972 at all delivery points within the designated area, the "D" and "E" Quota for Soft White Spring wheat are hereby cancelled.
- (3) Effective Friday, July 14, 1972 at all delivery points within the designated area, the "C" and "D" Quotas for Alberta Red Winter wheat are hereby cancelled.
- (4) Effective May 30 the regular flaxseed Quota was increased to 20 bushels per quota acre for truck deliveries to Western processors for domestic crushing only.
- (5) Effective May 30 the regular rapeseed Quota was increased to 25 bushels per quota acre for truck deliveries to Western crushers for domestic crushing only.
- (6) Effective June 20, 1972 the special Quota for low erucic acid rapeseed increased to 30 bushels per assigned acre for truck deliveries to Western crushers for domestic crushing only.

Special Quotas 1971-72 as at Monday July 10, 1972

Pitic	1 carlot (50 assigned acres)	All blocks
Selected Hercules Durum	1 carlot (60 assigned acres)	All blocks
Selected Oats	50 bushels per assigned acre	All blocks
Selected Barley	50 bushels per assigned acre Extended to second carlot	All blocks Alta. only
Rye for distilleries	40 bushels per assigned acre	
Flaxseed for processors	25 bushels per assigned acre	
Rapeseed (low erucic acid)	20 bushels per assigned acre (6)	All blocks
Rapeseed for crushers	20 bushels per assigned acre	
Two-Row Barley	Extended to an additional carlot per assigned acre	All blocks
Six-Row Barley (Olli variety)	Extended to a fourth carlot per assigned acre	All blocks

General Quotas 1971-72 as at Monday, July 10, 1972 Canadian National Railway Blocks

No.	Name	Wheat (all others)		Durum		Oats			Barley
		D(1)	E	C(2)	D	B(3)	C(3)	D	E
bushels per quota acre									
01	Winnipeg N.	2	1	5	5	3	3	3	5
03	Winnipeg S.	2	1	5	5	3	3	3	5
05	Winnipeg W.	2	1	5	5	3	3	3	5
07	Brandon N.	2	1	5	5	3	3	3	5
09	Brandon W.	2	1	5	5	3	3	3	5
11	Melville	2	1	5	5	3	3	3	5
13	Dauphin	2	1	5	5	3	3	3	5
15	Kamsack	2	1	5	5	3	3	3	5
17	Saskatoon M.	2	1	5	5	3	3	3	5
19	Saskatoon S.	2	1	5	5	3	3	3	5
21	Saskatoon W.	2	1	5	5	3	3	3	5
23	Pr. Albert E. ...	2	1	5	5	3	3	3	5
25	Pr. Albert S. ...	2	1	5	5	3	3	3	5
27	Pr. Albert M. ...	2	1	5	5	3	3	3	5
29	Pr. Albert W. ...	2	1	5	5	3	3	3	5
31	Regina N.	2	1	5	5	3	3	3	5
33	Regina S.	2	1	5	5	3	3	3	5
35	Regina W.	2	1	5	5	3	3	3	5
37	Biggar N.	2	1	5	5	3	3	3	5
39	Biggar W.	2	1	5	5	3	3	3	5
41	Edmonton N.	2	1	5	5	3	3	3	5
43	Edmonton S.	2	1	5	5	3	3	3	5
45	Edmonton W.	2	1	5	5	3	3	3	5
47	Hanna S.	2	1	5	5	3	3	3	5
49	Hanna W.	2	1	5	5	3	3	3	5
90	NAR West	2	1	5	5	3	3	3	5
98	G.S.L.	2	1	5	5	3	3	3	5

- (1) Effective Friday, July 14, 1972 at all delivery points within the designated area, the "D" Quota for wheat is hereby cancelled.
- (2) Effective Friday, July 14, 1972 at all delivery points within the designated area, the "C" Quota for Durum wheat is hereby cancelled.
- (3) Effective Friday, July 14, 1972 at all delivery points within the designated area, the "B" and "C" Quotas for oats are hereby cancelled.

General Quotas 1971-72 as at Monday, July 10, 1972 Canadian Pacific Railway Blocks

No.	Name	Wheat (all others)		Durum		Oats			Barley
		D(1)	E	C(2)	D	B(3)	C(3)	D	E
bushels per quota acre									
61	Keewatin	2	1	5	5	3	3	3	5
62	La Riviere ...	2	1	5	5	3	3	3	5
63	Carberry	2	1	5	5	3	3	3	5
64	Brandon	2	1	5	5	3	3	3	5
71	Weyburn	2	1	5	5	3	3	3	5
72	Pasqua	2	1	5	5	3	3	3	5
73	Bulyea	2	1	5	5	3	3	3	5
74	Bredenbury ...	2	1	5	5	3	3	3	5
75	Saskatoon	2	1	5	5	3	3	3	5
76	Wilkie	2	1	5	5	3	3	3	5
77	Assiniboia ...	2	1	5	5	3	3	3	5
78	Swift Current.	2	1	5	5	3	3	3	5
79	Outlook	2	1	5	5	3	3	3	5
81	Medicine Hat .	2	1	5	5	3	3	3	5
82	Brooks	2	1	5	5	3	3	3	5
83	Lethbridge ...	2	1	5	5	3	3	3	5
84	Vulcan	2	1	5	5	3	3	3	5
85	Calgary	2	1	5	5	3	3	3	5
86	Red Deer	2	1	5	5	3	3	3	5
87	Edmonton	2	1	5	5	3	3	3	5
95	N.A.R. East ..	2	1	5	5	3	3	3	5
	B.C. Stations.	2	1	5	5	3	3	3	5

- (1) Effective Friday, July 14, 1972 at all delivery points within the designated area, the "D" Quota for wheat is hereby cancelled.
- (2) Effective Friday, July 14, 1972 at all delivery points within the designated area, the "C" Quota for Durum wheat is hereby cancelled.
- (3) Effective Friday, July 14, 1972 at all delivery points within the designated area, the "B" and "C" Quotas for oats are hereby cancelled.

Opening Quotas
Announced for
Major Grains

The Canadian Wheat Board announced on July 17, 1972 the opening quotas for wheat, barley and oats in the 1972-73 crop year.

These grain delivery quotas, which are effective August 1, 1972 include a two-bushel quota on wheat and a five-bushel quota on barley for all producers. An additional two-bushel quota on wheat will be in effect in certain shipping blocks in Alberta and Saskatchewan that supply grain to the West Coast. Opening quotas for oats, durum, Hercules durum and Alberta Red Winter wheat are also included in the initial announcement. Full details on other grains will be announced shortly.

"The opening quotas for August 1, are larger than usual, this year, because our sales commitments are higher than other years," explains CWB commissioner R.M. Esdale.

"Producers who have grain on hand, are urged to deliver their grain before they get too busy with their harvest. Some may have an opportunity to deliver grain directly from the combine," adds Mr. Esdale. "In either case, producers should apply for their new permit books now."

Here are the quotas for wheat, barley and oats that come into effect on August 1, 1972:

- | | | |
|--------------------------------------|----|--|
| Wheat(A) | -- | A two-bushel quota per quota acre for deliveries of all grades in all shipping blocks. |
| Wheat(B) | -- | A two-bushel quota per quota acre for delivery of all grades in the following 10 blocks:

Prince Albert South, Prince Albert East, Prince Albert West, Biggar North, Biggar West, Edmonton North, Edmonton South, Edmonton West, Hanna South and Hanna West. |
| Barley(A) | -- | A five-bushel quota for delivery of all grades in all blocks. |
| Durum(A)
(Other than
Hercules) | -- | A five-bushel quota for delivery of No. 3 and lower grades only, in all blocks. |
| Hercules(A) | -- | A five-bushel quota for delivery of No. 3 and lower grades only, in all blocks. |
| Oats(A) | -- | A five-bushel quota for delivery of all grades in all blocks. |
| Alberta Red
Winter Wheat(A) | -- | A two-bushel quota for delivery of all grades in all blocks. |

All wheat, barley and oat quotas will be non-cumulative, as they were in 1971-72 crop year, and termination dates will be announced at some time in the future. Opening quotas for rapeseed, rye, flaxseed and for grains going to specialty markets will be announced shortly.

Re Quotas — On June 29, 1972 The Canadian Wheat Board Instructions to the
All Other Wheat Trade No. 50 re Quotas — All Other Wheat stated that effective
Monday, July 3, 1972 at all delivery points within the undernoted
blocks an "E" quota for All Other Wheat is hereby authorized at a level of one(1)
bushel per quota acre assigned to All Other Wheat. This quota applies to the quota
acres assigned to "All Other Wheat" in the individual producer's permit book and does
not authorize delivery of hercules durum, other durum, soft white spring wheat and
Alberta red winter wheat.

The delivery points within each block in the designated area are those points
set forth in Instructions to the Trade re Quotas (General) No. 2 dated July 29, 1971.

Under the quota policy for the 1971-72 crop year, wheat quotas are designated
as non-cumulative. The fifth quota is to be identified as the "E" quota. The date
of termination for the "E" quota will be announced at a future date.

Deliveries must be confined to the producer's primary or alternate delivery
point indicated in the permit book and will be subject to deduction under the Prairie
Grain Advance Payments Act.

Block No. 31 — Regina North
Block No. 35 — Regina West

Block No. 72 — Pasqua
Block No. 79 — Outlook

It would be appreciated if all companies will notify their elevator managers
of the foregoing.

Producers Asked to Gear
for Heavy Grain Deliveries

On July 6, 1972 the Canadian Wheat Board stated that
Prairie grain producers were alerted to get ready for
a summer and fall of unprecedented grain deliveries.

C.W. Gibbings, Commissioner of the Canadian Wheat Board, said the record pace
of Prairie grain shipments now underway will continue unabated until the close of
Great Lakes navigation and heavy producer deliveries of both wheat and barley will
be needed to meet the demand.

Mr. Gibbings said the Wheat Board would soon announce the opening quotas for the
start of the new crop year on August 1. Producers should get their new permit books
as soon as possible so that there will be no interruption in wheat and barley
deliveries to country elevators.

"It's going to be a summer unlike any that's ever happened before," Mr.
Gibbings said. "Producers have become used to the traditional August slow-down after
the July rush is over. But there will not be let-up this year. August will be
just like another July in grain shipments and I'm sure producers will keep-up their
deliveries to ensure that our sales commitments can be met."

With rail shipments to Churchill getting underway, country elevator shipments
are now averaging over 30 million bushels per week. Grain shipping programs for the
balance of the summer and fall call for shipments of about 20 million bushels per
week to Thunder Bay, over 8 million bushels per week to West Coast ports and
approximately 2 million bushels per week to Churchill, Manitoba.

Mr. Gibbings urged producers to apply immediately for their 1972-73 permit books
to ensure that they can continue delivering grain at the opening of the new crop year
on August 1.

"It is very important that producers be ready to make their deliveries as soon as the new quotas come into effect," Mr. Gibbings said, "and to make sure deliveries are not delayed for lack of permit books we'll take whatever steps are necessary to get the permit books out to producers as quickly as possible!"

Mr. Gibbings said personalized forms had been sent directly to producers this year to speed-up the application process. Since producers have the right to adjust their quota acres up to October 31, 1972, there no longer is any reason to delay sending in permit book applications.

"Producers should apply now and, if necessary, adjust their quota acres after the crop has been harvested," Mr. Gibbings said.

More Opening Grain On July 20, 1972 opening quotas for rapeseed, rye, flaxseed
Quotas Announced and grain quotas for the specialty markets for the 1972-73
crop year were announced by the Canadian Wheat Board. These
follow the opening quotas for wheat, barley and oats which were announced earlier
in the week.

The following quotas are effective for producers in all shipping blocks on August 1, 1972. All quotas are shown as bushels per quota acre:

Rapeseed	-	Three bushels
Low Erucic Rapeseed	-	Three bushels
Flaxseed	-	Three bushels
Rye	-	Five bushels
Feed Wheats (A)	-	A two-bushel quota for delivery of all grades

SPECIALTY MARKET - (These quotas apply only to producers who have assigned appropriate acres to these crops).

Rapeseed (to crushers)	-	20 bushels
Low Erucic Rapeseed (to crushers)	-	20 bushels
Flaxseed (to crushers)	-	15 bushels
Rye (to distillers)	-	25 bushels
Selected Oats (for human consumption)	-	1 Carlot - Maximum 60 Tons Trucking - 50 bushels per assigned acre Maximum 3000 bushels
Selected Barley	-	1 Carlot - Maximum 60 Tons
Selected Soft White Spring Wheat	-	1 Carlot - Maximum 60 Tons Trucking - 50 bushels per assigned acre Maximum 3000 bushels.

All current grain quotas for the 1971-72 crop year will terminate on July 31, 1972, and the above quotas will come into effect on August 1, 1972.

U.S.S.R. Buys More Canadian Grain On July 18, 1972 the sale of 1.5 million tons of wheat and flour (approximately 55 million bushels) to the Soviet Union was announced by the Honourable Jean-Luc Pepin, Minister of Industry, Trade and Commerce, and by the Honourable Otto Lang, Minister Responsible for the Canadian Wheat Board.

This purchase is being made under the option clause in the contract for 3.5 million tons announced on February 28, 1972.

In addition, the Canadian Wheat Board has completed negotiations for the sale of 200,000 tons (approximately nine million bushels) of barley for shipment during the 1972-73 crop year.

When added to the present 3.5 million ton contract, this brings the total sales value of Canadian grain for shipment to the USSR from August 1, 1972 to July 31, 1973 to approximately \$350 million.

Wheat shipments will begin next month from both Pacific and East Coast ports. Barley shipments will move through the West Coast. The sale was concluded in Ottawa between the Canadian Wheat Board and V/O EXPORTKHEB, the Soviet grain trading corporation, during the visit of the First Deputy Minister of Foreign Trade of the USSR, N.R. Kuzmin and Exportkhleb President N.A. Belousov. As in previous contracts with the USSR, the terms call for payment in cash at time of delivery.

Delivery of Board Grain 1971-72 Crop Year The Canadian Wheat Board Instructions to the Trade No. 32 for the 1971-72 Crop Year under date of July 24, 1972 stated in part that producers delivering wheat, oats or barley in the present pool period must complete delivery of such grain to the Board by July 31 next.

All producers' certificates issued in respect of deliveries for the 1971-72 pool period must be dated not later than July 31, 1972. All producers' certificates covering wheat, oats or barley which are dated August 1, or subsequently, will apply to the 1972-73 pool period.

Rye Quota Increased On July 14, 1972 an increase in producer delivery quota for rye was announced by the Canadian Wheat Board. The change went into effect Thursday, July 13.

A five-bushel increase, raising the rye quota from 25 to 30 bushels per quota acre, was also authorized at all delivery points.

This quota will terminate at the end of the present crop year on July 31, 1972.

Lake Shipments of Canadian Grain Total shipments of the six major grains out of Lakehead terminals from the opening of navigation to July 12 this year amounted to 215.4 million bushels, 12 per cent above the 192.5 million shipped during the same period in 1971. The 1972 season of navigation opened on April 14 while the 1971 season opened on April 10. Shipments of wheat, at 104.8 million bushels were slightly above the 1971 figure of 104.6 million and accounted for 49 per cent of the total.

Lake Shipments of Canadian Grain from the Opening of Navigation to July 12, 1972
and to Approximately the Same date 1960 to 1971

Year	Wheat	Oats	Barley	Rye	Flaxseed	Rapeseed	Total
thousand bushels							
1960	86,524	8,610	21,820	2,278	2,816	—	122,049
1961	118,317	11,608	18,823	1,388	2,665	—	152,801
1962	58,041	6,494	10,475	666	2,367	—	78,043
1963	69,921	18,052	9,288	1,117	2,379	—	100,756
1964	158,050	10,546	14,037	2,029	4,239	—	188,900
1965	94,888	17,560	13,248	1,948	3,872	559	132,075
1966	155,576	13,352	16,015	3,774	5,569	555	194,841
1967	130,129	14,207	32,394	2,207	4,152	530	183,619
1968	77,050	7,786	8,492	567	2,930	255	97,082
1969	63,158	5,341	14,992	630	3,652	689	88,462
1970	103,450	11,012	46,606	1,820	6,070	2,989	171,946
1971	104,569	11,011	59,536	1,993	6,994	8,358	192,462
1972	104,770	10,668	85,654	1,487	5,701	7,083	215,363

Advances Issued Under the
Prairie Grain Advance
Payments Act

Requests are received concerning the level of cash advances issued and outstanding. This information from the Canadian Wheat Board will be carried in the Wheat Review as a regular feature.

Advances issued August 1, 1971 to July 21, 1972

34,303 advances totalling \$68,142,555

Outstanding advances on July 21, 1972

Issued in 1971-72 \$ 5,159,681
Issued in 1970-71 and prior \$ 8,764,740

Total outstanding advances \$13,924,421

Increase Delivery Points
for Grain Producers

On July 25, 1972 the Canadian Wheat Board announced that the five shipping points where Canadian Government Elevators are located in Western Canada will serve as additional delivery points for Saskatchewan and Alberta grain producers in the 1972-73 crop year.

Effective August 1, 1972 Saskatoon and Moose Jaw will be additional alternate delivery points for all producers whose delivery points are in Saskatchewan. Edmonton, Calgary and Lethbridge will become alternate delivery points for all producers whose delivery points are in Alberta. These points will be in addition to the primary and alternate delivery points named by each producer in his permit book application.

Producers who choose to deliver grain to one of the centers where a Canadian Government Elevator is located, may deliver grain to any country elevator at that point, as well as the elevator operated by the Canadian Grain Commission. Producers delivering grain to one of the Canadian Government Elevators will assign the grain to the account of one of the country elevator firms. All grain deliveries will continue to be bought and paid for by the country elevator companies who are acting as agents of the Wheat Board.

Producers who now have Saskatoon, Moose Jaw, Edmonton, Calgary or Lethbridge as their primary or alternate delivery point may apply to the Board to make changes in their permit books to name another delivery point in the same province, if they wish.

Crop Conditions in
the Prairie Provinces

The Telegraphic Crop Report published by Statistics Canada under date of July 12, 1972, summarized crop conditions in each of the Prairie Provinces as follows:

Scattered showers throughout Manitoba during the past week brought much needed moisture. Crops generally range from fair to good. Early cereals are about 50 per cent headed and sunflowers and corn are progressing well. Rapeseed is now in bloom. A good crop of canning peas is expected. Grasshopper spraying is being continued and sunflower beetles are wide spread. Bertha armyworms are appearing in the Swan River region. Haying is now over 50 per cent completed. The second hay crop and pastures are only fair. Millet is being seeded for hay.

Conditions are quite dry throughout most of Saskatchewan with crop deterioration reported particularly in the southwest and east of Regina and rain is urgently needed. Farther north, cool night temperatures have provided some relief and from Saskatoon north and east to Melfort timely rains have been received. Early cereals are in head and rapeseed is in blossom throughout most parts of Saskatchewan. Bertha armyworms are present in rapeseed fields but so far there has been no damage.

Crop prospects in Alberta show extreme variability. Rainfall since April 1 has been light in some areas and excessive in others. Precipitation has been very light along the Saskatchewan border and rain is needed in this area if average yields are to be expected. Throughout most of the central portion of the province rainfall has been sufficient to maintain the crops. In other areas some flooding has resulted. Temperatures have been cooler than normal and warm weather is required.

Advanced Preliminary
Estimates of Specified
Crop and Summerfallow
Acreages Prairie Provinces
1972

Preliminary estimates for the Prairie Provinces of acreages seeded to all types of wheat, durum wheat, oats for all purposes, barley, rye, flaxseed, rapeseed and acreages in summerfallow in 1972 appear in the accompanying table. All of these estimates are subject to change upon the completion of the tabulation of

the 1972 acreage survey returns. The 1972 acreage estimates are based on returns from Statistics Canada's annual June survey. Agricultural statisticians in each of the provinces have co-operated in determining the estimates. The 1971 acreages included in this report are those obtained from the Census of Agriculture conducted in that year as published in the Statistics Canada Census report catalogue no. 96-718. These benchmarks will necessitate some adjustments in the acreage series for certain crops for the 1967-71 period and for this reason historical comparisons are not included in the table.

Farmers in the Prairie Provinces have seeded larger acreages of wheat this year than last and are devoting more land to summerfallow. All other crop acreages for the Prairies as a whole are smaller in 1972 than in 1971. The acreage seeded to all types of wheat in the Prairie Provinces in 1972 reached 20.8 million acres, some 10 per cent larger than the area seeded in 1971. Combined acreage in oats and barley, the major feed grains at 17.6 million acres dropped by 10 per cent from the previous year's level. Oat acreage at 5.7 million is down 10 per cent and the acreage sown to barley, at 11.9 million is down 11 per cent. All rye acreage at 0.6 million is down 36 per cent from the 1971 figure of 0.9 million acres. The acreage planted to rapeseed decreased 38 per cent to 3.3 million acres from 5.3 million in 1971 while flaxseed also registered a decrease of 19 per cent to 1.4 million acres. The area to be summerfallowed in 1972 at 29.0 million acres is some 11 per cent more than the previous year.

Preliminary Estimates of Crop and Summerfallow Acreages, 1972
with Comparisons — Prairie Provinces

Crop	1971(1)	1972	1972 as % of 1971
		acres	per cent
Spring wheat (including durum) ...	18,885,000	20,800,000	110
Oats (including oats for hay)	6,308,000	5,700,000	90
Barley	13,312,000	11,900,000	89
Fall rye	855,000	540,000	63
Spring rye	50,700	41,500	82
All rye	905,700	581,500	64
Flaxseed	1,762,000	1,420,000	81
Rapeseed	5,306,000	3,270,000	62
Summerfallow	26,224,000	29,000,000	111

Preliminary estimates of durum wheat acreage in the Prairie Provinces at 3.2 million acres indicate a 39 per cent increase in acreage this year compared with the 1971 acreage of 2.3 million acres.

Preliminary Estimate of Durum Wheat Acreages, 1972
with Comparisons — Prairie Provinces

Province	1971(1)	1972	1972 as % of 1971
		acres	per cent
Manitoba	141,000	160,000	113
Saskatchewan	1,889,000	2,700,000	143
Alberta	242,000	300,000	124
Prairie Provinces	2,272,000	3,160,000	139

(1) 1971 Census acreages.

Farmers' Marketings (1) of Wheat in the Prairie Provinces 1971-72

Week ending		Manitoba	Saskatchewan	Alberta	Total	Last year ^r
bushels						
August	11, 1971 ...	19,280	280,376	2,868	302,524	64,029
	18	45,222	1,364,384	7,688	1,417,294	45,524
	25	1,140,677	3,962,606	917,899	6,021,182	97,747
September	1	1,054,714	7,856,529	2,314,028	11,225,271	6,693,462
	8	1,237,858	10,812,860	2,156,484	14,207,202	7,017,382
	15	1,372,703	14,911,298	4,318,710	20,602,711	8,178,772
	22	2,698,575	10,590,451	2,984,025	16,273,051	10,982,349
	29	1,648,043	6,921,017	2,356,118	10,925,178	7,094,969
October	6	2,099,756	11,014,624	1,582,732	14,697,112	6,843,332
	13	2,052,588	9,821,569	2,141,418	14,015,575	4,119,896
	20	1,600,362	7,695,414	1,906,736	11,202,512	4,376,848
	27	1,987,212	11,150,867	1,523,677	14,661,756	4,825,460
November	3	2,457,525	11,934,610	1,313,469	15,705,604	2,872,360
	10	1,165,718	7,777,345	2,757,438	11,700,501	6,744,460
	17	1,134,445	5,503,565	4,091,090	10,729,100	7,171,347
	24	945,079	4,785,907	4,147,756	9,878,742	6,248,654
December	1	798,536	7,392,800	3,578,196	11,769,532	4,479,859
	8	713,988	5,554,395	3,650,988	9,919,371	6,814,164
	15	476,084	3,215,397	1,770,709	5,462,190	11,066,471
	22	679,819	15,663,213	1,937,916	18,280,948	9,664,792
	29	515,326	7,926,173	1,709,492	10,150,991	1,826,815
January	5, 1972 ...	436,773	7,997,663	2,327,515	10,761,951	3,755,006
	12	318,239	8,288,134	3,093,729	11,700,102	3,340,119
	19	138,763	3,143,539	1,838,682	5,120,984	1,077,133
	26	68,455	1,344,349	937,449	2,350,253	9,762,409
February	2	46,625	918,372	694,188	1,659,185	6,246,201
	9	134,958	4,038,073	2,753,009	6,926,040	4,051,116
	16	127,068	2,129,836	2,127,336	4,384,240	6,021,869
	23	108,982	3,012,196	2,020,488	5,141,666	6,681,266
March	1	68,164	2,017,247	918,347	3,003,758	6,027,831
	8	74,764	1,284,497	719,667	2,078,928	4,458,391
	15	77,670	981,152	794,044	1,852,866	6,098,383
	22	228,440	3,506,399	1,515,054	5,249,893	7,490,287
	29	219,790	2,856,142	1,745,620	4,821,552	4,077,276
April	5	137,941	3,281,651	1,001,074	4,420,666	2,893,183
	12	189,074	4,490,476	1,708,617	6,388,167	1,912,195
	19	132,337	4,309,244	1,597,405	6,038,986	3,340,048
	26	321,336	6,991,753	3,864,261	11,177,350	5,426,835
May	3	1,450,941	5,106,332	2,306,563	8,863,836	7,370,337
	10	1,882,415	5,548,171	1,838,529	9,269,115	9,964,602
	17	1,799,657	3,407,722	2,051,013	7,258,392	5,017,134
	24	719,491	4,691,573	1,115,775	6,526,839	6,038,578
	31	738,943	5,065,011	1,072,831	6,876,785	8,643,784
June	7	1,523,008	12,277,706	2,261,220	16,061,934	13,824,825
	14	4,151,912	16,538,134	2,963,994	23,654,040	22,939,791
	21	4,618,607	16,109,776	3,675,773	24,404,156	18,788,857
	28	2,840,355	12,336,191	2,966,990	18,143,536	16,200,406
July	5	2,694,847	9,994,774	2,552,238	15,241,859	17,721,536
	12	1,867,371	12,092,604	2,166,704	16,126,679	16,376,581
Totals		52,960,436	329,894,117	101,797,552	484,652,105	342,774,671
Average similar period: 1960-61 --						
1969-70		50,304,680	261,839,164	101,633,966	413,777,810	

(1) Includes receipts at primary, process and interior terminal elevators.

Visible Supply of Canadian Wheat, July 12, 1972
Compared with Approximately the Same Date, 1970 and 1971

Position	1970	1971	1972
	thousand bushels		
Primary elevators — Manitoba	30,927	24,834	22,353
Saskatchewan	154,812	141,414	108,087
Alberta	77,020	61,019	34,037
Sub-totals	262,759	227,267	164,477
Process elevators	4,496	4,995	4,488
Interior terminals	12,961	6,895	4,089
Vancouver-New Westminster	8,981	6,884	5,971
Victoria	743	327	763
Prince Rupert	999	494	736
Churchill	4,659	2,997	2,027
Thunder Bay	9,686	17,040	28,549
In transit rail (western division)	41,399	17,649	22,368
Bay, Lake and Upper St. Lawrence ports ...	25,341	10,226	23,731
Lower St. Lawrence and Maritime ports	26,466	27,915	20,658
In transit lake	8,531	10,304	10,946
In transit rail (eastern division)	763	833	250
Totals	407,784	333,826	289,053

Grading of Wheat Inspected, August — June 1971-72 with Comparisons

Grade	Crop year		August — June			
	Average	1970-71	1970-71		1971-72	
	<u>1965-66</u>		cars	per cent	cars	per cent
	<u>1969-70</u>					
	per cent					
1 C.W. Red Spring	—	—	—	—	154,307	60.4
No. 1 Man. Northern	10.9	6.5	11,978	5.9	—	—
No. 2 Man. Northern	32.7	37.2	75,765	37.4	—	—
No. 3 Man. Northern	19.3	19.8	40,804	20.1	31,255	12.2
No. 4 Man. Northern	8.6	12.0	24,006	11.8	18,617	7.3
No. 5 Wheat	3.3	4.5	9,613	4.7	4,768	1.9
No. 6 Wheat	0.4	0.7	1,551	0.8	409	0.2
Feed Wheat	0.1	0.1	172	0.1	77	(1)
Others Red Spring	18.2	6.2	13,065	6.4	10,670	4.2
C. W. Garnet	0.1	(1)	39	(1)	4	(1)
C. W. White Spring	0.1	0.3	549	0.3	922	0.4
C. W. Mixed Wheat	0.1	0.1	196	0.1	263	0.1
Alberta Winter	0.8	0.8	1,605	0.8	1,509	0.6
Nos. 1-6 C.W. Amber Durum	4.6	11.4	22,444	11.1	31,880	12.5
Other C.W. Amber Durum ..	0.9	0.5	894	0.4	806	0.3
Totals	100.0	100.0	202,681	100.0	255,487	100.0
Gross bushels (approx.)			405,433,000		513,399,000	

(1) Less than .05 per cent.

FARMERS' MARKETINGS OF WHEAT, PRAIRIE PROVINCES

(SPECIFIED PERIODS)

MILLION BUSHELS
800 —

MILLION BUSHELS
800 —

700 —

700 —

600 —

600 —

500 —

500 —

400 —

400 —

300 —

300 —

200 —

200 —

100 —

100 —

0

0

PEAK MARKETINGS
1966-67 CROP YEAR
632.4 MILLION BUSHELS

30 year average

10 year average

1966-67

1967-68

1968-69

1969-70

1970-71

1971-72

1940-41
1969-70

1960-61
1969-70

JULY

JUNE

MAY

APR

MAR

FEB

JAN

DEC

NOV

OCT

SEPT

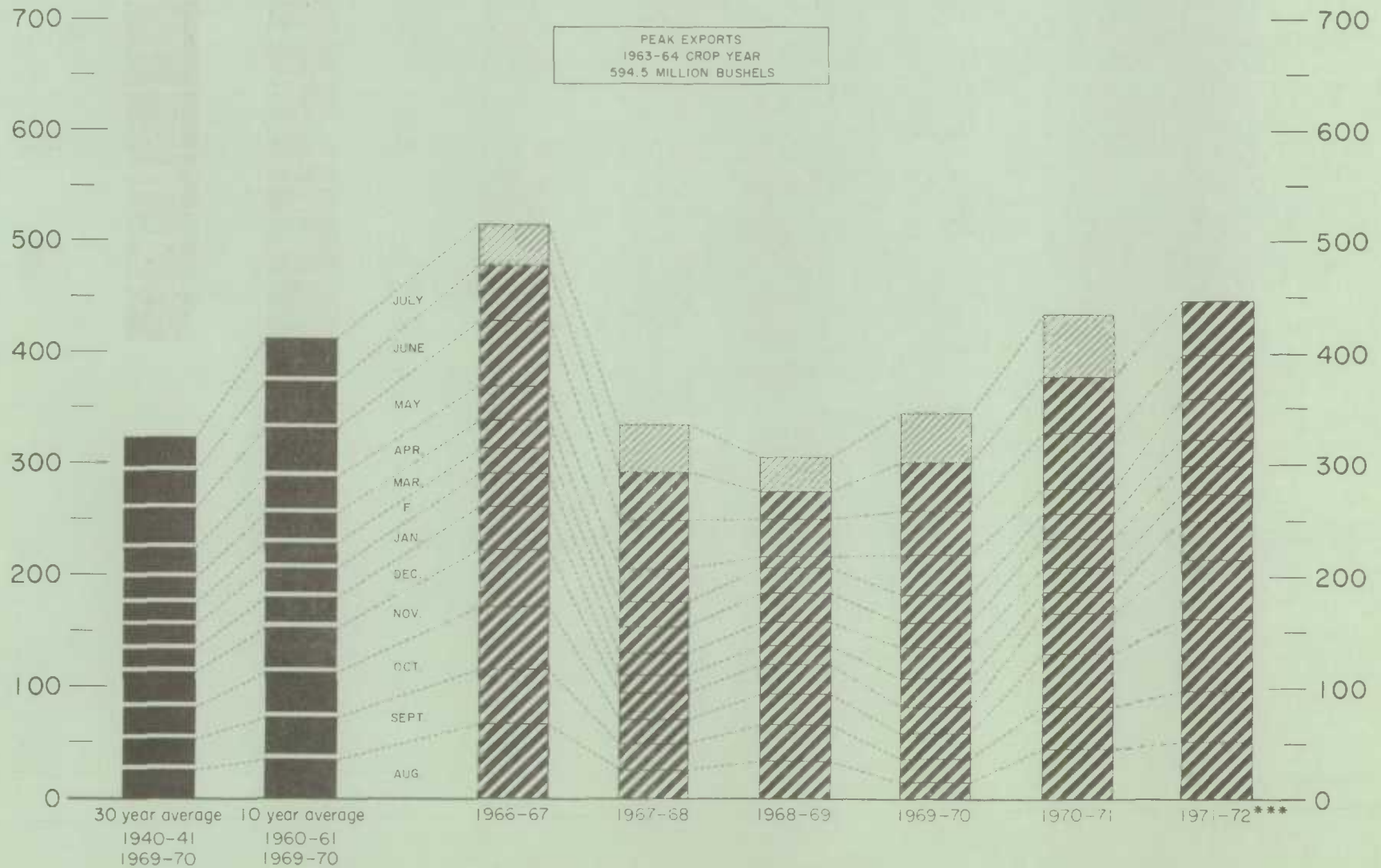
AUG

EXPORTS OF CANADIAN WHEAT* AND WHEAT FLOUR**

(SPECIFIED PERIODS)

MILLION BUSHELS

MILLION BUSHELS



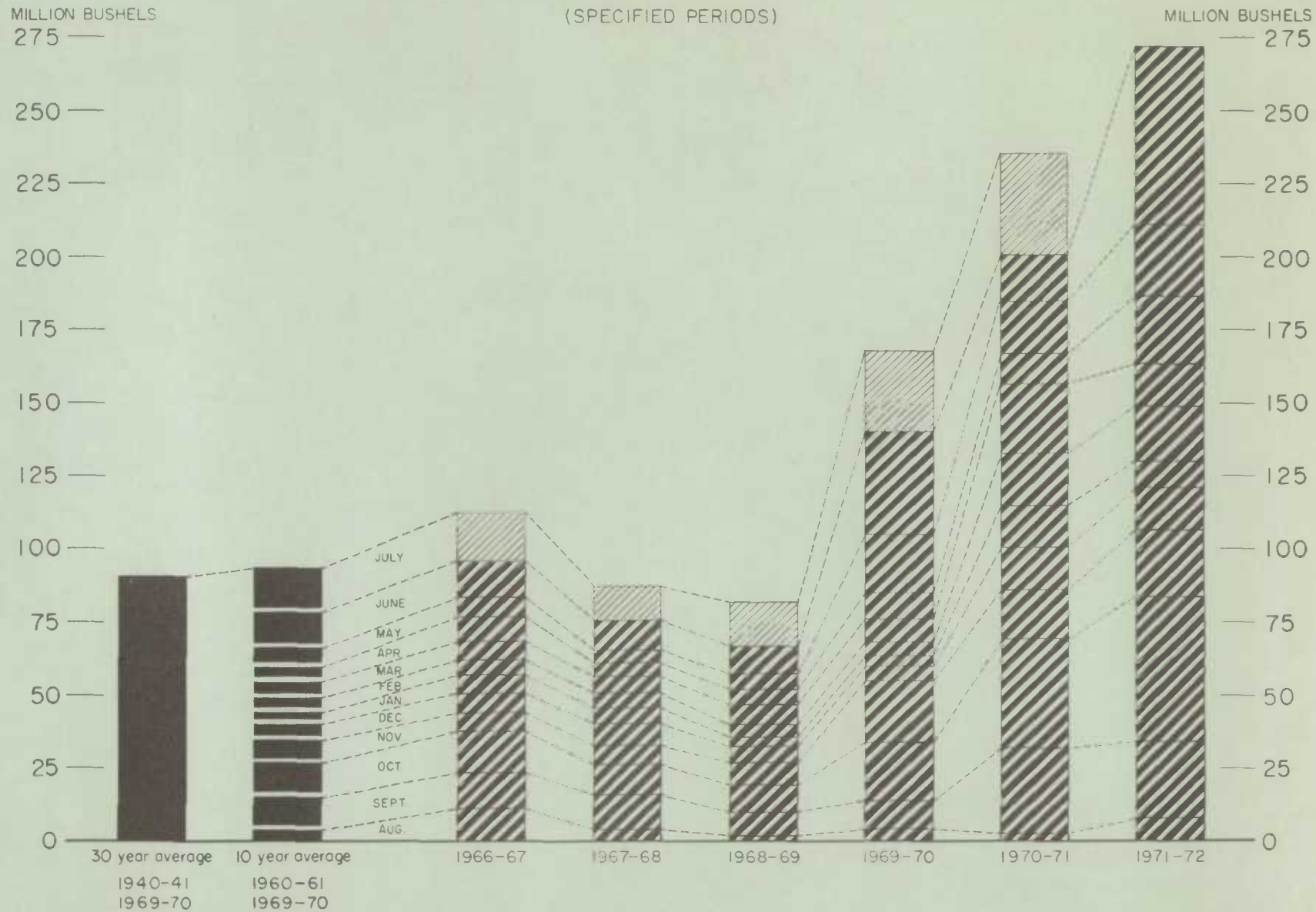
*Beginning with 1955-56 includes seed wheat.

**In terms of wheat equivalent.

***Preliminary.

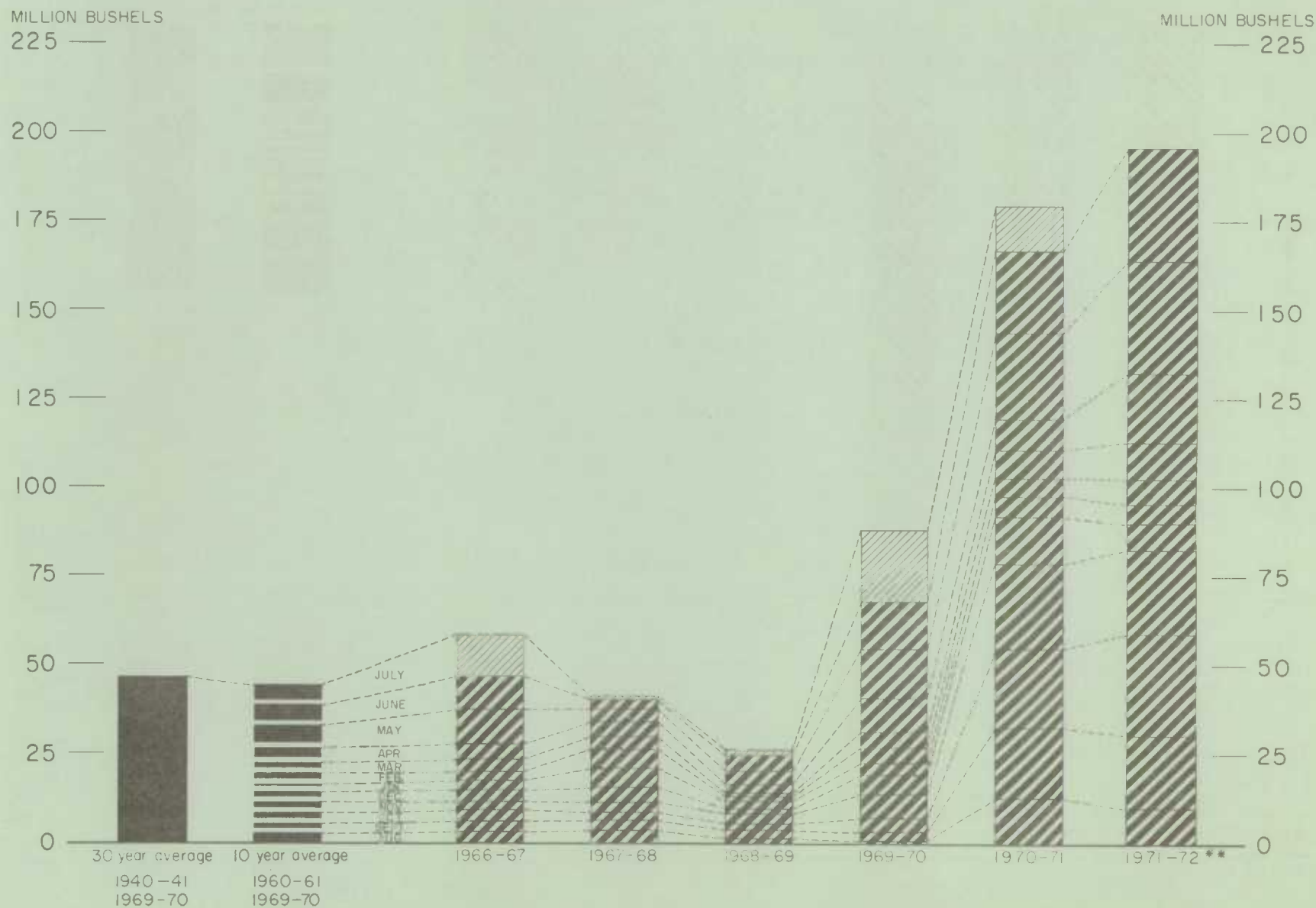
Agriculture Division Statistics Canada

FARMERS' MARKETINGS OF BARLEY, PRAIRIE PROVINCES



Agriculture Division Statistics Canada

IV
EXPORTS OF CANADIAN BARLEY AND BARLEY PRODUCTS*
(SPECIFIED PERIODS)

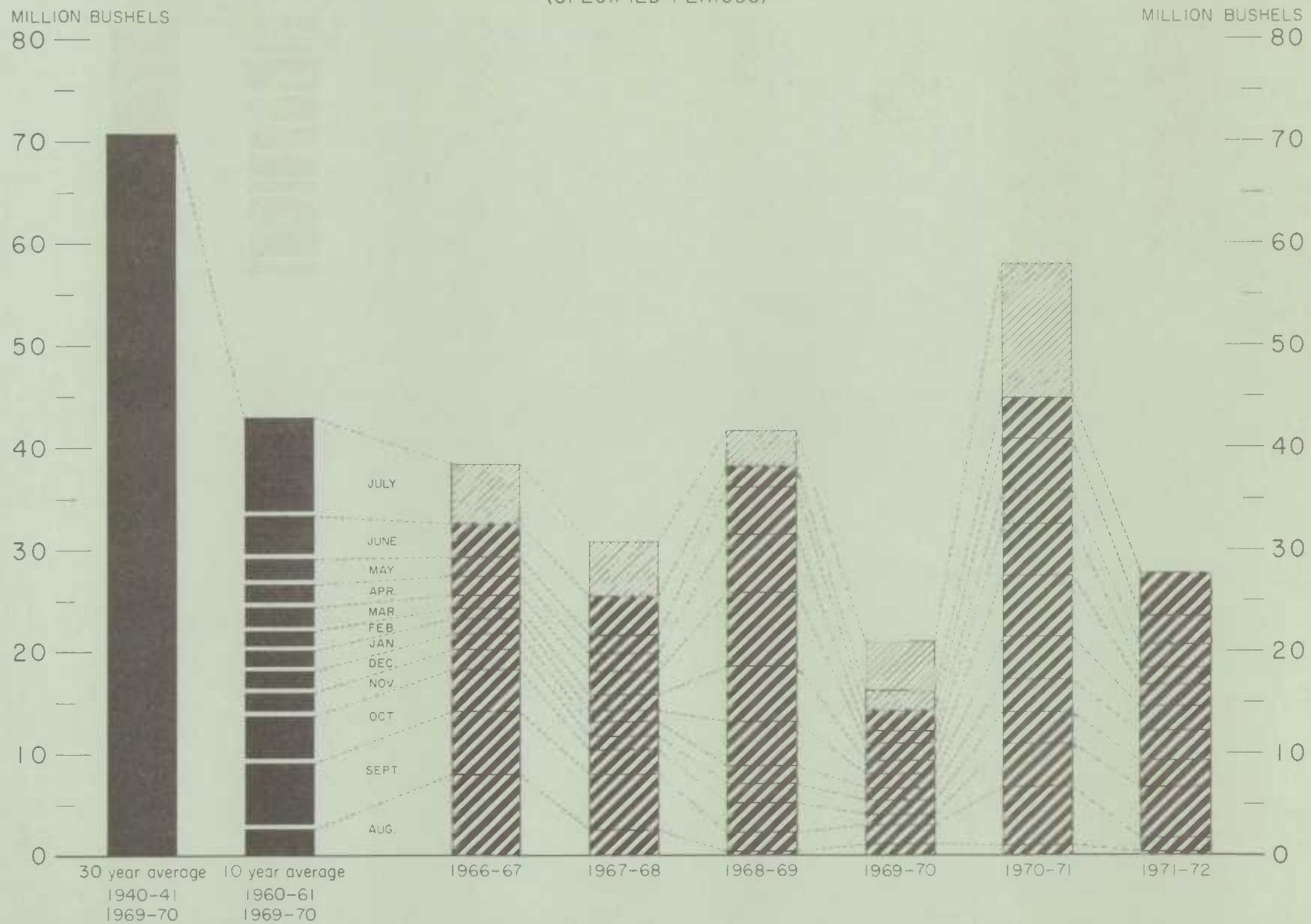


* In terms of grain equivalent. ** Preliminary.

Agriculture Division Statistics Canada

FARMERS' MARKETINGS OF OATS, PRAIRIE PROVINCES

(SPECIFIED PERIODS)

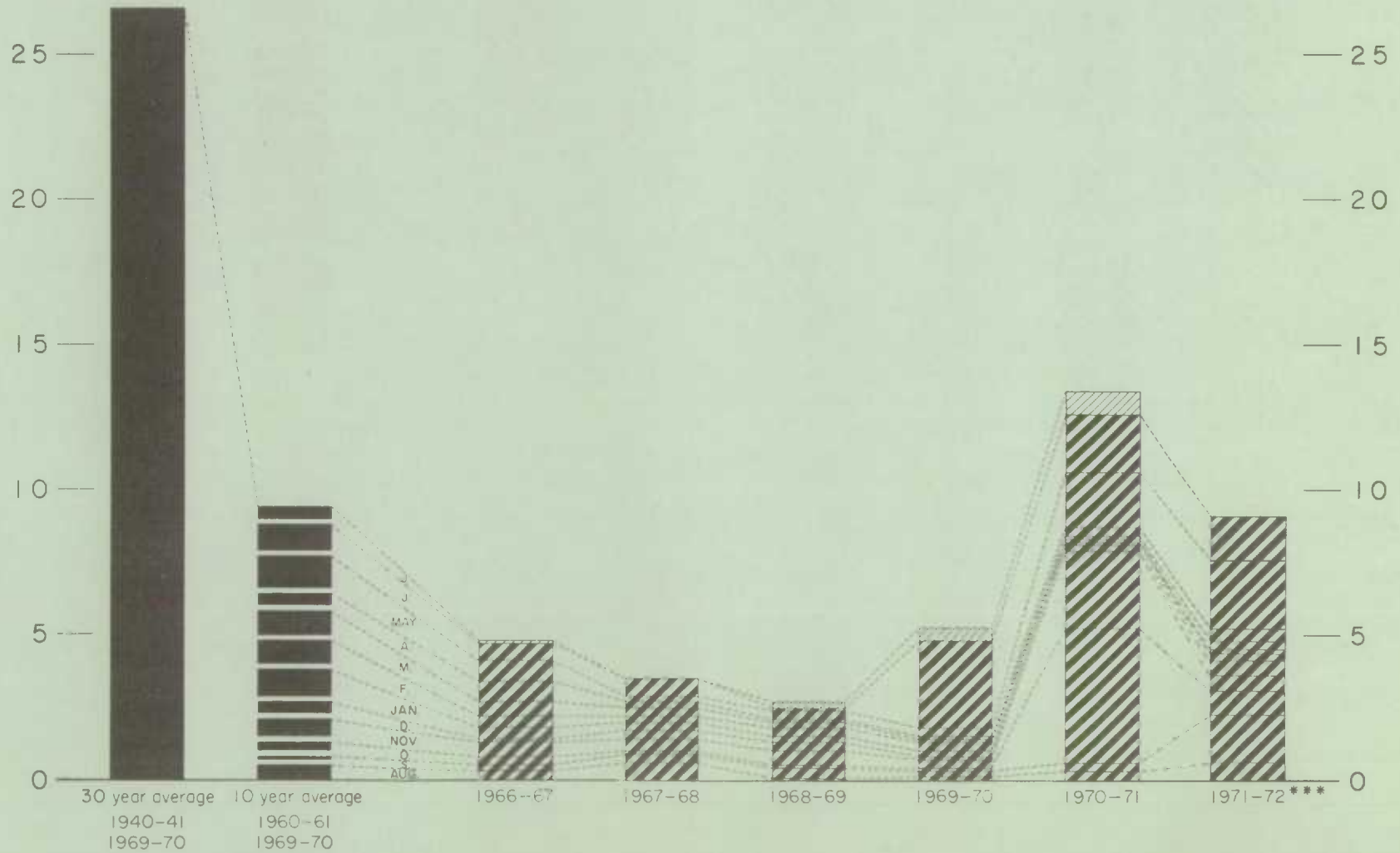


EXPORTS OF CANADIAN OATS* AND OAT PRODUCTS**

(SPECIFIED PERIODS)

MILLION BUSHELS
30 —

MILLION BUSHELS
30 —

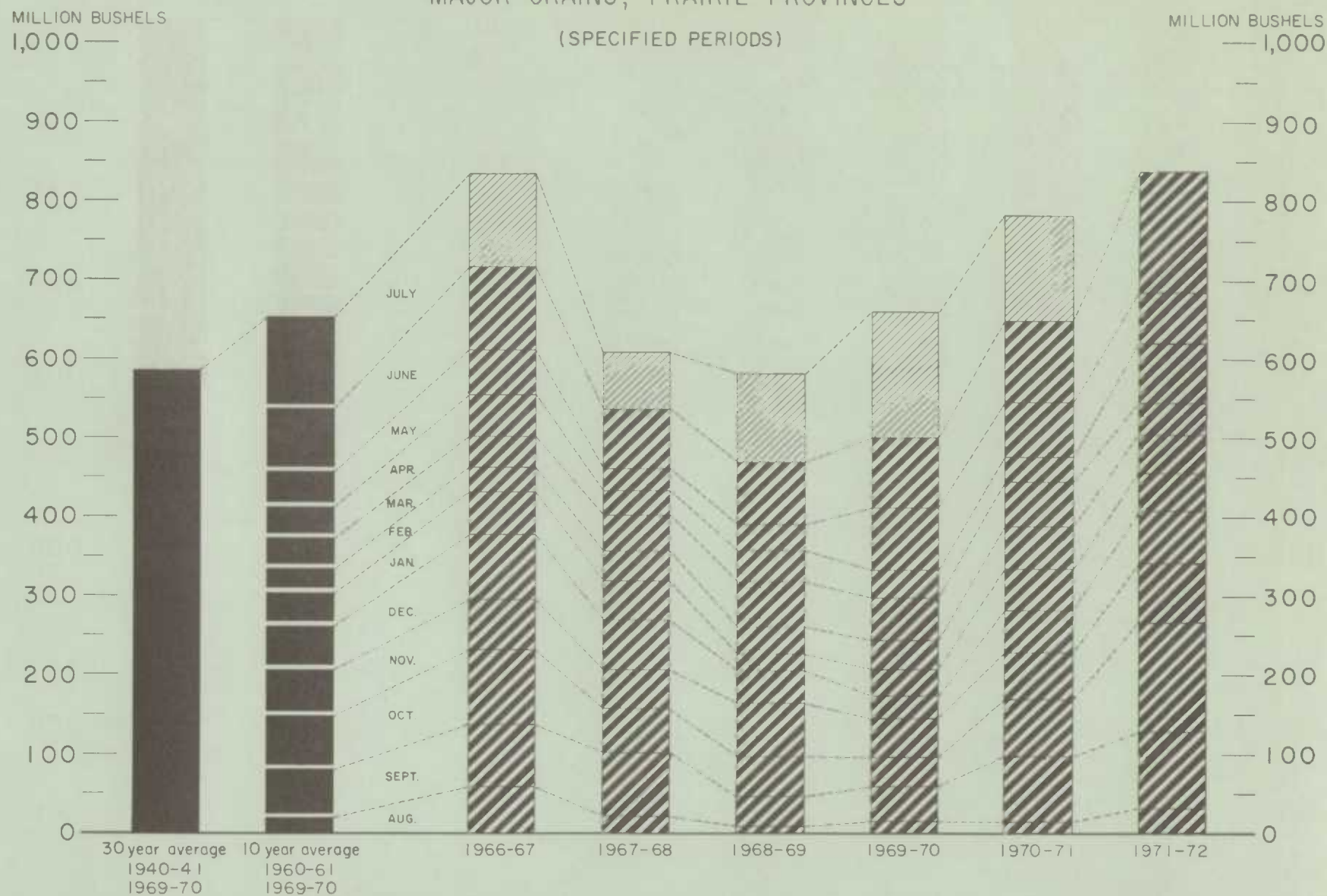


*Beginning with 1960-61 includes relatively small quantity of seed oats

**In terms of grain equivalent

***Preliminary.

FARMERS' MARKETINGS OF CANADA'S SIX MAJOR GRAINS*, PRAIRIE PROVINCES

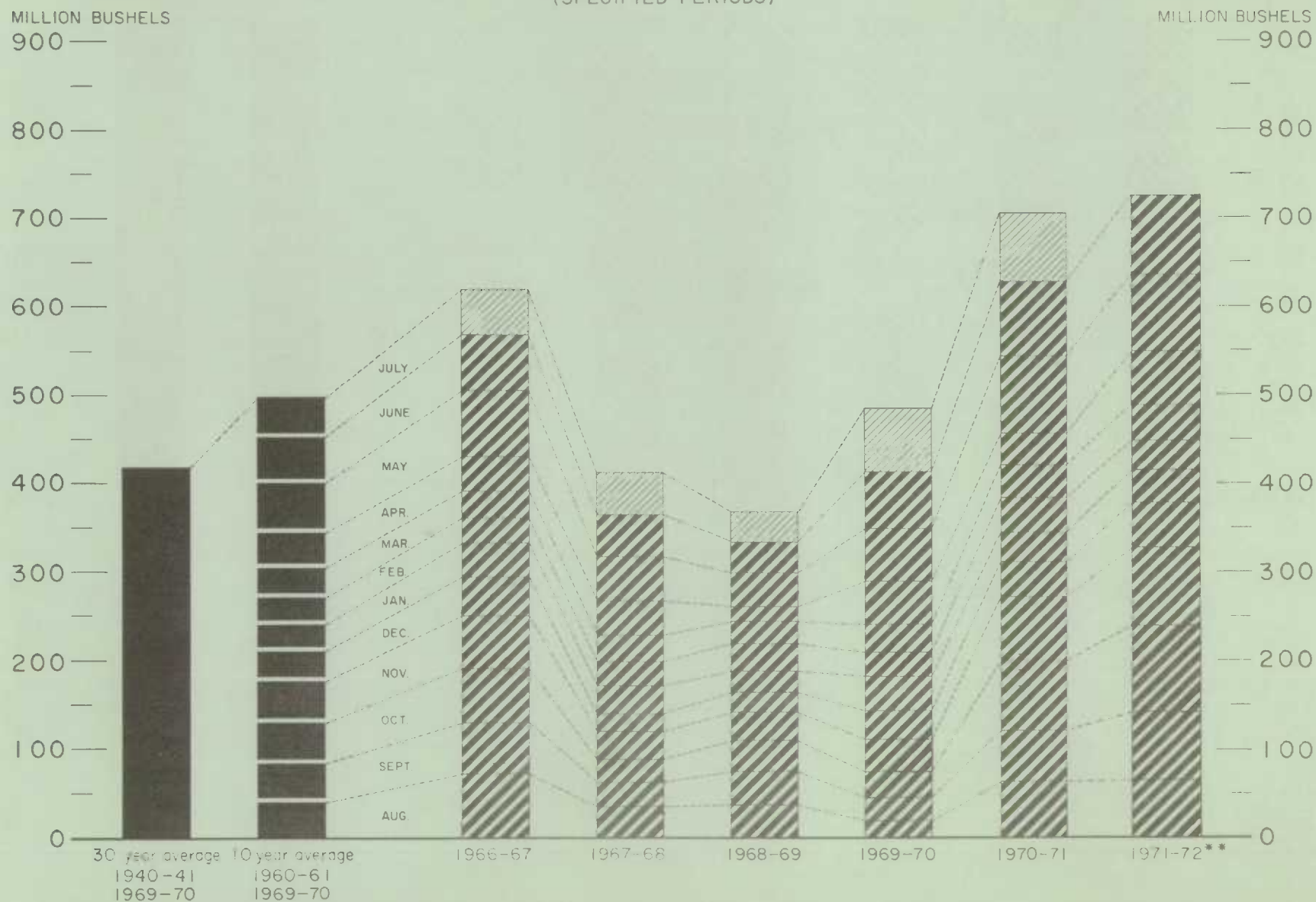


* Wheat, oats, barley, rye, flaxseed and from 1960-61 rapeseed.

Agriculture Division Statistics Canada

EXPORTS OF CANADA'S SIX MAJOR GRAINS AND PRODUCTS*

(SPECIFIED PERIODS)

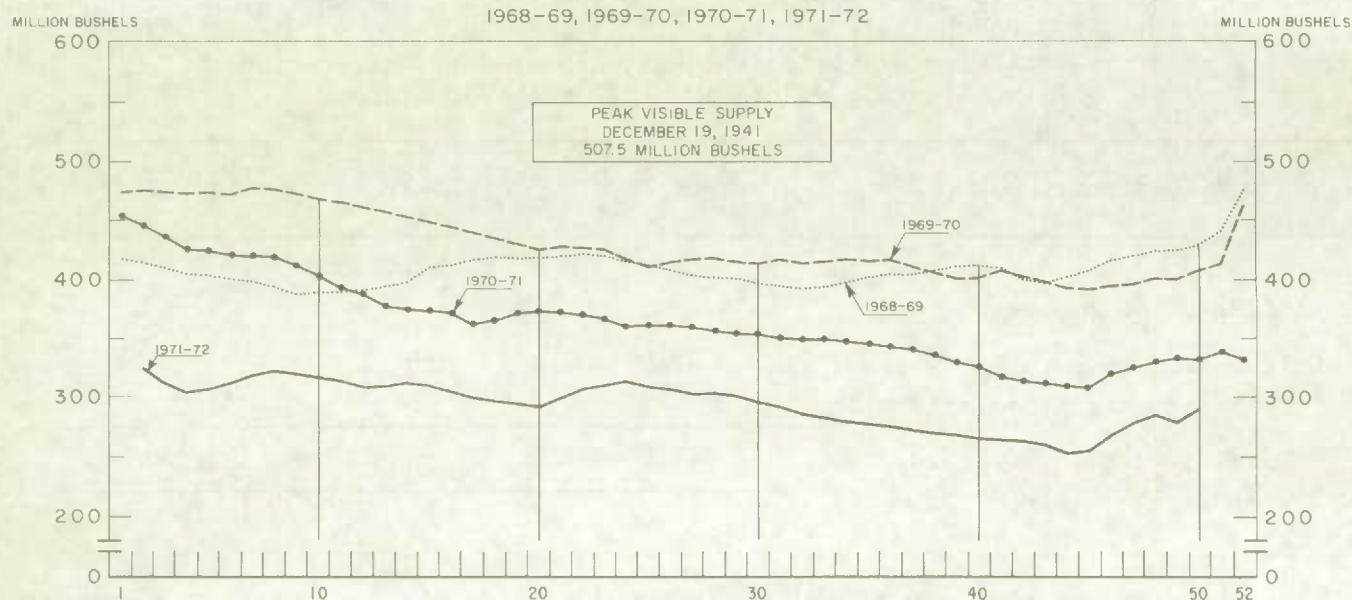


* Wheat, seed wheat, and wheat flour; oats, seed oats and oatmeal and rolled oats; barley and malt; rye; flaxseed and from 1960-61 rapeseed.

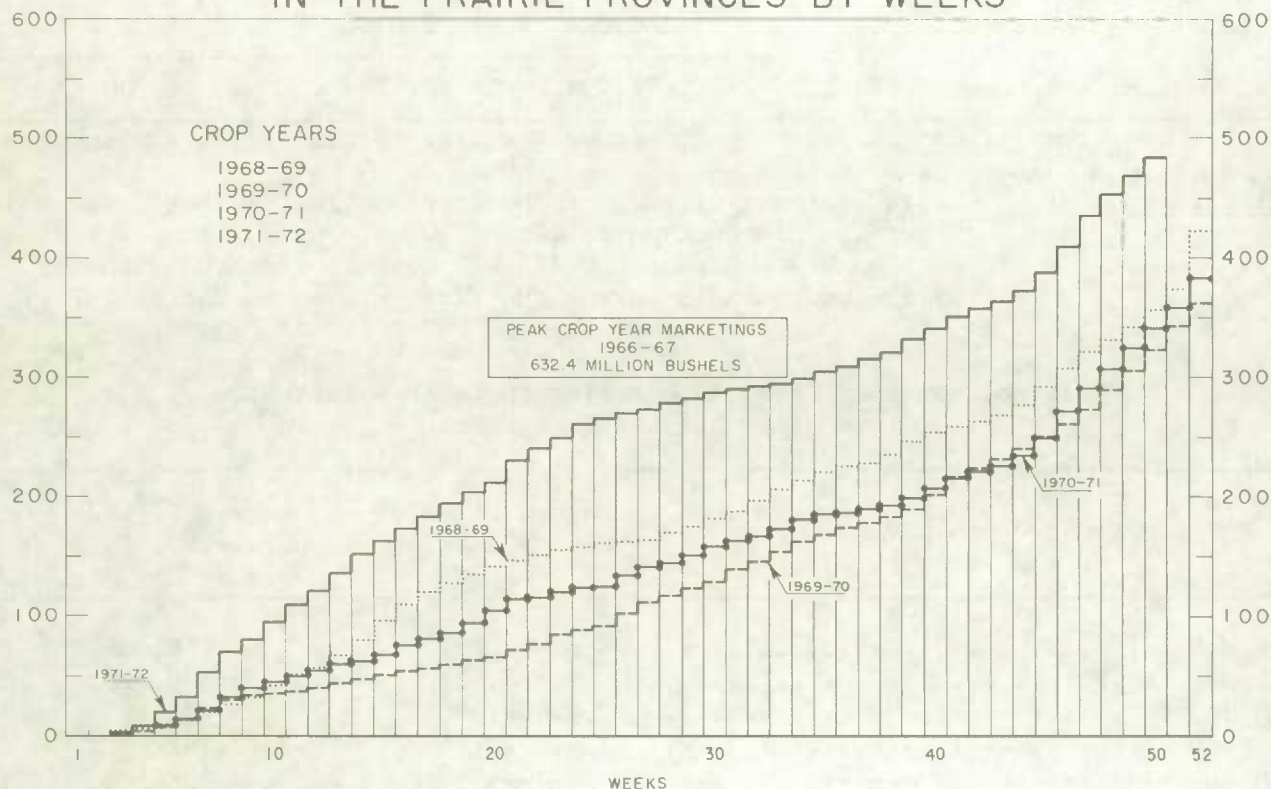
** Preliminary.

Agriculture Division Statistics Canada

WEEKLY VISIBLE SUPPLY OF CANADIAN WHEAT



CUMULATIVE RECORD OF WHEAT MARKETINGS IN THE PRAIRIE PROVINCES BY WEEKS



(Data in both charts for crop years beginning August 1)

Wheat Shipments to
the United States

Total vessel and rail shipments of wheat to the United States, either for re-export or retention for domestic use, from the beginning of the current crop year to July 12, 1972 amounted to 95,000 bushels. Only 2,900 bushels were shipped during the corresponding period of 1970-71 but 1,173,000 bushels were shipped in 1969-70.

Wheat Shipments(1) to the United States by Destination
August 1, 1971 - July 12, 1972 with Comparisons

Destination	1969-70	1970-71	1971-72
bushels			
<u>By Vessel</u>			
Buffalo	942,994	—	—
Hawaii	—	—	95,200
Totals, vessel	942,994	—	95,200
<u>By Rail</u>			
U.S.A. domestic points	180,000	2,878	—
Buffalo	50,000	—	—
Total, rail	230,000	2,878	—
Totals, shipments	1,172,994	2,878	95,200

(1) Either for re-export or retention for domestic use. Excluding seed wheat.

Rail Shipments of
Wheat to Maritime
Ports

Rail shipments of wheat to Maritime ports from Bay, Lake and Upper St. Lawrence ports during August-June of the current crop year amounted to 30,416,000 bushels compared with the 27,236,000 bushels during the first eleven months of 1970-71.

Rail Shipments of Wheat to Maritime Ports from Bay, Lake
and Upper St. Lawrence Ports

Origin of shipments	August 1, 1970 - June 30, 1971	August 1, 1971 - June 30, 1972
bushels		
Port McNicoll	8,004,297	9,168,589
Midland, Tiffin	9,616,637	9,609,773
Owen Sound	2,649,790	3,125,164
Goderich	1,972,168	2,307,941
Sarnia	2,803,643	3,421,141
Port Colborne	1,140,702	598,841
Kingston	764,553	1,604,316
Prescott	284,326	579,762
Totals	27,236,116	30,415,527

Distribution of Rail Shipments of Wheat from Thunder Bay, June 1972

Overseas Exports of Canadian Grain by Ports of Loading, August 1 - July 12, 1971-72 with Comparisons

(1) Excluding seed.

Shipments Under
Feed Grain
Assistance Regulations

Freight assistance shipments of wheat from the Prairie Provinces to Eastern Canada and British Columbia during August 1971-May 1972, amounted to 20,693,000 bushels, 24 per cent below the 27,336,000 shipped during the comparable period of 1970-71. The bulk of the shipments during the current ten months under review went to destinations in Quebec with that province accounting for 52 per cent of the total compared with 47 per cent the previous year.

Provincial Distribution of Wheat Shipments under the Feed Grain Assistance Regulations
August - May 1971-72 and 1970-71

Month	Western wheat							Eastern wheat	
	Nfld.	P.E.I.	N.S.	N.B.	Que.	Ont.	B.C.	Total	Quebec
thousand bushels									
August 1971 ..	49	7	218	90	1,489	359	262	2,473	—
September	65	10	176	123	1,161	250	234	2,019	—
October	67	12	237	72	912	330	378	2,008	—
November	4	20	256	65	1,558	299	419	2,622	—
December	241	14	128	73	982	369	325	2,132	—
January 1972 .	3	28	146	80	994	344	370	1,965	—
February	4	33	179	99	738	205	377	1,635	—
March	68	31	251	129	1,471	516	696	3,163	—
April	1	7	41	33	227	45	15	370	—
May	153	36	150	80	1,128	296	464	2,307	—
Totals	655	197	1,780	846	10,662	3,014	3,539	20,693	—
Same months									
1970-71	436	346	2,337	1,106	12,911	6,755	3,445	27,336	9

Millfeed shipments under the Feed Grain Assistance Regulations indicate the movement of 341,308 tons during August-May 1971-72. Data on the August 1970-May 1971 shipments of millfeeds place the ten-month total at 370,060 tons. The greater portion of the millfeed shipments during the comparable period under review went to destinations in Quebec and Ontario.

Provincial Distribution of Millfeed Shipments under the Feed Grain Assistance
Regulations August - May 1971-72 and 1970-71

Province	August - May	
	1970-71	1971-72
Newfoundland	2,604	2,511
Prince Edward Island	2,965	2,490
Nova Scotia	10,891	8,782
New Brunswick	11,461	8,530
Quebec	179,885	169,020
Ontario	133,363	123,342
British Columbia	28,891	26,633
Totals	370,060	341,308

tons

Monthly Exports of Canadian Wheat and Wheat Flour

Year and month	Wheat in bulk(1)	Seed wheat(2)	Total wheat	Wheat flour (2,3)	Total wheat and wheat flour(3)
thousand bushels					
<u>1969-70</u>					
August	13,012	60	13,071	2,306	15,378
September	20,949	74	21,023	1,219	22,242
October	18,838	2	18,840	2,231	21,071
November	22,835	116	22,951	1,863	24,814
December	22,294	52	22,346	2,434	24,779
January	26,351	87	26,438	2,524	28,962
February	18,597	290	18,887	2,077	20,964
March	21,958	499	22,457	2,600	25,057
April	32,913	334	33,247	2,440	35,687
May	36,047	157	36,204	2,443	38,648
June	39,898	103	40,001	3,103	43,104
July	44,010	59	44,070	1,725	45,794
Totals	317,703	1,832	319,535	26,963	346,498
<u>1970-71</u>					
August	44,765	103	44,868	699	45,567
September	35,194	120	35,315	2,306	37,620
October	44,412	84	44,496	3,543	48,039
November	33,307	71	33,378	2,126	35,504
December	18,016	43	18,059	1,444	19,502
January	18,882	2	18,884	2,725	21,609
February	23,334	77	23,411	2,421	25,832
March	20,293	93	20,386	1,900	22,286
April	20,951	157	21,108	1,855	22,963
May	47,631	49	47,681	1,811	49,491
June	47,904	71	47,975	1,986	49,961
July	54,750	100	54,850	1,988	56,839
Totals	409,440	971	410,410	24,803	435,213
<u>1971-72(4)</u>					
August	48,530	26	48,557	1,526	50,083
September	44,520	234	44,754	3,662	48,416
October	59,356	136	59,492	2,218	61,709
November	52,948	1	52,949	1,889	54,838
December	32,041	110	32,151	2,719 ^r	34,870 ^r
January	21,627	66	21,693	1,402 ^r	23,095 ^r
February	23,420	48	23,468	1,581	25,050
March	22,108	180	22,289	1,875	24,163
April	33,798	32	33,829	1,946	35,775
May	39,255	32	39,288	2,003	41,291
June	45,540	45	45,584	2,212	47,796
Totals	423,144	911	424,055	23,032	447,087

(1) Export clearances including shipments to the United States compiled by the Economics and Statistics Division of the Canadian Grain Commission. (2) Compiled from Canadian Customs returns, 1969-70 and 1970-71 adjusted to remove effect of time lag in reporting. (3) In terms of wheat equivalent. Wheat flour conversion rate: 2.3 bushels per cwt. (4) Subject to revision.

Exports of Canadian Wheat(1) by Destination, June 1972 and 1971

Destination	Wheat (except durum)	Durum wheat	All wheat	
			June 1972	June 1971 ^r
			bushels	
<u>Western Europe</u>				
EEC:				
Belgium and Luxembourg	523,936	181,664	705,600	276,531
Germany, West	109,275	552,533	661,808	1,746,388
Italy	636,756	—	636,756	1,645,304
Netherlands	662,295	515,008	1,177,303	1,791,109
Sub-totals	1,932,262	1,249,205	3,181,467	5,459,332
Other Western Europe:				
Britain	3,969,404	—	3,969,404	8,861,603
Ireland	—	—	—	125,496
Spain	—	—	—	3,125
Switzerland	39,200	—	39,200	150,525
Sub-totals	4,008,604	—	4,008,604	9,140,749
Totals	5,940,866	1,249,205	7,190,071	14,600,081
<u>Eastern Europe</u>				
Albania	830,637	—	830,637	832,384
Poland	—	—	—	866,133
U.S.S.R. (Russia)	5,603,759	3,895,994	9,499,753	558,208
Totals	6,434,396	3,895,994	10,330,390	2,256,725
<u>Africa</u>				
Algeria	—	1,399,615	1,399,615	816,796
Ghana	285,557	—	285,557	183,727
Ivory Coast	15,752	—	15,752	—
Nigeria	1,103,869	—	1,103,869	—
Tunisia	—	1,376,005	1,376,005	—
Totals	1,405,178	2,775,620	4,180,798	1,000,523
<u>Asia</u>				
Afghanistan	—	—	—	36,743
Bangladesh	1,502,456	511,621	2,014,077	—
Hong Kong	195,664	—	195,664	44,427
Iraq	—	—	—	3,131,877
Japan	3,331,213	—	3,331,213	3,073,986
Korea, North	—	—	—	595,455
Malaysia	147,467	—	147,467	29,307
People's Republic of China	13,434,403	1,983,370	15,417,773	17,237,515
Philippines	—	—	—	573,253
Singapore	173,600	—	173,600	30,986
Syria	843,733	—	843,733	1,347,322
Totals	19,628,536	2,494,991	22,123,527	26,100,871
<u>Western Hemisphere</u>				
Barbados	—	—	—	36
Brazil	—	—	—	2,208,033
Cuba	762,412	—	762,412	—
Haiti	273,953	—	273,953	285,250
Jamaica	997	—	997	290,690
Peru	603,785	—	603,785	1,161,743
Venezuela	73,578	—	73,578	—
Totals	1,714,725	—	1,714,725	3,945,752
Sub-totals, all countries	35,123,701	10,415,810	45,539,511	47,903,952
Seed wheat (2)			44,738	71,360
Totals, all countries	35,123,701	10,415,810	45,584,249	47,975,312

(1) Overseas clearances as reported by the Economics and Statistics Division of the Canadian Grain Commission, excluding seed. (2) Compiled from Canadian Customs returns, 1971 adjusted for time lag.

Cumulative Exports of Canadian Wheat(1) by Destination

Destination	August 1971 — June 1972		Total	
	Wheat (except durum)	Durum wheat	Total wheat	same period last year ^r
bushels				
<u>Western Europe</u>				
EEC:				
Belgium and Luxembourg ..	4,291,724 ^r	309,286 ^r	4,601,010 ^r	7,563,590
France	346,863	—	346,863	1,858,381
Germany, West	5,778,364 ^r	3,365,553	9,143,917 ^r	21,135,175
Italy	7,758,942	5,810,071	13,569,013	10,613,243
Netherlands	6,036,883 ^r	3,771,975 ^r	9,808,858 ^r	7,424,390
Sub-totals	24,212,776 ^r	13,256,885 ^r	37,469,661 ^r	48,594,779
Other Western Europe:				
Austria	—	—	—	410,829
Britain	42,191,319 ^r	403,252	42,594,571 ^r	55,405,328
Denmark	—	—	—	58,783
Ireland	536,635	—	536,635	2,237,201
Malta and Gozo	937,328	7,840	945,168	1,253,579
Norway	1,086,400	—	1,086,400	2,951,448
Spain	—	—	—	3,125
Sweden	55,090	—	55,090	58,820
Switzerland	1,387,452 ^r	806,066 ^r	2,193,518 ^r	4,622,466
Sub-totals	46,194,224 ^r	1,217,158 ^r	47,411,382 ^r	67,001,579
Totals	70,407,000	14,474,043	84,881,043	115,596,358
<u>Eastern Europe</u>				
Albania	1,638,792	—	1,638,792	1,190,784
Czechoslovakia	—	584,752	584,752	—
Poland	—	1,813,147	1,813,147	1,836,800
U.S.S.R. (Russia)	79,895,972	16,589,828	96,485,800	4,921,016
Totals	81,534,764	18,987,727	100,522,491	7,948,600
<u>Africa</u>				
Algeria	2,468,080	6,952,946	9,421,026	12,080,548
Ghana	2,248,045	—	2,248,045	1,850,981
Ivory Coast	15,752	—	15,752	—
Mauritania	100,668	—	100,668	—
Morocco	862,516	220,460	1,082,976	505,195
Mozambique	—	—	—	104,534
Nigeria	2,600,564	—	2,600,564	459,200
South Africa	—	234,746	234,746	3,939,600
Sudan	—	—	—	36,709
Tanzania	—	—	—	7,976
Tunisia	—	1,899,507	1,899,507	2,111,476
U.A.R.	—	—	—	14,048,074
Totals	8,295,625	9,307,659	17,603,284	35,144,293

For footnotes see end of table.

Cumulative Exports of Canadian Wheat(1) by Destination -- Concluded

Destination	August 1971 — June 1972			Total same period last year ^r
	Wheat (except durum)	Durum wheat	Total wheat	
bushels				
Asia				
Afghanistan	468,140	—	468,140	389,342
Bangladesh	2,298,232	847,621	3,145,853	—
Hong Kong	891,147	—	891,147	697,516
India	22,971,818	—	22,971,818	17,098,372
Indonesia	1,386,300	—	1,386,300	—
Iraq	—	—	—	11,841,379
Japan	45,427,882	390,124	45,818,006	34,774,664
Korea, North	1,180,666	—	1,180,666	1,655,722
Malaysia	530,324	—	530,324	296,858
Pakistan	2,717,900	—	2,717,900	4,066,847
People's Republic of China	89,386,810	8,403,905	97,790,715	77,099,228
Philippines	5,835,150	—	5,835,150	3,992,086
Singapore	411,227	—	411,227	357,839
Southern Yemen	—	—	—	19,842
Syria	7,489,619	—	7,489,619	10,208,698
Taiwan	2,762,853	—	2,762,853	524,533
Thailand	200,361	—	200,361	—
Turkey	—	—	—	3,540,382
Totals	183,958,429	9,641,650	193,600,079	166,563,308
Oceania				
United States Oceania	143,114	—	143,114	—
Western Hemisphere				
Barbados	56	—	56	70
Brazil	10,283,242	—	10,283,242	13,984,494
Costa Rica	340,751	56,771	397,522	—
Cuba	6,123,018	557,426	6,680,444	3,248,293
Dominican Republic	231,496	77,165	308,661	—
Ecuador	—	—	—	306,259
Haiti	1,537,128	—	1,537,128	1,634,904
Jamaica	1,338,830	—	1,338,830	1,415,978
Paraguay	—	—	—	2,206
Peru	5,400,875	—	5,400,875	8,549,040
St. Lucia	—	—	—	334
Venezuela	345,742	5,994	351,736	292,499
United States(2)	95,200	—	95,200	2,878
Totals	25,696,338	697,356	26,393,694	29,436,955
Sub-totals, all countries ...	370,035,270	53,108,435	423,143,705	354,689,515
Seed wheat(3)			910,833	870,230
Totals, all countries	370,035,270	53,108,435	424,054,538	355,559,745

(1) Overseas clearances as reported by the Economics and Statistics Division of the Canadian Grain Commission, for all countries except the United States. Excluding seed wheat. (2) Compiled from returns of Canadian elevator licensees and shippers and advice from American grain correspondents. (3) Compiled from Canadian Customs returns, 1970-71 adjusted for time lag, 1971-72 preliminary.

Customs Exports of Canadian Wheat Flour by Countries of Consignment

Destination	February 1972(1)	May 1972(2)	August — May	
			1971-72(2)	1970-71(1)
	bushels			
<u>Western Europe</u>				
EEC:				
Belgium and Luxembourg	927	927	955	38,610
France	—	—	—	115
Germany, West	—	—	2,663	720
Italy	—	—	—	14,490
Netherlands	—	—	—	722
Sub-totals	927	927	3,618	54,657
Other Western Europe:				
Britain	186,776	158,205	1,398,908	1,809,206
Gibraltar	—	2,576	5,281	8,115
Greece	—	1,104	41,520	36,303
Iceland	—	—	34,663	—
Ireland	—	—	3,606	—
Malta and Gozo	—	—	—	46
Norway	—	—	115	115
Portugal	7,590	—	31,089	24,960
Spain	—	—	—	1,840
Sub-totals	194,366	161,885	1,515,182	1,880,585
Totals	195,293	162,812	1,518,800	1,935,242
<u>Africa</u>				
Algeria	—	—	561,034	163,357
Angola	—	—	—	12,190
Cameroon	—	—	117,921	1,610
Dahomey	1,380	1,610	28,290	13,685
French Africa n.e.s.	—	—	361,645	—
Gabon	—	—	—	5,658
Gambia, The	2,300	17,250	42,550	57,732
Ghana	—	—	846	168,498
Guinea	—	—	52,803	35,420
Ivory Coast	2,530	4,370	19,090	11,454
Liberia	20,925	10,138	181,123	230,089
Malagasy	—	—	—	14,219
Malawi	2,001	—	25,748	59,899
Mozambique	3,889	—	16,551	22,706
Nigeria	—	—	9,945	2,300
Portuguese Africa, n.e.s.	3,036	18,260	101,463	122,047
Sierra Leone	—	1,920	5,338	8,529
Somalia	—	—	22,816	22,287
South Africa	—	—	—	2,259
Sudan	—	—	17,121	77,899
Tanzania	—	—	1,610	6,152
Togo	8,740	31,855	122,510	116,762
U.A.R.	—	150,754	2,213,757	465,385
Zaire	1,150	6,900	35,880	147,343
Totals	45,951	243,057	3,938,041	1,767,480
<u>Asia</u>				
Afghanistan	2,139	345	2,484	1,104
Bahrain	—	—	200	596
Burma	—	—	—	958,260
Ceylon	—	—	1,506,590	1,525,620
Cyprus	—	—	23,978	12,387
Hong Kong	30,820	12,650	168,475	158,965

For footnotes see end of table.

Customs Exports of Canadian Wheat Flour by Countries of Consignment — Concluded

Destination	February 1972(1)	May 1972(2)	August — May	
			1971-72(2)	1970-71(1)
bushels				
Asia — Concluded				
Indonesia	—	—	—	1,231,275
Iran	430	936	4,646	4,025
Iraq	—	—	—	141,034
Japan	1,538	230	8,671	6,368
Jordan	—	127	8,811	—
Lebanon	5,377	10,529	211,234	19,092
Portuguese Asia	—	—	—	8,234
Qatar	338	396	1,482	1,008
Saudi Arabia	—	27,600	192,816	267,158
Singapore	—	—	4,600	—
Southern Yemen	2,282	—	4,614	—
Syria	—	—	67,027	—
Thailand	11,500	5,980	77,841	85,203
Trucial States	—	—	4,490	2,955
Totals	54,424	58,793	2,287,959	4,423,284
Oceania				
British Oceania, n.e.s.	—	—	460	3,450
Fiji	—	—	1,380	1,610
United States Oceania	—	—	748	17,250
Totals	—	—	2,588	22,310
Western Hemisphere				
Bahamas	22,273	23,023	171,113	187,471
Barbados	8,087	23,184	208,435	281,329
Bermuda	10,599	4,575	96,612	108,116
British Honduras	4,798	—	35,434	50,471
Cuba(3)	925,446	1,310,588	11,314,118(4)	10,247,958
Dominican Republic	—	—	2,530	35,144
French West Indies	—	—	966	920
Guyana	412	1,683	11,907	16,399
Honduras	—	2,634	5,387	7,859
Jamaica	8,046	3,446	93,081	95,057
Leeward and Windward Is.	69,632	34,854	591,217	671,340
Netherlands Antilles	6,465	6,992	45,215	165,347
Panama	—	338	1,014	676
Paraguay	—	—	—	2,535
Peru	—	—	—	172
St. Pierre and Miquelon	3,126	3,461	24,051	22,845
Surinam	1,886	1,801	20,955	25,215
Trinidad and Tobago	67,784	104,850	419,209	506,593
Venezuela	—	—	304	426
United States	—	17,071	31,883	254,202
Totals	1,128,554	1,538,500	13,073,431	12,680,075
Totals, all countries	1,424,222	2,003,162	20,820,819	20,828,391

(1) In terms of wheat equivalent. Adjusted to remove effect of time lag in the returns made by Customs.
Conversion rate: 2.3 bushels per cwt.

(2) In terms of wheat equivalent. Preliminary and unadjusted for time lag. Conversion rate: 2.3 bushels per cwt.

(3) Source — Canadian National Millers Association.

(4) December 1971 Cuba should read 2,062,746 bushels. Please adjust cumulative totals accordingly.
n.e.s. — Not elsewhere specified.

Note: Data for June wheat flour exports not available.

Canadian Wheat Board Weekly Average Cash Wheat Prices, Crop Year 1971-72
Basis in Store Thunder Bay and Vancouver

Class and grade	Week ending			
	June 23	June 30	July 7	July 14
cents and eighths per bushel				
<u>Initial payment to producers</u>				
1 C.W. Red Spring 14%	146	146	146	146
1 Northern	150	150	150	150
2 Northern	146	146	146	146
3 Northern	141	141	141	141
4 Northern	133	133	133	133
5 Wheat	119	119	119	119
6 Wheat	115	115	115	115
Feed Wheat	110	110	110	110
1 C.W. Garnet	133	133	133	133
2 C.W. Garnet	128	128	128	128
3 C.W. Garnet	123	123	123	123
1 Alberta Red Winter	132	132	132	132
2 Alberta Winter	127	127	127	127
3 Alberta Winter	121	121	121	121
1 C.W. Amber Durum	146	146	146	146
2 C.W. Amber Durum	142	142	142	142
3 C.W. Amber Durum	137	137	137	137
<u>Exports</u>				
(Basis in store Thunder Bay)				
1 C.W. Red Spring 14%	169/5	169/6	170/1	170/1
1 Northern	171/5	171/6	172/1	172/1
2 Northern	169/5	169/6	170/1	170/1
3 Northern	164/5	164/6	165/1	165/1
4 Northern	161/5	161/6	162/1	162/1
5 Wheat(1)	148/4	148/4	148/4	148/4
6 Wheat(1)	146/4	146/4	146/4	146/4
Feed Wheat(1)	141/4	141/4	141/4	141/4
1 C.W. Garnet	161/5	161/6	162/1	162/1
2 C.W. Garnet	160/5	160/6	161/1	161/1
3 C.W. Garnet	159/5	159/6	160/1	160/1
1 Alberta Red Winter	161/5	161/6	162/1	162/1
2 Alberta Winter	160/5	160/6	161/1	161/1
3 Alberta Winter	159/5	159/6	160/1	160/1
1 C.W. Amber Durum	168/2	168/3	168/6	168/6
2 C.W. Amber Durum	167/2	167/3	167/6	167/6
3 C.W. Amber Durum	158/2	158/3	158/6	158/6
(Basis in store Vancouver)				
1 C.W. Red Spring 14%	177/7	178	178/3	178/3
1 Northern	178/7	179	179/3	179/3
2 Northern	177/7	178	178/3	178/3
3 Northern	172/7	173	173/3	173/3
4 Northern	170/7	171	171/3	171/3
1 C.W. Garnet	170/7	171	171/3	171/3
2 C.W. Garnet	169/7	170	170/3	170/3
3 C.W. Garnet	168/7	169	169/3	169/3
1 Alberta Red Winter	170/7	171	171/3	171/3
2 Alberta Winter	169/7	170	170/3	170/3
3 Alberta Winter	168/7	169	165/3	169/3

(1) Domestic sales only.

CANADIAN FLOUR MILLING SITUATION

Production Wheat flour production by Canadian mills during June 1972 amounted to 3,294,000 hundredweight, representing a decrease of 5 per cent from the May 1972 output of 3,485,000 hundredweight, but 4 per cent more than the adjusted June 1971 total of 3,170,000 hundredweight and 1 per cent above the 10-year average production for the month of June of 3,241,000 hundredweight. Mills reporting operations during June 1972 had a total rated capacity of 169,000 hundredweight per 24-hour day and on the basis of a 26-day working period 75.0 per cent of this rated capacity was effective. Wheat milled for flour during June 1972 amounted to 7,416,000 bushels, 5 per cent below the 7,838,000 bushels milled during the preceding month but 4 per cent higher than the adjusted June 1971 total of 7,150,000 bushels. Of the wheat milled for flour during June 1972 some 6,066,000 bushels were Western Canadian spring wheat (other than Durum) while the remainder consisted of Ontario winter wheat (630,000 bushels); Durum (552,000 bushels); and all other (169,000 bushels).

Exports According to preliminary Customs returns, exports of Canadian wheat flour during May 1972 amounted to the equivalent of 2,003,000 bushels (some 871,000 hundredweight of flour) 3 per cent more than the April 1972 exports of 1,946,000 bushels, and 11 per cent above the adjusted May 1971 exports of 1,811,000 bushels. Flour shipments during the month under review went to thirty-six countries with leading markets for Canadian wheat flour in terms of wheat, in thousands of bushels, were as follows: Cuba, 1,311; Britain, 158; U.A.R., 151; Trinidad and Tobago, 105; Leeward and Windward Islands, 35; and Togo, 32.

Note: Data re exports of wheat flour for June 1972 by country of destination are not available at this time and will be included in the next issue.

Wheat Milled for Flour, and Production and Exports of Wheat Flour, Canada

Crop year	Wheat milled for flour bushels	Wheat flour	
		Production	Exports(1)
		cwt.	
1935-36 — 1939-40 average	67,845,114	29,405,451	9,603,941
1940-41 — 1944-45 "	99,704,638	43,908,245	23,699,546
1945-46 — 1949-50 "	107,330,372	47,011,540	25,819,721
1950-51 — 1954-55 "	100,446,328	43,847,894	21,812,041
1955-56 — 1959-60 "	99,148,211	39,752,589	16,349,156
1960-61 — 1964-65 "	91,128,177	40,834,088	15,769,803
1965-66	97,925,995	43,531,263	16,576,117
1966-67	90,084,646	39,978,571	13,848,208
1967-68	84,769,150	37,755,841	10,734,857
1968-69	85,048,591	37,621,151	10,705,452
1969-70	90,557,332	39,640,459	11,723,205
1970-71	87,467,328	38,534,863	10,783,801
1971-72(2):			
August	7,476,891	3,298,715	663,543
September	7,962,496	3,556,947	1,592,171
October	8,164,466	3,588,290	964,238
November	7,389,047	3,258,470	821,373
December	6,864,695	3,026,145	1,182,204
January	6,933,208	3,079,219	609,520
February	6,816,010	3,038,145	687,561
March	7,155,915	3,171,815	815,105
April	6,903,088	3,066,667	845,875
May	7,838,094	3,484,522	870,940
June	7,416,440	3,293,835	961,581(3)
Totals	80,920,350	35,862,770	10,014,111
Same months 1970-71 ^r	80,190,036	35,330,636	9,919,329

(1) Based on Customs returns. Exports for the crop years 1945-46 — 1970-71 revised to remove effect of time lag in the returns made by Customs.

(2) Subject to revision.

(3) Estimated.

UNITED STATES SITUATION

Disappearance of United States Wheat During the crop year (July-June) 1971-72 total disappearance (exports plus domestic use) of United States wheat amounted to 1,443 million bushels, down about 82 million bushels or 5 per cent from the previous year's total of 1,525 million. Total domestic supplies of wheat are currently placed at 2,369.7 million bushels 5 per cent above the previous year's total of 2,254.9 million reflecting an increase of 269 million in production which more than offsets a decrease of 154 million in carryover stocks. Domestic requirements increased from an estimated 786.6 million bushels in 1970-71 to 822.0 million in 1971-72, the highest total since 1945-46. The 1971-72 exports of wheat, wheat flour and products in terms of grain equivalent amounted to 621.1 million bushels, a decrease of 16 per cent from the 738.7 million exported in 1970-71.

The estimated domestic requirements plus total exports of wheat and wheat flour equals the total disappearance figure of 1,443 million bushels which was 12 per cent smaller than the total production of 1,640 million and, as a result, the difference between total production and total disappearance figures reflected an increase of 197 million bushels in carryover stocks to a level of 926.8 million at July 1, 1972 in contrast to 730.2 million a year previous.

United States Wheat Supplies

Item	1970-71 ^r	1971-72 ^p
	million bushels	
Carryover at beginning of crop year (July 1)	884.7	730.2
Production	1,370.2	1,639.5
Total estimated domestic supplies	2,254.9	2,369.7
Imports of wheat and wheat flour in terms of wheat for domestic use, July-June	0.6	0.3
Total estimated supplies(1)	2,255.5	2,370.0
Less estimated domestic requirements for crop year(1) ..	786.6	822.0 ^r
Available for export and for carryover	1,468.9	1,548.0
<u>Deduct</u>		
Exports of wheat as grain, July-June	674.9	567.1
Exports of wheat flour and products(2) in terms of wheat, July-June	63.8	54.0
Total exports of wheat and wheat flour	738.7	621.1
Balance on July 1 for export and for carryover	730.2	926.8

(1) Includes shipments to United States Territories and wheat for military food use at home and abroad.

(2) Includes bulgar, rolled wheat and macaroni.

1972 Wheat Crop
Forecast at 1,551
Million Bushels

A report released on July 12, 1972 by the Crop Reporting Board of the United States Department of Agriculture stated that production of all wheat is forecast at 1,551 million bushels, 5 per cent less than in 1971 but 13 per cent more than the 1970 crop. Changes between the July 1 forecast and final estimates have averaged 43 million bushels during the past decade, ranging from 8 million to 92 million bushels. The indicated yield of 32.4 bushels per harvested acre compares with last year's record high of 33.8 bushels, and 31.0 bushels for the 1970 crop year. Acreage of all wheat for harvest as grain, at 47.8 million acres, is 1 per cent below last year but 8 per cent above 1970.

A winter wheat crop of 1,195 million bushels is now forecast, 3 per cent above last year's crop and 8 per cent above 2 years earlier. The current forecast is 3 million bushels more than the June 1, 1972 forecast. Acreage for harvest as grain, at 35.4 million acres, is 7 per cent above last year and 6 per cent above the 1970 acreage. Acreage for harvest is nearly 2 per cent higher than estimated earlier this year; however, this increase was nearly offset by a decrease in yield per acre. The U. S. yield per acre is indicated at 33.8 bushels, compared with 35.2 bushels last year and 33.3 bushels in 1970.

Three-fifths of the Kansas wheat crop had been harvested by July 1, compared with 70 per cent a year earlier and the average of 65 per cent. Only scattered fields remained to be combined in southern and some central areas. Harvest had started in northern counties but progress in the western and northern districts was slowed by scattered rains. Wheat quality reports indicate test weights substantially above the average of 61.5 pounds, although slightly below a year earlier. Protein content has averaged 11.5 per cent, below last year's 12.1 and slightly below the average of 11.8.

Wheat harvest in the Southern Plains was nearly finished. In Oklahoma only a few fields remained for harvest in the Panhandle on July 1. Marketings to date have been of higher quality than last year. Protein percentages were substantially above last year's level which was the highest since 1967. Test weight remained more than a pound per bushel above the 1971 crop average. Moisture content and dockage were up slightly but total quality defects were down substantially. Harvest in Texas was 95 per cent complete, about equal to a year ago. Scattered showers on the High Plains delayed harvest in a few localities and caused some lodging. Acreage harvested in Oklahoma and Texas was above earlier expectations, accounting for a considerable boost in outturn compared with prospects a month earlier.

Nebraska's wheat was advancing to maturity with about 95 per cent turning colour in late June. Forty per cent of the acreage was ripe although only 10 per cent was combined because showers delayed harvest. Combining was slow in fields where straw was lodged. The Colorado crop benefitted from substantial precipitation during June. Harvest was underway during the week of June 19; however, cool damp mornings and thunderstorms slowed harvest.

By the first of July, 10 per cent was harvested. Hail damage was moderate to severe in east central districts. Winter wheat in South Dakota remained in excellent condition. Warmer temperatures with adequate moisture supplies in June permitted rapid growth and development. Maturity of winter wheat was slightly ahead of normal with 58 per cent turning colour as of July 3. Yield prospects are currently excellent throughout the major growing areas, although considerable lodging is occurring and some diseases have been observed. Harvest is expected to begin in mid-July, about 1 week behind last year but ahead of normal.

Prospects declined slightly in Montana where precipitation was generally below normal during June. Soil moisture continued short in the major producing areas of

north central Montana. As of the end of June about 85 per cent of the crop was headed, about the same as last year but ahead of normal. Prospects in Washington continue good. Moisture was generally adequate although some signs of moisture stress were beginning to appear on lighter soils. Harvest is expected to begin in southern areas shortly. Grasshoppers were causing concern in southeastern counties of Washington and eastern Oregon. Control measures were being taken but the pests were concentrating more on green foliage and range land. Weather during June favoured grain development in Oregon.

Harvest of wheat in Missouri was three-fourths complete. Sixty-five per cent of the Illinois crop had been combined by July 1, about the same as in 1971. Combining in Indiana was 20 per cent complete, compared with the average of 10 per cent. Harvest was most advanced in the southwest. Fifteen per cent of Ohio's wheat was ripe, compared with the average of 25 per cent.

Rains prolonged harvest in the southern area of the country and slowed cleanup operations. Wheat combining was virtually over by July 1 in the Deep South and three-fourths complete in Kentucky and Tennessee. Rust and other diseases along with heavy June rains reduced prospects sharply in most Southeastern and Atlantic States.

The crop of spring wheat other than durum is estimated at 278 million bushels, 28 per cent below the record large 1971 production but one-third above the 1970 total. All States except Nevada were reduced substantially from 1971.

Planting of spring wheat was spread over an abnormally long time period in the major States and much of the crop is later than normal. On July 4 about one-third of the North Dakota crop had headed, compared with the 10-year average for the date of 45 per cent.

Yields are expected to average 27.9 bushels in 1972, compared with 30.7 in 1971 and 23.7 bushels in 1970. Growing conditions are generally good in South Dakota, most of Minnesota, western North Dakota, and eastern Montana but topsoils are dry and the crop is suffering in varying degrees in the eastern half of North Dakota and north central Montana.

An estimated 9,969,000 acres of spring wheat other than durum is expected to be harvested in 1972, down 21 per cent from the 12,654,000 acres harvested in 1971. There were 8,823,000 acres harvested in 1970. Planted area totals 10,295,000 acres, also 21 per cent below last year, and compares with 9,047,000 acres in 1970.

Production of durum wheat is forecast at 77.3 million bushels, 12 per cent below the near record 1971 crop but 53 per cent above the small 1970 crop. Acreages are smaller than last year in all States and yields are down in North and South Dakota and Minnesota.

The durum planting period was longer than usual this year and progress of the crop is later than normal. Twenty-one per cent of the North Dakota crop had headed by July 4 compared with the average for the date of 31 per cent.

An average yield of 30.8 bushels per acre is expected, compared with 31.9 bushels last year and 25.0 in 1970. Moisture is generally adequate in major Montana, South Dakota, and northwestern North Dakota producing areas but is becoming short in eastern North Dakota and neighboring Minnesota counties.

Harvested acreage is estimated at 2,506,000 acres, compared with 2,750,000 acres last year and 2,018,000 acres in 1970. Area planted totalled 2,575,000 acres, a decrease of 9 per cent from 1971.

ARGENTINE SITUATION

Supplies Higher
than Previous Year

Total estimated domestic supplies of wheat in Argentina for the 1971-72 (December-November) crop year are placed at some 224.7 million bushels, an increase of 7 per cent over the comparable 1970-71 total of 209.4 million reflecting a rise in production which more than offset a decline in carryover stocks. The 1971 production estimated at 199.9 million bushels was 11 per cent above the 180.8 million produced in 1970 while the December 1, 1971 carryover stocks, at 24.8 million, are 13 per cent less than the 28.7 million at the same date a year ago. After making an allowance of 135.0 million bushels for anticipated domestic requirements, an estimated 89.7 million are available for export and for carryover in 1971-72, some 47 per cent above the 61.1 million the previous year.

Exports Above
Last Year's Level

Preliminary exports of wheat and wheat flour in terms of wheat equivalent during December 1971 - June 1972 amounted to 36.7 million bushels, 53 per cent more than the total shipped during the same seven months in 1970-71. The balance remaining on July 1, 1972 for export and for carryover was estimated at 52.9 million bushels, as against the July 1, 1971 total of 37.2 million.

Argentine Wheat Supplies

Item	1970-71 ^r	1971-72 ^p
	million bushels	
Carryover at beginning of crop year (December 1)(1) ..	28.7	24.8
Production	180.8	199.9
Total estimated domestic supplies	209.4	224.7
Less estimated requirements for crop year	148.3	135.0
Available for export and for carryover	61.1	89.7
<u>Deduct</u>		
Exports of wheat as grain, December-June	20.4	33.4
Exports of wheat flour in terms of wheat, December - June	3.6	3.3
Total exports of wheat and wheat flour	24.0	36.7
Balance on July 1 for export and for carryover	37.2	52.9

(1) Includes allowances for farm stocks.

AUSTRALIAN SITUATION

Wheat Supplies
Down from Last Year The 1971-72 (December-November) crop year carryover stocks estimated at 124.9 million bushels was 53 per cent less than the 265.1 million bushels at December 1970. While the 1971 production at 303.0 million bushels, was some 5 per cent more than the 289.9 million harvested the previous year. Total supplies of wheat at 427.9 million bushels remained below the comparable figure of 555.0 million in 1970-71. A deduction of some 85.7 million bushels for anticipated domestic requirements leaves a residual of 342.2 million for export and for carryover during 1971-72, some 25 per cent below the 458.1 million in the previous year.

Exports Decline
from Last Year Combined exports of wheat as grain and wheat flour in terms of grain equivalent during the period December 1 - June 30 of the current Australian crop year amounted to 178.7 million bushels, 12 per cent below the 202.8 million exported during the corresponding seven months of the 1970-71 crop year. The decline was reflected in the remaining balance as at July 1, 1972 for export and for carryover at 163.5 million bushels and was 36 per cent below the comparable 1971 total of 255.3 million.

Australian Wheat Supplies

Item	1970-71 ^r	1971-72 ^p
	million bushels	
Carryover, including flour as wheat, at beginning of crop year (December 1)	265.1	124.9
Production	289.9	303.0
Total estimated domestic supplies	555.0	427.9
Less estimated domestic requirements for crop year	96.9	85.7
Available for export and for carryover	458.1	342.2
<u>Deduct</u>		
Exports of wheat as grain, December-June	192.2	171.8
Exports of wheat flour in terms of wheat, December-June	10.6	6.9
Total exports of wheat and wheat flour	202.8	178.7
Balance on July 1 for export and for carryover	255.3	163.5

WHEAT SITUATION IN GREECE

The following information relative to wheat situation in Greece has been extracted from a report by Mr. G. Bastounis, Commercial Officer, Canadian Embassy, Athens under date of June 12, 1972 and is reproduced with the permission of the Trade Commissioner Service, Department of Industry, Trade and Commerce.

Economic conditions in 1971 and outlook for 1972. — For the third consecutive year since 1969, Greece made steady and rapid economic progress in 1971. National income at constant prices increased 7.3 per cent, 3.3 per cent of this gain was accounted for by agriculture. The share of agriculture in the overall composition of the national income is gradually declining, reaching 17.9 per cent in 1971.

On the basis of data for the first five months of the current year, the outlook for 1972 will be equally as good as that of 1971. Economic growth is estimated to be around 7.5 per cent, with a rise in agricultural output of about 4.5 per cent.

The accompanying table depicts acreages and production of wheat during the year 1970 and 1971.

	<u>Acreage</u>		<u>Production</u>	
	1970 thousand acres	1971	1970 thousand bushels	1971
Wheat, soft	1,963	1,963	58,888	58,099
Wheat, durum	490	479	12,033	11,916

CALENDAR OF WHEAT EVENTS

- June 23 The U.S.D.A. announced that wheat producers in the United States will receive \$1.28 per bushel in preliminary payment on their 1972 crop.
- July 12 According to a report published by Statistics Canada, farmers in the Prairie Provinces have seeded larger acreages of wheat this year than last and are devoting more land to summerfallow. All other crop acreages for the Prairies as a whole are smaller in 1972 than in 1971. The acreage seeded to all types of wheat in the Prairie Provinces in 1972 reached 20,800,000 acres, some 10 per cent larger than the area seeded in 1971.
- According to a report published by the Crop Reporting Board, United States Department of Agriculture, all wheat production in the United States in 1972 is forecast at 1,551 million bushels, 5 per cent less than in 1971 but 13 per cent more than the 1970 crop.
- 17 The Canadian Wheat Board announced opening quotas for wheat, barley and oats for the 1972-73 crop year. For details see page 12 of this report.
- 18 The Honourable Otto Lang, Minister Responsible for the Canadian Wheat Board announced that the U.S.S.R. will purchase an additional 1.5 million tons of wheat and flour (approximately 55 million bushels) during the next crop year under the option clause in the contract for 3.5 million tons announced on February 28, 1972.

Flour Production

According to the Bureau of the Census, United States Department of Commerce, wheat flour production in the United States in May 1972 amounted to 21,063,000 hundredweight, averaging 957,000 hundredweight per working day. This compared with an average output per working day of 983,000 hundredweight last month and 1,011,000 hundredweight in May 1971. Wheat flour mills during May 1972 operated at 97.1 per cent of capacity, below both the 99.7 per cent of the previous month and the 100.9 per cent the same month a year ago. Flour mills in May 1972 ground 46,932,000 bushels of wheat compared with 43,772,000 bushels the previous month and 44,970,000 bushels in May 1971.

STATISTICS CANADA LIBRARY
BIBLIOTHÈQUE STATISTIQUE CANADA



1010686911