

The wheat review

OCTOBER 1971



STATISTICS CANADA
Agriculture Division
Crops Section

THE WHEAT REVIEW

OCTOBER 1971

Published by Authority of
The Minister of Industry, Trade and Commerce

November 1971
5502-502

Price: 30 cents
\$3.00 a year

Vol. 42—No. 3

Statistics Canada should be credited when republishing all or any part of this document

Information Canada
Ottawa

TABLE OF CONTENTS

	<u>Page</u>
<u>World Wheat Situation</u>	
World Wheat Production Above Previous Year	5
August-September Exports Decline from a Year Ago	5
Wheat Supplies of Four Major Exporters Below Previous Year	5
World Wheat and Rye Production Indicated Higher in 1971	6
<u>Canadian Situation</u>	
Wheat Supplies Down from Previous Year	7
August-September Exports Above a Year Ago	7
Marketings, Disappearance and Visible Supplies	8
September 1971 Exports of Wheat and Flour Total 48.4 Million Bushels	8
Wheat Sale to the People's Republic of China Announced	9
Special Steps Continued to Help Speed Up Grain Shipments	9
New Record Set for Churchill Movement	11
General Quotas 1971-72 C.N.R. and C.P.R. Blocks	12
Special Quotas 1971-72	14
Production of Canada's 1971 Grain Crops	15
Rail Shipments of Wheat to Maritime Ports	16
Lake Shipments of Canadian Grain	17
Farmers' Marketings	17
Visible Supply of Canadian Wheat	18
Grading of Wheat Inspected, August-September 1971 with Comparisons	18
Weekly Visible Supply and Farmers' Marketings (charts)	19
Rail Shipments of Wheat from Thunder Bay	20
Overseas Exports of Canadian Grain by Ports of Loading	20
Shipments Under Feed Grain Assistance Regulations	21
Monthly Exports of Canadian Wheat and Wheat Flour	22
Exports of Canadian Wheat by Destination	23
Customs Exports of Canadian Wheat Flour by Countries of Consignment	26
Canadian Wheat Board Weekly Average Cash Wheat Prices	28
<u>Canadian Flour Milling Situation</u>	
Production and Exports	29
<u>United States Situation</u>	
Supplies Above 1970-71 Level	30
Exports Below Previous Year	30
1971 Wheat Crop at Record High, 1,628 Million Bushels	31
United States Wheat and Flour Exports	31
<u>Australian Situation</u>	34
<u>Argentine Situation</u>	42
<u>Calendar of Wheat Events</u>	45

S Y M B O L S

The following standard symbols are used in
Statistics Canada publications:

- .. figures not available.
- nil or zero.
- p preliminary figures.
- r revised figures.

WORLD WHEAT SITUATION

World Wheat Production
Above Previous Year

On the basis of the first estimate of the Foreign Agricultural Service, United States Department of Agriculture, the 1971 world wheat crop is placed at some 11.2 billion bushels, 6 per cent above the 1970 harvest of 10.6 billion and 19 per cent above the ten-year (1960-69) average of 9.4 billion.

August-September Exports
Decline from a Year Ago

Total exports of wheat and wheat flour in terms of wheat from the four traditional major exporters during August-September 1971 have amounted to 267.0 million bushels, a decrease of 3 per cent from the 276.5 million shipped during the comparable first two months of 1970, but 14 per cent more than the ten-year (1960-69) average shipments for the same two months of some 233.8 million bushels. As indicated in the accompanying table, based on the Canadian crop year, shipments from Canada were at a higher level this year than last while those from Australia, United States and Argentina were lower.

Exports of Wheat and Flour in Terms of Wheat, August - September 1971
with Comparisons

August - September	Canada	Australia	United States	Argentina	Total	France
			million bushels			
1950	31.8	21.5	31.6	11.6	96.5	
1951	44.0	21.2	82.4	12.3	159.9	
1952	62.1	12.6	52.4	—	127.1	
1953	53.2	9.0	41.9	19.2	123.3	
1954	48.8	11.1	33.1	22.5	115.5	
1955	42.5	16.8	42.9	19.6	121.8	
1956	57.3	29.1	76.7	17.2	180.3	
1957	52.0	18.2	68.1	14.8	153.1	
1958	44.4	11.9	69.9	11.0	137.2	
1959	50.1	17.8	68.9	10.7	147.5	
1960	56.6	18.4	98.4	19.5	192.9	
1961	70.8	40.4	106.2	2.3	219.7	
1962	52.8	13.7	102.9	6.2	175.6	
1963	77.0	34.5	114.7	7.2	233.4	
1964	91.2	26.1	123.3	16.5	257.1	
1965	113.2	42.0	135.1	50.6	340.9	
1966	116.7	25.1	157.9	16.4	316.1	
1967	49.6	51.9	139.2 ^r	1.4	242.1 ^r	
1968	65.9	41.0	84.9	10.5	202.3	27.0
1969 ^r	37.6	54.3	74.5 ^r	11.4	177.8 ^r	31.6
1970 ^r	83.2	64.1	115.6	13.6	276.5	20.0
1971 ^p	98.5	53.6	111.7	3.2	267.0	..

Wheat Supplies of
Four Major Exporters
Below Previous Year

Total supplies of wheat remaining in Canada, Australia, United States and Argentina at October 1, 1971 for export and for carryover at the end of their respective crop years, amounted to 2,614.6 million bushels, 6 per cent below the 2,766.9 million at the same time a year ago. This decrease reflected smaller supplies for Canada, Australia and Argentina which more than offset a 9 per cent increase in United States. Supplies on or about October 1, 1971, in millions of bushels, were held as follows, with last year's comparable figures in brackets: Canada, 1,012.7 (1,101.4); Australia, 182.2 (321.4); United States, 1,414.2 (1,301.5); and Argentina, 5.5 (42.7).

World Wheat and Rye Production
Indicated Higher in 1971

According to the September 1971 issue of "World Agricultural Production and Trade" published by the United States Department of Agriculture,

Foreign Agricultural Service, world production of wheat in 1971 totalled 304 million metric tons, up from 288 million tons, according to Foreign Agricultural Service estimates. This is second of record to the 308 million-ton harvest of 1968. World wheat area gained 3 per cent compared with 1970. Larger crops are indicated in all major areas of the world except the Soviet Union.

North American wheat production is estimated at 59.9 million tons, up 23 per cent. The Canadian crop at 14.2 million tons was up 57 per cent, 53 per cent increase in seeded area. Harvested area was, however, held a third below the 5-year average under the diversion payment program. The United States produced a record 44.2 million tons of wheat in 1971, 18 per cent over 1970, and 3 per cent above the 1968 record. Area was up 9 per cent and yield was 8 per cent above last year's high.

The European wheat crop totalled 76.6 million tons, up from 66.5 million. Weather conditions were generally favourable for fall planting and during the growing season. Western Europe produced 49.0 million tons, 12 per cent over 1970 and 9 per cent above the 1965-69 average. The EC harvested a 33.1 million-ton crop, up 3.4 million tons and 9 per cent above the 5-year average. France produced 14.6 million tons, up 1.6 million. Italy and West Germany had record harvests based on record yields. The Spanish crop recovered from a poor 1970 harvest and the United Kingdom produced a record 4.5 million tons.

The East European wheat crop, at 27.6 million tons, was 4.4 million tons higher for the year and 7 per cent above average. All countries in the area showed improvement. Poland and Yugoslavia had record harvests, at 5.0 and 5.3 million tons, respectively. Wheat production in the Soviet Union is expected to be below the high level of 1970.

African wheat production is estimated at 7.8 million tons, up 5 per cent. Improvement in the Moroccan crop was the principal factor. The wheat harvest in Asia is estimated at 71.8 million tons, 4 per cent over 1970 and 22 per cent above the 5-year average. Record crops in India and Turkey account for most of the gain. Drought reduced harvests in Iran and Pakistan.

Larger plantings in Southern Hemisphere countries, particularly in Australia and Argentina, indicate prospects for larger wheat harvests for that region later in the year.

World rye production in 1971 is estimated at 29.7 million tons, 11 per cent over 1970, but 3 per cent below the 1965-69 average. Rye area was up 5 per cent and yield was at a record level. The rye harvest in North America totalled 2.0 million tons, 27 per cent over 1970 and nearly double the 1965-69 average. Canada produced 643,000 tons of rye in 1971, up 13 per cent. The U.S. crop at 1.3 million tons, was 36 per cent larger than in 1970. This was the largest crop since 1942 and yield was at a record level. West European rye production totalled 5.2 million tons, up 13 per cent and just over the 5-year average. West Germany harvested 3.0 million tons, up 13 per cent on improved yield. Eastern Europe had a 10.5 million-ton crop, 36 per cent over 1970. Poland produced 8.1 million tons, just over the 1965-69 average after a poor crop last year. The Soviet rye crop is forecast moderately lower than that of a year ago. Turkish production is estimated 12 per cent higher at 760,000 tons.

CANADIAN SITUATION

Wheat Supplies Down from Previous Year

Reflecting a substantial drop in carryover stocks, which more than offset a sharp rise in production, the 1971-72 wheat supplies in Canada, are estimated at 1,271.2 million bushels, 5 per cent below the next-to-record 1,340.2 million in 1970-71. The 1971 crop of 521.7 million bushels, forecast on the basis of conditions at September 15, represents an increase of 57 per cent over the 331.5 million produced in 1970.

Assuming realization of the September forecast of production and after making an allowance of 160.0 million bushels for anticipated domestic requirements, supplies available for export and for carryover during 1971-72 would amount to 1,111.2 million bushels, 6 per cent below the 1,184.6 million in 1970-71.

August-September Exports Above a Year Ago

Exports of wheat and flour, in terms of wheat equivalent, during August-September 1971 amounted to 98.5 million bushels, 18 per cent above the 83.2 million exported

during the same two months of 1970. This year's exports consisted of 93.1 million bushels of wheat in bulk, 260 thousand of seed and 5.1 million of flour in terms of wheat. During the August-September period last year these figures were 80.0 million of wheat in bulk, 223 thousand of seed and 3.0 million of flour in wheat equivalent. The balance remaining on October 1, 1971 for export and for carryover amounted to 1,012.7 million bushels, 8 per cent below the October 1, 1970 total of 1,101.4 million.

Canadian Wheat Supplies

Item	1970-71 ^R	1971-72 ^P
	million bushels	
Carryover in North America at beginning of crop year (August 1)	1,008.7	749.5
Production	331.5	521.7(1)
Total estimated supplies	1,340.2	1,271.2
Less estimated domestic requirements for crop year	155.6	160.0
Available for export and for carryover	1,184.6	1,111.2
<u>Deduct</u>		
Exports of wheat in bulk, August - September (2)	80.0	93.1
Exports of seed wheat, August - September (3)	0.2	0.3
Total exports of wheat as grain	80.2	93.3
Exports of wheat flour in terms of wheat, August - September (3)	3.0	5.1
Total exports of wheat and wheat flour	83.2	98.5
Balance on October 1 for export and for carryover	1,101.4	1,012.7

(1) Based on September forecast of production.

(2) As reported by the Canadian Grain Commission.

(3) Customs returns, 1970-71 adjusted for time lag.

Marketings, Disappearance
and Visible Supplies

Total primary deliveries of wheat (both east and west) up to October 13 of the current crop year have amounted to 98.8 million bushels compared with 34.8 million marketed during the same period of the previous year. Some 51.7 million bushels of this year's total were delivered during the four weeks September 16 to October 13. During the same period the volume of Canadian wheat entering domestic and export channels amounted to 50.7 million bushels. As a result, the total visible supply of Canadian wheat increased slightly from 281.5 million at September 15 to a level of 282.4 million at October 13, 1971.

The total visible supply of Canadian wheat at October 13 this year represented declines of 22 per cent from the 1970 comparable total of 403.1 million and was 33 per cent below the 465.6 million of two years ago. Primary elevator stocks, amounting to 178.2 million bushels, showed a decrease of 32 per cent from the previous year's figure of 260.2 million and was 37 per cent lower than the 281.3 million of 1969. Wheat stocks at interior terminals at October 13, 1971, totalled 6.6 million bushels, lower than both the 11.0 million a year ago and the 12.2 million of two years ago. The 9.9 million bushels "in transit rail" (western division) were slightly above the 1970 figure of 9.6 million but 38 per cent less than the 16.0 million in this position in 1969. Supplies at the Lakehead, totalling some 23.5 million bushels, registered an increase of 4 per cent over last year's comparable level of 22.5 million but was 53 per cent smaller than the 49.8 million of 1969. Stocks "in transit lake", amounting to 7.7 million bushels were 21 per cent below the previous year's level of 9.8 million but considerably larger than the 1969 figure of 2.7 million. The 36.9 million bushels in Bay, Lake and Upper St. Lawrence ports were above the 34.0 million of a year ago but less than the 38.7 million of two years ago. Supplies in Lower St. Lawrence and Maritime ports at October 13, 1971, at 38.2 million bushels, registered a decrease of 10 per cent from the comparable 1970 figure of 42.5 million, and declined by 12 per cent from the 43.5 million at the same date in 1969. The 6.7 million bushels in West Coast ports (Vancouver-New Westminster, Prince Rupert and Victoria) were sharply below both the 6.8 million at October 14, 1970 and the 15.8 million at the comparable date in 1969.

September 1971 Exports of
Wheat and Flour Total
48.4 Million Bushels

Combined exports of wheat in bulk, seed wheat and wheat flour in terms of grain equivalent during September 1971 amounted to 48.4 million bushels, 3 per cent below the August 1971 total of 50.1 million, but 30 per cent more than the ten-year (1960-69) average exports for the month of September of 37.3 million and 29 per cent above the September 1970 total of 37.6 million.

Exports of wheat in bulk during September 1971 (as reported by the Canadian Grain Commission), amounted to 45.5 million bushels, registering a decrease of 6 per cent from the 48.5 million of August 1971 but increased by 29 per cent over the September 1970 total of 35.2 million. Exports of seed wheat during September 1971, based on Canadian Customs returns, amounted to 234 thousand bushels compared with the September 1970 total (adjusted to remove time lag) of 120 thousand bushels. Customs returns also indicate that the equivalent of 3.6 million bushels of wheat was exported in the form of flour during September 1971, more than double the August 1971 figure of 1.5 million, 57 per cent above the September 1970 total (adjusted for time lag) of 2.3 million and 60 per cent more than the ten-year average of 2.3 million.

Cumulative exports of wheat in bulk during the August-September period of the current crop year amounted to 93.1 million bushels, 16 per cent above the 80.0 million

shipped during the first two months of the 1970-71 crop year and 37 per cent more than the average for the period of 67.8 million. The People's Republic of China was the major market for this grain in the first two months of 1971 with shipments amounting to 22.7 million bushels and accounting for 24 per cent of the total. The U.S.S.R. (Russia) and Japan followed with imports of 17.2 million and 10.5 million this year compared with 4.4 million and 6.0 million, respectively, last year. Other principal markets for Canadian wheat during the first two months of the current crop year with figures for the same period of the preceding crop year in brackets, were as follows, in millions of bushels: India, 7.1 (11.8); Syria, 4.1 (4.1); Britain, 3.9 (9.9); Brazil, 3.9 (4.9); Italy, 3.8 (1.4); Netherlands, 3.4 (0.8); and Belgium and Luxembourg 2.2 (2.0). Cumulative exports of seed wheat during August-September of the current crop year, based on Canadian Customs returns, amounted to 260 thousand bushels compared with last year's comparable total (adjusted to remove time lag) of 223 thousand.

Exports of wheat flour by countries of consignment for September 1971 based on Customs data, are not available at this time.

Wheat Sale to the
People's Republic of
China Announced

On September 14, 1971 the Honourable Otto Lang, Minister Responsible for the Canadian Wheat Board stated that the sale of 500,000 long tons of wheat by the Canadian Wheat Board to the People's Republic of China was announced in

the House of Commons.

The contract, which allows for a tolerance of five per cent more or less of the stated quantity, involves a maximum of 19.6 million bushels. This is in addition to the contract for 98 million bushels negotiated in Peking last October. When delivery is completed exports of Canadian wheat to China will total 117.6 million bushels in the present calendar year, Mr. Lang said.

In tabling the Wheat Board Press release which announced the sale, Mr. Lang said credit terms were made possible under a guarantee to the Canadian Wheat Board by the Federal Government.

Grades to be shipped under the new contract are No. 2, No. 3 and No. 4 Northern Wheat. All shipments will be from west coast ports, beginning within the next few weeks and continuing for a three-month period.

Terms of the sale are the same as in previous contracts with the People's Republic of China. These involve payment of 25 per cent cash when each vessel is loaded and the balance to be paid within 18 months with interest.

Special Steps Continued to
Help Speed Up Grain Shipments

A press release issued by the Grain Transportation Committee under date of October 8, 1971 stated that special measures instituted last spring to speed up grain shipments will be continued until the close up of navigation to help Canada's grain handling and transportation industry to carry out the biggest fall shipping program ever established in this country, the Grain Transportation Committee said.

From 475 to 500 million bushels of grain will be shipped from country elevators during the five-month period from August 1 to December 31, 1971. This is an increase of over 100 million bushels over actual country elevator shipments during the same period last year.

The unprecedented level of country elevator shipments is the result of the large forward sales of wheat and barley that have been made by the Canadian Wheat Board. To ensure that country elevator stocks of the required grain are adequate to maintain shipments at the maximum levels, grain producers are urged to take full advantage of their delivery opportunities.

The Grain Transportation Committee, made up of senior officers from the grain handling companies, the two major railways, the Canadian Grain Commission and the Canadian Wheat Board, urged that every effort be made to ensure that the special steps that have been taken to speed up grain shipments be carried out effectively. These steps include:

A requirement that country elevator managers load railway cars on Saturday when properly notified under the policy that has been established. This provision was introduced to maintain a more even flow of rail shipments and overcome the irregular arrival of railway cars at terminals that occur when terminals unload cars on the basis of a six-day week, when railways operate on a seven-day week and country elevators load cars on a five-day basis. Individual elevator managers, however, will not be asked to be available for loading on Saturdays more than three times between September 1 and the close of Lakehead navigation.

A car-pooling system in port areas under which rail cars carrying wheat and barley are distributed among terminal elevators in accordance with the maximum rated through-put capacity of each of the terminals. It has brought about a significant increase in the quantity of grain handled at Vancouver and Thunder Bay.

Members of the Committee emphasized that these measures are necessary to enable the grain handling and transportation system to move the record quantities of grain needed to meet all sales commitments this winter and early next spring.

"The ability to move more grain to overseas and domestic markets than ever before automatically results in expanded delivery opportunities for producers," the Committee said in its statement. "The record in grain exports last crop year, totalling approximately 700 million bushels, could not have been achieved without the introduction of such special measures as Saturday loading. The benefits to western producers and the entire economy of Western Canada is readily apparent."

More than 310 million bushels of grain will be moved to Thunder Bay terminals between August 1 and December 18, 1971 and about 140 million bushels will be shipped to West Coast ports during the five months ending December 31, 1971. Country shipments to Churchill will reach approximately 25 million bushels by the end of the present shipping season and shipments to western mills are expected to reach approximately 22 million bushels during the August-December period.

The shipping program sets specific terminal unload rates for the five-month period. The program calls for unloads of 8,500 cars per week at Thunder Bay and 3,500 cars per week at West Coast ports.

New Record Set For
Churchill Movement

On October 20, 1971 the Canadian Wheat Board announced that a new export record for the Port of Churchill was set October 19, 1971 when the 17,000-ton Hallendrecht cleared with about 600,000 bushels of wheat in her holds.

Bound for Rotterdam, the Hallendrecht was the last vessel to load export grain at Churchill this year and brought total grain clearances to a new high of approximately 25.5 million bushels for the season. The previous record of 24.7 million bushels was set in 1965.

A total of 36 vessels were involved in the Churchill movement this year. Starting with the Tamworth which cleared the port August 7, twelve of these vessels were bound for the United Kingdom, 11 to India, five to Belgium, four to Holland, two to Italy and one each to Norway and Iraq. A coastal vessel, due at Churchill today, will pick up the screenings which accumulated during this year's operations.

A total of 4.9 million bushels of barley were cleared through Churchill this year. This was the first time a second grain was involved in the Churchill movement and as a result of the experiment, it is the intention of the Wheat Board to move substantial quantities of barley through the northern port next year.

"With the short season that we have at the port, the Churchill movement always required a lot of careful planning and close co-ordination between the country elevator companies, Canadian National Railways, the Canadian Grain Commission and government terminals," said C.A. Gusberti, the Wheat Board's General Director of Sales. "Yet, despite the added problem of handling barley through the terminal, we had no difficulty in meeting our sales commitments at the Port."

More than 12,200 carlots of grain were required for the Churchill movement this year. Wheat stocks in the terminal will reach just over one million bushels when the last grain cars arrive at Churchill in a few days. The balance needed to fill the terminal will be moved early next summer when the exact kinds and quantities of grain needed for shipment at the start of the 1972 season will be known.

"It is essential to ensure that the grain in the terminal at the start of a new season is the kind and grade of grain that is needed when the first vessels arrive," said Mr. Gusberti. "This is particularly important now that Canada's wheat grades are being sold on a protein basis. Unless we gear rail shipments to Churchill to the arrival of vessels, it would be virtually impossible to maintain shipments through this port at a maximum level."

General Quotas 1971-72 as at Tuesday, Oct. 12, 1971 Canadian National Railway Blocks

No.	Name	Wheat (All Others)				Durum		Oats		Barley		
		A(1)	B	C	D	A	B	A	B	A	B	C
bushels per quota acre												
01	Winnipeg N.	2	2			5				5	5	
03	Winnipeg S.	2	2			5				5	5	
05	Winnipeg W.	2	2			5				5	5	
07	Brandon N.	2	2			5				5	5	
09	Brandon W.	2	2			5				5	5	
11	Melville	2	2			5				5	5	
13	Dauphin	2	—			5				5	5	
15	Kamsack	2	—			5				5	5	
17	Saskatoon M. ...	2	2			5				5	5	
19	Saskatoon S. ...	2	2			5				5	5	
21	Saskatoon W. ...	2	2			5				5	5	
23	Pr. Albert E. ..	2	2			5				5	5	
25	Pr. Albert S. ..	2	2			5				5	5	
27	Pr. Albert M. ..	2	—			5				5	5	
29	Pr. Albert W. ..	2	2			5				5	5	
31	Regina	2	2			5				5	5	
33	Regina S.	2	2			5				5	5	
35	Regina W.	2	2			5				5	5	
37	Biggar N.	2	—			5				5	—	
39	Biggar W.	2	—			5				5	—	
41	Edmonton N.	2	—			5				5	—	
43	Edmonton S.	2	—			5				5	—	
45	Edmonton W.	2	—			5				5	—	
47	Hanna S.	2	—			5				5	—	
49	Hanna W.	2	—			5				5	—	
90	N.A.R. West	2	—			5				5	—	
98	G.S.L.	2	—			5				5	—	

- (1) The "A" quota for wheat approved at various dates since August 1, 1971 for delivery of wheat grading No. 3 Manitoba Northern and Lower is now to include but not to exceed the two (2) bushels per assigned acre to wheat, No. 1 C.W. Red Spring Wheat.

General Quotas 1971-72 as at Tuesday, Oct. 12, 1971 Canadian Pacific Railway Blocks

Name		Wheat (All Others)				Durum		Oats		Barley		
		A(1)	B	C	D	A	B	A	B	A	B	C
No.		bushels per quota acre										
61	Keewatin	2	2			5				5	5	
62	La Riviere ...	2	—			5				5	5	
63	Carberry	2	2			5				5	5	
64	Brandon	2	2			5				5	5	
71	Weyburn	2	—			5				5	5	
72	Pasqua	2	—			5				5	5	
73	Bulyea	2	2			5				5	5	
74	Bredenbury ...	2	—			5				5	5	
75	Saskatoon	2	—			5				5	5	
76	Wilkie	2	—			5				5	5	
77	Assiniboia ...	2	—			5				5	5	
78	Swift Current.	2	—			5				5	5	
79	Outlook	2	—			5				5	5	
81	Medicine Hat .	2	—			5				5	—	
82	Brooks	2	—			5				5	—	
83	Lethbridge ...	2	—			5				5	—	
84	Vulcan	2	—			5				5	—	
85	Calgary	2	—			5				5	—	
86	Red Deer	2	—			5				5	—	
87	Edmonton	2	—			5				5	—	
95	N.A.R. East ..	2	—			5				5	—	
	B.C. Stations.	2	—			5				5	—	

- (1) The "A" quota for wheat approved at various dates since August 1, 1971 for delivery of wheat grading No. 3 Manitoba Northern and Lower is now to include but not to exceed the two (2) bushels per assigned acre to wheat, No. 1 C.W. Red Spring Wheat.

Special Quotas 1971-72 as at Tuesday, October 12, 1971

Hercules durum	5 bushels per assigned acre	All delivery points
Soft White Spring	5 bushels per assigned acre	All delivery points
Alberta Red Winter	2 bushels per assigned acre	All delivery points
Selected oats	50 bushels per assigned acre	All delivery points
Selected barley	50 bushels per assigned acre	All delivery points
Rye	5 bushels per assigned acre	All delivery points
Rye for distilleries	25 bushels per assigned acre	
Flaxseed	3 bushels per assigned acre	All delivery points
Flaxseed for processors	15 bushels per assigned acre	
Rapeseed	5 bushels per assigned acre	All delivery points
Rapeseed (low erucic acid)	10 bushels per assigned acre	All delivery points
Rapeseed for crushers	20 bushels per assigned acre	

Production of Canada's
1971 Grain Crops

On the basis of yields indicated at September 15, production of the six major grains as well as corn, soybeans and mixed grains this year, with the 1970 totals and the ten-year (1960-69) averages, respectively, in brackets, in millions of bushels, is as follows: all wheat, 521.7 (331.5, 609.5); oats, 371.4 (367.8, 378.1); barley, 656.1 (415.7, 233.4); all rye, 25.3 (22.4, 13.2); flaxseed, 26.8 (48.9, 20.2); rapeseed, 100.6 (72.2, 17.6); corn, 101.0 (100.9, 53.2); soybeans, 9.4 (10.4, 7.2); and mixed grains, 102.2 (98.6, 74.6).

Canada's 1971 wheat crop now placed at 521.7 million bushels is 57 per cent above last year's 331.5 million bushels but 14 per cent below the ten-year (1960-69) average of 609.5 million. Production is higher than the previous year due to a 54 per cent increase in seeded acreage and a minor increase in the average yield. The average yield at 27.1 bushels per acre is 2 per cent above last year's average yield of 26.6 bushels per acre and 23 per cent above the ten-year average of 22.0 bushels per acre. This year's all Canada crop of spring wheat, including durum, is forecast at 507.8 million bushels compared with the 1970 crop of 315.9 million and the ten-year average of 593.3 million bushels. Ontario's winter wheat crop is estimated at 13.9 million bushels a decrease of 11 per cent from last year's crop of 15.6 million.

September Forecast of the 1971 Production of Principal Grain Crops
Canada and Prairie Provinces Compared with Latest Estimates for 1970

Province and crop	Area		Yield per acre		Production	
	1970	1971	1970	1971(1)	1970	1971(1)
<u>CANADA</u>	acres		bushels			
Winter wheat	355,000	339,000	43.9	41.0	15,584,000	13,899,000
Spring wheat(2)	12,129,000	18,889,000	26.0	26.9	315,935,000	507,796,000
All wheat	12,484,000	19,228,000	26.6	27.1	331,519,000	521,695,000
Oats for grain	7,149,000	7,005,000	51.5	53.0	367,850,000	371,359,000
Barley	10,042,900	15,206,500	41.4	43.1	415,704,000	656,088,000
Fall rye	875,700	972,000	22.6	23.7	19,800,000	23,037,000
Spring rye	139,000	124,000	18.9	18.4	2,627,000	2,282,000
All rye	1,014,700	1,096,000	22.1	23.1	22,427,000 ^r	25,319,000
Corn for grain	1,196,900	1,335,000	84.3 ^r	75.7	100,925,000 ^r	101,082,000
Flaxseed	3,368,300	2,010,500	14.5	13.3	48,932,000	26,768,000
Rapeseed	4,050,000	5,475,000	17.8	18.4	72,200,000	100,600,000
Soybeans	335,000	360,000	31.0	26.0	10,385,000	9,360,000
Mixed grains	1,939,800	1,988,600	50.8	51.4	98,573,000	102,158,000
<u>PRAIRIE PROVINCES</u>						
Spring wheat(2)	12,000,000	18,700,000	26.0	26.8	312,500,000	502,000,000
Oats for grain	5,260,000	5,177,000	53.2	53.9	280,000,000	279,000,000
Barley	9,500,000	14,600,000	41.2	42.9	391,000,000	627,000,000
Rye	944,000	1,029,000	21.6	22.8	20,427,000	23,482,000
Flaxseed	3,350,000	2,000,000	14.5	13.3	48,700,000	26,600,000
Rapeseed	4,050,000	5,475,000	17.8	18.4	72,200,000	100,600,000

(1) As indicated on basis of conditions on or about September 15.

(2) Includes durum wheat in the Prairie Provinces where Canada's commercial production of this crop is concentrated and also relatively small quantities of winter wheat in provinces other than Ontario.

In the Prairie Provinces the 1971 wheat crop is now placed at 502.0 million bushels, some 189.5 million bushels or 61 per cent above the 1970 crop. The current crop is sharply above that of 1970 in Manitoba where production is forecast at 70.0 million bushels compared with 30.5 million last year. Production in Saskatchewan which accounts for about 66 per cent of this year's all Canada wheat crop, is estimated at 342.0 million bushels, some 63 per cent more than last year's outturn of 210.0 million. The Alberta crop, forecast at 90.0 million bushels, is up 25 per cent from last year's production of 72.0 million. The indicated average yield per seeded acre in the Prairie Provinces, on the basis of conditions at mid-September, is 26.8 bushels, with Manitoba averaging 29.2 Saskatchewan 26.7 and Alberta 25.7 bushels. Current estimates of production in the Prairie Provinces include relatively small quantities of winter wheat principally in Alberta, and an estimated 60.5 million bushels of durum wheat.

The 1971 acreage of durum wheat in the Prairie Provinces is 20 per cent less than that seeded in 1970, and the average yield estimated at 24.6 bushels per acre is 7 per cent below the 1970 level. Mid-September indications are for a crop of 60.5 million bushels compared with the 1970 crop of 80.9 million. Estimated production by province, in millions of bushels, is as follows: Manitoba, 4.0; Saskatchewan, 49.0; and Alberta, 7.5.

September Forecast of the 1971 Production of Durum Wheat(1)
in the Prairie Provinces Compared with 1970

Province	Area		Yield per acre		Production	
	1970	1971	1970	1971(1)	1970	1971(1)
	acres		bushels			
Manitoba	115,000	150,000	20.9	26.7	2,400,000	4,000,000
Saskatchewan	2,500,000	2,000,000	26.4	24.5	66,000,000	49,000,000
Alberta	450,000	310,000	27.8	24.2	12,500,000	7,500,000
Totals	3,065,000	2,460,000	26.4	24.6	80,900,000	60,500,000

(1) Acreage and production included with spring wheat.

(2) As indicated on the basis of conditions on or about September 15.

Rail Shipments of Wheat to Maritime Ports Rail shipments of wheat to Maritime ports from Bay, Lake and Upper St. Lawrence ports during August-September 1971 totalled 323,000 bushels compared with 1,409,000 bushels in 1970.

Rail Shipments of Wheat to Maritime Ports from Bay, Lake and Upper St. Lawrence Ports

Origin of shipments	August 1 - September 30, 1970	August 1 - September 30, 1971
	bushels	
Port McNicoll	381,492	112,500
Midland, Tiffin	159,100	210,412
Owen Sound	350,415	-
Goderich	517,816	-
Totals	1,408,823	322,912

Lake Shipments of Canadian Grain Total shipments of the six major grains out of Lakehead terminals from the opening of navigation to October 13 this year amounted to 385.0 million bushels, 17 per cent above the 329.0 million shipped during the comparable period of 1970 and in sharp contrast to the 10-year (1960-69) average for the period 233.0 million. In 1971 the season of navigation opened on April 10 while the 1970 season opened on April 8. Shipments of wheat, at 226.3 million bushels accounted for 59 per cent of the total six grains.

Lake Shipments of Canadian Grain from the Opening of Navigation to October 13, 1971 and to Approximately the Same Date, 1960 to 1970

Year	Wheat	Oats	Barley	Rye	Flaxseed	Rapeseed	Total
thousand bushels							
1960	138,946	16,405	34,597	3,242	5,688	—	198,878
1961	168,536	17,370	31,381	1,984	4,934	—	224,205
1962	100,500	12,907	17,838	3,589	4,213	—	139,047
1963	148,845	32,126	22,805	1,844	4,604	—	210,224
1964	284,022	25,837	29,613	4,264	6,097	—	349,833
1965	206,076	35,955	29,547	3,345	7,510	559	282,992
1966	284,232	20,270	28,091	5,818	9,432	653	348,496
1967	167,830	25,390	50,002	4,686	6,658	862	255,427
1968	126,198	12,472	17,703	1,637	3,411	326	161,747
1969	109,363	11,907	29,870	1,524	5,771	1,006	159,441
1970	203,232	15,772	95,136	2,268	8,884	3,676	328,969
1971	226,332	20,066	110,997	3,994	11,953	11,618	384,960

Farmers' Marketings Deliveries of wheat from farms in the Prairie Provinces up to October 13 of the current crop year amounted to 109.7 million bushels, more than double the comparable 1970 total of 50.8 million and 63 per cent higher than the ten-year (1960-69) average for the period of 67.2 million bushels.

Farmers' Marketings (1) of Wheat in the Prairie Provinces 1971-72

Week ending	Manitoba	Saskatchewan	Alberta	Total	Last year
bushels					
August 11, 1971 ...	19,280	280,376	2,868	302,524	64,029
18	45,222	1,364,384	7,688	1,417,294	45,524
25	1,140,677	3,962,606	917,899	6,021,182	97,747
September 1	1,054,714	7,856,529	2,314,028	11,225,271	6,693,462
8	1,237,858	10,812,860	2,156,484	14,207,202	7,017,382
15	1,372,703	14,911,298	4,318,710	20,602,711	8,178,772
22	2,698,575	10,590,451	2,984,025	16,273,051	10,982,349
29	1,648,043	6,921,017	2,356,118	10,925,178	7,094,969
October 6	2,099,756	11,014,624	1,582,732	14,697,112	6,522,669
13	2,052,588	9,821,569	2,141,418	14,015,575	4,105,321
Totals	13,369,416	77,535,714	18,781,970	109,687,100	50,802,224
Average similar period: 1960-69	9,215,905	42,584,880	15,364,171	67,164,957	

(1) Includes receipts at primary, process and interior terminal elevators.

Visible Supply of Canadian Wheat, October 13, 1971
Compared with Approximately the Same Date, 1969 and 1970

Position	1969	1970	1971
	thousand bushels		
Primary elevators — Manitoba	35,849	29,183	18,283
Saskatchewan	163,385	157,963	109,156
Alberta	82,107	73,014	50,734
Sub-totals	281,341	260,160	178,173
Process elevators	4,244	3,963	3,938
Interior terminals	12,219	11,041	6,611
Vancouver-New Westminster	13,661	5,311	5,271
Victoria	899	540	290
Prince Rupert	1,248	990	1,092
Churchill	1,135	1,746	1,100
Thunder Bay	49,848	22,549	23,451
In transit rail (western division)	16,050	9,638	9,946
Bay, Lake and Upper St. Lawrence ports	38,702	34,043	36,928
Lower St. Lawrence and Maritime ports	43,487	42,459	38,245
In transit lake	2,726	9,825	7,729
In transit rail (eastern division)	13	819	358
Totals	465,573	403,084	313,132

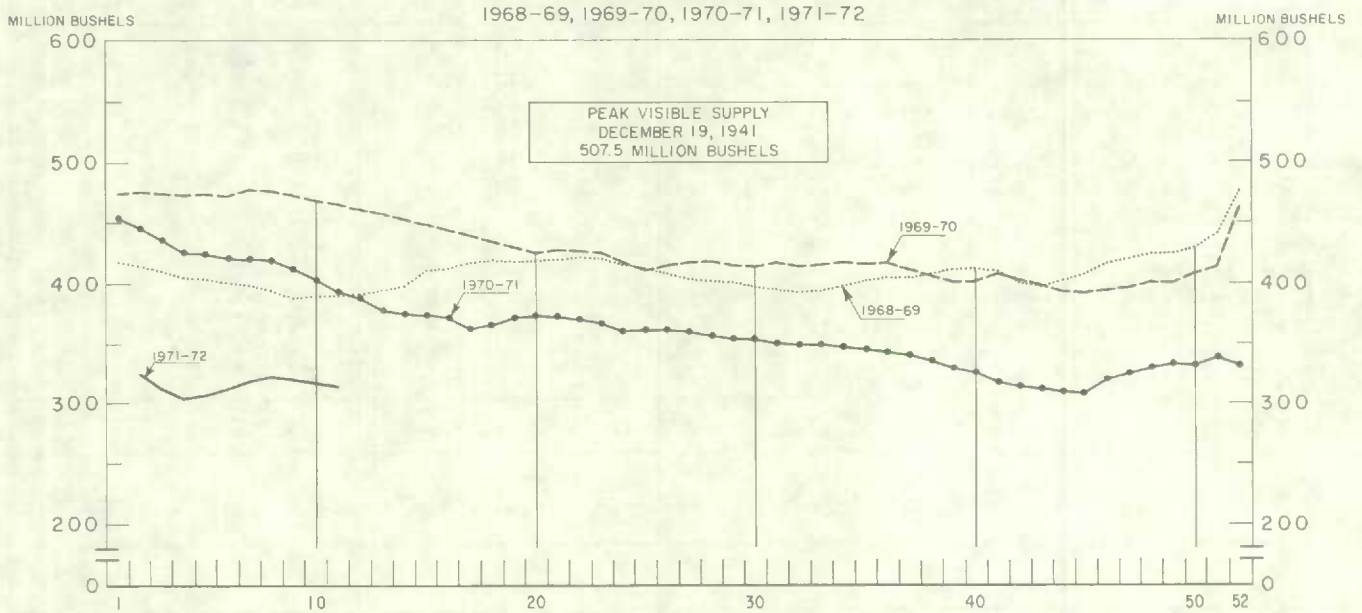
Grading of Wheat Inspected, August-September 1971 with Comparisons

Grade	Crop year		August-September			
	Average		1970		1971	
	1965-66 1969-70	1970-71				
	per cent	per cent	cars	per cent	cars	per cent
1 C.W. Red Spring	—	—	—	—	43,042	59.8
No. 1 Man. Northern	10.9	6.5	1,765	3.6	—	—
No. 2 Man. Northern	32.7	37.2	14,472	29.3	—	—
No. 3 Man. Northern	19.3	19.8	9,538	19.3	9,319	12.9
No. 4 Man. Northern	8.6	12.0	6,950	14.1	7,177	10.0
No. 5 Wheat	3.3	4.5	4,102	8.3	1,177	1.6
No. 6 Wheat	0.4	0.7	792	1.6	109	0.2
Feed Wheat	0.1	0.1	89	0.2	9	(1)
Others Red Spring	18.2	6.2	7,356	14.9	2,845	4.0
C.W. Garnet	0.1	(1)	27	0.1	3	(1)
C.W. White Spring	0.1	0.3	100	0.2	134	0.2
C.W. Mixed Wheat	0.1	0.1	63	0.1	60	0.1
Alberta Winter	0.8	0.8	602	1.2	355	0.5
Nos. 1-6 C.W. Amber Durum	4.6	11.4	3,350	6.8	7,410	10.3
Other C.W. Amber Durum	0.9	0.5	175	0.3	363	0.5
Totals	100.0	100.0	49,381	100.0	72,003	100.0

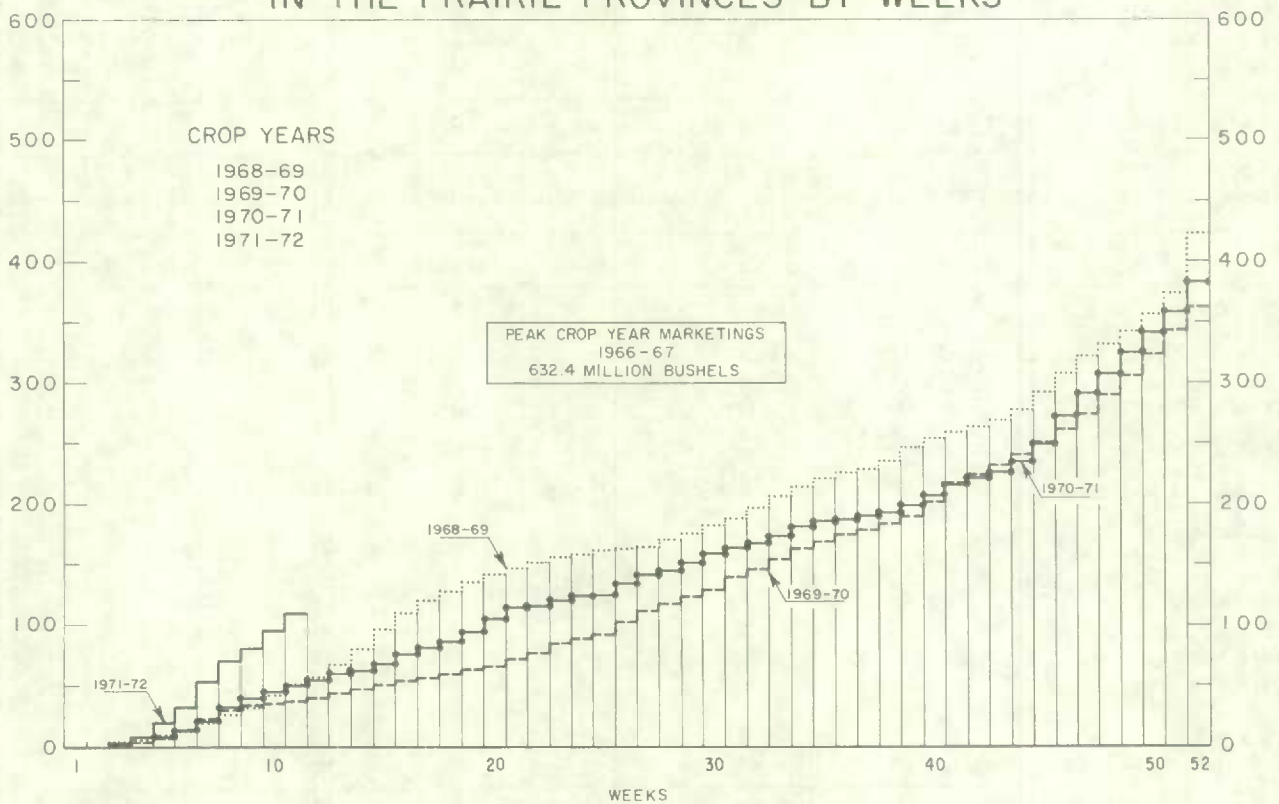
Gross bushels (approx.) 98,534,000

(1) Less than .05 per cent.

WEEKLY VISIBLE SUPPLY OF CANADIAN WHEAT



CUMULATIVE RECORD OF WHEAT MARKETINGS IN THE PRAIRIE PROVINCES BY WEEKS



(Data in both charts for crop years beginning August 1)

Rail Shipments of Wheat from Thunder Bay 1968-69 — 1971-72

Month	1968-69	1969-70	1970-71	1971-72
		bushels		
August	—	132,953	169,566	181,419
September	23,084	134,054	244,549	195,721
October	57,458	149,076	176,450	
November	101,966	126,319	178,523	
December	44,136	179,384	330,120	
January	131,034	272,300	525,019	
February	99,776	403,541	552,926	
March	153,067	298,335	418,387	
April	79,899	260,918	407,206	
May	108,339	311,200	187,347	
June	120,532	221,999	156,548	
July	137,404	293,745	200,415	
Totals	1,056,695	2,783,824	3,547,056	

Distribution of Rail Shipments of Wheat from Thunder Bay, September 1971

Grade	Prince Edward Island	Nova Scotia	New Brunswick	Quebec	Ontario
			bushels		
1 C.W. Red Spring ..	—	—	—	—	—
Northern grades	—	—	—	—	—
Feed grades	3,333	33,833	94,667	36,821	5,500
Durum	—	—	—	17,567	4,000
Totals	3,333	33,833	94,667	54,388	9,500

Overseas Exports of Canadian Grain by Ports of Loading, August 1- October 13, 1971 with Comparisons

Port	Wheat(1)	Durum wheat(1)	Oats(1)	Barley	Rye	Flaxseed	Rapeseed
			thousand bushels				
<u>Pacific Seaboard</u>							
Van.-New West	39,656	1,704	—	7,563	1,366	1,121	3,444
Victoria	1,582	—	—	—	—	—	—
Prince Rupert	2,934	—	—	—	—	—	—
<u>Churchill</u>	18,658	—	—	4,918	—	—	—
<u>Thunder Bay Direct</u>	666	624	2,714	757	1,238	3,077	2,376
<u>St. Lawrence</u>							
Montreal	6,865	11,203	—	4,254	—	—	—
Sorel	8,611	—	—	—	—	—	—
Trois-Rivières	2,404	—	—	—	92	—	—
Quebec	4,629	326	—	3,098	—	12	22
Baie Comeau	10,182	1,083	—	9,776	152	566	—
Port Cartier	8,260	613	—	11,656	—	—	—
<u>Maritime</u>							
Halifax	289	—	—	—	—	—	—
Totals	104,738	15,552	2,714	42,021	2,848	4,777	5,842
August 1-October 14, 1970	93,179	7,489	1,584	36,024	730	2,214	2,401

(1) Excluding seed.

Shipments Under
Feed Grain
Assistance Regulations

Freight assistance shipments of wheat from the Prairie Provinces to Eastern Canada and British Columbia during August-September 1971 amounted to 4,492,000 bushels, sharply below the 6,034,000 shipped during the same two months of 1970. The bulk of the shipments during the current month under review went to destinations in Quebec and Ontario with these two provinces accounting for a combined 73 per cent of the total. During August-September last year Quebec and Ontario accounted for 74 per cent of the total.

Provincial Distribution of Wheat Shipments under the Feed Grain Assistance Regulations
August - September 1971 and 1970

Month	Western wheat								Eastern wheat
	Nfld.	P.E.I.	N.S.	N.B.	Que.	Ont.	B.C.	Total	Que.
thousand bushels									
August 1971 ...	49	7	218	90	1,489	359	262	2,473	-
September	65	11	176	123	1,161	250	234	2,019	-
Totals	114	17	393	213	2,651	609	495	4,492	-
Same months									
1970	157	34	454	221	2,321	2,139	708	6,034	6

Millfeed shipments under the Feed Grain Assistance Regulations indicate shipments of 69,054 tons during August-September 1971. Shipments for the two-month total of the previous crop year amounted to 75,641 tons. The greater portion of the millfeed shipments during the period under review went to destinations in Quebec and Ontario.

Provincial Distribution of Millfeed Shipments
under the Feed Grain Assistance Regulations
August - September 1971 and 1970

Province	August - September	
	1970	1971
		tons
Newfoundland	22	1,148
Prince Edward Island	580	514
Nova Scotia	1,893	1,229
New Brunswick	2,027	1,771
Quebec	36,250	36,280
Ontario	30,133	23,797
British Columbia	4,736	4,315
Totals	75,641	69,054

Monthly Exports of Canadian Wheat and Wheat Flour

Year and month	Wheat in bulk(1)	Seed wheat(2)	Total wheat	Wheat flour(2,3)	Total wheat and wheat flour(3)
thousand bushels					
<u>1969-70</u>					
August	13,012	60	13,071	2,306	15,378
September	20,949	74	21,023	1,219	22,242
October	18,838	2	18,840	2,231	21,071
November	22,835	116	22,951	1,863	24,814
December	22,294	52	22,346	2,434	24,779
January	26,351	87	26,438	2,524	28,962
February	18,597	290	18,887	2,077	20,964
March	21,958	499	22,457	2,600	25,057
April	32,913	334	33,247	2,440	35,687
May	36,047	157	36,204	2,443	38,648
June	39,898	103	40,001	3,103	43,104
July	44,010	59	44,070	1,725	45,794
Totals	317,703	1,832	319,535	26,963	346,498
<u>1970-71(4)</u>					
August	44,765	103	44,868	834	45,702
September	35,194	120	35,314	1,864	37,179
October	44,412	84	44,496	3,463	47,959
November	33,307	72	33,378	2,449	35,827
December	18,016	43	18,059	1,720	19,779
January	18,882	1	18,883	2,425	21,308
February	23,334	41	23,375	2,562	25,937
March	20,293	106	20,400	2,057	22,457
April	20,951	145	21,097	1,576	22,673
May	47,631	83	47,714	2,125	49,839
June	47,904	71	47,975	2,026	50,001
July	54,750	76	54,826	1,575	56,401
Totals	409,440	946	410,385	24,676	435,062
<u>1971-72(4)</u>					
August	48,530	26	48,557	1,526	50,083
September	44,520	234	44,754	3,621	48,376
Totals	93,051	260	93,311	5,148	98,459

(1) Export clearances including shipments to the United States compiled by the Economics and Statistics Division of the Canadian Grain Commission. (2) Compiled from Canadian Customs returns, 1969-70 adjusted to remove effect of time lag in reporting. (3) In terms of wheat equivalent. Wheat flour conversion rate: 2.3 bushels per cwt. (4) Subject to revision.

Exports of Canadian Wheat (1) by Destination, September 1971 and 1970^r

Destination	Wheat (except durum)	Durum wheat	All wheat	
			September 1971	September 1970 ^r
bushels				
<u>Western Europe</u>				
EEC:				
Belgium and Luxembourg	1,392,187	—	1,392,187	1,312,634
France	—	—	—	184,497
Germany, West	442,791	186,657	629,458	1,236,626
Italy	175,149	653,520	828,669	1,442,667
Netherlands	331,600	1,072,792	1,404,392	402,199
Sub-totals	2,341,727	1,912,979	4,254,706	4,578,623
Other Western Europe:				
Britain	3,049,040	—	3,049,040	4,843,071
Malta and Gozo	238,000	—	238,000	—
Norway	—	—	—	711,200
Sweden	18,368	—	18,368	9,382
Switzerland	183,717	—	183,717	409,920
Sub-totals	3,489,125	—	3,489,125	5,973,573
Totals	5,830,852	1,912,979	7,743,831	10,552,196
<u>Eastern Europe</u>				
U.S.S.R. (Russia)	6,631,341	647,920	7,279,261	1,058,133
<u>Africa</u>				
Algeria	—	1,198,044	1,198,044	828,501
Ghana	—	—	—	434,121
Morocco	420,000	120,000	540,000	—
U.A.R.	—	—	—	3,381,788
Totals	420,000	1,318,044	1,738,044	4,644,410
<u>Asia</u>				
Hong Kong	59,547	—	59,547	—
India	2,594,928	—	2,594,928	2,815,712
Japan	6,948,353	151,578	7,099,931	2,682,773
Pakistan	1,709,867	—	1,709,867	27,067
People's Republic of China	8,913,034	623,467	9,536,501	5,234,228
Philippines	1,085,467	—	1,085,467	—
Singapore	—	—	—	37,893
Syria	1,852,648	—	1,852,648	1,532,197
Taiwan	530,133	—	530,133	524,533
Totals	23,693,977	775,045	24,469,022	12,854,403
<u>Western Hemisphere</u>				
Brazil	1,356,346	—	1,356,346	3,357,454
Cuba	492,260	101,990	594,250	985,899
Haiti	287,999	—	287,999	—
Jamaica	290,024	—	290,024	278,880
Peru	761,600	—	761,600	1,356,320
Venezuela	—	—	—	106,624
Totals	3,188,229	101,990	3,290,219	6,085,177
Sub-totals, all countries .	39,764,399	4,755,978	44,520,377	35,194,319
Seed wheat(2)			233,933	120,238
Totals, all countries ...	39,764,399	4,755,978	44,754,310	35,314,557

(1) Overseas clearances as reported by the Economics and Statistics Division of the Canadian Grain Commission, for all countries except the United States. Excluding seed wheat.

(2) Compiled from Canadian Customs returns, 1970 adjusted for time lag, 1971 preliminary.

Cumulative Exports of Canadian Wheat(1) by Destination

Destination	August — September 1971			Total same period last year ^r
	Wheat (except durum)	Durum wheat	Total wheat	
bushels				
<u>Western Europe</u>				
EEC:				
Belgium and Luxembourg	2,162,964 ^r	—	2,162,964 ^r	2,008,573
France	166,088 ^r	—	166,088 ^r	225,695
Germany, West	516,577 ^r	323,307	839,884 ^r	3,459,012
Italy	1,477,416	2,340,553	3,817,969	1,442,667
Netherlands	1,715,097 ^r	1,733,816	3,448,913 ^r	750,205
Sub-totals	6,038,142 ^r	4,397,676	10,435,818 ^r	7,886,152
Other Western Europe:				
Austria	—	—	—	94,627
Britain	3,922,203	—	3,922,203	9,909,488
Denmark	—	—	—	22,047
Ireland	—	—	—	287,467
Malta and Gozo	238,000	—	238,000	—
Norway	780,267	—	780,267	2,147,400
Sweden	18,368	—	18,368	22,047
Switzerland	404,581 ^r	—	404,581 ^r	1,150,726
Sub-totals	5,363,419 ^r	—	5,363,419 ^r	13,633,802
Totals	11,401,561	4,397,676	15,799,237	21,519,954
<u>Eastern Europe</u>				
U.S.S.R. (Russia)	15,889,208	1,292,032	17,181,240	4,362,808
<u>Africa</u>				
Algeria	—	1,340,796	1,340,796	828,501
Ghana	634,849	—	634,849	777,266
Morocco	420,000	120,000	540,000	—
South Africa	—	234,746	234,746	—
Sudan	—	—	—	2,279
U.A.R.	—	—	—	7,454,755
Totals	1,054,849	1,695,542	2,750,391	9,062,801
<u>Asia</u>				
Hong Kong	187,675	—	187,675	125,627
India	7,126,560	—	7,126,550	11,784,644

See footnotes at end of table.

FARMERS' MARKETINGS OF WHEAT, PRAIRIE PROVINCES

(SPECIFIED PERIODS)

MILLION BUSHELS
800 —

MILLION BUSHELS
800 —

700 —

700 —

600 —

600 —

500 —

500 —

400 —

400 —

300 —

300 —

200 —

200 —

100 —

100 —

0

0

30 year average

10 year average

1966-67

1967-68

1968-69

1969-70

1970-71

1971-72

1940-41
1969-70

1960-61
1969-70

PEAK MARKETINGS
1966-67 CROP YEAR
632.4 MILLION BUSHELS

JULY

JUNE

MAY

APR

MAR

FEB

JAN

DEC

NOV

OCT

SEPT

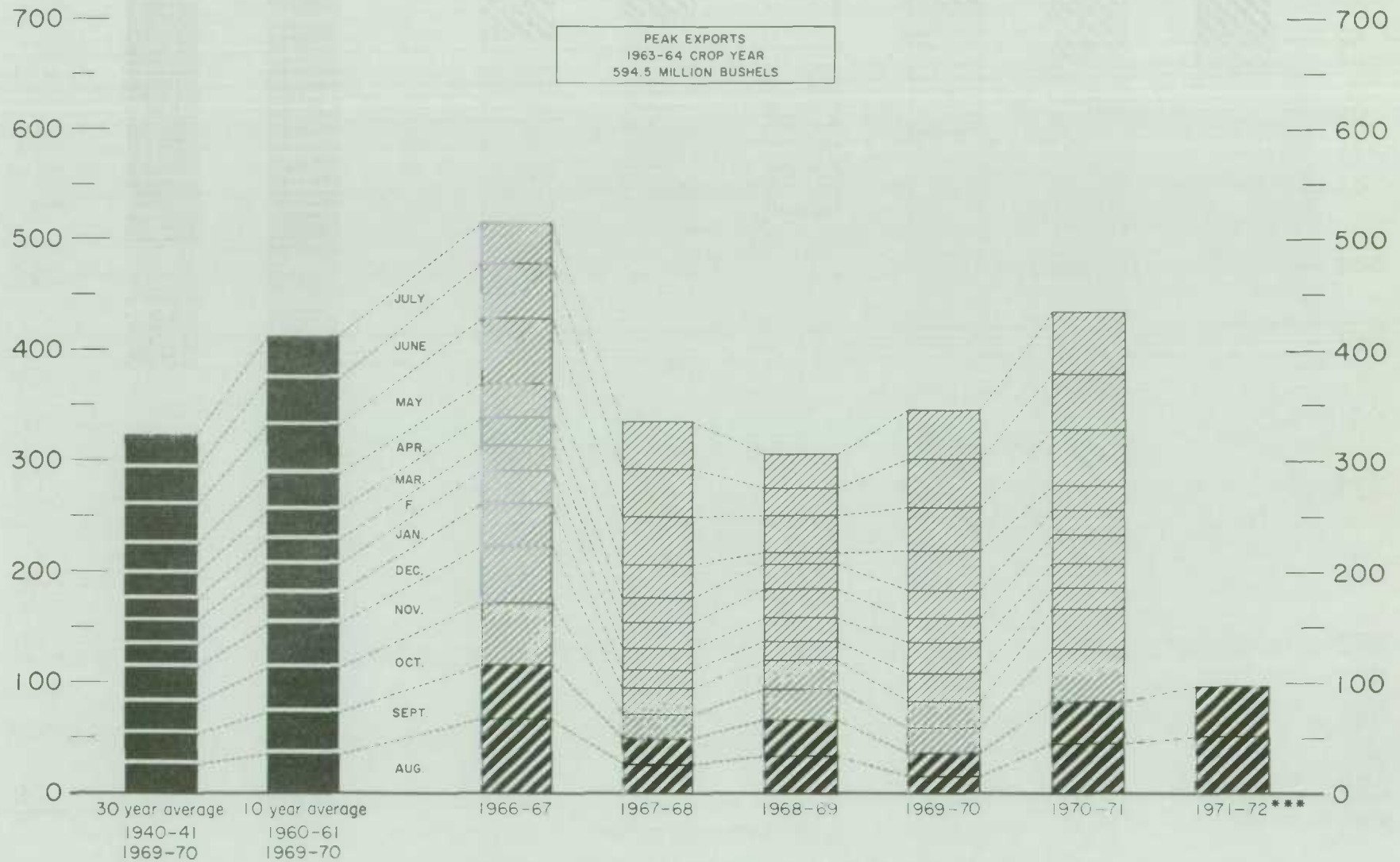
AUG

EXPORTS OF CANADIAN WHEAT* AND WHEAT FLOUR**

(SPECIFIED PERIODS)

MILLION BUSHELS

MILLION BUSHELS



*Beginning with 1955-56 includes seed wheat.

**In terms of wheat equivalent.

***Preliminary.

Agriculture Division Statistics Canada

FARMERS' MARKETINGS OF BARLEY, PRAIRIE PROVINCES

MILLION BUSHELS

(SPECIFIED PERIODS)

MILLION BUSHELS

275 —

275 —

250 —

250 —

225 —

225 —

200 —

200 —

175 —

175 —

150 —

150 —

125 —

125 —

100 —

100 —

75 —

75 —

50 —

50 —

25 —

25 —

0

0

30 year average

10 year average

1940-41
1969-70

1960-61
1969-70

1966-67

1967-68

1968-69

1969-70

1970-71

1971-72

JULY

JUNE

MAY

APR

MAR

FEB

JAN

DEC

NOV

OCT

SEPT

AUG

EXPORTS OF CANADIAN BARLEY AND BARLEY PRODUCTS*

(SPECIFIED PERIODS)

MILLION BUSHEL

225 —

200 —

175 —

150 —

125 —

100 —

75 —

50 —

25 —

0 —

MILLION BUSHEL

— 225

— 200

— 175

— 150

— 125

— 100

— 75

— 50

— 25

— 0

30 year average

1940-41

1969-70

10 year average

1960-61

1969-70

1966-67

1967-68

1968-69

1969-70

1970-71

1971-72 **

JULY

JUNE

MAY

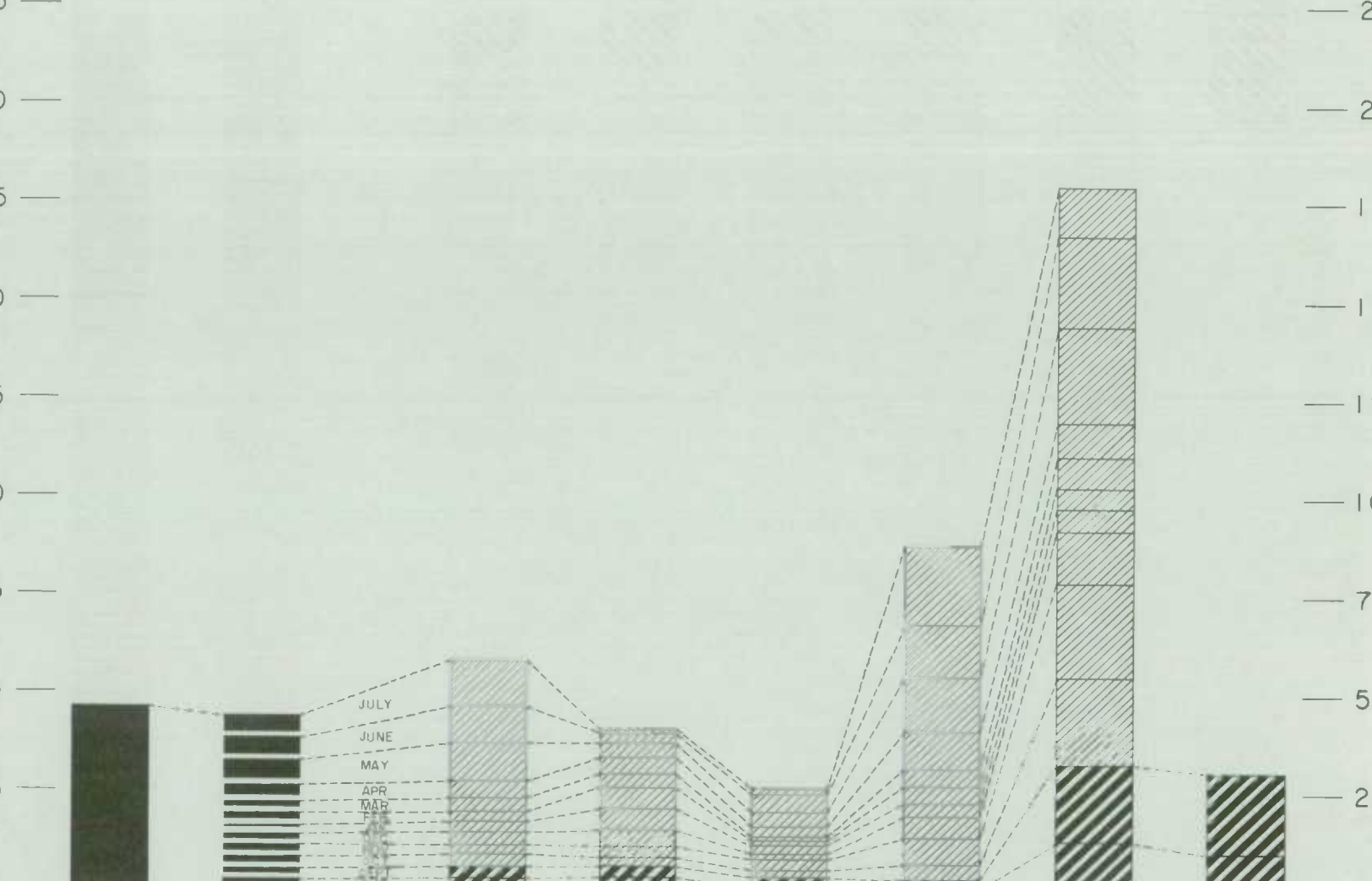
APR

MAR

FEB

* In terms of grain equivalent. ** Preliminary.

Agriculture Division Statistics Canada



FARMERS' MARKETINGS OF OATS, PRAIRIE PROVINCES

(SPECIFIED PERIODS)

MILLION BUSHEL

80 —

70 —

60 —

50 —

40 —

30 —

20 —

10 —

0 —

30 year average

1940-41
1969-70

10 year average

1960-61
1969-70

1966-67

1967-68

1968-69

1969-70

1970-71

1971-72

JULY

JUNE

MAY

APR.

MAR.

FEB.

JAN.

DEC.

NOV.

OCT.

SEPT.

AUG.

MILLION BUSHEL

80 —

70 —

60 —

50 —

40 —

30 —

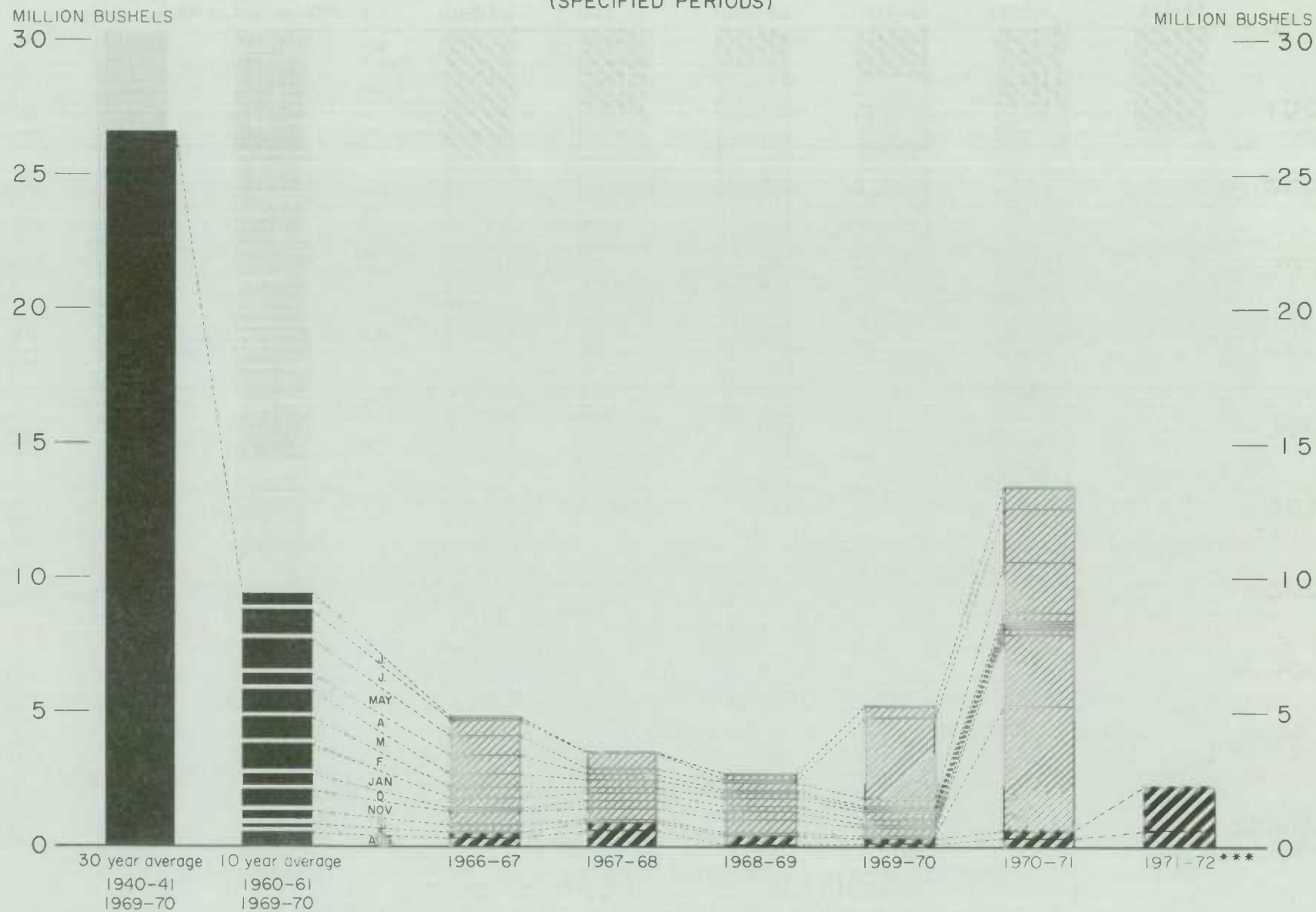
20 —

10 —

0 —

EXPORTS OF CANADIAN OATS* AND OAT PRODUCTS**

(SPECIFIED PERIODS)

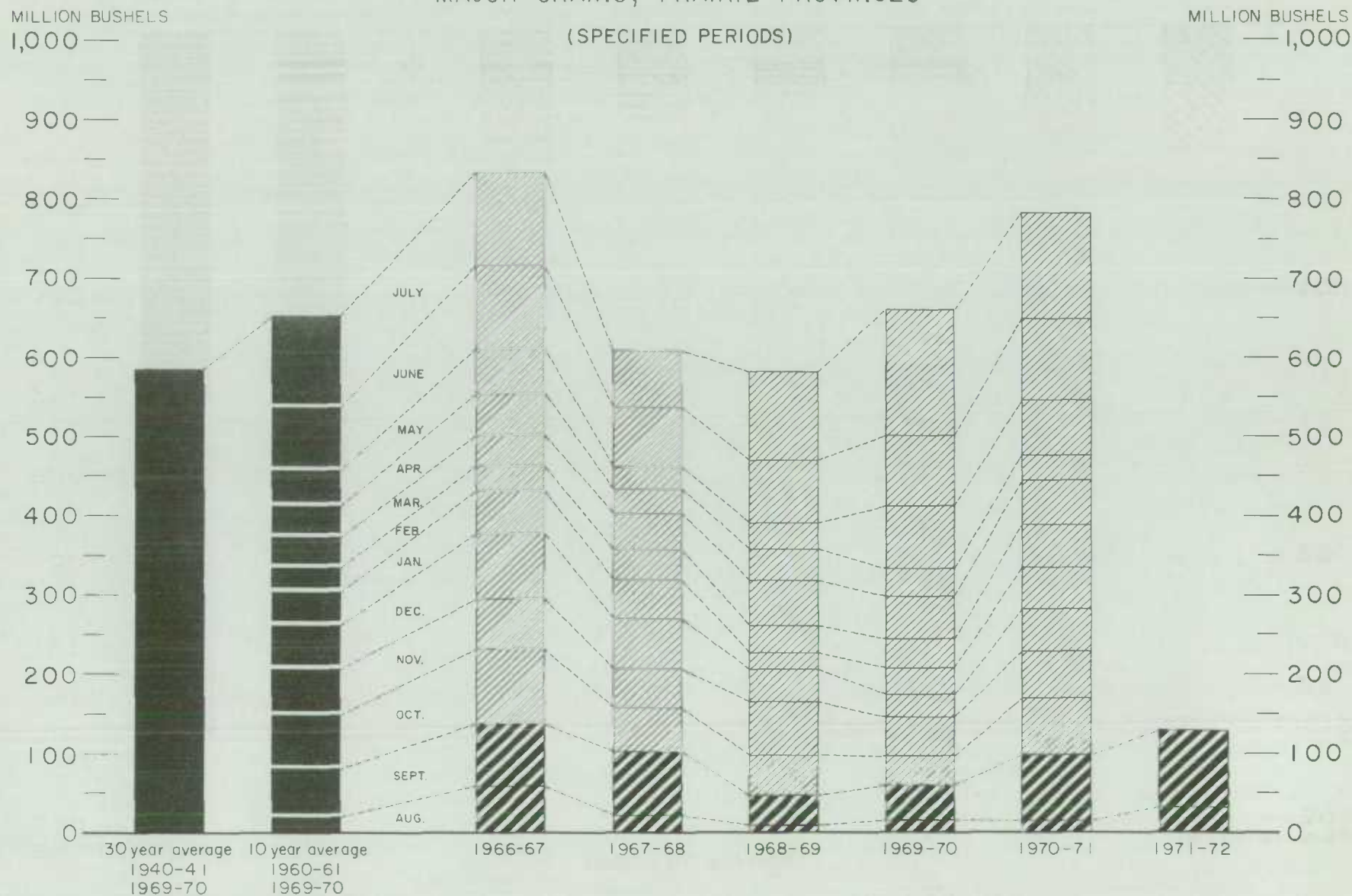


*Beginning with 1960-61 includes relatively small quantity of seed oats.

**In terms of grain equivalent.

***Preliminary.

FARMERS' MARKETINGS OF CANADA'S SIX MAJOR GRAINS*, PRAIRIE PROVINCES

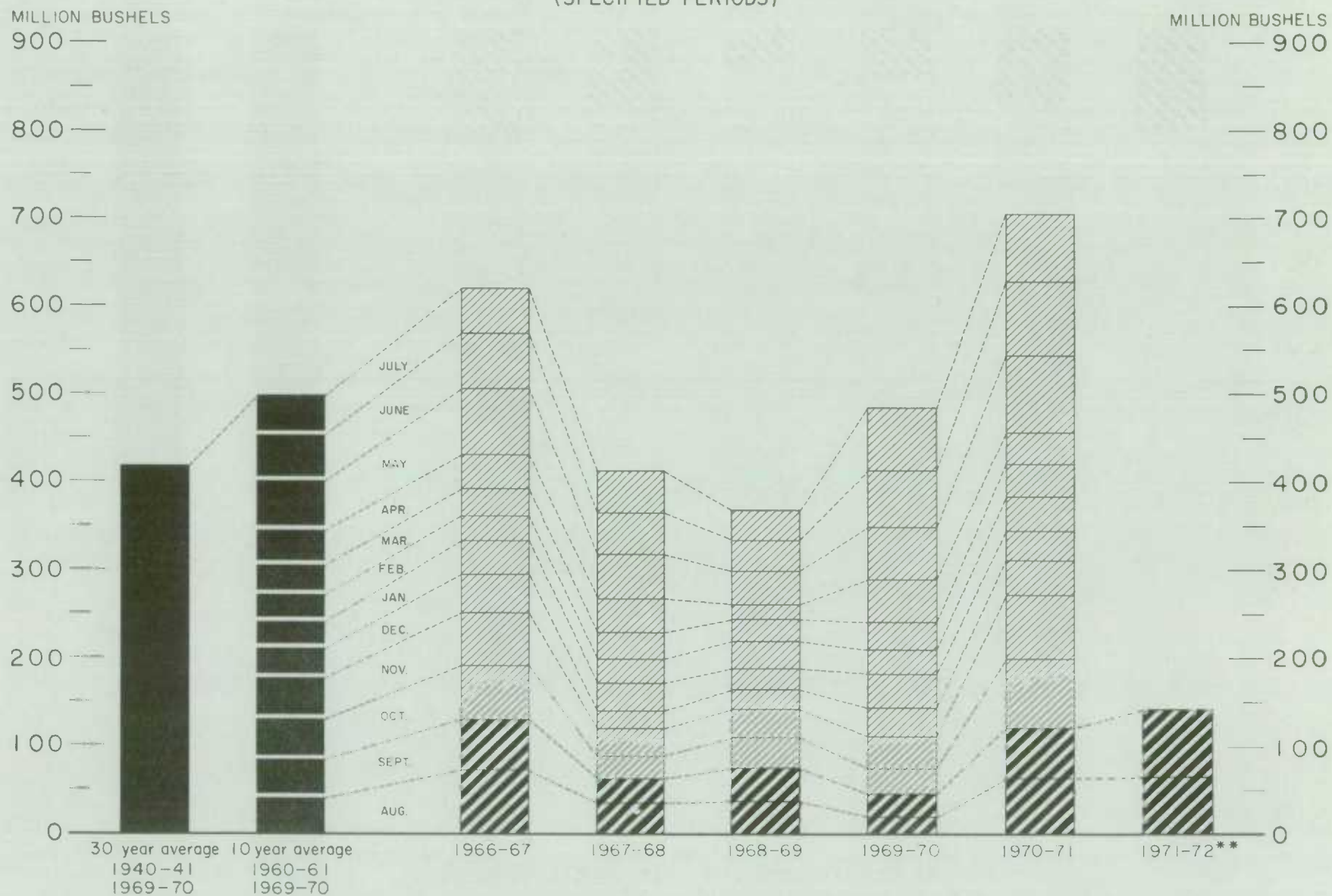


* Wheat, oats, barley, rye, flaxseed and from 1960-61 rapeseed.

Agriculture Division Statistics Canada

EXPORTS OF CANADA'S SIX MAJOR GRAINS AND PRODUCTS*

(SPECIFIED PERIODS)



* Wheat, seed wheat, and wheat flour; oats, seed oats and oatmeal and rolled oats; barley and malt; rye; flaxseed and from 1960-61 rapeseed.
 ** Preliminary.

Cumulative Exports of Canadian Wheat(1) by Destination — Concluded

Destination	August — September 1971			Total same period last year ^r
	Wheat (except durum)	Durum wheat	Total wheat	
bushels				
<u>Asia — concluded</u>				
Japan	10,291,367	197,874	10,489,241	5,955,040
Korea, North	1,180,666	—	1,180,666	—
Malaysia	38,640	—	38,640	—
Pakistan	1,709,867	—	1,709,867	27,067
People's Republic of China .	21,344,474	1,333,174	22,677,648	12,502,262
Philippines	1,975,494	—	1,975,494	—
Singapore	50,960	—	50,960	77,093
Syria	4,104,520	—	4,104,520	4,135,349
Taiwan	530,133	—	530,133	524,533
Thailand	53,387	—	53,387	—
Totals	48,593,743	1,531,048	50,124,791	35,131,615
<u>Oceania</u>				
U.S. Oceania	73,487	—	73,487	—
<u>Western Hemisphere</u>				
Brazil	3,917,142	—	3,917,142	4,887,187
Cuba	1,085,435	185,089	1,270,524	2,045,734
Haiti	575,505	—	575,505	341,787
Jamaica	290,694	—	290,694	278,880
Peru	972,533	—	972,533	2,219,803
Venezuela	—	—	—	108,447
United States(2)	95,200	—	95,200	—
Totals	6,936,509	185,089	7,121,598	9,881,838
Sub-totals, all countries.	83,949,357	9,101,387	93,050,744	79,959,016
Seed wheat(3)			260,303	223,265
Totals, all countries	83,949,357	9,101,387	93,311,047	80,182,281

- (1) Overseas clearances as reported by the Economics and Statistics Division of the Canadian Grain Commission, for all countries except the United States. Excluding seed wheat.
- (2) Compiled from returns of Canadian elevator licensees and shippers and advice from American grain correspondents.
- (3) Compiled from Canadian Customs returns, 1970 adjusted for time lag, 1971 preliminary.

Customs Exports of Canadian Wheat Flour by Countries of Consignment

Destination	May	August	
	1971(1)	1971(2)	1970(1)
bushels			
<u>Western Europe</u>			
EEC:			
Belgium and Luxembourg	—	—	7,740
Italy	4,140	—	2,070
Netherlands	—	—	653
Sub-totals	4,140	—	10,463
Other Western Europe:			
Britain	237,719	189,023	153,171
Gibraltar	—	2,705	—
Greece	2,070	—	—
Iceland	—	13,110	—
Portugal	3,800	1,840	1,380
Sub-totals	243,589	206,678	154,551
Totals	247,729	206,678	165,014
<u>Africa</u>			
Angola	—	—	2,300
Congo-Kinshasa	14,014	4,600	23,920
Dahomey	1,610	11,730	—
Gabon	—	—	5,658
Gambia	5,927	4,600	5,750
Ghana	127	375	149,965
Ivory Coast	3,864	230	—
Liberia	43,378	24,440	4,862
Malawi	6,831	—	9,005
Mozambique	2,012	2,762	5,773
Nigeria	2,300	4,600	—
Portuguese Africa n.e.s.	2,111	7,142	5,785
Sierre Leone	—	400	1,967
Somalia	2,841	22,816	—
South Africa	—	—	230
Tanzania	—	1,610	805
Togo	13,915	22,115	460
U.A.R.	—	442,630	—
Totals	98,930	550,050	216,480
<u>Asia</u>			
Hong Kong	12,510	9,131	10,258
Iran	290	409	264

See footnotes at end of table.

Customs Exports of Canadian Wheat Flour by Countries of Consignment — Concluded

Destination	May	August	
	1971(1)	1971(2)	1970(1)
		bushels	
<u>Asia - Concluded</u>			
Japan	—	1,539	—
Jordan	—	8,367	—
Lebanon	5,069	93,805	225
Portuguese Asia	1,012	—	—
Saudi Arabia	—	2,300	9,430
Thailand	4,600	2,300	9,476
Trucial States	—	345	—
Totals	23,481	118,196	29,653
<u>Oceania</u>			
British Oceania n.e.s.	690	—	460
United States Oceania	—	—	3,450
Totals	690	—	3,910
<u>Western Hemisphere</u>			
Bahamas	16,309	14,488	18,145
Barbados	45,623	17,365	13,924
Bermuda	6,799	7,707	11,330
British Honduras	4,747	4,193	3,908
Cuba(3)	1,136,034	523,034	—
Dominican Republic	—	—	35,144
Guyana	4,683	653	1,092
Honduras	—	—	345
Jamaica	8,784	5,299	13,692
Leeward and Windward Is.	81,245	49,938	57,902
Netherlands Antilles	3,218	1,067	15,141
Panama	—	338	—
St. Pierre and Miquelon	1,504	2,634	1,978
Surinam	1,978	793	1,674
Trinidad and Tobago	102,476	19,792	36,006
Venezuela	46	—	—
United States	30,468	3,924	73,683
Totals	1,443,914	651,225	283,964
Totals, all countries	1,814,744	1,526,149	699,021

(1) In terms of wheat equivalent. Adjusted to remove effect of time lag in the returns made by Customs. Conversion rate: 2.3 bushels per cwt.

(2) In terms of wheat equivalent. Preliminary and unadjusted for time lag. Conversion rate: 2.3 bushels per cwt.

(3) Source — Canadian National Millers Association.
n.e.s. — Not elsewhere specified.

NOTE: Data for September wheat flour exports not available.

Canadian Wheat Board Weekly Average Cash Wheat Prices, Crop Year 1971-72
Basis in Store Thunder Bay and Vancouver

Class and grade	Week ending			
	Sept. 24	Oct. 1	Oct. 8	Oct. 15
cents and eighths per bushel				
<u>Initial payment to producers</u>				
1 C.W. Red Spring 14%	146	146	146	146
1 Northern	150	150	150	150
2 Northern	146	146	146	146
3 Northern	141	141	141	141
4 Northern	133	133	133	133
5 Wheat	119	119	119	119
6 Wheat	115	115	115	115
Feed Wheat	110	110	110	110
1 C.W. Garnet	133	133	133	133
2 C.W. Garnet	128	128	128	128
3 C.W. Garnet	123	123	123	123
1 Alberta Red Winter	132	132	132	132
2 Alberta Winter	127	127	127	127
3 Alberta Winter	121	121	121	121
1 C.W. Amber Durum	146	146	146	146
2 C.W. Amber Durum	142	142	142	142
3 C.W. Amber Durum	137	137	137	137
<u>Exports</u>				
<u>(Basis in store Thunder Bay)</u>				
1 C.W. Red Spring 14%	170/4	166/6	166/3	166
1 Northern	172/4	168/6	168/3	168
2 Northern	170/4	166/6	166/3	166
3 Northern	165/4	161/6	161/3	161
4 Northern	162/4	158/6	158/3	158
5 Wheat(1)	153/3	147/6	144/4	144/4
6 Wheat(1)	151/3	145/6	142/4	142/4
Feed Wheat(1)	146/3	140/6	137/4	137/4
1 C.W. Garnet	162/4	158/6	158/3	158
2 C.W. Garnet	161/4	157/6	157/3	157
3 C.W. Garnet	160/4	156/6	156/3	156
1 Alberta Red Winter	162/4	158/6	158/3	158
2 Alberta Winter	161/4	157/6	157/3	157
3 Alberta Winter	160/4	156/6	156/3	156
1 C.W. Amber Durum	166/2	163/5	163/2	163
2 C.W. Amber Durum	163/2	160/5	160/2	160
3 C.W. Amber Durum	154/2	151/5	151/2	151
<u>(Basis in store Vancouver)</u>				
1 C.W. Red Spring 14%	176/1	176	175/5	175/2
1 Northern	177/1	177	176/5	176/2
2 Northern	176/1	176	175/5	175/2
3 Northern	174/1	174	173/5	173/2
4 Northern	169/1	169	168/5	168/2
1 C.W. Garnet	169/1	169	168/5	168/2
2 C.W. Garnet	168/1	168	167/5	167/2
3 C.W. Garnet	167/1	167	166/5	166/2
1 Alberta Red Winter	169/1	169	168/5	168/2
2 Alberta Winter	168/1	168	167/5	167/2
3 Alberta Winter	167/1	167	166/5	166/2

(1) Domestic sales only.

CANADIAN FLOUR MILLING SITUATION

Production Wheat flour production by Canadian mills during September 1971 amounted to 3,505,000 hundredweight, representing an increase of 6 per cent over the August 1971 output of 3,299,000 hundredweight, 4 per cent above the ten-year (1961-70) average production for the month of 3,372,000 hundredweight but 2 per cent less than the adjusted September 1970 figure of 3,580,000 hundredweight. Mills reporting operations during September 1971 had a total rated capacity of 168,000 hundredweight per 24-hour day and on the basis of a 24-day working period about 87 per cent of this rated capacity was effective. Wheat milled for flour during September 1971 amounted to 7,702,000 bushels, 3 per cent above the 7,477,000 bushels milled during the preceding month but 6 per cent lower than the 8,182,000 bushels milled during September 1970.

Exports According to preliminary Customs returns, exports of Canadian wheat flour during August 1971 amounted to the equivalent of 1,526,000 bushels (some 664,000 hundredweight of flour) 3 per cent below the July 1971 exports of 1,575,000 bushels, but more than double the adjusted August 1970 exports of 699,000 bushels. Flour shipments during the month under review went to forty countries with the leading markets for Canadian wheat flour in terms of wheat, in thousands of bushels, as follows: Cuba, 523; U.A.R., 443; Britain, 189; Lebanon, 94; Leeward and Windward Islands, 50; Liberia, 24; Somalia, 23; Togo, 22 and Trinidad and Tobago, 20.

NOTE: Data re exports of wheat flour for September 1971 by country of destination are not available at this time and will be included in the next issue.

Wheat Milled for Flour, and Production and Exports of Wheat Flour, Canada

Crop year	Wheat milled for flour	Wheat flour	
		Production	Exports(1)
	bushels		cwt.
1935-36 - 1939-40 average	67,845,114	29,405,451	9,603,941
1940-41 - 1944-45 "	99,704,638	43,908,245	23,699,546
1945-46 - 1949-50 "	107,330,372	47,011,540	25,819,721
1950-51 - 1954-55 "	100,446,328	43,847,894	21,812,041
1955-56 - 1959-60 "	99,148,211	39,752,589	16,349,156
1960-61 - 1964-65 "	91,128,177	40,834,088	15,769,803
1965-66	97,925,995	43,531,263	16,576,117
1966-67	90,084,646	39,978,571	13,848,208
1967-68	84,769,150	37,755,841	10,734,857
1968-69	85,048,591	37,621,151	10,705,452
1969-70	90,557,332	39,640,459	11,723,205
1970-71(2)	87,466,864	38,533,275	10,728,762
1971-72(2)			
August	7,476,891	3,298,715	663,543
September	7,702,000 ^P	3,505,000 ^P	1,574,505
Totals	15,178,891	6,803,715	2,238,048
Same months 1970-71 ^r	15,990,712	6,962,772	1,306,483

(1) Based on Customs returns. Exports for the crop years 1945-46 - 1969-70 revised to remove effect of time lag in the returns made by Customs. (2) Subject to revision.

UNITED STATES SITUATION

Supplies Above
1970-71 Level

Reflecting an increase in production, which more than offset a decrease in carryover stocks, total domestic supplies of wheat in the United States for the 1971-72 crop year are currently placed at 2,357.8 million bushels, 4 per cent more than the previous year's total of 2,263.1 million. The current crop, estimated at 1,627.6 million bushels, represents an increase of 18 per cent over last year's outturn of 1,378.5 million, while the 730.2 million bushels carried over at July 1, 1971 were 17 per cent below the 1970 stocks of 884.7 million. Domestic disappearance during 1971-72 is estimated at about 780.0 million bushels, 2 per cent lower than the 794.8 million last year. After deducting anticipated domestic requirements for the current United States crop year, some 1,577.9 million remain available for export and for carryover, slightly above the 1,468.4 million in 1970-71.

Exports Below
Previous Year

Exports of wheat and wheat flour in terms of grain equivalent during the period July-September 1971 amounted to 163.8 million bushels, 2 per cent less than the 167.0 million exported during the same months last year. The balance remaining on October 1, 1971 for export and for carryover was estimated at 1,414.2 million bushels compared with 1,301.5 million on approximately the same date a year ago.

United States Wheat Supplies

Item	1970-71 ^r	1971-72 ^p
	million bushels	
Carryover at beginning of crop year (July 1)	884.7	730.2
Production	1,378.5	1,627.6 ^r
Total estimated domestic supplies	2,263.1	2,357.8
Imports of wheat and wheat flour in terms of wheat for domestic use, July-September	0.1	0.1
Total estimated supplies (1)	2,263.3	2,357.9
Less estimated domestic requirements for crop year(2).	794.8	780.0
Available for export and for carryover	1,468.4	1,577.9
<u>Deduct</u>		
Exports of wheat as grain, July - September	154.2	149.1
Exports of wheat flour in terms of wheat, July - September	12.7	14.6
Total exports of wheat and wheat flour	167.0	163.8
Balance on October 1 for export and for carryover ...	1,301.5	1,414.2

(1) Excludes imports for October-June.

(2) Includes shipments to United States Territories and wheat for military food use at home and abroad.

1971 Wheat Crop at
Record High, 1,628
Million Bushels

In a report released on October 12, 1971 the Crop Reporting Board of the United States Department of Agriculture stated that production of all wheat is forecast at a record high 1,628 million bushels, up 2.2 million bushels from a month earlier, 18 per cent above 1970, and 11 per cent above 1969. Forecasts of durum and other spring wheat were higher than a month earlier. During the past decade, changes between the October 1 forecast and final production estimates have averaged 17 million bushels — ranging from 3 to 38 million bushels. Yield of all wheat is expected to average a record 33.7 bushels per acre, 2.6 bushels above last year and 3.0 bushels above 1969. Acreage for harvest, at 48.4 million acres, is 9 per cent above 1970.

Production of durum wheat is forecast at 87.0 million bushels, up sharply from the 50.5-million-bushel 1970 crop but 18 per cent below the record large 1969 crop of 106.1 million bushels. The expected yield of 32.4 bushels per acre is a record high and 7.4 bushels above last year. Yield forecasts were unchanged from a month earlier in all States except Minnesota where the yield was up a bushel.

Unfavourable harvest weather delayed completion of combining in North Dakota where harvest was 93 per cent complete on October 5. Much of the remaining acreage was in the swath but sprout damage and general loss of quality was occurring. Montana's harvest was virtually finished by mid-September, about a week ahead of average because of nearly ideal harvest weather.

A record crop of 378 million bushels is indicated for spring wheat other than durum. This is 2.2 million bushels more than the September forecast and sharply above the 1970 crop of 209.9 million bushels. Yield per acre, at a record 29.9 bushels, compares with 23.8 last year and the previous high of 27.5 in 1969.

Completion of the North Dakota harvest was delayed by unfavourable weather but only 3 per cent remained to be harvested on September 28. Combining in Montana was nearing the finish by September 15. In Idaho, only a few higher elevation fields remained to be harvested at the end of the month.

United States Wheat
and Flour Exports

Wheat exports at 677 million bushels, were 136 million above the fiscal year of 1970. The major increases in million bushels were to the United Kingdom, 32; Republic of Korea, 23; Romania, 18; Japan, 18; West Germany, 17; Yugoslavia, 14; and Morocco, 13. Smaller increases, totalling 24 million bushels, to Portugal, Iran, Republic of China, and Algeria helped offset decreased exports in million bushels to India, 32; Pakistan, 12; Turkey, 6; and Argentina 4.8 million bushels.

Total exports of wheat flour fell by 13 million bushels to 52 million (grain equivalent). Major losses were to Bolivia and Ceylon with lesser losses to South Vietnam, and the Republic of Korea. All of these countries are basically P.L. 480 markets.

United States Exports of Wheat and Flour (1) by Country of Destination
July-June 1969-70 and 1970-71

Country of destination	July-June 1969-70			July-June 1970-71		
	Wheat	Flour(2)	Total	Wheat	Flour(2)	Total
thousand bushels						
<u>Western Hemisphere</u>						
Canada	(3)	24	24	(3)	21	21
Mexico	125	10	135	132	8	140
Costa Rica	1,921	62	1,983	2,544	47	2,591
El Salvador	2,405	79	2,484	2,884	88	2,972
Guatemala	2,618	108	2,726	3,230	138	3,368
Other Central America	4,034	359	4,393	5,354	274	5,628
Dominican Republic	3,227	138	3,365	3,938	95	4,033
Haiti	—	41	41	—	45	45
Jamaica	937	530	1,467	921	396	1,317
Trinidad and Tobago	2,078	5	2,083	2,496	26	2,522
Other Bermuda and Caribbean.	—	574	574	851	553	1,404
Argentina	4,798	—	4,798	2	—	2
Bolivia	268	4,393	4,661	589	140	729
Brazil	33,288	1,185	34,473	28,823	1,033	29,856
Chile	436	321	757	5,122	429	5,551
Colombia	9,032	738	9,770	12,133	752	12,885
Ecuador	1,960	121	2,081	2,748	142	2,890
Guyana	1,390	—	1,390	728	22	750
Peru	5,802	308	6,110	6,986	350	7,336
Surinam	279	225	504	497	169	666
Uruguay	—	14	14	—	5	5
Venezuela	25,145	18	25,163	20,949	22	20,971
Other South America	1,116	75	1,191	1,636	70	1,706
Totals	100,859	9,328	110,187	102,563	4,825	107,388
<u>Western Europe</u>						
EEC:						
Belgium-Luxembourg	7,256	5	7,261	6,532	1	6,533
France	5,366	—	5,366	6,080	—	6,080
Germany, West	6,343	1	6,344	22,999	49	23,048
Italy	9,228	14	9,242	17,097	5	17,102
Netherlands	24,234	488	24,722	21,526	430	21,956
Totals	52,427	508	52,935	74,234	485	74,719
Other Western Europe:						
Cyprus	1,045	30	1,075	1,583	53	1,636
Iceland	8	291	299	56	187	243
Norway	2,258	4	2,262	2,380	4	2,384
Portugal	4,888	116	5,004	9,975	49	10,024
Spain	(4)	—	(4)	6,894	—	6,894
Switzerland	7,105	—	7,105	7,023	1	7,024
United Kingdom	12,586	15	12,601	44,855	15	44,870
Others	908	87	995	1,589	130	1,719
Totals	28,798	543	29,341	74,355	439	74,794

See footnotes at end of table.

United States Exports of Wheat and Flour (1) by Country of Destination
July-June 1969-70 and 1970-71 — Concluded

Country of destination	July-June 1969-70			July-June 1970-71		
	Wheat	Flour (2)	Total	Wheat	Flour (2)	Total
thousand bushels						
<u>Eastern Europe</u>						
Poland	—	372	372	—	34	34
Romania	—	—	—	17,849	—	17,849
Yugoslavia	—	2	2	14,056	2	14,058
Others	—	—	—	185	—	185
Totals	—	374	374	32,090	36	32,126
Totals, Europe	81,225	1,425	82,650	180,679	960	181,639
<u>Asia</u>						
Cambodia	—	—	—	—	402	402
Ceylon	—	6,212	6,212	—	2,098	2,098
Hong Kong	1,794	161	1,955	1,866	92	1,958
India	85,042	36	85,078	53,109	53	53,162
Indonesia	362	15,280	15,642	—	15,286	15,286
Iran	—	(4)	(4)	8,812	4	8,816
Israel	12,247	3,366	15,613	13,151	3,453	16,604
Japan	87,517	4	87,521	105,739	3	105,742
Jordan	20	3,439	3,459	751	2,938	3,689
Korea, Republic of	35,776	4,578	40,354	58,451	3,417	61,868
Lebanon	2,283	667	2,950	4,510	856	5,366
Nansei and Nanpo Islands ...	1,357	500	1,857	1,430	187	1,617
Pakistan	36,283	3	36,286	24,018	2	24,020
Philippines	16,646	280	16,926	16,623	581	17,204
Saudi Arabia	22	4,146	4,168	40	4,869	4,909
Republic of China (Taiwan) .	14,422	—	14,422	21,094	—	21,094
Turkey	24,446	623	25,069	18,831	589	19,420
Vietnam, South	1,828	7,602	9,430	5,001	5,196	10,197
Others	2,873	516	3,389	6,244	532	6,776
Totals	322,918	47,413	370,331	339,670	40,558	380,228
<u>Africa</u>						
Algeria ..	8,322	597	8,919	11,637	41	11,678
Congo (Kinshasa)	—	817	817	—	972	972
Ghana	910	—	910	1,220	9	1,229
Guinea	—	452	452	—	370	370
Morocco	6,915	2,583	9,498	19,885	2,106	21,991
Nigeria	8,737	86	8,823	10,235	425	10,660
Southern Africa, n.e.c.	—	469	469	—	13	13
Sierra Leone	970	15	985	991	2	993
Tunisia	8,725	948	9,673	6,762	714	7,476
Others	1,134	617	1,751	2,915	674	3,589
Totals	35,713	6,584	42,297	53,645	5,326	58,971
<u>Oceania</u>	—	87	87	—	71	71
World totals	540,715	64,837	605,552	676,557	51,740	728,297
Other products	11,014	—	11,014	11,689	—	11,689
Totals, all countries	551,729	64,837	616,566	688,246	51,740	739,986

(1) Data includes shipments for relief. (2) Grain equivalent. (3) Transshipments through Canada have been included in data for countries of ultimate destination. (4) Less than 500 bushels.

AUSTRALIAN SITUATION

Wheat Supplies
Below Previous Year Reflecting decreases in both carryover stocks and production, total supplies of wheat in Australia for the 1970-71 (December-November) crop year are estimated at 558.6 million bushels, 15 per cent less than the 654.2 million in 1969-70. The 1970 crop estimated at 293.5 million bushels was sharply lower than the 387.5 million bushels harvested in 1969-70, and carryover stocks, at December 1, 1970, at 265.1 million bushels, were slightly lower than the 266.7 million at the same date a year ago. After deducting some 100.2 million bushels for anticipated domestic requirements, an estimated 458.4 million are available for export and for carryover during 1970-71, some 18 per cent below the 562.1 million in 1969-70.

Exports Above
Previous Year Combined exports of wheat as grain and wheat flour in terms of grain equivalent during the period December 1 - October 2 of the current Australian crop year amounted to 276.2 million bushels, an increase of 15 per cent over the 240.7 million exported during the corresponding ten months of the 1969-70 crop year. The balance remaining on October 3, 1971 for export and for carryover, at 182.2 million bushels, was 43 per cent below the comparable 1970 total of 321.4 million.

Australian Wheat Supplies

Item	1969-70 ^r	1970-71 ^p
	million bushels	
Carryover, including flour as wheat, at beginning of crop year (December 1)	266.7	265.1
Production	387.5	293.5
Total estimated domestic supplies	654.2	558.6
Less estimated domestic requirements for crop year	92.1	100.2 ^r
Available for export and for carryover	562.1	458.4
<u>Deduct</u>		
Exports of wheat as grain, December 1 - October 2 ...	225.3	262.2
Exports of wheat flour in terms of wheat, December 1 - October 2	15.4	14.0
Total exports of wheat and wheat flour	240.7	276.2
Balance on October 3 for export and for carryover	321.4	182.2

The following information relative to the Australian situation has been extracted from a report from Mr. R. Groundwater, Assistant Commercial Secretary for Canada, Melbourne, under date of October 12, 1971 and is reproduced with the permission of the Trade Commissioner Service, Department of Industry, Trade and Commerce.

Estimated wheat production. — The estimated wheat production in 1971-72 is 314 million bushels from an acreage of 17.6 million acres. Assuming a figure of 20-25 million bushels for production retained on farms, deliveries to the Australian Wheat Board are in the vicinity of 290-295 million bushels. The estimates are subject to substantial variation of 10-20 million bushels due to climatic factors. The major variations would occur in New South Wales and Queensland. The States of Victoria, South Australia and Western Australia are practically ensured of harvesting an average crop. Harvesting will begin in mid-October and will be completed by the end of December.

Wheat Acreage and Production in 1971-72

<u>State</u>	<u>Estimated acreage</u> acres	<u>Estimated production</u> million bushels	<u>Quota allocation</u>
Queensland	1.2	26	38
New South Wales ...	6.1	88	128
Victoria	2.8	60	57
South Australia ...	2.5	55	40
Western Australia .	5.0	85	76
Totals	17.6	314	339

Good precipitation patterns in Queensland during August allowed wheat sowings to be completed, although acreage was below early planting intentions. Climatic conditions were generally good, which substantially improved the growth of crops sown during the normal planting season and yield prospects were good. Less than average yields were expected from late planted crops.

Conditions remained excellent throughout September. The crop progressed well under conditions of adequate soil moisture and warm temperatures. Good yields from early crops were expected at this time with only poor to fair yields anticipated from late crops. However, the hot, dry weather during the last week of September and early October has dampened optimism. Moisture is required, particularly for the substantial acreage that was planted late, if a good crop is to be harvested. Weeds have been a problem in the southern areas and will have a detrimental affect on yields. Crops in central Queensland and the Downs are being attacked by mice. Estimates of damage due to the mice range from 500,000 to 1 million bushels. The Department of Agriculture is combating the plague with poisoned grain, however, the magnitude of loss due to mice is minor in comparison to yield fluctuations which can occur due to climatic conditions. Wheat quality is expected to be excellent with most of the wheat being of a prime hard quality. There has been little damage to date from frost or rust and it is highly unlikely that they will be a problem in the remainder of the season. The only difficulty which can be envisaged, at this time, is weather damaged grain if abnormal moisture problems occur during harvest. Harvesting has begun in central Queensland and will commence in 2-3 weeks in the western areas of the Darling Downs. Owing to the late crops, harvesting will not be uniform in the State, but will be extended over a greater period of time than the normal October-November period.

The New South Wales situation is not clear at this time, as the actual seeded acreage has not been accurately determined due to planting difficulties in northern areas of the State. August conditions were mixed with good growing conditions prevailing in northern and central areas and dry conditions in the southern areas. Crops were only fair to good throughout the State, so that below average yields are expected. Weed growth was prevalent in most crops, although no serious problem of disease or insects have been reported. Conditions deteriorated in September with nearly all areas requiring moisture. A few areas report average conditions such as the eastern areas of the Riverina and central west region. In most cases, early crops are in a satisfactory condition as ample sub-soil moisture was available for early growth. However, late grown crops are under substantial stress and the outlook is not favourable. October rains are a necessity to obtain a reasonable crop. Historical records reveal that an optimal spring, which is necessary to guarantee a good crop, is not favourable. In general, the prospects are not good and even under optimum conditions, the State quota will not be reached.

Conditions in Victoria are generally satisfactory with an above average crop expected. The Mallee and northern areas are dry as only limited precipitation was received during September. Although rains are needed to finish the crop in these areas, the situation is not as serious as in New South Wales. The Wimmera has had perfect conditions throughout the season and September was no exception. Adequate moisture was received with excellent rains in early October consolidating the crop. Less than perfect conditions in some areas are more than balanced by an excellent season in others with the total crop expected to be sufficient to meet the State quota.

The wheat growing season has been near perfect in South Australia. August rainfall was above average in most districts with only a few areas subject to flooding and excellent precipitation was received in September consolidating the crop. Above average yields are expected even in the lower rainfall areas owing to excellent precipitation patterns in the last two months. October rainfall will be important in bringing off a bumper crop but, even without substantial rainfall, yields will probably be above average. No problems from disease or insects have been reported. Wheat harvesting will begin in early November with most of the crop to be taken off in mid-November to mid-December.

Western Australia received light showers in the earlier part of September followed by heavier precipitation which has ensured an excellent crop and good yields. Warm dry weather is desired in October to ripen the crop for harvesting in early November.

Review of F.A.Q. wheat system required. — The Director of the Bread Research Institute, Mr. Eric Bond, suggested in an address that the F.A.Q. system of wheat marketing should be critically reappraised in order to exploit the range of soft and hard wheat available in Australia. The wheat industry should examine the market requirements in determining a sophisticated grading system, one which emphasizes the quality of wheat rather than quantity. The contention was that F.A.Q. system has emphasized quantity in past years, with adverse consequences on wheat breeding programs, which has been detrimental in aggregate, to the wheat industry.

An effective system of wheat classification would not only improve general quality of wheat but would emphasize the fact that a wide range of wheats are available and be readily recognized and accepted by buyers. To a limited extent, this happens within the present system where several classes of wheat are segregated, however, a new system would take advantage and capitalize on the fact.

Protein is a major factor in determining the acceptability of wheat for many markets and considerable attention should be paid to the fact as to utilize natural production areas and to implement rigorous application of a protein classification system over a range of protein levels. Wheat breeding programs must take into account the necessity of improving quality and substantial research is required for a better understanding of protein formation in wheat. Adequate controls over varieties grown is needed throughout Australia in order to maintain and improve quality standards. It was suggested that wheat breeders should pay attention to the visual appearance of hard wheats in order to help segregation.

A change in the classification system is necessary due to greater emphasis on quality standard and specification of the raw materials. It is probable that larger quantities of hard wheat will be required in the future which can be produced in Australia. Furthermore, a wide range of wheats with specific qualities could be offered through a more realistic classification system, which would be of considerable advantage in the marketing of Australian wheat.

New wheat variety recommendations in New South Wales. — The New South Wales Standing Advisory Committee on wheat has suggested several changes in wheat variety recommendations for the 1972 season. The Committee suggested that a rust resistant crossbred wheat, presently known as Tamworth 221, be recommended for the northern dryland areas as a replacement for Festiquay. Festiquay has been deleted from all recommendations because of rust susceptibility.

The cross evolved in the Department of Agriculture northern breeding program is suitable for early to mid-season sowings in the north west. Milling and baking qualities of the cross are good, being of the Gabo class, and are superior to Festiquay and about equal to Gatchen and Gamut.

Festiquay has been grown in New South Wales and Queensland, and in 1969-70 Festiquay accounted for approximately 5 per cent of the total New South Wales acreage. The Queensland proportion has been slightly higher at nearly 9 per cent in 1969-70.

Summit has been added to the recommendations for southern irrigation areas as a supplement to the biscuit wheat Pinnacle. The addition of the variety was based on its rust resistant characteristics.

Premium wheat pool payment. — The Australian Wheat Board made the final payment on New South Wales Prime Hard wheat delivered to northern and western stations in the 1969-70 season. The payments were made on a protein content basis, assessed at delivery points and apportioned by the Premium Wheatgrowers' Association of Narrabri. The payments were as follows: — 13 per cent — 14 per cent — 5.4 cents per bushel; 14.1 per cent — 15 per cent — 8.0 cents; and over 15 per cent — 10.6 cents per bushel. The payment is in addition to the initial payment of 5 cents per bushel over all deliveries to these categories.

In 1968-69, the Australian Wheat Board paid premiums on 29.2 million bushels of New South Wales wheat, with premiums ranging from 7.34 cents per bushels for wheat with a protein content of 12.5 per cent — 13.5 per cent to 10.97 cents per bushel for wheat with a protein content of over 15 per cent. Premiums in the previous year, 1967-68 were slightly higher ranging from 8.19 cents per bushel.

Australian Wheatgrowers' Federation meeting. — The Australian Wheatgrowers'

Federation changed its policy on quotas in respect to State shortfalls(1) at its bi-annual meeting. In previous years, when a shortfall was experienced by a State, the Federation considered and usually provided an additional quota to the particular State in the following year. Although such a system was flexible, the resulting allocation in the subsequent year was a compromise and naturally unacceptable by farmers in the particular State.

The policy change is that at least a 50 per cent restitution of State shortfalls would be granted, based on deliveries with the additional quota, representing the shortfall, being distributed over a maximum of two seasons. Such special quotas would lapse after two years. The shortfall quota would be implemented in the subsequent year when possible, depending upon marketing potential and carryover stocks.

In recognition of past shortfalls, the Federation allocated 7 million bushels to Western Australia to off-set the shortfall in 1969-70. Queensland was granted 2 million bushels for the next three consecutive seasons in recognition of the three consecutive droughts since the initiation of quotas. These quotas are additional to quotas which may be granted for the 1972-73 season.

It can be expected that Queensland will have an additional shortfall quota in 1972-73 as deliveries in 1971-72 will fall short of the States 37 million bushel quota. At present, it appears that New South Wales will receive a special shortfall quota in 1972-73 as total production is estimated to be substantially less than the total quota of 128 million bushels.

The Federation will hold a meeting in mid-December to determine national and State quotas — a month earlier than in past seasons — to provide ample lead time for appropriate decision making by farmers. The Federation expressed optimism in the possibility of increasing quotas for the 1972-73 season due to the excellent export sales made by the Australian Wheat Board and expected below quota production in this season. However, the Commonwealth Government must accede to the request and through financial power (the first advance) could force a re-examination of total quota size if necessary. As politics play an important role in such decisions, the quota does not require to be economically logical.

The major issue of the meeting was on quotas, although other reports were made. One such report was for an all-risk crop insurance scheme for wheat growers. The proposed scheme, to be examined by State organizations and then by the Australian Wheatgrowers' Federation, is to provide insurance against the uncertainty of weather.

The proposal envisages Government and grower financial participation with administrative costs being borne by the Commonwealth Government. The method of premium payment by the farmers would be a deduction on the first or second payment on delivered wheat.

The Australian wheat grower would ensure that his individual quota would be met rather than on total production or acreage. If an individual could not deliver his quota due to some natural phenomenon, a payment would be made equivalent to the first advance less freight on the difference between the quantity delivered and the quota.

The proposed scheme is far from being implemented as it must go through State organizations, back to the Australian Wheatgrowers' Federation and then be approved by all Governments.

(1) Shortfalls - amount of wheat by which a State fails to reach its quota.

United Arab Republic (U.A.R.) wheat sale. — The Australian Wheat Board has sold a further 500,000 long tons (18,667,000 bushels) of wheat to the U.A.R. The contract specifies shipment between November 1971 and June 1972, with payments on extended credit terms for 3 years.

The sale is in addition to the sale of one million tons (37,333,000 bushels) obtained in May 1971, which is currently being shipped to the U.A.R. These sales follow previous contracts for 1.5 million tons (56 million bushels) of wheat which was shipped between September 1970 and June 1971. The U.A.R. has become a major market for Australian wheat in the past two years playing an important factor in the record export sales made by the Australian Wheat Board in 1971-72.

The U.A.R. trade delegation announced that the purchase fulfills a three year contract for 3 million tons (112 million bushels) of wheat. Total shipments of specified contracts total approximately 2.75 million tons (102.7 million bushels), which fulfills the overall contract. The shipping period is two years rather than three and the delegation indicated that further contracts would likely be made, even though the initial contract was finished.

The U.A.R. delegation stated that Australian wheat resembles domestic wheat and millers were satisfied with Australian wheat. According to the U.A.R. spokesman, Australian wheat is more acceptable than American or Continental wheat.

Exports of Australian Wheat and Wheat Flour in Terms of Wheat
December 1 — September 18, 1970-71 and Corresponding Period 1969-70

Destination	Wheat		Wheat flour	
	1969-70	1970-71	1969-70	1970-71
thousand bushels				
<u>Western Europe</u>				
EEC:				
Germany, West	30	30	—	—
Netherlands	2,232	249	—	—
Sub-totals	2,262	279	—	—
Other Western Europe:				
Britain	32,480	45,117	310	315
Ireland	1,180	608	—	—
Italy	—	1,033	—	—
Malta	529	384	—	—
Norway	1,864	4,850	—	—
Sweden	94	—	—	—
Switzerland	137	1,644	—	—
Sub-totals	36,284	53,636	310	315
Totals	38,546	53,915	310	315
<u>Eastern Europe</u>				
Germany, East	—	5,159	—	—

See footnotes at end of table.

Exports of Australian Wheat and Wheat Flour in Terms of Wheat
December 1 - September 18, 1970-71 and Corresponding Period 1969-70 - Continued

Destination	Wheat		Wheat flour	
	1969-70	1970-71	1969-70	1970-71
thousand bushels				
<u>Africa</u>				
Angola	—	1,030	—	—
Ethiopia	1,156	1,566	—	—
Malawi	—	—	403	580
Mauritius — Comm.	—	—	502	557
— F.Aid	—	—	115	129
Mozambique	2,713	2,718	—	—
Rhodesia	2,646	1,560	—	—
South Africa	—	849	—	—
Sudan	7,018	4,816	—	—
Tanzania	5	272	—	—
U.A.R.	1,468	47,683	—	—
Zambia	1,988	2,055	—	—
Others	158	17	704	195
Totals	17,152	62,566	1,724	1,461
<u>Asia</u>				
Aden	1,469	270	—	—
Aden and Aden I/T	—	—	89	—
Aden and Aden I/T Atta	—	—	66	24
Arabian Gulf	—	—	184	180
Arabian Gulf Atta	—	—	1,049	1,005
Burma — F.Aid	—	—	28	559
Ceylon	2,054	2,539	—	—
— Comm.	—	—	4,182	4,346
— F. Aid	—	—	572	602
China	76,321	3,038	—	—
Hong Kong	1,492	2,253	27	18
India — Comm.	1,773	1,876	—	—
— F. Aid	1,140	1,723	—	—
Indonesia — Comm.	—	—	7	6
— F. Aid	—	448	2,716	1,575
Iran	—	18,808	—	—
Iraq	2,046	16,324	—	—
Japan	27,354	24,706	—	—
Korea, North	3,559	—	—	—
Korea, South	—	7,402	—	—
Kuwait	2,552	4,054	—	—
Lebanon	1,703	2,298	—	—
Malaysia	8,847	8,543	—	—

See footnotes at end of table.

Exports of Australian Wheat and Wheat Flour in Terms of Wheat
December 1 — September 18, 1970-71 and Corresponding Period 1969-70 — Concluded

Destination	Wheat		Wheat flour	
	1969-70	1970-71	1969-70	1970-71
thousand bushels				
<u>Asia — concluded</u>				
Pakistan — Comm.	4,416	2,700	—	—
— F. Aid	954	234	—	—
Philippines	—	1,296	161	172
Sabah	—	—	5	3
Sarawak	—	—	5	(1)
Saudi Arabia	2,601	1,818	228	209
Singapore	5,761	5,929	1	1
Taiwan	2,252	5,161	—	—
Thailand	1,266	1,068	202	155
Others	1,173	950	159	113
Totals	148,733	113,438	9,681	8,968
<u>Oceania</u>				
New Zealand	1,656	1,827	—	—
Okinawa	131	634	—	—
Totals	1,787	2,461	—	—
<u>Western Hemisphere</u>				
Bolivia	503	1,660	—	—
Chile	3,084	6,124	—	—
Peru	1,701	5,227	—	—
West Indies Area	—	—	47	43
Totals	5,288	13,011	47	43
<u>Pacific Area and Sundries</u>				
Pacific Islands	70	48	3,044	3,114
Ships' Stores and Sundries	—	—	141	100
Totals	70	48	3,185	3,214
Totals, all countries	211,571	250,600	14,948	14,000

(1) Less than 500 bushels.

ARGENTINE SITUATION

Supplies Less than a Year Ago Reflecting a decrease in production which more than offset an increase in carryover stocks, total estimated domestic supplies of wheat in Argentina for the 1970-71 (December-November) crop year are placed at some 183.7 million bushels, a decline of 33 per cent from the previous year's total of 273.5 million. The 1970 production estimated at 156.2 million bushels is 39 per cent below the 257.9 million produced in 1969, while the December 1, 1970 carryover stocks at 27.5 million are sharply above the 15.6 million at the same date a year ago. After making an allowance of 150.0 million bushels for anticipated domestic requirements, an estimated 33.7 million are available for export and for carryover in 1970-71, sharply below the 116.7 million the previous year.

Exports Decline from Year Ago Preliminary exports of wheat and wheat flour in terms of wheat equivalent during December 1970 - September 1971 amounted to 28.3 million bushels, in sharp contrast to the 74.1 million exported during the same ten months in 1969-70. The balance remaining on October 1, 1971 for export and for carryover was estimated at only 5.5 million bushels, as against the October 1, 1970 total of 42.6 million.

Argentine Wheat Supplies

Item	1969-70 ^r	1970-71 ^p
	million bushels	
Carryover at beginning of crop year (December 1) (1) ...	15.6	27.5
Production	257.9	156.2
Total estimated domestic supplies	273.5	183.7
Imports, December- September
Total estimated supplies	273.5	183.7
Less estimated requirements for crop year	156.8	150.0
Available for export and for carryover	116.7	33.7
<u>Deduct</u>		
Exports of wheat as grain, December-September	70.9	23.3
Exports of wheat flour in terms of wheat, December - September	3.2	5.0
Total exports of wheat and wheat flour	74.1	28.3
Balance on October 1 for export and for carryover	42.6	5.5

(1) Includes allowances for farm stocks.

The following account of the Argentine situation has been extracted from a report from Mr. H.G. Fairfield, Assistant Commercial Secretary (Agriculture) for Canada, Buenos Aires, under date of October 11, 1971 and is reproduced with the permission of the Trade Commissioner Service, Department of Industry, Trade and Commerce. Where possible conversions to Canadian measures and currency have been made for the convenience of our readers.

The Argentine-Brazil wheat agreement was announced on September 9. It is renewable annually until 1974 with the annual quantity to be fixed at approximately 1.0 million tons (36.7 million bushels) in the second half of November until February 15 but the Governments by mutual agreement can revise the said quantity. There is also a separate contract for 150,000 tons (5.5 million bushels) for delivery in 1971 at U\$S 65.00 per ton (\$1.80 per bushel Cdn.) f.o.b. Buenos Aires.

The price formula is as follows: USA hard winter No. 2 ordinary c.i.f. Rotterdam quotations minus freight gulf to Rotterdam. The price for each quarter will be calculated using average quotations and freight registered for ten working days prior to official negotiations for each quarter. Negotiations for each quarter will take place during the first month of the quarter to prevent lagged prices. There will be U\$S 4.00 added to this price as compensation for reserving necessary quantities. Also there is a U\$S 0.367 per ton per month, cumulative charge. These charges start in the second month and cumulate until the end of the year.

On the basis of the present average f.o.b. Buenos Aires prices should be between U\$S 66 and 67 (\$1.82 and \$1.85 per bushel Cdn.). The second estimate of area sown was up by 50,000 hectares (124,000 acres) in 1971-72.

The estimates by province are as follows:

	thousand acres
Buenos Aires	6,864
Santa Fe	1,507
La Pampa	1,193
Cordoba	968
Entre Rios	622
Chaco	136
Other provinces	195
Total	<u>11,486</u>

Dry weather did not affect La Pampa as much as expected although wet weather affected Buenos Aires more than expected. A preliminary production estimate is due on November 9 and the first official production estimate is due on December 9. Verbal estimates by the trade vary from 5.5 to 6.0 million tons (202.1 million to 220.5 million bushels). This would mean 1.5 to 2.0 million tons (55.1 million to 73.5 million bushels) for export including durums.

Hard wheat prices closed at 22.30 pesos per 100 kilos (\$1.23 per bushel Cdn.) f.o.r. Buenos Aires at the end of September and 21.50 pesos (\$1.19 per bushel) at Bahia Blanca. Durums were quoted at 21.80 and 20.20 pesos (\$1.21 and \$1.12 per bushel) at Buenos Aires and Bahia Blanca, respectively, at September 30.

On the Buenos Aires futures exchange hard wheat was quoted on September 30 at 22.30 pesos (\$1.23 per bushel) for October delivery; 22.90 (\$1.27 per bushel) for November; 24.50 (\$1.36 per bushel) for December; 25.00 (\$1.38 per bushel) for January; and 25.50 (\$1.41 per bushel) for February delivery.

Argentine Wheat Exports December — July 1970-71 and 1969-70

Destination	July		December — July	
	1970	1971	1969-70	1970-71
thousand bushels				
<u>Western Europe</u>				
EEC:				
Belgium	187	—	911	—
France	—	—	601	244
Germany, Federal Republic	—	—	276	26
Italy	5,807	767	18,901	10,790
Netherlands	28	—	986	259
Sub-totals	6,022	767	21,575	11,319
Other Western Europe:				
Britain	36	—	437	—
Portugal	—	—	798	—
Spain	—	—	—	448
Sub-totals	36	—	1,235	448
Totals	6,058	767	22,910	11,767
<u>Africa</u>				
Algeria	—	—	537	—
Libya	418	—	418	909
Totals	418	—	955	909
<u>Asia</u>				
India	—	—	2,022	—
Lebanon	—	—	287	261
Syria	—	—	—	1,533
Totals	—	—	2,309	1,794
<u>Western Hemisphere</u>				
Bolivia	—	—	—	18
Brazil	3,510	—	23,019	4,354
Chile	59	86	2,529	1,638
Paraguay	152	—	1,173	142
Peru	485	—	4,262	318
Totals	4,206	86	30,983	6,470
Totals, all countries	10,682	853	57,156	20,939

CALENDER OF WHEAT EVENTS

- September 24 According to the Bureau of the Census, United States Department of Commerce, wheat flour production in the United States in August 1971 amounted to 22,111,000 hundredweight, averaging 1,005,000 hundredweight per working day. This compared with an average output per working day of 919,000 hundredweight last month and 1,011,000 hundredweight in August 1970. Wheat flour mills during August operated at 100.4 per cent of capacity, compared with 91.8 per cent and 100.6 per cent, respectively, for the previous month and the same month a year ago. Flour mills in August 1971 ground 49,235,000 bushels of wheat compared with 45,164,000 bushels the previous month and 47,440,000 bushels in August 1970.
- October 1 Based on conditions at September 15 Canada's 1971 wheat crop was estimated at 521.7 million bushels, 57 per cent above last year's 331.5 million bushels but 14 per cent below the ten-year (1960-69) average of 609.5 million. In the Prairie Provinces the 1971 wheat crop is estimated at 502.0 million bushels, some 189.5 million bushels or 61 per cent above the 1970 crop.
- 7 According to a press release the United States Department of Agriculture announced the signing of a Public Law 480 agreement with the Democratic Republic of the Congo providing for the sale of \$2,130,000 worth of U.S. wheat flour. The signing took place in Kinshasa.
- 8 The United States Department of Agriculture announced issuance of two Public Law 480 purchase authorizations to Vietnam for a total of \$1,869,000 for 30,000 metric tons (1,101,000 bushels) of wheat.
- A press release issued by the Grain Transportation Committee stated that special measures instituted last spring to speed up grain shipments will be continued until the close of navigation to help Canada's grain handling and transportation industry to carry out the biggest fall shipping program ever established in this country.
- 12 According to the Crop Reporting Board of the United States Department of Agriculture production of all wheat in the United States is forecast at a record high of 1,628 million bushels, up 2.2 million bushels from a month earlier, 18 per cent above 1970 and 11 per cent above 1969.
- According to a report received by Mr. R.A. Groundwater, Assistant Commercial Secretary for Canada, Melbourne, the estimated wheat production in Australia in 1971-72 is 314 million bushels from an acreage of 17.6 million acres.
- 20 The Canadian Wheat Board announced that a new export record for Port Churchill was set on October 19, 1971 when the 17,000-ton Hallendrecht cleared with about 600,000 bushels of wheat in her holds. The total for the 1971 season was approximately 25.5 million bushels as compared with the previous high of 24.7 million in 1965.

STATISTICS CANADA LIBRARY
BIBLIOTHEQUE STATISTIQUE CANADA



1010687071