

# DOES NOT CIRCULATE NE PAS PRÊTER The wheat review

AUGUST 1972



SEP 15 1972  
30  
35105, 37





STATISTICS CANADA

Agriculture Division

Crops Section

## THE WHEAT REVIEW

AUGUST 1972

*Published by Authority of*  
The Minister of Industry, Trade and Commerce

September 1972  
5502-502

Price: 30 cents  
\$3.00 a year

Vol. 43—No. 1

Statistics Canada should be credited when republishing all or any part of this document

Information Canada  
Ottawa





## TABLE OF CONTENTS

	<u>Page</u>
<u>World Wheat Situation</u>	
Crop Year Shipments Lower than a Year Ago .....	5
Wheat Supplies Decline from Last Year .....	5
<u>Canadian Situation</u>	
Supplies Fourth Highest on Record .....	6
1971-72 Crop Year Exports Above Previous Year .....	7
Initial Payment Prices Wheat, Oats and Barley 1972-73 Crop Year .....	8
Weather and Crops .....	8
General Quotas 1971-72 .....	9
Special Quotas 1971-72 .....	9
General Quotas 1971-72 C.N.R. and C.P.R. Blocks .....	10
Lake Shipments of Canadian Grain .....	12
Advances Issued Under the Prairie Grain Advance Payments Act .....	12
Preliminary Estimates of Specified Crop and Summerfallow Acreages 1972 ....	13
Carryover Stocks of Canadian Grain at July 31, 1972 .....	14
Farm Stocks in the Prairie Provinces .....	14
Canadian Wheat Carryover 1941-72 .....	15
Farmers' Marketings of Wheat in the Prairie Provinces .....	16
Visible Supply of Canadian Wheat .....	17
Grading of Wheat Inspected Crop Year 1971-72 with Comparisons .....	17
Weekly Visible Supply and Farmers' Marketings (charts) .....	18
Wheat Shipments to the United States by Destination .....	19
Rail Shipments of Wheat to Maritime Ports .....	19
Rail Shipments of Wheat from Thunder Bay.....	20
Overseas Exports of Canadian Grain by Ports of Loading .....	20
Shipments Under Feed Grain Assistance Regulations .....	21
Monthly Exports of Canadian Wheat and Wheat Flour .....	22
Exports of Canadian Wheat by Destination .....	23
Customs Exports of Canadian Wheat Flour by Countries of Consignment .....	26
Canadian Wheat Board Weekly Average Cash Wheat Prices 1971-72 .....	29
Canadian Wheat Board Weekly Average Cash Wheat Prices 1972-73 .....	30
Initial Payment to Producers .....	31
<u>Canadian Flour Milling Situation</u>	
Production and Exports .....	32
<u>United States Situation</u>	
Supply Position .....	33
Exports Below Previous Year .....	33
Stocks of Wheat in All Positions July 1, 1972 .....	34
Summary of the Wheat Situation .....	35
All Wheat Production .....	36
USDA Announces Preliminary Payment of \$1.28 Per Bushel to Wheat Producers .	36
1973 Wheat Program Announced; Includes Options and Substitution .....	36
Flour Production .....	37
<u>Australian Situation</u> .....	38
<u>Argentine Situation</u> .....	43
<u>French Situation</u> .....	46
<u>Grain Situation in Federal Republic of Germany</u> .....	51
<u>Wheat Situation in Britain</u> .....	53
<u>Grain Situation in Switzerland</u> .....	54
<u>Calendar of Wheat Events</u> .....	56

## S Y M B O L S

The following standard symbols are used in  
Statistics Canada publications:

- .. figures not available
- nil or zero.
- p preliminary figures.
- r revised figures.

Due to rounding, the sums of individual items  
may not agree exactly with the totals.

# WORLD WHEAT SITUATION

## Crop Year Shipments Lower than a Year Ago

Total shipments of wheat and flour in terms of wheat, from Canada, Australia, United States and Argentina during the 1971-72 (August-July) crop year, have amounted to 1,492.4

million bushels, some 5 per cent less than the 1970-71 level of 1,574.0 million but 2 per cent above the ten-year (1960-61 - 1969-70) average of 1,469.0 million.

Exports from Canada recorded a 16 per cent increase and those from Argentina were slightly larger than the total of a year ago while shipments from United States and Australia registered declines. Shipments from the four traditional major exporters during the 1971-72 crop year, with comparisons, appear in the following table.

Exports of Wheat and Flour in Terms of Wheat, August-July 1971-72  
with comparisons

August-July	Canada	Australia	United States	Argentina	Total	France
million bushels						
1950-51 .....	241.0	127.8	375.3	94.5	838.6	
1951-52 .....	355.8	93.4	466.6	24.1	939.9	
1952-53 .....	385.5	107.0	322.6	38.9	854.0	
1953-54 .....	255.1	63.4	211.4	110.3	640.2	
1954-55 .....	251.9	94.3	280.4	134.5	761.1	
1955-56 .....	312.3	107.5	359.4	108.6	887.8	
1956-57 .....	264.4	120.2	539.5	100.6	1,024.7	
1957-58 .....	320.3	61.9	396.4	77.6	856.2	
1958-59 .....	294.5	82.7	455.6	106.2	939.0	
1959-60 .....	277.3	117.8	513.1	76.5	984.7	
1960-61 .....	353.2	198.0	677.5	62.9	1,291.6	
1961-62 .....	358.0	219.8	704.2	95.5	1,377.5	
1962-63 .....	331.4	186.2	650.6	60.7	1,228.9	
1963-64 .....	594.5	274.0	852.3	106.5	1,827.3	
1964-65 .....	399.6	245.1	736.9	174.3	1,555.9	
1965-66 .....	584.9	193.3	868.6	280.7	1,927.5	
1966-67 .....	515.2	264.0	732.7	101.1	1,613.0	111.0
1967-68 .....	336.0	247.4	754.9	70.5	1,408.8	155.4
1968-69 .....	305.8	210.8	541.0	91.6	1,149.2	221.5
1969-70 .....	346.5	272.5	608.3	83.2	1,310.5	205.9
1970-71 <sup>r</sup> .....	435.2	346.8	738.3	53.7	1,574.0	124.3
1971-72 <sup>P</sup> .....	503.9	304.7	629.5	54.3	1,492.4	183.2(1)

(1) August-May only.

## Wheat Supplies Decline from Last Year

At the close of the Canadian crop year (July 31), total supplies of wheat remaining in Canada, Australia, United States and Argentina, for export and for carryover at the end of their respective crop

years, amounted to 2,332.5 million bushels, 5 per cent below the 2,450.8 million at the same date in 1971. During 1971-72 decreases in supplies were registered in Canada and Australia while those in United States and Argentina increased over a year ago. Supplies on or about August 1, 1972 in millions of bushels, were held as follows, with last year's comparable figures in brackets: Canada, 589.3 (734.2); Australia, 142.7 (235.6); United States, 1,553.7 (1,444.9); and Argentina, 46.8 (36.1).

Estimates for both years include on-farm stocks as well as those in commercial positions. It is to be noted that the 1972 United States crop estimates at 1,543.1 million bushels is now included. The supply figures for Canada represent crop-year-end carryover only, as the new crop will not be taken into account until September 1 in these calculations. The new Australian and Argentine production for 1971-72 will be included at January 1.



Exports of Wheat and Flour in Terms of Wheat, August-July 1971-72  
with Comparisons

August-July	Canada	Australia	United States	Argentina	Total	France
million metric tons						
1950-51 .....	6,559	3,478	10,214	2,572	22,823	
1951-52 .....	9,683	2,542	12,699	656	25,580	
1952-53 .....	10,492	2,912	8,780	1,059	23,242	
1953-54 .....	6,943	1,725	5,753	3,002	17,424	
1954-55 .....	6,856	2,566	7,631	3,661	20,714	
1955-56 .....	8,500	2,926	9,781	2,956	24,162	
1956-57 .....	7,196	3,271	14,683	2,738	27,888	
1957-58 .....	8,717	1,685	10,788	2,112	23,302	
1958-59 .....	8,015	2,251	12,400	2,890	25,556	
1959-60 .....	7,547	3,206	13,964	2,082	26,799	
1960-61 .....	9,613	5,389	18,439	1,712	35,152	
1961-62 .....	9,743	5,982	19,165	2,599	37,490	
1962-63 .....	9,019	5,068	17,707	1,652	33,446	
1963-64 .....	16,180	7,457	23,196	2,898	49,732	
1964-65 .....	10,875	6,671	20,055	4,744	42,345	
1965-66 .....	15,919	5,261	23,640	7,639	52,459	
1966-67 .....	14,022	7,185	19,941	2,752	43,899	3,021
1967-68 .....	9,145	6,733	20,545	1,919	38,342	4,229
1968-69 .....	8,322	5,737	14,724	2,493	31,276	6,028
1969-70 .....	9,430	7,416	16,555	2,264	35,666	5,606
1970-71 .....	11,844	9,438	20,093	1,461	42,838	3,383
1971-72 <sup>P</sup> .....	13,714	8,293	17,132	1,478	40,617	4,986(1)

(1) August-May only.

CANADIAN SITUATION

Supplies Fourth  
Highest on Record

Total supplies of Canadian wheat in the crop year 1971-72 totalled 1,263.8 million bushels, representing a decline of 6 per cent from the previous year's total of 1,340.2 million, with a sharp decrease in carryover stocks more than offsetting a 60 per cent increase in production. Stocks at the beginning of the crop year amounted to 734.2 million bushels, 27 per cent below the record 1,008.7 million at July 31, 1970. The 1971 crop, at 529.6 million bushels, was sharply above the 331.5 million level of the previous year when Operation Lift was in effect.

Exports of wheat and wheat flour in terms of wheat during the 1971-72 crop year amounted to 503.9 million bushels in contrast to 435.2 million shipped in 1970-71, and the highest since 515.3 million were exported in 1966-67. Domestic use of wheat in Canada, at 169.7 million bushels in 1971-72, was slightly below the 170.8 million the previous year but 9 per cent above the recent ten-year average of 156.1 million. Seed use, in keeping with a moderate increase in acreage in 1972 was 10 per cent more than the amount used in the previous year while quantities used as human food and for industrial use showed little change.

Reflecting the combined effect of a smaller total supply and increased disappearance (export and domestic) the July 31, 1972 carryover, at 589.3 million bushels was reduced by 20 per cent from the 1971 level of 734.2 million.



Total Supply and Disposition of Canadian Wheat 1967-68 — 1971-72  
(Crop Years August 1 — July 31)

Item	1967-68	1968-69	1969-70	1970-71 <sup>r</sup>	1971-72
million bushels					
<u>Supplies</u>					
Carryover, at beginning of crop year .....	566.4 <sup>r</sup>	665.5	851.8	1,008.7	734.2(1)
Production .....	592.9	649.8	684.3	331.5	529.6
Totals(2) .....	1,159.3 <sup>r</sup>	1,315.4	1,536.1	1,340.2	1,263.8
<u>Disposition</u>					
Exports, wheat and flour .....	336.0	305.8	346.5	435.2	503.9
Human consumption ..	60.5	61.4	64.6	64.5	65.2(3)
Seed .....	39.4	33.4	16.8	26.1	28.6(3)
Industrial use ....	2.4	1.1	0.5	0.6	0.5(3)
Carryover, at end of crop year ....	665.5	851.8	1,008.7	734.2	589.3
Residual item(4) ..	55.5 <sup>r</sup>	61.7	99.1	79.7	76.3
Totals .....	1,159.3 <sup>r</sup>	1,315.4	1,536.1	1,340.2	1,263.8

- (1) Subject to further revision pending receipt of Canadian Grain Commission's final data on commercial stocks at July 31, 1972.  
 (2) Includes small amounts of imports.  
 (3) Estimated.  
 (4) Includes feed for livestock and waste but also reflects the effect of any estimating errors in other components of the balance sheet.

1971-72 Crop Year According to preliminary data, combined exports of wheat in bulk, seed wheat and wheat flour in terms of wheat equivalent  
Exports Above in the crop year (August-July) 1971-72 amounted to 503.9  
Previous Year million bushels, an increase of 16 per cent over the previous year's total of 435.2 million bushels and 22 per cent above the ten-year (1960-61 — 1969-70) average exports of 412.5 million bushels.

Exports of wheat in bulk (as reported by the Canadian Grain Commission) amounted to 478.1 million bushels, some 17 per cent more than the 409.4 million shipped in 1970-71 and 27 per cent more than the ten-year average of 377.5 million. Exports of seed wheat, based on preliminary Customs data amounted to 1.0 million bushels unchanged from the 1970-71 adjusted figure. Wheat flour exports, based on preliminary data, were the equivalent of 24.8 million bushels, little changed from the adjusted exports cleared during 1970-71 but 24 per cent below the ten-year average of 32.8 million.

The 1971-72 total for exports of wheat in bulk was compiled from overseas clearances (and exports to the United States) as reported by the Canadian Grain Commission, while data on exports of wheat flour and seed wheat were obtained from Canadian Customs returns. Adjusted data on wheat flour exports for the 1971-72 crop year, removing the effect of time lag in reporting Customs returns, will be included in a subsequent issue of this publication.

Monthly exports of wheat in bulk, seed wheat and wheat flour in terms of wheat during the crop year recently completed ranged from a high of 61.7 million bushels in October 1971 to a low of 23.1 million in January 1972. Overseas clearances of bulk wheat, the major component of the total exports of wheat, seed wheat and flour, ranged between 59 million bushels in October and 21.6 million in January.

The People's Republic of China was the major market for Canadian wheat with purchases of 111.7 million bushels and accounted for 23 per cent of the 1971-72 crop year total. The U.S.S.R. (Russia) is in second place with imports of 109.6 million and also accounted for 23 per cent of the crop year total. During the 1970-71 crop year People's Republic of China imported 88.3 million (22 per cent of total) and U.S.S.R. (Russia) 12.1 million (3 per cent of total). Other principal markets during the 1971-72 crop year with quantities in millions of bushels, with the 1970-71 figures in brackets were as follows: Japan, 50.6 (40.0); Britain, 47.9 (64.6); India, 23.0 (17.1); Italy, 14.4 (15.4); Brazil, 13.6 (15.5); Algeria, 10.9 (14.3); Netherlands, 10.8 (8.8); Germany West, 9.7 (22.7); and Syria, 9.2 (10.6).

Initial Payment Prices  
Wheat, Oats and Barley  
1972-73 Crop Year

The Canadian Wheat Board in its Instructions to the Trade No. 13 for the 1972-73 crop year under the date of August 2, 1972 announced the following initial payments effective on and after August 1, 1972:

Wheat	—	One dollar and forty-six cents (\$1.46) per bushel basis the grade No. One C.W. Red Spring in store Thunder Bay or Vancouver.
Oats	—	Sixty cents (60¢) per bushel basis the grade No. 2 Canada Western in store Thunder Bay or Vancouver.
Barley	—	Ninety-six cents (96¢) per bushel basis the grade No. 3 Canada Western Six Row in store Thunder Bay or Vancouver.

Weather  
and Crops

A Telegraphic Crop Report, published by Statistics Canada on August 23, 1972 summarized crop conditions in the Prairie Provinces as follows:

Recent warm weather has advanced plant development to the point where harvesting is commencing. However, the crops are still later than usual and continued favourable temperatures are wanted. In Manitoba, farmers are harvesting rye and forage seeds while in Saskatchewan swathings of cereals has started except in the northern districts. In southeast Alberta swathings are in full swing and activity is either starting or about to start in the central part of the province. In general, given favourable weather conditions yield prospects range from average to good in most of the prairies. Bertha armyworm infestations are reported and spraying to control this pest is being undertaken.

General Quotas 1971-72 as at Monday, July 31, 1972

	<u>D</u>	<u>E</u>	<u>F</u>	<u>Total quotas for 1971-72</u> bushels	
Hercules Durum	5	—	—	20	All blocks
Soft White Springs	—	—	15	40	All blocks
Alberta Red Winter	—	1	—	9	All blocks
Rye	30				All blocks
Flaxseed	15(1)				All blocks
Rapeseed	12(2)				All blocks

Special Quotas 1971-72 as at Monday July 31, 1972

Pitic	1 carlot (50 assigned acres)	All blocks
Selected Hercules Durum	1 carlot (60 assigned acres)	All blocks
Selected oats	50 bushels per assigned acre	All blocks
Selected barley	50 bushels per assigned acre Extended to second carlot	All blocks Alta. only
Rye for distilleries	40 bushels per assigned acre	
Flaxseed for processors	25 bushels per assigned acre	
Rapeseed (low eruc acid)	20 bushels per assigned acre(3)	All blocks
Rapeseed for crushers	20 bushels per assigned acre	
Two-Row barley	2 carlots (100 assigned acres)	All blocks
Six-Row barley (olli variety)	4 carlots (200 assigned acres)	All blocks

- (1) Effective May 30 the regular flaxseed quota was increased to 20 bushels per quota acre for truck deliveries to western processors for domestic crushing only.
- (2) Effective July 7 the regular rapeseed quota was increased to 25 bushels per quota acre for truck deliveries to western crushers for domestic crushing only
- (3) Effective June 20, 1972 the special quota for low erucic acid rapeseed increased to 30 bushels per assigned acre for truck deliveries to western crushers for domestic crushing only.



General Quotas 1971-72 as at Monday, July 31, 1972 Canadian National Railway Blocks

No.	Name	Wheat	Total	Durum	Total	Oats	Total	Barley	Total
		(all others)	quotas		quotas		quotas		quotas
			1971-72		1971-72		1971-72		1971-72
		<u>E</u>	bushels	<u>D</u>	bushels	<u>D</u>	bushels	<u>E</u>	bushels
01	Winnipeg N. ....	1	9	5	20	3	12	5	40
03	Winnipeg S. ....	1	9	5	20	3	12	5	40
05	Winnipeg W. ....	1	9	5	20	3	12	5	40
07	Brandon N. ....	1	9	5	20	3	12	5	40
09	Brandon W. ....	1	9	5	20	3	12	5	40
11	Melville .....	1	9	5	20	3	12	5	40
13	Dauphin .....	1	9	5	20	3	12	5	40
15	Kamsack .....	1	9	5	20	3	12	5	40
17	Saskatoon M. ...	1	9	5	20	3	12	5	40
19	Saskatoon S. ...	1	9	5	20	3	12	5	40
21	Saskatoon W. ...	1	9	5	20	3	12	5	40
23	Pr. Albert E. ..	1	9	5	20	3	12	5	40
25	Pr. Albert S. ..	1	9	5	20	3	12	5	40
27	Pr. Albert M. ..	1	9	5	20	3	12	5	40
29	Pr. Albert W. ..	1	9	5	20	3	12	5	40
31	Regina N. ....	1	9	5	20	3	12	5	40
33	Regina S. ....	1	9	5	20	3	12	5	40
35	Regina W. ....	1	9	5	20	3	12	5	40
37	Biggar N. ....	1	9	5	20	3	12	5	40
39	Biggar W. ....	1	9	5	20	3	12	5	40
41	Edmonton N. ....	1	9	5	20	3	12	5	40
43	Edmonton S. ....	1	9	5	20	3	12	5	40
45	Edmonton W. ....	1	9	5	20	3	12	5	40
47	Hanna S. ....	1	9	5	20	3	12	5	40
49	Hanna W. ....	1	9	5	20	3	12	5	40
90	NAR West .....	1	9	5	20	3	12	5	40
98	G.S.L. ....	1	9	5	20	3	12	5	40

General Quotas 1971-72 as at Monday, July 31, 1972 Canadian Pacific Railway Blocks

No.	Name	Wheat (all others)	Total quotas 1971-72	Durum	Total quotas 1971-72	Oats	Total quotas 1971-72	Barley	Total quotas 1972-72
		<u>E</u>	bushels	<u>D</u>	bushels	<u>D</u>	bushels	<u>E</u>	bushels
61	Keewatin .....	1	9	5	20	3	12	5	40
62	La Riviere .....	1	9	5	20	3	12	5	40
63	Carberry .....	1	9	5	20	3	12	5	40
64	Brandon .....	1	9	5	20	3	12	5	40
71	Weyburn .....	1	9	5	20	3	12	5	40
72	Pasqua .....	1	9	5	20	3	12	5	40
73	Bulyea .....	1	9	5	20	3	12	5	40
74	Bredenbury .....	1	9	5	20	3	12	5	40
75	Saskatoon .....	1	9	5	20	3	12	5	40
76	Wilkie .....	1	9	5	20	3	12	5	40
77	Assiniboia .....	1	9	5	20	3	12	5	40
78	Swift Current ..	1	9	5	20	3	12	5	40
79	Outlook .....	1	9	5	20	3	12	5	40
81	Medicine Hat ...	1	9	5	20	3	12	5	40
82	Brooks .....	1	9	5	20	3	12	5	40
83	Lethbridge .....	1	9	5	20	3	12	5	40
84	Vulcan .....	1	9	5	20	3	12	5	40
85	Calgary .....	1	9	5	20	3	12	5	40
86	Red Deer .....	1	9	5	20	3	12	5	40
87	Edmonton .....	1	9	5	20	3	12	5	40
95	N.A.R. East ....	1	9	5	20	3	12	5	40
	B.C. Stations ...	1	9	5	20	3	12	5	40

Lake Shipments of Canadian Grain Total shipments of the six major grains out of Lakehead terminals from the opening of navigation to August 9 this year amounted to 281.4 million bushels, 13 per cent above the 248.1 million shipped during the same period in 1971. The 1972 season of navigation opened on April 14 while the 1971 season opened on April 10. Shipments of wheat, at 147.7 million were 2 per cent above the 1971 figure of 144.9 million bushels and accounted for 52 per cent of the total.

Lake Shipments of Canadian Grain from the Opening of Navigation to August 9, 1972 and to Approximately the Same Date 1961 to 1971

	Wheat	Oats	Barley	Rye	Flaxseed	Rapeseed	Total
	thousand bushels						
1961 .....	133,438	14,459	23,466	1,388	3,309	—	176,061
1962 .....	67,483	7,843	12,056	1,176	3,129	—	91,687
1963 .....	87,313	20,571	11,480	1,548	3,297	—	124,207
1964 .....	196,939	15,388	18,347	2,283	4,759	—	237,716
1965 .....	118,791	25,081	17,549	2,291	5,223	559	169,495
1966 .....	196,406	14,594	19,096	4,031	7,195	555	241,876
1967 .....	147,241	19,196	41,354	2,745	5,002	816	216,354
1968(1) .....	77,196	7,968	8,764	567	2,930	255	97,681
1969 .....	76,681	7,804	19,329	939	4,344	760	109,857
1970 .....	135,313	12,726	59,397	1,820	6,559	2,989	218,804
1971 .....	144,918	12,814	70,334	2,238	8,517	9,241	248,062
1972 .....	147,680	13,175	101,997	2,529	7,205	8,818	281,404

(1) Reports indicate that no grain moved down the Great Lakes from July 18 to July 31, 1968, due to the Lakehead strike.

Advances Issued Under the  
Prairie Grain Advance  
Payments Act

Requests are received concerning the level of cash advances issued and outstanding. This information from the Canadian Wheat Board will be carried in the Wheat Review as a regular feature.

Advances issued August 1, 1972 to August 25, 1972  
486 advances totalling ..... \$ 1,340,293

Outstanding advances on August 25, 1972

Issued in 1972-73 .....	\$ 1,340,293
Issued in 1971-72 and prior .....	\$ 4,113,824
Issued in 1970-71 and prior .....	\$ 8,416,063
Total outstanding advances .....	\$13,870,180



Preliminary Estimates  
of Specified Crop and  
Summerfallow Acreages  
1972

The acreage estimates for 1972 are, with some exceptions, based on returns from the Statistics Canada annual June survey of seeded acreages and have been made in consultation with the officials responsible for agricultural statistics in each of the provinces. Current estimates are subject to

revision in the light of further information received during the season and when marketing and other check data become available after the end of the crop year.

Preliminary Estimates of Crop and Summerfallow Acreages, 1972  
with Comparisons — Canada(1)

Crops	1971	1972	1972 as %
			of 1971
	acres		per cent
Winter wheat .....	341,000	365,000	107
Spring wheat(2) .....	19,065,700	20,984,700	110
All wheat .....	19,406,700	21,349,700	110
Oats for grain(3) .....	7,823,900	7,179,000	92
Barley .....	13,980,500	12,510,400	89
Fall rye(4) .....	906,300	593,000	65
Spring rye .....	50,700	41,500	82
All rye .....	957,000	634,500	66
Corn for grain .....	1,410,100	1,418,000	101
Mixed grain .....	2,054,800	2,064,900	100
Flaxseed .....	1,767,500	1,424,500	81
Rapeseed .....	5,306,000	3,270,000	62
Soybeans .....	367,000	405,000	110
Summerfallow .....	26,224,000	29,000,000	111

(1) In some provinces the area seeded to certain crops is too small to permit reliable annual estimates. Acreages in such crops have not been included in the totals for Canada.

(2) Includes relatively small acreages of winter wheat in all provinces other than Ontario.

(3) Includes oats for grain and for hay in the Prairie Provinces.

(4) Includes small acreages of spring rye in Quebec, Ontario and British Columbia.

Total wheat acreage in Canada in 1972, estimated at 21.3 million acres, is 10 per cent larger than last year's 19.4 million. In the Prairie Provinces, where most of Canada's wheat is grown, acreage is estimated at 20.8 million, an increase of 10 per cent from last year's 18.9 million. The area seeded to oats in Canada in 1972 is estimated at 7.2 million acres, some 8 per cent less than that of 1971. In the Prairie Provinces the oats acreage, at 5.7 million acres, is 10 per cent below that of 1971. Canadian barley acreage for 1972 at 12.5 million acres decreased 11 per cent from the 1971 level of 14.0 million. Barley acreage in the Prairies is placed at 11.9 million, down 11 per cent from the 1971 level.

Rye acreage at 634,500 is 34 per cent below the 1971 level of 957,000. Fall seedings of rye were down 35 per cent and spring rye decreased by 18 per cent. The greater part of Canada's rye is grown in the Prairie Provinces where the 1972 acreage is estimated at 581,500 acres as compared with 905,700 in 1971.

Carryover Stocks  
of Canadian Grain  
at July 31, 1972

Total carryover stocks of the six major Canadian grains in all North American positions at July 31, 1972 were estimated at 974.9 million bushels, 8 per cent below last year's revised total of 1,064.2 million. Decreases occurred in stocks of wheat, oats and flaxseed from the previous year while carryover stocks of barley, rye and rapeseed registered increases.

Stocks of Canadian Grain at July 31, 1972

Position	Wheat	Oats	Barley	Rye	Flaxseed	Rapeseed
thousand bushels						
<u>In Canada</u>						
On farms .....	317,500	96,000	106,000	5,500	6,000	16,300
Primary elevators(1) .....	132,930	14,113	42,477	7,047	5,339	16,210
Process elevators .....	4,374	141	2,646	67	34	1,042
Interior terminal elevators.....	4,082	23	5,330	2	204	48
Vancouver - New Westminster .....	7,022	1	2,960	601	804	2,305
Victoria elevator .....	772	—	5	—	—	—
Prince Rupert elevators .....	324	—	—	1	—	—
Churchill elevator .....	3,458	34	1,025	—	—	—
Thunder Bay elevators .....	31,417	3,642	19,018	1,286	2,992	3,654
In transit rail:						
Western division(1) .....	25,068	1,408	3,629	587	468	2,152
Eastern division .....	382	282	—	—	—	—
In transit lake .....	10,833	288	2,760	—	—	—
Eastern elevators .....	48,293	1,809	8,124	380	170	118
Eastern mills(1) .....	2,587	583	—	—	—	—
Western mills(1) .....	214	—	1	17	—	—
Totals in Canada(1) .....	589,256	118,324	193,975	15,488	16,011	41,829
In United States .....	—	—	—	—	—	—
Totals, Canadian grain in Canada and United States, July 31, 1972(1) .	589,256	118,324	193,975	15,488	16,011	41,829
<u>Comparative stocks, July 31, 1971<sup>r</sup></u>						
In Canada .....	744,154	125,373	144,269	12,601	26,606	11,029
In United States .....	—	—	—	142	—	—
Totals in Canada and United States.	744,154	125,373	144,269	12,743	26,606	11,029

(1) Preliminary revised — subject to further revision.

Revisions for the July 31, 1971 estimates are included in this report and any further revisions for the period 1967-70 will be published in detail in due course. These revisions are necessary due to the incorporation of the 1971 Census acreage benchmarks into the series. In general, revisions of farm stocks from the previously published results will be small but space does not allow a complete review of these data at this time. Total stocks of wheat were estimated at 589.3 million bushels, 21 per cent below last year's revised estimate of 744.2 million. Stocks of oats in all positions estimated at 118.3 million bushels, were 6 per cent smaller than last year's 125.4 million. Barley stocks, at 194.0 million bushels, increased by 34 per cent over the 144.3 million held in 1971. Carryover stocks of rye in all positions, estimated at 15.5 million bushels were up 22 per cent over last year's 12.7 million. July-end carryover stocks of flaxseed at 16.0 million bushels, were 40 per cent below the previous year's 26.6 million. Estimated stocks of rapeseed, at 41.8 million, were in sharp contrast to last year's figure of 11.0 million.

Farm Stocks  
in the Prairie Provinces

Farm-held stocks of wheat, oats, barley, rye, flaxseed and rapeseed in the Prairies, at July 31, 1972 amounted to 515.8 million bushels, a decrease of 6 per cent from the July-end 1971 total of 547.9 million. Since the bulk of farm stocks of grain is held in Western Canada, stocks in the Prairie Provinces have been segregated for ease in comparison with last year's totals. Approximately 94 per cent of this year's farm-held stocks was located in the Prairie Provinces compared with 97 per cent at July 31, 1971.

Estimated Farm Stocks in the Prairie Provinces, July 31, 1972 and 1971

Province	Wheat	Oats	Barley	Rye	Flaxseed	Rapeseed
thousand bushels						
Manitoba .....	26,000	14,000	10,000	500	1,000	2,300
Saskatchewan .....	250,000	40,000	56,000	3,000	4,000	10,500
Alberta .....	38,000	24,000	30,000	2,000	1,000	3,500
Totals, July 31, 1972 .....	314,000	78,000	96,000	5,500	6,000	16,300
Totals, July 31, 1971 .....	402,000	75,000	55,000	5,200	10,500	200



Canadian Wheat Preliminary estimates place total stocks of Canadian wheat in all North American  
Carryover positions at July 31, 1972 at 589.3 million bushels, 20 per cent below last year's  
1941-72 revised total of 734.2 million. An estimated 317.5 million bushels of this  
year's total were held on farms, while 132.9 million of the off-farm stocks were  
in country elevators. The next largest amounts, 48.3 million were in store in Eastern elevators, 31.4  
million in Thunder Bay elevators and 25.4 million bushels in "in transit rail", respectively.

The carryover includes all Canadian wheat in North American positions whether on farms, in store  
or in transit.

Carryover of Canadian Wheat in Canada and the United States, July 31, 1941-72

Year	Carryover of wheat in Canada	Stocks of Canadian wheat in U.S. positions	Total carryover of Canadian wheat in Canada and U.S.
thousand bushels			
1941 .....	448,338	31,792	480,129
1942 .....	404,897	18,856	423,752
1943 .....	579,371	15,255	594,626
1944 .....	338,138	18,394	356,531
1945 .....	238,480	19,593	258,073
1946 .....	73,466	134	73,600
1947 .....	86,055	87	86,141
1948 .....	77,676	35	77,710
1949 .....	102,343	68	102,411
1950 .....	112,200	—	112,200
10-year average 1941-50 .....	246,096	10,421	256,517
1951 .....	187,190	2,013	189,203
1952 .....	214,934	2,244	217,178
1953 .....	382,546	640	383,185
1954 .....	618,568	107	618,675
1955 .....	536,302	446	536,748
1956 .....	578,803	771	579,574
1957 .....	733,335	211	733,546
1958 .....	648,454	—	648,454
1959 .....	587,842	159	588,001
1960 .....	599,588	—	599,588
10-year average 1951-60 .....	508,756	659	509,415
1961 .....	608,341	—	608,341
1962 .....	391,058	—	391,058
1963 .....	487,247	—	487,247
1964 .....	459,440	—	459,440
1965 .....	513,024	—	513,024
1966 .....	420,122	—	420,122
1967 .....	566,351 <sup>r</sup>	—	566,351 <sup>r</sup>
1968 .....	665,510	—	665,510
1969 .....	851,828	—	851,828
1970 .....	1,008,690	—	1,008,690
10-year average 1961-70 .....	597,131	—	597,131
1971 <sup>r</sup> .....	734,154	—	734,154
1972 <sup>p</sup> .....	589,256	—	589,256



Farmers' Marketings(1) of Wheat in the Prairie Provinces 1971-72

Farmers' Marketings (1) of wheat in the Prairie Provinces 1971-72						
Week ending		Manitoba	Saskatchewan	Alberta	Total	Last year <sup>r</sup>
bushels						
August	11, 1971 ...	19,280	280,376	2,868	302,524	64,029
	18 .....	45,222	1,364,384	7,688	1,417,294	45,524
	25 .....	1,140,677	3,962,606	917,899	6,021,182	97,747
September	1 .....	1,054,714	7,856,529	2,314,028	11,225,271	6,693,462
	8 .....	1,237,858	10,812,860	2,156,484	14,207,202	7,017,382
	15 .....	1,372,703	14,911,298	4,318,710	20,602,711	8,178,772
	22 .....	2,698,575	10,590,451	2,984,025	16,273,051	10,982,349
	29 .....	1,648,043	6,921,017	2,356,118	10,925,178	7,094,969
October	6 .....	2,099,756	11,014,624	1,582,732	14,697,112	6,843,332
	13 .....	2,052,588	9,821,569	2,141,418	14,015,575	4,119,896
	20 .....	1,600,362	7,695,414	1,906,736	11,202,512	4,376,848
	27 .....	1,987,212	11,150,867	1,523,677	14,661,756	4,825,460
November	3 .....	2,457,525	11,934,610	1,313,469	15,705,604	2,872,360
	10 .....	1,165,718	7,777,345	2,757,438	11,700,501	6,744,460
	17 .....	1,134,445	5,503,565	4,091,090	10,729,100	7,171,347
	24 .....	945,079	4,785,907	4,147,756	9,878,742	6,248,654
December	1 .....	798,536	7,392,800	3,578,196	11,769,532	4,479,859
	8 .....	713,988	5,554,395	3,650,988	9,919,371	6,814,164
	15 .....	476,084	3,215,397	1,770,709	5,462,190	11,066,471
	22 .....	679,819	15,663,213	1,937,916	18,280,948	9,664,792
	29 .....	515,326	7,926,173	1,709,492	10,150,991	1,826,815
January	5, 1972 ...	436,773	7,997,663	2,327,515	10,761,951	3,755,006
	12 .....	318,239	8,288,134	3,093,729	11,700,102	3,340,119
	19 .....	138,763	3,143,539	1,838,682	5,120,984	1,077,133
	26 .....	68,455	1,344,349	937,449	2,350,253	9,762,409
February	2 .....	46,625	918,372	694,188	1,659,185	6,246,201
	9 .....	134,958	4,038,073	2,753,009	6,926,040	4,051,116
	16 .....	127,068	2,129,836	2,127,336	4,384,240	6,021,869
	23 .....	108,982	3,012,196	2,020,488	5,141,666	6,681,266
March	1 .....	68,164	2,017,247	918,347	3,003,758	6,027,831
	8 .....	74,764	1,284,497	719,667	2,078,928	4,458,391
	15 .....	77,670	981,152	794,044	1,852,866	6,098,383
	22 .....	228,440	3,506,399	1,515,054	5,249,893	7,490,287
	29 .....	219,790	2,856,142	1,745,620	4,821,552	4,077,276
April	5 .....	137,941	3,281,651	1,001,074	4,420,666	2,893,183
	12 .....	189,074	4,490,476	1,708,617	6,388,167	1,912,195
	19 .....	132,337	4,309,244	1,597,405	6,038,986	3,340,048
	26 .....	321,336	6,991,753	3,864,261	11,177,350	5,426,835
May	3 .....	1,450,941	5,106,332	2,306,563	8,863,836	7,370,337
	10 .....	1,882,415	5,548,171	1,838,529	9,269,115	9,964,602
	17 .....	1,799,657	3,407,722	2,051,013	7,258,392	5,017,134
	24 .....	719,491	4,691,573	1,115,775	6,526,839	6,038,578
	31 .....	738,943	5,065,011	1,072,831	6,876,785	8,643,784
June	7 .....	1,523,008	12,277,706	2,261,220	16,061,934	13,824,825
	14 .....	4,151,912	16,538,134	2,963,994	23,654,040	22,939,791
	21 .....	4,618,607	16,109,776	3,675,773	24,404,156	18,788,857
	28 .....	2,840,355	12,336,191	2,966,990	18,143,536	16,200,406
July	5 .....	2,694,847	9,994,774	2,552,238	15,241,859	17,721,536
	12 .....	1,867,371	12,091,635	2,166,704	16,125,710	16,376,581
	19 .....	2,235,240	12,573,671	2,697,721	17,506,632	17,186,430
	31 .....	2,006,048	10,280,988	2,960,565	15,247,601	24,344,894
Totals .....		57,201,724	352,747,807	107,455,838	517,405,369	384,305,995
Average similar period: 1960-61 - ....						
1969-70 .....		57,229,017	305,182,577	113,903,429	476,315,022	

(1) Includes receipts at primary, process and interior terminal elevators.

Visible Supply of Canadian Wheat, August 9, 1972.  
Compared with Approximately the Same Date, 1970 and 1971

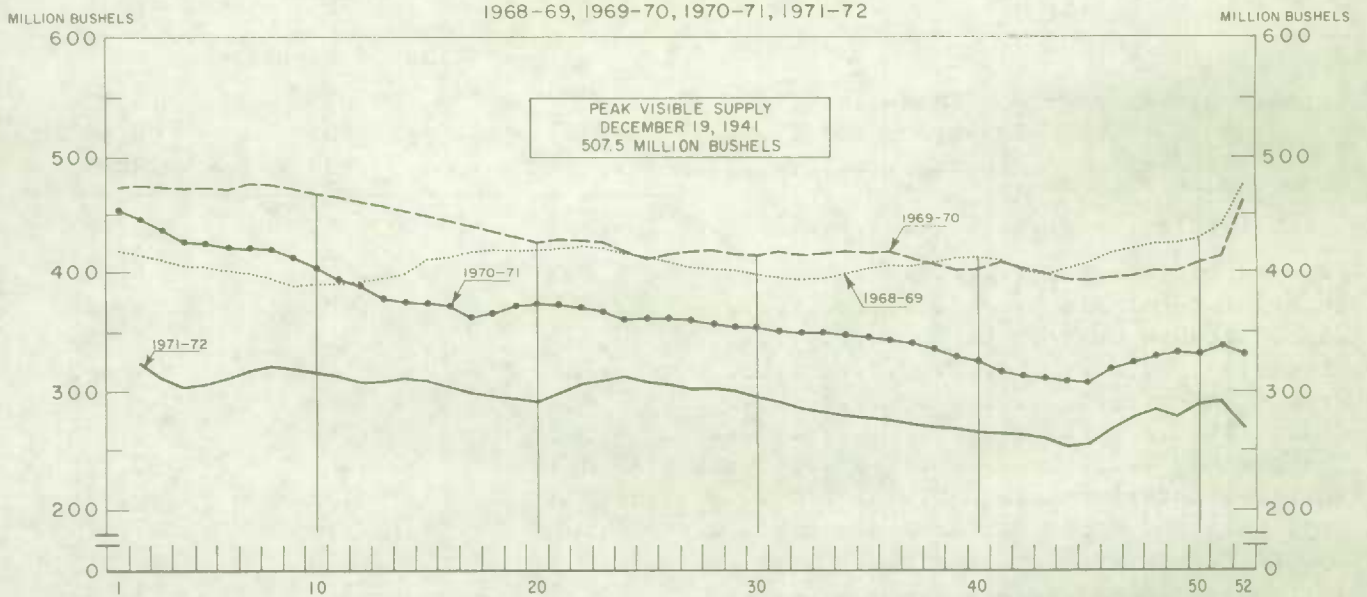
Position	1970	1971	1972
	thousand bushels		
Primary elevators — Manitoba .....	35,159	20,875	15,908
Saskatchewan .....	166,627	124,285	88,430
Alberta .....	82,894	58,639	29,551
Sub-totals .....	284,680	203,799	133,889
Process elevators .....	4,325	4,615	4,304
Interior terminals .....	12,564	6,934	4,082
Vancouver-New Westminster .....	10,549	7,762	7,934
Victoria .....	701	466	462
Prince Rupert .....	668	688	446
Churchill .....	4,542	3,886	3,106
Thunder Bay .....	43,814	22,462	30,385
In transit rail (western division) .....	21,553	14,252	19,091
Bay, Lake and Upper St. Lawrence ports ..	31,501	12,116	27,479
Lower St. Lawrence and Maritime ports ...	28,395	34,824	26,845
In transit lake .....	9,697	12,339	13,394
In transit rail (eastern division) .....	611	676	343
Totals .....	453,600	324,819	271,760

Grading of Wheat Inspected, August 1971-July 1972 with Comparisons

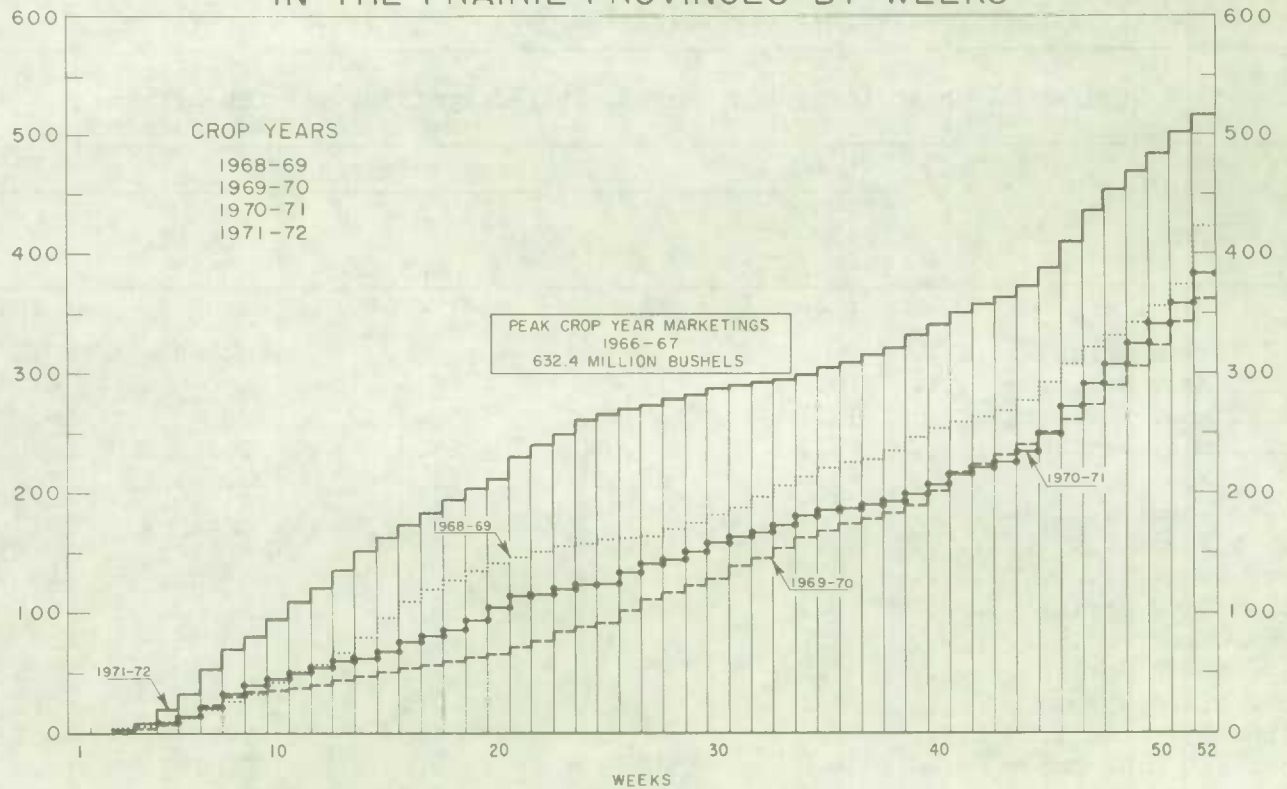
Grade	Crop year				
	Average	1970-71		1971-72	
	1965-66 1969-70				
	per cent	cars	per cent	cars	per cent
1 C.W. Red Spring .....	—	—	—	176,068	60.1
No. 1 Man. Northern .....	10.9	15,593	6.5	—	—
No. 2 Man. Northern .....	32.7	89,123	37.2	—	—
No. 3 Man. Northern .....	19.3	47,480	19.8	36,986	12.6
No. 4 Man. Northern .....	8.6	28,624	12.0	20,948	7.2
No. 5 Wheat .....	3.3	10,747	4.5	5,293	1.8
No. 6 Wheat .....	0.4	1,636	0.7	493	0.2
Feed Wheat .....	0.1	174	0.1	85	(1)
Others Red Spring .....	18.2	14,934	6.2	12,793	4.4
C.W. Garnet .....	0.1	42	(1)	5	(1)
C.W. White Spring .....	0.1	641	0.3	960	0.3
C.W. Mixed Wheat .....	0.1	231	0.1	313	0.1
Alberta Winter .....	0.8	1,832	0.8	1,904	0.7
Nos. 1-6 C.W. Amber Durum	4.6	27,219	11.4	36,075	12.3
Others C.W. Amber Durum .	0.9	1,141	0.5	887	0.3
Totals .....	100.0	239,417	100.0	292,810	100.0
Gross bushels (approx.) .		482,985,000		591,831,000	

(1) Less than .05 per cent.

# WEEKLY VISIBLE SUPPLY OF CANADIAN WHEAT



## CUMULATIVE RECORD OF WHEAT MARKETINGS IN THE PRAIRIE PROVINCES BY WEEKS



(Data in both charts for crop years beginning August 1)



Wheat Shipments to The United States by Destination      Total vessel and rail shipments of wheat to the United States, either for re-export or retention for domestic use, for the 1971-72 crop year amounted to 95,000 bushels, in sharp contrast to the 2,900 bushels shipped in the twelve month period of 1970-71 but considerably lower than the 1,173,000 bushels shipped during the 1969-70 crop year.

Wheat Shipments(1) to the United States by Destination  
Crop Year 1971-72 with Comparisons

Destination	1969-70	1970-71	1971-72
bushels			
<u>By Vessel</u>			
Buffalo .....	942,994	—	—
Hawaii .....	—	—	95,200
Totals, vessel .....	942,994	—	95,200
<u>By Rail</u>			
U.S.A. domestic points .....	180,000	2,878	—
Buffalo .....	50,000	—	—
Totals, rail .....	230,000	2,878	—
Totals, shipments .....	1,172,994	2,878	95,200

(1) Either for re-export or retention for domestic use. Excluding seed wheat.

Rail Shipments of Wheat to Maritime Ports      Rail shipments of wheat to Maritime ports from Bay, Lake and Upper St. Lawrence ports during August 1971-July 1972 amounted to 30,549,000 bushels compared with the August-July 1970-71 figure of 27,613,000 bushels.

Rail Shipments of Wheat to Maritime Ports from Bay, Lake  
and Upper St. Lawrence Ports

Origin of shipments	August 1, 1970 — July 31, 1971	August 1, 1971 — July 31, 1972
bushels		
Port McNicoll .....	8,006,397	9,168,589
Midland, Tiffin .....	9,990,963	9,743,533
Owen Sound .....	2,649,790	3,125,164
Goderich .....	1,972,168	2,307,941
Sarnia .....	2,803,643	3,421,141
Port Colborne .....	1,140,702	598,841
Kingston .....	764,553	1,604,316
Prescott .....	284,326	579,762
Totals .....	27,612,542	30,549,287

Rail Shipments of Wheat from Thunder Bay 1968-69 — 1971-72

Month	1968-69	1969-70	1970-71	1971-72
		bushels		
August .....	—	132,953	169,566	181,419
September .....	23,084	134,054	244,549	195,721
October .....	57,458	149,076	176,450	128,382
November .....	101,966	126,319	178,523	158,083
December .....	44,136	179,384	330,120	193,204
January .....	131,034	272,300	525,019	1,420,522
February .....	99,776	403,541	552,926	2,392,713
March .....	153,067	298,335	418,387	1,728,504
April .....	79,899	260,918	407,206	260,435
May .....	108,339	311,200	187,347	189,234
June .....	120,532	221,999	156,548	223,019
July .....	137,404	293,745	200,415	141,665
Totals .....	1,056,695	2,783,824	3,547,056	7,212,901

Distribution of Rail Shipments of Wheat from Thunder Bay, July 1972

Grade	Prince Edward Island	Nova Scotia	New Brunswick	Quebec	Ontario
			bushels		
Feed grades .....	10,667	28,000	50,000	45,132	5,866
Durum .....	—	—	—	2,000	—
Totals .....	10,667	28,000	50,000	47,132	5,866

Overseas Exports of Canadian Grain by Ports of Loading, August 1, 1971—July 31, 1972 with Comparisons

Port	Wheat(1)	Durum wheat(1)	Oats(1)	Barley	Rye	Flaxseed	Rapeseed
<u>Pacific Seaboard</u>							
Van. — New West .....	177,598	14,433	270	50,328	6,214	9,619	26,728
Victoria .....	7,750	—	—	—	—	—	908
Prince Rupert .....	13,940	—	—	—	55	—	—
<u>Churchill</u> .....	20,570	—	—	4,918	—	—	—
<u>Thunder Bay Direct</u> .....	3,063	2,615	6,443	2,373	3,421	13,594	14,317
<u>Sarnia Direct</u> .....	123	—	—	—	—	—	—
<u>St. Lawrence</u> .....							
Montreal .....	26,701	24,961	—	13,551	—	141	99
Sorel .....	28,478	4,847	—	11,011	122	—	—
Trois-Rivières .....	17,754	1,510	—	4,324	92	—	—
Quebec .....	12,837	1,485	—	20,420	294	703	181
Baie Comeau .....	34,562	7,498	—	49,411	266	1,164	266
Port Cartier .....	37,837	5,163	—	54,223	—	516	—
<u>Maritime</u>							
Saint John .....	891	—	—	—	—	—	—
West Saint John .....	14,522	1,204	—	502	—	—	—
Halifax .....	17,523	—	—	—	—	—	—
Totals .....	414,149	63,715	6,713	211,063	10,464	25,738	42,498
August 1, 1970 — July 31, 1971 <sup>r</sup> .....	359,700	49,737	12,147	163,797	8,373	21,162	46,802

(1) Excluding seed.

Shipments Under  
Feed Grain  
Assistance Regulations

Freight assistance shipments of wheat from the Prairie Provinces to Eastern Canada and British Columbia during August 1971-July 1972, amounted to 25,204,000 bushels, 22 per cent below the 32,149,000 shipped during the comparable

period of 1970-71. The bulk of the shipments during the twelve months under review went to destinations in Quebec with that province accounting for 52 per cent of the total compared with 48 per cent the previous year.

Provincial Distribution of Wheat Shipments under the Feed Grain Assistance Regulations  
August - July 1971-72 and 1970-71

Month	Western wheat							Eastern wheat	
	Nfld.	P.E.I.	N.S.	N.B.	Que.	Ont.	B.C.	Total	Quebec
	thousand bushels								
August 1971 ..	49	7	218	90	1,489	359	262	2,473	—
September ....	65	10	176	123	1,161	250	234	2,019	—
October .....	67	12	237	72	912	330	378	2,008	—
November .....	4	20	256	65	1,558	299	419	2,622	—
December .....	241	14	128	73	982	369	325	2,132	—
January 1972 .	3	28	146	80	994	344	370	1,965	—
February .....	4	33	179	99	738	205	377	1,635	—
March .....	68	31	251	129	1,471	516	696	3,163	—
April .....	1	7	41	33	227	45	15	370	—
May .....	153	36	150	80	1,128	296	464	2,307	—
June .....	3	55	196	77	1,180	279	356	2,145	—
July .....	63	13	238	95	1,264	270	422	2,366	—
Totals .....	721	265	2,214	1,018	13,106	3,562	4,317	25,204	—
Same months									
1970-71 ....	622	420	2,738	1,276	15,347	7,467	4,281	32,149	12

Millfeed shipments under the Feed Grain Assistance Regulations indicate the movement of 401,815 tons during August-July 1971-72. Data on the August 1970-July 1971 shipments of millfeeds place the twelve-month total at 435,390 tons. The greater portion of the millfeed shipments during the 1971-72 crop year went to destinations in Quebec and Ontario.

Provincial Distribution of Millfeed Shipments under the Feed Grain Assistance  
Regulations August - July 1971-72 and 1970-71

Province	August - July	
	1970-71	1971-72
Newfoundland .....	3,044	2,509
Prince Edward Island .....	3,390	3,077
Nova Scotia .....	12,954	11,139
New Brunswick .....	13,031	9,886
Quebec .....	211,634	198,058
Ontario .....	158,038	146,179
British Columbia .....	33,299	30,967
Totals .....	435,390	401,815



Monthly Exports of Canadian Wheat and Wheat Flour

Year and month	Wheat in bulk(1)	Seed wheat(2)	Total wheat	Wheat flour (2,3)	Total wheat and wheat flour(3)
			thousand bushels		
1969-70					
August .....	13,012	60	13,071	2,306	15,378
September .....	20,949	74	21,023	1,219	22,242
October .....	18,838	2	18,840	2,231	21,071
November .....	22,835	116	22,951	1,863	24,814
December .....	22,294	52	22,346	2,434	24,779
January .....	26,351	87	26,438	2,524	28,962
February .....	18,597	290	18,887	2,077	20,964
March .....	21,958	499	22,457	2,600	25,057
April .....	32,913	334	33,247	2,440	35,687
May .....	36,047	157	36,204	2,443	38,648
June .....	39,898	103	40,001	3,103	43,104
July .....	44,010	59	44,070	1,725	45,794
Totals .....	317,703	1,832	319,535	26,963	346,498
1970-71					
August .....	44,765	103	44,868	699	45,567
September .....	35,194	120	35,315	2,306	37,620
October .....	44,412	84	44,496	3,543	48,039
November .....	33,307	71	33,378	2,126	35,504
December .....	18,016	43	18,059	1,444	19,502
January .....	18,882	2	18,884	2,725	21,609
February .....	23,334	77	23,411	2,421	25,832
March .....	20,293	93	20,386	1,900	22,286
April .....	20,951	157	21,108	1,855	22,963
May .....	47,631	49	47,681	1,811	49,491
June .....	47,904	71	47,975	1,986	49,961
July .....	54,750	100	54,850	1,988	56,839
Totals .....	409,440	971	410,410	24,803	435,213
1971-72(4)					
August .....	48,530	26	48,557	1,526	50,083
September .....	44,520	234	44,754	3,662	48,416
October .....	59,356	136	59,492	2,218	61,709
November .....	52,948	1	52,949	1,889	54,838
December .....	32,041	110	32,151	2,719	34,870
January .....	21,627	66	21,693	1,402	23,095
February .....	23,420	48	23,468	1,581	25,050
March .....	22,108	180	22,289	1,875	24,163
April .....	33,798	32	33,829	1,946	35,775
May .....	39,255	32	39,288	2,003	41,291
June .....	45,540	45	45,584	2,691 <sup>r</sup>	48,276 <sup>r</sup>
July .....	54,940	70	55,010	1,314	56,324
Totals .....	478,084	981	479,065	24,826	503,891

(1) Export clearances including shipments to the United States compiled by the Economics and Statistics Division of the Canadian Grain Commission. (2) Compiled from Canadian Customs returns, 1969-70 and 1970-71 adjusted to remove effect of time lag in reporting. (3) In terms of wheat equivalent. Wheat flour conversion rate: 2.3 bushels per cwt. (4) Subject to revision.

Exports of Canadian Wheat(1) by Destination, July 1972 and 1971

Destination	Wheat (except durum)	Durum wheat	All wheat	
			July 1972	July, 1971 <sup>r</sup>
<u>Western Europe</u>		bushels		
EEC:				
Belgium and Luxembourg .....	148,847	—	148,847	1,027,952
France .....	—	231,496	231,496	19,488
Germany, West .....	316,089	283,547	599,636	1,528,674
Italy .....	862,400	—	862,400	4,833,267
Netherlands .....	710,449	474,945	1,185,394	1,345,159
Sub-totals .....	2,037,785	989,988	3,027,773	8,754,540
Other Western Europe:				
Britain .....	5,147,912	—	5,147,912	9,158,255
Norway .....	—	—	—	817,787
Switzerland .....	39,200	154,000	193,200	339,883
Sub-totals .....	5,187,112	154,000	5,341,112	10,315,925
Totals .....	7,224,897	1,143,988	8,368,885	19,070,465
<u>Eastern Europe</u>				
Albania .....	—	—	—	453,600
Poland .....	—	1,025,700	1,025,700	—
U.S.S.R. (Russia) .....	11,357,918	1,717,171	13,075,089	7,166,329
Totals .....	11,357,918	2,742,871	14,100,789	7,619,929
<u>Africa</u>				
Algeria .....	—	1,492,222	1,492,222	2,185,803
Ghana .....	447,245	—	447,245	529,129
Ivory Coast .....	57,735	—	57,735	—
Nigeria .....	257,994	—	257,994	—
South Africa .....	—	485,039	485,039	—
Tunisia .....	—	225,333	225,333	—
Totals .....	762,974	2,202,594	2,965,568	2,714,932
<u>Asia</u>				
Bangladesh .....	1,894,293	—	1,894,293	—
Hong Kong .....	—	—	—	125,440
Iraq .....	—	—	—	1,612,761
Japan .....	4,776,017	—	4,776,017	5,189,874
Korea, North .....	—	—	—	1,289,867
Lebanon .....	—	1,102,830	1,102,830	—
Malaysia .....	53,200	—	53,200	—
People's Republic of China .....	10,636,389	3,312,363	13,948,752	11,240,519
Philippines .....	528,267	—	528,267	2,030,151
Singapore .....	—	—	—	47,973
Syria .....	1,738,800	—	1,738,800	432,432
Totals .....	19,626,966	4,415,193	24,042,159	21,969,017
<u>Western Hemisphere</u>				
Barbados .....	30	—	30	—
Brazil .....	3,304,764	—	3,304,764	1,548,851
Cuba .....	847,760	101,000	948,760	848,139
Haiti .....	278,182	—	278,182	—
Jamaica .....	263,639	—	263,639	670
Peru .....	663,236	—	663,236	978,133
Venezuela .....	—	3,881	3,881	—
Totals .....	5,357,611	104,881	5,462,492	3,375,793
Sub-totals, all countries .....	44,330,366	10,609,527	54,939,893	54,750,136
Seed wheat(2) .....			70,193	100,307
Totals, all countries .....	44,330,366	10,609,527	55,010,086	54,850,443

(1) Overseas clearances as reported by the Economics and Statistics Division of the Canadian Grain Commission, excluding seed.

(2) Compiled from Canadian Customs returns, 1971 adjusted for time lag.

Cumulative Exports of Canadian Wheat(1) by Destination

Destination	August 1971 — July 1972			Total same period last year <sup>r</sup>
	Wheat (except durum)	Durum wheat	Total wheat	
bushels				
<u>Western Europe</u>				
EEC:				
Belgium and Luxembourg ..	4,434,971 <sup>r</sup>	309,286	4,744,257 <sup>r</sup>	8,591,542
France .....	346,863	231,496	578,359	1,877,869
Germany, West .....	6,094,453	3,637,268 <sup>r</sup>	9,731,721 <sup>r</sup>	22,663,849
Italy .....	8,621,342	5,810,071	14,431,413 <sup>r</sup>	15,446,510
Netherlands .....	6,631,336 <sup>r</sup>	4,128,387 <sup>r</sup>	10,759,723 <sup>r</sup>	8,769,549
Sub-totals .....	26,128,965 <sup>r</sup>	14,116,508 <sup>r</sup>	40,245,473 <sup>r</sup>	57,349,319
Other Western Europe:				
Austria .....	—	—	—	410,829
Britain .....	47,455,227 <sup>r</sup>	455,217	47,910,444 <sup>r</sup>	64,563,583
Denmark .....	—	—	—	58,783
Ireland .....	536,635	—	536,635	2,237,201
Malta and Gozo .....	937,328	7,840	945,168	1,253,579
Norway .....	1,086,400	—	1,086,400	3,769,235
Spain .....	—	—	—	3,125
Sweden .....	55,090	—	55,090	58,820
Switzerland .....	1,432,252 <sup>r</sup>	1,038,466	2,470,718 <sup>r</sup>	4,962,349
Sub-totals .....	51,502,932 <sup>r</sup>	1,501,523 <sup>r</sup>	53,004,455 <sup>r</sup>	77,317,504
Totals .....	77,631,897	15,618,031	93,249,928	134,666,823
<u>Eastern Europe</u>				
Albania .....	1,638,792	—	1,638,792	1,644,384
Czechoslovakia .....	—	584,752	584,752	—
Poland .....	—	2,838,847	2,838,847	1,836,800
U.S.S.R. (Russia) .....	91,253,890	18,306,999	109,560,889	12,087,345
Totals .....	92,892,682	21,730,598	114,623,280	15,568,529
<u>Africa</u>				
Algeria .....	2,468,080	8,445,168	10,913,248	14,266,351
Ghana .....	2,695,290	—	2,695,290	2,380,110
Ivory Coast .....	73,487	—	73,487	—
Mauritania .....	100,668	—	100,668	—
Morocco .....	862,516	220,460	1,082,976	505,195
Mozambique .....	—	—	—	104,534
Nigeria .....	2,858,558	—	2,858,558	459,200
South Africa .....	—	719,785	719,785	3,939,600
Sudan .....	—	—	—	36,709
Tanzania .....	—	—	—	7,976
Tunisia .....	—	2,124,840	2,124,840	2,111,476
U.A.R. ....	—	—	—	14,048,074
Totals .....	9,058,599	11,510,253	20,568,852	37,859,225

For footnotes see end of table.



Cumulative Exports of Canadian Wheat(1) by Destination — Concluded

Destination	August 1971 — July 1972			Total same period last year <sup>f</sup>
	Wheat (except durum)	Durum wheat	Total wheat	
bushels				
Asia				
Afghanistan .....	468,140	—	468,140	389,342
Bangladesh .....	4,192,525	847,621	5,040,146	—
Hong Kong .....	891,147	—	891,147	822,956
India .....	22,971,818	—	22,971,818	17,098,372
Indonesia .....	1,386,300	—	1,386,300	—
Iraq .....	—	—	—	13,454,140
Japan .....	50,203,899	390,124	50,594,023	39,964,538
Korea, North .....	1,180,666	—	1,180,666	2,945,589
Lebanon .....	—	1,102,830	1,102,830	—
Malaysia .....	583,524	—	583,524	296,858
Pakistan .....	2,717,900	—	2,717,900	4,066,847
People's Republic of China	100,023,199	11,716,268	111,739,467	88,339,747
Philippines .....	6,363,417	—	6,363,417	6,022,237
Singapore .....	411,227	—	411,227	405,812
Southern Yemen .....	—	—	—	19,842
Syria .....	9,228,419	—	9,228,419	10,641,130
Taiwan .....	2,762,853	—	2,762,853	524,533
Thailand .....	200,361	—	200,361	—
Turkey .....	—	—	—	3,540,382
Totals .....	203,585,395	14,056,843	217,642,238	188,532,325
Oceania				
United States Oceania .....	143,114	—	143,114	—
Western Hemisphere				
Barbados .....	86	—	86	70
Brazil .....	13,588,006	—	13,588,006	15,533,345
Costa Rica .....	340,751	56,771	397,522	—
Cuba .....	6,970,778	658,426	7,629,204	4,096,432
Dominican Republic .....	231,496	77,165	308,661	—
Ecuador .....	—	—	—	306,259
Haiti .....	1,815,310	—	1,815,310	1,634,904
Jamaica .....	1,602,469	—	1,602,469	1,416,648
Paraguay .....	—	—	—	2,206
Peru .....	6,064,111	—	6,064,111	9,527,173
St. Lucia .....	—	—	—	334
Venezuela .....	345,742	9,875	355,617	292,500
United States(2) .....	95,200	—	95,200	2,878
Totals .....	31,053,949	802,237	31,856,186	32,812,749
Sub-totals, all countries ...	414,365,636	63,717,962	478,083,598	409,439,651
Seed wheat(3) .....			981,026	970,537
Totals, all countries .	414,365,636	63,717,962	479,064,624	410,410,188

(1) Overseas clearances as reported by the Economics and Statistics Division of the Canadian Grain Commission, for all countries except the United States. Excluding seed wheat. (2) Compiled from returns of Canadian elevator licensees and shippers and advice from American grain correspondents. (3) Compiled from Canadian Customs returns, 1970-71 adjusted for time lag, 1971-72 preliminary.

Customs Exports of Canadian Wheat Flour by Countries of Consignment

Destination	March 1972(1)	June 1972(2)	August — June	
			1971-72(2)	1970-71(1)
bushels				
<u>Western Europe</u>				
EEC:				
Belgium and Luxembourg .....	—	—	955	38,610
France .....	—	—	—	115
Germany, West .....	—	—	2,663	1,106
Italy .....	—	—	—	16,560
Netherlands .....	—	46	46	722
Sub-totals .....	—	46	3,664	57,113
Other Western Europe:				
Britain .....	168,436	145,632	1,544,540	1,951,270
Gibraltar .....	—	—	5,281	8,115
Greece .....	—	—	41,520	37,315
Iceland .....	1,776	1,776	36,439	—
Ireland .....	—	—	3,606	—
Malta and Gozo .....	—	—	—	46
Norway .....	—	—	115	115
Portugal .....	—	3,680	34,769	26,906
Spain .....	—	—	—	1,840
Sub-totals .....	170,212	151,088	1,666,270	2,025,607
Totals .....	170,212	151,134	1,669,934	2,082,720

Africa

Algeria .....	—	—	561,034	163,357
Angola .....	—	—	—	12,190
Cameroon .....	—	—	117,921	1,610
Dahomey .....	460	—	28,290	13,685
French Africa, n.e.s. ....	175,897	—	361,645	—
Gabon .....	—	—	—	5,658
Gambia, The .....	10,350	4,025	46,575	57,898
Ghana .....	—	—	846	168,751
Guinea .....	—	58	52,861	35,420
Ivory Coast .....	1,840	3,926	23,016	11,914
Liberia .....	11,429	16,452	204,705 <sup>r</sup>	236,147
Malagasy .....	—	—	—	14,219
Malawi .....	—	2,277	28,025	62,475

For footnotes see end of table.

Customs Exports of Canadian Wheat Flour by Countries of Consignment — Continued

Destination	March 1972 (1)	June 1972 (2)	August — June	
			1971-72 (2)	1970-71 (1)
bushels				
Africa — Concluded				
Mozambique .....	—	6,831	23,382	25,240
Nigeria .....	—	30,859	40,804	2,300
Portuguese Africa, n.e.s. .	19,617	12,222	115,985 <sup>r</sup>	148,414
Sierra Leone .....	729	—	5,338	9,354
Somalia .....	—	—	22,816	22,287
South Africa .....	—	—	—	2,259
Sudan .....	—	198,692	215,813	77,899
Tanzania .....	—	9,632	11,242	6,152
Togo .....	14,835	14,970	137,480	119,858
U.A.R. ....	150,753	137,501	2,351,258	465,385
Zaire .....	6,900	3,450	39,330	147,343
Totals .....	392,810	440,905	4,388,366 <sup>r</sup>	1,809,815
Asia				
Afghanistan .....	—	—	2,484	1,449
Bahrain .....	—	—	200	596
Burma .....	—	—	—	958,260
Ceylon .....	—	—	1,506,590	1,525,620
Cyprus .....	—	—	23,978	12,387
Hong Kong .....	10,626	10,350	178,825	178,745
Indonesia .....	—	—	—	1,232,289
Iran .....	504	—	4,646	4,740
Iraq .....	—	—	—	141,034
Israel .....	—	—	—	174,959
Japan .....	1,320	—	8,671	6,598
Jordan .....	317	—	8,811	8,112
Lebanon .....	—	152,458	363,692	220,687
Portuguese Asia .....	—	—	—	9,246
Qatar .....	—	—	1,482	1,123
Saudi Arabia .....	1,757	2,300	195,116	267,158
Singapore .....	—	—	4,600	—
Southern Yemen .....	—	—	4,614	—
Syria .....	—	—	67,027	—
Thailand .....	8,970	8,280	86,121	93,253
Trucial States .....	—	—	4,490	3,307
Totals .....	23,494	173,388	2,461,347	4,839,563

For footnotes see end of table.



Customs Exports of Canadian Wheat Flour by Countries of Consignment — Concluded

Destination	March 1972(1)	June 1972(2)	August — June	
			1971-72(2)	1970-71(1)
bushels				
<u>Oceania</u>				
Australia .....	—	92	92	230
British Oceania n.e.s. ....	460	460	920	3,795
Fiji .....	460	—	1,380	1,610
United States Oceania .....	—	—	748	17,250
Totals .....	920	552	3,140	22,885
<u>Western Hemisphere</u>				
Bahamas .....	21,912	13,756	190,221 <sup>r</sup>	210,956
Barbados .....	28,322	51,106	259,541	319,666
Bermuda .....	10,122	11,182	107,794	120,416
British Honduras .....	—	304	35,738	56,959
Cuba(3) .....	1,452,579	1,629,769	12,943,887	11,351,767
Dominican Republic .....	1,035	2,180	4,710	35,144
French West Indies .....	—	1,028	1,994 <sup>r</sup>	3,519
Guyana .....	3,597	2,804	14,699 <sup>r</sup>	19,058
Honduras .....	—	687	6,074	10,046
Jamaica .....	4,375	10,355	103,436	103,703
Leeward and Windward Islands	101,796	88,893	680,110	751,311
Netherlands Antilles .....	4,179	6,394	51,609	172,555
Panama .....	—	—	1,014	676
Paraguay .....	—	—	—	2,535
Peru .....	—	—	—	172
St. Pierre and Miquelon ....	3,162	966	25,017 <sup>r</sup>	25,065
Surinam .....	5,658	810	23,939 <sup>r</sup>	26,464
Trinidad and Tobago .....	69,223	89,445	508,654	540,093
Venezuela .....	—	117	421	426
United States .....	—	15,640	30,567 <sup>r</sup>	308,942
Totals .....	1,705,960	1,925,436	14,989,425 <sup>r</sup>	14,059,473
Totals, all countries ..	2,293,396	2,691,405	23,512,212 <sup>r</sup>	22,814,456

(1) In terms of wheat equivalent. Adjusted to remove effect of time lag in the returns made by Customs. Conversion rate: 2.3 bushels per cwt.

(2) In terms of wheat equivalent. Preliminary and unadjusted for time lag. Conversion rate: 2.3 bushels per cwt.

(3) Source — Canadian National Millers Association.

n.e.s. — Not elsewhere specified.

NOTE: Data for July wheat flour exports not available.

# FARMERS' MARKETINGS OF WHEAT, PRAIRIE PROVINCES

(SPECIFIED PERIODS)

MILLION BUSHEL  
800 —

MILLION BUSHEL  
800 —

700 —

700 —

600 —

600 —

500 —

500 —

400 —

400 —

300 —

300 —

200 —

200 —

100 —

100 —

0

0

30 year average 10 year average

1940-41 1960-61  
1969-70 1969-70

1966-67

1967-68

1968-69

1969-70

1970-71

1971-72

PEAK MARKETINGS  
1966-67 CROP YEAR  
632.4 MILLION BUSHEL

JULY

JUNE

MAY

APR

MAR

FEB

JAN

DEC

NOV

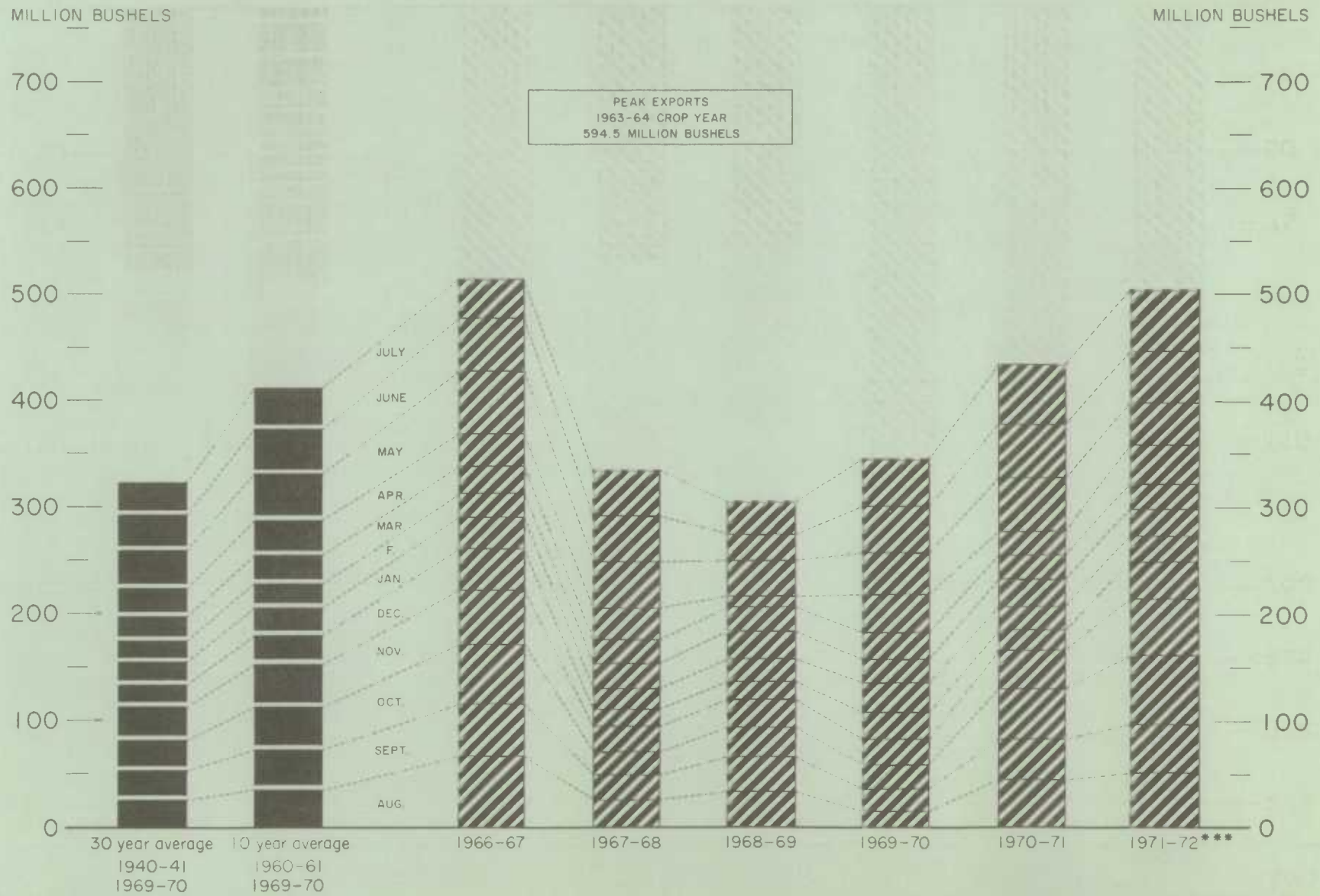
OCT

SEPT

AUG.

## EXPORTS OF CANADIAN WHEAT\* AND WHEAT FLOUR\*\*

(SPECIFIED PERIODS)



\*Beginning with 1955-56 includes seed wheat.

\*\*In terms of wheat equivalent.

\*\*\*Preliminary.

Agriculture Division Statistics Canada



# FARMERS' MARKETINGS OF BARLEY, PRAIRIE PROVINCES

(SPECIFIED PERIODS)

MILLION BUSHEL

— 300

— 275

— 250

— 225

— 200

— 175

— 150

— 125

— 100

— 75

— 50

— 25

— 0

MILLION BUSHEL

275 —

250 —

225 —

200 —

175 —

150 —

125 —

100 —

75 —

50 —

25 —

0 —

30 year average

1940-41

1969-70

10 year average

1960-61

1969-70

JULY

JUNE

MAY

APR

MAR

FEB

JAN

DEC

NOV

OCT

SEPT

AUG

1966-67

1967-68

1968-69

1969-70

1970-71

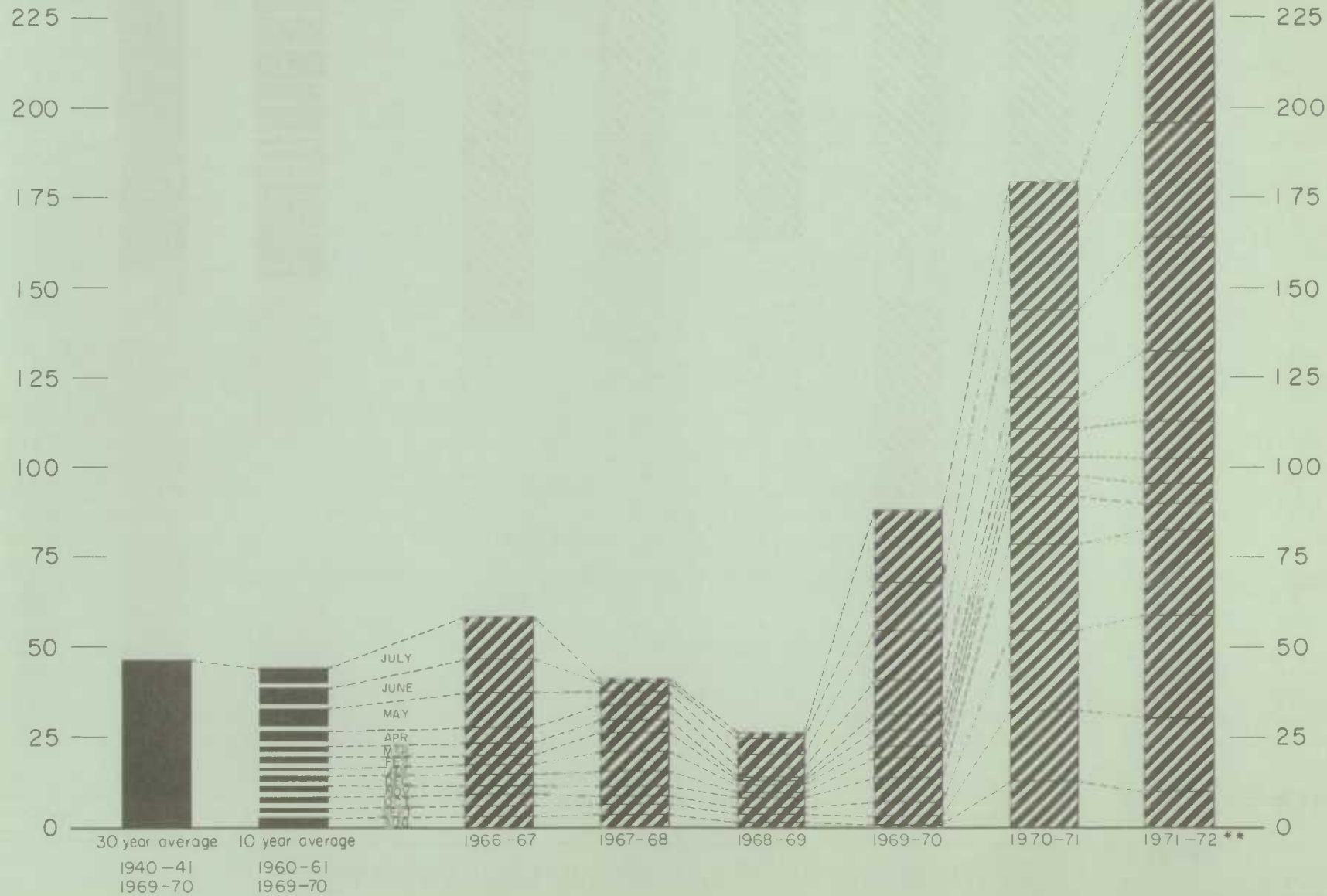
1971-72

## EXPORTS OF CANADIAN BARLEY AND BARLEY PRODUCTS\*

(SPECIFIED PERIODS)

MILLION BUSHEL  
— 250

MILLION BUSHEL

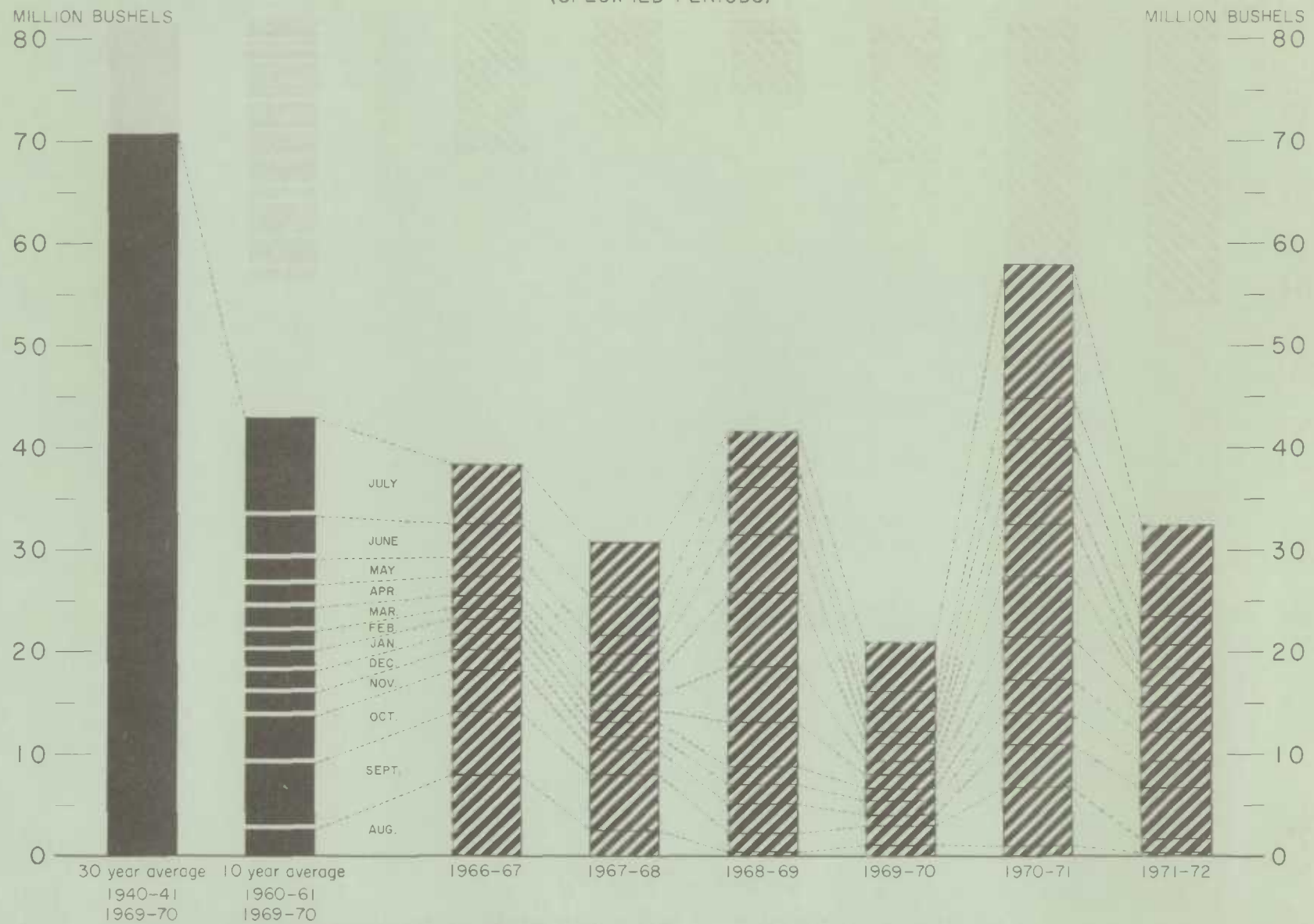


\* In terms of grain equivalent. \*\* Preliminary.

Agriculture Division Statistics Canada

# FARMERS' MARKETINGS OF OATS, PRAIRIE PROVINCES

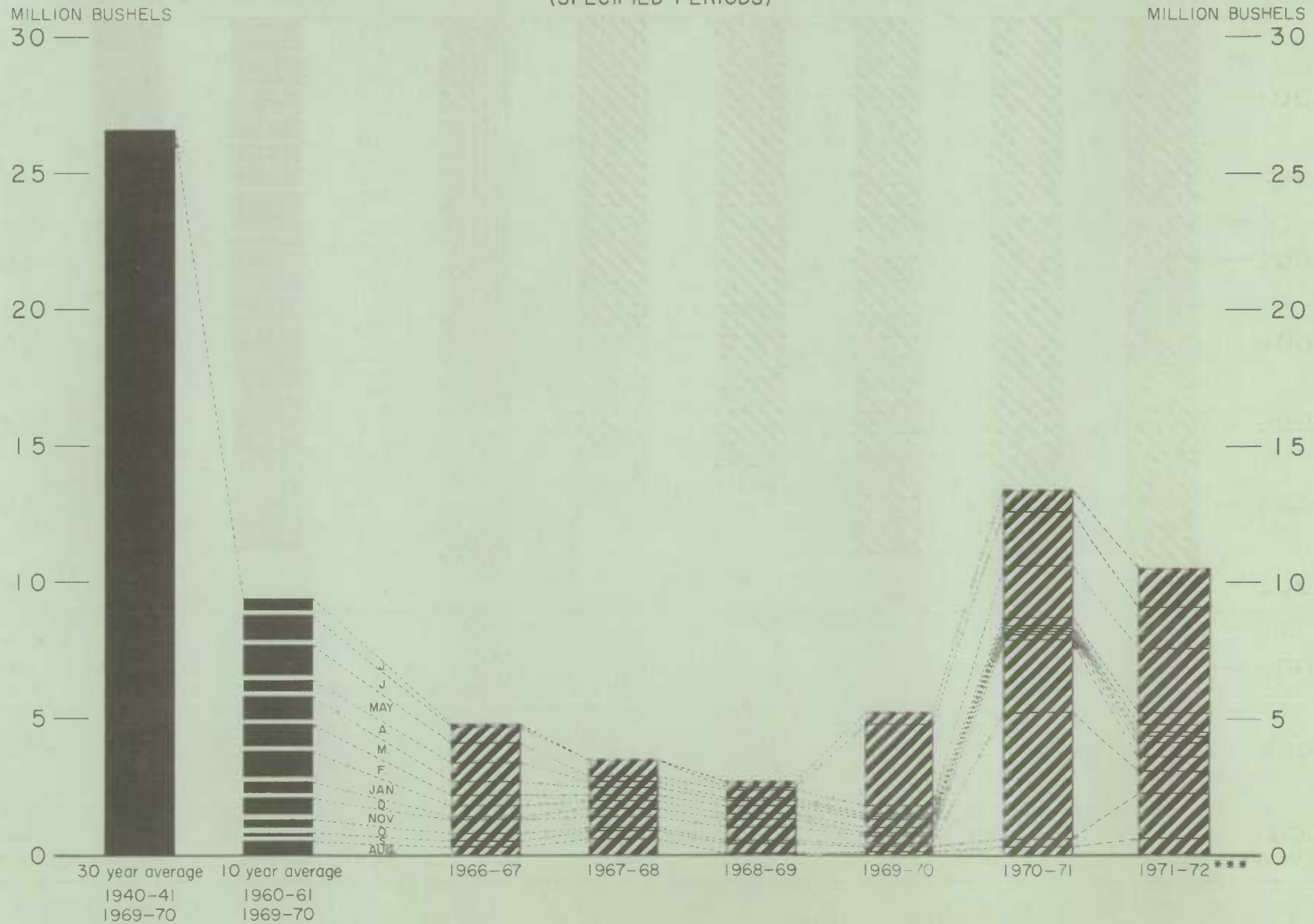
(SPECIFIED PERIODS)





# EXPORTS OF CANADIAN OATS\* AND OAT PRODUCTS\*\*

(SPECIFIED PERIODS)

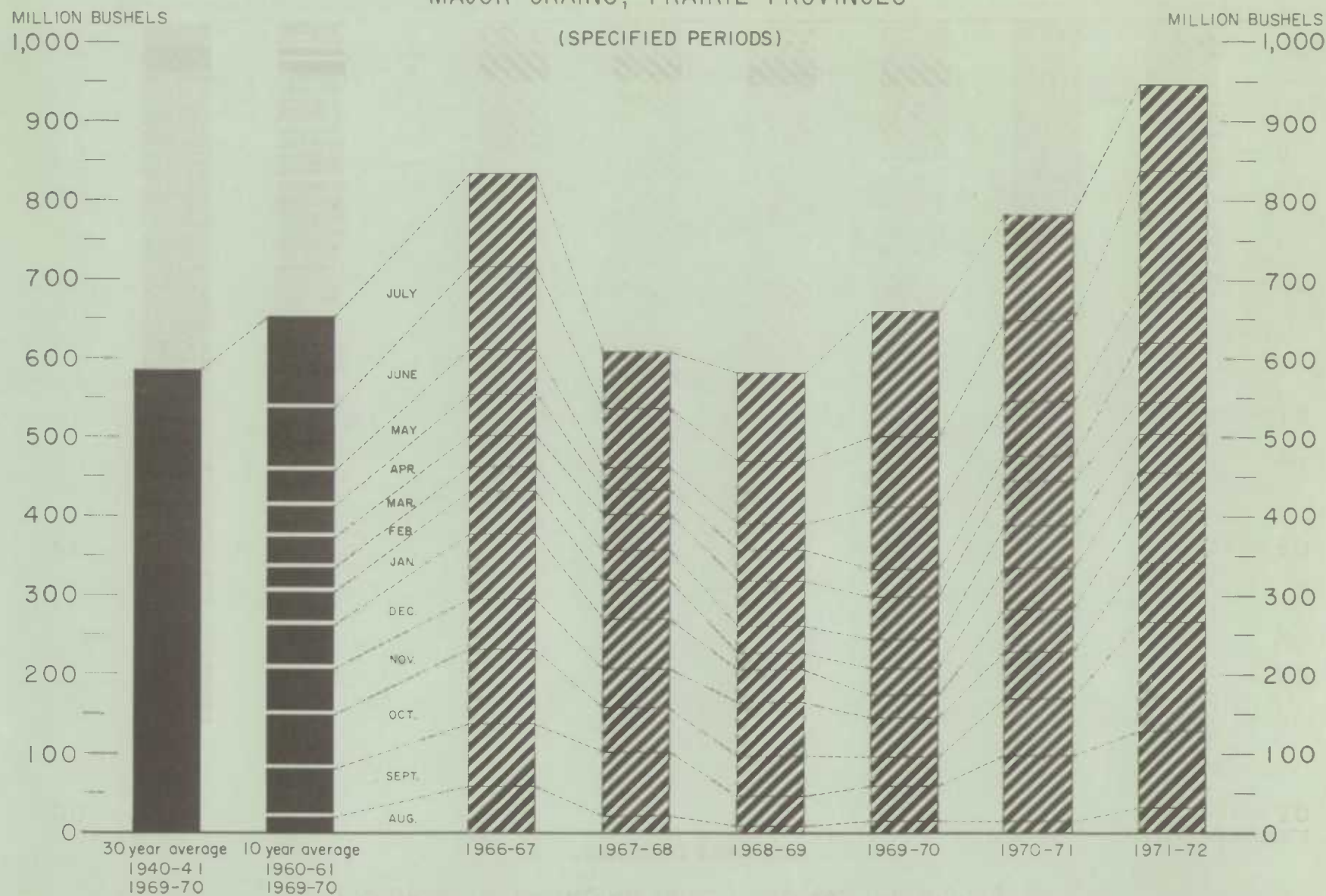


\*Beginning with 1960-61 includes relatively small quantity of seed oats.

\*\*In terms of grain equivalent.

\*\*\*Preliminary.

# FARMERS' MARKETINGS OF CANADA'S SIX MAJOR GRAINS\*, PRAIRIE PROVINCES

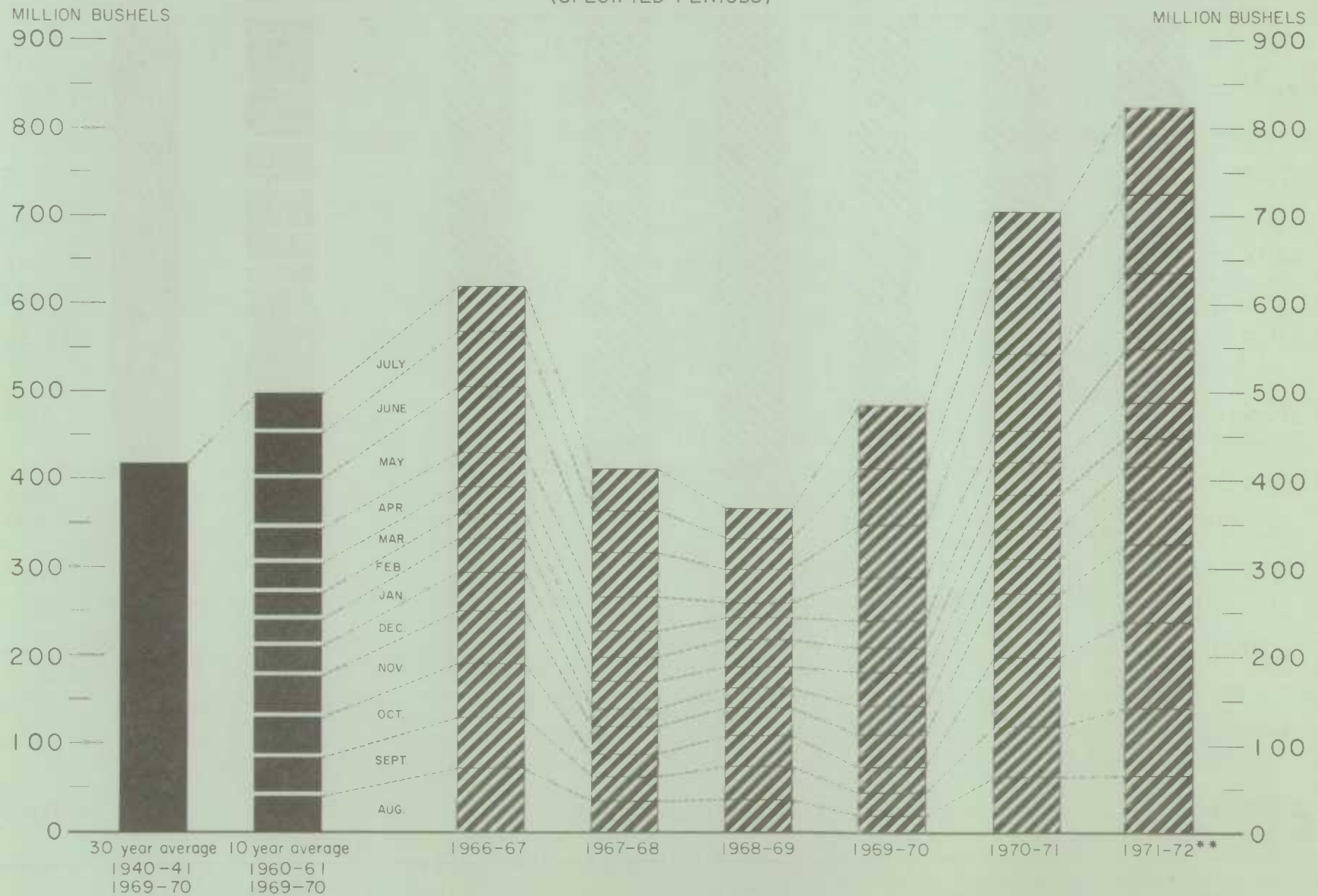


\* Wheat, oats, barley, rye, flaxseed and from 1960-61 rapeseed.

Agriculture Division Statistics Canada

# EXPORTS OF CANADA'S SIX MAJOR GRAINS AND PRODUCTS\*

(SPECIFIED PERIODS)



\* Wheat, seed wheat, and wheat flour; oats, seed oats and oatmeal and rolled oats; barley and malt; rye; flaxseed and from 1960-61 rapeseed.

\*\* Preliminary.



Canadian Wheat Board Weekly Average Cash Wheat Prices, Crop Year 1971-72  
Basis in Store Thunder Bay and Vancouver

Class and grade	Week ending	
	July 21	July 31(2)
	cents and eighths per bushel	
<u>Initial payment to producers</u>		
1 C.W. Red Spring 14% .....	146	146
1 Northern .....	150	150
2 Northern .....	156	146
3 Northern .....	141	141
4 Northern .....	133	133
5 Wheat .....	119	119
6 Wheat .....	115	115
Feed Wheat .....	110	110
1 C.W. Garnet .....	133	133
2 C.W. Garnet .....	128	128
3 C.W. Garnet .....	123	123
1 Alberta Red Winter .....	132	132
2 Alberta Winter .....	127	127
3 Alberta Winter .....	121	121
1 C.W. Amber Durum .....	146	146
2 C.W. Amber Durum .....	142	142
3 C.W. Amber Durum .....	137	137
<u>Exports</u>		
<u>(Basis in store Thunder Bay)</u>		
1 C.W. Red Spring 14% .....	170	170
1 Northern .....	172	172
2 Northern .....	170	170
3 Northern .....	165	165
4 Northern .....	162	162
5 Wheat(1) .....	148/4	148/4
6 Wheat(1) .....	146/4	146/4
Feed Wheat(1) .....	141/4	141/4
1 C.W. Garnet .....	162	162
2 C.W. Garnet .....	161	161
3 C.W. Garnet .....	160	160
1 Alberta Red Winter .....	162	162
2 Alberta Winter .....	161	161
3 Alberta Winter .....	160	160
1 C.W. Amber Durum .....	168/5	168/5
2 C.W. Amber Durum .....	167/5	167/5
3 C.W. Amber Durum .....	158/5	158/5
<u>(Basis in store Vancouver)</u>		
1 C.W. Red Spring 14% .....	178/2	178/2
1 Northern .....	179/2	179/2
2 Northern .....	178/2	178/2
3 Northern .....	173/2	173/2
4 Northern .....	171/2	171/2
1 C.W. Garnet .....	171/2	171/2
2 C.W. Garnet .....	170/2	170/2
3 C.W. Garnet .....	169/2	169/2
1 Alberta Red Winter .....	171/2	171/2
2 Alberta Winter .....	170/2	170/2
3 Alberta Winter .....	169/2	169/2

(1) Domestic sales only.

(2) Period ending July 31.

Canadian Wheat Board Weekly Average Cash Wheat Prices, Crop Year 1972-73  
Basis in Store Thunder Bay and Vancouver

Class and grade	Period Ending
	August 11(1)
cents and eighths per bushel	
<u>Initial payment to producers</u>	
1 C.W. Red Spring .....	146
2 C.W. Red Spring .....	139
3 C.W. Red Spring .....	130
No. 1 Canada Utility .....	117
No. 2 Canada Utility .....	117
No. 3 Canada Utility .....	117
1 Alberta Red Winter .....	132
2 Alberta Winter .....	127
3 Alberta Winter .....	121
1 C.W. Amber Durum .....	146
2 C.W. Amber Durum .....	142
3 C.W. Amber Durum .....	137
<u>Export</u>	
<u>(Basis in Store Thunder Bay)</u>	
1 C.W. Red Spring 14% .....	171/7
2 C.W. Red Spring 14% .....	167/7
3 C.W. Red Spring .....	155/7
No. 1 Canada Utility .....	147
No. 2 Canada Utility .....	145
No. 3 Canada Utility .....	147
3 Northern .....	166/7
4 Northern .....	163/7
5 Wheat(1) .....	149
6 Wheat(1) .....	147
Feed Wheat(1) .....	142
1 Alberta Red Winter .....	163/7
2 Alberta Winter .....	162/7
3 Alberta Winter .....	161/7
1 C.W. Amber Durum .....	170/4
2 C.W. Amber Durum .....	169/4
3 C.W. Amber Durum .....	160/4
<u>(Basis in Store Vancouver)</u>	
1 C.W. Red Spring 14% .....	179/5
3 Northern .....	174/5
4 Northern .....	172/5
1 Alberta Red Winter .....	172/5
2 Alberta Winter .....	171/5
3 Alberta Winter .....	170/5

(1) Domestic sales only.

(2) Period ending August 11.

Initial Payment  
to Producers

The Canadian Wheat Board in its Instructions to the Trade No. 11 announces the fixed minimum carlot prices for wheat basis in store Thunder Bay or Vancouver. The amount to be paid in respect of wheat of the grade No. 1 C.W. Red Spring was fixed by Order-in-Council P.C. 1972-1394 of the 20th day of June, 1972. The amount to be paid in respect of each other grade of wheat referred to in the following table was fixed by the Board and approved by Order-in-Council P.C. 1972-1396 of the 20th day of June, 1972, pursuant to the Canadian Wheat Board Act, as amended.

Canadian Wheat Board Price List for Specified Grades of Wheat, Crop Year 1972-73  
(In Carload Lots, Basis in Store Thunder Bay or Vancouver)

Effective August 1, 1972

Grade	Straight	Tough	Damp
dollars per bushel			
No. 1 Canada Red Spring .....	1.46	1.42	1.30
No. 2 Canada Red Spring .....	1.39	1.35	1.23
No. 3 Canada Red Spring .....	1.30	1.26	1.14
No. 1 Canada Utility .....	1.17	1.13	1.03
No. 2 Canada Utility .....	1.17	1.13	1.03
No. 3 Canada Utility .....	1.17	1.13	1.03
No. 1 C.W. Amber Durum .....	1.46	1.42	1.30
No. 2 C.W. Amber Durum .....	1.42	1.38	1.26
No. 3 C.W. Amber Durum .....	1.37	1.33	1.21
Extra No. 4 C.W. Amber Durum ...	1.37	1.33	1.21
No. 4 C.W. Amber Durum .....	1.29	1.25	1.13
No. 5 C.W. Amber Durum .....	1.17	1.13	1.01
No. 1 Alberta Red Winter .....	1.32	1.28	1.16
No. 2 Alberta Winter .....	1.27	1.23	1.11
No. 3 Alberta Winter .....	1.21	1.17	1.05
No. 4 Alberta Winter .....	1.17	1.13	1.01
No. 1 Soft White Spring .....	1.46	1.42	1.30
No. 2 Soft White Spring .....	1.43	1.39	1.27
No. 3 Soft White Spring .....	1.39	1.35	1.23
No. 4 Soft White Spring .....	1.17	1.13	1.01
No. 1 Mixed Wheat .....	1.19	1.15	1.05
No. 2 Mixed Wheat .....	1.16	1.12	1.02
No. 3 Mixed Wheat .....	1.16	1.12	1.02
No. 4 Mixed Wheat .....	1.11	1.07	.97
No. 5 Mixed Wheat .....	1.19	1.15	1.05
No. 6 Mixed Wheat .....	1.16	1.12	1.02
No. 1 C.W. Mixed Grain .....	1.05	1.01	.91



# CANADIAN FLOUR MILLING SITUATION

**Production** Wheat flour production by Canadian mills during July 1972 amounted to 3,060,000 hundredweight, representing a decrease of 7 per cent from both the June 1972 output of 3,294,000 hundredweight, and the 10-year average production for the month of July of 3,289,000 hundredweight, and 5 per cent less than the adjusted July 1971 total of 3,204,000 hundredweight. Mills reporting operations during July 1972 had a total rated capacity of 163,000 hundredweight per 24-hour day and on the basis of a 25-day working period 75.1 per cent of this rated capacity was effective. Wheat milled for flour during July 1972 amounted to 6,910,000 bushels, 7 per cent below the 7,416,000 bushels milled during the preceding month and 5 per cent less than the adjusted July 1971 total of 7,277,000 bushels. Of the wheat milled for flour during July 1972 some 5,958,000 bushels were Western Canadian spring wheat (other than Durum) while the remainder consisted of Ontario winter wheat (473,000 bushels); Durum (285,000 bushels); and all other (194,000 bushels).

**Exports** According to preliminary Customs returns, exports of Canadian wheat flour during June 1972 amounted to the equivalent of 2,691,000 bushels (some 1,170,000 hundredweight of flour) 34 per cent greater than the May 1972 exports of 2,003,000 bushels, and 36 per cent above the adjusted June 1971 exports of 1,986,000 bushels. Flour shipments during the month under review went to thirty-nine countries with leading markets for Canadian wheat flour in terms of wheat, in thousands of bushels, were as follows: Cuba, 1,630; Lebanon, 152; Britain, 146; U.A.R., 138; Trinidad and Tobago, and Leeward and Windward Islands, 89 each.

Note: Data re exports of wheat flour for July 1972 by country of destination are not available at this time and will be included in the next issue.

## Wheat Milled for Flour, and Production and Exports of Wheat Flour, Canada

Crop year	Wheat milled for flour	Wheat flour	
		Production	Exports(1)
	bushels	cwt.	
1935-36 — 1939-40 average .....	67,845,114	29,405,451	9,603,941
1940-41 — 1944-45 " .....	99,704,638	43,908,245	23,699,546
1945-46 — 1949-50 " .....	107,330,372	47,011,540	25,819,721
1950-51 — 1954-55 " .....	100,446,328	43,847,894	21,812,041
1955-56 — 1959-60 " .....	99,148,211	39,752,589	16,349,156
1960-61 — 1964-65 " .....	91,128,177	40,834,088	15,769,803
1965-66 .....	97,925,995	43,531,263	16,576,117
1966-67 .....	90,084,646	39,978,571	13,848,208
1967-68 .....	84,769,150	37,755,841	10,734,857
1968-69 .....	85,048,591	37,621,151	10,705,452
1969-70 .....	90,557,332	39,640,459	11,723,205
1970-71 .....	87,467,328	38,534,863	10,783,801
1971-72(2):			
August .....	7,476,891	3,298,715	663,543
September .....	7,962,496	3,556,947	1,592,171
October .....	8,164,466	3,588,290	964,238
November .....	7,389,047	3,258,470	821,373
December .....	6,864,695	3,026,145	1,182,204
January .....	6,933,208	3,079,219	609,520
February .....	6,816,010	3,038,145	687,561
March .....	7,155,915	3,171,815	815,100 <sup>r</sup>
April .....	6,903,088	3,066,667	845,875
May .....	7,838,094	3,484,522	870,940 <sup>r</sup>
June .....	7,416,440	3,293,835	1,170,176 <sup>r</sup>
July .....	6,910,368	3,059,719	571,308
Totals .....	87,830,718	38,922,489	10,794,009
Same months 1970-71 <sup>r</sup> .....	87,467,328	38,534,863	10,783,801

(1) Based on Customs returns. Exports for the crop years 1945-46 — 1970-71 revised to remove effect of time lag in the returns made by Customs.

(2) Subject to revision.

UNITED STATES SITUATION

Supply Position      Total domestic supplies of wheat in the United States for the 1972-73 crop year are currently placed at 2,408.4 million bushels, 2 per cent more than the previous year's total of 2,369.7 million reflecting an increase in carryover stocks which more than offset a decrease in production. The 865.3 million bushels carried over at July 1, 1972 were 18 per cent more than the 1971 stocks, while the current crop, estimated at 1,543.1 million bushels, represents a decline of 6 per cent from last year's outturn of 1,639.5 million.

Exports Below Previous Year      Exports of wheat, wheat flour and other products in terms of grain equivalent during July 1972 amounted to 49.7 million bushels, 4 per cent below the 52.1 million exported during the same month last year. The balance remaining on July 31, 1972 for export and for carryover was estimated at 1,553.7 million bushels compared with 1,444.9 million on the same date a year ago.

United States Wheat Supplies

Item	1971-72 <sup>r</sup>	1972-73 <sup>p</sup>
	million bushels	
Carryover at beginning of crop year (July 1) .....	730.2	865.3 <sup>r</sup>
Production .....	1,639.5	1,543.1
Total estimated domestic supplies .....	2,369.7	2,408.4
Imports of wheat and wheat flour in terms of wheat for domestic use, July .....	(1)	(1)
Total estimated supplies (2) .....	2,369.8	2,408.5
Less estimated domestic requirements for crop year(3)	872.9 <sup>r</sup>	805.0
Available for export and for carryover .....	1,496.9	1,603.5
<u>Deduct</u>		
Exports of wheat as grain, July .....	47.5	44.7
Exports of wheat flour and products(4) in terms of wheat, July .....	4.6	5.0
Total exports of wheat and wheat flour .....	52.1	49.7
Balance on July 31 for export and for carryover ....	1,444.9	1,553.7

(1) Less than 50,000 bushels.

(2) Excluding imports for August-June.

(3) Includes shipments to United States Territories and wheat for military food use at home and abroad.

(4) Includes bulgar, rolled wheat and macaroni.

Stocks of Wheat  
in All Positions  
July 1, 1972

On July 24, 1972 the United States Department of Agriculture stated in a release that stocks of all wheat were 19 per cent more than a year earlier, with durum supplies up 29 per cent.

Old crop carryover of all wheat on July 1 totalled 865 million bushels, 19 per cent more than a year earlier, but 2 per cent less than July 1, 1970. Off-farm holdings of 509 million bushels were 4 per cent more than a year earlier and farm holdings, at a record high of nearly 357 million, were up 49 per cent. Stocks in all positions on July 1 indicate disappearance during the July 1, 1971 to June 30, 1972 crop year of 1,504 million bushels, compared with 1,525 million a year earlier and 1,394 million 2 years ago. Disappearance for April-June 1972 was 348 million bushels, compared with 333 million a year earlier. The Commodity Credit Corporation owned 367 million bushels of the total wheat stocks and had loans outstanding on 349 million.

Old crop durum wheat stocks in all positions on July 1 totalled 69.2 million bushels, 29 per cent more than a year earlier but 11 per cent below 2 years ago. Farm holdings of 48.5 million were 31 per cent above last year, and off-farm stocks were up 23 per cent. Disappearance during the crop year ended June 30, 1972, is indicated at 72.3 million bushels, compared with 74.5 million a year earlier.

Stocks of United States Wheat by Positions  
July 1, 1972 with comparisons

Grain and position	July 1, 1970	July 1, 1971	April 1, 1972	July 1, 1972
thousand bushels				
<u>All wheat (old crop)</u>				
On farms(1) .....	306,877	239,029	528,129	356,625
Commodity Credit Corp.(2) ...	1,219	1,814	1,978	1,906
Mills, elev. & whses. (1,3) .	576,561	489,388	682,983	506,806
Totals .....	884,657	730,231	1,213,090	865,337
<u>Durum wheat(4) (old crop)</u>				
On farms(1) .....	60,047	36,883	72,201	48,479
Commodity Credit Corp. (2) ..	161	558	588	594
Mills, elev. & whses. (1,3) .	17,423	16,259	24,371	20,164
Totals .....	77,631	53,700	97,160	69,237

(1) Estimates of the Crop Reporting Board.

(2) C.C.C.-owned grain at bin sites.

(3) All off-farm storages not otherwise designated, including terminals and processing plants. Includes C.C.C.-owned grain in these storages.

(4) Included in all wheat.



Summary of the  
Wheat Situation

In a report released on July 31, 1972 the United States Department of Agriculture stated that the wheat outlook for the 1972-73 marketing year features abundant supplies of all major wheat classes, lower domestic disappearance, and much larger exports. Highlighting this outlook is a recent 3-year agreement with the USSR for the purchase of \$750 million of U.S. grains. Under this blanket grain agreement, at least \$200 million will be purchased during 1972-73; inclusion of sizable wheat purchases is indicated.

Indicated 1972 U.S. wheat production of 1,551 million bushels (basis July 1) is the third largest on record. The July 1, 1972, carryover of 865 million bushels brings the 1972-73 supply to 2,416 million bushels, 2 per cent larger than last season. Domestic disappearance is expected to be lower. Wheat feeding, the only component of domestic use that fluctuates substantially, is likely to drop from the high 1971-72 level of 287 million bushels because of larger supplies and lower relative prices for feed grains.

Wheat exports, another widely fluctuating demand component, could rise around a fourth from the 632 million bushels in 1971-72 in light of Soviet purchases, continued strong demand in Far Eastern markets, and lower exportable supplies in Argentina and Australia. Disappearance will likely exceed production, resulting in a moderate reduction in carryover at the end of the 1972-73 season.

Early-season prices in June dropped well below the high levels of a year ago. However, July prices rebounded in anticipation of active export business. With the strength of export demand apparent in the coming months, farm prices are likely to average somewhat above the \$1.31 of last season.

Hard Red Winter (HRW): Supplies for 1972-73 will be virtually the same as last season. Domestic disappearance will likely drop from last season's very high level as a result of reduced feeding. Supplies available for export and carryover will be about 5 per cent larger.

Hard Red Spring (HRS): Although the indicated harvest is 28 per cent lower than last year's record, a substantial increase in July 1 carryover pushed supplies up slightly to the highest level in 14 years. Even with a strong domestic and foreign demand this year, another large carryover appears in the works for next summer.

Soft Red Winter (SRW): Supplies will be up moderately due to a 7 per cent bigger crop. Lower anticipated domestic use will push availabilities for export and carryover up a third from last year's 61 million bushels.

Durum wheat: Larger durum stocks more than offset a smaller 1972 crop and supplies will be up moderately for 1972-73. Domestic use may hold near recent levels, leaving availabilities for export and carryover over 100 million bushels. Providing exports are maintained at last season's high level, a buildup of stocks will be avoided.

White wheat: The 1972-73 supply is expected to be moderately above last season with increases in both carryover and production. If total domestic use equals the levels of recent years, the supply for export and carryover could total over 150 million bushels.

World wheat trade in 1972-73 may rise moderately above last season, mainly because of increased import requirements in Eastern Europe and the USSR where 1972 harvests have been reduced by poor weather. Stocks of the major exporters are down for a second straight year but are still ample to meet anticipated needs.

Major provisions of the 1973 U.S. wheat program provide for a domestic wheat allotment of 18.7 million acres; a National average farm loan of \$1.25 per bushel; payment of domestic certificates; an acreage set aside requirement equal to 86 per cent of the farm domestic allotment; a voluntary additional set aside up to 150 per cent of the farm domestic allotment; and substitution of feed grains (including barley) and soybeans for wheat. The 1973 program is aimed at improving farm income, reducing stocks, and providing growers flexibility in their farm operations. Participating producers, who must meet their set aside and conserving base requirements, are eligible for farm- and warehouse-stored loans and domestic certificate payments.

All Wheat Production In a report released on August 12 by the Crop Reporting Board of the United States Department of Agriculture production of all wheat is forecast at 1,543 million bushels (basis August 1) 6 per cent less than last year but 13 per cent above 1970. The August 1 forecast is about 8 million bushels below the July 1 forecast as a result of declines in spring wheat prospects. Changes between the August 1 forecast and the final estimates have averaged 22 million bushels ranging from 1 million to 60 million. The indicated yield of all wheat is forecast at 32.3 bushels per acre, second only to last year's record high of 33.8 bushels. Grain was expected to be harvested from 47.8 million acres, 1 per cent below last year.

USDA Announces Preliminary Payment of \$1.28 Per Bushel to Wheat Producers On June 23, 1972 United States Department of Agriculture announced in part that wheat producers will receive \$1.28 per bushel in preliminary payment on their 1972 crop. The preliminary payment will be made as soon after July 1 as practicable and amounts to 75 per cent of the estimated face value of domestic wheat certificates. The final face value of the certificates will be the difference between 100 per cent of the July 1, 1972 parity price per bushel and the national average price received by farmers for wheat from July through November. Final certificate payments will be made after December 1.

For 1971-crop wheat, the total certificate payment was \$1.63 per bushel based on July 1, 1971 parity of \$2.93 per bushel and a five-month average price of \$1.30 per bushel. The preliminary certificate payment was \$1.20 per bushel and the final payment was 43 cents per bushel.

1973 Wheat Program Announced; Includes Options and Substitution Secretary of Agriculture Earl L. Butz, of the United States Department of Agriculture announced in part on July 17, 1972 the major provisions of the 1973 wheat program. They include the set aside required for participation, an option to voluntarily set aside additional acreage and the payment rate for the additional set aside. To participate in the wheat program, a producer must set aside an acreage equal to 86 per cent of the farm's domestic wheat allotment — the maximum provided by law. Producers will again be allowed to substitute feed grains or soybeans for wheat to preserve allotment history. The Secretary further announced that barley will again be included in the 1973 feed grain program.

In addition to the set aside required for participation, a producer may earn payment for setting aside additional acreage up to 150 per cent of his 1973 domestic wheat allotment — twice the amount of additional acreage allowed in the 1972 program — at a payment rate of 88 cents per bushel. This option is aimed at encouraging retirement of additional land to prevent excessive wheat production.



"The announcement of voluntary set aside is being made much earlier than last year so the winter wheat producer can plan his wheat operation before investing any money in his 1973 crop," Secretary Butz said in outlining the 1973 program.

"Provisions of the 1973 wheat program are aimed at achieving a reduction of stocks so that producers can obtain fair rates of return on their capital and labor in the marketplace," Secretary Butz said. "Goals also include allowing each farmer greater freedom of choice to plant the commodities that best fit his individual operation and managerial talents."

Loan rate for 1973 will be \$1.25 per bushel national average — the same as in 1972 — and farm-stored and warehouse-stored loans are available to producers who participate in the program. As in the past years, producers who elect to set aside only the acreage required for participation will be eligible for certificates on their allotment acres and for loans on all wheat produced on the farm.

Farmers who elect to participate in the voluntary option may set aside additional acreage up to 150 per cent of their domestic wheat allotment. Payment rate for this additional set aside will be 88 cents per bushel, times the farm's established yield, times the acres set aside. In 1972 the voluntary option was limited to 75 per cent of their domestic allotment with a payment of 94 cents per bushel. Producers who choose this option must agree to limit their total 1973 wheat program acreage planted for harvest. The limit will be their 1972 spring and winter wheat program acreages plus the 1972 voluntary set aside minus the 1973 voluntary set-aside acreage. Program acreages are those reported and accepted for compliance in 1972. Substitution provisions of the 1973 wheat program are identical to those in 1972 with corn, grain sorghum, barley or soybeans allowed for reservation of allotment history. The USDA also announced that the 1973 feed grain program will have a mandatory set aside for barley of not less than 25 per cent of the farm's barley base, with other details of the feed grain program to be announced later.

Loan discounts for undesirable varieties of wheat have been discontinued. Undesirable varieties listed in the past were those deemed not suitable for milling purposes. The USDA said that less than 1/2 of 1 per cent of the total acreage planted to wheat in recent years has been devoted to varieties and classes of wheat previously on the undesirable variety list.

#### Flour Production

According to the Bureau of the Census, United States Department of Commerce, wheat flour production in the United States in June 1972 amounted to 21,118,000 hundredweight, averaging 960,000 hundredweight per working day. This compared with an average output per working day of 958,000 hundredweight last month and 954,000 hundredweight in June 1971. Wheat flour mills during June operated at 94.9 per cent of capacity, compared with 97.2 per cent and 95.3 per cent, respectively, for the previous month and the same month a year ago. Flour mills in June 1972 ground 47,231,000 bushels of wheat compared with 46,897,000 bushels the previous month and 46,658,000 bushels in June 1971.



AUSTRALIAN SITUATION

Wheat Supplies Reflecting the effect of a decrease in carryover stocks which  
Below Previous Year more than offset a 5 per cent increase in production, total  
 estimated supplies of wheat in Australia for the 1971-72  
 (December-November) crop year are placed at 427.9 million bushels, 23 per cent less  
 than the 555.0 million in 1970-71. Carryover stocks at December 1, 1971, at 124.9  
 million bushels were sharply below the 265.1 million at the same date a year ago,  
 while the 1971 production, at 303.0 million was slightly more than the comparable  
 289.9 million in 1970. After deducting some 85.8 million bushels for anticipated  
 domestic requirements, an estimated 342.1 million are available for export and for  
 carryover during 1971-72, a decrease of 25 per cent from the 458.1 million in 1970-71.

Exports Less Combined exports of wheat as grain and wheat flour in terms of  
than Year Ago grain equivalent during the period December 1 — July 22 of the  
 current Australian crop year amounted to 199.4 million bushels,  
 some 10 per cent below the 222.6 million exported during the corresponding period  
 of the 1970-71 crop year. The balance remaining on July 23, 1972 for export and  
 for carryover, at 142.7 million bushels, was 39 per cent lower than the 235.6 million  
 at the same date a year ago.

Australian Wheat Supplies

Item	1970-71 <sup>r</sup>	1971-72 <sup>p</sup>
	million bushels	
Carryover, including flour as wheat, at beginning of crop year (December 1) .....	265.1	124.9
Production .....	289.9	303.0
Total estimated domestic supplies .....	555.0	427.9
Less estimated domestic requirements for crop year ..	96.9	85.8 <sup>r</sup>
Available for export and for carryover .....	458.1	342.1
<u>Deduct</u>		
Exports of wheat as grain, December 1 — July 22 ...	210.7	193.2
Exports of wheat flour in terms of wheat, December 1 — July 22 .....	11.9	6.2
Total exports of wheat and wheat flour .....	222.6	199.4
Balance on July 23 for export and for carryover .....	235.6	142.7

The following information relative to the Australian situation has been  
 extracted from a report from Mr. L.B. Stryker, Marketing Officer for Canada, Melbourne,  
 under date of August 10, 1972 and is reproduced with the permission of the Trade  
 Commissioner Service, Department of Industry, Trade and Commerce.

Wheat situation in Australia for 1972-73 crop. — Australia is facing a major, nation-wide drought. In Mackay (Queensland) the Minister for Primary Industry, Mr. Sinclair, told the Australian Agricultural Council that the drought was spreading. It was now affecting huge areas of New South Wales, Queensland, Victoria and Western Australia. The seriousness of the situation is reflected in revised estimates of receivals by the Australian Wheat Board for the current crop year of 255 million bushels, which is 54 million bushels less than the total anticipated in our previous report.

The following is current estimated receivals by States compared with last month: —

<u>State</u>	<u>Previous estimated receivals</u> million bushels	<u>Current estimated receivals</u> million bushels
New South Wales .....	100	60
Western Australia .....	95	95
Victoria .....	50	50
Queensland .....	36	20
South Australia .....	28	30
Totals .....	309	255

In New South Wales the crops in the south have been kept going by light rains, however, in the north the situation is worse and in the Prime Hard areas not all the wheat has been sown yet. In Victoria some of the Northern Mallee has not been sown and in the South-eastern Mallee some wheat has been sown dry. The 50 million bushels estimate for Victoria is regarded as a maximum.

In South Australia, the 30 million bushel crop is predicted with some confidence as apart from about 4 areas crops have good prospects for satisfactory, yields. In Western Australia the situation is very satisfactory but in Queensland lack of rain has probably meant an end to any additional sowing.

Wheat exports. — Total Australian wheat exports for the year since November 1971 were 5,174,738 tons (193,190,000 bushels), which is 470,101 tons (17,550,000 bushels) less than the 5,644,839 tons (210,740,000 bushels) exported in the same period of the previous year, according to the Australian Wheat Board.

Wheat shipments during the fortnight to July 22 amounted to 95,373 long tons (3,561,000 bushels). Shipments to Asia included 30,260 tons (1,130,000 bushels) to Japan, with Malaysia taking 27,975 tons (1,044,000 bushels), Thailand 5,278 tons (197,000 bushels), Singapore 1,045 tons (39,000 bushels) and Hong Kong 1,580 tons (59,000 bushels). Latin American shipments included 28,700 tons (1,071,000 bushels) to Peru.

Marketing of Australian wheat. — At the present time, it appears that the Australian Wheat Board will sell around 265 million bushels of wheat and flour on export markets for shipment in the 1971-72 crop year. Wheat sales on the domestic market could reach 64 million bushels, which will give the Wheat Board a total disposal of about 329 million bushels for the year.



A result of this order, which is by no means as good as the record figures established last year, should be satisfactory for the Australian wheat industry. It would compare with average exports of 279 million bushels of wheat and flour over the past five years, and total disposals averaging 341 million bushels for the same period.

Credit sales delay wheat payments. — A changing pattern in world trade in wheat, which is moving away from cash sales to credit selling on terms of up to three years, is preventing the Australian Wheat Board from maintaining its usual pattern of payments after the first advance of \$A1.10 (\$1.28 Cdn.) per bushel is made on each Pool.

The recent sale by the United States of \$A750 million (\$875 million Cdn.) worth of grains, including wheat, to U.S.S.R. on three year credit terms was a good example of the change. Before this transaction the U.S.S.R. was always a cash buyer for wheat, including Australian.

Credit sales had serious repercussions for Australian farmers, who received about 80 per cent of the value of their wheat on delivery through the first advance of \$A1.10 (\$1.28 Cdn.) per bushel, but then had to wait for funds to come from sales before any further payments were received. In some cases this could be up to three years from the time the wheat was shipped.

The Chairman of the Australian Wheat Board, Mr. J.P. Cass, said: "The Australian Wheat Board always tries to make cash sales when it can, but it has little option but to match terms being offered by competitors. This is resulting in an increasing volume of wheat being sold on terms and also an extension of the length of terms, up to three years.

"The Board will always continue to pay promptly to growers any funds coming from sales from outstanding Pools. Because of our credit sales, there is no prospect of further payments being made from the 1969-70, 1970-71 and 1971-72 Pools before July, 1973 when a second payment of 8 cents (9 cents Cdn.) per bushel on the 1969-70 Pool should be available, provided all outstanding amounts due under credit terms are paid on due dates. After July 1973 there would continue to be a time lag in payments, but the frequency of payments should be the same as in previous years."

Exports of Australian Wheat and Wheat Flour in Terms of Wheat  
December 1 — July 22, 1971-72 and Corresponding Period 1970-71

Destination	Wheat		Wheat flour	
	1970-71	1971-72	1970-71	1971-72
<u>Western Europe</u>				
EEC:				
Germany, West .....	30	—	—	—
Italy .....	1,033	—	—	—
Netherlands .....	249	—	—	—
Sub-total .....	1,312	—	—	—
Other Western Europe:				
Britain .....	43,250	14,684	244	151
Ireland .....	608	534	—	—
Malta .....	384	565	—	—
Norway .....	4,850	4,033	—	—
Switzerland .....	1,644	—	—	—
Sub-totals .....	50,736	19,816	244	151
Totals .....	52,048	19,816	244	151



Exports of Australian Wheat and Wheat Flour in Terms of Wheat  
December 1 - July 22, 1971-72 and Corresponding Period 1970-71 - Continued

Destination	Wheat		Wheat flour	
	1970-71	1971-72	1970-71	1971-72
	thousand bushels			
<u>Eastern Europe</u>				
Germany, East .....	5,158	16,271	—	—
U.S.S.R. (Russia) .....	—	11,638	—	—
Totals .....	5,158	27,909	—	—
<u>Africa</u>				
Angola .....	1,030	573	—	—
Ethiopia .....	1,566	—	—	—
Egypt U.A.R. ....	40,059	44,029	—	—
Kenya .....	—	2,382	—	—
Malawi .....	—	—	431	323
Mauritius - Comm. ....	—	—	301	470
— F. Aid .....	—	—	125	164
Mozambique .....	2,222	1,621	—	—
Rhodesia .....	1,560	1,145	—	—
South Africa .....	849	—	—	—
Sudan .....	3,815	1,430	—	—
Tanzania .....	272	749	—	—
Zambia .....	1,303	1,889	—	—
Others .....	3	2	168	317
Totals .....	52,679	53,820	1,025	1,274
<u>Asia</u>				
Aden .....	3 <sup>r</sup>	460	—	—
Aden and Aden I/T Atta ....	—	—	5	19
Afghanistan .....	—	411	—	—
Arabian Gulf .....	177	211	131	212
Arabian Gulf Atta .....	—	—	766	772
Bangladesh - Comm. ....	—	237	—	—
— F. Aid .....	—	511	—	—
Burma - F. Aid .....	—	—	541	—
Ceylon - Sri Lanka .....	2,022	2,066	—	—
— Sri Lanka - Comm..	—	—	4,162	66
— Sri Lanka - F. Aid.	—	—	582	657
China .....	3,038	—	—	—
Hong Kong .....	2,066	1,186	13	10
India - Comm. ....	1,876	—	—	—
— F. Aid .....	1,723	1,466	—	—
Indonesia - F. Aid .....	224	1,796	1,525	—
— Comm. ....	—	—	5	2
Iran .....	11,719	2,783	—	—
Iraq .....	15,152	2,696	—	—
Japan .....	18,267	33,182	—	—
Korea North .....	—	1,852	—	—
Korea South .....	4,496	2,898	—	—
Kuwait .....	2,857	2,896	—	—
Lebanon .....	2,298	1,260	—	—

Exports of Australian Wheat and Wheat Flour in Terms of Wheat  
December 1 - July 22, 1971-72 and Corresponding Period 1970-71 - Concluded

Destination	Wheat		Wheat flour	
	1970-71	1971-72	1970-71	1971-72
thousand bushels				
<u>Asia - concluded</u>				
Malaysia .....	6,989	7,434	—	—
Pakistan - Comm. ....	2,699	—	—	—
— F. Aid .....	234	878	—	—
Philippines .....	426	—	—	—
— Comm. ....	—	—	133	184
Sabah .....	—	—	2	1
Sarawak .....	—	—	(1)	—
Saudi Arabia .....	985	2,820	41	110
Singapore .....	5,523	3,373	1	(1)
Taiwan .....	4,619	3,791	—	—
Thailand .....	1,067	1,294	114	107
Yemen .....	440	1,547	—	—
Others .....	—	—	86	91
Totals .....	88,900	77,048	8,107	2,231
<u>Oceania</u>				
New Zealand .....	1,642	550	—	—
Okinawa .....	597	198	—	—
Totals .....	2,239	748	—	—
<u>Western Hemisphere</u>				
Bolivia .....	1,196	566	—	—
Chile .....	5,396	10,050	—	—
Peru .....	3,052	3,188	—	—
West Indies Area .....	—	—	30	32
Totals .....	9,644	13,804	30	32
<u>Pacific Area and Sundries</u>				
Pacific Islands .....	41	44	2,415	2,479
Ships' Stores and Sundries ..	—	—	81	73
Totals .....	41	44	2,496	2,552
Totals, all countries ...	210,700	193,190	11,900	6,240

(1) Less than 500 bushels.

ARGENTINE SITUATION

Supplies Increase  
Over Previous Year

Total estimated domestic supplies of wheat in Argentina for the 1971-72 (December-November) crop year are placed at some 224.7 million bushels, an increase of 7 per cent over the comparable 1970-71 total of 209.4 million reflecting a rise in production which more than offset a decline in carryover stocks. The 1971 estimate of production at 199.9 million bushels was 11 per cent above the 180.8 million produced in 1970 while the December 1, 1971 carryover stocks, at 24.8 million, are 13 per cent less than the 28.7 million at the same date a year ago. After making an allowance of 135.0 million bushels for anticipated domestic requirements, an estimated 89.7 million are available for export and for carryover in 1971-72, some 47 per cent above the 61.1 million the previous year.

Exports Higher than  
Last Year's Level

Preliminary exports of wheat and wheat flour in terms of wheat equivalent during December 1971 - July 1972 amounted to 42.9 million bushels, some 72 per cent larger than the 25.0 million shipped during the same eight months in 1970-71. The balance remaining on August 1, 1972 for export and for carryover was estimated at 46.8 million bushels, as against the August 1, 1971 total of 36.1 million.

Argentine Wheat Supplies

Item	1970-71 <sup>r</sup>	1971-72 <sup>p</sup>
	million bushels	
Carryover at beginning of crop year (December 1)(1) ..	28.7	24.8
Production .....	180.8	199.9
Total estimated domestic supplies .....	209.4	224.7
Less estimated requirements for crop year.....	148.3	135.0
Available for export and for carryover .....	61.1	89.7
<u>Deduct</u>		
Exports of wheat as grain, December-July .....	21.4	39.1
Exports of wheat flour in terms of wheat, December-July .....	3.6	3.8
Total exports of wheat and wheat flour .....	25.0	42.9
Balance on August 1 for export and for carryover .....	36.1	46.8

(1) Includes allowances for farm stocks.

The following account of the Argentine situation has been extracted from a report from Mr. H.G. Fairfield, Assistant Commercial Secretary (Agriculture) Buenos Aires, under date of July 28 and August 14, and is reproduced with the permission of the Trade Commissioner Service, Department of Industry, Trade and Commerce. Where possible conversions to Canadian measures and currency have been made for the convenience of our readers.



The situation throughout the wheat belt is favourable for 1972-73 seedings. This favourable situation has been helped by rumours that wheat prices would be raised again, although no official confirmation has been issued yet.

The area seeded to wheat has now been established at 5,460,000 hectares (13,486,000 acres), 9 per cent higher than in 1971-72. Area seeded to wheat by province for 1972-73 compared with 1971-72 is as follows:

	<u>1971-72</u>	<u>1972-73</u>
	thousand acres	
Buenos Aires .....	7,263	7,921
Santa Fe .....	1,828	1,852
La Pampa .....	1,200	1,796
Cordoba .....	1,037	1,045
Entre Rios .....	652	528
Others .....	360	344
Totals .....	<u>12,340</u>	<u>13,486</u>

On August 14, hard wheat prices closed at 42.80 pesos per 100 kilos (\$2.28 per bushel Cdn.) f.o.r. Buenos Aires; semi-hard wheat at 42.20 pesos (\$2.25 per bushel) and Durums at 33.00 pesos (\$1.76 per bushel). At Bahia Blanca they closed at 39.70, 39.10 and 29 pesos, (\$2.12, \$2.09 and \$1.55 per bushel), respectively. On the Buenos Aires Futures Exchange wheat was quoted at 43.50 pesos per 100 kilos (\$2.32 per bushel) for September delivery.

The following is extracted in part from a report dated July 28.

In August a delegation from Brazil will come to discuss the shipment of the remaining 150,000 tons (5,511,000 bushels) of the 1.0 million ton contract (36,743,000 bushels) between the two countries.

In the previous report we stated exporters were allowed to change 64 per cent on the financial market and 36 per cent on the commercial market. A further change was made last week. Now the percentages are 70 per cent and 30 per cent, respectively.

If the support price for 1972-73 is increased to 44 pesos per 100 kilos (\$2.35 per bushel Cdn.), if the export and other taxes remain at 41.3 per cent payable on an index price of \$60.00 U.S. per metric ton (\$1.67 per bushel Cdn.) and if the composite exchange rate remains the same, then at an export price of \$65.00 U.S. per ton (\$1.80 per bushel) the exporters after tax return will be approximately 34 pesos per 100 kilos (\$1.81 per bushel). Obviously something is going to have to change.

On July 28, hard wheat closed at 41.10 pesos per 100 kilos (\$2.19 per bushel) f.o.r. Buenos Aires, semi-hard wheat at 40.50 pesos (\$2.16 per bushel) and durums at 33.00 pesos (\$1.76 per bushel).

In Bahia Blanca they closed at: 36, 35.40 and 28.50 pesos (\$1.92, \$1.89 and \$1.52 per bushel), respectively. On the Futures Exchange, hard wheat was quoted at 41.10 pesos (\$2.19 per bushel) for August delivery and at 42.50 pesos (\$2.27 per bushel) for September.

Argentine Wheat Exports December — May 1970-71 and 1971-72

Destination	May		December-May	
	1971	1972	1970-71	1971-72
thousand bushels				
<u>Western Europe</u>				
EEC:				
Germany, West .....	26	—	26	—
France .....	—	—	244	—
Italy .....	1,031	306	8,773	7,068
Netherlands .....	—	78	259	218
Sub-totals .....	1,057	384	9,302	7,286
Other Western Europe:				
Spain .....	—	—	448	—
Sub-total .....	—	—	448	—
Totals .....	1,057	384	9,750	7,286
<u>Africa</u>				
Algeria .....	—	—	—	463
Jordan .....	—	—	—	154
Libya .....	202	—	909	220
Totals .....	202	—	909	837
<u>Asia</u>				
Lebanon .....	—	—	261	—
Syria .....	220	—	1,533	—
Totals .....	220	—	1,794	—
<u>Western Hemisphere</u>				
Bolivia .....	—	—	18	—
Brazil .....	—	4,748	4,354	15,407
Chile .....	—	445	1,493	3,494
Paraguay .....	—	65	142	138
Peru .....	—	—	318	—
Totals .....	—	5,258	6,325	19,039
Totals, all countries .....	1,479	5,641	18,776	27,164

# FRENCH SITUATION

Supplies Above      Total estimated commercial domestic supplies of soft wheat in  
a Year Ago      France for the crop year (August-July) 1971-72, consisting of the  
August 1 carryover of 97.8 million bushels and anticipated  
marketings of 437.2 million amount to some 535.1 million, 22 per cent more than the  
1970-71 total of 437.9 million, reflecting increases in both carryover stocks and  
anticipated deliveries. Imports during the August-May period of the current crop year,  
including durum and both hard and soft wheat have amounted to 6.4 million bushels in  
sharp contrast to the 12.7 million imported during the same months last year. After  
deducting 226.3 million bushels for estimated domestic use, including normal feed  
wheat requirements, the surplus available for export and for carryover is about 315.1  
million bushels, 43 per cent above the 220.9 million the previous year.

Exports Higher      Combined exports of wheat and wheat flour in terms of grain  
than Previous Year      equivalent during the first ten months of the 1971-72 crop  
year amounted to 183.2 million bushels, 72 per cent larger than  
the comparable August 1970-May 1971 total of 106.6 million. The balance of commercial  
supplies remaining on June 1, 1972 for export and for carryover amounted to 132.0  
million, a 15 per cent increase, compared with the June 1, 1971 total of 114.3 million  
bushels.

## French Soft Wheat Supplies

Item	1970-71 <sup>r</sup>	1971-72 <sup>p</sup>
	million bushels	
Commercial carryover, August 1 .....	83.3	97.8
Anticipated deliveries to Grain Board .....	354.6	437.2
Total estimated commercial domestic supplies ..	437.9	535.1
Imports(1), August-May .....	12.7	6.4
Total commercial supplies .....	450.6	541.5
Less domestic requirements for crop year .....	229.7	226.3
Available for export and for carryover .....	220.9	315.1
<u>Deduct</u>		
Exports of wheat(2), August-May .....	72.3	150.6
Exports of wheat flour, August-May .....	34.3	32.6
Total exports of wheat and wheat flour .....	106.6	183.2
Balance on June 1 for export and for carryover ..	114.3	132.0

(1) Includes durum, hard and soft wheat.

(2) Includes denatured, durum and soft wheat.

The following account of the wheat situation in France has been extracted from a report from Mr. G.W. Doucet, Agricultural Secretary, Canadian Embassy, Paris, under date of July 27, 1972 and is reproduced with the permission of the Trade Commissioner Service, Department of Industry, Trade and Commerce. Where possible, conversions to Canadian measures have been made for the convenience of our readers.



External trade. — Total wheat imports for May 1972 were placed at 1,710 metric tons (63,000 bushels). This compares with 27,375 tons (1,006,000 bushels) in the corresponding month of May last year and with 29,833 tons (1,096,000 bushels) imported during April 1972. There was no durum wheat shipment from the U.S.

The August-May total imports now reaches 174,657 tons (6,417,000 bushels), of which 92,120 tons (3,385,000 bushels) was durum wheat, as against 344,350 tons (12,653,000 bushels) in August-May 1970-71, of which 218,898 tons (8,043,000 bushels) was durum wheat. Key reduction continues to affect durum wheat with 126,778 tons (4,658,000 bushels) less, while it attains 42,915 tons (1,577,000 bushels) less for both hard and soft wheats. Therefore, the total slump now rises up to 169,693 metric tons (6,235,000 bushels) for French wheat imports over last year.

#### French Wheat Imports, August-May

Destination	Durum wheat		Hard and soft wheats	
	1970-71	1971-72	1970-71	1971-72
	thousand bushels			
Belgium .....	—	—	4	1
Germany .....	—	—	(1)	9
Italy .....	—	—	1	1
U.S.S.R. ....	—	—	411	191
United States .....	6,291	2,955	2,257	1,603
Canada .....	851	—	1,822	1,227
Argentina .....	901	429	115	—
Totals .....	8,043	3,385	4,610	3,033

(1) Less than 500 bushels.

Total wheat exports in May 1972 amounted to 428,580 metric tons (15,747,000 bushels), some 241,233 tons (8,864,000 bushels) more than the 187,347 tons (6,884,000 bushels) in May 1971. In comparison with April 1972 export figure of 426,691 tons (15,678,000 bushels) we have to mention a weak increase of 1,889 tons (69,000 bushels), including:

- a 22,387 ton (823,000 bushel) increase for denatured wheats;
- a 760 ton (28,000 bushel) decrease for durum wheat; and
- a 19,737 ton (725,000 bushel) decline for soft milling wheat.

August-May total exports amounted to 4,098,205 metric tons (150,582,000 bushels) compared with 1,966,500 tons (72,256,000 bushels) last year, an increase of 2,131,705 tons (78,326,000 bushels).

Total wheat shipments to the EEC since August were placed at 2,534,719 metric tons (93,134,000 bushels) compared with only 1,550,496 tons (56,970,000 bushels) for the same period of last year, an increase of 984,223 tons (36,164,000 bushels). The exports to the EEC continue to account for approximately 62 per cent of the total French wheat now exported.

In May 1972, the new EEC members (UK, Ireland and Norway) bought 109,947 tons (4,040,000 bushels) compared with none in May 1971, so that the total French sales to these countries were 533,572 tons (19,605,000 bushels) for the first ten months, in contrast to only 72,678 tons (2,670,000 bushels) last year.

French Wheat Exports, August-May

Destination	Milling soft wheat		Durum		Denatured durum and soft wheat	
	1970-71	1971-72	1970-71	1971-72	1970-71	1971-72
thousand bushels						
Belgium .....	10,445	13,767	213	298	8,275	12,589
Holland .....	12,431	13,884	9	10	736	1,803
Germany .....	15,835	27,952	176	426	1,980	3,849
Italy .....	6,591	18,163	251	380	28	13
U.K. ....	2,641	16,710	—	16	—	577
Switzerland .....	1,907	7,259	1	7	7	18
Ireland .....	29	2,162	—	—	—	—
Norway .....	—	141	—	—	—	—
Malta .....	—	81	—	—	—	—
Spain .....	—	1	—	—	—	—
Spanish Canaries ..	—	—	—	—	—	1
Portugal .....	1	294	—	—	—	—
Andorra .....	13	14	—	—	1	—
Czechoslovakia ....	—	3,739	—	—	—	—
U.S.S.R. ....	—	613	—	—	—	59
Poland .....	—	13,288	—	—	—	—
Spanish N. Africa .	20	—	—	—	—	—
Dahomey .....	—	—	—	—	2	—
Libya .....	—	—	—	—	9	—
Ghana .....	—	—	—	—	9	—
Tunisia .....	1,672	134	—	—	—	—
Angola .....	—	1,705	—	—	—	—
Morocco .....	—	370	—	—	—	—
Afghanistan .....	—	294	—	—	—	—
Egypt .....	—	—	—	—	15	—
Kenya .....	—	478	—	—	—	—
Uganda .....	—	1	—	—	—	—
Reunion Island ....	—	—	—	77	13	—
Guadeloupe .....	—	—	—	—	1	—
Martinique .....	—	—	—	—	13	(1)
Madagascar .....	—	—	(1)	1	—	—
Mauritania .....	14	204	—	—	—	—
Upper Volta .....	138	551	—	—	—	—
Mascate and Oman ..	—	—	—	—	—	2
Senegal .....	4,065	3,202	—	—	—	48
Ivory Coast .....	2,385	3,159	—	—	—	—
Cameroon .....	725	891	—	—	—	4
Central African Rep.	259	211	—	—	—	—
Gabon .....	276	478	—	—	—	—
Congo-Brazza .....	171	80	—	—	—	(1)

See footnotes at end of table.

French Wheat Exports, August-May — Concluded

Destination	Milling soft wheat		Durum		Denatured durum and soft wheat	
	1970-71	1971-72	1970-71	1971-72	1970-71	1971-72
thousand bushels						
Ecuador .....	—	4	—	—	—	—
Yemen .....	—	—	—	—	—	10
Guyana .....	—	—	—	—	1	—
Pakistan .....	551	551	—	—	—	—
Japan .....	29	—	—	—	—	—
Philippines .....	—	—	—	—	(1)	4
China .....	136	—	—	—	—	—
U.S.A. ....	—	9	—	—	—	—
Barbados .....	—	—	—	—	2	—
Chile .....	—	—	—	—	1	—
Others .....	178	(1)	3	—	—	—
Totals .....	60,510	130,389	654	1,215	11,091	18,977

(1) Less than 500 bushels.

Flour shipments of 79,884 metric tons this May brought the ten months total to 591,060 tons, compared with 603,168 tons in August-May 1970-71.

Prices and market. — During June and the first half of July 1972, prices of soft wheat remained around 0.50 to 1.00 francs per 100 kilos (3 to 5 cents Cdn. per bushel) above the intervention price for the last crop, and around 1.25 to 1.50 francs (7 to 8 cents per bushel) above this support price for the next one. Good varieties, such as Rex, were priced 53.50 to 54 francs per 100 kilos (\$2.85 to \$2.88 per bushel) during June and 54 francs (\$2.88 per bushel) during the beginning of July. Denatured wheat passed from 49.50 francs (\$2.64 per bushel) during the first days of June to 45.50 or 45.75 francs (\$2.42 or \$2.44 per bushel) at the end of the same month. It was priced at 0.75 to 1.00 francs (4 to 5 cents per bushel) above the support price on July 19. Export prices kept the same level of 53.50 to 53.75 francs (\$2.85 to \$2.86 per bushel) for FOB Rouen, specific weight: 76 kilograms per hectolitre (61 pounds per bushel). The FOB Rouen price for the expected crop would be 0.50 to 0.75 francs per 100 kilos (3 to 5 cents per bushel) above the new intervention price.

There was no ONIC Permanent Committee, but the general feeling on the eve of a new trade crop year is not optimistic, as the stock to be reported would rise up to around 1.6 to 2 million metric tons (58,789,000 to 73,487,000 bushels). As the sales to the EEC and Third Countries would be more difficult than during the previous crop year, there is some risk in having a heavy market. The AGPB claimed for a drawing up of exports program and for the settlement of contracts to supply French millers.

The Bank of France outlook indicates the same level of activity for semolina sector. For noodles, both competition and demand are strong, and the 2 per cent increase in noodle prices on June 1 will improve the situation of firms.



The demand continues to feel well with the contract to be fulfilled with Korea. Millers were permitted to increase their prices on June 1, 1972. In biscuit bakery, both domestic and external demands are strong.

Next crop. — Hereunder, are listed the last estimates (June 1, 1972) of the French Ministry of Agriculture for the next crop, in comparison with the provisional figure for 1971.

	<u>Cultivated Area</u>		<u>Yield</u>		<u>Production</u>	
	<u>1971</u> thousand acres	<u>1972</u> thousand acres	<u>1971</u> bushels per acre	<u>1972</u> bushels per acre	<u>1971</u> thousand bushels	<u>1972</u> thousand bushels
Winter:						
— soft wheat .....	8,974	8,969	58	58	524,070	524,327
— durum wheat ....	165	161	35	39	5,842	6,246
Spring:						
— soft wheat .....	422	383	54	52	22,744	19,841
— durum wheat ....	257	262	46	48	11,721	12,566
Totals:						
— soft wheat .....	9,396	9,351	—	—	546,814	544,168
— durum wheat ....	422	422	—	—	17,563	18,813

Weather conditions were not so favourable to grain crops, especially to spring grains during May; several rainy days, insufficient sun light and low temperatures resulted in excessive growth of weeds accompanied by several parasitic and cryptogamic diseases. Following the dry months of May and June, stormy and very rainy weather prevailed from July 17 to 23 and resulted in serious lodging, especially for durum wheat.

The AGPB Meeting. — On June 20 and 21, the French Wheat Producers Association held its national meeting at Royan. The wheat producers claimed against the imports into the EEC of products, which replace grains, as manioc, certain walnuts and beans, which are not subject to European levies upon imports, and are processed into animal feed instead of grains. They are worried about the increasing grains surpluses of the EEC, the lack of financial means for FEOGA (as these products have to support no levies) and the increase of restitutions to be granted by FEOGA in order to export these grains surpluses not used in the animal feed sector. As the EEC has imported 1,350,000 metric tons of such products in 1970, French producers asked for the setting up of customs duties.

Mr. Cointat, the French Minister of Agriculture, said that the taxes collected upon producers, which amount to 700 million francs (\$136.9 million Cdn.) for 1971-72, i.e. 6 per cent of the value of the grain production, would not be increased next crop year, as they reached a maximum level. He announced that regulations for the next crop year would be released on July 31, 1972.

# GRAIN SITUATION IN FEDERAL REPUBLIC OF GERMANY

The following account of the current grain situation in the Federal Republic of Germany has been extracted from a report received from Mr. K. Schmitz, Commercial Officer, Agriculture, Canadian Embassy, Bonn, West Germany, under date of August 14, 1972 and is reproduced with the permission of the Trade Commissioner Service, Department of Industry, Trade and Commerce.

Weather conditions. — After the dry and mild autumn and winter, West German farmers have encountered mainly cold and wet weather from mid-April till June. May precipitation was 150 per cent of the long-term average in the north and 120 per cent in the south. Therefore on the whole there was a delay of one or two weeks compared with other years. The harvest of winter-barley started first in Bavaria and Northrhine-Westphalia in mid-July and is totally completed now. Higher temperatures in July accelerated the ripening process of other grains so that harvest of summer-barley began in the first week of August.

Crop conditions and outlook. — An official preliminary estimate by the Federal Ministry of Agriculture predicted another very large grain crop this year. It is put at 20.7 million metric tons — including corn — against 1971's crop of just under 21 million tons and the 1966 to 1971 average of 18.2 million tons. The crop is expected to comprise 10.1 million tons as bread grain, wheat 6.5 - 7 million tons (238.8 to 257.2 million bushels) and 10.6 million tons as feed grain. This estimate hardly differs from the computerized forecast. The total grain acreage amounts to 5.3 million hectares (13.1 million acres) and is larger by 1.5 per cent than 1971. Acreage under winter wheat is up by 4 per cent, winter barley up by 9 per cent and spring barley up by 3 per cent.

## Summary of the Wheat Situation

	<u>August-April</u>	
	<u>1970-71</u>	<u>1971-72</u>
	thousand bushels	
Available production .....	201,794	254,558
Change in stocks .....	+ 55,960	75,691
Exports .....	22,487	27,888
Imports(1) .....	78,741	73,781
Domestic utilization .....	202,088	224,759
Seed .....	9,663	10,215
Feed .....	87,816	110,634
Loss .....	992	955
Industrial consumption .....	3,013	3,197
Food consumption .....	100,603	99,758

(1) imports from GDR included.

From August 1, 1971 to May 31, 1972 farmers' marketings of wheat were 4,133,413 metric tons (151,875,000 bushels) against 3,290,232 tons (120,894,000 bushels) during the corresponding period of the previous year.

Stocks of wheat kept on farms in the beginning of July amounted to 423,000 tons (15,542,000 bushels) compared to the July 1971 figure of 308,000 tons (11,317,000 bushels).



Stocks of wheat held by processors, co-operatives and grain traders, except small mills, at June 1 are as follows:

	<u>1971</u>	<u>1972</u>
	thousand bushels	
Wheat .....	34,814	34,223
Wheat flour .....	4,104	3,571
Other wheat products .....	2,234	2,054
Totals, wheat (grain value) .....	41,152	39,848

Milling of wheat increased by 2.2 per cent compared with last year's corresponding period. Milling for export was 10 per cent higher than last year whereas the share of soft wheat from third countries for domestic consumption decreased from 21 per cent in 1971 to 13.7 per cent this year. Higher quality German wheat for milling amounted to 70.0 per cent (67.8 in 1971) and wheat from E.E.C. countries to 16.3 per cent (11.2 in 1971).

	<u>August - May</u>	
	<u>1970-71</u>	<u>1971-72</u>
	thousand metric tons	
Milling of wheat .....	3,290.5	3,362.1
Extraction rate in per cent .....	78.5	38.4
Production of wheat flour .....	2,402.3	2,445.3
Production of pasta products .....	165.4	167.1

Disappearance Chart for Flour(1)

	<u>August - April</u>	
	<u>1970-71</u>	<u>1971-72</u>
	thousand metric tons	
Opening stocks .....	91.0	92.8
Production .....	2,407.9	2,441.6
Imports .....	74.1	72.0
Exports .....	307.6	357.6
Closing stocks .....	143.2	139.6
Marketing .....	2,122.2	2,109.2

(1) Includes semolina.

The utilization of wheat in mixed feeds has continuously increased during the last 3 months, but has not yet reached last year's total, when from August 1970 to May 1971, 750,700 metric tons were used in mixed feed. As of May 1972 the corresponding amount was 735,000 tons. Therefore barley, oats and especially corn have rapidly increased as ingredients of mixed feed.

Market review. - Business in old-crop bread-grain had become insignificant until the end of July, as millers have more or less ignored old-crop German wheat. The small wheat quantities still available have been denatured and used for animal feed. The first contracts for German new-crop wheat were signed in July before the harvest had begun. Industrial users were at that time not prepared to go above



the intervention price. Wheat market developments will be greatly influenced by the quality of the new German crop. There was limited trading in imported quality wheat for the season which ended July 31. Most millers have also covered their requirements for August. As licences are still restricted to 30 days, it is difficult to assess the situation from September onwards.

#### WHEAT SITUATION IN BRITAIN

The following account of the wheat situation in Britain has been extracted from a report received from Mr. B.M. White, Commercial Secretary (Agriculture) for Canada, London under date of August 9, 1972 and is reproduced with the permission of the Trade Commissioner Service, Department of Industry, Trade and Commerce.

General conditions. — A cool damp summer has ensured a delay of three or more weeks in cereal harvesting in some parts of the U.K. Wheat harvesting began at the end of July in some areas of the South and South West of England and Wales. As a result of leaf rust damage and the sprouting which is expected to be widespread, the outlook for the wheat crop is poor. The quality of milling wheat is expected to be below that of 1971.

Production. — The June 1972 Agricultural Census for England and Wales shows an increase in the cereals area over June 1971. The total area under cereals has increased by 36,000 acres (0.4 per cent). Wheat is up by 90,000 acres (3.4 per cent) to 2,709,000 acres. However, because of the unfavourable weather conditions this year unofficial estimates place the yield at approximately 175 million bushels (4.7 million long tons).

Imports. — Imports of wheat in 1971-72 are forecast at 3.7 million long tons (138.1 million bushels) which would be a reduction of 1.56 million (58.4 million bushels) below the figure of 5.27 million tons (196.5 million bushels) recorded in 1970-71. The reduction reflects in part last year's record wheat harvest.

Stocks of wheat on farms. — Stocks of wheat on farms in Great Britain at the end of May 1972 were 440,000 long tons (16,427,000 bushels) compared with 350,000 long tons (13,067,000 bushels) at the end of May 1971. Total stocks as a percentage of total production were 9.25 per cent for 1972 and 7.25 per cent for 1971.

Supplies and consumption. — Figures contained in the Home Grown Cereals Authority's Seventh Annual Report 1971-72 forecast a 14 per cent increase in home grown wheat for the year 1971-72 compared with 1970-71 up from 155.5 million bushels to 177.2 million bushels. Imports of wheat are expected to be down by some 30 per cent in the same period, from 196.5 million bushels to 138.1 million bushels.

#### Wheat Supplies and Consumption Crop Year July — June

<u>Supplies(1)</u>	<u>1970-71</u>	<u>1971-72 (Forecast)</u>	<u>Percentage difference</u>
	million bushels		<u>per cent</u>
Home production .....	155.5	177.2	+ 14
Imports .....	196.5	138.1	- 30
Total .....	352.0	315.3	- 16

Human consumption.... 187

Animal feed and waste. 149

All uses(3) ..... 344

Figures not yet available

(1) Flour included as wheat equivalent.

(2) Including millings subsequently exported as flour.

(3) Seed and industrial uses are almost entirely home grown.

Wheat market. — At the end of the first week of August 1972 home-produced wheat traded at easier levels. September-December feed wheat was making £29.30 per long ton (\$2.04 per bushel Cdn.) delivered to Liverpool. Interest was also shown for sizeable quantities of imported feed wheat for September-December shipments. although the only trade reported was for August shipment £27.25 per long ton (\$1.90 per bushel).

Outlook for the 1972-73 cereals year. — The most significant event in the 1972-73 cereals year will be U.K. entry into the EEC. Since the transitional period for agriculture begins February 1, 1973, a fundamental change in the cereals support system will occur in the middle of the cereals year. As of February 1, 1973, if market prices go below intervention levels, growers will be able to sell into intervention. This type of fall-back support will not exist prior to February 1. Since the intervention prices are now known, their existence could be reflected back to the early part of the 1972-73 cereals year in terms of market prices. If buyers in the pre-February 1 period are not prepared to pay prices which bear the appropriate relationship to intervention prices, growers may keep their grain on the farm and await the arrival of the Common Market system. This could lead to an unbalanced marketing pattern and avoidable imports in the first half of the year followed by substantial offerings and low prices of domestic grains leading to heavy intervention buying after February 1, 1973.

#### GRAIN SITUATION IN SWITZERLAND

The following account of the current grain situation in Switzerland has been extracted from a report received from Mr. E.A. Mallory, Assistant Commercial Secretary and Vice-Consul, Canadian Embassy, Berne, under date of July 7, 1972 and is reproduced with the permission of the Trade Commissioner Service, Department of Industry, Trade and Commerce.

General weather conditions. — In 1971, agricultural production benefitted greatly from good weather. The winter was mild with little snow while springtime days were close to ideal for planting. Relatively high mean temperatures were experienced during the summer months coupled with normal rainfall. The only dark spot was extensive crop damage suffered in some regions as a result of hailstorms. A greater than average number of hours of sunlight during the autumn made the harvest a good one for the Swiss farmer.

Grain — 1971 calendar year. — Although acreage was somewhat reduced, cereal grain crops were very good both quantitatively and qualitatively. The acreage devoted to feed grains, especially corn, was substantially increased and yielded excellent crops.

Imports of milling wheat decreased by 9.9 per cent in 1971 compared with 1970. The following table summarizes Swiss imports for 1971.



<u>Country of Origin</u>	<u>Soft wheat</u>	<u>Hard wheat</u> thousand bushels	<u>Total</u>
Canada .....	4,565	2,843	7,408
United States .....	1,193	485	1,678
France .....	340	—	340
Hungary .....	159	1	160
Australia .....	125	—	125
U.S.S.R. ....	36	—	36
Argentina .....	—	27	27
United Kingdom .....	3	—	3
Italy .....	(1)	—	(1)
Totals, 1971 .....	6,422	3,356	9,778
Totals, 1970 .....	7,198	3,648	10,846
Totals, 1969 .....	8,527	3,435	11,962

(1) Less than 500 bushels.

It is interesting to note that the Canadian total of 201,611 metric tons (7,408,000 bushels) represents 75.8 per cent of all Swiss imports in milling wheat. This compares favourably with 151,754 metric tons (5,576,000 bushels) or 51.4 per cent imported from Canada in 1970.

From time to time, Switzerland must renew or replenish its stocks of wheat that it keeps on hand in the event of a national emergency which would make it difficult to import wheat. In 1970, 7,893 metric tons (290,000 bushels) of replenishments for these stocks of soft wheat were purchased exclusively from the United States. In 1971, 28,178 metric tons (1,035,000 bushels) were purchased exclusively from Canada. With respect to private and public sector buying, milling wheat imports can be broken down as follows:

<u>year</u>	<u>Imports by</u> <u>government</u>	<u>Imports by</u> <u>private buyers</u> thousand bushels	<u>Total</u>
1970 .....	290	10,556	10,846
1971 .....	1,035	8,742	9,778

Feed wheat imports were up slightly in 1971 over 1970 as can be seen in the following table.

<u>Feed Wheat Imports</u>			
<u>Country of Origin</u>	<u>1969</u>	<u>1970</u> thousand bushels	<u>1971</u>
France .....	3,125	3,925	4,572
Australia .....	—	9	1,840
United States .....	—	714	1,336
Hungary .....	335	1,477	105
United Kingdom .....	945	1,201	69
Canada .....	15	49	21
Italy .....	48	4	—
Argentina .....	7	—	—
Totals .....	4,477	7,378	7,943



It should be noted that in 1971, the share of the EEC countries (France and West Germany) amounted to 126,313 metric tons (4,641,000 bushels) or 58.4 per cent of Swiss imports. This compares with 139,636 metric tons (5,131,000 bushels) or 69.5 per cent in 1970 from the EEC countries.

Domestic production in Switzerland of cereal grains decreased by 4 per cent in 1971 compared with a year earlier. Total production reached 55,436 carloads (one carload equals 10 metric tons). The processing of soft wheat amounted to 46,552 carloads while hard wheat production for pasta manufacture amounted to 8,884 carloads giving the 55,436 carload total.

Flour. — In 1971, the processing of domestic wheat for milling amounted to 30,611 carloads = 65.8 per cent of total wheat production compared to 62.7 per cent in 1970. Flour production in Switzerland amounted to 34,899 carloads in 1971 which was a 4 per cent drop from 1970. For the first time white flour accounted for the highest share of flour production with 37.9 per cent being recorded in 1971. There were also increases in "special" flour production last year. 6.8 per cent of all flour produced compared with 6.1 per cent in 1970 was of the "special" type. Special flour includes for example, rye, wholewheat and millet.

#### CALENDAR OF WHEAT EVENTS

- |        |    |   |
|--------|----|---|
| July   | 24 | The United States Department of Agriculture reported that stocks of all wheat, in the United States at July 1, 1972 were 865 million bushels.   |
| August | 2  | The Canadian Wheat Board in its Instructions to the Trade No. 13 announced the Initial Payment Prices for wheat, oats and barley during the 1972-73 crop year. The price for No. 1 Canada Western Red Spring Wheat in store Thunder Bay or Vancouver was placed at \$1.46 per bushel. |
|        | 12 | According to the Crop Reporting Board of the United States Department of Agriculture, production of all wheat in the United States in 1972, basis August 1, is forecast at 1,543.1 million bushels.   |
|        | 14 | According to a report received from Mr. H.G. Fairfield, Assistant Commercial Secretary (Agriculture) for Canada, Buenos Aires, the area seeded to wheat in Argentina has now been established at 5,460,000 hectares (13,486,000 acres), or 9 per cent higher than in 1971-72.         |



STATISTICS CANADA LIBRARY  
BIBLIOTHEQUE STATISTIQUE CANADA



1010686912