

CATALOGUE No.

31-001

MONTHLY

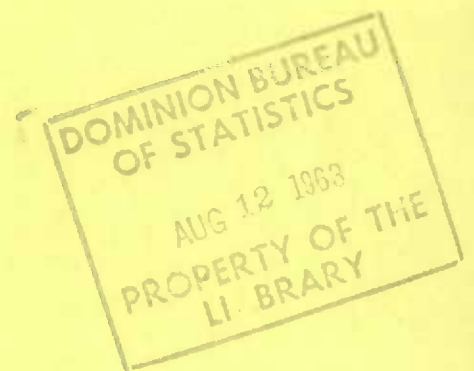


CANADA

DOES NOT CIRCULATE
NE PAS PRÉTER

INVENTORIES, SHIPMENTS AND ORDERS
IN MANUFACTURING INDUSTRIES

APRIL 1963



DOMINION BUREAU OF STATISTICS

Industry Division

DOMINION BUREAU OF STATISTICS

Industry Division

INVENTORIES, SHIPMENTS AND ORDERS
IN MANUFACTURING INDUSTRIES

APRIL 1963

Published by Authority of
The Minister of Trade and Commerce

August 1963
6531-501

Price \$3.00 per year

TABLE OF CONTENTS

	Page
Trend Summary (Charts and Text)	iv
TABLE 1. Estimated Value of Shipments in all Manufacturing Industries, by Province of Origin, Monthly - 1959 to date, by months	1
TABLE 2A. Estimated Value of Shipments, Orders and Inventory in all Manufacturing Industries, 1959 to date, by months	2
TABLE 2B. Estimated Value of Shipments, Orders and Inventory in all Manufacturing Industries, 1959 to date, by months - <u>Adjusted for Seasonal Variation</u>	3
TABLE 3. Estimated Value of Shipments, Orders and Inventory in Manufacturing Industries 1959 to date, by months, grouped according to the Standard Industrial Classification	
Non-Durable - Major Groups 1, 2, 3, 4, 5, 6, 7, 10, 11, 18, 19 and 20	4
Durable - Major Groups 8, 9, 12, 13, 14, 15, 16 and 17	5
Major Group 1 - Food and Beverage Industries	6
Major Group 2 - Tobacco Products Industries	7
Major Group 3 - Rubber Industries	8
Major Group 4 - Leather Industries	9
Major Group 5 - Textile Industries	10
Major Group 6 - Knitting Mills	11
Major Group 7 - Clothing Industries	12
Major Group 8 - Wood Industries	13
Major Group 9 - Furniture & Fixture Industries	14
Major Group 10 - Paper & Allied Industries	15
Major Group 11 - Printing, Publishing and Allied Industries (not published separately, values included in Table 2)	
Major Group 12 - Primary Metal Industries	16
Major Group 13 - Metal Fabricating Industries (except Machinery and Transportation Equipment Industries)	17
Major Group 14 - Machinery Industries	18
Major Group 15 - Transportation Equipment Industries	19
Major Group 16 - Electrical Products Industries	20
Major Group 17 - Non-Metallic Mineral Products Industries	21
Major Group 18 - Petroleum and Coal Products Industries	22
Major Group 19 - Chemical and Chemical Products Industries	23
Major Group 20 - Miscellaneous Manufacturing Industries	24

TABLE OF CONTENTS

	Page
TABLE 4. Ratios of Value of Inventory Owned to Value of Shipments, 1959 to date, by months:	
Industries grouped according to the Standard Industrial Classification	
Total inventory	25
Finished products inventory	26
Industrial Grouping -	
Industries included in groups of the Standard Industrial Classification, Tables 3 and 4	27
Concepts and Sources	29
Footnotes to tables	30

SYMBOLS

The interpretation of the symbols used in the tables throughout this publication is as follows:

.. Figures not available.

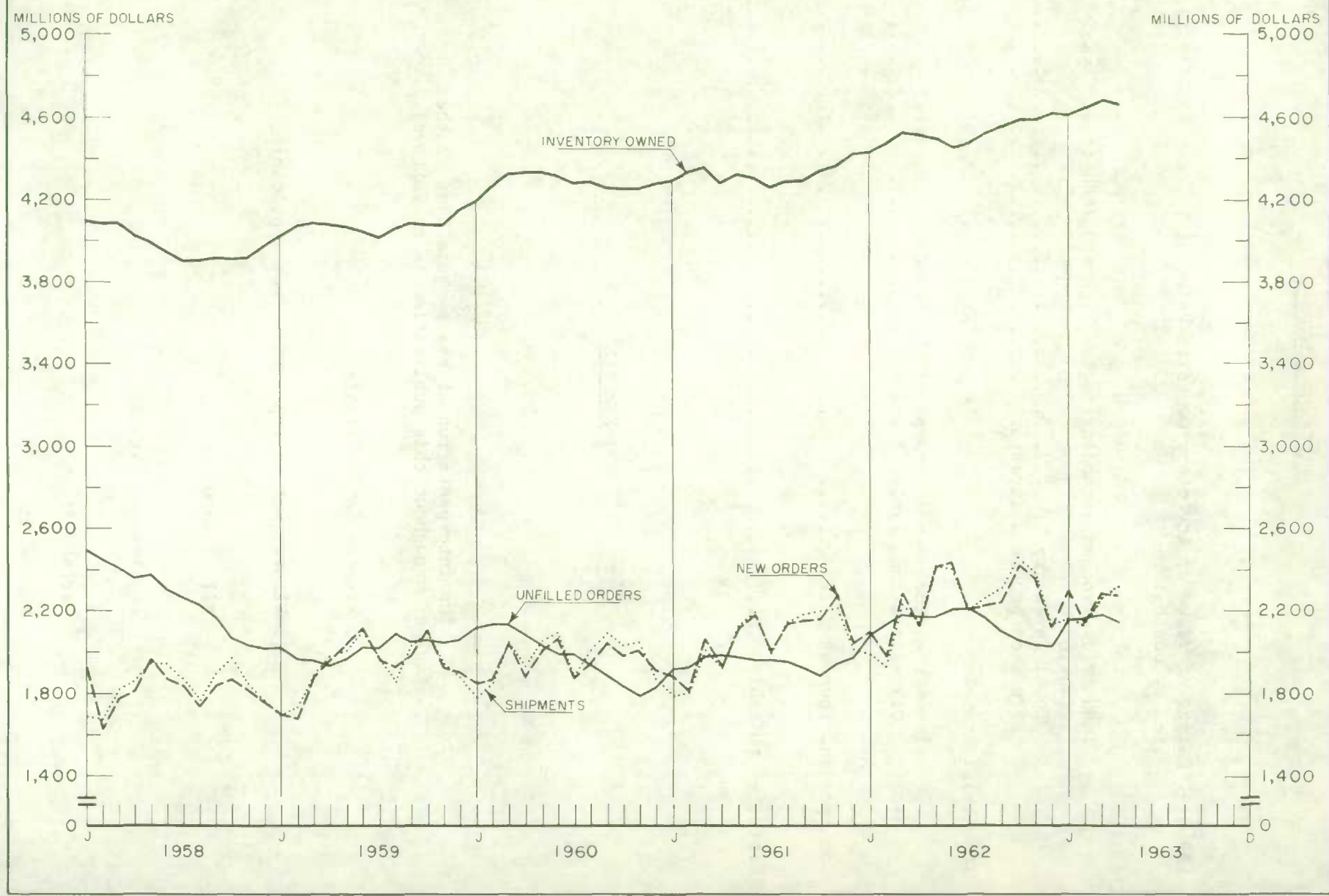
... Figures not appropriate or not applicable.

- Nil or zero.

^p Preliminary figures.

^r Revised figures.

ESTIMATED VALUES OF SHIPMENTS, INVENTORY OWNED AND ORDERS IN ALL MANUFACTURING INDUSTRIES



TREND SUMMARY

Manufacturers' shipments and new orders, adjusted for seasonal variation, have been running considerably above earlier years since the beginning of 1963 with new peaks being reached for both in February. Since shipments have been rising faster than new orders the level of unfilled orders, although higher than the corresponding month in 1962 in January and February, was at the same level at the end of March this year as last year and at the end of April was 1.6 per cent below the level of unfilled orders (seasonally adjusted) on the books at the end of April 1962.

Shipments, seasonally adjusted, in the first quarter of 1963 were 2 per cent higher than shipments in the fourth quarter of 1962 and 8 per cent above shipments in the first quarter. April shipments are 4 per cent higher than shipments in April last year and new orders received in April were 3 per cent higher than new orders received in April 1962.

Total inventories, seasonally adjusted, have been running 4 to 5 per cent above the level of inventories in the corresponding period of 1962 with the greatest increase in the goods in process inventories which are 10 to 11 per cent higher. Raw materials inventories are 2 per cent higher at the end of April and at the end of the first quarter than at the corresponding date last year and finished goods inventories were 3 or 4 per cent above last year at the corresponding dates.

Since shipments rose faster than inventories during the first quarter of this year the ratio of inventories to shipments has been generally lower during this period both for total inventories and for finished goods inventories. The rise in both in April using the seasonally adjusted data was very close bringing the ratios back to similar levels this year as compared with last at 0.67 for the finished goods to shipments ratios for both years and to 2.01 for total inventory owned to shipments in April 1962 and 1.99 in April this year.

To compare the rate of increase in the shipments series between the durable and non-durable industries and between industry groups, monthly values unadjusted for seasonal variation must be used so the comparative changes will not be the same as the changes discussed above. For example total shipments in April although higher than shipments in April a year ago by 8.4 per cent as compared with the increase in the first quarter 1963 of 6.6 per cent, rose less than would have been expected as shown in the decline in April shipments in the seasonally adjusted series above.

Using the unadjusted data shipments in the non-durable goods industries rose by nearly 7 per cent in April as compared with shipments in April 1962 while shipments in the first quarter rose by just less than 4 per cent. In the durable goods industries the increase in April was fractionally higher than the increase in the first quarter 10.7 per cent as compared with 10.2 per cent. The increase in the first quarter of 1963 however reflects the low level of shipments in January and February of last year; the increase in March is much lower as it is compared with the much higher level of shipments in March 1962.

Total inventories in manufacturing have been rising steadily since the fourth quarter of 1961 with the exception of the second quarter in 1962 when a drop in finished goods inventories brought total inventories down by about 1 per cent before they resumed their upward trend. The drop in finished goods inventory continued until September 1962 but finished goods have been rising also since then although not as sharply as total inventories. What is perhaps the most significant change in the trend was the reversal of the long downward movement in goods in process inventories in the durable goods industries in the first quarter of 1961. The increase in the first quarter of 1961 was small but was followed by a steady rise up to the third quarter of 1962; inventories declined in November by about 2 per cent and remained at this level in December and with a drop in January regained this level in February before rising again in March. In April they have remained at the March level which is just below the level they were at, at the beginning of 1958.

TABLE 2B. Estimated Value of Shipments, Orders and Inventory, in all Manufacturing Industries

3

Adjusted for Seasonal Variation

Date	Shipments	Orders		Inventory at end of month					
		New orders received during month	Unfilled orders at end of month	Owned	Held but not owned	All inventory held			
						Total	Raw materials	Goods in process	Finished products
millions of dollars									
1959 - January	1,832.2	1,751.7	1,978.6	3,999.2	451.3	4,450.5	1,964.7	1,197.8	1,288.0
February	1,902.4	1,852.0	1,928.2	4,011.3	414.4	4,425.7	1,964.7	1,168.6	1,292.4
March	1,898.4	1,883.5	1,913.3	4,021.3	406.6	4,427.9	1,967.5	1,170.6	1,289.8
April	1,961.7	1,959.7	1,911.3	4,040.0	400.6	4,440.6	1,966.7	1,174.3	1,299.6
May	1,940.2	1,968.0	1,939.1	4,043.9	394.1	4,438.0	1,967.2	1,175.0	1,295.8
June	1,952.4	2,018.3	2,005.0	4,052.6	392.8	4,445.4	1,972.3	1,174.9	1,298.2
July	1,950.7	1,953.9	2,008.2	4,061.9	380.3	4,442.2	1,977.5	1,170.1	1,294.6
August	1,919.2	1,995.1	2,084.1	4,093.1	387.7	4,480.8	1,979.9	1,196.0	1,304.9
September ..	1,948.3	1,939.2	2,075.0	4,114.0	377.0	4,491.0	1,992.3	1,191.6	1,307.1
October	1,963.8	2,013.1	2,124.3	4,108.9	379.4	4,488.3	1,983.6	1,194.5	1,310.2
November ...	1,962.3	1,966.8	2,128.8	4,114.7	355.9	4,470.6	1,984.8	1,169.1	1,316.7
December ...	1,969.6	1,954.2	2,113.4	4,155.9	337.1	4,493.0	1,999.6	1,165.7	1,327.7
Totals ...									
1960 - January	2,006.1	1,983.6	2,090.9	4,178.6	339.1	4,517.7	2,000.0	1,170.9	1,346.8
February ...	1,967.1	1,974.7	2,098.5	4,214.5	328.8	4,543.3	2,017.3	1,165.7	1,360.3
March	1,999.4	1,973.1	2,072.2	4,261.3	290.8	4,552.1	2,029.4	1,139.3	1,383.4
April	1,931.9	1,897.9	2,038.2	4,294.6	299.8	4,594.4	2,045.0	1,144.1	1,405.3
May	1,992.9	1,951.9	1,997.2	4,311.2	306.7	4,617.9	2,050.9	1,148.8	1,418.2
June	1,955.6	1,931.2	1,972.8	4,331.5	300.8	4,632.3	2,055.9	1,149.3	1,427.1
July	1,946.0	1,944.2	1,971.0	4,336.9	297.8	4,634.7	2,049.8	1,142.7	1,442.2
August	1,989.9	1,952.9	1,934.0	4,325.2	292.1	4,617.3	2,036.9	1,134.0	1,446.4
September ...	2,003.4	1,990.6	1,921.2	4,301.2	279.0	4,580.2	2,018.6	1,118.5	1,443.1
October	1,973.8	1,955.7	1,903.1	4,291.5	263.1	4,554.6	2,015.8	1,084.9	1,453.9
November ...	1,981.3	1,946.6	1,868.4	4,292.6	263.3	4,555.9	2,013.5	1,091.3	1,451.1
December ...	1,962.9	1,978.8	1,884.3	4,276.4	263.3	4,539.7	2,008.8	1,081.0	1,449.9
Totals ...									
1961 - January	1,996.5	2,007.6	1,895.4	4,281.3	255.2	4,536.5	2,022.4	1,073.6	1,440.5
February ...	1,993.5	1,987.8	1,889.7	4,283.8	251.7	4,535.5	2,018.8	1,078.4	1,438.3
March	1,956.1	1,984.2	1,917.8	4,287.4	256.7	4,544.1	2,010.1	1,097.6	1,436.4
April	1,992.4	2,012.8	1,938.2	4,241.3	255.0	4,496.3	1,972.5	1,097.7	1,426.1
May	1,974.9	1,974.9	1,938.2	4,300.0	222.3	4,522.3	2,000.1	1,080.5	1,441.7
June	2,030.8	2,025.2	1,932.6	4,323.5	203.9	4,527.4	2,002.8	1,074.4	1,450.2
July	2,048.7	2,052.6	1,936.5	4,315.0	206.6	4,521.6	2,007.1	1,072.7	1,441.8
August	2,106.1	2,120.0	1,950.4	4,327.3	204.5	4,531.8	2,020.4	1,069.9	1,441.5
September ...	2,072.1	2,089.3	1,967.6	4,336.4	209.4	4,545.8	2,028.5	1,079.1	1,438.2
October	2,115.8	2,113.4	1,965.2	4,383.2	214.7	4,597.9	2,045.7	1,101.9	1,450.3
November ...	2,126.1	2,191.1	2,030.2	4,401.9	222.1	4,624.0	2,050.2	1,113.2	1,460.6
December ...	2,174.1	2,184.3	2,040.4	4,418.5	230.4	4,648.9	2,054.2	1,129.2	1,465.5
Totals ...									
1962 - January	2,142.0	2,158.7	2,057.1	4,416.0	229.8	4,645.8	2,043.2	1,138.1	1,464.5
February ...	2,156.9	2,192.1	2,092.3	4,420.9	235.8	4,656.7	2,038.1	1,143.7	1,474.9
March	2,187.9	2,200.8	2,105.2	4,448.8	239.2	4,688.0	2,048.1	1,157.9	1,482.0
April	2,224.2	2,236.9	2,117.9	4,472.3	252.9	4,725.2	2,066.8	1,169.3	1,489.1
May	2,251.8	2,264.7	2,130.8	4,468.9	266.3	4,735.2	2,069.8	1,186.6	1,478.8
June	2,231.3	2,266.3	2,165.8	4,484.2	274.5	4,758.7	2,074.8	1,209.2	1,474.7
July	2,267.8	2,276.2	2,174.2	4,535.5	285.2	4,820.7	2,097.0	1,234.9	1,488.8
August	2,226.3	2,219.3	2,167.2	4,567.9	287.3	4,855.2	2,097.4	1,247.7	1,510.1
September ...	2,283.9	2,276.2	2,159.5	4,605.7	292.1	4,897.8	2,102.2	1,257.8	1,537.8
October	2,283.4	2,280.8	2,156.9	4,619.2	293.8	4,913.0	2,099.5	1,278.8	1,534.7
November ...	2,295.7	2,263.1	2,124.3	4,614.0	290.4	4,904.4	2,105.4	1,261.2	1,537.8
December ...	2,306.5	2,283.5	2,101.3	4,606.5	286.0	4,892.5	2,088.4	1,257.9	1,546.2
Totals ...									
1963 - January	2,332.0	2,359.7	2,129.0	4,596.6	301.9	4,898.5	2,079.9	1,270.9	1,547.7
February ...	2,378.1	2,373.5	2,124.4	4,594.8	299.0	4,893.8	2,079.1	1,264.8	1,549.9
March	2,314.4	2,295.8	2,105.8	4,601.7	300.9	4,902.6	2,093.0	1,282.8	1,526.8
April ^P	2,319.8	2,298.6	2,084.6	4,622.0	305.9	4,927.9	2,101.4	1,281.6	1,544.9
May									
June									
July									
August									
September ...									
October									
November ...									
December ...									
Totals ...									

For 1958 estimates adjusted for seasonal variation, see page 31.

TABLE 3. Estimated Value of Shipments, Orders and Inventory in Manufacturing Industries grouped according to the Standard Industrial Classification

Major Group 1 - Food and Beverage Industries

Date	Shipments	Orders		Inventory at end of month					
		New orders received during month(2)	Unfilled orders at end of month(2)	Owned	Held but not owned	All inventory held			
						Total	Raw materials	Goods in process	Finished products
thousands of dollars									
1959 - January	352,470			655,610	-	655,610	312,751	142,956	199,903
February ...	343,696			627,412	-	627,412	296,397	143,744	187,271
March	363,566			602,516	-	602,516	284,166	142,625	175,725
April	382,316			596,500	-	596,500	282,408	146,524	167,568
May	407,360			595,255	-	595,255	283,092	148,055	164,108
June	420,859			600,859	-	600,859	288,831	148,882	163,146
July	420,403			600,069	-	600,069	292,457	146,291	161,321
August	406,960			637,241	-	637,241	315,990	145,809	175,442
September ..	413,120			665,407	-	665,407	324,987	147,489	192,931
October	425,511			668,379	-	668,379	322,945	147,094	198,340
November ...	400,026			682,709	-	682,709	336,101	147,316	199,292
December ...	391,823			669,970	-	669,970	334,234	143,722	192,014
Totals ...	4,728,110								
1960 - January	359,839			647,207	-	647,207	314,886	144,487	187,834
February ...	361,573			618,727	-	618,727	302,541	145,513	170,673
March	379,908			601,615	-	601,615	287,533	147,285	166,797
April	379,437			593,675	-	593,675	283,579	147,173	162,923
May	413,712			603,127	-	603,127	295,677	147,956	159,494
June	433,528			602,357	-	602,357	296,519	147,750	158,088
July	426,727			608,759	-	608,759	301,112	146,017	161,630
August	434,478			636,360	-	636,360	316,245	144,688	175,427
September ..	438,204			658,035	-	658,035	307,677	145,165	205,193
October	426,715			686,192	-	686,192	319,353	146,486	220,353
November ...	425,894			699,033	-	699,033	331,023	149,741	218,269
December ...	399,787			685,619	-	685,619	325,752	147,516	212,351
Totals ...	4,879,802								
1961 - January	369,782			676,276	-	676,276	321,385	149,159	205,732
February ...	361,749			650,693	-	650,693	308,013	152,758	189,922
March	402,500			640,861	-	640,861	301,441	153,514	185,906
April	396,758			632,292	-	632,292	297,231	155,947	179,114
May	438,300			620,571	-	620,571	290,952	157,785	171,834
June	455,134			625,459	-	625,459	295,771	158,128	171,560
July	444,013			647,984	-	647,984	319,348	157,666	170,970
August	464,910			685,689	-	685,689	343,274	156,075	186,340
September ..	446,579			715,928	-	715,928	345,450	157,831	212,647
October	455,668			743,574	-	743,574	359,497	160,145	223,932
November ...	450,322			763,754	-	763,754	377,865	164,161	221,728
December ...	412,856			747,446	-	747,446	366,472	162,539	218,435
Totals ...	5,098,571								
1962 - January	393,723			715,651	-	715,651	351,415	151,796	212,440
February ...	368,737			694,949	-	694,949	339,279	154,126	201,544
March	420,059			671,603	-	671,603	324,709	155,246	191,648
April	411,427			667,055	-	667,055	324,750	157,488	184,817
May	460,037			659,976	-	659,976	323,907	160,188	175,881
June	471,075			645,432	-	645,432	311,188	161,055	173,189
July	464,154			679,271	-	679,271	342,820	159,555	176,896
August	467,778			722,956	-	722,956	366,988	158,346	197,622
September ..	444,298			756,001	-	756,001	369,457	160,411	226,133
October	471,787			776,308	-	776,308	383,409	162,079	230,820
November ...	456,445			805,579	-	805,579	407,839	165,191	232,549
December ...	416,104			794,249	-	794,249	399,521	163,206	231,522
Totals ...	5,245,624								
1963 - January	412,660			767,186	-	767,186	384,393	161,198	221,595
February ...	402,712			745,508	-	745,508	368,789	162,053	214,666
March	417,061			732,451	-	732,451	365,106	162,773	204,572
April	430,075			723,733	-	723,733	361,729	163,137	198,867
May									
June									
July									
August									
September ..									
October									
November ...									
December ...									
Totals ...									

See footnotes, page 30.

TABLE 3. Estimated Value of Shipments, Orders and Inventory in Manufacturing Industries grouped according to the Standard Industrial Classification

Major Group 2 - Tobacco Products Industries

Date	Shipments	Orders		Inventory at end of month					
		New orders received during month(2)	Unfilled orders at end of month(2)	Owned	Held but not owned	All inventory held			
						Total	Raw materials	Goods in process	Finished products
thousands of dollars									
1959 - January	24,042			114,122	-	114,122	100,015	2,223	11,884
February ...	25,655			128,810	-	128,810	112,180	2,211	14,419
March	29,502			140,199	-	140,199	122,689	2,271	15,239
April	32,039			147,650	-	147,650	128,663	2,227	16,760
May	26,628			144,285	-	144,285	124,288	2,231	17,766
June	29,853			137,469	-	137,469	117,782	2,191	17,496
July	28,107			127,056	-	127,056	113,139	2,088	11,829
August	22,546			122,146	-	122,146	108,523	2,555	11,068
September ..	26,797			115,486	-	115,486	101,005	2,626	11,855
October	24,188			113,003	-	113,003	96,104	2,714	14,185
November ...	25,434			112,270	-	112,270	94,955	2,842	14,473
December ...	29,783			124,272	-	124,272	108,821	2,580	12,871
Totals ...	324,574								
1960 - January	25,748			133,635	-	133,635	114,492	2,812	16,331
February ...	30,459			152,519	-	152,519	132,298	2,851	17,370
March	32,246			164,713	-	164,713	142,104	2,730	19,879
April	24,242			161,430	-	161,430	138,818	2,793	19,819
May	25,625			152,018	-	152,018	129,664	2,803	19,551
June	32,515			142,663	-	142,663	121,261	2,780	18,622
July	25,934			134,504	-	134,504	121,131	2,675	10,698
August	22,652			125,009	-	125,009	111,649	2,787	10,573
September ..	28,124			118,539	-	118,539	103,459	2,768	12,312
October	23,953			116,093	-	116,093	99,069	2,946	14,078
November ...	27,003			119,719	-	119,719	102,878	2,985	13,856
December ...	35,916			140,453	-	140,453	123,844	2,937	13,672
Totals ...	334,417								
1961 - January	28,292			161,194	-	161,194	141,552	3,320	16,322
February ...	30,995			174,605	-	174,605	152,843	3,956	17,806
March	33,199			180,395	-	180,395	156,785	3,940	19,670
April	26,467			177,575	-	177,575	152,880	3,868	20,827
May	26,362			172,311	-	172,311	147,815	3,615	20,881
June	30,038			167,396	-	167,396	141,672	3,522	22,202
July	24,334			156,495	-	156,495	137,430	3,432	15,633
August	24,756			150,821	-	150,821	131,867	3,738	15,216
September ..	26,467			143,665	-	143,665	124,291	3,709	15,665
October	24,113			140,583	-	140,583	118,162	3,797	18,624
November ...	25,064			137,905	-	137,905	114,826	3,902	19,177
December ...	31,350			145,259	-	145,259	125,540	3,659	16,060
Totals ...	331,437								
1962 - January	29,372			163,366	-	163,366	139,488	5,081	18,797
February ...	31,919			171,373	-	171,373	145,861	5,556	19,956
March	37,084			201,136	-	201,136	152,729	5,503	42,904
April	35,685			183,377	-	183,377	153,263	5,668	24,446
May	32,428			181,377	-	181,377	150,786	5,734	24,857
June	34,320			174,783	-	174,783	144,173	5,666	24,944
July	25,334			163,253	-	163,253	140,300	5,110	17,843
August	27,755			155,182	-	155,182	133,813	4,940	16,429
September ..	27,779			150,823	-	150,823	128,196	4,990	17,637
October	25,686			145,296	-	145,296	120,891	5,109	19,296
November ...	27,204			141,979	-	141,979	117,994	5,262	18,723
December ...	28,323			138,442	-	138,442	117,050	4,920	16,472
Totals ...	362,889								
1963 - January	24,196			141,266	-	141,266	118,451	5,135	17,680
February ...	31,637			155,185	-	155,185	129,451	5,367	20,367
March	34,827			167,694	-	167,694	137,907	5,232	24,555
April	37,121			174,280	-	174,280	143,414	5,126	25,740
May									
June									
July									
August									
September ...									
October									
November ...									
December ...									
Totals ...									

See footnotes, page 30.

TABLE 3. Estimated Value of Shipments, Orders and Inventory in Manufacturing Industries grouped according to the Standard Industrial Classification

Major Group 6 - Knitting Mills

Date	Shipments	Orders		Inventory at end of month					
		New orders received during month(2)	Unfilled orders at end of month(2)	Owned	Held but not owned	All inventory held			
						Total	Raw materials	Goods in process	Finished products
thousands of dollars									
1959 - January	13,375			44,182	-	44,182	11,497	12,069	20,616
February	14,337			45,478	-	45,478	11,665	12,384	21,429
March	15,275			46,610	-	46,610	11,741	12,689	22,180
April	13,682			48,323	-	48,323	11,967	12,894	23,462
May	11,969			50,724	-	50,724	12,538	13,714	24,472
June	12,746			52,421	-	52,421	12,784	13,905	25,732
July	15,346			51,303	-	51,303	12,957	14,003	24,343
August	18,013			50,093	-	50,093	12,953	14,142	22,998
September	21,001			47,830	-	47,830	12,842	13,402	21,586
October	20,412			46,228	-	46,228	13,039	12,678	20,511
November	18,923			44,901	-	44,901	13,102	11,891	19,908
December	14,192			44,863	-	44,863	12,827	11,167	20,869
Totals	189,271								
1960 - January	12,971			46,083	-	46,083	12,836	11,290	21,957
February	14,966			48,399	-	48,399	13,477	11,783	23,139
March	16,723			49,212	-	49,212	13,589	11,780	23,843
April	14,069			50,845	-	50,845	14,200	11,830	24,815
May	13,326			52,527	-	52,527	14,633	11,908	25,986
June	13,672			53,328	-	53,328	14,570	11,693	27,065
July	15,521			51,880	-	51,880	14,453	11,757	25,670
August	19,521			50,712	-	50,712	13,965	11,879	24,868
September	21,862			48,086	-	48,086	13,420	11,708	22,958
October	20,614			46,727	-	46,727	13,424	11,287	22,016
November	20,316			46,217	-	46,217	13,101	11,390	21,726
December	14,590			46,270	-	46,270	13,228	11,717	21,325
Totals	198,151								
1961 - January	14,056			47,729	-	47,729	13,022	11,860	22,847
February	15,847			48,403	-	48,403	12,783	12,097	23,523
March	16,509			49,089	-	49,089	13,085	12,123	23,881
April	14,057			49,848	-	49,848	12,835	12,404	24,609
May	13,940			50,956	-	50,956	12,668	12,495	25,793
June	14,125			51,886	-	51,886	12,971	12,292	26,623
July	17,187			49,464	-	49,464	12,592	11,723	25,149
August	20,866			47,805	-	47,805	12,656	11,657	23,492
September	21,978			46,239	-	46,239	12,471	11,724	22,044
October	21,961			44,599	-	44,599	12,182	11,756	20,661
November	22,199			43,723	-	43,723	11,904	11,704	20,115
December	15,460			43,641	-	43,641	11,087	11,729	20,827
Totals	208,185								
1962 - January	15,259			45,921	-	45,921	12,649	12,245	21,027
February	15,463			46,650	-	46,650	12,934	12,299	21,417
March	16,265			48,623	-	48,623	13,721	12,566	22,336
April	14,880			49,644	-	49,644	13,872	12,735	23,037
May	14,261			51,382	-	51,382	13,800	13,094	24,488
June	15,033			52,987	-	52,987	14,610	13,131	25,246
July	17,851			52,224	-	52,224	14,942	13,475	23,807
August	20,625			51,115	-	51,115	14,888	13,384	22,843
September	22,205			49,160	-	49,160	14,673	13,318	21,169
October	22,277			47,367	-	47,367	14,808	13,031	19,528
November	21,074			46,294	-	46,294	14,427	12,710	19,157
December	15,908			46,487	-	46,487	13,671	12,500	20,316
Totals	211,101								
1963 - January	15,745			47,783	-	47,783	13,940	12,972	20,871
February	16,216			48,907	-	48,907	14,054	13,052	21,801
March ^F	16,926			49,691	-	49,691	14,341	12,692	22,658
April ^P	15,885			51,053	-	51,053	14,548	12,862	23,643
May									
June									
July									
August									
September									
October									
November									
December									
Totals									

See footnotes, page 30.

TABLE 3. Estimated Value of Shipments, Orders and Inventory in Manufacturing Industries grouped according to the Standard Industrial Classification

Major Group 8 - Wood Industries

Date	Shipments	Orders		Inventory at end of month					
		New orders received during month(2)	Unfilled orders at end of month(2)	Owned	Held but not owned	All inventory held			
						Total	Raw materials	Goods in process	Finished products
thousands of dollars									
1959 - January	68,975			186,820	-	186,820	96,265	1,857	88,698
February	71,414			205,223	-	205,223	105,715	1,691	97,817
March	82,972			221,464	-	221,464	113,629	1,664	106,171
April	97,882			211,309	-	211,309	109,483	1,449	100,377
May	106,503			206,915	-	206,915	107,846	1,384	97,685
June	118,617			199,519	-	199,519	104,060	1,468	93,991
July	98,960			198,149	-	198,149	105,136	1,443	91,570
August	83,072			200,609	-	200,609	107,852	1,552	91,205
September	91,241			207,844	-	207,844	111,736	1,772	94,336
October	99,062			200,612	-	200,612	108,918	1,785	89,909
November	80,595			181,435	-	181,435	96,505	1,872	83,058
December	81,914			186,767	-	186,767	102,059	2,033	82,675
Totals	1,081,207								
1960 - January	73,370			195,299	-	195,299	105,458	1,941	87,900
February	81,628			212,401	-	212,401	113,924	1,959	96,518
March	95,716			232,162	-	232,162	122,950	2,010	107,202
April	82,138			228,065	-	228,065	119,489	2,106	106,470
May	98,281			222,068	-	222,068	114,252	2,120	105,696
June	108,260			212,191	-	212,191	108,026	2,070	102,095
July	92,910			212,655	-	212,655	108,604	2,080	101,971
August	99,720			207,132	-	207,132	105,043	2,053	100,036
September	93,779			199,141	-	199,141	101,353	1,986	95,802
October	85,627			189,705	-	189,705	94,160	2,071	93,474
November	79,811			175,970	-	175,970	87,437	2,107	86,426
December	75,377			187,979	-	187,979	91,491	2,134	94,354
Totals	1,066,617								
1961 - January	74,368			183,701	-	183,701	93,708	2,218	87,775
February	78,817			196,958	-	196,958	99,541	2,127	95,290
March	91,159			204,142	-	204,142	104,034	1,997	98,111
April	86,052			203,582	-	203,582	102,789	1,983	98,810
May	103,561			192,339	-	192,339	97,646	2,227	92,466
June	116,993			187,131	-	187,131	94,007	2,204	90,920
July	102,640			182,743	-	182,743	91,001	2,064	89,678
August	108,769			177,353	-	177,353	88,807	2,074	86,472
September	102,577			174,113	-	174,113	85,671	2,104	86,338
October	96,223			171,316	-	171,316	83,478	2,139	85,699
November	91,578			164,941	-	164,941	80,206	2,102	82,633
December	79,128			172,843	-	172,843	81,745	2,025	89,073
Totals	1,131,865								
1962 - January	81,594			174,787	-	174,787	83,842	1,647	89,298
February	86,008			187,728	-	187,728	90,046	1,847	95,835
March	104,359			197,619	-	197,619	93,904	1,905	101,810
April	94,637			198,358	-	198,358	93,797	1,910	102,651
May	123,710			190,725	-	190,725	92,226	1,996	96,503
June	130,635			182,657	-	182,657	88,258	2,030	92,369
July	118,471			184,603	-	184,603	88,670	2,175	93,758
August	124,006			179,461	-	179,461	86,252	2,161	91,048
September	112,280			183,303	-	183,303	85,985	2,319	94,999
October	113,547			174,809	-	174,809	81,713	2,240	90,856
November	99,012			172,961	-	172,961	80,872	2,220	89,869
December	86,437			178,914	-	178,914	82,866	2,263	93,785
Totals	1,274,696								
1963 - January	90,589			182,888	-	182,888	83,990	2,340	96,558
February	95,915			188,504	-	188,504	86,820	2,672	99,012
March	106,961			201,414	-	201,414	95,606	2,935	102,873
April	107,064			203,418	-	203,418	95,951	3,062	104,405
May									
June									
July									
August									
September									
October									
November									
December									
Totals									

See footnotes, page 30.

TABLE 3. Estimated Value of Shipments, Orders and Inventory in Manufacturing Industries grouped according to the Standard Industrial Classification

Major Group 9 - Furniture and Fixture Industries

Date	Shipments	Orders		Inventory at end of month					
		New orders received during month(2)	Unfilled orders at end of month(2)	Owned	Held but not owned	All inventory held			
						Total	Raw materials	Goods in process	Finished products
thousands of dollars									
1959 - January	23,567			56,317	-	56,317	31,647	11,954	12,716
February ...	25,798			57,734	-	57,734	32,154	12,374	13,206
March	26,934			58,510	-	58,510	32,104	12,655	13,751
April	28,288			58,950	-	58,950	31,955	13,169	13,826
May	28,440			59,646	-	59,646	32,209	13,791	13,646
June	29,662			59,250	-	59,250	31,614	13,203	14,433
July	27,055			57,693	-	57,693	30,842	13,072	13,779
August	30,439			56,397	-	56,397	30,411	12,444	13,542
September ..	33,685			55,508	-	55,508	30,063	12,316	13,129
October	31,743			55,433	-	55,433	30,226	12,122	13,085
November ...	30,750			55,657	-	55,657	30,552	12,033	13,072
December ...	28,068			58,898	-	58,898	33,249	12,265	13,384
Totals ...	344,429								
1960 - January	23,313			60,797	-	60,797	34,076	12,734	13,987
February ...	26,734			61,495	-	61,495	34,357	12,833	14,305
March	29,234			62,059	-	62,059	34,577	13,155	14,327
April	26,634			62,772	-	62,772	34,510	13,698	14,564
May	28,439			62,830	-	62,830	34,339	13,803	14,688
June	29,179			62,837	-	62,837	33,809	13,690	15,338
July	24,149			62,515	-	62,515	34,162	13,537	14,816
August	34,222			61,395	-	61,395	33,047	13,823	14,525
September ..	34,651			58,974	-	58,974	31,827	12,966	14,181
October	32,213			58,991	-	58,991	31,793	13,042	14,156
November ...	31,937			58,265	-	58,265	31,901	12,404	13,960
December ...	27,272			60,438	-	60,438	33,791	12,037	14,610
Totals ...	347,977								
1961 - January	22,970			61,336	-	61,336	34,465	11,768	15,103
February ...	25,525			61,226	-	61,226	34,417	11,983	14,826
March	27,767			61,349	-	61,349	33,858	12,706	14,785
April	25,904			61,164	-	61,164	32,977	13,375	14,812
May	29,293			60,347	-	60,347	31,909	13,150	15,288
June	29,439			60,374	-	60,374	31,341	12,539	16,494
July	25,522			59,572	-	59,572	31,885	12,419	15,268
August	34,457			58,643	-	58,643	31,644	12,492	14,507
September ..	32,794			58,608	-	58,608	32,019	12,397	14,192
October	33,251			61,132	-	61,132	33,536	13,280	14,316
November ...	33,722			60,046	-	60,046	33,218	12,324	14,504
December ...	27,886			61,205	-	61,205	34,325	12,968	13,912
Totals ...	348,530								
1962 - January	24,975			62,733	-	62,733	35,775	12,454	14,504
February ...	26,828			63,779	-	63,779	36,618	12,654	14,507
March	29,328			63,425	-	63,425	36,439	12,684	14,302
April	29,021			63,100	-	63,100	35,708	12,607	14,785
May	32,434			62,713	-	62,713	34,808	13,428	14,477
June	30,743			63,243	-	63,243	34,447	13,935	14,861
July	27,732			62,952	-	62,952	34,823	13,906	14,223
August	33,999			63,195	-	63,195	33,802	15,610	13,783
September ..	34,678			63,028	-	63,028	33,557	15,997	13,474
October	38,110			64,062	-	64,062	34,105	16,668	13,289
November ...	35,026			63,953	-	63,953	33,855	16,840	13,258
December ...	28,425			64,414	-	64,414	34,250	15,763	14,401
Totals ...	371,299								
1963 - January	28,075			65,523	-	65,523	34,789	16,103	14,631
February ...	28,314			67,030	-	67,030	35,771	16,511	14,748
March ^F	29,950			67,455	-	67,455	36,040	16,533	14,882
April ^P	30,199			67,635	-	67,635	36,348	16,646	14,641
May									
June									
July									
August									
September ..									
October									
November ...									
December ...									
Totals ...									

See footnotes, page 30.

TABLE 3. Estimated Value of Shipments, Orders and Inventory in Manufacturing Industries grouped according to the Standard Industrial Classification

Major Group 10 - Paper and Allied Industries

Date	Shipments	Orders		Inventory at end of month					
		New orders received during month(2)	Unfilled orders at end of month(2)	Owned	Held but not owned	All inventory held			
						Total	Raw materials	Goods in process	Finished products
thousands of dollars									
1959 - January	153,278			357,293	-	357,293	268,302	13,740	75,251
February	144,253			361,266	-	361,266	266,832	14,269	80,165
Msrch	154,386			358,273	-	358,273	257,243	14,961	86,069
April	176,801			342,062	-	342,062	246,828	14,856	80,378
May	177,615			332,414	-	332,414	240,489	15,280	76,645
June	174,136			330,946	-	330,946	239,470	15,107	76,369
July	173,192			329,304	-	329,304	240,436	15,354	73,514
August	169,959			330,269	-	330,269	240,972	14,827	74,470
September ..	178,673			324,747	-	324,747	239,261	14,540	70,946
October	187,733			324,902	-	324,902	239,774	14,625	70,503
November	179,627			324,587	-	324,587	241,580	14,670	68,337
December ...	167,874			332,158	-	332,158	247,873	14,770	69,515
Totals ...	2,037,527								
1960 - January	159,643			337,186	-	337,186	247,456	14,922	74,808
February ...	160,877			347,687	-	347,687	251,450	15,221	81,016
March	175,887			353,381	-	353,381	250,126	15,443	87,812
April	175,573			344,463	-	344,463	243,710	15,790	84,963
May	181,016			339,268	-	339,268	239,266	15,606	84,396
June	187,531			336,116	-	336,116	240,819	15,269	80,028
July	171,582			341,127	-	341,127	247,570	15,331	78,226
August	183,691			346,296	-	346,296	251,058	16,033	79,205
September ..	188,353			349,087	-	349,087	256,039	15,902	77,146
October	184,028			356,794	-	356,794	263,047	15,649	78,098
November ...	193,005			355,034	-	355,034	264,568	16,845	73,621
December ...	166,904			358,725	-	358,725	270,165	16,080	72,480
Totals ...	2,128,090								
1961 - January	160,921			369,588	-	369,588	271,867	18,093	79,628
February ...	155,226			378,538	-	378,538	274,929	16,930	86,679
March	175,350			382,769	-	382,769	268,510	17,773	96,486
April	175,099			369,394	-	369,394	259,327	17,834	92,233
May	187,991			362,472	-	362,472	252,481	18,313	91,678
June	190,764			360,725	-	360,725	253,026	16,969	90,730
July	175,005			367,192	-	367,192	259,035	17,714	90,443
August	196,625			364,718	-	364,718	259,401	17,765	87,552
September ..	187,744			362,196	-	362,196	258,558	17,561	86,077
October	192,201			364,704	-	364,704	260,237	17,445	87,022
November ...	200,307			360,305	-	360,305	260,963	16,763	82,579
December ...	173,560			363,430	-	363,430	265,499	16,495	81,436
Totals ...	2,170,793								
1962 - January	173,707			370,833	-	370,833	264,518	16,471	89,844
February ...	154,216			376,333	-	376,333	265,833	15,269	95,231
March	190,317			376,190	-	376,190	261,246	17,033	97,911
April	184,492			365,033	-	365,033	250,607	17,363	97,063
May	203,778			360,790	-	360,790	248,799	16,950	95,041
June	199,142			360,028	-	360,028	247,443	17,301	95,284
July	189,284			361,661	-	361,661	250,208	17,859	93,594
August	204,518			362,270	-	362,270	253,256	17,905	91,109
September ..	194,003			363,151	-	363,151	255,222	18,456	89,473
October	211,798			358,269	-	358,269	253,459	17,657	87,153
November ...	204,829			356,508	-	356,508	254,585	17,226	84,697
December ...	173,664			357,972	-	357,972	256,575	16,992	84,405
Totals ...	2,283,748								
1963 - January	173,106			364,706	-	364,706	255,681	16,730	92,295
February ...	164,750			369,730	-	369,730	255,596	16,453	97,681
March	180,128			369,996	-	369,996	249,408	17,140	103,448
April P.....	197,089			358,337	-	358,337	239,145	16,510	102,682
May									
June									
July									
August									
September ..									
October									
November ...									
December ...									
Totals ...									

See footnotes, page 30.

TABLE 3. Estimated Value of Shipments, Orders and Inventory in Manufacturing Industries grouped according to the Standard Industrial Classification

Major Group 12 - Primary Metal Industries

Date	Shipments	Orders		Inventory at end of month					
		New orders received during month	Unfilled orders at end of month	Owned(3)	Held but not owned(3)	All inventory held			
						Total	Raw materials	Goods in process	Finished products
thousands of dollars									
1959 - January	164,434	138,717	166,493			436,715	235,832	83,808	117,075
February ...	177,139	181,147	170,501			439,999	232,644	85,436	121,919
March	201,253	214,730	183,978			439,619	225,137	85,189	129,293
April	214,650	208,031	177,359			443,757	219,549	86,750	137,458
May	225,903	229,445	180,901			444,555	222,682	89,433	132,440
June	236,768	233,250	177,383			438,642	227,204	86,144	125,294
July	222,280	225,412	180,515			454,436	244,134	85,062	125,240
August	211,453	209,561	178,623			452,718	243,922	86,907	121,889
September ..	226,241	240,703	193,085			451,479	244,456	88,939	118,084
October	245,114	278,626	226,597			444,613	244,394	86,365	113,854
November ...	247,581	235,233	214,249			438,159	244,005	86,273	107,881
December ...	238,024	223,926	200,151			436,281	238,444	89,435	108,402
Totals ...	2,610,840								
1960 - January	230,115	234,385	204,421			434,149	227,664	88,204	118,281
February ...	225,741	221,242	199,922			431,650	219,751	89,834	122,065
March	237,562	237,390	199,750			438,683	214,412	91,879	132,392
April	225,500	213,148	187,398			453,585	218,259	92,930	142,396
May	239,392	228,575	176,581			468,583	226,712	93,894	147,977
June	222,411	201,170	155,340			479,633	237,287	92,724	149,622
July	211,193	216,284	160,431			493,840	246,707	93,023	154,110
August	226,318	216,250	150,363			500,830	258,947	91,272	150,611
September ..	227,698	229,570	152,235			510,941	266,187	91,873	152,881
October	225,437	224,478	151,276			512,737	265,310	92,702	154,725
November ...	237,396	212,279	126,159			515,860	272,060	87,307	156,493
December ...	195,619	216,603	147,143			518,211	268,424	87,888	161,899
Totals ...	2,704,382								
1961 - January	215,645	223,148	154,646			506,847	256,059	82,773	168,015
February ...	203,837	215,493	166,302			501,380	244,499	83,960	172,921
March	222,496	217,468	161,274			497,448	233,637	86,794	177,017
April	211,019	222,514	172,769			502,621	230,589	88,657	183,375
May	243,009	229,325	159,085			522,558	244,555	92,998	185,005
June	244,354	257,304	172,035			526,746	248,343	93,391	185,012
July	233,206	241,236	180,065			529,966	255,778	95,627	178,561
August	255,325	256,441	181,181			537,071	269,693	94,652	172,726
September ..	258,088	252,394	175,487			531,947	272,631	93,701	165,615
October	253,904	243,685	165,268			544,667	279,860	99,613	165,194
November ...	248,980	241,454	157,742			552,425	286,235	96,641	169,549
December ...	220,453	239,262	176,551			561,976	289,503	99,624	172,849
Totals ...	2,810,316								
1962 - January	247,257	246,184	175,478			535,667	259,064	104,603	172,000
February ...	224,672	230,528	181,374			533,139	246,849	105,206	181,084
March	256,063	267,373	192,644			530,465	239,916	104,418	186,131
April	244,737	257,634	205,541			534,907	238,077	104,053	192,777
May	276,840	272,391	201,092			534,003	237,723	102,381	193,899
June	274,760	272,867	199,199			531,926	244,735	101,224	185,967
July	253,711	255,119	200,607			532,881	252,616	100,924	179,341
August	265,010	259,905	195,502			537,141	255,886	105,248	176,007
September ..	255,354	252,228	192,376			541,353	259,534	104,574	177,245
October	253,291	257,945	197,030			546,942	264,137	104,301	178,504
November ...	269,451	265,879	193,458			545,747	265,514	102,604	177,629
December ...	239,162	258,098	212,394			552,646	264,568	104,637	183,441
Totals ...	3,060,308								
1963 - January	269,164	276,322	219,552			544,796	253,355	106,792	184,649
February ...	244,503	253,354	228,403			540,984	244,807	104,525	191,652
March	268,221	272,237	232,419			523,516	234,864	101,444	187,208
April	255,112	267,424	244,731			519,995	227,925	101,235	190,835
May									
June									
July									
August									
September ..									
October									
November ...									
December ...									
Totals ...									

See footnotes, page 30.

TABLE 3. Estimated Value of Shipments, Orders and Inventory in Manufacturing Industries grouped according to the Standard Industrial Classification

Major Group 13 - Metal Fabricating Industries (except Machinery and Transportation Equipment Industries)

Date	Shipments(1)	Orders		Inventory at end of month					
		New orders received during month	Unfilled orders at end of month	Owned	Held but not owned	All inventory held			
						Total	Raw materials	Goods in process	Finished products
thousands of dollars									
1959 - January	91,026	99,082	299,483	308,368	82,147	390,515	157,660	152,971	79,884
February ...	91,527	100,983	308,939	322,513	78,678	401,191	162,436	153,946	84,809
March	105,365	115,950	319,524	331,906	81,409	413,315	165,173	159,330	88,812
April	112,118	126,091	333,497	340,640	80,320	420,960	164,915	164,885	91,160
May	122,857	114,166	324,806	339,924	80,749	420,673	164,895	166,905	88,873
June	139,736	134,389	319,459	336,952	84,045	420,997	164,044	166,072	90,881
July	126,113	128,292	321,638	335,457	86,811	422,268	165,054	172,274	84,940
August	122,332	122,478	321,784	331,758	88,835	420,593	162,380	176,519	81,694
September ..	143,131	135,542	314,195	319,129	91,821	410,950	157,884	173,044	80,022
October	134,822	134,203	313,576	318,119	66,146	384,265	156,603	148,514	79,148
November ...	118,391	110,346	305,531	316,414	69,169	385,583	156,534	149,495	79,554
December ...	107,649	101,559	299,441	330,301	63,354	393,655	162,428	148,103	83,124
Totals ...	1,415,067								
1960 - January	97,713	97,668	299,396	341,093	65,740	406,833	167,150	155,048	84,635
February ...	101,539	120,582	318,439	351,111	68,111	419,222	173,155	157,259	88,808
March	114,539	115,883	319,783	365,458	71,541	436,999	178,304	165,179	93,516
April	111,711	104,017	312,089	374,082	77,047	451,129	185,497	170,058	95,574
May	121,732	123,808	314,165	377,197	76,269	453,466	184,692	172,696	96,078
June	129,854	119,235	303,546	377,537	78,405	455,942	179,673	180,269	96,000
July	122,312	117,367	298,601	367,140	82,256	449,396	175,524	182,016	91,856
August	139,910	127,698	286,389	358,197	82,985	441,182	169,277	181,899	90,006
September ..	141,466	141,088	286,011	341,034	80,250	421,284	163,532	173,388	84,364
October	127,955	104,137	262,193	326,364	45,425	371,789	161,411	128,179	82,199
November ...	118,748	117,273	260,718	316,014	44,885	360,899	150,754	127,263	82,882
December ...	105,522	99,326	254,522	308,557	41,411	349,968	144,566	120,929	84,473
Totals ...	1,433,001								
1961 - January	91,433	91,642	254,731	311,146	44,337	355,483	144,729	125,720	85,034
February ...	92,232	87,230	249,729	316,989	45,763	362,752	145,642	129,595	87,515
March	106,845	109,725	252,609	331,407	48,881	380,288	144,040	133,739	102,509
April	103,830	98,877	247,656	323,973	49,388	373,361	145,936	136,495	90,930
May	117,775	117,046	246,927	325,733	48,229	373,962	145,799	136,978	91,185
June	128,734	128,743	246,936	323,251	50,289	373,540	143,574	139,493	90,473
July	116,104	116,877	247,709	319,136	47,321	366,457	144,482	134,971	87,004
August	135,947	137,157	248,919	312,402	48,881	361,283	141,157	137,342	82,784
September ..	142,367	141,012	247,564	305,430	45,445	350,875	139,998	131,256	79,621
October	130,853	126,636	243,347	304,271	36,090	340,361	143,275	117,895	79,191
November ...	131,427	124,015	235,935	306,890	37,786	344,676	142,186	122,219	80,271
December ...	108,071	109,762	237,626	310,701	39,697	350,398	142,969	123,408	84,021
Totals ...	1,405,618								
1962 - January	103,937	118,062	251,751	317,561	43,386	360,947	144,605	133,235	83,107
February ...	97,759	110,420	264,412	329,329	43,897	373,226	145,276	140,248	87,702
March	126,424	141,349	279,337	336,479	42,272	378,751	150,940	136,646	91,165
April	116,968	120,638	283,007	341,920	44,265	386,185	152,474	140,618	93,093
May	139,054	139,855	283,808	344,886	48,625	393,511	154,225	146,552	92,734
June	146,426	147,686	285,068	342,868	54,943	397,811	154,463	151,221	92,127
July	138,890	134,629	280,807	342,388	56,571	398,959	153,484	156,254	89,221
August	146,747	145,271	279,331	334,625	53,323	387,948	149,787	151,291	86,870
September ..	161,166	146,466	264,631	324,842	52,741	377,583	147,212	146,373	83,998
October	162,062	152,806	255,375	320,181	34,985	355,166	145,267	127,360	82,539
November ...	142,919	132,090	244,546	313,706	39,410	353,116	141,111	128,959	83,046
December ...	115,231	111,519	240,834	313,154	38,199	351,353	139,336	127,391	84,626
Totals ...	1,597,583								
1963 - January	121,019	130,910	250,725	319,439	40,378	359,817	141,569	130,426	87,822
February ...	117,860	121,679	254,544	323,564	39,698	363,262	143,778	130,353	89,131
March	125,370	114,781	243,955	331,354	41,351	372,705	145,296	135,097	92,312
April	128,063	127,088	242,980	334,275	44,655	378,930	146,190	138,240	94,500
May									
June									
July									
August									
September ..									
October									
November ...									
December ...									
Totals ...									

See footnotes, page 30.

TABLE 3. Estimated Value of Shipments, Orders and Inventory in Manufacturing Industries grouped according to the Standard Industrial Classification

Major Group 15 - Transportation Equipment Industries

Date	Shipments(1)	Orders		Inventory at end of month					
		New orders received during month	Unfilled orders at end of month	Owned	Held but not owned	All inventory held			
						Total	Raw materials	Goods in process	Finished products
thousands of dollars									
1959 - January	179,139	159,388	568,185	250,377	295,671	546,048	117,077	388,625	40,346
February	190,682	111,116	488,619	247,906	274,340	522,246	115,979	365,125	41,142
March	203,980	185,908	470,547	249,163	255,447	504,610	118,061	345,037	41,512
April	208,460	183,884	445,971	255,475	253,578	509,053	118,197	347,191	43,665
May	195,240	234,835	485,566	254,933	248,286	503,219	114,940	343,393	44,886
June	207,959	232,532	510,139	253,736	251,986	505,722	111,332	344,856	49,534
July	176,857	146,534	479,816	234,548	233,377	467,925	106,311	309,923	51,691
August	98,426	178,194	559,584	244,915	255,532	500,447	109,486	346,066	44,895
September	111,773	66,959	514,770	276,371	240,619	516,990	111,286	355,298	50,406
October	162,228	171,137	523,679	288,453	241,513	529,966	114,896	360,826	54,244
November	139,917	123,395	507,157	281,069	217,115	498,184	115,759	334,518	47,907
December	153,902	161,509	514,764	291,920	208,576	500,496	114,682	334,796	51,018
Totals	2,028,563								
1960 - January	172,087	174,487	517,164	283,437	209,254	492,691	111,563	325,605	55,523
February	173,399	187,231	530,996	288,929	207,404	496,333	111,636	326,535	58,162
March	217,451	228,799	542,344	279,886	161,332	441,218	109,498	271,947	59,773
April	190,129	184,640	536,855	279,316	166,528	445,844	108,987	277,688	59,169
May	200,625	193,095	529,325	276,160	174,888	451,048	107,204	283,615	60,229
June	192,085	177,754	514,994	261,511	174,956	436,467	104,968	269,514	61,985
July	129,503	123,614	509,105	243,850	166,795	410,645	104,637	245,476	60,532
August	93,880	88,378	503,603	254,153	168,168	422,321	108,498	261,186	52,637
September	119,231	103,493	487,865	270,193	156,762	426,955	109,381	263,146	54,428
October	151,763	137,170	473,272	274,816	158,777	433,593	110,554	265,219	57,820
November	170,429	165,196	468,039	274,711	161,914	436,625	106,712	275,273	54,640
December	193,299	197,052	471,792	264,063	179,881	443,944	107,772	284,548	51,624
Totals	2,003,881								
1961 - January	151,935	141,705	461,562	269,457	169,759	439,216	106,833	273,233	59,150
February	157,766	168,682	472,478	281,823	173,938	455,761	107,145	286,034	62,582
March	179,869	206,888	499,497	285,729	180,142	465,871	108,170	294,158	63,543
April	173,834	174,981	500,644	288,122	175,540	463,662	108,325	292,498	62,839
May	191,924	184,404	493,124	294,030	142,053	436,083	108,485	265,973	61,625
June	197,556	160,316	455,884	289,104	127,942	417,046	106,696	248,957	61,393
July	141,912	130,661	444,633	256,457	134,262	390,719	106,718	229,250	54,751
August	102,821	85,650	427,462	281,611	131,769	413,380	108,921	249,252	55,207
September	144,659	126,281	409,084	287,946	136,813	424,759	109,717	262,031	53,011
October	174,920	156,593	390,757	300,939	134,994	435,933	107,852	270,638	57,443
November	204,278	263,458	449,937	294,119	141,176	435,295	105,925	273,521	55,849
December	219,324	207,879	438,492	294,530	150,809	445,339	108,608	281,256	55,475
Totals	2,040,798								
1962 - January	199,760	186,023	424,755	297,190	142,981	440,171	110,720	271,836	57,615
February	202,051	216,119	438,823	296,398	152,426	448,824	108,509	279,648	60,667
March	228,584	248,869	459,108	295,224	163,151	458,375	109,436	290,477	58,462
April	223,793	224,665	459,980	292,959	169,233	462,192	108,832	295,068	58,292
May	265,110	247,454	442,324	300,429	169,505	469,934	109,264	304,096	56,574
June	254,588	298,911	486,647	291,499	176,727	468,226	108,250	303,489	56,487
July	185,557	195,624	496,714	274,132	184,544	458,676	108,784	294,687	55,205
August	114,724	109,411	491,401	313,598	187,076	500,674	116,714	331,171	52,789
September	175,222	173,276	489,455	329,397	191,535	520,932	116,600	346,032	58,300
October	252,700	229,387	466,142	338,026	187,911	525,937	117,553	349,353	59,031
November	267,101	261,386	460,427	327,136	188,807	515,943	115,970	342,560	57,413
December	262,941	249,426	446,912	322,695	194,915	517,610	116,957	344,910	55,743
Totals	2,632,131								
1962 - January	252,672	263,690	457,930	312,556	187,201	499,757	113,689	326,609	59,459
February	234,443	233,192	456,679	317,942	194,955	512,897	114,015	337,530	61,352
March	244,222	266,717	479,174	320,960	205,368	526,328	116,121	349,079	61,128
April	270,193	226,941	435,922	320,612	203,180	523,792	116,515	346,259	61,018
May									
June									
July									
August									
September									
October									
November									
December									
Totals									

See footnotes, page 30.

TABLE 3. Estimated Value of Shipments, Orders and Inventory in Manufacturing Industries grouped according to the Standard Industrial Classification

Major Group 17 - Non-Metallic Mineral Products Industries

Date	Shipments	Orders		Inventory at end of month					
		New orders received during month(2)	Unfilled orders at end of month(2)	Owned	Held but not owned	All inventory held			
						Total	Raw materials	Goods in process	Finished products
thousands of dollars									
1959 - January	39,105			101,947	-	101,947	48,652	10,929	42,366
February	39,676			105,267	-	105,267	48,224	12,341	44,702
March	45,299			107,255	-	107,255	47,103	13,871	46,281
April	52,471			108,494	-	108,494	46,671	13,812	48,011
May	62,526			106,531	-	106,531	46,128	13,419	46,984
June	70,272			103,407	-	103,407	46,733	11,886	44,788
July	71,046			100,998	-	100,998	48,642	10,256	42,100
August	62,576			99,993	-	99,993	49,174	8,633	42,186
September	66,446			98,281	-	98,281	49,439	7,737	41,105
October	64,313			97,798	-	97,798	49,115	7,851	40,832
November	53,717			101,734	-	101,734	50,529	7,984	43,221
December	44,911			105,751	-	105,751	52,722	8,532	44,497
Totals	672,358								
1960 - January	35,488			108,859	-	108,859	52,395	9,449	47,015
February	38,102			111,242	-	111,242	51,011	10,357	49,874
March	44,323			111,874	-	111,874	48,073	11,298	52,503
April	45,188			113,817	-	113,817	47,101	12,052	54,664
May	56,678			114,444	-	114,444	47,660	11,736	55,048
June	67,645			112,733	-	112,733	47,852	10,856	54,025
July	64,389			111,264	-	111,264	48,378	10,130	52,756
August	67,608			108,389	-	108,389	49,259	9,377	49,753
September	66,676			104,466	-	104,466	48,809	8,904	46,753
October	62,909			102,858	-	102,858	49,006	7,713	46,139
November	57,222			104,636	-	104,636	50,167	8,061	46,408
December	41,249			107,431	-	107,431	50,414	9,111	47,906
Totals	647,477								
1961 - January	37,774			110,842	-	110,842	50,420	10,030	50,392
February	36,842			112,849	-	112,849	49,935	11,087	51,827
March	43,321			111,758	-	111,758	47,773	11,626	52,359
April	46,616			112,482	-	112,482	46,730	11,709	54,043
May	61,933			110,943	-	110,943	45,862	11,617	53,464
June	69,751			107,450	-	107,450	45,420	10,590	51,440
July	65,298			107,368	-	107,368	46,942	10,062	50,364
August	71,333			104,310	-	104,310	47,213	9,626	47,471
September	64,299			104,326	-	104,326	47,928	9,464	46,934
October	64,686			105,279	-	105,279	49,341	9,304	46,634
November	58,302			105,395	-	105,395	48,323	9,306	47,766
December	42,424			110,451	-	110,451	50,899	10,179	49,373
Totals	662,579								
1962 - January	37,624			113,851	-	113,851	51,329	9,855	52,667
February	37,861			116,375	-	116,375	50,160	10,408	55,807
March	51,707			115,679	-	115,679	48,685	12,024	54,970
April	53,451			116,208	-	116,208	48,468	12,616	55,124
May	70,999			114,299	-	114,299	48,191	12,482	53,626
June	77,137			110,995	-	110,995	47,787	11,707	51,501
July	74,241			108,088	-	108,088	48,996	10,770	48,322
August	78,106			105,418	-	105,418	49,494	10,184	45,740
September	68,016			104,801	-	104,801	50,266	9,095	45,440
October	72,556			105,813	-	105,813	51,272	9,092	45,449
November	64,267			106,443	-	106,443	51,826	9,358	45,259
December	45,056			112,786	-	112,786	52,284	10,597	49,905
Totals	731,021								
1963 - January	41,099			117,625	-	117,625	50,486	11,170	55,969
February	40,483			123,031	-	123,031	51,231	12,408	59,392
March	47,807			124,693	-	124,693	50,500	14,031	60,162
April	52,974			125,059	-	125,059	49,755	15,129	60,175
May									
June									
July									
August									
September									
October									
November									
December									
Totals									

See footnotes, page 30.

TABLE 3. Estimated Value of Shipments, Orders and Inventory in Manufacturing Industries grouped according to the Standard Industrial Classification

Major Group 18 - Petroleum and Coal Products Industries

Date	Shipments	Orders		Inventory at end of month					
		New orders received during month(2)	Unfilled orders at end of month(2)	Owned	Held but not owned	All inventory held			
						Total	Raw materials	Goods in process	Finished products
thousands of dollars									
1959 - January	97,238			194,370	-	194,370	64,050	18,011	112,309
February ...	90,493			197,560	-	197,560	63,137	20,477	113,946
March	93,341			201,489	-	201,489	59,724	20,962	120,803
April	94,202			201,103	-	201,103	63,270	20,775	117,058
May	93,535			201,457	-	201,457	67,406	19,825	114,226
June	92,634			197,012	-	197,012	61,808	20,075	115,129
July	98,062			195,636	-	195,636	62,580	20,337	112,719
August	92,429			203,024	-	203,024	66,863	19,828	116,333
September ..	100,377			205,199	-	205,199	65,767	20,776	118,656
October	103,260			201,371	-	201,371	66,542	19,076	115,753
November ...	100,414			192,980	-	192,980	62,846	18,077	112,057
December ...	104,086			188,627	-	188,627	61,191	17,649	109,787
Totals ...	1,160,071								
1960 - January	97,968			203,639	-	203,639	64,254	18,087	121,298
February ...	88,544			210,702	-	210,702	63,505	20,671	126,526
March	96,185			212,656	-	212,656	61,476	18,107	133,073
April	95,079			210,914	-	210,914	61,507	18,852	130,555
May	101,030			211,639	-	211,639	64,300	22,040	125,299
June	99,929			211,554	-	211,554	61,695	24,940	124,919
July	100,018			214,063	-	214,063	64,435	21,669	127,959
August	102,605			219,272	-	219,272	66,191	22,380	130,701
September ..	102,891			220,697	-	220,697	67,123	25,097	128,477
October	100,574			214,215	-	214,215	67,537	19,934	126,744
November ...	104,510			208,330	-	208,330	65,482	21,743	121,105
December ...	105,372			202,932	-	202,932	65,458	20,775	116,699
Totals ...	1,194,705								
1961 - January	100,276			205,159	-	205,159	65,847	21,183	118,129
February ...	89,429			208,650	-	208,650	65,299	20,756	122,595
March	93,277			207,133	-	207,133	62,485	19,318	125,330
April	91,803			214,537	-	214,537	64,719	19,017	130,801
May	106,013			215,640	-	215,640	65,515	21,459	128,666
June	102,553			214,383	-	214,383	65,107	20,767	128,509
July	104,316			207,464	-	207,464	63,203	23,567	120,694
August	107,234			210,566	-	210,566	64,877	20,325	125,364
September ..	102,406			212,616	-	212,616	66,075	21,640	124,901
October	108,695			211,896	-	211,896	68,022	21,064	122,810
November ...	114,229			206,125	-	206,125	66,770	21,848	117,507
December ...	116,739			208,896	-	208,896	66,231	22,703	119,962
Totals ...	1,236,970								
1962 - January	111,222			201,746	-	201,746	63,645	20,137	117,964
February ...	99,288			201,423	-	201,423	60,096	20,804	120,523
March	106,249			209,216	-	209,216	59,126	20,947	129,143
April	97,214			216,041	-	216,041	63,674	20,016	132,351
May	113,969			213,758	-	213,758	66,948	19,852	126,958
June	109,467			212,228	-	212,228	65,331	21,643	125,254
July	112,665			217,468	-	217,468	69,067	22,376	126,025
August	116,517			217,210	-	217,210	68,168	22,716	126,326
September ..	114,185			213,692	-	213,692	62,173	22,841	128,678
October	122,024			211,167	-	211,167	63,666	20,144	127,357
November ...	125,135			210,371	-	210,371	67,877	20,471	122,023
December ...	123,522			208,941	-	208,941	66,522	20,083	122,336
Totals ...	1,351,457								
1963 - January	121,782			205,997	-	205,997	64,512	23,131	118,354
February ...	110,700			204,217	-	204,217	61,354	23,979	118,884
March	110,056			212,213	-	212,313	62,734	22,181	127,398
April	109,469			211,789	-	211,789	62,699	22,049	127,041
May									
June									
July									
August									
September ..									
October									
November ...									
December ...									
Totals ...									

See footnotes, page 30.

TABLE 3. Estimated Value of Shipments, Orders and Inventory in Manufacturing Industries grouped according to the Standard Industrial Classification

Major Group 19 - Chemical and Chemical Products Industries

Date	Shipments	Orders		Inventory at end of month					
		New orders received during month(2)	Unfilled orders at end of month(2)	Owned	Held but not owned	All inventory held			
						Total	Raw materials	Goods in process	Finished products
thousands of dollars									
1959 - January	101,649			243,193	-	243,193	112,073	33,211	97,909
February ...	105,034			242,441	-	242,441	109,610	33,879	98,952
March	111,287			240,532	-	240,532	105,808	35,590	99,134
April	118,760			237,049	-	237,049	104,319	35,310	97,420
May	117,011			231,170	-	231,170	102,784	32,849	95,537
June	114,888			225,439	-	225,439	101,526	32,702	91,211
July	103,996			226,076	-	226,076	103,183	33,746	89,147
August	104,034			227,971	-	227,971	104,188	35,199	88,584
September ..	123,480			226,100	-	226,100	106,514	33,811	85,775
October	115,473			231,085	-	231,085	110,826	35,761	84,498
November ...	103,450			234,829	-	234,829	109,793	35,636	89,400
December ...	97,320			241,957	-	241,957	108,333	36,605	97,019
Totals ...	1,316,382								
1960 - January	103,461			244,397	-	244,397	106,967	36,272	101,158
February ...	108,597			244,710	-	244,710	104,803	36,217	103,690
March	121,208			248,220	-	248,220	104,531	37,375	106,314
April	121,243			247,451	-	247,451	105,089	36,979	105,383
May	133,895			241,649	-	241,649	107,334	33,375	100,940
June	128,172			242,805	-	242,805	108,944	31,230	102,631
July	101,262			243,883	-	243,883	108,832	31,767	103,284
August	114,982			244,747	-	244,747	111,153	32,109	101,485
September ..	123,186			240,137	-	240,137	109,854	32,639	97,644
October	112,957			243,454	-	243,454	111,164	33,764	98,526
November ...	110,003			250,958	-	250,958	113,295	35,636	102,027
December ...	94,490			256,883	-	256,883	111,412	35,724	109,747
Totals ...	1,373,456								
1961 - January	111,393			257,800	-	257,800	111,165	35,921	110,714
February ...	106,926			258,713	-	258,713	107,528	36,917	114,268
March	122,602			255,595	-	255,595	103,079	36,799	115,717
April	122,326			254,497	-	254,497	101,764	37,399	115,334
May	140,940			246,637	-	246,637	101,376	33,539	111,722
June	135,054			240,472	-	240,472	99,860	32,408	108,204
July	108,400			242,873	-	242,873	101,972	32,423	108,478
August	120,341			248,100	-	248,100	107,582	33,229	107,289
September ..	125,885			247,495	-	247,495	108,596	33,819	105,080
October	125,524			252,682	-	252,682	112,165	35,144	105,373
November ...	121,107			255,630	-	255,630	110,520	36,494	108,616
December ...	106,392			260,109	-	260,109	111,541	36,251	112,317
Totals ...	1,446,890								
1962 - January	120,670			264,331	-	264,331	110,221	36,295	117,815
February ...	114,658			263,140	-	263,140	106,586	36,556	119,998
March	132,991			266,232	-	266,232	105,914	36,926	123,392
April	137,732			261,490	-	261,490	100,639	36,959	123,892
May	162,107			250,439	-	250,439	101,260	32,588	116,591
June	145,542			244,768	-	244,768	101,170	32,827	110,771
July	119,599			251,230	-	251,230	105,408	32,090	113,732
August	128,901			253,825	-	253,825	107,597	31,115	115,113
September ..	131,892			253,930	-	253,930	109,314	30,345	114,271
October	133,585			257,074	-	257,074	111,475	31,626	113,973
November ...	126,197			257,235	-	257,235	110,354	32,354	114,527
December ...	112,644			262,595	-	262,595	111,646	33,263	117,686
Totals ...	1,566,518								
1963 - January	120,693			265,282	-	265,282	109,074	33,405	122,803
February ...	120,408			267,610	-	267,610	107,292	34,083	126,235
March	132,845			269,345	-	269,345	106,432	36,323	126,590
April	143,080			265,452	-	265,452	104,235	35,110	126,107
May									
June									
July									
August									
September ..									
October									
November ...									
December ...									
Totals ...									

See footnotes, page 30.

INDUSTRIAL GROUPINGS

The industries shown in the Standard Industrial Classification Groups are listed below.

The bracketed letters following the individual industry titles indicate the statistical series - shipments, inventories and orders in which the industry is included monthly: (s) means the industry is included in the shipments series; (i) in the inventory series; and (o) in the orders series. Industries for which monthly coverage is not indicated are included in the all-industry and group totals estimates.

STANDARD INDUSTRIAL CLASSIFICATION

Industrial Groupings shown in Tables 3 and 4

Major Group 1. Foods and Beverages

Slaughtering and Meat Packing Plants (s)(i)
 Animal Oils and Fats Plants (s)
 Sausage and Sausage Casing Manufacturers (s)
 Poultry Processors
 Butter and Cheese Plants (s)(i)
 Pasteurizing Plants (s)(i)
 Condenseries (s)(i)
 Ice Cream Manufacturers (s)(i)
 Process Cheese Manufacturers (s)
 Fish Products Industry (s)(i)
 Fruit and Vegetable Canners and Preservers (s)(i)(o)
 Feed Manufacturers (s)(i)
 Flour Mills (s)(i)(o)
 Breakfast Cereal Manufacturers (s)(i)
 Biscuit Manufacturers (s)(i)
 Bakeries (s)
 Confectionery Manufacturers (s)(i)
 Sugar Refineries (s)(i)
 Vegetable Oil Mills (s)(i)(o)
 Macaroni Manufacturers (s)(i)
 Miscellaneous Food Manufacturers (s)(i)
 Soft Drink Manufacturers (s)
 Distilleries (s)(i)
 Breweries (s)(i)
 Wineries (s)(i)

Major Group 2. Tobacco Products Industries

Leaf Tobacco Processing (s)(i)
 Tobacco Products Manufacturers (s)(i)

Major Group 3. Rubber Industries

Rubber Footwear Manufacturers (s)(i)(o)
 Rubber Tire and Tube Manufacturers (s)(i)(o)
 Other Rubber Industries (s)(i)(o)

Major Group 4. Leather Industries

Leather Tanneries (s)(i)(o)
 Shoe Factories (s)(i)(o)
 Leather Glove Factories (s)
 Leather Belting Manufacturers (s)
 Boot and Shoe Findings Manufacturers (s)
 Miscellaneous Leather Products Manufacturers (s)

Major Group 5. Textile Industries

Cotton Yarn and Cloth Mills (s)(i)(o)
 Wool Yarn Mills (s)(i)(o)
 Wool Cloth Mills (s)(i)(o)
 Synthetic Textile Mills (s)(i)(o)
 Fibre Preparing Mills (s)(i)(o)

Major Group 5. Textile Industries - Concluded

Thread Mills (s)(i)
 Cordage and Twine Industry (s)(i)
 Narrow Fabric Mills (s)(i)(o)
 Pressed and Punched Felt Mills (s)(i)(o)
 Carpet, Mat and Rug Industry (s)(i)(o)
 Textile Dyeing and Finishing Plants (s)(i)(o)
 Linoleum and Coated Fabrics Industry (s)(i)(o)
 Canvas Products Industry (s)(i)(o)
 Cotton and Jute Bag Industry (s)(i)(o)
 Automobile Fabric Accessory Manufacturers (s)(i)
 Embroidery, Pleating, Hemstitching Manufacturers (s)
 Miscellaneous Textiles (n.e.s.) Industry (s)(i)(o)

Major Group 6. Knitting Mills

Hosiery Mills (s)(i)(o)
 Other Knitting Mills (s)(i)(o)

Major Group 7. Clothing Industries

Men's Clothing Factories (s)(i)(o)
 Men's Clothing Contractors (s)
 Women's Clothing Factories (s)(i)(o)
 Women's Clothing Contractors (s)
 Children's Clothing Industry (s)(i)(o)
 Fur Goods Industry (s)(i)
 Hat and Cap Industry (s)(i)(o)
 Foundation Garment Industry (s)(i)(o)
 Fabric Glove Manufacturers (s)
 Miscellaneous Clothing (n.e.s.) Industry (s)

Major Group 8. Wood Industries

Shingle Mills (s)
 Sawmills except Shingle Mills (s)(i)(o)
 Veneer and Plywood Mills (s)(i)(o)
 Sash and Door and Planing Mills (excluding hardwood flooring) (s)(i)(o)
 Hardwood Flooring (s)(i)(o)
 Wooden Box Factories (s)(i)
 Coffin and Casket Industries (s)
 Wood preservation (s)(i)
 Wood Handles and Turning (s)(i)(o)
 Woodenware (s)(i)
 Cooperage (s)(i)
 Miscellaneous Wood Industries, n.e.s. (s)(i)(o)

Major Group 9. Furniture and Fixture Industries

Household Furniture Industry (s)(i)(o)
 Office Furniture Industry (s)(i)(o)
 Other Furniture Industries (s)(i)(o)
 Electric Lamp and Shade Industry (s)

Major Group 10. Paper and Allied Industries

Pulp and Paper Mills (s)(i)(o)
 Asphalt Roofing Manufacturers (s)(i)(o)
 Folding Box and Set-up Box Manufacturers (s)(i)(o)
 Corrugated Box Manufacturers (s)(i)(o)
 Paper Bag Manufacturers (s)(i)(o)
 Other Paper Converters (s)(i)(o)

Major Group 11. Printing, Publishing and Allied Industries

Printing and Bookbinding (s)
 Lithographing (s)
 Engraving and duplicate plates (s)
 Trade Composition or typesetting (s)
 Publishing Only (s)
 Printing and Publishing (s)

Major Group 12. Primary Metal Industries

Iron and Steel Mills (s)(i)(o)
 Steel Pipe and Tube Mills (s)(i)(o)
 Iron Foundries (s)(i)(o)
 Smelting and Refining (s)(i)(o)
 Aluminum Rolling, Casting and Extruding (s)(i)(o)
 Copper and Alloy Rolling, Casting and Extruding (s)(i)(o)
 Metal Rolling, Casting and Extruding, n.e.s. (s)(i)(o)

Major Group 13. Metal Fabricating Industries (except Machinery and Transportation Equipment Industries)

Boiler and Plate Works (s)(i)(o)
 Fabricated Structural Metal Industry (s)(i)(o)
 Ornamental and Architectural Metal Industry (s)(i)(o)
 Metal Stamping, Pressing and Coating Industry (s)(i)(o)
 Wire and Wire Products Manufacturers (s)(i)(o)
 Hardware, Tool and Cutlery Manufacturers (s)(i)(o)
 Heating Equipment Manufacturers (s)(i)(o)
 Machine Shops
 Miscellaneous Metal Fabricating Industries (s)(i)(o)

Major Group 14. Machinery Industries (except electrical machinery)

Agricultural Implement Industry (s)(i)(o)
 Miscellaneous Machinery and Equipment Manufacturers (s)(i)(o)
 Commercial Refrigeration and Air Conditioning Equipment Manufacturers (s)(i)(o)
 Office and Store Machinery Manufacturers (s)(i)(o)

Major Group 15. Transportation Equipment Industries

Aircraft and Parts Manufacturers (s)(i)(o)
 Motor Vehicle Manufacturers (s)(i)(o)
 Truck Body and Trailer Manufacturers (s)(i)(o)
 Motor Vehicle Parts and Accessories Manufacturers (s)(i)(o)
 Railroad Rolling Stock Industry (s)(i)(o)
 Shipbuilding and Repair (s)(i)(o)
 Boatbuilding and Repair (s)
 Miscellaneous Vehicle Manufacturers (s)

Major Group 16. Electrical Products Industries

Manufacturers of Small Electrical Appliances (s)(i)(o)
 Manufacturers of Major Appliances (electric and non-electric) (s)(i)(o)
 Manufacturers of Household Radio and Television Receivers (s)(i)(o)
 Communications Equipment Manufacturers (s)(i)(o)

Major Group 16. Electrical Products Industries - Concluded

Manufacturers of Electrical Industrial Equipment (s)(i)(o)
 Battery Manufacturers (s)(i)(o)
 Manufacturers of Electric Wire and Cable (s)(i)(o)
 Manufacturers of Miscellaneous Electrical Products (s)(i)(o)

Major Group 17. Non-Metallic Mineral Products Industries

Cement Manufacturers (s)(i)(o)
 Lime Manufacturers (s)
 Gypsum Products Manufacturers (s)
 Concrete Products Manufacturers (s)(i)(o)
 Ready-Mix Concrete Manufacturers (s)(i)
 Clay Products Manufacturers (from domestic clays) (s)(i)
 Clay Products Manufacturers (from imported clays) (s)(i)(o)
 Refractories Manufacturers (s)(i)
 Stone Products Manufacturers (s)
 Mineral Wool Manufacturers (s)(i)(o)
 Asbestos Products Manufacturers (s)(i)(o)
 Glass Manufacturers (s)(i)(o)
 Glass Products Manufacturers (s)(i)(o)
 Abrasives Manufacturers (s)(i)(o)
 Other Non-Metallic Mineral Products Industries (s)(i)

Major Group 18. Petroleum and Coal Products Industries

Petroleum Refining (s)(i)
 Manufacturers of Lubricating Oils and Greases (s)(i)
 Other Petroleum and Coal Products Industries (s)(i)

Major Group 19. Chemical and Chemical Products Industry

Explosives and Ammunition Manufacturers (s)(i)(o)
 Manufacturers of Mixed Fertilizers (s)(i)
 Manufacturers of Plastics and Synthetic Resins (s)(i)(o)
 Manufacturers of Pharmaceuticals and Medicines (s)(i)(o)
 Paint and Varnish Manufacturers (s)(i)(o)
 Manufacturers of Soap and Cleaning Compounds (s)(i)(o)
 Manufacturers of Toilet Preparations (s)(i)
 Manufacturers of Industrial Chemicals (s)(i)(o)
 Manufacturers of Printing Inks (s)(i)
 Other Chemical Industries, n.e.s. (s)(i)(o)

Major Group 20. Miscellaneous Manufacturing Industries

Instrument and Related Products Manufacturers (s)(i)(o)
 Clock and Watch Manufacturers (s)(i)(o)
 Orthopedic and Surgical Appliance Manufacturers (s)(i)(o)
 Ophthalmic Goods Manufacturers (s)(i)
 Dental Laboratories
 Jewellery and Silverware Manufacturers (s)(i)(o)
 Broom, Brush and Mop Industry (s)(i)(o)
 Venetian Blind Manufacturers (s)
 Plastic Fabricators, n.e.s. (s)(i)
 Sporting Goods Industry (s)(i)
 Toys and Games Industry (s)
 Fur Dressing and Dyeing Industry
 Signs and Displays Industry (s)
 Button, Buckle and Fastener Industry (s)
 Candle Manufacturers (s)
 Hair Goods Manufacturers (s)
 Artificial Flowers and Feathers Manufacturers (s)
 Model and Pattern Manufacturers (s)
 Musical Instruments Industry (s)(i)(o)
 Sound Recording Industry (s)(i)(o)
 Typewriter Supplies Manufacturers (s)
 Fountain Pen and Pencil Manufacturers (s)(i)(o)
 Smokers' Supplies Manufacturers (s)
 Stamp and Stencil (Rubber and Metal) Manufacturers (s)
 Statuary, Art Goods, Regalia and Novelty Manufacturers (s)
 Umbrella Manufacturers (s)
 Artificial Ice Manufacturers (s)
 Other Miscellaneous Industries (s)(i)(o)

CONCEPTS AND SOURCES

For further detail, and for description of methods used, see March 1963 report, page 28.

CONCEPTS

Shipments - (Tables 1 to 4) - represent an estimated projection, on a monthly basis, of the latest available Census of Manufactures values.

New Orders - (Tables 2 and 3) - This series is designed to indicate the rate at which new business is being received. It is defined as all New Orders Received during the period, at estimated selling values. Thus it covers total new orders, net of cancellations, regardless of whether the orders will be filled from stock or as a result of activity during the same month (and, therefore, will also be reported as shipments in the month received) or whether they will be added to existing backlogs.

Unfilled Orders - (Tables 2 and 3) - are defined at estimated selling value, at the end of the period stated, of orders received but not yet shipped (or treated as a sale), irrespective of work done on them or of stocks from which they can be filled.

Total Inventory Owned - (Tables 2 to 4) - represents the estimated book value of inventory owned by manufacturers in connection with manufacturing operations, whether held at plant or not, at the end of the period stated. It is made up of: raw materials, goods in process, finished goods of own manufacture at plant and warehouse, less value of inventory held but not owned which cannot be assigned to specific components. Since the series relates to manufacturing inventory only, value of goods purchased for re-sale is not included.

Inventory Held but Not Owned - (Tables 2 and 3) - represents, as far as possible, the portion of manufacturers' total inventory holdings which are no longer owned by the reporting manufacturers because of payments made on long-term contracts as work on these progresses. This item is applicable only to the relatively few industries where long-term contracts are common although, because of the nature of the item, the value per industry is high.

Because of variations in accounting methods there are a few cases where it is not possible to obtain values for this type of inventory. The estimated value shown for this item must therefore be considered to some extent incomplete.

Total Inventory Held - (Tables 2 and 3) - represents the estimated total value of manufacturers' inventory holdings in connection with manufacturing operations, regardless of ownership; it differs from inventory owned by the inclusion of amounts held under progress payments arrangements.

Inventory Components - (Tables 2 and 3) - Raw Materials, Goods in Process, and Finished Products are reported and compiled as on the books of each manufacturer, i.e. there has been no attempt to define the components specifically for each industry.

The inventory components are always a breakdown of total inventory held, not of total inventory owned. In industries where these two items differ, due to the inclusion of inventory held but not owned (see above), it is not possible to obtain value of inventory owned by components since, where separate progress accounts are maintained, firms concerned can only state that, of total holdings, a certain amount is no longer owned by them. It is fairly obvious that the bulk of such payments apply to goods in process holdings but due to time lags in shipments and to prepayments some of the total value of inventory held but not owned would be applicable to finished products or raw materials.

Any comparisons of shipments/inventory ratios should be made using total inventory owned, not total inventory held, since the latter includes values which have already been written off to sales. If shipments/inventory ratios are desired using inventory components, rather than total inventory, a reasonable approximation to total inventory owned by components would be obtained by assuming that all inventory held but not owned had been included with goods in process.

Groupings - The Standard Industrial Classification groupings of industries used in Tables 3 and 4 are defined according to the Standard Industrial Classification Manual. A list of the industries included in the Standard Industrial Classification groups will be found on page 27 of the bulletin.

SOURCES

Monthly (or, in a few cases, quarterly) reports covering value of inventories and shipments are now submitted on a voluntary basis by 3,000 plants in 120 industries; in addition, 3,000 small plants in 100 of these industries report monthly shipments only. Of the first group, 1,025 plants in 83 industries also report new and unfilled orders. Four industries are included in the total shipments estimates by using data available from other Bureau series, and two of these are also included in the total inventory estimates.

FOOTNOTES TO TABLES

TABLE 1. - (1) Prince Edward Island and Nova Scotia combined for monthly estimates.

(2) Yukon and the Northwest Territories combined with British Columbia.

TABLE 2. - (1) Annual shipments values differ slightly from published Census of Manufactures totals due to inventory adjustments for certain industries where Census of Manufactures data represent production rather than shipments values.

TABLE 3. - (1) See footnote (1), table 2.

(2) The value of Unfilled Orders and, therefore, of New Orders for industries in major groups - 1, 2, 6, 8, 9, 10, 17, 18 and 19 is small and sample coverage is not adequate to provide separate estimates for them.

(3) The value of inventory held but not owned in this group is very small, and sample coverage is not adequate to provide separate data. Estimates for this type of inventory are included with Total Inventory Held; for all practical purposes this can be considered the equivalent of Inventory Owned.

TABLE 4. - (1) Ratios for this group were calculated using values of Total Inventory Held instead of values of Total Inventory Owned. See footnote (3), table 3.

STATISTICS CANADA LIBRARY
BIBLIOTHÈQUE STATISTIQUE CANADA



1010691765