

CATALOGUE No.

31-001

MONTHLY



DOES NOT CIRCULATE  
NE PAS PRÊTER

INVENTORIES, SHIPMENTS AND ORDERS  
IN MANUFACTURING INDUSTRIES

DECEMBER 1964

DOMINION BUREAU  
OF STATISTICS  
APR 6 1965  
PROPERTY OF THE  
LIBRARY

DOMINION BUREAU OF STATISTICS  
Industry Division



DOMINION BUREAU OF STATISTICS  
Industry Division

INVENTORIES, SHIPMENTS AND ORDERS  
IN MANUFACTURING INDUSTRIES

DECEMBER 1964

*Published by Authority of*  
The Minister of Trade and Commerce

April 1965  
6531-501

Price: 30 cents  
\$3.00 a year

TABLE OF CONTENTS

	Page
Trend Summary (Charts and Text) .....	iv
TABLE 1. Estimated Value of Shipments in all Manufacturing Industries, by Province of Origin, Monthly - 1960 to date, by months .....	1
TABLE 2A. Estimated Value of Shipments, Orders and Inventory in all Manufacturing Industries, 1960 to date, by months .....	2
TABLE 2B. Estimated Value of Shipments, Orders and Inventory in all Manufacturing Industries, 1960 to date, by months - <u>Adjusted for Seasonal Variation</u> .....	3
TABLE 3. Estimated Value of Shipments, Orders and Inventory in Manufacturing Industries 1960 to date, by months, grouped according to the Standard Industrial Classification .....	
Non-Durable - Major Groups 1, 2, 3, 4, 5, 6, 7, 10, 11, 18, 19 and 20 .....	4
Durable - Major Groups 8, 9, 12, 13, 14, 15, 16 and 17 .....	5
Major Group 1 - Food and Beverage Industries .....	6
Major Group 2 - Tobacco Products Industries .....	7
Major Group 3 - Rubber Industries .....	8
Major Group 4 - Leather Industries .....	9
Major Group 5 - Textile Industries .....	10
Major Group 6 - Knitting Mills .....	11
Major Group 7 - Clothing Industries .....	12
Major Group 8 - Wood Industries .....	13
Major Group 9 - Furniture & Fixture Industries .....	14
Major Group 10 - Paper & Allied Industries .....	15
Major Group 11 - Printing, Publishing and Allied Industries (not published separately, values included in Table 2)	
Major Group 12 - Primary Metal Industries .....	16
Major Group 13 - Metal Fabricating Industries (except Machinery and Transportation Equipment Industries) .....	17
Major Group 14 - Machinery Industries .....	18
Major Group 15 - Transportation Equipment Industries .....	19
Major Group 16 - Electrical Products Industries .....	20
Major Group 17 - Non-Metallic Mineral Products Industries .....	21
Major Group 18 - Petroleum and Coal Products Industries .....	22
Major Group 19 - Chemical and Chemical Products Industries .....	23
Major Group 20 - Miscellaneous Manufacturing Industries .....	24

## TABLE OF CONTENTS

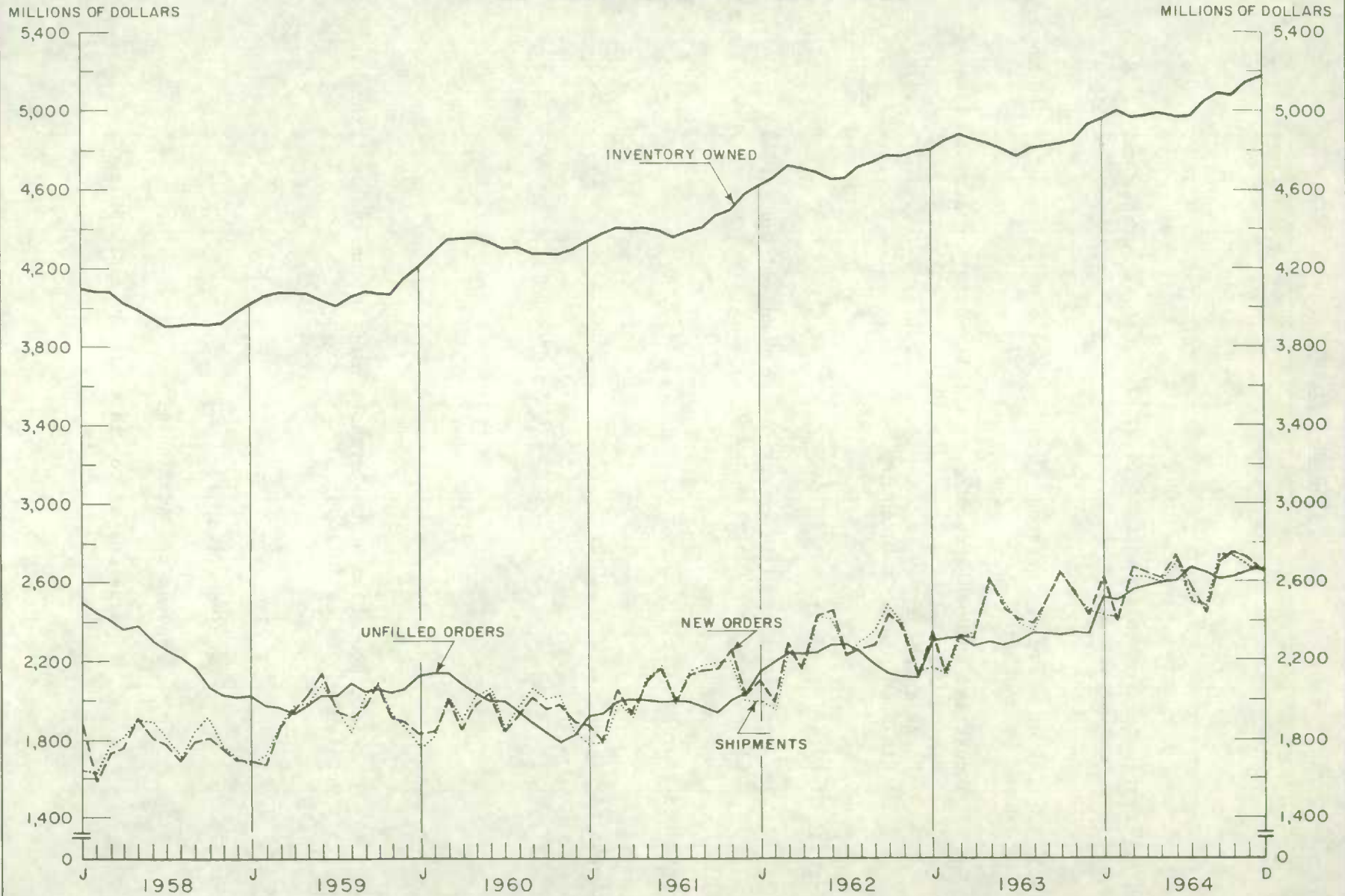
	Page
Table 4. Statistics for selected individual industries, current and 12 previous months .....	25
Table 5. Ratios of Value of Inventory Owned to Value of Shipments, 1960 to date, by months:	
Industries grouped according to the Standard Industrial Classification	
Total inventory .....	38
Finished products inventory .....	39
Industrial Grouping -	
Industries included in groups of the Standard Industrial Classification, Tables 3 and 5 .....	40
Concepts and Sources .....	42
Footnotes to tables .....	43

## SYMBOLS

The interpretation of the symbols used in the tables throughout this publication is as follows:

- P Preliminary figures.
- r Revised figures.
- .. Figures not available.
- ... Figures not appropriate or not applicable.
- Nil or zero.

ESTIMATED VALUES OF SHIPMENTS, INVENTORY OWNED AND ORDERS  
IN ALL MANUFACTURING INDUSTRIES



Manufacturers' shipments in 1964 were estimated at \$31,183.9 million, an increase of 7.8 per cent as compared with 1963. In terms of value, the food and beverage industries with an increase of \$417.4 million in the year, contributed the greatest portion of the total advance, that is nearly a fifth of the total increase of \$2,248.2 million. Other major industry groups contributing to the increase were the primary metal industries, the paper and allied products industries and the transportation equipment industries which shared 12 per cent, 10 per cent and 8 per cent of the total estimated increase in value respectively.

Considering the magnitude of the total annual change within the major industry groups themselves, those groups which had the greatest shares of the total increment also had the larger relative increases over their shipments in previous years. However, the estimated amount of increase of \$123 million in the non-metallic mineral products industries which represented only about 5 per cent of the total increase in manufacturers' shipments, in fact constituted a 16.6 per cent increase in the value of shipments in this group as compared with the previous year to reach a new peak. Other industry groups which had significant increases were the primary metal industries of 12 per cent and the machinery industries of 13 per cent; the metal fabricating industries and the rubber industries of 11 per cent each; and the leather products industries and the paper and allied products industries of 10 per cent each. Nearly all of the other major industry groups showed some amount of increase except the knitting mills which had no increase in the year as compared with 1963 and the petroleum and coal products and the tobacco products industries which registered declines of 0.8 per cent and 4.5 per cent respectively. Most of the durable goods industries showed greater increases than the non-durable goods industries both in terms of value and in proportion to the level of shipments. The increase was estimated at 6.3 per cent for the non-durable goods industries in total and at 9.7 per cent for the durable goods industries. In the non-durable goods industries the range was from the declines mentioned above for the tobacco and the petroleum industries to the increase of 16.6 per cent in the non-metallic minerals group; in the durable goods group the increases ranged from 5 per cent in the furniture and fixtures industries to 13 per cent in the machinery industries.

With the seasonal variation in manufacturers' shipments adjusted in a set of preliminary and unpublished estimates for the major groups; the predominant pattern in manufacturers' shipments in 1964 was the strong upward movement in the first quarter of the year followed by a slump in the middle rising again to a high level in the fourth quarter usually as high but not higher than the first quarter peak. The food and beverage industries group is an exception in that it has risen steadily for the past ten years with a slight slump at mid-year but a fourth quarter peak. The tobacco products industries and the knitting mills fluctuated rather more widely than other groups and an upward trend appeared only during the fourth quarter. Shipments in the petroleum and coal products industries also fluctuated widely, reached a peak in April and were lower again by the year's end. The strong upward movement in the rubber industries through 1963 continued up to mid 1964 but since then has fluctuated widely and on balance appears to be moving downward. The clothing industries, on the other hand, having shown a downward trend from mid 1963 to May this year, moved sharply upward during the summer, fell in the early fall and rose again during the fourth quarter. The furniture and fixture industry group fluctuated during the first three quarters around a fairly stable level but rose sharply in the last two months of the year. The machinery industries instead of continuing from a high fourth quarter level in the previous year climbed from a fourth quarter slump to a peak in the first quarter followed by the typical pattern mentioned above of a mid year slump with an increase in the fourth quarter. The transportation equipment

industries which also followed the typical pattern during the year, ended however, with a decline in the last quarter.

In the month of December inventories owned by manufacturers were valued by preliminary estimate at \$5,176.0 million, which was the highest value in the year 1964, and represented an increase of 0.5 per cent over November; but the seasonally adjusted estimate for the same month showed a decline of 0.6 per cent as compared with November which in the seasonally adjusted series was the highest value in the year.

The average inventories owned by manufacturers in 1964 were estimated at \$5,032.3 million, an increase of 4.0 per cent from the average of \$4,839.7 million in the previous year. Both the unadjusted estimate and the seasonally adjusted estimate of manufacturers' owned inventories during the year indicated a rather significant upward trend, especially during the second half of the year, following the decline in March and the relatively slow advance in the second quarter. The durable goods industries, as a whole, appeared to have much stronger increases during the last five months. The non-durable industry group continued the increase from the high level in the last quarter 1963 through the first quarter in 1964, declined in the mid-year, and rose gradually again towards the last quarter of the year.

Unfortunately, a comparison of the component groups in the total inventory held, which differs from total inventory owned by the amount of inventory held mainly as goods in process under progress payments arrangements, cannot be made by individual industries with seasonally adjusted data. Since in many industries the accumulation of raw materials has a direct relation to the crop year which in turn is followed by intense activity and a build up of finished products, the seasonal pattern of raw materials and finished products may differ considerably and, of course, activity in certain durable goods industries depends on the temperature with the resultant effect on inventories as much as the textile and clothing industries do.

The differences between the components are striking with the lowest increase shown in finished products. In fact there is almost no difference between the durable and non-durable goods industries in this item which in December was 2.4 per cent higher in non-durables and 2.5 per cent higher in durables. The ratio of finished products inventory to shipments had fallen by December 1964 to 0.66 as compared with 0.70 in December 1963; the average ratio in 1964 was 0.68 as compared with 0.71 in 1963.

The increase in raw materials inventories over the year was 5.4 per cent with a wide difference between the increase of 2.0 per cent in the raw materials inventory of the non-durable goods industry groups and the increase of 10.3 per cent in the raw materials inventory of the durable goods industry groups. The increase was shown by all groups with however the wood industries showing an increase of only 1.0 per cent. The metal fabricating industries, the transportation equipment industries and the electrical products industries showed the greatest increases of 15, 19 and 13 per cent respectively. The furniture and fixture industries and the non-metallic mineral products industries each showed an increase of 6 per cent; the primary metal industries and the machinery industries each showed increases of 8.0 per cent in raw materials inventory in December 1964 as compared with December 1963.

The largest increase in inventories was in the goods in process component which in December 1964 was 7.6 per cent above the level of December 1963. Again the larger advance was in the durable goods group where inventory of goods in process was 9 per cent higher this December than in December 1963 as compared with the non-durable



goods industries where goods in process at the end of December was 5 per cent above the level of December 1963. In the durable goods industry groups the inventory held but not owned was 5.4 per cent higher in December 1964 than in December 1963 and since, at a level of \$286 million, could account for something up to 30 per cent of the total goods in process inventory of \$958 million (some small amount would be held as raw materials), it is apparent that manufacturers' investment in inventory of goods in process had risen even more than 9.0 per cent over the year.

The difference between the major groups in the durable goods industries is fairly wide. Two groups, the wood industries which had only a very slight increase in raw materials, and the non-metallic minerals products industries where raw materials rose by 6 per cent, both showed declines in goods in process. The furniture and fixtures industries which was one, with the two above, to show the smallest increase in raw materials, had goods in process only fractionally higher at the end of 1964 than at the end of 1963. Goods in process in the machinery industries was also lower at the end of December this year than in December 1963 though raw materials were up by 8 per cent and inventory held but not owned was up from \$25 million to \$42 million over the twelve months. The remaining four durable goods industry groups showed goods in process up between 10 and 12 per cent over the year.

In the non-durable goods groups the increase in the level of goods in process in the food and beverage industries group at 5 per cent is the same as the increase in the non-durable goods total which is to be expected since the food and beverage industries account for 40 per cent of the non-durable goods industries. The level of activity in the tobacco products industries show much the largest increase over the twelve months with an increase of 25 per cent. Raw materials inventories are up only slightly but finished products also show an increase in December 1964 as compared with the previous December of 30 per cent.

Inventories of goods in process in the textile industries are 9 per cent higher this December than a year ago in contrast to inventories in goods in process in knitting mills which were 1 per cent lower than a year ago and in the clothing industries which were at the same level. In the leather industries goods in process were up by 2 per cent.

The rubber industries show an increase of 7 per cent in goods in process in December this year as compared with last and in fact during 1964 the level has been on the average 8 per cent above 1963. The paper and allied industries and the petroleum and coal products industries show goods in process inventories up 10 and 11 per cent respectively; the chemical and chemical products industries are up by 6 per cent and the miscellaneous manufacturing industries show goods in process inventories up 4 per cent this December as compared with last.











TABLE 3. Estimated Value of Shipments, Orders and Inventory in Manufacturing Industries grouped according to the Standard Industrial Classification

Durable  
Includes Major Groups 8, 9, 12, 13, 14, 15, 16 and 17.

Date	Shipments(1)	Orders		Inventory at end of month					
		New orders received during month	Unfilled orders at end of month	Owned	Held but not owned	All inventory held			
						Total	Raw materials	Goods in process	Finished products
thousands of dollars									
1960 - January	753,853	767,326	1,699,340	1,939,610	325,222	2,264,832	878,614	800,739	585,479
February	784,035	800,595	1,715,900	1,986,534	326,498	2,313,032	885,699	813,582	613,751
March	895,596	902,386	1,722,690	2,030,978	285,983	2,316,961	889,291	776,640	651,030
April	823,485	775,046	1,674,251	2,056,516	295,656	2,352,172	896,292	790,214	665,666
May	887,652	847,641	1,634,240	2,068,359	302,551	2,370,910	894,846	799,082	676,982
June	903,265	850,048	1,581,023	2,054,511	305,442	2,359,953	890,564	793,123	676,266
July	766,519	760,123	1,574,627	2,020,747	302,499	2,323,246	896,227	763,768	663,251
August	788,664	764,935	1,550,698	2,012,718	303,036	2,315,754	900,598	778,232	636,924
September	838,959	805,611	1,517,350	1,992,471	285,424	2,277,895	888,038	769,964	619,893
October	824,990	779,991	1,472,351	1,964,053	252,337	2,216,390	875,672	723,265	617,453
November	841,403	801,489	1,432,437	1,940,749	252,167	2,192,916	861,818	721,371	609,727
December	773,928	794,263	1,452,772	1,942,074	252,143	2,194,217	854,735	712,701	626,781
Totals	9,882,549								
1961 - January	720,914	749,125	1,480,983	1,937,967	242,283	2,180,250	841,552	695,767	642,931
February	730,343	744,492	1,495,132	1,977,123	247,224	2,224,347	836,975	717,434	669,938
March	820,008	882,110	1,557,234	1,998,097	254,454	2,252,551	827,816	734,542	690,193
April	787,739	801,104	1,570,599	2,018,550	249,676	2,268,226	822,795	740,949	704,482
May	895,550	887,928	1,562,977	2,042,027	214,540	2,256,567	828,607	721,403	706,557
June	945,431	919,676	1,537,222	2,040,736	201,553	2,242,289	822,757	707,335	712,197
July	822,070	826,680	1,541,832	1,997,519	204,301	2,201,820	831,406	680,473	689,941
August	861,162	870,096	1,550,766	2,006,796	203,684	2,210,480	844,685	698,088	667,707
September	912,520	896,432	1,534,678	2,004,021	207,372	2,211,393	843,995	710,413	656,985
October	906,579	892,944	1,521,043	2,042,355	196,960	2,239,315	853,362	718,728	667,225
November	933,682	998,492	1,585,853	2,052,193	203,916	2,256,109	854,769	722,457	678,883
December	850,363	880,068	1,615,558	2,115,609	212,674	2,328,283	872,162	753,390	702,731
Totals	10,186,361								
1962 - January	830,910	877,239	1,661,887	2,105,460	218,297	2,323,757	863,134	767,286	693,337
February	819,561	876,780	1,719,106	2,143,950	236,011	2,379,961	858,092	791,862	730,007
March	968,426	1,025,663	1,776,343	2,175,132	241,021	2,416,153	860,544	803,690	751,919
April	925,946	929,935	1,780,332	2,184,768	254,778	2,439,546	860,348	814,600	764,598
May	1,079,860	1,073,463	1,773,935	2,185,296	264,131	2,449,427	859,610	832,316	757,501
June	1,096,486	1,142,294	1,819,743	2,162,335	282,056	2,444,391	859,888	838,604	745,939
July	959,129	958,685	1,819,299	2,140,381	297,379	2,437,760	873,774	837,249	726,737
August	944,999	929,224	1,803,524	2,166,957	297,888	2,464,845	880,605	879,180	705,060
September	1,010,615	964,655	1,757,564	2,183,016	304,657	2,487,673	881,946	894,079	711,648
October	1,086,990	1,058,534	1,729,108	2,207,628	285,811	2,493,439	881,620	901,969	709,850
November	1,059,441	1,039,814	1,709,481	2,181,185	283,554	2,464,739	882,109	877,743	704,887
December	945,429	941,749	1,705,801	2,202,351	283,982	2,486,333	884,661	874,648	727,024
Totals	11,727,792								
1963 - January	944,566	1,073,909	1,835,144	2,225,537	283,538	2,509,075	870,038	870,405	768,632
February	922,007	940,911	1,854,048	2,266,599	292,085	2,558,684	872,653	886,232	799,799
March	1,021,808	1,020,029	1,852,269	2,279,051	300,070	2,579,121	871,768	896,854	810,499
April	1,027,260	1,008,071	1,833,080	2,283,742	305,111	2,588,853	863,239	898,845	826,769
May	1,185,694	1,198,272	1,845,658	2,281,109	293,959	2,575,068	862,378	885,655	827,035
June	1,139,617	1,109,747	1,815,788	2,254,940	296,052	2,550,992	859,086	874,172	817,734
July	1,053,424	1,073,443	1,835,807	2,219,872	277,826	2,497,698	878,216	825,104	794,378
August	948,617	1,009,859	1,897,049	2,264,955	270,744	2,535,699	889,630	861,875	784,194
September	1,086,170	1,051,230	1,862,109	2,276,604	283,888	2,560,492	900,428	877,062	783,002
October	1,174,858	1,173,686	1,860,937	2,259,063	279,602	2,538,665	897,667	875,956	765,042
November	1,147,304	1,168,251	1,881,884	2,238,011	285,450	2,523,461	893,658	874,792	755,011
December	1,120,193	1,113,629	1,875,320	2,284,518	271,508	2,556,026	900,805	880,979	774,242
Totals	12,771,518								
1964 - January	1,100,285	1,246,704	2,021,739	2,296,982	275,724	2,572,706	888,310	891,311	793,085
February	1,103,045	1,099,812	2,018,506	2,317,269	283,087	2,600,356	891,497	902,849	806,010
March	1,226,615	1,278,938	2,070,829	2,298,003	297,216	2,595,219	886,682	902,629	805,908
April	1,195,904	1,218,088	2,093,013	2,313,612	293,250	2,606,862	888,637	898,020	820,205
May	1,176,553	1,186,127	2,102,587	2,345,404	311,754	2,657,158	902,591	917,852	836,715
June	1,253,756	1,266,932	2,115,763	2,330,131	289,566	2,619,697	906,242	878,157	835,298
July	1,086,761	1,151,699	2,180,701	2,314,979	287,648	2,602,627	929,696	870,377	802,554
August	1,024,360	1,025,046	2,181,387	2,376,217	274,072	2,650,289	943,211	914,695	792,383
September	1,218,400	1,196,983	2,159,970	2,404,869	268,281	2,673,150	955,627	925,078	792,445
October	1,200,842	1,212,580	2,171,708	2,405,341	264,488	2,669,829	962,729	924,824	782,276
November	1,204,591	1,256,814	2,223,931	2,437,111	275,567	2,712,678	978,457	940,086	794,135
December	1,216,285	1,214,452	2,222,098	2,459,024	286,263	2,745,287	993,746	957,595	793,946
Totals	14,007,397								

See footnotes, page 43.

TABLE 3. Estimated Value of Shipments, Orders and Inventory in Manufacturing Industries grouped according to the Standard Industrial Classification

## Major Group 1 - Food and Beverage Industries.

Date	Shipments	Orders		Inventory at end of month					
		New orders received during month(2)	Unfilled orders at end of month(2)	Owned	Held but not owned	All inventory held			
						Total	Raw materials	Goods in process	Finished products
thousands of dollars									
1960 - January ....	352,335			647,207	-	647,207	314,886	144,487	187,834
February ...	354,354			618,727	-	618,727	302,541	145,513	170,673
March .....	372,405			601,615	-	601,615	287,533	147,285	166,797
April .....	372,424			593,675	-	593,675	283,579	147,173	162,923
May .....	405,528			603,127	-	603,127	295,677	147,956	159,494
June .....	425,430			602,357	-	602,357	296,519	147,750	158,088
July .....	418,731			608,759	-	608,759	301,112	146,017	161,630
August .....	426,154			636,360	-	636,360	316,245	144,688	175,427
September ..	429,806			658,035	-	658,035	307,677	145,165	205,193
October ....	418,190			686,192	-	686,192	319,353	146,486	220,353
November ...	417,427			699,033	-	699,033	331,023	149,741	218,269
December ...	392,254			685,619	-	685,619	325,752	147,516	212,351
Totals ...	4,785,038								
1961 - January ....	365,533			674,529	-	674,529	320,293	148,216	206,020
February ...	358,203			647,205	-	647,205	305,531	150,880	190,794
March .....	397,765			635,628	-	635,628	297,569	150,695	187,364
April .....	392,188			625,312	-	625,312	291,966	152,190	181,156
May .....	432,897			611,847	-	611,847	284,296	153,090	174,461
June .....	451,208			614,985	-	614,985	287,720	152,494	174,771
July .....	438,939			635,767	-	635,767	309,905	151,093	174,769
August .....	459,893			671,726	-	671,726	332,441	148,562	190,723
September ..	442,035			700,220	-	700,220	333,224	149,381	217,615
October ....	450,941			726,121	-	726,121	345,879	150,757	229,485
November ...	445,215			744,558	-	744,558	362,858	153,833	227,867
December ...	408,668			726,507	-	726,507	350,072	151,275	225,160
Totals ...	5,043,485								
1962 - January ....	396,895			709,888	-	709,888	341,382	151,748	216,758
February ...	372,932			689,830	-	683,830	329,819	154,078	205,933
March .....	424,703			667,782	-	667,782	316,694	155,178	195,910
April .....	416,117			663,556	-	663,556	316,939	157,497	189,120
May .....	464,485			656,211	-	656,211	315,721	160,123	180,367
June .....	476,593			643,111	-	643,111	303,863	161,039	178,209
July .....	468,907			675,882	-	675,882	334,263	159,488	182,131
August .....	471,889			717,932	-	717,932	356,664	158,346	202,922
September ..	449,719			750,368	-	750,368	358,697	160,411	231,260
October ....	476,362			770,911	-	770,911	372,903	162,072	235,936
November ...	460,853			799,293	-	799,293	396,128	165,183	237,982
December ...	421,428			787,203	-	787,203	387,589	163,177	236,437
Totals ...	5,300,883								
1963 - January ....	415,034			760,568	-	760,568	372,069	161,239	227,260
February ...	399,882			732,642	-	732,642	351,758	161,609	219,275
March .....	424,137			721,503	-	721,503	345,852	164,129	211,522
April .....	443,756			703,324	-	703,324	336,121	163,327	203,876
May .....	492,799			705,586	-	705,586	338,660	162,720	204,206
June .....	484,469			699,425	-	699,425	336,701	162,954	199,770
July .....	497,403			702,994	-	702,994	342,528	162,183	198,283
August .....	492,039			725,424	-	725,424	358,149	159,987	207,288
September ...	480,947			755,815	-	755,815	364,529	162,810	228,476
October ....	509,492			798,652	-	798,652	387,310	163,851	247,491
November ...	480,644			826,934	-	826,934	400,519	167,822	258,593
December ...	462,680			822,774	-	822,774	397,195	166,339	259,240
Totals ...	5,583,282								
1964 - January ....	455,327			801,974	-	801,974	384,441	165,226	252,307
February ...	435,363			767,692	-	767,692	359,781	166,902	241,009
March .....	466,194			735,768	-	735,768	341,903	168,848	225,017
April .....	480,615			741,225	-	741,225	350,447	170,477	220,301
May .....	504,165			728,028	-	728,028	344,086	171,501	212,441
June .....	532,162			718,773	-	718,773	342,083	171,531	205,159
July .....	539,957			732,053	-	732,053	357,904	169,548	204,601
August .....	515,390			759,008	-	759,008	376,350	169,319	213,339
September ...	526,133			789,185	-	789,185	379,279	170,011	239,895
October ....	533,710			796,243	-	796,243	383,837	170,170	242,236
November ...	510,777			823,950	-	823,950	400,070	175,211	248,669
December ...	500,922			810,786	-	810,786	390,470	174,718	245,598
Totals ...	6,000,715								

See footnotes page 43.



TABLE 3. Estimated Value of Shipments, Orders and Inventory in Manufacturing Industries grouped according to the Standard Industrial Classification

Major Group 2 - Tobacco Products Industries

Date	Shipments	Orders		Inventory at end of month					
		New orders received during month(2)	Unfilled orders at end of month(2)	Owned	Held but not owned	All inventory held			
						Total	Raw materials	Goods in process	Finished products
thousands of dollars									
1960 - January ....	25,802			133,635	-	133,635	114,492	2,812	16,331
February ...	30,541			152,519	-	152,519	132,298	2,851	17,370
March .....	32,270			164,713	-	164,713	142,104	2,730	19,879
April .....	24,239			161,430	-	161,430	138,818	2,793	19,819
May .....	25,592			152,018	-	152,018	129,664	2,803	19,551
June .....	32,490			142,663	-	142,663	121,261	2,780	18,622
July .....	25,894			134,504	-	134,504	121,131	2,675	10,698
August .....	22,600			125,009	-	125,009	111,649	2,787	10,573
September ..	28,092			118,539	-	118,539	103,459	2,768	12,312
October .....	23,914			116,093	-	116,093	99,069	2,946	14,078
November ...	26,969			119,719	-	119,719	102,878	2,985	13,856
December ...	35,973			140,453	-	140,453	123,844	2,937	13,672
Totals ...	334,376								
1961 - January ....	28,687			161,380	-	161,380	141,979	3,110	16,291
February ...	31,447			174,977	-	174,977	153,697	3,536	17,744
March .....	33,668			180,956	-	180,956	158,067	3,311	19,578
April .....	26,755			178,323	-	178,323	154,590	3,029	20,704
May .....	26,616			173,245	-	173,245	149,952	2,566	20,727
June .....	30,296			168,516	-	168,516	144,236	2,263	22,017
July .....	24,544			157,804	-	157,804	140,422	1,964	15,418
August .....	24,978			152,316	-	152,316	135,286	2,060	14,970
September ..	26,696			145,347	-	145,347	128,138	1,821	15,388
October ....	24,335			142,451	-	142,451	122,436	1,699	18,316
November ...	25,282			139,951	-	139,951	119,527	1,585	18,839
December ...	31,682			147,502	-	147,502	130,669	1,142	15,691
Totals ...	334,986								
1962 - January ....	29,376			162,729	-	162,729	144,312	1,432	16,985
February ...	32,032			170,505	-	170,505	150,907	1,566	18,032
March .....	37,218			198,331	-	198,331	158,012	1,551	38,768
April .....	35,874			182,250	-	182,250	158,564	1,597	22,089
May .....	32,081			180,079	-	180,079	156,002	1,616	22,461
June .....	33,736			173,296	-	173,296	149,160	1,597	22,539
July .....	24,747			162,715	-	162,715	145,152	1,440	16,123
August .....	27,324			154,679	-	154,679	138,442	1,392	14,845
September ..	27,199			149,973	-	149,973	132,630	1,406	15,937
October ....	25,213			143,948	-	143,948	125,072	1,440	17,436
November ...	26,642			140,477	-	140,477	122,076	1,483	16,918
December ...	27,607			137,368	-	137,368	121,098	1,386	14,884
Totals ...	359,049								
1963 - January ....	24,428			144,414	-	144,414	126,843	1,469	16,102
February ...	32,187			159,875	-	159,875	139,669	1,533	18,673
March .....	35,351			173,912	-	173,912	149,817	1,503	22,592
April .....	38,748			180,823	-	180,823	155,818	1,488	23,517
May .....	38,823			178,020	-	178,020	152,057	1,494	24,469
June .....	33,152			171,761	-	171,761	144,662	1,510	25,589
July .....	31,353			160,224	-	160,224	139,387	1,470	19,367
August .....	26,736			153,675	-	153,675	133,796	1,474	18,405
September ...	30,026			146,451	-	146,451	126,354	1,474	18,623
October ....	24,289			141,343	-	141,343	121,412	1,445	18,486
November ...	27,755			146,476	-	146,476	125,746	1,364	19,366
December ...	36,880			149,291	-	149,291	131,273	1,383	16,635
Totals ...	379,728								
1964 - January ....	29,477			160,951	-	160,951	141,762	1,394	17,795
February ...	25,798			173,877	-	173,877	150,769	1,514	21,594
March .....	28,731			174,665	-	174,665	150,542	1,626	22,497
April .....	39,482			176,868	-	176,868	152,251	1,680	22,937
May .....	29,331			175,327	-	175,327	149,835	1,845	23,647
June .....	31,041			172,199	-	172,199	144,636	1,824	25,739
July .....	29,102			159,634	-	159,634	138,567	1,730	19,337
August .....	26,442			154,569	-	154,569	135,420	1,870	17,279
September ..	28,046			148,416	-	148,416	127,140	1,870	19,406
October ...	25,650			145,351	-	145,351	121,004	1,899	22,448
November ...	28,200			150,332	-	150,332	122,886	1,782	25,664
December P ...	41,514			154,841	-	154,841	131,444	1,724	21,673
Totals ...	362,814								

See footnotes, page 43.







TABLE 3. Estimated Value of Shipments, Orders and Inventory in Manufacturing Industries grouped according to the Standard Industrial Classification

Major Group 6 - Knitting Mills

Date	Shipments	Orders		Inventory at end of month					
		New orders received during month(2)	Unfilled orders at end of month(2)	Owned	Held but not owned	All inventory held			
						Total	Raw materials	Goods in process	Finished products
thousands of dollars									
1960 - January ....	13,016			46,083	-	46,083	12,836	11,290	21,957
February ...	15,041			48,399	-	48,399	13,477	11,783	23,139
March .....	16,818			49,212	-	49,212	13,589	11,780	23,843
April .....	14,132			50,845	-	50,845	14,200	11,830	24,815
May .....	13,403			52,527	-	52,527	14,633	11,908	25,986
June .....	13,764			53,328	-	53,328	14,570	11,693	27,065
July .....	15,678			51,880	-	51,880	14,453	11,757	25,670
August .....	19,704			50,712	-	50,712	13,965	11,879	24,868
September ..	22,058			48,086	-	48,086	13,420	11,708	22,958
October ....	20,798			46,727	-	46,727	13,424	11,287	22,016
November ...	20,448			46,217	-	46,217	13,101	11,390	21,726
December ...	14,693			46,270	-	46,270	13,228	11,717	21,325
Totals ...	199,553								
1961 - January ....	14,777			48,213	-	48,213	13,374	11,918	22,921
February ...	16,657			49,372	-	49,372	13,488	12,214	23,670
March .....	17,316			50,543	-	50,543	14,142	12,299	24,102
April .....	14,728			51,786	-	51,786	14,244	12,638	24,904
May .....	14,648			53,378	-	53,378	14,429	12,787	26,162
June .....	14,906			54,793	-	54,793	15,085	12,643	27,065
July .....	18,157			52,854	-	52,854	15,057	12,133	25,664
August .....	22,045			51,679	-	51,679	15,473	12,125	24,081
September ..	23,181			50,597	-	50,597	15,640	12,250	22,707
October ....	23,203			49,442	-	49,442	15,704	12,341	21,397
November ...	23,366			49,051	-	49,051	15,778	12,348	20,925
December ...	16,319			49,453	-	49,453	15,313	12,429	21,711
Totals ...	219,303								
1962 - January ....	16,395			52,717	-	52,717	17,592	13,040	22,085
February ...	16,694			53,560	-	53,560	18,002	13,099	22,459
March .....	17,494			55,930	-	55,930	19,150	13,401	23,379
April .....	15,883			57,032	-	57,032	19,353	13,577	24,102
May .....	15,291			58,821	-	58,821	19,221	13,977	25,623
June .....	16,151			60,801	-	60,801	20,368	14,013	26,420
July .....	19,237			60,152	-	60,152	20,811	14,403	24,938
August .....	22,177			59,035	-	59,035	20,766	14,316	23,953
September ..	23,807			56,920	-	56,920	20,456	14,226	22,238
October ....	23,834			55,127	-	55,127	20,669	13,910	20,548
November ...	22,563			53,917	-	53,917	20,156	13,583	20,178
December ...	17,047			53,802	-	53,802	19,079	13,365	21,358
Totals ...	226,573								
1963 - January ....	16,593			55,303	-	55,303	19,268	13,926	22,109
February ...	17,432			56,743	-	56,743	19,457	13,895	23,391
March .....	17,940			57,789	-	57,789	19,952	13,620	24,217
April .....	16,341			58,457	-	58,457	20,082	13,488	24,887
May .....	16,040			58,838	-	58,838	20,181	13,722	24,935
June .....	16,236			61,458	-	61,458	20,054	13,872	27,532
July .....	20,062			59,445	-	59,445	19,872	13,802	25,771
August .....	23,026			57,762	-	57,762	20,144	13,500	24,118
September ..	24,861			54,046	-	54,046	19,595	12,854	21,597
October ....	24,878			52,496	-	52,496	19,597	12,415	20,484
November ...	22,077			51,899	-	51,899	19,520	12,249	20,130
December ...	16,192			52,988	-	52,988	19,648	12,395	20,945
Totals ...	231,678								
1964 - January ....	16,282			54,346	-	54,346	19,389	13,116	21,841
February ...	17,251			54,893	-	54,893	19,550	13,326	22,017
March .....	16,728			54,220	-	54,220	19,250	12,751	22,219
April .....	14,972			57,864	-	57,864	20,224	13,384	24,256
May .....	14,555			59,641	-	59,641	20,988	13,638	25,015
June .....	16,605			61,591	-	61,591	21,592	13,897	26,102
July .....	18,896			60,060	-	60,060	21,211	13,987	24,862
August .....	22,113			58,856	-	58,856	20,686	13,989	24,181
September ..	24,846			57,141	-	57,141	20,756	12,451	23,934
October ....	25,069			55,492	-	55,492	20,471	11,960	23,061
November <sup>F</sup> ..	24,204			54,319	-	54,319	20,423	12,322	21,574
December <sup>P</sup> ..	20,103			54,908	-	54,908	20,760	12,319	21,829
Totals ...	231,624								

See footnotes, page 43.



TABLE 3. Estimated Value of Shipments, Orders and Inventory in Manufacturing Industries grouped according to the Standard Industrial Classification

Major Group 8 - Wood Industries

Date	Shipments	Orders		Inventory at end of month					
		New orders received during month(2)	Unfilled orders at end of month(2)	Owned	Held but not owned	All inventory held			
						Total	Raw materials	Goods in process	Finished products
thousands of dollars									
1960 - January ....	68,702			195,299	-	195,299	105,458	1,941	87,900
February ...	76,459			212,401	-	212,401	113,924	1,959	96,518
March .....	89,597			232,162	-	232,162	122,950	2,010	107,202
April .....	77,276			228,065	-	228,065	119,489	2,106	106,470
May .....	91,389			222,068	-	222,068	114,252	2,120	105,696
June .....	100,372			212,191	-	212,191	108,026	2,070	102,095
July .....	85,810			212,655	-	212,655	108,604	2,080	101,971
August .....	92,808			207,132	-	207,132	105,043	2,053	100,036
September ..	87,466			199,141	-	199,141	101,353	1,986	95,802
October ....	80,111			189,705	-	189,705	94,160	2,071	93,474
November ...	75,151			175,970	-	175,970	87,437	2,107	86,426
December ...	70,654			187,979	-	187,979	91,491	2,134	94,354
Totals ...	995,795								
1961 - January ....	67,607			184,368	-	184,368	93,669	2,196	88,503
February ...	71,475			198,293	-	198,293	99,464	2,082	96,747
March .....	83,456			206,143	-	206,143	103,917	1,930	100,296
April .....	79,559			206,252	-	206,252	102,634	1,893	101,725
May .....	94,550			195,676	-	195,676	97,452	2,115	96,109
June .....	107,339			191,136	-	191,136	93,776	2,069	95,291
July .....	93,415			187,416	-	187,416	90,731	1,907	94,778
August .....	99,491			182,692	-	182,692	88,498	1,895	92,299
September ..	93,802			180,120	-	180,120	85,323	1,902	92,895
October ....	88,399			177,991	-	177,991	83,091	1,915	92,985
November ...	83,875			172,285	-	172,285	79,782	1,855	90,648
December ...	72,369			180,853	-	180,853	81,281	1,756	97,816
Totals ...	1,035,337								
1962 - January ....	82,399			184,013	-	184,013	85,672	1,647	96,694
February ...	86,941			197,982	-	197,982	91,938	1,847	104,197
March .....	105,568			208,403	-	208,403	95,679	1,905	110,819
April .....	95,760			208,955	-	208,955	95,517	1,910	111,528
May .....	125,349			200,999	-	200,999	94,039	1,996	104,964
June .....	132,560			192,738	-	192,738	90,011	2,030	100,697
July .....	120,072			194,891	-	194,891	90,405	2,175	102,311
August .....	125,825			189,577	-	189,577	87,946	2,161	99,470
September ..	113,764			193,638	-	193,638	87,486	2,319	103,833
October ....	115,213			184,857	-	184,857	83,166	2,240	99,451
November ...	100,402			182,537	-	182,537	82,317	2,220	98,000
December ...	87,757			188,737	-	188,737	84,238	2,263	102,236
Totals ...	1,291,610								
1963 - January ....	92,807			191,740	-	191,740	86,408	2,340	102,992
February ...	98,238			209,193	-	209,193	92,784	2,772	113,637
March .....	109,776			220,198	-	220,198	99,679	2,935	117,584
April .....	104,647			223,106	-	223,106	99,870	3,109	120,127
May .....	135,052			227,314	-	227,314	99,493	2,951	124,870
June .....	140,274			225,047	-	225,047	97,851	3,010	124,186
July .....	141,807			223,379	-	223,379	96,862	2,940	123,577
August .....	137,441			217,674	-	217,674	94,592	3,121	119,961
September ..	124,191			216,293	-	216,293	93,625	3,111	119,557
October ....	129,447			207,028	-	207,028	89,922	3,458	113,648
November ...	109,119			199,644	-	199,644	87,202	3,408	109,034
December ...	101,717			205,460	-	205,460	89,767	3,236	112,457
Totals ...	1,424,516								
1964 - January ....	108,030			206,480	-	206,480	91,112	2,858	112,510
February ...	114,867			212,915	-	212,915	95,186	2,806	114,923
March .....	139,147			214,533	-	214,533	99,974	2,874	111,685
April .....	116,717			211,129	-	211,129	97,780	2,890	110,459
May .....	124,575			216,025	-	216,025	97,637	2,894	115,494
June .....	146,297			209,524	-	209,524	93,617	2,890	113,017
July .....	138,482			210,612	-	210,612	92,889	2,978	114,745
August .....	129,090			207,733	-	207,733	91,303	3,007	113,423
September ..	133,948			210,951	-	210,951	91,608	3,105	116,238
October ....	134,964			208,148	-	208,148	90,466	3,064	114,618
November ...	116,977			204,467	-	204,467	89,206	3,001	112,260
DecemberP ..	111,434			209,729	-	209,729	90,660	2,953	116,116
Totals ...	1,514,528								

See footnotes, page 43.

TABLE 3. Estimated Value of Shipments, Orders and Inventory in Manufacturing Industries grouped according to the Standard Industrial Classification

## Major Group 9 - Furniture and Fixture Industries

Date	Shipments	Orders		Inventory at end of month					
		New orders received during month(2)	Unfilled orders at end of month(2)	Owned	Held but not owned	All inventory held			
						Total	Raw materials	Goods in process	Finished products
thousands of dollars									
1960 - January	22,909			60,797	-	60,797	34,076	12,734	13,987
February	26,269			61,495	-	61,495	34,357	12,833	14,305
March	28,736			62,059	-	62,059	34,577	13,155	14,327
April	26,179			62,772	-	62,772	34,510	13,698	14,564
May	27,956			62,830	-	62,830	34,339	13,803	14,688
June	28,677			62,837	-	62,837	33,809	13,690	15,338
July	23,742			62,515	-	62,515	34,162	13,537	14,816
August	33,624			61,395	-	61,395	33,047	13,823	14,525
September	34,064			58,974	-	58,974	31,827	12,966	14,181
October	31,654			58,991	-	58,991	31,793	13,042	14,156
November	31,385			58,265	-	58,265	31,901	12,404	13,960
December	26,794			60,438	-	60,438	33,791	12,037	14,610
Totals	341,989								
1961 - January	23,853			61,631	-	61,631	34,671	11,813	15,147
February	26,541			61,816	-	61,816	34,830	12,072	14,914
March	28,918			62,234	-	62,234	34,477	12,840	14,917
April	27,033			62,344	-	62,344	33,803	13,553	14,988
May	30,545			61,822	-	61,822	32,941	13,373	15,508
June	30,639			62,144	-	62,144	32,580	12,806	16,758
July	26,410			61,636	-	61,636	33,330	12,731	15,575
August	35,602			61,001	-	61,001	33,295	12,848	14,858
September	33,977			61,262	-	61,262	33,877	12,798	14,587
October	34,479			64,080	-	64,080	35,600	13,725	14,755
November	35,016			63,290	-	63,290	35,489	12,814	14,987
December	29,034			64,743	-	64,743	36,802	13,502	14,439
Totals	362,047								
1962 - January	26,521			66,407	-	66,407	38,355	12,985	15,067
February	28,526			67,522	-	67,522	39,258	13,194	15,070
March	31,191			67,147	-	67,147	39,067	13,224	14,856
April	30,918			66,787	-	66,787	38,283	13,145	15,359
May	34,542			66,357	-	66,357	37,318	14,001	15,038
June	32,688			66,897	-	66,897	36,931	14,529	15,437
July	29,457			66,606	-	66,606	37,333	14,499	14,774
August	36,086			66,834	-	66,834	36,240	16,276	14,318
September	36,807			66,652	-	66,652	35,976	16,679	13,997
October	40,502			67,748	-	67,748	36,565	17,379	13,804
November	37,181			67,626	-	67,626	36,296	17,558	13,772
December	30,169			68,114	-	68,114	36,719	16,435	14,960
Totals	394,588								
1963 - January	30,141			69,360	-	69,360	37,191	16,843	15,326
February	31,479			71,388	-	71,388	38,394	17,123	15,871
March	33,170			71,851	-	71,851	38,788	17,407	15,656
April	33,905			71,864	-	71,864	38,716	17,869	15,279
May	36,400			70,675	-	70,675	37,736	17,380	15,559
June	35,126			71,076	-	71,076	37,300	17,582	16,194
July	32,178			72,436	-	72,436	38,586	18,456	15,394
August	38,120			71,341	-	71,341	37,445	18,782	15,114
September	41,654			70,988	-	70,988	37,549	18,709	14,730
October	44,457			71,834	-	71,834	38,249	18,223	15,362
November	40,315			71,331	-	71,331	37,881	18,526	14,924
December	34,900			72,817	-	72,817	39,271	18,421	15,125
Totals	431,845								
1964 - January	31,414			73,685	-	73,685	40,234	18,643	14,808
February	34,060			74,998	-	74,998	41,289	18,864	14,845
March	37,149			74,141	-	74,141	40,984	18,771	14,386
April	36,447			75,175	-	75,175	40,843	19,109	15,223
May	36,883			75,390	-	75,390	40,949	18,961	15,480
June	38,886			74,755	-	74,755	40,123	18,817	15,815
July	32,868			74,876	-	74,876	41,172	19,078	14,626
August	39,120			74,757	-	74,757	40,944	19,245	14,568
September	43,153			74,305	-	74,305	40,812	19,156	14,337
October	43,645			73,508	-	73,508	40,807	18,713	13,988
November	40,681			73,633	-	73,633	40,893	18,518	14,222
December <sup>P</sup>	37,875			74,205	-	74,205	41,431	18,437	14,337
Totals	452,181								

See footnotes, page 43.



TABLE 3. Estimated Value of Shipments, Orders and Inventory in Manufacturing Industries grouped according to the Standard Industrial Classification

Major Group 10 - Paper and Allied Industries

Date	Shipments	Orders		Inventory at end of month					
		New orders received during month(2)	Unfilled orders at end of month(2)	Owned	Held but not owned	All inventory held			
						Total	Raw materials	Goods in process	Finished products
thousands of dollars									
1960 - January	159,512			337,186	-	337,186	247,456	14,922	74,808
February	160,692			347,687	-	347,687	251,450	15,221	81,016
March	175,727			353,381	-	353,381	250,126	15,443	87,812
April	175,388			344,463	-	344,463	243,710	15,790	84,963
May	180,848			339,268	-	339,268	239,266	15,606	84,396
June	187,318			336,116	-	336,116	240,819	15,269	80,028
July	171,406			341,127	-	341,127	247,570	15,331	78,226
August	183,432			346,296	-	346,296	251,058	16,033	79,205
September	188,146			349,087	-	349,087	256,039	15,902	77,146
October	183,843			356,794	-	356,794	263,047	15,649	78,098
November	192,810			355,034	-	355,034	264,568	16,845	73,621
December	166,782			358,725	-	358,725	270,165	16,080	72,480
Totals	2,125,904								
1961 - January	163,438			370,163	-	370,163	272,221	18,144	79,798
February	157,745			379,686	-	379,686	275,639	17,031	87,016
March	178,354			384,492	-	384,492	269,574	17,925	96,993
April	177,821			371,690	-	371,690	260,746	18,036	92,908
May	191,132			365,342	-	365,342	254,254	18,566	92,522
June	193,853			364,169	-	364,169	255,155	17,272	91,742
July	177,763			371,212	-	371,212	261,518	18,069	91,625
August	199,769			369,312	-	369,312	262,238	18,171	88,903
September	190,754			367,363	-	367,363	261,750	18,017	87,596
October	195,148			370,447	-	370,447	263,784	17,952	88,711
November	203,509			366,621	-	366,621	264,866	17,320	84,435
December	176,515			370,220	-	370,220	269,755	17,003	83,462
Totals	2,205,801								
1962 - January	176,681			378,032	-	378,032	268,299	16,709	93,024
February	157,005			383,556	-	383,556	269,636	15,435	98,485
March	194,859			383,353	-	383,353	264,926	17,280	101,147
April	187,822			372,052	-	372,052	254,088	17,654	100,310
May	207,887			367,749	-	367,749	252,178	17,186	98,385
June	203,392			366,920	-	366,920	250,820	17,554	98,546
July	193,444			368,555	-	368,555	253,586	18,135	96,834
August	208,780			369,177	-	369,177	256,630	18,216	94,331
September	198,026			370,031	-	370,031	258,637	18,762	92,632
October	216,147			365,158	-	365,158	256,919	17,919	90,320
November	208,912			363,420	-	363,420	258,112	17,487	87,821
December	177,320			364,837	-	364,837	260,152	17,225	87,460
Totals	2,330,275								
1963 - January	177,249			372,056	-	372,056	259,494	17,380	95,182
February	168,924			376,894	-	376,894	259,070	17,089	100,735
March	184,547			377,308	-	377,308	252,847	17,837	106,624
April	200,077			366,404	-	366,404	242,406	17,483	106,515
May	218,090			359,333	-	359,333	236,014	17,955	105,364
June	213,394			356,415	-	356,415	238,109	17,862	100,444
July	204,285			359,721	-	359,721	242,281	18,188	99,252
August	213,736			360,756	-	360,756	245,490	17,793	97,473
September	211,854			356,485	-	356,485	247,692	18,013	90,780
October	223,893			357,412	-	357,412	249,481	17,666	90,265
November	219,363			356,414	-	356,414	250,738	17,511	88,165
December	204,511			355,260	-	355,260	254,898	17,654	82,708
Totals	2,439,923								
1964 - January	206,512			360,160	-	360,160	254,576	18,083	87,501
February	198,023			370,671	-	370,671	257,338	18,599	94,734
March	211,439			375,841	-	375,841	255,814	19,649	100,378
April	227,737			366,981	-	366,981	248,499	19,533	98,949
May	224,014			358,860	-	358,860	242,097	19,525	97,238
June	234,129			357,469	-	357,469	243,264	19,521	94,684
July	222,108			363,629	-	363,629	246,503	20,631	96,495
August	227,314			366,468	-	366,468	250,970	20,030	95,468
September	230,055			367,242	-	367,242	255,620	19,118	92,504
October	237,638			369,206	-	369,206	257,410	18,975	92,821
November	229,636			367,276	-	367,276	257,245	19,281	90,750
December	223,051			373,847	-	373,847	263,872	19,347	90,628
Totals	2,671,656								

See footnotes, page 43.

TABLE 3. Estimated Value of Shipments, Orders and Inventory in Manufacturing Industries grouped according to the Standard Industrial Classification

## Major Group 12 - Primary Metal Industries

Date	Shipments	Orders		Inventory at end of month					
		New orders received during month	Unfilled orders at end of month	Owned(3)	Held but not owned	All inventory held			
						Total	Raw materials	Goods in process	Finished products
thousands of dollars									
1960 - January ....	228,634	232,904	204,421			434,149	227,664	88,204	118,281
February ...	224,131	219,632	199,922			431,650	219,751	89,834	122,065
March .....	235,447	235,275	199,750			438,683	214,412	91,879	132,392
April .....	223,610	211,258	187,398			453,585	218,259	92,930	142,396
May .....	238,084	227,267	176,581			468,583	226,712	93,894	147,977
June .....	220,909	199,668	155,340			479,633	237,287	92,724	149,622
July .....	209,692	214,783	160,431			493,840	246,707	93,023	154,110
August .....	225,106	215,038	150,363			500,830	258,947	91,272	150,611
September ..	226,082	227,954	152,235			510,941	266,187	91,873	152,881
October .....	224,418	223,459	151,276			512,737	265,310	92,702	154,725
November ...	235,944	210,827	126,159			515,860	272,060	87,307	156,493
December ...	194,518	215,502	147,143			518,211	268,424	87,888	161,899
Totals ...	2,686,575								
1961 - January ....	216,366	222,933	153,710			505,487	254,853	82,145	168,489
February ...	203,705	214,423	164,428			498,656	242,083	82,705	173,868
March .....	222,996	217,031	158,463			493,367	230,016	84,912	178,439
April .....	210,473	221,030	169,020			497,179	225,761	86,148	185,270
May .....	242,421	227,801	154,400			515,756	238,520	89,862	187,374
June .....	243,371	255,384	166,413			518,580	241,099	89,627	187,854
July .....	232,982	240,073	173,504			520,444	247,330	91,236	181,878
August .....	255,431	255,611	173,684			526,190	260,038	89,635	176,517
September ..	257,217	250,585	167,052			519,705	261,769	88,056	169,880
October .....	253,149	241,994	155,897			531,063	267,790	93,340	169,933
November ...	247,283	238,818	147,432			537,461	272,958	89,742	174,761
December ...	218,632	236,505	165,305			545,653	275,020	92,098	178,535
Totals ...	2,804,026								
1962 - January ....	239,531	245,661	171,435			532,001	255,052	97,521	179,428
February ...	217,966	223,140	176,609			528,250	241,414	98,237	188,599
March .....	248,477	259,356	187,488			524,104	232,483	97,452	194,169
April .....	237,900	250,603	200,191			528,233	230,583	96,861	200,789
May .....	269,362	265,214	196,043			528,357	231,081	95,516	201,760
June .....	267,900	266,103	194,246			526,198	238,120	94,396	193,682
July .....	248,164	249,869	195,951			527,652	246,869	94,185	186,598
August .....	258,665	252,609	189,895			532,760	250,623	98,799	183,338
September ..	248,612	246,422	187,705			537,256	255,037	97,821	184,398
October .....	247,486	252,137	192,356			543,322	260,000	97,319	186,003
November ...	262,230	258,809	188,935			542,023	261,316	95,741	184,966
December ...	231,804	248,971	206,102			548,359	260,402	97,105	190,852
Totals ...	2,978,097								
1963 - January ....	254,179	254,162	206,085			538,702	247,619	99,244	191,839
February ...	229,646	240,317	216,756			532,397	235,992	97,438	198,967
March .....	260,788	263,268	219,236			510,475	222,088	94,404	193,983
April .....	250,843	268,988	237,381			509,275	215,125	94,512	199,638
May .....	285,049	291,211	243,543			507,805	217,281	96,205	194,319
June .....	270,656	256,140	229,027			503,797	222,976	95,298	185,523
July .....	252,520	250,502	227,009			513,220	231,606	97,204	184,410
August .....	257,196	241,293	211,106			527,865	239,238	100,611	188,016
September ..	255,047	249,999	206,058			534,787	244,509	100,041	190,237
October .....	278,189	275,411	203,280			531,178	249,333	96,795	185,050
November ...	274,266	276,950	205,964			528,229	253,008	96,610	178,611
December ...	252,716	261,439	214,687			538,575	252,912	98,477	187,186
Totals ...	3,121,095								
1964 - January ....	268,757	339,041	284,971			526,407	238,407	99,962	188,038
February ...	263,359	246,396	268,008			519,287	228,324	101,656	189,307
March .....	282,747	306,300	291,561			505,957	210,755	103,204	191,998
April .....	298,437	299,263	292,387			508,512	213,736	105,612	189,164
May .....	295,727	281,187	277,847			521,598	224,282	108,244	189,072
June .....	294,872	285,728	268,703			519,614	227,539	107,352	184,723
July .....	287,453	281,626	262,876			521,334	240,665	106,785	173,884
August .....	300,127	285,628	248,377			521,798	245,695	110,250	165,853
September ..	293,403	286,298	241,272			527,459	251,480	112,326	163,653
October .....	298,800	305,151	247,623			535,204	256,894	112,300	166,010
November <sup>F</sup> ..	300,561	326,824	273,886			548,632	271,082	108,995	168,555
December <sup>P</sup> ..	315,929	303,553	261,510			549,439	272,534	108,801	168,104
Totals ...	3,500,172								

See footnotes, page 43.

TABLE 3. Estimated Value of Shipments, Orders and Inventory in Manufacturing Industries grouped according to the Standard Industrial Classification

Major Group 13 - Metal Fabricating Industries (except Machinery and Transportation Equipment Industries)

Date	Shipments(1)	Orders		Inventory at end of month					
		New orders received during month	Unfilled orders at end of month	Owned	Held but not owned	All inventory held			
						Total	Raw materials	Goods in process	Finished products
thousands of dollars									
1960 - January ....	96,580	96,535	299,396	341,093	65,740	406,833	167,150	155,048	84,635
February ...	100,412	119,455	318,439	351,111	68,111	419,222	173,155	157,259	88,808
March .....	113,251	114,595	319,783	365,458	71,541	436,999	178,304	165,179	93,516
April .....	110,064	102,370	312,089	374,082	77,047	451,129	185,497	170,058	95,574
May .....	120,730	122,806	314,165	377,197	76,269	453,466	184,692	172,696	96,078
June .....	128,592	117,973	303,546	377,537	78,405	455,942	179,673	180,269	96,000
July .....	119,941	114,996	298,601	367,140	82,256	449,396	175,524	182,016	91,856
August .....	137,600	125,388	286,389	358,197	82,985	441,182	169,277	181,899	90,006
September ..	139,042	138,664	286,011	341,034	80,250	421,284	163,532	173,388	84,364
October .....	125,617	101,799	262,193	326,364	45,425	371,789	161,411	128,179	82,199
November ...	117,137	115,662	260,718	316,014	44,885	360,899	150,754	127,263	82,882
December ...	103,627	97,431	254,522	308,557	41,411	349,968	144,566	120,929	84,473
Totals ...	1,412,593								
1961 - January ....	96,806	97,031	254,747	312,672	44,767	357,439	145,719	126,269	85,451
February ...	99,249	94,261	249,759	320,041	46,624	366,665	147,621	130,692	88,352
March .....	114,792	117,689	252,656	323,051	50,171	373,222	147,008	135,384	90,830
April .....	111,606	106,668	247,718	330,076	51,108	381,184	149,893	138,688	92,603
May .....	126,194	125,480	247,004	333,363	50,380	383,743	150,747	139,720	93,276
June .....	137,237	137,261	247,028	332,404	52,870	385,274	149,509	142,783	92,982
July .....	123,750	124,539	247,817	329,814	50,332	380,146	151,405	138,809	89,932
August .....	145,393	146,617	249,041	324,609	52,323	376,932	149,072	141,728	86,132
September ..	153,165	151,827	247,703	319,160	49,316	368,476	148,901	136,191	83,384
October .....	140,520	137,318	244,501	319,528	40,393	359,921	153,169	123,378	83,374
November ...	143,070	134,673	236,104	323,671	42,518	366,189	153,067	128,250	84,872
December ...	116,213	117,919	237,810	329,009	44,859	373,868	154,840	129,987	89,041
Totals ...	1,507,995								
1962 - January ....	112,096	126,910	252,624	340,116	46,276	386,392	159,553	137,563	89,276
February ...	104,500	115,579	263,703	351,318	46,755	398,073	159,500	144,611	93,962
March .....	138,511	153,431	278,623	360,838	44,869	405,707	166,723	141,000	97,984
April .....	128,173	132,761	283,211	366,502	47,195	413,697	168,525	145,016	100,156
May .....	151,994	154,013	285,230	369,810	51,957	421,767	170,639	151,069	100,059
June .....	159,149	160,824	286,905	367,950	58,361	426,311	170,919	155,853	99,539
July .....	152,172	148,034	282,767	366,934	60,137	427,071	169,621	160,860	96,590
August .....	161,395	160,552	281,924	359,242	56,421	415,663	165,632	155,974	94,057
September ..	180,325	165,249	266,848	348,680	55,324	404,004	162,605	150,905	90,494
October .....	178,613	169,144	257,379	344,740	36,197	380,937	160,473	131,597	88,867
November ...	156,384	145,056	246,051	337,217	40,986	378,203	155,879	133,121	89,203
December ...	125,196	121,091	241,946	335,886	39,925	375,811	153,701	131,512	90,598
Totals ...	1,748,508								
1963 - January ....	123,357	139,464	258,053	340,746	42,362	383,108	153,994	134,860	94,254
February ...	123,835	114,502	248,720	347,087	42,154	389,241	157,724	134,697	96,820
March .....	132,023	126,998	243,695	356,278	43,775	400,053	160,845	139,053	100,155
April .....	136,643	133,976	241,028	363,607	47,768	411,375	163,686	144,157	103,532
May .....	161,647	162,410	241,791	365,274	48,413	413,687	162,547	146,492	104,648
June .....	157,407	155,146	239,530	362,392	48,514	410,906	161,417	147,214	102,275
July .....	152,841	157,320	244,009	361,799	51,028	412,827	163,140	149,443	100,244
August .....	155,307	158,097	246,799	356,620	49,253	405,873	161,318	146,057	98,498
September ..	169,666	169,339	246,472	346,081	48,893	394,974	156,859	141,666	96,449
October .....	175,181	172,344	243,635	332,890	38,586	371,476	152,319	126,385	94,772
November ...	153,427	152,477	242,685	329,162	42,678	371,840	151,235	127,971	92,634
December ...	146,059	140,469	237,095	332,580	42,738	375,318	150,955	130,174	94,189
Totals ...	1,787,393								
1964 - January ....	145,455	163,632	255,272	339,324	44,094	383,418	152,189	135,426	95,803
February ...	147,177	149,939	258,034	349,094	48,151	397,245	155,754	143,000	98,491
March .....	180,867	183,984	261,151	345,392	59,925	405,317	158,911	148,376	98,450
April .....	153,071	161,794	269,874	357,528	54,762	412,290	161,225	147,497	103,568
May .....	150,081	158,019	277,812	368,583	54,840	423,423	164,037	152,350	107,036
June .....	167,321	184,663	295,154	374,786	58,630	433,416	166,746	157,835	108,835
July .....	170,469	194,961	319,646	367,269	57,650	424,919	168,446	151,061	105,412
August .....	162,942	168,081	324,785	368,456	55,146	423,602	171,378	150,095	102,129
September ...	183,917	193,262	334,130	362,144	53,918	416,062	171,378	145,602	99,082
October .....	183,961	180,290	330,459	357,588	37,963	395,551	169,658	127,661	98,232
November ...	170,637	171,347	331,169	359,820	43,933	403,753	170,270	134,471	99,012
December ...	171,433	174,992	334,728	363,640	50,506	414,146	173,627	142,874	97,645
Totals ...	1,987,331								

See footnotes, page 43.



TABLE 3. Estimated Value of Shipments, Orders and Inventory in Manufacturing Industries grouped according to the Standard Industrial Classification

Major Group 15 - Transportation Equipment Industries

Date	Shipments(1)	Orders		Inventory at end of month					
		New orders received during month	Unfilled orders at end of month	Owned	Held but not owned	All inventory held			
						Total	Raw materials	Goods in process	Finished products
thousands of dollars									
1960 - January ....	172,148	174,548	517,164	283,437	209,254	492,691	111,563	325,605	55,523
February ....	173,449	187,281	530,996	288,929	207,404	496,333	111,636	326,535	58,162
March .....	217,253	228,601	542,354	279,886	161,332	441,218	109,498	271,947	59,773
April .....	190,047	184,558	536,855	279,316	166,528	445,844	108,987	277,688	59,169
May .....	200,529	192,999	529,325	276,160	174,888	451,048	107,204	283,615	60,229
June .....	192,032	177,701	514,994	261,511	174,956	436,467	104,968	269,514	61,985
July .....	129,417	123,528	509,105	243,850	166,795	410,645	104,637	265,476	60,532
August .....	93,759	88,257	503,603	254,153	168,168	422,321	108,498	261,186	52,637
September ..	119,153	103,415	487,865	270,193	156,762	426,955	109,381	263,146	54,428
October ....	151,646	137,053	473,272	274,816	158,777	433,593	110,554	265,219	57,820
November ...	170,348	165,115	468,039	274,711	161,914	436,625	106,712	275,273	54,640
December ...	193,170	196,923	471,792	264,063	179,881	443,944	107,772	284,548	51,624
Totals ...	2,002,951								
1961 - January ....	146,731	138,517	463,578	272,737	167,756	440,493	107,231	273,546	59,716
February ...	151,068	164,001	476,511	288,301	170,004	458,305	107,939	286,656	63,710
March .....	171,642	200,678	505,547	295,432	174,261	469,693	109,362	295,095	65,236
April .....	165,879	169,042	508,710	301,049	167,704	468,753	109,913	293,744	65,096
May .....	183,334	177,832	503,208	310,160	132,290	442,450	110,471	267,532	64,447
June .....	188,907	153,682	467,983	308,471	116,214	424,685	109,077	250,829	64,779
July .....	134,755	125,520	458,748	279,053	120,580	399,633	109,497	231,434	58,702
August .....	101,803	86,650	443,595	298,387	116,176	414,563	112,098	242,744	59,721
September ..	139,998	123,636	427,233	306,815	119,275	426,090	113,291	254,709	58,090
October ....	168,495	152,184	410,922	321,900	115,509	437,409	111,822	262,503	63,084
November ...	195,325	256,522	472,119	317,154	119,769	436,923	110,292	264,574	62,057
December ...	208,748	199,320	462,691	333,161	127,458	460,619	113,373	284,999	62,247
Totals ...	1,956,685								
1962 - January ....	193,520	184,425	453,596	331,349	128,128	459,477	113,862	277,896	67,719
February ...	198,148	211,970	467,418	331,818	136,608	468,426	111,621	285,294	71,511
March .....	221,053	243,589	489,954	331,245	146,161	477,406	112,610	295,978	68,818
April .....	215,302	217,479	492,131	328,713	151,718	480,431	111,911	299,820	68,700
May .....	253,281	235,850	474,700	334,214	152,073	486,287	112,307	307,567	66,413
June .....	246,137	294,388	522,951	326,247	158,599	484,846	111,233	307,130	66,483
July .....	180,391	188,430	530,990	308,330	165,879	474,209	111,753	297,805	64,651
August .....	120,717	113,764	524,037	347,728	168,087	515,815	119,908	333,724	62,183
September ..	178,185	176,434	522,286	363,067	172,115	535,182	119,749	347,483	67,950
October ....	246,582	220,521	496,225	371,860	168,786	540,646	120,737	351,228	68,681
November ...	254,719	247,729	489,235	358,391	169,670	528,061	119,103	342,082	66,876
December ...	254,089	239,917	475,063	351,977	175,384	527,361	120,210	342,097	65,054
Totals ...	2,562,124								
1963 - January ....	237,617	295,217	532,663	344,933	167,847	512,780	116,734	326,902	69,144
February ...	221,422	237,872	549,113	353,067	174,654	527,721	117,994	338,869	70,858
March .....	237,724	244,831	556,220	352,516	185,463	537,979	119,873	347,819	70,287
April .....	255,620	224,877	525,477	350,855	183,818	534,673	120,076	344,534	70,063
May .....	288,680	301,747	538,544	345,374	170,654	516,028	119,772	330,080	66,176
June .....	255,072	239,963	523,435	334,572	170,420	504,992	116,794	320,766	67,432
July .....	203,295	217,007	537,147	309,087	160,077	469,164	120,597	285,733	62,834
August .....	105,966	188,203	619,384	366,357	153,233	519,590	128,903	324,766	65,921
September ..	206,565	189,910	602,729	392,647	164,874	557,521	137,542	346,621	73,358
October ....	259,893	263,901	606,737	397,803	174,574	572,377	137,480	364,660	70,237
November ...	301,054	293,712	599,395	390,500	179,449	569,949	137,390	358,496	74,063
December ...	335,522	312,699	576,572	400,600	167,409	568,009	134,145	359,463	74,401
Totals ...	2,908,430								
1964 - January ....	308,910	325,339	593,001	410,695	168,358	579,053	133,799	364,078	81,176
February ...	289,843	293,420	596,578	415,273	169,465	584,738	135,978	367,006	81,754
March .....	294,944	309,270	610,904	418,187	164,070	582,257	140,520	359,495	82,242
April .....	304,921	300,503	606,486	422,343	155,505	577,848	137,774	355,652	84,422
May .....	290,966	308,632	624,152	416,827	177,033	593,860	137,090	367,986	88,784
June .....	300,255	298,165	622,062	395,947	153,897	549,844	135,182	321,977	92,685
July .....	178,675	209,111	652,498	390,584	152,983	543,567	140,961	321,900	80,706
August .....	130,045	133,682	656,135	452,978	143,565	596,543	144,288	360,047	92,208
September ..	254,640	231,281	632,776	480,900	139,514	620,414	149,823	370,998	99,593
October ....	232,924	248,855	648,707	487,906	143,384	631,290	155,020	385,521	90,749
November ...	272,801	294,312	670,218	498,233	146,279	644,512	153,586	393,124	97,802
DecemberP ..	273,643	266,935	663,510	505,128	149,812	654,940	159,537	402,471	92,932
Totals ...	3,132,567								

See footnotes, page 43.



TABLE 3. Estimated Value of Shipments, Orders and Inventory in Manufacturing Industries grouped according to the Standard Industrial Classification

Major Group 17 - Non-Metallic Mineral Products Industries

Date	Shipments	Orders		Inventory at end of month					
		New orders received during month(2)	Unfilled orders at end of month(2)	Owned	Held but not owned	All inventory held			
						Total	Raw materials	Goods in process	Finished products
thousands of dollars									
1960 - January ....	35,098			108,859	-	108,859	52,395	9,449	47,015
February ...	37,671			111,242	-	111,242	51,011	10,357	49,874
March .....	43,797			111,874	-	111,874	48,073	11,298	52,503
April .....	44,603			113,817	-	113,817	47,101	12,052	54,664
May .....	55,976			114,444	-	114,444	47,660	11,736	55,048
June .....	66,708			112,733	-	112,733	47,852	10,856	54,025
July .....	63,463			111,264	-	111,264	48,378	10,130	52,756
August .....	66,758			108,389	-	108,389	49,259	9,377	49,753
September ..	65,804			104,466	-	104,466	48,809	8,904	46,753
October ....	62,053			102,858	-	102,858	49,006	7,713	46,139
November ...	56,406			104,636	-	104,636	50,167	8,061	46,408
December ...	40,799			107,431	-	107,431	50,414	9,111	47,906
Totals ...	639,136								
1961 - January ....	38,849			111,478	-	111,478	50,547	9,926	51,005
February ...	37,755			114,127	-	114,127	50,193	10,880	53,054
March .....	44,269			113,673	-	113,673	48,160	11,315	54,198
April .....	47,524			115,037	-	115,037	47,247	11,295	56,495
May .....	62,886			114,137	-	114,137	46,506	11,100	56,531
June .....	71,210			111,278	-	111,278	46,194	9,969	55,115
July .....	66,588			111,834	-	111,834	47,846	9,336	54,652
August .....	72,039			109,415	-	109,415	48,244	8,799	52,372
September ..	65,104			110,069	-	110,069	49,089	8,532	52,448
October ....	65,688			111,661	-	111,661	50,631	8,268	52,762
November ...	59,614			112,417	-	112,417	49,743	8,168	54,506
December ...	43,474			118,112	-	118,112	52,447	8,937	56,728
Totals ...	675,000								
1962 - January ....	38,667			121,959	-	121,959	52,684	8,763	60,512
February ...	39,069			125,091	-	125,091	51,596	9,328	64,167
March .....	53,119			124,277	-	124,277	50,203	10,872	63,202
April .....	54,751			124,683	-	124,683	49,827	11,452	63,404
May .....	72,548			122,395	-	122,395	49,569	11,334	61,492
June .....	79,019			118,654	-	118,654	49,058	10,606	58,990
July .....	76,039			115,243	-	115,243	50,211	9,688	55,344
August .....	79,832			112,188	-	112,188	50,738	9,091	52,359
September ..	69,730			111,629	-	111,629	51,554	8,029	52,066
October ....	74,145			112,892	-	112,892	52,766	8,030	52,096
November ...	65,899			113,638	-	113,638	53,430	8,335	51,873
December ...	46,547			120,506	-	120,506	53,809	9,426	57,271
Totals ...	749,365								
1963 - January ....	39,974			125,977	-	125,977	51,899	9,833	64,245
February ...	39,411			131,816	-	131,816	52,232	10,975	68,609
March .....	49,154			133,198	-	133,198	51,878	12,382	68,938
April .....	55,514			133,168	-	133,168	50,731	13,335	69,102
May .....	71,828			132,527	-	132,527	51,541	13,552	67,434
June .....	74,385			130,916	-	130,916	52,309	12,601	66,006
July .....	74,549			129,262	-	129,262	53,252	12,107	63,903
August .....	72,624			125,872	-	125,872	52,855	11,377	61,640
September ..	73,569			123,580	-	123,580	54,460	10,274	58,846
October ....	75,153			120,303	-	120,303	53,522	9,314	57,467
November ...	66,085			120,039	-	120,039	54,446	8,810	56,783
December ...	48,898			123,248	-	123,248	54,337	9,670	59,241
Totals ...	741,144								
1964 - January ....	51,267			124,056	-	124,056	53,719	8,468	61,869
February ...	52,018			124,995	-	124,995	53,206	8,307	63,482
March .....	62,088			123,088	-	123,088	51,582	8,524	62,982
April .....	61,514			126,756	-	126,756	50,997	8,931	66,828
May .....	71,674			127,335	-	127,335	50,807	8,940	67,588
June .....	84,454			125,112	-	125,112	50,899	8,969	65,244
July .....	84,787			121,593	-	121,593	51,178	8,571	61,844
August .....	79,224			121,710	-	121,710	52,466	8,474	60,770
September ..	83,487			120,874	-	120,874	53,478	8,275	59,121
October ....	85,069			120,346	-	120,346	54,516	8,030	57,800
November ...	78,110			127,098	-	127,098	56,650	8,032	62,416
December ...	70,419			127,522	-	127,522	57,433	8,214	61,875
Totals ...	864,111								

See footnotes, page 43.

22 TABLE 3. Estimated Value of Shipments, Orders and Inventory in Manufacturing Industries grouped according to the Standard Industrial Classification

Major Group 18 - Petroleum and Coal Products Industries

Date	Shipments	Orders		Inventory at end of month					
		New orders received during month(2)	Unfilled orders at end of month(2)	Owned	Held but not owned	All inventory held			
						Total	Raw materials	Goods in process	Finished products
thousands of dollars									
1960 - January	94,068			203,639	-	203,639	64,254	18,087	121,298
February	85,006			210,702	-	210,702	63,505	20,671	126,526
March	92,361			212,656	-	212,656	61,476	18,107	133,073
April	91,288			210,914	-	210,914	61,507	18,852	130,555
May	97,012			211,639	-	211,639	64,300	22,040	125,299
June	95,951			211,554	-	211,554	61,695	24,940	124,919
July	96,165			214,063	-	214,063	64,435	21,669	127,959
August	98,475			219,272	-	219,272	66,191	22,380	130,701
September	98,787			220,697	-	220,697	67,123	25,097	128,477
October	96,539			214,215	-	214,215	67,537	19,934	126,744
November	100,315			208,330	-	208,330	65,482	21,743	121,105
December	101,203			202,932	-	202,932	65,458	20,775	116,699
Totals	1,147,170								
1961 - January	99,032			204,293	-	204,293	65,443	21,063	117,787
February	88,445			206,921	-	206,921	64,491	20,517	121,913
March	92,259			204,539	-	204,539	61,274	18,959	124,306
April	90,702			211,079	-	211,079	63,104	18,539	129,436
May	104,525			211,317	-	211,317	63,496	20,861	126,960
June	101,131			209,196	-	209,196	62,684	20,050	126,462
July	102,890			201,412	-	201,412	60,377	22,730	118,305
August	105,715			203,651	-	203,651	61,647	19,369	122,635
September	101,023			204,835	-	204,835	62,441	20,564	121,830
October	107,151			203,251	-	203,251	63,984	19,869	119,398
November	112,434			196,616	-	196,616	62,329	20,533	113,754
December	114,867			198,523	-	198,523	61,386	21,269	115,868
Totals	1,220,174								
1962 - January	110,921			201,746	-	201,746	63,644	20,137	117,965
February	99,205			201,423	-	201,423	60,095	20,804	120,524
March	106,193			209,216	-	209,216	59,125	20,947	129,144
April	97,281			216,041	-	216,041	63,673	20,016	132,352
May	113,849			213,757	-	213,757	66,946	19,852	126,959
June	109,937			212,228	-	212,228	65,330	21,643	125,255
July	112,995			217,468	-	217,468	69,066	22,376	126,026
August	116,856			217,210	-	217,210	68,167	22,716	126,327
September	114,134			213,692	-	213,692	62,172	22,841	128,679
October	121,658			211,168	-	211,168	63,665	20,144	127,359
November	124,382			210,371	-	210,371	67,876	20,471	122,024
December	122,699			208,941	-	208,941	66,521	20,083	122,337
Totals	1,350,110								
1963 - January	119,446			207,642	-	207,642	64,511	23,131	120,000
February	108,372			206,974	-	206,974	61,353	23,979	121,642
March	107,667			217,288	-	217,288	62,733	22,181	132,374
April	107,410			214,509	-	214,509	63,537	19,715	131,257
May	119,127			213,547	-	213,547	66,675	18,138	128,734
June	107,110			221,327	-	221,327	66,972	22,311	132,044
July	117,853			220,779	-	220,779	66,748	21,961	132,070
August	120,043			224,050	-	224,050	67,359	22,204	134,487
September	122,128			222,388	-	222,388	65,177	19,582	137,629
October	116,873			219,812	-	219,812	61,351	19,881	138,580
November	118,574			218,957	-	218,957	64,481	19,789	134,687
December	133,195			218,502	-	218,502	63,064	20,394	135,044
Totals	1,397,798								
1964 - January	118,359			221,052	-	221,052	62,950	21,330	136,772
February	108,440			227,555	-	227,555	62,905	20,510	144,140
March	110,554			230,990	-	230,990	63,415	22,397	145,178
April	109,890			226,837	-	226,837	61,080	19,570	146,187
May	109,650			228,603	-	228,603	63,826	20,131	144,646
June	112,525			225,771	-	225,771	63,816	20,826	141,129
July	116,762			227,182	-	227,182	59,116	20,739	147,327
August	117,828			226,387	-	226,387	58,293	21,492	146,602
September	115,281			227,269	-	227,269	59,593	21,936	145,740
October	120,240			220,275	-	220,275	64,056	20,193	136,026
November	118,565			214,957	-	214,957	63,110	23,176	128,671
December	128,423			201,989	-	201,989	60,360	22,635	118,994
Totals	1,386,517								

See footnotes, page 43.



TABLE 3. Estimated Value of Shipments, Orders and Inventory in Manufacturing Industries grouped according to the Standard Industrial Classification

Major Group 19 - Chemical and Chemical Products Industries

Date	Shipments	Orders		Inventory at end of month					
		New orders received during month(2)	Unfilled orders at end of month(2)	Owned	Held but not owned	All inventory held			
						Total	Raw materials	Goods in process	Finished products
thousands of dollars									
1960 - January	102,775			244,397	-	244,397	106,967	36,272	101,158
February	107,275			244,710	-	244,710	104,803	36,217	103,690
March	119,474			248,220	-	248,220	104,531	37,375	106,314
April	120,081			247,451	-	247,451	105,089	36,979	105,383
May	132,648			241,649	-	241,649	107,334	33,375	100,940
June	126,677			242,805	-	242,805	108,944	31,230	102,631
July	100,274			243,883	-	243,883	108,832	31,767	103,284
August	113,510			244,747	-	244,747	111,153	32,109	101,485
September	121,945			240,137	-	240,137	109,854	32,639	97,644
October	111,723			243,454	-	243,454	111,164	33,764	98,526
November	108,058			250,958	-	250,958	113,295	35,636	102,027
December	93,240			256,883	-	256,883	111,412	35,724	109,747
Totals	1,357,680								
1961 - January	110,785			262,912	-	262,912	115,239	35,793	111,880
February	106,270			264,712	-	264,712	111,454	36,656	116,602
March	121,228			262,483	-	262,483	106,857	36,408	119,218
April	121,221			262,272	-	262,272	105,394	36,878	120,000
May	139,864			255,303	-	255,303	104,859	32,888	117,556
June	133,551			250,023	-	250,023	103,194	31,627	115,202
July	107,578			253,313	-	253,313	105,157	31,511	116,645
August	119,177			259,429	-	259,429	110,618	32,187	116,624
September	124,737			259,713	-	259,713	111,485	32,647	115,581
October	124,283			265,787	-	265,787	114,905	33,843	117,039
November	119,845			269,628	-	269,628	113,113	35,064	121,451
December	105,339			275,121	-	275,121	113,985	34,688	126,448
Totals	1,433,878								
1962 - January	119,357			278,991	-	278,991	110,204	34,522	134,265
February	113,292			278,077	-	278,077	106,580	34,892	136,605
March	131,185			281,979	-	281,979	106,012	35,335	140,632
April	136,216			277,319	-	277,319	100,764	35,326	141,229
May	160,141			264,557	-	264,557	101,324	31,021	132,212
June	143,838			257,629	-	257,629	101,140	31,272	125,217
July	117,432			264,451	-	264,451	105,381	30,609	128,461
August	126,708			267,259	-	267,259	107,501	29,782	129,976
September	129,980			267,320	-	267,320	109,156	29,086	129,078
October	131,542			270,661	-	270,661	111,279	30,374	129,008
November	124,020			271,064	-	271,064	110,134	31,133	129,797
December	110,921			277,011	-	277,011	111,446	32,024	133,541
Totals	1,544,632								
1963 - January	120,016			279,209	-	279,209	108,639	31,844	138,726
February	119,959			281,607	-	281,607	106,688	32,012	142,907
March	132,274			282,788	-	282,788	105,203	34,508	143,077
April	144,302			279,460	-	279,460	103,091	33,765	142,604
May	165,124			268,744	-	268,744	102,191	29,393	137,160
June	143,613			264,374	-	264,374	101,590	30,470	132,314
July	122,644			270,608	-	270,608	102,484	30,764	137,360
August	130,857			272,377	-	272,377	106,131	30,144	136,102
September	138,914			270,140	-	270,140	105,522	30,692	133,926
October	146,896			270,631	-	270,631	105,766	30,757	134,108
November	134,657			272,197	-	272,197	109,176	31,636	131,385
December	121,623			280,194	-	280,194	110,590	33,485	136,119
Totals	1,620,879								
1964 - January	135,296			284,606	-	284,606	108,891	33,964	141,751
February	133,998			287,786	-	287,786	108,068	34,830	144,888
March	148,402			288,389	-	288,389	106,858	36,627	144,904
April	155,753			287,225	-	287,225	105,908	35,021	146,296
May	161,150			278,321	-	278,321	104,678	31,708	141,935
June	160,188			277,370	-	277,370	105,618	31,919	139,833
July	130,570			285,889	-	285,889	108,500	32,983	144,406
August	136,812			285,069	-	285,069	108,811	32,669	143,589
September	151,129			286,637	-	286,637	110,975	33,039	142,623
October	149,451			291,018	-	291,018	112,843	33,546	144,629
November	145,223			294,547	-	294,547	115,362	34,145	145,040
December	143,178			297,601	-	297,601	116,798	35,324	145,479
Totals	1,751,150								

See footnotes, page 43.



TABLE 4. Estimated Value of Shipments, Orders, and Inventories in Selected Individual Industries

Industry	1963		1964										
	Dec.	Jan.	Feb.	Mar.	Apr.	May	June	Jul.	Aug.	Sept.	Oct.	Nov. <sup>r</sup>	Dec. <sup>p</sup>
thousands of dollars													
<b>FOODS AND BEVERAGES</b>													
<b>Slaughtering and meat processors:(1)</b>													
Shipments .....	94,204	92,523	86,627	94,813	93,418	101,905	103,873	102,437	105,025	104,261	106,778	101,707	98,945
Total inventory owned .....	50,130	53,954	56,724	55,875	59,084	58,380	57,256	54,451	51,595	51,584	52,756	59,788	55,138
<b>Dairy products industries:(2)</b>													
Shipments .....	75,239	69,996	69,828	76,191	82,183	91,567	105,735	107,756	98,852	98,753	90,386	86,115	89,147
Total inventory owned .....	44,936	42,746	41,035	41,980	43,021	48,096	51,174	52,203	52,208	52,499	51,401	50,017	50,241
Raw materials .....	25,268	25,138	24,432	25,142	25,369	26,284	27,062	27,863	27,801	27,231	26,982	26,975	26,875
Goods in process and finished products ...	19,668	17,608	16,603	16,838	17,652	21,812	24,112	24,340	24,407	25,268	24,419	23,042	23,365
<b>Fruit and vegetable canners and preservers:</b>													
Shipments .....	27,986	32,290	29,238	33,442	33,938	33,221	33,165	36,969	30,803	34,708	40,480	36,199	32,933
Total inventory owned .....	144,131	136,883	127,925	118,586	114,338	108,008	104,558	111,669	128,622	156,072	153,143	153,672	147,746
Raw materials and goods in process .....	35,736	35,131	34,149	34,120	34,671	34,746	36,614	38,928	41,654	39,190	39,833	39,944	38,801
Finished products .....	108,395	101,752	93,776	84,466	79,667	73,262	67,944	72,741	86,968	116,882	113,310	113,728	108,945
<b>Flour mills:</b>													
Shipments .....	28,060	29,572	28,968	28,301	24,647	23,117	24,297	24,686	21,647	20,739	20,814	20,255	19,753
New orders .....	21,389	24,718	24,075	24,633	19,368	19,949	20,804	21,317	22,174	20,753	22,423	19,003	19,378
Unfilled orders .....	36,109	31,255	26,362	22,694	17,415	14,247	10,754	7,385	7,912	7,926	9,535	8,283	7,908
Total inventory owned .....	51,440	46,999	41,945	38,322	36,447	36,083	34,818	34,881	34,048	37,480	38,478	40,991	38,622
Raw materials .....	45,236	40,593	35,787	31,421	30,152	29,518	28,531	28,487	29,285	32,854	33,501	35,820	33,725
<b>Biscuit manufacturers:</b>													
Shipments .....	7,297	8,668	8,416	8,969	9,077	9,284	9,659	9,527	9,260	10,404	10,121	10,080	8,590
Total inventory owned .....	8,696	10,243	10,559	10,334	10,450	10,224	10,081	10,217	10,360	10,328	10,719	10,410	9,714
Raw materials .....	5,199	6,310	6,207	6,087	6,121	5,960	5,679	5,757	5,960	5,778	5,769	5,558	5,320
Goods in process .....	377	430	407	392	431	448	437	436	420	412	413	407	368
Finished products .....	3,120	3,503	3,945	3,855	3,898	3,816	3,965	4,024	3,980	4,138	4,537	4,445	3,486
<b>Confectionery manufacturers:</b>													
Shipments .....	14,948	14,388	14,094	13,509	13,625	12,400	11,997	11,606	13,822	17,090	18,571	17,271	15,915
Total inventory owned .....	30,658	30,754	30,558	30,168	30,276	30,518	33,373	35,450	36,082	36,463	36,254	35,544	34,079
Raw materials .....	16,739	17,088	16,645	16,957	16,658	16,786	18,792	20,853	20,813	21,003	21,842	21,351	20,014
Goods in process .....	3,053	3,001	2,917	3,038	3,153	3,095	3,169	3,381	3,692	3,943	3,427	3,335	3,311
Finished products .....	10,866	10,665	10,996	10,173	10,465	10,637	11,412	11,216	11,577	11,517	10,985	10,858	10,754
<b>Sugar refineries:</b>													
Shipments .....	18,047	18,081	17,116	17,384	19,279	17,665	18,360	18,880	17,008	18,562	16,062	15,090	14,508
Total inventory owned .....	76,882	78,031	65,869	55,215	62,885	54,744	49,271	39,567	34,643	30,424	37,380	44,820	45,055
Raw materials .....	29,314	29,884	21,587	18,302	27,454	25,242	26,249	22,139	19,988	18,160	17,744	18,985	16,837
Goods in process .....	2,517	2,835	2,530	2,185	2,671	2,360	2,356	1,024	779	336	621	625	451
Finished products .....	45,051	45,312	41,752	34,728	32,760	27,142	20,666	16,404	13,876	11,928	19,015	25,210	27,767

(1) Includes sausage and sausage casing manufacturers.

(2) Includes butter and cheese plants, pasteurizing plants, condenseries, ice cream manufacturers and process cheese manufacturers.

TABLE 4. Estimated Value of Shipments, Orders, and Inventories in Selected Individual Industries - Continued

Industry	1963	1964											
	Dec.	Jan.	Feb.	Mar.	Apr.	May	June	July	Aug.	Sept.	Oct.	Nov. <sup>F</sup>	Dec. <sup>P</sup>
thousands of dollars													
<u>FOODS AND BEVERAGES - Concluded</u>													
<u>Miscellaneous food industries:(3)</u>													
Shipments .....	36,599	38,353	37,141	40,411	39,757	41,969	43,185	42,319	42,315	44,489	44,331	44,022	41,732
Total inventory owned .....	77,775	75,863	74,593	72,816	73,915	77,415	74,200	73,784	71,538	73,261	75,088	81,458	83,767
<u>Breweries:</u>													
Shipments .....	25,476	16,898	18,538	21,486	23,265	25,831	29,492	33,076	28,696	26,151	25,126	22,281	30,055
Total inventory owned .....	33,539	34,015	34,199	36,385	39,917	40,002	41,347	39,827	39,009	37,202	35,827	39,058	34,120
Raw materials .....	12,345	13,614	13,727	13,936	13,752	13,523	13,231	12,485	12,667	12,739	12,558	13,377	13,029
Goods in process .....	10,604	8,722	10,487	11,345	12,107	12,994	13,466	13,027	11,711	10,734	10,970	12,069	10,930
Finished products .....	10,590	11,679	9,985	11,104	14,058	13,485	14,650	14,315	14,631	13,729	12,299	13,612	10,161
<u>Wineries:</u>													
Shipments .....	1,816	1,569	1,444	1,547	1,851	1,663	1,667	1,513	1,514	1,821	2,376	2,409	1,737
Total inventory owned .....	12,725	12,846	12,500	12,161	11,365	11,339	11,115	11,961	11,719	11,890	10,576	14,305	14,108
Raw materials .....	1,317	1,332	1,310	1,164	1,125	1,194	1,192	2,426	2,419	2,741	2,409	2,045	1,868
Goods in process .....	10,401	10,050	9,714	9,596	8,930	8,677	8,368	8,027	7,705	7,691	6,946	11,251	11,126
Finished products .....	1,007	1,464	1,476	1,401	1,310	1,468	1,555	1,508	1,595	1,458	1,221	1,009	1,114
<u>RUBBER INDUSTRIES</u>													
<u>Rubber footwear manufacturers:(4)</u>													
Shipments .....	16,584	14,996	16,813	17,552	17,380	16,203	17,361	13,937	16,902	20,166	19,514	18,984	18,187
Total inventory owned .....	32,723	33,488	35,146	36,014	37,513	38,940	40,350	40,051	38,297	37,006	35,792	35,651	36,220
Raw materials .....	11,227	10,752	10,904	11,247	11,458	11,473	11,268	11,652	12,093	12,201	11,623	11,451	11,845
Goods in process .....	5,342	5,525	5,726	5,708	5,806	5,982	5,762	5,671	5,690	5,542	5,747	5,695	5,548
Finished products .....	16,154	17,211	18,516	19,059	20,249	21,485	23,320	22,728	20,514	19,263	18,422	18,505	18,827
<u>Rubber tire and tube manufacturers:</u>													
Shipments .....	18,800	16,233	18,138	18,707	20,595	20,883	23,886	18,997	18,058	23,539	19,989	21,162	19,018
Total inventory owned .....	59,654	61,920	64,590	66,178	66,641	65,158	63,401	65,569	64,062	64,918	65,099	63,762	67,142
Raw materials .....	11,906	10,311	10,441	10,233	10,604	10,901	9,929	10,966	11,625	11,443	12,139	11,312	14,284
Goods in process .....	5,485	5,735	5,868	5,755	5,765	5,715	6,019	5,659	6,203	5,886	5,756	6,056	6,009
Finished products .....	42,263	45,874	48,281	50,190	50,272	48,542	47,453	48,944	46,234	47,589	47,204	46,394	46,849
<u>LEATHER INDUSTRIES</u>													
<u>Leather tanneries:</u>													
Shipments .....	4,839	5,468	4,965	4,722	5,491	4,894	5,247	3,851	4,747	5,269	4,831	4,968	4,665
New orders .....	4,490	5,426	4,668	4,572	7,672	4,271	4,664	3,839	4,686	5,373	4,365	5,221	4,255
Unfilled orders .....	7,983	7,941	7,644	7,494	9,675	9,052	8,469	8,457	8,396	8,500	8,034	8,287	7,797
Total inventory owned .....	12,669	12,271	11,901	11,853	11,738	10,803	10,726	11,248	12,141	11,998	12,160	12,789	12,882

(3) Includes malt and malt products, rice mills, starch and glucose and miscellaneous food manufacturers.

(4) Includes rubber footwear manufacturers and other rubber industries.

TABLE 4. Estimated Value of Shipments, Orders, and Inventories in Selected Individual Industries - Continued

Industry	1963		1964										
	Dec.	Jan.	Feb.	Mar.	Apr.	May	June	July	Aug.	Sept.	Oct.	Nov. <sup>r</sup>	Dec. <sup>p</sup>
thousands of dollars													
<u>LEATHER INDUSTRIES - Concluded</u>													
<u>Shoe factories:</u>													
Shipments .....	11,220	17,486	19,335	20,296	17,855	14,881	14,255	15,140	21,272	22,451	19,859	15,726	14,760
Total inventory owned .....	42,683	43,982	44,585	41,759	41,450	43,943	45,476	44,897	42,138	40,220	39,925	41,894	44,428
<u>TEXTILE INDUSTRIES</u>													
<u>Cotton yarn and cloth mills:</u>													
Shipments .....	25,960	26,915	26,455	29,838	26,007	22,625	24,083	21,560	19,814	25,689	27,776	26,625	27,934
New orders .....	28,618	27,740	27,047	30,191	25,198	23,162	22,342	21,193	19,756	23,829	31,340	28,244	26,376
Unfilled orders .....	46,643	47,468	48,060	48,413	47,604	48,141	46,400	46,033	45,975	44,115	47,679	49,298	47,740
Total inventory owned .....	57,199	57,647	58,250	57,359	57,177	57,904	64,346	66,290	65,898	61,502	61,257	60,993	60,213
Raw materials .....	12,301	12,509	12,718	14,401	14,301	14,632	18,520	21,247	20,315	14,565	13,318	12,996	13,224
Goods in process .....	13,872	14,547	14,814	14,535	14,547	14,546	14,646	14,059	14,350	14,737	14,612	14,560	14,029
Finished products .....	31,026	30,591	30,718	28,423	28,329	28,726	31,180	30,984	31,233	32,200	33,327	33,437	32,960
<u>Wool yarn mills:</u>													
Shipments .....	2,437	2,297	2,215	2,021	2,001	1,937	2,333	2,193	2,376	2,669	2,679	2,434	2,288
Total inventory owned .....	7,260	7,290	7,915	8,617	8,869	9,097	9,483	9,548	9,209	8,984	8,356	7,686	7,334
<u>Wool cloth mills:</u>													
Shipments .....	6,497	7,029	6,781	6,742	7,140	7,178	7,419	7,317	7,122	7,895	8,005	7,258	7,008
Total inventory owned .....	24,544	24,940	26,006	27,541	27,700	27,656	29,018	29,019	28,686	28,270	28,044	28,929	28,490
Raw materials .....	10,113	10,430	11,153	11,663	11,556	11,167	12,066	12,295	12,096	11,887	11,244	11,948	11,498
Goods in process .....	9,410	9,445	9,616	10,051	10,238	10,540	10,692	10,094	10,303	10,362	10,850	10,766	10,719
Finished products .....	5,021	5,065	5,237	5,827	5,906	5,949	6,260	6,630	6,287	6,021	5,950	6,215	6,273
<u>Synthetic textile mills:</u>													
Shipments .....	29,604	28,317	29,979	31,840	30,550	29,530	32,223	24,863	28,066	33,030	31,838	32,322	30,339
Total inventory owned .....	52,915	52,874	53,187	53,185	53,992	55,183	57,829	58,892	60,733	60,699	59,381	58,308	59,736
Raw materials .....	16,119	16,195	15,944	15,765	16,981	16,563	17,794	18,255	19,022	19,686	19,362	19,039	19,761
Goods in process .....	17,427	17,418	17,529	17,287	18,579	19,140	20,116	19,575	20,252	19,978	19,361	19,373	19,539
Finished products .....	19,369	19,261	19,714	20,133	18,432	19,480	19,919	21,062	21,459	21,035	20,656	19,896	20,436
<u>Cordage and twine industry:</u>													
Shipments .....	1,377	2,295	2,131	1,995	2,640	4,729	5,744	2,819	2,135	2,511	990	1,738	1,840
Total inventory owned .....	10,890	12,216	12,449	14,309	14,569	13,489	12,975	12,068	12,329	11,952	13,390	12,256	11,831
<u>Carpet, mat and rug industry:</u>													
Shipments .....	3,490	4,334	4,849	5,201	4,981	4,443	4,330	4,247	4,417	5,856	5,084	5,214	4,648
Total inventory owned .....	11,271	11,657	12,099	11,903	12,441	13,078	13,411	13,306	13,848	13,829	14,056	13,964	14,609

TABLE 4. Estimated Value of Shipments, Orders, and Inventories in Selected Individual Industries - Continued

Industry	1963	1964											
	Dec.	Jan.	Feb.	Mar.	Apr.	May	June	July	Aug.	Sept.	Oct.	Nov. <sup>r</sup>	Dec. <sup>p</sup>
thousands of dollars													
<u>TEXTILE INDUSTRIES - Concluded</u>													
<u>Linoleum and coated fabrics industry:</u>													
Shipments .....	3,265	3,598	3,461	5,039	3,999	3,783	3,957	3,115	3,546	3,603	3,745	3,867	3,950
Total inventory owned .....	9,399	9,500	9,570	9,434	9,481	9,507	9,688	9,848	10,027	10,048	10,236	10,322	10,353
Raw materials .....	2,383	2,291	2,396	2,253	2,225	2,231	2,254	2,441	2,450	2,123	2,402	2,395	2,403
Goods in process .....	1,831	1,743	1,665	1,791	1,874	1,942	1,944	1,835	2,056	2,063	2,053	1,888	1,877
Finished products .....	5,185	5,466	5,509	5,390	5,382	5,334	5,490	5,572	5,521	5,862	5,781	6,039	6,073
<u>Canvas products industry:</u>													
Shipments .....	1,202	1,240	1,376	1,890	2,422	2,747	2,882	2,373	1,503	1,621	1,523	1,356	1,480
Total inventory owned .....	5,034	5,681	5,777	6,157	6,023	5,744	5,553	5,417	5,211	5,254	5,538	5,408	5,439
<u>Cotton and jute bag industry:</u>													
Shipments .....	2,600	2,777	2,501	2,474	2,432	2,187	2,161	2,089	2,332	2,857	3,331	2,906	2,730
Total inventory owned .....	6,262	5,691	5,359	5,279	5,401	5,524	5,763	5,720	5,990	6,050	5,560	5,590	5,711
<u>Miscellaneous textile industries:(5)</u>													
Shipments .....	7,610	8,780	8,886	9,214	10,012	10,354	9,999	8,971	9,888	11,063	11,440	9,894	8,687
Total inventory owned .....	18,085	18,465	18,537	19,579	20,306	19,808	20,118	19,838	19,058	19,194	18,705	18,845	20,088
<u>KNITTING MILLS</u>													
<u>Hosiery mills:</u>													
Shipments .....	5,334	6,340	6,388	5,863	5,453	4,791	4,717	5,290	5,792	6,692	7,864	6,763	5,494
Total inventory owned .....	13,866	14,406	14,494	12,386	13,081	13,683	14,310	14,322	14,208	13,522	13,272	13,223	13,350
Raw materials .....	3,753	3,927	4,079	3,958	3,927	4,150	4,225	4,166	4,188	4,004	3,927	4,073	4,042
Goods in process .....	3,880	3,983	4,040	3,249	3,342	3,450	3,521	3,488	3,385	3,274	3,290	3,475	3,463
Finished products .....	6,233	6,496	6,375	5,181	5,812	6,083	6,564	6,668	6,635	6,244	6,055	5,675	5,845
<u>Other knitting mills:</u>													
Shipments .....	10,858	9,942	10,863	10,865	9,519	9,764	11,888	13,606	16,321	18,154	17,205	17,441	14,609
Total inventory owned .....	39,122	39,940	40,399	41,832	44,783	45,958	47,281	45,738	44,648	43,619	42,220	41,096	41,558
Raw materials .....	15,895	15,462	15,471	15,292	16,297	16,838	17,367	17,045	16,498	16,752	16,544	16,350	16,718
Goods in process .....	8,515	9,133	9,286	9,502	10,042	10,188	10,376	10,499	10,604	9,177	8,670	8,847	8,856
Finished products .....	14,712	15,345	15,642	17,038	18,444	18,932	19,538	18,194	17,546	17,690	17,006	15,899	15,984

(5) Includes the following: Automobile fabric accessory manufacturers, embroidery, pleating, hemstitching manufacturers and miscellaneous textiles (n.e.s.) Industry.

TABLE 4. Estimated Value of Shipments, Orders, and Inventories in Selected Individual Industries - Continued

Industry	1963		1964										
	Dec.	Jan.	Feb.	Mar.	Apr.	May	June	July	Aug.	Sept.	Oct.	Nov. <sup>†</sup>	Dec. <sup>P</sup>
thousands of dollars													
<u>CLOTHING INDUSTRIES</u>													
<u>Men's clothing industry:(6)</u>													
Shipments .....	24,957	25,958	33,404	37,356	34,627	27,705	24,492	23,077	36,640	40,529	40,230	35,564	29,589
Total inventory owned .....	78,944	80,705	80,202	80,082	80,565	82,883	85,516	85,240	84,764	83,206	79,734	80,050	83,564
Raw materials .....	36,331	37,072	36,658	36,870	36,792	38,135	38,187	38,908	38,885	38,757	36,916	37,504	38,827
Goods in process .....	12,060	12,423	12,748	12,992	12,909	13,010	13,481	13,821	14,593	14,396	13,720	12,837	12,829
Finished products .....	30,553	31,210	30,796	30,220	30,864	31,738	33,848	32,511	31,286	30,053	29,098	29,709	31,908
<u>Women's clothing industry:(7)</u>													
Shipments .....	20,086	30,300	36,726	38,780	34,092	28,378	24,280	35,617	49,741	45,283	42,093	33,987	23,576
Total inventory owned .....	68,947	72,244	73,205	73,135	68,162	64,363	67,721	68,945	66,295	64,491	64,832	72,273	77,997
<u>Foundation garment industry:</u>													
Shipments .....	3,868	3,346	3,847	4,403	4,379	4,069	4,289	3,629	4,030	4,767	4,228	4,180	4,011
Total inventory owned .....	9,731	9,742	9,956	10,086	10,226	10,569	10,523	10,724	10,456	10,609	10,745	10,678	10,557
Raw materials .....	4,416	4,314	4,406	4,357	4,364	4,379	4,073	4,418	4,429	4,420	4,362	4,285	4,263
Goods in process .....	1,788	1,964	2,059	1,883	1,771	1,705	1,705	1,762	1,947	1,913	1,913	1,872	1,828
Finished products .....	3,527	3,464	3,491	3,846	4,091	4,485	4,745	4,544	4,080	4,276	4,470	4,521	4,466
<u>WOOD INDUSTRIES</u>													
<u>Veneer and plywood mills:</u>													
Shipments .....	13,528	13,840	14,465	19,012	14,457	13,887	14,793	13,755	13,646	14,903	14,712	13,795	14,118
Total inventory owned .....	30,394	29,758	30,160	27,251	27,191	27,533	26,460	26,387	26,313	26,361	27,303	27,733	27,849
<u>Sash and door and planing mills (excluding hardwood flooring):</u>													
Shipments .....	22,499	21,234	21,452	26,785	20,653	22,494	26,318	26,241	24,771	25,352	24,743	24,535	24,917
Total inventory owned .....	41,844	46,098	47,437	50,282	48,617	49,376	46,469	44,893	44,567	44,531	44,644	45,330	45,141
<u>PAPER AND ALLIED INDUSTRIES</u>													
<u>Pulp and paper mills:</u>													
Shipments .....	155,551	153,183	146,842	154,894	171,345	169,974	173,913	163,121	169,474	168,279	177,133	171,701	166,794
Total inventory owned .....	270,042	271,461	279,614	283,742	272,724	264,189	262,557	269,604	274,004	276,348	278,840	277,122	282,712
Raw materials and goods in process .....	219,847	218,131	220,895	219,289	211,022	204,491	205,400	209,400	213,570	218,626	220,534	220,472	227,048
Finished products .....	50,195	53,330	58,719	64,453	61,702	59,698	57,157	60,204	60,434	57,722	58,306	56,650	55,664
<u>Asphalt roofing manufacturers:</u>													
Shipments .....	3,143	2,905	3,260	6,194	3,157	2,887	3,638	4,075	4,234	4,626	4,058	3,618	3,675
Total inventory owned .....	7,054	7,310	7,753	7,228	7,797	7,738	7,649	7,567	7,250	6,992	7,062	7,381	7,057

(6) Includes men's clothing factories and men's clothing contractors.

(7) Includes women's clothing factories, women's clothing contractors and children's clothing industry.

TABLE 4. Estimated Value of Shipments, Orders, and Inventories in Selected Individual Industries - Continued

Industry	1963	1964											
	Dec.	Jan.	Feb.	Mar.	Apr.	May	June	July	Aug.	Sept.	Oct.	Nov. <sup>F</sup>	Dec. <sup>P</sup>
	thousands of dollars												
<u>PAPER AND ALLIED INDUSTRIES - Concluded</u>													
<u>Paper box and bag manufacturers: (8)</u>													
Shipments .....	29,823	31,844	30,519	32,251	34,487	33,219	35,206	34,793	34,454	36,650	36,909	36,005	34,364
Total inventory owned .....	47,330	50,343	51,183	52,408	53,050	53,075	53,476	53,085	53,071	52,055	51,722	51,185	52,110
<u>Miscellaneous paper converters:</u>													
Shipments .....	15,994	18,580	17,402	18,100	18,748	17,934	21,372	20,119	19,152	20,500	19,538	18,312	18,218
Total inventory owned .....	30,834	31,046	32,121	32,463	33,410	33,858	33,787	33,373	32,143	31,847	31,582	31,588	31,968
<u>PRIMARY METAL INDUSTRIES</u>													
<u>Iron and steel mills:</u>													
Shipments .....	75,423	88,976	84,757	89,913	91,050	93,441	91,824	89,000	90,138	90,936	94,418	98,131	97,836
Unfilled orders .....	105,448	122,757	115,736	133,972	137,923	134,100	133,951	136,369	130,639	128,302	127,746	148,465	132,627
Total inventory owned .....	198,847	184,724	177,942	165,020	167,420	169,842	171,838	176,679	187,976	200,480	209,218	209,681	208,194
<u>Steel pipe and tube mills:</u>													
Shipments .....	7,214	11,863	11,401	13,969	14,931	17,472	18,133	13,806	15,855	14,952	10,155	9,476	9,007
Unfilled orders .....	12,924	30,330	28,121	27,113	25,662	20,791	21,216	16,506	15,556	11,125	10,391	10,611	14,296
Total inventory owned .....	33,447	34,124	35,412	33,974	33,445	37,398	36,178	34,213	33,477	31,675	31,461	31,378	31,897
<u>Iron foundries:</u>													
Shipments .....	9,213	10,264	10,294	11,307	12,194	11,002	11,885	13,056	10,562	12,285	11,738	12,273	12,168
Total inventory owned .....	19,899	19,111	18,773	18,346	18,930	19,206	19,443	18,071	16,870	16,543	17,012	16,760	17,659
<u>Smelting and refining:</u>													
Shipments .....	130,377	123,668	124,816	134,658	146,846	140,723	138,078	140,738	151,323	141,750	148,336	147,673	159,017
Total inventory owned .....	233,356	235,860	233,172	232,790	229,434	234,443	232,213	235,292	219,737	215,194	212,679	227,513	228,555
Raw materials .....	99,894	96,854	94,078	91,946	91,891	98,197	99,097	108,238	100,511	98,422	95,212	106,051	106,446
Goods in process .....	36,724	37,695	38,546	38,015	39,075	38,686	38,865	39,460	39,442	39,350	40,454	41,436	40,636
Finished products .....	96,738	101,311	100,548	102,829	98,468	97,560	94,251	87,594	79,784	77,422	77,013	80,026	81,473
<u>Copper and alloy rolling, casting and extruding:</u>													
Shipments .....	11,347	15,002	13,616	14,102	14,300	13,207	14,301	12,939	14,517	14,126	14,688	14,170	14,942
Total inventory owned .....	17,517	16,067	16,675	16,987	18,611	20,397	21,278	19,821	19,108	18,823	19,702	20,384	20,074

(8) Includes folding boxes and set-up boxes manufacturers, corrugated boxes manufacturers and paper bag manufacturers.



TABLE 4. Estimated Value of Shipments, Orders, and Inventories in Selected Individual Industries - Continued

Industry	1963	1964											
	Dec.	Jan.	Feb.	March	Apr.	May	June	July	Aug.	Sept.	Oct.	Nov. <sup>r</sup>	Dec. <sup>f</sup>
	thousands of dollars												
<b>METAL FABRICATING INDUSTRIES</b>													
(except machinery and transportation equipment industries)													
<b>Boiler and plate work:</b>													
Shipments .....	9,876	6,333	6,896	8,654	6,966	5,512	7,121	6,545	8,581	8,839	9,474	9,016	12,036
Total inventory owned .....	17,082	15,581	15,736	13,788	13,474	14,560	14,709	14,734	14,771	12,489	11,971	12,829	16,036
<b>Fabricated structural metal industry:</b>													
Shipments .....	20,533	19,508	21,358	31,694	20,064	18,730	19,568	20,878	18,747	21,841	28,757	19,879	19,083
New orders .....	16,535	16,561	22,142	32,403	28,325	19,410	31,457	19,716	19,276	26,814	27,222	25,075	20,193
Unfilled orders .....	62,751	59,804	60,588	61,297	69,558	70,238	82,127	80,965	81,494	86,467	84,932	90,128	91,238
Total inventory owned .....	51,230	54,546	55,450	48,818	52,198	54,353	55,639	56,092	58,760	60,995	60,531	60,866	61,888
Total inventory held .....	91,543	96,641	100,699	104,929	103,083	105,211	110,286	109,539	109,248	109,633	93,570	99,652	106,847
<b>Metal stamping, pressing and coating industry:</b>													
Shipments .....	33,289	35,113	34,782	39,895	39,455	39,556	47,041	48,259	47,871	52,795	45,390	43,398	41,001
New orders .....	32,617	36,244	35,084	42,043	39,445	39,679	49,404	49,608	48,081	51,646	45,369	42,125	40,311
Unfilled orders .....	22,275	23,406	23,708	25,856	25,846	25,969	28,332	29,681	29,891	28,742	28,721	27,450	26,760
Total inventory owned .....	69,970	71,722	76,244	79,090	82,070	84,174	85,663	85,388	85,688	81,190	78,475	77,489	76,712
Raw materials .....	30,677	32,384	34,176	34,505	36,059	37,004	37,363	38,022	39,632	37,947	36,750	36,662	35,324
Goods in process .....	14,583	14,007	14,933	15,931	16,611	17,181	17,318	16,898	16,515	15,655	15,377	14,670	14,749
Finished products .....	24,710	25,331	27,135	28,654	29,400	29,989	30,982	30,468	29,541	27,588	26,348	26,157	26,639
<b>Wire and wire products manufacturers:</b>													
Shipments .....	20,849	22,826	21,850	24,472	25,974	24,929	27,119	23,037	22,360	25,468	24,420	25,009	24,150
Total inventory owned .....	52,879	53,971	54,874	54,883	54,775	55,207	54,461	54,773	52,689	52,816	54,108	54,793	55,750
Raw materials .....	23,015	22,622	22,762	23,052	22,613	22,919	22,901	23,959	22,876	23,026	23,495	23,790	24,336
Goods in process .....	4,291	4,465	4,337	4,194	4,123	4,272	4,267	4,073	4,551	4,711	4,752	4,833	5,613
Finished products .....	25,573	26,884	27,775	27,637	28,039	28,016	27,293	26,741	25,262	25,079	25,861	26,170	25,801
<b>Hardware, tool and cutlery manufacturers:</b>													
Shipments .....	10,873	13,915	13,208	17,284	14,656	13,668	14,799	13,761	13,315	15,184	14,962	14,525	15,116
New orders .....	11,121	16,761	13,247	17,040	13,544	13,009	14,600	13,114	14,113	15,199	14,861	14,741	15,994
Unfilled orders .....	8,417	11,263	11,302	11,058	9,946	9,287	9,088	8,441	9,239	9,254	9,153	9,369	10,247
Total inventory owned .....	33,044	31,891	31,523	31,520	31,833	32,978	33,622	33,130	33,539	33,468	33,716	34,190	34,758
Raw materials .....	10,918	10,445	10,205	10,472	10,546	10,959	11,011	10,853	11,108	11,019	11,191	11,243	11,278
Goods in process .....	9,916	9,908	9,914	10,025	10,081	10,374	10,527	10,623	10,540	10,313	10,238	10,157	10,109
Finished products .....	12,210	11,538	11,404	11,023	11,206	11,645	12,084	11,654	11,891	12,136	12,287	12,790	13,371
<b>Miscellaneous metal fabricating industries:</b>													
Shipments .....	20,914	22,662	23,649	27,494	22,395	21,847	23,528	25,051	21,092	25,114	25,937	24,659	26,342
Unfilled orders .....	30,469	33,752	34,908	35,321	34,512	36,955	38,333	39,036	40,330	40,589	41,296	41,896	42,425
Total inventory held .....	60,155	61,168	63,329	62,897	64,830	67,854	70,917	65,806	66,072	64,247	64,549	64,823	63,930
Raw materials .....	22,135	22,456	22,751	22,539	21,681	22,895	23,799	24,338	26,020	25,275	26,033	25,826	26,675
Goods in process .....	19,782	20,333	22,232	22,563	23,786	24,297	25,171	20,562	19,928	19,451	19,161	20,105	20,104
Finished products .....	18,238	18,379	18,346	17,795	19,363	20,662	21,947	20,906	20,124	19,521	19,355	18,892	17,151

TABLE 4. Estimated Value of Shipments, Orders, and Inventories in Selected Individual Industries - Continued

Industry	1963	1964											
	Dec.	Jan.	Feb.	Mar.	Apr.	May	June	July	Aug.	Sept.	Oct.	Nov. <sup>r</sup>	Dec. <sup>p</sup>
thousands of dollars													
<b>MACHINERY INDUSTRIES</b>													
(except electrical machinery)													
<b>Agricultural implement industry:</b>													
Shipments .....	11,061	16,095	16,705	21,496	25,827	22,114	21,153	22,456	16,935	14,009	12,697	13,929	15,475
Total inventory owned .....	53,044	54,006	54,900	53,616	49,958	47,569	46,809	44,648	43,661	45,732	48,862	52,632	56,613
<b>Miscellaneous machinery and equipment manufacturers and commercial refrigeration and air conditioning equipment manufacturers:</b>													
Shipments .....	48,853	42,001	48,583	58,032	54,657	49,305	56,911	48,556	44,501	50,340	50,640	53,485	65,833
New orders .....	52,665	46,551	48,095	44,798	49,557	54,635	72,701	54,120	51,294	53,041	53,385	43,133	81,013
Unfilled orders .....	171,301	175,851	175,363	162,129	157,029	162,359	178,149	183,713	190,506	193,207	195,952	185,602	200,782
Total inventory owned .....	142,203	143,465	141,533	133,281	134,580	138,238	136,784	136,437	136,347	134,006	131,672	130,417	126,892
Total inventory held .....	167,656	168,272	169,839	166,342	166,362	168,871	171,254	170,548	169,881	168,724	170,517	171,705	168,506
Raw materials .....	56,571	56,105	56,467	54,421	56,288	57,856	59,229	58,596	58,624	58,711	58,247	58,411	57,156
Goods in process .....	65,253	64,255	64,721	64,630	61,520	61,772	62,840	63,845	65,263	64,844	66,930	67,245	64,352
Finished products .....	45,832	47,912	48,651	47,291	48,554	49,243	49,185	48,107	45,994	45,169	45,340	46,049	46,998
<b>Office and store machinery manufacturers:</b>													
Shipments .....	8,567	8,069	8,808	8,357	7,510	7,695	7,214	7,412	5,751	8,011	8,741	8,929	9,057
Total inventory owned .....	36,461	36,831	36,696	37,200	37,555	38,050	38,218	39,121	40,471	41,399	39,451	39,543	39,139
Raw materials .....	11,125	10,990	10,957	14,772	15,354	15,505	15,380	15,086	15,567	15,378	14,979	14,980	14,981
Goods in process .....	9,966	9,935	9,883	7,906	8,015	8,069	8,132	8,316	8,992	9,985	8,727	8,968	8,849
Finished products .....	15,370	15,906	15,856	14,522	14,186	14,476	14,706	15,719	15,912	16,036	15,745	15,595	15,309
<b>TRANSPORTATION EQUIPMENT INDUSTRIES</b>													
<b>Motor vehicle manufacturers:</b>													
Shipments .....	162,071	149,319	137,245	149,375	158,763	145,885	151,825	74,658	21,584	105,794	104,106	125,542	109,463
Total inventory owned .....	121,382	125,656	125,104	125,476	122,172	121,103	107,865	86,527	125,561	142,178	128,388	145,279	147,639
Raw materials .....	14,607	15,019	15,524	17,146	17,238	17,359	18,261	17,335	18,013	19,252	19,780	18,603	21,040
Goods in process .....	76,829	79,243	77,814	76,417	72,967	68,617	48,286	39,674	71,844	80,734	80,076	90,642	95,542
Finished products .....	29,946	31,394	31,766	31,913	31,967	35,127	41,318	29,518	35,704	42,192	28,532	36,034	31,057
<b>Motor vehicle parts and accessories manufacturers:</b>													
Shipments .....	53,210	56,107	51,230	54,191	57,592	53,742	53,970	19,919	21,279	42,345	31,382	44,566	46,844
New orders .....	55,270	54,330	54,227	54,027	32,252	35,616	46,423	43,839	44,697	32,317	54,308	31,370	48,259
Unfilled orders .....	95,312	93,535	96,532	96,368	71,028	52,902	45,355	69,275	92,693	82,665	105,591	92,395	93,810
Total inventory owned .....	104,288	107,359	109,152	110,562	106,464	100,657	91,737	101,558	121,980	129,786	145,124	140,416	142,910
Raw materials .....	33,533	33,466	34,113	35,411	33,025	30,691	27,878	31,368	37,101	41,379	45,052	43,933	44,885
Goods in process .....	50,549	51,425	52,444	52,819	50,328	47,049	43,486	49,693	60,180	62,557	71,123	67,455	68,560
Finished products .....	20,206	22,468	22,595	22,332	23,111	22,917	20,373	20,497	24,699	25,850	28,949	29,028	29,465

TABLE 4. Estimated Value of Shipments, Orders, and Inventories in Selected Individual Industries - Continued

Industry	1963		1964										
	Dec.	Jan.	Feb.	Mar.	Apr.	May	June	July	Aug.	Sept.	Oct.	Nov. <sup>r</sup>	Dec. <sup>p</sup>
thousands of dollars													
<u>TRANSPORTATION EQUIPMENT INDUSTRIES - Concluded</u>													
<u>Railroad rolling stock industry:</u>													
Shipments .....	26,203	25,000	22,866	25,468	23,195	22,573	26,364	24,539	23,622	28,196	24,062	28,291	28,354
New orders .....	20,286	25,637	27,442	31,090	22,571	33,997	24,574	37,393	19,262	23,980	26,348	36,810	24,021
Unfilled orders .....	48,397	49,034	53,610	59,232	58,608	70,032	68,242	81,096	76,736	72,520	74,806	83,325	78,992
Total inventory held .....	48,958	47,686	48,202	49,090	52,992	56,639	54,907	57,240	58,118	61,289	63,699	61,187	62,582
Raw materials .....	31,274	30,412	30,604	32,599	33,572	35,180	33,238	34,282	33,262	33,296	34,772	33,625	34,702
Goods in process and finished products ...	17,684	17,274	17,598	16,491	19,420	21,459	21,669	22,958	24,856	27,993	28,927	27,562	27,880
<u>Shipbuilding and repair:</u>													
Shipments .....	22,204	12,804	12,162	12,665	10,844	14,471	14,041	15,204	13,826	16,034	13,537	15,721	17,196
New orders .....	20,500	21,392	8,291	13,045	19,313	14,681	36,190	21,095	6,305	11,372	16,190	15,917	15,471
Unfilled orders .....	120,749	129,337	125,466	125,846	134,315	134,525	156,674	162,565	155,044	150,382	153,035	153,231	151,506
Total inventory held .....	96,873	100,122	102,050	104,487	103,726	105,283	104,916	106,342	107,309	103,500	107,715	109,443	110,771
Raw materials .....	15,181	14,982	14,683	15,826	15,918	15,896	16,419	16,938	16,479	16,587	16,981	16,868	17,008
Goods in process and finished products ...	81,692	85,140	87,367	88,661	87,808	89,387	88,497	89,404	90,830	86,913	90,734	92,575	93,763
<u>ELECTRICAL PRODUCTS INDUSTRIES</u>													
<u>Manufacturers of small electrical appliances:</u>													
Shipments .....	8,560	5,411	7,477	7,915	6,952	6,843	7,146	6,807	7,349	11,094	11,250	10,829	9,890
Total inventory owned .....	19,184	20,199	20,726	21,219	22,148	22,595	23,524	23,578	22,824	21,941	21,168	21,197	21,892
<u>Manufacturers of major appliances (electric and non-electric):</u>													
Shipments .....	18,640	17,682	18,590	20,111	21,136	20,750	21,031	21,913	20,059	24,670	21,294	21,399	18,941
New orders .....	18,720	19,568	18,336	20,962	21,274	20,824	20,707	21,642	19,328	24,653	20,751	23,517	18,585
Unfilled orders .....	1,748	3,634	3,380	4,231	4,369	4,443	4,119	3,848	3,117	3,100	2,557	4,675	4,319
Total inventory held .....	61,351	62,985	64,790	67,545	70,673	71,079	71,925	68,482	69,834	68,561	69,311	69,542	70,643
Raw materials .....	16,011	16,092	16,735	17,849	17,541	18,499	19,025	19,057	20,931	19,939	20,276	20,305	20,880
Goods in process .....	14,033	14,437	14,584	14,587	16,574	16,155	16,500	15,789	16,114	15,602	14,996	14,755	14,978
Finished products .....	31,307	32,456	33,471	35,109	36,558	36,425	36,400	33,636	32,789	33,020	34,039	34,482	34,785
<u>Manufacturers of household radio and television receivers:</u>													
Shipments .....	13,564	11,220	11,352	10,270	10,329	8,986	10,160	10,877	11,936	15,830	16,779	16,102	16,535
New orders .....	12,952	15,635	11,069	10,247	12,434	8,922	9,959	17,675	10,233	14,089	13,894	17,429	18,911
Unfilled orders .....	13,601	18,016	17,733	17,710	19,815	19,751	19,550	26,348	24,645	22,904	20,019	21,346	23,722
Total inventory held .....	44,394	46,313	45,691	45,585	46,045	46,731	48,496	51,559	51,942	50,242	49,452	50,232	50,260
Raw materials .....	7,551	7,873	7,720	7,816	8,060	8,229	8,446	9,832	10,399	10,571	10,157	10,056	10,002
Goods in process .....	11,608	11,442	10,186	10,447	9,725	10,059	10,388	10,809	12,158	11,923	13,820	15,851	15,755
Finished products .....	25,235	26,998	27,785	27,322	28,260	28,443	29,662	30,918	29,385	27,748	25,475	24,325	24,503

TABLE 4. Estimated Value of Shipments, Orders, and Inventories in Selected Individual Industries - Continued

Industry	1963		1964										
	Dec.	Jan.	Feb.	Mar.	Apr.	May	June	July	Aug.	Sept.	Oct.	Nov. <sup>F</sup>	Dec. <sup>P</sup>
thousands of dollars													
<u>ELECTRICAL PRODUCTS INDUSTRIES - Concluded</u>													
<u>Communications equipment manufacturers:</u>													
Shipments .....	27,605	31,981	32,687	35,584	32,363	32,288	31,076	21,843	21,101	33,366	31,761	30,507	30,939
New orders .....	23,212	42,434	33,658	30,925	39,273	28,183	27,668	27,029	19,924	33,314	23,987	28,891	27,422
Unfilled orders .....	204,030	214,483	215,454	210,795	217,705	213,600	210,192	215,378	214,201	214,149	206,375	204,759	201,242
Total inventory held .....	105,111	104,380	103,063	105,011	104,746	103,276	100,947	100,882	100,910	100,799	103,187	105,344	105,344
Raw materials .....	17,712	17,333	17,455	17,794	17,006	16,310	15,756	15,844	15,466	15,370	15,499	15,836	17,339
Goods in process .....	71,726	71,331	69,683	69,745	69,908	69,552	69,524	69,862	69,421	69,806	69,254	70,626	71,139
Finished products .....	15,673	15,716	15,925	17,472	17,832	17,414	15,667	15,176	15,195	15,734	16,046	16,725	16,866
<u>Manufacturers of electrical industrial equipment:</u>													
Shipments .....	29,865	20,723	23,027	25,795	24,724	24,066	27,034	20,830	22,746	25,192	26,075	28,236	28,185
New orders .....	37,763	22,587	24,290	30,262	28,877	21,125	28,759	36,791	21,480	24,170	21,507	30,916	25,870
Unfilled orders .....	188,036	189,900	191,163	195,630	199,783	196,842	198,567	214,528	213,262	212,240	207,672	210,352	208,037
Total inventory held .....	81,702	82,461	84,799	86,016	87,541	89,408	90,226	92,001	91,697	92,214	93,712	91,820	90,593
Raw materials .....	22,331	22,680	23,366	22,255	23,014	22,867	22,817	23,706	23,737	23,922	24,219	24,073	23,715
Goods in process .....	36,157	36,935	37,825	40,105	40,747	42,064	41,844	42,470	42,118	42,521	42,997	42,413	41,386
Finished products .....	23,214	22,846	23,608	23,656	23,780	24,477	25,565	25,825	25,842	25,771	26,496	25,334	25,492
<u>Battery manufacturers:</u>													
Shipments .....	4,052	3,684	2,788	3,132	3,075	2,770	2,636	2,912	3,354	3,935	4,406	4,239	4,327
New orders .....	4,086	3,594	2,989	2,556	2,805	2,854	2,668	2,962	3,682	4,372	4,328	4,201	4,280
Unfilled orders .....	2,881	2,791	2,992	2,416	2,146	2,230	2,262	2,312	2,640	3,077	2,999	2,961	2,914
Total inventory owned .....	9,013	9,095	9,658	9,824	10,158	10,540	11,209	11,581	12,268	11,437	10,168	9,711	9,680
Raw materials .....	3,847	3,957	3,743	3,679	3,531	3,620	3,432	3,842	3,946	3,977	3,831	3,698	3,675
Goods in process .....	2,468	2,381	2,441	2,368	2,362	2,370	2,396	2,298	2,349	2,445	2,246	2,375	2,606
Finished products .....	2,698	2,757	3,474	3,777	4,265	4,550	5,381	5,441	5,973	5,015	4,091	3,638	3,399
<u>Manufacturers of electrical wire and cable:</u>													
Shipments .....	15,037	15,275	16,753	23,251	23,458	17,567	19,248	16,192	16,432	21,029	20,319	19,915	19,690
New orders .....	15,535	21,847	15,096	25,997	24,827	18,622	17,214	15,895	16,856	20,803	17,910	21,207	20,685
Unfilled orders .....	32,194	38,766	37,109	39,855	41,224	42,279	40,245	39,948	40,372	40,146	37,737	39,029	40,024
Total inventory owned .....	41,328	42,461	42,762	43,795	44,917	45,716	48,020	45,350	44,758	45,102	45,555	44,982	45,347
Raw materials .....	9,227	9,190	9,450	10,125	10,264	9,663	12,203	12,014	13,160	13,161	11,709	11,718	12,120
Goods in process .....	10,324	10,111	10,117	10,738	10,471	11,624	11,971	11,342	11,832	12,392	13,017	12,869	12,869
Finished products .....	21,777	23,160	23,195	22,932	24,182	24,429	23,846	21,994	19,766	19,549	20,829	20,395	20,358
<u>Manufacturers of miscellaneous electrical products:</u>													
Shipments .....	14,577	14,311	14,951	15,730	14,766	14,263	18,062	14,229	13,648	18,376	17,517	17,254	16,680
New orders .....	13,475	15,308	15,120	17,866	13,980	14,498	18,542	14,145	15,641	18,020	17,087	19,144	16,229
Unfilled orders .....	10,666	11,663	11,832	13,968	13,182	13,417	13,897	13,813	15,806	15,450	15,020	16,910	16,459
Total inventory owned .....	33,708	32,957	33,607	34,126	35,402	36,045	37,157	38,329	37,081	37,176	37,140	36,385	37,642
Raw materials .....	12,863	12,413	12,690	12,344	12,676	12,906	13,356	14,256	13,717	14,004	13,822	13,801	14,040
Goods in process .....	7,085	7,191	7,454	7,482	7,770	7,878	7,948	7,974	8,256	8,084	8,089	7,958	8,026
Finished products .....	13,760	13,353	13,463	14,300	14,956	15,261	15,853	16,099	15,108	15,088	15,229	14,626	15,576

TABLE 4. Estimated Value of Shipments, Orders, and Inventories in Selected Individual Industries - Continued

Industry	1963	1964											
	Dec.	Jan.	Feb.	Mar.	Apr.	May	June	July	Aug.	Sept.	Oct.	Nov. r	Dec. P
thousands of dollars													
<u>NON-METALLIC MINERAL PRODUCTS INDUSTRIES</u>													
<u>Cement and concrete products manu-</u>													
<u>facturers:(9)</u>													
Shipments .....	20,140	20,218	21,603	26,228	29,178	39,009	47,997	49,626	46,951	48,036	50,046	43,103	33,454
Total inventory owned .....	47,879	47,331	47,832	47,725	50,688	50,452	48,991	46,010	44,183	44,066	43,333	44,970	47,186
Raw materials and goods in process .....	26,756	25,232	25,095	24,752	24,322	24,148	24,217	24,403	24,465	25,158	25,646	26,520	26,177
Finished products .....	21,123	22,099	22,737	22,973	26,366	26,304	24,774	21,607	19,718	18,908	17,687	18,450	21,009
<u>Asbestos products manufacturers:</u>													
Shipments .....	2,454	2,846	2,852	3,398	3,224	3,432	3,814	3,902	3,469	3,972	3,843	3,856	3,465
Total inventory owned .....	9,421	9,478	9,933	10,089	10,481	10,517	10,511	9,981	9,835	9,478	8,709	9,188	9,537
<u>Glass and glass products manufacturers:</u>													
Shipments .....	8,935	8,812	8,057	8,463	10,059	10,200	11,446	9,106	7,536	9,510	8,646	10,045	10,607
Total inventory owned .....	25,694	27,826	28,651	28,885	29,110	28,956	27,503	28,000	29,591	28,630	29,047	32,923	31,085
Raw materials .....	11,034	11,761	11,735	11,062	11,386	10,676	10,386	10,582	11,273	11,196	11,208	12,049	12,587
Goods in process and finished products .....	14,660	16,065	16,916	17,823	17,724	18,280	17,117	17,418	18,318	17,434	17,839	20,874	18,498
<u>Abrasives manufacturers:</u>													
Shipments .....	3,945	3,632	3,729	4,619	4,201	4,027	4,047	3,590	4,060	4,751	4,370	4,359	4,692
New orders .....	4,219	3,601	4,144	4,446	4,256	4,229	3,895	3,745	4,139	4,518	4,239	4,462	4,737
Unfilled orders .....	1,094	1,063	1,478	1,305	1,360	1,562	1,410	1,565	1,644	1,411	1,280	1,383	1,428
Total inventory owned .....	8,315	8,083	8,083	7,761	7,282	7,487	7,645	7,816	7,755	7,767	8,109	8,183	8,690
Raw materials and goods in process .....	5,445	5,177	5,207	4,820	4,549	4,780	4,825	4,629	4,688	4,772	4,958	5,008	5,633
Finished products .....	2,870	2,906	2,876	2,941	2,733	2,707	2,820	3,187	3,067	2,995	3,151	3,175	3,057
<u>PETROLEUM AND COAL PRODUCTS INDUSTRIES</u>													
<u>Petroleum refineries:(10)</u>													
Shipments .....	131,845	117,354	107,380	108,859	108,420	107,471	109,565	113,371	114,508	111,273	118,194	117,045	126,883
Total inventory owned .....	215,733	218,013	224,386	227,988	223,694	225,099	222,057	223,411	222,543	223,307	216,143	210,757	197,916
Raw materials .....	61,833	61,638	61,402	61,925	59,583	62,197	62,194	57,392	56,477	57,711	62,296	61,226	58,244
Goods in process .....	20,394	21,330	20,510	22,397	19,570	20,131	20,826	20,739	21,492	21,936	20,193	23,176	22,635
Finished products .....	133,506	135,045	142,474	143,666	144,541	142,771	139,037	145,280	144,574	143,660	133,654	126,355	117,037

(9) Includes cement manufacturers, concrete products manufacturers and ready-mix concrete manufacturers.

(10) Includes petroleum refining and manufacturers of lubricating oils and greases.

TABLE 4. Estimated Value of Shipments, Orders, and Inventories in Selected Individual Industries - Continued

Industry	1963	1964											
	Dec.	Jan.	Feb.	Mar.	Apr.	May	June	July	Aug.	Sept.	Oct.	Nov. <sup>r</sup>	Dec. <sup>p</sup>
	thousands of dollars												
<u>CHEMICAL AND CHEMICAL PRODUCTS INDUSTRY</u>													
<u>Manufacturers of mixed fertilizers:</u>													
Shipments .....	5,007	5,508	5,804	5,540	8,605	14,693	5,764	886	999	3,626	2,343	2,626	5,296
Total inventory owned .....	16,347	16,749	17,762	18,847	16,758	8,418	7,722	8,743	11,503	13,962	16,254	17,847	17,007
<u>Manufacturers of plastics and synthetic resins:</u>													
Shipments .....	10,892	10,816	11,646	12,338	12,489	13,335	14,341	11,635	12,550	12,916	11,969	12,510	12,677
Total inventory owned .....	16,233	16,621	16,402	15,713	17,121	16,870	16,780	16,951	16,421	15,769	15,917	15,677	16,006
<u>Manufacturers of pharmaceuticals and medicines:</u>													
Shipments .....	14,830	18,045	17,358	17,343	17,208	16,129	17,293	16,433	18,807	20,722	19,871	18,578	18,020
Total inventory owned .....	41,524	41,829	42,274	42,784	44,056	44,496	46,029	45,007	43,984	43,286	43,267	43,531	45,364
Raw materials .....	14,287	14,354	14,377	14,538	14,534	14,458	14,330	14,305	14,148	14,388	14,695	15,250	16,227
Goods in process .....	8,346	8,375	8,652	9,498	9,884	9,743	9,707	9,110	8,717	8,906	8,762	8,564	8,968
Finished products .....	18,891	19,100	19,245	18,748	19,638	20,295	21,992	21,592	21,119	19,992	19,810	19,717	20,169
<u>Paint and varnish manufacturers:</u>													
Shipments .....	10,377	14,563	14,658	21,575	18,094	18,810	19,570	17,909	15,821	14,811	14,494	14,188	15,060
Total inventory owned .....	38,418	40,003	41,133	39,752	40,995	40,425	39,759	39,637	37,834	38,033	39,505	40,351	40,571
Raw materials .....	12,578	12,714	12,926	12,824	12,746	12,918	12,821	12,562	12,061	12,112	12,408	12,744	12,768
Goods in process .....	2,219	2,266	2,308	2,154	2,183	2,239	2,360	2,344	2,313	2,450	2,519	2,532	2,562
Finished products .....	23,621	25,023	25,899	24,774	26,066	25,268	24,578	24,731	23,460	23,471	24,578	25,075	25,241
<u>Manufacturers of soap and cleaning compounds:</u>													
Shipments .....	12,634	15,229	15,053	13,567	15,088	14,913	15,454	14,481	14,529	16,451	17,056	15,332	13,860
Total inventory owned .....	23,613	23,831	23,390	22,719	22,839	22,959	21,893	21,395	20,256	19,890	20,296	20,876	22,118
Raw materials .....	9,409	9,103	8,940	8,542	8,893	8,897	8,210	8,161	8,031	7,354	7,762	7,870	8,224
Goods in process .....	2,203	2,264	2,295	2,236	2,109	2,122	2,318	2,209	2,197	2,402	2,335	2,600	2,781
Finished products .....	12,001	12,464	12,155	11,941	11,837	11,940	11,365	11,025	10,028	10,134	10,199	10,406	11,105
<u>Manufacturers of toilet preparations:</u>													
Shipments .....	6,749	5,749	6,452	7,432	7,030	6,613	6,868	5,964	6,643	8,154	10,440	10,198	7,118
Total inventory owned .....	13,956	14,551	14,886	15,000	14,985	15,163	15,307	15,792	16,111	16,821	16,245	15,919	15,558
Raw materials and goods in process .....	8,386	8,420	8,741	8,980	8,857	9,011	9,041	9,317	9,538	10,014	9,484	9,500	9,310
Finished products .....	5,570	6,131	6,145	6,020	6,128	6,152	6,266	6,477	6,573	6,807	6,761	6,419	6,248

TABLE 4. Estimated Value of Shipments, Orders, and Inventories in Selected Individual Industries - Concluded

Industry	1963	1964											
	Dec.	Jan.	Feb.	Mar.	Apr.	May	June	July	Aug.	Sept.	Oct.	Nov. <sup>F</sup>	Dec. <sup>P</sup>
	thousands of dollars												
<u>MISCELLANEOUS MANUFACTURING INDUSTRIES</u>													
<u>Scientific and professional equipment manufacturers: (11)</u>													
Shipments .....	18,806	15,374	16,122	19,365	15,990	17,146	16,884	17,061	18,171	19,088	19,470	18,602	17,836
Total inventory held .....	46,521	48,548	51,167	49,976	51,443	52,251	52,651	51,417	51,013	50,435	48,937	49,003	49,091
<u>Jewellery and silver manufacturers:</u>													
Shipments .....	6,401	4,656	6,354	6,108	5,638	5,376	5,401	4,173	6,795	7,758	7,731	7,150	6,638
Total inventory owned .....	17,539	18,295	18,036	18,666	19,414	19,864	19,882	19,961	19,525	19,196	19,794	20,058	19,345
<u>Broom, brush and mop industry:</u>													
Shipments .....	1,998	2,451	2,309	2,719	2,678	2,674	2,811	2,279	2,403	2,647	2,927	2,494	2,260
Total inventory owned .....	8,327	8,346	8,463	8,585	8,632	8,863	8,853	9,138	9,195	9,462	9,333	9,503	9,817
Raw materials .....	4,118	4,214	4,289	4,380	4,459	4,510	4,465	4,673	4,684	4,795	4,643	4,650	4,649
Goods in process .....	918	901	875	936	949	1,011	924	920	929	981	999	909	929
Finished products .....	3,291	3,231	3,299	3,269	3,224	3,342	3,464	3,545	3,582	3,686	3,691	3,944	4,239

(11) Includes instrument and related products manufacturers, clock and watch manufacturers, orthopedic and surgical appliance manufacturers, ophthalmic goods manufacturers and dental laboratories.







INDUSTRIAL GROUPINGS

The industries shown in the Standard Industrial Classification Groups are listed below.

A single asterisk (\*) preceding the individual industry title indicates that the industry is shown separately in Table 4 - Statistics for Selected Individual Industries.

A double asterisk (\*\*) preceding the individual industry title indicates that the industry is shown in Table 4 combined with one or more other industries. The industries grouped are listed in footnotes to the table.

The bracketed letters following the individual industry titles indicate the statistical series - shipments, inventories and orders in which the industry is included monthly: (s) means the industry is included in the shipments series; (i) in the inventory series; and (o) in the orders series. Industries for which monthly coverage is not indicated are included in the all-industry and group totals estimates.

STANDARD INDUSTRIAL CLASSIFICATION

Industrial Groupings shown in Tables 3 and 5

Major Group 1. Foods and Beverages

- \*\* Slaughtering and Meat Packing Plants (s)(i)
- Animal Oils and Fats Plants (s)
- \*\* Sausage and Sausage Casing Manufacturers (s)
- Poultry Processors
- \*\* Butter and Cheese Plants (s)(i)
- \*\* Pasteurizing Plants (s)(i)
- \*\* Condenseries (s)(i)
- \*\* Ice Cream Manufacturers (s)(i)
- \*\* Process Cheese Manufacturers (s)
- Fish Products Industry (s)(i)
- \* Fruit and Vegetable Canners and Preservers (s)(i)(o)
- Feed Manufacturers (s)(i)
- \* Flour Mills (s)(i)(o)
- Breakfast Cereal Manufacturers (s)(i)
- \* Biscuit Manufacturers (s)(i)
- Bakeries (s)
- \* Confectionery Manufacturers (s)(i)
- \* Sugar Refineries (s)(i)
- Vegetable Oil Mills (s)(i)(o)
- Macaroni Manufacturers (s)(i)
- \* Miscellaneous Food Manufacturers (s)(i)
- Soft Drink Manufacturers (s)
- Distilleries (s)(i)
- \* Breweries (s)(i)
- \* Wineries (s)(i)

Major Group 2. Tobacco Products Industries

- Leaf Tobacco Processing (s)(i)
- Tobacco Products Manufacturers (s)(i)

Major Group 3. Rubber Industries

- \*\* Rubber Footwear Manufacturers (s)(i)(o)
- \* Rubber Tire and Tube Manufacturers (s)(i)(o)
- \*\* Other Rubber Industries (s)(i)(o)

Major Group 4. Leather Industries

- \* Leather Tanneries (s)(i)(o)
- \* Shoe Factories (s)(i)(o)
- Leather Glove Factories (s)
- Leather Belting Manufacturers (s)
- Boot and Shoe Findings Manufacturers (s)
- Miscellaneous Leather Products Manufacturers (s)

Major Group 5. Textile Industries

- \* Cotton Yarn and Cloth Mills (s)(i)(o)
- \* Wool Yarn Mills (s)(i)(o)
- \* Wool Cloth Mills (s)(i)(o)
- \* Synthetic Textile Mills (s)(i)(o)
- Fibre Preparing Mills (s)(i)(o)

Major Group 5. Textile Industries - Concluded

- Thread Mills (s)(i)
- \* Cordage and Twine Industry (s)(i)
- Narrow Fabric Mills (s)(i)(o)
- Pressed and Punched Felt Mills (s)(i)(o)
- \* Carpet, Mat and Rug Industry (s)(i)(o)
- Textile Dyeing and Finishing Plants (s)(i)(o)
- \* Linoleum and Coated Fabrics Industry (s)(i)(o)
- \* Canvas Products Industry (s)(i)(o)
- \* Cotton and Jute Bag Industry (s)(i)(o)
- \*\* Automobile Fabric Accessory Manufacturers (s)(i)
- \*\* Embroidery, Pleating, Hemstitching Manufacturers (s)
- \*\* Miscellaneous Textiles (n.e.s.) Industry (s)(i)(o)

Major Group 6. Knitting Mills

- \* Hosiery Mills (s)(i)(o)
- \* Other Knitting Mills (s)(i)(o)

Major Group 7. Clothing Industries

- \*\* Men's Clothing Factories (s)(i)(o)
- \*\* Men's Clothing Contractors (s)
- \*\* Women's Clothing Factories (s)(i)(o)
- \*\* Women's Clothing Contractors (s)
- \*\* Children's Clothing Industries (s)(i)(o)
- Fur Goods Industry (s)(i)
- Hat and Cap Industry (s)(i)(o)
- \* Foundation Garment Industry (s)(i)(o)
- Fabric Glove Manufacturers (s)
- Miscellaneous Clothing (n.e.s.) Industry (s)

Major Group 8. Wood Industries

- Shingle Mills (s)
- Sawmills except Shingle Mills (s)(i)(o)
- \* Veneer and Plywood Mills (s)(i)(o)
- \* Sash and Door and Planing Mills (excluding hardwood flooring) (s)(i)(o)
- Hardwood Flooring (s)(i)(o)
- Wooden Box Factories (s)(i)
- Coffin and Casket Industries (s)
- Wood preservation (s)(i)
- Wood Handles and Turning (s)(i)(o)
- Woodenware (s)(i)
- Cooperage (s)(i)
- Miscellaneous Wood Industries, n.e.s. (s)(i)(o)

Major Group 9. Furniture and Fixture Industries

- Household Furniture Industry (s)(i)(o)
- Office Furniture Industry (s)(i)(o)
- Other Furniture Industries (s)(i)(o)
- Electric Lamp and Shade Industry (s)

Major Group 10. Paper and Allied Industries

- \* Pulp and Paper Mills (s)(i)(o)
- \* Asphalt Roofing Manufacturers (s)(i)(o)
- \*\* Folding Box and Set-up Box Manufacturers (s)(i)(o)
- \*\* Corrugated Box Manufacturers (s)(i)(o)
- \*\* Paper Bag Manufacturers (s)(i)(o)
- \* Other Paper Converters (s)(i)(o)

Major Group 11. Printing, Publishing and Allied Industries

- Printing and Bookbinding (s)
- Lithographing (s)
- Engraving and duplicate plates (s)
- Trade Composition or typesetting (s)
- Publishing Only (s)
- Printing and Publishing (s)

Major Group 12. Primary Metal Industries

- \* Iron and Steel Mills (s)(i)(o)
- \* Steel Pipe and Tube Mills (s)(i)(o)
- \* Iron Foundries (s)(i)(o)
- \* Smelting and Refining (s)(i)(o)
- Aluminum Rolling, Casting and Extruding (s)(i)(o)
- \* Copper and Alloy Rolling, Casting and Extruding (s)(i)(o)
- Metal Rolling, Casting and Extruding, n.e.s. (s)(i)(o)

Major Group 13. Metal Fabricating Industries (except Machinery and Transportation Equipment Industries)

- \* Boiler and Plate Works (s)(i)(o)
- \* Fabricated Structural Metal Industry (s)(i)(o)
- Ornamental and Architectural Metal Industry (s)(i)(o)
- \* Metal Stamping, Pressing and Coating Industry (s)(i)(o)
- \* Wire and Wire Products Manufacturers (s)(i)(o)
- \* Hardware, Tool and Cutlery Manufacturers (s)(i)(o)
- Heating Equipment Manufacturers (s)(i)(o)
- Machine Shops
- \* Miscellaneous Metal Fabricating Industries (s)(i)(o)

Major Group 14. Machinery Industries (except electrical machinery)

- \* Agricultural Implement Industry (s)(i)(o)
- \*\* Miscellaneous Machinery and Equipment Manufacturers (s)(i)(o)
- \*\* Commercial Refrigeration and Air Conditioning Equipment Manufacturers (s)(i)(o)
- \* Office and Store Manufacturers (s)(i)(o)

Major Group 15. Transportation Equipment Industries

- Aircraft and Parts Manufacturers (s)(i)(o)
- \* Motor Vehicle Manufacturers (s)(i)(o)
- Truck Body and Trailer Manufacturers (s)(i)(o)
- \* Motor Vehicle Parts and Accessories Manufacturers (s)(i)(o)
- \* Railroad Rolling Stock Industry (s)(i)(o)
- \* Shipbuilding and Repair (s)(i)(o)
- Boatbuilding and Repair (s)
- Miscellaneous Vehicle Manufacturers (s)

Major Group 16. Electrical Products Industries

- \* Manufacturers of Small Electrical Appliances (s)(i)(o)
- \* Manufacturers of Major Appliances (electric and non-electric) (s)(i)(o)
- \* Manufacturers of Household Radio and Television Receivers (s)(i)(o)
- \* Communications Equipment Manufacturers (s)(i)(o)
- \* Manufacturers of Electrical Industrial Equipment (s)(i)(o)

Major Group 16. Electrical Products Industries - Concluded

- \* Battery Manufacturers (s)(i)(o)
- \* Manufacturers of Electric Wire and Cable (s)(i)(o)
- \* Manufacturers of Miscellaneous Electrical Products (s)(i)(o)

Major Group 17. Non-Metallic Mineral Products Industries

- \*\* Cement Manufacturers (s)(i)(o)
- Lime Manufacturers (s)
- Gypsum Products Manufacturers (s)
- \*\* Concrete Products Manufacturers (s)(i)(o)
- \*\* Ready-Mix Concrete Manufacturers (s)(i)
- Clay Products Manufacturers (from domestic clays) (s)(i)
- Clay Products Manufacturers (from imported clays) (s)(i)(o)
- Refractories Manufacturers (s)(i)
- Stone Products Manufacturers (s)
- Mineral Wool Manufacturers (s)(i)(o)
- \* Asbestos Products Manufacturers (s)(i)(o)
- \*\* Glass Manufacturers (s)(i)(o)
- \*\* Glass Products Manufacturers (s)(i)(o)
- \* Abrasives Manufacturers (s)(i)(o)
- Other Non-Metallic Mineral Products Industries (s)(i)

Major Group 18. Petroleum and Coal Products Industries

- \*\* Petroleum Refining (s)(i)
- \*\* Manufacturers of Lubricating Oils and Greases (s)(i)
- Other Petroleum and Coal Products Industries (s)(i)

Major Group 19. Chemical and Chemical Products Industry

- Explosives and Ammunition Manufacturers (s)(i)(o)
- \* Manufacturers of Mixed Fertilizers (s)(i)
- \* Manufacturers of Plastics and Synthetic Resins (s)(i)(o)
- \* Manufacturers of Pharmaceuticals and Medicines (s)(i)(o)
- \* Paint and Varnish Manufacturers (s)(i)(o)
- \* Manufacturers of Soap and Cleaning Compounds (s)(i)(o)
- \* Manufacturers of Toilet Preparations (s)(i)
- Manufacturers of Industrial Chemicals (s)(i)(o)
- Manufacturers of Printing Inks (s)(i)
- Other Chemical Industries, n.e.s. (s)(i)(o)

Major Group 20. Miscellaneous Manufacturing Industries

- \*\* Instrument and Related Products Manufacturers (s)(i)(o)
- \*\* Clock and Watch Manufacturers (s)(i)(o)
- \*\* Orthopedic and Surgical Appliance Manufacturers (s)(i)(o)
- \*\* Ophthalmic Goods Manufacturers (s)(i)
- \*\* Dental Laboratories
- \* Jewellery and Silverware Manufacturers (s)(i)(o)
- \* Broom, Brush and Mop Industry (s)(i)(o)
- Venetian Blind Manufacturers (s)
- Plastic Fabricators, n.e.s. (s)(i)
- Sporting Goods Industry (s)(i)
- Toys and Games Industry (s)
- Fur Dressing and Dyeing Industry
- Signs and Displays Industry (s)
- Button, Buckle and Fastener Industry (s)
- Candle Manufacturers (s)
- Hair Goods Manufacturers (s)
- Artificial Flowers and Feathers Manufacturers (s)
- Model and Pattern Manufacturers (s)
- Musical Instruments Industry (s)(i)(o)
- Sound Recording Industry (s)(i)(o)
- Typewriter Supplies Manufacturers (s)
- Fountain Pen and Pencil Manufacturers (s)(i)(o)
- Smokers' Supplies Manufacturers (s)
- Stamp and Stencil (Rubber and Metal) Manufacturers (s)
- Statuary, Art Goods, Regalia and Novelty Manufacturers (s)
- Umbrella Manufacturers (s)
- Artificial Ice Manufacturers (s)
- Other Miscellaneous Industries (s)(i)(o)

### CONCEPTS

Shipments - (Tables 1 to 4) - represent an estimated projection, on a monthly basis, of the latest available Census of Manufactures values.

New Orders - (Tables 2 and 3) - This series is designed to indicate the rate at which new business is being received. It is defined as all New Orders Received during the period, at estimated selling values. Thus it covers total new orders, net of cancellations, regardless of whether the orders will be filled from stock or as a result of activity during the same month (and, therefore, will also be reported as shipments in the month received) or whether they will be added to existing backlogs.

Unfilled Orders - (Tables 2 and 3) - are defined as orders on books at the end of the period stated. That is, they cover orders received but not yet shipped (or treated as a sale), irrespective of work done on them or of stocks from which they can be filled.

Total Inventory Owned - (Tables 2 to 4) - represents the estimated book value of inventory owned by manufacturers in connection with the manufacturing operations of the establishment covered whether held at plant or elsewhere, at the end of the period stated. It is made up of: raw materials, goods in process, finished goods of own manufacture less the value of inventory held but not owned which cannot be assigned to specific components. Since the series relates to manufacturing inventory only, value of goods purchased for re-sale is not included.

Inventory Held but Not Owned - (Tables 2 and 3) - represents, as far as possible, the portion of manufacturers' total inventory holdings which are no longer owned by the reporting manufacturers because of payments made on long-term contracts as work on these progresses. This item is applicable only to the relatively few industries where long-term contracts are common although, because of the nature of the item, the value per industry is high.

Because of variations in accounting methods there are a few cases where it is not possible to obtain values for this type of inventory. The estimated value shown for this item must therefore be considered to some extent incomplete.

Total Inventory Held - (Tables 2 and 3) - represents the estimated total value of manufacturers' inventory holdings in connection with manufacturing operations, regardless of ownership; it differs from inventory owned by the inclusion of inventories held under progress payments arrangements.

Inventory Components - (Tables 2 and 3) - Raw Materials, Goods in Process, and Finished Products are reported and compiled as on the books of each manufacturer, i.e. there has been no attempt to define the components specifically for each industry.

The inventory components are always a breakdown of total inventory held, not of total inventory owned. In industries where these two items differ, due to the inclusion of inventory held but not owned (see above), it is not possible to obtain value of inventory owned by components since, where separate progress accounts are maintained, firms concerned can only state that, of total holdings, a certain amount is not longer owned by them. It is fairly obvious that the bulk of such payments apply to goods in process holdings but due to time lags in shipments and to prepayments some of the total value of inventory held but not owned would be applicable to finished products or raw materials.

Any comparisons of shipments/inventory ratios should be made using total inventory owned, not total inventory held, since the latter includes values which have already been written off to sales. If shipments/inventory ratios are desired using inventory components, rather than total inventory, a reasonable approximation to total inventory owned by components would be obtained by assuming that all inventory held but not owned had been included with goods in process.

Groupings - The Standard Industrial Classification groupings of industries used in Tables 3 and 4 are defined according to the Standard Industrial Classification Manual. A list of the industries included in the Standard Industrial Classification groups will be found on page 40 of the bulletin.

### SOURCES

Monthly (or, in a few cases, quarterly) reports covering value of inventories and shipments are now submitted on a voluntary basis by 3,000 plants in 120 industries; in addition, 3,000 small plants in 100 of these industries report monthly shipments only. Of the first group, 1,025 plants in 83 industries also report new and unfilled orders. Four industries are included in the total shipments estimates by using data available from other Bureau series, and two of these are also included in the total inventory estimates.

FOOTNOTES TO TABLES

TABLE 1. - (1) Prince Edward Island, Yukon and Northwest Territories are not published separately. They are included in the total for Canada.

TABLE 2. - (1) Annual shipments values differ slightly from published Census of Manufactures totals due to inventory adjustments for certain industries where Census of Manufactures data represent production rather than shipments values.

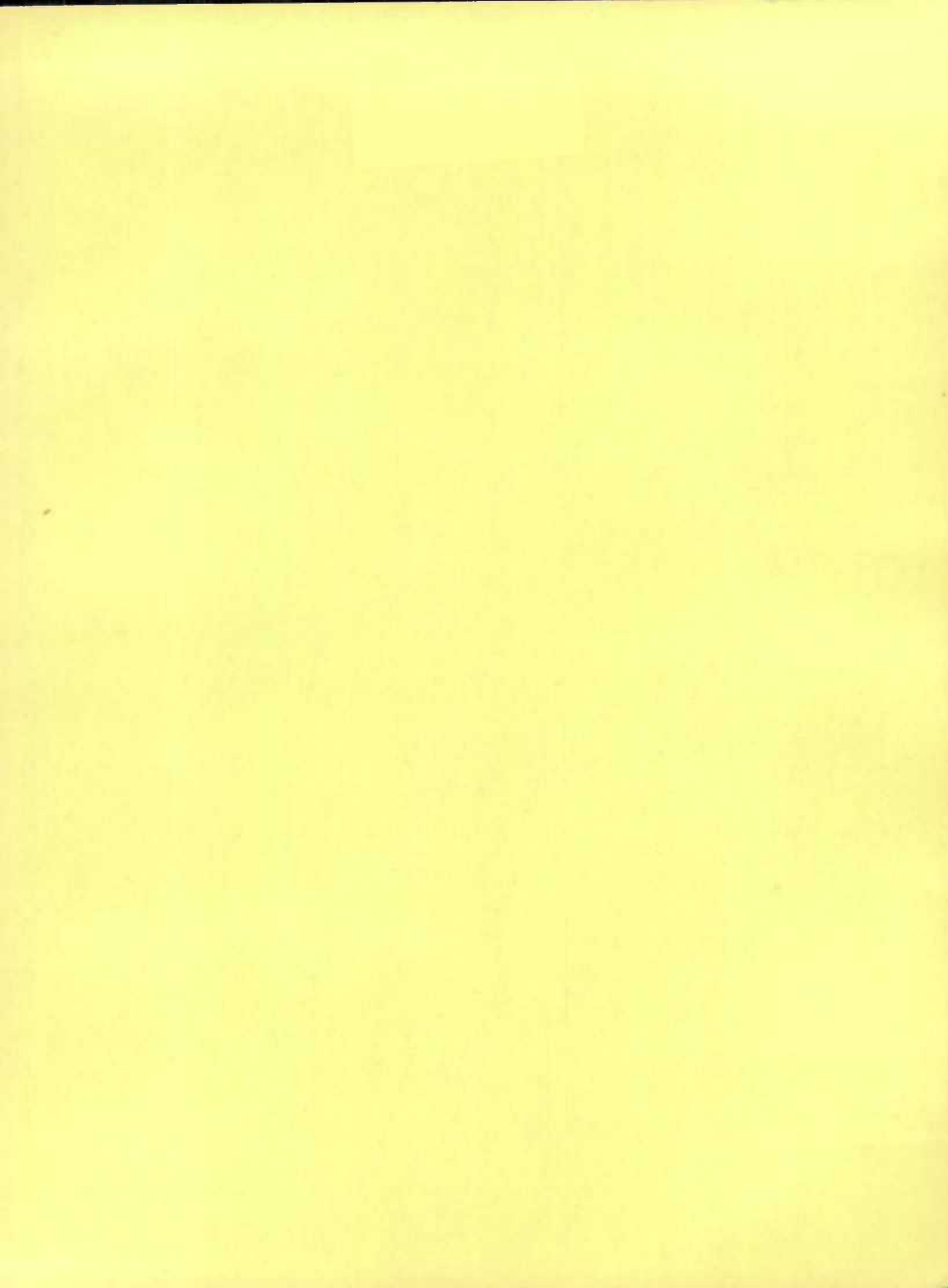
TABLE 3. - (1) See footnote (1), table 2.

(2) The value of Unfilled Orders and, therefore, of New Orders for industries in major groups - 1, 2, 6, 8, 9, 10, 17, 18 and 19 is small and sample coverage is not adequate to provide separate estimates for them.

(3) The value of inventory held but not owned in this group is very small, and sample coverage is not adequate to provide separate data. Estimates for this type of inventory are included with Total Inventory Held; for all practical purposes this can be considered the equivalent of Inventory Owned.

TABLE 5. - (1) Ratios for this group were calculated using values of Total Inventory Held instead of values of Total Inventory Owned. See footnote (3), table 3.





STATISTICS CANADA LIBRARY  
BIBLIOTHÈQUE STATISTIQUE CANADA



1010691784