

CATALOGUE No.

31-001

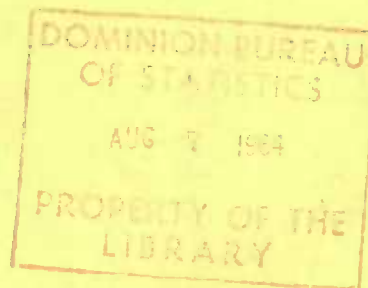
MONTHLY



DOES NOT CIRCULATE
NE PAS PRÊTER

**INVENTORIES, SHIPMENTS AND ORDERS
IN MANUFACTURING INDUSTRIES**

APRIL 1964



DOMINION BUREAU OF STATISTICS

Industry Division

DOMINION BUREAU OF STATISTICS
Industry Division

INVENTORIES, SHIPMENTS AND ORDERS
IN MANUFACTURING INDUSTRIES

APRIL 1964

Published by Authority of
The Minister of Trade and Commerce

July 1964
6531-501

Price: 30 cents
\$3.00 a year

TABLE OF CONTENTS

	Page
Trend Summary (Charts and Text)	iv
TABLE 1. Estimated Value of Shipments in all Manufacturing Industries, by Province of Origin, Monthly - 1960 to date, by months	1
TABLE 2A. Estimated Value of Shipments, Orders and Inventory in all Manufacturing Industries, 1960 to date, by months	2
TABLE 2B. Estimated Value of Shipments, Orders and Inventory in all Manufacturing Industries, 1960 to date, by months - <u>Adjusted for Seasonal Variation</u>	3
TABLE 3. Estimated Value of Shipments, Orders and Inventory in Manufacturing Industries 1960 to date, by months, grouped according to the Standard Industrial Classification	
Non-Durable - Major Groups 1, 2, 3, 4, 5, 6, 7, 10, 11, 18, 19 and 20	4
Durable - Major Groups 8, 9, 12, 13, 14, 15, 16 and 17	5
Major Group 1 - Food and Beverage Industries	6
Major Group 2 - Tobacco Products Industries	7
Major Group 3 - Rubber Industries	8
Major Group 4 - Leather Industries	9
Major Group 5 - Textile Industries	10
Major Group 6 - Knitting Mills	11
Major Group 7 - Clothing Industries	12
Major Group 8 - Wood Industries	13
Major Group 9 - Furniture & Fixture Industries	14
Major Group 10 - Paper & Allied Industries	15
Major Group 11 - Printing, Publishing and Allied Industries (not published separately, values included in Table 2)	
Major Group 12 - Primary Metal Industries	16
Major Group 13 - Metal Fabricating Industries (except Machinery and Transportation Equipment Industries)	17
Major Group 14 - Machinery Industries	18
Major Group 15 - Transportation Equipment Industries	19
Major Group 16 - Electrical Products Industries	20
Major Group 17 - Non-Metallic Mineral Products Industries	21
Major Group 18 - Petroleum and Coal Products Industries	22
Major Group 19 - Chemical and Chemical Products Industries	23
Major Group 20 - Miscellaneous Manufacturing Industries	24

TABLE OF CONTENTS

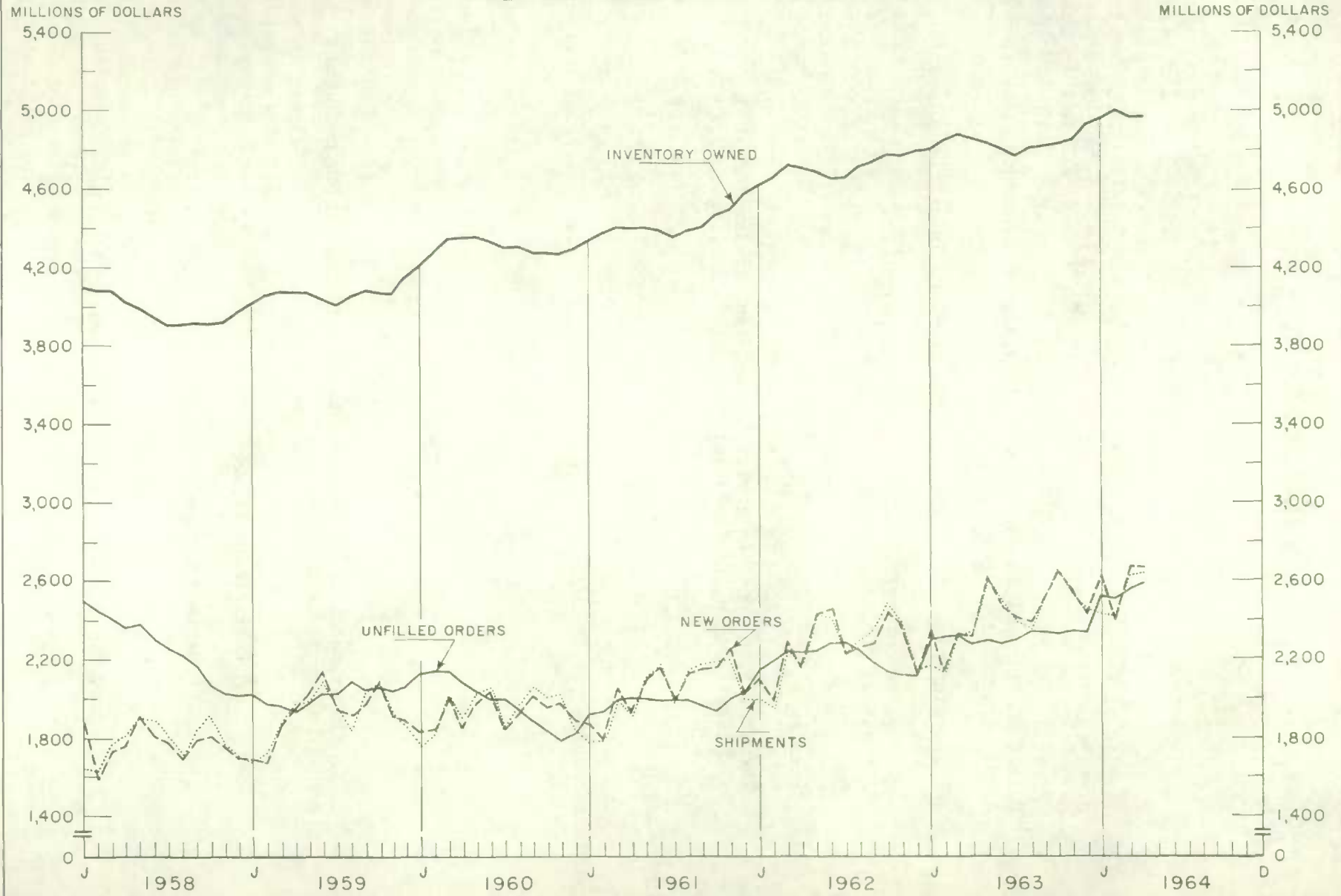
	Page
Table 4. Statistics for selected individual industries, current and 12 previous months	25
Table 5. Ratios of Value of Inventory Owned to Value of Shipments, 1960 to date, by months:	
Industries grouped according to the Standard Industrial Classification	
Total inventory	38
Finished products inventory	39
 Industrial Grouping -	
Industries included in groups of the Standard Industrial Classification, Tables 3 and 5	40
 Concepts and Sources	42
 Footnotes to tables	43

SYMBOLS

The interpretation of the symbols used in the tables throughout this publication is as follows:

- P Preliminary figures.
- r Revised figures.
- .. Figures not available.
- ... Figures not appropriate or not applicable.
- Nil or zero.

ESTIMATED VALUES OF SHIPMENTS, INVENTORY OWNED AND ORDERS IN ALL MANUFACTURING INDUSTRIES



TREND SUMMARY

Manufacturers' shipments in April continued at the high level shown in March and during the first quarter of the year, shipments in the first four months are just over thirteen percent higher than last year. The high level this year has not, however, been accompanied by a strong upward trend from the beginning of the year as the seasonally adjusted series shows a decline in both February and again this month; it is rather the continuation of the high level of shipments reached in the last four months of the previous year. The level of shipments in both December of last year and January this year was not only higher in absolute terms but in terms of the usual seasonal pattern exceptionally high.

Inventories are higher this year than last but, compared with the level of shipments, have risen proportionally less. The ratio of total inventory owned to shipments for all industries combined was 1.88 at the end of April as compared with 2.07 at the end of April in 1963. Nor is the change peculiar to only a few industries, for only in knitting mills and the clothing industries and in the petroleum and coal products industries are the ratios of total inventory owned to shipments higher this April than at the end of April last year. The drop in the ratio of finished products inventory to total shipments is equally striking.

The level of unfilled orders rose by just over one percent in April as compared with March and is just over thirteen percent higher than at the end of April last year. On a seasonally adjusted basis the increase in April was two and a half percent.

Some contrast in the pattern of inventories as between the durable and non-durable goods industries seems to be apparent. Shipments in both groups are higher but finished goods inventories in the durable goods industries have fallen off in March and April as compared with 1963 while finished goods inventories in the non-durable goods industries are at a higher level than the year before. Raw material inventories are generally higher and inventories of goods in process in the non-durable goods industries are also. In the durable goods industries goods in process inventories in April fell below the level of goods in process in February and March and were lower than goods in process in April 1963. The lower level of goods in process inventories in the durable goods industries shows up in the wood industries, and the electrical products industries but the differences are not great; in the non-metallic mineral products industries the level of goods in process has been sharply lower all year with April at sixty-six percent of the level in April a year ago; in the machinery industries the level has also been down considerably and at the end of April was only eight-two percent of the level at the end of April 1963. In the non-metallic mineral products industries the decline in the level of goods in process has been accompanied by no change in the level of raw materials and in spite of a substantial rise in shipments, by a relatively slight decline in stocks of finished products. In the machinery industries raw material stocks are significantly higher, finished products stocks are stable although slightly below the levels during the first four months last year; shipments are up considerably. In both of these industries the adjustment may simply be a shift in reporting patterns particularly in the machinery industries between raw materials stocks and work put in place; or it may indicate a change in the production pattern or a shift in the relative importance of the industries within the major groups.

TABLE 1. Estimated Value of Shipments in All Manufacturing Industries, by Province of Origin

1

Calendar years and calendar months	Province									
	Newfoundland	Nova Scotia	New Brunswick	Quebec	Ontario	Manitoba	Saskatchewan	Alberta	British Columbia	Canada(1)
	thousands of dollars									
1960 - January	8,749	27,947	26,149	509,522	898,370	53,301	25,715	63,557	145,442	1,760,875
February ...	9,041	28,244	28,214	541,507	922,343	53,129	23,415	64,431	152,950	1,825,339
March	8,887	31,406	29,717	606,383	1,017,670	56,964	26,518	69,878	167,064	2,016,566
April	9,545	29,686	29,584	563,179	970,507	55,882	25,443	69,327	152,102	1,907,402
May	11,628	35,584	32,098	599,630	1,007,172	58,459	29,842	75,236	171,769	2,024,269
June	11,018	35,167	33,876	609,540	1,028,926	63,103	31,957	78,865	172,256	2,067,372
July	13,209	37,883	32,584	558,958	886,964	60,463	30,076	80,236	147,751	1,851,182
August	9,948	33,175	33,179	636,159	912,760	69,355	33,953	81,628	163,472	1,977,184
September ..	11,444	34,152	30,380	650,452	990,402	66,610	30,682	81,467	164,399	2,063,456
October	10,166	31,992	33,237	620,529	978,195	63,336	28,700	71,530	161,935	2,002,415
November ...	11,852	30,454	31,143	630,591	1,001,288	61,548	26,671	70,360	148,598	2,015,058
December ...	11,399	35,820	28,794	559,933	909,811	57,834	26,320	64,298	147,386	1,843,950
Totals ...	126,886	391,510	368,955	7,086,383	11,524,408	719,984	339,292	870,813	1,895,124	23,355,068
1961 - January	10,032	27,172	29,689	514,230	898,807	56,261	24,299	73,705	142,492	1,779,229
February ...	7,747	27,808	27,506	537,254	894,428	52,888	23,386	69,430	147,800	1,790,421
March	9,500	31,167	32,340	592,356	989,198	58,137	27,668	79,980	168,315	1,991,058
April	8,144	26,482	30,614	567,192	961,052	57,714	26,873	71,510	158,023	1,910,124
May	12,276	31,866	35,988	618,115	1,054,780	64,048	32,474	81,060	173,625	2,107,234
June	12,998	35,636	35,303	641,074	1,083,758	66,352	33,097	84,279	180,227	2,175,564
July	13,082	34,112	35,607	586,001	958,289	70,578	32,843	82,090	162,129	1,978,093
August	14,937	33,685	37,625	682,467	993,936	73,843	34,571	88,648	177,118	2,140,096
September ..	12,995	32,746	33,450	680,274	1,049,514	75,266	30,743	84,528	172,859	2,175,496
October	12,944	33,037	36,312	675,011	1,062,621	71,924	30,983	84,386	177,489	2,187,708
November ...	12,446	31,264	34,010	682,159	1,095,178	65,855	29,209	76,171	169,809	2,198,909
December ...	10,359	34,932	30,410	597,196	1,000,843	65,969	27,971	71,332	152,454	1,993,975
Totals ...	137,460	379,907	398,854	7,373,329	12,042,404	778,835	354,117	947,119	1,982,340	24,427,907
1962 - January	11,034	32,762	28,758	595,112	986,664	68,132	29,306	75,731	162,331	1,993,444
February ...	8,680	29,603	27,883	585,556	963,361	63,741	25,772	72,358	162,444	1,941,387
March	11,426	34,923	32,778	683,609	1,104,727	71,695	30,253	81,270	190,260	2,243,256
April	11,542	31,528	32,065	647,694	1,077,504	68,067	28,117	75,876	180,939	2,155,821
May	12,336	37,857	37,908	727,276	1,207,869	72,634	34,278	87,308	202,813	2,424,004
June	14,508	41,051	39,224	724,173	1,187,536	78,091	35,230	91,345	200,161	2,414,955
July	12,441	35,472	37,316	669,797	1,067,939	82,054	35,716	89,203	185,130	2,218,277
August	12,827	39,096	37,460	750,991	1,044,482	82,274	35,421	91,150	196,209	2,293,487
September ...	12,540	37,465	34,251	759,790	1,113,432	76,005	32,219	86,773	189,296	2,344,096
October	13,140	41,637	38,049	768,449	1,215,728	78,901	34,840	89,677	200,560	2,484,041
November ...	12,962	40,139	33,085	734,868	1,201,974	75,223	31,525	81,920	181,614	2,396,166
December ...	10,289	36,350	31,048	656,954	1,055,562	68,515	27,709	76,542	171,624	2,138,097
Totals ...	143,725	437,883	409,825	8,304,269	13,226,778	885,332	380,386	999,153	2,223,381	27,047,744
1963 - January	10,120	33,560	32,472	621,943	1,103,736	66,889	27,847	76,841	180,855	2,158,446
February ...	9,048	31,381	29,362	627,058	1,077,692	66,044	26,528	75,771	181,627	2,126,794
March	8,330	37,042	33,785	685,444	1,151,204	73,763	29,472	83,757	201,536	2,306,866
April	9,988	33,667	33,401	687,493	1,201,103	74,052	31,532	79,437	191,999	2,345,306
May	13,657	40,112	41,765	751,511	1,315,529	82,343	35,453	93,801	223,381	2,601,723
June	14,636	39,696	40,167	714,548	1,250,942	77,849	33,083	88,924	221,217	2,485,067
July	13,192	39,593	41,083	709,842	1,156,178	82,367	35,589	87,607	221,877	2,390,529
August	13,696	40,097	40,548	759,492	1,070,884	84,100	36,899	91,602	216,423	2,356,920
September ..	13,922	39,838	39,561	778,983	1,226,887	84,203	35,545	88,061	206,313	2,516,447
October	13,980	41,204	42,016	798,796	1,318,507	87,382	35,722	93,438	221,204	2,655,288
November ...	12,805	40,872	37,335	756,909	1,300,303	78,549	33,110	84,040	197,343	2,544,147
December ...	15,177	41,257	33,350	723,378	1,244,620	74,269	31,179	83,183	198,811	2,448,183
Totals ...	148,551	458,319	444,845	8,615,397	14,417,585	931,810	391,959	1,026,462	2,462,586	28,935,716
1964 - January	12,023	38,340	34,343	697,185	1,248,424	77,424	30,223	85,630	200,224	2,428,050
February ...	9,111	36,670	34,961	711,682	1,225,532	75,102	28,847	84,543	206,840	2,415,885
March	8,882	40,826	34,784	753,970	1,344,872	83,063	31,349	92,159	232,834	2,625,948
April	12,130	38,719	38,308	753,707	1,358,249	78,980	30,964	91,818	231,678	2,637,499
May										
June										
July										
August										
September ..										
October										
November ...										
December ...										
Totals ...										

See footnotes, page 43.

TABLE 2A. Estimated Value of Shipments, Orders and Inventory, in all Manufacturing Industries

Date	Shipments(1)	Orders		Inventory at end of month					
		New orders received during month	Unfilled orders at end of month	Owned	Held but not owned	All inventory held			
						Total	Raw materials	Goods in process	Finished products
thousands of dollars									
1960 - January	1,760,875	1,824,034	2,123,278	4,209,840	328,002	4,537,842	2,016,772	1,158,686	1,362,384
February ...	1,825,339	1,838,176	2,136,115	4,282,402	329,278	4,611,680	2,034,949	1,175,676	1,401,055
March	2,016,566	2,013,907	2,133,456	4,344,335	288,745	4,633,080	2,032,889	1,138,604	1,461,587
April	1,907,402	1,850,997	2,077,051	4,351,167	298,355	4,649,522	2,025,988	1,154,505	1,469,029
May	2,024,269	1,978,781	2,031,563	4,356,327	305,114	4,661,441	2,027,511	1,161,387	1,472,543
June	2,067,372	2,031,899	1,996,090	4,338,013	308,144	4,646,157	2,016,983	1,156,071	1,473,103
July	1,851,182	1,848,351	1,993,259	4,300,914	305,432	4,606,346	2,038,521	1,119,820	1,448,005
August	1,977,184	1,923,362	1,939,437	4,307,838	306,339	4,614,177	2,050,270	1,138,032	1,425,875
September ..	2,063,456	2,010,404	1,886,385	4,278,091	288,809	4,566,900	2,014,580	1,130,625	1,421,695
October	2,002,415	1,949,415	1,833,385	4,273,847	255,914	4,529,761	2,017,831	1,079,778	1,432,152
November ...	2,015,058	1,972,913	1,791,240	4,272,897	255,741	4,528,638	2,023,408	1,085,521	1,419,709
December ...	1,843,950	1,881,962	1,829,252	4,297,558	255,713	4,553,271	2,041,072	1,072,200	1,439,999
Totals ...	23,355,068								
1961 - January	1,779,229	1,876,230	1,926,253	4,332,332	245,737	4,578,069	2,048,749	1,061,923	1,467,397
February ...	1,790,421	1,798,215	1,934,047	4,381,446	250,478	4,631,924	2,042,650	1,088,620	1,500,654
March	1,991,058	2,050,792	1,993,781	4,404,411	257,604	4,662,015	2,021,008	1,105,419	1,535,588
April	1,910,124	1,918,088	2,001,745	4,402,976	252,723	4,655,699	1,994,832	1,113,708	1,547,159
May	2,107,234	2,103,502	1,998,013	4,405,064	217,447	4,622,511	1,984,976	1,095,096	1,542,439
June	2,175,564	2,167,787	1,990,236	4,395,878	204,479	4,600,357	1,971,559	1,080,986	1,547,812
July	1,978,093	1,982,985	1,995,128	4,360,688	207,144	4,567,832	2,007,886	1,052,249	1,507,697
August	2,140,096	2,137,244	1,992,276	4,392,411	206,475	4,598,886	2,044,918	1,065,620	1,488,348
September ...	2,175,496	2,148,858	1,965,638	4,402,554	210,056	4,612,610	2,037,664	1,080,647	1,494,299
October	2,187,708	2,157,177	1,935,107	4,468,925	199,587	4,668,512	2,063,923	1,089,036	1,515,553
November ...	2,198,909	2,261,847	1,998,045	4,499,118	206,411	4,705,529	2,080,795	1,098,144	1,526,590
December ...	1,993,975	2,027,092	2,031,162	4,580,787	215,013	4,795,800	2,108,647	1,126,079	1,561,074
Totals ...	24,427,907								
1962 - January	1,993,444	2,100,373	2,138,091	4,621,311	220,231	4,841,542	2,102,718	1,143,441	1,595,383
February ...	1,941,387	1,990,353	2,187,057	4,665,244	238,003	4,903,247	2,091,143	1,172,048	1,640,056
March	2,243,256	2,295,066	2,238,867	4,725,506	242,897	4,968,403	2,087,658	1,188,537	1,692,208
April	2,155,821	2,151,477	2,234,523	4,710,339	256,753	4,967,092	2,079,317	1,202,578	1,685,197
May	2,424,004	2,428,662	2,239,181	4,690,259	266,176	4,956,435	2,081,786	1,218,291	1,656,358
June	2,414,955	2,456,727	2,280,953	4,653,871	284,297	4,938,168	2,068,234	1,231,879	1,638,055
July	2,218,277	2,218,646	2,281,322	4,666,359	299,704	4,966,063	2,127,339	1,228,464	1,610,260
August	2,293,487	2,258,136	2,245,971	4,715,527	300,325	5,015,852	2,148,171	1,270,049	1,597,632
September ...	2,344,809	2,277,143	2,178,305	4,742,540	307,084	5,049,624	2,136,796	1,286,750	1,626,078
October	2,484,041	2,437,024	2,131,288	4,772,082	288,268	5,060,350	2,144,686	1,292,814	1,622,850
November ...	2,396,166	2,379,407	2,114,529	4,770,399	286,119	5,056,518	2,165,320	1,272,280	1,618,918
December ...	2,138,097	2,134,225	2,110,657	4,798,878	286,743	5,085,621	2,165,831	1,267,965	1,651,825
Totals ...	27,047,744								
1963 - January	2,158,446	2,345,749	2,297,960	4,802,862	286,129	5,088,991	2,136,825	1,272,275	1,679,891
February ...	2,126,794	2,137,493	2,308,659	4,856,690	294,716	5,151,406	2,129,884	1,293,195	1,728,327
March	2,306,866	2,312,743	2,314,536	4,881,575	302,706	5,184,281	2,122,666	1,308,245	1,753,370
April	2,345,306	2,306,031	2,275,261	4,857,677	307,644	5,165,321	2,100,635	1,305,783	1,758,903
May	2,601,723	2,617,417	2,290,955	4,838,336	296,637	5,134,973	2,096,180	1,286,184	1,752,609
June	2,485,067	2,466,581	2,272,469	4,808,118	298,832	5,106,950	2,083,655	1,281,465	1,741,830
July	2,390,529	2,412,713	2,294,653	4,768,053	280,324	5,048,377	2,113,804	1,228,108	1,706,465
August	2,356,920	2,393,339	2,331,072	4,814,704	273,658	5,088,362	2,135,331	1,265,115	1,687,916
September ..	2,516,447	2,515,587	2,330,212	4,824,384	286,757	5,111,141	2,140,956	1,280,255	1,689,930
October	2,655,288	2,651,573	2,326,497	4,834,186	282,520	5,116,706	2,150,360	1,277,326	1,689,020
November ...	2,544,147	2,560,949	2,343,299	4,857,335	288,351	5,145,686	2,174,196	1,280,634	1,690,856
December ...	2,448,183	2,437,904	2,333,020	4,932,421	274,362	5,206,783	2,197,333	1,290,259	1,719,191
Totals ...	28,935,716								
1964 - January	2,428,050	2,618,352	2,523,322	4,964,405	278,568	5,242,973	2,183,916	1,305,931	1,753,126
February ...	2,415,885	2,400,582	2,508,019	5,000,069	286,389	5,286,458	2,178,705	1,324,211	1,783,542
March ^c	2,625,948	2,669,648	2,551,719	4,961,423	300,882	5,262,305	2,155,422	1,329,744	1,777,139
April ^p	2,637,499	2,668,264	2,582,484	4,967,172	296,963	5,264,135	2,153,684	1,321,837	1,788,614
May									
June									
July									
August									
September ...									
October									
November ...									
December ...									
Totals ...									

See footnotes, page 43.

TABLE 3. Estimated Value of Shipments, Orders and Inventory in Manufacturing Industries grouped according to the Standard Industrial Classification

Durable

Includes Major Groups 8, 9, 12, 13, 14, 15, 16 and 17.

Date	Shipments(1)	Orders		Inventory at end of month					
		New orders received during month	Unfilled orders at end of month	Owned	Held but not owned	All inventory held			
						Total	Raw materials	Goods in process	Finished products
thousands of dollars									
1960 - January	753,853	767,326	1,699,340	1,939,610	325,222	2,264,832	878,614	800,739	585,479
February	784,035	800,595	1,715,900	1,986,534	326,498	2,313,032	885,699	813,582	613,751
March	895,596	902,386	1,722,690	2,030,978	285,983	2,316,961	889,291	776,640	651,030
April	823,485	775,046	1,674,251	2,056,516	295,656	2,352,172	896,292	790,214	665,666
May	887,652	847,641	1,634,240	2,068,359	302,551	2,370,910	894,846	799,082	676,982
June	903,265	850,048	1,581,023	2,054,511	305,442	2,359,953	890,564	793,123	676,266
July	766,519	760,123	1,574,627	2,020,747	302,499	2,323,246	896,227	763,768	663,251
August	788,864	764,935	1,550,698	2,012,718	303,036	2,315,754	900,598	778,232	636,924
September	838,959	805,611	1,517,350	1,992,471	285,424	2,277,895	888,038	769,964	619,893
October	824,990	779,991	1,472,351	1,964,053	252,337	2,216,390	875,672	723,265	617,453
November	841,403	801,489	1,432,437	1,940,749	252,167	2,192,916	861,818	721,371	609,727
December	773,928	794,263	1,452,772	1,942,074	252,143	2,194,217	854,735	712,701	626,781
Totals	9,882,549								
1961 - January	720,914	749,125	1,480,983	1,937,967	242,283	2,180,250	841,552	695,767	642,931
February	730,343	744,492	1,495,132	1,977,123	247,224	2,224,347	836,975	717,434	669,938
March	820,008	882,110	1,557,234	1,998,097	254,454	2,252,551	827,816	734,542	690,193
April	787,739	801,104	1,570,599	2,018,550	249,676	2,268,226	822,795	740,949	704,482
May	895,550	887,928	1,562,977	2,042,027	214,540	2,256,567	828,607	721,403	706,557
June	945,431	919,676	1,537,222	2,040,736	201,553	2,242,289	822,757	707,335	712,197
July	822,070	826,680	1,541,832	1,997,519	204,301	2,201,820	831,406	680,473	689,941
August	861,162	870,096	1,550,766	2,006,796	203,684	2,210,480	844,685	698,088	667,707
September	912,520	896,432	1,534,678	2,004,021	207,372	2,211,393	843,995	710,413	656,985
October	906,579	892,944	1,521,043	2,042,355	196,960	2,239,315	853,362	718,728	667,225
November	933,682	998,492	1,585,853	2,052,193	203,916	2,256,109	854,769	722,457	678,883
December	850,563	880,068	1,615,558	2,115,609	212,674	2,328,283	872,162	753,390	702,731
Totals	10,186,361								
1962 - January	830,910	877,239	1,661,887	2,105,460	218,297	2,323,757	863,134	767,286	693,337
February	819,561	876,780	1,719,106	2,143,950	236,011	2,379,961	858,092	791,862	730,007
March	968,426	1,025,663	1,776,343	2,175,132	241,021	2,416,153	860,544	803,690	751,919
April	925,946	929,935	1,780,332	2,184,768	254,778	2,439,546	860,348	814,600	764,598
May	1,079,860	1,073,463	1,773,935	2,185,296	264,131	2,449,427	859,610	832,316	757,501
June	1,096,486	1,142,294	1,819,743	2,162,335	282,056	2,444,391	859,848	838,604	745,939
July	959,129	958,685	1,819,299	2,140,381	297,379	2,437,760	873,774	837,249	726,737
August	944,999	929,224	1,803,524	2,166,957	297,888	2,464,845	880,605	879,180	705,060
September	1,010,615	964,655	1,757,564	2,183,016	304,657	2,487,673	881,946	894,079	711,648
October	1,086,990	1,058,534	1,729,108	2,207,628	285,811	2,493,439	881,620	901,969	709,850
November	1,059,441	1,039,814	1,709,481	2,181,185	283,554	2,464,739	882,109	877,743	704,887
December	945,429	941,749	1,705,801	2,202,351	283,982	2,486,333	884,661	874,648	727,024
Totals	11,727,792								
1963 - January	944,566	1,073,909	1,835,144	2,225,537	283,538	2,509,075	870,038	870,405	768,632
February	922,007	940,911	1,854,048	2,266,599	292,085	2,558,684	872,653	886,232	799,799
March	1,021,808	1,020,029	1,852,269	2,279,051	300,070	2,579,121	871,768	896,854	810,499
April	1,027,260	1,008,071	1,833,080	2,283,742	305,111	2,588,853	863,239	898,845	826,769
May	1,185,694	1,198,272	1,845,658	2,281,109	293,959	2,575,068	862,378	885,655	827,035
June	1,139,617	1,109,747	1,815,788	2,254,940	296,052	2,550,992	859,086	874,172	817,734
July	1,053,424	1,073,443	1,835,807	2,219,872	277,826	2,497,698	878,216	825,104	794,378
August	948,617	1,009,859	1,897,049	2,264,955	270,744	2,535,699	889,630	861,875	784,194
September	1,086,170	1,051,230	1,862,109	2,276,604	283,888	2,560,492	900,428	877,062	783,002
October	1,174,858	1,173,686	1,860,937	2,259,063	279,602	2,538,665	897,667	875,956	765,042
November	1,147,304	1,168,251	1,881,884	2,238,011	285,450	2,523,461	893,658	874,792	755,011
December	1,120,193	1,113,629	1,875,320	2,284,518	271,508	2,556,026	900,805	880,979	774,242
Totals	12,771,518								
1964 - January	1,100,285	1,246,704	2,021,739	2,296,982	275,724	2,572,706	888,310	891,311	793,085
February	1,103,045	1,099,812	2,018,506	2,317,269	283,087	2,600,356	891,497	902,849	806,010
March ^F	1,226,615	1,278,938	2,070,829	2,298,003	297,216	2,595,219	886,682	902,629	805,908
April ^P	1,209,295	1,238,592	2,100,126	2,313,389	293,252	2,606,641	890,115	897,384	819,142
May									
June									
July									
August									
September									
October									
November									
December									
Totals									

See footnotes, page 43.

TABLE 3. Estimated Value of Shipments, Orders and Inventory in Manufacturing Industries grouped according to the Standard Industrial Classification

Major Group 1 - Food and Beverage Industries.

Date	Shipments	Orders		Inventory at end of month					
		New orders received during month(2)	Unfilled orders at end of month(2)	Owned	Held but not owned	All inventory held			
						Total	Raw materials	Goods in process	Finished products
thousands of dollars									
1960 - January	352,335			647,207	-	647,207	314,886	144,487	187,834
February	354,354			618,727	-	618,727	302,541	145,513	170,673
March	372,405			601,615	-	601,615	287,533	147,285	166,797
April	372,424			593,675	-	593,675	283,579	147,173	162,923
May	405,528			603,127	-	603,127	295,677	147,956	159,494
June	425,430			602,357	-	602,357	296,519	147,750	158,088
July	418,731			608,759	-	608,759	301,112	146,017	161,630
August	426,154			636,360	-	636,360	316,245	144,688	175,427
September ..	429,806			658,035	-	658,035	307,677	145,165	205,193
October	418,190			686,192	-	686,192	319,353	146,486	220,353
November	417,427			699,033	-	699,033	331,023	149,741	218,269
December ...	392,254			685,619	-	685,619	325,752	147,516	212,351
Totals ...	4,785,038								
1961 - January	365,533			674,529	-	674,529	320,293	148,216	206,020
February ...	358,203			647,205	-	647,205	305,531	150,880	190,794
March	397,765			635,628	-	635,628	297,569	150,695	187,364
April	392,188			625,312	-	625,312	291,966	152,190	181,156
May	432,897			611,847	-	611,847	284,296	153,090	174,461
June	451,208			614,985	-	614,985	287,720	152,494	174,771
July	438,939			635,767	-	635,767	309,905	151,093	174,769
August	459,893			671,726	-	671,726	332,441	148,562	190,723
September ..	442,035			700,220	-	700,220	333,224	149,381	217,615
October	450,941			726,121	-	726,121	345,879	150,757	229,485
November ...	445,215			744,558	-	744,558	362,858	153,833	227,867
December ...	408,668			726,507	-	726,507	350,072	151,275	225,160
Totals ...	5,043,485								
1962 - January	396,895			709,888	-	709,888	341,382	151,748	216,758
February ...	372,932			689,830	-	689,830	329,819	154,078	205,933
March	424,703			667,782	-	667,782	316,694	155,178	195,910
April	416,117			663,556	-	663,556	316,939	157,497	189,120
May	464,485			656,211	-	656,211	315,721	160,123	180,367
June	476,593			643,111	-	643,111	303,863	161,039	178,209
July	468,907			675,882	-	675,882	334,263	159,488	182,131
August	471,889			717,932	-	717,932	356,664	158,346	202,922
September ..	449,719			750,368	-	750,368	358,697	160,411	231,260
October	476,362			770,911	-	770,911	372,903	162,072	235,936
November ...	460,853			799,293	-	799,293	396,128	165,183	237,982
December ...	421,428			787,203	-	787,203	387,589	163,177	236,437
Totals ...	5,300,883								
1963 - January	415,034			760,568	-	760,568	372,069	161,239	227,260
February ...	399,882			732,642	-	732,642	351,758	161,609	219,275
March	424,137			721,503	-	721,503	345,852	164,129	211,522
April	443,756			703,324	-	703,324	336,121	163,327	203,876
May	492,799			705,586	-	705,586	338,660	162,720	204,206
June	484,469			699,425	-	699,425	336,701	162,954	199,770
July	497,403			702,994	-	702,994	342,528	162,183	198,283
August	492,039			725,424	-	725,424	358,149	159,987	207,288
September ..	480,947			755,815	-	755,815	364,529	162,810	228,476
October	509,492			798,652	-	798,652	387,310	163,851	247,491
November ...	480,644			826,934	-	826,934	400,519	167,822	258,593
December ...	462,680			822,774	-	822,774	397,195	166,339	259,240
Totals ...	5,583,282								
1964 - January	455,327			801,974	-	801,974	384,441	165,226	252,307
February ...	435,363			767,692	-	767,692	359,781	166,902	241,009
March ^F	466,194			735,768	-	735,768	341,903	168,848	225,017
April ^P	478,234			737,560	-	737,560	345,379	170,256	221,925
May									
June									
July									
August									
September ..									
October									
November ...									
December ...									
Totals ...									

See footnotes, page 43.

TABLE 3. Estimated Value of Shipments, Orders and Inventory in Manufacturing Industries grouped according to the Standard Industrial Classification

Major Group 2 - Tobacco Products Industries

Date	Shipments	Orders		Inventory at end of month					
		New orders received during month(2)	Unfilled orders at end of month(2)	Owned	Held but not owned	All inventory held			
						Total	Raw materials	Goods in process	Finished products
thousands of dollars									
1960 - January	25,802			133,635	-	133,635	114,492	2,812	16,331
February	30,541			152,519	-	152,519	132,298	2,851	17,370
March	32,270			164,713	-	164,713	142,104	2,730	19,879
April	24,239			161,430	-	161,430	138,818	2,793	19,819
May	25,592			152,018	-	152,018	129,664	2,803	19,551
June	32,490			142,663	-	142,663	121,261	2,780	18,622
July	25,894			134,504	-	134,504	121,131	2,675	10,698
August	22,600			125,009	-	125,009	111,649	2,787	10,573
September	28,092			118,539	-	118,539	103,459	2,768	12,312
October	23,914			116,093	-	116,093	99,069	2,946	14,078
November	26,969			119,719	-	119,719	102,878	2,985	13,856
December	35,973			140,453	-	140,453	123,844	2,937	13,672
Totals	334,376								
1961 - January	28,687			161,380	-	161,380	141,979	3,110	16,291
February	31,447			174,977	-	174,977	153,697	3,536	17,744
March	33,668			180,956	-	180,956	158,067	3,311	19,578
April	26,755			178,323	-	178,323	154,590	3,029	20,704
May	26,616			173,245	-	173,245	149,952	2,566	20,727
June	30,296			168,516	-	168,516	144,236	2,263	22,017
July	24,544			157,804	-	157,804	140,422	1,964	15,418
August	24,978			152,316	-	152,316	135,286	2,060	14,970
September	26,696			145,347	-	145,347	128,138	1,821	15,388
October	24,335			142,451	-	142,451	122,436	1,699	18,316
November	25,282			139,951	-	139,951	119,527	1,585	18,839
December	31,682			147,502	-	147,502	130,669	1,142	15,691
Totals	334,986								
1962 - January	29,376			162,729	-	162,729	144,312	1,432	16,985
February	32,032			170,505	-	170,505	150,907	1,566	18,032
March	37,218			198,331	-	198,331	158,012	1,551	38,768
April	35,874			182,250	-	182,250	158,564	1,597	22,089
May	32,081			180,079	-	180,079	156,002	1,616	22,461
June	33,736			173,296	-	173,296	149,160	1,597	22,539
July	24,747			162,715	-	162,715	145,152	1,440	16,123
August	27,324			154,679	-	154,679	138,442	1,392	14,845
September	27,199			149,973	-	149,973	132,630	1,406	15,937
October	25,213			143,948	-	143,948	125,072	1,440	17,436
November	26,642			140,477	-	140,477	122,076	1,483	16,918
December	27,607			137,368	-	137,368	121,098	1,386	14,884
Totals	359,049								
1963 - January	24,428			144,414	-	144,414	126,843	1,469	16,102
February	32,187			159,875	-	159,875	139,669	1,533	18,673
March	35,351			173,912	-	173,912	149,817	1,503	22,592
April	38,748			180,823	-	180,823	155,818	1,488	23,517
May	38,823			178,020	-	178,020	152,057	1,494	24,469
June	33,152			171,761	-	171,761	144,662	1,510	25,589
July	31,353			160,224	-	160,224	139,387	1,470	19,367
August	26,736			153,675	-	153,675	133,796	1,474	18,405
September	30,026			146,451	-	146,451	126,354	1,474	18,623
October	24,289			141,343	-	141,343	121,412	1,445	18,486
November	27,755			146,476	-	146,476	125,746	1,364	19,366
December	36,880			149,291	-	149,291	131,273	1,383	16,635
Totals	379,728								
1964 - January	29,477			160,951	-	160,951	141,762	1,394	17,795
February	25,798			173,877	-	173,877	150,769	1,514	21,594
March ^F	28,731			174,665	-	174,665	150,542	1,626	22,497
April ^P	39,482			176,868	-	176,868	152,251	1,680	22,937
May									
June									
July									
August									
September									
October									
November									
December									
Totals									

See footnotes, page 43.

TABLE 3. Estimated Value of Shipments, Orders and Inventory in Manufacturing Industries grouped according to the Standard Industrial Classification

Major Group 6 - Knitting Mills

Date	Shipments	Orders		Inventory at end of month					
		New orders received during month(2)	Unfilled orders at end of month(2)	Owned	Held but not owned	All inventory held			
						Total	Raw materials	Goods in process	Finished products
thousands of dollars									
1960 - January	13,016			46,083	-	46,083	12,836	11,290	21,957
February	15,041			48,399	-	48,399	13,477	11,783	23,139
March	16,818			49,212	-	49,212	13,589	11,780	23,843
April	14,132			50,845	-	50,845	14,200	11,830	24,815
May	13,403			52,527	-	52,527	14,633	11,908	25,986
June	13,764			53,328	-	53,328	14,570	11,693	27,065
July	15,678			51,880	-	51,880	14,453	11,757	25,670
August	19,704			50,712	-	50,712	13,965	11,879	24,868
September	22,058			48,086	-	48,086	13,420	11,708	22,958
October	20,798			46,727	-	46,727	13,424	11,287	22,016
November	20,448			46,217	-	46,217	13,101	11,390	21,726
December	14,693			46,270	-	46,270	13,228	11,717	21,325
Totals	199,553								
1961 - January	14,777			48,213	-	48,213	13,374	11,918	22,921
February	16,657			49,372	-	49,372	13,488	12,214	23,670
March	17,316			50,543	-	50,543	14,142	12,299	24,102
April	14,728			51,786	-	51,786	14,244	12,638	24,904
May	14,648			53,378	-	53,378	14,429	12,787	26,162
June	14,906			54,793	-	54,793	15,085	12,643	27,065
July	18,157			52,854	-	52,854	15,057	12,133	25,664
August	22,045			51,679	-	51,679	15,473	12,125	24,081
September	23,181			50,597	-	50,597	15,640	12,250	22,707
October	23,203			49,442	-	49,442	15,704	12,341	21,397
November	23,366			49,051	-	49,051	15,778	12,348	20,925
December	16,319			49,453	-	49,453	15,313	12,429	21,711
Totals	219,303								
1962 - January	16,395			52,717	-	52,717	17,592	13,040	22,085
February	16,694			53,560	-	53,560	18,002	13,099	22,459
March	17,494			55,930	-	55,930	19,150	13,401	23,379
April	15,883			57,032	-	57,032	19,353	13,577	24,102
May	15,291			58,821	-	58,821	19,221	13,977	25,623
June	16,151			60,801	-	60,801	20,368	14,013	26,420
July	19,237			60,152	-	60,152	20,811	14,403	24,938
August	22,177			59,035	-	59,035	20,766	14,316	23,953
September	23,807			56,920	-	56,920	20,456	14,226	22,238
October	23,834			55,127	-	55,127	20,669	13,910	20,548
November	22,563			53,917	-	53,917	20,156	13,583	20,178
December	17,047			53,802	-	53,802	19,079	13,365	21,358
Totals	226,573								
1963 - January	16,593			55,303	-	55,303	19,268	13,926	22,109
February	17,432			56,743	-	56,743	19,457	13,895	23,391
March	17,940			57,789	-	57,789	19,952	13,620	24,217
April	16,341			58,457	-	58,457	20,082	13,488	24,887
May	16,040			58,838	-	58,838	20,181	13,722	24,935
June	16,236			61,458	-	61,458	20,054	13,872	27,532
July	20,062			59,445	-	59,445	19,872	13,802	25,771
August	23,026			57,762	-	57,762	20,144	13,500	24,118
September	24,861			54,046	-	54,046	19,595	12,854	21,597
October	24,878			52,496	-	52,496	19,597	12,415	20,484
November	22,077			51,899	-	51,899	19,520	12,249	20,130
December	16,192			52,988	-	52,988	19,648	12,395	20,945
Totals	231,678								
1964 - January	16,282			54,346	-	54,346	19,389	13,116	21,841
February	17,251			54,893	-	54,893	19,550	13,326	22,017
March ^F	16,728			54,220	-	54,220	19,250	12,751	22,219
April ^P	14,800			55,337	-	55,337	19,668	12,778	22,891
May									
June									
July									
August									
September									
October									
November									
December									
Totals									

See footnotes, page 43.

TABLE 3. Estimated Value of Shipments, Orders and Inventory in Manufacturing Industries grouped according to the Standard Industrial Classification

Major Group 8 - Wood Industries

Date	Shipments	Orders		Inventory at end of month					
		New orders received during month(2)	Unfilled orders at end of month(2)	Owned	Held but not owned	All inventory held			
						Total	Raw materials	Goods in process	Finished products
thousands of dollars									
1960 - January	68,702			195,299	-	195,299	105,458	1,941	87,900
February	76,459			212,401	-	212,401	113,924	1,959	96,518
March	89,597			232,162	-	232,162	122,950	2,010	107,202
April	77,276			228,065	-	228,065	119,489	2,106	106,470
May	91,389			222,068	-	222,068	114,252	2,120	105,696
June	100,372			212,191	-	212,191	108,026	2,070	102,095
July	85,810			212,655	-	212,655	108,604	2,080	101,971
August	92,808			207,132	-	207,132	105,043	2,053	100,036
September	87,466			199,141	-	199,141	101,353	1,986	95,802
October	80,111			189,705	-	189,705	94,160	2,071	93,474
November	75,151			175,970	-	175,970	87,437	2,107	86,426
December	70,654			187,979	-	187,979	91,491	2,134	94,354
Totals	995,795								
1961 - January	67,607			184,368	-	184,368	93,669	2,196	88,503
February	71,475			198,293	-	198,293	99,464	2,082	96,747
March	83,456			206,143	-	206,143	103,917	1,930	100,296
April	79,559			206,252	-	206,252	102,634	1,893	101,725
May	94,550			195,676	-	195,676	97,452	2,115	96,109
June	107,339			191,136	-	191,136	93,776	2,069	95,291
July	93,415			187,416	-	187,416	90,731	1,907	94,778
August	99,491			182,692	-	182,692	88,498	1,895	92,299
September	93,802			180,120	-	180,120	85,323	1,902	92,895
October	88,399			177,991	-	177,991	83,091	1,915	92,985
November	83,875			172,285	-	172,285	79,782	1,855	90,648
December	72,369			180,853	-	180,853	81,281	1,756	97,816
Totals	1,035,337								
1962 - January	82,399			184,013	-	184,013	85,672	1,647	96,694
February	86,941			197,982	-	197,982	91,938	1,847	104,197
March	105,568			208,403	-	208,403	95,679	1,905	110,819
April	95,760			208,955	-	208,955	95,517	1,910	111,528
May	125,349			200,999	-	200,999	94,039	1,996	104,964
June	132,560			192,738	-	192,738	90,011	2,030	100,697
July	120,072			194,891	-	194,891	90,405	2,175	102,311
August	125,825			189,577	-	189,577	87,946	2,161	99,470
September	113,764			193,638	-	193,638	87,486	2,319	103,833
October	115,213			184,857	-	184,857	83,166	2,240	99,451
November	100,402			182,537	-	182,537	82,317	2,220	98,000
December	87,757			188,737	-	188,737	84,238	2,263	102,236
Totals	1,291,610								
1963 - January	92,807			191,740	-	191,740	86,408	2,340	102,992
February	98,238			209,193	-	209,193	92,784	2,772	113,637
March	109,776			220,198	-	220,198	99,679	2,935	117,584
April	104,647			223,106	-	223,106	99,870	3,109	120,127
May	135,052			227,314	-	227,314	99,493	2,951	124,870
June	140,274			225,047	-	225,047	97,851	3,010	124,186
July	141,807			223,379	-	223,379	96,862	2,940	123,577
August	137,441			217,674	-	217,674	94,592	3,121	119,961
September	124,191			216,293	-	216,293	93,625	3,111	119,557
October	129,447			207,028	-	207,028	89,922	3,458	113,648
November	109,119			199,644	-	199,644	87,202	3,408	109,034
December	101,717			205,460	-	205,460	89,767	3,236	112,457
Totals	1,424,516								
1964 - January	108,030			206,480	-	206,480	91,112	2,858	112,510
February	114,867			212,915	-	212,915	95,186	2,806	114,923
March ^r	139,147			214,533	-	214,533	99,974	2,874	111,685
April ^P	130,407			213,310	-	213,310	99,245	2,876	111,189
May									
June									
July									
August									
September									
October									
November									
December									
Totals									

See footnotes, page 43.

TABLE 3. Estimated Value of Shipments, Orders and Inventory in Manufacturing Industries grouped according to the Standard Industrial Classification

Major Group 9 - Furniture and Fixture Industries

Date	Shipments	Orders		Inventory at end of month					
		New orders received during month(2)	Unfilled orders at end of month(2)	Owned	Held but not owned	All inventory held			
						Total	Raw materials	Goods in process	Finished products
thousands of dollars									
1960 - January	22,909			60,797	-	60,797	34,076	12,734	13,987
February ...	26,269			61,495	-	61,495	34,357	12,833	14,305
March	28,736			62,059	-	62,059	34,577	13,155	14,327
April	26,179			62,772	-	62,772	34,510	13,698	14,564
May	27,956			62,830	-	62,830	34,339	13,803	14,688
June	28,677			62,837	-	62,837	33,809	13,690	15,338
July	23,742			62,515	-	62,515	34,162	13,537	14,816
August	33,624			61,395	-	61,395	33,047	13,823	14,525
September ..	34,064			58,974	-	58,974	31,827	12,966	14,181
October	31,654			58,991	-	58,991	31,793	13,042	14,156
November ...	31,385			58,265	-	58,265	31,901	12,404	13,960
December ...	26,794			60,438	-	60,438	33,791	12,037	14,610
Totals ...	341,989								
1961 - January	23,853			61,631	-	61,631	34,671	11,813	15,147
February ...	26,541			61,816	-	61,816	34,830	12,072	14,914
March	28,918			62,234	-	62,234	34,477	12,840	14,917
April	27,033			62,344	-	62,344	33,803	13,553	14,988
May	30,545			61,822	-	61,822	32,941	13,373	15,508
June	30,639			62,144	-	62,144	32,580	12,806	16,758
July	26,410			61,636	-	61,636	33,330	12,731	15,575
August	35,602			61,001	-	61,001	33,295	12,848	14,858
September ...	33,977			61,262	-	61,262	33,877	12,798	14,587
October	34,479			64,080	-	64,080	35,600	13,725	14,755
November ...	35,016			63,290	-	63,290	35,489	12,814	14,987
December ...	29,034			64,743	-	64,743	36,802	13,502	14,439
Totals ...	362,047								
1962 - January	26,521			66,407	-	66,407	38,355	12,985	15,067
February ...	28,526			67,522	-	67,522	39,258	13,194	15,070
March	31,191			67,147	-	67,147	39,067	13,224	14,856
April	30,918			66,787	-	66,787	38,283	13,145	15,359
May	34,542			66,357	-	66,357	37,318	14,001	15,038
June	32,688			66,897	-	66,897	36,931	14,529	15,437
July	29,457			66,606	-	66,606	37,333	14,499	14,774
August	36,086			66,834	-	66,834	36,240	16,276	14,318
September ...	36,807			66,652	-	66,652	35,976	16,679	13,997
October	40,502			67,748	-	67,748	36,565	17,379	13,804
November ...	37,181			67,626	-	67,626	36,296	17,558	13,772
December ...	30,169			68,114	-	68,114	36,719	16,435	14,960
Totals ...	394,588								
1963 - January	30,141			69,360	-	69,360	37,191	16,843	15,326
February ...	31,479			71,388	-	71,388	38,394	17,123	15,871
March	33,170			71,851	-	71,851	38,788	17,407	15,656
April	33,905			71,864	-	71,864	38,716	17,869	15,279
May	36,400			70,675	-	70,675	37,736	17,380	15,559
June	35,126			71,076	-	71,076	37,300	17,582	16,194
July	32,178			72,436	-	72,436	38,586	18,456	15,394
August	38,120			71,341	-	71,341	37,445	18,782	15,114
September ...	41,654			70,988	-	70,988	37,549	18,709	14,730
October	44,457			71,834	-	71,834	38,249	18,223	15,362
November ...	40,315			71,331	-	71,331	37,881	18,526	14,924
December ...	34,900			72,817	-	72,817	39,271	18,421	15,125
Totals ...	431,845								
1964 - January	31,414			73,685	-	73,685	40,234	18,643	14,808
February ...	34,060			74,998	-	74,998	41,289	18,864	14,845
March ^T	37,149			74,141	-	74,141	40,984	18,771	14,386
April ^P	36,125			75,054	-	75,054	40,772	19,093	15,189
May									
June									
July									
August									
September ...									
October									
November ...									
December ...									
Totals ...									

See footnotes, page 43.

TABLE 3. Estimated Value of Shipments, Orders and Inventory in Manufacturing Industries grouped according to the Standard Industrial Classification

Major Group 10 - Paper and Allied Industries

Date	Shipments	Orders		Inventory at end of month					
		New orders received during month(2)	Unfilled orders at end of month(2)	Owned	Held but not owned	All inventory held			
						Total	Raw materials	Goods in process	Finished products
thousands of dollars									
1960 - January	159,512			337,186	-	337,186	247,456	14,922	74,808
February ...	160,692			347,687	-	347,687	251,450	15,221	81,016
March	175,727			353,381	-	353,381	250,126	15,443	87,812
April	175,388			344,463	-	344,463	243,710	15,790	84,963
May	180,848			339,268	-	339,268	239,266	15,606	84,396
June	187,318			336,116	-	336,116	240,819	15,269	80,028
July	171,406			341,127	-	341,127	247,570	15,331	78,226
August	183,432			346,296	-	346,296	251,058	16,033	79,205
September ..	188,146			349,087	-	349,087	256,039	15,902	77,146
October	183,843			356,794	-	356,794	263,047	15,649	78,098
November ...	192,810			355,034	-	355,034	264,568	16,845	73,621
December ...	166,782			358,725	-	358,725	270,165	16,080	72,480
Totals ...	2,125,904								
1961 - January	163,438			370,163	-	370,163	272,221	18,144	79,798
February ...	157,745			379,686	-	379,686	275,639	17,031	87,016
March	178,354			384,492	-	384,492	269,574	17,925	96,993
April	177,821			371,690	-	371,690	260,746	18,036	92,908
May	191,132			365,342	-	365,342	254,254	18,566	92,522
June	193,853			364,169	-	364,169	255,155	17,272	91,742
July	177,763			371,212	-	371,212	261,518	18,069	91,625
August	199,769			369,312	-	369,312	262,238	18,171	88,903
September ..	190,754			367,363	-	367,363	261,750	18,017	87,596
October	195,148			370,447	-	370,447	263,784	17,952	88,711
November ...	203,509			366,621	-	366,621	264,866	17,320	84,435
December ...	176,515			370,220	-	370,220	269,755	17,003	83,462
Totals ...	2,205,801								
1962 - January	176,681			378,032	-	378,032	268,299	16,709	93,024
February ...	157,005			383,556	-	383,556	269,636	15,435	98,485
March	194,859			383,353	-	383,353	264,926	17,280	101,147
April	187,822			372,052	-	372,052	254,088	17,654	100,310
May	207,887			367,749	-	367,749	252,178	17,186	98,385
June	203,392			366,920	-	366,920	250,820	17,554	98,546
July	193,444			368,555	-	368,555	253,586	18,135	96,834
August	208,780			369,177	-	369,177	256,630	18,216	94,331
September ..	198,026			370,031	-	370,031	258,637	18,762	92,632
October	216,147			365,158	-	365,158	256,919	17,919	90,320
November ...	208,912			363,420	-	363,420	258,112	17,487	87,821
December ...	177,320			364,837	-	364,837	260,152	17,225	87,460
Totals ...	2,330,275								
1963 - January	177,249			372,056	-	372,056	259,494	17,380	95,182
February ...	168,924			376,894	-	376,894	259,070	17,089	100,735
March	184,547			377,308	-	377,308	252,847	17,837	106,624
April	200,077			366,404	-	366,404	242,406	17,483	106,515
May	218,090			359,333	-	359,333	236,014	17,955	105,364
June	213,394			356,415	-	356,415	238,109	17,862	100,444
July	204,285			359,721	-	359,721	242,281	18,188	99,252
August	213,736			360,756	-	360,756	245,490	17,793	97,473
September ..	211,854			356,485	-	356,485	247,692	18,013	90,780
October	223,893			357,412	-	357,412	249,481	17,666	90,265
November ...	219,363			356,414	-	356,414	250,738	17,511	88,165
December ...	204,511			355,260	-	355,260	254,898	17,654	82,708
Totals ...	2,439,923								
1964 - January	206,512			360,160	-	360,160	254,576	18,083	87,501
February ...	198,023			370,671	-	370,671	257,338	18,599	94,734
March ^T	211,439			375,841	-	375,841	255,814	19,649	100,378
April ^P	227,742			367,462	-	367,462	249,214	19,563	98,685
May									
June									
July									
August									
September ..									
October									
November ...									
December ...									
Totals ...									

See footnotes, page 43.

TABLE 3. Estimated Value of Shipments, Orders and Inventory in Manufacturing Industries grouped according to the Standard Industrial Classification

Major Group 12 - Primary Metal Industries

Date	Shipments	Orders		Inventory at end of month					
		New orders received during month	Unfilled orders at end of month	Owned(3)	Held but not owned	All inventory held			
						Total	Raw materials	Goods in process	Finished products
thousands of dollars									
1960 - January	228,634	232,904	204,421			434,149	227,664	88,204	118,281
February ...	224,131	219,632	199,922			431,650	219,751	89,834	122,065
March	235,447	235,275	199,750			438,683	214,412	91,879	132,392
April	223,610	211,258	187,398			453,585	218,259	92,930	142,396
May	238,084	227,267	176,581			468,583	226,712	93,894	147,977
June	220,909	199,668	155,340			479,633	237,287	92,724	149,622
July	209,692	214,783	160,431			493,840	246,707	93,023	154,110
August	225,106	215,038	150,363			500,830	258,947	91,272	150,611
September ..	226,082	227,954	152,235			510,941	266,187	91,873	152,881
October	224,418	223,459	151,276			512,737	265,310	92,702	154,725
November ...	235,944	210,827	126,159			515,860	272,060	87,307	156,493
December ...	194,518	215,502	147,143			518,211	268,424	87,888	161,899
Totals ...	2,686,575								
1961 - January	216,366	222,933	153,710			505,487	254,853	82,145	168,489
February ...	203,705	214,423	164,428			498,656	242,083	82,705	173,868
March	222,996	217,031	158,463			493,367	230,016	84,912	178,439
April	210,473	221,030	169,020			497,179	225,761	86,148	185,270
May	242,421	227,801	154,400			515,756	238,520	89,862	187,374
June	243,371	255,384	166,413			518,580	241,099	89,627	187,854
July	232,982	240,073	173,504			520,444	247,330	91,236	181,878
August	255,431	255,611	173,684			526,190	260,038	89,635	176,517
September ..	257,217	250,585	167,052			519,705	261,769	88,056	169,880
October	253,149	241,994	155,897			531,063	267,790	93,340	169,933
November ...	247,283	238,818	147,432			537,461	272,958	89,742	174,761
December ...	218,632	236,505	165,305			545,653	275,020	92,098	178,535
Totals ...	2,804,026								
1962 - January	239,531	245,661	171,435			532,001	255,052	97,521	179,428
February ...	217,966	223,140	176,609			528,250	241,414	98,237	188,599
March	248,477	259,356	187,488			524,104	232,483	97,452	194,169
April	237,900	250,603	200,191			528,233	230,583	96,861	200,789
May	269,362	265,214	196,043			528,357	231,081	95,516	201,760
June	267,900	266,103	194,246			526,198	238,120	94,396	193,682
July	248,164	249,869	195,951			527,652	246,869	94,185	186,598
August	258,665	252,609	189,895			532,760	250,623	98,799	183,338
September ..	248,612	246,422	187,705			537,256	255,037	97,821	184,398
October	247,486	252,137	192,356			543,322	260,000	97,319	186,003
November ...	262,230	258,809	188,935			542,023	261,316	95,741	184,966
December ...	231,804	248,971	206,102			548,359	260,402	97,105	190,852
Totals ...	2,978,097								
1963 - January	254,179	254,162	206,085			538,702	247,619	99,244	191,839
February ...	229,646	240,317	216,756			532,397	235,992	97,438	198,967
March	260,788	263,268	219,236			510,475	222,088	94,404	193,983
April	250,843	268,988	237,381			509,275	215,125	94,512	199,638
May	285,049	291,211	243,543			507,805	217,281	96,205	194,319
June	270,656	256,140	229,027			503,797	222,976	95,298	185,523
July	252,520	250,502	227,009			513,220	231,606	97,204	184,410
August	257,196	241,293	211,106			527,865	239,238	100,611	188,016
September ..	255,047	249,999	206,058			534,787	244,509	100,041	190,237
October	278,189	275,411	203,280			531,178	249,333	96,795	185,050
November ...	274,266	276,950	205,964			528,229	253,008	96,610	178,611
December ...	252,716	261,439	214,687			538,575	252,912	98,477	187,186
Totals ...	3,121,095								
1964 - January	268,757	339,041	284,971			526,407	238,407	99,962	188,038
February ...	263,359	246,396	268,008			519,287	228,324	101,656	189,307
March	282,747	306,300	291,561			505,957	210,755	103,204	191,998
April	295,649	299,793	295,705			507,652	213,775	105,638	188,239
May									
June									
July									
August									
September ..									
October									
November ...									
December ...									
Totals ...									

See footnotes, page 43.

TABLE 3. Estimated Value of Shipments, Orders and Inventory in Manufacturing Industries grouped according to the Standard Industrial Classification

Major Group 13 - Metal Fabricating Industries (except Machinery and Transportation Equipment Industries)

Date	Shipments(1)	Orders		Inventory at end of month					
		New orders received during month	Unfilled orders at end of month	Owned	Held but not owned	All inventory held			
						Total	Raw materials	Goods in process	Finished products
thousands of dollars									
1960 - January	96,580	96,535	299,396	341,093	65,740	406,833	167,150	155,048	84,635
February ...	100,412	119,455	318,439	351,111	68,111	419,222	173,155	157,259	88,808
March	113,251	114,595	319,783	365,458	71,541	436,999	178,304	165,179	93,516
April	110,064	102,370	312,089	374,082	77,047	451,129	185,497	170,058	95,574
May	120,730	122,806	314,165	377,197	76,269	453,466	184,692	172,696	96,078
June	128,592	117,973	303,546	377,537	78,405	455,942	179,673	180,269	96,000
July	119,941	114,996	298,601	367,140	82,256	449,396	175,524	182,016	91,856
August	137,600	125,388	286,389	358,197	82,985	441,182	169,277	181,899	90,006
September ..	139,042	138,664	286,011	341,034	80,250	421,284	163,532	173,388	84,364
October	125,617	101,799	262,193	326,364	45,425	371,789	161,411	128,179	82,199
November ...	117,137	115,662	260,718	316,014	44,885	360,899	150,754	127,263	82,882
December ...	103,627	97,431	254,522	308,557	41,411	349,968	144,566	120,929	84,473
Totals ...	1,412,593								
1961 - January	96,806	97,031	254,747	312,672	44,767	357,439	145,719	126,269	85,451
February ...	99,249	94,261	249,759	320,041	46,624	366,665	147,621	130,692	88,352
March	114,792	117,689	252,656	323,051	50,171	373,222	147,008	135,384	90,830
April	111,606	106,668	247,718	330,076	51,108	381,184	149,893	138,688	92,603
May	126,194	125,480	247,004	333,363	50,380	383,743	150,747	139,720	93,276
June	137,237	137,261	247,028	332,404	52,870	385,274	149,509	142,783	92,982
July	123,750	124,539	247,817	329,814	50,332	380,146	151,405	138,809	89,932
August	145,393	146,617	249,041	324,609	52,323	376,932	149,072	141,728	86,132
September ..	153,165	151,827	247,703	319,160	49,316	368,476	148,901	136,191	83,384
October	140,520	137,318	244,501	319,528	40,393	359,921	153,169	123,378	83,374
November ...	143,070	134,673	236,104	323,671	42,518	366,189	153,067	128,250	84,872
December ...	116,213	117,919	237,810	329,009	44,859	373,868	154,840	129,987	89,041
Totals ...	1,507,995								
1962 - January	112,096	126,910	252,624	340,116	46,276	386,392	159,553	137,563	89,276
February ...	104,500	115,579	263,703	351,318	46,755	398,073	159,500	144,611	93,962
March	138,511	153,431	278,623	360,838	44,869	405,707	166,723	141,000	97,984
April	128,173	132,761	283,211	366,502	47,195	413,697	168,525	145,016	100,156
May	151,994	154,013	285,230	369,810	51,957	421,767	170,639	151,069	100,059
June	159,149	160,824	286,905	367,950	58,361	426,311	170,919	155,853	99,539
July	152,172	148,034	282,767	366,934	60,137	427,071	169,621	160,860	96,590
August	161,395	160,552	281,924	359,242	56,421	415,663	165,632	155,974	94,057
September ..	180,325	165,249	266,848	348,680	55,324	404,004	162,605	150,905	90,494
October	178,613	169,144	257,379	344,740	36,197	380,937	160,473	131,597	88,867
November ...	156,384	145,056	246,051	337,217	40,986	378,203	155,879	133,121	89,203
December ...	125,196	121,091	241,946	335,886	39,925	375,811	153,701	131,512	90,598
Totals ...	1,748,508								
1963 - January	123,357	139,464	258,053	340,746	42,362	383,108	153,994	134,860	94,254
February ...	123,835	114,502	248,720	347,087	42,154	389,241	157,724	134,697	96,820
March	132,023	126,998	243,695	356,278	43,775	400,053	160,845	139,053	100,155
April	136,643	133,976	241,028	363,607	47,768	411,375	163,686	144,157	103,532
May	161,647	162,410	241,791	365,274	48,413	413,687	162,547	146,492	104,648
June	157,407	155,146	239,530	362,392	48,514	410,906	161,417	147,214	102,275
July	152,841	157,320	244,009	361,799	51,028	412,827	163,140	149,443	100,244
August	155,307	158,097	246,799	356,620	49,253	405,873	161,318	146,057	98,498
September ..	169,666	169,339	246,472	346,081	48,893	394,974	156,859	141,666	96,449
October	175,181	172,344	243,635	332,890	38,586	371,476	152,319	124,385	94,772
November ...	153,427	152,477	242,685	329,162	42,678	371,840	151,235	127,971	92,634
December ...	146,059	140,469	237,095	332,580	42,738	375,318	150,955	130,174	94,189
Totals ...	1,787,393								
1964 - January	145,455	163,632	255,272	339,324	44,094	383,418	152,189	135,426	95,803
February ...	147,177	149,939	258,034	349,094	48,151	397,245	155,754	143,000	98,491
March ^f	180,867	183,984	261,151	345,392	59,925	405,317	158,491	148,376	98,450
April ^p	156,801	164,995	269,345	356,243	53,644	409,887	161,105	145,593	103,189
May									
June									
July									
August									
September ..									
October									
November ...									
December ...									
Totals ...									

See footnotes, page 43.

TABLE 3. Estimated Value of Shipments, Orders and Inventory in Manufacturing Industries grouped according to the Standard Industrial Classification

Major Group 15 - Transportation Equipment Industries

Date	Shipments(1)	Orders		Inventory at end of month					
		New orders received during month	Unfilled orders at end of month	Owned	Held but not owned	All inventory held			
						Total	Raw materials	Goods in process	Finished products
thousands of dollars									
1960 - January	172,148	174,548	517,164	283,437	209,254	492,691	111,563	325,605	55,523
February ...	173,449	187,281	530,996	288,929	207,404	496,333	111,636	326,535	58,162
March	217,253	228,601	542,344	279,866	161,332	441,218	109,498	271,947	59,773
April	190,047	184,558	536,855	279,316	166,528	445,844	108,987	277,688	59,169
May	200,529	192,999	529,325	276,160	174,888	451,048	107,204	283,615	60,229
June	192,032	177,701	514,994	261,511	174,956	436,467	104,968	269,514	61,985
July	129,417	123,528	509,105	243,850	166,795	410,645	104,637	245,476	60,532
August	93,759	88,257	503,603	254,153	168,168	422,321	108,498	261,186	52,637
September ..	119,153	103,415	487,865	270,193	156,762	426,955	109,381	263,146	54,428
October	151,646	137,053	473,272	274,816	158,777	433,593	110,554	265,219	57,820
November ...	170,348	165,115	468,039	274,711	161,914	436,625	106,712	275,273	54,640
December ...	193,170	196,923	471,792	264,063	179,881	443,944	107,772	284,548	51,624
Totals ...	2,002,951								
1961 - January	146,731	138,517	463,578	272,737	167,756	440,493	107,231	273,546	59,716
February ...	151,068	164,001	476,511	288,301	170,004	458,305	107,939	286,656	63,710
March	171,642	200,678	505,547	295,432	174,261	469,693	109,362	295,095	65,236
April	165,879	169,042	508,710	301,049	167,704	468,753	109,913	293,744	65,096
May	183,334	177,832	503,208	310,160	132,290	442,450	110,471	267,532	64,447
June	188,907	153,682	467,983	308,471	116,214	424,685	109,077	250,829	64,779
July	134,755	125,520	458,748	279,053	120,580	399,633	109,497	231,434	58,702
August	101,803	86,650	443,595	298,387	116,176	414,563	112,098	242,744	59,721
September ..	139,998	123,636	427,233	306,815	119,275	426,090	113,291	254,709	58,090
October	168,495	152,184	410,922	321,900	115,509	437,409	111,822	262,503	63,084
November ...	195,325	256,522	472,119	317,154	119,769	436,923	110,292	264,574	62,057
December ...	208,748	199,320	462,691	333,161	127,458	460,619	113,373	284,999	62,247
Totals ...	1,956,685								
1962 - January	193,520	184,425	453,596	331,349	128,128	459,477	113,862	277,896	67,719
February ...	198,148	211,970	467,418	331,818	136,608	468,426	111,621	285,294	71,511
March	221,053	243,589	489,954	331,245	146,161	477,406	112,610	295,978	68,818
April	215,302	217,479	492,131	328,713	151,718	480,431	111,911	299,820	68,700
May	253,281	235,850	474,700	334,214	152,073	486,287	112,307	307,567	66,413
June	246,137	294,388	522,951	326,247	158,599	484,846	111,233	307,130	66,483
July	180,391	188,430	530,990	308,330	165,879	474,209	111,753	297,805	64,651
August	120,717	113,764	524,037	347,728	168,087	515,815	119,908	333,724	62,183
September ..	178,185	176,434	522,286	363,067	172,115	535,182	119,749	347,483	67,950
October	246,582	220,521	496,225	371,860	168,786	540,646	120,737	351,228	68,681
November ...	254,719	247,729	489,235	358,391	169,670	528,061	119,103	342,082	66,876
December ...	254,089	239,917	475,063	351,977	175,384	527,361	120,210	342,097	65,054
Totals ...	2,562,124								
1963 - January	237,617	295,217	532,663	344,933	167,847	512,780	116,734	326,902	69,144
February ...	221,422	237,872	549,113	353,067	174,654	527,721	117,994	338,869	70,858
March	237,724	244,831	556,220	352,516	185,463	537,979	119,873	347,819	70,287
April	255,620	224,877	525,477	350,855	183,818	534,673	120,076	344,534	70,063
May	288,680	301,747	538,544	345,374	170,654	516,028	119,772	330,080	66,176
June	255,072	239,963	523,435	334,572	170,420	504,992	116,794	320,766	67,432
July	203,295	217,007	537,147	309,087	160,077	469,164	120,597	285,733	62,834
August	105,966	188,203	619,384	366,357	153,233	519,590	128,903	324,766	65,921
September ..	206,565	189,910	602,729	392,647	164,874	557,521	137,542	346,621	73,358
October	259,893	263,901	606,737	397,803	174,574	572,377	137,480	364,660	70,237
November ...	301,054	293,712	599,395	390,500	179,449	569,949	137,390	358,496	74,063
December ...	335,522	312,699	576,572	400,600	167,409	568,009	134,145	359,463	74,401
Totals ...	2,908,430								
1964 - January	308,910	325,339	593,001	410,695	168,358	579,053	133,799	364,078	81,176
February ...	289,843	293,420	596,578	415,273	169,465	584,738	135,978	367,006	81,754
March ^F	294,944	309,270	610,904	418,187	164,070	582,257	140,520	359,495	82,242
April ^P	305,564	304,327	609,667	421,903	156,679	578,582	137,627	356,308	84,647
May									
June									
July									
August									
September ..									
October									
November ...									
December ...									
Totals ...									

See footnotes, page 43.

TABLE 3. Estimated Value of Shipments, Orders and Inventory in Manufacturing Industries grouped according to the Standard Industrial Classification

Major Group 17 - Non-Metallic Mineral Products Industries

Date	Shipments	Orders		Inventory at end of month					
		New orders received during month(2)	Unfilled orders at end of month(2)	Owned	Held but not owned	All inventory held			
						Total	Raw materials	Goods in process	Finished products
thousands of dollars									
1960 - January	35,098			108,859	-	108,859	52,395	9,449	47,015
February ...	37,671			111,242	-	111,242	51,011	10,357	49,874
March	43,797			111,874	-	111,874	48,073	11,298	52,503
April	44,603			113,817	-	113,817	47,101	12,052	54,664
May	55,976			114,444	-	114,444	47,660	11,736	55,048
June	66,708			112,733	-	112,733	47,852	10,856	54,025
July	63,463			111,264	-	111,264	48,378	10,130	52,756
August	66,758			108,389	-	108,389	49,259	9,377	49,753
September ..	65,804			104,466	-	104,466	48,809	8,904	46,753
October	62,053			102,858	-	102,858	49,006	7,713	46,139
November ...	56,406			104,636	-	104,636	50,167	8,061	46,408
December ...	40,799			107,431	-	107,431	50,414	9,111	47,906
Totals ...	639,136								
1961 - January	38,849			111,478	-	111,478	50,547	9,926	51,005
February ...	37,755			114,127	-	114,127	50,193	10,880	53,054
March	44,269			113,673	-	113,673	48,160	11,315	54,198
April	47,524			115,037	-	115,037	47,247	11,295	56,495
May	62,886			114,137	-	114,137	46,506	11,100	56,531
June	71,210			111,278	-	111,278	46,194	9,969	55,115
July	66,588			111,834	-	111,834	47,846	9,336	54,652
August	72,039			109,415	-	109,415	48,244	8,799	52,372
September ..	65,104			110,069	-	110,069	49,089	8,532	52,448
October	65,688			111,661	-	111,661	50,631	8,268	52,762
November ...	59,614			112,417	-	112,417	49,743	8,168	54,506
December ...	43,474			118,112	-	118,112	52,447	8,937	56,728
Totals ...	675,000								
1962 - January	38,667			121,959	-	121,959	52,684	8,763	60,512
February ...	39,069			125,091	-	125,091	51,596	9,328	64,167
March	53,119			124,277	-	124,277	50,203	10,872	63,202
April	54,751			124,683	-	124,683	49,827	11,452	63,404
May	72,548			122,395	-	122,395	49,569	11,334	61,492
June	79,019			118,654	-	118,654	49,058	10,606	58,990
July	76,039			115,243	-	115,243	50,211	9,688	55,344
August	79,832			112,188	-	112,188	50,738	9,091	52,359
September ..	69,730			111,629	-	111,629	51,554	8,029	52,046
October	74,145			112,892	-	112,892	52,766	8,030	52,096
November ...	65,899			113,638	-	113,638	53,430	8,335	51,873
December ...	46,547			120,506	-	120,506	53,809	9,426	57,271
Totals ...	749,365								
1963 - January	39,974			125,977	-	125,977	51,899	9,833	64,245
February ...	39,411			131,816	-	131,816	52,232	10,975	68,609
March	49,154			133,198	-	133,198	51,878	12,382	68,938
April	55,514			133,168	-	133,168	50,731	13,335	69,102
May	71,828			132,527	-	132,527	51,541	13,552	67,434
June	74,385			130,916	-	130,916	52,309	12,601	66,006
July	74,549			129,262	-	129,262	53,252	12,107	63,903
August	72,624			125,872	-	125,872	52,855	11,377	61,640
September ..	73,569			123,580	-	123,580	54,460	10,274	58,846
October	75,153			120,303	-	120,303	53,522	9,314	57,467
November ...	66,085			120,039	-	120,039	54,446	8,810	56,783
December ...	48,898			123,248	-	123,248	54,337	9,670	59,241
Totals ...	741,144								
1964 - January	51,267			124,056	-	124,056	53,719	8,468	61,869
February ...	52,018			124,995	-	124,995	53,206	8,307	63,482
March ^F	62,088			123,088	-	123,088	51,582	8,524	62,982
April ^P	60,623			126,365	-	126,365	50,959	8,767	66,639
May									
June									
July									
August									
September ..									
October									
November ...									
December ...									
Totals ...									

See footnotes, page 43.

TABLE 3. Estimated Value of Shipments, Orders and Inventory in Manufacturing Industries grouped according to the Standard Industrial Classification

Major Group 18 - Petroleum and Coal Products Industries

Date	Shipments	Orders		Inventory at end of month					
		New orders received during month(2)	Unfilled orders at end of month(2)	Owned	Held but not owned	All inventory held			
						Total	Raw materials	Goods in process	Finished products
thousands of dollars									
1960 - January	94,068			203,639	-	203,639	64,254	18,087	121,298
February ...	85,006			210,702	-	210,702	63,505	20,671	126,526
March	92,361			212,656	-	212,656	61,476	18,107	133,073
April	91,288			210,914	-	210,914	61,507	18,852	130,555
May	97,012			211,639	-	211,639	64,300	22,040	125,299
June	95,951			211,554	-	211,554	61,695	24,940	124,919
July	96,165			214,063	-	214,063	64,435	21,669	127,959
August	98,475			219,272	-	219,272	66,191	22,380	130,701
September ..	98,787			220,697	-	220,697	67,123	25,097	128,477
October	96,539			214,215	-	214,215	67,537	19,934	126,744
November ...	100,315			208,330	-	208,330	65,482	21,743	121,105
December ...	101,203			202,932	-	202,932	65,458	20,775	116,699
Totals ...	1,147,170								
1961 - January	99,032			204,293	-	204,293	65,443	21,063	117,787
February ...	88,445			206,921	-	206,921	64,491	20,517	121,913
March	92,259			204,539	-	204,539	61,274	18,959	124,306
April	90,702			211,079	-	211,079	63,104	18,539	129,436
May	104,525			211,317	-	211,317	63,496	20,861	126,960
June	101,131			209,196	-	209,196	62,684	20,050	126,462
July	102,890			201,412	-	201,412	60,377	22,730	118,305
August	105,715			203,651	-	203,651	61,647	19,369	122,635
September ..	101,023			204,835	-	204,835	62,441	20,564	121,830
October	107,151			203,251	-	203,251	63,984	19,869	119,398
November ...	112,434			196,616	-	196,616	62,329	20,533	113,754
December ...	114,867			198,523	-	198,523	61,386	21,269	115,868
Totals ...	1,220,174								
1962 - January	110,921			201,746	-	201,746	63,644	20,137	117,965
February ...	99,205			201,423	-	201,423	60,095	20,804	120,524
March	106,193			209,216	-	209,216	59,125	20,947	129,144
April	97,281			216,041	-	216,041	63,673	20,016	132,352
May	113,849			213,757	-	213,757	66,946	19,852	126,959
June	109,937			212,228	-	212,228	65,330	21,643	125,255
July	112,995			217,468	-	217,468	69,066	22,376	126,026
August	116,856			217,210	-	217,210	68,167	22,716	126,327
September ..	114,134			213,692	-	213,692	62,172	22,841	128,679
October	121,658			211,168	-	211,168	63,665	20,144	127,359
November ...	124,382			210,371	-	210,371	67,876	20,471	122,024
December ...	122,699			208,941	-	208,941	66,521	20,083	122,337
Totals ...	1,350,110								
1963 - January	119,446			207,642	-	207,642	64,511	23,131	120,000
February ...	108,372			206,974	-	206,974	61,353	23,979	121,642
March	107,667			217,288	-	217,288	62,733	22,181	132,374
April	107,410			214,509	-	214,509	63,537	19,715	131,257
May	119,127			213,547	-	213,547	66,675	18,138	128,734
June	107,110			221,327	-	221,327	66,972	22,311	132,044
July	117,853			220,779	-	220,779	66,748	21,961	132,070
August	120,043			224,050	-	224,050	67,359	22,204	134,487
September ..	122,128			222,388	-	222,388	65,177	19,582	137,629
October	116,873			219,812	-	219,812	61,351	19,881	138,580
November ...	118,574			218,957	-	218,957	64,481	19,789	134,687
December ...	133,195			218,502	-	218,502	63,064	20,394	135,044
Totals ...	1,397,798								
1964 - January	118,359			221,052	-	221,052	62,950	21,330	136,772
February ...	108,440			227,555	-	227,555	62,905	20,510	144,140
March	110,554			230,990	-	230,990	63,415	22,397	145,178
April ^P	109,781			226,914	-	226,914	61,157	19,570	146,187
May									
June									
July									
August									
September ..									
October									
November ...									
December ...									
Totals ...									

See footnotes, page 43.

TABLE 3. Estimated Value of Shipments, Orders and Inventory in Manufacturing Industries grouped according to the Standard Industrial Classification

Major Group 19 - Chemical and Chemical Products Industries

Date	Shipments	Orders		Inventory at end of month					
		New orders received during month(2)	Unfilled orders at end of month(2)	Owned	Held but not owned	All inventory held			
						Total	Raw materials	Goods in process	Finished products
thousands of dollars									
1960 - January	102,775			244,397	-	244,397	106,967	36,272	101,158
February ...	107,275			244,710	-	244,710	104,803	36,217	103,690
March	119,474			248,220	-	248,220	104,531	37,375	106,314
April	120,081			247,451	-	247,451	105,089	36,979	105,383
May	132,648			241,649	-	241,649	107,334	33,375	100,940
June	126,677			242,805	-	242,805	108,944	31,230	102,631
July	100,274			243,883	-	243,883	108,832	31,767	103,284
August	113,510			244,747	-	244,747	111,153	32,109	101,485
September ..	121,945			240,137	-	240,137	109,854	32,639	97,644
October	111,723			243,454	-	243,454	111,164	33,764	98,526
November ...	108,058			250,958	-	250,958	113,295	35,636	102,027
December ...	93,240			256,883	-	256,883	111,412	35,724	109,747
Totals ...	1,357,680								
1961 - January	110,785			262,912	-	262,912	115,239	35,793	111,880
February ...	106,270			264,712	-	264,712	111,454	36,656	116,602
March	121,228			262,483	-	262,483	106,857	36,408	119,218
April	121,221			262,272	-	262,272	105,394	36,878	120,000
May	139,864			255,303	-	255,303	104,859	32,888	117,556
June	133,551			250,023	-	250,023	103,194	31,627	115,202
July	107,578			253,313	-	253,313	105,157	31,511	116,645
August	119,177			259,429	-	259,429	110,618	32,187	116,624
September ..	124,737			259,713	-	259,713	111,485	32,647	115,581
October	124,283			265,787	-	265,787	114,905	33,843	117,039
November ...	119,845			269,628	-	269,628	113,113	35,064	121,451
December ...	105,339			275,121	-	275,121	113,985	34,688	126,448
Totals ...	1,433,878								
1962 - January	119,357			278,991	-	278,991	110,204	34,522	134,265
February ...	113,292			278,077	-	278,077	106,580	34,892	136,605
March	131,185			281,979	-	281,979	106,012	35,335	140,632
April	136,216			277,319	-	277,319	100,764	35,326	141,229
May	160,141			264,557	-	264,557	101,324	31,021	132,212
June	143,838			257,629	-	257,629	101,140	31,272	125,217
July	117,432			264,451	-	264,451	105,381	30,609	128,461
August	126,708			267,259	-	267,259	107,501	29,782	129,976
September ..	129,980			267,320	-	267,320	109,156	29,086	129,078
October	131,542			270,661	-	270,661	111,279	30,374	129,008
November ...	124,020			271,064	-	271,064	110,134	31,133	129,797
December ...	110,921			277,011	-	277,011	111,446	32,024	133,541
Totals ...	1,544,632								
1963 - January	120,016			279,209	-	279,209	108,639	31,844	138,726
February ...	119,959			281,607	-	281,607	106,688	32,012	142,907
March	132,274			282,788	-	282,788	105,203	34,508	143,077
April	144,302			279,460	-	279,460	103,091	33,765	142,604
May	165,124			268,744	-	268,744	102,191	29,393	137,160
June	143,613			264,374	-	264,374	101,590	30,470	132,314
July	122,644			270,608	-	270,608	102,484	30,764	137,360
August	130,857			272,377	-	272,377	106,131	30,144	136,102
September ..	138,914			270,140	-	270,140	105,522	30,692	133,926
October	146,896			270,631	-	270,631	105,766	30,757	134,108
November ...	134,657			272,197	-	272,197	109,176	31,636	131,385
December ...	121,623			280,194	-	280,194	110,590	33,485	136,119
Totals ...	1,620,879								
1964 - January	135,296			284,606	-	284,606	108,891	33,964	141,751
February ...	133,998			287,786	-	287,786	108,068	34,830	144,888
March ^F	148,402			288,389	-	288,389	106,858	36,627	144,904
April ^P	153,352			287,890	-	287,890	105,787	34,925	147,178
May									
June									
July									
August									
September ..									
October									
November ...									
December ...									
Totals ...									

See footnotes, page 43.

TABLE 4. Estimated Value of Shipments, Orders, and Inventories in Selected Individual Industries

Industry	1963									1964			
	Apr.	May	June	July	Aug.	Sept.	Oct.	Nov.	Dec.	Jan.	Feb.	Mar. ^r	Apr. ^p
	thousands of dollars												
FOODS AND BEVERAGES													
<u>Slaughtering and meat processors:(1)</u>													
Shipments	93,902	100,159	97,997	101,013	103,057	99,352	102,675	97,516	94,204	92,523	86,627	94,813	91,553
Total inventory owned	56,885	57,387	56,782	52,590	47,942	47,556	50,032	56,855	50,130	53,954	56,724	55,875	58,081
<u>Dairy products industries:(2)</u>													
Shipments	76,615	86,840	96,702	95,551	91,169	83,880	83,689	76,368	75,239	69,996	69,828	76,191	81,035
Total inventory owned	38,189	41,406	45,381	45,311	49,220	49,221	48,429	46,497	44,936	42,746	41,035	41,980	42,890
Raw materials	23,972	23,845	25,318	25,843	26,409	25,681	26,130	25,488	25,268	25,138	24,432	25,142	25,670
Goods in process and finished products ...	14,217	17,561	20,063	19,468	22,811	23,540	22,299	21,009	19,668	17,608	16,603	16,838	17,220
<u>Fruit and vegetable canners and preservers:</u>													
Shipments	30,664	32,718	33,459	31,268	28,287	34,132	36,969	33,551	27,986	32,290	29,238	33,442	34,044
Total inventory owned	110,970	105,319	100,246	107,501	121,791	144,101	152,385	150,563	144,131	136,883	127,925	118,586	114,728
Raw materials and goods in process	31,632	31,632	32,081	34,752	38,831	38,130	38,311	38,865	35,736	35,131	34,149	34,120	34,656
Finished products	79,338	73,687	68,165	72,749	82,960	105,971	114,074	111,698	108,395	101,752	93,776	84,466	80,072
<u>Flour mills:</u>													
Shipments	18,727	19,582	17,112	17,212	18,454	18,669	29,206	28,397	28,060	29,572	28,968	28,301	26,338
New orders	20,089	18,951	14,403	18,416	16,689	57,207	29,466	24,162	21,389	24,718	24,075	24,633	24,343
Unfilled orders	12,118	11,487	8,778	9,982	8,217	46,755	47,015	42,780	36,109	31,255	26,362	22,694	20,699
Total inventory owned	30,600	32,379	28,820	34,262	30,114	33,266	40,189	43,341	51,440	46,999	41,945	38,322	36,727
Raw materials	26,592	28,399	24,427	30,169	26,429	28,227	34,633	37,578	45,236	40,593	35,787	31,421	30,189
<u>Biscuit manufacturers:</u>													
Shipments	8,109	9,130	8,540	8,709	9,352	9,760	9,610	9,186	7,297	8,668	8,416	8,969	9,049
Total inventory owned	10,127	9,513	9,454	9,062	9,298	9,792	10,311	9,897	8,696	10,243	10,559	10,334	10,450
Raw materials	5,674	5,745	5,725	5,674	5,466	5,913	5,955	5,576	5,199	6,310	6,207	6,087	6,121
Goods in process	420	402	401	409	453	435	443	386	377	430	407	392	431
Finished products	4,033	3,366	3,328	2,979	3,379	3,444	3,913	3,935	3,120	3,503	3,945	3,855	3,898
<u>Confectionery manufacturers:</u>													
Shipments	12,383	12,466	10,394	10,310	13,436	17,425	17,660	17,314	14,948	14,388	14,094	13,509	13,256
Total inventory owned	29,867	31,256	33,535	34,260	35,066	33,720	32,730	33,125	30,658	30,754	30,558	30,168	30,276
Raw materials	17,673	18,987	19,675	20,003	19,958	19,948	19,261	19,702	16,739	17,088	16,645	16,957	16,658
Goods in process	2,656	2,675	2,852	2,987	3,033	3,005	3,138	3,213	3,053	3,001	2,917	3,038	3,153
Finished products	9,538	9,594	11,008	11,270	12,075	10,767	10,331	10,210	10,866	10,665	10,996	10,173	10,465
<u>Sugar refineries:</u>													
Shipments	14,923	24,893	15,810	20,835	20,573	23,202	24,350	16,881	18,047	18,081	17,116	17,384	18,613
Total inventory owned	47,393	45,559	45,892	40,269	34,613	37,981	57,768	76,812	76,882	78,031	65,869	55,215	58,004
Raw materials	22,541	22,022	23,195	22,451	19,528	24,757	31,796	36,652	29,314	29,884	21,587	18,302	21,265
Goods in process	1,549	1,411	1,973	1,326	1,410	1,436	1,817	2,600	2,517	2,835	2,530	2,185	2,671
Finished products	23,303	22,126	20,724	16,492	13,675	11,788	24,155	37,560	45,051	45,312	41,752	34,728	34,068

(1) Includes sausage and sausage casing manufacturers.

(2) Includes butter and cheese plants, pasteurizing plants, condenseries, ice cream manufacturers and process cheese manufacturers.

TABLE 4. Estimated Value of Shipments, Orders, and Inventories in Selected Individual Industries - Continued

Industry	1963									1964			
	Apr.	May	June	July	Aug.	Sept.	Oct.	Nov.	Dec.	Jan.	Feb.	Mar. ^r	Apr. ^p
thousands of dollars													
<u>FOODS AND BEVERAGES - Concluded</u>													
<u>Miscellaneous food industries:(3)</u>													
Shipments	40,799	41,896	38,136	39,447	38,757	38,916	43,905	44,346	36,599	38,353	37,141	40,411	41,143
Total inventory owned	68,379	70,963	71,123	69,374	65,901	65,876	65,670	69,148	77,775	75,863	74,593	72,816	73,791
<u>Breweries:</u>													
Shipments	22,545	25,861	27,740	32,002	28,894	22,275	23,285	22,365	25,476	16,898	18,538	21,486	23,012
Total inventory owned	37,915	39,237	38,528	38,581	35,945	36,333	34,891	37,231	33,539	34,015	34,199	36,385	39,871
Raw materials	13,188	12,295	12,232	11,946	11,331	11,555	11,560	12,629	12,345	13,614	13,727	13,936	13,745
Goods in process	12,049	12,442	12,986	12,968	11,043	10,831	10,998	11,334	10,604	8,722	10,487	11,345	12,087
Finished products	12,678	14,500	13,310	13,667	13,571	13,947	12,333	13,268	10,590	11,679	9,985	11,104	14,039
<u>Wineries:</u>													
Shipments	1,803	1,696	1,613	1,526	1,523	1,830	2,204	2,273	1,816	1,569	1,444	1,547	1,845
Total inventory owned	11,371	10,995	10,693	10,709	10,309	10,572	10,835	12,689	12,725	12,846	12,500	12,161	11,365
Raw materials	1,442	1,416	1,413	1,759	1,910	1,897	1,614	1,214	1,317	1,332	1,310	1,164	1,125
Goods in process	8,706	8,295	7,818	7,494	7,067	7,375	8,099	10,440	10,401	10,050	9,714	9,596	8,930
Finished products	1,223	1,284	1,462	1,456	1,332	1,300	1,122	1,035	1,007	1,464	1,476	1,401	1,310
<u>RUBBER INDUSTRIES</u>													
<u>Rubber footwear manufacturers:(4)</u>													
Shipments	14,708	13,997	14,808	13,646	16,551	18,832	18,487	16,974	16,584	14,996	16,813	17,552	18,668
Total inventory owned	36,161	38,098	39,019	39,285	36,956	33,227	32,192	34,379	32,723	33,488	35,146	36,014	36,697
Raw materials	10,706	10,526	10,203	10,595	10,654	10,449	10,330	11,126	11,227	10,752	10,904	11,247	11,488
Goods in process	4,991	5,184	5,287	5,356	5,573	5,494	5,282	5,830	5,342	5,525	5,726	5,708	5,750
Finished products	20,464	22,388	23,529	23,334	20,729	17,284	16,580	17,423	16,154	17,211	18,516	19,059	19,459
<u>Rubber tire and tube manufacturers:</u>													
Shipments	18,286	18,869	20,113	21,532	14,569	19,778	22,571	19,755	18,800	16,233	18,138	18,707	20,134
Total inventory owned	60,832	60,881	61,167	59,566	58,117	58,078	56,372	57,221	59,654	61,920	64,590	66,178	66,289
Raw materials	10,542	10,368	9,937	9,625	9,761	9,670	9,388	10,215	11,906	10,311	10,441	10,233	10,758
Goods in process	5,323	5,581	5,727	5,563	5,979	5,733	5,423	5,373	5,485	5,735	5,868	5,755	5,747
Finished products	44,967	44,932	45,503	44,378	42,377	42,675	41,561	41,633	42,263	45,874	48,281	50,190	49,784
<u>LEATHER INDUSTRIES</u>													
<u>Leather tanneries:</u>													
Shipments	4,730	4,691	4,771	3,244	4,905	4,967	5,130	5,282	4,839	5,468	4,965	4,722	5,142
New orders	4,969	5,359	3,903	3,238	4,806	5,887	5,335	5,857	4,490	5,426	4,668	4,572	7,333
Unfilled orders	6,937	7,605	6,737	6,731	6,632	7,552	7,757	8,332	7,983	7,941	7,644	7,494	9,685
Total inventory owned	14,670	14,224	13,744	13,422	12,844	12,862	12,687	12,649	12,669	12,271	11,901	11,853	11,746

(3) Includes malt and malt products, rice mills, starch and glucose and miscellaneous food manufacturers.

(4) Includes rubber footwear manufacturers and other rubber industries.

TABLE 4. Estimated Value of Shipments, Orders, and Inventories in Selected Individual Industries - Continued

Industry	1963									1964			
	Apr.	May	June	July	Aug.	Sept.	Oct.	Nov.	Dec.	Jan.	Feb.	Mar. ^r	Apr. ^p
	thousands of dollars												
<u>LEATHER INDUSTRIES - Concluded</u>													
<u>Shoe factories:</u>													
Shipments	15,712	13,199	11,877	12,760	19,487	17,975	18,075	14,560	11,220	18,501	20,442	21,414	18,817
Total inventory owned	42,089	43,298	44,476	43,759	40,578	39,310	39,202	41,899	42,683	43,982	44,585	41,759	41,731
<u>TEXTILE INDUSTRIES</u>													
<u>Cotton yarn and cloth mills:</u>													
Shipments	21,711	23,324	23,118	19,302	21,510	24,377	27,167	25,588	25,960	26,915	26,455	29,838	30,688
New orders	17,963	20,601	22,219	20,039	21,991	26,365	29,442	28,029	28,618	27,740	27,047	30,191	29,634
Unfilled orders	39,685	36,962	36,063	36,800	37,281	39,269	41,544	43,985	46,643	47,468	48,060	48,413	47,359
Total inventory owned	61,012	60,814	60,422	58,109	56,977	57,211	56,650	56,972	57,199	57,647	58,250	57,359	57,174
Raw materials	15,792	15,515	15,179	14,389	13,938	12,485	11,656	11,513	12,301	12,509	12,718	14,401	14,267
Goods in process	14,108	14,336	14,233	13,806	14,219	14,517	14,346	14,211	13,872	14,547	14,814	14,535	14,579
Finished products	31,112	30,963	31,010	29,914	28,820	30,209	30,648	31,248	31,026	30,591	30,718	28,423	28,328
<u>Wool yarn mills:</u>													
Shipments	1,812	2,111	2,344	2,306	2,785	2,962	3,311	3,117	2,437	2,297	2,215	2,021	2,034
Total inventory owned	7,155	7,468	7,576	7,122	7,200	6,982	6,923	6,851	7,260	7,290	7,915	8,617	8,814
<u>Wool cloth mills:</u>													
Shipments	6,132	6,816	7,016	6,555	6,362	6,366	7,012	6,640	6,497	7,029	6,781	6,742	7,163
Total inventory owned	25,636	25,409	25,365	25,281	24,531	23,952	24,028	24,617	24,544	24,940	26,006	27,541	27,634
Raw materials	11,139	11,043	10,702	10,899	10,533	10,013	10,008	10,406	10,113	10,430	11,153	11,663	11,630
Goods in process	9,031	8,995	9,251	9,242	9,280	9,352	9,313	9,539	9,410	9,445	9,616	10,051	10,136
Finished products	5,466	5,371	5,412	5,140	4,718	4,587	4,707	4,672	5,021	5,065	5,237	5,827	5,868
<u>Synthetic textile mills:</u>													
Shipments	25,636	27,935	26,180	26,899	25,340	29,585	30,711	30,019	29,604	28,317	29,979	31,840	30,620
Total inventory owned	51,775	51,165	51,946	52,121	51,662	51,516	50,752	51,254	52,915	52,874	53,187	53,185	53,992
Raw materials	12,841	13,099	12,906	13,639	13,770	14,160	14,747	15,653	16,119	16,195	15,944	15,765	16,981
Goods in process	18,006	18,207	18,329	17,311	17,723	17,618	17,398	16,578	17,427	17,418	17,529	17,287	18,579
Finished products	20,928	19,859	20,711	21,171	20,169	19,738	18,607	19,023	19,369	19,261	19,714	20,133	18,432
<u>Cordage and twine industry:</u>													
Shipments	2,061	4,055	4,515	3,124	1,800	1,596	1,265	1,570	1,377	2,295	2,131	1,995	2,505
Total inventory owned	8,445	7,860	6,943	6,513	7,489	7,535	8,989	9,517	10,890	12,216	12,449	14,309	14,108
<u>Carpet, mat and rug industry:</u>													
Shipments	3,568	3,538	3,189	2,958	3,040	4,086	4,424	3,962	3,490	4,334	4,849	5,201	5,158
Total inventory owned	10,246	10,770	11,287	11,536	11,978	11,503	10,689	10,765	11,271	11,657	12,099	11,903	12,105

TABLE 4. Estimated Value of Shipments, Orders, and Inventories in Selected Individual Industries - Continued

Industry	1963									1964			
	Apr.	May	June	July	Aug.	Sept.	Oct.	Nov.	Dec.	Jan.	Feb.	Mar. ^r	Apr. ^p
	thousands of dollars												
<u>TEXTILE INDUSTRIES - Concluded</u>													
<u>Linoleum and coated fabrics industry:</u>													
Shipments	3,713	4,369	3,497	3,568	3,919	3,751	4,094	3,516	3,265	3,598	3,461	5,039	3,999
Total inventory owned	9,500	9,144	9,214	9,151	9,061	9,339	9,428	9,473	9,399	9,500	9,570	9,434	9,481
Raw materials	2,564	2,443	2,519	2,647	2,457	2,519	2,341	2,367	2,383	2,291	2,396	2,253	2,225
Goods in process	1,671	1,682	1,726	1,704	1,782	1,886	1,990	1,927	1,831	1,743	1,665	1,791	1,874
Finished products	5,265	5,019	4,969	4,800	4,822	4,934	5,097	5,179	5,185	5,466	5,509	5,390	5,382
<u>Canvas products industry:</u>													
Shipments	2,193	2,394	2,401	2,356	1,311	1,322	1,211	1,194	1,202	1,240	1,376	1,890	2,395
Total inventory owned	5,432	5,073	4,989	4,512	4,410	4,454	4,654	4,690	5,034	5,681	5,777	6,157	6,036
<u>Cotton and jute bag industry:</u>													
Shipments	2,301	2,418	1,991	1,994	2,504	3,086	3,753	3,143	2,600	2,777	2,501	2,474	2,494
Total inventory owned	4,554	4,542	4,506	4,656	4,457	4,613	4,692	5,531	6,262	5,691	5,359	5,279	5,401
<u>Miscellaneous textile industries:(5)</u>													
Shipments	8,860	9,881	9,002	8,329	8,881	9,618	10,071	9,455	7,610	8,780	8,886	9,214	10,030
Total inventory owned	17,390	17,124	16,464	16,050	16,318	16,907	16,737	16,333	18,085	18,465	18,537	19,579	20,306
<u>KNITTING MILLS</u>													
<u>Hosiery mills:</u>													
Shipments	6,234	5,627	5,057	6,136	7,082	7,887	8,232	7,109	5,334	6,340	6,388	5,863	5,454
Total inventory owned	15,692	15,976	16,056	15,928	15,381	13,730	13,435	13,440	13,866	14,406	14,494	12,388	12,663
Raw materials	3,989	4,029	3,970	4,054	4,011	3,638	3,594	3,743	3,753	3,927	4,079	3,958	4,008
Goods in process	4,726	4,585	4,492	4,457	4,352	3,985	3,857	3,817	3,880	3,983	4,040	3,249	3,302
Finished products	6,977	7,362	7,594	7,417	7,018	6,107	5,984	5,880	6,233	6,496	6,375	5,181	5,353
<u>Other knitting mills:</u>													
Shipments	10,107	10,413	11,179	13,926	15,944	16,974	16,646	14,968	10,858	9,942	10,863	10,865	9,346
Total inventory owned	42,765	42,862	45,402	43,517	42,381	40,316	39,061	38,459	39,122	39,940	40,399	41,832	42,674
Raw materials	16,093	16,152	16,084	15,818	16,133	15,957	16,003	15,777	15,895	15,462	15,471	15,292	15,660
Goods in process	8,762	9,137	9,380	9,345	9,148	8,869	8,558	8,432	8,515	9,133	9,286	9,502	9,476
Finished products	17,910	17,573	19,938	18,354	17,100	15,490	14,500	14,250	14,712	15,345	15,642	17,038	17,538

(5) Includes the following: Automobile fabric accessory manufacturers, embroidery, pleating, hemstitching manufacturers and miscellaneous textiles (n.e.s.) Industry.

TABLE 4. Estimated Value of Shipments, Orders, and Inventories in Selected Individual Industries - Continued

Industry	1963									1964			
	Apr.	May	June	July	Aug.	Sept.	Oct.	Nov.	Dec.	Jan.	Feb.	Mar. ^r	Apr. ^p
	thousands of dollars												
<u>CLOTHING INDUSTRIES</u>													
<u>Men's clothing industry:(6)</u>													
Shipments	32,879	26,907	20,153	21,140	35,298	38,913	37,983	31,526	24,957	25,958	33,404	37,356	34,813
Total inventory owned	74,156	76,012	78,032	77,936	76,548	74,016	73,675	75,564	78,944	80,705	80,202	80,082	80,018
Raw materials	34,948	35,721	36,268	37,342	35,434	34,664	34,236	34,927	36,331	37,072	36,658	36,870	36,465
Goods in process	10,897	11,085	11,216	11,231	12,238	12,164	12,021	12,015	12,060	12,423	12,748	12,992	12,876
Finished products	28,311	29,206	30,548	29,363	28,876	27,188	27,418	28,622	30,553	31,210	30,796	30,220	30,677
<u>Women's clothing industry:(7)</u>													
Shipments	35,888	30,058	22,666	33,899	53,042	47,139	45,118	32,245	20,086	30,300	36,726	38,780	33,457
Total inventory owned	63,095	61,468	61,600	64,142	58,908	56,842	55,737	57,912	68,947	72,244	73,205	73,135	66,430
<u>Foundation garment industry:</u>													
Shipments	4,160	4,069	4,440	3,784	3,945	4,876	4,643	4,267	3,868	3,346	3,847	4,403	4,379
Total inventory owned	9,343	9,402	9,294	9,162	9,152	9,009	9,080	9,343	9,731	9,742	9,956	10,086	10,226
Raw materials	4,361	4,199	4,168	4,334	4,249	4,352	4,118	4,218	4,416	4,314	4,406	4,357	4,364
Goods in process	1,366	1,385	1,396	1,387	1,599	1,625	1,648	1,735	1,788	1,964	2,059	1,883	1,771
Finished products	3,616	3,818	3,730	3,441	3,304	3,032	3,314	3,390	3,527	3,464	3,491	3,846	4,091
<u>WOOD INDUSTRIES</u>													
<u>Veneer and plywood mills:</u>													
Shipments	14,905	15,185	14,726	13,760	14,054	13,438	14,606	13,030	13,528	13,840	14,465	19,012	15,774
Total inventory owned	33,531	34,704	34,164	33,094	32,753	30,979	29,502	28,967	30,394	29,758	30,160	27,251	27,830
<u>Sash and door and planing mills (excluding hardwood flooring):</u>													
Shipments	21,087	26,069	27,815	28,550	28,969	26,000	27,232	23,932	22,499	21,234	21,452	26,785	21,052
Total inventory owned	50,806	47,698	46,217	43,975	43,101	41,973	41,024	40,609	41,844	46,098	47,437	50,282	50,096
<u>PAPER AND ALLIED INDUSTRIES</u>													
<u>Pulp and paper mills:</u>													
Shipments	147,607	161,387	159,098	148,178	155,566	153,174	164,787	163,981	155,551	153,183	146,842	154,894	171,485
Total inventory owned	277,437	269,472	266,978	269,498	272,189	270,448	271,926	269,937	270,042	271,461	279,614	283,742	273,161
Raw materials and goods in process	207,088	200,886	202,606	205,266	207,730	211,522	214,196	214,487	219,847	218,131	220,895	219,289	211,742
Finished products	70,349	68,586	64,372	64,232	64,459	58,926	57,730	55,450	50,195	53,330	58,719	64,453	61,419
<u>Asphalt roofing manufacturers:</u>													
Shipments	4,331	4,456	4,866	4,925	5,577	6,493	4,945	4,079	3,143	2,905	3,260	6,194	3,157
Total inventory owned	8,228	8,438	8,482	8,170	8,095	7,578	7,520	7,291	7,054	7,310	7,753	7,228	7,797

(6) Includes men's clothing factories and men's clothing contractors.

(7) Includes women's clothing factories, women's clothing contractors and children's clothing industry.

TABLE 4. Estimated Value of Shipments, Orders, and Inventories in Selected Individual Industries - Continued

Industry	1963									1964			
	Apr.	May	June	July	Aug.	Sept.	Oct.	Nov.	Dec.	Jan.	Feb.	Mar. ^r	Apr. ^p
thousands of dollars													
<u>PAPER AND ALLIED INDUSTRIES - Concluded</u>													
<u>Paper box and bag manufacturers:</u> (8)													
Shipments	31,082	34,067	32,094	33,337	34,305	33,616	36,311	34,108	29,823	31,844	30,519	32,251	34,376
Total inventory owned	48,969	50,340	49,743	51,290	50,293	49,505	49,140	49,314	47,330	50,343	51,183	52,408	53,069
<u>Miscellaneous paper converters:</u>													
Shipments	17,057	18,180	17,336	17,845	18,288	18,571	17,850	17,195	15,994	18,580	17,402	18,100	18,724
Total inventory owned	31,770	31,083	31,212	30,763	30,179	28,954	28,826	29,872	30,834	31,046	32,121	32,463	33,435
<u>PRIMARY METAL INDUSTRIES</u>													
<u>Iron and steel mills:</u>													
Shipments	79,326	89,783	83,878	79,896	81,715	79,027	86,996	83,271	75,423	88,976	84,757	89,913	91,050
Unfilled orders	125,541	128,036	116,301	117,674	108,902	106,982	100,526	107,723	105,448	122,757	115,736	133,972	137,923
Total inventory owned	143,596	149,051	156,527	168,885	182,721	190,923	192,744	198,497	198,847	184,724	177,942	165,020	167,420
<u>Steel pipe and tube mills:</u>													
Shipments	8,536	12,833	14,284	10,162	10,605	9,731	10,689	9,179	7,214	11,863	11,401	13,969	15,166
Unfilled orders	20,887	17,770	13,607	9,761	9,739	8,652	8,020	7,747	12,924	30,330	28,121	27,113	25,964
Total inventory owned	40,660	38,468	36,125	34,611	33,442	32,659	31,189	30,835	33,447	34,124	35,412	33,974	33,188
<u>Iron foundries:</u>													
Shipments	10,245	11,245	11,758	9,930	9,959	10,082	12,647	10,364	9,213	10,264	10,294	11,307	12,194
Total inventory owned	20,499	21,429	21,401	21,150	20,201	19,101	18,678	18,743	19,899	19,111	18,773	18,346	19,052
<u>Smelting and refining:</u>													
Shipments	123,168	139,472	130,013	124,266	125,976	124,818	131,829	135,848	130,377	123,668	124,816	134,658	144,031
Total inventory owned	254,627	246,912	236,992	233,891	238,958	238,764	235,549	228,586	233,356	235,860	233,172	232,790	229,360
Raw materials	114,576	110,960	107,413	102,603	101,548	100,838	98,557	98,874	99,894	96,854	94,078	91,946	92,141
Goods in process	39,730	38,986	36,954	37,942	38,541	38,756	38,277	37,543	36,724	37,695	38,546	38,015	38,980
Finished products	100,321	96,966	92,625	93,346	98,869	99,170	98,715	92,169	96,738	101,311	100,548	102,829	98,239
<u>Copper and alloy rolling, casting and extruding:</u>													
Shipments	13,209	14,370	13,432	11,399	12,028	13,257	14,224	15,576	11,347	15,002	13,616	14,102	14,212
Total inventory owned	17,915	17,781	17,067	18,030	17,545	17,596	17,329	17,363	17,517	16,067	16,675	16,987	18,023

(8) Includes folding boxes and set-up boxes manufacturers, corrugated boxes manufacturers and paper bag manufacturers.

TABLE 4. Estimated Value of Shipments, Orders, and Inventories in Selected Individual Industries - Continued

Industry	1963									1964			
	Apr.	May	June	July	Aug.	Sept.	Oct.	Nov.	Dec.	Jan.	Feb.	Mar. ^r	Apr. ^p
	thousands of dollars												
METAL FABRICATING INDUSTRIES (except machinery and transportation equipment industries)													
Boiler and plate work:													
Shipments	6,211	6,234	7,599	6,457	6,848	8,125	8,076	8,557	9,876	6,333	6,896	8,654	6,940
Total inventory owned	18,015	17,799	17,304	17,229	17,229	17,735	16,467	16,562	17,082	15,581	15,736	13,788	13,474
Fabricated structural metal industry:													
Shipments	18,562	24,700	20,451	18,278	21,332	22,818	25,446	17,310	20,533	19,508	21,358	31,694	21,696
New orders	18,363	23,334	17,334	18,243	21,510	18,867	20,027	23,743	16,535	16,561	22,142	32,403	30,084
Unfilled orders	74,026	72,660	69,543	69,508	69,686	65,735	60,316	66,749	62,751	59,804	60,588	61,297	69,685
Total inventory owned	58,981	59,169	58,460	57,392	56,947	53,579	50,433	51,556	51,230	54,546	55,450	48,818	51,758
Total inventory held	104,928	105,591	104,926	106,701	104,372	100,698	86,512	91,545	91,543	96,641	100,699	104,929	101,525
Metal stamping, pressing and coating industry:													
Shipments	35,080	40,590	42,619	41,774	44,271	46,606	44,216	37,997	33,289	35,113	34,782	39,895	39,167
New orders	34,358	41,071	42,922	42,954	43,594	46,207	41,059	36,774	32,617	36,244	35,084	42,043	38,930
Unfilled orders	26,439	26,920	27,223	28,403	27,726	27,327	24,170	22,947	22,275	23,406	23,708	25,856	25,619
Total inventory owned	83,389	85,975	84,118	87,756	84,538	79,578	74,940	71,044	69,970	71,722	76,244	79,090	82,144
Raw materials	37,276	37,506	35,590	36,996	36,917	35,635	33,000	31,659	30,677	32,384	34,176	34,505	36,055
Goods in process	17,346	17,748	18,439	19,264	17,524	15,942	15,365	14,501	14,583	14,007	14,933	15,931	16,673
Finished products	28,767	30,721	30,089	31,496	30,097	28,001	26,575	24,884	24,710	25,331	27,135	28,654	29,416
Wire and wire products manufacturers:													
Shipments	21,063	24,157	21,754	20,670	19,325	22,131	23,625	22,226	20,849	22,826	21,850	24,472	25,928
Total inventory owned	55,162	52,899	52,042	51,639	52,317	53,036	51,363	51,710	52,879	53,971	54,874	54,883	54,736
Raw materials	23,100	22,527	22,759	23,068	23,164	23,530	22,048	22,649	23,015	22,622	22,762	23,052	22,727
Goods in process	4,026	3,441	2,909	3,340	3,293	3,957	3,781	3,503	4,291	4,465	4,337	4,194	4,105
Finished products	28,036	26,931	26,374	25,231	25,860	25,549	25,534	25,558	25,573	26,884	27,775	27,637	27,904
Hardware, tool and cutlery manufacturers:													
Shipments	11,723	13,452	12,361	12,415	12,769	13,231	12,745	11,702	10,873	13,915	13,208	17,284	15,636
New orders	11,584	14,026	11,850	11,487	12,497	12,394	13,366	12,273	11,121	16,761	13,247	17,040	14,347
Unfilled orders	8,951	9,525	9,014	8,086	7,814	6,977	7,598	8,169	8,417	11,263	11,302	11,058	9,769
Total inventory owned	32,215	32,319	32,322	31,634	31,471	30,839	31,439	31,897	33,044	31,891	31,523	31,520	31,716
Raw materials	10,990	11,030	11,111	11,140	11,098	10,761	10,772	10,977	10,918	10,445	10,205	10,472	10,439
Goods in process	9,865	10,027	9,790	9,513	9,572	9,499	9,563	9,709	9,916	9,908	9,914	10,025	10,104
Finished products	11,360	11,262	11,421	10,981	10,801	10,579	11,104	11,211	12,210	11,538	11,404	11,023	11,173
Miscellaneous metal fabricating industries:													
Shipments	20,690	23,743	24,220	23,781	21,827	23,164	25,846	23,035	20,914	22,662	23,649	27,494	22,464
Unfilled orders	35,590	34,805	33,913	32,940	31,905	34,249	32,255	32,084	30,469	33,752	34,908	35,321	35,504
Total inventory held	60,783	61,589	62,494	61,566	60,656	60,351	58,211	58,062	60,155	61,168	63,329	62,897	63,978
Raw materials	23,281	23,373	24,468	25,087	23,411	22,560	21,836	21,713	22,135	22,456	22,751	22,539	21,665
Goods in process	17,695	18,240	18,907	18,839	19,657	20,482	19,305	19,069	19,782	20,333	22,232	22,563	22,950
Finished products	19,807	19,976	19,119	17,640	17,588	17,309	17,070	17,280	18,238	18,379	18,346	17,795	19,363

TABLE 4. Estimated Value of Shipments, Orders, and Inventories in Selected Individual Industries - Continued

Industry	1963									1964			
	Apr.	May	June	July	Aug.	Sept.	Oct.	Nov.	Dec.	Jan.	Feb.	Mar. ^r	Apr. ^p
	thousands of dollars												
MACHINERY INDUSTRIES													
(except electrical machinery)													
Agricultural implement industry:													
Shipments	19,201	17,652	18,669	17,163	12,652	9,724	10,299	12,168	11,061	16,095	16,705	21,496	22,525
Total inventory owned	44,616	45,113	42,925	39,448	39,276	40,906	47,016	48,785	53,044	54,006	54,900	53,616	52,771
Miscellaneous machinery and equipment manufacturers and commercial refrigeration and air conditioning equipment manufacturers:													
Shipments	48,496	51,390	50,109	59,864	42,770	49,648	51,377	45,296	48,853	42,001	48,583	58,032	57,302
New orders	41,997	48,155	44,392	51,435	46,298	55,622	49,720	47,000	52,665	46,551	48,095	44,798	54,286
Unfilled orders	175,321	172,086	166,369	157,940	161,468	167,442	165,785	167,489	171,301	175,851	175,363	162,129	159,113
Total inventory owned	151,350	149,149	145,861	143,034	141,837	139,992	141,649	142,107	142,203	143,465	141,533	133,281	135,198
Total inventory held	189,507	189,437	186,463	172,215	172,979	170,735	170,700	168,750	167,656	168,272	169,839	166,342	166,926
Raw materials	52,373	51,986	51,808	53,191	53,177	53,298	54,390	53,867	56,571	56,105	56,467	54,421	56,332
Goods in process	86,115	86,812	84,465	70,935	71,991	71,255	70,106	67,615	65,253	64,255	64,721	64,630	61,705
Finished products	51,019	50,639	50,190	48,089	47,811	46,182	46,204	47,268	45,832	47,912	48,651	47,291	48,889
Office and store machinery manufacturers:													
Shipments	7,514	8,067	7,244	6,209	6,413	7,597	8,218	8,651	8,567	8,069	8,808	8,357	7,510
Total inventory owned	36,603	37,407	37,010	36,253	35,661	36,084	34,939	34,937	36,461	36,831	36,696	37,200	37,555
Raw materials	13,359	12,889	12,042	12,451	11,732	10,827	11,719	11,857	11,125	10,990	10,957	14,772	15,354
Goods in process	8,171	8,311	8,243	7,642	8,141	8,901	8,052	8,195	9,966	9,935	9,883	7,906	8,015
Finished products	15,073	16,207	16,725	16,160	15,788	16,356	15,168	14,885	15,370	15,906	15,856	14,522	14,186
TRANSPORTATION EQUIPMENT INDUSTRIES													
Motor vehicle manufacturers:													
Shipments	138,735	151,208	135,537	96,673	14,982	91,022	132,724	162,031	162,071	149,319	137,245	149,375	157,520
Total inventory owned	107,936	104,795	95,910	72,604	100,563	110,154	116,158	115,765	121,382	125,656	125,104	125,476	122,602
Raw materials	14,174	14,050	13,175	12,660	14,593	14,233	15,066	16,080	14,607	15,019	15,524	17,146	17,472
Goods in process	64,698	64,759	53,888	37,199	62,995	68,057	76,378	70,806	76,829	79,243	77,814	76,417	72,989
Finished products	29,064	25,986	28,847	22,745	22,975	27,864	24,714	28,879	29,946	31,394	31,766	31,913	32,141
Motor vehicle parts and accessories manufacturers:													
Shipments	41,018	43,323	39,217	24,709	15,207	31,195	45,699	52,041	53,210	56,107	51,230	54,191	57,451
New orders	32,356	28,423	35,853	32,847	45,587	43,572	54,037	53,805	55,270	54,330	54,227	54,027	32,111
Unfilled orders	50,519	35,619	32,255	40,393	70,773	83,150	91,488	93,252	95,312	93,535	96,532	96,368	71,028
Total inventory owned	76,122	73,659	68,610	70,366	87,029	103,488	104,111	100,545	104,288	107,359	109,152	110,562	106,567
Raw materials	24,527	23,082	20,845	21,361	26,572	33,233	33,904	31,992	33,533	33,466	34,113	35,411	33,032
Goods in process	35,049	34,308	32,146	32,250	42,510	50,007	49,548	48,117	50,549	51,425	52,444	52,819	50,373
Finished products	16,269	16,269	15,619	16,755	17,947	20,248	20,659	20,436	20,206	22,468	22,595	22,332	23,162

TABLE 4. Estimated Value of Shipments, Orders, and Inventories in Selected Individual Industries - Continued

Industry	1963									1964			
	Apr.	May	June	July	Aug.	Sept.	Oct.	Nov.	Dec.	Jan.	Feb.	Mar. ^r	Apr. ^p
	thousands of dollars												
<u>TRANSPORTATION EQUIPMENT INDUSTRIES - Concluded</u>													
<u>Railroad rolling stock industry:</u>													
Shipments	18,873	20,504	19,545	16,895	17,496	20,896	23,595	26,107	26,203	25,000	22,866	25,468	23,937
New orders	17,087	18,894	20,963	17,627	17,093	17,119	21,722	27,625	20,286	25,637	27,442	31,090	23,313
Unfilled orders	58,309	56,699	58,117	58,849	58,446	54,669	52,796	54,314	48,397	49,034	53,610	59,232	58,608
Total inventory held	44,312	45,750	44,540	48,894	51,343	54,916	56,392	52,015	48,958	47,686	48,202	49,090	52,679
Raw materials	31,705	33,156	32,381	34,036	34,654	35,934	34,699	34,767	31,274	30,412	30,604	32,599	33,259
Goods in process and finished products ...	12,607	12,594	12,159	14,858	16,689	18,982	21,693	17,248	17,684	17,274	17,598	16,491	19,420
<u>Shipbuilding and repair:</u>													
Shipments	13,043	22,096	12,785	22,954	14,392	15,581	13,508	15,455	22,204	12,804	12,162	12,665	10,844
New orders	15,334	11,614	8,797	23,186	58,981	7,858	21,896	13,068	20,500	21,392	8,291	13,045	19,313
Unfilled orders	93,824	83,342	79,354	79,586	124,175	116,452	124,840	122,453	120,749	129,337	125,466	125,846	134,315
Total inventory held	126,933	118,198	118,257	111,372	104,219	101,617	108,565	112,872	96,873	100,122	102,050	104,487	105,174
Raw materials	12,027	12,131	12,254	12,846	13,213	13,340	13,309	14,248	15,181	14,982	14,683	15,826	15,918
Goods in process and finished products ...	114,906	106,067	106,003	98,526	91,006	88,277	95,256	98,624	81,692	85,140	87,367	88,661	89,256
<u>ELECTRICAL PRODUCTS INDUSTRIES</u>													
<u>Manufacturers of small electrical appliances:</u>													
Shipments	6,340	6,550	6,410	6,105	6,756	10,374	10,892	10,724	8,560	5,411	7,477	7,915	6,902
Total inventory owned	20,557	20,828	20,979	21,089	21,149	20,426	19,996	18,742	19,184	20,199	20,726	21,219	22,148
<u>Manufacturers of major appliances (electric and non-electric):</u>													
Shipments	19,475	21,075	19,906	20,399	19,497	23,244	22,303	20,273	18,640	17,682	18,590	20,111	21,093
New orders	19,466	20,598	20,348	21,105	19,156	23,236	20,518	20,551	18,720	19,568	18,336	20,962	21,235
Unfilled orders	2,853	2,376	2,818	3,524	3,183	3,175	1,390	1,668	1,748	3,634	3,380	4,231	4,373
Total inventory owned	63,321	64,769	65,192	60,128	57,532	55,583	55,544	57,644	61,351	62,985	64,790	67,545	69,293
Raw materials	17,001	17,157	15,676	15,449	15,409	15,957	15,988	15,512	16,011	16,092	16,735	17,849	18,055
Goods in process	11,915	11,944	13,000	12,513	13,017	12,391	12,377	12,309	14,033	14,437	14,584	14,587	15,259
Finished products	34,405	35,668	36,516	32,166	29,106	27,235	27,179	29,823	31,307	32,456	33,471	35,109	35,979
<u>Manufacturers of household radio and television receivers:</u>													
Shipments	8,699	9,033	8,977	10,474	11,486	16,753	16,813	15,123	13,564	11,220	11,352	10,270	10,440
New orders	7,405	13,847	8,190	7,604	11,593	16,032	14,715	12,182	12,952	15,635	11,069	10,247	12,545
Unfilled orders	18,709	23,523	22,736	19,866	19,973	19,252	17,154	14,213	13,601	18,016	17,733	17,710	19,815
Total inventory held	46,186	48,378	50,037	50,094	49,800	47,182	46,497	46,114	44,394	46,313	45,691	45,585	45,684
Raw materials	8,061	8,376	8,407	9,095	9,522	9,039	8,486	8,146	7,551	7,873	7,720	7,816	7,683
Goods in process	10,553	10,114	11,005	11,892	11,766	12,167	12,057	12,011	11,608	11,442	10,186	10,447	9,725
Finished products	27,572	29,888	30,625	29,107	28,512	25,976	25,954	25,957	25,235	26,998	27,785	27,322	28,276

TABLE 4. Estimated Value of Shipments, Orders, and Inventories in Selected Individual Industries - Continued

Industry	1963									1964			
	Apr.	May	June	July	Aug.	Sept.	Oct.	Nov.	Dec.	Jan.	Feb.	Mar. ^r	Apr. ^p
	thousands of dollars												
<u>ELECTRICAL PRODUCTS INDUSTRIES - Concluded</u>													
<u>Communications equipment manufacturers:</u>													
Shipments	28,425	30,948	31,429	22,302	28,372	30,222	28,415	26,953	27,605	31,981	32,687	35,584	32,489
New orders	24,778	23,759	24,345	21,185	27,863	24,548	25,863	38,319	23,212	42,434	33,658	30,925	39,184
Unfilled orders	221,182	213,993	206,909	205,792	205,283	199,609	197,057	208,423	204,030	214,483	215,454	210,795	217,490
Total inventory held	111,026	107,564	107,619	106,989	103,355	104,450	103,291	103,575	105,111	104,380	103,063	105,011	104,399
Raw materials	18,328	17,066	16,218	16,641	18,761	20,108	17,477	15,861	17,712	17,333	17,455	17,794	16,731
Goods in process	75,623	73,399	74,094	73,930	68,866	68,738	69,477	71,784	71,726	71,331	69,683	69,745	69,931
Finished products	17,075	17,099	17,307	16,418	15,728	15,604	16,337	15,930	15,673	15,716	15,925	17,472	17,737
<u>Manufacturers of electrical industrial equipment:</u>													
Shipments	22,487	27,266	28,102	23,611	22,080	27,684	25,737	26,626	29,865	20,723	23,027	25,795	24,632
New orders	30,971	28,333	37,373	22,580	18,401	27,179	27,616	43,949	37,763	22,587	24,290	30,262	28,785
Unfilled orders	155,813	156,880	166,151	165,120	161,441	160,936	162,815	180,138	188,036	189,900	191,163	195,630	199,783
Total inventory held	84,806	84,651	83,899	83,212	81,184	81,050	80,973	81,558	81,702	82,461	84,799	86,016	87,518
Raw materials	22,927	22,767	22,828	23,940	23,979	23,366	23,148	22,640	22,331	22,680	23,366	22,255	22,956
Goods in process	39,037	39,109	38,269	36,594	37,041	36,489	36,307	38,068	36,157	36,935	37,825	40,105	40,747
Finished products	22,842	22,775	22,802	22,678	20,164	21,195	21,518	20,850	23,214	22,846	23,608	23,656	23,815
<u>Battery manufacturers:</u>													
Shipments	2,824	3,136	3,288	2,657	3,634	4,742	5,628	4,440	4,052	3,684	2,788	3,132	3,120
New orders	2,619	3,151	3,249	2,501	4,748	4,681	5,388	4,217	4,086	3,594	2,989	2,556	2,850
Unfilled orders	2,437	2,452	2,413	2,257	3,371	3,310	3,070	2,847	2,881	2,791	2,992	2,416	2,146
Total inventory owned	10,378	10,684	10,403	10,196	10,794	10,570	9,865	9,096	9,013	9,095	9,658	9,824	10,152
Raw materials	3,361	3,473	3,353	3,491	3,544	3,477	3,557	3,614	3,847	3,957	3,743	3,679	3,522
Goods in process	2,643	2,594	2,656	2,604	2,911	3,558	2,930	2,675	2,468	2,381	2,441	2,368	2,363
Finished products	4,374	4,617	4,394	4,101	4,339	3,535	3,378	2,807	2,698	2,757	3,474	3,777	4,267
<u>Manufacturers of electrical wire and cable:</u>													
Shipments	14,134	18,488	18,423	14,952	16,531	20,552	17,489	17,722	15,037	15,275	16,753	23,251	23,346
New orders	14,132	17,534	20,867	16,356	16,507	15,993	23,944	15,578	15,535	21,847	15,096	25,997	24,399
Unfilled orders	29,074	28,120	30,564	31,968	31,944	27,385	33,840	31,696	32,194	38,766	37,109	39,855	40,908
Total inventory owned	44,882	44,071	44,032	43,008	41,160	40,332	41,171	40,142	41,328	42,461	42,762	43,795	44,393
Raw materials	8,951	8,883	9,036	10,055	9,115	9,224	8,879	8,543	9,227	9,190	9,450	10,125	10,137
Goods in process	10,588	10,170	10,786	10,265	10,656	9,399	10,341	9,901	10,324	10,111	10,117	10,738	10,544
Finished products	25,343	25,018	24,210	22,688	21,389	21,709	21,951	21,698	21,777	23,160	23,195	22,932	23,712
<u>Manufacturers of miscellaneous electrical products:</u>													
Shipments	12,493	13,433	14,140	12,498	11,772	14,938	15,367	15,062	14,577	14,311	14,951	15,730	14,767
New orders	12,781	14,541	13,637	12,547	11,307	14,656	14,754	15,010	13,475	15,308	15,120	17,866	15,553
Unfilled orders	12,526	13,634	13,131	13,180	12,715	12,433	11,820	11,768	10,666	11,663	11,832	13,968	14,754
Total inventory owned	33,863	34,483	36,052	35,131	34,947	35,384	34,830	33,439	33,708	32,957	33,607	34,126	35,305
Raw materials	13,512	13,637	13,942	12,772	12,859	13,044	13,039	12,730	12,863	12,413	12,690	12,344	12,607
Goods in process	6,350	6,352	6,680	7,110	6,981	6,951	6,902	6,945	7,085	7,191	7,454	7,482	7,738
Finished products	14,001	14,494	15,430	15,249	15,107	15,389	14,889	13,764	13,760	13,353	13,463	14,300	14,960

TABLE 4. Estimated Value of Shipments, Orders, and Inventories in Selected Individual Industries - Continued

Industry	1963									1964			
	Apr.	May	June	July	Aug.	Sept.	Oct.	Nov.	Dec.	Jan.	Feb.	Mar. ^F	Apr. ^P
	thousands of dollars												
<u>NON-METALLIC MINERAL PRODUCTS INDUSTRIES</u>													
<u>Cement and concrete products manufacturers:(9)</u>													
Shipments	24,778	38,104	39,046	40,881	41,840	41,215	41,285	32,492	20,140	20,218	21,603	26,228	28,479
Total inventory owned	54,459	53,546	53,793	52,664	50,939	48,451	45,670	46,911	47,879	47,331	47,832	47,725	50,507
Raw materials and goods in process	28,076	28,291	28,305	28,277	28,015	27,590	26,232	26,490	26,756	25,232	25,095	24,752	24,261
Finished products	26,383	25,255	25,488	24,387	22,924	20,861	19,438	20,421	21,123	22,099	22,737	22,973	26,246
<u>Asbestos products manufacturers:</u>													
Shipments	3,105	3,524	3,751	3,331	2,884	3,292	3,138	3,084	2,454	2,846	2,852	3,398	3,331
Total inventory owned	11,131	10,780	10,224	10,077	9,635	9,173	9,347	9,051	9,421	9,478	9,933	10,089	10,233
<u>Glass and glass products manufacturers:</u>													
Shipments	9,136	9,514	10,304	9,098	7,269	8,171	9,351	11,233	8,935	8,812	8,057	8,463	9,709
Total inventory owned	28,548	28,436	27,467	28,276	28,110	27,633	26,896	25,045	25,694	27,826	28,651	28,885	29,148
Raw materials	11,361	11,396	11,203	11,832	11,897	11,476	10,959	11,047	11,034	11,761	11,735	11,062	11,427
Goods in process and finished products	17,187	17,040	16,264	16,444	16,213	16,157	15,937	13,998	14,660	16,065	16,916	17,823	17,721
<u>Abrasives manufacturers:</u>													
Shipments	4,004	4,329	3,964	3,142	3,329	3,975	3,646	3,507	3,945	3,632	3,729	4,619	4,201
New orders	4,002	4,533	3,765	2,841	3,528	3,923	3,730	3,455	4,219	3,601	4,144	4,446	4,256
Unfilled orders	937	1,141	942	641	840	788	872	820	1,094	1,063	1,478	1,305	1,360
Total inventory owned	8,449	7,845	7,544	7,690	7,489	7,566	7,828	7,999	8,315	8,083	8,083	7,761	7,282
Raw materials and goods in process	5,103	5,009	4,946	4,767	4,728	4,952	5,046	5,081	5,445	5,177	5,207	4,820	4,549
Finished products	3,346	2,836	2,598	2,923	2,761	2,614	2,782	2,918	2,870	2,906	2,876	2,941	2,733
<u>PETROLEUM AND COAL PRODUCTS INDUSTRIES</u>													
<u>Petroleum refineries:(10)</u>													
Shipments	105,989	116,871	104,411	114,587	116,684	119,643	114,679	116,824	131,845	117,354	107,380	108,859	108,311
Total inventory owned	211,845	210,673	218,341	217,785	221,268	219,549	217,013	216,215	215,733	218,013	224,386	227,988	223,771
Raw materials	62,408	65,448	65,713	65,398	66,134	63,925	60,152	63,307	61,833	61,638	61,402	61,925	59,660
Goods in process	19,715	18,138	22,311	21,961	22,204	19,582	19,881	19,789	20,394	21,330	20,510	22,397	19,570
Finished products	129,722	127,087	130,317	130,426	132,930	136,042	136,980	133,119	133,506	135,045	142,474	143,666	144,541

(9) Includes cement manufacturers, concrete products manufacturers and ready-mix concrete manufacturers.

(10) Includes petroleum refining and manufacturers of lubricating oils and greases.

TABLE 4. Estimated Value of Shipments, Orders, and Inventories in Selected Individual Industries - Continued

Industry	1963									1964			
	Apr.	May	June	July	Aug.	Sept.	Oct.	Nov.	Dec.	Jan.	Feb.	Mar. ^r	Apr. ^p
	thousands of dollars												
<u>CHEMICAL AND CHEMICAL PRODUCTS INDUSTRY</u>													
<u>Manufacturers of mixed fertilizers:</u>													
Shipments	8,796	15,536	5,258	1,094	1,188	3,215	2,372	2,514	5,007	5,508	5,804	5,540	8,605
Total inventory owned	18,615	9,264	7,780	8,259	10,640	11,966	14,994	17,035	16,347	16,749	17,762	18,847	16,758
<u>Manufacturers of plastics and synthetic resins:</u>													
Shipments	11,114	11,855	12,514	11,138	11,851	12,843	12,010	11,435	10,892	10,816	11,646	12,338	12,039
Total inventory owned	19,304	18,778	17,997	18,754	17,788	16,366	16,686	16,739	16,233	16,621	16,402	15,713	17,064
<u>Manufacturers of pharmaceuticals and medicines:</u>													
Shipments	14,508	16,610	14,648	15,547	17,870	18,681	19,002	16,735	14,830	18,045	17,358	17,343	16,901
Total inventory owned	41,328	41,590	42,154	41,730	41,393	39,959	39,713	40,372	41,524	41,829	42,274	42,784	43,802
Raw materials	13,568	13,265	13,221	13,500	13,651	13,480	13,838	14,049	14,287	14,354	14,377	14,538	14,566
Goods in process	9,121	8,969	9,045	8,985	8,794	8,687	8,142	8,305	8,346	8,375	8,652	9,498	9,854
Finished products	18,639	19,356	19,888	19,245	18,948	17,792	17,733	18,018	18,891	19,100	19,245	18,748	19,382
<u>Paint and varnish manufacturers:</u>													
Shipments	17,494	23,828	17,779	16,620	15,194	14,803	15,116	13,178	10,377	14,563	14,658	21,575	18,204
Total inventory owned	39,169	37,316	36,902	36,401	34,754	35,378	35,774	37,020	38,418	40,003	41,133	39,752	40,917
Raw materials	12,639	12,530	12,241	11,919	11,528	11,783	11,564	11,928	12,578	12,714	12,926	12,824	12,761
Goods in process	2,252	2,172	2,225	2,198	2,159	2,154	2,177	2,234	2,219	2,266	2,308	2,154	2,183
Finished products	24,278	22,614	22,436	22,284	21,067	21,441	22,033	22,858	23,621	25,023	25,899	24,774	25,973
<u>Manufacturers of soap and cleaning compounds:</u>													
Shipments	14,671	15,179	15,190	13,968	14,544	15,729	17,126	14,705	12,634	15,229	15,053	13,567	15,069
Total inventory owned	23,868	23,883	23,726	23,997	23,845	22,788	22,438	22,565	23,613	23,831	23,390	22,719	22,839
Raw materials	9,267	9,081	8,961	9,186	9,516	9,360	9,139	9,234	9,409	9,103	8,940	8,542	8,893
Goods in process	1,970	2,120	2,272	2,140	2,146	2,139	2,122	2,252	2,203	2,264	2,295	2,236	2,109
Finished products	12,631	12,682	12,493	12,671	12,183	11,289	11,177	11,079	12,001	12,464	12,155	11,941	11,837
<u>Manufacturers of toilet preparations:</u>													
Shipments	6,132	6,610	6,285	5,743	6,176	7,780	9,054	8,067	6,749	5,749	6,452	7,432	6,997
Total inventory owned	12,623	13,247	14,099	14,159	14,695	14,689	14,269	14,333	13,956	14,551	14,886	15,000	14,966
Raw materials and goods in process	7,388	7,977	8,661	8,711	9,265	9,012	8,699	8,626	8,386	8,420	8,741	8,980	8,835
Finished products	5,235	5,270	5,438	5,448	5,430	5,677	5,570	5,707	5,570	6,131	6,145	6,020	6,131

TABLE 4. Estimated Value of Shipments, Orders, and Inventories in Selected Individual Industries - Concluded

Industry	1963									1964			
	Apr.	May	June	July	Aug.	Sept.	Oct.	Nov.	Dec.	Jan.	Feb.	Mar. ^r	Apr. ^p
	thousands of dollars												
<u>MISCELLANEOUS MANUFACTURING INDUSTRIES</u>													
<u>Scientific and professional equipment manufacturers:(11)</u>													
Shipments	16,485	17,723	17,775	16,456	17,985	19,159	19,796	19,308	18,806	15,374	16,122	19,365	16,045
Total inventory held	49,197	49,609	49,536	48,517	47,988	47,730	47,703	47,302	46,521	48,548	51,167	49,976	51,270
<u>Jewellery and silver manufacturers:</u>													
Shipments	4,814	4,885	4,732	4,194	7,332	6,853	8,454	7,671	6,401	4,656	6,354	6,108	5,515
Total inventory owned	20,199	19,520	19,454	19,105	18,554	18,851	18,230	17,568	17,539	18,295	18,036	18,666	19,513
<u>Broom, brush and mop industry:</u>													
Shipments	2,540	2,546	2,429	2,160	2,174	2,483	2,944	2,358	1,998	2,451	2,309	2,719	2,649
Total inventory owned	7,819	7,876	7,803	7,663	7,537	7,541	7,666	7,769	8,327	8,346	8,463	8,585	8,590
Raw materials	4,311	4,304	4,282	4,243	3,970	3,903	3,943	3,834	4,118	4,214	4,289	4,380	4,428
Goods in process	801	788	728	731	804	841	862	896	918	901	875	936	946
Finished products	2,707	2,784	2,793	2,689	2,763	2,797	2,861	3,039	3,291	3,231	3,299	3,269	3,216

(11) Includes instrument and related products manufacturers, clock and watch manufacturers, orthopedic and surgical appliance manufacturers, ophthalmic goods manufacturers and dental laboratories.

TABLE 5. Ratios of Value of Total Inventory Owned to Value of Shipments grouped according to the Standard Industrial Classification

Date	Major group number																			
	Total	1	2	3	4	5	6	7	8	9	10	12(1)	13	14	15	16	17	18	19	20
1960																				
Jan.	2.39	1.84	5.18	3.65	2.88	3.28	3.54	2.82	2.84	2.65	2.11	1.90	3.53	4.47	1.65	3.73	3.10	2.16	2.38	3.09
Feb.	2.35	1.75	4.99	3.51	2.60	3.11	3.22	2.27	2.78	2.34	2.16	1.93	3.50	3.63	1.67	3.64	2.95	2.48	2.28	2.78
Mar.	2.15	1.62	5.10	3.22	2.41	2.93	2.93	2.06	2.59	2.16	2.01	1.86	3.23	3.13	1.29	3.29	2.55	2.30	2.08	2.55
Apr.	2.28	1.59	6.66	3.55	2.87	3.17	3.60	2.31	2.95	2.40	1.96	2.03	3.40	3.30	1.47	3.78	2.55	2.31	2.06	2.91
May	2.15	1.49	5.94	3.54	3.41	3.07	3.92	2.62	2.43	2.25	1.88	1.97	3.12	3.29	1.38	3.76	2.04	2.18	1.82	2.87
June	2.10	1.42	4.39	3.23	3.32	2.99	3.87	3.29	2.11	2.19	1.79	2.17	2.94	3.04	1.36	3.47	1.69	2.20	1.92	2.61
July	2.32	1.45	5.19	3.37	3.76	3.51	3.31	3.44	2.48	2.63	1.99	2.36	3.06	3.84	1.88	4.00	1.75	2.23	2.43	2.95
Aug.	2.18	1.49	5.53	3.08	2.04	3.00	2.57	1.89	2.23	1.83	1.89	2.22	2.60	3.87	2.71	3.70	1.62	2.23	2.16	2.46
Sept.	2.07	1.53	4.22	2.77	2.03	2.71	2.18	1.80	2.28	1.73	1.86	2.26	2.45	3.74	2.27	2.73	1.59	2.23	1.97	2.22
Oct.	2.13	1.64	4.85	2.78	2.27	2.73	2.25	1.96	2.37	1.86	1.94	2.28	2.60	4.21	1.81	2.96	1.66	2.22	2.18	2.26
Nov.	2.12	1.67	4.44	2.99	2.74	2.82	2.26	2.20	2.34	1.86	1.84	2.19	2.70	3.91	1.61	2.86	1.86	2.08	2.32	2.28
Dec.	2.33	1.75	3.90	3.54	3.35	3.08	3.15	3.33	2.66	2.26	2.15	2.66	2.98	3.82	1.37	3.23	2.63	2.01	2.76	2.64
Avr.	2.21	1.60	5.03	3.27	2.81	3.03	3.07	2.50	2.51	2.18	1.97	2.15	3.01	3.69	1.71	3.43	2.17	2.22	2.20	2.64
1961																				
Jan.	2.43	1.55	5.63	3.97	2.72	2.91	3.26	2.87	2.73	2.58	2.26	2.34	3.23	4.32	1.86	3.45	2.87	2.06	2.37	2.95
Feb.	2.45	1.81	5.56	3.62	2.32	3.01	2.96	2.27	2.77	2.33	2.41	2.45	3.22	3.90	1.91	3.33	3.02	2.34	2.49	2.73
Mar.	2.21	1.60	5.37	3.17	1.98	2.75	2.92	2.06	2.47	2.15	2.16	2.21	2.81	3.57	1.72	3.11	2.57	2.22	2.17	2.42
Apr.	2.31	1.59	6.67	3.20	2.42	2.99	3.52	2.47	2.59	2.31	2.09	2.36	2.96	3.18	1.81	3.69	2.42	2.33	2.16	2.73
May	2.09	1.41	6.51	3.11	2.76	2.78	3.64	2.69	2.07	2.02	1.91	2.13	2.64	3.12	1.69	3.39	1.81	2.02	1.83	2.64
June	2.02	1.36	5.56	2.89	2.85	2.55	3.68	3.18	1.78	2.03	1.88	2.13	2.42	3.10	1.63	3.10	1.56	2.07	1.87	2.46
July	2.20	1.45	6.43	3.30	3.11	2.89	2.91	3.20	2.01	2.33	2.09	2.23	2.67	3.30	2.07	3.66	1.68	1.96	2.35	2.58
Aug.	2.05	1.46	6.10	3.10	1.95	2.64	2.34	1.78	1.84	1.71	1.85	2.06	2.23	3.62	2.93	3.19	1.52	1.93	2.18	2.28
Sept.	2.02	1.58	5.44	2.60	2.07	2.41	2.18	1.85	1.92	1.80	1.93	2.02	2.08	3.76	2.19	2.68	1.69	2.03	2.08	2.21
Oct.	2.04	1.61	5.85	2.31	2.19	2.36	2.13	1.90	2.01	1.86	1.90	2.10	2.27	4.34	1.91	2.91	1.70	1.90	2.14	2.16
Nov.	2.05	1.67	5.54	2.65	2.53	2.44	2.10	2.23	2.05	1.81	1.80	2.17	2.26	3.63	1.62	2.85	1.89	1.75	2.25	2.28
Dec.	2.30	1.78	4.66	3.28	3.26	2.73	3.03	3.27	2.50	2.23	2.10	2.50	2.83	3.58	1.60	3.25	2.72	1.73	2.61	2.56
Avr.	2.18	1.60	5.78	3.10	2.51	2.71	2.89	2.48	2.23	2.10	2.03	2.23	2.64	3.62	1.91	3.22	2.12	2.03	2.21	2.50
1962																				
Jan.	2.32	1.79	5.54	3.62	2.67	2.65	3.22	2.74	2.23	2.50	2.14	2.22	3.03	4.14	1.71	3.92	3.15	1.82	2.34	2.77
Feb.	2.40	1.85	5.32	3.51	2.53	2.75	3.21	2.31	2.28	2.37	2.44	2.42	3.36	4.21	1.67	3.76	3.20	2.03	2.45	2.68
Mar.	2.11	1.57	5.33	3.17	2.27	2.56	3.20	2.00	1.97	2.15	1.97	2.11	2.61	3.31	1.50	3.47	2.34	1.97	2.15	2.46
Apr.	2.18	1.59	5.08	3.14	2.57	2.89	3.59	2.24	2.18	2.16	1.98	2.22	2.86	3.24	1.53	3.79	2.28	2.22	2.04	2.57
May	1.93	1.41	5.61	3.04	2.86	2.55	3.85	2.46	1.60	1.92	1.77	1.96	2.43	2.94	1.32	3.68	1.69	1.88	1.65	2.37
June	1.93	1.35	5.14	2.93	3.20	2.54	3.76	3.34	1.45	2.05	1.80	1.96	2.31	3.02	1.33	3.43	1.50	1.93	1.79	2.39
July	2.10	1.44	6.58	3.37	3.37	2.91	3.13	3.01	1.62	2.26	1.91	2.13	2.41	3.45	1.71	4.04	1.52	1.92	2.25	2.43
Aug.	2.06	1.52	5.66	3.22	2.13	2.84	2.66	1.85	1.51	1.85	1.77	2.06	2.23	3.37	2.88	3.70	1.41	1.86	2.11	2.18
Sept.	2.02	1.67	5.51	2.56	2.28	2.48	2.39	1.82	1.70	1.81	1.87	2.16	1.93	3.66	2.04	2.99	1.60	1.87	2.06	2.09
Oct.	1.92	1.62	5.71	2.26	2.24	2.33	2.31	1.83	1.60	1.67	1.69	2.20	1.93	3.72	1.51	3.08	1.52	1.74	2.06	1.98
Nov.	1.99	1.73	5.27	2.60	2.52	2.43	2.39	2.20	1.82	1.74	2.07	2.16	3.59	1.41	3.15	1.72	1.69	2.19	2.21	2.21
Dec.	2.24	1.87	4.98	3.22	3.21	2.78	3.16	3.15	2.15	2.26	2.06	3.37	2.68	3.84	1.39	3.48	2.59	1.70	2.50	2.58
Avr.	2.10	1.62	5.48	3.05	2.65	2.64	3.07	2.41	1.84	2.07	1.93	2.16	2.50	3.54	1.67	3.54	2.04	1.89	2.13	2.39
1963																				
Jan.	2.23	1.84	5.91	3.50	2.66	2.46	3.33	2.73	2.07	2.30	2.10	2.12	2.76	4.15	1.45	3.46	3.15	1.74	2.33	2.77
Feb.	2.28	1.83	4.97	3.43	2.65	2.59	3.26	2.29	2.13	2.27	2.23	2.32	2.80	3.75	1.59	3.35	3.34	1.91	2.35	2.76
Mar.	2.12	1.70	4.92	3.13	2.47	2.33	3.22	2.11	2.01	2.17	2.04	1.96	2.70	3.47	1.48	3.04	2.71	2.02	2.14	2.48
Apr.	2.07	1.58	4.67	2.94	2.72	2.53	3.58	2.17	2.13	2.12	1.83	2.03	2.66	3.13	1.37	3.45	2.40	2.00	1.94	2.68
May	1.86	1.43	4.59	3.01	3.10	2.25	3.67	2.58	1.68	1.94	1.65	1.78	2.26	3.04	1.20	3.06	1.85	1.79	1.63	2.50
June	1.93	1.44	5.18	2.87	3.32	2.34	3.79	3.33	1.60	2.02	1.67	1.86	2.30	3.00	1.31	3.05	1.76	2.07	1.84	2.56
July	1.99	1.41	5.11	2.81	3.37	2.70	2.96	2.75	1.58	2.25	1.76	2.03	2.37	2.66	1.52	3.45	1.73	1.87	2.21	2.64
Aug.	2.04	1.47	5.75	3.06	2.11	2.45	2.51	1.70	1.58	1.87	1.69	2.05	2.30	3.55	3.46	3.16	1.73	1.87	2.08	2.30
Sept.	1.92	1.57	4.88	2.36	2.18	2.19	2.17	1.67	1.74	1.70	1.68	2.10	2.04	3.28	1.90	2.51	1.68	1.82	1.94	2.15
Oct.	1.82	1.57	5.82	2.16	2.11	2.05	2.11	1.67	1.60	1.62	1.60	1.91	1.90	3.24	1.53	2.61	1.60	1.88	1.84	1.99
Nov.	1.91	1.72	5.28	2.49	2.51	2.18	2.35	2.17	1.83	1.77	1.62	1.93	2.15	3.46	1.30	2.71	1.82	1.85	2.02	2.17
Dec.	2.01	1.78	4.05	2.61	3.08	2.38	3.27	3.17	2.02	2.09	1.74	2.13	2.28	3.42	1.19	2.86	2.52	1.64	2.30	2.40
Avr.	2.02	1.61	5.09	2.86	2.69	2.37	3.02	2.36	1.83	2.01	1.80	2.02	2.38	3.35	1.61	3.06	2.19	1.87	2.05	2.45
1964																				
Jan.	2.04	1.76	5.46	3.06	2.42	2.32	3.34	2.75	1.91	2.35	1.74	1.96	2.33	3.58	1.33	3.16	2.42	1.87	2.10	2.73
Feb.	2.07	1.76	6.74	2.85	2.22	2.31	3.18	2.35	1.85	2.20	1.87	1.97	2.37	3.18	1.43	3.03	2.40	3.10	2.15	2.58
Mar. ^x	1.89	1.58	6.08	2.82	2.08	2.18	3.24	2.16	1.54	2.00	1.78	1.79	1.91	2.58	1.42	2.77	1.98	2.09	1.94	2.33
Apr. ^p	1.88	1.54	4.48	2.65	2.26	2.18	3.74	2.29	1.64	2.08	1.61	1.72	2.27	2.61	1.38	2.83	2.08	2.07	1.88	2.59
May																				
June																				
July																				
Aug.																				
Sept.																				
Oct.																				
Nov.																				
Dec.																				
Avr.																				

See footnotes, page 43.

INDUSTRIAL GROUPINGS

The industries shown in the Standard Industrial Classification Groups are listed below.

A single asterisk (*) preceding the individual industry title indicates that the industry is shown separately in Table 4 - Statistics for Selected Individual Industries.

A double asterisk (**) preceding the individual industry title indicates that the industry is shown in Table 4 combined with one or more other industries. The industries grouped are listed in footnotes to the table.

The bracketed letters following the individual industry titles indicate the statistical series - shipments, inventories and orders in which the industry is included monthly: (s) means the industry is included in the shipments series; (i) in the inventory series; and (o) in the orders series. Industries for which monthly coverage is not indicated are included in the all-industry and group totals estimates.

STANDARD INDUSTRIAL CLASSIFICATION

Industrial Groupings shown in Tables 3 and 5

Major Group 1. Foods and Beverages

- ** Slaughtering and Meat Packing Plants (s)(i)
- Animal Oils and Fats Plants (s)
- ** Sausage and Sausage Casing Manufacturers (s)
- Poultry Processors
- ** Butter and Cheese Plants (s)(i)
- ** Pasteurizing Plants (s)(i)
- ** Condenseries (s)(i)
- ** Ice Cream Manufacturers (s)(i)
- ** Process Cheese Manufacturers (s)
- Fish Products Industry (s)(i)
- * Fruit and Vegetable Canners and Preservers (s)(i)(o)
- Feed Manufacturers (s)(i)
- * Flour Mills (s)(i)(o)
- Breakfast Cereal Manufacturers (s)(i)
- * Biscuit Manufacturers (s)(i)
- Bakeries (s)
- * Confectionery Manufacturers (s)(i)
- * Sugar Refineries (s)(i)
- Vegetable Oil Mills (s)(i)(o)
- Macaroni Manufacturers (s)(i)
- * Miscellaneous Food Manufacturers (s)(i)
- Soft Drink Manufacturers (s)
- Distilleries (s)(i)
- * Breweries (s)(i)
- * Wineries (s)(i)

Major Group 2. Tobacco Products Industries

- Leaf Tobacco Processing (s)(i)
- Tobacco Products Manufacturers (s)(i)

Major Group 3. Rubber Industries

- ** Rubber Footwear Manufacturers (s)(i)(o)
- * Rubber Tire and Tube Manufacturers (s)(i)(o)
- ** Other Rubber Industries (s)(i)(o)

Major Group 4. Leather Industries

- * Leather Tanneries (s)(i)(o)
- * Shoe Factories (s)(i)(o)
- Leather Glove Factories (s)
- Leather Belting Manufacturers (s)
- Boot and Shoe Findings Manufacturers (s)
- Miscellaneous Leather Products Manufacturers (s)

Major Group 5. Textile Industries

- * Cotton Yarn and Cloth Mills (s)(i)(o)
- * Wool Yarn Mills (s)(i)(o)
- * Wool Cloth Mills (s)(i)(o)
- * Synthetic Textile Mills (s)(i)(o)
- Fibre Preparing Mills (s)(i)(o)

Major Group 5. Textile Industries - Concluded

- Thread Mills (s)(i)
- * Cordage and Twine Industry (s)(i)
- Narrow Fabric Mills (s)(i)(o)
- Pressed and Funched Felt Mills (s)(i)(o)
- * Carpet, Mat and Rug Industry (s)(i)(o)
- Textile Dyeing and Finishing Plants (s)(i)(o)
- * Linoleum and Coated Fabrics Industry (s)(i)(o)
- * Canvas Products Industry (s)(i)(o)
- * Cotton and Jute Bag Industry (s)(i)(o)
- ** Automobile Fabric Accessory Manufacturers (s)(i)
- ** Embroidery, Pleating, Hemstitching Manufacturers (s)
- ** Miscellaneous Textiles (n.e.s.) Industry (s)(i)(o)

Major Group 6. Knitting Mills

- * Hosiery Mills (s)(i)(o)
- * Other Knitting Mills (s)(i)(o)

Major Group 7. Clothing Industries

- ** Men's Clothing Factories (s)(i)(o)
- ** Men's Clothing Contractors (s)
- ** Women's Clothing Factories (s)(i)(o)
- ** Women's Clothing Contractors (s)
- ** Children's Clothing Industries (s)(i)(o)
- Fur Goods Industry (s)(i)
- Hat and Cap Industry (s)(i)(o)
- * Foundation Garment Industry (s)(i)(o)
- Fabric Glove Manufacturers (s)
- Miscellaneous Clothing (n.e.s.) Industry (s)

Major Group 8. Wood Industries

- Shingle Mills (s)
- Sawmills except Shingle Mills (s)(i)(o)
- * Veneer and Plywood Mills (s)(i)(o)
- * Sash and Door and Planing Mills (excluding hardwood flooring) (s)(i)(o)
- Hardwood Flooring (s)(i)(o)
- Wooden Box Factories (s)(i)
- Coffin and Casket Industries (s)
- Wood preservation (s)(i)
- Wood Handles and Turning (s)(i)(o)
- Woodenware (s)(i)
- Cooperage (s)(i)
- Miscellaneous Wood Industries, n.e.s. (s)(i)(o)

Major Group 9. Furniture and Fixture Industries

- Household Furniture Industry (s)(i)(o)
- Office Furniture Industry (s)(i)(o)
- Other Furniture Industries (s)(i)(o)
- Electric Lamp and Shade Industry (s)

Major Group 10. Paper and Allied Industries

- * Pulp and Paper Mills (s)(i)(o)
- * Asphalt Roofing Manufacturers (s)(i)(o)
- ** Folding Box and Set-up Box Manufacturers (s)(i)(o)
- ** Corrugated Box Manufacturers (s)(i)(o)
- ** Paper Bag Manufacturers (s)(i)(o)
- * Other Paper Converters (s)(i)(o)

Major Group 11. Printing, Publishing and Allied Industries

- Printing and Bookbinding (s)
- Lithographing (s)
- Engraving and duplicate plates (s)
- Trade Composition or typesetting (s)
- Publishing Only (s)
- Printing and Publishing (s)

Major Group 12. Primary Metal Industries

- * Iron and Steel Mills (s)(i)(o)
- * Steel Pipe and Tube Mills (s)(i)(o)
- * Iron Foundries (s)(i)(o)
- * Smelting and Refining (s)(i)(o)
- Aluminum Rolling, Casting and Extruding (s)(i)(o)
- * Copper and Alloy Rolling, Casting and Extruding (s)(i)(o)
- Metal Rolling, Casting and Extruding, n.e.s. (s)(i)(o)

Major Group 13. Metal Fabricating Industries (except Machinery and Transportation Equipment Industries)

- * Boiler and Plate Works (s)(i)(o)
- * Fabricated Structural Metal Industry (s)(i)(o)
- Ornamental and Architectural Metal Industry (s)(i)(o)
- * Metal Stamping, Pressing and Coating Industry (s)(i)(o)
- * Wire and Wire Products Manufacturers (s)(i)(o)
- * Hardware, Tool and Cutlery Manufacturers (s)(i)(o)
- Heating Equipment Manufacturers (s)(i)(o)
- Machine Shops
- * Miscellaneous Metal Fabricating Industries (s)(i)(o)

Major Group 14. Machinery Industries (except electrical machinery)

- * Agricultural Implement Industry (s)(i)(o)
- ** Miscellaneous Machinery and Equipment Manufacturers (s)(i)(o)
- ** Commercial Refrigeration and Air Conditioning Equipment Manufacturers (s)(i)(o)
- * Office and Store Manufacturers (s)(i)(o)

Major Group 15. Transportation Equipment Industries

- Aircraft and Parts Manufacturers (s)(i)(o)
- * Motor Vehicle Manufacturers (s)(i)(o)
- Truck Body and Trailer Manufacturers (s)(i)(o)
- * Motor Vehicle Parts and Accessories Manufacturers (s)(i)(o)
- * Railroad Rolling Stock Industry (s)(i)(o)
- * Shipbuilding and Repair (s)(i)(o)
- Boatbuilding and Repair (s)
- Miscellaneous Vehicle Manufacturers (s)

Major Group 16. Electrical Products Industries

- * Manufacturers of Small Electrical Appliances (s)(i)(o)
- * Manufacturers of Major Appliances (electric and non-electric) (s)(i)(o)
- * Manufacturers of Household Radio and Television Receivers (s)(i)(o)
- * Communications Equipment Manufacturers (s)(i)(o)
- * Manufacturers of Electrical Industrial Equipment (s)(i)(o)

Major Group 16. Electrical Products Industries - Concluded

- * Battery Manufacturers (s)(i)(o)
- * Manufacturers of Electric Wire and Cable (s)(i)(o)
- * Manufacturers of Miscellaneous Electrical Products (s)(i)(o)

Major Group 17. Non-Metallic Mineral Products Industries

- ** Cement Manufacturers (s)(i)(o)
- Lime Manufacturers (s)
- Gypsum Products Manufacturers (s)
- ** Concrete Products Manufacturers (s)(i)(o)
- ** Ready-Mix Concrete Manufacturers (s)(i)
- Clay Products Manufacturers (from domestic clays) (s)(i)
- Clay Products Manufacturers (from imported clays) (s)(i)(o)
- Refractories Manufacturers (s)(i)
- Stone Products Manufacturers (s)
- Mineral Wool Manufacturers (s)(i)(o)
- * Asbestos Products Manufacturers (s)(i)(o)
- ** Glass Manufacturers (s)(i)(o)
- ** Glass Products Manufacturers (s)(i)(o)
- * Abrsives Manufacturers (s)(i)(o)
- Other Non-Metallic Mineral Products Industries (s)(i)

Major Group 18. Petroleum and Coal Products Industries

- ** Petroleum Refining (s)(i)
- ** Manufacturers of Lubricating Oils and Greases (s)(i)
- Other Petroleum and Coal Products Industries (s)(i)

Major Group 19. Chemical and Chemical Products Industry

- Explosives and Ammunition Manufacturers (s)(i)(o)
- * Manufacturers of Mixed Fertilizers (s)(i)
- * Manufacturers of Plastics and Synthetic Resins (s)(i)(o)
- * Manufacturers of Pharmaceuticals and Medicines (s)(i)(o)
- * Paint and Varnish Manufacturers (s)(i)(o)
- * Manufacturers of Soap and Cleaning Compounds (s)(i)(o)
- * Manufacturers of Toilet Preparations (s)(i)
- Manufacturers of Industrial Chemicals (s)(i)(o)
- Manufacturers of Printing Inks (s)(i)
- Other Chemical Industries, n.e.s. (s)(i)(o)

Major Group 20. Miscellaneous Manufacturing Industries

- ** Instrument and Related Products Manufacturers (s)(i)(o)
- ** Clock and Watch Manufacturers (s)(i)(o)
- ** Orthopedic and Surgical Appliance Manufacturers (s)(i)(o)
- ** Ophthalmic Goods Manufacturers (s)(i)
- ** Dental Laboratories
- * Jewellery and Silverware Manufacturers (s)(i)(o)
- * Broom, Brush and Mop Industry (s)(i)(o)
- Venetian Blind Manufacturers (s)
- Plastic Fabricators, n.e.s. (s)(i)
- Sporting Goods Industry (s)(i)
- Toys and Games Industry (s)
- Fur Dressing and Dyeing Industry
- Signs and Displays Industry (s)
- Button, Buckle and Fastener Industry (s)
- Candle Manufacturers (s)
- Hair Goods Manufacturers (s)
- Artificial Flowers and Feathers Manufacturers (s)
- Model and Pattern Manufacturers (s)
- Musical Instruments Industry (s)(i)(o)
- Sound Recording Industry (s)(i)(o)
- Typewriter Supplies Manufacturers (s)
- Fountain Pen and Pencil Manufacturers (s)(i)(o)
- Smokers' Supplies Manufacturers (s)
- Stamp and Stencil (Rubber and Metal) Manufacturers (s)
- Statuary, Art Goods, Regalia and Novelty Manufacturers (s)
- Umbrella Manufacturers (s)
- Artificial Ice Manufacturers (s)
- Other Miscellaneous Industries (s)(i)(o)

CONCEPTS

Shipments - (Tables 1 to 4) - represent an estimated projection, on a monthly basis, of the latest available Census of Manufactures values.

New Orders - (Tables 2 and 3) - This series is designed to indicate the rate at which new business is being received. It is defined as all New Orders Received during the period, at estimated selling values. Thus it covers total new orders, net of cancellations, regardless of whether the orders will be filled from stock or as a result of activity during the same month (and, therefore, will also be reported as shipments in the month received) or whether they will be added to existing backlogs.

Unfilled Orders - (Tables 2 and 3) - are defined as orders on books at the end of the period stated. That is, they cover orders received but not yet shipped (or treated as a sale), irrespective of work done on them or of stocks from which they can be filled.

Total Inventory Owned - (Tables 2 to 4) - represents the estimated book value of inventory owned by manufacturers in connection with the manufacturing operations of the establishment covered whether held at plant or elsewhere, at the end of the period stated. It is made up of: raw materials, goods in process, finished goods of own manufacture less the value of inventory held but not owned which cannot be assigned to specific components. Since the series relates to manufacturing inventory only, value of goods purchased for re-sale is not included.

Inventory Held but Not Owned - (Tables 2 and 3) - represents, as far as possible, the portion of manufacturers' total inventory holdings which are no longer owned by the reporting manufacturers because of payments made on long-term contracts as work on these progresses. This item is applicable only to the relatively few industries where long-term contracts are common although, because of the nature of the item, the value per industry is high.

Because of variations in accounting methods there are a few cases where it is not possible to obtain values for this type of inventory. The estimated value shown for this item must therefore be considered to some extent incomplete.

Total Inventory Held - (Tables 2 and 3) - represents the estimated total value of manufacturers' inventory holdings in connection with manufacturing operations, regardless of ownership; it differs from inventory owned by the inclusion of inventories held under progress payments arrangements.

Inventory Components - (Tables 2 and 3) - Raw Materials, Goods in Process, and Finished Products are reported and compiled as on the books of each manufacturer, i.e. there has been no attempt to define the components specifically for each industry.

The inventory components are always a breakdown of total inventory held, not of total inventory owned. In industries where these two items differ, due to the inclusion of inventory held but not owned (see above), it is not possible to obtain value of inventory owned by components since, where separate progress accounts are maintained, firms concerned can only state that, of total holdings, a certain amount is not longer owned by them. It is fairly obvious that the bulk of such payments apply to goods in process holdings but due to time lags in shipments and to prepayments some of the total value of inventory held but not owned would be applicable to finished products or raw materials.

Any comparisons of shipments/inventory ratios should be made using total inventory owned, not total inventory held, since the latter includes values which have already been written off to sales. If shipments/inventory ratios are desired using inventory components, rather than total inventory, a reasonable approximation to total inventory owned by components would be obtained by assuming that all inventory held but not owned had been included with goods in process.

Groupings - The Standard Industrial Classification groupings of industries used in Tables 3 and 4 are defined according to the Standard Industrial Classification Manual. A list of the industries included in the Standard Industrial Classification groups will be found on page 40 of the bulletin.

SOURCES

Monthly (or, in a few cases, quarterly) reports covering value of inventories and shipments are now submitted on a voluntary basis by 3,000 plants in 120 industries; in addition, 3,000 small plants in 100 of these industries report monthly shipments only. Of the first group, 1,025 plants in 83 industries also report new and unfilled orders. Four industries are included in the total shipments estimates by using data available from other Bureau series, and two of these are also included in the total inventory estimates.

FOOTNOTES TO TABLES

TABLE 1. - (1) Prince Edward Island, Yukon and Northwest Territories are not published separately. They are included in the total for Canada.

TABLE 2. - (1) Annual shipments values differ slightly from published Census of Manufactures totals due to inventory adjustments for certain industries where Census of Manufactures data represent production rather than shipments values.

TABLE 3. - (1) See footnote (1), table 2.

(2) The value of Unfilled Orders and, therefore, of New Orders for industries in major groups - 1, 2, 6, 8, 9, 10, 17, 18 and 19 is small and sample coverage is not adequate to provide separate estimates for them.

(3) The value of inventory held but not owned in this group is very small, and sample coverage is not adequate to provide separate data. Estimates for this type of inventory are included with Total Inventory Held; for all practical purposes this can be considered the equivalent of Inventory Owned.

TABLE 5. - (1) Ratios for this group were calculated using values of Total Inventory Held instead of values of Total Inventory Owned. See footnote (3), table 3.

STATISTICS CANADA LIBRARY
BIBLIOTHÈQUE STATISTIQUE CANADA

1010691776