

CATALOGUE No.

31-001

MONTHLY

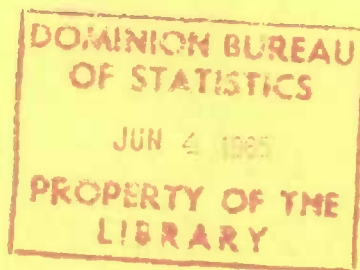
e-1



DOES NOT CIRCULATE
NE PAS PRÉTER

INVENTORIES, SHIPMENTS AND ORDERS
IN MANUFACTURING INDUSTRIES

FEBRUARY 1965



DOMINION BUREAU OF STATISTICS

Industry Division

DOMINION BUREAU OF STATISTICS

Industry Division

INVENTORIES, SHIPMENTS AND ORDERS
IN MANUFACTURING INDUSTRIES

FEBRUARY 1965

Published by Authority of
The Minister of Trade and Commerce

June 1965
6831-501

Price: 30 cents
\$3.00 a year

TABLE OF CONTENTS

	Page
Trend Summary (Charts and Text)	iv
TABLE 1. Estimated Value of Shipments in all Manufacturing Industries, by Province of Origin, Monthly - 1960 to date, by months	1
TABLE 2A. Estimated Value of Shipments, Orders and Inventory in all Manufacturing Industries, 1960 to date, by months	2
TABLE 2B. Estimated Value of Shipments, Orders and Inventory in all Manufacturing Industries, 1960 to date, by months - <u>Adjusted for Seasonal Variation</u>	3
TABLE 3. Estimated Value of Shipments, Orders and Inventory in Manufacturing Industries 1960 to date, by months, grouped according to the Standard Industrial Classification	
Non-Durable - Major Groups 1, 2, 3, 4, 5, 6, 7, 10, 11, 18, 19 and 20	4
Durable - Major Groups 8, 9, 12, 13, 14, 15, 16 and 17	5
Major Group 1 - Food and Beverage Industries	6
Major Group 2 - Tobacco Products Industries	7
Major Group 3 - Rubber Industries	8
Major Group 4 - Leather Industries	9
Major Group 5 - Textile Industries	10
Major Group 6 - Knitting Mills	11
Major Group 7 - Clothing Industries	12
Major Group 8 - Wood Industries	13
Major Group 9 - Furniture & Fixture Industries	14
Major Group 10 - Paper & Allied Industries	15
Major Group 11 - Printing, Publishing and Allied Industries (not published separately, values included in Table 2)	
Major Group 12 - Primary Metal Industries	16
Major Group 13 - Metal Fabricating Industries (except Machinery and Transportation Equipment Industries)	17
Major Group 14 - Machinery Industries	18
Major Group 15 - Transportation Equipment Industries	19
Major Group 16 - Electrical Products Industries	20
Major Group 17 - Non-Metallic Mineral Products Industries	21
Major Group 18 - Petroleum and Coal Products Industries	22
Major Group 19 - Chemical and Chemical Products Industries	23
Major Group 20 - Miscellaneous Manufacturing Industries	24

TABLE OF CONTENTS

	Page
Table 4. Statistics for selected individual industries, current and 12 previous months	25
Table 5. Ratios of Value of Inventory Owned to Value of Shipments, 1960 to date, by months:	
Industries grouped according to the Standard Industrial Classification	
Total inventory	38
Finished products inventory	39
 Industrial Grouping -	
Industries included in groups of the Standard Industrial Classification, Tables 3 and 5	40
 Concepts and Sources	42
 Footnotes to tables	43

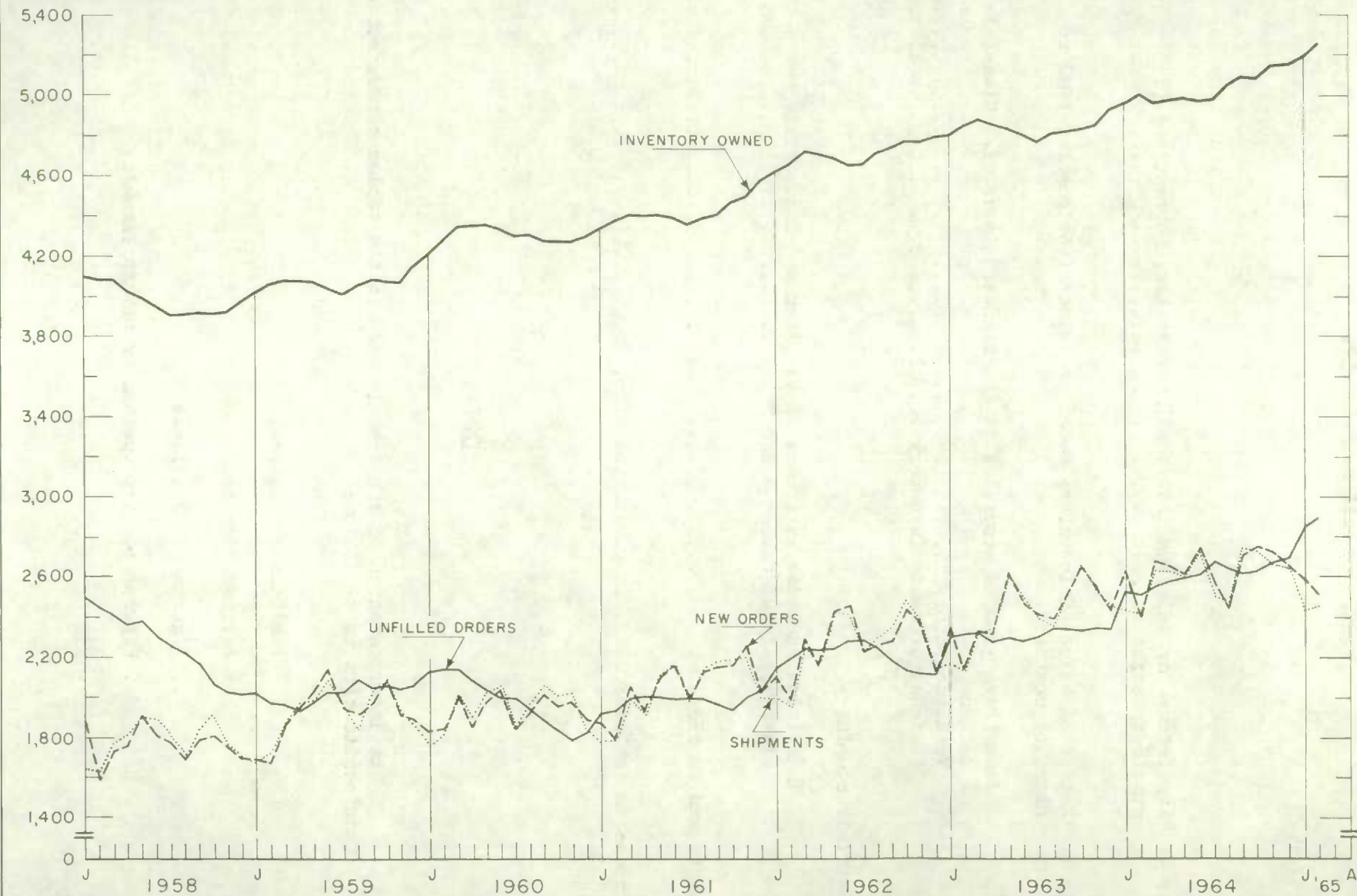
SYMBOLS

The interpretation of the symbols used in the tables throughout this publication is as follows:

- P Preliminary figures.
- r Revised figures.
- .. Figures not available.
- ... Figures not appropriate or not applicable.
- Nil or zero.

ESTIMATED VALUES OF SHIPMENTS, INVENTORY OWNED AND ORDERS IN ALL MANUFACTURING INDUSTRIES

MILLIONS OF DOLLARS



The preliminary shipments estimate of \$2,461.8 million in February 1965 showed a small increase of 1.1 per cent over the revised January estimate of \$2,436.0 million and 1.9 per cent over the \$2,414.8 million estimate for February a year ago. After seasonal adjustment, shipments in February were valued at \$2,728.0 million which was only 0.8 per cent above the January level. February shipments in the durable goods industries showed a moderate increase of 1.2 per cent from \$1,101.3 million to \$1,114.7 million slightly higher than the non-durable goods which rose 0.9 per cent from \$1,334.7 million in January to \$1,347.1 million in February.

All the durable goods industry groups, except the transportation equipment industries which dropped 2 per cent, advanced somewhat with increases more pronounced in the furniture and fixture industries and the wood industries which rose 10.8 per cent and 8.1 per cent respectively. Within the non-durable goods industries, appreciable increases in shipments were also reported in the rubber industries of 18.7 per cent, the clothing industries of 18.4 per cent, the leather industries of 12.0 per cent, and the knitting mills of 5.9 per cent; the tobacco industries registered the greatest decline of 21.4 per cent and the petroleum and coal products industries decreased by 5.2 per cent in February.

New orders received by manufacturers during February decreased 2.8 per cent from \$2,583.9 million in January, but seasonally adjusted, the series shows an increase of 4.1 per cent to a February level of \$2,787.6 million. At the end of February, the backlog of unfilled orders which rose 1.8 per cent in January was at \$2,890.3 million; after adjustment for seasonal variation, the February value was estimated at \$2,830.3 million which was 2.2 per cent higher than at the end of January. Unfilled orders held by durable goods producers amounted to \$2,393.2 million in February, 2.6 per cent above the month before; the non-durable producers' unfilled orders were down 2.2 per cent from the \$508.3 million estimated in January.

Inventories owned by manufacturers were up 1.5 per cent over the level of \$5,189.3 million at the end of January to a February high of \$5,265.4 million; seasonally adjusted the rise was 0.8 per cent to a February level of \$5,198.6 million. The increase in inventories in the unadjusted series showed up in the goods in process and the finished products both of which rose by just over 2 per cent. However, the seasonally adjusted estimate indicated that the increase in raw materials was seasonally more important as the adjusted series shows an increase in this component of 0.8 per cent relatively higher than the increase in the two other components. Inventories owned by durable goods manufacturers at the end of February increased by 1.8 per cent from \$2,471.2 million in January, slightly more than the non-durable goods industries which rose 1.2 per cent from the level of \$2,718.1 million at the end of January. The tobacco industries which had a significant decrease of shipments in February reported a 8.5 per cent build up in total inventories, the highest relative increase among the manufacturing industries.

Both the ratio of inventories owned-to-shipments and the ratio of finished products-to-shipments at 2.14 and 0.75 in February 1965, reached record highs for the past two years.

TABLE 1. Estimated Value of Shipments in All Manufacturing Industries, by Province of Origin

1

Calendar years and calendar months	Province									
	Newfoundland	Nova Scotia	New Brunswick	Quebec	Ontario	Manitoba	Saskatchewan	Alberta	British Columbia	Canada(1)
	thousands of dollars									
1961 - January	10,032	27,172	29,689	514,230	898,807	56,261	24,299	73,705	142,492	1,779,229
February ...	7,747	27,808	27,506	537,254	894,428	52,888	23,386	69,430	147,800	1,790,421
March	9,500	31,167	32,340	592,356	989,198	58,137	27,668	79,980	168,315	1,991,058
April	8,144	26,482	30,614	567,192	961,052	57,714	26,873	71,510	158,023	1,910,124
May	12,276	31,866	35,988	618,115	1,054,780	64,048	32,474	81,060	173,625	2,107,234
June	12,998	35,636	35,303	641,074	1,083,758	66,352	33,097	84,279	180,227	2,175,564
July	13,082	34,112	35,607	586,001	958,289	70,578	32,843	82,090	162,129	1,978,093
August	14,937	33,685	37,625	682,467	993,936	73,843	34,571	88,648	177,118	2,140,096
September ..	12,995	32,746	33,450	680,274	1,049,514	75,266	30,743	84,528	172,859	2,175,496
October	12,944	33,037	36,312	675,011	1,062,621	71,924	30,983	84,386	177,489	2,187,708
November ...	12,446	31,264	34,010	682,159	1,095,178	65,855	29,209	76,171	169,809	2,198,909
December ...	10,359	34,932	30,410	597,196	1,000,843	65,969	27,971	71,332	152,454	1,993,975
Totals ...	137,460	379,907	398,854	7,373,329	12,042,404	778,835	354,117	947,119	1,982,340	24,427,907
1962 - January	11,034	32,762	28,758	595,112	986,664	68,132	29,306	75,731	162,331	1,993,444
February ...	8,680	29,603	27,883	585,556	963,361	63,741	25,772	72,358	162,444	1,941,387
March	11,426	34,923	32,778	683,609	1,104,727	71,695	30,253	81,270	190,260	2,243,256
April	11,542	31,528	32,065	647,694	1,077,504	68,067	28,117	75,876	180,939	2,155,821
May	12,336	37,857	37,908	727,276	1,207,869	72,634	34,278	87,308	202,813	2,424,004
June	14,508	41,051	39,224	724,173	1,187,536	78,091	35,230	91,345	200,161	2,414,955
July	12,441	35,472	37,316	669,797	1,067,939	82,054	35,716	89,203	185,130	2,218,277
August	12,827	39,096	37,460	750,991	1,044,482	82,274	35,421	91,150	196,209	2,293,487
September ..	12,540	37,465	34,251	759,790	1,113,432	76,005	32,219	86,773	189,296	2,344,809
October	13,140	41,637	38,049	768,449	1,215,728	78,901	34,840	89,677	200,560	2,484,041
November ...	12,962	40,139	33,085	734,868	1,201,974	75,223	31,525	81,920	181,614	2,396,166
December ...	10,289	36,350	31,048	656,954	1,055,562	68,515	27,709	76,542	171,624	2,138,097
Totals ...	143,725	437,883	409,825	8,304,269	13,226,778	885,332	380,386	999,153	2,223,381	27,047,744
1963 - January	10,120	33,560	32,472	621,943	1,103,736	66,889	27,847	76,841	180,855	2,158,446
February ...	9,048	31,381	29,362	627,058	1,077,692	66,044	26,528	75,771	181,627	2,126,794
March	8,330	37,042	33,785	685,444	1,151,204	73,763	29,472	83,757	201,536	2,306,866
April	9,988	33,667	33,401	687,493	1,201,103	74,052	31,532	79,437	191,999	2,345,306
May	13,657	40,112	41,765	751,511	1,315,229	82,343	35,453	93,801	223,381	2,601,723
June	14,636	39,696	40,167	714,548	1,250,942	77,849	33,083	88,924	221,217	2,485,067
July	13,192	39,593	41,083	709,842	1,156,178	82,367	35,589	87,607	221,877	2,390,529
August	13,696	40,097	40,548	759,492	1,070,884	84,100	36,899	91,602	216,423	2,356,920
September ..	13,922	39,838	39,561	778,983	1,226,887	84,203	35,545	88,061	206,313	2,516,447
October	13,980	41,204	42,016	798,796	1,318,507	87,382	35,722	93,438	221,204	2,655,288
November ...	12,805	40,872	37,335	756,909	1,300,303	78,549	33,110	84,040	197,343	2,544,147
December ...	15,177	41,257	33,350	723,378	1,244,620	74,269	31,179	83,183	198,811	2,448,183
Totals ...	148,551	458,319	444,845	8,615,397	14,417,585	931,810	391,959	1,026,462	2,462,586	28,935,716
1964 - January	12,023	38,340	34,343	697,185	1,247,409	77,424	30,223	85,630	200,224	2,427,035
February ...	9,111	36,670	34,961	711,682	1,224,425	75,102	28,847	84,543	206,840	2,414,778
March	8,882	40,826	34,784	753,970	1,343,754	83,063	31,349	92,159	232,834	2,624,830
April	12,157	38,396	37,482	748,290	1,359,364	79,892	30,663	91,207	222,823	2,623,263
May	12,633	44,149	39,456	741,741	1,320,875	81,247	33,140	94,894	222,842	2,595,671
June	14,418	44,129	41,969	762,241	1,386,468	86,248	36,774	105,305	239,206	2,720,608
July	14,881	41,686	39,118	737,367	1,211,043	93,715	36,588	98,457	226,986	2,503,318
August	15,584	42,555	37,785	784,033	1,153,542	78,751	37,309	102,429	224,730	2,480,196
September ..	14,710	47,067	39,058	837,061	1,352,950	77,103	35,338	97,491	234,051	2,738,934
October	13,315	44,091	38,788	830,967	1,349,660	82,319	35,378	92,903	237,526	2,728,330
November ...	13,545	42,364	36,058	799,929	1,355,348	80,963	32,559	89,007	219,147	2,672,351
December ...	13,290	45,128	34,562	790,767	1,320,506	75,986	33,092	94,612	230,579	2,642,380
Totals ...	154,549	505,401	448,364	9,195,233	15,625,344	971,813	401,260	1,128,637	2,697,788	31,171,694
1965 - January ^F ...	12,628	43,033	32,104	690,216	1,248,610	71,230	31,082	89,511	212,716	2,435,999
February ^P ..	11,953	36,913	33,729	714,101	1,244,146	73,851	30,138	90,428	222,405	2,461,845
March										
April										
May										
June										
July										
August										
September ..										
October										
November ...										
December ...										
Totals ...										

See footnotes, page 43.

TABLE 2A. Estimated Value of Shipments, Orders and Inventory in all Manufacturing Industries

Date	Shipments(1)	Orders		Inventory at end of month					
		New orders received during month	Unfilled orders at end of month	Owned	Held but not owned	All inventory held			
						Total	Raw materials	Goods in process	Finished products
thousands of dollars									
1961 - January	1,779,229	1,876,230	1,926,253	4,332,332	245,737	4,578,069	2,048,749	1,061,923	1,467,397
February ...	1,790,421	1,798,215	1,934,047	4,381,446	250,478	4,631,924	2,042,650	1,088,620	1,500,654
March	1,991,058	2,050,792	1,993,781	4,404,411	257,604	4,662,015	2,021,008	1,105,419	1,535,588
April	1,910,124	1,918,088	2,001,745	4,402,976	252,723	4,655,699	1,994,832	1,113,708	1,547,159
May	2,107,234	2,103,502	1,998,013	4,405,064	217,447	4,622,511	1,984,976	1,095,096	1,542,439
June	2,175,564	2,167,787	1,990,236	4,395,878	204,479	4,600,357	1,971,559	1,080,986	1,547,812
July	1,978,093	1,982,985	1,995,128	4,360,688	207,144	4,567,832	2,007,886	1,052,249	1,507,697
August	2,140,096	2,137,244	1,992,276	4,392,411	206,475	4,598,886	2,044,918	1,065,620	1,488,348
September ..	2,175,496	2,148,858	1,965,638	4,402,554	210,056	4,612,610	2,037,664	1,080,647	1,494,299
October	2,187,708	2,157,177	1,935,107	4,468,925	199,587	4,668,512	2,063,923	1,089,036	1,515,553
November ...	2,198,909	2,261,847	1,998,045	4,499,118	206,411	4,705,529	2,080,795	1,098,144	1,526,590
December ...	1,993,975	2,027,092	2,031,162	4,580,787	215,013	4,795,800	2,108,647	1,126,079	1,561,074
Totals ...	24,427,907								
1962 - January	1,993,444	2,100,373	2,138,091	4,621,311	220,231	4,841,542	2,102,718	1,143,441	1,595,383
February ...	1,941,387	1,990,353	2,187,057	4,665,244	238,003	4,903,247	2,091,143	1,172,048	1,640,056
March	2,243,256	2,295,066	2,238,867	4,725,506	242,897	4,968,403	2,087,658	1,188,537	1,692,208
April	2,155,821	2,151,477	2,234,523	4,710,339	256,753	4,967,092	2,079,317	1,202,578	1,685,197
May	2,424,004	2,428,662	2,239,181	4,690,259	266,176	4,956,435	2,081,786	1,218,291	1,656,358
June	2,414,955	2,456,727	2,280,953	4,653,871	284,297	4,938,168	2,068,234	1,231,879	1,638,055
July	2,218,277	2,218,646	2,281,322	4,666,359	299,704	4,966,063	2,127,339	1,228,464	1,610,260
August	2,293,487	2,258,136	2,245,971	4,715,527	300,325	5,015,852	2,148,171	1,270,049	1,597,632
September ...	2,344,809	2,277,143	2,178,305	4,742,540	307,084	5,049,624	2,136,796	1,286,750	1,626,078
October	2,484,041	2,437,024	2,131,288	4,772,082	288,268	5,060,350	2,144,686	1,292,814	1,622,850
November ...	2,396,166	2,379,407	2,114,529	4,770,399	286,119	5,056,518	2,165,320	1,272,280	1,618,918
December ...	2,138,097	2,134,225	2,110,657	4,798,878	286,743	5,085,621	2,165,831	1,267,965	1,651,825
Totals ...	27,047,744								
1963 - January	2,158,446	2,345,749	2,297,960	4,802,862	286,129	5,088,991	2,136,825	1,272,275	1,679,891
February ...	2,126,794	2,137,493	2,308,659	4,856,690	294,716	5,151,406	2,129,884	1,293,195	1,728,327
March	2,306,866	2,312,743	2,314,536	4,881,575	302,706	5,184,281	2,122,666	1,308,245	1,753,370
April	2,345,306	2,306,031	2,275,261	4,857,677	307,644	5,165,321	2,100,635	1,305,783	1,758,903
May	2,601,723	2,617,417	2,290,955	4,838,336	296,637	5,134,973	2,096,180	1,286,184	1,752,609
June	2,485,067	2,466,581	2,272,469	4,808,118	298,832	5,106,950	2,083,655	1,281,465	1,741,830
July	2,390,529	2,412,713	2,294,653	4,768,053	280,324	5,048,377	2,113,804	1,228,108	1,706,465
August	2,356,920	2,393,339	2,331,072	4,814,704	273,658	5,088,362	2,135,331	1,265,115	1,687,916
September ..	2,516,447	2,515,587	2,330,212	4,824,384	286,757	5,111,141	2,140,956	1,280,255	1,689,930
October	2,655,288	2,651,573	2,326,497	4,834,186	282,520	5,116,706	2,150,360	1,277,326	1,689,020
November ...	2,544,147	2,560,949	2,343,299	4,857,335	288,351	5,145,686	2,174,196	1,280,634	1,690,856
December ...	2,448,183	2,437,904	2,333,020	4,932,421	274,362	5,206,783	2,197,333	1,290,259	1,719,191
Totals ...	28,935,716								
1964 - January	2,427,035	2,617,337	2,523,322	4,964,405	278,568	5,242,973	2,183,916	1,305,931	1,753,126
February ...	2,414,778	2,399,475	2,508,019	5,000,069	286,389	5,286,458	2,178,705	1,324,211	1,783,542
March	2,624,830	2,668,530	2,551,719	4,961,423	300,882	5,262,305	2,155,422	1,329,744	1,777,139
April	2,623,263	2,646,493	2,574,949	4,976,204	296,961	5,273,165	2,158,865	1,323,192	1,791,108
May	2,595,671	2,615,047	2,594,325	4,984,595	315,549	5,300,144	2,161,777	1,343,955	1,794,412
June	2,720,608	2,734,446	2,608,163	4,972,621	293,383	5,266,004	2,169,056	1,305,991	1,790,957
July	2,503,318	2,566,501	2,671,346	4,977,257	291,459	5,268,716	2,211,305	1,298,030	1,759,381
August	2,480,196	2,449,281	2,640,431	5,050,427	277,905	5,328,332	2,241,145	1,344,661	1,742,526
September ..	2,738,934	2,708,204	2,609,701	5,089,417	272,049	5,361,466	2,247,031	1,352,199	1,762,236
October	2,728,330	2,746,932	2,628,303	5,084,702	268,031	5,352,733	2,256,371	1,346,887	1,749,475
November ...	2,672,351	2,719,478	2,675,430	5,150,667	279,038	5,429,705	2,290,491	1,370,843	1,768,371
December ...	2,642,380	2,659,050	2,692,100	5,153,028	306,640	5,459,668	2,315,327	1,383,401	1,760,940
Totals ...	31,171,694								
1965 - January ^F ...	2,435,999	2,583,860	2,839,961	5,189,286	314,055	5,503,341	2,289,176	1,401,620	1,812,545
February ^P ...	2,461,845	2,512,222	2,890,338	5,265,447	315,002	5,580,449	2,295,508	1,431,142	1,853,799
March									
April									
May									
June									
July									
August									
September ..									
October									
November ...									
December ...									
Totals ...									

See footnotes, page 43.

TABLE 3. Estimated Value of Shipments, Orders and Inventory in Manufacturing Industries grouped according to the Standard Industrial Classification

Durable
Includes Major Groups 8, 9, 12, 13, 14, 15, 16 and 17

Date	Shipments (1)	Orders		Inventory at end of month					
		New orders received during month	Unfilled orders at end of month	Owned	Held but not owned	All inventory held			
						Total	Raw materials	Goods in process	Finished products
thousands of dollars									
1961 - January	720,914	749,125	1,480,983	1,937,967	242,283	2,180,250	841,552	695,767	642,931
February ...	730,343	744,492	1,495,132	1,977,123	247,224	2,224,347	836,975	717,434	669,938
March	820,008	882,110	1,557,234	1,998,097	254,454	2,252,551	827,816	734,542	690,193
April	787,739	801,104	1,570,599	2,018,550	249,676	2,268,226	822,795	740,949	704,482
May	895,550	887,928	1,562,977	2,042,027	214,540	2,256,567	828,607	721,403	706,557
June	945,431	919,676	1,537,222	2,040,736	201,553	2,242,289	822,757	707,335	712,197
July	822,070	826,680	1,541,832	1,997,519	204,301	2,201,820	831,406	680,473	689,941
August	861,162	870,096	1,550,766	2,006,796	203,684	2,210,480	844,685	698,088	667,707
September ...	912,520	896,432	1,534,678	2,004,021	207,372	2,211,393	843,995	710,413	656,985
October	906,579	892,944	1,521,043	2,042,355	196,960	2,239,315	853,362	718,728	667,225
November ...	933,682	998,492	1,585,853	2,052,193	203,916	2,256,109	854,769	722,457	678,883
December ...	850,363	880,068	1,615,558	2,115,609	212,674	2,328,283	872,162	753,390	702,731
Totals ...	10,186,361								
1962 - January	830,910	877,239	1,661,887	2,105,460	218,297	2,323,757	863,134	767,286	693,337
February ...	819,561	876,780	1,719,106	2,143,950	236,011	2,379,961	858,092	791,862	730,007
March	968,426	1,025,663	1,776,343	2,175,132	241,021	2,416,153	860,544	803,690	751,919
April	925,946	929,935	1,780,332	2,184,768	254,778	2,439,546	860,348	814,600	764,598
May	1,079,860	1,073,463	1,773,935	2,185,296	264,131	2,449,427	859,610	832,316	757,501
June	1,096,486	1,142,294	1,819,743	2,162,335	282,056	2,444,391	859,848	838,604	745,939
July	959,129	958,685	1,819,299	2,140,381	297,379	2,437,760	873,774	837,249	726,737
August	944,999	929,224	1,803,524	2,166,957	297,888	2,464,845	880,605	879,180	705,060
September ...	1,010,615	964,655	1,757,564	2,183,016	304,657	2,487,673	881,946	894,079	711,648
October	1,086,990	1,058,534	1,729,108	2,207,628	285,811	2,493,439	881,620	901,969	709,850
November ...	1,059,441	1,039,814	1,709,481	2,181,185	283,554	2,464,739	882,109	877,743	704,887
December ...	945,429	941,749	1,705,801	2,202,351	283,982	2,486,333	884,661	874,648	727,024
Totals ...	11,727,792								
1963 - January	944,566	1,073,909	1,835,144	2,225,537	283,538	2,509,075	870,038	870,405	768,632
February ...	922,007	940,911	1,854,048	2,266,599	292,085	2,558,684	872,653	886,232	799,799
March	1,021,808	1,020,029	1,852,269	2,279,051	300,070	2,579,121	871,768	896,854	810,499
April	1,027,260	1,008,071	1,833,080	2,283,742	305,111	2,588,853	863,239	898,845	826,769
May	1,185,694	1,198,272	1,845,658	2,281,109	293,959	2,575,068	862,378	885,655	827,035
June	1,139,617	1,109,747	1,815,788	2,254,940	296,052	2,550,992	859,086	874,172	817,734
July	1,053,424	1,073,443	1,835,807	2,219,872	277,826	2,497,698	878,216	825,104	794,378
August	948,617	1,009,859	1,897,049	2,264,955	270,744	2,535,699	889,630	861,875	784,194
September ...	1,086,170	1,051,230	1,862,109	2,276,604	283,888	2,560,492	900,428	877,062	783,002
October	1,174,858	1,173,686	1,860,937	2,259,063	279,602	2,538,665	897,667	875,956	765,042
November ...	1,147,304	1,168,251	1,881,884	2,238,011	285,450	2,523,461	893,658	874,792	755,011
December ...	1,120,193	1,113,629	1,875,320	2,284,518	271,508	2,556,026	900,805	880,979	774,242
Totals ...	12,771,518								
1964 - January	1,100,285	1,246,704	2,021,739	2,296,982	275,724	2,572,706	888,310	891,311	793,085
February ...	1,103,045	1,099,812	2,018,506	2,317,269	283,087	2,600,356	891,497	902,849	806,010
March	1,226,615	1,278,938	2,070,829	2,298,003	297,216	2,595,219	886,682	902,629	805,908
April	1,195,904	1,218,088	2,093,013	2,313,612	293,250	2,606,862	888,637	898,020	820,205
May	1,176,553	1,186,127	2,102,587	2,345,404	311,754	2,657,158	902,591	917,852	836,715
June	1,253,756	1,266,932	2,115,763	2,330,131	289,566	2,619,697	906,242	878,157	835,298
July	1,086,761	1,151,699	2,180,701	2,314,979	287,648	2,602,627	929,696	870,377	802,554
August	1,024,360	1,025,046	2,181,387	2,376,217	274,072	2,650,289	943,211	914,695	792,383
September ...	1,218,400	1,196,983	2,159,970	2,404,869	268,281	2,673,150	955,627	925,078	792,445
October	1,200,842	1,212,580	2,171,708	2,405,341	264,488	2,669,829	962,729	924,824	782,276
November ...	1,204,591	1,256,814	2,223,931	2,437,111	275,567	2,712,678	978,457	940,086	794,135
December ...	1,224,152	1,234,514	2,234,293	2,449,251	303,146	2,752,397	1,000,267	953,356	798,774
Totals ...	14,015,264								
1965 - January ^r ...	1,101,292	1,198,646	2,331,647	2,471,235	310,753	2,781,988	990,206	965,502	826,280
February ^p ...	1,114,723	1,176,270	2,393,194	2,515,747	311,781	2,827,528	991,063	987,615	848,850
March									
April									
May									
June									
July									
August									
September ...									
October									
November ...									
December ...									
Totals ...									

See footnotes, page 43.

TABLE 3. Estimated Value of Shipments, Orders and Inventory in Manufacturing Industries grouped according to the Standard Industrial Classification

Major Group 1 - Foods and Beverages Industries

Date	Shipments	Orders		Inventory at end of month					
		New orders received during month(2)	Unfilled orders at end of month(2)	Owned	Held but not owned	All inventory held			
						Total	Raw materials	Goods in process	Finished products
thousands of dollars									
1961 - January	365,533			674,529	-	674,529	320,293	148,216	206,020
February ...	358,203			647,205	-	647,205	305,531	150,880	190,794
March	397,765			635,628	-	635,628	297,569	150,695	187,364
April	392,188			625,312	-	625,312	291,966	152,190	181,156
May	432,897			611,847	-	611,847	284,296	153,090	174,461
June	451,208			614,985	-	614,985	287,720	152,494	174,771
July	438,939			635,767	-	635,767	309,905	151,093	174,769
August	459,893			671,726	-	671,726	332,441	148,562	190,723
September ..	442,035			700,220	-	700,220	333,224	149,381	217,615
October	450,941			726,121	-	726,121	345,879	150,757	229,485
November ...	445,215			744,558	-	744,558	362,858	153,833	227,867
December ...	408,668			726,507	-	726,507	350,072	151,275	225,160
Totals ...	5,043,485								
1962 - January	396,895			709,888	-	709,888	341,382	151,748	216,758
February ...	372,932			689,830	-	683,830	329,819	154,078	205,933
March	424,703			667,782	-	667,782	316,694	155,178	195,910
April	416,117			663,556	-	663,556	316,939	157,497	189,120
May	464,485			656,211	-	656,211	315,721	160,123	180,367
June	476,593			643,111	-	643,111	303,863	161,039	178,209
July	468,907			675,882	-	675,882	334,263	159,488	182,131
August	471,889			717,932	-	717,932	356,664	158,346	202,922
September ..	449,719			750,368	-	750,368	358,697	160,411	231,260
October	476,362			770,911	-	770,911	372,903	162,072	235,936
November ...	460,853			799,293	-	799,293	396,128	165,183	237,982
December ...	421,428			787,203	-	787,203	387,589	163,177	236,437
Totals ...	5,300,883								
1963 - January	415,034			760,568	-	760,568	372,069	161,239	227,260
February ...	399,882			732,642	-	732,642	351,758	161,609	219,275
March	424,137			721,503	-	721,503	345,852	164,129	211,522
April	443,756			703,324	-	703,324	336,121	163,327	203,876
May	492,799			705,586	-	705,586	338,660	162,720	204,206
June	484,469			699,425	-	699,425	336,701	162,954	199,770
July	497,403			702,994	-	702,994	342,528	162,183	198,283
August	492,039			725,424	-	725,424	358,149	159,987	207,288
September ..	480,947			755,815	-	755,815	364,529	162,810	228,476
October	509,492			798,652	-	798,652	387,310	163,851	247,491
November ...	480,644			826,934	-	826,934	400,519	167,822	258,593
December ...	462,680			822,774	-	822,774	397,195	166,339	259,240
Totals ...	5,583,282								
1964 - January	455,327			801,974	-	801,974	384,441	165,226	252,307
February ...	435,363			767,692	-	767,692	359,781	166,902	241,009
March	466,194			735,768	-	735,768	341,903	168,848	225,017
April	480,615			741,225	-	741,225	350,447	170,477	220,301
May	504,165			728,028	-	728,028	344,086	171,501	212,441
June	532,162			718,773	-	718,773	342,083	171,531	205,159
July	539,957			732,053	-	732,053	357,904	169,548	204,601
August	515,390			759,008	-	759,008	376,350	169,319	213,339
September ..	526,133			789,185	-	789,185	379,279	170,011	239,895
October	533,710			796,243	-	796,243	383,837	170,170	242,236
November ...	510,777			823,950	-	823,950	400,070	175,211	248,669
December ...	497,242			792,323	-	792,323	375,369	174,791	242,163
Totals ...	5,997,035								
1965 - January ^r ...	450,866			777,682	-	777,682	364,530	175,466	237,686
February ^p ...	449,434			767,057	-	767,057	358,015	176,885	232,157
March									
April									
May									
June									
July									
August									
September ..									
October									
November ...									
December ...									
Totals ...									

See footnotes, page 43.

TABLE 3. Estimated Value of Shipments, Orders and Inventory in Manufacturing Industries grouped according to the Standard Industrial Classification

Major Group 2 - Tobacco Products Industries

Date	Shipments	Orders		Inventory at end of month					
		New orders received during month(2)	Unfilled orders at end of month(2)	Owned	Held but not owned	All inventory held			
						Total	Raw materials	Goods in process	Finished products
thousands of dollars									
1961 - January	28,687			161,380	-	161,380	141,979	3,110	16,291
February ...	31,447			174,977	-	174,977	153,697	3,536	17,744
March	33,668			180,956	-	180,956	158,067	3,311	19,578
April	26,755			178,323	-	178,323	154,590	3,029	20,704
May	26,616			173,245	-	173,245	149,952	2,566	20,727
June	30,296			168,516	-	168,516	144,236	2,263	22,017
July	24,544			157,804	-	157,804	140,422	1,964	15,418
August	24,978			152,316	-	152,316	135,286	2,060	14,970
September ..	26,696			145,347	-	145,347	128,138	1,821	15,388
October	24,335			142,451	-	142,451	122,436	1,699	18,316
November ...	25,282			139,951	-	139,951	119,527	1,585	18,839
December ...	31,682			147,502	-	147,502	130,669	1,142	15,691
Totals ...	334,986								
1962 - January	29,376			162,729	-	162,729	144,312	1,432	16,985
February ...	32,032			170,505	-	170,505	150,907	1,566	18,032
March	37,218			198,331	-	198,331	158,012	1,551	38,768
April	35,874			182,250	-	182,250	158,564	1,597	22,089
May	32,081			180,079	-	180,079	156,002	1,616	22,461
June	33,736			173,296	-	173,296	149,160	1,597	22,539
July	24,747			162,715	-	162,715	145,152	1,440	16,123
August	27,324			154,679	-	154,679	138,442	1,392	14,845
September ..	27,199			149,973	-	149,973	132,630	1,406	15,937
October	25,213			143,948	-	143,948	125,072	1,440	17,436
November ...	26,642			140,477	-	140,477	122,076	1,483	16,918
December ...	27,607			137,368	-	137,368	121,098	1,386	14,884
Totals ...	359,049								
1963 - January	24,428			144,414	-	144,414	126,843	1,469	16,102
February ...	32,187			159,875	-	159,875	139,669	1,533	18,673
March	35,351			173,912	-	173,912	149,817	1,503	22,592
April	38,748			180,823	-	180,823	155,818	1,488	23,517
May	38,823			178,020	-	178,020	152,057	1,494	24,469
June	33,152			171,761	-	171,761	144,662	1,510	25,589
July	31,353			160,224	-	160,224	139,387	1,470	19,367
August	26,736			153,675	-	153,675	133,796	1,474	18,405
September ..	30,026			146,451	-	146,451	126,354	1,474	18,623
October	24,289			141,343	-	141,343	121,412	1,445	18,486
November ...	27,755			146,476	-	146,476	125,746	1,364	19,366
December ...	36,880			149,291	-	149,291	131,273	1,383	16,635
Totals ...	379,728								
1964 - January	29,477			160,951	-	160,951	141,762	1,394	17,795
February ...	25,798			173,877	-	173,877	150,769	1,514	21,594
March	28,731			174,665	-	174,665	150,542	1,626	22,497
April	39,482			176,868	-	176,868	152,251	1,680	22,937
May	29,331			175,327	-	175,327	149,835	1,845	23,647
June	31,041			172,199	-	172,199	144,636	1,824	25,739
July	29,102			159,634	-	159,634	138,567	1,730	19,337
August	26,442			154,569	-	154,569	135,420	1,870	17,279
September ..	28,046			148,416	-	148,416	127,140	1,870	19,406
October	25,650			145,351	-	145,351	121,004	1,899	22,448
November ...	28,200			150,332	-	150,332	122,886	1,782	25,664
December ...	41,711			154,656	-	154,656	131,241	1,745	21,670
Totals ...	363,011								
1965 - January ^T ...	39,067			158,003	-	158,003	131,836	1,810	24,357
February ^P ...	30,703			171,386	-	171,386	143,098	1,872	26,416
March									
April									
May									
June									
July									
August									
September ..									
October									
November ...									
December ...									
Totals ...									

See footnotes, page 43.

TABLE 3. Estimated Value of Shipments, Orders and Inventory in Manufacturing Industries grouped according to the Standard Industrial Classification

Major Group 6 - Knitting Mills

Date	Shipments	Orders		Inventory at end of month					
		New orders received during month(2)	Unfilled orders at end of month(2)	Owned	Held but not owned	All inventory held			
						Total	Raw materials	Goods in process	Finished products
thousands of dollars									
1961 - January	14,777			48,213	-	48,213	13,374	11,918	22,921
February ...	16,657			49,372	-	49,372	13,488	12,214	23,670
March	17,316			50,543	-	50,543	14,142	12,299	24,102
April	14,728			51,786	-	51,786	14,244	12,638	24,904
May	14,648			53,378	-	53,378	14,429	12,787	26,162
June	14,906			54,793	-	54,793	15,085	12,643	27,065
July	18,157			52,854	-	52,854	15,057	12,133	25,664
August	22,045			51,679	-	51,679	15,473	12,125	24,081
September ..	23,181			50,597	-	50,597	15,640	12,250	22,707
October	23,203			49,442	-	49,442	15,704	12,341	21,397
November ...	23,366			49,051	-	49,051	15,778	12,348	20,925
December ...	16,319			49,453	-	49,453	15,313	12,429	21,711
Totals ...	219,303								
1962 - January	16,395			52,717	-	52,717	17,592	13,040	22,085
February ...	16,694			53,560	-	53,560	18,002	13,099	22,459
March	17,494			55,930	-	55,930	19,150	13,401	23,379
April	15,883			57,032	-	57,032	19,353	13,577	24,102
May	15,291			58,821	-	58,821	19,221	13,977	25,623
June	16,151			60,801	-	60,801	20,368	14,013	26,420
July	19,237			60,152	-	60,152	20,811	14,403	24,938
August	22,177			59,035	-	59,035	20,766	14,316	23,953
September ..	23,807			56,920	-	56,920	20,456	14,226	22,238
October	23,834			55,127	-	55,127	20,669	13,910	20,548
November ...	22,563			53,917	-	53,917	20,156	13,583	20,178
December ...	17,047			53,802	-	53,802	19,079	13,365	21,358
Totals ...	226,573								
1963 - January	16,593			55,303	-	55,303	19,268	13,926	22,109
February ...	17,432			56,743	-	56,743	19,457	13,895	23,391
March	17,940			57,789	-	57,789	19,952	13,620	24,217
April	16,341			58,457	-	58,457	20,082	13,488	24,887
May	16,040			58,838	-	58,838	20,181	13,722	24,935
June	16,236			61,458	-	61,458	20,054	13,872	27,532
July	20,062			59,445	-	59,445	19,872	13,802	25,771
August	23,026			57,762	-	57,762	20,144	13,500	24,118
September ..	24,861			54,046	-	54,046	19,595	12,854	21,597
October	24,878			52,496	-	52,496	19,597	12,415	20,484
November ...	22,077			51,899	-	51,899	19,520	12,249	20,130
December ...	16,192			52,988	-	52,988	19,648	12,395	20,945
Totals ...	231,678								
1964 - January	16,282			54,346	-	54,346	19,389	13,116	21,841
February ...	17,251			54,893	-	54,893	19,550	13,326	22,017
March	16,728			54,220	-	54,220	19,250	12,751	22,219
April	14,972			57,864	-	57,864	20,224	13,384	24,256
May	14,555			59,641	-	59,641	20,988	13,638	25,015
June	16,605			61,591	-	61,591	21,592	13,897	26,102
July	18,896			60,060	-	60,060	21,211	13,987	24,862
August	22,113			58,856	-	58,856	20,686	13,989	24,181
September ..	24,846			57,141	-	57,141	20,756	12,451	23,934
October	25,069			55,492	-	55,492	20,471	11,960	23,061
November ...	24,204			54,319	-	54,319	20,423	12,322	21,574
December ...	17,681			54,131	-	54,131	19,209	11,946	22,976
Totals ...	229,202								
1965 - January ^F ...	17,196			55,786	-	55,786	18,988	12,380	24,418
February ^P ...	18,219			56,573	-	56,573	18,929	12,913	24,731
March									
April									
May									
June									
July									
August									
September ..									
October									
November ...									
December ...									
Totals ...									

See footnotes, page 43.

TABLE 3. Estimated Value of Shipments, Orders and Inventory in Manufacturing Industries grouped according to the Standard Industrial Classification

Major Group 8 - Wood Industries

Date	Shipments	Orders		Inventory at end of month					
		New orders received during month(2)	Unfilled orders at end of month(2)	Owned	Held but not owned	All inventory held			
						Total	Raw materials	Goods in process	Finished products
thousands of dollars									
1961 - January	67,607			184,368	-	184,368	93,669	2,196	88,503
February ...	71,475			198,293	-	198,293	99,464	2,082	96,747
March	83,456			206,143	-	206,143	103,917	1,930	100,296
April	79,559			206,252	-	206,252	102,634	1,893	101,725
May	94,550			195,676	-	195,676	97,452	2,115	96,109
June	107,339			191,136	-	191,136	93,776	2,069	95,291
July	93,415			187,416	-	187,416	90,731	1,907	94,778
August	99,491			182,692	-	182,692	88,498	1,895	92,299
September ..	93,802			180,120	-	180,120	85,323	1,902	92,895
October	88,399			177,991	-	177,991	83,091	1,915	92,985
November ...	83,875			172,285	-	172,285	79,782	1,855	90,648
December ...	72,369			180,853	-	180,853	81,281	1,756	97,816
Totals ...	1,035,337								
1962 - January	82,399			184,013	-	184,013	85,672	1,647	96,694
February ...	86,941			197,982	-	197,982	91,938	1,847	104,197
March	105,568			208,403	-	208,403	95,679	1,905	110,819
April	95,760			208,955	-	208,955	95,517	1,910	111,528
May	125,349			200,999	-	200,999	94,039	1,996	104,964
June	132,560			192,738	-	192,738	90,011	2,030	100,697
July	120,072			194,891	-	194,891	90,405	2,175	102,311
August	125,825			189,577	-	189,577	87,946	2,161	99,470
September ..	113,764			193,638	-	193,638	87,486	2,319	103,833
October	115,213			184,857	-	184,857	83,166	2,240	99,451
November ...	100,402			182,537	-	182,537	82,317	2,220	98,000
December ...	87,757			188,737	-	188,737	84,238	2,263	102,236
Totals ...	1,291,610								
1963 - January	92,807			191,740	-	191,740	86,408	2,340	102,992
February ...	98,238			209,193	-	209,193	92,784	2,772	113,637
March	109,776			220,198	-	220,198	99,679	2,935	117,584
April	104,647			223,106	-	223,106	99,870	3,109	120,127
May	135,052			227,314	-	227,314	99,493	2,951	124,870
June	140,274			225,047	-	225,047	97,851	3,010	124,186
July	141,807			223,379	-	223,379	96,862	2,940	123,577
August	137,441			217,674	-	217,674	94,592	3,121	119,961
September ..	124,191			216,293	-	216,293	93,625	3,111	119,557
October	129,447			207,028	-	207,028	89,922	3,458	113,648
November ...	109,119			199,644	-	199,644	87,202	3,408	109,034
December ...	101,717			205,460	-	205,460	89,767	3,236	112,457
Totals ...	1,424,516								
1964 - January	108,030			206,480	-	206,480	91,112	2,858	112,510
February ...	114,867			212,915	-	212,915	95,186	2,806	114,923
March	139,147			214,533	-	214,533	99,974	2,874	111,685
April	116,717			211,129	-	211,129	97,780	2,890	110,459
May	124,575			216,025	-	216,025	97,637	2,894	115,494
June	146,297			209,524	-	209,524	93,617	2,890	113,017
July	138,482			210,612	-	210,612	92,889	2,978	114,745
August	129,090			207,733	-	207,733	91,303	3,007	113,423
September ..	133,948			210,951	-	210,951	91,608	3,105	116,238
October	134,964			208,148	-	208,148	90,466	3,064	114,618
November ...	116,977			204,467	-	204,467	89,206	3,001	112,260
December ...	112,504			209,333	-	209,333	90,391	2,847	116,095
Totals ...	1,515,598								
1965 - January ^r ...	114,683			218,402	-	218,402	93,501	2,869	122,032
February ^p ..	124,004			226,185	-	226,185	96,717	2,921	126,547
March									
April									
May									
June									
July									
August									
September ..									
October									
November ...									
December ...									
Totals ...									

See footnotes, page 43.

TABLE 3. Estimated Value of Shipments, Orders and Inventory in Manufacturing Industries grouped according to the Standard Industrial Classification

Major Group 9 - Furniture and Fixture Industries

Date	Shipments	Orders		Inventory at end of month					
		New orders received during month(2)	Unfilled orders at end of month(2)	Owned	Held but not owned	All inventory held			
						Total	Raw materials	Goods in process	Finished products
thousands of dollars									
1961 - January	23,853			61,631	-	61,631	34,671	11,813	15,147
February ...	26,541			61,816	-	61,816	34,830	12,072	14,914
March	28,918			62,234	-	62,234	34,477	12,840	14,917
April	27,033			62,344	-	62,344	33,803	13,553	14,988
May	30,545			61,822	-	61,822	32,941	13,373	15,508
June	30,639			62,144	-	62,144	32,580	12,806	16,758
July	26,410			61,636	-	61,636	33,330	12,731	15,575
August	35,602			61,001	-	61,001	33,295	12,848	14,858
September ...	33,977			61,262	-	61,262	33,877	12,798	14,587
October	34,479			64,080	-	64,080	35,600	13,725	14,755
November ...	35,016			63,290	-	63,290	35,489	12,814	14,987
December ...	29,034			64,743	-	64,743	36,802	13,502	14,439
Totals ...	362,047								
1962 - January	26,521			66,407	-	66,407	38,355	12,985	15,067
February ...	28,526			67,522	-	67,522	39,258	13,194	15,070
March	31,191			67,147	-	67,147	39,067	13,224	14,856
April	30,918			66,787	-	66,787	38,283	13,145	15,359
May	34,542			66,357	-	66,357	37,318	14,001	15,038
June	32,688			66,897	-	66,897	36,931	14,529	15,437
July	29,457			66,606	-	66,606	37,333	14,499	14,774
August	36,086			66,834	-	66,834	36,240	16,276	14,318
September ..	36,807			66,652	-	66,652	35,976	16,679	13,997
October	40,502			67,748	-	67,748	36,565	17,379	13,804
November ...	37,181			67,626	-	67,626	36,296	17,558	13,772
December ...	30,169			68,114	-	68,114	36,719	16,435	14,960
Totals ...	394,588								
1963 - January	30,141			69,360	-	69,360	37,191	16,843	15,326
February ...	31,479			71,388	-	71,388	38,394	17,123	15,871
March	33,170			71,851	-	71,851	38,788	17,407	15,656
April	33,905			71,864	-	71,864	38,716	17,869	15,279
May	36,400			70,675	-	70,675	37,736	17,380	15,559
June	35,126			71,076	-	71,076	37,300	17,582	16,194
July	32,178			72,436	-	72,436	38,586	18,456	15,394
August	38,120			71,341	-	71,341	37,445	18,782	15,114
September ...	41,654			70,988	-	70,988	37,549	18,709	14,730
October	44,457			71,834	-	71,834	38,249	18,223	15,362
November ...	40,315			71,331	-	71,331	37,881	18,526	14,924
December ...	34,900			72,817	-	72,817	39,271	18,421	15,125
Totals ...	431,845								
1964 - January	31,414			73,685	-	73,685	40,234	18,643	14,808
February ...	34,060			74,998	-	74,998	41,289	18,864	14,845
March	37,149			74,141	-	74,141	40,984	18,771	14,386
April	36,447			75,175	-	75,175	40,843	19,109	15,223
May	36,883			75,390	-	75,390	40,949	18,961	15,480
June	38,886			74,755	-	74,755	40,123	18,817	15,815
July	32,868			74,876	-	74,876	41,172	19,078	14,626
August	39,120			74,757	-	74,757	40,944	19,245	14,568
September ...	43,153			74,305	-	74,305	40,812	19,156	14,337
October	43,645			73,508	-	73,508	40,807	18,713	13,988
November ...	40,681			73,633	-	73,633	40,893	18,518	14,222
December ...	37,689			74,923	-	74,923	40,746	18,775	15,402
Totals ...	451,995								
1965 - January ^F ...	31,482			77,767	-	77,767	43,235	18,518	16,014
February ^P ...	34,890			78,986	-	78,986	43,580	18,794	16,612
March									
April									
May									
June									
July									
August									
September ...									
October									
November ...									
December ...									
Totals ...									

See footnotes, page 43.

TABLE 3. Estimated Value of Shipments, Orders and Inventory in Manufacturing Industries grouped according to the Standard Industrial Classification

Major Group 10 - Paper and Allied Industries

Date	Shipments	Orders		Inventory at end of month					
		New orders received during month(2)	Unfilled orders at end of month(2)	Owned	Held but not owned	All inventory held			
						Total	Raw materials	Goods in process	Finished products
thousands of dollars									
1961 - January	163,438			370,163	-	370,163	272,221	18,144	79,798
February	157,745			379,686	-	379,686	275,639	17,031	87,016
March	178,354			384,492	-	384,492	269,574	17,925	96,993
April	177,821			371,690	-	371,690	260,746	18,036	92,908
May	191,132			365,342	-	365,342	254,254	18,566	92,522
June	193,853			364,169	-	364,169	255,155	17,272	91,742
July	177,763			371,212	-	371,212	261,518	18,069	91,625
August	199,769			369,312	-	369,312	262,238	18,171	88,903
September	190,754			367,363	-	367,363	261,750	18,017	87,596
October	195,148			370,447	-	370,447	263,784	17,952	88,711
November	203,509			366,621	-	366,621	264,866	17,320	84,435
December	176,515			370,220	-	370,220	269,755	17,003	83,462
Totals	2,205,801								
1962 - January	176,681			378,032	-	378,032	268,299	16,709	93,024
February	157,005			383,556	-	383,556	269,636	15,435	98,485
March	194,859			383,353	-	383,353	264,926	17,280	101,147
April	187,822			372,052	-	372,052	254,088	17,654	100,310
May	207,887			367,749	-	367,749	252,178	17,186	98,385
June	203,392			366,920	-	366,920	250,820	17,554	98,546
July	193,444			368,555	-	368,555	253,586	18,135	96,834
August	208,780			369,177	-	369,177	256,630	18,216	94,331
September	198,026			370,031	-	370,031	258,637	18,762	92,632
October	216,147			365,158	-	365,158	256,919	17,919	90,320
November	208,912			363,420	-	363,420	258,112	17,487	87,821
December	177,320			364,837	-	364,837	260,152	17,225	87,460
Totals	2,330,275								
1963 - January	177,249			372,056	-	372,056	259,494	17,380	95,182
February	168,924			376,894	-	376,894	259,070	17,089	100,735
March	184,547			377,308	-	377,308	252,847	17,837	106,624
April	200,077			366,404	-	366,404	242,406	17,483	106,515
May	218,090			359,333	-	359,333	236,014	17,955	105,364
June	213,394			356,415	-	356,415	238,109	17,862	100,444
July	204,285			359,721	-	359,721	242,281	18,188	99,252
August	213,736			360,756	-	360,756	245,490	17,793	97,473
September	211,854			356,485	-	356,485	247,692	18,013	90,780
October	223,893			357,412	-	357,412	249,481	17,666	90,265
November	219,363			356,414	-	356,414	250,738	17,511	88,165
December	204,511			355,260	-	355,260	254,898	17,654	82,708
Totals	2,439,923								
1964 - January	206,512			360,160	-	360,160	254,576	18,083	87,501
February	198,023			370,671	-	370,671	257,338	18,599	94,734
March	211,439			375,841	-	375,841	255,814	19,649	100,378
April	227,737			366,981	-	366,981	248,499	19,533	98,949
May	224,014			358,860	-	358,860	242,097	19,525	97,238
June	234,129			357,469	-	357,469	243,264	19,521	94,684
July	222,108			363,629	-	363,629	246,503	20,631	96,495
August	227,314			366,468	-	366,468	250,970	20,030	95,468
September	230,055			367,242	-	367,242	255,620	19,118	92,504
October	237,638			369,206	-	369,206	257,410	18,975	92,821
November	229,636			367,276	-	367,276	257,245	19,281	90,750
December	221,108			378,197	-	378,197	271,155	18,765	88,277
Totals	2,669,713								
1965 - January ^F	205,233			381,003	-	381,003	266,828	19,856	94,319
February ^P	204,093			394,511	-	394,511	269,579	20,511	104,421
March									
April									
May									
June									
July									
August									
September									
October									
November									
December									
Totals									

See footnotes, page 43.

TABLE 3. Estimated Value of Shipments, Orders and Inventory in Manufacturing Industries grouped according to the Standard Industrial Classification

Major Group 12 - Primary Metal Industries

Date	Shipments	Orders		Inventory at end of month					
		New orders received during month	Unfilled orders at end of month	Owned(3)	Held but not owned	All inventory held			
						Total	Raw materials	Goods in process	Finished products
thousands of dollars									
1961 - January	216,366	222,933	153,710			505,487	254,853	82,145	168,489
February ...	203,705	214,423	164,428			498,656	242,083	82,705	173,868
March	222,996	217,031	158,463			493,367	230,016	84,912	178,439
April	210,473	221,030	169,020			497,179	225,761	86,148	185,270
May	242,421	227,801	154,400			515,756	238,520	89,862	187,374
June	243,371	255,384	166,413			518,580	241,099	89,627	187,854
July	232,982	240,073	173,504			520,444	247,330	91,236	181,878
August	255,431	255,611	173,684			526,190	260,038	89,635	176,517
September ..	257,217	250,585	167,052			519,705	261,769	88,056	169,880
October	253,149	241,994	155,897			531,063	267,790	93,340	169,933
November ...	247,283	238,818	147,432			537,461	272,958	89,742	174,761
December ...	218,632	236,505	165,305			545,653	275,020	92,098	178,535
Totals ...	2,804,026								
1962 - January	239,531	245,661	171,435			532,001	255,052	97,521	179,428
February ...	217,966	223,140	176,609			528,250	241,414	98,237	188,599
March	248,477	259,356	187,488			524,104	232,483	97,452	194,169
April	237,900	250,603	200,191			528,233	230,583	96,861	200,789
May	269,362	265,214	196,043			528,357	231,081	95,516	201,760
June	267,900	266,103	194,246			526,198	238,120	94,396	193,682
July	248,164	249,869	195,951			527,652	246,869	94,185	186,598
August	258,665	252,609	189,895			532,760	250,623	98,799	183,338
September ..	248,612	246,422	187,705			537,256	255,037	97,821	184,398
October	247,486	252,137	192,356			543,322	260,000	97,319	186,003
November ...	262,230	258,809	188,935			542,023	261,316	95,741	184,966
December ...	231,804	248,971	206,102			548,359	260,402	97,105	190,852
Totals ...	2,978,097								
1963 - January	254,179	254,162	206,085			538,702	247,619	99,244	191,839
February ...	229,646	240,317	216,756			532,397	235,992	97,438	198,967
March	260,788	263,268	219,236			510,475	222,088	94,404	193,983
April	250,843	268,988	237,381			509,275	215,125	94,512	199,638
May	285,049	291,211	243,543			507,805	217,281	96,205	194,319
June	270,656	256,140	229,027			503,797	222,976	95,298	185,523
July	252,520	250,502	227,009			513,220	231,606	97,204	184,410
August	257,196	241,293	211,106			527,865	239,238	100,611	188,016
September ..	255,047	249,999	206,058			534,787	244,509	100,041	190,237
October	278,189	275,411	203,280			531,178	249,333	96,795	185,050
November ...	274,266	276,950	205,964			528,229	253,008	96,610	178,611
December ...	252,716	261,439	214,687			538,575	252,912	98,477	187,186
Totals ...	3,121,095								
1964 - January	268,757	339,041	284,971			526,407	238,407	99,962	188,038
February ...	263,359	246,396	268,008			519,287	228,324	101,656	189,307
March	282,747	306,300	291,561			505,957	210,755	103,204	191,998
April	298,437	299,263	292,387			508,512	213,736	105,612	189,164
May	295,727	281,187	277,847			521,598	224,282	108,244	189,072
June	294,872	285,728	268,703			519,614	227,539	107,352	184,723
July	287,453	281,626	262,876			521,334	240,665	106,785	173,884
August	300,127	285,628	248,377			521,798	245,695	110,250	165,853
September ..	293,403	286,298	241,272			527,459	251,480	112,326	163,653
October	298,800	305,151	247,623			535,204	256,894	112,300	166,010
November ...	300,561	326,824	273,886			548,632	271,082	108,995	168,555
December ...	304,244	290,756	260,398			555,358	274,008	110,578	170,772
Totals ...	3,488,487								
1965 - January ^r ...	281,111	312,127	291,414			559,027	259,718	115,130	184,179
February ^p ..	282,387	309,936	318,963			558,457	255,109	115,576	187,772
March									
April									
May									
June									
July									
August									
September ..									
October									
November ...									
December ...									
Totals ...									

See footnotes, page 43.

TABLE 3. Estimated Value of Shipments, Orders and Inventory in Manufacturing Industries grouped according to the Standard Industrial Classification

Major Group 13 - Metal Fabricating Industries (except Machinery and Transportation Equipment Industries)

Date	Shipments (1)	Orders		Inventory at end of month					
		New orders received during month	Unfilled orders at end of month	Owned	Held but not owned	All inventory held			
						Total	Raw materials	Goods in process	Finished products
thousands of dollars									
1961 - January	96,806	97,031	254,747	312,672	44,767	357,439	145,719	126,269	85,451
February ...	99,249	94,261	249,759	320,041	46,624	366,665	147,621	130,692	88,352
March	114,792	117,689	252,656	323,051	50,171	373,222	147,008	135,384	90,830
April	111,606	106,668	247,718	330,076	51,108	381,184	149,893	138,688	92,603
May	126,194	125,480	247,004	333,363	50,380	383,743	150,747	139,720	93,276
June	137,237	137,261	247,028	332,404	52,870	385,274	149,509	142,783	92,982
July	123,750	124,539	247,817	329,814	50,332	380,146	151,405	138,809	89,932
August	145,393	146,617	249,041	324,609	52,323	376,932	149,072	141,728	86,132
September ...	153,165	151,827	247,703	319,160	49,316	368,476	148,901	136,191	83,384
October	140,520	137,318	244,501	319,528	40,393	359,921	153,969	123,378	83,374
November ...	143,070	134,673	236,104	323,671	42,518	366,189	153,067	128,250	84,872
December ...	116,213	117,919	237,810	329,009	44,859	373,868	154,840	129,987	89,041
Totals ...	1,507,995								
1962 - January	112,096	126,910	252,624	340,116	46,276	386,392	159,553	137,563	89,276
February ...	104,500	115,579	263,703	351,318	46,755	398,073	159,500	144,611	93,962
March	138,511	153,431	278,623	360,838	44,869	405,707	166,723	141,000	97,984
April	128,173	132,761	283,211	366,502	47,195	413,697	168,525	145,016	100,156
May	151,994	154,013	285,230	369,810	51,957	421,767	170,639	151,069	100,059
June	159,149	160,824	286,905	367,950	58,361	426,311	170,919	155,853	99,539
July	152,172	148,034	282,767	366,934	60,137	427,071	169,621	160,860	96,590
August	161,395	160,552	281,924	359,242	56,421	415,663	165,632	155,974	94,057
September ..	180,325	165,249	266,848	348,680	55,324	404,004	162,605	150,905	90,494
October	178,613	169,144	257,379	344,740	36,197	380,937	160,473	131,597	88,867
November ...	156,384	145,056	246,051	337,217	40,986	378,203	155,879	133,121	89,203
December ...	125,196	121,091	241,946	335,886	39,925	375,811	153,701	131,512	90,598
Totals ...	1,748,508								
1963 - January	123,357	139,464	258,053	340,746	42,362	383,108	153,994	134,860	94,254
February ...	123,835	114,502	248,720	347,087	42,154	389,241	157,724	134,697	96,820
March	132,023	126,998	243,695	356,278	43,775	400,053	160,845	139,053	100,155
April	136,643	133,976	241,028	363,607	47,768	411,375	163,686	144,157	103,532
May	161,647	162,410	241,791	365,274	48,413	413,687	162,547	146,492	104,648
June	157,407	155,146	239,530	362,392	48,514	410,906	161,417	147,214	102,275
July	152,841	157,320	244,009	361,799	51,028	412,827	163,140	149,443	100,244
August	155,307	158,097	246,799	356,620	49,253	405,873	161,318	146,057	98,498
September ..	169,666	169,339	246,472	346,081	48,893	394,974	156,859	141,666	96,449
October	175,181	172,344	243,635	332,890	38,586	371,476	152,319	124,385	94,772
November ...	153,427	152,477	242,685	329,162	42,678	371,840	151,235	127,971	92,634
December ...	146,059	140,469	237,095	332,580	42,738	375,318	150,955	130,174	94,189
Totals ...	1,787,393								
1964 - January	145,455	163,632	255,272	339,324	44,094	383,418	152,189	135,426	95,803
February ...	147,177	149,939	258,034	349,094	48,151	397,245	155,754	143,000	98,491
March	180,867	183,984	261,151	345,392	59,925	405,317	158,491	148,376	98,450
April	153,071	161,794	269,874	357,528	54,762	412,290	161,225	147,497	103,568
May	150,081	158,019	277,812	368,583	54,840	423,423	164,037	152,350	107,036
June	167,321	184,663	295,154	374,786	58,630	433,416	166,746	157,835	108,835
July	170,469	194,961	319,646	367,269	57,650	424,919	168,446	151,061	105,412
August	162,942	168,081	324,785	368,456	55,146	423,602	171,378	150,095	102,129
September ..	183,917	193,262	334,130	362,144	53,918	416,062	171,378	145,602	99,082
October	183,961	180,290	330,459	357,588	37,963	395,551	169,658	127,661	98,232
November ...	170,637	171,347	331,169	359,820	43,933	403,753	170,270	134,471	99,012
December ...	175,313	194,170	350,026	363,773	52,648	416,421	177,261	141,885	97,275
Totals ...	1,991,211								
1965 - January ^x ...	147,269	165,351	368,108	372,615	61,244	433,859	182,487	150,447	100,925
February ^p ...	147,452	161,267	381,923	381,353	63,028	444,381	183,919	157,056	103,406
March									
April									
May									
June									
July									
August									
September ...									
October									
November ...									
December ...									
Totals ...									

See footnotes, page 43.

TABLE 3. Estimated Value of Shipments, Orders and Inventory in Manufacturing Industries grouped according to the Standard Industrial Classification

Major Group 15 - Transportation Equipment Industries

Date	Shipments (1)	Orders		Inventory at end of month					
		New orders received during month	Unfilled orders at end of month	Owned	Held but not owned	All inventory held			
						Total	Raw materials	Goods in process	Finished products
thousands of dollars									
1961 - January	146,731	138,517	463,578	272,737	167,756	440,493	107,231	273,546	59,716
February ...	151,068	164,001	476,511	288,301	170,004	458,305	107,939	286,656	63,710
March	171,642	200,678	505,547	295,432	174,261	469,693	109,362	295,095	65,236
April	165,879	169,042	508,710	301,049	167,704	468,753	109,913	293,744	65,096
May	183,334	177,832	503,208	310,160	132,290	442,450	110,471	267,532	64,447
June	188,907	153,682	467,983	308,471	116,214	424,685	109,077	250,829	64,779
July	134,755	125,520	458,748	279,053	120,580	399,633	109,497	231,434	58,702
August	101,803	86,650	443,595	298,387	116,176	414,563	112,098	242,744	59,721
September ..	139,998	123,636	427,233	306,815	119,275	426,090	113,291	254,709	58,090
October	168,495	152,184	410,922	321,900	115,509	437,409	111,822	262,503	63,084
November ...	195,325	256,522	472,119	317,154	119,769	436,923	110,292	264,574	62,057
December ...	208,748	199,320	462,691	333,161	127,458	460,619	113,373	284,999	62,247
Totals ...	1,956,685								
1962 - January	193,520	184,425	453,596	331,349	128,128	459,477	113,862	277,896	67,719
February ...	198,148	211,970	467,418	331,818	136,608	468,426	111,621	285,294	71,511
March	221,053	243,589	489,954	331,245	146,161	477,406	112,610	295,978	68,818
April	215,302	217,479	492,131	328,713	151,718	480,431	111,911	299,820	68,700
May	253,281	235,850	474,700	334,214	152,073	486,287	112,307	307,567	66,413
June	246,137	294,388	522,951	326,247	158,599	484,846	111,233	307,130	66,483
July	180,391	188,430	530,990	308,330	165,879	474,209	111,753	297,805	64,651
August	120,717	113,764	524,037	347,728	168,087	515,815	119,908	333,724	62,183
September ..	178,185	176,434	522,286	363,067	172,115	535,182	119,749	347,483	67,950
October	246,582	220,521	496,225	371,860	168,786	540,646	120,737	351,228	68,681
November ...	254,719	247,729	489,235	358,391	169,670	528,061	119,103	342,082	66,876
December ...	254,089	239,917	475,063	351,977	175,384	527,361	120,210	342,097	65,054
Totals ...	2,562,124								
1963 - January	237,617	295,217	532,663	344,933	167,847	512,780	116,734	326,902	69,144
February ...	221,422	237,872	549,113	353,067	174,654	527,721	117,994	338,869	70,858
March	237,724	244,831	556,220	352,516	185,463	537,979	119,873	347,819	70,287
April	255,620	224,877	525,477	350,855	183,818	534,673	120,076	344,534	70,063
May	288,680	301,747	538,544	345,374	170,654	516,028	119,772	330,080	66,176
June	255,072	239,963	523,435	334,572	170,420	504,992	116,794	320,766	67,432
July	203,295	217,007	537,147	309,087	160,077	469,164	120,597	285,733	62,834
August	105,966	188,203	619,384	366,357	153,233	519,590	128,903	324,766	65,921
September ..	206,565	189,910	602,729	392,647	164,874	557,521	137,542	346,621	73,358
October	259,893	263,901	606,737	397,803	174,574	572,377	137,480	364,660	70,237
November ...	301,054	293,712	599,395	390,500	179,449	569,949	137,390	358,496	74,063
December ...	335,522	312,699	576,572	400,600	167,409	568,009	134,145	359,463	74,401
Totals ...	2,908,430								
1964 - January	308,910	325,339	593,001	410,695	168,358	579,053	133,799	364,078	81,176
February ...	289,843	293,420	596,578	415,273	169,465	584,738	135,978	367,006	81,754
March	294,944	309,270	610,904	418,187	164,070	582,257	140,520	359,495	82,242
April	304,921	300,503	606,486	422,343	155,505	577,848	137,774	355,652	84,422
May	290,966	308,632	624,152	416,827	177,033	593,860	137,090	367,986	88,784
June	300,255	298,165	622,062	395,947	153,897	549,844	135,182	321,977	92,685
July	178,675	209,111	652,498	390,584	152,983	543,567	140,961	321,900	80,706
August	130,045	133,682	656,135	452,978	143,565	596,543	144,288	360,047	92,208
September ..	254,640	231,281	632,776	480,900	139,514	620,414	149,823	370,998	99,593
October	232,924	248,855	648,707	487,906	143,384	631,290	155,020	385,521	90,749
November ...	272,801	294,312	670,218	498,233	146,279	644,512	153,586	393,124	97,802
December ...	282,268	251,003	638,953	499,436	160,810	660,246	161,636	403,625	94,985
Totals ...	3,141,192								
1965 - January ^T ...	276,879	313,117	675,191	491,741	161,398	653,139	156,630	403,348	93,161
February ^P ...	271,382	268,184	671,993	501,640	161,670	663,310	155,364	411,614	96,332
March									
April									
May									
June									
July									
August									
September ..									
October									
November ...									
December ...									
Totals ...									

See footnotes, page 43.

TABLE 3. Estimated Value of Shipments, Orders and Inventory in Manufacturing Industries grouped according to the Standard Industrial Classification

Major Group 17 - Non-Metallic Mineral Products Industries

Date	Shipments	Orders		Inventory at end of month					
		New orders received during month(2)	Unfilled orders at end of month(2)	Owned	Held but not owned	All inventory held			
						Total	Raw materials	Goods in process	Finished products
thousands of dollars									
1961 - January	38,849			111,478	-	111,478	50,547	9,926	51,005
February	37,755			114,127	-	114,127	50,193	10,880	53,054
March	44,269			113,673	-	113,673	48,160	11,315	54,198
April	47,524			115,037	-	115,037	47,247	11,295	56,495
May	62,886			114,137	-	114,137	46,506	11,100	56,531
June	71,210			111,278	-	111,278	46,194	9,969	55,115
July	66,588			111,834	-	111,834	47,846	9,336	54,652
August	72,039			109,415	-	109,415	48,244	8,799	52,372
September	65,104			110,069	-	110,069	49,089	8,532	52,448
October	65,688			111,661	-	111,661	50,631	8,268	52,762
November	59,614			112,417	-	112,417	49,743	8,168	54,506
December	43,474			118,112	-	118,112	52,447	8,937	56,728
Totals	675,000								
1962 - January	38,667			121,959	-	121,959	52,684	8,763	60,512
February	39,069			125,091	-	125,091	51,596	9,328	64,167
March	53,119			124,277	-	124,277	50,203	10,872	63,202
April	54,751			124,683	-	124,683	49,827	11,452	63,404
May	72,548			122,395	-	122,395	49,569	11,334	61,492
June	79,019			118,654	-	118,654	49,058	10,606	58,990
July	76,039			115,243	-	115,243	50,211	9,688	55,344
August	79,832			112,188	-	112,188	50,738	9,091	52,359
September	69,730			111,629	-	111,629	51,554	8,029	52,046
October	74,145			112,892	-	112,892	52,766	8,030	52,096
November	65,899			113,638	-	113,638	53,430	8,335	51,873
December	46,547			120,506	-	120,506	53,809	9,426	57,271
Totals	749,365								
1963 - January	39,974			125,977	-	125,977	51,899	9,833	64,245
February	39,411			131,816	-	131,816	52,232	10,975	68,609
March	49,154			133,198	-	133,198	51,878	12,382	68,938
April	55,514			133,168	-	133,168	50,731	13,335	69,102
May	71,828			132,527	-	132,527	51,541	13,552	67,434
June	74,385			130,916	-	130,916	52,309	12,601	66,006
July	74,549			129,262	-	129,262	53,252	12,107	63,903
August	72,624			125,872	-	125,872	52,855	11,377	61,640
September	73,569			123,580	-	123,580	54,460	10,274	58,846
October	75,153			120,303	-	120,303	53,522	9,314	57,467
November	66,085			120,039	-	120,039	54,446	8,810	56,783
December	48,898			123,248	-	123,248	54,337	9,670	59,241
Totals	741,144								
1964 - January	51,267			124,056	-	124,056	53,719	8,468	61,869
February	52,018			124,995	-	124,995	53,206	8,307	63,482
March	62,088			123,088	-	123,088	51,582	8,524	62,982
April	61,514			126,756	-	126,756	50,997	8,931	66,828
May	71,674			127,335	-	127,335	50,807	8,940	67,588
June	84,454			125,112	-	125,112	50,899	8,969	65,244
July	84,787			121,593	-	121,593	51,178	8,571	61,844
August	79,224			121,710	-	121,710	52,466	8,474	60,770
September	83,487			120,874	-	120,874	53,478	8,275	59,121
October	85,069			120,346	-	120,346	54,516	8,030	57,800
November	78,110			127,098	-	127,098	56,650	8,032	62,416
December	68,516			127,447	-	127,447	58,044	8,136	61,267
Totals	862,208								
1965 - January ^F	50,105			132,733	-	132,733	57,160	8,718	66,855
February ^D	51,771			137,668	-	137,668	56,196	9,565	71,907
March									
April									
May									
June									
July									
August									
September									
October									
November									
December									
Totals									

See footnotes, page 43.

TABLE 3. Estimated Value of Shipments, Orders and Inventory in Manufacturing Industries grouped according to the Standard Industrial Classification

Major Group 18 - Petroleum and Coal Products Industries

Date	Shipments	Orders		Inventory at end of month					
		New orders received during month(2)	Unfilled orders at end of month(2)	Owned	Held but not owned	All inventory held			
						Total	Raw materials	Goods in process	Finished products
thousands of dollars									
1961 - January	99,032			204,293	-	204,293	65,443	21,063	117,787
February ...	88,445			206,921	-	206,921	64,491	20,517	121,913
March	92,259			204,539	-	204,539	61,274	18,959	124,306
April	90,702			211,079	-	211,079	63,104	18,539	129,436
May	104,525			211,317	-	211,317	63,496	20,861	126,960
June	101,131			209,196	-	209,196	62,684	20,050	126,462
July	102,890			201,412	-	201,412	60,377	22,730	118,305
August	105,715			203,651	-	203,651	61,647	19,369	122,635
September ..	101,023			204,835	-	204,835	62,441	20,564	121,830
October	107,151			203,251	-	203,251	63,984	19,869	119,398
November ...	112,434			196,616	-	196,616	62,329	20,533	113,754
December ...	114,867			198,523	-	198,523	61,386	21,269	115,868
Totals ...	1,220,174								
1962 - January	110,921			201,746	-	201,746	63,644	20,137	117,965
February ...	99,205			201,423	-	201,423	60,095	20,804	120,524
March	106,193			209,216	-	209,216	59,125	20,947	129,144
April	97,281			216,041	-	216,041	63,673	20,016	132,352
May	113,849			213,757	-	213,757	66,946	19,852	126,959
June	109,937			212,228	-	212,228	65,330	21,643	125,255
July	112,995			217,468	-	217,468	69,066	22,376	126,026
August	116,856			217,210	-	217,210	68,167	22,716	126,327
September ..	114,134			213,692	-	213,692	62,172	22,841	128,679
October	121,658			211,168	-	211,168	63,665	20,144	127,359
November ...	124,382			210,371	-	210,371	67,876	20,471	122,024
December ...	122,699			208,941	-	208,941	66,521	20,083	122,337
Totals ...	1,350,110								
1963 - January	119,446			207,642	-	207,642	64,511	23,131	120,000
February ...	108,372			206,974	-	206,974	61,353	23,979	121,642
March	107,667			217,288	-	217,288	62,733	22,181	132,374
April	107,410			214,509	-	214,509	63,537	19,715	131,257
May	119,127			213,547	-	213,547	66,675	18,138	128,734
June	107,110			221,327	-	221,327	66,972	22,311	132,044
July	117,853			220,779	-	220,779	66,748	21,961	132,070
August	120,043			224,050	-	224,050	67,359	22,204	134,487
September ..	122,128			222,388	-	222,388	65,177	19,582	137,629
October	116,873			219,812	-	219,812	61,351	19,881	138,580
November ...	118,574			218,957	-	218,957	64,481	19,789	134,687
December ...	133,195			218,502	-	218,502	63,064	20,394	135,044
Totals ...	1,397,798								
1964 - January	118,359			221,052	-	221,052	62,950	21,330	136,772
February ...	108,440			227,555	-	227,555	62,905	20,510	144,140
March	110,554			230,990	-	230,990	63,415	22,397	145,178
April	109,890			226,837	-	226,837	61,080	19,570	146,187
May	109,650			228,603	-	228,603	63,826	20,131	144,646
June	112,525			225,771	-	225,771	63,816	20,826	141,129
July	116,762			227,182	-	227,182	59,116	20,739	147,327
August	117,828			226,387	-	226,387	58,293	21,492	146,602
September ..	115,281			227,269	-	227,269	59,593	21,936	145,740
October	120,240			220,275	-	220,275	64,056	20,193	136,026
November ...	118,565			214,957	-	214,957	63,110	23,176	128,671
December ...	130,011			198,997	-	198,997	60,083	22,481	116,433
Totals ...	1,388,105								
1965 - January ^I ...	119,786			204,260	-	204,260	58,737	23,128	122,395
February ^P ...	113,583			207,721	-	207,721	58,575	24,424	124,722
March									
April									
May									
June									
July									
August									
September ..									
October									
November ...									
December ...									
Totals ...									

See footnotes, page 43.

TABLE 3. Estimated Value of Shipments, Orders and Inventory in Manufacturing Industries grouped according to the Standard Industrial Classification

Major Group 19 - Chemical and Chemical Products Industries

Date	Shipments	Orders		Inventory at end of month					
		New orders received during month(2)	Unfilled orders at end of month(2)	Owned	Held but not owned	All inventory held			
						Total	Raw materials	Goods in process	Finished products
thousands of dollars									
1961 - January	110,785			262,912	-	262,912	115,239	35,793	111,880
February ...	106,270			264,712	-	264,712	111,454	36,656	116,602
March	121,228			262,483	-	262,483	106,857	36,408	119,218
April	121,221			262,272	-	262,272	105,394	36,878	120,000
May	139,864			255,303	-	255,303	104,859	32,888	117,556
June	133,551			250,023	-	250,023	103,194	31,627	115,202
July	107,578			253,313	-	253,313	105,157	31,511	116,645
August	119,177			259,429	-	259,429	110,618	32,187	116,624
September ..	124,737			259,713	-	259,713	111,485	32,647	115,581
October	124,283			265,787	-	265,787	114,905	33,843	117,039
November ...	119,845			269,628	-	269,628	113,113	35,064	121,451
December ...	105,339			275,121	-	275,121	113,985	34,688	126,448
Totals ...	1,433,878								
1962 - January	119,357			278,991	-	278,991	110,204	34,522	134,265
February ...	113,292			278,077	-	278,077	106,580	34,892	136,605
March	131,185			281,979	-	281,979	106,012	35,335	140,632
April	136,216			277,319	-	277,319	100,764	35,326	141,229
May	160,141			264,557	-	264,557	101,324	31,021	132,212
June	143,838			257,629	-	257,629	101,140	31,272	125,217
July	117,432			264,451	-	264,451	105,381	30,609	128,461
August	126,708			267,259	-	267,259	107,501	29,782	129,976
September ..	129,980			267,320	-	267,320	109,156	29,086	129,078
October	131,542			270,661	-	270,661	111,279	30,374	129,008
November ...	124,020			271,064	-	271,064	110,134	31,133	129,797
December ...	110,921			277,011	-	277,011	111,446	32,024	133,541
Totals ...	1,544,632								
1963 - January	120,016			279,209	-	279,209	108,639	31,844	138,726
February ...	119,959			281,607	-	281,607	106,688	32,012	142,907
March	132,274			282,788	-	282,788	105,203	34,508	143,077
April	144,302			279,460	-	279,460	103,091	33,765	142,604
May	165,124			268,744	-	268,744	102,191	29,393	137,160
June	143,613			264,374	-	264,374	101,590	30,470	132,314
July	122,644			270,608	-	270,608	102,484	30,764	137,360
August	130,857			272,377	-	272,377	106,131	30,144	136,102
September ..	138,914			270,140	-	270,140	105,522	30,692	133,926
October	146,896			270,631	-	270,631	105,766	30,757	134,108
November ...	134,657			272,197	-	272,197	109,176	31,636	131,385
December ...	121,623			280,194	-	280,194	110,590	33,485	136,119
Totals ...	1,620,879								
1964 - January	135,296			284,606	-	284,606	108,891	33,964	141,751
February ...	133,998			287,786	-	287,786	108,068	34,830	144,888
March	148,402			288,389	-	288,389	106,858	36,627	144,904
April	155,753			287,225	-	287,225	105,908	35,021	146,296
May	161,150			278,321	-	278,321	104,678	31,708	141,935
June	160,188			277,370	-	277,370	105,618	31,919	139,833
July	130,570			285,889	-	285,889	108,500	32,983	144,406
August	136,812			285,069	-	285,069	108,811	32,669	143,589
September ..	151,129			286,637	-	286,637	110,975	33,039	142,623
October	149,451			291,018	-	291,018	112,843	33,546	144,629
November ...	145,223			294,547	-	294,547	115,362	34,145	145,040
December ...	140,737			298,127	-	298,127	118,367	35,745	144,015
Totals ...	1,748,709								
1965 - January ^r ...	135,092			304,110	-	304,110	117,393	36,015	150,702
February ^p ..	138,367			306,914	-	306,914	116,208	37,058	153,648
March									
April									
May									
June									
July									
August									
September ..									
October									
November ...									
December ...									
Totals ...									

See footnotes, page 43.

TABLE 4. Estimated Value of Shipments, Orders, and Inventories in Selected Individual Industries

Industry	1964											1965	
	Feb.	Mar.	Apr.	May	June	Jul.	Aug.	Sept.	Oct.	Nov.	Dec.	Jan. ^r	Feb. ^p
thousands of dollars													
FOODS AND BEVERAGES													
Slaughtering and meat processors:(1)													
Shipments	86,627	94,813	93,418	101,905	103,873	102,437	105,025	104,261	106,778	101,707	98,807	98,655	90,799
Total inventory owned	56,724	55,875	59,084	58,380	57,256	54,451	51,595	51,584	52,756	59,788	54,517	54,570	56,147
Dairy products industries:(2)													
Shipments	69,828	76,191	82,183	91,567	105,735	107,756	98,852	98,753	90,386	86,115	86,389	77,326	77,943
Total inventory owned	41,035	41,980	43,021	48,096	51,174	52,203	52,208	52,499	51,401	50,017	47,057	46,413	44,408
Raw materials	24,432	25,142	25,369	26,284	27,062	27,863	27,801	27,231	26,982	26,975	26,035	25,822	25,299
Goods in process and finished products ...	16,603	16,838	17,652	21,812	24,112	24,340	24,407	25,268	24,419	23,042	21,022	20,591	19,109
Fruit and vegetable canners and preservers:													
Shipments	29,238	33,442	33,938	33,221	33,165	36,969	30,803	34,708	40,480	36,199	33,651	32,248	32,889
Total inventory owned	127,925	118,586	114,338	108,008	104,558	111,669	128,622	156,072	153,143	153,672	148,926	143,416	139,340
Raw materials and goods in process	34,149	34,120	34,671	34,746	36,614	38,928	41,654	39,190	39,833	39,944	38,776	37,716	36,630
Finished products	93,776	84,466	79,667	73,262	67,944	72,741	86,968	116,882	113,310	113,728	110,150	105,700	102,710
Flour mills:													
Shipments	28,968	28,301	24,647	23,117	24,297	24,686	21,647	20,739	20,814	20,255	19,592	17,425	20,055
New orders	24,075	24,633	19,368	19,949	20,804	21,317	22,174	20,753	22,423	19,003	19,199	23,846	19,161
Unfilled orders	26,362	22,694	17,415	14,247	10,754	7,385	7,912	7,926	9,535	8,283	7,890	14,311	13,417
Total inventory owned	41,945	38,322	36,447	36,083	34,818	34,881	34,048	37,480	38,478	40,991	38,664	37,285	37,045
Raw materials	35,787	31,421	30,152	29,518	28,531	28,487	29,285	32,854	33,501	35,820	33,771	32,130	31,972
Biscuit manufacturers:													
Shipments	8,416	8,969	9,077	9,284	9,659	9,527	9,260	10,404	10,121	10,080	8,161	7,905	8,621
Total inventory owned	10,559	10,334	10,450	10,224	10,081	10,217	10,360	10,328	10,719	10,410	9,230	9,958	10,062
Raw materials	6,207	6,087	6,121	5,960	5,679	5,757	5,960	5,778	5,769	5,558	5,383	6,043	6,022
Goods in process	407	392	431	448	437	436	420	412	413	407	366	387	377
Finished products	3,945	3,855	3,898	3,816	3,965	4,024	3,980	4,138	4,537	4,445	3,481	3,528	3,663
Confectionery manufacturers:													
Shipments	14,094	13,509	13,625	12,400	11,997	11,606	13,822	17,090	18,571	17,271	13,641	13,959	14,318
Total inventory owned	30,558	30,168	30,276	30,518	33,373	35,450	36,082	36,463	36,254	35,544	31,580	33,863	32,533
Raw materials	16,645	16,957	16,658	16,786	18,792	20,853	20,813	21,003	21,842	21,351	17,188	18,983	17,729
Goods in process	2,917	3,038	3,153	3,095	3,169	3,381	3,692	3,943	3,427	3,335	3,268	3,232	3,135
Finished products	10,996	10,173	10,465	10,637	11,412	11,216	11,577	11,517	10,985	10,858	11,124	11,648	11,669
Sugar refineries:													
Shipments	17,116	17,384	19,279	17,665	18,360	18,880	17,008	18,562	16,062	15,090	12,780	10,413	11,125
Total inventory owned	65,869	55,215	62,885	54,744	49,271	39,567	34,643	30,424	37,380	44,820	42,320	37,673	37,451
Raw materials	21,587	18,302	27,454	25,242	26,249	22,139	19,988	18,160	17,744	18,985	16,207	14,594	15,631
Goods in process	2,530	2,185	2,671	2,360	2,356	1,024	779	336	621	625	405	566	697
Finished products	41,752	34,728	32,760	27,142	20,666	16,404	13,876	11,928	19,015	25,210	25,708	22,513	21,123

(1) Includes sausage and sausage casing manufacturers.

(2) Includes butter and cheese plants, pasteurizing plants, condenseries, ice cream manufacturers and process cheese manufacturers.

TABLE 4. Estimated Value of Shipments, Orders, and Inventories in Selected Individual Industries - Continued

Industry	1964											1965	
	Feb.	Mar.	Apr.	May	June	July	Aug.	Sept.	Oct.	Nov.	Dec.	Jan. ^r	Feb. ^p
thousands of dollars													
<u>FOODS AND BEVERAGES - Concluded</u>													
<u>Miscellaneous food industries:(3)</u>													
Shipments	37,141	40,411	39,757	41,969	43,185	42,319	42,315	44,489	44,331	44,022	40,770	38,282	40,509
Total inventory owned	74,593	72,816	73,915	77,415	74,200	73,784	71,538	73,261	75,088	81,458	82,289	80,356	79,001
<u>Breweries:</u>													
Shipments	18,538	21,486	23,265	25,831	29,492	33,076	28,696	26,151	25,126	22,281	30,773	20,586	22,712
Total inventory owned	34,199	36,385	39,917	40,002	41,347	39,827	39,009	37,202	35,827	39,058	34,064	36,397	35,734
Raw materials	13,727	13,936	13,752	13,523	13,231	12,485	12,667	12,739	12,558	13,377	13,053	13,777	14,139
Goods in process	10,487	11,345	12,107	12,994	13,466	13,027	11,711	10,734	10,970	12,069	10,888	10,961	10,963
Finished products	9,985	11,104	14,058	13,485	14,650	14,315	14,631	13,729	12,299	13,612	10,123	11,659	10,632
<u>Wineries:</u>													
Shipments	1,444	1,547	1,851	1,663	1,667	1,513	1,514	1,821	2,376	2,409	1,737	1,247	1,412
Total inventory owned	12,500	12,161	11,365	11,339	11,115	11,961	11,719	11,890	10,576	14,305	14,108	14,446	13,965
Raw materials	1,310	1,164	1,125	1,194	1,192	2,426	2,419	2,741	2,409	2,045	1,868	1,750	1,842
Goods in process	9,714	9,596	8,930	8,677	8,368	8,027	7,705	7,691	6,946	11,251	11,126	11,125	10,845
Finished products	1,476	1,401	1,310	1,468	1,555	1,508	1,595	1,458	1,221	1,009	1,114	1,571	1,278
<u>RUBBER INDUSTRIES</u>													
<u>Rubber footwear manufacturers:(4)</u>													
Shipments	16,813	17,552	17,380	16,203	17,361	13,937	16,902	20,166	19,514	18,984	17,017	15,639	18,368
Total inventory owned	35,146	36,014	37,513	38,940	40,350	40,051	38,297	37,006	35,792	35,651	36,702	36,530	36,576
Raw materials	10,904	11,247	11,458	11,473	11,268	11,652	12,093	12,201	11,623	11,451	12,201	11,856	11,555
Goods in process	5,726	5,708	5,806	5,982	5,762	5,671	5,690	5,542	5,747	5,695	5,400	5,434	5,542
Finished products	18,516	19,059	20,249	21,485	23,320	22,728	20,514	19,263	18,422	18,505	19,101	19,240	19,479
<u>Rubber tire and tube manufacturers:</u>													
Shipments	18,138	18,707	20,595	20,883	23,886	18,997	18,058	23,539	19,989	21,162	18,813	14,742	17,692
Total inventory owned	64,590	66,178	66,641	65,158	63,401	65,569	64,062	64,918	65,099	63,762	68,652	69,783	72,357
Raw materials	10,441	10,233	10,604	10,901	9,929	10,966	11,625	11,443	12,139	11,312	14,689	11,956	10,989
Goods in process	5,868	5,755	5,765	5,715	6,019	5,659	6,203	5,886	5,756	6,056	6,167	6,295	6,255
Finished products	48,281	50,190	50,272	48,542	47,453	48,944	46,234	47,589	47,204	46,394	47,796	51,532	55,113
<u>LEATHER INDUSTRIES</u>													
<u>Leather tanneries:</u>													
Shipments	4,965	4,722	5,491	4,894	5,247	3,851	4,747	5,269	4,831	4,968	4,703	4,841	4,806
New orders	4,668	4,572	7,672	4,271	4,664	3,839	4,686	5,373	4,365	5,221	4,230	3,968	4,733
Unfilled orders	7,644	7,494	9,675	9,052	8,469	8,457	8,396	8,500	8,034	8,287	7,814	6,941	6,868
Total inventory owned	11,901	11,853	11,738	10,803	10,726	11,248	12,141	11,998	12,160	12,789	12,941	13,160	13,064

(3) Includes malt and malt products, rice mills, starch and glucose and miscellaneous food manufacturers.

(4) Includes rubber footwear manufacturers and other rubber industries.

TABLE 4. Estimated Value of Shipments, Orders, and Inventories in Selected Individual Industries - Continued

Industry	1964											1965	
	Feb.	Mar.	Apr.	May	June	July	Aug.	Sept.	Oct.	Nov.	Dec.	Jan. ^r	Feb. ^p
	thousands of dollars												
<u>LEATHER INDUSTRIES - Concluded</u>													
<u>Shoe factories:</u>													
Shipments	19,335	20,296	17,855	14,881	14,255	15,140	21,272	22,451	19,859	15,726	14,501	15,600	17,506
Total inventory owned	44,585	41,759	41,450	43,943	45,476	44,897	42,138	40,220	39,925	41,894	44,843	47,074	46,295
<u>TEXTILE INDUSTRIES</u>													
<u>Cotton yarn and cloth mills:</u>													
Shipments	26,455	29,838	26,007	22,625	24,083	21,560	19,814	25,689	27,776	26,625	27,481	27,185	25,957
New orders	27,047	30,191	25,198	23,162	22,342	21,193	19,756	23,829	31,340	28,244	24,560	28,379	26,118
Unfilled orders	48,060	48,413	47,604	48,141	46,400	46,033	45,975	44,115	47,679	49,298	46,377	47,571	47,732
Total inventory owned	58,250	57,359	57,177	57,904	64,346	66,290	65,898	61,502	61,257	60,993	62,684	63,301	63,576
Raw materials	12,718	14,401	14,301	14,632	18,520	21,247	20,315	14,565	13,318	12,996	15,698	16,697	17,351
Goods in process	14,814	14,535	14,547	14,546	14,646	14,059	14,350	14,737	14,612	14,560	13,925	13,945	12,772
Finished products	30,718	28,423	28,329	28,726	31,180	30,984	31,233	32,200	33,327	33,437	33,061	32,659	32,453
<u>Wool yarn mills:</u>													
Shipments	2,215	2,021	2,001	1,937	2,333	2,193	2,376	2,669	2,679	2,434	2,046	1,968	1,932
Total inventory owned	7,915	8,617	8,869	9,097	9,483	9,548	9,209	8,984	8,356	7,686	6,636	6,525	6,538
<u>Wool cloth mills:</u>													
Shipments	6,781	6,742	7,140	7,178	7,419	7,317	7,122	7,895	8,005	7,258	7,360	6,318	6,492
Total inventory owned	26,006	27,541	27,700	27,656	29,018	29,019	28,686	28,270	28,044	28,929	28,193	28,032	28,129
Raw materials	11,153	11,663	11,556	11,167	12,066	12,295	12,096	11,887	11,244	11,948	11,264	11,504	11,285
Goods in process	9,616	10,051	10,238	10,540	10,692	10,094	10,303	10,362	10,850	10,766	10,389	10,974	11,052
Finished products	5,237	5,827	5,906	5,949	6,260	6,630	6,287	6,021	5,950	6,215	6,540	5,554	5,792
<u>Synthetic textile mills:</u>													
Shipments	29,979	31,840	30,550	29,530	32,223	24,863	28,066	33,030	31,838	32,322	29,490	29,201	31,389
Total inventory owned	53,187	53,185	53,992	55,183	57,829	58,892	60,733	60,699	59,381	58,308	60,717	60,963	61,796
Raw materials	15,944	15,765	16,981	16,563	17,794	18,255	19,022	19,686	19,362	19,039	20,258	19,816	19,805
Goods in process	17,529	17,287	18,579	19,140	20,116	19,575	20,252	19,978	19,361	19,373	19,829	19,683	19,829
Finished products	19,714	20,133	18,432	19,480	19,919	21,062	21,459	21,035	20,658	19,896	20,630	21,464	22,162
<u>Cordage and twine industry:</u>													
Shipments	2,131	1,995	2,640	4,729	5,744	2,819	2,135	2,511	990	1,738	1,538	2,643	3,022
Total inventory owned	12,449	14,309	14,569	13,489	12,975	12,068	12,329	11,952	13,390	12,256	11,140	10,827	10,220
<u>Carpet, mat and rug industry:</u>													
Shipments	4,849	5,201	4,981	4,443	4,330	4,247	4,417	5,856	5,084	5,214	4,093	4,235	4,144
Total inventory owned	12,099	11,903	12,441	13,078	13,411	13,306	13,848	13,829	14,056	13,964	15,282	14,927	14,881

TABLE 4. Estimated Value of Shipments, Orders, and Inventories in Selected Individual Industries - Continued

Industry	1964											1965	
	Feb.	Mar.	Apr.	May	June	July	Aug.	Sept.	Oct.	Nov.	Dec.	Jan. ^F	Feb. ^P
	thousands of dollars												
<u>TEXTILE INDUSTRIES - Concluded</u>													
<u>Linoleum and coated fabrics industry:</u>													
Shipments	3,461	5,039	3,999	3,783	3,957	3,115	3,546	3,603	3,745	3,867	3,740	3,334	3,751
Total inventory owned	9,570	9,434	9,481	9,507	9,688	9,848	10,027	10,048	10,236	10,322	10,240	10,524	10,152
Raw materials	2,396	2,253	2,225	2,231	2,254	2,441	2,450	2,123	2,402	2,395	2,652	2,953	2,418
Goods in process	1,665	1,791	1,874	1,942	1,944	1,835	2,056	2,063	2,053	1,888	1,765	1,689	1,816
Finished products	5,509	5,390	5,382	5,334	5,490	5,572	5,521	5,862	5,781	6,039	5,823	5,882	5,918
<u>Canvas products industry:</u>													
Shipments	1,376	1,890	2,422	2,747	2,882	2,373	1,503	1,621	1,523	1,356	1,446	1,486	1,607
Total inventory owned	5,777	6,157	6,023	5,744	5,553	5,417	5,211	5,254	5,538	5,408	5,285	5,564	5,551
<u>Cotton and jute bag industry:</u>													
Shipments	2,501	2,474	2,432	2,187	2,161	2,089	2,332	2,857	3,331	2,906	2,400	2,308	2,251
Total inventory owned	5,359	5,279	5,401	5,524	5,763	5,720	5,990	6,050	5,560	5,590	5,828	5,572	5,339
<u>Miscellaneous textile industries:(5)</u>													
Shipments	8,886	9,214	10,012	10,354	9,999	8,971	9,888	11,063	11,440	9,894	8,580	9,132	9,596
Total inventory owned	18,537	19,579	20,306	19,808	20,118	19,838	19,058	19,194	18,705	18,845	20,284	20,056	20,698
<u>KNITTING MILLS</u>													
<u>Hosiery mills:</u>													
Shipments	6,388	5,863	5,453	4,791	4,717	5,290	5,792	6,692	7,864	6,763	5,039	5,937	6,219
Total inventory owned	14,494	12,388	13,081	13,683	14,310	14,322	14,208	13,522	13,272	13,223	13,334	13,640	13,846
Raw materials	4,079	3,958	3,927	4,150	4,225	4,166	4,188	4,004	3,927	4,073	4,035	4,194	4,141
Goods in process	4,040	3,249	3,342	3,450	3,521	3,488	3,385	3,274	3,290	3,475	3,468	3,232	3,398
Finished products	6,375	5,181	5,812	6,083	6,564	6,668	6,635	6,244	6,055	5,675	5,831	6,214	6,307
<u>Other knitting mills:</u>													
Shipments	10,863	10,865	9,519	9,764	11,888	13,606	16,321	18,154	17,205	17,441	12,642	11,259	12,000
Total inventory owned	40,399	41,832	44,783	45,958	47,281	45,738	44,648	43,619	42,220	41,096	40,797	42,146	42,727
Raw materials	15,471	15,292	16,297	16,838	17,367	17,045	16,498	16,752	16,544	16,350	15,174	14,794	14,788
Goods in process	9,286	9,502	10,042	10,188	10,376	10,499	10,604	9,177	8,670	8,847	8,478	9,148	9,515
Finished products	15,642	17,038	18,444	18,932	19,538	18,194	17,546	17,690	17,006	15,899	17,145	18,204	18,424

(5) Includes the following: Automobile fabric accessory manufacturers, embroidery, pleating, hemstitching manufacturers and miscellaneous textiles (n.e.s.) Industry.

TABLE 4. Estimated Value of Shipments, Orders, and Inventories in Selected Individual Industries - Continued

Industry	1964											1965	
	Feb.	Mar.	Apr.	May	June	July	Aug.	Sept.	Oct.	Nov.	Dec.	Jan. ^r	Feb. ^p
thousands of dollars													
<u>CLOTHING INDUSTRIES</u>													
<u>Men's clothing industry:(6)</u>													
Shipments	33,404	37,356	34,627	27,705	24,492	23,077	36,640	40,529	40,230	35,564	26,753	27,464	33,691
Total inventory owned	80,202	80,082	80,565	82,883	85,516	85,240	84,764	83,206	79,734	80,050	82,571	83,290	83,788
Raw materials	36,658	36,870	36,792	38,135	38,187	38,908	38,885	38,757	36,916	37,504	38,022	38,152	38,311
Goods in process	12,748	12,992	12,909	13,010	13,481	13,821	14,593	14,396	13,720	12,837	12,930	13,124	13,463
Finished products	30,796	30,220	30,864	31,738	33,848	32,511	31,286	30,053	29,098	29,709	31,619	32,014	32,014
<u>Women's clothing industry:(7)</u>													
Shipments	36,726	38,780	34,092	28,378	24,280	35,617	49,741	45,283	42,093	33,987	20,229	30,950	37,705
Total inventory owned	73,205	73,135	68,162	64,363	67,721	68,945	66,295	64,491	64,832	72,273	78,634	81,182	81,121
<u>Foundation garment industry:</u>													
Shipments	3,847	4,403	4,379	4,069	4,289	3,629	4,030	4,767	4,228	4,180	3,941	3,645	4,009
Total inventory owned	9,956	10,086	10,226	10,569	10,523	10,724	10,456	10,609	10,745	10,678	10,603	10,627	11,345
Raw materials	4,406	4,357	4,364	4,379	4,073	4,418	4,429	4,420	4,362	4,285	4,375	4,377	4,287
Goods in process	2,059	1,883	1,771	1,705	1,705	1,762	1,947	1,913	1,913	1,872	1,724	1,784	1,892
Finished products	3,491	3,846	4,091	4,485	4,745	4,544	4,080	4,276	4,470	4,521	4,504	4,466	5,166
<u>WOOD INDUSTRIES</u>													
<u>Veneer and plywood mills:</u>													
Shipments	14,465	19,012	14,457	13,887	14,793	13,755	13,646	14,903	14,712	13,795	15,316	14,999	13,659
Total inventory owned	30,160	27,251	27,191	27,533	26,460	26,387	26,313	26,361	27,303	27,733	27,217	25,698	26,303
<u>Sash and door and planing mills (excluding hardwood flooring):</u>													
Shipments	21,452	26,785	20,653	22,494	26,318	26,241	24,771	25,352	24,743	24,535	24,654	19,758	19,993
Total inventory owned	47,437	50,282	48,617	49,376	46,469	44,893	44,567	44,531	44,644	45,330	44,904	51,819	53,418
<u>PAPER AND ALLIED INDUSTRIES</u>													
<u>Pulp and paper mills:</u>													
Shipments	146,842	154,894	171,345	169,974	173,913	163,121	169,474	168,279	177,133	171,701	165,030	154,583	152,615
Total inventory owned	279,614	283,742	272,724	264,189	262,557	269,604	274,004	276,348	278,840	277,122	285,484	287,774	297,907
Raw materials and goods in process	220,895	219,289	211,022	204,491	205,400	209,400	213,570	218,626	220,534	220,472	232,641	229,684	231,390
Finished products	58,719	64,453	61,702	59,698	57,157	60,204	60,434	57,722	58,306	56,650	52,843	58,090	66,517
<u>Asphalt roofing manufacturers:</u>													
Shipments	3,260	6,194	3,157	2,887	3,638	4,075	4,234	4,626	4,058	3,618	3,975	1,558	2,181
Total inventory owned	7,753	7,228	7,797	7,738	7,649	7,567	7,250	6,992	7,062	7,381	6,913	7,198	7,662

(6) Includes men's clothing factories and men's clothing contractors.

(7) Includes women's clothing factories, women's clothing contractors and children's clothing industry.

TABLE 4. Estimated Value of Shipments, Orders, and Inventories in Selected Individual Industries - Continued

Industry	1964											1965	
	Feb.	Mar.	Apr.	May	June	July	Aug.	Sept.	Oct.	Nov.	Dec.	Jan. ^r	Feb. ^p
	thousands of dollars												
<u>PAPER AND ALLIED INDUSTRIES - Concluded</u>													
<u>Paper box and bag manufacturers:(8)</u>													
Shipments	30,519	32,251	34,487	33,219	35,206	34,793	34,454	36,650	36,909	36,005	33,841	30,917	31,023
Total inventory owned	51,183	52,408	53,050	53,075	53,476	53,085	53,071	52,055	51,722	51,185	52,991	52,791	54,852
<u>Miscellaneous paper converters:</u>													
Shipments	17,402	18,100	18,748	17,934	21,372	20,119	19,152	20,500	19,538	18,312	18,262	18,175	18,274
Total inventory owned	32,121	32,463	33,410	33,858	33,787	33,373	32,143	31,847	31,582	31,588	32,809	33,240	34,090
<u>PRIMARY METAL INDUSTRIES</u>													
<u>Iron and steel mills:</u>													
Shipments	84,757	89,913	91,050	93,441	91,824	89,000	90,138	90,936	94,418	98,131	93,134	88,379	86,007
Unfilled orders	115,736	133,972	137,923	134,100	133,951	136,369	130,639	128,302	127,746	148,465	135,966	117,323	134,971
Total inventory owned	177,942	165,020	167,420	169,842	171,838	176,679	187,976	200,480	209,218	209,681	208,863	202,635	198,472
<u>Steel pipe and tube mills:</u>													
Shipments	11,401	13,969	14,931	17,472	18,133	13,806	15,855	14,952	10,155	9,476	9,743	9,961	11,601
Unfilled orders	28,121	27,113	25,662	20,791	21,216	16,506	15,556	11,125	10,391	10,611	13,950	13,454	13,671
Total inventory owned	35,412	33,974	33,445	37,398	36,178	34,213	33,477	31,675	31,461	31,378	32,608	34,138	37,239
<u>Iron foundries:</u>													
Shipments	10,294	11,307	12,194	11,002	11,885	13,056	10,562	12,285	11,738	12,273	12,378	11,633	9,546
Total inventory owned	18,773	18,346	18,930	19,206	19,443	18,071	16,870	16,543	17,012	16,760	18,056	18,284	19,872
<u>Smelting and refining:</u>													
Shipments	124,816	134,658	146,846	140,723	138,078	140,738	151,323	141,750	148,336	147,673	154,047	136,325	139,317
Total inventory owned	233,172	232,790	229,434	234,443	232,213	235,292	219,737	215,194	212,679	227,513	234,521	241,363	239,391
Raw materials	94,078	91,946	91,891	98,197	99,097	108,238	100,511	98,422	95,212	106,051	111,706	110,687	110,609
Goods in process	38,546	38,015	39,075	38,686	38,865	39,460	39,442	39,350	40,454	41,436	40,981	41,262	39,754
Finished products	100,548	102,829	98,468	97,560	94,251	87,594	79,784	77,422	77,013	80,026	81,834	89,414	89,028
<u>Copper and alloy rolling, casting and extruding:</u>													
Shipments	13,616	14,102	14,300	13,207	14,301	12,939	14,517	14,126	14,688	14,170	15,789	16,797	16,827
Total inventory owned	16,675	16,987	18,611	20,397	21,278	19,821	19,108	18,823	19,702	20,384	17,872	17,663	18,416

(8) Includes folding boxes and set-up boxes manufacturers, corrugated boxes manufacturers and paper bag manufacturers.

TABLE 4. Estimated Value of Shipments, Orders, and Inventories in Selected Individual Industries - Continued

Industry	1964											1965	
	Feb.	March	Apr.	May	June	July	Aug.	Sept.	Oct.	Nov.	Dec.	Jan. ^r	Feb. ^p
	thousands of dollars												
METAL FABRICATING INDUSTRIES (except machinery and transportation equipment industries)													
Boiler and plate work:													
Shipments	6,896	8,654	6,966	5,512	7,121	6,545	8,581	8,839	9,474	9,016	13,369	7,314	7,622
Total inventory owned	15,736	13,788	13,474	14,560	14,709	14,734	14,771	12,489	11,971	12,829	15,932	15,670	15,870
Fabricated structural metal industry:													
Shipments	21,358	31,694	20,064	18,730	19,568	20,878	18,747	21,841	28,757	19,879	24,022	21,496	18,014
New orders	22,142	32,403	28,325	19,410	31,457	19,716	19,276	26,814	27,222	25,075	26,964	30,928	28,786
Unfilled orders	60,588	61,297	69,558	70,238	82,127	80,965	81,494	86,467	84,932	90,128	93,070	102,502	113,274
Total inventory owned	55,450	48,818	52,198	54,353	55,639	56,092	58,760	60,995	60,531	60,866	59,927	62,540	64,848
Total inventory held	100,699	104,929	103,083	105,211	110,286	109,539	109,248	109,633	93,570	99,652	107,407	118,551	123,156
Metal stamping, pressing and coating industry:													
Shipments	34,782	39,895	39,455	39,556	47,041	48,259	47,871	52,795	45,390	43,396	40,171	33,824	35,849
New orders	35,084	42,043	39,445	39,679	49,404	49,608	48,081	51,646	45,369	42,125	39,300	35,722	37,310
Unfilled orders	23,708	25,856	25,846	25,969	28,332	29,681	29,891	28,742	28,721	27,450	26,579	28,477	29,938
Total inventory owned	76,244	79,090	82,070	84,174	85,663	85,388	85,688	81,190	78,475	77,489	75,873	81,043	83,677
Raw materials	34,176	34,505	36,059	37,004	37,363	38,022	39,632	37,947	36,750	36,662	35,864	38,868	38,429
Goods in process	14,933	15,931	16,611	17,181	17,318	16,898	16,515	15,655	15,377	14,670	14,205	14,691	16,258
Finished products	27,135	28,654	29,400	29,989	30,982	30,468	29,541	27,588	26,348	26,157	25,804	27,484	28,990
Wire and wire products manufacturers:													
Shipments	21,850	24,472	25,974	24,929	27,119	23,037	22,360	25,468	24,420	25,009	22,779	22,845	23,418
Total inventory owned	54,874	54,883	54,775	55,207	54,461	54,773	52,689	52,816	54,108	54,793	58,580	59,863	59,507
Raw materials	22,762	23,052	22,613	22,919	22,901	23,959	22,876	23,026	23,495	23,790	26,451	27,224	26,861
Goods in process	4,337	4,194	4,123	4,272	4,267	4,073	4,551	4,711	4,752	4,833	5,702	5,061	4,909
Finished products	27,775	27,637	28,039	28,016	27,293	26,741	25,262	25,079	25,861	26,170	26,427	27,578	27,737
Hardware, tool and cutlery manufacturers:													
Shipments	13,208	17,284	14,656	13,668	14,799	13,761	13,315	15,184	14,962	14,525	14,437	13,375	14,186
New orders	13,247	17,040	13,544	13,009	14,600	13,114	14,113	15,199	14,861	14,741	17,460	13,899	13,282
Unfilled orders	11,302	11,058	9,946	9,287	9,088	8,441	9,239	9,254	9,153	9,369	12,392	12,916	12,012
Total inventory owned	31,523	31,520	31,833	32,978	33,622	33,130	33,539	33,468	33,716	34,190	36,198	36,241	36,597
Raw materials	10,205	10,472	10,546	10,959	11,011	10,853	11,108	11,019	11,191	11,243	11,831	11,716	12,197
Goods in process	9,914	10,025	10,081	10,374	10,527	10,623	10,540	10,313	10,238	10,157	10,200	10,366	10,404
Finished products	11,404	11,023	11,206	11,645	12,084	11,654	11,891	12,136	12,287	12,790	14,167	14,159	13,996
Miscellaneous metal fabricating industries:													
Shipments	23,649	27,494	22,395	21,847	23,528	25,051	21,092	25,114	25,937	24,659	26,812	22,029	21,875
Unfilled orders	34,908	35,321	34,512	36,955	38,333	39,036	40,330	40,589	41,296	41,896	41,042	41,741	41,692
Total inventory held	63,329	62,897	64,830	67,854	70,917	65,806	66,072	64,247	64,549	64,823	63,973	64,260	66,555
Raw materials	22,751	22,539	21,681	22,895	23,799	24,338	26,020	25,275	26,033	25,826	26,518	25,341	25,590
Goods in process	22,232	22,563	23,786	24,297	25,171	20,562	19,928	19,451	19,161	20,105	20,011	20,089	21,185
Finished products	18,346	17,795	19,363	20,662	21,947	20,906	20,124	19,521	19,355	18,892	17,444	18,830	19,780

TABLE 4. Estimated Value of Shipments, Orders, and Inventories in Selected Individual Industries - Continued

Industry	1964											1965	
	Feb.	Mar.	Apr.	May	June	July	Aug.	Sept.	Oct.	Nov.	Dec.	Jan. ^r	Feb. ^p
	thousands of dollars												
MACHINERY INDUSTRIES													
(except electrical machinery)													
Agricultural implement industry:													
Shipments	16,705	21,496	25,827	22,114	21,153	22,456	16,935	14,009	12,697	13,929	16,071	20,504	17,278
Total inventory owned	54,900	53,616	49,958	47,569	46,809	44,648	43,661	45,732	48,862	52,632	56,083	54,636	56,583
Miscellaneous machinery and equipment manufacturers and commercial refrigeration and air conditioning equipment manufacturers:													
Shipments	48,583	58,032	54,657	49,305	56,911	48,556	44,501	50,340	50,640	53,485	68,924	42,108	46,096
New orders	48,095	44,798	49,557	54,635	72,701	54,120	51,294	53,041	53,385	43,133	96,996	50,149	51,976
Unfilled orders	175,363	162,129	157,029	162,359	178,149	183,713	190,506	193,207	195,952	185,602	213,674	221,715	227,595
Total inventory owned	141,533	133,281	134,580	138,238	136,784	136,437	136,347	134,006	131,672	130,417	129,300	131,427	136,010
Total inventory held	169,839	166,342	166,362	168,871	171,254	170,548	169,881	168,724	170,517	171,705	167,316	168,597	170,737
Raw materials	56,467	54,421	56,288	57,856	59,229	58,596	58,624	58,711	58,247	58,411	57,160	59,106	61,231
Goods in process	64,721	64,630	61,520	61,772	62,840	63,845	65,263	64,844	66,930	67,245	62,916	63,232	63,807
Finished products	48,651	47,291	48,554	49,243	49,185	48,107	45,994	45,169	45,340	46,049	47,240	46,259	45,699
Office and store machinery manufacturers:													
Shipments	8,808	8,357	7,510	7,695	7,214	7,412	5,751	8,011	8,741	8,929	10,464	5,968	6,008
Total inventory owned	36,696	37,200	37,555	38,050	38,218	39,121	40,471	41,399	39,451	39,543	34,927	34,969	35,443
Raw materials	10,957	14,772	15,354	15,505	15,380	15,086	15,567	15,378	14,979	14,980	14,000	12,984	12,929
Goods in process	9,883	7,906	8,015	8,069	8,132	8,316	8,992	9,985	8,727	8,968	8,604	9,333	9,471
Finished products	15,856	14,522	14,186	14,476	14,706	15,719	15,912	16,036	15,745	15,595	12,323	12,652	13,043
TRANSPORTATION EQUIPMENT INDUSTRIES													
Motor vehicle manufacturers:													
Shipments	137,245	149,375	158,763	145,885	151,825	74,658	21,584	105,794	104,106	125,542	109,527	141,837	134,237
Total inventory owned	125,104	125,476	122,172	121,103	107,865	86,527	125,561	142,178	128,388	145,279	146,227	138,489	138,143
Raw materials	15,524	17,146	17,238	17,359	18,261	17,335	18,013	19,252	19,780	18,603	19,343	17,843	17,267
Goods in process	77,814	76,417	72,967	68,617	48,286	39,674	71,844	80,734	80,076	90,642	95,447	88,917	87,158
Finished products	31,766	31,913	31,967	35,127	41,318	29,518	35,704	42,192	28,532	36,034	31,437	31,729	33,718
Motor vehicle parts and accessories manufacturers:													
Shipments	51,230	54,191	57,592	53,742	53,970	19,919	21,279	42,345	31,382	44,566	35,760	47,181	52,269
New orders	54,227	54,027	32,252	35,616	46,423	43,839	44,697	32,317	54,308	31,370	65,217	53,410	50,438
Unfilled orders	96,532	96,368	71,028	52,902	45,355	69,275	92,693	82,665	105,591	92,395	121,852	128,081	126,250
Total inventory owned	109,152	110,562	106,464	100,657	91,737	101,558	121,980	129,786	145,124	140,416	146,791	147,947	143,126
Raw materials	34,113	35,411	33,025	30,691	27,878	31,368	37,101	41,379	45,052	43,933	45,179	44,273	42,116
Goods in process	52,444	52,819	50,328	47,049	43,486	49,693	60,180	62,557	71,123	67,455	70,489	73,825	70,496
Finished products	22,595	22,332	23,111	22,917	20,373	20,497	24,699	25,850	28,949	29,028	31,123	29,849	30,514

TABLE 4. Estimated Value of Shipments, Orders, and Inventories in Selected Individual Industries - Continued

Industry	1964											1965	
	Feb.	Mar.	Apr.	May	June	July	Aug.	Sept.	Oct.	Nov.	Dec.	Jan. ^r	Feb. ^p
	thousands of dollars												
<u>TRANSPORTATION EQUIPMENT INDUSTRIES - Concluded</u>													
<u>Railroad rolling stock industry:</u>													
Shipments	22,866	25,468	23,195	22,573	26,364	24,539	23,622	28,196	24,062	28,291	29,031	24,366	22,037
New orders	27,442	31,090	22,571	33,997	24,574	37,393	19,262	23,980	26,348	36,810	24,760	42,792	25,899
Unfilled orders	53,610	59,232	58,608	70,032	68,242	81,096	76,736	72,520	74,806	83,325	79,054	97,480	101,342
Total inventory held	48,202	49,090	52,992	56,639	54,907	57,240	58,118	61,289	63,699	61,187	63,949	63,395	69,183
Raw materials	30,604	32,599	33,572	35,180	33,238	34,282	33,262	33,296	34,772	33,625	36,056	36,263	36,368
Goods in process and finished products ...	17,598	16,491	19,420	21,459	21,669	22,958	24,856	27,993	28,927	27,562	27,893	27,132	32,815
<u>Shipbuilding and repair:</u>													
Shipments	12,162	12,665	10,844	14,471	14,041	15,204	13,826	16,034	13,537	15,721	29,701	12,907	14,480
New orders	8,291	13,045	19,313	14,681	36,190	21,095	6,305	11,372	16,190	15,917	22,946	19,869	13,912
Unfilled orders	125,466	125,846	134,315	134,525	156,674	162,565	155,044	150,382	153,035	153,231	146,476	153,438	152,870
Total inventory held	102,050	104,487	103,726	105,283	104,916	106,342	107,309	103,500	107,715	109,443	117,010	115,115	120,714
Raw materials	14,683	15,826	15,918	15,896	16,419	16,938	16,479	16,587	16,981	16,868	18,306	14,870	15,097
Goods in process and finished products ...	87,367	88,661	87,808	89,387	88,497	89,404	90,830	86,913	90,734	92,575	98,704	100,245	105,617
<u>ELECTRICAL PRODUCTS INDUSTRIES</u>													
<u>Manufacturers of small electrical appliances:</u>													
Shipments	7,477	7,915	6,952	6,843	7,146	6,807	7,349	11,094	11,250	10,829	10,086	6,473	6,973
Total inventory owned	20,726	21,219	22,148	22,595	23,524	23,578	22,824	21,941	21,168	21,197	21,607	21,048	21,665
<u>Manufacturers of major appliances (electric and non-electric):</u>													
Shipments	18,590	20,111	21,136	20,750	21,031	21,913	20,059	24,670	21,294	21,399	18,788	19,737	20,808
New orders	18,336	20,962	21,274	20,824	20,707	21,642	19,328	24,653	20,751	23,517	19,322	20,134	20,583
Unfilled orders	3,380	4,231	4,369	4,443	4,119	3,848	3,117	3,100	2,557	4,675	5,209	5,606	5,381
Total inventory owned	64,790	67,545	70,673	71,079	71,925	68,482	69,834	68,561	69,311	69,542	70,827	70,704	70,864
Raw materials	16,735	17,849	17,541	18,499	19,025	19,057	20,931	19,939	20,276	20,305	20,886	20,383	20,067
Goods in process	14,584	14,587	16,574	16,155	16,500	15,789	16,114	15,602	14,996	14,755	14,950	14,985	15,244
Finished products	33,471	35,109	36,558	36,425	36,400	33,636	32,789	33,020	34,039	34,482	34,991	35,336	35,553
<u>Manufacturers of household radio and television receivers:</u>													
Shipments	11,352	10,270	10,329	8,986	10,160	10,877	11,936	15,830	16,779	16,102	14,757	12,539	12,514
New orders	11,069	10,247	12,434	8,922	9,959	17,675	10,233	14,089	13,894	17,429	16,678	11,845	14,213
Unfilled orders	17,733	17,710	19,815	19,751	19,550	26,348	24,645	22,904	20,019	21,346	23,267	22,573	24,272
Total inventory held	45,691	45,585	46,045	46,731	48,496	51,559	51,942	50,242	49,452	50,232	49,967	47,702	48,033
Raw materials	7,720	7,816	8,060	8,229	8,446	9,832	10,399	10,571	10,157	10,056	10,085	9,643	9,377
Goods in process	10,186	10,447	9,725	10,059	10,388	10,809	12,158	11,923	13,820	15,851	15,081	13,240	13,419
Finished products	27,785	27,322	28,260	28,443	29,662	30,918	29,385	27,748	25,475	24,325	24,801	24,819	25,237

TABLE 4. Estimated Value of Shipments, Orders, and Inventories in Selected Individual Industries - Continued

Industry	1964											1965	
	Feb.	Mar.	Apr.	May	June	July	Aug.	Sept.	Oct.	Nov.	Dec.	Jan. ^r	Feb. ^p
	thousands of dollars												
<u>ELECTRICAL PRODUCTS INDUSTRIES - Concluded</u>													
<u>Communications equipment manufacturers:</u>													
Shipments	32,687	35,584	32,363	32,288	31,076	21,843	21,101	33,366	31,761	30,507	29,882	31,403	29,463
New orders	33,658	30,925	39,273	28,183	27,668	27,029	19,924	33,314	23,987	28,891	30,464	25,115	30,212
Unfilled orders	215,454	210,795	217,705	213,600	210,192	215,378	214,201	214,149	206,375	204,759	205,341	199,053	199,802
Total inventory held	103,063	105,011	104,746	103,276	100,947	100,882	100,082	100,910	100,799	103,187	104,145	103,301	104,348
Raw materials	17,455	17,794	17,006	16,310	15,756	15,844	15,466	15,370	15,499	15,836	16,717	15,852	15,718
Goods in process	69,683	69,745	69,908	69,552	69,524	69,862	69,421	69,806	69,254	70,626	70,104	68,654	69,738
Finished products	15,925	17,472	17,832	17,414	15,667	15,176	15,195	15,734	16,046	16,725	17,324	18,795	18,892
<u>Manufacturers of electrical industrial equipment:</u>													
Shipments	23,027	25,795	24,724	24,066	27,034	20,830	22,746	25,192	26,075	28,236	33,790	21,903	23,813
New orders	24,290	30,262	28,877	21,125	28,759	36,791	21,480	24,170	21,507	30,916	35,304	29,673	43,602
Unfilled orders	191,163	195,630	199,783	196,842	198,567	214,528	213,262	212,240	207,672	210,352	211,866	219,636	239,425
Total inventory held	84,799	86,016	87,541	89,408	90,226	92,001	91,697	92,214	93,712	91,820	90,937	92,826	95,849
Raw materials	23,366	22,255	23,014	22,867	22,817	23,706	23,737	23,922	24,219	24,073	24,080	24,623	25,083
Goods in process	37,825	40,105	40,747	42,064	41,844	42,470	42,118	42,521	42,997	42,413	38,558	39,176	40,424
Finished products	23,608	23,656	23,780	24,477	25,565	25,825	25,842	25,771	26,496	25,334	28,299	29,027	30,342
<u>Battery manufacturers:</u>													
Shipments	2,788	3,132	3,075	2,770	2,636	2,912	3,354	3,935	4,406	4,239	4,318	3,458	3,255
New orders	2,989	2,556	2,805	2,854	2,668	2,962	3,682	4,372	4,328	4,201	4,193	4,056	3,013
Unfilled orders	2,992	2,416	2,146	2,230	2,262	2,312	2,640	3,077	2,999	2,961	2,836	3,434	3,192
Total inventory owned	9,658	9,824	10,158	10,540	11,209	11,581	12,268	11,437	10,168	9,711	9,692	9,912	10,324
Raw materials	3,743	3,679	3,531	3,620	3,432	3,842	3,946	3,977	3,831	3,698	3,645	3,659	3,852
Goods in process	2,441	2,368	2,362	2,370	2,396	2,298	2,349	2,445	2,246	2,375	2,788	2,768	2,839
Finished products	3,474	3,777	4,265	4,550	5,381	5,441	5,973	5,015	4,091	3,638	3,259	3,485	3,633
<u>Manufacturers of electrical wire and cable:</u>													
Shipments	16,753	23,251	23,458	17,567	19,248	16,192	16,432	21,029	20,319	19,915	19,296	19,612	19,983
New orders	15,096	25,997	24,827	18,622	17,214	15,895	16,856	20,803	17,910	21,207	19,271	25,131	17,753
Unfilled orders	37,109	39,855	41,224	42,279	40,245	39,948	40,372	40,146	37,737	39,029	39,004	44,523	42,293
Total inventory owned	42,762	43,795	44,917	45,716	48,020	45,350	44,758	45,102	45,555	44,982	45,840	46,300	47,046
Raw materials	9,450	10,125	10,264	9,663	12,203	12,014	13,160	13,161	11,709	11,718	12,622	13,577	13,763
Goods in process	10,117	10,738	10,474	11,624	11,971	11,342	11,832	12,392	13,017	12,869	12,711	13,625	13,766
Finished products	23,195	22,932	24,182	24,429	23,846	21,994	19,766	19,549	20,829	20,395	20,507	19,098	19,517
<u>Manufacturers of miscellaneous electrical products:</u>													
Shipments	14,951	15,730	14,766	14,263	18,062	14,229	13,648	18,376	17,517	17,254	17,242	16,058	16,646
New orders	15,120	17,866	13,980	14,498	18,542	14,145	15,641	18,020	17,087	19,144	16,562	15,666	16,405
Unfilled orders	11,832	13,968	13,182	13,417	13,897	13,813	15,806	15,450	15,020	16,910	16,230	15,838	15,597
Total inventory owned	33,607	34,126	35,402	36,045	37,157	38,329	37,081	37,176	37,140	36,385	37,681	37,419	38,002
Raw materials	12,690	12,344	12,676	12,906	13,356	14,256	13,717	14,004	13,822	13,801	14,724	14,105	14,011
Goods in process	7,454	7,482	7,770	7,878	7,948	7,974	8,256	8,084	8,089	7,958	8,110	8,365	8,563
Finished products	13,463	14,300	14,956	15,261	15,853	16,099	15,108	15,088	15,229	14,626	14,847	14,949	15,428

TABLE 4. Estimated Value of Shipments, Orders, and Inventories in Selected Individual Industries - Continued

Industry	1964											1965	
	Feb.	Mar.	Apr.	May	June	July	Aug.	Sept.	Oct.	Nov.	Dec.	Jan. ^r	Feb. ^p
	thousands of dollars												
<u>NON-METALLIC MINERAL PRODUCTS INDUSTRIES</u>													
<u>Cement and concrete products manu-</u>													
facturers:(9)													
Shipments	21,603	26,228	29,178	39,009	47,997	49,626	46,951	48,036	50,046	43,103	29,787	22,322	23,298
Total inventory owned	47,832	47,725	50,688	50,452	48,991	46,010	44,183	44,066	43,333	44,970	47,636	51,438	55,304
Raw materials and goods in process	25,095	24,752	24,322	24,148	24,217	24,403	24,465	25,158	25,646	26,520	26,283	26,293	26,636
Finished products	22,737	22,973	26,366	26,304	24,774	21,607	19,718	18,908	17,687	18,450	21,353	25,145	28,668
<u>Asbestos products manufacturers:</u>													
Shipments	2,852	3,398	3,224	3,432	3,814	3,902	3,469	3,972	3,843	3,856	3,414	2,990	3,116
Total inventory owned	9,933	10,089	10,481	10,517	10,511	9,981	9,835	9,478	8,709	9,188	9,551	10,180	10,305
<u>Glass and glass products manufacturers:</u>													
Shipments	8,057	8,463	10,059	10,200	11,446	9,106	7,536	9,510	8,646	10,045	10,649	7,313	7,460
Total inventory owned	28,651	28,885	29,110	28,956	27,503	28,000	29,591	28,630	29,047	32,923	31,085	30,629	31,580
Raw materials	11,735	11,062	11,386	10,676	10,386	10,582	11,273	11,196	11,208	12,049	12,587	12,707	12,820
Goods in process and finished products	16,916	17,823	17,724	18,280	17,117	17,418	18,318	17,434	17,839	20,874	18,498	17,922	18,760
<u>Abrasives manufacturers:</u>													
Shipments	3,729	4,619	4,201	4,027	4,047	3,590	4,060	4,751	4,370	4,359	5,027	4,263	4,170
New orders	4,144	4,446	4,256	4,229	3,895	3,745	4,139	4,518	4,239	4,462	5,072	4,110	4,548
Unfilled orders	1,478	1,305	1,360	1,562	1,410	1,565	1,644	1,411	1,280	1,383	1,428	1,275	1,653
Total inventory owned	8,083	7,761	7,282	7,487	7,645	7,816	7,755	7,767	8,109	8,183	8,743	8,263	8,216
Raw materials and goods in process	5,207	4,820	4,549	4,780	4,825	4,629	4,688	4,772	4,958	5,008	5,746	5,348	5,242
Finished products	2,876	2,941	2,733	2,707	2,820	3,187	3,067	2,995	3,151	3,175	2,997	2,915	2,974
<u>PETROLEUM AND COAL PRODUCTS INDUSTRIES</u>													
<u>Petroleum refineries:(10)</u>													
Shipments	107,380	108,859	108,420	107,471	109,565	113,371	114,508	111,273	118,194	117,045	128,471	118,991	112,782
Total inventory owned	224,386	227,988	223,694	225,099	222,057	223,411	222,543	223,307	216,143	210,757	194,924	200,046	203,463
Raw materials	61,402	61,925	59,583	62,197	62,194	57,392	56,477	57,711	62,296	61,226	57,967	56,609	56,519
Goods in process	20,510	22,397	19,570	20,131	20,826	20,739	21,492	21,936	20,193	23,176	22,481	23,128	24,424
Finished products	142,474	143,666	144,541	142,771	139,037	145,280	144,574	143,660	133,654	126,355	114,476	120,309	122,520

(9) Includes cement manufacturers, concrete products manufacturers and ready-mix concrete manufacturers.

(10) Includes petroleum refining and manufacturers of lubricating oils and greases.

TABLE 4. Estimated Value of Shipments, Orders, and Inventories in Selected Individual Industries - Continued

Industry	1964											1965	
	Feb.	Mar.	Apr.	May	June	July	Aug.	Sept.	Oct.	Nov.	Dec.	Jan. ^r	Feb. ^p
	thousands of dollars												
<u>CHEMICAL AND CHEMICAL PRODUCTS INDUSTRY</u>													
<u>Manufacturers of mixed fertilizers:</u>													
Shipments	5,804	5,540	8,605	14,693	5,764	886	999	3,626	2,343	2,626	6,056	4,876	5,865
Total inventory owned	17,762	18,847	16,758	8,418	7,722	8,743	11,503	13,962	16,254	17,847	17,674	17,560	17,942
<u>Manufacturers of plastics and synthetic resins:</u>													
Shipments	11,646	12,338	12,489	13,335	14,341	11,635	12,550	12,916	11,969	12,510	12,502	11,292	11,814
Total inventory owned	16,402	15,713	17,121	16,870	16,780	16,951	16,421	15,769	15,917	15,677	16,246	16,709	16,881
<u>Manufacturers of pharmaceuticals and medicines:</u>													
Shipments	17,358	17,343	17,208	16,129	17,293	16,433	18,807	20,722	19,871	18,578	16,753	18,637	19,052
Total inventory owned	42,274	42,784	44,056	44,496	46,029	45,007	43,984	43,286	43,267	43,531	45,297	45,178	45,297
Raw materials	14,377	14,538	14,534	14,458	14,330	14,305	14,148	14,388	14,695	15,250	16,283	15,849	15,933
Goods in process	8,652	9,498	9,884	9,743	9,707	9,110	8,717	8,906	8,762	8,564	9,048	9,543	10,074
Finished products	19,245	18,748	19,638	20,295	21,992	21,592	21,119	19,992	19,810	19,717	19,966	19,786	19,290
<u>Paint and varnish manufacturers:</u>													
Shipments	14,658	21,575	18,094	18,810	19,570	17,909	15,821	14,811	14,494	14,188	14,462	11,515	12,575
Total inventory owned	41,133	39,752	40,995	40,425	39,759	39,637	37,834	38,033	39,505	40,351	40,036	43,022	41,368
Raw materials	12,926	12,824	12,746	12,918	12,821	12,562	12,061	12,112	12,408	12,744	13,003	13,937	12,787
Goods in process	2,308	2,154	2,183	2,239	2,360	2,344	2,313	2,450	2,519	2,532	2,644	2,106	2,160
Finished products	25,899	24,774	26,066	25,268	24,578	24,731	23,460	23,471	24,578	25,075	24,389	26,979	26,421
<u>Manufacturers of soap and cleaning compounds:</u>													
Shipments	15,053	13,567	15,088	14,913	15,454	14,481	14,529	16,451	17,056	15,332	13,874	15,566	14,436
Total inventory owned	23,390	22,719	22,839	22,959	21,893	21,395	20,256	19,890	20,296	20,876	22,117	22,702	23,067
Raw materials	8,940	8,542	8,893	8,897	8,210	8,161	8,031	7,354	7,762	7,870	8,228	8,507	8,652
Goods in process	2,295	2,236	2,109	2,122	2,318	2,209	2,197	2,402	2,335	2,600	2,782	2,739	2,885
Finished products	12,155	11,941	11,837	11,940	11,365	11,025	10,028	10,134	10,199	10,406	11,107	11,456	11,530
<u>Manufacturers of toilet preparations:</u>													
Shipments	6,452	7,432	7,030	6,613	6,868	5,964	6,643	8,154	10,440	10,198	6,754	6,300	7,082
Total inventory owned	14,886	15,000	14,985	15,163	15,307	15,792	16,111	16,821	16,245	15,919	15,355	15,041	15,148
Raw materials and goods in process	8,741	8,980	8,857	9,011	9,041	9,317	9,538	10,014	9,484	9,500	9,273	8,781	9,006
Finished products	6,145	6,020	6,128	6,152	6,266	6,475	6,573	6,807	6,761	6,419	6,082	6,260	6,142

TABLE 4. Estimated Value of Shipments, Orders, and Inventories in Selected Individual Industries - Concluded

Industry	1964											1965	
	Feb.	Mar.	Apr.	May	June	July	Aug.	Sept.	Oct.	Nov.	Dec.	Jan. ^r	Feb. ^p
	thousands of dollars												
<u>MISCELLANEOUS MANUFACTURING INDUSTRIES</u>													
<u>Scientific and professional equipment manufacturers:(1)</u>													
Shipments	16,122	19,365	15,990	17,146	16,884	17,061	18,171	19,088	19,470	18,602	18,778	16,420	16,627
Total inventory held	51,167	49,976	51,443	52,251	52,651	51,417	51,013	50,435	48,937	49,003	49,400	50,405	50,473
<u>Jewellery and silver manufacturers:</u>													
Shipments	6,354	6,108	5,638	5,376	5,401	4,173	6,795	7,758	7,731	7,150	6,393	4,951	6,792
Total inventory owned	18,036	18,666	19,414	19,864	19,882	19,961	19,525	19,196	19,794	20,058	19,303	19,609	20,125
<u>Broom, brush and mop industry:</u>													
Shipments	2,309	2,719	2,678	2,674	2,811	2,279	2,403	2,647	2,927	2,494	2,156	2,629	2,516
Total inventory owned	8,463	8,585	8,632	8,863	8,853	9,138	9,195	9,462	9,333	9,503	9,842	9,694	9,633
Raw materials	4,289	4,380	4,459	4,510	4,465	4,673	4,684	4,795	4,643	4,650	4,591	4,572	4,540
Goods in process	875	936	949	1,011	924	920	929	981	999	909	992	1,009	1,011
Finished products	3,299	3,269	3,224	3,342	3,464	3,545	3,582	3,686	3,691	3,944	4,259	4,113	4,082

(1) Includes instrument and related products manufacturers, clock and watch manufacturers, orthopedic and surgical appliance manufacturers, ophthalmic goods manufacturers and dental laboratories.

TABLE 5. Ratios of Value of Total Inventory Owned to Value of Shipments grouped according to the Standard Industrial Classification

Date	Major group number																			
	Total	1	2	3	4	5	6	7	8	9	10	12(1)	13	14	15	16	17	18	19	20
1961																				
Jan.	2.43	1.55	5.63	3.97	2.72	2.91	3.26	2.87	2.73	2.58	2.26	2.34	3.23	4.32	1.86	3.45	2.87	2.06	2.37	2.95
Feb.	2.45	1.81	5.56	3.62	2.32	3.01	2.96	2.27	2.77	2.33	2.41	2.45	3.22	3.90	1.91	3.33	3.02	2.34	2.49	2.73
Mar.	2.21	1.60	5.37	3.17	1.98	2.75	2.92	2.06	2.47	2.15	2.16	2.21	2.81	3.57	1.72	3.11	2.57	2.22	2.17	2.42
Apr.	2.31	1.59	6.67	3.20	2.42	2.99	3.52	2.47	2.59	2.31	2.09	2.36	2.96	3.18	1.81	3.69	2.42	2.33	2.16	2.73
May	2.09	1.41	6.51	3.11	2.76	2.78	3.64	2.69	2.07	2.02	1.91	2.13	2.64	3.12	1.69	3.39	1.81	2.02	1.83	2.64
June	2.02	1.36	5.56	2.89	2.85	2.55	3.68	3.18	1.78	2.03	1.88	2.13	2.42	3.10	1.63	3.10	1.56	2.07	1.87	2.46
July	2.20	1.45	6.43	3.30	3.11	2.89	2.91	3.20	2.01	2.33	2.09	2.23	2.67	3.30	2.07	3.66	1.68	1.96	2.35	2.58
Aug.	2.05	1.46	6.10	3.10	1.95	2.64	2.34	1.78	1.84	1.71	1.85	2.06	2.23	3.62	2.93	3.19	1.52	1.93	2.18	2.28
Sept.	2.02	1.58	5.44	2.60	2.07	2.41	2.18	1.85	1.92	1.80	1.93	2.02	2.08	3.76	2.19	2.68	1.69	2.03	2.08	2.21
Oct.	2.04	1.61	5.85	2.31	2.19	2.36	2.13	1.90	2.01	1.86	1.90	2.10	2.27	4.34	1.91	2.91	1.70	1.90	2.14	2.16
Nov.	2.05	1.67	5.54	2.65	2.53	2.44	2.10	2.23	2.05	1.81	1.80	2.17	2.26	3.63	1.62	2.85	1.89	1.75	2.25	2.28
Dec.	2.30	1.78	4.66	3.28	3.26	2.73	3.03	3.27	2.50	2.23	2.10	2.50	2.83	3.58	1.60	3.25	2.72	1.73	2.61	2.56
Avr.	2.18	1.60	5.78	3.10	2.51	2.71	2.89	2.48	2.23	2.10	2.03	2.23	2.64	3.62	1.91	3.22	2.12	2.03	2.21	2.50
1962																				
Jan.	2.32	1.79	5.54	3.62	2.67	2.65	3.22	2.74	2.23	2.50	2.14	2.22	3.03	4.14	1.71	3.92	3.15	1.82	2.34	2.77
Feb.	2.40	1.85	5.32	3.51	2.53	2.75	3.21	2.31	2.28	2.37	2.44	2.42	3.36	4.21	1.67	3.76	3.20	2.03	2.45	2.68
Mar.	2.11	1.57	5.33	3.17	2.27	2.56	3.20	2.00	1.97	2.15	1.97	2.11	2.61	3.31	1.50	3.47	2.34	1.97	2.15	2.46
Apr.	2.18	1.59	5.08	3.14	2.57	2.89	3.59	2.24	2.18	2.16	1.98	2.22	2.86	3.24	1.53	3.79	2.28	2.22	2.04	2.57
May	1.93	1.41	5.61	3.04	2.86	2.55	3.85	2.46	1.60	1.92	1.77	1.96	2.43	2.94	1.32	3.68	1.69	1.88	1.65	2.37
June	1.93	1.35	5.14	2.93	3.20	2.54	3.76	3.34	1.45	2.05	1.80	1.96	2.31	3.02	1.33	3.43	1.50	1.93	1.79	2.39
July	2.10	1.44	6.58	3.37	3.37	2.91	3.13	3.01	1.62	2.26	1.91	2.13	2.41	3.45	1.71	4.04	1.52	1.92	2.25	2.43
Aug.	2.06	1.52	5.66	3.22	2.13	2.84	2.66	1.85	1.51	1.85	1.77	2.06	2.23	3.37	2.88	3.70	1.41	1.86	2.11	2.18
Sept.	2.02	1.67	5.51	2.56	2.28	2.48	2.39	1.82	1.70	1.81	1.87	2.16	1.93	3.66	2.04	2.99	1.60	1.87	2.06	2.09
Oct.	1.92	1.62	5.71	2.26	2.24	2.33	2.31	1.83	1.60	1.67	1.69	2.20	1.93	3.72	1.51	3.08	1.52	1.74	2.06	1.98
Nov.	1.99	1.73	5.27	2.60	2.52	2.43	2.39	2.20	1.82	1.82	1.74	2.07	2.16	3.59	1.41	3.15	1.72	1.69	2.19	2.21
Dec.	2.24	1.87	4.98	3.22	3.21	2.78	3.16	3.15	2.15	2.26	2.06	3.37	2.68	3.84	1.39	3.48	2.59	1.70	2.50	2.58
Avr.	2.10	1.62	5.48	3.05	2.65	2.64	3.07	2.41	1.84	2.07	1.93	2.16	2.50	3.54	1.67	3.54	2.04	1.89	2.13	2.39
1963																				
Jan.	2.23	1.84	5.91	3.50	2.66	2.46	3.33	2.73	2.07	2.30	2.10	2.12	2.76	4.15	1.45	3.46	3.15	1.74	2.33	2.77
Feb.	2.28	1.83	4.97	3.43	2.65	2.59	3.26	2.29	2.13	2.27	2.23	2.32	2.80	3.75	1.59	3.35	3.34	1.91	2.35	2.76
Mar.	2.12	1.70	4.92	3.13	2.47	2.33	3.22	2.11	2.01	2.17	2.04	1.96	2.70	3.47	1.48	3.04	2.71	2.02	2.14	2.48
Apr.	2.07	1.58	4.67	2.94	2.72	2.53	3.58	2.17	2.13	2.12	1.83	2.03	2.66	3.13	1.37	3.45	2.40	2.00	1.94	2.68
May	1.86	1.43	4.59	3.01	3.10	2.25	3.67	2.58	1.68	1.94	1.65	1.78	2.26	3.04	1.20	3.06	1.85	1.79	1.63	2.50
June	1.93	1.44	5.18	2.87	3.32	2.34	3.79	3.33	1.60	2.02	1.67	1.86	2.30	3.00	1.31	3.05	1.76	2.07	1.84	2.56
July	1.99	1.41	5.11	2.81	3.37	2.70	2.96	2.75	1.58	2.25	1.76	2.03	2.37	2.66	1.52	3.45	1.73	1.87	2.21	2.64
Aug.	2.04	1.47	5.75	3.06	2.11	2.45	2.51	1.70	1.58	1.87	1.69	2.05	2.30	3.55	3.46	3.16	1.73	1.87	2.08	2.30
Sept.	1.92	1.57	4.88	2.36	2.18	2.19	2.17	1.67	1.74	1.70	1.68	2.10	2.04	3.28	1.90	2.51	1.68	1.82	1.94	2.15
Oct.	1.82	1.57	5.82	2.16	2.11	2.05	2.11	1.67	1.60	1.62	1.60	1.91	1.90	3.24	1.53	2.61	1.60	1.88	1.84	1.99
Nov.	1.91	1.72	5.28	2.49	2.51	2.18	2.35	2.17	1.83	1.77	1.62	1.93	2.15	3.46	1.30	2.71	1.82	1.85	2.02	2.17
Dec.	2.01	1.78	4.05	2.61	3.08	2.38	3.27	3.17	2.02	2.09	1.74	2.13	2.28	3.42	1.19	2.86	2.52	1.64	2.30	2.40
Avr.	2.02	1.61	5.09	2.86	2.69	2.37	3.02	2.36	1.83	2.01	1.80	2.02	2.38	3.35	1.61	3.06	2.19	1.87	2.05	2.45
1964																				
Jan.	2.05	1.76	5.46	3.06	2.51	2.32	3.34	2.75	1.91	2.35	1.74	1.96	2.33	3.58	1.33	3.16	2.42	1.87	2.10	2.73
Feb.	2.07	1.76	6.74	2.85	2.31	2.31	3.18	2.35	1.85	2.20	1.87	1.97	2.37	3.18	1.43	3.03	2.40	3.10	2.15	2.58
Mar.	1.89	1.58	6.08	2.82	2.15	2.18	3.24	2.16	1.54	2.00	1.78	1.79	1.91	2.58	1.42	2.77	1.98	2.09	1.94	2.33
Apr.	1.90	1.54	4.48	2.74	2.30	2.30	3.86	2.31	1.81	2.06	1.61	1.70	2.34	2.55	1.39	2.85	2.06	2.06	1.84	2.58
May	1.92	1.44	5.98	2.81	2.76	2.37	4.10	2.78	1.73	2.04	1.60	1.76	2.46	2.86	1.43	3.10	1.78	2.08	1.73	2.70
June	1.83	1.35	5.55	2.52	2.80	2.34	3.71	3.24	1.43	1.92	1.53	1.76	2.24	2.63	1.32	3.00	1.48	2.01	1.73	2.57
July	1.99	1.36	5.49	3.21	2.87	2.83	3.18	2.82	1.52	2.28	1.64	1.81	2.15	2.84	2.19	3.53	1.43	1.95	2.19	2.74
Aug.	2.04	1.47	5.85	2.93	2.05	2.78	2.66	1.91	1.61	1.91	1.61	1.74	2.26	3.32	3.48	3.49	1.54	1.92	2.08	2.41
Sept.	1.86	1.50	5.29	2.33	1.88	2.29	2.30	1.83	1.57	1.72	1.60	1.80	1.97	3.09	1.89	2.65	1.45	1.97	1.90	2.15
Oct.	1.86	1.49	5.67	2.55	2.01	2.29	2.21	1.86	1.54	1.68	1.55	1.79	1.94	3.09	2.09	2.69	1.41	1.83	1.95	2.11
Nov.	1.93	1.61	5.33	2.48	2.44	2.32	2.24	2.23	1.75	1.81	1.60	1.83	2.11	2.95	1.83	2.71	1.63	1.81	2.03	2.27
Dec.	1.95	1.59	3.71	2.94	2.73	2.50	3.06	3.24	1.86	1.99	1.71	1.83	2.07	2.34	1.77	2.69	1.86	1.53	2.12	2.44
Avr.	1.94	1.54	5.47	2.77	2.40	2.40	3.09	2.46	1.68	2.00	1.65	1.81	2.18	2.92	1.80	2.97	1.79	2.02	1.98	2.47
1965																				
Jan. ^r	2.13	1.72	4.04	3.50	2.96	2.53	3.24	2.83	1.90	2.47	1.86	1.99	2.53	3.26	1.78	3.03	2.65	1.71	2.25	2.70
Feb. ^p	2.14	1.71	5.58	3.02	2.61	2.46	3.11	2.45	1.82	2.26	1.93	1.98	2.59	3.32	1.85	3.02	2.66	1.83	2.22	2.69
Mar.																				
Apr.																				
May																				
June																				
July																				
Aug.																				
Sept.																				
Oct.																				
Nov.																				
Dec.																				
Avr.																				

See footnotes, page 43.

INDUSTRIAL GROUPINGS

The industries shown in the Standard Industrial Classification Groups are listed below.

A single asterisk (*) preceding the individual industry title indicates that the industry is shown separately in Table 4 - Statistics for Selected Individual Industries.

A double asterisk (**) preceding the individual industry title indicates that the industry is shown in Table 4 combined with one or more other industries. The industries grouped are listed in footnotes to the table.

The bracketed letters following the individual industry titles indicate the statistical series - shipments, inventories and orders in which the industry is included monthly: (s) means the industry is included in the shipments series; (i) in the inventory series; and (o) in the orders series. Industries for which monthly coverage is not indicated are included in the all-industry and group totals estimates.

STANDARD INDUSTRIAL CLASSIFICATION

Industrial Groupings shown in Tables 3 and 5

Major Group 1. Foods and Beverages

- ** Slaughtering and Meat Packing Plants (s)(i)
- Animal Oils and Fats Plants (s)
- ** Sausage and Sausage Casing Manufacturers (s)
- Poultry Processors
- ** Butter and Cheese Plants (s)(i)
- ** Pasteurizing Plants (s)(i)
- ** Condenseries (s)(i)
- ** Ice Cream Manufacturers (s)(i)
- ** Process Cheese Manufacturers (s)
- Fish Products Industry (s)(i)
- * Fruit and Vegetable Canners and Preservers (s)(i)(o)
- Feed Manufacturers (s)(i)
- * Flour Mills (s)(i)(o)
- Breakfast Cereal Manufacturers (s)(i)
- * Biscuit Manufacturers (s)(i)
- Bakeries (s)
- * Confectionery Manufacturers (s)(i)
- * Sugar Refineries (s)(i)
- Vegetable Oil Mills (s)(i)(o)
- Macaroni Manufacturers (s)(i)
- * Miscellaneous Food Manufacturers (s)(i)
- Soft Drink Manufacturers (s)
- Distilleries (s)(i)
- * Breweries (s)(i)
- * Wineries (s)(i)

Major Group 2. Tobacco Products Industries

- Leaf Tobacco Processing (s)(i)
- Tobacco Products Manufacturers (s)(i)

Major Group 3. Rubber Industries

- ** Rubber Footwear Manufacturers (s)(i)(o)
- * Rubber Tire and Tube Manufacturers (s)(i)(o)
- ** Other Rubber Industries (s)(i)(o)

Major Group 4. Leather Industries

- * Leather Tanneries (s)(i)(o)
- * Shoe Factories (s)(i)(o)
- Leather Glove Factories (s)
- Leather Belting Manufacturers (s)
- Boot and Shoe Findings Manufacturers (s)
- Miscellaneous Leather Products Manufacturers (s)

Major Group 5. Textile Industries

- * Cotton Yarn and Cloth Mills (s)(i)(o)
- * Wool Yarn Mills (s)(i)(o)
- * Wool Cloth Mills (s)(i)(o)
- * Synthetic Textile Mills (s)(i)(o)
- Fibre Preparing Mills (s)(i)(o)

Major Group 5. Textile Industries - Concluded

- Thread Mills (s)(i)
- * Cordage and Twine Industry (s)(i)
- Narrow Fabric Mills (s)(i)(o)
- Pressed and Punched Felt Mills (s)(i)(o)
- * Carpet, Mat and Rug Industry (s)(i)(o)
- Textile Dyeing and Finishing Plants (s)(i)(o)
- * Linoleum and Coated Fabrics Industry (s)(i)(o)
- * Canvas Products Industry (s)(i)(o)
- * Cotton and Jute Bag Industry (s)(i)(o)
- ** Automobile Fabric Accessory Manufacturers (s)(i)
- ** Embroidery, Pleating, Hemstitching Manufacturers (s)
- ** Miscellaneous Textiles (n.e.s.) Industry (s)(i)(o)

Major Group 6. Knitting Mills

- * Hosiery Mills (s)(i)(o)
- * Other Knitting Mills (s)(i)(o)

Major Group 7. Clothing Industries

- ** Men's Clothing Factories (s)(i)(o)
- ** Men's Clothing Contractors (s)
- ** Women's Clothing Factories (s)(i)(o)
- ** Women's Clothing Contractors (s)
- ** Children's Clothing Industries (s)(i)(o)
- Fur Goods Industry (s)(i)
- Hat and Cap Industry (s)(i)(o)
- * Foundation Garment Industry (s)(i)(o)
- Fabric Glove Manufacturers (s)
- Miscellaneous Clothing (n.e.s.) Industry (s)

Major Group 8. Wood Industries

- Shingle Mills (s)
- Sawmills except Shingle Mills (s)(i)(o)
- * Veneer and Plywood Mills (s)(i)(o)
- * Sash and Door and Planing Mills (excluding hardwood flooring) (s)(i)(o)
- Hardwood Flooring (s)(i)(o)
- Wooden Box Factories (s)(i)
- Coffin and Casket Industries (s)
- Wood preservation (s)(i)
- Wood Handles and Turning (s)(i)(o)
- Woodenware (s)(i)
- Cooperage (s)(i)
- Miscellaneous Wood Industries, n.e.s. (s)(i)(o)

Major Group 9. Furniture and Fixture Industries

- Household Furniture Industry (s)(i)(o)
- Office Furniture Industry (s)(i)(o)
- Other Furniture Industries (s)(i)(o)
- Electric Lamp and Shade Industry (s)

Major Group 10. Paper and Allied Industries

- * Pulp and Paper Mills (s)(i)(o)
- * Asphalt Roofing Manufacturers (s)(i)(o)
- ** Folding Box and Set-up Box Manufacturers (s)(i)(o)
- ** Corrugated Box Manufacturers (s)(i)(o)
- ** Paper Bag Manufacturers (s)(i)(o)
- * Other Paper Converters (s)(i)(o)

Major Group 11. Printing, Publishing and Allied Industries

- Printing and Bookbinding (s)
- Lithographing (s)
- Engraving and duplicate plates (s)
- Trade Composition or typesetting (s)
- Publishing Only (s)
- Printing and Publishing (s)

Major Group 12. Primary Metal Industries

- * Iron and Steel Mills (s)(i)(o)
- * Steel Pipe and Tube Mills (s)(i)(o)
- * Iron Foundries (s)(i)(o)
- * Smelting and Refining (s)(i)(o)
- Aluminum Rolling, Casting and Extruding (s)(i)(o)
- * Copper and Alloy Rolling, Casting and Extruding (s)(i)(o)
- Metal Rolling, Casting and Extruding, n.e.s. (s)(i)(o)

Major Group 13. Metal Fabricating Industries (except Machinery and Transportation Equipment Industries)

- * Boiler and Plate Works (s)(i)(o)
- * Fabricated Structural Metal Industry (s)(i)(o)
- Ornamental and Architectural Metal Industry (s)(i)(o)
- * Metal Stamping, Pressing and Coating Industry (s)(i)(o)
- * Wire and Wire Products Manufacturers (s)(i)(o)
- * Hardware, Tool and Cutlery Manufacturers (s)(i)(o)
- Heating Equipment Manufacturers (s)(i)(o)
- Machine Shops
- * Miscellaneous Metal Fabricating Industries (s)(i)(o)

Major Group 14. Machinery Industries (except electrical machinery)

- * Agricultural Implement Industry (s)(i)(o)
- ** Miscellaneous Machinery and Equipment Manufacturers (s)(i)(o)
- ** Commercial Refrigeration and Air Conditioning Equipment Manufacturers (s)(i)(o)
- * Office and Store Manufacturers (s)(i)(o)

Major Group 15. Transportation Equipment Industries

- Aircraft and Parts Manufacturers (s)(i)(o)
- * Motor Vehicle Manufacturers (s)(i)(o)
- Truck Body and Trailer Manufacturers (s)(i)(o)
- * Motor Vehicle Parts and Accessories Manufacturers (s)(i)(o)
- * Railroad Rolling Stock Industry (s)(i)(o)
- * Shipbuilding and Repair (s)(i)(o)
- Boatbuilding and Repair (s)
- Miscellaneous Vehicle Manufacturers (s)

Major Group 16. Electrical Products Industries

- * Manufacturers of Small Electrical Appliances (s)(i)(o)
- * Manufacturers of Major Appliances (electric and non-electric) (s)(i)(o)
- * Manufacturers of Household Radio and Television Receivers (s)(i)(o)
- * Communications Equipment Manufacturers (s)(i)(o)
- * Manufacturers of Electrical Industrial Equipment (s)(i)(o)

Major Group 16. Electrical Products Industries - Concluded

- * Battery Manufacturers (s)(i)(o)
- * Manufacturers of Electric Wire and Cable (s)(i)(o)
- * Manufacturers of Miscellaneous Electrical Products (s)(i)(o)

Major Group 17. Non-Metallic Mineral Products Industries

- ** Cement Manufacturers (s)(i)(o)
- Lime Manufacturers (s)
- Gypsum Products Manufacturers (s)
- ** Concrete Products Manufacturers (s)(i)(o)
- ** Ready-Mix Concrete Manufacturers (s)(i)
- Clay Products Manufacturers (from domestic clays) (s)(i)
- Clay Products Manufacturers (from imported clays) (s)(i)(o)
- Refractories Manufacturers (s)(i)
- Stone Products Manufacturers (s)
- Mineral Wool Manufacturers (s)(i)(o)
- * Asbestos Products Manufacturers (s)(i)(o)
- ** Glass Manufacturers (s)(i)(o)
- ** Glass Products Manufacturers (s)(i)(o)
- * Abrasives Manufacturers (s)(i)(o)
- Other Non-Metallic Mineral Products Industries (s)(i)

Major Group 18. Petroleum and Coal Products Industries

- ** Petroleum Refining (s)(i)
- ** Manufacturing of Lubricating Oils and Greases (s)(i)
- Other Petroleum and Coal Products Industries (s)(i)

Major Group 19. Chemical and Chemical Products Industry

- Explosives and Ammunition Manufacturers (s)(i)(o)
- * Manufacturers of Mixed Fertilizers (s)(i)
- * Manufacturers of Plastics and Synthetic Resins (s)(i)(o)
- * Manufacturers of Pharmaceuticals and Medicines (s)(i)(o)
- * Paint and Varnish Manufacturers (s)(i)(o)
- * Manufacturers of Soap and Cleaning Compounds (s)(i)(o)
- * Manufacturers of Toilet Preparations (s)(i)
- Manufacturers of Industrial Chemicals (s)(i)(o)
- Manufacturers of Printing Inks (s)(i)
- Other Chemical Industries, n.e.s. (s)(i)(o)

Major Group 20. Miscellaneous Manufacturing Industries

- ** Instrument and Related Products Manufacturers (s)(i)(o)
- ** Clock and Watch Manufacturers (s)(i)(o)
- ** Orthopedic and Surgical Appliance Manufacturers (s)(i)(o)
- ** Ophthalmic Goods Manufacturers (s)(i)
- ** Dental Laboratories
- * Jewellery and Silverware Manufacturers (s)(i)(o)
- * Broom, Brush and Mop Industry (s)(i)(o)
- Venetian Blind Manufacturers (s)
- Plastic Fabricators, n.e.s. (s)(i)
- Sporting Goods Industry (s)(i)
- Toys and Games Industry (s)
- Fur Dressing and Dyeing Industry
- Signs and Displays Industry (s)
- Button, Buckle and Fastener Industry (s)
- Candle Manufacturers (s)
- Hair Goods Manufacturers (s)
- Artificial Flowers and Feathers Manufacturers (s)
- Model and Pattern Manufacturers (s)
- Musical Instruments Industry (s)(i)(o)
- Sound Recording Industry (s)(i)(o)
- Typewriter Supplies Manufacturers (s)
- Fountain Pen and Pencil Manufacturers (s)(i)(o)
- Smokers' Supplies Manufacturers (s)
- Stamp and Stencil (Rubber and Metal) Manufacturers (s)
- Statuary, Art Goods, Regalia and Novelty Manufacturers (s)
- Umbrella Manufacturers (s)
- Artificial Ice Manufacturers (s)
- Other Miscellaneous Industries (s)(i)(o)

CONCEPTS

Shipments - (Tables 1 to 4) - represent an estimated projection, on a monthly basis, of the latest available Census of Manufactures values.

New Orders - (Tables 2 and 3) - This series is designed to indicate the rate at which new business is being received. It is defined as all New Orders Received during the period, at estimated selling values. Thus it covers total new orders, net of cancellations, regardless of whether the orders will be filled from stock or as a result of activity during the same month (and, therefore, will also be reported as shipments in the month received) or whether they will be added to existing backlogs.

Unfilled Orders - (Tables 2 and 3) - are defined as orders on books at the end of the period stated. That is, they cover orders received but not yet shipped (or treated as a sale), irrespective of work done on them or of stocks from which they can be filled.

Total Inventory Owned - (Tables 2 to 4) - represents the estimated book value of inventory owned by manufacturers in connection with the manufacturing operations of the establishment covered whether held at plant or elsewhere, at the end of the period stated. It is made up of: raw materials, goods in process, finished goods of own manufacture less the value of inventory held but not owned which cannot be assigned to specific components. Since the series relates to manufacturing inventory only, value of goods purchased for re-sale is not included.

Inventory Held but Not Owned - (Tables 2 and 3) - represents, as far as possible, the portion of manufacturers' total inventory holdings which are no longer owned by the reporting manufacturers because of payments made on long-term contracts as work on these progresses. This item is applicable only to the relatively few industries where long-term contracts are common although, because of the nature of the item, the value per industry is high.

Because of variations in accounting methods there are a few cases where it is not possible to obtain values for this type of inventory. The estimated value shown for this item must therefore be considered to some extent incomplete.

Total Inventory Held - (Tables 2 and 3) - represents the estimated total value of manufacturers' inventory holdings in connection with manufacturing operations, regardless of ownership; it differs from inventory owned by the inclusion of inventories held under progress payments arrangements.

Inventory Components - (Tables 2 and 3) - Raw Materials, Goods in Process, and Finished Products are reported and compiled as on the books of each manufacturer, i.e. there has been no attempt to define the components specifically for each industry.

The inventory components are always a breakdown of total inventory held, not of total inventory owned. In industries where these two items differ, due to the inclusion of inventory held but not owned (see above), it is not possible to obtain value of inventory owned by components since, where separate progress accounts are maintained, firms concerned can only state that, of total holdings, a certain amount is not longer owned by them. It is fairly obvious that the bulk of such payments apply to goods in process holdings but due to time lags in shipments and to prepayments some of the total value of inventory held but not owned would be applicable to finished products or raw materials.

Any comparisons of shipments/inventory ratios should be made using total inventory owned, not total inventory held, since the latter includes values which have already been written off to sales. If shipments/inventory ratios are desired using inventory components, rather than total inventory, a reasonable approximation to total inventory owned by components would be obtained by assuming that all inventory held but not owned had been included with goods in process.

Groupings - The Standard Industrial Classification groupings of industries used in Tables 3 and 4 are defined according to the Standard Industrial Classification Manual. A list of the industries included in the Standard Industrial Classification groups will be found on page 40 of the bulletin.

SOURCES

Monthly (or, in a few cases, quarterly) reports covering value of inventories and shipments are now submitted on a voluntary basis by 3,000 plants in 120 industries; in addition, 3,000 small plants in 100 of these industries report monthly shipments only. Of the first group, 1,025 plants in 83 industries also report new and unfilled orders. Four industries are included in the total shipments estimates by using data available from other Bureau series, and two of these are also included in the total inventory estimates.

FOOTNOTES TO TABLES

TABLE 1. - (1) Prince Edward Island, Yukon and Northwest Territories are not published separately. They are included in the total for Canada.

TABLE 2. - (1) Annual shipments values differ slightly from published Census of Manufactures totals due to inventory adjustments for certain industries where Census of Manufactures data represent production rather than shipments values.

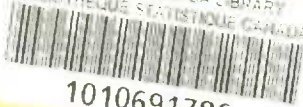
TABLE 3. - (1) See footnote (1), table 2.

(2) The value of Unfilled Orders and, therefore, of New Orders for industries in major groups - 1, 2, 6, 8, 9, 10, 17, 18 and 19 is small and sample coverage is not adequate to provide separate estimates for them.

(3) The value of inventory held but not owned in this group is very small, and sample coverage is not adequate to provide separate data. Estimates for this type of inventory are included with Total Inventory Held; for all practical purposes this can be considered the equivalent of Inventory Owned.

TABLE 5. - (1) Ratios for this group were calculated using values of Total Inventory Held instead of values of Total Inventory Owned. See footnote (3), table 3.

STATISTICS CANADA LIBRARY
BIBLIOTHÈQUE STATISTIQUE CANADA



1010691786

STATISTICS CANADA LIBRARY
BIBLIOTHÈQUE STATISTIQUE CANADA