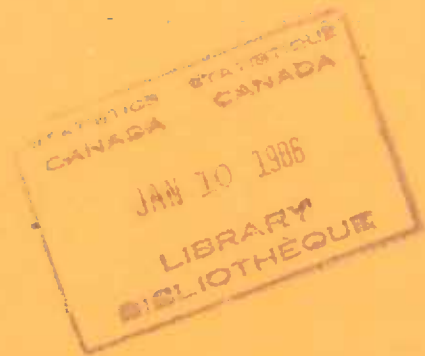


# Capacity utilization rates in Canadian manufacturing

Third quarter 1985

# Taux d'utilisation de la capacité dans les industries manufacturières au Canada

Troisième trimestre 1985



### Data in Many Forms...

Statistics Canada disseminates data in a variety of forms. In addition to publications, both standard and special tabulations are offered on computer print-outs, microfiche and microfilm, and magnetic tapes. Maps and other geographic reference materials are available for some types of data. Direct access to aggregated information is possible through CANSIM, Statistics Canada's machine-readable data base and retrieval system.

### How to Obtain More Information

Inquiries about this publication and related statistics or services should be directed to:

National Wealth and Capital Stock Section,  
Science, Technology and Capital Stock Division,

Statistics Canada, Ottawa, K1A 0T6 (Telephone: 990-9684) or to the Statistics Canada reference centre in:

St. John's (772-4073)	Sturgeon Falls (753-4888)
Halifax (426-5331)	Winnipeg (949-4020)
Montréal (283-5725)	Regina (359-5405)
Ottawa (990-8116)	Edmonton (420-3027)
Toronto (973-6586)	Vancouver (666-3691)

Toll-free access is provided in all provinces and territories, for users who reside outside the local dialing area of any of the regional reference centres.

Newfoundland and Labrador	Zénith 0-7037
Nova Scotia, New Brunswick and Prince Edward Island	1-800-565-7192
Quebec	1-800-361-2831
Ontario	1-800-268-1151
Manitoba	1-800-282-8006
Saskatchewan	1(112)800-667-3524
Alberta	1-800-222-6400
British Columbia (South and Central)	112-800-663-1551
Yukon and Northern B.C. (area served by NorthwTel Inc.)	Zénith 0-8913
Northwest Territories (area served by NorthwTel Inc.)	Call collect 420-2011

### How to Order Publications

This and other Statistics Canada publications may be purchased from local authorized agents and other community bookstores, through the local Statistics Canada offices, or by mail order to Publication Sales and Services, Statistics Canada, Ottawa, K1A 0T6.

1(613)993-7276

Toronto  
Credit card only (973-8018)

### Des données sous plusieurs formes...

Statistique Canada diffuse les données sous formes diverses. Outre les publications, des totalisations habituelles et spéciales sont offertes sur imprimés d'ordinateur, sur microfiches et microfilms et sur bandes magnétiques. Des cartes et d'autres documents de référence géographique sont disponibles pour certaines sortes de données. L'accès direct à des données agrégées est possible par le truchement de CANSIM, la base de données ordinaire et le système d'extraction de Statistique Canada.

### Comment obtenir d'autres renseignements

Toutes demandes de renseignements au sujet de cette publication ou de statistiques et services connexes doivent être adressées à:

Section de la richesse nationale et du stock de capital,  
Division des sciences, de la technologie et du stock de capital,

Statistique Canada, Ottawa, K1A 0T6 (téléphone: 990-9684) ou au centre de consultation de Statistique Canada à:

St. John's (772-4073)	Sturgeon Falls (753-4888)
Halifax (426-5331)	Winnipeg (949-4020)
Montréal (283-5725)	Regina (359-5405)
Ottawa (990-8116)	Edmonton (420-3027)
Toronto (973-6586)	Vancouver (666-3691)

Un service d'appel interurbain sans frais est offert, dans toutes les provinces et dans les territoires, aux utilisateurs qui habitent à l'extérieur des zones de communication locale des centres régionaux de consultation.

Terre-Neuve et Labrador	Zénith 0-7037
Nouvelle-Écosse, Nouveau-Brunswick et Île-du-Prince-Édouard	1-800-565-7192
Québec	1-800-361-2831
Ontario	1-800-268-1151
Manitoba	1-800-282-8006
Saskatchewan	1(112)800-667-3524
Alberta	1-800-222-6400
Colombie-Britannique (sud et centrale)	112-800-663-1551
Yukon et nord de la C.-B. (territoire desservi par la NorthwTel Inc.)	Zénith 0-8913

Territoires du Nord-Ouest (territoire desservi par la NorthwTel Inc.)	Appelez à frais virés au 420-2011
---	-----------------------------------

### Comment commander les publications

On peut se procurer cette publication et les autres publications de Statistique Canada auprès des agents autorisés et des autres librairies locales, par l'entremise des bureaux locaux de Statistique Canada, ou en écrivant à la Section des ventes et de la distribution des publications, Statistique Canada, Ottawa, K1A 0T6.

1(613)993-7276

Toronto  
Carte de crédit seulement (973-8018)

## **Statistics Canada**

Science, Technology and Capital  
Stock Division

# **Capacity utilization rates in Canadian manufacturing**

Third quarter 1985

## **Statistique Canada**

Division des sciences, de la technologie et du  
stock de capital

# **Taux d'utilisation de la capacité dans les industries manufacturières au Canada**

Troisième trimestre 1985

Published under the authority of  
the Minister of Supply and  
Services Canada

© Minister of Supply  
and Services Canada 1986

January 1986  
5-3204-501

Price: Canada, \$20.00, \$80.00 a year  
Other Countries, \$21.00, \$84.00 a year

Payment to be made in Canadian funds or equivalent

Catalogue 31-003, Vol. 10, No. 3

ISSN 0700-1517

Ottawa

Publication autorisée par  
le ministre des Approvisionnements et  
Services Canada

© Ministre des Approvisionnements  
et Services Canada 1986

Janvier 1986  
5-3204-501

Prix: Canada, \$20.00, \$80.00 par année  
Autres pays, \$21.00, \$84.00 par année

Paiement en dollars canadiens ou l'équivalent

Catalogue 31-003, vol. 10, n° 3

ISSN 0700-1517

Ottawa

## SYMBOLS

The following standard symbols are used in Statistics Canada publications:

- .. figures not available.
- ... figures not appropriate or not applicable.
- nil or zero.
- amount too small to be expressed.
- P preliminary figures.
- † revised figures.
- x confidential to meet secrecy requirements of the Statistics Act.

## SIGNES CONVENTIONNELS

Les signes conventionnels suivants sont employés uniformément dans les publications de Statistique Canada:

- .. nombres indisponibles.
- ... n'ayant pas lieu de figurer.
- néant ou zéro.
- nombres infimes.
- P nombres provisoires.
- † nombres rectifiés.
- x confidentiel en vertu des dispositions de la loi sur la statistique relatives au secret.

TABLE OF CONTENTS

	Page
Introduction	v
Highlights	xiii
Highlights Table	1
Table 1.	2
Food and Beverages	2
Tobacco Products	4
Rubber and Plastics Products Industries	6
Leather	8
Textile	10
Knitting Mills & Clothing	12
Wood	14
Furniture and Fixtures	16
Paper and Allied Industries	18
Printing, Publishing and Allied Industries	20
Primary Metals	22
Metal Fabricating	24
Machinery	26
Transportation Equipment	28
Electrical Products	30
Non-metallic Mineral Products	32
Petroleum and Coal Products	34
Chemical and Chemical Products	36
Miscellaneous Manufacturing	38
Table 2. Aggregates of Capacity Utilization Rates	40
Durable Manufacturing Industries	40
Non-durable Manufacturing Industries	40
Total Manufacturing Industries	40
Table 3. Annual Averages of Utilization Rates	42
Food and Beverages	42
Tobacco Products	42
Rubber and Plastics Products industries	42
Leather	42
Textile	42
Knitting Mills & Clothing	42
Wood	43
Furniture and Fixtures	43
Paper and Allied Industries	43

TABLE DES MATIÈRES

	Page
Introduction	v
Faits saillants	xiii
Faits saillants - Tableau	1
Tableau 1.	2
Aliments et boissons	2
Tabacs	4
Industrie du caoutchouc et des produits en matière plastique	6
Cuir	8
Textiles	10
Bonneterie et vêtements	12
Bois	14
Meubles et accessoires	16
Papiers et industries connexes	18
Impression, publication et industries connexes	20
Métaux primaires	22
Fabrications métalliques	24
Machines	26
Matériel de transport	28
Appareils et fournitures électriques	30
Produits des minéraux non métalliques	32
Dérivés du pétrole et du charbon	34
Produits chimiques	36
Industries diverses	38
Tableau 2. Les agrégations des taux d'utilisation de la capacité	40
Industries manufacturières de biens durables	40
Industries manufacturières de biens non durables	40
Ensemble du secteur manufacturier	40
Tableau 3. La moyenne annuelle de taux d'utilisation	42
Aliments et boissons	42
Tabacs	42
Industrie du caoutchouc et des produits en matière plastique	42
Cuir	42
Textiles	42
Bonneterie et vêtements	42
Bois	43
Meubles et accessoires	43
Papiers et industries connexes	43

TABLE OF CONTENTS - Concluded

	Page
Printing, Publishing and Allied Industries	43
Primary Metals	43
Metal Fabricating	44
Machinery	44
Transportation Equipment	44
Electrical Products	44
Non-metallic Mineral Products	44
Petroleum and Coal Products	44
Chemical and Chemical Products	45
Miscellaneous Manufacturing	45
Durable	45
Non-durable	45
Manufacturing Industries	45

Chart

I. Capacity Utilization Rates in Canadian Manufacturing, 1971-1984	46
Food and Beverages	46
Tobacco Products	46
Rubber and Plastic Products Industries	46
Leather	46
Textile	47
Knitting Mills & Clothing	47
Wood	47
Furniture and Fixtures	47
Paper and Allied Industries	48
Printing, Publishing and Allied Industries	48
Primary Metals	48
Metal Fabricating	48
Machinery	49
Transportation Equipment	49
Electrical Products	49
Non-metallic Mineral Products	49
Petroleum and Coal Products	50
Chemical and Chemical Products	50
Miscellaneous Manufacturing	50
Durable Goods	50
Non-durable Goods	51
Manufacturing Industries	51

List of Related Publications

TABLE DES MATIÈRES - fin

	Page
Impression, publication et industries connexes	45
Métaux primaires	46
Fabrications métalliques	46
Machines	46
Matériel de transport	46
Appareils et fournitures électriques	46
Produits des minéraux non métalliques	46
Dérivés du pétrole et du charbon	46
Produits chimiques	47
Industries diverses	47
Biens durables	47
Bien non durables	47
Industries manufacturières	47

Graphique

1. Taux d'utilisation de la capacité dans les industries manufacturières du Canada, 1971-1984	46
Aliments et boissons	46
Tabacs	46
Industrie du caoutchouc et des produits en matière plastique	46
Cuir	46
Textiles	47
Bonneterie et vêtements	47
Bois	47
Meubles et accessoires	47
Papiers et industries connexes	48
Impression, publication et industries connexes	48
Métaux primaires	48
Fabrications métalliques	48
Machines	49
Matériel de transport	49
Appareils et fournitures électriques	49
Produits des minéraux non métalliques	49
Dérivés du pétrole et du charbon	50
Produits chimiques	50
Industries diverses	50
Biens durables	50
Biens non durables	51
Industries manufacturières	51

Liste des publications connexes

## INTRODUCTION

From the point of view of utilization of resources available for the production of goods, there is a significant similarity between the labour force and the stock of capital in place. Any degree of under-utilization in either type of resource indicates the gap between potential and actual use of these resources. However, when the socio-political implications of unemployed resources are considered, then the difference between capital stocks and labour becomes substantial.

It is common knowledge that the stock of capital in place typically is not used with the same degree of intensity over the year. Recently, increasing attention has been focused on the measurement of productive potential and the extent to which it is realized. This capacity utilization measurement is an interesting way of examining the relationship between the total resources available and the level of potential output. Within this context, utilization measures could establish significant yardsticks indicative of trends and cycles in capacity utilization.

Economists, particularly in the United States, in their efforts to measure capacity have developed a number of alternative methods varying from direct annual surveys to econometric models.

At present in Canada, the Department of Industry, Trade and Commerce produces an index of capacity utilization for the goods-producing industries by using the Wharton School trend-through-peak estimation procedures.<sup>(1)</sup> This index is derived from seasonally adjusted quarterly indexes of industrial production, which are charted and the peaks selected by inspection. These peaks are considered to be the capacity output of the industry. Successive capacity peaks are joined by a straight line to indicate the capacity during the intervening periods. Forward extrapolation of the same straight line generates capacity measures for periods following the last peak until the actual production index intersects the line.

<sup>(1)</sup> These indexes are published in *Rate of Capacity Utilization, Canada*. Department of Industry, Trade and Commerce, Ottawa.

Si l'on se place dans la perspective de l'utilisation des ressources disponibles, on constate une certaine similitude entre la main-d'oeuvre occupée et le stock de capital en place. Tout degré de sous-utilisation de l'une ou l'autre de ces ressources indique qu'il existe une différence entre leur utilisation potentielle et réelle. Cependant, si l'on tient compte des implications sociales et politiques de la non-utilisation des ressources disponibles, la différence entre les stocks de capital et la main-d'oeuvre s'accroît.

Il est reconnu que le stock de capital en place n'est pas utilisé dans la même proportion d'une année à l'autre. Depuis quelque temps, on cherche de plus en plus à mesurer d'une façon précise la différence entre le potentiel de productivité et la productivité réelle. Cette mesure de l'utilisation de la capacité peut servir à examiner la relation existant entre l'ensemble des ressources disponibles et le potentiel de production. De plus, une mesure de l'utilisation de la capacité pourrait servir à mesurer les tendances et les cycles à l'intérieur de celle-ci.

Dans le cadre de travaux sur la mesure de la capacité, des économistes, en particulier aux États-Unis, ont mis sur pied un certain nombre d'autres méthodes de quantification allant des enquêtes annuelles directes aux modèles économétriques.

Au Canada, le ministère de l'Industrie et du Commerce produit actuellement un indice de l'utilisation de la capacité pour les industries de biens d'après les méthodes d'estimation de la tendance générale par les sommets de l'école Wharton<sup>(1)</sup>. Cet indice est calculé à partir d'indices trimestriels désaisonnalisés de la production industrielle, qui sont reportés sur un graphique sur lequel on choisit les sommets. On considère que ces sommets représentent la capacité de production de l'industrie. Les différents sommets atteints au cours de chaque trimestre sont reliés par une ligne droite de façon à indiquer la capacité au cours de la période comprise entre deux sommets. Une extrapolation directe de cette même ligne droite permet de mesurer la capacité pour la période comprise entre le dernier sommet jusqu'à l'intersection par l'indice de la production réelle de la ligne droite.

<sup>(1)</sup> Ces indices sont publiés dans *Taux d'utilisation de la capacité*. Ministère de l'Industrie et du Commerce, Ottawa.

The Statistics Canada approach represents an alternative measure and is based on the capital-output ratio of each industry. It provides a basis for establishing the capacity output series with which actual output data are compared in order to derive the utilization rates. The definition of capacity in this procedure is the maximum output obtainable under "normal" technological and market conditions.

Some differences in level exist between the Statistics Canada series and those of the Department of Industry, Trade and Commerce. This situation is to be expected, of course, given the different estimation procedures underlying each set of measures.

The Statistical Tables show quarterly indexes of capacity utilization in Canadian manufacturing broken down into various major groups according to the 1970 **Standard Industrial Classification**.

The methodology used to produce these indexes is based on a comparison of the **actual** output of an industry during a certain time period with the estimated **capacity** output during that period.(2)

The estimated capacity output is based on a capacity capital-output ratio derived from the industry's gross stock of fixed capital, measured in 1971 dollars. These capital stock estimates are produced by the National Wealth and Capital Stock Section of Statistics Canada, and a brief outline of the method used to derive the estimates follows.(3) The capital stock figures used here have been adjusted to reflect decreases in efficiency of older capital due to technical obsolescence, and consolidations of operations by industries. While these changes have affected the general level of the rates, they have not altered, to any significant degree the trends reflected in the rates.

The measurement procedure underlying the capital stock estimates is known as the "perpetual inventory" method. Briefly, this method involves the accumulation, over a period of years, of investment expenditures by industry to obtain its capital stock in any given year. The basic ingredients required are:

- (2) The concepts of capacity used follows the work of Daniel Creamer, "Capital Expansion and Capacity in Post-War Manufacturing", Studies in Business Economics, No. 72 National Industrial Conference Board, New York, 1961.
- (3) Capital stock estimates are published in **Fixed Capital Flows and Stocks**, Catalogue 13-211, Annual.

L'approche de Statistique Canada est en fait un autre genre de mesure et repose sur le coefficient de capital de chaque industrie. Elle permet d'établir des séries sur la capacité de production que l'on compare aux données sur la production réelle de façon à obtenir les taux d'utilisation. La capacité, d'après cette méthode, se définit comme le maximum de biens que l'on peut produire dans des conditions technologiques et commerciales "normales".

Il existe certaines différences de niveau entre les séries de Statistique Canada et celles du ministère de l'Industrie et du Commerce. Il va sans dire que ces différences proviennent du fait que les méthodes d'estimation de chacun des ensembles de mesures sont différentes.

Les tableaux statistiques présentent des indices trimestriels de l'utilisation de la capacité pour les industries manufacturières du Canada ventilés en principaux groupes selon la **Classification des activités économiques**, de 1970.

La méthodologie inhérente au calcul de ces indices repose sur la comparaison de la production **réelle** d'une industrie au cours d'une certaine période avec la **capacité** estimée de production au cours de cette même période(2).

La capacité de production estimée est calculée d'après le coefficient de capital de capacité obtenu à partir du stock brut de capital fixe de l'industrie, mesuré en dollars de 1971. Ces estimations du stock de capital sont produites par la Section de la richesse nationale et du stock de capital de Statistique Canada. Voici une brève description de la méthode utilisée pour calculer les estimations(3). Les chiffres sur le stock de capital utilisés ici ont été corrigés pour tenir compte de l'efficacité décroissante du capital ancien attribuable à l'obsolescence technique, et à la consolidation des opérations par les industries. Ces corrections ont affecté le niveau général des taux, mais elles n'ont pas modifié de façon importante les tendances reflétées par ces taux.

La méthode de mesure des estimations de stocks de capital est celle de "l'inventaire perpétuel". En bref, il s'agit d'accumuler pendant un certain nombre d'années les dépenses d'investissement de l'industrie pour obtenir son stock de capital pour une année donnée. Les éléments fondamentaux nécessaires sont:

- (2) La définition de la capacité utilisée ici est celle qu'a formulée Daniel Creamer dans "Capital Expansion and Capacity in Post-War Manufacturing", Studies in Business Economics, n° 72, National Industrial Conference Board, New York, 1961.
- (3) Des estimations du stock de capital sont publiées dans **Flux et stocks de capital fixe**, n° 13-211 au catalogue, annuel.



Annual investment series in current dollars by industry and category of expenditure;

price deflators relating to the investment-series; and

estimates of the average economic life of the assets used in the various industries.

To illustrate the mechanics of the "perpetual inventory" method, an example of the actual computing process is given. (Text Table I summarizes the computational procedure involved in this example.) Assume that the capital assets in a particular industry remain in production for 10 years before they are retired. We start with year one and adjusting for prices, we accumulate the investment expenditures pertaining to the types of capital assets in question for a period of 10 years. In the tenth year, a measure of the gross stock of this industry's capital assets is obtained. In the eleventh year, we deduct from the accumulated total the investment expenditures of the first year and add the purchase of capital assets of the eleventh year. We proceed in the same manner for all subsequent years.

In the **gross capital stocks**, capital assets are included at their full value during the entire time they remain in the capital stock. In other words, the deductions from gross investment are due to the fact that assets in question have ceased to exist. An alternative set of measures of capital stocks is derived by adjusting the value of the assets in existence for the wear and tear and obsolescence they undergo during their service life; these estimates are known as **net capital stocks**. Calculations of net capital stocks are made by applying a depreciation formula to the gross stock estimated. The net stock is equal to the difference between the cumulative value of past gross investment and cumulative depreciation.

The quarterly capital estimates are derived by applying a linear interpolation to the annual capital stocks. The stock estimates are then combined with the seasonally adjusted quarterly production indexes to derive quarterly capital-output ratios for the whole period. The production indexes for the Petroleum and Coal Industry are the gross output rather than the gross domestic product which are used for all other industries. It is felt that the gross output

(4) The indexes of industrial production used are those published in **Gross Domestic Product by Industry**, Catalogues 61-213, and 61-005, Statistics Canada.

Les séries annuelles des investissements, par industrie et catégorie de dépense;

les indices de déflation se rapportant aux séries sur les investissements;

les estimations de la durée de vie économique moyenne des actifs utilisés par les différentes industries.

Pour expliquer le mécanisme de "l'inventaire perpétuel", voici un exemple du processus réel du calcul. (Le tableau explicatif I résume le processus du calcul.) Supposons que l'actif immobilisé de l'industrie demeure en production pendant 10 ans avant d'être retiré. On commence par la première année et, après déflation, on accumule les dépenses d'investissement se rapportant aux catégories de capital considérées pour une période de 10 ans. La dixième année, on obtient une mesure du stock brut des actifs immobilisés de cette industrie. La onzième année, on déduit les dépenses d'investissement de la première année du total cumulatif et on ajoute les achats d'actifs immobilisés au cours de la onzième année. On procède de la même façon pour toutes les années suivantes.

On regroupe dans les **stocks bruts de capital** les actifs immobilisés à leur valeur intégrale tant que ces actifs font partie du stock de capital. En d'autres termes, les déductions sur les investissements bruts s'expliquent par le fait que les actifs en question ont cessé d'exister. On obtient un autre ensemble de mesures des stocks de capital en ajustant la valeur des actifs existants pour prendre en compte l'usure et l'obsolescence qu'ils subissent lors de leur durée de vie, et l'on appelle ces estimations **stocks nets de capital**. On calcule les stocks nets de capital grâce à une formule d'amortissement que l'on fait intervenir dans les estimations des stocks bruts. Le stock net est égal à la différence entre la valeur cumulative des investissements bruts antérieurs et la dépréciation accumulée.

Les estimations trimestrielles de capital sont calculées d'après une interpolation linéaire des stocks annuels de capital. Ces estimations de stocks sont ajustées pour tenir compte des dépenses engagées au titre de la réduction de la pollution et ensuite combinées aux indices trimestriels désaisonnalisés de la production pour donner les coefficients de capital trimestriels pour l'ensemble de la période. L'indice de la production pour l'industrie des dérivés du pétrole et du charbon est l'indice de la production

(4) Les indices de la production industrielle utilisés ont été publiés dans **Produit intérieur brut par industrie**, n° 61-213 et 61-005 au catalogue, Statistique Canada.

index better reflects the performance of the industry in the light of significant price changes.(4)

These ratios are expressed in the Statistical Tables in constant 1971 dollars in order to show the degree of capital intensity in the various industries. The minimum capital-output ratio during this period indicates the historical capacity peak. When we divide the capital stocks series by the minimum capital-output ratio, we obtain a series of potential output.

As the final step in this procedure, actual data for individual production indexes are expressed as a ratio of the potential output series in percentage form to obtain the indexes of capacity utilization.

We summarize the procedure of measuring the capacity and operating rates in the following fashion:

Let  $K_t$  = fixed capital stocks at time  $t$ ,

let  $\frac{K_0}{P_0}$  = capacity capital-output ratio

where  $K_0$  = fixed capital in benchmark period(5)

and  $P_0$  = capacity output in the same period,

let  $P_t$  = actual output at time  $t$ ,

and  $CP_t$  = estimated capacity output at time  $t$ .

Then  $K_t \div \frac{K_0}{P_0} = CP_t$ .

$\frac{P_t}{CP_t} \times 100$  = percentage of capacity utilized at time  $t$ ; that is, the capacity utilization rate.

Of course, in subsequent periods, if a lower capital-output ratio occurs, it is adopted as the capacity ratio, and the entire series is adjusted accordingly.

This formula was used to calculate the manufacturing industry capacity utilization rates shown in the Statistical Tables. The indexes for durable, non-durable and total

(5) As noted previously, this benchmark period is the time when the minimum capital-output ratio occurred.

brute au lieu de celui du produit intérieur brut qui est utilisé dans les autres industries. En vue d'importants changements des prix, on croit que l'indice de la production brute soit plus représentatif de la performance de cette industrie(4).

Dans les Tableaux statistiques, ces coefficients sont exprimés en dollars constants de 1971 de façon à indiquer le degré d'intensité de capital des différentes industries. Le coefficient de capital minimum au cours de cette période indique le sommet historique de la capacité. Lorsqu'on divise les séries des stocks de capital par le coefficient de capital minimum, on obtient une série de la production potentielle.

Enfin, les données réelles pour les indices de production individuels sont exprimées en tant que ratio des séries de la production potentielle en pourcentage pour obtenir les indices de l'utilisation de la capacité.

Nous pouvons résumer ainsi la marche à suivre pour la mesure des taux d'utilisation de la capacité et d'activité:

Soit  $K_t$  = stocks de capital au temps  $t$ ,

et soit  $\frac{K_0}{P_0}$  = coefficient de capital de la capacité

où  $K_0$  = capital fixe au cours de la période repère(5)

et  $P_0$  = production potentielle au cours de la même période,

soit  $P_t$  = production réelle au temps  $t$ ,

et  $CP_t$  = production potentielle prévue au temps  $t$ .

Alors  $K_t \div \frac{K_0}{P_0} = CP_t$ .

$\frac{P_t}{CP_t} \times 100$  = pourcentage de la capacité utilisée au temps  $t$ ; c'est-à-dire le taux d'utilisation de la capacité.

Bien entendu, lorsque l'on enregistre un coefficient de capital plus bas, au cours des périodes qui suivent, on le considère comme étant le ratio de capacité, et toute la série est ajustée en conséquence.

Cette formule a été utilisée pour calculer les taux de l'utilisation de la capacité des industries manufacturières présentés dans les Tableaux statistiques. Les indices ont été calculés par

(5) Comme il a été mentionné auparavant, cette période repère est le moment où l'on a enregistré le plus bas coefficient capital-production.

TEXT TABLE I. Example: Assumed Service Life = 10 Years = L

TABLEAU EXPLICATIF I. Exemple: Durée de vie supposée de 10 ans = L

Year	Data on current dollar gross fixed capital formation	Deflator year 12 = 1.000	Constant dollar gross fixed capital formation columns (1) ÷ (2)	Discards, move column (5) on 10 years	Columns (3)-(4)	Gross stock, column (5) after cumulation	Depreciation $\frac{1}{2L} (K_n + K_{n-1})$	Net investment column (3)-(7)	Net stock, column (8) after cumulation
Année	Données sur la formation brute de capital fixe en dollars courants	Indice de déflation = 1.000 pour l'année 12	Formation brute de capital fixe en dollars constants colonnes (1) ÷ (2)	Retraits, descendre la colonne (3) de 10 ans	Colonnes (3)-(4)	Stocks bruts, colonne (5) après cumul	Dépréciation $\frac{1}{2L} (K_n + K_{n-1})$	Investissement net colonnes (3)-(7)	Stocks net, colonne (8) après cumul
	(1)	(2)	(3)	(4)	(5)	(6)	(7)	(8)	(9)
	$I_n$	$P$				$K_n$			$N K_n$
1	17.6	.772	22.8		22.8	22.8		22.8	22.8
2	36.2	.825	43.9		43.9	66.7	4.5	39.4	62.2
3	20.4	.857	23.8		23.8	90.5	7.9	15.9	78.1
4	15.3	.855	17.9		17.9	108.4	9.9	8.0	86.1
5	19.7	.868	22.7		22.7	131.1	12.0	10.7	96.8
6	27.2	.907	30.0		30.0	161.1	14.6	15.4	112.2
7	35.0	.928	37.7		37.7	198.8	18.0	19.7	131.9
8	20.5	.967	21.2		21.2	220.0	20.9	.3	132.2
9	13.8	.979	14.1		14.1	234.1	22.7	- 8.6	123.6
10	27.0	.982	27.5		27.5	261.6	24.8	2.7	126.3
11	27.2	.986	27.6	22.8	4.8	266.4	26.4	1.2	127.5
12	21.8	1.000	21.8	43.9	- 22.1	244.3	25.5	- 3.7	123.8

manufacturing were derived by aggregation, using the same weights as the 1971 Gross Domestic Product.(6)

The statistics presented here are only statistical estimates and they are not operating ratios based on either engineering measures, such as productive machine hours, or survey results.

(6) For the period prior to 1971 the data are not available on a 1971 base. To obtain a continuous record on a 1971 base, the indexes on a 1961 base were mechanically rebased to 1971 by multiplying by 100.0 and dividing by the 1971 index value on a 1961 base. An adjustment has been made to the production indexes for Rubber and Plastics Products, and Miscellaneous Manufacturing, based on the annual Real Domestic Product Indexes, to capture the trend of the individual industries according to the 1970 Standard Industrial Classification, from 1961 to 1970.

agrégation tant pour l'ensemble des industries manufacturières que pour les industries des biens durables et non durables à partir des mêmes pondérations que celles pour du produit intérieur brut de 1971(6).

Ces chiffres représentent uniquement des approximations et ne sont pas des coefficients de fonctionnement basés sur des mesures industrielles, comme les heures de production des machines, ni des résultats d'une enquête.

(6) En ce qui concerne les années antérieures à 1971, les données ne sont pas disponibles sur la base 1971 = 100. Pour obtenir une continuité des données de ces années, les indices sur la base 1961 = 100 furent convertis arithmétiquement à l'année de référence 1971 en les multipliant par 100.0 et en divisant le produit obtenu par la valeur de l'indice de 1971 sur la base de 1961 = 100. On a ajusté les indices de production de l'industrie du caoutchouc et des produits en matière plastique, et des industries manufacturières diverses, basés sur l'indice annuel du produit intérieur réel de façon à connaître la tendance des industries selon la Classification des activités économiques de 1970, pour la période de 1961 à 1970.

Given the many conceptual and measurement problems surrounding the notion of capacity utilization, the utilization rates shown here are indicative of trends and cycles in the utilization of capital. The indicated level is only a statistical approximation and should be viewed as such. For example, a rate of 100% indicates a high level of capital utilization which is considered a peak for the period observed.

Étant donné qu'il existe plusieurs problèmes relatifs à la notion du taux d'utilisation, il conviendrait de noter que les taux d'utilisation publiés ne constituent pas des mesures exactes, mais des statistiques indiquant les tendances et les cycles d'utilisation du stock de capital fixe. Par exemple, un taux de 100% indique un haut niveau de l'utilisation de capital qui est considéré un sommet pendant la période observée.

TEXT TABLE II. CANSIM Databank Numbers

TABLEAU EXPLICATIF II. Numéros dans la banque de données CANSIM

CANSIM Matrix Number 3539: Capacity Utilization Rates in Canadian Manufacturing

Numéro de matrice CANSIM 3539: Taux d'utilisation de la capacité dans les industries manufacturières au Canada

Industry	Databank number
Industrie	Numéro dans la banque de données
Food and beverages - Aliments et boissons	D883568
Tobacco products - Tabacs	D883569
Rubber and plastics products industries - Industrie du caoutchouc et des produits en matière plastique	D883570
Leather - Cuir	D883571
Textile - Textiles	D883572
Knitting mills & clothing - Bonneterie et vêtements	D883591
Knitting mills (ending last quarter 1984) - Bonneterie (se terminant au dernier trimestre 1984)	D883573
Clothing (ending last quarter 1984) - Vêtements (se terminant au dernier trimestre 1984)	D883574
Wood - Bois	D883575
Furniture and fixtures - Meubles et accessoires	D883576
Paper and allied industries - Papiers et industries connexes	D883577
Printing, publishing and allied industries - Impression, publication et industries connexes	D883578
Primary metals - Métaux primaires	D883579
Metal fabricating - Fabrications métalliques	D883580
Machinery - Machines	D883581
Transportation equipment - Matériel de transport	D883582
Electrical products - Appareils et fournitures électriques	D883583
Non-metallic mineral products - Produits des minéraux non-métalliques	D883584
Petroleum and coal products - Dérivés du pétrole et du charbon	D883585
Chemical and chemical products - Produits chimiques	D883586
Miscellaneous manufacturing - Industries diverses	D883587
Durable manufacturing industries - Industries manufacturières de biens durables	D883588
Non-durable manufacturing industries - Industries manufacturières de biens non-durables	D883589
Total manufacturing industries - Ensemble du secteur manufacturier	D883590

**Note:** To order any data from CANSIM on magnetic tape or computer printouts, contact CANSIM Division, Statistics Canada, K1A 0T6.

**Nota:** Pour commander toute série de données du système CANSIM sur bande magnétique ou imprimés d'ordinateur, s'adresser à la Division CANSIM, Statistique Canada, Ottawa, K1A 0T6.

TEXT TABLE III. Composition of Aggregates, and Gross Domestic Product Weights

TABLEAU EXPLICATIF III. Composition des agrégations, et les pondérations du produit intérieur brut

Aggregate	Component industries	1971 gross domestic product weight		
		Percentage	Millions of dollars	
Agrégation	Industries composantes	Pondération du produit intérieur brut de 1971		
		Pourcentage	Millions de dollars	
Durable manufacturing industries - Industries manufacturières de biens durables	Wood - Bois	0.998	831.2	
	Furniture and fixtures - Meubles et accessoires	0.420	349.6	
	Primary metals - Métaux primaires	1.990	1,657.0	
	Metal fabricating - Fabrications métalliques	1.971	1,640.7	
	Machinery - Machines	1.004	836.1	
	Transportation equipment - Matériel de transport	2.700	2,248.1	
	Electrical products - Appareils et fournitures électriques	1.605	1,336.5	
	Non-metallic mineral products - Produits des minéraux non métalliques	0.896	745.7	
	Non-durable manufacturing industries - Industries manufacturières de biens non durables	Food and beverages - Aliments et boissons	3.171	2,640.3
		Tobacco products - Tabacs	0.217	180.3
Rubber and plastics products industries - Industrie du caoutchouc et des produits en matière plastique		0.648	539.4	
Leather - Cuir		0.209	174.4	
Textile - Textiles		0.788	655.9	
Knitting mills and clothing - Bonneterie et vêtements		0.940	782.4	
Paper and allied industries - Papiers et industries connexes		1.881	1,566.4	
Printing, publishing and allied industries - Impression, publication et industries connexes		1.104	918.9	
Petroleum and coal products - Dérivés du pétrole et du charbon		0.315	262.5	
Chemical and chemical products - Produits chimiques		1.359	1,131.2	
Miscellaneous manufacturing - Industries diverses		0.654	544.4	



## HIGHLIGHTS

The utilization rates for the third quarter 1985 appearing in this publication correspond to those released on December 13, 1985 in the Statistics Canada Daily and CANSIM.

Capacity utilization in Canadian manufacturing during the third quarter of 1985 increased by 2.4% to a level of 78.3% from 76.5% in the second quarter of 1985. In this third quarter, higher capacity utilization rates were posted in 16 of the 19 industry groups. The most important increases were 8.7% in transportation equipment, 6.0% in knitting mills and clothing, 5.9% in leather, 5.3% in wood and 5.0% in furniture and fixtures. All other increases were less than 4.0%. Of the three industry groups whose rates declined, the decreases range from 1.3% to 0.3%.

Utilization rates in durable manufacturing industries increased by 2.9% in the third quarter of 1985 to 73.6% of capacity from 71.5% in the second quarter of 1985. In the non-durable sector, capacity utilization increased 1.7% to 83.1% from 81.7%.

Beginning in the first quarter of 1985, capacity utilization rates will no longer be calculated for Knitting Mills and Clothing Industries as individual industrial groups because the production data for these two industry groups has been amalgamated due to changes in the industrial classification.

As part of a continuous review of the quality of the capacity utilization rates it should be noted that the rates have been revised to reflect decreases in efficiency of older capital due to technical obsolescence and consolidations of operations by industries; in particular, Paper and Allied Industries and Petroleum and Coal Products. While these changes have affected the general level of the rates, they have not altered, to any significant degree, the trends reflected in the rates.

## FAITS SAILLANTS

Les taux d'utilisation publiés dans ce numéro du troisième trimestre de 1985 correspondent à ceux parus dans le Quotidien de Statistique Canada du 13 décembre 1985 et dans CANSIM.

L'utilisation de la capacité dans les industries manufacturières canadiennes s'est accrue de 2.4% au cours du troisième trimestre de 1985, passant de 76.5% au trimestre précédent à 78.3% à celui observé. Seize des dix-neuf branches d'activité ont connu une hausse de leur capacité d'utilisation. Les hausses les plus importantes ont été enregistrées dans la fabrication de matériel de transport (8.7%), l'industrie de la bonneterie et des vêtements (6.0%), les produits de cuir (5.9%), les produits du bois (5.3%) et la fabrication de meubles et accessoires (5.0%). Toutes les autres majorations étaient inférieures à 4.0%. Parmi les trois branches dont les taux ont fléchi, les baisses variaient de 1.3% à 0.3%.

Les taux d'utilisation dans les industries manufacturières de biens durables ont monté de 2.9% au cours du troisième trimestre de 1985, passant de 71.5% au deuxième trimestre à 73.6%. Dans le secteur des biens non durables, l'utilisation de la capacité s'est accrue de 1.7%, allant de 81.7% à 83.1%.

Depuis le premier trimestre de 1985, les taux d'utilisation de la capacité ne sont plus calculés séparément pour la bonneterie et pour les vêtements, les données pour ces deux branches d'activité ayant été amalgamées à la suite de la modification de la classification des activités économiques.

Il convient de noter que, dans le cadre d'un examen permanent des taux d'utilisation de la capacité, ces derniers ont été révisés pour tenir compte de l'efficacité décroissante du capital ancien attribuable à l'obsolescence technique, et à la consolidation des opérations par les industries, particulièrement l'industrie du papier et activités annexes et la fabrication de produits du pétrole et du charbon. Ces corrections ont affecté le niveau général des taux, mais elles n'ont pas modifié de façon importante les tendances reflétées par ces taux.





## Highlights Table

## Fait saillants - Tableau

	III 1985	Quarterly % change QIII 1985 QII 1985	II 1985	Quarterly % change QII 1985/ QI 1985	I 1985	Quarterly % change QI 1985/ QIV 1984	IV 1984
Industrie		Variation en % tri- mestrielle QIII 1985 QII 1985		Variation en % tri- mestrielle QII 1985 QI 1985		Variation en % tri- mestrielle QI 1985/ QIV 1984	
<b>TOTAL MANUFACTURING - ENSEMBLE DU SECTEUR MANUFACTURIER</b>	<b>78.3</b>	<b>2.4</b>	<b>76.5</b>	<b>1.2</b>	<b>75.6</b>	<b>-0.4</b>	<b>75.9</b>
<b>Durable manufacturing industries - Industries manufacturières de biens durables</b>	<b>73.6</b>	<b>2.9</b>	<b>71.5</b>	<b>1.3</b>	<b>70.6</b>	<b>0.6</b>	<b>70.2</b>
Wood - Bois	71.9	5.3	68.3	2.4	66.7	-0.9	67.3
Furniture and fixtures - Meubles et accessoires	84.5	5.0	80.5	6.2	75.8	1.6	74.6
Primary metals - Métaux primaires	75.4	1.8	74.1	0.1	74.0	-0.7	74.5
Metal fabricating - Fabrication de produits métalliques	74.8	0.4	74.5	7.5	69.3	3.4	67.0
Machinery - Machines	70.5	0.1	70.4	-2.2	72.0	-0.8	72.6
Transportation equipment - Matériel de transport	72.6	8.7	66.8	-3.0	68.9	-1.6	70.0
Electrical products - Appareils et fournitures électriques	71.6	-0.3	71.8	-1.0	72.5	5.2	68.9
Non-metallic mineral products - Produits des minéraux non métalliques	73.3	0.5	72.9	7.4	67.9	-1.9	69.2
<b>Non-durable manufacturing industries - Industries manufacturières de biens non durables</b>	<b>83.1</b>	<b>1.7</b>	<b>81.7</b>	<b>1.2</b>	<b>80.7</b>	<b>-1.3</b>	<b>81.8</b>
Food and beverages - Aliments et boissons	79.2	0.3	79.0	0.6	78.5	-0.4	78.8
Tobacco products - Tabacs	80.2	-0.9	80.9	9.2	74.1	-2.9	76.3
Rubber and plastics products industries - Industrie du caoutchouc et des produits en matière plastique	93.6	2.1	91.7	2.1	89.8	-4.1	93.6
Leather - Cuir	83.9	5.9	79.2	2.5	77.3	-7.8	83.8
Textile - Textiles	97.0	3.2	94.0	3.4	90.9	0.6	90.4
Knitting mills and clothing - Bonneterie et vêtements	96.0	6.0	90.6	0.3	90.3	-6.0	96.1
Paper and allied industries - Papiers et industries connexes	82.0	1.0	81.2	-1.6	82.5	0.6	82.0
Printing, publishing and allied industries - Impression, publication et industries connexes	99.9	1.2	98.7	2.0	96.8	-0.5	97.3
Petroleum and coal products - Dérivés du pétrole et du charbon	68.6	-1.3	69.5	5.3	66.0	-11.0	73.8
Chemical and chemical products - Produits chimiques	64.1	1.9	62.9	1.5	62.0	1.5	61.1
Miscellaneous manufacturing - Industries diverses	78.5	2.3	76.7	5.5	72.7	-2.0	74.2

TABLE 1. Food and Beverages

TABLEAU 1. Aliments et boissons

		Index of industrial production	Gross capital stock	Capital-output ratio	Index of potential output	Capacity utilization rate
		Indice de la production industrielle	Stock de capital brut	Coefficient de capital	Indice de la production potentielle	Taux d'utilisation de la capacité
		1971 = 100	\$ millions			
1961	I	62.2	3176.7	1.93	65.9	94.4
	II	63.0	3218.8	1.94	66.8	94.4
	III	65.7	3261.0	1.88	67.6	97.1
	IV	66.1	3303.1	1.89	68.5	96.5
1962	I	66.4	3345.2	1.91	69.4	95.7
	II	67.9	3386.2	1.89	70.2	96.7
	III	68.1	3427.2	1.91	71.1	95.8
	IV	88.1	3468.3	1.93	71.9	94.7
1963	I	69.3	3509.4	1.92	72.8	95.2
	II	70.2	3544.8	1.91	73.5	95.5
	III	71.1	3580.2	1.91	74.3	95.7
	IV	72.2	3615.5	1.90	75.0	96.3
1964	I	74.3	3650.8	1.86	75.7	98.1
	II	74.6	3687.5	1.87	76.5	97.5
	III	74.9	3724.2	1.88	77.3	97.0
	IV	76.9	3760.9	1.85	78.0	98.6
1965	I	76.8	3797.6	1.87	78.8	97.4
	II	76.3	3837.8	1.91	79.6	95.8
	III	78.4	3878.0	1.87	80.4	97.5
	IV	80.0	3918.2	1.85	81.3	98.4
1966	I	80.6	3958.4	1.86	82.1	98.2
	II	82.0	4007.8	1.85	83.1	98.6
	III	82.6	4057.2	1.86	84.2	98.1
	IV	84.4	4106.6	1.84	85.2	99.1
1967	I	85.2	4156.1	1.85	86.2	98.8
	II	86.8	4208.9	1.84	87.3	99.4
	III	88.4	4261.7	1.83	88.4	100.0
	IV	88.8	4314.4	1.84	89.5	99.2
1968	I	89.2	4367.2	1.85	90.6	98.5
	II	88.7	4414.6	1.89	91.6	96.9
	III	89.7	4462.1	1.88	92.6	96.9
	IV	91.7	4509.6	1.86	93.5	98.0
1969	I	92.0	4557.1	1.88	94.5	97.3
	II	91.8	4605.6	1.90	95.5	96.1
	III	93.5	4654.1	1.89	96.5	96.9
	IV	94.2	4702.6	1.89	97.5	96.6
1970	I	95.3	4751.1	1.89	98.6	96.7
	II	94.3	4807.2	1.93	99.7	94.6
	III	96.2	4863.3	1.91	100.9	95.4
	IV	97.0	4919.4	1.92	102.0	95.1
1971	I	97.8	4975.6	1.93	103.2	94.8
	II	99.1	5022.5	1.92	104.2	95.1
	III	101.7	5069.4	1.89	105.2	96.7
	IV	101.3	5116.3	1.91	106.1	95.5
1972	I	102.8	5163.3	1.90	107.1	96.0
	II	105.3	5206.2	1.87	108.0	97.5
	III	105.7	5249.2	1.88	108.9	97.1
	IV	108.0	5292.2	1.86	109.8	98.4
1973	I	107.8	5335.3	1.87	110.7	97.4
	II	106.3	5393.1	1.92	111.9	95.0
	III	108.8	5451.0	1.90	113.1	96.2
	IV	111.7	5508.9	1.87	114.3	97.3

TABLE 1. Food and Beverages

TABEAU 1. Aliments et boissons

		Index of industrial production	Gross capital stock	Capital-output ratio	Index of potential output	Capacity utilization rate
		Indice de la production industrielle	Stock de capital brut	Coefficient de capital	Indice de la production potentielle	Taux d'utilisation de la capacité
		1971 = 100	\$ millions			
1974	I	109.5	5566.8	1.93	115.5	94.8
	II	108.5	5623.4	1.96	116.6	93.0
	III	106.5	5680.0	2.02	117.8	90.4
	IV	105.0	5736.7	2.07	119.0	88.2
1975	I	105.1	5793.4	2.09	120.2	87.5
	II	106.2	5835.1	2.08	121.0	87.7
	III	108.6	5876.8	2.05	121.9	89.1
	IV	109.4	5918.4	2.05	122.8	89.1
1978	I	110.3	5960.0	2.05	123.6	89.2
	II	115.2	5998.3	1.97	124.4	92.6
	III	114.4	6036.6	2.00	125.2	91.4
	IV	114.2	6074.8	2.01	126.0	90.6
1977	I	114.9	6113.0	2.02	126.8	90.6
	II	115.4	6158.5	2.02	127.7	90.3
	III	114.8	6204.1	2.05	128.7	89.2
	IV	115.5	6249.5	2.05	129.6	89.1
1978	I	115.1	6295.0	2.07	130.6	88.1
	II	113.9	6337.1	2.11	131.4	86.6
	III	116.7	6379.2	2.07	132.3	88.2
	IV	119.1	6421.2	2.04	133.2	89.4
1979	I	119.6	6463.2	2.05	134.1	89.2
	II	119.1	6515.0	2.07	135.1	88.1
	III	118.5	6566.8	2.10	136.2	87.0
	IV	121.6	6618.5	2.06	137.3	88.6
1980	I	122.2	6670.3	2.07	138.4	88.3
	II	122.4	6733.8	2.08	139.7	87.6
	III	121.0	6797.3	2.13	141.0	85.8
	IV	119.9	6860.9	2.17	142.3	84.2
1981	I	123.6	6924.5	2.12	143.6	86.1
	II	123.7	6960.5	2.13	144.4	85.7
	III	123.0	6996.5	2.15	145.1	84.8
	IV	122.5	7032.5	2.17	145.9	84.0
1982	I	121.1	7068.6	2.21	146.6	82.6
	II	121.4	7113.1	2.22	147.5	82.3
	III	122.7	7157.6	2.21	148.5	82.6
	IV	120.4	7202.0	2.27	149.4	80.6
1983	I	123.1	7246.5	2.23	150.3	81.9
	II	122.2	7286.7	2.26	151.1	80.8
	III	122.4	7326.9	2.27	152.0	80.5
	IV	121.8	7367.0	2.29	152.8	79.7
1984	I	121.5	7407.2	2.31	153.6	79.1
	II	121.8	7451.9	2.32	154.6	78.8
	III	121.9	7496.7	2.33	155.5	78.4
	IV	123.3	7541.4	2.32	156.4	78.8
1985	I	123.5	7586.2	2.33	157.4	78.5
	II	124.9	7623.8	2.31	158.1	79.0
	III	125.8	7661.4	2.31	158.9	79.2
	IV					

TABLE 1. Tobacco Products

TABLEAU 1. Tabacs

		Index of industrial production	Gross capital stock	Capital-output ratio	Index of potential output	Capacity utilization rate
		Indice de la production industrielle	Stock de capital brut	Coefficient de capital	Indice de la production potentielle	Taux d'utilisation de la capacité
		1971 = 100	\$ millions			
1961	I	72.3	142.6	1.09	76.5	94.5
	II	73.1	144.3	1.09	77.4	94.4
	III	73.3	146.0	1.10	78.3	93.6
	IV	73.3	147.7	1.12	79.3	92.5
1962	I	75.8	149.5	1.09	80.2	94.5
	II	74.9	150.2	1.11	80.6	92.9
	III	75.4	151.0	1.11	81.0	93.1
	IV	76.1	151.7	1.11	81.4	93.5
1963	I	78.8	152.4	1.07	81.8	96.4
	II	79.0	153.7	1.08	82.5	95.8
	III	78.6	155.0	1.09	83.2	94.5
	IV	77.5	156.3	1.12	83.9	92.4
1964	I	74.7	157.6	1.17	84.6	88.3
	II	80.1	158.7	1.10	85.2	94.1
	III	85.8	159.9	1.03	85.8	100.0
	IV	84.5	161.1	1.06	86.4	97.8
1965	I	82.1	162.3	1.10	87.1	94.3
	II	84.6	164.4	1.08	88.2	95.0
	III	85.5	166.5	1.08	89.3	95.7
	IV	86.1	168.6	1.09	90.5	95.2
1966	I	89.2	170.7	1.06	91.6	97.4
	II	84.9	173.1	1.13	92.9	91.4
	III	85.2	175.6	1.14	94.2	90.4
	IV	90.5	178.0	1.09	95.5	94.8
1967	I	93.6	180.5	1.07	96.9	96.6
	II	93.4	182.5	1.08	97.9	95.4
	III	92.1	184.6	1.11	99.1	93.0
	IV	90.5	186.8	1.14	100.2	90.3
1968	I	89.7	189.0	1.17	101.4	88.4
	II	89.1	190.9	1.19	102.4	87.0
	III	89.9	192.8	1.19	103.5	86.9
	IV	92.8	194.7	1.16	104.5	88.8
1969	I	94.6	196.6	1.15	105.5	89.7
	II	93.1	197.7	1.18	106.1	87.8
	III	92.4	198.9	1.19	106.7	86.6
	IV	93.7	199.9	1.18	107.3	87.4
1970	I	96.7	201.0	1.15	107.9	89.7
	II	100.2	201.9	1.12	108.3	92.5
	III	98.2	202.8	1.15	108.8	90.2
	IV	102.1	203.7	1.11	109.3	93.4
1971	I	95.6	204.7	1.19	109.8	87.0
	II	98.9	205.8	1.15	110.4	89.6
	III	101.4	206.9	1.13	111.0	91.3
	IV	104.1	208.0	1.11	111.6	93.3
1972	I	102.7	209.2	1.13	112.3	91.5
	II	103.7	210.0	1.12	112.7	92.0
	III	105.8	210.9	1.11	113.2	93.5
	IV	104.9	211.6	1.12	113.5	92.4
1973	I	104.8	212.3	1.12	113.9	92.0
	II	104.1	212.8	1.13	114.2	91.2
	III	106.2	213.3	1.11	114.5	92.8
	IV	106.6	213.8	1.11	114.7	92.9

TABLE 1. Tobacco Products

TABLEAU 1. Tabacs

		Index of industrial production	Gross capital stock	Capital-output ratio	Index of potential output	Capacity utilization rate
		Indice de la production industrielle	Stock de capital brut	Coefficient de capital	Indice de la production potentielle	Taux d'utilisation de la capacité
		1971 = 100	\$ millions			
1974	I	112.1	214.3	1.06	115.0	97.5
	II	113.2	217.2	1.06	116.5	97.1
	III	109.3	220.1	1.12	118.1	92.5
	IV	112.1	223.1	1.10	119.7	93.6
1975	I	110.5	226.2	1.14	121.4	91.0
	II	106.9	227.4	1.18	122.0	87.6
	III	110.8	228.6	1.14	122.7	90.3
	IV	113.2	229.8	1.13	123.3	91.8
1976	I	113.8	231.1	1.13	124.0	91.8
	II	116.6	230.6	1.10	123.7	94.2
	III	113.7	230.1	1.12	123.5	92.1
	IV	107.4	229.5	1.19	123.1	87.2
1977	I	112.1	228.9	1.13	122.8	91.3
	II	108.5	229.1	1.17	122.9	88.3
	III	108.0	229.3	1.18	123.0	87.8
	IV	115.4	229.6	1.10	123.2	93.7
1978	I	112.5	230.0	1.13	123.4	91.2
	II	105.5	230.9	1.21	123.9	85.2
	III	106.5	231.8	1.21	124.4	85.6
	IV	109.4	232.8	1.18	124.9	87.6
1979	I	111.8	233.8	1.16	125.5	89.1
	II	113.6	234.5	1.14	125.8	90.3
	III	111.8	235.3	1.17	126.3	88.5
	IV	108.9	236.1	1.20	126.7	86.0
1980	I	113.9	236.9	1.15	127.1	89.6
	II	110.5	238.5	1.20	128.0	86.3
	III	110.7	240.2	1.20	128.9	85.9
	IV	112.3	241.8	1.19	129.7	86.6
1981	I	106.6	243.5	1.27	130.7	81.6
	II	112.2	243.7	1.20	130.8	85.8
	III	122.3	244.0	1.11	130.9	93.4
	IV	117.4	244.2	1.15	131.0	89.6
1982	I	115.0	244.5	1.18	131.2	87.7
	II	114.9	246.0	1.19	132.0	87.0
	III	112.3	247.5	1.22	132.8	84.6
	IV	114.5	248.9	1.21	133.6	85.7
1983	I	115.9	250.4	1.20	134.4	86.3
	II	105.3	251.3	1.32	134.8	78.1
	III	100.7	252.2	1.39	135.3	74.4
	IV	105.4	253.1	1.33	135.8	77.6
1984	I	102.9	254.1	1.37	136.3	75.5
	II	99.5	254.3	1.42	136.5	72.9
	III	99.5	254.5	1.42	136.6	72.9
	IV	104.3	254.7	1.35	136.7	76.3
1985	I	101.4	254.9	1.39	136.8	74.1
	II	110.7	255.1	1.28	136.9	80.9
	III	109.8	255.3	1.29	137.0	80.2
	IV					

TABLE 1. Rubber and Plastics Products Industries

TABLEAU 1. Industrie du caoutchouc et des produits en matière plastique

		Index of industrial production	Gross capital stock	Capital-output ratio	Index of potential output	Capacity utilization rate
		Indice de la production industrielle	Stock de capital brut	Coefficient de capital	Indice de la production potentielle	Taux d'utilisation de la capacité
		1971 = 100	\$ millions			
1961	I	35.0	380.5	2.02	63.0	55.5
	II	36.9	383.8	1.93	63.6	58.0
	III	39.9	387.1	1.80	64.1	62.2
	IV	43.9	390.3	1.65	64.7	67.9
1962	I	45.1	393.6	1.62	65.2	69.2
	II	50.4	397.2	1.46	65.8	76.6
	III	53.4	400.9	1.39	66.4	80.4
	IV	52.4	404.6	1.43	67.0	78.2
1963	I	54.1	408.3	1.40	67.7	80.0
	II	54.3	411.8	1.41	68.2	79.6
	III	50.7	415.3	1.52	68.8	73.7
	IV	52.1	418.9	1.49	69.4	75.1
1964	I	58.0	422.5	1.35	70.0	82.8
	II	59.6	428.1	1.33	70.9	84.0
	III	56.4	433.8	1.43	71.9	78.5
	IV	58.7	439.5	1.39	72.8	80.6
1965	I	59.8	445.3	1.38	73.8	81.0
	II	61.1	451.6	1.37	74.8	81.7
	III	61.2	457.9	1.39	75.9	80.7
	IV	66.6	464.2	1.29	76.9	86.6
1966	I	71.8	470.6	1.22	78.0	92.1
	II	71.8	484.4	1.25	80.3	89.5
	III	68.8	498.2	1.34	82.6	83.3
	IV	70.7	512.1	1.34	84.9	83.3
1967	I	72.6	526.0	1.34	87.2	83.3
	II	75.6	531.9	1.30	88.1	85.8
	III	84.1	537.9	1.19	89.1	94.4
	IV	79.0	543.8	1.28	90.1	87.7
1968	I	91.1	549.8	1.12	91.1	100.0
	II	79.0	559.6	1.31	92.7	85.2
	III	78.2	569.5	1.35	94.4	82.9
	IV	87.7	579.4	1.22	96.0	91.3
1969	I	91.6	589.3	1.19	97.6	93.8
	II	93.2	604.8	1.20	100.2	93.0
	III	90.8	620.4	1.27	102.8	88.3
	IV	95.2	636.0	1.24	105.4	90.3
1970	I	95.7	651.6	1.26	108.0	88.6
	II	91.9	665.1	1.34	110.2	83.4
	III	98.0	678.7	1.28	112.5	87.1
	IV	91.2	692.3	1.41	114.7	79.5
1971	I	93.1	705.9	1.41	117.0	79.6
	II	98.2	729.0	1.38	120.8	81.3
	III	104.7	752.2	1.33	124.6	84.0
	IV	105.0	775.5	1.37	128.5	81.7
1972	I	107.2	798.8	1.38	132.4	81.0
	II	116.9	813.8	1.29	134.8	86.7
	III	115.3	828.8	1.33	137.3	84.0
	IV	118.6	843.8	1.32	139.8	84.8
1973	I	126.2	858.8	1.26	142.3	86.7
	II	125.8	881.1	1.30	146.0	86.2
	III	134.9	903.5	1.24	149.7	90.1
	IV	137.3	925.8	1.25	153.4	89.5

TABLE 1. Rubber and Plastics Products Industries

TABLEAU 1. Industrie du caoutchouc et des produits en matière plastique

		Index of industrial production Indice de la production industrielle	Gross capital stock Stock de capital brut	Capital-output ratio Coefficient de capital	Index of potential output Indice de la production potentielle	Capacity utilization rate Taux d'utilisation de la capacité
		1971 = 100	\$ millions			
1974	I	138.2	948.1	1.27	157.1	88.0
	II	134.5	966.3	1.33	160.1	84.0
	III	128.4	984.6	1.42	163.1	78.7
	IV	130.4	1002.9	1.43	166.2	78.5
1975	I	127.5	1021.3	1.49	169.2	75.3
	II	119.6	1033.6	1.60	171.3	69.8
	III	119.0	1046.0	1.63	173.3	68.7
	IV	123.2	1058.3	1.59	175.4	70.3
1976	I	129.3	1070.7	1.54	177.4	72.9
	II	137.9	1075.4	1.45	178.2	77.4
	III	142.5	1080.1	1.41	179.0	79.6
	IV	142.4	1084.7	1.41	179.7	79.2
1977	I	146.8	1089.3	1.38	180.5	81.3
	II	147.4	1093.6	1.38	181.2	81.3
	III	149.4	1097.9	1.36	181.9	82.1
	IV	144.2	1102.2	1.42	182.6	79.0
1978	I	146.2	1106.5	1.40	183.3	79.7
	II	153.5	1109.3	1.34	183.8	83.5
	III	155.8	1112.1	1.32	184.3	84.5
	IV	165.5	1114.8	1.25	184.7	89.6
1979	I	167.5	1117.5	1.24	185.2	90.5
	II	174.7	1126.1	1.20	186.6	93.6
	III	174.6	1134.7	1.20	188.0	92.9
	IV	168.9	1143.2	1.25	189.4	89.2
1980	I	163.4	1151.7	1.31	190.8	85.6
	II	150.3	1157.7	1.43	191.8	78.4
	III	150.5	1163.7	1.43	192.6	78.1
	IV	153.3	1169.6	1.41	193.8	79.1
1981	I	158.9	1175.5	1.37	194.8	81.6
	II	169.5	1187.8	1.30	196.8	86.1
	III	167.4	1200.1	1.33	198.9	84.2
	IV	155.1	1212.4	1.45	200.9	77.2
1982	I	145.3	1224.7	1.56	202.9	71.6
	II	138.9	1233.4	1.65	204.4	68.0
	III	141.4	1242.1	1.63	205.8	68.7
	IV	137.0	1250.8	1.69	207.3	66.1
1983	I	149.7	1259.5	1.56	208.7	71.7
	II	157.7	1258.2	1.48	208.5	75.6
	III	166.4	1256.9	1.40	208.3	79.9
	IV	177.4	1255.6	1.31	208.0	85.3
1984	I	182.6	1254.3	1.27	207.8	87.9
	II	185.9	1256.9	1.25	208.3	89.3
	III	189.8	1259.5	1.23	208.7	90.9
	IV	195.6	1262.1	1.20	209.1	93.6
1985	I	188.1	1264.8	1.25	209.6	89.8
	II	192.6	1268.0	1.22	210.1	91.7
	III	197.1	1271.2	1.20	210.6	93.6
	IV					

TABLE 1. Leather

TABLEAU 1. Cuir

		Index of industrial production	Gross capital stock	Capital-output ratio	Index of potential output	Capacity utilization rate
		Indice de la production industrielle	Stock de capital brut	Coefficient de capital	Indice de la production potentielle	Taux d'utilisation de la capacité
		1971 = 100	\$ millions			
1961	I	86.6	133.4	0.88	96.4	89.8
	II	89.5	133.5	0.86	96.5	92.7
	III	91.2	133.6	0.84	96.6	94.4
	IV	92.9	133.7	0.83	96.7	96.1
1962	I	92.9	133.9	0.83	96.8	96.0
	II	94.3	134.1	0.82	96.9	97.3
	III	93.2	134.4	0.83	97.2	95.9
	IV	91.8	134.7	0.84	97.4	94.3
1963	I	93.3	135.1	0.83	97.7	95.5
	II	92.8	135.6	0.84	98.0	94.7
	III	92.0	136.2	0.85	98.5	93.4
	IV	95.5	136.7	0.82	98.8	96.6
1964	I	96.9	137.2	0.81	99.2	97.7
	II	96.9	137.5	0.81	99.4	97.5
	III	97.4	137.9	0.81	99.7	97.7
	IV	96.6	138.1	0.82	99.8	96.8
1965	I	98.4	138.4	0.81	100.1	98.3
	II	96.7	138.5	0.82	100.1	94.6
	III	98.0	138.6	0.81	100.2	97.8
	IV	100.2	138.6	0.79	100.2	100.0
1966	I	99.5	138.7	0.80	100.3	98.2
	II	100.8	139.7	0.79	101.0	98.8
	III	97.8	140.7	0.82	101.7	96.1
	IV	99.1	141.8	0.82	102.5	96.7
1967	I	96.0	142.9	0.85	103.3	92.9
	II	94.8	143.1	0.87	103.5	91.6
	III	96.4	143.4	0.85	103.7	93.0
	IV	99.1	143.7	0.83	103.9	95.4
1968	I	100.9	144.1	0.82	104.2	96.9
	II	103.5	145.0	0.80	104.8	98.7
	III	100.9	146.0	0.83	105.5	95.6
	IV	103.7	146.9	0.81	106.2	97.6
1969	I	105.4	147.9	0.80	106.9	98.6
	II	105.7	148.9	0.81	107.6	98.2
	III	103.1	150.0	0.83	108.4	95.1
	IV	95.7	150.9	0.90	109.1	87.7
1970	I	95.5	151.8	0.91	109.7	87.0
	II	93.7	151.9	0.93	109.8	85.3
	III	97.5	152.0	0.89	109.9	88.7
	IV	99.1	152.1	0.88	110.0	90.1
1971	I	100.2	152.2	0.87	110.0	91.1
	II	96.6	152.7	0.91	110.4	87.5
	III	99.7	153.3	0.88	110.8	90.0
	IV	102.2	153.9	0.86	111.3	91.9
1972	I	97.8	154.6	0.91	111.8	87.5
	II	94.1	156.6	0.95	113.2	83.1
	III	99.0	158.6	0.92	114.7	86.3
	IV	94.4	160.6	0.98	116.1	81.3
1973	I	100.1	162.7	0.93	117.6	85.1
	II	98.0	163.3	0.96	118.1	83.0
	III	99.1	163.9	0.95	118.5	83.6
	IV	102.1	164.6	0.92	119.0	85.8



TABLE 1. Leather

TABLEAU 1. Cuir

		Index of industrial production	Gross capital stock	Capital-output ratio	Index of potential output	Capacity utilization rate
		Indice de la production industrielle	Stock de capital brut	Coefficient de capital	Indice de la production potentielle	Taux d'utilisation de la capacité
		1971 = 100	\$ millions			
1974	I	104.0	165.4	0.91	119.6	87.0
	II	104.5	166.4	0.91	120.3	86.9
	III	100.8	167.5	0.95	121.1	83.2
	IV	98.6	168.5	0.98	121.8	80.9
1975	I	99.4	169.6	0.98	122.6	81.1
	II	98.9	170.4	0.99	123.2	80.3
	III	100.7	171.2	0.97	123.8	81.4
	IV	105.6	172.0	0.93	124.3	84.9
1976	I	107.8	172.8	0.92	124.9	86.3
	II	108.9	173.1	0.91	125.1	87.0
	III	104.3	173.4	0.95	125.4	83.2
	IV	104.3	173.6	0.95	125.5	83.1
1977	I	100.9	173.9	0.99	125.7	80.3
	II	96.9	174.1	1.03	125.9	77.0
	III	96.4	174.3	1.04	126.0	76.5
	IV	93.6	174.4	1.07	126.1	74.2
1978	I	103.3	174.6	0.97	126.2	81.8
	II	111.6	174.5	0.90	126.2	88.5
	III	103.6	174.5	0.97	126.2	82.1
	IV	114.5	174.3	0.87	126.0	90.9
1979	I	114.2	174.2	0.87	125.9	90.7
	II	114.7	174.4	0.87	126.1	91.0
	III	110.8	174.6	0.90	126.2	87.8
	IV	106.5	174.7	0.94	126.3	84.3
1980	I	103.5	174.8	0.97	126.4	81.9
	II	105.6	175.1	0.95	126.6	83.4
	III	105.2	175.4	0.96	126.8	83.0
	IV	107.7	175.7	0.94	127.0	84.8
1981	I	113.0	176.1	0.89	127.3	88.8
	II	113.6	175.8	0.89	127.1	89.4
	III	108.1	175.6	0.93	126.9	85.2
	IV	107.0	175.4	0.94	126.8	84.4
1982	I	97.9	175.3	1.03	126.7	77.2
	II	91.8	174.3	1.09	126.0	72.9
	III	95.5	173.3	1.04	125.3	76.2
	IV	88.9	172.3	1.11	124.6	71.4
1983	I	94.8	171.4	1.04	123.9	76.5
	II	99.9	171.6	0.98	124.1	80.5
	III	105.3	171.9	0.94	124.3	84.7
	IV	109.4	172.1	0.90	124.4	87.9
1984	I	106.2	172.3	0.93	124.6	85.3
	II	101.0	172.1	0.98	124.4	81.2
	III	100.5	172.0	0.98	124.3	80.8
	IV	104.1	171.8	0.95	124.2	83.8
1985	I	95.9	171.7	1.03	124.1	77.3
	II	98.2	171.5	1.00	124.0	79.2
	III	104.0	171.4	0.94	123.9	83.9
	IV					

TABLE 1. Textile

TABLEAU 1. Textiles

		Index of industrial production	Gross capital stock	Capital-output ratio	Index of potential output	Capacity utilization rate
		Indice de la production industrielle	Stock de capital brut	Coefficient de capital	Indice de la production potentielle	Taux d'utilisation de la capacité
		1971 = 100	\$ millions			
1961	I	49.0	1174.1	3.65	95.0	51.6
	II	50.8	1173.2	3.52	95.0	53.5
	III	53.5	1172.4	3.34	94.9	56.4
	IV	54.7	1171.6	3.27	94.8	57.7
1962	I	55.7	1170.8	3.20	94.8	58.8
	II	57.2	1172.5	3.13	94.9	60.3
	III	59.3	1174.3	3.02	95.0	62.4
	IV	58.9	1176.1	3.04	95.2	61.9
1963	I	59.8	1178.0	3.00	95.3	62.7
	II	62.1	1183.2	2.90	95.8	64.8
	III	64.1	1188.4	2.83	96.2	66.6
	IV	66.3	1193.7	2.75	96.6	68.6
1964	I	68.0	1199.1	2.69	97.1	70.1
	II	70.1	1216.4	2.65	98.5	71.2
	III	70.7	1233.8	2.66	99.9	70.8
	IV	69.3	1251.3	2.75	101.3	68.4
1965	I	70.5	1268.8	2.74	102.7	68.7
	II	70.9	1289.2	2.77	104.3	67.9
	III	74.5	1309.6	2.68	106.0	70.5
	IV	73.9	1330.0	2.74	107.6	68.7
1966	I	74.5	1350.4	2.76	109.3	68.2
	II	71.4	1366.5	2.92	110.6	64.8
	III	71.8	1382.7	2.94	111.9	64.2
	IV	75.3	1398.7	2.83	113.2	66.5
1967	I	73.7	1414.8	2.93	114.5	64.4
	II	74.3	1422.5	2.92	115.1	64.5
	III	76.0	1430.2	2.87	115.8	65.7
	IV	77.6	1437.9	2.83	116.4	66.7
1968	I	78.9	1445.6	2.79	117.0	67.4
	II	81.5	1449.4	2.71	117.3	69.5
	III	85.6	1453.3	2.59	117.6	72.8
	IV	89.9	1457.1	2.47	117.9	76.2
1969	I	94.0	1461.0	2.37	118.2	79.5
	II	98.1	1469.7	2.28	119.0	82.5
	III	96.3	1478.5	2.34	119.7	80.5
	IV	92.8	1487.2	2.44	120.4	77.1
1970	I	91.7	1496.0	2.49	121.1	75.7
	II	91.3	1504.7	2.51	121.8	75.0
	III	89.8	1513.5	2.57	122.5	73.3
	IV	93.0	1522.2	2.50	123.2	75.5
1971	I	96.1	1530.9	2.43	123.9	77.6
	II	97.4	1536.0	2.40	124.3	78.3
	III	101.0	1541.2	2.33	124.7	81.0
	IV	105.4	1546.3	2.24	125.2	84.2
1972	I	107.4	1551.5	2.20	125.6	85.5
	II	112.7	1562.1	2.11	126.4	89.1
	III	114.1	1572.7	2.10	127.3	89.6
	IV	118.4	1583.2	2.04	128.1	92.4
1973	I	118.8	1593.8	2.05	129.0	92.1
	II	119.5	1607.8	2.05	130.1	91.8
	III	118.0	1621.8	2.10	131.3	89.9
	IV	120.7	1635.8	2.07	132.4	91.2

TABLE 1. Textile

TABLEAU 1. Textiles

		Index of industrial production	Gross capital stock	Capital-output ratio	Index of potential output	Capacity utilization rate
		Indice de la production industrielle	Stock de capital brut	Coefficient de capital	Indice de la production potentielle	Taux d'utilisation de la capacité
		1971 = 100	\$ millions			
1974	I	120.3	1649.8	2.09	133.5	90.1
	II	117.2	1666.1	2.17	134.8	86.9
	III	115.2	1682.5	2.23	136.2	84.6
	IV	107.0	1698.7	2.42	137.5	77.8
1975	I	105.2	1715.0	2.49	138.8	75.8
	II	107.1	1731.1	2.46	140.1	76.4
	III	112.8	1747.3	2.36	141.4	79.8
	IV	117.8	1763.5	2.28	142.7	82.5
1976	I	115.7	1779.7	2.35	144.0	80.3
	II	112.8	1784.4	2.41	144.4	78.1
	III	114.6	1789.1	2.38	144.8	79.1
	IV	112.8	1793.8	2.42	145.2	77.7
1977	I	116.4	1798.6	2.36	145.6	80.0
	II	120.8	1795.3	2.27	145.3	83.1
	III	122.0	1792.1	2.24	145.0	84.1
	IV	123.4	1788.9	2.21	144.8	85.2
1978	I	123.8	1785.7	2.20	144.5	85.7
	II	125.8	1784.3	2.16	144.4	87.1
	III	126.2	1782.9	2.15	144.3	87.5
	IV	132.3	1781.4	2.05	144.2	91.8
1979	I	137.2	1780.0	1.98	144.1	95.2
	II	140.5	1778.7	1.93	144.0	97.6
	III	140.8	1777.5	1.92	143.9	97.9
	IV	136.5	1776.2	1.98	143.8	95.0
1980	I	133.6	1774.9	2.03	143.7	93.0
	II	125.7	1779.2	2.16	144.0	87.3
	III	128.6	1783.5	2.11	144.4	89.1
	IV	136.2	1787.7	2.00	144.7	94.1
1981	I	139.0	1792.0	1.97	145.0	95.8
	II	145.2	1794.0	1.88	145.2	100.0
	III	139.6	1796.1	1.96	145.4	96.0
	IV	125.4	1798.1	2.19	145.5	86.2
1982	I	114.7	1800.1	2.39	145.7	78.7
	II	107.1	1798.8	2.56	145.6	73.6
	III	104.1	1797.6	2.63	145.5	71.6
	IV	109.3	1796.3	2.51	145.4	75.2
1983	I	118.2	1795.1	2.32	145.3	81.4
	II	121.2	1794.5	2.26	145.2	83.4
	III	119.8	1793.9	2.28	145.2	82.5
	IV	120.2	1793.2	2.27	145.1	82.8
1984	I	137.7	1792.6	1.98	145.1	94.9
	II	137.6	1793.9	1.99	145.2	94.6
	III	133.7	1795.2	2.05	145.3	92.0
	IV	131.4	1796.5	2.08	145.4	90.4
1985	I	132.3	1797.8	2.07	145.5	90.9
	II	136.9	1799.1	2.00	145.6	94.0
	III	141.4	1800.4	1.94	145.7	97.0
	IV					

TABLE 1. Knitting Mills and Clothing(1)

TABLEAU 1. Bonneterie et vêtements(1)

		Index of industrial production	Gross capital stock	Capital-output ratio	Index of potential output	Capacity utilization rate
		Indice de la production industrielle	Stock de capital brut	Coefficient de capital	Indice de la production potentielle	Taux d'utilisation de la capacité
		1971 = 100	\$ millions			
1961	I	66.6	379.0	0.73	108.2	61.6
	II	68.0	379.0	0.71	108.2	62.9
	III	69.2	379.2	0.70	108.2	63.9
	IV	70.0	379.2	0.69	108.2	64.7
1962	I	71.1	379.4	0.68	108.3	65.7
	II	71.6	379.3	0.68	108.2	66.1
	III	73.1	379.2	0.66	108.2	67.6
	IV	73.0	379.0	0.66	108.2	67.5
1963	I	74.7	379.0	0.65	108.2	69.1
	II	76.5	379.4	0.63	108.3	70.7
	III	77.2	380.0	0.63	108.4	71.2
	IV	78.4	380.3	0.62	108.5	72.2
1964	I	80.1	380.7	0.61	108.6	73.7
	II	80.2	380.8	0.61	108.7	73.8
	III	80.7	381.0	0.60	108.7	74.2
	IV	81.8	381.1	0.60	108.8	75.2
1965	I	82.2	381.3	0.59	108.8	75.5
	II	82.4	381.5	0.59	108.9	75.7
	III	83.7	381.9	0.58	109.0	76.8
	IV	85.6	382.2	0.57	109.1	76.5
1966	I	85.5	382.7	0.57	109.2	76.3
	II	85.8	384.1	0.57	109.6	76.3
	III	86.5	385.6	0.57	110.0	76.6
	IV	85.3	387.0	0.58	110.4	77.2
1967	I	84.3	388.5	0.59	110.9	76.0
	II	84.5	388.0	0.59	110.7	76.3
	III	84.0	387.6	0.59	110.6	75.9
	IV	85.0	387.1	0.58	110.5	76.9
1968	I	87.4	386.7	0.57	110.4	79.2
	II	89.9	387.3	0.55	110.5	81.3
	III	90.1	388.0	0.55	110.7	81.4
	IV	90.8	388.4	0.55	110.8	81.9
1969	I	91.3	389.0	0.54	111.0	82.2
	II	92.6	392.1	0.54	111.9	82.8
	III	93.0	395.2	0.54	112.8	82.5
	IV	92.8	398.3	0.55	113.7	81.6
1970	I	93.7	401.5	0.55	114.6	81.8
	II	92.4	402.6	0.56	114.9	80.4
	III	92.3	403.8	0.56	115.2	80.1
	IV	95.3	405.1	0.54	115.6	82.4
1971	I	97.8	406.4	0.53	116.0	84.3
	II	96.9	408.2	0.54	116.5	83.2
	III	101.5	410.1	0.52	117.0	86.7
	IV	103.5	411.9	0.51	117.5	88.0
1972	I	104.9	413.9	0.50	118.1	88.8
	II	105.6	417.8	0.51	119.2	88.6
	III	108.2	421.7	0.50	120.3	89.9
	IV	110.8	425.5	0.49	121.4	91.2
1973	I	108.9	429.4	0.50	122.5	88.9
	II	114.3	435.1	0.49	124.2	92.1
	III	115.9	440.9	0.49	125.8	92.1
	IV	116.5	446.7	0.49	127.5	91.4

TABLE 1. Knitting Mills and Clothing(1)

TABLEAU 1. Bonneterie et vêtements(1)

		Index of industrial production	Gross capital stock	Capital-output ratio	Index of potential output	Capacity utilization rate
		Indice de la production industrielle	Stock de capital brut	Coefficient de capital	Indice de la production potentielle	Taux d'utilisation de la capacité
		1971 = 100	\$ millions			
1974	I	114.7	452.6	0.50	129.2	88.8
	II	114.0	455.0	0.51	129.8	87.8
	III	110.6	457.4	0.53	130.5	84.7
	IV	111.8	459.9	0.53	131.2	85.2
1975	I	111.1	462.4	0.53	132.0	84.2
	II	112.9	463.4	0.52	132.2	85.4
	III	114.4	464.4	0.52	132.5	86.3
	IV	121.4	465.3	0.49	132.8	91.4
1976	I	124.3	466.3	0.48	133.1	93.4
	II	124.5	466.6	0.48	133.2	93.5
	III	122.1	466.9	0.49	133.2	91.6
	IV	115.5	467.2	0.52	133.3	86.6
1977	I	116.4	467.6	0.51	133.4	87.2
	II	116.5	467.3	0.51	133.4	87.4
	III	114.9	467.0	0.52	133.3	86.2
	IV	110.5	466.6	0.54	133.2	83.0
1978	I	116.8	466.4	0.51	133.1	87.8
	II	118.8	466.4	0.50	133.1	89.3
	III	121.0	466.4	0.49	133.1	90.9
	IV	130.3	466.3	0.46	133.1	97.9
1979	I	129.6	466.3	0.46	133.1	97.4
	II	133.1	466.4	0.45	133.1	100.0
	III	126.2	466.7	0.47	133.2	94.8
	IV	125.2	466.9	0.48	133.2	94.0
1980	I	120.2	467.2	0.50	133.3	90.2
	II	120.5	469.4	0.50	134.0	90.0
	III	123.9	471.6	0.49	134.6	92.1
	IV	123.3	473.7	0.49	135.2	91.2
1981	I	124.3	475.9	0.49	135.8	91.5
	II	124.6	476.0	0.49	135.8	91.7
	III	123.0	476.2	0.49	135.9	90.5
	IV	115.0	476.4	0.53	136.0	84.6
1982	I	109.2	476.7	0.56	136.0	80.3
	II	103.3	474.6	0.59	135.4	76.3
	III	104.6	472.6	0.58	134.9	77.6
	IV	107.3	470.5	0.56	134.3	79.9
1983	I	116.3	468.4	0.51	133.7	87.0
	II	118.3	467.8	0.51	133.5	88.6
	III	118.4	467.3	0.50	133.4	88.8
	IV	120.3	466.7	0.50	133.2	90.3
1984	I	118.8	466.2	0.50	133.0	89.3
	II	121.6	465.5	0.49	132.8	91.5
	III	125.3	465.0	0.47	132.7	94.4
	IV	127.4	464.4	0.47	132.5	96.1
1985	I	119.6	463.9	0.50	132.4	90.3
	II	119.6	462.5	0.49	132.0	90.6
	III	126.6	462.2	0.47	131.9	96.0
	IV					

TABLE 1. Wood

TABLEAU 1. Bois

		Index of industrial production	Gross capital stock	Capital-output ratio	Index of potential output	Capacity utilization rate
		Indice de la production industrielle	Stock de capital brut	Coefficient de capital	Indice de la production potentielle	Taux d'utilisation de la capacité
		1971 = 100	\$ millions			
1961	I	60.9	978.5	1.93	74.0	82.3
	II	64.2	986.3	1.85	74.6	86.1
	III	66.9	994.2	1.79	75.2	89.0
	IV	65.0	1002.1	1.85	75.8	85.8
1962	I	66.3	1010.1	1.83	76.4	86.8
	II	68.7	1015.6	1.78	76.8	89.4
	III	71.1	1021.2	1.73	77.2	92.1
	IV	71.2	1026.8	1.74	77.7	91.7
1963	I	73.0	1032.4	1.70	78.1	93.5
	II	73.0	1041.1	1.72	78.7	92.7
	III	74.8	1049.9	1.69	79.4	94.2
	IV	75.4	1058.6	1.69	80.1	94.2
1964	I	80.6	1067.4	1.59	80.7	99.8
	II	77.0	1078.5	1.69	81.6	94.4
	III	82.4	1089.6	1.59	82.4	100.0
	IV	81.9	1100.5	1.62	83.2	98.4
1965	I	80.8	1111.5	1.65	84.1	96.1
	II	81.0	1126.0	1.67	85.2	95.1
	III	83.6	1140.6	1.64	86.3	96.9
	IV	86.6	1155.1	1.60	87.4	99.1
1966	I	83.3	1169.7	1.69	88.5	94.2
	II	86.0	1181.7	1.65	89.4	96.2
	III	85.5	1193.8	1.68	90.3	94.7
	IV	84.9	1205.9	1.71	91.2	93.1
1967	I	86.9	1218.1	1.69	92.1	94.3
	II	86.9	1226.3	1.70	92.7	93.7
	III	88.0	1234.5	1.69	93.4	94.3
	IV	83.5	1242.8	1.79	94.0	88.8
1968	I	82.6	1251.1	1.82	94.6	87.3
	II	87.6	1262.2	1.73	95.5	91.8
	III	90.5	1273.4	1.69	96.3	94.0
	IV	95.6	1284.6	1.62	97.1	98.4
1969	I	91.4	1295.8	1.71	98.0	93.3
	II	96.6	1329.3	1.66	100.5	96.1
	III	92.5	1362.8	1.77	103.1	89.8
	IV	93.8	1396.3	1.79	105.6	88.8
1970	I	93.5	1429.8	1.84	108.1	86.5
	II	85.4	1457.7	2.05	110.2	77.5
	III	89.0	1485.6	2.01	112.3	79.2
	IV	92.6	1513.5	1.97	114.5	80.9
1971	I	90.8	1541.4	2.04	116.6	77.9
	II	98.2	1569.6	1.92	118.7	82.7
	III	105.1	1597.9	1.83	120.8	87.0
	IV	106.4	1626.2	1.84	123.0	86.5
1972	I	104.0	1654.6	1.91	125.1	83.1
	II	101.1	1686.7	2.01	127.6	79.3
	III	104.5	1718.8	1.98	130.0	80.4
	IV	114.8	1751.0	1.84	132.4	86.7
1973	I	117.8	1783.2	1.82	134.9	87.4
	II	117.4	1838.2	1.88	139.0	84.5
	III	120.7	1893.2	1.89	143.2	84.3
	IV	125.5	1948.2	1.87	147.3	85.2

TABLE 1. Wood

TABLEAU 1. Bois

		Index of industrial production	Gross capital stock	Capital-output ratio	Index of potential output	Capacity utilization rate
		Indice de la production industrielle	Stock de capital brut	Coefficient de capital	Indice de la production potentielle	Taux d'utilisation de la capacité
		1971 = 100	\$ millions			
1974	I	130.4	2003.3	1.85	151.5	86.1
	II	124.7	2049.5	1.98	155.0	80.5
	III	115.9	2095.7	2.18	158.5	73.1
	IV	104.5	2141.8	2.47	162.0	64.5
1975	I	101.7	2187.9	2.59	165.5	61.5
	II	110.5	2223.2	2.42	168.1	65.7
	III	100.7	2258.5	2.70	170.8	59.0
	IV	118.1	2293.7	2.34	173.5	68.1
1976	I	125.7	2329.0	2.23	176.1	71.4
	II	134.7	2358.4	2.11	178.4	75.5
	III	137.1	2387.9	2.10	180.6	75.9
	IV	141.8	2417.3	2.05	182.8	77.6
1977	I	144.3	2446.8	2.04	185.0	78.0
	II	138.2	2471.4	2.15	186.9	73.9
	III	143.4	2496.0	2.09	188.8	76.0
	IV	145.2	2520.5	2.09	190.6	76.2
1978	I	141.3	2545.1	2.17	192.5	73.4
	II	146.9	2575.8	2.11	194.8	75.4
	III	149.6	2606.5	2.10	197.1	75.9
	IV	154.6	2637.1	2.05	199.4	77.5
1979	I	148.7	2667.8	2.16	201.7	73.7
	II	158.1	2704.7	2.06	204.5	77.3
	III	159.3	2741.7	2.07	207.3	76.8
	IV	154.7	2778.7	2.16	210.1	73.6
1980	I	150.8	2815.8	2.25	212.9	70.8
	II	144.7	2852.5	2.37	215.7	67.1
	III	152.9	2889.2	2.27	218.5	70.0
	IV	155.5	2925.9	2.26	221.3	70.3
1981	I	163.1	2962.7	2.19	224.1	72.8
	II	162.7	2990.1	2.21	226.1	72.0
	III	124.8	3017.6	2.91	228.2	54.7
	IV	137.4	3045.0	2.67	230.3	59.7
1982	I	123.9	3072.4	2.98	232.3	53.3
	II	127.3	3081.3	2.91	233.0	54.6
	III	130.5	3090.3	2.85	233.7	55.8
	IV	131.2	3099.4	2.84	234.4	56.0
1983	I	142.2	3108.5	2.63	235.1	60.5
	II	151.5	3114.4	2.47	235.5	64.3
	III	172.4	3120.4	2.18	236.0	73.1
	IV	162.5	3126.4	2.31	236.4	68.7
1984	I	150.3	3132.4	2.51	236.9	63.4
	II	155.4	3141.3	2.43	237.6	65.4
	III	158.0	3150.3	2.40	238.2	66.3
	IV	160.9	3159.3	2.36	238.9	67.3
1985	I	159.8	3168.4	2.39	239.6	66.7
	II	164.0	3174.4	2.33	240.1	68.3
	III	173.0	3180.4	2.21	240.5	71.9
	IV					

TABLE 1. Furniture and Fixtures

TABLEAU 1. Meubles et accessoires

		Index of industrial production	Gross capital stock	Capital-output ratio	Index of potential output	Capacity utilization rate
		Indice de la production industrielle	Stock de capital brut	Coefficient de capital	Indice de la production potentielle	Taux d'utilisation de la capacité
		1971 = 100	\$ millions			
1961	I	55.5	167.0	0.86	75.7	73.4
	II	58.0	166.9	0.82	75.6	76.7
	III	59.7	166.9	0.80	75.6	78.9
	IV	60.5	166.9	0.79	75.6	80.0
1962	I	61.1	166.9	0.78	75.6	80.8
	II	62.2	167.7	0.77	76.0	81.9
	III	63.2	168.5	0.76	76.3	82.8
	IV	63.9	169.2	0.76	76.7	83.4
1963	I	65.2	170.0	0.75	77.0	84.7
	II	65.9	171.9	0.75	77.9	84.6
	III	68.0	173.8	0.73	78.7	86.4
	IV	69.0	175.7	0.73	79.6	86.7
1964	I	70.4	177.7	0.72	80.5	87.4
	II	71.4	180.0	0.72	81.6	87.6
	III	72.2	182.4	0.72	82.6	87.4
	IV	75.0	184.7	0.70	83.7	89.6
1965	I	78.6	187.0	0.68	84.7	92.8
	II	81.1	190.1	0.67	86.1	94.2
	III	82.7	193.3	0.67	87.6	94.4
	IV	86.1	196.4	0.65	89.0	96.8
1966	I	90.3	199.5	0.63	90.4	94.9
	II	92.2	203.5	0.63	92.2	100.0
	III	94.0	207.6	0.63	94.1	99.9
	IV	94.0	211.7	0.64	95.9	98.0
1967	I	93.8	215.8	0.66	97.8	95.9
	II	94.8	219.6	0.66	99.5	95.3
	III	95.2	223.5	0.67	101.3	94.0
	IV	94.1	227.4	0.69	103.0	91.3
1968	I	95.5	231.4	0.69	104.8	91.1
	II	96.8	235.0	0.69	106.5	90.9
	III	97.3	238.7	0.70	108.1	90.0
	IV	99.4	242.3	0.70	109.8	90.5
1969	I	101.7	246.0	0.69	111.5	91.2
	II	102.4	247.5	0.69	112.1	91.3
	III	103.5	249.0	0.69	112.8	91.7
	IV	103.4	250.5	0.69	113.5	91.1
1970	I	100.3	252.1	0.72	114.2	87.8
	II	95.0	254.5	0.77	115.3	82.4
	III	95.0	256.9	0.77	116.4	81.6
	IV	94.4	259.3	0.79	117.5	80.4
1971	I	89.9	261.7	0.83	118.6	75.8
	II	97.0	263.3	0.78	119.3	81.3
	III	105.2	264.9	0.72	120.0	87.7
	IV	107.4	266.5	0.71	120.7	88.9
1972	I	108.3	268.2	0.71	121.5	89.1
	II	113.5	271.1	0.68	122.8	92.4
	III	117.9	274.0	0.66	124.1	95.0
	IV	123.1	276.8	0.64	125.4	98.2
1973	I	126.2	279.6	0.63	126.7	99.6
	II	125.9	285.3	0.65	129.3	97.4
	III	122.1	291.1	0.68	131.9	92.6
	IV	125.7	296.8	0.68	134.5	93.5



TABLE 1. Furniture and Fixtures

TABLEAU 1. Meubles et accessoires

		Index of industrial production	Gross capital stock	Capital-output ratio	Index of potential output	Capacity utilization rate
		Indice de la production industrielle	Stock de capital brut	Coefficient de capital	Indice de la production potentielle	Taux d'utilisation de la capacité
		1971 = 100	\$ millions			
1974	I	128.8	302.5	0.67	137.1	94.0
	II	129.3	308.8	0.68	139.9	92.4
	III	123.7	315.1	0.73	142.8	86.6
	IV	116.7	321.4	0.79	145.6	80.1
1975	I	118.1	327.7	0.79	148.5	79.5
	II	110.4	330.6	0.86	149.8	73.7
	III	120.1	333.5	0.79	151.1	79.5
	IV	120.2	336.4	0.80	152.4	78.9
1976	I	117.6	339.4	0.83	153.8	76.5
	II	126.0	340.5	0.77	154.3	81.7
	III	126.5	341.7	0.77	154.8	81.7
	IV	127.0	342.9	0.77	155.4	81.7
1977	I	118.7	344.1	0.83	155.9	76.1
	II	109.8	344.8	0.90	156.2	70.3
	III	111.2	345.6	0.89	156.6	71.0
	IV	113.2	346.4	0.88	156.9	72.1
1978	I	119.5	347.3	0.83	157.4	75.9
	II	123.2	347.5	0.81	157.4	78.3
	III	122.0	347.8	0.82	157.6	77.4
	IV	129.8	348.0	0.77	157.7	82.3
1979	I	131.1	348.3	0.76	157.8	83.1
	II	133.6	349.4	0.75	158.3	84.4
	III	130.0	350.5	0.77	158.8	81.9
	IV	127.3	351.6	0.79	159.3	79.9
1980	I	130.0	352.8	0.78	159.8	81.3
	II	124.1	353.8	0.82	160.3	77.4
	III	127.8	354.9	0.79	160.8	79.5
	IV	133.1	355.9	0.76	161.2	82.5
1981	I	143.3	356.9	0.71	161.7	88.6
	II	145.5	359.5	0.71	162.9	89.3
	III	145.4	362.1	0.71	164.1	88.6
	IV	127.8	364.7	0.82	165.2	77.3
1982	I	110.4	367.4	0.95	166.5	66.3
	II	105.4	367.5	1.00	166.5	63.3
	III	100.7	367.7	1.04	166.6	60.4
	IV	107.4	367.9	0.98	166.7	64.4
1983	I	120.2	368.2	0.88	166.8	72.1
	II	120.1	367.4	0.88	166.5	72.2
	III	128.2	366.7	0.82	166.1	77.2
	IV	133.8	366.0	0.78	165.8	80.7
1984	I	127.1	365.4	0.82	165.6	76.8
	II	120.1	365.1	0.87	165.4	72.6
	III	120.3	364.8	0.87	165.3	72.8
	IV	123.2	364.5	0.85	165.1	74.6
1985	I	125.1	364.3	0.83	165.1	75.8
	II	133.5	366.2	0.78	165.9	80.5
	III	140.9	368.1	0.75	166.8	84.5
	IV					

TABLE 1. Paper and Allied Industries

TABLEAU 1. Papiers et industries connexes

		Index of industrial production	Gross capital stock	Capital-output ratio	Index of potential output	Capacity utilization rate
		Indice de la production industrielle	Stock de capital brut	Coefficient de capital	Indice de la production potentielle	Taux d'utilisation de la capacité
		1971 = 100	\$ millions			
1961	I	63.1	3860.4	3.91	68.3	92.4
	II	62.7	3891.8	3.96	68.8	91.1
	III	63.4	3923.3	3.95	69.4	91.4
	IV	64.3	3954.7	3.93	70.0	91.9
1962	I	65.1	3986.2	3.91	70.5	92.3
	II	65.5	4019.0	3.92	71.1	92.1
	III	66.3	4051.8	3.90	71.7	92.5
	IV	65.8	4084.6	3.96	72.3	91.1
1963	I	65.3	4117.5	4.03	72.8	89.7
	II	69.3	4156.8	3.83	73.5	94.2
	III	70.0	4196.2	3.83	74.2	94.3
	IV	72.1	4235.5	3.75	74.9	96.2
1964	I	74.0	4274.9	3.69	75.6	97.9
	II	75.0	4346.1	3.70	76.9	97.6
	III	77.2	4417.4	3.65	78.1	98.8
	IV	79.4	4488.6	3.61	79.4	100.0
1965	I	78.7	4559.8	3.70	80.7	97.6
	II	79.1	4654.3	3.76	82.3	96.1
	III	81.5	4748.9	3.72	84.0	97.0
	IV	82.9	4843.5	3.73	85.7	96.8
1966	I	85.8	4938.1	3.67	87.4	98.2
	II	87.4	5064.4	3.70	89.6	97.6
	III	87.8	5190.7	3.77	91.8	95.6
	IV	86.8	5316.9	3.91	94.1	92.3
1967	I	87.7	5443.2	3.96	96.3	91.1
	II	85.1	5542.0	4.16	98.0	86.8
	III	86.9	5640.9	4.14	99.8	87.1
	IV	85.3	5739.8	4.30	101.5	84.0
1968	I	87.0	5838.7	4.28	103.3	84.2
	II	93.7	5882.7	4.01	104.1	90.0
	III	87.2	5926.7	4.34	104.8	83.2
	IV	92.4	5970.6	4.13	105.6	87.5
1969	I	97.1	6014.5	3.95	106.4	91.3
	II	99.1	6079.3	3.92	107.5	92.2
	III	102.2	6144.2	3.84	108.7	94.0
	IV	102.1	6209.1	3.88	109.8	93.0
1970	I	102.8	6274.0	3.90	111.0	92.6
	II	100.2	6372.5	4.06	112.7	88.9
	III	95.4	6471.1	4.33	114.5	83.3
	IV	100.9	6569.7	4.16	116.2	86.8
1971	I	97.8	6668.4	4.35	118.0	82.9
	II	97.2	6756.4	4.44	119.5	81.3
	III	100.8	6844.4	4.33	121.1	83.3
	IV	104.2	6932.3	4.25	122.6	85.0
1972	I	106.4	7020.3	4.21	124.2	85.7
	II	110.0	7074.6	4.11	125.1	87.9
	III	110.8	7129.0	4.11	126.1	87.9
	IV	114.1	7183.4	4.02	127.1	89.8
1973	I	117.9	7237.8	3.92	128.0	92.1
	II	121.8	7272.3	3.81	128.6	94.7
	III	109.8	7306.9	4.25	129.3	84.9
	IV	118.6	7341.4	3.95	129.9	91.3

TABLE 1. Paper and Allied Industries

TABLEAU 1. Papiers et industries connexes

		Index of industrial production	Gross capital stock	Capital-output ratio	Index of potential output	Capacity utilization rate
		Indice de la production industrielle	Stock de capital brut	Coefficient de capital	Indice de la production potentielle	Taux d'utilisation de la capacité
		1971 = 100	\$ millions			
1974	I	127.9	7375.9	3.68	130.5	98.0
	II	126.1	7431.2	3.76	131.5	95.9
	III	123.6	7486.5	3.87	132.4	93.3
	IV	117.2	7541.8	4.11	133.4	87.9
1975	I	109.2	7597.1	4.44	134.4	81.3
	II	103.2	7637.5	4.72	135.1	76.4
	III	90.0	7678.0	5.45	135.8	66.3
	IV	83.6	7718.5	5.89	136.5	61.2
1976	I	98.9	7759.1	5.01	137.3	72.1
	II	117.4	7806.0	4.24	138.1	85.0
	III	118.8	7852.9	4.22	138.9	85.5
	IV	112.9	7899.8	4.47	139.7	80.8
1977	I	112.9	7946.8	4.49	140.6	80.3
	II	110.7	7991.3	4.61	141.4	78.3
	III	110.7	8035.9	4.63	142.1	77.9
	IV	115.7	8080.5	4.46	142.9	80.9
1978	I	121.0	8125.1	4.29	143.7	84.2
	II	125.1	8143.9	4.16	144.1	86.8
	III	126.5	8162.8	4.12	144.4	87.6
	IV	127.0	8181.6	4.11	144.7	87.8
1979	I	124.8	8200.5	4.19	145.1	86.0
	II	123.9	8228.1	4.24	145.5	85.1
	III	127.0	8255.8	4.15	146.0	87.0
	IV	128.0	8283.4	4.13	146.5	87.4
1980	I	133.4	8327.5	3.99	147.3	90.6
	II	127.7	8371.5	4.19	148.1	86.2
	III	125.1	8415.6	4.29	148.9	84.0
	IV	125.8	8459.6	4.29	149.6	84.1
1981	I	127.6	8526.0	4.27	150.8	84.6
	II	130.2	8592.4	4.21	152.0	85.7
	III	122.5	8658.7	4.51	153.2	80.0
	IV	126.8	8725.1	4.39	154.3	82.2
1982	I	120.4	8783.4	4.66	155.4	77.5
	II	115.1	8841.8	4.90	156.4	73.6
	III	114.2	8900.1	4.98	157.4	72.5
	IV	112.5	8958.4	5.08	158.5	71.0
1983	I	116.8	8970.4	4.90	158.7	73.6
	II	122.3	8982.3	4.69	158.9	77.0
	III	130.9	8994.3	4.39	159.1	82.3
	IV	132.3	9006.2	4.35	159.3	83.0
1984	I	119.8	9009.9	4.80	159.4	75.2
	II	128.1	9013.7	4.49	159.4	80.3
	III	133.1	9017.4	4.33	159.5	83.4
	IV	130.9	9021.1	4.40	159.6	82.0
1985	I	132.1	9048.7	4.37	160.1	82.5
	II	130.7	9095.3	4.44	160.9	81.2
	III	132.6	9141.9	4.40	181.7	82.0
	IV					

TABLE 1. Printing, Publishing and Allied Industries

TABLEAU 1. Impression, publication et industries connexes

		Index of industrial production	Gross capital stock	Capital-output ratio	Index of potential output	Capacity utilization rate
		Indice de la production industrielle	Stock de capital brut	Coefficient de capital	Indice de la production potentielle	Taux d'utilisation de la capacité
		1971 = 100	\$ millions			
1961	I	69.3	800.6	1.26	88.8	78.0
	II	68.8	806.4	1.28	89.4	76.9
	III	70.6	812.3	1.25	90.1	78.4
	IV	71.2	818.1	1.25	90.7	78.5
1962	I	71.9	823.9	1.25	91.4	78.7
	II	71.3	831.2	1.27	92.2	77.3
	III	72.1	838.6	1.27	93.0	77.5
	IV	71.7	845.8	1.28	93.8	76.4
1963	I	72.4	853.0	1.28	94.6	76.5
	II	73.1	862.9	1.28	95.7	76.4
	III	74.3	872.9	1.28	96.8	76.7
	IV	73.5	882.9	1.31	97.9	75.1
1964	I	73.6	893.0	1.32	99.0	74.3
	II	76.3	905.0	1.29	100.4	76.0
	III	72.3	917.0	1.38	101.7	71.1
	IV	75.3	929.1	1.34	103.0	73.1
1965	I	77.1	941.2	1.33	104.4	73.9
	II	78.2	950.1	1.32	105.4	74.2
	III	79.7	959.0	1.31	106.4	74.9
	IV	83.3	968.0	1.26	107.4	77.5
1966	I	84.5	977.0	1.26	108.4	78.0
	II	85.4	987.1	1.26	109.5	78.0
	III	85.8	997.3	1.26	110.6	77.6
	IV	85.7	1007.5	1.28	111.7	76.7
1967	I	87.7	1017.7	1.26	112.9	77.7
	II	88.7	1024.6	1.26	113.6	78.1
	III	88.2	1031.6	1.27	114.4	77.1
	IV	88.2	1038.5	1.28	115.2	76.6
1968	I	90.0	1045.4	1.26	115.9	77.6
	II	89.9	1053.6	1.28	116.9	76.9
	III	89.2	1061.9	1.30	117.8	75.7
	IV	91.2	1070.1	1.28	118.7	76.8
1969	I	93.6	1078.4	1.25	119.6	78.3
	II	93.4	1087.7	1.27	120.6	77.4
	III	95.7	1097.0	1.25	121.7	78.7
	IV	94.5	1106.3	1.27	122.7	77.0
1970	I	92.9	1115.7	1.31	123.7	75.1
	II	96.1	1127.0	1.28	125.0	76.9
	III	95.0	1138.3	1.30	126.2	75.3
	IV	98.1	1149.5	1.28	127.5	76.9
1971	I	97.4	1160.8	1.30	128.7	75.7
	II	98.8	1172.7	1.29	130.1	76.0
	III	99.8	1184.6	1.29	131.4	76.0
	IV	103.7	1196.4	1.26	132.7	78.2
1972	I	102.8	1208.3	1.28	134.0	76.7
	II	107.7	1217.7	1.23	135.0	79.7
	III	111.9	1227.2	1.19	136.1	82.2
	IV	113.0	1236.6	1.19	137.1	82.4
1973	I	117.1	1246.1	1.16	138.2	84.7
	II	117.0	1257.6	1.17	139.5	83.9
	III	120.3	1269.1	1.15	140.8	85.4
	IV	124.7	1280.6	1.12	142.0	87.2

TABLE 1. Printing, Publishing and Allied Industries

TABLEAU 1. Impression, publication et industries connexes

		Index of industrial production	Gross capital stock	Capital-output ratio	Index of potential output	Capacity utilization rate
		Indice de la production industrielle	Stock de capital brut	Coefficient de capital	Indice de la production potentielle	Taux d'utilisation de la capacité
		1971 = 100	\$ millions			
1974	I	124.7	1292.2	1.13	143.3	87.0
	II	126.5	1302.6	1.12	144.5	87.6
	III	125.8	1313.1	1.14	145.6	86.4
	IV	125.5	1323.5	1.15	146.8	85.5
1975	I	127.2	1334.0	1.14	147.9	86.0
	II	126.7	1344.5	1.15	149.1	85.0
	III	128.2	1355.0	1.15	150.3	85.3
	IV	128.0	1365.5	1.16	151.4	84.5
1976	I	133.0	1376.0	1.13	152.6	87.2
	II	136.1	1386.1	1.11	153.7	88.5
	III	138.9	1396.3	1.09	154.9	89.7
	IV	142.8	1406.3	1.07	156.0	91.6
1977	I	140.8	1416.4	1.09	157.1	89.6
	II	140.4	1425.1	1.10	158.1	88.8
	III	139.5	1433.9	1.12	159.0	87.7
	IV	140.6	1442.6	1.12	160.0	87.9
1978	I	146.1	1451.4	1.08	161.0	90.8
	II	148.9	1459.6	1.07	161.9	92.0
	III	150.3	1467.8	1.06	162.8	92.3
	IV	150.1	1476.0	1.07	163.7	91.7
1979	I	151.9	1484.3	1.06	164.6	92.3
	II	152.9	1495.3	1.06	165.8	92.2
	III	158.5	1506.4	1.03	167.1	94.9
	IV	161.8	1517.3	1.02	168.3	96.2
1980	I	168.4	1528.3	0.99	169.5	99.4
	II	168.6	1541.2	0.99	170.9	98.6
	III	170.6	1554.2	0.99	172.4	99.0
	IV	173.8	1567.1	0.98	173.8	100.0
1981	I	170.3	1580.1	1.01	175.2	97.2
	II	174.7	1591.3	0.99	176.5	99.0
	III	175.2	1602.6	1.00	177.7	98.6
	IV	173.1	1614.0	1.01	179.0	96.7
1982	I	164.8	1625.4	1.07	180.3	91.4
	II	161.5	1632.3	1.10	181.0	89.2
	III	157.0	1639.2	1.14	181.8	86.4
	IV	156.1	1646.1	1.15	182.6	85.5
1983	I	160.0	1653.0	1.12	183.3	87.3
	II	162.0	1659.2	1.11	184.0	88.0
	III	166.1	1665.5	1.09	184.7	89.9
	IV	168.3	1671.6	1.08	185.4	90.8
1984	I	183.7	1677.8	0.99	186.1	98.7
	II	185.3	1690.5	0.99	187.5	98.8
	III	185.9	1703.3	1.00	188.9	98.4
	IV	185.2	1716.1	1.01	190.3	97.3
1985	I	185.7	1728.9	1.01	191.7	96.8
	II	190.6	1741.4	0.99	193.1	98.7
	III	194.4	1753.9	0.98	194.5	99.9
	IV					

TABLE 1. Primary Metals

TABLEAU 1. Métaux primaires

		Index of industrial production	Gross capital stock	Capital-output ratio	Index of potential output	Capacity utilization rate
		Indice de la production industrielle	Stock de capital brut	Coefficient de capital	Indice de la production potentielle	Taux d'utilisation de la capacité
		1971 = 100	\$ millions			
1961	I	56.4	3522.4	3.77	71.8	78.5
	II	59.4	3542.9	3.60	72.2	82.2
	III	59.8	3563.4	3.60	72.7	82.3
	IV	60.7	3584.0	3.56	73.1	83.1
1962	I	60.9	3604.6	3.57	73.5	82.9
	II	64.2	3656.1	3.44	74.6	86.1
	III	66.9	3707.6	3.34	75.6	88.5
	IV	63.6	3759.0	3.57	76.7	83.0
1963	I	66.4	3810.5	3.46	77.7	85.5
	II	67.6	3843.5	3.43	78.4	86.2
	III	68.4	3876.5	3.42	79.1	86.5
	IV	71.1	3909.3	3.32	79.7	89.2
1964	I	73.4	3942.2	3.24	80.4	91.3
	II	75.6	4001.2	3.19	81.6	92.7
	III	77.6	4060.2	3.16	82.8	93.7
	IV	80.6	4119.2	3.08	84.0	96.0
1965	I	80.4	4178.2	3.14	85.2	94.4
	II	83.0	4226.0	3.07	86.2	96.3
	III	86.4	4273.8	2.99	87.2	99.1
	IV	88.0	4321.5	2.96	88.1	99.9
1966	I	89.1	4369.3	2.96	89.1	100.0
	II	88.5	4449.1	3.03	90.7	97.5
	III	88.2	4528.9	3.10	92.4	95.5
	IV	85.7	4608.7	3.25	94.0	91.2
1967	I	83.7	4688.5	3.38	95.6	87.5
	II	83.0	4735.7	3.44	96.6	85.9
	III	83.7	4782.9	3.45	97.5	85.8
	IV	87.9	4830.0	3.32	98.5	89.2
1968	I	89.6	4877.1	3.28	99.5	90.1
	II	89.3	4911.5	3.32	100.2	89.2
	III	94.6	4945.9	3.16	100.9	93.8
	IV	98.3	4980.4	3.06	101.6	96.8
1969	I	98.6	5014.9	3.07	102.3	96.4
	II	100.5	5059.5	3.04	103.2	97.4
	III	88.9	5104.2	3.47	104.1	85.4
	IV	90.5	5148.9	3.43	105.0	86.2
1970	I	103.5	5193.7	3.03	105.9	97.7
	II	99.7	5271.0	3.19	107.5	92.8
	III	100.9	5348.4	3.20	109.1	92.5
	IV	98.9	5425.7	3.31	110.6	89.4
1971	I	96.1	5503.0	3.46	112.2	85.6
	II	100.2	5565.2	3.35	113.5	88.3
	III	102.5	5627.4	3.31	114.8	89.3
	IV	101.1	5689.7	3.40	116.0	87.1
1972	I	96.8	5752.0	3.59	117.3	82.5
	II	99.7	5802.7	3.51	118.3	84.3
	III	100.9	5853.5	3.50	119.4	84.5
	IV	107.7	5904.4	3.31	120.4	89.4
1973	I	108.8	5955.4	3.30	121.4	89.6
	II	110.8	6005.1	3.27	122.5	90.5
	III	113.0	6054.9	3.23	123.5	91.5
	IV	116.2	6104.7	3.17	124.5	93.3

TABLE 1. Primary Metals

TABLEAU 1. Métaux primaires

		Index of industrial production	Gross capital stock	Capital-output ratio	Index of potential output	Capacity utilization rate
		Indice de la production industrielle	Stock de capital brut	Coefficient de capital	Indice de la production potentielle	Taux d'utilisation de la capacité
		1971 = 100	\$ millions			
1974	I	120.0	6154.5	3.10	125.5	95.6
	II	118.4	6251.1	3.19	127.5	92.9
	III	120.0	6347.8	3.19	129.4	92.7
	IV	116.9	6444.5	3.33	131.4	89.0
1975	I	110.5	6541.2	3.57	133.4	82.8
	II	105.8	6632.0	3.78	135.2	78.2
	III	105.1	6722.8	3.86	137.1	76.7
	IV	106.3	6813.5	3.87	138.9	76.5
1976	I	107.2	6904.3	3.89	140.8	76.1
	II	105.4	6952.2	3.98	141.8	74.3
	III	103.0	7000.1	4.10	142.7	72.2
	IV	101.0	7048.0	4.21	143.7	70.3
1977	I	105.7	7095.9	4.05	144.7	73.0
	II	111.2	7142.5	3.88	145.7	76.3
	III	117.6	7189.2	3.69	146.6	80.2
	IV	114.0	7235.9	3.83	147.6	77.3
1978	I	113.7	7282.7	3.87	148.5	76.6
	II	120.7	7298.9	3.65	148.8	81.1
	III	118.4	7315.2	3.73	149.2	79.4
	IV	121.5	7331.4	3.64	149.5	81.3
1979	I	121.7	7347.7	3.64	149.8	81.2
	II	121.6	7372.5	3.66	150.3	80.9
	III	119.4	7397.4	3.74	150.8	79.2
	IV	124.3	7422.3	3.60	151.4	82.1
1980	I	123.6	7447.2	3.64	151.9	81.4
	II	116.1	7514.7	3.91	153.2	75.8
	III	118.5	7582.2	3.86	154.6	76.6
	IV	127.0	7649.7	3.64	156.0	81.4
1981	I	124.9	7717.3	3.73	157.4	79.4
	II	130.4	7794.6	3.61	158.9	82.0
	III	123.3	7871.9	3.85	160.5	76.8
	IV	106.4	7949.2	4.51	162.1	65.6
1982	I	107.3	8026.5	4.51	163.7	65.6
	II	98.4	8052.2	4.94	164.2	59.9
	III	94.3	8077.9	5.17	164.7	57.2
	IV	88.2	8103.6	5.54	165.3	53.4
1983	I	92.6	8129.4	5.30	165.8	55.9
	II	105.3	8107.9	4.65	165.3	63.7
	III	111.7	8086.4	4.37	164.9	67.7
	IV	117.8	8064.8	4.13	164.5	71.6
1984	I	122.7	8043.3	3.96	164.0	74.8
	II	121.3	8058.0	4.01	164.3	73.8
	III	124.1	8072.8	3.93	164.6	75.4
	IV	122.8	8087.5	3.97	164.9	74.5
1985	I	122.2	8102.3	4.00	165.2	74.0
	II	123.1	8148.9	4.00	166.2	74.1
	III	126.0	8195.6	3.93	167.1	75.4
	IV					

TABLE 1. Metal Fabricating

TABLEAU 1. Fabrications métalliques

		Index of industrial production	Gross capital stock	Capital-output ratio	Index of potential output	Capacity utilization rate
		Indice de la production industrielle	Stock de capital brut	Coefficient de capital	Indice de la production potentielle	Taux d'utilisation de la capacité
		1971 = 100	\$ millions			
1961	I	52.3	1296.0	1.51	78.2	66.9
	II	53.7	1299.2	1.47	78.4	68.5
	III	55.2	1302.4	1.44	78.6	70.2
	IV	55.8	1305.6	1.43	78.8	70.8
1962	I	57.2	1308.8	1.39	79.0	72.4
	II	59.0	1315.3	1.36	79.4	74.3
	III	61.0	1321.9	1.32	79.8	76.5
	IV	61.4	1328.5	1.32	80.2	76.6
1963	I	62.6	1335.1	1.30	80.6	77.7
	II	64.0	1341.0	1.28	80.9	79.1
	III	65.2	1347.0	1.26	81.3	80.2
	IV	65.4	1353.0	1.26	81.7	80.1
1964	I	68.0	1359.0	1.22	82.0	82.9
	II	69.7	1369.9	1.20	82.7	84.3
	III	71.5	1380.8	1.18	83.3	85.8
	IV	75.6	1391.7	1.12	84.0	90.0
1965	I	77.4	1402.6	1.10	84.7	91.4
	II	79.7	1423.3	1.09	85.9	92.8
	III	82.2	1444.1	1.07	87.2	94.3
	IV	85.7	1464.9	1.04	88.4	96.9
1966	I	89.3	1485.7	1.01	89.7	99.6
	II	89.3	1511.2	1.03	91.2	97.9
	III	90.8	1536.8	1.03	92.8	97.9
	IV	90.2	1562.3	1.06	94.3	95.7
1967	I	90.4	1587.8	1.07	95.8	94.3
	II	90.1	1607.0	1.09	97.0	92.9
	III	89.5	1626.2	1.11	98.2	91.2
	IV	89.5	1645.3	1.12	99.3	90.1
1968	I	87.6	1664.5	1.16	100.5	87.2
	II	89.1	1682.4	1.15	101.5	87.7
	III	91.6	1700.3	1.13	102.6	89.3
	IV	93.4	1718.2	1.12	103.7	90.1
1969	I	97.1	1736.1	1.09	104.8	92.7
	II	98.4	1757.3	1.09	106.1	92.8
	III	97.7	1778.6	1.11	107.4	91.0
	IV	98.0	1800.0	1.12	108.6	90.2
1970	I	97.9	1821.4	1.13	109.9	89.1
	II	97.0	1842.4	1.16	111.2	87.2
	III	97.5	1863.4	1.16	112.5	86.7
	IV	98.3	1884.3	1.17	113.7	86.4
1971	I	97.9	1905.3	1.19	115.0	85.1
	II	100.0	1918.1	1.17	115.8	86.4
	III	100.6	1930.9	1.17	116.5	86.3
	IV	102.1	1943.6	1.16	117.3	87.0
1972	I	99.8	1956.4	1.19	118.1	84.5
	II	103.3	1970.8	1.16	119.0	86.8
	III	105.5	1985.2	1.15	119.8	88.0
	IV	106.4	1999.4	1.15	120.7	88.2
1973	I	109.8	2013.7	1.12	121.5	90.3
	II	113.2	2036.7	1.10	122.9	92.1
	III	116.1	2059.7	1.08	124.3	93.4
	IV	119.6	2082.7	1.06	125.7	95.1



TABLE 1. Metal Fabricating

TABLEAU 1. Fabrications métalliques

		Index of industrial production	Gross capital stock	Capital-output ratio	Index of potential output	Capacity utilization rate
		Indice de la production industrielle	Stock de capital brut	Coefficient de capital	Indice de la production potentielle	Taux d'utilisation de la capacité
		1971 = 100	\$ millions			
1974	I	127.1	2105.8	1.01	127.1	100.0
	II	124.9	2131.7	1.04	128.7	97.1
	III	124.3	2157.6	1.06	130.2	95.4
	IV	122.5	2183.3	1.09	131.8	93.0
1975	I	115.0	2209.1	1.17	133.3	86.2
	II	110.1	2228.9	1.23	134.5	81.8
	III	112.9	2248.7	1.21	135.7	83.2
	IV	113.5	2268.4	1.22	136.9	82.9
1976	I	117.3	2288.1	1.19	138.1	84.9
	II	121.6	2302.3	1.15	139.0	87.5
	III	121.4	2316.6	1.16	139.8	86.8
	IV	120.4	2330.7	1.18	140.7	85.6
1977	I	121.7	2344.9	1.17	141.5	86.0
	II	115.7	2355.9	1.24	142.2	81.4
	III	117.4	2367.0	1.23	142.9	82.2
	IV	119.3	2378.0	1.21	143.5	83.1
1978	I	119.9	2389.1	1.21	144.2	83.1
	II	123.7	2398.5	1.18	144.8	85.4
	III	125.1	2408.0	1.17	145.3	86.1
	IV	125.2	2417.4	1.18	145.9	85.8
1979	I	127.2	2426.9	1.16	146.5	86.8
	II	131.0	2442.6	1.14	147.4	88.9
	III	133.2	2458.4	1.12	148.4	89.8
	IV	135.1	2474.1	1.12	149.3	90.5
1980	I	135.3	2489.9	1.12	150.3	90.0
	II	127.1	2511.5	1.20	151.6	83.8
	III	126.6	2533.2	1.22	152.9	82.8
	IV	129.0	2554.8	1.21	154.2	83.7
1981	I	128.8	2576.5	1.22	155.5	82.8
	II	135.7	2586.7	1.16	156.1	86.9
	III	133.4	2596.9	1.19	156.7	85.1
	IV	123.4	2607.2	1.29	157.4	78.4
1982	I	120.5	2617.5	1.32	158.0	76.3
	II	108.6	2613.6	1.47	157.7	68.8
	III	102.9	2609.8	1.55	157.5	65.3
	IV	97.6	2605.9	1.63	157.3	62.1
1983	I	100.1	2602.0	1.58	157.0	63.7
	II	101.9	2594.7	1.55	156.6	65.1
	III	105.8	2587.4	1.49	156.2	67.7
	IV	107.8	2580.2	1.46	155.7	69.2
1984	I	103.8	2573.0	1.51	155.3	66.8
	II	104.3	2578.5	1.51	155.6	67.0
	III	107.7	2584.1	1.46	156.0	69.1
	IV	104.7	2589.7	1.51	156.3	67.0
1985	I	108.5	2595.3	1.46	156.6	69.3
	II	117.1	2604.3	1.36	157.2	74.5
	III	118.0	2613.4	1.35	157.7	74.8
	IV					

TABLE 1. Machinery

TABLEAU 1. Machines

		Index of industrial production	Gross capital stock	Capital-output ratio	Index of potential output	Capacity utilization rate
		Indice de la production industrielle	Stock de capital brut	Coefficient de capital	Indice de la production potentielle	Taux d'utilisation de la capacité
		1971 = 100	\$ millions			
1961	I	44.4	509.3	1.37	76.9	57.7
	II	45.5	513.6	1.35	77.6	58.7
	III	45.9	517.9	1.35	78.2	58.7
	IV	46.7	522.3	1.34	78.9	59.2
1962	I	48.5	526.8	1.30	79.6	61.0
	II	50.1	531.4	1.27	80.3	62.4
	III	52.1	536.0	1.23	81.0	64.4
	IV	53.9	540.6	1.20	81.6	66.0
1963	I	54.0	545.3	1.21	82.4	65.6
	II	54.8	553.8	1.21	83.6	65.5
	III	55.7	562.4	1.21	84.9	65.6
	IV	57.7	570.9	1.18	86.2	66.9
1964	I	61.3	579.5	1.13	87.5	70.0
	II	64.8	592.5	1.09	89.5	72.4
	III	67.8	605.6	1.07	91.5	74.1
	IV	68.4	618.6	1.08	93.4	73.2
1965	I	69.0	631.7	1.09	95.4	72.3
	II	71.7	641.1	1.07	96.8	74.0
	III	74.6	650.6	1.04	98.3	75.9
	IV	78.0	660.1	1.01	99.7	78.2
1966	I	80.0	669.6	1.00	101.1	79.1
	II	82.5	682.4	0.99	103.1	80.0
	III	85.1	695.3	0.98	105.0	81.0
	IV	87.1	708.2	0.97	107.0	81.4
1967	I	85.9	721.1	1.00	108.9	78.9
	II	85.8	733.0	1.02	110.7	77.5
	III	86.2	745.0	1.03	112.5	76.6
	IV	84.7	757.0	1.07	114.3	74.1
1968	I	83.7	769.0	1.10	116.1	72.1
	II	82.5	777.4	1.13	117.4	70.3
	III	88.5	785.6	1.06	118.7	74.6
	IV	88.9	794.3	1.07	120.0	74.1
1969	I	94.2	802.8	1.02	121.2	77.7
	II	97.5	813.1	1.00	122.8	79.4
	III	99.9	823.5	0.99	124.4	80.3
	IV	99.8	833.6	1.00	125.9	79.2
1970	I	99.5	844.1	1.01	127.5	78.0
	II	96.1	857.1	1.07	129.5	74.2
	III	95.7	870.1	1.09	131.4	72.8
	IV	97.5	883.1	1.08	133.4	73.1
1971	I	97.0	896.1	1.10	135.3	71.7
	II	97.3	902.1	1.11	136.2	71.4
	III	98.6	908.2	1.10	137.2	71.9
	IV	107.2	914.1	1.02	138.1	77.6
1972	I	105.3	920.1	1.05	139.0	75.8
	II	113.5	927.8	0.98	140.1	81.0
	III	115.2	935.6	0.97	141.3	81.5
	IV	113.7	943.3	0.99	142.5	79.8
1973	I	123.9	951.0	0.92	143.6	86.3
	II	121.8	965.4	0.95	145.8	83.5
	III	126.1	979.8	0.93	148.0	85.2
	IV	126.9	994.2	0.94	150.2	84.5

TABLE 1. Machinery

TABLEAU 1. Machines

		Index of industrial production	Gross capital stock	Capital-output ratio	Index of potential output	Capacity utilization rate
		Indice de la production industrielle	Stock de capital brut	Coefficient de capital	Indice de la production potentielle	Taux d'utilisation de la capacité
		1971 = 100	\$ millions			
1974	I	138.4	1008.6	0.87	152.3	90.9
	II	141.3	1027.0	0.87	155.1	91.1
	III	141.0	1045.5	0.89	157.9	89.3
	IV	147.9	1064.0	0.86	160.7	92.0
1975	I	145.2	1082.6	0.89	163.5	88.8
	II	138.3	1102.4	0.95	166.5	83.1
	III	142.2	1122.3	0.94	169.5	83.9
	IV	140.7	1142.2	0.97	172.5	81.6
1976	I	135.5	1162.1	1.03	175.5	77.2
	II	140.7	1176.6	1.00	177.7	79.2
	III	142.1	1191.2	1.00	179.9	79.0
	IV	143.7	1205.7	1.00	182.1	78.9
1977	I	142.5	1220.2	1.02	184.3	77.3
	II	144.8	1232.2	1.02	186.1	77.8
	III	142.3	1244.3	1.05	187.9	75.7
	IV	146.7	1256.5	1.02	189.8	77.3
1978	I	152.2	1268.7	1.00	191.6	79.4
	II	163.8	1280.3	0.93	193.4	84.7
	III	165.3	1291.9	0.93	195.1	84.7
	IV	171.1	1303.6	0.91	196.9	86.9
1979	I	181.1	1315.3	0.87	198.7	91.2
	II	181.3	1332.4	0.88	201.2	90.1
	III	198.5	1349.5	0.81	203.8	97.4
	IV	202.9	1366.6	0.81	206.4	98.3
1980	I	209.0	1383.8	0.79	209.0	100.0
	II	207.4	1406.7	0.81	212.5	97.6
	III	199.7	1429.7	0.86	215.9	92.5
	IV	192.7	1452.6	0.90	219.4	87.8
1981	I	207.6	1475.6	0.85	222.9	93.2
	II	209.2	1498.7	0.86	226.4	92.4
	III	207.0	1521.9	0.88	229.9	90.1
	IV	203.3	1545.0	0.91	233.3	87.1
1982	I	189.0	1568.2	0.99	236.9	79.8
	II	174.4	1587.3	1.09	239.7	72.7
	III	157.2	1606.5	1.22	242.6	64.8
	IV	148.4	1625.6	1.31	245.5	60.4
1983	I	138.8	1644.8	1.42	248.4	55.9
	II	141.2	1656.2	1.40	250.1	56.4
	III	153.2	1667.7	1.30	251.9	60.8
	IV	166.0	1679.1	1.21	253.6	65.5
1984	I	166.9	1690.5	1.21	255.3	65.4
	II	178.4	1709.2	1.15	258.1	69.1
	III	195.1	1727.9	1.06	261.0	74.8
	IV	191.4	1746.6	1.09	263.8	72.6
1985	I	192.1	1765.4	1.10	266.6	72.0
	II	190.6	1792.5	1.12	270.7	70.4
	III	193.8	1819.6	1.12	274.8	70.5
	IV					

TABLE 1. Transportation Equipment

TABLEAU 1. Matériel de transport

		Index of industrial production	Gross capital stock	Capital-output ratio	Index of potential output	Capacity utilization rate
		Indice de la production industrielle	Stock de capital brut	Coefficient de capital	Indice de la production potentielle	Taux d'utilisation de la capacité
		1971 = 100	\$ millions			
1961	I	30.5	1702.5	2.48	80.8	37.7
	II	30.8	1709.1	2.47	81.2	38.0
	III	31.4	1715.7	2.43	81.5	38.5
	IV	35.1	1722.3	2.18	81.8	42.9
1962	I	35.8	1729.0	2.15	82.1	43.6
	II	38.1	1735.4	2.03	82.4	46.2
	III	37.3	1741.8	2.08	82.7	45.1
	IV	41.1	1748.1	1.89	83.0	49.5
1963	I	41.5	1754.5	1.88	83.3	49.8
	II	43.3	1770.4	1.82	84.1	51.5
	III	41.0	1786.3	1.94	84.8	48.3
	IV	50.3	1802.1	1.59	85.6	58.8
1964	I	49.8	1818.0	1.62	86.3	57.7
	II	49.6	1850.6	1.66	87.9	56.4
	III	47.1	1883.3	1.78	89.4	52.7
	IV	47.2	1916.0	1.81	91.0	51.9
1965	I	56.3	1948.7	1.54	92.5	60.8
	II	60.7	2004.4	1.47	95.2	63.8
	III	56.6	2060.2	1.62	97.8	57.9
	IV	66.5	2115.8	1.42	100.5	66.2
1966	I	67.0	2171.5	1.44	103.1	65.0
	II	64.2	2228.6	1.54	105.8	60.7
	III	59.4	2285.7	1.71	108.5	54.7
	IV	69.9	2342.9	1.49	111.3	62.8
1967	I	72.4	2400.1	1.47	114.0	63.5
	II	75.6	2441.4	1.44	115.9	65.2
	III	77.9	2482.8	1.42	117.9	66.1
	IV	77.5	2524.1	1.45	119.9	64.7
1968	I	73.4	2565.4	1.55	121.8	60.3
	II	89.2	2589.4	1.29	123.0	72.5
	III	91.2	2613.5	1.27	124.1	73.5
	IV	95.7	2637.6	1.23	125.2	76.4
1969	I	96.4	2661.8	1.23	126.4	76.3
	II	93.9	2697.0	1.28	128.1	73.3
	III	101.4	2732.2	1.20	129.7	78.2
	IV	98.3	2767.4	1.25	131.4	74.8
1970	I	91.5	2802.6	1.36	133.1	68.8
	II	91.4	2855.2	1.39	135.6	67.4
	III	87.4	2907.8	1.48	138.1	63.3
	IV	72.2	2960.3	1.82	140.6	51.4
1971	I	97.2	3012.9	1.38	143.1	67.9
	II	96.2	3031.0	1.40	143.9	66.8
	III	102.5	3049.2	1.32	144.8	70.8
	IV	103.2	3067.3	1.32	145.7	70.9
1972	I	106.8	3085.5	1.29	146.5	72.9
	II	107.9	3102.6	1.28	147.3	73.2
	III	109.0	3119.7	1.27	148.1	73.6
	IV	121.0	3136.7	1.15	148.9	81.2
1973	I	133.7	3153.8	1.05	149.8	89.3
	II	135.9	3163.5	1.04	151.2	89.9
	III	138.0	3213.3	1.04	152.6	90.4
	IV	138.0	3243.0	1.05	154.0	89.6

TABLE 1. Transportation Equipment

TABLEAU 1. Matériel de transport

		Index of industrial production	Gross capital stock	Capital-output ratio	Index of potential output	Capacity utilization rate
		Indice de la production industrielle	Stock de capital brut	Coefficient de capital	Indice de la production potentielle	Taux d'utilisation de la capacité
		1971 = 100	\$ millions			
1974	I	139.6	3272.7	1.04	155.4	89.8
	II	133.1	3318.7	1.11	157.6	84.5
	III	138.4	3364.7	1.08	159.8	86.6
	IV	144.5	3410.7	1.05	162.0	89.2
1975	I	124.6	3456.7	1.23	164.1	75.9
	II	137.2	3486.1	1.13	165.5	82.9
	III	145.7	3515.6	1.07	166.9	87.3
	IV	143.5	3545.0	1.10	168.3	85.2
1976	I	148.9	3574.5	1.07	169.7	87.7
	II	151.4	3588.8	1.05	170.4	88.8
	III	149.4	3603.1	1.07	171.1	87.3
	IV	146.4	3617.3	1.10	171.8	85.2
1977	I	160.9	3631.6	1.00	172.4	93.3
	II	161.3	3666.7	1.01	174.1	92.6
	III	155.7	3701.8	1.06	175.8	88.6
	IV	156.3	3736.8	1.06	177.4	88.1
1978	I	150.1	3771.9	1.12	179.1	83.8
	II	159.0	3809.2	1.07	180.9	87.9
	III	162.9	3846.5	1.05	182.7	89.2
	IV	173.1	3883.8	1.00	184.4	93.9
1979	I	186.2	3921.2	0.94	186.2	100.0
	II	169.9	3982.9	1.04	189.1	89.8
	III	162.9	4044.7	1.10	192.1	84.8
	IV	152.0	4106.4	1.20	195.0	78.0
1980	I	145.2	4168.1	1.28	197.9	73.4
	II	126.9	4289.2	1.50	203.7	62.3
	III	131.9	4410.3	1.49	209.4	63.0
	IV	144.3	4531.3	1.40	215.2	67.1
1981	I	139.5	4652.3	1.48	220.9	63.1
	II	146.3	4749.8	1.44	225.5	64.9
	III	139.9	4847.3	1.54	230.2	60.8
	IV	127.7	4944.8	1.72	234.8	54.4
1982	I	124.9	5042.3	1.80	239.4	52.2
	II	132.9	5076.4	1.70	241.1	55.1
	III	134.5	5110.6	1.69	242.7	55.4
	IV	107.4	5144.7	2.13	244.3	44.0
1983	I	135.5	5178.9	1.70	245.9	55.1
	II	135.0	5221.1	1.72	247.9	54.5
	III	141.6	5263.3	1.65	249.9	56.7
	IV	168.1	5305.5	1.40	251.9	66.7
1984	I	175.5	5347.7	1.36	253.9	69.1
	II	166.8	5374.3	1.43	255.2	65.4
	III	186.9	5401.0	1.29	256.5	72.9
	IV	180.4	5427.6	1.34	257.7	70.0
1985	I	178.4	5454.3	1.36	259.0	68.9
	II	176.1	5548.0	1.40	263.4	66.8
	III	194.6	5641.8	1.29	267.9	72.6
	IV					

TABLE 1. Electrical Products

TABLEAU 1. Appareils et fournitures électriques

		Index of industrial production	Gross capital stock	Capital-output ratio	Index of potential output	Capacity utilization rate
		Indice de la production industrielle	Stock de capital brut	Coefficient de capital	Indice de la production potentielle	Taux d'utilisation de la capacité
		1971 = 100	\$ millions			
1961	I	44.2	767.5	1.30	68.6	64.4
	II	46.4	773.1	1.25	69.1	67.1
	III	49.0	778.7	1.19	69.6	70.4
	IV	51.9	784.3	1.13	70.1	74.0
1962	I	54.3	789.9	1.09	70.6	76.9
	II	55.9	798.7	1.07	71.4	78.3
	III	58.3	807.6	1.04	72.2	80.7
	IV	59.3	816.4	1.03	73.0	81.2
1963	I	59.6	825.3	1.04	73.8	80.7
	II	60.7	833.5	1.03	74.5	81.4
	III	62.3	841.8	1.01	75.3	82.8
	IV	64.6	850.1	0.98	76.0	85.0
1964	I	66.0	858.5	0.97	76.8	86.0
	II	68.4	867.8	0.95	77.6	88.1
	III	69.9	877.1	0.94	78.4	89.1
	IV	71.6	886.4	0.93	79.3	90.3
1965	I	74.5	895.8	0.90	80.1	93.0
	II	76.6	909.6	0.89	81.3	94.2
	III	78.1	923.4	0.88	82.6	94.6
	IV	80.6	937.0	0.87	83.8	96.2
1966	I	82.4	950.6	0.86	85.0	96.9
	II	86.4	974.4	0.84	87.1	99.1
	III	89.0	998.2	0.84	89.3	99.7
	IV	91.4	1022.0	0.84	91.4	100.0
1967	I	89.1	1045.9	0.88	93.5	95.3
	II	86.2	1065.8	0.93	95.3	90.4
	III	87.7	1085.8	0.93	97.1	90.3
	IV	90.1	1105.8	0.92	98.9	91.1
1968	I	90.3	1125.9	0.93	100.7	89.7
	II	90.9	1137.5	0.94	101.7	89.4
	III	92.7	1149.2	0.93	102.8	90.2
	IV	94.7	1160.8	0.92	103.8	91.2
1969	I	97.6	1172.4	0.90	104.9	93.1
	II	100.5	1188.4	0.88	106.3	94.6
	III	100.3	1204.4	0.90	107.7	93.1
	IV	99.9	1220.4	0.91	109.1	91.5
1970	I	98.2	1236.4	0.94	110.6	88.8
	II	95.4	1252.7	0.98	112.0	85.2
	III	93.9	1269.0	1.01	113.5	82.7
	IV	93.4	1285.3	1.03	114.9	81.3
1971	I	95.9	1301.6	1.02	116.4	82.4
	II	99.2	1319.1	0.99	118.0	84.1
	III	100.6	1336.7	0.99	119.5	84.2
	IV	104.2	1354.1	0.97	121.1	86.0
1972	I	103.7	1371.6	0.99	122.7	84.5
	II	106.4	1383.2	0.97	123.7	86.0
	III	110.8	1394.9	0.94	124.7	88.8
	IV	111.4	1406.6	0.94	125.8	88.6
1973	I	122.8	1418.3	0.86	126.8	96.8
	II	116.8	1437.5	0.92	128.6	90.9
	III	121.7	1456.7	0.90	130.3	93.4
	IV	123.6	1475.9	0.89	132.0	93.6

TABLE 1. Electrical Products

TABLEAU 1. Appareils et fournitures électriques

		Index of industrial production	Gross capital stock	Capital-output ratio	Index of potential output	Capacity utilization rate
		Indice de la production industrielle	Stock de capital brut	Coefficient de capital	Indice de la production potentielle	Taux d'utilisation de la capacité
		1971 = 100	\$ millions			
1974	I	127.2	1495.1	0.88	133.7	95.1
	II	132.8	1512.7	0.85	135.3	98.2
	III	129.5	1530.4	0.88	136.9	94.6
	IV	122.0	1548.0	0.95	138.4	88.1
1975	I	116.8	1565.6	1.00	140.0	83.4
	II	114.3	1578.8	1.03	141.2	81.0
	III	114.5	1592.0	1.04	142.4	80.4
	IV	119.3	1605.3	1.01	143.6	83.1
1976	I	119.1	1618.6	1.02	144.8	82.3
	II	118.5	1631.1	1.03	145.9	81.2
	III	118.8	1643.7	1.04	147.0	80.8
	IV	118.4	1656.2	1.05	148.1	79.9
1977	I	117.5	1668.8	1.06	149.2	78.7
	II	116.8	1675.8	1.07	149.9	77.9
	III	115.6	1682.9	1.09	150.5	76.8
	IV	114.0	1689.9	1.11	151.1	75.4
1978	I	113.6	1696.9	1.12	151.8	74.9
	II	115.9	1701.8	1.10	152.2	76.2
	III	116.9	1706.8	1.09	152.6	76.6
	IV	124.9	1711.7	1.03	153.1	81.6
1979	I	130.5	1716.7	0.98	153.5	85.0
	II	129.1	1724.7	1.00	154.2	83.7
	III	133.9	1732.7	0.97	155.0	86.4
	IV	131.8	1740.7	0.99	155.7	84.7
1980	I	135.2	1748.7	0.97	156.4	86.5
	II	128.7	1766.6	1.03	158.0	81.5
	III	128.6	1784.6	1.04	159.6	80.6
	IV	130.9	1802.4	1.03	161.2	81.2
1981	I	136.0	1820.3	1.00	162.8	83.5
	II	144.2	1840.0	0.95	164.6	87.6
	III	142.5	1859.8	0.98	166.3	85.7
	IV	138.7	1879.5	1.01	168.1	82.5
1982	I	127.3	1899.3	1.12	169.9	74.9
	II	125.9	1915.1	1.14	171.3	73.5
	III	124.9	1931.0	1.16	172.7	72.3
	IV	116.9	1946.8	1.25	174.1	67.1
1983	I	123.2	1962.7	1.19	175.5	70.2
	II	123.0	1984.9	1.21	177.5	69.3
	III	127.7	2007.2	1.18	179.5	71.1
	IV	131.7	2029.3	1.15	181.5	72.6
1984	I	125.1	2051.5	1.23	183.5	68.2
	II	124.0	2073.2	1.25	185.4	66.9
	III	129.2	2095.0	1.21	187.4	69.0
	IV	130.4	2116.8	1.21	189.3	68.9
1985	I	138.7	2136.6	1.15	191.3	72.5
	II	139.0	2165.3	1.17	193.6	71.8
	III	140.4	2192.7	1.17	196.1	71.6
	IV					

TABLE 1. Non-metallic Mineral Products

TABLEAU 1. Produits des minéraux non métalliques

		Index of industrial production	Gross capital stock	Capital-output ratio	Index of potential output	Capacity utilization rate
		Indice de la production industrielle	Stock de capital brut	Coefficient de capital	Indice de la production potentielle	Taux d'utilisation de la capacité
		1971 = 100	\$ millions			
1961	I	56.1	1239.1	2.96	74.2	75.6
	II	59.1	1246.9	2.83	74.7	79.2
	III	60.5	1254.8	2.78	75.1	80.5
	IV	62.2	1262.6	2.72	75.6	82.3
1962	I	63.0	1270.5	2.70	76.1	82.8
	II	68.9	1280.6	2.49	76.7	89.9
	III	69.4	1290.8	2.49	77.3	89.8
	IV	70.6	1300.9	2.47	77.9	90.6
1963	I	66.2	1311.1	2.66	78.5	84.3
	II	68.9	1320.6	2.57	79.1	87.1
	III	70.3	1330.2	2.54	79.6	88.3
	IV	68.9	1339.6	2.61	80.2	85.9
1964	I	76.5	1349.1	2.36	80.8	94.7
	II	72.2	1367.6	2.54	81.9	88.2
	III	74.7	1386.1	2.49	83.0	90.0
	IV	80.4	1404.5	2.34	84.1	95.6
1965	I	81.8	1423.0	2.33	85.2	96.0
	II	81.2	1446.3	2.39	86.6	93.8
	III	83.8	1469.7	2.35	88.0	95.2
	IV	86.1	1493.1	2.33	89.4	96.3
1966	I	90.8	1516.5	2.24	90.8	100.0
	II	85.5	1553.1	2.44	93.0	91.9
	III	84.9	1589.8	2.51	95.2	89.2
	IV	82.5	1626.6	2.64	97.4	84.7
1967	I	81.3	1663.4	2.74	99.6	81.6
	II	78.4	1687.1	2.89	101.0	77.6
	III	79.9	1710.9	2.87	102.4	78.0
	IV	83.0	1734.6	2.80	103.9	79.9
1968	I	82.1	1758.4	2.87	105.3	78.0
	II	89.8	1772.0	2.65	106.1	84.6
	III	89.2	1785.6	2.68	106.9	83.4
	IV	87.5	1799.2	2.78	107.7	81.2
1969	I	90.3	1812.9	2.69	108.5	83.2
	II	91.3	1835.8	2.70	109.9	83.1
	III	91.4	1858.8	2.73	111.3	82.1
	IV	89.1	1881.7	2.83	112.7	79.1
1970	I	87.5	1904.6	2.92	114.0	76.7
	II	83.0	1928.8	3.12	115.5	71.9
	III	85.4	1953.0	3.07	116.9	73.0
	IV	90.3	1977.1	2.94	118.4	76.3
1971	I	91.6	2001.3	2.93	119.8	76.4
	II	98.9	2007.4	2.72	120.2	82.3
	III	101.4	2013.6	2.66	120.6	84.1
	IV	106.8	2019.7	2.54	120.9	88.3
1972	I	103.2	2025.9	2.63	121.3	85.1
	II	108.7	2045.5	2.52	122.5	88.8
	III	110.9	2065.1	2.50	123.6	89.7
	IV	112.5	2084.7	2.49	124.8	90.1
1973	I	120.7	2104.4	2.34	126.0	95.8
	II	117.2	2136.8	2.44	127.9	91.6
	III	120.6	2169.3	2.41	129.9	92.9
	IV	119.7	2201.7	2.47	131.8	90.8



TABLE 1. Non-metallic Mineral Products

TABLEAU 1. Produits des minéraux non métalliques

		Index of industrial production	Gross capital stock	Capital-output ratio	Index of potential output	Capacity utilization rate
		Indice de la production industrielle	Stock de capital brut	Coefficient de capital	Indice de la production potentielle	Taux d'utilisation de la capacité
		1971 = 100	\$ millions			
1974	I	130.8	2234.2	2.29	133.8	97.8
	II	126.8	2255.6	2.39	135.1	93.9
	III	123.9	2277.1	2.46	136.3	90.9
	IV	119.3	2298.6	2.58	137.6	86.7
1975	I	114.1	2320.2	2.73	138.9	82.1
	II	114.1	2340.4	2.75	140.1	81.4
	III	118.9	2360.7	2.66	141.3	84.1
	IV	124.1	2380.9	2.57	142.6	87.1
1976	I	126.2	2401.2	2.55	143.8	87.8
	II	123.5	2425.4	2.63	145.2	85.0
	III	118.9	2449.7	2.76	146.7	81.1
	IV	115.3	2473.9	2.88	148.1	77.8
1977	I	121.0	2498.2	2.77	149.6	80.9
	II	119.5	2522.8	2.83	151.1	79.1
	III	118.1	2547.5	2.89	152.5	77.4
	IV	119.0	2572.0	2.90	154.0	77.3
1978	I	121.2	2596.6	2.87	155.5	78.0
	II	124.3	2615.3	2.82	156.6	79.4
	III	130.8	2634.1	2.70	157.7	82.9
	IV	132.8	2652.7	2.68	158.8	83.6
1979	I	132.3	2671.4	2.71	159.9	82.7
	II	134.3	2698.5	2.69	161.6	83.1
	III	138.4	2725.7	2.64	163.2	84.8
	IV	132.7	2752.8	2.78	164.8	80.5
1980	I	126.9	2780.0	2.94	166.5	76.2
	II	118.5	2793.2	3.16	167.2	70.9
	III	120.9	2806.4	3.11	168.0	72.0
	IV	123.9	2819.6	3.05	168.8	73.4
1981	I	123.2	2832.8	3.08	169.6	72.6
	II	124.8	2843.2	3.06	170.2	73.3
	III	118.6	2853.7	3.23	170.9	69.4
	IV	113.0	2864.1	3.40	171.5	65.9
1982	I	97.4	2874.6	3.96	172.1	56.6
	II	97.6	2864.3	3.94	171.5	56.9
	III	94.4	2854.0	4.05	170.9	55.2
	IV	92.2	2843.7	4.14	170.3	54.2
1983	I	98.8	2833.5	3.85	169.7	58.2
	II	104.2	2822.4	3.63	169.0	61.7
	III	107.2	2811.3	3.52	168.3	63.7
	IV	103.0	2800.2	3.65	167.7	61.4
1984	I	110.3	2789.2	3.39	187.0	66.0
	II	110.8	2780.6	3.37	166.5	66.6
	III	111.9	2772.1	3.32	166.0	67.4
	IV	114.5	2763.4	3.24	165.5	69.2
1985	I	112.0	2754.8	3.30	164.9	67.9
	II	120.1	2750.2	3.07	164.7	72.9
	III	120.5	2745.6	3.06	164.4	73.3
	IV					

TABLE 1. Petroleum and Coal Products

TABLEAU 1. Dérivés du pétrole et du charbon

		Index of industrial production	Gross capital stock	Capital-output ratio	Index of potential output	Capacity utilization rate
		Indice de la production industrielle	Stock de capital brut	Coefficient de capital	Indice de la production potentielle	Taux d'utilisation de la capacité
		1971 = 100	\$ millions			
1961	I	59.4	1795.5	11.52	75.9	78.2
	II	63.5	1801.6	10.81	76.2	83.3
	III	62.7	1807.8	10.98	76.5	82.0
	IV	62.8	1813.9	11.00	76.7	81.9
1962	I	66.2	1820.1	10.47	77.0	86.0
	II	65.9	1839.7	10.63	77.8	84.7
	III	66.7	1859.4	10.62	78.6	84.8
	IV	69.7	1879.1	10.27	79.5	87.7
1963	I	70.7	1898.8	10.23	80.3	88.0
	II	70.7	1909.6	10.29	80.8	87.5
	III	74.2	1920.4	9.86	81.2	91.4
	IV	74.3	1931.1	9.90	81.7	91.0
1964	I	73.2	1941.9	10.11	82.1	89.1
	II	72.2	1944.8	10.26	82.3	87.8
	III	72.3	1947.7	10.26	82.4	87.8
	IV	74.1	1950.6	10.03	82.5	89.8
1965	I	76.3	1953.5	9.75	82.6	92.3
	II	75.1	1961.2	9.95	83.0	90.3
	III	76.6	1968.9	9.79	83.3	92.0
	IV	74.9	1976.6	10.05	83.6	89.6
1966	I	76.7	1984.4	9.86	83.9	91.4
	II	80.3	1998.6	9.48	84.5	95.0
	III	79.3	2012.8	9.67	85.1	93.1
	IV	80.8	2027.0	9.56	85.7	94.2
1967	I	78.4	2041.3	9.92	86.3	90.8
	II	79.9	2065.0	9.85	87.3	91.5
	III	79.9	2088.8	9.96	88.3	90.4
	IV	81.6	2112.6	9.86	89.4	91.3
1968	I	86.2	2136.5	9.44	90.4	95.4
	II	90.6	2168.4	9.12	91.7	98.8
	III	88.5	2200.3	9.47	93.1	95.1
	IV	89.7	2232.2	9.48	94.4	95.0
1969	I	93.1	2264.1	9.26	95.8	97.2
	II	87.7	2294.1	9.97	97.0	90.4
	III	95.3	2324.2	9.29	98.3	96.9
	IV	92.1	2354.3	9.74	99.6	92.5
1970	I	93.6	2384.5	9.70	100.9	92.8
	II	94.6	2441.2	9.83	103.3	91.6
	III	92.6	2498.0	10.28	105.7	87.6
	IV	96.7	2554.7	10.06	108.1	89.5
1971	I	92.0	2611.5	10.81	110.5	83.3
	II	97.3	2657.3	10.40	112.4	86.6
	III	102.7	2703.2	10.03	114.3	89.8
	IV	107.9	2749.0	9.71	116.3	92.8
1972	I	108.4	2794.9	9.82	118.2	91.7
	II	108.4	2840.5	9.98	120.1	90.2
	III	114.9	2886.1	9.57	122.1	94.1
	IV	116.9	2931.6	9.55	124.0	94.3
1973	I	120.3	2977.2	9.43	125.9	95.5
	II	123.3	3037.2	9.38	128.5	96.0
	III	131.0	3097.2	9.01	131.0	100.0
	IV	128.4	3157.3	9.37	133.5	96.1

TABLE 1. Petroleum and Coal Products

TABLEAU 1. Dérivés du pétrole et du charbon

		Index of industrial production	Gross capital stock	Capital-output ratio	Index of potential output	Capacity utilization rate
		Indice de la production industrielle	Stock de capital brut	Coefficient de capital	Indice de la production potentielle	Taux d'utilisation de la capacité
		1971 = 100	\$ millions			
1974	I	132.2	3217.4	9.27	136.1	97.1
	II	130.2	3287.8	9.62	139.1	93.6
	III	128.1	3358.2	9.99	142.0	90.2
	IV	130.6	3428.6	10.00	145.0	90.1
1975	I	124.4	3499.1	10.72	148.0	84.1
	II	135.1	3561.6	10.04	150.6	89.7
	III	126.3	3624.1	10.93	153.3	82.4
	IV	127.7	3686.6	11.00	155.9	81.9
1976	I	125.7	3749.1	11.36	158.6	79.3
	II	128.9	3786.8	11.19	160.2	80.5
	III	123.8	3824.6	11.77	161.8	76.5
	IV	127.0	3862.3	11.59	163.4	77.7
1977	I	136.7	3900.1	10.87	165.0	82.9
	II	138.1	3936.0	10.86	166.5	83.0
	III	133.6	3971.9	11.33	168.0	79.5
	IV	134.7	4007.7	11.33	169.5	79.5
1978	I	134.6	4043.5	11.44	171.0	78.7
	II	134.7	4068.4	11.51	172.1	78.3
	III	143.4	4093.3	10.87	173.1	82.8
	IV	144.2	4118.2	10.88	174.2	82.8
1979	I	146.0	4143.1	10.81	175.2	83.3
	II	147.6	4158.6	10.73	175.9	83.9
	III	147.3	4174.1	10.80	176.5	83.4
	IV	149.4	4189.7	10.68	177.2	84.3
1980	I	151.3	4170.9	10.50	176.4	85.8
	II	146.6	4152.2	10.79	175.6	83.5
	III	142.1	4133.4	11.08	174.8	81.3
	IV	146.3	4114.6	10.71	174.0	84.1
1981	I	145.0	4169.4	10.95	176.4	82.2
	II	146.9	4224.1	10.95	178.7	82.2
	III	139.8	4278.9	11.66	181.0	77.2
	IV	133.5	4333.6	12.37	183.3	72.8
1982	I	124.8	4367.6	13.33	184.7	67.6
	II	122.7	4401.7	13.67	186.2	65.9
	III	124.9	4435.7	13.53	187.6	66.6
	IV	119.2	4469.7	14.28	189.1	63.1
1983	I	117.7	4352.0	14.09	184.1	63.9
	II	113.8	4234.3	14.17	179.1	63.5
	III	128.6	4116.5	12.19	174.1	73.9
	IV	125.3	3998.8	12.18	169.1	74.1
1984	I	126.9	4034.3	12.11	170.6	74.4
	II	126.4	4069.9	12.27	172.1	73.4
	III	119.1	4105.4	13.13	173.6	68.6
	IV	129.2	4140.9	12.21	175.1	73.8
1985	I	116.0	4157.3	13.65	175.8	66.0
	II	122.4	4164.6	12.96	176.1	69.5
	III	121.1	4171.9	13.12	176.5	68.6
	IV					

TABLE 1. Chemical and Chemical Products

TABLEAU 1. Produits chimiques

		Index of industrial production	Gross capital stock	Capital-output ratio	Index of potential output	Capacity utilization rate
		Indice de la production industrielle	Stock de capital brut	Coefficient de capital	Indice de la production potentielle	Taux d'utilisation de la capacité
		1971 = 100	\$ millions			
1961	I	46.7	2157.3	4.08	62.7	74.4
	II	48.2	2189.6	4.02	63.7	75.7
	III	49.5	2221.9	3.97	64.6	76.6
	IV	50.6	2254.2	3.94	65.5	77.2
1962	I	51.6	2286.5	3.92	66.5	77.6
	II	53.4	2306.8	3.82	67.1	79.6
	III	52.5	2327.1	3.92	67.7	77.6
	IV	51.8	2347.4	4.01	68.3	75.9
1963	I	53.5	2367.7	3.91	68.8	77.7
	II	55.1	2392.0	3.84	69.6	79.2
	III	56.6	2416.3	3.77	70.3	80.6
	IV	57.9	2440.5	3.73	71.0	81.6
1964	I	61.4	2464.8	3.55	71.7	85.7
	II	62.1	2494.3	3.55	72.5	85.6
	III	65.5	2523.9	3.41	73.4	89.3
	IV	67.4	2553.4	3.35	74.2	90.8
1965	I	66.0	2582.9	3.46	75.1	87.9
	II	68.9	2648.9	3.40	77.0	89.3
	III	71.6	2714.9	3.35	78.9	90.7
	IV	74.6	2780.9	3.30	80.9	92.3
1966	I	76.2	2847.0	3.30	82.8	92.1
	II	76.6	2908.8	3.36	84.6	90.6
	III	77.1	2970.7	3.41	86.4	89.3
	IV	77.4	3032.5	3.46	88.2	87.8
1967	I	78.0	3094.4	3.51	90.0	86.7
	II	78.5	3152.1	3.55	91.7	85.7
	III	79.7	3209.9	3.56	93.3	85.4
	IV	80.5	3267.6	3.59	95.0	84.7
1968	I	82.2	3325.3	3.58	96.7	85.0
	II	83.5	3389.4	3.59	98.6	84.7
	III	86.1	3453.6	3.55	100.4	85.7
	IV	89.0	3517.8	3.49	102.3	87.0
1969	I	91.9	3582.1	3.45	104.2	88.2
	II	93.8	3623.9	3.42	105.4	89.0
	III	95.8	3665.7	3.38	106.6	89.9
	IV	93.9	3707.5	3.49	107.8	87.1
1970	I	96.2	3749.3	3.45	109.0	88.2
	II	95.1	3794.6	3.53	110.3	86.2
	III	92.5	3840.0	3.67	111.7	82.8
	IV	95.5	3885.3	3.60	113.0	84.5
1971	I	98.0	3930.6	3.55	114.3	85.7
	II	99.7	3962.5	3.51	115.2	86.5
	III	101.2	3994.5	3.49	116.1	87.1
	IV	100.9	4026.4	3.53	117.1	86.2
1972	I	102.0	4058.4	3.52	118.0	86.4
	II	104.9	4084.7	3.44	118.8	88.3
	III	106.8	4111.0	3.40	119.5	89.3
	IV	109.3	4137.3	3.35	120.3	90.9
1973	I	114.2	4163.6	3.22	121.1	94.3
	II	118.6	4206.0	3.14	122.3	97.0
	III	120.5	4248.4	3.12	123.5	97.5
	IV	123.7	4290.9	3.07	124.8	99.1

TABLE 1. Chemical and Chemical Products

TABLEAU 1. Produits chimiques

		Index of industrial production	Gross capital stock	Capital-output ratio	Index of potential output	Capacity utilization rate
		Indice de la production industrielle	Stock de capital brut	Coefficient de capital	Indice de la production potentielle	Taux d'utilisation de la capacité
		1971 = 100	\$ millions			
1974	I	126.0	4333.4	3.04	126.0	100.0
	II	124.5	4423.0	3.14	128.6	96.8
	III	126.3	4512.7	3.16	131.2	96.3
	IV	123.0	4602.5	3.31	133.8	91.9
1975	I	117.9	4692.3	3.52	136.4	86.4
	II	112.4	4830.6	3.80	140.5	80.0
	III	115.0	4968.9	3.62	144.5	79.6
	IV	120.3	5107.2	3.75	148.5	81.0
1978	I	121.7	5245.6	3.81	152.5	79.8
	II	124.6	5405.1	3.83	157.2	79.3
	III	126.1	5564.6	3.90	161.8	77.9
	IV	127.6	5724.2	3.97	166.4	76.7
1977	I	128.3	5883.8	4.05	171.1	75.0
	II	133.2	6043.2	4.01	175.7	75.8
	III	134.1	6202.7	4.09	180.4	74.4
	IV	132.4	6362.1	4.25	185.0	71.6
1978	I	135.3	6521.6	4.26	189.6	71.4
	II	136.6	6660.8	4.31	193.7	70.5
	III	139.5	6800.0	4.31	197.7	70.6
	IV	146.8	6939.2	4.18	201.8	72.8
1979	I	149.6	7078.5	4.18	205.8	72.7
	II	153.6	7184.1	4.13	208.9	73.5
	III	159.2	7289.7	4.05	212.0	75.1
	IV	157.5	7395.4	4.15	215.0	73.2
1980	I	157.4	7501.2	4.21	218.1	72.2
	II	153.8	7567.8	4.35	220.0	69.9
	III	151.8	7634.5	4.45	222.0	68.4
	IV	158.7	7701.2	4.29	223.9	70.9
1981	I	160.9	7767.9	4.27	225.9	71.2
	II	159.5	7929.7	4.39	230.6	69.2
	III	160.1	8091.5	4.47	235.3	68.0
	IV	154.6	8253.3	4.72	240.0	64.4
1982	I	148.2	8415.2	5.02	244.7	60.6
	II	144.6	8561.2	5.23	248.9	58.1
	III	143.4	8707.2	5.37	253.2	56.6
	IV	141.7	8853.2	5.52	257.4	55.0
1983	I	151.5	8999.2	5.25	261.7	57.9
	II	156.5	9076.8	5.13	263.9	59.3
	III	161.4	9154.4	5.01	266.2	60.6
	IV	163.9	9231.9	4.98	268.4	61.1
1984	I	161.0	9309.5	5.11	270.7	59.5
	II	166.8	9326.0	4.94	271.2	61.5
	III	168.2	9342.5	4.91	271.6	61.9
	IV	166.4	9359.0	4.97	272.1	61.1
1985	I	169.1	9375.6	4.90	272.6	62.0
	II	171.8	9387.9	4.83	273.0	62.9
	III	175.2	9400.2	4.74	273.3	64.1
	IV					

TABLE 1. Miscellaneous Manufacturing

TABLEAU 1. Industries diverses

		Index of industrial production	Gross capital stock	Capital-output ratio	Index of potential output	Capacity utilization rate
		Indice de la production industrielle	Stock de capital brut	Coefficient de capital	Indice de la production potentielle	Taux d'utilisation de la capacité
		1971 = 100	\$ millions			
1961	I	55.2	252.2	0.84	65.4	84.4
	II	57.0	254.5	0.82	66.0	86.4
	III	58.1	256.9	0.81	66.6	87.3
	IV	60.2	259.2	0.79	67.2	89.6
1962	I	59.8	261.6	0.80	67.8	88.2
	II	60.9	265.5	0.80	68.8	88.5
	III	62.7	269.4	0.79	69.8	89.8
	IV	63.6	273.3	0.79	70.8	89.8
1963	I	63.0	277.3	0.81	71.9	87.7
	II	64.0	280.7	0.81	72.8	88.0
	III	65.0	284.2	0.80	73.7	88.2
	IV	66.8	287.6	0.79	74.5	89.6
1964	I	67.9	291.1	0.79	75.4	90.0
	II	70.3	295.1	0.77	76.5	91.9
	III	71.7	299.1	0.77	77.5	92.5
	IV	72.1	303.0	0.77	78.5	91.8
1965	I	73.1	306.9	0.77	79.5	91.9
	II	74.8	312.0	0.77	80.9	92.5
	III	76.5	317.1	0.76	82.2	93.1
	IV	76.2	322.1	0.78	83.5	91.3
1966	I	79.0	327.1	0.76	84.8	93.2
	II	81.2	335.3	0.76	86.9	93.4
	III	84.2	343.6	0.75	89.1	94.5
	IV	85.7	351.7	0.75	91.2	94.0
1967	I	83.2	359.9	0.79	93.3	89.2
	II	83.9	366.7	0.80	95.0	88.3
	III	85.6	373.6	0.80	96.8	88.4
	IV	88.3	380.2	0.79	98.5	89.6
1968	I	86.1	386.9	0.83	100.3	85.9
	II	89.6	393.2	0.81	101.9	87.9
	III	90.7	399.6	0.81	103.6	87.6
	IV	92.7	406.0	0.80	105.2	88.1
1969	I	91.8	412.4	0.83	106.9	85.9
	II	94.1	418.8	0.82	108.5	86.7
	III	96.1	425.3	0.81	110.2	87.2
	IV	98.9	431.7	0.80	111.9	88.4
1970	I	94.7	438.2	0.85	113.6	83.4
	II	92.8	443.5	0.88	114.9	80.7
	III	94.5	448.8	0.87	116.3	81.2
	IV	95.6	454.1	0.87	117.7	81.2
1971	I	91.0	459.4	0.93	119.1	76.4
	II	100.3	463.4	0.85	120.1	83.5
	III	102.8	467.5	0.84	121.2	84.8
	IV	105.2	471.5	0.82	122.2	86.1
1972	I	100.4	475.5	0.87	123.2	81.5
	II	106.1	477.1	0.83	123.7	85.8
	III	112.4	478.8	0.78	124.1	90.6
	IV	114.3	480.4	0.77	124.5	91.8
1973	I	115.3	482.0	0.77	124.9	92.3
	II	113.4	486.0	0.79	126.0	90.0
	III	117.2	490.1	0.77	127.0	92.3
	IV	121.6	494.1	0.75	128.1	95.0

TABLE 1. Miscellaneous Manufacturing

TABLEAU 1. Industries diverses

		Index of industrial production	Gross capital stock	Capital-output ratio	Index of potential output	Capacity utilization rate
		Indice de la production industrielle	Stock de capital brut	Coefficient de capital	Indice de la production potentielle	Taux d'utilisation de la capacité
		1971 = 100	\$ millions			
1974	I	129.1	498.1	0.71	129.1	100.0
	II	128.7	502.9	0.72	130.3	98.7
	III	121.9	507.7	0.77	131.6	92.6
	IV	121.2	512.5	0.78	132.8	91.2
1975	I	118.0	517.3	0.81	134.1	88.0
	II	120.3	517.8	0.79	134.2	89.6
	III	120.1	518.3	0.79	134.3	89.4
	IV	121.6	518.8	0.78	134.5	90.4
1976	I	124.9	519.3	0.76	134.6	92.8
	II	126.0	521.3	0.76	135.1	93.3
	III	125.6	523.3	0.77	135.6	92.6
	IV	122.6	525.3	0.79	136.1	90.0
1977	I	123.7	527.3	0.78	136.7	90.5
	II	120.0	527.5	0.81	136.7	87.8
	III	117.0	527.7	0.83	136.8	85.5
	IV	120.4	527.8	0.81	136.8	88.0
1978	I	126.0	528.0	0.77	136.8	92.1
	II	125.6	530.2	0.78	137.4	91.4
	III	129.7	532.4	0.75	138.0	94.0
	IV	135.5	534.6	0.72	138.6	97.8
1979	I	130.0	536.8	0.76	139.1	93.4
	II	137.1	538.8	0.72	139.6	98.2
	III	137.2	540.8	0.72	140.2	97.9
	IV	133.5	542.8	0.75	140.7	94.9
1980	I	132.9	544.8	0.75	141.2	94.1
	II	137.1	550.1	0.74	142.6	96.2
	III	137.4	555.4	0.74	144.0	95.4
	IV	133.6	560.8	0.77	145.4	91.9
1981	I	136.7	566.2	0.76	146.8	93.2
	II	135.4	569.3	0.77	147.6	91.8
	III	135.0	572.4	0.78	148.4	91.0
	IV	128.1	575.4	0.83	149.1	85.9
1982	I	123.9	578.4	0.86	149.9	82.6
	II	120.9	579.5	0.88	150.2	80.5
	III	117.1	580.6	0.91	150.5	77.8
	IV	121.1	581.6	0.88	150.7	80.3
1983	I	119.1	582.6	0.90	151.0	78.9
	II	119.5	585.6	0.90	151.8	78.7
	III	119.9	588.6	0.90	152.6	78.6
	IV	123.9	591.5	0.88	153.3	80.8
1984	I	120.8	594.5	0.90	154.1	78.4
	II	115.8	597.9	0.95	155.0	74.7
	III	113.7	601.3	0.97	155.8	73.0
	IV	116.2	604.6	0.96	156.7	74.2
1985	I	114.5	608.0	0.98	157.6	72.7
	II	122.1	613.9	0.92	159.1	76.7
	III	126.2	619.9	0.90	160.7	78.5
	IV					

TABLE 2. Aggregates of Capacity Utilization Rates

TABLEAU 2. Les agrégations des taux d'utilisation de la capacité

		Durable manufacturing industries  Industries manufacturières de biens durables	Non-durable manufacturing industries  Industries manufacturières de biens non durables	Total manufacturing industries  Ensemble du secteur manufacturier
1961	I	63.2	81.0	72.0
	II	65.3	81.5	73.3
	III	66.7	83.1	74.8
	IV	68.4	83.7	76.0
1962	I	69.5	84.0	76.6
	II	72.1	84.9	78.4
	III	73.4	85.0	79.1
	IV	73.7	84.0	78.8
1963	I	74.0	84.4	79.2
	II	75.0	85.7	80.3
	III	75.0	85.8	80.4
	IV	78.1	86.7	82.3
1964	I	80.3	88.5	84.3
	II	80.0	88.7	84.3
	III	80.5	88.6	84.5
	IV	81.9	89.6	85.7
1965	I	84.2	88.7	86.4
	II	85.5	88.2	86.9
	III	85.4	89.4	87.3
	IV	88.7	90.3	89.5
1966	I	89.0	90.9	89.9
	II	87.3	90.3	88.8
	III	85.3	89.3	87.3
	IV	85.6	88.8	87.2
1967	I	83.8	87.9	85.8
	II	82.5	87.3	84.9
	III	82.4	87.9	85.1
	IV	81.9	86.9	84.4
1968	I	79.9	87.7	83.7
	II	83.4	87.8	85.6
	III	85.2	86.6	85.9
	IV	86.9	88.8	87.8
1969	I	87.5	89.9	88.7
	II	87.6	89.7	88.6
	III	85.6	90.1	87.9
	IV	84.2	89.0	86.6
1970	I	83.6	88.5	86.0
	II	79.9	86.6	83.2
	III	78.6	85.3	81.9
	IV	75.4	86.3	80.8
1971	I	78.0	85.3	81.6
	II	79.7	85.8	82.7
	III	81.6	87.5	84.5
	IV	82.5	88.0	85.2
1972	I	80.8	87.8	84.3
	II	82.3	89.9	86.0
	III	83.3	90.6	86.9
	IV	86.5	91.8	89.1
1973	I	91.0	92.6	91.8
	II	89.9	92.6	91.2
	III	90.8	91.9	91.4
	IV	91.2	93.9	92.5



TABLE 2. Aggregates of Capacity Utilization Rates

TABLEAU 2. Les agrégations des taux d'utilisation de la capacité

		Durable manufacturing industries  Industries manufacturières de biens durables	Non-durable manufacturing industries  Industries manufacturières de biens non durables	Total manufacturing industries  Ensemble du secteur manufacturier
1974	I	93.8	94.3	94.0
	II	91.2	92.4	91.8
	III	89.7	89.7	89.7
	IV	87.2	87.0	87.1
1975	I	80.4	84.3	82.3
	II	79.7	82.7	81.2
	III	80.5	81.4	81.0
	IV	81.2	81.5	81.3
1976	I	81.8	83.7	82.7
	II	82.5	87.1	84.8
	III	81.3	86.6	83.9
	IV	80.1	84.9	82.5
1977	I	82.3	85.0	83.6
	II	81.1	84.5	82.8
	III	80.7	83.6	82.2
	IV	80.3	83.6	81.9
1978	I	79.2	84.9	82.0
	II	82.3	85.4	83.8
	III	82.8	86.4	84.6
	IV	85.4	88.5	86.9
1979	I	87.5	88.3	87.9
	II	85.5	88.8	87.1
	III	85.2	88.6	86.9
	IV	83.4	88.3	85.8
1980	I	82.0	88.3	85.1
	II	75.6	86.3	80.9
	III	75.6	85.4	80.4
	IV	77.4	85.6	81.5
1981	I	77.2	86.3	81.7
	II	79.3	86.8	83.0
	III	74.8	84.9	79.8
	IV	69.3	82.3	75.7
1982	I	65.1	78.4	71.7
	II	62.8	76.0	69.3
	III	60.8	75.4	68.0
	IV	55.9	74.6	65.1
1983	I	60.2	77.3	68.6
	II	62.1	78.2	70.0
	III	65.5	79.8	72.6
	IV	69.0	80.5	74.7
1984	I	68.8	80.3	74.5
	II	68.0	81.3	74.5
	III	71.3	81.6	76.4
	IV	70.2	81.8	75.9
1985	I	70.6	80.7	75.6
	II	71.5	81.7	76.5
	III	73.6	83.1	78.3
	IV			

TABLE 3. Annual Averages of Utilization Rates

TABLEAU 3. La moyenne annuelle de taux d'utilisation

	Food and beverages  Aliments et boissons	Tobacco products  Tabacs	Rubber and plastics products industries  Industrie du caoutchouc et des produits en matière plastique	Leather  Cuir	Textile  Textiles	Knitting mills and clothing(1)  Bonneterie et vêtements(1)
1961	95.6	93.8	60.9	93.3	54.8	63.3
1962	95.7	93.5	76.1	95.9	60.9	66.7
1963	95.7	94.8	77.1	95.1	65.7	70.8
1964	97.8	95.1	81.5	97.4	70.1	74.2
1965	97.3	95.3	82.5	98.2	68.9	76.6
1966	98.5	93.5	87.1	98.0	65.9	78.1
1967	99.4	93.8	87.8	93.2	65.3	76.3
1968	97.6	87.8	89.9	97.2	71.5	81.0
1969	96.7	87.9	91.4	94.9	79.9	82.3
1970	95.5	91.5	84.7	87.8	74.9	81.2
1971	95.5	90.3	81.7	90.1	80.3	85.6
1972	97.3	92.4	84.1	84.6	89.2	89.6
1973	96.6	92.2	88.6	84.4	91.3	91.1
1974	91.6	95.2	82.3	84.5	84.9	86.6
1975	88.4	90.2	71.0	81.9	78.6	86.8
1976	91.0	91.3	77.3	84.9	78.8	91.3
1977	89.8	90.3	80.9	77.0	83.1	86.0
1978	88.1	87.4	84.3	85.8	88.0	91.5
1979	88.2	88.5	91.8	88.5	96.4	96.6
1980	86.5	87.1	80.3	83.3	90.9	90.9
1981	85.2	87.6	82.3	87.0	94.5	89.6
1982	82.0	86.3	68.6	74.4	74.8	78.5
1983	80.7	79.1	78.1	82.4	82.5	88.7
1984	78.8	74.4	90.4	82.8	93.0	92.8
1985						

(1) Beginning in the first quarter of 1985, capacity utilization rates will no longer be calculated for knitting mills and clothing industries as individual industrial groups because the production data for these two industry groups have been amalgamated due to changes in the industrial classification. - Depuis le premier trimestre de 1985, les taux d'utilisation de la capacité ne sont plus calculés séparément pour la bonneterie et pour les vêtements, les données pour ces deux branches d'activité ayant été amalgamées à la suite de la modification de la Classification des industries.

TABLE 3. Annual Averages of Utilization Rates

TABLEAU 3. La moyenne annuelle de taux d'utilisation

	Wood Bois	Furniture and fixtures Meubles et accessoires	Paper and allied industries Papiers et industries connexes	Printing, publishing and allied industries Impression publication et industries connexes	Primary metals Métaux primaires
1961	85.8	77.3	91.7	78.0	81.5
1962	90.0	82.2	92.0	77.5	85.1
1964	93.7	85.6	93.6	76.2	86.9
1964	98.2	88.0	98.6	73.6	93.4
1965	96.8	94.6	96.9	75.2	97.4
1966	94.6	99.5	95.9	77.6	96.1
1967	92.8	94.1	87.3	77.4	87.1
1968	92.9	90.6	86.2	76.8	92.5
1969	92.0	91.3	92.6	77.9	91.4
1970	81.0	83.1	87.9	76.1	93.1
1971	83.5	83.4	83.1	76.5	87.6
1972	82.4	93.7	87.8	80.3	85.2
1973	85.4	95.8	90.8	85.5	91.2
1974	76.1	88.3	93.8	86.6	92.6
1975	63.6	77.9	71.3	85.2	78.6
1976	75.1	80.4	80.9	89.3	73.2
1977	76.0	72.4	79.4	88.5	76.7
1978	75.6	78.5	86.6	91.7	79.6
1979	75.4	82.3	86.4	93.9	80.9
1980	69.6	80.2	86.2	99.3	78.8
1981	64.8	86.0	83.1	97.9	76.0
1982	54.9	63.6	73.7	88.1	59.0
1983	66.7	75.6	79.0	89.0	64.7
1984	65.6	74.2	80.2	98.3	74.6
1985					

TABLE 3. Annual Averages of Utilization Rates

TABLEAU 3. La moyenne annuelle de taux d'utilisation

	Metal fabricating  Fabrications métalliques	Machinery  Machines	Transportation equipment  Matériel de transport	Electrical products  Appareils et fournitures électriques	Non-metallic mineral products  Produits des minéraux non métalliques	Petroleum and coal products  Dérivés du pétrole et du charbon
1961	69.1	58.6	39.3	69.0	79.4	81.4
1962	75.0	63.5	46.1	79.3	88.3	85.8
1963	79.3	65.9	52.1	82.5	86.4	89.5
1964	85.8	72.4	54.7	88.4	92.1	88.6
1965	93.9	75.1	62.2	94.5	95.3	91.1
1966	97.8	80.4	60.8	98.9	91.5	93.4
1967	92.1	76.8	64.9	91.8	79.3	91.0
1968	88.6	72.8	70.7	90.1	81.8	96.1
1969	91.7	79.2	75.7	93.1	81.9	94.3
1970	87.4	74.5	62.7	84.5	74.5	90.3
1971	86.2	73.2	69.1	84.2	82.8	86.1
1972	86.9	79.5	75.2	87.0	88.4	92.6
1973	92.7	84.9	89.8	93.7	92.8	96.9
1974	96.4	90.8	87.5	94.0	92.3	92.8
1975	83.5	84.4	82.8	82.0	83.7	84.5
1976	86.2	78.6	87.3	81.1	82.9	78.5
1977	83.2	77.0	90.7	77.2	78.7	81.2
1978	85.1	83.9	88.7	77.3	81.0	80.7
1979	89.0	94.3	88.2	85.0	82.8	83.7
1980	85.1	94.5	66.5	82.5	73.1	83.7
1981	83.3	90.7	60.8	84.8	70.3	78.6
1982	68.1	69.4	51.7	72.0	55.7	65.8
1983	66.4	59.7	58.3	70.8	61.3	68.9
1984	67.5	70.5	69.4	68.3	67.3	72.6
1985						

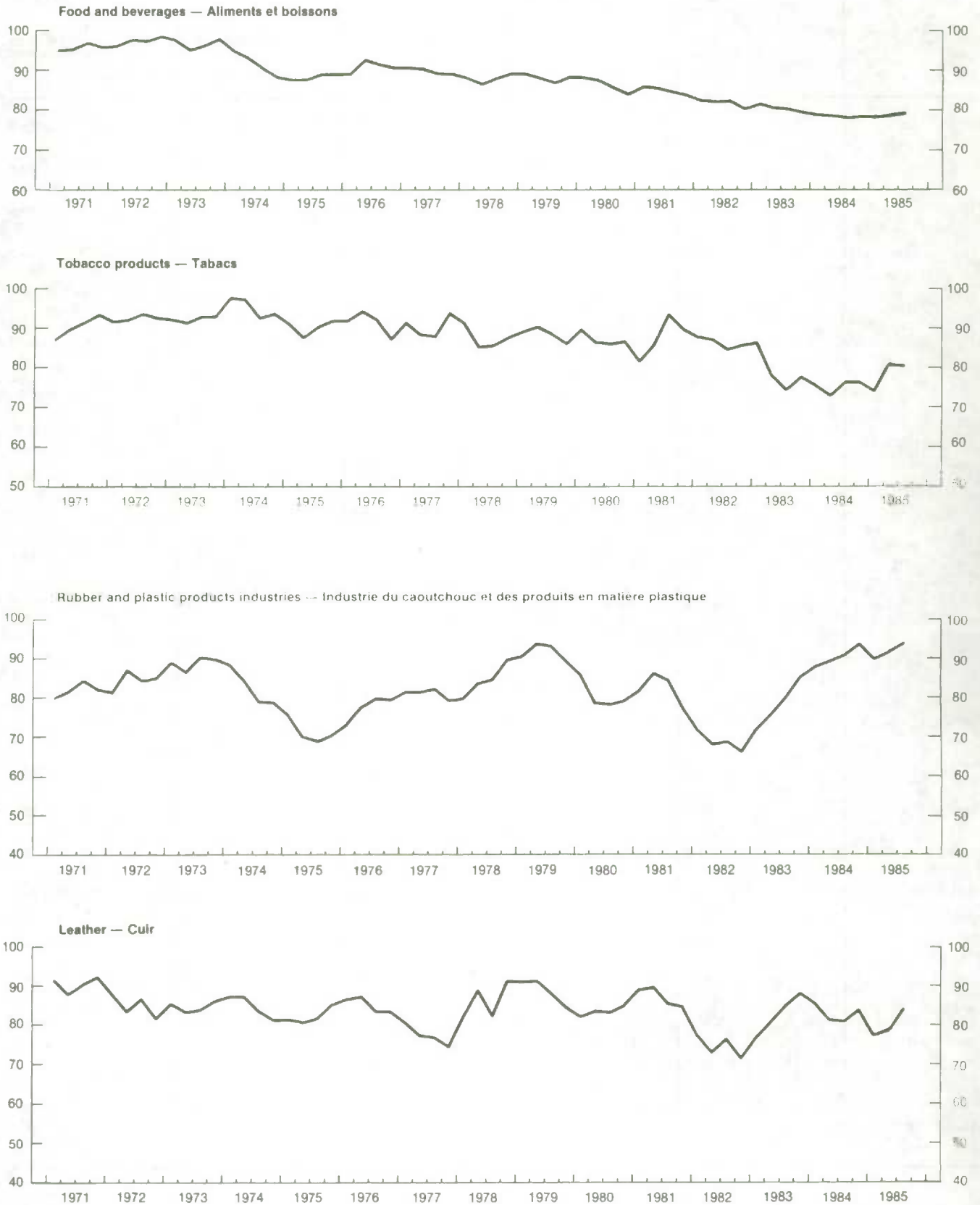
TABLE 3. Annual Averages of Utilization Rates

TABLEAU 3. La moyenne annuelle de taux d'utilisation

	Chemical and chemical products  Produits chimiques	Miscellaneous manufacturing  Industries diverses	Durable goods  Biens durables	Non durable goods  Biens non durables	Manufacturing industries  Industries manufacturières
1961	76.0	86.9	65.9	82.3	74.0
1962	77.7	89.1	72.2	84.5	78.2
1963	79.8	88.4	75.5	85.7	80.6
1964	87.9	91.6	80.7	88.9	84.7
1965	90.1	92.2	86.0	89.2	87.5
1966	90.0	93.8	86.8	89.8	88.3
1967	85.6	88.9	82.7	87.5	85.1
1968	85.6	87.4	83.9	87.7	85.8
1969	88.6	87.1	86.2	89.7	88.0
1970	85.4	81.6	79.4	86.7	83.0
1971	86.4	82.7	80.5	86.7	83.5
1972	88.7	87.4	83.2	90.0	86.6
1973	97.0	92.4	90.7	92.8	91.7
1974	96.3	95.6	90.5	90.9	90.7
1975	81.8	89.4	80.5	82.5	81.5
1976	78.4	92.2	81.4	85.6	83.5
1977	74.2	88.0	81.1	84.2	82.6
1978	71.3	93.8	82.4	86.3	84.3
1979	73.6	96.1	85.4	88.5	86.9
1980	70.4	94.4	77.7	86.4	82.0
1981	68.2	90.5	75.2	85.1	80.1
1982	57.6	80.3	61.2	76.1	68.5
1983	59.7	79.3	64.2	79.0	71.5
1984	61.0	75.1	69.6	81.3	75.3
1985					

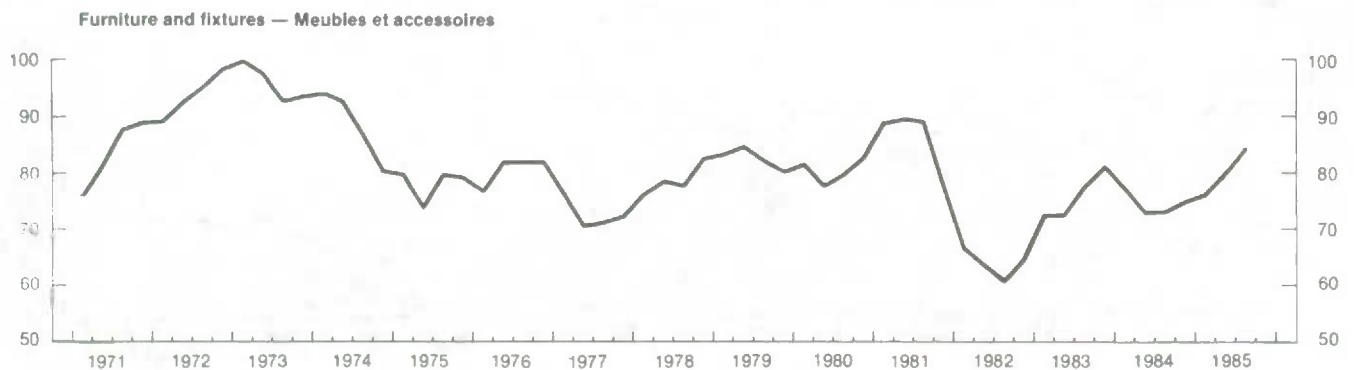
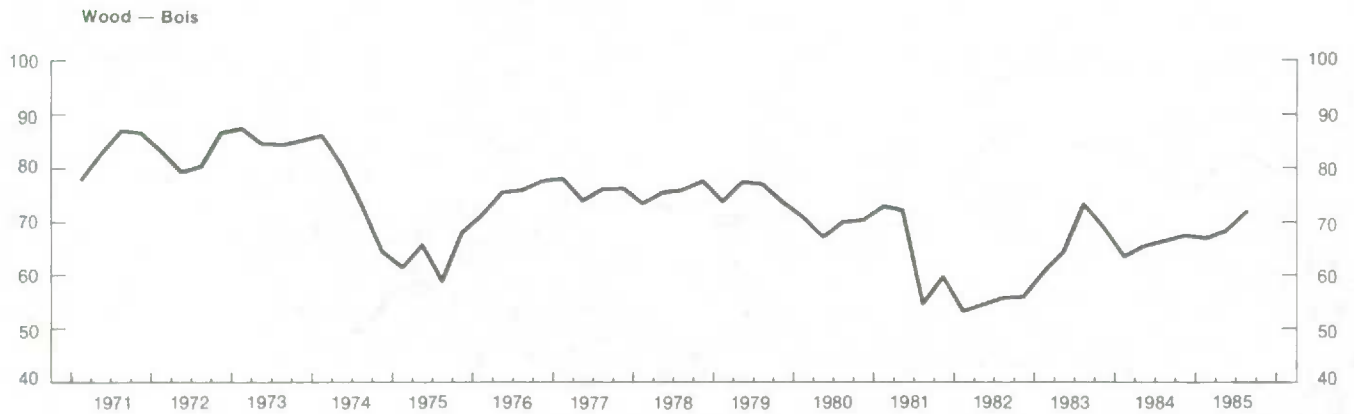
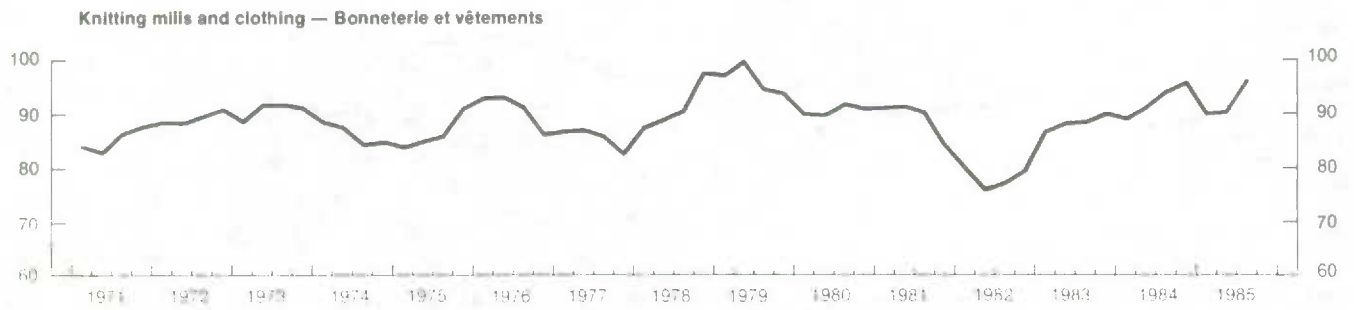
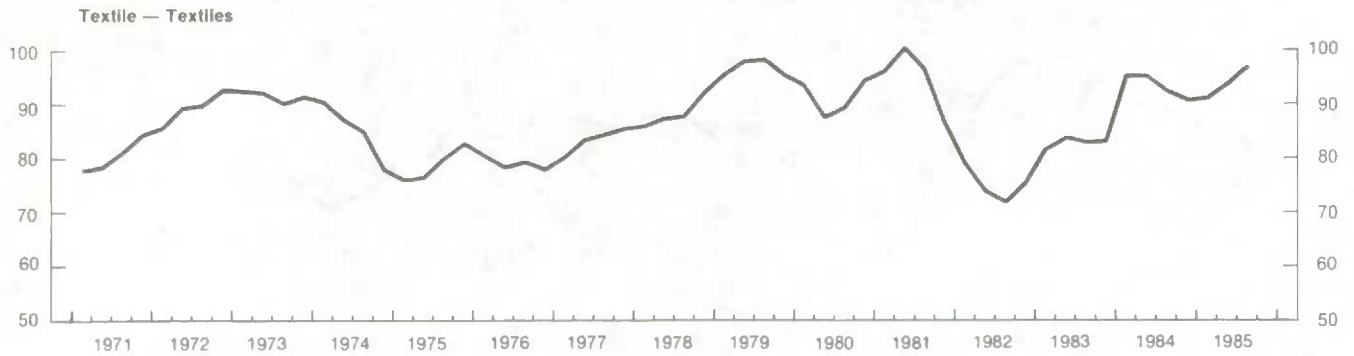
### Capacity Utilization Rates in Canadian Manufacturing, 1971-1985

### Taux d'utilisation de la capacité dans les industries manufacturières au Canada, 1971-1985



Capacity Utilization Rates in Canadian Manufacturing, 1971-1985

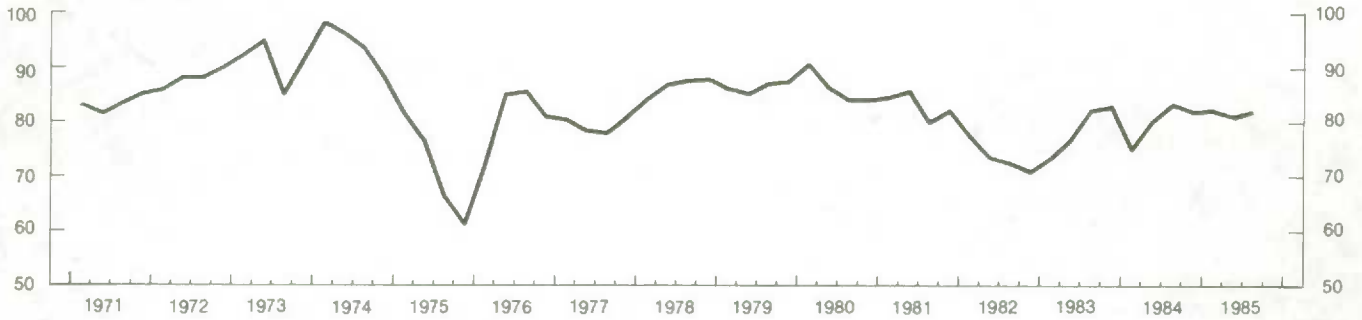
Taux d'utilisation de la capacité dans les industries manufacturières au Canada, 1971-1985



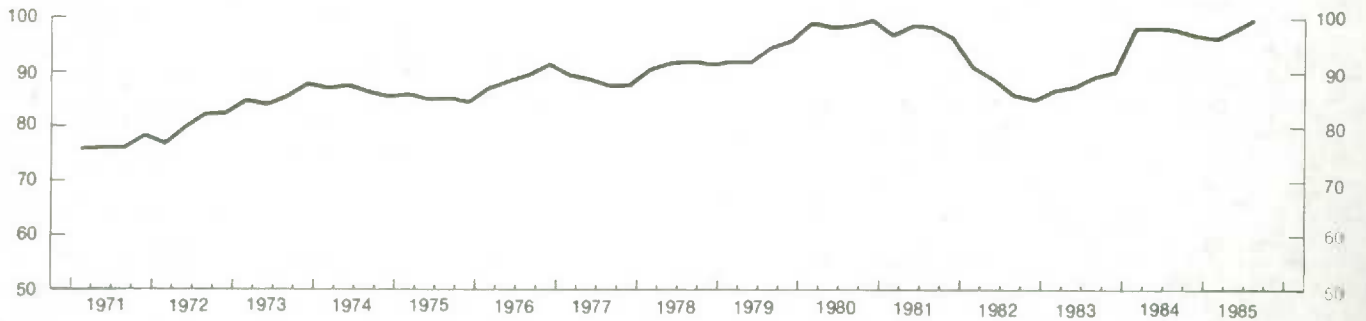
**Capacity Utilization Rates in Canadian Manufacturing, 1971-1985**

**Taux d'utilisation de la capacité dans les industries manufacturières au Canada, 1971-1985**

**Paper and allied industries — Papiers et industries connexes**



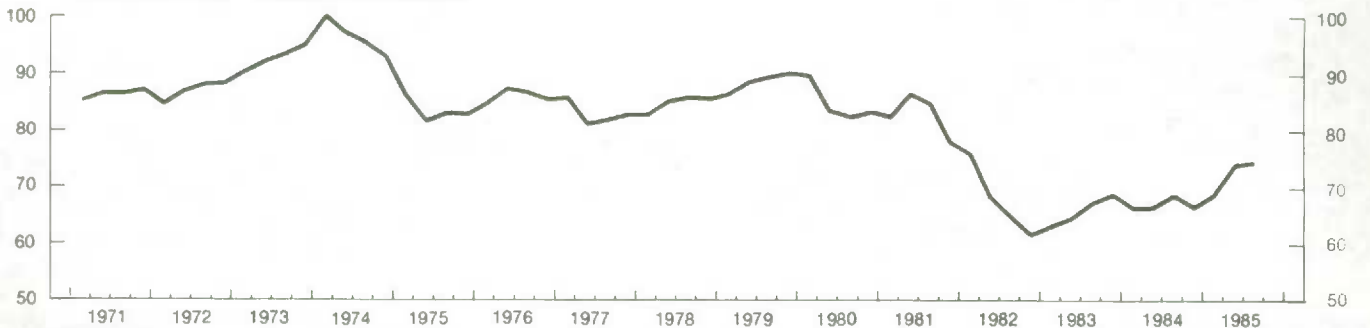
**Printing, publishing and allied industries — Impression, publication et industries connexes**



**Primary metals — Métaux primaires**



**Metal fabricating — Fabrications métalliques**





Capacity Utilization Rates in Canadian Manufacturing, 1971-1985

Taux d'utilisation de la capacité dans les industries manufacturières au Canada, 1971-1985

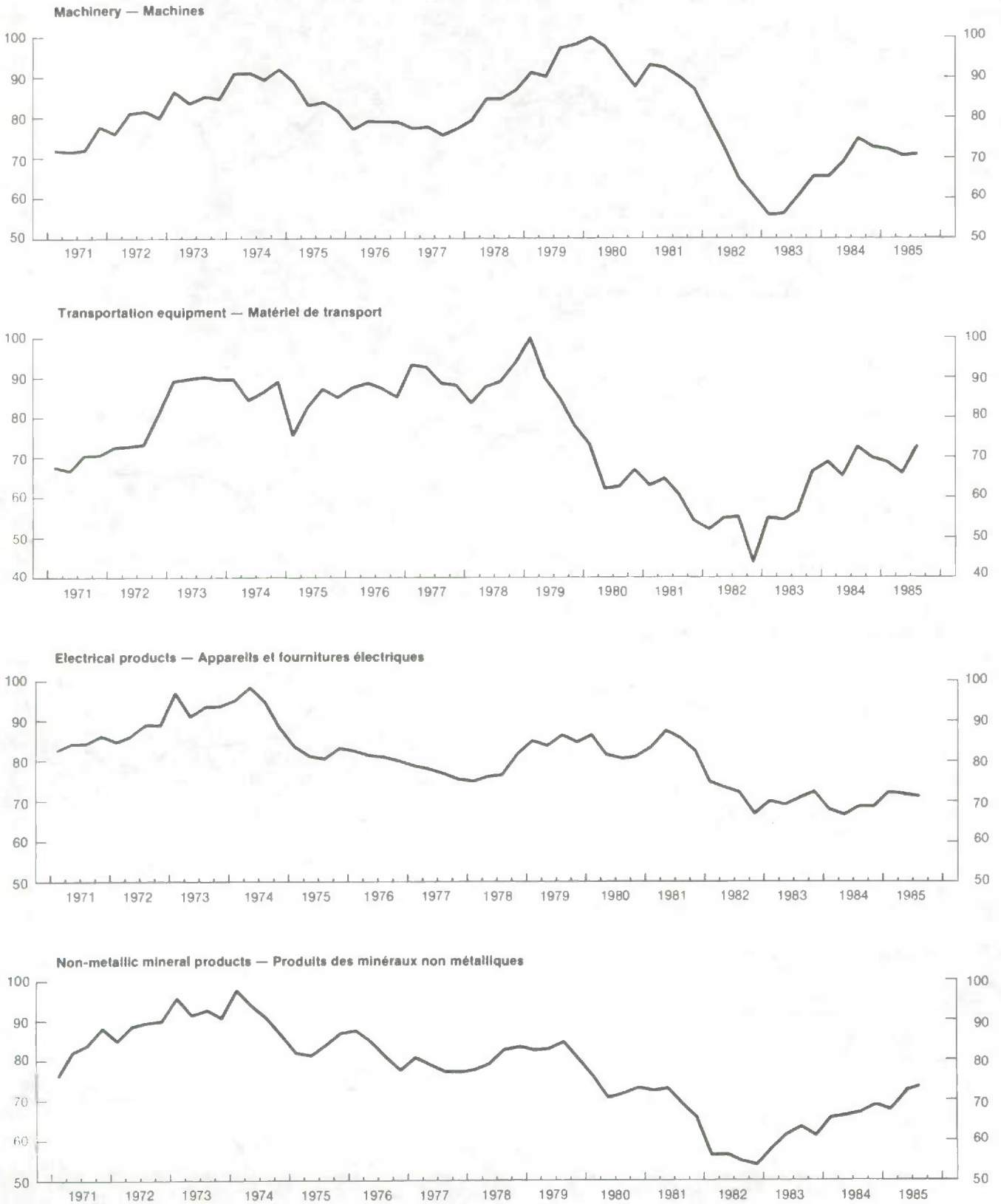


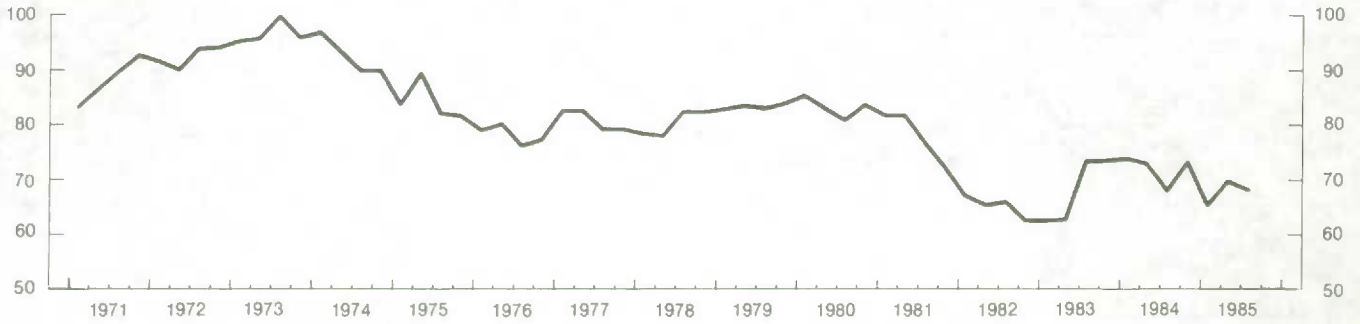
Chart — 1 continued

Graphique — 1 suite

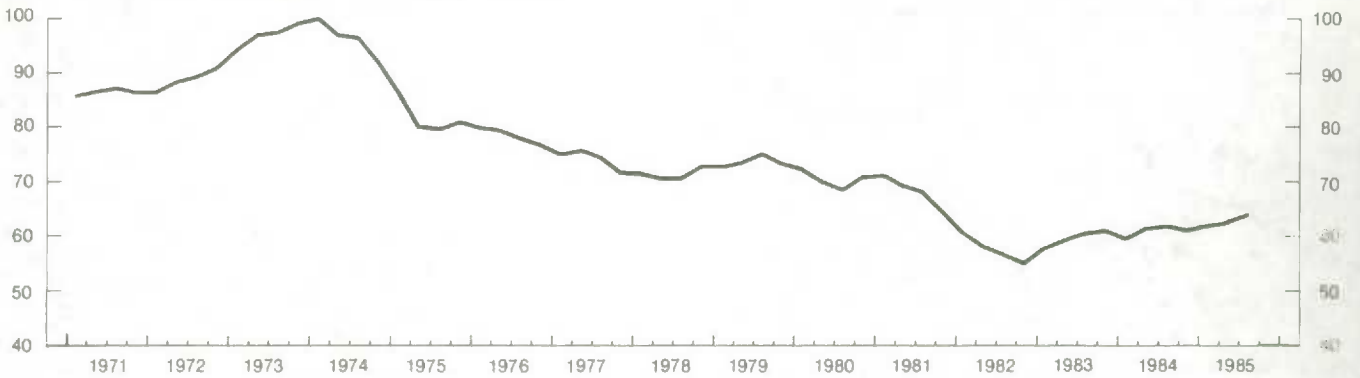
### Capacity Utilization Rates in Canadian Manufacturing, 1971-1985

Taux d'utilisation de la capacité dans les industries manufacturières au Canada, 1971-1985

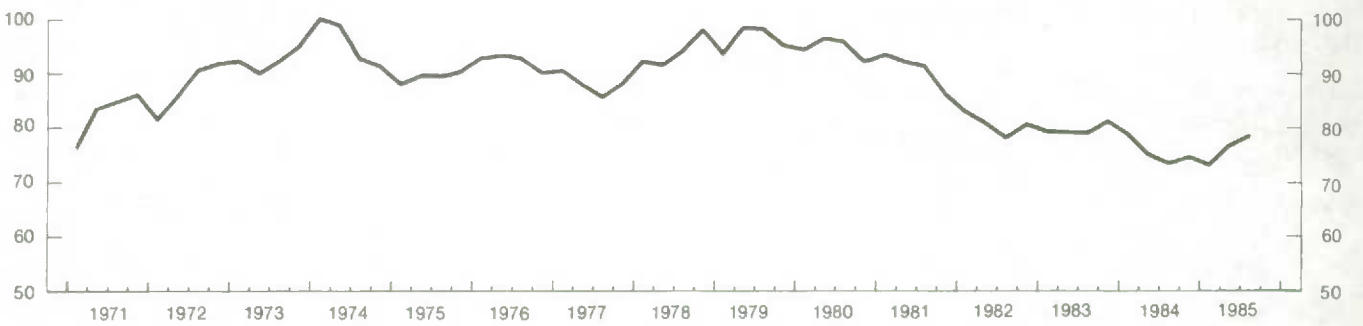
Petroleum and coal products — Dérivés du pétrole et du charbon



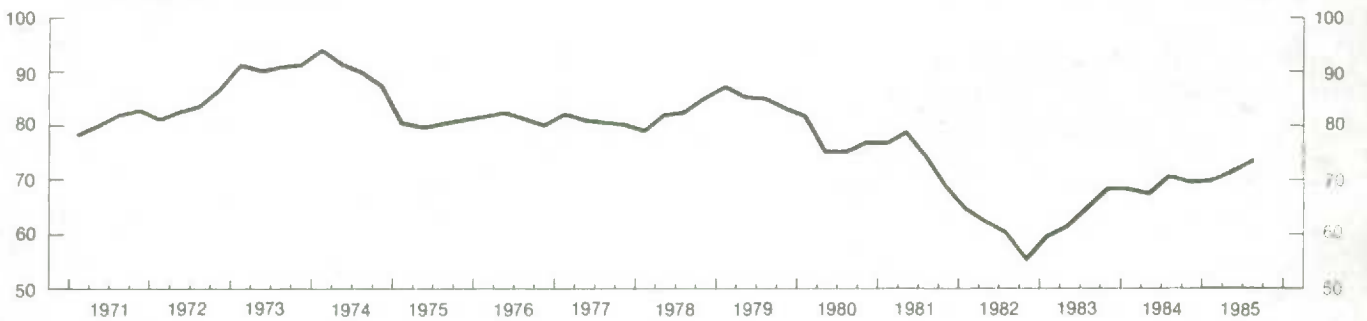
Chemical and chemical products — Produits chimiques



Miscellaneous manufacturing — Industries diverses



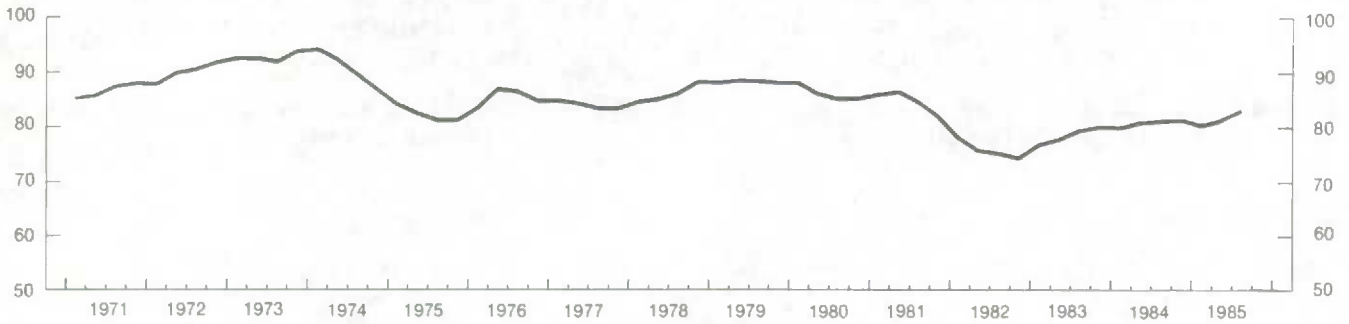
Durable goods — Biens durables



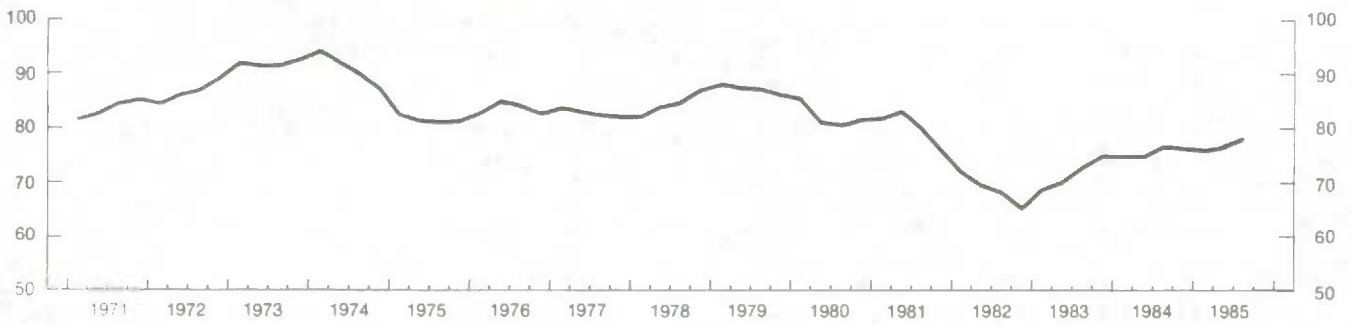
### Capacity Utilization Rates in Canadian Manufacturing, 1971-1985

### Taux d'utilisation de la capacité dans les industries manufacturières au Canada, 1971-1985

Non-durable goods — Biens non durables



Manufacturing industries — Industries manufacturières



LIST OF RELATED PUBLICATIONS

Catalogue

**Occasional**

- 13-522 Fixed Capital Flows and Stocks, Manufacturing, Canada, 1926-1960. Methodology, 1967. English.
- 13-568 Fixed Capital Flows and Stocks, historical. Bilingual.

**Annual**

- 13-211 Fixed Capital Flows and Stocks. Bilingual.
- 61-205 Private and Public Investment in Canada, Outlook. Bilingual.
- 61-206 Private and Public Investment in Canada, Mid-year Review. Bilingual.
- 61-213 Gross Domestic Product by Industry. Bilingual.

**Monthly**

- 61-005 Gross Domestic Product by Industry. Bilingual.

In addition to the selected publications listed above, Statistics Canada publishes a wide range of statistical reports on Canadian economic and social affairs. A comprehensive catalogue of all current publications is available from Statistics Canada, Ottawa (Canada), K1A 0T6.

Catalogue 11-204E, price Canada \$5.00, Other Countries \$6.00.

LISTE DES PUBLICATIONS CONNEXES

Catalogue

**Hors Série**

- 13-522 Fixed Capital Flows and Stocks, Manufacturing, Canada, 1926-1960 Methodology, 1967. Anglais.
- 13-568 Flux et stocks de capital fixe, historique. Bilingue.

**Annuel**

- 13-211 Flux et stocks de capital fixe. Bilingue.
- 61-205 Investissements privés et publics au Canada, Perspectives. Bilingue.
- 61-206 Investissements privés et publics au Canada, Revue de la mi-année. Bilingue.
- 61-213 Produit intérieur brut par industrie. Bilingue.

**Mensuel**

- 61-005 Produit intérieur brut par industries. Bilingue.

Outre les publications énumérées ci-dessus, Statistique Canada publie une grande variété de bulletins statistiques sur la situation économique et sociale du Canada. On peut se procurer un catalogue complet des publications courantes en s'adressant à Statistique Canada, Ottawa (Canada), K1A 0T6.

Nº 11-204F, prix Canada \$5.00, Autres pays \$6.00.



DATE DUE  
DATE DE RETOUR

~~MAR 11 1986~~

MAY 28 1986  
MAI 28

OCMP

1942

STATISTICS CANADA LIBRARY  
BIBLIOTHEQUE STATISTIQUE CANADA



1010647456