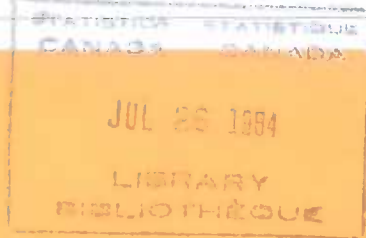


Capacity utilization rates in Canadian manufacturing

Taux d'utilisation de la capacité dans les industries manufacturières au Canada

First quarter 1984

Premier trimestre 1984



Data in Many Forms...

Statistics Canada disseminates data in a variety of forms. In addition to publications, both standard and special tabulations are offered on computer print-outs, microfiche and microfilm, and magnetic tapes. Maps and other geographic reference materials are available for some types of data. Direct access to aggregated information is possible through CANSIM, Statistics Canada's machine-readable data base and retrieval system.

How to Obtain More Information

Inquiries about this publication and related statistics or services should be directed to:

National Wealth and Capital Stock Section,
Construction Division,

Statistics Canada, Ottawa, K1A 9Z9 (Telephone: 990-9684) or to the Statistics Canada reference centre in:

St. John's (772-4073)	Sturgeon Falls (753-4888)
Halifax (426-5331)	Winnipeg (949-4020)
Montréal (283-5725)	Regina (359-5405)
Ottawa (990-8116)	Edmonton (420-3027)
Toronto (966-6586)	Vancouver (666-3691)

Toll-free access is provided in all provinces and territories, for users who reside outside the local dialing area of any of the regional reference centres.

Newfoundland and Labrador	Zenith 0-7037
Nova Scotia, New Brunswick and Prince Edward Island	1-800-565-7192
Quebec	1-800-361-2831
Ontario	1-800-268-1151
Manitoba	1-800-282-8006
Saskatchewan	1(112)800-667-3524
Alberta	1-800-222-6400
British Columbia (South and Central)	112-800-663-1551
Yukon and Northern B.C. (area served by NorthwTel Inc.)	Zenith 0-8913
Northwest Territories (area served by NorthwTel Inc.)	Zenith 2-2015

How to Order Publications

This and other Statistics Canada publications may be purchased from local authorized agents and other community bookstores, through the local Statistics Canada offices, or by mail order to Publication Sales and Services, Statistics Canada, Ottawa, K1A 0T6.

Des données sous plusieurs formes...

Statistique Canada diffuse les données sous formes diverses. Outre les publications, des totalisations habituelles et spéciales sont offertes sur imprimés d'ordinateur, sur microfiches et microfilms et sur bandes magnétiques. Des cartes et d'autres documents de référence géographiques sont disponibles pour certaines sortes de données. L'accès direct à des données agrégées est possible par le truchement de CANSIM, la base de données ordiolingue et le système d'extraction de Statistique Canada.

Comment obtenir d'autres renseignements

Toutes demandes de renseignements au sujet de cette publication ou de statistiques et services connexes doivent être adressées à:

Section de la richesse nationale et du stock de capital,
Division de la construction,

Statistique Canada, Ottawa, K1A 9Z9 (téléphone: 990-9684) ou au centre de consultation de Statistique Canada à:

St. John's (772-4073)	Sturgeon Falls (753-4888)
Halifax (426-5331)	Winnipeg (949-4020)
Montréal (283-5725)	Regina (359-5405)
Ottawa (990-8116)	Edmonton (420-3027)
Toronto (966-6586)	Vancouver (666-3691)

Un service d'appel interurbain sans frais est offert, dans toutes les provinces et dans les territoires, aux utilisateurs qui habitent à l'extérieur des zones de communication locale des centres régionaux de consultation.

Terre-Neuve et Labrador	Zénith 0-7037
Nouvelle-Écosse, Nouveau-Brunswick et Île-du-Prince-Édouard	1-800-565-7192
Québec	1-800-361-2831
Ontario	1-800-268-1151
Manitoba	1-800-282-8006
Saskatchewan	1(112)800-667-3524
Alberta	1-800-222-6400
Colombie-Britannique (sud et centrale)	112-800-663-1551
Yukon et nord de la C.-B. (territoire desservi par la NorthwTel Inc.)	Zénith 0-8913
Territoires du Nord-Ouest (territoire desservi par la NorthwTel Inc.)	Zénith 2-2015

Comment commander les publications

On peut se procurer cette publication et les autres publications de Statistique Canada auprès des agents autorisés et des autres librairies locales, par l'entremise des bureaux locaux de Statistique Canada, ou en écrivant à la Section des ventes et de la distribution des publications, Statistique Canada, Ottawa, K1A 0T6.

Catalogue
31-003

Capacity Utilization Rates in
Canadian Manufacturing

First Quarter 1984

Errata

Page 1

Highlights Table

QIII 1983/III 1983 should read
QIV 1983/QIII 1983 and QII 1983/
QI 1983 should read QIII 1983/
QII 1983.

5-3204-501

Catalogue
31-003

Taux d'utilisation de la capacité dans
les industries manufacturières au

Canada

Premier trimestre 1984

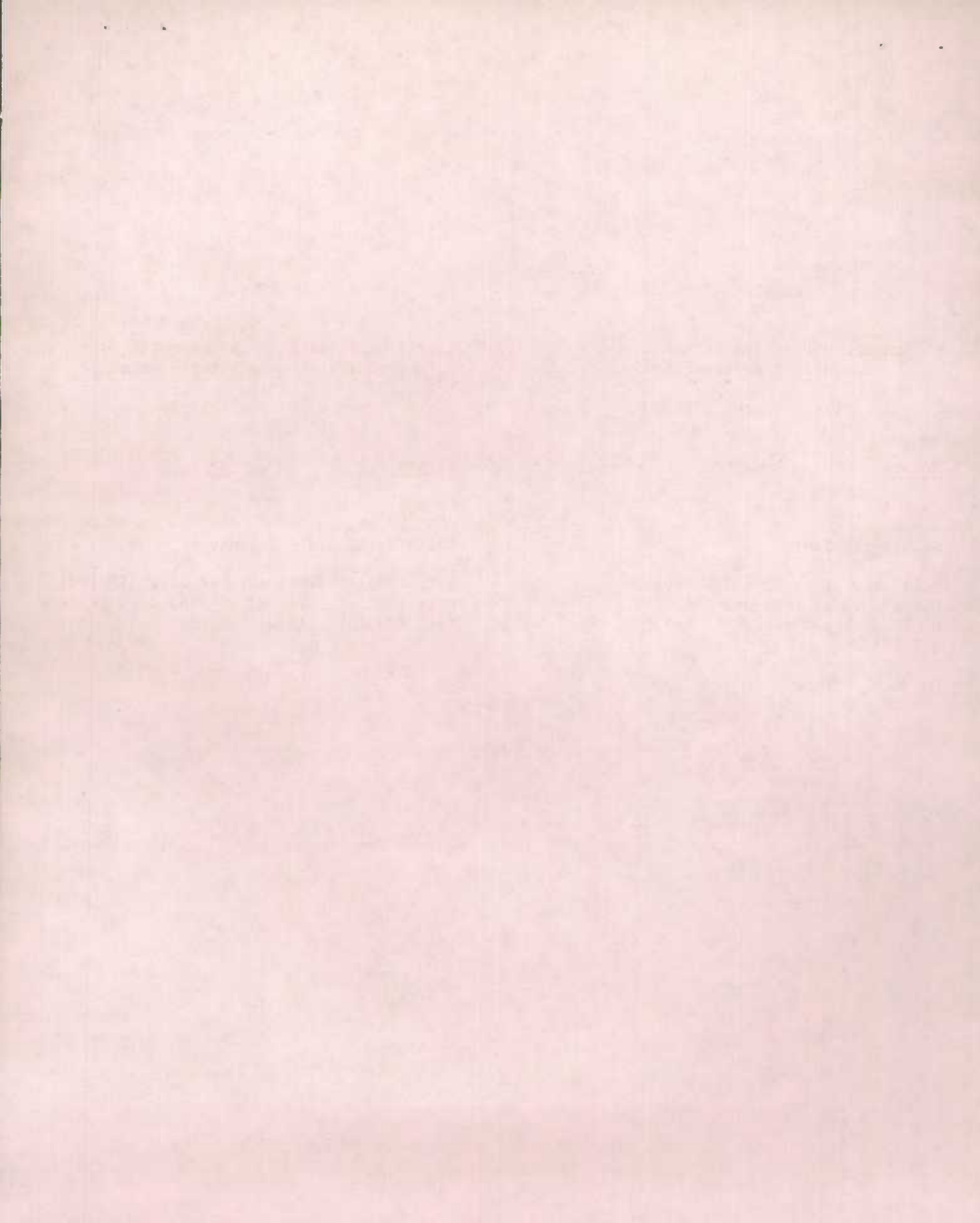
Errata

Page 1

Faits saillants - Tableau

QIII 1983/III 1983 doit se lire QIV 1983/
QIII 1983 et QII 1983/QI 1983 doit se lire
QIII 1983/QII 1983.

5-3204-501



Statistics Canada

Construction Division

Capacity utilization rates in Canadian manufacturing

First quarter 1984

Statistique Canada

Division de la construction

Taux d'utilisation de la capacité dans les industries manufacturières au Canada

Premier trimestre 1984

Published under the authority of
the Minister of Supply and
Services Canada

Statistics Canada should be credited when
reproducing or quoting any part of this document

© Minister of Supply
and Services Canada 1984

July 1984
5-3204-501

Price: Canada, \$5.55, \$22.20 a year
Other Countries, \$6.65, \$26.60 a year

Catalogue 31-003, Vol. 9, No. 1

ISSN 0700-1517

Ottawa

Publication autorisée par
le ministre des Approvisionnements et
Services Canada

Reproduction ou citation autorisée sous réserve
d'indication de la source: Statistique Canada

© Ministre des Approvisionnements
et Services Canada 1984

Juillet 1984
5-3204-501

Prix: Canada, \$5.55, \$22.20 par année
Autres pays, \$6.65, \$26.60 par année

Catalogue 31-003, vol. 9, n° 1

ISSN 0700-1517

Ottawa

SYMBOLS

The following standard symbols are used in Statistics Canada publications:

- .. figures not available.
- ... figures not appropriate or not applicable.
- nil or zero.
- amount too small to be expressed.
- P preliminary figures.
- F revised figures.
- x confidential to meet secrecy requirements of the Statistics Act.

SIGNES CONVENTIONNELS

Les signes conventionnels suivants sont employés uniformément dans les publications de Statistique Canada:

- .. nombres indisponibles.
- ... n'ayant pas lieu de figurer.
- néant ou zéro.
- nombres infimes.
- P nombres provisoires.
- F nombres rectifiés.
- x confidentiel en vertu des dispositions de la Loi sur la statistique relatives au secret.

TABLE OF CONTENTS

	Page
Introduction	v
Highlights	xii
Highlights Table	1
Table 1:	2
Food and Beverages	2
Tobacco Products	4
Rubber and Plastics Products Industries	6
Leather	8
Textile	10
Knitting Mills	12
Clothing	14
Wood	16
Furniture and Fixtures	18
Paper and Allied Industries	20
Printing, Publishing and Allied Industries	22
Primary Metals	24
Metal Fabricating	26
Machinery	28
Transportation Equipment	30
Electrical Products	32
Non-metallic Mineral Products	34
Petroleum and Coal Products	36
Chemical and Chemical Products	38
Miscellaneous Manufacturing	40
Table 2. Aggregates of Capacity Utilization Rates	42
Durable Manufacturing Industries	42
Non-durable Manufacturing Industries	42
Total Manufacturing Industries	42
Table 3. Annual Averages of Utilization Rates	44
Food and Beverages	44
Tobacco Products	44
Rubber and Plastics Products industries	44
Leather	44
Textile	44
Knitting Mills	44
Clothing	45
Wood	45
Furniture and Fixtures	45
Paper and Allied Industries	45

TABLE DES MATIÈRES

	Page
Introduction	v
Faits saillants	xii
Faits saillants - Tableau	1
Tableau 1:	2
Aliments et boissons	2
Tabacs	4
Industrie du caoutchouc et des produits en matière plastique	6
Cuir	8
Textiles	10
Bonneterie	12
Vêtements	14
Bois	16
Meubles et accessoires	18
Papiers et industries connexes	20
Impression, publication et industries connexes	22
Métaux primaires	24
Fabrications métalliques	26
Machines	28
Matériel de transport	30
Appareils et fournitures électriques	32
Produits des minéraux non métalliques	34
Dérivés du pétrole et du charbon	36
Produits chimiques	38
Industries diverses	40
Tableau 2. Les agrégations des taux d'utilisation de la capacité	42
Industries manufacturières de biens durables	42
Industries manufacturières de biens non durables	42
Ensemble du secteur manufacturier	42
Tableau 3. La moyenne annuelle de taux d'utilisation	44
Aliments et boissons	44
Tabacs	44
Industrie du caoutchouc et des produits en matière plastique	44
Cuir	44
Textiles	44
Bonneterie	44
Vêtements	45
Bois	45
Meubles et accessoires	45
Papiers et industries connexes	45

TABLE OF CONTENTS - Concluded

	Page
Printing, Publishing and Allied Industries	45
Primary Metals	45
Metal Fabricating	46
Machinery	46
Transportation Equipment	46
Electrical Products	46
Non-metallic Mineral Products	46
Petroleum and Coal Products	46
Chemical and Chemical Products	47
Miscellaneous Manufacturing	47
Durable	47
Non-durable	47
Manufacturing Industries	47

Chart

I. Capacity Utilization Rates in Canadian Manufacturing, 1971-1984	48
Food and Beverages	48
Tobacco Products	48
Rubber and Plastic Products Industries	48
Leather	48
Textile	48
Knitting Mills	48
Clothing	48
Wood	48
Furniture and Fixtures	49
Paper and Allied Industries	49
Printing, Publishing and Allied Industries	49
Primary Metals	49
Metal Fabricating	49
Machinery	49
Transportation Equipment	49
Electrical Products	49
Non-metallic Mineral Products	50
Petroleum and Coal Products	50
Chemical and Chemical Products	50
Miscellaneous Manufacturing	50
Durable Goods	50
Non-durable Goods	50
Manufacturing Industries	50

List of Related Publications (Inside Back Cover)

TABLE DES MATIÈRES - fin

	Page
Impression, publication et industries connexes	45
Métaux primaires	45
Fabrications métalliques	46
Machines	46
Matériel de transport	46
Appareils et fournitures électriques	46
Produits des minéraux non métalliques	46
Dérivés du pétrole et du charbon	46
Produits chimiques	47
Industries diverses	47
Biens durables	47
Bien non durables	47
Industries manufacturières	47

Graphique

1. Taux d'utilisation de la capacité dans les industries manufacturières du Canada, 1971-1984	48
Aliments et boissons	48
Tabacs	48
Industrie du caoutchouc et des produits en matière plastique	48
Cuir	48
Textiles	48
Bonneterie	48
Vêtements	48
Bois	48
Meubles et accessoires	49
Papiers et industries connexes	49
Impression, publication et industries connexes	49
Métaux primaires	49
Fabrications métalliques	49
Machines	49
Matériel de transport	49
Appareils et fournitures électriques	49
Produits des minéraux non métalliques	50
Dérivés du pétrole et du charbon	50
Produits chimiques	50
Industries diverses	50
Biens durables	50
Biens non durables	50
Industries manufacturières	50

Liste des publications connexes (verso intérieur de la couverture arrière)

INTRODUCTION

From the point of view of utilization of resources available for the production of goods, there is a significant similarity between the labour force and the stock of capital in place. Any degree of under-utilization in either type of resource indicates the gap between potential and actual use of these resources. However, when the socio-political implications of unemployed resources are considered, then the difference between capital stocks and labour becomes substantial.

It is common knowledge that the stock of capital in place typically is not used with the same degree of intensity over the year. Recently, increasing attention has been focused on the measurement of productive potential and the extent to which it is realized. This capacity utilization measurement is an interesting way of examining the relationship between the total resources available and the level of potential output. Within this context, utilization measures could establish significant yardsticks indicative of trends and cycles in capacity utilization.

Economists, particularly in the United States, in their efforts to measure capacity have developed a number of alternative methods varying from direct annual surveys to econometric models.

At present in Canada, the Department of Industry, Trade and Commerce produces an index of capacity utilization for the goods-producing industries by using the Wharton School trend-through-peak estimation procedures.⁽¹⁾ This index is derived from seasonally adjusted quarterly indexes of industrial production, which are charted and the peaks selected by inspection. These peaks are considered to be the capacity output of the industry. Successive capacity peaks are joined by a straight line to indicate the capacity during the intervening periods. Forward extrapolation of the same straight line generates capacity measures for periods following the last peak until the actual production index intersects the line.

(1) These indexes are published in **Rate of Capacity Utilization, Canada**. Department of Industry, Trade and Commerce, Ottawa.

Si l'on se place dans la perspective de l'utilisation des ressources disponibles, on constate une certaine similitude entre la main-d'oeuvre occupée et le stock de capital en place. Tout degré de sous-utilisation de l'une ou l'autre de ces ressources indique qu'il existe une différence entre leur utilisation potentielle et réelle. Cependant, si l'on tient compte des implications sociales et politiques de la non-utilisation des ressources disponibles, la différence entre les stocks de capital et la main-d'oeuvre s'accroît.

Il est reconnu que le stock de capital en place n'est pas utilisé dans la même proportion d'une année à l'autre. Depuis quelque temps, on cherche de plus en plus à mesurer d'une façon précise la différence entre le potentiel de productivité et la productivité réelle. Cette mesure de l'utilisation de la capacité peut servir à examiner la relation existant entre l'ensemble des ressources disponibles et le potentiel de production. De plus, une mesure de l'utilisation de la capacité pourrait servir à mesurer les tendances et les cycles à l'intérieur de celle-ci.

Dans le cadre de travaux sur la mesure de la capacité, des économistes, en particulier aux États-Unis, ont mis sur pied un certain nombre d'autres méthodes de quantification allant des enquêtes annuelles directes aux modèles économétriques.

Au Canada, le ministère de l'Industrie et du Commerce produit actuellement un indice de l'utilisation de la capacité pour les industries de biens d'après les méthodes d'estimation de la tendance générale par les sommets de l'école Wharton⁽¹⁾. Cet indice est calculé à partir d'indices trimestriels désaisonnalisés de la production industrielle, qui sont reportés sur un graphique sur lequel on choisit les sommets. On considère que ces sommets représentent la capacité de production de l'industrie. Les différents sommets atteints au cours de chaque trimestre sont reliés par une ligne droite de façon à indiquer la capacité au cours de la période comprise entre deux sommets. Une extrapolation directe de cette même ligne droite permet de mesurer la capacité pour la période comprise entre le dernier sommet jusqu'à l'intersection par l'indice de la production réelle de la ligne droite.

(1) Ces indices sont publiés dans **Taux d'utilisation de la capacité**. Ministère de l'Industrie et du Commerce, Ottawa.

The Statistics Canada approach represents an alternative measure and is based on the capital-output ratio of each industry. It provides a basis for establishing the capacity output series with which actual output data are compared in order to derive the utilization rates. The definition of capacity in this procedure is the maximum output obtainable under "normal" technological and market conditions.

Some differences in level exist between the Statistics Canada series and those of the Department of Industry, Trade and Commerce. This situation is to be expected, of course, given the different estimation procedures underlying each set of measures.

The Statistical Tables show quarterly indexes of capacity utilization in Canadian manufacturing broken down into various major groups according to the 1970 **Standard Industrial Classification**.

The methodology used to produce these indexes is based on a comparison of the **actual** output of an industry during a certain time period with the estimated **capacity** output during that period.(2)

The estimated capacity output is based on a capacity capital-output ratio derived from the industry's gross stock of fixed capital, measured in 1971 dollars. These capital stock estimates are produced by the National Wealth and Capital Stock Section of Statistics Canada, and a brief outline of the method used to derive the estimates follows.(3)

The measurement procedure underlying the capital stock estimates is known as the "perpetual inventory" method. Briefly, this method involves the accumulation, over a period of years, of investment expenditures by industry to obtain its capital stock in any given year. The basic ingredients required are:

Annual investment series in current dollars by industry and category of expenditure;

price deflators relating to the investment-series; and

estimates of the average economic life of the assets used in the various industries.

(2) The concepts of capacity used follows the work of Daniel Creamer, "Capital Expansion and Capacity in Post-War Manufacturing", Studies in Business Economics, No. 72 National Industrial Conference Board, New York, 1961.

(3) Capital stock estimates are published in **Fixed Capital Flows and Stocks**, Catalogue 13-211, Annual.

L'approche de Statistique Canada est en fait un autre genre de mesure et repose sur le coefficient de capital de chaque industrie. Elle permet d'établir des séries sur la capacité de production que l'on compare aux données sur la production réelle de façon à obtenir les taux d'utilisation. La capacité, d'après cette méthode, se définit comme le maximum de biens que l'on peut produire dans des conditions technologiques et commerciales "normales".

Il existe certaines différences de niveau entre les séries de Statistique Canada et celles du ministère de l'Industrie et du Commerce. Il va sans dire que ces différences proviennent du fait que les méthodes d'estimation de chacun des ensembles de mesures sont différentes.

Les tableaux statistiques présentent des indices trimestriels de l'utilisation de la capacité pour les industries manufacturières du Canada ventilés en principaux groupes selon la **Classification des activités économiques**, de 1970.

La méthodologie inhérente au calcul de ces indices repose sur la comparaison de la production **réelle** d'une industrie au cours d'une certaine période avec la **capacité** estimée de production au cours de cette même période(2).

La capacité de production estimée est calculée d'après le coefficient de capital de capacité obtenu à partir du stock brut de capital fixe de l'industrie, mesuré en dollars de 1971. Ces estimations du stock de capital sont produites par la Section de la richesse nationale et du stock de capital de Statistique Canada. Voici une brève description de la méthode utilisée pour calculer les estimations(3).

La méthode de mesure des estimations de stocks de capital est celle de "l'inventaire perpétuel". En bref, il s'agit d'accumuler pendant un certain nombre d'années les dépenses d'investissement de l'industrie pour obtenir son stock de capital pour une année donnée. Les éléments fondamentaux nécessaires sont:

Les séries annuelles des investissements, par industrie et catégorie de dépense;

les indices de déflation se rapportant aux séries sur les investissements;

les estimations de la durée de vie économique moyenne des actifs utilisés par les différentes industries.

(2) La définition de la capacité utilisée ici est celle qu'a formulée Daniel Creamer dans "Capital Expansion and Capacity in Post-War Manufacturing", Studies in Business Economics, n° 72, National Industrial Conference Board, New York, 1961.

(3) Des estimations du stock de capital sont publiées dans **Flux et stocks de capital fixe**, n° 13-211 au catalogue, annuel.

To illustrate the mechanics of the "perpetual inventory" method, an example of the actual computing process is given. (Text table I summarizes the computational procedure involved in this example.) Assume that the capital assets in a particular industry remain in production for 10 years before they are retired. We start with year one and adjusting for prices, we accumulate the investment expenditures pertaining to the types of capital assets in question for a period of 10 years. In the tenth year, a measure of the gross stock of this industry's capital assets is obtained. In the eleventh year, we deduct from the accumulated total the investment expenditures of the first year and add the purchase of capital assets of the eleventh year. We proceed in the same manner for all subsequent years.

In the **gross capital stocks**, capital assets are included at their full value during the entire time they remain in the capital stock. In other words, the deductions from gross investment are due to the fact that assets in question have ceased to exist. An alternative set of measures of capital stocks is derived by adjusting the value of the assets in existence for the wear and tear and obsolescence they undergo during their service life; these estimates are known as **net capital stocks**. Calculations of net capital stocks are made by applying a depreciation formula to the gross stock estimated. The net stock is equal to the difference between the cumulative value of past gross investment and cumulative depreciation.

The quarterly capital estimates are derived by applying a linear interpolation to the annual capital stocks. The stock estimates are then combined with the seasonally adjusted quarterly production indexes to derive quarterly capital-output ratios for the whole period. The production indexes for the Petroleum and Coal Industry are the gross output rather than the gross domestic product which are used for all other industries. It is felt that the gross output index better reflects the performance of the industry in the light of significant price changes.(4)

(4) The indexes of industrial production used are those published in **Gross Domestic Product by Industry**, Catalogues 61-213, and 61-005, Statistics Canada.

Pour expliquer le mécanisme de "l'inventaire perpétuel", voici un exemple du processus réel du calcul. (Le tableau explicatif I résume le processus du calcul.) Supposons que l'actif immobilisé de l'industrie demeure en production pendant 10 ans avant d'être retiré. On commence par la première année et, après déflation, on accumule les dépenses d'investissement se rapportant aux catégories de capital considérées pour une période de 10 ans. La dixième année, on obtient une mesure du stock brut des actifs immobilisés de cette industrie. La onzième année, on déduit les dépenses d'investissement de la première année du total cumulatif et on ajoute les achats d'actifs immobilisés au cours de la onzième année. On procède de la même façon pour toutes les années suivantes.

On regroupe dans les **stocks bruts de capital** les actifs immobilisés à leur valeur intégrale tant que ces actifs font partie du stock de capital. En d'autres termes, les déductions sur les investissements bruts s'expliquent par le fait que les actifs en question ont cessé d'exister. On obtient un autre ensemble de mesures des stocks de capital en ajustant la valeur des actifs existants pour prendre en compte l'usure et l'obsolescence qu'ils subissent lors de leur durée de vie, et l'on appelle ces estimations **stocks nets de capital**. On calcule les stocks nets de capital grâce à une formule d'amortissement que l'on fait intervenir dans les estimations des stocks bruts. Le stock net est égal à la différence entre la valeur cumulative des investissements bruts antérieurs et la dépréciation accumulée.

Les estimations trimestrielles de capital sont calculées d'après une interpolation linéaire des stocks annuels de capital. Ces estimations de stocks sont ajustées pour tenir compte des dépenses engagées au titre de la réduction de la pollution et ensuite combinées aux indices trimestriels désaisonnalisés de la production pour donner les coefficients de capital trimestriels pour l'ensemble de la période. L'indice de la production pour l'industrie des dérivés du pétrole et du charbon est l'indice de la production brute au lieu de celui du produit intérieur brut qui est utilisé dans les autres industries. En vue d'importants changements des prix, on croit que l'indice de la production brute soit plus représentatif de la performance de cette industrie(4).

(4) Les indices de la production industrielle utilisés ont été publiés dans **Produit intérieur brut par industrie**, n° 61-213 et 61-005 au catalogue, Statistique Canada.

These ratios are expressed in the Statistical Tables in constant 1971 dollars in order to show the degree of capital intensity in the various industries. The minimum capital-output ratio during this period indicates the historical capacity peak. When we divide the capital stocks series by the minimum capital-output ratio, we obtain a series of potential output.

As the final step in this procedure, actual data for individual production indexes are expressed as a ratio of the potential output series in percentage form to obtain the indexes of capacity utilization.

We summarize the procedure of measuring the capacity and operating rates in the following fashion:

Let K_t = fixed capital stocks at time t ,

let $\frac{K_0}{P_0}$ = capacity capital-output ration

where K_0 = fixed capital in benchmark period(5)

and P_0 = capacity output in the same period,

let P_t = actual output at time t ,

and CP_t = estimated capacity output at time t .

Then $K_t + \frac{K_0}{P_0} = CP_t$.

$\frac{P_t}{CP_t} \times 100$ = percentage of capacity utilized at time t ; that is, the capacity utilization rate.

Of course, in subsequent periods, if a lower capital-output ratio occurs, it is adopted as the capacity ratio, and the entire series is adjusted accordingly.

This formula was used to calculate the manufacturing industry capacity utilization rates shown in the Statistical Tables. The indexes for durable, non-durable and total

(5) As noted previously, this benchmark period is the time when the minimum capital-output ratio occurred.

Dans les Tableaux statistiques, ces coefficients sont exprimés en dollars constants de 1971 de façon à indiquer le degré d'intensité de capital des différentes industries. Le coefficient de capital minimum au cours de cette période indique le sommet historique de la capacité. Lorsqu'on divise les séries des stocks de capital par le coefficient de capital minimum, on obtient une série de la production potentielle.

Enfin, les données réelles pour les indices de production individuels sont exprimées en tant que ratio des séries de la production potentielle en pourcentage pour obtenir les indices de l'utilisation de la capacité.

Nous pouvons résumer ainsi la marche à suivre pour la mesure des taux d'utilisation de la capacité et d'activité:

Soit K_t = stocks de capital au temps t ,

et soit $\frac{K_0}{P_0}$ = coefficient de capital de la capacité

où K_0 = capital fixe au cours de la période repère(5)

et P_0 = production potentielle au cours de la même période,

soit P_t = production réelle au temps t ,

et CP_t = production potentielle prévue au temps t .

Alors $K_t + \frac{K_0}{P_0} = CP_t$.

$\frac{P_t}{CP_t} \times 100$ = pourcentage de la capacité utilisée au temps t ; c'est-à-dire le taux d'utilisation de la capacité.

Bien entendu, lorsque l'on enregistre un coefficient de capital plus bas, au cours des périodes qui suivent, on le considère comme étant le ratio de capacité, et toute la série est ajustée en conséquence.

Cette formule a été utilisée pour calculer les taux de l'utilisation de la capacité des industries manufacturières présentés dans les Tableaux statistiques. Les indices ont été calculés par

(5) Comme il a été mentionné auparavant, cette période repère est le moment où l'on a enregistré le plus bas coefficient capital-production.

TEXT TABLE I. Exemple: Assumed Service Life = 10 Years = L

TABLEAU EXPLICATIF I. Exemple: Durée de vie supposée de 10 ans = L

Year	Data on current dollar gross fixed capital formation	Deflator year 12 = 1.000	Constant dollar gross fixed capital formation columns (1) ÷ (2)	Discards, move column (3) on 10 years	Columns (3)-(4)	Gross stock, column (5) after cumulation	Depreciation $\frac{1}{2L} (K_n + K_{n-1})$	Net Investment columns (3)-(7)	Net stock, column (8) after cumulation
Année	Données sur la formation brute de capital fixe en dollars courants	Indice de déflation = 1,000 pour l'année 12	Formation brute de capital fixe en dollars constants colonnes (1) ÷ (2)	Retraits, descendre la colonne (3) de 10 ans	Colonnes (3)-(4)	Stocks bruts, colonne (5) après cumul	Dépréciation $\frac{1}{2L} (K_n + K_{n-1})$	Investissement net colonnes (3)-(7)	Stocks net, colonne (8) après cumul
	(1)	(2)	(3)	(4)	(5)	(6)	(7)	(8)	(9)
	I_n	P				K_n			$N_n^{K_n}$
1	17.6	.772	22.8		22.8	22.8		22.8	22.8
2	36.2	.825	43.9		43.9	66.7	4.5	39.4	62.2
3	20.4	.857	23.8		23.8	90.5	7.9	15.9	78.1
4	15.3	.855	17.9		17.9	108.4	9.9	8.0	86.1
5	19.7	.868	22.7		22.7	131.1	12.0	10.7	96.8
6	27.2	.907	30.0		30.0	161.1	14.6	15.4	112.2
7	35.0	.928	37.7		37.7	198.8	18.0	19.7	131.9
8	20.5	.967	21.2		21.2	220.0	20.9	.3	132.2
9	13.8	.979	14.1		14.1	234.1	22.7	- 8.6	123.6
10	27.0	.982	27.5		27.5	261.6	24.8	2.7	126.3
11	27.2	.986	27.6	22.8	4.8	266.4	26.4	1.2	127.5
12	21.8	1.000	21.8	43.9	- 22.1	244.3	25.5	- 3.7	123.8

manufacturing were derived by aggregation, using the same weights as the 1971 Gross Domestic Product.(6)

The statistics presented here are only statistical estimates and they are not operating ratios based on either engineering measures, such as productive machine hours, or survey results.

(6) For the period prior to 1971 the data are not available on a 1971 base. To obtain a continuous record on a 1971 base, the indexes on a 1961 base were mechanically rebased to 1971 by multiplying by 100.0 and dividing by the 1971 index value on a 1961 base. An adjustment has been made to the production indexes for Rubber and Plastics Products, and Miscellaneous Manufacturing, based on the annual Real Domestic Product Indexes, to capture the trend of the individual industries according to the 1970 Standard Industrial Classification, from 1961 to 1970.

agrégation tant pour l'ensemble des industries manufacturières que pour les industries des biens durables et non durables à partir des mêmes pondérations que celles pour du produit intérieur brut de 1971(6).

Ces chiffres représentent uniquement des approximations et ne sont pas des coefficients de fonctionnement basés sur des mesures industrielles, comme les heures de production des machines, ni des résultats d'une enquête.

(6) En ce qui concerne les années antérieures à 1971, les données ne sont pas disponibles sur la base 1971 = 100. Pour obtenir une continuité des données de ces années, les indices sur la base 1961 = 100 furent convertis arithmétiquement à l'année de référence 1971 en les multipliant par 100.0 et en divisant le produit obtenu par la valeur de l'indice de 1971 sur la base de 1961 = 100. On a ajusté les indices de production de l'industrie du caoutchouc et des produits en matière plastique, et des industries manufacturières diverses, basés sur l'indice annuel du produit intérieur réel de façon à connaître la tendance des industries selon la Classification des activités économiques de 1970, pour la période de 1961 à 1970.

Given the many conceptual and measurement problems surrounding the notion of capacity utilization, the utilization rates shown here are indicative of trends and cycles in the utilization of capital. The indicated level is only a statistical approximation and should be viewed as such. For example, a rate of 100% indicates a high level of capital utilization which is considered a peak for the period observed.

Étant donné qu'il existe plusieurs problèmes relatifs à la notion du taux d'utilisation, il conviendrait de noter que les taux d'utilisation publiés ne constituent pas des mesures exactes, mais des statistiques indiquant les tendances et les cycles d'utilisation du stock de capital fixe. Par exemple, un taux de 100% indique un haut niveau de l'utilisation de capital qui est considéré un sommet pendant la période observée.

TEXT TABLE II. CANSIM Databank Numbers

TABLEAU EXPLICATIF II. Numéros dans la banque de données CANSIM

CANSIM Matrix Number 3539: Capacity Utilization Rates in Canadian Manufacturing

Numéro de matrice CANSIM 3539: Taux d'utilisation de la capacité dans les industries manufacturières au Canada

Industry	Databank number
Industrie	Numéro dans la banque de données
Food and beverages - Aliments et boissons	D883568
Tobacco products - Tabacs	D883569
Rubber and plastics products industries - Industrie du caoutchouc et des produits en matière plastique	D883570
Leather - Cuir	D883571
Textile - Textiles	D883572
Knitting mills - Bonneterie	D883573
Clothing - Vêtements	D883574
Wood - Bois	D883575
Furniture and fixtures - Meubles et accessoires	D883576
Paper and allied industries - Papiers et industries connexes	D883577
Printing, publishing and allied industries - Impression, publication et industries connexes	D883578
Primary metals - Métaux primaires	D883579
Metal fabricating - Fabrications métalliques	D883580
Machinery - Machines	D883581
Transportation equipment - Matériel de transport	D883582
Electrical products - Appareils et fournitures électriques	D883583
Non-metallic mineral products - Produits des minéraux non-métalliques	D883584
Petroleum and coal products - Dérivés du pétrole et du charbon	D883585
Chemical and chemical products - Produits chimiques	D883586
Miscellaneous manufacturing - Industries diverses	D883587
Durable manufacturing industries - Industries manufacturières de biens durables	D883588
Non-durable manufacturing industries - Industries manufacturières de biens non-durables	D883589
Total manufacturing industries - Ensemble du secteur manufacturier	D883590

Note: To order any data from CANSIM on magnetic tape or computer printouts, contact CANSIM Division, Statistics Canada, K1A 9Z9.

Nota: Pour commander toute série de données du système CANSIM sur bande magnétique ou imprimés d'ordinateur, s'adresser à la Division CANSIM, Statistique Canada, Ottawa, K1A 9Z9.

TEXT TABLE III. Composition of Aggregates, and Gross Domestic Product Weights

TABLEAU EXPLICATIF III. Composition des agrégations, et les pondérations du produit intérieur brut.

Aggregate	Component industries	1971 gross domestic product weight		
		Percentage	Millions of dollars	
Agrégation	Industries composantes	Pondération du produit intérieur brut de 1971		
		Pourcentage	Millions de dollars	
Durable manufacturing industries - Industries manufacturières de biens durables	Wood - Bois	0.998	831.2	
	Furniture and fixtures - Meubles et accessoires	0.420	349.6	
	Primary metals - Métaux primaires	1.990	1,657.0	
	Metal fabricating - Fabrications métalliques	1.971	1,640.7	
	Machinery - Machines	1.004	836.1	
	Transportation equipment - Matériel de transport	2.700	2,248.1	
	Electrical products - Appareils et fournitures électriques	1.605	1,336.5	
	Non-metallic mineral products - Produits des minéraux non métalliques	0.896	745.7	
	Non-durable manufacturing industries - Industries manufacturières de biens non durables	Food and beverages - Aliments et boissons	3.171	2,640.3
		Tobacco products - Tabacs	0.217	180.3
Rubber and plastics products industries - Industrie du caoutchouc et des produits en matière plastique		0.648	539.4	
Leather - Cuir		0.209	174.4	
Textile - Textiles		0.788	655.9	
Knitting mills - Bonneterie		0.214	178.1	
Clothing - Vêtements		0.726	604.3	
Paper and allied industries - Papiers et industries connexes		1.881	1,566.4	
Printing, publishing and allied industries - Impression, publication et industries connexes		1.104	918.9	
Petroleum and coal products - Dérivés du pétrole et du charbon		0.315	262.5	
Chemical and chemical products - Produits chimiques		1.359	1,131.2	
Miscellaneous manufacturing - Industries diverses		0.654	544.4	

HIGHLIGHTS

The utilization rates for the first quarter 1984 appearing in this publication correspond to those released on June 14, 1984 in the Statistics Canada Daily and CANSIM.

The capacity utilization rate in Canadian manufacturing industries remained virtually unchanged from the fourth quarter of 1983. The rate fell of 0.3% to a level of 71.7% from 71.9% in the fourth quarter of 1983. Eleven of the 20 industry groups recorded lower capacity utilization rates, but of these, four had a decrease of less than 1%. The two most important declines were in the wood industries, 10.8%, and the paper and allied industries, 9.2%, both of which can be attributed to labour problems in these industries in British Columbia. The most important gains were 8.4% in the non-metallic minerals products group and 8.0% in the machinery industry group.

Utilization rates in durable manufacturing industries recorded a 1.7% increase in the first quarter of 1984, rising to 67.4% of capacity from 66.3% in the fourth quarter of 1983. This is a continuance of the upward movements which began in the first quarter of 1983 for the durable sector. In the non-durable sector there was a 1.9% decrease to 76.1% from 77.6%.

FAITS SAILLANTS

Les taux d'utilisation publiés dans ce numéro du premier trimestre de 1984 correspondent à ceux parus dans le Quotidien de Statistique Canada du 14 juin 1984 et dans CANSIM.

L'utilisation de la capacité dans les industries manufacturières canadiennes est demeurée pratiquement inchangée par rapport au quatrième trimestre de 1983. En effet, le taux a chuté de 0.3% pour s'établir à 71.7%, comparativement à 71.9% au quatrième trimestre de 1983. Onze des 20 groupes industriels ont affiché une baisse du taux d'utilisation de la capacité, mais quatre de ceux-ci n'ont subi qu'une baisse inférieure à 1%. Les deux diminutions les plus importantes ont été celle du groupe du bois (10.8%) et celle du groupe des papiers et industries connexes (9.2%); dans les deux cas, les baisses sont attribuables à des problèmes de relations de travail en Colombie-Britannique. Les deux augmentations les plus importantes ont été celle du groupe des produits des minéraux non métalliques (8.4%) et celle du groupe des machines (8.0%).

Les taux d'utilisation dans les industries manufacturières de biens durables ont enregistré une hausse de 1.7% au cours du premier trimestre de 1984, passant de 66.3% au quatrième trimestre de 1983 à 67.4%. Il s'agit là de la poursuite d'un mouvement à la hausse qui a débuté au cours du premier trimestre de 1983 dans le secteur des biens durables. Dans le secteur des biens non durables, il s'est produit une diminution de 1.9%, et le taux s'est établi à 76.1%, comparativement à 77.6% au cours du trimestre précédent.

Highlights Table

Faits saillants - Tableau

Industry Industrie	I 1984	Quarterly % change QI 1984/ QIV 1983	IV 1983	Quarterly % change QIII 1983/ III 1983	III 1983	Quarterly % change QII 1983/ QI 1983	II 1983
		Variation en % tri- mestrielle QI 1984/ QIV 1983		Variation en % tri- mestrielle QIII 1983/ QII 1983		Variation en % tri- mestrielle QII 1983/ QI 1983	
Food and beverages - Aliments et boissons	77.8	- 0.4	78.1	- 1.3	79.1	- 0.3	79.3
Tobacco products - Tabacs	74.5	- 0.1	74.6	5.7	70.6	- 6.4	75.4
Rubber and plastics products industries - Industrie du caoutchouc et des produits en matière plastique	81.1	4.6	77.5	4.9	73.9	5.0	70.4
Leather - Cuir	78.4	0.9	77.7	2.6	75.7	9.1	69.4
Textile - Textiles	78.9	- 3.4	81.7	0.6	81.2	- 1.2	82.2
Knitting mills - Bonneterie	91.2	- 6.3	97.3	4.0	93.6	- 2.0	95.5
Clothing - Vêtements	76.5	- 1.7	77.8	0.1	77.7	0.8	77.1
Wood - Bois	64.4	- 10.8	72.2	- 4.0	75.2	12.6	66.8
Furniture and fixtures - Meubles et accessoires	71.1	- 0.1	71.2	4.2	68.3	7.2	63.7
Paper and allied industries - Papiers et industries connexes	71.8	- 9.2	79.1	- 2.2	80.9	9.3	74.0
Printing, publishing and allied industries - Im- pression, publication et industries connexes	89.6	1.1	88.6	- 0.1	88.7	2.8	86.3
Primary metals - Métaux primaires	70.3	4.0	67.6	4.6	64.6	6.1	60.9
Metal fabricating - Fabrication de produits métal- liques	62.6	- 3.4	64.8	3.3	62.7	4.7	59.9
Machinery - Machines	67.3	8.0	62.3	10.7	56.3	4.8	53.7
Transportation equipment - Matériel de transport	69.5	5.5	65.9	14.6	57.5	3.4	55.6
Electrical products - Appareils et fournitures élec- triques	70.2	0.3	70.0	0.0	70.0	2.8	68.1
Non-metallic mineral products - Produits des minéraux non métalliques	61.8	8.4	57.0	- 5.3	60.2	3.8	58.0
Petroleum and coal products - Dérivés du pétrole et du charbon	57.6	0.7	57.2	- 3.5	59.3	14.3	51.9
Chemical and chemical products - Produits chimiques	61.8	- 0.6	62.2	- 0.3	62.4	2.6	60.8
Miscellaneous manufacturing - Industries diverses	81.8	- 2.9	84.2	4.9	80.3	- 1.7	81.7
Durable manufacturing industries - Industries manu- facturières de biens durables	67.4	1.7	66.3	4.6	63.4	5.1	60.3
Non-durable manufacturing industries - Industries manufacturières de biens non durables	76.1	- 1.9	77.6	- 0.1	77.7	2.4	75.9
Total manufacturing - Ensemble du secteur manufac- turier	71.7	- 0.3	71.9	2.1	70.4	3.5	68.0

TABLE 1. Food and Beverages

TABLEAU 1. Aliments et boissons

		Index of industrial production	Gross capital stock	Capital-output ratio	Index of potential output	Capacity utilization rate
		Indice de la production industrielle	Stock de capital brut	Coefficient de capital	Indice de la production potentielle	Taux d'utilisation de la capacité
		1971 = 100	\$ millions			
1961	I	62.2	3559.7	2.17	64.4	96.6
	II	63.0	3610.0	2.17	65.3	96.5
	III	65.7	3660.3	2.11	66.2	99.2
	IV	66.1	3710.5	2.13	67.1	98.5
1962	I	66.4	3760.8	2.15	68.0	97.6
	II	67.9	3811.2	2.13	68.9	98.5
	III	68.1	3861.6	2.15	69.9	97.5
	IV	68.1	3912.0	2.18	70.8	96.2
1963	I	69.3	3962.5	2.17	71.7	96.7
	II	70.2	4007.2	2.16	72.5	96.8
	III	71.1	4052.0	2.16	73.3	97.0
	IV	72.2	4096.6	2.15	74.1	97.4
1964	I	74.3	4141.2	2.11	74.9	99.2
	II	74.6	4188.0	2.13	75.8	98.5
	III	74.9	4234.9	2.14	76.6	97.8
	IV	76.9	4281.7	2.11	77.5	99.3
1965	I	76.8	4328.5	2.13	78.3	98.1
	II	76.3	4379.6	2.17	79.2	96.3
	III	78.4	4430.7	2.14	80.2	97.8
	IV	80.0	4481.8	2.12	81.1	98.7
1966	I	80.8	4532.9	2.13	82.0	98.3
	II	82.0	4590.5	2.12	83.0	98.7
	III	82.6	4648.1	2.13	84.1	98.2
	IV	84.4	4705.6	2.11	85.1	99.1
1967	I	85.2	4763.2	2.12	86.2	98.9
	II	86.8	4824.8	2.11	87.3	99.4
	III	88.4	4886.5	2.09	88.4	100.0
	IV	88.8	4948.1	2.11	89.5	99.2
1968	I	89.2	5009.8	2.13	90.6	98.4
	II	88.7	5067.9	2.16	91.7	96.7
	III	89.7	5126.1	2.16	92.7	96.7
	IV	91.7	5184.3	2.14	93.8	97.8
1969	I	92.0	5242.5	2.16	94.8	97.0
	II	91.8	5303.3	2.19	95.9	95.7
	III	93.5	5364.1	2.17	97.0	96.4
	IV	94.2	5424.9	2.18	98.1	96.0
1970	I	95.3	5485.7	2.18	99.2	96.0
	II	94.3	5552.3	2.23	100.4	93.9
	III	96.2	5618.9	2.21	101.6	94.6
	IV	97.0	5685.5	2.22	102.9	94.3
1971	I	97.8	5752.1	2.23	104.1	94.0
	II	99.1	5811.6	2.22	105.1	94.3
	III	101.7	5871.1	2.19	106.2	95.8
	IV	101.3	5930.6	2.22	107.3	94.4
1972	I	102.8	5990.1	2.21	108.4	94.9
	II	105.3	6048.8	2.18	109.4	96.2
	III	105.7	6107.5	2.19	110.5	95.7
	IV	108.0	6166.2	2.16	111.6	96.8

TABLE 1. Food and Beverages

TABLEAU 1. Aliments et boissons

		Index of industrial production Indice de la production industrielle	Gross capital stock Stock de capital brut	Capital-output ratio Coefficient de capital	Index of potential output Indice de la production potentielle	Capacity utilization rate Taux d'utilisation de la capacité
		1971 = 100	\$ millions			
1973	I	107.8	6225.0	2.19	112.6	95.7
	II	106.3	6297.6	2.24	113.9	93.3
	III	108.8	6370.2	2.22	115.2	94.4
	IV	111.7	6442.9	2.18	118.8	95.8
1974	I	109.5	6515.7	2.25	117.9	92.9
	II	108.5	6587.3	2.30	119.2	91.0
	III	106.5	6658.9	2.37	120.5	88.4
	IV	105.0	6730.6	2.43	121.8	86.2
1975	I	105.1	6802.3	2.45	123.1	85.4
	II	106.2	6853.0	2.44	124.0	85.7
	III	108.6	6903.8	2.41	124.9	87.0
	IV	109.4	6954.5	2.41	125.8	87.0
1976	I	110.3	7005.3	2.41	126.7	87.0
	II	115.2	7044.1	2.32	127.4	90.4
	III	114.4	7082.9	2.34	128.1	89.3
	IV	114.2	7121.7	2.36	128.8	88.6
1977	I	114.9	7160.5	2.36	129.5	88.7
	II	115.4	7206.0	2.37	130.4	88.5
	III	114.8	7251.6	2.39	131.2	87.5
	IV	115.5	7297.2	2.39	132.0	87.5
1978	I	115.1	7342.9	2.42	132.8	86.6
	II	113.9	7386.9	2.46	133.6	85.2
	III	116.7	7430.9	2.41	134.4	86.8
	IV	119.1	7474.8	2.38	135.2	86.1
1979	I	119.6	7518.8	2.38	136.0	87.9
	II	119.1	7573.2	2.41	137.0	86.9
	III	118.5	7627.6	2.44	138.0	85.9
	IV	121.6	7682.0	2.39	139.0	87.5
1980	I	122.2	7736.4	2.40	140.0	87.3
	II	122.4	7809.5	2.42	141.3	86.6
	III	121.0	7882.7	2.47	142.6	84.9
	IV	119.9	7955.8	2.51	143.9	83.3
1981	I	123.6	8029.0	2.46	145.2	85.1
	II	123.7	8076.5	2.47	146.1	84.7
	III	123.0	8124.0	2.50	147.0	83.7
	IV	122.5	8171.4	2.53	147.8	82.9
1982	I	121.1	8218.9	2.57	148.7	81.4
	II	121.4	8273.8	2.58	149.7	81.1
	III	122.7	8328.8	2.57	150.7	81.4
	IV	120.4	8383.7	2.64	151.7	79.4
1983	I	123.0	8438.6	2.60	152.7	80.6
	II	121.8	8486.6	2.64	153.5	79.3
	III	122.2	8534.6	2.65	154.4	79.1
	IV	121.2	8582.6	2.68	155.3	78.1
1984	I	121.4	8630.6	2.69	156.1	77.8

TABLE 1. Tobacco Products

TABLEAU 1. Tabacs

		Index of industrial production	Gross capital stock	Capital-output ratio	Index of potential output	Capacity utilization rate
		Indice de la production industrielle	Stock de capital brut	Coefficient de capital	Indice de la production potentielle	Taux d'utilisation de la capacité
		1971 = 100	\$ millions			
1961	I	72.3	165.5	1.27	77.0	93.8
	II	73.1	167.8	1.27	78.1	93.6
	III	73.3	170.1	1.29	79.2	92.6
	IV	73.3	172.4	1.30	80.3	91.3
1962	I	75.8	174.7	1.28	81.3	93.2
	II	74.9	175.1	1.30	81.5	91.9
	III	75.4	175.6	1.29	81.7	92.2
	IV	76.1	175.9	1.28	81.9	92.9
1963	I	78.8	176.3	1.24	82.1	96.0
	II	79.0	177.5	1.25	82.6	95.6
	III	78.6	178.8	1.26	83.2	94.4
	IV	77.5	180.0	1.29	83.8	92.5
1964	I	74.7	181.2	1.35	84.4	88.6
	II	80.1	182.7	1.27	85.1	94.2
	III	85.8	184.3	1.19	85.8	100.0
	IV	84.5	185.8	1.22	86.5	97.7
1965	I	82.1	187.3	1.27	87.2	94.2
	II	84.6	189.9	1.24	88.4	95.7
	III	85.5	192.6	1.25	89.7	95.4
	IV	86.1	195.2	1.26	90.9	94.7
1966	I	89.2	197.9	1.23	92.1	96.8
	II	84.9	201.1	1.31	93.6	90.7
	III	85.2	204.3	1.33	95.1	89.6
	IV	90.5	207.4	1.27	96.6	93.7
1967	I	93.6	210.6	1.25	98.0	95.5
	II	93.4	213.8	1.27	99.5	93.8
	III	92.1	217.1	1.31	101.1	91.1
	IV	90.5	220.2	1.35	102.5	88.3
1968	I	89.7	223.3	1.38	104.0	86.3
	II	89.1	226.0	1.41	105.2	84.7
	III	89.9	228.8	1.41	106.5	84.4
	IV	92.8	231.5	1.38	107.8	86.1
1969	I	94.6	234.3	1.37	109.1	86.7
	II	93.1	236.2	1.41	110.0	84.7
	III	92.4	238.1	1.43	110.8	83.4
	IV	93.7	240.0	1.42	111.7	83.9
1970	I	96.7	242.0	1.39	112.7	85.8
	II	100.2	243.7	1.35	113.5	88.3
	III	98.2	245.5	1.39	114.3	85.9
	IV	102.1	247.2	1.34	115.1	88.7
1971	I	95.6	249.0	1.44	115.9	82.5
	II	98.9	250.3	1.40	116.5	84.9
	III	101.4	251.7	1.38	117.2	86.5
	IV	104.1	253.0	1.35	117.8	88.4
1972	I	102.7	254.3	1.37	118.4	86.7
	II	103.7	254.6	1.36	118.5	87.5
	III	105.8	254.9	1.34	118.7	89.2
	IV	104.9	255.2	1.35	118.8	88.3

TABLE 1. Tobacco Products

TABLEAU 1. Tabacs

		Index of industrial production	Gross capital stock	Capital-output ratio	Index of potential output	Capacity utilization rate
		Indice de la production industrielle	Stock de capital brut	Coefficient de capital	Indice de la production potentielle	Taux d'utilisation de la capacité
		1971 = 100	\$ millions			
1973	I	104.8	255.5	1.35	118.9	88.1
	II	104.1	255.5	1.36	118.9	87.5
	III	106.2	255.5	1.33	118.9	89.3
	IV	106.6	255.5	1.33	118.9	89.6
1974	I	112.1	255.6	1.26	119.0	94.2
	II	113.2	259.0	1.27	120.6	93.9
	III	109.3	262.4	1.33	122.2	89.5
	IV	112.1	265.9	1.32	123.8	90.6
1975	I	110.5	269.4	1.35	125.4	88.1
	II	106.9	271.4	1.41	126.3	84.6
	III	110.8	273.5	1.37	127.3	87.0
	IV	113.2	275.4	1.35	128.2	88.3
1976	I	113.8	277.4	1.35	129.1	88.1
	II	116.6	277.2	1.32	129.0	90.4
	III	113.7	277.1	1.35	129.0	88.1
	IV	107.4	276.9	1.43	128.9	83.3
1977	I	112.1	276.7	1.37	128.8	87.0
	II	108.5	277.7	1.42	129.3	83.9
	III	108.0	278.8	1.43	129.8	83.2
	IV	115.4	279.8	1.34	130.3	88.6
1978	I	112.5	280.9	1.38	130.8	86.0
	II	105.5	282.0	1.48	131.3	80.4
	III	106.5	283.2	1.47	131.8	80.8
	IV	109.4	284.3	1.44	132.4	82.7
1979	I	111.8	285.4	1.42	132.9	84.1
	II	113.6	286.8	1.40	133.5	85.1
	III	111.8	288.2	1.43	134.2	83.3
	IV	108.9	289.6	1.47	134.8	80.8
1980	I	113.9	291.1	1.42	135.5	84.0
	II	110.5	292.0	1.47	135.9	81.3
	III	110.7	292.9	1.47	136.4	81.2
	IV	112.3	293.7	1.45	136.7	82.1
1981	I	106.6	294.5	1.53	137.1	77.8
	II	112.2	295.0	1.46	137.3	81.7
	III	122.3	295.5	1.34	137.6	88.9
	IV	117.4	295.9	1.40	137.8	85.2
1982	I	115.0	296.3	1.43	137.9	83.4
	II	114.9	297.7	1.44	138.6	82.9
	III	112.3	299.2	1.48	139.3	80.6
	IV	114.5	300.7	1.46	140.0	81.8
1983	I	116.4	302.2	1.44	140.7	82.7
	II	106.6	303.8	1.58	141.4	75.4
	III	100.4	305.5	1.69	142.2	70.6
	IV	106.7	307.2	1.60	143.0	74.6
1984	I	107.2	309.0	1.60	143.9	74.5

TABLE 1. Rubber and Plastics Products Industries

TABLEAU 1. Industrie du caoutchouc et des produits en matière plastique

		Index of industrial production	Gross capital stock	Capital-output ratio	Index of potential output	Capacity utilization rate
		Indice de la production industrielle	Stock de capital brut	Coefficient de capital	Indice de la production potentielle	Taux d'utilisation de la capacité
		1971 = 100	\$ millions			
1961	I	35.0	459.3	2.43	64.9	54.0
	II	36.9	462.9	2.33	65.4	56.4
	III	39.9	466.6	2.17	65.9	60.5
	IV	43.9	470.3	1.99	66.4	66.1
1962	I	45.1	474.0	1.95	66.9	67.4
	II	50.4	475.5	1.75	67.2	75.0
	III	53.4	477.1	1.66	67.4	79.2
	IV	52.4	478.7	1.69	67.6	77.5
1963	I	54.1	480.3	1.65	67.8	79.7
	II	54.3	483.9	1.65	68.3	79.4
	III	50.7	487.6	1.78	68.9	73.6
	IV	52.1	491.3	1.75	69.4	75.1
1964	I	58.0	495.0	1.58	69.9	83.0
	II	59.6	501.8	1.56	70.9	84.1
	III	56.4	508.6	1.67	71.8	78.5
	IV	58.7	515.5	1.63	72.8	80.6
1965	I	59.8	522.4	1.62	73.8	81.0
	II	61.1	530.4	1.61	74.9	81.8
	III	61.2	538.5	1.63	76.1	80.5
	IV	66.6	546.6	1.52	77.2	86.3
1966	I	71.8	554.7	1.43	78.3	91.6
	II	71.8	569.5	1.47	80.4	89.3
	III	68.8	584.3	1.57	82.5	83.4
	IV	70.7	599.2	1.57	84.6	83.5
1967	I	72.6	614.1	1.57	86.7	83.7
	II	75.6	621.8	1.52	87.8	86.1
	III	84.1	629.6	1.39	88.9	94.6
	IV	79.0	637.3	1.50	90.0	87.8
1968	I	91.1	645.0	1.31	91.1	100.0
	II	79.0	655.0	1.54	92.5	85.4
	III	78.2	665.0	1.58	93.9	83.3
	IV	87.7	674.9	1.43	95.3	92.0
1969	I	91.6	684.9	1.39	96.7	94.7
	II	93.2	701.5	1.40	99.1	94.1
	III	90.8	718.1	1.47	101.4	89.5
	IV	95.2	734.7	1.43	103.8	91.7
1970	I	95.7	751.4	1.46	106.1	90.2
	II	91.9	766.0	1.55	108.2	84.9
	III	98.0	780.7	1.48	110.3	88.9
	IV	91.2	795.3	1.62	112.3	81.2
1971	I	93.1	809.9	1.61	114.4	81.4
	II	98.2	834.8	1.58	117.9	83.3
	III	104.7	859.7	1.52	121.4	86.2
	IV	105.0	884.5	1.56	124.9	84.0
1972	I	107.2	909.4	1.57	128.4	83.5
	II	116.9	927.4	1.47	131.0	89.2
	III	115.3	945.5	1.52	133.5	86.3
	IV	118.6	963.5	1.51	136.1	87.2

TABLE 1. Rubber and Plastics Products Industries

TABLEAU 1. Industrie du caoutchouc et des produits en matière plastique

		Index of industrial production	Gross capital stock	Capital-output ratio	Index of potential output	Capacity utilization rate
		Indice de la production industrielle	Stock de capital brut	Coefficient de capital	Indice de la production potentielle	Taux d'utilisation de la capacité
		1971 = 100	\$ millions			
1973	I	126.2	981.6	1.44	138.6	91.0
	II	125.8	1008.3	1.49	142.4	88.3
	III	134.9	1035.1	1.42	146.2	92.3
	IV	137.3	1062.0	1.43	150.0	91.5
1974	I	138.2	1088.9	1.46	153.8	89.9
	II	134.5	1111.1	1.53	156.9	85.7
	III	128.4	1133.3	1.64	160.1	80.2
	IV	130.4	1155.5	1.64	163.2	79.9
1975	I	127.5	1177.8	1.71	166.4	76.6
	II	119.6	1192.1	1.85	168.4	71.0
	III	119.0	1206.5	1.88	170.4	69.8
	IV	123.2	1220.8	1.84	172.4	71.5
1976	I	129.3	1235.1	1.77	174.4	74.1
	II	137.9	1243.3	1.67	175.6	78.5
	III	142.5	1251.5	1.63	176.8	80.6
	IV	142.4	1259.7	1.64	177.9	80.0
1977	I	146.8	1267.9	1.60	179.1	82.0
	II	147.4	1275.8	1.60	180.2	81.8
	III	149.4	1283.8	1.59	181.3	82.4
	IV	144.2	1291.8	1.66	182.5	79.0
1978	I	146.2	1299.9	1.65	183.6	79.6
	II	153.5	1306.5	1.58	184.5	83.2
	III	155.8	1313.2	1.56	185.5	84.0
	IV	165.5	1319.9	1.48	186.4	88.8
1979	I	167.5	1326.7	1.47	187.4	89.4
	II	174.7	1338.7	1.42	189.1	92.4
	III	174.6	1350.8	1.43	190.8	91.5
	IV	168.9	1362.8	1.50	192.5	87.7
1980	I	163.4	1374.9	1.56	194.2	84.1
	II	150.3	1385.7	1.71	195.7	76.8
	III	150.5	1396.6	1.72	197.3	76.3
	IV	153.3	1407.3	1.70	198.8	77.1
1981	I	158.9	1418.1	1.65	200.3	79.3
	II	169.5	1431.7	1.57	202.2	83.8
	III	167.4	1445.3	1.60	204.1	82.0
	IV	155.1	1458.8	1.74	206.0	75.3
1982	I	145.3	1472.3	1.88	207.9	69.9
	II	138.9	1486.5	1.98	210.0	66.2
	III	141.4	1500.8	1.97	212.0	66.7
	IV	137.0	1515.1	2.05	214.0	64.0
1983	I	145.1	1529.5	1.95	216.0	67.2
	II	152.4	1533.5	1.87	216.6	70.4
	III	160.5	1537.6	1.78	217.2	73.9
	IV	168.7	1541.7	1.69	217.8	77.5
1984	I	177.0	1545.9	1.62	218.3	81.1

TABLE 1. Leather

TABLEAU 1. Cuir

		Index of industrial production	Gross capital stock	Capital-output ratio	Index of potential output	Capacity utilization rate
		Indice de la production industrielle	Stock de capital brut	Coefficient de capital	Indice de la production potentielle	Taux d'utilisation de la capacité
		1971 = 100	\$ millions			
1961	I	86.6	156.6	1.04	99.2	87.3
	II	89.5	156.5	1.00	99.2	90.2
	III	91.2	156.5	0.98	99.2	91.9
	IV	92.9	156.4	0.97	99.1	93.7
1962	I	92.9	156.4	0.97	99.1	93.7
	II	94.3	156.3	0.95	99.1	95.2
	III	93.2	156.2	0.96	99.0	94.1
	IV	91.8	156.1	0.98	98.9	92.8
1963	I	93.3	156.1	0.96	98.9	94.3
	II	92.8	156.3	0.97	99.1	93.7
	III	92.0	156.5	0.98	99.2	92.8
	IV	95.5	156.7	0.94	99.3	96.2
1964	I	96.9	156.9	0.93	99.4	97.4
	II	96.9	157.0	0.93	99.5	97.4
	III	97.4	157.2	0.93	99.6	97.8
	IV	96.6	157.3	0.93	99.7	96.9
1965	I	98.4	157.5	0.92	99.8	98.6
	II	96.7	157.7	0.94	99.9	96.8
	III	98.0	157.9	0.92	100.1	97.9
	IV	100.2	158.1	0.90	100.2	100.0
1966	I	99.5	158.4	0.91	100.4	99.1
	II	100.8	159.5	0.91	101.1	99.7
	III	97.8	160.7	0.94	101.8	96.0
	IV	99.1	161.9	0.94	102.6	96.6
1967	I	96.0	163.1	0.97	103.4	92.9
	II	94.8	163.9	0.99	103.9	91.3
	III	96.4	164.8	0.98	104.4	92.3
	IV	99.1	165.7	0.96	105.0	94.4
1968	I	100.9	166.7	0.95	105.7	95.5
	II	103.5	167.9	0.93	106.4	97.3
	III	100.9	169.1	0.96	107.2	94.1
	IV	103.7	170.2	0.94	107.9	96.1
1969	I	105.4	171.4	0.93	108.6	97.0
	II	105.7	172.8	0.94	109.5	96.5
	III	103.1	174.2	0.97	110.4	93.4
	IV	95.7	175.5	1.05	111.2	86.0
1970	I	95.5	176.9	1.06	112.1	85.2
	II	93.7	177.6	1.09	112.6	83.2
	III	97.5	178.3	1.05	113.0	86.3
	IV	99.1	178.9	1.04	113.4	87.4
1971	I	100.2	179.6	1.03	113.8	88.0
	II	96.6	180.4	1.07	114.3	84.5
	III	99.7	181.3	1.04	114.9	86.8
	IV	102.2	182.1	1.02	115.4	88.6
1972	I	97.8	183.0	1.07	116.0	84.3
	II	94.1	185.5	1.13	117.6	80.0
	III	99.0	188.0	1.09	119.1	83.1
	IV	94.4	190.4	1.16	120.7	78.2

TABLE 1. Leather

TABLEAU 1. Cuir

		Index of industrial production Indice de la production industrielle	Gross capital stock Stock de capital brut	Capital-output ratio Coefficient de capital	Index of potential output Indice de la production potentielle	Capacity utilization rate Taux d'utilisation de la capacité
		1971 = 100	\$ millions			
1973	I	100.1	192.9	1.10	122.3	81.9
	II	98.0	194.2	1.14	123.1	79.6
	III	99.1	195.5	1.13	123.9	80.0
	IV	102.1	196.9	1.11	124.8	81.8
1974	I	104.0	198.3	1.09	125.7	82.8
	II	104.5	200.0	1.10	126.8	82.4
	III	100.8	201.7	1.15	127.8	78.9
	IV	98.6	203.5	1.18	129.0	76.4
1975	I	99.4	205.3	1.18	130.1	76.4
	II	98.9	206.7	1.20	131.0	75.5
	III	100.7	208.2	1.19	132.0	76.3
	IV	105.6	209.6	1.14	132.8	79.5
1976	I	107.8	211.0	1.12	133.7	80.6
	II	108.9	211.8	1.12	134.2	81.1
	III	104.3	212.6	1.17	134.7	77.4
	IV	104.3	213.3	1.17	135.2	77.2
1977	I	100.9	214.0	1.22	135.6	74.4
	II	96.9	214.5	1.27	135.9	71.3
	III	96.4	215.1	1.28	136.3	70.7
	IV	93.6	215.5	1.32	136.6	68.5
1978	I	103.3	216.0	1.20	136.9	75.5
	II	111.6	216.2	1.11	137.0	81.4
	III	103.6	216.5	1.20	137.2	75.5
	IV	114.5	216.6	1.08	137.3	83.4
1979	I	114.2	216.8	1.09	137.4	83.1
	II	114.7	216.9	1.08	137.5	83.4
	III	110.8	217.1	1.12	137.6	80.5
	IV	106.5	217.2	1.17	137.7	77.4
1980	I	103.5	217.3	1.20	137.7	75.2
	II	105.6	218.4	1.19	138.4	76.3
	III	105.2	219.5	1.20	139.1	75.6
	IV	107.7	220.6	1.17	139.8	77.0
1981	I	113.0	221.8	1.13	140.6	80.4
	II	113.6	222.0	1.12	140.7	80.7
	III	108.1	222.2	1.18	140.8	76.8
	IV	107.0	222.4	1.19	141.0	75.9
1982	I	97.9	222.6	1.30	141.1	69.4
	II	91.8	222.2	1.39	140.8	65.2
	III	95.5	221.9	1.33	140.6	67.9
	IV	88.9	221.6	1.43	140.4	63.3
1983	I	91.7	221.3	1.38	140.3	65.4
	II	96.8	220.1	1.30	139.5	69.4
	III	105.1	219.0	1.19	138.8	75.7
	IV	107.2	217.7	1.16	138.0	77.7
1984	I	107.6	216.5	1.15	137.2	78.4

TABLE 1. Textile

TABLEAU 1. Textiles

		Index of industrial production	Gross capital stock	Capital-output ratio	Index of potential output	Capacity utilization rate
		Indice de la production industrielle	Stock de capital brut	Coefficient de capital	Indice de la production potentielle	Taux d'utilisation de la capacité
		1971 = 100	\$ millions			
1961	I	49.0	1365.6	4.25	94.6	51.8
	II	50.8	1362.9	4.09	94.4	53.8
	III	53.5	1360.3	3.88	94.2	56.8
	IV	54.7	1357.7	3.78	94.1	58.2
1962	I	55.7	1355.1	3.71	93.9	59.3
	II	57.2	1357.5	3.62	94.0	60.8
	III	59.3	1360.0	3.50	94.2	62.9
	IV	58.9	1362.5	3.53	94.4	62.4
1963	I	59.8	1365.0	3.48	94.6	63.2
	II	62.1	1373.9	3.37	95.2	65.2
	III	64.1	1382.9	3.29	95.8	66.9
	IV	66.3	1391.9	3.20	96.4	68.8
1964	I	68.0	1400.9	3.14	97.1	70.1
	II	70.1	1422.7	3.09	98.6	71.1
	III	70.7	1444.5	3.12	100.1	70.6
	IV	69.3	1466.3	3.23	101.6	68.2
1965	I	70.5	1488.1	3.22	103.1	68.4
	II	70.9	1513.6	3.25	104.9	67.6
	III	74.5	1539.1	3.15	106.6	69.9
	IV	73.9	1564.5	3.23	108.4	68.2
1966	I	74.5	1590.0	3.25	110.2	67.6
	II	71.4	1609.3	3.44	111.5	64.0
	III	71.8	1628.6	3.46	112.8	63.6
	IV	75.3	1647.9	3.34	114.2	66.0
1967	I	73.7	1667.3	3.45	115.5	63.8
	II	74.3	1678.8	3.44	116.3	63.9
	III	76.0	1690.3	3.39	117.1	64.9
	IV	77.6	1701.6	3.34	117.9	65.8
1968	I	78.9	1713.0	3.31	118.7	66.5
	II	81.5	1723.7	3.22	119.4	68.2
	III	85.6	1734.4	3.09	120.2	71.2
	IV	89.9	1745.1	2.96	120.9	74.4
1969	I	94.0	1755.8	2.85	121.6	77.3
	II	98.1	1772.2	2.75	122.8	79.9
	III	96.3	1788.7	2.83	123.9	77.7
	IV	92.8	1805.1	2.97	125.1	74.2
1970	I	91.7	1821.5	3.03	126.2	72.7
	II	91.3	1836.2	3.07	127.2	71.8
	III	89.8	1850.9	3.14	128.2	70.0
	IV	93.0	1865.6	3.06	129.3	72.0
1971	I	96.1	1880.4	2.98	130.3	73.8
	II	97.4	1888.9	2.96	130.9	74.4
	III	101.0	1897.4	2.86	131.5	76.8
	IV	105.4	1905.9	2.76	132.0	79.8
1972	I	107.4	1914.4	2.72	132.6	81.0
	II	112.7	1920.5	2.60	133.1	84.7
	III	114.1	1926.7	2.57	133.5	85.5
	IV	118.4	1932.8	2.49	133.9	88.4

TABLE 1. Textile

TABLEAU 1. Textiles

		Index of industrial production Indice de la production industrielle	Gross capital stock Stock de capital brut	Capital-output ratio Coefficient de capital	Index of potential output Indice de la production potentielle	Capacity utilization rate Taux d'utilisation de la capacité
		1971 = 100	\$ millions			
1973	I	118.8	1938.9	2.49	134.3	88.4
	II	119.5	1948.0	2.49	135.0	88.5
	III	118.0	1957.2	2.53	135.6	87.0
	IV	120.7	1966.2	2.48	136.2	88.6
1974	I	120.3	1975.2	2.50	136.8	87.9
	II	117.2	1986.0	2.58	137.6	85.2
	III	115.2	1996.9	2.64	138.3	83.3
	IV	107.0	2007.8	2.86	139.1	76.9
1975	I	105.2	2018.7	2.93	139.9	75.2
	II	107.1	2029.5	2.89	140.6	76.2
	III	112.8	2040.4	2.76	141.4	79.8
	IV	117.8	2051.3	2.65	142.1	82.9
1976	I	115.7	2062.3	2.72	142.9	81.0
	II	112.8	2068.7	2.80	143.3	78.7
	III	114.6	2075.1	2.76	143.8	79.7
	IV	112.8	2081.6	2.81	144.2	78.2
1977	I	116.4	2088.1	2.74	144.7	80.5
	II	120.8	2082.5	2.63	144.3	83.7
	III	122.0	2076.9	2.60	143.9	84.8
	IV	123.4	2071.3	2.56	143.5	86.0
1978	I	123.8	2065.7	2.54	143.1	86.5
	II	125.8	2064.3	2.50	143.0	88.0
	III	126.2	2062.9	2.49	142.9	88.3
	IV	132.3	2061.5	2.38	142.8	92.6
1979	I	137.2	2060.1	2.29	142.7	96.1
	II	140.5	2062.0	2.24	142.9	98.3
	III	140.8	2064.0	2.23	143.0	98.5
	IV	136.5	2065.9	2.31	143.1	95.4
1980	I	133.6	2067.9	2.36	143.3	93.3
	II	125.7	2073.4	2.51	143.6	87.5
	III	128.6	2079.0	2.46	144.0	89.3
	IV	136.2	2084.4	2.33	144.4	94.3
1981	I	139.0	2089.9	2.29	144.8	96.0
	II	145.2	2095.8	2.20	145.2	100.0
	III	139.6	2101.8	2.30	145.6	95.9
	IV	125.4	2107.8	2.56	146.0	85.9
1982	I	114.7	2113.8	2.81	146.4	78.3
	II	107.1	2113.5	3.01	146.4	73.1
	III	104.1	2113.3	3.10	146.4	71.1
	IV	109.3	2113.0	2.95	146.4	74.7
1983	I	117.5	2112.8	2.74	146.4	80.3
	II	120.3	2112.1	2.68	146.3	82.2
	III	118.8	2111.4	2.71	146.3	81.2
	IV	119.4	2110.7	2.70	146.2	81.7
1984	I	115.4	2110.1	2.79	146.2	78.9

TABLE 1. Knitting Mills

TABLEAU 1. Bonneterie

		Index of industrial production Indice de la production industrielle	Gross capital stock Stock de capital brut	Capital-output ratio Coefficient de capital	Index of potential output Indice de la production potentielle	Capacity utilization rate Taux d'utilisation de la capacité
		1971 = 100	\$ millions			
1961	I	47.6	173.9	2.05	85.0	56.0
	II	48.7	175.0	2.02	85.5	56.9
	III	50.0	176.2	1.98	86.1	58.1
	IV	51.1	177.3	1.95	86.7	59.0
1962	I	52.1	178.5	1.92	87.2	59.7
	II	52.8	179.4	1.91	87.7	60.2
	III	54.3	180.4	1.87	88.2	61.6
	IV	55.2	181.3	1.84	88.6	62.3
1963	I	57.8	182.2	1.77	89.0	64.9
	II	60.7	184.1	1.70	90.0	67.5
	III	61.3	186.0	1.70	90.9	67.4
	IV	61.7	187.8	1.71	91.8	67.2
1964	I	62.6	189.7	1.70	92.7	67.5
	II	64.9	191.6	1.66	93.6	69.3
	III	65.0	193.6	1.67	94.6	68.7
	IV	65.1	195.6	1.69	95.6	68.1
1965	I	66.2	197.6	1.68	96.6	68.5
	II	66.3	199.4	1.69	97.5	68.0
	III	67.6	201.2	1.67	98.3	68.7
	IV	68.7	202.9	1.66	99.2	69.3
1966	I	69.7	204.6	1.65	100.0	69.7
	II	68.1	206.4	1.70	100.9	67.5
	III	67.7	208.3	1.73	101.8	66.5
	IV	67.2	210.1	1.76	102.7	65.4
1967	I	65.7	212.0	1.81	103.6	63.4
	II	67.0	211.7	1.77	103.5	64.8
	III	67.9	211.5	1.75	103.4	65.7
	IV	69.3	211.1	1.71	103.2	67.2
1968	I	73.5	210.8	1.61	103.0	71.3
	II	77.5	210.9	1.53	103.1	75.2
	III	80.8	211.0	1.47	103.1	78.4
	IV	83.8	211.0	1.41	103.1	81.3
1969	I	83.5	211.0	1.42	103.1	81.0
	II	85.8	212.9	1.39	104.1	82.5
	III	87.3	214.9	1.38	105.0	83.1
	IV	87.9	216.8	1.38	106.0	83.0
1970	I	90.4	218.7	1.36	106.9	84.6
	II	89.3	219.8	1.38	107.4	83.1
	III	90.1	221.0	1.38	108.0	83.4
	IV	94.0	222.1	1.33	108.6	86.6
1971	I	93.8	223.3	1.34	109.1	85.9
	II	94.3	224.1	1.33	109.5	86.1
	III	104.4	225.0	1.21	110.0	94.9
	IV	107.8	225.8	1.18	110.4	97.7
1972	I	98.1	226.7	1.30	110.8	88.5
	II	105.8	229.5	1.22	112.2	94.3
	III	109.5	232.3	1.19	113.5	96.4
	IV	108.9	235.2	1.21	115.0	94.7

TABLE 1. Knitting Mills

TABLEAU 1. Bonneterie

		Index of industrial production	Gross capital stock	Capital-output ratio	Index of potential output	Capacity utilization rate
		Indice de la production industrielle	Stock de capital brut	Coefficient de capital	Indice de la production potentielle	Taux d'utilisation de la capacité
		1971 = 100	\$ millions			
1973	I	110.4	238.1	1.21	116.4	94.9
	II	111.7	240.9	1.21	117.7	94.9
	III	111.0	243.7	1.23	119.1	93.2
	IV	115.3	246.5	1.20	120.5	95.7
1974	I	117.3	249.3	1.19	121.8	96.3
	II	108.2	250.5	1.30	122.4	88.4
	III	105.3	251.8	1.34	123.1	85.6
	IV	101.2	253.0	1.40	123.7	81.8
1975	I	103.7	254.2	1.38	124.2	83.5
	II	107.8	253.4	1.32	123.8	87.0
	III	106.1	252.7	1.34	123.5	85.9
	IV	110.0	251.9	1.29	123.1	89.3
1976	I	105.5	251.2	1.34	122.8	85.9
	II	109.5	251.0	1.29	122.7	89.3
	III	107.2	250.9	1.31	122.6	87.4
	IV	100.3	250.7	1.40	122.5	81.9
1977	I	102.0	250.6	1.38	122.5	83.3
	II	98.5	250.0	1.43	122.2	80.6
	III	102.2	249.5	1.37	121.9	83.8
	IV	103.8	248.9	1.35	121.6	85.3
1978	I	102.8	248.3	1.36	121.4	84.7
	II	108.1	247.7	1.29	121.1	89.3
	III	105.7	247.1	1.31	120.8	87.5
	IV	108.7	246.4	1.27	120.4	90.3
1979	I	106.3	245.8	1.30	120.1	88.5
	II	117.0	245.8	1.18	120.1	97.4
	III	114.2	245.8	1.21	120.1	95.1
	IV	112.8	245.8	1.22	120.1	93.9
1980	I	113.7	245.9	1.21	120.2	94.6
	II	113.8	246.8	1.22	120.6	94.3
	III	118.0	247.8	1.18	121.1	97.4
	IV	121.6	248.8	1.15	121.6	100.0
1981	I	120.9	249.9	1.16	122.1	99.0
	II	118.7	249.2	1.18	121.8	97.5
	III	116.9	248.6	1.19	121.5	96.2
	IV	108.2	247.9	1.29	121.2	89.3
1982	I	104.4	247.3	1.33	120.9	86.4
	II	104.1	247.3	1.33	120.9	86.1
	III	107.5	247.3	1.29	120.9	88.9
	IV	108.1	247.3	1.28	120.9	89.4
1983	I	115.7	247.3	1.20	120.9	95.7
	II	115.5	247.5	1.20	121.0	95.5
	III	113.3	247.7	1.23	121.1	93.6
	IV	117.9	247.9	1.18	121.2	97.3
1984	I	110.6	248.2	1.26	121.3	91.2

TABLE 1. Clothing

TABLEAU 1. Vêtements

		Index of industrial production	Gross capital stock	Capital-output ratio	Index of potential output	Capacity utilization rate
		Indice de la production industrielle	Stock de capital brut	Coefficient de capital	Indice de la production potentielle	Taux d'utilisation de la capacité
		1971 = 100	\$ millions			
1961	I	72.2	249.1	0.57	117.8	61.3
	II	73.7	249.9	0.56	118.2	62.3
	III	74.9	250.8	0.55	118.6	63.1
	IV	75.6	251.7	0.55	119.1	63.5
1962	I	76.7	252.6	0.54	119.5	64.2
	II	77.2	253.6	0.54	120.0	64.4
	III	78.6	254.6	0.54	120.4	65.3
	IV	78.2	255.6	0.54	120.9	64.7
1963	I	79.7	256.6	0.53	121.4	65.7
	II	81.1	258.1	0.53	122.1	66.4
	III	81.9	259.6	0.52	122.8	66.7
	IV	83.3	261.1	0.52	123.5	67.4
1964	I	85.3	262.7	0.51	124.3	68.6
	II	84.7	264.7	0.52	125.2	67.6
	III	85.3	266.8	0.52	126.2	67.6
	IV	86.7	268.8	0.51	127.1	68.2
1965	I	86.9	270.9	0.52	128.1	67.8
	II	87.2	273.7	0.52	129.5	67.4
	III	88.5	276.5	0.52	130.8	67.7
	IV	90.6	279.1	0.51	132.0	68.6
1966	I	90.1	281.8	0.52	133.3	67.6
	II	91.0	283.2	0.51	134.0	67.9
	III	92.0	284.6	0.51	134.6	68.3
	IV	90.6	286.0	0.52	135.3	67.0
1967	I	89.8	287.5	0.53	136.0	66.0
	II	89.6	287.5	0.53	136.0	65.9
	III	88.8	287.5	0.54	136.0	65.3
	IV	89.6	287.6	0.53	136.0	65.9
1968	I	91.5	287.7	0.52	136.1	67.2
	II	93.5	287.7	0.51	136.1	68.7
	III	92.9	287.7	0.51	136.1	68.3
	IV	92.9	287.6	0.51	136.0	68.3
1969	I	93.6	287.6	0.51	136.0	68.8
	II	94.6	288.1	0.50	136.3	69.4
	III	94.7	288.6	0.50	136.5	69.4
	IV	94.3	289.0	0.51	136.7	69.0
1970	I	94.7	289.5	0.51	136.9	69.2
	II	93.3	288.3	0.51	136.4	88.4
	III	92.9	287.2	0.51	135.8	68.4
	IV	95.7	285.9	0.49	135.2	70.8
1971	I	99.0	284.7	0.48	134.7	73.5
	II	97.7	279.4	0.47	132.2	73.9
	III	100.7	274.2	0.45	129.7	77.6
	IV	102.2	268.9	0.44	127.2	80.4
1972	I	106.9	263.7	0.41	124.7	85.7
	II	105.5	264.7	0.42	125.2	84.3
	III	107.8	265.8	0.41	125.7	85.7
	IV	111.4	266.9	0.40	126.2	88.2

TABLE 1. Clothing

TABLEAU 1. Vêtements

		Index of industrial production	Gross capital stock	Capital-output ratio	Index of potential output	Capacity utilization rate
		Indice de la production industrielle	Stock de capital brut	Coefficient de capital	Indice de la production potentielle	Taux d'utilisation de la capacité
		1971 = 100	\$ millions			
1973	I	108.4	268.0	0.41	126.8	85.5
	II	115.1	271.0	0.39	128.2	89.8
	III	117.4	274.1	0.39	129.7	90.5
	IV	116.8	277.2	0.39	131.1	89.1
1974	I	113.9	280.3	0.41	132.6	85.9
	II	115.7	281.3	0.40	133.1	87.0
	III	112.2	282.3	0.42	133.5	84.0
	IV	114.9	283.2	0.41	134.0	85.8
1975	I	113.3	284.2	0.42	134.4	84.3
	II	114.4	282.8	0.41	133.8	85.5
	III	116.8	281.4	0.40	133.1	87.8
	IV	124.7	279.9	0.37	132.4	94.2
1976	I	129.9	278.5	0.35	131.7	98.6
	II	128.9	279.8	0.36	132.3	97.4
	III	126.5	281.1	0.37	133.0	95.1
	IV	120.0	282.4	0.39	133.6	89.8
1977	I	120.7	283.7	0.39	134.2	89.9
	II	121.8	284.1	0.39	134.4	90.6
	III	118.6	284.5	0.40	134.6	88.1
	IV	112.5	284.8	0.42	134.7	83.5
1978	I	120.9	285.2	0.39	134.9	89.6
	II	122.0	286.4	0.39	135.5	90.1
	III	125.5	287.7	0.38	136.1	92.2
	IV	136.7	289.0	0.35	136.7	100.0
1979	I	136.5	290.3	0.35	137.3	99.4
	II	137.8	291.7	0.35	138.0	99.9
	III	129.8	293.2	0.37	138.7	93.6
	IV	128.9	294.7	0.38	139.4	92.5
1980	I	122.1	296.2	0.40	140.1	87.1
	II	122.5	297.9	0.40	140.9	86.9
	III	125.6	299.7	0.39	141.8	88.6
	IV	123.8	301.5	0.40	142.6	86.8
1981	I	125.3	303.3	0.40	143.5	87.3
	II	126.4	305.1	0.40	144.3	87.6
	III	124.8	306.9	0.41	145.2	86.0
	IV	117.0	308.6	0.44	146.0	80.2
1982	I	110.6	310.3	0.46	146.8	75.4
	II	103.0	310.1	0.50	146.7	70.2
	III	103.8	309.9	0.49	146.6	70.8
	IV	107.1	309.7	0.48	146.5	73.1
1983	I	110.4	309.5	0.46	146.4	75.4
	II	112.5	308.3	0.45	145.8	77.1
	III	112.9	307.2	0.45	145.3	77.7
	IV	112.6	306.0	0.45	144.7	77.8
1984	I	110.4	304.9	0.46	144.2	76.5

TABLE 1. Wood

TABLEAU 1. Bois

		Index of industrial production	Gross capital stock	Capital-output ratio	Index of potential output	Capacity utilization rate
		Indice de la production industrielle	Stock de capital brut	Coefficient de capital	Indice de la production potentielle	Taux d'utilisation de la capacité
		1971 = 100	\$ millions			
1961	I	60.9	1102.0	2.18	71.7	84.9
	II	64.2	1115.2	2.09	72.6	88.5
	III	66.9	1128.4	2.03	73.4	91.1
	IV	65.0	1141.6	2.11	74.3	87.5
1962	I	66.3	1154.8	2.10	75.2	88.2
	II	68.7	1164.5	2.04	75.8	90.7
	III	71.1	1174.2	1.99	76.4	93.0
	IV	71.2	1183.8	2.00	77.0	92.4
1963	I	73.0	1193.5	1.97	77.7	94.0
	II	73.0	1204.7	1.99	78.4	93.1
	III	74.8	1216.0	1.96	79.1	94.5
	IV	75.4	1227.2	1.96	79.9	94.4
1964	I	80.6	1238.5	1.85	80.6	100.0
	II	77.0	1254.0	1.96	81.6	94.4
	III	82.4	1269.6	1.85	82.6	99.7
	IV	81.9	1285.2	1.89	83.6	97.9
1965	I	80.8	1300.9	1.94	84.7	95.4
	II	81.0	1322.1	1.96	86.0	94.1
	III	83.6	1343.3	1.93	87.4	95.6
	IV	86.6	1364.5	1.90	88.8	97.5
1966	I	83.3	1385.7	2.00	90.2	92.4
	II	86.0	1403.7	1.96	91.4	94.1
	III	85.5	1421.7	2.00	92.5	92.4
	IV	84.9	1439.7	2.04	93.7	90.8
1967	I	86.9	1457.7	2.02	94.9	91.6
	II	86.9	1463.5	2.03	95.2	91.2
	III	88.0	1469.4	2.01	95.6	92.0
	IV	83.5	1475.3	2.13	96.0	87.0
1968	I	82.6	1481.2	2.16	96.4	85.7
	II	87.6	1498.8	2.06	97.5	89.8
	III	90.5	1516.4	2.02	98.7	91.7
	IV	95.6	1533.9	1.93	99.8	95.8
1969	I	91.4	1551.5	2.04	101.0	90.5
	II	96.6	1591.3	1.98	103.6	93.3
	III	92.5	1631.2	2.12	106.2	87.1
	IV	93.8	1671.1	2.14	108.8	86.3
1970	I	93.5	1711.0	2.20	111.3	84.0
	II	85.4	1745.2	2.46	113.6	75.2
	III	89.0	1779.4	2.41	115.8	76.9
	IV	92.6	1813.5	2.36	118.0	78.5
1971	I	90.8	1847.7	2.45	120.2	75.5
	II	98.2	1880.5	2.30	122.4	80.2
	III	105.1	1913.3	2.19	124.5	84.4
	IV	106.4	1946.1	2.20	126.6	84.0
1972	I	104.0	1979.0	2.29	128.8	80.8
	II	101.1	2011.2	2.39	130.9	77.2
	III	104.5	2043.4	2.35	133.0	78.6
	IV	114.8	2075.6	2.18	135.1	85.0

TABLE 1. Wood

TABLEAU 1. Bois

		Index of industrial production	Gross capital stock	Capital-output ratio	Index of potential output	Capacity utilization rate
		Indice de la production industrielle	Stock de capital brut	Coefficient de capital	Indice de la production potentielle	Taux d'utilisation de la capacité
		1971 = 100	\$ millions			
1973	I	117.8	2107.9	2.15	137.2	85.9
	II	117.4	2158.4	2.21	140.5	83.6
	III	120.7	2208.9	2.20	143.8	94.0
	IV	125.5	2259.3	2.17	147.0	85.4
1974	I	130.4	2309.8	2.13	150.3	86.7
	II	124.7	2361.4	2.28	153.7	81.1
	III	115.9	2413.0	2.50	157.0	73.8
	IV	104.5	2464.5	2.84	160.4	65.2
1975	I	101.7	2516.1	2.98	163.7	62.1
	II	110.5	2557.5	2.78	166.4	66.4
	III	100.7	2599.0	3.11	169.1	59.5
	IV	118.1	2640.4	2.69	171.8	68.7
1976	I	125.7	2681.9	2.57	174.5	72.0
	II	134.7	2712.5	2.42	176.5	76.3
	III	137.1	2743.1	2.41	178.5	76.8
	IV	141.8	2773.7	2.35	180.5	78.6
1977	I	144.3	2804.3	2.34	182.5	79.1
	II	138.2	2827.7	2.46	184.0	75.1
	III	143.4	2851.2	2.39	185.6	77.3
	IV	145.2	2874.6	2.38	187.1	77.6
1978	I	141.3	2898.1	2.47	188.6	74.9
	II	146.9	2930.5	2.40	190.7	77.0
	III	149.6	2962.9	2.38	192.8	77.6
	IV	154.6	2995.3	2.33	194.9	79.3
1979	I	148.7	3027.8	2.45	197.0	75.5
	II	158.1	3070.1	2.34	199.8	79.1
	III	159.3	3112.4	2.35	202.6	78.6
	IV	154.7	3154.6	2.45	205.3	75.4
1980	I	150.8	3196.9	2.55	208.1	72.5
	II	144.7	3240.9	2.69	210.9	68.6
	III	152.9	3285.0	2.58	213.8	71.5
	IV	155.5	3329.0	2.58	216.6	71.8
1981	I	163.1	3373.0	2.49	219.5	74.3
	II	162.7	3404.8	2.52	221.6	73.4
	III	124.8	3436.6	3.31	223.6	55.8
	IV	137.4	3468.4	3.04	225.7	60.9
1982	I	123.9	3500.3	3.40	227.8	54.4
	II	127.3	3513.8	3.32	228.7	55.7
	III	130.5	3527.3	3.25	229.6	56.8
	IV	131.2	3540.8	3.25	230.4	56.9
1983	I	144.6	3554.4	2.96	231.3	62.5
	II	154.9	3561.0	2.77	231.7	66.8
	III	174.7	3567.7	2.46	232.2	75.2
	IV	168.0	3574.3	2.56	232.6	72.2
1984	I	150.0	3581.0	2.87	233.0	64.4

TABLE 1. Furniture and Fixtures

TABLEAU 1. Meubles et accessoires

		Index of industrial production	Gross capital stock	Capital-output ratio	Index of potential output	Capacity utilization rate
		Indice de la production industrielle	Stock de capital brut	Coefficient de capital	Indice de la production potentielle	Taux d'utilisation de la capacité
		1971 = 100	\$ millions			
1961	I	55.5	190.4	0.98	79.3	70.0
	II	58.0	191.2	0.94	79.6	72.9
	III	59.7	192.0	0.92	79.9	74.7
	IV	60.5	192.7	0.91	80.2	75.4
1962	I	61.1	193.5	0.91	80.6	75.8
	II	62.2	193.2	0.89	80.4	77.3
	III	63.2	193.0	0.87	80.3	78.7
	IV	63.9	192.8	0.86	80.3	79.6
1963	I	65.2	192.6	0.84	80.2	81.3
	II	65.9	193.1	0.84	80.4	82.0
	III	68.0	193.7	0.81	80.6	84.3
	IV	69.0	194.2	0.81	80.8	85.3
1964	I	70.4	194.8	0.79	81.1	86.8
	II	71.4	195.9	0.78	81.6	87.5
	III	72.2	197.1	0.78	82.1	88.0
	IV	75.0	198.3	0.76	82.6	90.8
1965	I	78.6	199.5	0.73	83.1	94.6
	II	81.1	203.8	0.72	84.8	95.6
	III	82.7	208.1	0.72	86.6	95.5
	IV	86.1	212.5	0.71	88.5	97.3
1966	I	90.3	216.9	0.69	90.3	100.0
	II	92.2	222.5	0.69	92.6	99.5
	III	94.0	228.2	0.69	95.0	98.9
	IV	94.0	233.9	0.71	97.4	96.5
1967	I	93.8	239.6	0.73	99.8	94.0
	II	94.8	244.2	0.74	101.7	93.2
	III	95.2	248.9	0.75	103.6	91.9
	IV	94.1	253.6	0.77	105.6	89.1
1968	I	95.5	258.3	0.77	107.5	88.8
	II	96.8	263.5	0.78	109.7	88.2
	III	97.3	268.8	0.79	111.9	86.9
	IV	99.4	274.0	0.79	114.1	87.1
1969	I	101.7	279.3	0.79	116.3	87.5
	II	102.4	280.9	0.78	116.9	87.6
	III	103.5	282.5	0.78	117.6	88.0
	IV	103.4	284.2	0.79	118.3	87.4
1970	I	100.3	285.9	0.82	119.0	84.3
	II	95.0	289.5	0.87	120.5	78.8
	III	95.0	293.1	0.88	122.0	77.9
	IV	94.4	296.6	0.90	123.5	76.4
1971	I	89.9	300.2	0.96	125.0	71.9
	II	97.0	302.3	0.89	125.9	77.1
	III	105.2	304.5	0.83	126.8	83.0
	IV	107.4	306.6	0.82	127.6	84.1
1972	I	108.3	308.8	0.82	128.6	84.2
	II	113.5	312.2	0.79	130.0	87.3
	III	117.9	315.6	0.77	131.4	89.7
	IV	123.1	318.9	0.74	132.8	92.7

TABLE 1. Furniture and Fixtures

TABLEAU 1. Meubles et accessoires

		Index of industrial production	Gross capital stock	Capital-output ratio	Index of potential output	Capacity utilization rate
		Indice de la production industrielle	Stock de capital brut	Coefficient de capital	Indice de la production potentielle	Taux d'utilisation de la capacité
		1971 = 100	\$ millions			
1973	I	126.2	322.3	0.73	134.2	94.1
	II	125.9	327.9	0.74	136.5	92.2
	III	122.1	333.6	0.78	138.9	87.9
	IV	125.7	339.2	0.77	141.2	89.0
1974	I	128.8	344.8	0.77	143.5	89.7
	II	129.3	351.9	0.78	146.5	88.3
	III	123.7	359.1	0.83	149.5	82.7
	IV	116.7	366.2	0.90	152.5	76.5
1975	I	118.1	373.4	0.90	155.5	76.0
	II	110.4	377.6	0.98	157.2	70.2
	III	120.1	381.9	0.91	159.0	75.5
	IV	120.2	386.1	0.92	160.7	74.8
1976	I	117.6	390.4	0.95	162.5	72.4
	II	126.0	392.2	0.89	163.3	77.2
	III	126.5	394.1	0.89	164.1	77.1
	IV	127.0	395.9	0.89	164.8	77.1
1977	I	118.7	397.8	0.96	165.6	71.7
	II	109.8	399.1	1.04	166.2	66.1
	III	111.2	400.5	1.03	166.7	66.7
	IV	113.2	401.8	1.02	167.3	67.7
1978	I	119.5	403.2	0.97	167.9	71.2
	II	123.2	404.0	0.94	168.2	73.2
	III	122.0	404.9	0.95	168.6	72.4
	IV	129.8	405.7	0.89	168.9	76.8
1979	I	131.1	406.5	0.89	169.2	77.5
	II	133.6	407.9	0.87	169.8	78.7
	III	130.0	409.3	0.90	170.4	76.3
	IV	127.3	410.7	0.92	171.0	74.5
1980	I	130.0	412.1	0.91	171.6	75.8
	II	124.1	413.7	0.95	172.2	72.1
	III	127.8	415.4	0.93	172.9	73.9
	IV	133.1	416.9	0.90	173.6	76.7
1981	I	143.3	418.5	0.84	174.2	82.2
	II	145.5	421.8	0.83	175.6	82.9
	III	145.4	425.1	0.84	177.0	82.2
	IV	127.8	428.4	0.96	178.4	71.7
1982	I	110.4	431.8	1.12	179.8	61.4
	II	105.4	433.2	1.18	180.4	58.4
	III	100.7	434.6	1.23	180.9	55.7
	IV	107.4	436.0	1.16	181.5	59.2
1983	I	115.3	437.5	1.09	182.1	63.3
	II	116.0	437.2	1.08	182.0	63.7
	III	124.3	436.9	1.01	181.9	68.3
	IV	129.4	436.6	0.97	181.8	71.2
1984	I	129.1	436.4	0.97	181.7	71.1

TABLE 1. Paper and Allied Industries

TABLEAU 1. Papiers et industries connexes

		Index of industrial production	Gross capital stock	Capital-output ratio	Index of potential output	Capacity utilization rate
		Indice de la production industrielle	Stock de capital brut	Coefficient de capital	Indice de la production potentielle	Taux d'utilisation de la capacité
		1971 = 100	\$ millions			
1961	I	63.1	4574.4	4.63	68.2	92.5
	II	62.7	4613.7	4.70	68.8	91.1
	III	63.4	4653.0	4.69	69.4	91.4
	IV	64.3	4692.1	4.66	70.0	91.9
1962	I	65.1	4731.2	4.64	70.6	92.3
	II	65.5	4765.0	4.64	71.1	92.2
	III	66.3	4798.8	4.62	71.6	92.6
	IV	65.8	4832.5	4.69	72.1	91.3
1963	I	65.3	4866.2	4.76	72.6	90.0
	II	69.3	4916.4	4.53	73.3	94.5
	III	70.0	4966.7	4.53	74.1	94.5
	IV	72.1	5016.8	4.44	74.8	96.4
1964	I	74.0	5067.0	4.37	75.6	97.9
	II	75.0	5152.7	4.39	76.8	97.6
	III	77.2	5238.5	4.33	78.1	98.8
	IV	79.4	5324.2	4.28	79.4	100.0
1965	I	78.7	5409.9	4.39	80.7	97.5
	II	79.1	5525.1	4.46	82.4	96.0
	III	81.5	5640.3	4.42	84.1	96.9
	IV	82.9	5755.5	4.43	85.8	96.6
1966	I	85.8	5870.8	4.37	87.6	98.0
	II	87.4	6018.2	4.40	89.7	97.4
	III	87.8	6165.7	4.48	91.9	95.5
	IV	86.8	6313.1	4.64	94.1	92.2
1967	I	87.7	6460.5	4.70	96.3	91.0
	II	85.1	6582.6	4.94	98.2	86.7
	III	86.9	6704.7	4.93	100.0	86.9
	IV	85.3	6826.8	5.11	101.8	83.8
1968	I	87.0	6949.0	5.10	103.6	84.0
	II	93.7	7012.4	4.78	104.6	89.6
	III	87.2	7075.8	5.18	105.5	82.6
	IV	92.4	7139.1	4.93	106.5	86.8
1969	I	97.1	7202.4	4.74	107.4	90.4
	II	99.1	7268.8	4.68	108.4	91.4
	III	102.2	7335.3	4.58	109.4	93.4
	IV	102.1	7401.7	4.63	110.4	92.5
1970	I	102.8	7468.1	4.64	111.4	92.3
	II	100.2	7564.8	4.82	112.8	88.8
	III	95.4	7661.6	5.13	114.3	83.5
	IV	100.9	7758.3	4.91	115.7	87.2
1971	I	97.8	7855.0	5.13	117.1	83.5
	II	97.2	7955.4	5.23	118.6	81.9
	III	100.8	8055.9	5.10	120.1	83.9
	IV	104.2	8156.3	5.00	121.6	85.7
1972	I	106.4	8256.8	4.95	123.1	86.4
	II	110.0	8325.1	4.83	124.2	88.6
	III	110.8	8393.5	4.84	125.2	88.5
	IV	114.1	8461.8	4.73	126.2	90.4

TABLE 1. Paper and Allied Industries

TABLEAU 1. Papiers et industries connexes

		Index of industrial production	Gross capital stock	Capital-output ratio	Index of potential output	Capacity utilization rate
		Indice de la production industrielle	Stock de capital brut	Coefficient de capital	Indice de la production potentielle	Taux d'utilisation de la capacité
		1971 = 100	\$ millions			
1973	I	117.9	8530.1	4.62	127.2	92.7
	II	121.8	8573.3	4.49	127.9	95.3
	III	109.8	8616.6	5.01	128.5	85.4
	IV	118.6	8659.8	4.66	129.1	91.8
1974	I	127.9	8703.0	4.34	129.8	98.5
	II	126.1	8758.3	4.43	130.6	96.5
	III	123.6	8813.6	4.55	131.4	94.0
	IV	117.2	8868.9	4.83	132.3	88.8
1975	I	109.2	8924.3	5.22	133.1	82.1
	II	103.2	8968.4	5.55	133.7	77.2
	III	90.0	9012.6	6.39	134.4	67.0
	IV	83.6	9056.7	6.92	135.1	61.9
1976	I	98.9	9100.8	5.87	135.7	72.9
	II	117.4	9164.5	4.98	136.7	85.9
	III	118.8	9228.2	4.96	137.6	88.3
	IV	112.9	9291.8	5.25	138.6	81.5
1977	I	112.9	9355.5	5.29	139.5	80.9
	II	110.7	9406.4	5.42	140.3	78.9
	III	110.7	9457.3	5.45	141.0	78.5
	IV	115.7	9508.1	5.25	141.8	81.6
1978	I	121.0	9559.0	5.04	142.6	84.9
	II	125.1	9559.4	4.88	142.6	87.8
	III	126.5	9559.8	4.82	142.6	88.7
	IV	127.0	9560.2	4.81	142.6	89.1
1979	I	124.8	9560.7	4.89	142.6	87.5
	II	123.9	9572.6	4.93	142.8	88.8
	III	127.0	9584.5	4.82	142.9	88.9
	IV	128.0	9596.4	4.79	143.1	89.4
1980	I	133.4	9608.3	4.60	143.3	93.1
	II	127.7	9707.1	4.85	144.8	88.2
	III	125.1	9805.9	5.00	146.2	85.5
	IV	125.8	9904.6	5.03	147.7	85.2
1981	I	127.6	10003.3	5.00	149.2	85.5
	II	130.2	10162.1	4.98	151.5	85.9
	III	122.5	10320.9	5.38	153.9	79.6
	IV	126.8	10479.7	5.28	156.3	81.1
1982	I	120.4	10638.6	5.64	158.7	75.9
	II	115.1	10747.4	5.96	160.3	71.8
	III	114.2	10856.3	6.07	161.9	70.5
	IV	112.5	10965.2	6.22	163.5	68.8
1983	I	117.3	11074.2	6.03	165.1	71.0
	II	122.7	11113.4	5.78	165.7	74.0
	III	134.6	11152.6	5.29	166.3	80.9
	IV	132.1	11191.7	5.41	166.9	79.1
1984	I	120.3	11230.9	5.96	167.5	71.8

TABLE 1. Printing, Publishing and Allied Industries

TABLEAU 1. Impression, publication et industries connexes

		Index of industrial production Indice de la production industrielle	Gross capital stock Stock de capital brut	Capital-output ratio Coefficient de capital	Index of potential output Indice de la production potentielle	Capacity utilization rate Taux d'utilisation de la capacité
		1971 = 100	\$ millions			
1961	I	69.3	911.3	1.43	87.1	79.6
	II	68.8	917.7	1.45	87.7	78.4
	III	70.6	924.2	1.42	88.3	79.9
	IV	71.2	930.6	1.42	88.9	80.0
1962	I	71.9	937.0	1.42	89.6	80.3
	II	71.3	945.2	1.44	90.3	78.9
	III	72.1	953.5	1.44	91.1	79.1
	IV	71.7	961.7	1.46	91.9	78.0
1963	I	72.4	969.9	1.46	92.7	78.1
	II	73.1	981.9	1.46	93.8	77.9
	III	74.3	994.0	1.46	95.0	78.2
	IV	73.5	1006.1	1.49	96.2	76.4
1964	I	73.6	1018.3	1.51	97.3	75.8
	II	76.3	1033.3	1.47	98.8	77.3
	III	72.3	1048.3	1.58	100.2	72.2
	IV	75.3	1063.3	1.54	101.6	74.1
1965	I	77.1	1078.4	1.52	103.1	74.8
	II	78.2	1087.0	1.51	103.9	75.3
	III	79.7	1095.7	1.50	104.7	76.1
	IV	83.3	1104.4	1.44	105.6	78.9
1966	I	84.5	1113.1	1.43	106.4	79.4
	II	85.4	1125.8	1.43	107.6	79.4
	III	85.8	1138.6	1.44	108.8	78.8
	IV	85.7	1151.3	1.46	110.0	77.9
1967	I	87.7	1164.0	1.44	111.3	78.8
	II	88.7	1173.0	1.44	112.1	79.1
	III	88.2	1182.1	1.46	113.0	78.1
	IV	88.2	1191.2	1.47	113.9	77.5
1968	I	90.0	1200.3	1.45	114.7	78.4
	II	89.9	1210.8	1.47	115.7	77.7
	III	89.2	1221.4	1.49	116.7	76.4
	IV	91.2	1231.9	1.47	117.7	77.5
1969	I	93.6	1242.5	1.44	118.8	78.8
	II	93.4	1252.0	1.46	119.7	78.1
	III	95.7	1261.6	1.43	120.6	79.4
	IV	94.5	1271.1	1.48	121.5	77.8
1970	I	92.9	1280.6	1.50	122.4	75.9
	II	96.1	1293.7	1.47	123.6	77.7
	III	95.0	1306.8	1.50	124.9	76.1
	IV	98.1	1319.8	1.46	126.1	77.8
1971	I	97.4	1332.9	1.49	127.4	76.5
	II	98.8	1348.9	1.49	128.9	76.6
	III	99.8	1365.0	1.49	130.5	76.5
	IV	103.7	1380.9	1.45	132.0	78.6
1972	I	102.8	1396.9	1.48	133.5	77.0
	II	107.7	1410.3	1.43	134.8	79.9
	III	111.9	1423.7	1.38	136.1	82.2
	IV	113.0	1437.1	1.38	137.4	82.3

TABLE 1. Printing, Publishing and Allied Industries

TABLEAU 1. Impression, publication et industries connexes

		Index of industrial production	Gross capital stock	Capital-output ratio	Index of potential output	Capacity utilization rate
		Indice de la production industrielle	Stock de capital brut	Coefficient de capital	Indice de la production potentielle	Taux d'utilisation de la capacité
		1971 = 100	\$ millions			
1973	I	117.1	1450.6	1.35	138.6	84.5
	II	117.0	1465.2	1.36	140.0	83.5
	III	120.3	1479.9	1.34	141.4	85.0
	IV	124.7	1494.6	1.30	142.9	87.3
1974	I	124.7	1509.4	1.32	144.3	86.4
	II	126.5	1525.2	1.31	145.8	86.8
	III	125.8	1541.0	1.33	147.3	85.4
	IV	125.5	1556.7	1.35	148.8	84.3
1975	I	127.2	1572.4	1.35	150.3	84.6
	II	126.7	1587.3	1.36	151.7	83.5
	III	128.2	1602.2	1.36	153.1	83.7
	IV	128.0	1617.1	1.37	154.6	82.8
1976	I	133.0	1632.1	1.34	156.0	85.3
	II	136.1	1646.3	1.32	157.4	86.5
	III	138.9	1660.6	1.30	158.7	87.5
	IV	142.8	1674.9	1.28	160.1	89.2
1977	I	140.8	1689.2	1.31	161.5	87.2
	II	140.4	1700.3	1.32	162.5	86.4
	III	139.5	1711.5	1.34	163.6	85.3
	IV	140.6	1722.6	1.33	164.6	85.4
1978	I	146.1	1733.8	1.29	165.7	88.2
	II	148.9	1736.5	1.27	166.0	89.7
	III	150.3	1739.3	1.26	166.2	90.4
	IV	150.1	1742.0	1.26	166.5	90.2
1979	I	151.9	1744.7	1.25	166.8	91.1
	II	152.9	1751.9	1.25	167.4	91.3
	III	158.5	1759.1	1.21	168.1	94.3
	IV	161.8	1766.4	1.19	168.8	95.8
1980	I	168.4	1773.7	1.15	169.5	99.3
	II	168.6	1788.5	1.15	170.9	98.6
	III	170.6	1803.4	1.15	172.4	99.0
	IV	173.8	1818.4	1.14	173.8	100.0
1981	I	170.3	1833.4	1.17	175.2	97.2
	II	174.7	1845.8	1.15	176.4	99.0
	III	175.2	1858.3	1.15	177.6	98.8
	IV	173.1	1870.8	1.18	178.8	96.8
1982	I	164.8	1883.3	1.24	180.0	91.8
	II	161.5	1894.2	1.28	181.0	89.2
	III	157.0	1905.1	1.32	182.1	86.2
	IV	156.1	1916.0	1.34	183.1	85.2
1983	I	157.5	1927.0	1.33	184.2	85.5
	II	159.8	1937.0	1.32	185.1	86.3
	III	165.1	1947.1	1.28	186.1	88.7
	IV	165.8	1957.1	1.28	187.1	88.6
1984	I	168.5	1967.1	1.27	188.0	89.6

TABLE 1. Primary Metals

TABLEAU 1. Métaux primaires

		Index of industrial production	Gross capital stock	Capital-output ratio	Index of potential output	Capacity utilization rate
		Indice de la production industrielle	Stock de capital brut	Coefficient de capital	Indice de la production potentielle	Taux d'utilisation de la capacité
		1971 = 100	\$ millions			
1961	I	56.4	4106.0	4.39	73.6	76.6
	II	59.4	4138.0	4.20	74.2	80.0
	III	59.8	4170.1	4.21	74.8	80.0
	IV	60.7	4202.2	4.18	75.4	80.5
1962	I	60.9	4234.3	4.20	75.9	80.2
	II	64.2	4288.6	4.03	76.9	83.5
	III	66.9	4342.9	3.92	77.9	85.9
	IV	63.6	4397.1	4.17	78.9	80.6
1963	I	66.4	4451.3	4.05	79.8	83.2
	II	67.6	4473.0	3.99	80.2	84.3
	III	68.4	4494.8	3.97	80.6	84.8
	IV	71.1	4516.4	3.83	81.0	87.8
1964	I	73.4	4538.1	3.73	81.4	90.2
	II	75.6	4590.6	3.66	82.3	91.8
	III	77.6	4643.2	3.61	83.3	93.2
	IV	80.6	4695.8	3.52	84.2	95.7
1965	I	80.4	4748.5	3.56	85.2	94.4
	II	83.0	4803.3	3.49	86.1	96.3
	III	86.4	4858.2	3.39	87.1	99.2
	IV	88.0	4913.0	3.37	88.1	99.9
1966	I	89.1	4967.9	3.36	89.1	100.0
	II	88.5	5068.2	3.46	90.9	97.4
	III	88.2	5168.5	3.54	92.7	95.1
	IV	85.7	5268.7	3.71	94.5	90.7
1967	I	83.7	5369.0	3.87	96.3	86.9
	II	83.0	5440.3	3.96	97.6	85.1
	III	83.7	5511.7	3.97	98.9	84.7
	IV	87.9	5582.9	3.83	100.1	87.8
1968	I	89.6	5654.1	3.81	101.4	88.4
	II	89.3	5708.3	3.86	102.4	87.2
	III	94.6	5762.6	3.68	103.4	91.5
	IV	98.3	5816.8	3.57	104.3	94.2
1969	I	98.6	5871.1	3.59	105.3	93.6
	II	100.5	5928.6	3.56	106.3	94.5
	III	88.9	5986.2	4.06	107.4	82.8
	IV	90.5	6043.7	4.03	108.4	83.5
1970	I	103.5	6101.2	3.56	109.4	94.6
	II	99.7	6194.9	3.75	111.1	89.7
	III	100.9	6288.7	3.76	112.8	89.5
	IV	98.9	6382.3	3.89	114.5	86.4
1971	I	96.1	6476.0	4.07	116.1	82.7
	II	100.2	6558.6	3.95	117.6	85.2
	III	102.5	6641.2	3.91	119.1	86.1
	IV	101.1	6723.7	4.01	120.6	83.8
1972	I	96.8	6806.3	4.24	122.1	79.3
	II	99.7	6889.4	4.17	123.6	80.7
	III	100.9	6972.5	4.17	125.1	80.7
	IV	107.7	7055.5	3.95	126.5	85.1

TABLE 1. Primary Metals

TABLEAU 1. Métaux primaires

		Index of industrial production	Gross capital stock	Capital-output ratio	Index of potential output	Capacity utilization rate
		Indice de la production industrielle	Stock de capital brut	Coefficient de capital	Indice de la production potentielle	Taux d'utilisation de la capacité
		1971 = 100	\$ millions			
1973	I	108.8	7138.6	3.96	128.0	85.0
	II	110.8	7213.7	3.93	129.4	85.6
	III	113.0	7288.8	3.89	130.7	86.4
	IV	116.2	7363.9	3.82	132.1	88.0
1974	I	120.0	7439.0	3.74	133.4	89.9
	II	118.4	7539.1	3.84	135.2	87.6
	III	120.0	7639.2	3.84	137.0	87.6
	IV	116.9	7739.3	4.00	138.8	84.2
1975	I	110.5	7839.5	4.28	140.6	78.6
	II	105.8	7940.4	4.53	142.4	74.3
	III	105.1	8041.3	4.62	144.2	72.9
	IV	106.3	8142.3	4.62	146.0	72.8
1976	I	107.2	8243.4	4.64	147.8	72.5
	II	105.4	8317.8	4.76	149.2	70.7
	III	103.0	8392.2	4.92	150.5	68.4
	IV	101.0	8466.7	5.06	151.9	66.5
1977	I	105.7	8541.2	4.88	153.2	69.0
	II	111.2	8607.0	4.67	154.4	72.0
	III	117.6	8672.9	4.45	155.5	75.6
	IV	114.0	8738.7	4.63	156.7	72.7
1978	I	113.7	8804.6	4.67	157.9	72.0
	II	120.7	8827.7	4.41	158.3	76.2
	III	118.4	8850.8	4.51	158.7	74.6
	IV	121.5	8873.8	4.41	159.2	76.3
1979	I	121.7	8896.8	4.41	159.6	76.3
	II	121.6	8919.4	4.43	160.0	76.0
	III	119.4	8942.1	4.52	160.4	74.4
	IV	124.3	8964.6	4.35	160.8	77.3
1980	I	123.6	8987.2	4.39	161.2	76.7
	II	116.1	9057.6	4.71	162.4	71.5
	III	118.5	9128.0	4.65	163.7	72.4
	IV	127.0	9198.4	4.37	165.0	77.0
1981	I	124.9	9268.9	4.48	166.2	75.1
	II	130.4	9351.2	4.33	167.7	77.8
	III	123.3	9433.6	4.62	169.2	72.9
	IV	106.4	9516.0	5.40	170.7	62.3
1982	I	107.3	9598.4	5.40	172.1	62.3
	II	98.4	9614.3	5.90	172.4	57.1
	III	94.3	9630.2	6.16	172.7	54.6
	IV	88.2	9646.2	6.60	173.0	51.0
1983	I	93.0	9662.2	6.27	173.3	53.7
	II	105.7	9669.7	5.52	173.4	60.9
	III	112.2	9677.3	5.21	173.6	64.6
	IV	117.4	9684.8	4.98	173.7	67.6
1984	I	122.2	9692.4	4.79	173.8	70.3

TABLE 1. Metal Fabricating

TABLEAU 1. Fabrications métalliques

		Index of industrial production	Gross capital stock	Capital-output ratio	Index of potential output	Capacity utilization rate
		Indice de la production industrielle	Stock de capital brut	Coefficient de capital	Indice de la production potentielle	Taux d'utilisation de la capacité
		1971 = 100	\$ millions			
1961	I	52.3	1591.1	1.85	85.4	81.2
	II	53.7	1598.7	1.81	85.9	82.5
	III	55.2	1606.3	1.77	86.3	84.0
	IV	55.8	1613.8	1.76	86.7	84.4
1962	I	57.2	1621.3	1.73	87.1	65.7
	II	59.0	1607.0	1.66	86.3	68.4
	III	61.0	1592.8	1.59	85.5	71.3
	IV	61.4	1578.5	1.57	84.8	72.4
1963	I	62.6	1564.3	1.52	84.0	74.5
	II	64.0	1558.9	1.48	83.7	76.4
	III	65.2	1553.5	1.45	83.4	78.1
	IV	65.4	1548.1	1.44	83.1	78.7
1964	I	68.0	1542.7	1.38	82.9	82.1
	II	69.7	1546.4	1.35	83.0	83.9
	III	71.5	1550.1	1.32	83.2	85.9
	IV	75.6	1553.8	1.25	83.4	90.6
1965	I	77.4	1557.5	1.23	83.6	92.5
	II	79.7	1583.9	1.21	85.1	93.7
	III	82.2	1610.3	1.19	86.5	95.1
	IV	85.7	1636.5	1.16	87.9	97.5
1966	I	89.3	1662.8	1.13	89.3	100.0
	II	89.3	1696.2	1.16	91.1	98.0
	III	90.8	1729.7	1.16	92.9	97.7
	IV	90.2	1763.1	1.19	94.7	95.3
1967	I	90.4	1796.6	1.21	96.5	93.7
	II	90.1	1820.9	1.23	97.8	92.1
	III	89.5	1845.2	1.26	99.1	90.3
	IV	89.5	1869.6	1.27	100.4	89.1
1968	I	87.6	1894.1	1.32	101.7	86.1
	II	89.1	1915.3	1.31	102.9	86.8
	III	91.6	1936.6	1.29	104.0	88.1
	IV	93.4	1957.9	1.28	105.1	88.8
1969	I	97.1	1979.2	1.24	106.3	91.4
	II	98.4	2008.3	1.24	107.9	91.2
	III	97.7	2037.5	1.27	109.4	89.3
	IV	98.0	2066.6	1.29	111.0	88.3
1970	I	97.9	2095.7	1.30	112.5	87.0
	II	97.0	2124.2	1.33	114.1	85.0
	III	97.5	2152.8	1.35	115.6	84.3
	IV	98.3	2181.4	1.35	117.2	83.9
1971	I	97.9	2210.1	1.38	118.7	82.5
	II	100.0	2230.5	1.36	119.8	83.5
	III	100.6	2251.0	1.36	120.9	83.2
	IV	102.1	2271.5	1.36	122.0	83.7
1972	I	99.8	2292.0	1.40	123.1	81.1
	II	103.3	2311.8	1.36	124.2	83.2
	III	105.5	2331.7	1.35	125.2	84.2
	IV	106.4	2351.4	1.35	126.3	84.3

TABLE 1. Metal Fabricating

TABLEAU 1. Fabrications métalliques

		Index of industrial production	Gross capital stock	Capital-output ratio	Index of potential output	Capacity utilization rate
		Indice de la production industrielle	Stock de capital brut	Coefficient de capital	Indice de la production potentielle	Taux d'utilisation de la capacité
		1971 = 100	\$ millions			
1973	I	109.8	2371.2	1.32	127.3	86.2
	II	113.2	2398.4	1.29	128.8	87.9
	III	116.1	2425.6	1.27	130.3	89.1
	IV	119.6	2452.7	1.25	131.7	90.8
1974	I	127.1	2479.9	1.19	133.2	95.4
	II	124.9	2509.3	1.22	134.8	92.7
	III	124.3	2538.8	1.24	136.3	91.2
	IV	122.5	2568.3	1.28	137.9	88.8
1975	I	115.0	2597.8	1.38	139.5	82.4
	II	110.1	2624.2	1.45	140.9	78.1
	III	112.9	2650.7	1.43	142.4	79.3
	IV	113.5	2677.1	1.44	143.8	78.9
1976	I	117.3	2703.5	1.40	145.2	80.8
	II	121.6	2724.5	1.37	146.3	83.1
	III	121.4	2745.6	1.38	147.5	82.3
	IV	120.4	2766.6	1.40	148.6	81.0
1977	I	121.7	2787.6	1.40	149.7	81.3
	II	115.7	2802.2	1.48	150.5	76.9
	III	117.4	2816.8	1.46	151.3	77.6
	IV	119.3	2831.5	1.45	152.1	78.5
1978	I	119.9	2846.2	1.45	152.9	78.4
	II	123.7	2859.1	1.41	153.5	80.8
	III	125.1	2872.0	1.40	154.2	81.1
	IV	125.2	2884.9	1.40	154.9	80.8
1979	I	127.2	2897.8	1.39	155.6	81.7
	II	131.0	2921.4	1.36	156.9	83.5
	III	133.2	2945.0	1.35	158.2	84.2
	IV	135.1	2968.7	1.34	159.4	84.7
1980	I	135.3	2992.5	1.35	160.7	84.2
	II	127.1	3020.5	1.45	162.2	78.4
	III	126.6	3048.6	1.47	163.7	77.3
	IV	129.0	3076.7	1.45	165.2	78.1
1981	I	128.8	3104.9	1.47	166.7	77.2
	II	135.7	3123.1	1.40	167.7	80.9
	III	133.4	3141.3	1.44	168.7	79.1
	IV	123.4	3159.4	1.56	169.7	72.7
1982	I	120.5	3177.6	1.61	170.7	70.6
	II	108.6	3184.9	1.79	171.0	63.5
	III	102.9	3192.3	1.89	171.4	60.0
	IV	97.6	3199.6	2.00	171.8	56.8
1983	I	101.4	3207.0	1.93	172.2	58.9
	II	103.3	3209.1	1.89	172.3	59.9
	III	108.1	3211.2	1.81	172.5	62.7
	IV	111.8	3213.2	1.75	172.6	64.8
1984	I	108.1	3215.3	1.81	172.7	62.6

TABLE 1. Machinery

TABLEAU 1. Machines

		Index of industrial production	Gross capital stock	Capital-output ratio	Index of potential output	Capacity utilization rate
		Indice de la production industrielle	Stock de capital brut	Coefficient de capital	Indice de la production potentielle	Taux d'utilisation de la capacité
		1971 = 100	\$ millions			
1961	I	44.4	576.5	1.55	75.1	59.1
	II	45.5	579.3	1.52	75.4	60.3
	III	45.9	582.2	1.52	75.8	60.5
	IV	46.7	585.1	1.50	76.2	61.3
1962	I	48.5	588.0	1.45	76.6	63.3
	II	50.1	593.7	1.42	77.3	64.8
	III	52.1	599.5	1.38	78.1	66.7
	IV	53.9	605.3	1.34	78.8	68.4
1963	i	54.0	611.1	1.35	79.6	67.8
	II	54.8	620.4	1.35	80.8	67.8
	III	55.7	629.8	1.35	82.0	67.9
	IV	57.7	639.1	1.32	83.2	69.3
1964	I	61.3	648.5	1.27	84.5	72.6
	II	64.8	664.4	1.23	86.5	74.9
	III	67.8	680.4	1.20	88.6	76.5
	IV	68.4	696.2	1.22	90.7	75.4
1965	i	69.0	712.1	1.23	92.7	74.4
	II	71.7	724.2	1.21	94.3	76.0
	III	74.6	736.4	1.18	95.9	77.8
	IV	78.0	748.4	1.15	97.5	80.0
1966	i	80.0	760.5	1.14	99.0	80.8
	II	82.5	776.7	1.13	101.2	81.6
	III	85.1	793.0	1.11	103.3	82.4
	IV	87.1	809.2	1.11	105.4	82.6
1967	I	85.9	825.5	1.15	107.5	79.9
	II	85.8	840.5	1.17	109.5	78.4
	III	86.2	855.6	1.19	111.4	77.4
	IV	84.7	870.7	1.23	113.4	74.7
1968	I	83.7	885.8	1.27	115.4	72.5
	II	82.5	897.2	1.30	116.9	70.6
	III	88.5	908.6	1.23	118.3	74.8
	IV	88.9	920.0	1.24	119.8	74.2
1969	I	94.2	931.5	1.18	121.3	77.6
	II	97.5	941.9	1.16	122.7	79.5
	III	99.9	952.4	1.14	124.0	80.5
	IV	99.8	962.8	1.15	125.4	79.6
1970	I	99.5	973.3	1.17	126.8	78.5
	II	96.1	988.3	1.23	128.7	74.7
	III	95.7	1003.3	1.25	130.7	73.2
	IV	97.5	1018.3	1.25	132.6	73.5
1971	I	97.0	1033.3	1.27	134.6	72.1
	II	97.3	1041.9	1.28	135.7	71.7
	III	98.6	1050.5	1.27	136.8	72.1
	IV	107.2	1059.0	1.18	137.9	77.7
1972	I	105.3	1067.6	1.21	139.0	75.7
	II	113.5	1076.7	1.13	140.2	80.9
	III	115.2	1085.8	1.13	141.4	81.5
	IV	113.7	1094.8	1.15	142.6	79.7

TABLE 1. Machinery

TABLEAU 1. Machines

		Index of industrial production Indice de la production industrielle	Gross capital stock Stock de capital brut	Capital-output ratio Coefficient de capital	Index of potential output Indice de la production potentielle	Capacity utilization rate Taux d'utilisation de la capacité
		1971 = 100	\$ millions			
1973	I	123.9	1103.8	1.07	143.8	86.2
	II	121.8	1118.9	1.10	145.7	83.6
	III	126.1	1134.0	1.08	147.7	85.4
	IV	126.9	1149.1	1.08	149.7	84.8
1974	I	138.4	1164.2	1.01	151.6	91.3
	II	141.3	1184.0	1.00	154.2	91.6
	III	141.0	1203.8	1.02	156.8	89.9
	IV	147.9	1223.6	0.99	159.4	92.8
1975	I	145.2	1243.5	1.02	162.0	89.7
	II	138.3	1265.7	1.09	164.8	83.9
	III	142.2	1288.0	1.08	167.8	84.8
	IV	140.7	1310.2	1.11	170.6	82.5
1976	I	135.5	1332.5	1.18	173.5	78.1
	II	140.7	1352.1	1.15	176.1	79.9
	III	142.1	1371.7	1.15	178.7	79.5
	IV	143.7	1391.2	1.16	181.2	79.3
1977	I	142.5	1410.7	1.18	183.7	77.6
	II	144.8	1425.7	1.18	185.7	78.0
	III	142.3	1440.7	1.21	187.6	75.8
	IV	146.7	1455.6	1.19	189.6	77.4
1978	I	152.2	1470.6	1.16	191.5	79.5
	II	163.8	1483.9	1.08	193.3	84.8
	III	165.3	1497.2	1.08	195.0	84.8
	IV	171.1	1510.4	1.06	196.7	87.0
1979	I	181.1	1523.6	1.01	198.4	91.3
	II	181.3	1543.9	1.02	201.1	90.2
	III	198.5	1564.2	0.94	203.7	97.4
	IV	202.9	1584.4	0.93	206.4	98.3
1980	I	209.0	1604.7	0.92	209.0	100.0
	II	207.4	1631.0	0.94	212.4	97.6
	III	199.7	1657.3	0.99	215.9	92.5
	IV	192.7	1683.5	1.04	219.3	87.9
1981	I	207.6	1709.7	0.98	222.7	93.2
	II	209.2	1738.4	0.99	226.4	92.4
	III	207.0	1767.1	1.02	230.2	89.9
	IV	203.3	1795.8	1.06	233.9	86.9
1982	I	189.0	1824.5	1.15	237.6	79.5
	II	174.4	1849.2	1.27	240.8	72.4
	III	157.2	1874.0	1.43	244.1	64.4
	IV	148.4	1898.8	1.53	247.3	60.0
1983	I	136.0	1923.7	1.69	250.5	54.3
	II	135.7	1938.8	1.71	252.5	53.7
	III	143.3	1953.9	1.63	254.5	56.3
	IV	159.7	1969.0	1.47	256.4	62.3
1984	I	173.8	1984.2	1.37	258.4	67.3

TABLE 1. Transportation Equipment

TABLEAU 1. Matériel de transport

		Index of industrial production	Gross capital stock	Capital-output ratio	Index of potential output	Capacity utilization rate
		Indice de la production industrielle	Stock de capital brut	Coefficient de capital	Indice de la production potentielle	Taux d'utilisation de la capacité
		1971 = 100	\$ millions			
1961	I	30.5	1844.0	2.69	74.8	40.8
	II	30.8	1855.6	2.68	75.2	40.9
	III	31.4	1867.3	2.65	75.7	41.5
	IV	35.1	1878.9	2.38	76.2	46.1
1962	I	35.8	1890.6	2.35	76.6	46.7
	II	38.1	1902.2	2.22	77.1	49.4
	III	37.3	1913.8	2.28	77.6	48.1
	IV	41.1	1925.3	2.08	78.1	52.7
1963	I	41.5	1936.9	2.08	78.5	52.8
	II	43.3	1959.7	2.01	79.4	54.5
	III	41.0	1982.6	2.15	80.4	51.0
	IV	50.3	2005.5	1.77	81.3	61.9
1964	I	49.8	2028.5	1.81	82.2	60.6
	II	49.6	2068.8	1.86	83.9	59.1
	III	47.1	2109.1	1.99	85.5	55.1
	IV	47.2	2149.3	2.03	87.1	54.2
1965	I	56.3	2189.5	1.73	88.8	63.4
	II	60.7	2252.0	1.65	91.3	66.5
	III	56.6	2314.6	1.82	93.8	60.3
	IV	66.5	2377.1	1.59	96.4	69.0
1966	I	67.0	2439.7	1.62	98.9	67.7
	II	64.2	2508.8	1.74	101.7	63.1
	III	59.4	2577.9	1.93	104.5	56.8
	IV	69.9	2647.0	1.68	107.3	65.1
1967	I	72.4	2716.1	1.67	110.1	65.7
	II	75.6	2765.8	1.63	112.1	67.4
	III	77.9	2815.6	1.61	114.1	68.2
	IV	77.5	2865.5	1.64	116.2	66.7
1968	I	73.4	2915.4	1.77	118.2	62.1
	II	89.2	2944.6	1.47	119.4	74.7
	III	91.2	2973.9	1.45	120.6	75.6
	IV	95.7	3003.1	1.40	121.8	78.6
1969	I	96.4	3032.4	1.40	122.9	78.4
	II	93.9	3072.5	1.46	124.6	75.4
	III	101.4	3112.6	1.37	126.2	80.4
	IV	98.3	3152.6	1.43	127.8	76.9
1970	I	91.5	3192.7	1.55	129.4	70.7
	II	91.4	3251.5	1.58	131.8	69.3
	III	87.4	3310.4	1.68	134.2	65.1
	IV	72.2	3369.2	2.08	136.6	52.9
1971	I	97.2	3428.1	1.57	139.0	69.9
	II	96.2	3455.5	1.60	140.1	68.7
	III	102.5	3482.9	1.51	141.2	72.6
	IV	103.2	3510.3	1.51	142.3	72.5
1972	I	106.8	3537.7	1.47	143.4	74.5
	II	107.9	3557.1	1.47	144.2	74.8
	III	109.0	3576.6	1.46	145.0	75.2
	IV	121.0	3596.1	1.32	145.8	83.0

TABLE 1. Transportation Equipment

TABLEAU 1. Matériel de transport

		Index of industrial production	Gross capital stock	Capital-output ratio	Index of potential output	Capacity utilization rate
		Indice de la production industrielle	Stock de capital brut	Coefficient de capital	Indice de la production potentielle	Taux d'utilisation de la capacité
		1971 = 100	\$ millions			
1973	I	133.7	3615.7	1.20	148.6	91.2
	II	135.9	3651.1	1.20	148.0	91.8
	III	138.0	3686.6	1.19	149.5	92.3
	IV	138.0	3722.0	1.20	150.9	91.5
1974	I	139.6	3757.4	1.20	152.3	91.6
	II	133.1	3814.3	1.27	154.6	86.1
	III	138.4	3871.2	1.24	156.9	88.2
	IV	144.5	3928.1	1.21	159.3	90.7
1975	I	124.6	3985.1	1.42	161.6	77.1
	II	137.2	4024.2	1.30	163.1	84.1
	III	145.7	4063.4	1.24	164.7	88.4
	IV	143.5	4102.5	1.27	166.3	86.3
1978	I	148.9	4141.7	1.24	167.9	88.7
	II	151.4	4168.1	1.22	169.0	89.6
	III	149.4	4194.5	1.25	170.1	87.9
	IV	146.4	4220.9	1.28	171.1	85.6
1977	I	160.9	4247.3	1.17	172.2	93.4
	II	161.3	4292.5	1.18	174.0	92.7
	III	155.7	4337.7	1.24	175.9	88.5
	IV	156.3	4382.9	1.25	177.7	88.0
1978	I	150.1	4428.1	1.31	179.5	83.6
	II	159.0	4469.2	1.25	181.2	87.8
	III	162.9	4510.4	1.23	182.9	89.1
	IV	173.1	4551.6	1.17	184.5	93.8
1979	I	186.2	4592.8	1.10	186.2	100.0
	II	169.9	4664.8	1.22	189.1	89.8
	III	162.9	4736.8	1.29	192.0	84.8
	IV	152.0	4808.8	1.41	195.0	78.0
1980	I	145.2	4880.8	1.50	197.9	73.4
	II	126.9	5016.2	1.76	203.4	62.4
	III	131.9	5151.7	1.74	208.9	63.2
	IV	144.3	5287.1	1.63	214.3	67.3
1981	I	139.5	5422.6	1.73	219.8	63.5
	II	146.3	5535.5	1.68	224.4	65.2
	III	139.9	5648.4	1.80	229.0	61.1
	IV	127.7	5761.2	2.01	233.6	54.7
1982	I	124.9	5874.1	2.09	238.1	52.4
	II	132.9	5909.3	1.98	239.6	55.5
	III	134.5	5944.6	1.97	241.0	55.8
	IV	107.4	5979.8	2.48	242.4	44.3
1983	I	138.2	6015.1	1.94	243.9	56.7
	II	136.5	6059.8	1.97	245.7	55.6
	III	142.4	6104.5	1.91	247.5	57.5
	IV	164.4	6149.2	1.66	249.3	65.9
1984	I	174.4	6194.0	1.58	251.1	69.5

TABLE 1. Electrical Products

TABLEAU 1. Appareils et fournitures électriques

		Index of industrial production	Gross capital stock	Capital-output ratio	Index of potential output	Capacity utilization rate
		Indice de la production industrielle	Stock de capital brut	Coefficient de capital	Indice de la production potentielle	Taux d'utilisation de la capacité
		1971 = 100	\$ millions			
1961	I	44.2	857.1	1.45	65.3	67.7
	II	46.4	865.9	1.40	65.9	70.4
	III	49.0	874.8	1.34	66.6	73.6
	IV	51.9	883.7	1.27	67.3	77.1
1962	I	54.3	892.7	1.23	68.0	79.9
	II	55.9	904.5	1.21	68.9	81.2
	III	58.3	916.4	1.18	69.8	83.6
	IV	59.3	928.2	1.17	70.7	83.9
1963	I	59.6	940.0	1.18	71.6	83.3
	II	60.7	951.7	1.17	72.5	83.8
	III	62.3	963.4	1.16	73.4	84.9
	IV	64.6	975.0	1.13	74.2	87.0
1964	I	66.0	986.6	1.12	75.1	87.9
	II	68.4	999.9	1.09	76.1	89.8
	III	69.9	1013.2	1.08	77.1	90.6
	IV	71.6	1026.4	1.07	78.2	91.6
1965	I	74.5	1039.7	1.04	79.2	94.1
	II	76.6	1058.6	1.03	80.6	95.0
	III	78.1	1077.6	1.03	82.0	95.2
	IV	80.6	1096.6	1.02	83.5	96.5
1966	I	82.4	1115.6	1.01	84.9	97.0
	II	86.4	1143.8	0.99	87.1	99.2
	III	89.0	1172.1	0.99	89.2	99.7
	IV	91.4	1200.4	0.98	91.4	100.0
1967	I	89.1	1228.7	1.03	93.6	95.2
	II	86.2	1254.1	1.09	95.5	90.3
	III	87.7	1279.6	1.09	97.4	90.0
	IV	90.1	1305.0	1.08	99.4	90.7
1968	I	90.3	1330.5	1.10	101.3	89.1
	II	90.9	1347.1	1.11	102.6	88.6
	III	92.7	1363.7	1.10	103.8	89.3
	IV	94.7	1380.3	1.09	105.1	90.1
1969	I	97.6	1396.9	1.07	106.4	91.8
	II	100.5	1416.1	1.05	107.8	93.2
	III	100.3	1435.4	1.07	109.3	91.8
	IV	99.9	1454.7	1.09	110.8	90.2
1970	I	98.2	1474.0	1.12	112.2	87.5
	II	95.4	1490.2	1.17	113.5	84.1
	III	93.9	1506.5	1.20	114.7	81.9
	IV	93.4	1522.8	1.22	115.9	80.6
1971	I	95.9	1539.1	1.20	117.2	81.8
	II	99.2	1557.4	1.17	118.6	83.7
	III	100.6	1575.7	1.17	120.0	83.9
	IV	104.2	1593.9	1.14	121.4	85.9
1972	I	103.7	1612.2	1.16	122.8	84.5
	II	106.4	1627.0	1.14	123.9	85.9
	III	110.8	1641.8	1.11	125.0	88.6
	IV	111.4	1656.7	1.11	126.1	88.3

TABLE 1. Electrical Products

TABLEAU 1. Appareils et fournitures électriques

		Index of industrial production	Gross capital stock	Capital-output ratio	Index of potential output	Capacity utilization rate
		Indice de la production industrielle	Stock de capital brut	Coefficient de capital	Indice de la production potentielle	Taux d'utilisation de la capacité
		1971 = 100	\$ millions			
1973	I	122.8	1671.6	1.02	127.3	96.5
	II	116.8	1693.9	1.09	129.0	90.6
	III	121.7	1716.2	1.06	130.7	93.1
	IV	123.6	1738.5	1.05	132.4	93.4
1974	I	127.2	1760.8	1.04	134.1	94.9
	II	132.8	1780.6	1.00	135.6	98.0
	III	129.5	1800.4	1.04	137.1	94.5
	IV	122.0	1820.2	1.12	138.6	88.0
1975	I	116.8	1840.1	1.18	140.1	83.4
	II	114.3	1855.4	1.21	141.3	80.9
	III	114.5	1870.8	1.22	142.4	80.4
	IV	119.3	1886.2	1.18	143.6	83.1
1976	I	119.1	1901.7	1.19	144.8	82.3
	II	118.5	1916.4	1.21	145.9	81.2
	III	118.8	1931.2	1.22	147.0	80.8
	IV	118.4	1945.9	1.23	148.2	79.9
1977	I	117.5	1960.6	1.25	149.3	78.7
	II	116.8	1971.5	1.26	150.1	77.8
	III	115.6	1982.4	1.28	150.9	76.6
	IV	114.0	1993.4	1.31	151.8	75.1
1978	I	113.6	2004.4	1.32	152.6	74.4
	II	115.9	2010.1	1.30	153.1	75.7
	III	116.9	2015.8	1.29	153.5	76.2
	IV	124.9	2021.6	1.21	153.9	61.1
1979	I	130.5	2027.4	1.16	154.4	84.5
	II	129.1	2036.8	1.18	155.1	83.2
	III	133.9	2046.3	1.14	155.8	85.9
	IV	131.8	2055.7	1.17	156.5	84.2
1980	I	135.2	2065.1	1.14	157.2	86.0
	II	128.7	2088.4	1.21	159.0	80.9
	III	128.6	2111.7	1.23	160.8	80.0
	IV	130.9	2134.8	1.22	162.5	80.5
1981	I	136.0	2158.0	1.19	164.3	82.8
	II	144.2	2184.2	1.13	166.3	86.7
	III	142.5	2210.4	1.16	168.3	84.7
	IV	138.7	2236.6	1.21	170.3	81.4
1982	I	127.3	2262.8	1.33	172.3	73.9
	II	125.9	2285.5	1.36	174.0	72.3
	III	124.9	2308.3	1.38	175.8	71.1
	IV	116.9	2330.9	1.49	177.5	65.9
1983	I	123.3	2353.6	1.43	179.2	68.8
	II	123.9	2388.7	1.44	181.9	68.1
	III	129.2	2423.8	1.40	184.6	70.0
	IV	131.0	2458.9	1.40	187.2	70.0
1984	I	133.4	2494.0	1.40	189.9	70.2

TABLE 1. Non-metallic Mineral Products

TABLEAU 1. Produits des minéraux non métalliques

		Index of industrial production	Gross capital stock	Capital-output ratio	Index of potential output	Capacity utilization rate
		Indice de la production industrielle	Stock de capital brut	Coefficient de capital	Indice de la production potentielle	Taux d'utilisation de la capacité
		1971 = 100	\$ millions			
1961	I	56.1	1451.2	3.47	78.7	71.3
	II	59.1	1461.6	3.32	79.3	74.5
	III	60.5	1472.1	3.26	79.9	75.8
	IV	62.2	1482.6	3.20	80.4	77.3
1962	I	63.0	1493.1	3.18	81.0	77.8
	II	68.9	1507.1	2.93	81.8	84.3
	III	69.4	1521.1	2.94	82.5	84.1
	IV	70.6	1535.1	2.92	83.3	84.8
1963	I	66.2	1549.2	3.14	84.0	78.8
	II	68.9	1551.1	3.02	84.1	81.9
	III	70.3	1553.0	2.96	84.2	83.5
	IV	68.9	1554.7	3.03	84.3	81.7
1964	I	76.5	1556.5	2.73	84.4	90.6
	II	72.2	1566.5	2.91	85.0	85.0
	III	74.7	1576.5	2.83	85.5	87.4
	IV	80.4	1586.5	2.65	86.1	93.4
1965	I	81.8	1596.5	2.62	86.6	94.5
	II	81.2	1615.8	2.67	87.6	92.6
	III	83.8	1635.2	2.62	88.7	94.5
	IV	86.1	1654.5	2.58	89.7	95.9
1966	I	90.8	1673.9	2.47	90.8	100.0
	II	85.5	1715.2	2.69	93.0	91.9
	III	84.9	1756.5	2.77	95.3	89.1
	IV	82.5	1797.7	2.92	97.5	84.6
1967	I	81.3	1839.0	3.03	99.8	81.5
	II	78.4	1870.8	3.20	101.5	77.3
	III	79.9	1902.6	3.19	103.2	77.4
	IV	83.0	1934.4	3.13	104.9	79.1
1968	I	82.1	1966.2	3.21	106.7	77.0
	II	89.8	1986.7	2.97	107.8	83.3
	III	89.2	2007.2	3.02	108.9	81.9
	IV	87.5	2027.6	3.11	110.0	79.6
1969	I	90.3	2048.1	3.04	111.1	81.3
	II	91.3	2076.2	3.05	112.6	81.1
	III	91.4	2104.3	3.09	114.1	80.1
	IV	89.1	2132.4	3.21	115.7	77.0
1970	I	87.5	2160.6	3.31	117.2	74.7
	II	83.0	2191.9	3.54	118.9	69.8
	III	85.4	2223.3	3.49	120.6	70.8
	IV	90.3	2254.7	3.35	122.3	73.8
1971	I	91.6	2286.2	3.35	124.0	73.9
	II	98.9	2301.5	3.12	124.8	79.2
	III	101.4	2316.8	3.06	125.7	80.7
	IV	106.8	2332.0	2.93	126.5	84.4
1972	I	103.2	2347.3	3.05	127.3	81.1
	II	108.7	2373.3	2.93	128.7	84.4
	III	110.9	2399.3	2.90	130.1	85.2
	IV	112.5	2425.3	2.89	131.6	85.5

TABLE 1. Non-metallic Mineral Products

TABLEAU 1. Produits des minéraux non métalliques

		Index of industrial production Indice de la production industrielle	Gross capital stock Stock de capital brut	Capital-output ratio Coefficient de capital	Index of potential output Indice de la production potentielle	Capacity utilization rate Taux d'utilisation de la capacité
		1971 = 100	\$ millions			
1973	I	120.7	2451.4	2.72	133.0	90.8
	II	117.2	2488.3	2.85	135.0	86.8
	III	120.6	2525.2	2.81	137.0	88.0
	IV	119.7	2562.0	2.87	139.0	86.1
1974	I	130.8	2598.9	2.66	141.0	92.8
	II	126.8	2624.4	2.78	142.4	89.1
	III	123.9	2649.9	2.87	143.7	86.2
	IV	119.3	2675.4	3.01	145.1	82.2
1975	I	114.1	2701.0	3.17	146.5	77.9
	II	114.1	2727.2	3.21	147.9	77.1
	III	118.9	2753.5	3.11	149.4	79.6
	IV	124.1	2779.7	3.00	150.8	82.3
1976	I	126.2	2806.0	2.98	152.2	82.9
	II	123.5	2839.8	3.08	154.0	80.2
	III	118.9	2873.6	3.24	155.9	76.3
	IV	115.3	2907.4	3.38	157.7	73.1
1977	I	121.0	2941.2	3.26	159.5	75.8
	II	119.5	2973.3	3.34	161.3	74.1
	III	118.1	3005.4	3.41	163.0	72.4
	IV	119.0	3037.4	3.42	164.8	72.2
1978	I	121.2	3069.4	3.40	166.5	72.8
	II	124.3	3093.6	3.34	167.8	74.1
	III	130.8	3117.8	3.20	169.1	77.3
	IV	132.8	3141.9	3.17	170.4	77.9
1979	I	132.3	3166.1	3.21	171.7	77.0
	II	134.3	3202.7	3.20	173.7	77.3
	III	138.4	3239.3	3.14	175.7	78.8
	IV	132.7	3275.9	3.31	177.7	74.7
1980	I	126.9	3312.6	3.50	179.7	70.6
	II	118.5	3333.3	3.77	180.8	65.5
	III	120.9	3354.0	3.72	181.9	66.5
	IV	123.9	3374.6	3.65	183.1	67.7
1981	I	123.2	3395.3	3.70	184.2	66.9
	II	124.6	3413.4	3.67	185.2	67.4
	III	118.6	3431.6	3.88	186.1	63.7
	IV	113.0	3449.6	4.09	187.1	60.4
1982	I	97.4	3467.6	4.77	188.1	51.8
	II	97.6	3446.8	4.74	187.0	52.2
	III	94.4	3426.0	4.87	185.8	50.8
	IV	92.2	3405.1	4.95	184.7	49.9
1983	I	99.2	3384.3	4.58	183.6	54.0
	II	106.1	3369.5	4.26	182.8	58.0
	III	109.6	3354.7	4.10	182.0	60.2
	IV	103.3	3339.9	4.34	181.2	57.0
1984	I	111.5	3325.1	4.00	180.4	61.8

TABLE 1. Petroleum and Coal Products

TABLEAU 1. Dérivés du pétrole et du charbon

		Index of industrial production	Gross capital stock	Capital-output ratio	Index of potential output	Capacity utilization rate
		Indice de la production industrielle	Stock de capital brut	Coefficient de capital	Indice de la production potentielle	Taux d'utilisation de la capacité
		1971 = 100	\$ millions			
1961	I	59.4	1973.2	12.65	74.7	79.5
	II	63.5	1984.4	11.90	75.1	84.5
	III	62.7	1995.6	12.12	75.6	83.0
	IV	62.8	2006.8	12.17	76.0	82.6
1962	I	66.2	2018.1	11.61	76.4	86.6
	II	65.9	2042.1	11.80	77.3	85.2
	III	66.7	2066.2	11.80	78.2	85.2
	IV	69.7	2090.2	11.42	79.2	88.1
1963	I	70.7	2114.3	11.39	80.1	88.3
	II	70.7	2125.8	11.45	80.5	87.8
	III	74.2	2137.4	10.97	80.9	91.7
	IV	74.3	2148.8	11.02	81.4	91.3
1964	I	73.2	2160.2	11.24	81.8	89.5
	II	72.2	2165.9	11.43	82.0	88.0
	III	72.3	2171.6	11.44	82.2	87.9
	IV	74.1	2177.3	11.19	82.5	89.9
1965	I	76.3	2183.0	10.90	82.7	92.3
	II	75.1	2195.2	11.14	83.1	90.3
	III	76.6	2207.4	10.98	83.6	91.6
	IV	74.9	2219.6	11.29	84.1	89.1
1966	I	76.7	2231.8	11.08	84.5	90.7
	II	80.3	2250.1	10.67	85.2	94.2
	III	79.3	2268.5	10.90	85.9	92.3
	IV	80.8	2286.8	10.78	86.6	93.3
1967	I	78.4	2305.1	11.20	87.3	89.8
	II	79.9	2333.8	11.13	88.4	90.4
	III	79.9	2362.5	11.26	89.5	89.3
	IV	81.6	2391.2	11.16	90.6	90.1
1968	I	86.2	2419.9	10.69	91.6	94.1
	II	90.6	2451.1	10.31	92.8	97.6
	III	88.5	2482.3	10.69	94.0	94.1
	IV	89.7	2513.5	10.67	95.2	94.2
1969	I	93.1	2544.8	10.41	96.4	96.6
	II	87.7	2574.8	11.18	97.5	89.9
	III	95.3	2604.9	10.41	98.6	96.6
	IV	92.1	2635.1	10.90	99.8	92.3
1970	I	93.6	2665.4	10.85	100.9	92.7
	II	94.6	2723.4	10.97	103.1	91.7
	III	92.6	2781.5	11.44	105.3	87.9
	IV	96.7	2839.4	11.19	107.5	89.9
1971	I	92.0	2897.4	12.00	109.7	83.8
	II	97.3	2951.1	11.55	111.8	87.1
	III	102.7	3004.9	11.15	113.8	90.2
	IV	107.9	3058.6	10.80	115.8	93.2
1972	I	108.4	3112.4	10.94	117.9	92.0
	II	108.4	3166.3	11.13	119.9	90.4
	III	114.9	3220.2	10.68	121.9	94.2
	IV	116.9	3274.2	10.67	124.0	94.3

TABLE 1. Petroleum and Coal Products

TABLEAU 1. Dérivés du pétrole et du charbon

		Index of industrial production Indice de la production industrielle	Gross capital stock Stock de capital brut	Capital-output ratio Coefficient de capital	Index of potential output Indice de la production potentielle	Capacity utilization rate Taux d'utilisation de la capacité
		1971 = 100	\$ millions			
1973	I	120.3	3328.2	10.54	126.0	95.4
	II	123.3	3393.7	10.49	128.5	95.9
	III	131.0	3459.2	10.06	131.0	100.0
	IV	128.4	3524.7	10.46	133.5	96.2
1974	I	132.2	3590.2	10.35	136.0	97.2
	II	130.2	3666.7	10.73	138.9	93.8
	III	128.1	3743.2	11.13	141.8	90.4
	IV	130.6	3819.7	11.14	144.7	90.3
1975	I	124.4	3896.2	11.93	147.5	84.3
	II	135.1	3968.1	11.19	150.3	89.9
	III	126.3	4040.0	12.19	153.0	82.6
	IV	127.7	4111.8	12.27	155.7	82.0
1976	I	125.7	4183.7	12.68	158.4	79.3
	II	128.9	4227.8	12.49	160.1	80.5
	III	123.8	4272.0	13.15	161.8	76.5
	IV	127.0	4316.0	12.95	163.4	77.7
1977	I	136.7	4360.0	12.15	165.1	82.8
	II	138.1	4394.1	12.12	166.4	83.0
	III	133.6	4428.3	12.63	167.7	79.7
	IV	134.7	4462.5	12.62	169.0	79.7
1978	I	134.6	4496.8	12.73	170.3	79.0
	II	134.7	4520.4	12.78	171.2	78.7
	III	143.4	4544.1	12.07	172.1	83.3
	IV	144.2	4567.6	12.07	173.0	83.4
1979	I	146.0	4591.1	11.98	173.9	84.0
	II	147.6	4614.3	11.91	174.7	84.5
	III	147.3	4637.6	11.99	175.6	83.9
	IV	149.4	4660.8	11.88	176.5	84.6
1980	I	151.3	4684.0	11.79	177.4	85.3
	II	146.6	4712.0	12.24	178.4	82.2
	III	142.1	4740.1	12.71	179.5	79.2
	IV	146.3	4768.1	12.42	180.6	81.0
1981	I	145.0	4796.2	12.60	181.6	79.8
	II	146.9	4872.9	12.64	184.5	79.6
	III	139.8	4949.6	13.49	187.4	74.6
	IV	133.5	5026.3	14.34	190.3	70.1
1982	I	124.8	5103.0	15.58	193.3	64.6
	II	122.7	5207.3	16.17	197.2	62.2
	III	124.9	5311.6	16.20	201.2	62.1
	IV	119.2	5415.9	17.31	205.1	58.1
1983	I	116.4	5520.2	18.07	209.1	55.7
	II	109.6	5577.1	19.39	211.2	51.9
	III	126.5	5634.0	16.97	213.4	59.3
	IV	123.3	5690.8	17.58	215.5	57.2
1984	I	125.3	5747.7	17.47	217.7	57.6

TABLE 1. Chemical and Chemical Products

TABLEAU 1. Produits chimiques

		Index of industrial production	Gross capital stock	Capital-output ratio	Index of potential output	Capacity utilization rate
		Indice de la production industrielle	Stock de capital brut	Coefficient de capital	Indice de la production potentielle	Taux d'utilisation de la capacité
		1971 = 100	\$ millions			
1961	I	46.7	2579.4	4.88	65.1	71.8
	II	48.2	2611.2	4.79	65.9	73.2
	III	49.5	2643.0	4.72	66.7	74.2
	IV	50.6	2674.8	4.67	67.5	75.0
1962	I	51.6	2706.7	4.64	68.3	75.6
	II	53.4	2723.6	4.51	68.7	77.7
	III	52.5	2740.5	4.61	69.1	75.9
	IV	51.8	2757.4	4.71	69.6	74.5
1963	I	53.5	2774.3	4.58	70.0	76.4
	II	55.1	2794.3	4.48	70.5	78.2
	III	56.6	2814.4	4.40	71.0	79.7
	IV	57.9	2834.4	4.33	71.5	81.0
1964	I	61.4	2854.5	4.11	72.0	85.3
	II	62.1	2887.6	4.11	72.8	85.3
	III	65.5	2920.8	3.94	73.7	88.9
	IV	67.4	2953.9	3.87	74.5	90.5
1965	I	66.0	2987.0	4.00	75.4	87.6
	II	68.9	3059.8	3.93	77.2	89.3
	III	71.6	3132.7	3.87	79.0	90.6
	IV	74.6	3205.5	3.80	80.9	92.3
1966	I	76.2	3278.4	3.80	82.7	92.1
	II	76.6	3347.1	3.86	84.4	90.7
	III	77.1	3415.9	3.92	86.2	89.5
	IV	77.4	3484.7	3.98	87.9	88.0
1967	I	78.0	3553.5	4.03	89.6	87.0
	II	78.5	3617.8	4.07	91.3	86.0
	III	79.7	3682.1	4.08	92.9	85.8
	IV	80.5	3746.4	4.11	94.5	85.2
1968	I	82.2	3810.7	4.10	96.1	85.5
	II	83.5	3882.2	4.11	97.9	85.3
	III	86.1	3953.7	4.06	99.7	86.3
	IV	89.0	4025.1	4.00	101.5	87.7
1969	I	91.9	4096.6	3.94	103.3	88.9
	II	93.8	4143.1	3.90	104.5	89.7
	III	95.8	4189.6	3.87	105.7	90.6
	IV	93.9	4236.0	3.99	106.9	87.9
1970	I	96.2	4282.5	3.94	108.0	89.0
	II	95.1	4332.4	4.03	109.3	87.0
	III	92.5	4382.3	4.19	110.5	83.7
	IV	95.5	4432.1	4.10	111.8	85.4
1971	I	98.0	4482.0	4.04	113.1	86.7
	II	99.7	4521.3	4.01	114.1	87.4
	III	101.2	4560.6	3.98	115.0	88.0
	IV	100.9	4599.8	4.03	116.0	87.0
1972	I	102.0	4639.0	4.02	117.0	87.2
	II	104.9	4678.8	3.94	118.0	88.9
	III	106.8	4718.6	3.91	119.0	89.7
	IV	109.3	4758.5	3.85	120.0	91.1

TABLE 1. Chemical and Chemical Products

TABLEAU 1. Produits chimiques

		Index of industrial production	Gross capital stock	Capital-output ratio	Index of potential output	Capacity utilization rate
		Indice de la production industrielle	Stock de capital brut	Coefficient de capital	Indice de la production potentielle	Taux d'utilisation de la capacité
		1971 = 100	\$ millions			
1973	I	114.2	4798.4	3.71	121.0	94.3
	II	118.6	4847.4	3.61	122.3	97.0
	III	120.5	4896.5	3.59	123.5	97.6
	IV	123.7	4945.6	3.53	124.8	99.2
1974	I	126.0	4994.8	3.50	126.0	100.0
	II	124.5	5079.0	3.61	128.1	97.2
	III	126.3	5163.2	3.61	130.2	97.0
	IV	123.0	5247.3	3.77	132.4	92.9
1975	I	117.9	5331.5	4.00	134.5	87.7
	II	112.4	5465.4	4.30	137.9	81.5
	III	115.0	5599.4	4.30	141.3	81.4
	IV	120.3	5733.4	4.21	144.6	83.2
1978	I	121.7	5867.4	4.26	148.0	82.2
	II	124.6	6052.4	4.29	152.7	81.6
	III	126.1	6237.4	4.37	157.3	80.1
	IV	127.6	6422.4	4.45	162.0	78.8
1977	I	128.3	6607.4	4.55	166.7	77.0
	II	133.2	6795.1	4.51	171.4	77.7
	III	134.1	6962.8	4.60	176.1	76.1
	IV	132.4	7170.4	4.79	180.9	73.2
1978	I	135.3	7358.1	4.81	185.6	72.9
	II	136.6	7509.6	4.86	189.4	72.1
	III	139.5	7661.2	4.85	193.3	72.2
	IV	146.8	7812.8	4.70	197.1	74.5
1979	I	149.6	7964.4	4.71	200.9	74.5
	II	153.6	8079.6	4.65	203.8	75.4
	III	159.2	8194.9	4.55	206.7	77.0
	IV	157.5	8310.3	4.66	209.6	75.1
1980	I	157.4	8425.7	4.73	212.5	74.1
	II	153.8	8509.1	4.89	214.7	71.7
	III	151.8	8592.6	5.00	216.8	70.0
	IV	158.7	8676.1	4.83	218.9	72.5
1981	I	160.9	8759.6	4.81	221.0	72.8
	II	159.5	8943.5	4.96	225.6	70.7
	III	160.1	9127.5	5.04	230.3	69.5
	IV	154.6	9311.5	5.32	234.9	65.8
1982	I	148.2	9495.6	5.66	239.5	81.9
	II	144.6	9666.7	5.91	243.9	59.3
	III	143.4	9837.8	6.06	248.2	57.8
	IV	141.7	10008.8	6.24	252.5	56.1
1983	I	152.5	10179.8	5.90	256.8	59.4
	II	157.7	10288.6	5.77	259.5	60.8
	III	163.7	10397.5	5.61	262.3	62.4
	IV	164.8	10506.3	5.64	265.0	62.2
1984	I	165.5	10615.1	5.67	267.8	61.8

TABLE 1. Miscellaneous Manufacturing

TABLEAU 1. Industries diverses

		Index of industrial production	Gross capital stock	Capital-output ratio	Index of potential output	Capacity utilization rate
		Indice de la production industrielle	Stock de capital brut	Coefficient de capital	Indice de la production potentielle	Taux d'utilisation de la capacité
		1971 = 100	\$ millions			
1961	I	55.2	290.4	0.97	63.1	87.4
	II	57.0	293.1	0.94	63.7	89.4
	III	58.1	295.9	0.94	64.3	90.3
	IV	60.2	298.5	0.91	64.9	92.7
1962	I	59.8	301.2	0.93	65.5	91.3
	II	60.9	305.8	0.92	66.5	91.6
	III	62.7	310.4	0.91	67.5	92.9
	IV	63.6	315.1	0.91	68.5	92.8
1963	I	63.0	319.8	0.93	69.5	90.6
	II	64.0	324.3	0.93	70.5	90.8
	III	65.0	328.9	0.93	71.5	90.9
	IV	66.8	333.5	0.92	72.5	92.1
1964	I	67.9	338.1	0.91	73.5	92.4
	II	70.3	343.4	0.90	74.7	94.1
	III	71.7	348.8	0.89	75.8	94.5
	IV	72.1	354.1	0.90	77.0	93.6
1965	I	73.1	359.5	0.90	78.2	93.5
	II	74.8	366.0	0.90	79.6	94.0
	III	76.5	372.5	0.89	81.0	94.4
	IV	76.2	378.9	0.91	82.4	92.5
1966	I	79.0	385.3	0.90	83.8	94.3
	II	81.2	394.5	0.89	85.8	94.7
	III	84.2	403.8	0.88	87.8	95.9
	IV	85.7	413.0	0.89	89.8	95.4
1967	I	83.2	422.2	0.93	91.8	90.6
	II	83.9	430.1	0.94	93.5	89.7
	III	85.6	438.0	0.94	95.2	89.9
	IV	88.3	445.9	0.93	97.0	91.1
1968	I	86.1	453.9	0.97	98.7	87.2
	II	89.6	461.3	0.95	100.3	89.3
	III	90.7	468.8	0.95	101.9	89.0
	IV	92.7	476.2	0.94	103.5	89.5
1969	I	91.8	483.7	0.97	105.2	87.3
	II	94.1	491.4	0.96	106.9	88.1
	III	96.1	499.1	0.95	108.5	88.5
	IV	98.9	506.8	0.94	110.2	89.7
1970	I	94.7	514.6	1.00	111.9	84.6
	II	92.8	521.3	1.03	113.4	81.9
	III	94.5	528.0	1.03	114.8	82.3
	IV	95.6	534.6	1.03	116.2	82.2
1971	I	91.0	541.3	1.09	117.7	77.3
	II	100.3	546.5	1.00	118.8	84.4
	III	102.8	551.7	0.99	120.0	85.7
	IV	105.2	556.9	0.97	121.1	86.9
1972	I	100.4	562.2	1.03	122.3	82.1
	II	106.1	564.3	0.98	122.7	86.5
	III	112.4	566.4	0.93	123.2	91.3
	IV	114.3	568.5	0.91	123.6	92.5

TABLE 1. Miscellaneous Manufacturing

TABLEAU 1. Industries diverses

		Index of industrial production	Gross capital stock	Capital-output ratio	Index of potential output	Capacity utilization rate
		Indice de la production industrielle	Stock de capital brut	Coefficient de capital	Indice de la production potentielle	Taux d'utilisation de la capacité
		1971 = 100	\$ millions			
1973	I	115.3	570.8	0.91	124.1	92.9
	II	113.4	576.3	0.93	125.3	90.5
	III	117.2	582.1	0.91	126.6	92.6
	IV	121.6	587.9	0.89	127.8	95.1
1974	I	129.1	593.7	0.84	129.1	100.0
	II	128.7	600.3	0.86	130.5	98.6
	III	121.9	607.0	0.91	132.0	92.4
	IV	121.2	613.6	0.93	133.4	90.8
1975	I	118.0	620.2	0.97	134.9	87.5
	II	120.3	621.8	0.95	135.2	89.0
	III	120.1	623.4	0.95	135.6	88.6
	IV	121.6	625.0	0.94	135.9	89.5
1976	I	124.9	626.6	0.92	136.3	91.7
	II	126.0	629.3	0.92	136.8	92.1
	III	125.6	632.1	0.92	137.5	91.4
	IV	122.6	634.8	0.95	138.0	88.8
1977	I	123.7	637.5	0.95	138.6	89.2
	II	120.0	639.4	0.98	139.0	86.3
	III	117.0	641.4	1.01	139.5	83.9
	IV	120.4	643.3	0.98	139.9	86.1
1978	I	126.0	645.2	0.94	140.3	89.8
	II	125.6	647.4	0.95	140.8	89.2
	III	129.7	649.6	0.92	141.3	91.8
	IV	135.5	651.7	0.88	141.7	95.6
1979	I	130.0	653.9	0.92	142.2	91.4
	II	137.1	654.0	0.88	142.2	96.4
	III	137.2	654.1	0.88	142.2	96.5
	IV	133.5	654.2	0.90	142.3	93.8
1980	I	132.9	654.3	0.90	142.3	93.4
	II	137.1	659.4	0.88	143.4	95.6
	III	137.4	664.5	0.89	144.5	95.1
	IV	133.6	669.6	0.92	145.6	91.8
1981	I	136.7	674.7	0.91	146.7	93.2
	II	135.4	678.2	0.92	147.5	91.8
	III	135.0	681.7	0.93	148.2	91.1
	IV	128.1	685.1	0.98	149.0	88.0
1982	I	123.9	688.5	1.02	149.7	82.8
	II	120.9	688.6	1.05	149.7	80.7
	III	117.1	688.7	1.08	149.8	78.2
	IV	121.1	688.8	1.04	149.8	80.9
1983	I	122.2	688.9	1.04	149.8	81.6
	II	123.1	692.5	1.03	150.6	81.7
	III	121.6	696.1	1.05	151.4	80.3
	IV	128.2	699.8	1.00	152.2	84.2
1984	I	125.2	703.5	1.03	153.0	81.8

TABLE 2. Aggregates of Capacity Utilization Rates

TABLEAU 2. Les agrégations des taux d'utilisation de la capacité

		Durable manufacturing industries Industries manufacturières de biens durables	Non-durable manufacturing industries Industries manufacturières de biens non durables	Total manufacturing industries Ensemble du secteur manufacturier
1961	I	63.0	81.4	72.1
	II	64.9	81.9	73.3
	III	66.1	83.5	74.7
	IV	67.8	84.1	75.8
1962	I	68.8	84.3	76.4
	II	71.5	85.2	78.2
	III	72.8	85.3	79.0
	IV	73.4	84.3	78.8
1963	I	73.8	84.8	79.2
	II	75.0	85.9	80.4
	III	75.1	86.1	80.5
	IV	78.5	86.8	82.6
1964	I	80.8	88.6	84.6
	II	80.7	88.7	84.6
	III	81.2	88.5	84.8
	IV	82.7	89.4	86.0
1965	I	85.2	88.4	86.8
	II	86.5	87.8	87.1
	III	88.2	88.8	87.5
	IV	89.5	89.6	89.6
1966	I	89.7	90.2	89.9
	II	87.8	89.6	88.7
	III	85.6	88.5	87.1
	IV	85.8	88.1	87.0
1967	I	83.9	87.2	85.5
	II	82.5	86.6	84.5
	III	82.2	87.1	84.6
	IV	81.7	86.1	83.8
1968	I	79.5	86.8	83.1
	II	82.9	86.8	84.8
	III	84.6	85.6	85.1
	IV	86.1	87.7	86.9
1969	I	86.6	88.8	87.7
	II	86.6	88.6	87.6
	III	84.7	89.1	86.9
	IV	83.2	88.0	85.6
1970	I	82.5	87.5	85.0
	II	78.9	85.7	82.2
	III	77.5	84.5	80.9
	IV	74.2	85.4	79.7
1971	I	77.0	84.5	80.7
	II	78.5	85.0	81.7
	III	80.2	86.8	83.5
	IV	81.0	87.4	84.1
1972	I	79.3	87.3	83.2
	II	80.7	89.3	84.9
	III	81.7	89.9	85.7
	IV	84.7	91.1	87.9

TABLE 2. Aggregates of Capacity Utilization Rates

TABLEAU 2. Les agrégations des taux d'utilisation de la capacité

		Durable manufacturing industries Industries manufacturières de biens durables	Non-durable manufacturing industries Industries manufacturières de biens non durables	Total manufacturing industries Ensemble du secteur manufacturier
1973	I	89.2	91.9	90.5
	II	88.1	91.9	90.0
	III	89.1	91.2	90.1
	IV	89.4	93.1	91.2
1974	I	92.0	93.5	92.6
	II	89.5	91.7	90.8
	III	88.0	89.0	88.5
	IV	85.7	86.4	86.1
1975	I	79.0	83.7	81.3
	II	78.4	82.2	80.2
	III	79.1	81.0	80.0
	IV	79.7	81.2	80.4
1976	I	80.3	83.4	81.8
	II	80.9	86.8	83.8
	III	79.6	86.2	82.9
	IV	78.3	84.4	81.3
1977	I	80.4	84.4	82.4
	II	79.2	84.0	81.6
	III	78.7	83.1	80.9
	IV	78.2	83.1	80.6
1978	I	77.1	84.3	80.7
	II	80.1	84.9	82.5
	III	80.6	85.9	83.2
	IV	83.2	88.1	85.6
1979	I	85.2	87.9	86.5
	II	83.2	88.5	85.8
	III	82.9	88.4	85.6
	IV	81.0	88.1	84.5
1980	I	79.6	88.2	83.9
	II	73.4	86.0	79.6
	III	73.4	85.1	79.1
	IV	75.2	85.2	80.1
1981	I	74.9	85.8	80.3
	II	76.9	86.2	81.5
	III	72.5	84.0	78.2
	IV	67.2	81.4	74.2
1982	I	63.0	77.4	70.1
	II	60.8	74.9	67.8
	III	58.9	74.1	66.4
	IV	54.0	73.2	63.5
1983	I	58.5	75.2	66.8
	II	60.3	75.9	68.0
	III	63.4	77.7	70.4
	IV	66.3	77.6	71.9
1984	I	67.4	76.1	71.7

TABLE 3. Annual Averages of Utilization Rates

TABLEAU 3. La moyenne annuelle de taux d'utilisation

	Food and beverages	Tobacco products	Rubber and plastics products industries	Leather	Textile	Knitting mills
	Aliments et boissons	Tabacs	Industrie du caoutchouc et des produits en matière plastique	Cuir	Textiles	Bonneterie
1961	97.7	92.8	59.3	90.8	55.2	57.5
1962	97.5	92.6	74.8	94.0	61.4	61.0
1963	97.0	94.6	77.0	94.3	66.0	66.8
1964	98.7	95.1	81.6	97.4	70.0	68.4
1965	97.7	95.0	82.4	98.3	68.5	68.6
1966	98.6	92.7	87.0	97.9	65.3	67.3
1967	99.4	92.2	88.1	92.7	64.6	65.3
1968	97.4	85.4	90.2	95.8	70.1	76.6
1969	96.3	84.7	92.5	93.2	77.3	82.4
1970	94.7	87.2	86.3	85.5	71.6	84.4
1971	94.6	85.6	83.7	87.0	76.2	91.2
1972	95.9	87.9	86.6	81.4	84.9	93.5
1973	94.8	88.6	90.8	80.8	88.1	94.7
1974	89.6	92.1	83.9	80.1	83.3	88.0
1975	86.3	87.0	72.2	76.9	78.5	86.4
1976	88.8	87.5	78.3	79.1	79.4	86.1
1977	88.1	85.7	81.3	71.2	83.8	83.3
1978	86.7	82.5	83.9	79.0	88.9	88.0
1979	87.1	83.3	90.3	81.1	97.1	93.7
1980	85.5	82.2	78.6	76.0	91.1	96.6
1981	84.1	83.4	80.1	78.5	94.5	95.5
1982	80.8	82.2	66.7	66.5	74.3	87.7
1983	79.3	75.8	72.3	72.1	81.4	95.5
1984						

TABLE 3. Annual Averages of Utilization Rates

TABLEAU 3. La moyenne annuelle de taux d'utilisation

	Clothing Vêtements	Wood Bois	Furniture and fixtures Meubles et accessoires	Paper and allied industries Papiers et industries connexes	Printing, publishing and allied industries Impression publication et industries connexes	Primary metals Métaux primaires
1961	62.6	88.0	73.3	91.7	79.5	79.3
1962	64.7	91.1	77.9	92.1	79.1	82.6
1963	66.6	94.0	83.2	93.9	77.7	85.0
1964	88.0	98.0	88.3	98.6	74.8	92.7
1965	67.9	95.7	95.8	96.8	76.3	97.5
1966	67.7	92.4	98.7	95.8	78.9	95.8
1967	65.8	90.5	92.1	87.1	78.4	86.1
1968	68.1	90.8	87.8	85.8	77.5	90.3
1969	69.2	89.3	87.6	91.9	78.5	88.6
1970	69.2	78.7	79.4	88.0	76.9	90.1
1971	76.4	81.0	79.0	83.8	77.1	84.5
1972	86.0	80.4	88.5	88.5	80.4	81.5
1973	88.7	84.7	90.8	91.3	85.1	86.3
1974	85.7	76.7	84.3	94.4	85.7	87.3
1975	88.0	64.2	74.1	72.1	83.7	74.7
1976	95.2	75.9	76.0	81.7	87.1	69.5
1977	88.0	77.3	68.1	80.0	86.1	72.3
1978	93.0	77.2	73.4	87.6	89.6	74.8
1979	96.4	77.2	76.8	88.2	93.1	76.0
1980	87.4	71.1	74.6	88.0	99.2	74.4
1981	85.3	66.1	79.8	83.0	97.9	72.0
1982	72.4	56.0	58.7	71.8	88.1	56.3
1983	77.0	69.2	66.6	76.3	87.3	61.7
1984						

TABLE 3. Annual Averages of Utilization Rates

TABLEAU 3. La moyenne annuelle de taux d'utilisation

	Metal fabricating	Machinery	Transportation equipment	Electrical products	Non-metallic mineral products	Petroleum and coal products
	Fabrications métalliques	Machines	Matériel de transport	Appareils et fournitures électriques	Produits des minéraux non métalliques	Dérivés du pétrole et du charbon
1961	63.0	60.3	42.3	72.2	74.7	82.4
1962	69.5	65.8	49.2	82.2	82.8	86.3
1963	76.9	68.2	55.1	84.8	81.5	89.8
1964	85.6	74.9	57.3	90.0	89.1	88.8
1965	94.7	77.1	64.8	95.2	94.4	90.8
1966	97.8	81.9	63.2	99.0	91.4	92.6
1967	91.3	77.6	67.0	91.6	78.8	89.9
1968	87.4	73.0	72.8	89.3	80.5	95.0
1969	90.1	79.3	77.8	91.8	79.9	93.9
1970	85.1	75.0	64.5	83.5	72.3	90.6
1971	83.2	73.4	70.9	83.8	79.6	88.6
1972	83.2	79.5	76.9	86.8	84.1	92.7
1973	88.5	85.0	91.7	93.4	87.9	96.9
1974	92.0	91.4	89.2	93.9	87.6	92.9
1975	79.7	85.2	84.0	82.0	79.2	84.7
1976	81.8	79.2	88.0	81.1	78.1	78.5
1977	78.6	77.2	90.7	77.1	73.6	81.3
1978	60.2	84.0	88.6	76.9	75.5	61.1
1979	83.5	94.3	88.2	84.5	77.0	84.3
1980	79.5	94.5	66.6	81.9	67.6	81.9
1981	77.5	90.6	61.1	83.9	64.6	76.0
1982	62.7	69.1	52.0	70.8	51.2	61.6
1983	61.6	56.7	58.9	69.2	57.3	56.0
1984						

TABLE 3. Annual Averages of Utilization Rates

TABLEAU 3. La moyenne annuelle de taux d'utilisation

	Chemical and chemical products Produits chimiques	Miscellaneous manufacturing Industries diverses	Durable goods Biens durables	Non durable goods Biens non durables	Manufacturing industries Industries manufacturières
1961	73.6	90.0	65.5	82.7	74.0
1962	75.9	92.2	71.6	84.8	78.1
1963	78.8	91.1	75.6	85.9	80.7
1964	87.5	93.7	81.4	88.8	85.0
1965	90.0	93.6	86.9	88.7	87.8
1966	90.1	95.1	87.2	89.1	88.2
1967	86.0	90.3	82.6	86.8	84.6
1968	86.2	88.8	83.3	86.7	85.0
1969	69.3	88.4	85.3	88.6	87.0
1970	86.3	82.8	78.3	85.8	82.0
1971	87.3	83.6	79.2	85.9	82.5
1972	89.2	88.1	81.6	89.4	85.4
1973	97.0	92.8	89.0	92.0	90.5
1974	96.8	95.5	88.8	90.2	89.5
1975	83.5	88.7	79.1	82.0	80.5
1976	80.7	91.0	79.8	85.2	82.5
1977	76.0	86.4	79.1	83.7	81.4
1978	72.9	91.6	80.3	85.8	83.0
1979	75.5	94.5	83.1	88.2	85.6
1980	72.1	94.0	75.4	86.1	80.7
1981	69.7	90.5	72.9	84.4	78.6
1982	58.8	80.7	59.2	74.9	67.0
1983	61.2	82.0	62.1	76.6	69.3
1984					

Chart — 1

Graphique — 1

Capacity Utilization Rates in Canadian Manufacturing, 1971-1984

Taux d'utilisation de la capacité dans les industries manufacturières au Canada, 1971-1984

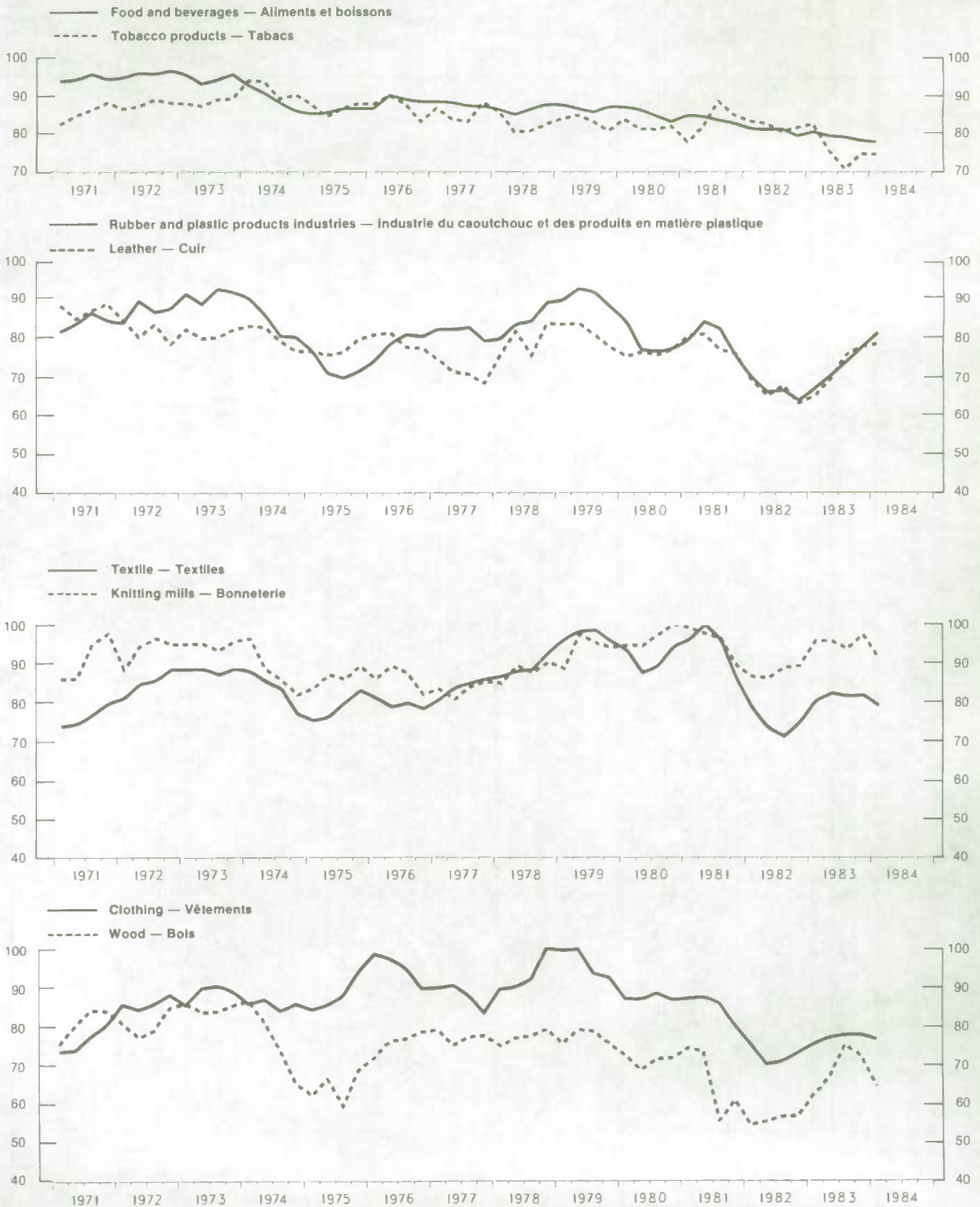


Chart — 1 continued

Graphique — 1 suite

Capacity Utilization Rates in Canadian Manufacturing, 1971-1984

Taux d'utilisation de la capacité dans les industries manufacturières au Canada, 1971-1984

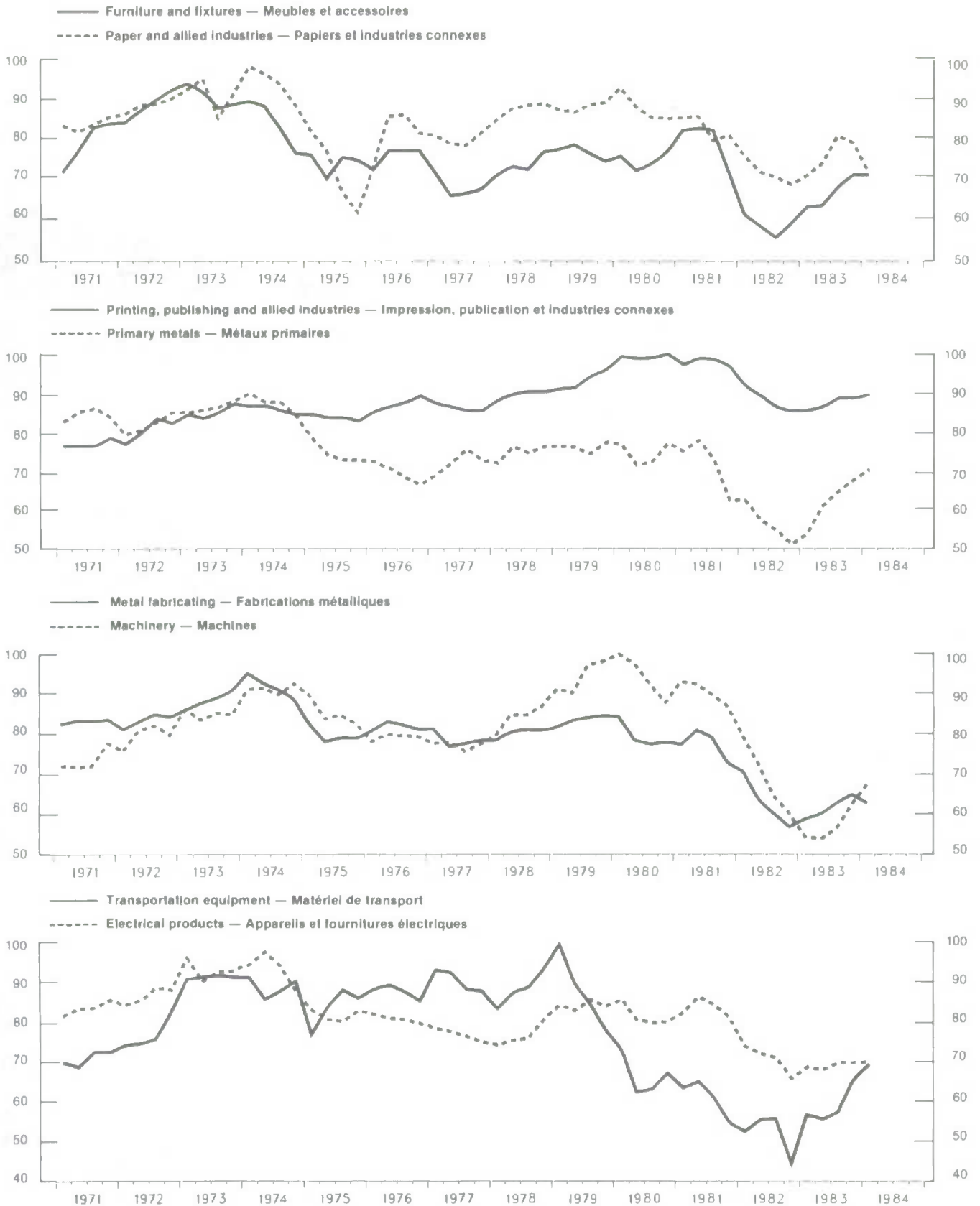
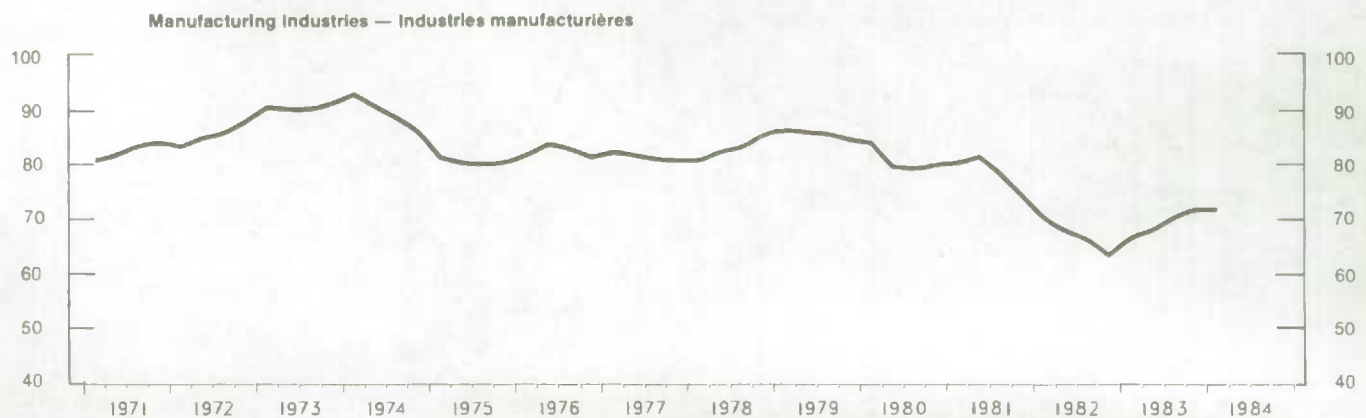
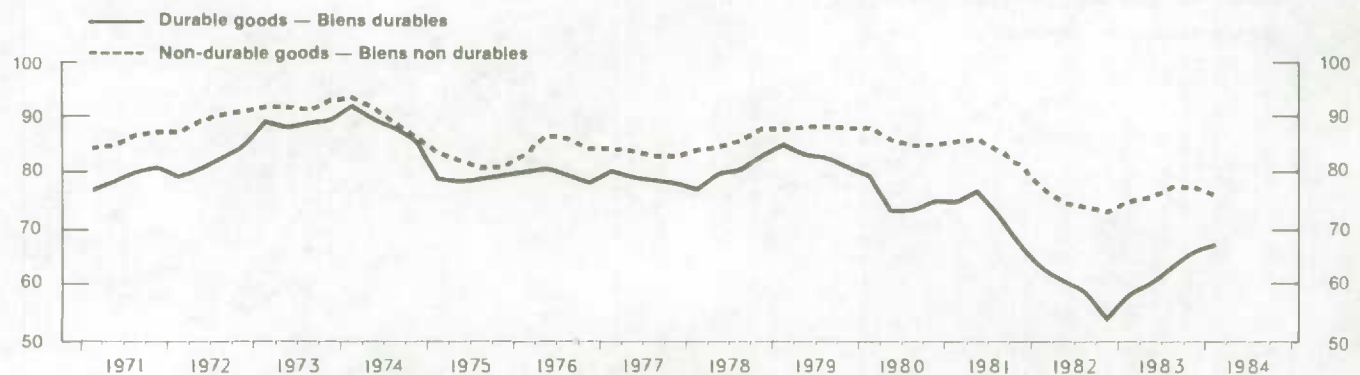
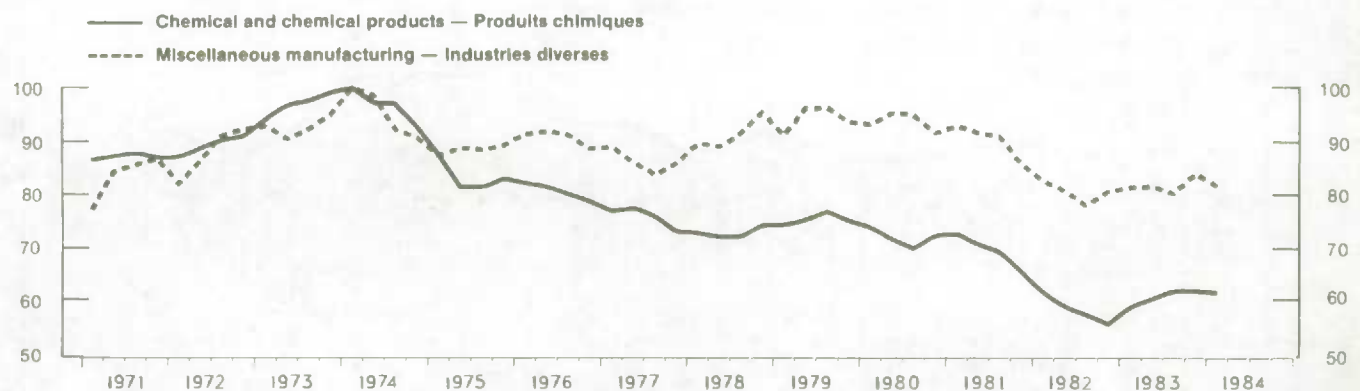
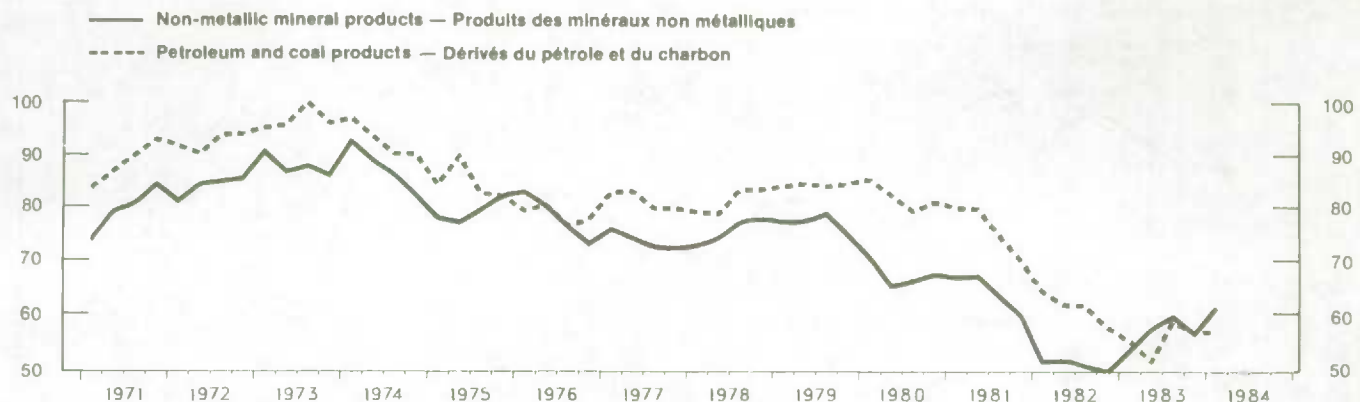


Chart — 1 concluded

Graphique — 1 fin

Capacity Utilization Rates In Canadian Manufacturing, 1971-1984

Taux d'utilisation de la capacité dans les industries manufacturières au Canada, 1971-1984



LIST OF RELATED PUBLICATIONS

Catalogue

Occasional

- 13-522 Fixed Capital Flows and Stocks, Manufacturing, Canada, 1926-1960. Methodology, 1967. English.
- 13-568 Fixed Capital Flows and Stocks, historical. Bilingual.

Annual

- 13-211 Fixed Capital Flows and Stocks. Bilingual.
- 61-205 Private and Public Investment in Canada, Outlook. Bilingual.
- 61-206 Private and Public Investment in Canada, Mid-year Review. Bilingual.
- 61-213 Gross Domestic Product by Industry. Bilingual.

Monthly

- 61-005 Gross Domestic Product by Industry. Bilingual.

In addition to the selected publications listed above, Statistics Canada publishes a wide range of statistical reports on Canadian economic and social affairs. A comprehensive catalogue of all current publications is available free on request from Statistics Canada, Ottawa, K1A 0T6.

LISTE DES PUBLICATIONS CONNEXES

Catalogue

Hors Série

- 13-522 Fixed Capital Flows and Stocks, Manufacturing, Canada, 1926-1960 Methodology, 1967. Anglais.
- 13-568 Flux et stocks de capital fixe, historique. Bilingue.

Annuel

- 13-211 Flux et stocks de capital fixe. Bilingue.
- 61-205 Investissements privés et publics au Canada, Perspectives. Bilingue.
- 61-206 Investissements privés et publics au Canada, Revue de la mi-année. Bilingue.
- 61-213 Produit intérieur brut par industrie. Bilingue.

Mensuel

- 61-005 Produit intérieur brut par industries. Bilingue.

Outre les publications ci-dessus énumérées, Statistique Canada publie une grande variété de rapports statistiques sur le Canada tant dans le domaine économique que social. On peut se procurer gratuitement un catalogue complet des publications courantes à Statistique Canada, Ottawa, K1A 0T6.

STATISTICS CANADA LIBRARY
BIBLIOTHÈQUE STATISTIQUE CANADA



1010647439