

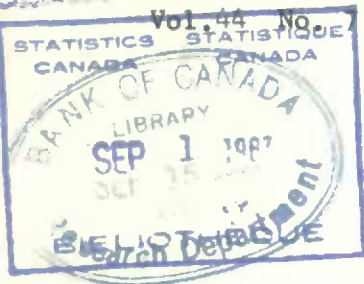
CATALOGUE No.
32-013
MONTHLY

DOMINION BUREAU OF STATISTICS

OTTAWA - CANADA

Published by Authority of the Minister of Trade and Commerce

Price: \$1.00 per year



THE SUGAR SITUATION, JULY 1964

1. Raw Cane Sugar

(a) Stocks, Receipts, Meltings and Sales, July

	<u>1 9 6 3</u>	<u>1 9 6 4</u>
	'000 lb.	'000 lb.
Stocks in Companies' Hands, July 1	190,181	201,084
Received by Companies during July	82,125	102,772
Total Supply	272,306	303,855
Less Meltings and Sales during July	117,156	88,650
Adjustments during July	-	-
Stocks in Companies' Hands, July 31	155,150	215,206

(b) Stocks, Receipts, Meltings and Sales (cumulative) January 1 - July 31

Stocks in Companies' Hands, January 1	307,814	254,678
Received by Companies January 1 - July 31	693,439	729,206
Total Supply	1,001,253	983,883
Less Meltings and Sales, January 1 - July 31	846,103	768,678
Adjustments January 1 - July 31	-	-
Stocks in Companies' Hands, July 31	155,150	215,206

11. Refined Beet and Cane Sugar - Summary

(a) Stocks, Manufactures and Sales, July

Stocks in Companies' Hands, July 1	259,870	291,320
Manufactured during July	115,349	100,625
Total Supply	375,219	391,945
Less Total Sales during July	157,636	192,922
Adjustments during July	- 1,393	- 8,329
Stocks in Companies' Hands, July 31	216,191	190,694

(b) Stocks, Manufactures and Sales (cumulative) January 1 - July 31

Stocks in Companies' Hands, January 1	411,584	453,250
Manufactured January 1 - July 31	825,205	790,124
Total Supply	1,236,789	1,243,373
Less Total Sales January 1 - July 31	1,015,836	1,030,918
Adjustments January 1 - July 31	- 4,762	- 21,761
Stocks in Companies' Hands, July 31	216,191	190,694

Prepared in the Crops Section Agriculture Division

5502-552

REFINED SUGAR

Stocks, Manufactures and Sales, by Types, July 1 - July 31

	1 9 6 3		1 9 6 4	
	Beet '000 lb.	Cane '000 lb.	Beet '000 lb.	Cane '000 lb.
<u>Stocks in Companies' Hands, July 1</u>				
Granulated	90,950	151,284	112,381	162,779
Yellow and Brown	-	17,636	-	16,160
Total Stocks	90,950	168,920	112,381	178,940
<u>Manufactured, July 1 - July 31</u>				
Granulated	-	106,172	-	93,468
Yellow and Brown	-	9,177	-	7,157
Total Manufactured	-	115,349	-	100,625
<u>Supply</u> (Stocks July 1 + Manufactures)				
Granulated	90,950	257,457	112,381	256,248
Yellow and Brown	-	26,813	-	23,317
Total Supply	90,950	284,269	112,381	279,565
<u>Domestic Sales, July 1 - July 31</u>				
Granulated	21,095	125,541	34,592	147,041
Yellow and Brown	-	9,886	-	9,306
Total Domestic Sales	21,095	135,427	34,592	156,347
<u>Export Sales, July 1 - July 31</u>				
Granulated	-	1,111	-	1,967
Yellow and Brown	-	3	-	16
Total Export Sales	-	1,114	-	1,983
<u>Domestic + Export Sales, July 1 - July 31</u>				
Granulated	21,095	126,652	34,592	149,008
Yellow and Brown	-	9,889	-	9,322
Total Domestic + Export Sales	21,095	136,541	34,592	158,330
<u>Adjustments, July 1 - July 31</u>				
Granulated	- 25	- 1,407	- 110	- 8,166
Yellow and Brown	-	+ 39	-	- 54
Total Adjustments	- 25	- 1,368	- 110	- 8,220
<u>Stocks in Companies' Hands, July 1</u>				
Granulated	69,831	129,397	77,679	99,074
Yellow and Brown	-	16,963	-	13,942
Total Stocks	69,831	146,360	77,679	113,015

REFINED SUGAR - concluded

Stocks, Manufactures and Sales, by Types (cumulative) January 1 - July 31

	1 9 6 3		1 9 6 4	
	Beet '000 lb.	Cane '000 lb.	Beet '000 lb.	Cane '000 lb.
<u>Stocks in Companies' Hands, Jan. 1</u>				
Granulated	227,886	162,393	263,437	170,991
Yellow and Brown	-	21,304	-	18,811
Total Stocks	227,886	183,697	263,437	189,812
<u>Manufactured, Jan. 1 - July 31</u>				
Granulated	3,090	747,638	15,061	702,715
Yellow and Brown	-	74,478	-	72,347
Total Manufactured	3,090	822,115	15,061	775,063
<u>Supply</u> (Stocks January 1 + Manufactures)				
Granulated	230,976	910,031	278,499	873,707
Yellow and Brown	-	95,782	-	91,168
Total Supply	230,976	1,005,813	278,499	964,875
<u>Domestic Sales, Jan. 1 - July 31</u>				
Granulated	160,831	762,576	198,416	745,719
Yellow and Brown	-	74,455	-	72,438
Total Domestic Sales	160,831	837,031	198,416	818,157
<u>Export Sales, Jan. 1 - July 31</u>				
Granulated	-	13,218	-	10,684
Yellow and Brown	-	4,756	-	3,661
Total Export Sales	-	17,974	-	14,345
<u>Domestic + Export Sales,</u> <u>January 1 - July 31</u>				
Granulated	160,831	775,794	198,416	756,404
Yellow and Brown	-	79,211	-	76,099
Total Domestic + Export Sales	160,831	855,005	198,416	832,502
<u>Adjustments, Jan. 1 - July 31</u>				
Granulated	- 314	- 4,840	- 2,404	-18,230
Yellow and Brown	-	+ 392	-	- 1,128
Total Adjustments	- 314	- 4,448	- 2,404	-19,358
<u>Stocks in Companies' Hands, July 31</u>				
Granulated	69,831	129,397	77,679	99,074
Yellow and Brown	-	16,963	-	13,942
Total stocks	69,831	146,360	77,679	113,015



1010682718

IMPORTS OF REFINED SUGAR(1)

	<u>1 9 6 3</u> lb.	<u>1 9 6 4</u> lb.
January	495,700	3,321,900
February	425,000	3,190,300
January and February	920,700	6,512,200

(1) Source: Trade of Canada Imports.