

41 001

Published by Authority of the Rt. Hon. C. D. Howe, M.P.
Minister of Trade and Commerce

MC28-21-4-48

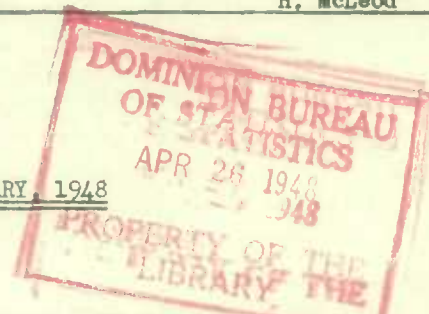
Original File Copy

Department of Trade and Commerce
Dominion Bureau of Statistics
Mining, Metallurgical and Chemical Statistics
Ottawa - CanadaDominion Statistician:
Director - Division of Census of Industry and Merchandising:
Chief - Mining, Metallurgical and Chemical Statistics:Herbert Marshall
W. H. Losee
H. McLeodMonthly Report

on

PRIMARY IRON AND STEEL IN CANADA - JANUARY, 1948

(Part II)



Note: Because there is at present an unavoidable delay in compiling the statistics of imports into Canada, it has been decided to issue this monthly report in two sections for a few months. The first section on "Production and Shipments" will be released as soon as possible after the end of each month and the second section on "Imports" will follow later as a separate report. This is a temporary arrangement and the two sections will be combined again when the situation with regards to imports has been cleared up. The statement on production and shipments in January, 1948, was released on March 10, 1948.

IMPORTS OF PRIMARY FORMS OF IRON AND STEEL, JANUARY, 1948.

Commodity	Country of Origin	J A N U A R Y		
		Carbon	Alloy	Stainless
		(Tons of 2,000 pounds)		
Pig Iron -				
Basic	United States	649
Ingots	United States	1,540
Billets, blooms, slabs and sheet bars	United States	3	1	...
Tube rounds and tube billets (O.H.)	United States	968
Bars and Sections -				
Hot rolled, n.o.p.	United States	5,395	37	2.8
	United Kingdom	50
Hot rolled -				
For agricultural implements	United States	2,941	550	...
Rounds over 4 7/8", squares over 4"	United States	43	6	...
Angles, channels, etc.	United States	1,261	...	2.7
Structurals (bar sizes) for agricultural implements	United States	256
Sash or casement sections	United States	192
Bars - Cold rolled, n.o.p.	United States	659	11	1.1
Cold rolled, for agricultural implements	United States	652	2	...
Bars - Tool steel	United States	80	48	...
	United Kingdom	21	12	...
	Sweden	6
Structurals	United States	15,7513
	United Kingdom	259

Note: "n.o.p." means "not otherwise provided for".

Imports of Primary Forms of Iron and Steel, January, 1948 (Continued)

Commodity	Country of Origin	J A N U A R Y		
		Carbon	Alloy	Stainless
		(Tons of 2,000 pounds)		
Plates -				
78" and under in width	United States	3,564	5	46.1
	United Kingdom	255
Over 78" and under 100" in width	United States	1,465
Over 100" in width	United States	7337
Flanged, dished or curved	United States	1056
Boiler, pulp digesters, etc.	United States	302
Chequered or surface pattern	United States	619
Sheets -				
Silicon .075 or more	United States	...	2,218	...
Galvanized	United States	711
Hot rolled -				
18 gauge and heavier	United States	3,637	...	13.3
Lighter than 18 gauge	United States	278	...	15.8
For hollow ware (vitreous enamel)	United States	378
.05% per pound and over	United States	5
Coated with paint, tar, asphaltum, etc..	United States	213
Corrugated	United States	169
For saws	United States	43	3	...
For cold rolled strip	United States	83
Cold rolled -				
18 gauge and heavier	United States	1,161	1	67.9
Lighter than 18 gauge	United States	2,505	18	96.3
	United Kingdom	14
For hollow ware (vitreous enamel)	United States	132
Black plate (tin mill)	United States	907
Coated with paint, tar, asphaltum, etc..	United States	59
For heating apparatus	United States	21
For saws	United States	30	1	...
For tubes	United States	257
Black plate - For tinning	United States	1,291
Tin plate - Primes	United States	1,978
	United Kingdom	10
Electrolytic (25#)	United States	1,548
Terne plate - Long	United States	351
Short	United States	196
Strip -				
Hot rolled -				
18 gauge and heavier	United States	1,840	...	1.6
Lighter than 18 gauge	United States	171
For cold rolling	United States	301
For barrel hoops	United States	214
Painted	United States	305
For saws	United States	10	4	...
	Sweden	7
For motor vehicles	United States	1,075
Silicon .075 or more	United States	19
Cold rolled -				
18 gauge and heavier	United States	226	...	30.4
Lighter than 18 gauge	United States	569	...	66.9
	Sweden	14
Painted	United States	17
For saws	United States	20	3	...
	Sweden	...	2	...
For tubes	United States	123
For tubular products	United States	58
For butt hinges	United States	9
Galvanized strip	United States	1,123

Imports of Primary Forms of Iron and Steel, January, 1948 (Continued)

Commodity	Country of Origin	J A N U A R Y		
		Carbon	Alloy	Stainless
		(Tons of 2,000 pounds)		
Skelp -				
Over 15 3/8" in width	United States	554
15 3/8" and under	United States	5,386
Pipes and Tubes -				
Cast	United States	255
Boiler and pulp mill digesters -				
Hot finished	United States	1,185
Cold drawn	United States	120	2	...
Welded	United States	105
Seamless, 12" and under in diameter -				
Cold drawn	United States	1,522	7	10.5
	United Kingdom	4
	Sweden6
Hot finished	United States	97
Seamless, 12" and over in diameter -				
Cold drawn	United States	105
Hot finished	United States	1
Welded, 4" and under in diameter	United States	751	...	2.9
Welded, more than 4" in diameter	United States	282
Tubing -				
Not over 1/2" diameter, welded and coated.	United States	35	...	1.0
Casing	United States	57
Fittings and couplings	United States	2468
Wire rope				
	United States	25
	United Kingdom	29
Wire -				
For wire rope	United States	1,576
	United Kingdom	65
For corset laces, steels, etc.	United States	3
For spring mattress, etc.	United States	40
Wire cloth and netting				
	United States	35
	United Kingdom	9
Wire, coated	United States	23
Wire - All other	United States	9333
Wire rods, not over 3/8" in diameter	United States	198
Welding rods and welding wire	United States	178	...	2.2
Castings -				
For agricultural implements	United States	61
For ingot moulds	United States	2,241
Malleable	United States	64
Non-malleable	United States	116
Steel	United States	851
For railway vehicles	United States	21
Rolls	United States	316	13	...
Forgings				
	United States	153	8	...
Axles -				
For railway vehicles	United States	45
For all other vehicles	United States	1



1010680764

Primary

- 4 -

Imports of Primary Forms of Iron and Steel, January, 1948 (Concluded)

Commodity	Country of Origin	J A N U A R Y		
		Carbon	Alloy	Stainless
		(Tons of 2,000 pounds)		
Wheels -				
For railway rolling stock	United States	78
	United Kingdom	118
Tires -				
For railway rolling stock	United States	864
	United Kingdom	369
Rails -				
60 pounds and under	United States	27
Over 60 pounds and under 100 pounds	United States	115
Over 100 pounds	United States	7
Grooved for electric tramways	United States	888
Track material -				
Angle bars, tie plates, rail joints	United States	100
Intersections, switches, frogs	United States	3

- - - - -