

42 002

## Historical File Copy

Published by Authority of the Rt. Hon. C. D. Howe, M.P.  
Minister of Trade and Commerce

MC1-31-5-48

Price -  
10 centsDepartment of Trade and Commerce  
Dominion Bureau of Statistics  
Mining, Metallurgical and Chemical Statistics  
Ottawa - CanadaDOMINION BUREAU  
OF STATISTICS

MAY 31 1948

PROPERTY OF THE  
LIBRARY

Dominion Statistician:	Herbert Marshall
Director - Division of Census of Industry and Merchandising:	W. H. Losee
Chief - Mining, Metallurgical and Chemical Statistics:	H. McLeod

Monthly Report onMOTOR VEHICLE SHIPMENTS - CANADA - APRIL, 1948

Factory shipments of Canadian-made vehicles totalled 24,243 units in April, 1948, compared with 27,112 units in the previous month and with 21,891 units in April, 1947. The shipments for the current month included 13,239 passenger cars, 10,930 trucks and 74 buses.

Table 1 - Motor Vehicle Shipments - Canada - April, 1948

	Factory Shipments of Made-in-Canada Vehicles			Shipments of vehicles imported from United States
	For sale in Canada	For export	Total	
	(Number of Units)			
(a) <u>Passenger Cars -</u>				
Permanent open cars:				
Roadsters .....	...	...	...	...
Touring .....	...	...	...	...
Convertible cars:				
Coupe, roadster .....	...	...	...	24
Sedan, touring .....	...	...	...	...
Permanent closed cars:				
Coupe .....	885	25	910	4
2-door sedan .....	3,626	...	3,626	45
4-door sedan .....	6,355	1,552	7,907	245
Other closed .....	93	...	93	5
Chassis (sold without bodies)	1	702	703	...
Total Passenger Cars .....	10,960	2,279	13,239	323
(b) <u>Commercial vehicles, including</u> <u>trucks, buses and chassis -</u>				
Maximum Gross Vehicle Weight				
- in pounds -				
5,000 and less .....	2,955	1,488	4,443	133
5,001 - 10,000 .....	1,676	335	2,011	162
10,001 - 14,000 .....	874	1,247	2,121	14
14,001 - 16,000 .....	1,385	399	1,784	2
16,001 - 19,500 .....	313	...	313	10
19,501 - 26,000 .....	191	...	191	7
Over 26,000 .....	67	...	67	9
Total Trucks .....	7,461	3,469	10,930	337
Total Coaches or Buses ..	74	...	74	...
Total Commercial Vehicles ...	7,535	3,469	11,004	337
TOTAL PASSENGER AND COMMERCIAL ....	18,495	5,748	24,243	660



Table 2 - Motor Vehicle Shipments - Canada - Four Months Ended, April, 1948

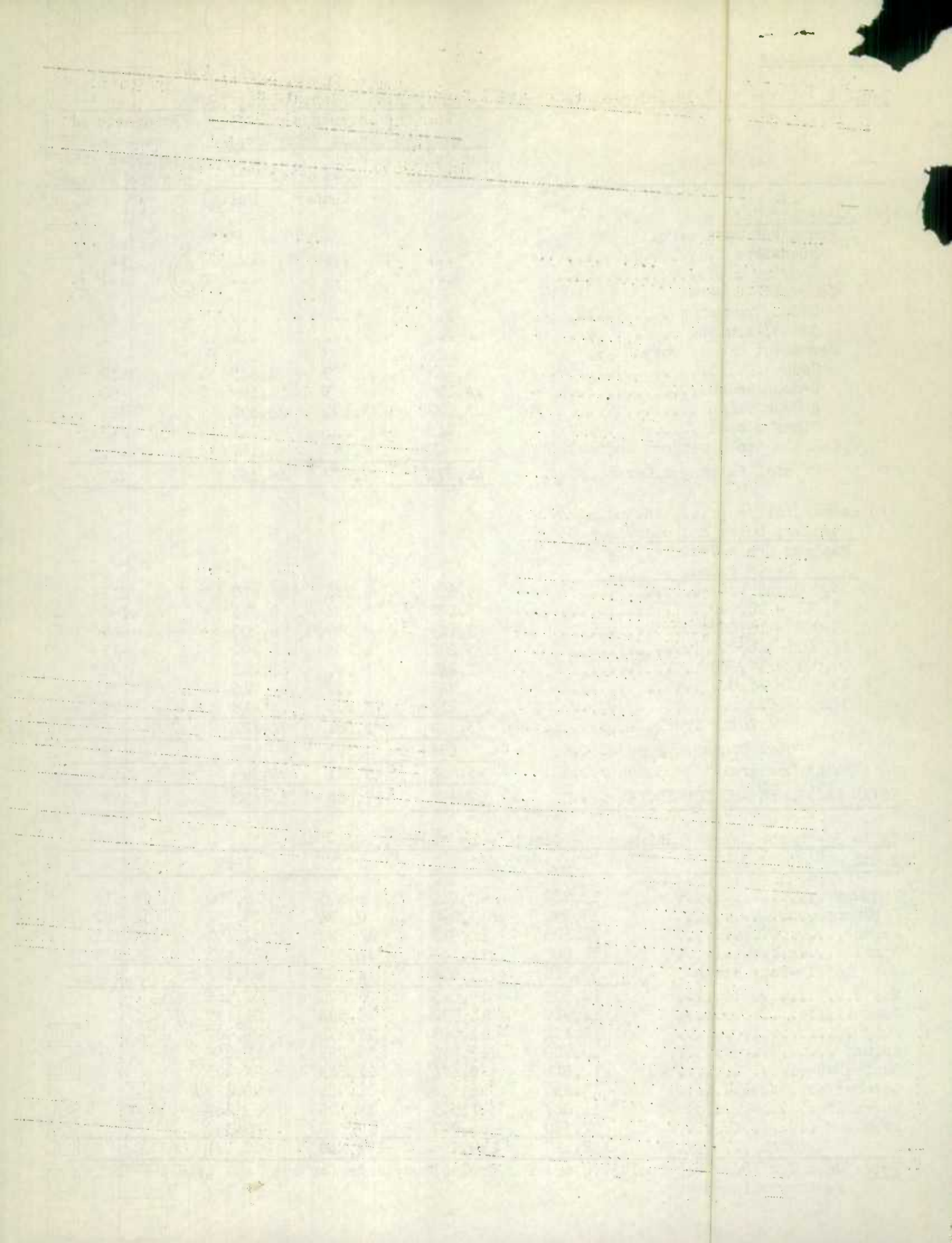
	Factory Shipments of Made-in-Canada Vehicles			Shipments of vehicles imported from United States
	For sale in Canada	For export	Total	
	(Number of Units)			
(a) Passenger Cars -				
Permanent open cars:				
Roadsters .....	...	...	...	...
Touring .....	...	...	...	...
Convertible cars:				
Coupe, roadster .....	...	...	...	43
Sedan, touring .....	...	...	...	1
Permanent closed cars:				
Coupe .....	4,254	89	4,343	12
2-door sedan .....	14,106	3	14,109	90
4-door sedan .....	23,172	3,400	26,572	584
Other closed .....	241	...	241	19
Chassis (sold without bodies)	1	4,187	4,188	...
Total Passenger Cars ....	41,774	7,679	49,453	749
(b) Commercial vehicles, including trucks, buses and chassis -				
Maximum Gross Vehicle Weight - in pounds -				
5,000 and less .....	9,624	3,786	13,410	411
5,001 - 10,000 .....	5,182	1,333	6,515	190
10,001 - 14,000 .....	3,143	3,057	6,200	47
14,001 - 16,000 .....	5,287	1,205	6,492	11
16,001 - 19,500 .....	1,241	...	1,241	21
19,501 - 26,000 .....	745	...	745	31
Over 26,000 .....	218	...	218	29
Total Trucks .....	25,440	9,381	34,821	740
Total Coaches or Buses ..	178	...	178	3
Total Commercial Vehicles ....	25,618	9,381	34,999	743
TOTAL PASSENGER AND COMMERCIAL ....	67,392	17,060	84,452	1,492

Table 3 - Motor Vehicle Shipments - Canada - by Months, 1944-1948

Month	1944	1945	1946	1947	1948
January .....	13,702	13,745	8,495	18,700	16,715
February .....	13,930	13,090	7,484	20,331	16,382
March .....	14,625	14,912	11,373	22,491	27,112
April .....	11,061	14,351	16,830	21,891	24,243
Total -Four Months.	53,318	56,098	44,182	83,413	84,452
May .....	12,303	15,045	20,022	21,665	
June .....	14,317	14,532	15,585	21,137	
July .....	12,132	11,093	17,221	21,907	
August .....	13,729	13,376	12,293	15,659	
September .....	12,511	8,484	11,543	24,205	
October .....	13,230	6,596	14,951	25,479	
November .....	14,047	1,575	19,105	23,267	
December .....	12,530	5,997	17,348	20,399	
TOTAL .....	158,117	132,796	172,250	257,131	

Note: Data for 1944-1946 inclusive are for production; data for 1947 and 1948 are for factory shipments.





LIST OF REPORTING COMPANIES, APRIL, 1948

---

xCanadian Car and Foundry Co. Ltd.	Fort William, Ontario
xChrysler Corporation of Canada Ltd.	Windsor, Ontario
Diamond-T Trucks Ltd.	Toronto, Ontario
Federal Motor Truck Co. Ltd.	Detroit, Mich., U.S.A.
xFleet Manufacturing Limited	Fort Erie, Ontario
xFord Motor Company of Canada Ltd.	Windsor, Ontario
Four Wheel Drive Auto Co. Ltd.	Kitchener, Ontario
xGeneral Motors of Canada Limited	Oshawa, Ontario
xHayes Mfg. Co. Ltd.	Vancouver, British Columbia
Hudson Motors Ltd.	Tilbury, Ontario
xInternational Harvester Co. of Canada Ltd.	Chatham, Ontario
Kaiser-Fraser Corp. Ltd.	Willow Run, Mich., U.S.A.
Leyland Motors, Limited	Toronto, Ontario
Mack Trucks of Canada Ltd.	Toronto, Ontario
Nash Motors of Canada Ltd.	Toronto, Ontario
Packard Motor Car Co. of Canada Ltd.	Windsor, Ontario
xReo Motor Company of Canada, Ltd.	Leaside, Ontario
Studebaker Corp. of Canada Ltd.	Hamilton, Ontario
xWhite Company Ltd.	Montreal, Quebec
Willys-Overland of Canada Ltd.	Toronto, Ontario
Weymouth-Bradley, Ltd.	Toronto, Ontario

---

x Canadian producers.

STATISTICS CANADA LIBRARY  
BIBLIOTHEQUE STATISTIQUE CANADA



1010641796