

Published by Authority of the Rt. Hon. C. D. Howe, M.P.  
Minister of Trade and Commerce

Department of Trade and Commerce  
Dominion Bureau of Statistics  
Mining, Metallurgical and Chemical Statistics  
Ottawa - Canada

MCL-27-9-48  
Price -  
10 cents  
SEP 29 1948  
PROPERTY OF THE

Dominion Statistician: Herbert Marshall  
Director - Division of Census of Industry and Merchandising: W. H. Losee  
Chief - Mining, Metallurgical and Chemical Statistics: H. McLeod

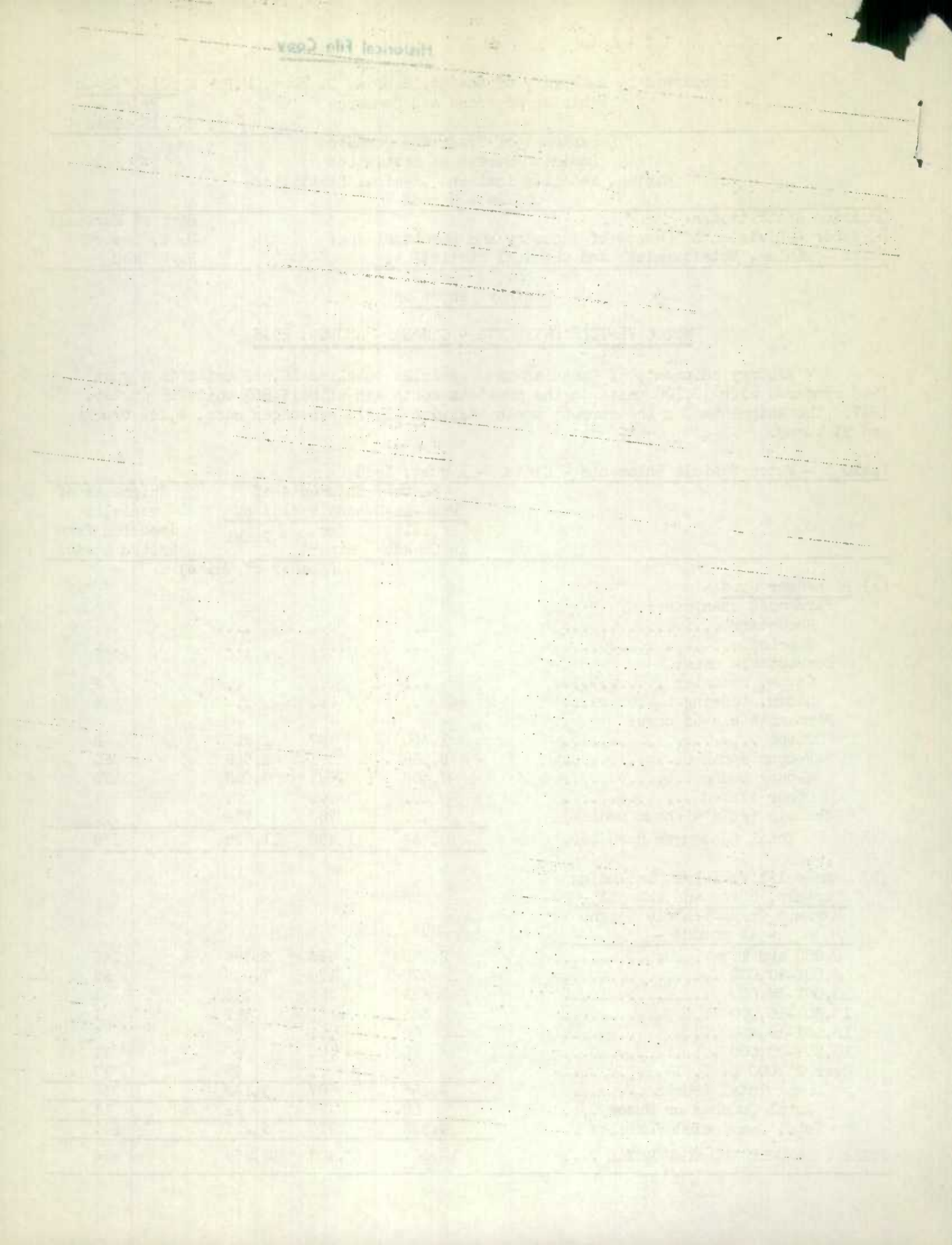
Monthly Report on

MOTOR VEHICLE SHIPMENTS - CANADA - AUGUST, 1948

Factory shipments of Canadian-made vehicles totalled 16,959 units in August, 1948 compared with 15,106 units in the previous month and with 15,659 units in August, 1947. The shipments for the current month included 11,726 passenger cars, 5,142 trucks and 91 buses.

Table 1 - Motor Vehicle Shipments - Canada - August, 1948

	Factory Shipments of Made-in-Canada Vehicles			Shipments of vehicles imported from United States
	For sale in Canada	For export	Total	
	(Number of Units)			
(a) Passenger Cars -				
Permanent open cars:				
Roadsters .....	...	...	...	...
Touring .....	...	...	...	...
Convertible cars:				
Coupe, roadster .....	...	...	...	2
Sedan, touring .....	...	...	...	4
Permanent closed cars:				
Coupe .....	1,300	37	1,337	9
2-door sedan .....	2,528	1	2,529	50
4-door sedan .....	6,406	692	7,098	173
Other closed .....	...	...	...	1
Chassis (sold without bodies)	...	762	762	...
Total Passenger Cars ....	10,234	1,492	11,726	239
(b) Commercial vehicles, including trucks, buses and chassis - Maximum Gross Vehicle Weight - in pounds -				
5,000 and less .....	2,335	453	2,788	145
5,001-10,000 .....	875	170	1,045	56
10,001-14,000 .....	523	252	775	1
14,001-16,000 .....	385	12	397	1
16,001-19,500 .....	60	...	60	5
19,501-26,000 .....	50	...	50	11
Over 26,000 .....	27	...	27	17
Total Trucks .....	4,255	887	5,142	236
Total Coaches or Buses ....	68	23	91	11
Total Commercial Vehicles ..	4,323	910	5,233	247
TOTAL PASSENGER AND COMMERCIAL ....	14,557	2,402	16,959	486



Motor Vehicles

- 2 -

Table 2 - Motor Vehicle Shipments - Canada - Eight Months Ended August, 1948

	Factory Shipments of Made-in-Canada Vehicles			Shipments of vehicles imported from United States
	For sale in Canada	For export	Total	
	(Number of Units)			
(a) Passenger Cars -				
Permanent open cars:				
Roadsters .....	...	...	...	...
Convertible cars:				
Coupe, roadster .....	...	...	...	75
Sedan, touring .....	...	...	...	5
Permanent closed cars:				
Coupe .....	9,294	431	9,725	94
2-door sedan .....	24,686	8	24,694	424
4-door sedan .....	46,965	5,788	52,753	1,576
Other closed .....	292	...	292	62
Chassis (sold without bodies)	1	7,949	7,950	...
Total Passenger Cars .....	81,238	14,176	95,414	2,236
(b) Commercial vehicles, including trucks, buses and chassis -				
Maximum Gross Vehicle Weight				
- in pounds -				
5,000 and less .....	20,594	6,038	26,632	887
5,001-10,000 .....	9,798	2,083	11,881	500
10,001-14,000 .....	5,958	6,006	11,964	64
14,001-16,000 .....	9,574	2,083	11,657	26
16,001-19,500 .....	1,703	...	1,703	95
19,501-26,000 .....	1,141	...	1,141	83
Over 26,000 .....	396	...	396	77
Total Trucks .....	49,164	16,210	65,374	1,732
Total Coaches or Buses ....	376	83	459	14
Total Commercial Vehicles ..	49,540	16,293	65,833	1,746
TOTAL PASSENGER AND COMMERCIAL ....	130,778	30,469	161,247	3,982

Table 3 - Motor Vehicle Shipments - Canada - by Months, 1944-1948

Month	1944	1945	1946	1947	1948
(Number of Units)					
January .....	13,702	13,745	8,495	18,700	16,715
February .....	13,930	13,090	7,484	20,331	16,382
March .....	14,625	14,912	11,373	22,491	27,112
April .....	11,061	14,351	16,830	21,891	24,243
May .....	12,303	15,045	20,022	21,665	21,368
June .....	14,317	14,532	15,585	21,137	23,362
July .....	12,132	11,093	17,221	21,907	15,106
August .....	13,729	13,376	12,293	15,659	16,959
Total Eight Months ...	105,799	110,144	109,303	163,781	161,247
September .....	12,511	8,484	11,543	24,205	
October .....	13,230	6,596	14,951	25,479	
November .....	14,047	1,575	19,105	23,240	
December .....	12,451	5,846	16,626	21,310	
TOTAL .....	158,038	132,645	171,528	258,015	

Note: Data for 1944-1946 inclusive are for production; data for 1947 and 1948 are for factory shipments.





LIST OF REPORTING COMPANIES, AUGUST, 1948

---

x Canadian Car and Foundry Co. Ltd.	Fort William, Ontario
x Chrysler Corporation of Canada Ltd.	Windsor, Ontario
Diamond-T Trucks Ltd.	Toronto, Ontario
Federal Motor Truck Co. Ltd.	Detroit, Michigan, U.S.A.
x Fleet Manufacturing Limited	Fort Erie, Ontario
x Ford Motor Company of Canada Ltd.	Windsor, Ontario
Four Wheel Drive Auto Co. Ltd.	Kitchener, Ontario
x General Motors of Canada Limited	Oshawa, Ontario
x Hayes Mfg. Co. Ltd.	Vancouver, British Columbia
Hudson Motors Ltd.	Tilbury, Ontario
x International Harvester Co. of Canada Ltd.	Chatham, Ontario
Kaiser-Fraser Corp. Ltd.	Willow Run, Michigan, U.S.A.
Leyland Motors, Limited	Toronto, Ontario
Mack Trucks of Canada Ltd.	Toronto, Ontario
Nash Motors of Canada Ltd.	Toronto, Ontario
Packard Motor Car Co. of Canada Ltd.	Windsor, Ontario
x Reo Motor Company of Canada, Ltd.	Leaside, Ontario
Studebaker Corp. of Canada Ltd.	Hamilton, Ontario
x White Company Ltd.	Montreal, Quebec
Willys-Overland of Canada Ltd.	Toronto, Ontario
Weymouth-Bradley, Ltd.	Toronto, Ontario

---

x Canadian producers.

- - - - -

STATISTICS CANADA LIBRARY  
BIBLIOTHEQUE STATISTIQUE CANADA



1010641800