

CATALOGUE No.

45-001

MONTHLY

# DOMINION BUREAU OF STATISTICS

OTTAWA - CANADA

Published by Authority of the Minister of Trade and Commerce

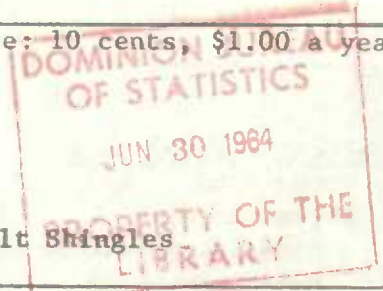
Vol. 16, No. 4

Price: 10 cents, \$1.00 a year

## ASPHALT ROOFING

APRIL 1964

TABLE 1. Production and Shipments of Asphalt Shingles



	All grades(1)				Seconds(2)	
	April		Four months ended April		1964	
	1963	1964	1963	1964	Current month	Year to date
	roof squares					
<b>Asphalt shingles, 210 lb. and over:</b>						
Production .....	242,023	205,785	642,086	978,586	-	-
Shipments to:						
Atlantic Provinces	13,633	12,238	23,977	50,080	408	1,185
Quebec .....	32,316	27,234	105,976	182,738	426	2,064
Ontario .....	98,364	72,243	249,580	368,883	1,234	5,039
Man. and Sask. ...	29,131	26,003	81,603	135,466	10	100
Alberta .....	19,044	20,244	57,982	106,449	550	2,539
British Columbia	12,123	14,782	46,606	61,066	50	50
Export .....	460	2,458	545	3,033	-	-
<b>Total shipments</b>	<b>205,071</b>	<b>175,202</b>	<b>566,269</b>	<b>907,715</b>	<b>2,678</b>	<b>10,977</b>
<b>Asphalt shingles less than 210 lb.:</b>						
Production .....	26,159	26,145	50,461	77,789	-	-
Shipments to:						
Atlantic Provinces	3,582	1,290	4,431	6,788	21	52
Quebec .....	1,441	152	1,612	701	-	-
Ontario .....	6,857	8,392	10,446	31,070	373	488
Man. and Sask. ...	2,593	1,742	4,211	4,771	-	-
Alberta .....	568	495	1,433	1,360	-	90
British Columbia	7,328	8,805	32,465	30,132	33	63(3)
Export .....	12	36	12	36	-	-(3)
<b>Total shipments</b>	<b>22,381</b>	<b>20,912</b>	<b>54,610</b>	<b>74,858</b>	<b>427</b>	<b>693</b>

Note: See page 4 for footnotes and definition of provinces.

June 1964  
6522-706

Industry Division

**TABLE 2. Production and Shipments of Roll Roofings and Roll Type Sidings**

	<b>All grades(1)</b>				<b>Seconds(2)</b>	
	<b>April</b>		<b>Four months ended April</b>		<b>1964</b>	
	<b>1963</b>	<b>1964</b>	<b>1963</b>	<b>1964</b>	<b>Current month</b>	<b>Year to date</b>
	<b>roof squares</b>					
<b>Smooth surfaced rolls:</b>						
Production .....	50,077	50,596	163,973	239,923	-	-
Shipments to:						
Atlantic Provinces	4,936	3,014	9,116	15,747	22	22
Quebec .....	11,889	10,314	27,356	61,337	255	458
Ontario .....	18,748	10,664	37,268	61,193	99	437
Man. and Sask. ....	5,730	3,393	12,780	16,826	10	145
Alberta .....	4,207	3,206	15,439	18,439	166	371
British Columbia ..	6,296	4,398	25,717	28,882	111	174
Export .....	590	1,805	1,235	3,130	-	-
<b>Total shipments</b>	<b>52,396</b>	<b>36,794</b>	<b>128,911</b>	<b>205,554</b>	<b>663</b>	<b>1,607</b>
<b>Mineral surfaced rolls:</b>						
Production .....	56,036	48,855	127,553	168,264	-	-
Shipments to:						
Atlantic Provinces	5,042	3,453	7,742	15,154	85	111
Quebec .....	5,869	6,151	10,444	26,325	640	712
Ontario .....	22,006	14,484	36,306	54,992	270	961
Man. and Sask. ....	8,503	7,282	23,621	27,539	-	11
Alberta .....	4,766	3,456	13,235	18,084	47	318
British Columbia ..	8,118	3,644	19,434	16,080	34	317
Export .....	1,335	1,609	2,794	2,453	-	-
<b>Total shipments</b>	<b>55,639</b>	<b>40,079</b>	<b>113,576</b>	<b>160,627</b>	<b>1,076</b>	<b>2,430</b>
<b>Roll type sidings:</b>						
Production .....	649	9,992	16,075	23,759	-	-
Shipments to:						
Atlantic Provinces	333	286	482	1,113	-	-
Quebec .....	1,212	1,354	2,095	7,010	48	48
Ontario .....	2,900	1,379	4,706	6,225	15	83
Man. and Sask. ....	665	382	1,198	1,549	-	-
Alberta .....	344	356	853	996	-	-
British Columbia ..	256	184	515	361	-	-
Export .....	-	1,218	90	1,408	-	-
<b>Total shipments</b>	<b>5,710</b>	<b>5,159</b>	<b>9,939</b>	<b>18,662</b>	<b>63</b>	<b>131</b>

**Note:** See page 4 for footnotes and definition of provinces.

TABLE 3. Production and Shipments of Tar and Asphalt Felts and Sheathings

	All grades(1)			
	April		Four months ended April	
	1963	1964	1963	1964
	tons			
<b>Tar and asphalt felts:</b>				
Production .....	2,473	6,439	15,300	22,058
Shipments to:				
Atlantic Provinces ..	603	355	1,176	1,857
Quebec .....	3,185	1,179	6,574	8,110
Ontario .....	1,941	1,326	4,802	6,329
Man. and Sask. ....	224	266	671	1,008
Alberta .....	199	204	672	1,023
British Columbia ....	406	458	1,466	1,771
Export .....	16	76	39	163
Total shipments ...	6,574	3,864	15,400	20,261
<b>Tar &amp; asphalt sheathings:</b>				
<u>Kraft base:</u>				
Production .....	106	437	1,009	1,214(3)
Shipments to:				
Atlantic Provinces ..	6	7	25	23
Quebec .....	87	17	194	203
Ontario .....	71	42	130	178
Man. and Sask. ....	82	34	234	326
Alberta .....	91	80	262	435
British Columbia ....	67	63	319	418(3)
Export .....	-	1	-	1
Total shipments ...	404	244	1,164	1,584(3)
<b>Tar &amp; asphalt sheathings:</b>				
<u>Non Kraft base:</u>				
Production .....	617	520	1,892	2,900
Shipments to:				
Atlantic Provinces ..	43	16	81	145
Quebec .....	227	90	586	662
Ontario .....	158	101	340	510
Man. and Sask. ....	34	17	112	165
Alberta .....	12	26	87	112
British Columbia ....	25	30	119	139
Export .....	-	-	-	-
Total shipments ...	499	280	1,325	1,733

Note: See page 4 for footnotes and definition of provinces.

TABLE 4. Domestic Shipments of Roofing Pitch and Roofing Asphalt

	April		Four months ended April	
	1963	1964	1963	1964
	tons			
<u>Roofing pitch:</u>				
Shipments to:				
Atlantic Provinces .....	126	89	268	232
Quebec .....	635	691	1,652	2,212
Ontario .....	1,559	626	3,493	3,680
Manitoba and Saskatchewan ....	28	9	65	52
Alberta .....	4	6	10	17
British Columbia .....	9	14	21	29
<b>Total domestic shipments ...</b>	<b>2,361</b>	<b>1,435</b>	<b>5,509</b>	<b>6,222</b>

Roofing asphalt:

Shipments to:

Atlantic Provinces .....	542	284	1,433	1,146
Quebec .....	3,419	1,860	7,794	8,717
Ontario .....	2,404	2,323	7,266	9,397
Manitoba and Saskatchewan ....	388	452	1,212	1,961
Alberta .....	432	450	1,798	1,944
British Columbia .....	971	991	3,335	3,424(3)
<b>Total domestic shipments ...</b>	<b>8,156</b>	<b>6,360</b>	<b>22,838</b>	<b>26,589(3)</b>

Summary of footnotes and definitions for this report are as follows:

- (1) Total all grades includes regular and seconds.
- (2) Seconds only, included with "all grades".
- (3) Includes revision for March.

Provincial definitions:

- Atlantic Provinces - Includes the Maritimes and Newfoundland, excludes Labrador.
- Quebec - Includes Labrador.
- Ontario - Excludes points west of Port Arthur and Fort William.
- Manitoba and Saskatchewan - Includes Ontario west of Port Arthur and Fort William.
- British Columbia - Includes Yukon and Northwest Territories.