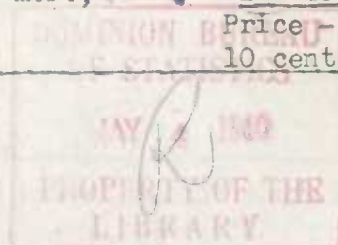


Published by Authority of the HON. W. D. EULER, M.P.;
Minister of Trade and Commerce

1-5-40

Price -
10 cents

DEPARTMENT OF TRADE AND COMMERCE
DOMINION BUREAU OF STATISTICS
MINING, METALLURGICAL AND CHEMICAL BRANCH
OTTAWA - CANADA



Dominion Statistician: R. H. Coats, LL.D., F.R.S.C., F.S.S. (Hon.)
Chief - Mining, Metallurgical and Chemical Branch: W. H. Losee, B.Sc.

MONTHLY REPORT

COAL AND COKE STATISTICS FOR CANADA - MARCH, 1940

The Canadian output of coal in March amounted to 1,324,714 tons compared with 1,177,818 tons a year ago, and 1,115,625 tons, the five-year average for the month. During the month under review, bituminous coal production totalled 1,045,513 tons, sub-bituminous coal, 35,431 tons and lignite coal, 243,770 tons.

Nova Scotia operators reported an output of 591,669 tons as against 481,124 tons in the corresponding month of 1939. Alberta's production was recorded at 457,384 tons, consisting of 269,603 tons of bituminous coal, 35,431 tons of sub-bituminous coal and 152,350 tons of lignite coal. The March, 1939 Alberta output included 208,726 tons of bituminous coal, 45,976 tons of sub-bituminous coal and 180,936 tons of lignite coal. Mines in British Columbia produced 140,106 tons; a year ago, 125,448 tons were produced. A 2.2 per cent increase was recorded in the output of Saskatchewan coal; the month's total was 91,420 tons compared with 89,470 tons in March, 1939. New Brunswick mined 44,135 tons or 4.3 per cent below the output in the corresponding month of 1939.

Imports of coal into Canada in March totalled 430,598 tons; this represented a decline of 20 per cent from the tonnage imported a year ago. Importations during March, 1935-1939 averaged 531,198 tons. Anthracite coal receipts amounted to 137,969 tons, made up of 128,745 tons from the United States and 9,224 tons from Great Britain. Bituminous coal imports were recorded at 292,465 tons and consisted of 291,708 tons from the United States and 757 tons from Great Britain. One hundred and sixty-four tons of lignite coal were imported from the United States during the month.

Canadian coal exports in March amounted to 31,083 tons; a year ago, 31,328 tons were exported. During the first quarter of 1940 Canada exported 128,644 tons or 27.8 per cent above the total for the corresponding period of 1939.

Coal made available for consumption in Canada during March was computed at 1,724,229 tons; the estimated supply made available a year ago was 1,684,768 tons.

COAL STATISTICS FOR CANADA, MARCH, 1940

(Short tons)

	OUTPUT	I M P O R T S				EXPORTS
		U.S.	G.B.	TOTAL		
Prince Edward Island -						
Anthracite
Bituminous	34	...	34
Nova Scotia -						
Anthracite	511	2,797	3,308
Bituminous	591,669	2,963	...	2,963	3,452	...
New Brunswick -						
Anthracite	61	6,427	6,488
Bituminous	44,135	664	757	1,421	8,260	...
Quebec -						
Anthracite	23,007	...	23,007
Bituminous	21,351	...	21,351
Central Ontario -						
Anthracite	104,721	...	104,721
Bituminous	262,596	...	262,596
Manitoba and Head of Lakes -						
Anthracite	445	...	445
Bituminous	3,993	...	3,993
Lignite
Saskatchewan -						
Anthracite
Bituminous	34	...	34
Lignite	91,420	83	...
Alberta -						
Anthracite
Bituminous	269,603	73	...	73	9	...
Sub-bituminous	35,431
Lignite	152,350	70	...
British Columbia -						
Anthracite
Bituminous	140,106	19,170	...
Lignite	164	...	164	39	...
Yukon -						
Bituminous
CANADA -						
(a) March, 1940 -						
Anthracite	128,745	9,224	137,969
Bituminous	1,045,513	291,708	757	292,465	30,891	...
Sub-bituminous	35,431
Lignite	245,770	164	...	164	192	...
TOTAL	1,324,714	420,617	9,981	430,598	31,083	...
March, 1939	1,177,818	516,543	19,495	x 538,278	31,328	...
(b) THREE MONTHS ending MARCH 31, 1940						
Anthracite	413,475	44,167	457,642
Bituminous	3,286,254	881,274	5,621	886,895	126,753	...
Sub-bituminous	144,209
Lignite	1,054,007	778	...	778	1,891	...
TOTAL	4,484,470	1,295,527	49,788	1,345,315	128,644	...
THREE MONTHS ending MARCH 31, 1939	3,676,847	1,361,789	71,759	x 1,436,563	100,636	...

x Includes coal imported from other countries.

COKE - MARCH - 1940

Coke production during March totalled 239,290 tons compared with 224,568 tons made in February of this year and 187,785 tons in March of a year ago. Coke oven charges for the month included 127,613 tons of Canadian coal and 206,358 tons of imported coal.

Included in this month's output was 15,712 tons of breeze, of which 6,479 tons were sold. Eastern producers made 8,046 tons of breeze and sold 3,406 tons. Ontario made 6,681 tons and sold 2,015 tons while western ovens produced 985 tons and sold 1,058 tons.

In addition to the coke reported above, Canadian oil refineries produced 4,404 tons of petroleum coke. Total stocks of all coke in the hands of the producers on March 31, 1940, stood at 187,836 tons.

COKE STATISTICS FOR CANADA, BY MONTHS, 1940
(Exclusive of Petroleum Coke)

Month	Bituminous coal used in coke making			Coke made
	Canadian	Imported	TOTAL	
January	137,743	225,591	363,334	257,269
February	98,751	212,131	310,882	224,568
March	127,613	206,358	333,971	239,290
TOTAL	364,107	644,080	1,008,187	721,127

DISPOSITION OF COKE BY THE PRODUCERS

Month	U S E D		S O L D			Total dis- posed of (except exports)
	In coke or gas plants	In makers' smelters	Direct to consumer		To dealers for resale	
			For do- mestic use	For other uses		
January	27,688	106,000	38,815	37,224	107,078	324,514
February	25,210	84,573	33,328	40,656	88,655	275,935
March	25,301	95,690	30,036	39,253	74,850	267,016
TOTAL	78,199	286,263	102,179	117,153	270,583	867,465

1010635920

- 4 -

PRODUCTION IN CANADA, IMPORTS AND EXPORTS OF COKE, BY PROVINCES,
for MARCH, 1939 and 1940 (Exclusive of Petroleum Coke)

	Nova Scotia New Brunswick and Quebec		Ontario		Manitoba, Saskatchewan, Alberta and Br. Columbia		C A N A D A	
	March	Year to date	March	Year to date	March	Year to date	March	Year to date
PRODUCTION -								
1939	58,593	171,256	110,143	336,631	19,049	58,863	187,785	566,750
1940	88,677	246,357	129,901	411,814	20,712	62,956	239,290	721,127
IMPORTS -								
1939	936	1,183	20,034	62,088	635	4,461	21,605	67,732
1940	285	1,003	36,001	91,288	385	2,235	36,671	94,526
EXPORTS -								
1939	42	143	2,549	9,762	2,591	9,905
1940	46	212	1	8,296	1,646	6,105	1,693	14,613
AVAILABLE FOR CONSUMPTION -								
1939	59,487	172,296	130,177	398,719	17,135	53,562	206,799	624,577
1940	88,916	247,148	165,901	494,806	19,451	59,086	274,263	801,040

NOTE - Re IMPORTS - The imports of coal or coke, as shown in this report, represent the actual tonnages arriving at customs ports, while the report of the Trade of Canada shows clearances from customs for consumption in Canada.

PRODUCTION OF COKE IN CANADA, BY MONTHS, 1934 - 1940
(In thousands of short tons)

Month	1934	1935	1936	1937	1938	1939	1940
January	195	200	212	218	224	202	257
February	169	181	198	198	199	177	225
March	192	198	202	221	218	188	239
THREE MONTHS ...	556	579	612	637	641	567	721
April	186	180	190	214	208	183	
May	185	185	200	218	208	185	
June	179	180	199	210	192	188	
July	184	176	193	212	183	189	
August	189	175	191	214	182	191	
September	188	180	189	208	184	186	
October	204	205	212	218	184	227	
November	199	206	208	217	180	229	
December	173	192	218	222	190	243	
TOTAL FOR YEAR..	2,243	2,258	2,412	2,570	2,352	2,388	