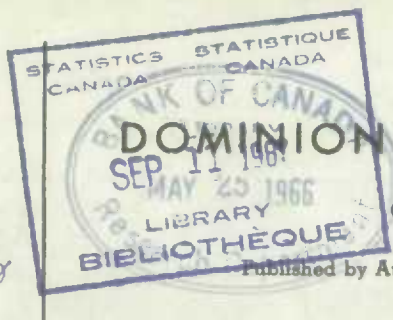


CATALOGUE No.

46-002

MONTHLY



DOMINION BUREAU OF STATISTICS

OTTAWA - CANADA

Published by Authority of the Minister of Trade and Commerce

Vol. 9, No. 2

Price: 10 cents, \$1.00 a year

SPECIFIED CHEMICALS

FEBRUARY 1966

TABLE 1. Production of Specified Chemicals

		February	
		1965	1966
Acetylene, in cylinders or for delivery by pipeline	M cu. ft.	19,656 ^r	20,476
Acid - Hydrochloric (muriatic), as 100%	lb.	5,427,782	6,950,850
Sulphuric, all grades including oleum, (as 100%)	ton	137,927	192,310
Ammonia, anhydrous, 100%	"	51,984	66,376
Ammonium nitrate (all grades)	"	44,189 ^r	48,358
Ammonium sulphate	"	25,691	20,838
Chlorine	"	40,307 ^r	50,997
Ethylene	lb.	46,996,680	49,927,932
Fertilizers, mixed	ton	105,547 ^r	115,801
Formaldehyde, 100% solids basis	lb.	8,624,839	8,918,117
Oxygen, gas and liquid, in cylinders or for delivery by pipeline	M cu. ft.	165,476 ^r	166,129
Sodium hydroxide (caustic soda) (as 100% NaOH)	ton	45,346	55,798
Synthetic resins (actually made as such):(1)			
Polyethylene type	lb.	16,476,331 ^r	16,524,252
Polystyrene type	"	5,027,182	7,223,255
Vinyl chloride type	"	6,042,165	6,580,833
Urea, all grades	ton	12,320	9,852

See page 2 for footnotes.

Industry Division

May 1966
6507-827



1010649486

TABLE 2. Production of Specified Chemicals

		Two months ended February	
		1965	1966
Acetylene, in cylinders or for delivery by pipeline	M cu. ft.	37,959 ^r	40,536
Acid - Hydrochloric (muriatic), as 100%	lb.	10,917,295	13,158,292
Sulphuric, all grades including oleum, (as 100%)	ton	296,507	404,574
Ammonia, anhydrous, 100%	"	112,385	143,293
Ammonium nitrate (all grades)	"	89,124 ^r	99,340
Ammonium sulphate	"	53,563	46,815
Chlorine	"	83,114 ^r	103,392
Ethylene	lb.	96,109,467	100,411,104
Fertilizers, mixed	ton	181,510 ^r	226,072
Formaldehyde, 100% solids basis	lb.	17,087,023	17,838,472
Oxygen, gas and liquid, in cylinders or for delivery by pipeline	M cu. ft.	333,575 ^r	340,813
Sodium hydroxide (caustic soda) (as 100% NaOH)	ton	92,985	114,354
Synthetic resins (actually made as such):(1)			
Polyethylene type	lb.	30,004,485 ^r	31,342,678
Polystyrene type	"	9,377,652	13,661,873
Vinyl chloride type	"	12,080,257	13,005,358
Urea, all grades	ton	28,394	28,595

Note: Data carried in this report reflect the experience of respondent firms listed on the January report. However, please note the following changes for the month under review:

NIL

(1) Factory shipments rather than production for these items. Figures include gross weight of forms derived from raw resin, as well as resin sold as such, reported by primary resin producers.

^r Revised figures.