

Published by Authority of the Honourable W. D. Euler, M.P.,
Minister of Trade and Commerce.

DOMINION BUREAU OF STATISTICS
TRANSPORTATION AND PUBLIC UTILITIES BRANCH
OTTAWA

Dominion Statistician, R.H. COATS, LL. D., F.R.S.C., F.S.S. (Hon.)

Chief, Transportation and Public Utilities Branch, G.S. Wrong, B.Sc.

Vol. XLV

CAR LOADINGS

No. 49

(Forty-ninth Week ended December 11th, 1937)

Car loadings for the week ended December 11th decreased to 47,187 cars from 50,047 cars for the corresponding week last year and 50,568 cars for the previous week. The index number dropped from 72.36 for the previous week to 71.81, the second lowest point reached this year. Compared with last year's loadings ore and pulpwood with increases of 711 and 77 cars respectively were the only commodities which were heavier. None of the decreases was unusually large, but they were all substantial. Lumber declined by 767 cars, other forest products by 737 cars, coal by 573 cars, live stock by 490 cars, coke by 262 cars, miscellaneous by 257 cars, merch andise by 228 cars, pulp and paper by 179 cars, and grain by 155 cars.

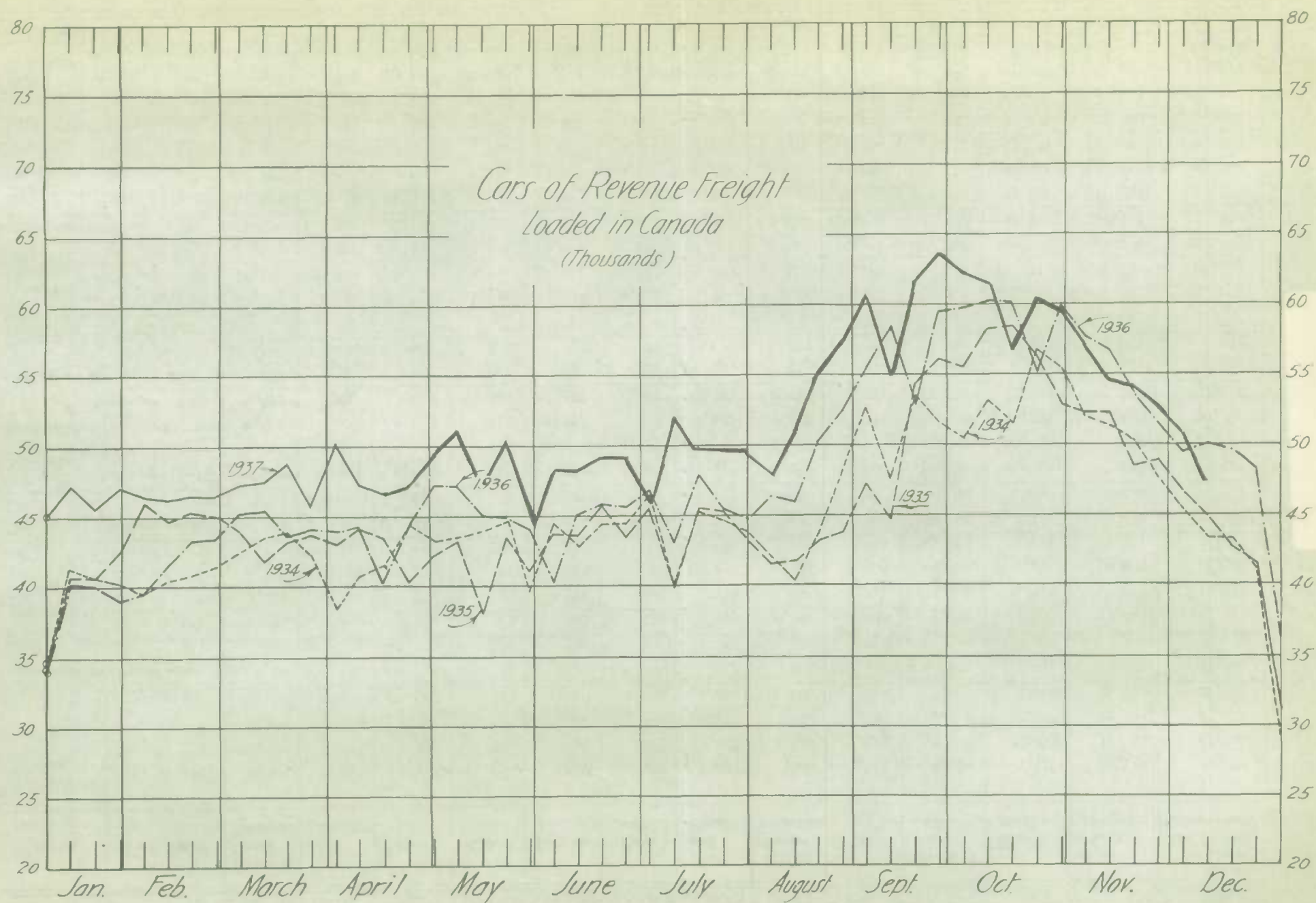
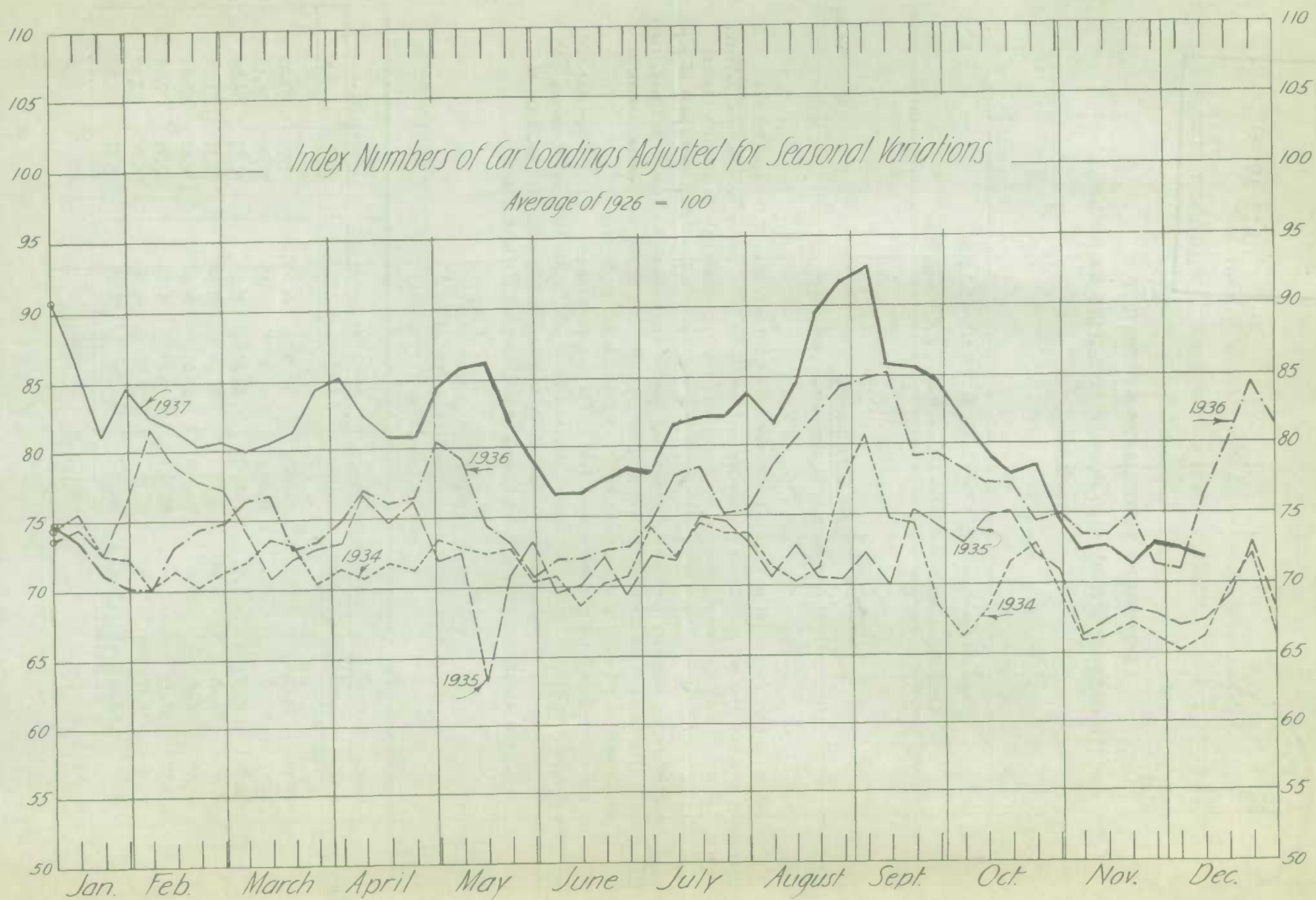
In the eastern division total loadings dropped from 33,830 cars for last year to 30,144 cars and the index number dropped from 84.97 to 75.72, the largest decreases being coal, 1,270 cars; miscellaneous, 864 cars; and lumber, 596 cars. In the western division loadings increased by 826 cars, or from 16,217 to 17,043 cars, coal being heavier by 697 cars, miscellaneous by 607 cars, and ore by 515 cars.

INDEX NUMBERS

(Adjusted for seasonal variations and holidays)

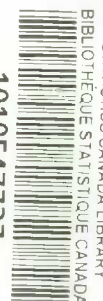
Average, 1926 = 100

Week	Western Division		Eastern Division		Total for Canada		Merchandise	
	1937	: 1936	1937	: 1936	1937	: 1936	1937	: 1936
42	78.75	73.53	77.33	73.60	78.65	74.46	77.99	77.23
43	72.87	74.93	76.31	75.44	74.60	74.93	77.09	78.11
44	69.98	69.92	74.41	76.60	72.28	73.54	76.78	76.08
45	67.84	66.03	74.98	79.14	72.62	73.38	73.33	77.54
46	67.58	66.93	74.21	81.57	71.06	74.96	74.22	82.52
47	65.35	58.79	79.06	80.95	72.84	71.26	77.05	77.60
48	63.70	56.09	78.46	81.23	72.36	70.96	78.78	77.92
49	66.01	62.81	75.72	84.97	71.81	76.16	75.57	76.94



Division	Week ended	Grain & Grain Products	Live Stock	Coal	Coke	Lumber	Pulp-wood	Pulp and Paper	Other Forest Products	Ore	Merchandise, L.C.L.	Miscellaneous	Total Cars Loaded	Total Cars Rec'd from Connections
EASTERN DIVISION	Dec. 11, 1937	2,785	653	3,315	514	814	842	2,270	1,004	1,008	9,363	7,576	30,144	22,100
	Dec. 4, "	2,795	683	3,330	540	992	737	2,233	1,317	1,163	9,842	9,069	32,701	23,864
	Nov. 27, "	2,948	767	3,794	525	1,241	749	2,147	786	1,236	9,748	9,448	33,389	29,214
	Dec. 5, 1936	2,953	642	4,585	784	1,410	1,151	2,296	1,226	798	9,545	8,440	33,830	26,178
Compared with prev. week		- 10	- 30	- 15	- 26	- 178	+ 105	+ 37	- 313	- 155	- 479	- 1,493	- 2,557	- 1,764
1936		- 168	+ 11	- 1,270	- 270	- 596	- 309	- 26	- 222	+ 210	- 182	- 864	- 3,686	- 4,078
WESTERN DIVISION	Dec. 11, 1937	1,736	890	3,521	89	406	422	345	1,057	1,496	3,161	3,920	17,043	1,417
	Dec. 4, "	2,269	1,100	3,075	75	584	319	349	1,245	1,216	3,240	4,395	17,867	1,333
	Nov. 27, "	3,114	1,143	2,879	90	615	224	274	1,276	1,505	3,305	4,846	19,271	1,546
	Dec. 5, 1936	1,723	1,391	2,824	81	577	36	498	1,572	995	3,207	3,313	16,217	1,434
Compared with prev. week		- 533	- 210	+ 446	+ 14	- 178	+ 103	- 4	- 188	+ 280	- 79	- 475	- 824	+ 84
1936		+ 13	- 501	+ 697	+ 8	- 171	+ 386	- 153	- 515	+ 501	- 46	+ 607	+ 826	- 17
TOTAL FOR CANADA	Dec. 11, 1937	4,521	1,543	6,836	603	1,220	1,264	2,615	2,061	2,504	12,524	11,496	47,187	23,517
	Dec. 4, "	5,064	1,783	6,405	615	1,576	1,056	2,582	2,562	2,379	13,082	13,464	50,568	25,197
	Nov. 27, "	6,062	1,910	6,673	615	1,856	973	2,421	2,062	2,741	13,053	14,294	52,660	30,760
	Dec. 5, 1936	4,676	2,033	7,409	865	1,987	1,187	2,794	2,798	1,793	12,752	11,753	50,047	27,612
Compared with prev. week		- 543	- 240	+ 431	- 12	- 356	+ 208	+ 33	- 501	+ 125	- 558	- 1,968	- 3,381	- 1,680
1936		- 155	- 490	- 573	- 262	- 767	+ 77	- 179	- 737	+ 711	- 228	- 257	- 2,860	- 4,095
CUMULATIVE TOTALS														
EASTERN DIVISION	Dec. 11, 1937	88,105	31,524	218,438	21,558	71,734	68,306	111,784	35,024	49,283	476,313	500,628	1,672,697	1,236,170
	Dec. 5, 1936	99,575	28,983	240,637	23,386	58,581	52,027	97,896	31,514	35,193	449,586	391,726	1,509,104	1,100,235
	Dec. 7, 1935	80,646	23,500	215,218	22,645	52,649	61,488	86,765	36,102	30,088	444,289	369,545	1,422,935	989,445
1937 Compared with 1936		-11,470	+ 2,541	-22,199	- 1,828	+13,153	+16,279	+13,888	+ 3,510	+14,090	+ 26,727	+108,902	+ 163,593	+ 135,935
WESTERN DIVISION	Dec. 11, 1937	162,637	66,174	86,710	2,187	30,663	8,017	15,269	60,170	59,654	160,906	179,518	831,905	65,207
	Dec. 5, 1936	227,523	58,843	87,037	1,875	27,457	6,979	11,164	58,041	44,825	161,330	150,081	835,155	53,342
	Dec. 7, 1935	220,900	51,110	82,907	1,798	25,038	5,740	8,221	62,077	40,534	158,133	157,173	813,631	56,828
1937 Compared with 1936		-64,886	+ 7,331	- 327	+ 312	+ 3,206	+ 1,038	+ 4,105	+ 2,129	+14,829	- 424	+ 29,437	- 3,250	+ 11,865
TOTAL FOR CANADA	Dec. 11, 1937	250,742	97,698	305,148	23,745	102,397	76,323	127,053	95,194	108,937	637,219	680,146	2,504,602	1,301,377
	Dec. 5, 1936	327,098	87,826	327,674	25,261	86,038	59,006	109,060	89,555	80,018	610,916	541,807	2,344,259	1,153,577
	Dec. 7, 1935	301,546	74,610	298,125	24,443	77,687	67,228	94,986	98,179	70,622	602,422	526,718	2,236,566	1,046,273
1937 Compared with 1936		-76,356	+ 9,872	-22,526	- 1,516	+16,359	+17,317	+17,993	+ 5,639	+28,919	+ 26,303	+138,339	+ 160,343	+ 147,800

1010547737

STATISTICS CANADA LIBRARY
BIBLIOTHEQUE STATISTIQUE CANADA