

1B552  
001  
Jan '70

CATALOGUE No.

52-001

MONTHLY

# DOMINION BUREAU OF STATISTICS

OTTAWA - CANADA

Published by Authority of the Minister of Industry, Trade and Commerce

Vol. 47, No. 1

Price: 20 cents, \$2.00 a year

## RAILWAY CARLOADINGS

JANUARY 1970

### NOTE

Frequency of publication changed  
to monthly commencing with this issue.

This is the first edition of the new expanded monthly Railway Carloadings publication. Commencing with this issue a 70-commodity breakdown will be used in place of the old 48-commodity split used for the past twelve years. Commodities shown separately for the first time include Lead and Zinc Ores, Plywood, Potash, Sulphur, Liquified Petroleum Gas, Motor Vehicle Parts and Container Traffic among others. Traffic received from connections is now split between receipts from U.S. Connections and receipts from Canadian Connections, thus permitting a separation of traffic loaded outside Canada from that already included under Canadian loadings in the body of the statement. Piggyback traffic too is covered in greater detail.

In addition to providing a finer breakdown, the new Railway Carloadings report, for the first time, shows tons as well as cars for all categories. This should increase the usefulness of this publication by providing a stable measure of traffic volume which will not be affected by the introduction of larger equipment. On the other hand the carload will continue to provide a useful measure of transportation service performed, especially where shifts in the proportions of high-rated and low-rated traffic occur. Thus a 20-ton load of automobiles might well bring in the same revenue as an 80-ton load of iron ore. Yet a shift in the composition of traffic towards iron ore and away from automobiles might result in greater tonnage without a corresponding increase in carloads nor in revenues to the railways. Therefore it is suggested, an analysis of both tonnages and carloads will provide a more comprehensive picture of railway freight traffic volumes than will either of these measures taken alone.

\* \* \* \* \*

Total carloads of revenue freight loaded by railroads in Canada during the Month of January 1970 totalled 280,252, up 0.4 per cent from 279,061 in January 1969. However tonnage loaded increased by 5.9 per cent to 15,015,550 from 14,183,333 a year earlier, as the number of heavily loaded cars of grain rose substantially. This is also reflected in the regional figures as Eastern loadings declined 6.8 per cent while Western loadings rose 15.6 per cent.

The major increases by commodity were as follows: Wheat-cars up 56.1 per cent to 20,639 and tons up 57.6 per cent to 1,199,016; Other Grain-cars up 68.5 per cent to 8,943 and tons up 74.5 per cent to 490,843; Sulphur-cars up 80.1 per cent to 4,172 and tons up 78.0 per cent to 345,609; and Gypsum-cars up 49.5 per cent to 3,042 and tons up 48.6 per cent to 272,482.

The most notable decreases were shown by: Non-Ferrous Metals, n.e.s.-cars down 52.1 per cent to 1,798 and tons down 49.4 per cent to 116,211; Packaging containers-cars down 32.0 per cent to 2,551 and tons down 17.7 per cent to 35,678; and Coal-cars down 29.6 per cent to 8,952 and tons down 27.5 per cent to 566,860.

The increase of 5.9 per cent in tonnage of carload traffic loaded was partly offset by decreases in non-carload (small shipments of less than one carload) traffic loaded and in tonnage of receipts from United States connections, so that total tonnage of freight handled by railways in Canada showed an increase of 4.5 per cent to 17,171,431.

Piggyback traffic dipped by 2.6 per cent as an increase in container shipments was more than offset by a decrease in loadings of trailers.

Transportation and Public Utilities Division  
Transportation Section

May - 1970 - Mai  
8702-501

TABLE 1. Revenue Freight Loaded on Lines in Canada during the Month of  
January 1970

No.	Commodity	Total			
		January 1970		January 1969	
		Cars	Tons	Cars	Tons
1	Wheat .....	20,639	1,199,016	13,224	760,724
2	Other grain .....	8,943	490,843	5,307	281,353
3	Grain products .....	4,885	178,436	5,621	189,645
4	Potatoes .....	2,384	69,925	2,678	74,515
5	Other vegetables, fresh and frozen .....	326	8,473	499	13,401
6	Fruits, fresh and frozen .....	463	9,241	343	6,893
7	Other agricultural products .....	1,934	76,017	1,640	56,767
8	Livestock .....	955	14,513	1,183	17,210
9	Meats, fresh and frozen .....	1,291	25,127	1,374	22,629
10	Other meats, fish and packing house products (edible) .....	534	13,864	582	10,435
11	Other animal products .....	575	18,377	615	16,845
12	Coal .....	8,952	566,860	12,708	781,558
13	Potash .....	5,374	472,832	4,042	350,212
14	Sulphur .....	4,172	345,609	2,316	194,130
15	Iron ore and concentrates (incl. pellets) .....	35,453	3,122,450	35,276	2,996,674
16	Copper ores and concentrates .....	2,187	146,570	2,055	136,612
17	Copper-nickel ores and concentrates .....	6,687	476,818	8,018	594,469
18	Lead and zinc ores and concentrates .....	3,192	212,785	3,283	223,905
19	Other ores and concentrates .....	1,208	73,360	889	53,288
20	Alumina, bauxite and other aluminum ores .....	1,903	155,222	1,749	146,775
21	Sand, gravel and crushed stone .....	3,389	245,836	3,155	224,536
22	Gypsum, crude .....	3,042	272,482	2,035	183,373
23	Cement, natural and portland .....	806	59,609	1,258	93,509
24	Asbestos, crude .....	1,065	42,890	1,763	76,391
25	Phosphate rock .....	402	38,851	509	49,757
26	Salt .....	2,111	151,596	1,889	122,263
27	Other mine products .....	2,593	150,872	3,046	166,851
28	Lumber .....	11,400	448,745	12,318	472,545
29	Plywood .....	2,322	89,451	2,235	82,913
30	Pulpwood .....	7,187	385,710	7,733	396,796
31	Pulpwood chips .....	8,635	400,979	7,428	329,200
32	Logs, poles and other forest products .....	7,960	301,871	7,707	307,119
33	Coke .....	1,958	103,179	2,003	108,254
34	Iron and steel - Primary and manufactured .....	8,190	502,772	7,187	405,406
35	Aluminum - Primary and manufactured .....	802	45,117	960	49,396
36	Copper - Primary and manufactured .....	973	50,849	1,182	61,390
37	Non-ferrous metals, n.e.s. - Primary and manufactured .....	1,798	116,211	3,755	229,712
38	Scrap and waste metals .....	2,341	112,355	2,622	127,995
39	Machinery and parts .....	909	28,309	1,278	35,898
40	Passenger automobiles .....	3,984	91,186	4,326	95,248
41	Freight automobiles .....	1,797	32,095	1,675	27,949
42	Agricultural implements and parts .....	792	12,260	895	13,202
43	Other motor vehicles .....	204	3,146	196	4,321
44	Vehicle parts .....	3,848	85,770	3,929	94,470
45	Gasoline .....	4,530	216,747	4,745	213,893
46	Fuel oil .....	12,485	572,901	13,559	570,934
47	Liquidified petroleum gas .....	3,427	231,638	2,994	196,070
48	Other refined petroleum products .....	1,533	58,406	1,631	58,829
49	Sulphuric acid .....	830	71,061	840	72,824
50	Salt cake (sodium sulphate) .....	465	42,813	446	40,127
51	Gases other than petroleum .....	1,085	61,277	939	50,891
52	Other chemicals and acids .....	3,623	216,794	3,364	187,070
53	Woodpulp .....	6,744	404,390	6,767	397,065
54	Newsprint paper .....	10,412	499,500	10,425	464,472
55	Paperboard, pulpboard and fibreboard .....	1,717	60,985	1,511	53,961
56	Paper other than newsprint .....	2,747	75,373	2,605	67,417
57	Packaging containers (not C.O.F.C. containers) .....	2,551	35,678	3,751	43,360
58	Building materials .....	3,753	137,070	4,234	139,881
59	Sugar .....	703	36,771	900	46,431
60	Beverages .....	1,307	40,718	1,490	43,416
61	Dairy and other food products .....	3,323	95,120	3,748	104,542
62	Animal and poultry feed .....	2,101	84,979	2,509	87,405
63	Vegetable oils .....	366	14,153	300	11,095
64	Plastic and cellulose products .....	852	19,679	678	14,054
65	Fertilizers (excluding potash) .....	2,186	129,602	2,696	149,221
66	Manufactured and miscellaneous goods .....	8,469	208,258	8,963	225,806
67	Pool car traffic(1) .....	6,117	90,465	6,124	84,666
68	C.O.F.C. - Container-on-flat-car traffic (piggyback)(2) .....	493	13,997	78	1,252
69	T.O.F.C. - Trailer-on-flat-car traffic (piggyback)(2) .....	7,868	148,696	9,278	172,117
A	Total carload traffic loaded .....	280,252	15,015,550	279,061	14,183,333
70	Non-carload (l.c.l., express, etc.) traffic loaded .....	...	83,421	...	106,625
B	Receipts from United States connections .....	47,671	2,072,460	47,612	2,148,498
C	Total traffic carried (excluding duplications) .....	...	17,171,431	...	16,438,456
D	Interchanges between Canadian carriers .....	51,351	3,145,863	50,370	3,008,727
E	Total container-on-flat-car traffic loaded(3) .....	3,699	78,444	2,271	36,091
F	Total trailer-on-flat-car traffic loaded(3) .....	13,148	236,772	15,034	263,571
G	C.O.F.C. and T.O.F.C. included in "Receipts from U.S. Connections" .....	1,311	41,246	1,017	28,566

(1) Freight forwarder and shipper association traffic.

(2) Excludes plan 11 piggyback traffic assigned directly to codes 1-67 and 70 above.



TABLE 1. Revenue Freight Loaded on Lines in Canada during the Month of January 1970

Eastern Division				Western Division				No.
January 1970		January 1969		January 1970		January 1969		
Cars	Tons	Cars	Tons	Cars	Tons	Cars	Tons	
3,362	197,686	3,232	184,882	17,277	1,001,330	9,992	575,842	1
1,791	106,062	1,642	86,853	7,152	384,781	3,665	194,500	2
2,107	71,142	3,045	95,861	2,778	107,294	2,576	93,784	3
2,367	69,446	2,645	73,775	17	479	33	740	4
308	7,567	472	12,694	18	906	27	707	5
113	2,510	88	2,041	350	6,731	255	4,852	6
975	34,894	1,032	31,707	959	41,123	608	25,060	7
88	1,223	64	690	867	13,290	1,119	16,520	8
169	4,394	120	1,792	1,122	20,733	1,254	20,837	9
402	11,003	397	6,475	132	2,861	185	3,960	10
404	12,416	345	9,299	171	5,961	270	7,546	11
4,658	294,753	7,946	509,241	4,294	272,107	4,762	272,317	12
15	975	7	560	5,359	471,857	4,035	349,652	13
29	2,527	11	854	4,143	343,082	2,305	193,276	14
34,226	3,036,560	33,679	2,885,498	1,227	85,890	1,597	111,176	15
1,077	80,362	1,133	82,996	1,110	66,208	922	53,616	16
6,235	452,873	7,651	575,377	452	23,945	367	19,092	17
1,314	97,089	2,045	134,547	1,878	115,696	1,238	89,358	18
1,178	71,378	833	49,428	30	1,982	56	3,860	19
1,903	155,222	1,749	146,775	-	-	-	-	2A
2,750	197,560	2,548	178,931	639	48,276	607	45,605	20
2,681	245,469	1,836	168,476	361	27,013	199	14,897	21
532	41,242	1,066	80,698	274	18,367	192	12,811	22
547	28,253	1,287	62,730	518	14,637	476	13,661	23
5	254	-	-	397	38,597	509	49,757	24
1,880	136,801	1,670	109,646	231	14,795	219	12,617	25
1,959	123,162	1,979	124,959	634	27,710	1,067	41,892	26
2,651	111,276	3,331	134,316	8,749	337,469	8,987	338,229	27
781	27,789	741	24,973	1,541	61,662	1,494	57,940	28
4,680	246,866	4,557	228,893	2,507	138,844	3,176	167,903	29
5,315	195,170	4,981	179,480	3,320	205,809	2,447	149,720	30
3,056	105,334	3,039	109,842	4,904	196,537	4,668	197,277	31
1,418	75,471	1,511	82,199	540	27,708	492	26,055	32
7,262	453,985	6,210	361,769	928	48,787	977	43,637	33
637	36,291	803	41,537	165	8,826	157	7,859	34
893	46,068	1,068	53,728	80	4,781	114	7,662	35
1,092	69,394	3,083	186,582	706	46,817	672	43,130	36
1,716	80,242	1,877	91,471	625	32,113	745	36,524	37
664	20,500	1,062	28,670	245	7,809	216	7,228	38
3,856	89,645	4,241	94,124	128	1,541	85	1,124	39
1,703	30,500	1,668	27,896	94	1,595	7	53	40
770	11,813	833	11,609	22	447	62	1,593	41
189	2,755	180	4,010	15	391	16	311	42
3,844	85,712	3,924	94,339	4	58	5	131	43
2,368	113,628	2,729	123,730	2,162	103,119	2,016	90,163	44
9,842	449,936	10,340	439,882	2,643	122,965	3,219	131,052	45
441	21,676	352	15,363	2,986	209,962	2,642	180,707	46
1,249	48,269	1,228	44,562	284	10,137	403	14,267	47
749	65,581	783	68,659	81	5,480	57	4,165	48
13	960	20	1,179	452	41,853	426	38,948	49
813	44,340	659	35,418	272	16,937	280	15,473	50
2,680	148,908	2,692	142,778	943	67,886	672	44,292	51
3,639	217,612	3,705	214,998	3,105	186,778	3,062	182,067	52
8,239	373,638	8,185	353,124	2,173	125,862	2,240	111,348	53
1,416	48,397	1,188	40,638	301	12,588	323	13,323	54
1,828	43,851	1,761	38,876	919	31,522	844	28,541	55
2,123	29,421	3,408	38,844	428	6,257	343	4,516	56
3,118	114,502	3,348	114,961	635	22,568	886	24,920	57
556	31,814	728	40,366	147	4,957	172	6,065	58
839	27,972	1,000	30,170	468	12,746	490	13,246	59
2,640	74,410	3,172	86,798	683	20,710	576	17,744	60
1,789	70,440	2,107	70,236	312	14,539	402	17,169	62
249	8,424	204	6,659	117	5,729	96	4,436	63
709	13,441	556	9,157	143	6,238	122	4,897	64
1,234	68,073	1,474	68,333	952	61,529	1,222	80,888	65
6,622	153,020	7,161	173,462	1,847	55,238	1,802	52,344	66
4,385	68,981	4,561	66,285	1,732	21,484	1,563	18,381	67
482	13,893	77	1,216	11	104	1	16	68
4,914	93,404	6,269	122,723	2,954	55,292	3,009	49,394	69
176,539	9,516,225	189,338	9,720,660	103,713	5,499,325	89,723	4,462,673	A
...	59,587	...	79,375	...	23,834	...	27,250	70
41,728	1,822,466	42,493	1,942,872	5,943	249,994	5,119	205,626	B
...	11,398,278	...	11,742,907	...	5,773,153	...	4,695,549	C
39,592	2,582,696	39,578	2,506,650	11,759	563,167	10,792	502,077	D
2,320	44,496	1,621	22,429	1,379	33,948	650	13,622	E
8,961	155,144	11,271	206,837	4,187	81,628	3,763	56,734	F
873	37,693	631	25,212	438	3,553	386	3,354	G

(3) Includes all C.O.F.C. or T.O.F.C. traffic loaded under all plans.

... Figures not appropriate or not applicable.

Note: No. 61 intentionally omitted.



1010550246

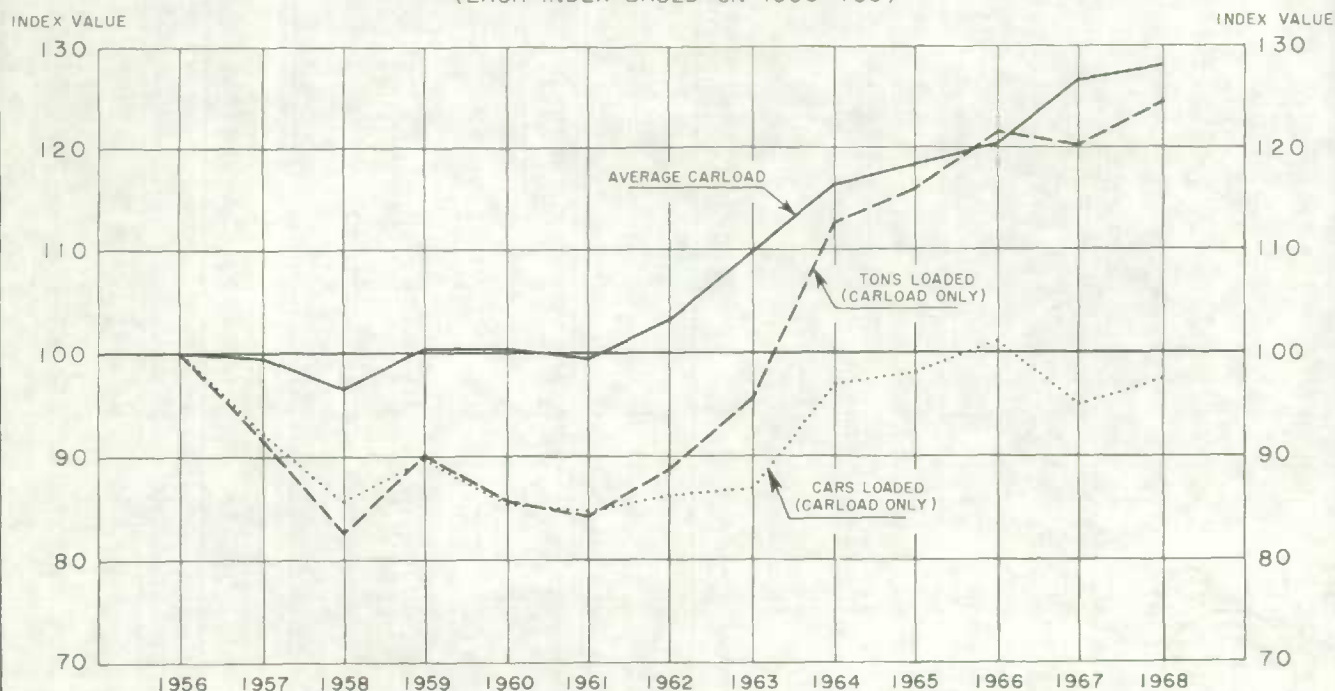
TABLE 2. Revenue Freight Loaded in Canada  
(Carload only)

	1970				1969 <sup>r</sup>				Base year 1961(1)
	Eastern Division	Western Division	Canada	Index 1961=100(1)	Eastern Division	Western Division	Canada	Index 1961=100(1)	
cars									'000 cars
January .....	176,539	103,713	280,252	123.5	189,338	89,723	279,061	122.9	227.0
February .....									213.4
March .....									233.4
April .....									230.9
May .....									281.8
June .....									287.5
July .....									282.3
August .....									284.0
September .....									284.8
October .....									296.0
November .....									267.3
December .....									226.7
Total months									
tons									'000,000 tons
January .....	9,516,225	5,499,325	15,015,550	179.6	9,720,660	4,462,673	14,183,333	169.7	8.36
February .....									8.18
March .....									8.58
April .....									8.89
May .....									11.68
June .....									12.38
July .....									12.45
August .....									12.62
September .....									12.73
October .....									13.38
November .....									10.75
December .....									9.45
Total months									

(1) Data for the Base Year 1961 has been redistributed over the 12 months by using the seasonal distribution of all traffic for the 5 years 1959 to 1963 inclusive. This has been done to eliminate any monthly fluctuations due to unusual factors such as major strikes, and produce a "normal" seasonal distribution of 1961 data.

r Revised figures.

### THE RAILWAY CARLOAD IN CANADA: 1956-1968 (EACH INDEX BASED ON 1956=100)



THE ABOVE INCREASE IN AVERAGE CARLOAD REFLECTS BOTH LARGER EQUIPMENT AND CHANGES IN TRAFFIC DISTRIBUTION BETWEEN COMMODITIES. THESE FACTORS WILL BE DEALT WITH IN SUBSEQUENT ISSUES.