

52-009  
CJ

*mbik*



# RAILWAY FREIGHT TRAFFIC

JULY, 1958



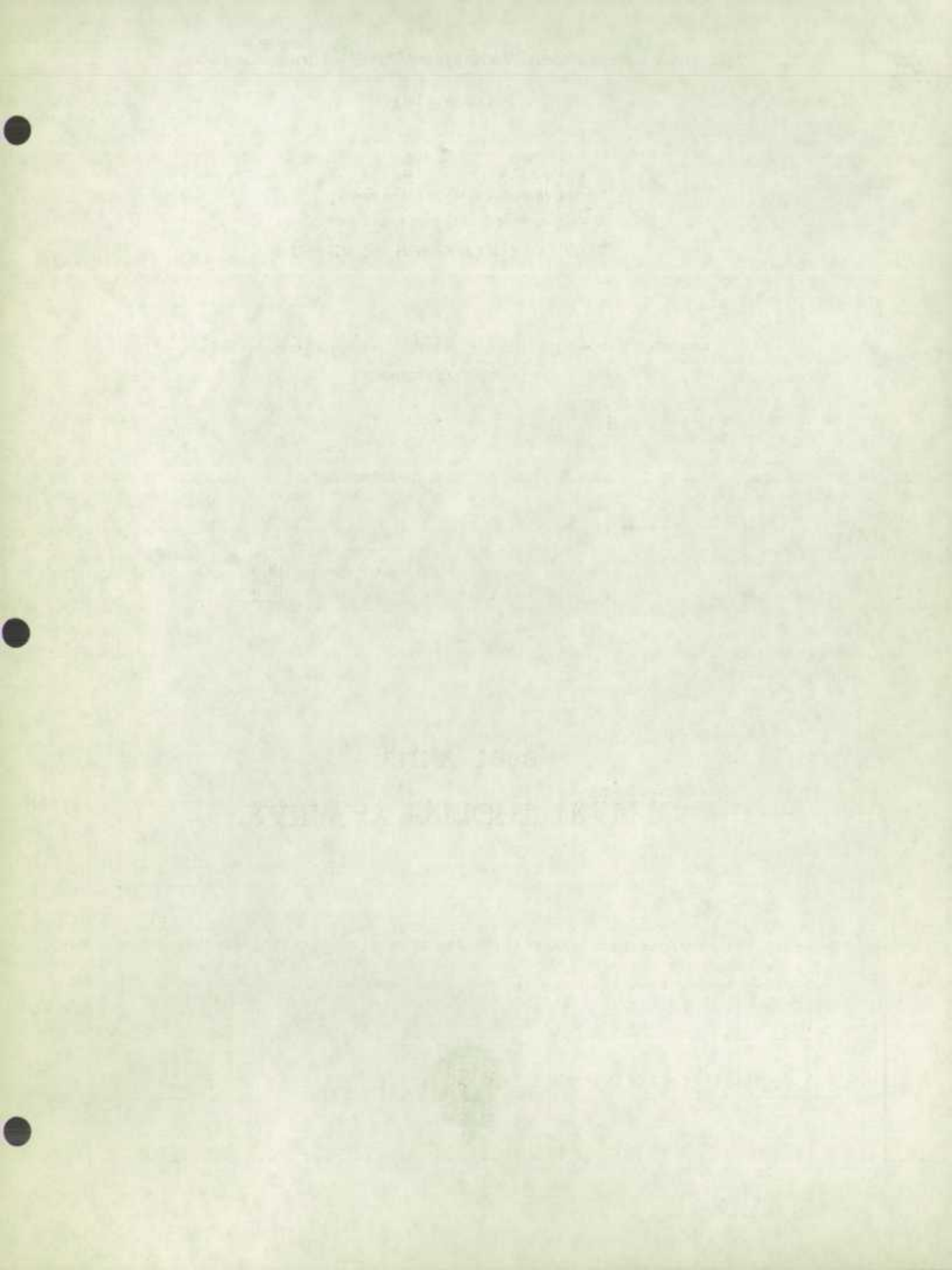
*Published by Authority of*  
The Honourable Gordon Churchill, Minister of Trade and Commerce

**DOMINION BUREAU OF STATISTICS**  
**Public Finance and Transportation Division**  
**Transportation and Public Utilities Section**

8504-507-78

Price \$2.00 per year

Vol. 36, No. 7



## RAILWAY FREIGHT TRAFFIC

July, 1958

Presented in this report are railway freight traffic statistics of class 1 and 2 railways operating in Canada. The British Columbia Electric Railway, which reported for the first time in January 1958, is not included in the comparable 1957 data. As of January 1, 1958 the Hudson Bay Railway was absorbed into the Canadian National System.

During the month of July, revenue freight loaded on lines in Canada or received from United States rail connections totalled 14,679,308 tons, a decline of 13.8 per cent from 17,035,828 a year earlier. Of the July 1958 total, 12,837,151 tons (14,503,132 in 1957) were loaded in Canada, (including imports at lake or ocean ports); 838,495 (1,264,347) were received from United States rail connections destined to points in Canada; and 1,003,662 tons (1,268,349) were intransit movements (United States to United States through Canada).

Freight loaded in Canada, as divided among the main commodity groups, showed the following tonnages: products of agriculture, 2,318,906 (as against 2,051,301 in 1957); animals and products, 88,661 (97,432); products of mines, 6,163,279 (7,406,289); products of forests, 1,238,450 (1,530,393); and manufactures and miscellaneous 2,913,461 (3,269,665). Less than carload freight declined to 114,394 tons from 148,052.

A provincial breakdown of freight loaded in Canada indicated declines in eight of the ten provinces. The greatest of these occurred in Newfoundland and Nova Scotia where the volume of freight loaded dropped 28.1 per cent to 195,272 tons (271,695) and 728,850 (1,013,076), respectively. Quebec with the third largest decline fell 18.6 per cent to 3,792,136 (4,655,891). Loadings in Prince Edward Island rose 44.6 per cent to 15,180 tons (10,500) and tonnage originating in Saskatchewan increased to 1,545,077 (1,225,649).

During the month under review, a total of 14,764,718 tons of freight terminated on railway lines in Canada of which 12,613,019 tons were unloaded at points in Canada (including deliveries to water carriers) and 2,151,699 tons were delivered to United States rail connections. By comparison, 17,203,279 tons terminated in Canada in July, 1957 of which 14,654,813 tons were unloaded at Canadian points and 2,548,466 tons were delivered to the United States.

During the first seven months of 1958, a total of 86,113,018 tons of freight was loaded in Canada (including water-borne imports) or was received from United States rail connections. This compares with 96,622,941 tons in the similar period of 1957.

REVENUE FREIGHT CARRIED BY RAILWAYS IN CANADA

July, 1958

No.	COMMODITIES	Originated or loaded (including imports at lake or ocean ports)	Received from U.S. (rail)		Total freight traffic (excluding duplications)				Terminated or unloaded (including exports at lake or ocean ports)	Delivered to U.S. rail connections
			Destined to Canadian points	Destined to U.S. points	Current month		Year-to-date			
					1958	1957	1958	1957		
<b>GROUP 1</b>					TONS (2,000 lb.)					
<b>Products of Agriculture (C.L.)</b>										
1.	Wheat .....	1,485,988	98	41,814	1,527,900	1,395,377	9,193,715	7,836,132	1,479,996	43,632
3.	Corn .....	28,897	2,953	37,073	68,923	65,860	553,682	726,834	13,042	55,536
5.	Sorghum grains .....	77	70	586	733	690	14,514	2,639	147	586
7.	Oats .....	187,333	69	3,357	190,759	134,738	807,564	842,735	172,020	9,685
9.	Barley .....	264,217	-	3,487	267,704	172,267	1,915,032	1,372,936	259,794	4,313
10.	Rye .....	32,709	-	77	32,786	22,945	155,928	104,437	33,971	77
11.	Rice .....	1,164	693	427	2,284	3,263	14,585	25,433	1,246	427
13.	Grain, N.O.S. ....	902	340	408	1,650	1,060	21,362	23,520	1,201	428
15.	Flour, wheat .....	91,762	2,427	27,782	121,971	121,020	952,890	794,332	84,268	35,852
17.	Meal, corn .....	124	182	509	815	381	4,660	4,506	295	509
19.	Flour, edible, N.O.S. ....	1,429	730	4,758	6,917	7,575	84,818	126,310	2,809	6,003
21.	Cereal food preparations, N.D.S. ....	6,310	667	13,149	20,126	18,808	134,333	139,118	6,204	13,479
23.	Mill products, N.O.S. ....	97,508	1,231	26,201	124,940	133,360	895,549	907,013	84,647	41,326
25.	Hay .....	2,935	14	25	2,974	2,281	33,828	31,207	2,876	102
27.	Straw .....	61	48	23	132	39	1,072	2,861	109	23
29.	Tobacco, unmanufactured .....	4,164	182	-	4,346	3,306	36,786	44,241	4,083	210
31.	Tobacco siftings, sweepings, and waste .....	70	-	-	70	44	419	1,294	69	-
33.	Cotton in bales .....	175	6,076	1,680	7,931	9,410	68,801	67,473	6,035	1,679
35.	Cotton linters, noils, and regins .....	491	1,343	427	2,261	3,074	20,701	23,057	1,731	532
37.	Cottonseed .....	-	-	-	-	-	387	214	-	-
39.	Cottonseed oil cake and meal .....	172	30	40	242	338	1,917	2,007	202	40
41.	Cottonseed hulls and bran .....	28	61	29	118	117	302	756	228	29
43.	Soybeans .....	1,955	40	471	2,466	4,142	25,047	32,106	1,694	518
45.	Soybean oil cake and meal .....	18,075	8,670	21,162	47,907	55,047	344,622	427,853	26,993	21,211
47.	Vegetable and nut oil cake and meal, N.O.S. ....	2,710	362	932	4,004	4,729	31,101	33,064	2,036	2,073
49.	Apples, fresh, not frozen .....	1,091	507	-	1,598	1,390	76,889	33,982	1,579	12
51.	Bananas, fresh .....	129	12,326	1,389	13,844	17,051	100,513	101,477	12,495	1,400
53.	Berries, fresh, not frozen .....	227	35	-	262	130	683	820	386	-
55.	Cantaloupes and melons, N.O.S. ....	51	3,838	1,811	5,700	4,958	12,730	11,930	3,417	1,811
57.	Grapes, fresh .....	-	2,733	76	2,809	2,643	15,340	9,415	2,612	76
59.	Lemons, limes, and citrus fruits, N.O.S. ....	37	1,588	241	1,866	4,936	8,512	13,823	1,597	241
61.	Oranges and grapefruit .....	81	13,141	601	13,823	22,291	123,355	147,921	13,173	600
63.	Peaches, fresh, not frozen .....	310	3,733	104	4,147	2,105	5,233	2,492	3,987	104
65.	Pears, fresh, not frozen .....	28	542	92	662	3,619	4,559	3,619	555	92
67.	Watermelons .....	29	10,940	64	11,033	8,152	19,663	17,662	11,300	51
69.	Fruits, fresh, N.O.S., not frozen .....	4,756	2,128	156	7,040	7,106	17,069	16,201	6,686	307
71.	Fruits, dried, dehydrated, and evaporated, N.O.S. ....	668	881	269	1,818	2,222	14,538	15,840	1,549	269
73.	Fruits and berries, fresh, frozen .....	633	1,832	591	3,056	3,557	15,653	13,592	1,173	1,865
75.	Coffee .....	475	313	3,613	4,401	5,091	35,494	39,312	746	3,654
77.	Cabbage .....	956	288	31	1,275	2,528	23,531	22,295	1,290	43
79.	Celery .....	-	1,647	364	2,011	3,982	29,849	34,769	1,647	364
81.	Lettuce .....	83	988	134	1,205	4,239	58,693	64,089	1,092	134
83.	Onions, dry .....	486	2,831	1,126	4,443	4,349	28,398	25,659	3,286	1,126
85.	Potatoes, other than sweet .....	14,722	7,133	3,579	25,434	25,973	601,791	477,450	22,134	3,798
87.	Tomatoes .....	1,254	4,735	44	6,033	6,130	45,555	50,610	6,061	57
89.	Vegetables, fresh, N.O.S., not frozen .....	2,511	7,349	531	10,391	14,547	119,834	127,161	10,029	595
91.	Beans and peas, dried .....	1,769	120	3,046	4,935	15,330	56,056	120,675	1,804	3,099
93.	Vegetables, dried, dehydrated, and evaporated, N.O.S. ....	-	66	70	136	446	2,436	2,652	66	70
95.	Vegetables, fresh, frozen .....	125	104	2,362	2,591	3,700	25,324	25,523	267	2,362
97.	Peanuts .....	77	670	-	747	1,135	8,387	14,245	686	-
101.	Sugar beets .....	85	-	-	85	-	51,168	37,091	85	-
103.	Malt, N.O.S. ....	17,870	-	13,186	31,056	30,876	201,893	219,627	13,395	17,662
105.	Flaxseed .....	38,367	40	99	38,506	58,823	277,134	612,109	36,918	1,415
107.	Seeds, N.O.S. ....	1,828	90	352	2,270	1,816	97,158	88,009	1,471	826
199.	Products of agriculture, N.O.S. ....	1,002	2,650	Cr. 385	3,267	7,977	50,970	63,785	2,999	Cr. 312
(900)	<b>TOTAL PRODUCTS OF AGRICULTURE</b> .....	<b>2,318,906</b>	<b>108,293</b>	<b>219,204</b>	<b>2,646,403</b>	<b>2,424,350</b>	<b>17,441,083</b>	<b>15,986,853</b>	<b>2,350,181</b>	<b>279,991</b>

GROUP II										
Animals and Products (C.L.)										
201.	Horses, mules, ponies and asses .....	1,645	-	-	1,645	1,749	9,534	10,134	1,491	215
203.	Cattle and calves, single-deck .....	27,424	46	79	27,549	32,864	198,197	185,284	22,259	5,591
205.	Calves, double-deck .....	36	-	15	51	226	1,102	749	25	26
207.	Sheep and goats, single-deck .....	701	13	-	714	563	4,330	4,871	714	-
209.	Sheep and goats, double-deck .....	25	10	-	35	170	1,043	2,362	35	-
211.	Swine, single-deck .....	12,396	-	-	12,396	11,108	95,773	86,871	12,970	10
213.	Swine, double-deck .....	18	-	147	165	827	4,449	9,731	18	147
215.	Meats, fresh, N.O.S. ....	15,277	85	11,572	26,934	41,865	212,729	262,014	14,155	13,422
217.	Meats, cooked, cured, dried, and smoked .....	2,458	201	1,314	3,973	4,543	25,405	33,300	2,291	1,660
219.	Packing house products, edible, N.O.S. ....	7,333	281	495	8,109	9,488	60,675	81,555	7,045	530
221.	Margarine, N.O.S. ....	1,070	-	31	1,101	1,279	9,444	7,669	1,076	31
223.	Poultry, live .....	30	-	-	30	12	111	216	30	-
225.	Poultry, dressed and frozen .....	255	-	659	914	2,306	8,076	9,265	255	659
227.	Eggs .....	711	-	-	711	892	6,837	4,829	711	-
229.	Butter .....	2,060	-	2,453	4,513	6,229	33,546	38,368	2,088	2,453
231.	Cheese .....	1,191	-	1,831	3,022	6,060	27,802	42,861	1,190	1,831
233.	Dairy products, N.O.S. ....	-	-	-	-	138	467	1,150	-	-
235.	Wool and mohair in grease .....	298	40	3,024	3,362	5,817	14,999	22,723	338	3,024
237.	Wool and mohair, N.O.S. ....	1,171	400	69	1,640	1,422	7,668	8,885	1,599	101
239.	Hides, skins, and pelts, N.O.S. ....	2,534	1,120	4,755	8,409	16,018	89,523	106,071	2,335	5,799
241.	Leather, N.O.S. ....	55	-	454	509	1,303	4,583	6,207	55	454
243.	Sea food, N.O.S. ....	5,793	76	49	5,918	7,129	36,342	42,466	3,827	2,086
245.	Fish and sea animal oil .....	2,088	132	603	2,823	2,310	19,956	26,072	2,025	690
299.	Animals and products, N.O.S. ....	4,092	925	1,804	6,821	7,972	55,349	73,957	3,988	2,826
(910)	<b>TOTAL ANIMALS AND PRODUCTS</b> .....	<b>88,661</b>	<b>3,329</b>	<b>29,354</b>	<b>121,344</b>	<b>162,290</b>	<b>927,940</b>	<b>1,067,610</b>	<b>80,520</b>	<b>41,555</b>
GROUP III										
Products of Mines (C.L.)										
301.	Anthracite coal, N.O.S. ....	1,689	110,382	13,101	125,172	154,274	779,824	1,019,991	110,162	13,432
303.	Anthracite coal to breakers and washeries .....	-	-	-	-	30	140	4,038	-	-
305.	Bituminous coal .....	665,247	78,484	3,228	746,959	836,377	6,957,710	7,779,145	738,798	11,444
307.	Coke .....	77,603	46,465	16,202	140,270	170,509	943,092	1,250,808	117,659	22,075
309.	Iron ore .....	2,310,128	567	1,308	2,312,003	3,296,167	5,673,153	7,916,664	2,284,704	27,549
311.	Aluminum ore and concentrates .....	250,899	1,482	4,427	256,808	257,338	1,361,393	1,322,072	252,324	4,475
313.	Copper ore and concentrates .....	40,493	-	61	40,554	34,544	267,985	797,674	31,874	185
314.	Copper-nickel (nickel) ore and concentrates .....	247,965	-	-	247,965	283,174	1,902,748	1,892,423	249,614	43
315.	Lead ore and concentrates .....	16,425	-	-	16,425	26,636	132,729	162,904	17,575	2,300
317.	Zinc ore and concentrates .....	56,885	-	-	56,885	66,479	419,116	401,220	48,898	29,463
319.	Ores and concentrates, N.O.S. ....	143,815	9,512	544	153,871	170,210	909,527	979,727	101,117	49,017
321.	Barytes .....	1,107	20	450	1,577	3,112	20,509	26,393	1,127	450
323.	Clay and bentonite .....	14,122	15,626	2,880	32,628	39,145	211,052	253,459	29,137	3,702
325.	Sand, industrial .....	15,797	38,753	2,719	57,269	75,602	403,365	498,772	58,085	2,734
327.	Gravel and sand, N.O.S. ....	794,971	2,062	872	797,905	750,267	3,003,811	2,709,599	798,397	931
329.	Stone and rock: broken, ground, and crushed .....	865,349	6,985	2,513	874,847	898,289	3,891,003	4,328,147	862,085	16,436
331.	Fluxing stone and raw dolomite .....	32,522	51	-	32,573	25,748	159,369	153,990	15,378	17,194
333.	Stone, rough, N.O.S. ....	4,283	1,571	961	6,815	9,165	56,011	69,141	5,851	1,121
335.	Stone, finished, N.O.S. ....	319	160	917	1,396	3,056	19,490	23,078	479	941
337.	Petroleum, crude .....	44,777	60	32	44,869	62,993	396,434	448,397	44,599	869
339.	Asphalt .....	89,720	1,431	1,984	93,135	94,474	235,345	246,379	88,311	2,065
341.	Salt .....	55,739	2,838	8,246	66,823	74,522	511,335	589,822	47,293	14,971
343.	Phosphate rock .....	17,157	99,464	25	116,646	112,740	343,747	365,401	116,581	25
345.	Sulphur .....	28,558	1,665	171	30,394	36,583	141,378	155,488	30,288	171
346.	Asbestos, not further processed than milled .....	80,010	61	4,840	84,911	81,389	481,023	555,407	32,949	49,771
348.	Gypsum, crude .....	154,377	-	20	154,397	409,687	960,662	1,941,858	154,209	188
399.	Products of mines, N.O.S. ....	153,322	23,225	16,657	193,204	152,306	1,156,510	1,088,360	151,460	44,085
(920)	<b>TOTAL PRODUCTS OF MINES</b> .....	<b>6,163,279</b>	<b>440,864</b>	<b>82,158</b>	<b>6,686,301</b>	<b>8,124,796</b>	<b>31,338,461</b>	<b>36,980,357</b>	<b>6,388,954</b>	<b>315,637</b>

REVENUE FREIGHT CARRIED BY RAILWAYS IN CANADA

July, 1958

No.	COMMODITIES	Originated or loaded (including imports at lake or ocean ports)	Received from U.S. (rail)		Total freight traffic (excluding duplications)				Terminated or unloaded (including exports at lake or ocean ports)	Delivered to U.S. rail connections
			Destined to Canadian points	Destined to U.S. points	Current month		Year-to-date			
					1958	1957	1958	1957		
	<b>GROUP IV</b>									
	<b>Products of Forests (C.L.)</b>									
401.	Logs, butts, and bolts .....	89,370	194	2,522	92,086	130,206	851,867	939,115	87,720	3,178
403.	Posts, poles, and piling, wooden .....	37,130	1,659	1,211	40,000	64,545	230,052	346,083	32,663	13,026
405.	Wood fuel .....	2,276	-	-	2,276	4,317	16,557	24,389	2,254	22
407.	Ties, railroad .....	4,834	-	-	4,834	15,538	50,355	65,818	4,861	129
409.	Pulpwood .....	471,837	73	84	471,994	678,530	3,157,437	4,436,103	480,082	59,924
411.	Lumber, shingles, and lath .....	580,372	25,247	56,581	662,200	672,239	3,563,267	3,928,486	357,284	286,225
413.	Box, crate, and coopeage materials .....	1,647	1,269	567	3,483	4,122	31,258	35,000	2,075	704
415.	Veneer, plywood, and built-up wood .....	37,012	1,025	17,115	55,152	61,959	389,375	379,737	34,929	21,900
417.	Rosin and turpentine .....	483	2,024	-	2,507	2,440	15,124	19,678	2,507	50
499.	Products of forests, N.O.S. ....	13,489	1,102	2,829	17,420	36,833	118,797	158,241	13,785	3,779
(930)	<b>TOTAL PRODUCTS OF FORESTS</b> .....	<b>1,238,450</b>	<b>32,593</b>	<b>80,909</b>	<b>1,351,952</b>	<b>1,670,729</b>	<b>8,424,089</b>	<b>10,332,650</b>	<b>1,018,160</b>	<b>388,937</b>
	<b>GROUP V</b>									
	<b>Manufactures and Miscellaneous (C.L.)</b>									
501.	Gasoline .....	400,468	6,072	1,585	408,125	449,852	2,256,118	2,398,294	405,289	1,678
503.	Fuel, road, and petroleum residual oils, N.O.S. ....	179,166	473	620	180,259	184,743	1,894,491	1,962,228	181,067	620
505.	Lubricating oils and greases .....	20,284	4,966	3,605	28,855	31,924	197,527	228,598	24,880	3,596
507.	Petroleum products, refined, N.O.S. ....	43,303	10,583	8,375	62,261	72,990	433,666	505,821	49,287	8,832
509.	Gases, other than petroleum, N.O.S. ....	21,528	925	1,781	24,234	25,267	169,406	187,342	21,213	3,279
511.	Cottonseed oil .....	140	1,028	311	1,479	1,874	10,738	9,553	1,113	366
513.	Linseed oil .....	431	-	821	1,252	2,095	10,705	16,358	432	821
515.	Soybean oil .....	123	999	16,813	17,935	10,678	73,781	80,293	1,061	16,813
517.	Vegetable and nut oils, N.O.S. ....	3,355	510	2,506	6,371	5,542	52,335	55,718	3,865	2,535
519.	Oils, N.O.S. ....	412	615	280	1,307	1,637	8,170	10,044	1,070	304
521.	Oil foots, sediment, and tank bottoms .....	282	-	630	912	978	4,849	4,385	254	658
523.	Rubber, crude, natural, and synthetic .....	6,763	2,373	4,069	13,205	16,528	121,494	152,524	8,706	5,367
525.	Rubber goods, N.O.S. ....	1,604	138	540	2,282	2,368	9,459	11,218	800	540
527.	Chemicals, N.O.S. ....	34,703	15,857	19,201	69,761	99,905	536,969	694,404	46,024	25,075
529.	Sulphuric acid .....	7,114	10	-	7,124	8,076	54,860	61,508	6,919	-
531.	Acids, N.O.S. ....	3,147	762	1,655	5,564	6,743	60,955	55,731	3,535	1,920
533.	Sodium (soda) products .....	57,149	4,396	9,570	71,115	77,293	548,043	516,446	51,626	12,417
535.	Alcohol, N.O.S. ....	2,204	577	898	3,679	3,760	23,234	27,490	2,281	1,454
537.	Blacks, N.O.S. ....	1,149	889	152	2,190	3,865	23,552	36,361	2,686	384
539.	Fertilizers, N.O.S. ....	73,791	11,914	9,970	95,675	120,904	1,370,279	1,253,895	55,551	37,728
541.	Insecticides and fungicides, N.O.S. ....	667	351	806	1,824	2,633	16,619	22,768	1,017	806
543.	Tar, pitch, and creosote .....	14,860	4,015	3,293	22,168	24,747	141,800	163,823	18,141	3,438
545.	Tanning material, N.O.S. ....	67	162	158	387	842	4,457	4,553	260	127
547.	Paint, paint material, putty, and varnish .....	6,470	1,825	3,388	11,683	11,659	77,009	84,708	8,664	3,495
549.	Plastics .....	1,557	1,158	2,190	4,905	4,922	39,236	38,652	1,815	3,134
551.	Cellulose articles, N.O.S. ....	94	130	346	570	459	3,001	2,578	224	346
553.	Drugs, medicines, and toilet preparations .....	620	120	1,368	2,108	1,820	17,235	14,320	726	1,474
555.	Aluminum: bar, ingot, pig, and slab .....	41,839	-	2,923	44,762	29,254	250,920	280,413	21,775	21,309
557.	Aluminum, N.O.S. ....	4,625	25	1,045	5,695	4,691	43,542	51,514	4,566	3,877
559.	Copper: ingot, and pig .....	28,215	510	3,264	31,989	24,632	244,863	194,669	27,411	5,502
561.	Copper, brass, and bronze, N.O.S. ....	22,076	84	3,580	25,740	22,751	159,514	166,564	18,474	8,221
563.	Lead and zinc: bar, ingot, and pig .....	43,964	-	2,953	46,917	35,400	244,872	263,690	21,587	25,305
565.	Lead and zinc, N.O.S. ....	835	73	-	908	352	4,472	7,950	157	751
567.	Magnesium metal and alloy .....	405	55	-	460	253	2,670	460	-	-
569.	Alloys for steel manufacture .....	6,847	878	1,554	9,279	16,179	62,838	129,389	6,242	2,939
570.	Matte .....	25,437	-	-	25,437	23,968	169,580	203,553	25,436	-
571.	Metals and alloys, N.O.S. ....	3,080	499	151	3,730	7,395	58,620	57,259	2,892	5,545
573.	Iron, pig .....	9,561	236	1,268	11,065	32,346	98,991	304,073	23,460	1,340
575.	Iron and steel: billet, bloom, and ingot .....	13,468	171	1,282	14,921	40,339	160,094	328,391	13,587	1,334
577.	Iron and steel: bar, rod, and slab .....	32,701	1,026	502	34,229	55,940	356,812	436,286	34,486	531
579.	Iron and steel, N.O.S. ....	347	677	28	1,052	2,023	20,408	28,052	734	162
581.	Iron and steel nails and wire (woven and not woven) N.O.S. ....	7,767	543	2,319	10,629	15,177	81,205	110,772	8,370	2,507
583.	Manufactured iron and steel .....	86,552	22,704	26,596	135,852	213,445	1,160,450	1,962,629	106,511	28,480

GROUP V

Manufactures and Miscellaneous (C.L.) - Cont'd.

585.	Cast iron pipe and fittings	1,156	120	76	1,352	3,519	14,464	21,061	1,287	76
587.	Iron and steel pipe and fittings, N.O.S.	43,397	4,983	1,230	49,610	144,868	528,416	644,887	60,610	3,231
589.	Tanks, N.O.S.	1,755	310	361	2,426	4,063	16,857	28,466	1,978	361
591.	Agricultural implements, N.O.S.	11,061	4,479	1,103	16,643	22,198	166,639	160,595	7,804	8,732
593.	Agricultural implement parts, N.O.S.	484	149	66	699	1,207	14,382	20,491	453	369
595.	Machinery and machines, N.O.S.	27,305	7,151	9,891	44,347	58,757	298,639	405,365	31,738	12,749
597.	Machinery parts	5,751	1,574	1,790	9,115	9,915	65,890	87,120	7,181	1,929
601.	Business and office machines, N.O.S.	19	-	-	19	106	1,025	3,502	19	-
603.	Railway equipment moved on own wheels	863	226	1,643	2,732	10,318	37,503	39,010	805	1,842
605.	Railway equipment, S.L. not moved on own wheels	205	16	-	221	791	1,905	7,427	218	-
607.	Railway equipment parts	3,712	369	547	4,628	11,884	30,968	68,047	3,781	578
609.	Rails and railway track material, iron and steel	12,052	394	116	12,562	18,245	137,431	174,952	5,282	475
611.	Vehicles, other than motor	1,448	73	211	1,732	2,424	32,192	14,035	1,417	280
613.	Automobiles, passenger	13,276	418	8,293	21,987	31,032	205,672	286,307	13,083	9,022
615.	Automobiles, freight	3,319	87	292	3,698	6,235	23,438	54,196	3,355	321
617.	Vehicles, motor, N.O.S.	3,794	5,908	1,623	11,325	21,190	135,189	185,035	8,218	2,510
619.	Military vehicles, N.O.S.	159	-	80	239	1,343	3,748	7,816	146	92
621.	Automobiles and autotrucks, K.D.	1,249	142	782	2,173	6,729	29,338	80,324	255	1,928
623.	Vehicle parts, N.O.S.	16,199	8,404	61,974	86,577	128,974	690,825	972,807	22,572	63,754
625.	Airplanes, aircraft, and parts	395	494	93	982	812	6,823	5,793	1,005	165
627.	Tires and tubes, rubber	4,472	286	3,119	7,877	9,138	48,487	61,806	4,552	3,358
629.	Guns, small arms, and parts, N.O.S.	135	-	15	150	532	1,274	7,055	135	15
631.	Ammunition and explosives	5,696	324	2,139	8,159	9,462	57,989	95,064	5,951	2,375
633.	Cement: natural and portland	173,013	626	795	174,434	322,653	913,074	1,147,435	171,691	1,666
635.	Cement, N.O.S.	2,281	890	1,131	4,302	7,241	27,024	86,088	6,453	1,132
637.	Brick, common	4,459	157	22	4,638	2,096	25,137	15,713	5,207	22
639.	Brick, N.O.S. and building tile	16,093	11,859	2,113	30,065	40,949	152,284	193,073	27,400	2,258
641.	Refractories	4,675	12,469	1,558	18,702	31,706	119,977	193,147	16,245	2,633
643.	Artificial stone, N.O.S.	1,525	52	148	1,725	4,369	13,319	16,897	1,496	148
645.	Lime, N.O.S.	52,018	1,205	778	54,001	28,144	274,104	225,206	52,237	1,226
647.	Plaster: stucco and wall	16,018	1,730	233	17,981	14,001	94,417	77,535	17,632	253
649.	Sewer pipe and drain tile (not metal)	10,469	978	587	12,034	9,435	42,761	42,907	11,359	602
651.	Broken or ground brick, blocks, crockery, and glass	593	-	480	1,073	2,312	8,146	53,624	430	531
653.	Woodpulp	148,036	1,262	15,213	164,511	185,491	1,310,013	1,403,036	36,935	136,269
655.	Scrap paper and rags	11,896	4,616	5,129	21,641	24,055	153,812	281,685	16,642	6,950
657.	Newsprint paper	309,688	536	9,492	319,716	350,084	2,428,145	2,667,529	74,396	247,359
659.	Printing paper, N.O.S.	7,094	414	37,823	45,331	47,132	342,863	384,378	5,997	41,776
661.	Wrapping paper	10,866	1,192	7,363	19,421	18,767	133,010	138,549	11,593	8,237
663.	Paper bags	4,676	355	725	5,756	6,278	37,421	46,808	5,055	808
665.	Paper and paper articles, N.O.S.	16,031	973	13,159	30,163	29,900	206,596	202,362	16,214	15,151
667.	Printed matter, N.O.S.	1,022	945	818	2,785	4,050	17,058	27,971	1,953	818
669.	Paperboard, fibreboard, and pulpboard	35,374	6,100	10,227	51,701	51,741	355,005	380,405	40,330	11,121
671.	Wallboard	36,539	3,110	3,256	42,905	41,609	236,879	219,307	36,925	4,779
673.	Building paper and prepared roofing materials	19,617	3,680	2,894	26,191	22,362	134,312	120,108	24,362	3,413
675.	Insulating materials, N.O.S.	9,065	731	2,388	12,184	12,883	68,639	76,524	9,843	2,403
677.	Building woodwork and millwork	953	70	2,936	3,959	5,785	25,912	33,721	874	2,915
679.	Building materials, N.O.S.	2,669	126	378	3,173	2,833	17,149	18,049	2,737	378
681.	Buildings and houses, fabricated and portable, N.O.S.	630	392	53	1,075	1,295	4,297	5,519	1,130	92
683.	Asbestos articles, N.O.S.	282	-	48	330	163	1,548	4,030	265	48
685.	Electrical equipment and parts, N.O.S.	7,040	1,710	2,969	11,719	17,316	85,097	96,736	8,118	3,405
687.	Furnaces, heaters, radiators, and parts	1,058	955	1,401	3,414	4,813	24,672	22,997	2,078	1,430
689.	Bathroom and lavatory fixtures and sinks	1,063	328	833	2,224	3,106	15,136	18,774	1,598	833
691.	Hardware, N.O.S.	1,990	59	167	2,216	1,709	13,143	17,586	2,084	189
693.	Glass	3,365	1,374	1,67	4,906	5,226	41,131	45,821	4,705	167
695.	Glassware, N.O.S.	1,181	1,872	656	3,709	4,369	26,672	33,913	2,861	793
697.	Glass bottles, jars, and packing glasses, N.O.S.	8,937	3,112	1,759	13,808	14,343	67,185	71,589	11,983	1,818
701.	Chinaware, crockery and earthenware	366	181	117	664	847	4,934	7,511	546	117
703.	Woodenware	784	171	772	1,727	2,231	14,459	18,863	954	842
705.	Household utensils, N.O.S.	87	51	138	276	668	5,119	1,927	138	138
707.	Refrigerators, freezing apparatus, and parts	1,961	2,360	1,919	6,240	8,279	45,822	55,026	4,362	1,908
709.	Laundry equipment	621	328	2,212	3,467	21,231	23,918	921	1,271	1,271
711.	Stoves, ranges, and parts	583	541	356	314	2,715	13,790	18,923	58	356
713.	Floor covering	2,112	309	1,148	3,569	4,693	31,422	37,524	2,360	1,246

REVENUE FREIGHT CARRIED BY RAILWAYS IN CANADA

July, 1958

No.	COMMODITIES	Originated or loaded (including imports at lake or ocean ports)	Received from U.S. (rail)		Total freight traffic (excluding duplications)				Terminated or unloaded (including exports at lake or ocean ports)	Delivered to U.S. rail connections
			Destined to Canadian points	Destined to U.S. points	Current month		Year-to-date			
					1958	1957	1958	1957		
TONS (2,000 lb.)										
<b>GROUP V</b>										
Manufactures and Miscellaneous (C.L.) - Concl.										
715.	Furniture, N.O.S.	3,193	517	2,843	6,553	7,895	43,349	57,128	3,685	2,908
717.	Furniture parts	58	-	141	199	243	1,628	2,618	73	141
719.	Tools and parts, N.O.S.	55	104	174	333	603	3,259	6,129	195	174
721.	Abrastves, other than crude	657	1,234	460	2,351	4,547	17,772	22,326	1,637	486
723.	Bagging: burlap, cotton, gunny, and jute, N.O.S.	498	437	120	1,055	748	11,803	11,026	515	514
725.	Bags: burlap, cotton, gunny, and jute, N.O.S.	111	-	21	132	858	3,851	5,737	111	21
727.	Cotton cloth and cotton fabrics, N.O.S.	1,164	221	173	1,558	2,044	12,000	10,873	1,386	173
729.	Cotton factory products	1,220	309	469	1,998	2,356	13,360	18,122	1,551	487
731.	Synthetic fibre and yarns (rayon and nylon)	139	62	22	223	592	2,677	5,427	201	22
733.	Cloth and fabrics, N.O.S.	299	32	64	395	1,359	6,918	9,367	330	64
735.	Rope, cordage, and binder twine, N.O.S.	3,766	68	296	4,130	6,651	25,366	32,044	3,225	884
737.	Boots, shoes, and findings, N.O.S.	167	41	601	809	1,494	5,419	8,037	167	642
739.	Luggage and handbags, N.O.S.	12	-	15	27	10	513	809	-	27
741.	Athletic, gymnasium, playground, and sporting equipment, N.O.S.	69	15	17	101	740	1,732	3,160	84	17
743.	Games and toys	44	108	495	647	772	3,235	3,492	142	505
745.	Liquors, alcoholic, N.O.S.	7,966	814	694	9,454	10,727	65,774	71,396	6,904	2,418
747.	Wine	1,065	23	1,982	3,070	4,612	31,847	29,342	1,089	1,982
749.	Liquors, malt	47,408	124	11,073	58,605	65,132	275,000	323,853	46,527	11,457
751.	Beverages, N.O.S.	827	-	-	827	987	5,549	5,650	1,699	56
753.	Ice	3,105	-	-	3,105	4,367	7,582	10,591	3,105	-
755.	Syrup and molasses, refined	2,251	663	6,860	9,774	10,874	79,500	73,961	3,125	7,261
757.	Molasses, residual	1,860	258	1,852	3,970	749	24,287	21,411	1,843	1,440
759.	Sugar	46,324	332	6,699	53,355	45,663	276,765	245,817	45,788	6,777
761.	Candy and confectionery	2,555	40	3,010	5,605	7,126	45,655	45,186	2,638	3,012
763.	Food products, N.O.S., in cans and packages, not frozen	63,426	11,071	42,268	116,765	116,001	855,413	789,498	72,271	44,727
765.	Food products, N.O.S. frozen	689	2,659	2,299	5,647	6,466	27,626	32,653	3,239	2,369
767.	Starch	2,709	589	4,994	8,292	9,305	60,816	73,722	3,193	4,999
769.	Soap and cleaning and washing compounds	8,646	774	1,561	10,981	10,454	91,523	93,549	9,751	1,599
771.	Maiches	272	56	90	418	402	3,156	2,609	352	90
773.	Feed, animal and poultry, N.O.S.	57,556	6,662	66,959	131,177	147,492	962,032	955,914	58,134	72,426
775.	Manufactured tobacco, N.O.S.	637	-	95	732	710	5,761	5,980	637	95
777.	Cigarettes	3,646	22	80	3,748	2,698	22,388	13,874	3,616	131
779.	Containers, metal	14,297	1,431	733	16,461	22,509	90,874	96,876	15,745	823
781.	Containers, wooden	1,592	289	13	1,894	1,405	10,594	11,358	1,674	30
783.	Containers, fibreboard and paperboard, K-D.	4,154	307	2,758	7,219	9,145	44,767	49,948	4,292	2,863
785.	Containers, N.O.S.	1,713	1,344	1,488	4,545	6,990	32,327	40,815	2,869	1,768
787.	Containers, returned empty	21,437	524	2,111	24,072	26,361	130,448	157,724	22,373	2,356
789.	Scrap iron and scrap steel	74,299	Cr. 3,631	2,117	72,785	117,345	448,687	697,027	49,228	22,434
791.	Iron and steel borings, turnings, etc.	1,292	32	746	2,070	10,110	22,518	40,569	1,287	826
793.	Fumace slag	3,551	887	103	4,541	5,938	22,566	34,039	4,153	157
795.	Waste materials for remelting, N.O.S.	8,785	174	3,074	12,033	29,319	138,701	188,601	6,954	5,438
797.	Waste materials, N.O.S.	10,349	3,225	1,030	14,604	20,870	96,122	131,899	12,900	2,098
799.	Manufactures and miscellaneous, N.O.S.	216,982	9,131	39,856	265,969	207,159	1,708,305	1,481,443	224,779	41,261
(940)	<b>TOTAL MANUFACTURES AND MISCELLANEOUS</b>	2,913,461	243,003	581,708	3,738,172	4,474,935	27,117,921	31,020,628	2,650,349	1,114,631
(960)	<b>GRAND TOTAL, CARLOAD TRAFFIC</b>	12,722,757	828,082	993,333	14,544,172	16,857,100	85,249,494	95,388,098	12,488,164	2,140,751
<b>GROUP VII</b>										
All L.C.L. Freight										
970.	All L.C.L. freight	114,394	10,413	10,329	135,136	178,728	863,524	1,234,843	124,855	10,948
(980)	<b>GRAND TOTAL, CARLOAD AND L.C.L. TRAFFIC</b>	12,837,151	838,495	1,003,662	14,679,308	17,035,828	86,113,018	96,622,941	12,613,019	2,151,699



REVENUE FREIGHT LOADED AND UNLOADED AT POINTS IN CANADA  
PROVINCIAL DISTRIBUTION

July, 1958

No.	COMMODITIES	Newfoundland		Prince Edward Island		Nova Scotia		New Brunswick		Quebec	
		Loaded	Unloaded	Loaded	Unloaded	Loaded	Unloaded	Loaded	Unloaded	Loaded	Unloaded
		TONS (2,000 lb.)									
	<b>GROUP I</b>										
	<b>Products of Agriculture (C.L.)</b>										
1.	Wheat .....	-	-	-	599	249	11,987	733	1,876	13,636	128,113
3.	Corn .....	-	-	-	-	-	426	-	363	2,742	4,672
5.	Sorghum grains .....	-	-	-	-	-	-	-	-	-	30
7.	Oats .....	-	-	-	68	68	1,624	380	1,925	17,829	21,777
9.	Barley .....	-	-	-	455	-	829	149	1,623	21,643	23,102
10.	Rye .....	-	-	-	-	-	-	-	-	40	349
11.	Rice .....	-	-	-	-	-	23	-	19	1,063	310
13.	Grain, N.O.S. ....	-	-	-	-	20	37	-	5	20	389
15.	Flour, wheat .....	-	334	26	436	67	3,507	168	3,300	8,265	38,902
17.	Meal, corn .....	-	-	-	-	-	-	-	-	25	108
19.	Flour, edible, N.O.S. ....	-	-	-	-	-	268	-	201	160	1,675
21.	Cereal food preparations, N.O.S. ....	-	12	-	25	-	272	-	307	47	1,389
23.	Mill products, N.O.S. ....	-	40	9	306	238	1,900	222	2,687	16,868	38,041
25.	Hay .....	-	147	-	-	92	253	332	-	245	135
27.	Straw .....	-	-	-	-	-	-	-	-	15	47
29.	Tobacco, unmanufactured .....	-	-	-	-	-	-	16	-	188	3,862
31.	Tobacco siftings, sweepings, and waste .....	-	-	-	-	-	-	-	-	5	64
33.	Cotton in bales .....	-	-	-	-	29	564	-	229	146	3,001
35.	Cotton linters, noils, and tegins .....	-	-	-	-	-	29	14	-	369	572
37.	Cottonseed .....	-	-	-	-	-	-	-	-	-	-
39.	Cottonseed oil cake and meal .....	-	-	-	55	-	-	80	25	-	-
41.	Cottonseed hulls and bran .....	-	-	-	-	-	115	-	-	28	-
43.	Soybeans .....	-	-	-	-	-	60	-	-	-	176
45.	Soybean oil cake and meal .....	-	-	-	101	-	211	-	614	152	10,622
47.	Vegetable and nut oil cake and meal, N.O.S. ....	-	-	-	-	-	55	30	65	260	627
49.	Apples, fresh, not frozen .....	-	49	-	-	186	-	25	-	51	420
51.	Bananas, fresh .....	-	61	-	32	61	644	-	342	-	3,722
53.	Berries, fresh, not frozen .....	-	23	23	-	-	-	-	-	-	96
55.	Cantaloupes and melons, N.O.S. ....	-	-	-	-	-	51	-	12	-	668
57.	Grapes, fresh .....	-	-	-	-	-	31	-	-	-	1,389
59.	Lemons, limes, and citrus fruits, N.O.S. ....	-	-	-	-	-	-	-	25	37	695
61.	Oranges and grapefruit .....	-	302	-	88	5	977	-	379	44	3,750
63.	Peaches, fresh, not frozen .....	-	-	-	-	-	-	76	98	-	1,211
65.	Pears, fresh, not frozen .....	-	-	-	-	-	-	-	19	-	141
67.	Watermelons .....	-	-	-	-	-	249	-	158	29	2,085
69.	Fruits, fresh, N.O.S., not frozen .....	-	-	-	-	18	43	17	59	15	1,221
71.	Fruits, dried, dehydrated, and evaporated, N.O.S. ....	-	-	-	30	304	84	84	35	148	473
73.	Fruits and berries, fresh, frozen .....	-	-	15	-	77	-	27	-	-	164
75.	Coffee .....	-	-	-	-	-	7	-	38	223	237
77.	Cabbage .....	5	303	-	13	-	200	13	154	34	323
79.	Celery .....	-	-	-	-	-	25	-	66	-	1,231
81.	Lettuce .....	-	-	-	-	-	51	-	51	-	94
83.	Onions, dry .....	-	70	-	13	103	219	-	65	-	1,602
85.	Potatoes, other than sweet .....	5	773	7,225	-	8	1,259	898	428	1,252	6,804
87.	Tomatoes .....	-	53	-	-	-	165	-	140	83	2,044
89.	Vegetables, fresh, N.O.S., not frozen .....	27	180	-	48	37	590	27	483	196	1,903
91.	Beans and peas, dried .....	-	-	-	18	-	45	-	48	19	878
93.	Vegetables, dried, dehydrated, and evaporated, N.O.S. ....	-	-	-	-	-	-	-	-	-	14
95.	Vegetables, fresh, frozen .....	-	-	-	-	-	-	-	-	-	-
97.	Peanuts .....	-	-	-	-	22	-	-	-	55	22
101.	Sugar beets .....	-	-	-	-	-	-	-	-	40	40
103.	Malt, N.O.S. ....	-	-	-	-	-	180	-	446	121	3,884
105.	Flaxseed .....	-	-	-	-	-	-	62	-	-	43
107.	Seeds, N.O.S. ....	-	-	-	-	-	-	-	-	-	40
199.	Products of agriculture, N.O.S. ....	-	-	-	-	246	65	-	-	179	127
(900)	<b>TOTAL PRODUCTS OF AGRICULTURE</b> .....	37	2,347	7,298	2,287	1,830	27,045	3,353	16,285	86,272	313,284

REVENUE FREIGHT LOADED AND UNLOADED AT POINTS IN CANADA  
PROVINCIAL DISTRIBUTION

July, 1958

No.	COMMODITIES	Newfoundland		Prince Edward Island		Nova Scotia		New Brunswick		Quebec	
		Loaded	Unloaded	Loaded	Unloaded	Loaded	Unloaded	Loaded	Unloaded	Loaded	Unloaded
		TONS (2,000 lb.)									
	<b>GROUP II</b>										
	<b>Animals and Products (C.L.)</b>										
201.	Horses, mules, ponies and asses .....	10	-	23	-	-	12	-	13	10	546
203.	Cattle and calves, single-deck .....	-	153	451	150	136	11	370	652	751	3,941
205.	Calves, double-deck .....	-	-	-	-	-	-	-	-	8	8
207.	Sheep and goats, single-deck .....	-	-	34	-	-	-	308	118	10	421
209.	Sheep and goats, double-deck .....	-	-	-	-	-	-	-	-	-	-
211.	Swine, single-deck .....	-	-	319	75	103	-	123	518	620	690
213.	Swine, double-deck .....	-	-	-	-	-	-	-	-	-	-
215.	Meats, fresh, N.O.S. ....	13	372	75	216	-	1,026	218	784	914	7,604
217.	Meats, cooked, cured, dried, and smoked .....	29	307	136	53	18	477	69	189	447	246
219.	Packing house products, edible, N.O.S. ....	30	269	97	113	25	1,061	20	771	290	1,184
221.	Margarine, N.O.S. ....	13	106	-	-	-	72	-	62	-	-
223.	Poultry, live .....	-	-	-	-	-	-	-	-	-	30
225.	Poultry, dressed and frozen .....	-	54	-	-	-	31	-	-	21	-
227.	Eggs .....	-	24	36	-	212	12	-	30	-	430
229.	Butter .....	-	-	10	-	-	10	-	14	208	298
231.	Cheese .....	-	-	-	-	-	-	-	24	941	148
233.	Dairy products, N.O.S. ....	-	-	-	-	-	-	-	-	-	-
235.	Wool and mohair in grease .....	-	-	-	-	-	-	-	-	6	91
237.	Wool and mohair, N.O.S. ....	-	-	-	-	18	5	61	-	530	686
239.	Hides, skins, and pelts, N.O.S. ....	-	-	79	-	24	-	111	-	237	365
241.	Leather, N.O.S. ....	-	-	-	-	-	-	-	-	-	55
243.	Sea food, N.O.S. ....	24	31	50	13	2,189	728	707	99	663	814
245.	Fish and sea animal oil .....	-	-	-	-	337	53	53	-	65	154
299.	Animals and products, N.O.S. ....	-	-	29	-	63	63	123	-	572	494
(910)	<b>TOTAL ANIMALS AND PRODUCTS</b> .....	119	1,316	1,339	620	3,125	3,561	2,163	3,274	6,293	18,205
	<b>GROUP III</b>										
	<b>Products of Mines (C.L.)</b>										
301.	Anthracite coal, N.O.S. ....	-	-	-	136	166	526	-	996	940	26,248
303.	Anthracite coal to breakers and washeries .....	-	-	-	-	-	-	-	-	-	-
305.	Bituminous coal .....	1,375	1,375	-	2,511	379,708	318,335	54,058	53,232	56,335	105,269
307.	Coke .....	-	-	-	-	2,455	223	-	259	13,418	37,496
309.	Iron ore .....	-	-	-	-	-	-	178	-	1,657,907	1,621,361
311.	Aluminum ore and concentrates .....	-	-	-	-	-	-	-	-	250,899	250,681
313.	Copper ore and concentrates .....	-	1,050	-	-	-	-	-	-	28,626	30,824
314.	Copper-nickel (nickel) ore and concentrates .....	-	-	-	-	-	-	-	-	-	46
315.	Lead ore and concentrates .....	-	3,891	-	-	-	-	319	-	404	-
317.	Zinc ore and concentrates .....	-	14,355	-	-	-	-	546	-	12,658	3,847
319.	Ores and concentrates, N.O.S. ....	-	-	-	-	-	15	-	-	130,458	15,211
321.	Barytes .....	-	-	-	-	-	-	-	-	-	-
323.	Clay and bentonite .....	100	100	-	-	-	36	-	177	3,240	5,908
325.	Sand, industrial .....	-	-	-	-	151	300	-	434	12,225	21,542
327.	Gravel and sand, N.O.S. ....	4,025	4,025	1,151	11,069	31,675	15,558	10,500	16,247	275,472	227,311
329.	Stone and rock: broken, ground, and crushed .....	28,038	28,073	-	3,502	26,285	9,126	536	19,104	49,409	44,649
331.	Fluxing stone and raw dolomite .....	-	-	-	-	-	75	-	-	44	115
333.	Stone, rough, N.O.S. ....	-	-	-	-	253	146	-	-	997	3,180
335.	Stone, finished, N.O.S. ....	-	15	-	-	-	31	46	140	255	36
337.	Petroleum, crude .....	-	-	-	-	-	-	-	-	-	67
339.	Asphalt .....	604	1,014	30	2,327	17,191	7,825	-	12,643	28,919	11,570
341.	Salt .....	-	122	-	671	9,620	2,222	369	3,983	4,480	19,275
343.	Phosphate rock .....	-	-	-	-	-	-	-	-	17,157	17,518
345.	Sulphur .....	-	-	-	-	-	-	-	-	6,184	4,072
346.	Asbestos, not further processed than milled .....	-	-	-	-	-	-	-	-	73,558	30,097
348.	Gypsum, crude .....	3,962	3,962	-	-	129,920	126,869	-	-	-	3,051
399.	Products of mines, N.O.S. ....	2,186	2,186	-	-	90	953	46	755	26,250	33,103
(920)	<b>TOTAL PRODUCTS OF MINES</b> .....	40,290	60,168	1,181	20,216	597,514	482,240	66,598	107,970	2,649,835	2,512,477

GROUP IV											
Products of Forests (C.L.)											
401.	Logs, butts, and bolts	58	58	-	-	94	114	3,335	900	3,547	6,329
403.	Posts, poles, and piling, wooden	237	833	97	568	963	3,066	1,233	244	1,835	3,123
405.	Wood fuel	-	-	-	-	254	254	107	107	169	554
407.	Ties, railroad	-	98	-	-	238	341	230	-	96	-
409.	Pulpwood	82,128	149,034	945	-	10,972	11,043	29,561	22,246	134,291	124,524
411.	Lumber, shingles, and lath	1,603	6,053	134	486	11,689	4,317	25,602	9,087	83,560	86,023
413.	Box, crate, and cooperage materials	50	135	-	40	273	120	-	86	734	651
415.	Veneer, plywood, and built-up wood	96	291	-	117	-	1,134	300	226	2,559	7,176
417.	Rosin and turpentine	-	-	-	-	22	22	-	18	112	602
499.	Products of forests, N.O.S.	162	162	-	51	1,407	1,421	2,032	1,722	5,508	5,917
(930)	<b>TOTAL PRODUCTS OF FORESTS</b>	<b>84,334</b>	<b>156,664</b>	<b>1,176</b>	<b>1,262</b>	<b>25,912</b>	<b>21,832</b>	<b>62,400</b>	<b>34,636</b>	<b>232,411</b>	<b>234,899</b>
GROUP V											
Manufactures and Miscellaneous (C.L.)											
501.	Gasoline	14,746	14,622	1,684	3,427	23,882	20,858	16,804	19,723	92,020	71,964
503.	Fuel, road, and petroleum residual oils, N.O.S.	8,648	7,819	897	1,103	11,652	8,759	4,050	6,470	51,637	46,352
505.	Lubricating oils and greases	340	468	-	140	130	1,363	95	728	2,103	4,662
507.	Petroleum products, refined, N.O.S.	59	139	-	134	1,836	1,193	35	995	12,706	10,528
509.	Gases, other than petroleum, N.O.S.	-	-	-	-	-	12	-	1,489	5,424	5,300
511.	Cottonseed oil	-	-	-	-	-	-	28	-	32	220
513.	Linseed oil	-	-	-	-	-	23	-	-	136	86
515.	Soybean oil	-	-	-	-	-	-	-	-	-	138
517.	Vegetable and nut oils, N.O.S.	-	29	-	-	1,779	36	-	-	415	803
519.	Oils, N.O.S.	-	68	-	-	-	-	-	-	344	130
521.	Oil foots, sediment, and tank bottoms	-	-	-	-	28	-	-	-	-	33
523.	Rubber, crude, natural, and synthetic	-	-	-	-	1,955	5	-	-	360	3,895
525.	Rubber goods, N.O.S.	-	-	-	-	74	6	-	25	209	143
527.	Chemicals, N.O.S.	51	127	-	236	183	991	20	2,442	10,615	13,053
529.	Sulphuric acid	-	-	-	-	-	-	-	33	1,143	1,534
531.	Acids, N.O.S.	-	-	-	-	-	-	-	49	898	377
533.	Sodium (soda) products	-	5	-	30	-	306	-	2,295	10,579	16,323
535.	Alcohol, N.O.S.	-	-	-	6	27	125	6	-	331	477
537.	Blacks, N.O.S.	-	857	-	-	-	-	-	-	264	134
539.	Fertilizers, N.O.S.	18	-	34	318	2,991	1,595	1,369	564	15,083	15,399
541.	Insecticides and fungicides, N.O.S.	-	-	-	103	-	21	-	-	107	77
543.	Tar, pitch, and creosote	-	-	-	-	1,649	889	36	1,237	1,256	6,823
545.	Tanning material, N.O.S.	-	-	-	-	-	-	-	-	22	-
547.	Paint, paint material, putty, and varnish	15	15	-	-	-	391	-	35	1,343	1,003
549.	Plastics	-	-	-	-	-	-	-	15	374	572
551.	Cellulose articles, N.O.S.	-	-	-	-	-	-	-	-	-	-
553.	Drugs, medicines, and toilet preparations	-	-	58	-	47	15	-	33	145	190
555.	Aluminum: bar, ingot, pig, and slab	-	-	-	-	-	5	-	-	31,816	19,493
557.	Aluminum, N.O.S.	9	18	-	-	-	225	-	70	4,042	3,038
559.	Copper: ingot, and pig	-	-	-	-	-	-	-	-	19,006	24,569
561.	Copper, brass, and bronze, N.O.S.	21	21	-	35	-	39	-	71	16,619	13,815
563.	Lead and zinc: bar, ingot, and pig	-	-	-	-	-	88	50	-	1,519	4,955
565.	Lead and zinc, N.O.S.	-	-	-	-	-	-	-	-	84	-
567.	Magnesium metal and alloy	-	-	-	-	-	-	-	10	88	426
569.	Alloys for steel manufacture	-	-	-	-	-	1,004	-	-	2,319	1,067
570.	Matte	-	-	-	-	-	1,616	-	-	9,089	-
571.	Metals and alloys, N.O.S.	-	-	-	-	56	-	-	-	-	562
573.	Iron, pig	-	-	-	-	-	45	-	160	549	19,834
575.	Iron and steel: billet, bloom, and ingot	-	-	-	-	952	69	-	-	-	11,511
577.	Iron and steel: bar, rod, and slab	-	-	-	-	-	-	107	327	633	7,892
579.	Iron and steel, N.O.S.	-	-	-	-	-	45	-	-	159	-
581.	Iron and steel nails and wire (woven and not woven) N.O.S.	52	129	-	35	1,063	143	21	402	1,101	2,464
583.	Manufactured iron and steel	199	1,256	-	320	14,913	3,289	434	3,498	8,286	31,551
585.	Cast iron pipe and fittings	7	47	-	-	-	-	-	116	204	371
587.	Iron and steel pipe and fittings, N.O.S.	68	243	-	110	140	534	117	1,337	2,543	4,821
589.	Tanks, N.O.S.	50	50	-	10	20	63	17	73	446	271
591.	Agricultural implements, N.O.S.	-	-	-	47	-	51	42	198	95	683

**REVENUE FREIGHT LOADED AND UNLOADED AT POINTS IN CANADA**  
**PROVINCIAL DISTRIBUTION**  
 July, 1958

No.	COMMODITIES	Newfoundland		Prince Edward Island		Nova Scotia		New Brunswick		Quebec	
		Loaded	Unloaded	Loaded	Unloaded	Loaded	Unloaded	Loaded	Unloaded	Loaded	Unloaded
	<b>GROUP V</b>	<b>TONS (2,000 lb.)</b>									
	<b>Manufactures and Miscellaneous (C.L.) - Cont'd.</b>										
593.	Agricultural implement parts, N.O.S.	-	-	-	14	-	-	-	10	25	12
595.	Machinery and machines, N.O.S.	1,188	1,529	117	19	1,480	1,603	372	1,572	5,333	4,950
597.	Machinery parts	121	283	-	44	126	387	37	23	1,770	2,021
601.	Business and office machines, N.O.S.	-	-	-	-	-	-	-	-	19	-
603.	Railway equipment moved on own wheels	-	-	-	-	-	-	-	-	227	233
605.	Railway equipment, S.U. not moved on own wheels	-	-	20	-	80	34	-	80	53	62
607.	Railway equipment parts	-	-	-	-	345	650	335	374	2,280	1,129
609.	Rails and railway track material, iron and steel	24	86	-	-	72	130	-	23	233	624
611.	Vehicles, other than motor	61	56	-	-	25	27	25	14	157	130
613.	Automobiles, passenger	45	227	-	245	205	1,264	127	650	732	1,643
615.	Automobiles, freight	109	440	-	203	5	208	-	282	166	342
617.	Vehicles, motor, N.O.S.	175	271	10	121	98	196	78	358	387	1,909
619.	Military vehicles, N.O.S.	-	-	-	-	-	20	20	-	17	23
621.	Automobiles and autotrucks, K.D.	-	12	-	-	-	-	-	-	-	115
623.	Vehicle parts, N.O.S.	11	6	-	39	299	365	54	449	1,994	1,822
625.	Airplanes, aircraft, and parts	-	-	-	-	16	-	35	-	161	796
627.	Tires and tubes, rubber	-	17	-	24	17	132	-	387	204	1,159
629.	Guns, small arms, and parts, N.O.S.	-	-	-	-	-	-	-	-	20	20
631.	Ammunition and explosives	10	96	-	20	15	647	448	126	2,874	1,463
633.	Cement: natural and portland	5,385	5,239	-	1,733	464	10,365	16,308	5,158	24,651	54,240
635.	Cement, N.O.S.	225	225	-	-	-	91	-	25	506	1,344
637.	Brick, common	77	168	-	89	753	293	312	414	366	548
639.	Brick, N.O.S. and building tile	256	471	-	171	2,418	887	980	2,022	1,263	6,066
641.	Refractories	-	-	-	-	41	795	-	96	3,166	2,827
643.	Artificial stone, N.O.S.	637	637	-	56	33	102	162	138	83	9
645.	Lime, N.O.S.	-	50	-	100	-	319	410	540	8,704	7,166
647.	Plaster: stucco and wall	-	-	19	37	613	372	4,074	260	1,315	2,809
649.	Sewer pipe and drain tile (not metal)	647	872	-	491	1,068	627	1,005	411	363	1,076
651.	Broken or ground brick, blocks, crockery, and glass	-	-	-	-	-	-	-	-	78	222
653.	Woodpulp	1,551	1,551	-	-	61	250	14,647	4,206	37,994	13,380
655.	Scrap paper and rags	37	-	-	-	129	501	197	205	4,419	4,619
657.	Newsprint paper	25,163	25,163	-	80	918	921	7,081	364	162,631	31,361
659.	Printing paper, N.O.S.	-	-	-	-	-	71	25	-	833	1,344
661.	Wrapping paper	205	386	-	-	65	337	229	119	5,600	3,144
663.	Paper bags	-	-	-	33	-	234	48	375	2,840	572
665.	Paper and paper articles, N.O.S.	-	49	-	36	492	505	40	258	1,707	3,421
667.	Printed matter, N.O.S.	-	-	-	-	-	151	33	112	36	205
669.	Paperboard, fibreboard, and pulpboard	50	264	-	-	299	437	10,861	798	9,279	14,707
671.	Wallboard	916	1,011	-	197	29	1,768	2,637	1,835	10,613	4,356
673.	Building paper and prepared roofing materials	-	426	-	144	16	1,534	936	2,769	12,953	3,303
675.	Insulating materials, N.O.S.	23	97	10	18	475	224	-	183	331	2,796
677.	Building woodwork and millwork	21	33	-	-	28	39	-	61	221	52
679.	Building materials, N.O.S.	-	-	-	-	-	53	25	-	711	442
681.	Buildings and houses, fabricated and portable, N.O.S.	-	79	-	-	79	53	-	-	105	302
683.	Asbestos articles, N.O.S.	26	26	-	-	-	-	-	-	24	-
685.	Electrical equipment and parts, N.O.S.	53	90	-	-	-	176	26	59	1,145	2,667
687.	Furnaces, heaters, radiators, and parts	-	-	-	-	13	63	72	48	191	378
689.	Bathroom and lavatory fixtures and sinks	-	-	-	-	-	85	16	66	358	259
691.	Hardware, N.O.S.	-	-	-	-	329	90	91	71	218	489
693.	Glass	-	-	-	-	183	372	68	107	1,588	329
695.	Glassware, N.O.S.	-	-	-	-	-	52	-	58	231	1,161
697.	Glass bottles, jars, and packing glasses, N.O.S.	20	20	-	46	23	671	-	501	3,413	2,349
701.	Chinaware, crockery and earthenware	-	-	-	-	15	-	-	15	37	118
703.	Woodenware	-	-	-	8	12	12	-	18	166	605
705.	Household utensils, N.O.S.	-	-	-	-	-	-	-	-	16	41
707.	Refrigerators, freezing apparatus, and parts	5	5	-	-	-	175	11	127	265	922
709.	Laundry equipment	-	-	-	-	-	90	-	-	39	428
711.	Stoves, ranges and parts	-	-	-	-	38	Cr. 1,547	90	90	156	584
713.	Floor covering	33	33	-	26	-	124	-	71	1,721	90

GROUP V											
Manufactures and Miscellaneous (C.L.) - Concl.											
715.	Furniture, N.O.S.	-	32	-	-	13	179	52	44	1,098	457
717.	Furniture parts	-	-	-	-	-	-	-	-	16	-
719.	Tools and parts, N.O.S.	-	-	-	-	-	-	-	-	28	79
721.	Abrasives, other than crude	-	-	-	-	-	-	-	5	86	1,258
723.	Bagging: burlap, cotton, gunny, and jute, N.O.S.	-	-	-	-	6	-	-	-	392	26
725.	Bags: burlap, cotton, gunny, and jute, N.O.S.	-	-	16	-	-	-	-	16	16	16
727.	Cotton cloth and cotton fabrics, N.O.S.	-	-	-	-	142	108	17	-	463	376
729.	Cotton factory products	-	-	-	-	101	107	-	12	280	700
731.	Synthetic fibre and yarns (rayon and nylon)	-	-	-	-	-	-	-	-	100	99
733.	Cloth and fabrics, N.O.S.	-	-	-	-	-	-	-	-	221	20
735.	Rope, cordage, and binder twine, N.O.S.	-	-	-	12	34	73	-	31	66	156
737.	Boots, shoes, and findings, N.O.S.	-	-	-	-	-	-	-	-	147	5
739.	Luggage and handbags, N.O.S.	-	-	-	-	-	-	-	-	12	-
741.	Athletic, gymnasium, playground, and sporting equipment, N.O.S.	-	-	-	-	-	-	-	-	24	-
743.	Games and toys	-	-	-	-	-	-	-	-	20	55
745.	Liquors, alcoholic, N.O.S.	71	71	-	67	102	253	92	213	1,608	1,373
747.	Wine	-	-	-	12	15	81	-	88	185	379
749.	Liquors, malt	1,294	1,293	-	38	1,558	3,140	892	1,037	22,319	16,419
751.	Beverages, N.O.S.	220	220	-	-	-	447	167	69	341	864
753.	Ice	-	-	-	-	763	763	-	-	1,942	1,942
755.	Syrup and molasses, refined	-	63	-	24	30	205	368	78	93	1,010
757.	Molasses, residual	-	-	-	-	15	153	168	12	994	1,418
759.	Sugar	7	287	-	685	40	3,336	20,461	1,658	8,794	10,207
761.	Candy and confectionery	-	-	-	-	231	38	54	97	972	644
763.	Food products, N.O.S., in cans and packages not frozen	104	679	145	357	2,129	6,118	1,915	3,970	11,710	15,744
765.	Food products, N.O.S. frozen	-	-	-	-	-	46	-	46	35	1,885
767.	Starch	-	-	-	-	-	58	391	175	96	886
769.	Soap and cleaning and washing compounds	36	87	-	74	-	1,160	38	648	636	2,900
771.	Matches	-	-	-	-	-	54	-	62	75	21
773.	Feed, animal and poultry, N.O.S.	96	282	433	2,100	2,274	8,624	5,483	4,291	21,947	23,217
775.	Manufactured tobacco, N.O.S.	-	-	-	-	-	25	48	74	556	78
777.	Cigarettes	-	-	-	-	-	33	11	251	2,929	253
779.	Containers, metal	43	33	11	251	12	249	9	124	3,580	3,196
781.	Containers, wooden	7	7	-	39	21	91	-	67	519	515
783.	Containers, fibreboard and paperboard, K.D.	9	51	-	46	81	117	56	145	596	954
785.	Containers, N.O.S.	7	-	-	26	16	129	9	111	642	854
787.	Containers, returned empty	659	637	24	9	1,011	1,029	503	362	8,262	11,087
789.	Scrap iron and scrap steel	359	457	-	-	1,393	1,872	1,086	314	20,438	6,635
791.	Iron and steel borings, turnings, etc.	-	43	-	-	45	45	-	-	421	389
793.	Furnace slag	-	-	-	-	2,371	2,122	-	249	129	725
795.	Waste materials for remelting, N.O.S.	24	-	-	-	1,007	697	250	20	2,616	2,179
797.	Waste materials, N.O.S.	-	-	-	-	17	44	-	284	8,447	9,045
799.	Manufactures and miscellaneous, N.O.S.	515	546	22	252	8,099	13,037	4,464	7,084	57,607	48,184
(940)	<b>TOTAL MANUFACTURES AND MISCELLANEOUS</b>	<b>64,808</b>	<b>70,619</b>	<b>3,500</b>	<b>14,040</b>	<b>96,280</b>	<b>115,192</b>	<b>121,680</b>	<b>89,980</b>	<b>795,501</b>	<b>712,042</b>
(960)	<b>GRAND TOTAL, CARLOAD TRAFFIC</b>	<b>189,588</b>	<b>291,114</b>	<b>14,494</b>	<b>38,425</b>	<b>724,661</b>	<b>649,870</b>	<b>256,194</b>	<b>252,145</b>	<b>3,770,312</b>	<b>3,790,907</b>
<b>GROUP VII</b>											
<b>All L.C.L. Freight</b>											
970.	All L.C.L. freight	5,684	8,417	686	1,163	4,189	7,355	4,355	6,612	21,824	22,950
(980)	<b>GRAND TOTAL, CARLOAD AND L.C.L. TRAFFIC</b>	<b>195,272</b>	<b>299,531</b>	<b>15,180</b>	<b>39,588</b>	<b>728,850</b>	<b>657,225</b>	<b>260,963</b>	<b>258,757</b>	<b>3,792,136</b>	<b>3,813,857</b>

REVENUE FREIGHT LOADED AND UNLOADED AT POINTS IN CANADA  
PROVINCIAL DISTRIBUTION

July, 1958

No.	COMMODITIES	Ontario		Manitoba		Saskatchewan		Alberta		British Columbia	
		Loaded	Unloaded	Loaded	Unloaded	Loaded	Unloaded	Loaded	Unloaded	Loaded	Unloaded
		TONS (2,000 lb.)									
	<b>GROUP I</b>										
	<b>Products of Agriculture (C.L.)</b>										
1.	Wheat .....	188,455	880,268	104,482	44,383	987,799	48,727	187,528	29,582	3,106	334,461
3.	Corn .....	25,933	5,916	125	84	97	13	-	224	-	1,344
5.	Sorghum grains .....	-	102	-	-	62	-	15	15	-	-
7.	Oats .....	20,576	133,162	24,209	2,270	79,692	3,991	43,623	3,443	956	3,760
9.	Barley .....	13,031	186,500	33,123	12,817	142,714	479	52,949	647	608	33,342
10.	Rye .....	344	32,514	3,443	-	15,517	-	13,265	177	100	931
11.	Rice .....	-	697	-	127	27	-	-	20	74	50
13.	Grain, N.O.S. ....	309	580	163	57	252	-	65	20	73	113
15.	Flour, wheat .....	34,602	17,769	10,492	1,494	25,740	1,464	12,320	1,329	82	15,733
17.	Meal, corn .....	99	106	-	-	-	-	-	-	-	81
19.	Flour, edible, N.O.S. ....	950	271	121	40	149	68	28	30	21	256
21.	Cereal food preparations, N.O.S. ....	5,427	2,138	212	369	569	5	365	485	-	842
23.	Mill products, N.O.S. ....	34,331	21,906	9,962	2,227	18,304	4,263	13,281	2,916	4,293	10,361
25.	Hay .....	293	283	197	57	207	1,800	1,478	174	91	27
27.	Straw .....	-	38	22	-	-	-	-	-	24	24
29.	Tobacco, unmanufactured .....	3,960	221	-	-	-	-	-	-	-	-
31.	Tobacco siftings, sweepings, and waste .....	65	5	-	-	-	-	-	-	-	-
33.	Cotton in bales .....	-	2,163	-	48	-	-	-	30	-	-
35.	Cotton linters, noils, and regins .....	71	910	-	167	-	-	-	53	37	-
37.	Cottonseed .....	-	-	-	-	-	-	-	-	-	-
39.	Cottonseed oil cake and meal .....	-	-	61	31	-	-	-	30	31	61
41.	Cottonseed hulls and bran .....	-	85	-	-	-	-	-	-	-	28
43.	Soybeans .....	1,955	1,458	-	-	-	-	-	-	-	-
45.	Soybean oil cake and meal .....	16,859	12,840	952	246	112	537	-	1,226	-	596
47.	Vegetable and nut oil cake and meal, N.O.S. ....	1,676	352	179	-	540	62	25	533	-	342
49.	Apples, fresh, not frozen .....	54	356	25	216	-	238	-	202	750	98
51.	Bananas, fresh .....	11	4,525	11	657	-	473	46	893	-	1,146
53.	Berries, fresh, not frozen .....	-	140	-	-	11	11	-	116	193	-
55.	Cantaloupes and melons, N.O.S. ....	45	1,714	-	180	-	243	6	347	-	202
57.	Grapes, fresh .....	-	959	-	143	-	38	-	39	-	13
59.	Lemons, limes, and citrus fruits, N.O.S. ....	-	612	-	86	-	39	-	140	-	-
61.	Oranges and grapefruit .....	20	5,624	-	692	-	415	-	725	12	221
63.	Peaches, fresh, not frozen .....	71	1,918	-	248	-	202	-	280	163	30
65.	Pears, fresh, not frozen .....	-	285	-	82	-	13	-	15	28	-
67.	Watermelons .....	-	6,295	-	264	-	776	-	856	-	617
69.	Fruits, fresh, N.O.S., not frozen .....	542	1,109	-	867	-	1,126	12	1,736	4,152	525
71.	Fruits, dried, dehydrated, and evaporated, N.O.S. ....	-	614	-	120	24	47	-	96	108	50
73.	Fruits and berries, fresh, frozen .....	31	668	-	78	-	18	-	-	483	245
75.	Coffee .....	70	190	9	132	-	30	68	75	105	37
77.	Cabbage .....	860	131	12	62	-	-	-	104	32	-
79.	Celery .....	-	273	-	52	-	-	-	-	-	-
81.	Lettuce .....	83	72	-	378	-	104	-	303	-	39
83.	Onions, dry .....	367	964	-	76	-	199	-	38	16	40
85.	Potatoes, other than sweet .....	3,256	5,352	55	2,364	24	2,387	-	2,160	1,999	607
87.	Tomatoes .....	458	1,043	-	725	-	475	39	1,136	674	280
89.	Vegetables, fresh, N.O.S., not frozen .....	756	3,040	182	803	-	1,086	32	1,793	1,254	103
91.	Beans and peas, dried .....	578	166	607	554	187	40	-	-	378	55
93.	Vegetables, dried, dehydrated, and evaporated, N.O.S. ....	-	52	-	-	-	-	-	-	-	-
95.	Vegetables, fresh, frozen .....	17	121	-	37	-	39	16	31	92	39
97.	Peanuts .....	-	80	-	210	-	93	-	65	-	216
101.	Sugar beets .....	-	45	-	-	45	-	-	-	-	-
103.	Malt, N.O.S. ....	6,721	5,168	8,332	188	-	675	2,696	626	-	2,228
105.	Flaxseed .....	406	25,689	7,364	328	16,693	223	12,862	225	980	10,410
107.	Seeds, N.O.S. ....	-	87	40	21	646	407	1,142	539	-	377
199.	Products of agriculture, N.O.S. ....	30	2,323	96	301	-	40	-	30	451	113
(900)	<b>TOTAL PRODUCTS OF AGRICULTURE</b> .....	<b>363,312</b>	<b>1,369,899</b>	<b>204,476</b>	<b>74,281</b>	<b>1,289,411</b>	<b>71,206</b>	<b>341,551</b>	<b>53,504</b>	<b>21,366</b>	<b>420,043</b>

GROUP II											
Animals and Products (C.L.)											
201.	Horses, mules, ponies and asses	443	249	88	31	819	426	233	168	19	46
203.	Cattle and calves, single-deck	2,051	3,164	3,137	9,049	10,814	301	8,927	1,102	787	3,736
205.	Calves, double-deck	-	17	-	-	11	-	17	-	-	-
207.	Sheep and goats, single-deck	15	38	26	34	31	22	260	35	17	46
209.	Sheep and goats, double-deck	-	-	-	-	-	-	17	10	8	25
211.	Swine, single-deck	570	1,045	783	3,556	2,269	626	7,533	3,947	76	2,513
213.	Swine, double-deck	-	-	8	8	-	-	10	10	-	-
215.	Meats, fresh, N.O.S.	2,942	2,417	4,853	292	1,160	77	5,021	28	81	1,339
217.	Meats, cooked, cured, dried, and smoked	553	344	339	173	282	108	483	52	102	342
219.	Packing house products, edible, N.O.S.	2,166	2,323	2,749	232	163	253	1,728	139	65	700
221.	Margarine, N.O.S.	966	-	78	232	-	188	-	127	13	289
223.	Poultry, live	-	-	-	-	-	-	30	-	-	-
225.	Poultry, dressed and frozen	152	64	51	60	-	31	31	15	-	-
227.	Eggs	23	34	204	134	189	-	47	-	-	47
229.	Butter	76	91	383	783	1,224	376	159	99	-	417
231.	Cheese	214	131	-	256	-	214	-	169	36	248
233.	Dairy products, N.O.S.	-	-	-	-	-	-	-	-	-	-
235.	Wool and mohair in grease	85	247	-	-	-	-	207	-	-	-
237.	Wool and mohair, N.O.S.	119	872	-	-	121	-	186	36	136	-
239.	Hides, skins, and pelts, N.O.S.	786	1,774	231	60	222	-	733	6	111	130
241.	Leather, N.O.S.	55	-	-	-	-	-	-	-	-	-
243.	Sea food, N.O.S.	13	1,584	43	326	-	77	65	130	2,039	25
245.	Fish and sea animal oil	422	-	-	122	-	12	-	-	1,211	-
299.	Animals and products, N.O.S.	1,197	2,531	718	25	412	58	785	73	193	744
(910)	<b>TOTAL ANIMALS AND PRODUCTS</b>	<b>12,848</b>	<b>18,609</b>	<b>13,691</b>	<b>15,373</b>	<b>17,717</b>	<b>2,769</b>	<b>26,472</b>	<b>6,146</b>	<b>4,894</b>	<b>10,647</b>
GROUP III											
Products of Mines (C.L.)											
301.	Anthracite coal, N.O.S.	274	81,796	-	185	34	-	275	-	-	275
303.	Anthracite coal to breakers and washeries	-	-	-	-	-	-	-	-	-	-
305.	Bituminous coal	73,017	184,771	-	33,556	39,601	13,048	40,655	1,524	20,498	25,177
307.	Coke	41,158	62,348	384	1,794	495	66	5,137	649	14,556	14,824
309.	Iron ore	651,890	663,102	153	47	-	-	-	194	-	-
311.	Aluminum ore and concentrates	-	1,484	-	-	-	41	-	-	-	118
313.	Copper ore and concentrates	10,239	-	1,031	-	-	-	473	-	124	-
314.	Copper-nickel (nickel) ore and concentrates	238,292	239,941	8,335	-	-	-	46	9,627	1,292	-
315.	Lead ore and concentrates	162	-	-	-	-	-	-	-	15,540	13,684
317.	Zinc ore and concentrates	11,484	2,981	-	-	-	-	-	-	32,197	27,715
319.	Ores and concentrates, N.O.S.	9,501	84,456	20	177	-	469	702	408	3,134	381
321.	Barytes	-	20	152	152	-	40	610	835	345	80
323.	Clay and bentonite	133	10,442	1,466	1,142	5,990	5,607	3,193	5,351	-	374
325.	Sand, industrial	451	27,393	2,902	880	-	308	28	6,211	40	1,017
327.	Gravel and sand, N.O.S.	335,384	386,706	113,218	113,671	143	233	23,370	23,443	33	134
329.	Stone and rock: broken, ground, and crushed	505,064	502,368	128,968	78,138	26,190	78,489	97,059	96,879	3,800	1,757
331.	Fluxing stone and raw dolomite	32,444	15,144	-	-	34	-	-	-	-	44
333.	Stone, rough, N.O.S.	2,286	1,594	668	657	-	50	53	93	26	131
335.	Stone, finished, N.O.S.	-	155	-	32	-	5	-	65	18	-
337.	Petroleum, crude	2,044	17,425	710	488	28,734	13,364	13,281	13,217	8	38
339.	Asphalt	9,110	19,240	1,507	12,202	15,552	1,230	10,393	7,930	6,414	12,330
341.	Salt	31,532	10,466	1,763	2,461	4,302	2,266	3,519	4,881	154	946
343.	Phosphate rock	-	950	-	-	-	-	-	23,585	-	74,528
345.	Sulphur	6,515	7,835	-	222	-	-	14,064	16,036	1,795	2,123
346.	Asbestos, not further processed than milled	2,629	2,644	-	72	-	-	-	65	3,823	71
348.	Gypsum, crude	3,100	3,100	16,241	14,994	-	540	54	1,693	1,100	-
399.	Products of mines, N.O.S.	118,072	99,213	436	2,594	1,072	2,427	547	4,773	4,623	5,456
(920)	<b>TOTAL PRODUCTS OF MINES</b>	<b>2,084,781</b>	<b>2,425,574</b>	<b>277,954</b>	<b>263,464</b>	<b>122,147</b>	<b>118,183</b>	<b>213,459</b>	<b>217,459</b>	<b>109,520</b>	<b>181,203</b>

**REVENUE FREIGHT LOADED AND UNLOADED AT POINTS IN CANADA**  
**PROVINCIAL DISTRIBUTION**  
 July, 1958

No.	COMMODITIES	Ontario		Manitoba		Saskatchewan		Alberta		British Columbia	
		Loaded	Unloaded	Loaded	Unloaded	Loaded	Unloaded	Loaded	Unloaded	Loaded	Unloaded
	<b>GROUP IV</b>	<b>TONS (2,000 lb.)</b>									
	<b>Products of Forests (C.L.)</b>										
401.	Logs, butts, and bolts .....	5,030	4,102	-	-	15	47	6,520	5,609	70,771	70,561
403.	Posts, poles, and piling, wooden .....	9,455	11,088	110	2,455	1,094	2,615	3,020	5,401	19,086	3,270
405.	Wood fuel .....	653	246	-	-	349	390	18	84	726	619
407.	Ties, railroad .....	1,824	1,638	29	280	-	29	18	18	2,399	2,457
409.	Pulpwood .....	198,580	167,483	4,152	1,286	2,439	-	4,497	334	4,272	4,132
411.	Lumber, shingles, and lath .....	59,175	151,838	2,110	20,305	6,272	20,798	29,051	27,252	361,176	31,125
413.	Box, crate, and cooperage materials .....	400	867	27	117	55	27	38	19	70	13
415.	Veneer, plywood, and built-up wood .....	1,338	12,447	125	1,717	233	2,347	665	4,490	31,696	4,984
417.	Rosin and turpentine .....	322	1,496	-	147	-	18	-	22	27	182
499.	Products of forests, N.O.S. ....	3,597	3,158	25	693	331	156	95	214	332	291
(930)	<b>TOTAL PRODUCTS OF FORESTS</b> .....	<b>280,374</b>	<b>354,363</b>	<b>6,578</b>	<b>27,000</b>	<b>10,788</b>	<b>26,427</b>	<b>43,922</b>	<b>43,443</b>	<b>490,555</b>	<b>117,634</b>
	<b>GROUP V</b>										
	<b>Manufactures and Miscellaneous (C.L.)</b>										
501.	Gasoline .....	93,813	114,791	32,400	46,741	42,502	40,639	62,417	47,322	20,200	25,202
503.	Fuel, road, and petroleum residual oils, N.O.S. ....	35,554	42,090	5,225	15,494	14,738	7,007	38,008	33,607	8,757	12,366
505.	Lubricating oils and greases .....	12,527	6,912	79	2,387	9	2,394	4,865	3,495	136	2,331
507.	Petroleum products, refined, N.O.S. ....	12,404	18,520	166	2,247	879	647	14,524	12,685	694	2,199
509.	Gases, other than petroleum, N.O.S. ....	9,118	7,926	-	129	-	31	6,447	952	539	5,374
511.	Cottonseed oil .....	53	536	-	78	-	32	-	-	27	247
513.	Linseed oil .....	78	45	60	61	127	-	30	30	-	187
515.	Soybean oil .....	92	468	31	-	-	-	-	-	-	455
517.	Vegetable and nut oils, N.O.S. ....	509	2,550	153	266	468	-	-	151	31	30
519.	Oils, N.O.S. ....	68	806	-	16	-	-	-	20	-	30
521.	Oil foos, sediment, and tank bottoms .....	254	221	-	-	-	-	-	-	-	-
523.	Rubber, crude, natural, and synthetic .....	4,442	4,773	6	27	-	6	-	-	-	-
525.	Rubber goods, N.O.S. ....	1,321	311	-	52	-	-	-	77	-	186
527.	Chemicals, N.O.S. ....	19,666	20,401	200	1,833	23	1,109	2,804	2,546	1,141	3,286
529.	Sulphuric acid .....	4,952	4,277	-	236	-	73	453	368	566	398
531.	Acids, N.O.S. ....	1,321	1,705	-	71	-	87	389	171	539	1,075
533.	Sodium (soda) products .....	30,841	23,456	100	1,056	12,740	258	1,301	4,556	1,588	3,341
535.	Alcohol, N.O.S. ....	108	1,421	-	20	-	43	1,570	20	162	169
537.	Blacks, N.O.S. ....	865	1,633	-	-	-	-	20	42	-	20
539.	Fertilizers, N.O.S. ....	19,736	21,525	329	241	86	117	12,851	1,021	21,294	14,771
541.	Insecticides and fungicides, N.O.S. ....	163	102	121	114	32	152	244	351	-	97
543.	Tar, pitch, and creosote .....	10,937	6,764	743	867	176	771	-	586	63	204
545.	Tanning material, N.O.S. ....	33	216	-	32	-	-	-	-	12	12
547.	Paint, paint material, putty, and varnish .....	4,113	4,396	105	630	-	284	464	950	430	960
549.	Plastics .....	244	927	-	41	-	10	939	38	-	212
551.	Cellulose articles, N.O.S. ....	10	6	-	134	-	-	84	-	-	84
553.	Drugs, medicines, and toilet preparations .....	370	132	-	80	-	-	-	33	-	243
555.	Aluminium: bar, ingot, pig, and slab .....	61	2,101	-	-	-	-	-	-	9,962	176
557.	Aluminium, N.O.S. ....	488	491	66	107	-	136	-	177	20	304
559.	Copper: ingot, and pig .....	4,526	2,332	4,530	-	-	-	-	510	153	-
561.	Copper, brass, and bronze, N.O.S. ....	5,132	3,501	158	316	23	95	58	181	65	400
563.	Lead and zinc: bar, ingot, and pig .....	321	5,651	6,478	50	-	50	13	193	35,583	10,600
565.	Lead and zinc, N.O.S. ....	-	50	-	-	-	-	-	84	751	23
567.	Magnesium metal and alloy .....	317	24	-	-	-	-	-	-	-	-
569.	Alloys for steel manufacture .....	4,487	3,897	-	146	-	-	-	75	41	53
570.	Matte .....	25,358	14,652	-	-	-	-	-	-	79	79
571.	Metals and alloys, N.O.S. ....	5,984	776	Cr. 4,239	Cr. 4,245	414	-	850	-	15	15
573.	Iron, pig .....	9,012	2,669	-	213	-	-	-	266	-	273
575.	Iron and steel: billet, bloom, and ingot .....	12,516	2,007	-	-	-	-	-	-	-	-
577.	Iron and steel: bar, rod, and slab .....	28,932	15,079	2,004	2,054	75	1,674	822	5,904	128	1,556
579.	Iron and steel, N.O.S. ....	136	427	-	-	-	-	-	126	52	136
581.	Iron and steel nails and wire (woven and not woven) N.O.S. ....	3,999	992	622	1,625	12	731	51	1,287	846	562
583.	Manufactured iron and steel .....	52,224	32,324	3,798	11,995	94	2,867	3,594	10,027	3,010	9,384
585.	Cast iron pipe and fittings .....	216	59	106	287	-	194	376	160	247	53
587.	Iron and steel pipe and fittings, N.O.S. ....	32,167	35,172	947	2,400	4,542	6,615	410	7,223	2,463	2,155
589.	Tanks, N.O.S. ....	635	630	241	120	60	343	80	351	206	67
591.	Agricultural implements, N.O.S. ....	9,678	1,471	468	874	278	1,931	467	2,441	33	108



GROUP V											
Manufactures and Miscellaneous (C.L.) - Cont'd.											
593.	Agricultural implement parts, N.O.S.	365	113	35	41	22	58	21	194	16	11
595.	Machinery and machines, N.O.S.	10,070	10,361	983	2,225	740	1,028	1,832	3,410	5,190	5,041
597.	Machinery parts	3,055	2,294	114	592	27	592	188	691	313	672
601.	Business and office machines, N.O.S.	-	19	-	-	-	-	-	-	-	-
603.	Railway equipment moved on own wheels	568	432	-	22	-	18	-	100	-	-
605.	Railway equipment, S.U. not moved on own wheels	38	16	-	12	-	14	-	-	14	-
607.	Railway equipment parts	614	1,101	138	92	-	-	-	417	-	18
609.	Rails and railway track material, iron and steel	10,922	5,858	188	Cr. 4,178	-	2,553	-	648	613	Cr. 462
611.	Vehicles, other than motor	506	149	39	420	140	104	347	337	148	180
613.	Automobiles, passenger	12,087	182	4	1,435	-	1,740	-	3,020	76	2,677
615.	Automobiles, freight	2,794	276	22	206	-	182	60	862	163	354
617.	Vehicles, motor, N.O.S.	1,842	1,851	338	709	86	820	173	1,385	607	598
619.	Military vehicles, N.O.S.	20	-	12	-	6	-	74	74	10	29
621.	Automobiles and autotrucks, K.D.	1,232	44	-	6	-	6	17	41	-	31
623.	Vehicle parts, N.O.S.	13,729	18,460	34	204	30	260	18	388	30	579
625.	Airplanes, aircraft, and parts	124	116	13	38	-	-	32	35	14	20
627.	Tires and tubes, rubber	3,946	491	305	727	-	460	-	636	-	519
629.	Guns, small arms, and parts, N.O.S.	75	75	-	-	-	-	40	40	-	-
631.	Ammunition and explosives	1,293	1,770	298	395	26	144	505	838	227	452
633.	Cement - natural and portland	70,052	39,757	14,576	7,187	1,283	7,125	33,651	31,152	6,643	9,735
635.	Cement, N.O.S.	860	3,835	218	268	39	110	341	371	92	184
637.	Brick, common	499	1,442	68	538	545	1,802	972	37	170	184
639.	Brick, N.O.S. and building tile	1,672	7,882	987	2,826	2,148	2,733	5,904	3,362	465	980
641.	Refractories	579	10,014	66	513	151	96	42	724	630	1,180
643.	Artificial stone, N.O.S.	156	64	-	-	-	25	454	430	-	35
645.	Lime, N.O.S.	36,333	40,770	4,290	877	-	560	1,802	1,171	479	684
647.	Plaster, stucco and wall	7,502	11,285	1,191	776	11	184	789	1,276	504	633
649.	Sewer pipe and drain tile (not metal)	3,413	1,039	1,904	3,680	869	826	1,091	1,137	109	1,200
651.	Broken or ground brick, blocks, crockery, and glass	367	60	96	-	-	-	52	148	-	-
653.	Woodpulp	51,174	16,212	-	-	-	-	7,546	931	35,063	405
655.	Scrap paper and rags	5,875	8,365	404	139	22	-	326	598	487	215
657.	Newsprint paper	84,844	13,581	8,150	407	-	758	-	1,710	20,901	51
659.	Printing paper, N.O.S.	5,665	3,453	-	315	-	63	40	233	531	518
661.	Wrapping paper	3,674	4,954	155	1,356	5	454	62	510	871	333
663.	Paper bags	889	2,348	281	413	-	87	30	792	588	201
665.	Paper and paper articles, N.O.S.	10,039	6,395	517	2,161	-	517	135	1,647	3,101	1,225
667.	Printed matter, N.O.S.	901	643	46	192	6	170	-	158	-	322
669.	Paperboard, fibreboard, and pulpboard	13,256	18,911	102	2,874	-	462	274	1,416	1,253	461
671.	Wallboard	9,061	11,991	10,581	2,000	15	4,068	1,904	7,785	783	1,914
673.	Building paper and prepared roofing materials	1,560	10,343	1,464	944	76	1,585	775	1,226	1,837	2,088
675.	Insulating materials, N.O.S.	7,008	3,119	135	468	-	731	345	1,293	738	914
677.	Building woodwork and millwork	83	249	20	63	-	58	-	188	580	131
679.	Building materials, N.O.S.	712	798	275	167	6	141	548	725	392	411
681.	Buildings and houses, fabricated and portable, N.O.S.	386	269	-	105	-	55	42	159	18	108
683.	Asbestos articles, N.O.S.	202	11	30	-	-	12	-	191	-	25
685.	Electrical equipment and parts, N.O.S.	5,030	2,795	321	651	44	348	17	516	404	816
687.	Furnaces, heaters, radiators, and parts	724	389	24	245	-	233	6	411	28	311
689.	Bathroom and lavatory fixtures and sinks	677	234	-	268	-	61	-	340	12	285
691.	Hardware, N.O.S.	844	137	240	296	-	150	21	594	247	257
693.	Glass	577	2,376	360	540	-	74	-	869	589	38
695.	Glassware, N.O.S.	653	863	22	283	-	41	138	120	137	283
697.	Glass bottles, jars, and packing glasses, N.O.S.	2,961	5,414	-	264	-	890	2,476	126	44	1,702
701.	Chinaware, crockery and earthenware	137	247	-	50	-	100	34	16	143	-
703.	Woodenware	494	154	37	63	-	-	-	70	75	24
705.	Household utensils, N.O.S.	40	57	-	24	-	-	-	16	31	-
707.	Refrigerators, freezing apparatus, and parts	1,570	774	73	545	-	348	-	836	37	630
709.	Laundry equipment	582	207	-	61	-	12	-	42	-	81
711.	Stoves, ranges, and parts	Cr. 924	265	13	251	-	77	-	188	44	150
713.	Floor covering	320	294	-	336	-	199	38	547	-	640

REVENUE FREIGHT LOADED AND UNLOADED AT POINTS IN CANADA  
PROVINCIAL DISTRIBUTION

July, 1958

No.	COMMODITIES	Ontario		Manitoba		Saskatchewan		Alberta		British Columbia	
		Loaded	Unloaded	Loaded	Unloaded	Loaded	Unloaded	Loaded	Unloaded	Loaded	Unloaded
		TONS (2,000 lb.)									
	<b>GROUP V</b>										
	<b>Manufactures and Miscellaneous (C.L.) - Concl.</b>										
715.	Furniture, N.O.S. ....	1,205	830	507	517	-	374	129	767	189	485
717.	Furniture parts .....	35	35	7	31	-	-	-	-	-	7
719.	Tools and parts, N.O.S. ....	27	32	-	21	-	20	-	43	-	-
721.	Abrasives, other than crude .....	571	307	-	-	-	20	-	-	-	47
724.	Bagging: burlap, cotton, gunny, and jute, N.O.S. ....	100	121	-	28	-	15	-	265	-	60
725.	Bags: burlap, cotton, gunny, and jute, N.O.S. ....	-	26	57	-	-	22	-	31	22	-
727.	Cotton cloth and cotton fabrics, N.O.S. ....	125	539	-	335	-	-	-	28	417	-
729.	Cotton factory products .....	713	501	60	75	-	15	-	83	66	58
731.	Synthetic fibre and yarns (rayon and nylon) .....	-	58	-	-	-	44	39	-	-	-
733.	Cloth and fabrics, N.O.S. ....	40	202	-	26	-	38	-	44	38	-
735.	Rope, cordage, and binder twine, N.O.S. ....	3,362	919	89	448	12	427	-	1,135	203	24
737.	Boots, shoes, and findings, N.O.S. ....	20	146	-	16	-	-	-	-	-	-
739.	Luggage and handbags, N.O.S. ....	-	-	-	-	-	-	-	-	-	-
741.	Athletic, gymnasium, playground, and sporting equipment, N.O.S. ....	45	24	-	15	-	-	-	-	-	45
743.	Games and toys .....	-	75	-	12	-	-	-	-	24	-
745.	Liquors, alcoholic, N.O.S. ....	4,877	1,663	45	1,025	46	861	106	131	999	1,247
747.	Wine .....	604	95	25	74	30	174	30	123	176	63
749.	Liquors, malt .....	13,509	16,378	1,079	1,247	3,389	3,521	676	834	2,692	2,620
751.	Beverages, N.O.S. ....	65	36	13	30	-	-	21	33	-	-
753.	Ice .....	263	238	32	57	-	-	47	47	58	58
755.	Syrup and molasses, refined .....	1,585	1,153	20	292	-	20	-	115	155	165
757.	Molasses, residual .....	469	-	58	131	6	6	150	67	-	56
759.	Sugar .....	356	12,928	904	1,171	376	5,150	12,088	8,316	3,298	2,050
761.	Candy and confectionery .....	1,202	486	75	501	-	170	-	346	21	356
763.	Food products, N.O.S., in cans and packages, not frozen .....	32,074	12,703	3,294	8,996	210	4,175	1,238	8,538	10,607	10,991
765.	Food products, N.O.S., frozen .....	20	616	154	104	30	49	58	33	392	460
767.	Starch .....	2,169	1,186	53	243	-	53	-	-	-	592
769.	Soap and cleaning and washing compounds .....	7,749	663	101	951	12	492	59	1,058	15	1,718
771.	Matches .....	167	69	-	12	-	25	-	60	30	49
773.	Feed, animal and poultry, N.O.S. ....	16,128	9,513	2,682	801	436	944	2,515	1,164	5,562	7,198
775.	Manufactured tobacco, N.O.S. ....	33	125	-	150	-	16	-	92	-	77
777.	Cigarettes .....	706	1,121	-	588	-	261	-	478	-	631
779.	Containers, metal .....	9,001	8,763	99	526	12	156	22	1,180	1,508	1,267
781.	Containers, wooden .....	647	508	98	91	111	194	134	46	55	116
783.	Containers, fibreboard and paperboard, K.D. ....	1,798	1,169	220	159	14	337	139	224	1,241	1,090
785.	Containers, N.O.S. ....	740	1,199	64	79	37	89	143	193	55	189
787.	Containers, returned empty .....	8,117	5,840	474	74	770	849	307	754	1,310	1,062
789.	Scrap iron and scrap steel .....	17,520	30,484	20,032	2,993	3,014	-	5,853	5,809	4,604	664
791.	Iron and steel borings, turnings, etc. ....	819	810	-	-	-	-	-	-	7	-
793.	Furnace slag .....	415	421	-	-	-	-	-	636	636	-
795.	Waste materials for remelting, N.O.S. ....	2,828	3,294	182	33	314	126	282	539	1,282	66
797.	Waste materials, N.O.S. ....	1,417	2,767	201	92	23	324	244	201	143	143
799.	Manufactures and miscellaneous, N.O.S. ....	85,692	56,434	13,597	19,335	3,639	11,791	35,824	47,887	7,523	20,229
(940)	<b>TOTAL MANUFACTURES AND MISCELLANEOUS</b> .....	1,070,721	861,296	148,288	165,418	96,056	130,959	278,295	297,438	238,332	193,365
(960)	<b>GRAND TOTAL, CARLOAD TRAFFIC</b> .....	3,812,036	5,029,741	650,987	545,536	1,536,119	349,544	903,699	617,990	864,667	922,892
	<b>GROUP VII</b>										
	<b>All L.C.L. Freight</b>										
970.	All L.C.L. freight .....	45,341	43,371	9,569	7,043	8,958	11,398	6,363	7,868	7,011	8,678
(980)	<b>GRAND TOTAL, CARLOAD AND L.C.L. TRAFFIC</b> .....	3,857,377	5,073,112	660,556	552,579	1,545,077	360,942	910,062	625,858	871,678	931,570

REVENUE FREIGHT CARRIED BY RAILWAYS IN CANADA

SUMMARY

July, 1958

	Canada	Newfoundland	Prince Edward Island	Nova Scotia	New Brunswick	Quebec	Ontario	Manitoba	Saskatchewan	Alberta	British Columbia
	TONS (2,000 lb.)										
<b>Originated or loaded</b> (including imports at lake or ocean ports)											
Products of Agriculture (C.L.)	2,318,906	37	7,298	1,830	3,353	86,272	363,312	204,476	1,289,411	341,551	21,366
Animals and Products (C.L.)	88,661	119	1,339	3,125	2,163	6,293	12,848	13,691	17,717	26,472	4,894
Products of Mines (C.L.)	6,163,279	40,290	1,181	597,514	66,598	2,649,835	2,084,781	277,954	122,147	213,459	109,520
Products of Forests (C.L.)	1,238,450	84,334	1,176	25,912	62,400	232,411	280,374	6,578	10,788	43,922	490,555
Manufactures and Miscellaneous (C.L.)	2,913,461	64,808	3,500	96,280	121,680	795,501	1,070,721	148,288	96,056	278,295	238,332
<b>Total C.L. Freight</b>	<b>12,722,757</b>	<b>189,588</b>	<b>14,494</b>	<b>724,661</b>	<b>256,194</b>	<b>3,770,312</b>	<b>3,812,036</b>	<b>650,987</b>	<b>1,536,119</b>	<b>903,699</b>	<b>864,667</b>
L.C.L. Freight	114,394	5,684	686	4,189	4,769	21,824	45,341	9,569	8,958	6,363	7,011
<b>Grand Total</b>	<b>12,837,151</b>	<b>195,272</b>	<b>15,180</b>	<b>728,850</b>	<b>260,963</b>	<b>3,792,136</b>	<b>3,857,377</b>	<b>660,556</b>	<b>1,545,077</b>	<b>910,062</b>	<b>871,678</b>
<b>Received from U.S. (rail)</b>											
Products of Agriculture (C.L.)	327,497	-	-	-	841	14,030	288,607	7,642	1,014	151	15,212
Animals and Products (C.L.)	32,683	-	-	-	-	1,255	30,984	223	12	12	197
Products of Mines (C.L.)	523,022	-	-	-	1,039	87,898	316,213	7,306	5,935	26,215	78,416
Products of Forests (C.L.)	113,502	-	-	-	816	5,570	89,627	1,113	847	278	15,251
Manufactures and Miscellaneous (C.L.)	824,711	-	-	-	13,118	124,342	635,575	18,717	9,168	1,008	22,783
<b>Total C.L. Freight</b>	<b>1,821,415</b>	<b>-</b>	<b>-</b>	<b>-</b>	<b>15,814</b>	<b>233,095</b>	<b>1,361,006</b>	<b>35,001</b>	<b>16,976</b>	<b>27,664</b>	<b>131,859</b>
L.C.L. Freight	20,742	-	-	-	632	4,140	14,274	719	364	20	593
<b>Grand Total</b>	<b>1,842,157</b>	<b>-</b>	<b>-</b>	<b>-</b>	<b>16,446</b>	<b>237,235</b>	<b>1,375,280</b>	<b>35,720</b>	<b>17,340</b>	<b>27,684</b>	<b>132,452</b>
<b>Total freight traffic (excluding duplications)</b>											
Products of Agriculture (C.L.)	2,646,403	37	7,298	1,830	4,194	100,302	651,919	212,118	1,290,425	341,702	36,578
Animals and Products (C.L.)	121,344	119	1,339	3,125	2,163	7,548	43,832	13,914	17,729	26,484	5,091
Products of Mines (C.L.)	6,686,301	40,290	1,181	597,514	67,637	2,737,733	2,400,994	285,260	128,082	239,674	187,936
Products of Forests (C.L.)	1,351,952	84,334	1,176	25,912	63,216	237,981	370,001	7,691	11,635	44,200	505,806
Manufactures and Miscellaneous (C.L.)	3,738,172	64,808	3,500	96,280	134,798	919,843	1,706,296	167,005	105,224	279,303	261,115
<b>Total C.L. Freight</b>	<b>14,544,172</b>	<b>189,588</b>	<b>14,494</b>	<b>724,661</b>	<b>272,008</b>	<b>4,003,407</b>	<b>5,173,042</b>	<b>685,988</b>	<b>1,553,095</b>	<b>931,363</b>	<b>996,526</b>
L.C.L. Freight	135,136	5,684	686	4,189	5,401	25,964	59,615	10,288	9,322	6,383	7,604
<b>Grand Total</b>	<b>14,679,308</b>	<b>195,272</b>	<b>15,180</b>	<b>728,850</b>	<b>277,409</b>	<b>4,029,371</b>	<b>5,232,657</b>	<b>696,276</b>	<b>1,562,417</b>	<b>937,746</b>	<b>1,004,130</b>
<b>Terminated or unloaded</b> (including exports at lake or ocean ports)											
Products of Agriculture (C.L.)	2,350,181	2,347	2,287	27,045	16,285	313,284	1,369,899	74,281	71,206	53,504	420,043
Animals and Products (C.L.)	80,520	1,316	620	3,561	3,274	18,205	18,609	15,373	2,769	6,146	10,647
Products of Mines (C.L.)	6,388,954	60,168	20,216	482,240	107,970	2,512,477	2,425,574	263,464	118,183	217,459	181,203
Products of Forests (C.L.)	1,018,160	156,664	1,262	21,832	34,636	234,899	354,363	27,000	26,427	43,443	117,634
Manufactures and Miscellaneous (C.L.)	2,650,349	70,619	14,040	115,192	89,980	712,042	861,296	165,418	130,959	297,438	193,365
<b>Total C.L. Freight</b>	<b>12,488,164</b>	<b>291,114</b>	<b>38,425</b>	<b>649,870</b>	<b>252,145</b>	<b>3,790,907</b>	<b>5,029,741</b>	<b>545,536</b>	<b>349,544</b>	<b>617,990</b>	<b>922,892</b>
L.C.L. Freight	124,855	8,417	1,163	7,355	6,612	22,950	43,371	7,043	11,398	7,868	8,678
<b>Grand Total</b>	<b>12,613,019</b>	<b>299,531</b>	<b>39,588</b>	<b>657,225</b>	<b>258,757</b>	<b>3,813,857</b>	<b>5,073,112</b>	<b>552,579</b>	<b>360,942</b>	<b>625,858</b>	<b>931,570</b>
<b>Delivered to U.S. rail connections</b>											
Products of Agriculture (C.L.)	279,991	-	-	-	792	76,870	196,279	2,510	2,761	-	779
Animals and Products (C.L.)	41,555	-	-	-	105	11,828	23,015	1,549	2,383	24	2,651
Products of Mines (C.L.)	315,637	-	-	-	1,485	57,832	224,464	691	607	3,374	27,184
Products of Forests (C.L.)	388,937	-	-	-	8,542	44,841	223,886	11,529	75,513	-	24,626
Manufactures and Miscellaneous (C.L.)	1,114,631	-	-	-	3,621	201,954	800,491	27,193	23,678	27	57,667
<b>Total C.L. Freight</b>	<b>2,140,751</b>	<b>-</b>	<b>-</b>	<b>-</b>	<b>14,545</b>	<b>393,325</b>	<b>1,468,135</b>	<b>43,472</b>	<b>104,942</b>	<b>3,425</b>	<b>112,907</b>
L.C.L. Freight	10,948	-	-	-	51	1,064	9,410	86	124	112	101
<b>Grand Total</b>	<b>2,151,699</b>	<b>-</b>	<b>-</b>	<b>-</b>	<b>14,596</b>	<b>394,389</b>	<b>1,477,545</b>	<b>43,558</b>	<b>105,066</b>	<b>3,537</b>	<b>113,008</b>

STATISTICS CANADA LIBRARY  
BIBLIOTHÈQUE STATISTIQUE CANADA



1010549355

RAILWAY FREIGHT TRAFFIC