

52 003

CANADA
DOMINION BUREAU OF STATISTICS
TRANSPORTATION BRANCH

OPERATING REVENUES, EXPENSES AND STATISTICS
of
RAILWAYS
With Annual Operating Revenues of \$500,000
For
February
1922

-----+ + +-----

Published by Authority of the Hon. J. A. Robb, M. P.,
Minister of Trade and Commerce.

+ + +

OTTAWA

1922

DOMINION BUREAU OF STATISTICS
TRANSPORTATION BRANCH
OTTAWA

Dominion Statistician, R.H. Coats, B.A., F.S.S.
Chief, Transportation Branch, G.S. Wrong, B.Sc.

OPERATING REVENUES, EXPENSES & STATISTICS

OF

RAILWAYS WITH AN ANNUAL OPERATING REVENUE OF \$500,000

For the Month of February 1922.

The railways as a whole showed an operating deficit of \$140,315 whereas for February 1921 the deficit was \$1,431,832. The revenues decreased \$4,370,277 or 13 per cent, over \$3,000,000 of this being in freight earnings, despite a slight increase in the revenue ton miles. Passenger revenues decreased \$1,419,880 or 24 per cent, with a decrease of 20 per cent in passenger miles.

Expenses were reduced \$5,661,793 or 16 per cent, the largest cut being in transportation expenses which were reduced \$3,815,660 or 20 per cent with a decrease of 5 per cent in total train miles and 4 per cent in total ton miles.

The passenger miles showed a decrease of 20 per cent while the average fare per passenger per mile was .284 cents or about 6 per cent, less than for February 1921. This was, however, 50 per cent above the average fare per mile paid during 1913. The average load per car decreased 1.5 tons thereby increasing the loaded freight car mileage. The pay roll showed a decrease of \$3,534,908 or 17 per cent with a reduction in the number of employees of 13,830 or 9 per cent.

CANADIAN NATIONAL RAILWAYS showed a decrease of \$2,497,679 in revenues and a decrease of \$3,108,849 in expenses, giving a net deficit from operations of \$2,375,829 as against \$2,986,998 for February 1921. The operating ratio of 131.05 per cent was higher than for both February 1921 and January 1922.

Revenue ton miles decreased 11 per cent and passenger miles 20 per cent, while the average tons of revenue freight per train increased 13 per cent. The average receipts per ton mile showed a decrease of 17 per cent and the average passenger receipts per passenger mile a decrease of 10 per cent. The pay roll decreased \$1,863,406 or 24 per cent with a reduction of 8,331 or 13 per cent in the number of employees.

CANADIAN PACIFIC RAILWAYS showed an improvement over January operations with an operating ratio of 93.87 per cent as against 95.96 per cent for January 1922. With 10 per cent less days the freight traffic increased 8 per cent and passenger traffic decreased 10 per cent or about held its own. Compared with February 1921 the freight traffic showed an increase of 11 per cent but passenger traffic decreased almost 25 per cent and compared with February 1920 the decrease in passenger traffic was almost 50 per cent. The pay roll showed a decrease of \$558,450 or 8.5 per cent with a decrease of 7 per cent in the number of employees.

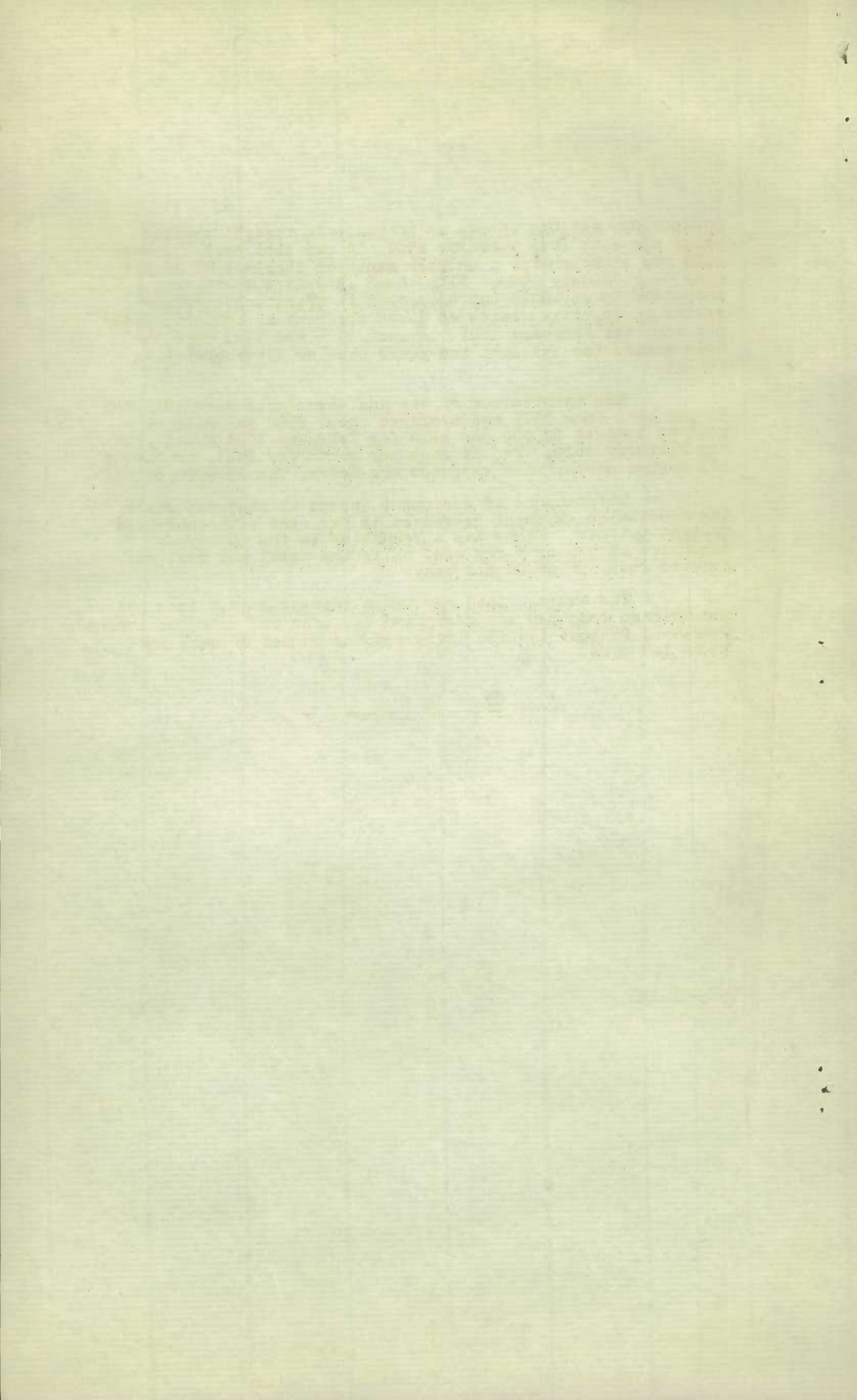
GRAND TRUNK RAILWAY showed an increase in freight traffic of 12 per cent over February 1921, 14 per cent over February 1920 and although for a shorter month an increase of 16 per cent over January 1922. With these increases there were increases in revenues but decreases in operating expenses giving an operating ratio of 82.95 per cent as against 99.42 per cent for February 1921. August 1920 and 1921 were the only months for the last two years showing lower operating ratios.

The maintenance of way and structures were cut over 50 per cent from 1921 and averaged about \$960 per mile of road as against \$2,000 per mile for February 1921 and \$1,700 for February 1920. The average per month for 1921, including the summer months when expenses are heavy, was \$3,990 per mile.

Maintenance of equipment showed an increase while transportation expenses decreased 11 per cent with increased freight traffic. There was a reduction in the number of employees of 936 or 3 per cent while the total pay roll was reduced \$825,356 or 20 per cent.

The average load per train increased 39.9 tons but the average load per car decreased 1.7 tons and with the increased freight traffic increased the number of cars per train 1.8 cars.

10-5-22-KH.



OPERATING REVENUES, EXPENSES & STATISTICS

STEAM RAILWAYS OF CANADA

With an annual Operating Revenue of \$500,000

For the Month of February 1922.

	1922	1921
OPERATING REVENUES		
Freight	\$21,265,512.74	\$24,325,016.09
Passenger	4,381,567.76	5,801,447.56
Mail	605,904.24	309,572.31
Express	967,239.80	1,035,663.38
Other Freight Train	4,842.80	4,219.11
Other Passenger Train	337,027.12	438,787.07
Water Line	40,445.27	46,945.73
All Other	939,111.50	950,277.19
Total Railway Operating Revenues	28,541,651.23	32,911,928.44
OPERATING EXPENSES		
Maint. of Way and Structures	\$4,374,213.65	\$5,432,090.42
Maint. of Equipment	7,457,492.29	8,142,288.07
Traffic	929,884.39	864,671.44
Transportation	14,730,774.38	18,546,431.06
Misc. Operations	372,170.19	455,149.66
General	901,379.10	970,977.82
Trans. for Investment	Cr. 83,943.80	Cr. 67,847.79
Total Railway Operating Expenses	28,681,967.20	34,343,760.68
OPERATING INCOME		
Net Operating Revenue	Dr. \$140,315.97	Dr. \$1,431,832.24
Railway Tax Accruals	524,185.56	468,441.56
Uncollectable Revenues	867.55	536.15
Hire of Equipment	Cr. 318,706.95	Cr. 131,695.29
Joint Facilities Rents	Dr. 65,081.16	Cr. 23,265.67
Operating Income	Dr. 411,743.29	Dr. 1,745,848.99
OPERATING STATISTICS		
Average Miles of Road Operated	38,729.30	38,408.60
No. of Tons Carried (Rev. Fr.)	7,206,045	8,411,181
No. of Tons Carried One Mile (Rev. Fr.)	2,011,226.031	2,002,311.396
No. of Tons Carried (All Fr.)	8,443,538	10,144,682
No. of Tons Carried One Mile (All Fr.)	2,180,863.650	2,250,938.854
No. of Revenue Pass. Carried	2,891,293	3,280,845
No. of Revenue Pass. Carried One Mile	147,543.826	183,914.869
# Freight Train Miles	4,318,204	4,528,769
# Passenger Train Miles	3,215,635	3,488,974
Total Train Miles (Rev. & Non Rev.)	7,734,093	8,181,195
Freight Car Miles-Loaded	85,244,458	83,055,271
Freight Car Miles-Empty	35,837,462	40,991,137
Passenger Train Car Miles	20,465,297	22,474,748
Total amount of Pay Roll	\$16,633,552.33	\$20,168,460.50
Number of Employees	140,678	154,508
AVERAGES PER MILE OF ROAD OPERATED		
Operating Revenue	\$736.95	\$856.89
Operating Expenses	\$740.58	\$894.17
No. of Tons Moved One Mile (Rev.)	51,930	52,132
No. of Tons Moved One Mile (All Fr.)	56,310	58,605
AVERAGES PER FREIGHT TRAIN MILE		
Freight Revenue	\$4.93	\$5.37
No. of Tons of Freight (Revenue)	465.8	442.1
No. of Tons of Freight (All Fr.)	505.0	497.0
Loaded Freight Cars	19.7	18.3
Empty Freight Cars	8.3	9.0
AVERAGES PER PASS. TRAIN MILE		
Passenger Train Revenue	\$1.96	\$2.17
Passengers Carried	45.9	52.7
Passenger Cars	6.4	6.4
Average Length of Haul (Rev. Fr.) Miles	279.1	238.1
Average Passenger Journey Miles	51.0	56.1
Average Tons per loaded Fr. Car	25.6	27.1
Av. Fr. Receipt per Rev. Ton Miles	1.057¢	1.215¢
Av. Passenger Receipt per Pass. Per Mile	2.970¢	3.154¢
Ratio of Pay Roll to Operating Revenues	58.3%	61.3%
Ratio of Pay Roll to Operating Expenses	58.0%	58.7%
Ratio of Operating Expenses to Revenues	100.49%	104.35%

Contains a proportion of mixed train miles

OPERATING REVENUES, EXPENSES & STATISTICS

CANADIAN NATIONAL RAILWAYS

For the Month of February 1922

	1922	1921
OPERATING REVENUES		
Freight	\$5,919,182.52	\$8,070,309.74
Passenger	978,027.08	1,362,198.85
Mail	178,697.67	87,477.39
Express	251,286.66	236,800.14
Other Freight Train	Dr. 794.65	...
Other Passenger Train	105,225.25	138,329.53
Water Line
All Other	219,118.22	253,306.34
Total Railway Operating Revenues	7,650,742.75	10,148,421.99
OPERATING EXPENSES		
Maint. of Way and Structures	\$2,126,272.41	\$2,498,865.90
Maint. of Equipment	2,521,350.08	3,021,911.61
Traffic	159,443.38	213,279.19
Transportation	4,935,242.27	7,093,313.84
Misc. Operations	124,546.98	165,214.98
General	243,274.69	210,653.49
Trans. for Investment	Cr. 83,558.06	Cr. 67,818.67
Total Railway Operating Expenses	10,026,571.75	13,135,420.34
OPERATING INCOME		
Net Operating Revenue	Dr. 2,375,829.00	Dr. 2,986,998.35
Railway Tax Accruals	97,698.83	66,918.31
Uncollectable Revenues	1.00	10.82
Hire of Equipment	Cr. 115,340.54	Cr. 131,873.08
Joint Facilities Rents	Dr. 19,523.90	Dr. 52,178.00
Operating Income	Dr. 2,377,712.19	Dr. 2,974,232.40
OPERATING STATISTICS		
Average Miles of Road Operated	17,212.10	17,023.77
No. of Tons Carried (Rev. Fr.)	1,485,969	2,144,384
No. of Tons Carried One Mile (Rev. Fr.)	656,773,076	743,194,563
No. of Tons Carried (All Fr.)	1,953,046	3,041,905
No. of Tons Carried One Mile (All Fr.)	731,714,391	870,936,756
No. of Revenue Pass. Carried	772,421	928,957
No. of Revenue Pass. Carried One Mile	36,574,866	45,750,966
Freight Train Miles	1,472,315	1,885,175
Passenger Train Miles	908,742	1,118,204
Total Train Miles (Rev. & Non Rev.)	2,515,114	3,108,445
Freight Car Miles- Loaded	26,648,963	31,213,330
Freight Car Miles- Empty	11,033,185	16,440,601
Passenger Train Car Miles	5,965,477	7,032,201
Total amount of Pay Roll	\$5,962,508.78	\$7,825,914.77
Number of Employees	52,816	61,147
AVERAGES PER MILE OF ROAD OPERATED		
Operating Revenues	\$444.50	\$596.13
Operating Expenses	\$582.53	\$771.59
No. of Tons Moved One Mile (Revenue)	38,158	43,656
No. of Tons Moved One Mile (All Fr.)	42,511	51,107
AVERAGES PER FREIGHT TRAIN MILE		
Freight Revenue	\$4.02	\$4.28
No. of Tons of Freight (Revenue)	446.1	394.2
No. of Tons of Freight (All Fr.)	497.0	461.5
Loaded Freight Cars	13.1	16.6
Empty Freight Cars	7.5	8.7
AVERAGES PER PASS. TRAIN MILE		
Passenger Train Revenue	\$1.66	\$1.63
Passengers Carried	40.2	40.9
Passenger Cars	6.6	6.3
Average Length of Haul (Rev. Fr.) Miles	442.0	346.6
Average Passenger Journey Miles	47.3	49.2
Average Tons per loaded Fr. Car	27.5	27.9
Av. Fr. Receipt per Rev. Ton Mile	.901 ¢	1.086 ¢
Av. Passenger Receipt per Pass. per Mile	2.674 ¢	2.977 ¢
Ratio of Pay Roll to Operating Revenues	77.9 %	77.1 %
Ratio of Pay Roll to Operating Expenses	59.5 %	59.6 %
Ratio of Op. Expenses to Revenues	131.05 %	129.4 %

Contains a proportion of mixed train miles

OPERATING REVENUES, EXPENSES & STATISTICS

CANADIAN PACIFIC RY.

MONTREAL & ATLANTIC RY.

ESQUIMALT & NANAIMO RY.

For the Month of February 1922

	1922	1921
OPERATING REVENUES		
Freight	\$8,103,407.74	\$8,801,712.42
Passenger	1,933,549.53	2,672,022.00
Mail	281,283.19	152,414.20
Express	445,631.94	654,232.87
Other Freight Train	5,637.45	4,219.11
Other Passenger Train	202,949.41	250,396.93
Water Line	40,476.03	47,033.73
All Other	446,637.77	439,583.95
Total Railway Operating Revenues	11,459,574.06	13,021,675.21
OPERATING EXPENSES		
Maint. of Way and Structures	\$1,374,503.75	\$1,557,561.05
Maint. of Equipment	2,729,120.06	3,052,639.01
Traffic	568,289.28	450,228.33
Transportation	5,593,048.63	6,545,295.88
Misc. Operations	184,649.67	215,709.83
General	307,440.27	329,895.50
Trans. for Investment		
Total Railway Operating Expenses	10,757,051.66	12,151,329.60
OPERATING INCOME		
Net Operating Revenue	\$702,522.40	\$870,345.61
Railway Tax Accruals	243,500.00	227,597.62
Uncollectable Revenues		
Hire of Equipment	Cr. 211,603.46	Cr. 176,330.64
Joint Facilities Rents	Cr. 20,672.32	Cr. 17,631.66
Operating Income	691,298.18	836,710.29
OPERATING STATISTICS		
Average Miles of Road Operated	13,877.2	13,772.1
No. of Tons Carried (Revenue Freight)	2,019,257	2,146,747
No. of Tons Carried One Mile (Revenue Freight)	774,825,140	697,810,960
No. of Tons Carried (All Freight)	2,461,538	2,649,559
No. of Tons Carried One Mile (All Freight)	842,498,205	791,279,014
No. of Revenue Pass. Carried	994,255	1,098,678
No. of Revenue Pass. Carried One Mile	62,650,314	83,315,240
* Freight Train Miles	1,570,036	1,404,163
* Passenger Train Miles	1,385,608	1,402,569
Total Train Miles (Rev. & Non Revenue)	3,009,150	2,842,217
Freight Car Miles - Loaded	31,411,900	28,725,712
Freight Car Miles - Empty	10,630,383	9,599,487
Passenger Train Car Miles	8,875,702	9,620,610
Total amount of Pay Roll	\$5,913,847.10	\$6,472,297.43
Number of Employees	50,127	53,303
AVERAGES PER MILE OF ROAD OPERATED		
Operating Revenue	\$825.58	\$945.51
Operating Expenses	\$775.16	\$882.31
No. of Tons Moved One Mile (Revenue)	55,834	50,575
No. of Tons Moved One Mile (All Fr.)	60,710	57,455
AVERAGES PER FREIGHT TRAIN MILE		
Freight Revenue	\$5.16	\$6.27
No. of Tons of Freight (Revenue)	493.5	436.9
No. of Tons of Freight (All Fr.)	536.6	563.5
Loaded Freight Cars	20.0	20.5
Empty Freight Cars	6.8	6.8
AVERAGES PER PASS. TRAIN MILE		
Passenger Train Revenue	\$2.07	\$2.66
Passengers Carried	45.2	59.4
Passenger Cars	6.4	6.9
Average length of Haul (Rev. Fr.) Miles	383.7	325.1
Average Passenger Journey Miles	62.0	75.8
Average Tons per loaded Fr. Car	26.8	27.5
Av. Fr. Receipt per Rev. Ton Mile	1.0464	1.2614
Av. Passenger Receipt per Pass. per Mile	3.0864	3.2074
Ratio of Pay Roll to Operating Revenues	51.6%	49.7%
Ratio of Pay Roll to Operating Expenses	55.0%	53.3%
Ratio of Operating Expenses to Revenues	93.87%	93.32%

* Contains a proportion of mixed train miles

OPERATING REVENUES, EXPENSES & STATISTICS

GRAND TRUNK RAILWAY

For the Month of February 1922.

	1922	1921
OPERATING REVENUES		
Freight	\$4,321,027.00	\$4,173,954.69
Passenger	856,460.00	1,001,143.93
Mail	105,000.00	43,074.87
Express	200,000.00	95,782.21
Other Freight Train		
Other Passenger Train	17,200.00	33,757.00
Water Line		
All Other	167,800.00	147,005.64
Total Railway Operating Revenues	5,667,487.00	5,494,718.34
OPERATING EXPENSES		
Maint. of Way and Structures	\$347,974.88	\$729,413.44
Maint. of Equipment	1,353,561.81	1,319,570.48
Traffic	124,431.33	127,327.66
Transportation	2,642,261.22	2,971,501.45
Misc. Operations	29,623.88	41,739.11
General	203,267.48	273,431.98
Trans. for Investment	Cr. 135.35	
Total Railway Operating Expenses	4,700,985.25	5,462,924.10
OPERATING INCOME		
Net Operating Revenue	\$966,501.75	\$31,734.24
Railway Tax Accruals	110,850.00	106,669.00
Uncollectable Revenues	619.33	478.20
Hire of Equipment	Cr. 236,582.82	Cr. 69,104.20
Joint Facilities Rents	Cr. 50,535.08	Cr. 157,009.79
Operating Income	1,142,150.34	151,301.03
OPERATING STATISTICS		
Average Miles of Road Operated	3,612	3,612
No. of Tons Carried Rev. Freight	1,800,337	1,748,454
No. of Tons Carried One Mile Rev. Freight	351,825.696	314,033.223
No. of Tons Carried All Freight	2,073,339	2,006,705
No. of Tons Carried One Mile All Freight	370,724.847	334,843.888
No. of Revenue Pass. Carried	783,606	843,453
No. of Revenue Pass. Carried One Mile	30,003.173	33,363.660
# Freight Train Miles	783,606	773,081
# Passenger Train Miles	580,049	600,322
Total train miles (Rev. & Non Rev.)	1,343,655	1,373,403
Freight Car Miles - Loaded	15,640,575	13,165,827
Freight Car Miles - Empty	7,932,377	8,717,010
Passenger Train Car Miles	3,141,512	3,360,529
Total amount of Pay Roll	\$3,303,306.27	\$4,128,662.95
Number of Employees	27,192	28,123
AVERAGES PER MILE OF ROAD OPERATED		
Operating Revenue	\$ 1,569.07	\$ 1,521.24
Operating Expenses	1,301.49	1,512.45
No. of Tons Moved One Mile (Revenue)	97,405	86,947
No. of Tons Moved One Mile (All Fr.)	102,637	92,717
AVERAGES PER FREIGHT TRAIN MILE		
Freight Revenue	\$5.51	\$4.40
No. of Tons of Freight (Revenue)	449.0	406.2
No. of Tons of Freight (All Fr.)	473.1	433.2
Loaded Freight Cars	20.0	17.0
Empty Freight Cars	10.1	11.3
AVERAGES PER PASS. TRAIN MILE		
Passenger Train Revenue	\$2.10	\$1.96
Passengers Carried	53.6	55.6
Passenger Cars	5.6	5.6
Average Length of Haul (Rev. Fr.) Miles	191.2	179.6
Average Passenger Journey Miles	39.0	39.6
Average Tons per Loaded Fr. Car	23.7	25.4
Av. Fr. Receipt per Rev. Ton Mile	1.225¢	1.229¢
Av. Passenger Receipt per Pass. per Mile	2.855¢	3.001¢
Ratio of Pay Roll to Operating Revenues	58.3%	75.1%
Ratio of Pay Roll to Operating Expenses	70.3%	75.6%
Ratio of Op. Expenses to Revenues	82.95%	90.40%

Contains a proportion of mixed train miles

STATISTICS CANADA LIBRARY
BIBLIOTHÈQUE STATISTIQUE CANADA



1010703512