

52 003

Historical File Copy

RECEIVED FEB 4 1928

DOMINION BUREAU OF STATISTICS

C A N A D A
DEPARTMENT OF TRADE AND COMMERCE
DOMINION BUREAU OF STATISTICS
TRANSPORTATION BRANCH

OPERATING REVENUES EXPENSES & STATISTICS
of
RAILWAYS

With Annual Operating Revenues of \$500,000

For
NOVEMBER
1927

— + + + —

Published by authority of the Hon. James Malcolm, M. P.,
Minister of Trade and Commerce

+ + +

OTTAWA
1928

THE NATIONAL ARCHIVES

RECORDS

1951

For the above records the National Archives is not responsible for the accuracy of the information contained therein.

DEPARTMENT OF TRADE AND COMMERCE
DOMINION BUREAU OF STATISTICS
TRANSPORTATION BRANCH
OTTAWA

Dominion Statistician, R.H. Coats, B.A., F.S.S., (Hon.) F.R.S.C.
Chief, Transportation Branch, G.S. Wrong, B.Sc.

OPERATING REVENUES, EXPENSES & STATISTICS

STEAM RAILWAYS OF CANADA

WITH ANNUAL OPERATING REVENUES OF \$500,000

FOR THE MONTH OF NOVEMBER, 1927

The revenue ten miles of Canadian railways for November was the heaviest handled in any month, exceeding the previous high record of November 1923 by 4.7 per cent and the November 1926 figure by 8.1 per cent. The heavy grain movement was the big factor in this record traffic but the low average receipts per ton mile produced an increase in freight revenues of only \$144,865, or .4 per cent, and gross revenues were heavier than in 1926 by only \$333,192, or .7 per cent.

Operating expenses were increased by \$1,774,155, or 5.3 per cent which reduced the net operating revenues by \$1,440,963. The total pay roll was heavier than for November last year by \$1,542,001, or 7.5 per cent for practically no increase in the average number of employees. Both gross and net tons per train mile were heavier than in 1926, but, due to reduction in the average receipts, the earnings per train mile were less by 29 cents.

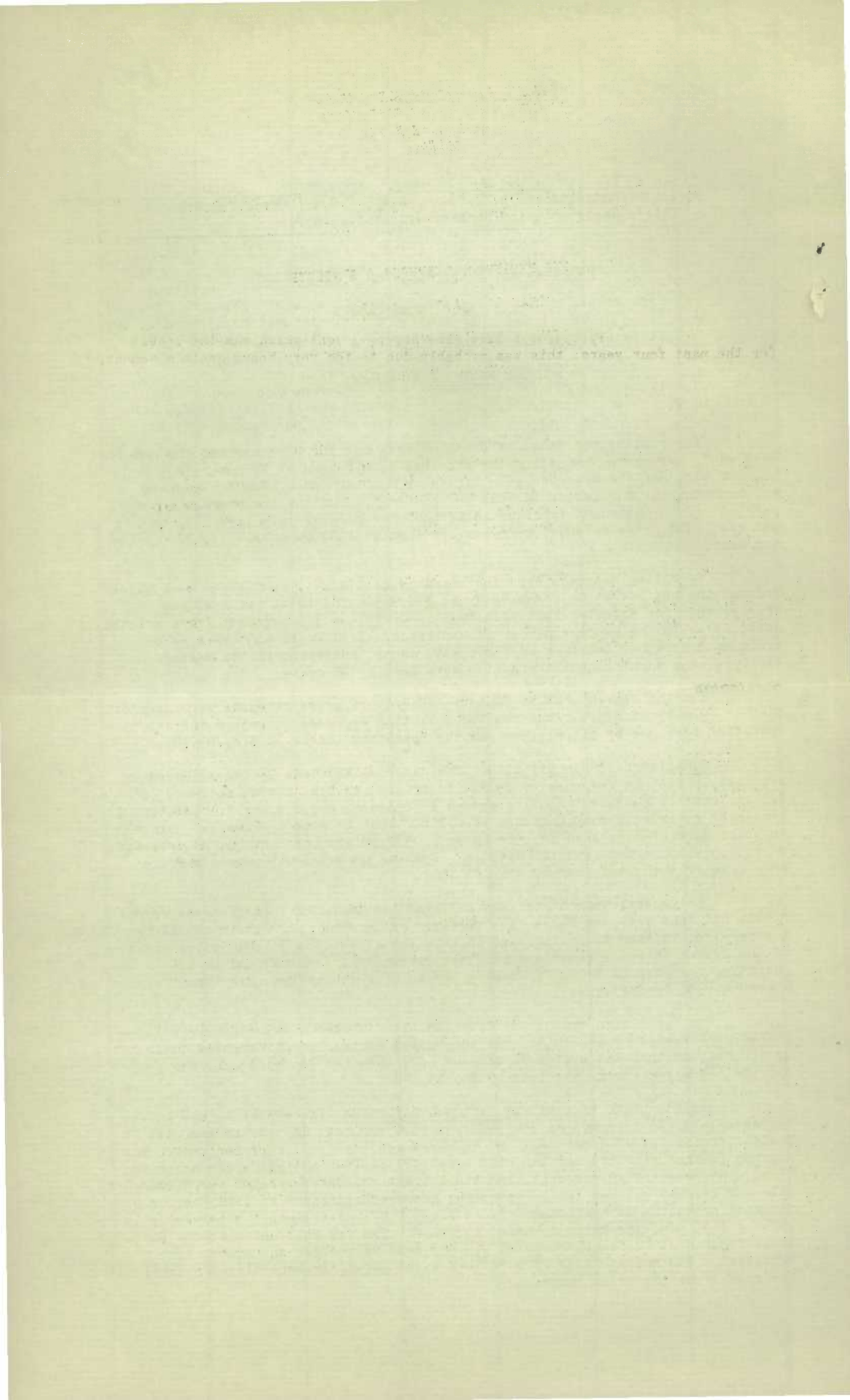
For the eleven months, January - November, gross revenues were greater than in 1926 by \$4,233,446 but heavier operating expenses decreased the net operating revenues by \$11,913,556 and the operating income by \$12,769,199.

CANADIAN NATIONAL RAILWAYS- The Canadian National Railways showed an increase in freight revenues of \$528,201, or 3.3 per cent for an increase of 8.8 per cent in revenue ten miles and an increase of \$69,665, or 3.1 per cent in passenger revenues for an increase of 6.2 per cent in passenger miles. Gross revenues were greater than in 1926 by \$635,057, or 3.2 per cent but an increase of \$553,554, or 4 per cent in operating expenses produced net revenues which were greater than last year by only \$81,503.

The Central Vermont railway suffered considerable loss from the recent floods and went into the hands of a receiver on December 12. Their report was not received in time to be included in this report but the United States lines of the system showed a reduction in gross revenues of \$436,679 and in net operating revenues of \$495,428, making the net for the system less than for November 1926 by \$413,924.

For the eleven months the Canadian lines showed a reduction in net operating revenues of \$4,286,307 but the United States lines increased their net by \$70,460, so that the system figure was less than in 1926 by \$4,215,846 and the operating income was less by \$4,543,842.

EASTERN LINES OF CANADIAN NATIONAL RAILWAYS- The eastern lines showed a decrease in gross revenues of \$343,486, or 16.6 per cent despite an increase in freight traffic of 13.3 per cent and in passenger traffic of 9.7 per cent. The average freight receipts per ton mile were .763 cent as against 1.074 cents in 1926, a decrease of 29 per cent, and the average passenger receipt per passenger mile was less by 6.8 per cent. Operating expenses increased by \$188,964, or 9 per cent, producing an operating deficit of \$372,871 as against a net revenue in 1926 of \$199,578, the decrease being \$572,450. The pay roll increased by \$147,006, or 10.8 per cent for an increase of 4.7 per cent in the average number of employees. The average tons of revenue freight per train were slightly less, but the gross tons per train increased.

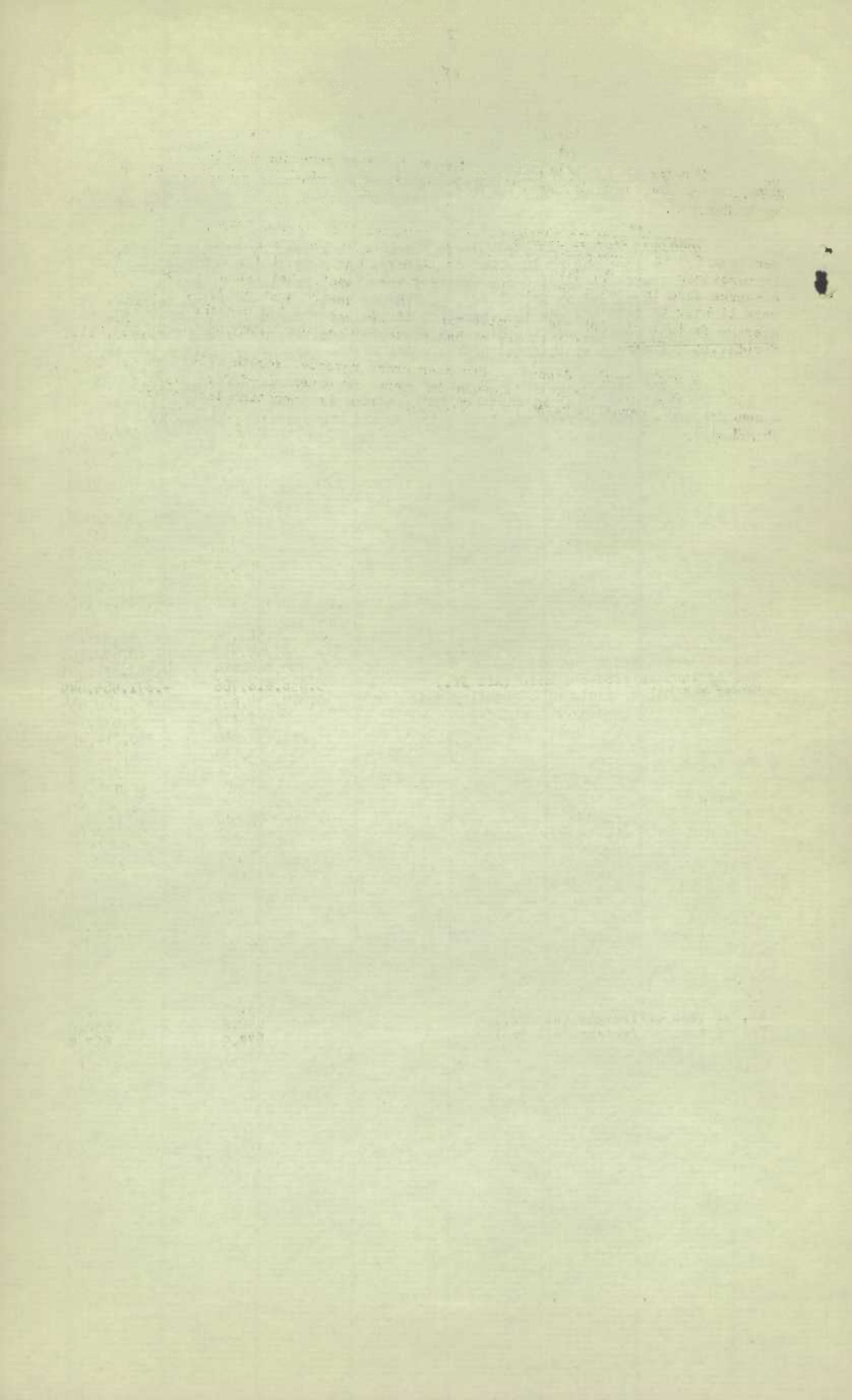


For the five months, July - November, gross revenues declined by \$886,149 and the operating deficit increased from \$1,549,793 to \$2,843,945, or by \$1,294,152.

CANADIAN PACIFIC RAILWAY- Gross revenues increased by \$490,518, or 2.3 per cent for an increase of 10.4 per cent in freight traffic and 6.4 per cent in passenger traffic. Maintenance expenses were heavy and total operating expenses were increased by \$1,061,127, or 7.5 per cent. Net operating revenues were lighter by \$570,608 and the operating income was reduced by \$373,929. The average freight receipt per ton mile was only .743 cent which was the lowest for the past four years; this was probably due to the very heavy grain movement.

For the period January - November gross revenues were heavier than in 1926 by \$3,114,821, but an increase in operating expenses of \$7,854,511 reduced the net operating revenues by \$4,739,699 and the operating income by \$5,486,539.

31/1/28/GA



OPERATING REVENUES, EXPENSES & STATISTICS
STEAM RAILWAYS OF CANADA
WITH ANNUAL OPERATING REVENUES OF \$500,000
For the Month of November, 1927

	1927	1926
<u>OPERATING REVENUES</u>		
Freight	\$38,714,301.27	\$38,569,435.42
Passenger	6,283,037.01	6,050,524.86
Mail	646,394.93	603,903.69
Express	1,732,391.53	1,887,217.78
Other freight train	3,963.13	2,113.49
Other passenger train	530,771.73	531,527.70
Water Line	290,848.35	287,022.05
All other	1,401,196.00	1,337,966.75
Total railway operating revenues	49,602,903.95	49,269,711.74
<u>OPERATING EXPENSES</u>		
Maintenance of way and structures	\$6,171,234.41	\$5,673,401.73
Maintenance of equipment	8,179,963.87	8,325,213.73
Traffic	1,472,612.54	1,379,242.66
Transportation	18,341,214.41	17,124,782.17
Miscellaneous	405,056.22	384,965.70
General	1,012,435.93	967,156.78
Trans. for investment	77,219.27	123,620.38
Total railway operating expenses	35,505,298.11	33,731,142.39
<u>OPERATING INCOME</u>		
Net operating revenue	\$14,097,605.84	\$15,538,569.35
Railway tax accruals	993,081.20	1,275,515.05
Uncollectable revenues	5,121.69	465.63
Hire of equipment	Dr. 140,804.54	Dr. 194,642.95
Joint facilities rents	Cr. 164.55	Cr. 17,315.60
Operating income	12,958,762.96	14,085,261.32
<u>OPERATING STATISTICS</u>		
Average miles of road operated	39,522.98	39,317.16
No. of tons carried (Rev. Fr.)	12,205,537	12,602,191
No. of tons carried one mile " "	4,786,263,834	4,427,631,307
No. of tons carried one mile (All Fr.)	5,056,818,766	4,671,965,649
Gross ton miles, excl. of locomotive & tender	10,620,791,673	9,899,140,554
No. of revenue passengers carried	2,917,379	3,035,746
No. of revenue passengers carried one mile	233,436,286	220,014,419
# Freight train miles	7,452,639	6,996,284
# Passenger train miles	3,843,371	3,825,974
Total Train miles (Rev. & Non Rev.)	11,515,287	11,023,840
Freight car miles-loaded	168,833,472	162,665,981
Freight car miles-empty	104,057,084	93,123,493
Passenger train car miles	28,045,762	27,485,684
Total amount of pay roll	\$22,121,546.48	\$20,579,545.43
Number of employees	160,910	160,608
<u>DAILY AVERAGES PER MILE OF ROAD OPERATED</u>		
Operating revenue	\$41.83	\$41.77
Operating expenses	\$29.94	\$28.60
No. of tons moved one mile (Rev. Fr.)	4,037	3,754
No. of tons moved one mile (All Fr.)	4,265	3,961
No. of rev. pass. carried one mile	197	187
<u>#AVERAGES PER FREIGHT TRAIN MILE</u>		
Freight revenue	\$5.20	\$5.51
No. of tons of freight (Rev. Fr.)	642.2	632.9
No. of tons of freight (All Fr.)	678.5	667.8
Gross ton miles	1425.1	1414.9
Loaded freight cars	22.7	23.2
Empty freight cars	14.0	13.3
<u>#AVERAGES PER PASSENGER TRAIN MILE</u>		
Passenger train revenues	\$2.39	\$2.37
Passengers carried	60.7	57.5
Passenger cars	7.3	7.2
Average operating expenses per train mile	\$3.08	\$3.06
Average length of haul (Rev. Fr.) Miles	392.1	351.3
Average passenger journey Miles	80.0	72.5
Average tons per loaded freight car mile	30.0	28.7
Av. freight receipt per rev. ton mile	.809¢	.871¢
Av. passenger receipt per passenger per mile	2.692¢	2.750¢
Ratio of pay roll to operating revenues	44.6%	41.8%
Ratio of operating expenses to revenues	71.58%	68.46%

Contains a proportion of mixed train miles.

THE UNIVERSITY OF CHICAGO
LIBRARY

1911

MAINTENANCE OF WAY AND STRUCTURES

MAINTENANCE OF WAY AND STRUCTURES

MAINTENANCE OF WAY AND STRUCTURES

MAINTENANCE OF WAY AND STRUCTURES

MAINTENANCE OF WAY AND STRUCTURES

MAINTENANCE OF WAY AND STRUCTURES

MAINTENANCE OF WAY AND STRUCTURES

MAINTENANCE OF WAY AND STRUCTURES

OPERATING REVENUES, EXPENSES & STATISTICS

EASTERN LINES

CANADIAN NATIONAL RAILWAYS

For the month of November, 1927

	1927	1926
<u>OPERATING REVENUES</u>		
Freight	\$1,259,855.00	\$1,645,936.00
Passenger	349,764.00	341,926.00
Mail	72,613.00	68,553.62
Express	133,185.17	157,487.79
Other freight train	--	--
Other passenger train	36,582.08	33,721.24
Water line	--	--
All other	70,881.75	58,742.35
Total railway operating revenues	1,922,881.00	2,306,367.00
<u>OPERATING EXPENSES</u>		
Maintenance of way and structures	\$ 453,353.58	\$ 356,433.50
Maintenance of equipment	385,943.14	403,914.65
Traffic	63,132.41	58,171.48
Transportation	1,238,291.07	1,165,555.21
Miscellaneous operations	28,521.42	26,028.20
General	133,802.49	98,299.50
Trans. for investment	Cr. 7,291.66	Cr. 1,614.32
Total railway operating expenses	2,295,752.45	2,106,788.22
<u>OPERATING INCOME</u>		
Net operating revenue	Dr. \$372,871.45	199,578.78
Railway tax accruals	21,359.08	82,897.90
Uncollectable revenues	22.50	115.94
Hire of equipment	Dr. 13,903.86	Dr. 13,189.93
Joint facilities rents	Dr. 558.76	Dr. 1,541.22
Operating income	Dr. 408,715.65	101,833.79
<u>OPERATING STATISTICS</u>		
Average miles of road operated	3,107.99	3,108.97
No. of tons carried (Rev.Fr.)	539,499	561,193
No. of tons carried one mile " "	165,173,798	153,235,335
No. of tons carried one mile (All Fr.)	186,116,356	164,305,376
Gross ton miles, excl. of locomotive & tender	404,289,023	369,309,213
No. of revenue pass. carried	252,795	258,846
No. of revenue pass. carried one mile	17,009,547	15,502,098
# Freight train miles	384,023	352,269
# Passenger train miles	303,072	292,193
Total train miles (Rev. & Non Rev.)	703,158	658,865
Freight car miles-loaded	7,700,751	7,244,143
Freight car miles-empty	2,402,144	2,258,975
Passenger train car miles	1,969,521	1,919,062
Total amount of pay roll	\$1,506,915	\$1,359,909
Number of employees	12,163	11,620
<u>DAILY AVERAGES PER MILE OF ROAD OPERATED</u>		
Operating revenue	\$20.62	\$24.73
Operating expenses	\$24.62	\$22.59
No. of tons moved one mile (Rev.Fr.)	1,771	1,643
No. of tons moved one mile (All Fr.)	1,996	1,762
No. of revenue passengers carried one mile	182	166
<u>#AVERAGES PER FREIGHT TRAIN MILE</u>		
Freight revenue	\$3.28	\$4.67
No. of tons of freight (Rev.Fr.)	430.1	435.0
No. of tons of freight (All Fr.)	484.6	466.4
Gross ton miles	1052.8	1048.4
Loaded freight cars	20.1	20.6
Empty freight cars	6.3	6.4
<u>#AVERAGES PER PASSENGER TRAIN MILE</u>		
Passenger train revenues	\$1.95	\$2.06
Passengers carried	56.1	53.1
Passenger cars	6.5	6.6
Average operating expenses per train mile	\$3.26	\$3.20
Average length of haul (Rev.Fr.) Miles	306.2	273.1
Average passenger journey Miles	67.3	59.9
Average tons per loaded freight car mile	24.2	22.7
Av. freight receipt per rev. ton mile	.763¢	1.074¢
Av. passenger receipt per pass. per mile	2.056¢	2.206¢
Ratio of pay roll to operating revenues	78.4%	59.0%
Ratio of operating expenses to revenues	119.39%	91.35%

Contains a proportion of mixed train miles.

OPERATING REVENUES, EXPENSES & STATISTICS

CANADIAN NATIONAL RAILWAYS

For the month of November, 1927

	1927	1926
<u>OPERATING REVENUES</u>		
Freight	\$16,465,468.58	\$15,937,267.03
Passenger	2,320,043.76	2,250,377.99
Mail	214,208.88	197,375.51
Express	932,127.09	963,824.94
Other freight train	--	--
Other passenger train	178,743.82	200,407.55
Water line	--	--
All other	552,497.88	478,779.42
Total railway operating revenues	20,663,090.01	20,028,032.44
<u>OPERATING EXPENSES</u>		
Maintenance of way and structures	\$2,260,678.38	\$2,170,266.03
Maintenance of equipment	3,199,573.71	3,520,010.26
Traffic	461,124.80	411,590.21
Transportation	8,045,038.99	7,377,021.55
Miscellaneous operations	154,062.08	133,948.27
General	426,990.97	433,937.92
Transportation for investment	Cr. 65,016.90	Cr. 117,876.25
Total railway operating expenses	14,482,452.03	13,928,897.99
<u>OPERATING INCOME</u>		
Net operating revenue	\$6,180,637.98	\$6,099,134.45
Railway tax accruals	240,980.00	230,487.21
Uncollectable revenues	4,070.63	249.28
Hire of equipment	Dr. 16,329.72	Dr. 62,361.54
Joint facilities rents	Cr. 17,613.48	Cr. 28,844.13
Operating income	5,936,871.11	5,834,880.55
<u>OPERATING STATISTICS</u>		
Average miles of road operated	17,753.64	17,690.40
No. of tons carried (Rev.Fr.)	4,649,352	4,562,498
No. of tons carried one mile " "	2,025,149,159	1,860,906,211
No. of tons carried one mile (All Fr.)	2,145,443,674	1,967,905,466
Gross ton miles, excl. of locomotive & tender	4,577,548,496	4,224,758,282
No. of revenue passengers carried	1,247,608	1,355,740
No. of revenue pass. carried one mile	89,888,390	84,611,726
# Freight train miles	3,066,629	2,855,494
# Passenger train miles	1,539,846	1,524,595
Total train miles (Rev. & Non Rev.)	4,722,699	4,508,878
Freight car miles-loaded	72,557,762	69,832,016
Freight car miles-empty	46,847,555	40,695,449
Passenger train car miles	10,711,045	10,644,854
Total amount of pay roll	\$ 10,287,433	\$ 9,703,260
Number of employees	74,700	77,132
<u>DAILY AVERAGES PER MILE OF ROAD OPERATED</u>		
Operating revenue	\$38.80	\$37.74
Operating expenses	\$27.19	\$26.25
No. of tons moved one mile (Rev.Fr.)	3,802	3,506
No. of tons moved one mile (All Fr.)	4,028	3,708
No. of revenue passengers carried one mile	169	159
<u>#AVERAGES PER FREIGHT TRAIN MILE</u>		
Freight revenue	\$5.37	\$5.58
No. of tons of freight (Rev.Fr.)	660.4	651.7
No. of tons of freight (All Fr.)	699.6	689.2
Gross ton miles	1492.7	1479.5
Loaded freight cars	23.7	24.5
Empty freight cars	15.3	14.3
<u>#AVERAGES PER PASSENGER TRAIN MILE</u>		
Passenger train revenues	\$2.37	\$2.37
Passengers carried	58.4	55.5
Passenger cars	7.0	7.0
Average operating expenses per train mile	\$3.07	\$3.09
Average length of haul (Rev.Fr.) Miles	435.6	407.9
Average passenger journey Miles	72.0	62.4
Average tons per loaded freight car mile	29.6	28.2
Av. freight receipt per rev. ton mile	.813¢	.856¢
Av. passenger receipt per passenger per mile	2.581¢	2.660¢
Ratio of pay roll to operating revenues	49.8%	48.4%
Ratio of operating expenses to revenues	70.09%	69.55%

Contains a proportion of mixed train miles.

THE
OFFICE OF THE
SECRETARY OF THE
NAVY

1. The Secretary of the Navy is the principal officer of the Department of the Navy, and is responsible for the management and control of the naval forces of the United States.

2. The Secretary of the Navy is appointed by the President, and holds office during the pleasure of the President.

3. The Secretary of the Navy is the head of the Department of the Navy, and is responsible for the management and control of the naval forces of the United States.

4. The Secretary of the Navy is the head of the Department of the Navy, and is responsible for the management and control of the naval forces of the United States.

5. The Secretary of the Navy is the head of the Department of the Navy, and is responsible for the management and control of the naval forces of the United States.

6. The Secretary of the Navy is the head of the Department of the Navy, and is responsible for the management and control of the naval forces of the United States.

7. The Secretary of the Navy is the head of the Department of the Navy, and is responsible for the management and control of the naval forces of the United States.

8. The Secretary of the Navy is the head of the Department of the Navy, and is responsible for the management and control of the naval forces of the United States.

9. The Secretary of the Navy is the head of the Department of the Navy, and is responsible for the management and control of the naval forces of the United States.

10. The Secretary of the Navy is the head of the Department of the Navy, and is responsible for the management and control of the naval forces of the United States.

11. The Secretary of the Navy is the head of the Department of the Navy, and is responsible for the management and control of the naval forces of the United States.

12. The Secretary of the Navy is the head of the Department of the Navy, and is responsible for the management and control of the naval forces of the United States.

13. The Secretary of the Navy is the head of the Department of the Navy, and is responsible for the management and control of the naval forces of the United States.

14. The Secretary of the Navy is the head of the Department of the Navy, and is responsible for the management and control of the naval forces of the United States.

15. The Secretary of the Navy is the head of the Department of the Navy, and is responsible for the management and control of the naval forces of the United States.

16. The Secretary of the Navy is the head of the Department of the Navy, and is responsible for the management and control of the naval forces of the United States.

17. The Secretary of the Navy is the head of the Department of the Navy, and is responsible for the management and control of the naval forces of the United States.

18. The Secretary of the Navy is the head of the Department of the Navy, and is responsible for the management and control of the naval forces of the United States.

19. The Secretary of the Navy is the head of the Department of the Navy, and is responsible for the management and control of the naval forces of the United States.

20. The Secretary of the Navy is the head of the Department of the Navy, and is responsible for the management and control of the naval forces of the United States.

OPERATING REVENUES, EXPENSES & STATISTICS

CANADIAN PACIFIC RAILWAY

For the month of November, 1927

	1927	1926
<u>OPERATING REVENUES</u>		
Freight	\$17,246,853.91	\$16,967,373.97
Passenger	2,838,990.71	2,666,828.42
Mail	310,579.59	289,185.66
Express	441,046.65	442,205.58
Other freight train	3,316.66	1,383.48
Other passenger train	284,041.07	268,078.13
Water line	228,223.84	232,137.27
All other	622,460.91	617,802.01
Total railway operating revenues	21,975,513.34	21,484,994.52
<u>OPERATING EXPENSES</u>		
Maintenance of way and structures	\$2,762,926.39	\$2,351,798.01
Maintenance of equipment	3,711,242.60	3,581,903.38
Traffic	861,430.76	828,718.00
Transportation	7,394,369.42	6,923,729.90
Miscellaneous operations	172,467.92	177,171.79
General	274,635.31	252,623.52
Trans. for investment	--	--
Total railway operating expenses	15,177,072.40	14,115,944.60
<u>OPERATING INCOME</u>		
Net operating revenue	\$6,798,440.94	\$7,369,049.92
Railway tax accruals	598,313.68	821,253.60
Uncollectable revenues	--	--
Hire of equipment	Cr. 149,484.76	Cr. 162,258.35
Joint facilities rents	Cr. 26,181.69	Cr. 39,668.05
Operating income	6,375,793.71	6,749,722.72
<u>OPERATING STATISTICS</u>		
Average miles of road operated	14,181.7	14,004.5
No. of tons carried (Rev. Fr.)	4,115,520	4,205,270
No. of tons carried one mile " "	2,322,026,698	2,103,270,488
No. of tons carried one mile (All Fr.)	2,444,956,478	2,222,116,704
Gross ton miles, excl. of locomotive & tender	4,873,678,852	4,513,315,567
No. of revenue passengers carried	1,036,510	1,016,513
No. of revenue pass. carried one mile	100,664,061	94,592,710
#Freight train miles	3,394,528	3,148,315
#Passenger train miles	1,522,335	1,519,488
Total train miles (Rev. & Non Rev.)	4,978,223	4,705,833
Freight car miles-loaded	74,236,377	70,202,655
Freight car miles-empty	45,951,292	41,912,170
Passenger train car miles	11,695,390	11,337,596
Total amount of pay roll	\$8,555,130.26	\$7,817,347.46
Number of employees	60,994	58,448
<u>DAILY AVERAGES PER MILE OF ROAD OPERATED</u>		
Operating revenue	\$51.65	\$51.14
Operating expenses	\$35.67	\$33.60
No. of tons moved one mile (Rev. Fr.)	5,458	5,006
No. of tons moved one mile (All Fr.)	5,747	5,289
No. of rev. passengers carried one mile	237	225
<u>#AVERAGES PER FREIGHT TRAIN MILE</u>		
Freight revenue	\$5.08	\$5.39
No. of tons of freight (Rev. Fr.)	684.0	668.1
No. of tons of freight (All Fr.)	720.3	705.8
Gross ton miles	1435.7	1433.6
Loaded freight cars	21.9	22.3
Empty freight cars	13.5	13.3
<u>#AVERAGES PER PASSENGER TRAIN MILE</u>		
Passenger train revenues	\$2.55	\$2.41
Passengers carried	66.1	62.3
Passenger cars	7.7	7.5
Average operating expenses per train mile	\$ 3.05	\$3.00
Average length of haul (Rev. Fr.) Miles	564.2	500.2
Average passenger journey Miles	97.1	93.2
Average tons per loaded freight car mile	32.9	31.7
Av. freight receipt per rev. ton mile	.743¢	.807¢
Av. passenger receipt per passenger per mile	2.820¢	2.819¢
Ratio of pay roll to operating revenues	38.9%	36.4%
Ratio of operating expenses to revenues	79.07%	65.70%

Contains a proportion of mixed train miles.

RECEIVED
JAN 10 1964

100-100000

100-100000

100-100000

100-100000

100-100000

100-100000

100-100000

100-100000

100-100000

100-100000

100-100000

100-100000

100-100000

100-100000

100-100000

100-100000

100-100000

100-100000

100-100000

100-100000

100-100000

100-100000

100-100000

100-100000

100-100000

100-100000

100-100000

100-100000

100-100000

100-100000

100-100000

100-100000

100-100000

100-100000

100-100000

100-100000

100-100000

100-100000

100-100000

100-100000

100-100000

100-100000

100-100000

100-100000

100-100000

100-100000

100-100000

100-100000

100-100000

100-100000

100-100000

100-100000

100-100000

100-100000

100-100000

100-100000

100-100000

100-100000

7
CANADIAN NATIONAL SYSTEM
(Steam Lines in Canada and United States)
For the month of November, 1927.

OPERATING REVENUES

	<u>1927</u>	<u>1926</u>
Canadian Lines	\$20,663,090.01	\$20,028,032.44
Duluth, Winnipeg & Pacific	207,096.00	213,267.00
Grand Trunk Western Lines	2,601,332.00	3,066,121.00
New England Lines	228,446.99	194,166.56
Total	<u>23,699,965.00</u>	<u>23,501,587.00</u>

OPERATING EXPENSES

Canadian Lines	\$14,482,452.03	\$13,928,897.99
Duluth, Winnipeg & Pacific	167,099.37	166,502.14
Grand Trunk Western Lines	2,000,833.87	1,999,384.31
New England Lines	272,247.56	215,545.70
Total	<u>16,922,632.83</u>	<u>16,310,330.14</u>

NET OPERATING REVENUE

Canadian Lines	\$6,180,637.98	\$6,099,134.45
Duluth, Winnipeg & Pacific	39,996.63	46,764.86
Grand Trunk Western Lines	600,498.13	1,066,736.69
New England Lines	Dr. 43,800.57	Dr. 21,379.14
Total	<u>6,777,332.17</u>	<u>7,191,256.86</u>

OPERATING INCOME

Canadian Lines	\$5,936,871.11	\$5,834,880.55
Duluth, Winnipeg & Pacific	31,705.10	37,128.60
Grand Trunk Western Lines	184,333.10	565,871.31
New England Lines	Dr. 104,528.82	Dr. 80,722.49
Total	<u>6,048,380.49</u>	<u>6,357,157.97</u>

S U M M A R Y

Eleven Months ended November 30th

	<u>1927</u>	<u>1926</u>
--	-------------	-------------

ALL RAILWAYS

Operating Revenues	\$449,128,873.64	\$444,895,427.54
Operating Expenses	365,692,935.93	349,545,933.11
Net Operating Revenue	83,435,937.71	95,349,494.43
Operating Income	74,677,566.46	87,446,765.93

CANADIAN NATIONAL RAILWAYS

Operating Revenue - Canadian Lines	\$197,208,738.65	\$194,740,892.33
Central Vermont & U.S. Lines	46,199,657.35	45,472,276.37
Total	<u>243,408,396.00</u>	<u>240,213,168.70</u>
Operating Expenses-Canadian Lines	169,018,400.39	162,264,246.54
Central Vermont & U.S. Lines	34,271,065.60	33,614,145.47
Total	<u>203,289,465.99</u>	<u>195,878,392.01</u>
Net Operating Revenues - Canadian Lines	28,190,338.26	32,476,645.79
Central Vermont & U.S. Lines	11,928,591.75	11,858,130.90
Total	<u>40,118,930.01</u>	<u>44,334,776.69</u>
Operating Income - Canadian Lines	26,371,948.39	31,275,024.52
Central Vermont & U.S. Lines	6,157,593.12	5,798,359.07
Total	<u>32,529,541.51</u>	<u>37,073,383.59</u>

CANADIAN PACIFIC RAILWAY

Operating Revenues	\$183,108,175.63	\$179,993,353.71
Operating Expenses	143,044,015.78	135,189,494.24
Net Operating Revenue	40,064,159.85	44,803,859.47
Operating Income	37,842,404.74	43,328,944.06

EASTERN LINES

CANADIAN NATIONAL RAILWAYS

Five Months Ended November, 1927 & 1926

Operating Revenues	\$9,531,503.00	\$10,417,652.00
Operating Expenses	12,375,448.65	11,967,445.76
Net Operating Revenue	Dr. 2,843,945.65	Dr. 1,549,793.76
Operating Income	Dr. 2,937,403.18	Dr. 1,908,294.92

STATISTICS CANADA LIBRARY
BIBLIOTHÈQUE STATISTIQUE CANADA



1010553442